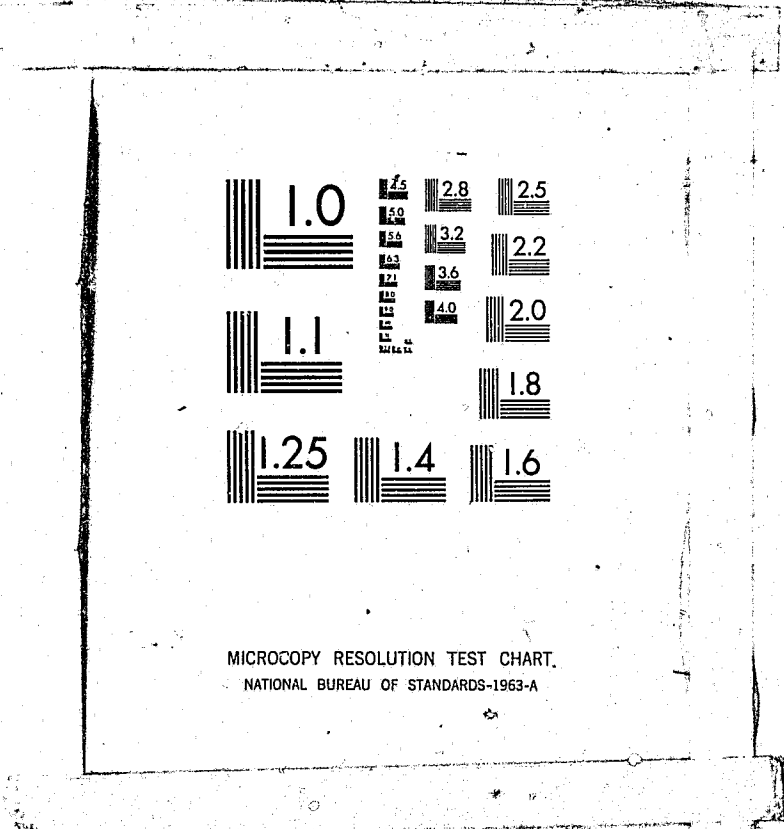


National Criminal Justice Reference Service



This microfiche was produced from documents received for inclusion in the NCJRS data base. Since NCJRS cannot exercise control over the physical condition of the documents submitted, the individual frame quality will vary. The resolution chart on this frame may be used to evaluate the document quality.



MICROCOPY RESOLUTION TEST CHART
NATIONAL BUREAU OF STANDARDS-1963-A

Microfilming procedures used to create this fiche comply with the standards set forth in 41CFR 101-11.504.

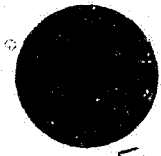
Points of view or opinions stated in this document are those of the author(s) and do not represent the official position or policies of the U. S. Department of Justice.

National Institute of Justice
United States Department of Justice
Washington, D. C. 20531

DATE FILMED
12/28/81

79509

1979 YEARLY STATISTICAL REPORT
OF THE FURLOUGH PROGRAM



MF
I

U.S. Department of Justice
National Institute of Justice

This document has been reproduced exactly as received from the person or organization originating it. Points of view or opinions stated in this document are those of the authors and do not necessarily represent the official position or policies of the National Institute of Justice.

Permission to reproduce this copyrighted material has been granted by
MA Department of Corrections/Daniel
P. LeClair

to the National Criminal Justice Reference Service (NCJRS).

Further reproduction outside of the NCJRS system requires permission of the copyright owner.

Prepared by:

Lawrence T. Williams
Research Specialist

Massachusetts Department of Correction

Louis M. Berman
Interim Commissioner

October, 1980

PUBLICATION #12137

Approved by John Manton, Acting State Purchasing Agent

NCJRS

JUN 18 1981

ACQUISITIONS

ABSTRACT

The furlough program has been in operation by the Massachusetts Department of Correction since November 6, 1972. A total of 58,665 furloughs were granted between the inception of the program and December 31, 1979. During that period, 515 of those furloughs resulted in escapes (a resident failing to return to his correctional facility within two hours of his/her designated time), thus yielding an overall escape rate of 0.9%. The present report contains a statistical description of the furlough program for the year 1979 as well as a trend analysis of the program since its inception in 1972.

An analysis of available statistics indicates that although the number of furloughs granted over the years has fluctuated, the escape rate has decreased from 1.9% in 1973 to 0.4% in 1978. There was an 11% decrease in the number of furloughs in 1979 as compared to 1978. This report also presents frequencies and escape rates of background characteristics for each furlough granted during 1979 as well as nature of present offense variables, personal background variables, criminal history variables, and furlough variables.

79509

TABLE OF CONTENTS

TITLE	PAGE NUMBER
I. Abstract	i
II. Introduction	1
III. Section I - Statistical Fact Sheet on the Massachusetts Furlough Program - 1979	2
IV. Section II - Overview	6
V. Table I - Summary Furlough Statistics for the Years 1972 to 1979	8
VI. Table II - Comparative Furlough Statistics by Institution for the Years 1973-1975	9
VII. Table III - Comparative Furlough Statistics by Institution for the Years 1976 - 1979	10
VIII. Table IV - Number of Individuals Furloughed Monthly in Proportion to the Average Population 1979	12
IX. Section III - Escape Rates of Background Characteristics of the Furlough Program - 1979	13
X. Footnotes	31

INTRODUCTION

This report is a statistical description of the Massachusetts Department of Correction Furlough Program for the year 1979. Included is some information on trends for the program from its inception in 1972 until the end of 1979.

The report is divided into three sections. The first section gives an overview of pertinent furlough statistics both since the inception of the program and for 1979; the number of furloughs granted; the number of individuals furloughed; escape rates, trends in furlough statistics; and the effect of furlough participation on recidivism rates. Section II provides a brief overview of the Massachusetts Department of Correction Furlough Program. Comparisons of furlough characteristics over the past seven years are discussed. The last section contains escape rates on background characteristics, present offense variables, criminal history variables, and furlough variables. The figures in the tables represent number of furloughs, not numbers of individuals; therefore, an individual may be counted more than once if he/she has had more than one furlough during 1979.

The data for the tables in this report were derived from the computerized data base developed by the Correction and Parole Management Information System (CAPMIS) and were produced on the Massachusetts State College Computer Network (MSCCN).

SECTION I
STATISTICAL FACT SHEET ON THE MASSACHUSETTS FURLOUGH PROGRAM-1979

STATISTICAL FACT SHEET ON THE MASSACHUSETTS
DEPARTMENT OF CORRECTION FURLOUGH PROGRAM-1979

Proportion of the Population Participating in Furlough Program

On January 1, 1980, the Department of Correction had in its custody 2,754 residents. Of that number, 760 had received one or more furloughs (28%). The remaining 72% did not participate in the furlough program. This excludes these individuals awaiting booking in the system.

Overall Statistics

Between the inception of the furlough program in Massachusetts on November 6, 1972, and December 31, 1979, a total of 58,665 furloughs have been granted. The number of individuals furloughed within this time span is 10,951. Thus, the average number of furloughs per resident is approximately 5.

1979 Statistics

From January 1, 1979 to December 31, 1979, a total of 8,040 furloughs were granted. The number of individuals furloughed in 1979 was 1,232. The average number of furloughs per resident was approximately 7.

Escape Rate by Furlough Since Inception of Program

Out of the 58,665 furloughs granted, 515 have resulted in escapes, for an overall furlough escape rate of 0.9%.

When a comparison is made of escape rates on a yearly basis, the results are as follows: for 1973, the escape rate was 1.9%; for 1974, 1.5%; for 1975, 1.0%; for 1976 and 1977, 0.5%; for 1978, 0.4%; and for 1979, 0.5%.

Escape Rate by Individuals Furloughed Since Inception of the Program

Of the 10,951 individuals furloughed, 515 have been declared escaped at least once. The escape rate by individual furloughed, then is 4.7%.

Escape Rate by Individuals Furloughed in 1979

Of the 1,232 individuals furloughed in 1979, 38 have been declared on escape status. The escape rate by individual furloughed is 3.0%. There were 164 cases which were classified as technical escapes. These 164 cases involved 128 individuals. These individuals all voluntarily returned within two hours of their return time. Thirty-six individuals had been placed on escaped status and voluntarily returned within the two hour period more than once during 1979.

Escapees at Large

As of December 31, 1979, 467 or 91% of the total escapees had voluntarily returned or had been returned to the custody of the Department of Correction. The remaining 48, or 9% remained at large.

Trends in the Number of Individuals Furloughed

Since the inception of the furlough program, the number of individuals furloughed per year has decreased significantly. From 1973 to 1979, the number of residents furloughed decreased from 1868 to 1232 - a decline of 34%.

The escape rate by individuals furloughed has also decreased within the same time span. In 1973, the escape rate by individual was 7.2%, and 1979, 3.1%.

Effect of Furlough Program on Recidivism

Departmental research on recidivism for the years 1973 through 1977 indicates that individuals who had experienced one or more furloughs prior to release had significantly lower rates of recidivism than those individuals released without having a furlough.

For example, in 1973, the recidivism rate for residents released without a furlough was 25%, while the recidivism rate for individuals having received a furlough was 17%. Similarly, in 1977 those individuals without a furlough had a recidivism rate of 23% whereas those with a furlough had a recidivism rate of only 9%.

SECTION II
OVERVIEW

SECTION I: OVERVIEW

The furlough program for residents of Massachusetts Correctional facilities has been operating since November 6, 1972. Between that time and December 31, 1979, a total of 58,665 furloughs have been granted. In 515 cases, individuals have failed to return to their respective correctional facility within two hours of their prescribed time of return. Thus, since the inception of the program there is an overall escape rate of 0.9%.¹

Table I is a summary of furlough statistics for the years 1972 to 1979. For each of these years, information regarding the number of furloughs, the number of individuals furloughed, the number of escapes and corresponding escape rates is presented. The escape rates by furlough have decreased from 1973 to 1979 and range from 1.9% to 0.4%. Similarly, the escape rates by individuals have also decreased. There was an 11% of decrease in the number of furloughs in 1979 as compared to 1978.

There were 164 cases during the year 1979 that were classified as technical escapes. These 164 cases involved 128 individuals. Each of these 128 individuals voluntarily returned within two hours of their return time. Of the 128, 36 had been placed on this technical escape status more than once and had voluntarily returned to custody within the two hour period.

TABLE I
SUMMARY FURLOUGH STATISTICS FOR THE YEARS 1972 TO 1979

YEAR	NUMBER OF FURLOUGHS ²	INDIVIDUALS FURLOUGHED	NUMBER OF ESCAPES	ESCAPE RATE BY INDIVIDUAL ²	ESCAPE RATE BY FURLOUGH
1972 ³	1182	793	8	1.0	0.7
1973	7195	1868	134	7.2	1.9
1974	8322	1668	127	7.6	1.5
1975	8680	1482	88	5.9	1.0
1976	7985	1305	40	3.1	0.5
1977	8199	1355	42	3.1	0.5
1978	9062	1248	38	3.0	0.4
1979	8040	1232	38	3.1	0.5
TOTAL	58665	10951	515	4.7	0.9

Table II and III gives furlough statistics by institution furloughed from for the years 1973-1975 and 1976-1979 respectively. The number of furloughs and the corresponding escape rates for each correctional institution is given. Although minor fluctuations have occurred at some institutions, the overall escape rates have been decreasing. There were not any escapes on furlough during 1979 from Walpole, Concord, Norfolk, Charlotte House, Brooke House, Norfolk Pre-Release, 699 House Drug Contract Houses, South Middlesex, Park Drive Pre-Release, Western Avenue Pre-Release, or Gardner.

TABLE II
COMPARATIVE FURLOUGH STATISTICS BY INSTITUTION FOR THE YEARS 1973-1975

INSTITUTIONS	1973		1974		1975	
	FURLOUGHS	ESCAPE RATE	FURLOUGHS	ESCAPE RATE	FURLOUGHS	ESCAPE RATES
Walpole	107	3.7	310	2.3	338	1.5
Concord	1254	3.5	923	4.2	812	3.3
Framlingham	562	1.6	741	0.9	805	1.0
Norfolk	1811	2.2	1466	2.2	1200	1.2
SECC	244	5.3	283	1.4	196	3.1
Monroe	342	0.6	306	2.3	274	1.8
Plymouth	451	1.1	4.6	1.0	500	1.6
Warwick	321	1.1	209	2.9	55	1.8
Boston State	1333	1.2	2061	0.3	1804	0.3
Shirley	709	0.6	494	2.4	715	1.3
Charlotte House	61	0.8	86	2.3	83	0.0
Roxbury	0	0.0	130	0.0	444	0.0
Brooke House	0	0.0	422	0.2	509	0.0
Coolidge House	0	0.0	471	0.0	583	0.0
Temporary Housing	0	0.0	0	0.0	1	0.0
RDC	0	0.0	0	0.0	2	0.0
Norfolk Pre-Release	0	0.0	4	0.0	96	0.0
699 House	0	0.0	0	0.0	138	0.0
BOSP/METAC	0	0.0	0	0.0	40	0.0
577 House	0	0.0	0	0.0	85	0.0
TOTAL	7195	1.9	8322	1.5	8680	1.0

Finally, the number of inmates furloughed per month in proportion to the average populations for each institution is presented in Table IV. Statewide, out of an average population of 2763, an average of 428 individuals receive a furlough during a course of a month. Thus results in an average proportion of 15.5% of the population being furloughed during the course of one month. This is 1.3 percentage points lower than that of last year.

TABLE III

COMPARATIVE FURLOUGH STATISTICS BY INSTITUTION FOR THE YEARS 1976-1979

INSTITUTIONS	1976		1977		1978		1979	
	FURLOUGHS	ESCAPE RATE	FURLOUGHS	ESCAPE RATE	FURLOUGHS	ESCAPE RATE	FURLOUGHS	ESCAPE RATE
Walpole	398	1.5	166	0.0	70	0.0	51	0.0
Concord	430	0.7	352	1.4	134	2.2	20	0.0
Framingham	642	0.5	775	1.0	788	0.3	676	0.9
Norfolk	741	0.7	560	0.2	238	0.0	223	0.0
SECC	165	0.6	233	1.7	210	1.4	232	0.9
Bay State	0	0.0	168	1.2	845	0.3	732	0.1
NECC	0	0.0	0	0.0	418	0.7	646	0.6
Monroe	233	3.4	223	2.7	52	7.7	0	0.0
Plymouth	385	0.8	413	0.2	398	0.0	400	0.2
Warwick	0	0.0	252	1.6	234	2.6	289	2.1
Boston State	1241	0.1	1073	0.2	1602	0.3	1279	0.3
Shirley	574	0.9	295	1.0	352	0.6	421	0.7
Charlotte House	126	0.8	103	0.0	97	0.0	108	0.0
Roxbury	80	0.0	0	0.0	0	0.0	0	0.0
Brooke House	578	0.0	272	0.0	419	0.0	283	0.0
Coolidge House	331	0.0	269	0.0	230	0.0	232	0.9
Temporary Housing	150	0.0	154	0.0	59	0.0	193	1.0
Norfolk Pre-Release	334	0.0	309	0.3	348	0.0	269	0.0
699 House	136	0.7	144	0.0	136	0.0	93	0.0
BOSP/METAC	203	0.5	220	0.0	148	0.0	0	0.0
Drug Rehabilitation	14	0.0	55	0.0	18	0.0	1	0.0
577 House	619	0.0	786	0.2	538	0.0	277	0.7
Middlesex P.R.	44	2.3	379	0.3	317	0.6	367	0.0
Lancaster	404	0.2	513	0.4	425	0.7	290	0.7
Medfield	157	0.0	264	0.0	257	0.0	232	1.3
Park Drive	0	0.0	221	0.0	460	0.0	588	0.0
Western Avenue P.R.	0	0.0	0	0.0	169	0.2	88	0.0
Gardner	0	0.0	0	0.0	0	0.0	50	0.0
TOTAL	7985	0.5	8199	0.5	9062	0.4	8040	0.5

TABLE IV

NUMBER OF INMATES FURLOUGHED MONTHLY
IN PROPORTION TO THE AVERAGE POPULATION - 1979

<u>INSTITUTION</u>	<u>AVERAGE POPULATION</u>	<u>AVERAGE NUMBER OF INDIVIDUALS FURLOUGHED PER MONTH</u>	<u>POPULATION PROPORTION RECEIVING FURLOUGHS</u>
Walpole	614	3	0.5
Concord	334	2	0.6
Framingham	113	39	34.5
Norfolk	740	17	2.3
S.E.C.C.	231	17	7.4
N.E.C.C.	134	53	39.6
Bay State C.C.	76	45	59.2
Gardner*	17	6	35.3
Plymouth	57	26	45.6
Warwick	42	18	42.9
Boston State	49	45	91.8
Shirley	80	29	36.3
Charlotte House	6	5	83.3
Brooke House	7	6	85.7
Norfolk Pre-Release	25	13	52.0
699 House	4	3	75.0
Drug Rehabilitation	15	0	0.0
577 House (DI/DOC)	7	7	**
S. Middlesex	32	17	53.1
Lancaster	29	16	55.2
Medfield	24	15	62.5
Park Drive	32	25	78.1
Coolidge/THP	9	9	**
Western Avenue P.R.*	17	12	70.6
Lemuel Shattuck	9	9	9.0
R.D.C.	58	0	0.0
Sharp*	2	0	0.0
TOTAL	2763	428	15.5

* These figures represent averages for months in which the facilities were in operation.

**The greater number of individuals furloughed at these institutions reflects a substantial population turnover at these facilities.

SECTION III

ESCAPE RATES OF BACKGROUND CHARACTERISTICS OF THE FURLOUGH PROGRAM 1979

Section III: Escape Rates by Background Characteristics of the Furlough Population

The tables which follow contain frequencies and escape rates of characteristics of individuals for each furlough granted during 1979. Information concerning an individual's present offense variables: Personal background characteristics, criminal history and furlough variables are presented. It is important to note that the figures in these tables refer to the number of furloughs, not the number of individuals furloughed; therefore, some individuals may be counted more than once if she/he has had more than one furlough during 1979.

In order to determine any significant relationships between the characteristics of the existing variables and their escape ratios, chi square statistics were computed. Significant relationships were found in the following variables: institution of commitment, known drug use, total number of court appearances, number of prior person offenses and property offenses, number of prior drug and escape offenses, number of prior juvenile incarcerations, any prior incarcerations, and age at first arrest.

Framingham commitments have a significantly higher escape rate (1.1%) than commitments to other institutions (0.4%) ($X^2=4.63, df=1, p<.05$). Those individuals who have some kind of drug use mentioned have a significantly higher escape rate (0.7%) than those who do not have any drug use mentioned (0.3%) ($X^2=4.99, df=1, p<.05$). Individuals with 12 or more prior court appearances have a rate of 0.9% compared to a rate of 0.3% for those with 11 or fewer appearances ($X^2=4.97, df=1, p<.05$). Individuals with 4 or more person offenses

have a significantly higher rate (0.7%) than those with 3 or fewer person offenses (0.3%) ($X^2=8.51, df=1, p<.05$), those with 6 or more property offenses (0.7%) have a higher rate than those with 5 or fewer prior property offenses (0.3%) ($X^2=5.19, df=1, p<.05$). Individuals without any prior drug offenses ($X^2=3.99, df=1, p<.05$), without any prior escape offenses ($X^2=9.40, df=1, p<.05$) without any prior juvenile incarcerations ($X^2=11.99, df=1, p<.05$), and with two or more prior incarcerations ($X^2=9.05, df=1, p<.05$) have a higher escape rate. Also, those individuals who were age 15 or younger at their age at first arrest had a higher rate (0.7%) than those whose age at first arrest was 16 or older (0.4%) ($X^2=5.36, df=1, p<.05$).

I. PRESENT OFFENSE VARIABLES

	<u>NUMBER</u>	<u>PERCENT</u>	<u>ESCAPE RATE</u>
A. <u>INSTITUTION COMMITTED TO</u>			
Walpole	5720	71	0.4
Concord	1759	22	0.5
Framingham	558	7	1.1
Deer Island	3	0	0.0
TOTAL	8040	100	0.5
B. <u>JAIL CREDITS</u>			
None	2562	32	0.3
1 to 10	1087	13	0.4
11 to 50	1018	13	0.4
51 to 100	1003	13	0.9
101 to 150	574	7	0.5
151 to 200	637	8	0.5
Over 200	1159	14	0.7
TOTAL	8040	100	0.5
C. <u>PRESENT OFFENSE-GENERAL CATEGORIES</u>			
Person	5576	69	0.5
Sex	724	9	0.4
Property	1122	14	0.3
Drug	496	6	0.2
Other	122	2	1.6
TOTAL	8040	100	0.5
D. <u>PRESENT OFFENSE-DRUG</u>			
Not Applicable	7575	94	0.5
Possession of Heroin	16	0	0.0
Stealing Narcotics	1	0	0.0
Sale of Heroin	55	1	0.0
Sale of Narcotics	13	0	0.0
Possession w/intent to Sell	1	0	0.0
Controlled Substance-Unclassified	75	1	0.0
Class A-Controlled Substance	179	3	0.6
Class B-Controlled Substance	109	1	0.0
Class C-Controlled Substance	8	0	0.0
Class D-Controlled Substance	8	0	0.0
TOTAL	8040	100	0.5

E. PRESENT OFFENSE-PERSON

	<u>NUMBER</u>	<u>PERCENT</u>	<u>ESCAPE RATE</u>
Non-person Offense			
Murder 1	2464	31	0.4
Murder 2	428	5	0.0
Manslaughter	1045	13	0.3
Assault-Intent to Murder	647	8	0.9
Armed Robbery	179	2	2.2
Unarmed Robbery	2210	27	0.5
Armed Assault	371	5	0.8
Unarmed Assault	507	6	0.2
Extortion	45	1	0.0
Kidnapping	9	0	0.0
Conspiracy	68	1	0.0
Other Person	50	1	0.0
	17	0	0.0
TOTAL	8040	100	0.5

F. PRESENT OFFENSE-SEX

Non-Sex Offenses			
Rape	7316	91	0.5
Assault w/intent to Rape	476	6	0.2
Rape of Minor	53	1	1.9
Assault w/intent to Rape Minor	139	2	0.7
Unnatural Acts	46	0	0.0
	10	0	0.0
TOTAL	8040	100	0.5

G. PRESENT OFFENSE-PROPERTY

Non-Person Offenses			
Arson	6918	86	0.5
Burglary-Armed	89	1	0.0
Burglary	100	1	0.0
Possession of Burglary Tools	445	6	0.4
Stealing	49	1	0.0
Larceny from the Person	23	0	0.0
Larceny	45	1	0.0
Vehicle Theft	85	1	0.0
Forgery-Uttering	31	0	0.0
Fraud	126	2	0.0
Stolen Goods	27	0	0.0
	102	1	1.0
TOTAL	8040	100	0.5

	<u>NUMBER</u>	<u>PERCENT</u>	<u>ESCAPE RATE</u>
<u>I. MINIMUM SENTENCE IN YEARS</u>			
1 Year	5	0	0.0
2 Years	145	2	0.0
3 Years	486	6	0.6
4 Years	292	4	0.3
5 Years	592	7	0.5
6 Years	488	6	0.4
7 Years	448	6	0.9
8 Years	355	4	0.6
9 Years	276	3	0.4
10 Years	467	6	0.6
11 to 12 Years	347	4	0.6
13 to 15 Years	232	3	0.9
16 to 19 Years	114	1	0.0
20 to 24 Years	58	2	0.0
25 or More Years	101	1	0.0
Life	1522	19	0.2
Indeterminate	2112	26	0.6
TOTAL	8040	100	0.5
<u>J. MAXIMUM SENTENCE IN YEARS</u>			
Less Than One Month	2	0	0.0
Less Than 1 Year	41	1	0.0
1 Year	20	0	0.0
2 Years	276	3	0.7
3 Years	32	0	0.0
4 Years	15	0	0.0
5 Years	745	9	0.5
6 Years	179	3	0.6
7 Years	419	5	0.2
8 Years	247	3	0.0
9 Years	101	1	1.0
10 Years	1319	16	0.8
11 to 12 Years	725	9	0.7
13 to 15 Years	921	12	0.2
16 to 19 Years	363	5	0.8
20 to 24 Years	856	11	0.7
25 or More Years	243	3	0.0
Life	1536	19	0.2
TOTAL	8040	100	0.5

II. PERSONAL BACKGROUND CHARACTERISTICS

	<u>NUMBER</u>	<u>PERCENT</u>	<u>ESCAPE RATE</u>
<u>A. RACE</u>			
White	5152	64	0.4
Black	2748	34	0.6
Hispanic	140	2	0.0
TOTAL	8040	100	0.5
<u>B. MARITAL STATUS</u>			
Married	2277	28	0.3
Single	4060	51	0.4
Divorced	822	10	0.5
Widowed	188	2	0.5
Common Law	24	0	0.0
Separated	641	8	1.2
Unknown	28	1	0.0
TOTAL	8040	100	0.5
<u>C. MILITARY DISCHARGE</u>			
No Service	5601	70	0.5
Honorable	709	9	0.4
Dishonorable	15	0	6.7
Bad Conduct	301	4	0.0
Medical	14	0	0.0
Discharge Unknown	734	9	0.1
Unknown	666	8	0.6
TOTAL	8040	100	0.5

	<u>NUMBER</u>	<u>PERCENT</u>	<u>ESCAPE RATE</u>
D. PRIOR ADDRESS-SELECTED TOWNS			
Boston	3110	39	0.5
Brockton	168	2	1.2
Cambridge	148	2	0.0
Fall River	103	1	1.0
Framingham	29	0	0.0
Holyoke	137	2	0.7
Lawrence	33	0	3.0
Lowell	127	2	0.0
Lynn	92	1	0.0
New Bedford	189	2	0.0
Quincy	116	1	0.9
Somerville	247	3	0.4
Springfield	401	5	1.0
Worcester	338	4	0.9
Other Mass.	2377	30	0.3
Out of State	411	6	0.0
Unknown	14	0	0.0
TOTAL	8040	100	0.5
E. PRIOR ADDRESS-COUNTY			
Worcester	546	7	0.7
Franklin	80	1	0.0
Middlesex	1196	15	0.3
Suffolk	3272	41	0.6
Norfolk	437	5	0.2
Bristol	421	5	0.2
Plymouth	387	5	0.5
Essex	439	6	0.5
Hampshire	34	6	0.5
Hampden	653	8	0.
Berkshire	61	1	0.0
Barnstable	89	1	1.1
Out of State	411	5	0.0
Unknown	14	0	0.0
TOTAL	8040	100	0.5

	<u>NUMBER</u>	<u>PERCENT</u>	<u>ESCAPE RATE</u>
F. PRIOR ADDRESS-SMSA			
Boston	5035	63	0.4
Brockton	224	3	0.9
Fall River	119	2	0.8
Fitchburg-Leominster	65	1	0.0
Lawrence-Haverhill	92	1	2.2
Lowell	162	2	0.0
New Bedford	204	2	0.0
Pittsfield	35	0	0.0
Providence-Pawtucket-Warwick	54	1	0.0
Springfield	684	9	0.9
Worcester	432	5	0.7
Other Massachusetts	509	6	0.4
Out of State	411	5	0.0
Unknown	14	0	0.0
TOTAL	8040	100	0.5
G. OCCUPATION			
Professional	183	2	0.0
Semi-Professional	172	2	0.0
Business	369	5	0.3
Sales, Clerical	868	11	0.6
Manual	3975	49	0.5
Services	1811	23	0.6
Agriculture	7	0	14.3
Armed Services	47	1	0.0
Housekeeper	4	0	0.0
Student	128	1	0.0
Unemployed	193	2	1.0
Unknown	283	4	0.4
TOTAL	8040	100	0.5
H. TIME AT MOST SKILLED POSITION			
Less Than 1 Month	471	6	0.8
1-2 Months	522	7	0.8
3-4 Months	800	10	0.6
5-6 Months	650	8	0.3
7-9 Months	544	7	0.2
10-12 Months	563	7	1.1
1-2 Years	1226	15	0.4
2-5 Years	1434	18	0.4
5 Or More Years	1155	14	0.3
Unknown	675	8	0.3
TOTAL	8040	100	0.5

	<u>NUMBER</u>	<u>PERCENT</u>	<u>ESCAPE RATE</u>
<u>I. TIME ON JOB OF LONGEST DURATION</u>			
Less Than 1 Month	401	5	1.0
1-2 Months	370	5	0.5
3-4 Months	757	9	0.7
5-6 Months	631	8	0.2
7-9 Months	566	7	0.4
10-12 Months	593	7	1.0
1-2 Years	1256	16	0.6
2-5 Years	1605	20	0.4
5 or More Years	1276	16	0.2
Unknown	588	7	0.3
TOTAL	8040	100	0.5
<u>J. LAST GRADE COMPLETED</u>			
3rd or Less	151	2	1.3
Fourth	56	1	0.0
Fifth	112	1	0.0
Sixth	267	3	0.0
Seventh	487	6	0.6
Eighth	832	10	0.8
Ninth	1390	17	0.6
Tenth	1077	13	0.3
Eleventh	786	10	0.5
High School Graduate	1435	18	0.3
G.E.D.	1005	13	0.5
Some College	154	2	0.0
College Graduate	213	3	0.0
Unknown	75	1	0.0
TOTAL	8040	100	0.5
<u>K. KNOWN DRUG USE</u>			
None	4519	56	0.3
Non-Specific	386	5	0.8
Heroin	1698	21	0.8
Marijuana	653	8	0.8
Other	622	8	0.2
Unknown	162	2	0.0
TOTAL	8040	100	0.5

III. CRIMINAL HISTORY VARIABLES

A. TOTAL NUMBER OF COURT APPEARANCES

	<u>NUMBER</u>	<u>PERCENT</u>	<u>ESCAPE RATE</u>
First Offense	554	7	0.4
Two	537	7	0.4
Three	462	6	0.2
Four	371	5	0.3
Five	576	7	0.0
6 to 8	1219	15	0.5
9 to 11	1276	16	0.4
12 to 15	1076	13	0.5
16 to 20	891	11	0.4
More than 20	1065	13	1.1
Unknown	13	0	0.0
TOTAL	8040	100	0.5

B. NUMBER OF CHARGES FOR PERSON OFFENSES

	<u>NUMBER</u>	<u>PERCENT</u>	<u>ESCAPE RATE</u>
None	915	11	0.5
One	1431	18	0.0
Two	1230	14	0.3
Three	1246	16	0.4
Four	694	9	0.7
Five	657	8	0.6
6 to 8	1026	13	0.7
Over 8	841	11	1.0
TOTAL	8040	100	0.5

C. NUMBER OF CHARGES FOR PROPERTY OFFENSES

	<u>NUMBER</u>	<u>PERCENT</u>	<u>ESCAPE RATE</u>
None	2062	26	0.2
One	831	10	0.5
Two	724	9	0.1
Three	510	6	0.4
Four	490	6	0.4
Five	414	6	1.0
6 to 8	907	11	0.6
Over 8	2102	26	0.8
TOTAL	8046	100	0.5

	<u>NUMBER</u>	<u>PERCENT</u>	<u>ESCAPE RATE</u>
<u>D. NUMBER OF CHARGES FOR SEX OFFENSES</u>			
None	6657	83	0.5
One	711	9	0.7
Two	371	5	0.3
Three	107	1	1.9
Four	102	1	0.0
Five	54	1	0.0
6 to 8	28	0	0.0
Over 8	10	0	0.0
TOTAL	8040	100	0.5
<u>E. NUMBER OF CHARGES FOR NARCOTICS OFFENSES</u>			
None	5447	68	0.4
One	867	11	0.5
Two	411	5	1.2
Three	358	4	1.4
Four	236	3	0.0
Five	132	1	0.8
6 to 8	298	4	0.3
Over 8	291	4	0.7
TOTAL	8040	100	0.5
<u>F. NUMBER OF CHARGES FOR DRUNKENNESS OFFENSES</u>			
None	5421	67	0.4
One	1180	15	0.7
Two	412	5	0.2
Three	336	4	0.0
Four	245	3	1.2
Five	104	1	0.0
6 to 8	213	3	0.9
Over 8	129	2	0.8
TOTAL	8040	100	0.5
<u>G. NUMBER OF CHARGES FOR ESCAPE OFFENSES</u>			
None	7639	95	0.4
One	320	4	1.2
Two	45	1	2.2
Three	17	0	5.9
Four	4	0	0.0
6 to 8	15	0	0.0
TOTAL	8040	100	0.5

	<u>NUMBER</u>	<u>PERCENT</u>	<u>ESCAPE RATE</u>
<u>H. NUMBER OF PRIOR JUVENILE INCARCERATIONS</u>			
None	6299	78	0.3
One	880	11	1.1
Two	493	6	0.6
Three	196	2	1.5
Four	65	1	1.5
Five	61	1	0.0
Six or More	46	1	0.0
TOTAL	8040	100	0.5
<u>I. NUMBER OF PRIOR COUNTY INCARCERATIONS</u>			
None	5197	65	0.4
One	1534	19	0.5
Two	571	7	0.2
Three	431	5	1.6
Four	111	2	2.7
Five	104	1	1.0
Six or More	92	1	0.0
TOTAL	8040	100	0.5
<u>J. NUMBER OF PRIOR STATE OR FEDERAL INCARCERATIONS</u>			
None	6160	76	0.5
One	888	11	0.3
Two	492	6	0.8
Three	238	3	0.0
Four	146	2	0.7
Five	60	1	0.0
Six or More	56	1	1.8
TOTAL	8040	100	0.5
<u>K. NUMBER OF PRIOR ADULT INCARCERATIONS</u>			
None	4242	53	0.4
One	1652	21	0.4
Two	822	10	0.2
Three	563	7	0.9
Four	263	3	0.4
Five	188	2	2.7
Six or More	310	4	0.6
TOTAL	8040	100	0.5

	<u>NUMBER</u>	<u>PERCENT</u>	<u>ESCAPE RATE</u>
<u>L. TOTAL NUMBER OF ANY PRIOR INCARCERATIONS</u>			
None	3635	45	0.2
One	1795	22	0.4
Two	862	11	0.6
Three	494	6	0.8
Four	375	5	0.8
Five	246	3	1.6
Six or More	633	8	0.8
TOTAL	8040	100	0.5
<u>M. NUMBER OF JUVENILE PAROLES</u>			
None	6767	84	0.4
One	715	9	0.7
Two	325	4	0.6
Three	127	2	2.4
Over 3	106	1	0.0
TOTAL	8040	100	0.5
<u>N. NUMBER OF JUVENILE PAROLE VIOLATIONS</u>			
Never Paroled	6767	84	0.4
None	732	9	0.5
One	353	4	1.4
Two	103	1	1.0
Three	10	1	0.0
Over 3	79	1	0.0
TOTAL	8040	100	0.5
<u>O. NUMBER OF ADULT PAROLES</u>			
None	6276	78	0.5
One	1079	13	0.4
Two	393	5	1.0
Three	175	2	0.0
Over 3	117	2	0.9
TOTAL	8040	100	0.5

	<u>NUMBER</u>	<u>PERCENT</u>	<u>ESCAPE RATE</u>
<u>P. NUMBER OF ADULT PAROLE VIOLATIONS</u>			
Never Paroled	6276	78	0.5
None	747	9	0.4
One	623	8	0.6
Two	280	4	0.7
Three	56	0	0.0
Over 3	58	1	0.0
TOTAL	8040	100	0.5
<u>Q. TOTAL NUMBER OF PRIOR PAROLES</u>			
None	5570	69	0.4
One	1200	15	0.2
Two	574	7	0.9
Three	329	4	0.6
Over 3	367	5	0.8
TOTAL	8040	100	0.5
<u>R. TOTAL NUMBER OF PRIOR PAROLE VIOLATIONS</u>			
Never Paroled	5570	69	0.4
None	1079	13	0.4
One	773	10	0.5
Two	350	4	1.1
Three	113	2	0.9
Over 3	155	2	0.0
TOTAL	8040	100	0.5
<u>S. AGE AT INCARCERATION</u>			
Fifteen	2	0	0.0
Sixteen	46	0	0.0
Seventeen	61	0	0.0
Eighteen	387	5	0.8
Nineteen	394	5	0.3
Twenty	486	6	0.6
Twenty-one	529	7	0.4
Twenty-two	455	6	1.1
Twenty-three	600	8	0.7
Twenty-four	705	9	0.6
Twenty-five	395	5	0.5
26 to 30	1561	19	0.3
31 to 40	1671	21	0.4
Over 40	745	9	0.4
Unknown	3	0	0.0
TOTAL	8040	100	0.5

	NUMBER	PERCENT	ESCAPE RATE
<u>T. AGE AT FIRST ARREST</u>			
10 or Less	451	6	0.2
Eleven	247	3	1.2
Twelve	287	1	0.3
Thirteen	567	7	0.9
Fourteen	695	9	0.6
Fifteen	747	9	0.9
Sixteen	667	8	0.3
Seventeen	961	12	0.4
Eighteen	630	8	0.3
Nineteen	450	6	0.2
Twenty	294	4	1.0
Twenty-One	294	4	0.3
Twenty-Two	152	2	0.7
Twenty-Three	200	3	0.0
Twenty-Four	226	3	0.0
Twenty-Five	209	3	0.0
26 to 30	361	5	0.3
31 to 40	189	2	0.0
Over 40	189	2	0.5
Unknown	224	3	0.4
TOTAL	8040	100	0.5

	NUMBER	PERCENT	ESCAPE RATE
<u>U. AGE AT FIRST DRUNK ARREST</u>			
Not Applicable	5427	68	0.4
8 to 14	30	0	0.0
15 to 17	589	7	1.0
18 to 19	738	9	0.3
20 to 21	462	6	0.6
22 to 24	304	4	1.3
25 to 29	276	3	0.0
30 to 34	56	1	0.0
35 to 39	55	1	0.0
40 And Older	29	0	0.0
Unknown	74	1	0.0
TOTAL	8040	100	0.5

	NUMBER	PERCENT	ESCAPE RATE
<u>V. AGE AT FIRST DRUG ARREST</u>			
Not Applicable	5332	66	0.4
8 to 14	45	1	0.0
15 to 17	510	6	0.6
18 to 19	664	8	0.8
20 to 21	501	6	0.8
22 to 24	349	4	0.9
25 to 29	325	4	0.6
30 to 34	136	2	0.0
35 to 39	49	1	0.0
40 And Older	41	1	2.4
Unknown	88	1	0.0
TOTAL	8040	100	0.5
<u>IV. FURLOUGH VARIABLES</u>			
<u>A. TYPE OF FURLOUGH</u>			
Earned	7874	98	0.5
Emergency	58	1	1.7
Escorted	108	1	0.0
TOTAL	8040	100	0.5
<u>B. MONTH FURLOUGHED</u>			
January	466	6	0.2
February	525	7	0.8
March	589	7	0.7
April	609	5	0.3
May	711	9	0.3
June	687	9	1.2
July	712	9	0.6
August	685	9	0.6
September	725	9	0.1
October	626	8	0.5
November	779	10	0.1
December	926	12	0.4
TOTAL	8040	100	0.5

	<u>NUMBER</u>	<u>PERCENT</u>	<u>ESCAPE RATE</u>
C. <u>HOURS FURLOUGHED</u>			
Six or Less	493	6	0.0
7 to 12	2547	32	0.2
13 to 18	762	10	0.3
19 to 24	1736	22	0.0
25 to 30	282	3	1.8
31 to 36	820	10	0.1
37 to 42	113	1	1.8
43 to 48	963	12	0.0
Over 48	304	4	1.3
Escape	20	0	100.0
TOTAL	8040	100	0.5
D. <u>INSTITUTION FURLOUGHED FROM</u>			
Walpole	51	1	0.0
Concord	20	0	0.0
Framingham	676	8	0.9
Norfolk	223	3	0.0
SECC	232	3	0.9
Forestry	689	9	1.0
Bay State Correctional Center	732	9	0.1
NECC	646	8	0.6
Pre-Release	4753	59	0.4
TOTAL	8040	100	0.5

FOOTNOTES

1. The Department of Correction furlough statistics define an "escape from furlough" in accordance with Department Order 46701, entitled, "Furloughs - rules and regulations". According to Section 10.4 (c): "Failure of the resident to return to the correctional facility after the two hour period set forth in Section 10.4(b) shall be considered an escape regardless of prior notification to the facility by the resident that he would be late. The superintendent or his designee shall notify, forthwith, appropriate law enforcement officials of the escape."
2. These figures may differ from prior departmental reports due to multiple counting of individuals furloughed from different institutions.
3. The figures for 1972 represent totals for only two months of 1972. Therefore, the number of furloughs and individuals furloughed is much lower than subsequent years.

END