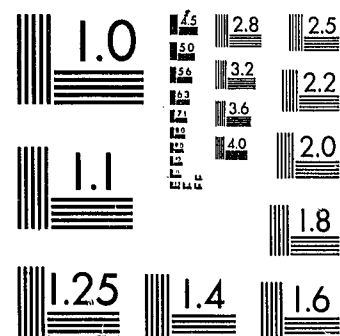


National Criminal Justice Reference Service



This microfiche was produced from documents received for inclusion in the NCJRS data base. Since NCJRS cannot exercise control over the physical condition of the documents submitted, the individual frame quality will vary. The resolution chart on this frame may be used to evaluate the document quality.



MICROCOPY RESOLUTION TEST CHART
NATIONAL BUREAU OF STANDARDS-1963-A

Microfilming procedures used to create this fiche comply with the standards set forth in 41CFR 101-11.504.

Points of view or opinions stated in this document are those of the author(s) and do not represent the official position or policies of the U. S. Department of Justice.

National Institute of Justice
United States Department of Justice
Washington, D. C. 20531

DATE FILMED

12/01/81



Rape in Arkansas
1979

September 1980

79409

Arkansas Crime Information Center



A Research and Statistics Division Report

U.S. Department of Justice
National Institute of Justice

This document has been reproduced exactly as received from the person or organization originating it. Points of view or opinions stated in this document are those of the authors and do not necessarily represent the official position or policies of the National Institute of Justice.

Permission to reproduce this copyrighted material has been granted by
Arkansas Crime Information Center

to the National Criminal Justice Reference Service (NCJRS).

Further reproduction outside of the NCJRS system requires permission of the copyright owner.

RAPE IN ARKANSAS

1979

September, 1980

NCJRS

JUN 22 1981

ACQUISITIONS

Arkansas Crime Information Center
One Capitol Mall
Little Rock, AR 72201

79409

PREFACE

The definition of rape (Arkansas Criminal Code; §41-1803; pages 129-130; effective January, 1976) is:

A person commits rape if he engages in sexual intercourse or deviate sexual activity with another person:

- (a) by forcible compulsion; or*
- (b) who is incapable of consent because he is physically helpless; or*
- (c) who is less than eleven (11) years old.*

The definition of forcible rape in the Uniform Crime Reporting (UCR) Program is:

Forcible rape is the carnal knowledge of a female through the use of force or the threat of force. Assaults to commit forcible rape are also included; however, statutory rape (without force) is not counted in this category.

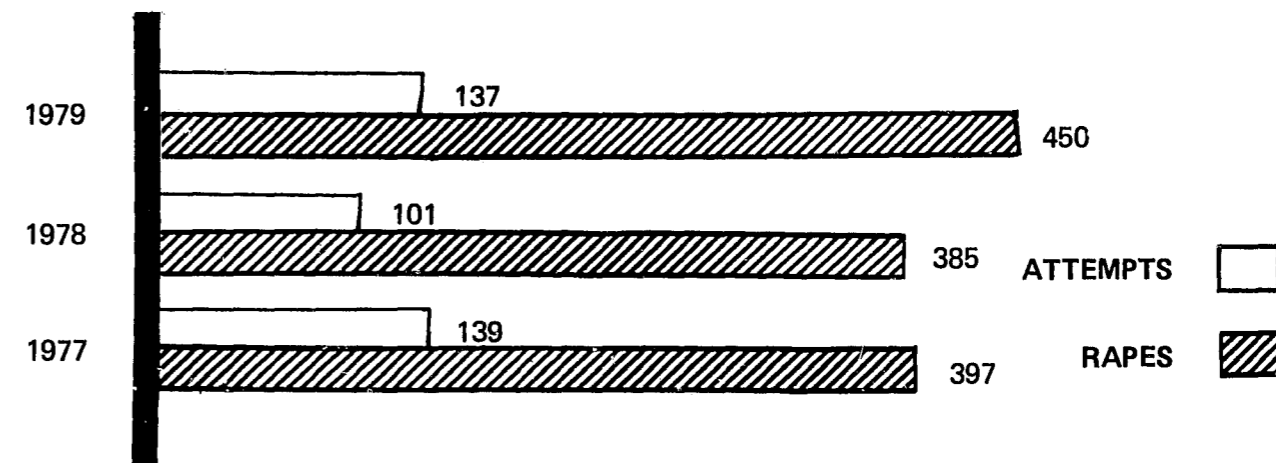
There is a wide disparity between these two definitions. This report utilizes the Uniform Crime Reporting definition of rape. The report includes all data collected, with the cooperation of law enforcement agencies from their offense reports, utilizing the UCR statistics reported to the Arkansas Crime Information Center.

Throughout this report, except where noted, rape and attempted rape are combined statistically.

RAPE IN ARKANSAS, 1979

There were 587 rapes and attempted rapes in Arkansas reported through the Uniform Crime Reporting Program. Of these, 450 were rapes and 137 were attempted rapes reported by law enforcement agencies. There was an average of 187 law enforcement agencies submitting Uniform Crime Reports each month in 1979. This represents law enforcement reports covering 96.6% of the state population.

**DISTRIBUTION OF RAPES AND ATTEMPTED RAPES
1977, 1978, & 1979**



RAPE, 1979

	NUMBER	% DISTRIBUTION
Rape	450	76.7
Attempted Rape	137	23.3
TOTAL	587	100.0

VICTIMS OF RAPE, 1979

The victims of rape in Arkansas were predominantly white (61%) and less than 25 years of age (66%). The youngest victim was 1 year old and the oldest, 95. The victim characteristics by race and age are:

VICTIM CHARACTERISTICS	NUMBER	% DISTRIBUTION
RACE		
White	358	61.0
Black	228	38.9
Unknown	1	.1
AGE		
Juveniles (under 18)	191	32.5
18-24	197	33.6
25-34	121	20.6
35 and over	74	12.6
Unknown	4	.7
TOTAL	587	100.0

VICTIM-OFFENDER RACE RELATIONSHIP

The first race listed is the race of the *victim*, and the second race is that of the *offender(s)*. For example: *white/black* means that the victim was white and the offender was black (1 or more).

VICTIM/OFFENDER(S) RACE	NUMBER	% DISTRIBUTION
White/White	258	43.9
Black/Black	211	35.9
Total Intraracial Rapes (same race)	469	79.9
White/Black	85	14.5
Black/White	12	2.0
White/White & Black*	1	.2
Black/White & Black*	1	.2
Total Interracial Rapes (different races)	99	16.9
White/Unknown	14	2.4
Black/Unknown	4	.7
Unknown/Unknown	1	.2
Total Unknown Rapes	19	3.2
TOTAL RAPES	587	100.0

*For a rape involving both white and black offenders, the offense is counted as interracial.

RAPE REPORTING TIME LAPSE

Approximately two-thirds of the rapes were reported to law enforcement agencies within four hours of the commission of the offense.

HOURS REPORTING TIME	NUMBER	% DISTRIBUTION
Less than 1	231	39.3
1 - 4	158	26.9
4+ - 8	47	8.0
8+ - 12	25	4.3
12+ - 24	33	5.6
More than 24	68	11.6
Unknown	25	4.3

NUMBER OF OFFENDERS PER RAPE

Almost 9 out of 10 rapes or attempted rapes were committed by a lone offender.

OFFENDER(S) PER OFFENSE	NUMBER	% DISTRIBUTION
One	511	87.0
Two	51	8.7
Three	13	2.2
Four	8	1.4
More than four	4	.7

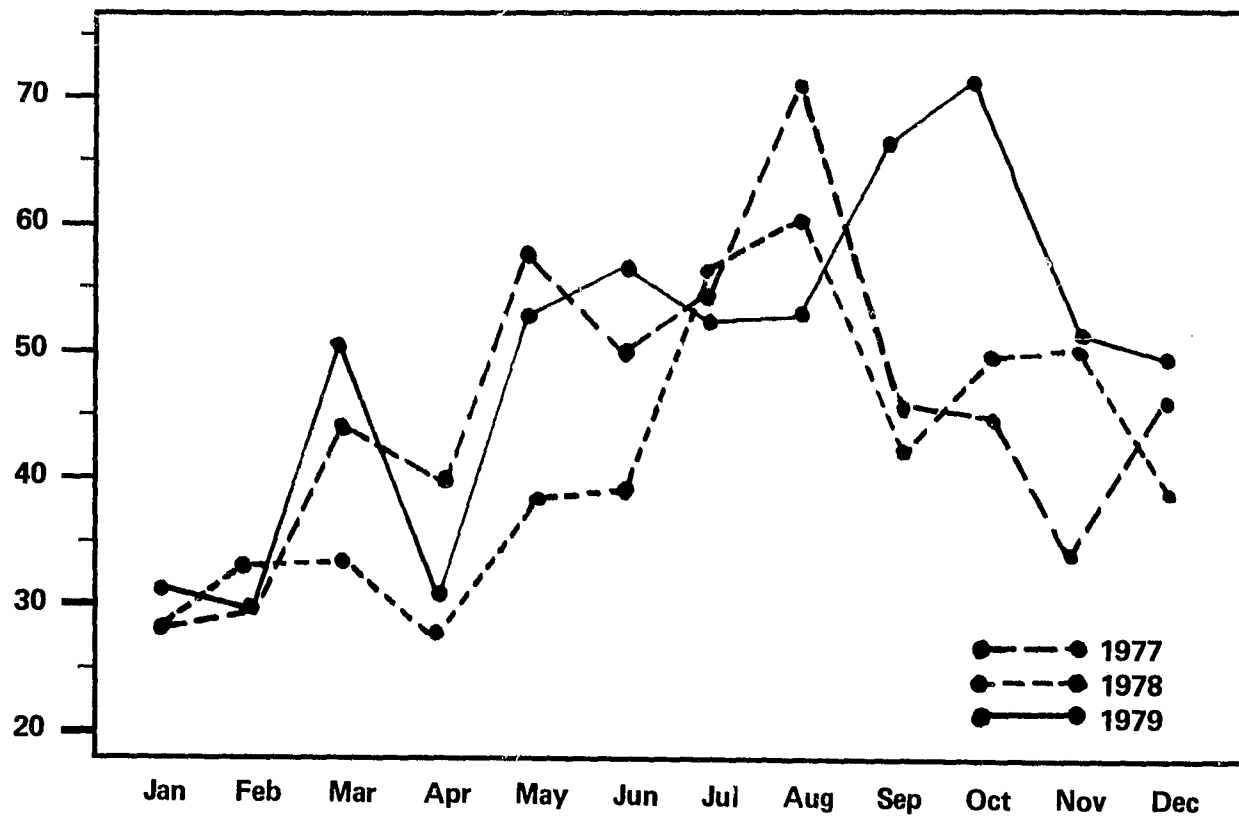
RELATIONSHIP OF OFFENDER TO VICTIM

Approximately one-half of all rapes and rape attempts were committed by persons unknown to the victim.

RELATIONSHIP	NUMBER	% DISTRIBUTION
Unknown to victim	270	46.0
Known by victim	254	43.3
Family member	61	10.4
Unknown (data not available)	2	.3

RAPES BY MONTH, 1977, 1978, and 1979

In 1979, more rapes occurred in October than in any other month. Approximately one-fourth of the rapes for the year occurred in September and October. In 1977 and 1978 the largest number occurred in August.



MONTH	NUMBER	% DISTRIBUTION
January	31	5.3
February	29	4.9
March	50	8.5
April	30	5.1
May	52	8.9
June	55	9.4
July	52	8.9
August	52	8.9
September	65	11.0
October	69	11.7
November	52	8.9
December	48	8.2
Unknown	2	.3
TOTAL RAPES	587	100.0

RAPE BY DAY OF WEEK

One-third of the rapes were committed on Saturday and Sunday.

DAY OF RAPE	NUMBER	% DISTRIBUTION
Sunday	99	16.8
Monday	68	11.6
Tuesday	75	12.8
Wednesday	64	10.9
Thursday	71	12.1
Friday	78	13.4
Saturday	99	16.8
Unknown	33	5.6

RAPE BY TIME OF DAY

Almost one-third of all rapes, when time of day was known, were between 10 p.m. and 2 a.m.

TIME OF DAY	NUMBER	% DISTRIBUTION
A.M. 12:01 - 2	84	14.3
2:01 - 4	75	12.8
4:01 - 6	35	6.0
6:01 - 8	24	4.1
8:01 - 10	24	4.1
10:01 - Noon	23	3.9
P.M. 12:01 - 2	30	5.1
2:01 - 4	34	5.8
4:01 - 6	33	5.6
6:01 - 8	42	7.2
8:01 - 10	60	10.2
10:01 - Midnight	81	13.7
Unknown	42	7.2

RAPE SITUATIONS

LOCATION OF ORIGINAL CONTACT/ACCOST:

The original contact between the victim and offender(s) in almost one-half the rapes occurred in the victim's residence. The offender was a friend or acquaintance in approximately 40% of these cases, a stranger in 40%, and a family member in 20%.

ORIGINAL CONTACT/ACCOST	NUMBER	% DISTRIBUTION
Victim's residence	273	46.5
Suspect's residence	26	4.8
Other residences	23	3.9
Automobiles	27	4.6
Public outdoor areas (streets, parks, etc.)	153	26.1
Bars and lounges	27	4.6
Fields, vacant lots, etc.	13	2.2
All other locations	13	2.2
Unknown	30	5.1

WEAPON USED TO EXERT FORCE UPON VICTIM:

In approximately three out of four of the rapes, the offender used no external weapon.

WEAPON USED	NUMBER	% DISTRIBUTION
Firearm	59	10.0
Knife/Sharp instrument	69	11.8
Club/Blunt Instrument	11	1.9
Verbal threats, fists, etc.	439	74.8
Unknown	9	1.5

LOCATION OF ACTUAL RAPES AND ATTEMPTED RAPES:

Almost one-half of the rapes occurred in the victim's residence.

LOCATION OF RAPE	NUMBER	% DISTRIBUTION
Victim's residence	260	44.3
Other residences	72	12.3
Automobiles	42	7.1
Public outdoor areas (streets, parks, etc.)	139	23.7
Fields, vacant lots, etc.	51	8.7
All other locations	12	2.0
Unknown	11	1.9

MEDICAL ATTENTION SOUGHT OR REQUIRED BY VICTIMS

Of the 450 rape victims, (this does not include attempts), 367 or 81.6% received a routine medical examination. In 122 of the total 587 rapes, it was not known whether the victim sustained injuries. Of the 465 known, 330 (71%) were not injured, 89 (19%) received minor injuries, 46 (10%) were seriously injured.

RAPE OFFENDERS (SUSPECTS)

One-half of the offenders were between the ages of 20 and 30 years.

AGE OF OFFENDER	WHITE	BLACK	UNKNOWN
Under 20	65 (9.2%)	66 (9.3%)	
20 - 30	140 (19.8%)	217 (30.7%)	
Over 30	83 (11.8%)	46 (6.5%)	
Unknown	25 (3.6%)	46 (6.5%)	18 (2.6%)
TOTAL	313 (44.3%)	375 (53.1%)	18 (2.6%)

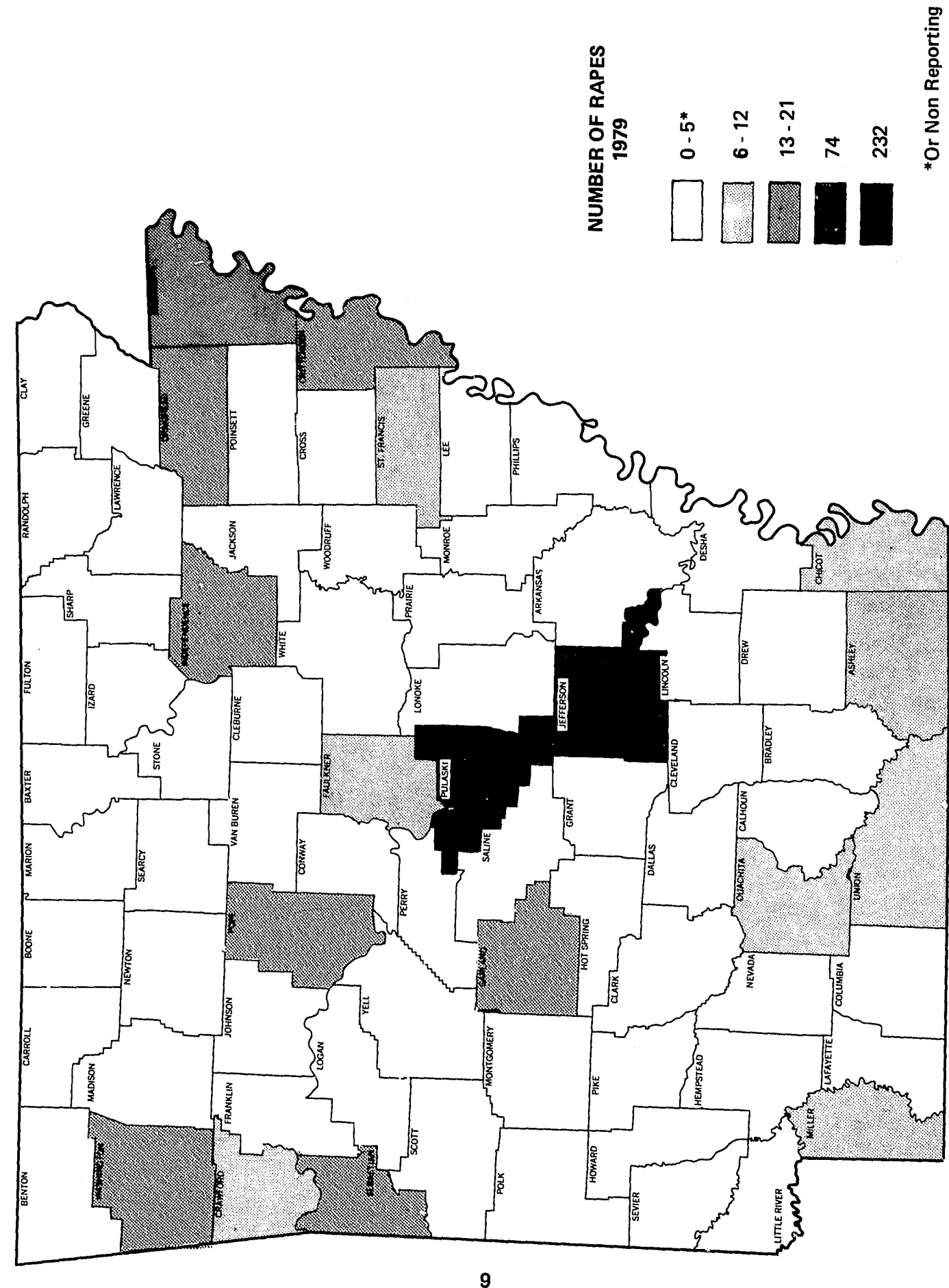
**RAPES, BY COUNTY
1979**

The following map shows the total number of rapes, by county. All non-shaded counties fall into one of the following categories:

1. The law enforcement agencies in the county reported 0-5 rapes.
2. The law enforcement agencies in the county did not submit Uniform Crime Reports.

The list following the map gives the number of rapes included in this report, by law enforcement agency.

The final page is a sample of the collection form used in 1979 to gather the data for this report.



NUMBER OF RAPES

(By Reporting Agency)

ASHLEY COUNTY	7	CRAIGHEAD COUNTY	15
Sheriff	3	Sheriff	6
Crossett	3	Jonesboro	9
Wilmot	1		
BAXTER COUNTY	3	CRAWFORD COUNTY	6
Sheriff	1	Van Buren	6
Mountain Home	2		
BENTON COUNTY	3	CRITTENDEN COUNTY	15
Bentonville	1	Sheriff	3
Rogers	1	Earle	1
Lowell	1	West Memphis	11
BOONE COUNTY	3	CROSS COUNTY	4
Sheriff	2	Sheriff	3
Harrison	1	Wynne	1
CALHOUN COUNTY	1	DALLAS COUNTY	1
Sheriff	1	Fordyce	1
CARROLL COUNTY	1	DESHA COUNTY	5
Sheriff	1	Sheriff	2
		Dumas	2
CHICOT COUNTY	8	McGehee	1
Sheriff	1	DREW COUNTY	1
Dermott	2	Monticello	1
Eudora	5	FAULKNER COUNTY	6
CLARK COUNTY	3	Sheriff	3
Sheriff	1	Conway	3
Arkadelphia	2	FULTON COUNTY	1
CLAY COUNTY	3	Sheriff	1
Sheriff	3	GARLAND COUNTY	14
CLEBURNE COUNTY	2	Sheriff	7
Sheriff	2	Hot Springs	7
CLEVELAND COUNTY	1	GRANT COUNTY	2
Sheriff	1	Sheriff	2
COLUMBIA COUNTY	1	GREENE COUNTY	1
Sheriff	1	Paragould	1
CONWAY COUNTY	5	HEMPSTEAD COUNTY	4
Sheriff	4	Hope	4
Morrilton	1	HOT SPRING COUNTY	2
		Sheriff	1
		Malvern	1

INDEPENDENCE COUNTY	13	POPE COUNTY	13
Sheriff	7	Sheriff	9
Batesville	6	Russellville	4
JACKSON COUNTY	2	PRAIRIE COUNTY	4
Newport	2	Sheriff	2
		Des Arc	1
JEFFERSON COUNTY	74	Hazen	1
Sheriff	20	PULASKI COUNTY	232
Pine Bluff	54	Sheriff	64
JOHNSON COUNTY	3	Jacksonville	1
Sheriff	3	Little Rock	136
LAFAYETTE COUNTY	1	North Little Rock	28
Sheriff	1	Sherwood	3
LEE COUNTY	5	RANDOLPH COUNTY	3
Sheriff	3	Sheriff	2
Marianna	2	Pocahontas	1
LINCOLN COUNTY	2	ST. FRANCIS COUNTY	8
Sheriff	2	Sheriff	3
LOGAN COUNTY	1	Forrest City	5
Sheriff	1	SALINE COUNTY	5
LONOKE COUNTY	1	Sheriff	3
Sheriff	1	Benton	2
MILLER COUNTY	10	SEBASTIAN COUNTY	18
Sheriff	3	Sheriff	1
Texarkana	7	Ft. Smith	17
MISSISSIPPI COUNTY	20	SEVIER COUNTY	3
Sheriff	13	Sheriff	2
Blytheville	4	DeQueen	1
Osceola	3	UNION COUNTY	9
MONROE COUNTY	1	Sheriff	2
Brinkley	1	El Dorado	6
MONTGOMERY COUNTY	1	Smackover	1
Sheriff	1	VAN BUREN COUNTY	1
NEWTON COUNTY	1	Sheriff	1
Sheriff	1	WASHINGTON COUNTY	21
OUACHITA COUNTY	7	Sheriff	9
Sheriff	1	Fayetteville	5
Camden	6	Johnson	1
PERRY COUNTY	1	Springdale	6
Sheriff	1	WHITE COUNTY	5
PHILLIPS COUNTY	1	Beebe	2
Sheriff	1	Searcy	3
POLK COUNTY	1	WOODRUFF COUNTY	2
Sheriff	1	Sheriff	2
		STATE TOTAL	587

END