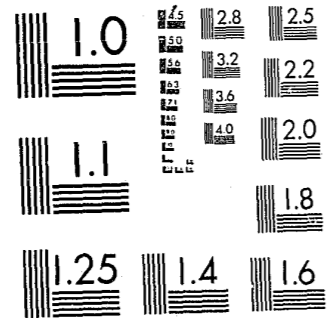


National Criminal Justice Reference Service



This microfiche was produced from documents received for inclusion in the NCJRS data base. Since NCJRS cannot exercise control over the physical condition of the documents submitted, the individual frame quality will vary. The resolution chart on this frame may be used to evaluate the document quality.



MICROCOPY RESOLUTION TEST CHART  
NATIONAL BUREAU OF STANDARDS-1963-A

Microfilming procedures used to create this fiche comply with the standards set forth in 41CFR 101-11.504.

Points of view or opinions stated in this document are those of the author(s) and do not represent the official position or policies of the U. S. Department of Justice.

National Institute of Justice  
United States Department of Justice  
Washington, D. C. 20531

DATE FILMED

10/29/81

# Report of Escapes FY 1980

Virginia Department  
of Corrections 

78528

x  
Report  
of  
Escapes  
FY 1980

x  
Virginia Department  
of Corrections 

NCJRS

MAY 26 1981

ACQUISITION

Virginia Department of Corrections

Terrell Don Hutto, DIRECTOR

Herbert A. Parr  
EXECUTIVE ASSISTANT DIRECTOR

Robert M. Landon  
DIVISION OF INSTITUTIONAL SERVICES

Carlton B. Bolte  
DIVISION OF COMMUNITY  
AND PREVENTION SERVICES



William E. Weddington  
DIVISION OF PROGRAM  
DEVELOPMENT AND EVALUATION

Frank Mueller  
DIVISION OF CAPITAL OUTLAY  
AND MAINTENANCE

Robert E. Zukowski  
DIVISION OF FINANCE

P. O. Box 26963  
Richmond, Virginia 23261

U.S. Department of Justice 78528  
National Institute of Justice

This document has been reproduced exactly as received from the person or organization originating it. Points of view or opinions stated in this document are those of the authors and do not necessarily represent the official position or policies of the National Institute of Justice.

Permission to reproduce this copyrighted material has been granted by  
Virginia Department of Correction

to the National Criminal Justice Reference Service (NCJRS).  
Further reproduction outside of the NCJRS system requires permission of the copyright owner.



# CONTENTS

	Page
Analysis of Escapes During the Fiscal Year Ended June 30, 1980 .....	1
Graph I Comparison of Felon Escapes During the Past Ten Years Fiscal Years Ended June 30, 1971 - 1980 .....	6
Graph II Comparison of Felon Population on June 30, Fiscal Years 1971-1980 .....	6

## T A B L E S

I Number of Escapes According to Race and Sex Compared with Total Felon Population on June 30, 1980 .....	7
II Comparison of Number of Escapes During the Past Ten Years .....	7
III Time Left to Serve at Time of Escape, and Time Served Prior to Escape Fiscal Year Ended June 30, 1980 .....	7
IV Number of Escapes by Month of Escape .....	8
V Time of Day Prisoner Escaped .....	8
VI Sentences of Escapees as Compared with Total Felon Population on June 30, 1980 .....	9
VII Ages of Escapees as Compared with Total Felon Population on June 30, 1980 .....	9
VIII Types of Offenses of Escapees as Compared with Total Felon Population on June 30, 1980 .....	10
IX Marital Status of Escapees as Compared with Total Felon Population on June 30, 1980 .....	10
X Assignment at Time of Escape, Fiscal Year Ended June 30, 1980 .....	11
XI Parole Status at Time of Escape, Fiscal Year Ended June 30, 1980 .....	11
XII Military Service and AWOL Records of Escapees Fiscal Year Ended June 30, 1980 .....	11
XIII Escapees' Substance Abuse History, Fiscal Year Ended June 30, 1980 .....	12
XIV Escapees' Employment History, Fiscal Year Ended June 30, 1980 .....	12
XV Day of Week Escaped, Fiscal Year Ended June 30, 1980 .....	12
XVI Status of Parents of Escapees, Fiscal Year Ended June 30, 1980 .....	13
XVII Juvenile Records of Escapees, Fiscal Year Ended June 30, 1980 .....	13
XVIII Number of Years Under Virginia State Care as Juvenile Fiscal Year Ended June 30, 1980 .....	13

*Continued on next page.*

Table	Page
XIX Escapees' Prior Virginia Felony Sentences Served Fiscal Year Ended June 30, 1980 .....	14
XX Types of Crimes Committed by Escapees While At Large Fiscal Year Ended June 30, 1980 .....	14
XXI Had Detainer, Was to be Tried on Additional Offense(s) Fiscal Year Ended June 30, 1980 .....	14
XXII Time Escapee Remained At Large, Fiscal Year Ended June 30, 1980 .....	15
XXIII Escapees Recaptured, Returned Voluntarily or Still At Large as of June 30, 1980 .....	15
XXIV Escapees Committing Crimes While At Large, Fiscal Year Ended June 30, 1980 .....	15
XXV Escapees' Prior Sentences to State Adult Correctional Institution for Misdemeanors, Fiscal Year Ended June 30, 1980 .....	16
XXVI Escapees' Prior Misdemeanant Convictions Fiscal Year Ended June 30, 1980 .....	16
XXVII Escapees' Prior Out-of-State Felony Sentences Served Fiscal Year Ended June 30, 1980 .....	16
XXVIII Prior Escape Record .....	17
XXIX Classification of Escapees as to Custody Status .....	17
XXX Intelligence of Escapees as Compared with Total Felon Population on June 30, 1980 .....	17
XXXI Education Levels of Escapees, Fiscal Year Ended June 30, 1980 .....	18
XXXII Previous Criminal Records of Escapees Fiscal Year Ended June 30, 1980 .....	18
XXXIII Institution Escaped From, Fiscal Year Ended June 30, 1980 .....	18
Breakdown of Escapes from Correctional Field Units .....	19
XXXIV Employment Skills of Escapees, Fiscal Year Ended June 30, 1980 .....	20
Appendix Explanation of Data Source .....	21

## Report of Felon Escapes During the Fiscal Year Ended June 30, 1980

*The data compiled in this statistical report of escapes occurring in fiscal year 1980 were extracted from the felon files maintained by the Virginia Department of Corrections, Division of Institutional Services, Classification and Records Unit. Statistics are not tabulated for felons whose escape charges were dismissed or nol-prossed in court.*

### NUMBER OF ESCAPES

There were 88 felon escapes from the Virginia Correctional System during the fiscal year ending June 30, 1980. This is an increase of 2.3 percent from the 86 escapes which occurred in the previous fiscal year. The average number of escapes per year during the past ten years is 223.

### RACE AND SEX

Of the escapees, 64 or 72.7 percent were white males and 24 or 27.3 percent were non-white males. There were no female escapees. This compares to the total felon population on June 30, 1980, of 39.4 percent white males and 57.1 percent non-white males. The proportion of the confined felon population to total escapees has remained relatively constant - 1.1 percent in fiscal years 1978 and 1979 and 1.0 percent in fiscal year 1980.

### MONTH ESCAPED, TIME OF DAY, AND ASSIGNMENT

The largest number of escapes during fiscal year 1980 occurred during the month of June. There has been a change in the trend where in fiscal years 1972 - 1977 the month of August accounted for the largest number of escapes. In fiscal years 1978 and 1979, the largest number of escapes occurred in June and May, respectively. The months of May through August accounted for 36.3 percent of all escapes in fiscal 1980. As in fiscal 1979, more than half of the escapes (51 or 58.0 percent) occurred between the hours of 9:00 a.m. and 5:00 p.m. The largest number of escapes (25 or 28.4 percent) occurred while inmates were working on the highway. Escapes from correctional field units or major institutions was second, accounting for 19 escapes or 21.6 percent. Escapes occurring by inmates on furlough accounted for 6 escapes or 6.8 percent of all escapes. This represents a decrease from fiscal year 1979 when 8 escapes or 9.3 percent occurred when inmates were on furlough. This is also a significant decrease from fiscal year 1974 when inmates on furlough accounted for 23.4 percent of all escapes.

### PAROLE STATUS

Of the 88 escapees, 27 or 30.7 percent were not yet eligible for parole at the time of the escape. Thirty-eight escapees (43.2 percent) had been denied parole prior to their escape. Of the 38 escapees who were denied parole, 24 or 63.2 percent had been denied three or more months prior to the escapes. Ten or 11.4 percent were parole violators. This represents a significant increase from fiscal year 1979 when there were only 4 escapees (4.7 percent) who were parole violators.

#### LENGTH OF SENTENCE

During fiscal year 1980, the largest number of escapees were serving sentences of six to ten years, accounting for 26 or 29.5 percent of all escapes. The above continues the trend started in fiscal year 1975 when the largest number of escapees were serving sentences between six and ten years. Twenty years or more was the most frequent sentence being served by escapees in fiscal 1977. Escapees with sentences between six and fifteen years accounted for over half (48 or 54.6 percent) of all escapes in fiscal 1980. In the total felon population, 1,448 felons or 17.0 percent were serving sentences between six and ten years, while 2,852 or 33.5 percent were serving sentences between six and fifteen years.

#### TIME SERVED PRIOR TO ESCAPE

Of the 88 escapes, 53.4 percent occurred during the first and second years of confinement and 69.3 percent occurred within the first three years of confinement. There was also a large percentage (23.9 percent) of all escapes that occurred before one year of confinement.

#### TIME LEFT TO SERVE AT TIME OF ESCAPE

At the time of escape, 65 or 73.9 percent of the escapees had less than five years remaining to serve. Of these, 7 or 8.0 percent had less than one year to serve and 31 or 35.2 percent had less than two years to serve. There were 10 escapees (11.4 percent) who had detainers or were to be tried for other offenses.

#### AGE OF ESCAPEES

As in fiscal years 1977 - 1979, this year the largest proportion of all escapes (34 or 38.6 percent) occurred in the age group of 20 to 24 years. Sixty-nine escapees or 78.4 percent were under the age of 30. There were no escapees over 49 years of age.

#### PREVIOUS RECORD

Prior felony or misdemeanor sentences had been served by 45 escapees (51.1 percent). An additional 12 felon escapees (13.6 percent) had an adult record but had not previously served a felon or misdemeanor sentence in a state correctional institution. Escapees with a juvenile record comprised 64 or 72.7 percent of the total, while only 8 or 9.1 percent had no prior record of any kind. Comparison to the total felon population shows that 3,494 felons or 41.0 percent had served prior felony sentences. Among the felon population, 600 felons or 7.0 percent had served prior misdemeanor sentences but had no prior felony record, and 4,626 felons or 54.3 percent had juvenile records.

#### PRIOR ESCAPES

Escapees with a history of one or more escapes numbered 23 or 26.1 percent. Five escapees had a history of two prior escapes, 3 had a history of three prior escapes and 2 escapees had escaped five times prior to the current escape.

#### OFFENSE

At the time of escape, 50 escapees or 56.8 percent were serving sentences for Offenses Against Property, while 29 or 33.0 percent were serving sentences for Offenses Against Persons. The most frequent offense category among the total felon population on June 30, 1980 was Offenses Against Persons, representing 54.7 percent of the total felon population.

#### MARITAL STATUS

Among the felon escapees, 48 or 54.6 percent were single and 24 or 27.3 percent were married. This compares with the total felon population on June 30, 1980 in which 59.0 percent were single and 19.7 percent were married.

#### MILITARY SERVICE AND AWOL RECORDS

Of the 24 escapees who were known to have military service, 15 or 62.5 percent had a history of being AWOL one or more times.

#### CUSTODY STATUS

Over half (57 or 64.8 percent) of the total escapes were committed by inmates in under gun status.

#### EDUCATION AND INTELLIGENCE

Educational level of fifth grade or higher was reported for 62 escapees or 84.9 percent of the 73 escapees who had been tested. An I.Q. of 90 (normal) or above was reported for 69.3 percent of the escapees. In comparison, 72.5 percent of the total felon population on June 30, 1980 who had been tested were fifth grade level or higher and 54.1 percent tested an I.Q. of 90 (normal) or above.

#### INSTITUTION

Inmates assigned to correctional field units at the time of their escape accounted for a majority (62 or 70.4 percent) of all felon escapes. Among the major institutions, Powhatan Complex experienced the largest number of escapes (11 or 12.5 percent).

#### TIME ESCAPEE REMAINED FREE

Within 24 hours, 30 or 34.1 percent of the escapees were captured or had surrendered. Within 29 days an additional 18 inmates or 20.5 percent were taken back into custody, resulting in 48 inmates or 54.6 percent being captured or surrendering within 30 days. On June 30, 1980, 29 escapees or 32.9 percent remained at large.

#### CRIMES COMMITTED WHILE AT LARGE

Fourteen or 15.9 percent of all escapees were known to have committed crimes while at large. Break and Enter was the most prevalent crime committed, accounting for 5 crimes.

#### STATUS OF PARENTS

The parents of 30 or 34.1 percent of the escapees were married and/or living together. Twenty-five escapees or 28.4 percent came from homes where the parents were either divorced or separated, while 23 or 26.1 percent came from homes where one parent had died. *It should be noted that all of these categories reflect parental status at the time the escapee was originally committed and not the status at the time of the escape.*

#### SUBSTANCE ABUSE HISTORY

There were 41 escapees (46.6 percent) who had a history of liquor habits and drug use. Nineteen or 21.6 percent had been addicted to drugs, while 10 or 11.4 percent were drug users - no addiction. There were only 3 escapees (3.4 percent) who had no record of drug or liquor use.

#### EMPLOYMENT HISTORY

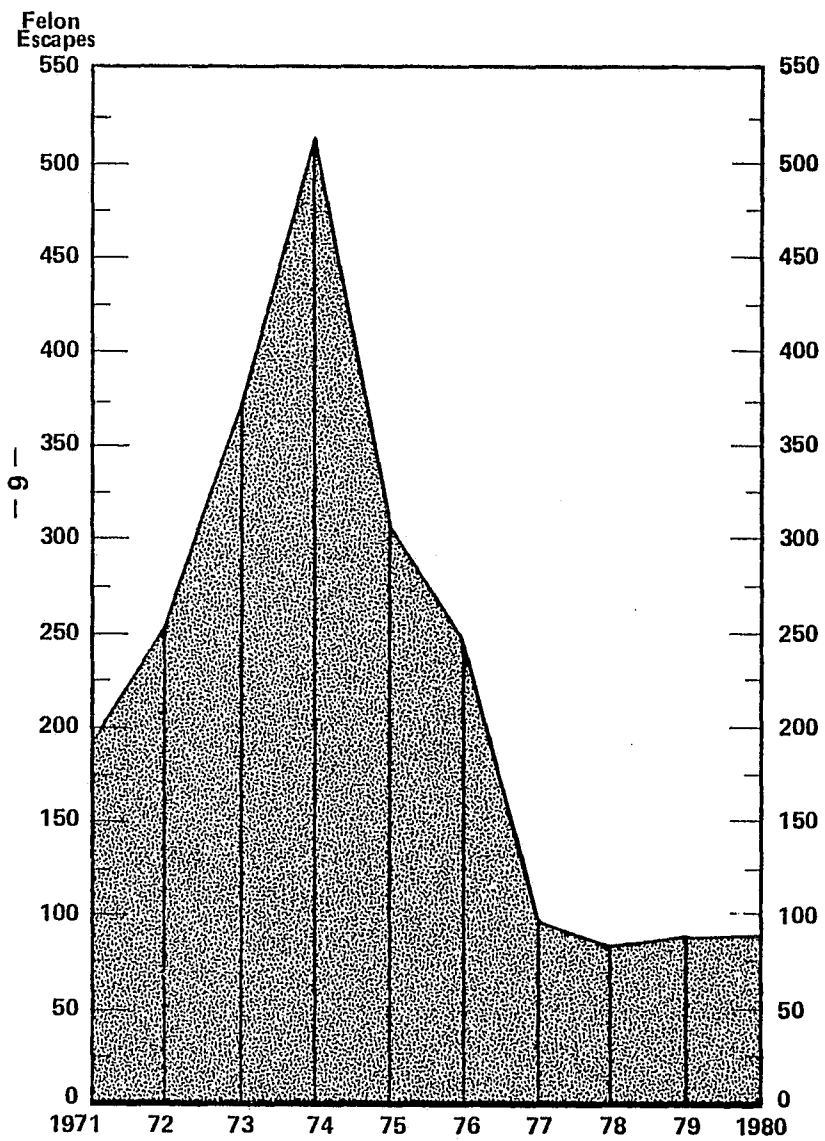
Prior to confinement for their current felony offenses, 18 escapees or 20.4 percent had been steady workers, whereas 27 escapees or 30.7 percent had only worked intermittently (less than 6 months employment in the 12 months prior to arrest). There were 33 escapees (37.5 percent) who only held odd jobs. It is significant to note that the number of escapees who were steady workers prior to their felon confinement, decreased from 23.3 percent in fiscal year 1979 to 20.4 percent in fiscal 1980, a 2.9 percentage point decrease. It should also be noted that in comparing fiscal year 1980 to fiscal years 1977 and 1978, there had been a decrease in the number of escapees who were steady workers prior to their confinement. The percentage dropped from 75.5 percent in fiscal 1977, to 37.5 percent in fiscal 1978, to the current level of 20.4 percent.

## GRAPHS

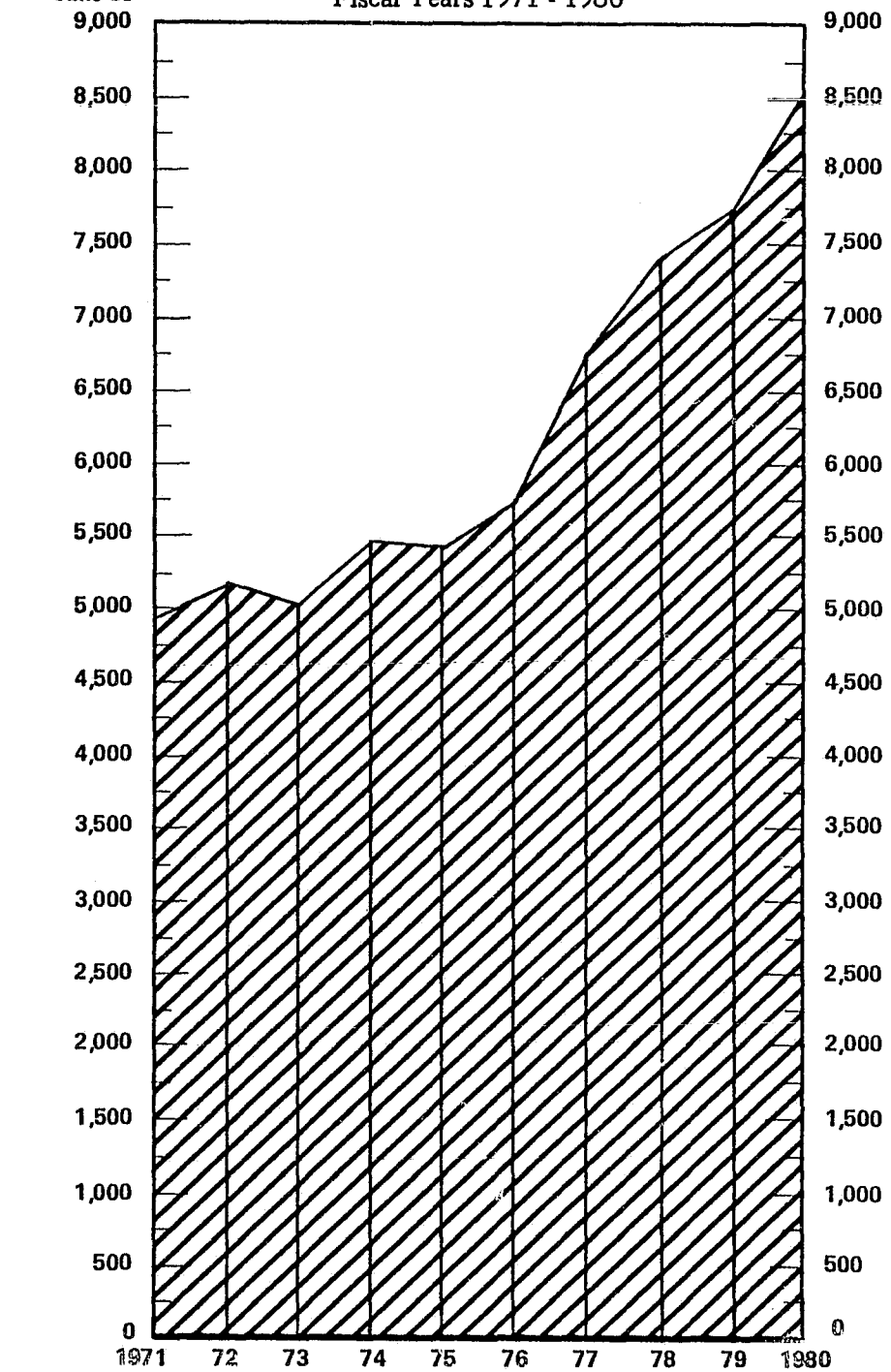
## AND

## TABLES

GRAPH I  
 Comparison of Felon Escapes  
 During the Past Ten Years  
 Fiscal Years Ended June 30, 1971 - 1980



GRAPH II  
 Comparison of Felon Population on June 30  
 Fiscal Years 1971 - 1980





**TABLE I  
NUMBER OF ESCAPES ACCORDING TO RACE AND SEX  
COMPARED WITH TOTAL FELON POPULATION ON JUNE 30, 1980**

RACE AND SEX	Escapes, Year Ended June 30, 1980		Total Felon Population June 30, 1980		Escapes, Year Ended June 30, 1979	
	Number	Percentage Distribution	Number	Percentage Distribution	Number	Percentage Distribution
White Males	64	72.7	3,360	39.4	46	53.5
White Females	0	0	109	1.3	2	2.3
Non-White Males	24	27.3	4,865	57.1	35	40.7
Non-White Females	0	0	187	2.2	3	3.5
<b>Total</b>	<b>88</b>	<b>100.0</b>	<b>8,521</b>	<b>100.0</b>	<b>86</b>	<b>100.0</b>

**TABLE II  
COMPARISON OF NUMBER OF ESCAPES  
DURING THE PAST TEN YEARS**

Year Ended June 30	Number of Escapes
1971	.191
1972	.250
1973	.372
1974	.513
1975	.305
1976	.247
1977	.94
1978	.80
1979	.86
1980	.88
Avg. No. Per Year	.223

**TABLE III  
TIME LEFT TO SERVE AT TIME OF ESCAPE AND TIME SERVED PRIOR TO ESCAPE  
FISCAL YEAR ENDED JUNE 30, 1980**

TIME SERVED PRIOR TO ESCAPE	TIME LEFT TO SERVE AT TIME OF ESCAPE										
	Total	Less than 1 Yr.	1 Yr.	2 Yrs.	3 Yrs.	4 Yrs.	5 Yrs.	6 - 9 Yrs.	10 - 14 Yrs.	15 Yrs. and Over	Life
Less than 1 yr.	21	3	6	2	5	-	1	3	-	1	-
1 yr.-less than 2 yrs.	26	2	6	3	2	4	2	5	2	-	-
2 yrs.-less than 3 yrs.	14	2	6	2	2	-	-	1	1	-	-
3 yrs.-less than 4 yrs.	13	-	3	4	1	2	-	2	1	-	-
4 yrs.-less than 5 yrs.	4	-	-	1	1	-	-	1	1	-	-
5 yrs.-less than 6 yrs.	1	-	1	-	-	-	-	-	-	-	-
6 yrs.-less than 10 yrs.	8	-	2	1	3	-	-	-	1	1	-
10 yrs. and over	1	-	-	1	-	-	-	-	-	-	-
<b>Total</b>	<b>88</b>	<b>7</b>	<b>24</b>	<b>14</b>	<b>14</b>	<b>6</b>	<b>3</b>	<b>12</b>	<b>6</b>	<b>2</b>	<b>0</b>

TABLE IV  
NUMBER OF ESCAPEES BY MONTH OF ESCAPE

Month of Escape	Year Ended June 30, 1980		Year Ended June 30, 1979	
	Number	Percentage Distribution	Number	Percentage Distribution
JULY	5	5.7	11	12.8
AUGUST	1	1.1	8	9.3
SEPTEMBER	8	9.1	11	12.8
OCTOBER	6	6.8	5	5.8
NOVEMBER	9	10.2	5	5.8
DECEMBER	5	5.7	4	4.7
JANUARY	6	6.8	6	7.0
FEBRUARY	10	11.4	3	3.5
MARCH	4	4.6	7	8.1
APRIL	8	9.1	6	7.0
MAY	9	10.2	13	15.1
JUNE	17	19.3	7	8.1
TOTAL	88	100.0	86	100.0

TABLE V  
TIME OF DAY PRISONER ESCAPED

TIME OF DAY PRISONER ESCAPED	Year Ended June 30, 1980		Year Ended June 30, 1979	
	Number	Percentage Distribution	Number	Percentage Distribution
9:00 p.m. - 12:59 a.m.	14	15.9	13	15.1
1:00 a.m. - 4:59 a.m.	0	0.0	1	1.2
5:00 a.m. - 8:59 a.m.	2	2.3	7	8.1
9:00 a.m. - 12:59 p.m.	31	35.2	27	31.4
1:00 p.m. - 4:59 p.m.	20	22.7	25	29.1
5:00 p.m. - 8:59 p.m.	14	15.9	12	13.9
Unknown	5	5.7	1	1.2
Not applicable - Work Release or Furlough	2	2.3	0	0.0
Total	88	100.0	86	100.0

TABLE VI  
SENTENCES OF ESCAPEES AS COMPARED WITH TOTAL FELON POPULATION ON JUNE 30, 1980

SENTENCE	ESCAPEES		TOTAL FELON POPULATION	
	Number	Percentage Distribution	Number	Percentage Distribution
Under 2 years	1	1.1	160	1.9
2 years - less than 3 years	4	4.5	279	3.3
3 years - less than 4 years	7	8.0	363	4.2
4 years - less than 5 years	3	3.4	501	5.9
5 years - less than 6 years	10	11.4	775	9.1
6 years - less than 10 years	26	29.5	1,448	17.0
10 years - less than 15 years	22	25.0	1,404	16.5
15 years - less than 20 years	7	8.0	840	9.9
20 years or over	8	9.1	2,227	26.1
Life	0	0.0	515	6.0
Death	0	0.0	9	0.1
Total	88	100.0	8,521	100.0

TABLE VII  
AGES OF ESCAPEES\* AS COMPARED WITH TOTAL FELON POPULATION ON JUNE 30, 1980

AGE	ESCAPEES		TOTAL FELON POPULATION	
	Number	Percentage Distribution	Number	Percentage Distribution
Under 20	7	8.0	482	5.7
20 - 24	34	38.6	2,406	28.2
25 - 29	28	31.8	2,320	27.2
30 - 34	8	9.1	1,411	16.6
35 - 39	6	6.8	748	8.8
40 - 44	3	3.4	470	5.5
45 - 49	2	2.3	296	3.5
50 and over	0	0.0	388	4.5
Total	88	100.0	8,521	100.0

\*Age at time of escape.

TABLE VIII  
TYPES OF OFFENSES OF ESCAPEES AS COMPARED WITH  
TOTAL FELON POPULATION ON JUNE 30, 1980

TYPE OF OFFENSE	ESCAPEES		TOTAL FELON POPULATION	
	Number	Percentage Distribution	Number	Percentage Distribution
Offenses Against Persons	29	33.0	4,659	54.7
Offenses Against Property	50	56.8	2,960	34.7
Offenses Against Decency, Peace and Good Order	3	3.4	139	1.6
Offenses Against Public Justice	1	1.1	40	0.5
Violation of Traffic and Vehicle Laws	0	0.0	91	1.1
Offenses Against Public Policy, Economy and Health	5	5.7	632	7.4
<b>Total</b>	<b>88</b>	<b>100.0</b>	<b>8,521</b>	<b>100.0</b>

TABLE IX  
MARITAL STATUS OF ESCAPEES AS COMPARED WITH  
TOTAL FELON POPULATION ON JUNE 30, 1980

Marital Status	ESCAPEES		TOTAL FELON POPULATION	
	Number	Percentage Distribution	Number	Percentage Distribution
SINGLE	48	54.6	5,026	59.0
MARRIED	24	27.3	1,682	19.7
SEPARATED	6	6.8	776	9.1
WIDOWED	9	10.2	163	1.9
DIVORCED	1	1.1	810	9.5
UNKNOWN	0	0.0	64	0.8
<b>TOTAL</b>	<b>88</b>	<b>100.0</b>	<b>8,521</b>	<b>100.0</b>

TABLE X  
ASSIGNMENT AT TIME OF ESCAPE  
FISCAL YEAR ENDED JUNE 30, 1980

ASSIGNMENT	Number	Percentage Distribution
In correctional unit or institution	19	21.6
Working on highway	25	28.4
Working on farm	7	8.0
Riding to or from work	1	1.1
On work release or study release	6	6.8
On furlough	6	6.8
On job inside correctional unit or institution	12	13.7
Other	6	6.8
Assignment not indicated	6	6.8
<b>Total</b>	<b>88</b>	<b>100.0</b>

TABLE XI  
PAROLE STATUS AT TIME OF ESCAPE  
FISCAL YEAR ENDED JUNE 30, 1980

PAROLE STATUS	Number	Percentage Distribution
Not yet eligible	27	30.7
Returned for violation of parole within 3 months of escape	2	2.3
Returned for violation of parole more than 3 months before escape	8	9.1
Heard by board; decision pending or approved by board; parole plan pending	2	2.3
Eligible; not yet heard	6	6.8
Parole denied:		
Less than 30 days before escape	4	4.5
1 month, but less than 3 months before escape	10	11.4
3 months or more before escape	24	27.3
Parole deferred	4	4.5
Not interested in parole	1	1.1
<b>Total</b>	<b>88</b>	<b>100.0</b>

TABLE XII  
MILITARY SERVICE AND AWOL RECORDS OF ESCAPEES  
FISCAL YEAR ENDED JUNE 30, 1980

MILITARY SERVICE AND AWOL RECORD	Number	Percentage Distribution
No military service	63	71.6
Military service:		
Record of AWOL	15	17.1
No record of AWOL	9	10.2
Unable to determine	1	1.1
<b>Total</b>	<b>88</b>	<b>100.0</b>

TABLE XIII  
ESCAPEES' SUBSTANCE ABUSE HISTORY  
FISCAL YEAR ENDED JUNE 30, 1980

SUBSTANCE ABUSE HISTORY	Number	Percentage Distribution
Heavy drinker; no drug use known	9	10.2
Occasional drinker; no drug use known	4	4.5
History of using drugs; no liquor habits known	2	2.3
Drug user; no liquor habits known	10	11.4
History of using drugs and liquor	41	46.6
History of being drug addict and of using liquor	19	21.6
No record of drugs or liquor	3	3.4
Total	88	100.0

TABLE XIV  
ESCAPEES' EMPLOYMENT HISTORY  
FISCAL YEAR ENDED JUNE 30, 1980

EMPLOYMENT HISTORY	Number	Percentage Distribution
Steady worker	18	20.4
Worked intermittently (less than 6 months employment in 12 months prior to arrest)	27	30.7
Nomadic in work habits, but usually steadily employed (4 jobs or more in 12 months prior to arrest)	8	9.1
Only held odd jobs; no real employment record	33	37.5
No employment history	2	2.3
Total	88	100.0

TABLE XV  
DAY OF WEEK ESCAPED  
FISCAL YEAR ENDED JUNE 30, 1980

Day of Week	Number	Percentage Distribution
SUNDAY	8	9.1
MONDAY	16	18.2
TUESDAY	14	15.9
WEDNESDAY	21	23.8
THURSDAY	13	14.8
FRIDAY	13	14.8
SATURDAY	3	3.4
TOTAL	88	100.0

TABLE XVI  
STATUS OF PARENTS OF ESCAPEES\*  
FISCAL YEAR ENDED JUNE 30, 1980

Status of Parents	Number	Percentage Distribution
LIVING TOGETHER	30	34.1
SEPARATED	7	8.0
DIVORCED	18	20.5
NOT MARRIED	6	6.8
ONE PARENT DEAD	23	26.1
BOTH PARENTS DEAD	4	4.5
TOTAL	88	100.0

\*Reflects parental status at time of escapee's commitment.

TABLE XVII  
JUVENILE RECORDS OF ESCAPEES  
FISCAL YEAR ENDED JUNE 30, 1980

Juvenile Record	Number	Percentage Distribution
NO JUVENILE RECORD	24	27.3
YES, OTHER THAN STATE WARD	19	21.6
STATE WARD, LEARNING CENTER	35	39.8
STATE WARD, LEARNING CENTER AND FOSTER HOME	9	10.2
STATE WARD, OTHER	1	1.1
TOTAL	88	100.0

TABLE XVIII  
NUMBER OF YEARS UNDER VIRGINIA STATE CARE\*  
AS JUVENILE, FISCAL YEAR ENDED JUNE 30, 1980

Years Under State Care	Number	Percentage Distribution
NONE	46	52.3
1 YEAR	15	17.0
2 YEARS	6	6.8
3 YEARS	6	6.8
4 YEARS	3	3.4
5 YEARS	2	2.3
6 YEARS	4	4.6
7 YEARS	0	0
8 YEARS	1	1.1
9 YEARS OR MORE	1	1.1
UNKNOWN	4	4.6
TOTAL	88	100.0

\*Includes State Ward, Learning Center; Foster Home.

TABLE XIX  
ESCAPEES' PRIOR VIRGINIA FELONY SENTENCES  
SERVED\*, FISCAL YEAR ENDED JUNE 30, 1980

Number of Sentences Served	Number	Percentage Distribution
NONE	58	65.9
ONE	18	20.5
TWO	11	12.5
THREE	1	1.1
TOTAL	88	100.0

\* Prior to current commitment.

TABLE XX  
TYPES OF CRIMES COMMITTED BY ESCAPEES WHILE  
AT LARGE, FISCAL YEAR ENDED JUNE 30, 1980

TYPE OF CRIME	Number	Percentage Distribution
No Crimes Committed	34	38.6
Offenses Against Persons:	4	4.6
Murder, 1st Degree	1	
Robbery, Other or Unspecified	2	
Robbery, Attempted	1	
Offenses Against Property:	8	9.1
Break and Enter	5	
Grand Larceny	2	
Trespassing	1	
Offenses Against Decency:	1	1.1
Possession of Firearm	1	
Offenses Against Public Policy:	1	1.1
Drug Violation	1	
Unknown	40	45.5
Total	88	100.0

TABLE XXI  
HAD DETAINER, WAS TO BE TRIED ON ADDITIONAL  
OFFENSE(S), FISCAL YEAR ENDED JUNE 30, 1980

DETAINDER STATUS	Number	Percentage Distribution
Had detainer or was to be tried on additional offense(s)	10	11.4
No detainer	78	88.6
Total	88	100.0

TABLE XXII  
TIME ESCAPEE REMAINED AT LARGE  
FISCAL YEAR ENDED JUNE 30, 1980

TIME ESCAPEE REMAINED AT LARGE	Number	Percentage Distribution
Less than 1 hour	4	4.5
1 hour, but less than 3 hours	6	6.8
3 hours, but less than 6 hours	8	9.1
6 hours, but less than 12 hours	5	5.7
12 hours, but less than 24 hours	7	8.0
1 day (24 hours) but less than 2 days	6	6.8
2 days, but less than 10 days	7	8.0
10 days, but less than 30 days	5	5.7
1 month, but less than 6 months	9	10.2
6 months or more	2	2.3
At large on June 30, 1980	29	32.9
Total	88	100.0

TABLE XXIII  
ESCAPEES RECAPTURED, RETURNED VOLUNTARILY  
OR STILL AT LARGE AS OF JUNE 30, 1980

	Number	Percentage Distribution
Recaptured	47	53.4
Returned voluntarily	9	10.2
At large	29	33.0
Recaptured; serving sentence in other state	1	1.1
Recaptured in other state; not yet returned to Virginia	2	2.3
Total	88	100.0

TABLE XXIV  
ESCAPEES COMMITTING CRIMES WHILE AT LARGE  
FISCAL YEAR ENDED JUNE 30, 1980

	Number	Percentage Distribution
Committed crime on escape	14	15.9
No crime committed on escape	34	38.6
Unknown	40	45.5
Total	88	100.0

TABLE XXV  
ESCAPEES' PRIOR SENTENCES TO STATE  
CORRECTIONAL INSTITUTION, FOR MISDEMEANORS\*  
FISCAL YEAR ENDED JUNE 30, 1980

Number of Sentences	Number	Percentage Distribution
NONE	78	88.6
ONE	8	9.1
TWO	2	2.3
TOTAL	88	100.0

\*Prior to commitment.

TABLE XXVI  
ESCAPEES' PRIOR MISDEMEANANT CONVICTIONS\*  
FISCAL YEAR ENDED JUNE 30, 1980

Number of Convictions	Number	Percentage Distribution
NONE	54	61.4
ONE	20	22.7
TWO	7	8.0
THREE	3	3.4
FOUR	2	2.3
FIVE	0	0.0
SIX	1	1.1
SEVEN	0	0.0
EIGHT	1	1.1
TOTAL	88	100.0

\*Prior to current felony conviction.

TABLE XXVII  
ESCAPEES' PRIOR OUT-OF-STATE FELONY SENTENCES  
SERVED\*, FISCAL YEAR ENDED JUNE 30, 1980

Number of Sentences	Number	Percentage Distribution
NONE	68	77.3
ONE	16	18.2
TWO	2	2.3
THREE	1	1.1
FOUR	1	1.1
TOTAL	88	100.0

\*Prior to current commitment.

TABLE XXVIII  
PRIOR ESCAPE RECORD

Number of Prior Escapes	Fiscal Year Ended June 30, 1980		Fiscal Year Ended June 30, 1979	
	Number	Percentage Distribution	Number	Percentage Distribution
NO PRIOR ESCAPES	65	73.8	66	76.7
1 PRIOR ESCAPE	13	14.8	10	11.6
2 PRIOR ESCAPES	5	5.7	6	7.0
3 PRIOR ESCAPES	3	3.4	4	4.7
4 PRIOR ESCAPES	0	0.0	0	0.0
5 PRIOR ESCAPES	2	2.3	0	0.0
TOTAL	88	100.0	86	100.0

TABLE XXIX  
CLASSIFICATION OF ESCAPEES AS TO CUSTODY STATUS

Type of Supervision	Fiscal Year Ended June 30, 1980		Fiscal Year Ended June 30, 1979	
	Number	Percentage Distribution	Number	Percentage Distribution
TRUSTY	31	35.2	43	50.0
UNDER GUN	57	64.8	43	50.0
TOTAL	88	100.0	86	100.0

TABLE XXX  
INTELLIGENCE OF ESCAPEES AS COMPARED WITH  
TOTAL FELON POPULATION ON JUNE 30, 1980

INTELLIGENCE	ESCAPEES		TOTAL FELON POPULATION	
	Number	Percentage Distribution	Number	Percentage Distribution
Severely Retarded (I.Q. 43 - 59)	0	0.0	71	0.8
Moderately Retarded (I.Q. 60 - 69)	4	4.5	558	6.5
Borderline (I.Q. 70 - 79)	9	10.2	1,283	15.1
Dull Normal (I.Q. 80 - 89)	14	15.9	1,817	21.3
Normal (I.Q. 90 - 109)	38	43.2	3,319	39.0
Bright Normal (I.Q. 110 - 119)	21	23.9	894	10.5
Superior (I.Q. 120 - 128)	2	2.3	187	2.2
No Test	0	0.0	392	4.6
Total	88	100.0	86	100.0

TABLE XXXI  
EDUCATION LEVELS OF ESCAPEES  
FISCAL YEAR ENDED JUNE 30, 1980

EDUCATION LEVEL	Number	Percentage Distribution
Beginner (Illiterate - 4.9)	11	12.5
Intermediate (5.0 - 8.9)	43	48.9
Advanced (9.0 - 11.9)	16	18.2
High School and above	3	3.4
Unknown—no test	15	17.0
Total	88	100.0

TABLE XXXII  
PREVIOUS CRIMINAL RECORDS OF ESCAPEES  
FISCAL YEAR ENDED JUNE 30, 1980

PREVIOUS CRIMINAL RECORD	TOTAL
Juvenile record <sup>1</sup>	64
Adult record, but no State correctional institution sentence <sup>2</sup>	12
Served prior State correctional institution sentence <sup>3</sup>	45
No previous record	8

<sup>1</sup> Includes Learning Center, Foster Home, State Ward and Other State Ward.  
<sup>2</sup> Jail and misdemeanor convictions.  
<sup>3</sup> Includes Virginia and out-of-state sentences.

TABLE XXXIII  
INSTITUTION ESCAPED FROM  
FISCAL YEAR ENDED JUNE 30, 1980

INSTITUTION	Number	Percentage Distribution
BLAND	3	3.4
STAUNTON	4	4.6
POWHATAN COMPLEX	11	12.5
SOUTHAMPTON COMPLEX	3	3.4
PRE/WORK RELEASE CENTER	5	5.7
CORRECTIONAL FIELD UNITS	62	70.4
TOTAL	88	100.0

BREAKDOWN OF ESCAPES FROM CORRECTIONAL FIELD UNITS

Unit Number	Unit Location	Number of Escapes
1	Pulaski	.3
2	Caroline	.3
3	Nansemond	.0
4	Baskerville	.2
5	Floyd	.2
6	Woodbridge	.5
7	White Post	.2
8	Harrisonburg	.0
9	Rustburg	.2
10	Augusta	.1
11	Culpeper	.0
12	Fluvanna	.4
13	Pocahontas	.5
15	Chatham	.3
16	New Kent	.1
17	Haynesville	.1
18	Wise	.1
20	Capron	.2
21	Stafford	.2
22	Tidewater	.0
23	Halifax	.0
24	Smith Mountain Lake	.1
25	Dotetourt	.2
26	Haymarket	.4
27	Dinwiddie	.1
28	Patrick Henry	.0
29	Buchanan	.3
30	Northern Virginia	.11
31	Tazewell	.1
TOTAL		.62

TABLE XXXIV  
 EMPLOYMENT SKILLS OF ESCAPEES\*  
 FISCAL YEAR ENDED JUNE 30, 1980

EMPLOYMENT SKILL	Number	Percentage Distribution
Attendant, filling station	4	4.6
Attendant, parking lot	1	1.1
Auto mechanic	2	2.3
Bookkeeping machine operator	1	1.1
Bricklayer, brickmason	2	2.3
Busboy	2	2.3
Business owner, operator, manager	1	1.1
Carpenter	2	2.3
Carpenter's helper	4	4.6
Cleaner, janitor	3	3.4
Clerk— sales, store	2	2.3
Clerk—shipping or stock	2	2.3
Construction worker	12	13.7
Cook, commercial	1	1.1
Dancer	2	2.3
Electrician	1	1.1
Engraver	1	1.1
Factory Worker	3	3.4
Farmhand	3	3.4
Fisherman	1	1.1
Gardener	1	1.1
Heavy equipment operator	3	3.4
Instructor, teacher	1	1.1
Iron worker	1	1.1
Laborer	10	11.4
Laundry worker	1	1.1
Optician	1	1.1
Painter	4	4.6
Pipe fitter	2	2.3
Plumber's helper	1	1.1
Roofer	3	3.4
Sheetmetal worker	1	1.1
Tree trimmer	2	2.3
Truck driver	4	4.6
Welder	3	3.4
<b>Total</b>	<b>88</b>	<b>100.0</b>

\*Reflects employment skills at time of commitment.

APPENDIX

==== Explanation of Data Source ====

The data used to produce this report were extracted from felon inmate files located in the Division of Institutional Services under the File Maintenance Section of the Classification and Records Unit. Each individual escapee's record was examined and the necessary information retrieved. For coding purposes, the number of escapes used in this report represents those reported to the Research and Reporting Unit by the Classification and Records Unit. This report does not cover those escapes which were given a nolle prosequi disposition at court.



**END**