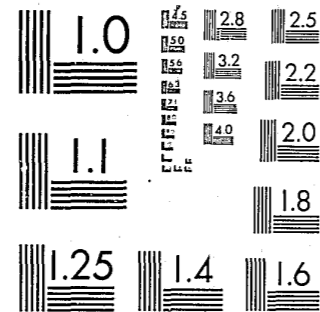


National Criminal Justice Reference Service



This microfiche was produced from documents received for inclusion in the NCJRS data base. Since NCJRS cannot exercise control over the physical condition of the documents submitted, the individual frame quality will vary. The resolution chart on this frame may be used to evaluate the document quality.



MICROCOPY RESOLUTION TEST CHART
NATIONAL BUREAU OF STANDARDS-1963-A

Microfilming procedures used to create this fiche comply with the standards set forth in 41CFR 101-11.504.

Points of view or opinions stated in this document are those of the author(s) and do not represent the official position or policies of the U. S. Department of Justice.

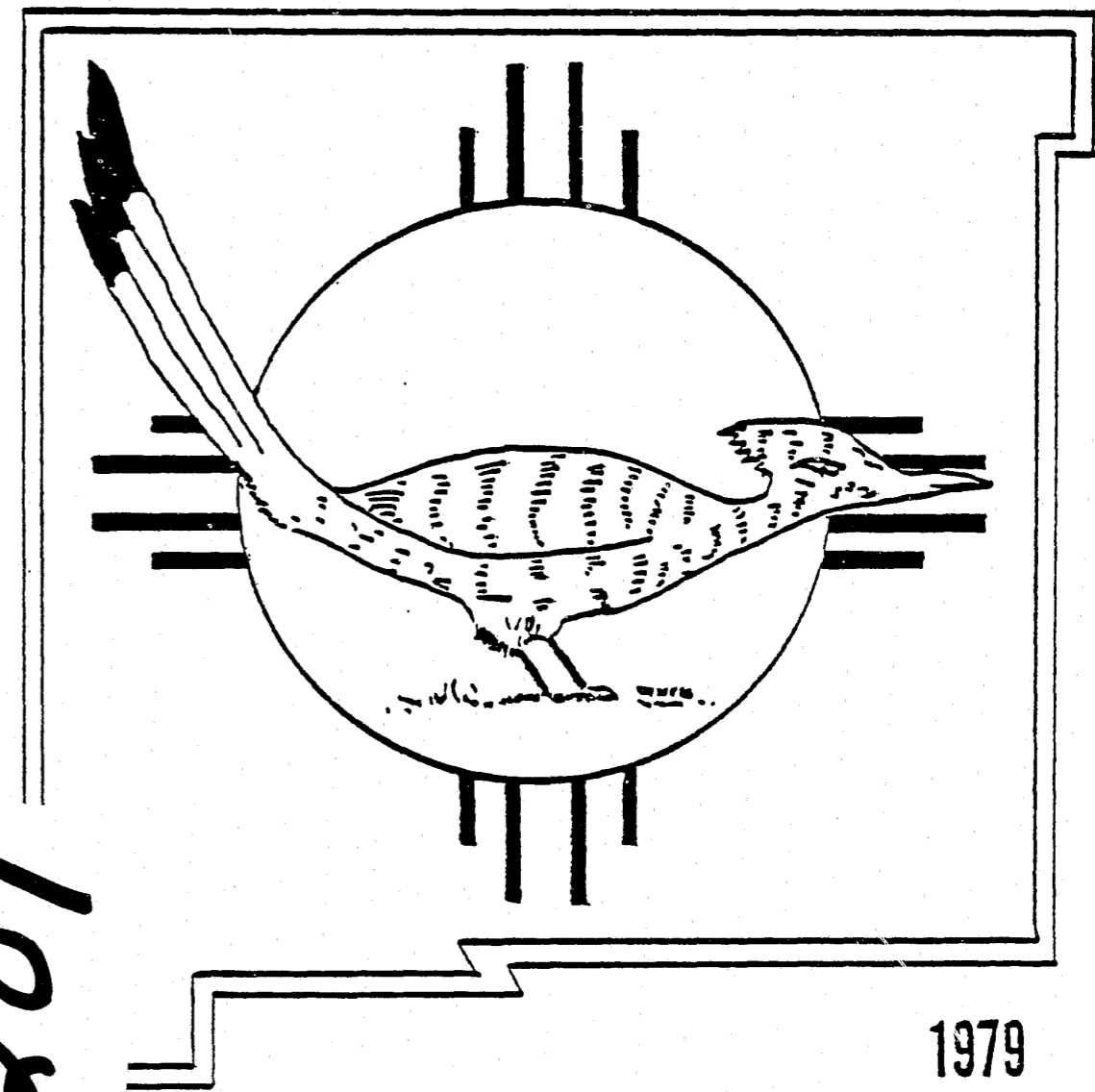
National Institute of Justice
United States Department of Justice
Washington, D. C. 20531

DATE FILMED

9/30/81

NEW MEXICO

CRIME REPORTS



1979

NEW MEXICO STATE POLICE
UNIFORM CRIME REPORTS

78201

MF-1



New Mexico State Police

P.O. BOX 1628
SANTA FE, NEW MEXICO 87501



BRUCE KING
GOVERNOR

MARTIN VIGIL
CHIEF

April 25, 1980

NCJRS

THE HONORABLE BRUCE KING
Governor of New Mexico
State Capitol
Santa Fe, New Mexico 87503

MAY 14 1981

ACQUISITIONS

Dear Governor King:

The following summary presents the highlights of the Uniform Crime Reporting Program in New Mexico during 1979.

During 1979, there were 7,303 violent crimes (152 murders, 611 rapes, 1,498 robberies, 5,042 aggravated assaults), and 62,360 property crimes (17,935 burglaries, 40,263 larcenies, 4,162 motor vehicle thefts), for a total of 69,663 serious crimes in the state. This is an increase of 11.0 percent from 62,733 serious crimes reported in 1978.

The serious crime rate per 1,000 population was 55.9; up from the 51.4 rate for 1978.

Firearms were used in 61.1 percent of the 152 murders; 130 of the reported murders were cleared by arrest.

Six-hundred eleven (611) rapes were reported; an increase of 15.2 percent over the 530 reported in 1978. 36.9 percent of the cases reported were cleared by arrest.

There were 1,498 robberies in 1979; an increase of 9.9 percent over the 1,362 reported in 1978. There was a total of \$1,665,228 taken in New Mexico robberies.

There were 17,935 reported cases of breaking and entering in 1979; an increase of 11.5 percent in this category from 16,073 reported in 1978. Larceny accounted for 40,263 cases; and, within this category, there were 9,080 thefts of motor vehicle parts and accessories.

In 1979, New Mexico law enforcement agencies reported 4,162 cases of motor vehicle thefts amounting to approximately \$12.1 million. Law enforcement was able to recover 2,510 of these stolen vehicles.

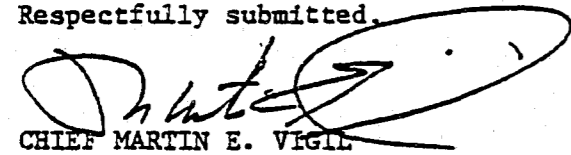
Police recovered \$11.3 million of the \$34.5 million in property stolen in 1979.

Governor Bruce King
April 25, 1980
Page Two (2)

There were 701 law enforcement officers assaulted and three killed during 1979. The number of officers assaulted increased by 4.7 percent over 1978. The largest number, 189 assaults, were officers responding to family disturbance calls.

The cooperation extended by the law enforcement agencies throughout New Mexico has made possible the success of the Uniform Crime Reporting Program during 1979. It is with appreciation to these dedicated officers, and in the interest of better law enforcement for all the citizens of New Mexico, that this sixth annual New Mexico Crime Report is submitted.

Respectfully submitted,



CHIEF MARTIN E. VIGIL
New Mexico State Police

MEV:dml

STATE OF NEW MEXICO
BRUCE KING GOVERNOR

U.S. Department of Justice
National Institute of Justice

This document has been reproduced exactly as received from the person or organization originating it. Points of view or opinions stated in this document are those of the authors and do not necessarily represent the official position or policies of the National Institute of Justice.

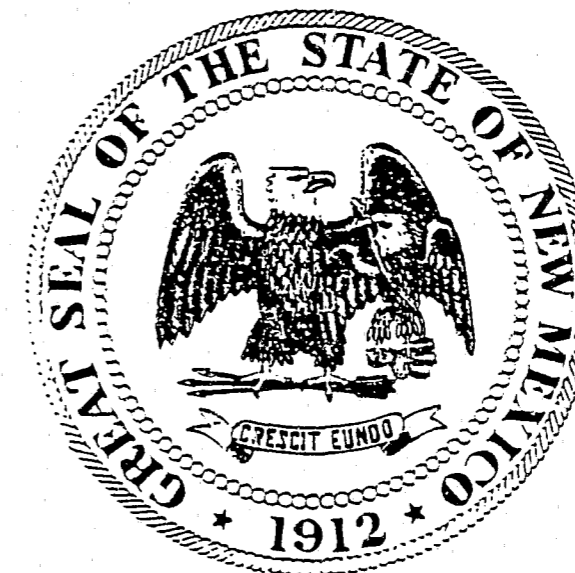
Permission to reproduce this copyrighted material has been granted by Martin E. Vigil

New Mexico State Police

to the National Criminal Justice Reference Service (NCJRS).

Further reproduction outside of the NCJRS system requires permission of the copyright owner.

NEW MEXICO STATE POLICE
MARTIN E. VIGIL CHIEF



UNIFORM CRIME REPORTING

POST OFFICE BOX 1628
SANTA FE, NEW MEXICO 87501
TELEPHONE 505/827-5147

TABLE OF CONTENTS

PART I
NEW MEXICO UNIFORM CRIME REPORTING PROGRAM 1

1. Introduction 2
History of Uniform Crime Reporting 2
Intent of the System 2

2. Assumptions and Limitations of the Publication 2
Assumptions. 3
Limitations. 3

3. Uniform Crime Reporting Classification of Offenses 4
Major Offenses (Crime Index) 4
Other Crime Offenses 4

4. Conclusion 4

PART II
NEW MEXICO CRIME INDEX OFFENSES. 5

1. Criminal Homicide. 6
Definition and Classification. 6
Analysis 6

2. Rape 9
Definition and Classification. 9
Analysis 9

3. Robbery 10
Definition and Classification 10
Analysis 10

4. Aggravated Assault 11
Definition and Classification. 11
Analysis 11

5. Burglary 12
Definition and Classification. 12
Analysis 12

6. Larceny. 14
Definition and Classification. 14
Analysis 14

7. Motor Vehicle Theft. 17
Definition and Classification. 17
Analysis 17

8. Value of Property Stolen and Recovered for Index Offenses. 20

9. All Arrests for Part I and Part II Crimes. 24

10. Police Assault Figures 31

11. Crime Index Trends 34

I
NEW MEXICO
UNIFORM CRIME REPORTING
PROGRAM
ANNUAL REPORT 1979

INTRODUCTION

HISTORY OF UNIFORM CRIME REPORTING

The need to gather and analyze crime statistics in this country dates back to 1870. During this time Congress sought to provide a national system of crime reporting, but their efforts failed. In 1871 the National Police Association attempted to collect crime data, but with equal lack of success.

It was not until 1927 that a Uniform Records Committee was established by the International Association of Chiefs of Police. This committee developed a uniform classification for most parts of the country. This classification was based directly upon the system employed by the Bureau of Census in compiling statistics of prisoners.

During the later part of 1930, the program was turned over to the Federal Bureau of Investigation. The Bureau began receiving on a voluntary basis crime statistics from police agencies throughout the United States. Since those early times, the Bureau has published many distinguished reports using those statistics. In recent years, the Bureau has actively assisted individual states in developing their own statewide programs.

INTENT OF THE SYSTEM

The intent of the New Mexico Uniform Crime Reporting (NMUCR) Program shall be to supply local community agencies, institutions and organizations with a source of crime statistics which they can use to assist in management decisions and implementing planning strategies to deter, reduce and prevent crime.

ASSUMPTIONS AND LIMITATIONS OF THE PUBLICATION

Unfortunately, we cannot state that all police agencies within New Mexico accurately record and submit crime data to NMUCR; however, the statistics listed in this publication are based on the most accurate data currently available. Accompanying this current data are many assumptions and limitations which directly affect the accuracy and precision of the statistics within this publication. These assumptions and limitations also directly affect the summarizing and the comparing of local community crime statistics. These are being noted for the reader who endeavors to draw conclusions concerning the statistical data.

The following factors are the major aspects which have an influence on the statistics presented in this publication:

ASSUMPTION

1. Crime is a social problem in New Mexico.
2. Crime figures presented in this publication are police statistics as distinguished from judicial or penal statistics.
3. Actual crimes represent violations of New Mexico statutes and local ordinances.
4. Citizen apathy and indifference contribute to the spread of crime.
5. Community institutions and organizations, coupled with police agencies are influenced by the decline and/or rise in crime rates.
6. A high level of integrity is needed in order to state NMUCR index crime rates.
7. Some police agencies have a profound distrust of the practical value of a statistical collection of data.
8. It is significant to consider the fact that policy relevant to reporting will differ in accordance with the philosophy of the various agency heads.

LIMITATIONS

1. All police departments are not equipped to render complete and accurate accounting of offenses committed and persons charged because of limited manpower, funding, etc.
2. Difference in the collecting and interpreting crime date.
3. Some police jurisdictions overlap.
4. Some juveniles are informally handled which affects the accuracy of the juvenile report input.
5. Crimes against persons and their property are not always reported to police.
6. Crime clearances lag months and sometimes years behind the actual reported offenses.
7. Property illustrations reflect the property stolen and/or recovered. Property damage is not included.
8. Stolen property figures represent property stolen during the reporting year. Recovered property figures may reflect reported property stolen in a previous calendar year but recovered in the reporting year.

UNIFORM CRIME REPORTING CLASSIFICATION OF OFFENSES

MAJOR OFFENSES (CRIME INDEX) - PART I

VIOLENT CRIMES

Murder and Non-Negligent
Manslaughter
Forcible Rape
Robbery
Aggravated Assault

NON-VIOLENT CRIMES

Burglary
Larceny
Motor Vehicle Theft

OTHER CRIME OFFENSES (NON-INDEX) - PART II

Other Assaults
Arson
Forgery and Counterfeiting
Fraud
Embezzlement
Stolen Property: Buying, Receiving, Possession, etc.
Vandalism
Weapons: Carrying, Possession, etc.
Prostitution
Sex Offenses (Except Forcible Rape and Prostitution)
Narcotic Drug Laws
Gambling
Offense Against Family and Children
Driving Under the Influence
Disorderly Conduct
Vagrancy
All Other Offenses (Except Traffic)
Suspicion
Curfew and Loitering
Runaways

CONCLUSION

The release of crime statistics frequently results in a controversy as to the accuracy of the statistics and how these statistics should be interpreted. Listed within this publication are many of the major assumptions and limitations which make it very apparent that great caution should be used when referring to the statistical data in this publication. The recognition of the assumptions and limitations should help the reader of this statistical resource to focus attention on valid objects, thus minimizing the dangers of over-generalization.

II

NEW MEXICO

CRIME INDEX OFFENSES

CRIMINAL HOMICIDE

Definition and Classification

Murder is defined as the unlawful killing of a human being. Any death due to a fight, argument, quarrel, assault or commission of a crime is included.

Analysis

In 1979, New Mexico reported 152 homicides. The month of December had the highest frequency of murders with 18. There were 69,663 index offenses reported and the crime of murder made up .2 percent of these offenses.

There were .1 murders for 1,000 New Mexico residents. The weapon most often used was the firearm, which was used to commit 61.1 percent of the murders. Information was also gathered on the type of firearm, and it was found that 40.8 percent of the firearms were handguns. Cutting and stabbing instruments were used to commit 14.5 percent of the murders. Other weapons (blunt objects, fire, etc.) were used in the commission of 16.5 percent of the homicides. All other murders were committed through the use of personal weapons such as hands, fists, feet, etc. These amounted to 7.8 percent.

Murder and Non-Negligent Manslaughter By Month

| TOTAL | JAN | FEB | MAR | APR | MAY | JUN | JUL | AUG | SEP | OCT | NOV | DEC |
|-------|-----|-----|-----|-----|-----|-----|-----|-----|-----|-----|-----|-----|
| 152 | 13 | 8 | 15 | 12 | 12 | 16 | 13 | 14 | 10 | 12 | 9 | 18 |

HOMICIDE - VICTIM BY AGE AND RACE

| AGE | <u>White</u> | | <u>Negro</u> | | <u>Indian</u> | | <u>Total</u> | |
|---------|--------------|--------|--------------|--------|---------------|--------|--------------|--------|
| | MALE | FEMALE | MALE | FEMALE | MALE | FEMALE | MALE | FEMALE |
| Under 1 | | | 1 | | | | 1 | |
| 1-4 | 2 | 1 | | 1 | | | 2 | 2 |
| 5-9 | 2 | | | | | | 2 | |
| 10-14 | 1 | | | | | | 1 | |
| 15-19 | 9 | 1 | 1 | 1 | 1 | 1 | 11 | 3 |
| 20-24 | 9 | 1 | 1 | | 1 | | 11 | 1 |
| 25-29 | 12 | 3 | 3 | | 1 | | 16 | 3 |
| 30-34 | 16 | 3 | | | | 1 | 16 | 4 |
| 35-39 | 13 | 6 | 1 | 1 | | | 14 | 7 |
| 40-44 | 3 | | 1 | | 1 | | 5 | |
| 45-49 | 3 | 3 | | | 1 | | 4 | 3 |
| 50-54 | 4 | 4 | 1 | | 1 | | 6 | 4 |
| 55-59 | 1 | | | | 1 | | 2 | |
| 60-64 | 4 | 2 | | | | | 4 | 2 |
| 65-Over | 4 | 3 | | | | | 4 | 3 |
| UNK | 14 | 4 | | | 3 | | 14 | 7 |
| TOTALS | 97 | 31 | 9 | 3 | 10 | 2 | 113 | 39 |

HOMICIDE - CIRCUMSTANCES AND WEAPON

| | <u>Handgun</u> | <u>Rifle</u> | <u>Shotgun</u> | <u>Firearm</u> | <u>Knife</u> | <u>Hands</u> | <u>Other</u> |
|------------------|----------------|--------------|----------------|----------------|--------------|--------------|--------------|
| Rape | 1 | | | | | 2 | 1 |
| Robbery | | | | 3 | | 2 | 1 |
| Burglary | 3 | | | | 1 | | 1 |
| Other-Not Stated | 7 | | | 4 | 1 | | 2 |
| Lovers Triangle | 3 | | | | | | |
| Brawl-Alcohol | 5 | 2 | | 1 | 2 | 2 | |
| Argument-Money | 3 | | | | 1 | | |
| Other Arguments | 26 | 7 | | 2 | 6 | 2 | 2 |
| All Other | 14 | | 5 | 7 | 11 | 4 | 18 |
| TOTALS | 62 | 9 | 5 | 17 | 22 | 12 | 25 |

RAPE

Definition and Classification

Rape is defined by NMUCR as the carnal knowledge of a female; forcibly and against her will. Generally carnal abuse (statutory rape) or other sex offenses are not classified in this section.

Analysis

Forcible rape and attempts to commit forcible rape accounted for 611 of New Mexico's 69,663 index crimes reported in 1979.

Law enforcement cleared 36.9 percent of the cases reported by an arrest.

Forcible Rape by Month

| CIRCUMSTANCES | TOTAL | JAN | FEB | MAR | APR | MAY | JUN | JUL | AUG | SEP | OCT | NOV | DEC |
|----------------|-------|-----|-----|-----|-----|-----|-----|-----|-----|-----|-----|-----|-----|
| Forcible Rape | 433 | 32 | 26 | 31 | 38 | 42 | 43 | 47 | 45 | 41 | 36 | 18 | 34 |
| Attempted Rape | 178 | 14 | 15 | 7 | 10 | 9 | 18 | 21 | 19 | 23 | 24 | 13 | 5 |
| TOTALS | 611 | 46 | 41 | 38 | 48 | 51 | 61 | 68 | 64 | 64 | 60 | 31 | 39 |

ROBBERY

Definition and Classification

Robbery is defined as the felonious and forcible taking the property of another against the person's will by violence, force or by putting the person in fear. Generally, robbery differs from larceny in that it is aggravated by the element of force or threat of force.

Analysis

There were 1,498 robberies reported during 1979. These robberies were 2.1 percent of the index crimes reported during the year. Reporting agencies were able to clear 28.9 percent of the robberies; the average dollar amount taken was \$1,111. There was a total of \$1,665,228 taken in New Mexico robberies.

Robbery by Month and Weapon

| CIRCUMSTANCES | TOTAL | JAN | FEB | MAR | APR | MAY | JUN | JUL | AUG | SEP | OCT | NOV | DEC |
|-----------------------------|-------|-----|-----|-----|-----|-----|-----|-----|-----|-----|-----|-----|-----|
| Firearm | 685 | 79 | 49 | 37 | 48 | 46 | 63 | 52 | 36 | 57 | 55 | 70 | 93 |
| Knife or Cutting Instrument | 205 | 24 | 9 | 30 | 15 | 22 | 22 | 17 | 17 | 9 | 17 | 10 | 13 |
| Other Dangerous Weapons | 104 | 9 | 6 | 9 | 10 | 7 | 3 | 9 | 17 | 8 | 8 | 10 | 8 |
| Strong Arm | 504 | 34 | 32 | 46 | 41 | 39 | 36 | 54 | 41 | 50 | 40 | 51 | 40 |
| TOTALS | 1,498 | 146 | 96 | 122 | 114 | 114 | 124 | 132 | 111 | 124 | 120 | 141 | 154 |

AGGRAVATED ASSAULT

Definition and Classification

Assault is defined by NMUCR as an unlawful attack by one person upon another for the purpose of inflicting severe bodily injury. Not included in this section are assaults with intent to rob or rape.

Analysis

There were 5,042 aggravated assaults in the state in 1979. The largest number of assaults were committed during the month of October with 473. Personal weapons such as hands, fists, feet, etc., are most frequently used to commit an aggravated assault. These types of personal weapons were used to carry out 30 percent of the aggravated assaults.

Firearms were used in 28.3 percent of the assaults; knife or cutting instruments in 21.8 percent and the remaining 19.7 percent with the use of other dangerous weapons. Aggravated assaults amounted to 7.4 percent of the index crimes.

Assault by Month and Weapon

| CIRCUMSTANCES | TOTAL | JAN | FEB | MAR | APR | MAY | JUN | JUL | AUG | SEP | OCT | NOV | DEC |
|-------------------------|-------|-----|-----|-----|-----|-----|-----|-----|-----|-----|-----|-----|-----|
| Firearm | 1,428 | 117 | 103 | 106 | 129 | 111 | 131 | 118 | 114 | 143 | 139 | 95 | 122 |
| Cutting Instrument | 1,103 | 78 | 59 | 94 | 80 | 100 | 121 | 126 | 102 | 73 | 85 | 92 | 93 |
| Other Dangerous Weapons | 997 | 64 | 80 | 73 | 65 | 84 | 91 | 90 | 93 | 90 | 121 | 71 | 75 |
| Hands, Fists Feet, etc. | 1,514 | 121 | 147 | 127 | 109 | 128 | 122 | 129 | 130 | 105 | 128 | 142 | 126 |
| TOTALS | 5,042 | 380 | 389 | 400 | 383 | 423 | 465 | 463 | 439 | 411 | 473 | 400 | 416 |

BURGLARY

Definition and Classification

Burglary is defined as the unlawful entry of a structure to commit a felony or theft, even though no force was used to gain entry.

Analysis

The 17,935 burglaries in New Mexico during 1979 comprised 25.6 percent of the index crimes. The reporting agencies were successful in clearing 1,987 of these crimes.

The greatest number of burglaries were in the forcible entry category which accounted for 77.9 percent of all burglaries. Unlawful entry, no force, accounted for 16.9 percent and the remaining were attempted forcible entry.

Burglary by Location and Time

| CLASSIFICATION | NUMBER OF OFFENSES | % DISTRIBUTION |
|---------------------------|--------------------|----------------|
| Residence (Sub-Total) | 12,135 | 67.5 |
| Night (6 PM - 6 AM) | 4,032 | 22.4 |
| Day (6 AM - 6 PM) | 4,982 | 27.6 |
| Unknown | 3,121 | 17.5 |
| Non-Residence (Sub-Total) | 5,800 | 32.5 |
| Night (6 PM - 6 AM) | 3,542 | 19.8 |
| Day (6 AM - 6 PM) | 783 | 4.4 |
| Unknown | 1,475 | 8.3 |
| TOTAL | 17,935 | |

BURGLARY BY MONTH AND ENTRY

| MEANS OF ENTRY | TOTAL | JAN | FEB | MAR | APR | MAY | JUN | JUL | AUG | SEP | OCT | NOV | DEC |
|---------------------------------|--------|-------|-------|-------|-------|-------|-------|-------|-------|-------|-------|-------|-------|
| Forcible Entry | 14,019 | 1,153 | 1,081 | 1,212 | 1,179 | 1,205 | 1,162 | 1,343 | 1,220 | 1,205 | 1,101 | 1,028 | 1,130 |
| Unlawful Entry (No Force) | 3,002 | 209 | 181 | 215 | 232 | 225 | 236 | 347 | 370 | 289 | 259 | 231 | 208 |
| Attempted Forcible Entry | 914 | 70 | 50 | 91 | 72 | 82 | 111 | 102 | 66 | 77 | 58 | 63 | 72 |
| TOTALS | 17,935 | 1,432 | 1,312 | 1,518 | 1,483 | 1,512 | 1,509 | 1,792 | 1,656 | 1,571 | 1,418 | 1,322 | 1,410 |

LARCENY - THEFT

Definition and Classification

Larceny - Theft is the unlawful taking or stealing of property or articles of value without the use of force, violence or fraud.

New Mexico Law Enforcement Agencies reported 40,263 cases of larceny-theft in 1979. These larcenies made up 57.7 percent of the index offenses. Of the total number of these crimes 8,038 were cleared.

LARCENY BY MONTH AND VALUE

| <u>CLASSIFICATION</u> | <u>TOTAL</u> | <u>JAN</u> | <u>FEB</u> | <u>MAR</u> | <u>APR</u> | <u>MAY</u> | <u>JUN</u> | <u>JUL</u> | <u>AUG</u> | <u>SEP</u> | <u>OCT</u> | <u>NOV</u> | <u>DEC</u> |
|-----------------------|--------------|------------|------------|------------|------------|------------|------------|------------|------------|------------|------------|------------|------------|
| \$200 & Over | 10,209 | 842 | 917 | 921 | 846 | 795 | 828 | 911 | 857 | 813 | 838 | 791 | 850 |
| \$50 to \$200 | 12,251 | 944 | 934 | 1,024 | 1,024 | 1,114 | 1,119 | 1,189 | 1,085 | 1,032 | 1,042 | 860 | 884 |
| Under \$50 | 17,803 | 1,359 | 1,432 | 1,715 | 1,426 | 1,455 | 1,424 | 1,426 | 1,486 | 1,402 | 1,513 | 1,500 | 1,665 |
| TOTALS | 40,263 | 3,145 | 3,283 | 3,660 | 3,296 | 3,364 | 3,371 | 3,526 | 3,428 | 3,247 | 3,393 | 3,151 | 3,399 |

LARCENY BY CLASSIFICATION AND MONTH

| <u>CLASSIFICATION</u> | <u>TOTAL</u> | <u>JAN</u> | <u>FEB</u> | <u>MAR</u> | <u>APR</u> | <u>MAY</u> | <u>JUN</u> | <u>JUL</u> | <u>AUG</u> | <u>SEP</u> | <u>OCT</u> | <u>NOV</u> | <u>DEC</u> |
|--------------------------------|---------------|--------------|--------------|--------------|--------------|--------------|--------------|--------------|--------------|--------------|--------------|--------------|--------------|
| Pocket Picking | 172 | 12 | 7 | 21 | 17 | 19 | 9 | 22 | 22 | 7 | 18 | 10 | 8 |
| Purse Snatch | 188 | 9 | 13 | 6 | 25 | 15 | 16 | 11 | 18 | 15 | 12 | 24 | 24 |
| Shop Lifting | 6,923 | 517 | 631 | 612 | 481 | 569 | 501 | 472 | 544 | 506 | 587 | 647 | 856 |
| From Motor Vehicles | 6,989 | 658 | 601 | 631 | 519 | 574 | 535 | 577 | 566 | 542 | 596 | 560 | 630 |
| Motor Vehicle Parts/Access. | 9,080 | 723 | 746 | 875 | 760 | 672 | 701 | 800 | 749 | 722 | 786 | 808 | 738 |
| Bicycles | 3,754 | 137 | 156 | 303 | 320 | 399 | 433 | 536 | 458 | 356 | 349 | 151 | 156 |
| From Buildings | 5,420 | 521 | 465 | 527 | 588 | 476 | 437 | 447 | 355 | 455 | 381 | 396 | 372 |
| From Coin Oper. Machines | 231 | 25 | 18 | 34 | 17 | 24 | 27 | 18 | 12 | 12 | 25 | 10 | 9 |
| All Others | 7,506 | 543 | 646 | 651 | 569 | 616 | 712 | 643 | 704 | 632 | 639 | 545 | 606 |
| TOTALS | 40,263 | 3,145 | 3,283 | 3,660 | 3,296 | 3,364 | 3,371 | 3,526 | 3,428 | 3,247 | 3,393 | 3,151 | 3,399 |

MOTOR VEHICLE THEFT

Definition and Classification

NMUCR defines motor vehicle theft as the unlawful taking or stealing of a motor vehicle, including attempts. Examples of motor vehicles are automobiles, trucks, buses, motorcycles, motor scooters, snowmobiles, etc.

Analysis

In 1979, New Mexico agencies reported 4,162 offenses of motor vehicle thefts. Motor vehicle thefts accounted for 5.9 percent of the 69,663 index crimes reported.

During 1979, 18.3 percent of the 4,162 offenses reported were cleared by an arrest.

Motor Vehicle Theft by Month

| <u>TYPE</u> | <u>TOTAL</u> | <u>JAN</u> | <u>FEB</u> | <u>MAR</u> | <u>APR</u> | <u>MAY</u> | <u>JUN</u> | <u>JUL</u> | <u>AUG</u> | <u>SEP</u> | <u>OCT</u> | <u>NOV</u> | <u>DEC</u> |
|-------------------|--------------|------------|------------|------------|------------|------------|------------|------------|------------|------------|------------|------------|------------|
| Autos | 2,330 | 188 | 148 | 214 | 203 | 235 | 199 | 206 | 208 | 205 | 159 | 201 | 164 |
| Trucks & Buses | 1,112 | 92 | 102 | 91 | 73 | 88 | 102 | 103 | 97 | 93 | 89 | 99 | 83 |
| Other Vehicles | 720 | 36 | 48 | 74 | 72 | 77 | 88 | 60 | 64 | 58 | 57 | 38 | 48 |
| TOTALS | 4,162 | 316 | 298 | 379 | 348 | 400 | 389 | 369 | 369 | 356 | 305 | 338 | 295 |

MOTOR VEHICLE RECOVERY INFORMATION

| <u>SITUATION</u> | <u>TOTAL</u> | <u>JAN</u> | <u>FEB</u> | <u>MAR</u> | <u>APR</u> | <u>MAY</u> | <u>JUN</u> | <u>JUL</u> | <u>AUG</u> | <u>SEP</u> | <u>OCT</u> | <u>NOV</u> | <u>DEC</u> |
|--|--------------|------------|------------|------------|------------|------------|------------|------------|------------|------------|------------|------------|------------|
| Locally stolen (Recovered Locally) | 1,815 | 146 | 149 | 168 | 155 | 168 | 145 | 160 | 121 | 155 | 161 | 156 | 131 |
| Locally Stolen (Recovered Other) | 695 | 68 | 61 | 42 | 59 | 51 | 48 | 60 | 62 | 66 | 53 | 66 | 59 |
| Total | 2,510 | 214 | 210 | 210 | 214 | 219 | 193 | 220 | 183 | 221 | 214 | 222 | 190 |
| Stolen Other (Recovered Locally) | 893 | 102 | 83 | 64 | 70 | 54 | 62 | 87 | 65 | 67 | 78 | 84 | 77 |
| TOTALS | 3,403 | 316 | 293 | 274 | 284 | 273 | 255 | 307 | 248 | 288 | 292 | 306 | 267 |

STATE TOTALS - PART I CRIMES, 1979

| <u>Index Crimes</u> | <u>Total</u> | <u>Total Cleared</u> | <u>Rate Per 1000 Inhabitants</u> | <u>% Distribution</u> |
|---------------------|--------------|----------------------|----------------------------------|-----------------------|
| Criminal Homicide | 152 | 130 | .1 | .2 |
| Forcible Rape | 611 | 226 | .4 | .8 |
| Robbery | 1,498 | 433 | 1.1 | 2.1 |
| Aggravated Assault | 5,042 | 2,501 | 4.1 | 7.4 |
| Burglary | 17,935 | 1,987 | 14.3 | 25.6 |
| Larceny | 40,263 | 8,038 | 32.3 | 57.7 |
| Motor Vehicle Theft | 4,162 | 765 | 3.3 | 5.9 |
| TOTALS | 69,663 | 14,080 | 55.9 | |

State Totals

This section deals with state totals. These figures demonstrate the potential for a deeper study of crime analysis that can be made in addition to the information contained hereafter.

VALUE OF PROPERTY STOLEN AND RECOVERED FOR INDEX OFFENSES

The next several charts will deal with value of property stolen and recovered by article and month, as well as property stolen by crime and month.

The article or type of property stolen is of great importance to the police administrator when he attempts to develop programs to prevent the theft of any particular article.

This is an attempt to list articles stolen by month, and also, to reveal the value of property involved in the seven Part I crimes.

VALUE OF PROPERTY STOLEN AND RECOVERED BY MONTH

| <u>MONTH</u> | <u>Total Amount (Dollars)</u> | | |
|--------------|-------------------------------|------------------|--------------------|
| | <u>STOLEN</u> | <u>RECOVERED</u> | <u>% RECOVERED</u> |
| January | 2,547,996 | 957,182 | 37.5 |
| February | 2,674,725 | 890,730 | 33.3 |
| March | 2,586,068 | 875,734 | 33.8 |
| April | 2,640,668 | 1,037,374 | 39.2 |
| May | 3,169,692 | 950,691 | 29.9 |
| June | 2,691,131 | 1,074,237 | 39.9 |
| July | 2,941,570 | 897,559 | 30.5 |
| August | 3,407,203 | 1,040,687 | 30.5 |
| September | 3,080,739 | 1,182,630 | 38.3 |
| October | 2,713,074 | 883,192 | 32.5 |
| November | 2,701,033 | 817,314 | 30.2 |
| December | 3,429,224 | 768,886 | 22.4 |
| TOTALS | 34,583,123 | 11,376,216 | 32.8 |

TYPE AND VALUE OF PROPERTY STOLEN

| PROPERTY TYPE | TOTAL | DIST. | JAN | FEB | MAR | APR | MAY | JUN | JUL | AUG | SEP | OCT | NOV | DEC |
|----------------------------|------------|-------|-----------|-----------|-----------|-----------|-----------|-----------|-----------|-----------|-----------|-----------|-----------|-----------|
| Currency | 2,271,632 | 6.5 | 165,114 | 227,495 | 130,373 | 129,626 | 170,005 | 168,684 | 259,525 | 168,630 | 355,858 | 186,191 | 133,878 | 176,108 |
| Jewelry | 4,468,396 | 12.9 | 277,539 | 225,873 | 269,862 | 357,948 | 305,510 | 266,960 | 281,015 | 384,551 | 426,158 | 359,314 | 304,477 | 1,009,189 |
| Clothing | 652,356 | 1.8 | 95,177 | 43,810 | 69,139 | 46,387 | 44,561 | 41,097 | 42,739 | 62,235 | 45,887 | 41,041 | 52,799 | 67,484 |
| Locally Stolen Vehicles | 12,169,153 | 35.1 | 955,279 | 839,231 | 902,946 | 809,629 | 1,498,076 | 1,030,848 | 946,827 | 1,397,292 | 1,123,455 | 876,609 | 971,114 | 817,867 |
| Office Equipment | 328,921 | .9 | 34,122 | 38,338 | 21,747 | 44,242 | 13,901 | 24,641 | 26,260 | 29,787 | 19,492 | 21,223 | 32,963 | 22,205 |
| TVs Stereos | 3,594,625 | 10.3 | 310,778 | 263,179 | 298,667 | 293,018 | 281,483 | 284,077 | 353,696 | 299,399 | 317,578 | 290,077 | 279,072 | 123,601 |
| Firearms | 736,576 | 2.1 | 74,102 | 50,776 | 72,917 | 47,078 | 65,204 | 35,674 | 61,114 | 80,600 | 47,107 | 77,335 | 57,217 | 67,452 |
| Household Goods | 1,058,464 | 3.0 | 64,694 | 146,894 | 80,638 | 80,462 | 69,809 | 72,223 | 158,775 | 72,286 | 98,293 | 70,305 | 55,048 | 89,017 |
| Consumable Goods | 536,076 | 1.5 | 14,362 | 119,590 | 24,203 | 18,978 | 25,053 | 123,012 | 30,452 | 43,875 | 26,635 | 59,628 | 20,406 | 29,882 |
| Livestock | 103,260 | .2 | 1,034 | 15,796 | 13,477 | 4,915 | 5,960 | 21,771 | 21,700 | 2,755 | 3,635 | 6,506 | 1,919 | 1,792 |
| Misc. | 8,663,659 | 25.0 | 555,795 | 703,743 | 702,099 | 808,385 | 690,130 | 622,144 | 759,467 | 865,793 | 616,641 | 724,845 | 790,190 | 824,427 |
| TOTALS | 34,583,123 | | 2,547,996 | 2,674,725 | 2,586,068 | 2,640,668 | 3,169,692 | 2,691,131 | 2,941,570 | 3,407,203 | 3,080,739 | 2,713,074 | 2,701,033 | 3,429,224 |

TYPE AND VALUE OF PROPERTY RECOVERED

| PROPERTY TYPE | TOTAL | PERCENT RECOVERED | JAN | FEB | MAR | APR | MAY | JUN | JUL | AUG | SEP | OCT | NOV | DEC |
|----------------------------|-------------------|-------------------|----------------|----------------|----------------|------------------|----------------|------------------|----------------|------------------|------------------|----------------|----------------|----------------|
| Currency | 356,448 | 15.6 | 27,632 | 37,805 | 18,514 | 96,082 | 46,533 | 21,816 | 14,898 | 13,442 | 19,301 | 30,418 | 16,699 | 13,284 |
| Jewelry | 511,389 | 11.4 | 31,815 | 19,663 | 66,511 | 69,617 | 8,686 | 20,859 | 11,374 | 66,854 | 114,499 | 45,473 | 19,017 | 57,021 |
| Clothing | 75,895 | 11.6 | 9,247 | 4,404 | 4,774 | 8,521 | 4,260 | 5,856 | 4,913 | 7,160 | 6,424 | 5,018 | 5,621 | 9,677 |
| Locally Recovered Vehicles | 8,475,749 | 69.6 | 815,110 | 606,778 | 676,016 | 585,816 | 739,174 | 712,409 | 720,007 | 807,063 | 899,515 | 658,481 | 686,803 | 568,515 |
| Office Equipment | 84,425 | 25.6 | 7,100 | 8,012 | 4,003 | 6,006 | 9,002 | 7,781 | 2,300 | 9,006 | 9,002 | 8,000 | 9,242 | 5,171 |
| TVs | | | | | | | | | | | | | | |
| Stereos | 269,975 | 7.5 | 18,356 | 19,362 | 39,348 | 192,242 | 20,784 | 18,310 | 17,249 | 12,217 | 26,900 | 16,767 | 23,174 | 22,310 |
| Firearms | 91,364 | 12.4 | 8,469 | 9,444 | 9,508 | 4,925 | 20,341 | 3,501 | 2,641 | 7,861 | 5,934 | 7,530 | 6,645 | 4,565 |
| Household Goods | 54,405 | 5.1 | 2,081 | 2,478 | 7,898 | 4,531 | 3,343 | 7,687 | 2,664 | 5,620 | 4,828 | 4,005 | 1,421 | 7,849 |
| Consumable Goods | 243,898 | 45.4 | 1,053 | 105,499 | 2,364 | 4,961 | 3,803 | 102,164 | 2,619 | 10,068 | 2,910 | 7,291 | 2,182 | 2,984 |
| Livestock | 24,086 | 23.3 | | 2,174 | 14,440 | 30 | 900 | | | | | 2,860 | 1,042 | 800 |
| Misc. | 1,188,582 | 13.7 | 36,319 | 75,111 | 52,358 | 237,623 | 93,863 | 172,394 | 122,874 | 81,396 | 93,295 | 101,751 | 45,508 | 76,490 |
| TOTALS | 11,376,216 | 32.8 | 957,182 | 890,730 | 875,734 | 1,037,574 | 950,691 | 1,074,237 | 897,559 | 1,040,607 | 1,182,630 | 883,192 | 817,314 | 760,886 |

VALUE OF PROPERTY STOLEN BY CRIME

| <u>OFFENSE</u> | <u>TOTAL</u> | <u>JAN</u> | <u>FEB</u> | <u>MAR</u> | <u>APR</u> | <u>MAY</u> | <u>JUN</u> | <u>JUL</u> | <u>AUG</u> | <u>SEP</u> | <u>OCT</u> | <u>NOV</u> | <u>DEC</u> |
|----------------|-------------------|------------------|------------------|------------------|------------------|------------------|------------------|------------------|------------------|------------------|------------------|------------------|------------------|
| Murder | 9,449 | 988 | | 3,735 | | | 4,620 | 106 | | | | | |
| Rape | 3,638 | 120 | 78 | | | | 127 | 43 | 393 | 1,592 | 213 | 72 | 1,000 |
| Robbery | 1,665,228 | 45,735 | 73,345 | 31,830 | 25,555 | 72,918 | 90,450 | 92,525 | 59,673 | 170,305 | 75,152 | 142,180 | 785,560 |
| Burglary | 11,086,719 | 782,389 | 886,287 | 856,692 | 911,231 | 893,422 | 818,123 | 1,072,182 | 1,058,828 | 1,084,148 | 1,014,909 | 778,743 | 929,765 |
| Larceny | 9,857,123 | 796,352 | 893,560 | 805,763 | 916,776 | 717,486 | 762,219 | 840,846 | 907,263 | 729,000 | 724,844 | 855,212 | 907,802 |
| Vehicles | 11,960,966 | 922,412 | 821,455 | 888,048 | 787,106 | 1,485,866 | 1,015,592 | 935,868 | 1,381,046 | 1,095,694 | 897,956 | 924,826 | 805,077 |
| TOTALS | 34,583,123 | 2,547,996 | 2,674,725 | 2,586,068 | 2,640,668 | 3,169,692 | 2,691,131 | 2,941,570 | 3,407,203 | 3,080,719 | 2,713,074 | 2,701,033 | 1,429,224 |

ALL ARRESTS FOR PART I AND PART II OFFENSES

Arrest statistics reflecting characteristics of persons arrested by age, sex and race are collected monthly from contributing law enforcement agencies. In examining these arrest figures, it is important to remember that the same person may be arrested several times during the year for the same type or different offenses.

A juvenile is counted as a person arrested when he commits an offense and the circumstances are such that if the offender were an adult an arrest would be made.

Juvenile Dispositions

| | |
|--|--------|
| Handled within the Department and released | 2,212 |
| Referred to Juvenile Court or Probation Department | 9,319 |
| Referred to Welfare Agency | 79 |
| Referred to Other Police Agency | 149 |
| Referred to Adult or Criminal Court | 24 |
| TOTAL | 11,783 |

AGE AND SEX OF PERSONS ARRESTED - 17 AND UNDER

| <u>OFFENSE</u> | <u>SEX</u> | <u>10 AND UNDER</u> | <u>11-12</u> | <u>13-14</u> | <u>15</u> | <u>16</u> | <u>17</u> | <u>TOTAL</u> |
|----------------------------------|------------|-----------------------------|--------------|--------------|--------------|--------------|--------------|--------------|
| Murder | Male | | 1 | 1 | | 3 | 3 | 8 |
| Forcible Rape | Male | 1 | 2 | 5 | 2 | 8 | 8 | 26 |
| Robbery | Male | 1 | 3 | 8 | 15 | 22 | 31 | 80 |
| | Female | | | 1 | 1 | 4 | 1 | 7 |
| Aggr. Assault | Male | 4 | 15 | 24 | 55 | 90 | 101 | 289 |
| | Female | | 1 | 12 | 9 | 11 | 9 | 42 |
| Burglary | Male | 21 | 40 | 189 | 214 | 208 | 177 | 849 |
| | Female | 4 | 8 | 14 | 13 | 12 | 12 | 63 |
| Larceny | Male | 117 | 258 | 552 | 381 | 426 | 405 | 2,139 |
| | Female | 35 | 111 | 345 | 244 | 228 | 234 | 1,197 |
| Motor Vehicle Theft | Male | 1 | 4 | 52 | 65 | 40 | 48 | 210 |
| | Female | | 4 | 18 | 8 | 11 | 9 | 50 |
| PART I TOTALS | | 184 | 447 | 1,221 | 1,007 | 1,063 | 1,038 | 4,960 |
| Other Assaults | Male | 3 | 5 | 28 | 33 | 58 | 46 | 173 |
| | Female | | 1 | 5 | 10 | 14 | 7 | 37 |
| Arson | Male | 12 | 3 | 4 | 3 | 2 | 2 | 26 |
| | Female | 2 | | 1 | | | | 3 |
| Forgery and Counterfeiting | Male | 3 | 1 | 7 | 8 | 8 | 5 | 32 |
| | Female | | | 3 | 3 | | 2 | 8 |
| Fraud | Male | | | 3 | 6 | 9 | 20 | 38 |
| | Female | | | 3 | 4 | 3 | 5 | 15 |
| Embezzlement | Male | | | 1 | 1 | 4 | 7 | 13 |
| | Female | | | 2 | 2 | 2 | 2 | 8 |
| Possession Stolen Property | Male | | 4 | 42 | 39 | 55 | 45 | 185 |
| | Female | | | 1 | 8 | 8 | 2 | 19 |
| Vandalism | Male | 63 | 65 | 106 | 69 | 92 | 106 | 501 |
| | Female | 8 | 6 | 16 | 13 | 9 | 5 | 57 |

AGE AND SEX - 17 AND UNDER (CONT'D.)

| <u>OFFENSES</u> | <u>SEX</u> | <u>10 AND UNDER</u> | <u>11-12</u> | <u>13-14</u> | <u>15</u> | <u>16</u> | <u>17</u> | <u>TOTAL</u> |
|-------------------------------|------------|-----------------------------|--------------|--------------|--------------|--------------|--------------|---------------|
| Possession of Weapons | Male | 2 | 5 | 10 | 24 | 25 | 15 | 81 |
| | Female | | | | 3 | | 2 | 5 |
| Prostitution | Female | | | | 1 | 1 | 2 | 4 |
| Other Sex Offenses | Male | | | | 5 | 9 | 6 | 20 |
| | Female | | | 2 | | | | 2 |
| Narcotic Drug Laws | Male | 2 | 4 | 51 | 97 | 162 | 110 | 426 |
| | Female | | 2 | 8 | 23 | 29 | 46 | 108 |
| DWI | Male | | | 7 | 18 | 114 | 193 | 332 |
| | Female | | | | 5 | 10 | 22 | 37 |
| Liquor Laws | Male | | 2 | 72 | 206 | 422 | 566 | 1,268 |
| | Female | | 3 | 55 | 57 | 94 | 114 | 323 |
| Disorderly Conduct | Male | 5 | 9 | 74 | 110 | 172 | 224 | 594 |
| | Female | | 3 | 28 | 50 | 30 | 42 | 153 |
| All Other Offenses | Male | 26 | 46 | 200 | 198 | 271 | 343 | 1,084 |
| | Female | 8 | 13 | 62 | 53 | 69 | 58 | 263 |
| Curfew and Loitering | Male | 1 | 4 | 55 | 81 | 114 | 118 | 373 |
| | Female | | 1 | 29 | 34 | 33 | 38 | 135 |
| Runaway | Male | 2 | 16 | 53 | 53 | 35 | 32 | 191 |
| | Female | 3 | 10 | 83 | 101 | 73 | 39 | 309 |
| PART II TOTALS | | 140 | 203 | 1,011 | 1,318 | 1,927 | 2,224 | 6,823 |
| TOTAL JUVENILE ARRESTS | | 324 | 650 | 2,232 | 2,325 | 2,990 | 3,262 | 11,783 |

AGE AND SEX OF PERSONS ARRESTED

| OFFENSES | SEX | 18 | 19 | 20 | 21 | 22 | 23 | 24 | 25-29 | 30-34 | 35-39 | 40-44 | 45-49 | 50-54 | 55-59 | 60-64 | 65 | TOTAL |
|----------------------------|--------|-----|-----|-----|-----|-----|-----|-----|-------|-------|-------|-------|-------|-------|-------|-------|----|-------|
| Murder | Male | 3 | 3 | 4 | 4 | 6 | 9 | 9 | 16 | 17 | 7 | 4 | 3 | | 2 | | | 87 |
| | Female | 1 | | | 3 | 1 | 1 | 1 | | 3 | | 1 | 2 | | | | | 13 |
| Forcible Rape | Male | 13 | 11 | 16 | 11 | 16 | 3 | 4 | 28 | 19 | 13 | 4 | 3 | 4 | 1 | | | 146 |
| | Female | 2 | 4 | 3 | 3 | 2 | 1 | | 6 | 4 | 1 | | 1 | | | | | 27 |
| Robbery | Male | 31 | 33 | 19 | 27 | 18 | 12 | 19 | 49 | 24 | 11 | 3 | 3 | 2 | 3 | | | 254 |
| | Female | 2 | 4 | 3 | 3 | 2 | 1 | | 6 | 4 | 1 | | 1 | | | | | 27 |
| Aggr. Assault | Male | 192 | 109 | 102 | 124 | 126 | 100 | 120 | 220 | 124 | 145 | 82 | 62 | 43 | 31 | 11 | 10 | 1,609 |
| | Female | 10 | 14 | 11 | 12 | 7 | 7 | 11 | 31 | 35 | 15 | 13 | 8 | 4 | 1 | | | 179 |
| Burglary | Male | 69 | 126 | 86 | 76 | 56 | 49 | 45 | 123 | 54 | 35 | 31 | 9 | 5 | 2 | 2 | | 768 |
| | Female | 12 | 9 | 4 | 6 | 1 | 5 | 5 | 15 | 9 | 4 | 1 | | 1 | | | | 72 |
| Larceny | Male | 289 | 250 | 185 | 158 | 150 | 115 | 107 | 369 | 238 | 147 | 110 | 72 | 47 | 43 | 22 | 5 | 2,297 |
| | Female | 192 | 169 | 119 | 114 | 101 | 105 | 82 | 299 | 194 | 109 | 84 | 73 | 55 | 36 | 28 | 7 | 1,767 |
| Motor Vehicle Theft | Male | 51 | 32 | 21 | 17 | 19 | 17 | 15 | 55 | 19 | 12 | 7 | 7 | 3 | 3 | 1 | | 279 |
| | Female | 2 | 3 | | 1 | 2 | 1 | 3 | 2 | 2 | 1 | | | | | | | 17 |
| PART I TOTALS | | 867 | 753 | 570 | 556 | 505 | 425 | 421 | 1,221 | 742 | 500 | 340 | 243 | 164 | 122 | 64 | 22 | 7,515 |
| Other Assaults | Male | 53 | 49 | 33 | 59 | 44 | 45 | 42 | 48 | 93 | 55 | 42 | 20 | 25 | 14 | 15 | 3 | 640 |
| | Female | 8 | 5 | 3 | 3 | 5 | 5 | 7 | 17 | 17 | 10 | 10 | 8 | 3 | 1 | 1 | | 103 |
| Arson | Male | 3 | 7 | 2 | | | 5 | 3 | 3 | 1 | 3 | | | 1 | 1 | | | 29 |
| | Female | | | 1 | | | | | | 2 | 1 | | | | | | | 4 |
| Forgery and Counterfeiting | Male | 5 | 11 | 15 | 14 | 17 | 8 | 13 | 32 | 23 | 11 | 8 | 5 | 2 | 2 | 1 | | 167 |
| | Female | 3 | 4 | 8 | 6 | 7 | 2 | 10 | 25 | 8 | 1 | 3 | 2 | 1 | | | | 80 |
| Fraud | Male | 32 | 20 | 34 | 43 | 35 | 38 | 15 | 103 | 74 | 41 | 32 | 37 | 26 | 8 | 5 | 1 | 544 |
| | Female | 9 | 17 | 7 | 15 | 11 | 10 | 7 | 58 | 29 | 26 | 10 | 5 | 6 | 3 | | | 213 |
| Embezzlement | Male | 4 | 8 | 8 | 7 | 3 | 6 | 2 | 12 | 12 | 10 | 7 | 5 | 4 | | 1 | | 89 |
| | Female | 3 | 5 | 3 | 1 | 1 | 2 | 3 | 3 | 3 | 2 | 4 | 2 | 1 | | | | 33 |
| Stolen Property | Male | 42 | 48 | 46 | 22 | 35 | 36 | 19 | 69 | 65 | 24 | 11 | 9 | 6 | 5 | 3 | | 440 |
| | Female | 13 | 4 | 3 | 4 | 5 | 2 | 5 | 12 | 6 | 5 | | | | | | | 59 |
| Vandalism | Male | 69 | 41 | 46 | 26 | 29 | 20 | 20 | 78 | 41 | 27 | 15 | 9 | 7 | 8 | 4 | 3 | 443 |
| | Female | 7 | 4 | 4 | 8 | 1 | 1 | 3 | 3 | 10 | 4 | 8 | 6 | 1 | 2 | 1 | | 63 |
| Possession of Weapons | Male | 8 | 6 | 8 | 7 | 8 | 6 | 10 | 25 | 9 | 11 | 4 | | 4 | 3 | | 2 | 111 |
| | Female | 4 | 2 | 2 | 4 | 3 | 2 | 1 | 4 | 2 | 2 | 2 | | | | | | 28 |

AGE AND SEX OF PERSONS ARRESTED (CONT'D.)

| OFFENSES | SEX | 18 | 19 | 20 | 21 | 22 | 23 | 24 | 25-29 | 30-34 | 35-39 | 40-44 | 45-49 | 50-54 | 55-59 | 60-64 | 65 | TOTAL |
|-------------------------------------|--------|-------|-------|-------|-------|-------|-------|-------|-------|-------|-------|-------|-------|-------|-------|-------|-----|--------|
| Prostitution | Male | 1 | 1 | 1 | 1 | | 2 | 1 | 3 | 5 | 4 | | | | | | | 19 |
| | Female | 10 | 4 | 9 | 14 | 13 | 15 | 6 | 32 | 6 | 5 | 3 | 1 | | | | | |
| Other Sex Offenses | Male | 9 | 7 | 13 | 14 | 12 | 17 | 12 | 51 | 15 | 9 | 10 | 7 | 8 | 2 | | 1 | 195 |
| | Female | 2 | 5 | 1 | 4 | 1 | 6 | 1 | 6 | 4 | 3 | | 1 | | 1 | | | 75 |
| Narcotic Drugs | Male | 134 | 127 | 97 | 81 | 75 | 61 | 61 | 177 | 77 | 33 | 13 | 6 | 1 | | | | 944 |
| | Female | 28 | 17 | 12 | 9 | 15 | 8 | 8 | 21 | 4 | 1 | 4 | 6 | 1 | | | | 177 |
| Gambling | Male | | | | | | | | | 2 | 2 | 4 | 1 | 2 | 1 | | | 17 |
| | Female | | | | | | | | | | | | | | | | | |
| Offenses Against Family | Male | 2 | 2 | 6 | 3 | 5 | 7 | 1 | 21 | 12 | 9 | 6 | 2 | 3 | 4 | | | 81 |
| | Female | 1 | 2 | 2 | 3 | 3 | 2 | 4 | 15 | 10 | 4 | 6 | 1 | 2 | | | | 55 |
| DUI | Male | 409 | 445 | 462 | 519 | 569 | 677 | 467 | 1,702 | 1,111 | 791 | 622 | 498 | 412 | 302 | 166 | 53 | 8,945 |
| | Female | 35 | 37 | 38 | 53 | 49 | 45 | 41 | 175 | 134 | 111 | 84 | 63 | 51 | 35 | 17 | 6 | 970 |
| Liquor Laws | Male | 659 | 555 | 437 | 108 | 90 | 59 | 46 | 148 | 88 | 34 | 48 | 36 | 20 | 18 | 7 | 3 | 2,356 |
| | Female | 83 | 64 | 36 | 4 | 10 | 6 | 6 | 14 | 15 | 7 | 7 | 4 | 2 | 4 | | | 262 |
| Disorderly Conduct | Male | 421 | 275 | 236 | 316 | 251 | 283 | 236 | 815 | 573 | 359 | 197 | 179 | 144 | 137 | 91 | 62 | 4,570 |
| | Female | 43 | 47 | 41 | 59 | 36 | 36 | 39 | 133 | 119 | 73 | 30 | 45 | 18 | 14 | 6 | 2 | 741 |
| Vagrancy | Male | | | | 1 | 1 | 1 | | 1 | 2 | 1 | 3 | 3 | 4 | | | | 20 |
| | Female | | | | | | | | | | | | | | | | | |
| All Other Offenses (Except Traffic) | Male | 842 | 815 | 771 | 735 | 678 | 597 | 510 | 1,737 | 1,170 | 628 | 485 | 247 | 180 | 154 | 102 | 63 | 9,714 |
| | Female | 130 | 121 | 104 | 96 | 100 | 106 | 89 | 225 | 175 | 107 | 44 | 37 | 23 | 18 | 12 | 1 | 1,190 |
| PART II TOTALS | | 3,072 | 2,755 | 2,465 | 2,219 | 2,092 | 1,916 | 1,668 | 5,768 | 3,918 | 2,414 | 1,730 | 1,240 | 951 | 736 | 435 | 203 | 33,604 |
| TOTAL ARRESTS | | 3,939 | 3,508 | 3,035 | 2,795 | 2,597 | 2,341 | 2,089 | 6,989 | 4,660 | 2,914 | 2,070 | 1,483 | 1,117 | 853 | 499 | 225 | 41,119 |

TOTAL ARRESTS BY RACE

| <u>OFFENSE</u> | <u>WHITE</u> | <u>NEGRO</u> | <u>INDIAN</u> | <u>OTHER</u> | <u>TOTAL</u> |
|--------------------------|---------------|--------------|---------------|--------------|---------------|
| Murder | 89 | 17 | 2 | | 108 |
| Rape | 141 | 18 | 12 | 1 | 172 |
| Robbery | 301 | 38 | 29 | | 368 |
| Aggravated Assault | 1,665 | 117 | 337 | | 2,119 |
| Burglary | 1,375 | 136 | 236 | 5 | 1,752 |
| Larceny | 6,041 | 370 | 962 | 27 | 7,400 |
| Motor Vehicle Theft | 492 | 23 | 38 | 3 | 556 |
| PART I TOTALS | 10,104 | 719 | 1,616 | 36 | 12,475 |
| Other Assaults | 818 | 80 | 52 | 3 | 953 |
| Arson | 62 | | | | 62 |
| Forgery & Counterfeiting | 242 | 38 | 7 | | 287 |
| Fraud | 693 | 80 | 37 | | 810 |
| Embezzlement | 130 | 8 | 5 | | 143 |
| Stolen Property | 611 | 49 | 42 | 1 | 703 |
| Vandalism | 958 | 34 | 70 | 2 | 1,064 |
| Weapons | 196 | 16 | 13 | | 225 |
| Prostitution | 111 | 29 | 1 | | 141 |
| Other Sex Offenses | 207 | 13 | 32 | | 252 |
| Narcotic Drugs | 1,492 | 48 | 65 | | 1,605 |
| Gambling | 7 | 5 | | | 12 |
| Offenses Against Family | 72 | 2 | 64 | | 138 |
| DWI | 9,034 | 205 | 1,033 | 12 | 10,284 |
| Liquor Laws | 3,535 | 84 | 590 | | 4,209 |
| Disorderly Conduct | 4,301 | 127 | 1,630 | | 6,058 |
| Vagrancy | 22 | | | | 22 |
| All Other Offenses | 10,458 | 622 | 1,364 | 7 | 12,451 |
| Curfew | 345 | 32 | 131 | | 508 |
| Runaways | 467 | 6 | 22 | 5 | 500 |
| PART II TOTALS | 33,761 | 1,478 | 5,158 | 30 | 40,427 |
| TOTAL ARRESTS | 43,865 | 2,197 | 6,774 | 66 | 52,902 |

IN MEMORIAM

The New Mexico State Police joins the criminal justice community of New Mexico in extending its sincere sympathy to the families of the following law enforcement officers who gave their lives in the performance of protecting and serving the citizens of their communities and state during 1979.



DAVID L. COKER
New Mexico State Police

THOMAS C. BEDFORD, JR.
Lincoln County Sheriff's Department

ROYCE BENNETT
Deming Police Department

POLICE ASSAULT FIGURES

Police assault figures are crucial to the police administrator. They say much to anyone attempting to evaluate the causation of this type of criminal activity. The information to follow will portray the frequency of these events and allow each agency head to evaluate the cause after considering his unique variables and factors.

| <u>Time of Assault</u> | | <u>AM</u> | <u>PM</u> |
|------------------------|-------|-----------|-----------|
| 12:01 | 2:00 | 115 | 20 |
| 2:01 | 4:00 | 81 | 36 |
| 4:01 | 6:00 | 30 | 57 |
| 6:01 | 8:00 | 14 | 60 |
| 8:01 | 10:00 | 5 | 99 |
| 10:01 | 12:00 | 29 | 155 |
| TOTALS | | 274 | 427 |

POLICE ASSAULTS BY ACTIVITY, WEAPON AND ASSIGNMENT

| ACTIVITY | TOTAL | FIREARMS | KNIFE/CUT. INSTRUMENTS | OTHER DANG. WEAPONS | HANDS, FISTS, FEET | TWO-HAN VEHICLE | ONE HAN ALONE | VEHICLE ASSISTED | PLAIN ALONE | CLOTHES ASSISTED | OTHER ALONE | ASSISTED | TOTAL CLEAR |
|------------------------|------------|-----------|---------------------------|------------------------|-----------------------|--------------------|------------------|---------------------|----------------|---------------------|----------------|-----------|----------------|
| Disturbance | 189 | 23 | 11 | 41 | 114 | 5 | 45 | 132 | 2 | | 2 | | 187 |
| Burglary | 14 | 2 | | 2 | 10 | | 2 | 12 | | | | | 14 |
| Robbery | 2 | 1 | | 1 | | | 1 | 1 | | | | | 1 |
| Other Arrests | 98 | 9 | 4 | 12 | 73 | 3 | 32 | 59 | 1 | | | 3 | 92 |
| Civil Disorders | 7 | | 1 | 5 | 1 | | 1 | 6 | | | | | 1 |
| Prisoners | 83 | | | 5 | 78 | 10 | 29 | 36 | 1 | 1 | 3 | 1 | 83 |
| Suspicious | 45 | 2 | 1 | 12 | 30 | | 21 | 23 | | | | 1 | 43 |
| Ambush | 1 | 1 | | | | | 1 | | | | | | |
| Deranged | 9 | 3 | 3 | | 3 | | 3 | 4 | | | | 2 | 8 |
| Traffic | 122 | 4 | | 27 | 91 | 1 | 46 | 68 | 1 | 4 | 1 | 1 | 120 |
| All Others | 131 | 11 | 9 | 16 | 95 | 2 | 50 | 75 | | 2 | 1 | 1 | 129 |
| TOTALS | 701 | 56 | 29 | 121 | 495 | 21 | 231 | 416 | 5 | 7 | 7 | 14 | 680 |
| Personal Injury | 61 | 2 | | 10 | 49 | | | | | | | | |
| Non-Personal Injury | 640 | 54 | 29 | 111 | 446 | | | | | | | | |

NEW MEXICO UNIFORM CRIME REPORTING

Statistics presented here were gathered under the Uniform Crime Reporting program of New Mexico and were submitted by the law enforcement agencies of the state. Attempts at comparisons of the resulting crime figures should not be made without first considering the individual crime factors which exist in each city and county.

Crime figures for the calendar year 1979, as measured by the crime index, disclosed a statewide increase 11.5 percent as compared to 1978. Violent crime, which includes murder, rape, robbery and aggravated assault, increased 13.0 percent while the property crime grouping of burglary, larceny and motor vehicle theft increased 11.6 percent.

STATE OF NEW MEXICO

CRIME INDEX TRENDS

January - December Percent Change 1979 Over 1978

ACTUAL OFFENSES KNOWN TO THE POLICE:

| <u>Index Offenses</u> | <u>1978</u> | <u>1979</u> | <u>% CHANGE</u> |
|-----------------------|-------------|-------------|-----------------|
| Murder | 132 | 152 | + 15.5 |
| Rape | 530 | 611 | + 15.2 |
| Robbery | 1,362 | 1,498 | + 9.9 |
| Aggravated Assault | 4,595 | 5,042 | + 9.7 |
| Burglary | 16,073 | 17,935 | + 11.5 |
| Larceny | 36,126 | 40,263 | + 11.5 |
| Motor Vehicle Theft | 3,915 | 4,162 | + 6.3 |
| TOTALS | 62,733 | 69,663 | + 11.0 |

| | | MURDER | FORCIBLE RAPE | ROBBERY | AGGRAVATED ASSAULT | BURGLARY | LARCENY | MOTOR VEHICLE THEFT | TOTAL |
|-------------------|------|--------|------------------|---------|-----------------------|----------|---------|---------------------------|--------|
| BERNALILLO | | | | | | | | | |
| Sheriff | 1978 | 9 | 42 | 91 | 225 | 1,176 | 1,271 | 180 | 2,994 |
| | 1979 | 16 | 44 | 71 | 316 | 1,275 | 1,430 | 245 | 3,397 |
| Albuquerque | 1978 | 37 | 187 | 694 | 1,516 | 6,191 | 12,910 | 1,331 | 22,866 |
| | 1979 | 47 | 215 | 815 | 1,602 | 7,298 | 15,613 | 1,751 | 27,361 |
| U.M.H. | 1978 | | 3 | 1 | 1 | 17 | 622 | 23 | 667 |
| | 1979 | | 2 | | 1 | 17 | 643 | 18 | 681 |
| State Police | 1978 | 3 | 7 | 2 | 21 | 12 | 65 | 48 | 158 |
| | 1979 | 1 | 6 | 7 | 37 | 13 | 90 | 19 | 173 |
| CARRIZO | | | | | | | | | |
| Sheriff | 1978 | 2 | 2 | | 2 | 7 | 11 | | 24 |
| | 1979 | | | | 1 | 1 | 10 | 2 | 14 |
| State Police | 1978 | | | | 4 | 5 | 11 | 4 | 24 |
| | 1979 | | 4 | 1 | 6 | 16 | 16 | 2 | 63 |
| CHAVES | | | | | | | | | |
| Sheriff | 1978 | 1 | 2 | 2 | 11 | 61 | 106 | 15 | 198 |
| | 1979 | | 6 | 1 | 19 | 55 | 100 | 14 | 195 |
| Roswell | 1978 | 7 | 7 | 35 | 85 | 487 | 1,365 | 145 | 2,131 |
| | 1979 | 7 | 6 | 34 | 146 | 580 | 1,667 | 108 | 2,568 |
| State Police | 1978 | | | | 1 | 1 | 1 | 6 | 9 |
| | 1979 | | 3 | | 2 | 3 | 11 | 10 | 29 |
| COLFAX | | | | | | | | | |
| Sheriff | 1978 | | | 2 | 2 | 9 | 17 | 1 | 31 |
| | 1979 | | 1 | | 1 | 9 | 19 | 1 | 31 |
| Raton | 1978 | | 2 | 5 | 19 | 90 | 204 | 25 | 345 |
| | 1979 | | 1 | 6 | 33 | 83 | 225 | 15 | 363 |
| Cimarron (1) | 1978 | | | | | | | | |
| | 1979 | | | | | 5 | 4 | | 9 |
| Springer | 1978 | | | | 2 | 5 | 6 | 2 | 15 |
| | 1979 | | 1 | | 1 | 12 | 8 | 3 | 25 |
| State Police | 1978 | | 3 | 2 | 6 | 17 | 40 | 3 | 71 |
| | 1979 | | 3 | 2 | 7 | 16 | 24 | 6 | 78 |

| | | MURDER | FORCIBLE RAPE | ROBBERY | AGGRAVATED ASSAULT | BURGLARY | LARCENY | MOTOR VEHICLE THEFT | TOTAL |
|-----------------|------|--------|------------------|---------|-----------------------|----------|---------|---------------------------|-------|
| CURRY | | | | | | | | | |
| Sheriff | 1978 | | | 1 | 1 | 17 | 48 | 6 | 73 |
| | 1979 | | | | | 15 | 42 | 2 | 59 |
| Clovis | 1978 | 3 | 14 | 20 | 93 | 279 | 925 | 37 | 1,371 |
| | 1979 | 5 | 16 | 20 | 91 | 359 | 973 | 53 | 1,517 |
| State Police | 1978 | | | 1 | | 3 | 5 | 8 | 17 |
| | 1979 | | | | 6 | 5 | 26 | 8 | 45 |
| DE BACA | | | | | | | | | |
| Sheriff | 1978 | | | 2 | 1 | 17 | 29 | 3 | 52 |
| | 1979 | | | | 1 | 16 | 10 | 2 | 29 |
| State Police | 1978 | | | | 6 | | 3 | | 9 |
| | 1979 | | 2 | | 2 | 7 | 14 | 1 | 26 |
| DONA ANA | | | | | | | | | |
| Sheriff | 1978 | 3 | 4 | 4 | 40 | 189 | 274 | 49 | 561 |
| | 1979 | 1 | 10 | 6 | 49 | 239 | 303 | 72 | 680 |
| Las Cruces | 1978 | 1 | 8 | 37 | 118 | 431 | 2,329 | 193 | 3,117 |
| | 1979 | 9 | 21 | 50 | 148 | 574 | 2,388 | 189 | 3,379 |
| Heslin | 1978 | | | | 1 | 15 | 31 | 2 | 49 |
| | 1979 | | | | 1 | 3 | 7 | 3 | 14 |
| N.H.S.V. | 1978 | | 2 | 1 | 13 | 29 | 258 | 10 | 313 |
| | 1979 | | 4 | | 10 | 18 | 318 | 16 | 366 |
| State Police | 1978 | | | 2 | 1 | 9 | 5 | 19 | 36 |
| | 1979 | 1 | | | 5 | 1 | 20 | 16 | 43 |
| EDDY | | | | | | | | | |
| Sheriff | 1978 | | 2 | 3 | | 85 | 140 | 15 | 245 |
| | 1979 | 2 | 4 | 3 | 17 | 69 | 140 | 21 | 256 |
| Artesia | 1978 | 1 | 1 | 1 | 11 | 74 | 303 | 17 | 408 |
| | 1979 | | 2 | 2 | 14 | 128 | 336 | 17 | 499 |
| Carlsbad | 1978 | 2 | 7 | 12 | 52 | 393 | 931 | 100 | 1,497 |
| | 1979 | 5 | 5 | 12 | 77 | 297 | 885 | 90 | 1,371 |
| State Police | 1978 | | | | 2 | 1 | 1 | 7 | 11 |
| | 1979 | | | | 2 | | 9 | 9 | 20 |

| | | MURDER | FORCIBLE RAPE | ROBBERY | AGGRAVATED ASSAULT | BURGLARY | LARCENY | MOTOR VEHICLE THEFT | TOTAL |
|------------------|------|------------------------------|------------------|---------|-----------------------|----------|---------|---------------------------|-------|
| GRANT | | | | | | | | | |
| Sheriff | 1978 | 1 | 1 | 4 | 20 | 72 | 128 | 18 | 244 |
| | 1979 | | 1 | 4 | 24 | 66 | 116 | 8 | 219 |
| Silver City | 1978 | | 2 | 3 | 18 | 127 | 412 | 17 | 579 |
| | 1979 | | 7 | 1 | 18 | 99 | 367 | 13 | 505 |
| Bayard | 1978 | 2 | | 2 | 8 | 23 | 43 | 1 | 74 |
| | 1979 | | 2 | 2 | 8 | 26 | 88 | 2 | 128 |
| Central | 1978 | | 1 | 1 | 2 | 21 | 22 | | 47 |
| | 1979 | | | | 2 | 12 | 8 | 2 | 24 |
| Hurley | 1978 | | 1 | | 1 | 5 | 4 | | 11 |
| | 1979 | | | | | 5 | 3 | | 8 |
| W.N.H.U. | 1978 | | | | | 5 | | | 5 |
| | 1979 | | | | | 3 | 9 | | 12 |
| State Police | 1978 | | | 2 | 1 | 1 | 2 | 4 | 10 |
| | 1979 | | | 1 | 1 | 3 | 7 | 4 | 16 |
| GUADALUPE | | | | | | | | | |
| Sheriff | 1978 | | | | 3 | 5 | 2 | | 10 |
| | 1979 | NO REPORTS RECEIVED FOR 1979 | | | | | | | |
| Santa Rosa | 1978 | | | | | 6 | 10 | 1 | 17 |
| | 1979 | NO REPORTS RECEIVED FOR 1979 | | | | | | | |
| Vaughn | 1978 | | 1 | | 1 | 4 | 4 | | 10 |
| | 1979 | | | | 1 | 1 | | | 2 |
| State Police | 1978 | 1 | 1 | 3 | 2 | 5 | 12 | 3 | 27 |
| | 1979 | | | 2 | 4 | 5 | 18 | 6 | 35 |
| HARDING | | | | | | | | | |
| Sheriff | 1978 | | | | | | | | |
| | 1979 | | | | | 5 | 8 | | 13 |
| State Police | 1978 | | | | 1 | 10 | 1 | | 11 |
| | 1979 | | | | | 7 | 5 | | 13 |
| HIDALGO | | | | | | | | | |
| Sheriff | 1978 | | | | 6 | 24 | 24 | | 54 |
| | 1979 | | | | 6 | 4 | 7 | 3 | 20 |
| Lordburg | 1978 | | | 7 | 10 | 49 | 94 | 12 | 172 |
| | 1979 | | | 1 | 8 | 50 | 69 | 6 | 124 |
| State Police | 1978 | | | | | | 3 | 2 | 6 |
| | 1979 | | 2 | | 1 | | 6 | 10 | 19 |

| | | MURDER | FORCIBLE RAPE | ROBBERY | AGGRAVATED ASSAULT | BURGLARY | LARCENY | MOTOR VEHICLE THEFT | TOTAL |
|-------------------|------|------------------------------|---------------|---------|--------------------|----------|---------|---------------------|-------|
| LEA | | | | | | | | | |
| Sheriff | 1978 | 4 | 3 | 3 | 7 | | | | |
| | 1979 | 2 | 3 | 1 | 17 | 32 | 72 | 11 | 132 |
| Eunice | 1978 | | | | | 65 | 161 | 13 | 262 |
| | 1979 | NO REPORTS RECEIVED FOR 1979 | | | | | | | |
| Hobbs | 1978 | 3 | 17 | 33 | 170 | 380 | 1,202 | 83 | 1,888 |
| | 1979 | | 9 | 26 | 196 | 420 | 1,376 | 97 | 2,124 |
| Jal | 1978 | | 1 | | | | | 1 | 3 |
| | 1979 | NO REPORTS RECEIVED FOR 1979 | | | | | | | |
| Lovington | 1978 | | 3 | 1 | 17 | 106 | 300 | 17 | 444 |
| | 1979 | | 5 | 2 | 30 | 81 | 297 | 14 | 429 |
| Tatum | 1978 | | | | | 13 | 13 | 2 | 28 |
| | 1979 | | 1 | | | 5 | 6 | 1 | 13 |
| State Police | 1978 | | | | 1 | 1 | | | 1 |
| | 1979 | | | | | | 3 | 10 | 14 |
| LINCOLN | | | | | | | | | |
| Sheriff | 1978 | | 1 | 1 | 4 | 30 | 24 | 5 | 65 |
| | 1979 | 1 | 1 | 1 | 4 | 31 | 17 | 2 | 57 |
| Ruidoso | 1978 | | | 3 | 25 | 106 | 157 | 23 | 314 |
| | 1979 | 1 | | | 15 | 114 | 144 | 21 | 295 |
| Ruidoso | 1978 | | 1 | 1 | 9 | 12 | 24 | 3 | 50 |
| Downs | 1979 | 1 | 1 | | 5 | 21 | 24 | 2 | 54 |
| State Police | 1978 | | | | 4 | 6 | 10 | 4 | 24 |
| | 1979 | | | | 6 | 2 | 20 | 13 | 41 |
| LOS ALAMOS | | | | | | | | | |
| Sheriff | | | | | | | | | |
| Los Alamos | 1978 | | | 1 | 2 | 90 | 408 | 18 | 519 |
| | 1979 | | | | | 83 | 391 | 14 | 498 |
| State Police | 1978 | | | 3 | 7 | | | | |
| | 1979 | | | | | 1 | | | 1 |

| | | MURDER | FORCIBLE RAPE | ROBBERY | AGGRAVATED ASSAULT | BURGLARY | LARCENY | MOTOR VEHICLE THEFT | TOTAL |
|------------------|------|--------|------------------|---------|-----------------------|----------|---------|---------------------------|-------|
| LUNA | | | | | | | | | |
| Sheriff | 1978 | | | 4 | 8 | 79 | 98 | 14 | 203 |
| | 1979 | 2 | 1 | 5 | 8 | 97 | 131 | 17 | 261 |
| Deming | 1978 | | 6 | 4 | 28 | 151 | 472 | 40 | 701 |
| | 1979 | | 2 | 9 | 28 | 203 | 433 | 17 | 697 |
| State Police | 1978 | | | 1 | 1 | 1 | 1 | 2 | 6 |
| | 1979 | | | 1 | 2 | | 10 | 14 | 27 |
| HICKINLEY | | | | | | | | | |
| Sheriff | 1978 | | 16 | 20 | 34 | 81 | 107 | 26 | 284 |
| | 1979 | | 17 | 11 | 34 | 71 | 82 | 19 | 234 |
| Callup | 1978 | 7 | 17 | 57 | 137 | 354 | 1,056 | 159 | 1,787 |
| | 1979 | 5 | 24 | 91 | 189 | 378 | 1,123 | 143 | 1,953 |
| State Police | 1978 | | 4 | 6 | 20 | 19 | 69 | 24 | 122 |
| | 1979 | | 5 | 8 | 26 | 16 | 69 | 18 | 122 |
| MORA | | | | | | | | | |
| Sheriff | 1978 | | 1 | | 2 | 13 | 14 | 2 | 32 |
| | 1979 | | | | | 12 | 11 | 1 | 24 |
| Wagon Mound | 1978 | | | | | | | | |
| | 1979 | | | | | | | | |
| State Police | 1978 | 3 | | 3 | 16 | 22 | 15 | 1 | 60 |
| | 1979 | | 1 | 2 | 15 | 40 | 16 | 2 | 76 |
| OTERO | | | | | | | | | |
| Sheriff | 1978 | 4 | 1 | 1 | 5 | 48 | 23 | 3 | 85 |
| | 1979 | 2 | 1 | | 1 | 63 | 28 | 4 | 99 |
| Almogordo | 1978 | | 9 | 8 | 35 | 496 | 655 | 57 | 1,260 |
| | 1979 | | 10 | 20 | 57 | 466 | 942 | 74 | 1,569 |
| Cloudcroft | 1978 | | | | | | | | |
| | 1979 | | | 1 | | 10 | 2 | 1 | 14 |
| Tularosa | 1978 | | | | 1 | 12 | 43 | 8 | 64 |
| | 1979 | 1 | | | 1 | 36 | 35 | | 73 |
| State Police | 1978 | | | 1 | 8 | 4 | 7 | 6 | 26 |
| | 1979 | 1 | | | 10 | 3 | 10 | 16 | 48 |

| | | MURDER | FORCIBLE RAPE | ROBBERY | AGGRAVATED ASSAULT | BURGLARY | LARCENY | MOTOR VEHICLE THEFT | TOTAL |
|-------------------|------|---------------------------------------|---------------|---------|--------------------|----------|---------|---------------------|-------|
| <u>QUAY</u> | | | | | | | | | |
| Sheriff | 1978 | NO REPORTS RECEIVED FOR 1978 AND 1979 | | | | | | | |
| | 1979 | | | | | | | | |
| Tucumcari | 1978 | 3 | 1 | 6 | 40 | 96 | 239 | 30 | 415 |
| | 1979 | | 3 | 12 | 45 | 142 | 319 | 27 | 548 |
| State Police | 1978 | 1 | | 5 | 7 | 9 | 16 | 6 | 44 |
| | 1979 | | | 3 | 3 | 2 | 19 | 5 | 32 |
| <u>RIO ARRIBA</u> | | | | | | | | | |
| Sheriff | 1978 | | | | 4 | 15 | 8 | 1 | 28 |
| | 1979 | | 2 | | 4 | 18 | 13 | 1 | 38 |
| Dulce | 1978 | | | | 43 | 2 | 14 | | 59 |
| | 1979 | 1 | | | 45 | 3 | 14 | | 63 |
| Espanola | 1978 | | 4 | 6 | 52 | 95 | 301 | 28 | 486 |
| | 1979 | 4 | 4 | 12 | 67 | 205 | 460 | 39 | 791 |
| Santa Clara | 1978 | | | | 1 | 2 | | 1 | 4 |
| | 1979 | NO REPORTS RECEIVED FOR 1979 | | | | | | | |
| San Juan | 1978 | | 1 | | 2 | 5 | 11 | 3 | 22 |
| | 1979 | NO REPORTS RECEIVED FOR 1979 | | | | | | | |
| State Police | 1978 | 3 | 4 | 7 | 90 | 164 | 102 | 30 | 400 |
| | 1979 | | 10 | 10 | 101 | 181 | 180 | 21 | 503 |
| <u>ROOSEVELT</u> | | | | | | | | | |
| Sheriff | 1978 | | 3 | | 5 | 61 | 92 | 8 | 169 |
| | 1979 | | 5 | 3 | 9 | 62 | 77 | 8 | 164 |
| Portales | 1978 | | 1 | 4 | 25 | 156 | 357 | 26 | 569 |
| | 1979 | | 6 | 4 | 22 | 122 | 295 | 10 | 459 |
| E.N.H.U. | 1978 | | 1 | | 2 | 16 | 119 | 2 | 140 |
| | 1979 | | | | 4 | 1 | 110 | 1 | 116 |
| State Police | 1978 | | | | | 1 | 4 | 2 | 7 |
| | 1979 | | | | | | 10 | 4 | 14 |

| | | MURDER | FORCIBLE RAPE | ROBBERY | AGGRAVATED ASSAULT | BURGLARY | LARCENY | MOTOR VEHICLE THEFT | TOTAL |
|-------------------|------|------------------------------|------------------|---------|-----------------------|----------|---------|---------------------------|-------|
| SANDOVAL | | | | | | | | | |
| Sheriff (1) | 1978 | | | 1 | 4 | 6 | 8 | | 19 |
| | 1979 | 2 | 3 | 5 | 29 | 166 | 161 | 16 | 382 |
| Bernalillo(1) | 1978 | | | | 7 | 13 | 36 | | 56 |
| | 1979 | NO REPORTS RECEIVED FOR 1979 | | | | | | | |
| Corrales | 1978 | | | 2 | 6 | 65 | 32 | 4 | 89 |
| | 1979 | | 2 | | 12 | 82 | 51 | 6 | 153 |
| Cuba | 1978 | | | 1 | | 12 | 7 | | 20 |
| | 1979 | | | 1 | 4 | 2 | 7 | 1 | 15 |
| State Police | 1978 | | 1 | | 12 | 5 | 17 | 11 | 46 |
| | 1979 | | 1 | 3 | 4 | 2 | 19 | 5 | 34 |
| SAN JUAN | | | | | | | | | |
| Sheriff | 1978 | 5 | 15 | 3 | 56 | 85 | 194 | 39 | 397 |
| | 1979 | 3 | 14 | 4 | 72 | 89 | 258 | 57 | 497 |
| Aztec | 1978 | | 1 | 5 | 11 | 43 | 132 | 15 | 207 |
| | 1979 | | 2 | 3 | 19 | 53 | 151 | 6 | 234 |
| Bloomfield | 1978 | | 1 | | 7 | 31 | 73 | 7 | 119 |
| | 1979 | | 1 | 2 | 8 | 29 | 76 | 10 | 126 |
| Farmington | 1978 | 4 | 16 | 72 | 389 | 518 | 1,665 | 192 | 2,856 |
| | 1979 | 8 | 32 | 70 | 419 | 623 | 1,895 | 187 | 3,234 |
| State Police | 1978 | | | | 8 | 5 | 24 | 20 | 57 |
| | 1979 | | | 9 | 16 | 4 | 195 | 22 | 244 |
| SAN MIGUEL | | | | | | | | | |
| Sheriff | 1978 | | 2 | | 3 | 29 | 20 | 1 | 55 |
| | 1979 | | | | 4 | 28 | 12 | | 44 |
| Las Vegas | 1978 | | 6 | 12 | 64 | 252 | 458 | 50 | 842 |
| | 1979 | 3 | 9 | 20 | 111 | 366 | 562 | 48 | 1,119 |
| N.H.H.U. | 1978 | | | 1 | 5 | 15 | 61 | | 82 |
| | 1979 | | 2 | | 7 | 16 | 62 | 3 | 90 |
| State Police | 1978 | 1 | 5 | 5 | 63 | 33 | 29 | 13 | 149 |
| | 1979 | 2 | 8 | 2 | 16 | 36 | 31 | 5 | 172 |

| | | MURDER | FORCIBLE RAPE | ROBBERY | AGGRAVATED ASSAULT | BURGLARY | LARCENY | MOTOR VEHICLE THEFT | TOTAL |
|-----------------|------|--------|------------------|---------|-----------------------|----------|---------|---------------------------|-------|
| SANTA FE | | | | | | | | | |
| Sheriff | 1978 | 1 | 13 | 2 | 14 | 70 | 36 | 5 | 141 |
| | 1979 | | 3 | 2 | 18 | 83 | 42 | 6 | 154 |
| Santa Fe (1) | 1978 | 10 | 35 | 73 | 433 | 937 | 2,471 | 304 | 4,263 |
| | 1979 | 7 | 16 | 10 | 258 | 458 | 1,477 | 150 | 2,396 |
| State Police | 1978 | 2 | 10 | 3 | 62 | 115 | 67 | 26 | 285 |
| | 1979 | | 10 | 16 | 42 | 110 | 119 | 32 | 329 |
| SIERRA | | | | | | | | | |
| Sheriff | 1978 | 1 | 2 | | 10 | 22 | 64 | 9 | 108 |
| | 1979 | | | 1 | 5 | 24 | 74 | 5 | 109 |
| T. or C. | 1978 | | | 4 | 8 | 62 | 186 | 11 | 271 |
| | 1979 | | | 3 | 8 | 46 | 146 | 4 | 207 |
| State Police | 1978 | | | | 2 | | | 1 | 3 |
| | 1979 | | | | | | 5 | 2 | 7 |
| SOCORRO | | | | | | | | | |
| Sheriff | 1978 | 2 | 2 | | 4 | 15 | 15 | 5 | 43 |
| | 1979 | 1 | 1 | 2 | 5 | 22 | 36 | 3 | 70 |
| Socorro | 1978 | | 3 | 2 | 66 | 89 | 153 | 17 | 330 |
| | 1979 | | 1 | | 39 | 98 | 160 | 19 | 317 |
| State Police | 1978 | | 1 | 1 | | 1 | 28 | 5 | 36 |
| | 1979 | | | 2 | 2 | | 9 | 6 | 19 |
| TAOS | | | | | | | | | |
| Sheriff | 1978 | 1 | 1 | 5 | 23 | 69 | 114 | 2 | 215 |
| | 1979 | 3 | 3 | 2 | 22 | 88 | 161 | 6 | 285 |
| Red River | 1978 | | | | | 3 | 22 | | 25 |
| | 1979 | | | | 3 | 6 | 33 | 3 | 45 |
| Taos | 1978 | | 2 | 7 | 19 | 83 | 173 | 15 | 299 |
| | 1979 | 1 | 1 | 3 | 20 | 99 | 210 | 12 | 346 |
| State Police | 1978 | 1 | 2 | | 17 | 34 | 69 | 15 | 138 |
| | 1979 | 1 | 2 | 6 | 38 | 53 | 67 | 15 | 182 |

| | | MURDER | FORCIBLE RAPE | ROBBERY | AGGRAVATED ASSAULT | BURGLARY | LARCENY | MOTOR VEHICLE THEFT | TOTAL |
|------------------------|------|--------|------------------|---------|-----------------------|----------|---------|---------------------------|-------|
| <u>TORRANCE</u> | | | | | | | | | |
| Sheriff | 1978 | | 1 | | 7 | 34 | 33 | 9 | 84 |
| | 1979 | | | 1 | 16 | 79 | 62 | 3 | 161 |
| Entancin | 1978 | | | | 5 | 9 | 10 | | 24 |
| | 1979 | | | | | 3 | 3 | | 6 |
| Horiarty | 1978 | | 1 | 1 | 2 | 9 | 8 | 2 | 21 |
| | 1979 | | | | 1 | 3 | 6 | | 10 |
| Mountainair | 1978 | | | | 1 | 1 | 2 | | 4 |
| | 1979 | | | | | 1 | | | 1 |
| State Police | 1978 | | | | 6 | 5 | 12 | 5 | 28 |
| | 1979 | | | | | 8 | 22 | 4 | 34 |
| <u>UNION</u> | | | | | | | | | |
| Sheriff | 1978 | | | | | 6 | 16 | 5 | 27 |
| | 1979 | | | | | 3 | 8 | | 11 |
| Clayton | 1978 | | | 3 | 10 | 31 | 78 | 3 | 125 |
| | 1979 | | | | 15 | 44 | 72 | 3 | 134 |
| State Police | 1978 | | | | 1 | 4 | 5 | 2 | 12 |
| | 1979 | | | | | 6 | 11 | 3 | 20 |
| <u>VALENCIA</u> | | | | | | | | | |
| Sheriff | 1978 | 3 | 7 | 15 | 63 | 272 | 285 | 73 | 718 |
| | 1979 | 1 | 7 | 11 | 54 | 311 | 265 | 44 | 693 |
| Acoma | 1978 | | | | 9 | 17 | 9 | | 35 |
| | 1979 | | | 1 | 17 | 16 | 11 | 1 | 46 |
| Melen | 1978 | | 2 | 2 | 17 | 119 | 149 | 7 | 296 |
| | 1979 | 1 | 4 | 7 | 20 | 102 | 143 | 4 | 281 |
| Bonque Farms | 1978 | | | | 3 | 15 | 43 | 1 | 62 |
| | 1979 | | | | 6 | 25 | 45 | 1 | 77 |
| Grants | 1978 | | 5 | 15 | 47 | 197 | 300 | 64 | 703 |
| | 1979 | 2 | 8 | 18 | 63 | 253 | 456 | 58 | 858 |
| Los Lunas | 1978 | | | 2 | 8 | 18 | 145 | 4 | 177 |
| | 1979 | | 1 | 1 | 9 | 26 | 168 | 4 | 209 |
| Hilan | 1978 | | 1 | 4 | 5 | 52 | 77 | 9 | 148 |
| | 1979 | 1 | 1 | 1 | 2 | 49 | 65 | 3 | 102 |
| State Police | 1978 | | | 4 | 17 | 14 | 27 | 11 | 73 |
| | 1979 | 1 | | 4 | 18 | 32 | 76 | 29 | 160 |

(1) Reported for six months or less

Uniform Crime Reporting Section
New Mexico State Police Department
P. O. Box 1628
Santa Fe, New Mexico 87501

END