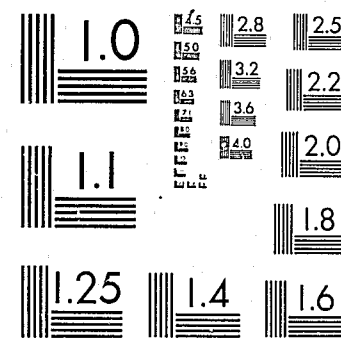


National Criminal Justice Reference Service

**ncjrs**

This microfiche was produced from documents received for inclusion in the NCJRS data base. Since NCJRS cannot exercise control over the physical condition of the documents submitted, the individual frame quality will vary. The resolution chart on this frame may be used to evaluate the document quality.



MICROCOPY RESOLUTION TEST CHART  
NATIONAL BUREAU OF STANDARDS-1963-A

Microfilming procedures used to create this fiche comply with the standards set forth in 41CFR 101-11.504.

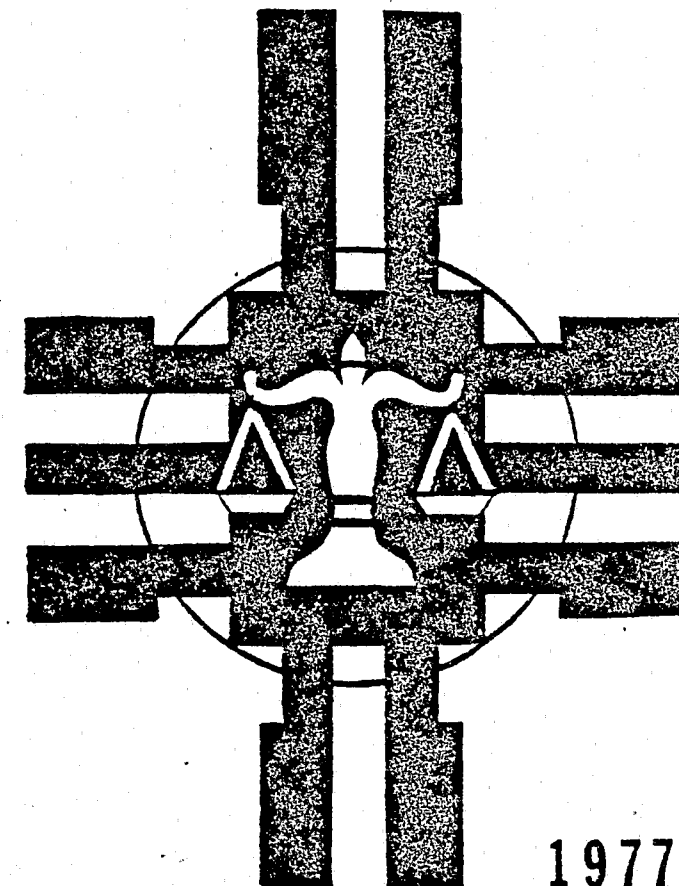
Points of view or opinions stated in this document are those of the author(s) and do not represent the official position or policies of the U. S. Department of Justice.

National Institute of Justice  
United States Department of Justice  
Washington, D. C. 20531

DATE FILMED

9/30/81

# NEW MEXICO <sup>MF-1</sup> CRIME REPORTS



CRIMINAL JUSTICE DEPARTMENT

DR. CHARLES E. BECKNELL

SECRETARY

78199

# STATE OF NEW MEXICO

JERRY APODACA GOVERNOR

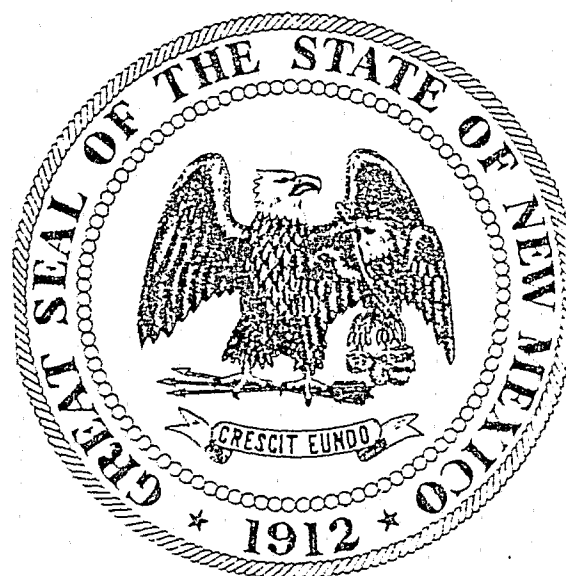
NCJRS

MAY 14 1981

ACQUISITIONS

## CRIMINAL JUSTICE DEPARTMENT

CRIMINAL JUSTICE SUPPORT DIVISION  
TECHNICAL SERVICES BUREAU



U.S. Department of Justice  
National Institute of Justice  
This document has been reproduced exactly as received from the person or organization originating it. Points of view or opinions stated in this document are those of the authors and do not necessarily represent the official position or policies of the National Institute of Justice.

Permission to reproduce this copyrighted material has been

granted by

Martin E. Vigil

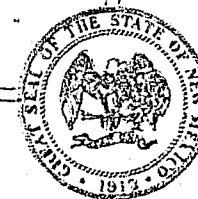
New Mexico State Police

to the National Criminal Justice Reference Service (NCJRS).

Further reproduction outside of the NCJRS system requires permission of the copyright owner.

UNIFORM CRIME REPORTING

Post Office Box 1628  
Santa Fe, New Mexico 87501  
Telephone 505/827-5147



## STATE OF NEW MEXICO CRIMINAL JUSTICE DEPARTMENT

JERRY APODACA, GOVERNOR  
DR. CHARLES E. BECKNELL  
SECRETARY

Administrative Services Division  
Corrections Division  
Criminal Justice Support Division  
New Mexico State  
Adult Parole Board  
Juvenile Parole Board  
Organized Crime Prevention Commission  
Public Defender

October 3, 1978

The Honorable Jerry Apodaca  
Governor, State of New Mexico  
State Capitol  
Santa Fe, New Mexico 87503

Dear Governor Apodaca:

The following summary presents the highlights of the Uniform Crime Reporting Program in New Mexico during 1977:

During 1977, there were 6,724 violent crimes (112 murders, 510 rapes, 1,322 robberies, 4,780 aggravated assaults) and 57,259 property crimes (16,760 burglaries, 36,915 larcenies, 3,584 motor vehicle thefts) for a total of 63,983 serious crimes in the state. This is a decrease of 10.7 percent from the 71,720 serious crimes reported in 1976.

The serious crime rate per 1,000 population was 53.7, down from the 62.4 rate for 1976.

Firearms were used in 62.5 percent of the 112 murders reported. Ninety-eight (98) of the 112 reported murders were cleared by an arrest.

Five hundred ten (510) rapes were reported, an increase of 7.3 percent over the 475 reported in 1976; 8.5 percent of 292 cases cleared were made by the arrest of juveniles.

There were 1,322 reported robberies in 1977, a decrease of 8.8 percent over the 1,450 in 1976. There was a total of \$976,386 taken in New Mexico robberies.

There were 16,760 reported cases of breaking and entering in 1977, a decrease of 13.3 percent in this crime category from the 19,336 cases reported in 1976; consequently, there was also a decrease in arrests made for breaking and entering in 1977. There were 2,504 arrests in this category in 1977, a 7.7 percent decrease from 1976.

The Honorable Jerry Apodaca  
October 3, 1978  
Page 2

Larceny accounted for 36,915 cases and within this category approximately \$7.1 million was stolen in New Mexico. Thefts from motor vehicles registered the largest amount of dollar loss, \$2.3 million.

In 1977, New Mexico law enforcement agencies reported 3,584 offenses of motor vehicle thefts amounting to approximately \$7.5 million. Law enforcement agencies were able to recover 2,220 of these stolen vehicles.

Police recovered \$7.8 million of the \$22.1 million in property stolen during 1977.

There were 5,452 arrests for violations of narcotic drug laws, an increase of 8.3 percent over 1976. In 1977, 1,047 of the persons arrested for narcotic drug law violations were under the age of 18.

Fourteen thousand four hundred fifty (14,450) juveniles were arrested in 1977, of which 4,863 were arrested for serious crimes.

Once again, the cooperation extended by the law enforcement agencies throughout New Mexico has made possible the success of the Uniform Crime Reporting Program during 1977. It is with appreciation to these dedicated officers, and in the interest of better law enforcement for all the citizens of New Mexico, that this fourth annual Uniform Crime Report is submitted.

Sincerely,

*Charles E. Becknell*  
DR. CHARLES E. BECKNELL  
Secretary

CEB:MJB:vrt

## TABLE OF CONTENTS

### PART I

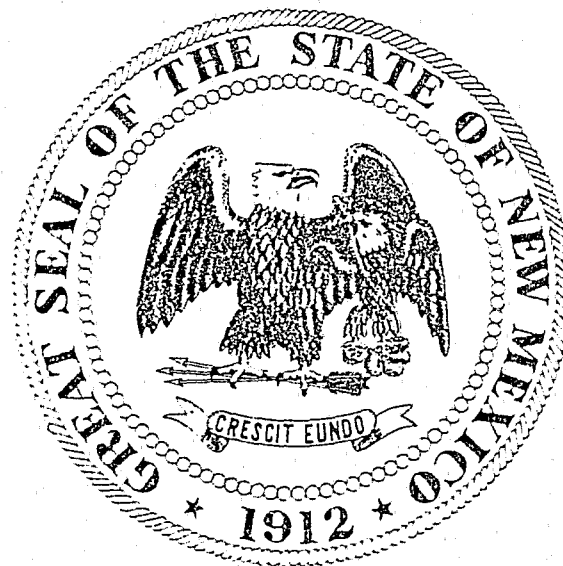
NEW MEXICO UNIFORM CRIME REPORTING PROGRAM . . . . .	1
1. Introduction . . . . .	2
History of Uniform Crime Reporting . . . . .	2
Intent of the System . . . . .	2
2. Assumptions and Limitations of the Publication . . . . .	2
Assumptions . . . . .	3
Limitations . . . . .	3
3. Uniform Crime Reporting Classification of Offenses . . . . .	4
Major Offenses (Crime Index) . . . . .	4
Other Crime Offenses . . . . .	4
4. Conclusion . . . . .	4

### PART II

NEW MEXICO CRIME INDEX OFFENSES. . . . .	5
1. Criminal Homicide. . . . .	6
Definition and Classification. . . . .	6
Analysis . . . . .	6
2. Rape . . . . .	9
Definition and Classification . . . . .	9
Analysis . . . . .	9
3. Robbery . . . . .	10
Definition and Classification . . . . .	10
Analysis . . . . .	10
4. Aggravated Assault . . . . .	11
Definition and Classification . . . . .	11
Analysis . . . . .	11
5. Burglary . . . . .	12
Definition and Classification . . . . .	12
Analysis . . . . .	12
6. Larceny . . . . .	14
Definition and Classification. . . . .	14
Analysis . . . . .	14
7. Motor Vehicle Theft. . . . .	17
Definition and Classification . . . . .	17
Analysis . . . . .	17
8. State Totals - Part I Crimes . . . . .	19
9. Value of Property Stolen and Recovered for Index Offenses. . . . .	21
10. All Arrests for Part I and Part II Crimes . . . . .	25
11. Police Assault Figures . . . . .	32
12. Crime Index Trends . . . . .	34

I  
NEW MEXICO  
UNIFORM CRIME REPORTING  
PROGRAM

ANNUAL REPORT 1977



INTRODUCTION

HISTORY OF UNIFORM CRIME REPORTING

The need to gather and analyze crime statistics in this country dates back to 1870. During this time Congress sought to provide a national system of crime reporting, but their efforts failed. In 1871 the National Police Association attempted to collect crime data, but with equal lack of success.

It was not until 1927 that a Uniform Records Committee was established by the International Association of Chiefs of Police. This committee developed a uniform classification for most parts of the country. This classification was based directly upon the system employed by the Bureau of Census in compiling statistics of prisoners.

During the later part of 1930, the program was turned over to the Federal Bureau of Investigation. The Bureau began receiving on a voluntary basis crime statistics from police agencies throughout the United States. Since those early times, the Bureau has published many distinguished reports using those statistics. In recent years, the Bureau has actively assisted individual states in developing their own statewide programs.

INTENT OF THE SYSTEM

The intent of the New Mexico Uniform Crime Reporting (NMUCR) Program shall be to supply local community agencies, institutions and organizations with a source of crime statistics which they can use to assist in management decisions and implementing planning strategies to deter, reduce and prevent crime.

ASSUMPTIONS AND LIMITATIONS OF THE PUBLICATION

Unfortunately, we cannot state that all police agencies within New Mexico accurately record and submit crime data to NMUCR; however, the statistics listed in this publication are based on the most accurate data currently available. Accompanying this current data are many assumptions and limitations which directly affect the accuracy and precision of the statistics within this publication. These assumptions and limitations also directly affect the summarizing and the comparing of local community crime statistics. These are being noted for the reader who endeavors to draw conclusions concerning the statistical data.

The following factors are the major aspects which have an influence on the statistics presented in this publication:

## ASSUMPTION

1. Crime is a social problem in New Mexico.
2. Crime figures presented in this publication are police statistics as distinguished from judicial or penal statistics.
3. Actual crimes represent violations of New Mexico statutes and local ordinances.
4. Citizen apathy and indifference contribute to the spread of crime.
5. Community institutions and organizations, coupled with police agencies are influenced by the decline and/or rise in crime rates.
6. A high level of integrity is needed in order to state NMUCR index crime rates.
7. Some police agencies have a profound distrust of the practical value of a statistical collection of data.
8. It is significant to consider the fact that policy relevant to reporting will differ in accordance with the philosophy of the various agency heads.

## LIMITATIONS

1. All police departments are not equipped to render complete and accurate accounting of offenses committed and persons charged because of limited manpower, funding, etc.
2. Difference in the collecting and interpreting crime data.
3. Some police jurisdictions overlap.
4. Some juveniles are informally handled which affects the accuracy of the juvenile report input.
5. Crimes against persons and their property are not always reported to police.
6. Crime clearances lag months and sometimes years behind the actual reported offenses.
7. Property illustrations reflect the property stolen and/or recovered. Property damage is not included.
8. Stolen property figures represent property stolen during the calendar year 1977. Recovered property figures may reflect reported property stolen in a previous calendar year but recovered in the calendar year 1977.

## UNIFORM CRIME REPORTING CLASSIFICATION OF OFFENSES

### MAJOR OFFENSES (CRIME INDEX) - PART I

#### VIOLENT CRIMES

Murder and Non-Negligent  
Manslaughter  
Forcible Rape  
Robbery  
Aggravated Assault

#### NON-VIOLENT CRIMES

Burglary  
Larceny  
Motor Vehicle Theft

### OTHER CRIME OFFENSES (NON-INDEX) - PART II

Other Assaults  
Arson  
Forgery and Counterfeiting  
Fraud  
Embezzlement  
Stolen Property: Buying, Receiving, Possession, etc.  
Vandalism  
Weapons: Carrying, Possession, etc.  
Prostitution  
Sex Offenses (Except Forcible Rape and Prostitution)  
Narcotic Drug Laws  
Gambling  
Offense Against Family and Children  
Driving Under the Influence  
Disorderly Conduct  
Vagrancy  
All Other Offenses (Except Traffic)  
Suspicion  
Curfew and Loitering  
Runaways

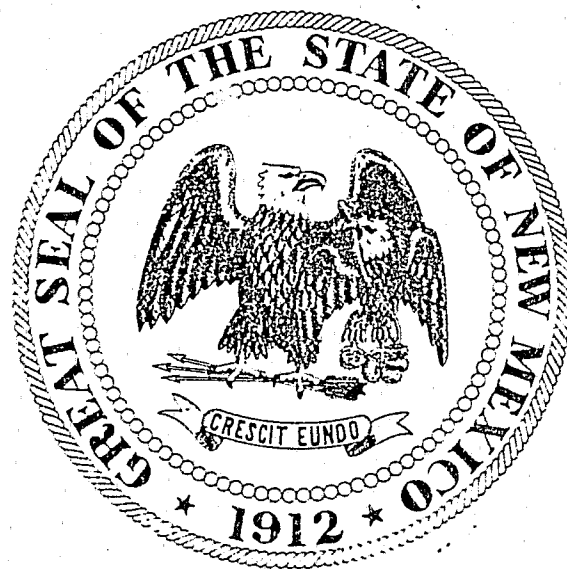
## CONCLUSION

The release of crime statistics frequently results in a controversy as to the accuracy of the statistics and how these statistics should be interpreted. Listed within this publication are many of the major assumptions and limitations which make it very apparent that great caution should be used when referring to the statistical data in this publication. The recognition of the assumptions and limitations should help the reader of this statistical resource to focus attention on valid objects, thus minimizing the dangers of over-generalization.

II

NEW MEXICO

CRIME INDEX OFFENSES



Note: FBI/UCR collects data only for the following ethnic groups:  
White (includes Mexicans and Latins), Negro, Indian, Chinese,  
Japanese and all others (includes Asian Indian, Eskimos, Fili-  
pinos, Indonesians, Koreans, Polynesians and all other non-whites).

CRIMINAL HOMICIDE

Definition and Classification

Murder is defined as the unlawful killing of a human being. Any death due to a fight, argument, quarrel, assault or commission of a crime is included.

Analysis

In 1977, New Mexico reported 112 criminal homicides. The month of November had the highest frequency of murders with fifteen. There were 63,983 index crimes reported and the crime of murder made up .1 percent of these offenses.

There were .08 murders for 1,000 New Mexico residents. The weapon most often used was the firearm, which was used to commit 62.5 percent of the murders. Information was also gathered on the type of firearm, and it was found that 45.5 percent of the firearms were handguns. Cutting or stabbing instruments were used to commit 15.5 percent of the murders. Other weapons (blunt objects, poisons, etc.) were used in the commission of 9.8 percent of the homicides. All other murders were committed through the use of personal weapons such as hands, fists, feet, etc. These amounted to 12.5 percent.

Statewide law enforcement cleared 87.5 percent or 98 of these offenses by arrests.

Murder by Month

CIRCUMSTANCE	TOTAL	JAN	FEB	MAR	APR	MAY	JUN	JUL	AUG	SEP	OCT	NOV	DEC
Murder Non-Negligent Manslaughter	112	4	6	12	10	13	10	6	7	5	11	15	13

# HOMICIDE - VICTIM BY AGE AND RACE

AGE	<u>White</u>		<u>Negro</u>		<u>Indian</u>		<u>Total</u>	
	MALE	FEMALE	MALE	FEMALE	MALE	FEMALE	MALE	FEMALE
Under 1	2	2					2	2
1-4	1	1					1	1
5-9								
10-14								
15-19	4	1			1		5	1
20-24	15	2	1				16	2
25-29	13	3	2	1		2	15	6
30-34	10	1					10	1
35-39	9	2	2			1	11	3
40-44	9		1	1			10	1
45-49	5				1		6	
50-54	4	2					4	2
55-59			1	1			1	1
60-64								
65-Over	3	3					3	3
Unk	4	1					4	1
TOTALS	79	18	7	3	2	3	88	24

# HOMICIDE - CIRCUMSTANCES AND WEAPON

	<u>Handgun</u>	<u>Rifle</u>	<u>Shotgun</u>	<u>Firearm</u>	<u>Knife</u>	<u>Hands</u>	<u>Other</u>
Lovers Triangle	2						
Argument	21	2	1		11	3	1
Felony	4				1	2	1
Fight	7	1	2		2	1	
Family	4		1		1	1	
Other	13	3	3	6	2	7	9
TOTALS	51	6	7	6	17	14	11



RAPE

Definition and Classification

Rape is defined by NMUCR as the carnal knowledge of a female; forcibly and against her will. Generally carnal abuse (statutory rape) or other sex offenses are not classified in this section.

Analysis

Forcible rape and attempts to commit forcible rape accounted for 510 of New Mexico's 63,983 index crimes reported in 1977.

In 57.2 percent of the cases of rape reported, law enforcement was able to clear the offense by an arrest. 8.5 percent of the 292 cases cleared were made by the arrest of juveniles.

Forcible Rape by Month

CIRCUMSTANCES	TOTAL	JAN	FEB	MAR	APR	MAY	JUN	JUL	AUG	SEP	OCT	NOV	DEC
Forcible Rape	368	32	14	26	25	29	39	34	39	52	27	22	29
Attempted Rape	142	15	10	11	5	13	11	11	20	11	15	15	5
TOTALS	510	47	24	37	30	42	50	45	59	63	42	37	34

ROBBERY

Definition and Classification

Robbery is defined as the felonious and forcible taking the property of another against the person's will by violence, force or by putting the person in fear. Generally, robbery differs from larceny in that it is aggravated by the element of force or threat of force.

Analysis

There were 1,322 robberies reported during 1977. These robberies were 2.0 percent of the index crimes reported during the year. Reporting agencies were able to clear 36.6 percent of the robberies. The average dollar amount taken was \$738. There was a total of \$976,386 taken in New Mexico robberies.

Robbery by Month and Weapon Involved

CIRCUMSTANCES	TOTAL	JAN	FEB	MAR	APR	MAY	JUN	JUL	AUG	SEP	OCT	NOV	DEC
Firearm	545	82	56	56	28	18	21	48	29	50	56	41	60
Knife or Cutting Instrument	195	18	15	13	11	14	10	26	23	19	14	15	17
Other Dangerous Weapons	89	10	5	5	10	1	1	11	12	5	12	9	8
Strong Arm	493	36	35	40	33	40	30	49	48	61	38	35	48
TOTALS	1,322	146	111	114	82	73	62	134	112	135	120	100	133



## AGGRAVATED ASSAULT

### Definition and Classification

Assault is defined by NMUCR as an unlawful attack by one person upon another for the purpose of inflicting severe bodily injury. Not included in this section are assaults with intent to rob or rape.

### Analysis

There were 4,780 aggravated assaults in the state in 1977. The largest number of assaults were committed during the month of July with 476. Personal weapons such as hands, fists, feet, etc., are most frequently used to commit an aggravated assault. These types of personal weapons were used to carry out 33 percent of the aggravated assaults.

Firearms were used in 22.4 percent of the assaults, knife or cutting instruments in 22.4 percent and the remaining 22.8 percent with the use of other dangerous weapons. Aggravated assaults amounted to 7.5 percent of the index crimes.

During 1977, 3,002 or 62.8 percent of the 4,780 actual offenses of assault were cleared by arrest.

### Assault by Month and Weapon Used

CIRCUMSTANCES	TOTAL	JAN	FEB	MAR	APR	MAY	JUN	JUL	AUG	SEP	OCT	NOV	DEC
Firearm	1,075	92	92	75	70	93	85	109	113	104	80	89	73
Cutting Instrument	1,072	80	87	82	86	96	82	118	83	104	96	72	86
Other Dangerous Weapons	1,051	55	73	96	84	83	121	101	84	97	111	66	80
Hands, Fists, Feet, etc.	1,582	145	107	118	120	167	180	148	119	125	131	128	94
TOTALS	4,780	372	359	371	360	439	468	476	399	430	418	355	333

## BURGLARY

### Definition and Classification

Burglary is defined as the unlawful entry of a structure to commit a felony or theft, even though no force was used to gain entry.

### ANALYSIS

The 16,760 burglaries in New Mexico during 1977 comprised 26.5 percent of the index crimes. The reporting agencies were successful in clearing 2,585 of these crimes.

The greatest number of burglaries were in the forcible entry category, which accounted for 72.6 percent of all burglaries. Unlawful entry, no force accounted for 21.8 percent and those remaining were attempted forcible entry.

### Burglary by Location and Time

CLASSIFICATION	NUMBER OF OFFENSES	% DISTRIBUTION
Residence (Sub-Total)	11,437	68.2
Night (6 PM - 6 AM)	4,149	24.7
Day (6 AM - 6 PM)	4,320	25.7
Unknown	2,968	17.8
Non-Residence (Sub-Total)	5,323	31.8
Night (6 PM - 6 AM)	2,570	15.4
Day (6 AM - 6 PM)	1,746	10.4
Unknown	1,007	6.0
TOTAL	16,760	

BURGLARY BY MONTH AND MEANS OF ENTRY

Means of Entry	TOTAL	JAN	FEB	MAR	APR	MAY	JUN	JUL	AUG	SEP	OCT	NOV	DEC
Forcible Entry	12,182	1,404	906	1,079	971	994	870	990	955	1,013	964	1,016	1,020
Unlawful Entry (No force)	3,655	309	332	310	297	387	211	365	368	314	272	220	270
Attempted For- cible Entry	923	94	79	99	71	82	35	70	76	78	81	72	86
TOTALS	16,760	1,807	1,317	1,488	1,339	1,463	1,116	1,425	1,399	1,405	1,317	1,308	1,376

## LARCENY - THEFT

### Definition and Classification

Larceny-Theft is the unlawful taking or stealing of property or articles of value without the use of force, violence or fraud.

### Analysis

New Mexico law enforcement agencies reported 36,915 cases of larceny-theft in 1977. These larcenies made up 58.7 percent of the index offenses. Of the total number of these crimes, 7,300 were cleared.

A total of \$7,063,483 was stolen in these larcenies. The category in which the largest amount of dollar loss occurred was "thefts from a motor vehicle" wherein \$2,214,875 was taken.

The second highest amount taken was through thefts from buildings, \$1,206,940. Thefts of vehicle parts and accessories had the third highest amount with \$1,060,886 worth of property taken.

Larceny, like burglary, is difficult to clear by arrest because of the lack of evidence and witnesses present during the commission of these two offenses.

LARCENY BY MONTH AND VALUE

<u>CLASSIFICATION</u>	<u>TOTAL</u>	<u>% DIST</u>	<u>JAN</u>	<u>FEB</u>	<u>MAR</u>	<u>APR</u>	<u>MAY</u>	<u>JUN</u>	<u>JUL</u>	<u>AUG</u>	<u>SEP</u>	<u>OCT</u>	<u>NOV</u>	<u>DEC</u>
\$200 & Over	8,225	22.2	681	691	816	694	623	636	638	733	667	707	659	680
\$50 to \$200	12,296	33.3	990	1,028	1,145	1,006	932	1,075	1,111	1,191	986	1,080	904	848
Under \$50	16,394	44.5	1,320	1,423	1,536	1,440	1,218	1,285	1,330	1,447	1,308	1,367	1,301	1,419
TOTALS	36,915		2,991	3,142	3,497	3,140	2,773	2,996	3,079	3,371	2,961	3,154	2,864	2,947

LARCENY BY CLASSIFICATION AND MONTH

CLASSIFICATION	TOTAL	JAN	FEB	MAR	APR	MAY	JUN	JUL	AUG	SEP	OCT	NOV	DEC
Pocket Picking	357	37	47	28	11	14	28	59	27	23	46	11	26
Purse Snatching	198	17	16	19	15	13	15	12	14	15	29	17	16
Shop Lifting	5,868	467	542	610	490	427	386	442	446	472	487	489	610
From Motor Vehicles	7,487	644	686	720	640	574	608	580	589	641	594	634	577
Motor Vehicle Parts/Access.	8,452	766	816	930	796	640	596	617	754	581	649	666	641
Bicycles	3,291	128	167	243	276	303	406	418	481	295	290	173	111
From Buildings	5,071	481	393	434	374	347	373	381	473	433	472	455	455
From Coin Oper. Machines	234	18	28	26	15	8	30	12	29	14	16	20	18
All Other	5,957	433	447	487	523	447	554	558	558	487	571	399	493
TOTALS	36,915	2,991	3,142	3,497	3,140	2,773	2,996	3,079	3,371	2,961	3,154	2,864	2,947

MOTOR VEHICLE THEFT

Definition and Classification

NMUCR defines motor vehicle theft as the unlawful taking or stealing of a motor vehicle, including attempts. Examples of motor vehicles are automobiles, trucks, buses, motorcycles, motor scooters, snowmobiles, etc.

Analysis

In 1977, New Mexico agencies reported 3,584 offenses of motor vehicle thefts. Motor vehicle thefts accounted for 5.7 percent of the 63,983 index crimes committed.

During 1977, 22.8 percent of the 3,584 offenses reported were cleared by an arrest.

Motor Vehicle Theft by Month

TYPE	TOTAL	JAN	FEB	MAR	APR	MAY	JUN	JUL	AUG	SEP	OCT	NOV	DEC
Autos	2,075	189	190	185	138	167	160	199	177	148	181	166	175
Trucks & Buses	981	113	76	67	83	67	73	78	75	83	88	101	77
Other Vehicles	528	47	33	36	47	34	51	55	47	56	55	36	31
TOTALS	3,584	349	299	288	268	268	284	332	299	287	324	303	283

# MOTOR VEHICLE RECOVERY INFORMATION

SITUATION	TOTAL	JAN	FEB	MAR	APR	MAY	JUN	JUL	AUG	SEP	OCT	NOV	DEC
Locally Stolen (Recovered Locally)	1,717	109	136	166	135	112	154	143	148	156	149	157	152
Locally Stolen (Recovered Other)	503	39	51	45	31	35	40	43	47	40	49	44	39
Total (Locally Stolen and Recovered)	2,220	148	187	211	166	147	194	186	195	196	198	201	191
Stolen Out-of- Town (Recovered Locally)	842	53	60	64	52	63	50	84	87	67	104	65	93
TOTALS	3,062	201	247	275	218	210	244	270	282	263	302	266	284



# STATE TOTALS - PART I CRIMES

<u>Index Crimes</u>	<u>Total For 1977</u>	<u>Arrests</u>	<u>Total Cleared</u>	<u>Rate Per (1000) Inhabitants</u>	<u>% Distribution</u>
Criminal Homicide	112	124	98	.09	.1
Forcible Rape	510	186	292	.4	.7
Robbery	1,322	424	484	1.1	2.0
Aggravated Assault	4,780	2,618	3,002	4.1	7.4
Burglary	16,760	2,504	2,585	14.0	26.5
Larceny	36,915	7,161	7,300	31.0	57.6
Motor Vehicle Theft	3,584	958	818	3.0	5.6
TOTALS	63,983	13,975	14,579	53.7	

## State Totals

This section deals with state totals. These figures demonstrate the potential for a deeper study of crime analysis that can be made in addition to the information contained hereafter.

INDEX CRIMES BY MONTH - STATE TOTALS 1977

<u>Index Offenses</u>	TOTAL	JAN	FEB	MAR	APR	MAY	JUN	JUL	AUG	SEP	OCT	NOV	DEC
Murder Non-Neg. Man.	112	4	6	12	10	13	10	6	7	5	11	15	13
Forcible Rape	510	47	24	37	30	42	50	45	59	63	42	37	34
Rape by Force	368	32	14	26	25	29	39	34	39	52	27	22	29
Attempted	142	15	10	11	5	13	11	11	20	11	15	15	5
Robbery	1,322	146	111	114	82	73	62	134	112	135	120	100	133
Firearms	545	82	56	56	28	18	21	48	29	50	56	41	60
Knife or Cutting Instrument	195	18	15	13	11	14	10	26	23	19	14	15	17
Other Dangerous Weapons	89	10	5	5	10	1	1	11	12	5	12	9	8
Strong Arm	493	36	35	40	33	40	30	49	48	61	38	35	48
Assault	4,780	372	359	371	360	439	468	476	399	430	418	355	333
Firearms	1,075	92	92	75	70	93	85	109	113	104	80	89	73
Knife or Cutting Instrument	1,072	80	87	82	86	96	82	118	83	104	96	72	86
Other Dangerous Weapons	1,051	55	73	96	84	83	121	101	84	97	111	66	80
Hands, Fists, Feet, etc.	1,582	145	107	118	120	167	180	148	119	125	131	128	94
Burglary	16,760	1,807	1,317	1,488	1,339	1,463	1,116	1,425	1,399	1,405	1,317	1,308	1,376
Forcible Entry	12,182	1,404	906	1,079	971	994	870	990	955	1,013	964	1,016	1,020
Unlawful Entry	3,655	309	332	310	297	387	211	365	368	314	272	220	270
Attempted Entry	923	94	79	99	71	82	35	70	76	78	81	72	86
Larceny	36,915	2,991	3,142	3,497	3,140	2,773	2,996	3,079	3,371	2,961	3,154	2,864	2,947
Motor Vehicle Theft	3,584	349	299	288	268	268	284	332	299	287	324	303	283
Autos	2,075	189	190	185	138	167	160	199	177	148	181	166	175
Trucks, Buses	981	113	76	67	83	67	73	78	75	83	88	101	77
Other Vehicles	528	47	33	36	47	34	51	55	47	56	55	36	31
TOTALS	63,983	5,716	5,258	5,807	5,229	5,071	4,986	5,497	5,646	5,286	5,386	4,982	5,119

# VALUE OF PROPERTY STOLEN AND RECOVERED FOR INDEX OFFENSES

The next two charts will deal with value of property stolen and recovered by article and month, as well as property stolen by crime and month. These charts will reveal a great deal of detail in expounding on the areas mentioned above.

The article or type of property stolen is of great importance to the police administrator when he attempts to develop programs to prevent the theft of any particular article.

This is an attempt to list articles stolen by month and also to reveal the value of property involved in the seven Part I Crimes.

## Value of Property Stolen and Recovered by Month

MONTH	TOTAL AMOUNT STOLEN	TOTAL AMOUNT RECOVERED	% RECOVERED
January	\$ 2,190,958	\$ 520,155	23.7
February	1,717,420	494,582	28.7
March	1,888,788	955,829	50.6
April	1,670,682	446,196	26.7
May	1,663,811	741,695	44.5
June	1,763,716	744,545	42.2
July	1,854,377	770,140	41.5
August	1,913,197	748,318	39.1
September	1,882,164	566,120	30.0
October	1,862,300	550,379	29.5
November	1,930,458	749,425	38.2
December	1,843,400	587,113	31.8
TOTAL	\$22,181,271	\$7,874,497	35.5

TYPE AND VALUE OF PROPERTY STOLEN BY MONTH

Property Stolen	Total	Dist.	JAN	FEB	MAR	APR	MAY	JUN	JUL	AUG	SEP	OCT	NOV	DEC
Currency	1,212,913	5.4	114,388	96,653	93,653	57,150	55,994	107,608	106,144	122,497	119,971	106,515	133,323	99,407
Jewelry	2,719,340	12.2	442,848	105,182	216,058	231,962	160,271	244,369	158,467	201,285	260,154	171,251	244,617	282,876
Clothing	433,070	1.7	40,677	29,475	22,863	29,963	35,088	46,099	31,447	37,050	37,421	40,941	36,876	45,180
Locally Stolen Vehicles	7,497,694	33.8	658,253	608,241	665,624	508,893	564,101	579,979	709,547	630,788	617,240	659,746	693,213	602,069
Office Equipment	188,138	.8	20,515	21,284	23,383	15,575	12,239	16,123	10,800	13,494	11,865	14,663	14,000	14,197
TVs														
Stereos	3,115,356	14.0	300,930	313,274	283,556	282,464	251,414	192,414	262,516	260,791	240,671	212,994	273,727	240,605
Firearms	588,959	2.6	60,409	50,712	52,913	50,681	53,732	39,818	37,884	48,130	45,660	51,186	45,177	52,657
Household Items	484,637	2.8	52,999	45,591	40,527	35,653	35,105	34,991	38,245	37,754	57,299	27,755	36,431	42,287
Consumer Items	187,473	.8	9,840	13,153	22,399	12,255	11,451	11,452	24,618	24,023	12,090	17,720	12,942	15,530
Livestock	72,422	.3	7,888	460	5,215	1,701	1,665	2,326	10,217	2,259	7,590	3,150	1,758	28,193
Misc.	5,681,269	25.6	482,211	433,785	462,597	444,385	482,751	488,547	464,492	535,126	472,203	556,379	438,394	420,399
TOTALS	22,181,271		2,190,958	1,717,420	1,888,788	1,679,682	1,663,811	1,763,716	1,854,377	1,913,197	1,882,164	1,862,300	1,930,453	1,843,400

VALUE OF PROPERTY STOLEN BY CRIME AND MONTH

Index Offense	Total	JAN	FEB	MAR	APR	MAY	JUN	JUL	AUG	SEP	OCT	NOV	DEC
Murder	1,795					1,795							
Rape	7,209	5,050	18	64	100		1,300	377	50			250	
Robbery	976,386	89,844	89,844	77,844	57,349	46,640	157,169	73,302	63,467	116,282	74,739	75,929	55,562
Burglary	6,720,626	842,515	438,923	682,619	464,794	662,665	429,703	340,293	498,143	792,340	503,714	491,672	573,205
Larceny	7,063,483	595,881	585,394	462,636	639,546	388,610	595,565	730,858	716,749	356,262	624,101	669,394	698,431
Vehicles	7,497,694	658,253	608,241	665,625	508,893	564,101	579,979	709,547	630,788	617,240	659,746	693,213	516,152
TOTALS	22,181,271	2,190,958	1,717,420	1,888,788	1,670,682	1,663,811	1,763,716	1,854,377	1,913,197	1,882,164	1,862,300	1,930,458	1,841,400

VALUE OF PROPERTY RECOVERED BY ARTICLE AND MONTH

Property Recovered	Total	Percent Recovered	JAN	FEB	MAR	APR	MAY	JUN	JUL	AUG	SEP	OCT	NOV	DEC
Currency	201,325	16.8	25,586	4,819	4,793	10,249	12,549	5,048	8,725	6,918	18,387	55,936	28,514	19,801
Jewelry	310,041	11.4	30,946	11,327	22,713	24,014	58,057	15,096	21,295	19,457	49,572	12,217	18,794	26,553
Clothing	97,280	22.4	4,340	4,976	20,013	8,497	3,524	11,603	5,792	5,928	5,193	6,751	11,789	8,874
Locally Stolen Vehicles	5,636,515	75.1	373,908	406,256	442,242	295,128	528,803	633,024	650,199	598,258	345,810	381,039	600,371	381,476
Office Equipment	93,385	49.6	2,631	4,113	10,167	11,365	11,827	7,986	11,573	2,629	4,467	7,998	10,909	7,720
TVs, Stereos	301,423	9.6	20,492	17,676	35,142	32,366	25,637	23,286	23,718	16,267	14,038	15,967	19,162	57,672
Firearms	75,368	12.7	10,994	5,354	7,026	4,016	10,942	1,665	3,396	2,700	4,700	9,800	4,413	10,362
Household Items	75,475	15.5	6,479	2,224	2,638	2,956	9,780	4,925	3,323	3,296	1,174	2,728	16,921	19,031
Consumer Items	22,124	11.8	2,043	2,422	1,751	791	1,566	1,734	1,840	2,819	2,492	1,255	1,662	1,749
Livestock	3,700	5.1	535			300	1,508	306	300			75		676
Miscellaneous	1,057,861	18.6	42,201	35,415	409,343	56,514	77,502	39,872	39,979	90,046	120,287	56,613	36,890	53,199
TOTAL	7,874,497	35.5	520,155	494,582	955,829	446,196	741,695	744,545	770,140	748,318	566,120	550,379	749,425	587,113

ALL ARRESTS FOR PART I AND PART II OFFENSES

Arrest statistics reflecting characteristics of persons arrested by age, sex and race are collected monthly from contributing law enforcement agencies. In examining these arrest figures, it is important to remember that the same person may be arrested several times during the year for the same type or different offenses.

A juvenile is counted as a person arrested when he commits an offense and the circumstances are such that if the offender were an adult an arrest would be made.

Juvenile Dispositions

Handled within the Department and released (released to parents, etc.)	3,413
Referred to Juvenile Court or Probation Department	10,545
Referred to Welfare Agency	99
Referred to other Police Agency	288
Referred to Criminal or Adult Court	105
TOTAL	14,450



AGE and SEX OF PERSONS ARRESTED - 18 YEARS & OVER

OFFENSES	SEX	18	19	20	21	22	23	24	25-29	30-34	35-39	40-44	45-49	50-54	55-59	60-64	65 and Over	TOTAL
Murder	Male	7	9	4	6	1	4	2	17	11	10	6	1	3	1			82
	Female	1	1	1	1	1		1	8	5	8	1		2	1	1		36
Forcible Rape	Male	20	18	9	7	8	10	9	41	15	14	5	4	3				163
	Female																	
Robbery	Male	30	21	30	22	25	20	16	77	19	16	6	5	3	2		1	291
	Female	3	3	3	1	2	1	14	14	7	1		4	1				54
Aggr. Assault	Male	130	149	132	138	132	89	118	421	236	200	95	68	54	12	28	7	2,029
	Female	14	18	13	13	14	9	5	57	41	28	6	12	13	5	4	2	254
Burglary	Male	238	144	119	121	96	68	60	188	123	49	30	11	3	3		1	1,256
	Female	10	12	10	8	5	5	4	16	6	8	2	2					88
Larceny-Theft	Male	370	270	215	164	150	113	108	462	254	165	190	72	66	57	48	47	2,751
	Female	165	132	144	128	102	89	91	298	180	96	51	46	30	29	13	21	1,615
Motor Vehicle Theft	Male	70	58	43	34	35	31	24	65	56	22	6	9	1	2	1		459
	Female		7	3		4	1	3	9	4		2		1				34
TOTAL - PART 1 OFFENSES		1,058	842	726	643	575	440	455	1,673	957	617	400	234	180	114	97	81	9,112
Other Assaults	Male	46	47	42	40	48	45	31	144	105	70	52	28	26	10	4	4	742
	Female	12	4	6	11	10	4	7	17	8	8	5	5	4	1	2		104
Arson	Male	1	2		2	1	2		8	6		1	1	3	2			29
	Female			1					2	1			1					5
Forgery & Counterfeiting	Male	13	13	10	21	17	15	5	39	27	10	7	2	1	1			131
	Female	5	7	9	13	5	2	8	17	6	2	1	1					76
Fraud	Male	18	39	38	22	30	27	25	102	62	43	36	28	21	8	2	1	502
	Female	20	14	16	10	11	6	11	48	25	14	7	3	2				188
Embezzlement	Male	4	4	3	11	8	1	8	15	8	16	13	3	2				96
	Female	1		4	3	3	1		2									14
Stolen Property	Male	61	46	31	41	31	26	17	92	47	27	19	17	10	3	3	1	472
	Female	10	10	5	2	3	4	3	16	7	9	3	6	1				79
Vandalism	Male	36	38	20	33	24	21	21	65	52	30	11	6	19	6	2		330
	Female	4	3	3		4	5	1	11	10	1	5	2	1				50
Weapons	Male	27	49	51	58	34	21	21	132	73	49	31	23	18	8	7	6	608
	Female	4	5	4	4		2		13	6	3	3		1	1			56

OFFENSES	SEX	18	19	20	21	22	23	24	25-29	30-34	35-39	40-44	45-49	50-54	55-59	60-64	65 and over	TOTAL
Prostitution & Commer. Vice	Male		2	1		1	4	1	4	3		1	1					18
	Female	3	12	10	11	15	7	6	24	3	3	1						95
Other Sex Offenses	Male	16	14	13	24	16	13	19	51	31	26	16	11	10	3	2	7	272
	Female	1	2		2		2	6	10	3	4	2		2				65
Narcotic Drugs	Male	576	502	493	405	386	320	573	499	198	84	35	5	7	6	1	1	5,091
	Female	72	40	45	47	37	26	67	59	10	8	2	1					514
Gambling	Male								2		2			1	6		2	13
	Female								1	1	1							3
Offenses Against Family & Childr.	Male	7	8	12	3	5	2	2	19	22	4	8	5	4	1			103
	Female	6	5	4	3	2	5	4	18	14	9	3	1					75
DWI	Male	405	369	425	457	449	369	347	1,458	1,006	829	664	558	467	341	188	126	8,458
	Female	17	33	28	46	38	44	33	118	87	106	65	105	60	23	19	16	838
Liquor Laws	Male	934	753	593	250	190	149	94	422	211	163	86	64	59	41	26	27	4,062
	Female	86	73	55	23	16	15	14	34	25	14	13	8	7	2	1		886
Disorderly Conduct	Male	375	350	320	383	337	297	267	1,012	596	405	335	241	190	173	134	127	5,552
	Female	62	58	54	58	38	59	32	181	125	62	56	68	34	20	15	3	924
Vagrancy	Male		2	1		1			1	4	2	1	1	1	1			13
	Female											1						1
All Other Offenses (Except Traffic)	Male	1,165	1,014	894	867	800	701	538	2,011	1,086	653	390	280	205	160	94	63	10,921
	Female	215	173	146	141	78	129	99	283	178	128	76	58	19	15	13	5	1,756
	Male	2	2	1	1			1										7
	Female	1																1
PART II TOTALS		4,205	3,693	3,338	2,992	2,635	2,324	2,261	6,933	4,046	2,785	1,956	1,533	1,166	830	512	390	41,599
TOTAL ARRESTS		5,263	4,535	4,064	3,635	3,210	2,764	2,716	8,606	5,003	3,402	2,356	1,767	1,346	964	609	471	50,714

AGE and SEX OF PERSONS ARRESTED - 17 YEARS & UNDER

OFFENSES	SEX	10 and Under	11-12	13-14	15	16	17	TOTAL
Murder	Male			1		2	5	8
	Female							
Forcible Rape	Male		1	2	4	7	9	23
	Female							
Robbery	Male		2	4	12	19	25	62
	Female	1		5	2	4	3	15
Aggr. Assault	Male	4	6	43	41	84	108	286
	Female		1	8	11	11	18	49
Burglary	Male	48	88	278	223	240	206	1,083
	Female	3	10	17	18	16	13	77
Larceny	Male	123	207	502	322	411	332	1,897
	Female	40	100	241	184	182	151	898
Motor Veh. Theft	Male	3	6	84	96	112	92	393
	Female	2	1	25	13	18	13	72
PART I TOTALS		224	422	1,210	926	1,106	975	4,863
Other Assaults	Male	7	13	17	15	33	30	115
	Female	5	2	12	4	13	6	42
Arson	Male	8	8	9	3	5	2	35
	Female			2		2		4
Forgery & Counterfeiting	Male	1	2	4	3	2	8	20
	Female	1		2	4	3	6	16
Fraud	Male	1		6	10	16	7	40
	Female				3	2	1	6
Embezzlement	Male				2	4	1	7
	Female					1		1
Stolen Property	Male	1	5	36	29	56	48	175
	Female			6	7	7	7	27
Vandalism	Male	58	51	114	65	84	80	452
	Female	9	7	13	9	10	10	58
Weapons	Male	6	5	12	16	20	33	92
	Female	2		2		4	2	10
Prostitution & Commer. Vice	Male						2	2
	Female							
Other Sex Offenses	Male	3	2	4	4	7	9	29
	Female	2		1	3			6
Narcotic Drugs	Male	3	3	60	164	264	375	869
	Female	3	1	17	32	63	62	178
Gambling	Male							
	Female					1		1

AGE and SEX OF PERSONS ARRESTED - 17 YEARS & UNDER  
(Continued)

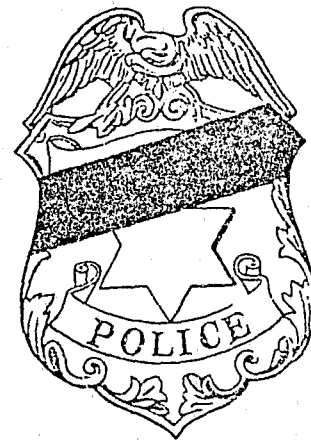
<u>OFFENSES</u>	<u>SEX</u>	<u>10 and Under</u>	<u>11-12</u>	<u>13-14</u>	<u>15</u>	<u>16</u>	<u>17</u>	<u>TOTAL</u>
DWI	Male	3		6	27	87	188	311
	Female			2	3	7	20	32
Liquor Laws	Male		3	64	228	493	720	1,508
	Female	3	6	60	78	119	105	371
Disorderly Conduct	Male	4	22	57	102	192	239	616
	Female	2	6	31	34	59	50	182
Vagrancy	Male							
	Female							
All Other Offenses (Except traffic)	Male	28	49	170	220	312	336	1,115
	Female	8	23	75	74	88	83	351
Suspicion	Male	2	2	5	7	3	9	28
	Female							
Curfew & Loitering	Male	3	15	124	142	339	180	803
	Female	2	6	95	67	128	86	384
Runaways	Male	15	26	162	154	217	122	696
	Female	2	18	282	291	275	137	1,005
PART II TOTALS		182	275	1,450	1,800	2,916	2,964	9,587
TOTAL JUVENILE ARRESTS		406	697	2,660	2,726	4,022	3,939	14,450

TOTAL ARRESTS BY RACE

<u>OFFENSE</u>	<u>White</u>	<u>Negro</u>	<u>Indian</u>	<u>Chinese</u>	<u>Japanese</u>	<u>Others</u>	<u>Total</u>
Murder	102	9	13				124
Rape	134	14	38				186
Robbery	343	55	25			1	424
Agg. Assault	2,249	121	245			3	2,618
Burglary	2,268	118	116			2	2,504
Larceny	6,087	375	692			7	7,161
Motor Vehicle Theft	839	46	70			3	958
PART I TOTALS	12,022	738	1,199			16	13,975
Other Assaults	797	65	140			1	1,003
Arson	67	5	1				73
Forgery & Counterfeiting	257	24	12				293
Fraud	636	69	29			2	736
Embezzlement	105	7	4			2	118
Stolen Property	620	94	39				753
Vandalism	799	18	99			1	917
Weapons	652	56	46			2	756
Prostitution & Commercialized Vice	83	30	2				115
Other Sex Offenses	241	14	86				341
Narcotic Drugs	5,291	144	113		1	3	5,552
Gambling	12	5					17
Offenses Against Family & Children	92	3	81				176
DWI	8,471	173	945	47	1	2	9,639
Liquor Laws	5,439	104	780			4	6,327
Disorderly Conduct	5,357	267	1,638			2	7,264
Vagrancy	8	1	7				16
All Other Offenses	11,728	766	1,627	2		20	14,143
Suspicion	35					1	36
Curfew	953	23	208		2	1	1,187
Runaways	1,627	23	48	1		2	1,701
PART II TOTALS	43,270	1,891	5,905	50	4	43	51,163
TOTAL ARRESTS	55,292	2,629	7,104	50	4	59	65,138

# IN MEMORIAM

The Department of Criminal Justice joins the criminal justice community of New Mexico in extending its sincere sympathy to the families of the following law enforcement officers who gave their lives in the performance of protecting and serving the citizens of their communities during 1977.



Officer Charles E. Wasmer  
Bosque Farms Police Department

Killed by the husband of female driver the victim had stopped for traffic violation. Subject approached and threatened victim with a 12-gauge shotgun. As victim drew service weapon, subject fired shotgun hitting officer in chest and face. Victim returned fire striking subject in wrist. The subject was taken into custody.

Officer Ronald E. Shores  
Questa Police Department

Struck and killed by automobile. Victim officer was maintaining roadblock in an attempt to stop subject involved in high-speed chase with state and local officers. Subject who was wanted in connection with alleged kidnapping and stolen car case was taken into custody.

## POLICE ASSAULT FIGURES

Police assault figures are crucial to the police administrator. They say much to anyone attempting to evaluate the causation of this type of criminal activity. The information to follow will portray the frequency of these events and allow each agency head to evaluate the cause after considering his unique variables and factors.

Time of Assault		AM	PM
12:01	2:00	104	22
2:01	4:00	78	21
4:01	6:00	29	54
6:01	8:00	11	55
8:01	10:00	11	78
10:01	12:00	17	98
TOTALS		250	328

## POLICE ASSAULTS BY ACTIVITY, WEAPON AND ASSIGNMENT

Activity	Total	Firearms	Knife/Cut. Instruments	Other Dang. Weapons	Hands, Feet, Fists	Two-Man Vehicle	One-Man Alone	Vehicle Assisted	Det. Spec. Assign. Alone	Assisted	Other Alone	Assisted	Total Clear
Disturbance	151	23	7	10	111	7	36	95	4	8		1	151
Burglary	6				6	2		4					6
Robbery													
Other Arrests	125	10	3	8	104	4	45	63	1	5	1		119
Civil Disorders	5		2		3		1	3				1	5
Prisoners	58	1	1	1	55		25	32					57
Suspicious	59	9	3	7	40	4	27	24		1			56
Ambush	3	3					3						3
Deranged													
Traffic	89	4	1	24	60	2	39	34	1		1	1	78
All Other	82	1	3	16	62	4	33	31		1		1	70
TOTALS	578	51	20	66	441	23	209	286	6	15	2	4	545
Personal Injury	71	5		10	56								
Non-Personal Injury	507	46	20	56	385								



## NEW MEXICO UNIFORM CRIME REPORTING

Statistics presented here were gathered under the Uniform Crime Reporting Program of New Mexico and were submitted by the law enforcement agencies of the State. Attempts at comparisons of the resulting crime figures should not be made without first considering the individual crime factors which exist in each city and county.

Crime figures for the calendar year 1977, as measured by the Crime Index, disclosed a statewide decrease of 10.7 percent as compared to 1976. Violent crimes which include murder, rape, robbery and aggravated assault increased 4.0 percent, while the non-violent crime grouping of burglary, larceny and motor vehicle theft decreased 11.4 percent.

### STATE OF NEW MEXICO

#### CRIME INDEX TRENDS

January - December Percent Change 1977 Over 1976

#### ACTUAL OFFENSES KNOWN TO THE POLICE:

<u>Index Offenses</u>	<u>1976</u>	<u>1977</u>	<u>% Change</u>
Murder	110	112	+ 1.8
Rape	475	510	+ 7.3
Robbery	1,450	1,322	- 8.8
Aggravated Assault	4,426	4,780	+ 7.9
Burglary	19,336	16,760	-13.3
Larceny	42,115	36,915	-12.3
Motor Vehicle Theft	3,808	3,584	- 5.8
TOTALS	71,720	63,983	-10.7

		MURDER	FORCIBLE RAPE	ROBBERY	AGGRAVATED ASSAULT	BURGLARY	LARCENY	MOTOR VEHICLE THEFT	35 TOTAL
<u>BERNALILLO</u>									
Sheriff	1976	11	62	73	268	1,410	1,605	215	3,644
	1977	5	49	79	260	1,115	1,144	141	2,793
Albuquerque	1976	28	186	871	1,335	7,790	16,725	1,491	28,426
	1977	30	211	754	1,398	6,568	13,833	1,164	23,958
U. N. M.	1976		3		9	113	714		862
	1977		1	2	49	29	560	23	664
State Police	1976		3	3	11	15	88	30	150
	1977		9	5	14	9	94	47	178
<u>CATRON</u>									
Sheriff	1976				2		2	1	5
	1977				7	7	10	3	27
State Police	1976				4	7			11
	1977				4	5	10	3	22
<u>CHAVES</u>									
Sheriff	1976	1	2		22	54	91	6	176
	1977	1	2	4	27	72	79	12	197
Roswell	1976	6	2	19	75	504	1,548	106	2,260
	1977	12	5	12	85	449	1,159	107	1,829
State Police	1976				2		4	3	9
	1977						4	5	9
<u>COLFAX</u>									
Sheriff	1976	1	1		7	24	18	1	52
	1977					10	30		40
Raton	1976		1	2	24	80	173	13	293
	1977		2	4	45	104	216	17	388
Cimarron	1976				3	9	12	1	25
	1977					7	11		21
Springer	1976				5	9	1	1	16
	1977				4	5	15	3	27
State Police	1976		2	2	3	19	15	3	44
	1977	1		2	4	18	27	6	58

		MURDER	FORCIBLE RAPE	ROBBERY	AGGRAVATED ASSAULT	BURGLARY	LARCENY	MOTOR VEHICLE THEFT	TOTAL
<u>CURRY</u>									
Sheriff	1976				4	33	79	3	119
	1977			4	4	10	51	3	72
Clovis	1976	3	10	24	116	442	1,021	64	1,680
	1977	2	9	15	103	324	1,033	57	1,543
State Police	1976				2	3	10	2	17
	1977		1	1	1	3	14	16	36
<u>DE BACA</u>									
Sheriff	1976		1	3	5	9	15	2	35
	1977					7	27	2	36
State Police	1976								
	1977					1	7	6	14
<u>DONA ANA</u>									
Sheriff	1976		9	10	31	118	151	29	348
	1977	3	11	6	60	186	139	22	427
Las Cruces	1976	3	8	34	98	828	2,270	127	3,368
	1977	3	9	31	115	622	2,171	208	3,159
Mesilla	1976		1		10	14	58	1	84
	1977		1	1	8	16	45	2	73
N. M. S. U.	1976				5	37	372	9	423
	1977			1	7	11	310	12	341
State Police	1976			1	2	2	9	5	19
	1977			1		5	21	14	41
<u>EDDY</u>									
Sheriff	1976		2	4	22	35	106	1	170
	1977	2	1	3	16	62	127	7	218
Artesia	1976	1	6	1	18	113	227	17	383
	1977		3		11	50	275	24	363
Carlsbad	1976		1	21	44	263	858	41	1,228
	1977	2	7	12	52	232	741	67	1,113
State Police	1976				1		1	1	3
	1977					1	14	8	23

		MURDER	FORCIBLE RAPE	ROBBERY	AGGRAVATED ASSAULT	BURGLARY	LARCENY	MOTOR VEHICLE THEFT	TOTAL
<u>GRANT</u>									
Sheriff	76	1	2		6	44	59	7	119
Silver City	77		1	5	28	69	85	9	197
	76		1	2	18	126	475	17	639
Bayard	77			3	8	144	320	21	496
	76		1		10	14	19	2	41
Central	77				5	20	30	1	56
Hurley	76				5	11	15		31
	77				11	17	20	4	52
W. N. M. U.	76			1	5	9	15	2	31
	77				4	16	12	1	34
State Police	76					3	28	5	36
	77					10	9		19
							3	2	5
							2	1	3
<u>GUADALUPE</u>									
Sheriff	76	3			8	28	5		44
Santa Rosa	77	2	1	2	3	6	5	1	20
	76					23	25		48
Vaughn	77		1			12	18	2	33
	76	1			2	1	2	2	8
State Police	77				3		2		5
	76	1			1	7	12		21
	77				1	8	14	1	24
<u>HARDING</u>									
Sheriff	76								
	77					8	3	2	13
State Police	76				3		4		7
	77					3	5		8
						2	4		6
<u>HIDALGO</u>									
Sheriff	76								
	77				3	21	42	3	69
Lordsburg	76				5	22	18	2	47
	77			3	3	23	24	6	59
State Police	76	1	1		15	58	12	21	108
	77						4		4
							8		8

		MURDER	FORCIBLE RAPE	ROBBERY	AGGRAVATED ASSAULT	BURGLARY	LARCENY	MOTOR VEHICLE THEFT	TOTAL
<u>LEA</u>									
Sheriff	1976	1	4	3	21	113	195	10	347
	1977	3	8	7	12	79	155	7	271
Hobbs	1976	5	8	41	183	572	1,561	63	2,433
	1977	2	4	35	170	459	1,023	78	1,771
Lovington	1976		1	14	20	187	338	22	582
	1977	1	2	8	19	115	383	9	537
Eunice	1976			4	3	22	32	1	62
	1977					6	8		14
Jal	1976	1				3	2	2	8
	1977					3	7	2	12
Tatum	1976				6	12	5	1	24
	1977		1		3	6	23	2	35
State Police	1976							1	1
	1977				3	1	9	7	20
<u>LINCOLN</u>									
Sheriff	1976		1	2	13	52	57	10	135
	1977			1	9	32	37	5	84
Ruidoso	1976	1	2		13	128	166	1	326
	1977			3	128	128	159	19	437
State Police	1976			1	3	2	8	1	15
	1977				6	6	14	4	30
<u>LOS ALAMOS</u>									
Sheriff	1976	Submitted by P.D.							
	1977								
Los Alamos	1976			3	8	71	407	12	501
	1977								
State Police	1976		2		10	66	421	20	519
	1977								
<u>LUNA</u>									
Sheriff	1976	1		4	11	73	107	9	225
	1977								
Deming	1976		1	1	8	63	110	5	188
	1977		3	4	38	169	428	8	650
State Police	1976	1	1	9	30	158	564	32	795
	1977			1	1		2		4
						1	9	3	13

		MURDER	FORCIBLE RAPE	ROBBERY	AGGRAVATED ASSAULT	BURGLARY	LARCENY	MOTOR VEHICLE THEFT	TOTAL
<u>McKINLEY</u>									
Sheriff	1976	4	14	9	66	48	64	13	218
	1977	1	19	17	48	81	98	11	275
Gallup	1976	4	11	37	158	251	1,331	169	1,961
	1977		16	53	146	335	996	131	1,677
State Police	1976			1	15	2	7	10	35
	1977				6	4	16	25	51
<u>MORA</u>									
Sheriff	1976		1	2	3	11	20		37
	1977				8	14	29	1	52
Wagon Mound	1976				1	4	2		7
	1977				5	7	7	1	20
State Police	1976	2		1	7	20	15	3	48
	1977			1	20	25	19	7	72
<u>OTERO</u>									
Sheriff	1976	2	3	2	3	44	41	4	99
	1977	2	3	2	15	83	40	3	148
Alamogordo	1976	1	3	9	18	402	1,148	64	1,645
	1977	2	1	17	31	589	915	62	1,617
Tularosa	1976				3	26	64	4	97
	1977				5	48	54	5	112
State Police	1976			1	9		2	2	14
	1977	1	2	2	10	4	13	7	39
<u>QUAY</u>									
Sheriff ①	1976					3	1		4
	1977								
Tucumcari	1976	1	2	6	103	156	323	13	604
	1977	1	2	8	52	144	306	25	538
State Police	1976			2	4	2	7	2	17
	1977			2	2	6	26	7	43

		MURDER	FORCIBLE RAPE	ROBBERY	AGGRAVATED ASSAULT	BURGLARY	LARCENY	MOTOR VEHICLE THEFT	TOTAL
<u>RIO ARRIBA</u>									
Sheriff ①	1976		1		10	49	6		66
	1977		1		4	4	11		20
Chama	1976			1	4	4	7		16
	1977				3	2			5
Dulce	1976				66				66
	1977				67	6	11		84
Espanola	1976	1	1	18	98	180	330	42	670
	1977		1	9	23	101	317	35	486
Santa Clara	1976				9	4	1	3	17
	1977				12	4			16
San Juan	1976			1	5	12	3		21
	1977	1	1		7	5	9	2	25
State Police	1976	2	10	2	45	145	81	17	302
	1977	5	10	10	66	156	95	21	363
<u>ROOSEVELT</u>									
Sheriff	1976		1		1	49	70	11	132
	1977				9	37	86	6	138
Portales	1976	2	1	4	66	169	244	19	505
	1977		2	1	18	123	299	19	462
E. N. M. U.	1976					15	108	2	125
	1977					15	87		102
State Police	1976					1	5	1	7
	1977			1			11	4	16
<u>SANDOVAL</u>									
Sheriff	1976	1	7	2	10	110	141	22	293
	1977	1	1	5	32	165	152	40	396
Bernalillo	1976			2	19	45	66	6	138
	1977				31	25	35	3	94
Corrales	1976		1		11	41	27	2	82
	1977		1	1	12	37	32	4	87
Cuba	1976	1		1	4	4	8	1	19
	1977				10	9	26	1	46
State Police	1976				7	7	17	5	36
	1977	1		1	11	3	14	7	37



		MURDER	FORCIBLE RAPE	ROBBERY	AGGRAVATED ASSAULT	BURGLARY	LARCENY	MOTOR VEHICLE THEFT	TOTAL
<u>SAN JUAN</u>									
Sheriff	1976	3	1	4	14	74	187	28	311
	1977	2	13	3	27	76	191	40	352
Aztec	1976	1	5	2	16	53	140	5	222
	1977			1	17	32	126	10	186
Bloomfield	1976		1		41	10	67	6	125
	1977			1	23	30	103	9	166
Farmington	1976	1	11	34	239	474	1,388	184	2,351
	1977	2	7	26	303	410	1,387	218	2,353
State Police	1976				2	1	111	19	133
	1977	1			6	5	192	13	217
<u>SAN MIGUEL</u>									
Sheriff	1976				2	12			16
	1977			1	11	49	1	1	99
Las Vegas	1976		6	18	107	672	546	59	1,408
	1977	3	6	12	105	384	624	35	1,169
N. M. H. U.	1976				12	18	92		122
	1977				10	13	72	1	96
State Police	1976	1	3	6	23	47	39	13	132
	1977	1	3	3	13	37	40	9	106
<u>SANTA FE</u>									
Sheriff	1976		3	2	72	74	63	14	228
	1977		7		12	78	32	3	132
Santa Fe	1976	2	34	67	318	1,089	2,970	418	4,898
	1977	4	33	63	422	937	2,529	314	4,302
San Ildefonso	1976				1	2			3
	1977				5	1			6
State Police	1976	2	8	10	27	92	84	32	255
	1977	1	8	6	68	121	97	47	348
<u>SIERRA</u>									
Sheriff	1976			1		24	73	10	108
	1977			2	5	13	50	7	77
T. or C.	1976		3		24	35	147	5	214
	1977	1	5	2	21	66	175	9	279
State Police	1976						9	8	17
	1977								

		MURDER	FORCIBLE RAPE	ROBBERY	AGGRAVATED ASSAULT	BURGLARY	LARCENY	MOTOR VEHICLE THEFT	TOTAL
<u>SOCORRO</u>									
Sheriff	1976	1	3		6	8	13		31
	1977		2	2	6	13	23		46
Socorro	1976	1	1	1	39	81	135	13	271
	1977			1	16	35	39	3	94
State Police	1976	2	1	2	1	1	8	3	18
	1977		1	1	3		13	7	25
<u>TAOS</u>									
Sheriff	1976	1			12	87	136	6	242
	1977		2	4	15	136	159	5	321
Questa	1976			2	3	4		1	10
	1977	1			3	5	7		16
Red River	1976				5	5	10		20
	1977				5	3	23	2	33
Taos	1976	3	2	4	9	94	214	12	338
	1977		4	3	20	56	151	12	246
State Police	1976		3	3	8	36	53	10	113
	1977				10	35	60	15	120
<u>TORRANCE</u>									
Sheriff	1976					31	12		43
	1977	2		1	9	25	31	8	76
Encino	1976				1	1	6		8
	1977		1		3		9		13
Estancia	1976				3	11	8		22
	1977				4	4	7		15
Moriarty	1976		1		3	9	2	1	16
	1977			1	3	8	20	1	33
Mountainair	1976					4	4		8
	1977	1			5	1			7
State Police	1976				1	8	15	4	28
	1977			2	6	12	24	9	53

43

		MURDER	FORCIBLE RAPE	ROBBERY	AGGRAVATED ASSAULT	BURGLARY	LARCENY	MOTOR VEHICLE THEFT	TOTAL
<u>UNION</u>									
Sheriff	1976		1			22	11	3	37
	1977					12	16	1	29
Clayton	1976				4	53	35	1	93
	1977			1	14	44	103		162
State Police	1976		1				3	2	6
	1977					6	11	3	20
<u>VALENCIA</u>									
Sheriff	1976		4	12	61	314	257	71	719
	1977	2	7	12	62	286	243	47	659
Acoma (2)	1976								
	1977				8	4	8		20
Belen	1976			1	6	73	186	10	276
	1977		2	1	23	119	167	5	317
Bosque Farms	1976			3	4	29	54		90
	1977	1		1	4	16	42	3	67
Grants	1976	1	1	19	53	212	251	39	576
	1977	2	2	15	30	135	221	34	439
Los Lunas	1976	1		1	8	58	356	5	429
	1977		1	2	31	56	249	8	347
Milan	1976		1	5	9	52	69	8	144
	1977	1		3	11	48	56	3	122
State Police	1976		2	2	5	2	13	8	32
	1977		2	3	10	10	21	7	53

(1) DID NOT PARTICIPATE FOR ALL OF 1976 or 1977

(2) FIRST YEAR OF PARTICIPATION

Uniform Crime Reporting Section  
Technical Services Bureau  
Criminal Justice Support Division  
Criminal Justice Department  
P. O. Box 1628  
Santa Fe, New Mexico 87501