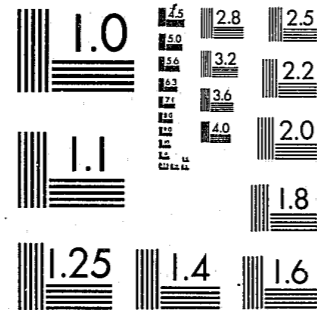


National Criminal Justice Reference Service



This microfiche was produced from documents received for inclusion in the NCJRS data base. Since NCJRS cannot exercise control over the physical condition of the documents submitted, the individual frame quality will vary. The resolution chart on this frame may be used to evaluate the document quality.



MICROCOPY RESOLUTION TEST CHART
NATIONAL BUREAU OF STANDARDS-1963-A

Microfilming procedures used to create this fiche comply with the standards set forth in 41CFR 101-11.504.

Points of view or opinions stated in this document are those of the author(s) and do not represent the official position or policies of the U. S. Department of Justice.

National Institute of Justice
United States Department of Justice
Washington, D. C. 20531

DATE FILMED

12/01/81

Statistical Report
CRIME INDEX TRENDS



OFFICE OF MANAGEMENT ANALYSIS
CRIME ANALYSIS SECTION

1980

77348

ARTER

SEMI-ANNUAL

FIRST NINE MONTHS

YEAR

STATISTICAL NOTE:

The population statistics used in this publication are based on the 1980 U.S. Census.

Complete crime statistics for the Year 1980, for the cities of Houston and Boston (5th & 19th largest) not received by the F.B.I. These two cities were replaced by Kansas City, Mo. & Nashville, Tenn. (26th & 27th largest) in the tables in this report where applicable.

U.S. Department of Justice 77348
National Institute of Justice

This document has been reproduced exactly as received from the person or organization originating it. Points of view or opinions stated in this document are those of the authors and do not necessarily represent the official position or policies of the National Institute of Justice.

Permission to reproduce this copyrighted material has been granted by

Philip M. McGuire
New York Police Dept.

to the National Criminal Justice Reference Service (NCJRS).

Further reproduction outside of the NCJRS system requires permission of the copyright owner.

CRIME INDEX TRENDS

YEAR 1980

1. The Federal Bureau of Investigation's Crime Index Trends for the Year 1980 has been received by this Department. Below are the nationwide increase &/or decrease in crime compared to New York City for the same period of time.

<u>NATIONWIDE</u>	<u>CRIME</u>	<u>NEW YORK CITY</u>
+ 7	Murder & Non-Negligent Manslaughter	+ 4.7
+ 9	Forcible Rape	- 4.2
+20	Robbery	+21.8
+ 8	Aggravated Assault	- 1.6
+14	Burglary	+18.3
+ 8	Larceny-Theft	+13.0
+ 2	Motor Vehicle Theft	+12.0
+10	TOTAL CRIME INDEX	+14.3

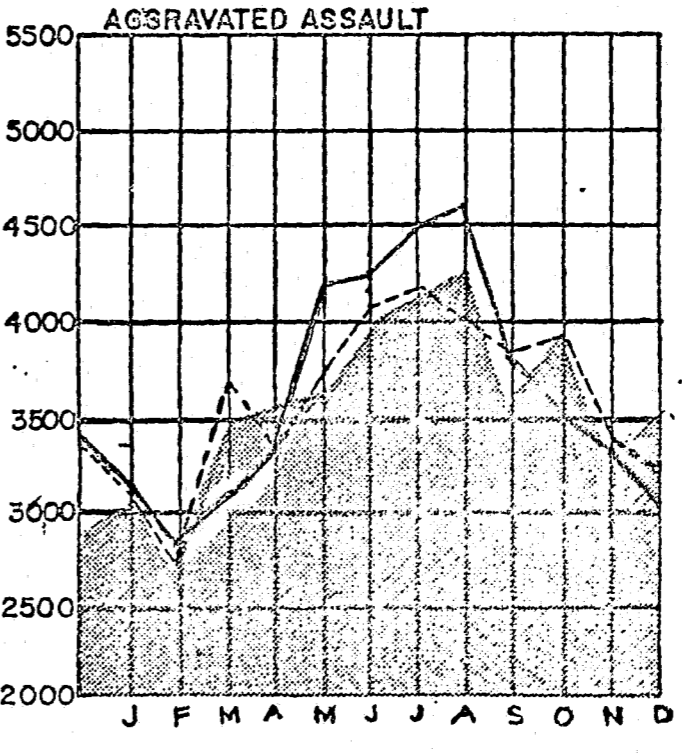
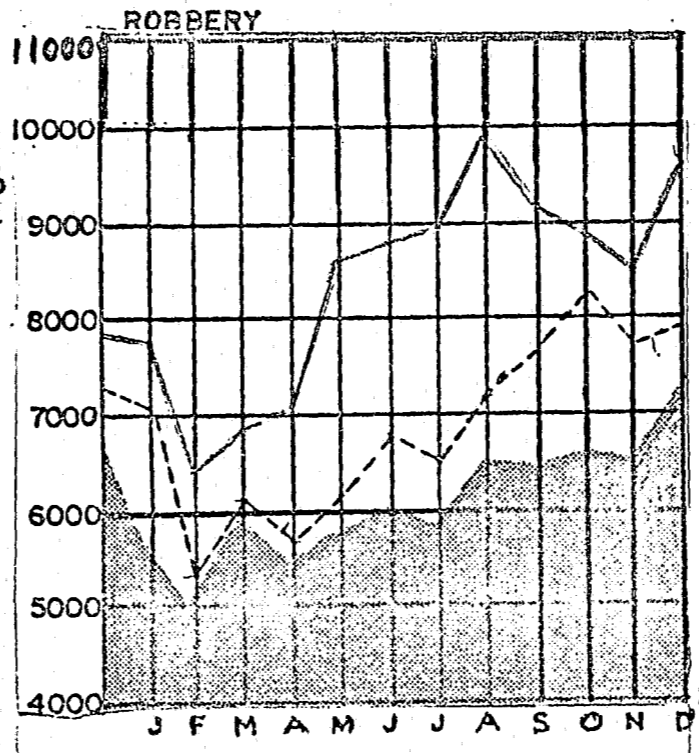
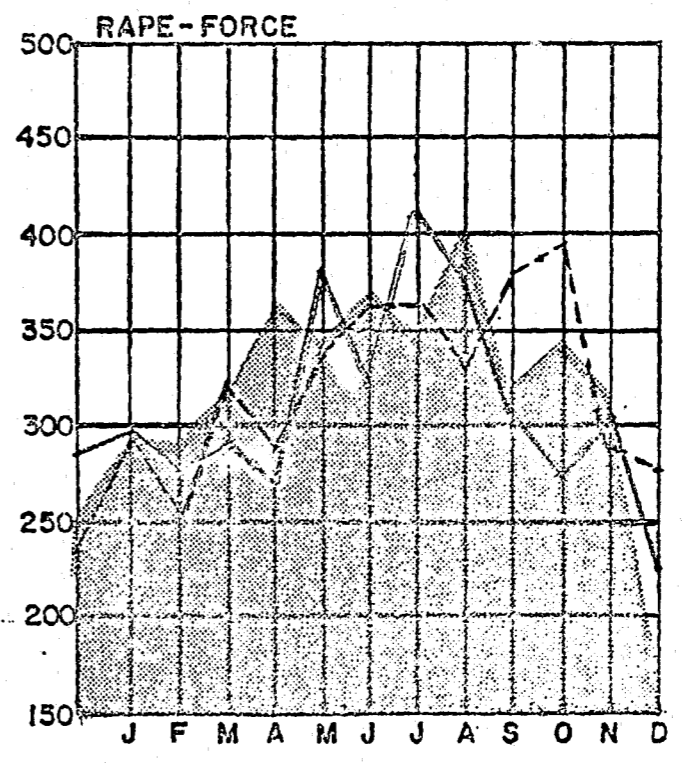
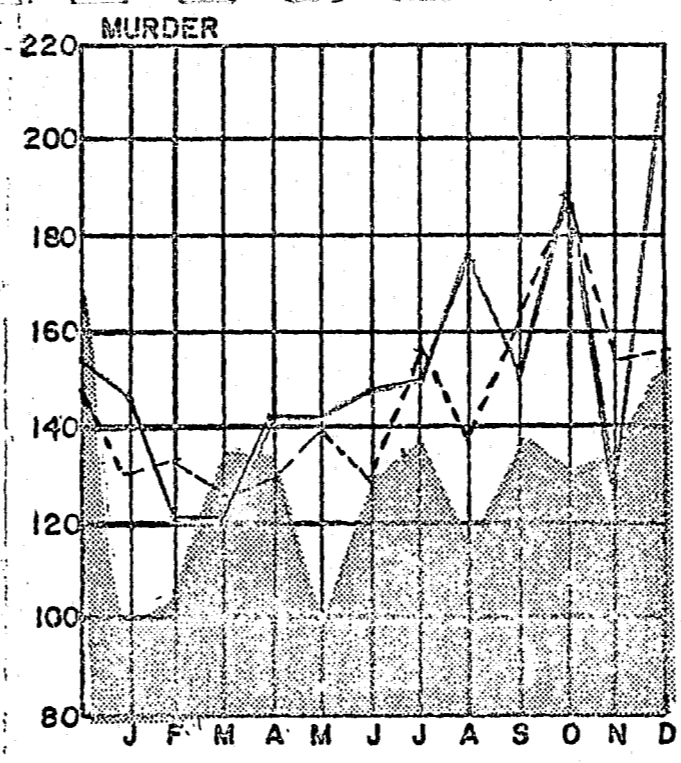
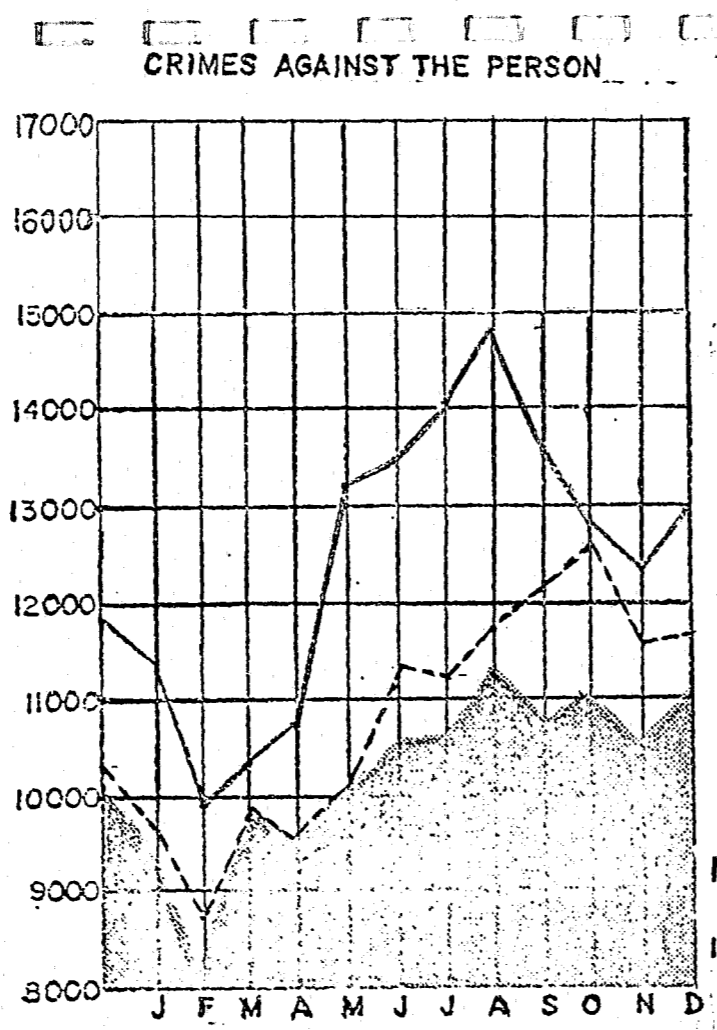
2. Percentage increase &/or decrease, Total Crime Index, for the TEN largest cities.

<u>Rank</u> <u>Year 1980</u>	<u>City</u>	<u>% Change</u> <u>Year 1980</u>	<u>Rank</u> <u>Year 1979</u>	<u>% Change</u> <u>Year 1979</u>
1.	Philadelphia	+22.4	1	+13.2
2.	Phoenix	+17.1	7	+ 5.0
3.	Detroit	+15.0	9	+ 0.1
4.	New York	+14.3	3	+ 8.8
5.	Los Angeles	+13.6	2	+10.8
6.	Dallas	+13.0	4	+ 8.3
7.	Chicago	+ 5.2	10	- 2.1
8.	San Antonio	+ 5.2	8	+ 4.6
9.	Baltimore	+ 4.0	7	+ 6.1
10.	San Diego	- 2.2	5	+ 7.8

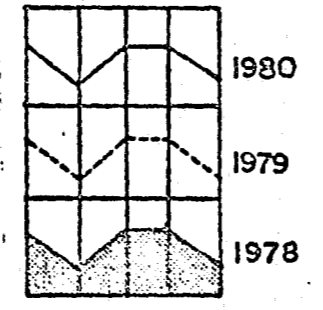
3. Rate per 100,000 population. (Based on 1980 U. S. Census)

In the crime rate per 100,000 population for the seven major crimes (Crime Index Trends) New York ranks as follows among the TWENTY-FIVE largest cities. Note highest rate ranks first.

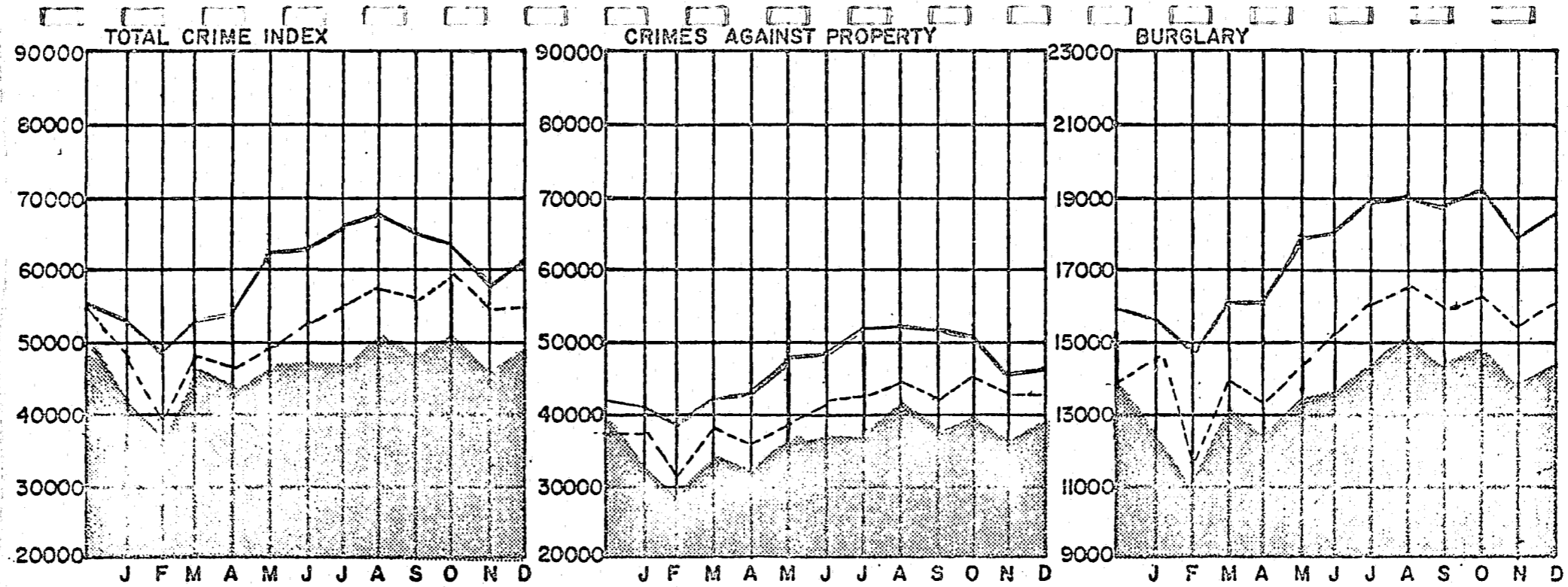
	<u>1980</u>	<u>1979</u>
Murder & Non-Negligent Manslaughter	12	11
Forcible Rape	21	20
Robbery	1	1
Aggravated Assault	9	5
Burglary	9	10
Larceny Theft	19	20
Motor Vehicle Theft	4	5
TOTAL CRIME INDEX	9	12



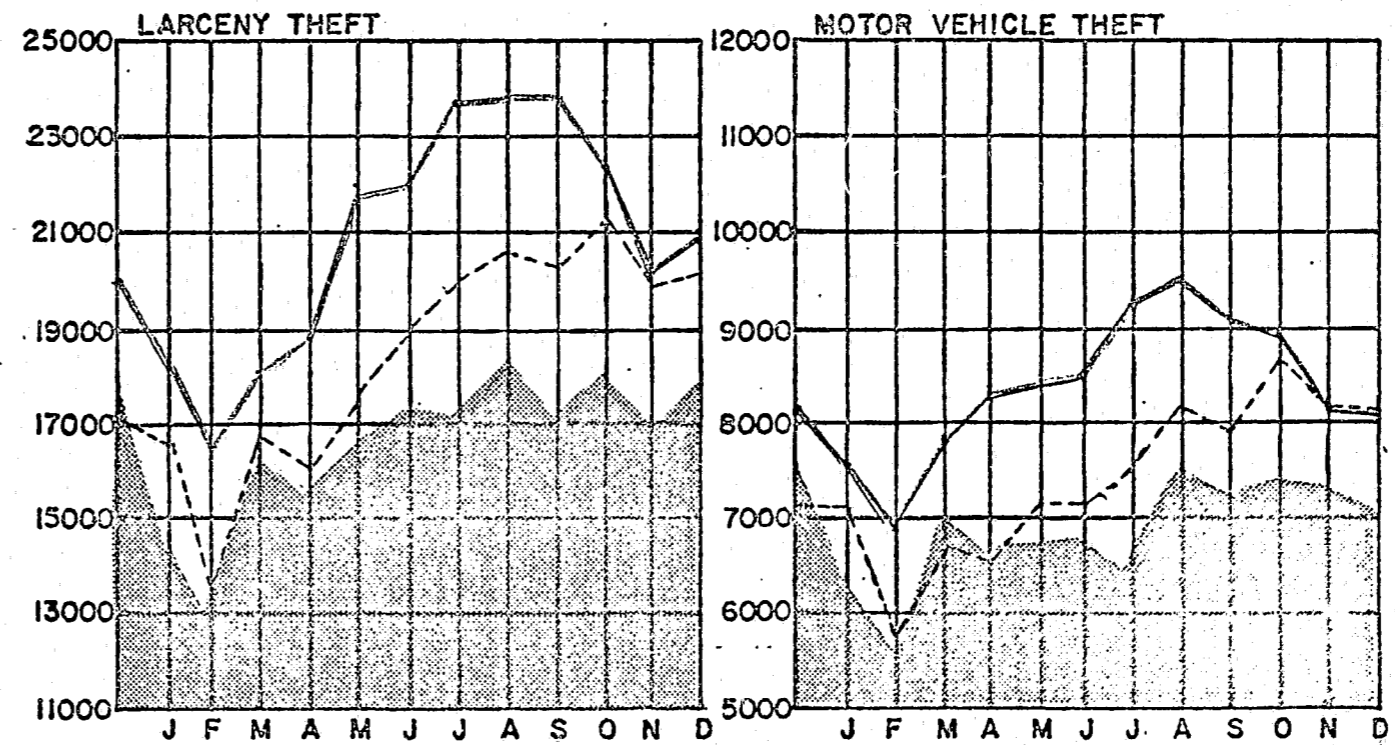
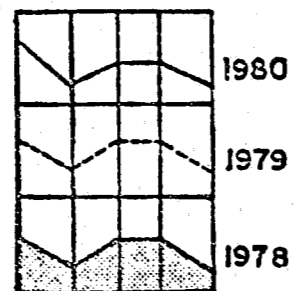
N.Y.C.P.D.
CRIME INDEX
BY MONTH



W



**N.Y.C.P.D.
CRIME INDEX
BY MONTH**



 CRIME INDEX TRENDS AS REPORTED TO THE F.B.I.
 * TEN LARGEST CITIES *
 * YEAR END 1980 1980 VS. 1979 *

	MURDER & NON-NEGL. MANSLAUGHTER *****			FORCIBLE RAPE *****			ROBBERY *****			AGGRAVATED ASSAULT *****		
	80 VS. 79	PERCENT		80 VS. 79	PERCENT		80 VS. 79	PERCENT		80 VS. 79	PERCENT	
	****	****	*****	****	****	*****	****	****	*****	****	****	*****
NEW YORK	1814	1733	4.6 *	3711	3875	-4.2 *	100550	82572	21.7 *	43476	44203	-1.6 *
CHICAGO	863	856	0.8 *	1329	1655	-19.6 *	16261	14464	12.4 *	10205	10832	-5.7 *
LOSANGELES	1011	786	28.6 *	2813	2508	12.1 *	25637	20454	25.3 *	21987	19624	12.0 *
PHILADELPHIA	437	385	13.5 *	937	838	11.8 *	10883	8838	23.1 *	5043	4476	12.6 *
DETROIT	549	452	21.4 *	1313	1369	-4.0 *	13429	11413	17.6 *	7999	7787	2.7 *
DALLAS	319	307	3.9 *	1121	983	14.0 *	4983	4456	11.8 *	6258	5707	9.6 *
SAN DIEGO	103	96	7.2 *	362	331	9.3 *	2986	2884	3.5 *	2738	2125	28.8 *
BALTIMORE	216	245	-11.8 *	560	564	-0.7 *	10020	8482	18.1 *	5775	6232	-7.3 *
SAN ANTONIO	164	171	-4.0 *	362	367	-1.3 *	1742	1689	3.1 *	1997	1861	7.3 *
PHOENIX	103	91	13.1 *	485	477	1.6 *	3037	2337	29.9 *	3395	2898	17.1 *

	BURGLARY *****			LARCENY-THEFT *****			MOTOR VEHICLE THEFT *****			TOTAL CRIME INDEX *****		
	80 VS. 79	PERCENT		80 VS. 79	PERCENT		80 VS. 79	PERCENT		80 VS. 79	PERCENT	
	****	****	*****	****	****	*****	****	****	*****	****	****	*****
NEW YORK	210703	178162	18.2 *	249421	220817	12.9 *	100478	89748	11.9 *	710153	621110	14.3 *
CHICAGO	34288	33396	2.6 *	102873	94087	9.3 *	30786	31438	-2.0 *	196605	186728	5.2 *
LOSANGELES	86525	74339	16.3 *	112982	101623	11.1 *	42883	39301	9.1 *	293838	258635	13.6 *
PHILADELPHIA	24940	20965	18.9 *	40910	33863	20.8 *	17995	13221	36.1 *	101145	82536	22.4 *
DETROIT	40848	32701	24.9 *	41067	35501	15.6 *	22218	21502	3.3 *	127423	110725	15.0 *
DALLAS	30133	26442	13.9 *	55372	48019	15.3 *	7824	7847	-0.2 *	106010	93761	13.0 *
SAN DIEGO	19960	19952	0.0 *	36649	39224	-6.5 *	7707	7481	3.0 *	70505	72093	-2.2 *
BALTIMORE	17659	16915	4.3 *	36854	34537	6.7 *	5620	6769	-16.9 *	76704	73744	4.0 *
SAN ANTONIO	17776	16502	7.7 *	31228	29746	4.9 *	4604	4645	-0.8 *	57873	54981	5.2 *
PHOENIX	24137	19715	22.4 *	51598	44344	16.3 *	5768	5285	9.1 *	88523	75147	17.7 *

 RANKING BY PERCENT INCREASE OR DECREASE IN CRIME
 * TEN LARGEST CITIES *
 * YEAR END 1980 1980 VS. 1979 *

RANK	MURDER & NON-NEGL MANSL.	FORCIBLE RAPE	ROBBERY	AGGRAVATED ASSAULT	
****	*****	*****	*****	*****	
1 *	LOSANGELES	28.6 * DALLAS	14.0 * PHOENIX	29.9 * SAN DIEGO	28.8 *
2 *	DETROIT	21.4 * LOSANGELES	12.1 * LOSANGELES	25.3 * PHOENIX	17.1 *
3 *	PHILADELPHIA	13.5 * PHILADELPHIA	11.8 * PHILADELPHIA	23.1 * PHILADELPHIA	12.6 *
4 *	PHOENIX	13.1 * SAN DIEGO	9.3 * <u>NEW YORK</u>	21.7 * LOSANGELES	12.0 *
5 *	SAN DIEGO	7.2 * PHOENIX	1.6 * BALTIMORE	18.1 * DALLAS	9.6 *
6 *	<u>NEW YORK</u>	4.6 * BALTIMORE	-0.7 * DETROIT	17.6 * SAN ANTONIO	7.3 *
7 *	DALLAS	3.9 * SAN ANTONIO	-1.3 * CHICAGO	12.4 * DETROIT	2.7 *
8 *	CHICAGO	0.8 * DETROIT	-4.0 * DALLAS	11.8 * <u>NEW YORK</u>	-1.6 *
9 *	SAN ANTONIO	-4.0 * <u>NEW YORK</u>	-4.2 * SAN DIEGO	3.5 * CHICAGO	-5.7 *
10 *	BALTIMORE	-11.8 * CHICAGO	-19.6 * SAN ANTONIO	3.1 * BALTIMORE	-7.3 *

RANK	BURGLARY	LARCENY THEFT	MOTOR VEHICLE THEFT	TOTAL CRIME INDEX	
****	*****	*****	*****	*****	
1 *	DETROIT	24.9 * PHILADELPHIA	20.8 * PHILADELPHIA	36.1 * PHILADELPHIA	22.4 *
2 *	PHOENIX	22.4 * PHOENIX	16.3 * <u>NEW YORK</u>	11.9 * PHOENIX	17.7 *
3 *	PHILADELPHIA	18.9 * DETROIT	15.6 * LOSANGELES	9.1 * DETROIT	15.0 *
4 *	<u>NEW YORK</u>	18.2 * DALLAS	15.3 * PHOENIX	9.1 * <u>NEW YORK</u>	14.3 *
5 *	LOSANGELES	16.3 * <u>NEW YORK</u>	12.9 * DETROIT	3.3 * LOSANGELES	13.6 *
6 *	DALLAS	13.9 * LOSANGELES	11.1 * SAN DIEGO	3.0 * DALLAS	13.0 *
7 *	SAN ANTONIO	7.7 * CHICAGO	9.3 * DALLAS	-0.2 * CHICAGO	5.2 *
8 *	BALTIMORE	4.3 * BALTIMORE	6.7 * SAN ANTONIO	-0.8 * SAN ANTONIO	5.2 *
9 *	CHICAGO	2.6 * SAN ANTONIO	4.9 * CHICAGO	-2.0 * BALTIMORE	4.0 *
10 *	SAN DIEGO	0.0 * SAN DIEGO	-6.5 * BALTIMORE	-16.9 * SAN DIEGO	-2.2 *

 RANKING OF THE TEN LARGEST CITIES BY RATE PER 100,000 POPULATION FOR THE
 * YEAR END 1980 *

RANK ****	MURDER & NON-NEGLIGENT MANSLAUGHTER *****		FORCIBLE RAPE *****		ROBBERY *****		AGGRAVATED ASSAULT *****	
	CITY ****	RATE ****	CITY ****	RATE ****	CITY ****	RATE ****	CITY ****	RATE ****
1	* DETROIT	46.0	* DALLAS	124.3	* NEW YORK	1433.2	* LOSANGELES	745.3
2	* DALLAS	35.3	* DETROIT	110.1	* BALTIMORE	1279.1	* BALTIMORE	737.2
3	* LOSANGELES	34.2	* LOSANGELES	95.3	* DETROIT	1126.3	* DALLAS	694.2
4	* CHICAGO	29.0	* BALTIMORE	71.4	* LOSANGELES	869.0	* DETROIT	670.9
5	* BALTIMORE	27.5	* PHOENIX	62.0	* PHILADELPHIA	647.7	* NEW YORK	619.7
6	* PHILADELPHIA	26.0	* PHILADELPHIA	55.7	* DALLAS	552.7	* PHOENIX	434.4
7	* NEW YORK	25.8	* NEW YORK	52.8	* CHICAGO	547.5	* CHICAGO	343.6
8	* SAN ANTONIO	20.9	* SAN ANTONIO	46.2	* PHOENIX	388.6	* SAN DIEGO	314.7
9	* PHOENIX	13.1	* CHICAGO	44.7	* SAN DIEGO	343.2	* PHILADELPHIA	300.1
10	* SAN DIEGO	11.8	* SAN DIEGO	41.6	* SAN ANTONIO	222.3	* SAN ANTONIO	254.9

RANK ****	BURGLARY *****		LARCENY THEFT *****		MOTOR VEHICLE THEFT *****		TOTAL CRIME INDEX *****	
	CITY ****	RATE ****	CITY ****	RATE ****	CITY ****	RATE ****	CITY ****	RATE ****
1	* DETROIT	3426.2	* PHOENIX	6602.9	* DETROIT	1863.5	* DALLAS	11759.9
2	* DALLAS	3342.7	* DALLAS	6142.5	* LOSANGELES	1453.6	* PHOENIX	11328.1
3	* PHOENIX	3088.7	* BALTIMORE	4704.8	* NEW YORK	1432.2	* DETROIT	10687.8
4	* NEW YORK	3003.3	* SAN DIEGO	4212.4	* PHILADELPHIA	1070.9	* NEW YORK	10122.4
5	* LOSANGELES	2933.0	* SAN ANTONIO	3986.7	* CHICAGO	1036.7	* LOSANGELES	9960.5
6	* SAN DIEGO	2294.2	* LOSANGELES	3829.8	* SAN DIEGO	885.8	* BALTIMORE	9792.1
7	* SAN ANTONIO	2269.3	* NEW YORK	3555.2	* DALLAS	867.9	* SAN DIEGO	8103.9
8	* BALTIMORE	2254.3	* CHICAGO	3464.2	* PHOENIX	738.1	* SAN ANTONIO	7388.3
9	* PHILADELPHIA	1484.3	* DETROIT	3444.5	* BALTIMORE	717.4	* CHICAGO	6620.6
10	* CHICAGO	1154.6	* PHILADELPHIA	2434.7	* SAN ANTONIO	587.7	* PHILADELPHIA	6019.6

COMPARISON OF TEN LARGEST CITIES

YEAR 1980

BY POPULATION AND CRIME INDEX AS REPORTED TO F. B. I.
USING NEW YORK CITY POPULATION AND CRIME AS A BASE

	<u>POPULATION</u>	<u>TOTAL CRIME INDEX</u>	<u>PERCENTAGE - POPULATION TO NEW YORK CITY</u>	<u>PERCENTAGE OF CRIME TO NEW YORK CITY</u>
NEW YORK CITY	7,015,608	710,153	100.0	100.0
CHICAGO	2,969,570	196,605	42.3	27.7
LOS ANGELES	2,950,010	293,838	42.0	41.4
PHILADELPHIA	1,680,235	101,145	23.9	14.2
DETROIT	1,192,222	127,423	17.0	17.9
DALLAS	901,450	106,010	12.8	14.9
SAN DIEGO	870,006	70,505	12.4	9.9
BALTIMORE	783,320	76,704	11.2	10.8
SAN ANTONIO	783,296	57,873	11.2	8.1
PHOENIX	781,443	88,523	11.1	12.5

PERCENTAGE DISTRIBUTION

CRIME INDEX

YEAR 1980

	<u>MURDER NON-NEGL. MANSL.</u>	<u>FORCIBLE RAPE</u>	<u>ROBBERY</u>	<u>AGGRAVATED ASSAULT</u>	<u>BURGLARY</u>	<u>LARCENY THEFT</u>	<u>MOTOR VEHICLE THEFT</u>	<u>TOTAL CRIME INDEX</u>
NEW YORK CITY	0.3	0.5	14.2	6.1	29.7	35.1	14.1	100.0
CHICAGO	0.4	0.7	8.3	5.2	17.4	52.3	15.7	100.0
LOS ANGELES	0.3	1.0	8.7	7.5	29.4	38.5	14.6	100.0
PHILADELPHIA	0.4	0.9	10.8	5.0	24.7	40.4	17.8	100.0
DETROIT	0.4	1.0	10.5	6.3	32.1	32.2	17.5	100.0
DALLAS	0.3	1.1	4.7	5.9	28.4	52.2	7.4	100.0
SAN DIEGO	0.5	0.5	4.2	3.9	28.3	52.0	10.9	100.0
BALTIMORE	0.3	0.7	13.1	7.5	23.0	48.1	7.3	100.0
SAN ANTONIO	0.3	0.6	3.0	3.5	30.7	53.9	8.0	100.0
PHOENIX	0.1	0.6	3.4	3.8	27.3	58.3	6.5	100.0

COMPARISON OF CRIMES FOR YEAR 1980
REPORTED BY NEW YORK CITY TO THE F.B.I.
WITH THE YEAR 1980 OF CRIMES REPORTED BY
THREE SELECTED CITIES WHOSE TOTAL POPULATION OF APPROXIMATES N.Y.C.

<u>CITY</u>	<u>POPULATION</u>	<u>TOTAL CRIME INDEX REPORTED FOR THE 12 MONTHS 1980</u>
NEW YORK CITY	7,015,608	710,153

CHICAGO	2,969,570	196,605
LOS ANGELES	2,950,010	293,838
<u>DETROIT</u>	<u>1,192,222</u>	<u>127,423</u>
TOTAL	7,111,802	617,866

 * YEAR END 1980 *
 RANKING OF THE MOST POPULOUS CITIES IN THE UNITED STATES BY DECREASING MAGNITUDE
 * OF CRIME RATE PER 100,000 FOR CRIME INDEX OFFENSES REPORTED TO THE F.B.I. *

MURDER & NON-NEGLIGENT MANSLAUGHTER		FORCIBLE RAPE		ROBBERY		AGGRAVATED ASSAULT		
RANK ****	CITY ****	RATE ****	CITY ****	RATE ****	CITY ****	RATE ****	CITY ****	
1	* ST. LOUIS	50.1	* DENVER	143.8	* NEW YORK	1433.2	* ST. LOUIS	986.9
2	* CLEVELAND	46.2	* DALLAS	124.3	* WASHINGTON	1400.5	* KANSAS CITY	777.9
3	* DETROIT	46.0	* CLEVELAND	122.7	* ST. LOUIS	1323.5	* LOSANGELES	745.3
4	* NEW ORLEANS	39.1	* MEMPHIS	122.2	* BALTIMORE	1279.1	* BALTIMORE	737.2
5	* DALLAS	35.3	* KANSAS CITY	115.9	* CLEVELAND	1188.0	* DALLAS	694.2
6	* LOSANGELES	34.2	* SAN FRANCISCO	112.6	* DETROIT	1126.3	* DETROIT	670.9
7	* WASHINGTON	31.1	* DETROIT	110.1	* SAN FRANCISCO	1116.6	* CLEVELAND	645.5
8	* KANSAS CITY	29.7	* NEW ORLEANS	105.5	* LOSANGELES	869.0	* SAN FRANCISCO	639.9
9	* CHICAGO	29.0	* SEATTLE	104.0	* NEW ORLEANS	834.4	* NEW YORK	619.7
10	* BALTIMORE	27.5	* LOSANGELES	95.3	* PHILADELPHIA	647.7	* WASHINGTON	509.4
11	* PHILADELPHIA	26.0	* ST. LOUIS	87.3	* KANSAS CITY	646.9	* JACKSONVILLE	504.9
12	* NEW YORK	25.8	* COLUMBUS	81.8	* MEMPHIS	596.4	* NEW ORLEANS	488.2
13	* MEMPHIS	23.5	* SAN JOSE	76.5	* COLUMBUS	573.7	* SEATTLE	482.4
14	* SAN ANTONIO	20.9	* JACKSONVILLE	76.4	* DALLAS	552.7	* DENVER	480.5
15	* DENVER	20.2	* BALTIMORE	71.4	* CHICAGO	547.5	* PHOENIX	434.4
16	* NASHVILLE	19.7	* WASHINGTON	69.1	* DENVER	484.0	* CHICAGO	343.6
17	* SAN FRANCISCO	16.3	* NASHVILLE	67.1	* NASHVILLE	461.1	* MEMPHIS	327.5
18	* COLUMBUS	15.4	* PHOENIX	62.0	* SEATTLE	458.0	* SAN DIEGO	314.7
19	* INDIANAPOLIS	15.3	* INDIANAPOLIS	58.9	* PHOENIX	388.6	* PHILADELPHIA	300.1
20	* PHOENIX	13.1	* PHILADELPHIA	55.7	* SAN DIEGO	343.2	* NASHVILLE	278.6
21	* JACKSONVILLE	12.9	* NEW YORK	52.8	* INDIANAPOLIS	315.5	* SAN ANTONIO	254.9
22	* SEATTLE	12.8	* SAN ANTONIO	46.2	* JACKSONVILLE	301.3	* INDIANAPOLIS	250.7
23	* SAN DIEGO	11.8	* CHICAGO	44.7	* MILWAUKEE	283.7	* SAN JOSE	244.9
24	* MILWAUKEE	11.6	* SAN DIEGO	41.6	* SAN JOSE	273.9	* COLUMBUS	241.8
25	* SAN JOSE	9.9	* MILWAUKEE	33.6	* SAN ANTONIO	222.3	* MILWAUKEE	193.8

RANK ****	BURGLARY *****	LARCENY THEFT *****	MOTOR VEHICLE THEFT *****	TOTAL CRIME INDEX *****			
CITY ****	RATE ****	CITY ****	RATE ****	CITY ****	RATE ****		
1 * ST. LOUIS	4498.9	* PHOENIX	6602.9	* CLEVELAND	2477.7	* ST. LOUIS	14405.9 *
2 * DENVER	4050.0	* SEATTLE	6197.0	* DETROIT	1863.5	* DENVER	12019.0 *
3 * DETROIT	3426.2	* DALLAS	6142.5	* LOSANGELES	1453.6	* DALLAS	11759.9 *
4 * KANSAS CITY	3406.0	* ST. LOUIS	6027.7	* NEW YORK	1432.2	* PHOENIX	11328.1 *
5 * DALLAS	3342.7	* DENVER	5766.3	* ST. LOUIS	1431.2	* KANSAS CITY	11034.3 *
6 * CLEVELAND	3117.7	* COLUMBUS	5304.6	* SAN FRANCISCO	1208.6	* SEATTLE	10834.3 *
7 * PHOENIX	3088.7	* KANSAS CITY	5202.1	* DENVER	1073.9	* DETROIT	10687.8 *
8 * COLUMBUS	3043.0	* WASHINGTON	4890.8	* PHILADELPHIA	1070.9	* SAN FRANCISCO	10447.6 *
9 * NEW YORK	3003.3	* SAN FRANCISCO	4861.8	* CHICAGO	1036.7	* NEW YORK	10122.4 *
10 * LOSANGELES	2933.0	* SAN JOSE	4731.5	* NEW ORLEANS	1002.1	* CLEVELAND	10060.9 *
11 * MEMPHIS	2912.0	* BALTIMORE	4704.8	* SAN DIEGO	885.8	* WASHINGTON	10022.4 *
12 * SEATTLE	2801.3	* NEW ORLEANS	4608.9	* DALLAS	867.9	* LOSANGELES	9960.5 *
13 * NASHVILLE	2611.9	* SAN DIEGO	4212.4	* KANSAS CITY	855.4	* COLUMBUS	9851.8 *
14 * WASHINGTON	2559.6	* JACKSONVILLE	4187.9	* SEATTLE	778.6	* BALTIMORE	9792.1 *
15 * NEW ORLEANS	2541.5	* SAN ANTONIO	3986.7	* MEMPHIS	741.2	* NEW ORLEANS	9619.9 *
16 * JACKSONVILLE	2506.7	* NASHVILLE	3910.1	* PHOENIX	738.1	* SAN JOSE	8282.8 *
17 * SAN FRANCISCO	2491.6	* MILWAUKEE	3906.2	* BALTIMORE	717.4	* SAN DIEGO	8103.9 *
18 * SAN DIEGO	2294.2	* LOSANGELES	3829.8	* SAN JOSE	715.9	* NASHVILLE	7935.8 *
19 * SAN ANTONIO	2269.3	* NEW YORK	3555.2	* MILWAUKEE	595.9	* JACKSONVILLE	7923.9 *
20 * BALTIMORE	2254.3	* CHICAGO	3464.2	* COLUMBUS	591.3	* MEMPHIS	7896.7 *
21 * SAN JOSE	2230.0	* DETROIT	3444.5	* SAN ANTONIO	587.7	* SAN ANTONIO	7388.3 *
22 * MILWAUKEE	1522.6	* MEMPHIS	3173.6	* NASHVILLE	587.1	* CHICAGO	6620.6 *
23 * PHILADELPHIA	1484.3	* INDIANAPOLIS	2720.1	* WASHINGTON	561.6	* MILWAUKEE	6547.6 *
24 * INDIANAPOLIS	1449.4	* CLEVELAND	2462.7	* INDIANAPOLIS	544.8	* PHILADELPHIA	6019.6 *
25 * CHICAGO	1154.6	* PHILADELPHIA	2434.7	* JACKSONVILLE	333.6	* INDIANAPOLIS	5355.0 *

R;

END