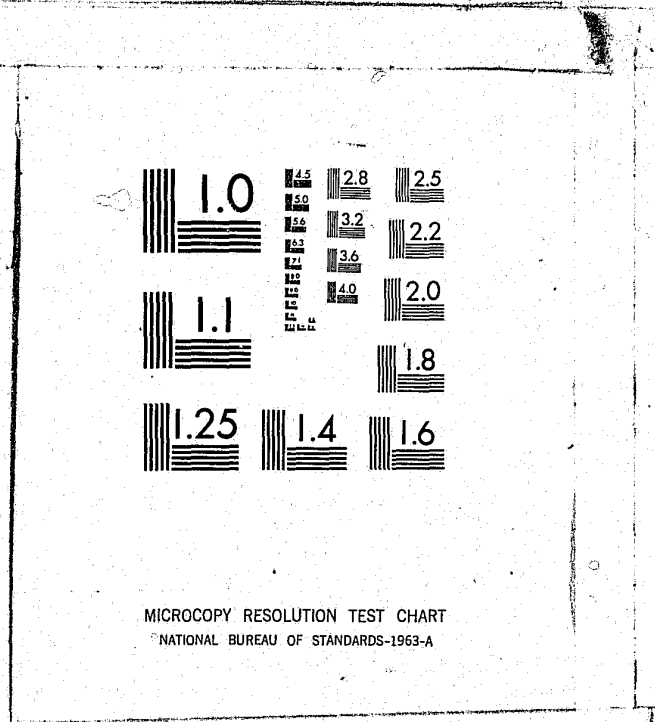


National Criminal Justice Reference Service



This microfiche was produced from documents received for inclusion in the NCJRS data base. Since NCJRS cannot exercise control over the physical condition of the documents submitted, the individual frame quality will vary. The resolution chart on this frame may be used to evaluate the document quality.



MICROCOPY RESOLUTION TEST CHART
NATIONAL BUREAU OF STANDARDS-1963-A

Microfilming procedures used to create this fiche comply with the standards set forth in 41CFR 101-11.504.

Points of view or opinions stated in this document are those of the author(s) and do not represent the official position or policies of the U. S. Department of Justice.

National Institute of Justice
United States Department of Justice
Washington, D. C. 20531

DATE FILMED
8/03/81

77296

OFFENDERS ADMITTED TO THE MUTUAL AGREEMENT PROGRAM
CALENDAR YEARS 1975 AND 1976 COMPARED

U.S. Department of Justice
National Institute of Justice

This document has been reproduced exactly as received from the person or organization originating it. Points of view or opinions stated in this document are those of the authors and do not necessarily represent the official position or policies of the National Institute of Justice.

Permission to reproduce this copyrighted material in microfiche only has been granted by
Stephen M. Puckett/Wisconsin
Division of Corrections

to the National Criminal Justice Reference Service (NCJRS).

Further reproduction outside of the NCJRS system requires permission of the copyright owner.



DEPARTMENT OF HEALTH AND SOCIAL SERVICES

DIVISION OF CORRECTIONS
OFFICE OF SYSTEMS AND EVALUATION
MADISON, WISCONSIN 53701

JULY 1977

STATE OF WISCONSIN

DEPARTMENT OF HEALTH AND SOCIAL SERVICES
Donald E. Percy, Secretary

DIVISION OF CORRECTIONS
Allyn R. Sielaff, Administrator

BUREAU OF INSTITUTIONS
Robert E. Ellsworth, Acting Director
John G. Stoddard, Deputy Director

MAP SUPERVISOR
Russel L. Leik

OFFICE OF SYSTEMS AND EVALUATION
Paul H. Kusuda, Director
Perry C. Baker, Deputy Director, Statistics and Evaluation Section
Theodore H. Johnson, Deputy Director, Records Development Section

FUNDS FOR THIS PUBLICATION WERE PROVIDED BY
THE LAW ENFORCEMENT ASSISTANCE ADMINISTRATION,
Grant No. 76-03-12-S-2696-6

WISCONSIN MUTUAL AGREEMENT PROGRAM

The Wisconsin Mutual Agreement Program (MAP) was implemented statewide in Wisconsin in the fall of 1973. MAP provides the vehicle for coordinated and planned involvement in all phases and levels of adult institutional correctional services. Persons having input into individualized programs include the resident, Program Review Coordinator and Committee, Social Worker, Probation and Parole Agent, Institution Representative, Parole Board members, and the MAP Coordinator.

The processes involved in MAP begin with individual assessment and preparation of an individualized program proposal. The proposed agreement is submitted for a thorough review to those institutions and persons affected. Residents negotiate for a definite parole date in exchange for meeting specific, individualized objectives as to advancement in job-related skills, education, work experience, personal management, and other factors involved in release preparation. When all conditions are agreed upon, the MAP Coordinator, Institution Representative, and Parole Board members recommend that the agreement be signed by the Secretary of the Department of Health and Social Services. After the Secretary's and resident's signatures are on the agreement, it becomes a legally binding document.

The Division of Corrections must provide resources to meet contract specifications. During the time between contract signing and the resident's release, periodic reviews and evaluations are performed by the Program Review Coordinator. Such reviews occur at least once every six months, when the resident requests contract changes, or upon revelation of problems threatening the contract. When changes appear needed, the resident, subject to the approval of the Parole Board and Institution Representative, may renegotiate for programs or date changes. Renegotiation requires the final signature of the DHSS Secretary before the new or revised contract becomes effective.

In summary, MAP provides an opportunity to corrections institutional residents to practice planning skills and self-direction through voluntary choices. The planning process itself has developmental potential because it structures decision-making into increments the residents can handle. MAP allows the institutional stay of a resident to progress so that confinement may be directly related to transition to the community.

NCJRS

APR 20 1981

ACQUISITIONS

OFFENDERS ADMITTED TO THE MUTUAL AGREEMENT PROGRAM

CALENDAR YEARS 1975 and 1976 COMPARED

This report describes adult offenders who negotiated agreements through the Mutual Agreement Program (MAP) for calendar years 1975 and 1976. Information for this report was routinely collected from adult institution record offices, social services and MAP negotiation staff.

Institutions of negotiations were Wisconsin State Prison (WSP), Wisconsin State Reformatory (WSR), Wisconsin Correctional Institution (WCI), Kettle Moraine Correctional Institution (KMCI), and Taycheedah Correctional Institution (TCI). Each of the adult institutions had independent MAP teams consisting of a MAP Coordinator and Institution Representative. (KMCI and TCI were combined for one MAP team).

With the inception of MAP, a series of processes was conceived to be important before a resident actually became a MAP participant. While the program was voluntary, not all residents referred to MAP actually negotiated with the Parole Board and Institution Representative. Table A illustrates the dropout effect experienced through the first two years of operations statewide. As demonstrated, nearly 45 percent of the referrals during the first six months of program operations received contracts. This increased to 68 percent in the second six months, then decreased the following two six-month periods. While this illustrates that a majority of residents receive contracts, it also illustrates a high attrition rate from point of referral to point of receiving a contract.

Table A

Summary of MAP Involvement from October, 1974
Through September, 1976, by Six Month Intervals

Time Interval	Number of Referrals	Number of Proposals Developed	Number of Initial Negotiations	Number of Residents Receiving Contracts
Totals <u>Number</u> (Percent)	<u>2,345</u> (100)	<u>1,994</u> (85.0)	<u>1,836</u> (78.3)	<u>1,440</u> (61.4)
October, 1974 March, 1975	176 (100)	115 (65.3)	110 (62.5)	79 (44.9)
April, 1975 September, 1975	888 (100)	764 (86.0)	738 (83.1)	605 (68.1)
October, 1975 March, 1976	620 (100)	538 (86.8)	481 (77.6)	360 (58.1)
April, 1976 September, 1976	661 (100)	577 (87.3)	507 (76.7)	396 (59.9)

Table B illustrates the types of contracts written during the two-year period. For each year, program-oriented contracts predominated; 92 percent in 1975 and 89 percent in 1976. Program-oriented contracts are those containing at least one component of treatment or education. There may also include a transfer to another facility for the completion of specified components. Performance contracts are time-oriented and usually contain a transfer provision. All institutions of negotiation share in this effort of organizing programs which residents agree to complete.

Table B

Residents Receiving MAP Contracts, by
Type of Contract and Institution of Negotiation

Type of Contract	Totals		WSP		WSR		WCI		KMCI		TCI ¹	
	1975	1976	1975	1976	1975	1976	1975	1976	1975	1976	1975	1976
<u>Totals</u>	<u>794</u>	<u>768</u>	<u>218</u>	<u>196</u>	<u>204</u>	<u>131</u>	<u>262</u>	<u>224</u>	<u>63</u>	<u>151</u>	<u>47</u>	<u>66</u>
(Percent)	(100)	(100)	(100)	(100)	(100)	(100)	(100)	(100)	(100)	(100)	(100)	(100)
<u>Performance Contract</u>	<u>61</u>	<u>84</u>	<u>26</u>	<u>30</u>	<u>14</u>	<u>3</u>	<u>20</u>	<u>39</u>	<u>1</u>	<u>8</u>	<u>--</u>	<u>4</u>
	(7.7)	(11.0)	(11.9)	(15.3)	(6.9)	(2.3)	(7.6)	(17.4)	(1.6)	(5.3)	(--)	(6.1)
No Transfer	12	25	7	11	4	--	1	9	--	3	--	2
	(1.5)	(3.3)	(3.2)	(5.6)	(2.0)	(--)	(0.4)	(4.0)	(--)	(2.0)	(--)	(3.0)
With Transfer	49	59	19	19	10	3	19	30	1	5	--	2
	(6.2)	(7.7)	(8.7)	(9.7)	(4.9)	(2.3)	(7.3)	(13.4)	(1.6)	(3.3)	(--)	(3.0)
<u>Program Contract</u>	<u>733</u>	<u>684</u>	<u>192</u>	<u>166</u>	<u>190</u>	<u>128</u>	<u>242</u>	<u>185</u>	<u>62</u>	<u>143</u>	<u>47</u>	<u>62</u>
	(92.3)	(89.0)	(88.1)	(84.7)	(93.1)	(97.7)	(92.4)	(82.6)	(98.4)	(94.7)	(100)	(93.9)
All Components	410	384	92	64	116	85	114	86	53	102	35	47
	(51.6)	(50.0)	(42.2)	(32.7)	(56.9)	(64.9)	(43.5)	(38.4)	(84.1)	(67.5)	(74.5)	(71.2)
No Education	171	169	65	74	34	20	65	51	5	19	2	5
	(21.5)	(22.0)	(29.8)	(37.8)	(16.7)	(15.3)	(24.8)	(22.8)	(7.9)	(12.6)	(4.2)	(7.6)
No Treatment	152	131	35	28	40	23	63	48	4	22	10	10
	(19.1)	(17.0)	(16.1)	(1.43)	(19.6)	(17.6)	(24.0)	(21.4)	(6.3)	(14.6)	(21.3)	(15.2)

¹ TCI has limited opportunity for transfer of residents. It is a minimum security institution for men. For women, the only transfer facility, starting April, 1976, at present is the Women's Community Correctional Center, Milwaukee.

In addition to the nature of contracts, i.e., performance versus program-oriented contracts, Table C illustrates the content of the contracts during each calendar year. For 1975 the typical negotiated contract contained an institution needs work assignment; treatment through clinical services (generally for group counseling); a vocational program (welding and masonry were overwhelming choices), and a transfer component to the Wisconsin Correctional Camp System. For 1976 a similar pattern existed with the exception of disciplinary reports. Because of the change made in eliminating this component, disciplinary items were excluded. Treatment fluctuated in both cases. While Clinical Services was most often agreed upon, treatment through social services closely matched Clinical Services, particularly in the medium security institutions.

Table C
Residents Receiving MAP Contracts, by Year of Contract
Institution of Negotiation, and Contract Components

Contract Component	Totals		WSP		WSR		WCI		KMCI		TCI	
	1975	1976	1975	1976	1975	1976	1975	1976	1975	1976	1975	1976
<u>Totals</u>	<u>794</u>	<u>768</u>	<u>218</u>	<u>196</u>	<u>204</u>	<u>131</u>	<u>262</u>	<u>224</u>	<u>63</u>	<u>151</u>	<u>47</u>	<u>66</u>
(Percent)	(100)	(100)	(100)	(100)	(100)	(100)	(100)	(100)	(100)	(100)	(100)	(100)
Work Assignment-- Institution Needs	504	441	205	195	169	119	68	35	37	65	25	27
	(63.5)	(57.4)	(94.0)	(99.5)	(82.8)	(90.8)	(25.9)	(15.6)	(58.7)	(43.0)	(53.2)	(40.9)
Treatment Clinical Services ¹	318	299	89	68	80	74	94	78	25	52	30	27
	(40.1)	(38.9)	(40.8)	(34.7)	(39.2)	(56.5)	(35.9)	(34.8)	(39.7)	(34.4)	(63.8)	(40.9)
Education-- Vocational Programs	318	312	70	52	60	46	140	106	21	87	27	21
	(40.1)	(40.6)	(32.1)	(26.5)	(29.4)	(35.1)	(53.4)	(47.3)	(33.3)	(57.6)	(57.4)	(31.8)
Transfer-- Wisconsin Correctional Camp System	316	319	74	60	60	50	166	137	16	64	--	8
	(39.8)	(41.5)	(33.9)	(30.6)	(29.4)	(38.1)	(63.4)	(61.2)	(25.4)	(42.4)	(--)	(12.1)

¹ While clinical services predominated, other treatment sources were used frequently.

A set of 20 supplemental tables follows this discussion providing detailed information about adult residents entering the Mutual Agreement Program. All tables compare calendar years 1975 and 1976 by the institution of negotiation.

Prepared by:
Stephen M. Puckett, Research Analyst
Mutual Agreement Program
Office of Systems and Evaluations
Division of Corrections
P.O. Box 669
Madison, Wisconsin 53701

Table 1

For Residents Receiving MAP Contracts, by Year of Contract
and Institution of Negotiation

Work Assignment	Totals		WSP		WSR		WCI		KMCI		TCI		
	1975	1976	1975	1976	1975	1976	1975	1976	1975	1976	1975	1976	
<u>TOTAL</u>	<u>NUMBER</u> (PERCENT)	<u>794</u> (100.0)	<u>768</u> (100.0)	<u>218</u> (100.0)	<u>196</u> (100.0)	<u>204</u> (100.0)	<u>131</u> (100.0)	<u>262</u> (100.0)	<u>224</u> (100.0)	<u>63</u> (100.0)	<u>151</u> (100.0)	<u>47</u> (100.0)	<u>66</u> (100.0)
None Reported		14 (1.8)	6 (0.9)	2 (0.9)	-- (--)	9 (4.4)	3 (2.3)	2 (0.8)	-- (--)	-- (--)	2 (1.3)	1 (2.1)	1 (1.5)
Institution Needs		504 (63.5)	441 (57.4)	205 (94.0)	195 (99.5)	169 (82.8)	119 (90.8)	68 (25.9)	35 (15.6)	37 (58.7)	65 (43.0)	25 (53.2)	27 (40.9)
General Maintenance		32 (4.0)	39 (5.1)	1 (0.5)	-- (--)	1 (0.5)	1 (0.8)	24 (9.2)	23 (10.3)	6 (9.5)	11 (7.3)	-- (--)	4 (6.1)
Mechanical Maintenance		36 (4.5)	19 (2.5)	4 (1.8)	1 (0.5)	6 (2.9)	-- (--)	24 (9.2)	12 (5.4)	1 (1.6)	6 (4.0)	1 (2.1)	-- (--)
Industries		34 (4.3)	28 (3.6)	1 (0.5)	-- (--)	3 (1.5)	-- (--)	24 (9.2)	16 (7.1)	2 (3.2)	7 (4.6)	4 (8.5)	5 (7.6)
Institution Services		98 (12.3)	179 (23.3)	1 (0.5)	-- (--)	2 (1.0)	3 (2.3)	83 (31.7)	114 (50.9)	4 (6.3)	42 (27.8)	8 (17.0)	20 (30.3)
Food Services		51 (6.4)	40 (5.2)	2 (0.9)	-- (--)	7 (3.4)	2 (1.5)	29 (11.1)	16 (7.1)	6 (9.5)	13 (8.6)	7 (14.9)	9 (13.6)
Ancillary		25 (3.1)	16 (2.1)	2 (0.9)	-- (--)	7 (3.4)	3 (2.3)	8 (3.0)	8 (3.6)	7 (11.1)	5 (3.3)	1 (2.1)	-- (--)

Table 2

Treatment Components
For Residents Receiving MAP Contracts, by Year of Contract
and Institution of Negotiation

Treatment	Totals		WSP		WSR		WCI		KMCI		TCI	
	1975	1976	1975	1976	1975	1976	1975	1976	1975	1976	1975	1976
<u>TOTAL</u>	<u>794</u>	<u>768</u>	<u>218</u>	<u>196</u>	<u>204</u>	<u>131</u>	<u>262</u>	<u>224</u>	<u>63</u>	<u>151</u>	<u>47</u>	<u>66</u>
	(100.0)	(100.0)	(100.0)	(100.0)	(100.0)	(100.0)	(100.0)	(100.0)	(100.0)	(100.0)	(100.0)	(100.0)
None Reported	254	221	63	57	84	32	89	88	8	31	10	13
	(32.0)	(28.8)	(28.9)	(29.1)	(41.2)	(24.4)	(34.0)	(39.3)	(12.7)	(20.5)	(21.3)	(19.7)
Clinical Services	318	299	89	68	80	74	94	78	25	52	30	27
	(40.1)	(38.9)	(40.8)	(34.7)	(39.2)	(56.5)	(35.9)	(34.8)	(39.7)	(34.4)	(63.8)	(40.9)
Social Services	175	215	58	65	25	19	64	48	21	58	7	25
	(22.0)	(28.0)	(26.6)	(33.2)	(12.2)	(14.5)	(24.4)	(21.4)	(33.3)	(38.4)	(14.9)	(37.9)
Other	47	33	8	6	15	6	15	10	9	10	-	1
	(5.9)	(4.3)	(3.7)	(3.1)	(7.3)	(4.6)	(5.7)	(4.5)	(14.3)	(6.6)	(-)	(1.5)

Table 3

Education Components (First Phase)
For Residents Receiving MAP Contracts, by Year of Contract
and Institution of Negotiation

Education	Totals		WSP		WSR		WCI		KMCI		TCI	
	1975	1976	1975	1976	1975	1976	1975	1976	1975	1976	1975	1976
<u>TOTAL</u>	<u>794</u>	<u>768</u>	<u>218</u>	<u>196</u>	<u>204</u>	<u>131</u>	<u>262</u>	<u>224</u>	<u>63</u>	<u>151</u>	<u>47</u>	<u>66</u>
	(100.0)	(100.0)	(100.0)	(100.0)	(100.0)	(100.0)	(100.0)	(100.0)	(100.0)	(100.0)	(100.0)	(100.0)
None Reported	234	252	91	103	48	23	88	91	7	27	--	8
	(29.5)	(32.8)	(41.7)	(52.6)	(23.5)	(17.6)	(33.6)	(40.6)	(11.1)	(17.9)	(--)	(12.1)
Academic High School	40	27	18	4	9	5	3	4	4	8	6	6
	(5.0)	(3.5)	(8.3)	(2.0)	(4.4)	(3.8)	(1.1)	(1.8)	(6.3)	(5.3)	(12.8)	(9.1)
Academic College	53	41	11	9	29	22	6	2	3	1	4	7
	(6.7)	(5.3)	(5.0)	(4.6)	(14.2)	(16.8)	(2.3)	(0.9)	(4.8)	(0.7)	(8.5)	(10.6)
Vocational	318	312	70	52	60	46	140	106	21	87	27	21
	(40.1)	(40.6)	(32.1)	(26.5)	(29.4)	(35.1)	(53.4)	(47.3)	(33.3)	(57.6)	(57.4)	(31.8)
Apprenticeships	--	4	--	1	--	2	--	--	--	1	--	1
	(--)	(0.5)	(--)	(0.5)	(--)	(1.5)	(--)	(--)	(--)	(0.7)	(--)	(1.5)
Adult Basic Education	34	49	6	13	5	2	15	13	6	9	2	12
	(4.3)	(6.4)	(2.8)	(6.6)	(2.5)	(1.5)	(5.7)	(5.8)	(9.5)	(6.0)	(4.3)	(18.2)
High School Equivalency	115	83	22	14	53	31	10	8	22	18	8	12
	(14.5)	(10.8)	(10.1)	(7.1)	(26.0)	(23.7)	(3.8)	(3.6)	(34.9)	(11.9)	(17.0)	(18.2)

Table 4

Education Components (Second Phase)
For Residents Receiving MAP Contracts, by Year of Contract
and Institution of Negotiation

Education	Totals		WSP		WSR		WCI		KMCI		TCI	
	1975	1976	1975	1976	1975	1976	1975	1976	1975	1976	1975	1976
<u>TOTAL</u> <u>NUMBER</u>	<u>794</u> (100.0)	<u>768</u> (100.0)	<u>218</u> (100.0)	<u>196</u> (100.0)	<u>204</u> (100.0)	<u>131</u> (100.0)	<u>262</u> (100.0)	<u>224</u> (100.0)	<u>63</u> (100.0)	<u>151</u> (100.0)	<u>47</u> (100.0)	<u>66</u> (100.0)
None Reported	671 (84.5)	626 (81.5)	198 (90.8)	183 (93.4)	172 (84.3)	105 (80.2)	232 (88.5)	203 (90.6)	36 (57.1)	81 (53.6)	33 (70.2)	54 (82.0)
Academic High School	7 (0.9)	14 (1.8)	4 (1.8)	1 (0.5)	-- (--)	2 (1.6)	1 (0.4)	1 (0.4)	-- (--)	8 (5.3)	2 (4.3)	2 (3.0)
Academic College	12 (1.5)	13 (1.7)	-- (--)	-- (--)	6 (2.9)	8 (6.1)	1 (0.4)	-- (--)	1 (1.6)	2 (1.3)	4 (8.5)	3 (4.5)
Vocational	53 (6.7)	30 (3.9)	4 (1.8)	5 (2.6)	13 (6.4)	7 (5.3)	9 (3.4)	5 (2.2)	22 (34.9)	12 (7.9)	5 (10.6)	1 (1.5)
Apprenticeships	1 (0.1)	1 (0.1)	1 (0.5)	-- (--)	-- (--)	1 (0.8)	-- (--)	-- (--)	-- (--)	-- (--)	-- (--)	-- (--)
Adult Basic Education	18 (2.3)	29 (3.8)	6 (2.8)	3 (1.5)	2 (1.0)	1 (0.8)	8 (3.1)	3 (1.3)	2 (3.2)	19 (12.6)	-- (--)	3 (4.5)
High School Equivalency	32 (4.0)	55 (7.2)	5 (2.3)	4 (2.0)	11 (5.4)	7 (5.3)	11 (4.2)	12 (5.4)	2 (3.2)	29 (19.2)	3 (6.4)	3 (4.5)

Table 5

Discipline Components
For Residents Receiving MAP Contracts, By Year of Contract
and Institution of Negotiation

Disciplinary Reports	Totals		WSP		WSR		WCI		KMCI		TCI	
	1975	1976	1975	1976	1975	1976	1975	1976	1975	1976	1975	1976
<u>TOTAL</u>	<u>794</u>	<u>768</u>	<u>218</u>	<u>196</u>	<u>204</u>	<u>131</u>	<u>262</u>	<u>224</u>	<u>63</u>	<u>151</u>	<u>47</u>	<u>66</u>
	(100.0)	(100.0)	(100.0)	(100.0)	(100.0)	(100.0)	(100.0)	(100.0)	(100.0)	(100.0)	(100.0)	(100.0)
None Reported	10 (1.3)	357 (46.5)	1 (0.5)	77 (39.3)	6 (2.9)	60 (45.8)	2 (0.8)	106 (47.3)	-- (--)	92 (60.9)	1 (2.1)	22 (33.3)
One Report	50 (6.3)	7 (0.9)	6 (2.7)	2 (1.0)	13 (6.4)	3 (2.3)	13 (5.0)	-- (--)	5 (7.9)	1 (0.7)	13 (27.7)	1 (1.5)
Two Reports	228 (28.7)	105 (13.7)	36 (16.5)	30 (15.3)	69 (33.8)	17 (13.0)	71 (27.1)	23 (10.3)	32 (50.8)	18 (11.9)	20 (42.5)	17 (25.8)
Three Reports	358 (45.1)	122 (15.9)	135 (61.9)	29 (14.8)	90 (44.1)	21 (16.0)	109 (41.6)	36 (16.1)	14 (22.2)	20 (13.2)	10 (21.3)	16 (24.2)
Four Reports	86 (10.8)	81 (10.5)	19 (8.7)	28 (14.3)	22 (10.8)	5 (3.8)	34 (13.0)	28 (12.5)	9 (14.3)	14 (9.3)	2 (4.2)	6 (9.1)
Five Reports	35 (4.4)	61 (7.9)	11 (5.0)	16 (8.2)	4 (2.0)	17 (13.0)	19 (7.2)	23 (10.3)	-- (--)	4 (2.6)	1 (2.1)	1 (1.5)
Six or More Reports	27 (3.4)	35 (4.6)	10 (4.6)	14 (7.1)	-- (--)	8 (6.1)	14 (5.3)	8 (3.6)	3 (4.8)	2 (1.3)	-- (--)	3 (4.5)

Table 6

Transfer Components (First Placement)
For residents Receiving MAP Contracts, by Year of Contract
and Institution of Negotiation

Transfer Place and Reason--First Placement	Totals		WSP		WSR		WCI		KMCI		TCI	
	1975	1976	1975	1976	1975	1976	1975	1976	1975	1976	1975	1976
TOTALS	794	768	218	196	204	131	262	224	63	151	47	66
			(100.0)	(100.0)	(100.0)	(100.0)	(100.0)	(100.0)	(100.0)	(100.0)	(100.0)	(100.0)
None Reported	226	215	31	27	67	32	47	42	34	56	47	58
			(14.2)	(13.8)	(32.8)	(24.4)	(17.9)	(18.7)	(54.0)	(37.1)	(100.0)	(87.9)
WSP	--	3	--	3	--	--	--	--	--	--	--	--
			(--)	(1.5)	(--)	(--)	(--)	(--)	(--)	(--)	(--)	(--)
WSR	2	1	1	--	1	1	--	--	--	--	--	--
			(0.5)	(--)	(0.5)	(0.8)	(--)	(--)	(--)	(--)	(--)	(--)
WCI	53	42	45	36	8	3	--	--	--	3	--	--
			(20.6)	(18.4)	(3.9)	(2.3)	(--)	(--)	(--)	(2.0)	(--)	(--)
KMCI	64	49	24	29	29	14	8	1	3	5	--	--
			(11.1)	(14.8)	(14.2)	(10.7)	(3.0)	(0.4)	(4.8)	(3.3)	(--)	(--)
TCI	106	123	34	41	24	17	38	44	10	21	--	--
			(15.6)	(20.9)	(11.8)	(13.0)	(14.5)	(19.6)	(15.9)	(13.9)	(--)	(--)
WCCS	316	319	74	60	60	50	166	137	16	64	--	8
			(33.9)	(30.6)	(29.4)	(38.1)	(63.4)	(61.2)	(25.4)	(42.4)	(--)	(12.1)
County Jails; Others	27	16	9	--	15	14	3	--	--	2	--	--
			(4.1)	(--)	(7.4)	(10.7)	(1.1)	(--)	(--)	(1.3)	(--)	(--)

Table 7
 Transfer Component (Second Placement)
 Residents Receiving MAP Contracts by Year of Contract
 and Institution of Negotiation

Transfer Place and Reason--Second Placement	Totals		WSP		WSR		WCI		KMCI		TCI	
	1975	1976	1975	1976	1975	1976	1975	1976	1975	1976	1975	1976
<u>TOTALS</u> <u>NUMBER</u> <u>(PERCENT)</u>	<u>794</u>	<u>768</u>	<u>218</u> (100.0)	<u>196</u> (100.0)	<u>204</u> (100.0)	<u>131</u> (100.0)	<u>262</u> (100.0)	<u>224</u> (100.0)	<u>63</u> (100.0)	<u>151</u> (100.0)	<u>47</u> (100.0)	<u>66</u> (100.0)
None Reported	655	660	147 (67.4)	139 (70.9)	177 (86.8)	118 (90.1)	224 (85.5)	202 (90.2)	60 (95.2)	140 (92.7)	47 (100.0)	61 (92.4)
KMCI	2	3	1 (0.5)	2 (1.0)	-- (--)	-- (--)	-- (--)	-- (--)	1 (1.6)	1 (0.7)	-- (--)	-- (--)
TCI	27	18	22 (10.1)	11 (5.6)	3 (1.5)	3 (2.3)	1 (0.4)	2 (0.9)	1 (1.6)	1 (0.7)	-- (--)	1 (1.5)
WCCS	103	82	44 (20.2)	42 (21.4)	22 (10.8)	7 (5.3)	37 (14.1)	20 (8.9)	-- (--)	9 (6.0)	-- (--)	4 (6.1)
County Jail; Others	7	5	4 (1.8)	2 (1.0)	2 (1.0)	3 (2.3)	-- (--)	-- (--)	1 (1.6)	-- (--)	-- (--)	-- (--)

Table 8

Length of Contract
For Residents Receiving MAP Contracts by Year of Contract
and Institution of Negotiation

Length of Contract	Totals		WSP		WSR		WCI		KMCI		TCI	
	1975	1976	1975	1976	1975	1976	1975	1976	1975	1976	1975	1976
<u>TOTALS</u>	<u>794</u>	<u>766</u>	<u>218</u>	<u>196</u>	<u>204</u>	<u>131</u>	<u>262</u>	<u>223</u>	<u>63</u>	<u>150</u>	<u>47</u>	<u>66</u>
	(100.0)	(100.0)	(100.0)	(100.0)	(100.0)	(100.0)	(100.0)	(100.0)	(100.0)	(100.0)	(100.0)	(100.0)
1 month, less than 6.0	196	191	47	51	57	21	46	43	24	52	22	24
	(24.7)	(24.9)	(21.5)	(26.0)	(27.9)	(16.0)	(17.6)	(19.3)	(38.1)	(34.7)	(46.8)	(36.4)
6.0 months, less than 12.0	388	362	109	80	94	63	141	122	22	69	22	28
	(48.9)	(47.3)	(50.0)	(40.8)	(46.1)	(48.1)	(53.8)	(54.7)	(34.9)	(46.0)	(46.8)	(42.4)
12.0 months, less than 18.0	180	189	49	52	47	42	65	54	16	27	3	14
	(22.7)	(24.7)	(22.5)	(26.5)	(23.0)	(32.1)	(24.8)	(24.2)	(25.4)	(18.0)	(6.4)	(21.2)
18.0 months, less than 24.0	28	23	12	12	6	5	9	4	1	2	--	--
	(3.5)	(3.0)	(5.5)	(6.1)	(2.9)	(3.8)	(3.4)	(1.8)	(1.6)	(1.3)	(--)	(--)
24.0 months and over	2	1	1	1	--	--	1	--	--	--	--	--
	(0.2)	(0.1)	(0.5)	(0.5)	(--)	(--)	(0.4)	(--)	(--)	(--)	(--)	(--)
Mean (in months)	9.3	9.4	9.7	9.9	9.0	10.4	9.9	9.2	8.4	8.4	6.6	8.1

Table 9
 Length of Sentence
 For Residents Receiving MAP Contracts by Year of Contract
 and Institution of Negotiation

Length of Sentence	Totals		WSP		WSR		WCI		KMCI		TCI	
	1975	1976	1975	1976	1975	1976	1975	1976	1975	1976	1975	1976
<u>TOTALS</u>	<u>794</u>	<u>768</u>	<u>218</u>	<u>196</u>	<u>214</u>	<u>131</u>	<u>262</u>	<u>224</u>	<u>63</u>	<u>151</u>	<u>47</u>	<u>66</u>
	(100.0)	(100.0)	(100.0)	(100.0)	(100.0)	(100.0)	(100.0)	(100.0)	(100.0)	(100.0)	(100.0)	(100.0)
Not Reported	2 (0.3)	3 (0.4)	2 (0.9)	1 (0.5)	-- (--)	-- (--)	-- (--)	1 (0.4)	-- (--)	-- (--)	-- (--)	1 (1.5)
Less than 1 year	-- (--)	2 (0.3)	-- (--)	-- (--)	-- (--)	-- (--)	-- (--)	1 (0.4)	-- (--)	1 (0.7)	-- (--)	-- (--)
1 year, less than 2 years	56 (7.1)	27 (3.5)	16 (7.3)	6 (3.1)	19 (9.3)	6 (4.6)	4 (1.5)	4 (1.8)	7 (11.1)	2 (1.3)	10 (21.3)	9 (13.6)
2 years, less than 3 years	127 (16.0)	120 (15.6)	23 (10.6)	28 (14.3)	42 (20.6)	24 (18.3)	32 (12.2)	21 (9.4)	21 (33.3)	33 (21.9)	9 (19.1)	14 (21.2)
3 years, less than 4 years	217 (27.3)	211 (27.5)	39 (17.9)	35 (17.9)	63 (30.9)	27 (20.6)	79 (30.2)	64 (28.6)	18 (28.6)	59 (39.1)	18 (38.3)	26 (39.4)
4 years, less than 5 years	106 (13.4)	105 (13.7)	28 (12.8)	24 (12.2)	24 (11.8)	17 (13.0)	46 (17.6)	36 (16.1)	6 (9.5)	22 (14.6)	2 (4.3)	6 (9.1)
5 years, less than 10 years	245 (30.9)	250 (32.6)	88 (40.4)	80 (40.8)	52 (25.5)	53 (40.5)	88 (33.6)	81 (36.2)	10 (15.9)	27 (17.9)	7 (14.9)	9 (13.6)
10 years, less than 15 years	32 (4.0)	37 (4.8)	16 (7.3)	13 (6.6)	4 (2.0)	4 (3.1)	10 (3.8)	13 (5.8)	1 (1.6)	7 (4.6)	1 (2.1)	-- (--)
15 years, less than 20 years	7 (0.9)	7 (0.9)	5 (2.3)	4 (2.0)	-- (--)	-- (--)	2 (0.8)	3 (1.3)	-- (--)	-- (--)	-- (--)	-- (--)
20 years, less than life	2 (0.3)	5 (0.7)	1 (0.5)	4 (2.0)	-- (--)	-- (--)	1 (0.4)	-- (--)	-- (--)	-- (--)	-- (--)	1 (1.5)
Life	-- (--)	1 (0.1)	-- (--)	1 (0.5)	-- (--)	-- (--)	-- (--)	-- (--)	-- (--)	-- (--)	-- (--)	-- (--)
Mean (in months)	50	54	58	66	42	52	53	55	36	44	37	41

Table 11

Admission Type
For Residents Receiving MAP Contracts by Year of Contract
and by Institution of Negotiation

Admission Type	Totals		WSP*		WSR		WCI*		KMCI		TCI*	
	1975	1976	1975	1976	1975	1976	1975	1976	1975	1976	1975	1976
TOTALS	<u>794</u>	<u>765</u>	<u>218</u>	<u>196</u>	<u>204</u>	<u>131</u>	<u>262</u>	<u>223</u>	<u>63</u>	<u>151</u>	<u>47</u>	<u>65</u>
	(100.0)	(100.0)	(100.0)	(100.0)	(100.0)	(100.0)	(100.0)	(100.0)	(100.0)	(100.0)	(100.0)	(100.0)
<u>New Admission</u>	702	686	162	154	191	124	240	199	62	145	47	62
	(88.4)	(89.3)	(74.3)	(78.6)	(93.6)	(94.7)	(91.6)	(89.2)	(98.4)	(96.0)	(100.0)	(95.4)
New Sentence, Probation Violator	307	253	44	38	93	53	122	66	28	61	20	35
	(38.7)	(33.1)	(20.2)	(19.4)	(45.6)	(40.6)	(46.6)	(29.6)	(44.4)	(40.4)	(42.6)	(53.8)
Probation Violator, No New Sentence	22	24	16	14	--	--	3	6	3	3	--	1
	(2.8)	(3.1)	(7.3)	(7.1)	(--)	(--)	(1.1)	(2.7)	(4.8)	(2.0)	(--)	(1.5)
New Sentence Only	365	403	102	101	94	71	112	125	30	80	27	26
	(46.0)	(52.6)	(46.8)	(51.5)	(46.1)	(54.1)	(42.7)	(56.1)	(47.6)	(53.0)	(57.4)	(40.0)
Juvenile Aftercare Violator	8	4	--	1	4	--	3	2	1	1	--	--
	(1.0)	(0.5)	(--)	(0.5)	(2.0)	(--)	(1.1)	(0.9)	(1.6)	(0.7)	(--)	(--)
<u>Re-Admission</u>	92	82	56	42	13	7	22	24	1	6	--	3
	(11.6)	(10.7)	(25.7)	(21.4)	(6.4)	(5.3)	(8.4)	(10.8)	(1.6)	(4.0)	(--)	(4.6)
New Sentence, Parole Violator	42	40	23	21	8	3	10	13	1	3	--	--
	(5.3)	(5.2)	(10.6)	(10.7)	(3.9)	(2.3)	(3.8)	(5.8)	(1.6)	(2.0)	(--)	(--)
New Sentence, Mandatory Release Violator	19	18	11	8	3	2	5	6	--	1	--	1
	(2.4)	(2.3)	(5.0)	(4.1)	(1.5)	(1.5)	(1.9)	(2.7)	(--)	(0.7)	(--)	(1.5)
Parole Violator, No New Sentence	17	14	12	7	1	1	4	4	--	1	--	1
	(2.1)	(1.8)	(5.5)	(3.6)	(0.5)	(0.8)	(1.5)	(1.8)	(--)	(0.7)	(--)	(1.5)
Mandatory Release Violator, No New Sentence	14	10	10	6	1	1	3	1	--	1	--	1
	(1.8)	(1.3)	(4.6)	(3.1)	(0.5)	(0.8)	(1.1)	(0.4)	(--)	(0.7)	(--)	(1.5)

*One case for each of the marked institutions has been deleted, bringing the total for 1976 3 cases less than actually reported.

Table 12

Age
For Residents Receiving MAP Contracts by Year of Contract
and by Institution of Negotiation

Age	Totals		WSP		WSR		SCI		KMCI		TCI	
	1975	1976	1975	1976	1975	1976	1975	1976	1975	1976	1975	1976
<u>TOTALS</u>	<u>794</u>	<u>768</u>	<u>218</u>	<u>196</u>	<u>204</u>	<u>131</u>	<u>262</u>	<u>224</u>	<u>63</u>	<u>151</u>	<u>47</u>	<u>66</u>
	(100.0)	(100.0)	(100.0)	(100.0)	(100.0)	(100.0)	(100.0)	(100.0)	(100.0)	(100.0)	(100.0)	(100.0)
	<u>NUMBER</u>	<u>NUMBER</u>	<u>NUMBER</u>	<u>NUMBER</u>	<u>NUMBER</u>	<u>NUMBER</u>	<u>NUMBER</u>	<u>NUMBER</u>	<u>NUMBER</u>	<u>NUMBER</u>	<u>NUMBER</u>	<u>NUMBER</u>
	(PERCENT)	(PERCENT)	(PERCENT)	(PERCENT)	(PERCENT)	(PERCENT)	(PERCENT)	(PERCENT)	(PERCENT)	(PERCENT)	(PERCENT)	(PERCENT)
Less than 20	189 (23.8)	174 (22.7)	11 (5.0)	3 (1.5)	93 (45.6)	61 (46.6)	50 (19.1)	42 (18.8)	27 (42.9)	57 (37.7)	8 (17.0)	11 (16.7)
20, but less than 25	333 (41.9)	328 (42.7)	52 (23.9)	72 (36.7)	102 (50.0)	64 (48.9)	135 (51.5)	93 (41.5)	24 (38.1)	63 (41.7)	20 (42.6)	36 (54.5)
25, but less than 30	155 (19.5)	145 (18.9)	88 (40.4)	60 (30.6)	7 (3.4)	5 (3.8)	46 (17.6)	51 (22.8)	7 (11.1)	19 (12.6)	7 (14.9)	10 (15.2)
30, but less than 35	53 (6.7)	64 (8.3)	32 (14.7)	30 (15.3)	1 (0.5)	1 (0.8)	15 (5.7)	23 (10.3)	1 (1.6)	5 (3.3)	4 (8.5)	5 (7.6)
35, but less than 40	32 (4.0)	27 (3.5)	19 (8.7)	16 (8.2)	1 (0.5)	-- (--)	7 (2.7)	5 (2.2)	-- (--)	3 (2.0)	5 (10.6)	3 (4.5)
40, but less than 45	17 (2.1)	9 (1.2)	7 (3.2)	4 (2.0)	-- (--)	-- (--)	7 (2.7)	4 (1.8)	3 (4.8)	1 (0.7)	-- (--)	-- (--)
45, but less than 60	14 (1.8)	20 (2.6)	8 (3.7)	10 (5.1)	-- (--)	-- (--)	2 (0.8)	6 (2.7)	1 (1.6)	3 (2.0)	3 (6.4)	1 (1.5)
60 and over	1 (0.1)	1 (0.1)	1 (0.5)	1 (0.5)	-- (--)	-- (--)	-- (--)	-- (--)	-- (--)	-- (--)	-- (--)	-- (--)
Mean (in months)	24	24	28	28	20	20	24	25	23	22	25	24

Table 13

Sex--Race
For Residents Receiving MAP Contracts by Year of Contract
and by Institution of Negotiation

Sex--Race	Totals		WSP		WSR		WCI		KMCI		TCI		
	1975	1976	1975	1976	1975	1976	1975	1976	1975	1976	1975	1976	
<u>TOTALS</u>	<u>NUMBER</u>	<u>794</u>	<u>768</u>	<u>218</u>	<u>196</u>	<u>204</u>	<u>131</u>	<u>262</u>	<u>224</u>	<u>63</u>	<u>151</u>	<u>47</u>	<u>66</u>
	<u>(PERCENT)</u>	<u>(100.0)</u>	<u>(100.0)</u>	<u>(100.0)</u>	<u>(100.0)</u>	<u>(100.0)</u>	<u>(100.0)</u>	<u>(100.0)</u>	<u>(100.0)</u>	<u>(100.0)</u>	<u>(100.0)</u>	<u>(100.0)</u>	<u>(100.0)</u>
<u>Male</u>		750	721	218	196	204	131	262	224	63	151	3	19
		(94.5)	(93.9)	(100.0)	(100.0)	(100.0)	(100.0)	(100.0)	(100.0)	(100.0)	(100.0)	(6.4)	(28.8)
White		507	448	156	125	162	107	142	119	45	83	2	14
		(63.9)	(58.3)	(71.6)	(63.8)	(79.4)	(81.7)	(54.2)	(53.1)	(71.4)	(55.0)	(4.3)	(21.2)
Black		212	253	52	63	31	21	114	101	14	65	1	3
		(26.7)	(32.9)	(23.9)	(32.1)	(15.2)	(16.0)	(43.5)	(45.1)	(22.2)	(43.0)	(2.1)	(4.5)
Other		31	20	10	8	11	3	6	4	4	3	--	2
		(3.9)	(2.6)	(4.6)	(4.1)	(5.4)	(2.3)	(2.3)	(1.8)	(6.3)	(2.0)	(--)	(3.0)
<u>Female</u>		44	47	--	--	--	--	--	--	--	--	44	47
		(5.5)	(6.1)	(--)	(--)	(--)	(--)	(--)	(--)	(--)	(--)	(93.6)	(71.2)
White		26	20	--	--	--	--	--	--	--	--	26	20
		(3.3)	(2.6)	(--)	(--)	(--)	(--)	(--)	(--)	(--)	(--)	(55.3)	(30.3)
Black		16	25	--	--	--	--	--	--	--	--	16	25
		(2.0)	(3.3)	(--)	(--)	(--)	(--)	(--)	(--)	(--)	(--)	(34.0)	(37.9)
Other		2	2	--	--	--	--	--	--	--	--	2	2
		(0.3)	(0.3)	(--)	(--)	(--)	(--)	(--)	(--)	(--)	(--)	(4.3)	(3.0)

Table 14

Region of Commitment¹
 For Residents Receiving MAP Contracts by Year of Contract
 and by Institution of Negotiation

County of Commitment (Regional Groupings)	Totals		WSP		WSR		WCI		KMCI		TCI	
	1975	1976	1975	1976	1975	1976	1975	1976	1975	1976	1975	1976
<u>TOTALS</u>	<u>794</u>	<u>768</u>	<u>218</u>	<u>196</u>	<u>204</u>	<u>131</u>	<u>262</u>	<u>224</u>	<u>63</u>	<u>151</u>	<u>47</u>	<u>66</u>
	(100.0)	(100.0)	(100.0)	(100.0)	(100.0)	(100.0)	(100.0)	(100.0)	(100.0)	(100.0)	(100.0)	(100.0)
Region 1 (Southern)	90	94	24	30	19	15	33	29	6	13	8	7
	(11.3)	(12.2)	(11.0)	(15.3)	(9.3)	(11.5)	(12.6)	(12.9)	(9.5)	(8.6)	(17.0)	(10.6)
Region 2 (Southeastern)	99	93	30	21	26	13	30	33	11	16	2	10
	(12.5)	(12.1)	(13.8)	(10.7)	(12.7)	(9.9)	(11.5)	(14.7)	(17.5)	(10.6)	(4.3)	(15.2)
Region 3 (Milwaukee)	352	368	108	98	73	38	132	117	19	82	20	33
	(44.3)	(47.9)	(49.5)	(50.0)	(35.8)	(29.0)	(50.2)	(52.2)	(30.2)	(54.3)	(42.6)	(50.0)
Region 4 (Eastern)	124	110	27	23	42	32	28	19	18	26	9	10
	(15.6)	(14.3)	(12.4)	(11.7)	(20.6)	(24.4)	(10.7)	(8.5)	(28.6)	(17.2)	(19.1)	(15.2)
Region 5 (Western)	129	103	29	24	44	33	39	26	9	14	8	6
	(16.2)	(13.4)	(13.3)	(12.2)	(21.6)	(25.2)	(14.9)	(11.6)	(14.3)	(9.3)	(17.0)	(9.1)

¹Regional means those new regions containing the counties within the boundaries as identified through the Bureau of Probation and Parole Geographic Outline 7/1/76.

Table 15

Previous Felony Convictions
For Residents Receiving MAP Contracts by Year of Contract
and by Institution of Negotiation

Previous Felony Convictions	Totals		WSP		WSR		WCI		KMCI		TCI	
	1975	1976	1975	1976	1975	1976	1975	1976	1975	1976	1975	1976
<u>TOTALS</u> <u>NUMBER</u> <u>(PERCENT)</u>	<u>794</u> (100.0)	<u>768</u> (100.0)	<u>218</u> (100.0)	<u>196</u> (100.0)	<u>204</u> (100.0)	<u>131</u> (100.0)	<u>262</u> (100.0)	<u>224</u> (100.0)	<u>63</u> (100.0)	<u>151</u> (100.0)	<u>47</u> (100.0)	<u>66</u> (100.0)
<u>None Recorded</u>	464 (58.4)	416 (54.2)	104 (47.7)	72 (36.7)	144 (70.6)	88 (67.2)	141 (53.8)	126 (56.3)	44 (69.8)	92 (60.9)	31 (66.0)	38 (57.6)
<u>Previous Convictions</u>	<u>330</u> (41.6)	<u>352</u> (45.8)	<u>114</u> (52.3)	<u>124</u> (63.3)	<u>60</u> (29.4)	<u>43</u> (32.8)	<u>121</u> (46.2)	<u>98</u> (43.7)	<u>19</u> (30.2)	<u>59</u> (39.1)	<u>16</u> (34.0)	<u>28</u> (42.4)
One	204 (25.7)	230 (29.9)	47 (21.6)	70 (35.7)	50 (24.5)	38 (29.0)	86 (32.8)	66 (29.5)	13 (20.6)	39 (25.8)	8 (17.0)	17 (25.8)
Two	53 (6.7)	78 (10.2)	20 (9.2)	32 (16.3)	8 (3.9)	3 (2.3)	20 (7.6)	23 (10.3)	2 (3.2)	18 (11.9)	3 (6.4)	2 (3.0)
Three or More	73 (9.2)	44 (5.7)	47 (21.6)	22 (11.2)	2 (1.0)	2 (1.5)	15 (5.7)	9 (4.0)	4 (6.3)	2 (1.3)	5 (10.6)	9 (13.6)

Table 16

Previous Penal Experience
For Residents Receiving MAP Contracts by Year of Contract
and by Institution of Negotiation

Previous Penal Experience	Totals		WSP		WSR		WCI		KMCI		TCI	
	1975	1976	1975	1976	1975	1976	1975	1976	1975	1976	1975	1976
<u>TOTALS</u> <u>NUMBER</u> <u>(PERCENT)</u>	<u>794</u> (100.0)	<u>768</u> (100.0)	<u>218</u> (100.0)	<u>196</u> (100.0)	<u>204</u> (100.0)	<u>131</u> (100.0)	<u>262</u> (100.0)	<u>224</u> (100.0)	<u>63</u> (100.0)	<u>151</u> (100.0)	<u>47</u> (100.0)	<u>66</u> (100.0)
<u>None Recorded</u>	460 (57.9)	407 (53.0)	110 (50.5)	85 (43.4)	122 (59.8)	74 (56.5)	146 (55.7)	121 (54.0)	40 (63.5)	78 (51.7)	42 (89.4)	49 (74.2)
<u>Previous Correctional Institution Experience</u>	334 (42.1)	361 (47.0)	108 (49.5)	111 (56.6)	82 (40.2)	57 (43.5)	116 (44.3)	103 (46.0)	23 (36.5)	73 (48.3)	5 (10.6)	17 (25.8)
Wisc. Penal Institution, Prison, or Home for Women	20 (2.5)	34 (4.4)	11 (5.0)	15 (7.6)	-- (--)	-- (--)	4 (1.5)	5 (2.2)	2 (3.2)	5 (3.3)	3 (6.4)	9 (13.6)
Reformatory	99 (12.5)	81 (10.5)	44 (20.2)	39 (19.9)	20 (9.8)	10 (7.6)	33 (12.6)	19 (8.5)	2 (3.2)	13 (8.6)	-- (--)	-- (--)
Prison or Reformatory	11 (1.4)	10 (1.3)	8 (3.7)	6 (3.1)	-- (--)	1 (0.8)	2 (0.8)	3 (1.3)	1 (1.6)	-- (--)	-- (--)	-- (--)
<u>Not at a Wisc. Inst., but at Other Prison or Reformatory</u>	45 (5.7)	47 (6.1)	26 (12.0)	22 (11.2)	5 (2.5)	2 (1.5)	13 (5.0)	15 (6.7)	1 (1.6)	6 (4.0)	-- (--)	2 (3.0)
<u>Not at a Penal Inst., but Served a Jail Sentence</u>	159 (20.0)	189 (24.6)	19 (8.7)	29 (14.8)	57 (27.9)	44 (33.6)	64 (24.4)	61 (27.2)	17 (26.9)	49 (32.4)	2 (4.3)	6 (9.1)

Table 17

Juvenile Institution Experience
For Residents Receiving MAP Contracts by Year of Contract
and by Institution of Negotiation

Juvenile Institution Experience	Totals		WSP		WSR		WCI		KMCI		TCI	
	1975	1976	1975	1976	1975	1976	1975	1976	1975	1976	1975	1976
<u>TOTALS</u> <u>NUMBER</u> (PERCENT)	<u>794</u> (100.0)	<u>768</u> (100.0)	<u>218</u> (100.0)	<u>196</u> (100.0)	<u>204</u> (100.0)	<u>131</u> (100.0)	<u>262</u> (100.0)	<u>224</u> (100.0)	<u>63</u> (100.0)	<u>151</u> (100.0)	<u>47</u> (100.0)	<u>66</u> (100.0)
<u>None Recorded</u>	554 (69.8)	538 (70.1)	166 (76.1)	147 (75.0)	112 (54.9)	73 (55.7)	182 (69.5)	158 (70.5)	51 (81.0)	108 (71.5)	43 (91.5)	52 (78.8)
<u>At Wisc. Institutions</u>	229 (28.9)	217 (28.2)	47 (21.6)	47 (24.0)	90 (44.1)	55 (42.0)	78 (29.8)	60 (26.8)	10 (15.9)	41 (27.1)	4 (8.5)	14 (21.2)
Wisc. Juv. Train. Schools	222 (28.0)	206 (26.8)	47 (21.6)	47 (24.0)	88 (43.1)	52 (39.7)	76 (29.0)	56 (25.0)	9 (14.3)	37 (24.5)	2 (4.3)	14 (21.2)
Other In-State	7 (0.9)	11 (1.4)	-- (--)	-- (--)	2 (1.0)	3 (2.3)	2 (0.8)	4 (1.8)	1 (1.6)	4 (2.6)	2 (4.3)	-- (--)
<u>Not at Wisc. Institution But at other Institution</u>	<u>11</u> (1.4)	<u>13</u> (1.7)	<u>5</u> (2.3)	<u>2</u> (1.0)	<u>2</u> (1.0)	<u>3</u> (2.3)	<u>2</u> (0.8)	<u>6</u> (2.7)	<u>2</u> (3.2)	<u>2</u> (1.3)	<u>--</u> (--)	<u>--</u> (--)

Table 18

Grade Completed at Admission
For Residents Receiving MAP Contracts by Year of Contract
and Institution of Negotiation

Grade Completed	TOTALS		WSP		WSR		WCI		KMCI		TCI		
	1975	1976	1975	1976	1975	1976	1975	1976	1975	1976	1975	1976	
<u>TOTALS</u>	<u>NUMBER</u>												
	(PERCENT)												
		794	768	218	196	204	131	262	224	63	151	47	66
		(100.0)	(100.0)	(100.0)	(100.0)	(100.0)	(100.0)	(100.0)	(100.0)	(100.0)	(100.0)	(100.0)	(100.0)
Less than Fourth		109	99	61	48	17	8	29	31	2	8	--	4
		(13.7)	(12.9)	(28.0)	(24.5)	(8.3)	(6.1)	(11.1)	(13.8)	(3.2)	(5.3)	(--)	(6.1)
Fourth		--	3	--	--	--	--	--	1	--	1	--	1
		(--)	(0.4)	(--)	(--)	(--)	(--)	(--)	(0.4)	(--)	(0.7)	(--)	(1.5)
Fifth		5	1	2	--	1	--	2	--	--	1	--	--
		(0.6)	(0.1)	(0.9)	(--)	(0.5)	(--)	(0.8)	(--)	(--)	(0.7)	(--)	(--)
Sixth		4	4	2	--	--	--	1	1	--	1	1	2
		(0.5)	(0.5)	(0.9)	(--)	(--)	(--)	(0.4)	(0.4)	(--)	(0.7)	(2.1)	(3.0)
Seventh		11	9	2	1	--	--	6	3	1	2	2	3
		(1.4)	(1.2)	(0.9)	(0.5)	(--)	(--)	(2.3)	(1.3)	(1.6)	(1.3)	(4.3)	(4.5)
Eighth		46	57	31	22	6	3	3	14	5	17	1	1
		(5.8)	(7.4)	(14.2)	(11.2)	(2.9)	(2.3)	(1.1)	(6.3)	(7.9)	(11.3)	(2.1)	(1.5)
Ninth		89	81	19	24	30	12	25	16	4	26	11	3
		(11.2)	(10.5)	(8.7)	(12.2)	(14.7)	(9.2)	(9.5)	(7.1)	(6.3)	(17.2)	(23.4)	(4.5)
Tenth		133	128	23	27	29	28	56	30	15	28	10	15
		(16.8)	(16.7)	(10.6)	(13.8)	(14.2)	(21.4)	(21.4)	(13.4)	(23.8)	(18.5)	(21.3)	(22.7)
Eleventh		170	166	27	26	51	41	65	43	17	39	10	17
		(21.4)	(21.6)	(12.4)	(13.3)	(25.0)	(31.3)	(24.8)	(19.2)	(27.0)	(25.8)	(21.3)	(25.8)
Twelfth of More		227	220	51	48	70	39	75	85	19	28	12	20
		(28.6)	(28.6)	(23.4)	(24.5)	(34.3)	(29.8)	(28.6)	(37.9)	(30.2)	(18.5)	(25.5)	(30.3)

Table 19
 Achievement Test Results
 For Residents Receiving MAP Contracts by Year of Contract
 and Institution of Negotiation

Achievement Test Results	Totals		WSP		WSR		WCI		KMCI		TCI		
	1975	1976	1975	1976	1975	1976	1975	1976	1975	1976	1975	1976	
<u>TOTALS</u>	<u>NUMBER</u>	<u>794</u>	<u>768</u>	<u>218</u>	<u>196</u>	<u>204</u>	<u>131</u>	<u>262</u>	<u>224</u>	<u>63</u>	<u>151</u>	<u>47</u>	<u>66</u>
	(PERCENT)	(100.0)	(100.0)	(100.0)	(100.0)	(100.0)	(100.0)	(100.0)	(100.0)	(100.0)	(100.0)	(100.0)	(100.0)
Less than 3.5		149 (18.8)	165 (21.5)	74 (33.9)	62 (31.6)	19 (9.3)	10 (7.6)	46 (17.6)	39 (17.4)	4 (6.3)	33 (21.9)	6 (12.8)	21 (31.8)
3.5 to 4.4		27 (3.4)	37 (4.8)	7 (3.2)	6 (3.1)	7 (3.4)	5 (3.8)	10 (3.8)	11 (4.9)	3 (4.8)	15 (9.9)	-- (--)	-- (--)
4.5 to 5.4		42 (5.3)	43 (5.6)	12 (5.5)	8 (4.1)	10 (4.9)	4 (3.1)	17 (6.5)	15 (6.7)	3 (4.8)	13 (8.6)	-- (--)	3 (4.5)
5.5 to 6.4		53 (6.7)	53 (6.9)	13 (6.0)	13 (6.6)	12 (5.9)	8 (6.1)	22 (8.4)	14 (6.3)	4 (6.3)	14 (9.3)	2 (4.3)	4 (6.1)
6.5 to 7.4		79 (9.9)	79 (10.3)	17 (7.8)	19 (9.7)	23 (11.3)	12 (9.2)	25 (9.5)	20 (8.9)	7 (11.1)	22 (14.6)	7 (14.9)	6 (9.1)
7.5 to 8.4		98 (12.3)	83 (10.8)	24 (11.0)	26 (13.3)	27 (13.2)	15 (11.5)	31 (11.8)	23 (10.3)	7 (11.1)	13 (8.6)	9 (19.1)	6 (9.1)
8.5 to 9.4		94 (11.8)	76 (9.9)	21 (9.6)	16 (8.2)	21 (10.3)	16 (12.2)	31 (11.8)	26 (11.6)	13 (20.6)	7 (4.6)	8 (17.0)	11 (16.7)
9.5 to 10.4		77 (9.7)	75 (9.8)	18 (8.3)	9 (4.6)	21 (10.3)	21 (16.0)	21 (8.0)	27 (12.1)	7 (11.1)	10 (6.6)	10 (21.3)	8 (12.1)
10.5 to 11.4		66 (8.3)	56 (7.3)	9 (4.1)	10 (5.1)	22 (10.8)	17 (13.0)	22 (8.4)	18 (8.0)	9 (14.3)	9 (6.0)	4 (8.5)	2 (3.0)
11.5 or higher		109 (13.7)	101 (13.2)	23 (10.6)	27 (13.8)	42 (20.6)	23 (17.6)	37 (14.1)	31 (13.8)	6 (9.5)	15 (9.9)	1 (2.0)	5 (7.6)

Table 20

Intelligence Estimate
For Residents Receiving MAP Contracts by Year of Contract
and Institution of Contract Negotiation

Intelligence Estimate	Totals		WSP		WSR		WCI		KMCI		TCI	
	1975	1976	1975	1976	1975	1976	1975	1976	1975	1976	1975	1976
<u>TOTALS</u>	<u>794</u>	<u>768</u>	<u>218</u>	<u>196</u>	<u>204</u>	<u>131</u>	<u>262</u>	<u>224</u>	<u>63</u>	<u>151</u>	<u>47</u>	<u>66</u>
	(100.0)	(100.0)	(100.0)	(100.0)	(100.0)	(100.0)	(100.0)	(100.0)	(100.0)	(100.0)	(100.0)	(100.0)
Superior and Above	44 (5.5)	21 (2.7)	4 (1.8)	1 (0.5)	23 (11.3)	8 (6.1)	17 (6.5)	6 (2.7)	-- (--)	5 (3.3)	-- (--)	1 (1.5)
Bright Normal	60 (7.6)	65 (8.5)	12 (5.5)	8 (4.1)	22 (10.8)	14 (10.7)	21 (8.0)	25 (11.2)	2 (3.2)	15 (9.9)	3 (6.4)	3 (4.5)
Average or Normal	408 (51.4)	349 (45.4)	86 (39.4)	80 (40.8)	111 (54.4)	81 (61.8)	132 (50.4)	104 (46.4)	50 (79.4)	61 (40.4)	29 (61.7)	23 (34.8)
Dull Normal	122 (15.4)	130 (16.9)	43 (19.7)	37 (18.9)	21 (10.3)	13 (9.9)	43 (16.4)	39 (17.4)	6 (9.5)	33 (21.9)	9 (19.1)	8 (12.1)
Borderline	34 (4.3)	26 (3.4)	5 (2.3)	2 (1.0)	10 (4.9)	1 (0.8)	13 (5.0)	6 (2.7)	4 (6.3)	12 (7.9)	2 (4.3)	5 (7.6)
Defective	3 (0.4)	6 (0.8)	-- (--)	2 (1.0)	1 (0.5)	1 (0.8)	-- (--)	1 (0.4)	-- (--)	1 (0.7)	2 (4.3)	1 (1.5)
Not Reported	123 (15.5)	171 (22.3)	68 (31.2)	66 (33.7)	16 (7.8)	13 (9.9)	36 (13.7)	43 (19.2)	1 (1.6)	24 (15.9)	2 (4.3)	25 (37.9)

END