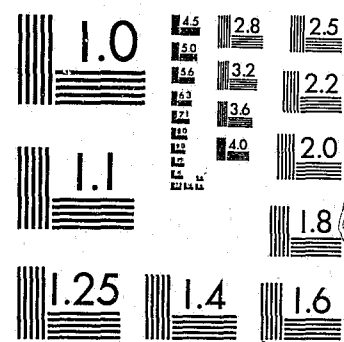


National Criminal Justice Reference Service



This microfiche was produced from documents received for inclusion in the NCJRS data base. Since NCJRS cannot exercise control over the physical condition of the documents submitted, the individual frame quality will vary. The resolution chart on this frame may be used to evaluate the document quality.



MICROCOPY RESOLUTION TEST CHART
NATIONAL BUREAU OF STANDARDS-1963-A

Microfilming procedures used to create this fiche comply with the standards set forth in 41CFR 101-11.504.

Points of view or opinions stated in this document are those of the author(s) and do not represent the official position or policies of the U. S. Department of Justice.

National Institute of Justice
United States Department of Justice
Washington, D. C. 20531

08/04/82

~~X~~
PENNSYLVANIA BUREAU of CORRECTION'S
1980 ANNUAL STATISTICAL REPORT



DICK THORNBURGH
Governor

WILLIAM W. SCRANTON, III
Lieutenant Governor

RONALD J. MARKS
Commissioner

ERSKIND DeRAMUS
Deputy Commissioner

77114

Division of Planning and Research
LEE T. BERNARD, II, Acting Director



Pennsylvania Bureau of Correction
P.O. Box 598
Camp Hill, Pennsylvania 17011

1980 ANNUAL STATISTICAL REPORT

Division of Planning & Research
Lee T. Bernard, II
Acting Director

by

W. Scott Thornsley, Chief
Planning & Development Section

John H. Mease, Chief
Records & Statistics Section

NCJRS

APR 13 1981

ACQUISITIONS

RONALD J. MARKS
Commissioner



ERSKIND DERAMUS
Deputy Commissioner

PENNSYLVANIA BUREAU OF CORRECTION
P. O. BOX 598
CAMP HILL, PENNSYLVANIA 17011
(717) 787-7480
March, 1981

PREFACE

I am pleased to present the Pennsylvania Bureau of Correction's 1980 Annual Statistical Report. This report provides pertinent information such as the Bureau's yearly commitment and release rates, average time served by inmates released during 1980 by major offense, inmate population figures, as well as numerous other tables of interest.

Since 1980 was a decennial census year, several tables have been included to display the Bureau's growth in inmate population since 1970. Also included for the first time in an annual statistical report is a table displaying the number of inmates requiring housing by calendar quarter during 1980; henceforth, this will be the Bureau's only inmate population indicator. This table will permit the reader who is concerned with prison overcrowding the opportunity to witness the rapid demand for more prison cells in Pennsylvania. It represents an earnest effort by the Bureau in displaying a realistic state prison population; however, for comparative purposes, tables displaying the committed and physically present inmate populations are still presented.

Since this report is intended only as a descriptive tool for examining the Bureau's inmate population, caution is advised if the user attempts to create cause-effect relationships from the statistical information presented.

Respectfully submitted,

Ronald J. Marks
Ronald J. Marks
Commissioner

TABLE OF CONTENTS

	<u>PAGE</u>
Preface	iii
Introduction	1
Legislative Mandate	1
Administrative Responsibility	1
Purpose of the Report	1
Definitions	2
Crimes and Offense Categories	5
Source	5
Differentiation of Crimes	5
Definitions of Crime Index Offenses	5
Narrative Summary	9
Commitments	9
Conditional Releases on Parole/Recommitted Parole Violators	9
Other Discharges	10
Committed Inmate Population as of December 31, 1980	10
Average Time Served for Conditional Discharges	10

LIST OF TABLES/FIGURES

<u>TABLE</u>		
1	Major Types of Receptions in the Bureau of Correction, 1970 - 1980	12
<i>Figure 1</i>	Major Receptions in Bureau of Correction, 1970 - 1980	13
2	1980 Court Commitments Received by the Bureau of Correction, by Race and Sex	14
3	Criminal Court Commitments for Criminal Homicides Received by the Bureau of Correction, 1970-1980	15
4	The Top Ten Counties with Regard to Both 1980 Commitments and End-of-Year Count	16
5	The Top Ten Criminal Court Offense Categories Both Received by the Bureau During 1980, and as of December 31, 1980	17

	<u>TABLE</u>	<u>PAGE</u>
Figure 2	Court Commitments Received in Bureau of Correction by Major Offenses, 1980	18
6	1980 Criminal Court Commitments for Crime Index and Part II Offenses Received by the Bureau, by Race and Sex	19
7	Admission Movements in the Bureau of Correction, 1979-1980	20
8	Release Movements in the Bureau of Correction, 1979-1980	21
9	Conditional Releases on Parole from the Bureau of Correction, 1970 to 1980	22
10	Age of Committed Inmate Population as of December 31, 1980, by Institution	23
11	Committed Populations in the Bureau of Correction on December 31, 1980, by Race and Sex	24
12	Committed Populations in the Bureau of Correction on December 31, 1979 and 1980	25
13	Maximum Status of Committed Inmates in the Bureau of Correction on December 31, 1980, by Race and Sex	26
14	Populations of Inmates Requiring Housing in the Bureau of Correction by Month	27
Figure 3	Inmates Requiring Housing in the Bureau of Correction, January, 1979 to December, 1980	28
15	Inmates Requiring Housing in the Bureau of Correction on December 31, 1978-1980.	29
16	1970 & 1980 Yearly Average Daily Populations of Inmates Physically Confined in the Bureau of Correction	30
17	1970 & 1980 Yearly Average Daily Populations in Bureau of Correction.	31
18	Physical Populations in the Bureau of Correction on December 31, 1970 and 1980	32

	<u>TABLE</u>	<u>PAGE</u>
19	Number of Inmates Physically Confined in the Bureau of Correction on December 31, 1970 and 1980, Civilian Populations, and Rates Per 100,000 for Standard Metropolitan Statistics Areas in Pennsylvania	33
20	Average Time Served by Selected Offense of Parolees Released from the Bureau of Correction During 1980, by Method	34
21	Average Time Served by Selected Offense of Inmates Released from Bureau of Correction During 1980, by Sex	35
22	Average Total Time Served by Inmates Paroled and Unconditionally Discharged During 1980, by Race.	36
23	Average Total Time Served by Inmates Paroled and Unconditionally Discharged During 1980, by Sex.	37
24	Average Total Time Served by Inmates Paroled During 1980, by Race	38
25	Average Total Time Served by Inmates Paroled During 1980, by Sex	39
26	Average Total Time Served by Inmates Unconditionally Discharged During 1980, by Race	40
27	Average Total Time Served by Inmates Unconditionally Discharged During 1980, by Sex	41
28	Average Total Time Served by Inmates Reparoled During 1980, by Race	42
29	Average Total Time Served by Inmates Reparoled During 1980, by Sex	43
30	Complement Control Report by Facility as of December 31, 1980	44
31	Inmates Participating in the Furlough, Group Home, and Community Service Center Program by Month and Institution	45
32	Major Types of Receptions Received in the Bureau of Correction During 1980, by Sex	46

<u>TABLE</u>		<u>PAGE</u>
33	Age Distribution of 1980 Adult Court Commitments Received in the Bureau of Correction, by Committing County	47
34	1980 Criminal Court Commitments for Part I Offenses Received in the Bureau of Correction, by County	48
35	1980 Criminal Court Commitments for Selected Part II Offenses Received in the Bureau of Correction, by Committing County	49
36	Major Offense Distribution of Committed Inmate Population on December 31, 1980 by Type of Correctional Facility	50
37	Committed Inmate Population as of December 31, 1980 by County, Race and Sex	51
38	Status of Committed Populations in the Bureau of Correction on December 31, 1980, by County . .	52
39	Conditional Discharges from the Bureau of Correction During 1980, by County	53
40	Inmates Released from the Bureau of Correction After Serving Indefinite Sentences During 1980.	54

U.S. Department of Justice
National Institute of Justice

This document has been reproduced exactly as received from the person or organization originating it. Points of view or opinions stated in this document are those of the authors and do not necessarily represent the official position or policies of the National Institute of Justice.

Permission to reproduce this copyrighted material has been granted by
Pennsylvania Bureau of
Correction

to the National Criminal Justice Reference Service (NCJRS).

Further reproduction outside of the NCJRS system requires permission of the copyright owner.

INTRODUCTION

This report presents a descriptive, statistical summary of the inmates admitted to, released from, and confined in the Pennsylvania Bureau of Correction for the calendar year 1980.

The data provided in the Pennsylvania Bureau of Correction's *1980 Annual Statistical Report* are for the most part self-explanatory and hence does not merit narrative elaboration. However, a summary narrative has been provided to quickly identify major points of interest.

Legislative Mandate

The Pennsylvania Bureau of Correction was established by Sections 911, 912, 913, 914, 914.1, 915 and 916 of the Act of April 9, 1929 (P.L. 177, No. 175). The Bureau of Correction is currently an administrative agency of the Office of the General Counsel (Act of October 15, 1980; P.L. _____, No. 164).

Administrative Responsibility

Under the direction of Commissioner of Correction Ronald J. Marks the Bureau of Correction is responsible for seven state correctional institutions, two state regional correctional facilities, fifteen community service centers, a committed inmate population in excess of 8,500 and a staff complement in excess of 3,000.

Purpose of the Report

The report has the following three purposes:

1. It gives correctional administrators and planners within the Commonwealth summary data involving inmate population movements and counts of inmates committed to and confined in the Bureau of Correction;
2. It provides concerned legislators and judicial personnel with a yearly record of inmates confined in the Bureau of Correction; and
3. It serves as the Bureau's official document for statistical correctional information, and subsequently is distributed to state criminal justice agencies, Commonwealth officials, the State library systems, etc.

Definitions

1. State correctional institution - These institutions represent the Bureau's major correctional facilities, located at Camp Hill, Dallas, Graterford, Huntingdon, Muncy, Pittsburgh and Rockview. The State Correctional Institution at Muncy receives all female commitments to the Bureau of Correction.
2. State regional correctional facility - These are specialized facilities in two of the Commonwealth's six "Common Human Service Regions" which usually receive inmates sentenced from six months to two years. The State Regional Correctional Facility at Greensburg (formerly the Westmoreland County Prison) was dedicated on April 21, 1969. The State Regional Correctional Facility at Mercer was dedicated on September 8, 1978.
3. Community service centers - These centers provide community based programs for offenders as an alternative to incarceration, and they are operated as a continuum to the rehabilitative services provided in state correctional institutions or regional correctional facilities. Community service centers are residences in the community with custodial structure and a strong emphasis on guidance and counseling, with the hope of preparing the inmate for parole. The Bureau operates fifteen community service centers, three of which are exclusively for women.
4. Group homes - These homes provide another phase of transition from prison to community living. For those inmates who do not need the structured setting provided by the residential community service center, a group or individual home is an appropriate setting. This type of placement provides the former institutionalized inmate with a considerable amount of responsibility and freedom while they receive both supervision and an increased opportunity for rehabilitative treatment.
5. Diagnostic and classification centers - The Bureau's three centers (operated within the institutional confines of the State Correctional Institutions at Camp Hill, Graterford and Pittsburgh) are responsible for processing all newly received criminal court commitments. (It is at these centers that the offender receives his educational, psychological, and vocational classification.) After the offender has been classified, he will then be transferred to an appropriate institution according to his established program.
6. Yearly average daily population - This represents the cumulative total of daily inmate population counts for the year divided by 365 days. The population count reflects those inmates who are physically confined.
7. Specified population movements - Generally, most admission and release movements used in this report are self-explanatory; however, certain movements are further defined for reader information:

- a. Authorized temporary absences - Court authorized appearances for inmate writs, hearings, funerals, etc. Always under jurisdiction of the local court.
 - b. Detentioners - Inmates awaiting trial or sentencing after a trial, but in all cases without a sentence transferred from a county prison and detained in the Bureau of Correction for medical or security reasons.
 - c. Furlough - Inmates are released on furlough for purpose of family visits, job applications, and pre-release planning. Inmates on furlough are not supervised but are still under the jurisdiction of the Bureau of Correction.
 - d. Interstate compact - Inmates transferred to the Bureau of Correction to serve time due another state under the Interstate Compact for Corrections (ICC) or an inmate under the ICC returning to the state which the time is being served.
 - e. Intrasystem transfers - Transfers between state correctional institutions, state regional correctional facilities, community service centers, and group homes under the jurisdiction of the Bureau of Correction. Does not include temporary transfers and transfer in transit between these facilities.
 - f. Intersystem transfers - Includes transfers between state correctional facilities (regionals included) and county prisons, state and local mental hospitals, other local hospitals, and other states and jurisdictions.
 - g. Miscellaneous - Generally includes inmates released to and received from authorities for various reasons, and administrative releases to adjust and or correct inmate population counts.
 - h. Special escorted leave - Inmates released for a short period of time for various reasons but always under the escort of institution or regional staff. Most of these are returned the same day.
 - i. Weekenders - Inmates committed to service time only on weekends or when not working. At the present time, weekend sentences are only served at the Greensburg State Regional Correctional Facility.
8. Physically present inmate population - This type of inmate population count reflects only those inmates who are *physically present within a state correctional institution or a state regional correctional facility.*

9. Committed inmate population - This type of inmate population count reflects the total number of inmates who have been committed to the Bureau of Correction, and thus represents a more accurate representation of the Bureau's inmate responsibility. Specifically, the committed inmate population count reflects the following:

- a. Inmates physically present;
- b. Inmates confined in community service centers and group homes;
- c. Inmates on authorized temporary absences;
- d. Inmates on bail;
- e. Inmates detained by other authorities;
- f. Inmates on furlough;
- g. Inmates confined in local hospitals;
- h. Inmates confined in mental hospitals;
- i. Inmates listed on escape status;
- j. Etc.

10. Inmates requiring housing - This type of inmate population includes (a) inmates physically present, (b) inmates on furlough, (c) inmates out to local hospitals, (d) inmates on authorized temporary absences (or writ), and (e) inmates serving time on weekends.

CRIMES AND OFFENSE CATEGORIES

Source

In order to enable the reader to better comprehend the definition of crimes and offenses referred to in this report, all offense classifications found under the "Crime Index Offenses" (formerly Part I crimes) have been defined. The majority of definitions are taken from the *Pennsylvania Consolidated Statutes*, Title 18, "Crimes and Offenses," 1978 Edition, though some definitions have been obtained from the *Uniform Crime Report: Commonwealth of Pennsylvania, 1978 Annual Report*, for purpose of clarity and offense specificity.

Differentiation of Crimes

For reporting purposes, crimes are broken down into two major categories: (1) Crime Index Offenses (formerly Part I Offenses) and (2) Part II Offenses. According to the Pennsylvania State Police, Crime Index Offenses are ...

...crimes that are considered by law enforcement to be the most serious crimes that readily come to the attention of police and occur with a frequency great enough to be reported as a separate category. Crime Index Offenses are used nationally as a basis for comparison of criminal activity.

Crime Index Offenses are further differentiated into major categories. The Crime Index categories of murder, nonnegligent manslaughter, forcible rape, robbery and aggravated assault comprise the general category of "Violent Crime," while the categories of burglary, larceny-theft, and motor vehicle theft comprise the general category of "Property Crime."

Those offenses which are not classified as Index Crime Offenses are simply classified as Part II Offenses. There are 19 distinct Part II Offense categories; however, for purposes of brevity, all categories are not included in the commitment table, nor are they defined.

Definitions of Crime Index Offenses

Criminal homicide

(a) Offense defined - A person is guilty of criminal homicide if he intentionally, knowingly, recklessly or negligently causes the death of another human being.

(b) Classification - Criminal homicide shall be classified as murder, voluntary manslaughter, or involuntary manslaughter.

Murder

(a) Murder of the first degree - A criminal homicide constitutes murder of the first degree when it is committed by an intentional killing.

(b) Murder of the second degree - A criminal homicide constitutes murder of the second degree when it is committed while defendant was engaged as a principal or an accomplice in the perpetration of a felony.

(c) Murder of the third degree - All other kinds of murder shall be murder of the third degree. Murder of the third degree is a felony of the first degree.

Voluntary manslaughter

(a) General rule - A person who kills an individual without lawful justification commits voluntary manslaughter if at the time of the killing he is acting under a sudden and intense passion resulting from serious provocation by:

- (1) the individual killed; or
- (2) another whom the actor endeavors to kill, but he negligently or accidentally causes the death of the individual killed.

Involuntary manslaughter

(a) General rule - A person is guilty of involuntary manslaughter when as a direct result of the doing of an unlawful act in a reckless or grossly negligent manner, or the doing of a lawful act in a reckless or grossly negligent manner, he causes the death of another person.

Rape

A person commits a felony of the first degree when he engages in sexual intercourse with another person not his spouse:

- (1) by forcible compulsion;
- (2) by threat of forcible compulsion that would prevent resistance by a person of reasonable resolution;
- (3) who is unconscious; or
- (4) who is so mentally deranged or deficient that such person is incapable of consent.

Robbery

(a) Offense defined -

- (1) A person is guilty of robbery if, in the course of committing a theft, he:
 - (i) inflicts serious bodily injury upon another;
 - (ii) threatens another with or intentionally puts him in fear of immediate serious bodily injury;
 - (iii) commits or threatens immediately to commit any felony of the first or second degree;
 - (iv) inflicts bodily injury upon another or threatens another with or intentionally puts him in fear of immediate bodily injury; or
 - (v) physically takes or removes property from the person of another by force however slight.
- (2) An act shall be deemed "in the course of committing a theft" if it occurs in an attempt to commit theft or in flight after the attempt or commission.

Aggravated assault

(a) Offense defined - A person is guilty of aggravated assault if he:

- (1) attempts to cause serious bodily injury to another, or causes such injury intentionally, knowingly or recklessly under circumstances manifesting extreme indifference to the value of human life;
- (2) attempts to cause or intentionally, knowingly or recklessly causes serious bodily injury to a police officer making or attempting to make a lawful arrest;
- (3) attempts to cause or intentionally or knowingly causes bodily injury to a police officer making or attempting to make a lawful arrest; or
- (4) attempts to cause or intentionally or knowingly causes bodily injury to another with a deadly weapon.

(b) Grading - Aggravated assault under paragraphs (a)(1) and (a)(2) of this section is a felony of the second degree. Aggravated assault under paragraphs (a)(3) and (a)(4) of this section is a misdemeanor of the first degree.

Burglary

(a) Offense defined - A person is guilty of burglary if he enters a building or occupied structure, or separately secured or occupied portion thereof, with intent to commit a crime therein, unless the premises are at the time open to the public or the actor is licensed or privileged to enter.

Larceny-theft

(a) Definition - Larceny-theft is the unlawful taking or stealing of property or articles of value without the use of force, violence, or fraud. It includes crimes such as shoplifting, pocket-picking, purse-snatching, thefts from autos, theft of auto parts and accessories, bicycle theft, etc. For the purposes of Uniform Crime Reporting, this offense category does not include embezzlement, "con" games, forgery or worthless checks. Motor vehicle theft is a separate Index Crime and, therefore, is also excluded.

Motor vehicle theft

(a) Definition - Motor vehicle theft is the illegal taking of a motor vehicle, or driving the vehicle without the owner's consent. Attempted motor vehicle thefts are included. This category includes theft of motor-driven vehicles, such as automobiles, trucks, buses, motorcycles, motor scooters, and snowmobiles. Specifically excluded is the temporary use when the vehicle is actually returned by the user, and lawful access to the vehicle has been granted or can be assumed.

Arson

(a) Endangering persons - A person commits a felony of the first degree if he intentionally starts a fire or causes an explosion, whether on his own property or on that of another, and thereby recklessly places another person in danger of death or bodily injury.

(b) Endangering property - A person commits a felony of the second degree if he:

- (1) starts a fire or causes an explosion with intent of destroying a building or occupied structure of another;
- (2) intentionally starts a fire or causes an explosion, whether on his own property or on that of another and thereby recklessly places a building or occupied structure of another in danger of damage or destruction; or
- (3) starts a fire or causes an explosion with intent of destroying or damaging any property, whether his own or of another, to collect insurance for such loss.

NARRATIVE SUMMARY

Commitments

Adult court commitments to the Bureau of Correction reversed a three year declining trend by displaying a 11.54 percent increase over 1979's commitment total of 3,178 to 3,545 during 1980.

Male commitments comprised 95 percent (N=3,372) of 1980's adult court commitments; of that figure 54 percent (N=1,907) were white males and 41 percent (N=1,465) were non-white males.

The racial breakdown for the 173 committed female offenders was almost identical, as 89 white females and 84 non-white females were committed during 1980.

White commitments accounted for over 56 percent (N=1,996) for all commitments during 1980.

The age distribution for the court commitments can be visualized as a bell shaped curve, with the age categories rising to a peak with the 21-24 age group (which represented 26.8 percent (N=950) of the commitments) and then declining.

During 1980, Philadelphia, Allegheny, Montgomery, Erie and Westmoreland counties provided the Bureau with 53.2 percent (N=1,887) of the Commonwealth's total adult court commitments.

The major committing offenses of burglary, robbery, larceny-theft and murder continue to account for the majority (53.9 percent; N=1,911) of all commitments.

Where the commitments are distinguished by committing category, one finds that over 69 percent (N=2,453) of all commitments were for Crime Index Offenses. When the major categories of the Crime Index Offenses are further differentiated (i.e., either "violent crime" and "property crime") by race, the following is revealed:

- With regard to property crimes, 2.1 whites are committed for every non-white offender; and
- With regard to violent crimes, 1.6 non-whites are committed for every white offender.

Conditional Releases on Parole/Recommitted Parole Violators

Although the total number of paroles granted from the Pennsylvania Board of Probation and Parole (PBPP) has decreased yearly since 1977, the number of parole violators recommitted from PBPP has increased since 1977. (i.e. During 1977, 3,255 inmates were either paroled for the first time or received a reparole; this number declined to 2,555 in 1980. Furthermore, 487

- For those 136 inmates released serving a sentence of aggravated assault, the average time served was 2 years and 1 month; and
- For those 120 inmates released serving a sentence of forcible rape, the average time served was 4 years and 1 month.

TABLE 1
Major Types of Receptions in the Bureau of Correction, 1970 to 1980

Year	Adult Court Commitments			Recommitted Parole Violators				County Prison Transfers	Detent- ioners	Grand Total
	State	Federal	Total	Technical*	Convicted*	County	Total			
1970	2,504	(b)	2,504	343	231	2	576	486	307 ^a	3,873
1971	2,912	4	2,916	346	235	7	488	289	496	4,189
1972	3,226	28	3,254	294	310	16	620	264	657	4,795
1973	3,385	17	3,402	266	385	27	678	179	506	4,765
1974	3,121	25	3,146	256	369	26	651	297	446	4,540
1975	3,568	7	3,575	269	341	24	634	314	377	4,900
1976	3,595	20	3,615	181	350	30	561	282	315	4,773
1977	3,569	12	3,581	129	358	31	518	278	295	4,672
1978	3,244	18	3,262	238	420	33	691	327	247	4,527
1979	3,129	49	3,178	287	445	40	772	89	229	4,268
1980	3,496	49	3,545	307	489	47	843	91	251	4,730

* Recommitted by Pennsylvania Board of Probation and Parole.
a. Estimated.
b. Not available.

Figure 1
Major Receptions in Bureau of Correction,
1970 - 1980

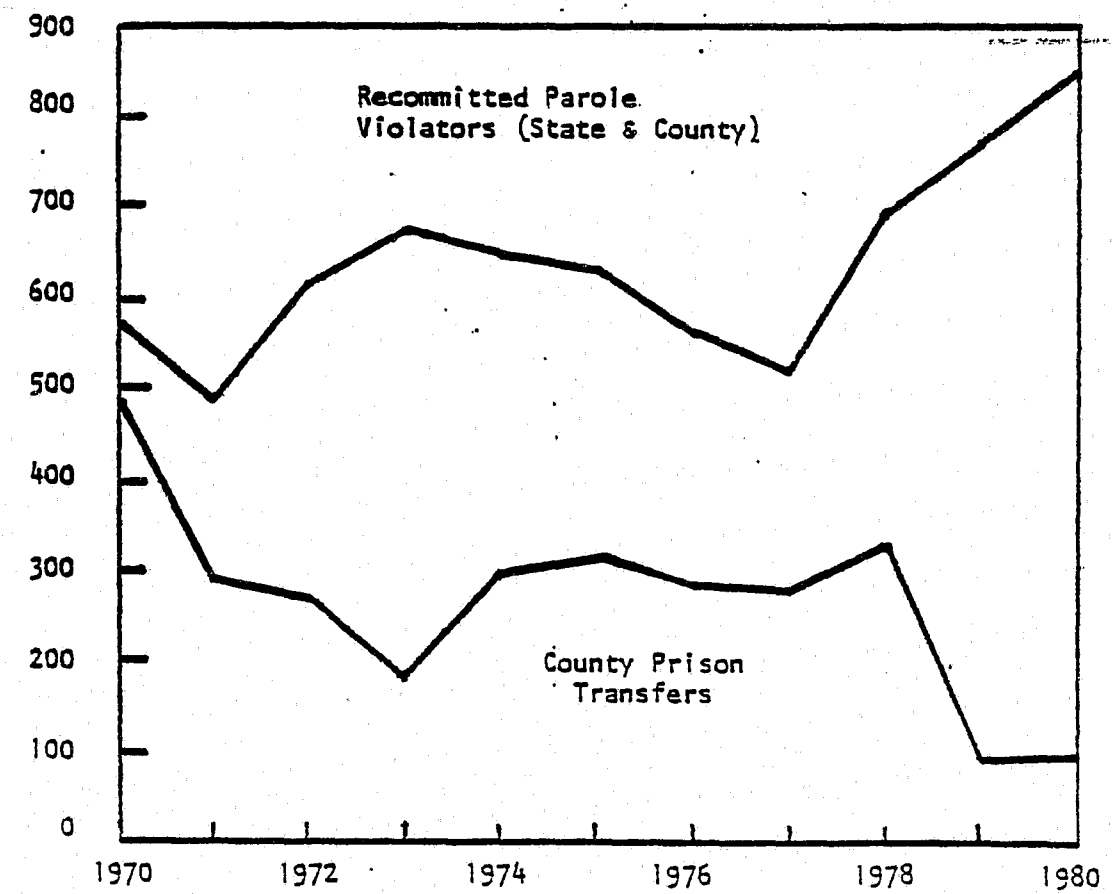
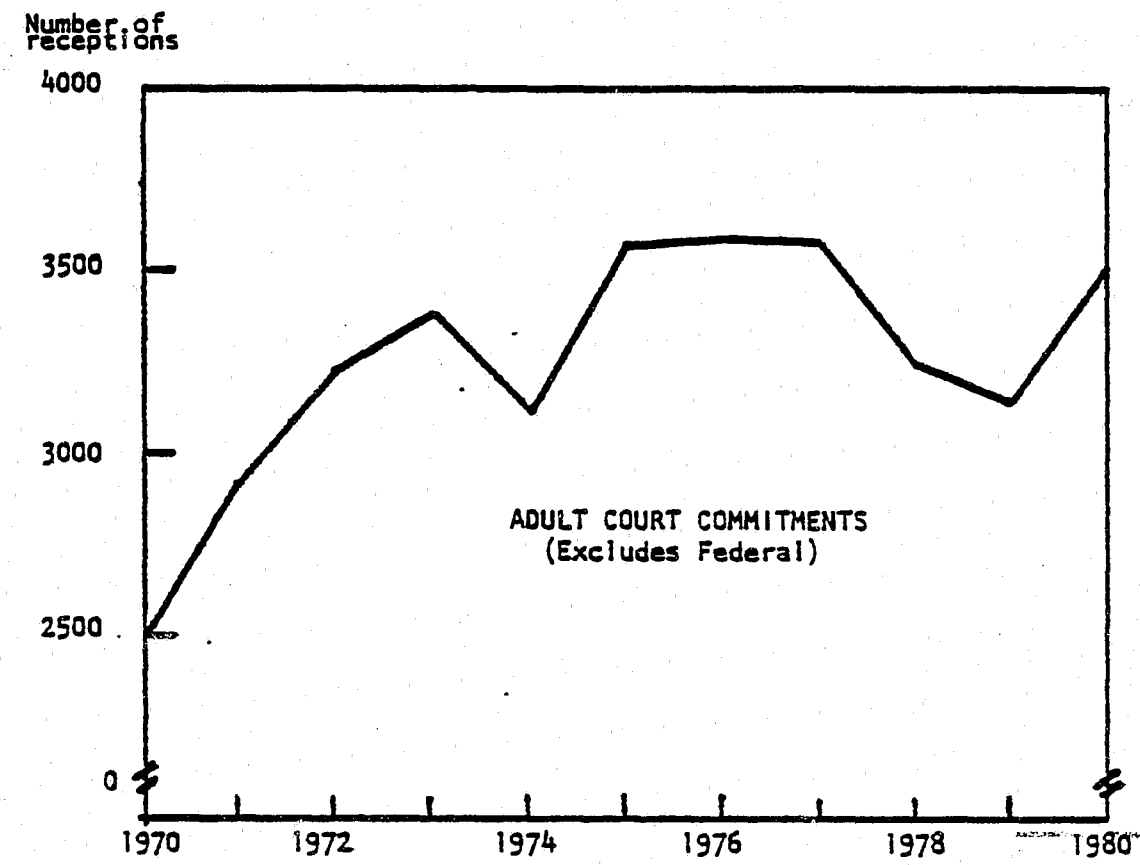


TABLE 2
1980 Court Commitments Received by the Bureau of Correction,
by Race and Sex

Age Distribution	Male			Female			Total			Percent	Cum. Percent
	White	Non-White	Total	White	Non-White	Total	White	Non-White	Total		
Unknown	2	-	2	-	-	-	2	-	2	0.06	0.06
17 years & under	12	13	25	-	-	-	12	13	25	0.71	0.77
18 years	39	26	65	-	-	-	39	26	65	1.83	2.60
19 years	115	69	184	3	3	6	118	72	190	5.36	7.96
20 years	157	99	256	4	3	7	161	102	263	7.42	15.38
21-24 years	576	347	923	17	10	27	593	357	950	26.80	42.18
25-29 years	449	371	820	22	25	47	471	396	867	24.46	66.64
30-34 years	231	265	496	13	20	33	244	285	529	14.92	81.56
35-39 years	121	111	232	10	9	19	131	120	251	7.08	88.64
40-44 years	68	71	139	10	5	15	78	76	154	4.34	92.98
45-49 years	54	45	99	2	3	5	56	48	104	2.93	95.91
50-54 years	34	12	46	1	-	1	35	12	47	1.33	97.24
55-59 years	21	15	36	2	1	3	23	16	39	1.10	98.34
60-64 years	5	9	14	-	-	-	5	9	14	0.39	98.73
65 years & over	23	12	35	5	5	10	28	17	45	1.27	100.00
Total	1,907	1,465	3,372	89	84	173	1,996	1,549	3,545	100.00	100.00

Average age - 28.6

TABLE 3
Criminal Court Commitments for Criminal Homicides
Received by the Bureau of Correction, 1970-1980

Year	Murder				Manslaughter			Total
	First Degree	Second Degree	Third Degree	Sub-total	Vol.	Invol.	Sub-total	
1970 . .	50	144	-	194	86	18	104	298
1971 . .	53	145	-	198	92	13	105	303
1972 . .	55	172	-	227	107	23	130	357
1973 . .	87	169	-	256	108	25	133	389
1974 . .	86	212	-	298	98	19	117	415
1975 . .	91	108	113	312	109	23	132	444
1976 . .	61	55	196	312	117	15	132	444
1977 . .	57	45	173	275	58	38	96	371
1978 . .	59	31	129	219	66	32	98	317
1979 . .	53	28	132	213	47	33	80	293
1980 . .	64	35	136	235	56	31	87	322

Note: Third degree murder includes "unspecified" murders.

TABLE 4
The Top Ten Counties with Regard to Both 1980 Commitments and End-of-Year Count

Rank	Highest Committing Counties in 1980			Bureau Commitments as of December 31, 1980		
	County	Commitments	Percent	County	Commitments	Percent
1.	Philadelphia	735	20.74	Philadelphia	2,909	33.89
2.	Allegheny	685	19.32	Allegheny	1,182	13.77
3.	Montgomery	198	5.59	Montgomery	444	5.17
4.	Erie	144	4.06	Dauphin	373	4.34
5.	Westmoreland	125	3.53	Erie	252	2.94
6.	Mercer	98	2.77	Delaware	204	2.38
7.	Dauphin	89	2.51	Lancaster	191	2.23
8.	Lancaster	83	2.34	York	188	2.19
9.	Berks	77	2.17	Berks	188	2.19
10.	Fayette	76	2.14	Mercer	148	1.73
	Remaining Counties	1,235	34.83	Remaining Counties	2,503	29.17
	Total	3,545	100.00		8,582	100.00

TABLE 5

The Top Ten Criminal Court Offense Categories Both Received by the Bureau
During 1980, and as of December 31, 1980

Rank	Committed during 1980			As of December 31, 1980			
	Offense	Number	Percent	Rank	Offense	Number	Percent
1.	Burglary	710	20.03	1.	Robbery	2,022	23.55
2.	Robbery	671	18.93	2.	Murder	1,827	21.28
3.	Larceny-theft	281	7.93	3.	Burglary	1,337	15.57
4.	Murder	249	7.03	4.	Forcible rape	711	8.28
5.	Nar. drug laws	216	6.09	5.	Agg. assault	436	5.08
6.	Agg. assault	215	6.06	6.	Larceny-theft	377	4.39
7.	Forcible rape	173	4.88	7.	Nar. drug laws	335	3.90
8.	Stolen property	130	3.67	8.	Manslaughter	233	2.71
9.	Prison breach	107	3.02	9.	Sex offenses	173	2.01
10.	Simple assault	106	2.99	10.	Prison breach	164	1.91
All Other Crime Index and Part II Offenses		687	19.37			972	11.32
Total		3,545	100.00			8,587	100.00

Figure 2

Court Commitments Received in Bureau of Correction by Major Offenses, 1980

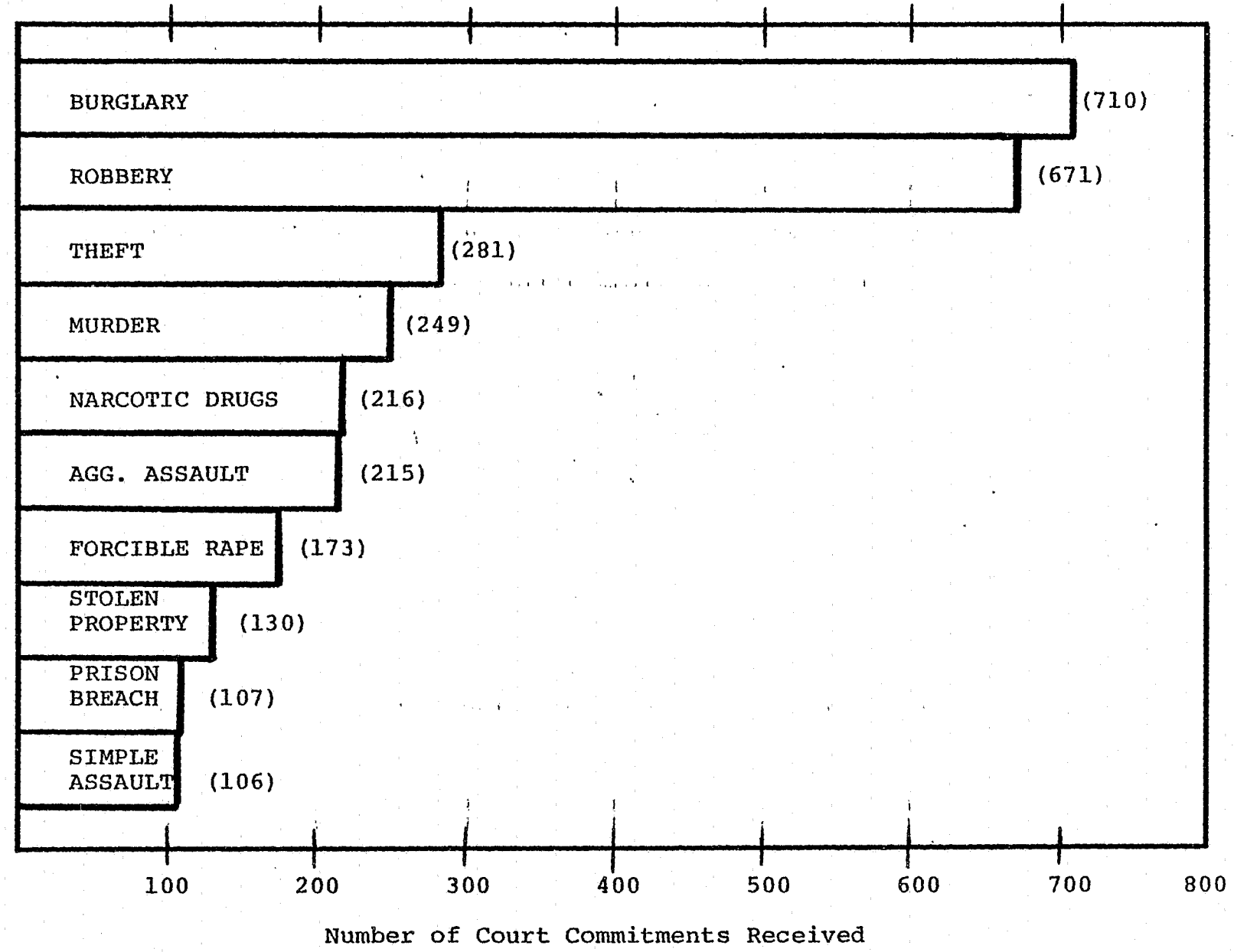


TABLE 6
 1980 Criminal Court Commitments for
 Crime Index and Part II Offenses
 Received by the Bureau, by Race and Sex

Offense Classification	Race		Sex		Total	Percent
	White	Non-White	Male	Female		
<u>Crime Index Offenses</u>						
Criminal Homicide	134	202	317	19	336	9.48
Murder	93	156	240	9	249	7.03
First degree	26	38	64	0	64	1.80
Second degree	12	23	34	1	35	1.00
Third degree	48	88	128	8	136	3.84
Unspecified	7	7	14	0	14	0.39
Manslaughter	41	46	77	10	87	2.45
Voluntary	22	34	48	8	56	1.58
Involuntary	19	12	29	2	31	.87
Forcible rape	55	118	173	0	173	4.88
Robbery	271	400	658	13	671	18.93
Aggravated assault	97	118	203	12	215	6.06
Burglary	507	203	700	10	710	20.03
Larceny - theft	167	114	249	32	281	7.93
Motor vehicle theft	15	9	24	0	24	.68
Arson	36	7	39	4	43	1.21
Total Crime Index Offenses	1,282	1,171	2,363	90	2,453	69.20
<u>Part II Offenses</u>						
Indecent Assault	27	12	38	1	39	1.10
Simple assault	67	39	99	7	106	2.99
Forgery & counterfeiting	56	29	69	16	85	2.40
Fraud	32	16	40	8	48	1.35
Embezzlement	3	0	3	0	3	.08
Stolen property	72	58	127	3	130	3.67
Weapons	17	25	41	1	42	1.18
Motor vehicle violations	27	3	29	1	30	.85
Prison breach	86	21	96	11	107	3.02
Blackmail & extortion	3	0	2	1	3	.08
Kidnapping	11	8	18	1	19	.54
Statutory rape	11	3	14	0	14	.39
Other sex offenses	38	20	55	3	58	1.64
Narcotic drug violations	137	79	204	12	216	6.09
Other Part II Offenses	127	65	174	48	192	5.42
Total Part II Offenses	714	378	1,099	83	1,092	30.80
Total	1,996	1,549	3,372	173	3,545	100.00

TABLE 7
Admission Movements in the Bureau of Correction,
1979-1980

Admissions	1979	1980	Change: 1979-80	
			Amount	Percent
Court Commitments	3,178	3,545	367	11.5
State	3,129	3,496	367	11.7
Federal	49	49	0	0.0
Recommitted Parole Violators	772	843	71	9.2
From PBPP	732	796	64	8.7
Technical	287	307	20	7.0
Convicted	445	489	44	9.9
By County Court	40	47	7	17.5
Escapes returned	84	78	-6	-7.1
Transfers received	6,512	6,438	-74	-1.1
Intrasystem transfers	4,838	4,725	-113	-2.3
Intersystem transfers	646	682	36	5.6
From county prisons	89	91	2	2.2
From Farview State Hospital	35	103	68	194.3
From other mental hospitals	61	55	-6	-9.8
Interstate compact	9	13	4	(a)
Other intersystem transfers	452	420	-32	-7.1
Temporary transfers and transits	1,028	1,031	3	0.3
Authorized temporary absences	5,626	6,052	426	7.6
Bail	23	16	-7	(a)
Special escorted leave	3,004	2,974	-30	-1.0
Returned from furlough	3,787	2,849	-938	-24.8
Detentioners	229	251	22	9.6
Weekends	580	502	-78	-13.4
Miscellaneous	241	201	-40	-16.6
Total	24,036	23,749	-287	-1.2

a. Not calculated for 25 movements and under.

TABLE 8
Release Movements in the Bureau of Correction,
1979-1980

Releases	1979	1980	Change: 1979-80	
			Amount	Percent
Unconditional discharges	486	511	25	5.1
Expiration of maximum sentence	247	253	6	2.4
By court's order	184	215	31	16.8
By Federal authorities	55	43	-12	21.8
Conditional discharges	3,351	3,305	-46	-13.7
Paroled by PBPP	2,711	2,555	-156	-5.8
Expiration of original min. sent.	2,300	2,169	-131	-5.7
Commutation of orig. min. sent.	3	4	1	(a)
Reparoled	408	382	-26	-6.4
Paroled by county court	640	750	110	17.2
Deaths	20	22	2	(a)
Escapes	88	91	3	3.4
Transfers released	6,502	6,374	-128	-2.0
Intrasystem transfers	4,838	4,725	-113	-2.3
Intersystem transfers	637	629	-8	-1.3
To county prisons	37	37	0	0.0
To Farview State Hospital	55	117	62	112.7
To other mental hospitals	69	42	-27	-39.1
Interstate compact	10	11	1	(a)
Other intersystem transfers	466	413	-53	-11.4
Temporary transfers and transits	1,027	1,029	2	0.2
Authorized temporary absences	5,632	6,060	428	7.6
Bail	25	29	4	(a)
Special escorted leave	3,004	2,978	-26	-0.9
Released on furlough	3,794	2,851	-943	-24.9
Detentioners	236	233	-3	-1.3
Weekends	575	506	-69	-12.0
Miscellaneous releases	269	410	141	52.4
Total	23,982	23,370	-612	-2.3

a. Not calculated for 25 movements and under.

TABLE 9
 Conditional Releases on Parole
 from the Bureau of Correction, 1970 - 1980

Year	Pennsylvania Board of Probation & Parole					County paroles	Total conditional releases
	After orig. min. sentence	After comm. of min. sent.	Total first paroles	Re-paroled	Total state paroles		
1970	1,497	27	1,524	379	1,903	509	2,412
1971	2,309	61	2,370	608	2,978	765	3,743
1972	2,134	60	2,194	447	2,641	820	3,461
1973	2,145	33	2,178	449	2,627	773	3,400
1974	2,220	22	2,242	510	2,752	884	3,636
1975	2,069	20	2,089	492	2,581	901	3,482
1976	2,285	17	2,302	618	2,922	741	3,663
1977	2,623	12	2,635	620	3,255	636	3,891
1978	2,372	13	2,385	550	2,935	593	3,528
1979	2,300	3	2,303	408	2,711	640	3,351
1980	2,169	4	2,173	382	2,555	750	3,305

TABLE 10
Age of Committed Inmate Population as of December 31, 1980, by Institution

Age	Camp Hill	Dallas	Graterford	Greensburg	Huntingdon	Mercer	Huncy	Pittsburgh	Rockview	Total	Percent
Below 18	29	0	0	1	1	0	0	0	0	31	0.36
18-20	346	28	33	52	40	42	10	23	80	654	7.62
21-25	605	222	313	88	301	94	59	195	378	2,255	26.28
26-30	256	532	1,139	94	541	48	126	656	378	3,770	43.93
31-40	28	89	251	12	123	4	31	136	66	740	8.62
41-50	27	99	243	11	101	11	32	113	51	688	8.02
Above 50	13	79	101	7	40	3	14	80	25	362	4.22
Unknown	4	15	39	7	1	1	1	13	1	82	0.95
Total	1,308	1,064	2,119	272	1,148	203	273	1,216	979	8,582	100.00

Note: Above totals include Community Service Centers and Group Homes supervised by the parent institution.

TABLE 11
Committed Populations in the Bureau of Correction on December 31, 1980, by Race & Sex

Correctional Facility	Race		Sex		Racial Distribution		Total
	White	Non-White	Male	Female	Percent White	Percent Non-White	
DIAGNOSTIC AND CLASSIFICATION CTRS:	324	347	671	-	48.3	51.7	671
Camp Hill	94	38	132	-	71.2	28.8	132
Graterford	101	216	317	-	31.9	68.1	317
Pittsburgh	129	93	222	-	58.1	41.9	222
STATE CORRECTIONAL INSTITUTIONS:	3,091	4,077	6,912	256	43.1	56.9	7,168
Camp Hill	514	624	1,138	-	45.2	54.8	1,138
Dallas	523	503	1,026	-	51.0	49.0	1,026
Graterford	369	1,330	1,699	-	21.7	78.3	1,699
Huntingdon	613	516	1,129	-	54.3	45.7	1,129
Muncy	116	157	17	256	42.5	57.5	273
Pittsburgh	360	564	924	-	39.0	61.0	924
Rockview	596	383	979	-	60.9	39.1	979
REGIONAL CORRECTIONAL FACILITIES:	319	111	430	-	74.2	25.8	430
Greensburg	183	89	272	-	67.3	32.7	272
Mercer	136	22	158	-	86.1	13.9	158
COMMUNITY SERVICE CTRS. (TOTAL)	162	143	254	50	53.0	47.0	304
GROUP HOMES (TOTAL)	8	1	8	1	88.9	11.1	9
BUREAU OF CORRECTION	3,903	4,679	8,275	307	45.5	54.5	8,582

TABLE 12
Committed Populations in the Bureau of Correction
on December 31, 1979 and 1980

Correctional Facility	Committed population		Change: 1979-80	
	December 31, 1979	December 31, 1980	Amount	Percent
DIAGNOSTIC AND CLASSIFICATION CTRS:	523	671	148	28.3
Camp Hill	91	132	41	45.1
Graterford	268	317	49	18.3
Pittsburgh	164	222	58	35.4
STATE CORRECTIONAL INSTITUTIONS:	6,908	7,168	260	3.8
Camp Hill	1,100	1,138	38	3.5
Dallas	1,014	1,026	12	1.2
Graterford	1,572	1,699	127	8.1
Huntingdon	1,073	1,129	56	5.2
Muncy	267	273	6	2.2
Pittsburgh	987	924	-63	-6.4
Rockview	895	979	84	9.4
REGIONAL CORRECTIONAL FACILITIES:	449	430	-19	-4.2
Greensburg	284	272	-12	-4.2
Mercer	165	158	-7	-4.2
COMMUNITY SERVICE CENTERS (Total)	309	304	-5	-1.6
GROUP HOMES (Total)	14	9	-5	-35.7
Total	8,203	8,582	379	4.6

TABLE 13

Maximum Status of Committed Inmates in the Bureau of Correction
on December 31, 1980, by Race and Sex

Maximum Status	Race		Sex		Total Inmates			Racial Distribution	
	White	Non-White	Male	Female	Total	Percent	Cum. Percent	Percent White	Percent Non-White
Under one year	8	6	12	2	14	0.2	0.2	57.1	42.9
1 year to under 2 yrs.	374	194	537	31	568	6.6	6.8	65.8	34.2
2 years to under 5 yrs.	671	394	986	79	1,065	12.4	19.2	63.0	37.0
5 years to under 10 yrs.	1,038	966	1,932	72	2,004	23.3	42.5	51.8	48.2
10 years to under 15 yrs.	663	1,011	1,627	47	1,674	19.5	62.0	39.6	60.4
15 years to under 20 yrs.	242	436	658	20	678	7.9	69.9	35.7	64.3
20 years and over	514	1,044	1,537	21	1,558	18.2	88.1	33.0	67.0
Life Sentences	329	570	874	25	899	10.5	98.6	36.6	63.4
Execution cases	4	6	10	0	10	0.1	98.7	40.0	60.0
Detentioners	37	16	48	5	53	0.6	99.3	69.8	30.2
Unknown	23	36	54	5	59	0.7	100.0	39.0	61.0
Total	3,903	4,679	8,275	307	8,582	100.0	100.0	45.5	54.5

TABLE 14

Populations of Inmates Requiring Housing
in the Bureau of Correction, by month

Month *	1979	1980
January	7,770	7,865
February	7,780	7,920
March	7,906	8,008
April	7,879	8,040
May	7,869	8,083
June	7,922	8,135
July	7,894	8,199
August	7,849	8,137
September	7,836	8,210
October	7,844	8,232
November	7,859	8,299
December	7,806	8,243

* End of month populations

Figure 3

Inmates Requiring Housing in the Bureau of Correction,
January, 1979 to December, 1980

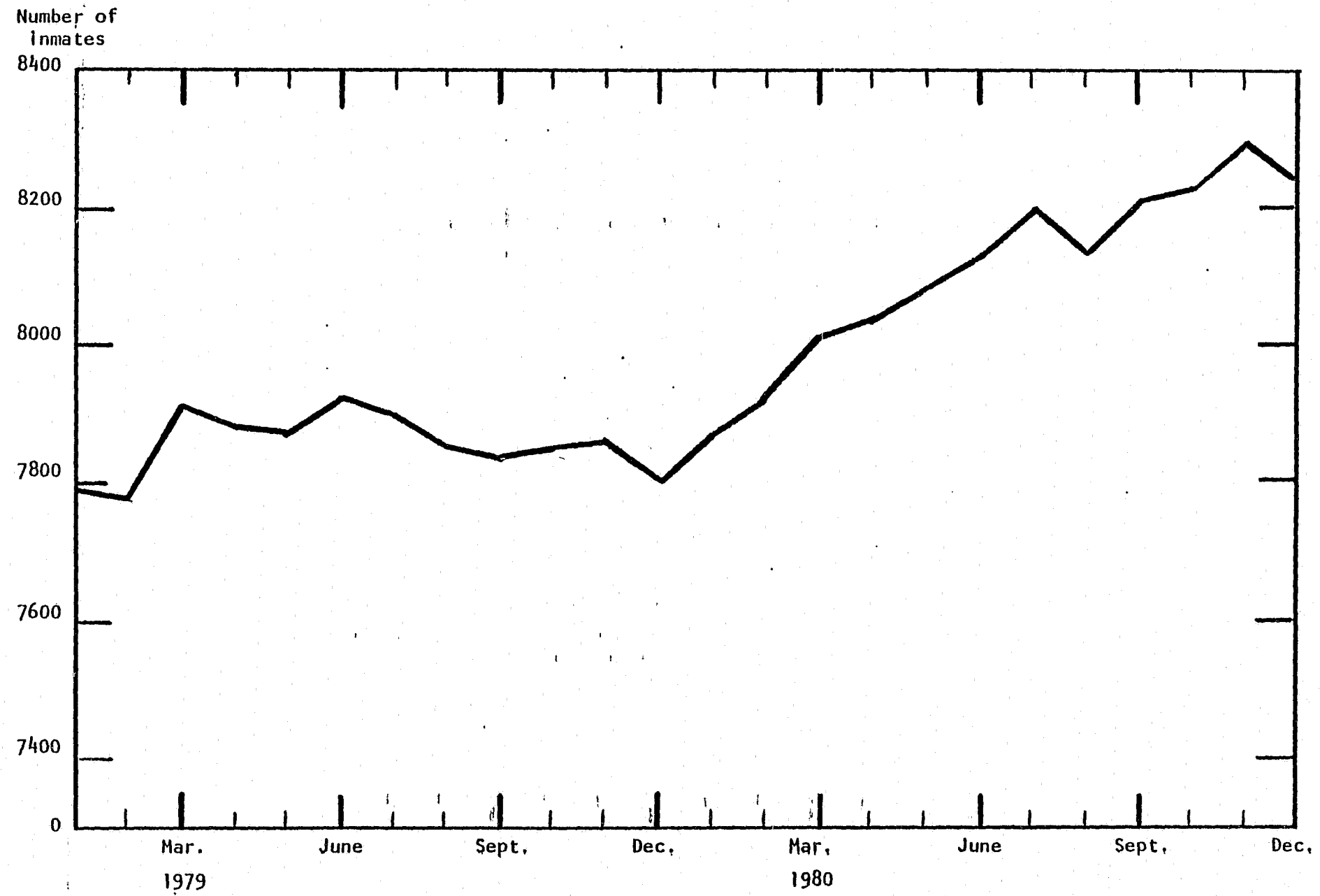


TABLE 15
 Inmates Requiring Housing in the Bureau of
 Correction on December 31, 1978-1980, by Facility

Correctional Facility	December 31st		
	1978	1979	1980
Camp Hill	1,157	1,168	1,258
Dallas	1,030	973	997
Graterford	1,806	1,742	1,930
Greensburg	232	267	258
Huntingdon	1,063	1,041	1,101
Mercer	89	165	157
Muncy	213	241	252
Pittsburgh	1,040	1,068	1,077
Rockview	897	873	959
Community Service Centers	251	258	249
Group Homes	20	10	5
Total	7,798	7,806	8,243

TABLE 16
1979 & 1980 Yearly Average Daily Populations of Inmates Physically
Confined in the Bureau of Correction, by Facility

Correctional Facility	Average Daily Population		Change: 1979-80	
	1979	1980	Amount	Percent
DIAGNOSTIC AND CLASSIFICATION CTRS:	501	537	36	7.2
Camp Hill	103	107	4	3.9
Graterford	251	239	-12	-4.8
Pittsburgh	147	191	44	29.9
STATE CORRECTIONAL INSTITUTIONS:	6,450	6,620	170	2.6
Camp Hill	1,037	1,070	33	3.2
Dallas	950	961	11	1.2
Graterford	1,447	1,542	95	6.6
Huntingdon	1,045	1,044	-1	-0.1
Muncy	219	239	20	9.1
Pittsburgh	845	867	22	2.6
Rockview	907	897	-10	-1.1
REGIONAL CORRECTIONAL FACILITIES:	357	404	47	13.2
Greensburg	212	232	20	9.4
Mercer	145	172	27	18.6
COMMUNITY SERVICE CENTERS (Total)	278	245	-33	-11.9
GROUP HOMES (Total)	16	6	-10	-62.5
Total	7,602	7,812	210	2.8

TABLE 17
1970 & 1980 Yearly Average Daily Populations in the Bureau of Correction*

Correctional Facility	1970	1980	Change: 1970-80	
			Amount	Percent
BUREAU OF CORRECTION:	6,042	7,812	1,770	29.3
Criminal Court Population	5,458	7,812	2,354	43.1
Juvenile Court Population	584	(b)	-584	(d)
DIAGNOSTIC AND CLASSIFICATION CTRS:	688	537	-151	-21.9
Camp Hill	83	107	24	28.9
Dallas	91	(a)	-91	(d)
Graterford	299	239	-60	-20.1
Huntingdon	28	(a)	-28	(d)
Pittsburgh	187	191	4	2.1
STATE CORRECTIONAL INSTITUTIONS:	5,198	6,620	1,422	27.4
Camp Hill	930	1,070	140	15.1
Criminal Court Population	366	1,070	704	192.3
Juvenile Court Population	564	(b)	-564	(d)
Dallas	497	961	464	93.4
Criminal Court Population	491	961	470	95.7
Juvenile Court Population	6	(b)	-6	(d)
Graterford	1,340	1,542	202	15.1
Huntingdon	876	1,044	168	19.2
Muncy	143	239	96	67.1
Criminal Court Population	130	239	109	83.8
Juvenile Court Population	13	(b)	-13	(d)
Pittsburgh	779	867	88	11.3
Rockview	633	897	264	41.7
REGIONAL CORRECTIONAL FACILITIES:	129	404	275	213.2
Greensburg	129 ^c	232	103	79.8
Mercer	-	172	172	(d)
COMMUNITY SERVICE CENTERS, TOTAL	27	245	218	(d)
GROUP HOMES, TOTAL	-	6	6	(d)

a. Deactivated during 1978.

b. Since August 15, 1975, no juveniles were committed by juvenile court.

c. Total includes one juvenile.

d. Not calculated for base populations (1970) under 50 or declining populations of 100 percent.

* based on inmates physically present

TABLE 18

December 31, 1970 & 1980 Physical Populations in the Bureau of Correction,
by Facility.

Correctional Facility	1970	1980	Change: 1970 - 80	
			Amount	Percent
BUREAU OF CORRECTION	6,289	7,888	1,599	25.4
Criminal Court Population	5,708	7,888	2,180	38.2
Juvenile Court Population	581	(b)	-581	(d)
DIAGNOSTIC AND CLASSIFICATION CTRS.	781	624	-157	20.1
Camp Hill	57	128	71	124.6
Dallas	129	(a)	-129	(d)
Graterford	350	289	-61	17.4
Huntingdon	66	(a)	-66	(d)
Pittsburgh	179	207	28	15.6
STATE CORRECTIONAL INSTITUTIONS:	5,344	6,640	1,296	24.3
Camp Hill	975	1,073	98	10.1
Criminal Court Population	411	1,073	662	161.1
Juvenile Court Population	564	(b)	-564	(d)
Dallas	546	960	414	75.8
Criminal Court Population	545	960	415	76.1
Juvenile Court Population	1	(b)	-1	(d)
Graterford	1,263	1,549	286	22.6
Huntingdon	852	1,062	210	24.6
Muncy	161	243	82	50.9
Criminal Court Population	148	243	95	64.2
Juvenile Court Population	13	(b)	-13	(d)
Pittsburgh	798	847	49	6.1
Rockview	749	906	157	21.0
REGIONAL CORRECTIONAL FACILITIES:	128	375	247	193.0
Greensburg	128 ^c	220	92	71.9
Mercer	-	155	155	(d)
COMMUNITY SERVICE CENTERS, TOTAL	36	244	208	(d)
GROUP HOMES, TOTAL	-	5	5	(d)

a. Deactivated during 1978.

b. Since August 15, 1975, no juveniles were committed by juvenile court.

c. Total includes three juveniles.

d. Not calculated for base populations (1970) under 50 or declining populations of 100 percent.

TABLE 19
 Number of Inmates Physically Confined in the Bureau of Correction on December 31, 1970 & 1980, Civilian Populations, and Rates Per 100,000
 For Standard Metropolitan Statistical Areas in Pennsylvania

Standard Metropolitan Statistical Area	Number of Inmates on:				Civilian Population*				Rate per 100,000	
	12/31/70	Percent of total	12/31/80	Percent of total	1970	Percent of total	1980	Percent of total	1970	1980
Allentown-Bethlehem-Easton SHSA	103	1.7	169	2.1	520,422	4.4	550,674	4.7	19.8	30.7
Carbon County	11	0.2	9	0.1	50,573	0.4	53,183	0.5	21.8	16.9
Lehigh County	47	0.8	98	1.2	255,304	2.2	272,280	2.3	18.4	36.0
Northampton County	45	0.7	62	0.8	214,545	1.8	225,211	1.9	21.0	27.5
Altoona SHSA (Blair County)	40	0.6	64	0.8	135,356	1.1	136,447	1.2	29.6	46.9
Erie SHSA (Erie County)	176	2.8	238	3.0	263,654	2.2	279,290	2.4	66.8	85.2
Harrisburg SHSA	355	5.7	437	5.5	410,505	3.5	446,308	3.8	86.5	97.9
Cumberland County	58	0.9	67	0.8	158,177	1.4	178,607	1.5	36.7	37.5
Dauphin County	279	4.5	353	4.5	223,713	1.9	231,918	2.0	124.7	152.2
Perry County	18	0.3	17	0.2	28,615	0.2	35,783	0.3	82.9	47.5
Johnstown SHSA	50	0.8	86	1.1	262,822	2.2	264,241	2.2	19.0	32.5
Cambria	40	0.6	47	0.6	186,785	1.6	182,974	1.5	21.4	25.7
Somerset	10	0.2	39	0.5	76,037	0.6	81,267	0.7	13.2	48.0
Lancaster SHSA (Lancaster County)	151	2.4	174	2.2	320,079	2.7	361,998	3.1	47.2	48.1
Northeast Penna. SHSA	162	2.6	179	2.3	621,882	5.3	628,116	5.3	26.0	28.5
Lackawanna County	57	0.9	74	1.0	234,504	2.0	225,429	1.9	24.3	32.8
Luzerne County	63	1.0	82	1.0	341,958	2.9	335,889	2.8	18.4	24.4
Monroe County	42	0.7	23	0.3	45,422	0.4	66,798	0.6	92.5	34.4
Philadelphia SHSA	2,935	46.9	3,452	43.8	3,872,006	32.8	3,669,347	31.0	75.9	94.1
Bucks County	88	1.4	124	1.6	416,728	3.5	477,798	4.0	21.1	26.0
Chester County	94	1.5	110	1.4	277,746	2.4	316,180	2.7	33.8	34.8
Delaware County	226	3.6	182	2.3	603,456	5.1	554,473	4.7	37.4	32.8
Montgomery County	214	3.4	411	5.2	624,080	5.3	639,721	5.4	34.3	64.2
Philadelphia County	2,313	37.0	2,825	33.3	1,949,996	16.5	1,881,175	14.2	118.6	156.1
Pittsburgh SHSA	1,222	19.5	1,396	17.7	2,401,362	20.4	2,260,336	19.1	50.9	61.8
Allegheny County	982	15.7	1,108	14.0	1,605,133	13.6	1,447,541	12.3	61.2	76.1
Beaver County	53	0.8	108	1.3	208,418	1.8	203,559	1.7	25.4	52.1
Washington County	88	1.4	98	1.2	210,876	1.8	216,854	1.8	40.8	44.3
Westmoreland County	101	1.6	92	1.2	376,935	3.2	392,382	3.3	26.8	23.4
Reading SHSA (Berks County)	106	1.7	179	2.3	296,382	2.5	312,543	2.6	35.8	57.3
Williamsport SHSA (Lycoming County)	19	0.3	90	1.1	113,296	1.0	118,548	1.0	16.8	75.9
York SHSA	182	2.9	201	2.6	329,540	2.8	380,604	3.2	55.2	52.8
Adams County	35	0.6	22	0.3	56,937	0.5	68,345	0.6	61.5	32.2
York County	147	2.3	179	2.3	272,603	2.3	312,259	2.6	53.9	57.3
SHSA Total	5,501	87.9	6,665	84.5	9,547,306	80.9	9,408,452	79.6	57.6	70.8
Outside SHSA	759	12.1	1,223	15.5	2,253,460	19.1	2,415,768	20.4	33.7	50.6
Pennsylvania Total	6,260	100.0	7,888	100.0	11,800,766	100.0	11,824,220	100.0	53.0	66.7

* U.S. Bureau of Census Populations on April 1, 1980 Figures are Preliminary.

TABLE 20

Average Time Served by Selected Offense of Parolees Released from the Bureau of Correction During 1980, by Method

Offense Classification	State Parole			Reparole (state)			County Parole					
	Number	Time Served			Number	Time Served			Number	Time Served		
		Yr.	Mo.	Da.		Yr.	Mo.	Da.		Yr.	Mo.	Da.
Crime Index Offenses:												
Murder	145	6	6	24	22	1	4	28	-	-	-	-
1st degree	14	17	7	8	1	1	0	24	-	-	-	-
2nd degree	55	7	3	19	15	1	7	6	-	-	-	-
3rd degree	69	3	11	18	6	1	0	4	-	-	-	-
Unspecified	7	4	4	4	-	-	-	-	-	-	-	-
Manslaughter	85	2	11	20	12	0	11	23	9	0	6	19
Voluntary	60	3	3	17	12	0	11	23	1	0	11	27
Involuntary	25	2	1	29	-	-	-	-	8	0	6	0
Forcible Rape	120	4	1	8	13	2	5	15	10	0	8	7
Robbery	490	3	1	20	111	1	2	14	88	0	10	15
Aggravated Assault	136	2	1	25	22	1	2	4	39	0	7	22
Burglary	444	2	3	14	90	1	3	16	158	0	8	24
Larceny-theft	135	1	5	23	25	0	11	10	117	0	8	22
Selected Part II Offenses:												
Arson	32	3	0	4	3	2	4	8	9	0	9	23
Simple Assaults	44	1	5	25	2	1	4	5	45	0	8	6
Forgery	61	2	0	2	13	1	1	2	12	0	9	11
Fraud	18	1	10	2	1	0	9	6	9	0	8	12
Stolen property (receiving)	48	1	7	25	8	1	0	20	40	0	8	10
Weapons	16	1	4	9	2	1	0	22	15	0	8	4
Statutory rape	13	2	9	20	3	0	11	11	-	-	-	-
Prostitution	1	3	0	5	-	-	-	-	6	0	7	14
Drunken driving	2	0	7	4	1	0	11	10	22	0	4	29
Possession & use of narcotic drugs	23	1	9	14	1	0	9	17	45	0	5	29
Sale & use of narcotic drugs	97	2	4	25	12	1	1	16	13	0	6	5
Deviate sexual intercourse	28	3	2	28	4	2	1	15	2	0	6	6
Prison breach	71	1	7	27	11	0	10	20	30	0	8	19
Kidnapping	12	3	8	3	-	-	-	-	1	0	6	22
Total Releases*	2,122	2	9	17	368	1	3	0	740	0	8	11

* Includes Offenses not listed above.

TABLE 21
Average Time Served by Selected Offense of Inmates Released from
Bureau of Correction During 1980, by Sex

Offense Classification	Male				Female				Total			
	Number	Time Served			Number	Time Served			Number	Time Served		
		Yr.	Mo.	Da.		Yr.	Mo.	Da.		Yr.	Mo.	Da.
Crime Index Offenses												
Murder	172	5	10	15	4	1	6	8	176	5	9	9
1st degree	18	15	0	15	-	-	-	-	18	15	0	15
2nd degree	74	5	10	11	-	-	-	-	74	5	10	11
3rd degree	73	3	9	4	4	1	6	8	77	3	7	23
Unspecified	7	4	4	4	-	-	-	-	7	4	4	4
Manslaughter	95	2	6	24	16	2	2	4	111	2	6	4
Voluntary	65	2	11	29	10	2	3	10	75	2	10	24
Involuntary	30	1	7	24	6	2	0	4	36	1	8	16
Forcible Rape	152	3	7	5	-	-	-	-	152	3	7	5
Robbery	701	2	6	10	23	2	0	25	724	2	6	4
Aggravated assault	209	1	10	12	8	1	3	21	217	1	10	5
Burglary	754	1	9	27	16	1	3	10	770	1	9	23
Larceny-theft	297	1	2	8	30	0	10	25	327	1	1	28
Selected Part II Offenses												
Arson	48	2	4	27	1	1	6	0	49	2	4	20
Simple Assaults	101	1	1	14	7	0	8	29	108	1	1	5
Forgery	75	1	9	15	17	1	4	18	92	1	8	18
Fraud	28	1	5	18	4	1	0	1	32	1	4	27
Stolen property (receiving)	106	1	2	8	4	1	3	24	110	1	2	10
Weapons	34	1	0	17	1	0	8	0	35	1	0	13
Kidnapping	14	3	3	0	-	-	-	-	14	3	3	0
Statutory rape	16	2	5	12	-	-	-	-	16	2	5	12
Prostitution	4	1	4	0	3	0	5	18	7	0	11	19
Drunken driving	25	0	5	28	1	0	1	18	26	0	5	23
Possession & use of narcotic drugs	76	0	11	28	-	-	-	-	76	0	11	28
Sale & use of narcotic drugs	124	2	0	27	8	2	2	25	132	2	1	1
Deviate sexual intercourse	42	2	11	21	-	-	-	-	42	2	11	21
Prison breach	120	1	5	20	13	0	9	25	133	1	4	27
Total Released*	3,381	2	1	20	173	1	4	19	3,554	2	1	6

* Includes offenses not listed above.

TABLE 22
Average Total Time Served by Inmates
Paroled and Unconditionally Discharged During, 1980, by Race

Maximum Sentence	Non-White			White			Total			Cumulative Percent
	Number of Inmates	Percent	Average Time Actually Served Yrs. Mos. Days	Number of Inmates	Percent	Average Time Actually Served Yrs. Mos. Days	Number of Inmates	Percent	Average Time Actually Served Yrs. Mos. Days	
Less than 1 year	15	1.03	0 3 10	37	2.01	0 6 25	52	1.58	0 5 25	1.58
Less than 2 years	254	17.49	0 10 10	614	33.33	0 9 0	868	26.35	0 9 11	27.93
Less than 3 years	80	5.51	1 0 24	177	9.61	1 0 12	257	7.80	1 0 16	35.73
Less than 4 years	108	7.44	1 7 15	158	8.58	1 5 2	266	8.08	1 6 2	43.81
Less than 5 years	77	5.30	1 10 15	145	7.87	1 10 10	222	6.74	1 10 11	50.55
Less than 6 years	259	17.84	1 9 28	237	12.87	1 10 21	496	15.06	1 10 9	65.61
Less than 7 years	62	4.27	2 6 13	107	5.81	2 5 27	169	5.13	2 6 3	70.74
Less than 8 years	63	4.34	2 8 29	52	2.82	2 9 13	115	3.49	2 9 5	74.23
Less than 9 years	44	3.03	3 3 22	46	2.50	3 2 5	90	2.73	3 2 28	76.96
Less than 10 years	05	.34	3 2 12	04	.22	3 3 15	09	.27	3 2 27	77.23
10 to 14 years	299	20.59	3 4 23	181	9.83	3 6 4	480	14.57	3 5 8	91.80
15 to 19 years	88	6.06	4 11 13	35	1.90	5 2 19	123	3.73	5 0 7	95.53
20 to 29 years	82	5.65	6 7 14	34	1.85	6 5 29	116	3.52	6 7 1	99.05
30 to 39 years	02	.14	4 7 26	01	.05	12 0 0	03	.09	7 1 5	99.14
40 to 49 years	01	.07	10 0 0	02	.11	14 7 9	03	.09	13 0 24	99.23
50 years and over	01	.07	9 0 0	00	.00	0 0 0	01	.03	9 0 0	99.26
Life/life commuted	12	.83	10 9 5	12	.65	17 3 9	24	.73	14 0 4	100.00
Total	1,452	100.00	2 6 28	1,842	100.00	1 10 19	3,294	100.00	2 2 6	100.00

Note: Totals do not include average time served by inmates who were re-paroled. This is contained separately.

TABLE 23
Average Total Time Served by Inmates
Paroled and Unconditionally Discharged During 1980, by Sex

Maximum Sentence	Male			Female			Total			Cumulative Percent
	Number of Inmates	Percent	Average Time Actually Served Yrs. Mos. Days	Number of Inmates	Percent	Average Time Actually Served Yrs. Mos. Days	Number of Inmates	Percent	Average Time Actually Served Yrs. Mos. Days	
Less than 1 year	42	1.34	0 6 17	10	6.10	0 2 23	52	1.58	0 5 25	1.58
Less than 2 years	820	26.20	0 9 12	48	29.27	0 9 6	868	26.35	0 9 11	27.93
Less than 3 years	242	7.73	1 0 16	15	9.15	1 0 19	257	7.80	1 0 16	35.73
Less than 4 years	246	7.86	1 6 17	20	12.20	0 12 3	266	8.08	1 6 2	43.81
Less than 5 years	203	6.49	1 10 5	19	11.59	2 0 16	222	6.74	1 10 11	50.55
Less than 6 years	471	15.05	1 10 12	25	15.24	1 8 7	496	15.06	1 10 9	65.61
Less than 7 years	167	5.34	2 6 0	02	1.22	3 0 13	169	5.13	2 6 3	70.74
Less than 8 years	112	3.58	2 9 12	03	1.83	2 0 4	115	3.49	2 9 5	74.23
Less than 9 years	87	2.78	3 2 21	03	1.83	3 9 2	90	2.73	3 2 28	76.96
Less than 10 years	09	.29	3 2 27	00	.00	0 0 0	09	.27	3 2 27	77.23
10 to 14 years	463	14.79	3 5 17	17	10.37	2 9 9	480	14.57	3 5 8	91.80
15 to 19 years	121	3.87	5 0 28	02	1.22	1 7 8	123	3.73	5 0 7	95.53
20 to 29 years	116	3.71	6 7 1	00	.00	0 0 0	116	3.52	6 7 1	99.05
30 to 39 years	03	.10	7 1 5	00	.00	0 0 0	03	.09	7 1 5	99.14
40 to 49 years	03	.10	13 0 24	00	.00	0 0 0	03	.09	13 0 24	99.23
50 years and over	01	.03	9 0 0	00	.00	0 0 0	01	.03	9 0 0	99.26
Life/life commuted	24	.77	14 0 4	00	.00	0 0 0	24	.73	14 0 4	100.00
Total	3,130	100.00	2 2 21	164	100.00	1 4 23	3,294	100.00	2 2 6	100.00

Note: See prior note referencing "re-parole".

TABLE 24
Average Total Time Served by Inmates
Paroled During 1980, by Race

Maximum Sentence	Non-White			White			Total			Cumulative Percent
	Number of Inmates	Percent	Average Time Actually Served Yrs. Mos. Days	Number of Inmates	Percent	Average Time Actually Served Yrs. Mos. Days	Number of Inmates	Percent	Average Time Actually Served Yrs. Mos. Days	
Less than 1 year	09	.69	0 2 18	28	1.79	0 7 17	37	1.29	0 6 11	1.29
Less than 2 years	221	17.00	0 9 8	504	32.27	0 8 7	725	25.33	0 8 16	26.62
Less than 3 years	67	5.15	0 11 22	132	8.45	0 12 0	199	6.95	0 11 27	33.57
Less than 4 years	89	6.85	1 3 13	129	8.26	1 4 12	218	7.62	1 4 0	41.19
Less than 5 years	65	5.00	1 11 20	115	7.36	1 10 14	180	6.29	1 11 0	47.48
Less than 6 years	225	17.31	1 10 14	210	13.44	1 10 26	435	15.20	1 10 20	62.68
Less than 7 years	56	4.31	2 7 8	102	6.53	2 6 5	158	5.52	2 6 17	68.20
Less than 8 years	58	4.46	2 7 19	48	3.07	2 10 3	106	3.70	2 8 23	71.90
Less than 9 years	42	3.23	3 4 22	45	2.88	3 2 26	87	3.04	3 3 23	74.94
Less than 10 years	05	.38	3 2 12	04	.26	3 3 15	09	.31	3 2 27	75.25
10 to 14 years	286	22.00	3 5 0	169	10.82	3 6 16	455	15.90	3 5 17	91.15
15 to 19 years	85	6.54	5 0 6	31	1.98	5 6 26	116	4.05	5 1 29	95.20
20 to 29 years	81	6.23	6 8 12	31	1.98	6 9 12	112	3.91	6 8 20	99.11
30 to 39 years	01	.08	7 0 0	01	.06	12 0 0	02	.07	9 6 2	99.18
40 to 49 years	01	.08	10 0 0	02	.13	14 7 9	03	.10	13 0 24	99.28
50 years and over	01	.08	9 0 0	00	.00	0 0 0	01	.03	9 0 0	99.31
Life/life commuted	08	.62	12 0 27	11	.70	18 5 19	19	.66	15 9 12	100.00
Total	1,300	100.00	2 7 20	1,562	100.00	1 11 18	2,862	100.00	2 3 5	100.00

Note: This table does not include those inmates who are paroled, recommitted as either a technical or convicted parole violator, and then re-paroled. There is a separate table displaying the total time served by inmates who were re-paroled.

TABLE 25
Average Total Time Served by Inmates
Paroled During 1960, by Sex

Maximum Sentence	Male			Female			Total			Cumulative Percent
	Number of Inmates	Percent	Average Time Actually Served Yrs. Mos. Days	Number of Inmates	Percent	Average Time Actually Served Yrs. Mos. Days	Number of Inmates	Percent	Average Time Actually Served Yrs. Mos. Days	
Less than 1 year	32	1.18	0 7 1	05	3.57	0 2 4	37	1.29	0 6 11	1.29
Less than 2 years	697	25.24	0 8 16	38	27.14	0 8 15	725	25.33	0 8 16	26.62
Less than 3 years	125	6.83	0 11 27	13	9.29	0 12 3	199	6.95	0 11 27	33.57
Less than 4 years	200	7.35	1 4 12	18	12.86	0 11 22	218	7.62	1 4 0	41.19
Less than 5 years	164	6.02	1 10 27	16	11.43	1 11 29	180	6.29	1 11 0	47.48
Less than 6 years	411	15.10	1 10 23	24	17.14	1 8 29	435	15.20	1 10 20	62.68
Less than 7 years	156	5.73	2 6 14	02	1.43	3 0 13	158	5.52	2 6 17	68.20
Less than 8 years	103	3.78	2 9 0	03	2.14	2 0 4	106	3.70	2 8 23	71.90
Less than 9 years	84	3.09	3 3 17	03	2.14	3 9 2	87	3.04	3 3 23	74.94
Less than 10 years	09	.33	3 2 27	00	.00	0 0 0	09	.31	3 2 27	75.25
10 to 14 years	438	16.09	3 5 27	17	12.14	2 9 9	455	15.90	3 5 17	91.15
15 to 19 years	115	4.22	5 2 12	01	.71	1 0 0	116	4.05	5 1 29	95.20
20 to 29 years	112	4.11	6 8 20	00	.00	0 0 0	112	3.91	6 8 20	99.11
30 to 39 years	02	.07	9 6 2	00	.00	0 0 0	02	.07	9 6 2	99.18
40 to 49 years	03	.11	13 0 24	00	.00	0 0 0	03	.10	13 0 24	99.28
50 years and over	01	.04	9 0 0	00	.00	0 0 0	01	.03	9 0 0	99.31
Life/life committed	19	.70	15 9 12	00	.00	0 0 0	19	.66	15 9 12	100.00
Total	2,722	100.00	2 3 20	140	100.00	1 5 13	2,862	100.00	2 3 5	100.00

Note: See prior note referencing "re-parole."

TABLE 26
Average Total Time Served by Inmates
Unconditionally Discharged During 1980, by Race

Maximum Sentence	Non-White			White			Total			Cumulative Percent
	Number of Inmates	Percent	Average Time Actually Served Yrs. Mos. Days	Number of Inmates	Percent	Average Time Actually Served Yrs. Mos. Days	Number of Inmates	Percent	Average Time Actually Served Yrs. Mos. Days	
Less than 1 year	06	3.95	0 4 14	09	3.21	0 4 15	15	3.47	0 4 14	3.47
Less than 2 years	33	21.71	1 5 6	110	39.29	1 0 10	143	33.10	1 1 14	36.57
Less than 3 years	13	8.55	1 7 7	45	16.07	1 2 4	58	13.43	1 3 8	50.00
Less than 4 years	19	12.50	3 2 3	29	10.36	1 8 5	48	11.11	2 3 7	61.11
Less than 5 years	12	7.89	1 2 18	30	10.71	1 9 23	42	9.72	1 7 22	70.83
Less than 6 years	34	22.37	1 6 9	27	9.64	1 9 15	61	14.12	1 7 21	84.95
Less than 7 years	06	3.95	1 10 21	05	1.79	2 0 10	11	2.55	1 11 16	87.50
Less than 8 years	05	3.29	3 12 4	04	1.43	2 1 14	09	2.08	3 1 29	89.58
Less than 9 years	02	1.32	1 7 10	01	.36	0 7 5	03	.69	1 3 7	90.27
Less than 10 years	00	.00	0 0 0	00	.00	0 0 0	00	.00	0 0 0	90.27
10 to 14 years	13	8.55	2 11 18	12	4.29	3 0 20	25	5.79	3 0 0	96.06
15 to 19 years	03	1.97	2 9 21	04	1.43	2 6 14	07	1.62	2 7 25	97.68
20 to 29 years	01	.66	0 4 4	03	1.07	3 7 1	04	.93	2 9 10	98.61
30 to 39 years	01	.66	2 3 17	00	.00	0 0 0	01	.23	2 3 17	98.84
40 to 49 years	00	.00	0 0 0	00	.00	0 0 0	00	.00	0 0 0	98.84
50 years and over	00	.00	0 0 0	00	.00	0 0 0	00	.00	0 0 0	98.84
Life/life commuted	04	2.63	8 1 10	01	.36	4 2 4	05	1.16	7 3 28	100.00
Total	152	100.00	2 0 21	280	100.00	1 5 7	432	100.00	1 7 28	100.00

Note: The term "unconditional discharge" refers to those inmates discharged by either having their maximum sentence expire or released by court order or by federal authorities. This total does not include those inmates discharged while on "authorized temporary absence," which is a final move.

TABLE 27
Average Total Time Served by Inmates
Unconditionally Discharged During 1980, by Sex

Maximum Sentence	Male			Female			Total			Cumulative Percent
	Number of Inmates	Percent	Average Time Actually Served Yrs. Mos. Days	Number of Inmates	Percent	Average Time Actually Served Yrs. Mos. Days	Number of Inmates	Percent	Average Time Actually Served Yrs. Mos. Days	
Less than 1 year	10	2.45	0 5 0	05	20.83	0 3 12	15	3.47	0 4 14	3.47
Less than 2 years	133	32.60	1 1 18	10	41.67	0 11 24	143	33.10	1 1 14	36.57
Less than 3 years	56	13.73	1 3 6	02	8.33	1 5 11	58	13.43	1 3 8	50.00
Less than 4 years	46	11.27	2 3 22	02	8.33	1 3 12	48	11.11	2 3 7	61.11
Less than 5 years	39	9.56	1 7 1	03	12.50	2 4 12	42	9.72	1 7 22	70.83
Less than 6 years	60	14.71	1 8 0	01	4.17	0 3 1	61	14.12	1 7 21	84.95
Less than 7 years	11	2.70	1 11 16	00	.00	0 0 0	11	2.55	1 11 16	87.50
Less than 8 years	09	2.21	3 1 29	00	.00	0 0 0	09	2.08	3 1 29	89.58
Less than 9 years	03	.74	1 3 7	00	.00	0 0 0	03	.69	1 3 7	90.27
Less than 10 years	00	.00	0 0 0	00	.00	0 0 0	00	.00	0 0 0	90.27
10 to 14 years	25	6.13	3 0 0	00	.00	0 0 0	25	5.79	3 0 0	96.06
15 to 19 years	06	1.47	2 8 23	01	4.17	2 2 12	07	1.62	2 7 25	97.68
20 to 29 years	04	.98	2 9 10	00	.00	0 0 0	04	.93	2 9 10	98.61
30 to 39 years	01	.25	2 3 17	00	.00	0 0 0	01	.23	2 3 17	98.84
40 to 49 years	00	.00	0 0 0	00	.00	0 0 0	00	.00	0 0 0	98.84
50 years and over	00	.00	0 0 0	00	.00	0 0 0	00	.00	0 0 0	98.84
Life/life commuted	05	1.23	7 3 28	00	.00	0 0 0	05	1.16	7 3 28	100.00
Total	408	100.00	1 8 10	24	100.00	1 1 2	432	100.00	1 7 28	100.00

Note: See note on prior page referencing definition of unconditional discharge and total discrepancy.

TABLE 28
Average Total Time Served by Inmates
Reparoled During 1980
by Race

Maximum Sentence	Non-White			White			Total			Cumulative Percent
	Number of Inmates	Percent	Average Time Actually Served Yrs. Mos. Days	Number of Inmates	Percent	Average Time Actually Served Yrs. Mos. Days	Number of Inmates	Percent	Average Time Actually Served Yrs. Mos. Days	
Less than 1 year	00	.00	0 0 0	00	.00	0 0 0	00	.00	0 0 0	
Less than 2 years	01	.48	1 2 6	01	.63	1 3 24	02	.55	1 3 0	.55
Less than 3 years	02	.96	0 4 9	05	3.16	0 11 19	07	1.91	0 9 16	2.46
Less than 4 years	11	5.29	0 11 22	11	6.96	0 10 2	22	6.01	0 10 27	8.47
Less than 5 years	06	2.88	1 3 12	15	9.49	1 2 1	21	5.74	1 2 13	14.21
Less than 6 years	45	21.63	1 3 6	43	27.22	1 2 6	88	24.04	1 2 22	38.25
Less than 7 years	18	8.65	1 2 26	29	18.35	1 1 27	47	12.84	1 2 8	51.09
Less than 8 years	12	5.77	1 5 20	14	8.86	1 1 29	26	7.10	1 3 20	58.19
Less than 9 years	08	3.85	1 3 5	03	1.90	0 9 7	11	3.01	1 1 15	61.20
Less than 10 years	01	.48	1 0 13	01	.63	0 9 29	02	.55	0 11 8	61.75
10 to 14 years	68	32.69	1 3 6	25	15.82	1 6 28	93	25.41	1 4 6	87.16
15 to 19 years	14	6.73	1 2 14	05	3.16	1 10 7	19	5.19	1 4 15	92.35
20 to 29 years	22	10.58	1 5 18	06	3.80	1 7 13	28	7.65	1 6 0	100.00
30 to 39 years	00	.00	0 0 0	00	.00	0 0 0	00	.00	0 0 0	100.00
40 to 49 years	00	.00	0 0 0	00	.00	0 0 0	00	.00	0 0 0	100.00
50 years and over	00	.00	0 0 0	00	.00	0 0 0	00	.00	0 0 0	100.00
Life/life commuted	00	.00	0 0 0	00	.00	0 0 0	00	.00	0 0 0	100.00
Total	208	100.00	1 3 6	158	100.00	1 2 24	366	100.00	1 3 1	100.00

Note: Table only refers to those inmates who were placed on parole, then were recommitted as either a technical or convicted parole violator, and then re-paroled.

TABLE 29
Average Total Time Served by Inmates
Reparoled During 1980, by Sex

Maximum Sentence	Male			Female			Total			Cumulative Percent
	Number of Inmates	Percent	Average Time Actually Served Yrs. Mos. Days	Number of Inmates	Percent	Average Time Actually Served Yrs. Mos. Days	Number of Inmates	Percent	Average Time Actually Served Yrs. Mos. Days	
Less than 1 year	00	.00	0 0 0	00	.00	0 0 0	00	.00	0 0 0	
Less than 2 years	02	.56	1 3 0	00	.00	0 0 0	02	.55	1 3 0	.55
Less than 3 years	06	1.69	0 10 2	01	9.09	0 6 12	07	1.91	0 9 16	2.46
Less than 4 years	21	5.92	0 11 9	01	9.09	0 2 26	22	6.01	0 10 27	8.47
Less than 5 years	21	5.92	1 2 13	00	.00	0 0 0	21	5.74	1 2 13	14.21
Less than 6 years	83	23.38	1 2 14	05	45.45	1 6 24	88	24.04	1 2 22	38.25
Less than 7 years	46	12.96	1 2 12	01	9.09	0 8 20	47	12.84	1 2 8	51.09
Less than 8 years	25	7.04	1 3 24	01	9.09	1 0 3	26	7.10	1 3 20	58.19
Less than 9 years	11	3.10	1 1 15	00	.00	0 0 0	11	3.01	1 1 15	61.20
Less than 10 years	02	.56	0 11 8	00	.00	0 0 0	02	.55	0 11 8	61.75
10 to 14 years	92	25.92	1 4 5	01	9.09	1 6 4	93	25.41	1 4 6	87.16
15 to 19 years	18	5.07	1 5 4	01	9.09	0 5 14	19	5.19	1 4 15	92.35
20 to 29 years	28	7.89	1 6 0	00	.00	0 0 0	28	7.65	1 6 0	100.00
30 to 39 years	00	.00	0 0 0	00	.00	0 0 0	00	.00	0 0 0	100.00
40 to 49 years	00	.00	0 0 0	00	.00	0 0 0	00	.00	0 0 0	100.00
50 years and over	00	.00	0 0 0	00	.00	0 0 0	00	.00	0 0 0	100.00
Life/life commuted	00	.00	0 0 0	00	.00	0 0 0	00	.00	0 0 0	100.00
Total	355	100.00	1 3 3	11	100.00	1 1 10	366	100.00	1 3 1	100.00

Note: Table only refers to those inmates who were placed on parole, then were recommitted as either a technical or convicted parole violator, and then re-paroled.

TABLE 30
Complement Control Report by Facility
as of December 31, 1980

Facility	Job Classification									Total
	Admin. & Clerical	Cust.	Trtmt.	Edu.	Med.	Voc. & Maint.	Human Serv.	Insp. & Invest.	Ind.	
Camp Hill										
Filled	66	215	31	12	8	48	56	4	26	446
Vacant	-	2	2	1	1	1	1	-	3	11
Dallas										
Filled	36	214	13	6	1	37	22	2	13	344
Vacant	1	2	-	-	-	-	-	-	-	4
Graterford										
Filled	72	333	35	4	7	44	39	5	29	568
Vacant	2	11	2	-	5	1	-	-	1	22
Huntingdon										
Filled	41	182	14	5	4	41	26	3	25	341
Vacant	1	1	-	-	-	-	-	-	-	2
Muncy										
Filled	25	83	10	8	10	18	10	1	3	168
Vacant	1	8	-	-	-	-	-	-	-	9
Pittsburgh										
Filled	59	216	26	7	8	36	29	3	10	394
Vacant	2	2	-	1	2	1	-	-	2	10
Rockview										
Filled	47	183	14	7	2	44	29	4	18	348
Vacant	1	5	-	-	-	2	-	-	-	8
Greensburg										
Filled	15	49	10	3	1	4	4	-	4	98
Vacant	1	2	-	-	-	1	1	-	-	4
Mercer										
Filled	15	60	9	-	-	6	13	-	-	103
Vacant	-	1	-	-	-	1	-	-	-	2
Community Services										
Filled	15	-	38	-	-	-	83	-	-	136
Vacant	-	-	4	-	-	-	1	-	-	5
Central Office										
Filled	69	1	6	1	-	1	3	14	14	109
Vacant	5	1	1	-	-	1	-	1	3	12
Total										
Filled	463	1,537	205	52	42	280	300	36	142	3,057
Vacant	14	32	10	3	8	7	2	1	10	88

Source: Personnel Services Division

TABLE 31
Inmates Participating in the Furlough, Group Home,
and Community Service Center Program by Month and Institution

1980	Correctional Facility									Total
	Camp Hill	Dallas	Graterford	Huntingdon	Muncy	Pittsburgh	Rockview	Greensburg	Mercer	
January										
Furlough	2	2	0	2	0	3	6	1	0	16
CSC	44	34	72	12	0	60	0	0	38	260
Group Homes	1	0	1	0	0	6	0	0	0	8
February										
Furlough	2	3	20	4	1	1	13	5	1	50
CSC	46	30	71	9	0	58	0	0	33	247
Group Homes	1	0	1	0	0	5	0	0	0	7
March										
Furlough	2	4	0	1	1	0	2	0	0	10
CSC	46	35	72	10	0	58	0	0	32	253
Group Homes	1	0	0	0	0	6	0	0	0	7
April										
Furlough	2	1	0	0	2	5	0	0	0	10
CSC	45	34	68	11	0	63	0	0	29	250
Group Homes	0	0	0	0	0	5	0	0	0	5
May										
Furlough	1	4	19	1	0	0	1	1	0	27
CSC	44	31	73	9	0	60	0	0	26	243
Group Homes	0	0	0	0	0	6	0	0	0	6
June										
Furlough	0	0	0	0	0	0	1	0	0	1
CSC	41	31	71	8	0	58	0	0	38	247
Group Homes	0	0	0	0	0	5	0	0	0	5
July										
Furlough	2	0	1	1	4	0	5	0	1	14
CSC	36	32	69	10	0	56	0	0	37	240
Group Homes	0	0	0	0	0	5	0	0	0	5
August										
Furlough	8	4	1	0	2	1	16	12	4	48
CSC	31	27	76	10	0	58	0	0	37	239
Group Homes	0	0	0	0	0	4	0	0	0	0
September										
Furlough	7	2	7	1	0	0	1	0	0	18
CSC	36	29	71	8	0	59	0	0	39	242
Group Homes	0	0	0	0	0	5	0	0	0	5
October										
Furlough	1	0	34	1	3	1	13	7	0	60
CSC	36	30	78	7	0	54	0	0	41	246
Group Homes	0	0	0	0	0	4	0	0	0	4
November										
Furlough	0	5	16	1	1	3	4	3	0	33
CSC	34	35	75	13	0	58	0	0	46	261
Group Homes	0	0	0	0	0	5	0	0	0	5
December										
Furlough	22	14	47	7	3	13	25	5	0	136
CSC	31	36	62	18	0	60	0	0	0	207
Group Homes	0	0	0	0	0	5	0	0	0	5

Source: "Monthly Population Count Report" (JBC-8b)
Note: Population counts are taken as of midnight on the last day of the month.

TABLE 36
Major Offense Distribution of Committed Inmate Population on
December 31, 1980, by Type of Correctional Facility

Offense Classification	Regional Correctional Facilities	Community Service Centers	SCI Muncy	All Other SCI's	Total	Percent
Crime Index Offenses						
Criminal Homicide	12	89	86	1,873	2,060	23.99
Murder	1	72	71	1,683	1,827	21.28
First degree	0	4	26	712	742	8.64
Second degree	0	29	12	369	410	4.78
Third degree	1	32	31	542	606	7.06
Unspecified	0	7	2	60	69	0.80
Manslaughter	11	17	15	190	233	2.71
Voluntary	4	12	15	153	184	2.14
Involuntary	7	5	0	37	49	0.57
Forcible rape	2	13	0	696	711	8.28
Robbery	55	73	31	1,863	2,022	23.55
Aggravated assault	27	10	14	385	436	5.08
Burglary	111	39	12	1,175	1,337	15.57
Theft	61	10	38	242	351	4.09
Motor Vehicle Theft	2	2	0	22	26	0.30
Arson	3	5	7	73	88	1.02
Total Crime Index Offenses	273	241	188	6,329	7,031	81.88
Part II Offenses						
Simple assault	19	4	8	77	108	1.26
Fraud	10	8	5	29	52	0.61
Receiving stolen property	24	1	2	107	134	1.56
Forgery	7	6	24	85	122	1.42
Statutory rape	0	2	0	35	37	0.43
Sex offenses (other)	11	4	5	153	173	2.01
Narcotic drug laws	40	25	20	250	335	3.90
Weapons	3	0	1	43	47	0.55
Drunk driving	7	1	0	4	12	0.14
Prison breach	6	1	11	146	164	1.91
Kidnapping	0	4	1	63	68	0.79
All others	23	10	7	178	218	2.54
Total Part II Offenses	150	66	84	1,170	1,470	17.12
Unknown	7	11	1	67	86	1.00
Total	430	318	273	7,566	8,587	-
Percent of Total	5.01	3.70	3.18	88.11	-	100.00

TABLE 37
Committed Inmate Population as of December 31, 1980
by County, Race and Sex

Committing County	Male		Female		Total		Total
	White	Non-White	White	Non-White	White	Non-White	
Adams	19	3	1	-	20	3	23
Allegheny	413	719	16	33	429	752	1,182
Armstrong	23	1	-	-	23	1	24
Beaver	56	51	3	2	59	53	112
Bedford	10	-	-	-	10	-	10
Berks	119	52	7	10	126	62	188
Blair	61	5	2	-	63	5	68
Bradford	9	-	-	-	9	-	9
Bucks	88	37	2	4	90	41	131
Butler	76	5	4	-	80	5	85
Cambria	30	18	-	-	30	18	48
Cameron	7	-	-	-	7	-	7
Carbon	9	-	-	-	9	-	9
Centre	44	3	-	1	44	4	48
Chester	56	52	6	4	62	56	118
Clarion	15	-	-	-	15	-	15
Clearfield	66	-	1	-	67	-	67
Clinton	19	1	1	-	20	1	21
Columbia	30	1	1	-	31	1	32
Crawford	78	10	6	2	84	12	96
Cumberland	55	11	2	3	57	14	71
Dauphin	117	231	6	16	123	247	373
Delaware	97	96	4	7	101	103	204
Elk	10	-	-	-	10	-	10
Erie	132	113	2	5	134	118	252
Fayette	94	21	2	-	96	21	117
Forest	7	-	1	-	8	-	8
Franklin	40	8	1	-	41	8	49
Fulton	3	1	-	-	3	1	4
Greene	21	-	1	-	22	-	22
Huntingdon	15	2	2	-	17	2	19
Indiana	29	2	1	-	30	2	32
Jefferson	21	-	-	-	21	-	21
Juniata	10	-	-	-	10	-	10
Lackawanna	71	2	2	3	73	5	78
Lancaster	120	62	7	2	127	64	191
Lawrence	52	19	1	-	53	19	72
Lebanon	46	3	2	-	48	3	51
Lehigh	68	31	4	1	72	32	104
Luzerne	77	8	4	-	81	8	89
Lycoming	68	11	6	8	74	19	93
McKean	12	-	-	-	12	-	12
Mercer	100	47	1	-	101	47	148
Mifflin	38	2	-	-	38	2	40
Monroe	24	2	-	1	24	3	27
Montgomery	216	196	13	19	229	215	444
Montour	5	-	-	-	5	-	5
Northampton	41	27	1	1	42	28	70
Northumberland	65	2	2	2	67	4	71
Perry	15	-	1	1	16	1	17
Philadelphia	334	2,523	10	39	344	2,562	2,909
Pike	6	-	-	-	6	-	6
Potter	10	-	2	-	12	-	12
Schuykill	23	2	-	-	23	2	25
Snyder	5	-	-	-	5	-	5
Somerset	39	-	1	-	40	-	40
Sullivan	1	-	-	-	1	-	1
Susquehanna	9	-	-	-	9	-	9
Tioga	34	-	1	-	35	-	35
Union	9	-	-	-	9	-	9
Venango	35	-	2	-	37	-	37
Warren	37	-	1	-	38	-	38
Washington	78	23	1	1	79	24	103
Wayne	9	-	1	-	10	-	10
Westmoreland	76	22	-	-	76	22	98
Wyoming	17	-	-	-	17	-	17
York	118	67	1	2	119	69	188
ICC	14	11	-	-	14	11	25
Federals	14	2	2	-	16	2	18
Unknown	1	3	-	-	1	3	-
Total	3,765	4,510	138	169	3,903	4,672	8,582

TABLE 40
 Inmates Released from the Bureau of Correction After
 Serving Indefinite Sentences* During 1980

Counties	Number released	Average Min. Sent. (yrs.)	Average Max. Sent. (yrs.)
Adams	18	1.76	5.63
Allegheny	655	1.71	4.65
Armstrong	19	1.02	2.67
Beaver	46	1.58	4.89
Bedford	2	1.50	4.50
Berks	82	2.00	6.38
Blair	15	3.46	8.73
Bradford	8	1.99	8.75
Bucks	43	2.38	6.62
Butler	42	1.45	3.47
Cambria	18	2.74	8.01
Cameron	3	0.90	1.92
Carbon	10	2.19	4.90
Centre	37	1.59	4.16
Chester	39	2.63	7.39
Clarion	17	0.83	1.81
Clearfield	36	0.99	2.69
Clinton	20	1.44	6.55
Columbia	14	2.09	5.62
Crawford	61	1.30	3.23
Cumberland	43	1.57	4.81
Dauphin	109	2.70	7.89
Delaware	52	3.42	7.84
Elk	6	1.20	2.58
Erie	102	1.69	4.00
Fayette	92	1.68	3.99
Forest	-	-	-
Franklin	17	2.56	6.79
Fulton	3	1.32	4.00
Greene	16	2.64	7.50
Huntingdon	16	0.99	3.12
Indiana	22	1.29	3.59
Jefferson	12	0.99	2.32
Juniata	9	1.49	4.66
Lackawanna	26	2.35	6.05
Lancaster	49	2.07	5.04
Lawrence	27	1.60	3.96
Lebanon	16	2.83	7.28
Lehigh	42	2.24	6.12
Luzerne	26	1.81	6.59
Lycoming	55	1.12	4.24
McKean	4	0.91	1.83
Mercer	80	1.41	3.67
Mifflin	18	2.04	4.88
Monroe	19	2.94	5.89
Montgomery	201	1.85	5.87
Montour	2	1.50	5.00
Northampton	14	3.53	7.57
Northumberland	18	1.62	4.09
Perry	11	1.74	6.80
Philadelphia	810	2.72	9.26
Pike	2	0.99	2.45
Potter	21	0.80	2.67
Schuylkill	7	1.99	4.98
Snyder	2	1.24	2.50
Somerset	10	2.22	6.04
Sullivan	4	1.61	4.25
Susquehanna	3	0.83	4.33
Tioga	9	1.77	5.00
Union	9	2.18	5.16
Venango	23	1.27	3.57
Warren	34	1.33	3.06
Washington	49	1.90	4.96
Wayne	6	1.33	2.83
Westmoreland	123	1.15	2.92
Wyoming	6	2.83	7.00
York	57	2.61	6.01
Total	3,467	2.03	5.96

* A sentence which displays only a minimum and maximum date.

END