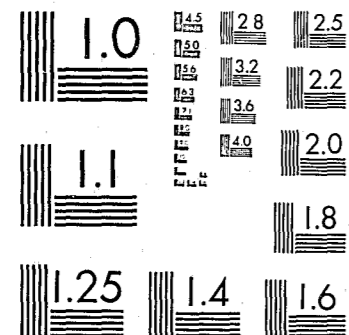


MFI

National Criminal Justice Reference Service



This microfiche was produced from documents received for inclusion in the NCJRS data base. Since NCJRS cannot exercise control over the physical condition of the documents submitted, the individual frame quality will vary. The resolution chart on this frame may be used to evaluate the document quality.



MICROCOPY RESOLUTION TEST CHART
NATIONAL BUREAU OF STANDARDS-1963-A

Microfilming procedures used to create this fiche comply with the standards set forth in 41CFR 101-11.504.

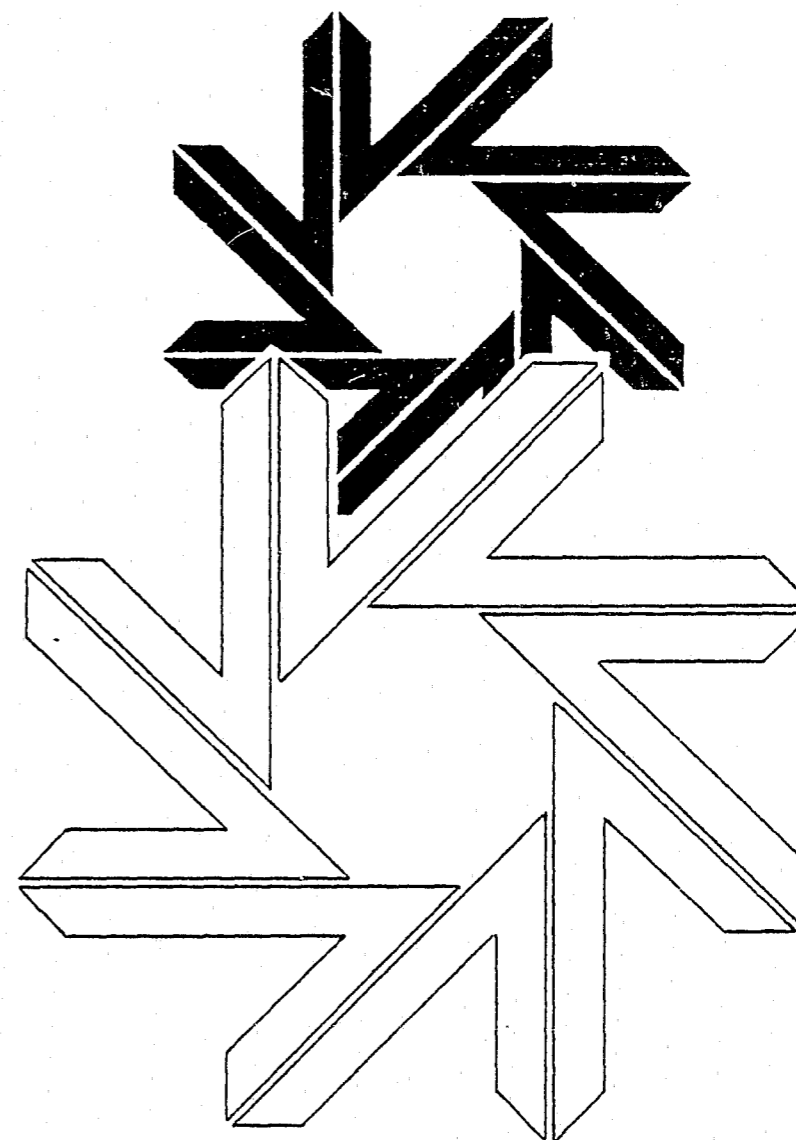
Points of view or opinions stated in this document are those of the author(s) and do not represent the official position or policies of the U. S. Department of Justice.

National Institute of Justice
United States Department of Justice
Washington, D. C. 20531

SEVEN NORTH SECOND

Profile of Clients Released from
RICHMOND COMMUNITY REHABILITATION CENTER

JULY 1, 1979 — JUNE 30, 1980



17892

U.S. Department of Justice 76841
National Institute of Justice

This document has been reproduced exactly as received from the person or organization originating it. Points of view or opinions stated in this document are those of the authors and do not necessarily represent the official position or policies of the National Institute of Justice.

Permission to reproduce this copyrighted material has been granted by

Stewart W. Lowery
Virginia Dept. of Corrections

to the National Criminal Justice Reference Service (NCJRS).

Further reproduction outside of the NCJRS system requires permission of the copyright owner.

PREFACE

This report is a profile of clients released from Seven North Second Rehabilitation Center during fiscal year 1980 (July 1, 1979 - June 30, 1980). There is also a follow-up of clients who successfully completed the program during fiscal year 1979. The data were compiled jointly by the Research and Reporting Unit and the staff at Seven North Second. The Electronic Data Processing Unit provided the computer processing. All questions, remarks, or requests relating to the report should be directed to:

Department of Corrections
Division of Program Development
and Evaluation
Research and Reporting Unit
P.O. Box 26963
Richmond, VA 23261

Telephone: (804) 257-1973
(SCATS) 327-1973

or

Seven North Second
Community Rehabilitation Center
7 North 2nd Street
Richmond, VA 23219

Telephone: (804) 786-7345

NCJRS

APR 6 1981

ACQUISITIONS

TABLE OF CONTENTS

	Page
Narrative of General Characteristics	1
- Tables -	
I. Age by Departure Status	4
II. Length of Stay by Departure Status	5
III. Substance Abuse by Departure Status	6
IV. Entry Status by Departure Status	7
Narrative of Criminal History	8
- Tables -	
V. Offense by Departure Status	10
VI. Prior Felony Commitment by Departure Status	13
VII. Time Spent in Confinement by Departure Status	14
Narrative of Education Profile	15
- Tables -	
VIII. Age by Educational Level	16
IX. Time Spent in Confinement by Educational Level	17
X. Time Spent in Confinement by Certificates Received	18
Narrative of Employment Profile	19
- Tables -	
XI. Time Employed While Not Incarcerated by Departure Status	21
XII. Time Employed While Participating in the Program by Departure Status	22
XIII. Number of Hours Worked While Participating in the Program	23
Narrative of Financial Profile	24
- Tables -	
XIV. Wages and Deductions for Fiscal Years 1979 and 1980	26
XV. Maintenance Account	27
XIV. Average Monthly Population	28

TABLE OF CONTENTS (cont'd.)

	Page
Narrative of the Follow-up of Clients Released During Fiscal Year 1979 - Tables -	29
XVII. Entry Status by Probation/Parole Status	31
XVIII. Probation/Parole Status by Employment Stability	32

GENERAL CHARACTERISTICS

Number Released

During fiscal year 1980, 91 clients were released from Seven North Second Community Rehabilitation Center. During fiscal year 1979, 84 clients were released from the Center. This represents an increase of seven clients (8.3 percent) over a one year period. All the clients released from the Center were male, either on probation or parole supervision.

Race

Of the 91 clients released, 29 or 31.9 percent were white, 60 or 65.9 percent were black, and two or 2.2 percent were hispanic.

Age

The average age of the clients at the time they were committed to the Center was 28 years. The clients in fiscal year 1980 were slightly older, on the average, than the clients were a year ago (average age was 26 years). The median age was 27 years, while the mode was 21 years. Nine or 9.9 percent of the clients were under 20 years of age, while 30 or 33.0 percent were over 30 years of age. The remaining 52 (57.1 percent) were 20-30 years of age. The youngest client was 17 years of age and the oldest client was 54 years of age.

A breakdown by age, as shown in Table I, reveals that of the 57 clients who completed the program, a majority (35.1 percent) were between the ages of 20-25. The second highest age group to complete the program were 31-35 years of age or 19.3 percent of the 57 clients. The majority of the 30 who did not complete the program (40.0 percent) were also between the age of 20-25 years. The second highest age group which did not complete the program was 26-30 years.

Length Of Stay

A breakdown of the length of stay shows that 13 clients (14.3 percent) stayed at the Center less than one month, 59 or 64.8 percent stayed one to three months, and 19 or 20.9 percent stayed four months or longer. The longest length of stay was seven months. The 91 clients stayed an average of two months. The average length of stay for fiscal year 1979 was also two months.

Analysis of the 91 clients reveals that a majority of the 57 clients who completed the program stayed at the Center two months* (See Table II). Of the 30 clients who did not complete the program, the largest number (46.7 percent) only stayed in the Center one month. On the average, the clients who completed the program stayed three months, while the clients who did not complete the program stayed one month.

Substance Abuse

Of the 91 clients who were released from the Center during fiscal year 1980, 34 or 37.4 percent exhibited characteristics of present or past substance abuse. Of these 34 clients, 17 exhibited drug dependence and 17 were classified as alcohol dependent. Of the 17 clients who exhibited drug dependence, 14 or 82.4 percent were under the influence of drugs at the time of their last offense, while 16 or 94.1 percent of the clients, who were alcohol dependent, were under the influence of alcohol at the time of their last offense.

Of the 57 clients who completed the program, over half (35 or 61.4 percent) of the clients had no history of substance abuse (See Table III). The same was found for the 30 clients who did not complete the program - over half (20 or 66.7 percent) did not display a history of substance abuse. Of the two clients who were transferred to another facility, one was transferred to a drug program and the other to an alcohol treatment center. The two clients who were terminated at the Center were not substance abusers.

Type of Client

Of the 91 clients released during fiscal year 1980, 68 or 74.7 percent were parolees and 23 or 25.3 percent were probationers. In fiscal year 1979 there were 84 clients released; 41 parolees, 38 probationers and 5 other releases. The number of parolees released in fiscal year 1980 increased by 27 or 65.9 percent, while the number of probationers released in fiscal year 1980 decreased by 15 or 39.5 percent.

Of the 68 parolees, eight or 11.8 percent were from pre-release centers and six or 8.8 percent were former residents who were currently under parole supervision. Of the 23 probationers, one or 4.4 percent was a former resident who was currently under probation supervision.

* Figures have been rounded to whole months.

Table IV shows that of the 57 clients who completed the program, the largest number (42 or 73.7 percent) were parolees, while 15 or 26.3 percent were probationers. Of the 30 clients who did not complete the program, again the largest number (24 or 80.0 percent) were parolees, while only six or 20.0 percent were probationers.

Departure Status

Of the 91 clients who left the Center during fiscal year 1980, 57 or 62.6 percent left after completing the program, 30 or 33.0 percent did not complete the program, two or 2.2 percent were transferred to another facility and two or 2.2 percent were terminated at the Center, but continued on supervision. Of the 30 clients who did not complete the program, seven or 23.3 percent were arrested and incarcerated for technical violations, four or 13.3 percent were arrested and incarcerated for new felony/misdemeanor convictions, 13 or 43.3 percent absconded from the Center, and six or 20.0 percent were discharged from the Center because of adjustment problems and/or violation of program rules. This year's program completion rate is an increase of 46.2 percent over fiscal year 1979.

TABLE I
Age by Departure Status

Age	Completed Program	Did Not Complete Program	Transferred to Another Facility	Terminated At Center	Total
Under 20	4 (7.0)	5 (16.7)	---	---	9
20-25	20 (35.1)	12 (40.0)	2 (100.0)	1 (50.0)	35
26-30	8 (14.0)	8 (26.7)	---	1 (50.0)	17
31-35	11 (19.3)	3 (10.0)	---	---	14
36-40	5 (8.8)	---	---	---	5
41-49	6 (10.5)	2 (6.6)	---	---	8
50 and older	3 (5.3)	---	---	---	3
Total	57 (100.0)	30 (100.0)	2 (100.0)	2 (100.0)	91

TABLE II
Length of Stay at the Center by Departure Status

Length of Stay	Completed Program	Did Not Complete Program	Transferred to Another Facility	Terminated At Center	Total
Less than 1 month	2 (3.5)	10 (33.3)	--	1 (50.0)	13
1 month	10 (17.6)	14 (46.7)	2 (100.0)	1 (50.0)	27
2 months	15 (26.3)	6 (20.0)	--	--	21
3 months	11 (19.3)	--	--	--	11
4 months	6 (10.5)	--	--	--	6
5 months	9 (15.8)	--	--	--	9
6 months	2 (3.5)	--	--	--	2
7 months	2 (3.5)	--	--	--	2
Total	57 (100.0)	30 (100.0)	2 (100.0)	2 (100.0)	91

TABLE III
 Substance Abuse by Departure Status
 (Drug and/or Alcohol)

Substance Abuse	Completed Program	Did Not Complete Program	Transferred to Another Facility	Terminated At Center	Total
Has a history of substance abuse	22 (38.6)	10 (33.3)	2 (100.0)	—	34
Has no history of substance abuse	35 (61.4)	20 (66.7)	0	2 (100.0)	57
Total	57 (100.0)	30 (100.0)	2 (100.0)	2 (100.0)	91

1
9

TABLE IV
Entry Status by Departure Status

Entry Status	Completed Program	Did Not Complete Program	Transferred to Another Facility	Terminated At Center	Total
Parolees	42 (73.7)	24 (80.0)	1 (50.0)	1 (50.0)	68
Probationers	15 (26.3)	6 (20.0)	1 (50.0)	1 (50.0)	23
Total	57 (100.0)	30 (100.0)	2 (100.0)	2 (100.0)	91

CRIMINAL HISTORY

Offense

Twenty-seven clients (29.7 percent) committed Offenses Against Persons, 57 (62.6 percent) committed Offenses Against Property, five (5.5 percent) committed Offenses Against Public Policy, Economy, and Health, and two (2.2 percent) committed other offenses. The most frequently committed offense was burglary, with thirteen (14.3 percent) occurrences. There were five (5.5 percent) sex offenders, who were released from the Center. This is a slight increase from fiscal year 1979, when there were four (4.8 percent) sex offenders.

Table V reveals that of the 57 clients who completed the program, the largest number committed burglary (six or 10.5 percent) while the largest number of the clients who did not complete the program also committed burglary (seven or 23.3 percent). Table V also reveals that four of the five sex offenders completed the program.

Sentence

The sentences received for these offenses ranged from zero (for probationers) to life. The average sentence (excluding the one client with a life sentence and 23 probationers) was 12 years. There were two clients with sentences of over 99 years.

Prior Felony Commitments

Of the clients released during fiscal year 1980, 68 or 74.7 percent had no felony commitments prior to the current one, while 23 or 25.3 percent had at least one prior felony commitment. Comparing fiscal year 1979 to 1980 reveals that there has been no change in the percentage of prior felony commitments.

Table VI reveals that a majority (42 or 73.7 percent) of the 57 clients who completed the program had no prior felony commitment, while the second largest group (12 or 21.0 percent) had only one prior felony commitment. As with the clients who completed the program, a majority (22 or 73.3 percent) of the 30 clients who did not complete the program had no prior felony commitment, while the second largest group (six or 20.0) had only one prior felony commitment. Of the four clients who were transferred to another facility or terminated at the Center, all had no prior felony commitments.

Time in Confinement

On an average, the 91 clients released from the Center spent 58 months confined in jails and/or Department of Corrections Institutions (both juvenile and adult institutions) in Virginia before entering the program. The median time in confinement was 43 months, while the mode was 18 months. Time in confinement ranged from two months to 330 months.

As Table VII shows, of the 57 clients who completed the program, a majority (22 or 38.6 percent) spent two years or less confined in jail and/or Department of Corrections Institutions (both juvenile and adult institutions) in Virginia. The second largest group (eight or 14.0 percent) spent over nine years in confinement before entering the program. Of the 30 clients who did not complete the program, the largest number (11 or 36.7 percent) had spent three years and one month to four years in confinement, while the second largest group (five or 16.7) were confined one year and one month to two years before entering the program.

TABLE V
Offense by Departure Status

Offenses	Completed Program	Did Not Complete Program	Transferred to Another Facility	Terminated At Center	Total
Homicide	1 (1.8)	--	--	--	1
Homicide-willful-family-gun	2 (3.5)	--	--	--	2
Homicide-willful-nonfamily-gun	1 (1.8)	--	--	--	1
Homicide-neglig-mansl-weapon	1 (1.8)	--	--	--	1
Sex assault-sodomy-girl-strongarm	1 (1.8)	--	--	--	1
Statutory rape	1 (1.8)	--	--	--	1
Attempted rape	1 (1.8)	1 (3.3)	--	--	2
Robbery	2 (3.5)	2 (6.7)	--	--	4
Robbery-business-gun	5 (8.8)	1 (3.3)	1 (50.0)	1 (50.0)	8
Robbery-business-strongarm	1 (1.8)	--	--	--	1
Robbery-street-gun	1 (1.8)	--	--	--	1
Robbery-street-strongarm	--	1 (3.3)	--	--	1
Robbery-resident-strongarm	1 (1.8)	--	--	--	1
Aggravated assault-nonfamily	1 (1.8)	--	--	--	1
Arson-resident-endangered life	1 (1.8)	--	--	--	1
Burglary	6 (10.5)	7 (23.3)	--	--	13

0 1 0 2 0 3 0 4 0 5 0 6 0 7 0 8 0 9 0 10 0 11 0 12 0 13 0 14 0 15 0 16 0 17 0 18 0 19 0 20 0 21 0 22 0 23 0 24 0 25 0 26 0 27 0 28 0 29 0 30 0 31 0 32 0 33 0 34 0 35 0 36 0 37 0 38 0 39 0 40 0 41 0 42 0 43 0 44 0 45 0 46 0 47 0 48 0 49 0 50 0 51 0 52 0 53 0 54 0 55 0 56 0 57 0 58 0 59 0 60 0 61 0 62 0 63 0 64 0 65 0 66 0 67 0 68 0 69 0 70 0 71 0 72 0 73 0 74 0 75 0 76 0 77 0 78 0 79 0 80 0 81 0 82 0 83 0 84 0 85 0 86 0 87 0 88 0 89 0 90 0 91 0 92 0 93 0 94 0 95 0 96 0 97 0 98 0 99 0 100 0 101 0 102 0 103 0 104 0 105 0 106 0 107 0 108 0 109 0 110 0 111 0 112 0 113 0 114 0 115 0 116 0 117 0 118 0 119 0 120 0 121 0 122 0 123 0 124 0 125 0 126 0 127 0 128 0 129 0 130 0 131 0 132 0 133 0 134 0 135 0 136 0 137 0 138 0 139 0 140 0 141 0 142 0 143 0 144 0 145 0 146 0 147 0 148 0 149 0 150 0 151 0 152 0 153 0 154 0 155 0 156 0 157 0 158 0 159 0 160 0 161 0 162 0 163 0 164 0 165 0 166 0 167 0 168 0 169 0 170 0 171 0 172 0 173 0 174 0 175 0 176 0 177 0 178 0 179 0 180 0 181 0 182 0 183 0 184 0 185 0 186 0 187 0 188 0 189 0 190 0 191 0 192 0 193 0 194 0 195 0 196 0 197 0 198 0 199 0 200 0 201 0 202 0 203 0 204 0 205 0 206 0 207 0 208 0 209 0 210 0 211 0 212 0 213 0 214 0 215 0 216 0 217 0 218 0 219 0 220 0 221 0 222 0 223 0 224 0 225 0 226 0 227 0 228 0 229 0 230 0 231 0 232 0 233 0 234 0 235 0 236 0 237 0 238 0 239 0 240 0 241 0 242 0 243 0 244 0 245 0 246 0 247 0 248 0 249 0 250 0 251 0 252 0 253 0 254 0 255 0 256 0 257 0 258 0 259 0 260 0 261 0 262 0 263 0 264 0 265 0 266 0 267 0 268 0 269 0 270 0 271 0 272 0 273 0 274 0 275 0 276 0 277 0 278 0 279 0 280 0 281 0 282 0 283 0 284 0 285 0 286 0 287 0 288 0 289 0 290 0 291 0 292 0 293 0 294 0 295 0 296 0 297 0 298 0 299 0 300 0 301 0 302 0 303 0 304 0 305 0 306 0 307 0 308 0 309 0 310 0 311 0 312 0 313 0 314 0 315 0 316 0 317 0 318 0 319 0 320 0 321 0 322 0 323 0 324 0 325 0 326 0 327 0 328 0 329 0 330 0 331 0 332 0 333 0 334 0 335 0 336 0 337 0 338 0 339 0 340 0 341 0 342 0 343 0 344 0 345 0 346 0 347 0 348 0 349 0 350 0 351 0 352 0 353 0 354 0 355 0 356 0 357 0 358 0 359 0 360 0 361 0 362 0 363 0 364 0 365 0 366 0 367 0 368 0 369 0 370 0 371 0 372 0 373 0 374 0 375 0 376 0 377 0 378 0 379 0 380 0 381 0 382 0 383 0 384 0 385 0 386 0 387 0 388 0 389 0 390 0 391 0 392 0 393 0 394 0 395 0 396 0 397 0 398 0 399 0 400 0 401 0 402 0 403 0 404 0 405 0 406 0 407 0 408 0 409 0 410 0 411 0 412 0 413 0 414 0 415 0 416 0 417 0 418 0 419 0 420 0 421 0 422 0 423 0 424 0 425 0 426 0 427 0 428 0 429 0 430 0 431 0 432 0 433 0 434 0 435 0 436 0 437 0 438 0 439 0 440 0 441 0 442 0 443 0 444 0 445 0 446 0 447 0 448 0 449 0 450 0 451 0 452 0 453 0 454 0 455 0 456 0 457 0 458 0 459 0 460 0 461 0 462 0 463 0 464 0 465 0 466 0 467 0 468 0 469 0 470 0 471 0 472 0 473 0 474 0 475 0 476 0 477 0 478 0 479 0 480 0 481 0 482 0 483 0 484 0 485 0 486 0 487 0 488 0 489 0 490 0 491 0 492 0 493 0 494 0 495 0 496 0 497 0 498 0 499 0 500 0 501 0 502 0 503 0 504 0 505 0 506 0 507 0 508 0 509 0 510 0 511 0 512 0 513 0 514 0 515 0 516 0 517 0 518 0 519 0 520 0 521 0 522 0 523 0 524 0 525 0 526 0 527 0 528 0 529 0 530 0 531 0 532 0 533 0 534 0 535 0 536 0 537 0 538 0 539 0 540 0 541 0 542 0 543 0 544 0 545 0 546 0 547 0 548 0 549 0 550 0 551 0 552 0 553 0 554 0 555 0 556 0 557 0 558 0 559 0 560 0 561 0 562 0 563 0 564 0 565 0 566 0 567 0 568 0 569 0 570 0 571 0 572 0 573 0 574 0 575 0 576 0 577 0 578 0 579 0 580 0 581 0 582 0 583 0 584 0 585 0 586 0 587 0 588 0 589 0 590 0 591 0 592 0 593 0 594 0 595 0 596 0 597 0 598 0 599 0 600 0 601 0 602 0 603 0 604 0 605 0 606 0 607 0 608 0 609 0 610 0 611 0 612 0 613 0 614 0 615 0 616 0 617 0 618 0 619 0 620 0 621 0 622 0 623 0 624 0 625 0 626 0 627 0 628 0 629 0 630 0 631 0 632 0 633 0 634 0 635 0 636 0 637 0 638 0 639 0 640 0 641 0 642 0 643 0 644 0 645 0 646 0 647 0 648 0 649 0 650 0 651 0 652 0 653 0 654 0 655 0 656 0 657 0 658 0 659 0 660 0 661 0 662 0 663 0 664 0 665 0 666 0 667 0 668 0 669 0 670 0 671 0 672 0 673 0 674 0 675 0 676 0 677 0 678 0 679 0 680 0 681 0 682 0 683 0 684 0 685 0 686 0 687 0 688 0 689 0 690 0 691 0 692 0 693 0 694 0 695 0 696 0 697 0 698 0 699 0 700 0 701 0 702 0 703 0 704 0 705 0 706 0 707 0 708 0 709 0 710 0 711 0 712 0 713 0 714 0 715 0 716 0 717 0 718 0 719 0 720 0 721 0 722 0 723 0 724 0 725 0 726 0 727 0 728 0 729 0 730 0 731 0 732 0 733 0 734 0 735 0 736 0 737 0 738 0 739 0 740 0 741 0 742 0 743 0 744 0 745 0 746 0 747 0 748 0 749 0 750 0 751 0 752 0 753 0 754 0 755 0 756 0 757 0 758 0 759 0 760 0 761 0 762 0 763 0 764 0 765 0 766 0 767 0 768 0 769 0 770 0 771 0 772 0 773 0 774 0 775 0 776 0 777 0 778 0 779 0 780 0 781 0 782 0 783 0 784 0 785 0 786 0 787 0 788 0 789 0 790 0 791 0 792 0 793 0 794 0 795 0 796 0 797 0 798 0 799 0 800 0 801 0 802 0 803 0 804 0 805 0 806 0 807 0 808 0 809 0 810 0 811 0 812 0 813 0 814 0 815 0 816 0 817 0 818 0 819 0 820 0 821 0 822 0 823 0 824 0 825 0 826 0 827 0 828 0 829 0 830 0 831 0 832 0 833 0 834 0 835 0 836 0 837 0 838 0 839 0 840 0 841 0 842 0 843 0 844 0 845 0 846 0 847 0 848 0 849 0 850 0 851 0 852 0 853 0 854 0 855 0 856 0 857 0 858 0 859 0 860 0 861 0 862 0 863 0 864 0 865 0 866 0 867 0 868 0 869 0 870 0 871 0 872 0 873 0 874 0 875 0 876 0 877 0 878 0 879 0 880 0 881 0 882 0 883 0 884 0 885 0 886 0 887 0 888 0 889 0 890 0 891 0 892 0 893 0 894 0 895 0 896 0 897 0 898 0 899 0 900 0 901 0 902 0 903 0 904 0 905 0 906 0 907 0 908 0 909 0 910 0 911 0 912 0 913 0 914 0 915 0 916 0 917 0 918 0 919 0 920 0 921 0 922 0 923 0 924 0 925 0 926 0 927 0 928 0 929 0 930 0 931 0 932 0 933 0 934 0 935 0 936 0 937 0 938 0 939 0 940 0 941 0 942 0 943 0 944 0 945 0 946 0 947 0 948 0 949 0 950 0 951 0 952 0 953 0 954 0 955 0 956 0 957 0 958 0 959 0 960 0 961 0 962 0 963 0 964 0 965 0 966 0 967 0 968 0 969 0 970 0 971 0 972 0 973 0 974 0 975 0 976 0 977 0 978 0 979 0 980 0 981 0 982 0 983 0 984 0 985 0 986 0 987 0 988 0 989 0 990 0 991 0 992 0 993 0 994 0 995 0 996 0 997 0 998 0 999 0 1000 0

TABLE V (cont.)
Offense by Departure Status

Offenses	Completed Program	Did Not Complete Program	Transferred to Another Facility	Terminated At Center	Total
Burglary-forced entry-resident	4 (7.0)	1 (3.3)	—	—	5
Burglary-forced entry-nonresident	5 (8.8)	4 (13.3)	—	1 (50.0)	10
Burglary-no forced entry-non resident	—	1 (3.3)	—	—	1
Burglarious tool-possession	—	1 (3.3)	—	—	1
Attempted burglary	—	1 (3.3)	—	—	1
Larceny	4 (7.0)	5 (16.7)	—	—	9
Purse snatching-nonforce	1 (1.8)	—	—	—	1
Shoplifting	1 (1.8)	—	—	—	1
Larceny-from auto	1 (1.8)	—	—	—	1
Attempted larceny	1 (1.8)	—	—	—	1
Unauthorized use of vehicle	1 (1.8)	1 (3.3)	1 (50.0)	—	3
Forgery	3 (5.3)	1 (3.3)	—	—	4
Forgery of checks	2 (3.5)	2 (6.7)	—	—	4
Receiving stolen property	—	1 (3.3)	—	—	1
Damage property-private	1 (1.8)	—	—	—	1
Hallucinogen-possession	1 (1.8)	—	—	—	1
Heroin-sell	1 (1.8)	—	—	—	1

TABLE V (cont.)
Offense by Departure Status

Offenses	Completed Program	Did Not Complete Program	Transferred to Another Facility	Terminated At Center	Total
Cocaine-sell	1 (1.8)	--	--	--	1
Marijuana-sell	2 (3.5)	--	--	--	2
Homosexual act with boy	1 (1.8)	--	--	--	1
Flight to avoid	1 (1.8)	--	--	--	1
*Total	57 (100.0)	30 (100.0)	2 (100.0)	2 (100.0)	91

*Due to rounding these percentages do not add to 100 percent.

TABLE VI
Prior Felony Commitment by Departure Status

Prior Felony Commitments	Completed Program	Did Not Complete Program	Transferred to Another Facility	Terminated At Center	Total
No prior felony commitments	42 (73.7)	22 (73.3)	2 (100.0)	2 (100.0)	68
One prior felony commitment	12 (21.0)	6 (20.0)	--	--	18
Two prior felony commitments	3 (5.3)	2 (6.7)	--	--	5
Total	57 (100.0)	30 (100.0)	2 (100.0)	2 (100.0)	91

TABLE VII
Time Spent in Confinement by Departure Status

Time Spent in Confinement	Completed Program	Did Not Complete Program	Transferred to Another Facility	Terminated At Center	Total
1 yr or less	11 (19.3)	1 (3.3)	1 (50.0)	1 (50.0)	14
1 yr, 1 mo - 2 yrs	11 (19.3)	5 (16.7)	--	--	16
2 yrs, 1 mo - 3 yrs	5 (8.8)	3 (10.0)	--	--	8
3 yrs, 1 mo - 4 yrs	3 (5.3)	11 (36.7)	1 (50.0)	--	15
4 yrs, 1 mo - 5 yrs	7 (12.3)	3 (10.0)	--	--	10
5 yrs, 1 mo - 6 yrs	4 (7.0)	1 (3.3)	--	--	5
6 yrs, 1 mo - 7 yrs	4 (7.0)	2 (6.7)	--	--	6
7 yrs, 1 mo - 8 yrs	3 (5.3)	--	--	--	3
8 yrs, 1 mo - 9 yrs	1 (1.7)	--	--	--	1
Over 9 years	8 (14.0)	4 (13.3)	--	1 (50.0)	13
Total	57 (100.0)	30 (100.0)	2 (100.0)	2 (100.0)	91

EDUCATIONAL PROFILE

Educational Level

The educational level of the 91 clients who were released from the program ranged from first grade to three years of college. Seventy-one or 78.0 percent had less than a high school education, 18 or 19.8 percent were high school graduates, and two or 2.2 percent had some college but did not graduate. In comparing these figures to the educational level of the clients released during fiscal year 1979, it was revealed that the percentage of clients with less than a high school education decreased from 84.9 percent in fiscal year 1979 to the present level of 78.0 percent. The mean educational level was 8.7 years, the median was 8.8 years, and the mode was 12 years.

Table VIII reveals that of the 13 clients whose educational level was 1st-6th grade, the largest number of clients were 20-25 years of age and 41-49 years of age, with 4 or 30.8 percent each. Of the 58 clients who completed the 7th-11th grades, a majority was 20-25 years of age, with 24 clients (41.4 percent). The largest group of high school graduates was also 20-25 years of age, with seven clients or 38.9 percent. The two clients who had some college but did not graduate were in the 26-35 years of age group.

Length of Time Spent in Confinement by Educational Level

Of the 13 clients with an educational level of 1st through 6th grade, the largest number (three or 23.0 percent) spent from 25-36 months in confinement. Of the 58 clients with an educational level of 7th through 11th grade, the largest number (11 or 19.0 percent) spent 12 months or less in confinement (See Table IX).

Certificate Received While Incarcerated

Of the 18 clients with a high school education, 15 or 83.3 percent received the GED while incarcerated. There were 12 (13.2 percent) clients who received vocational certificates, 10 (11.0 percent) received GED's and five (5.5 percent) received both vocational certificates and GED while incarcerated (See Table X).

TABLE VIII
Age by Educational Level

Age	1st-6th Grade	7th-11th Grade	High School Graduate	Some College	Total
Under 20	1 (7.6)	7 (12.1)	1 (5.5)	—	9
20 - 25	4 (30.8)	24 (41.4)	7 (38.9)	—	35
26 - 30	—	12 (20.7)	4 (22.2)	1 (50.0)	17
31 - 35	2 (15.4)	8 (13.8)	3 (16.7)	1 (50.0)	14
36 - 40	—	2 (3.4)	3 (16.7)	—	5
41 - 49	4 (30.8)	4 (6.9)	—	—	8
50 and older	2 (15.4)	1 (1.7)	—	—	3
Total	13 (100.0)	58 (100.0)	18 (100.0)	2 (100.0)	91

TABLE IX
Length of Time Spent in Confinement
by Educational Level

Time Spent in Confinement	1st-6th Grade	7th-11th Grade	High School Graduate	Some College	Total
12 months & under	1 (7.7)	11 (19.0)	2 (11.0)	--	14
13 - 24 months	2 (15.4)	10 (17.2)	4 (22.2)	--	16
25 - 36 months	3 (23.0)	4 (6.9)	--	1 (50.0)	8
37 - 48 months	1 (7.7)	10 (17.2)	3 (16.7)	1 (50.0)	15
49 - 60 months	--	6 (10.3)	4 (22.2)	--	10
61 - 72 months	2 (15.4)	2 (3.5)	1 (5.6)	--	5
73 - 84 months	1 (7.7)	5 (8.6)	--	--	6
85 - 96 months	--	2 (3.5)	1 (5.6)	--	3
97 - 108 months	1 (7.7)	--	--	--	1
109 months & above	2 (15.4)	8 (13.8)	3 (16.7)	--	13
Total	13 (100.0)	58 (100.0)	18 (100.0)	2 (100.0)	91

TABLE X
Time Spent in Confinement by Certificate
Received While Incarcerated

Time Spent in Confinement	Vocational Certificate	GED	Vocational Certificate and GED	No Certificate	Total
12 months & under	—	—	—	14 (21.9)	14
13 - 24 months	1 (8.3)	2 (20.0)	—	13 (20.3)	16
25 - 36 months	1 (8.3)	1 (10.0)	—	6 (9.4)	8
37 - 48 months	3 (25.0)	3 (30.0)	1 (20.0)	8 (12.5)	15
49 - 60 months	2 (16.7)	3 (30.0)	1 (20.0)	4 (6.2)	10
61 - 72 months	1 (8.3)	—	—	4 (6.2)	5
73 - 84 months	2 (16.7)	—	—	4 (6.2)	6
85 - 96 months	—	1 (10.0)	1 (20.0)	1 (1.6)	3
97 - 108 months	—	—	—	1 (1.6)	1
109 months & above	2 (16.7)	—	2 (40.0)	9 (14.1)	13
Total	12 (100.0)	10 (100.0)	5 (100.0)	64 (100.0)	91

EMPLOYMENT PROFILE

Type of Employment

Of the 91 clients released during fiscal year 1980, 89 or 97.8 percent were employed during the period of non-incarceration, with the largest number of clients (24 or 27.0 percent) holding common laborer jobs. These 89 clients held their jobs an average of 57 months. The time employed while not incarcerated for the 89 clients who worked ranged from one month to 327 months.

Employment Training

There were 79 clients who held a job or received some employment training while incarcerated, with the largest number of clients (27 or 34.2 percent) again holding common laborer positions. These 79 clients held their jobs an average of 48 months. The time employed or receiving training while incarcerated ranged from one month to 318 months.

Time Employed While Not Incarcerated

Table XI reveals that a majority of the 57 clients (14 or 24.7 percent) who completed the program worked 121 months or more (over 10 years) while not incarcerated. Of the 30 who did not complete the program, the majority (10 or 33.3 percent) only worked one to 12 months while not incarcerated.

Time Employed While in Program

Of the 91 clients, 64 or 70.3 percent were employed and three or 3.3 percent were students while participating in the program, with common laborer positions being held by the largest number of clients (22 or 34.4 percent). The time employed while participating in the program ranged from one day to 101 days.

Of the 57 clients who completed the program, the largest number (14 or 24.6 percent) worked 15 to 21 days while participating in the program. Of the 30 clients who did not complete the program, the largest number (19 or 63.3 percent) did not work while at the Center (See Table XII).

Number of Hours Worked

During fiscal year 1980 the largest number of clients (17 or 18.7 percent) worked 81-120 hours while at the Center, while the second largest group (12 or 13.2 percent) worked 40-80 hours (excluding those who did not work at

all). During fiscal year 1979 the largest group (15 or 17.9 percent) only worked 40-80 hours, while the second largest group (10 or 11.9 percent) worked 81-120 hours while at the Center. In fiscal year 1979, there were more clients (eight or 9.5 percent) who worked 521 hours or more than in fiscal year 1980, with only two clients (2.2 percent) who worked 521 hours or more while at the Center (See Table XIII).

TABLE XI
Time Employed While Not Incarcerated
by Departure Status

Number of Hours Worked	Completed Program	Did Not Complete Program	Transferred to Another Facility	Terminated At Center	Total
Did not work	1 (1.7)	1 (3.3)	--	--	2
1 - 12 months	13 (22.8)	10 (33.3)	--	1 (50.0)	24
13 - 24 months	9 (15.8)	7 (23.4)	1 (50.0)	--	17
25 - 36 months	2 (3.5)	4 (13.4)	--	--	6
37 - 48 months	5 (8.8)	2 (6.7)	1 (50.0)	--	8
49 - 60 months	4 (7.0)	--	--	1 (50.0)	5
61 - 72 months	5 (8.8)	3 (10.0)	--	--	8
73 - 84 months	1 (1.7)	1 (3.3)	--	--	2
85 - 96 months	--	1 (3.3)	--	--	1
97 - 108 months	2 (3.5)	1 (3.3)	--	--	3
109 - 120 months	1 (1.7)	--	--	--	1
121 months or more	14 (24.7)	--	--	--	14
Total	57 (100.0)	30 (100.0)	2 (100.0)	2 (100.0)	91

TABLE XII
Time Employed while Participating in
the Program by Departure Status

Number of Hours Worked	Completed Program	Did Not Complete Program	Transferred to Another Facility	Terminated At Center	Total
Did not work	4 (7.0)	19 (63.3)	1 (50.0)	1 (50.0)	25
1 - 7 days	2 (3.5)	5 (16.7)	1 (50.0)	--	8
8 - 14 days	9 (15.9)	3 (10.0)	--	--	12
15 - 21 days	14 (24.6)	2 (6.7)	--	1 (50.0)	17
22 - 28 days	5 (8.8)	--	--	--	5
29 - 35 days	4 (7.0)	1 (3.3)	--	--	5
36 - 42 days	4 (7.0)	--	--	--	4
43 - 49 days	3 (5.3)	--	--	--	3
50 - 56 days	3 (5.3)	--	--	--	3
57 - 63 days	2 (3.5)	--	--	--	2
64 - 70 days	1 (1.7)	--	--	--	1
71 - 77 days	1 (1.7)	--	--	--	1
78 - 84 days	2 (3.5)	--	--	--	2
85 - 91 days	1 (1.7)	--	--	--	1
92 days and over	2 (3.5)	--	--	--	2
Total	57 (100.0)	30 (100.0)	2 (100.0)	2 (100.0)	91

TABLE XIII
 Number of Hours Worked while
 Participating in the Program

Number of Hours Worked	FY 1980		FY 1979	
	Number	Percent	Number	Percent
Did not work	25	27.4	14	16.7
Less than 40 hours	8	8.8	7	8.3
40 - 80 hours	12	13.2	15	17.9
81 - 120 hours	17	18.7	10	11.9
121 - 160 hours	5	5.5	7	8.3
161 - 200 hours	5	5.5	4	4.8
201 - 240 hours	4	4.4	5	5.9
241 - 280 hours	3	3.3	2	2.4
281 - 320 hours	3	3.3	2	2.4
321 - 360 hours	2	2.2	2	2.4
362 - 400 hours	1	1.1	--	--
401 - 440 hours	1	1.1	1	1.2
441 - 480 hours	2	2.2	1	1.2
481 - 520 hours	1	1.1	1	1.2
521 hours or more	2	2.2	8	9.5
Unknown	--	--	5	5.9
Total	91	100.0	84	100.0

FINANCIAL PROFILE

Wages

Of the 91 clients released, 65 or 71.4 percent earned taxable wages while participating in the program in fiscal year 1980. The total gross wages earned by the clients was \$61,036. This represents an increase of \$15,052 (32.7 percent) over gross wages earned by the 65 clients who worked and whose wages were unknown during fiscal 1979. The mean gross wage for fiscal year 1980 was \$939 which represents a \$232 increase in the mean gross wage earned during fiscal year 1979. The median wage was \$648. The gross wages ranged from \$23 to \$4,589.

Federal Tax

Sixty-one or 67.0 percent of the 91 clients had federal taxes deducted from their wages. The total federal taxes paid during fiscal year 1980 was \$6,325, an increase of \$2,517 or 66.1 percent over fiscal year 1979 when the clients paid a total of \$3,808 in federal taxes. The mean federal taxes paid was \$104, an increase of \$39 over the mean for fiscal year 1979. The median federal taxes paid was \$64. The range of federal taxes paid during fiscal year 1980 was \$1 to \$755.

State Tax

Of the 91 clients released during fiscal year 1980, 62 or 68.1 percent had State taxes deducted from their wages totalling \$1,457. This represents an increase of \$401 (38.0 percent) over fiscal year 1979's total of \$1,056. The mean State taxes paid in fiscal year 1980 was \$24 or an increase of \$6 over fiscal year 1979. The median State tax paid was \$15. State taxes paid during fiscal year 1980 ranged from \$1 to \$162.

OASDI

Sixty-four or 70.3 of the 91 clients had Old Age Survivor Disability Insurance (OASDI) deducted from their wages totalling \$3,630. This represents an increase of \$929 or 34.4 percent over fiscal year 1979. The mean OASDI paid was \$57, an increase of \$14 or 32.6 percent over fiscal year 1979. The median OASDI paid was \$39. OASDI deductions ranged from \$1 to \$283.

Rent

Of the 91 clients, 64 or 70.3 percent paid rent to the Center totalling \$6,073. This represents a 2.1 percent decrease of \$128 when compared to fiscal year 1979. The mean rent paid by the clients was \$95, a decrease of \$2 over fiscal year 1979. The median rent paid was \$73 with the rent payment ranging from \$12 to \$376. All rent paid to the Center goes to the State Treasury (See Table XIV).

Maintenance Account

The Center has a maintenance account which is used to supply financial assistance to residents to secure State identification, food and transportation until they secure employment. Each client may be allocated a maximum of \$70. During fiscal year 1980, 121 clients received financial assistance from this maintenance account totalling \$3,911. The Center issued an average of \$32 to each of the 121 clients during fiscal year 1980 (See Table XV).

TABLE XIV
Wages and Deductions for Fiscal Years 1979 and 1980

Fiscal Year	Total Gross Wages	Total Federal Tax Paid	Total State Tax Paid	Total OASDI Paid	Total Wage Deduction	Net Wage	Total Rent Paid
1979	45,984	3,808	1,056	2,701	7,565	38,419	6,201
1980	61,036	6,325	1,457	3,630	11,412	49,624	6,073
TOTAL	107,020	10,133	2,513	6,331	18,977	88,043	12,274

TABLE XV
MAINTENANCE ACCOUNT

Month	Number Receiving Maintenance Funds	Amount Issued	Average Amount Issued Monthly
July	12	277.00	23.00
August	10	372.00	37.00
September	4	135.00	34.00
October	6	219.00	37.00
November	8	245.00	31.00
December	15	603.00	40.00
January	12	472.00	39.00
February	6	182.00	30.00
March	7	126.00	18.00
April	13	327.00	25.00
May	11	409.00	37.00
June	17	544.00	32.00
TOTAL CLIENTS RECEIVING FUNDS	121	TOTAL AMOUNT ISSUED \$3,911.00	YEARLY AVERAGE \$32.00

TABLE XVI
Average Monthly Population
at Seven North Second
Rehabilitation Center
Fiscal Year 1980

<u>MONTHS</u>	<u>AVERAGE</u>
July - 1979	22
August - 1979	19
September - 1979	16
October - 1979	13
November - 1979	12
December - 1979	16
January - 1980	18
February - 1980	19
March - 1980	16
April - 1980	18
May - 1980	17
June - 1980	19

FOLLOW-UP OF CLIENTS WHO SUCCESSFULLY
COMPLETED THE PROGRAM DURING FISCAL YEAR 1979

There were 39 clients released during fiscal year 1979 after successfully completing the program. A follow-up was made at the end of fiscal year 1980 to determine their progress. The information was gathered from each client's probation or parole officer as well as the State Police Office.

Of the 39 clients released during fiscal year 1979 who successfully completed the program, 23 or 59.0 percent were parolees, while 16 or 41.0 percent were probationers.

Of the 39 clients who were released from the Center after completing the program, 12 or 30.8 percent were arrested during fiscal year 1980. Of the twelve arrested, seven or 58.3 percent were convicted of misdemeanor and/or felony charges, while five or 41.7 percent had no disposition to the charges as of June 30, 1980. Of the seven who were convicted, five or 71.4 percent were convicted of misdemeanor charges, one or 14.3 percent was convicted of a felony and one or 14.3 percent was convicted of a misdemeanor and a felony charge. Those who were convicted were free an average of seven months from the time they left the program to the time of arrest.

Of the 39 clients, 20 or 51.3 percent were regularly employed, worked 35 or more hours per week and employed 70-100 percent of the time since release from the program; four or 10.2 percent were part-time employees, worked 16-34 hours per week and employed 30-69 percent of the time. Since release one or 2.6 percent was infrequently employed, worked eight to 15 hours per week and employed 18-38 percent of the time since release; and one or 2.6 percent was unemployed, worked less than eight hours per week and worked less than 17 percent of the time since release. The employment history of 13 or 33.3 percent was unknown.

Of the 20 clients who were regularly employed after leaving the program, only one or 5.0 percent had a misdemeanor conviction and none had felony convictions. Of the four clients who were employed part-time, one or 25.0 percent had a felony conviction and none had a misdemeanor conviction. The two clients who were infrequently employed and unemployed had neither felony or misdemeanor convictions. Of the 13 clients whose employment history was unknown, six or 46.2 percent had at least one felony and/or misdemeanor conviction.

Of the 30 clients released during fiscal year 1979, eight or 20.5 percent were on probation/parole supervision on June 30, 1980, seventeen or 43.6 percent had completed their supervision, capias had been issued for two or 5.1 percent of these clients and five or 12.8 percent of these clients had had their supervision revoked. One or 2.6 percent of this population was incarcerated on a misdemeanor law violation, five or 18.8 percent of these clients had absconded from supervision and one or 2.6 percent had died while on supervision (See Table XVII).

Eight or 20.5 percent of these 39 clients who were on active supervision were also characterized as regularly employed, and 12 or 30.8 percent of these clients were assessed as regularly employed by their parole/probation officers at the time the client completed supervision. Employment assessments were unknown for 13 or 33.2 percent of these clients (See Table XVIII).

TABLE XVII
Entry Status By Probation/Parole Status

Probation/Parole Status	Parolee	Probationer	Total
Active Supervision	6	2	8
Completed Supervision	9	8	17
Capias/Board Warrant Issued	-	2	2
Incarcerated-Parole/ Probation Revoked	3	2	5
Incarcerated-New Misdemeanor	-	1	1
Absconded	4	1	5
Died While on Supervision	1	-	1
Total	23	16	39

TABLE XVIII
 Probation/Parole Status by Assessment of
 Clients Employment Stability

Probation/Parole Status	Regularly Employed	Part-Time Employment	Infrequently Employed	Unemployed	Unknown	Total
Active Supervision	8	-	-	-	-	8
Completed Supervision	12	3	1	1	-	17
Capias/Board Warrants Issued	-	-	-	-	2	2
Incarcerated-Parole/ Probation Revoked	-	1	-	-	4	5
Incarcerated-New Misdemeanor	-	-	-	-	1	1
Absconded	-	-	-	-	5	5
Other	-	-	-	-	1	1
Total	20	4	1	1	13	39

END