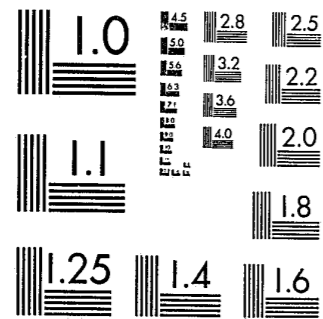


National Criminal Justice Reference Service



This microfiche was produced from documents received for inclusion in the NCJRS data base. Since NCJRS cannot exercise control over the physical condition of the documents submitted, the individual frame quality will vary. The resolution chart on this frame may be used to evaluate the document quality.



MICROCOPY RESOLUTION TEST CHART
NATIONAL BUREAU OF STANDARDS-1963-A

Microfilming procedures used to create this fiche comply with the standards set forth in 41CFR 101-11.504.

Points of view or opinions stated in this document are those of the author(s) and do not represent the official position or policies of the U. S. Department of Justice.

National Institute of Justice
United States Department of Justice
Washington, D. C. 20531

6-17-82

76085

ANALYSIS OF INSTITUTIONAL AND PAROLE LENGTHS OF STAY, 1980

The attached tables show institutional length of stay for wards released to parole during calendar year 1980, and parole length of stay for those revoked or discharged during the past four calendar years. Institutional length of stay for 1980 was 12.9 months -- an increase from the 12.0 months registered in 1979. The L.O.S. for first admissions was 13.7 months for 1980 compared to 12.6 for 1979. Parole length of stay was 18.4 months in 1980 compared to 18.6 months in 1979.

Table 1 shows the total 1980 parole releases by court of commitment, age at parole release, ethnic group, and admission status. It also shows the offense breakdown of first commitments.

A little over half of the wards paroled in 1980 had been committed from the juvenile court (56 percent). More than 75 percent were age 18 or older at parole release. Sixty-five percent were in minority ethnic groups. Seventy-seven percent of the parole releases were beginning their first parole experience, while 13 percent were paroled after a recommitment and 10 percent were paroled after a technical violation. Forty-six percent of the first paroles had been committed for offenses against person (homicide, robbery, assault, rape) while 48 percent had been committed for offenses against property (burglary, theft, auto theft).

Tables 2 and 3 show the institutional length of stay for first admissions by sex, ethnic group, age, and offense. The overall L.O.S. for first admissions was 13.7 months. Females had a slightly shorter L.O.S. than males (13.3 months compared to 13.7 months). Wards from juvenile court averaged 13.6 months and wards from criminal court averaged 13.8 months, although

76085

U.S. Department of Justice
National Institute of Justice

This document has been reproduced exactly as received from the person or organization. Points of view or opinions stated in this document are those of the author(s) and do not necessarily represent the official position or policies of the National Institute of Justice.

For more information, contact the author or the nearest office of the National Institute of Justice.

Keith S. Griffiths
DEpt. of the Youth Authority

U.S. Department of Justice, Reference Services, NCJ 855

Further reproduction outside of the NCJRS system requires permission of the copyright owner.

juvenile court wards who were 19 and over at release had a longer L.O.S. than those from criminal courts. As expected, those wards committed for misdemeanors had considerably shorter L.O.S. than those committed for felonies. Offenses against person show a higher L.O.S. than those against property.

Table 4 shows the comparison of L.O.S. on parole for the last 4 years. Non-violational discharges had a slightly higher L.O.S. in 1980 (21.5) than in 1979 (21.1). Revocations and violational discharges had a somewhat shorter L.O.S. in 1980 than in 1979.

TABLE 1
CHARACTERISTICS OF PAROLE RELEASES
1980 CALENDAR YEAR

| Characteristics | Total | | Males | | Females | |
|----------------------------------|--------|---------|--------|---------|---------|---------|
| | Number | Percent | Number | Percent | Number | Percent |
| Total paroles..... | 4,229 | 100.0 | 4,054 | 100.0 | 175 | 100.0 |
| Court of commitment | | | | | | |
| Juvenile court..... | 2,383 | 56.3 | 2,266 | 55.9 | 117 | 66.9 |
| Criminal court..... | 1,846 | 43.7 | 1,788 | 44.1 | 58 | 33.1 |
| Age at parole | | | | | | |
| 8-16..... | 430 | 10.2 | 397 | 9.8 | 33 | 18.8 |
| 17..... | 605 | 14.3 | 579 | 14.3 | 26 | 14.9 |
| 18..... | 906 | 21.4 | 864 | 21.3 | 42 | 24.0 |
| 19..... | 794 | 18.8 | 767 | 18.9 | 27 | 15.4 |
| 20..... | 772 | 18.3 | 746 | 18.4 | 26 | 14.9 |
| 21..... | 441 | 10.4 | 427 | 10.5 | 14 | 8.0 |
| 22 & over..... | 281 | 6.6 | 274 | 6.8 | 7 | 4.0 |
| Ethnic group | | | | | | |
| White..... | 1,493 | 35.3 | 1,418 | 35.0 | 75 | 42.9 |
| Spanish-spkg/surname..... | 1,175 | 27.8 | 1,133 | 27.9 | 42 | 24.0 |
| Black..... | 1,456 | 34.4 | 1,405 | 34.7 | 51 | 29.1 |
| Other..... | 105 | 2.5 | 98 | 2.4 | 7 | 4.0 |
| Admission status | | | | | | |
| Parole violator..... | 431 | 10.2 | 420 | 10.4 | 11 | 6.3 |
| Recommitment..... | 562 | 13.3 | 541 | 13.3 | 21 | 12.0 |
| First commitment..... | 3,236 | 76.5 | 3,093 | 76.3 | 143 | 81.7 |
| Offense (first commitments only) | 3,236 | 100.0 | 3,093 | 100.0 | 143 | 100.0 |
| Offense against person..... | 1,488 | 46.0 | 1,408 | 45.5 | 80 | 55.9 |
| Murder..... | 84 | 2.6 | 76 | 2.4 | 8 | 5.6 |
| Manslaughter..... | 53 | 1.6 | 48 | 1.5 | 5 | 3.5 |
| Robbery..... | 781 | 24.1 | 745 | 24.1 | 36 | 25.1 |
| Assault..... | 459 | 14.2 | 432 | 14.0 | 27 | 18.9 |
| Violent rape..... | 73 | 2.3 | 73 | 2.4 | - | - |
| Kidnap/extortion..... | 38 | 1.2 | 34 | 1.1 | 4 | 2.8 |
| Offense against property..... | 1,544 | 47.7 | 1,495 | 48.3 | 49 | 34.3 |
| Burglary..... | 854 | 26.4 | 838 | 27.1 | 16 | 11.2 |
| Theft..... | 361 | 11.1 | 338 | 10.9 | 23 | 16.1 |
| Auto theft..... | 300 | 9.3 | 291 | 9.4 | 9 | 6.3 |
| Arson..... | 29 | 0.9 | 28 | 0.9 | 1 | 0.7 |
| Drug related offenses..... | 88 | 2.7 | 80 | 2.6 | 8 | 5.6 |
| All other offenses..... | 116 | 3.6 | 110 | 3.6 | 6 | 4.2 |

TABLE 2
 Institutional Length of Stay for First Admissions
 1980 Calendar Year Parole Releases
 (Showing court of Commitment and Selected Characteristics)

| Characteristics | Total | | Juvenile court | | Criminal court | |
|---------------------------|-----------|--------|----------------|--------|----------------|--------|
| | No. Wards | L.O.S. | No. Wards | L.O.S. | No. Wards | L.O.S. |
| Total parole releases | 4,229 | 12.9 | 2,383 | 12.8 | 1,846 | 13.1 |
| Total first admissions | 3,236 | 13.7 | 1,859 | 13.6 | 1,377 | 13.8 |
| Sex | | | | | | |
| Males..... | 3,093 | 13.7 | 1,765 | 13.7 | 1,328 | 13.8 |
| Females..... | 143 | 13.3 | 94 | 12.9 | 49 | 14.1 |
| Ethnic group | | | | | | |
| White..... | 1,115 | 12.6 | 590 | 12.5 | 525 | 12.6 |
| Spanish spkg/surname..... | 896 | 14.4 | 569 | 14.1 | 327 | 14.9 |
| Black..... | 1,138 | 14.3 | 641 | 14.2 | 497 | 14.4 |
| Other..... | 87 | 14.2 | 59 | 14.0 | 28 | 14.6 |
| Age at parole | | | | | | |
| 8-16..... | 384 | 11.1 | 382 | 11.1 | 2 | 3.6 |
| 17..... | 500 | 12.1 | 495 | 12.1 | 5 | 10.6 |
| 18..... | 716 | 13.0 | 648 | 13.0 | 68 | 13.1 |
| 19..... | 618 | 15.2 | 299 | 19.1 | 319 | 11.5 |
| 20..... | 567 | 14.7 | 33 | 28.7 | 534 | 13.9 |
| 21..... | 305 | 15.1 | 1 | 36.1 | 304 | 15.1 |
| 22 & over..... | 146 | 17.0 | 1 | 15.2 | 145 | 17.0 |
| Type of offense | | | | | | |
| Misdemeanor..... | 240 | 7.6 | 216 | 7.7 | 24 | 6.7 |
| Felony..... | 2,996 | 14.2 | 1,643 | 14.4 | 1,353 | 14.0 |

TABLE 3
 INSTITUTIONAL LENGTH OF STAY FOR 1ST ADMISSIONS, 1980 CALENDAR YEAR
 By Commitment Offense and by Court at Parole Release

| Offense | Juvenile Court | | Criminal Court | |
|----------------------------------|----------------|-------------|----------------|-------------|
| | Number Paroled | Mean Months | Number Paroled | Mean Months |
| Total | 1,859 | 13.6 | 1,377 | 13.8 |
| Murder | 57 | 32.1 | 27 | 29.5 |
| Manslaughter | 24 | 23.5 | 29 | 19.2 |
| Robbery - enhanced | 114 | 18.7 | 212 | 17.5 |
| Other robbery offenses | 220 | 15.3 | 235 | 14.2 |
| Assault to murder | 11 | 20.1 | 6 | 20.7 |
| Aggravated assault | 216 | 16.2 | 113 | 16.9 |
| Other assault offenses | 94 | 11.3 | 19 | 12.5 |
| Burglary 1st degree | 52 | 12.6 | 67 | 12.8 |
| Other burglary offenses | 442 | 10.8 | 293 | 10.4 |
| Grand theft | 92 | 10.2 | 90 | 10.1 |
| Auto theft | 223 | 11.0 | 77 | 10.3 |
| Other theft offenses | 118 | 9.3 | 61 | 9.4 |
| Violent rape | 33 | 20.1 | 40 | 19.8 |
| Other sex offenses | 24 | 17.3 | 7 | 16.6 |
| Possession - hard narcotic | 3 | 12.7 | 4 | 9.6 |
| Sell - hard narcotic | 2 | 14.6 | 5 | 12.6 |
| Possession - marijuana | 4 | 5.1 | 1 | 7.3 |
| Sell - marijuana | 5 | 15.0 | 5 | 11.0 |
| Other narcotic offenses | 25 | 10.0 | 34 | 10.8 |
| Weapons | 21 | 12.3 | 4 | 9.8 |
| Arson | 21 | 16.2 | 8 | 17.7 |
| Extortion/Kidnapping | 21 | 18.7 | 17 | 17.9 |
| Miscellaneous felony | 10 | 13.1 | 20 | 13.0 |
| Miscellaneous misdemeanor | 19 | 6.0 | 3 | 5.3 |
| Escape juvenile facility..... | 8 | 4.6 | - | - |

TABLE 4
 PAROLE LENGTH OF STAY
 By Type of Removal from Parole

| Calendar Year | Total | | Non-violational Discharges | | Revocations | | Violational Discharges | |
|---------------|--------|-------------|----------------------------|-------------|-------------|-------------|------------------------|-------------|
| | Number | Mean Months | Number | Mean Months | Number | Mean Months | Number | Mean Months |
| 1977 | 4,536 | 19.2 | 2,116 | 22.4 | 1,127 | 11.4 | 1,293 | 20.9 |
| 1978 | 5,010 | 20.2 | 2,423 | 23.4 | 1,151 | 11.8 | 1,436 | 21.5 |
| 1979 | 4,349 | 18.6 | 1,915 | 21.1 | 1,105 | 11.9 | 1,329 | 20.6 |
| 1980 | 4,237 | 18.4 | 1,805 | 21.5 | 1,111 | 11.4 | 1,321 | 20.2 |

END