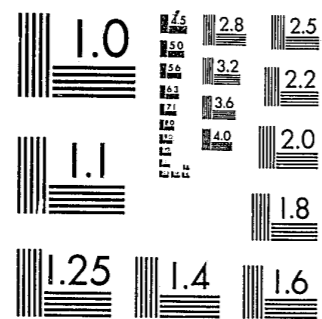


National Criminal Justice Reference Service



This microfiche was produced from documents received for inclusion in the NCJRS data base. Since NCJRS cannot exercise control over the physical condition of the documents submitted, the individual frame quality will vary. The resolution chart on this frame may be used to evaluate the document quality.



MICROCOPY RESOLUTION TEST CHART
NATIONAL BUREAU OF STANDARDS-1963-A

Microfilming procedures used to create this fiche comply with the standards set forth in 41CFR 101-11.504.

Points of view or opinions stated in this document are those of the author(s) and do not represent the official position or policies of the U. S. Department of Justice.

National Institute of Justice
United States Department of Justice
Washington, D. C. 20531

DATE FILMED

1-26-82

76009

MF 129

1976

YEARLY STATISTICAL REPORT OF THE
COMMUNITY REHABILITATION SYSTEM

U.S. Department of Justice
National Institute of Justice 76009

This document has been reproduced exactly as received from the person or organization originating it. Points of view or opinions stated in this document are those of the authors and do not necessarily represent the official position or policies of the National Institute of Justice.

Permission to reproduce this copyrighted material has been granted by

Daniel P. Le Clair

to the National Criminal Justice Reference Service (NCJRS).

Further reproduction outside of the NCJRS system requires permission of the copyright owner.

prepared by:

John K. Saia
March 1977

Division of Research
Massachusetts Department of Correction

Frank A. Hall
Commissioner

In 1972, The Massachusetts Department of Correction, in an attempt to provide alternatives to the traditional methods of correctional programming, began implementing a system of community-based correctional programs. These programs (i.e., The Furlough Program, The Work and Education Release Programs, The Special Impact Programs and the Community Rehabilitation Programs), had been made possible through the passage of the Correctional Reform Act (Chapter 777) by the Massachusetts Legislature in 1972.

The Community Rehabilitation System began operating a small network, of separately operated community-based correctional facilities in August of 1972. These centers were able to handle both "pre-release" and "post release" clients. Pre-release clients are defined as being clients who are within 18 months of their parole and post release clients are individuals who have already received their parole.

The main objective of the Community System is to provide the offender with a smooth transition from totally institutionalized prison life to the much larger outer world where the person released has to adjust to the society which has marked him a deviant. It is the feeling of the Department of Correction that in a carefully and responsibly run system of community-based correctional programs, the incarcerated individual can make the very difficult adjustment back into society in a more positive and productive way. The system wants the individual to be an asset to the society instead of a social deviant.

Residents at these facilities can participate in either work or educational release programs. Or, if they require or ask for it, they may receive counseling or other supportive services. While the methods of treatment and program structure may vary depending on the individual, it is expected that certain services are provided to all.

In 1976 three new pre-release centers began operation and began accepting residents under the direct supervision and control of the Department of Correction. Charlotte House and Roxbury Community Rehabilitation Center are sub contracted by private agencies, those being the Friends of Framingham and Roxbury Multi-Service Center respectfully. The Department of Correction has also sub contracted with Massachusetts Halfway Houses, Inc. five other centers; Brooke House Temporary Housing, Coolidge House, 699 House and 577 House. These centers still are considered and serve the same purpose as the Department of Correction.

NCJRS

MAR 26 1977

ACQUISITION

The data in this report charts the population movement to and from the community system and covers the period beginning December 27, 1975 to December 25, 1976. Other research material has been done on the CRS system including two other statistical reports besides this one for the years 1974 and 1975. These are in the following reports:

- Landolfi J. "Interim Report on Community Rehabilitation System - November 1972 - August 1973" published April 1974, Item #78
- LeClair Daniel P. - "An Analysis of Recidivism Among Residents Released From Boston State and Shirley Pre-Release Centers During 1972-1973". Published August 1975, Item #100
- Landolfi J. - "1974 Client Profile Massachusetts Halfway Houses, Inc.". Published September 1975, Item #103
 "A Comparison Between Pre-Release Program Completers And Non-Completers at Massachusetts Halfway Houses, Inc., Published October 1975, Item #104
- LeClair, Daniel P. - "A Profile of Characteristics Distinguishing Between Program Completers and Program Non-Completers in Massachusetts Pre-Release Centers". Published November 1975, Item #105
- Landolfi, J. - "An Analysis of Recidivism Among Residents Released from The Pre-Release Centers Administered by Massachusetts Halfway Houses, Inc." Published June 1976, Item #119

TABLE OF CONTENTS

	PAGE NUMBER
Introduction	1 & 2
Tables I and II represent the Overall Population Movement to and from Pre-Release Centers and Massachusetts Halfway Houses, Inc. 1976	3 & 4
Tables III and IV represent The 1976 Population Movement Admissions and Releases for the Pre-Release Centers	5,6,7 & 8
Tables V and VI represent the 1976 Population Movement Admissions and Releases for Massachusetts Halfway Houses, Inc.	9 & 10
Tables VII and VIII represent the Total 1976 Pre-Release Population Movement	11 & 12
Table IX represents the Overall Population Movement To And From Massachusetts Halfway Houses, Inc. 1976 Post Release Clients	13
Tables X and XI represent Admission and Release To and From Massachusetts Halfway Houses, Inc. for Post Release Population Movement 1976	14 & 15
Table XII is the Total CRS Resident Count Comparison, Number Remaining on 12/27/75 Against The Number Remaining on 12/25/76	16
Table XIII is an Overall Summary of Population Statistics of the Pre-Release Program Since its Implementation	17
Conclusion	18

TABLE I
OVERALL POPULATION MOVEMENT
TO AND FROM PRE-RELEASE CENTERS 1976

	<u>BOSTON</u> <u>STATE</u>	<u>SHIRLEY</u> <u>PRE-</u> <u>RELEASE</u>	<u>CHAR-</u> <u>LOTTE</u> <u>HOUSE</u>	<u>ROXBURY</u> <u>MULTI-</u> <u>SERVICE</u>	<u>NORFOLK</u> <u>PRE-</u> <u>RELEASE</u>	<u>LANCAS-</u> <u>TER PRE-</u> <u>RELEASE</u>	<u>MED-</u> <u>FIELD</u>	<u>FRAMING-</u> <u>HAM PRE-</u> <u>RELEASE</u>	<u>TOTAL</u> <u>MASS.</u> <u>HALF</u> <u>WAY HSE.</u> <u>CLIENTS</u>	<u>TOTAL</u> <u>PRE-</u> <u>RELEASE</u> <u>CLIENTS</u>
Number in Residence 12/27/75	51	68	8	12	22	0*	0**	0***	51	212
Total Ad- missions During the Year 1975	119	287	16	9	30	75	11	16	239	802
Total Re- leases During the Year 1976	117	258	18	7	25	44	8	0	256	733
Number in Residence 12/25/76	53	97	6	0	27	30	23	32	49	317

* Lancaster began accepting residents in January of 1976
** Medfield began accepting residents in August of 1976
*** Framingham began accepting residents in December of 1976

TABLE II

OVERALL POPULATION MOVEMENT TO AND FROM
MASSACHUSETTS HALFWAY HOUSES FOR 1976
PRE-RELEASE

	<u>BROOKE</u> <u>HOUSE</u>	<u>TEMPORARY</u> <u>HOUSING *</u>	<u>COOLIDGE</u> <u>HOUSE</u>	<u>699</u> <u>HOUSE</u>	<u>DI</u> <u>DOC**</u>	<u>577</u> <u>HOUSE</u>	<u>METAC</u>	<u>BOSP</u>	<u>TOTAL</u>
Number in Residence 12/27/75	13	16	6	10	6	0	0	0	51
Total Admissions During the Year 1976	52	5	41	64	33	27	5	12	239
Total Releases During the Year 1976	49	6	53	65	23	28	4	28	256
Number in Residence 12/25/76	16	0	11	9	0	13	0	0	49

* Due to the reorganization of the Dept. of Correction in August of 1976 Temporary Housing and the METAC program were included in the Coolidge House count for the last 1/3 of the year.

** In August of 1976 DI/DOC moved to 577 Mass. Ave., Boston and began reporting by distinguishing between Deer Island(DI) and Dept. of Correction (DOC) clients.

TABLE III

1976 PRE-RELEASE POPULATION MOVEMENT FOR BOSTON STATE,
SHIRLEY PRE-RELEASE, CHARLOTTE HOUSE AND ROXBURY CRC

RECEIVED FROM:	ADMISSIONS							
	BOSTON STATE		SHIRLEY PRE-RELEASE		CHARLOTTE HOUSE		ROXBURY C.R.C.	
	N	%	N	%	N	%	N	%
MCI Walpole	3	(3)	21	(7)	0	(0)	1	(11)
MCI Concord	14	(11)	107	(36)	0	(0)	2	(22)
MCI Norfolk	9	(7)	49	(17)	0	(0)	1	(11)
MCI Framingham	1	(1)	1	(1)	14	(88)	0	(0)
MCI Forestry	14	(11)	2	(1)	0	(0)	5	(56)
MCI Plymouth	4	(3)	0	(0)	0	(0)	0	(0)
MCI Monroe	0	(0)	0	(0)	0	(0)	0	(0)
S.E.C.C. Bridgewater	1	(1)	11	(4)	0	(0)	0	(0)
TNT	0	(0)	40	(14)	0	(0)	0	(0)
Jails & Houses of Corr.	0	(0)	3	(1)	2	(12)	0	(0)
Retnd. from Escape	9	(8)	4	(1)	0	(0)	0	(0)
D.A.R.C.	1	(1)	0	(0)	0	(0)	0	(0)
Court Appearance	0	(0)	2	(1)	0	(0)	0	(0)
R.D.C.	1	(1)	39	(13)	0	(0)	0	(0)
Hospital	2	(2)	1	(1)	0	(0)	0	(0)
Deer Island	1	(1)	1	(1)	0	(0)	0	(0)
Boston P.R.C.	0	(0)	1	(1)	0	(0)	0	(0)
R.C.R.C.	3	(3)	0	(0)	0	(0)	0	(0)
Medfield Prison Project	0	(0)	3	(1)	0	(0)	0	(0)
Retnd. from Furlough	0	(0)	1	(1)	0	(0)	0	(0)
Lancaster Pre-Release	2	(2)	1	(1)	0	(0)	0	(0)
Norfolk Pre-Release	5	(4)	0	(0)	0	(0)	0	(0)
699 House	1	(1)	0	(0)	0	(0)	0	(0)
Shirley Pre-Release	47	(39)	0	(0)	0	(0)	0	(0)
Trio House	1	(1)	0	(0)	0	(0)	0	(0)
Meridian House	0	(0)	0	(0)	0	(0)	0	(0)
TOTAL ADMISSIONS	119	(100)	287	(100)	16	(100)	9	(100)

TABLE III (continued)

1976 PRE-RELEASE POPULATION MOVEMENT FOR NORFOLK PRE-
RELEASE, LANCASTER PRE-RELEASE, MEDFIELD PRE-RELEASE & FRAMINGHAM PRE-RELEASE

ADMISSIONS

RECEIVED FROM:	NORFOLK PRE-RELEASE		LANCASTER PRE-RELEASE		MEDFIELD PRE-RELEASE		FRAMINGHAM PRE-RELEASE	
	N	%	N	%	N	%	N	%
MCI Walpole	1	(2)	2	(3)	0	(0)	0	(0)
MCI Concord	0	(0)	39	(52)	2	(18)	2	(13)
MCI Norfolk	14	(46)	1	(1)	7	(64)	0	(0)
MCI Framingham	0	(0)	1	(1)	0	(0)	13	(81)
MCI Forestry	0	(0)	3	(4)	0	(0)	0	(0)
MCI Plymouth	0	(0)	0	(0)	0	(0)	0	(0)
MCI Monroe	0	(0)	0	(0)	0	(0)	0	(0)
S.E.C.C. Bridge- water	1	(2)	2	(3)	0	(0)	0	(0)
T.N.T.	2	(7)	5	(7)	0	(0)	0	(0)
Jails & houses of Correction	0	(0)	1	(1)	0	(0)	0	(0)
Retnd. from Es- cape	1	(2)	1	(1)	0	(0)	0	(0)
D.A.R.C.	0	(0)	0	(0)	0	(0)	0	(0)
Court Appearance	0	(0)	0	(0)	0	(0)	0	(0)
R.D.C.	1	(23)	3	(4)	0	(0)	0	(0)
Hospital	0	(0)	0	(0)	0	(0)	0	(0)
Deer Island	0	(0)	0	(0)	0	(0)	0	(0)
Boston P.R.C.	0	(0)	0	(0)	0	(0)	0	(0)
R.C.R.C.	0	(0)	0	(0)	0	(0)	0	(0)
Medfield Prison Project	2	(7)	0	(0)	0	(0)	0	(0)
Retnd. from Furl.	0	(0)	0	(0)	0	(0)	0	(0)
Lancaster Pre-Re- lease	1	(2)	0	(0)	0	(0)	0	(0)
Norfolk Pre-Release	1	(2)	1	(1)	0	(0)	0	(0)
699 House	0	(0)	0	(0)	0	(0)	0	(0)
Shirley Pre-Release	6	(18)	16	(22)	2	(18)	1	(6)
Trio House	0	(0)	0	(0)	0	(0)	0	(0)
Meridian House	0	(0)	0	(0)	0	(0)	0	(0)
TOTAL ADMISSIONS	30	(100)	75	(100)	11	(100)	16	(100)

TABLE IV

1976 PRE-RELEASE POPULATION MOVEMENT FOR BOSTON STATE,
SHIRLEY PRE-RELEASE, CHARLOTTE HOUSE AND ROXBURY CRC

RELEASED BY:	SHIRLEY PRE-RELEASE		BOSTON STATE		CHARLOTTE HOUSE		ROXBURY C.R.C.	
	N	%	N	%	N	%	N	%
Parole Board	54	(18)	63	(52)	11	(62)	3	(43)
Expiration of Sentence	1	(1)	1	(1)	0	(0)	2	(29)
G.C.D.	1	(1)	2	(2)	2	(12)	0	(0)
Released by Order of Court	0	(0)	0	(0)	0	(0)	0	(0)
Sentence Revoked	0	(0)	0	(0)	0	(0)	0	(0)
RETURNED TO:								
MCI Walpole	18	(6)	15	(13)	0	(0)	0	(0)
MCI Concord	29	(11)	9	(8)	0	(0)	0	(0)
MCI Norfolk	1	(1)	0	(0)	0	(0)	0	(0)
MCI Framingham	6	(3)	0	(0)	3	(16)	1	(14)
MCI Forestry	1	(1)	0	(0)	0	(0)	0	(0)
MCI Monroe	2	(2)	2	(2)	0	(0)	0	(0)
MCI Plymouth	5	(3)	0	(0)	0	(0)	0	(0)
Bridgewater State Hosp.	0	(0)	1	(1)	0	(0)	0	(0)
Norfolk Medical	0	(0)	1	(1)	0	(0)	0	(0)
TRANSFERRED TO:								
Boston State	48	(15)	0	(0)	0	(0)	0	(0)
Norfolk Pre-Release	8	(3)	0	(0)	0	(0)	0	(0)
R.D.C.	2	(1)	0	(0)	0	(0)	0	(0)
Jails & Houses of Correction	6	(3)	2	(2)	1	(5)	0	(0)
Coolidge House	5	(3)	4	(3)	0	(0)	0	(0)
T.N.T.	5	(3)	0	(0)	0	(0)	0	(0)
Lancaster Pre-Release	19	(6)	0	(0)	0	(0)	0	(0)
S.E.C.C. Bridgewater	1	(1)	0	(0)	0	(0)	0	(0)
Deer Island DOC	4	(2)	0	(0)	0	(0)	0	(0)
Temp. Housing	2	(1)	0	(0)	0	(0)	0	(0)
699 House	2	(1)	0	(0)	0	(0)	0	(0)
Medfield Pre-Release	2	(1)	0	(0)	0	(0)	0	(0)
Hospitals	2	(1)	2	(2)	0	(0)	1	(14)
577 House	2	(1)	0	(0)	0	(0)	0	(0)
Third Nail	1	(1)	0	(0)	0	(0)	0	(0)
Meridian House	0	(0)	0	(0)	0	(0)	0	(0)
Shirley Pre-Release	0	(0)	0	(0)	0	(0)	0	(0)
Re-arrest	0	(0)	0	(0)	0	(0)	0	(0)
Returned by Judge on Probation	0	(0)	0	(0)	0	(0)	0	(0)
Trio House	0	(0)	1	(1)	0	(0)	0	(0)
D.A.R.C.	0	(0)	0	(0)	0	(0)	0	(0)
Escaped	25	(8)	14	(12)	1	(5)	0	(0)
Removed for Court App.	2	(1)	0	(0)	0	(0)	0	(0)
Custody	0	(0)	0	(0)	0	(0)	0	(0)
TOTAL RELEASES	258	(100)	117	(100)	18	(100)	7	(100)

TABLE IV (continued)

1976 PRE-RELEASE POPULATION MOVEMENT FOR NORFOLK PRE-RELEASE,
LANCASTER PRE-RELEASE, MEDFIELD PRE-RELEASE & FRAMINGHAM PRE-RELEASE

	RELEASES							
	NORFOLK PRE- RELEASE		LANCASTER PRE- RELEASE		MEDFIELD PRE- RELEASE		FRAMING- HAM PRE- RELEASE	
	N	%	N	%	N	%	N	%
RELEASED BY:								
Parole Board	6	(23)	15	(35)	0	(0)	0	(0)
Expiration of Sent.	5							
G.C.D.	0	(0)	1	(2)	0	(0)	0	(0)
Released by Order of Court	1	(3)	0	(0)	0	(0)	0	(0)
Sentence Revoked	1	(3)	0	(0)	0	(0)	0	(0)
RETURNED TO:								
MCI Walpole	1	(3)	0	(0)	0	(0)	0	(0)
MCI Concord	0	(0)	16	(36)	0	(0)	0	(0)
MCI Norfolk	5	(20)	0	(0)	1	(12)	0	(0)
MCI Framingham	0	(0)	0	(0)	1	(12)	0	(0)
MCI Forestry	0	(0)	0	(0)	0	(0)	0	(0)
MCI Monroe	0	(0)	1	(2)	0	(0)	0	(0)
MCI Plymouth	0	(0)	0	(0)	0	(0)	0	(0)
Bridgewater State Hosp	0	(0)	0	(0)	0	(0)	0	(0)
Norfolk Medical	0	(0)	1	(2)	0	(0)	0	(0)
TRANSFERRED TO:								
Boston State	1	(3)	3	(8)	1	(12)	0	(0)
Norfolk Pre-Release	3	(41)	1	(2)	2	(27)	0	(0)
R.D.C.	0	(0)	1	(2)	0	(0)	0	(0)
Jails & Houses of Correction	0	(0)	0	(0)	0	(0)	0	(0)
Brooke House	0	(0)	1	(2)	0	(0)	0	(0)
Coolidge House	0	(0)	0	(0)	0	(0)	0	(0)
T.N.T.	0	(0)	0	(0)	0	(0)	0	(0)
Lancaster Pre-Release	1	(3)	0	(0)	0	(0)	0	(0)
S.E.C.C. Bridge- water	0	(0)	0	(0)	0	(0)	0	(0)
Deer Island DOC	0	(0)	0	(0)	0	(0)	0	(0)
Temp. Housing	0	(0)	0	(0)	0	(0)	0	(0)
699 House	0	(0)	0	(0)	0	(0)	0	(0)
Medfield Pre-Release	0	(0)	0	(0)	0	(0)	0	(0)
Hospitals	0	(0)	0	(0)	0	(0)	0	(0)
577 House	0	(0)	0	(0)	0	(0)	0	(0)
Third Nail	0	(0)	0	(0)	0	(0)	0	(0)
Meridian House	0	(0)	2	(5)	0	(0)	0	(0)
Shirley Pre-Release	0	(0)	1	(2)	3	(37)	0	(0)
Re-Arrest	0	(0)	0	(0)	0	(0)	0	(0)
Retnd.by judge on Probation	0	(0)	0	(0)	0	(0)	0	(0)
Trio House	0	(0)	0	(0)	0	(0)	0	(0)
DARC	0	(0)	0	(0)	0	(0)	0	(0)
Escaped	3	(11)	1	(2)	0	(0)	0	(0)
Removed for court, app.	0	(0)	0	(0)	0	(0)	0	(0)
Custody	0	(0)	0	(0)	0	(0)	0	(0)
TOTAL RELEASES	27	(100)	44	(100)	8	(100)	0	(0)

TABLE V

ADMISSIONS TO MASSACHUSETTS HALFWAY HOUSES, INC.
FOR 1976 PRE-RELEASE POPULATION MOVEMENT

ADMISSIONS	BROOKE HOUSE		TEMPORARY HOUSING		COOLIDGE HOUSE		699 HOUSE		DI DOC		577 HOUSE		METAC		BOSP		TOTAL	
	N	%	N	%	N	%	N	%	N	%	N	%	N	%	N	%	N	%
MCI Walpole	3	(6)	0	(0)	0	(0)	16	(24)	0	(0)	1	(4)	0	(0)	0	(0)	20	(8)
MCI Concord	9	(18)	1	(20)	10	(24)	20	(31)	7	(21)	8	(30)	0	(0)	0	(0)	55	(22)
MCI Norfolk	3	(6)	0	(0)	3	(8)	17	(27)	1	(3)	1	(4)	0	(0)	0	(0)	25	(10)
MCI Forestry	0	(0)	0	(0)	1	(2)	2	(3)	0	(0)	0	(0)	0	(0)	0	(0)	3	(1)
MCI Framingham	2	(4)	0	(0)	1	(2)	0	(0)	0	(0)	0	(0)	0	(0)	0	(0)	3	(1)
SECC Bridge-water	3	(6)	0	(0)	1	(2)	0	(0)	0	(0)	2	(6)	0	(0)	0	(0)	6	(3)
MCI Plymouth	6	(12)	1	(20)	3	(18)	1	(2)	0	(0)	0	(0)	0	(0)	0	(0)	11	(5)
MCI Monroe	0	(0)	0	(0)	0	(0)	1	(2)	0	(0)	0	(0)	0	(0)	0	(0)	1	(1)
Boston Pre-Release	14	(28)	0	(0)	4	(9)	0	(0)	0	(0)	0	(0)	0	(0)	0	(0)	18	(8)
Shirley Pre-Release	8	(16)	1	(20)	3	(8)	3	(5)	7	(21)	2	(6)	0	(0)	0	(0)	24	(9)
Norfolk Pre-Release	0	(0)	0	(0)	1	(2)	0	(0)	0	(0)	0	(0)	0	(0)	0	(0)	1	(1)
Roxbury	1	(1)	2	(40)	2	(5)	0	(0)	1	(3)	3	(11)	0	(0)	0	(0)	9	(3)
Medfield Pre-Release	0	(0)	0	(0)	0	(0)	0	(0)	0	(0)	1	(4)	0	(0)	0	(0)	1	(1)
Trio House	0	(0)	0	(0)	0	(0)	0	(0)	1	(3)	0	(0)	0	(0)	0	(0)	1	(1)
Meridian House	1	(1)	0	(0)	0	(0)	0	(0)	0	(0)	0	(0)	0	(0)	0	(0)	1	(1)
Lancaster Pre-Release	1	(1)	0	(0)	0	(0)	0	(0)	0	(0)	0	(0)	0	(0)	0	(0)	1	(1)
Jails & Houses of Correction	1	(1)	0	(0)	0	(0)	0	(0)	0	(0)	0	(0)	0	(0)	0	(0)	1	(1)
Returned from escape	0	(0)	0	(0)	12	(30)	4	(6)	16	(49)	8	(30)	5	(100)	12	(100)	58	(23)
TOTAL ADMISSIONS	52	(100)	5	(100)	41	(100)	64	(100)	33	(100)	27	(100)	5	(100)	12	(100)	239	(100)

-11-
TABLE VI

RELEASES FROM MASSACHUSETTS HALFWAY HOUSES, INC.
FOR 1976 PRE-RELEASE POPULATION MOVEMENT

	BROOKE HOUSE		TEMPORARY HOUSING		COOLIDGE HOUSE		699 HOUSE		DI DOC		577 HOUSE		METAC		BOSP		TOTAL	
	N	%	N	%	N	%	N	%	N	%	N	%	N	%	N	%	N	%
<u>RELEASES</u>																		
<u>Released By:</u>																		
Parole Board	30	(61)	5	(83)	29	(56)	45	(69)	17	(74)	18	(64)	2	(50)	9	(32)	155	(60)
G.C.D.	1	(2)	1	(17)	3	(6)	0	(0)	0	(0)	1	(4)	1	(25)	8	(28)	15	(5)
<u>RETURNED TO:</u>																		
MCI Walpole	1	(2)	0	(0)	1	(1)	6	(9)	0	(0)	0	(0)	0	(0)	0	(0)	8	(3)
MCI Concord	6	(12)	0	(0)	2	(4)	5	(8)	0	(0)	2	(7)	0	(0)	0	(0)	15	(5)
MCI Plymouth	1	(2)	0	(0)	1	(1)	0	(0)	0	(0)	0	(0)	0	(0)	0	(0)	2	(1)
MCI Monroe	0	(0)	0	(0)	0	(0)	0	(0)	0	(0)	3	(10)	0	(0)	0	(0)	3	(1)
Jails & Houses of Correction	0	(0)	0	(0)	10	(19)	0	(0)	1	(4)	1	(4)	0	(0)	4	(14)	16	(6)
Custody	0	(0)	0	(0)	2	(4)	1	(2)	1	(4)	0	(0)	0	(0)	0	(0)	4	(2)
<u>TRANSFERRED TO:</u>																		
Shirley Pre-Release	1	(2)	0	(0)	0	(0)	0	(0)	1	(4)	0	(0)	0	(0)	0	(0)	2	(1)
Boston Pre-Release	0	(0)	0	(0)	0	(0)	1	(2)	0	(0)	0	(0)	0	(0)	0	(0)	1	(1)
D.A.R.C.	1	(2)	0	(0)	0	(0)	0	(0)	0	(0)	0	(0)	0	(0)	0	(0)	1	(1)
Escaped	7	(15)	0	(0)	5	(9)	7	(10)	3	(14)	2	(7)	1	(25)	7	(26)	32	(12)
Re-Arrest	0	(0)	0	(0)	0	(0)	0	(0)	0	(0)	1	(4)	0	(0)	0	(0)	1	(1)
Ret. by Judge on Probation	1	(2)	0	(0)	0	(0)	0	(0)	0	(0)	0	(0)	0	(0)	0	(0)	1	(1)
TOTAL RELEASES	49	(100)	6	(100)	53	(100)	65	(100)	23	(100)	28	(100)	4	(100)	28	(100)	256	(100)

TABLE VII

1976 PRE-RELEASE POPULATION MOVEMENT
TOTAL PRE-RELEASE ADMISSIONS

RECEIVED FROM:	TOTAL PRE-RELEASE ADMISSIONS	
	N	%
MCI Walpole	48	(6)
MCI Concord	221	(28)
MCI Norfolk	106	(13)
MCI Framingham	33	(4)
MCI Forestry	27	(3)
MCI Plymouth	11	(1.3)
MCI Monroe	1	(.1)
S.E.C.C. Bridgewater	21	(3)
T.N.T.	47	(6)
Jails & Houses of Correction	64	(8)
Returned from Escape	16	(2)
D.A.R.C.	1	(.1)
Court Appearance	2	(.2)
R.D.C.	44	(6)
Hospital	3	(.3)
Deer Island	2	(.2)
Boston Pre-Release	19	(2.3)
R.C.R.C.	12	(2)
Returned from Furlough	1	(.1)
Lancaster Pre-Release	5	(.6)
Norfolk Pre-Release	8	(1)
699 House	1	(.1)
Shirley Pre-Release	90	(11.3)
Trio House	2	(.2)
Meridian House	1	(.1)
TOTAL ADMISSIONS	792	(100)

TABLE VIII

1976 PRE-RELEASE POPULATION MOVEMENT
TOTAL PRE-RELEASE RELEASES

RELEASED BY	TOTAL PRE-RELEASE RELEASES	
	N	%
Parole Board	307	(42)
Expiration of Sentence	7	(1)
G.C.D.	21	(3)
Released by Order of Court	1	(.1)
Sentence Revoked	1	(.1)
RETURNED TO		
MCI Walpole	42	(5.8)
MCI Concord	69	(9.4)
MCI Norfolk	7	(1)
MCI Framingham	10	(1.3)
MCI Forestry	1	(.1)
MCI Monroe	8	(1)
MCI Plymouth	7	(1)
Bridgewater State Hospital	1	(.1)
Norfolk Medical	2	(.2)
TRANSFERRED TO:		
Boston State	54	(7.3)
Norfolk Pre-Release	14	(2)
R.D.C.	3	(.3)
Jails & Houses of Correction	24	(3.2)
Brooke House	9	(1.2)
Coolidge House	9	(1.2)
T.N.T.	5	(.6)
Lancaster Pre-Release	20	(3)
S.E.C.C. Bridgewater	1	(.1)
Deer Island/DOC	4	(.5)
Temporary Housing	2	(.2)
699 House	2	(.2)
Medfield Pre-Release	2	(.2)
Hospitals	5	(.6)
577 House	2	(.2)
Third Nail	1	(.1)
Meridian House	2	(.2)
Shirley Pre-Release	6	(.7)
Re-Arrest	1	(.1)
Returned by Judge on Probation	1	(.1)
Trio House	1	(.1)
D.A.R.C.	1	(.1)
Escaped	76	(10.4)
Removed for Court Appearance	2	(.2)
Custody	4	(.4)
TOTAL RELEASES	735	(100.0)

TABLE IX

OVERALL POPULATION MOVEMENT TO AND FROM
MASSACHUSETTS HALFWAY HOUSES FOR 1976

POST RELEASE

	<u>BROOKE HOUSE</u>	<u>TEMP- ORARY HOUSING</u>	<u>COOL- IDGE HOUSE</u>	<u>699 HOUSE</u>	<u>DI DOC</u>	<u>577 HOUSE</u>	<u>METAC</u>	<u>BOSP</u>
Number in Resi- dence 12/27/75	9	3	4	5	0	0	0	0
Total Admissions during the year 1976	36	4	33	44	2	6	1	2
Total Releases During the Year 1976	36	4	35	46	2	3	2	2
Number in Resi- dence 12/25/76	9	0	2	3	0	3	0	0

ADMISSIONS TO MASSACHUSETTS HALFWAY
HOUSES INC. FOR 1976 POST RELEASE
POPULATION MOVEMENT

ADMISSIONS	BROOKE HOUSE		TEMPORARY HOUSING		COOLIDGE HOUSE		699 HOUSE		DI/ DOC		577 HOUSE		METAC		BOSP	
	N	%	N	%	N	%	N	%	N	%	N	%	N	%	N	%
<u>Received From:</u>																
MCI Walpole	7	(20)	1	(25)	4	(12)	0	(0)	0	(0)	0	(0)	0	(0)	0	(0)
MCI Concord	6	(17)	1	(25)	12	(37)	0	(0)	1	(50)	0	(0)	0	(0)	0	(0)
MCI Norfolk	4	(11)	1	(25)	2	(6)	0	(0)	0	(0)	0	(0)	0	(0)	0	(0)
MCI Framingham	3	(8)	0	(0)	0	(0)	0	(0)	0	(0)	0	(0)	0	(0)	0	(0)
SECC Bridgewater	4	(11)	0	(0)	0	(0)	0	(0)	0	(0)	0	(0)	0	(0)	0	(0)
MCI Plymouth	0	(0)	1	(25)	1	(30)	0	(0)	0	(0)	0	(0)	0	(0)	0	(0)
Jails & Houses of Correction	8	(23)	0	(0)	5	(15)	0	(0)	1	(50)	0	(0)	0	(0)	0	(0)
METAC Pre-Release	0	(0)	0	(0)	6	(18)	0	(0)	0	(0)	0	(0)	1	(100)	0	(0)
Temporary Housing	0	(0)	0	(0)	0	(0)	0	(0)	0	(0)	0	(0)	0	(0)	1	(50)
B.O.S.P. Pre-Release	0	(0)	0	(0)	0	(0)	0	(0)	0	(0)	0	(0)	0	(0)	1	(50)
Brooke House	3	(8)	0	(9)	0	(00)	0	(0)	0	(0)	0	(0)	0	(0)	0	(0)
699 House	0	(0)	0	(0)	0	(0)	42	(95)	0	(0)	0	(0)	0	(0)	0	(0)
Boston State Pre-Release	0	(0)	0	(0)	1	(3)	0	(0)	0	(0)	0	(0)	0	(0)	0	(0)
Coolidge House	0	(0)	0	(0)	2	(6)	0	(0)	0	(0)	0	(0)	0	(0)	0	(0)
577 House	0	(0)	0	(0)	0	(0)	0	(0)	0	(0)	5	(83)	0	(0)	0	(0)
D.A.R.C.	0	(0)	0	(0)	0	(0)	0	(0)	0	(0)	1	(17)	0	(0)	0	(0)
Returned from Escape	1	(3)	0	(0)	0	(0)	0	(0)	0	(0)	0	(0)	0	(0)	0	(0)
After Care	0	((0)	0	(0)	0	(0)	2	(5)	0	(0)	0	(0)	0	(0)	0	(0)
TOTAL ADMISSIONS	36	(100)	4	(100)	33	(100)	44	(100)	2	(100)	6	(100)	1	(100)	2	(100)

TABLE XI

RELEASES FROM MASSACHUSETTS HALFWAY
HOUSES INC. FOR 1976 POST RELEASE
POPULATION MOVEMENT

RELEASES	BROOKE HOUSE		TEMPORARY HOUSING		COOLIDGE HOUSE		699 HOUSE		DI/DOC		577 HOUSE		METAC		BOSP	
	N	%	N	%	N	%	N	%	N	%	N	%	N	%	N	%
Successful Completions	20	(56)	2	(50)	20	(58)	43	(94)	2	(100)	3	(100)	0	(0)	2	(100)
A.W.O.L.	8	(22)	0	(0)	6	(18)	2	(40)	0	(0)	0	(0)	0	(0)	0	(0)
Program Transfer	2	(6)	0	(0)	3	(8)	1	(2)	0	(0)	0	(0)	2	(100)	0	(0)
Returned to Custody	2	(6)	0	(0)	0	(0)	0	(0)	0	(0)	0	(0)	0	(0)	0	(0)
Failure to Adjust	3	(8)	1	(25)	3	(8)	0	(0)	0	(0)	0	(0)	0	(0)	0	(0)
15 Day Detainer	1	(2)	0	(0)	0	(0)	0	(0)	0	(0)	0	(0)	0	(0)	0	(0)
Re-Arrest	0	(0)	1	(25)	3	(8)	0	(0)	0	(0)	0	(0)	0	(0)	0	(0)
TOTAL RELEASES	36	(100)	4	(100)	35	(100)	46	(100)	2	(100)	3	(100)	2	(100)	2	(100)

TABLE XII

12/75 TO 12/76 CRS RESIDENT COUNT COMPARISON

	PRE-RELEASE CLIENTS		POST RELEASE CLIENTS		TOTAL CLIENTS	
	12/75	12/76	12/75	12/76	12/75	12/76
Boston State	51	53	0	0	51	53
Shirley	68	97	0	0	68	97
Charlotte House	8	6	0	0	8	6
Roxbury	12	0	2	0	14	0
Norfolk Pre Release	22	27	0	0	22	27
Brooke House	13	16	9	9	22	25
Coolidge House	6	11	4	2	10	13
Temporary Housing	16	0	3	0	19	0
699 House	10	9	5	3	15	12
DI/DOC	6	0	0	0	6	0
Lancaster Pre-Release	0	30	0	0	0	30
Medfield Pre-Release	0	23	0	0	0	23
Framingham Pre-Release	0	32	0	0	0	32
METAC	0	0	0	0	0	0
BOSP	0	0	0	0	0	0
577 House	0	13	0	3	0	16
TOTAL	212	317	23	17	236	334

TABLE XIII

SUMMARY OF POPULATION STATISTICS
SINCE IMPLEMENTATION OF PRE RELEASE PROGRAM

	1973 - 12/29	1974 - 12/28	1975 - 12/27	1976 - 12/25
Total Institutional Population	2,031	2,057	2,278	2,685
Total Pre-Release Clients	100	131	212	317
Percentage of The Total Population Who were recorded as Pre-Release Clients	3.5%	4.8%	7.2%	11.8%

CONCLUSION

The year 1976 marked the opening of three pre-release facilities. Lancaster Pre-Release located in Lancaster, Massachusetts opened in January. In December, it held more pre-release clients (30) than did Coolidge House (11) and Charlotte House (6) combined. The two other facilities that opened were Medfield Pre-Release - which opened in August and had 23 pre-release clients on the last day of December, 1976 and Framingham Pre-Release which opened in December, 1976 and started out with 32 pre-release clients.

Because of the steady rate of prison overcrowding, there is a continuing trend in the increasing number of individuals reaching pre-release status. To accomodate large amounts of pre-release clients, six new pre-release centers (including the three mentioned above) have opened over the past two years. Comparing statistics for the years 1973, 1974, 1975 and 1976 the pre-release population increased from 100, to 131 to 212 to 317 for those respective years.

Also comparing the total pre-release population with the total institutional population for those same years, the percentage of the pre-release clients has increased from 3.5% to 4.8% to 7.2% to 11.8%. These figures show that even though the total institutional population has increased from 2031 to 2057 to 2278 to 2685, more and more clients within 18 months of their parole are achieving pre-release status. These figures are summarized in Table XIII.

END