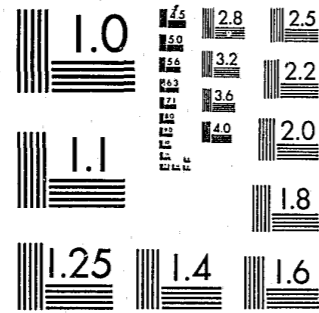


National Criminal Justice Reference Service



This microfiche was produced from documents received for inclusion in the NCJRS data base. Since NCJRS cannot exercise control over the physical condition of the documents submitted, the individual frame quality will vary. The resolution chart on this frame may be used to evaluate the document quality.



MICROCOPY RESOLUTION TEST CHART
NATIONAL BUREAU OF STANDARDS-1963-A

Microfilming procedures used to create this fiche comply with the standards set forth in 41CFR 101-11.504.

Points of view or opinions stated in this document are those of the author(s) and do not represent the official position or policies of the U. S. Department of Justice.

National Institute of Justice
United States Department of Justice
Washington, D. C. 20531

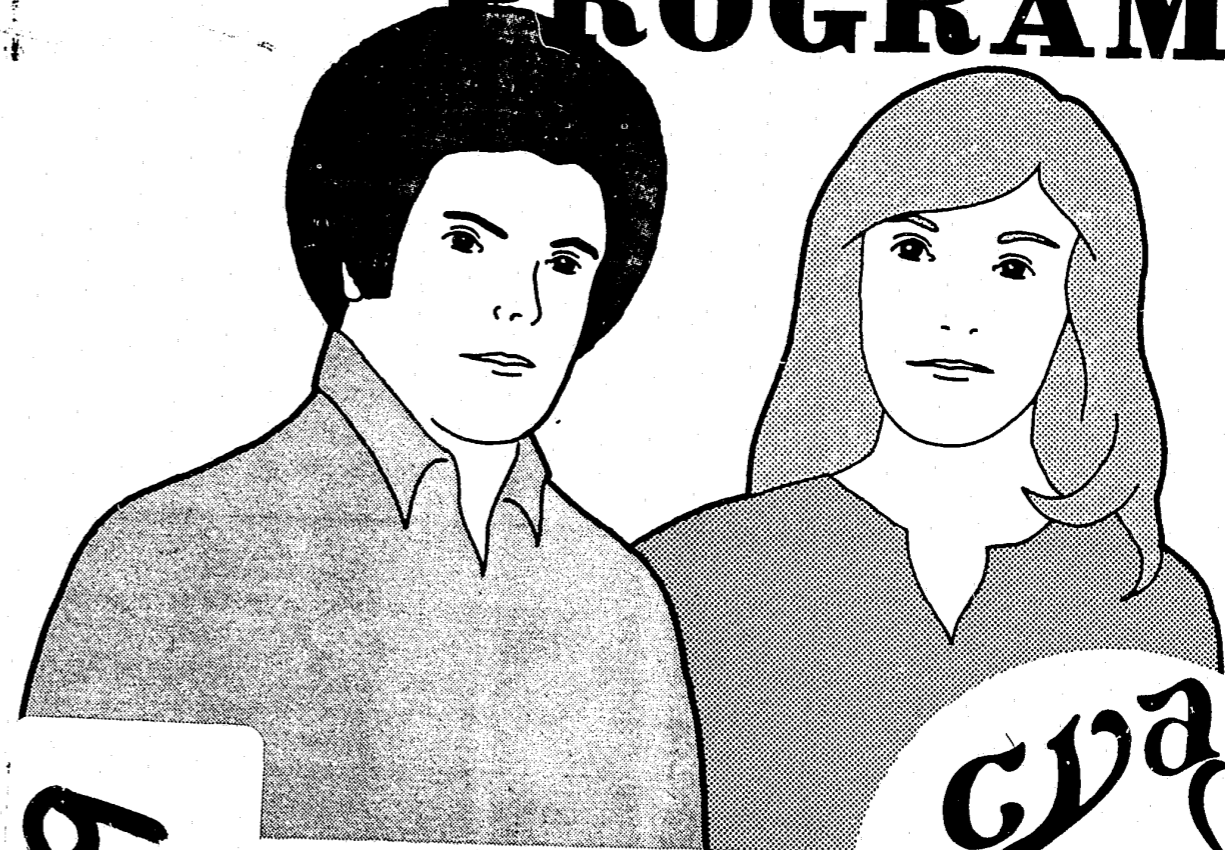
DATE FILMED

12/28/81

Cor
ChY
C

MFY

A GUIDE TO TREATMENT PROGRAMS



75629

October 1977



CALIFORNIA
YOUTH AUTHORITY

MF 1

State of California

EDMUND G. BROWN JR.
GOVERNOR

Health and Welfare Agency

MARIO OBLEDO
SECRETARY



Department of the

Youth Authority

PEARL S. WEST,
DIRECTOR

ROBERT H. MABBUTT,
CHIEF DEPUTY DIRECTOR

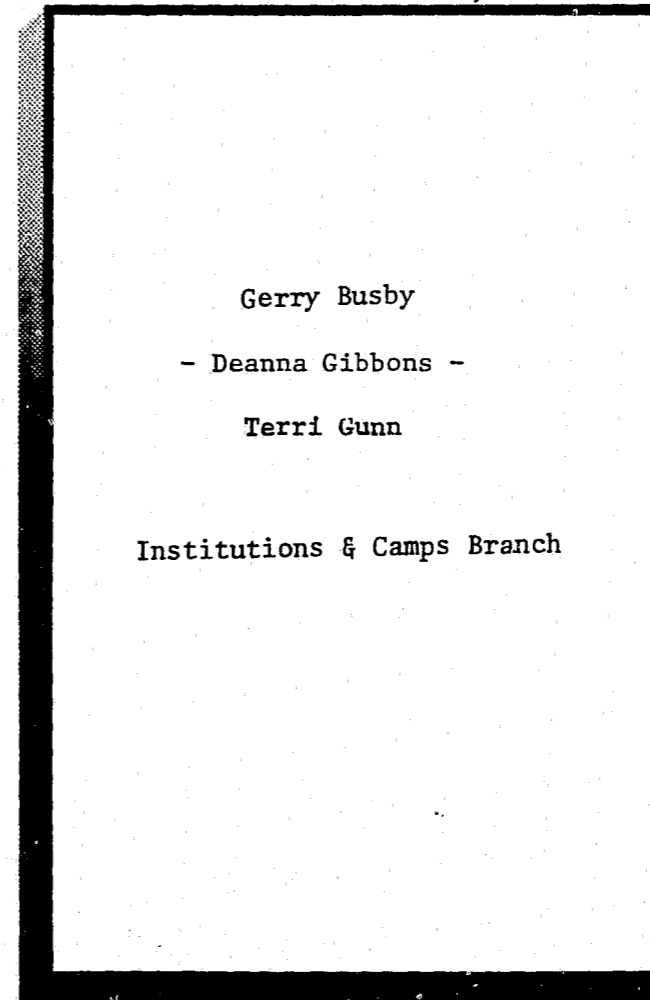
JAMES C. BARNETT,
DEPUTY DIRECTOR
PREVENTION AND COMMUNITY
CORRECTIONS BRANCH

RUTH E. KRANOVICH,
DEPUTY DIRECTOR
PAROLE SERVICES BRANCH

CHARLES A. KUHL,
DEPUTY DIRECTOR
INSTITUTIONS AND CAMPS BRANCH

FREDERICK F. MILLS,
DEPUTY DIRECTOR
PLANNING, RESEARCH, EVALUATION
AND DEVELOPMENT BRANCH

GEORGE R. ROBERTS,
DEPUTY DIRECTOR
MANAGEMENT SERVICES BRANCH



Gerry Busby

- Deanna Gibbons -

Terri Gunn

Institutions & Camps Branch

U.S. Department of Justice
National Institute of Justice

75629

This document has been reproduced exactly as received from the person or organization originating it. Points of view or opinions stated in this document are those of the authors and do not necessarily represent the official position or policies of the National Institute of Justice.

Permission to reproduce this copyrighted material in microfiche only has been granted by

Mr. Thomas McGee

to the National Criminal Justice Reference Service (NCJRS).

Further reproduction outside of the NCJRS system requires permission of the copyright owner.

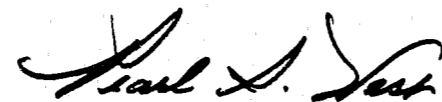
FOREWORD

The Department of the Youth Authority offers a variety of programs in its institutions, camps and parole services to help prepare wards for their return to the community and to succeed in law-abiding ways when they are back in the community.

These programs are periodically revised to meet the needs of changing times and a changing ward population. Programs are terminated when they no longer meet their objectives and new ones are implemented to meet the changing requirements of our ward population and the society which we serve and strive to protect. This publication, "Guide to Treatment Programs," is revised as needed to reflect ongoing program activity in as accurate and up-to-date manner as possible.

Although the program statements in this publication are extremely useful in describing the broad range of Departmental program activities, readers should realize that the statements are necessarily condensed overviews of what is taking place within the Youth Authority.

I would like to invite judges and others with a professional concern for the commitment of youths to our treatment programs, to feel free to contact my office for additional information or to arrange to visit the institutional and parole facilities where the program activities are taking place.



Pearl S. West, Director
Department of the Youth Authority

October 1977

TABLE OF CONTENTS

Institutions and Camps	1
Northern Reception Center-Clinic	2
Southern Reception Center-Clinic	6
O. H. Close School	8
Fred C. Nelles School	11
Karl Holton School	13
El Paso de Robles School	16
Ventura School	18
DeWitt Nelson Training Center	20
Preston School of Industry	23
Youth Training School	29
Youth Conservation Camps	35
Ben Lomond, Mt. Bullion, Pine Grove, Oak Glen, Washington Ridge	
Other Facilities Available to Youth Authority Wards	38
Deuel Vocational Institute	39
California Rehabilitation Center	40
California Institute for Women	41
California Medical Facility	42
Atascadero State Hospital	43
Patton State Hospital	44
Parole Services	45
Regular Parole Programs	46
Interstate Services Unit	47
Community Parole Centers	48
Stockton, Watts, Jefferson, Ujima, Esperanza	

TABLE OF CONTENTS (continued)

San Francisco Parole Services Project50
Park Centre Settlement House52
S.P.A.C.E.54
Tri-County Project56
JOBS57
Gang Violence Reduction Project58
Citizen's Initiative Parole Re-entry Project59
Map showing locations60

INSTITUTIONS AND CAMPS

The Youth Authority Institutions and Camps have the primary objective of providing a safe, secure and normal environment coupled with quality care and supervision to each resident during their period of confinement. Each program described in this publication is unique in style and presentation and meets the diversified needs of Departmental clientele. Courts may recommend a specific program, but the Youth Authority retains assignment jurisdiction regarding placement. The reader is encouraged to contact each facility if further information is desired.

NORTHERN RECEPTION CENTER-CLINIC

3001 Ramona Avenue
Sacramento, California 95826

(916) 452-1411

I. Program Statement - General

Population: 270. The Northern Reception Center-Clinic receives new commitments to the Youth Authority from the juvenile and adult courts in northern and central California. Specialized services are offered to children and youths received from counties, from other states, from Youth Authority institutions, and parole. The Northern Reception Center-Clinic's primary service is diagnosis. This service is provided both to wards committed to the Youth Authority by the juvenile and criminal courts and to youths referred by the county juvenile courts. Specialized medical, psychiatric, dental, and treatment services are provided for wards on transfer from other Youth Authority institutions and camps, parole violators, and parolees on temporary detention. Two long-term treatment programs are also maintained, which are described under "Programs - Specific."

II. Programs - Specific

A. Reception Program

The Reception Program initiates the treatment continuum for wards committed to the Youth Authority. The program is composed of four 47-bed living units. The Social Worker/Parole Agent acts as a case manager in the development of a clinical report which contains a complete analysis of a ward's behavior, with recommendations for treatment. In addition to a complete psycho-social and medical evaluation, educational testing is conducted to determine levels of ability in reading and comprehension. Psychological and psychiatric evaluations are conducted when further information is needed in formulating a diagnostic impression or treatment plan. Written reports are prepared in each of these areas with a staffing team and the ward meeting together to review all the material at hand. The staffing team compiles these evaluations into a comprehensive clinical findings and recommendations report. The ward then appears before the Youth Authority Board for final disposition. The entire reception-diagnostic process is completed within 28 days.

B. Cheyenne Coeducational Treatment Program

The Cheyenne Coeducational Treatment Program is a 35-bed unit designed for selected male (11) and female (15) residents from juvenile and adult courts in central and northern California. The female residents are prescreened and receive their diagnostic workup from Cheyenne

NORTHERN RECEPTION CENTER-CLINIC (continued)

Lodge staff. Male residents are screened from the Reception Program after completion of their diagnostic process.

The program has a four-phase system which is designed to provide the residents immediate positive reinforcement and a gauge with which to measure their progress. As the residents advance, they receive more privileges and responsibilities.

Counseling, academic and community involvement are the major program components. Residents are provided with an opportunity to maintain or re-establish family ties with parents or their children; receive their high school diploma, high school proficiency certificate, or GED certificate; counseling to help them with their personal and interpersonal problems; and to maximize the utilization of community resources (day passes, off-campus trips, training furloughs, etc.)

A combination of Transactional Analysis and Behavior Modification is the treatment mode utilized by the team. Psychiatric services are also available.

C. Wintu Lodge Intensive Treatment Program

Wintu Lodge is a 40-bed voluntary intensive counseling and educational program designed for emotionally disturbed but highly motivated wards committed to the Youth Authority by the juvenile courts.

The Program involves an innovative combination of Transactional Analysis and Behavior Modification as the treatment model. Staff meet with wards in three-times-weekly small group treatment sessions in addition to individual and large group counseling. Wards are encouraged to set specific goals in their therapy work and school programs. The school endeavor is related to earning credits and raising their academic level.

D. Medical Services

The 19-bed hospital and outpatient clinic is staffed by physicians, graduate nurses, a laboratory technician, an X-ray/EEG technician, and Medical Technical Assistants. Medical specialists and facilities in the Sacramento area are used to complement NRCC's resources in providing a wide range of medical, psychiatric, and dental diagnostic and treatment services to wards.

E. Specialized Services

NRCC receives parole violators from Parole Regions I and II awaiting parole revocation hearings. Temporary detention care is also provided for parolees for a period of up to 30 days per year. Emergency medical,

NORTHERN RECEPTION CENTER-CLINIC (continued)

psychiatric, and dental care is provided for wards transferred to NRCC from northern institutions and camps. As quickly as these services are completed, the ward is returned to the institution or camp from which he was transferred.

III. Educational Program

The educational program services the educational needs of wards assigned to the three major programs operated at the Northern Reception Center-Clinic. Students assigned to the Reception Program are provided achievement, vocational, and I-Level testing. The pupils who are assigned to the Cheyenne Coeducational Program are offered instruction in the basic skill subjects (reading, language, arts, and arithmetic). The students needing remedial instruction in these subjects are given supplementary instruction. Cheyenne students are also provided instruction in English, history, government, state requirements, multi-cultural studies, mathematics, home economics, and physical education.

Students assigned to the Wintu Program are offered classes in regular high school subjects, remedial reading, remedial language arts and remedial arithmetic, and arts and crafts. Students assigned to arts and crafts are afforded additional help and instruction by art therapist interns from a nearby university. Wards with severe reading difficulties are given additional assistance by volunteers provided by the Sacramento Literacy Program.

IV. Special Programs

A. Volunteer Services Program

The NRCC volunteer program is included in all dormitories and provides services which supplement and enrich those provided through departmental resources. Community volunteers of any age (over 18) serve in roles of recreation aid, program aid, counselor aid, tutor, art therapist, and religious counselor and minister. The volunteer program is coordinated by the Coordinator of Special Services; and after screening, orientation and assignment, each volunteer is trained and supervised by a person in the living unit who is responsible for volunteers. Religious volunteers are screened and approved by the Protestant Chaplain.

V. Community Adjustment

The two residential programs in which wards are directly paroled to the community are Wintu and Cheyenne. A Wintu resident who successfully completes his education and treatment contracts will have brought his academic level up to that of his age group's or have sufficient educational successes to equip him for continuing education. He will also be able to take full responsibility for his own behavior and feelings and be capable of successful

NORTHERN RECEPTION CENTER-CLINIC (continued)

interpersonal relationships with others. He will gain the capabilities to function as a responsible adult in the community.

A Cheyenne resident who has successfully completed his/her program is able to join the community as a responsible adult.

SOUTHERN RECEPTION CENTER-CLINIC

13200 South Bloomfield Avenue
Norwalk, California 90650

(213) 868-9979

I. Program Statement - General

Population: 320. All male juvenile and adult court commitments to the Youth Authority from the southern California area are sent to the Southern Reception Center-Clinic for diagnosis and classification prior to transfer to training schools or release on parole. The program provides remedial medical, dental treatment and initial diagnostic study. Approximately 230 wards are involved in the diagnostic process while 90 are in two special-purpose programs described below.

II. Program Statement - Specific

A. Reception Program

The receiving/diagnostic unit (Gibbs) is the entry unit where all wards received as new commitments spend the first seven days. Orientation Classification, Academic Achievement testing, Instruction in Grievance Procedure and the Disciplinary Decision-Making System takes place during this time. After seven days, the wards are reassigned to various units based on court commitment, age, size, maturity, etc.

B. Intensive Treatment Program

Population: 40 young men. This program provides intensive residential psychotherapy, behavioral therapy, educational and occupational therapy to severely emotionally and behaviorally disturbed Los Angeles County youths who are committed to the Youth Authority and are 14 through 21 years of age. Acceptance into the program is based upon a psychiatric and/or psychological evaluation that the ward is emotionally disturbed and at least minimally able to accept and respond to a therapeutic treatment approach. The program provides long-term residential treatment for thirty wards, crisis intervention for five wards on parole or in a Youth Authority institution and transitional services for five wards on pre-parole status.

A variety of treatment approaches are used as a function of the wards' needs. This includes individual and group psychotherapy, chemotherapy, behavioral therapy, bio-feedback training, and reality therapy among others. The individualized therapeutic treatment strategies are developed by the treatment staff to meet the specific needs of the ward.

SOUTHERN RECEPTION CENTER - CLINIC (continued)

C. Drake Program

Population: 50 young men. The Drake Unit Program provides facilities for the temporary housing and programming of assigned wards. These wards are those whose parole status has been suspended pending revocation, restoration, or change in placement; therapeutic temporary detention wards from parole field services; and severe local institutional adjustment problems. During their detention, recreation, work assignments, group counseling, and activity programs are provided.

D. Contract Cases

Absorbed within the general population are a number of contract cases-- those cases referred by the courts for diagnostic studies for 90 days or less. At any one time, SRCC may have from 20 to 50 such cases in process. Upon completion of the diagnostic studies, the wards are returned to the respective courts with recommendations by staff.

III. Educational Program

A. Academic

The school program attempts to remedy basic educational needs of each ward. This encompasses the teaching of basic skills needed for attaining junior high school and high school diplomas. Classes also attempt to remedy specific psychoeducational difficulties due to perceptual motor deficiencies, organic impairment and emotional disorders. Psycho-social and psychiatric treatment needs of the patient are interwoven in the educational program as equally important objective of the school program.

B. Vocational

The arts and crafts classroom provides a workshop experience in order to provide wards with basic work skills. The major emphasis of this program is prevocational experiences through the industrial arts milieu. The arts and crafts program is an integral part of the Intensive Treatment Program.

IV. Community Adjustment

The success of the young men in the Intensive Treatment Program is measured by their emotional ability to cope with community living. Community resources are actively engaged by institution staff to assist these young men in their transition period from the institution to parole.

O. H. CLOSE SCHOOL

7650 South Newcastle Road
P.O. Box 5500
Stockton, California 95205

I. Program Statement - General

Population: 345. This is a training school which provides an academic and treatment program for males from Northern California in the 13 to 16 age range. Wards are assigned to six residence halls according to their geographical origin and/or eventual parole destination. A seventh hall houses the younger ward program for wards ages 12-16 (see below). An eighth hall houses the Student Aide Program (see below). Staff is organized into semi-autonomous hall treatment teams which use Participative Management as their management model, involving joint participation of wards and staff at critical decision-making points. The goals of Participative Management include: The creation of a climate of fairness, normalcy, and greater safety within which treatment resources can be administered more effectively; teaching wards to function within the school's justice system; and teaching them to make responsible decisions and stand by them.

The severely aggressive, delinquently sophisticated, and mature ward should not be considered for placement at O. H. Close School due to the open program, emphasis on off-campus activities, and limited security housing.

II. Program Statement - Specific

A. Student Aide Program

Twenty-five older Youth Authority wards, carefully selected from the Northern Reception Center-Clinic or from other Youth Authority institutions, are in a program to give assistance to staff in the areas of classroom teaching, small treatment groups, recreation, and other institutional programs for students. The ward aides are assigned to the various remedial reading and math specialty teachers, as well as to specific areas on the program. They attend school for their own education and are members of small therapy groups. This training and experience is designed to prepare them for eventual work in the human services area.

B. Younger Ward Program

This program provides treatment for the youngest, most immature male wards committed to the Youth Authority. Twenty-five beds are available for young men, 12 through 16 years of age, who need a protective environment. Specific criteria for eligibility include one or more of the following: (1) wards who are twelve years of age; (2) immature and passive wards who need to live among less aggressive peers; (3) emotionally disturbed wards who have special program needs.

O. H. CLOSE SCHOOL (continued)

The more delinquently oriented and aggressive young men, 13 years of age or older will be diverted to other O. H. Close programs because they would tend to be disruptive in a program for less aggressive younger wards.

III. Educational Programs

The educational program is an integral part of the treatment program. Remedial and high school education is offered at O. H. Close School. Two academic teachers and one shop teacher are assigned to each fifty-bed residence hall. There are seven small three-teacher schools within the institution with this system.

Each teaching team is semidepartmentalized with all students getting an equal amount of time in all programs. The stress is on the basic subjects, however, the individual student's needs are kept in mind when setting his educational goals and preparing him to return to public school. Supplementary services are provided in remedial reading and remedial math through ESEA.

IV. Treatment Program

A variety of treatment methods and tools are available; however, Transactional Analysis is the major treatment and training method used by the institution. Within the broad framework of Transactional Analysis, the School's treatment activities are formulated and carried out by each of the treatment teams.

The services of several psychiatrists are available on a consultant basis. Direct services are offered to wards in the form of psychotherapy which supplements the team's treatment efforts. Individual counseling on the units is available at all times. Wards are required to attend one small group meeting each week.

V. Special Programs

A. Teacher Corps

O. H. Close has one of ten federally funded Teacher Corps Projects which have the special designation of youth advocacy projects. The program trains teacher interns to become effective teachers in a correctional/public school setting. It offers retraining for experienced teachers. Through liaison with the local school system, the Teacher Corps strengthens the re-entry process for parolees in the Stockton area.

B. Foster Grandparent Program

An extensive use of volunteer services in the community is being explored with projects such as the Foster Grandparent Program. Eighteen foster grandparents participate in the treatment program by spending 20 hours

O. H. CLOSE SCHOOL (continued)

per week in the residence halls to provide counsel to wards who in many cases have no families.

The benefits of this program are twofold: 1) the wards have someone from the community to relate to and are the recipients of the grandparent's experience, training, and counsel; 2) the grandparents, many of whom are unable to obtain other employment, are provided with something worthwhile to do.

C. Student Field Placements

O. H. Close is the site for a variety of student placements. This has included students from nearby junior colleges as well as four-year colleges and graduate students from the School of Social Work at California State University, Sacramento. The number of student placements and the depth of involvement have remained flexible according to the needs of the nearby campuses.

VI. Short-term Programs

This school has recently developed a short-term program aimed at substantially benefiting offenders who will be incarcerated for a period of 60-180 days. O. H. Close has the resources to provide a variety of individualized programs for these short-term cases including high school, remedial, and survival education; work experience; prevocational testing and shop training.

The institution treatment team will be able to work closely with parole staff with these cases. Such special parole programs as the Outward Bound Program of the Stockton Community Parole Center would be available to the team.

VII. Community Adjustment

This school provides continuing education to attain the goal of a high school diploma or the passing of GED requirements to increase employment prospects upon release. Those students that successfully complete the O. H. Close program are capable of responsible decision-making, which will assist in success on the job and in an educational setting.

FRED C. NELLES SCHOOL

11850 E. Whittier Boulevard
Whittier, California 90601

(213) 698-6781

I. Program Statement - General

Population: 340. This is a training school for young men ranging in age from 13 through 16 years of age committed by the juvenile courts of Southern California. Emphasis is on academic programming and prevocational training. The entire population is involved in a Behavioral Modification program using the principles of operant learning through contingency management. Wards and staff enter into contracts which are used to develop alternatives to delinquent behavior. Successful completion of a behavioral contract results in progress toward stated treatment objectives and release on parole.

The location in a metropolitan area provides the opportunity for community involvement and off-campus activities which gives the ward experience he might not have had otherwise.

Severe, chronic runaways are not placed at Nelles as physical security is a problem due to the urban location. Large severely aggressive wards will not be assigned to Fred C. Nelles School.

II. Program Statement - Specific

A. Cottages

There are four 40-ward cottages housing wards with long continuances and wards not amenable to short-term programs. These cottages include landscape gardening, small appliance repair, and institutional maintenance programs. Wards assigned to food service jobs are also included among this group.

One 40-ward and four 30-ward cottages house the short-term cases. The programs of these cottages include upholstery, small engine repair, and institutional maintenance. One cottage is primarily for drug abusers, which includes counseling, information giving, and the utilization of community resources.

III. Educational Program

A. Academic

The school is ungraded with a team of teachers assigned to each living unit with the exception of the kitchen cottage which has one teacher

FRED C. NELLES SCHOOL (continued)

assigned. Academic programs are flexible and designed to meet the specific needs of differing students. A reading specialist is available to consult with and assist classroom teachers. The reading specialist also works directly with selected wards. A mathematics specialist is available to assist classroom teachers and shop instructors in the development of materials to meet students' needs. Driver education is provided for selected wards. A reading laboratory designed to assist selected students most deficient in reading skills is available; also available is a language laboratory to assist selected students who are deficient in language and communication skills.

B. Vocational

Fred C. Nelles provides a diversified prevocational training program including shop, horticulture, landscape gardening, small appliance repair, small gasoline engine maintenance and repair, upholstery repair, elementary arc and gas welding, and blueprint reading.

IV. Treatment Program

Intensive counseling is provided by a psychiatrist and two clinical psychologists. Individual counseling on the unit is provided at all times. Small group counseling sessions generally meet once a week. Large groups consisting of all of the wards assigned to a cottage meet at need.

V. Short-term Program

One 35-ward short-term cottage is reserved for wards whose maximum detention time is limited and whose length of program will be from 60 to 180 days. Intensified training under the direction of professional staff will be provided in the areas of communication, self-assertion and concept deficiencies. Workshops in these areas are held for each ward on a scheduled basis. Ward/staff ratios are enriched for custody and treatment purposes.

The academic program is staffed by two teachers and is geared toward the "survival" skills needed by the wards. In addition, emphasis will be placed on communication and reading skills.

VI. Community Adjustment

Those students who have completed the remedial program shall have learned basic academic skills which equip them to deal with the routine management of everyday living. Students who have completed the contingency management program can be expected to better manage their behavior and have a more complete understanding of the cause and effect of their activity patterns.

KARL HOLTON SCHOOL

7650 South Newcastle Road
P. O. Box 5600
Stockton, California 95206

(209) 944-6331

I. Program Statement - General

Population: 340. This is a training school for young men with an approximate age range of 16 through 21. Karl Holton's program is primarily academic. It also affords the opportunity for off-grounds trips, day pass privileges and training furloughs. The institution is organized along the treatment team model with each of the seven living units (six - open dorm) operating relatively autonomously. All wards are classified according to I-Level and housed differentially; a specific treatment approach for each ward using Contingency Management (based on learning principles) has been developed. Only limited, short-term detention housing is made available by conversion of two of the individual rooms in the center of each dormitory for this purpose.

No maximum security housing is available. Due to the use of off-campus activities and the limited security housing available, the highly aggressive or delinquently sophisticated ward will be considered for alternate placement.

II. Program Statement - Specific

The education program at the school involves the assignment of an Educational Coordinator to each residence hall. This person coordinates all programs for the wards on that hall and teaches those wards some of the basic subjects. Additionally, that person spends approximately 7 hours each week participating in the living unit treatment team activities. All other educational programming is on an individualized basis with wards being enrolled as their individual needs dictate.

A. Academic

This school offers academic services on the remedial, high school, and junior college level.

Karl Holton provides approximately 18 months of full basic college programming. After that period of time, course options are more limited. A small, very select group of wards may be approved for programming on the Delta College Campus. Those students accepted for this programming must have a minimum of 8.0 reading comprehension score; be a high school graduate, age 18, or have passed the GED or High School Proficiency Tests; have the motivation to continue education beyond the high school level; have the social maturity to function well in a college program with its open setting.

B. Vocational

Vocationally, Karl Holton School offers training in auto mechanics, landscape gardening, vocational and occupational guidance, and business education. Specialized education is also offered through such training as Survival Education and Job Survival Skill Training.

III. Treatment Programs

Psychiatric service in the form of evaluation, diagnosis and consultation is provided with limited treatment service provided by a resident psychiatrist. Individual counseling is available at all times. Group counseling is available on an "as needed" basis. Small group counseling and large group meetings are used to enhance the treatment program of each individual living unit. These groups may include but are not limited to community-based drug groups, Rational Behavior Therapy groups, Assertion Training groups, and the sharing/giving of information in large community meetings.

IV. Special Programs

A. Foster Grandparent Program

A varied number of foster grandparents participate in the treatment program by spending 20 hours per week in assigned living units to provide support and counsel to the wards in that living unit.

The benefits from this program are twofold: the wards have someone from the community to relate to and are the recipients of the grandparents' experience, training and counsel; and the grandparents, many of whom are unable to obtain other employment, are provided with something worthwhile to do, which restores their feeling of worth.

B. M-2 Program

A volunteer program which matches M-2 (Man-to-Man) sponsors with wards who have little or no community contacts. The program is on a one-to-one basis and provides a visit at least once a month and other community contacts with the sponsor. Where possible, the M-2 sponsor maintains the relationship with the ward during initial parole adjustment and often assists in finding employment, school opportunities, etc.

V. Short-term Program

This school has recently developed a short-term program aimed at providing practical learning experience in a minimal period of time with the objective of motivating wards to perform an assigned activity and to minimize delinquent contact by long-term commitments. This program will specifically:

- (1) Provide a street survival orientation training experience. This training will be expected to minimize conflict with authorities and enhance success in school and employment.

- (2) Minimize penetration into traditional institution subcultures.
- (3) Wards will be assigned to existing occupational exploration of programs which provide them basic information about a variety of vocational fields.
- (4) Vocational shop programs will be provided for those wards already possessing some basic skills and interests in these areas.
- (5) Volunteer services will be provided in a variety of areas including consumer skills, budgeting, housekeeping and other appropriate interests.
- (6) Employee preparedness class will be offered dealing with self assessment, gaining information on existing job experience, completing employment applications, employment interviews and related areas.
- (7) Projects will be offered involving a variety of service activities in the local community.

The accent on service to these short-term wards will be to make program participation attractive by providing an enriched variety of activities not normally available to long-term commitments. This will serve to both accelerate the training experience and to isolate short-term wards during non-school hours.

VI. Community Adjustment

This school provides continuing education to attain the goal of a high school diploma or passing the GED requirements to increase employment prospects upon release.

Those students that have completed the remedial program shall have learned basic academic skills which equip them to deal with the routine management of everyday living. Students in the process of going through the high school or college program are able to continue in a public school and in their community at a level commensurate with their chronological age.

Students who have completed the contingency management program can be expected to better manage their behavior and have a more complete understanding of the cause and effect of their activity patterns.

EL PASO DE ROBLES SCHOOL

Drawer B
Paso Robles, California 93446

(805) 238-4040

I. Program Statement - General

Population: 405. El Paso de Robles School offers eight treatment programs for male Youth Authority wards, ages 16 through 21. The majority are involved in an academic program; however, several work experience programs are available. Individual and Group Counseling is provided utilizing several recognized modalities; i.e., Transactional Analysis, Reality Therapy, Behavior Modification. Specialized counseling is also available for wards with drug and alcohol abuse problems.

Older, delinquent, sophisticated wards committed from criminal courts who have lengthy continuances and will require a very secure setting for a relatively long period of time will not be considered for placement at El Paso de Robles School.

II. Program Statement - Specific

There are eight cottages of which five are designed for the 16 through 21 year-old wards. Three of these five cottages place emphasis on educational achievement for wards of a variety of educational backgrounds ranging from high school through college. The objective of these programs is for wards to accept individual responsibility and to obtain the ability to see the cause and effect arising from their actions. The remaining two cottages, for 16 through 21 years, have specialized programs. One program combines a high school education with a pre-forestry training program. The second program is unique in that it provides two services for the El Paso de Robles School. These are: (1) A Temporary Detention facility; and (2), an Intensive Treatment Program designed to treat physically assaultive, escape prone, intractable and unmanageable wards who have demonstrated by their behavior that they are unwilling or unable to productively participate in an open-dorm or less structured program.

Two cottages are designed for the 17 through 21 year-old wards. Both are work oriented programs. One is the institutional culinary vocational preparedness program. The second is the institutional based conservation camp program. The program population is designed to provide three hand crews to fight fires and work on construction-oriented projects for the Department of Forestry. The program additionally provides a full academic program on a tutorial basis during off hours.

One cottage is designed for the 18 through 21 year-old wards. This unit is primarily a work experience program which provides wards the opportunity to acquire skills working with various tradesmen and teachers in the education department. Through intensive job counseling, most wards are paroled from the unit with definite employment possibilities.

EL PASO DE ROBLES SCHOOL (continued)

The cottage's secondary assignment is to provide a one-week orientation service for all new wards entering the institution in order to expose these wards to the resources of the institution.

III. Educational Program

The Education Program at El Paso de Robles School is called the MONTA Program which stands for Management of New Teaching Alternatives. This program is designed around a three-week semester with students assigned to a particular teacher and subject matter five periods a day for three weeks; and, at the end of three weeks, students should be able to successfully complete a semester's work. The total curriculum provides the necessary courses to complete high school graduation and to prepare those students who function above the 8th grade level and who are 18 years of age or older, the opportunity to prepare and take the GED test. In addition, each semester four college courses are provided that are contracted through the local community college district. The focus of the education program is aimed at the earliest possible completion of high school graduation, completing GED tests and the remediation of education skill deficiencies as noted by the Test of Adult Basic Education.

IV. Treatment Program

A full-time Clinical Psychologist provides diagnostic services, individual and group therapy and psychological consultation. Treatment modalities utilized on the individual cottages are Reality Therapy, Behavior Modification and Transactional Analysis.

VENTURA SCHOOL

3001 Wright Road
Camarillo, California 93010

(805) 485-7951

I. Program Statement - General

Population: 410. The Ventura Reception Center-Clinic provides diagnostic and processing services for male and female youths from the Southern California area prior to their transfer to another training school.

The main campus is a coeducational training school for female commitments of all ages with a median age of 18.1 and male commitments with a median age of 19.6. Ventura's program includes academic instruction at the remedial, high school, and college level, vocational training, and psychiatric treatment for severely disturbed wards. Treatment modalities utilized are Reality Therapy and Behavior Modification.

II. Program Statement - Specific

A. Intensive Treatment Unit

The Intensive Treatment Program is for the more seriously disturbed and inadequate female wards. The cottage has a 25-bed capacity. Due to the lower staff/ward ratio, more individualized programs and treatment is feasible. Psychiatric and psychological consultation is an ongoing part of this program.

B. Junior College Program

Both male and female students who have completed high school or are eighteen years of age or older and whose reading and comprehensive scores are at least at the 10th grade level are eligible to attend college level courses at Ventura School. Upon successful completion of college work at Ventura School, wards become eligible to attend Ventura College provided they are not escape or security risks. Screening for male wards is carried out by Ventura College staff at the Southern Reception Center-Clinic. Female wards are screened for the college program at Ventura School.

III. Educational Program

A. Academic

Ventura School provides elementary (remedial), Individualized Manpower Training (remedial), high school, and college services. Most of the non-college program males are placed in academic high school level classes.

VENTURA SCHOOL (continued)

B. Vocational

Training at Ventura is geared primarily for the female population although vocational programs are open to the male wards. Some of the training courses offered include cosmetology, clerical skills, culinary arts, power sewing, and vocational housekeeping.

IV. Treatment Programs

Reality Therapy and Behavior Modification are the primary treatment modalities utilized throughout the institution. The psychiatric services offered include diagnosis, consultation, individual, and small group therapy.

Small group counseling is held on a weekly basis in the unit. Individual counseling is available at all times. Large group counseling is held up to three times weekly.

V. Short-term Program

This school is in the process of developing a short-term program for wards whose available confinement time is three months or less.

VI. Community Adjustment

This school provides continuing education on a high school, college, or vocational level to increase employment prospects upon release. Those trainees who have completed the cosmetology program at Ventura may transfer their credit hours to an accredited school or are qualified to take a state examination for that category.

All students who have successfully completed the Ventura program are emotionally equipped to deal with everyday community living and able to set realistic achievement goals.

DEWITT NELSON TRAINING CENTER

7650 South Newcastle Road
P. O. Box 5700
Stockton, California 95205

(209) 944-6113

I. Program Statement - General

Population: 400. The centralized thrust of the DeWitt Nelson Training Center Program is that of work experience, job training, and the development of employability skills for young men ranging in age from 17 to 23 years. DeWitt Nelson has three main programs: 1) the Work Experience Program, which consists of 100 young men who will be working in support services for the entire Northern California Youth Center; 2) 50 young men participate in the institution-based Forestry Camp Program; and 3) the Occupation Training and Academic Program which consists of 100 young men who need academic and vocational training to further qualifications for jobs. Maximum security housing is not available at this center.

II. Program Statement - Specific

A. Work Experience

One hundred young men, 18 years of age or older, who are in need of or unable to complete formal education, will be assigned to 14 different kinds of trades in the Central Facility Support Services. These young men work in non-secure areas so their escape risk potential should be minimal. On-the-job training assignments include: laundry and dry cleaning, which develops skills in washing, ironing, pressing, and dry cleaning; culinary arts, which teaches skills in meat cutting, baking, food preparation and distribution, short-order cooking, culinary sanitation, and cafeteria services training; grounds maintenance, which offers skills in painting, plumbing maintenance, carpentry, automotive mechanics, building maintenance, stationary engineering (clerical), and shoe repair. Major emphasis is on work habits and attitudes.

B. Institution-based Forestry Camp

For 17 through 25 year-old wards. This program is designed to treat wards by providing a work-incentive program for wards who would otherwise qualify for minimum security camp placement, but have demonstrated the lack of maturity or responsibility for function in that setting.

The program population is designed to provide three hand crews to fight fires and work on construction oriented projects for the Department of Forestry. The program additionally provides a full academic program on a tutorial basis during off hours.

DEWITT NELSON TRAINING CENTER (continued)

The population for this program is drawn from other institutions, the clinics, and those wards that are camp failures. They are accepted in this program following successful completion of an evaluation period. These wards would not normally have the Forestry Conservation opportunities if this special medium security setting was not available.

III. Educational Program

Two hundred young men who need academic skills to further their qualifications for jobs or desire a formal vocational training program. This program is conducted within the secure perimeter of the Center. Young men who can't be cleared initially for the other two programs because of escape offense records will be placed in this program. Transfers from this program to other programs at DeWitt Nelson may be made if these transfers meet the program needs of the trainee or are approved by the Institutional Classification Committee.

A. Academic

This school provides academic services on the remedial (reading and writing) and high school levels. Academic services are also offered through an Ethnic Studies Program, the ESEA Learning Lab, and the Family Life Education Program. Courses are also taught to the students working towards the passing of their G.E.D. test.

B. Vocational

Educational courses that train in occupational skills include: Individual Manpower Training System Diagnostic Program, Small Engine Repair and Industrial Arts, Auto Body/Fender Repair and Metal Painting, Landscaping and Grounds Maintenance, Automotive Maintenance, Vocational Culinary Arts, and Welding.

IV. Treatment Programs

Psychiatric consultation services are available on a part-time basis. Individual counseling is available at all times, small and large group counseling is available on an "as needed" basis.

A major emphasis will be made to utilize community resources to keep the Center's program relevant to the parole setting and problems trainees will face on parole. The following are areas that will involve some aspects of the community and its resources: family counseling programs, pre-parole programs, trade advisory groups and committees, work furloughs and furlough programs, social and recreational activity groups at the Center, recreational and educational field trips.

DEWITT NELSON TRAINING CENTER (continued)

V. Short-term Program

This school has recently developed a short-term program aimed at substantially benefiting offenders who will be incarcerated for a period of 60 to 180 days. This program will aid the institution-based forestry camp program with three to four fire suppression crews.

VI. Community Adjustment

The four basic goals of the DeWitt Nelson Program are: (1) to give the trainee a job upon release to parole; (2) to give the trainee entrance into a job training program upon release to parole; (3) to prepare the trainee whereby upon release to parole, he is as prepared for entrance level job work or as "marketable" for the "world of work" as we can make him; (4) to provide training and counseling with the trainee to break previous delinquent patterns and habits, develop a new life style, and divert the trainee from an institutional form of life.

Many job opportunities are available to the trainee prior to parole through a work furlough program.

PRESTON SCHOOL OF INDUSTRY

Rural Route, Box 5
Lone, California 95640

(209) 274-2421

I. Program Statement - General

Population: 405. Preston School of Industry serves the Youth Authority as a medium security institution handling superior court and juvenile court male commitments in the 17-24 age range. It primarily serves those wards committed from northern California. Preston is organized into nine specialized treatment programs designed to meet the needs of older wards requiring maximum control and intensive treatment services. The educational training program provides vocational training supported by academic components at remedial, high school, GED requirement, and junior college level. Emphasis is placed on providing each ward with at least one entrance-level skill upon return to the community.

II. Program Statement - Specific

There are nine cottages designed on a unique basis to meet the individual needs of the client population. The following is a description of those specialized programs.

A. Vocational Training Unit

This lodge is designed as a production and vocational training unit where the primary function is to provide meals and maintenance services for the institution. Specifically, intensive vocational counseling and training is provided to make available to each ward the opportunity to become proficient in one or more culinary entry-level job skills. Because of the nature of their work--maximum efficiency under minimum supervision--these wards are often placed in areas of trust and must be relatively motivated, readily trainable, and a minimum-security risk.

B. Violence Reduction Project

Two lodges are assigned to the project and there are ten specific objectives which form the basis for evaluating the progress of each young man in the program. These objectives are in turn based upon four fundamental program goals that are indicative of progress toward readiness for a successful parole adjustment. These goals are: 1) demonstration of respect for the property of others; 2) demonstration of respect for the personal rights and individual differences of others; 3) demonstration of an acceptable level of socially responsible behavior; 4) preparation for socially acceptable and personally satisfying community living by increasing knowledge and skills.

Several major program elements are involved in a young man's progression through this program. Progressive levels of responsibility and privileges

PRESTON SCHOOL OF INDUSTRY (continued)

are incorporated in three program phases. Phase status is earned or lost each month by meeting, or failing to meet, a pre-established number of specific objectives. Earned program time reductions are credited on a monthly basis and credit is lost only through specific action by the DDMS Level B Disposition Team. Counseling is separated into two types--behavioral counseling and in-depth intensive counseling. Intensive counseling is on a voluntary contractual basis.

C. Program for the Aggressive and Sophisticated Ward

This lodge consists of fifty individual rooms. It is a program designed for the highly delinquently oriented, aggressive and sophisticated ward who is very peer-group oriented and concerned with the maintenance of their image as "Low Riders."

The basic program component is a highly structured phase program consisting of three phases on a promotional basis. Basic treatment modality is individual counseling with emphasis on individual ward contracts.

D. Program for the Immature Ward

This is a living unit consisting of fifty individual rooms. Linden is a program designed for the unsophisticated, immature, weak ward who is in need of protective custody.

The basic program components consist of an individual academic classroom setting and assignment to minor secure maintenance trade assignments. Emphasis is placed on individual counseling with small group counseling on a voluntary basis.

E. Drug Abuser's Program

This lodge is a voluntary program for drug abusers. It has a capacity of 40 wards. Institutional treatment, rooted in the therapeutic community concept, requires from 9 to 18 months for graduation to the re-entry phase in the community.

The criteria for admission to the Preston Drug Abuse Program requires that male wards between the ages of 18 and 24 years have a history of chemical abuse, this includes alcohol, and that they voluntarily enter the program. Wards are accepted with continuances up to two years.

F. Intervention, Control and Treatment Program

Designated the Intervention, Control and Treatment Program, this lodge houses a maximum population of 50 wards by individual rooms. The need for intervention has been demonstrated by the ward's escape(s) from

PRESTON SCHOOL OF INDUSTRY (continued)

confinement and failure(s) to respond favorably to general programming. The need for control has been demonstrated by the ward's aggressive and often volatile behavior both in the community and while incarcerated. The need for treatment has been demonstrated by the ward's chronic history of parole violations and management problems presented when confined to less secure settings. A characteristic shared by this population is that of resisting counseling directed toward personal change.

Emphasis is placed on small group counseling using Transactional Analysis and Gestalt Therapy as a treatment of choice to develop a therapeutic climate wherein wards are willing to make significant redecisions about destructive aspects of their life styles. All wards are screened for involvement in academic and vocational school and are encouraged to participate in recreation and physical education activities.

There are four phases in the program and as wards progress on individual treatment and behavior objectives they are promoted to a higher phase of autonomy and responsibility within the program.

G. Program for the Emotionally and Mentally Disturbed

The Sequoia Counseling Program is an intensive counseling milieu and educational program that is designed to deal with 48 wards who are considered to be emotionally and mentally disturbed. This delinquent group of wards exhibits a multiplicity of behavioral patterns ranging from the borderline psychotic ward who is in poor contact with reality, to the acute neurotic who may have symptoms of depression, suicide, self-mutilation, confused sexual identity, or possible anxiety or psychosomatic attacks.

The treatment emphasis is placed on small groups and individual counseling using Transactional Analysis and Gestalt Therapy combined with elements of Behavior Modification. A therapeutic climate has been developed wherein wards are willing to make significant redecisions about the destructive aspects of their life style. The program has a five-stage phase structure. Wards are placed in the Sequoia program after they have been evaluated as needing treatment. This program is primarily segregated from the other programs at Preston.

H. Program for the Intractable Ward

This lodge is a 40-bed living unit which provides a secure setting for older more sophisticated wards of the Preston population who are considered intractable. Tamarack does not contain program elements designed to deal with weak, psychotic, or suicidal wards. Also included on Tamarack Lodge is a 21-bed Crisis Intervention Unit for use as a temporary program for other Preston lodges.

III. Educational Program

A. Academic

Remedial education is an integral part of the program for those students who fail to achieve in reading, language, or math above the 6th grade level. This is coordinated with the vocational programs in order to support and motivate students to achieve a job skill. In addition, a full range of subjects for high school graduation is offered. GED testing is available for qualified students.

The Special Unit Academic Program provides education, including ESEA, within the Tamarack Intractable Unit, the Oak Intensive Counseling Program, the Sequoia Counseling Program, the Manzanita Drug Program, and the Ironwood Protective Custody Program. This allows the Special treatment programs to maintain their isolation where necessary.

The Junior College Program offers a full semester's work and units of credit in various subjects. Currently, five different courses are offered in conjunction with San Joaquin Delta College.

The ESEA program provides eligible students who are deficient in math and language skills with learning labs. The learning labs are provided in both Language and Mathematics.

B. Vocational

Auto Mechanics is a basic course providing training in service station attendance, front end, brakes, engine tune-up, drive train, and automotive electrical systems. Advanced training includes complete engine overhaul; and provides students with the opportunity to gain certification in smog device installation, headlight adjusting, and brake inspection.

Culinary arts provides classroom instruction and on-the-job training in large group feeding situations. The FEAST dining room provides students with training for short order cooking, waiter, and busboy training.

General Shop provides basic training in a number of areas including machine shop practices, mechanical drawing, blueprint reading, welding and wood-working.

Horticulture provides training and practical experience in ground maintenance and greenhouse work including plant propagation, soil mixtures, plant bed preparation, pruning, and planting practices.

The Printing Shop is set up with both linotype and offset printing equipment. In this shop, students can get practical experience and classroom

instruction in both of these basic printing methods.

Welding is a basic 12-week course providing the students with theory and manipulative practice in electric arc and oxyacetylene welding. The advanced course gives the students the opportunity to learn these methods of welding in greater depth and includes metal inert gas and tungsten inert welding theory and practice, blueprint reading, and welding symbols.

Landscape Gardening provides students with classroom training and practical experience in ground maintenance. This includes landscape design, operation, care and maintenance of basic landscape machines, tools, and equipment.

Carpentry provides classroom instruction and practical experience in basic carpentry and construction design. It also provides students with the opportunity to learn basic mill and cabinet practices and procedures.

Electric Shop provides basic training in electrical circuitry and construction wiring practices and procedures. Advanced students have the opportunity to learn basic electronic equipment repair such as radio and television.

Small Engine Repair provides the students with theory and practices for repairing and overhauling small two and four-cycle engines. The advanced students are allowed to construct go-carts which provide them with experience in welding and basic layout and design.

IV. Special Programs

A. M-2 Program

This program matches sponsors with inmates and wards in California correctional institutions. These sponsors offer the wards friendship and moral support through monthly visits and correspondence, and assists them in making plans for their re-entry into the community.

V. Short-term Program

This school has recently developed a short-term program aimed at benefiting offenders who will be incarcerated for a period of 60 to 180 days. Those commitments that do not have their high school diploma will be assigned to all-day academic classes. Students who already have their high school diploma, or require only elective credits to graduate, will be assigned to one vocational shop all day. Each vocational program can handle a maximum of two short-term students. These students would be able to complete the basic program in a shop and could gain some basic saleable skills. In the future,

PRESTON SCHOOL OF INDUSTRY (continued)

the general shop may be utilized for these commitments. It would provide short courses in drafting, sheet metal, welding, and woodworking.

VI. Community Adjustment

Upon release, wards are encouraged to take advantage of the re-entry services provided by M-2 staff, such as, securing housing, transportation, and developing employment opportunities.

Institutional treatment in the Preston Drug Program requires 9 to 18 months for graduation to the re-entry phase in the community. The re-entry phase of the program provides a residential treatment unit with a capacity for six pre-parole furlough wards or parolees and is located in Sacramento.

Young men who have successfully completed Preston School of Industry's program have demonstrated a reasonable degree of impulse control. They shall have a minimum education level in reading equal to that of sixth grade, in order to comprehend instruction on the job. These young men shall have achieved at least one entry-level job skill. They will also have completed a survival education component that will enable them to deal realistically with the community. When they leave, these young men will have been provided, to the extent possible, a program that teaches them to understand the causative factors that brought them into the system.

YOUTH TRAINING SCHOOL

15180 Euclid Avenue
P. O. Box 800
Ontario, California 91761

(714) 597-1861

I. Program Statement - General

Population: 983. The Youth Training School provides "custody, care, industrial, vocational, and other training" for young men (ages 17-24) from juvenile and adult criminal courts, who are too mature to benefit by correctional schools and too immature in crime for confinement in prisons. The Youth Training School has developed a wide variety of programs which offer the young men the opportunity to make choices concerning what their program is going to be in the areas of personal, social, educational, and vocational development.

Since the Youth Training School is designed to handle older, more sophisticated wards of the Youth Authority, the younger, less experienced wards should not be placed here. Wards in need of "protective custody" and who cannot handle the strong delinquent environment should not be placed at this school.

II. Program Statement - Specific

The Youth Training School operates a voluntary program which allows wards to select their own program from a list of options for which they are eligible. Wards may also choose their level of involvement--one of four phases. Wards sign a contract on the degree of involvement.

- A. Phase A is a "no program--no reward" option. A young man may choose Phase A or he may be placed in Phase A when his behavior does not live up to the standards of a higher phase. Wards who fail to live up to the conditions of Phase B, C, or D are placed in Phase A for a minimum of 30 days. Upon successful completion of a Phase A program, the ward may choose any higher phase for which he is eligible.
- B. Phase B is a contracted level of program requiring one-half of an educational program for which he receives only 3 days per month off his continuance.
- C. Phase C requires 465 hours of acceptable educational program for which the ward receives two day passes per month, an evening program until 10 p.m., and a recommendation of 6 days per month off his continuance.
- D. Phase D requires a full-time program commitment for the ward who must receive good grades. In turn, he receives an evening program until 11 p.m., two day passes per month, and a recommendation of 9 days per month off his continuance.

YOUTH TRAINING SCHOOL (continued)

Those living unit programs that operate under the phase program are:

Unit I

A. Reception Center Clinic

The Clinic receives wards committed from Southern California counties, with first priority given to other than Los Angeles County, then the remainder of twelve beds a week are filled from Los Angeles County.

The staff give each ward received a thorough diagnosis, reviewing his physical condition, his educational background, and his social and delinquent background. The case is staffed and a recommendation for the most effective program is made to the initial Youth Authority Board.

B. YTS Orientation

A thorough orientation is given to every ward received at the Youth Training School within the ten working days prior to his assignment in the phase program. The ward is made aware of each living unit program and each educational program, and the qualifications for each one. He is made aware of all the rules as well as the Disciplinary Decision-Making System and the Ward Grievance Procedure. The ward then selects his program options and signs a Phase Contract.

C. Program Re-entry

Program Re-entry is a "short-timers" program for wards with ninety days or less before being paroled. Classes and support services are provided to help the young man prepare for his release to parole. Day trips for job interviews and school enrollment are made when possible.

D. College Program

The College Program houses wards in one place who spend most of their time in college classes. This is an attempt to create a more positive atmosphere toward study and intellectual growth.

E. Gnomy House Drug Program

Drug users with a major history of use are housed together in order to focus on their common problem. Wards volunteer to come to this program which uses "Synanon Games" as a method of communicating with each other and assisting them to face up to

YOUTH TRAINING SCHOOL (continued)

their own excuses. Wards are assigned to normal trade and school programs. Advanced wards assist in setting policies and in enforcing rules.

Unit II

A. Emotional Behavior Program

The wards on the Emotional Behavior Program volunteer for psychiatric and psychological type treatment. Transactional Analysis is also used as the primary framework for counseling and treatment. Wards who are capable of handling vocational or academic classes daily will attend them.

B. Behavior Control

Behavior Control provides a Phase C program for wards who need a more controlled type of program. Wards are placed here when they have been removed from other programs because of their aggressive behavior. They have a partial day educational program.

C. Wards in Need of Structure (WINS)

The WINS program houses younger, less sophisticated wards who are sent to YTS because of their serious offenses. These wards are provided more structure on the team as well as in trade and the classroom, in an attempt to prevent further contamination and pressure from more sophisticated wards.

D. Intensive Treatment

The Intensive Treatment Program is YTS' lockup program. It houses wards in need of temporary detention and long-term restricted wards. A temporary detention ward may remain for a few days when he is determined to be temporarily dangerous to others, self, or in danger of escape.

Wards may be assigned to the Intensive Treatment Program phase when the ward needs a period of re-training under the guidance of a psychologist for a period of 60 to 90 days. Upon satisfactory completion, the ward is transferred to another program where regular trade/education is available to him.

Unit III

A. Initial Commitment Program

The younger wards of Unit III are housed together. These young men are more sophisticated than the WINS program, but are

YOUTH TRAINING SCHOOL (continued)

separated from the more sophisticated wards on the rest of Unit III. They participate in all-day vocational and academic trades.

B. Maintenance

This company houses the wards who work with maintenance craftsmen. They work long hours, eat lunch with their craftsmen, and are paid for their efforts. To become eligible for this company, the wards must be referred by their vocational trade instructor and be acceptable to the maintenance section.

C. Vocational and Academic

These four companies house the wards who spend most of their efforts either in the classroom for remedial reading instruction, completing their high school degree or becoming proficient in the trade of their choice.

III. Educational Program

All wards, except those in Phase A or in Temporary Detention, are involved in an educational program. Instruction is available for all wards, even those on the Intensive Treatment Program.

A. Academic

A major effort is made to increase the reading and math levels of the wards through two special programs. ESEA funded classes are held for young men who are below 21 years and whose reading and math skills are below 8th grade level. A remedial program is a requirement for all students over 21 whose reading and math skills are below the 6th grade level.

High School graduation is required for all students who are close enough to graduate before leaving the Youth Training School.

The college program offers approximately eight classes per semester for students who are qualified to attend them. LaVerne College offers the courses, and it is now possible to earn an AA degree. Off-grounds attendance at the college is a possibility in the near future.

In addition, special classes are held to prepare the young men for release to the community; i.e., pre-parole classes, and a Driver's Training class which allows a young man to receive his driver's license prior to his release.

YOUTH TRAINING SCHOOL (continued)

B. Vocational

The following is a list of vocational shops which offer the opportunity for preparation to work in that trade:

- Auto Shop/ARCO Service Station Trainee
- Auto Body and Fender Repair
- Auto Paint Shop
- Building Maintenance (Janitorial Services)
- Carpentry
- Condominium Maintenance
- Food Service (Cooking, Baking, Meat Cutting)
- Furniture Finishing/Painting
- Graphic Arts/Print Shop
- Masonry
- Landscape Construction
- Mill and Cabinet
- Plastering
- Plumbing
- Refrigeration/Air Conditioning
- Sheet Metal
- Small Engine Repair
- Upholstery
- Welding

C. Work Passes

Nearby manufacturing firms are hiring a number of our wards who have completed their trade training with high grades and are clearable for a day pass to work in their plant. They leave the institution early for the day's work and return each evening following work.

D. Job Placement

The most successfully trained and most positively motivated young men are recommended by their instructors for job placement. The staff are kept very busy placing these young men in good jobs in their community upon release.

IV. Short-term Program

The Youth Training School has a program entitled Program Re-entry (PRE), which is a 50-bed unit that offers wards a transitional phase between the institution and community. This program provides short-term education to instruct the wards in how to deal with the day-to-day problems in the parole setting. Specific objectives of the program are to provide wards contact with resources available to them in the community; develop job leads prior to parole; initiate community contacts for difficult placement; provide a short-term "Survival Skills" program; provide orientation to Youth Authority parole; and provide an opportunity for the ward's family to assist in working out adjustment and re-entry problems.

YOUTH TRAINING SCHOOL (continued)

V. Community Adjustment

The most successfully trained and most positively motivated young men at the Youth Training School are recommended by their instructors for job placement. A selected group of trainees are involved in the work furlough program prior to release. Upon release, staff designated as Job Finders take on the responsibility of placing these young men in sound jobs in their community.

YOUTH CONSERVATION CAMPS

Ben Lomond
13575 Empire Grade
Santa Cruz, California 95060
(408) 423-1652

Mt. Bullion
Mariposa, California 95335
(209) 966-3634

Washington Ridge
Washington Star Route
Nevada City, California 95959
(916) 265-4623

Oak Glen
41100 Pine Bench Road
Yucaipa, California 92399
(714) 797-0196

Pine Grove
Pine Grove, California 95665
(209) 296-7581

I. Program Statement - General

Population: 76 at each camp with a total of 380. There are five conservation camps plus two institutional based camps located at DeWitt Nelson and Paso Fables jointly operated with the Department of Forestry for young men 18 years of age or older. Seventeen year-olds may be included subject to parental or guardian consent. The program is work-oriented in the areas of fire suppression, conservation projects, and in-camp support services. The program affords the opportunity to develop work habits, receive wages for work performed, and develop teamwork as a member of a crew of firefighters. The camp setting is a minimum security setting with no fences or locked doors to secure the young men; therefore, the stress is not only on the work program but also on internal controls.

II. Program Statement - Specific

Each ward must be 16 years of age or older to qualify for camp consideration, and must be physically and mentally fit for the work program, and must have the consent of parent or guardian if under the age of 18.

When a young man arrives at camp and prior to being assigned to a work crew, he is given a minimum of eight hours of instruction in safety practices and project operations. Wards are not assigned to fire suppression crews until they have had some experience in regular conservation project crews. On these regular project crews, the ward receives on-the-job training in the proper handling of tools and experience in working in forest and brush terrain.

Typical projects on the work crews are construction of fire breaks and fuel breaks, brush removal, reforestation, nursery projects, and forestry insect and disease control. During the fire season, the primary function is fire suppression. An essential element of the work program is to enable a ward to achieve experience and training in group work, relationships

YOUTH CONSERVATION CAMPS (continued)

with peer groups, ability to receive and follow directions, and to learn good work habits. Other work programs offered are food service assistants, tool repair and sharpening, building maintenance, laundry, and camp speciality, welding, carpentry and painting.

The recreation program at the camp consists mainly of seasonal sports such as softball, basketball, etc., hobby crafts and off-campus trips and photography. Athletic and crafts competition as well as conservation skills competition are a regular part of leisure activities.

Several of the camps have extensive community volunteer programs to supplement the regular program. Volunteers participating in the camp programs range from academic tutors to involvement with the M-2 program sponsors. Religious volunteers are also a regular part of the program.

Visiting at the camp is on Saturdays, Sundays and holidays. Wards may receive day passes when they qualify on the Sunday that their crew is available for day passes.

III. Educational Program

A full range of academic opportunities are provided at each camp. Evening and weekend classes are provided during the winter months wherever possible in conjunction with local school districts. Basic courses are remedial reading, remedial math, English, history and hobby crafts. There are also some special programs such as Alcoholics Anonymous and Narcotics Anonymous that are proving quite successful.

IV. Treatment Programs

Each ward is given individual counseling. Most camps conduct small group meetings and large group meetings. In addition, wards may opt for participation in contingency contracting, whereby certain behaviors are identified and, at measured intervals, reductions in length of program are used as reinforcers. These reinforcers are subject to final approval by the Board.

V. Short-Term Programs

The camps are in the process of developing short-term programs for those wards whose available confinement time is three months or less.

VI. Community Adjustment

The camp programs give wards an opportunity to participate in a work-oriented situation. This program teaches the young men work habits and effective discipline necessary to succeed in future occupational endeavors. In large, this contributes to their continuing successful adaptation to parole as seasonal firefighters for the Department of Forestry.

YOUTH CONSERVATION CAMPS (continued)

Though the wards may never again use their firefighting skills, the use of tools, the safety habits they learn, and the ability to work together in tight, hazardous, and stressful situations effectively prepares these young men to meet the responsibility of everyday community living.

OTHER FACILITIES AVAILABLE TO YOUTH AUTHORITY WARDS

The Youth Authority has contracted for bed space within other State facilities for the purpose of providing specialized care for a limited number of clientele who have been committed to the Youth Authority. A description of those programs is listed on the following pages.

DEUEL VOCATIONAL INSTITUTION

P. O. Box 400

Tracy, California 95376

(209) 835-4141

Program Statement - General

Population: 1,500 capacity. Deuel Vocational Institution is one of 13 institutions in the California Department of Corrections. This institution provides custodial supervision and control, academic, and vocational training and work experience for young men whose average age is 23.2 years. The population consists of inmates who have committed a wide variety of felony offenses. They are sentenced to prison by the superior courts of California for the terms prescribed by law. A small number of California Youth Authority wards who require the security that Deuel Vocational Institution can provide are also housed here. Currently, 150 beds are allotted for Youth Authority wards.

CALIFORNIA REHABILITATION CENTER

P. O. Box 841

Corona, California 91720

(714) 689-4552

CALIFORNIA INSTITUTION FOR WOMEN

Rural Route 1

Frontera, California 91720

(714) 597-1771

Program Statement - General

This institution's function is the treatment and control of drug addicts. The population is approximately 2,200 male and 300 female addicts; 35 beds are allotted for Youth Authority wards. It operates on a modified "Therapeutic Community" concept with major treatment efforts centered on large and small group counseling. Academic and vocational programming are secondary with usual assignments of one-half day only. Some all-day or six-hour work in training assignments are available as appropriate to individual needs.

Program Statement - General

Population: 960 rated capacity, 780 population. This is the only State institution in California for female felons; age range 18 and up. There exists a fairly extensive educational program with appropriate vocational training; one-half day work experience is required of all residents. A Psychiatric Treatment Unit is in operation, and the only Reception Guidance Center for female felons is also located in this institution. The Youth Authority quota is approximately 20. They are required to be over 18 years of age and criminal court commitments. Transfers to this institution from the Youth Authority are rare.

CALIFORNIA MEDICAL FACILITY

P. O. Box 2000

Vacaville, California 95688

(707) 448-6841

Program Statement - General

Population: approximately 1,400. This facility is the Department of Corrections' only institution providing intensive inpatient psychiatric service. There is limited placement of Youth Authority wards at this location. They are not routinely separated from the adult felons. Primary emphasis is on treatment programming consisting of group psychotherapy and active self-development groups. Academic opportunities from literacy training through high school are available as well as a number of vocational courses. This is the institution of choice for wards who are actively psychotic (and considered not amenable to mental hygiene placement). Those programs available for Youth Authority wards are Diagnosis and Observation (6 Youth Authority wards allowed), and Psychotherapy candidates.

ATASCADERO STATE HOSPITAL

Drawer A

Atascadero, California 93422

(805) 466-2200

Program Statement - General

Atascadero State Hospital provides a therapeutic environment inside a secure perimeter. It is relatively free of such typical institutional problems as escape, gang activities, violence and intimidation. Experience has shown that the most appropriate referrals are sex offenders, psychotics, and other emotionally disturbed wards. The Hospital is more likely to accept a case if the Youth Authority psychiatrist recommends Atascadero and if the ward himself wants their services.

Because Youth Authority wards are not separated from adult offenders, referrals must be at least 18 years of age and criminal court commitments. Atascadero currently makes 60 beds available to the Youth Authority. Those programs available are: Admission and Medical-Surgical Program, Acute Intensive Psychiatric Program, Interpersonal Skills Development, Therapeutic Interaction With Group Responsibility, Self-governing Skills, Assertive Skills Training, Program Interpersonal Communication Skills Program, Sexual Orientation Program, and the Community Planning, Orientation and Follow-up Program.

PATTON STATE HOSPITAL

Drawer B

Patton, California 92369

(714) 862-8121

Program Statement - General

Patton State Hospital is located 70 miles east of Los Angeles on the eastern outskirts of San Bernardino. It is a multi-purpose facility serving mentally disabled persons, developmentally disabled persons, and mentally disordered sex offenders.

The Youth Authority has access to 20 treatment beds at Patton. The majority of these beds are in the unit for adult offenders; therefore, the basic criteria is the same as for referrals to Atascadero State Hospital, i.e., adult court commitments over 18 years of age with a need for treatment in a hospital setting. Two coed programs are included in this unit.

Juvenile court commitments, who can be appropriately treated in the LPS program and who would benefit from treatment close to their homes, may be referred to Patton State Hospital if they are not in need of a highly secure environment. This is a coed program.

Our agreement with Patton calls for referrals of wards committed only from Orange, Riverside, San Bernardino and San Diego counties. Any exceptions to this restriction should first be cleared through Case Services.

All referrals to Patton should have a current psychiatric and psychological report recommending placement at Patton.

PAROLE SERVICES

Parole Services are designed to provide effective supervision, counseling, and assistance to C.Y.A. wards in the community. Our purpose is to help the parolees make a safe and satisfactory readjustment as they are released from an institution. Public safety and the youth's own welfare require that the state supervise the newly released ward until he can demonstrate an ability to function entirely on his own.

A variety of parole programs exist in the state. In urban areas, concentrations of parolees sometimes make differential programming possible. Sometimes such things as community needs, the availability of special skills among parole unit staff, or geographical distances will cause different program opportunities to be available to the parolee.

Programs are constantly being evaluated and improved in a continuing effort to meet the needs of our clientele who are on parole in the community. Those programs available to the parolees within our system are highlighted on the following pages.

REGULAR PAROLE PROGRAMS

There are 24 regular parole units located throughout the state who are responsible for providing regular parole services for approximately 6,376 young men and women parolees. Staffed on the average at a ratio of 50 cases for each parole agent and provided with a budget of its own, the parole unit provides the basic planning, counseling, supervision, reporting and assistance required to help assure the successful re-integration of the parolee with the community. Each unit designs a program to meet the particular needs of each parolee assigned to it, within the limits of available funding and staffing levels. Some units have made efforts to design special job-development programs to assist the parolee; others stress out-of-home placement services; others, special counseling programs. The staff of most units serve an area small enough that staff become knowledgeable about one another's cases and work sometimes as teams in providing services and in jointly staffing cases. In other units, agents may need to supervise youth in several counties and function relatively independently for long periods of time. In every instance, programs that provide for the protection of the community and the rehabilitation of our wards remains the central theme.

INTERSTATE SERVICES UNIT

4241 Williamsborough Drive
Sacramento, California 95823

(916) 445-6783

The Interstate Services Unit, located within central headquarters in Sacramento, arranges for the authorized interstate placement of California juveniles on probation or parole, adult probations, and certain adult parolees to other states and such cases from other states to California in accordance with California statutes and procedures. This unit is supervised by the Deputy Compact Administrator for the Juvenile Compact, who is responsible for the total administration of these Compacts. The Compacts are legally binding agreements under which the 50 states and certain territorial districts serve as each other's agents in the cooperative supervision of parolees and probationers and in the apprehension and return of juvenile runaways, escapees, and absconders to their state of legal residence. The Agreement on Detainers has been ratified by forty-two states. It affords the ward confined in a state correctional institution, or the prosecuting attorney, the right to a speedy trial of untried charges pending against the ward in the demanding state (this doesn't apply to juvenile court wards). The unit also functions as a regular parole unit for Youth Authority wards paroled to other states. Approximately 3,000 offenders from California are under supervision in other states. There are approximately 200 Youth Authority parolees under active parole supervision in other states. The unit coordinates the return to California of approximately 100 Youth Authority escapees and absconders annually and an additional 300 juvenile runaways to the demanding jurisdiction each year.

SPECIAL PAROLE PROGRAMS

Community Parole Center

I. Program Statement - General

Five community parole centers have been established primarily in ghetto urban areas and provided with staffing levels (reduced caseloads, educational, vocational and recreational specialists) to enable the parolee residing in this disorganized and economically depressed area some reasonable chance of success on parole. From the time of commitment by the court, parole center staff work with the ward, available family members, community agencies, interested citizens, employers and institutional staff in an effort to implement the concept of a "treatment continuum" for youth likely to be paroled to the center's area.

Each Community Parole Center serves up to 130 wards and have staff which include up to six caseload-carrying Parole Agent I's, one Group Supervisor, and one Youth Authority Teacher.

II. Program Service Areas

Stockton Community Parole Center
609 South San Joaquin Street
Stockton, California 95203
(209) 948-7663

The Stockton Community Parole Center is the only unit of this type in northern California and is located near the California Youth Authority institutional complexes in Sacramento, Stockton and Ione. This center is uniquely adapted not only to assist target-area wards, but also provides a wide range of intensive casework and placement services to out-of-area wards who have specialized behavioral and placement problems.

The remaining four Community Parole Centers are in Los Angeles County.

Watts Parole Center
9110 South Central Avenue
Los Angeles, CA 90002
(213) 589-6124

Jefferson Parole Center
4319 West Jefferson Boulevard
Los Angeles, CA 90016
(213) 731-2281

Ujima Parole Center
1315 North Bullis Road, Suite 6
Compton, CA 90221
(213) 638-4121

Esperanza Parole Center
3665 East Whittier Boulevard
Los Angeles, CA 90023
(213) 269-7351

Generally, these Community Parole Centers serve highly compacted geographical areas characterized by disorganization of family units, high crime rates and the failure of established agencies to effectively serve our ward population.

SAN FRANCISCO PAROLE SERVICES PROJECT

855 Page Street
San Francisco, California 94117
(415) 557-2437

I. Program Statement - General

The San Francisco Project is a program model that promotes maximum versatility and flexibility in parole program planning while providing increased surveillance and control. The delivery of services is based upon a case need assessment and established criteria for referring parolees to the different project components. The need assessment is made by staff of the intake component. Transfer of cases between the components, based on need and behavior, is determined in weekly staffing sessions involving the three components of the project: intake, treatment and case management.

II. Program Statement - Specific

A. Intake Component
855 Page Street
San Francisco, California 94117

This unit is mainly diagnostic in nature and is responsible for gathering data from the community to help determine the causative factors of delinquency and the services needed by wards committed to the Youth Authority.

B. Treatment Component
855 Page Street
San Francisco, California 94117

The Treatment Component provides intensive and individual counseling, intensive supervision and surveillance, bi-weekly counseling to parolees using the Guided Group Interaction modality. Educational services, (tutoring, etc.), and resident group programs are available.

C. Case Management Component
1855 Folsom Street
San Francisco, California 94103

The major functions of the Case Management are to provide supervision and surveillance for those youths not in need of intensive treatment. In the supervisory element, wards can be placed on an "Active Supervision" or "Maintenance Supervision" caseload. The type of supervision is dependent upon the ward's ability to secure resources to meet his own needs, the frequency of requests for services and the types of needs of the wards.

The resources development element provides services in employment and training, survival skills, drug abuse, alternative placements and liaison with other agencies.

PARK CENTRE SETTLEMENT HOUSE

4082 Centre Street
San Diego, California 92103

I. Program Statement - General

The purpose of the Park Centre Program is to provide Youth Authority wards who have no other place to live with a residence and program designed to prepare each individual for successful community living. The counseling emphasis is on acceptance of "real life" situations as opposed to a psychiatric orientation.

The program will accommodate five female and 18 male wards in residence. Sleeping quarters are segregated by sex and co-educational living units are segregated by relationship preference. Total program capacity is 75.

II. Program Statement - Specific

A Parole Agent II, three Parole Agent I's, a Youth Authority Teacher, one Parole Agent, 10 House Parents, and 6 to 8 professional interns are available to provide practical assistance to each resident in his or her own chosen vocational or personal adjustment goals. These individual goals must be defined by the residents and are of a short term nature with the assistance given corresponding to the resident's initiative and interest. Staff may use constructive and directive teaching methods to communicate the "how to" to residents so that they may achieve their stated goals.

There are sheltered work programs offered. Odd jobs are solicited in the community. A program of arts and crafts is offered which is used to teach residents self-employment skills.

A Youth Authority teacher is available to provide remedial educational services and to act as a broker with the established educational system in the community. If possible, a school placement is made in the city school system.

Twenty-four hour supervision is provided. All residents must perform a share of the cooking, cleaning and maintenance duties.

III. Program Limitations

Display of disinterest in learning results in eviction when performance is short of established goals.

No individual will be placed at Park Centre unless he or she wants to be. He or she may leave as soon as they wish or may stay as long as they like as long as they maintain an effective participation and are constructively involved in meeting their individual goals.

PARK CENTRE SETTLEMENT HOUSE (continued)

IV. Intake

Referrals are accepted from institutions and parole units on an individual basis. Whenever possible, a ward is interviewed at the residence prior to placement.

S.P.A.C.E.
(Social, Personal, and Community Experience Program)

1151 N. Madison Avenue
Los Angeles, California 90029

I. Program Statement - General

The S.P.A.C.E. Program is a coed, experimental, model of a community residential center, providing a 90-day, pre-release work furlough experience, along with intensive casework and parole services which begin when the residents arrive at the center and continue throughout his or her parole experience. Although the residents are in custody during the 90-day period, there is no lockup or restraint capability in the building, which necessitates an extensive and careful screening process to ensure selected wards have the maturity and self-control to handle the relatively open setting. It is assumed that when wards are placed in the program, they will be released on parole at the end of the 90 days.

II. Program Statement - Specific

- A. Wards must be 18 to 25 years of age.
- B. Wards may be of either sex.
- C. Wards must be willing to be paroled to, and remain in Los Angeles County during their parole period.
- D. Wards may come from any Youth Authority institution.
- E. Wards must, in the judgment of the Project Director, be amenable to the program.

III. Selection Process

- A. Wards in Youth Authority institutions make applications for acceptance on forms provided by the S.P.A.C.E. Program.
- B. Institutional staff evaluate and comment on the realistic nature of the application.
- C. S.P.A.C.E. staff interview applicants and review files.
- D. Cases are screened by S.P.A.C.E. intake staff who accept or reject.
- E. Accepted cases are presented to the Youth Authority Board for transfer to the S.P.A.C.E. Program.
- F. Rejected applicants are sent letters explaining why they are not acceptable to the program.

S.P.A.C.E. (continued)

The program can accept seven (7) to ten (10) wards per month on the first week of every month. It is a vital part of the program that wards assume responsibility for applying for the program, since this is the first step in making a commitment to remain in the open setting.

IV. Problems Which May Result in Rejection

- A. Extensive history of alcoholism.
- B. Extensive history of drug or narcotics usage.
- C. Extensive history of escape or runaway.

V. Board Order Form

The program automatically provides for residents to be removed at any time during the 90 days if they are not successfully completing the program. Program further provides automatically that the wards will make a release appearance before the Youth Authority Board, one to two weeks prior to the completion of their 90 days.

TRI-COUNTY PROJECT

100 North Winchester Boulevard
Suite 200
Santa Clara, California 95050
(408) 277-1190

The Tri-County Project was developed to provide youths gradual exposure and re-entry into the community. The overall goal is to assist wards in making a successful transition from a structured institutional setting, to job related programs in the community, and to increase successful job placement. This project serves 18 to 25 year-olds returning to San Mateo, Santa Clara, and Santa Cruz counties. Wards with no community ties may also be referred to the project. Wards are assigned to the program 90 days prior to the anticipated release date from an institution. Major emphasis is placed upon the areas of job training, employment, and readiness for independent living. Wards who successfully complete this program are expected to formulate plans to become self-sustaining or have an acceptable source of income. Examples of responsible behavior are: holding a job, showing good work habits, and saving money for future needs.

JOB S

1111 Jackson Street, Room 1015
Oakland, California 94607
(916) 464-0644

The JOBS Program is designed to provide specialized service to the high-need ghetto areas of Oakland and Richmond. These services consist of locating community resources for the training and employment of Youth Authority wards, and maintaining liaison with the variety of public and private agencies providing manpower services throughout the surrounding counties. The job development efforts of the program are directed toward locating a placement for a specific ward after he is referred for job placement, and providing the skills training needed to assure his success on the job.

GANG VIOLENCE REDUCTION PROJECT

3665 East Whittier Boulevard
Los Angeles, California 90023
(213) 620-2219

The main thrust of the Gang Violence Reduction Project is to bring various gangs in East Los Angeles together in a forum to reduce gang violence and provide constructive projects for gangs to work on in their communities. Gang members and staff will have the responsibility of developing resolutions and solutions to reduce gang conflict. Gang members are encouraged to take part in community projects. These projects are designed to benefit the community and allow gang members the opportunity to offer constructive service to the community. The project staff assists gang members in achieving educational and vocational goals through education and training facilities within the community.

CITIZEN'S INITIATIVE PAROLE RE-ENTRY PROJECT

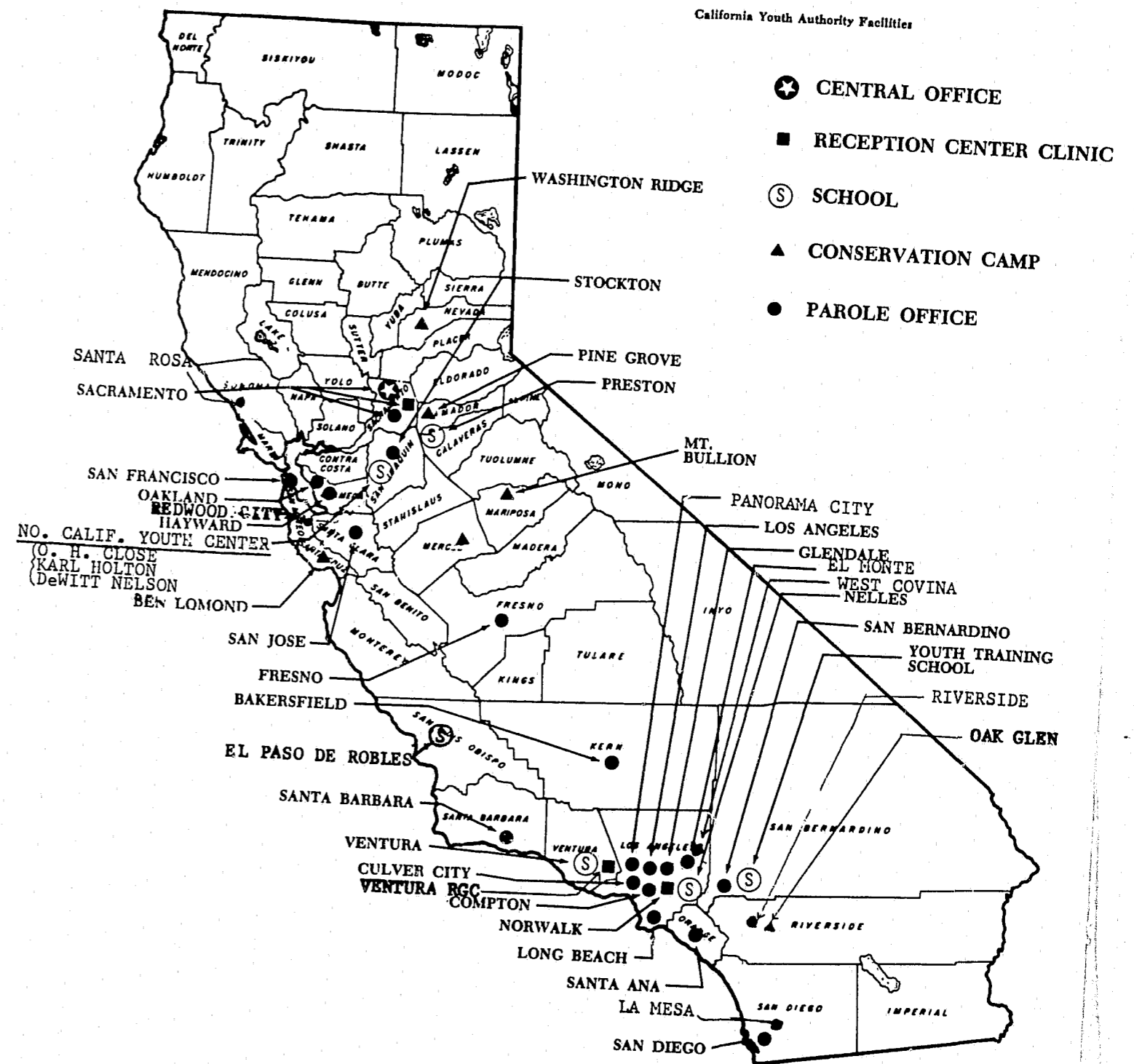
2222 Sierra Boulevard
 Sacramento, California 95825
 (916) 322-7645

22628 Foothill Boulevard
 Hayward, California 94541
 (415) 881-3392

Northern California Youth Center
 P.O. Box 5000
 Stockton, California 95205
 (209) 944-6125

The Citizen's Initiative Project is a volunteer program designed to assist young offenders from northern California who are committed to Youth Authority institutions and subsequently are referred to parole in their home communities. The project concentrates its major efforts on the time just prior to release from the institutions and during the first 90 days on parole, hoping to increase the level of ward success during that high risk period. Community volunteers are recruited to provide direct and indirect services to Youth Authority wards and staff; provide technical assistance to community groups and correctional agencies through the Resource Library and Speaker's Bureau; and serves as a medium for involving individual citizens in the planning of correctional programs.

At least 30 days prior to release on parole each project ward completes a pre-release interview. The interview helps the ward to identify potential or anticipated problem areas in the re-entry process. The institution and parole volunteer coordinators and the ward establish parole objectives and decide which areas of service citizen volunteers can be of greatest help. Emphasis is placed on independent living survival skills, communication and transportation problems.



END