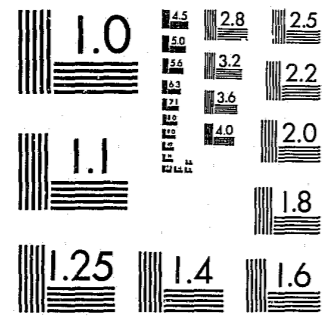


National Criminal Justice Reference Service



This microfiche was produced from documents received for inclusion in the NCJRS data base. Since NCJRS cannot exercise control over the physical condition of the documents submitted, the individual frame quality will vary. The resolution chart on this frame may be used to evaluate the document quality.



MICROCOPY RESOLUTION TEST CHART
NATIONAL BUREAU OF STANDARDS-1963-A

Microfilming procedures used to create this fiche comply with the standards set forth in 41CFR 101-11.504.

Points of view or opinions stated in this document are those of the author(s) and do not represent the official position or policies of the U. S. Department of Justice.

National Institute of Justice
United States Department of Justice
Washington, D. C. 20531

DATE FILMED

7/14/81

75390

THE NATIONAL YOUTH SURVEY

MH 27552

LEAA 78-JN-AX-0003

Delbert S. Elliott, Principal Investigator (NIMH & LEAA)
Suzanne S. Ageton, Co-Principal Investigator (NIMH)
Brian A. Knowles, Assistant Project Director (LEAA)
Tim Brennan, Investigator (LEAA)
Rachelle J. Canter, Investigator (NIMH)
David Huizinga, Investigator (NIMH)

PROJECT REPORT NO. 8
(REVISED)

1977 SELF-REPORTED DELINQUENCY ESTIMATES
BY SEX, RACE, CLASS AND AGE

by

D.S. ELLIOTT, S.S. AGETON, and D. HUIZINGA

May, 1978

Behavioral Research Institute

Boulder, CO

NCJRS

FEB 3 1981

ACQUISITIONS

(Hindelang et al., 1975; Nettler, 1974; Farrington, 1973; Reiss, 1975), a new SRD measure which corrected many of the deficiencies in earlier measures was developed for this study.

The measure includes a broad representative set of delinquent offenses. All UCR specific offenses (with the exception of traffic violations) involving more than 1 per cent of the reported juvenile arrests for the years 1972-1974 are included in the new measure. A number of additional items are included from those offenses reported in the "other" UCR category. These additional offenses were selected on the basis of two general criteria. First, items which were theoretically relevant to a delinquent lifestyle or subculture as discussed in the literature were selected for inclusion (Cohen, 1955; Cloward and Ohlin, 1960; Miller, 1958; 1966; Yablonsky, 1962; Short and Strodbeck, 1965). Thus, additional items--such as gang fighting, sexual intercourse, and carrying a hidden weapon--are included. Second, a systematic review of existing SRD measures was undertaken to locate items that tapped specific dimensions of delinquent behavior not previously included.

The resulting set of items is both more comprehensive and more representative of the conceptual universe of delinquent acts than found in prior SRD measures used in major, large-scale studies.³ The basic item set

³ The initial number of offense items included in the 1977 survey was 40. In the 1978 survey, approximately half of the subjects responded to a reduced set of 26 of these original 40 items, while the remainder responded to the full set. The annual incidence estimates for 1977 are thus limited to this subset of 26 offenses which are common to all subjects. The 1979 survey included the full set of 40 offenses for all subjects. The 1980 survey included 4 new items and the 1981 survey included one more new item, bringing the total offenses in the set to 44 for calendar year 1979 and 45 for calendar year 1980.

includes all but one of the UCR Part I offenses (homicide is excluded); 60 per cent of Part II offenses; and a wide range of "other" offenses--such as delinquent lifestyle items, misdemeanors, and status offenses. The vast majority of items involve a violation of criminal statutes.

Two separate response sets are used. Respondents are initially asked to indicate how many times during the past year they committed each act. If an individual's response to this open-ended question involves a frequency of 10 or more, interviewers then ask the youth to select one of the following categorical responses: 1) once a month, 2) once every 2-3 weeks, 3) once a week, 4) 2-3 times a week, 5) once a day, or 6) 2-3 times a day.⁴ A comparison of the two response sets indicates agreement between frequency estimates given in direct response to the open-ended question and frequency estimates based upon the implied frequency associated with the midpoint of the category selected.⁵

A specific attempt was also made to eliminate as much overlap in items as possible. None of the items contains a necessary overlap as in "cutting school" and "cutting class." Although some possible overlap remains, it ought

⁴ The categorical response set has led to the identification of some highly episodic events, e.g., 20 shoplifting offenses, all occurring within a two-month period during the summer (an initial response of 20; a categorical response 2-3 times a week, and an interviewer probe revealing that the offenses all occurred during the summer).

⁵ At the upper end of the frequency continuum, estimates based upon the midpoint of the category are substantially higher than the frequency response given directly. The open-ended frequency measure thus appears to provide a more conservative estimate of number of delinquent acts, and the estimates reported here are based upon this response. The correlation between total SRD frequency scores and categorical scores for the 1977 survey was .65.

not to constitute a serious problem with this SRD measure.⁶

The SRD measure asks respondents to indicate how many times, "from Christmas a year ago to the Christmas just past," they committed each offense. The recall period is thus a year, anchored by a specific reference point relevant to most youth. The use of a one-year period which coincides almost precisely with the calendar year allows for direct comparison with UCR data, NCP victimization data, and some prior SRD data. It also avoids the need to adjust for seasonal variations.

Administration Procedure

Each of the annual surveys involves a structured interview with the respondent. An interview format was selected over the self-administered questionnaire format for several reasons. First, we share Gold's belief (Gold, 1966) that the interview situation (if properly structured to protect confidentiality) can insure more accurate data. Second, our previous research suggests that the reliability of SRD measures is comparable for these two administration forms (Elliott et al., 1976). Finally, the necessity of securing informed consents from all subjects and the complexity of the present research require, in our judgment, a personal contact with the

⁶ Two of the context specific offenses involving theft at home and school may overlap the general theft items. These two context-specific items are not included in any of our general summary measures and contribute only to the summary measures of delinquent behavior in the home and school. We are obtaining estimates of the overlap between these two items and the general theft items in the 1981 survey.

respondents. Once this contact is made, it seems logical to use the interviewer to facilitate the data collection process and to improve the quality of the data obtained.

The Sample

The National Youth Survey involves a probability sample of households in the continental United States based upon a multistage, cluster sampling design. The sample was drawn in late 1976 and contained approximately 2,375 eligible youth aged 11-17 in 1976. Of these, 1,725 (73%) agreed to participate in the study and completed interviews in the 1977 survey.⁷ An age, sex and race comparison between eligible youth not interviewed and participating youth indicates that the loss rate from any particular age, sex, or racial group appears to be proportional to that group's representation in the population. Further, with respect to these characteristics, participating youth appear to be representative of the total 11 through 17-year-old youth population in the United States as established by the U.S. Census Bureau (Huizinga, 1978).

⁷ At each stage, the probabilities of selection were established to provide a self-weighting sample. Seventy-six primary sampling units were selected, with probability of selection being proportional to size. This sampling procedure resulted in the listing of 67,266 households, of which approximately 8,000 were selected for inclusion in the sample. All 11 through 17-year-old youth living in the selected households were eligible respondents for the study. The selected households generated an estimated total of 2,375 eligible youth. Of these, 650 (27%) did not participate in the study due to (1) parental refusal, (2) youth refusal, (3) an inability to make contact with the respondent, or (4) the youth being considered inappropriate for inclusion in the study (e.g., severely mentally retarded). Based upon a comparison with 1976 U.S. Census Bureau estimates, the resulting sample of participating youth does appear representative of American youth with respect to age, sex, and race (U.S. Bureau of the Census, 1977). For a detailed description of the sample, see Huizinga, 1978.

The Calculation of Annual Incidence Estimates

Annual national incidence estimates have been calculated for the total adolescent population and for sub-populations defined by sex, SES, ethnicity, and age. These estimates are presented in the following tables. For each of these groups, both the proportion of youth reporting one or more offenses of each type and the mean number of offenses of each type are reported. For each estimate, the .95 confidence interval and design effect are also presented.⁸

Since the NYS involves a national youth panel, the relevant age range changes each year as the panel matures. In order to obtain a precise age for purposes of the age-specific estimates, age categories reflect the respondent's age at the end (i.e., Dec. 31) of each calendar year. The age range for 1976 is 11 to 17. For 1980, the age range is 15-21.

The social class measure employed in these tables is the Hollingshead two-factor index (Hollingshead and Redlich, 1958) as applied to the principal wage earner in each youth's family. Hollingshead classes 1 and 2, involving primarily professional/managerial occupations and college level educations, are collapsed to make the Class I category in the tables. Hollingshead class

⁸ By applying a uniform sampling fraction in all sample strata, a self-weighting sample was obtained. A combined ratio estimate is used for the estimates of the proportion of youth involved in each behavior. The variance of these estimates is obtained by the method of collapsed strata (Kish, 1965). Complete description of the estimation procedures are contained in Project Report No. 2: Description of the National Youth Sample (Huizinga, 1978). These proportion and variance estimates are used in the computation of the confidence intervals.

The design effect is the ratio of the actual variance to the variance of the estimate from a simple random sample of the same size. It thus indicates the extent of clustering of the delinquent behaviors in geographical areas. The confidence intervals presented here have taken into account these clustering effects.

3, primarily owners of small businesses, clerical workers and persons in sales occupations and skilled manual occupations with high school or some college completed, constitutes the Class II category. Hollingshead classes 4 and 5, primarily semiskilled persons and those in unskilled manual occupations with high school or lower levels of education, make up the Class III category.

Specific estimates (proportions and means) are presented for whites (Anglos), blacks, Hispanics and a residual "other" category. Because of the small number of Hispanic respondents (N=76) and some obvious clustering of this ethnic group, the accuracy of the variance estimates is questionable, and we have not included confidence intervals or design effects for this subgroup. The same situation holds for the "other" ethnic category (N=28). Confidence intervals and design effects are thus presented for only the white and black ethnic categories.

Figure 1 below indicates the sizes of each of the subgroups for whom incidence estimates are presented. These subgroup N's represent our base subgroup sizes and are constant across all 5 reporting years (1976-1980).

SUBGROUPS FOR INCIDENCE ESTIMATES

	<u>Sex</u>		<u>Race</u>				<u>Class</u>			
	Male	Female	White	Black	Hispanic	Other	I	II	III	Missing
N	918	807	1361	260	76	28	392	509	722	102
%	53.2	46.8	78.9	15.1	4.4	1.6	22.7	29.5	41.9	5.9
<u>Birth Cohorts</u>										
Age 1976:		1965	1964	1963	1962	1961	1960	1959		
		11	12	13	14	15	16	17		
N		252	257	269	258	253	239	197		
%		14.6	14.9	15.6	15.0	14.7	13.9	11.4		

Figure 1

The mean frequency estimates are based upon the open-ended frequency estimates provided by the respondents. An examination of individual responses revealed a few reports with very high frequencies. This was a source of some concern since these extreme scores, if exaggerations or falsifications, should be "corrected" or modified so as not to unfairly effect the estimates of mean frequencies. In a special review of respondents with extreme scores, all subjects reporting frequencies of 24 or greater to any SRD item were identified. Two kinds of checks were made on these respondents. First, high score offense items were examined to determine if the response seemed reasonable, unlikely, or impossible. For example, throwing objects (snowballs) 100 times a year is not an unreasonable response; but armed robbery 100 times a year, while not impossible, does appear unlikely. Second, interviewer comments relative to specific items or to the general SRD item set were examined for impressions about the validity of these responses.

Several conclusions seem warranted from this review. First, the majority of interviewer comments associated with extreme scores provided positive justification for these scores rather than suggestions or impressions about deliberate falsification or exaggeration. Second, virtually none of the responses were logically impossible. Third, many of the highest frequency responses were reasonably justified by interviewer comments (for example, a report of 400 thefts under \$5 with an interviewer comment that the respondent indicated he worked at a grocery store and stole oranges to eat on a daily basis). Finally, there was no general rule for altering extreme scores which did not appear arbitrary and likely to produce errors of underestimation. As

a result, no correction was applied to individual frequency estimates.⁹ This suggests caution in the interpretation of the mean frequency estimates particularly when the subgroup size is small, since one or two extreme scores can dramatically effect the estimate.¹⁰

⁹ In a few instances, respondents were judged to be unreliable or unresponsive on the whole set of SRD items and were assigned no scores on the SRD items. But no individual item level adjustments to reported frequencies were made. In the 1980 and 1981 surveys, follow-up questions to the SRD items were included so as to obtain descriptions of the events being reported. From these descriptions, estimates of the appropriateness or inappropriateness of the events reported in response to specific SRD items can be calculated, and general corrections for classes of subjects can be determined. Such corrections will apply to individual SRD items and will be available only for 1979 and 1980 incidence estimates.

¹⁰ In our full report of the epidemiology of delinquent behavior, we present the median and mode of the distribution in addition to the mean, so as to alert the reader to this potential problem.

REFERENCES

- Cloward, Richard A. and Lloyd E. Ohlin
1960 Delinquency and Opportunity. Glencoe, Ill.: Free Press.
- Cohen, Albert K.
1955 Delinquent Boys: The Culture of the Gang. Glencoe, Ill.: Free Press.
- Elliott, Delbert S., Suzanne S. Ageton, Margaret Hunter, and Brian Knowles
1976 Research Handbook for Community Planning and Feedback Instruments (Revised). Vol. 1. Prepared for the Office of Youth Development, Department of Health, Education and Welfare, HEW-05-74-308. Boulder: Behavioral Research and Evaluation Corporation.
- Elliott, Delbert S., Suzanne S. Ageton, and Rachelle J. Canter
1979 "An Integrated Theoretical Perspective on Delinquent Behavior." Journal of Research on Crime and Delinquency 16:3-27.
- Farrington, David P.
1973 "Self-reports of Deviant Behavior: Predictive and Stable?" Journal of Criminal Law and Criminology 64:99-110.
- Gold, Martin
1966 "Undetected Delinquent Behavior." Journal of Research in Crime and Delinquency 3:27-46.
- Hindelang, Michael J., Travis Hirschi, and Joseph G. Weis
1975 Self-Reported Delinquency: Methods and Substance. Proposal submitted to the National Institute of Mental Health, Department of Health, Education and Welfare, MH 27778.
- Hollingshead, August B., and Frederick G. Redlich
1958 Social Class and Mental Illness. New York: Wiley.
- Huizinga, David
1978 Description of the National Youth Sample. Project Report No. 2. HEW Grant No. MH27552, The Dynamics of Delinquent Behavior: A National Survey. Boulder: Behavioral Research Institute.
- Kish, Leslie
1965 Survey Sampling. New York: Wiley.
- Miller, Walter B.
1958 "Lower Class Culture as a Generating Milieu of Gang Delinquency." Journal of Social Issues 14:5-19.

- Miller, Walter B.
1966 "Violent Crimes in City Gangs." Annals of the American Academy of Political and Social Science 364:97-112.
- Nettler, Gwynn
1974 Explaining Crime. New York: McGraw-Hill.
- Reiss, Albert J., Jr.
1975 "Inappropriate Theories and Inadequate Methods as Policy Plagues: Self Reported Delinquency and the Law." Pp. 211-222 in N. J. Demarath, Jr., Otto Larson and Carl F. Schuessler (eds.), Social Policy and Sociology. New York: Academic Press.
- Short, James F., Jr., and Fred C. Strodbeck
1965 Group Process and Gang Delinquency. Chicago: University of Chicago Press.
- Yablonsky, Lewis
1962 The Violent Gang. New York: MacMillan.

SELF-REPORTED DELINQUENCY ESTIMATES - 1977

A. TOTAL ADOLESCENT POPULATION, AGED 12-18 (N = 1,725)

OFFENSES	PROPORTION REPORTING ONE OR MORE OFFENSES	.95 CONFIDENCE INTERVAL	DESIGN EFFECTS	MEAN NUMBER OF OFFENSES	.95 CONFIDENCE INTERVAL	DESIGN EFFECT
Stole motor vehicle	.009	.004 - .014	1.000	.215	-0.000 - .607	.996
Stole something GT50	.022	.014 - .031	1.349	.098	.050 - .147	.886
Bought stolen goods	.084	.069 - .098	1.107	.422	.150 - .694	1.051
Runaway	.055	.043 - .067	1.158	.161	.033 - .289	.982
Carried hidden weapon	.069	.052 - .086	1.814	2.623	1.249 - 3.998	1.069
Stole something LT5	.177	.152 - .202	1.732	.972	.450 - 1.493	1.022
Aggravated assault	.039	.026 - .051	1.616	.139	.051 - .226	1.079
Prostitution	.005	.001 - .009	1.000	.013	.001 - .024	1.101
Sexual intercourse	.202	.175 - .229	1.776	3.955	2.892 - 5.017	1.195
Gang fights	.103	.085 - .120	1.355	.657	.158 - 1.156	.966
Sold marijuana	.073	.057 - .090	1.617	1.676	.509 - 2.842	1.161
Hit teacher	.065	.050 - .080	1.528	.216	.089 - .344	1.089
Hit parents	.046	.034 - .058	1.275	.098	.062 - .135	1.008
Hit students	.414	.379 - .449	1.994	2.777	2.121 - 3.432	1.195
Disorderly conduct	.315	.285 - .346	1.743	3.974	2.409 - 5.539	1.463
Sold hard drugs	.008	.003 - .014	1.000	.169	-0.000 - .341	1.074
Joyriding	.045	.034 - .057	1.248	.140	.061 - .219	1.091
Sexual assault	.009	.005 - .014	1.000	.016	.006 - .026	1.077
Strongarmed students	.029	.019 - .038	1.341	.206	.033 - .379	.996
Strongarmed teachers	.002	.000 - .005	1.000	.011	-0.000 - .027	1.014
Strongarmed others	.018	.009 - .027	1.789	.271	-0.000 - .718	1.004
Stole something 5-50	.057	.043 - .070	1.379	.239	.135 - .343	1.082
Stole at school	.063	.049 - .078	1.417	.173	.093 - .252	1.108
Broke into bldg/vehicle	.039	.028 - .051	1.415	.290	.090 - .490	.590
Panhandled	.018	.010 - .026	1.417	.106	-0.000 - .237	1.080

Analysis Cases = 1,655
Missing Cases = 70

SELF-REPORTED DELINQUENCY ESTIMATES - 1977

B. MALES, AGED 12 - 18 (N = 918)

OFFENSES	PROPORTION REPORTING ONE OR MORE OFFENSES	.95 CONFIDENCE INTERVAL	DESIGN EFFECTS	MEAN NUMBER OF OFFENSES	.95 CONFIDENCE INTERVAL	DESIGN EFFECT
Stole motor vehicle	.013	.004 - .021	1.237	.392	-0.000 - 1.125	.983
Stole something GT50	.039	.023 - .054	1.376	.177	.085 - .270	.921
Bought stolen goods	.130	.105 - .154	1.167	.742	.227 - 1.256	1.066
Runaway	.055	.038 - .071	1.133	.221	-0.000 - .460	.981
Carried hidden weapon	.115	.088 - .143	1.590	4.761	2.177 - 7.345	1.082
Stole something LT5	.221	.189 - .253	1.264	1.536	.586 - 2.490	.977
Aggravated assault	.058	.038 - .078	1.645	.234	.072 - .397	1.067
Prostitution	.007	.000 - .013	1.301	.016	-0.000 - .033	1.199
Sexual Intercourse	.262	.224 - .300	1.586	4.295	2.999 - 5.591	1.069
Gang Fights	.143	.117 - .170	1.228	1.123	.182 - 2.064	.974
Marijuana	.102	.076 - .129	1.636	2.229	.367 - 4.090	1.121
Hit teacher	.087	.066 - .110	1.297	.351	.118 - .585	1.044
Hit parents	.056	.041 - .070	.844	.111	.078 - .145	.519
Hit students	.581	.541 - .621	1.409	4.217	3.132 - 5.302	1.184
Disorderly conduct	.356	.316 - .396	1.470	4.876	2.137 - 7.615	1.642
Sold hard drugs	.015	.005 - .025	1.540	.317	-0.000 - .642	1.085
Joyriding	.057	.040 - .074	1.200	.224	.078 - .370	1.077
Sexual assault	.017	.009 - .026	.935	.030	.011 - .049	1.105
Strongarmed students	.041	.025 - .057	1.360	.359	.029 - .688	1.024
Strongarmed teachers	.005	.000 - .009	1.000	.021	-0.000 - .051	1.034
Strongarmed others	.031	.015 - .046	1.755	.504	-0.000 - 1.346	1.008
Stole something 5-50	.088	.063 - .115	1.758	.392	.197 - .588	1.152
Stole at school	.081	.062 - .101	1.103	.228	.097 - .358	.947
Broke into bldg/vehicle	.064	.046 - .082	1.119	.474	.112 - .837	.582
Panhandled	.022	.012 - .032	1.023	.067	.007 - .128	.978

Analysis Cases = 879
Missing Cases = 39

SELF-REPORTED DELINQUENCY ESTIMATES - 1977

C. FEMALES, AGED 12 - 18 (N = 807)

OFFENSES	PROPORTION REPORTING ONE OR MORE OFFENSES	.95 CONFIDENCE INTERVAL	DESIGN EFFECTS	MEAN NUMBER OF OFFENSES	.95 CONFIDENCE INTERVAL	DESIGN EFFECT
Stole motor vehicle	.005	0.000 - .010	1.000	.014	-0.000 - .030	.999
Stole something GT50	.004	-0.000 - .008	1.000	.009	-0.000 - .022	.986
Bought stolen goods	.032	.019 - .045	.987	.059	.030 - .088	.983
Runaway	.055	.040 - .071	.899	.093	.057 - .128	.970
Carried hidden weapon	.017	.007 - .027	1.078	.205	-0.000 - .485	1.081
Stole something LT 5	.128	.101 - .155	1.221	.334	.197 - .470	.813
Aggravated assault	.017	.007 - .027	1.107	.031	.010 - .052	1.084
Prostitution	.003	-0.000 - .006	1.000	.009	-0.000 - .025	1.005
Sexual intercourse	.135	.108 - .161	1.156	3.571	2.079 - 5.063	.977
Gang fights	.057	.040 - .074	1.012	.130	.074 - .186	.910
Sold marijuana	.040	.025 - .055	1.125	1.049	-0.000 - 2.291	1.128
Hit teacher	.040	.027 - .054	.896	.063	.037 - .090	.989
Hit parents	.035	.019 - .051	1.444	.084	.022 - .145	1.110
Hit students	.225	.186 - .264	1.681	1.147	.503 - 1.792	1.233
Disorderly conduct	.269	.234 - .305	1.194	2.952	1.631 - 4.274	.998
Sold hard drugs	.001	-0.000 - .004	1.000	.001	-0.000 - .004	1.000
Joyriding	.032	.019 - .045	1.043	.045	.022 - .068	1.090
Sexual assault	.000	.000 - .000	1.000	.000	.000 - .000	1.000
Strongarmed students	.014	.005 - .023	1.049	.032	.012 - .053	.759
Strongarmed teachers	.000	.000 - .000	1.000	.000	.000 - .000	1.000
Strongarmed others	.004	-.000 - .008	1.000	.008	-0.000 - .018	1.024
Stole something 5-50	.021	.010 - .031	.987	.066	.033 - .099	.473
Stole at school	.043	.027 - .059	1.161	.110	.054 - .167	1.126
Broke into Eldg/vehc	.012	.002 - .021	1.418	.081	-0.000 - .220	1.036
Panhandled	.014	.005 - .024	1.215	.149	-0.000 - .415	1.038

Analysis Cases = 776
Missing Cases = 31

SELF-REPORTED DELINQUENCY ESTIMATES - 1977

C. FEMALES, AGED 12 - 18 (N = 807)

OFFENSES	PROPORTION REPORTING ONE OR MORE OFFENSES	.95 CONFIDENCE INTERVAL	DESIGN EFFECTS	MEAN NUMBER OF OFFENSES	.95 CONFIDENCE INTERVAL	DESIGN EFFECT
Stole motor vehicle	.005	0.000 - .010	1.000	.014	-0.000 - .030	.999
Stole something GT50	.004	-0.000 - .008	1.000	.009	-0.000 - .022	.986
Bought stolen goods	.032	.019 - .045	.987	.059	.030 - .088	.983
Runaway	.055	.040 - .071	.899	.093	.057 - .128	.970
Carried hidden weapon	.017	.007 - .027	1.078	.205	-0.000 - .485	1.081
Stole something LT 5	.128	.101 - .155	1.221	.334	.197 - .470	.813
Aggravated assault	.017	.007 - .027	1.107	.031	.010 - .052	1.084
Prostitution	.003	-0.000 - .006	1.000	.009	-0.000 - .025	1.005
Sexual intercourse	.135	.108 - .161	1.156	3.571	2.079 - 5.063	.977
Gang fights	.057	.040 - .074	1.012	.130	.074 - .186	.910
Sold marijuana	.040	.025 - .055	1.125	1.049	-0.000 - 2.291	1.128
Hit teacher	.040	.027 - .054	.896	.063	.037 - .090	.989
Hit parents	.035	.019 - .051	1.444	.084	.022 - .145	1.110
Hit students	.225	.186 - .264	1.681	1.147	.503 - 1.792	1.233
Disorderly conduct	.269	.234 - .305	1.194	2.952	1.631 - 4.274	.998
Sold hard drugs	.001	-0.000 - .004	1.000	.001	-0.000 - .004	1.000
Joyriding	.032	.019 - .045	1.043	.045	.022 - .068	1.090
Sexual assault	.000	.000 - .000	1.000	.000	.000 - .000	1.000
Strongarmed students	.014	.005 - .023	1.049	.032	.012 - .053	.759
Strongarmed teachers	.000	.000 - .000	1.000	.000	.000 - .000	1.000
Strongarmed others	.004	-.000 - .008	1.000	.008	-0.000 - .018	1.024
Stole something 5-50	.021	.010 - .031	.987	.066	.033 - .099	.473
Stole at school	.043	.027 - .059	1.161	.110	.054 - .167	1.126
Broke into bldg/vehc	.012	.002 - .021	1.418	.081	-0.000 - .220	1.036
Panhandled	.014	.005 - .024	1.215	.149	-0.000 - .415	1.038

Analysis Cases = 776
Missing Cases = 31

SELF-REPORTED DELINQUENCY ESTIMATES - 1977

D. WHITES, AGED 12 - 18 (N = 1,361)

OFFENSES	PROPORTION REPORTING ONE OR MORE OFFENSES	.95 CONFIDENCE INTERVAL	DESIGN EFFECTS	MEAN NUMBER OF OFFENSES	.95 CONFIDENCE INTERVAL	DESIGN EFFECT
Stole motor vehicle	.010	.004 - .016	1.000	.264	-0.000 - .759	1.000
Stole something GT50	.022	.011 - .033	1.751	.087	.021 - .153	1.712
Bought stolen goods	.083	.065 - .101	1.384	.257	.156 - .359	1.598
Runaway	.060	.046 - .074	1.134	.116	.060 - .172	1.134
Carried hidden weapon	.062	.046 - .079	1.467	2.397	.930 - 3.864	1.019
Stole something LT 5	.182	.150 - .214	2.200	1.033	.386 - 1.679	1.014
Aggravated assault	.037	.023 - .050	1.573	.081	.046 - .116	1.263
Prostitution	.002	-0.000 - .005	1.000	.006	-0.000 - .015	1.015
Sexual intercourse	.183	.158 - .208	1.362	3.654	2.337 - 4.971	1.437
Gang Fights	.093	.073 - .112	1.460	.462	.138 - .787	.908
Sold marijuana	.078	.059 - .098	1.711	1.380	.500 - 2.259	1.261
Hit teacher	.054	.038 - .069	1.589	.221	.060 - .380	1.108
Hit parents	.055	.040 - .069	1.285	.120	.074 - .167	1.029
Hit students	.410	.370 - .451	2.163	2.355	1.813 - 2.897	1.206
Disorderly conduct	.343	.307 - .379	1.868	3.779	2.612 - 4.945	1.069
Sold hard drugs	.008	.002 - .015	1.000	.119	-0.000 - .265	1.117
Joyriding	.047	.034 - .060	1.216	.140	.050 - .230	1.116
Sexual assault	.010	.004 - .015	1.000	.018	.006 - .031	1.127
Strongarmed students	.023	.013 - .033	1.470	.227	.008 - .446	1.018
Strongarmed teachers	.003	-0.000 - .006	1.000	.014	-0.000 - .034	1.014
Strongarmed others	.018	.007 - .028	1.992	.332	-0.000 - .896	1.009
Stole something 5-50	.059	.041 - .076	1.709	.236	.090 - .382	1.601
Stole at school	.065	.048 - .082	1.572	.184	.085 - .283	1.158
Broke into bldg/vehc	.043	.029 - .056	1.440	.185	.056 - .314	.983
Panhandled	.018	.008 - .027	1.754	.125	-0.000 - .291	1.094

Analysis Cases = 1,314

Missing Cases = 47

SELF-REPORTED DELINQUENCY ESTIMATES - 1977

E. BLACKS, AGED 12 - 18 (N = 260)

OFFENSES	PROPORTION REPORTING ONE OR MORE OFFENSES	.95 CONFIDENCE INTERVAL	DESIGN EFFECTS	MEAN NUMBER OF OFFENSES	.95 CONFIDENCE INTERVAL	DESIGN EFFECT
Stole motor vehicle	.008	-0.000 - .020	1.017	.037	-0.000 - .091	1.017
Stole something GT50	.029	.007 - .051	1.003	.198	-0.000 - .432	1.100
Bought stolen goods	.082	.045 - .119	1.070	.650	-0.000 - 1.510	1.036
Runaway	.033	.011 - .055	.913	.449	-0.000 - 1.281	1.000
Carried hidden weapon	.074	.034 - .114	1.389	3.844	-0.000 - 8.298	1.040
Stole something LT 5	.119	.079 - .160	.920	.457	.153 - .761	1.225
Aggravated assault	.062	.029 - .094	1.083	.506	-0.000 - 1.056	1.009
Prostitution	.021	.004 - .037	.800	.053	-0.000 - .108	.843
Sexual intercourse	.347	.283 - .411	1.062	6.519	3.539 - 9.499	1.195
Gang fights	.119	.063 - .176	1.784	.387	.089 - .685	1.039
Sold marijuana	.053	.020 - .087	1.287	1.041	-0.000 - 2.690	1.032
Hit teachers	.129	.069 - .188	1.840	.253	.097 - .409	1.457
Hit parents	.008	-0.000 - .020	1.009	.008	-0.000 - .020	1.005
Hit students	.430	.351 - .509	1.501	3.736	1.706 - 5.765	.830
Disorderly conduct	.181	.127 - .235	1.164	1.440	.566 - 2.315	1.160
Sold hard drugs	.008	-0.000 - .021	1.117	.461	-0.000 - 1.314	1.036
Joyriding	.033	.007 - .059	1.248	.074	-0.000 - .156	1.043
Sexual assault	.008	-0.000 - .019	.876	.008	-0.000 - .019	.873
Strongarmed students	.041	.016 - .067	.997	.071	.016 - .125	1.110
Strongarmed teachers	.000	.000 - .000	1.000	.000	.000 - .000	1.000
Strongarmed others	.025	.003 - .047	1.209	.045	-0.000 - .091	1.361
Stole something 5-50	.037	.015 - .060	.827	.241	-0.000 - .494	1.089
Stole at school	.041	.014 - .069	1.153	.079	.028 - .130	.752
Broke into bldg/vehc	.021	.002 - .039	1.036	.815	-0.000 - 2.447	1.022
Panhandled	.021	.004 - .038	.767	.029	.005 - .053	.785

Analysis Cases = 243
Missing Cases = 17

SELF-REPORTED DELINQUENCY ESTIMATES - 1977

G. OTHER ETHNIC GROUPS, AGED 12 - 18 (N = 28)

<u>OFFENSES</u>	<u>PROPORTION REPORTING ONE OR MORE OFFENSES</u>	<u>.95 CONFIDENCE INTERVAL</u>	<u>DESIGN EFFECTS</u>	<u>MEAN NUMBER OF OFFENSES</u>	<u>.95 CONFIDENCE INTERVAL</u>	<u>DESIGN EFFECT</u>
Stole motor vehicle	.000			.000		
Stole something GT50	.036			.036		
Bought stolen goods	.143			.286		
Runaway	.071			.071		
Carried hidden weapon	.179			6.464		
Stole something LT 5	.357			3.143		
Aggravated assault	.000			.000		
Prostitution	.000			.000		
Sexual intercourse	.143			4.679		
Gang fights	.143			12.643		
Sold marijuana	.071			.143		
Hit teacher	.036			.036		
Hit parents	.000			.000		
Hit students	.321			6.679		
Disorderly conduct	.214			38.929		
Sold hard drugs	.000			.000		
Joyriding	.036			.893		
Sexual assault	.000			.000		
Strongarmed students	.179			.714		
Strongarmed teachers	.000			.000		
Strongarmed others	.000			.000		
Stole something 5-50	.143			.607		
Stole at school	.143			.536		
Broke into bldg/vehc	.107			.964		
Panhandled	.036			.071		

Analysis Cases = 28
Missing Cases = 0

SELF-REPORTED DELINQUENCY ESTIMATES - 1977

H. CLASS I, AGED 12 - 18 (N = 392)

OFFENSES	PROPORTION REPORTING ONE OR MORE OFFENSES	.95 CONFIDENCE INTERVAL	DESIGN EFFECTS	MEAN NUMBER OF OFFENSES	.95 CONFIDENCE INTERVAL	DESIGN EFFECT
Stole motor vehicle	.003	-0.000 - .008	1.000	.005	-0.000 - .016	1.040
Stole something GT 50	.010	.000 - .020	.930	.013	-0.000 - .026	.930
Bought stolen goods	.069	.031 - .108	2.175	.141	.063 - .220	1.431
Runaway	.031	.011 - .051	1.286	.041	.011 - .071	1.104
Carried hidden weapon	.036	.016 - .056	1.120	1.057	-0.000 - 2.902	.943
Stole something LT 5	.167	.114 - .220	1.911	.473	.271 - .675	1.433
Aggravated assault	.010	-0.000 - .021	1.023	.021	-0.000 - .045	1.016
Prostitution	.003	-0.000 - .008	1.000	.005	-0.000 - .015	.989
Sexual intercourse	.152	.116 - .187	.929	1.584	.659 - 2.508	.922
Gang fights	.031	.011 - .050	1.198	.062	.005 - .118	1.077
Sold marijuana	.057	.030 - .083	1.233	1.195	-0.000 - 3.080	.979
Hit teacher	.028	.013 - .043	.776	.054	.019 - .089	.709
Hit parents	.031	.012 - .049	1.089	.064	.012 - .117	1.042
Hit students	.333	.278 - .388	1.291	1.129	.798 - 1.460	1.180
Disorderly conduct	.398	.341 - .456	1.321	2.339	1.643 - 3.036	1.033
Sold hard drugs	.003	-0.000 - .008	1.000	.008	-0.000 - .023	.979
Joyriding	.049	.027 - .070	.938	.085	.037 - .132	1.013
Sexual assault	.000	.000 - .000	1.000	.000	0.000 - .000	1.000
Strongarmed students	.021	.008 - .033	.740	.126	-0.000 - .297	.944
Strongarmed teachers	.000	.000 - .000	1.000	.000	.000 - .000	1.000
Strongarmed others	.005	-0.000 - .013	1.076	.026	-0.000 - .066	1.020
Stole something 5-50	.031	.017 - .045	.640	.087	.059 - .116	.134
Stole at school	.047	.019 - .074	1.641	.083	.023 - .142	1.685
Broke into bldg/vehc	.021	.008 - .033	.750	.026	.009 - .042	.732
Panhandled	.021	.003 - .038	1.423	.028	.003 - .053	1.389

Analysis Cases = 389
Missing Cases = 3

SELF-REPORTED DELINQUENCY ESTIMATES - 1977

I. CLASS II, AGED 12 - 18 (N = 509)

OFFENSES	PROPORTION REPORTING ONE OR MORE OFFENSES	.95 CONFIDENCE INTERVAL	DESIGN EFFECTS	MEAN NUMBER OF OFFENSES	.95 CONFIDENCE INTERVAL	DESIGN EFFECT
Stole motor vehicle	.012	.001 - .024	1.277	.029	-0.000 - .065	1.093
Stole something GT50	.026	.006 - .047	1.948	.145	-0.000 - .296	1.755
Bought stolen goods	.077	.044 - .111	1.865	.314	.077 - .550	2.115
Runaway	.069	.042 - .096	1.365	.128	.066 - .190	1.289
Carried hidden weapon	.080	.050 - .110	1.478	4.080	.964 - 7.195	1.015
Stole something LT 5	.173	.127 - .219	1.777	1.729	.029 - 3.429	1.014
Aggravated assault	.041	.022 - .060	1.094	.198	-0.000 - .427	.988
Prostitution	.004	-0.000 - .012	1.991	.012	-0.000 - .037	1.374
Sexual intercourse	.184	.149 - .220	.985	3.828	1.879 - 5.778	1.350
Gang fights	.124	.085 - .163	1.657	1.145	-0.000 - 2.591	.986
Sold marijuana	.077	.044 - .110	1.838	1.458	.074 - 2.843	1.420
Hit teacher	.065	.035 - .095	1.772	.208	.053 - .363	2.031
Hit parents	.051	.027 - .075	1.440	.151	.047 - .254	1.104
Hit students	.415	.356 - .475	1.744	3.118	2.283 - 3.953	.544
Disorderly conduct	.318	.273 - .363	1.114	6.330	1.791 - 10.869	1.493
Sold hard drugs	.014	-0.000 - .031	2.345	.161	-0.000 - .425	1.282
Joyriding	.045	.025 - .065	1.135	.196	-0.000 - .416	1.076
Sexual assault	.006	-0.000 - .013	1.005	.016	-0.000 - .039	.995
Strongarmed students	.039	.021 - .057	1.017	.110	.016 - .204	1.476
Strongarmed teachers	.008	.000 - .016	.936	.037	-0.000 - .089	.991
Strongarmed others	.024	.003 - .045	2.224	.088	-0.000 - .192	2.062
Stole something 5-50	.067	.037 - .098	1.773	.403	.048 - .758	1.521
Stole at school	.084	.049 - .118	1.827	.303	.059 - .548	1.099
Broke into bldg/vehc	.059	.032 - .086	1.541	.369	.033 - .704	.980
Panhandled	.014	.002 - .027	1.285	.069	-0.000 - .170	.934

Analysis Cases = 491
Missing Cases = 18

SELF-REPORTED DELINQUENCY ESTIMATES - 1977

J. CLASS III, AGED 12 - 18 (N = 722)

OFFENSES	PROPORTION REPORTING ONE OR MORE OFFENSES	.95 CONFIDENCE INTERVAL	DESIGN EFFECTS	MEAN NUMBER OF OFFENSES	.95 CONFIDENCE INTERVAL	DESIGN EFFECT
Stole motor vehicle	.010	.003 - .018	.986	.494	-0.000 - 1.450	1.007
Stole something GT50	.023	.011 - .036	1.075	.103	.008 - .197	1.079
Bought stolen goods	.092	.064 - .121	1.574	.676	.012 - 1.340	1.107
Runaway	.059	.040 - .077	1.045	.120	.022 - .218	1.121
Carried hidden weapon	.075	.050 - .099	1.428	2.145	.330 - 3.960	1.068
Stole something LT 5	.176	.139 - .212	1.531	.689	.425 - .953	1.027
Aggravated assault	.048	.029 - .068	1.366	.172	.050 - .293	1.072
Prostitution	.006	.000 - .011	1.000	.016	-0.000 - .036	.948
Sexual intercourse	.224	.183 - .265	1.616	4.501	3.178 - 5.824	.629
Gang fights	.122	.100 - .144	.759	.695	.056 - 1.334	.983
Sold marijuana	.073	.048 - .099	1.612	2.245	-0.000 - 4.613	1.116
Hit teacher	.080	.057 - .103	1.202	.316	.042 - .590	.931
Hit parents	.051	.032 - .071	1.324	.088	.037 - .139	1.291
Hit students	.451	.402 - .501	1.631	3.230	2.236 - 4.224	.879
Disorderly conduct	.268	.225 - .311	1.576	3.295	1.563 - 5.026	1.296
Sold hard drugs	.009	.001 - .016	1.070	.290	-0.000 - .655	.998
Joyriding	.044	.027 - .061	1.179	.135	.040 - .230	1.001
Sexual assault	.015	.005 - .024	1.068	.024	.005 - .042	1.289
Strongarmed students	.025	.013 - .037	1.011	.336	-0.000 - .726	.932
Strongarmed teachers	.000	.009 - .000	1.000	.000	.000 - .000	1.000
Strongarmed others	.019	.009 - .029	.943	.570	-0.000 - 1.641	.984
Stole something 5-50	.059	.040 - .078	1.114	.199	.073 - .324	1.335
Stole at school	.049	.030 - .068	1.302	.122	.061 - .184	.965
Broke into bldg/vehc	.037	.019 - .054	1.425	.411	-0.000 - 1.008	1.051
Panhandled	.016	.006 - .026	1.022	.179	-0.000 - .481	1.030

Analysis Cases = 682
Missing Cases = 40

SELF-REPORTED DELINQUENCY ESTIMATES - 1977

K. 12 YEAR OLDS (N = 252)

OFFENSES	PROPORTION REPORTING ONE OR MORE OFFENSES	.95 CONFIDENCE INTERVAL	DESIGN EFFECTS	MEAN NUMBER OF OFFENSES	.95 CONFIDENCE INTERVAL	DESIGN EFFECT
Stole motor vehicle	.004	.000 - .012	1.004	1.326	-0.000 - 4.001	.999
Stole something GT50	.008	-0.000 - .020	.932	.012	-0.000 - .031	.958
Bought stolen goods	.025	-0.000 - .050	1.612	.037	-0.000 - .076	1.478
Runaway	.041	.007 - .076	1.788	.054	.012 - .096	1.355
Carried hidden weapon	.029	.008 - .050	.898	.037	.009 - .066	.907
Stole something LT 5	.095	.048 - .142	1.517	.161	.070 - .252	1.393
Aggravated assault	.008	-0.000 - .020	1.016	.021	-0.000 - .051	.012
Prostitution	.004	-0.000 - .012	.970	.004	-0.000 - .012	.966
Sexual intercourse	.033	.009 - .058	1.115	.095	-0.000 - .195	.975
Gang fights	.112	.060 - .163	1.561	.178	.078 - .276	1.038
Sold marijuana	.008	-0.000 - .020	.990	.012	-0.000 - .031	.997
Hit teacher	.037	.010 - .065	1.247	.062	.009 - .115	1.059
Hit parents	.033	.012 - .054	.831	.099	-0.000 - .208	1.003
Hit students	.434	.366 - .502	1.105	2.785	.750 - 4.820	1.042
Disorderly conduct	.174	.112 - .235	1.562	.492	.218 - .765	1.232
Sold hard drugs	.004	-0.000 - .013	1.012	.004	-0.000 - .013	1.008
Joyriding	.004	-0.000 - .012	.004	.004	-0.000 - .012	.999
Sexual assault	.013	-0.000 - .027	.951	.017	-0.000 - .037	.943
Strongarmed students	.012	-0.000 - .026	.952	.017	-0.000 - .036	.944
Strongarmed teachers	.000	.000 - .000	1.000	.000	.000 - .000	1.000
Strongarmed others	.008	-0.000 - .020	.949	.012	-0.000 - .031	.948
Stole something 5-50	.021	.002 - .039	.976	.025	.002 - .048	.981
Stole at school	.033	.010 - .056	.987	.074	-0.000 - .153	1.616
Broke into bldg/vehc	.025	-0.000 - .053	1.996	.066	-0.000 - .075	1.593
Panhandled	.008	-0.000 - .020	.990	.008	-0.000 - .020	.986

Analysis Cases = 242
Missing Cases = 10

SELF-REPORTED DELINQUENCY ESTIMATES - 1977

L. 13 YEAR OLDS (N = 257)

OFFENSES	PROPORTION REPORTING ONE OR MORE OFFENSES	.95 CONFIDENCE INTERVAL	DESIGN EFFECTS	MEAN NUMBER OF OFFENSES	.95 CONFIDENCE INTERVAL	DESIGN EFFECT
Stole motor vehicle	.000	.000 - .000	1.000	.000	.000 - .000	1.000
Stole something GT50	.004	-0.000 - .012	.995	.048	-0.000 - .144	.991
Bought stolen goods	.044	.016 - .071	1.122	.067	.031 - .104	.637
Runaway	.044	.022 - .065	.667	.067	.027 - .108	.778
Carried hidden weapon	.048	.024 - .071	.768	1.040	-0.000 - 2.651	1.005
Stole something LT 5	.163	.112 - .214	1.174	.488	.248 - .728	.981
Aggravated assault	.040	.012 - .067	1.211	.067	.015 - .120	1.176
Prostitution	.000	.000 - .000	1.000	.000	.000 - .000	1.000
Sexual intercourse	.040	.017 - .063	.812	.149	.007 - .291	.951
Gang fights	.107	.064 - .151	1.220	.917	-0.000 - 2.482	1.010
Sold marijuana	.008	-0.000 - .019	.966	.012	-0.000 - .030	.968
Hit teacher	.067	.036 - .099	.975	.127	.044 - .210	1.241
Hit parents	.032	.011 - .053	.888	.052	.004 - .100	1.035
Hit students	.401	.330 - .472	1.301	2.742	.942 - 4.542	.951
Disorderly conduct	.246	.185 - .307	1.240	3.631	.936 - 6.326	.938
Sold hard drugs	.000	.000 - .000	1.000	.000	.000 - .000	1.000
Joyriding	.024	.005 - .043	.952	.028	.004 - .051	.955
Sexual assault	.000	.000 - .000	1.000	.000	.000 - .000	1.000
Strongarmed students	.036	.014 - .058	.878	.083	.017 - .150	.985
Strongarmed teachers	.004	-0.000 - .013	.995	.004	-0.000 - .012	.991
Strongarmed others	.008	-0.000 - .020	1.062	.028	-0.000 - .069	1.051
Stole something 5-50	.024	.001 - .047	1.407	.238	-0.000 - .656	.996
Stole at school	.044	.016 - .071	1.107	.060	.019 - .100	1.147
Broke into bldg/vehc	.036	.014 - .057	.845	.246	-0.000 - .663	.993
Parhandled	.012	-0.000 - .026	1.000	.020	-0.000 - .044	1.013

Analysis Cases = 252
Missing Cases = 5

SELF-REPORTED DELINQUENCY ESTIMATES - 1977

M. 14 YEAR OLDS (N = 269)

OFFENSES	PROPORTION REPORTING ONE OR MORE OFFENSES	.95 CONFIDENCE INTERVAL	DESIGN EFFECTS	MEAN NUMBER OF OFFENSES	.95 CONFIDENCE INTERVAL	DESIGN EFFECT
Stole motor vehicle	.008	-0.000 - .019	1.091	.012	-0.000 - .030	1.066
Stole something GT50	.019	.005 - .033	.669	.039	-0.000 - .088	.998
Bought stolen goods	.069	.039 - .101	.933	.297	.028 - .566	1.266
Runaway	.058	.029 - .086	.944	.205	-0.000 - .457	1.100
Carried hidden weapon	.062	.029 - .094	1.166	2.062	-0.000 - 4.945	.971
Stole something LT 5	.181	.130 - .233	1.129	.788	.185 - 1.390	1.329
Aggravated assault	.039	.014 - .063	1.029	.073	.012 - .134	1.131
Prostitution	.008	-0.000 - .019	1.006	.023	-0.000 - .063	1.021
Sexual intercourse	.117	.079 - .155	.880	2.537	-0.000 - 5.369	1.207
Gang fights	.097	.058 - .135	1.090	.243	.113 - .373	1.005
Sold marijuana	.077	.043 - .111	1.035	1.730	-0.000 - 4.549	.974
Hit teacher	.097	.058 - .135	1.098	.355	.099 - .612	1.235
Hit parents	.050	.024 - .076	.893	.197	.021 - .373	.936
Hit students	.467	.394 - .540	1.354	2.625	1.664 - 3.587	.880
Disorderly conduct	.328	.270 - .387	.981	7.992	1.681 - 14.304	.986
Sold hard drugs	.008	-0.000 - .019	1.006	.016	-0.000 - .038	1.002
Joyriding	.062	.027 - .097	1.334	.127	.044 - .211	1.139
Sexual assault	.012	-0.000 - .026	1.094	.023	-0.000 - .051	1.090
Strongarmed students	.046	.016 - .077	1.320	.151	-0.000 - .313	1.497
Strongarmed teachers	.008	-0.000 - .019	1.006	.019	-0.000 - .052	1.021
Strongarmed others	.031	.007 - .054	1.178	.135	-0.000 - .292	1.323
Stole something 5-50	.074	.044 - .104	.838	.155	.065 - .245	1.073
Stole at school	.062	.033 - .090	.873	.151	.052 - .249	.966
Broke into bldg/vehc	.035	.012 - .057	.938	.054	.004 - .104	.944
Panhandled	.015	-0.000 - .031	1.019	.124	-0.000 - .319	.975

Analysis Cases = 259
Missing Cases = 10

SELF-REPORTED DELINQUENCY ESTIMATES - 1977

N. 15 YEAR OLDS (N = 258)

OFFENSES	PROPORTION REPORTING ONE OR MORE OFFENSES	.95 CONFIDENCE INTERVAL	DESIGN EFFECTS	MEAN NUMBER OF OFFENSES	.95 CONFIDENCE INTERVAL	DESIGN EFFECT
Stole motor vehicle	.008	-0.000 - .029	1.000	.016	-0.000 - .043	.996
Stole something GT50	.029	.008 - .049	.897	.132	-0.000 - .306	.989
Bought stolen goods	.111	.071 - .101	.949	.358	.157 - .560	.795
Runaway	.070	.039 - .113	.870	.115	.053 - .178	.840
Carried hidden weapon	.091	.047 - .134	1.351	3.506	.114 - 6.898	1.006
Stole something LT 5	.206	.161 - .250	.721	1.263	.640 - .887	.772
Aggravated assault	.062	.029 - .095	1.106	.173	.048 - .298	1.139
Prostitution	.000	.000 - .000	1.000	.000	.000 - .000	1.000
Sexual intercourse	.236	.182 - .289	.928	3.353	1.871 - 5.294	.818
Gang fights	.099	.058 - .140	1.116	2.066	-0.000 - 5.046	.976
Sold marijuana	.086	.052 - .121	.915	1.325	.368 - 2.283	.988
Hit teacher	.070	.038 - .103	.950	.508	-0.000 - 1.276	1.009
Hit parents	.049	.012 - .082	1.305	.082	.017 - .147	1.302
Hit students	.483	.413 - .554	1.178	4.335	2.022 - 6.647	1.031
Disorderly conduct	.370	.304 - .437	1.138	4.416	1.310 - 7.521	.983
Sold hard drugs	.012	-0.000 - .027	1.024	.527	-0.000 - 1.269	1.006
Joyriding	.070	.040 - .100	.844	.222	.068 - .376	.962
Sexual assault	.012	-0.000 - .027	.983	.012	-0.000 - .027	.979
Strongarmed students	.049	.020 - .079	1.113	.971	-0.000 - 2.130	1.006
Strongarmed teachers	.000	.000 - .000	1.000	.000	.000 - .000	1.000
Strongarmed others	.025	.005 - .044	.948	1.555	-0.000 - 4.553	.987
Stole something 5-50	.062	.033 - .091	.855	.280	-0.000 - .589	.967
Stole at school	.083	.045 - .120	1.097	.186	.056 - .316	1.067
Broke into bldg/vehc	.053	.031 - .076	.612	.444	-0.000 - .977	1.012
Panhandled	.029	.010 - .047	.713	.449	-0.000 - 1.271	.976

Analysis Cases = 243

Missing Cases = 15

SELF-REPORTED DELINQUENCY ESTIMATES - 1977

O. 16 YEAR OLDS (N = 253)

OFFENSES	PROPORTION REPORTING ONE OR MORE OFFENSES	.95 CONFIDENCE INTERVAL	DESIGN EFFECTS	MEAN NUMBER OF OFFENSES	.95 CONFIDENCE INTERVAL	DESIGN EFFECT
Stole motor vehicle	.029	.008 - .050	.963	.070	-0.000 - .147	1.008
Stole something GT50	.049	.017 - .082	1.325	.239	.049 - .428	1.044
Bought stolen goods	.144	.091 - .197	1.356	.564	.291 - .837	1.012
Runaway	.074	.036 - .112	1.246	.111	.039 - .183	1.003
Carried hidden weapon	.095	.054 - .135	1.146	5.700	.277 -11.122	.976
Stole something LT 5	.247	.190 - .304	1.048	1.037	.618 - .456	.977
Aggravated assault	.049	.018 - .081	1.273	.350	-0.000 - .806	.960
Prostitution	.008	-0.000 - .020	1.001	.033	-0.000 - .085	.990
Sexual intercourse	.270	.206 - .333	1.199	4.220	2.110 - 6.329	1.154
Gang fights	.144	.101 - .187	.897	.490	.202 - .777	.900
Sold marijuana	.136	.088 - .184	1.158	1.519	.111 - 2.926	1.107
Hit teacher	.086	.046 - .127	1.231	.259	.094 - .424	1.020
Hit parents	.053	.027 - .080	.830	.099	.039 - .159	1.041
Hit students	.453	.378 - .527	1.337	3.280	1.828 - 4.732	1.282
Disorderly conduct	.420	.350 - .489	1.176	4.510	3.114 - 5.907	.859
Sold hard drugs	.012	-0.000 - .027	1.019	.095	-0.000 - .221	1.013
Joyriding	.078	.040 - .116	1.208	.148	.056 - .241	1.036
Sexual assault	.004	-0.000 - .012	1.009	.008	-0.000 - .025	1.005
Strongarmed students	.033	.010 - .056	.981	.078	.011 - .146	.941
Strongarmed teachers	.004	-0.000 - .013	1.034	.049	-0.000 - .151	1.030
Strongarmed others	.033	.010 - .056	1.015	.074	.017 - .131	.988
Stole something 5-50	.095	.051 - .138	1.293	.461	.210 - .712	.788
Stole at school	.099	.051 - .147	1.539	.453	-0.000 - .927	1.065
Broke into bldg/vehc	.062	.026 - .098	1.342	.160	.026 - .295	1.050
Panhandled	.033	.006 - .060	1.358	.082	.011 - .153	1.157

Analysis Cases = 243
Missing Cases = 10

SELF-REPORTED DELINQUENCY ESTIMATES - 1977

P. 17 YEAR OLDS (N = 239)

OFFENSES	PROPORTION REPORTING ONE OR MORE OFFENSES	.95 CONFIDENCE INTERVAL	DESIGN EFFECTS	MEAN NUMBER OF OFFENSES	.95 CONFIDENCE INTERVAL	DESIGN EFFECT
Stole motor vehicle	.009	-0.000 - .021	1.045	.039	-0.000 - .096	1.045
Stole something GT 50	.026	.005 - .047	1.022	.182	-0.000 - .412	1.056
Bought stolen goods	.091	.057 - .125	.777	1.424	-0.000 - 3.311	1.052
Runaway	.039	.013 - .064	.979	.498	-0.000 - 1.372	.995
Carried hidden weapon	.074	.040 - .107	.913	5.216	-0.000 - 10.818	1.030
Stole something LT 5	.177	.128 - .227	.950	2.429	-0.000 - 5.933	.995
Aggravated assault	.030	.010 - .050	.764	.190	-0.000 - .506	1.046
Prostitution	.004	-0.000 - .013	1.027	.004	-0.000 - .013	1.022
Sexual intercourse	.349	.281 - .417	1.142	8.074	5.182 - 10.966	.825
Gang fights	.091	.053 - .128	.958	.446	.189 - .703	.507
Sold marijuana	.100	.061 - .138	.938	6.056	-0.000 - 13.101	1.086
Hit teacher	.039	.015 - .064	.865	.088	.005 - .171	.780
Hit parents	.069	.035 - .103	1.012	.087	.047 - .126	.761
Hit students	.345	.300 - .390	.503	2.144	1.120 - 3.169	1.188
Disorderly conduct	.351	.297 - .404	.709	3.844	.494 - 7.194	.981
Sold hard drugs	.017	-0.000 - .035	1.064	.524	-0.000 - 1.431	1.052
Joyriding	.043	.015 - .071	1.061	.190	-0.000 - .421	.970
Sexual assault	.013	-0.000 - .028	.975	.022	-0.000 - .051	.985
Strongarmed students	.013	-0.000 - .028	.993	.088	-0.000 - .205	.960
Strongarmed teachers	.000	.000 - .000	1.000	.000	0.000 - .000	1.000
Strongarmed others	.013	-0.000 - .028	.993	.017	-0.000 - .039	1.003
Stole something 5-50	.065	.031 - .099	1.075	.403	.121 - .684	.892
Stole at school	.070	.035 - .105	1.059	.189	.059 - .319	.986
Broke into bldg/vehc	.030	.006 - .054	1.121	1.017	-0.000 - 2.771	1.046
Panhandled	.017	-0.000 - .035	1.003	.017	-0.000 - .035	.998

Analysis Cases = 231
Missing Cases = 8

SELF-REPORTED DELINQUENCY ESTIMATES - 1977

Q. 18 YEAR OLDS (N = 197)

OFFENSES	PROPORTION REPORTING ONE OR MORE OFFENSES	.95 CONFIDENCE INTERVAL	DESIGN EFFECTS	MEAN NUMBER OF OFFENSES	.95 CONFIDENCE INTERVAL	DESIGN EFFECT
Stole motor vehicle	.005	-0.000 - .016	.980	.011	-0.000 - .032	.975
Stole something GT50	.022	-0.000 - .043	1.017	.032	-0.000 - .067	1.020
Bought stolen goods	.114	.070 - .157	.854	.227	.132 - .322	.809
Runaway	.059	.018 - .101	1.369	.070	.024 - .117	1.130
Carried hidden weapon	.092	.056 - .129	.723	.500	.134 - .866	1.012
Stole something LT 5	.168	.113 - .223	.980	.665	.181 - 1.149	.973
Aggravated assault	.043	.013 - .074	1.024	.097	.000 - .194	.972
Prostitution	.011	-0.000 - .026	.959	.027	-0.000 - .065	.943
Sexual intercourse	.446	.372 - .519	.989	11.158	5.274 - 17.041	1.099
Gang fights	.059	.025 - .094	.982	.146	.049 - .242	.870
Sold marijuana	.108	.066 - .151	.851	1.238	-0.000 - 2.516	1.055
Hit teacher	.050	.016 - .084	1.070	.061	.018 - .105	1.035
Hit parents	.032	.007 - .058	.965	.059	-0.000 - .122	1.008
Hit students	.272	.205 - .340	1.010	1.061	.620 - 1.503	.915
Disorderly conduct	.324	.260 - .389	.853	2.249	1.131 - 3.367	1.067
Sold hard drugs	.005	-0.000 - .016	1.034	.016	-0.000 - .050	1.029
Joyriding	.032	.007 - .058	.943	.308	-0.000 - .851	.982
Sexual assault	.011	-0.000 - .026	1.003	.032	-0.000 - .088	1.007
Strongarmed students	.000	.000 - .000	1.000	.000	.000 - .000	1.000
Strongarmed teachers	.000	.000 - .000	1.000	.000	.000 - .000	1.000
Strongarmed others	.005	-0.000 - .016	1.034	.022	-0.000 - .066	1.029
Stole something 5-50	.059	.028 - .091	.814	.086	.029 - .144	.963
Stole at school	.050	.007 - .093	1.723	.078	-0.000 - .163	2.314
Broke into bldg/vehc	.032	.013 - .052	.565	.032	.013 - .052	.562
Panhandled	.011	-0.000 - .026	.916	.016	-0.000 - .040	.919

Analysis Cases = 185
Missing Cases = 12

END