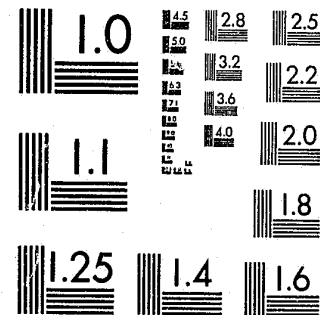


National Criminal Justice Reference Service



This microfiche was produced from documents received for inclusion in the NCJRS data base. Since NCJRS cannot exercise control over the physical condition of the documents submitted, the individual frame quality will vary. The resolution chart on this frame may be used to evaluate the document quality.



MICROCOPY RESOLUTION TEST CHART  
NATIONAL BUREAU OF STANDARDS-1963-A

Microfilming procedures used to create this fiche comply with the standards set forth in 41CFR 101-11.504.

Points of view or opinions stated in this document are those of the author(s) and do not represent the official position or policies of the U. S. Department of Justice.

National Institute of Justice  
United States Department of Justice  
Washington, D. C. 20531

Date Filmed

2/16/81

73490

December 1979

# DRIVING WHILE INTOXICATED ENFORCEMENT

grant  
evaluation

ST. LOUIS COUNTY POLICE DEPARTMENT

TABLE OF CONTENTS

	<u>Page</u>
INTRODUCTION . . . . .	1
SUMMARY OF MAJOR FINDINGS . . . . .	1
DEPLOYMENT AND REPORTING PROCEDURES . . . . .	2
PROGRAM ARRESTS . . . . .	4
PROGRAM ACTIVITIES . . . . .	5
GRANT EXPENDITURES . . . . .	6
ANALYSIS OF PROGRAM HOURS . . . . .	7
MOTOR VEHICLE ACCIDENTS . . . . .	9
COURT DISPOSITIONS . . . . .	10
MEDIA CAMPAIGN . . . . .	12
CONCLUSION . . . . .	13

APPENDIX: Table

SECTION A: ENFORCEMENT STATISTICS BY PRECINCT

Grant Program Activities for Two-Year Period . . . . .	A-1
Driving While Intoxicated Arrests By Month and Precinct . . . . .	A-2
Activity Log . . . . .	A-3

SECTION B: MOTOR VEHICLE ACCIDENTS

Accidents During Pre-Program Period . . . . .	B-1
Accidents During First Grant Period . . . . .	B-2
Accidents During Second Grant Period . . . . .	B-3
Causes of Motor Vehicle Accidents . . . . .	B-4

NCJRS

NOV 21 1980

ACQUISITIONS



TABLE OF CONTENTS  
(Continued)

APPENDIX (CONTINUED)

Table

SECTION C: ALCOHOL-RELATED MOTOR VEHICLE ACCIDENTS  
BY TIME OF DAY AND DAY OF WEEK

First Grant Period	
December 1977 to February 1978 . . . . .	C-1
March to May 1978 . . . . .	C-2
June to August 1978 . . . . .	C-3
September 1978 and Totals . . . . .	C-4
Second Grant Period	
December 1978 to February 1979 . . . . .	C-5
March to May 1979 . . . . .	C-6
June to August 1979 . . . . .	C-7
September 1979 and Totals . . . . .	C-8
Summary of Three Periods . . . . .	C-9

SECTION D: CHARTS

Program-Related DWI Arrests and Alcohol- Related Motor Vehicle Accidents By Precinct . . . . .	D-1
First Precinct . . . . .	D-1
Second Precinct . . . . .	D-2
Third Precinct . . . . .	D-3
Fourth Precinct . . . . .	D-4
Fifth Precinct . . . . .	D-5
Alcohol-Related Motor Vehicle Accidents By Day of Week . . . . .	D-6
Alcohol-Related Motor Vehicle Accidents By Hours of Day . . . . .	D-7

The following report provides an analysis of the second year of the Driving While Intoxicated Enforcement Grant Program using relevant data from the pre-program period - December 1976 - September 1977 and the first year of the program - December 1977 - September 1978. The second year of this program included the months of December 1978 through September 1979. Statistical information for the pre-program period and the first grant period were obtained from the September 1978 Evaluation of the Driving While Intoxicated Enforcement Program.

Introduction

The 1979 Driving While Intoxicated Enforcement Program was a continuation of the 1978 program using the same reporting procedures and concentrating on the same basic objectives.

The specific objectives of this grant were:

1. To continue the increased detection of subjects driving while intoxicated.
2. To reduce the number of alcohol-related accidents in the three categories of:
  - a. Property damage
  - b. Injuries
  - c. Fatalities
3. To reduce the average report completion time (processing time) for Driving While Intoxicated arrests.

Although the receipt of Breath Analyzer instruments for each Precinct Station was anticipated at the beginning of the second year, the instruments have not been provided on a Precinct basis and processing time still includes transportation of arrestees to the Department of Justice Services and/or St. Louis County Hospital.

Summary of Major Findings

The major findings of this report are:

1. Participation in the DWI program has decreased by 43 percent during the second grant period. However, the number of program-related DWI arrests has increased by 6.2 percent. These figures may indicate improved performance on the part of program participants.
2. The number of non-program related DWI arrests decreased by 10.7 percent during the second grant period. The total number of DWI arrests decreased during the second grant period.

3. The average breath analysis results increased from .145 during the first grant period to .154 in the second grant period. In addition, results of the intoximeter tests show a decrease of 32.6 percent of arrestees in the "under .10" category. These figures show an improvement in the quality of the program-related DWI arrests.
4. Program participants concentrated on DWI arrests during the second grant period and reported fewer instances of non-program related activities.
5. Police officers devoted 6,491.9 of their off-duty hours to participate in the program as compared to 7,873 hours during the first period. However, the average processing time was reduced from 2.2 during the first grant period to 2.1 and the average patrol hours per DWI arrest was reduced from 5.7 to 3.8.
6. The total number of motor vehicle accidents decreased by 5 percent during the second grant period. However, the number of accidents involving fatalities increased by 10.7 percent.
7. The number of alcohol-related accidents remained the same for the second grant period. However, there is some evidence to indicate that program-related arrests may have an impact on the number of alcohol-related accidents.
8. The percent of cases receiving "suspended imposition of sentence" during a comparable period decreased from 51.6 percent to 38.3 percent during the second grant period. The Prosecuting Attorney's Office appears to be taking a greater interest in DWI cases and has shown an interest in working with police officers.
9. The information available to date suggests that the Driving While Intoxicated Enforcement Program is moving in the right direction in attaining those objectives outlined under the grant.

#### Deployment and Reporting Procedures

Under the supervision of the Project Director, Sergeant William A. McDevitt, 98 police officers participated in this program during the grant period. Participation in the program has decreased by 43 percent from the first year. Approximately 123 commissioned employees attended the "DWI Detection Workshop Seminars" which were conducted with the Greater St. Louis Police Academy. Attendance at these eight-hour seminars was a prerequisite for program participation. In addition, the following procedures and requirements for participation in the program continued:

Commissioned employees with the rank of police officer wishing to participate in the program made their intention known by signing a list posted in the Precinct Stations. This list provided times and dates that officers were needed and the area to be assigned.

Officers were permitted to work this assignment on recreation days. However, if the officer was assigned to the day watch, he was allowed to work in the evening only when the following day was a regularly scheduled recreation day.

Participating officers were required to comply with General Order 77-36 (Uniforms and Appearance) and adhere to policies of the Bureau of Uniform Patrol.

Officers not participating in the Personal Car Program were required to contact the Commander of the Precinct in which they wished to be assigned to insure that vehicles would be available for their use.

Compensation for participating in this program was computed at one and one-half the officer's regular hourly wage and paid on the regular biweekly paycheck only after proper overtime procedures, as set forth for this program, were followed.

Selection of officers for this program was open to police officers of all Divisions and Bureaus, and assignments were made equally among those who effectively participated in the program.

During the first year of the program, those officers approved by the Project Director were restricted to participation in the program for four-hour periods between approximately 11 p.m. to 3 a.m. on Wednesdays, Thursdays, Fridays, Saturdays, or holidays. However, during the second year of the grant, the participants were allowed to work all seven days of the week from the hours of 9 p.m. to 5 a.m. and were not restricted to four-hour periods.

Prior to beginning a tour of duty, the police officer would report to the appropriate Precinct Station. There an on-duty supervisor would designate an area within the Precinct that the police officer was to patrol. Thus, the on-duty supervisor was able to coordinate the deployment of the program participants.

At the end of the tour, the police officers returned to the Precinct Station and submitted to the on-duty supervisor:

1. All completed offense reports;
2. A log which documented the police officers' activities (See Appendix A-3 for format of activity log ); and
3. An Overtime Request Form which documented the hours worked.

Upon approval of the on-duty supervisor, the activity log and overtime form were forwarded to the Project Director. The Project Director was responsible for:

1. Completion of the necessary forms to insure salary compensation for the participating officers; and
2. Maintaining records of (a) the police officers working in the program and the number of hours each police officer worked, and (b) persons arrested for DWI and related information; for example, date of arrest, breath analysis results, etc.

After completing his records, the Project Director forwarded the activity logs to the Bureau of Planning and Research. By use of these logs and computer printouts produced by the Bureau of Data Systems, the Bureau of Planning and Research provided the management personnel of the Department with:

1. Monthly enforcement statistics by Precinct (See Appendix, Table A-1 for totals).
2. The annual evaluations of the program.

The 1978 report emphasized the importance of the Personal Car Program as providing sufficient vehicles available for police officers to participate in the enforcement grant. This appears to be consistent during the second grant period as 56.1 percent of the participants drove personal cars issued by the Department.

Program Arrests

As shown by Table 1, the number of arrests for Driving While Intoxicated during the Department's normal patrol hours increased 39.1 percent during the first grant period as compared to the pre-program period. The fact that the number of non-program related DWI arrests decreased during the second program period by 10.7 percent may be due to the increased flexibility given the police officers in terms of the days and hours during which they could participate in the program. The number of arrests for Driving While Intoxicated increased by 24.3 percent during the second grant period as compared to the pre-program period.

TABLE 1  
NON-PROGRAM-RELATED DWI ARRESTS

PRECINCT	PRE-PROGRAM PERIOD	12/77-9/78 GRANT PERIOD	PERCENT CHANGE	12/78-9/79 GRANT PERIOD	PERCENT CHANGE	TOTAL PERCENT CHANGE
First Precinct	178	224	+25.8	214	-4.4	+20.2
Second Precinct	362	523	+44.5	533	+2.0	+47.2
Third Precinct	245	426	+73.9	320	-24.8	+30.6
Fourth Precinct	309	343	+11.0	274	-20.1	-11.3
Fifth Precinct	167	238	+42.5	226	- 5.0	+35.3
TOTALS	1,261	1,754	+39.1	1,567	-10.7	+24.3

The figures in Table 2 represent a comparison of total DWI arrests for each Precinct during the three time periods. The total number of arrests for Driving While Intoxicated increased 115.9 percent during the first grant period as compared to the pre-program period. Despite the fact that the total number of DWI arrests decreased by 4.7 percent during the second grant period, the number of program-related DWI arrests increased by 6.2 percent (Table 3, page 6).

The number of DWI arrests increased by 105.9 percent during the second grant period as compared to the pre-program period.

TABLE 2  
DEPARTMENT AND PROGRAM-RELATED DWI ARRESTS

PRECINCT	PRE-PROGRAM PERIOD	12/77-9/78 GRANT PERIOD	PERCENT CHANGE	12/78-9/79 GRANT PERIOD	PERCENT CHANGE	TOTAL PERCENT CHANGE
First Precinct	178	483	+171.3	467	-3.3	+162.4
Second Precinct	362	712	+ 96.7	739	+3.8	+104.1
Third Precinct	245	633	+158.4	610	-3.6	+149.0
Fourth Precinct	309	555	+79.6	468	-15.7	+ 51.5
Fifth Precinct	167	340	+103.6	312	-8.2	+ 86.8
TOTALS	1,261	2,723	+115.9	2,596	-4.7	+105.9

A comparison of available information concerning results of the intoximeter tests for program-related DWI arrests for the two program years shows an increase of 11.7 percent in the ".10 and over" category during the second program year. In addition, the average breath analysis results increased from .145 in the first year to .154 in the second year. These figures show an improvement in quality of DWI arrests on the part of program participants. Information available on repeat offenders indicates that 72.6 percent of those arrested during the second program year had no prior arrest record; 26.3 percent had one known arrest and 1.6 percent had two known arrests. Prior arrest information was unavailable for 0.5 percent of the arrestees.

Program Activities

Police officers participating in the program have provided services to the citizens of St. Louis County by providing protection from intoxicated drivers, acting as a deterrent through their visibility, stopping motorists, and assisting other commissioned employees in cases of emergency.

In order to maintain the emphasis of the program in arresting intoxicated drivers, police officers who participated were encouraged to assist other commissioned employees and motorists only when absolutely necessary and avoid the investigation and completion of report/arrests that were unrelated to the program. Table 3

provides a listing of program activities and shows an increase in DWI arrests and a decrease in non-program related activities during the second grant period.

TABLE 3  
PROGRAM ACTIVITIES

ACTIVITIES	12/77-9/78 GRANT PERIOD	12/78-9/79 GRANT PERIOD	PERCENT CHANGE
DWI Arrests	969	1,029	+ 6.2
Non-DWI Report/Arrests	120	63	-47.5
DWI Checks (Motorists Stopped)	6,356	5,366	-15.6
Citations (Total)	2,361	1,872	-20.7
Moving	2,238	1,719	-23.2
Non-Moving	123	153	+24.4
Assisting Motorists	114	46	-59.6
Assisting Other Commissioned Employees			
Alarm Soundings	35	12	-65.7
Auto Accidents	112	65	-42.0
Burglaries	46	21	-54.3
Disturbances	165	104	-37.0
Fires	6	3	-50.0
Larcenies	5	7	+40.0
Sick Cases	7	7	0.0
Suspicious Persons	28	22	-21.4
Robberies	10	11	+10.0

Grant Expenditures

A comparison of the total number of program hours distributed among the Precincts for the two grant periods is represented in Table 4.

TABLE 4  
PROGRAM HOURS BY PRECINCT

PRECINCT	12/77-9/78 GRANT PERIOD	12/78-9/79 GRANT PERIOD	PERCENT CHANGE
First Precinct	2341.9	1295.9	-44.7
Second Precinct	1308.4	1408.3	+ 7.6
Third Precinct	1581.4	1616.9	+ 2.2
Fourth Precinct	1705.4	1390.7	-18.4
Fifth Precinct	936.3	780.1	-16.7
TOTALS	7873.4	6491.9	-17.5

The average time and one-half wage for the police officers participating in this program during the first grant period was \$11.08 per hour as compared to \$11.10 per hour for the second grant period. The grant allocated \$79,000 for overtime pay and fringe benefits directly associated with overtime pay. The St. Louis County Police Department spent \$5,185.11 to cover the total costs of salaries. The actual grant expenditures can be broken down as follows:

Overtime Pay	\$72,444.36
FICA @ 6.13%	4,437.17
Retirement @ 10.08%	7,303.58
Subtotal Salaries	84,185.11
Advertising Costs	14,071.33
Ampules	987.00
TOTAL	\$99,243.44

The original salary allocation of \$80,000 was reduced to allow \$1,000 for the purchase of 1,400 breathalyzer ampules to be provided to the Department of Justice Services, the department responsible for administering the breath analysis tests. In addition, \$15,000 was allocated for reasonable and necessary expense incurred to develop and implement an alcohol public information and education program. This program was developed by the Bureau of Police Community Relations and is outlined under the Section "Media Campaign".

Analysis of Program Hours

The total number of program hours is subdivided in this report into the following categories:

DWI Process Hours - The amount of time an officer devoted to arrest, conveyance, acquiring of medical treatment at St. Louis County Hospital, if necessary, booking, observing the intoximeter test, and report writing for each DWI arrest. This time began when the police officer stopped the suspect's vehicle or arrived at the scene of an accident, and ended when the police officer returned to patrol duties.

Non-DWI Report/Arrests - The amount of time a police officer devoted to the investigation and completion of reports and/or arrests that were unrelated to a DWI arrest, (e.g. auto accident reports, larceny reports, etc.).

Court Appearances/Warrant Applications - The amount of program hours required for police officers to either appear in court and testify to program-related arrests or to make warrant applications relative to program-related arrests.

Patrol Hours - Patrol hours constitute the total program hours minus the above four categories. During this time period, police officers attempted to locate intoxicated drivers, stopped motorists, and assisted motorists and other police officers in those activities outlined in Table 3, page 6.

Table 5 represents, by Precinct, the total number of program hours distributed among the previously defined categories, during the second grant period.

TABLE 5  
BY PRECINCT  
PROGRAM HOURS BY TYPE

TYPE	PRECINCT					TOTAL
	1	2	3	4	5	
DWI Process Hours	543.7	415.2	656.5	459.2	186.8	2261.4
Non-DWI Report/ Arrest Hours	23.3	75.7	18.3	34.5	25.2	177.0
Court Appearances/ Warrant Applications	53.0	5.0	0	18.5	0	76.5
Patrol Hours	675.9	912.4	942.1	878.5	568.1	3977.0
TOTALS	1295.9	1408.3	1616.9	1390.7	780.1	6491.9

The number of hours directed towards non-DWI report/arrests and court appearances/warrant applications accounted for 3.9 percent of the total program hours as compared to 2.4 percent for the first grant period.

A comparison of the two grant periods in terms of average hours to the processing of persons arrested for DWI is presented in Table 6.

TABLE 6  
AVERAGE DWI PROCESS HOURS

PRECINCT	12/77-9/78 GRANT PERIOD	12/78-9/79 GRANT PERIOD	PERCENT CHANGE
First Precinct	2.4	2.1	-12.5
Second Precinct	1.8	2.0	+11.1
Third Precinct	2.3	2.2	- 4.3
Fourth Precinct	2.5	2.3	- 4.0
Fifth Precinct	1.9	2.1	+10.5
TOTAL	2.2	2.1	- 4.5

During the second grant period, three of the five Precincts were able to reduce the average hours devoted to the processing of persons arrested for DWI, thus reducing the Department average for processing hours by 4.5 percent. Further, all five Precincts were able to reduce the number of patrol hours per DWI arrests during the second grant period. As shown in Table 7, the Department-wide average for the second grant period was 3.9 patrol hours per DWI arrests, a reduction of 31.6 percent from the first grant period.

TABLE 7  
AVERAGE NUMBER OF PATROL HOURS PER DWI ARREST

PRECINCT	12/77-9/78 GRANT PERIOD	12/78-9/79 GRANT PERIOD	PERCENT CHANGE
First Precinct	6.4	2.6	-59.4
Second Precinct	4.9	4.4	-10.2
Third Precinct	5.3	3.2	-39.6
Fourth Precinct	5.4	4.5	-16.7
Fifth Precinct	7.1	6.6	- 7.0
TOTAL	5.7	3.9	-31.6

The results of Tables 6 and 7 may be explained by increased experience on the part of all participants.

#### Motor Vehicle Accidents

Table 8 represents a comparison of the number of motor vehicle accidents for the three time periods for unincorporated St. Louis County. Although motor vehicle accidents decreased by 5 percent during the second year of the grant as compared with the first grant period, when compared to the pre-program period, accidents increased by 11.8 percent. (See Appendix, Tables B-1 through B-3 for details.)

TABLE 8  
MOTOR VEHICLE ACCIDENTS

VEHICLE ACCIDENTS	PRE-PROGRAM PERIOD	12/77-9/78 GRANT PERIOD	PERCENT CHANGE	12/78-9/79 GRANT PERIOD	PERCENT CHANGE	TOTAL PERCENT CHANGE
Property Damage	3780	4278	+13.2	3955	- 7.5	+ 4.6
Injuries	1692	2171	+28.3	2167	- 0.2	+28.1
Fatalities	33	28	-15.2	31	+10.7	- 6.0
TOTAL	5505	6477	+17.7	6153	- 5.0	+11.8

The major causes of motor vehicle accidents involved collisions with stationary objects, overtaking and passing situations, and rear-end collisions. (See Appendix, Table B-4 for details)

Alcohol-related motor vehicle accidents accounted for 8.7 percent of the total motor vehicle accidents during the second grant period as compared to 8.2 percent during the first grant period and 7.5 percent during the pre-program period. However, as shown in Table 9, the actual number of alcohol-related motor vehicle accidents has remained the same for the two grant periods. (See Appendix, Tables C-1 through C-9.)

TABLE 9

ALCOHOL-RELATED MOTOR VEHICLE ACCIDENTS BY TYPE

TYPE OF MOTOR VEHICLE ACCIDENTS	12/76-9/77	12/77-9/78	PERCENT CHANGE	12/78-9/79	PERCENT CHANGE	TOTAL PERCENT CHANGE
Property Damage	279	352	+26.2	330	- 6.2	-18.3
Injuries	134	177	+32.1	201	+13.5	+50.0
Fatalities	2	5	+150.0	3	-40.0	+50.0
TOTALS	415	534	+28.7	534	0	+28.7

An analysis of the alcohol-related accidents revealed that during the second grant period 44.7 percent occurred on Fridays and Saturdays. In terms of time of accidents, 45.1 percent of the accidents occurred between the hours of 10 p.m. and 2 a.m.

During the first program period, alcohol-related accidents increased in all Precincts. A decrease in alcohol-related accidents occurred in both the Third and Fifth Precincts during the second grant period. These figures are represented by Table 10.

TABLE 10

ALCOHOL-RELATED MOTOR VEHICLE ACCIDENTS BY PRECINCT

PRECINCT	12/76-9/77	12/77-9/78	PERCENT CHANGE	12/78-9/79	PERCENT CHANGE	TOTAL PERCENT CHANGE
First Precinct	52	90	+73.1	103	+14.4	+98.1
Second Precinct	132	138	+ 4.5	141	+ 2.2	+ 6.8
Third Precinct	83	112	+34.9	109	- 2.7	+31.3
Fourth Precinct	107	119	+11.2	122	+ 2.5	+14.0
Fifth Precinct	41	75	+82.9	59	-21.3	+43.9
TOTALS	415	534	+28.7	534	0	+28.7

The impact of the DWI program on alcohol-related accidents is illustrated by the chart on page 11. When comparing program-related arrests with alcohol-related accidents, the months of February, May, and August clearly show an increase in program-related arrests with a corresponding decrease in the number of alcohol-related accidents. (See Appendix Tables D-1 through D-5)

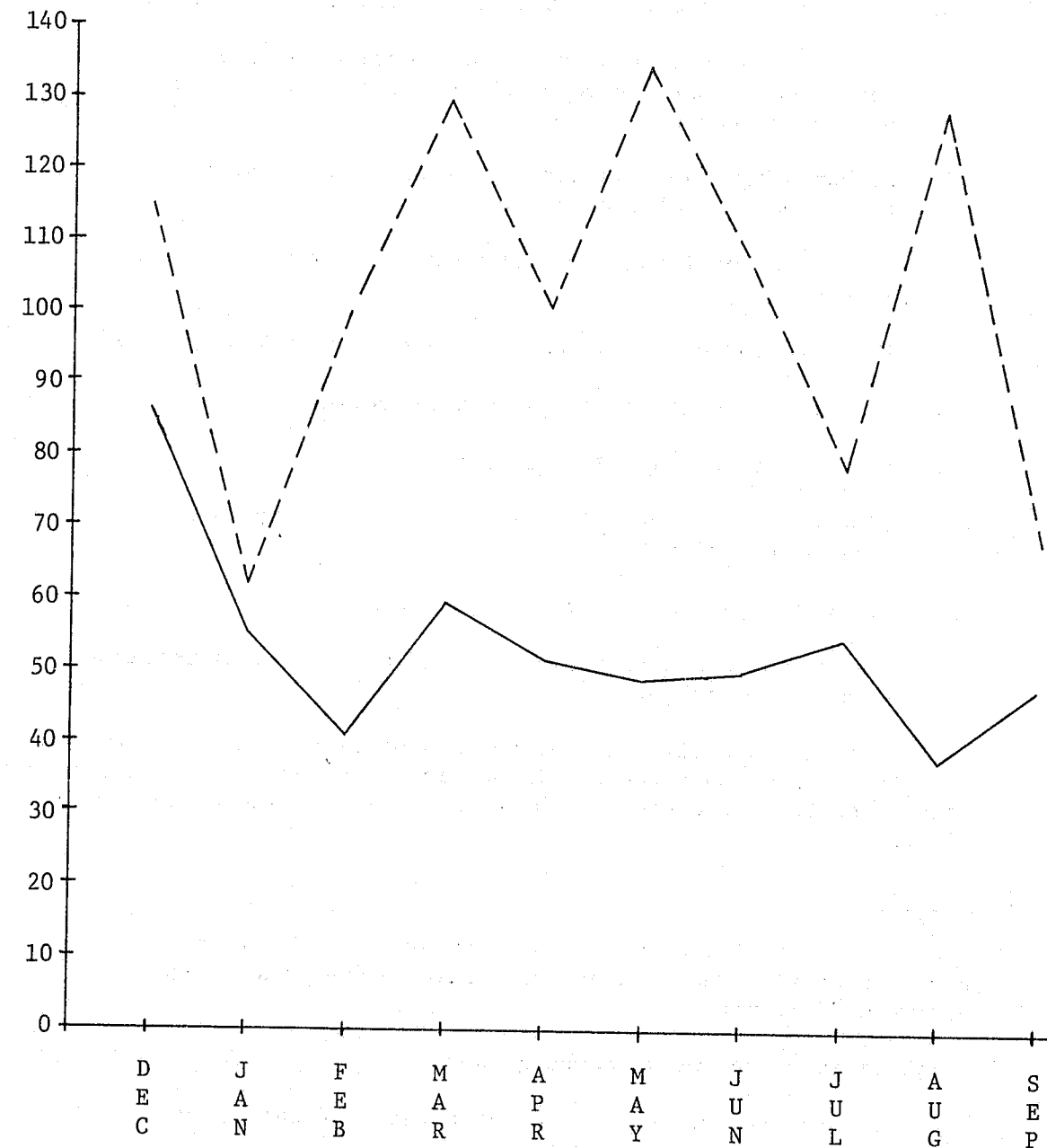
Court Dispositions

Information on disposition of cases was available from records maintained by the Prosecuting Attorney's Office and the State Traffic Dockets maintained by each of the Circuit Courts. The Bureau of Planning and Research investigated the dispositions of 120 persons arrested during December 1978 for DWI by police officers participating in the program. This investigation provided the following information concerning court dispositions:

PROGRAM-RELATED DWI ARRESTS AND ALCOHOL RELATED MOTOR VEHICLE ACCIDENTS

VEHICLE ACCIDENTS———

DWI ARRESTS-----





1. Thirty-five or 29.1 percent of the cases are still pending. However, in at least ten of these cases the defendant has pled guilty and is awaiting sentencing.
2. Forty-six or 38.3 percent of the cases received a suspended imposition of sentence disposition with probation periods ranging from six months to two years.
3. Eight or 6.7 percent of the cases were nolle prosequi.
4. Four or 3.3 percent of the cases received amended sentences of Driving Under the Influence due to low blood alcohol content.
5. Warrants have been issued for failure to appear in four or 3.3 percent of the cases.
6. Two cases received dispositions of suspension of drivers' licenses.
7. Four or 3.3 percent of the cases were found "not guilty".
8. Six or 5 percent of the cases were dismissed.
9. One case received a jail sentence.
10. Five cases received dispositions of fines including payment of court costs.
11. Three of the cases were "pending trial".
12. Two of the cases were closed; and, therefore, dispositions were unobtainable.

Excluding the cases still pending, the disposition rate in the courts appears to be about 80 percent. These figures suggest that the officers are supplying the prosecutors with the sufficient evidence to sustain convictions.

#### Media Campaign

The purpose of the DWI Alcohol Public Information Grant was to support the Driving While Intoxicated Enforcement Grant with an effective media campaign.

The objectives of the media campaign were:

1. To promote greater citizen cognizance of the hazards of driving while intoxicated.
2. To promote greater citizen cognizance of the increased enforcement level of the St. Louis County Police Department in removing intoxicated drivers from County roads and highways.

These objectives were accomplished through the development of news releases, press conferences, radio spot public service announcements, Bi-State Bus signs, and public service printed advertising in corporate house organ publications.

#### Conclusion

The Driving While Intoxicated Enforcement Program has shown improvement in many areas during the second grant period. The participating officers made more program-related arrests, reduced processing and patrol time, and improved the quality of program arrests.

Although the total number of alcohol-related accidents did not decrease during the second grant period, the number resulting in fatal injuries decreased from five during the first grant period to three. The actual impact of the program in terms of directly decreasing alcohol-related accidents may become clearer if the current patterns continue throughout the third grant period.

78:12:14

APPENDIX

Table A-1

DRIVING WHILE INTOXICATED GRANT PROGRAM ACTIVITIES

PRECINCT	TOTAL (Dec. 1977-Sept. 1978)					Total	TOTAL (Dec. 1978-Sept. 1979)					Total
	1	2	3	4	5		1	2	3	4	5	
<b>PROGRAM HOURS</b>												
Total Hours	2341.9	1308.4	1581.4	1705.4	936.3	7873.4	1295.9	1408.3	1616.9	1390.7	780.1	6491.9
DWI Process Hours	617.7	339.0	478.9	525.4	197.2	2158.2	543.7	415.2	656.5	459.2	186.8	2261.4
Non-DWI Report/Arrests/ Court Appearances/ Warrant Applications	63.6	31.1	15.4	41.7	12.2	164.0	76.3	80.7	18.3	53.0	25.2	253.5
Patrol Hours	1660.6	918.3	1087.1	1138.3	723.1	5527.4	675.9	912.4	942.1	878.5	568.1	3977.0
Others	0	20.0	0	0	3.8	23.8						*
<b>ACTIVITIES*</b>												
DWI Arrests	259	189	207	212	102	969	253	206	290	194	86	1029
Non-DWI Report/Arrests	49	22	20	20	9	120	9	21	9	18	6	63
DWI Checks	2041	998	1039	1548	730	6356	1021	1157	1223	1309	656	5366
Total	2349	1209	1266	1780	841	7445	1283	1384	1522	1521	748	6458
<b>CITATIONS</b>												
Moving	698	441	364	479	256	2238	398	391	446	330	154	1719
Non-Moving	93	6	5	10	9	123	36	45	28	34	10	153
Total	791	447	369	489	265	2361	434	436	474	364	164	1872
<b>ASSISTS</b>												
Alarm Soundings	9	8	7	8	3	35	0	6	1	2	3	12
Auto Accidents	43	26	18	7	18	112	12	12	15	10	16	65
Burglaries	19	7	12	5	3	46	3	9	5	1	3	21
Disturbances	81	16	25	19	24	165	10	41	15	25	13	104
Effecting Arrests	38	13	24	22	7	104	0	0	0	0	0	0
Fires	2	1	3	0	0	6	0	0	0	0	3	3
Larcenies	2	0	1	2	0	5	0	2	2	1	2	7
Motorists	44	23	21	6	20	114	2	23	4	1	16	46
Robberies	3	5	1	1	0	10	3	7	0	1	0	11
Sick Cases	2	0	2	1	2	7	0	5	0	1	1	7
Suspicious Persons	10	4	4	4	6	28	5	6	3	3	5	22
Other							7	34	7	14	14	76
Total	253	103	118	75	83	632	42	145	52	59	76	414
<b>COMPARISONS</b>												
Patrol Hours per DWI Arrest	6.4	4.9	5.3	5.4	7.1	5.7	2.6	4.4	3.2	4.5	6.6	3.8
Process Hours per DWI Arrest	2.4	1.8	2.3	2.5	1.9	2.2	2.1	2.0	2.2	2.3	2.1	2.1
DWI Checks per DWI Arrest	7.9	5.3	5.0	7.3	7.2	6.6	4.0	5.6	4.2	6.7	7.6	5.2
Patrol Hours per DWI Check	.8	.9	1.0	.7	1.0	.9	.7	.8	.8	.7	.9	1.2
Total Program Hours per DWI Arrest	9.0	6.9	7.6	8.0	9.2	8.1	5.1	6.8	5.5	7.1	9.0	6.3

\*No uncategorized hours for 1979

Table A-2

DRIVING WHILE INTOXICATED ARRESTS BY PRECINCT

PRECINCTS	1	2	3	4	5	TOTAL
December '76	27	51	31	41	26	176
January '77	11	28	21	27	17	104
February '77	18	43	24	26	22	133
March '77	12	41	28	39	16	136
April '77	25	27	27	30	19	128
May '77	22	36	29	31	16	134
June '77	12	29	15	27	13	96
July '77	10	24	24	31	16	105
August '77	14	41	18	26	6	105
September '77	27	42	28	31	16	144
<b>TOTAL</b>	<b>178</b>	<b>362</b>	<b>245</b>	<b>309</b>	<b>167</b>	<b>1261</b>

PRECINCTS	1	2	3	4	5	TOTAL
December '77	50	69	52	46	24	241
January '78	52	72	66	65	19	274
February '78	48	100	86	57	26	317
March '78	81	97	95	65	74	412
April '78	53	81	88	69	57	348
May '78	54	65	54	37	30	240
June '78	34	46	44	50	31	205
July '78	48	57	53	71	28	257
August '78	26	51	41	49	22	189
September '78	37	74	54	46	29	240
<b>TOTAL</b>	<b>483</b>	<b>712</b>	<b>633</b>	<b>555</b>	<b>340</b>	<b>2723</b>

PRECINCTS	1	2	3	4	5	TOTAL
December '78	48	76	72	62	43	301
January '79	45	72	43	64	21	245
February '79	53	69	64	41	27	254
March '79	52	111	82	51	42	338
April '79	56	95	69	42	32	294
May '79	44	87	61	35	30	257
June '79	35	60	51	33	35	214
July '79	47	52	50	46	31	226
August '79	49	47	58	56	19	229
September '79	38	70	60	38	32	238
<b>TOTAL</b>	<b>467</b>	<b>739</b>	<b>610</b>	<b>468</b>	<b>312</b>	<b>2596</b>



Table A-3

Activity Log

NAME \_\_\_\_\_ DSN \_\_\_\_\_ DATE \_\_\_\_\_ OVERTIME HOURS \_\_\_\_\_ CAR NO. \_\_\_\_\_

V O I N E W	R A D I O	TIME REC'D	TIME COMPL	BEAT NO. OF INCIDENTS	NATURE OF SERVICE	LOCATION	DISPOSITION RPT. WRITING - UNF. GOA - NRN - 10-25
					10 - 41	PRECINCT	

COMPLAINT NO.	COGIS	TIME	LAST NAME	FIRST	MIDDLE	RACE	SEX	AGE	CHARGE	BAC	MAG COURT

DEFENDANT HAS PRIOR ARREST FOR DWI  YES  NO

TOTAL NUMBER OF CITATIONS

MOVING \_\_\_\_\_ NON-MOVING \_\_\_\_\_

OFFICER \_\_\_\_\_ DSN \_\_\_\_\_

You have been assigned to work area \_\_\_\_\_, \_\_\_\_\_, \_\_\_\_\_, \_\_\_\_\_, utilizing Radio  
 Call #48 \_\_\_\_\_ from \_\_\_\_\_<sup>AM</sup> PM to \_\_\_\_\_<sup>AM</sup> PM on day \_\_\_\_\_, date \_\_\_\_\_, 197 \_\_\_\_\_.

Upon reporting for duty:

- (1) Have desk officer call DSN and Radio Call # to complaint desk.
- (2) Contact on-duty Precinct Supervisor for inspectional purposes.
- (3) You are required to ride in the area assigned and only the times indicated.
- (4) You are to assist regular beat cars only on serious calls, i.e. (Officer in need of aid).

Upon completion of duty:

- (1) Attach this card to Comp/Overtime Slip, which has been verified and signed by an on-duty Supervisor, along with completed log sheet, and forward to Sergeant William McDevitt, c/o School Safety.

NOTE

Overtime compensation for this program cannot be credited until procedures outlined on this form are properly completed.

Table B-1

MOTOR VEHICLE ACCIDENTS  
UNINCORPORATED ST. LOUIS COUNTY  
PRE-PROGRAM PERIOD

Month	TYPE OF ACCIDENT				NUMBER OF PERSONS INJURED OR KILLED			CALCULABLE COSTS			
	Property Damage	Injury	Fatality	Total	Injured	Killed	Total	Property Damage	Personal Injury	Fatality	Total
December 1976	434	181	2	617	258	2	260	\$ 208,320	\$ 877,200	\$ 164,000	\$1,249,520
January 1977	494	124	3	621	174	3	177	237,120	591,600	246,000	1,074,720
YTD*	930	305	5	1240	432	5	437	446,400	1,468,800	410,000	2,325,200
February 1977	329	101	0	430	138	0	138	157,920	469,200	0	627,120
YTD	1281	412	6	1699	579	6	585	564,480	1,968,600	492,000	3,075,480
March 1977	275	102	1	378	166	1	167	132,000	564,400	82,000	778,400
YTD	1563	515	8	2086	747	8	755	750,240	2,539,800	656,000	3,946,040
April 1977	1129	334	6	1469	293	5	298	174,240	996,200	410,000	1,580,440
YTD	1563	515	8	2086	1051	13	1064	896,160	3,573,400	1,066,000	5,569,640
May 1977	355	176	4	515	249	4	253	160,800	846,600	328,000	1,335,400
YTD	2276	897	16	3189	1301	17	1318	1,092,480	4,423,400	1,394,000	6,909,880
June 1977	336	168	2	506	236	2	238	161,280	802,400	164,000	1,127,680
YTD	2681	1095	19	3795	1577	20	1597	1,286,880	5,361,800	1,640,000	8,288,680
July 1977	347	169	3	519	224	6	230	166,560	761,600	492,000	1,420,160
YTD	3082	1292	23	4397	1851	28	1879	1,479,360	6,293,400	2,296,000	10,068,760
August 1977	332	204	7	543	306	9	315	159,360	1,040,400	738,000	1,937,760
YTD	3427	1505	30	4962	2169	37	2206	1,644,960	7,374,600	3,034,000	12,053,560
September 1977	341	182	3	526	271	3	274	163,680	921,400	246,000	1,331,080
TOTAL	3780	1692	33	5505	2446	40	2486	1,814,400	8,316,400	3,280,000	13,410,800

\*Monthly statistics reflect only those reports written and processed by the Bureau of Central Police Records during the identified month. Year-to-date statistics reflect those reports written from December to the month in question, including late reports.

Table B-2  
MOTOR VEHICLE ACCIDENTS  
UNINCORPORATED ST. LOUIS COUNTY  
FIRST GRANT PERIOD

Month	TYPE OF ACCIDENT				NUMBER OF PERSONS INJURED OR KILLED			CALCULABLE COSTS			
	Property Damage	Injury	Fatality	Total	Injured	Killed	Total	Property Damage	Personal Injury	Fatality	Total
December 1977	463	179	4	646	274	4	278	\$ 222,240	\$ 931,600	\$ 328,000	\$1,481,840
January 1978	480	187	2	669	268	2	270	230,400	911,200	164,000	1,305,600
YTD*	943	366	6	1315	542	6	548	452,640	1,842,800	492,000	2,787,440
February 1978	390	184	0	574	270	0	270	187,200	918,000	0	1,105,200
YTD	1340	552	6	1898	815	6	821	643,200	2,771,000	492,000	3,906,200
March 1978	431	181	1	613	254	1	255	206,880	863,600	82,000	1,152,480
YTD	1774	735	7	2516	1071	7	1078	851,520	3,641,400	574,000	5,066,920
April 1978	392	220	3	615	324	3	327	188,160	1,101,600	246,000	1,535,760
YTD	2212	974	10	3196	1429	10	1439	1,061,760	4,858,600	820,000	6,740,360
May 1978	462	242	3	707	355	3	358	221,760	1,207,000	246,000	1,674,760
YTD	2682	1223	13	3918	1793	13	1806	1,287,360	6,096,200	1,066,000	8,449,560
June 1978	417	257	4	678	381	4	385	200,160	1,295,400	328,000	1,823,560
YTD	3116	1490	18	4624	2185	18	2203	1,495,680	7,429,000	1,476,000	10,400,680
July 1978	397	218	3	618	348	4	352	190,560	1,183,200	328,000	1,701,760
YTD	3518	1711	21	5250	2536	22	2558	1,688,640	8,622,400	1,804,000	12,115,040
August 1978	366	213	3	582	326	4	330	175,680	1,108,400	328,000	1,612,080
YTD	3890	1928	24	5842	2867	27	2894	1,867,200	9,747,800	2,214,000	13,829,000
September 1978	365	222	3	590	295	4	299	175,200	1,003,000	328,000	1,506,200
<b>TOTAL</b>	<b>4278</b>	<b>2171</b>	<b>28</b>	<b>6477</b>	<b>3202</b>	<b>32</b>	<b>3234</b>	<b>\$2,053,440</b>	<b>\$10,886,800</b>	<b>\$2,624,000</b>	<b>\$15,564,240</b>

\*Monthly statistics reflect only those reports written and processed by the Bureau of Central Police Records during the identified month. Year-to-date statistics reflect those reports written from December to the month in question, including late reports.

**Table B-3**  
**MOTOR VEHICLE ACCIDENTS**  
**UNINCORPORATED ST. LOUIS COUNTY**  
**SECOND GRANT PERIOD**

Month	TYPE OF ACCIDENT				NUMBER OF PERSONS INJURED OR KILLED			CALCULABLE COSTS			
	Property Damage	Injury	Fatality	Total	Injured	Killed	Total	Property Damage	Personal Injury	Fatality	Total
December 1978	492	243	2	737	343	2	345	\$ 236,160	\$1,166,200	\$ 164,000	\$ 1,566,360
January 1979	611	227	2	840	334	2	336	293,280	1,135,600	164,000	1,592,880
YTD	611	227	2	840	334	2	336	293,280	1,135,600	164,000	1,592,880
February 1979	386	173	2	561	249	2	251	185,280	846,600	164,000	1,195,880
YTD	1002	401	4	1407	584	4	588	480,960	1,985,600	328,000	2,794,560
March 1979	450	254	4	708	383	4	387	216,000	1,302,200	328,000	1,846,200
YTD	1457	656	8	2121	968	8	976	699,360	3,291,200	656,000	4,646,560
April 1979	333	210	3	546	302	3	305	159,840	1,026,800	246,000	1,432,640
YTD	1797	872	11	2680	1281	11	1292	862,560	4,355,400	902,000	6,119,960
May 1979	353	221	3	577	342	4	346	169,440	1,162,800	328,000	1,660,240
YTD	2158	1102	14	3274	1636	15	1651	1,035,840	5,562,400	1,230,000	7,828,240
June 1979	354	225	3	582	340	3	343	169,920	1,156,000	246,000	1,571,920
YTD	2516	1330	18	3863	1979	18	1997	1,207,680	6,728,600	1,476,000	9,412,280
July 1979	342	212	4	558	297	4	301	164,160	1,009,800	328,000	1,501,960
YTD	2870	1557	22	4449	2296	22	2318	1,377,600	7,806,400	1,804,000	10,988,000
August 1979	306	184	3	493	272	3	275	146,880	924,800	246,000	1,317,680
YTD	3183	1745	24	4952	2573	25	2598	1,527,840	8,748,200	2,050,000	12,326,040
September 1979	268	165	5	438	240	05	245	128,640	816,000	410,000	1,354,640
YTD*	3463	1924	29	5416	2839	30	2869	1,662,240	9,652,600	2,460,000	13,774,840
<b>TOTAL</b>	<b>3955</b>	<b>2167</b>	<b>31</b>	<b>6153</b>	<b>3182</b>	<b>32</b>	<b>3214</b>	<b>1,898,400</b>	<b>10,818,800</b>	<b>2,624,000</b>	<b>15,341,200</b>

\*Monthly statistics reflect only those reports written and processed by the Bureau of Central Police Records during the identified month. Year-to-date statistics reflect those reports written from December to the month in question, including late reports.



Table B-4  
CAUSE OF MOTOR VEHICLE ACCIDENTS

Cause	Pre-Program Period	12/77-9/78 Grant Period	Percent Change	12/78-9/79 Grant Period	Percent Change
Backing Movement	291	484	+66.3	377	-22.1
Crossing Centerline	147	349	+137.4	384	+10.0
Cross Traffic Intersection	401	388	-3.2	347	-10.6
Overtake and Passing	489	618	+26.4	1065	+72.3
Run Off Road	95	77	-18.9	164	+113.0
Sideswipe Opposite Direction	276	145	-47.5	15	-89.7
Moving Vehicle Aflame	3	6	+100.0	2	-66.7
Head On	60	177	+195.0	123	-30.5
Rear End	884	1175	+32.9	1049	-10.7
Left Turn	511	693	+35.6	737	+6.3
Right Turn	96	156	+62.5	143	-8.3
Collision With Stationary Object	1146	1206	+5.2	1231	+2.1
Collision With Animal	25	14	-44.0	13	-7.1
Collision With Bicycle	95	67	-29.5	57	-14.9
Collision With Pedestrian	109	143	+31.2	146	+2.1
Road Defect	6	0	-100.0	0	0.0
Miscellaneous	355	583	+64.2	299	-48.7
Cause Unknown	516	196	-62.0	1	-99.5
TOTAL	5505	6477	+17.7	6153	-5.0

Table C-1

DRIVING WHILE INTOXICATED GRANT PROGRAM  
ALCOHOL RELATED TRAFFIC ACCIDENTS  
PROGRAM PERIOD  
TIME OF DAY

PRECINCTS	DECEMBER 1977						JANUARY 1978						FEBRUARY 1978					
	1	2	3	4	5	TOTAL	1	2	3	4	5	TOTAL	1	2	3	4	5	TOTAL
0001-0059	1-	1-2	3-1	2-	-1	7-4	1-1	2-	-1	1-3	2-	6-5	1-	1-		1-	-1	3-1
0100-0159	4-	3-	3-	2-1	1-	13-1	-1	-1	1-	-2	1-1	2-5			2-	1-	1-	4-
0200-0259							1-		1-			2-						1-
0300-0359	1-	1-				2-						2-		-1				-1
0400-0459	1-	1-			1+	3-		-1				-1	1-					1-
0500-0559																		
0600-0659							-1					-1						-1
0700-0759																		
0800-0859					-1	-1									-1			-1
0900-0959										-1		-1						-1
1000-1059														-1				-1
1100-1159								1-		-1		1-						-1
1200-1259				-1		-1												1-
1300-1359													1-1	1-				1-1
1400-1459	-1					-1												1-1
1500-1559								1-	1-			2-			1-	-1		1-1
1600-1659		-1	-1			-2		1-	1-		1-	2-			1-			1-
1700-1759	-1		-2	1-		1-3	1-	1-	1-		1-	4-		-1				-1
1800-1859							1-			-2		1-2	-1					-1
1900-1959	1-		1-1	1-	1-1	4-2		2-1	1-	1-	-2	4-3						2-
2000-2059		1-			-1	1-1		1-				1-						2-
2100-2159		-1				-1	1-			1-		2-	1-	1-2	2-		1-	5-2
2200-2259		1-2	1-	1-	1-	4-2	1-	1-	1-	-1		3-1	1-	2-2	-2			3-4
2300-2400	1-	3-1*	2-	1-	1-	8-1	1-1	3-		2-		6-1	1-	-1				1-1
SUBTOTAL	9-2	11-7	10-5	8-2	5-4	43-20	7-4	13-3	6-1	5-10	5-3	36-21	6-2	5-8	6-3	3-1	4-1	24-15
TOTAL	11	18	15	10	9	63	11	16	7	15	8	57	8	13	9	4	5	39

PRECINCTS	DAY OF WEEK						DAY OF WEEK						DAY OF WEEK					
	1	2	3	4	5	TOTAL	1	2	3	4	5	TOTAL	1	2	3	4	5	TOTAL
Sunday	3-1	2-2		3-1	2-	10-4	1-2	4-		-1	1-	6-3	1-1	-2	-2	-1	-1	1-7
Monday			1-			1-	1-	2-1	1-1	1-	-2	5-4		-1				-1
Tuesday			-1			-1		1-	1-	-2		2-2		1-	1-			3-
Wednesday		1-1*		-1	1-	2-2	2-	1-		1-	-1	4-1		-2				-2
Thursday	3-	1-2	2-1	2-	1-2	9-5			1-	1-	1-	3-		1-	1-		1-	3-
Friday	1-1	6-1	2-2	1-	1-	11-4	2-	3-	1-	2-	2-	10-	1-	2-1		1-	2-	6-1
Saturday	2-	1-1	5-1	2-	-2	10-4	1-2	2-2	2-	-7	1-	6-11	4-1	1-2	4-1	1-	1-	11-4
SUBTOTAL	9-2	11-7	10-5	8-2	5-4	43-20	7-4	13-3	6-1	5-10	5-3	36-21	6-2	5-8	6-3	3-1	4-1	24-15
TOTAL	11	18	15	10	9	63	11	16	7	15	8	57	8	13	9	4	5	39

Note: Traffic accidents are subdivided within each Precinct. Numbers to the left of the hyphen (-) indicate accidents involving only property damage; numbers to the right of the hyphen indicate accidents involving personal injuries or fatalities.

Table C-2

DRIVING WHILE INTOXICATED GRANT PROGRAM  
ALCOHOL RELATED TRAFFIC ACCIDENTS  
PROGRAM PERIOD

TIME OF DAY

PRECINCTS	MARCH 1978						APRIL 1978						MAY 1978					
	1	2	3	4	5	TOTAL	1	2	3	4	5	TOTAL	1	2	3	4	5	TOTAL
0001-0059			1-	1-		2-1		2-1		1-1	2-	5-2			1-3		1-1	5-5
0100-0159	-1	3-	5-1	-2		8-4	1-	-1	-2*	5-	-1	6-4	1-	2-1	1-	1-	1-	6-1
0200-0259	-1			1-	1-1	2-2		1-				1-	2-1	1-1			-2	3-4
0300-0359	-1	1-		-1	1-	2-2	-1	1-	-1			1-2						
0400-0459								1-		1-		2-						
0500-0559									1-			1-						
0600-0659										1-		1-						
0700-0759								1-				1-						
0800-0859				1-		1-						1-						
0900-0959																		
1000-1059										-1		-1					-1	-1
1100-1159							1-				-1	1-1						
1200-1259			-1		-1	-2	1-					1-						
1300-1359													1-					1-
1400-1459	1-1					1-1											-1	-1
1500-1559				1-		1-		-1				-1					-1	-1
1600-1659			-1			-1					-1	-2						
1700-1759	1-	1-	1-1	-1	2-	5-2		-1		1-	-1	1-2			-1			-1
1800-1859		1-	2-		1-	4-			1-	1-		2-		3-	-2		1-	4-2
1900-1959			-1			-1	1-1	1-			2-	4-1					3-	3-
2000-2059	1-	4-	1-	1-		7-	-1	2-			1-	3-1	1-	1-	-1			2-1
2100-2159	1-	1-1				2-1		1-		1-		2-	-1	1-		1-		2-1
2200-2259		-1	2-	1-	-1	3-2		1-		2-	1-1	4-1		1-1	2-	1-	1-	5-1
2300-2400	1-1	3-	2-1	2-		8-2	1-		1-1			2-1	1-	1-2	-1			2-3
SUBTOTAL	5-5	14-3	14-6	8-4	5-3	46-21	5-3	11-4	3-4	13-3	6-5	38-19	7-2	12-6	4-8	3-2	7-3	33-21
TOTAL	10	17	20	12	8	67	8	15	7	16	11	57	9	18	12	5	10	54

PRECINCTS	DAY OF WEEK						DAY OF WEEK						DAY OF WEEK					
	1	2	3	4	5	TOTAL	1	2	3	4	5	TOTAL	1	2	3	4	5	TOTAL
Sunday	1-1	1-	2-1	2-1		6-3	2-	3-4	1-1*	3-1	-1	9-7	1-	1-2	-3	-1	3-1	5-7
Monday	1-	2-	1-	-1		4-1		1-	-1		-1	1-2		1-	2-1	1-	1-	5-1
Tuesday		2-				2-				-1	1-1	1-2	1-	3-1			-1	4-2
Wednesday	-2	1-	3-	2-1		6-3				2-	1-	3-	2-	1-	1-			4-
Thursday	2-1	1-	1-		-1	4-2	-1	2-		1-	2-	5-1	1-	-2	-2		2-	3-4
Friday		5-2	4-2	1-	1-1	11-5	1-1	2-	1-1	1-	1-1	6-3	1-	5-1	-2		1-	7-3
Saturday	1-1	2-1	3-3	3-1	4-1	13-7	2-1	3-	1-1	6-1	1-1	13-4	1-2	1-	1-	2-1	-1	5-4
SUBTOTAL	5-5	14-3	14-6	8-4	5-3	46-21	5-3	11-4	3-4	13-3	6-5	38-19	7-2	12-6	4-8	3-2	7-3	33-21
TOTAL	10	17	20	12	8	67	8	15	7	16	11	57	9	18	12	5	10	54

Note: Traffic accidents are subdivided within each Precinct. Numbers to the left of the hyphen (-) indicate accidents involving only property damage; numbers to the right of the hyphen indicate accidents involving personal injuries or fatalities.

Table C-3

DRIVING WHILE INTOXICATED GRANT PROGRAM  
ALCOHOL RELATED TRAFFIC ACCIDENTS  
PROGRAM PERIOD  
TIME OF DAY

PRECINCTS	June 1978						July 1978						August 1978					
	1	2	3	4	5	TOTAL	1	2	3	4	5	TOTAL	1	2	3	4	5	TOTAL
0001-0059	1-1		2-1	3-	-2	6-4		1-	2-	1-1		4-1	1-			1-1	1-1	3-2
0100-0159		1-	1-		2-	4-		2-	1-	3-	1-	7-		2-	2-1		-1	4-2
0200-0259	1-	-1		1-		2-1	1-		1-1	1-		3-1		2-				2-
0300-0359		-1				-1				2-		2-		1-		-1*		1-1
0400-0459											1-	1-						1-
0500-0559				-1		-1		2-1				2-1						2-1
0600-0659																		
0700-0759		-1				-1		1-	1-			2-						
0800-0859																		
0900-0959															-1			-1
1000-1059																		
1100-1159		-1				-1										1-		1-
1200-1259															-1			-1
1300-1359													1-			-1		1-1
1400-1459			-1			-1	-1					-1						-1
1500-1559	1-			-1		1-1				1-1		1-1						1-1
1600-1659			1-	1-	1-	3-		1-	1-			2-			-1			-1
1700-1759			-2			-2				1-		1-		1-			1-1*	2-1
1800-1859				-1		-1	1-				1-	2-						1-1
1900-1959	1-	1-1	3-1		-1	5-3		1-			1-1*	2-1				1-1	-1	1-2
2000-2059		1-	-1		1-	2-1	2-			2-		4-				3-1		3-1
2100-2159			3-	1-	1-	5-	1-	1-	3-	2-		7-			-1			-1
2200-2259							1-3		1-	1-1		3-4						2-
2300-2400	1-	1-1	1-1	2-1		5-3		1-		1-		2-			1-	1-		2-
SUBTOTAL	5-1	4-6	11-7	8-4	5-3	33-21	6-4	10-1	10-1	15-3	4-1	45-10	2-	2-	3-4	7-6	2-5	22-16
TOTAL	6	10	18	12	8	54	10	11	11	18	5	55	2	9	7	13	7	38

PRECINCTS	DAY OF WEEK						DAY OF WEEK						DAY OF WEEK						
	1	2	3	4	5	TOTAL	1	2	3	4	5	TOTAL	1	2	3	4	5	TOTAL	
Sunday		-3	2-1	1-	-1	3-5		2-1	1-1	3-		6-2			3-	-1	1-2	-1	4-4
Monday	1-1	1-	-2	2-1		4-4	-1	2-	2-		1-	5-1		2-1			1-1		3-2
Tuesday		2-	-1	2-1	2-1	6-3	1-			1-1		2-1				-1*	-1		-2
Wednesday		-1	2-1	1-	1-	4-2	1-1		1-	-2	-1*	2-4			1-1	1-2			2-3
Thursday	2-	-1	4-	-2		6-3				1-		1-	2-		-1	3-			5-1
Friday		1-1	1-1	2-	1-	5-2	1-1	3-	4-	2-		10-1			1-	1-	-2*		3-2
Saturday	2-		2-1		1-1	5-2	3-1	3-	2-	8-	3-	19-1		2-	1-1	1-1	1-		5-2
SUBTOTAL	5-1	4-6	11-7	8-4	5-3	33-21	6-4	10-1	10-1	15-3	4-1	45-10	2-	8-1	3-4	7-6	2-5	22-16	
TOTAL	6	10	18	12	8	54	10	11	11	18	5	55	2	9	7	13	7	38	

Note: Traffic accidents are subdivided within each Precinct. Numbers to the left of the hyphen (-) indicate accidents involving only property damage; numbers to the right of the hyphen indicate accidents involving personal injuries or fatalities.



Table C-4

DRIVING WHILE INTOXICATED GRANT PROGRAM  
ALCOHOL RELATED TRAFFIC ACCIDENTS  
PROGRAM PERIOD

TIME OF DAY.

PRECINCTS	September 1978						TOTAL (Dec. 1977-Sept. 1978)						TOTAL					
	1	2	3	4	5	TOTAL	1	2	3	4	5	TOTAL	1	2	3	4	5	TOTAL
0001-0059		1-		-1		1-1	6-2	10-5	9-6	11-7	6-6	42-26						
0100-0159		2-		3-	2-	7-	6-2	15-3	16-4*	15-5	9-3	61-17						
0200-0259	2-1	-2		2-		4-3	7-3	4-4	2-1	6-	1-3	20-11						
0300-0359							1-2	4-2	-1	2-2*	1-	8-7						
0400-0459	1-					1-	2-	2-1		1-	2-	7-1						
0500-0559	1-					1-	2-	2-1	1-	-1		5-2						
0600-0659							-1			1-		1-1						
0700-0759								2-1	1-			3-1						
0800-0859									-1	1-	-1	1-2						
0900-0959								-1		-1		-2						
1000-1059								-1		-2		-3						
1100-1159							1-	1-1		1-1	-1	3-3						
1200-1259	1-1	1-1	1-1			3-3	2-1	1-1	1-3	-1	-1	4-7						
1300-1359					1-	1-	1-	1-		-1	1-	3-1						
1400-1459							3-4		-1			3-5						
1500-1559							1-	1-1	2-	2-4		6-5						
1600-1659								2-1	3-3	1-1	2-1	8-6						
1700-1759							2-1	3-2	2-6	3-1	4-2*	14-12						
1800-1859		1-		-1		1-1	2-1	5-	3-2	1-4	3-	14-7						
1900-1959	1-			3-		4-	4-1	5-2	5-3	6-1	7-6*	27-13						
2000-2059	1-1			-2		1-3	5-2	10-	1-2	6-3	4-1	26-8						
2100-2159	1-		-1			1-1	5-1	5-4	8-2	6-	2-	26-7						
2200-2259	1-2		-1	2-	1-	4-3	4-5	6-6*	8-3	9-2	4-2	31-18						
2300-2400	1-	1-2	1-1	4-	1-	3-3	8-2	15-7	7-5	8-2	1-1	39-17						
SUBTOTAL	10-5	6-5	2-4	10-4	4-	32-18	62-28	94-44	69-43	80-39	47-28	352-182						
TOTAL	15	11	6	14	4	50	90	138	112	119	75	534						

PRECINCTS	DAY OF WEEK						TOTAL						TOTAL					
	1	2	3	4	5	TOTAL	1	2	3	4	5	TOTAL	1	2	3	4	5	TOTAL
Sunday	1-	1-2	1-	1-1	1-	5-3	10-5	17-16	7-10*	14-9	7-5	55-45						
Monday							3-2	11-3	7-5	4-2	3-4	28-16						
Tuesday	1-2			1-		2-2	3-2	9-1	2-2	5-6*	3-4	22-15						
Wednesday	1-1		-1	2-1		3-3	6-4	4-4*	8-3	9-7	3-2*	30-20						
Thursday	-1	3-2	-1	-2	1-	4-6	10-3	8-7	9-5	8-4	8-3	43-22						
Friday	4-	1-	-1	2-	1-	8-1	11-3	29-6	14-9	13-	10-4*	77-22						
Saturday	3-1	1-1	1-1	4-	1-	10-3	19-9	16-7	22-9	27-11	13-6	97-42						
SUBTOTAL	10-5	6-5	2-4	10-4	4-	32-18	62-28	94-44	69-43	80-39	47-28	352-182						
TOTAL	15	11	6	14	4	50	90	138	112	119	75	534						

Note: Traffic accidents are subdivided within each Precinct. Numbers to the left of the hyphen (-) indicate accidents involving only property damage; numbers to the right of the hyphen indicate accidents involving personal injuries or fatalities.

\*Fatality

Table C-5

DRIVING WHILE INTOXICATED GRANT PROGRAM  
ALCOHOL RELATED TRAFFIC ACCIDENTS  
PROGRAM PERIOD

TIME OF DAY

PRECINCTS	December 1978						January 1979						February 1979					
	1	2	3	4	5	TOTAL	1	2	3	4	5	TOTAL	1	2	3	4	5	TOTAL
0001-0059																		
0100-0159	3-2	1-4	1-2	3-	1-	9-8	-1		1-		2-1	3-2	1-	1-1		1-		3-1
0200-0259			2-	3-	1-	2-1	3-1	-1	2-1	3-2	2-	10-5		3-	-1	-2	1-1	4-4
0300-0359	-1	1-		1-		2-1	-1			-2		-3		1-1		-1		1-2
0400-0459	1-1					1-1			1-			1-						
0500-0559	1-		1-			2-			-1			-1			-1			-1
0600-0659																		
0700-0759	-1			-1	1-	1-2												
0800-0859			1-			1-			1-		1-							
0900-0959																		
1000-1059		1-				1-												
1100-1159				-1		-1								1-				
1200-1259			-2	1-3	1-	2-5			1-		2-		-1	1-				
1300-1359		-1				-1	-1	1-		1-		-1		1-	-1			
1400-1459			1-	1-		2-		1-			1-						1-	
1500-1559								1-	1-	-1	2-1						1-	
1600-1659	1-	1-2				2-2			1-		1-							
1700-1759	1-	1-				2-				1-	-1	1-1			1-		-1	
1800-1859	2-	1-1	3-	1-2	1-1	8-4		1-	1-		1-	3-		1-			1-	
1900-1959		1-1		2-1		3-2	1-	1-	-1		-1	3-2			1-1		1-	
2000-2059			2-		-1	2-1	-1	2-		1-		3-1		-1	1-	-1	-1	
2100-2159		-1	1-	2-1	1-	4-2	-1	1-			1-1		-1				-1	
2200-2259		1-				1-	1-	-1	1-	-1		2-2			2-	-1	2-1	
2300-2400	1-	-1	2-1	4-1		7-3		1-	1-		2-		-1	1-	1-2		2-3	
SUBTOTAL	10-5	8-11	14-5	15-11	5-2	52-34	5-6	9-2	7-2	8-7	6-3	35-20	1-3	9-3	7-6	1-5	3-3	21-20
TOTAL	15	19	19	26	7	86	11	11	9	15	9	55	4	12	13	6	6	41

PRECINCTS	DAY OF WEEK						DAY OF WEEK						DAY OF WEEK					
	1	2	3	4	5	TOTAL	1	2	3	4	5	TOTAL	1	2	3	4	5	TOTAL
Sunday	1-	-1	1-1	2-2	3-	7-4	-2	1-	-1	1-1	2-	4-4		4-	3-3	-1	1-	8-4
Monday	-1		1-	1-		2-1	2-1	-1				2-2	-1	2-	1-		1-1	2-2
Tuesday	1-1	1-1		1-1	-1	3-4	-1	2-			1-1	3-2		1-		-1		1-1
Wednesday	2-	-2	2-	2-1		6-3	2-1	2-1	1-	1-1	-1	4-3	-1		2-		1-	3-1
Thursday		-2	-2	1-1		1-5	2-1		3-	1-		6-1				-1		-1
Friday	3-2	3-2	4-1	3-3	1-1	14-9	-1	3-	1-	2-1	2-	8-2		1-1	-2	1-1		2-4
Saturday	3-1	4-3	6-1	5-3	1-	19-8	1-	1-	2-1	4-4	-1	8-6	1-1	3-2	1-1	-1	-2	5-7
SUBTOTAL	10-5	8-11	14-5	15-11	5-2	52-34	5-6	9-2	7-2	8-7	6-3	35-20	1-3	9-3	7-6	1-5	3-3	21-20
TOTAL	15	19	19	26	7	86	11	11	9	15	9	55	4	12	13	6	6	41

Note: Traffic accidents are subdivided within each Precinct. Numbers to the left of the hyphen (-) indicate accidents involving only property damage; numbers to the right of the hyphen indicate accidents involving personal injuries or fatalities.

Table C-6

DRIVING WHILE INTOXICATED GRANT PROGRAM  
ALCOHOL RELATED TRAFFIC ACCIDENTS  
PROGRAM PERIOD

TIME OF DAY

PRECINCTS	March 1979						April 1979						May 1979					
	1	2	3	4	5	TOTAL	1	2	3	4	5	TOTAL	1	2	3	4	5	TOTAL
0001-0059	1-	-2	2-	1-2	1-	5-4	-1	1-1			1-	2-2	1-	1-	1-1	1-		4-1
0100-0159	2-	-2	2-	3-	1-2	8-4	3-		1-1*	1-1	1-	6-2	2-	3-1	1-1	1-		7-2
0200-0259		-1	-1			-2			1-1			1-1	1-1	1-1	1-			3-2
0300-0359	-1					-1	1-1					1-1						
0400-0459	1-					1-											-1	-1
0500-0559	1-					1-												
0600-0659								1-				1-						
0700-0759										1-		1-						
0800-0859		-1				-1												
0900-0959																		
1000-1059													1-					1-
1100-1159																		1-
1200-1259	-1					-1		-1				-1						
1300-1359									1-			1-						
1400-1459		1-				1-	-1					-1						-3
1500-1559								1-				1-						3-
1600-1659				1-		1-			1-			1-	-1	1-	1-	1-		2-1
1700-1759					-1*	-1	1-	4-1				5-1						
1800-1859	-1		1-	3-		4-1			1-			1-		-1				-1
1900-1959		-1			-1	-2			1-		1-	2-		-2				-2
2000-2059	1-1	5-	1-	-2		7-3			1-	1-1	1-	3-1						-1
2100-2159	1-1			-1		1-2	1-	2-	1-1			4-1	1-	2-			1-	4-
2200-2259		2-	2-	2-		6-	2-			1-1	1-	4-1	2-	2-				4-
2300-2400		-1	1-1			1-2	1-1	-2	1-1			2-4	-2	1-	1-2	1-		4-
SUBTOTAL	7-5	8-8	9-2	10-5	2-4	36-24	9-4	10-5	6-4	6-3	5-	36-16	7-4	13-5	5-4	6-5		31-18
TOTAL	12	16	11	15	6	60	13	52	10	9	5	52	11	18	9	11		49

PRECINCTS	DAY OF WEEK						DAY OF WEEK						DAY OF WEEK					
	1	2	3	4	5	TOTAL	1	2	3	4	5	TOTAL	1	2	3	4	5	TOTAL
Sunday	3-1	1-2	2-	2-2	-1	8-6	1-1	2-1	-1*	-1	1-	4-4		5-	1-	1-2		7-2
Monday	1-	4-	1-			6-		1-1	1-	1-	1-	3-1		-1	1-1	1-		2-2
Tuesday		-1	1-			1-2		4-	1-	2-	2-	9-	-1	1-1	-1	-1		1-4
Wednesday	-1			1-		1-1	3-2	-2	1-	-1	2-	6-5	1-	2-1		1-		4-1
Thursday		-1		2-		2-1	1-	1-	-1			2-1	2-2	1-1	1-	1-		5-3
Friday	1-1	2-1	2-	3-1	1-2*	9-5	2-	1-		1-		4-		2-	1-			3-
Saturday	2-2	1-3	3-2	2-1	1-1	9-8	2-1	1-1	3-2	2-1		8-5	4-1	2-1	1-2	2-2		9-6
SUBTOTAL	7-5	8-8	9-2	10-5	2-4	36-24	9-4	10-5	6-4	6-3	5-	36-16	7-4	13-5	5-4	6-5		31-18
TOTAL	12	16	11	15	6	60	13	15	10	9	5	52	11	18	9	11		49

Note: Traffic accidents are subdivided within each Precinct. Numbers to the left of the hyphen (-) indicate accidents involving only property damage; numbers to the right of the hyphen indicate accidents involving personal injuries or fatalities.

\*Fatality

Table C-7

DRIVING WHILE INTOXICATED GRANT PROGRAM  
ALCOHOL RELATED TRAFFIC ACCIDENTS  
PROGRAM PERIOD

TIME OF DAY

PRECINCTS	June, 1979						July, 1979						August, 1979					
	1	2	3	4	5	TOTAL	1	2	3	4	5	TOTAL	1	2	3	4	5	TOTAL
0001-0059	1-	2-1	4-1	4-1	1-1	12-4		2-1	2-			4-1		1-				1-
0100-0159	1-	-4		1-1	1-	3-5	1-			2-1		3-1	1-2	1-1	-1	.2-	-1	4-5
0200-0259	1-1				1-	2-1	1-	1-			1-	3-				-1	1-	1-1
0300-0359		1-				1-	1-		1-			2-						
0400-0459								1-				1-						
0500-0559																		
0600-0659																		
0700-0759																		
0800-0859							1-					1-				1-		1-
0900-0959															1-			1-
1000-1059																		
1100-1159																		
1200-1259							1-		-1	-1		1-2						
1300-1359				1-		1-						1-						
1400-1459								1-				1-					1-	1-
1500-1559										1-		1-						
1600-1659								1-	1-	-1	-1	2-2			-1			-1
1700-1759				-1		-1		1-				1-						
1800-1859	-1		1-	1-		2-1		1-1	1-			2-1	1-	1-	1-		1-	4-
1900-1959		1-	-1	1-1		2-2		-1	-1	-1	1-1*	1-4	-1			1-		1-1
2000-2059		2-	1-			3-								-1		-1	1-	1-2
2100-2159		1-1				1-1	2-1	1-1	-1	1-	1-1	5-4		-1	1-1	1-1		2-3
2200-2259	1-	1-1	-1		1-	3-2			1-	-1	1-	2-1			1-			2-
2300-2400		2-		1-		3-	-2	1-	2-2		-1	3-5	2-2			-1	1-	3-3
SUBTOTAL	4-2	10-7	6-4	9-3	4-1	33-17	8-3	10-4	5-6	7-5	4-3	34-21	4-5	3-4	4-2	6-4	5-1	22-16
TOTAL	6	17	10	12	5	50	11	14	11	12	7	55	9	7	6	10	6	38

PRECINCTS	DAY OF WEEK						DAY OF WEEK						DAY OF WEEK					
	1	2	3	4	5	TOTAL	1	2	3	4	5	TOTAL	1	2	3	4	5	TOTAL
Sunday	1-	1-3		4-	2-	8-3		-1	-3	3-	1-	4-4				1-		1-
Monday			2-			2-	1-	2-	1-	-1		4-1					1-	1-
Tuesday		2-	4-1	1-1		7-2	1-	2-2	1-	1-1	2-1	7-4		1-		3-		4-
Wednesday	1-1	-2				1-3	1-	2-			1-	4-	1-	-1		2-1	1-	4-2
Thursday	-1	2-		1-		3-1	1-2	2-1	1-	1-		5-3	2-1	-1	1-1			3-3
Friday	1-	2-	-1	-1	1-	4-2	2-	1-	1-2	2-1		6-3	-2	-1		-2	3-	3-5
Saturday	1-	3-2	-2	3-1	1-1	8-6	2-1	1-	1-1	-2	-2*	4-6	1-2	2-1	3-1	-1	-1	6-6
SUBTOTAL	4-2	10-7	6-4	9-3	4-3	33-17	8-3	10-4	5-6	7-5	4-3	34-21	4-5	3-4	4-2	6-4	5-1	22-16
TOTAL	6	17	10	12	5	50	11	14	11	12	7	55	9	7	6	10	6	38

Note: Traffic accidents are subdivided within each Precinct. Numbers to the left of the hyphen (-) indicate accidents involving only property damage; numbers to the right of the hyphen indicate accidents involving personal injuries or fatalities.

\*Fatality

**Table C-8**  
**DRIVING WHILE INTOXICATED GRANT PROGRAM**  
**ALCOHOL RELATED TRAFFIC ACCIDENTS**  
**PROGRAM PERIOD**

**TIME OF DAY**

PRECINCTS	September 1979						TOTAL (Dec. 1978 - Sept. 1979)											
	1	2	3	4	5	TOTAL	1	2	3	4	5	TOTAL	1	2	3	4	5	TOTAL
0001-0059			1-1	1-		2-1	4-2	8-6	11-3	8-3	5-2	36-16						
0100-0159	2-	2-1		-1	-2	4-4	18-5	10-14	7-7	16-8	7-6	58-40						
0200-0259		1-1	1-		-1	2-2	3-3	4-4	4-1	1-6	3-1	15-15						
0300-0359	1-1		2-			3-1	3-4	2-	2-	2-		9-4						
0400-0459				-1		-1	2-1	1-		1-2		4-3						
0500-0559							2-		1-1	-1		3-2						
0600-0659									1-			1-						
0700-0759							-1		1-			1-						
0800-0859							1-	-1	1-	-1	2-	2-2						
0900-0959	2-					2-	2-		1-	-2-		4-1						
1000-1059									1-			3-						
1100-1159			1-			1-		2-				2-						
1200-1259							1-2	-1	2-	-1		2-2						
1300-1359	-1					-1	-2	2-	-3	2-4	1-	6-9						
1400-1459		-1				-1	-1	1-1	1-1	2-		4-4						
1500-1559				1-	1-	2-	-1	3-1	1-	1-3	2-	7-5						
1600-1659					-1	-1	2-	3-	2-	3-1	1-	9-1						
1700-1759		1-		-1		1-1	2-1	3-3	1-1	3-1	-2	9-8						
1800-1859		1-1			1-	2-1	2-	7-1	1-1	1-1	-2	11-5						
1900-1959	1-				-1	1-1	3-2	6-4	7-	7-2	5-1	28-9						
2000-2059							2-1	4-5	1-4	4-3	2-4	13-17						
2100-2159	1-	2-1	1-			4-1	1-2	10-2	6-1	1-5	2-2	20-12						
2200-2259	1-		2-	1-	1-	5-	6-4	9-5	4-3	5-3	2-1	26-16						
2300-2400	-1		1-1			1-2	7-	6-2	9-1	5-4	4-	31-7						
SUBTOTAL	8-3	7-5	9-2	3-3	3-5	30-18	4-9	6-4	9-10	7-2	1-1	27-26						
TOTAL	11	12	11	6	8	48	63-40	87-54	72-37	71-51	37-22	330-204						

PRECINCTS	DAY OF WEEK																	
	1	2	3	4	5	TOTAL	1	2	3	4	5	TOTAL	1	2	3	4	5	TOTAL
Sunday	1-	1-	1-	1-1	1-1	4-2	7-4	15-8	8-9	15-10	11-2	56-33						
Monday	-1	2-	2-	1-		5-1	4-4	9-3	10-1	4-1	2-1	29-10						
Tuesday	2-1	1-1			1-	4-2	4-4	15-6	7-2	8-6	6-3	40-21						
Wednesday			2-		-1	2-1	8-5	6-9	8-	7-4	5-2	34-20						
Thursday		2-2				2-2	9-7	8-8	6-4	6-2	1-	30-21						
Friday	2-1	-1	2-2	1-	-1	5-5	11-7	15-6	11-8	13-10	8-4	58-35						
Saturday	3-	1-1	2-	-2	1-2	7-5	20-9	19-14	22-13	18-18	4-10	83-64						
SUBTOTAL	8-3	7-5	9-2	3-3	3-5	30-18	63-40	87-54	72-37	71-51	37-22	330-204						
TOTAL	11	12	11	6	8	48	103	141	109	122	59	534						

Note: Traffic accidents are subdivided within each Precinct. Numbers to the left of the hyphen (-) indicate accidents involving only property damage; numbers to the right of the hyphen indicate accidents involving personal injuries or fatalities.



Table C-9

DRIVING WHILE INTOXICATED GRANT PROGRAM  
ALCOHOL RELATED TRAFFIC ACCIDENTS  
PROGRAM PERIOD

TIME OF DAY

PRECINCTS	TOTAL (Dec. 1976-Sept. 1977)						TOTAL (Dec. 1977-Sept. 1978)						TOTAL (Dec. 1978-Sept. 1979)					
	1	2	3	4	5	TOTAL	1	2	3	4	5	TOTAL	1	2	3	4	5	TOTAL
0001-0059	3-1	19-4	3-6	6-2	3-	34-13	6-2	10-5	9-6	11-7	6-6	42-26	4-2	8-6	11-3	8-3	5-2	36-16
0100-0159	4-3	4-7	6-7*	18-4	5-3	37-24	6-2	15-3	16-4*	15-5	9-3	61-17	18-5	10-14	7-7*	16-8	7-6	58-40
0200-0259	-1*	9-8	1-4	3-6	-1	13-20	7-3	4-4	2-1	6-	1-3	20-11	3-3	4-4	4-1	1-6	3-1	15-15
0300-0359	2-	2-2	-3	1-2	2-1	7-8	1-2	4-2	-1	2-2*	1-	8-7	3-4	2-	2-	2-	-	9-4
0400-0459	1-	1-	1-	2-2	-1	5-3	2-	2-1	1-	1-	2-	7-1	2-1	1-	-	1-2	-	4-3
0500-0559	1-	-1	-	-	1-	2-1	2-	2-1	1-	-1	-	5-2	2-	-	1-1	-1	-	3-2
0600-0659	-	1-	3-	1-	-	5-	-1	-	-	1-	-	1-1	-	-	1-	-	-	1-
0700-0759	1-	-	2-	2-	-	5-	-	2-1	1-	-	-	3-1	-1	-	-	-1	2-	2-2
0800-0859	-	-	-	1-	1-	2-	-	-	-1	1-	-1	1-2	1-	-1	1-	2-	-	4-1
0900-0959	-	1-1	-	-	-	1-1	-	-1	-	-1	-	-2	2-	-	1-	-	-	3-
1000-1059	-1	-3	1-	-	-	1-4	-	-1	-	-2	-	-3	-	2-	-	-	-	2-
1100-1159	-	-	-	-	-	-	1-	1-1	-	1-1	-1	3-3	-	-1	2-	-1	-	2-2
1200-1259	-	1-	-1	1-1	-	2-2	2-1	1-1	1-3	-1	-1	4-7	1-2	2-	-3	2-4	1-	6-9
1300-1359	1-1	1-1	-	1-	-	3-2	1-	1-	-	-1	1-	3-1	-2	1-1	1-1	2-	-	4-4
1400-1459	-	2-	-1	-	-	2-1	3-4	-	-1	-	-	3-5	-1	3-1	1-	1-3	2-	7-5
1500-1559	1-	2-	1-	3-	-	7-	1-	1-1	2-	2-4	-	6-5	3-	2-	3-1	1-	-	9-1
1600-1659	2-	1-	2-3	4-1	-	9-4	-	2-1	3-3	1-1	2-1	8-6	2-1	3-3	1-1	3-1	-2	9-8
1700-1759	1-1	3-2	1-	2-1	2-	9-4	2-1	3-2	2-6	3-1	4-2*	14-12	2-	7-1	1-1	1-1	-2*	11-5
1800-1859	1-	5-	2-	4-1	2-1	14-2	2-1	5-	3-2	1-4	3-	14-7	3-2	6-4	7-	7-2	5-1	28-9
1900-1959	2-	5-2	6-4	3-2	4-1	20-9	4-1	5-2	5-3	6-1	7-6*	27-13	2-1	4-5	1-4	4-3	2-4*	13-17
2000-2059	4-2	10-1	5-4	8-1	2-	29-8	5-2	10-	1-2	6-3	4-1	26-8	1-2	10-2	6-1	1-5	2-2	20-12
2100-2159	6-	9-2	2-1	2-3	5-	24-6	5-1	5-4	8-2	6-	2-	26-7	6-4	9-5	4-3	5-3	2-1	26-16
2200-2259	4-4	5-7	5-2	11-	3-	28-13	4-5	6-6*	8-3	9-2	4-2	31-18	7-	6-2	9-1	5-4	4-	31-7
2300-2400	2-2	7-3	4-2	6-2	1-2	20-11	8-2	15-7	7-5	8-2	1-1	39-17	4-9	6-4	9-10	7-2	1-1	27-26
SUBTOTAL	36-16	88-44	45-38	79-28	31-10	279-136	62-28	94-44	69-43	80-39	47-28	352-182	63-40	87-54	72-37	71-51	37-22	330-204
TOTAL	52	132	83	107	41	415	90	138	112	119	75	534	103	141	109	122	59	534

PRECINCTS	DAY OF WEEK						DAY OF WEEK						DAY OF WEEK					
	1	2	3	4	5	TOTAL	1	2	3	4	5	TOTAL	1	2	3	4	5	TOTAL
Sunday	3-	23-6	6-10	13-6	3-	48-22	10-5	17-16	7-10*	14-9	7-5	55-45	7-4	15-8	8-9*	15-10	11-2	56-33
Monday	4-3	9-2	2-2	4-1	1-5	20-13	3-2	11-3	7-5	4-2	3-4	28-16	4-4	9-3	10-1	4-1	2-1	29-10
Tuesday	6-1	3-2	3-2	12-3	3-	27-8	3-2	9-1	2-2	5-6*	3-4	22-15	4-4	15-6	7-2	8-6	6-3	40-21
Wednesday	2-1	10-7	6-3	9-3	4-3	31-17	6-4	4-4*	8-3	9-7	3-2*	30-20	8-5	6-9	8-	7-4	5-2	34-20
Thursday	5-	12-5	5-3	14-1	6-	43-9	10-3	8-7	9-5	8-4	8-3	43-22	9-7	8-8	6-4	6-2	1-	30-21
Friday	5-6*	14-10	8-10	15-8	3-1	45-35	11-3	29-6	14-9	13-	10-4*	77-22	11-7	15-6	11-8	13-10	8-4*	58-35
Saturday	10-5	17-12	15-8*	12-6	11-1	65-32	19-9	16-7	22-9	27-11	13-6	97-42	20-9	19-14	22-13	18-18	4-10*	83-64
SUBTOTAL	36-16	88-44	45-38	79-28	31-10	279-136	62-28	94-44	69-43	80-39	47-28	352-182	63-40	87-54	72-37	71-51	37-22	330-204
TOTAL	52	132	83	107	41	415	90	138	112	119	75	534	103	141	109	122	59	534

Note: Traffic accidents are subdivided within each Precinct. Numbers to the left of the hyphen (-) indicate accidents involving only property damage; numbers to the right of the hyphen indicate accidents involving personal injuries or fatalities.

\*Fatality

TABLE D-1  
FIRST PRECINCT

VEHICLE ACCIDENTS ———  
DWI ARRESTS - - - - -

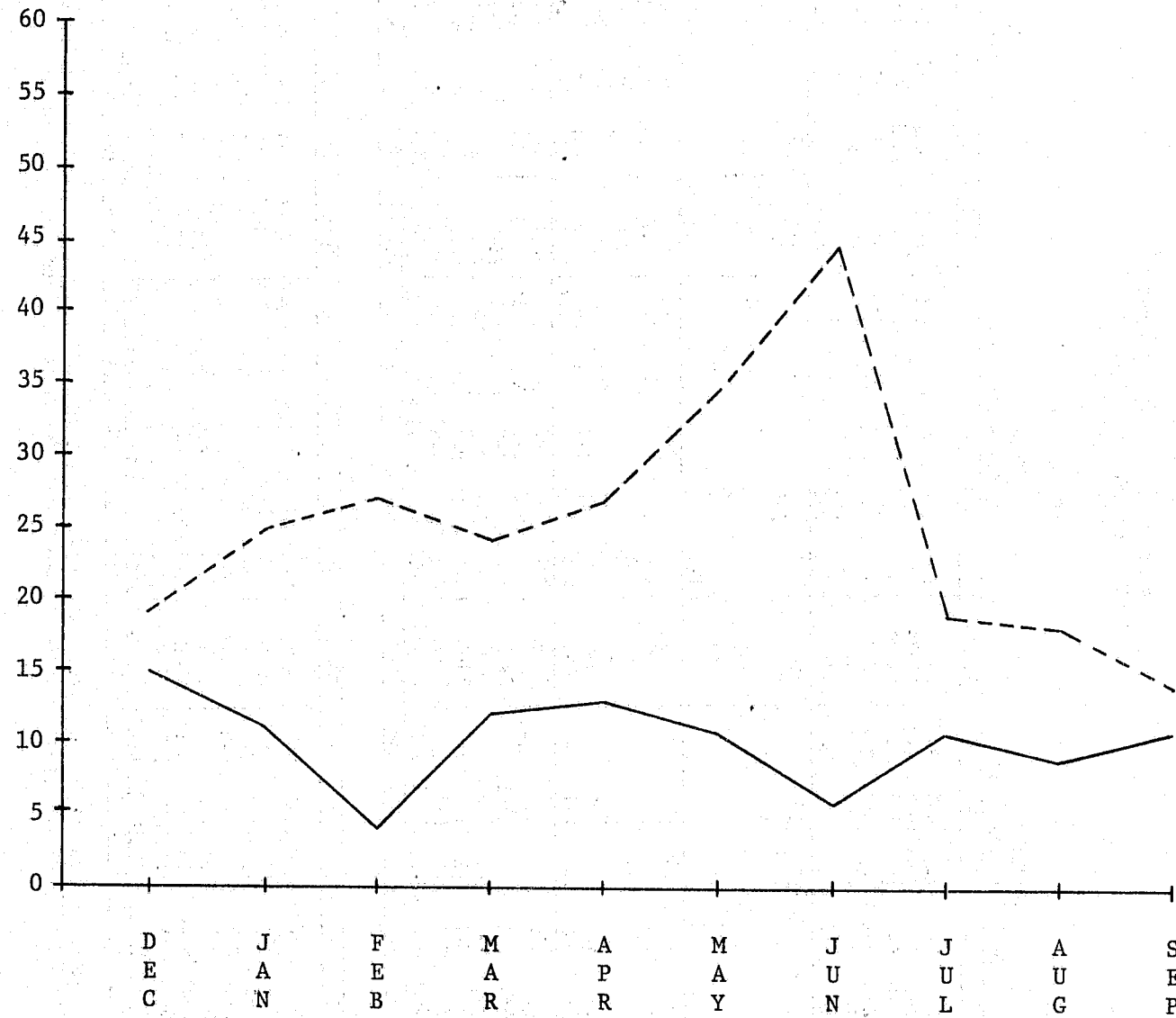


TABLE D-2  
SECOND PRECINCT

VEHICLE ACCIDENTS ———  
DWI ARRESTS - - - - -

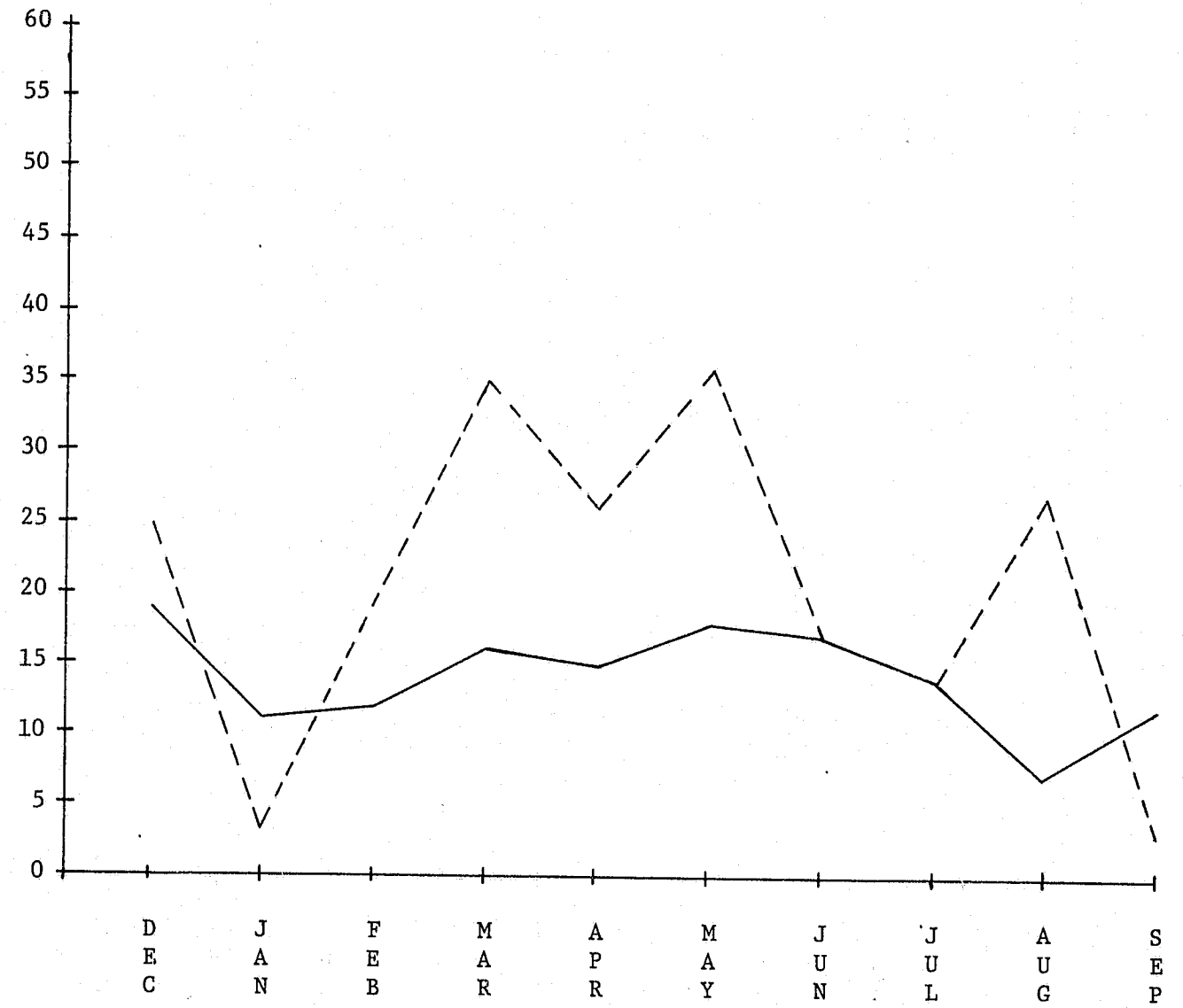


TABLE D-3  
THIRD PRECINCT

VEHICLE ACCIDENTS ———  
DWI ARRESTS - - - - -

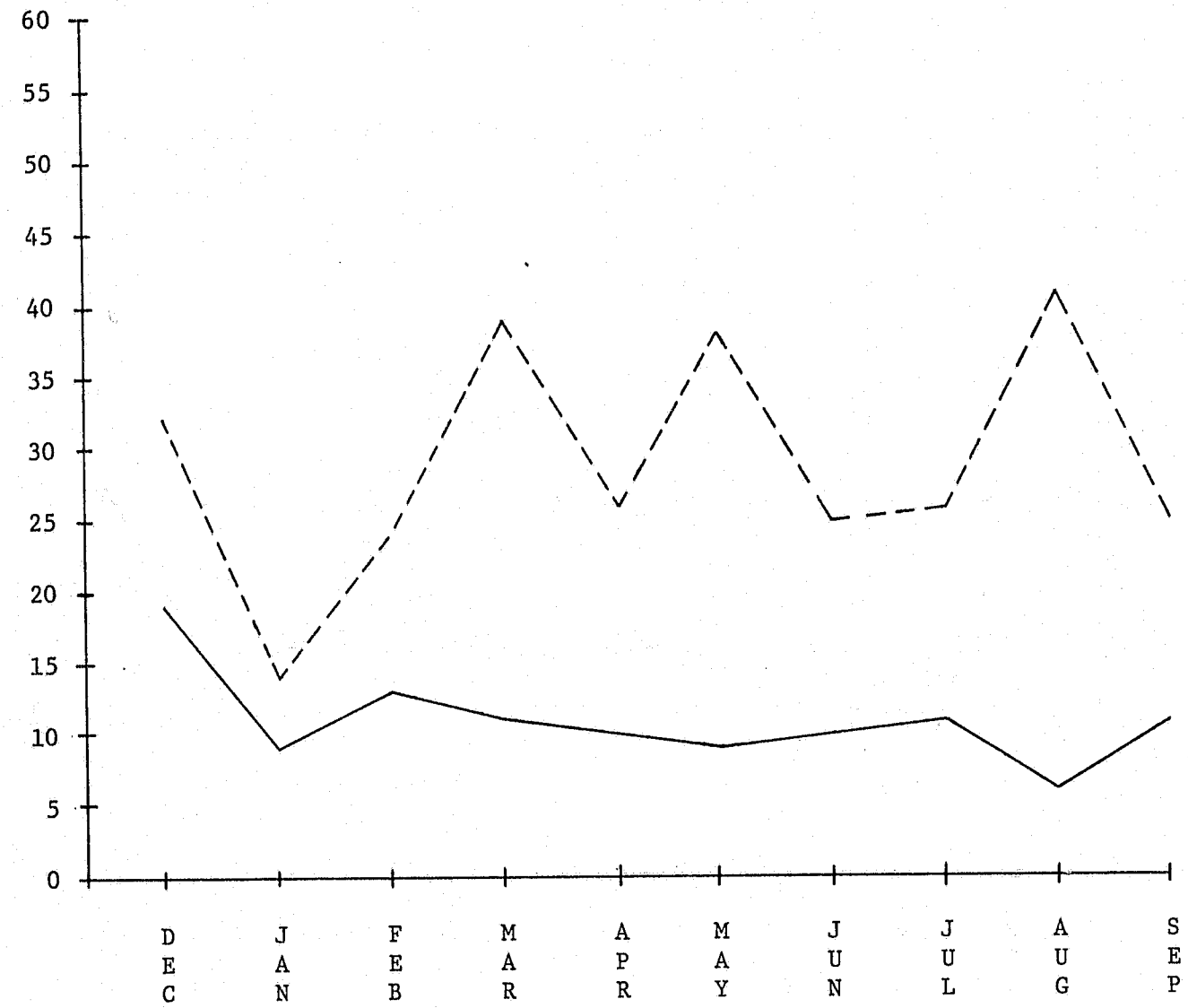


TABLE D-4  
FOURTH PRECINCT

VEHICLE ACCIDENTS ———  
DWI ARRESTS - - - - -

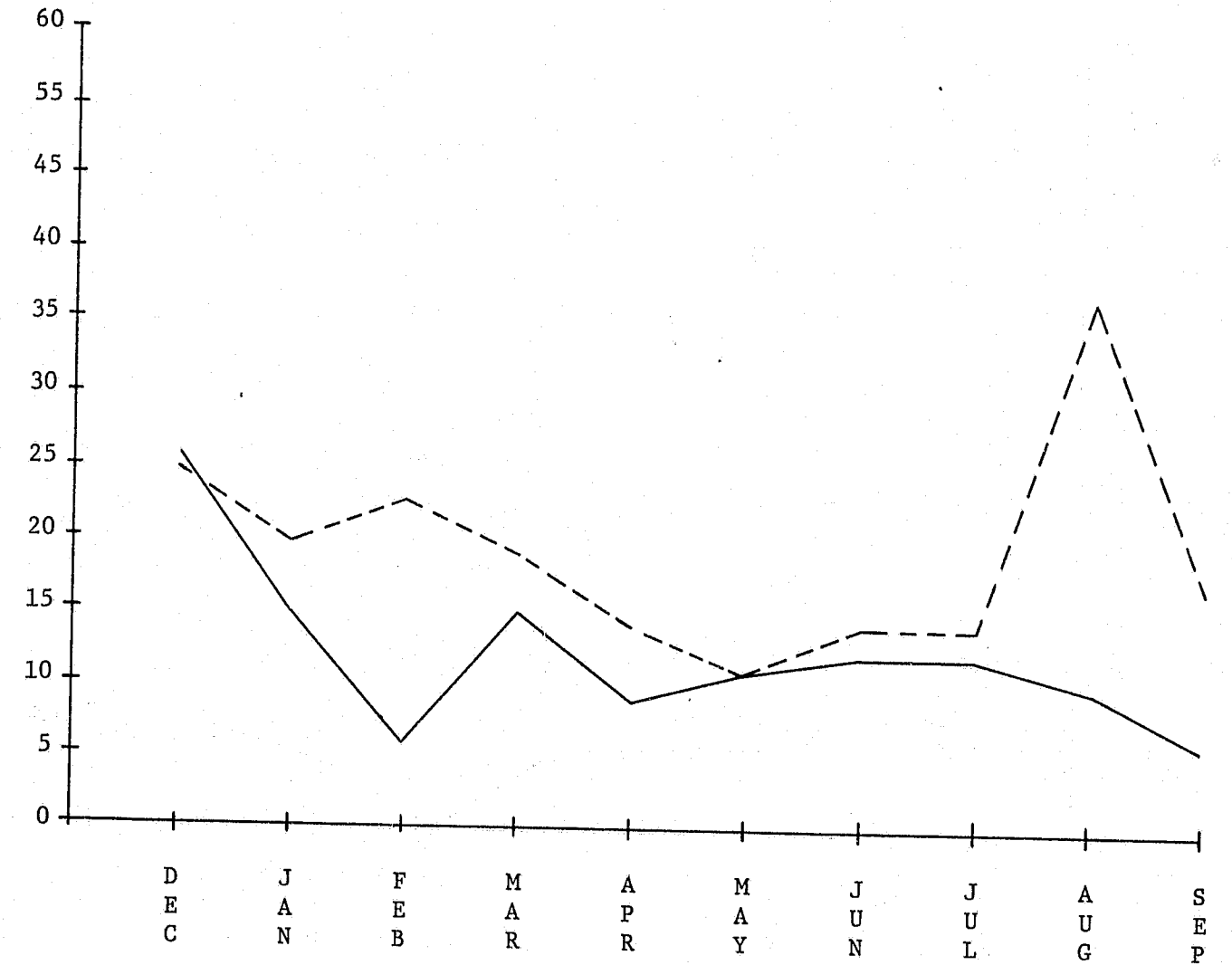
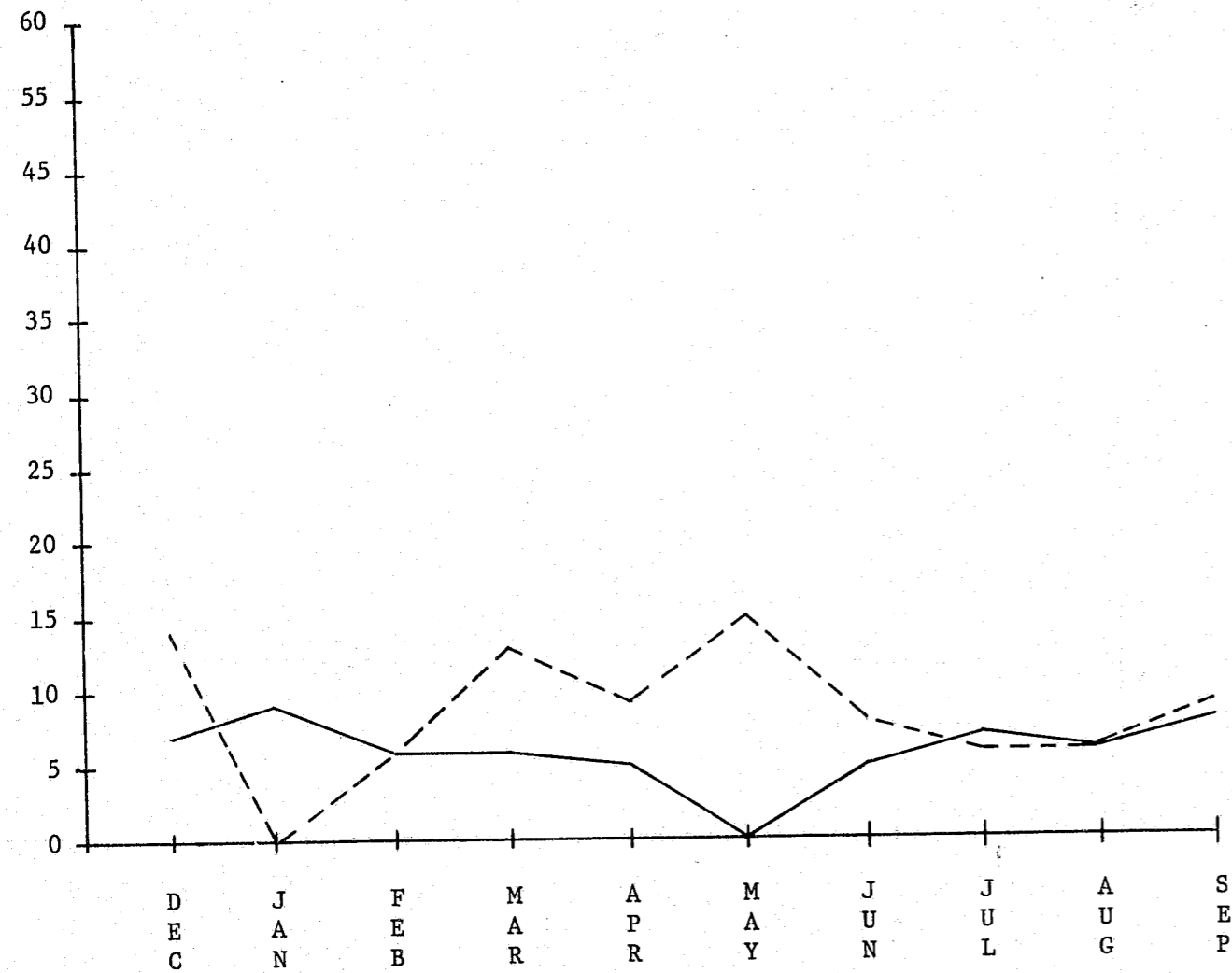


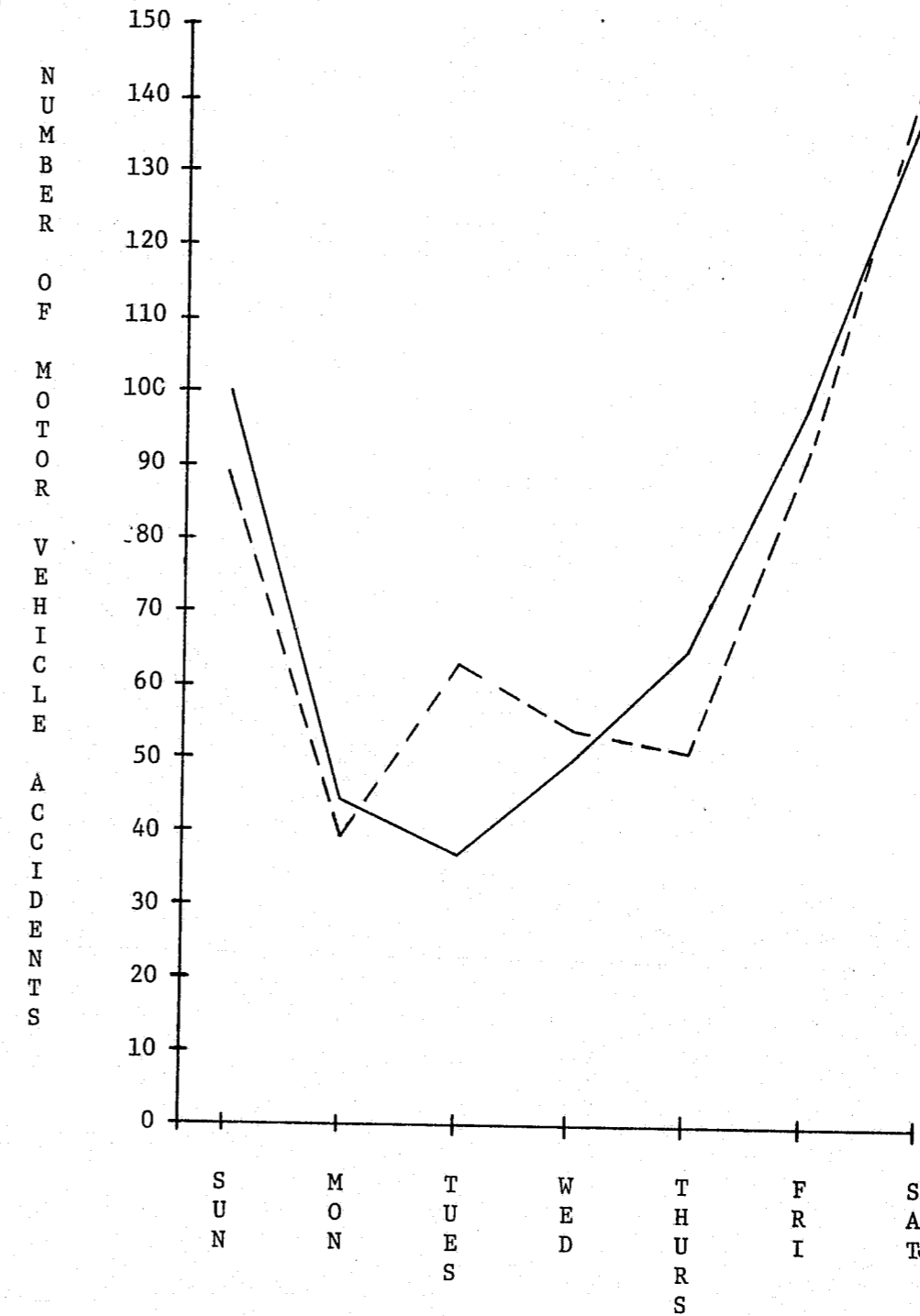
TABLE D-5  
FIFTH PRECINCT

VEHICLE ACCIDENTS ———  
DWI ARRESTS - - - - -



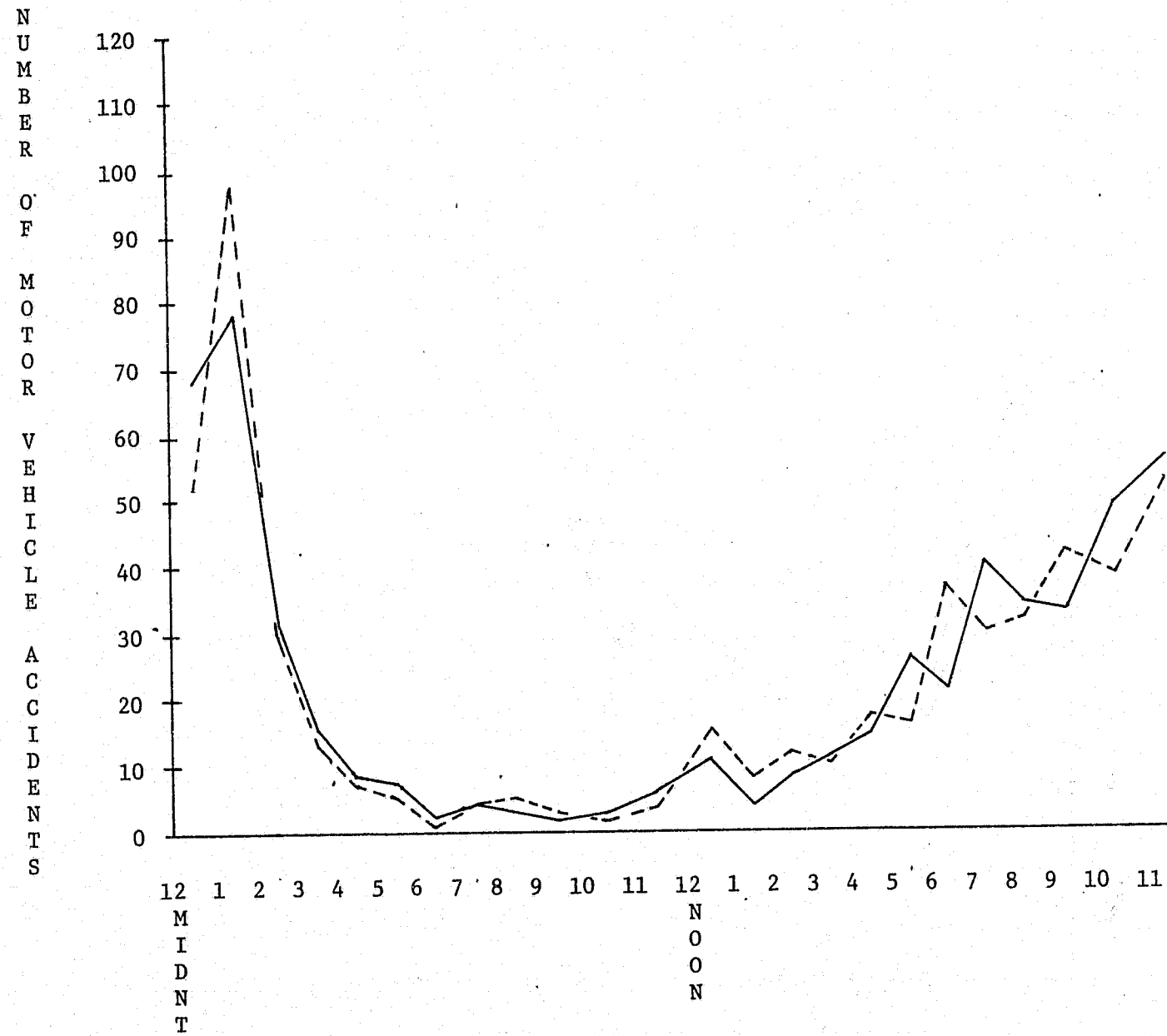
D-6  
ALCOHOL-RELATED MOTOR VEHICLE ACCIDENTS

FIRST GRANT PERIOD ———  
SECOND GRANT PERIOD - - - - -



ALCOHOL-RELATED MOTOR VEHICLE ACCIDENTS BY HOUR OF DAY

FIRST GRANT PERIOD ———  
SECOND GRANT PERIOD - - - - -



END