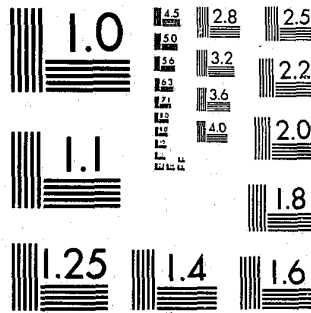


National Criminal Justice Reference Service



This microfiche was produced from documents received for inclusion in the NCJRS data base. Since NCJRS cannot exercise control over the physical condition of the documents submitted, the individual frame quality will vary. The resolution chart on this frame may be used to evaluate the document quality.



MICROCOPY RESOLUTION TEST CHART
NATIONAL BUREAU OF STANDARDS-1963-A

Microfilming procedures used to create this fiche comply with the standards set forth in 41CFR 101-11.504.

Points of view or opinions stated in this document are those of the author(s) and do not represent the official position or policies of the U. S. Department of Justice.

**National Institute of Law Enforcement and Criminal Justice
Law Enforcement Assistance Administration
United States Department of Justice
Washington, D. C. 20531**

DATE FILMED

JULY 28, 1980

66727

OFFENDERS RELEASED FROM ADULT CORRECTIONAL INSTITUTIONS
CALENDAR 1977



DEPARTMENT OF HEALTH AND SOCIAL SERVICES
DIVISION OF CORRECTIONS
OFFICE OF SYSTEMS AND EVALUATION
MADISON, WISCONSIN 53701

STATISTICAL BULLETIN C-54

DECEMBER 1978

S T A T E O F W I S C O N S I N

DEPARTMENT OF HEALTH AND SOCIAL SERVICES

Donald E. Percy, Secretary

DIVISION OF CORRECTIONS

Allyn R. Sielaff, Administrator

Lee Roy Black, Ph.D., Deputy Administrator

OFFICE OF SYSTEMS AND EVALUATION

Paul H. Kusuda, Director

Perry C. Baker, Deputy Director, Statistics and Evaluation Section

Theodore H. Johnson, Deputy Director, Systems Development Section

JUL 30 1979

CONTENTS

ACQUISITIONS

	Page
Offenders Released from Adult Institutions in 1977, Narrative.....	2
Selected Characteristics for First-Released Adult Males: 1973-1977 (Table A).....	3
Selected Characteristics for First-Released Adult Females: 1973-1977 (Table B).....	4
Selected Characteristics for Re-Released Adult Males: 1973-1977 (Table C).....	5
Selected Characteristics for Re-Released Adult Females: 1973-1977 (Table D).....	6
Type of Separation, 1976 and 1977 Compared (Table 1).....	7
Type of Status Change Separation, 1976 and 1977 Compared (Table 1a)...	9
Type of Commitment, Residents First and Re-Released (Table 2).....	10
Type of Commitment and Release, Residents First and Re-Released (Table 3).....	10
Race, Residents First and Re-Released (Table 4).....	11
Offense, Residents First and Re-Released (Table 5).....	12
County of Conviction, Residents First and Re-Released (Table 6).....	14
Average Length of Stay Since Last Admission, Residents First and Re-Released (Table 7).....	16
Average Length of Stay Since Sentence Began, Re-Releases Only (Table 8).....	16
Number of Previous Releases, Residents First and Re-Released (Table 9).....	17
Educational Progress, Residents First-Released (Table 10).....	17
Work Record, Residents First-Released (Table 11).....	18
Loss of Privileges, Residents First-Released (Table 12).....	18
Lock-Ups, Residents First-Released (Table 13).....	19
Group Counseling Sessions, Residents First-Released (Table 14).....	19
Length of Stay by Offense, Residents First-Released (Table 15).....	20
Length of Stay by Length of Sentence, Residents First-Released (Table 16).....	21

OFFENDERS RELEASED FROM
DIVISION OF CORRECTIONS ADULT INSTITUTIONS IN 1977

This report describes adult offenders who were first and re-released from Wisconsin adult correctional institutions during calendar year 1977. The information was routinely collected from adult institutional record offices and social service staffs. Adult correctional institutions of release were Wisconsin State Prison, Wisconsin State Reformatory, Wisconsin Correctional Institution-Fox Lake, Kettle Moraine Correctional Institution, Wisconsin Correctional Institution-Oakhill, Taycheedah Correctional Institution, and the Wisconsin Correctional Camp System.

Release information applying to adult males is reported under the heading, "Facilities for Men," in all supplemental tables except Table 1. Supplemental tables after Table 1 exclude information about releases from temporary holds pending revocation hearings, transfers out of adult facilities, and separations on authorized, unauthorized, and hospital leaves during 1977.

Tables A, B, C, and D depict trends in selected characteristics of adult releases during the past five years. The number of first and re-released adult offenders (males and females combined) fluctuated by as much as 21 percent from year to year and by 50 percent during the five-year period. After dropping from 1,132 in calendar year 1973 to 1,016 in 1974, the number of releases rose in each of the next three years, reaching 1,530 in 1977.

Adult Male First Releases

As shown in Table A, the 1,194 adult male first releases in 1977 were the highest number during the five-year period, representing a net increase of 48 percent over the 805 male first releases in 1973. The low for the period was 740 in 1974. In each of the years roughly 40 percent of the male first releases were from Milwaukee County.

The median length of stay varied only slightly during the period, ranging from 19.0 months in 1973 to 17.8 months in 1975. It rose to 18.7 months in 1976 before dropping to 18.1 months in 1977. This reflects a net decline of 0.9 of one month during the period.

Average (mean) lengths of stay ranged from four months to 5.1 months higher than the median lengths of stay. This occurred because small numbers of those released had much longer stays than the bulk of the first releases.

The proportion of male first releases with regular felony commitments showed a continuing rise, going from 96.2 percent in 1973 to 98.7 percent in 1977.

Table A
Selected Characteristics for First-Released Adult Males
1973-1977

Characteristics	Calendar Year				
	1973	1974	1975	1976	1977
<u>Total Adult Males First-Released</u>	<u>805</u>	<u>740</u>	<u>931</u>	<u>1,115</u>	<u>1,194</u>
Average (median) length of stay, in months	19.0	18.7	17.8	18.7	18.1
Average (mean) length of stay, in months	23.6	23.2	21.9	22.7	23.2
Percent with regular felony commitments	96.2	97.3	98.6	98.6	98.7
Percent with Milwaukee County commitments	39.5	40.7	38.0	39.4	40.2
Percent with work records reported as satisfactory	63.2	57.7	57.6	63.2	54.5
Percent without loss of privileges reported	46.8	47.2	42.7	49.4	48.5
Percent without lock-ups reported	64.6	61.5	62.7	66.8	65.0
Percent with group counseling sessions reported	20.9	23.8	28.5	33.9	31.0

Adult Female First Releases

The number of adult female first releases dropped from 73 in 1973 to 55 in 1974 but increased in each subsequent year, totaling 80 in 1977. The proportion of first releases from Milwaukee County ranged from 48 percent to nearly 58 percent, with exactly half of the 1977 first releases being from Milwaukee County.

Median lengths of stay increased gradually during the five-year period, from 9.8 months in 1973 to 14.7 months in 1977. The mean lengths of stay were as much as 2.2 months longer than the medians.

Variations in other characteristics of first-released females are shown in Table B. Of special interest is the fact that nearly one-third of the 1977 first releases took part in group counseling, more than in any previous year, and that a smaller percentage of the 1977 first releases (56 percent) had gone through incarceration without undergoing lock-ups than in previous years.

Table B
Selected Characteristics for First-Released Adult Females
1973-1977

Characteristics	Calendar Year				
	1973	1974	1975	1976	1977
<u>Total Adult Females First-Released</u>	<u>73</u>	<u>55</u>	<u>64</u>	<u>72</u>	<u>80</u>
Average (median) length of stay, in months	9.8	9.7	11.7	14.3	14.7
Average (mean) length of stay, in months	12.0	11.0	13.7	15.0	14.8
Percent with regular felony commitments	84.9	96.4	100.0	98.6	100.0
Percent with Milwaukee County commitments	57.5	54.6	48.4	48.6	50.0
Percent with work record reported as satisfactory	67.1	45.5	57.8	50.0	50.0
Percent without loss of privileges reported	68.5	56.3	46.9	61.1	50.0
Percent without lock-ups reported	82.2	67.3	56.3	65.2	55.4
Percent with group counseling sessions reported	17.8	20.0	12.6	15.4	32.5

First Released and Re-Released Adult Males Compared

Trends during the past five years for selected characteristics of first and re-released adult males may be compared in Tables A and C. Table C shows that the percentage of male re-releases declined each year until edging up to 17.4 percent in 1977. Total males released declined from 1,049 in 1973 to 955 in 1974, then rose steadily, reaching 1,446 in 1977.

Median lengths of stay of first-released males ranged from 0.1 month shorter to over five months longer than for the re-released males.

While about two-fifths of first-released males were from Milwaukee County, over one-half of re-releases were from that county in every year except 1973.

Table C
Selected Characteristics for Re-Released Adult Males
1973-1977

Characteristics	Calendar Year				
	1973	1974	1975	1976	1977
<u>Total Adult Males Re-Released</u>	<u>244</u>	<u>215</u>	<u>229</u>	<u>219</u>	<u>252</u>
Percent re-released of total adult male releases	23.3	22.5	19.7	16.4	17.4
Average (median) length of stay, in months	14.6	13.6	17.9	17.8	18.6
Average (mean) length of stay, in months	19.0	17.3	20.7	20.6	20.8
Percent with regular felony commitments	88.9	94.4	98.6	96.8	96.8
Percent with Milwaukee County Commitments	47.1	53.5	51.5	51.6	50.8

First Released and Re-Released Adult Females Compared

Five-year trends for selected characteristics of first and re-released adult females may be compared in Tables B and D. Because few females were re-released annually, their selected characteristics sometimes varied widely from year to year.

The proportion of re-released females among total females released ranged from a high of 12 percent in 1973 to a low of less than 5 percent in 1977. The total number of females released annually (first and re-releases) dropped from 84 in 1973 to 61 in 1974 before rising to 84 in 1977.

In each of the five years, the median length of stay of female first releases and re-releases was shorter than the length of stay of their male counterparts. The difference ranged from 2.6 to 11.9 months.

Table D
Selected Characteristics for Re-Released Adult Females
1973-1977

Characteristics	Calendar Year				
	1973	1974	1975	1976	1977
<u>Total Adult Females Re-Released</u>	<u>10</u>	<u>6</u>	<u>4</u>	<u>5</u>	<u>4</u>
Percent re-released of total adult female releases	12.0	9.8	5.9	6.5	4.8
Average (median) length of stay, in months	7.0	6.0	13.5	4.5	N/A
Average (mean) length of stay, in months	10.1	9.7	17.5	5.4	18.2
Percent with regular felony commitments	80.0	100.0	100.0	100.0	100.0
Percent with Milwaukee County commitments	70.0	50.0	0.0	60.0	50.0

The set of 15 supplemental tables provides detailed information about adults released during calendar year 1977 from Wisconsin adult correctional institutions. Tables 1 through 8 contain details about both first and re-released clients. The remaining tables report on first releases only.

Prepared by: William Curley, Planning Analyst
Barbara Drown, Research Analyst
Office of Systems and Evaluation
Division of Corrections
Madison, Wisconsin 53701

Table 1
 TYPE OF SEPARATION
 Separations from Population of Residents at
 Wisconsin Adult Correctional Institutions
 (1976 and 1977 Compared)

Type of Separation	Total		Total Males		Total Females		WSP		WSR		WCI		KMCI		WCI Oakhill		WCCS				TCI			
	1976	1977	1976	1977	1976	1977	1976	1977	1976	1977	1976	1977	1976	1977	1976	1977	Males		Females		Males		Females	
																	1976	1977	1976	1977	1976	1977	1976	1977
<u>Total</u>	<u>6,647</u>	<u>7,188</u>	<u>6,369</u>	<u>6,875</u>	<u>278</u>	<u>313</u>	<u>1,770</u>	<u>1,596</u>	<u>1,747</u>	<u>1,680</u>	<u>829</u>	<u>952</u>	<u>477</u>	<u>693</u>	<u>-</u>	<u>197</u>	<u>1,278</u>	<u>1,469</u>	<u>36</u>	<u>69</u>	<u>268</u>	<u>288</u>	<u>242</u>	<u>244</u>
<u>First Release</u>	<u>1,025</u>	<u>1,106</u>	<u>959</u>	<u>1,030</u>	<u>66</u>	<u>76</u>	<u>176</u>	<u>138</u>	<u>120</u>	<u>115</u>	<u>95</u>	<u>85</u>	<u>95</u>	<u>84</u>	<u>-</u>	<u>77</u>	<u>453</u>	<u>504</u>	<u>20</u>	<u>35</u>	<u>20</u>	<u>27</u>	<u>46</u>	<u>41</u>
<u>Adult parole</u>	<u>842</u>	<u>808</u>	<u>788</u>	<u>754</u>	<u>54</u>	<u>54</u>	<u>119</u>	<u>47</u>	<u>83</u>	<u>43</u>	<u>75</u>	<u>57</u>	<u>79</u>	<u>70</u>	<u>-</u>	<u>70</u>	<u>417</u>	<u>449</u>	<u>20</u>	<u>26</u>	<u>15</u>	<u>18</u>	<u>34</u>	<u>28</u>
<u>Mandatory release</u>	<u>151</u>	<u>248</u>	<u>142</u>	<u>226</u>	<u>9</u>	<u>22</u>	<u>47</u>	<u>78</u>	<u>32</u>	<u>67</u>	<u>14</u>	<u>11</u>	<u>8</u>	<u>12</u>	<u>-</u>	<u>6</u>	<u>36</u>	<u>44</u>	<u>-</u>	<u>9</u>	<u>5</u>	<u>8</u>	<u>9</u>	<u>13</u>
<u>Pardon, conditional pardon, commutation</u>	<u>-</u>	<u>-</u>	<u>-</u>	<u>-</u>	<u>-</u>	<u>-</u>	<u>-</u>	<u>-</u>	<u>-</u>	<u>-</u>	<u>-</u>	<u>-</u>	<u>-</u>	<u>-</u>	<u>-</u>	<u>-</u>	<u>-</u>	<u>-</u>	<u>-</u>	<u>-</u>	<u>-</u>	<u>-</u>	<u>-</u>	<u>-</u>
<u>Expiration of sentence</u>	<u>2</u>	<u>6</u>	<u>1</u>	<u>5</u>	<u>1</u>	<u>-</u>	<u>1</u>	<u>2</u>	<u>-</u>	<u>1</u>	<u>-</u>	<u>-</u>	<u>-</u>	<u>-</u>	<u>-</u>	<u>1</u>	<u>-</u>	<u>2</u>	<u>-</u>	<u>-</u>	<u>-</u>	<u>-</u>	<u>1</u>	<u>-</u>
<u>Discharge by court</u>	<u>29</u>	<u>22</u>	<u>27</u>	<u>22</u>	<u>2</u>	<u>-</u>	<u>9</u>	<u>11</u>	<u>5</u>	<u>4</u>	<u>5</u>	<u>3</u>	<u>8</u>	<u>2</u>	<u>-</u>	<u>-</u>	<u>-</u>	<u>1</u>	<u>-</u>	<u>-</u>	<u>-</u>	<u>1</u>	<u>2</u>	<u>-</u>
<u>W.O. parole</u>	<u>-</u>	<u>14</u>	<u>-</u>	<u>14</u>	<u>-</u>	<u>-</u>	<u>-</u>	<u>-</u>	<u>-</u>	<u>-</u>	<u>-</u>	<u>6</u>	<u>-</u>	<u>-</u>	<u>-</u>	<u>-</u>	<u>-</u>	<u>8</u>	<u>-</u>	<u>-</u>	<u>-</u>	<u>-</u>	<u>-</u>	<u>-</u>
<u>W.O. expiration of sentence</u>	<u>-</u>	<u>3</u>	<u>-</u>	<u>3</u>	<u>-</u>	<u>-</u>	<u>-</u>	<u>-</u>	<u>-</u>	<u>-</u>	<u>-</u>	<u>3</u>	<u>-</u>	<u>-</u>	<u>-</u>	<u>-</u>	<u>-</u>	<u>-</u>	<u>-</u>	<u>-</u>	<u>-</u>	<u>-</u>	<u>-</u>	<u>-</u>
<u>W.O. discharge by court</u>	<u>1</u>	<u>5</u>	<u>1</u>	<u>5</u>	<u>-</u>	<u>-</u>	<u>-</u>	<u>-</u>	<u>-</u>	<u>-</u>	<u>1</u>	<u>5</u>	<u>-</u>	<u>-</u>	<u>-</u>	<u>-</u>	<u>-</u>	<u>-</u>	<u>-</u>	<u>-</u>	<u>-</u>	<u>-</u>	<u>-</u>	<u>-</u>
<u>W.O. release</u>	<u>195</u>	<u>231</u>	<u>190</u>	<u>227</u>	<u>5</u>	<u>4</u>	<u>82</u>	<u>65</u>	<u>18</u>	<u>28</u>	<u>9</u>	<u>19</u>	<u>1</u>	<u>10</u>	<u>-</u>	<u>12</u>	<u>79</u>	<u>89</u>	<u>-</u>	<u>1</u>	<u>1</u>	<u>4</u>	<u>5</u>	<u>3</u>
<u>Adult parole</u>	<u>90</u>	<u>89</u>	<u>87</u>	<u>88</u>	<u>3</u>	<u>1</u>	<u>22</u>	<u>12</u>	<u>6</u>	<u>3</u>	<u>5</u>	<u>4</u>	<u>-</u>	<u>2</u>	<u>-</u>	<u>6</u>	<u>53</u>	<u>60</u>	<u>-</u>	<u>1</u>	<u>1</u>	<u>1</u>	<u>3</u>	<u>1</u>
<u>Mandatory release</u>	<u>69</u>	<u>105</u>	<u>69</u>	<u>102</u>	<u>-</u>	<u>3</u>	<u>43</u>	<u>41</u>	<u>5</u>	<u>18</u>	<u>2</u>	<u>11</u>	<u>1</u>	<u>5</u>	<u>-</u>	<u>6</u>	<u>18</u>	<u>20</u>	<u>-</u>	<u>-</u>	<u>-</u>	<u>1</u>	<u>-</u>	<u>3</u>
<u>Pardon, conditional pardon, commutation</u>	<u>-</u>	<u>-</u>	<u>-</u>	<u>-</u>	<u>-</u>	<u>-</u>	<u>-</u>	<u>-</u>	<u>-</u>	<u>-</u>	<u>-</u>	<u>-</u>	<u>-</u>	<u>-</u>	<u>-</u>	<u>-</u>	<u>-</u>	<u>-</u>	<u>-</u>	<u>-</u>	<u>-</u>	<u>-</u>	<u>-</u>	<u>-</u>
<u>Expiration of sentence</u>	<u>32</u>	<u>31</u>	<u>30</u>	<u>31</u>	<u>2</u>	<u>-</u>	<u>15</u>	<u>12</u>	<u>6</u>	<u>7</u>	<u>2</u>	<u>4</u>	<u>-</u>	<u>3</u>	<u>-</u>	<u>-</u>	<u>7</u>	<u>3</u>	<u>-</u>	<u>-</u>	<u>-</u>	<u>2</u>	<u>2</u>	<u>-</u>
<u>Discharge by court</u>	<u>4</u>	<u>6</u>	<u>4</u>	<u>6</u>	<u>-</u>	<u>-</u>	<u>2</u>	<u>-</u>	<u>1</u>	<u>-</u>	<u>-</u>	<u>-</u>	<u>-</u>	<u>-</u>	<u>-</u>	<u>-</u>	<u>1</u>	<u>6</u>	<u>-</u>	<u>-</u>	<u>-</u>	<u>-</u>	<u>-</u>	<u>-</u>
<u>Release from temporary Hold pending Revocation</u>	<u>5</u>	<u>5</u>	<u>4</u>	<u>5</u>	<u>1</u>	<u>-</u>	<u>2</u>	<u>3</u>	<u>2</u>	<u>1</u>	<u>-</u>	<u>-</u>	<u>-</u>	<u>-</u>	<u>-</u>	<u>-</u>	<u>-</u>	<u>1</u>	<u>-</u>	<u>-</u>	<u>-</u>	<u>-</u>	<u>1</u>	<u>-</u>
<u>Parole</u>	<u>2</u>	<u>2</u>	<u>2</u>	<u>2</u>	<u>-</u>	<u>-</u>	<u>1</u>	<u>1</u>	<u>1</u>	<u>1</u>	<u>-</u>	<u>-</u>	<u>-</u>	<u>-</u>	<u>-</u>	<u>-</u>	<u>-</u>	<u>-</u>	<u>-</u>	<u>-</u>	<u>-</u>	<u>-</u>	<u>-</u>	<u>-</u>
<u>Probation</u>	<u>3</u>	<u>3</u>	<u>2</u>	<u>3</u>	<u>1</u>	<u>-</u>	<u>1</u>	<u>2</u>	<u>1</u>	<u>-</u>	<u>-</u>	<u>-</u>	<u>-</u>	<u>-</u>	<u>-</u>	<u>-</u>	<u>-</u>	<u>1</u>	<u>-</u>	<u>-</u>	<u>-</u>	<u>-</u>	<u>1</u>	<u>-</u>
<u>Death</u>	<u>2</u>	<u>1</u>	<u>2</u>	<u>1</u>	<u>-</u>	<u>-</u>	<u>2</u>	<u>1</u>	<u>-</u>	<u>-</u>	<u>-</u>	<u>-</u>	<u>-</u>	<u>-</u>	<u>-</u>	<u>-</u>	<u>-</u>	<u>-</u>	<u>-</u>	<u>-</u>	<u>-</u>	<u>-</u>	<u>-</u>	<u>-</u>

Table 1 (Concluded)

Type of Separation	Total		Total Males		Total Females		WSP		WSR		WCI		KMCI		WCI Oakhill		WCCS				TCI			
																	Males		Females		Males		Females	
	1976	1977	1976	1977	1976	1977	1976	1977	1976	1977	1976	1977	1976	1977	1976	1977	1976	1977	1976	1977	1976	1977	1976	1977
Transfer to:	2,952	3,315	2,893	3,252	59	63	716	711	1,145	1,052	437	541	190	386	-	61	359	449	6	1	46	52	53	62
Adult Institution	2,667	3,057	2,608	2,994	59	63	716	709	1,145	1,049	437	506	190	379	-	60	74	241	6	1	46	50	53	62
Adult Institution intra camp system	285	203	285	203	-	-	-	-	-	-	-	-	-	-	-	-	285	203	-	-	-	-	-	-
J.O. Institution	-	23	-	23	-	-	-	-	-	2	-	21	-	-	-	-	-	-	-	-	-	-	-	-
Bureau of Community Corrections Institution	-	32	-	32	-	-	-	2	-	1	-	14	-	7	-	1	-	5	-	-	-	2	-	-
Absence	2,468	2,530	2,321	2,360	147	170	792	678	462	484	288	307	191	213	-	47	387	426	10	32	201	205	137	138
Non-correctional institution	111	107	100	101	11	6	64	39	29	21	7	36	-	4	-	-	-	-	-	1	-	1	11	12
Authorized	2,250	2,269	2,123	2,121	127	148	723	633	421	446	275	266	184	195	-	31	327	347	7	27	193	203	120	12
Unauthorized	107	154	98	138	9	16	5	6	12	17	6	5	7	14	-	16	60	79	3	4	8	1	-	-

Table 1a
 TYPE OF STATUS CHANGE SEPARATION /a
 Separations from the Populations of Residents at
 Wisconsin Adult Correctional Institutions
 (1976 and 1977 Compared)

Type of Separation	Total	
	1976	1977
<u>Total</u>	<u>624</u>	<u>604</u>
<u>First Release</u>	<u>163</u>	<u>167</u>
Adult parole	127	138
Adult mandatory release	20	20
Adult expiration of sentence	1	-
Adult discharge by court	15	9
<u>Re-Release</u>	<u>29</u>	<u>24</u>
Adult parole	17	13
Adult mandatory release	10	6
Adult expiration of sentence	2	5
<u>Release From Temporary Hold Pending Revocation Hearing</u>	<u>1</u>	<u>-</u>
Parole	-	-
Probation	1	-
<u>Death</u>	<u>3</u>	<u>4</u>
<u>Transfer to:</u>	<u>353</u>	<u>353</u>
Adult institution	344	353
Adult institution, intra-camp system	9	-
<u>Absence</u>	<u>75</u>	<u>56</u>
Non-correctional institution	3	10
Authorized	59	41
Unauthorized	13	5

/a Table 1 excludes these status change releases for residents out on temporary absence at the time they received the release type shown. The characteristics of the above residents who became permanent releases (paroles, mandatory releases, expiration of sentence, discharge court order) are included in all following tables.

Table 2
 TYPE OF COMMITMENT
 Residents First and Re-released from
 Wisconsin Adult Correctional Institutions in 1977

TYPE OF COMMITMENT	First Releases						Re-Releases					
	Total		Facilities For Men		Facilities For Women		Total		Facilities For Men		Facilities For Women	
	Number	Percent	Number	Percent	Number	Percent	Number	Percent	Number	Percent	Number	Percent
<u>Total</u>	<u>1,274</u>	<u>100.0</u>	<u>1,194</u>	<u>100.0</u>	<u>80</u>	<u>100.0</u>	<u>256</u>	<u>100.0</u>	<u>252</u>	<u>100.0</u>	<u>4</u>	<u>100.0</u>
<u>Regular</u>	<u>1,274</u>	<u>100.0</u>	<u>1,194</u>	<u>100.0</u>	<u>80</u>	<u>100.0</u>	<u>255</u>	<u>99.6</u>	<u>251</u>	<u>99.6</u>	<u>4</u>	<u>100.0</u>
Felony	1,259	98.8	1,179	98.7	80	100.0	248	96.9	244	96.8	4	100.0
Misdemeanor	15	1.2	15	1.3	-	-	7	2.7	7	2.8	-	-
<u>Sex Deviate</u>	<u>-</u>	<u>-</u>	<u>-</u>	<u>-</u>	<u>-</u>	<u>-</u>	<u>1</u>	<u>0.4</u>	<u>1</u>	<u>0.4</u>	<u>-</u>	<u>-</u>

Table 3
 TYPE OF COMMITMENT AND RELEASE
 Residents First and Re-released from
 Wisconsin Adult Correctional Institutions in 1977

TYPE OF COMMITMENT AND RELEASE	First Releases						Re-Releases					
	Total		Facilities For Men		Facilities For Women		Total		Facilities For Men		Facilities For Women	
	Number	Percent	Number	Percent	Number	Percent	Number	Percent	Number	Percent	Number	Percent
<u>Total</u>	<u>1,274</u>	<u>100.0</u>	<u>1,194</u>	<u>100.0</u>	<u>80</u>	<u>100.0</u>	<u>256</u>	<u>100.0</u>	<u>252</u>	<u>100.0</u>	<u>4</u>	<u>100.0</u>
<u>Regular Commitment</u>	<u>1,274</u>	<u>100.0</u>	<u>1,194</u>	<u>100.0</u>	<u>80</u>	<u>100.0</u>	<u>255</u>	<u>99.6</u>	<u>251</u>	<u>99.6</u>	<u>4</u>	<u>100.0</u>
Expiration of sentence	46	3.6	46	3.8	-	-	41	16.0	41	16.2	-	-
Parole	960	75.4	905	75.8	55	68.8	103	40.2	102	40.5	1	25.0
Mandatory release	268	21.0	243	20.4	25	31.2	111	43.4	108	42.9	3	75.0
<u>Sex Deviate Commitment</u>	<u>-</u>	<u>-</u>	<u>-</u>	<u>-</u>	<u>-</u>	<u>-</u>	<u>1</u>	<u>0.4</u>	<u>1</u>	<u>0.4</u>	<u>-</u>	<u>-</u>
Expiration of sentence	-	-	-	-	-	-	1	0.4	1	0.4	-	-

Table 4
RACE
Residents First and Re-released from
Wisconsin Adult Correctional Institutions in 1977

RACE	First Release						Re-Releases					
	Total		Facilities For Men		Facilities For Women		Total		Facilities For Men		Facilities For Women	
	Number	Percent	Number	Percent	Number	Percent	Number	Percent	Number	Percent	Number	Percent
<u>Total</u>	<u>1,274</u>	<u>100.0</u>	<u>1,194</u>	<u>100.0</u>	<u>80</u>	<u>100.0</u>	<u>256</u>	<u>100.0</u>	<u>252</u>	<u>100.0</u>	<u>4</u>	<u>100.0</u>
White	803	63.1	772	64.7	31	38.7	165	64.4	164	65.1	1	25.0
White (Mexican Origin)	17	1.3	16	1.3	1	1.3	2	0.8	2	0.8	-	-
Non-White	454	35.6	406	34.0	48	60.0	89	34.8	86	34.1	3	75.0
Black	416	32.6	372	31.1	44	55.0	85	33.2	82	32.5	3	75.0
Native American	36	2.8	32	2.7	4	5.0	4	1.6	4	1.6	-	-
Other	2	0.2	2	0.2	-	-	-	-	-	-	-	-

Table 5
OFFENSE
Residents First and Re-released from
Wisconsin Adult Correctional Institutions in 1977

OFFENSE	First Release						Re-Releases					
	Total		Facilities For Men		Facilities For Women		Total		Facilities For Men		Facilities For Women	
	Number	Percent	Number	Percent	Number	Percent	Number	Percent	Number	Percent	Number	Percent
<u>Total</u>	<u>1,274</u>	<u>100.0</u>	<u>1,194</u>	<u>100.0</u>	<u>80</u>	<u>100.0</u>	<u>256</u>	<u>100.0</u>	<u>252</u>	<u>100.0</u>	<u>4</u>	<u>100.0</u>
Murder	25	2.0	25	2.1	-	-	2	0.8	2	0.8	-	-
First degree	(9)	(0.7)	(9)	(0.8)	(-)	(-)	(2)	(0.8)	(2)	(0.8)	(-)	(-)
Second degree	(16)	(1.3)	(16)	(1.3)	(-)	(-)	(-)	(-)	(-)	(-)	(-)	(-)
Third degree	(-)	(-)	(-)	(-)	(-)	(-)	(-)	(-)	(-)	(-)	(-)	(-)
Attempted murder	4	0.3	4	0.3	-	-	-	-	-	-	-	-
Manslaughter	13	1.0	12	1.0	1	1.3	-	-	-	-	-	-
Negligent homicide	7	0.5	7	0.6	-	-	-	-	-	-	-	-
Robbery	244	19.2	233	19.5	11	13.8	49	19.1	49	19.4	-	-
Armed	(164)	(12.9)	(158)	(13.2)	(6)	(7.5)	(28)	(10.9)	(28)	(11.1)	(-)	(-)
Unarmed	(80)	(6.3)	(75)	(6.3)	(5)	(6.3)	(21)	(8.2)	(21)	(8.3)	(-)	(-)
Assault	54	4.3	48	4.1	6	7.6	13	5.2	13	5.2	-	-
Aggravated	(6)	(0.5)	(5)	(0.4)	(1)	(1.3)	(4)	(1.6)	(4)	(1.6)	(-)	(-)
Simple assault	(38)	(3.0)	(34)	(2.9)	(4)	(5.0)	(4)	(1.6)	(4)	(1.6)	(-)	(-)
Mayhem	(1)	(0.1)	(1)	(0.1)	(-)	(-)	(1)	(0.4)	(1)	(0.4)	(-)	(-)
Conduct regardless of life	(9)	(0.7)	(8)	(0.7)	(1)	(1.3)	(4)	(1.6)	(4)	(1.6)	(-)	(-)
Negligent use of weapon	(-)	(-)	(-)	(-)	(-)	(-)	(-)	(-)	(-)	(-)	(-)	(-)
Burglary	380	29.8	378	31.6	2	2.5	82	32.0	82	32.5	-	-
Armed	(4)	(0.3)	(4)	(0.3)	(-)	(-)	(2)	(0.8)	(2)	(0.8)	(-)	(-)
Unarmed	(376)	(29.5)	(374)	(31.3)	(2)	(2.5)	(80)	(31.2)	(80)	(31.7)	(-)	(-)
Theft	171	13.4	164	13.7	7	8.7	41	16.0	41	16.2	-	-
Theft	(88)	(6.9)	(85)	(7.1)	(3)	(3.7)	(21)	(8.2)	(21)	(8.3)	(-)	(-)
Auto theft	(65)	(5.1)	(62)	(5.2)	(3)	(3.7)	(19)	(7.4)	(19)	(7.5)	(-)	(-)
Receiving stolen property	(18)	(1.4)	(17)	(1.4)	(1)	(1.3)	(1)	(0.4)	(1)	(0.4)	(-)	(-)

Table 5 (Concluded)

OFFENSE	First Release						Re-Releases					
	Total		Facilities For Men		Facilities For Women		Total		Facilities For Men		Facilities For Women	
	Number	Percent	Number	Percent	Number	Percent	Number	Percent	Number	Percent	Number	Percent
Fraud	10	0.8	7	0.6	3	3.7	3	1.2	3	1.2	-	-
Embezzlement	3	0.2	2	0.2	1	1.3	-	-	-	-	-	-
Transfer of encumbered property	-	-	-	-	-	-	-	-	-	-	-	-
Forgery	102	8.0	77	6.4	25	31.2	25	9.7	22	8.7	3	75.0
Worthless checks	19	1.5	16	1.3	3	3.7	2	0.8	2	0.8	-	-
Sexual assault (1st deg.)	3	0.2	3	0.3	-	-	-	-	-	-	-	-
Sexual assault (2nd deg.)	1	0.1	1	0.1	-	-	-	-	-	-	-	-
Sexual assault (3rd deg.)	-	-	-	-	-	-	-	-	-	-	-	-
Sexual assault (4th deg.)	-	-	-	-	-	-	-	-	-	-	-	-
Rape (including attempt)	23	1.8	23	1.8	-	-	7	2.7	7	2.8	-	-
Sexual intercourse with child	11	0.9	11	0.9	-	-	5	1.9	5	2.0	-	-
Incest	2	0.2	2	0.2	-	-	-	-	-	-	-	-
Indecent behavior with child	11	0.9	11	0.9	-	-	1	0.4	1	0.4	-	-
Adultery	-	-	-	-	-	-	-	-	-	-	-	-
Sexual perversion (sodomy)	5	0.4	5	0.4	-	-	2	0.8	2	0.8	-	-
Lewd and lascivious behavior	-	-	-	-	-	-	-	-	-	-	-	-
Obscene matter	-	-	-	-	-	-	-	-	-	-	-	-
Drug law violations	103	8.1	94	7.9	9	11.2	9	3.5	9	3.6	-	-
Weapons (concealed)	7	0.5	6	0.5	1	1.3	-	-	-	-	-	-
Escape	4	0.3	4	0.3	-	-	2	0.8	2	0.8	-	-
Arson	10	0.8	10	0.8	-	-	2	0.8	2	0.8	-	-
Conspiracy, solicitation, bribery	1	0.1	1	0.1	-	-	-	-	-	-	-	-
Extortion	3	0.2	3	0.3	-	-	-	-	-	-	-	-
Kidnapping, abduction	3	0.2	2	0.2	1	1.3	-	-	-	-	-	-
Malicious dest. of prop.	2	0.2	2	0.2	-	-	-	-	-	-	-	-
Abandonment, non-support	3	0.2	3	0.3	-	-	-	-	-	-	-	-
Prostitution, pandering, commercialized vice	6	0.5	3	0.3	3	3.7	-	-	-	-	-	-
All other offenses	44	3.4	37	3.1	7	8.7	11	4.3	10	4.0	1	25.0

Table 6
 COUNTY OF CONVICTION
 Residents First and Re-Released from
 Wisconsin Adult Correctional Institutions in 1977

COUNTY OF COMMITMENT	Total Releases	First Releases			Re-Releases		
		Total	Facilities for Men	Facilities for Women	Total	Facilities for Men	Facilities for Women
Total	1,530	1,274	1,194	80	256	252	4
Adams	5	5	5	-	-	-	-
Ashland	3	2	2	-	1	1	-
Barron	10	10	10	-	-	-	-
Bayfield	-	-	-	-	-	-	-
Brown	34	24	22	2	10	10	-
Buffalo	1	1	1	-	-	-	-
Burnett	3	3	3	-	-	-	-
Calumet	1	1	1	-	-	-	-
Chippewa	11	10	10	-	1	1	-
Clark	2	2	2	-	-	-	-
Columbia	4	4	4	-	-	-	-
Crawford	3	2	2	-	1	1	-
Dane	75	61	58	3	14	14	-
Dodge	12	9	9	-	3	3	-
Door	5	4	4	-	1	1	-
Douglas	15	13	13	-	2	2	-
Dunn	7	6	4	2	1	1	-
Eau Claire	14	12	12	-	2	2	-
Florence	2	2	2	-	-	-	-
Fond du Lac	26	24	21	3	2	2	-
Forest	2	1	1	-	1	1	-
Grant	16	16	16	-	-	-	-
Green	2	2	2	-	-	-	-
Green Lake	2	2	1	1	-	-	-
Iowa	5	5	5	-	-	-	-
Iron	2	2	2	-	-	-	-
Jackson	7	6	5	1	1	1	-
Jefferson	8	6	6	-	2	2	-
Juneau	7	7	7	-	-	-	-
Kenosha	72	58	53	5	14	14	-
Kewaunee	2	2	2	-	-	-	-
LaCrosse	21	18	18	-	3	3	-
Lafayette	2	1	1	-	1	1	-
Langlade	9	8	8	-	1	1	-
Lincoln	2	2	1	1	-	-	-
Manitowoc	12	8	8	-	4	4	-
Marathon	30	28	26	2	2	2	-
Marinette	5	5	4	1	-	-	-
Marquette	-	-	-	-	-	-	-
Menomonee	1	1	1	-	-	-	-

Table 6 (Concluded)

COUNTY OF COMMITMENT	Total Releases	First Releases			Re-Releases		
		Total	Facilities for Men	Facilities for Women	Total	Facilities for Men	Facilities for Women
Milwaukee	650	520	480	40	130	128	2
Monroe	5	5	5	-	-	-	-
Oconto	5	5	5	-	-	-	-
Oneida	17	15	14	1	2	2	-
Outagamie	23	22	20	2	1	1	-
Ozaukee	5	4	4	-	1	1	-
Pepin	-	-	-	-	-	-	-
Pierce	7	5	5	-	2	2	-
Polk	6	5	5	-	1	1	-
Portage	3	3	3	-	-	-	-
Price	2	1	1	-	1	1	-
Racine	76	67	63	4	9	9	-
Richland	4	3	3	-	1	1	-
Rock	55	52	48	4	3	2	1
Rusk	6	5	5	-	1	1	-
St. Croix	5	5	5	-	-	-	-
Sauk	16	11	11	-	5	5	-
Sawyer	2	2	1	1	-	-	-
Shawano	19	18	16	2	1	1	-
Sheboygan	34	27	26	1	7	7	-
Taylor	2	1	1	-	1	1	-
Trempealeau	4	3	3	-	1	1	-
Vernon	8	7	7	-	1	1	-
Vilas	8	7	7	-	1	1	-
Walworth	18	17	17	-	1	-	1
Washburn	5	5	5	-	-	-	-
Washington	7	6	6	-	1	1	-
Waukesha	51	41	39	2	10	10	-
Waupaca	2	1	1	-	1	1	-
Waushara	4	4	4	-	-	-	-
Winnebago	28	22	20	2	6	6	-
Wood	13	12	12	-	1	1	-

Table 7
 AVERAGE LENGTH OF STAY SINCE LAST ADMISSION (IN MONTHS)
 Residents First and Re-released from
 Wisconsin Adult Correctional Institutions in 1977

Type of Release	Total	Facilities for Men	Facilities for Women
<u>All Releases</u>			
Mean	22.4	22.8	14.9
Median	18.9	19.4	14.7
<u>First Releases</u>			
Mean	22.7	23.2	14.8
Median	18.9	18.1	14.7
<u>Re-Releases</u>			
Mean	20.7	20.8	18.2
Median	17.0	18.6	N/A

Table 8
 AVERAGE LENGTH OF STAY SINCE SENTENCE BEGAN
 (IN MONTHS FOR RE-RELEASES ONLY)
 Residents Re-Released from
 Wisconsin Adult Correctional Institutions in 1977

Type of Release	Total	Facilities for Men	Facilities for Women
<u>Re-releases</u>			
Mean	56.4	56.8	30.5
Median	48.0	48.1	N/A

Table 9
 NUMBER OF PREVIOUS RELEASES
 Residents First and Re-released from
 Wisconsin Adult Correctional Institutions in 1977

Number of Previous Releases	Total		Facilities for Men		Facilities for Women	
	Number	Percent	Number	Percent	Number	Percent
Total	1,530	100.0	1,446	100.0	84	100.0
0	1,274	83.4	1,194	82.6	80	95.2
1	117	7.6	113	7.8	4	4.8
2	103	6.7	103	7.1	-	-
3	20	1.3	20	1.4	-	-
4	13	0.8	13	0.9	-	-
5	2	0.1	2	0.1	-	-
6	-	-	-	-	-	-
7 or more	1	0.1	1	0.1	-	-

Table 10
 EDUCATIONAL PROGRESS
 Residents First Released from
 Wisconsin Adult Correctional Institutions in 1977

Educational Progress	Total		Facilities for Men		Facilities for Women	
	Number	Percent	Number	Percent	Number	Percent
Total	1,274	100.0	1,194	100.0	80	100.0
No educational participation	596	46.8	574	48.1	22	27.5
Progress	578	45.4	526	44.0	52	65.0
Excellent	89	7.0	81	6.8	8	10.0
Good	319	25.0	287	24.0	32	40.0
Fair	118	9.3	109	9.1	9	11.3
Poor	52	4.1	49	4.1	3	3.7
No evaluation	100	7.8	94	7.9	6	7.5

Table 11
 WORK RECORD
 Residents First Released from
 Wisconsin Adult Correctional Institutions in 1977

Work Record	Total		Facilities for Men		Facilities for Women	
	Number	Percent	Number	Percent	Number	Percent
<u>Total</u>	<u>1,274</u>	<u>100.0</u>	<u>1,194</u>	<u>100.0</u>	<u>80</u>	<u>100.0</u>
<u>No work record</u>	<u>200</u>	<u>15.7</u>	<u>188</u>	<u>15.8</u>	<u>12</u>	<u>15.0</u>
<u>Work record</u>	<u>1,018</u>	<u>79.9</u>	<u>956</u>	<u>80.0</u>	<u>62</u>	<u>77.5</u>
Satisfactory	691	54.2	651	54.5	40	50.0
Mostly satisfactory	176	13.8	165	13.8	11	13.7
Neither satisfactory nor unsatisfactory	96	7.5	93	7.8	3	3.7
Mostly satisfactory	34	2.7	33	2.7	1	1.3
Unsatisfactory	21	1.7	14	1.2	7	8.8
<u>No evaluation</u>	<u>56</u>	<u>4.4</u>	<u>50</u>	<u>4.2</u>	<u>6</u>	<u>7.5</u>

Table 12
 LOSS OF PRIVILEGES
 Residents First Released from
 Wisconsin Adult Correctional Institutions in 1977

Number of Privilege Losses	Total		Facilities for Men		Facilities for Women	
	Number	Percent	Number	Percent	Number	Percent
<u>Total</u>	<u>1,274</u>	<u>100.0</u>	<u>1,194</u>	<u>100.0</u>	<u>80</u>	<u>100.0</u>
None	619	48.6	579	48.5	40	50.0
1	126	9.9	117	9.8	9	11.3
2	110	8.6	105	8.8	5	6.3
3	83	6.5	79	6.6	4	5.0
4	54	4.2	52	4.4	2	2.5
5-9	151	11.9	140	11.7	11	13.8
10-14	57	4.5	54	4.5	3	3.7
15-19	26	2.0	23	1.9	3	3.7
20 or more	48	3.8	45	3.8	3	3.7

Table 13
 LOCK-UPS
 Residents First Released from
 Wisconsin Adult Correctional Institutions in 1977

Number of Lock-ups	Total		Facilities for Men		Facilities for Women	
	Number	Percent	Number	Percent	Number	Percent
Total	1,274	100.0	1,194	100.0	80	100.0
None	820	64.4	776	65.0	44	55.4
1	177	13.9	162	13.6	15	18.5
2	98	7.7	96	8.0	2	2.5
3	55	4.3	51	4.2	4	5.0
4	32	2.5	28	2.4	4	5.0
5	22	1.7	17	1.4	5	6.2
6 or more	70	5.5	64	5.4	6	7.4

Table 14
 GROUP COUNSELING SESSIONS
 Residents First Released from
 Wisconsin Adult Correctional Institutions in 1977

Group Counseling Sessions	Total		Facilities for Men		Facilities for Women	
	Number	Percent	Number	Percent	Number	Percent
Total	1,274	100.0	1,194	100.0	80	100.0
None	878	68.8	824	69.0	54	67.5
1-5	78	6.1	63	5.3	15	18.7
6-10	75	5.9	72	6.0	3	3.7
11-15	97	7.6	93	7.8	4	5.0
16-20	52	4.1	52	4.4	-	-
21-25	20	1.6	20	1.7	-	-
26-30	19	1.5	18	1.5	1	1.3
31-35	7	0.6	7	0.6	-	-
36-40	6	0.5	4	0.3	2	2.5
41 or more	42	3.3	41	3.4	1	1.3

Table 15
 LENGTH OF STAY BY OFFENSE
 Average (Mean) Length of Stay /a (in months) by
 Offense of Residents First Released from
 Wisconsin Adult Correctional Institutions in 1977

Offense	Total	Facilities for Men	Facilities for Women
All Offenses	22.7	23.2	14.7
Murder, first degree	149.8	149.8	-
Murder, second degree	75.3	75.3	-
Manslaughter	29.1	29.3	26.0
Negligent homicide	22.4	22.4	-
Armed robbery	29.6	30.1	16.6
Unarmed robbery	10.8	10.1	18.8
Aggravated assault	17.1	17.4	16.0
Simple assault	21.5	22.4	14.2
Conduct regardless of life	27.6	27.8	26.0
Unarmed burglary	20.3	20.3	17.5
Theft	15.3	15.5	11.0
Auto theft	18.2	18.6	10.3
Receiving stolen property	15.2	15.5	11.0
Fraud	18.8	21.5	12.3
Forgery	18.4	19.5	14.8
Worthless checks	12.2	12.8	9.0
Rape (including attempt)	41.8	41.8	-
Sexual intercourse with child	21.4	21.4	-
Indecent behavior with child	23.6	23.6	-
Sexual perversion (sodomy)	23.4	23.4	-
Drug offenses	17.1	17.1	17.1
Weapons (concealed)	10.4	10.8	8.0
Arson	25.8	25.8	-
Prostitution, pandering, commercialized vice	15.0	22.3	7.6
All other offenses	17.1	17.6	15.0

/a Averages were not computed if there were fewer than 5 cases in the total of a particular offense category.

Table 16
 LENGTH OF STAY BY LENGTH OF SENTENCE
 Average (Mean) Length of Stay /a (in Months) by
 Length of Sentence of Residents First Released from
 Wisconsin Adult Correctional Institutions in 1977

Length of Sentence	Total	Facilities for Men	Facilities for Women
<u>All Sentences</u>	<u>22.5</u>	<u>23.2</u>	<u>14.7</u>
One year	8.9	8.9	8.8
Fourteen months	10.6	9.8	-
Fifteen months	10.3	10.5	-
Sixteen months	12.1	12.0	-
Eighteen months	11.6	11.6	-
Twenty months	13.6	12.4	-
Two years	14.5	14.7	12.5
Two and one-half years	16.7	17.2	-
Three years	18.7	18.8	15.7
Three and one-half years	23.4	23.7	-
Four years	22.3	22.4	20.1
Four and one-half years	28.1	28.1	-
Five years	25.9	26.1	18.4
Six years	29.7	29.7	-
Seven years	34.4	34.4	-
Eight years	34.2	34.2	-
Nine years	33.6	33.6	-
Ten years	42.4	42.4	-
Twelve years	45.4	45.4	-
Fifteen years	62.0	62.0	-
Twenty years	65.4	65.4	-
Life	149.4	149.4	-

/a An average was not computed if there were fewer than 5 in a length of sentence category.



State of Wisconsin

DEPARTMENT OF HEALTH AND SOCIAL SERVICES

DIVISION OF CORRECTIONS

NCJRS

66727

1 WEST WILSON STREET
P O BOX 669
MADISON, WISCONSIN 53701

JUL 30 1979

July 19, 1979

ACQUISITIONS

Shu-Shun Chiang
Supervisor of Acquisition
NCJRS
Acquisition Department No. 2
Box 6000
Rockville, MD 20850

Dear Mr. Chiang:

In response to your letter, I am enclosing copies of each of the statistical bulletins published annually by the Office of Systems and Evaluation of the Wisconsin Division of Corrections.

Your name is being added to our mailing list so that you will receive copies of these publications as they are issued.

Sincerely,

Bill Curley

Bill Curley, Planning Analyst
Office of Systems and Evaluation

BC:tp
591/11

Enclosures

Please return NCJ

#15 to JRB.

Thanks.

END