

~~X~~ FACT SHEETS ON INSTITUTIONS
AND
DIRECTIONS TO INSTITUTIONS

~~V~~ VIRGINIA DEPARTMENT OF CORRECTIONS
Division of Institutional Services
4615 West Broad Street
P. O. Box 26963
Richmond, Virginia 23261

65/28

DIRECTIONS

DEPARTMENT OF CORRECTIONS

ADULT AND JUVENILE INSTITUTIONS

Major Institutions

Bland Correctional Center: From Richmond
Take I-64 West to Staunton. From there take I-81 South to the Dublin exit. This exit puts you on State Route 100. Continue on Rt. 100 until the intersection of Rt. 100 and State Route 42 at Popular Hill. Turn left off Rt. 100 onto Rt. 42 and continue on this road for approximately 12 miles to the Center. There will be a sign saying "Bland Correctional Center" about three miles before you reach the institution.

Deep Meadow Correctional Center (same as Powhatan)

Deerfield Correctional Center (same as Southampton)

James River Correctional Center: From Richmond
Take State Route 6 West for approximately 21 miles to State Farm, Va; there will be a sign for the institution. The Center is about 2 to 3 miles west of the Town of Crozier. (Route 6 is Patterson Avenue).

Mecklenburg Correctional Center: From Richmond
Take I-95 South to Petersburg. From there, take I-85 Southwest to South Hill. Take U.S. 58 to Boydton. In Boydton, turn South off of U.S. 58 on State Route 707; proceed approximately 3 miles to the Center.

Virginia State Penitentiary: In Richmond
The institution is located at 500 Spring Street. It is bounded by Spring Street, Belvidere Street (U.S. 1 and 301), 2nd Street and Byrd Street. I-195 goes right by the institution--take 2nd Street exit.

Powhatan Correctional Center: From Richmond
One way is to take State Route 6 West to State Route 522. Turn left on 522 and continue until its intersection with State Route 711. Turn left on 711 and continue until you see signs reading "Powhatan Correctional Center."

Another way is to take U.S. Route 60 West to its intersection with State Route 522. Turn right onto 522 and continue for approximately 5 miles to State Route 711. Turn right onto 711 and continue until you see signs reading "Powhatan Correctional Center."

St. Brides Correctional Center: From Norfolk
Take I-64 to Chesapeake. Take the State Route 168 exit off of I-64.. Proceed South on Rt. 168 for approximately 15 miles (you will go through the community of Great Bridge) to Indian Creek Road. Turn left on Indian Creek Road and go for about three-quarters of a mile to Sanderson Road. Turn left on Sanderson Road and continue for approximately one-quarter of a mile to the Center which will be on the right.

Southampton Correctional Center: From Richmond

Take I-95 South to Emporia. Take Route 58 East for approximately 17 miles to Route 308. Take Route 308 North to the Center.

Staunton Correctional Center: From Richmond

Take I-64 West to the junction of I-64 and I-81 near City of Staunton. Take the Staunton exit off of I-81. Proceed West on U.S. 250 to the intersection of U.S. 250 and U.S. 11. The Center is located at this intersection.

Virginia Correctional Center for Women: From Richmond

Take State Route 6 West for approximately 25 miles to the Town of Goochland. There will be a sign for the Center.

Correctional Field Units and Work Release Units

Pulaski Correctional Unit #1:

Located 3 miles West of Radford on State Route 11. The unit sign is on Route 11.

Caroline Correctional Unit #2:

Take Route 30 East from Dawn off of Route 301. It's about 2 miles to the unit sign on Route 30.

Nansemond Correctional Unit #3:

Take Route 258 South from Windsor off of U.S. Route 460, one mile South of Walters. Turn right on Rt. 619 to the unit.

Baskerville Correctional Unit #4:

Take Route 678 North off Route 58 (12 miles West of South Hill) to Route 675. Turn right on Rt. 675 and go approximately $\frac{1}{2}$ mile to the unit.

Floyd Correctional Unit #5:

The unit is $2\frac{1}{2}$ miles West of the Town of Willis on State Route 221. There is a unit sign on Rt. 221.

Woodbridge Correctional Unit #6:

Turn off of I-95 at Dale City interchange and take State Route 638 West to Route 642. Continue West on Rt. 642 to Route 641. Turn right on Rt. 641, go approximately $\frac{1}{4}$ mile to the unit.

White Post Correctional Unit #7:

The unit is ten miles North of Front Royal on Route 522, near the double toll gate.

Harrisonburg Correctional Unit #8:

Take Route 11 North from Harrisonburg to Route 721. Turn left on 721 and follow the unit signs.

Rustburg Correctional Unit #9:

The unit is $\frac{1}{2}$ mile East of the Town of Rustburg on Route 24. Turn right on Route 615 to the unit sign.

Augusta Correctional Unit #10:

One mile South of Greenville on Route 11. There is a unit sign on Rt. 11.

Culpeper Correctional Unit #11:

Unit is $\frac{1}{2}$ mile South of Culpeper on Route 15.

Fluvanna Correctional Unit #12:

Unit is 3 miles West of Zions Crossroads on Route 250. There is a unit sign on Route 250.

Pocahontas Correctional Unit #13:

Take Route 360 West of Richmond to Route 604. Turn left on Rt. 604; it is approximately 4 miles to the unit.

Chatham Correctional Unit #15:

Take Route 57 West from Chatham for one mile. Turn left on Route 823 to the unit.

New Kent Correctional Unit #16:

Six miles East of New Kent Courthouse on Route 33. Turn right on Rt. 168 to unit sign.

Haynesville Correctional Unit #17:

Unit is five miles East of Warsaw on Route 360. There is a unit sign on Rt. 360.

Wise Correctional Unit #18:

Unit is 2 miles South of the Town of Coeburn on State Route 72.

Capron Correctional Unit #20:

Take Route 735 South at Sussex Courthouse approximately 11 miles. Turn left on Route 612.

Stafford Correctional Unit #21:

Unit is 7 miles North of Fredericksburg on State Route 1, to Eskimo Diner. Turn right at diner on Route 628. Proceed $1\frac{1}{2}$ miles to the unit.

Tidewater Correctional Unit #22:

Turn East off of I-64 on Rt. 168 in Chesapeake. Then turn left on Thrasher Road to Greenbriar Farms Road. Turn right on Greenbriar Farms Road to the unit.

Halifax Correctional Unit #23:

The unit is midway between Halifax and South Boston on State Route 501. Take Route 729 to unit sign.

Smith Mountain Lake Correctional Unit #24:

Take Route 122 South of Town of Bedford to one mile South of Moneta. Turn left on State Route 655 and proceed three miles to the unit.

Botetourt Correctional Unit #25:

Take Route 651 off of Route 11 at Troutville. It is approximately 2 miles to the unit.

Haymarket Correctional Unit #26:

The Unit is 7 miles North of the Town of Haymarket on State Route 15.

Dinwiddie Correctional Unit #27:

The unit is 15 miles West of the City of Petersburg on State Route 460.

Patrick Henry Correctional Unit #28:

Seven miles West of City of Martinsville on State Route 58. A unit sign is on Rt. 58.

Buchanan Correctional Unit #29:

Take Route 83 South from Vansant approximately 2 miles and turn left onto Route 620. Proceed 4 miles to the unit.

Northern Virginia Correctional Unit #30:

Unit is three miles South of Fairfax on Route 29-211. A unit sign is on Rt. 29-211.

Tazewell Correctional Unit #31:

Unit is seven miles North of the Town of Tazewell on Route 61.

Spring Street Work Release Unit:

Located in the City of Richmond at 601 Spring Street. Take U.S. 1 and 301 South to the corner of Spring and Belvidere Streets and turn right. The institution is located on the left side of the street.

Chesterfield Correctional Unit:

See directions for Pocahontas Correctional Unit #13.

Learning Centers

Appalachian Learning Center: From Richmond

Take Interstate 64, West, to the intersection with Interstate 81 just South of Staunton. Take I-81 to the second Abingdon exit. Take U.S. Route 19 (Alternate U.S. Route 58) North to Rosedale. Turn left at Rosedale onto State Route 80. Take second hard surface road which will have a sign for the Center. Proceed approximately 1 mile. Barrett is on the left.

Barrett Learning Center: From Richmond

Take U.S. Route 301, North approximately 18 miles and look for a sign on the right. Turn right on Rt. 651 approximately 1 mile. Barrett is on the left.

Beaumont Learning Center: From Richmond

Take State Route 6 (Patterson Avenue) approximately 22 miles West. Go left on Route 522 across the James River. Take first right and follow the signs.

Bon Air Learning Center: From Richmond

Cross the James River on the Lee Bridge continuing on Cowardin Avenue to Semmes Avenue, continuing on Semmes Avenue which will become Forest Hill Avenue. Continue on Forest Hill Avenue to Buford Road (Rt. 678). Turn left on Buford Road traveling approximately one mile. Turn right on Rockaway Road and follow the signs to Bon Air Learning Center.

Hanover Learning Center: From Richmond

Take U.S. Route 301, North, approximately 20 miles and look for a sign on the right. Turn right on Rt. 605 for approximately 3/4 mile. Follow signs to the Center.

Natural Bridge Learning Center: From Richmond

Take I-64 West to intersection with I-81 just south of Staunton; proceed south on I-81 to Exit 50 at Natural Bridge. This will be U.S. Route 11 south. Turn left on Route 130 and proceed to Natural Bridge Station; turn right on Route 759 and proceed approximately 3.5 miles to Natural Bridge Learning Center.

Reception and Diagnostic Center: From Richmond

Same directions as for Bon Air Learning Center.

DIVISION OF INSTITUTIONAL SERVICES

REGION I - WESTERN

BLAND CORRECTIONAL CENTER:

Route 2, Bland, Virginia 24315

Superintendent:
RSA Principal:

Mr. Wade D. Blankenship
Mr. David Mauldin

Location:

14 miles east of Bland County
Courthouse on Route 42.

Established:

1946

Size and Physical Layout:

2,193 acres, 593 of which are
highly cultivated, with five main
buildings.

Total Employees:

218 (including 148 Correctional
Officers).

Inmate Population:

443 (7-1-78) Total assignable beds,
435 (plus 15 special purpose beds).

Programs:

Religious

Chaplin, Weekly Services; various
denominations. Chaplin on call,
Bible study.

Educational:

ABE, YOP, College Classes, GED

Vocational (Classes)

Masonry, Power Mechanics, Electrical,
Sanitation, Food Service.

Social:

Counseling, Group Therapy, AA Jaycees.

Vocational:

Water Treatment, Food Service, Masonry.

DIVISION OF INSTITUTIONAL SERVICES

REGION I - WESTERN

STAUNTON CORRECTIONAL CENTER

P. O. Box 3500, Staunton, Va. 24401

Superintendent:

Mr. John S. Gathright

RSA Principal:

Mr. Richard Massey

Location:

Staunton, Virginia

Established:

1976

Size and Physical Layout:

Eleven major buildings located at old Western State Hospital.

Total Employees:

188 (including 135 Correctional Officers)

Inmate Population:

303 (7-1-78) Total assignable beds, 325 (plus 3 special purpose beds).

Programs:

Religious:

Sunday services, Muslim, Protestant, Catholic, Gideons, Salvation Army, Bible Study.

Educational:

ABE - GED, Blue Ridge Community College, Brant's School of Business.

Vocational:

Furniture Repair, Upholstery, Micro-electronics - within six months will start.

Social:

Jaycees, A. A., Substance Abuse Counseling effective after January 1, 1979; Creative Writing Workshop.

Vocational (OJT)

Tailor Shop, Book Binding

DIVISION OF INSTITUTIONAL SERVICES

REGION I - WESTERN

FLOYD CORRECTIONAL UNIT (#5)

P. O. Box 148, Willis, Virginia

Superintendent:

Mr. G. G. Jefferson

Location:

Floyd County

Acreage:

34 acres

Rated Inmate Population Capacity:

60

Type of Unit:

Permanent

Highway Quota:

None

Population:

Felon

Programs:

Work:

Cadre-Inmates assigned to work in unit's food service program and building and grounds maintenance.

Education:

None

Counseling:

One full-time counselor assigned.

Recreation:

Indoor and outdoor activities are operational, but limited due to the type of population.

Chaplin Services:

Local ministers visit the unit every Sunday.

Psychological Services:

Refers to Penitentiary facilities.

Medical Services:

Local doctor visits the unit twice a week. A full-time registered nurse is employed at this unit.

Volunteer Programs:

Alcoholics Anonymous, Bible Study and citizen's groups.

DIVISION OF INSTITUTIONAL SERVICES

REGION I - WESTERN

AUGUSTA CORRECTIONAL UNIT (#10)

Greenville, Virginia 24440

Superintendent:

Mr. C. C. Sheffer

Location:

Augusta County

Acreage:

171.88 acres

Rated Inmate Population Capacity:

85

Type of Unit:

Permanent

Highway Quota:

50

Population:

Felon

Programs:

Work:

1. Highway Maintenance - 50 inmates assigned to perform highway work in Augusta and Rockingbridge counties
2. Cadre-Inmates assigned to unit's food service program and building and grounds maintenance.

Education:

Part-time night school program offering G.E.D. preparation. Full-time vocational training program in Welding (capacity for 12 students).

Counseling:

A full-time counselor is assigned. Also inmates may request the Post Conviction Assistance Project to advise them when appearing before adjustment committees. Project Jump Street.

Recreation:

Standard indoor and outdoor activities.

Chaplin Services:

Protestant and Catholic services weekly.

Psychological Services:

Refers to Penitentiary facilities.

Medical Services:

Local doctor is available. Part-time registered nurse is employed.

Volunteer Programs:

Jaycee Chapter, student counselor interns from local colleges, arts and crafts, drug/alcohol therapy, Islamic study group.

DIVISION OF INSTITUTIONAL SERVICES

REGION I - WESTERN

WISE CORRECTIONAL UNIT (#18)

Drawer E, Coeburn, Virginia 24230

Superintendent:

Mr. F. C. Floyd

Location:

Wise County

Acreage:

45.89 acres

Rated Inmate Population Capacity:

85

Type of Unit:

Permanent

Highway Quota:

35

Population:

Felon

Programs:

Work:

1. Orchard - 10 inmates assigned to work in the unit's orchard.
2. Highway Maintenance - 35 inmates assigned to perform highway work in Dickerson, Wise and Scott Counties
3. Cadre-inmates assigned to unit food service program and building and grounds maintenance.

Education:

Program funded by local Catholic Charity and operated by Mountain Empire Community College: offers 4 college classes and G.E.D. preparation courses.

Counseling:

One counselor assigned to provide services at this unit.

Recreation:

Standard indoor and outside activities. Athletic games (basketball, softball and football) scheduled with other correctional units and local teams.

Chaplin Services:

Weekly Protestant services.

Psychological Services:

Refers to Penitentiary or Wise County Mental Health.

Medical Services:

Local doctor visits the unit once a week. Part-time registered nurse is available.

Volunteer Programs:

Jaycees and Y. A. T.

DIVISION OF INSTITUTIONAL SERVICES

REGION I - WESTERN

BOTETOURT CORRECTIONAL UNIT (#25)

Troutville, Virginia 24172

Superintendent:

Mr. J. E. Malicoat

Location:

Botetourt County

Acreage:

97.09 acres

Type of Unit:

Temporary

Highway Quota:

26

Population:

Felon

Programs:

Work:

1. Highway Maintenance - 30 inmates are assigned to highway maintenance in the Counties of Botetourt and Roanoke.
2. Cadre-Inmates assigned to the unit's food service program and unit's building and grounds maintenance.

Education:

Two paid teachers from the community offers instruction (GED) on Tuesday evenings and ABC.

Counseling:

One full-time counselor is assigned to this unit. Operates a drug therapy group at this unit on Thursday evenings; also a drug therapy group.

Recreation:

Standard indoor and outside activities. An arts and crafts program is offered on Wednesday and Saturday evenings. Volunteer instructor.

Chaplin Services:

Church services are offered Friday nights and Sundays by various religious denominations. Gideons and Bible classes during weeknights.

Psychological Services:

Refers to other institutions and Pen Hospital.

Medical Services:

Local doctor on call. Part-time registered nurse available at the unit six hours per day on weekends.

BOTETOURT CORRECTIONAL UNIT (#25) continued

Programs (continued):

Volunteer Programs:

Drug abuse program, T.A.P. (Total Action Against Poverty), community sponsored therapy sessions (volunteer), Jaycee Chapter. Volunteer plan with teachers plus three diverse weekly groups.

DIVISION OF INSTITUTIONAL SERVICES

REGION I - WESTERN

BUCHANAN CORRECTIONAL UNIT (#29)

Route 1, Box 55-A, Vansant, Va. 24656

Superintendent:

Mr. G. L. Farmer

Location:

Buchanan County

Acreage:

95.80 acres

Rated Inmate Population Capacity:

90

Type of Unit:

Temporary

Highway Quota:

35

Population:

Felon

Programs:

Work:

1. Highway Maintenance - 35 inmates perform highway duties in Buchanan County.
2. Cadre-Inmates assigned to the unit's food service program and building and grounds maintenance.

Education:

None

Counseling:

One full-time counselor assigned to cover this unit.

Recreation:

Standard indoor and outside activities.

Chaplin Services:

Weekly Protestant or Catholic services.

Psychological Services:

Refers to other institutions.

Medical Services:

Local doctor visits the unit one night per week. Part-time registered nurse has not yet been employed.

Volunteer Programs:

None

DIVISION OF INSTITUTIONAL SERVICES:

REGION I - WESTERN

TAZEWELL CORRECTIONAL UNIT (#31)

Route 3, Box 116, Tazewell, Va. 24651

Superintendent:

Mr. J. L. Sumner

Location:

Tazewell County

Acreage:

53.25 acres

Rated Inmate Population Capacity:

100

Type of Unit:

Permanent

Highway Quota:

None

Population:

100

Programs:

Work:

Cadre are assigned to work in the food service program, garden and building and grounds maintenance.

Education:

R.S.A. (GED and ABE)

Counseling:

Two full-time counselors.

Recreation:

Limited outside activities (in an area which has recently been fenced in). Inside activities consists of television, small library with books and periodicals, ping-pong table, etc. Hobby shop in use.

Religious Services:

Religious services are provided by volunteer groups.

Psychological Services:

Refers to other institutions.

Medical Services:

Full-time L.P.N. at the unit 3 hours per day. Unit physician visits the unit weekly.

Volunteer Programs:

R.S.V.P. and Jaycees

DIVISION OF INSTITUTIONAL SERVICES

REGION II - CENTRAL

MECKLENBURG CORRECTIONAL CENTER

P. O. Box 500, Boydton, Va. 23917

Superintendent:
RSA Principal:

Mr. Ed Morris
RSA services provided by Southampton
Correctional Center

Location:

Boydton 23917; approximately 4 miles
south of Boydton off U. S. 58.

Established:

Phase I construction (2 housing units
and temporary administrative space)
opened March, 1977.

Size and Physical Layout:

The completed facility will consist of
an operations building, boiler plant
and five housing units located on 190
acres.

Total Employees:

166 (including 200 correctional officers)

Inmate Population:

132 (7-1-78). Total assignable beds
133 (plus 12 special purpose beds). Final
assignable beds upon completion: 360.

Programs:

This correctional center was planned to meet the needs of inmates who require maximum security and who have not responded to treatment programs in other institutions. There will be a continual striving for individualization of programs. As far as possible, individual programs will depend on the inmate's behavior so that each can know what behavior must be improved. The program of reintegration into the community will begin with transfers to other correctional facilities, and it is from there the inmate usually will be released into society.

DIVISION OF INSTITUTIONAL SERVICES

REGION II - CENTRAL

BASKERVILLE CORRECTIONAL UNIT (#4)

Baskerville, Virginia 23915

Superintendent:

Mr. J. L. Ebbert

Location:

Mecklenburg County

Acreage:

371.73 acres

Rated Inmate Population Capacity:

100

Type of Unit:

Permanent

Highway Quota:

55

Population:

Felon

Programs:

Work:

1. Highway Maintenance - 55 inmates assigned to perform highway work in Lunenburg, Brunswick and Mecklenburg Counties.
2. Cadre-Inmates assigned to the unit's food service program and building and grounds maintenance.
3. Farming - Inmates assigned to tend cattle and work at the unit's farm.

Education:

Rehabilitative School Authority operates a full-time vocational training program in air conditioning and refrigeration (capacity 12 students).

Counseling:

One full-time counselor assigned.

Recreation:

Standard outside and inside activities.

Chaplin Services:

Local ministers provide weekly services.

Psychological Services:

Refers to other institutions.

Medical Services:

Local doctor is under contract. Part-time registered nurse available.

Volunteer Programs:

G.E.D. Program and Jaycees.

DIVISION OF INSTITUTIONAL SERVICES

REGION II - CENTRAL

RUSTBURG CORRECTIONAL UNIT (#9)

P. O. Box 340, Rustburg, Va. 24588

Superintendent:

Mr. L. R. Clawson

Location:

Campbell County

Acreage:

106.36 acres

Rated Inmate Population Capacity:

100

Type of Unit:

Permanent

Highway Quota:

42

Population:

Felon

Programs:

Work:

1. Highway Maintenance - 42 inmates perform highway work in Appomattox, Amherst and Campbell Counties.
2. Cadre-Inmates are assigned to work in the units food service program and building and grounds maintenance.

Education:

Part-time night school program offering Adult Basic Education and G.E.D. preparation taught by volunteers.

Counseling:

One counselor assigned to provide services at this unit.

Recreation:

Standard inside and outside activities. Athletic games (basketball, softball and football) scheduled with other units.

Chaplin Services:

Several denominations visits the unit on the weekend and weekdays.

Psychological Services:

Refers to other institutions or refers to Central Virginia Mental Health Clinic.

Medical Services:

Local physician visits the units once a week. Part-time registered nurse available during weekdays.

Volunteer Programs:

G.E.D. and Jaycees.

DIVISION OF INSTITUTIONAL SERVICES

REGION II - CENTRAL

CULPEPER CORRECTIONAL UNIT (#11)

P. O. Box 791, Culpeper, Va. 22701

Superintendent:

Mr. G. P. Dodson

Location:

Culpeper County

Acreage:

30.9 acres

Rated Inmate Population Capacity:

65

Type of Unit:

Permanent

Highway Quota:

40

Population:

Felon

Programs:

Work:

1. Highway Maintenance - 37 inmates assigned to perform highway work in Culpeper, Fauquier and Orange Counties.
2. Cadre-Inmates assigned to Unit's food service program and building and grounds maintenance, inmate self-help tutor.

Education:

Night school program offering G.E.D. preparation.

Counseling:

A full-time counselor is assigned to provide services at this unit. Also, inmates may request the Post Conviction Assistance Project to advise them when appearing before adjustment committees.

Recreation:

Standard indoor and outdoor activities. Athletic games (basketball, softball and football) scheduled with other correctional units or local teams.

Chaplin Services:

Various denominations offer services upon request. Also, Bible study class each Sunday by Gideons.

Psychological Services:

Refers to other institutions and to Culpeper County Mental Health Clinic.

Medical Services:

Local doctor available weekdays at office
Part-time registered nurse is available at the unit during weekdays.

Volunteer Programs:

Local artist provides instruction once a week. G.E.D., reading, basic electronic art

DIVISION OF INSTITUTIONAL SERVICES

REGION II - CENTRAL

FLUVANNA CORRECTIONAL UNIT (#12)

Box 73, Troy, Virginia 22974

Superintendent:

Mr. H. D. Bush

Location:

Fluvanna County

Acreage:

105.75 acres

Rated Inmate Population Capacity:

90

Type of Unit:

Temporary

Highway Quota:

45

Population:

Misdemeanant

Programs:

Work:

1. Highway Maintenance - 45 inmates assigned to perform highway work in Fluvanna, Louisa and Albemarle Counties.
2. Farming - inmates assigned to work in the units garden and tend the cattle herd.
3. Cadre-Inmates assigned to the units food service program and unit building and grounds maintenance.

Education:

None

Counseling:

One counselor is assigned to cover this unit. Some OAR volunteers. Inmates may request the Post Conviction Assistance Project to assist them when appearing before adjustment committees.

Chaplin Services:

Ministerial services on Sundays.

Psychological Services:

Refer to other institutions.

Medical Services:

Local doctor is on call. Part-time nurse is available.

Volunteer Programs:

G. E. D. preparation.

DIVISION OF INSTITUTIONAL SERVICES

REGION II - CENTRAL

CHATHAM CORRECTIONAL UNIT (#15)

Route 6, Box 50, Chatham, Virginia 24531

Superintendent:

Mr. C. E. White

Location:

Pittsylvania County

Acreage:

202.02 acres

Rated Inmate

85

Type of Unit:

Permanent

Highway Quota:

40

Population:

Felon

Programs:

Work:

1. Highway Maintenance - 40 inmates perform highway work in Pittsylvania County.
2. Cadre - Inmates assigned to work in Unit's food service program and building and grounds maintenance.

Education:

Part-time night school program offers Adult Basic Education and G.E.D. preparation taught by local volunteers.

Counseling:

Two full-time counselors assigned.

Recreation:

Standard indoor and outside activities. Athletic games (basketball, softball and football) scheduled with other correctional units and local teams, arts and crafts.

Chaplin Services:

Ministerial services on Sunday.

Psychological Services:

Refers to other institutions or to the Danville Mental Health Clinic.

Medical Services:

Local doctor visits the unit once a week. Part-time registered nurse is available.

Volunteer Programs:

Many programs are presently operating (education counseling, recreation, etc.) utilization community agencies. Danville Drug Center provides group counseling services at the unit. Inmates worked with Danville Community Improvement Council. G.E.D., ABE Bible Study, arts, creative writing, drug therapy, Jaycees and first aid.

DIVISION OF INSTITUTIONAL SERVICES

REGION II - CENTRAL

HALIFAX CORRECTIONAL UNIT (#23)

Box 667, Halifax, Virginia 24558

Superintendent:

Mr. W. J. Townley

Location:

Halifax County

Acreage:

104.82 acres

Rated Inmate Population Capacity:

185

Type of Unit:

Permanent

Highway Quota:

50

Population:

Felon

Programs:

Work:

1. Highway Maintenance - 50 inmates assigned to perform highway work in Halifax and Charlotte Counties.
2. Cadre - Inmates assigned to the unit's food service program and building and grounds maintenance.

Education:

Full-time school program offering Adult Basic Education operated by the rehabilitative School Authority.

Counseling:

Two full-time counselors are assigned to this unit.

Recreation:

Standard outside and indoor activities. Athletic games (softball and football) scheduled with other correctional units. full-time recreation supervisor is assigned.

Chaplin Services:

Weekly Protestant services.

Psychological Services:

Refers to other institution or to the Halifax County Mental Health Clinic.

Medical Services:

Local doctor is on call. Full-time registered nurse assigned.

Volunteer Programs:

Jaycees

DIVISION OF INSTITUTIONAL SERVICES

REGION II - CENTRAL

SMITH MOUNTAIN LAKE CORRECTIONAL UNIT (#24)

Moneta, Virginia 24121

Superintendent:

Mr. L. R. Ross

Location:

Bedford County

Acreage:

104.82 acres

Rated Inmate Population Capacity:

90

Type of Unit:

Temporary

Highway Quota:

39

Population:

Misdemeanant and Felon

Programs:

Work:

1. Highway Maintenance - 39 inmates assigned to perform highway work in Franklin and Bedford Counties.
2. Cadre - Inmates assigned to the unit's food service program and unit's building and grounds maintenance.

Education:

A full-time vocational training program in Building and Trades Cluster (Basic Carpentry, Electricity, Plumbing and Brickmasonry) is operating. This program is designed for 9 - 12 inmates.

Counseling:

One counselor is assigned to provide services at this unit.

Recreation:

Standard indoor and outside activities. Athletic games (basketball, softball and football) are scheduled with other correctional units.

Chaplin Services:

Protestant services and Bible study are available on a weekly basis.

Psychological Services:

Refers to other institutions.

Medical Services:

Local doctor is on call. A part-time nurse is available on weekdays.

Volunteer Programs:

Jaycees

DIVISION OF INSTITUTIONAL SERVICES

REGION II - CENTRAL

PATRICK HENRY CORRECTIONAL UNIT (#28)

Route 2, Box 412, Ridgeway, Va. 24148

Superintendent:

Mr. M. S. Rea

Location:

Henry County

Acreage:

88.75 acres

Rated Inmate Population Capacity:

100

Highway Quota

31

Type of Unit:

Permanent

Population:

Felon and Work Release

Programs:

Work:

1. Highway Maintenance - 31 inmates perform highway maintenance in Henry and Patrick Counties.
2. Cadre - Inmates assigned to work in the unit's food service program and building and grounds maintenance.

Education:

Part-time volunteer night school program offering Adult Basic Education and G.E.D. preparation. A Vocational training program in Carpentry is operating. The Department of Corrections constructed the training building.

Counseling:

Mental Health

Recreation:

Standard indoor and outside activities.

Chaplin Services:

Ministerial services on Sunday.

Psychological Services:

Refers to other institutions.

Medical Services:

Local doctor is on call. A part-time registered nurse is available on weekdays.

Volunteer Programs:

Active Citizens Advisor Council works with the unit to develop programs such as the Carpentry Training Program. Jaycees Chapter. Alcoholics Anonymous, Impact, Focus (Court Services Youth), Jaycees, ABE/GED.

DIVISION OF INSTITUTIONAL SERVICES

REGION III - NORTHERN

WHITE POST CORRECTIONAL UNIT (7)

White Post, Virginia 22663

Superintendent:

Mr. G. K. Lewis

Location:

Clarke County

Acreage:

308.67 acres

Rated Inmate Population Capacity:

85

Type of Unit:

Permanent

Highway Quota:

40

Population:

Felon

Programs:

Work:

1. Highway Maintenance - 40 inmates assigned to perform highway work in Frederick, Clarke and Warren Counties and the City of Winchester.
2. Cadre - Inmates assigned to unit's food service program and unit's building and grounds maintenance.

Education:

Part-time night school program offering Adult Basic Education and GED preparation courses.

Counseling:

One full-time counselor assigned.

Recreation:

Normal inside and outside activities. Outside basketball court. Athletic games (softball, basketball and football) scheduled with other correctional units and local teams. Art program.

Chaplain Services:

Two services per week provided by Inner Circle Ministry, Ministerial Association and Catholic charities.

Psychological Services:

Refers to other institutions and to Winchester Mental Health Clinic.

Medical Services:

Local doctor visits the unit once a week. Unit has a part-time nurse.

Volunteer Programs:

None

DIVISION OF INSTITUTIONAL SERVICES

REGION III - NORTHERN

CAROLINE CORRECTIONAL UNIT (2)

Route 1, Hanover, Va. 23069

Superintendent:

Mr. T. D. Lyon

Location:

Caroline County

Acreage:

152.18 acres

Rated Inmate Population Capacity:

130

Type of Unit:

Permanent

Highway Quota:

60

Population:

Felon

Programs:

Work:

1. Highway Maintenance - 60 inmates assigned to perform highway work in Caroline, Hanover and King William Counties.
2. Farming - 6 inmates assigned to unit farm and 20 inmates assigned to Unit 14 farming and dairy operations.
3. Cadre - 23 inmates assigned to unit's food service program and unit's building and grounds maintenance.

Education:

Part-time night school program offering Adult Basic Education and GED preparation. This program utilizes community volunteer teachers.

Counseling:

Two (2) full-time rehabilitation counselors. Project AID-SIR.

Recreation:

Outside activities (softball, basketball, family day picnics, etc.). Inside activities (hobby shop, pool table, ping-pong, library, etc.). Athletic games (softball, football) scheduled with other correctional units and local teams.

Chaplain Services:

Ministers of various denominations visit the unit once a week.

Psychological Services:

Refers to other institutions.

Medical Services:

Unit has part-time nurse employed. Refer to Penitentiary Hospital or MCV for emergencies.

Volunteer Programs:

Jaycee Chapter, inmate self-help leather work classes, community volunteers teach night school classes. Four inmates assigned to Hanover for construction.

DIVISION OF INSTITUTIONAL SERVICES

REGION III - NORTHERN

HARRISONBURG CORRECTIONAL UNIT (8)

Route 2, Harrisonburg, Va. 23801

Superintendent:

Mr. K. A. Meredith

Location:

Rockingham County

Acreage:

146.71 acres

Rated Inmate Population Capacity:

100

Type of Unit:

Permanent

Highway Quota

None

Population:

Felon and Misdemeanant

Programs:

Work:

Cadre: Inmates assigned to unit's food service program and unit's building and grounds maintenance.

Education:

Full-time educational program by the Rehabilitative School Authority for young offenders (aged 21 years old or less). Vocational program in environmental control.

Counseling:

One full-time counselor assigned. Also, inmates may request the Post Conviction Assistance Project (composed of University of Virginia Law School students) to advise them when they appear before the unit classification committee.

Recreation:

Standard inside and outside activities.

Chaplain Services:

Once a week (Mennonite, Catholic and Presbyterian).

Psychological Services:

Using the Massanutten Mental Health Clinic and referring to other institutions. Child Guidance Clinic.

Medical Services:

Local physician visits the unit once a week. Part-time nurse.

Volunteer Programs:

Black Student Alliance from Madison University, Catholic sponsored social group from Madison U., visiting program by volunteers from Eastern Mennonite College.

DIVISION OF INSTITUTIONAL SERVICES

REGION III - NORTHERN

HAYNESVILLE CORRECTIONAL UNIT (17)

Haynesville, Virginia 22427

Superintendent:

Mr. D. E. Mutter

Location:

Richmond County

Acreage:

136.16 acres

Rated Inmate Population Capacity:

85

Type of Unit:

Permanent

Highway Quota:

34

Population

Felon

Programs:

Work:

1. Cadre - Inmates assigned to unit's food service program and building and grounds maintenance.
2. Farming - Inmates assigned to unit's farm and garden.
3. Highway Maintenance - 34 inmates assigned to perform highway work in Richmond, Essex, Lancaster, Northumberland and Westmoreland Counties.

Education:

None

Counseling:

One full-time counselor assigned to unit.

Recreation:

Standard indoor and outside activities. Athletic games (softball and football) scheduled with other units.

Chaplain Services:

Services held weekly by various denominations.

Psychological Services:

Refer to other institutions.

Medical Services:

Part-time registered nurse available. Refer to Penitentiary, MCV and Tidewater Memorial Hospital.

Volunteer Programs:

Alcoholics Anonymous.

DIVISION OF INSTITUTIONAL SERVICES

REGION III - NORTHERN

STAFFORD CORRECTIONAL UNIT (21)

Route 4, Box 40, Stafford, Va. 22554

Superintendent:

Mr. C. A. Neff

Location:

Stafford County

Acreage:

167.25 acres

Rated Inmate Population Capacity:

85

Type of Unit:

Permanent

Highway Quota:

50

Population:

Felon

Programs:

Work:

1. Highway Maintenance - 50 inmates assigned to perform highway work in Stafford, Spotsylvania and King George Counties.
2. Cadre - Inmates assigned to unit's food service program and building and grounds maintenance.

Education:

Plans for part-time night school program offering Adult Basic Education and GED preparation courses. Funded by Rehabilitative School Authority and Stafford County schools.

Counseling:

One full-time counselor is assigned to this unit.

Recreation:

Standard indoor and outdoor activities. Athletic games (basketball, football and softball) scheduled with other correctional units and local teams.

Chaplain Services:

Weekly services by different denominations

Psychological Services:

Refers to other institutions.

Medical Services:

Local doctor available. Part-time registered nurse available.

Volunteer Programs:

Programs listed above and library services provided by a bookmobile from Fredericksburg. Jaycees. Great books discussion group.

DIVISION OF INSTITUTIONAL SERVICES

REGION III - NORTHERN

HAYMARKET CORRECTIONAL UNIT (26)

Haymarket, Virginia 22069

Superintendent:

Mrs. Judy Wyant

Location:

Prince William County

Acreage:

46.10 acres

Rated Inmate Population Capacity:

90

Type of Unit:

Temporary

Highway Quota:

50

Population:

Felons

Programs:

Work:

1. Highway maintenance - 50 inmates assigned to perform highway work in Loudoun, Fauquier and Prince William Counties.
2. Cadre - Inmates assigned to the units food service program and building and grounds maintenance.

Education:

Part-time night school. GED by RSA

Counseling:

One full-time counselor is assigned to this unit.

Recreation:

Standard inside and outside programs. Athletic games (softball and football) scheduled with other correctional units.

Chaplain Services:

Weekly services by various denominations.

Psychological Services:

Refers to other institutions or the Prince Williams Mental Health Clinic.

Medical Services:

Local physician is on call. A part-time registered nurse is available on weekdays.

Volunteer Programs:

Alcoholics Anonymous

DIVISION OF INSTITUTIONAL SERVICES

REGION III - NORTHERN

FAIRFAX CORRECTIONAL UNIT (30)

P. O. Box 487, Fairfax, Va. 22030

Superintendent:

Mr. J. B. Taylor

Location:

Fairfax County

Acreage:

70.98 acres

Rated Inmate Population Capacity:

150

Type of Unit:

Permanent

Highway Quota:

93

Population:

Felon

Programs:

Work:

1. Highway Maintenance - 93 inmates assigned to perform roadwork in Fairfax and Arlington Counties.
2. Cadre - Inmates assigned to units food service program and unit building and grounds maintenance.

Education:

Part-time night school program offering Adult Basic RSA Education and GED preparation. Carpentry is offered by RSA. This program places 10 inmates in classroom training. Upon completion, some inmates are transferred to maintenance work assignments at other correctional facilities.

Recreation:

Standard indoor and outside activities. Athletic games (basketball, softball and football) scheduled with other correctional units.

Chaplain Services:

Local ministers provide services.

Psychological Services:

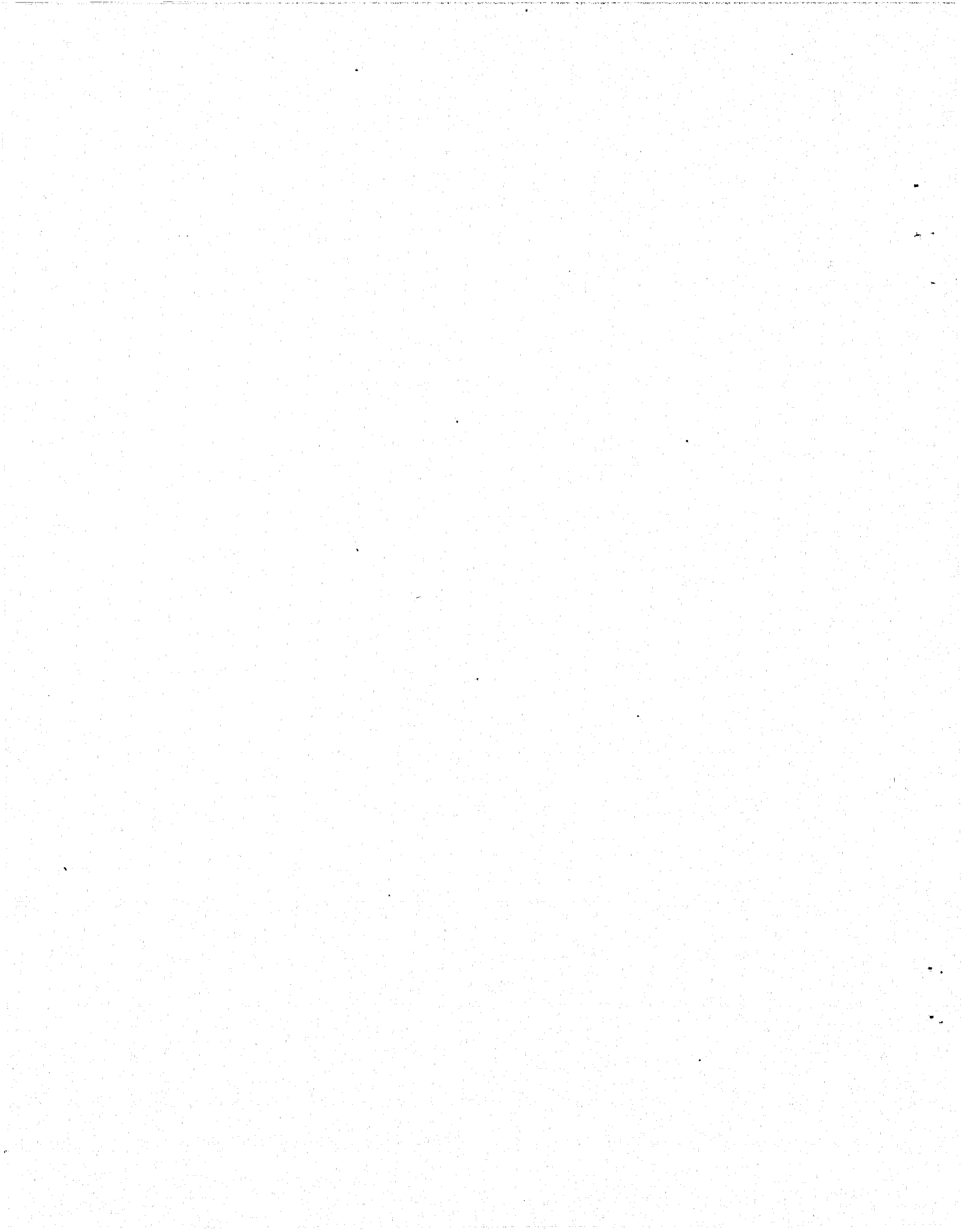
Refers to other institutions.

Medical Services:

Local physician visits the unit on Monday and Thursday and evenings. A full-time registered nurse is assigned to the unit.

Volunteer Programs:

Alcoholics Anonymous meets at the unit two times per week. Jaycee Chapter and O. A. R. of Fairfax & Arlington.



DIVISION OF INSTITUTIONAL SERVICES

REGION IV - EAST CENTRAL

VIRGINIA STATE PENITENTIARY

500 Spring Street, Richmond, Va. 23219

Warden:
RSA Principal:

Mr. James P. Mitchell
Mr. James Goode

Location:

500 Spring Street, Richmond, Va. 23219

Size and Physical Layout:

17 acres of land on which are located three cell houses, an industrial building, a hospital, schoolroom, a chapel, a dining hall, an administration building, a power plant and a service station.

Total Employees:

500 (including 368 correctional officers)

Inmate Population:

940 (7-1-78). Total assignable beds, 800 (plus special purpose beds).

Programs:

Religious:

Chaplin services - Choir

Educational:

ABE, GED, J. S. Reynolds, College Courses

Vocational:

Barbering, Climate Control, Drafting, Electricity, Machinist, Offset Printing

Social:

Art Club, Bilalian Development Society, Creative Workshop, Educational Awareness Program, FYSK Publications, Drug Program, Prison Band Program, New Hope AA Group, Prison Civil War Roundtable, Spring Street Jaycees, Vapen Chess Club, Veterans Club, TA Education Program

DIVISION OF INSTITUTIONAL SERVICES

REGION IV - EAST CENTRAL

DEEP MEADOW CORRECTIONAL CENTER

State Farm, Virginia 23160

Superintendent:
RSA Principal:

Mr. Alton Baskerville
Mr. Wallace M. Sterling

Location:

State Farm, Virginia 23160

Established:

1976

Size and Physical Layout:

Eight major buildings located on 15 acres. The facility was constructed with the utilization of 57 house trailers.

Total Employees:

234 (including 194 correctional officers)

Inmate Population:

369 (7-1-78). Total assignable beds, 432 (plus 12 special purpose beds).

Programs:

Religious:

Sunday services, Muslim, Protestant, Catholic

Educational:

ABE, GED, 1 college course to begin January, 1979

Vocational:

None

Social:

Jaycees, A. A., Drug Program

Vocational (OJT):

Food Service

DIVISION OF INSTITUTIONAL SERVICES

REGION IV - EAST CENTRAL

JAMES RIVER CORRECTIONAL CENTER

State Farm, Virginia 23160

Superintendent:
RSA Principal:

Mr. W. M. Riddle
Mr. Wallace M. Sterling

Location:

State Farm, Virginia 23160 (Goochland County)

Established:

1894

Size and Physical Layout:

Seven major buildings, plus farm and utility shops, situated on 1,200 acres on the North bank of the James River in Goochland County.

Total Employees:

167 (including 84 JRCC correctional officers and 13 correctional officers on loan.

Inmate Population:

251 (7-1-78). Total assignable beds, 214 (plus 66 special purpose beds).

Programs:

Religious:

Minister Weekly Bible Study

Educational:

College Programs (AA degree), Clep Exam Program, ABE, GED

Vocational (Classes):

None

Social:

Community Involvement Group, DVR, AA, Drug Treatment Program, Jaycees

Vocational

Dental Prosthetics Course, Heavy Equipment Operation and Maintenance.

DIVISION OF INSTITUTIONAL SERVICES

REGION IV - EAST CENTRAL

POWHATAN CORRECTIONAL CENTER

State Farm, Virginia 23160

Warden:
RSA Principal:

Mr. James D. Cox
Mr. Wallace M. Sterling

Location:

State Farm, Virginia 23160 (Powhatan County)

Established:

1894

Size and Physical Layout:

17 major buildings, plus farm and utility shops, situated on 2,600 acres in Powhatan County.

Total Employees:

635 (including 463 correctional officers).

Inmate Population:

1,110 (7-1-78); includes 240 in Receiving Unit, 160 assignable beds in West Housing Unit and 100 in North Housing Unit. Total assignable beds: 1,109 (plus special purpose beds).

Programs:

Religious:

Sunday Services, Nation of Islam, Morrish Science, Prayer Circle, Bible Study Choir, Religious Therapy Group

Educational:

ABE, GED, Youth Offender Educational Program, Cell Study Program, College, Black Studies

Vocational (Classes):

Bricklaying, Auto Mechanics, Barbering, Heavy Equipment Mechanics, Service Station Trainee.

Social:

DVR, Jaycees, AA, Drama Group, CONTACT (Therapy Group) Inmate Advisory Committee, Human Relations Class, Transactional Analysis, Therapy and T. A. Class, Football, Basketball, Ping Pong, Weights, Volleball, Horse Shoes, Music, Handball, Softball, Baseball, Table Games.

Vocational:

Tailor Shop, Laundry, Food Service, Inside Maintenance, Janitorial Services, Inside Utility Clerks, Dispensary, Shoe Repair, Clothing Room, Canteen, Barbers, Recreational Department.

DIVISION OF INSTITUTIONAL SERVICES

REGION IV - EAST CENTRAL

VIRGINIA CORRECTIONAL CENTER FOR WOMEN

P. O. Box 1, Goochland, Va. 23063

Superintendent:

Mrs. Ann F. Downes

RSA Principal:

Mrs. Bonnie Strawderman

Location:

Goochland, Virginia 23063

Established:

1932

Size and Physical Layout:

266.5 acres with 12 major buildings

Total Employees:

148 (including 68 correctional officers).

Inmate Population:

287 (7-1-78). Total assignable beds, 300
(plus 42 special purpose beds).

Programs:

Religious:

Chaplin Services, Choir, Bible Study

Educational:

ABE, GED, College classes, YOP

Vocational (Classes):

Cosmetology, Sewing, Business, Food
Service, Key Punch, Upholstery Class

Social:

DVR, AID SIR, Pre-Release Counseling,
Drama Group, Speech, Art Class, Craft
Shop, Group Counseling (Reality Therapy)
Exercise Group

Vocational:

Housekeeping, Food Service, Greenhouse,
Bakery, Paint Crew, Sewing, Storeroom,
Laundry, Work Release

DIVISION OF INSTITUTIONAL SERVICES

REGION IV - EAST CENTRAL

POCAHONTAS CORRECTIONAL UNIT (#13)

P. O. Box 126, Chesterfield, Va. 23832

Superintendent:

Mr. E. Stacy

Location:

Chesterfield County

Acreage:

102.72 acres

Rated Inmate Population Capacity:

200

Type of Unit:

Permanent

Highway Quota:

56

Population:

Felon and Inmate Awaiting Trial and
Parole Hearings

Programs:

Education:

None

Counseling:

2 Counselors (full time)

Chaplin Services:

Weekly Services

Psychological Services:

VSP

Volunteer:

None

DIVISION OF INSTITUTIONAL SERVICES

REGION IV - EAST CENTRAL

NEW KENT CORRECTIONAL UNIT (#16)

Star Route, Box 80-A
Barhamsville, Virginia 23011

Superintendent:

Mr. R. A. Baker

Location:

New Kent County

Acreage:

44.2 acres

Rated Inmate Population Capacity:

90

Type of Unit:

Temporary

Highway Quota:

50

Population:

Misdemeanant

Programs:

Work:

1. Cadre - Inmates assigned to units' food service program or building and grounds maintenance.
2. Highway Maintenance - 50 inmates assigned to perform highway work in Middlesex, New Kent, King William, King and Queen, James City, Charles City, Gloucester, York and Matthew Counties.

Education:

None

Counseling:

One full-time counselor assigned to the unit.

Recreation:

Standard outside and indoor activities. Athletic games (basketball, football and softball) are scheduled with other correctional units.

Chaplin Services:

Services held weekly by Gideons and Jehovah witnesses. Bible classes held weekly.

Psychological Services:

Inmates referred to other institutions.

Medical Services:

Inmates referred to the Penitentiary Medical Department. Part-time registered nurse is available.

Volunteer:

Jaycees

DIVISION OF INSTITUTIONAL SERVICES

REGION IV - EAST CENTRAL

DINWIDDIE CORRECTIONAL UNIT (#27)

Church Road, Virginia 23833

Superintendent:

Mr. J. D. Netherland

Location:

Dinwiddie County

Acreage:

208 Acres

Rated Inmate Population Capacity:

85

Type of Unit:

Permanent

Highway Quota:

30

Population:

Felon

Programs:

Education:

None

Counseling:

One Counselor

Chaplin:

Weekly Services

Psychological:

Petersburg Clinic and Central State
Hospital

Volunteer:

Jaycees

DIVISION OF INSTITUTIONAL SERVICES

REGION V - SOUTHEAST

DEERFIELD CORRECTIONAL CENTER

Route 1, Box 22, Capron, Va. 23829

Superintendent:
RSA Principal:

Mr. Robert R. Kelly

Location:

Route 1, Box 22, Capron, Va. 23829

Established:

1976

Size and Physical Layout:

7 major buildings plus 6 smaller structures within a compound of approximately 40 acres. This includes 4 modules which house 72 inmates each.

Total Employment:

198 (including 159 Correctional Officers).

Inmate Population:

288 (7-1-78). Total assignable beds, 288 (plus 8 special purpose beds).

Programs:

Religious:

No Chaplain but Sunday Services by volunteer ministers.

Educational:

ABE - GED

Vocational:

None

Social:

Jaycees - Recreation

Vocational (OJT)

None

DIVISION OF INSTITUTIONAL SERVICES

REGION V - SOUTHEAST

ST. BRIDES CORRECTIONAL CENTER

701 Sanderson Roadm Chesapeake, Va. 23322

Superintendent:
RSA Principal:

Mr. T. C. Richtmyer
Ms. Joan Midgett

Location:

701 Sanderson Road, Chesapeake, Va. 23322

Established:

August 1, 1974

Size and Physical Layout:

250 acres, 20 major buildings. A portion of the 250 acres is sub-leased to local farmers.

Total Employees:

182 (including 92 Correctional Officers).

Inmate Population:

425 (7-1-78). Total assignable beds, 425 (plus 46 special purpose beds).

Programs:

Religious:

Chaplin Christian Fellowship Group,
Muslim Group

Educational:

ABE - GED

Vocational (Classes)

Carpentry, Electrical, Plumbing, Masonry,
Lithography, Power Mechanics.

Social:

Orientation Program, Behavioral Assessment,
Counseling and Social Seminar (Drug
Counseling), AA, Jaycees.

Vocational:

Boiler Plant/Water Treatment, Gen. Building
Maintenance, Groundkeeping, Farming,
Laundry, Clerical, Tire Recapping.

DIVISION OF INSTITUTIONAL SERVICES

REGION V - SOUTHEAST

SOUTHAMPTON CORRECTIONAL CENTER

Capron, Virginia 23829

Superintendent:

Mr. Gene M. Johnson

RSA Principal:

Mr. John McCaffrey

Location:

Capron, Virginia 23829

Established:

1937

Size and Physical Layout:

10 major buildings for the correctional center proper. A 100 man Reception and Classification Center was put into operation in 1977. These facilities are situated on 2,675 acres. Work is scheduled to begin on an institution to house youthful offenders in early 1979.

Programs:

Religious:

Seven Day Adventist Weekly Group, Full Gospel Study, AIFA and Omega Group, Jehova Witness Group, Muslim Group, Full time Chaplain.

Educational:

ABE, GED, College Classes at Institution Full time

Vocational (Classes):

Auto Mechanics, Welding, Barbering, Brickmasonry, Carpentry, Electrical, General Building Maintenance, Heavy Equipment, Plumbing, Refrigeration.

Social:

Recreation, Weights, Tennis, Football, Softball, Basketball, Volleyball, Gymnastics, Arts and Crafts, Music, DVR, Counseling, Group Therapy, AA, Jaycees, Explorers, Swimming.

Vocational: (OJT):

Electrical, Sewage Treatment, Janitorial, Painting, Plumbing, Auto Mechanics, Carpentry, Truck Driving, General Laborer, Groundskeeper, Brickmasonry, Plant Fireman, Laundry, Cook, Baker, Waiter, Butcher, Janitor, Barber, Clerk, Medical Aid, Sawmill, Lifestock, Woodwork, Welding, Feedmill, Meat Slaughter, Shoe Factory, Dental Lab, Cannery, Housekeeping, Landscaping, Tractor, Inventory Clerk.

DIVISION OF INSTITUTIONAL SERVICES

REGION V - SOUTHEAST

NANSEMOND CORRECTIONAL UNIT (#3)

Walters, Virginia

Superintendent:

Mr. P. R. Mayo

Location:

Isle of Wright County

Acreage:

61.31 acres

Rated Inmate Population Capacity:

90

Type of Unit:

Permanent

Highway Quota:

30

Population:

Felon

Programs:

Work:

1. Highway Maintenance: 30 inmates assigned to perform highway work in Isle of Wright, Southampton and Surry Counties and the City of Suffolk.
2. Cadre: Inmates assigned to units food service program and building and grounds maintenance.

Education:

None

Counseling:

One counselor assigned to provide services at this unit.

Recreation:

Indoor and outside activities (softball, boxing, touch football and basketball).

Chaplain Services:

Weekly services by volunteers.

Psychological Services:

Through regional office.

Medical Services:

Local doctor visits the unit once a week (Tuesday) and emergencies are referred to the local hospital. There is a part-time nurse available.

Volunteer Programs:

Alcoholics Anonymous and religious.

DIVISION OF INSTITUTIONAL SERVICES

REGION V - SOUTHEAST

CAPRON CORRECTIONAL UNIT (#20)

Capron, Virginia 23829

Superintendent:

Mr. W. R. Loving

Location:

Southampton County

Acreage:

150 acres

Rated Inmate Population Capacity:

90

Type of Unit:

Temporary

Highway Quota:

42

Population:

Felon

Programs:

Work:

1. Highway Maintenance: 42 inmates assigned to perform work in Southampton, Greenville and Sussex Counties.
2. Cadre- Inmates assigned to unit's food service program and building and grounds maintenance.

Education:

None

Counseling:

One full-time counselor is assigned to provide services at this unit.

Recreation:

Standard indoor and outside activities. Athletic games (football, basketball, softball) scheduled with other correctional units.

Chaplain Services:

Weekly Protestant Services.

Psychological Services:

Southampton Correctional Center

Medical Services:

Local doctor is available. Part-time registered nurse is available.

Volunteer:

Religion

DIVISION OF INSTITUTIONAL SERVICES

REGION V - SOUTHEAST

TIDEWATER CORRECTIONAL UNIT (#22)

201 Greenbrier Road, Chesapeake, Va.

Superintendent:

Mr. J. E. Malicoat

Location:

Chesapeake City

Acreage:

113.01 acres

Rated Inmate Population Capacity:

85

Type of Unit:

Permanent

Highway Quota:

36

Population:

Felon

Programs:

Work:

1. Highway Maintenance: Inmates assigned to perform work in the City of Chesapeake.
2. Cadre - Inmates assigned to Unit's food service program and building and grounds maintenance.

Education:

None

Counseling:

One full-time rehabilitation counselor is assigned to this unit. Local mental health facilities provided by Southampton Correctional Center.

Recreation:

Inside and outside activities. Athletic games (softball and football) scheduled with other correctional units. Arts and crafts program.

Chaplain Services:

Weekly services available.

Psychological Services:

Southampton Correctional Center

Medical Services:

A full-time registered nurse is employed. Inmates referred to other institutions.

Volunteer Programs:

Religious, TAP - Pre-release

DIVISION OF INSTITUTIONAL SERVICES

REGION VI - YOUTH

APPALACHIAN LEARNING CENTER

Honaker, Virginia 24260

Superintendent:
RSA Principal:

Mr. Preston T. Buchanan
Mr. Sterling Phillips

Location:

Honaker, Virginia 24260

Established:

1967

Size and Physical Layout:

86 acres of land

Total Employees:

49

Population:

45 (7-78); Capacity 40

Programs:

The institution is designed primarily for older, more aggressive delinquent boys who cannot adjust in an open training school program.

Treatment:

Emphasis is on group and individual counseling. Each individual is assigned to a treatment team which works with him during his entire stay at the institution. The boys are motivated to set individual goals, make decisions, and exercise responsible judgement in society through the use of a positive reinforcement program.

Education:

Out of necessity, the stress is on remedial education.

Vocational:

Training in electricity, welding, masonry, barbering and auto mechanics.

DIVISION OF INSTITUTIONAL SERVICES

REGION VI - YOUTH

BARRETT LEARNING CENTER

Hanover, Virginia 23069

Superintendent:
RSA Principal:

Mr. James Ball
Ms. Lillian Shearin

Location:

Hanover, Virginia 23069

Established:

1915

Size and Physical Layout:

10 major buildings situated on 141 acres of land of which 16 acres are open campus, 40 acres are cultivated, and 85 acres are in woodland.

Total Employees:

87

School Population:

84 (7-78); Capacity 90

Programs:

The main emphasis is on the academic program, with staff guidance directed toward "accentuating the positive and eliminating the negative" in developing the day-to-day behavior patterns of the child.

Academic:

Remedial education and regular courses through a 10th grade level.

Vocational:

Food Service, cosmetology, typing and landscaping.

Treatment:

Counseling and treatment teams operate through a campus-wide behavior management program for children.

DIVISION OF INSTITUTIONAL SERVICES

REGION VI - YOUTH

BEAUMONT LEARNING CENTER

Beaumont, Virginia 23014

Superintendent:
RSA Principal:

Mr. Caroel L. Selby
Mr. Andrew Jackson

Location:

Beaumont, Virginia 23014

Established:

1890

Total Employees:

165

Size and Physical Layout:

20 main buildings are situated on a 40 acre campus on 2,400 acres in Powhatan County. Woodlands occupy approximately 1,400 acres and another 1,000 acres are in pasture or cultivation. Adult inmates from other institutions conduct the farming operations.

School Population:

303 (7-78); Capacity 200.

Programs:

Academic:

Preparation for and award of General Education Diploma - GED.

Vocational:

Courses in small engine repair, electricity plumbing, carpentry, barbering, food service, welding, brickmasonry, custodial services, auto mechanics, body and fender repair and painting.

Recreation:

Inter and intramural competition in basketball, softball, track and field, swimming and other sports; supervised camping trips and hiking trips; movies, bowling, dances and parties.

Hobbies:

Crafts shop for painting, sketching, sculpture, and handicrafts. Student-published monthly newspaper.

Treatment:

An individual program is planned for each boy by a team of treatment personnel including counselors, teachers, psychologists and chaplains.

DIVISION OF INSTITUTIONAL SERVICES

REGION VI - YOUTH

BON AIR LEARNING CENTER

Bon Air, Virginia 23235

Superintendent:
RSA Principal:

Ms. Kathleen Liles
Vacant

Location:

Bon Air, Virginia 23235

Established:

1910

Size and Physical Layout:

14 buildings on a 407 acre tract of land (including the property on which the Reception and Diagnostic Center for Children also is located).

Total Employees:

123

School Population:

139 (7-78); Capacity 135

Programs:

Academic:

General studies to prepare students for resumption of high school upon return to community. General Educational Diploma preparation, remedial and special classes.

Vocational:

Offerings, include cosmetology, food service, laundry, nurse's aide, office occupations, sewing and vocational homemaking.

Recreational:

Field trips, movies, bowling, concerts, plays, dances, dinner theatre engagements, picnics and activities with volunteers from neighborhood churches and civic organizations.

Treatment:

A team regularly meets with each student to determine her needs and goals.

DIVISION OF INSTITUTIONAL SERVICES

REGION VI - YOUTH

HANOVER LEARNING CENTER

Hanover, Virginia 23069

Superintendent:
RSA Principal:

Mrs. Diane Snellings
Mr. James Davis

Location:

Hanover, Virginia 23069

Established:

1898

Size and Physical Layout:

14 main buildings situated on 450 acres.

Total Employees:

124

School Population:

155 (7-78): Capacity 110

Programs:

Academic:

Emphasis on remedial education since most youngsters are educationally behind and will return to public school upon their release.

Pre-Vocational:

Classes are offered in construction procedures, lumber, concrete, bricklaying, cost estimating of materials, elementary drafting, electricity, tailoring and woodworking.

Recreation:

Co-educational campus parties, off campus trips, student government association, club activities and participation in community sports leagues.

Treatment:

Treatment teams work with each youth throughout his stay, encouraging each boy to participate in his individual goal-settings.

DIVISION OF INSTITUTIONAL SERVICES

REGION VI - YOUTH

NATURAL BRIDGE LEARNING CENTER

Star Route, Box 102
Natural Bridge Station, Va. 24579

Superintendent:
RSA Principal:

Mr. William J. Linkous
Mr. William Hepler

Location:

Star Route, Box 102
Natural Bridge Station, Va. 24579

Established:

1964

Size and Physical Layout:

19 major buildings situated on 58 acres.

Total Employees:

59

Population:

88 (7-78); Capacity 60.

Programs:

Treatment:

Counseling teams continuously work with groups of boys.

Recreation:

Fishing, miniature golf, volleyball, tennis, basketball, track, football, softball, wrestling, pool, ping-pong, swimming, movies and attendance at athletic events at area Universities.

Community Activities:

Community churches regularly invite the boys to church services and events.

Academic:

Special and remedial education with some boys attending public school in Natural Bridge.

Vocational:

Courses are offered in auto mechanics, cabinet making, barbering, masonry-brick-laying, cooking, and general building maintenance and repair.

Divisional Camping Programs:

Located adjacent to the Center is Camp New Hope which provides weekly outdoor experiences for children from the Learning Centers, Group Homes and Court Service Units.

DIVISION OF INSTITUTIONAL SERVICES

REGION VI - YOUTH

RECEPTION AND DIAGNOSTIC CENTER

1601 Bon Air Road, Bon Air, Va. 23234

MOBILE PSYCHIATRIC CLINIC

1601 Bon Air Road, Bon Air, Va. 23234

Superintendent RDC:

Mr. William G. Schoof

Director - MPC:

Mr. Dennis Waite

RSA Principal:

Mr. Phillip Blankenship

Location:

P. O. Box 3368, Bon Air, Virginia 23235
(Adjoins Bon Air Learning Center)

Established:

1968

Size and Physical Layout:

10 buildings situated on 30 acres.

Total Employees:

146

School Population:

114 (7-78): Capacity 130

Services:

Generally, the children are under observation and study at the center for four to six weeks. Each child receives psychological testing and some limited psychiatric evaluation, and casework study and evaluation is performed by the child welfare staff. The object of the evaluation is to determine the causes of the child's misbehavior, to help him understand those causes and to attempt to foster in him a desire for a better social adjustment. Placements are made to other state-operated juvenile institutions, community youth homes, foster homes, private boarding schools, state mental hospitals, schools for the mentally retarded, maternity homes and vocational schools.

END