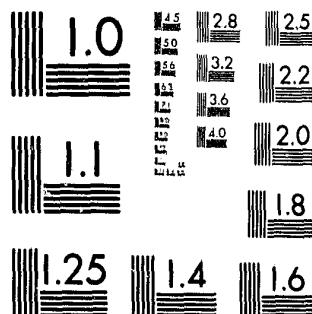


National Criminal Justice Reference Service



This microfiche was produced from documents received for inclusion in the NCJRS data base. Since NCJRS cannot exercise control over the physical condition of the documents submitted, the individual frame quality will vary. The resolution chart on this frame may be used to evaluate the document quality.



MICROCOPY RESOLUTION TEST CHART
NATIONAL BUREAU OF STANDARDS-1963-A

Microfilming procedures used to create this fiche comply with the standards set forth in 41CFR 101-11.504.

Points of view or opinions stated in this document are those of the author(s) and do not represent the official position or policies of the U. S. Department of Justice.

National Institute of Law Enforcement and Criminal Justice
Law Enforcement Assistance Administration
United States Department of Justice
Washington, D. C. 20531

DATE FILMED

4-11-80

1977 YEARLY STATISTICAL REPORT
OF THE FURLOUGH PROGRAM

Prepared by:

Charles Metzler
Research Unit

Massachusetts Department of Correction

Frank A. Hall
Commissioner

December, 1978

PUBLICATION #11145 - 30 - 250 - 12-78 - C.R.
Approved by Alfred C. Holland, State Purchasing Agent

62456

OCT 29 1979

TABLE OF CONTENTS

ACQUISITIONS

ABSTRACT

The furlough program has been an integral part of the Massachusetts Correctional Institutions since the program began in November, 1972. A total of 41,563 furloughs were granted between the inception of the program and December 31, 1977. During that period, 439 of those furloughs resulted in escapes (a resident failing to return to his correctional facility within two hours of his designated time), thus yielding an overall escape rate of 1.06%. The present report contains a statistical description of the furlough program for the year 1977 as well as a trend analysis of the program since its inception in 1972.

An analysis of available statistics revealed that although the number of furloughs granted over the years has fluctuated, the escape rate has decreased from 1.9% in 1972 to 0.5% in 1977, remaining relatively stable during the last two years of that time period. It was also noted during that period that the number of furloughs granted from lower security pre-release centers increased, as less furloughs were granted from higher security correctional institutions. Finally, this report presents frequencies and escape rates of background characteristics for each furlough granted during 1977. Information included in these tables consists of present offense variables, personal background characteristics, criminal history statistics and furlough variables.

<u>TITLE</u>	<u>PAGE NUMBER</u>
Introduction	1
Section I: Overview	2
Section II: Escape Rates of Background Characteristics of the Furlough Population	8
Present Offense Variables	9
Institution Committed To	9
Jail Credits	9
Present Offense-General Categories	9
Present Offense-Drug	9
Present Offense-Person	10
Present Offense- Sex	10
Present Offense-Property	10
Present Offense-Other	11
Minimum Sentence	11
Maximum Sentence	12
Personal Background Characteristics	12
Race	12
Marital Status	12
Military Discharge	13
Prior Address-Selected Cities & Towns	13
Prior Address-County	14
Prior Address-SMSA (Standard Metropolitan Statistical Areas)	14
Occupation	15
Time at Most Skilled Position	15
Time on Job of Longest Duration	15
Last Grade Completed	16
Known Drug Use	16
Criminal History Variables	16
Total Number of Court Appearances	16
Number of Prior Charges for Person Offenses	17
Number of Prior Charges for Property Offenses	17
Number of Prior Charges for Sex Offenses	17
Number of Prior Charges for Narcotics Offenses	18

TABLE OF CONTENTS

<u>TITLE</u>	<u>PAGE NUMBER</u>
Criminal History Variables (continued)	
Number of Prior Charges for Drunkenness Offenses	18
Number of Prior Charges for Escape Offenses	18
Number of Prior Juvenile Incarcerations	19
Number of Prior County Incarcerations	19
Number of Prior State or Federal Incarcerations	19
Number of Prior Adult Incarcerations	20
Number of Any Prior Incarcerations	20
Number of Prior Juvenile Paroles	20
Number of Prior Juvenile Parole Violations	21
Number of Prior Adult Paroles	21
Number of Prior Adult Parole Violations	21
Total Number of Prior Paroles	21
Total Number of Prior Parole Violations	22
Age at Incarceration	22
Age at First Arrest	22
Age at First Drunk Arrest	23
Age at First Drug Arrest	23
Furlough Variables	24
Type of Furlough	24
Month Furloughed	24
Hours Furloughed	24
Outcome of Furlough	24
Institution Furloughed From	25

INTRODUCTION

This report is a statistical description of the Massachusetts Department of Correction Furlough Program for the year 1977. Included is some trend analyses covering the program since its inception in 1972.

The report is divided into two sections. Section I provides a brief overview of the Massachusetts Furlough Program. Comparisons of furlough characteristics over the past five years, as well as monthly escape rates and proportions are discussed. Section II contains escape rates on background variables of an individual for each furlough granted during 1977. The background variables include personal background characteristics, present offense variables, criminal history variables and furlough variables. The figures in the tables represent numbers of furloughs, not numbers of individuals; therefore, an individual may be counted more than once if he/she has had more than one furlough during 1977.

The data for the construction of the tables in this report were derived from the computerized data base developed by the Correction and Parole Management Information System (CAPMIS) and were produced on the Massachusetts State College Computer Network (MSCCN).

OVERVIEW

The furlough program for residents of Massachusetts correctional facilities has been extensively implemented since the program commenced operation in November of 1972. Between that time and December 31, 1977, a total of 41,563 furloughs have been granted. In 439 cases, inmates have failed to return to their respective correctional facility within two hours of their prescribed time of return. Thus since the inception of the program there is an overall escape rate of 1.06%.¹

Table I is a summary of furlough statistics for the years 1973 to 1977. For each of these years, information regarding the number of furloughs, the number of individuals furloughed, the number of escapes and corresponding escape rates is presented. The escape rates by furlough have decreased from 1973 to 1977 and range from 1.9% to 0.5%. Similarly, the escape rates by individuals have also decreased. Even though the number of furloughs has increased by 2.7% over the past two years, the escape rate has remained at 0.5. Although the number of individuals furloughed has been decreasing, the number of furloughs granted has fluctuated over the years.²

SECTION I: OVERVIEW

TABLE I

SUMMARY FURLOUGH STATISTICS FOR THE YEARS 1973 TO 1977

<u>YEAR</u>	<u>NUMBER OF FURLOUGHS</u>	<u>INDIVIDUALS FURLOUGHED³</u>	<u>NUMBER OF ESCAPES</u>	<u>ESCAPE RATE BY INDIVIDUAL³</u>	<u>ESCAPE RATE BY FURLOUGH</u>
1973	7195	1868	134	7.2	1.9
1974	8322	1668	127	7.6	1.5
1975	8680	1482	88	5.9	1.0
1976	7985	1305	40	3.1	0.5
1977	8199	1355	42	3.1	0.5

Table II gives furlough statistics by institution furloughed from for the years 1973 to 1977. The number of furloughs, the number of escapes and the corresponding escape rates for each correctional institution is given. Although minor fluctuations have occurred at some institutions, the overall escape rates have been decreasing. Furthermore, the range of escape rates among institutions has been narrowing each year. In particular, the range of escape rates are 0.0% to 5.3% in 1973, 0.0% to 4.2% in 1974, 0.0% to 3.3% in 1975, 0.0% to 3.4% in 1976 and 0.0% to 2.7% in 1977. Also apparent is the decrease in the number of furloughs granted from higher security institutions and conversely, more furloughs granted to the lower security pre-release centers.

TABLE II

COMPARATIVE FURLOU | STATISTICS BY INSTITUTION FOR THE YEARS 1973-1977

INSTITUTIONS	1973			74			1975			1976			1977		
	FURLOUGHS	ESCAPES	RATE	FURLOUGH	ESCAPES	RATE	FURLOUGHS	ESCAPES	RATE	FURLOUGHS	ESCAPES	RATE	FURLOUGHS	ESCAPES	RATE
Walpole	107	4	3.7	310	7	2.3	335	5	1.5	398	6	1.5	166	0	0.0
Concord	1254	44	3.5	923	39	4.2	811	27	3.3	430	3	0.7	352	5	1.4
Framingham	562	9	1.6	741	7	0.9	797	7	0.9	642	3	0.5	775	8	1.0
Norfolk	1811	39	2.2	1466	32	2.2	1200	13	1.1	741	5	0.7	560	1	0.2
SECC	244	13	5.3	283	4	1.4	194	6	3.1	165	1	0.6	233	4	1.7
Bay State C.C.	0	0	0.0	0	0	0.0	0	0	0.0	0	0	0.0	168	2	1.2
Monroe	342	2	0.6	306	7	2.2	271	5	1.8	233	8	3.4	223	6	2.7
Plymouth	451	5	1.1	416	4	1.0	499	8	1.6	385	3	0.8	413	1	0.2
Warwick	322	4	1.2	209	6	2.9	55	1	1.8	0	0	0.0	252	4	1.6
Boston State	1333	8	0.6	2063	6	0.3	1755	6	0.3	1241	1	0.1	1073	2	0.2
Shirley	709	6	0.8	494	12	2.4	714	9	1.3	574	5	0.9	295	3	1.0
Charlotte House	61	0	0.0	86	2	2.3	83	0	0.0	126	1	0.8	103	0	0.0
Roxbury	0	0	0.0	130	0	0.0	443	0	0.0	80	0	0.0	0	0	0.0
Brooke House	0	0	0.0	422	0	0.0	509	0	0.0	578	0	0.0	272	0	0.0
Coolidge House	0	0	0.0	471	1	0.0	668	0	0.0	331	0	0.0	269	0	0.0
Temporary Housing	0	0	0.0	0	0	0.0	1	0	0.0	150	0	0.0	154	0	0.0
RDC	0	0	0.0	4	0	0.0	2	0	0.0	0	0	0.0	0	0	0.0
Norfolk Pre Release	0	0	0.0	0	0	0.0	96	1	1.0	334	0	0.0	309	1	0.3
699 House	0	0	0.0	0	0	0.0	132	0	0.0	136	1	0.7	144	0	0.0
BOSP/METAC	0	0	0.0	0	0	0.0	0	0	0.0	203	1	0.5	220	0	0.0
Drug Rehabilitation	0	0	0.0	0	0	0.0	0	0	0.0	14	0	0.0	55	0	0.0
577 House	0	0	0.0	0	0	0.0	0	0	0.0	619	0	0.0	786	2	0.2
S.Middlesex P.R.	0	0	0.0	0	0	0.0	0	0	0.0	74	1	2.3	379	1	0.3
Lancaster	0	0	0.0	0	0	0.0	0	0	0.0	404	1	0.2	513	2	0.4
Medfield Pre Release	0	0	0.0	0	0	0.0	0	0	0.0	157	0	0.0	264	0	0.0
Park Drive	0	0	0.0	0	0	0.0	0	0	0.0	0	0	0.0	221	0	0.0
TOTAL	7196	134	1.9	8324	127	1.5	8565	88	1.0	7985	40	0.5	8199	42	0.5

The escape rates by month for 1977 (see Table III) range from 0.3% for May, June and November to 0.8% during January and February. Apparently the escape rates are lowest during late spring and the early summer. It is interesting to note that although the number of furloughs increased, the escape rates remained relatively stable during these months.

TABLE III
ESCAPE RATES BY MONTH

<u>MONTH</u>	<u>NUMBER OF FURLOUGHS</u>	<u>NUMBER OF ESCAPES</u>	<u>ESCAPE RATE</u>
January	485	4	0.8
February	521	4	0.8
March	555	4	0.7
April	712	3	0.4
May	738	2	0.3
June	598	2	0.3
July	744	3	0.4
August	641	5	0.8
September	676	4	0.6
October	734	4	0.5
November	745	2	0.3
December	1050	5	0.5
TOTAL	8199	42	0.5

Finally, the number of inmates furloughed per month in proportion to the average populations for each institution is presented in Table IV. As can be seen from this table, the institutions with the higher proportions are those of lowest security. Statewide, out of an average population of 2,691, an average of 417 inmates received a furlough during a course of a month. This results in an average proportion of 15.5% of the inmate population being furloughed during the course of one month. This is 0.8 percentage points higher than that of last year.

TABLE IV
NUMBER OF INMATES FURLOUGHED MONTHLY
IN PROPORTION TO THE AVERAGE POPULATION

<u>INSTITUTION</u>	<u>AVERAGE POPULATION</u>	<u>AVERAGE NUMBER OF INDIVIDUALS FURLOUGHED PER MONTH</u>	<u>POPULATION PROPORTION</u>
Walpole	672	9	1.3
Concord	438	27	6.2
Framingham	127	41	32.3
Norfolk	739	42	5.7
SECC	217	16	7.4
Bay State Correction Center*	52	39	75.0
Monroe	28	14	50.0
Plymouth	51	26	51.0
Warwick	31	16	51.6
Boston State	53	32	60.4
Shirley	78	20	25.6
Charlotte House	6	5	83.3
Brooke House	10	6	60.0
Norfolk Pre Release	25	11	44.0
699 House	7	6	85.7
Drug Rehabilitation	28	10	35.7
577 House (DI/DOC)	7	15	**
S. Middlesex	28	16	57.1
Lancaster	29	18	62.1
Medfield	24	17	70.8
Park Drive*	25	22	88.0
Coolidge/THP/METAC/BOSP	16	9	56.3
TOTAL	2691	417	15.5

* These figures represent averages for months in which the facilities were in operation

** The greater number of individuals furloughed at these institutions reflects a substantial turnover at these facilities.

SECTION II: ESCAPE RATES OF BACKGROUND CHARACTERISTICS OF THE FURLOUGH POPULATION

The tables which follow contain frequencies and escape rates of characteristics of an individual for each furlough granted during 1977. Information concerning an individuals present offense variables, personal background characteristics, criminal history and furlough variables are presented. It is important to note that the figures in these tables refer to the number of furloughs, not the number of individuals furloughed; therefore, an individual may be counted more than once if she/he has had more than one furlough during 1977.

I) PRESENT OFFENSE VARIABLES

<u>INSTITUTION COMMITTED TO</u>	<u>NUMBER</u>	<u>PERCENT</u>	<u>ESCAPE RATE</u>
Walpole	4940	60.3	0.5
Concord	2060	25.1	0.5
Framingham	511	6.2	1.6
Bridgewater	2	.0	0.0
Deer Island	686	8.4	0.0
TOTAL	8199	100.0	0.5

JAIL CREDITS

None	3047	37.2	0.5
1 to 10	955	11.6	0.1
11 to 50	1023	12.5	0.7
51 to 100	691	8.4	0.3
101 to 150	552	6.7	0.9
151 to 200	644	7.9	0.5
Over 200	1160	14.1	0.4
Unknown	127	1.5	0.8
TOTAL	8199	100.0	0.5

PRESENT OFFENSE - GENERAL CATEGORIES

Person	5321	64.9	0.6
Sex	497	6.1	0.0
Property	1121	13.7	0.7
Drug	1085	13.2	0.4
Other	164	2.0	0.0
Unknown	11	.1	0.0
TOTAL	8199	100.0	0.5

PRESENT OFFENSE - DRUG

Not Applicable	7137	87.0	0.5
Possession-Heroin	43	.5	0.0
Syringe	1	.0	0.0
Sale of Heroin	97	1.2	1.0
Sale of Narcotic	1	.0	0.0
Intent to Sell	83	1.0	0.0
Controlled Substance	825	10.1	0.4
Other	1	.0	0.0
Unknown	11	.1	0.0
TOTAL	8199	100.0	0.5

<u>PRESENT OFFENSE - PERSON</u>	<u>NUMBER</u>	<u>PERCENT</u>	<u>ESCAPE RATE</u>
Not Applicable	2867	35.0	0.4
Murder 1	556	6.8	0.4
Murder 2	971	11.8	0.2
Manslaughter	704	8.6	0.9
Assault-Intent	164	2.0	1.2
Armed Robbery	1892	23.1	0.
Unarmed Robbery	338	4.1	1.8
Armed Assault	549	6.7	0.0
Unarmed Assault	33	.4	3.0
Extortion	5	.1	0.0
Kidnapping	55	.7	0.0
Conspiracy	4	.0	0.0
Other Person	50	.6	0.0
Unknown	11	.1	0.0
TOTAL	8199	100.0	0.5
 <u>PRESENT OFFENSE - SEX</u>			
Not Applicable	7691	93.8	0.5
Rape	319	3.9	0.0
Assault-Rape	90	1.1	0.0
Rape-Minor	50	.6	0.0
Assault-Rape-Minor	23	.3	0.0
Unnatural Acts	8	.1	0.0
Incest	7	.1	0.0
Unknown	11	.1	0.0
TOTAL	8199	100.0	0.5
 <u>PRESENT OFFENSE - PROPERTY</u>			
Not Applicable	7067	86.2	0.5
Arson	10	.1	0.0
Burglary-Armed	28	.3	0.0
Burglary	398	4.9	1.0
Tools	122	1.5	0.0
Larceny-Person	52	.6	0.0
Larceny	98	1.2	2.0
Vehicle Theft	104	1.3	0.0
Forgery-Uttering	127	1.5	0.8
Common Theft	7	.1	0.0
Stolen Goods	171	2.1	0.6
Property Injuries	4	.0	0.0
Unknown	11	.1	0.0
TOTAL	8199	100.0	0.5

<u>PRESENT OFFENSE - OTHER</u>	<u>NUMBER</u>	<u>PERCENT</u>	<u>ESCAPE RATE</u>
Not Applicable	7990	97.5	0.5
Escapes	46	.6	0.0
Weapons Offenses	51	.6	0.0
Nonsupport	16	.2	0.0
Pimping	6	.1	0.0
Prostitution	10	.1	0.0
Gaming	17	.2	0.0
Vehicle Offense	11	.1	0.0
Contempt of Court	7	.1	0.0
Other	34	.4	0.0
Unknown	11	.1	0.0
TOTAL	8199	100.0	0.5
 <u>MINIMUM SENTENCE IN YEARS</u>			
Less Than 1 Month	1	.0	0.0
Less Than 1 Year	21	.3	0.0
1 Year	22	.3	0.0
2 Years	108	1.3	1.9
3 Years	389	4.7	0.0
4 Years	258	3.1	0.4
5 Years	627	7.6	0.6
6 Years	292	3.6	0.0
7 Years	200	2.4	1.0
8 Years	349	4.3	0.0
9 Years	283	3.5	1.1
10 Years	249	3.0	1.6
11 to 12 Years	203	2.5	1.0
13 to 15 Years	226	2.8	0.4
16 to 19 Years	201	2.5	1.0
20 to 24 Years	25	.3	0.0
25 or More Years	64	.8	0.0
Life	1575	19.2	0.3
Death	1	.0	0.0
Indeterminate	3094	37.7	0.5
Unknown	11	.1	0.0
TOTAL	8199	100.0	0.5

<u>MAXIMUM SENTENCE IN YEARS</u>	<u>NUMBER</u>	<u>PERCENT</u>	<u>ESCAPE RATE</u>
Less Than 1 Month	31	.4	0.0
Less Than 1 Year	166	2.0	1.2
1 Year	327	4.0	0.0
2 Years	718	8.8	0.7
3 Years	42	.5	0.
4 Years	18	.2	0
5 Years	758	9.2	.3
6 Years	356	4.3	1.8
7 Years	537	6.5	0.9
8 Years	243	3.0	0.0
9 Years	123	1.5	0.0
10 Years	1086	13.2	0.2
11 to 12 Years	508	6.2	0.4
13 to 15 Years	577	7.0	1.4
16 to 19 Years	169	2.1	0.6
20 to 24 Years	754	9.2	0.9
25 or More Years	191	2.3	0.5
Life	1583	19.3	0.3
Death	1	.0	0.0
Unknown	11	.1	0.0
TOTAL	8199	100.0	0.5

II) PERSONAL BACKGROUND CHARACTERISTICS

RACE

White	4989	60.8	0.4
Black	2891	35.3	0.6
Other	210	2.6	1.0
Unknown	109	1.3	0.9
TOTAL	8199	100.0	0.5

MARITAL STATUS

Married	2403	29.3	0.6
Single	4144	50.5	0.6
Divorced	624	7.6	0.5
Widowed	246	3.0	0.0
Common Law	85	1.0	0.0
Separated	516	6.3	0.6
Unknown	181	2.2	0.6
TOTAL	8199	100.0	0.5

<u>MILITARY DISCHARGE</u>	<u>NUMBER</u>	<u>PERCENT</u>	<u>ESCAPE RATE</u>
No Service	6080	74.2	0.5
Honorable	538	6.6	0.4
Dishonorable	49	.6	0.0
Bad Conduct	294	3.6	0.7
Medical	35	.4	0.0
Discharge Unknown	770	9.4	0.1
Unknown	433	5.3	0.9
TOTAL	8199	100.0	0.5

PRIOR ADDRESS-SELECTED TOWNS

Boston	3421	41.7	0.5
Brockton	176	2.1	0.6
Cambridge	197	2.4	0.5
Fall River	118	1.4	0.0
Framingham	30	.4	0.0
Holyoke	51	.6	0.0
Lawrence	91	1.1	0.0
Lowell	77	.9	1.3
Lynn	110	1.3	0.0
New Bedford	285	3.5	0.0
Quincy	145	1.8	0.0
Somerville	143	1.7	0.7
Springfield	461	5.6	1.7
Worcester	416	5.1	1.2
Other Mass.	1918	23.4	0.3
Out of State	307	3.7	0.3
Unknown	253	3.1	0.4
TOTAL	8199	100.0	0.5

<u>PRIOR ADDRESS-COUNTY</u>	<u>NUMBER</u>	<u>PERCENT</u>	<u>ESCAPE RATE</u>
Worcester	692	8.4	0.9
Franklin	40	.5	0.0
Middlesex	908	11.1	0.1
Suffolk	3599	43.9	0.5
Norfolk	377	4.6	0.0
Bristol	532	6.5	0
Plymouth	342	4.2	.6
Essex	439	5.4	0.5
Hampshire	36	.5	0.0
Hampden	571	7.0	1.4
Berkshire	62	.8	0.0
Dukes	6	.1	0.0
Barnstable	29	.4	0.0
Nantucket	6	.1	0.0
Out of State	307	3.7	0.3
Unknown	253	3.1	0.4
TOTAL	8199	100.0	0.5

PRIOR ADDRESS SMSA

Boston	5017	61.2	0.5
Brockton	223	2.7	0.9
Fall River	141	1.7	0.0
Fitchburg-Leominster	77	.9	0.0
Lawrence-Haverhill	193	2.4	0.0
Lowell	97	1.2	1.0
New Bedford	333	4.1	0.0
Pittsfield	51	.6	0.0
Providence-Pawtucket-Warwick	39	.5	0.0
Springfield	595	7.3	1.3
Worcester	518	6.3	1.0
Other Mass.	355	4.3	0.3
Out of State	307	3.7	0.3
Unknown	253	3.1	0.4
TOTAL	8199	100.0	0.5

<u>OCCUPATION</u>	<u>NUMBER</u>	<u>PERCENT</u>	<u>ESCAPE RATE</u>
Professional	97	1.2	1.0
Semi-Professional	97	1.2	2.1
Business	424	5.2	0.0
Sales, Clerical	720	8.8	0.3
Manual	4197	51.2	0.6
Services	1763	21.5	0.5
Agriculture	74	.9	0.0
Armed Services	23	.3	0.0
Housekeeper	4	.0	0.0
Student	217	2.6	1.4
Unemployed	205	2.5	0.0
Unknown	378	4.6	0.3
TOTAL	8199	100.0	0.5

TIME AT MOST SKILLED POSITION

Less Than 1 Month	429	5.2	0.5
1 to 2 Months	574	7.0	0.9
3 to 4 Months	940	11.5	0.6
5 to 6 Months	706	8.6	0.4
7 to 9 Months	435	5.3	0.7
10 to 12 Months	677	8.3	0.7
1 to 2 Years	1170	14.3	0.4
2 to 5 Years	1173	14.3	0.6
5 or More Years	829	10.1	0.1
Unknown	1266	15.4	0.4
TOTAL	8199	100.0	0.5

TIME ON JOB OF LONGEST DURATION

Less Than 1 Month	307	3.7	0.3
1 to 2 Months	460	5.6	0.7
3 to 4 Months	811	9.9	1.1
5 to 6 Months	707	8.6	0.4
7 to 9 Months	454	5.5	0.4
10 to 12 Months	536	6.5	1.1
1 to 2 Years	1259	15.4	0.3
2 to 5 Years	1417	17.3	0.6
5 or More Years	1017	12.4	0.1
Unknown	1231	15.0	0.4
TOTAL	8199	100.0	0.5

<u>LAST GRADE COMPLETED</u>	<u>NUMBER</u>	<u>PERCENT</u>	<u>ESCAPE RATE</u>
Third or Less	44	.5	0.0
Fourth	107	1.3	0.9
Fifth	119	1.5	0.0
Sixth	295	3.6	0.7
Seventh	628	7.7	0.5
Eighth	1018	12.4	0.5
Ninth	1541	18.8	0.7
Tenth	1094	13.3	0.5
Eleventh	666	8.1	0.8
High School Graduate	1733	21.1	0.5
Some College	352	4.3	0.3
College Graduate	143	1.7	0.0
Unknown	459	5.6	0.2
TOTAL	8199	100.0	0.5

KNOWN DRUG USE

None	4508	55.0	0.4
Non-Specific	607	7.4	0.5
Heroin	1800	22.0	0.9
Marijuana	579	7.1	0.2
Other	434	5.3	0.2
Unknown	271	3.3	0.0
TOTAL	8199	100.0	0.5

III) CRIMINAL HISTORY VARIABLES

TOTAL NUMBER OF COURT APPEARANCES

First Offense	933	11.4	0.5
Two	553	6.7	0.6
Three	434	5.3	0.5
Four	425	5.2	0.0
Five	555	6.8	0.2
6 to 8	1480	18.1	0.4
9 to 11	1077	13.1	0.2
12 to 15	1055	12.9	0.7
16 to 20	683	8.3	1.2
More Than 20	927	11.3	0.9
Unknown	77	.9	0.0
TOTAL	8199	100.0	0.5

<u>NUMBER OF PRIOR CHARGES FOR PERSON OFFENSES</u>	<u>NUMBER</u>	<u>PERCENT</u>	<u>ESCAPE RATE</u>
None	1157	14.1	0.5
One	1487	18.1	0.4
Two	1420	17.3	0.4
Three	986	12.0	0.4
Four	599	7.3	0.3
Five	638	7.8	0.3
6 to 8	920	11.2	0.7
Over 8	570	7.0	1.2
Unknown	422	5.1	0.7
TOTAL	8199	100.0	0.5

NUMBER OF PRIOR CHARGES FOR PROPERTY OFFENSES

None	2003	24.4	0.3
One	935	11.4	0.5
Two	580	7.1	0.2
Three	684	8.3	0.1
Four	526	6.4	0.2
Five	359	4.4	0.8
6 to 8	817	10.0	0.4
Over 8	1875	22.9	1.0
Unknown	420	5.1	0.7
TOTAL	8199	100.0	0.5

NUMBER OF PRIOR CHARGES FOR SEX OFFENSES

None	6863	83.7	0.5
One	527	6.4	0.4
Two	243	3.0	0.0
Three	67	.8	0.0
Four	28	.3	0.0
Five	27	.3	0.0
6 to 8	18	.2	0.0
Over 8	10	.1	0.0
Unknown	416	5.1	0.7
TOTAL	8199	100.0	0.5

<u>NUMBER OF PRIOR CHARGES FOR NARCOTICS OFFENSES</u>	<u>NUMBER</u>	<u>PERCENT</u>	<u>ESCAPE RATE</u>
None	5037	61.4	0.4
One	783	9.5	0.6
Two	581	7.1	0.9
Three	286	3.5	0.3
Four	248	3.0	0.4
Five	187	2.3	1.
6 to 8	327	4.0	0.6
Over 8	328	4.0	0.3
Unknown	422	5.1	0.7
TOTAL	8199	100.0	0.5

NUMBER OF PRIOR CHARGES FOR DRUNKENNESS OFFENSES

None	5310	64.8	0.5
One	1095	13.4	0.5
Two	453	5.5	0.0
Three	315	3.8	0.6
Four	229	2.8	0.4
Five	94	1.1	1.1
6 to 8	137	1.7	0.7
Over 8	144	1.8	1.4
Unknown	422	5.1	0.7
TOTAL	8199	100.0	0.5

NUMBER OF PRIOR CHARGES FOR ESCAPE OFFENSES

None	7290	88.9	0.5
One	331	4.0	1.2
Two	111	1.4	0.9
Three	37	.5	0.3
Over 8	24	.3	0.0
Unknown	406	5.0	0.7
TOTAL	8199	100.0	0.5

NUMBER OF PRIOR JUVENILE INCARCERATIONS

	<u>NUMBER</u>	<u>PERCENT</u>	<u>ESCAPE RATE</u>
None	6315	77.0	0.4
One	732	8.9	0.3
Two	365	4.5	1.6
Three	180	2.2	1.7
Four	70	.9	4.3
Five	70	.9	2.9
6 or More	52	.6	0.0
Unknown	415	5.1	0.7
TOTAL	8199	100.0	0.5

NUMBER OF PRIOR COUNTY INCARCERATIONS

None	5043	61.5	0.4
One	1569	19.1	0.6
Two	591	7.2	0.8
Three	267	3.3	0.7
Four	155	1.9	0.0
Five	94	1.1	1.1
6 or More	65	.8	0.0
Unknown	415	5.1	0.7
TOTAL	8199	100.0	0.5

NUMBER OF PRIOR STATE OR FEDERAL INCARCERATIONS

None	6078	74.1	0.5
One	946	11.5	0.1
Two	374	4.6	0.3
Three	191	2.3	1.0
Four	132	1.6	2.3
Five	28	.3	3.6
6 or More	35	.4	0.0
Unknown	415	5.1	0.7
TOTAL	8199	100.0	0.5

<u>TOTAL NUMBER OF PRIOR ADULT INCARCERATIONS</u>	<u>NUMBER</u>	<u>PERCENT</u>	<u>ESCAPE RATE</u>
None	4207	51.3	0.5
One	1709	20.8	0.4
Two	798	9.7	0.4
Three	397	4.8	0.8
Four	286	3.5	1.0
Five	132	1.6	1.5
6 or More	255	3.1	0.8
Unknown	415	5.1	0.7
TOTAL	8199	100.0	0.5

<u>TOTAL NUMBER OF ANY PRIOR INCARCERATIONS</u>	<u>NUMBER</u>	<u>PERCENT</u>	<u>ESCAPE RATE</u>
None	3799	46.3	0.3
One	1516	18.5	0.3
Two	842	10.3	0.5
Three	563	6.9	1.4
Four	385	4.7	1.0
Five	173	2.1	2.3
6 Or More	506	6.2	0.6
Unknown	415	5.1	0.7
TOTAL	8199	100.0	0.5

<u>NUMBER OF PRIOR JUVENILE PAROLES</u>	<u>NUMBER</u>	<u>PERCENT</u>	<u>ESCAPE RATE</u>
None	6577	80.2	0.4
One	597	7.3	0.5
Two	295	3.6	1.4
Three	137	1.7	2.2
Over 3	139	1.7	2.2
Unknown	454	5.5	0.7
TOTAL	8199	100.0	0.5

<u>NUMBER OF PRIOR JUVENILE PAROLE VIOLATIONS</u>	<u>NUMBER</u>	<u>PERCENT</u>	<u>ESCAPE RATE</u>
Never Paroled	6577	80.2	0.4
None	632	7.7	0.3
One	305	3.7	2.6
Two	104	1.3	0.0
Three	73	.9	4.1
Over 3	54	.7	0.0
Unknown	454	5.5	0.7
TOTAL	8199	100.0	0.5

<u>NUMBER OF PRIOR ADULT PAROLES</u>	<u>NUMBER</u>	<u>PERCENT</u>	<u>ESCAPE RATE</u>
None	6296	76.8	0.5
One	970	11.8	0.5
Two	249	3.0	0.4
Three	145	1.8	2.1
Over 3	91	1.1	1.1
Unknown	448	5.5	0.7
TOTAL	8199	100.0	0.5

<u>NUMBER OF PRIOR ADULT PAROLE VIOLATIONS</u>	<u>NUMBER</u>	<u>PERCENT</u>	<u>ESCAPE RATE</u>
Never Paroled	6296	76.8	0.5
None	698	8.5	0.1
One	418	5.1	1.2
Two	221	2.7	1.4
Three	32	1.0	1.2
Over 3	36	.4	0.0
Unknown	448	5.5	0.7
TOTAL	8199	100.0	0.5

<u>TOTAL NUMBER OF PRIOR PAROLES</u>	<u>NUMBER</u>	<u>PERCENT</u>	<u>ESCAPE RATE</u>
None	5636	68.7	0.4
One	942	11.5	0.4
Two	505	6.2	0.6
Three	360	4.4	1.7
Over 3	300	3.7	1.3
Unknown	456	5.6	0.7
TOTAL	8199	100.0	0.5

<u>TOTAL NUMBER OF PRIOR PAROLE VIOLATIONS</u>	<u>NUMBER</u>	<u>PERCENT</u>	<u>ESCAPE RATE</u>
Never Paroled	5636	68.7	0.4
None	955	11.6	0.2
One	570	7.0	1.2
Two	282	3.4	1.1
Three	177	2.2	2.3
Over 3	123	1.5	0.8
Unknown	456	5.6	0.
TOTAL	8199	100.0	0.5

AGE AT INCARCERATION

Fifteen	7	.1	0.0
Sixteen	40	.5	5.0
Seventeen	139	1.7	1.4
Eighteen	398	4.9	0.5
Nineteen	533	6.5	0.4
Twenty	608	7.4	0.3
Twenty-One	574	7.0	0.3
Twenty-Two	523	6.4	1.0
Twenty-Three	546	6.7	0.0
Twenty-Four	437	5.3	0.7
Twenty-Five	535	6.5	0.2
26 to 30	1433	17.5	0.7
31 to 40	1619	19.7	0.5
Over 40	579	7.1	0.3
Unknown	228	2.8	0.4
TOTAL	8199	100.0	0.5

AGE AT FIRST ARREST

10 or Less	330	4.0	1.8
Eleven	154	1.9	0.6
Twelve	311	3.8	1.0
Thirteen	446	5.4	0.4
Fourteen	699	8.5	0.6
Fifteen	587	7.2	0.2
Sixteen	590	7.2	0.8
Seventeen	1079	13.2	0.4
Eighteen	851	10.4	0.4
Nineteen	436	5.3	0.5
Twenty	463	5.6	0.4
Twenty-One	437	5.3	0.2
Twenty-Two	205	2.5	0.5
Twenty-Three	282	3.4	0.4
Twenty-Four	181	2.2	0.0
Twenty-Five	188	2.3	0.0
26 to 30	235	2.9	0.9
31 to 40	214	2.6	0.5

AGE AT FIRST ARREST (continued)

	<u>NUMBER</u>	<u>PERCENT</u>	<u>ESCAPE RATE</u>
Over 40	104	1.3	0.0
Unknown	407	4.9	0.7
TOTAL	8199	100.0	0.5

AGE AT FIRST DRUNK ARREST

Not Applicable	5334	65.1	0.5
8 to 14	45	.5	2.2
15 to 17	487	5.9	0.6
18 to 19	554	6.8	0.5
20 to 21	454	5.5	0.9
22 to 24	517	6.3	0.4
25 to 29	198	2.4	0.0
30 to 34	114	1.4	0.9
35 to 39	31	.4	0.0
40 and Over	59	.7	0.0
Unknown	406	5.0	0.5
TOTAL	8199	100.0	0.5

AGE AT FIRST DRUG ARREST

Not Applicable	5123	62.5	0.4
8 to 14	47	.6	0.0
15 to 17	396	4.8	1.0
18 to 19	575	7.0	0.5
20 to 21	427	5.2	0.2
22 to 24	577	7.0	0.9
25 to 29	336	4.1	0.9
30 to 34	179	2.2	0.0
35 to 39	67	.8	0.0
40 and Over	43	.5	0.0
Unknown	429	5.2	0.9
TOTAL	8199	100.0	0.5

<u>TYPE OF FURLOUGH</u>	<u>NUMBER</u>	<u>PERCENT</u>	<u>ESCAPE RATE</u>
Earned	8065	98.4	0.5
Emergency	60	.7	0.0
Escorted	74	.9	0.0
TOTAL	8199	100.0	0.5
<u>MONTH FURLOUGHED</u>			
January	485	5.9	0.8
February	521	6.4	0.8
March	555	6.8	0.7
April	712	8.7	0.4
May	738	9.0	0.3
June	598	7.3	0.3
July	744	9.1	0.4
August	641	7.8	0.8
September	676	8.2	0.6
October	734	9.0	0.5
November	745	9.1	0.3
December	1050	12.8	0.5
TOTAL	8199	100.0	0.5
<u>HOURS FURLOUGHED</u>			
6 or Less	754	9.2	0.0
7 to 12	2705	33.0	0.04
13 to 18	491	6.0	0.2
19 to 24	1788	21.8	0.1
25 to 30	240	2.9	1.7
31 to 36	587	7.2	0.3
37 to 42	96	1.2	1.0
43 to 48	1112	13.6	0.1
Over 48	397	4.8	0.5
Escape or Arrest	29	.4	100.0
TOTAL	8199	100.0	0.5
<u>OUTCOME OF FURLOUGH</u>			
Successful	7992	97.5	0.0
Late Under	165	2.0	0.0
Late Over	13	.2	100.0
Escape	29	.4	100.0
TOTAL	8199	100.0	0.5

<u>INSTITUTION FURLOUGHED FROM</u>	<u>NUMBER</u>	<u>PERCENT</u>	<u>ESCAPE RATE</u>
Walpole	166	2.0	0.0
Concord	352	4.3	1.4
Framingham	775	9.5	1.0
Norfolk	560	6.8	0.2
S.E.C.C.	233	2.8	1.7
Forestry	888	10.8	1.2
Bay State Correction Center	168	2.0	1.2
Drug Rehabilitation	55	.7	0.0
Pre-Release	5002	61.0	0.2
TOTAL	8199	100.0	0.5

FOOTNOTES

1. The Department of Correction furlough statistics define an "escape from furlough" in accordance with Department Order 46701, entitled, "Furloughs-rules and regulations". According to Section 10.4 (c): "Failure of the resident to return to the correctional facility after the two hour period set forth in Section 10.4 (b) shall be considered an escape regardless of prior notification to the facility by the resident that he would be late. The superintendent or his designee shall notify, forthwith, appropriate law enforcement officials of the escapee".
2. Daniel's Test and Mann-Kendall Test were used to determine trend. For the number of escapes, Daniel's Test results are $N=5$; $d=2$; $p < .05$ and the Mann-Kendall Test results are $N=5$, $S=-8$; $p < .05$. The results for the number of individuals furloughed are exactly the same as for the number of escapes. For the number of furloughs, Daniel's Test results are $N=5$; $D=16$; $p > .05$ and the Mann-Kendall Test results are $N=5$, $S=2$; $p > .05$.
3. These figures may differ from prior departmental reports due to multiple counting of individuals furloughed from different institutions.

END