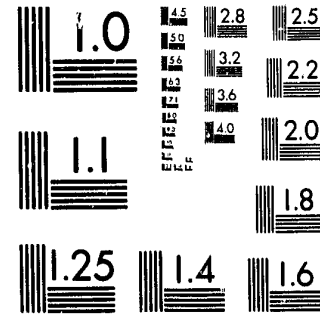


National Criminal Justice Reference Service



This microfiche was produced from documents received for inclusion in the NCJRS data base. Since NCJRS cannot exercise control over the physical condition of the documents submitted, the individual frame quality will vary. The resolution chart on this frame may be used to evaluate the document quality.



MICROCOPY RESOLUTION TEST CHART  
NATIONAL BUREAU OF STANDARDS-1963-A

Microfilming procedures used to create this fiche comply with the standards set forth in 41CFR 101-11.504.

Points of view or opinions stated in this document are those of the author(s) and do not represent the official position or policies of the U. S. Department of Justice.

National Institute of Law Enforcement and Criminal Justice  
Law Enforcement Assistance Administration  
United States Department of Justice  
Washington, D. C. 20531

DATE FILMED

4-9-80

60633

CONTENTS

	Page
Offenders Released from Adult Institutions in 1978, Narrative.....	1-4
Selected Characteristics for First-Released Adult Males: 1974-1978 (Table A)..	2
Selected Characteristics for First-Released Adult Females: 1974-1978 (Table B).	3
Selected Characteristics for Re-Released Adult Males: 1974-1978 (Table C).....	3
Selected Characteristics for Re-Released Adult Females: 1974-1978 (Table D)...	4
Type of Release: 1977 and 1978 Compared (Table 1).....	5
Type of Commitment, Residents First and Re-Released (Table 2).....	6
Race, Residents First and Re-Released (Table 3).....	6
Offense, Residents First and Re-Released (Table 4).....	7-8
County of Conviction, Residents First and Re-Released (Table 5).....	9-10
Average Length of Stay Since Last Admission, Residents First and Re-Released (Table 6).....	11
Average Length of Stay Since Sentence Began, Re-Releases Only (Table 7).....	11
Number of Previous Releases, Residents First and Re-Released (Table 8).....	11
Educational Progress, Residents First-Released (Table 9).....	12
Work Record, Residents First-Released (Table 10).....	12
Loss of Privileges, Residents First-Released (Table 11).....	13
Lockups, Residents First-Released (Table 12).....	13
Group Counseling Sessions, Residents First-Released (Table 13).....	13
Length of Stay by Offense, Residents First-Released (Table 14).....	14
Length of Stay by Length of Sentence, Residents First-Released (Table 15).....	15

**NCJRS**  
AUG 21 1979  
**ACQUISITIONS**

OFFENDERS RELEASED FROM  
DIVISION OF CORRECTIONS ADULT INSTITUTIONS IN 1978

This report describes adult offenders who were first and re-released from Wisconsin adult correctional institutions during calendar year 1978. The information was routinely collected from adult institutional record offices and social service staffs.

Adult correctional institutions of release were Wisconsin State Prison, Wisconsin State Reformatory, Kettle Moraine Correctional Institution, Wisconsin Correctional Institution-Fox Lake, Wisconsin Correctional Institution-Oakhill, Taycheedah Correctional Institution, Wisconsin Correctional Camp System, and Community Corrections Residential Centers. Effective July 1, 1979, names of four of the institutions were changed, as follows: the prison, to Waupun Correctional Institution; the reformatory, to Green Bay Correctional Institution; WCI-Fox Lake, to Fox Lake Correctional Institution, and WCI-Oakhill to Oakhill Correctional Institution.

Tables A, B, C, and D show trends in selected characteristics of adult releases during the past five years. The number of first and re-released adult offenders (both males and females) fluctuated by as much as 17 percent from year to year and by 31 percent during the five-year period. Increasing from 1,016 in calendar year 1974 to 1,228 in 1975, the number of releases rose in each of the next two years, then dropped by 4 percent to 1,471 in 1978.

Adult Male First Releases

As shown in Table A, the 1,178 adult male first releases in 1978 represented the first drop during the five-year period. The low for the period was 740 in 1974, and the high, 1,194 in 1977. In each of the years, about 40 percent of the male first releases had been committed from Milwaukee County.

The median length of stay varied slightly during the period, ranging from 17.8 months in 1975 to 19.3 months in 1978. It rose by 1.2 months between 1977 and 1978.

Average (mean) lengths of stay ranged from 3.5 months to 5.1 months higher than the median lengths of stay. This occurred because small numbers had much longer stays than most of the first releases.

The proportion of male first releases with regular felony commitments remained fairly steady, going from 97.3 percent in 1974 to 98.6 percent in 1978.

Table A  
Selected Characteristics for First-Released Adult Males  
1974 - 1978

Characteristics	Calendar Year				
	1974	1975	1976	1977	1978
Total Adult Males First-Released	740	931	1,115	1,194	1,178
Average (median) length of stay, in months	18.7	17.8	18.7	18.1	19.3
Average (mean) length of stay, in months	23.2	21.9	22.7	23.2	22.8
Percent with regular felony commitments	97.3	98.6	98.6	98.7	98.6
Percent with Milwaukee County commitments	40.7	38.0	39.4	40.2	41.0
Percent with work records reported as satisfactory	57.7	57.6	63.2	54.5	44.4
Percent without loss of privileges reported	47.2	42.7	49.4	48.5	44.0
Percent without lockups reported	61.5	62.7	66.8	65.0	59.5
Percent with group counseling session reported	23.8	28.5	33.9	31.0	41.3

Adult Female First Releases

The number of adult female first releases rose from 55 in 1974 to 80 in 1977, then dropped to 70 in 1978. The proportion of first releases from Milwaukee County ranged from 48 percent to nearly 55 percent, with 48.6 percent of the 1978 first releases from Milwaukee County.

Median lengths of stay increased gradually from 1974 to 1977, ranging from 9.7 months in 1974 to 14.7 months in 1977, then dropped to 13.8 months in 1978. The mean lengths of stay averaged 1.0 months longer than the medians during 1974 to 1977, then dramatically increased to 4.4 months longer in 1978, due to a small number serving considerably longer sentences.

Variations in other characteristics of first-released females are shown in Table B. Of special interest is the fact that nearly 46 percent of the 1978 first releases participated in group counseling and nearly 66 percent had satisfactory work records; these percentages were significantly higher than in the previous four years.

Table B  
Selected Characteristics for First-Released Adult Females  
1974 - 1978

Characteristics	Calendar Year				
	1974	1975	1976	1977	1978
Total Adult Females First-Released	55	64	72	80	70
Average (median) length of stay, in months	9.7	11.7	14.3	14.7	13.8
Average (mean) length of stay, in months	11.0	13.7	15.0	14.8	18.2
Percent with regular felony commitments	96.4	100.0	98.6	100.0	100.0
Percent with Milwaukee County commitments	54.6	48.4	48.6	50.0	48.6
Percent with work records reported as satisfactory	45.5	57.8	50.0	50.0	65.7
Percent without loss of privileges reported	56.3	46.9	61.1	50.0	37.1
Percent without lockups reported	67.3	56.3	65.2	55.4	42.8
Percent with group counseling sessions reported	20.0	12.6	15.4	32.5	45.8

First-Released and Re-Released Adult Males Compared

Trends during the five-year period of 1974-1978 for selected characteristics of first and re-released adult males may be compared in Tables A and C.

Table C shows that the percentage of male re-releases declined each year until edging up to 17.4 percent in 1977, then dropped again to 15.8 percent in 1978. Total males released rose steadily from 955 in 1974 to 1,446 in 1977, then dropped to 1,399 in 1978.

The four calendar years of 1975 through 1978 show less than 0.7 months difference in median lengths of stay for first and re-released males. By contrast, 1977 showed a 5 month difference.

Each year during the five-year period, a higher proportion of re-released males were from Milwaukee County (average 51 percent) than first-released males (average 40 percent).

Table C  
Selected Characteristics for Re-Released Adult Males  
1974 - 1978

Characteristics	Calendar Year				
	1974	1975	1976	1977	1978
Total Adult Males Re-Released	215	229	219	252	221
Percent re-released of total adult male releases	22.5	19.7	16.4	17.4	15.8
Average (median) length of stay, in months	13.6	17.9	17.8	18.6	18.6
Average (mean) length of stay, in months	17.3	20.7	20.6	20.8	20.8
Percent with regular felony commitments	99.4	98.6	96.8	96.8	97.3
Percent with Milwaukee County commitments	53.5	51.5	51.6	50.8	45.7

First-Released and Re-Released Adult Females Compared

Five-year trends for selected characteristics of first and re-released adult females may be compared in Tables B and D. Because few females were re-released annually, their selected characteristics sometimes varied widely from year to year.

The proportion of re-released females among total females released ranged from a high of 9.8 percent in 1974 to a low of 2.8 percent in 1978. The total number of females released annually (first and re-releases) rose from 61 in 1974 to 84 in 1977 before dropping to 72 in 1978.

In each of the five years, the median length of stay of female first releases and re-releases was shorter than the length of stay of their male counterparts. The difference ranged from 3.4 to 13.3 months.

Table D  
Selected Characteristics for Re-Released Adult Females  
1974 - 1978

Characteristics	Calendar Year				
	1974	1975	1976	1977	1978
Total Adult Females Re-Released	6	4	5	4	2
Percent re-released of total adult female releases	9.8	5.9	6.5	4.8	2.8
Average (median) length of stay, in months	6.0	13.5	4.5	N/A	N/A
Average (mean) length of stay, in months	9.7	17.5	5.4	18.2	6.0
Percent with regular felony commitments	100.0	100.0	100.0	100.0	100.0
Percent with Milwaukee County commitments	50.0	0.0	60.0	50.0	0.0

The set of 15 supplemental tables provides detailed information about adults released during calendar year 1978 from Wisconsin adult correctional institutions. Tables 1 through 8 (excluding Table 7) contain details about both first and re-released clients. The remaining tables report on first releases only.

Prepared by: Susan D. Kramer, Planning Analyst  
Statistics and Evaluation Section  
Office of Systems and Evaluation  
Division of Corrections  
Madison, Wisconsin 53701

Table 1  
 TYPE OF RELEASE  
 Residents First and Re-Released from  
 Wisconsin Adult Correctional Institutions  
 1977 and 1978 Compared

TYPE OF RELEASE	Total		Total Males		Total Females	
	1977	1978	1977	1978	1977	1978
<u>Total</u>	<u>1,338</u>	<u>1,471</u>	<u>1,258</u>	<u>1,399</u>	<u>80</u>	<u>72</u>
<u>First Release</u>	<u>1,106</u>	<u>1,245</u>	<u>1,030</u>	<u>1,175</u>	<u>76</u>	<u>70</u>
Adult parole	808	718	754	676	54	42
Mandatory release	248	375	226	357	22	18
Expiration of sentence	6	9	6	8	-	1
Discharge by court	22	41	22	33	-	8
Y.O. parole	14	73	14	73	-	-
Y.O. mandatory release	-	10	-	10	-	-
Y.O. expiration of sentence	3	15	3	14	-	1
Y.O. discharge by court	5	4	5	4	-	-
<u>Re-Release</u>	<u>231</u>	<u>222</u>	<u>227</u>	<u>220</u>	<u>4</u>	<u>2</u>
Adult parole	89	49	88	49	1	-
Mandatory release	105	138	102	136	3	2
Expiration of sentence	31	33	31	33	-	-
Discharge by court	6	2	6	2	-	-
<u>Death</u>	<u>1</u>	<u>4</u>	<u>1</u>	<u>4</u>	<u>-</u>	<u>-</u>

Table 2  
TYPE OF COMMITMENT  
Residents First and Re-Release from  
Wisconsin Adult Correctional Institutions  
in 1978

TYPE OF COMMITMENT	First Releases						Re-Releases					
	Total		Facilities For Men		Facility For Women		Total		Facilities For Men		Facility For Women	
	Number	Percent	Number	Percent	Number	Percent	Number	Percent	Number	Percent	Number	Percent
Total <sup>/1</sup>	1,248	100.0	1,178	100.0	70	100.0	223	100.0	221	100.0	2	100.0
Regular	1,248	100.0	1,178	100.0	70	100.0	222	99.6	220	99.6	2	100.0
Felony	1,232	98.7	1,162	98.6	70	100.0	217	97.3	215	97.3	2	100.0
Misdemeanor	16	1.3	16	1.4	-	-	5	2.3	5	2.3	-	-
Sex Crimes Law	-	-	-	-	-	-	1	0.4	1	0.4	-	-

<sup>/1</sup> Total includes three first-releases and one re-release, all males, whose type of release is listed as "death" in Table 1.

Table 3  
RACE  
Residents First and Re-Released from  
Wisconsin Adult Correctional Institutions  
in 1978

RACE	First Releases						Re-Releases					
	Total		Facilities For Men		Facility For Women		Total		Facilities For Men		Facility For Women	
	Number	Percent	Number	Percent	Number	Percent	Number	Percent	Number	Percent	Number	Percent
Total	1,248	100.0	1,178	100.0	70	100.0	223	100.0	221	100.0	2	100.0
White	779	62.4	741	62.9	38	54.3	139	62.3	139	62.9	-	-
White (Mexican origin)	11	0.9	9	0.8	2	2.9	5	2.2	5	2.3	-	-
Black	420	33.7	394	33.5	26	37.1	69	31.0	67	30.3	2	100.0
Native American	33	2.6	30	2.5	3	4.3	10	4.5	10	4.5	-	-
Other <sup>/1</sup>	5	0.4	4	0.3	1	1.4	-	-	-	-	-	-

<sup>/1</sup> "Other" may include certain Hispanics, Asians and other ethnic groups.

Table 4  
OFFENSE  
Residents First and Re-Released from  
Wisconsin Adult Correctional Institutions  
in 1978

OFFENSE	First Releases						Re-Releases					
	Total		Facilities For Men		Facility For Women		Total		Facilities For Men		Facility For Women	
	Number	Percent	Number	Percent	Number	Percent	Number	Percent	Number	Percent	Number	Percent
<b>Total</b>	<b>1,248</b>	<b>100.0</b>	<b>1,178</b>	<b>100.0</b>	<b>70</b>	<b>100.0</b>	<b>223</b>	<b>100.0</b>	<b>221</b>	<b>100.0</b>	<b>2</b>	<b>100.0</b>
Murder	16	1.3	15	1.3	1	1.4	1	0.5	1	0.5	-	-
First degree	(6)	(0.5)	(5)	(0.4)	(1)	(1.4)	(1)	(0.5)	(1)	(0.5)	(-)	(-)
Second degree	(10)	(0.8)	(10)	(0.9)	(-)	(-)	(-)	(-)	(-)	(-)	(-)	(-)
Third degree	(-)	(-)	(-)	(-)	(-)	(-)	(-)	(-)	(-)	(-)	(-)	(-)
Attempted murder	6	0.5	6	0.5	-	-	-	-	-	-	-	-
Manslaughter	8	0.6	6	0.5	2	2.9	1	0.5	1	0.5	-	-
Negligent homicide	8	0.6	8	0.7	-	-	1	0.5	1	0.5	-	-
Robbery	210	16.8	202	17.2	8	11.4	48	21.5	48	21.7	-	-
Armed	(146)	(11.7)	(141)	(12.0)	(5)	(7.1)	(33)	(14.8)	(33)	(14.9)	(-)	(-)
Unarmed	(64)	(5.1)	(61)	(5.2)	(3)	(4.3)	(15)	(6.7)	(15)	(6.8)	(-)	(-)
Assault	81	6.5	75	6.3	6	8.5	15	6.7	14	6.2	1	50.0
Aggravated	(10)	(0.8)	(9)	(0.7)	(1)	(1.4)	(2)	(0.9)	(2)	(0.8)	(-)	(-)
Simple assault	(47)	(3.8)	(43)	(3.7)	(4)	(5.7)	(7)	(3.1)	(6)	(2.7)	(1)	(50.0)
Mayhem	(3)	(0.2)	(3)	(0.2)	(-)	(-)	(-)	(-)	(-)	(-)	(-)	(-)
Conduct regardless of life	(21)	(1.7)	(20)	(1.7)	(1)	(1.4)	(6)	(2.7)	(6)	(2.7)	(-)	(-)
Negligent use of weapon	(-)	(-)	(-)	(-)	(-)	(-)	(-)	(-)	(-)	(-)	(-)	(-)
Burglary	367	29.4	359	30.5	8	11.4	68	30.5	68	30.8	-	-
Armed	(10)	(0.8)	(10)	(0.8)	(-)	(-)	(1)	(0.5)	(1)	(0.5)	(-)	(-)
Unarmed	(357)	(28.6)	(349)	(29.7)	(8)	(11.4)	(67)	(30.0)	(67)	(30.3)	(-)	(-)
Theft	192	15.3	188	15.9	4	5.7	35	15.6	35	15.7	-	-
Theft, except auto	(107)	(8.5)	(103)	(8.8)	(4)	(5.7)	(17)	(7.6)	(17)	(7.7)	(-)	(-)
Auto theft	(71)	(5.7)	(71)	(6.0)	(-)	(-)	(16)	(7.1)	(16)	(7.2)	(-)	(-)
Receiving stolen property	(14)	(1.1)	(14)	(1.1)	(-)	(-)	(2)	(0.9)	(2)	(0.8)	(-)	(-)

Table 4 (Conclud.d)

OFFENSE	First Releases						Re-Releases					
	Total		Facilities For Men		Facility For Women		Total		Facilities For Men		Facility For Women	
	Number	Percent	Number	Percent	Number	Percent	Number	Percent	Number	Percent	Number	Percent
Fraud	17	1.4	13	1.1	4	5.7	-	-	-	-	-	-
Embezzlement	1	0.1	-	-	1	1.4	-	-	-	-	-	-
Transfer of encumbered property	-	-	-	-	-	-	-	-	-	-	-	-
Forgery	89	7.1	66	5.7	23	31.7	22	9.7	21	9.6	1	50.0
Worthless checks	12	1.0	10	0.9	2	2.9	1	0.5	1	0.5	-	-
Sexual Assault(1st deg.)	9	0.7	9	0.7	-	-	-	-	-	-	-	-
Sexual Assault(2nd deg.)	4	0.3	4	0.3	-	-	-	-	-	-	-	-
Sexual Assault(3rd deg.)	2	0.2	2	0.1	-	-	-	-	-	-	-	-
Sexual Assault(4th deg.)	-	-	-	-	-	-	-	-	-	-	-	-
Rape (incl. attempt)	25	2.0	25	2.2	-	-	-	-	-	-	-	-
Sexual intercourse with child	6	0.5	6	0.5	-	-	3	1.3	3	1.4	-	-
Incest	-	-	-	-	-	-	-	-	-	-	-	-
Indecent behavior w/child	6	0.5	6	0.5	-	-	1	0.5	1	0.5	-	-
Adultery	-	-	-	-	-	-	-	-	-	-	-	-
Sexual perversion(sodomy)	2	0.2	2	0.1	-	-	-	-	-	-	-	-
Lewd and lascivious behavior	-	-	-	-	-	-	1	0.5	1	0.5	-	-
Obscene matter	-	-	-	-	-	-	-	-	-	-	-	-
Drug law violations	96	7.7	90	7.8	6	8.5	6	2.7	6	2.7	-	-
Weapons (concealed)	1	0.1	1	0.1	-	-	1	0.5	1	0.5	-	-
Escape	3	0.2	3	0.2	-	-	4	1.8	4	1.8	-	-
Arson	16	1.3	15	1.3	1	1.4	-	-	-	-	-	-
Conspiracy, solicitation, bribery	1	0.1	-	-	1	1.4	1	0.5	1	0.5	-	-
Extortion	1	0.1	1	0.1	-	-	-	-	-	-	-	-
Kidnapping, abduction	4	0.3	3	0.2	1	1.4	-	-	-	-	-	-
Malicious dest. of prop.	4	0.3	3	0.2	1	1.4	2	0.9	2	0.8	-	-
Abandonment, non-support	5	0.4	5	0.4	-	-	2	0.9	2	0.8	-	-
Prostitution, pandering, commercialized vice	2	0.2	2	0.1	-	-	-	-	-	-	-	-
All other offenses	54	4.3	53	4.6	1	2.9	10	4.4	10	4.5	-	-



Table 5  
COUNTY OF COMMITMENT  
Residents First and Re-Released from  
Wisconsin Adult Correctional Institutions  
in 1978

COUNTY OF COMMITMENT	Total Releases	First Releases			Re-Releases		
		Total	Facilities For Men	Facility For Women	Total	Facilities For Men	Facility For Women
<b>Total</b>	<b>1,471</b>	<b>1,248</b>	<b>1,178</b>	<b>70</b>	<b>223</b>	<b>221</b>	<b>2</b>
Adams	6	6	5	1	-	-	-
Ashland	10	9	9	-	1	1	-
Barron	16	11	11	-	5	5	-
Bayfield	3	3	3	-	-	-	-
Brown	30	26	23	3	4	4	-
Buffalo	-	-	-	-	-	-	-
Burnett	3	3	3	-	-	-	-
Calumet	-	-	-	-	-	-	-
Chippewa	8	7	7	-	1	1	-
Clark	4	4	4	-	-	-	-
Columbia	8	7	7	-	1	1	-
Crawford	5	5	5	-	-	-	-
Dane	72	57	54	3	15	15	-
Dodge	12	7	7	-	5	5	-
Door	3	3	2	1	-	-	-
Douglas	29	25	24	1	4	4	-
Dunn	8	7	7	-	1	1	-
Eau Claire	20	16	16	-	4	4	-
Florence	2	1	1	-	1	1	-
Fond du Lac	18	14	13	1	4	4	-
Forest	2	1	1	-	1	1	-
Grant	19	18	17	1	1	1	-
Green	4	3	3	-	1	1	-
Green Lake	8	8	7	1	-	-	-
Iowa	4	4	4	-	-	-	-
Iron	-	-	-	-	-	-	-
Jackson	2	1	1	-	1	1	-
Jefferson	9	8	7	1	1	1	-
Juneau	8	8	8	-	-	-	-
Kenosha	68	57	54	3	11	10	1
Kewaunee	-	-	-	-	-	-	-
LaCrosse	21	20	20	-	1	1	-
Lafayette	1	1	-	1	-	-	-
Langlade	6	5	5	-	1	1	-
Lincoln	7	7	7	-	-	-	-
Manitowoc	7	7	7	-	-	-	-
Marathon	28	25	24	1	3	3	-
Marinette	11	11	11	-	-	-	-
Marquette	-	-	-	-	-	-	-
Menominee	1	1	1	-	-	-	-

Table 5 (Concluded)

COUNTY OF COMMITMENT	Total Releases	First Releases			Re-Releases		
		Total	Facilities For Men	Facility For Women	Total	Facilities For Men	Facility For Women
Milwaukee	618	517	483	34	101	101	-
Monroe	5	5	5	-	-	-	-
Oconto	7	6	6	-	1	1	-
Oneida	10	8	7	1	2	2	-
Outagamie	13	9	9	-	4	4	-
Ozaukee	3	3	3	-	-	-	-
Pepin	-	-	-	-	-	-	-
Pierce	3	3	3	-	-	-	-
Polk	11	11	11	-	-	-	-
Portage	9	7	7	-	2	2	-
Price	3	2	2	-	1	1	-
Racine	84	76	73	3	8	7	1
Richland	5	2	2	-	3	3	-
Rock	57	48	45	3	9	9	-
Rusk	7	6	5	1	1	1	-
St. Croix	7	6	6	-	1	1	-
Sauk	9	8	8	-	1	1	-
Sawyer	3	3	3	-	-	-	-
Shawano	11	7	7	-	4	4	-
Sheboygan	25	22	19	3	3	3	-
Taylor	4	3	3	-	1	1	-
Trempealeau	-	-	-	-	-	-	-
Vernon	6	6	6	-	-	-	-
Vilas	2	2	2	-	-	-	-
Walworth	12	10	9	1	2	2	-
Washburn	3	3	3	-	-	-	-
Washington	10	9	9	-	1	1	-
Waukesha	24	21	19	2	3	3	-
Waupaca	5	4	4	-	1	1	-
Waushara	6	6	5	1	-	-	-
Winnebago	19	14	12	2	5	5	-
Wood	11	9	8	1	2	2	-
Unknown	16	16	16	-	-	-	-

Table 6  
AVERAGE LENGTH OF STAY SINCE LAST ADMISSION (IN MONTHS)  
Residents First and Re-Released from  
Wisconsin Adult Correctional Institutions  
in 1978

TYPE OF RELEASE	Total		Facilities for Men		Facility for Women	
	Number	Percent	Number	Percent	Number	Percent
<u>All Releases</u>						
Mean	21.9		22.1		17.9	
Median	17.9		18.1		13.0	
<u>First Releases</u>						
Mean	22.5		22.8		18.2	
Median	18.5		19.3		13.8	
<u>Re-Releases</u>						
Mean	18.5		18.6		6.0	
Median	12.3		13.0		N/A	

Table 7  
AVERAGE LENGTH OF STAY SINCE SENTENCE BEGAN  
(IN MONTHS FOR RE-RELEASES ONLY)  
Residents Re-Released from  
Wisconsin Adult Correctional Institutions  
in 1978

TYPE OF RELEASE	Total		Facilities for Men		Facility for Women	
	Number	Percent	Number	Percent	Number	Percent
<u>Re-Releases</u>						
Mean	52.6		52.9		20.0	
Median	43.3		44.0		N/A	

Table 8  
NUMBER OF PREVIOUS RELEASES  
Residents First and Re-Released From  
Wisconsin Adult Correctional Institutions  
in 1978

NUMBER OF PREVIOUS RELEASES	Total		Facilities for Men		Facility for Women	
	Number	Percent	Number	Percent	Number	Percent
<u>Total</u>	1,471	100.0	1,399	100.0	72	100.0
0	1,248	84.8	1,178	84.1	70	97.2
1	86	5.8	85	6.1	1	1.4
2	108	7.4	107	7.7	1	1.4
3	15	1.0	15	1.1	-	-
4	9	0.6	9	0.6	-	-
5	4	0.3	4	0.3	-	-
6	1	0.1	1	0.1	-	-

Table 9  
EDUCATIONAL PROGRESS  
Residents First-Released from  
Wisconsin Adult Correctional Institutions  
in 1978

EDUCATIONAL PROGRESS	Total		Facilities for Men		Facility for Women	
	Number	Percent	Number	Percent	Number	Percent
<u>Total</u>	1,248	100.0	1,178	100.0	70	100.0
No educational participation	580	46.5	561	47.6	19	27.2
<u>Progress</u>	648	51.9	598	50.8	50	71.4
Excellent	74	5.9	67	5.7	7	10.0
Good	370	29.7	339	28.8	31	44.3
Fair	161	12.9	153	13.0	8	11.4
Poor	43	3.4	39	3.3	4	5.7
<u>No evaluation</u>	20	1.6	19	1.6	1	1.4

Table 10  
WORK RECORD  
Residents First-Released from  
Wisconsin Adult Correctional Institutions  
in 1978

WORK RECORD	Total		Facilities for Men		Facility for Women	
	Number	Percent	Number	Percent	Number	Percent
<u>Total</u>	1,248	100.0	1,178	100.0	70	100.0
<u>No work record</u>	180	14.5	172	14.6	8	11.4
<u>Work record</u>	1,009	80.8	951	80.7	58	82.9
Satisfactory	569	45.6	523	44.4	46	65.7
Mostly satisfactory	226	18.1	217	18.4	9	12.9
Neither satisfactory nor unsatisfactory	136	10.9	134	11.4	2	2.9
Mostly unsatisfactory	58	4.6	58	4.9	-	-
Unsatisfactory	20	1.6	19	1.6	1	1.4
<u>No evaluation</u>	59	4.7	55	4.7	4	5.7

Table 11  
LOSS OF PRIVILEGES  
Residents First-Released from  
Wisconsin Adult Correctional Institutions in 1978

NUMBER OF PRIVILEGE LOSSES	Total		Facilities for Men		Facility for Women	
	Number	Percent	Number	Percent	Number	Percent
Total	1,248	100.0	1,178	100.0	70	100.0
None	544	43.6	518	44.0	26	37.1
1	124	9.9	113	9.6	11	15.7
2	112	9.0	106	9.0	6	8.6
3	81	6.5	78	6.6	3	4.3
4	59	4.7	56	4.8	3	4.3
5-9	156	12.5	149	12.6	7	10.0
10-14	81	6.5	75	6.4	6	8.6
15-19	37	3.0	34	2.9	3	4.3
20-24	21	1.7	17	1.4	4	5.7
25 or more	33	2.6	32	2.7	1	1.4

Table 12  
LOCKUPS  
Residents First-Released from  
Wisconsin Adult Correctional Institutions in 1978

NUMBER OF LOCKUPS	Total		Facilities for Men		Facility for Women	
	Number	Percent	Number	Percent	Number	Percent
Total	1,248	100.0	1,178	100.0	70	100.0
None	731	58.6	701	59.5	30	42.8
1	191	15.3	184	15.6	7	10.0
2	105	8.4	96	8.1	9	12.9
3	67	5.4	61	5.2	6	8.6
4	48	3.8	47	4.0	1	1.4
5	24	1.9	21	1.8	3	4.3
6 or more	82	6.6	68	5.8	14	20.0

Table 13  
GROUP COUNSELING SESSIONS  
Residents First-Released from  
Wisconsin Adult Correctional Institutions in 1978

GROUP COUNSELING SESSIONS	Total		Facilities for Men		Facility for Women	
	Number	Percent	Number	Percent	Number	Percent
Total	1,248	100.0	1,178	100.0	70	100.0
None	730	58.5	692	58.7	38	54.2
1-5	149	11.9	136	11.6	13	18.5
6-10	93	7.5	87	7.4	6	8.6
11-15	89	7.1	86	7.3	3	4.3
16-20	76	6.1	74	6.3	2	2.9
21-25	28	2.2	25	2.1	3	4.3
26-30	22	1.8	22	1.9	-	-
31-35	25	2.0	22	1.9	3	4.3
36-40	4	0.3	4	0.3	-	-
41 or more	32	2.6	30	2.5	2	2.9

Table 14  
LENGTH OF STAY BY OFFENSE  
Average (Mean) Length of Stay<sup>/a</sup> (in months) by  
Offense of Residents First-Released from  
Wisconsin Correctional Institutions in 1978

OFFENSE	Total	Facilities for Men	Facility for Women
All Offenses	22.6	22.9	18.2
Murder, first degree	115.0	102.6	177.0
Murder, second degree	51.8	51.8	-
Attempted murder	47.7	47.7	-
Manslaughter	31.0	36.8	13.5
Negligent homicide	19.0	19.0	-
Armed robbery	33.3	33.6	26.8
Unarmed robbery	26.5	26.9	18.3
Aggravated assault	14.7	14.9	13.0
Simple assault	19.8	20.1	16.5
Conduct regardless of life.	25.4	25.2	31.0
Armed burglary	35.4	35.4	-
Unarmed burglary	19.5	19.5	18.9
Theft, except auto	19.1	19.2	15.8
Auto theft	20.4	20.4	-
Receiving stolen property	23.5	23.5	-
Fraud	15.8	17.2	11.0
Forgery	19.3	20.3	16.6
Worthless checks	13.9	13.6	15.5
Rape (including attempt)	31.8	31.8	-
Sexual assault (1st degree)	13.6	13.6	-
Sexual intercourse with child	21.8	21.8	-
Indecent behavior with child	35.0	35.0	-
Drug offenses	17.5	18.4	4.7
Arson	18.4	19.1	7.0
Abandonment (non-support)	10.2	10.2	-
All other offenses	20.0	20.1	18.0

<sup>/a</sup> Averages were not computed if there were fewer than 5 cases in the total of a particular offense category.

Table 15  
 LENGTH OF STAY BY LENGTH OF SENTENCE  
 Average (Mean) Length of Stay/a (in months) by  
 Length of Sentence of Residents First Released from  
 Wisconsin Adult Correctional Institutions in 1978

LENGTH OF SENTENCE	Total	Facilities for Men	Facility for Women
All Sentences	22.8	22.8	18.2
One year	9.0	9.5	6.4
Fifteen months	11.3	11.3	-
Eighteen months	11.7	11.9	8.8
Two years	14.9	15.0	12.0
Two and one-half years	17.5	17.5	-
Three years	19.9	19.9	18.7
Three and one-half years	20.6	20.6	-
Four years	23.7	23.7	-
Four and one-half years	28.4	28.4	-
Five years	28.6	28.9	24.3
Five and one-half years	24.3	24.3	-
Six years	29.2	29.2	-
Six and one-half years	25.8	25.8	-
Seven years	31.7	31.7	-
Eight years	35.3	35.3	-
Nine years	36.5	36.5	-
Ten years	44.0	44.0	-
Fifteen years	55.9	55.9	-
Twenty years	71.5	71.5	-

/a An average was not computed if there were fewer than 5 in a length of sentence category.

**END**