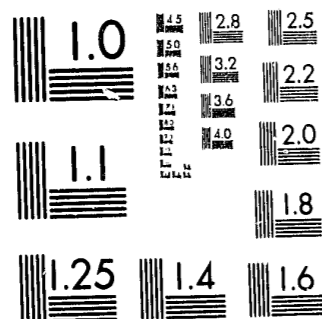


National Criminal Justice Reference Service



This microfiche was produced from documents received for inclusion in the NCJRS data base. Since NCJRS cannot exercise control over the physical condition of the documents submitted, the individual frame quality will vary. The resolution chart on this frame may be used to evaluate the document quality.



MICROCOPY RESOLUTION TEST CHART
NATIONAL BUREAU OF STANDARDS-1963-A

Microfilming procedures used to create this fiche comply with the standards set forth in 41CFR 101-11.504.

Points of view or opinions stated in this document are those of the author(s) and do not represent the official position or policies of the U. S. Department of Justice.

National Institute of Law Enforcement and Criminal Justice
Law Enforcement Assistance Administration
United States Department of Justice
Washington, D. C. 20531

DATE FILMED

3-26-80

EVALUATION OF JOLT AS A DETERRENCE PROGRAM

James C. Yarborough

July 18, 1979

Program Bureau
Michigan Department of Corrections

60290

Acknowledgments

Commendations are extended to all program sponsors, particularly members of the resident chapter of the Jackson Jaycees, and especially the JOLT Committee, for their display of concern and use of talents and other resources in promoting and operating JOLT. Special gratitude is expressed to the young men and their chaper ons who participated in JOLT, and to members of the Program Bureau staff who assisted in preparation of this report. Responsibility for the report, however, remains with the author.

Abstract

This is a report on an evaluation of the JOLT program, a criminal deterrence program operated at the State Prison of Southern Michigan at Jackson, by members of the JOLT Committee. Eligible young men were randomly assigned to either an experimental group which participated in JOLT, or a control group which did not. After comparing groups on a number of pre-JOLT variables and finding no significant differences between experimentals and controls, post-JOLT offense and detention behavior during three and six month follow-up periods were examined. Few significant differences were found between the groups, and those which were discovered tend to reflect the influence of living in an intact family situation and involvement in usual education and employment roles, rather than JOLT.

EVALUATION OF JOLT AS A DETERRENCE PROGRAM

TABLE OF CONTENTS

Acknowledgments	i
Abstract	ii
Introduction	1
Previous Findings	1
Program Description	2
Program Process	3
Evaluation Method	4
The Sample	5
Findings	6
Pre-JOLT Comparison	6
Post-JOLT Comparison at Three Months	7
Post-JOLT Comparison at Six Months	8
Summary and Conclusion	11
References	
Appendix (Tables 1 - 34)	

Introduction

The purpose of this evaluation is to determine whether the JOLT program is an effective method to deter juvenile delinquents from further criminal offenses. A definitive answer to that question is needed so that policy makers, program sponsors, and interested citizens can reach appropriate decisions on continuation or expansion of the program.

Previous Findings

In addition to JOLT, there are at least five similar programs reported to be operating at correctional facilities around the country at this time.¹ Though there are certain to be some important differences among these various programs, all of them presumably have the same goal in mind, namely, to steer youngsters away from crime.

While most such programs have not been subjected to objective scrutiny or, if so, their results have not been widely disseminated, probably the most popular of these, the Juvenile Awareness Program depicted in the film documentary, "Scared Straight," and operated by the Lifers Group at the State Prison of New Jersey, Rahway, has been the focus of recent research. In a study conducted by Dr. James Finkenauer, School of Criminal Justice at Rutgers University, it was found that, "more experimentals than controls committed subsequent offenses and their mean seriousness of subsequent delinquency scores was significantly higher."² Thus, the Juvenile Awareness Program apparently had a detrimental rather than beneficial effect. It is not the only such program to have done so.

In 1967, a brief report was issued on a program in which young delinquents visited the Ionia Reformatory in Michigan and talked with a group of young lifers. Though the total sample was relatively small (N = 58) a six month follow-up of experimentals and controls found that a higher percentage of the former became involved in further delinquency than the latter.³

Why the Rahway and Ionia programs would result in apparent harm is a matter of speculation. Perhaps as Dr. Finkenauer suggests, a "delinquency fulfilling prophecy" is set in motion by involvement in such programs.⁴ While we cannot address this issue, we can respond to the questions: Is JOLT different? Does JOLT deter?

Program Description

JOLT, an acronym for Juvenile Offenders Learn Truth, has been in operation at the State Prison of Southern Michigan at Jackson since May, 1978. The program grew out of a proposal developed by the prison Jaycee Chapter. Though sponsored by the Jaycees and interested local governmental officials, the program is actually administered by a JOLT Committee whose members are residents at Jackson Prison. The Michigan Department of Corrections provides access for the program and prison staff members serve as liaison between the JOLT Committee and outside groups, and provide coverage during visits of JOLT groups to the prison.

Though juvenile courts in several counties and other state and local agencies have demonstrated interest in becoming involved in JOLT, three juvenile courts were initially selected to participate in the program. They were in Wayne, Washtenaw, and Jackson counties. Oakland County's juvenile court has more recently become involved. Restrictions on the number and type of agency selected for involvement were based on two concerns: one, that the number and size of groups visiting the prison be kept small so as not to pose a management problem; two, that research on program impact would be facilitated (the Corrections Commission was concerned to evaluate that impact before deciding on any expansion).

JOLT visits usually occur twice weekly, on Tuesday and Thursday mornings, and typically last about two and one-half hours. Group size is usually between four and six youngsters and their parents and other escorts who are usually juvenile court workers.

Three conditions of eligibility were set for youngsters participating: (a) they had to be male, (b) had to have had an arrest or petition for an offense that would be criminal if committed by an adult, and (c) had to be accompanied to the prison by a parent or legal guardian. The remaining condition, already referred to, was that the JOLT program be evaluated so that its efficacy would be determined based on empirical evidence rather than impressions.

Program Process

Upon arrival at the prison, JOLT visitors are met by members of the staff and are checked in as are all other visitors. The entire group is then taken on a brief tour to a tower from which the entire prison grounds may be seen. The group then moves to the Reception and Guidance Center where youngsters are separated from their parents and other escorts. After being searched and fingerprinted, each youngster is escorted to an empty cell where he spends several minutes alone but subject to the verbal treatment — some staged, some natural — usually accorded to any other young, new prisoner. From an undetected vantage point, parents and other escorts observe the youngsters for the duration of their placement and stay in the cells. From the cell the youngsters are taken to a room where the intensive confrontation session takes place.

The intensive confrontation session is attended only by the youngsters and members of the JOLT Committee, as well as staff members who are always on hand for security reasons. The session, which is tape-recorded, is somewhat like the session depicted in the film documentary, "Scared Straight," as far as format and structure are concerned. However, differences do exist which primarily involve language and tactics. For example, while "street language" is used during JOLT sessions, it does not contain the extreme obscenities used in the New Jersey program. Gross verbal intimidation is also avoided. The message being delivered, however, is essentially the same: if you continue to engage in delinquent and criminal behavior, you may in time find yourself a prisoner confined in an institution like Jackson, and that the "pains of imprisonment" and their consequences will then become reality of considerable duration rather than a momentary pretense.

While the intensive confrontation session with youngsters is underway, parents and other escorts are meeting with other members of the JOLT Committee who describe the experience their youngsters are being put through, how they themselves came to be incarcerated and what it is like. Questions are answered and issues or problems that arise are discussed. When both sessions are over, the visitors are reunited and the visit is concluded.

Evaluation Method

The research design employed in this evaluation is sometimes referred to as a static group comparison.⁵ It may be represented symbolically in the following manner,

$$\begin{array}{c} X0_1 \\ \\ 0_2 \end{array}$$

where X indicates exposure to the program, and 0₁ and 0₂ indicates measurement or observation of the exposed group, referred to as experimental, and the unexposed group, referred to as control, respectively. The strength of this design was enhanced by assigning eligible youngsters to either the experimental or control group on a purely random basis. While juvenile courts referred whoever they chose within the pre-established conditions affecting sex and prior criminal offenses, a great potential for systematic bias between the groups existed without the use of random assignment. With random assignment, group composition was left to chance, which means that the two groups should be very nearly equal in all important respects.

The actual assignment procedure worked as follows. After having identified a pool of eligible youngsters — usually eight or more — the local JOLT coordinator called their case identification number into the research office. There, the numbers were assigned to experimental or control condition using a standard random numbers table. Group assignment was then recorded and called back to the local coordinator who then proceeded to make the necessary arrangements for those selected to visit the prison.

The post-JOLT follow-up period needed to be long enough to allow for new criminal behavior to be exhibited yet short enough so that results could be produced as early as possible. It was decided that a cohort follow-up would be used in which a standard amount of time following JOLT would be the focus of observation for each case. Based on the rate of case build-up, a decision was made to include in the evaluation only those youngsters who had been assigned to the program by the end of 1978. Since data collection was planned to begin around April, 1979, a three month follow-up was established for each case in the study. To focus upon longer term effects, a six month follow-up was also established for cases assigned to the program by the end of September, 1978.

Data were collected during April and May, 1979, by members of the research staff of the Program Bureau, Michigan Department of Corrections, after having been authorized access by local juvenile court judges to necessary court records. With a few exceptions, all data were extracted from official court records. In the exceptions, portions of records were unavailable primarily because information had not been transcribed. This information was almost invariably related to the youngsters' social history. In those instances, the court worker responsible for a given case was contacted and used as the source of information.

Anticipating that variations would occur in recording procedures used by each court and sometimes in the actual information recorded, visits were made to each court by the research staff for the purpose of becoming familiar with the layout and content of case files. It was expected that the information being sought would indeed be available for the research instrument had previously been shared with representatives of each court and had been revised in light of their feedback. Intercoder reliability was checked at each court and met or exceeded .90 before actual coding began.

The Sample

Two-hundred and eighty-seven cases were available for study. They were distributed by county as follows: Wayne, 215; Washtenaw, 32; Jackson, 39. As shown in Table 1, almost one half of those cases assigned to the experimental group did not make a JOLT visit by the cut off date of December, 1978, for the reasons shown in Table 2. Therefore, for the sake of coding efficiency, and given the relatively large number of cases from Wayne County, a decision was made to increase the rate of data collection by eliminating one half of the control group in Wayne County from the study.

During data analysis, it was discovered that one case from Jackson had been referred to JOLT who was in fact ineligible because no prior criminal offense had occurred. This case was excluded from the study resulting in a total study sample of 227 cases, distributed across counties as shown in Table 1.

Findings

Pre-JOLT Comparison

The random assignment procedure was employed to eliminate any systematic bias that may have otherwise been introduced between the experimental and control groups. A central question remained, however, as to whether the sought-after comparability between groups was indeed achieved. To answer this broad question, a series of analyses were performed on all important variables which characterized youngsters prior to their referral to JOLT. Those analyses are divided into the following areas: demographic and social background; prior offense history, prior conviction history; prior detention history. Experimental cases who did not visit the prison, referred to as experimental no goes, are included in all pre-JOLT analyses for comparative purposes.

A. Demographic and Social Background

Variables considered in this section were as follows: age at assignment; age at first offense; race; usual residence; major activity; and involvement in therapy.

Overall, age at assignment was found to range from 13 to 17 years old, with a mean of 15.5. As shown in Table 3, analysis of variance results showed the groups to be different to a degree which approached statistical significance. However, when experimental no goes were excluded from consideration, the near significance observed earlier disappeared leaving one to conclude that there was no difference between experimental and control groups.

Examination of Tables 4 through 8 reveals that the groups were not significantly different from each other on any of the remaining demographic or social background variables.

B. Prior Offense History

Tables 9 through 14 contain results of analysis which focused on prior offense variables. Variables considered here include the following: number of petitions; number of status offenses; number of criminal offenses; number of weeks between youngsters' most recent criminal offense and JOLT; whether at least one of any three most recent offenses were against person, property, or some other violation; nature of the most recent offense prior to JOLT. Examination of results shows that the three groups were not significantly different on any of these variables.

C. Prior Conviction History

Variables considered in this section included the following: number of prior convictions; number of weeks between most recent prior conviction and JOLT; nature of most recent prior conviction.

Table 15 shows that, overall, the number of prior convictions ranged from 0 to 8 with a mean of approximately 2. Analysis of variance results indicate that a significant difference does indeed exist among the three groups ($P = .048$). However, when experimental no goes were excluded from consideration, the significance of group differences again disappeared, leaving one to conclude that the experimental and control groups were comparable.

The analysis involving the number of weeks between the most recent conviction and JOLT, shown in Table 16, is similar to that for number of convictions in that experimental no goes were found to account for a significant difference between groups which, once they were removed from analysis, also attenuated.

There were no reliable differences between groups in the types of offense for which youngsters were most recently convicted, as demonstrated in Table 17. The majority of each group had a conviction for property offenses.

D. Detention History

Table 18 shows an extremely large range in the number of days spent in detention — 0 to 255, with the average being approximately 14.6. The difference between groups is not significant.

Post-JOLT Comparison at Three Months

Post-JOLT comparisons for the three- and six-month follow-up periods will focus only on offense and detention experiences for experimental and control groups.

A. Offense

The range of petitions entered during the three-month follow-up was from 0 to 6, with a mean of .349. The percentage of experimentals and controls who had no subsequent petitions were almost identical — 79.7% versus 78.9%, respectively, as shown in Table 19 B.

The criterion of success for JOLT was that the experimental group commit significantly fewer criminal offenses than the control group. Judging from the results shown in Table 20 B JOLT was not a successful deterrent. This is demonstrated by the fact that 80% and 81% of the experimentals and controls, respectively, had no subsequent offenses at three months.

If the program did not reduce the number of criminal offenses committed by experimentals in comparison to controls, then, perhaps it may have been successful in delaying their commission. Table 21 addresses this possibility. Contrary to what might have been expected, experimentals were not slower to commit subsequent offenses; as a matter of fact, they were more apt to commit their offenses slightly earlier than controls. This difference, however, is not significant.

Considering any of the first three offenses charged during the three-month follow-up, Table 22 shows that there is essentially no difference between groups with respect to type of offense charged. It should be noted here that two experimental cases from Wayne County had petitions which reportedly resulted in their cases being waived from juvenile to adult (criminal) court. The petition for one case had the following offenses charged: felonious assault, robbery armed, and possession of a firearm in the commission of a felony. The second case had a petition in which the offenses charged were homicide and assault.

Based on the results of the three-month follow-up, it appears then that JOLT neither reduces nor delays the occurrence of offenses; it is also apparent that the program does not "cause" youngsters to engage in types of offenses which are different from those charged against their control counterparts.

B. Detention

Consideration was given to the number of days spent in detention and the amount of time which transpired between JOLT and placement in detention. Results, shown in Tables 23 and 24, respectively, indicate that no significant differences between groups emerge on these variables.

Post-JOLT Comparison at Six Months

The analyses reported in this section parallel those reported on in the immediately preceding section. The difference is that results reported here were derived from the six- rather than three-month follow-up; hence, the number of applicable cases reduces to 84.

A. Offense

The percentage of youngsters who had no subsequent petitions at six months was less than at three months as might be expected. The similarity between experimentals and controls observed at three months was repeated almost exactly at six months with 69% of the experimentals and 67% of the controls having no subsequent petitions, as shown in Table 25 B.

Table 26 A shows results for the number of offenses charged. The range ran from 0 to 7 with the mean being .57. Sixty-nine percent of experimentals versus 71% of controls had no subsequent offense charged at the end of six months, as shown in Table 26 B. Since there were hardly any differences not to mention significant differences between experimental and control groups during either follow-up period, it can be concluded that JOLT has neither short term nor longer term deterrent effect.

Although the range in the number of weeks between JOLT and the date of the earliest offense about doubled from the three- to six-month follow-up, the mean number of weeks apparently did not keep pace, as shown in Table 27. Whereas the controls had a very slight advantage at three months, this situation was reversed at six months with experimentals being slightly favored. However, the magnitude of group difference is so very slight that it is inconsequential.

Although the cell sizes are too small to be reliable, results in Table 28 indicate that there is essentially no difference in the incidence of person, property, or other type of offenses by group. This result also obtained at three months.

B. Detention

Examining Table 29, one finds that the mean number of days in detention at six months increased by about 3 over the three-month level. However, whereas experimentals enjoyed about a 2 day edge over controls at three months, this difference disappears at six months and a reversal may also be taking place. Again, group differences are so slight as to be of no consequence.

As was the case at three months, there is no difference in the length of time between JOLT and placement in detention at six months, as the results in Table 30 show.

Other Findings

As part of an effort to search as diligently as possible for circumstances under which JOLT might prove to have some impact and to more completely exhaust the explanatory potential inherent in the current data base, another series of analyses were undertaken. Essentially an extension of the analyses performed for post-JOLT comparisons, the new series first analyzed the effects of group status upon incidence of post-JOLT offenses and then analyzed the effects due to an array of other pre- and post-JOLT variables introduced one at a time. They included demographic, prior social characteristics, prior criminal offense, conviction, and detention histories, as well as some post-JOLT background variables such as usual residence, major activity, and therapeutic involvement. Analysis of variance procedures were employed which used a hierarchical approach in performing the analyses.⁶ This means, for example, that the effect of group status upon number of criminal offenses is assessed first without adjusting for the effects of other variables. The effect due to a second variable such as number of prior offenses is assessed while adjusting for the effects of group status.

Of the entire series of analyses performed in this manner, only two were found to have effects which were statistically significant. Overall, the amount of variation in number of offenses at three months which was "explained" by a model consisting of group status and usual residence during the three-month follow-up together with their interaction was statistically significant, as shown in Table 31. Similarly, the amount of variation in number of offenses at six months which was "explained" by a model consisting of group status and post-JOLT major activity together with their interaction was found to be statistically significant, as shown in Table 32. In both instances, this significance is accounted for by the effects due to interaction among the explanatory variables.

For example, youngsters who are control group members who reside with both parents are favored to have fewer criminal offenses at three months. Likewise, control group members whose major activity is school or work are somewhat favored to have fewer offenses at six months than other combinations of groups.

Parental Chaperon

As mentioned in the section describing the JOLT program, one condition for visiting the prison was that the youngster had to be accompanied by a parent unless he had no parent, in which case he would be accompanied by his legal guardian. Some exceptions were made to this condition when situations appeared to legitimately warrant an exception. Of the 79 experimental group youngsters who visited the prison, 58 were for certain accompanied by parents. For the remaining 21 cases, we were unable to determine from records whether a parent or some other person accompanied the youngster. Breaking the cases down into one group which definitely was accompanied by a parent and another for which that was not certain, analyses were performed focusing on the number of criminal offenses charged at three and six months. As shown in Table 33 slightly more youngsters who definitely visited with a parent had no offense at three months as compared to the unknown group (81.0% vs 76.2%). Table 34 shows that, at six months, the comparable figures were 73.1% vs 61.5%. Though the figures favor the youngsters who were definitely accompanied by a parent, it is impossible to be firm about this because of the lack of certainty about the unknown group.

Summary and Conclusion

This evaluation sought to determine whether the JOLT program is an effective strategy through which young offenders may be deterred from further criminal acts. The evaluation design called for the random assignment of eligible youngsters to either an experimental group, which would be exposed to the JOLT experience, or to a control group which would not be so exposed. Although pre-JOLT data were collected on all 227 cases available for study, follow-up data for a three- and six-month period were recorded on cohorts of 169 and 84 cases, respectively. All data were extracted from files maintained by the referring local juvenile court.

Since the object of random group assignment was to ensure group comparability at the outset, the first stage of the evaluation sought to determine whether such comparability was in fact achieved. Experimental, control, and experimental cases who were supposed to visit the prison but did not, were compared on a number of pre-JOLT variables which included demographic and social background, and prior offense, conviction, and detention histories. It was determined that the experimental and control groups were not significantly

different from each other on any of these variables; any group differences which did emerge were attributable to the presence of experimental no goes — a group whose membership was purposively rather than randomly determined. Experimental — control group comparability was indeed achieved.

Post-JOLT analyses focused upon the follow-up offense and detention experiences of members of the experimental and control groups only, at three and six months following JOLT. Based on these analyses alone, the inescapable conclusion was that youngsters who participated in the program, undergoing the entire JOLT experience, did no better than their control counterparts. When multivariate analyses were performed using group status and other pre- and post-JOLT variables including demographic, prior social characteristics, criminal offense, conviction and detention histories, post-JOLT residence, major activity and involvement in therapy, only two relationships emerged which were statistically significant. In addition to group membership, these relationships involved the youngsters usual residence and major activity following JOLT. While control group members were favored very slightly to have fewer offenses following JOLT than experimentals, so too were youngsters who resided with both parents and those who were involved with school or work. While it is likely that experimentals will fare better if they reside with both parents or are involved in school or work, it is also true that they will still fare no better than controls under similar circumstances. Even if this were not the case, one might be inclined to conclude that family stability and stability in usual youthful roles involving education or employment are more important than JOLT.

It was found that experimentals who were definitely accompanied by a parent on the JOLT visit were more likely to have no subsequent offense at three months following JOLT than controls. While the likelihood of no offense was less for both groups at six months, the difference favoring those who were definitely accompanied by a parent had grown from 4.8 percentage points to 11.6. These differences, however, were not significant.

The importance of parental accompaniment is critically diminished by the lack of sufficient information on all cases, a situation we shall later seek to remedy.

In summary, then, it seems clear that JOLT does not have the negative impact upon participants that was apparently associated with the Ionia program many years ago or the Rahway program more recently. Perhaps this is accounted for, in part, by differences in the way the programs were conducted or the influence of parental accompaniment. Notwithstanding this difference, however, and despite the good intentions of the program sponsors and the JOLT Committee who should be especially commended, there can be little doubt that the preponderance of evidence reported here supports the conclusion that JOLT, unfortunately, is not an effective criminal deterrent.

References

¹A listing of "Youth Aversion Programs" was recently compiled and made available by the National Criminal Justice Reference Service, National Institute of Law Enforcement and Criminal Justice, Law Enforcement Assistance Administration.

²Finkenauer, James O., Juvenile Awareness Project: Evaluation Report No. 2. Newark, New Jersey: Rutgers - The State University, unpublished, April 18, 1979, p. 13.

³Michigan Department of Corrections, A Six Month Follow-up of Juvenile Delinquents Visiting the Ionia Reformatory. Lansing, Michigan: Research Report No. 4, unpublished, May 22, 1967

⁴Op cit., p. 15.

⁵Suchman, Edward A., Evaluation Research: Principles and Practice In Public Service and Social Action Programs. New York: Russell Sage Foundation, 1967, pp. 94-95.

⁶Nie, Norman H., et al., SPSS: Statistical Package for the Social Sciences. New York: McGraw-Hill Book Co., Second Edition, 1975, pp. 406-419.

A P P E N D I X

TABLE 1

COUNTY BY GROUP STATUS

Group Status	County			Total
	Wayne	Washtenaw	Jackson	
Experimental	37.2 (58)	25.0 (8)	33.3 (13)	34.8 (79)
Control	37.8 (59)	50.0 (16)	38.5 (15)	39.7 (90)
Experimental No Goes	25.0 (39)	25.0 (8)	28.2 (11)	25.6 (58)
TOTAL	100.0 (156)	100.0 (32)	100.0 (39)	100.0 (227)

() = N
 $\chi^2 = 2.301, df = 4, p = .681$

TABLE 2

REASONS FOR FAILURE TO TOUR

	%	N
Termination of Court's Jurisdiction	29.3	17
Loss of Interest	13.8	8
Rescheduled	12.1	7
Employment Related	8.6	5
Unknown	<u>36.2</u>	<u>21</u>
TOTAL	100.0	58

TABLE 3

AGE AT ASSIGNMENT BY GROUP STATUS

Group Status	N	Mean	Standard Deviation	Min	Max
Experimental	79	15.34	.92	13	17
Control	90	15.41	.83	13	17
Experimental No Goes	<u>58</u>	<u>15.67</u>	<u>.87</u>	<u>14</u>	<u>17</u>
TOTAL	227	15.45	.89	13	17

Analysis of Variance including Experimental, Control, and Experimental
 No Goes: F-Ratio = 2.582; P = .078

Analysis of Variance excluding Experimental No Goes: F-Ratio = .265;
 P = .608

TABLE 4
AGE AT FIRST OFFENSE BY GROUP STATUS

Group Status	N	Mean	Standard Deviation	Min	Max
Experimental	79	14.23	1.20	10	16
Control	90	14.32	1.38	10	16
Experimental No Goes	58	14.22	1.49	9	16
TOTAL	227	14.26	1.34	9	16

Analysis of Variance: F-Ratio = .138, P = .872

TABLE 5
RACE BY GROUP STATUS

Group Status	Minority ^a		White		Total	
	%	N	%	N	%	N
Experimental	49.4	39	50.6	40	100.0	79
Control	41.1	37	58.9	53	100.0	90
Experimental No Goes	56.9	33	43.1	25	100.0	58

^aComposed of 106 blacks and 3 Mexican-Americans
 $X^2=3.609$, d.f.=2, .10<P<.20

TABLE 6
USUAL RESIDENCE DURING SIX MONTH PERIOD PRIOR TO JOLT DATE BY GROUP STATUS

Group Status	With Both Parents		Other Residence		Total ^a	
	%	N	%	N	%	N
Experimental	48.7	38	51.3	40	100.0	78
Control	56.3	49	43.7	38	100.0	87
Experimental No Goes	44.6	25	55.4	31	100.0	56

^aInformation not available for 6 cases
 $X^2=2.045$, d.f.=2, .30<P<.50

TABLE 7
USUAL MAJOR ACTIVITY DURING SIX MONTH PERIOD PRIOR TO JOLT DATE BY GROUP STATUS

Group Status	School or Work		Idle or Detention		Total ^a	
	%	N	%	N	%	N
Experimental	87.0	67	13.0	10	100.0	77
Control	79.2	57	20.8	15	100.0	72
Experimental No Goes	77.8	42	22.2	12	100.0	54

^aInformation not available for 24 cases
 $X^2=2.325$, d.f.=2, P=.313

TABLE 8

INVOLVEMENT IN THERAPY DURING THE SIX
MONTH PERIOD PRIOR TO JOLT DATE BY GROUP STATUS

Group Status	Therapy		No Therapy		Total ^a	
	%	N	%	N	%	N
Experimental	11.8	9	88.2	67	100.0	76
Control	24.0	18	76.0	57	100.0	75
Experimental No Goes	16.7	9	83.3	45	100.0	54

^aInformation not available for 22 cases
 $X^2=3.895$, d.f.=2, P=.143

TABLE 9

NUMBER OF PRIOR PETITIONS BY GROUP STATUS

Group Status	N	Mean	Standard Deviation	Min	Max
Experimental	79	2.75	1.94	1	9
Control	90	2.91	2.15	1	9
Experimental No Goes	50	2.67	1.87	1	9
TOTAL	227	2.79	2.00	1	9

Analysis of Variance: F-Ratio = .281, P = .756

TABLE 10

NUMBER OF PRIOR STATUS OFFENSES BY GROUP STATUS

	N	Mean	Standard Deviation	Min	Max
Experimental	79	.253	1.115	0	9
Control	90	.289	.658	0	3
Experimental No Goes	58	.224	.750	0	5
TOTAL	227	.260	.861	0	9

Analysis of Variance: F-Ratio = .103, P = .903

TABLE 11

NUMBER OF PRIOR CRIMINAL OFFENSES BY GROUP STATUS

	N	Mean	Standard Deviation	Min	Max
Experimental	79	2.97	1.87	1	9
Control	90	3.11	2.28	1	9
Experimental No Goes	58	2.90	1.89	1	9
TOTAL	227	3.01	2.04	1	9

Analysis of Variance: F-Ratio = .211, P = .810

TABLE 12

NUMBER OF WEEKS BETWEEN MOST RECENT PRIOR OFFENSE
AND JOLT DATE BY GROUP STATUS

	<u>N</u>	<u>Mean</u>	<u>Standard Deviation</u>	<u>Min</u>	<u>Max</u>
Experimental	79	21.95	16.36	1	80
Control	90	19.68	16.59	1	91
Experimental No Goes	<u>58</u>	<u>23.48</u>	<u>19.28</u>	<u>0</u>	<u>75</u>
TOTAL	227	21.44	17.23	0	91

Analysis of Variance: F-Ratio = .912, P = .403

TABLE 13

TYPE OF OFFENSE FOR LAST THREE CHARGED
PRIOR TO JOLT DATE BY GROUP STATUS

	<u>Yes</u>		<u>Person</u>		<u>Total</u>		<u>Yes</u>		<u>Property</u>		<u>Total</u>		<u>Yes</u>		<u>Other</u>		<u>Total</u>		
	<u>%</u>	<u>N</u>	<u>%</u>	<u>N</u>	<u>%</u>	<u>N</u>	<u>%</u>	<u>N</u>	<u>%</u>	<u>N</u>	<u>%</u>	<u>N</u>	<u>%</u>	<u>N</u>	<u>%</u>	<u>N</u>	<u>%</u>	<u>N</u>	
Experimental	41.8	33	58.2	46	100.0	79	75.9	60	24.1	19	100.0	79	29.1	23	70.9	56	100.0	79	
Control	31.1	28	68.9	62	100.0	90	77.8	70	22.2	20	100.0	90	31.1	28	68.9	62	100.0	90	
Experimental No Goes	36.2	21	63.8	37	100.0	58	67.2	39	32.8	19	100.0	58	37.9	22	62.1	36	100.0	58	
			$\chi^2 = 2.073$				$\chi^2 = 2.202$				$\chi^2 = 1.267$								
			d.f. = 2				d.f. = 2				d.f. = 2								
			p = .355				p = .333				p = .531								

TABLE 14
TYPE OF MOST RECENT PRIOR OFFENSE BY GROUP STATUS

<u>Group Status</u>	<u>Person</u>		<u>Property</u>		<u>Other</u>		<u>Total</u>	
	<u>%</u>	<u>N</u>	<u>%</u>	<u>N</u>	<u>%</u>	<u>N</u>	<u>%</u>	<u>N</u>
Experimental	21.5	17	57.0	45	21.5	17	100.0	79
Control	21.1	19	60.0	54	18.9	17	100.0	90
Experimental No Goes	22.4	13	55.2	32	22.4	13	100.0	58

$\chi^2 = .431$
d.f. = 4, .90 < p < .95

TABLE 15
NUMBER OF PRIOR CONVICTIONS BY GROUP STATUS^a

<u>Group Status</u>	<u>N</u>	<u>Mean</u>	<u>Standard Deviation</u>	<u>Min</u>	<u>Max</u>
Experimental	78	2.08	1.35	0	7
Control	85	2.07	1.44	0	8
Experimental No Goes	57	1.58	.94	0	4
TOTAL	220	1.95	1.31	0	8

^aSeven cases which had no prior convictions, but had offenses pending disposition, were excluded from analysis.
Analysis of Variance including Experimental, Control, and Experimental No Goes: F-Ratio = 3.089, P = .048
Analysis of Variance excluding Experimental No Goes: F-Ratio = .001, P = .977

TABLE 16

NUMBER OF WEEKS BETWEEN MOST RECENT
PRIOR CONVICTION AND JOLT DATE BY GROUP STATUS

<u>Group Status</u>	<u>N</u>	<u>Mean</u>	<u>Standard Deviation</u>	<u>Min</u>	<u>Max</u>
Experimental	76	20.93	16.97	1	98
Control	82	17.35	15.71	1	98
Experimental No Goes	<u>55</u>	<u>25.06</u>	<u>21.92</u>	<u>1</u>	<u>98</u>
TOTAL	213	20.62	18.11	1	98

Analysis of Variance including Experimental, Control, and Experimental No Goes: F-Ratio = 3.053; P = .049

Analysis of Variance excluding Experimental No Goes: F-Ratio = 1.897; P = .170

TABLE 17

NATURE OF MOST RECENT CONVICTION BY GROUP STATUS

<u>Group Status</u>	<u>Person</u>		<u>Property</u>		<u>Other</u>		<u>Total</u>	
	<u>%</u>	<u>N</u>	<u>%</u>	<u>N</u>	<u>%</u>	<u>N</u>	<u>%</u>	<u>N</u>
Experimental	21.1	16	63.2	48	15.8	12	35.7	76
Control	15.9	13	64.6	53	19.5	16	38.5	82
Experimental No Goes	23.6	13	60.0	33	16.4	9	25.8	55

$\chi^2=1.589$, d.f.=4, P=.811

TABLE 18

PRIOR NUMBER OF DAYS SPENT IN DETENTION BY GROUP STATUS^a

<u>Group Status</u>	<u>N</u>	<u>Mean</u>	<u>Standard Deviation</u>	<u>Min</u>	<u>Max</u>
Experimental	79	13.53	35.14	0	225
Control	89	14.93	28.10	0	133
Experimental No Goes	<u>57</u>	<u>15.63</u>	<u>36.23</u>	<u>0</u>	<u>214</u>
TOTAL	225	14.62	32.70	0	225

^aInformation not available for two cases
Analysis of Variance: F-Ratio = .075, P = .928

TABLE 19A

NUMBER OF PETITIONS
DURING THREE MONTH FOLLOW-UP BY GROUP STATUS

<u>Group Status</u>	<u>N</u>	<u>Mean</u>	<u>Standard Deviation</u>	<u>Min</u>	<u>Max</u>
Experimental	79	.329	.873	0	6
Control	90	.367	.841	0	5
TOTAL	169	.349	.854	0	6

Analysis of Variance: F-Ratio = .081, P = .776

TABLE 19B

NUMBER OF PETITIONS
DURING THREE MONTH FOLLOW-UP BY GROUP STATUS

<u>Group Status</u>	<u>None</u>		<u>One or more</u>		<u>Total</u>	
	<u>%</u>	<u>N</u>	<u>%</u>	<u>N</u>	<u>%</u>	<u>N</u>
Experimental	79.7	63	20.3	16	100.0	79
Control	78.9	71	21.1	19	100.0	90

$\chi^2 = .003, d.f. = 1, P = .958$

TABLE 20A

NUMBER OF CRIMINAL OFFENSES CHARGED DURING THREE MONTH FOLLOW-UP PERIOD

<u>Group Status</u>	<u>N</u>	<u>Mean</u>	<u>Standard Deviation</u>	<u>Min</u>	<u>Max</u>
Experimental	79	.456	1.228	0	7
Control	90	.278	.637	0	3
TOTAL	169	.361	.961	0	7

Analysis of Variance: F-Ratio = 1.448, P = .231

TABLE 20B

NUMBER OF CRIMINAL OFFENSES CHARGED DURING THREE MONTH FOLLOW-UP PERIOD

<u>Group Status</u>	<u>None</u>		<u>One or more</u>		<u>Total</u>	
	<u>%</u>	<u>N</u>	<u>%</u>	<u>N</u>	<u>%</u>	<u>N</u>
Experimental	79.7	63	20.3	16	100.0	79
Control	81.1	73	18.9	17	100.0	90

$\chi^2 = .001, d.f. = 1, P = .977$

TABLE 21

NUMBER OF WEEKS BETWEEN JOLT AND
EARLIEST OFFENSE DURING THREE MONTH FOLLOW-UP BY GROUP STATUS

<u>Group Status</u>	<u>N</u>	<u>Mean</u>	<u>Standard Deviation</u>	<u>Min</u>	<u>Max</u>
Experimental	16	4.813	3.311	0	10
Control	17	5.294	4.074	0	11
TOTAL	33	5.061	3.674	0	11

Analysis of Variance: F-Ratio = .138, P = .713

TABLE 22

TYPE OF OFFENSE CHARGED DURING
THREE MONTH FOLLOW-UP BY GROUP STATUS

<u>Group</u> <u>Status</u>	<u>Yes</u>		<u>Person</u> <u>No</u>		<u>Total</u>		<u>Yes</u>		<u>Property</u> <u>No</u>		<u>Total</u>		<u>Yes</u>		<u>Other</u> <u>No</u>		<u>Total</u>	
	<u>%</u>	<u>N</u>	<u>%</u>	<u>N</u>	<u>%</u>	<u>N</u>	<u>%</u>	<u>N</u>	<u>%</u>	<u>N</u>	<u>%</u>	<u>N</u>	<u>%</u>	<u>N</u>	<u>%</u>	<u>N</u>	<u>%</u>	<u>N</u>
Experimental	6.3	5	93.7	74	100.0	79	13.9	11	86.1	68	100.0	79	5.1	4	94.9	75	100.0	79
Control	3.3	3	96.7	87	100.0	90	13.3	12	86.7	78	100.0	90	2.2	2	97.8	88	100.0	90
			$X^2 = .305$						$X^2 = .013$						$X^2 = .336$			
			d.f. = 1						d.f. = 1						d.f. = 1			
			p = .581						p = .910						p = .562			

TABLE 23

NUMBER OF DAYS IN DETENTION DURING
THREE MONTH FOLLOW-UP BY GROUP STATUS^a

<u>Group Status</u>	<u>N</u>	<u>Mean</u>	<u>Standard Deviation</u>	<u>Min</u>	<u>Max</u>
Experimental	79	3.18	9.24	0	54
Control	<u>89</u>	<u>5.36</u>	<u>15.75</u>	<u>0</u>	<u>90</u>
TOTAL	168	4.33	13.11	0	90

Analysis of Variance: F-Ratio = 1.161, P = .283

^aInformation not available for 1 control case

TABLE 24

NUMBER OF WEEKS BETWEEN JOLT AND PLACEMENT
IN DETENTION DURING THREE MONTH FOLLOW-UP BY GROUP STATUS

<u>Group Status</u>	<u>N</u>	<u>Mean</u>	<u>Standard Deviation</u>	<u>Min</u>	<u>Max</u>
Experimental	14	5.50	3.03	0	9
Control	<u>17</u>	<u>5.41</u>	<u>6.24</u>	<u>0</u>	<u>21</u>
TOTAL	31	5.45	4.97	0	21

Analysis of Variance: F-Ratio = .002, P = .962

TABLE 25A

NUMBER OF PETITIONS
DURING SIX MONTH FOLLOW-UP BY GROUP STATUS

<u>Group Status</u>	<u>N</u>	<u>Mean</u>	<u>Standard Deviation</u>	<u>Min</u>	<u>Max</u>
Experimental	39	.49	.85	0	3
Control	45	.67	1.22	0	6
TOTAL	84	.58	1.07	0	6

Analysis of Variance: F-Ratio = .589, P = .445

TABLE 25B

NUMBER OF PETITIONS
DURING SIX MONTH FOLLOW-UP BY GROUP STATUS

<u>Group Status</u>	<u>None</u>		<u>One or more</u>		<u>Total</u>	
	<u>%</u>	<u>N</u>	<u>%</u>	<u>N</u>	<u>%</u>	<u>N</u>
Experimental	69.2	27	30.8	12	100.0	39
Control	66.7	30	33.3	15	100.0	45

$\chi^2 = .000$, d.f. = 1, P = .987

TABLE 26A

NUMBER OF CRIMINAL OFFENSES CHARGED
DURING SIX MONTH FOLLOW-UP BY GROUP STATUS

<u>Group Status</u>	<u>N</u>	<u>Mean</u>	<u>Standard Deviation</u>	<u>Min</u>	<u>Max</u>
Experimental	39	.69	1.42	0	7
Control	45	.47	.84	0	3
TOTAL	84	.57	1.14	0	7

Analysis of Variance: F-Ratio = .811, P = .370

TABLE 26B

NUMBER OF CRIMINAL OFFENSES CHARGED
DURING SIX MONTH FOLLOW-UP BY GROUP STATUS

<u>Group Status</u>	<u>None</u>		<u>One or more</u>		<u>Total</u>	
	<u>%</u>	<u>N</u>	<u>%</u>	<u>N</u>	<u>%</u>	<u>N</u>
Experimental	69.2	27	30.8	12	100.0	39
Control	71.1	32	28.9	13	100.0	45

$\chi^2 = .003$, d.f. = 1, P = .959

TABLE 27

NUMBER OF WEEKS BETWEEN JOLT AND EARLIEST OFFENSE CHARGED
DURING SIX MONTH FOLLOW-UP BY GROUP STATUS

<u>Group Status</u>	<u>N</u>	<u>Mean</u>	<u>Standard Deviation</u>	<u>Min</u>	<u>Max</u>
Experimental	12	9.00	7.22	0	23
Control	13	8.31	7.09	1	20
TOTAL	25	8.64	7.01	0	23

Analysis of Variance: F-Ratio = .059, P = .811

TABLE 28

TYPE OF OFFENSE CHARGED DURING
SIX MONTH FOLLOW-UP BY GROUP STATUS

	<u>Yes</u>		<u>Person</u>		<u>Total</u>		<u>Yes</u>		<u>Property</u>		<u>Total</u>		<u>Yes</u>		<u>Other</u>		<u>Total</u>	
	<u>%</u>	<u>N</u>	<u>%</u>	<u>N</u>	<u>%</u>	<u>N</u>	<u>%</u>	<u>N</u>	<u>%</u>	<u>N</u>	<u>%</u>	<u>N</u>	<u>%</u>	<u>N</u>	<u>%</u>	<u>N</u>	<u>%</u>	<u>N</u>
Experimental	5.1	4	94.9	75	100.0	79	11.4	9	88.6	70	100.0	79	5.1	4	94.9	75	100.0	79
Control	3.3	3	96.7	87	100.0	90	8.9	8	91.1	82	100.0	90	2.2	2	97.8	88	100.0	90
			$X^2 = .031$				$X^2 = .080$						$X^2 = .336$					
			d.f. = 1				d.f. = 1						d.f. = 1					
			p = .860				p = .777						p = .562					

TABLE 29

NUMBER OF DAYS IN DETENTION DURING
SIX MONTH FOLLOW-UP BY GROUP STATUS^a

<u>Group Status</u>	<u>N</u>	<u>Mean</u>	<u>Standard Deviation</u>	<u>Min</u>	<u>Max</u>
Experimental	38	7.47	14.86	0	57
Control	44	7.09	19.16	0	81
TOTAL	82	7.27	17.20	0	81

^aInformation not available for 1 experimental case and 1 control case

Analysis of Variance: F-Ratio = .010, P = .921

TABLE 30

NUMBER OF WEEKS BETWEEN JOLT AND PLACEMENT
IN DETENTION DURING SIX MONTH FOLLOW-UP BY GROUP STATUS^a

<u>Group Status</u>	<u>N</u>	<u>Mean</u>	<u>Standard Deviation</u>	<u>Min</u>	<u>Max</u>
Experimental	12	9.08	4.62	3	19
Control	11	9.27	9.12	0	24
TOTAL	23	9.17	6.97	0	24

^aInformation not available for 1 experimental and 1 control case
Analysis of Variance: F-Ratio = .004, P = .950

TABLE 31

NUMBER OF CRIMINAL OFFENSES FOR THREE MONTH FOLLOW-UP
BY GROUP STATUS CONTROLLING FOR POST JOLT RESIDENCE

<u>Source of Variation</u>	<u>d.f.</u>	<u>Sum of Squares</u>	<u>Mean Squares</u>	<u>F-Ratio</u>	<u>P</u>
Main Effects	2	3.938	1.969	2.103	.126
Group Status	1	1.002	1.002	1.070	.303
Residence during 3-mo. follow-up	1	2.936	2.936	3.136	.079
Interactions	1	4.885	4.885	5.217	.024
Group Status, Residence during 3-mo. follow-up	1	4.885	4.885	5.217	.024
Explained	3	8.823	2.941	3.141	.028
Residual	<u>131</u>	<u>122.658</u>	<u>.936</u>		
TOTAL	134	131.481	.981		

TABLE 32

NUMBER OF CRIMINAL OFFENSES FOR SIX MONTH FOLLOW-UP
BY GROUP STATUS CONTROLLING FOR POST JOLT MAJOR ACTIVITY

<u>Source of Variation</u>	<u>d.f.</u>	<u>Sum of Squares</u>	<u>Mean Squares</u>	<u>F-Ratio</u>	<u>P</u>
Main Effects	2	.489	.245	.602	.553
Group Status	1	.076	.076	.187	.668
Major Activity during 6-mo. follow-up	1	.413	.413	1.017	.319
Interactions	1	4.131	4.131	10.167	.003
Group Status, Major Activity during 6-month follow-up	1	4.131	4.131	10.167	.003
Explained	3	4.620	1.540	3.790	.018
Residual	<u>39</u>	<u>15.845</u>	<u>.406</u>		
TOTAL	42	20.465	.487		

TABLE 33

EFFECT OF PARENTAL CHAPERON UPON
NUMBER OF SUBSEQUENT OFFENSES AT THREE MONTHS

<u>Chaperon</u>	<u>None</u>		<u>One or More</u>		<u>Total</u>	
	<u>%</u>	<u>N</u>	<u>%</u>	<u>N</u>	<u>%</u>	<u>N</u>
Parent	81.0	47	19.0	11	100.0	58
Unknown	76.2	16	23.8	5	100.0	21

$$\chi^2 = .024, \text{ d.f.} = 1, p = .876$$

TABLE 34

EFFECT OF PARENTAL CHAPERON UPON
NUMBER OF SUBSEQUENT OFFENSES AT SIX MONTHS

<u>Chaperon</u>	<u>None</u>		<u>One or More</u>		<u>Total</u>	
	<u>%</u>	<u>N</u>	<u>%</u>	<u>N</u>	<u>%</u>	<u>N</u>
Parent	73.1	19	26.9	7	100.0	26
Unknown	61.5	8	38.5	5	100.0	13

$$\chi^2 = .135, \text{ d.f.} = 1, p = .713$$

END