

6.01/42

MILWAUKEE COUNTY SHERIFF'S DEPARTMENT
ANNUAL REPORT

1978

COUNTY BOARD OF SUPERVISORS



Bernice K. Rose
1st District



R. Michael Mett
3rd District



First Vice Chairman
Wm. E. Meaux
2nd District



Chairman
F. Thomas Ament
16th District



Second Vice Chairman
Daniel F. Casey
23rd District



Harout O. Sanasarian
4th District



Lawrence W. Timmerman
5th District



Robert L. Jackson
6th District



Terrance L. Pitts
7th District

COUNTY EXECUTIVE

Wm. F. O'Donnell



Gerald D. Engel
8th District



James A. Krivitz
9th District



Paul A. Henningsen
10th District



John J. Valenti
11th District



Bernadette Skibinski
12th District



Emil M. Stanislawski
13th District



Richard D. Nyklewicz, Jr.
14th District



James Koconis
15th District



Daniel Cupertino, Jr.
17th District



Fred N. Tabak
18th District



John D. St. John
19th District



Richard H. Bussler
20th District



James J. Lynn
21st District



Joseph M. Hutsteiner
22nd District



Thomas P. Kujawa
24th District



Robert C. Brunner
25th District



OFFICE OF THE SHERIFF

Milwaukee County

MICHAEL S. WOLKE • Sheriff

February 28, 1979

Inspector
WILLIAM E. KLAMM
Deputy Inspector
SIGMUND T. SKOBY
Captains
ROBERT J. BIALK
ALVIN H. PETERSEN
JOSEPH F. LITTEL
DANIEL J. JARECKI
Administrative Assistant
EDWARD A. CERA
Planning & Research Coordinator
GEORGE U. BROTZ

The Honorable
County Board of Supervisors
Court House
Milwaukee, Wisconsin

Ladies and Gentlemen:

It is a privilege to submit to your honorable body
the annual report for 1978 listing the progress and
activities of this office.

Your excellent support and cooperation to our proposals
and requests during the year, accounted for a most efficient,
effective and economical service program to the citizens
of the County.

Our sincerest thanks and appreciation are extended to
the Board and to all county agencies allied with this
office for their assistance in fulfilling our goals and
objectives during this busy year.

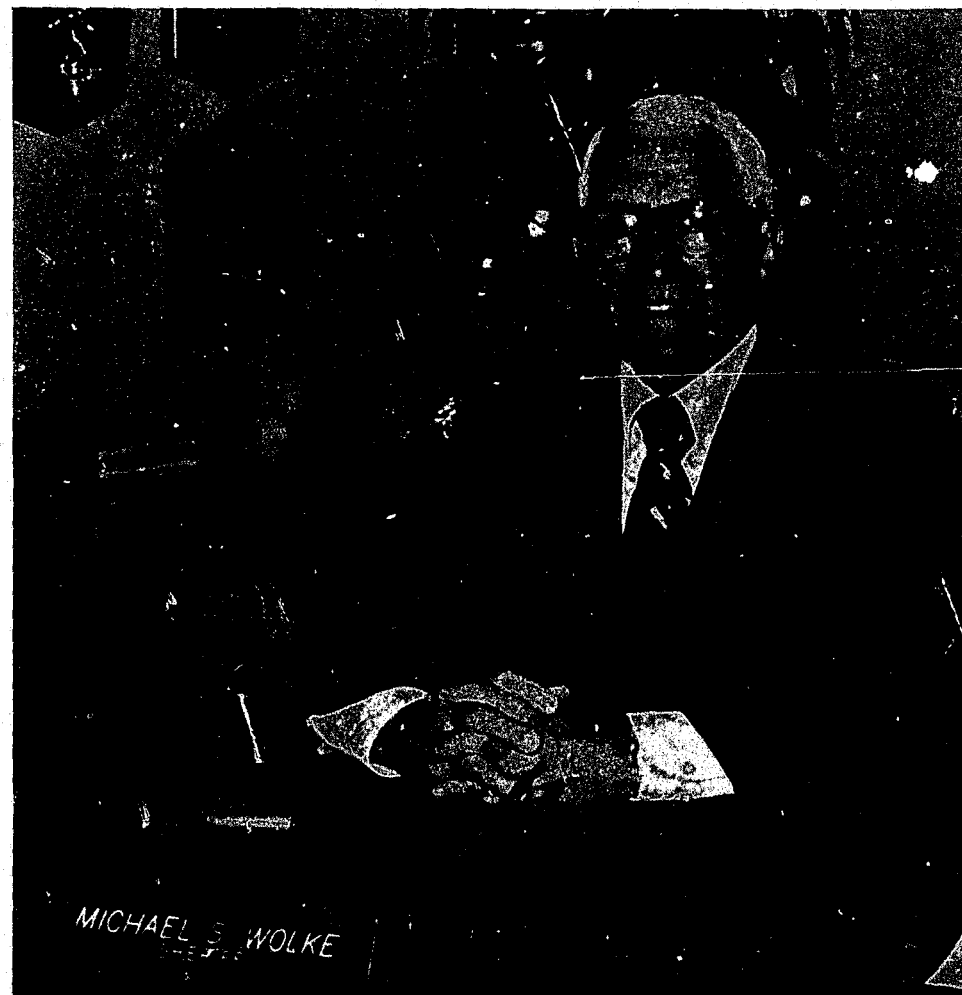
Respectfully submitted,

Michael S. Wolke
MICHAEL S. WOLKE, SHERIFF
MILWAUKEE COUNTY, WISCONSIN

MSW:EAC/amc

SAFETY BUILDING, SUITE 202 • 821 WEST STATE STREET • MILWAUKEE, WISCONSIN 53233

1310 R15

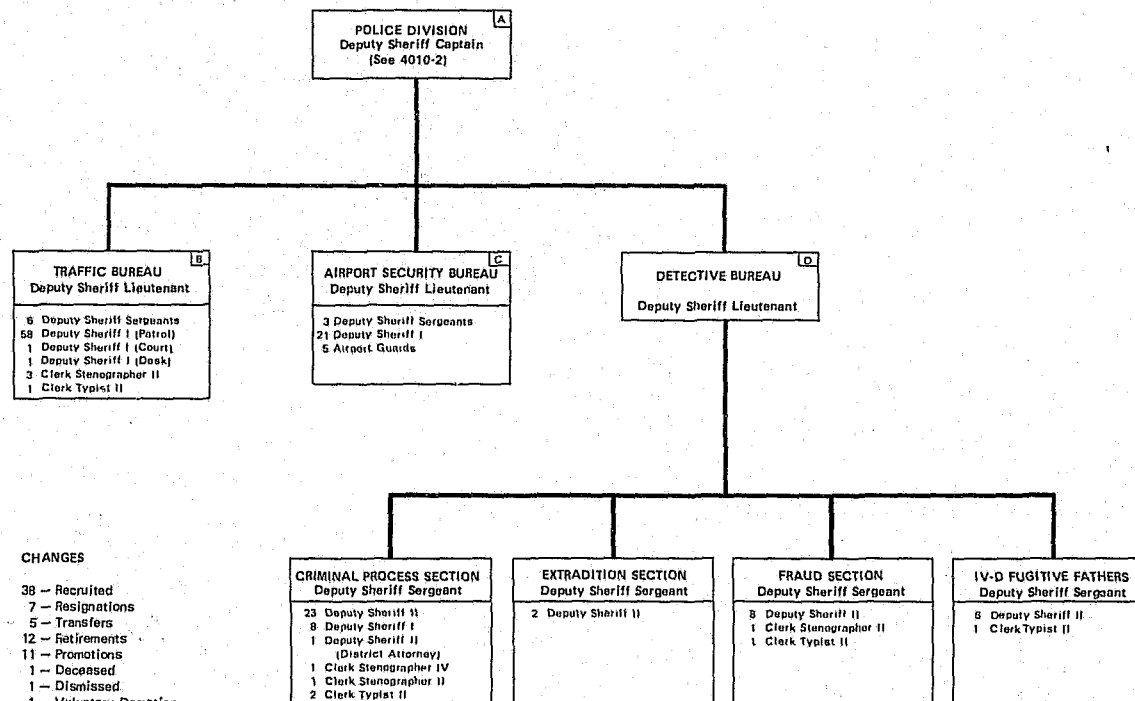
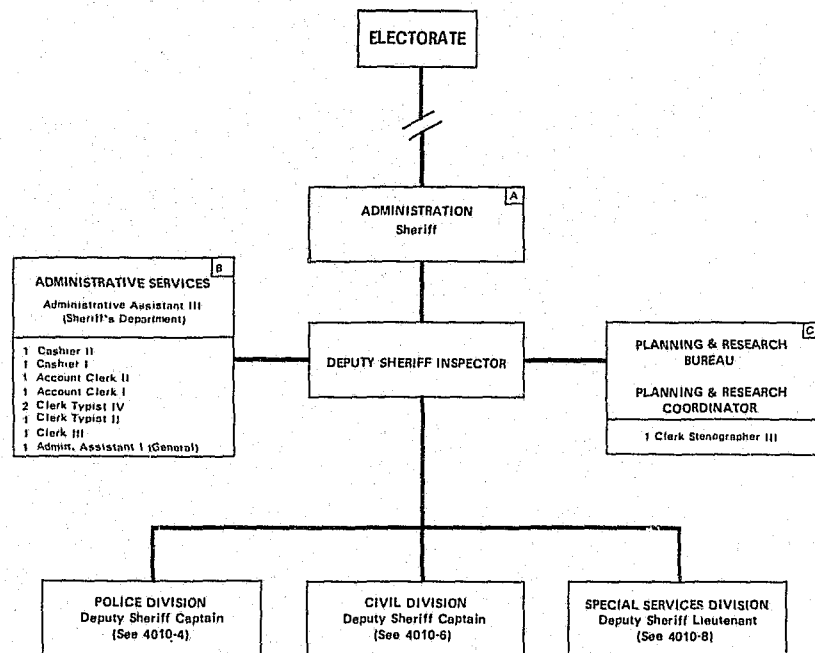


NCJRS

JUL 31 1979

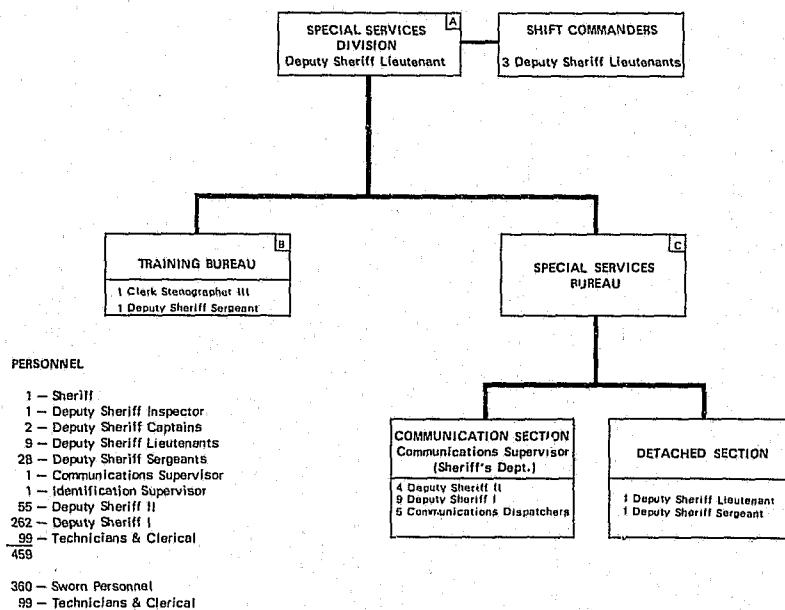
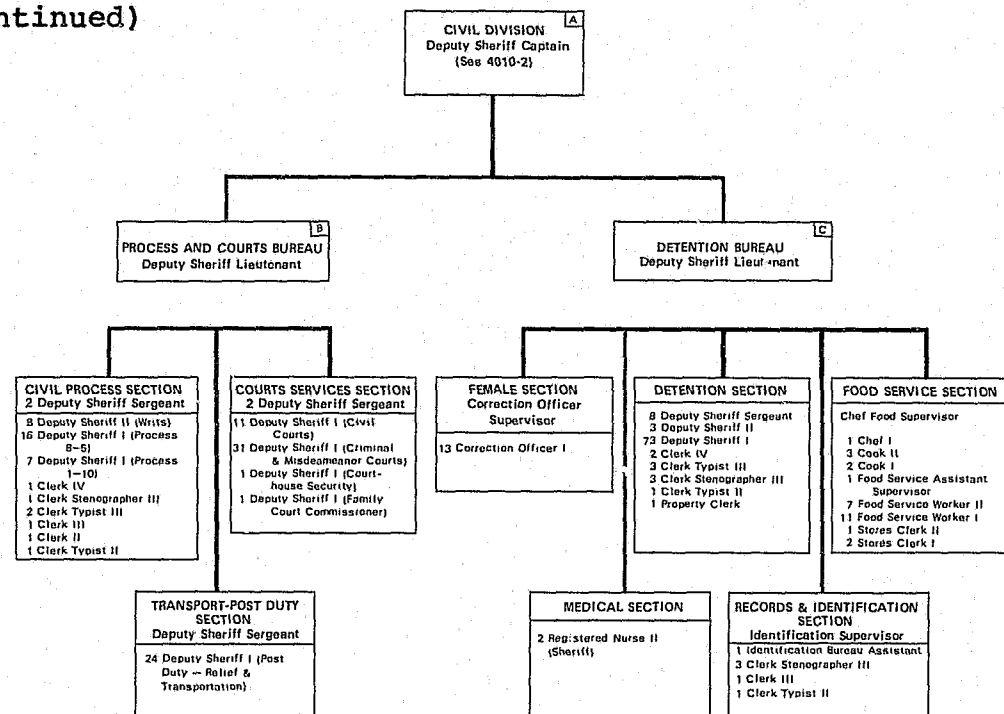
ACQUISITIONS

TABLE OF ORGANIZATION



CHANGES

- 38 -- Recruited
- 7 -- Resignations
- 5 -- Transfers
- 12 -- Retirements
- 11 -- Promotions
- 1 -- Deceased
- 1 -- Dismissed
- 1 -- Voluntary Demotion



ADMINISTRATION

The affirmative action goals of the Department were further enhanced during the year by the creation of an Affirmative Action Committee consisting of a cross section of bureau personnel and in command of a Lieutenant. In addition, eight employees attended specialized affirmative action training programs.

County Board action during the year brought about completion of the Department reorganization as recommended by the Department of Administration. The action taken was to approve a Deputy Sheriff Captain to be in charge of the Security Bureau, additional Sergeants to supervise shifts in the Communications Bureau.

In a prior segment of the Department restructure, the addition of a night command Lieutenant, now distributes more effective command responsibilities on the night shifts, providing one Lieutenant in charge at headquarters and one available several nights per week for field inspections. In addition, realignment enabled the placing of a Captain to administer the departmental Cadet program which utilizes CETA personnel, and provides guidance to the supervision of the Neighborhood Security entity and Museum Guards.

Special efforts were again effected in the parks at the requests of several municipal Police Chiefs, and upon recommendation of County Board members, a special task force was instituted to

control crime related activities in the park system.

Captains meetings were held every Tuesday and Friday in the Inspector's Office. Commanders of all service sections met every Thursday with the Deputy Inspector. Administrative staff meetings, which includes all above officers and representatives of the Deputy Sheriff's Association were held on the first Thursday of every month.

The Deputy Sheriff's Association, while negotiating their present contract resorted to informational picketing of the courthouse, Safety Building, and County Supervisors' homes. Generally, public sentiment was on their side as they exhibited

a high degree of professionalism in their actions.

The Training Academy, in addition to their formal training of recruits, conducted in-service programs in:

- Command Post Procedures
- Latent Fingerprints
- Handling Hostage & Negotiations
- Hazardous Materials, Spills & Accidents
- Smoke Masks
- Police Baton
- SWAT - Scuba
- Tornado Spotting
- Pistol Shoots
- Mental Health Act
- Dignitary Protection
- Drunken Driving
- Children's Code

RECEIPTS

	1976	1977	1978
1. Stipulations	\$ 214,657.00	\$ 165,381.00	\$ 190,014.00
2. Whistle Stop Program	-	-	2,873.37
3. Sundry Revenue	-	-	2,180.91
4. Service Fee	-	-	19,236.23
5. Process Service Fees	350,656.96	424,292.20	431,292.24
6. Miscellaneous Revenue	15,763.31	11,715.95	2,909.98
7. Personal Property Taxes	16,229.41	9,344.34	28,910.43
8. Parking Stipulations	32,699.62	44,468.10	42,006.20
9. Traffic Forfeitures	103,944.11	102,719.10	126,207.75
10. Cash Overage	(263.34)	45.70	62.14
11. Revenue ft Other Govts	6,316.00	5,464.00	2,256.00
12. Refectory	44,671.77	45,135.23	45,418.04
13. Prisoners Board - General	1,735.00	1,396.18	1,151.61
14. Huber Prisoners	461,058.56	399,984.14	451,166.19
15. Trust Funds	800,982.50	886,989.90	980,901.74
16. Airport Parking Stipulations	-	-	4,400.50

RECEIPTS (Cont'd)

	<u>1976</u>	<u>1977</u>	<u>1978</u>
17. Accident Reports	-	10,634.95	15,404.04
18. Revenue fr Transport Prisoners	-	22,436.86	32,114.76
	<u>\$2,048,450.69</u>	<u>\$2,130,007.65</u>	<u>\$2,378,506.13</u>

DISBURSEMENTS

1. Stipulations	\$ 214,583.00	\$ 165,448.00	\$ 190,095.00
2. Parking Stipulations	410.50	427.00	1,134.20
3. Traffic Forfeitures	102,510.11	103,614.60	126,050.25
4. Process Fees & Other Refunds	36,654.36	50,094.88	60,732.09
5. Huber Funds	257,419.87	213,329.26	176,082.90
6. Trust Funds	744,216.29	802,819.93	894,491.11
7. To Treasurer	665,293.61	689,407.93	841,357.21
	<u>\$2,011,087.74</u>	<u>\$2,025,141.60</u>	<u>\$2,289,942.76</u>

REVENUE

1136 Interest - Personal Property Tax	\$ 693.18	\$ 483.56	\$ 2,079.06
1340 Parking Stipulations	30,827.00	44,041.10	45,268.50
2274 St. Grt. - Coll. Cost Child Suppt.	46,931.00	200,073.09	190,482.52
2286 St. Grt. - Exp. Patrol	480,600.00	480,600.00	480,600.00
2287 St. Grt. - Law Enforce Trng	62,753.05	16,894.24	45,359.05
2299 Other St. Grts & Reimbur	-	-	4,020.80
2309 Fed. Grt. - Pol Proc. Trng	6,606.71	899.12	228.25
2374 Fed. Grt. - Coll Cost Child Support	212,393.18	204,408.00	267,482.00
2399 Other Fed. Grt. & Reimbur	-	-	12,835.00
2499 Revenue - Other Govts Sundry	6,316.00	6,867.55	2,496.00
3153 Sheriff's Witness Fees	12,480.40	11,122.25	10,439.00
3189 Sheriff's Fee Recovery	4,564.11	2,140.77	3,264.58
3360 Copy & Dupl Fees	-	10,634.95	15,404.04
3514 Comm. on Executions	15,694.72	24,769.64	32,675.99
3515 Pers. Prop. Tax Coll. Fees	503.39	666.52	1,315.50
3516 Process Service	337,654.10	414,476.84	443,674.41
3599 Other Service Charges	15,617.41	11,529.49	2,514.93
4099 Other Co. Concessions	44,671.72	45,135.23	45,418.04



REVENUE (Cont'd)

	<u>1976</u>	<u>1977</u>	<u>1978</u>
4921 Prisoners Board - Gen'l \$	1,675.00	\$ 1,396.18	\$ 1,151.61
4922 Prisoners Board - Huber	202,283.11	162,810.66	237,792.83
4903 Sale of Unclaimed Property	900.00	1,300.00	200.00
4912 Meals - Rev. from Employees	573.25	712.50	1,890.64
4923 Rev. fr. Transport of Pris.	-	22,436.86	32,114.76
4999 Other Misc. Revenue	2,175.07	689.37	7,466.44
8498 (Cash Over-Short)	(284.34)	45.70	62.14
TOTAL	\$1,485,628.06	\$1,663,650.06	\$1,886,236.09

MISCELLANEOUS

Budget Appropriations	\$7,213,199.00	\$5,102,574.00	\$12,428,368.00*
Budget Expenditures	\$6,885,342.00	\$4,963,807.00	\$12,546,738.00*
Sheriff Sales - Real Estate	391	480	520
- Personal Prop.	26	39	39
Sheriff Sales Volume	\$13,694,157.00	\$10,104,338.00	\$11,671,882.23
Sheriff Sales Revenue	-	-	\$ 15,930.90

* Change in Accounting Procedures

COUNTY JAIL

During 1978, remodeling designed to bring the jail into compliance with national standards continued. Much of the work was completed by the year's end and the new areas are scheduled for full operation by early 1979.

All day room construction in the 5-East section of the job has been completed and stainless steel tables ordered for these rooms have been delivered. The area will be opened for use early in 1979 as a women's section with the capability of being used jointly with male inmates. Moving the operation to the south end of the fifth floor will result in security improvements in the operation of the entire

area while providing more privileges to its inmates.

During 1978, the jail experimented with improving visiting privileges for all inmates. Completion of a non-contact visiting area at the West gate resulted in expansion of visiting hours in the jail from four hours to fourteen hours. For the first time in its history, the Jail now has visiting on two weekday evenings.

Unexpected strikes by skilled tradesmen and problems with delivery of materials delayed completion of the single cell complex being constructed on the third floor west. It is now



estimated that the area will be ready for use in March of 1979, and it will help to reduce overcrowding in the main Jail.

The roof top exercise area which was projected for use in Fall of 1978, has been delayed by the failure of the window units provided by the contractor. The windows have been redesigned and the new occupancy date has been moved up to Spring of 1979.

Completion of maximum security cells on the ground floor of the jail was delayed by strikes and supplier problems, and this badly needed area

will open for use in March of 1979.

As part of reconstruction, a new kitchen was started in 1978. Primary heating and ventilation work has extended into 1979, and the kitchen will not be operational during the period covered by the report. Added to this project by funding and construction approval, a new elevator will connect the new basement kitchen directly with all floors of the main Jail. The new elevator has been designed to handle all food and supplies, thus freeing the existing elevator for use in conveying inmates and other personnel with a corresponding increase in efficiency of the operation of the Jail.

Approval and funding was again provided by the County Board for the installation of a fire detection and alarm system in the Jail. No starting date for installation has been set. During 1978, the Jail had several serious fires with one death and several injuries.

In April of 1978, a new dental office was opened and treatment was provided for over three hundred inmates who previously would have been taken, under guard, to the dental clinic at the County General Hospital.

Major construction has resulted in disruption of operations. Many changes in performance were caused by court decisions which the Jail anticipated prior to final judgment.

COUNTY JAIL

	<u>1976</u>	<u>1977</u>	<u>1978</u>
Bookings, including Hubers	14,125	14,044	14,979
Prisoners Received - Male	12,702	12,526	13,341
- Female	1,423	1,518	1,638
Charges, Felony - Male	5,666	5,691	5,574
- Female	472	684	635
Misdemeanor & Civil Actions - Male	8,161	6,213	6,664
- Female	1,043	983	1,316
Traffic - Male	4,592	5,842	6,082
- Female	210	168	333
Prisoners Discharged - Male	12,805	12,552	13,271
- Female	1,409	1,519	1,640
Daily Aver. Population (Incl Hubers)	484	470	499
Discharged from Custody	14,214	14,041	14,911
Aver. Daily Discharges - Co. Jail	38.9	38.6	40.8
Refectory Sales	\$ 44,672	\$ 45,135	\$ 45,418

HUBER

Bookings	1,777	1,725	1,961
Prisoners Received - Male	1,676	1,628	1,864
- Female	101	97	91
Daily Aver. in Custody - Male	166.1	170.8	159.5
- Female	11.2	10.8	12.8
Discharged - Male	1,706	1,630	1,843
- Female	105	91	104
Daily Average Population	177.3	181.6	172.3
Discharged from Custody	1,811	1,721	1,947
Huber Earnings	\$461,059	\$399,984	\$451,166
Payment to County	\$202,283	\$162,811	\$237,793
Per Diem Costs	\$ 5.00	5.00	7.50
Prisoner Withdrawls (cash, tickets, dependent support, personal needs and debt payments)	\$257,420	\$213,329	\$176,083

FOOD SERVICE

Meals to Inmates	322,518	338,856	339,546
Meals Served to Jurors & Others	7,761	9,482	9,856

197619771978MEDICAL SECTION

Medication Visits	87,870	69,651	77,204
Requests for Medical Service	5,696	4,206	4,569
Treatments (Dressings, suture removal)	640	420	569
Referrals Co. Hosp. - Outpatient	607	738	832
Referrals Co. Hosp. - Dental	158	125	296
Referrals Co. Hosp. - Inpatient	31	23	36
Verification Calls	1,241	884	1,048
Telephone Consultations - Non Duty Hrs	68	66	76
Psychiatric Evaluations	54	33	144
Emergency First Aid Treatments	92	93	71
Drug Addicts Treated	176	75	71

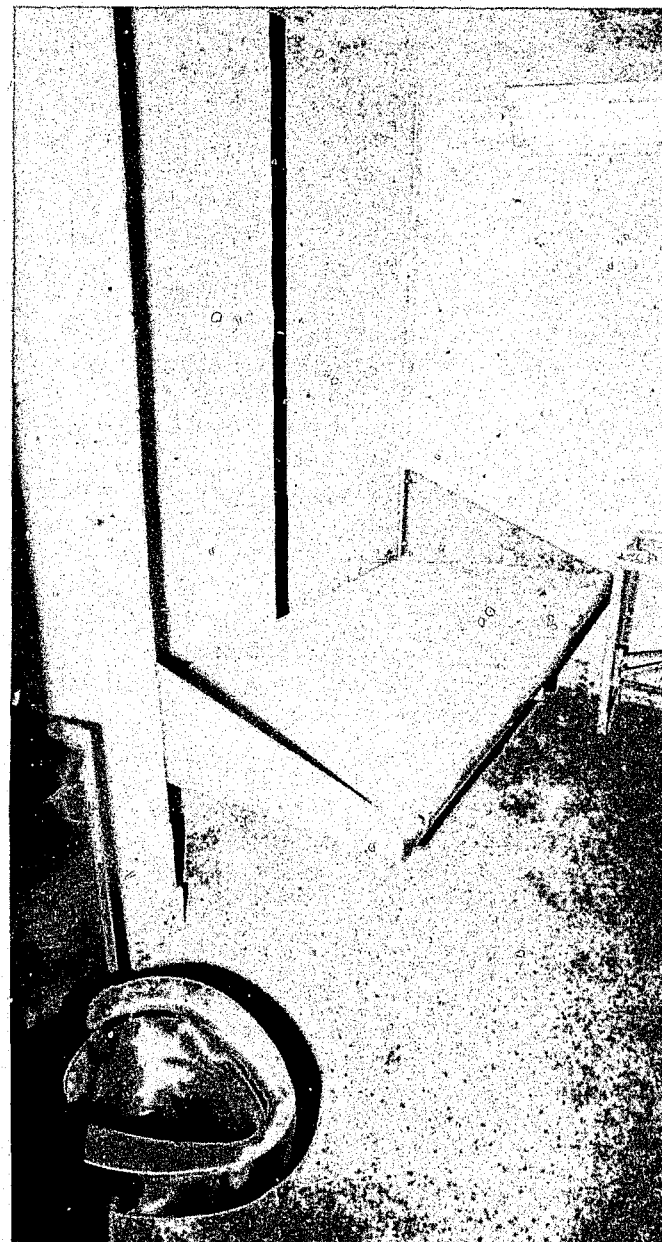
MILWAUKEE COUNTY HOSPITAL WATCHES

Prisoners Conveyed Co. Hosp. - Male	640	802	765
- Female	127	103	111
Jail Personnel Used to Convey - Male	1,280	1,170	1,312
Man-hours used to convey - Male	2,719	2,940	2,552
- Female	701	701	375
Number of Trips	767	905	876
Prisoners Under 24 Hour Watch - Male	20	19	24
- Female	1	4	1
Jail Personnel Used for Watch - Male	480	492	597
- Female	1	16	6
Hours Consumed in Watch - Male	5,254	4,120	4,964
- Female	16	126	48
Days Consumed in Watch - Male	219	172	207
- Female	1	5	2

BUREAU OF IDENTIFICATION

Number of Persons Fingerprinted			
Arrests	2,050	1,959	2,200
Repeaters	2,089	1,748	1,734
Civil Service Employees	762	824	702
Auxiliaries and Special Deputies	42	46	49
Citizenship	260	220	240
Civilian	-	72	79

Photographs Made





	<u>1976</u>	<u>1977</u>	<u>1978</u>
Sheriff's Departments' Arrests	3,773	3,216	3,562
Mug Photos (Sheriff Dept & Others)	-	1,748	1,940
Accident Investigations	1,573	2,889	3,053
Civil Service Employees	762	824	702
Photos for DA - Battery Cases	29	581	741
I.D. Photos for Auxiliary & Spec. Deps.	-	46	49
Records			
Records Checked for Other Agencies	14,987	15,260	9,829
Records Checked for Our Dept.	3,995	3,461	2,961
Dispositions Filed	2,641	1,266	1,082
T.I.M.E. Terminal Messages Sent			
Warrants Entered	-	10,638	15,478
Warrants Modified	-	282	574
Warrants Cancelled	-	8,466	8,875
Vehicle Checks	-	13,175	3,885
Wanted Checks	-	28,995	36,337
Traffic Record Checks	-	16,809	5,588
Administrative Messages	-	4,389	900
CHRI Messages	-	-	6,949
Miscellaneous Queries	-	107	495
Fingerprint Cards on File			
Prisoners	-	-	44,065
Civil Service	-	-	37,045
Documents Examined	-	-	41
Latent Fingerprints Analyzed	12	9	19
Search - Unidentified persons or Bodies thru fingerprints	-	-	27

PROCESS & COURTS

Newly created positions of Bureau Captain and Field Sergeant were filled to maintain closer supervision in the field as well as administratively. Process districts will be reduced by

three, inasmuch as the District Attorney's Office activated a procedure to serve subpoenas by the mailing process. Plans are now being formulated to computerize the records of

all process received.

Court restructuring was put into effect and jurisdiction of the courts were reclassified. All courts are

Presently Circuit Courts, which hear both criminal and civil matters, placing a greater demand on deputies assigned to the bailiff's pool. During 1978, there were twenty-three

(23) out-of-town Judges that required bailiff services on criminal matters, as opposed to six (6) Judges in 1977.

The Process and Courts Bureau provi-

ded personnel to assist municipalities in curbing disorders and vandalism in the County Park System. This function expended 478.0 man-hours.

PROCESS SERVICE

	<u>1976</u>	<u>1977</u>	<u>1978</u>
Process Received	114,629	109,155	106,140
Process served	131,131	129,019	128,365
Jury Summons Rec'd & Attempted	5,780	6,786	9,505
Revenue - Process Fees	\$350,656	\$424,292	\$431,292
Miles travelled in Process Work	304,978	312,074	305,330
Average Daily Servs. - 25 Dists.	585.3	539.9	513.0
Average Daily Mileage - 25 Dists.	1,186	1,160	1,164
Average Ind. Daily Servs.	22.7	21.6	20.5
Average Ind. Daily Mileage	47	46	47
Miles Travelled per Service	2	2	2
Deputies Assigned to Process	25	25	25
Deputies Assigned to Writs, Seizures & Levies	6	6	6
Body Attachments Effected	981	1,012	1,330
Writs of Restitution Served	695	794	1,116
Collections on Executions & Taxes	\$123,557	\$138,470	\$230,144

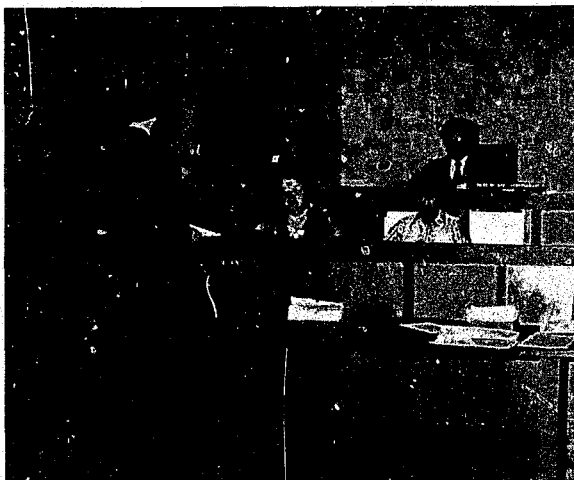
COURT SERVICE

Court Deputies Assigned - Male	43	43	44
- Female	2	2	1
Bailiff Service to Outside Judges	6	6	23
Number of Courts with Full-Time Bailiffs (incl. 7 Court Commissioners)	19	23	40
Family Court Commissioner - Deputies Assigned	1	1	1
Service on Calls for Assistance	1,256	2,344	2,888

TRANSPORTATION

Deputies Assigned to Post & Transp - Male	19	18	18
- Female	2	2	1





POLICE SERVICES

During the past year, the Sheriff assisted constituent agencies within Milwaukee County in maintaining peace and order within the Milwaukee County Park System.

Responding to requests from the District Attorney and municipal police chiefs for assistance in several sensitive, complex investigations of long duration, plus investigations generated by Corporation Counsel and County Institution personnel resulted in an increased workload on an overtime basis. Subsequently, manpower deployed by the normal daily service of criminal writs was diverted to those investigations, increasing the backlog in that service function.

FUGITIVE IV-D SECTION

This unit was made possible through an amendment of the Social Security

	<u>1976</u>	<u>1977</u>	<u>1978</u>
Patients and Prisoners Conveyed (Local)	4,615	4,728	4,634
Trips to Out-of-County Institutions	789	778	674
Deputy Personnel Used in Conveyance	4,167	3,914	3,566
Mileage travelled in Conveyances	165,682	164,567	150,233
Prisoners Returned from Other States	9	15	12

SPECIAL ASSIGNMENTS

	<u>1976</u>	<u>1977</u>	<u>1978</u>
Deputies Assigned to Courthouse	1	1	1
Service Calls and Assignments	6,537	5,366	6,160
Mail Deliveries (Supvrs, Attnys, etc.)	74	118	255
Past Due Traffic Notices	2,301	1,818	1,640



Act which provides for federal funds in seeking out fugitive fathers. Wisconsin State Law, Chapter 82, and Wisconsin Statutes, Chapter 46.25 became effective October 1, 1975, and provides the means of implementing federal legislation. Under this program, one Deputy Sheriff Sergeant and twelve Deputy Sheriff II's have the responsibility of locating fugitive fathers and enforcing orders for support. This unit coordinates all activities through the Child Support Enforcement Coordinator with other county departments and the Commission on Family Resources.

WELFARE FRAUD INVESTIGATIVE UNIT

This section consists of four teams of two Deputies each and one Deputy Sheriff Sergeant who conduct welfare fraud investigations at the Department of Social Services. One Clerk-Stenographer II and one Typist II handle the clerical duties. Sworn personnel are engaged in the investigation of complaints relating to persons obtaining welfare funds fraudulently. In 1978, this unit was responsible for uncovering \$590,894 in activity related to 409 substantiated cases. Restitution received by Department of Social Services at their business office shows \$81,302. A report validated by the Milwaukee County Data Processing Division, indicates voluntary restitution and court ordered restitution in the amount of \$244,036.

BOMB SQUAD

The explosive ordnance technicians responded to forty-eight searches and investigations related to threats received



by Department Heads in county owned buildings or on county owned lands. These technicians also disposed of several types of dangerous explosive materials with no premature detonations taking place.

For the year 1978, forty-four (44) Milwaukee County Deputy Sheriffs were assaulted by persons or prisoners being taken into custody on writs of temporary detention, warrants and/or persons suspected of crimes.

TRAFFIC BUREAU

The opening of the Airport Spur linking General Mitchell Field to Interstate I-94 added 1.4 miles to the Milwaukee County Freeway system during the year. This further extended the efforts of the Traffic Bureau which has experienced an increase of 10% in additional miles of highways since 1969 from 62.5 to 68.3 in 1978 without any addition in authorized patrol strength.

Countering state and national trends, the Milwaukee County freeway fatality rate dropped to 0.4 deaths per 100 million vehicle miles travelled. Seven (7) deaths occurred in six (6) fatal accidents. Traffic volume rose 6%.

Enforcement efforts by the Traffic Bureau deputies involved: a 98% increase in drunken driving arrests - from 214 in 1977 to 424 in 1978, and an increase of 14% in the number of speeders arrested.

AIRPORT SECURITY BUREAU

This force was established in 1973 to comply with the security requirements as established by the Federal Aviation Administration section of the U. S. Department of Transportation as set forth in Part 107 of the Federal Aviation Regulations. The Security Bureau at Mitchell Field is staffed and equipped to respond to the full scope of law enforcement needs of the Airport, including those of the air carriers and other tenants.

The potential for crimes against civil aviation remains, but the current U. S. Civil Aviation Security program has demonstrated the capability of meeting and containing the present threat.

Airline passenger screening procedures continue to effectively prevent weapons and dangerous articles from being carried aboard aircraft. Reactions by the public to passenger screening

procedures, indicates that they desire and expect these methods in the interest of aviation security.

The introduction of four new air carriers to Mitchell Field, the opening

of the Airport Spur from I-94 into the terminal area, and the partial opening of the new parking structure, have added to the responsibilities of the Sheriff's Airport Security Bureau.



	<u>1976</u>	<u>1977</u>	<u>1978</u>
<u>POLICE DIVISION</u>			
Complaints Received	3,629	4,287	3,894
Major Crimes Reported	443	517	491
Major Crimes Cleared	112	127	81
Warrants Received	17,045	17,476	18,315
Warrants Cleared	16,637	16,567	17,293
All Types County Commitments Cleared	2,674	2,637	2,632
Commitments After Judgment Cleared	24	15	0

CRIMINAL INVESTIGATIONS

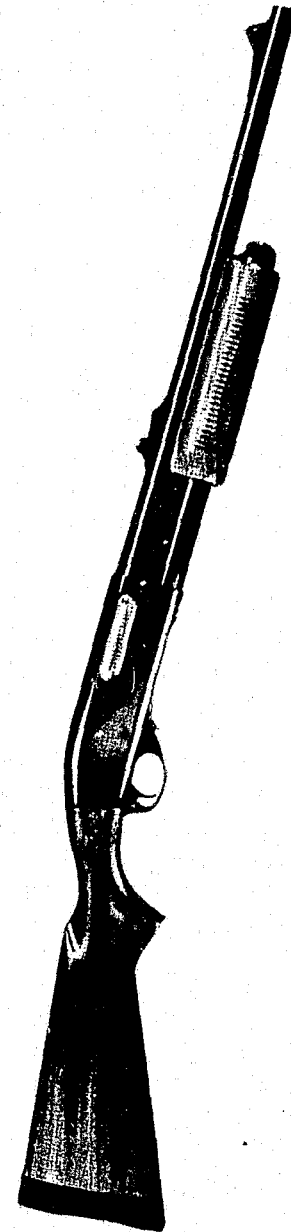
Clearances - Warrants			
Foreign	1,481	1,379	1,567
Abandonment/Non-support	1,610	890	582
Illegitimacy	1,011	1,090	972
Traffic Violations	3,269	3,223	3,020
Other	683	669	703
Clearances - Capias			
Foreign	562	506	497
Circuit Court	847	1,294	1,938***
County Court	3,222	3,093	2,459
Children's Court	134	180	164
Other	0	277**	470
Clearances - Commitments			
Foreign	135	280	431
On Sentences	2,512	2,341	2,199
City Ordinances	2	0	0
Other	1	1	2

FRAUD INVESTIGATION CASELOAD

Complaints Received and Assigned	1,505*	1,519	1,798
----------------------------------	--------	-------	-------

*** Includes 11 Agreements on Detainers (Speedy Trial) ** Warrants for Contempt (IV-D)

* Corrected 1976 Annual Data



	<u>1976</u>	<u>1977</u>	<u>1978</u>
Complaints Investigated	814	736	1,036
Complaints Substantiated	365	300	409
Welfare Cases Closed Due to Investigation	79	81	59
Warrants Issued	57	87	176
Special Investigations	25	24	12

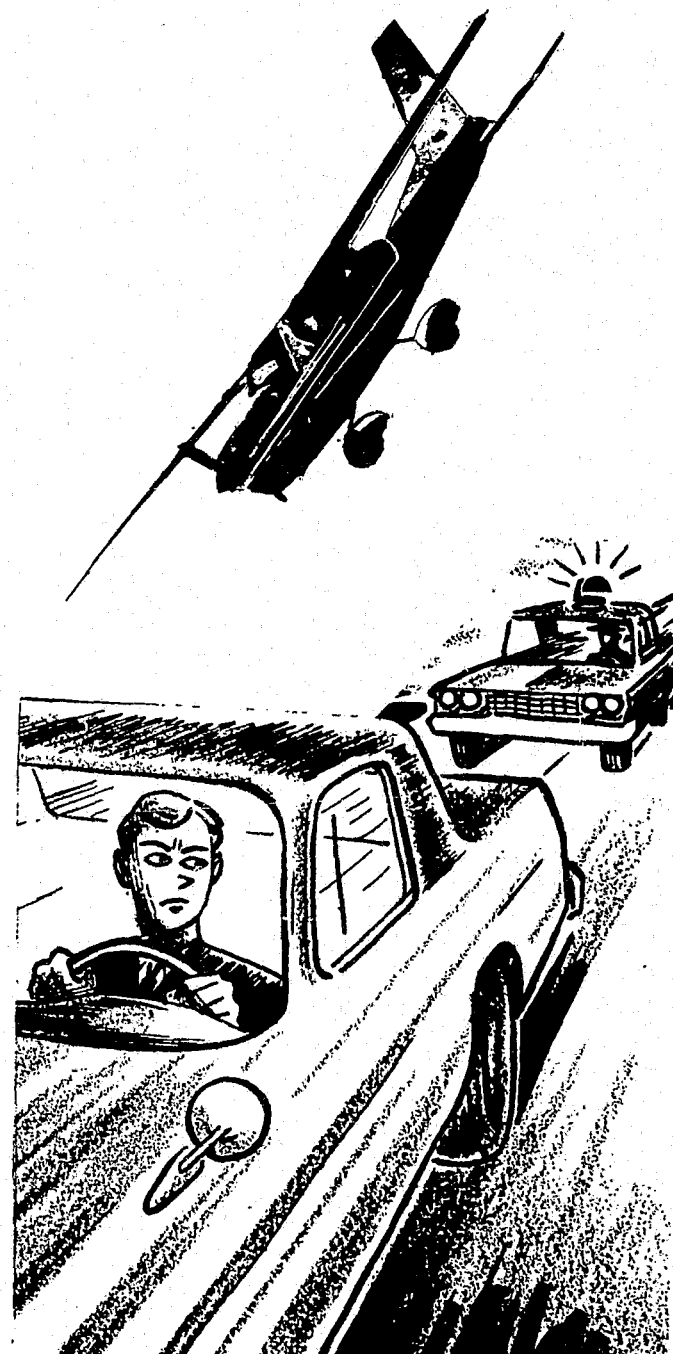
AIRPORT SECURITY BUREAU

Total Responses	3,247	9,857	11,494
Motor Vehicle Accidents - Property Damage	82	69	88
Accident - Personal Injury	5	5	7
Taxi Violations	39	27	41
Recovered Stolen Vehicles	12	11	11
Parking Citations	1,790	5,625	5,906
Traffic Citations	4	1	16
Assaults	2	2	6
Disorderly Conduct	33	16	125
Illness or Injury	105	139	168
Theft or Robbery	100	108	121
Vandalism	29	32	34
Fire Calls	76	117	85
Arrests	20	17	48
Narcotics	3	3	7
Training Hours	1,104	628	455.5
Court Hours	192	238	189.7
Police Assistance	345	3,480	4,612
Special Services	108	92	44

Passenger Screening			
Threats - Bomb	10	4	4
Threats - Hi-Jack	-	-	2
Threats - Others	1	2	15
Arrests	8	2	10
Confiscations	80	54	67
Weapons Detected and Turned Over for Airlines	34	49	69
Security Breaches	23	-	8

PATROL ACTIVITIES

Traffic Citations Issued (incl. Parking)	19,628	21,854	23,956
--	--------	--------	--------



	1976	1977	1978
Auto Accidents Reported & Investigated	3,288	4,074	4,096
Miles Traveled in Patrol Work	1,762,924	1,728,141	1,731,383
Daily Average Patrol Units	36.5	35.1	35.7
Daily Average Mileage Per Unit	132.3	134.9	129.5
Requests for Copies of Accident Reports	5,781	6,958	7,796

Traffic Accident Facts

Vehicle Miles Traveled	1,438,000,000	1,500,000,000	1,599,000,000 (Est)
Property Damage Accidents	2,484	3,071	2,913
Personal Injury Accidents	794	996	1,183
Persons Injured	1,108	1,371	1,319
Fatal Accidents	10	7	6
Persons Killed	13	7	7
Accidents per 1 Million Vehicle Miles	2.2	2.7	2.7
Deaths Per 100 Million Vehicle Miles	0.9	0.47	0.38
Fatal Accidents Per 100 Million Vehicle Miles	0.7	0.47	0.44

Accident Experience

On Roadway

M.V. on Other Road	16	4	8
M.V. in Transport	2,086	2,621	2,662
Parked M.V.	29	23	32
Maintenance Veh. or Equipment	11	11	1
Other Object	54	51	58
Pedestrian	1	2	1
Deer	3	3	5
Other Animal	-	2	-
Overturning	21	12	29
Other Non-Collision	26	31	47

Off Roadway

M.V. on Other Road	3	2	-
M.V. in Transport	23	25	30



	<u>1976</u>	<u>1977</u>	<u>1978</u>
Parked M.V.	14	21	18
Maintenance Veh. or Equipment	3	6	1
Fixed Object	958	1,316	1,152
Other Object	6	12	20
Pedestrian	1	-	-
Overturning	19	23	25
Other Non-Collision	14	9	7

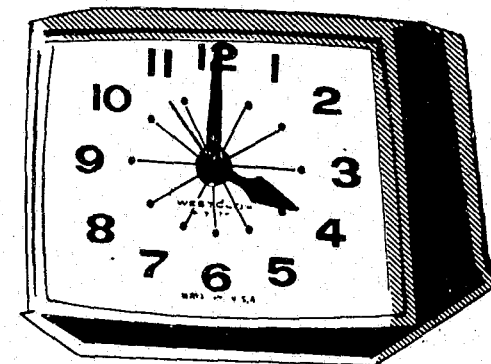
Accidents by Day of Week

Sunday	354	441	476
Monday	418	524	579
Tuesday	505	538	552
Wednesday	430	608	540
Thursday	510	660	639
Friday	608	852	807
Saturday	454	451	503
TOTALS	3,288	4,074	4,096

Accidents by Time of Day

Midnight	101	117	130
1:00 A.M.	97	111	126
2:00 A.M.	131	140	141
3:00 A.M.	63	75	72
4:00 A.M.	35	39	64
5:00 A.M.	42	60	64
6:00 A.M.	97	118	175
7:00 A.M.	231	315	309
8:00 A.M.	140	255	234
9:00 A.M.	106	163	153
10:00 A.M.	98	151	123
11:00 A.M.	108	159	138
NOON	113	175	144
1:00 P.M.	131	171	167
2:00 P.M.	170	200	201
3:00 P.M.	263	350	318
4:00 P.M.	275	336	365
5:00 P.M.	288	308	309

SUN.	MON.	TUES.	WED.	THURS.	FRI.	SAT.
						1
2	3	4	5	6	7	8
9	10	11	12	13	14	15
16	17	18	19	20	21	22
23	24	25	26	27	28	



	<u>1976</u>	<u>1977</u>	<u>1978</u>
6:00 P.M.	139	179	148
7:00 P.M.	119	161	171
8:00 P.M.	97	113	116
9:00 P.M.	103	92	108
10:00 P.M.	145	134	151
11:00 P.M.	155	132	150
Not Stated	41	20	19
	<u>3,288</u>	<u>4,074</u>	<u>4,096</u>

Age of Drivers Involved in Accidents

15 & Younger	6	2	1
16	50	78	39
17	134	136	108
18 - 19	482	587	600
20 - 24	1,252	1,538	1,572
25 - 34	1,552	2,004	2,477
35 - 44	896	1,110	1,223
45 - 54	727	974	895
55 - 64	405	494	553
65 - 74	102	141	150
75 & Older	33	19	33
Not Stated	11	13	12
Unknown (Hit & Run)	241	306	304
Unoccupied Vehicle	18	13	6
	<u>5,909</u>	<u>7,415</u>	<u>7,422</u>

Road Conditions

Dry	3,817	3,870	4,273
Wet	1,172	1,985	1,836
Snowy or Icy	859	1,493	1,277
Slush	51	51	16
Oily	10	7	2

Light Conditions

Daylight	1,913	2,537	2,522
----------	-------	-------	-------



	<u>1976</u>	<u>1977</u>	<u>1978</u>
Dawn or Dusk	147	366	158
Dark - No Street Light	66	114	56
Dark - Street Lighted	1,162	1,057	1,360

Possible Contributing Circumstances

Vehicle Factors

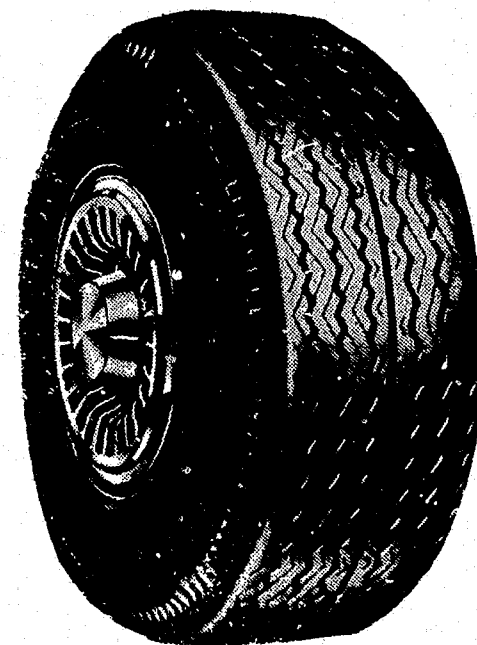
Improper Tires	86	90	105
Other Disabled	60	68	69
Steering	59	46	32
Brakes	49	64	67
Lost Wheel	16	22	22
Disabled/Prior Accident	16	29	22
Engine Failure	12	22	8
Fire	11	10	12
Defective/Broken Trailer Hitch	10	9	18

Driver Factors

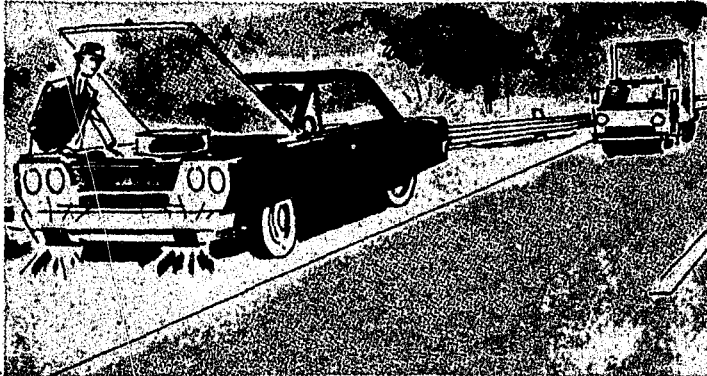
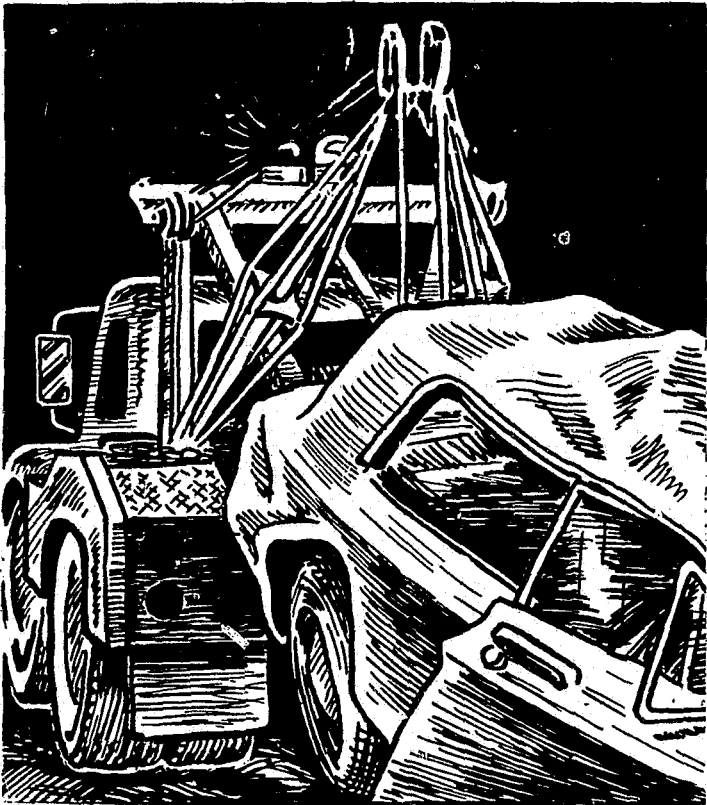
Speed Too Fast For Conditions	1,061	1,419	1,290
Inattentive Driving	905	972	1,095
Following Too Close	551	664	651
Failure to Control Vehicle	422	889	862
Improper Turn	155	108	100
Improper Lookout	143	184	164
Improper Overtaking	100	105	107
Deviating	99	74	66
Failure to Yield Right of Way	87	76	88
Unsafe/Improper Lane Change	59	145	189

Highway Factors

Icy/Slippery/Snow	779	646	971
Wet/Slippery/Rain	252	254	207
Construction	181	78	32
Heavy Traffic	162	208	401
Disabled/Prior Accident	157	246	264
Other Debris	56	86	53
Disabled in Traffic	40	96	59



	<u>1976</u>	<u>1977</u>	<u>1978</u>
Oil Spill	9	18	3
Animal in Roadway	8	18	4
Wisconsin Uniform Traffic Citations Issued			
	12,396	11,225	12,817
<u>Dispositions</u>			
Stipulations			
Unif. Traffic Citations	\$214,657	\$165,391	\$190,014
Parking	\$ 30,827	\$ 44,041	\$ 42,006
Bail Forfeitures	\$103,944	\$102,719	\$126,208
Warrant Fines	\$ 69,077	\$ 72,781	\$112,412
TOTALS	<u>\$418,505</u>	<u>\$384,922</u>	<u>\$470,640</u>
<u>Disabled Vehicles</u>			
Motorist Service	30,863	30,362	30,776
Towed from Expressway	3,997	3,830	4,660
<u>Cause of Vehicle Failure</u> <u>(Documented)</u>			
Motor Trouble	3,582	3,125	3,719
Out of Gas	2,145	1,673	2,069
Tire Trouble	1,651	1,480	1,738
Cooling System	537	459	563
Electrical System	543	437	584
All Others	1,692	1,709	2,084
TOTALS	<u>10,150</u>	<u>8,883</u>	<u>10,757</u>



COMMUNICATIONS

The Communications' Bureaus activities for 1978, in addition to providing normal, on-going communications services to the Department, placed emphasis on planning and development for the future. Administrative personnel began planning for the transition, in early 1979, to a staff of civilian operators supervised by Sergeants. Concurrently, development of a formal recruit and in-service training program for communications operators was begun, for initiation in 1979.

The Communication's Bureau staff spent a portion of the year with data processing personnel, revamping and refining the Justis/Time

system interface computer program to provide faster and more convenient data transmission/retrieval service to all interface users in 1979.

COMMUNICATIONS

Radio Messages recorded by shift:

12:00 Midnight - 8:00 A.M.

8:00 A.M. - 4:00 P.M.

4:00 P.M. - 12:00 Midnight

Radio messages recorded - YEARLY

Teletype messages sent

Park incidents reported - yearly

Paramedic unit responses (Jan to Oct)

Incident reports for Co. Hghwy Dept.

Emergency tests and warnings
disseminated

The Communications Bureau published a training guide, for department wide utilization, on the proper use of the Sheriff's Communication system.

	<u>1976</u>	<u>1977</u>	<u>1978</u>
12:00 Midnight - 8:00 A.M.	114,904	121,610	122,704
8:00 A.M. - 4:00 P.M.	174,904	186,673	173,305
4:00 P.M. - 12:00 Midnight	189,092	190,732	215,558
Radio messages recorded - YEARLY	479,958	498,015	513,014
Teletype messages sent	117,958	150,787	204,737
Park incidents reported - yearly	654	476	708
Paramedic unit responses (Jan to Oct)	260	404	711
Incident reports for Co. Hghwy Dept.	1,850	1,878	1,817
Emergency tests and warnings disseminated	402	430	428



TRAINING AND SPECIAL SERVICES

The Training Academy's staff of one Lieutenant, one Sergeant, and one Clerk-Steno has the challenging task of not only training all new deputies hired, but in keeping the entire department apprised of: all new laws amended laws, recent court rulings, and all other pertinent occurrences in the criminal justice system. The ever increasing demands that society places on law enforcement personnel require that they be well informed and properly trained. The Training Academy has the task to prepare our deputies for the demands of our citizens.

In 1978, the Training Academy held two recruit training classes in which 45 law enforcement officers were certified by the Law Enforcement Standards Board to perform as a sworn law enforcement officer. The Academy also conducted two qualification shoots where all department sworn personnel qualified in firing their service revolver. All deputies also received training in the proper defensive use of the baton as the department plans to issue batons to all uniformed personnel.

Two seminars on terrorism and hostage situations were presented, one to all department supervisory personnel and one to various county department heads, administrators, Judges, and elected officials. The Academy staff gave 39 presentations to 976 people who toured the Safety Building and gave 23

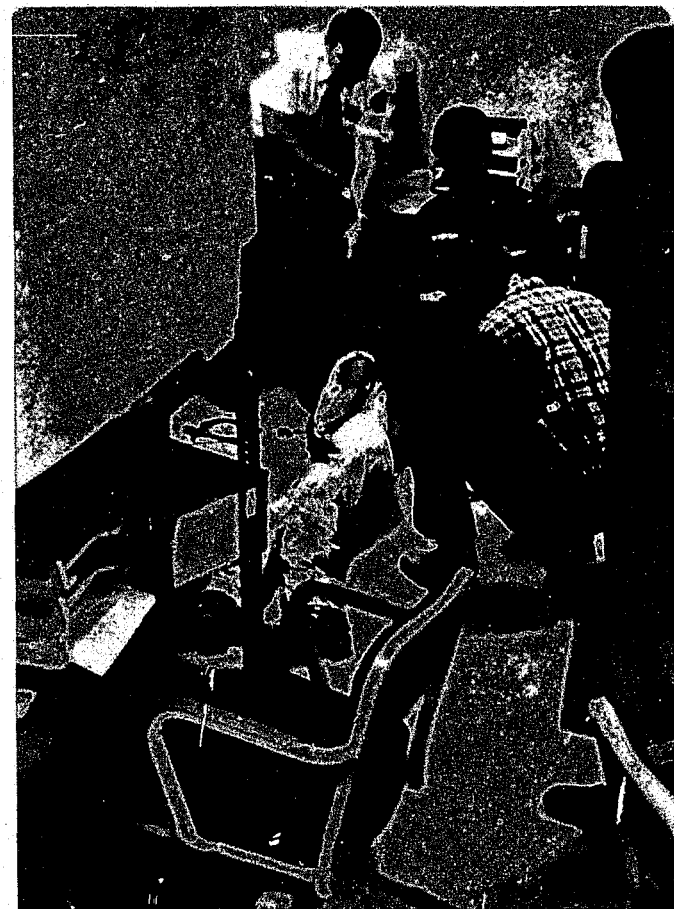
presentations to 1,080 people at various locations in Milwaukee County.

A new program involving in-service training was developed and implemented using the Academy's video tape equipment. Short 15 to 20 minute training tapes are produced in the Academy and shown to the deputies at their roll calls. These roll call sessions are on current law changes or other pertinent criminal justice material, and can be presented on normal duty time with no overtime expenditure. Seven training tapes were produced and viewed by department personnel in 1978. This new technique for in-service training will be expanded in 1979 as initial results have been excellent.

Our Department sent one man to the FBI Academy for the three-month command course, four men attended other out-of-state courses, and 49 officers attended seminars and schools within Wisconsin.

TRAINING

	<u>1976</u>	<u>1977</u>	<u>1978</u>
Deptm'l personnel attending recruit classes	27	6	19
Other dept personnel attending classes	54	35	26
Number of in-service classes conducted	8	7	18
Deptm'l personnel attending specialized courses	126	152	131
LESB and LEAA training reimbursement	\$28,993	\$28,018	\$47,855





LOOKING AHEAD

SECURITY BUREAU

The creation of a Security Bureau should facilitate the growing need to weld all the security needs of Milwaukee County under one person responsible to County Government.

DRUG UNIT

A county-wide Drug Unit will enable the Sheriff to coordinate drug related activities with Municipalities.

NEW OFFICES

Planning for new Sheriff's Department offices will continue in attempts to create a central headquarters designed to continue all functions with greater efficiency.

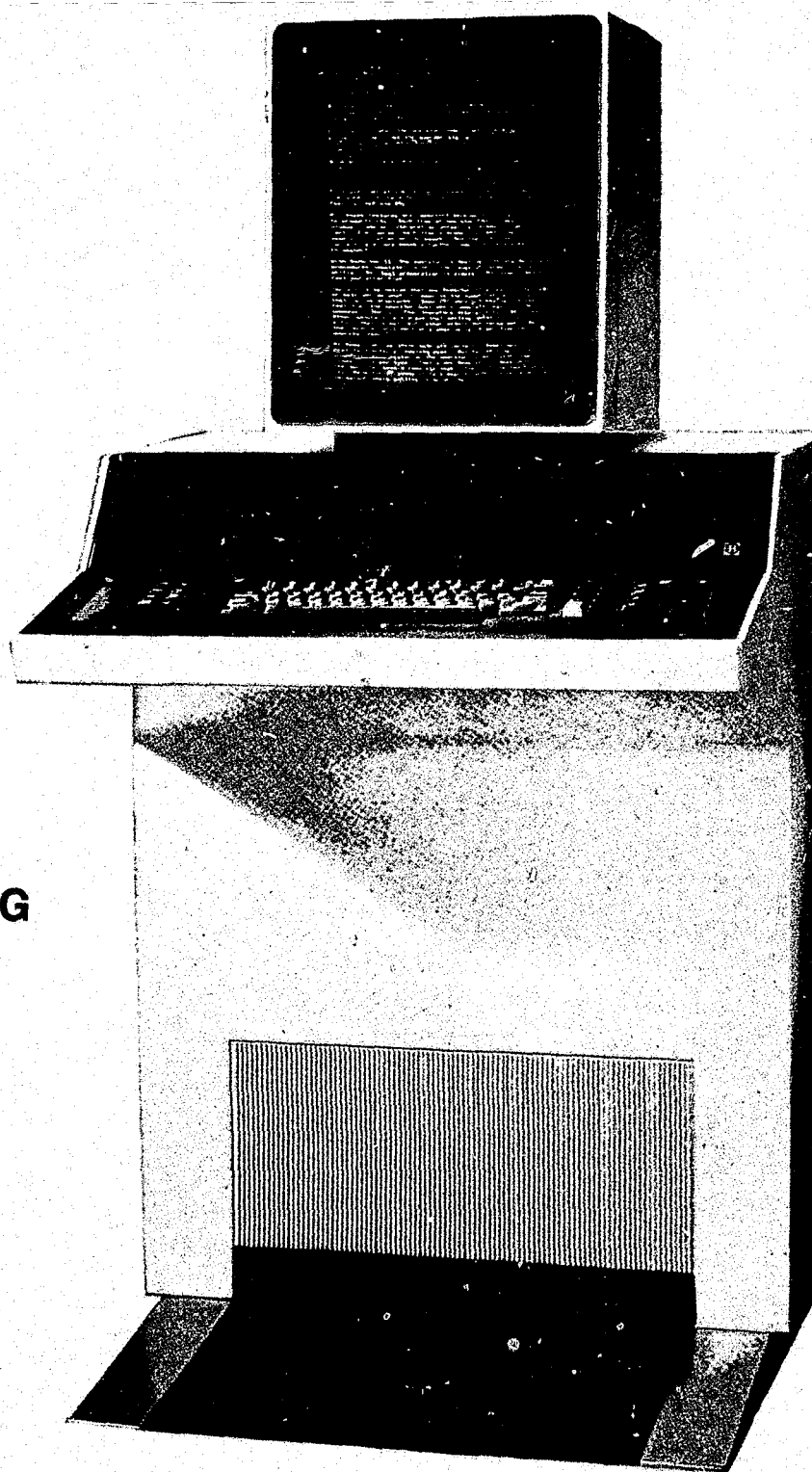
TRAINING FACILITY

The requirement for a new training facility must be carefully looked into so as to continue to comply with standards of training for law enforcement officers.

COMPUTERIZATION

The automation of civil process and Traffic Bureau records would provide a more sophisticated and structured information management and processing system.

WORD PROCESSING



A Code of Ethics for Sheriffs and Deputy Sheriffs

(Adopted June 29th by the Wisconsin Sheriffs & Deputy Sheriffs Association)

AS A LAW ENFORCEMENT OFFICER, by virtue of the authority conferred upon me by the state of Wisconsin and the local governments by which I am employed, I accept it as my responsibility and fundamental duty to devote my abilities, energies, and efforts to the preservation of law and order; to the safeguarding of lives and property; the protection of the innocent against deception, the weak against oppression or intimidation, and the peaceful against violence.

IN THE FACE OF DANGER, scorn or ridicule, I will remain courageous and calm. I will respect the constitutional rights of all individuals, regardless of color, race, or creed. I will practice self restraint and understanding in dealing with human frailties, and I will never lose sight of the fact that, as an officer of the law, I am not the master of the people — but the servant of the law abiding.

IN THOUGHT AND DEED, both in my personal and official life, I will strive to set a good example to all by obeying the laws of the land and the regulations of my Department. Confidential information divulged to me in my official capacity will be kept ever secret, unless revelation is necessary in the proper performance of my duties.

EVER MINDFUL of the fact that it is better to prevent the commission of an act of crime than to apprehend the wrongdoer after the act has been committed, I will constantly strive to communicate to the general public ways and means in which crime may be prevented.

WITHOUT FEAR OR FAVOR, malice or ill will, I will enforce the law courteously, impartially and effectively. Without compromise, I will pursue the perpetrators of criminal acts relentlessly, never employing unnecessary force in making apprehensions and bringing law violators to justice.

I REGARD THE BADGE OF MY CHOSEN PROFESSION as a symbol of public faith, and I accept it as a public trust.

I DEDICATE MYSELF to be true to that trust, and I will keep the faith by upholding the ideals set forth in this code of ethics, unanimously adopted by the Wisconsin Sheriffs & Deputy Sheriffs Association, in Conference, at Land O' Lakes, June 29, 1966.

CONTENTS

	Page		Page
Accidents, All Types	16 - 19	Highway Factors, Accidents	19
Accident Facts	16	Hospital Watches	8
Accidents, Per 1 Million Veh. Miles	16	Huber	7
Age of Driver	18	Identification, Bureau of	8 - 9
By Day of Week	17	Injuries, Traffic Accidents	16
By Time of Day	17	Jail, County	6 - 9
Contributing Circumstances	19 - 20	Letter of Transmittal	1
Deaths Per 100 Million Veh. Miles	16	Looking Ahead	24
Light Conditions	18 - 19	Medical Section	8
Road Conditions	18	Patrol Activities	15 - 20
Administration	3 - 6	Personnel Changes	3
Airport Security Bureau	13 & 15	Police Services	11 - 20
Arrests, Dispositions - Traffic	20	Process & Courts	9 - 11
Bailiff Services	10	Radio Communications	21
Bomb Squad	12 - 13	Receipts, Departmental	4 - 5
Budget Appropriation	6	Revenue, Departmental	5 - 6
Budget Expenditures	6	Sales, Sheriff	6
Citations Issued - Traffic	15	Special Assignments - Process	11
Clearances, Warrants, Commitments, Capias	14	Stipulations - Police Services	20
Communications	21	Supervisors, County Board of	Inside Front Cover
Court Service	10	Table of Organization	2 - 3
Detective Bureau	11	Towed from Expressway, Vehicles	20
Disbursements	5	Traffic Accident Facts	16
Driver Factors, Accidents	19	Traffic Bureau	12 - 13 & 15 - 20
Ethics, Code of	25	Training & Special Services	22 - 23
Fatalities, Traffic Accidents	16	Transportation - Process	10 - 11
Fines, Warrant - Traffic	20	Vehicle Failures, Accidents	19
Food Service	7	Vehicle Failures, Cause of	20
Fraud Investigation Caseload	14 - 15	Welfare Fraud Investigation Unit	12 & 14 - 15
Fugitive IV-D Section	11		

END