

**CARE AND MAINTENANCE OF 9mm SMITH & WESSON WEAPON**



60082



LEXINGTON-FAYETTE URBAN COUNTY DIVISION OF POLICE  
Lexington, Kentucky

JUL 16 1979

CARE AND MAINTENANCE OF 9MM SMITH & WESSON WEAPON**ACQUISITIONS**

It is extremely important in the carrying of the optional weapon, the 9mm Smith & Wesson, that it be kept clean. The methods for cleaning this weapon are as follows:

## I. Field Strip (with the magazine out)

- A. Draw slide to the rear with the right hand with fingers over slide and thumb behind grip tang. Line up the irregular shaped recess under the word Wesson with slide stop pin.
- B. With a soft piece of lead or plastic, push the slide stop pin from the right side of the weapon to the left. With the safety off, draw the barrel slide assembly forward off the front of the weapon.
- C. Remove the recoil spring and the recoil spring guide assembly, turning the barrel bushing one eighth turn counter-clockwise and slide out. Remove the barrel from the rear.
- D. Clean slide and particularly the face of the slide and underneath the ejector. Also clean the grip portion and top of the receiver being careful to remove all powder residue.
- E. Reassembly

In reassembling, make sure safety is off, the hammer forward, and the recoil spring and recoil spring guide assembly is placed on the notch in the barrel. The sear release lever and the sear plunger pin should be pushed down as the slide is pushed onto the receiver to the rear. Before placing the slide stop pin into the receiver, take your finger and push the barrel to the rear so as to align the retaining access to the receiver.

## II. Oiling

- A. Two (2) drops of oil on the barrel battery recesses.
- B. Two (2) drops of oil on each slide rail or the receiver rails.
- C. One (1) drop of oil on recoil spring guide assembly before replacing in the weapon.

- D. Two (2) drops of oil on the outside of the barrel when the slide is locked to the rear.
- E. One (1) drop of oil on the follower when the slide is locked to the rear.

IMPORTANT - UNLIKE A REVOLVER, THE 9MM WEAPON WILL NOT EJECT DRY.

### III. Carrying of Weapon

- A. The proper way to carry the weapon.
  - 1. Place the safety on safe.
  - 2. Open the slide to lock and drop one cartridge into the chamber and then close the slide. Let slide fall under its own power. (Do not let the slide go forward with any part of the hands touching it. Hand pressure will not let the weapon close to battery, rendering the weapon inoperative.)
  - 3. Never leave hammer fully cocked.
  - 4. Place a loaded magazine in the weapon.
    - a. Placing the safety on with the hammer fully cocked will not allow the weapon to fire for the safety bar covers the hammer prior to the dropping of the hammer.
    - b. With the weapon on safe, or with the magazine removed, the trigger is inoperative.
  - 5. The practice of carrying the 9mm auto-loader in "safe" condition is the result of an obvious trade-off between speed and safety. In the 12 year period 1965-1976, 833 law enforcement officers were killed with handguns. Of that number, 137 were killed with their own weapons. This is 16.5% of the total and is a convincing argument for carrying the weapon with the safety on. Birmingham, Alabama, while testing sidearms placed a Model 39 Smith & Wesson in the hands of various persons and recorded the time required for them to function the weapon from the safe condition.

A seven year old male was unable to function the Model 39 in two minutes.

An adult female was able to function the Model 39 in five seconds. She was very familiar with firearms.

A federal officer was unable to function the Model 39 in thirty seconds.

Four veteran police officers were unable to function the Model 39 within fifteen seconds. All of the above persons, including the seven year old, were able to immediately function a Model 10 Smith & Wesson revolver.

B. A Second Method

1. With the weapon on safe as stated in Section III, A, 1 through 4, b, slowly remove the safety from safe to fire, take hammer and place on half-cock.
2. Insert fully loaded magazine.

In this manner the weapon is on double action as per a revolver and does not require the use of the safety. In a situation where the weapon may be removed from the officer forcefully, the pushing of the magazine release button will drop the magazine about one sixteenth (1/16th) of an inch and render the weapon totally inoperable until the magazine is placed back into the weapon.

IT IS EXTREMELY IMPORTANT THAT THE MAGAZINE SAFETY DISCONNECT BE RETAINED IN THE WEAPON.

IV. Tips on Firing the Weapon

A. Characteristics

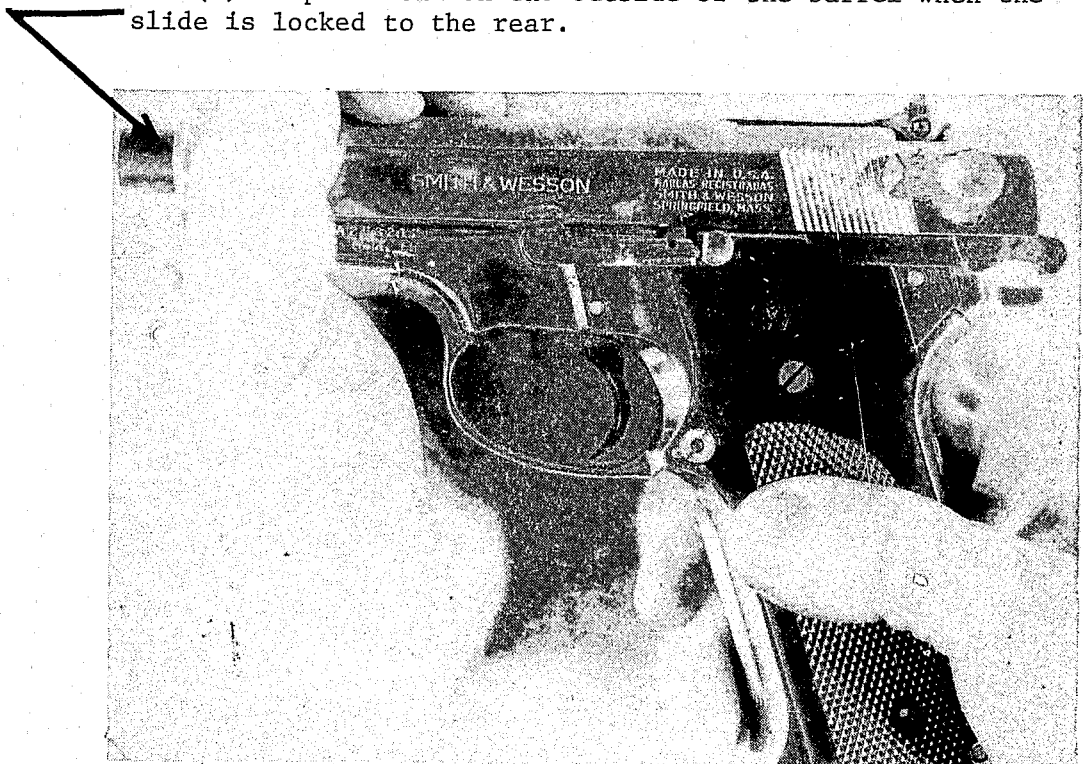
1. Unlike the revolver, this weapon must be gripped as tightly as possible with the entire hand, excluding the thumb. The grip should not be relaxed between rounds.
2. The Model 59 is primarily designed for a person with a large hand and becomes difficult to fire double action by persons with small hands.
3. The Model 39 works very well for a person with a small hand.
4. The weapon is best sighted in at dead center of the target and is so designed at twenty-five (25) yards.
5. Extreme care must be executed at the range to make sure that the weapon is not placed in front of the barricades with the hand and should always be placed to the right or the left of the barricades in order to avoid the slide striking the barricades upon firing. When this occurs, it will stop the weapon from ejecting.

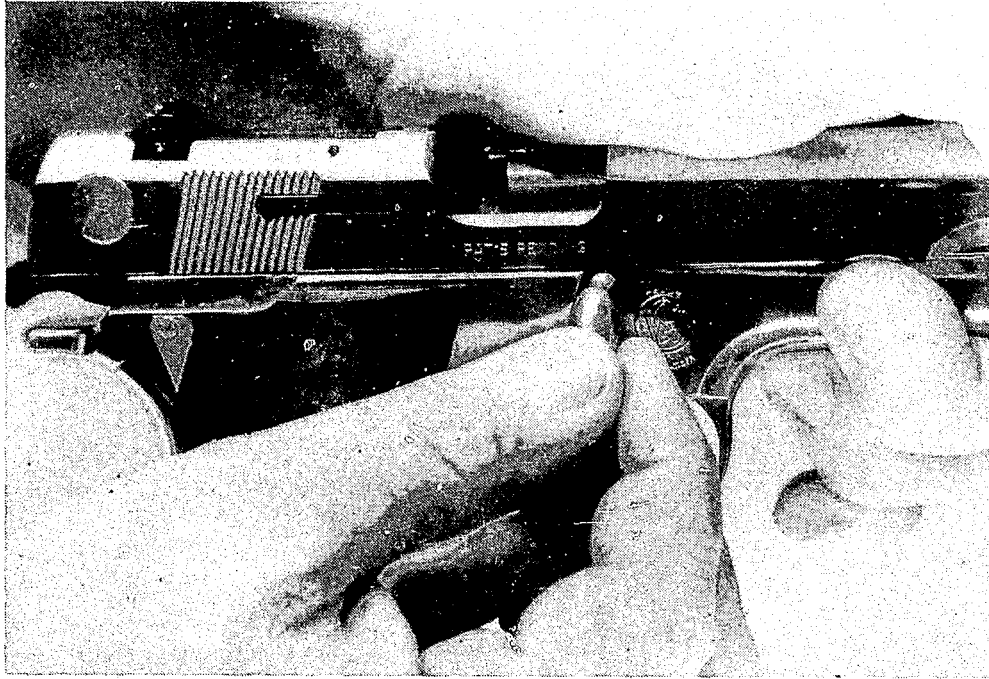
6. The first Model 39's that were made contained a barrel with a humped bullet ramp. This type barrel should not be used and can be exchanged at the factory for a straight ramped barrel.
7. This weapon functions poorly with old Super-Vel, and a number of reloads where the length of the cartridge is not as long as it should be.
8. The Division approved ammunition should be the only ammunition used for service; however, ball type ammunition not designed for 9mm machine guns may be used for practice purposes.
9. If the weapon fires high or low, different height sight assemblies can be exchanged from the factory by the Division Armorer. This will normally be at no cost from Smith & Wesson.



Draw slide to the rear with the right hand with fingers over slide and thumb behind grip tang. Line up the irregular shaped recess under the word Wesson with slide stop pin.

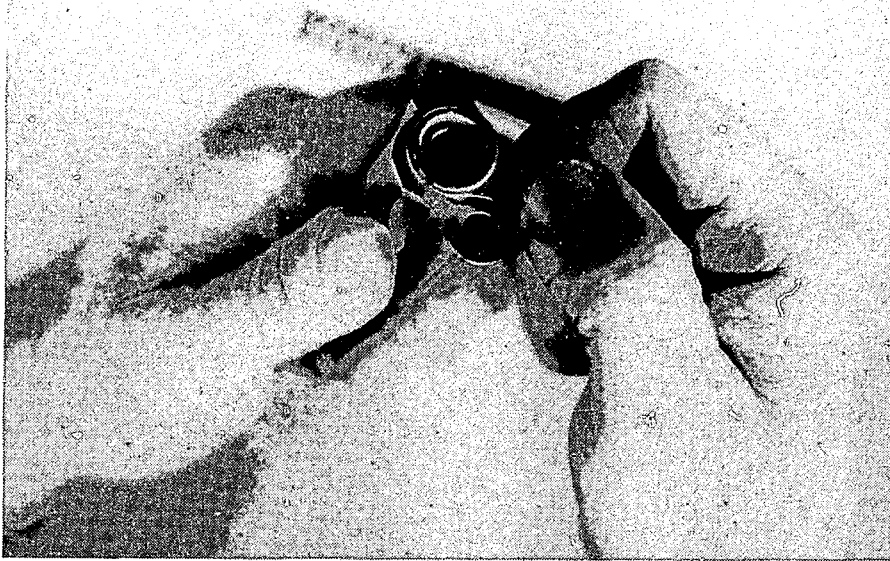
Two (2) drops of oil on the outside of the barrel when the slide is locked to the rear.





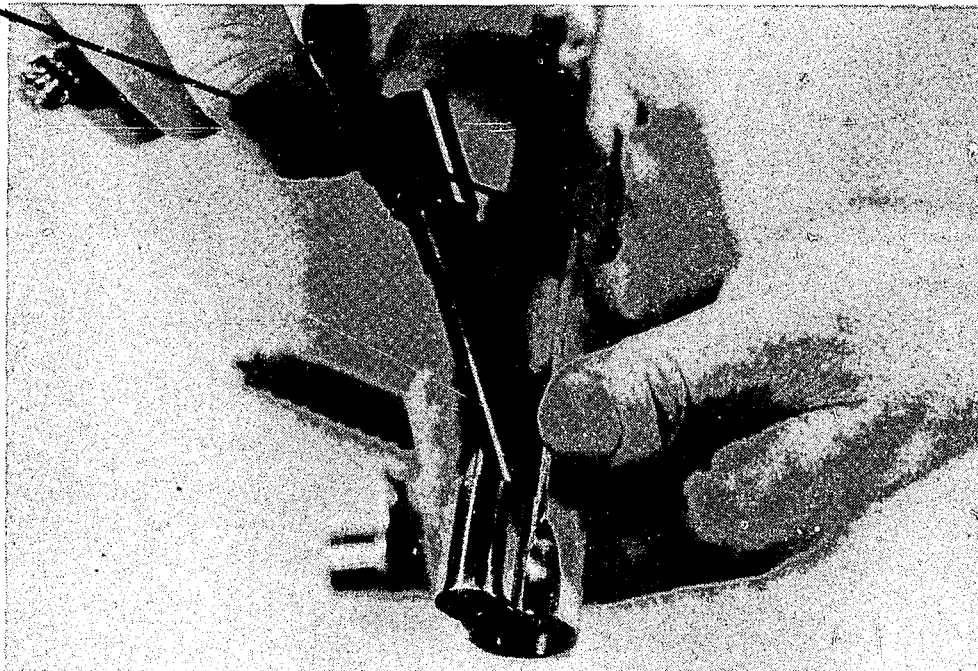
With a soft piece of lead or plastic, push the slide stop pin from the right side of the weapon to the left. With the safety off, draw the barrel slide assembly forward off the front of the weapon.



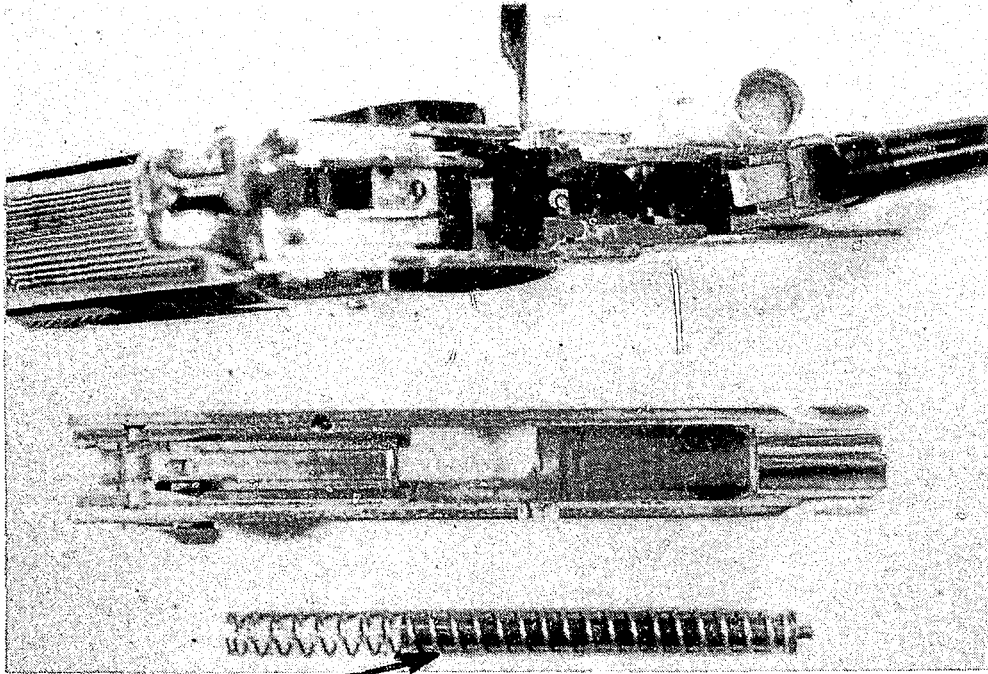


Remove the recoil spring and the recoil spring guide assembly, turning the barrel bushing one eighth turn counter-clockwise and slide out. Remove the barrel from the rear.

Two (2) drops of oil on each slide rail or the receiver rails.

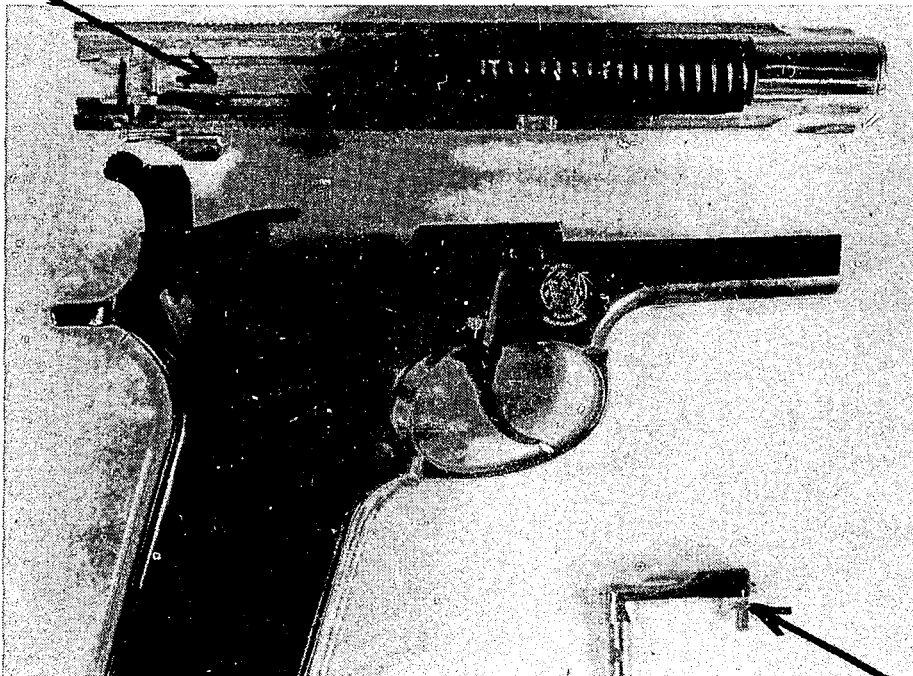




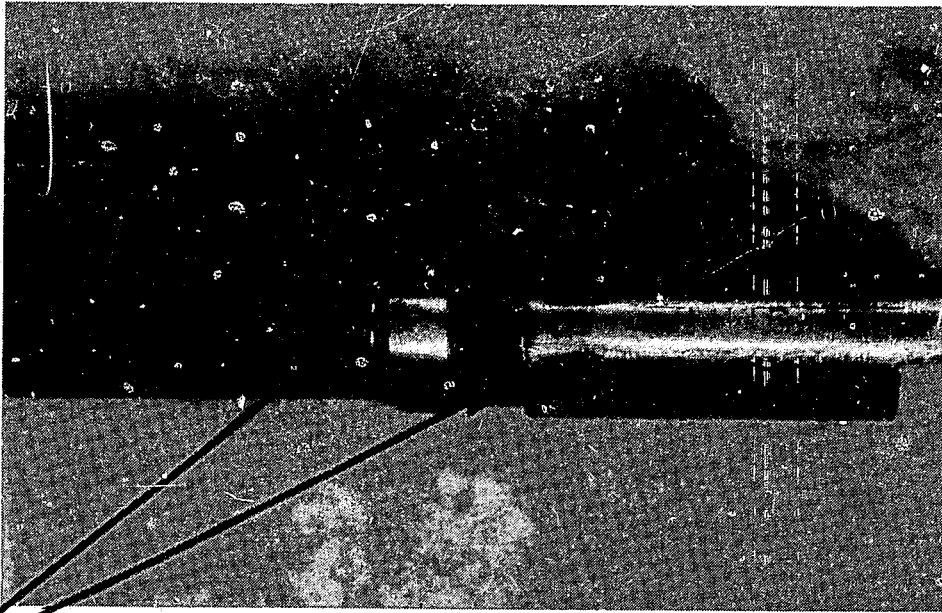


One (1) drop of oil on recoil spring guide assembly before replacing in the weapon.

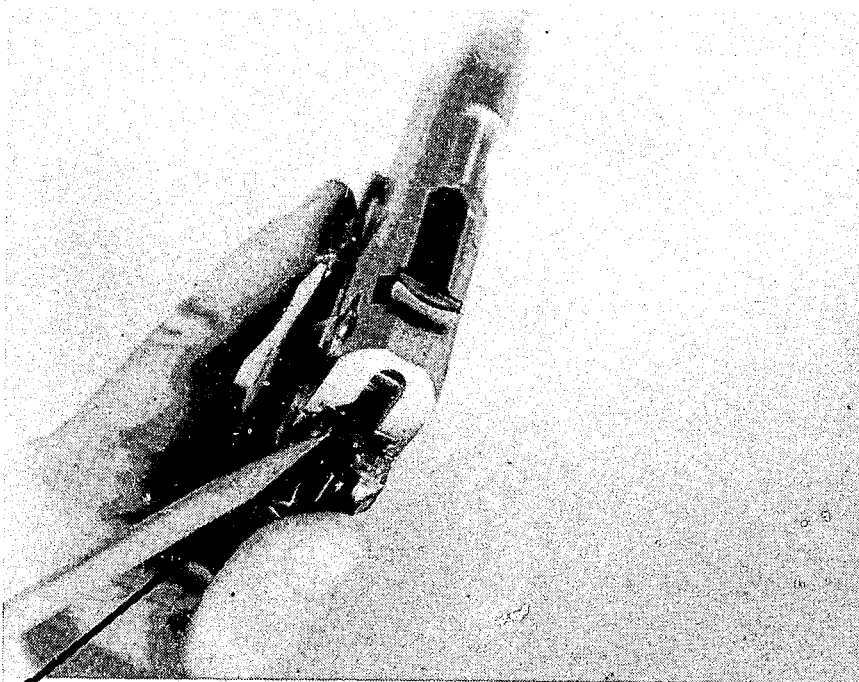
Clean slide and particularly the face of the slide and underneath the ejector. Also clean the grip portion and top of the receiver being careful to remove all powder residue.



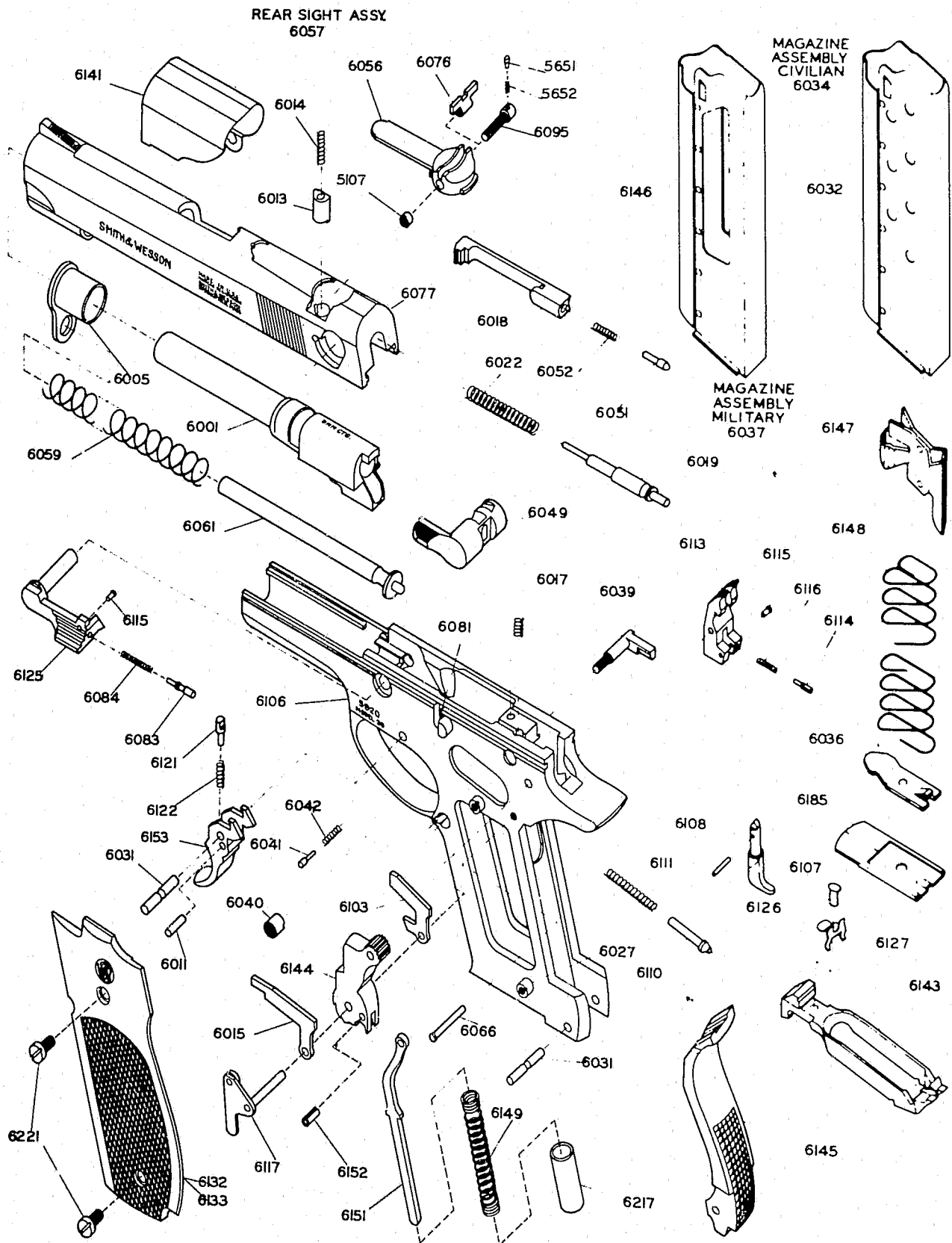
One (1) drop of oil on slide stop pin before replacing the pin in the weapon.



Two (2) drops of oil on the barrel battery recesses.



Placing the safety on with the hammer fully cocked will not allow the weapon to fire for the safety bar covers the hammer prior to the dropping of the hammer.



**SMITH & WESSON 9MM AUTOMATIC PISTOL**  
**DOUBLE ACTION** **MODEL No. 39**  
**PARTS LIST**

| No.  | Name                                | Price  | No.  | Name                                | Price  |
|------|-------------------------------------|--------|------|-------------------------------------|--------|
| 5107 | Rear Sight Windage Nut .....        | \$ .10 | 6084 | Slide Stop Plunger Spring .....     | \$ .20 |
| 5651 | Rear Sight Windage Screw Plunger .. | .15    | 6095 | Rear Sight Windage Screw .....      | .55    |
| 5652 | Rear Sight Windage Sc. Plg. Sprg .. | .10    | 6103 | Sear Release Lever .....            | .30    |
| 6001 | Barrel .....                        | 14.30  | 6106 | Frame (factory exchange only) ..... | 35.20  |
| 6005 | Barrel Bushing .....                | 1.65   | 6107 | Disconnecter .....                  | 1.10   |
| 6011 | Trigger Plunger Pin .....           | .10    | 6108 | Disconnecter Pin .....              | .10    |
| 6013 | Ejector-depressor Plunger .....     | .55    | 6110 | Drawbar Plunger .....               | .55    |
| 6014 | Ejector-depressor Plunger Spring .. | .10    | 6111 | Drawbar Plunger Spring .....        | .10    |
| 6015 | Ejector Magazine Depressor .....    | .55    | 6113 | Sear .....                          | 1.95   |
| 6017 | Ejector Spring .....                | .10    | 6114 | Sear Plunger .....                  | .15    |
| 6018 | Extractor .....                     | 2.20   | 6115 | Sear Plunger Pin .....              | .10    |
| 6019 | Firing Pin .....                    | .65    | 6115 | Slide Stop Plunger Pin .....        | .10    |
| 6022 | Firing Pin Spring .....             | .10    | 6116 | Sear Plunger Spring .....           | .10    |
| 6027 | Frame Stud .....                    | .30    | 6117 | Sideplate .....                     | .60    |
| 6031 | Insert Pin .....                    | .10    | 6121 | Trigger Plunger .....               | .30    |
| 6031 | Trigger Pin .....                   | .10    | 6122 | Trigger Plunger Spring .....        | .15    |
| 6032 | Magazine Tube .....                 | 1.65   | 6125 | Slide Stop .....                    | 3.30   |
| 6034 | Magazine Assembly .....             | 4.25   | 6126 | Trigger Play Spring Rivet .....     | .10    |
| 6036 | Magazine Butt Plate Catch .....     | .30    | 6127 | Trigger Play Spring .....           | .35    |
| 6037 | Magazine Assembly—Military .....    | 4.25   | 6132 | Stock, Right .....                  | 2.20   |
| 6039 | Magazine Catch .....                | .85    | 6133 | Stock, Left .....                   | 2.20   |
| 6040 | Magazine Catch Nut .....            | .40    | 6141 | Dust Shield—Military .....          | 1.10   |
| 6041 | Magazine Catch Plunger .....        | .15    | 6143 | Drawbar .....                       | 6.60   |
| 6042 | Magazine Catch Plunger Spring ..... | .20    | 6144 | Hammer .....                        | 3.05   |
| 6049 | Manual Safety .....                 | 3.85   | 6145 | Insert .....                        | 4.95   |
| 6051 | Manual Safety Plunger .....         | .15    | 6146 | Magazine Tube—Military .....        | 1.65   |
| 6052 | Manual Safety Plunger Spring .....  | .10    | 6147 | Magazine Follower .....             | .65    |
| 6056 | Rear Sight Leaf .....               | 4.15   | 6148 | Magazine Spring .....               | .90    |
| 6057 | Rear Sight Assembly .....           | 6.60   | 6149 | Mainspring .....                    | .35    |
| 6059 | Recoil Spring .....                 | .65    | 6151 | Stirrup .....                       | .45    |
| 6061 | Recoil Spring Guide Assembly .....  | 1.65   | 6152 | Stirrup Pin .....                   | .10    |
| 6066 | Sear Pin .....                      | .15    | 6153 | Trigger .....                       | 2.20   |
| 6076 | Rear Sight Slide .....              | 1.10   | 6185 | Magazine Butt Plate .....           | .45    |
| 6077 | Slide .....                         | 24.20  | 6217 | Mainspring Plunger .....            | .30    |
| 6081 | Slide Stop Button .....             | .45    | 6221 | Stock Screw .....                   | .10    |
| 6083 | Slide Stop Plunger .....            | .20    |      |                                     |        |

**SPECIFICATIONS**

|                                |                             |                     |   |
|--------------------------------|-----------------------------|---------------------|---|
| <b>Caliber</b> .....           | 9mm Luger and Parabellum    | <b>Sights</b> ..... | Fixed, 1/8-inch serrated ramp front;<br>Patridge type rear adjustable for windage |
| <b>Magazine Capacity</b> ..... | 8                           | <b>Stocks</b> ..... | Checked walnut with S&W monograms   |
| <b>Barrel Length</b> .....     | 4 inches                    | <b>Finish</b> ..... | S&W Blue or Nickel  |
| <b>Length Over All</b> .....   | 7 7/16 inches               | <b>Ammunition</b>   | 9mm Luger and Parabellum  |
| <b>Weight</b> .....            | 26 1/2 oz. without magazine |                     |   |

**END**