

X ANNUAL TRAFFIC REPORT

RHODE ISLAND DEPARTMENT OF CORRECTIONS

JULY 1977 - JUNE 1978

PREPARED BY: Walter J. Fontaine  
Senior Research Technician  
Rhode Island Department of  
Corrections

APPROVED BY: John J. Moran  
Director  
Rhode Island Department of  
Corrections

59322

The traffic statistics for fiscal year 1977-1978 show a slow decline in the population at the Adult Correctional Institution. Table 1 compares the population on the last day of fiscal year 1976-1977 (June 30, 1977) and the corresponding date of fiscal 1977-1978. The total population of the Adult Correctional Institution decreased by 7.7 percent. The sentenced population decreased by 6.3 percent and the awaiting trial population decreased by 15.0 percent. The decrease in population was 19.8 percent for Maximum Security, 3.9 percent for Medium Security, and 1.2 percent for Minimum Security. The number of men in the Work Release Program increased by 51.5 percent. There was a 14.3 percent increase in the population at the Women's Division. The Drug Program began during fiscal 1977-1978.

The month-to-month changes are shown in Table 2 and in Graph A located in the Appendix of the report. The population at Maximum Security was at its peak in the first month of the fiscal year (July 1978). The population declined by 7.8 percent between July and August, and then dropped an additional 1.5 percent between August and September. During October to March the average population remained between 402.0 and 416.5. The decline in population resumed during the next two months. The decline between March and April was 8.7 percent and the decline between April and May was 7.8 percent.

There was little change in the Medium Security average population. During the first eight months of the fiscal year,

**NCJRS**

JUL 11 1979

the mean population of Medium Security remained within the narrow range of 160.2 to 165.2. The population at Medium was lowest in April 1978 (143.0). One significant change at Medium was the removal of all awaiting trial inmates from Medium in April 1978.

The population at Minimum declined from a year long high of 80.1 in August 1977 to a low of 55.6 for February 1978. The Minimum population began increasing again until June 1978 when the monthly average was 79.6. The population in the Work Release Program remained between 27.23 and 32.48 during the first nine months of the fiscal year. On April 3, 1978 the population increased 55 percent and has since remained near 50.

The Drug Program began on October 31, 1977 with three men. Twenty inmates were on the program at the end of the fiscal year.

A total of 2140 persons were incarcerated during fiscal 1977-1978. Forty-six percent were incarcerated on sentences during at least part of the year. Of these 990 individuals, 581 were still in the ACI at the close of the fiscal year and 409 were no longer in the ACI when the fiscal year ended. An additional 2.4 percent of the persons passing through the ACI during fiscal 1977-1978 were never sentenced to serve time at the ACI but did serve fines. Of these 52 individuals, two remained at the ACI when the fiscal year closed. An additional 1098 persons who were neither sentenced nor fined during the year were incarcerated at the ACI under awaiting trial status.

At the close of the fiscal year, 87 of these remained in prison awaiting trial. The 1098 persons who awaited trial during the year included 20 Federal prisoners, most of whom were detained by Immigration authorities.

Table 4 is a summary of all the commitments to the Adult Correctional Institution during fiscal 1977-1978. The 990 persons who were incarcerated as sentenced persons at the Adult Correctional Institution during at least part of fiscal 1977-1978 accounted for 562 commitments. Of these 562 commitments, 341 were commitments resulting from sentences incurred during the year; 22 were commitments of parole violators who did not incur any new sentences, 11 were transfers from other states; 11 were returns from escape status; two were transfers from the Medical Center; five were commitments resulting from fines; and 170 were commitments under awaiting trial status (other than the commitment in which they were sentenced). In addition there were 47 persons who were committed as awaiting trial inmates prior to July 1, 1977 but were not sentenced until fiscal 1977-1978. Because these forty-seven individuals neither left the institution nor re-entered the institution during the year, they were not counted as 1977-1978 commitments.

The 52 persons who were fined but never sentenced during the year accounted for 54 commitments - 49 commitments resulting from fines and five awaiting trial commitments. Those 1098 persons who were neither sentenced nor fined accounted for 1207 commitments, all of which were under awaiting trial status.

Table 5 summarizes data on persons committed to the ACI during fiscal 1977-1978. A total of 1511 persons were committed during the year. At the end of the fiscal year, 329 were still in the ACI while 1182 had been released. A total of 400 sentenced persons were committed to the ACI during this 12 month period. These commitments included new sentenced men, parole violators, and returning escapees. Over 60 percent (60.3) were still in the ACI when the fiscal year closed. In addition to the 237 sentenced commitments, this group of 400 incurred four commitments as a result of fines and 159 commitments under awaiting trial status.

All but three of the 52 persons who were incarcerated at the Adult Correctional Institution as a result of a fine were committed during the current fiscal year. They accounted for 54 commitments. This was due to the fact that five persons that were fined also were committed to the ACI under awaiting trial status.

There were 1062 inmates who were neither committed as sentenced inmates nor as fined inmates. Of these 1062 persons, about eight percent (86 persons) were still in the Adult Correctional Institution awaiting trial when the year ended.

Table 6 summarizes the data on releases in fiscal 1977-1978. The 528 persons who served sentences during any part of the fiscal year accounted for 476 releases from sentences and an additional 182 releases from fines or awaiting trial status. The 51 inmates who served fines but no sentences during fiscal 1977-1978 accounted for 55 releases (51 from fined status and four from awaiting trial status). The 1037 inmates whose only releases were from awaiting-trial status accounted for 1166 releases.

Table 7 shows the type of releases for 461 sentenced persons and their 476 releases from sentences. Forty-five percent of those releases resulted from expiration of sentence. Just over one-third (33.8 percent) of the releases resulted from parole. Nearly eight (7.8) percent were discharged at court; 5.3 percent were bailed; and 3.8 percent were transferred to out of state authorities. The remaining 4.2 percent either escaped (12 cases), were transferred to the Medical Center (4 cases), were transferred to the Training School (2 cases), or died (2 cases).

Sometimes the Federal Government detains persons at the Adult Correctional Institution. During Fiscal 1977-1978, 23 persons were at the ACI as federal prisoners. Most of these people were being held for immigration authorities. Only two of these 23 persons were sentenced. Federal prisoners accounted for 22 commitments (1.2 percent of all commitments) and 22 releases (1.2 percent of all releases). The data is summarized in Table 8.

The juvenile traffic statistics are shown in tables 9 & 10. Table 9 deals with the Training School for Boys and Girls while Table 10 deals with the Juvenile Diagnostic Center. A total of 453 different persons were detained at the Training School during fiscal 1977-1978. These 364 boys and 89 girls accounted for 551 detentions (441 male and 110 female). Detentions were subdivided into four types:

- 1) Regular Court detentions - This referred to the direct detention to the Training School resulting from an appearance in the Family Court. It was only considered a regular court detention if no part of this detention was served at the Youth Correctional Center.
- 2) YCC detentions - This refers

to detentions by the court to the Training School in which all or part of this detention was spent at the Youth Correctional Center. 3) Diagnostic Center holds refers to youths held at the Training School while awaiting opening at the Diagnostic Center, and 4) Other holds - This refers to persons held as a result of a verbal order of either a judge or a police department. These people were held awaiting a Family Court hearing and were released after this hearing.

A total of 432 commitments occurred at the Training School during Fiscal 1977-1978. Of these 432 commitments, 337 involved boys and 95 involved girls. Precisely 50 percent of these 432 commitments were for regular court detentions; 20.1 percent were for YCC detentions; 14.8 percent were for Diagnostic Center holds; and 15.0 percent were for other holds. The 432 commitments do not include 290 occasions upon which a boy or girl was returned to the Training School from runaway status.

Statistics on releases showed similar trends. Nearly 48 percent of the releases involved regular court detentions; 19.4 percent involved YCC detentions; 16.3 percent involved Diagnostic Center holds; and 16.6 percent involved "other holds".

A considerable number of elopements occurred during the year. The 364 boys eloped a total of 254 times during the year, yielding an elopement rate of one elopement for every 1.43 boys. The 89 girls eloped a total of 38 times for an elopement rate of one elopement for every 2.34 girls.

Table 10 summarizes the traffic data for the Juvenile Diagnostic Center. A total of 205 persons passed through that institution during fiscal 1977-1978. The number of commitments was 197 and the number of releases was 200. Of

the 205 persons detained at the Diagnostic Center, 149 were boys and 56 were girls. There were 12 elopements (runaways) during the year - two committed by boys and ten committed by girls.

The monthly fluctuations of the on-grounds population of the Training School and the Diagnostic Center are illustrated on a graph in the Appendix. The Training School on-grounds count includes boys and girls residing in the cottages or in the Youth Correctional Center. During the first nine months of the fiscal year, one on grounds population increased steadily from a year-long low of 63.78 in July 1977 until a year-long high of 88.64 was reached in March 1978. This represented a 39 percent increase in the population. During the next three months the population receded slowly. There were 84 juveniles on the grounds when the fiscal year ended on June 30, 1978. This was 42 percent more than the population when the fiscal year began (July 1, 1977).

The average population at the Juvenile Diagnostic Center during Fiscal 1977-1978 (18.52) was 10.5 percent below the 1976-1977 figure (20.70). The highest **average** monthly population was 20.50 in February 1978. The lowest monthly average was 15.0 in June 1978.



TABLE I

COMPARISON OF THE ADULT CORRECTIONAL INSTITUTION POPULATION ON  
JUNE 30, 1977 and JUNE 30, 1978.

	<u>June 30, 1977</u>	<u>June 30, 1978</u>	<u>Percent Change</u>
Total ACI	726	670	- 7.7
Sentenced	606	568	- 6.3
Awaiting Trial	120**	102*	-15.0
Maximum	444	356	-19.8
Sentenced	356	258	-27.5
Awaiting Trial	88	98	+11.4
Medium	153	147	- 3.9
Sentenced	124	146	+17.7
Awaiting Trial	29	1	-96.6
Minimum	82	81	- 1.2
Work Release	33	50	+51.5
Women's Division	14	16	+14.3
Sentenced	11	13	+18.2
Awaiting Trial	3	3	0.0
Drug Unit	X	20	X

X Program did not exist in 1977

\* Includes one persons serving fine

\*\* Includes six persons serving fines

TABLE 2

AVERAGE (MEAN) POPULATION OF THE RHODE ISLAND ADULT CORRECTIONAL INSTITUTION BY MONTH - JULY 1977 - JUNE 1978.

<u>Month</u>	<u>Total ACI</u>	<u>Sentenced</u>	<u>Awaiting Trial</u>
Twelve month Average	684.86	575.78	109.07
July 1977	722.20	600.74	121.45
August 1977	686.94	574.95	112.00
September 1977	680.17	581.19	98.96
October 1977	689.78	582.56	107.23
November 1977	695.54	583.36	112.17
December 1977	688.23	583.32	104.91
January 1978	685.81	580.23	105.58
February 1978	693.65	574.33	119.32
March 1978	689.64	563.03	126.62
April 1978	668.01	565.50	102.51
May 1978	653.86	557.83	96.03
June 1978	664.20	561.83	102.36

TABLE 3

Persons who were incarcerated at the Adult Correctional Institution during Fiscal Year 1977 - 1978.

Total Number of Persons - 2140

Sentenced for at least part of the year.....	990
In the ACI on June 30, 1978.....	581
Sentenced.....	586
Awaiting Trial.....	13*
Not in the ACI on June 30, 1978.....	409

Fined during the year but never sentenced.....	52
In the ACI on June 30, 1978.....	2
Serving a fine.....	0
Awaiting Trial.....	2
Not in the ACI on June 30, 1978.....	50

Awaiting Trial but neither fined nor sentenced during the year.....	1098
Currently awaiting trial in the ACI.....	87**
Not in ACI on June 30, 1978.....	1011

\* Includes one person found guilty and awaiting sentence.

\*\* Includes three persons found guilty and awaiting sentence.

TABLE 4

Commitments to the Rhode Island Adult Correctional Institution  
during Fiscal 1977-1978.

Total Commitments - 1823

• Commitments involving sentenced persons.....	562
Committed and sentenced during year#.....	341
Committed as parole violator and never incurred a new sentence.....	22
Transferred from other states.....	11
Returned for escape status.....	11
Transferred from Institute for Mental Health.....	2
Committed as a result of fine but had been sentenced at another time during the year.....	5
Committed as awaiting trial inmates but had been sentenced at another time during the year.....	170

Commitments involving Fined Persons who were never sentenced.....	54
Committed as a result of fine.....	49
Awaiting trial commitments.....	5

Commitments involving persons who were neither fined nor sentenced.....	1207#
----------------------------------------------------------------------------	-------

\*In addition there were 47 persons committed prior to Fiscal 1977-78  
but were not sentenced until Fiscal 1977-78. These are not counted  
as commitments for Fiscal Year 1977-78.

#Includes one awaiting trial inmate who returned from escape status.

TABLE 5

Number of persons committed to the Adult Correctional Institution during Fiscal 1977-1978.

Total Commitments

Number of persons committed.....	1511
Still in ACI at end of fiscal year.....	329
Not in ACI at end of fiscal year.....	1182

Sentenced Commitments\*

Number of persons committed.....	400
Still incarcerated at end of fiscal year	
as sentenced persons.....	237
Incarcerated at end of fiscal year as awaiting trial	
inmates.....	4
Out of the ACI at end of fiscal year.....	159#

Commitments Resulting from Fines

(Excludes all inmates who were sentenced at any time during Fiscal 1977-1978)

Number of persons committed.....	49
Still in ACI at end of fiscal serving a fine.....	0
Still in ACI at end of fiscal year awaiting trial.....	2
Out of ACI at end of fiscal year.....	47

Commitments - Awaiting Trial\*\*

(Excluding persons ever sentenced or fined during Fiscal 1977-1978)

Number of persons committed.....	1062
In the ACI on June 30, 1978.....	86
Not in ACI on June 30, 1978.....	976

\* Includes eleven person returning from escape status.

\*\*Includes one person returning from escape status.

#This includes 136 people who were committed and sentenced during Fiscal 1977-78 and 23 persons sentenced prior to the start of Fiscal Year 1977-78 who were both released from that sentence and re-committed as awaiting trial inmates during Fiscal Year 1977-1978.

TABLE 6

Releases from the Adult Correctional Institution during Fiscal Year 1977-1978

	<u>Number of Persons Released</u>	<u>Number of Releases</u>
All releases	1615	1879
Releases of Sentenced Persons	528	658
Releases from sentences	461	476
Releases from fines	7	7
Releases from awaiting trial status	135	175
Releases of Persons who were fined but not sentenced	51	55
Released from fines	51	51
Released from awaiting trial status	0	4
Releases of persons who were awaiting trial but never fined nor sentenced	1037	1166

TABLE 7

Releases of sentenced persons from the Adult Correctional Institution according to type of release - Fiscal 1977-1978.

Number of persons released - 461

<u>Type of Release</u>	<u>Number of Persons</u>	<u>Number of Releases</u>
Total	461*	476
Expiration of Sentence	210	215
Parole	159	161
Bailed	25	25
Discharged at Court	37	37
Escape	12	12
Transfer to Medical Center	4	4
Transfer to other States or Federal Authorities	18	18
Transfer to Training School for Boys	2	2
Death	2	2

\*Total adds to more than 461 because some persons had more than one type of release during Fiscal 1977-1978

TABLE 8

Traffic statistics on Federal Prisoners Incarcerated at the ACI during Fiscal 1977-1978.

Number of Persons

Total . . . . .	23
Sentenced . . . . .	2
Awaiting Trial or Immigration . . . . .	21

Commitments

Total . . . . .	22
Sentenced . . . . .	2
Awaiting Trial or Immigration . . . . .	20

Releases

Total . . . . .	22
Sentenced . . . . .	2
Awaiting Trial or Immigration . . . . .	20



TABLE 9

Traffic Statistics of the Training School for Boys and Girls for Fiscal 1977-1978.

	<u>TOTAL</u>	<u>MALE</u>	<u>FEMALE</u>
Number of Juveniles Served	453**	364**	89**
with regular court detention	245	183	62
with YCC Detention*	134	134	0
with Diagnostic Center Holds	64	44	20
with Other Holds	65	47	18
Number of Detentions Served	551	441	110
Regular	274	202	72
YCC	148	148	0
Diagnostic Center Holds	64	44	20
Other Holds	65	47	18
Number of Commitments (excluding returns from elopement)	432	337	95
for Reg. Court Detentions	216	159	57
for YCC Detentions*	87	87	0
for Diagnostic Center Holds	64	44	20
for Other Holds	65	47	18
Number of Releases (excluding elopements)	392	297	95
from Reg. Court Detentions	187	130	57
from YCC Detentions*	76	76	0
from Diagnostic Center Holds	64	44	20
from Other Holds	65	47	18
Elopements			
Ran	292	254	38
Returned from run	290	250	40
Average Daily Population (Legal Count)	138.24	123.49	14.75
Average Daily Population (On Grounds)	77.00	68.59	8.41

\*A Detention was considered a YCC detention if any part of the detention was spent at the YCC, unless this part of the detention was under a "hold" status.

\*\*Totals do not add because some persons had more than one type of detention during the Fiscal Year.

TABLE 10

Traffic statistics of the Juvenile Diagnostic Center for Fiscal 1977-1978

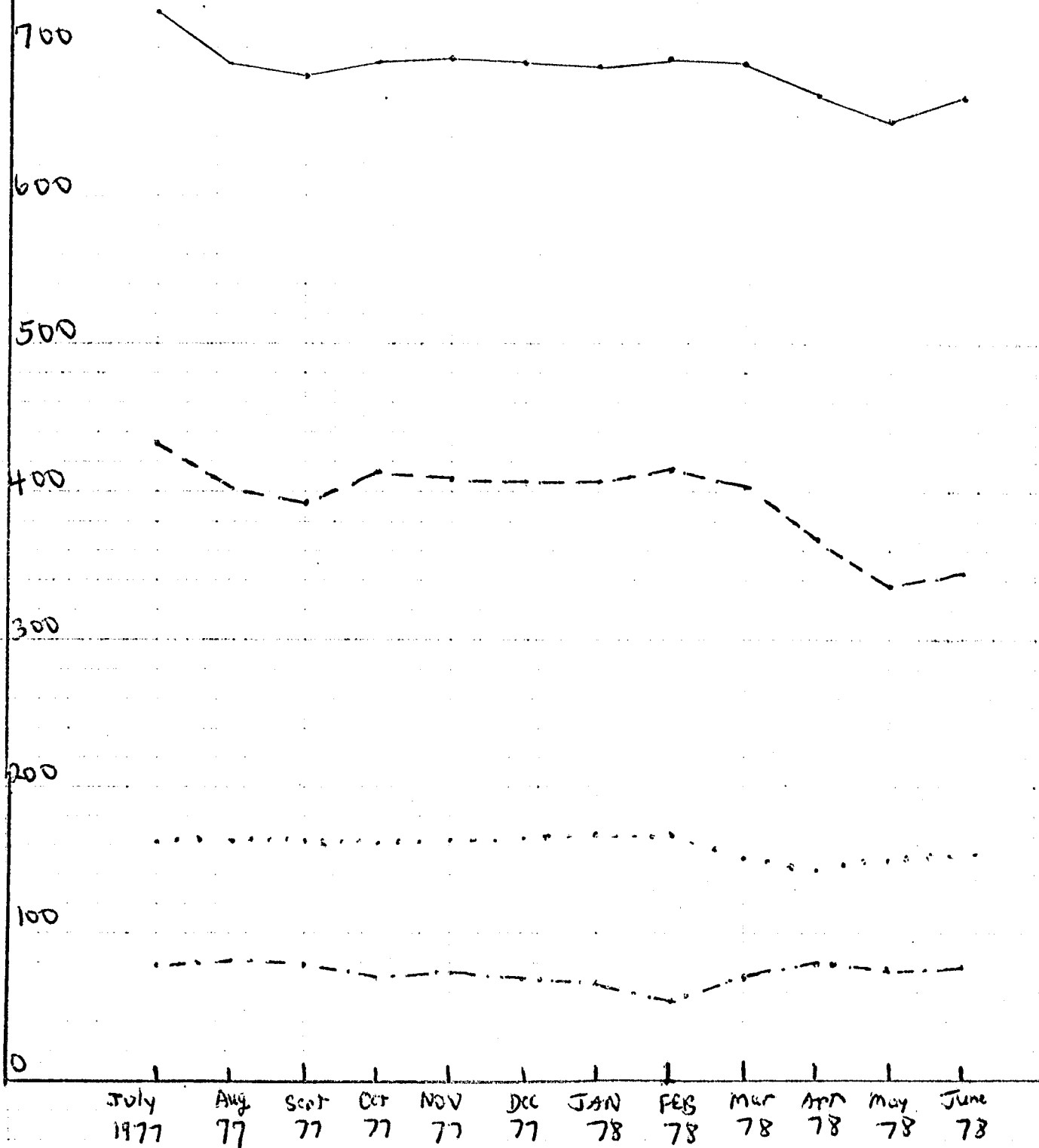
	<u>TOTAL</u>	<u>MALE</u>	<u>FEMALE</u>
Number of Juveniles Served	205	149	56
Commitments (TOTAL)	197	140	57
From Family Court	187	136	51
From Training School (Protective Status)	1	0	1
From Elopement Status	7	2	5
From Kent County Hospital	2	2	0
Releases (TOTAL)	200	141	59
At Family Court	179	131	48
To Parents Awaiting a Family Court Hearing	5	4	1
To Kent County Hospital	2	2	0
To Institute for Mental Health	1	1	0
To Training School	1	1	0
To unauthorize absence (Runaway)	12	2	10*

Mean on Grounds Population - 18.52

\*There were four girls released by the court while on elopement status.  
These are not included as releases in this table.

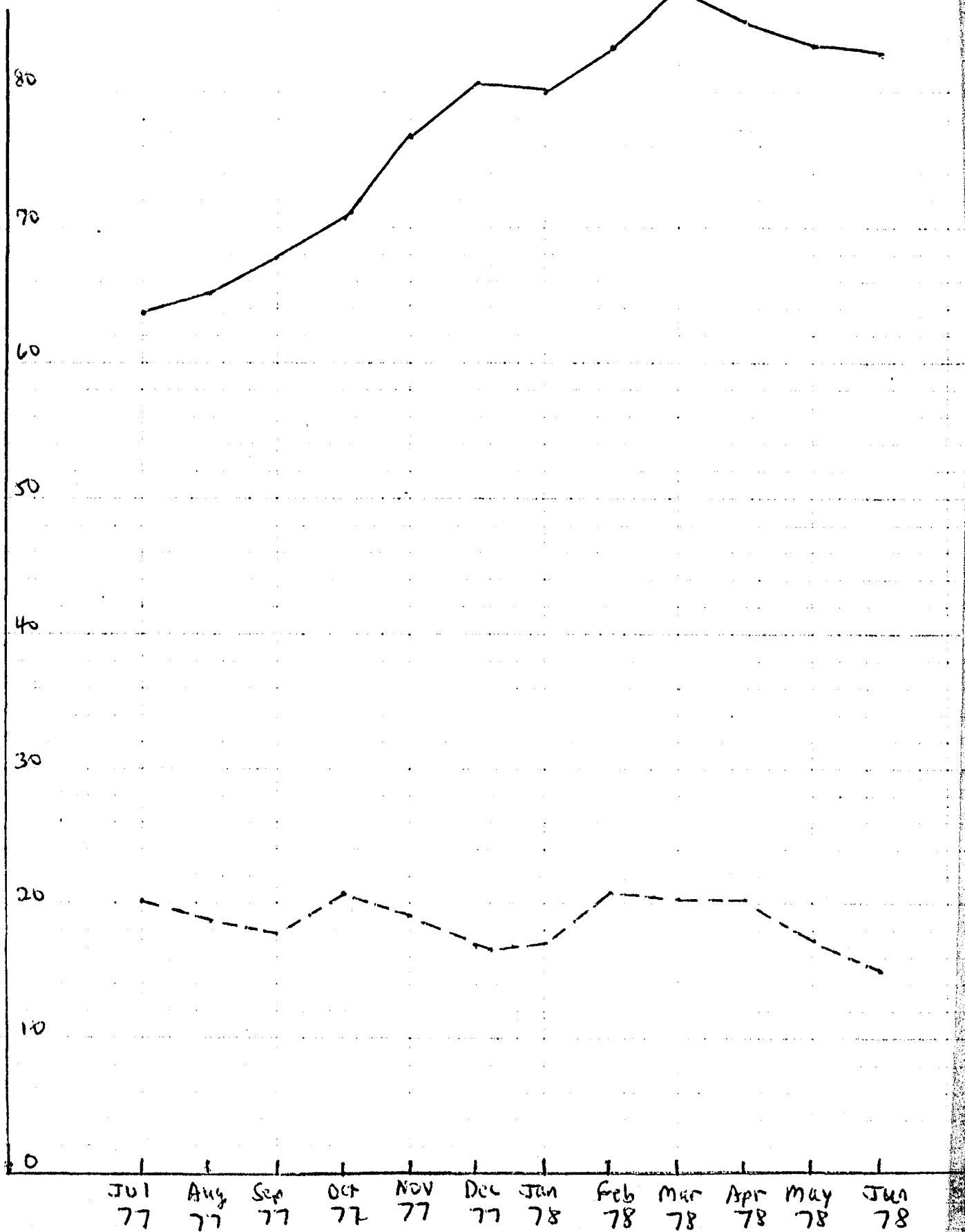
GRAPH A

# POPULATION OF THE ADULT CORRECTIONAL INSTITUTION JULY 1977 - JUNE 1978



\_\_\_\_\_ Entire ACE  
 - - - - - Maximum  
 . . . . . Medium  
 - . - . - Minimum

On - Grounds Population of the Training School and Juvenile Diagnostic Center — July 1977 — June 1978



Training School

Juvenile Diagnostic Center

**END**