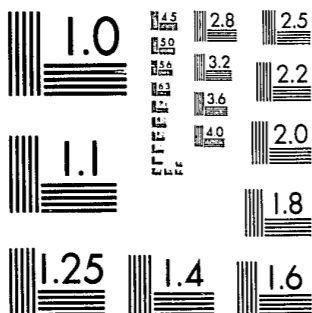
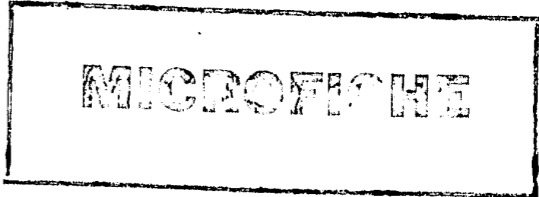


National Criminal Justice Reference Service



This microfiche was produced from documents received for inclusion in the NCJRS data base. Since NCJRS cannot exercise control over the physical condition of the documents submitted, the individual frame quality will vary. The resolution chart on this frame may be used to evaluate the document quality.



MICROCOPY RESOLUTION TEST CHART
NATIONAL BUREAU OF STANDARDS-1963-A

SPECIAL PROGRAM FOR DETAINED INMATES

PROGRESS REPORT

Division of Criminal
Justice Services

May 1978

Microfilming procedures used to create this fiche comply with the standards set forth in 41CFR 101-11.504.

Points of view or opinions stated in this document are those of the author(s) and do not represent the official position or policies of the U. S. Department of Justice.

**National Institute of Law Enforcement and Criminal Justice
Law Enforcement Assistance Administration
United States Department of Justice
Washington, D. C. 20531**

DATE FILMED
1/29/80

58369

TABLE OF CONTENTS

I	:	A. Background	1
		B. Summary of Operations	3
		C. Queens County	6
		D. Long Term Detainee Study	8
		E. Fiscal Operations	9
		F. Conclusion	10
II	:	A. Tables:	
		1. Detained Inmates Population (Manhattan, Bronx, Brooklyn)	11
		2. All Cases Assigned to Special Parts	12
		3. One Year and Older Cases Assigned to Special Parts	13
		4. 6-12 Month Old Cases Assigned to Special Parts	14
		5. Type of Case Dispositions (all cases)	15
		6. Type of Case Dispositions (year and older cases)	16
		7. Type of Case Dispositions (6-12 month cases)	17
		8A. Type of Case Dispositions (New York County)	18
		8B. Type of Case Dispositions (Kings County)	19
		8C. Type of Case Dispositions (Bronx County)	20
		9. Pleas - All Cases	21
		10. Pleas - Cases One Year and Older	22
		11. Pleas - 6-12 Month Cases	23
		12A. Pleas - New York County	24
		12B. Pleas - Kings County	25
		12C. Pleas - Bronx County	26
		13. Queens - Type of Case Dispositions (all cases)	27
		14. Queens - Type of Case Dispositions (year and older cases)	28
		15. Queens - Type of Case Dispositions (6-12 month cases)	29
		16. Queens - Pleas - All Cases	30
		17. Queens - Pleas - Cases One Year and Older	31
		18. Queens - Pleas - 6-12 Month Cases	32
		19. Severity of Sentence in S.P.D.I. Parts	33
		20. Comparison of Special Parts and City-wide	34

III : Appendices

A. Long Term Detainee Study

JUN 11 1979 *ly*

ACQUISITIONS

A. Background

The Special Program for Detained Inmate's goal is to greatly speed the trial and disposition of cases in which a defendant charged with a serious felony has been detained at least six months. Separate judicial, prosecutorial, defense and probation components are funded for this purpose. The New York State Division of Criminal Justice Services, the State Planning Agency, administers the program directly through a project administrative unit. This unit is also conducting a detailed analysis of the causes of trial delay.

The program commenced on June 7, 1976, when nine Supreme Court Parts devoted exclusively to long-term detainee cases and staffed with program personnel became operational.⁽¹⁾ First-year funding continued through July 1977. The program was subsequently refunded for a seven month period commencing August 1, 1977 and terminating on March 31, 1978.⁽²⁾

Prior to the program's inception, the New York City Correctional facilities had experienced severe overcrowding. The other components of the criminal justice system, including the courts' system and prosecution offices, were severely backlogged.

In late 1975, detainee overcrowding, exacerbated by the inability to bring cases to trial, resulted in a serious disturbance on Riker's Island, the New York City Correctional complex. Conditions had been further aggravated by the closing of the Manhattan House of Detention in 1974 pursuant to a federal court order; since that date, all New York County detainees have been housed at the Riker's Island complex. The

(1) The New York Supreme Court possesses trial level felony jurisdiction in New York City.

(2) The administrative unit was funded through May 31, 1978.

greatest backlog was concentrated in the three largest New York City counties -- New York, Kings and the Bronx. Only those counties were originally included in the Special Detainee Program. (3)

On October 1, 1977, the program expanded to Queens County. One Supreme Court Part was established to hear long term detainee proceedings and special prosecutorial and defense units were funded to process eligible cases.

Commencing April 1, 1978 the Special Detainee Program was institutionalized by the State of New York (the court component was institutionalized by O.C.A. on 3/1/78). The program is currently fully state funded and is continuing its operations in the four participating counties. The program presently maintains ten court parts and funds ancillary services necessary to maintain the parts, to provide adequate prosecution and defense services and to provide Probation Department services for long term detainee cases.

This progress report covers program activities from January 1978, the date of the last progress report, through March 31, 1978, i.e., the final period funded through LEAA appropriations. As such, it constitutes the final LEAA progress report. Population, disposition and other relevant statistical tables incorporate cumulative statistics from June 1976 through March 1978. Pending caseload and sentence statistics are as of April 1, 1978.

(3) See progress reports dated October 1976 and May 1977, for a more complete discussion of the Program's background and organization.

B. Summary of Operations

At the program's commencement, 253 defendants had been detained longer than one year and 630 were incarcerated for more than six months in the three "target" counties (Manhattan, Bronx and Brooklyn). By April 1, 1978 only thirty-seven defendants were detained longer than one year and 363 were detained longer than six months. (4) (The program's Queens component will be analyzed separately in Section "C").

The program has thus reduced dramatically the number of long term detainees. The number of defendants detained longer than one year has been reduced by close to ninety percent and the number detained longer than six months has been reduced by approximately forty-five percent. Prolonged detention (over one year) has been reduced drastically.

During the twenty-two month period funded by LEAA a total of 1,469 cases were assigned to the program. (5) Of these, 434 involved defendants who had been detained longer than one year (6) and 813 involved defendants who had been detained between six and twelve months. (7) (The remaining 222 cases were related cases involving defendants who had been detained less than six months or had been paroled (8)). A total of 1,134 cases had been disposed of while 335 were pending as of April 1, 1978. (9)

(4) Table 1
(5) Table 2
(6) Table 3
(7) Table 4
(8) Under the terms of the program's guidelines related cases may be heard in the special program's court parts.
(9) Table 5

Throughout the period covered by LEAA funding (June 1976 through March 1978) the program's case dispositions have been at an exceedingly high level. The conviction rate has been approximately eighty-five percent⁽¹⁰⁾ and the trial rate has been twenty-six percent,⁽¹¹⁾ more than double the average rate. A comparison of the program's performance to the citywide felony processing is incorporated in Table 20. Dismissals have averaged approximately eight percent of the caseload (compared to fourteen percent citywide). Ninety-five percent of all pleas have been for felony counts and seventy-three percent have been to the highest indictment count or one count lower.⁽¹²⁾

The program has also achieved an exceedingly strong sentence pattern. Approximately eighty-seven percent of all convicted defendants have been sentenced to serve felony prison terms (compared to fifty-three percent citywide).⁽¹³⁾ The median sentence has been ten years imprisonment and 114 defendants, fifteen percent of the total, have received life sentences. The sentencing policies reflect both the seriousness of the cases and the ability of the program to effectively bring cases to trial or other disposition.

The sentencing statistics should be read in conjunction with the conviction rate. With a conviction rate of eighty-five percent and a median sentence rate of ten years imprisonment, the overwhelming majority of long term detainees accused of committing felonies are convicted and receive substantial prison terms.

(11) Table 5
 (12) Table 5
 (13) Table 19

It should be noted that during the final six months of LEAA funding the long term detainee population remained relatively stable. The dramatic decrease was largely achieved during the first year and one-half. This is in part due to an increase in the number of cases "maturing", i.e., reaching the six month level of detention and, in part, to a significant increase in the trial rate. During the five month period ending April 1, 1978 thirty-six percent of all long term detainee cases were tried⁽¹⁴⁾. The trial rate has been triple that of the citywide average and approximately fifty percent higher than the rate during the program's initial phase. It may be that as the program progressed the remaining cases included "hard core" indictments which were not susceptible to disposition, though we have no way of statistically evaluating the trial upsurge. The project has surely stabilized the long term detainee population at a relatively low level and will rededicate its effort to further reducing the problem's dimension.

To summarize, the disposition, population and sentencing statistics underscore the program's effectiveness. Every indicator has remained at a continually high level from the date the program commenced. The Special Detainee Program has drastically reduced long term detention while maintaining extremely high disposition and trial rates.

(14) Table 5

C. Queens County

On October 3, 1977, the Special Detainee Program established a Queens part to process long term detainee cases in that County. Special units were simultaneously established in the Queens County District Attorney's Office and the Legal Aid Society.

At the time the project commenced, New York, Brooklyn and the Bronx experienced the greatest delay and had the highest long term detainee population. The backlog in Queens County was considerably less. For this reason, the program was originally designed only for the three "target" counties.

The project's success dramatically alleviated the long term detention problems in the three original counties. Simultaneously, the number of long term detention cases in Queens, which lacked a special detainee component, increased. On October 1, 1977, for example, ninety-three Queens defendants had been detained longer than six months; this number was only slightly lower than each of the three "target" counties.

By October 1, 1977, the county maintained a long term detainee population of ninety-three⁽¹⁵⁾. On April 1, 1978 the total had unfortunately risen to 114. Nevertheless, a total of forty-eight cases had been disposed of in the Queens part. The conviction rate has been close to ninety percent⁽¹⁶⁾ and the trial rate has been twenty-one percent. Although the program experienced implementation difficulties in Queens, the disposition rate has increased during the past six months.

(15) Table 1
(16) Table 13

It is clear that the Queens component is not sufficiently large to eliminate or substantially reduce the long term detainee population. Faced with an increasing problem, the unit stemmed, but could not eliminate, the long term detainee upsurge. Additional resources should be considered to augment Queens operations.

D. Long Term Detainee Study

The most important study conducted by the program is an indepth analysis of the causes of trial delay, attached as appendix "A" of this report. The study involves two major parts -- a cross sectional analysis of long term cases and an indepth evaluation of Kings County cases which involved detention of longer than one year. The analysis includes interviews with assistant district attorneys, defense attorneys and, where appropriate, judges and court personnel.

The study reveals important characteristics of long term detainees. Such defendants request attorney changes and adjournments far more frequently than other defendants. They are far more likely to go to trial, experience a high conviction rate after trial and receive more severe sentences. The interviews with attorneys and other participants indicate the competing goals within the criminal justice system and the difficulties in bringing long term detainee cases to trial or other disposition.

Long term detainee cases tend to highlight problems in the criminal justice system. The serious nature of most charges involving such defendants, the consequent likelihood of heavy sentences, the fact that many cases involve multiple defendants and the problems of assigned counsel combined deter a rapid disposition. The fact that the criminal courts are overburdened further contributes to delay. The Special Detainee Program is the first project to successfully deal with such cases and the long term detainee study should be of great interest to criminal justice administrators and judges.

E. Fiscal Operations

From June 7, 1976 through March 31, 1978, the entire period funded by LEAA, the following expenditures were incurred by the project:

Office of Court Administration (Court Services)	\$4,239,546 ⁽¹⁷⁾
Legal Aid Society (Defense Services)	1,642,844
District Attorney Offices (Prosecutorial Services)	1,453,527
Department of Probation	261,924
Administrative Unit	<u>322,454⁽¹⁸⁾</u>
TOTAL	<u>\$7,920,295</u>

The following is a breakdown of the above expenditures by category:

Personnel	\$5,369,672
Fringe Benefits	1,248,037
All Other Expenses	<u>1,302,586</u>
TOTAL	<u>\$7,920,295</u>

The source of funding was as follows:

1973 Unobligated Funds	\$4,953,102
1974 Unobligated Funds	967,193
1977 Discretionary Funds	<u>2,000,000</u>
TOTAL	<u>\$7,920,295</u>

(17) Funding was provided to the Office of Court Administration through February 28, 1978 (OCA institutionalized on March 1, 1978).

(18) Funding was provided to the Administrative Unit through May 30, 1978.

F. Conclusion

The Special Detainee Program is perhaps the most important New York State criminal justice program. The project has greatly reduced the number of defendants detained longer than six months and has practically eliminated detention of over one year. The conviction rate has been extremely high, extremely long sentences have resulted and the trial rate has been more than double the normal citywide trial rate.

The program is presently fully integrated and institutionalized into the New York criminal justice system. The Division of Criminal Justice Services in conjunction with the Office of Court Administration plans to continue and hopefully expand the project. We are confident that progress will continue and that the long term detention problem will be eliminated throughout New York State.

TABLE 1
DETAINED INMATE POPULATION
Manhattan, Bronx, Brooklyn

	12+ Months	6-12 Months	Total
June 1976	253	377	630
Nov. 1976	59	387	446
March 1977	33	274	307
June 1977	20	199	219
August 1977	25	172	197
Nov. 1977	29	275	304
Jan. 1978	30	293	323
April 1978	37	326	363

QUEENS

	12+ Months	6-12 Months	Total
October 1977	18	75	93
Jan. 1978	13	71	84
April 1978	27	87	114

TABLE 2
ALL CASES
ASSIGNED TO SPECIAL PARTS
(DEFENDANT-INDICTMENTS)
November, 1977 - April 1, 1978

PART	November ^{a)}	December ^{b)}	January ^{c)}	February ^{d)}	March ^{e)}	5 month Total	6/7/76-4/1/78 22 month Total
70	5	3	9	4	6	27	260
71	1	1	4	7	6	19	129
72	2	1	3	0	2	8	131
Total	8	5	16	11	14	54	520
40	3	2	10	8	6	29	140
41	3	0	7	2	5	17	124
42	7	5	4	11	7	34	174
Total	13	7	21	21	18	80	438
50	2	0	12	4	1	19	150
51	0	0	13	1	6	20	147
52	10	0	4	5	5	24	214
Total	12	0	29	10	12	63	511
GRAND TOTAL	33 ^{a)}	12 ^{b)}	66 ^{c)}	42 ^{d)}	44 ^{e)}	197	1469

ONE YEAR AND OLDER CASES
ASSIGNED TO SPECIAL PARTS
(DEFENDANT - INDICTMENTS)
November, 1977 - April 1, 1978

PART	November	December	January	February	March	5 month Total	6/7/76-4/1/78 22 month Total
70	1	0	1	0	0	2	81
71	0	1	1	2	0	4	36
72	0	0	0	0	0	0	39
Total	1	1	2	2	0	6	156
40	1	0	1	2	0	4	35
41	0	0	0	0	0	0	40
42	1	0	3	1	0	5	70
Total	2	0	4	3	0	9	145
50	0	0	4	0	0	4	29
51	0	0	8	0	1	9	43
52	1	0	0	2	0	3	61
Total	1	0	12	2	1	16	133
GRAND TOTAL	4	1	18	7	1	31	434

a) November figures include 4 bail cases, 1 case less than six months and 1 case unknown
 b) December figures include 2 cases less than six months and 1 bail case
 c) January figures include 4 bail cases, 2 parole cases and 1 case less than six months
 d) February figures include 1 parole case, 1 bail case and 1 case less than six months
 e) March figures include 3 bail cases, 2 cases less than six months and 1 case unknown

6-12 MONTH OLD CASES
 ASSIGNED TO SPECIAL PARTS
 (DEFENDANT - INDICTMENTS)
 November, 1977 - April 1, 1978

TABLE 5

PART	November	December	January	February	March	5 month Total	6/7/76-4/1/78 22 month Total
70	3	2	6	3	4	18	143
71	1	0	2	5	5	13	56
72	2	0	1	0	1	4	65
Total	6	2	9	8	10	35	264
40	2	1	8	5	5	21	89
41	2	0	7	1	5	15	74
42	5	5	1	10	7	28	81
Total	9	6	16	16	17	64	244
50	2	0	8	4	1	15	97
51	0	0	4	1	5	10	90
52	0	0	4	3	4	17	118
Total	8	0	16	8	10	42	305
GRAND TOTAL	23	8	41	32	37	141	813

TYPE OF CASE DISPOSITIONS: ALL CASES

November, 1977 - March, 1978

	NOV. a)	DEC. b)	JAN. c)	FEB. d)	MARCH e)	5 month Total	6/7/76-4/1/78 22 months Total	Percent
Pleas								
<i>Felony</i>	17	14	25	26	11	93	568	50%
<i>Misdemeanor</i>	1	0	1	4	3	9	31	2%
<i>Covered*</i>	0	2	5	3	2	12	120	11%
Total Pleas	18	16	31	33	16	114	719	63%
Trials								
<i>Conviction</i>	9	8	13	10	11	51	219	19%
<i>Acquittal</i>	6	3	5	1	7	22	72	6%
Total Trials	15	11	18	11	18	73	291	26%
Dismissals	2	6	4	0	4	16	91	8%
Other	0	0	1	0	0	1	33	3%
Grand Total	35	33	54	44	38	204	1134	100%

*Cases disposed of through a plea to a different indictment involving the same defendant.

- a) November figures include 1 bail case, 1 case less than 6 months old, and 1 case unknown age.
- b) December figures include 3 cases less than 6 months old
- c) January figures include 1 bail case and 2 cases less than 6 months
- d) February figures include 2 bail cases, 1 case less than 6 months old, and 2 cases of unknown age.
- e) March figures include 3 bail cases, 1 case less than 6 months old, and 3 cases of unknown age.

TABLE 6

TYPE OF CASE DISPOSITIONS: YEAR AND OLDER CASES
November, 1977 - March, 1978

	NOV.	DEC.	JAN.	FEB.	MARCH	5 month TOTAL	6/7/76-4/1/78	
							TOTAL	PERCENT
Pleas								
<i>Felony</i>	3	4	6	1	0	14	154	50%
<i>Misdemeanor</i>	0	0	1	1	1	3	4	1%
<i>Covered*</i>	0	1	2	1	1	5	39	12%
Total Pleas	3	5	9	3	2	22	197	63%
Trials								
<i>Conviction</i>	2	1	4	2	1	10	70	22%
<i>Acquittal</i>	1	1	1	1	0	4	17	5%
Total Trials	3	2	5	3	1	14	87	28%
Dismissals	0	1	0	0	0	1	25	8%
Other	0	0	0	0	0	0	5	1%
Grand Total	6	8	14	6	3	37	314	100%

*Cases disposed of through a plea to a different indictment involving the same defendant.

TABLE 7

TYPE OF CASE DISPOSITIONS: 6-12 month old cases
November, 1977 - March, 1978

	NOV.	DEC.	JAN.	FEB.	MARCH	5 month TOTAL	6/7/76-4/1/78	
							TOTAL	PERCENT
Pleas								
<i>Felony</i>	12	9	16	21	9	67	328	52%
<i>Misdemeanor</i>	1	0	0	2	1	4	13	2%
<i>Covered*</i>	0	0	3	2	1	6	69	11%
Total Pleas	13	9	19	25	11	77	410	65%
Trials								
<i>Conviction</i>	7	7	9	8	8	39	120	19%
<i>Acquittal</i>	4	2	4	0	5	15	43	7%
Total Trials	11	9	13	8	13	54	163	26%
Dismissals	1	4	4	0	2	11	39	6%
Other	0	0	1	0	0	1	19	3%
Grand Total	25	22	37	33	26	143	631	100%

*Cases disposed of through a plea to a different indictment involving the same defendant.

TABLE 8A

TYPE OF CASE DISPOSITIONS: NEW YORK COUNTY
November, 1977 - March, 1978

	NOV. 1)	DEC. 2)	JAN. 3)	FEB. 4)	MARCH 5)	5 month TOTAL	6/7/76-4/1/78	
							TOTAL	PERCENT
Pleas								
<i>Felony</i>	8	5	8	6	4	31	202	57%
<i>Misdemeanor</i>	0	0	0	0	0	0	5	1%
<i>Covered*</i>	0	2	1	0	1	4	39	11%
Total Pleas	8	7	9	6	5	35	246	69%
Trials								
<i>Conviction</i>	1	1	6	1	3	12	68	19%
<i>Acquittal</i>	1	1	0	0	1	3	11	3%
Total Trials	2	2	6	1	4	15	79	22%
Dismissals	1	3	1	0	2	7	19	5%
Other	0	0	0	0	0	0	11	3%
Grand Total	11	12	16	7	11	57	355	100%

*Cases disposed of through a plea to a different indictment involving the same defendant.

(+) Total may not equal 100% due to rounding of numbers

- 1) November includes 1 bail case
- 2) December includes 2 cases less than six months old
- 3) January includes 1 bail case and 2 cases less than six months old
- 4) February includes 1 bail case
- 5) March includes 1 case less than six months old and 2 parole cases

TABLE 8B

TYPE OF CASE DISPOSITIONS: KINGS COUNTY
November, 1977 - March, 1978

	NOV. 1)	DEC.	JAN.	FEB. 2)	MARCH 3)	5 month TOTAL	6/7/76-4/1/78	
							TOTAL	PERCENT
Pleas								
<i>Felony</i>	5	5	6	6	4	26	191	46%
<i>Misdemeanor</i>	0	0	1	3	2	6	16	4%
<i>Covered*</i>	0	0	2	1	1	4	20	5%
Total Pleas	5	5	9	10	7	36	227	55%
Trials								
<i>Conviction</i>	6	6	5	6	3	26	95	21%
<i>Acquittal</i>	0	0	0	1	1	2	26	6%
Total Trials	6	6	5	7	4	28	111	27%
Dismissals	1	0	3	0	1	5	58	14%
Other	0	0	0	0	0	0	15	4%
Grand Total	12	11	17	17	12	69	411	100%

*Cases disposed of through a plea to a different indictment involving the same defendant.

- 1) November includes 1 case less than six months old
- 2) February included 2 cases of unknown age
- 3) March includes 2 bail cases and 2 cases of unknown age

TABLE 8C

TYPE OF CASE DISPOSITIONS: BRONX COUNTY
November, 1977 - March, 1978

Pleas	NOV. 1)	DEC. 2)	JAN. 3)	FEB. 4)	MARCH 5)	5 month TOTAL	6/7/76-4/1/78 22 month TOTAL	PERCENT
	<i>Felony</i>	4	4	11	14	3	36	175
<i>Misdemeanor</i>	1	0	0	1	1	3	10	3%
<i>Covered*</i>	0	0	2	2	0	4	61	17%
Total Pleas	5	4	13	17	4	43	246	68%
Trials								
<i>Conviction</i>	2	1	2	3	5	13	66	18%
<i>Acquittal</i>	5	2	5	0	5	17	35	10%
Total Trials	7	3	7	3	10	30	101	28%
Dismissals	0	3	0	0	1	4	10	3%
Other	0	0	1	0	0	1	7	2%
Grand Total	12	10	21	20	15	78	364	100%

*Cases disposed of through a plea to a different indictment involving the same defendant.

- (+) Total may not equal 100% due to rounding of numbers
- 1) November includes 1 bail case and 1 case unknown age
- 2) December includes 1 case less than six months old
- 3) February includes 1 bail case and 1 case less than six months old
- 4) March includes 1 bail case and 1 case unknown age

TABLE 9

PLEAS - ALL CASES***
June 7, 1976 - April 1, 1978

Plea Felony Class	Plea Felony Class					Misdemeanor	Total
	A	B	C	D	E		
A**	63	121	26	9	4	2	225
B	-	75	74	55	11	8	223
C	-	-	25	33	11	2	71
D	-	-	-	19	15	11	45
E	-	-	-	-	11	8	19
Total	63	196	125	116	52	31	599^{a)}

FELONY CLASS

* Highest Indictment Charge

** Includes A-1, A-2, and A-3 felony charges

*** Table contains 100 pleas of bail, parole, cases of unknown age, and less than six month old cases.

a) Includes: 6 cases charge class unknown, 5 cases plea class unknown, and 5 cases plea and charge class unknown

TABLE 10

PLEAS - CASES ONE YEAR AND OLDER
June 7, 1976 - April 1, 1978

Plea Felony Class

	A	B	C	D	E	Misde- meanor	Total
A**	24	51	13	4	0	1	93
B	-	18	15	8	2	1	44
C	-	-	2	5	3	0	10
D	-	-	-	1	4	0	5
E	-	-	-	-	1	2	3
Total	24	69	30	18	10	4	158 ^{a)}

* Highest Indictment Charge

** Includes A-1, A-2, and A-3 felony charges

a) Includes: 3 cases charge class unknown

TABLE 11

PLEAS - 6-12 MONTH CASES
June 7, 1976 - April 1, 1978

Plea Felony Class

	A	B	C	D	E	Misde- meanor	Total
A**	33	55	10	4	3	0	105
B	-	47	51	41	7	3	149
C	-	-	18	17	7	3	45
D	-	-	-	5	7	6	18
E	-	-	-	-	10	3	13
Total	33	102	79	67	34	15	341 ^{a)}

* Highest Indictment Charge

** Includes A-1, A-2, and A-3 felony charges

a) Includes: 3 cases charge class unknown; 4 cases plea class unknown; and
4 cases charge and plea class unknown

FELONY
CHARGE
CLASS*

FELONY
CHARGE
CLASS*

TABLE 12A

PLEAS - NEW YORK COUNTY***
June 7, 1976 - April 1, 1978

Plea Felony Class

	A	B	C	D	E	Misde- meanor	Total
A**	25	61	15	4	1	0	106
B	-	28	18	12	1	1	60
C	-	-	10	10	4	0	24
D	-	-	-	7	4	2	13
E	-	-	-	-	2	2	4
Total	25	89	43	33	12	5	207

* Highest Indictment Charge

** Includes A-1, A-2, and A-3 felony charges

*** Includes: 14 cases six months or less, 12 cases unknown age, 14 bail cases, and 1 parole case

TABLE 12B

PLEAS - KINGS COUNTY***
June 7, 1976 - April 1, 1978

Plea Felony Class

	A	B	C	D	E	Misde- meanor	Total
A**	30	28	5	2	0	0	65
B	-	27	30	15	0	3	75
C	-	-	6	10	2	0	18
D	-	-	-	8	8	8	24
E	-	-	-	-	3	6	9
Total	30	55	41	35	13	17	207 ^{a)}

* Highest Indictment Charge

** Includes A-1, A-2, and A-3 felony charges

*** Includes: 8 cases less than six months, 10 cases unknown age, 13 bail cases and 6 parole cases

a) Includes: 6 cases charge class unknown, 5 cases plea class unknown, and 5 cases plea and charge class unknown

NEW YORK FELONY CLASSES*

NEW YORK FELONY CLASSES*

TABLE 12C

PLEAS - BRONX COUNTY***

June 7, 1976 - April 1, 1978

Plea Felony Class

	A	B	C	D	E	Misde- meanor	Total
A**	8	34	6	3	2	2	55
B	-	21	26	28	10	4	89
C	-	-	8	11	5	2	26
D	-	-	-	3	3	2	8
E	-	-	-	-	7	0	7
Total	8	55	40	45	27	10	185

* Highest Indictment Charge

** Includes A-1, A-2, and A-3 felony charges

*** Includes: 8 bail cases, 8 cases six months or less, 6 cases unknown age

TABLE 13

QUEENS**

TYPE OF CASE DISPOSITIONS: ALL CASES a)

	November	December	January	February	March	5 month Total	5 month Percent
Pleas							
<i>Felony</i>	0	9	3	4	11	27	56%
<i>Misdemeanor</i>	1	0	0	2	0	3	6%
<i>Covered*</i>	0	0	0	0	3	3	6%
Total Pleas	1	9	3	6	14	33	68%
Trials							
<i>Conviction</i>	1	0	2	4	3	10	21%
<i>Acquittal</i>	0	0	0	0	0	0	-
Total Trials	1	0	2	4	3	10	21%
Dismissals	1	0	1	2	1	5	11%
Other	0	0	0	0	0	0	-
Grand Total	3	9	6	12	18	48	100%

*Cases disposed of through a plea to a different indictment involving the same defendant.

**Figures include Part 20 and Part 20A. Federally Funded Part 20 became fully operational by November 1, 1977, State funded Part 20A became operational in late January, 1978. Since late January, 1978 Part 20 and 20A have functioned as a long term detainee complex. Available includes, 7 bail cases, 2 R.O.R. cases and 1 case less than six months old.

FELONY CLASS*

TABLE 14

QUEENS**
 TYPE OF CASE DISPOSITIONS: One Year and Older Cases

	November	December	January	February	March	5-month Total	Percentage
Pleas							
<i>Felony</i>	0	2	1	0	2	5	38%
<i>Misdemeanor</i>	1	0	0	0	0	1	8%
<i>Covered*</i>	0	0	0	0	0	0	—
Total Pleas	1	2	1	0	2	6	46%
Trials							
<i>Conviction</i>	0	0	1	3	1	5	38%
<i>Acquittal</i>	0	0	0	0	0	0	—
Total Trials	0	0	1	3	1	5	38%
Dismissals	0	0	1	0	1	2	15%
Other	0	0	0	0	0	0	—
Grand Total	1	2	3	3	4	13	100%(+)

*Cases disposed of through a plea to a different indictment involving the same defendant.

**Includes Part 20 and Part 20A

(+) May not total to 100% due to rounding of numbers

TABLE 15

QUEENS**
 TYPE OF CASE DISPOSITIONS: 6-12 Month Old Cases

	November	December	January	February	March	5-month Total	Percentage
Pleas							
<i>Felony</i>	0	7	2	4	3	16	64%
<i>Misdemeanor</i>	0	0	0	0	0	0	—
<i>Covered*</i>	0	0	0	0	2	2	8%
Total Pleas	0	7	2	4	5	18	72%
Trials							
<i>Conviction</i>	0	0	1	1	2	4	16%
<i>Acquittal</i>	0	0	0	0	0	0	—
Total Trials	0	0	1	1	2	4	16%
Dismissals	1	0	0	2	0	3	12%
Other	0	0	0	0	0	0	—
Grand Total	1	7	3	7	7	25	100%

*Cases disposed of through a plea to a different indictment involving the same defendant.

**Includes Part 20 and Part 20A

TABLE 16

QUEENS a)

PLEAS - ALL CASES b)

November 1, 1977 - April 1, 1978

Plea Felony Class

	A	B	C	D	E	Misde- meanor	Total
A**	0	6	0	0	0	0	6
B	-	2	5	1	0	0	8
C	-	-	3	4	1	0	8
D	-	-	-	1	4	3	8
E	-	-	-	-	0	0	0
Total	0	8	8	6	5	3	30

* Highest Indictment Charge

** Includes A-1, A-2, and A-3 felony charges

a) Includes operations of Part 20 and Part 20A

b) Table includes, 7 bail cases, 1 R.O.R. case and 1 case less than six months old.

FELONY CHARGE CLASSES*

TABLE 17

QUEENS a)

PLEAS - One Year and Older Cases

Plea Felony Class

	A	B	C	D	E	Misde- meanor	Total
A**	0	2	0	0	0	0	2
B	-	1	2	0	0	0	3
C	-	-	0	0	0	0	0
D	-	-	-	0	0	1	1
E	-	-	-	-	0	0	0
Total	0	3	2	0	0	1	6

* Highest Indictment Charge

** Includes A-1, A-2, and A-3 felony charges

a) Includes, Part 20 and Part 20A

FELONY CHARGE CLASSES*

TABLE 18
 QUEENS a)
 PLEAS - 6-12 Month Old Cases

FELONY CLASS*

	Plea Felony Class					Misdemeanor	Total
	A	B	C	D	E		
A**	0	4	0	0	0	0	4
B	-	0	1	1	0	0	2
C	-	-	0	4	1	0	5
D	-	-	-	1	3	0	4
E	-	-	-	-	0	0	0
Total	0	4	1	6	4	0	15

* Highest Indictment Charge

** Includes A-1, A-2, and A-3 felony charges

a) Includes, Part 20 and Part 20A

TABLE 19
 SEVERITY OF SENTENCE IN S.P.D.I. PARTS
 DEFENDANTS SENTENCED*

SENTENCING CATEGORY	NEW YORK	KINGS	BRONX	QUEENS ^{a)}	TOTAL	PERCENT DEFENDANTS SENTENCED
Unconditional Discharge	1	3	-	-	4	0.5
Conditional Discharge	1	4	-	-	5	0.7
Probation	6	11	12	8	37	4.8
Fine	-	-	-	-	-	-
Fine Served	1	-	7	3	11	1.4
DACC	-	-	-	-	-	-
1-6 months NYCCE	1	9	2	1	13	1.7
7-12 months NYCCE	5	12	8	2	27	3.5
1-3 years max. NYSDC	11	25	14	3	53	7.0
4-5 years max. NYSDC	35	33	39	6	113	14.7
6-8 years max. NYSDC	32	29	42	8	111	14.5
9-15 years max. NYSDC	68	43	51	5	167	21.9
16-25 years max. NYSDC	35	26	38	7	106	13.9
25 years - life max. NYSDC	38	61	14	1	114	15.0
TOTAL DEFENDANTS SENTENCED	234	256	227	44	761	100
Awaiting Sentence	1	6	4	1	12	1.6
Sentence in other Parts	33	2	28	-	63	8.3
TOTAL DEFENDANTS	268	264	259	45	836	110.6

* Indictments Disposed as of 4/1/78 and Sentence Imposed by 6/1/78.

† Queens figures reflect the operations of Part 20 and Part 20A.

Total may not equal 100% due to rounding of numbers.

TABLE 20

COMPARISON OF THE SPECIAL DETAINEE PARTS
WITH THE SUPREME COURT CRIMINAL BRANCH, NEW YORK CITY

PERFORMANCE MEASURE	SPECIAL PARTS ^{a)}	CITY-WIDE ^{b)}
DISMISSALS AS PERCENT OF ALL DISPOSITIONS	6.8%	14.3%
MISDEMEANOR PLEAS AS PERCENT OF ALL PLEAS	2.3%	11.9%
FELONY PLEAS AS PERCENT OF ALL PLEAS	97.6%	88.1%
PERCENT OF PLEAS TO HIGHEST OR NEXT HIGHEST CHARGE CLASS	73.5%	NA
TRIALS AS PERCENT OF ALL DISPOSITIONS	23.8%	11.3%
PERCENT OF TRIALS RESULTING IN CONVICTION	77.5%	66.6%
DAYS ON TRIAL AS PERCENT OF JUDGE DAYS SAT	60%	48.7%
TRIALS COMPLETED PER JUDGE YEAR	17.3 ^{c)}	16 ^{d)}
AVERAGE LENGTH OF TRIALS (DAYS)	5.6	NA

- a) Special Parts Data Is For Long-Term Cases and Reflects Operations From 6/3/76 through 10/30/77
- b) Source: Supreme Court Statistical Summaries and Comparisons for New York City, year to 10/30/77 O.C.A.
- c) Includes: All Cases In Special Parts
- d) Source: O.C.A. Comparative Statistical Profile, year through October, 1977

S.P.D.I. 12/20/77

END