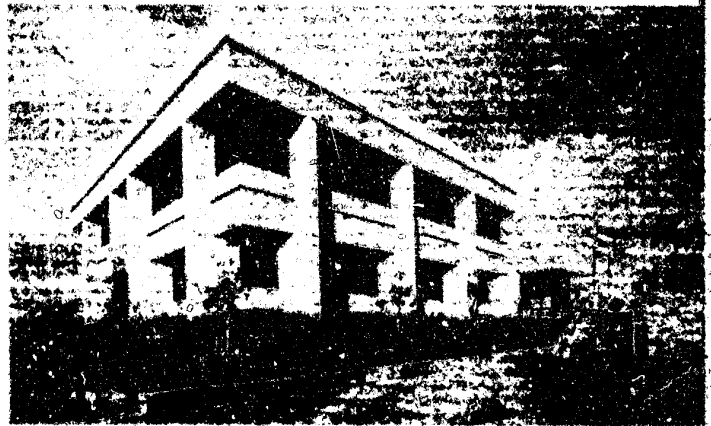




SAN JOSE POLICE DEPARTMENT

ANNUAL REPORT **1977**



1977

Law Enforcement Code of Ethics

As a Law Enforcement Officer, my fundamental duty is to serve mankind, to safeguard lives and property; to protect the innocent against deception, the weak against oppression or intimidation, and the peaceful against violence or disorder; and to respect the Constitutional rights of all men to liberty, equality and justice.

I will keep my private life unsullied as an example to all; maintain courageous calm in the face of danger, scorn, or ridicule; develop self-restraint; and be constantly mindful of the welfare of others. Honest in thought and deed in both my personal and official life, I will be exemplary in obeying the laws of the land and the regulations of my department. Whatever I see or hear of a confidential nature or that is confided to me in my official capacity will be kept ever secret unless revelation is necessary in the performance of my duty.

I will never act officiously or permit personal feelings, prejudices, animosities, or friendships to influence my decisions. With no compromise for crime and with relentless prosecution of criminals, I will enforce the law courteously and appropriately without fear or favor, malice or ill will, never employing unnecessary force or violence and never accepting gratuities.

I recognize the badge of my office as a symbol of public faith, and I accept it as a public trust to be held so long as I am true to the ethics of police service. I will constantly strive to achieve these objectives and ideals, dedicating myself before God to my chosen profession...law enforcement.



NCJRS

DEC 1 1978

ACQUISITIONS

San Jose Police Department

Annual Report 1977

San Jose, California

TABLE OF CONTENTS

3	From the Chief of Police	31	Arrest Report on Youth Under 18
4	San Jose City Government	32	Summary of Juveniles Arrested- by Month
5	Organization		Summary of Adults Arrested-by Month
6	Beat Map	33	Type of Accidents
7	Office of the Chief	34	Graphs - Accidents
8	Bureau of Field Operations	35	Driving While Intoxicated 1976-1977
10	Bureau of Investigation	36	Traffic Violations Charged
12	Bureau of Administration		Motorcycle Accidents
14	Department Highlights	37	Missing Persons
16	Grant Programs		Miscellaneous Information
17	Staff Reconciliation	38	1977 Qualification, Benefits, and Examination Process
18	Police Personnel Per 1000 Population	39	Retirees
19	General Fund Revenue	40	San Jose Police Executive 1849-1977
20	Comparison of Police General Fund Budget and Total City General Fund Budget	41	Population of 20 Largest Cities in Santa Clara County
21	STATISTICS - Crime Clock		
22	Definition of Part I Crimes		
	Actual Cases of Part I Crimes 1967-1977		
23	Part I Crimes 1974-1977		
24	Graphs - Actual Cases of Part I Crimes 1968-1977		
26	Crime and Clearance Report		
27	Major Felonies in San Jose 1968-1977		
28	Adult Felony Arrests Reported		
29	Adult Misdemeanor Arrests		
30	Age, Sex, and Race of Persons Arrested-18 Yrs. and Over		



From the Chief of Police

The year 1977 was one of transition and improved service for the San Jose Police Department. During the year, the Department increasingly emphasized crime prevention and community service. This new approach allowed us to better meet the needs of the community. Police personnel received part of the necessary skills for these programs through the Advanced Individual Training Program and the Advanced Supervisors Training Program. This change is not to say, however, that the Department has ignored the issue of crime. Although 1977 saw a general decrease in the City's crime rate, Police personnel continued to work for additional control and reductions. At the same time the Police Department maintained a vigorous crime control posture, it experienced a reduction in the number of citizen complaints against Police personnel.

In addition, the Department was able to handle a number of potentially serious situations within the City. These included the skillful handling of the Nazi Rally where violence was prevented, the use of female police officers as decoys in our control of a serious rape problem in the campus area, and the handling of a number of highly hazardous barricade situations in which personnel subdued armed persons without injury to them or innocent parties.

In March, the community and the Department alike were provided meaningful information on how well law enforcement services were being delivered. A citizen survey concluded that an overall majority of citizens within San Jose believe that the Police are providing an above average level of community protection. The Department, while gratified with this information, continued to strive for improvement.

An example of this is our attempt to improve communications with the community and within the Department through a new Department newsletter, "The Profile," and the development of an inside communications device appropriately named "Inside." Lastly, the enthusiastic response to the Department's participatory management reorganization effort is an example of our employees' willingness to improve. The Department continues to search for ways to provide better support for line operations and, consequently, has developed the Staff Inspections Unit which analyzes information on departmental operations and suggests improvements where appropriate.

Even though the Department has made great strides forward in 1977, we look forward to a considerable challenge in the future. Certainly the crime problem will need continual monitoring and a firm response if our gains of 1977 are to remain. We will continue to improve our relationships with the community in general and work toward removing those communications barriers which remain. Internally, we look forward to watching the progress on the Police Department's new multi-million dollar annex. All in all, 1978 will see further transition, additional improvements, and perhaps some additional sacrifice. In the end, police efficiency will depend upon our success in mobilizing the public to work with us in preventing crime by defensive tactics, as well as through vigorous apprehension and prosecution of those who commit crimes.

Joseph D. McNamara
Chief of Police

SAN JOSE CITY GOVERNMENT



MAYOR
JANET GRAY HAYES



CITY MANAGER
TED TEDESCO

San Jose has had the Council-Manager form of government since 1916. It was one of the first municipalities in the country to adopt this form of government. The Council is composed of six members and the Mayor, elected at large, for 4-year terms, with the Council members holding specific seats.

CITY COUNCIL



JOSEPH COLLA
Seat No. 2



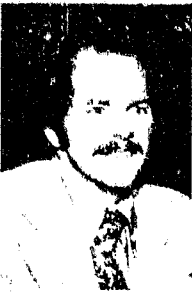
LAWRENCE PEGRAM
Seat No. 3



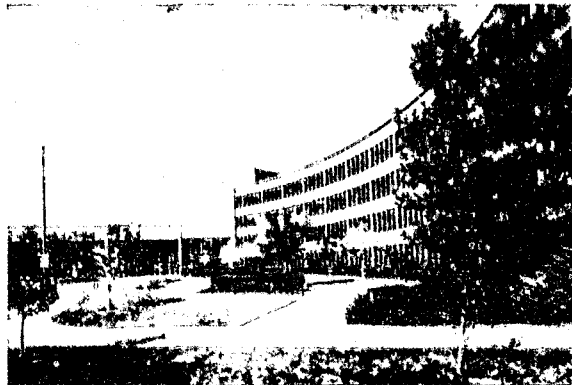
DAVID RUNYON
Seat No. 4



VICE MAYOR
SUSANNE WILSON
Seat No. 5



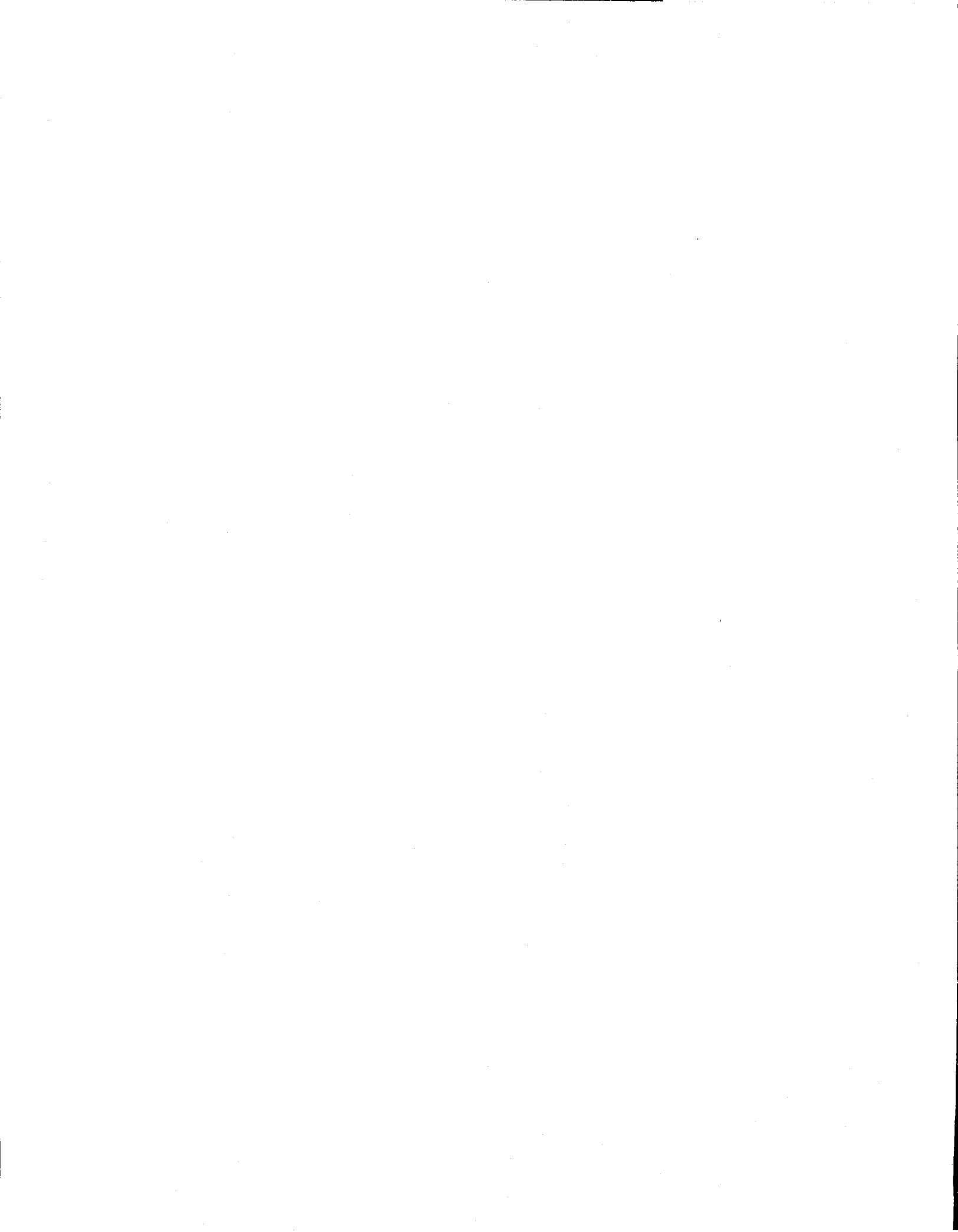
JIM SELF
Seat No. 6



ALFREDO GARZA, JR.
Seat No. 7

The present City Charter went into effect May 4, 1965, after being prepared and proposed by a board of Freeholders and adopted at a special election. It was approved by the State Legislature and replaced a charter adopted in 1916. The first charter was granted to the City by the State in 1897. The first Mayor, under the new charter, was elected at large in April, 1967.

The City Manager, appointed by the City Council, is the chief executive and administrator of the City government. He carries out the policies set forth by the City Council and is responsible for the operation of all City departments, functions, and services.



SAN JOSE POLICE DEPARTMENT ORGANIZATION

OFFICE OF THE CHIEF OF POLICE

SPECIAL INVESTIGATIONS

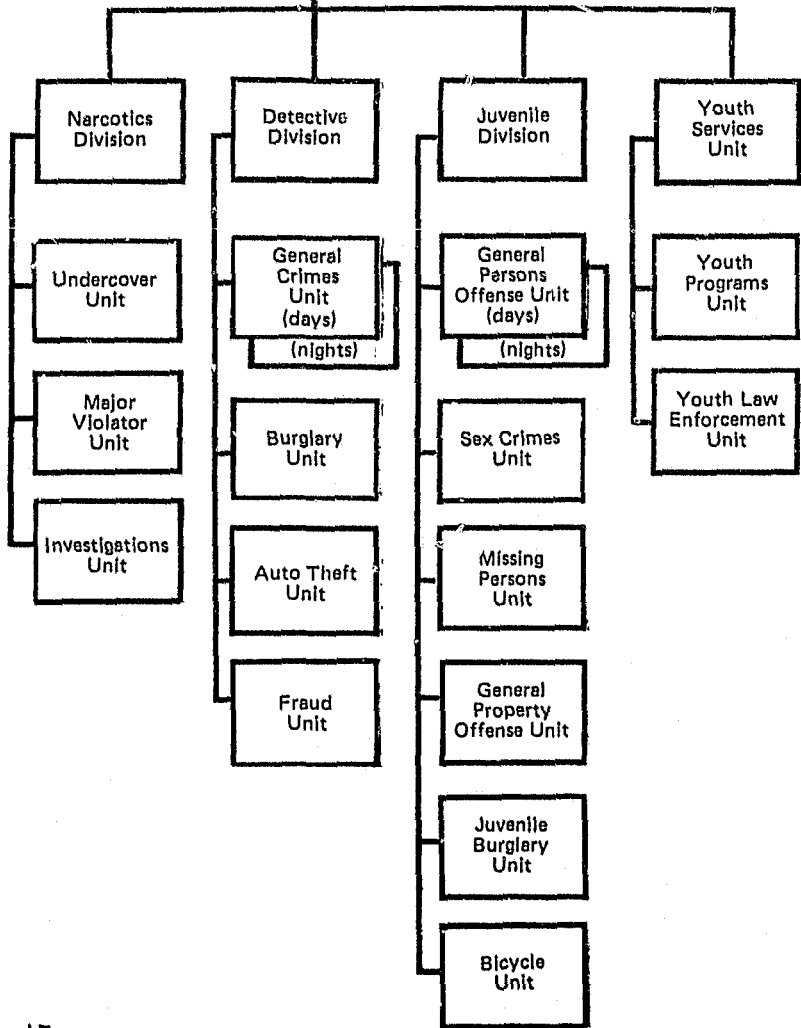
INTERNAL INVESTIGATIONS

RESEARCH AND DEVELOPMENT

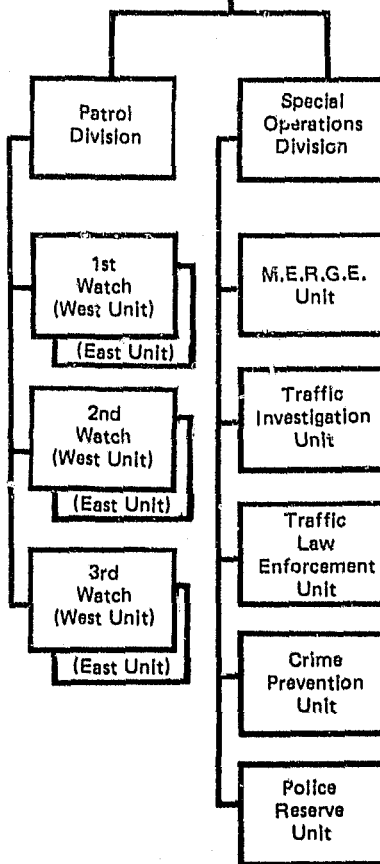
COMMAND AND INSPECT. SERVICES

PSYCHOLOGICAL SERVICES

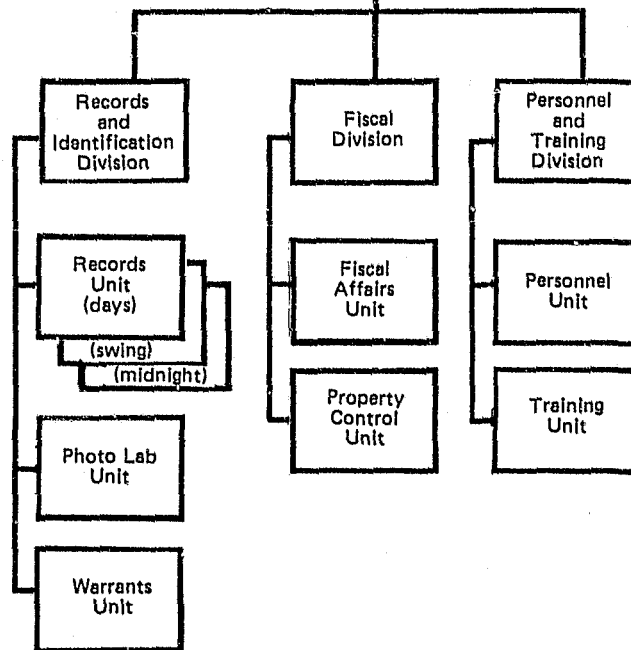
BUREAU OF INVESTIGATIONS



BUREAU OF FIELD OPERATIONS



BUREAU OF ADMINISTRATION



SAN JOSE POLICE

BEAT MAP



OFFICE OF THE CHIEF

Chief of Police 1.0 Secretary III 1.0
 Assistant Chief of Police 1.0

THE OFFICE OF THE CHIEF OF POLICE PROVIDES ADMINISTRATIVE DIRECTION TO THE BUREAUS OF FIELD OPERATIONS, INVESTIGATION, AND ADMINISTRATION TO ENSURE THAT THE BASIC POLICE FUNCTIONS – OPERATIONS, SERVICES, AND ADMINISTRATION – ARE PLANNED AND COORDINATED IN ACCORD WITH APPLICABLE POLICIES AND PROCEDURES NEEDED TO ATTAIN SPECIFIC DEPARTMENTAL OBJECTIVES AND GOALS.

IN ADDITION, THE CITY MANAGER IS PROVIDED WITH RECOMMENDATION AND PROPOSALS CONCERNING POLICE ACTIVITIES AND PROGRESS, AND A DEPARTMENTAL LIAISON IS MAINTAINED WITH COUNTY, REGIONAL, AND STATE AGENCIES.

Staff Inspections

Inspections of departmental operations are conducted to provide independent, factual reports of observed task performance based on at-the-scene observations and/or after-the-fact examinations of their results. Inspection findings are formally submitted to the Department administration and management to provide information which they may base direct and specific corrective action, if required, or initiate further study. Inspections provide a means to evaluate Department progress and recognize commendable performance by functional units and/or individual Department members. Inspection procedures for line operations are designed. Line commanders carry out these inspections.

Sergeant 1.0

Internal Investigations

To improve the quality of interaction between Police Department personnel and the public, complaints are received concerning improper conduct by sworn and non-sworn personnel. Complaints are recorded and objectively investigated. A report of findings, along with the recommendations of the Bureau Chief concerned, is directed to the Chief of Police for appropriate action. Liaison with the Office of Citizen Assistance is maintained. In the case of sustained complaints, appropriate action can result in disciplinary action, counselling or training of personnel. Court appearances are made with relevant records and testimony is given at Civil Service hearings. Civil suits against the City are reviewed.

Lieutenant 1.0
 Sergeant 2.0
 Police Officer 1.0
 Steno Clerk III 1.0
 Community Relations Rep. 1.0

Psychological Services

A psychologist under contract administers oral examinations and various psychological tests, acts as advisor to the Chief, and provides short-term counselling to officers and their families as required. Psychologist's services are used in selection of new officers, development of officers, and the solution of personal problems that affect officers' performance.

Psychologist (contract) 1.0
 Steno Clerk III 1.0

Research & Development

Crime reports and other data are analyzed in an effort to increase effectiveness and recommend better use of existing resources. Required statistical reports are prepared for the State and F.B.I. Research is conducted as to current and future police resource needs; service levels are identified and projected. A departmental training and research library is maintained. Program information for the Annual Budget is developed. A departmental Management Information (MIS) is operated.

Lieutenant 1.0
 Sergeant 1.0
 Police Officer 1.0
 Assistant Policewoman 1.0
 Administrative Analyst III 1.0
 Statistical Analyst 2.0
 Staff Analyst II 1.0
 Steno Clerk III 1.0
 Principal Clerk 1.0
 Typist Clerk II 6.0
 Police Automated Systems Coord. 1.0

Intelligence

Information is obtained and developed relating to organized crime and terrorist groups operating within the City. Information is obtained on public gatherings, including size, purpose, and potential for violence. Protection of visiting politicians and dignitaries is provided.

Captain5
Lieutenant	1.0
Sergeant	1.0
Police Officer	3.0
Steno Clerk III	1.0
Steno Clerk II	1.0

Vice

Investigation of various criminal activities, including prostitution, gambling, liquor-law violations, cardroom regulation, adult theatre, and arcade checks, is conducted. Investigations undertaken are both overt and covert in nature.

Captain5
Sergeant	2.0
Police Officer	9.0
Typist Clerk II	1.0

BUREAU OF FIELD OPERATIONS

Deputy Chief	1.0	Steno Clerk III	1.0
------------------------	-----	---------------------------	-----

THE BUREAU OF FIELD OPERATIONS ASSISTS THE CHIEF OF POLICE IN MAINTAINING POLICE SERVICES TO THE COMMUNITY BY PROVIDING FOR CONTINUOUS AVAILABILITY OF FIELD UNITS TO RESPOND TO CALLS FOR SERVICE; TO DETER CRIMES BY VISIBLE PATROL; TO DETECT, APPREHEND, AND PROCESS PERSONS ACTIVELY INVOLVED IN CRIMINAL ACTIVITY; TO RECOVER AND RETURN LOST OR STOLEN PROPERTY; TO ENSURE THE SAFE MOVEMENT OF VEHICULAR AND PEDESTRIAN TRAFFIC; TO REDUCE BOTH IMMEDIATE AND POTENTIAL HAZARDS TO THE COMMUNITY BY INCREASED CITIZEN CONTACT; AND BY SEEKING COMMUNITY ASSISTANCE IN CRIME PREVENTION ACTIVITY.

Traffic Enforcement

To maintain a safe and orderly flow of vehicular traffic on City streets, City enforcement and control activities requiring patrol, use of radar and other specialized methods are employed. Traffic Enforcement personnel are concentrated in areas experiencing high frequencies of traffic offenses, accidents, and injuries. Reported traffic accidents are investigated and documented. Citizens' complaints involving chronic traffic violations are investigated.

Lieutenant	1.0
Sergeant	6.0
Police Officer	44.0

Traffic Investigation

An investigation is conducted on hit-and-run, drunk driving, suspended, and revoked driver's license violations and related traffic matters in order to determine if an offense has been committed, and to provide adequate evidence for prosecution where there is an offense. A program known as "Avoid the 13" is carried out in the holiday season in cooperation with County law enforcement agencies which attempts to remove drunken drivers from the streets. Liaison between courts, District Attorney, and other criminal justice agencies is maintained for traffic-related business.

Lieutenant	1.0
Sergeant	3.0
Police Officer	9.0

Patrol

Direct response to citizen requests for service is provided. The visibility and presence of police officers is maintained through provision of patrol services 24 hours per day. Individual officers are assigned specific geographic areas of primary responsibility known as "beats." There are 43 beats within the City which are grouped by geographic locations and natural boundaries into 7 districts. A district is the responsibility of the Patrol Team which is composed of 5 to 10 police officers under the supervision of a Sergeant. While the individual officer is primarily responsible for all calls for service from citizens within his beat, due to fluctuating service demands within beats, the entire Patrol Team shares responsibility to respond to calls for service on a district basis. Calls for service vary in nature from assisting with minor complaints to responding to homicides. The seriousness of the incident determines the priority of the call, which in turn determines which officer(s) and how many respond. The majority of the Department's sworn personnel are assigned to the Patrol Watch function. During the calendar year 1977, approximately 349,366 field events were handled by Patrol. An Information Center is staffed with police officers to serve the public for both telephone and walk-in inquiries.

Captain	4.0
Lieutenant	13.0
Sergeant	54.0
Police Officer	413.0
Assistant Policewoman	6.0
Steno Clerk III	1.0
Steno Clerk II	1.0
Typist Clerk II	4.0



Crime Prevention

Citizens are informed and educated on crime prevention techniques. Seminars, workshops, and neighborhood discussions are presented, including meetings with business groups. Lines of communication between the citizens of San Jose and the Police Department are enhanced. Active community involvement by all members of the Department is facilitated. Programs to improve community and Department relations are developed and implemented.

Sergeant	1.0
Police Officer	5.0
Staff Analyst II	1.0
Typist Clerk II	2.0
Community Relations Rep.	4.0

Special Operations (MERGE)

Specialized units with advanced training are provided to initiate felony arrests. This supplement to regular patrol units forms a reserve for response to calls for service. Specialized skills and equipment are employed to save lives in situations dealing with bombings, riots, hostages, canine deployment, and similar circumstances. Self-initiated felony cases are emphasized (rape decoy operations, etc.). Protection is provided for visiting dignitaries.

Lieutenant	1.0
Sergeant	2.0
Police Officer	24.0

Parking Regulations

Parking control on City streets and City parking lots is provided to achieve adequate turnover of parking resources and proper traffic flow in high-use areas such as the Central Business District and San Jose State area. Local ordinances are enforced which may result in warnings, citations, and tow-aways. A program of removing abandoned vehicles off City streets is also administered.

Parking Control Checker	8.0
-----------------------------------	-----

Reserve

A group of approximately 150 unpaid uniformed citizens receive continued training to serve as a supplement to the Department for the purpose of meeting peak or extraordinary staff requirements. The Police Reserve Unit is responsible for obtaining correction of defective burglary alarms that divert field resources at a loss in excess of 13,000 patrol-hours annually. Traffic and crowd control at parades and other public events are performed.

Lieutenant 1.0

School Safety

The purpose of this program is to promote safe crossing of streets by children going to and from school. Intersections adjacent to elementary schools, as identified by the School Pedestrian Safety Committee, are patrolled by trained part-time Crossing Guards. Safety education programs are conducted.

Sergeant 1.0
 Typist Clerk II 1.0
 School Crossing Guard Coord. 4.0
 School Crossing Guard 40.0

BUREAU OF INVESTIGATION

Deputy Chief 1.0
 Captain 1.0

Steno Clerk III 1.0

THE BUREAU OF INVESTIGATION ASSISTS THE CHIEF OF POLICE IN MAINTAINING POLICE SERVICES TO THE COMMUNITY BY PROVIDING FOR: THE THOROUGH ANALYSIS OF REPORTED NONTRAFFIC CRIME TO DETERMINE FEASIBILITY OF FOLLOW-UP INVESTIGATION; THE THOROUGH INVESTIGATION OF CRIMES DEEMED SOLVABLE; INVESTIGATION OF THE SALE, DISTRIBUTION, AND USE OF ILLEGAL NARCOTICS, STOLEN GOODS, SEX CRIMES, CRIMES COMMITTED BY, AGAINST, OR INVOLVING JUVENILES.

Burglary

All reported burglaries not known to be committed by juveniles are reviewed for possible assignment. Liaison is conducted with pawnshops and scrap metal businesses. Fencing activities are monitored. Cases of reported burglaries containing sufficient information to allow the identification of the suspect through intuitive investigation are assigned to the Burglary Investigation Unit. The Burglary Prevention Detail is designed to reduce the incidents of burglary in high-crime areas using techniques such as saturation patrol, use of informants, and surveillance. Gun dealership licensing for concealed weapons is administered.

Lieutenant 1.0
 Sergeant 11.0
 Police Officer 9.0
 Steno Clerk II 1.0



General Crimes

There are four elements in the General Crimes Program — a technical unit and three line investigative units.

Technical investigations and activity follow-up is conducted, requiring photographing, diagramming, collection and preservation of evidence for homicides, rapes, officer involved shootings, and other major crime scenes for the entire Bureau of Investigations.

The Homicide Detail is responsible for the investigation of homicides, officer involved shootings, and attempted murders.

The Robbery Detail, augmented by the Robbery Grant Program, investigates armed robberies, including bank robberies, as well as strong-armed robberies.

Miscellaneous Crimes Detail is charged with the responsibility of investigating all felonious assaults, assaults with a deadly weapon, and miscellaneous crimes. Investigators are assigned at night to assist Bureau of Field Operations and provide immediate response to major events. These investigators do not carry caseloads when assigned nights.

Lieutenant	2.0
Sergeant	19.0
Steno Clerk III	1.0
Typist Clerk II	1.0

Sexual Assault

Investigations

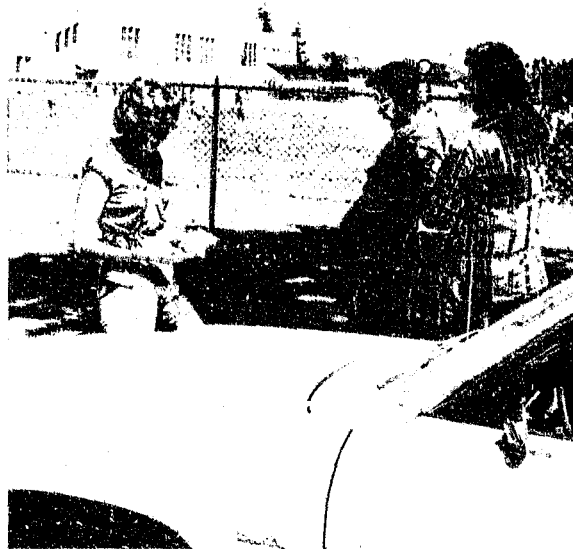
All reported cases of sexual crime are investigated. Through training of unit personnel, investigation techniques are used which minimize additional trauma for victims. Reported cases are assigned for follow-up investigation and collected evidence is processed. Victims, witnesses, and suspects are interviewed and appropriate disposition is made on all cases in which the perpetrator(s) is identified. The traditional Sex Detail is augmented by personnel from the Sex Offense Investigation grant.

Sergeant	1.0
Police Officer	4.0

Auto Theft

Stolen or dismantled vehicle cases are investigated to recover property and apprehend suspects. Covert, self-initiated investigations are directed toward organized or commercial vehicle theft activities. Recovered vehicles are identified, owners located, and vehicles returned.

Lieutenant	1.0
Sergeant	8.0
Police Officer	1.0
Steno Clerk II	1.0



Narcotics

Integral elements of the narcotics program are undercover purchases, identification of traffickers, maintenance of continuing lines of communications with informants, surveillance operations, and technical evaluations. The identification and apprehension of main sources of supply are emphasized to reduce availability, which is related to burglaries and other crimes. Expedites proper processing of patrol narcotics' arrests and seizures.

Lieutenant	1.0
Sergeant	5.0
Police Officer	16.0
Typist Clerk III	1.0
Typist Clerk II	1.0

Fraud

Cases involving fraudulent checks, credit cards, and property-theft cases, except in relation to burglary and vehicle theft, are reviewed for assignment. Check cases are often selected for investigation based on the number of check violations committed by a single suspect, the age of the check, or the amount of the check. Fraudulent checks, not immediately investigated, are filed with the intent of identifying the perpetrator through subsequent check cases. Of credit card cases, approximately half are reported by the individual and half by the credit card companies. Property theft cases are also reviewed for assignment, except those involving burglary or vehicle theft. Approximately one-third of the reported cases are assigned based on existence of sufficient facts to pursue the case.

Lieutenant	1.0
Sergeant	9.0
Police Officer	1.0
Steno Clerk III	1.0
Typist Clerk II	1.0

Juvenile Crime (Person)

Reports concerning crimes against persons in which a juvenile is either the victim or perpetrator (except homicide and sexual assault) are received. All missing person cases, juvenile and adult, are reviewed to identify those in which foul play is suspected and investigative contact is maintained in every case. All cases of crimes against persons committed by or against juveniles are investigated.

Captain	1.0
Lieutenant	1.0
Sergeant	14.0
Steno Clerk III	1.0
Steno Clerk II	3.0
Typist Clerk	2.0

Juvenile Crime (Property)

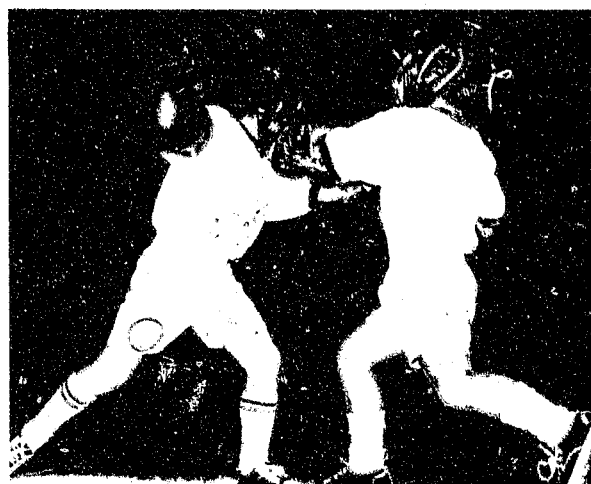
All property crimes in which a juvenile is the victim or perpetrator and property crimes committed on school grounds are examined and those cases where there is sufficient evidence to allow the identification of a perpetrator are assigned for investigation. Bicycle theft cases and all malicious mischief cases, regardless of the age of victim or suspect, are reviewed and assigned for investigation, using the same criteria as other property crimes.

Lieutenant	1.0
Sergeant	11.0
Police Officer	3.0

Youth Services

Educational and athletic programs for youngsters are planned, developed, and implemented. Education programs are provided in the schools regarding the dangers of drugs. A Law Enforcement Career Program is provided to youth between 14 and 21 for the purpose of developing an interest in a career in law enforcement. Volunteer assistance is obtained and coordinated from the community to provide athletic and other opportunities for youth.

Sergeant	3.0
Police Officer	2.0
Steno Clerk III	1.0
Typist Clerk II	1.0



BUREAU OF ADMINISTRATION

Deputy Chief	1.0	Steno Clerk III	1.0
------------------------	-----	---------------------------	-----

THE BUREAU OF ADMINISTRATION ASSISTS THE CHIEF OF POLICE BY PERFORMING MAJOR FUNCTIONS SUCH AS: 1) ADMINISTRATION OF THE DEPARTMENT'S FINANCIAL OPERATION; 2) RECRUITMENT AND SELECTION OF NEW PERSONNEL; 3) TESTING FOR PROMOTION AND TRAINING OF ALL PERSONNEL; 4) SAFEGUARDING AND LEGAL DISPOSITION OF ALL PROPERTY, EVIDENCE AND CONTRABAND IN CUSTODY OF POLICE DEPARTMENT; AND, 5) CONDUCTING OF EXTENSIVE P.A.L. YOUTH ACTIVITIES PROGRAM.

Personnel

Recruitment, testing, and background investigations of police officer candidates and civilian employees are conducted. Affirmative Action is implemented. Department positions are monitored and vacancies filled. Disabled officers are supervised and reassigned. All personnel transactions such as hirings, promotions, transfers, terminations, and executive actions are effectuated. Promotional tests are created and administered. Job analyses are conducted.

Captain5
Police Officer	3.0
Dept. Personnel Officer	1.0
Steno Clerk II	1.0
Typist Clerk III	1.0
Typist Clerk II	2.0
Personnel Analyst II	1.0



Training

Advanced training is conducted to improve police skills in preserving human rights and enforcing the law. Department policy is explained. Alternatives to the use of force are taught. Firearms qualifications are required and supervised. State mandated training is fulfilled. Officers are counselled on standards and career development. TV programs are created to teach new skills. Recruit Academy classes are monitored and supervised. Training for officers, field supervisors, and police managers is researched and conducted.

Captain5
Lieutenant	1.0
Sergeant	3.0
Police Officer	9.0
Typist Clerk II	1.0



Records and Identification

Records are maintained to serve the public and law enforcement sources with information pertaining to persons, stolen vehicles, emergency business directories, stolen properties, gun registration, and other areas. Required records maintained outside the Department are retrieved through automated and manual systems. Information is processed and made available on a timely basis to aid the Department in apprehending and prosecuting suspects, and for the return of lost or stolen property. Persons are arrested and court dispositions are handled in conjunction with processing of warrants. Citizens requiring fingerprints are served and a fingerprinting activity is maintained to assist law enforcement personnel in the apprehension of suspects.

Captain	1.0
Sergeant	5.0
Police Officer	17.0
Steno Clerk II	1.0
Principal Clerk	1.0
Typist Clerk II	1.0
Junior Clerk	1.0
Messenger Clerk	2.0
City Photographer	1.0
Darkroom Technician	1.0
Darkroom Assistant	1.0
Latent Fingerprint Exam.	2.0
Stock Clerk	1.0
Senior Records Clerk	10.0
Police Records Clerk	78.0

Fiscal

Administration of Department's financial operations is provided, including accounting, payroll, and equipment procurement services. Revenues and expenditures are monitored in conjunction with the preparation and administration of the Annual Budget. Appropriate financial information is prepared and disseminated to departmental units.

A Property Room and warehouse are maintained to provide security for evidence, found property, and police equipment. Evidence registration and release transactions are recorded. Found property is released according to law. A Central Supply Room is continually operated to control, maintain, assign, and retrieve beat packs, special items, and safety equipment. City photography services are provided. Photographic supplies are dispensed to other departments.

Assistant Policewoman	1.0
Administrative Analyst III	1.0
Staff Analyst II	1.0
Accounting Technician	1.0
Senior Account Clerk	1.0
Account Clerk	1.0
Typist Clerk II	1.0
Senior Property Clerk	1.0
Property Clerk	6.0
Stock Clerk	6.0

DEPARTMENT HIGHLIGHTS

- **CRIME PREVENTION** — The Crime Prevention Unit has two overall goals: (1) to involve everyone within the Department to be more responsive to crime prevention and community needs, and (2) to reduce the opportunity for the commission of preventable crime. Through citizen awareness programs, citizens are informed and educated on crime prevention techniques; seminars, workshops, and neighborhood discussions are given, including meeting with groups. Citizen-police cooperation in crime prevention programs have shown sufficient effects on crime reduction in participating areas which indicates the success of citizen involvement in assisting the police in crime prevention.
- **ROBBERY PREVENTION GRANT** — This project is to reduce armed robberies by the identification, apprehension, and conviction of the suspect. The project consists of the Surveillance Camera Program and the Secret Witness Program.

'Surveillance Camera Program' — During the project, surveillance cameras have been installed in businesses which have had recurring robberies in order to photograph the suspect during the commission of the crime.

'Secret Witness Program' — All unsolved robberies are published every Sunday in the Mercury—News newspaper. Rewards are then offered to anonymous informants for information which solves these robberies. When police are unable to identify the suspect pictured in the surveillance photographs, the programs are interfaced by publishing the photographs in the newspaper and offering rewards for the identity of the suspect.

- **CASE ASSIGNMENT AND CONTROL** — The Case Assignment and Control project provides for the Officer of the Day to review all burglary cases and to make assignments for investigation based on application of UNIFORM criteria.
- **STAFF INSPECTIONS** — The Staff Inspections function is organized to provide department management with a method to conduct positive self-examination of departmental contacts with people in the community, to review departmental operations affecting those contacts, and to ensure compliance with departmental procedures, policies, and goals. Simply stated, this process is facilitated by: (1) establishment and publication of standards; (2) observations and examination of department performance using Department standards as a guide; (3) identification and correction of deviations, and (4) follow-up inspections to ascertain if deficiencies have been corrected. An area of major emphasis is the examination of citizen service satisfaction in relation to department evaluation of officer performance on randomly selected incidents. All information is analyzed towards improving overall service to the community.
- **ARREST PACKETS** — Uniformity in the operation of processing of prisoners was achieved with an accompanying increase in the quality of evidence collected as arrest packets were designed to contain all forms required and instructions necessary for processing of in-custody cases initiated by patrol personnel.

The net results have been an improvement in quality of the contents of cases and savings of many hours of investigative time.

- **RECORDS INFORMATION SYSTEM PROJECT** – The Records Information System is a computer-based system designed in two phases: Phase 1 provides for the indexing of crime reports by name or case number; Phase 2 provides for: 1) case control which allows for the tracking of a case from its initial indexing to its conclusion; 2) mandatory crime reporting to satisfy the requirements of State of California Bureau of Criminal Statistics and Federal Bureau of Investigation; and 3) crime descriptors on each offense for the Crime Analysis Unit.

Currently, the system can be used to evaluate individual and unit activities for comparison of performance, and for monitoring departmental program budget objectives.

- **DISABILITY TRACKING SYSTEM** – The Disability Tracking System was developed to formalize a system for keeping track of sworn staff members who are on extended disability leave, sick leave, or on a modified duty status. The goal of this system is to reduce the length of time that officers stay out unnecessarily on disability leave and to make maximum proper utilization of those officers who are able to perform light duty assignments.
- **ADVANCED INDIVIDUAL TRAINING (AIT)** – The program was devised as a 40-hour per year training program designed for all line personnel to: reinforce the job skills of each officer; clarify roles; promote better understanding of administration policy and procedure expectations; increase communications throughout the Department; increase effective public service; and enhance community expectations while performing enforcement functions. The program has resulted in a reduction of citizen complaints against the police while promoting increased community relations.
- **INFORMATION CENTER** – The main objective of the program is to effectively handle as many non-emergency situations as possible over the telephone or, by citizen/officer contact at the Information Center located in the Police Administration Building rather than assigning field resources. The use of this concept has allowed the Department to render an acceptable level of services to the community in instances where the response of a field unit would not enhance the situation, thereby increasing the availability of field units to respond to more critical situations.
- **CARDIO-PULMONARY RESUSCITATION (CPR) / FIRST AID TRAINING FOR POLICE OFFICERS** – This project introduced a new concept in CPR/First Aid Training. The existing program framework was restructured to make training exercises job-related to the police officer duties. Training emphasis was placed not only on increasing abilities but also on improving the police officer's attitude toward the application of First Aid/CPR techniques. Indications are that this training reorientation of the program has resulted in police officers being able to perform better when ministering first aid and cardio-pulmonary resuscitation. The program has been sent to other local law enforcement agencies with the local Red Cross Chapter forwarding the information concerning this program to the National Red Cross Chapter, recommending the curriculum be used as a model for other metropolitan police departments.
- **FILE PURGING** – The Burglary File Purging program was initiated to purge Burglary Unit files on monthly basis, two years from date of original filing. The new procedure provided valuable file space to be regained, with the purging of files made more manageable as file purging activity is distributed over a twelve-month period.

Grant Programs

Financially assisted through the Law Enforcement Assistance Administration and the California Office of Criminal Justice Planning under Title I of the Crime Control Act of 1973.

COMPUTERIZED SINGLE FINGERPRINT CLASSIFICATION SYSTEM is an automated system which has the capability of rapidly correlating latent fingerprints of suspects with existing file, and has the capability of accessibility and adaption for county-wide use.

MOBILE DIGITAL TERMINAL SYSTEM has a direct impact on providing an efficient and secure communication linkage between the field officer and the Dispatch Center, and provides rapid and direct access to regional and national criminal justice data banks upon demand by the field officer.

PATROL EMPHASIS PROGRAM is designed to address the needs of the San Jose Police Department to deliver police services in a timely fashion and at a level that meets the community's expectations. The project goal is to increase the productivity of police manpower, strengthen the management and supervision decision-making process in order to allocate resources effectively to directly deter the incidence of crime.

ROBBERY PREVENTION is designed to reduce robberies in the City of San Jose and also to provide aids for law enforcement and the citizens of our community so that robbery suspects can be quickly identified, apprehended, and convicted in court.

SEXUAL ASSAULT INVESTIGATION is a comprehensive program designed to meet the physical and emotional health needs of the victims of serious sexual assaults with investigative techniques being used which minimize additional trauma for the victims.

STAFF RECONCILIATION

July 1, 1977

POSITION TITLE	OFFICE OF CHIEF	BUREAU OF FIELD OPERATIONS	BUREAU OF INVEST.	BUREAU OF ADMIN.	TOTAL
Chief of Police	1.0				1.0
Assistant Chief	1.0				1.0
Deputy Chief		1.0	1.0	1.0	3.0
Captain	1.0	4.0	2.0	2.0	9.0
Lieutenant	3.0	17.0	8.0	1.0	29.0
Sergeant	7.0	67.0	81.0	8.0	163.0
Police Officer	14.0	495.0	36.0	29.0	574.0
Assistant Policewoman	1.0	6.0		1.0	8.0
TOTAL SWORN	28.0	590.0	128.0	42.0	788.0
Secretary	1.0				1.0
Dept. Personnel Officer				1.0	1.0
Administrative Analyst III	1.0			1.0	2.0
Statistical Analyst	2.0				2.0
Staff Analyst II	1.0	1.0		1.0	3.0
Personnel Analyst II				1.0	1.0
Community Relations Rep.	1.0	4.0			5.0
Latent Fingerprint Exam.				2.0	2.0
Media Specialist				1.0	1.0
Accounting Technician				1.0	1.0
Senior Account Clerk				1.0	1.0
Account Clerk				1.0	1.0
Steno Clerk III	4.0	1.0	5.0	1.0	11.0
Steno Clerk II	1.0	1.0	5.0	2.0	9.0
Principal Clerk	1.0			1.0	2.0
Typist Clerk III		1.0	1.0	1.0	3.0
Typist Clerk II	7.0	7.0	6.0	5.0	25.0
Junior Clerk				1.0	1.0
Messenger Clerk				2.0	2.0
City Photographer				1.0	1.0
Darkroom Technician				1.0	1.0
Darkroom Assistant				1.0	1.0
Police Automated Systems Coordinator	1.0				1.0
Senior Property Clerk				1.0	1.0
Property Clerk				6.0	6.0
Stock Clerk				6.0	6.0
School Crossing Guard Coordinator		4.0			4.0
School Crossing Guard		40.0			40.0
Parking Control Checker		8.0			8.0
Senior Police Records Clerk				11.0	11.0
Police Records Clerk				78.0	78.0
TOTAL NONSWORN	20.0	67.0	17.0	128.0	232.0
TOTAL PERSONNEL	48.0	657.0	145.0	170.0	1020.0

POLICE PERSONNEL PER 1000 POPULATION

<u>FISCAL YEAR</u>	<u>POLICE PERSONNEL ACTUAL 12/31</u>	<u>POPULATION 12/31</u>	<u>POLICE PERSONNEL PER 1000 POPULATION</u>	<u>AREA IN SQUARE MILES</u>
1953-54	133	108,500	1.23	19.41
1954-55	139	114,500	1.21	21.94
1955-56	152	121,500	1.25	27.62
1956-57	168	129,500	1.30	32.44
1957-58	192	143,500	1.34	39.12
1958-59	205	164,500	1.25	45.56
1959-60	239	195,500	1.22	52.27
1960-61	258	226,000	1.14	63.87
1961-62	273	254,000	1.08	68.86
1962-63	300	279,000	1.08	71.40
1963-64	334	303,500	1.10	74.99
1964-65	354	328,000	1.08	104.94
1965-66	388	353,000	1.10	109.43
1966-67	420	375,500	1.12	113.88
1967-68	465	397,500	1.17	116.36
1968-69	525	419,000	1.25	134.35
1969-70	584	440,500	1.42	136.76
1970-71	660	465,000	1.42	138.58
1971-72	663	493,500	1.34	142.28
1972-73	752	506,800	1.48	144.95
1973-74	831	524,000	1.59	146.13
1974-75	888	547,500	1.62	148.55
1975-76	868	557,700	1.56	149.50
1976-77	988.4	575,100	1.72	150.50
1977-78	1020	587,700	1.74	151.40



GENERAL FUND REVENUE

Generated by the Police Department

Fiscal Year 1972-73 through 1977-78

Account Number	Description	1972-73 (Finance)	1973-74 (Finance)	1974-75 (Finance)	1975-76 (Finance)	Actual 1976-77 (Finance)	Estimated 1977-78 (Finance)
030280-02	Bicycle Licenses	13,450	14,757	9,221	13,456	14,562	12,520
030280-05	Miscellaneous		2,629	2,359	2,410	3,380	7,222
030310-01	C.V.C. Violations	1,073,262	1,077,112	1,397,243	1,421,642	1,671,832	1,595,065
030310-02	Traffic Ordinance Violations	217,300	201,089	222,291	325,090	243,591	241,254
030310-03	All Other Violations	83,936	98,799	111,352	125,917	130,564	119,847
032210-01	Fingerprinting Fees	11,389	12,548	12,386	13,160	14,009	13,692
032210-02	Police Officer Civil Court Appearance	2,805	2,440	3,319	2,377	1,867	1,130
032210-03	Extradition Reimbursement (State)	3,285	2,329	674	327	11,806	25,494
032210-04	Police Recruitment Reimbursement	202,699	273,168	70,023	111,111	142,523	177,843
032210-05	Misc. Police Fees and Charges (Confiscation, Auctions, etc.)	51,307	59,424	64,143	68,706	67,595	77,560
033210-06	Police Officer Escort Svcs.	27,309	28,573	30,722	43,265	51,228	44,037
	TOTAL	\$1,686,742	\$1,772,868	\$1,923,733	\$2,127,461	\$2,352,957	\$2,315,664

COMPARISON OF POLICE GENERAL FUND BUDGET AND TOTAL CITY GENERAL FUND BUDGET

Fiscal Year 1961-62 through 1977-78

	Personal Services	Non-Personal Expenses	Equipment	POLICE TOTAL	CITY TOTAL	Percent of City to Police
1961-62	\$1,955,895	\$415,170	\$18,250	\$2,389,315	\$14,593,065	16.4
1962-63	2,163,340	338,595	29,700	2,531,635	15,848,300	16.0
1963-64	2,660,850	358,695	14,535	3,034,080	18,344,230	16.5
1964-65	3,080,585	419,270	8,760	3,508,615	22,367,813	15.7
1965-66	3,439,895	423,815	15,170	3,878,880	22,637,690	17.1
1966-67	4,036,915	471,000	16,280	4,524,600	24,601,022	18.4
1967-68	4,407,165	536,305	29,690	4,973,160	27,378,595	18.2
1968-69	5,132,485	586,385	28,530	5,747,400	31,567,100	18.2
1969-70	6,235,000	625,000	74,000	6,934,000	36,707,000	18.9
1970-71	7,871,000	679,000	35,000	8,585,000	42,981,000	20.0
1971-72	9,127,000	734,000	16,000 210,000 (Vehicle Replacement)	10,087,000	45,753,000	22.0
1972-73	11,135,000	1,200,000	165,000	12,500,000	52,000,000	24.0
1973-74	12,925,000	1,460,000	359,000	14,744,000	59,312,000	24.8
1974-75	14,353,000	2,176,500	208,500	16,738,000	63,736,000	26.2
1975-76	15,619,000	2,753,000	583,000	18,955,000	87,065,000	21.7
1976-77	19,619,000	3,767,000	558,000	23,450,000	102,416,000	22.9
1977-78	19,320,000	3,928,965	367,800	23,616,765	115,194,400	20.5

STATISTICS

CRIME CLOCK - 1977

<u>OFFENSE</u>	<u>NUMBER OF OFFENSES</u>		<u>RATE</u>
Murder	41	1 every	8.9 days
Rape	322	"	1.1 days
Robbery	1031	"	8.5 hours
Aggravated Assault	1276	"	6.9 hours
Burglary	12027	"	47.0 minutes
Larceny	21064	"	26.9 minutes
Auto Theft	3447	"	2.5 hours
Total Major Offenses	39208	"	14.4 minutes
Check Offenses	3064	"	2.9 hours
Credit Card Offenses	2018	"	4.3 hours
Drug Offenses - Felony	1644	"	5.3 hours
Receiving Stolen Property	296	"	1.2 days
Weapons Offenses	240	"	1.5 days
Other Felony Offenses	1056	"	8.3 hours
Malicious Mischief	8165	"	1.1 hours
Disturbing the Peace	1594	"	5.5 hours
Simple Assaults	3659	"	2.1 hours
Misdemeanor Sex Offenses	837	"	10.1 hours
Misdemeanor Drug Offenses	1316	"	6.7 hours
All Other Misdemeanors (except Drunks)	2571	"	3.4 hours
Total Other Offenses	26460	"	21.4 minutes
TOTAL OFFENSES	65668	"	8.6 minutes

DEFINITIONS OF PART I CRIMES

MURDER: The intentional and careless killing of one human by another.

NEGLIGENT HOMICIDE: The killing of a human by act(s) of great carelessness.

ROBBERY: The taking of property from another's person or control by use of force or fear.

AGGRAVATED ASSAULT: An unlawful attack by one person upon another by means likely to cause death or great bodily harm.

ASSAULT: An unlawful attack by one person upon another.

BURGLARY: The unlawful entry of a structure to commit a theft or any felony.

THEFT: The unlawful taking, with intent of permanently depriving, the property of another.

ACTUAL CASES OF PART I CRIMES 1967-1977

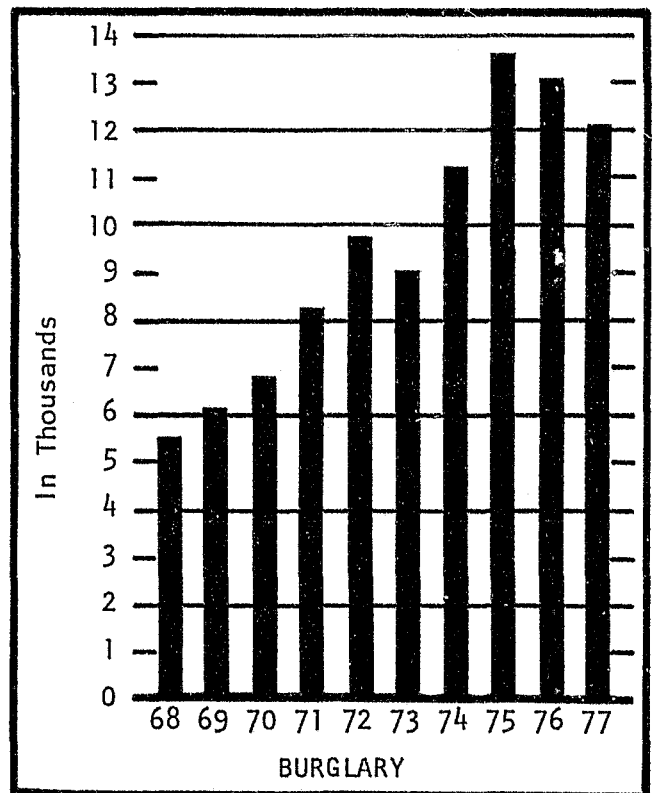
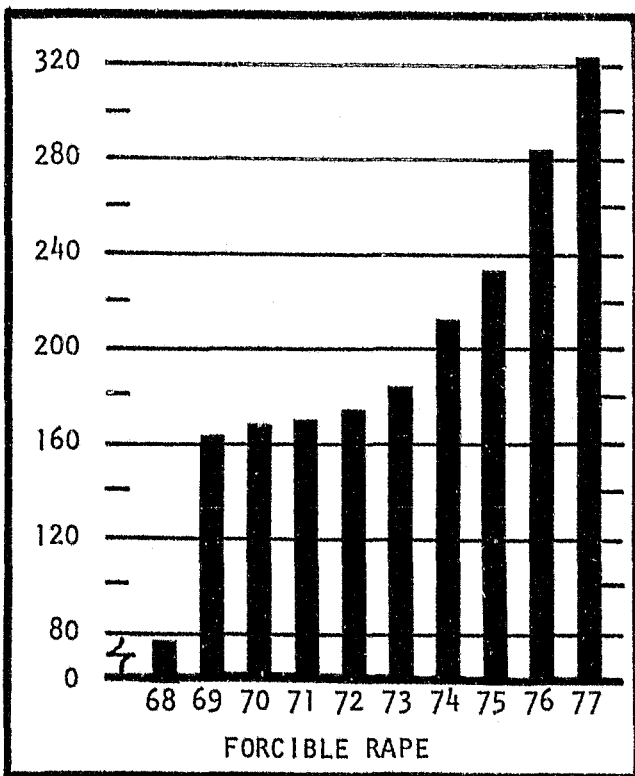
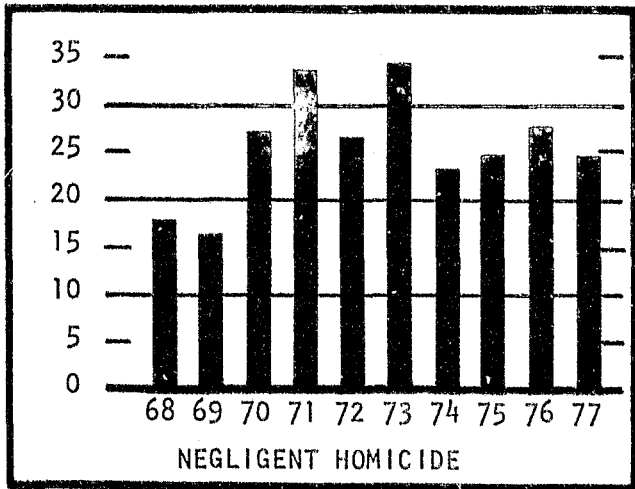
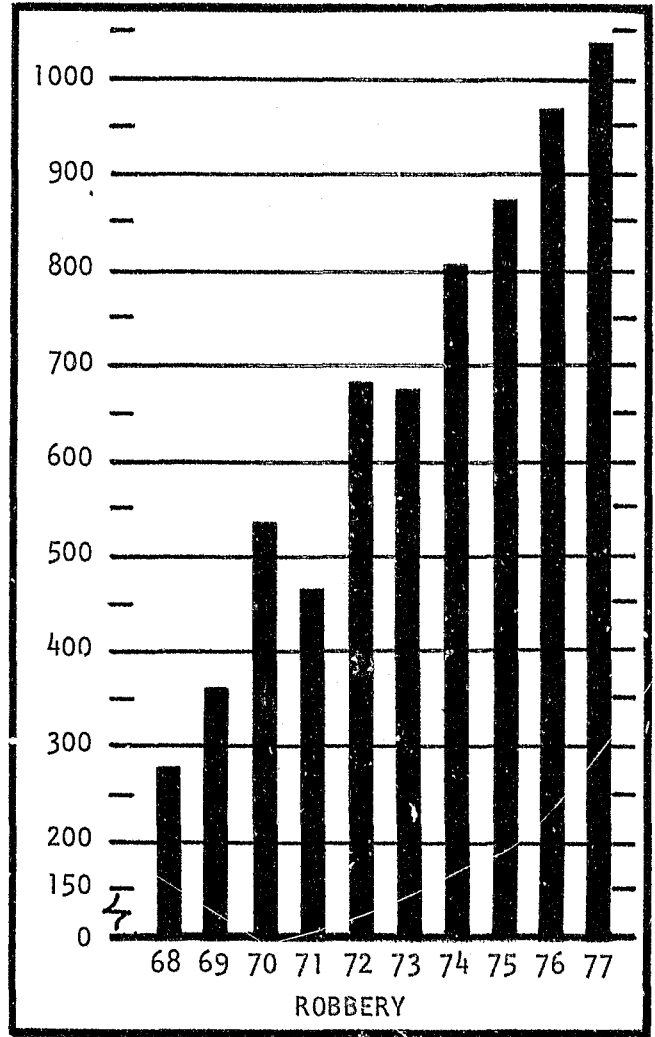
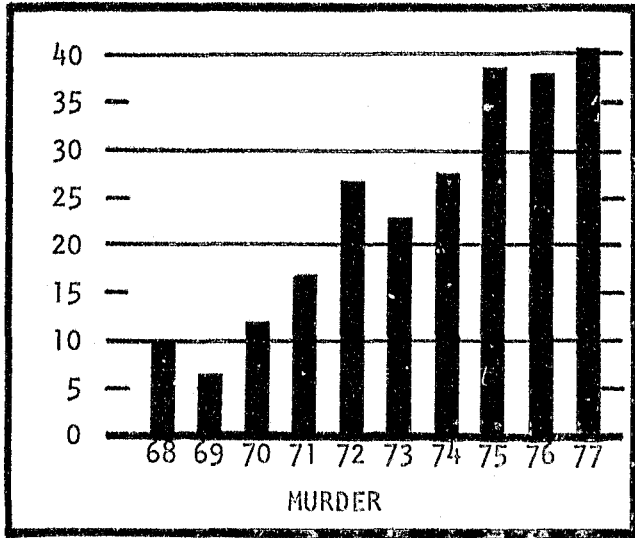
	MURDER	NEGLIGENT HOMICIDE	FORCIBLE RAPE	ROBBERY	AGGRAVATED ASSAULT	BURGLARY	THEFT	AUTO THEFT
1967	10	27	45	219	240	4462	14202	1785
1968	10	18	79	279	408	5517	17233	2192
1969	9	17	161	369	803	6274	18812	3070
1970	12	28	168	544	737	6830	20147	3571
1971	18	34	170	497	742	8190	21619	3621
1972	28	27	173	687	822	9603	22593	4180
1973	25	35	182	687	486	9168	21212	3767
1974	29	24	210	807	570	11180	23239	3775
1975	39	26	234	887	954	13846	24467	3654
1976	38	28	296	967	1223	13096	22063	3828
1977	41	24	322	1031	1276	12027	21064	3447



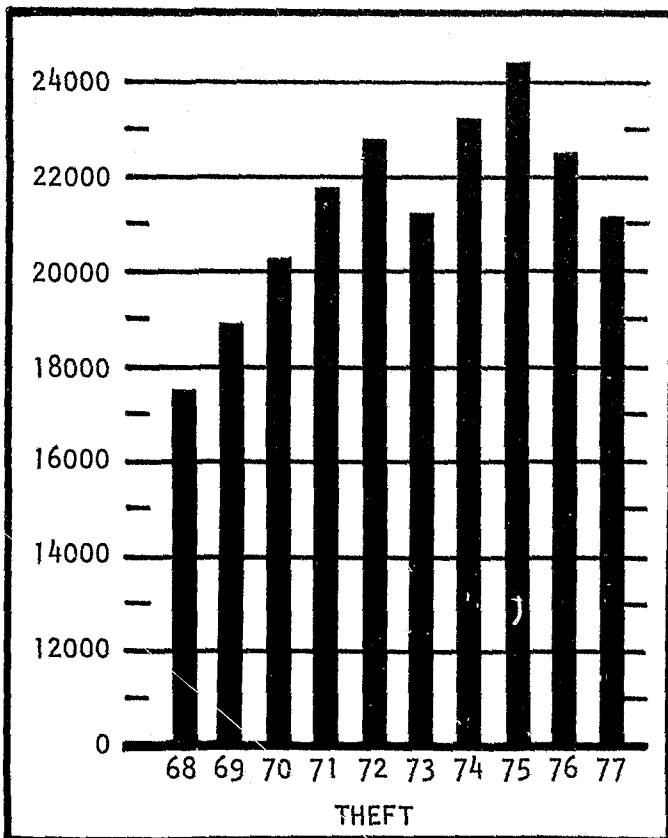
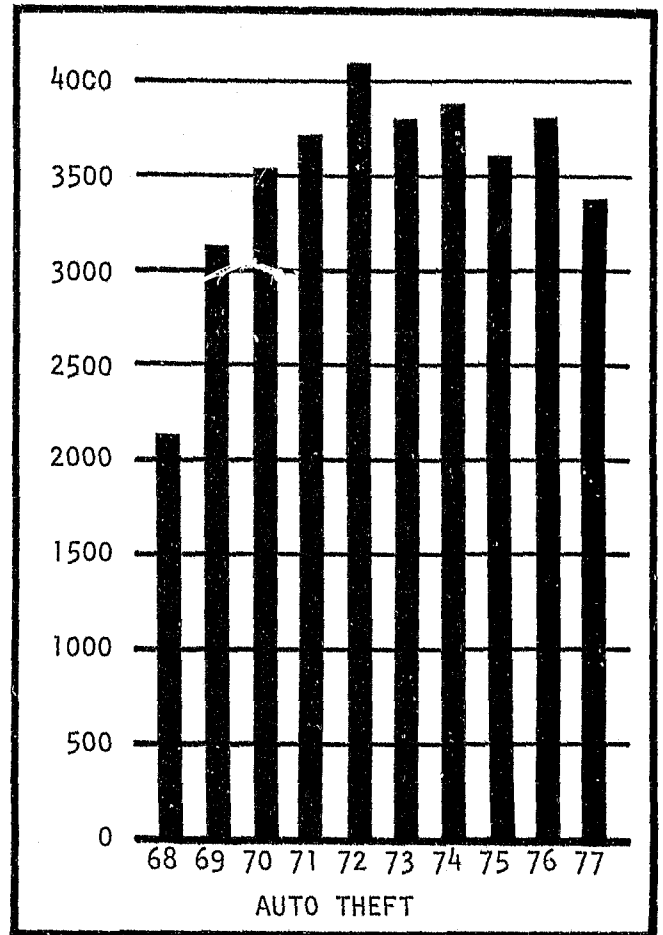
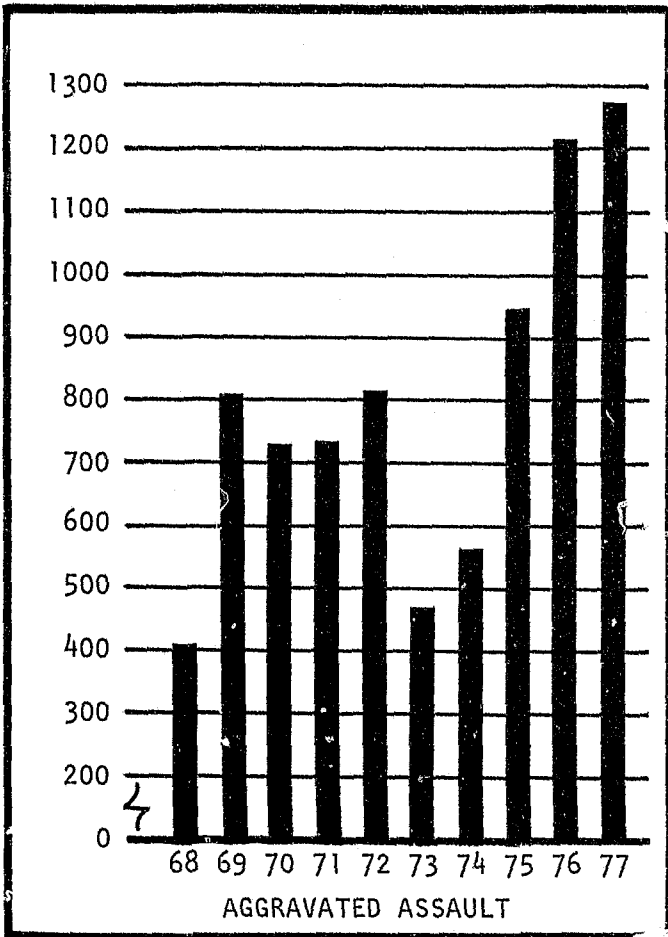
PART I CRIMES 1974 THROUGH 1977

OFFENSES	Cases Reported	Cases Unfounded	Actual Cases	Cases Cleared	Percent Cleared		Cases Reported	Cases Unfounded	Actual Cases	Cases Cleared	Percent Cleared
	1974						1975				
Murder	33	4	29	26	90		44	5	39	33	85
Negligent Homicide	75	51	24	23	96		73	47	26	26	100
Forcible Rape	225	15	210	84	40		253	19	234	104	44
Robbery	825	18	810	224	28		893	6	887	185	21
Aggravated Assault	572	2	569	357	63		962	8	954	507	53
Burglary	11232	52	11180	1226	11		13879	33	13846	1540	11
Theft Total	23305	66	23239	5230	23		24532	65	24467	5435	22
Auto Theft	4079	304	3775	219	6		4076	422	3654	252	7
TOTAL	40346	512	39836	7389	18.5		44712	605	44107	8082	18.3
	1976					1977					
Murder	38	-	38	28	74		42	1	41	29	71
Negligent Homicide	69	41	28	27	96		68	44	24	24	100
Forcible Rape	313	17	296	136	46		334	12	322	145	45
Robbery	974	7	967	271	28		1035	4	1031	245	24
Aggravated Assault	1236	13	1223	647	53		1292	16	1276	668	52
Burglary	13112	16	13096	1361	10		12059	32	12027	1019	8
Theft Total	22096	33	22063	4938	22		21110	46	21064	4726	22
Auto Theft	4243	415	3828	248	6		3912	465	3447	338	10
TOTAL	42081	542	41539	7656	18.4		39852	620	39232	7194	18.3

ACTUAL CASES OF PART I CRIMES 1967 - 1977



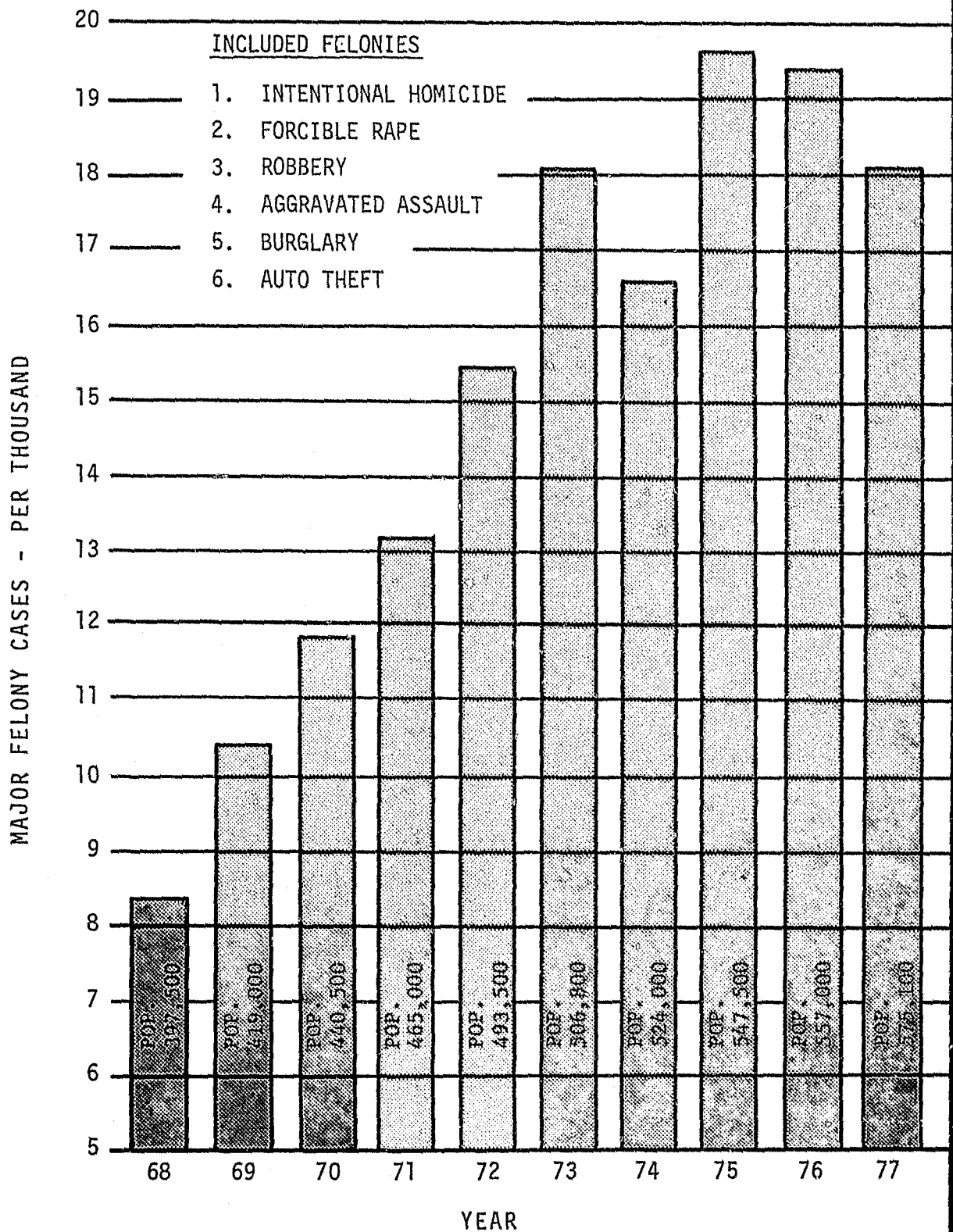
ACTUAL CASES OF PART I CRIMES 1968 - 1977



CRIME AND CLEARANCE REPORT 1977

CLASSIFICATION OF OFFENSES	Offenses Reported Or Known To Police	Unfounded Complaints	Number of Actual Offenses	OFFENSES CLEARED		
				Total Offenses Cleared	Offenses Cleared By Persons Under 18	
1. CRIMINAL HOMICIDE						
a. Murder & Non-Negligent Manslaughter	42	1	41	29		
b. Manslaughter by Negligence (Non-Vehicle)						
c. Manslaughter by Negligence (Vehicle)	68	44	24	24	3	
2. FORCIBLE RAPE	<u>TOTAL</u>	<u>334</u>	<u>12</u>	<u>322</u>	<u>145</u>	<u>20</u>
a. Forcible Rape	200	10	190	94	14	
b. Assault to Rape - Attempts	134	2	132	51	6	
3. ROBBERY	<u>TOTAL</u>	<u>1035</u>	<u>4</u>	<u>1031</u>	<u>245</u>	<u>58</u>
a. Firearm	444	2	442	98	13	
b. Knife or Cutting Instrument	169	1	168	47	11	
c. Other Dangerous Weapon	74		74	26	2	
d. Strongarm (No Weapon)	348	1	347	74	32	
4. ASSAULT	<u>TOTAL</u>	<u>4964</u>	<u>29</u>	<u>4935</u>	<u>2884</u>	<u>715</u>
a. Firearm	233	1	232	83	8	
b. Knife or Cutting Instrument	349	1	348	178	31	
c. Other Dangerous Weapon	461	6	455	222	35	
d. Hands, Fists, Feet, Etc.	249	8	241	185	23	
e. Other Assaults - Misdemeanor	3672	13	3659	2216	618	
5. BURGLARY	<u>TOTAL</u>	<u>12059</u>	<u>32</u>	<u>12027</u>	<u>1019</u>	<u>562</u>
a. Forcible Entry	7996	16	7980	653	366	
b. Unlawful Entry - No Force	3218	14	3204	280	151	
c. Attempted Forcible Entry	845	2	843	86	45	
6. LARCENY THEFT (Except AUTO)	<u>TOTAL</u>	<u>21110</u>	<u>46</u>	<u>21064</u>	<u>4726</u>	<u>2556</u>
7. MOTOR VEHICLE THEFT	<u>TOTAL</u>	<u>3912</u>	<u>465</u>	<u>3447</u>	<u>338</u>	<u>132</u>
a. Autos	3227	380	2847	286	106	
b. Trucks and Buses	253	24	229	22	9	
c. Other Vehicles	432	61	371	30	17	
	<u>GRAND TOTAL</u>	<u>43524</u>	<u>633</u>	<u>42891</u>	<u>9410</u>	<u>4046</u>

MAJOR FELONIES IN SAN JOSE 1968 THROUGH 1977

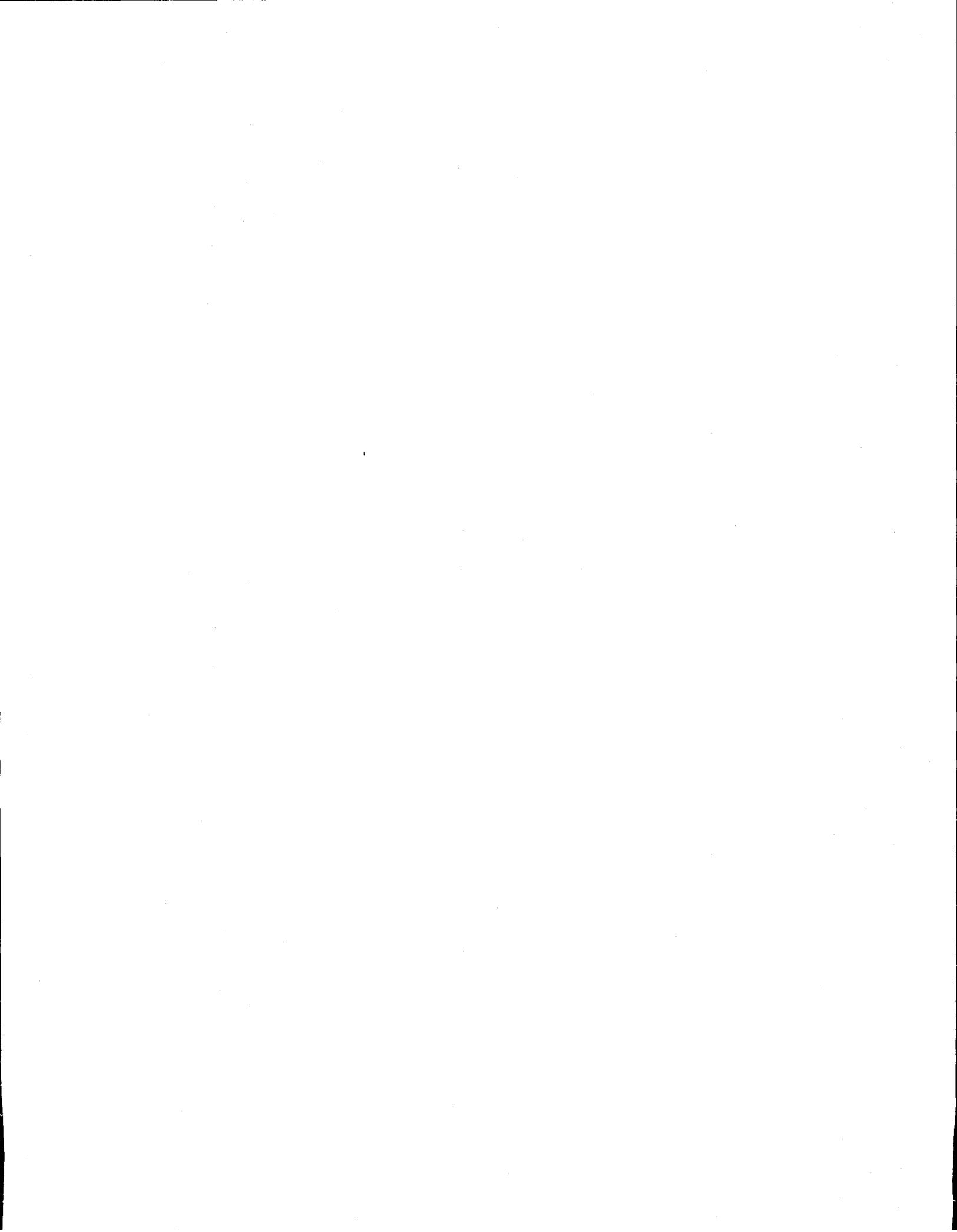


ADULT FELONY ARRESTS REPORTED - 1977
AS SUBMITTED TO THE CALIFORNIA STATE DEPARTMENT OF JUSTICE

<u>FELONIES</u>	<u>Male</u>	<u>Female</u>	<u>TOTAL ARRESTS</u>	<u>Re- leased</u>	<u>To Other Juris.</u>	<u>Misd. Comp. Filed</u>	<u>Fel. Comp. Filed</u>
Murder	29	4	33	4	2		27
Manslaughter Non-Vehicle	1		1	1			
Manslaughter Vehicle	8	2	10			4	6
Robbery	208	12	220	37	2	13	168
Assault	422	58	480	139	5	182	154
Burglary	575	69	644	89	5	108	442
Grand Theft - except auto	152	43	195	16	3	61	115
Receiving Stolen Property	233	36	269	67	2	68	132
Auto Theft	88	9	97	29	3	12	53
Checks-Credit Cards-Forgery	119	52	171	11	1	39	120
Rape-forcible	65		65	13		2	50
Unlawful Intercourse (Stat.)	10		10			3	7
L & L Conduct	57		57	3		2	52
Sex Perversion	5		5	2			3
Other Sex Offenses	20		20			3	17
Drug Laws							
Marijuana	166	40	206	28		57	121
Dangerous Drugs	663	198	861	138	7	162	554
Weapon Offenses	168	10	178	27	1	99	51
Drunk Driving	99	13	112		1	65	46
Hit and Run	10		10	2		5	3
Escape	11	1	12			1	11
Kidnapping	11	1	12	2		2	8
Bookmaking	1		1		1		
Arson	6	2	8			2	6
Other Offenses							
Bigamy							
Conspiracy to Commit Misd.	17	8	25	3	1	9	12
Extortion							
Perjury	3		3				3
Parole Violation	71	2	73	9	5	48	11
Probation Violation	48	5	53	10	4	36	3
Damage Telephone Lines	4		4	1		3	
False Imprisonment	3		3	1			2
FTA-Felony Want	1		1				1
Harboring a Felon	4	2	6	1	1	2	2
False Evidence of Registration	2		2			2	
Bringing Contraband to Jail	4		4			2	2
Destroy/Injury to Jail	1		1			1	
Felony Cruelty to Animals	1		1				1
Felony Vandalism	6		6			1	5
Contempt	2		2				2
Solicit to Commit Crime	2	1	3	1			2
Bribery	1		1				1
<u>TOTAL FELONIES</u>	<u>3297</u>	<u>568</u>	<u>3865</u>	<u>634</u>	<u>44</u>	<u>994</u>	<u>2193</u>
Outside Wants	75	6	81		81		

ADULT MISDEMEANOR ARRESTS - 1977
AS SUBMITTED TO THE CALIFORNIA STATE DEPARTMENT OF JUSTICE

<u>MISDEMEANORS</u>	<u>Male</u>	<u>Female</u>	<u>TOTAL ARRESTS</u>	<u>Re- leased</u>	<u>To Other Jurisd.</u>	<u>Complaint Filed</u>
Assault & Battery	921	137	1058	142	3	913
Petty Theft	1036	860	1896	19	2	1875
Checks-Credit Cards	38	9	47	3		44
Indecent Exposure	57		57	2		55
Annoying Children	64	5	69	1	1	67
Obscene Matter	2		2			2
Lewd Conduct	155	67	222	4		218
Drug Offenses	1203	202	1405	30	3	1372
Drunk Driving	2570	323	2893	32	3	2858
Traffic						
20002	663	133	796			796
14601	268	12	280	1	1	278
Other Traffic	1111	81	1192	5	1	1186
Non-Support	21		21	1		20
Prostitution	34	50	84	2		82
Disorderly Conduct						
Drunk	2037	115	2152	84	2	2066
Disturbing the Peace	158	25	183	33	1	149
Other Disorderly Conduct	103	1	104	23		81
Gambling	9	2	11			11
All Other Misdemeanors	1346	206	1552	39	3	1510
<u>TOTAL MISDEMEANORS</u>	<u>11796</u>	<u>2228</u>	<u>14024</u>	<u>421</u>	<u>20</u>	<u>13583</u>
Outside Wants	289	20	309			
<u>TOTAL ADULT ARRESTS</u>	<u>15093</u>	<u>2796</u>	<u>17889</u>	<u>1055</u>	<u>64</u>	<u>14577</u>



ARREST REPORT ON YOUTHS UNDER EIGHTEEN

1977

OFFENSES OR REASONS FOR ARREST	BOYS	GIRLS	TOTAL	LAW ENFORCEMENT DISPOSITIONS		
				HANDLED WITHIN DEPT.	OTHER AGENCIES	PROB. DEPT.
<u>FELONY - 602 W & I</u>						
Homicide	3	1	4		1	3
Robbery	99	20	119	15		104
Assault	163	35	198	35	3	160
Burglary	1390	139	1529	145	7	1377
Grand Theft - Except Auto	117	31	148	23	2	123
Auto Theft	291	39	330	32	3	295
Checks-Credit Cards-Forgery	15	5	20	3	-	17
Rape - Forcible						
Marijuana	659	117	776	50	5	721
Other Drug Offenses	83	23	106	6	2	98
Arson	54	2	56	3		53
All Other	197	27	224	26	4	194
<u>MISDEMEANOR - 602 W & I</u>						
Assault and Battery	442	170	612	168	29	415
Petty Theft	2290	1274	3564	346	832	2386
Checks-Credit Cards	2		2			2
Drug Offenses	19	5	24	1	1	22
Weapon Offenses	124	11	135	25	3	107
Drunk Driving	63	10	73	14	1	58
Drunk	123	31	154	12		142
Disturbing the Peace	226	48	274	73	11	190
Glue Sniffing	20	3	23	3	1	19
Malicious Mischief	724	94	818	355	50	413
Liquor Offenses	441	104	545	45	35	465
All Other	1119	222	1341	291	86	964
<u>DELINQUENT TENDENCIES - 601 W & I</u>						
Incorrigible	71	49	120	30	7	84
Loitering - Curfew	81	13	94	9	2	82
Truancy	6	1	7	5		2
Runaway	729	1192	1921	1694	51	176
All Other	192	66	258	76	24	158
<hr/>						
TOTALS	9743	3732	13475	3485	1160	8830
<hr/>						
PROTECTIVE CUSTODY - Dependent 600 W & I	283	249	532	158	72	302

SUMMARY OF JUVENILES ARRESTED BY MONTH FOR 1977

	Jan	Feb	Mar	Apr	May	Jun	Jul	Aug	Sep	Oct	Nov	Dec	TOTAL
Homicide	0	0	0	1	1	0	0	0	1	0	0	1	4
Robbery	8	13	23	12	10	2	14	6	7	11	4	9	119
Aggravated Assault	12	22	10	23	31	17	10	21	1	30	10	11	198
Burglary	129	168	134	124	160	152	122	133	91	116	92	108	1529
Forcible Rape	0	0	0	0	0	0	0	0	0	0	0	0	0
Arson	6	8	6	11	4	5	10	1	0	0	3	2	56
Auto Theft	25	24	23	20	31	44	41	20	33	23	15	31	330
Drug Offenses	74	80	83	61	81	70	51	44	44	93	93	132	906
Assault and Battery	37	50	56	64	32	74	53	31	40	70	45	60	612
Grand Theft	6	15	9	16	11	13	23	6	13	11	13	12	148
Weapon Offenses	15	21	7	15	8	10	3	9	16	13	7	11	135
TOTAL	312	401	351	347	369	387	327	271	246	367	282	377	4037

SUMMARY OF ADULTS ARRESTED BY MONTH FOR 1977

	Jan	Feb	Mar	Apr	May	Jun	Jul	Aug	Sep	Oct	Nov	Dec	TOTAL
Homicide	1	1	1	4	8	5	2	0	2	6	3	0	33
Robbery	21	16	20	17	14	16	14	22	14	23	13	30	220
Aggravated Assault	23	38	33	48	29	77	29	55	24	63	18	43	480
Burglary	82	71	76	56	48	53	35	31	34	45	53	60	644
Forcible Rape	8	7	4	4	4	15	3	4	3	5	3	5	65
Arson	4	0	0	0	0	0	0	1	0	2	0	1	8
Auto Theft	11	1	4	15	10	9	5	9	5	19	4	5	97
Drug Offenses	254	249	243	199	205	202	171	194	180	245	142	188	2472
Assault and Battery	91	86	81	84	74	110	86	77	93	122	76	78	1058
Grand Theft	13	15	8	19	23	22	16	20	19	15	14	11	195
Weapon Offenses	20	15	15	13	22	21	4	14	10	20	13	11	178
TOTAL	528	499	485	459	437	530	365	427	384	565	339	432	5450

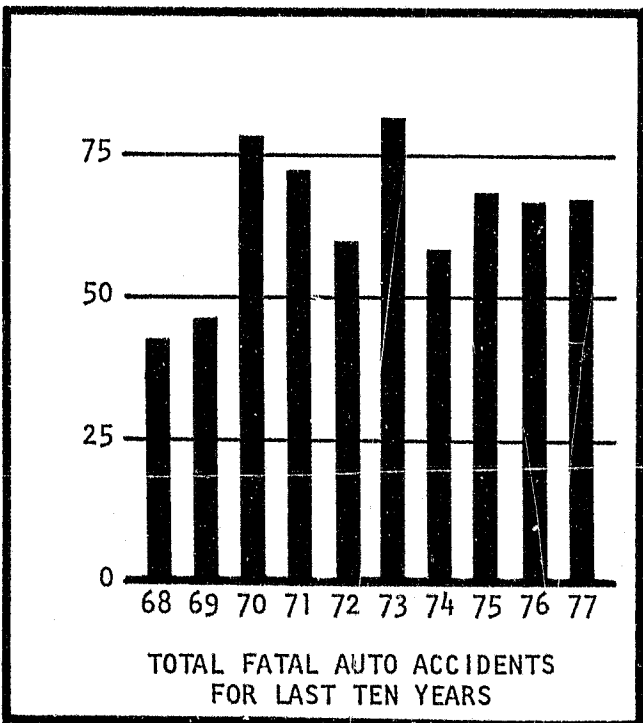
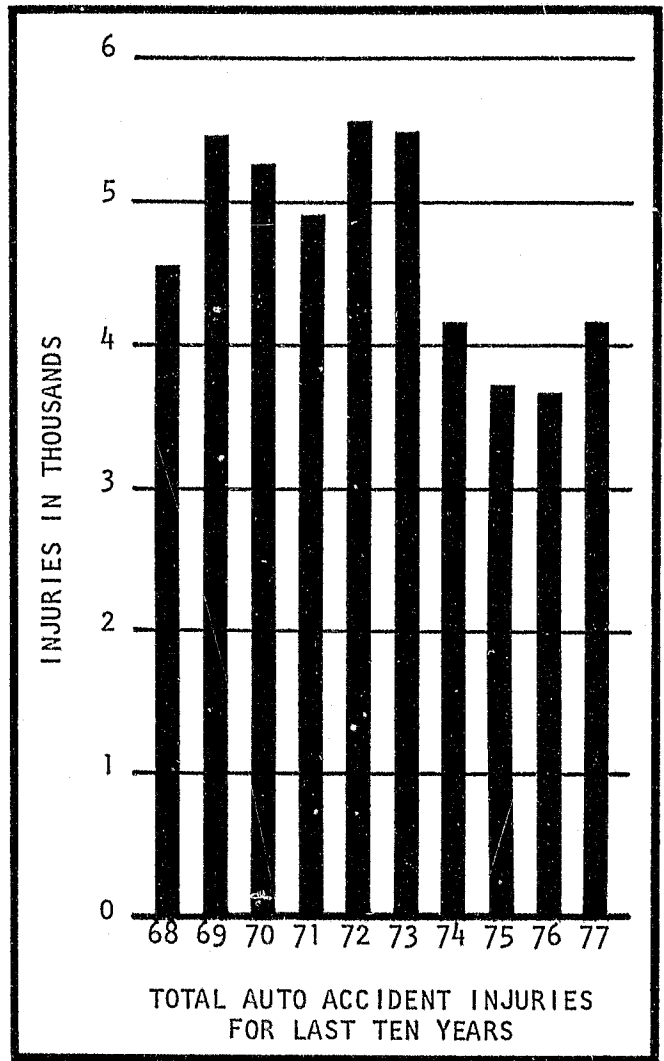
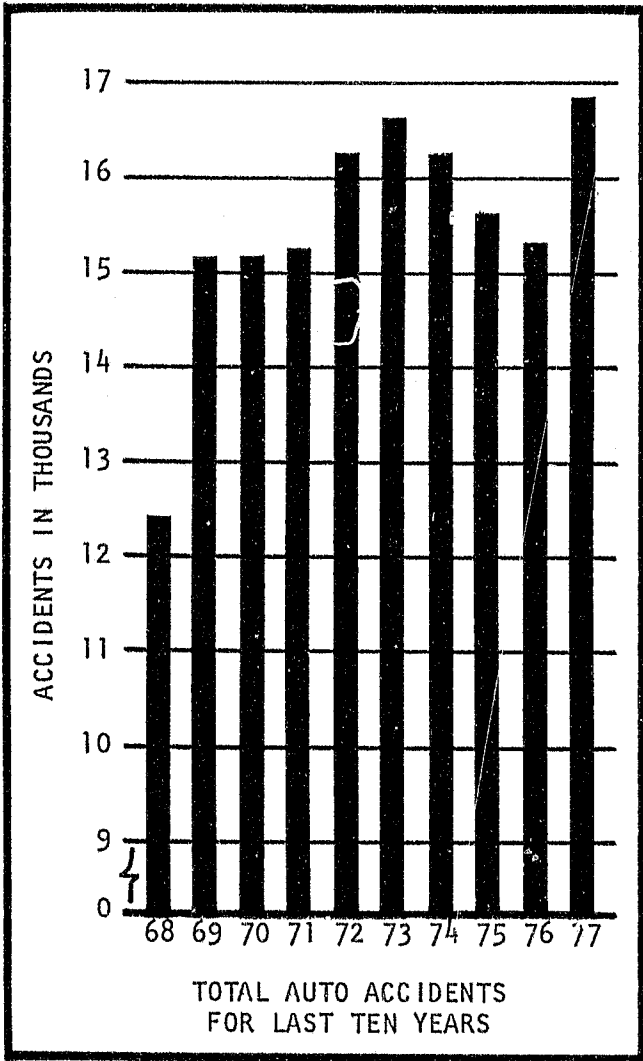
TYPE OF ACCIDENTS

1977

COLLISION OF MOTOR VEHICLE WITH:	NUMBER OF ACCIDENTS							NUMBER OF PERSONS				
	ALL ACCIDENTS	FATAL	NON-FATAL				PROPERTY DAMAGE	TOTAL KILLED	INJURED			
			TOTAL	a	b	c			TOTAL	a	b	c
1. Non-Collision	185	5	91	12	56	23	89	5	125	14	74	37
2. Pedestrian	348	18	318	63	161	94	12	19	341	66	171	104
3. Other Motor Vehicle	11421	26	2696	159	1222	1315	8699	26	4133	203	1656	2274
4. Vehicle on Other Road	0	0	0	0	0	0	0	0	0	0	0	0
5. Parked Vehicle	2740	3	336	22	238	76	2401	3	414	28	271	115
6. Train	10	0	3	0	3	0	7	0	3	0	3	0
7. Bicycle	305	1	234	23	143	68	70	1	245	23	149	73
8. Animal	47	0	9	0	5	4	38	0	9	0	5	4
9. Fixed Object	1783	12	540	65	372	103	1231	12	718	74	473	171
10. Other Object	42	0	9	1	8	0	33	0	11	1	10	0
TOTAL	16881	65	4236	345	2208	1683	12580	66	5999	409	2812	2778

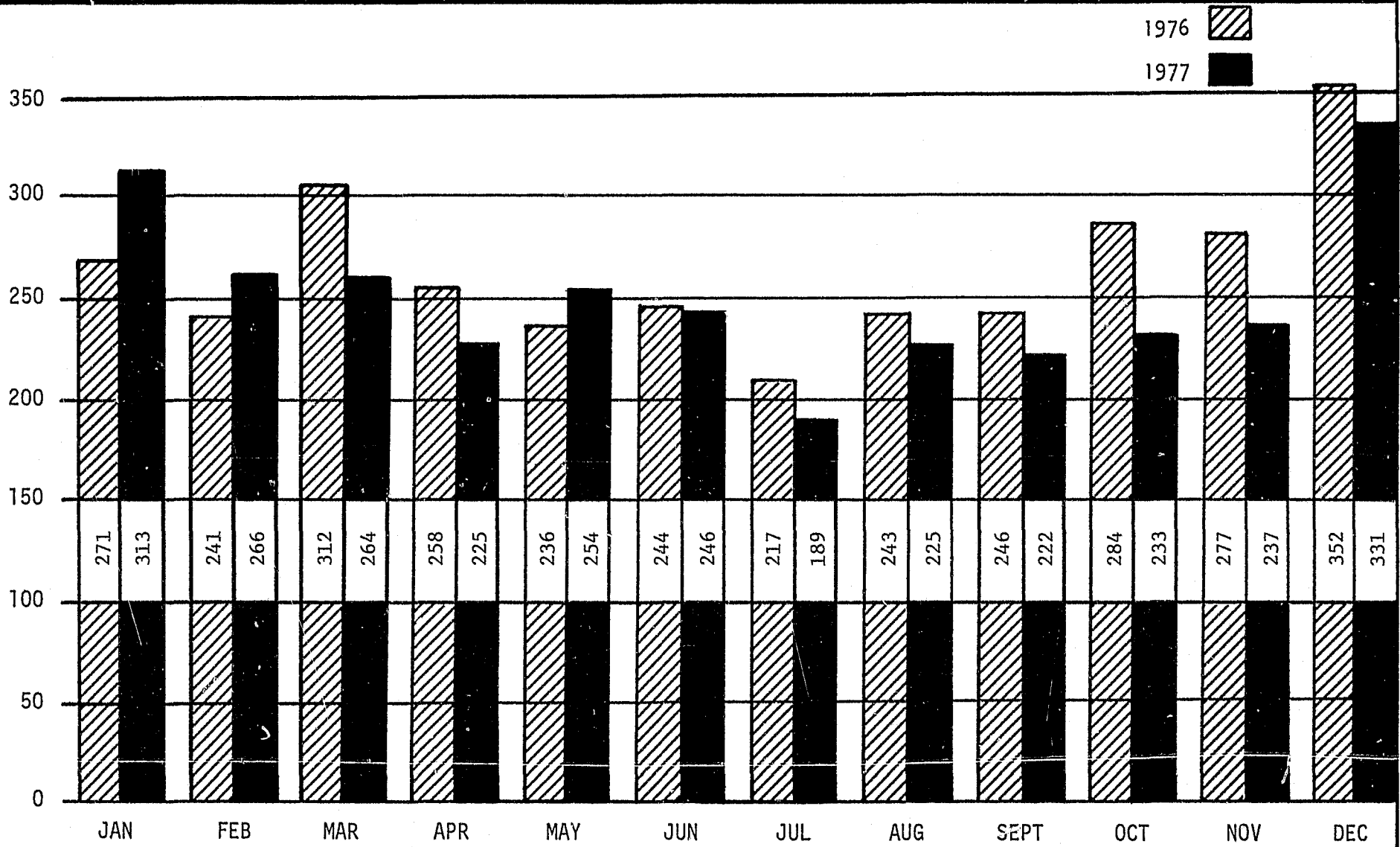
- a. Bleeding wound, distorted member, or any condition that required victim to be carried from scene.
- b. Other visible injuries such as bruises, abrasions, swelling, limping or other painful movement.
- c. Complaint of pain, without visible sign of injury or momentary unconsciousness.

ACCIDENTS 1968 - 1977





DRIVING WHILE INTOXICATED 1976 - 1977



NUMBER OF ARRESTS - TOTAL FOR 1976...3181

TOTAL FOR 1977...3005

TRAFFIC VIOLATIONS CHARGED 1977

VIOLATIONS-MOVING

Speeding: Radar	36523
Other	13680
Right of Way	2773
Left of Center	3213
Improper Passing	1197
Disregard Sign/Signal	21326
Following Too Close	526
Improper Turn	4744
Other Improper Driving	1391
Under the Influence	29
Wrong Way	921
Improper Signal	754
Other Violations	877
Bicycle Violations	4098
TOTAL	92052

VIOLATIONS-PARKING

Hazardous	22561
Meter	83461
Other	54510
TOTAL	160532

VIOLATIONS-OTHER

Bike: Defects	282
License & Regis.	1353
Vehicle Defects	25400
License/Registration	48251
Other/Vehicle	4925
Pedestrian Violation	436
TOTAL	80647
GRAND TOTAL	333231

CITATIONS

Bike: Moving	3215
Defects	68
License & Regis.	168
Moving	84269
Parking	158270
Vehicle Defects	11792
License/Registration	11401
Other Vehicle	2198
Pedestrian Violation	410
TOTAL	271791

MOTORCYCLE ACCIDENTS FOR 1977

MONTH	FATAL ACCIDENTS	INJURY ACCIDENTS	P.D. ACCIDENTS	TOTAL	FATALITIES	INJURIES
January	0	24	8	32	0	32
February	0	31	14	45	0	36
March	2	29	16	47	2	34
April	1	37	25	63	1	41
May	1	45	14	60	1	51
June	1	44	18	63	1	53
July	3	32	23	58	3	42
August	2	61	20	83	2	20
September	3	57	15	75	3	65
October	0	49	29	78	0	51
November	2	28	22	52	2	34
December	0	25	21	46	0	28
TOTAL	15	462	225	702	15	487

MISSING PERSONS

JANUARY 1977 - DECEMBER 1977

MONTH	MALE		FEMALE		TOTAL
	JUVENILE	ADULT	JUVENILE	ADULT	
January	71	19	98	10	198
February	84	11	154	12	261
March	87	11	115	13	226
April	49	21	65	16	151
May	57	17	103	19	196
June	46	42	129	15	232
July	53	40	115	26	234
August	54	45	62	23	184
September	95	26	115	23	259
October	54	25	94	16	189
November	61	25	104	16	206
December	18	16	38	12	84
TOTAL	729	298	1192	201	2420

MISCELLANEOUS INFORMATION

FINES AND FORFEITURES COLLECTED

City CVC	\$1,370,097.38
CHP CVC	287,250.74
City Traffic Ordinances	252,669.81
Other City Misdemeanors	125,648.80

TOTAL THIS YEAR	\$2,035,666.73
------------------------	-----------------------

Suicides	57
Suicide Attempts	488
Property Reported Lost	890
Property Found	1123
Insane	181
Falls & Miscellaneous Reported	81
Fingerprints	
Persons Fingerprinted in Bureau	13898
Teletypes	
Sent	14346
Received	12613
Photographs	
Prints Made	172853

1977 QUALIFICATION, BENEFITS AND EXAMINATION PROCESS

QUALIFICATIONS:

- AGE: 21 THROUGH 34
- WEIGHT: IN PROPORTION TO HEIGHT
- VISION: 20/50 EACH EYE (UNCORRECTED)
(CORRECTED TO 20/20)
- RESIDENT OF SANTA CLARA COUNTY WITHIN ONE YEAR
AFTER APPOINTMENT
- SIXTY (60) SEMESTER UNITS IN AN ACCREDITED COLLEGE
OR UNIVERSITY
- POSSESS VALID CALIFORNIA DRIVER'S LICENSE

BENEFITS:

- SALARY: \$1317 - \$1602 PER MONTH
- UNIFORM ALLOWANCE - \$150 PER YEAR
- 5.623% PER MONTH OF BASE PAY IN LIEU OF HOLIDAYS
- TWO WEEKS PAID VACATION FIRST YEAR
- INSURANCE BENEFITS
- CREDIT UNION
- RETIREMENT PLAN

OF THE 317 APPLICANTS WHO SIGNED UP FOR THE EXAMINATION:

- 286 QUALIFIED FOR THE EXAMINATION
- 164 SUCCESSFULLY COMPLETED EXAMINATION
- 220 TOOK THE WRITTEN EXAMINATION
- 141 PASSED THE ORAL INTERVIEWS
- 131 PASSED THE PHYSICAL AGILITY TEST

RETIREES

<u>NAME</u>	<u>RANK</u>	<u>APPOINTED</u>	<u>RETIRED</u>
VIRGINIA ADAMS	OFFICER	9/10/54	6/14/77
RALPH R. BRUNE	SERGEANT	12/1/47	6/1/77
WILLIAM C. CAMPBELL	SERGEANT	9/4/51	3/19/77
ROBERT CLEARY	CAPTAIN	12/8/48	3/19/77
GEORGE J. DWYER	SERGEANT	12/1/49	3/19/77
PAUL ELORREAGA	OFFICER	12/18/62	1/12/77
JANET S. HICKEY	OFFICER	4/2/45	4/23/77
ROBERT D. KASICH	OFFICER	5/3/67	4/11/77
RAYMOND W. LEE	SERGEANT	2/4/47	3/14/77
JAMES R. ROORDA	OFFICER	11/9/70	12/18/77
TOM P. ZENAHLIK	OFFICER	12/26/67	12/14/77

SAN JOSE CHIEF POLICE EXECUTIVE

1849 THROUGH 1977

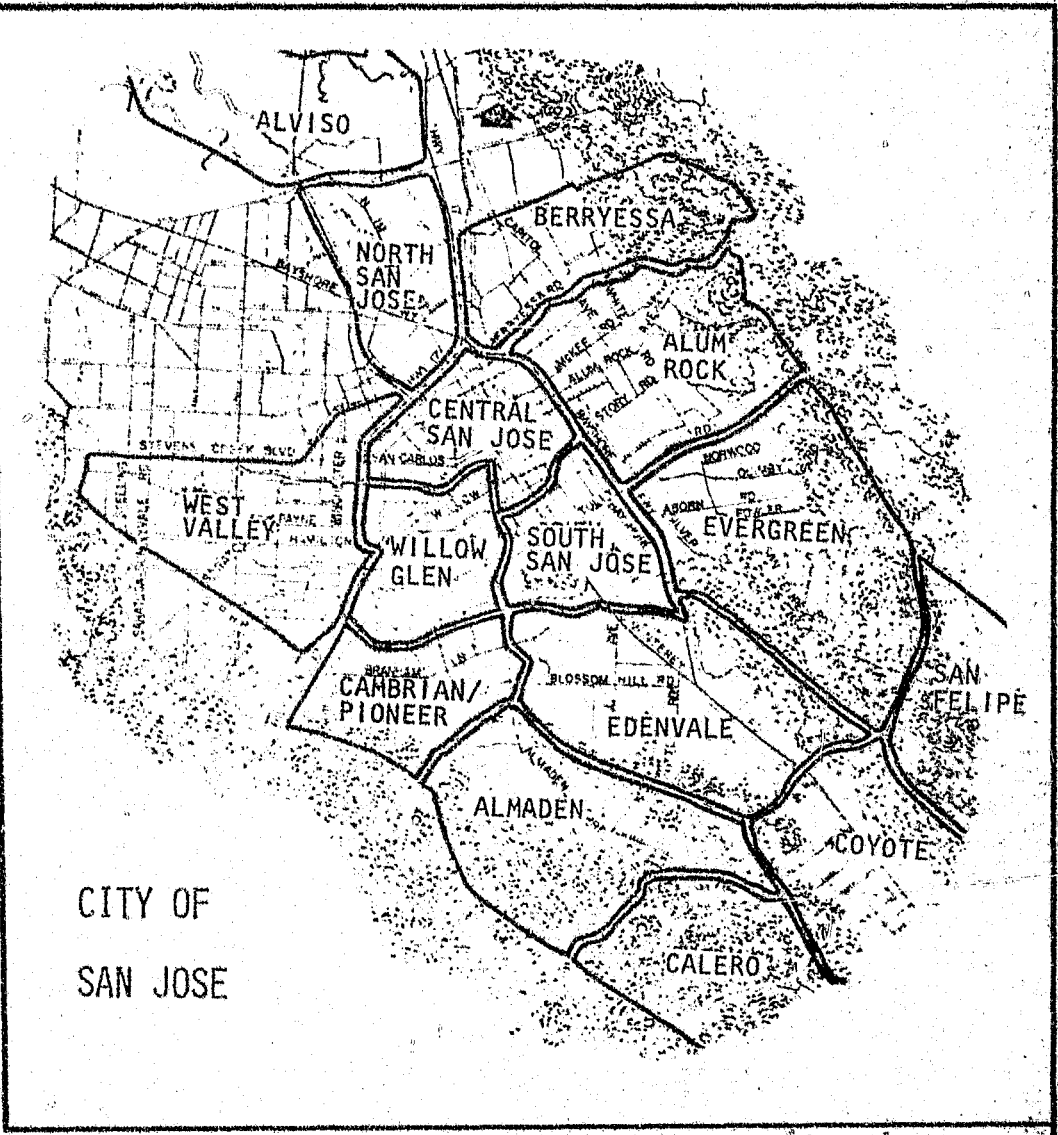
<u>Title</u>	<u>Name</u>	<u>Entered Position</u>	<u>Left Position</u>	<u>Years</u>
Alquacil (Constable)	HARRY J. BEE (1)	1849	1851	2
Marshal	GEORGE N. WHITMAN	1851	1852	1
"	GEORGE HALE	1852	1855	3
"	T. E. SOUBLETTE	1855	1859	4
"	JASPER D. GUNN	1859	1862	3
"	W. S. PATTERSON (2)	1862	1863	1
"	J. C. POTTER	1863	1866	3
"	A. B. HAMILTON	1866	1869	3
"	WILLIAM SEXTON	1869	1873	4
"	A. B. HAMILTON	1873	1874	1
Chief of Police	JAMES V. TISDALL	1874	1878	4
"	DAN HASKELL	1878	1882	4
"	W. B. SHOEMAKER	1882	1884	2
"	W. D. BROWN	1884	1888	4
"	RICHARD STEWART	1888	1892	4
"	HUGH A. DeLACY (Elected) (3)	1892	1895	3
"	JAMES KIDWARD	1895	1901	6
"	T. W. CARROLL	1901	1908	7
"	EDWARD HALEY (4)	1908	1910	2
"	GEORGE KIDDER (5)	1910	1912	2
"	FRANK ROSS	1912	1914	2
"	F. ROY HAYWARD	1914	1915	1
Acting Chief of Police	DAVE W. CAMPBELL	1915	1916	1
"	BEN FULLER	1916	1916	-
Chief of Police	JOHN NEWTON BLACK (6)	1916	1944	28
"	W. C. BROWN (7)	1944	1947	3
"	JOHN RAYMOND BLACKMORE (8)	1947	1971	24
"	ROBERT B. MURPHY (9)	1971	1976	5
Acting Chief of Police	JAY H. PROPST	1976	1976	-
Chief of Police	JOSEPH D. McNAMARA (10)	1976	19__	

- (1) Arrived in California in 1830.
- (2) Retired due to a severe injury.
- (3) Born in Ireland. Ex-Confederate soldier. Introduced patrol system in San Jose.
- (4) Born in San Jose in 1858.
- (5) On special police duty after 1906 earthquake.
- (6) 11/28/1916 - 6/30/1944.
- (7) 7/1/1944 - 3/31/1947.
- (8) 4/1/1947 - 5/14/1971.
- (9) 5/15/1971 - 7/15/1976.
- (10) 10/18/76 to present.



POPULATION OF
20 LARGEST CITIES
AND
CITIES IN
SANTA CLARA
COUNTY

ESTIMATED
FIGURES
JANUARY 1, 1977



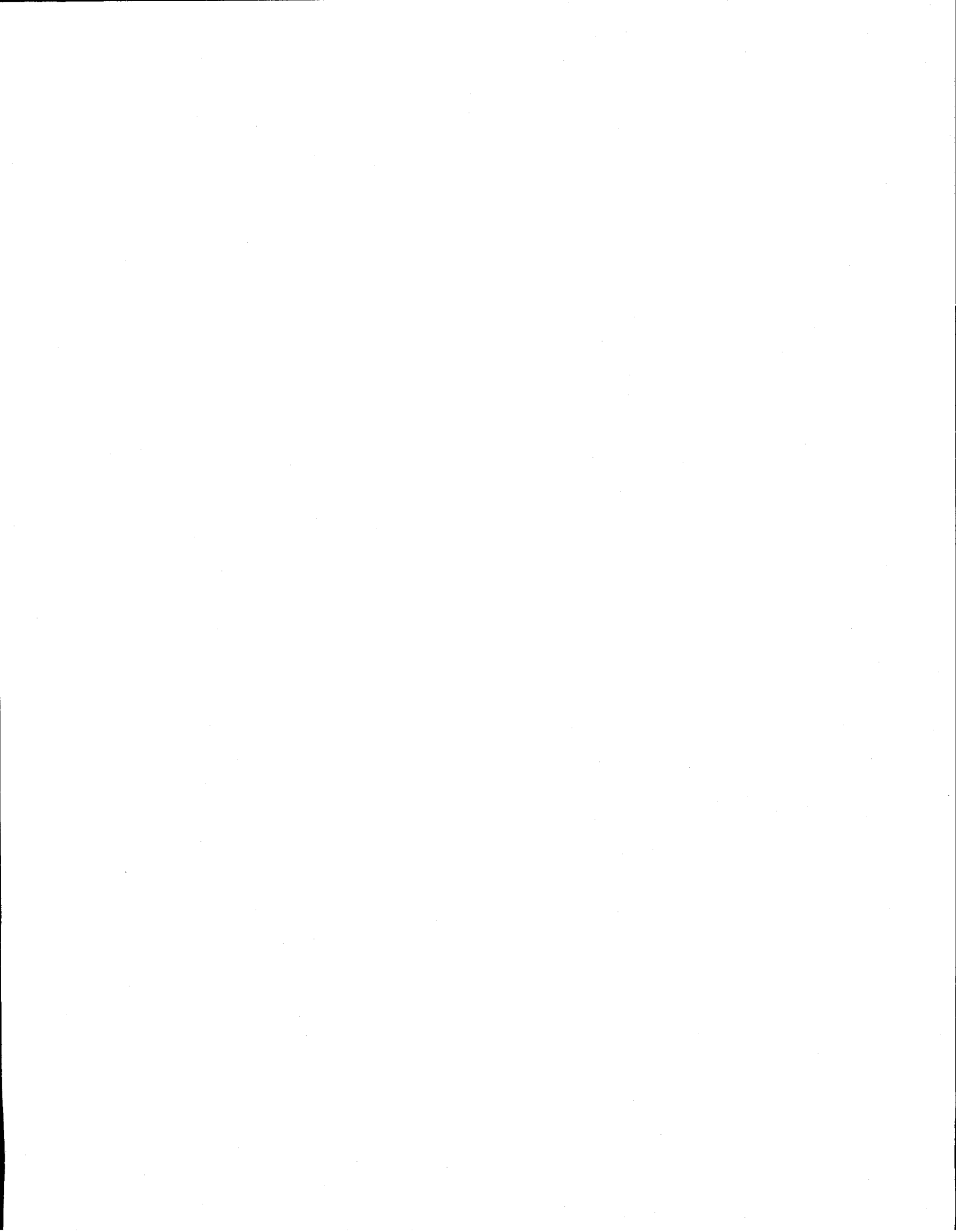
CITIES IN SANTA CLARA COUNTY

1. San Jose	575,100
2. Sunnyvale	105,000
3. Santa Clara	83,800
4. Mountain View	55,800
5. Palo Alto	54,900
6. Milpitas	32,300
7. Saratoga	29,700
8. Los Altos	26,250
9. Campbell	25,350
10. Los Gatos	24,650
11. Cupertino	22,900
12. Gilroy	17,150
13. Morgan Hill	12,200
14. Los Altos Hills	7,225
15. Monte Sereno	3,240

20 LARGEST CITIES IN CALIFORNIA

1. Los Angeles	2,754,500
2. San Diego	797,200
3. San Francisco	662,700
4. San Jose	575,100
5. Long Beach	342,100
6. Oakland	338,000
7. Sacramento	261,900
8. Anaheim	200,100
9. Fresno	186,900
10. Santa Ana	182,000
11. Huntington Beach	157,800
12. Riverside	152,400
13. Glendale	135,800
14. Torrance	134,200
15. Stockton	122,000
16. Garden Grove	118,000
17. Fremont	117,000
18. Berkeley	108,900
19. Pasadena	107,000
20. Sunnyvale	105,000





END