

PHILADELPHIA PRISONER INVENTORY SYSTEM

Judge Edward J. Blake
Chairman COJINT Committee
Philadelphia, Pennsylvania

Irving J. Chasen
Director COJINT Project
Philadelphia, Pennsylvania

INTRODUCTION

The COJINT (COmbined Justice Information Network over Terminals) Committee is a subgroup of the Philadelphia Regional Planning Council under the Pennsylvania Governor's Justice Commission.

Based on the recommendation of a consultants' study, and with the aid of a \$250,000 LEAA Discretionary Grant, the COJINT Committee formed an implementation unit of the COJINT Project, and funded the expansion of the Police Department and Courts' computer installations. These actions were the first steps toward the goal of the COJINT Project, namely the establishing in Philadelphia of a combined, coordinated, comprehensive criminal justice information system. This system will provide immediate availability of stored information and rapid entry of new information for every agency of the City involved in the criminal justice process.

PRINS (Prisoner Inventory System) has been designed and implemented to provide accurate and current information on all prisoners in the Philadelphia County Prisons (the Detention Center, Holmesburg, and the House of Correction). This information is in the form of a computerized data base resident on the Courts' S/360 Model 40 Computer. It is accessed through remote terminals by all agencies of the criminal justice system. PRINS was selected as the first COJINT project because of its value to all of the criminal justice agencies as well as its feasibility within the hardware and personnel resources available to the COJINT Project. PRINS caused very few procedural changes and no organizational changes.

THE SYSTEM OVERVIEW

The three prison reception centers batch the information that they receive on individuals and periodically forward this information to the Chief Registrar's Office. This information consists of the Commitment Form, the Extract of Police Information Form, and the Bail Certificate. As the information is received at the Registrar's area,

several computerized records are created or updated by keying the appropriate information into the on-line terminal. The operator who is keying in the data must first identify himself to the system as part of a security procedure designed to protect the information stored in the system. He is then instructed by the computer as to the data required and the format with which the data must be entered. The fact that several different data files, both shared by the Courts and Prisons, as well as unique Prison files will be created or updated does not matter to the operator. The operator is concerned with entering data. Editing features are incorporated in the system to notify the operator of keying mistakes. Such editing indicates omitted critical data, or data fields that should be all numeric and are not, etc.

Each of the Criminal Justice Agencies may make general (no security) inquiries into the PRINS Data Base. The type of prisoner information that can be retrieved on-line includes: location, bail, charges, and reception data. In addition to general information, the prisons have the capability of making sign-on type inquiries (SECURITY PROCEDURE REQUIRED) to obtain confidential information on prisoners like physical description data, psychological data, and gang affiliations.

PRINS is designed to be used on an IBM 360 DOS system with the IBM macro language, FASTER Multi-Thread. All terminals are under control of the FASTER Monitor.

PRINS consists of several data bases residing on DISK, direct access storage devices. They are as follows:

1. A *Phonetic file* which consists of the imprisoned individual's name, police photo identification number, charge, and holding commitment number.
2. A *Master file* which consists of elements relevant to an individual's physical description, personal information, activity status, location, special indicators (relative to physical and psychological characteristics for handling purposes in penal institutions) and other classification information.
3. A *Case (Commitment) file* which consists of information relevant to each unique commitment of an individual.
4. A *Logging file* which contains a history of each day's activity. This serves as an audit trail of daily activities and a source of statistical information.
5. A *Statistics file* which contains current inmate population statistics.
6. A *Security file* which contains a list of valid terminal operators who can access security information.
7. *Translation files* which are used in the conversion of input data to system codes and vice versa.

NON-SIGN ON TRANSACTION DESCRIPTIONS:

There are various levels of general information which can be accessed without signing on.

PRINS provides the terminal user with three general inquiry facilities. The screen formats are:

Name Search Inquiry. Using the incarcerated person's name, this transaction will provide the operator with a list of the individual's Police Photo Number, commitment number, charge, location, and full name.

Master Inquiry. Using the incarcerated individual's Police Photo Number, this transaction provides the individual's full name, commitment number, reception date, reception time, charge, location, race, sex, and prison institution number.

Commitment Inquiry. Using the incarcerated person's photo number this transaction will provide the terminal operator with the following information:

- Full name
- Photo number
- Commitment number
- Prison number
- Charge
- Reception Date
- Reception time
- Source of commitment
- Class Code
- Method of release
- Release date
- Release time
- Time Served
- Sentence effective date
- Sentence class
- Minimum and maximum Sentence
- Minimum and maximum Discharge date
- Date eligible for parole
- Comments

Prison Statistics. Using the desired day month and year a terminal operator can find the present population of any of the Philadelphia Prisons. The Statistics are broken down into detentioner and sentence groups according to sex. Statistics will be displayed showing the number of prisoners received, transferred, and discharged.

SIGN-ON TRANSACTION DESCRIPTIONS

PRINS is a highly versatile on-line Inventory System. All data entry for data input is completely edited for correctness before any actual processing takes place. If errors occur, the operator is given an error correction screen to allow him to correct false data and retry the transaction. PRINS is fully conversational. Upon completion of any transaction the operator is notified of the success of the operation, status of the record and file he was working on, and instructed how to correct minor errors. For instance, women are allowed only in the House of Correction. If the operator attempts

to admit a female to any other prison, he is notified of the error. Another example is when an operator tries to release an individual from one detainer to another detainer. If the new detainer does not exist, the operator is notified that the old holding detainer is released but a create (CAT) must be issued for the new detainer to correct the status of the individual.

All record creation and updating is done on the security protected prison terminals. All operators must sign-on and be identified to PRINS before they can alter any PRINS files. The operator must sign-on using his name and social security number. PRINS will check for the operator's name and social security number on the security file. If his security level matches the transaction he is attempting, he is allowed to continue. If not, he is denied access.

Further security is maintained by only defining the transactions valid for file manipulation on the security protected prison terminals. The Sign-on transactions are not usable on any other terminal within PRINS. For this reason, the prison operators are only allowed to access the PRINS files through the Prison terminals. The Security file contains the terminal-IDs for all valid operators. This protects the theft of sign-on names that may be tried on other terminals.

Once the operator has initially signed on he does not have to do so again. The operator's name and social security number are automatically passed from one transaction to another by PRINS. The Security Check is done for each transaction but the operator only keys it once. If the operator reaches the end of a chain of transactions he is presented with a modified sign-on screen which has his name and social security number already placed on the screen. All he needs to do is key in the desired transaction he wishes to use next.

Flows for this and the following transactions will be found at the end of the text.

TRANSACTION = CAT

This transaction will cause the creation of a master file, a *holding* case (commitment) record and a Phonetic (name) record. These are skeleton records upon completion of "CAT". "CAT" will update a master record with the new holding commitment if the master record already exists. However, if the existing master record reflects that there is an indisposed holding record currently existing, the record will not be updated with the new information. The current holding record must either be released first or changed to a supplementary status. Then the "CAT" can cause the new holding record

to be created. The logic is based on the rule that only one holding record exists for each individual.

"CAT" will also cause proper updating of prison population statistics.

If the operator keys in incorrect data he is presented with an error correction screen to correct the bad data and retry.

Upon completion of "CAT" the operator is notified of the success of the operation and the status of the file. (i.e., "RECORDS CREATED" or "RECORDS UPDATED").

TRANSACTION = SCOM

This transaction will cause the creation of Supplementary Commitments. Often an incarcerated individual will have several commitments or court cases against him. PRINS allows for just one (1) Holding Commitment. All other cases must be entered as Supplementary to the Holding Commitment. "CAT" will create the Holding Commitment and update the population statistics. "SCOM" will only create a Supplementary Record. No updating of the population statistics is done because it is only another case, not another individual.

Upon completion of "SCOM" the operator is notified of the success of the operation, status of the record, and given another screen to continue work.

TRANSACTION = RELS

This transaction will cause the release of a holding or a supplementary commitment.

If the commitment being released is a holding commitment it can either be a physical release (individual physically leaves) or a nonphysical release (i.e., individual is released to another detainer or sentenced).

For a physical release of a holding commitment; the record is deleted, the Phonetic (Name) record is deleted and the commitment and Location fields on the master are cleared. Various other forms of updating may take place depending on the method of release.

For a nonphysical release of a holding commitment, the case and master records are updated with the release information and any new data.

A supplementary record is always physically deleted and no change is made to the master (the master will only reflect holding information).

Various errors can occur. If the operator tries to release a holding record that does not have a commitment number corresponding to the number on the Master file, the operator is notified of the

error. If any of the case, master of phonetic, records for this individual do not exist, the operator is notified.

All population statistics are updated depending upon the method of release and status of the incarcerated individual.

If the operator keys in incorrect data he is presented with an error correction screen to retry the transaction.

After a successful "RELS" the operator is notified of the success and what type of record he released (i.e., holding or supplementary).

TRANSACTION = MNT

This transaction will allow the terminal operator to change the status of an incarcerated person's commitment records. A record is either "Holding" or "Supplementary".

For instance, suppose the prison wishes to change an individual's holding commitment to supplementary status, and change one of his existing supplementary records to holding status. This transaction will change the two commitment records, update the master file with new holding data, create a proper phonetic record for the new holding commitment and delete the old phonetic record.

This transaction can also be used for correcting any error within PRINS such as the existence of two (2) holding records. The improper (H) record can be changed to a supplementary (S) status.

TRANSACTION = UPD2

This transaction will allow the terminal operator to update an incarcerated individual's master record. This transaction is entered immediately after the "CAT" completes the creation of the basic master record. The UPD2 input screen is chained to the "CAT" transaction.

Update information: age, birthdate, education, social security no., birthplace, citizenship, naturalization date, height, weight, complexion, hair color, eye color, and visible marks.

TRANSACTION = UPD3

This transaction will allow the terminal operator to update specific information on the master and case files. The UPD3 input screen is chained to the UPD2 transaction.

Update information: class, source of commitment, sentence class, sentence effective date, maximum and minimum discharge dates, date eligible for parole and emergency information.

TRANSACTION = UPD4

This transaction will allow the terminal operator to update an individual's master record.

Update information: business and resident phone numbers, medical alert information, work specialty, FBI number, type of bail, parole and probation information.

TRANSACTION = UPD5

UPD5 will allow the terminal operator to set or turn off the special indicators in the PRINS files. These indicators are displayed under a security checked inquiry. A set of bit switches are used to indicate whether a prisoner is dangerous, escape prone, psychopathic, a gang member, a parole violator, suicidal, homosexual, a medical alert and so on.

TRANSACTION = MINQ

This transaction will retrieve and display the security protected information on the master file. The operator enters the imprisoned individual's police photo number. The response is four (4) screen pages of all the information on the master file. (See: Master file description) This inquiry is only valid on the prison terminals and the sign-on procedures must be used by all operators. The last page in the response to the terminal is the modified Sign-On screen. This allows the operator to continue processing without physically signing on again.

TRANSACTION = TRAN

This transaction will: (a) transfer one incarcerated individual from one Philadelphia prison to another, (b) transfer the individual from one cell to another within a Philadelphia prison.

"TRAN" may be used by the security checked prison personnel to correct erroneous data or actually update the location on the master file.

All data is edited on input. If errors occur, the operator is presented with an error correction screen to retry the operation.

Upon completion of "TRAN" the operator is given a modified sign-on screen to continue processing.

TRANSACTION = CHANGE

This transaction will change any of the Key data on the PRINS files. "CHANGE" allows the operator to change the mandatory data on the master, case and phonetic file. This is the same data the "CAT" transaction creates. For instance, if a record on the file has a dummy police photo number, "CHANGE" will: (a) delete the old master record, (b) create a new master record with the correct photo number, (c) delete the old case record, (d) create a new case record with the proper photo number, (e) update the phonetic record with the proper photo number. This same process takes place for changes to all KEY data on the PRINS files. For all changes to mandatory data that is not KEY data, an update is done to the proper file.

"CHANGE" will notify the operator of the success of the operation and the status of the file. For instance, if the operator changes a Holding Commitment number and one of the PRINS records is missing, the operator is told which file has missing records and how to remedy the error.

Upon completion of "CHANGE" the operator is presented with a Modified Sign-On Screen to continue processing.

SIGN-ON TRANSACTION FORMAT

Each terminal operator must sign-on to PRINS. To initiate the sign-on the operator keys in PR01. He is presented with the following screen.

```
PR02
,NAME:
,SSAN:
,TRAN:
```

The operator then keys in his name and social security number and enters the desired transaction. After the operator enters PR02 into PRINS, he receives the preformatted screen he will use to complete the desired transaction. All screens are preformatted with standard PRINS keywords. The keywords are followed by a colon (:). The colon (:) is the TAB character. To pass from one keyword to the next the operator hits the TAB key on the non destructive cursor terminals.

A list of all transaction codes and PRINS keywords is included.

The operator only needs to sign-on when he begins work. After the original sign-on, PRINS will

carry his name and social security number to each succeeding transaction for him. Therefore each transaction is security checked, and the operator avoids the tedious sign-on procedure.

FORMAT FOR SIGN-ON TRANSACTIONS

The terminal operator, after signing-on, must enter the type of transaction he desires to use (these transactions are included). The operator is presented with a screen preformatted with key-word operands. The following is a list of PRINS keywords.

KEYWORD	DESCRIPTION	LENGTH
AGE	AGE	2
AGRS	HOMOSEXUAL AGGRESSOR INDICATOR	1
BAIL	BAIL	5
BDYE	BIRTH DATE	6
BPLC	BIRTH PLACE CITY	10
BPLS	BIRTH PLACE STATE	2
CELL	CELL	4
CHRG	CHARGE	5
CLAS	DETAINER CLASS	2
COMP	COMPLEXION NCIC ABBREV.	3
COMS	SOURCE OF COMMITMENT	2
CTZ	CITIZENSHIP	1
DATE	RECEPTION DATE	6
DELP	DATE ELIGIBLE FOR PAROLE	6
DMAX	MAXIMUM DISCHARGE DATE	6
DMIN	MINIMUM DISCHARGE DATE	6
DNGR	DANGER INDICATOR	1
DROW	DEATH ROW INDICATOR	1
EADR	EMERGENCY ADDRESS	35
EDLV	EDUCATION LEVEL	2
EMP	EMERGENCY PHONE	10
EMR	EMERGENCY RELATION	1
ENAM	EMERGENCY NAME	26
ESCP	ESCAPE INDICATOR	1
EYES	EYES NCIC ABBREV.	3
FBI	FBI NUMBER	9
FNAM	FIRST NAME	10
FRSN	FORENSIC HOUSING INDICATOR	1
GANG	GANG MEMBER INDICATOR	1
HAIR	HAIR NCIC ABBREV.	3
HOMO	HOMOSEXUAL INDICATOR	1
HT	HEIGHT	3
INSD	DETENTIONER INSTITUTION NO.	7
INSS	SENTENCE INSTITUTION NO.	5
JUV	JUVENILE INDICATOR	1
LNAM	LAST NAME	15
LOC	LOCATION	1
MCCP	COMMITMENT NUMBER	9
MCH	HOLDING NO. TO BE	9
MCS	SUPPLEMENTARY NO. TO BE	9
MEDA	MEDICAL ALERT INFO OR CODE	25 OR 1
MI	MIDDLE INITIAL	1
MISC	MISCELLANEOUS COMMENTS	50
MREL	METHOD OF RELEASE	2
NAME	SIGN ON NAME	26
NAT	NATURALIZATION DATE	6
NFNM	NEW FIRST NAME	10
NLNM	NEW LAST NAME	15
NMCP	NEW COMMITMENT NO.	9
NMI	NEW MIDDLE INITIAL	1
NPP NO.	NEW PHOTO NUMBER	7
NRLC	NOT RELOCATABLE INDICATOR	1
PAAN	PAROLE AGENCY INFORMATION	10
PADT	PAROLE DATE	6

KEYWORD	DESCRIPTION	LENGTH
PBAN	PROBATION AGENCY INFORMATION	10
PBDT	PROBATION DATE	6
PBUS	BUSINESS PHONE	10
PP NO.	POLICE PHOTO NUMBER	7
PRBV	PROBATION VIOLATOR INDICATOR	1
PRES	RESIDENT PHONE	10
PSYC	PSYCHOPATHIC INDICATOR	1
RDTE	RELEASE DATE	6
RSEX	RACE/SEX CODE	1
RTME	RELEASE TIME	4
SEC	SENTENCE CLASS	1
SED	SENTENCE EFFECTIVE DATE	6
SLOC	SENTENCED LOCATION	1
SMAX	MAXIMUM SENTENCE	6
SMIN	MINIMUM SENTENCE	6
SSAN	SIGN ON SOCIAL SECURITY NO.	9
SSN	SOCIAL SECURITY NUMBER	9
SUIC	SUICIDE INDICATOR	1
TBAL	TYPE OF BAIL	2
TIME	RECEPTION TIME	4
TLOC	TRANSFER LOCATION	1
TRAN	TRANSACTION	UP TO 6
TSER	TIME SERVED	4
TYPC	D FOR DETENTION S FOR SENT.	1
WORK	WORK SPECIALTY	15
VSM	VISIBLE SCARS AND MARKS	5X11
VSM6	VSM CONTINUED	5X11
WT	WEIGHT NCIC ABBREV.	3

SIGN-ON TRANSACTION CODES TO BE USED WITH KEYWORD "TRAN=" ON SCREEN PR02:

Transaction	Explanation
CAT	Creates a <i>holding</i> commitment, master and phonetic record
SCOM	Creates a supplementary commitment record
RELS	Releases a specified commitment record
MNT	Performs case file maintenance
UPD2	Updates
UPD3	Updates
UPD4	Updates
UPD5	Updates
MINQ	Master file INQUIRY—displays the Master Record
TRAN	Transfers Inmates from one location or cell to another
CHANGE	Changes Key Data on the PRINS files

ON-LINE STORAGE REQUIREMENTS

1. PRINS Master File -- 90 cylinders of IBM 2314 disk storage for prime data. 9 cylinders for independent overflow. (5 records/block for 2,250 bytes), and 2 cylinders for indexing.
2. PRINS Case File -- 60 cylinders of 2314 disk storage for prime data. 4 cylinders for independent

overflow. (10 records/block for 2,000 bytes), and 2 cylinders for indexing.

3. PRINS Phonetic File -- 9 cylinders of 2314 disk storage for prime data. 4 cylinders for independent overflow. (5 records/block for 310 bytes), and 1 cylinder for indexing.
4. Statistics File -- 5 cylinders of 2314 disk storage for prime data. (8 records/block for 1,984 bytes), and 1 cylinder for indexing.
5. Security File -- 1 cylinder of 2314 disk storage for prime data. (32 records/block for 1,920 bytes), and 1 cylinder for indexing.
6. NCIC Visible Marks Files -- 2 cylinders of 2314 disk storage for prime data. (20 records/block for 240 bytes), and 2 cylinders for indexing.

MACHINE AND CORE REQUIREMENTS

1. PRINS is designed to run in the present FASTER partition of 136 thousand bytes on the Philadelphia Court computer configuration. IBM S/360 Model 40.
2. Any FASTER supported terminal configuration with the non destructive cursor and TAB feature will operate with the current design of PRINS.

PRINS FILE MAINTENANCE

The PRINS on line files are transferred to tape each night using standard utility programs. A revolving history of three days backup is kept at all times.

The PRINS files are all reorganized at least once a week using COJINT programs. The reorganization restructures the file to use the PRIME data area and physically delete certain records. The Reorganization program will allow all terminal deleted commitment records to stay on the file for approximately 7 weeks.

When the records are physically deleted from the on-line files, they are saved on tape for future use in statistical reporting.

There also exists a series of batch load, add, delete and update programs which were used to initially bring PRINS on line. These programs serve as a creation backup and as utilities whenever batch updates are required.

PRISONER INVENTORY SYSTEM

FILE DESCRIPTIONS

MASTER File
CASE File
PHONETIC File
STATISTICE File
SECURITY File
OPERATIONAL Files:

NCIC to PRINS

PRINS to NCIC

KEY: X — Hexadecimal Number
C — A/N Character

PRINS MASTER FILE — PRMAST (ISAM)

Field Name	Description	Comments	Size	Type	Position
	Delete Code	X'FF' for Delete	1	X	1— 1
PP No.	Police Photo No. (Key Expansion)	Key X'00's	7 10	C C	2— 8 9— 18
MCCP	Holding Commitment No.		9	C	19— 27
LOC	Location	Numeric 1,2,3	1	C	28— 28
OLOC	Location (Other)		15	C	29— 43
CELL	Location (Cell)		4	C	44— 47
RSEX	Race/Sex Code		1	C	48— 48
	Previous Cell Link	(I.G.) Internally Generated	4	X	49— 52
SSAN	Social Security No.		9	C	53— 61
FBI	FBI No.		9	C	62— 70
BAIL	Bail		5	C	71— 75
RDTE	Date-Made-Bail	MMDDYY	6	C	76— 81
TBAL	Bail Type		2	C	82— 83
HT	Height	FI	3	C	84— 86
WT	Weight	lbs.	3	C	87— 89
COMP	Complexion	NCIC Abbreviation	1	X	90— 90
HR	Hair	NCIC Abbreviation	1	X	91— 91
EYES	Eyes	NCIC Abbreviation	1	X	92— 92
VSM	Visible Scars and Marks	NCIC Abbreviation	10	X	93—102
VSMG					
MEDA	Medical Alert Information		25	C	103—127
PRES	Phone No. (Residence)		10	C	128—137
PBUS	Phone No. (Business)		10	C	138—147
BDTE	Birth Date	MMDDYY	7	C	148—153
BPLC	Birth Place City		10	C	154—163
BPLS	Birth Place State		2	C	164—165
AGE	Age		2	C	166—167
ENAM	Emergency Information Name	Free Form	26	C	168—193
EADR	Emergency Information Address	Free Form	35	C	194—228
EMP	Emergency Phone		10	C	229—238
	Emergency Relation		1	C	239—239
EDLV	Education Level		2	C	240—241
WORK	Work Specialty		15	C	242—256
	Activity Indicator	(I.G.) Internally Generated	1	X	257—257
	Bit Positions				
	1	Inactive			
	2	Detentioner			
	3	Temp/Stopover			
	4	Out on Bail			
	5	On Probation			
	6	On Parole			
	7	Sentenced			
	8	Reserved (Expansion)			
	Reserved Expansion		1	X	258—258
	Special Indicator (1)		1	X	259—259
DNGR	Bit Positions				
ESCP	1	Dangerous			
SUIC	2	Escape Tendency			
NRLC	3	Suicide Tendency			
DROW	4	Not Relocatable			
HOMO	5	Death Row			
ARGS	6	Homosexual			
MEDA	7	Aggressor/Homosexual			
	8	Medical Alert			
	Special Indicator (2)		1	X	260—260
FRSN	Bit Position				
PRBV	1	Forensic Unit			
PARV	2	Probation Violator			
JUV	3	Parole Violator			
PSYC	4	Juvenile			
GANG	5	Psychopathic			
	6	Gang Member			
	7	Reserved			
	Other Indicator	(I.G.) Internally Generated	1	X	261—261
	Bit Position				
	1	Parole Application			
	2	Temp. Record			
	3	Previous Temp. Record			
	4	Incomplete Record			

Field Name	Description	Comments	Size	Type	Position
	5	Reserved			
	6	Reserved			
	7	Reserved			
	8	Reserved			
	Previous Dummy Photo No.		7	C	262-268
	Previous Dummy Key Expansion		10	C	269-278
	Previous Dummy MCCP	Holding	9	C	279-287
	Primary Gang Affiliation		3	C	288-290
	Secondary Gang Affiliation		3	C	291-293
CTZ	Citizenship		1	C	294-294

KEY: X - Hexadecimal Number
C - A/N Character
P - Packed Decimal Digits

Field Name	Description	Comments	Size	Type	Position
NAT	Naturalization Date		6	C	295-300
PBDT	Probation Information Date		6	C	311-316
PBAN	Probation Information Agency		10	C	317-326
PADT	Parole Information Date		6	C	327-332
PAAN	Parole Information Agency		10	C	333-342
	Previous Incarceration Date	(I.G.) Internally Generated	6	C	343-348
	Date-Last Detention	(I.G.) Internally Generated	6	C	349-354
	No. of times Detentioner	(I.G.) Internally Generated	2	P	355-356
	Date-Last Sentence	(I.G.) Internally Generated	6	C	357-362
	No. of times Sentenced	(I.G.) Internally Generated	2	P	363-364
	Last Charge = Sentence	(I.G.) Internally Generated	5	C	365-369
MISC	Miscellaneous		50	C	370-419
LNAM	Last Name		15	C	420-434
FNAM	First Name		10	C	435-444
MI	Middle Initial		1	C	445-445
	Expansion		5	X	446-450

KEY: X — Hexadecimal Number
 C — A/N Character

PRINS CASE FILE — PRCASE (ISAM)

Field Name	Description	Comments	Size	Type	Position
	Delete Code	X'FF' for Delete	1	X	1— 1
	Record Type	H=Holding — S=Supplementary	1	C	2— 2
PP No.	Police Photo No.	Key	7	C	3— 9
MCCP	Commitment Number	Key	9	C	1— 18
	Key Expansion	Key	4	C	19— 22
	Other Indicator		1	X	23— 23
	Bit Position 1	Record Incomplete			
	2	Temporary Record			
	3	Previous Temporary Record			
	4	Reserved			
	5	Reserved			
	6	Reserved			
	7	Reserved			
	8	Reserved			
	Previous Key		16	C	24— 39
	Previous Key Expansion		4	C	40— 43
INSD	Institution No. (Detention)	YY-XXXXX	7	C	44— 50
INSS	Institution No. (Sentenced)	D-XXXX	5	C	51— 55
DATE	Reception Date	MMDDYY	6	C	56— 61
TIME	Reception Time	HHMM	4	C	62— 66
CHRG	Charge		5	C	67— 71
CLAS	Class Code		1	C	72— 72
MREL	Release Method		2	C	73— 74
RDTE	Release Date	MMDDYY	6	C	75— 80
RTME	Release Time	HHMM	4	C	81— 84
TSER	Time Served	MMDD	4	C	85— 88
SED	Sentence Effective Date	MMDDYY	6	C	89— 94
SEC	Sentence Class Code		6	C	95— 95
SMIN	Minimum Sentence		6	C	96—101
SMAX	Maximum Sentence		6	C	102—107
DMIN	Maximum Discharge Date	MMDDYY	6	C	108—113
SMAX	Maximum Discharge Date	MMDDYY	6	C	114—119
DEP	Date-Eligible Parole	MMDDYY	6	C	120—125
MISC	Misc. Comments		32	C	126—157
	Expansion		43	X	158—200

KEY: X — Hexadecimal Number
 C — A/N Character
 P — Packed Decimal Digits

PRINS PHOETIC FILE — PRPHN (ISAM)

Field Name	Description	Comments	Size	Type	Position
	Delete Code	X'FF' Delete	1	X	1— 1
	Phonetic Last Name	Key	4	C	2— 5
	Phonetic First Name	Key	4	C	6— 9
	Middle Initial	Key	1	C	10— 10
MCCP	Commitment Code	(M or C) Key	1	C	11— 11
MCCP	Commitment Number	(9 digits) Key	6	P	12— 17
	Micro Film Number	(X'00') Key	5	X	18— 22
LNAM	Last Name		15	C	23— 38
FNAM	First Name		10	C	39— 47
MI	Middle Initial		1	C	48— 48
PP No.	Photo No.		4	P	49— 52
CHRG	Charge		3	P	53— 55
LOC	Location		3	P	56— 56
RSEX	Race/Sex		1	C	57— 57
	Special Indicator	(I.G.) Internally Generated	1	X	58— 58
	Bit Position 1	Inactive			
	2	Detentioner			
	3	Temp/Stopover			
	4	Out on Bail			
	5	On Probation			
	6	On Parole			
	7	Sentenced			
	8	Reserved			
	Expansion		4	X	59— 62

KEY: X — Hexadecimal Number
 C — A/N Character
 P — Packed Decimal Digits
 L — Length

PRINS STATISTICS FILE-PRSTAT (ISAM)

Field Name	Description	Comments	Size	Type	Position
	Indicator	X'OF' or X'00'	1	X	1— 1
	Key	YYMMDD	6	C	2— 7
	Receive Counters	R	48	16P(L3)	8— 55
	Discharge Counters	D	48	16P(L3)	56—103
	Transfer-out counters	O	48	16P(L3)	104—151
	Transfer-in-counters	I	48	16P(L3)	152—199
	Totals	T	48	16P(L3)	199—247
	Miscellaneous Indicator		1	X	248—248
		COUNTER FORMAT			
	X=R, D,O,I,T,	See Comments above			
	XS1M	Sentenced Male, LOC=1	3	P	
	SX1F	Sentenced Female, LOC=1	3	P	
	XS2M	Sentenced Male, LOC=2	3	P	
	XS2F	Sentenced Female, LOC=2	3	P	
	XS3M	Sentenced Male, LOC=3	3	P	
	XS3F	Sentenced Female, LOC=3	3	P	
	XS4M	Sentenced Male, LOC=4	3	P	
	XS4F	Sentenced Female, LOC=4	3	P	
	XD1M	Detentioner Male, LOC=1	3	P	
	XD1F	Detentioner Female, LOC=1	3	P	
	XD2M	Detentioner Male, LOC=2	3	P	
	XD2F	Detentioner Female, LOC=2	3	P	
	XD3M	Detentioner Male, LOC=3	3	P	
	XD3F	Detentioner Female, LOC=3	3	P	
	XD4M	Detentioner Male, LOC=4	3	P	
	XD4F	Detentioner Female, LOC=4	3	P	

KEY: X – Hexadecimal Number
C – A/N Character

PRINS SECURITY FILE – PRSEC (ISAM)

Field Name	Description	Comments	Size	Type	Position
	Delete Code	X'FF' for Delete	1	X	1– 1
	Terminal I.D.	Key	4	C	2– 5
	Last Name	Key	15	C	6– 20
	First Name	Key	10	C	21– 30
	Middle Initial	Key	1	C	31– 31
	Social Security No.	Key	9	C	32– 40
	Security Level		1	X	41– 41
	Expansion expansion		19	X	42– 60

KEY: X – Hexadecimal Number
C – A/N Character

NCIC CONVERSION TO PRINS – PRNCIC (ISAM)

Field Name	Description	Comments	Size	Type	Position
	NCIC Code	Key	1	X	1– 1
	NCIC Abbreviation		11	C	2–12

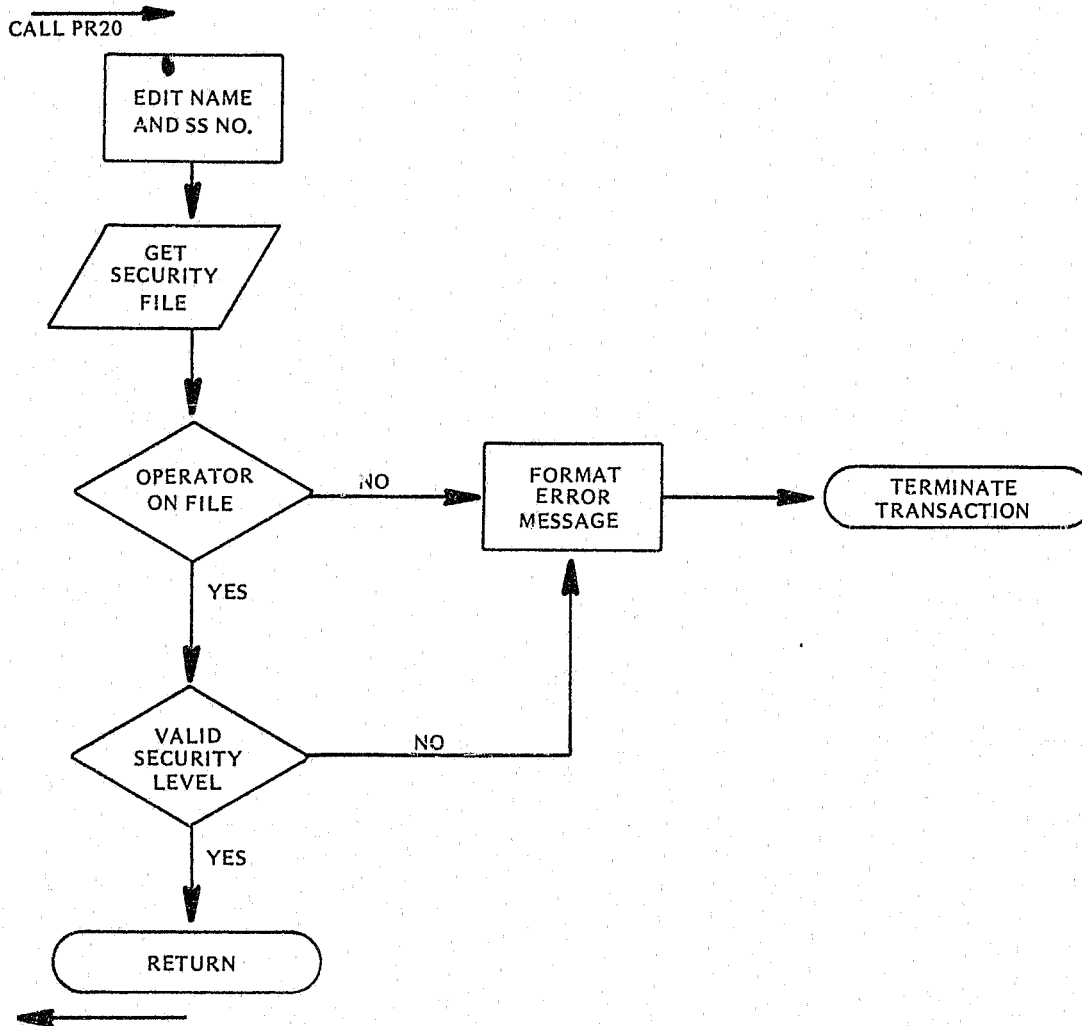
KEY: X – Hexadecimal Number
C – A/N Character

PRINS CONVERSION TO NCIC – NCICPR (ISAM)

Field Name	Description	Comments	Size	Type	Position
	NCIC Abbreviation	Key	11	C	1–11
	NCIC Code		1	X	12–12

SIGN-ON ROUTINE

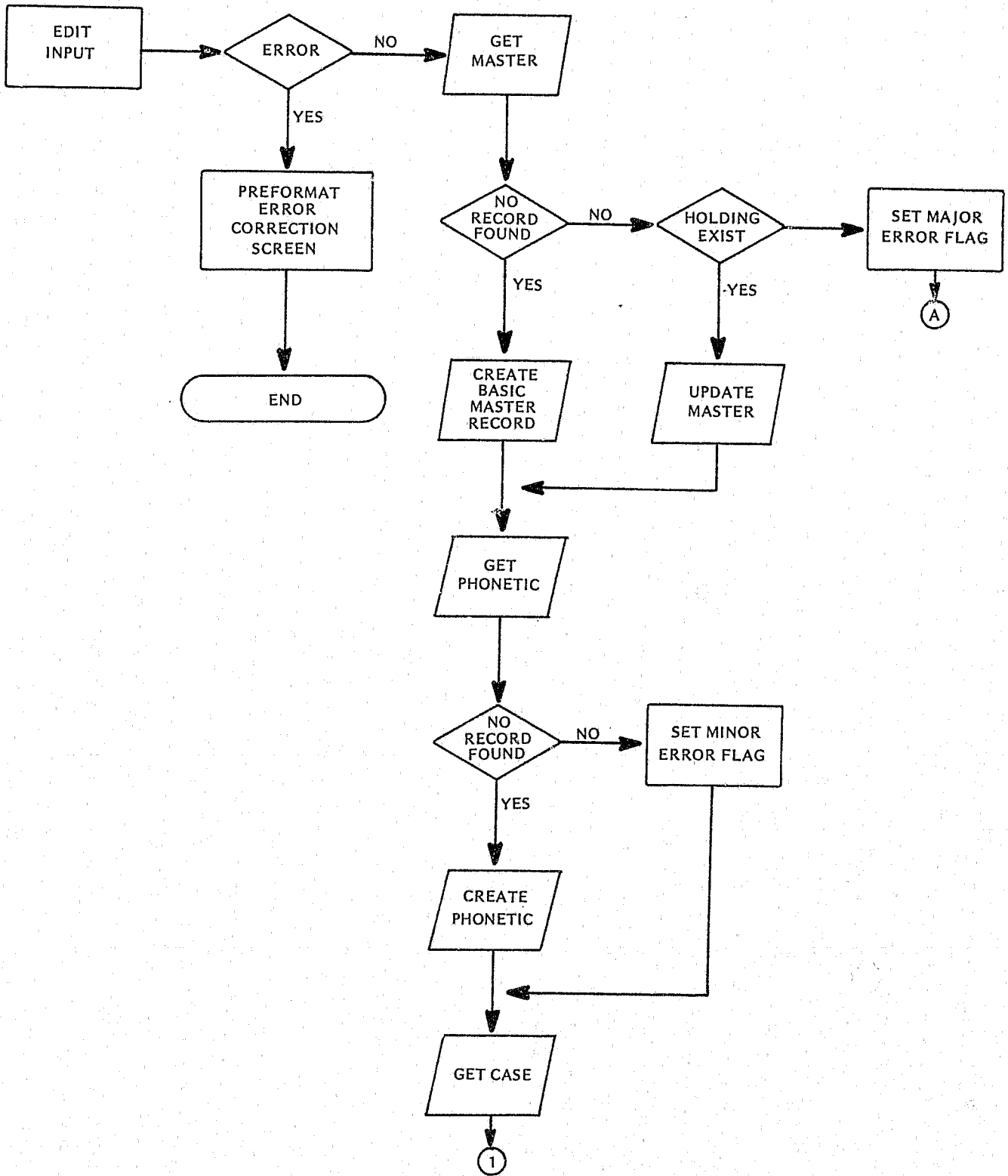
SIGN-ON TRANS

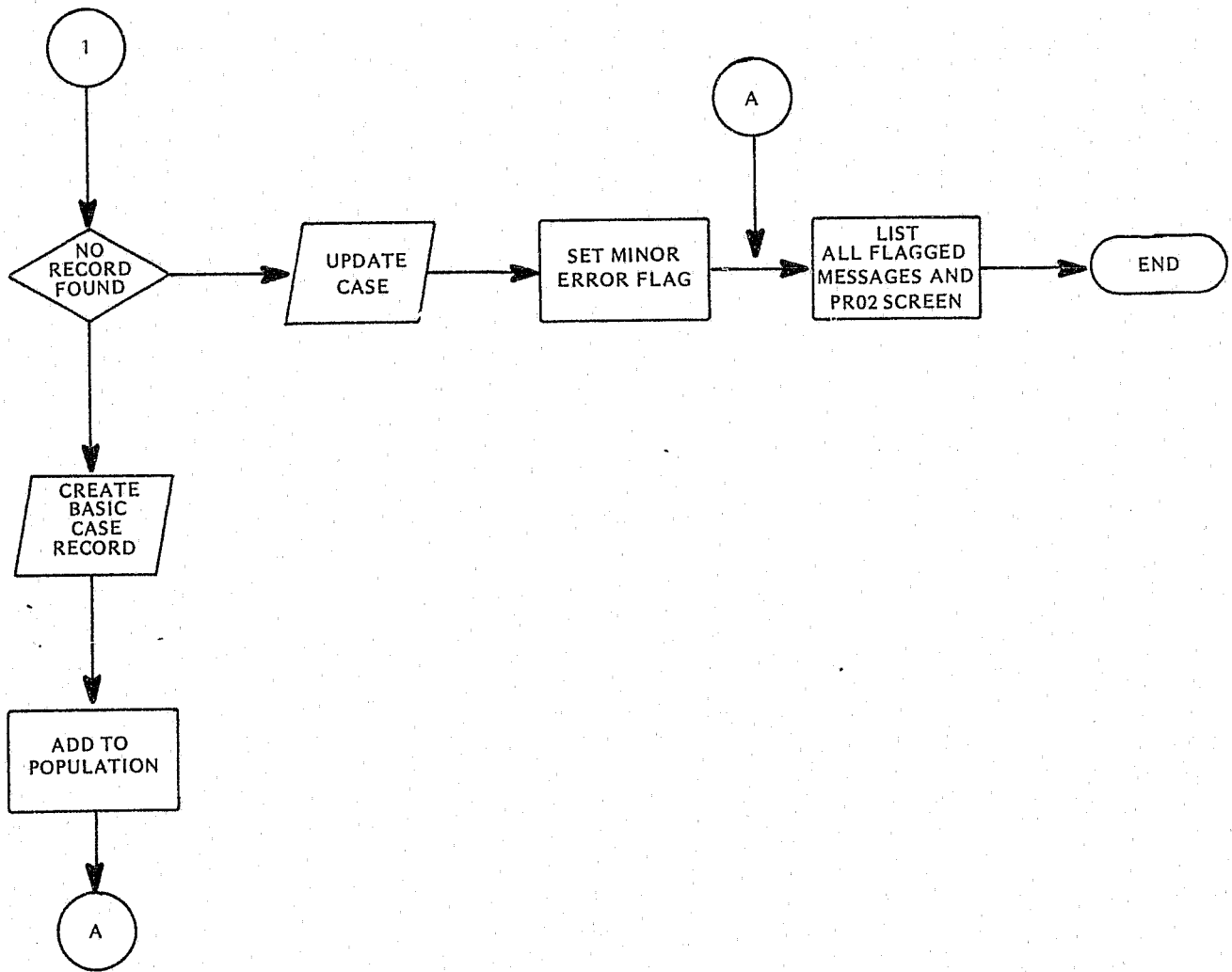


Note:

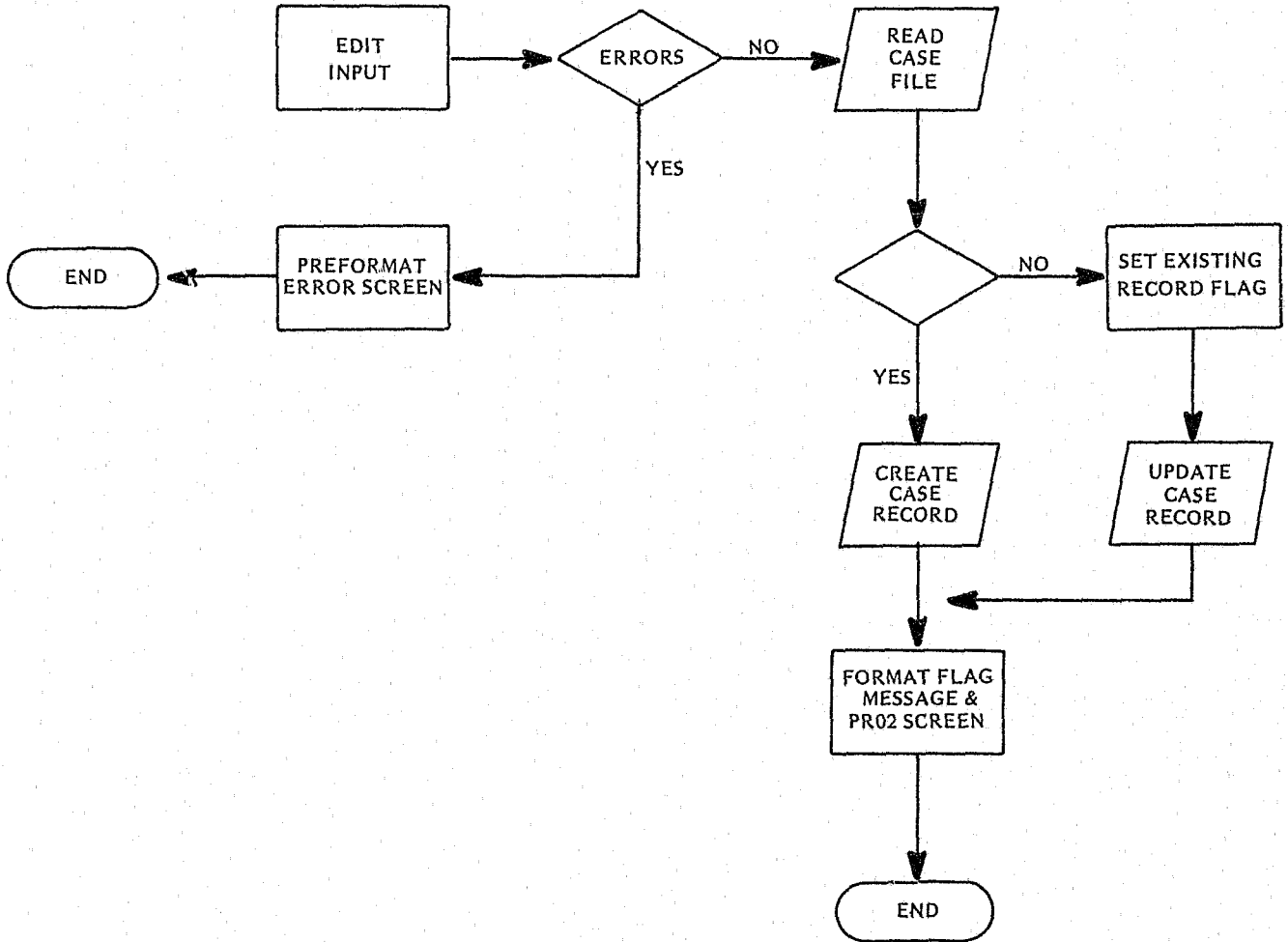
The screen layouts for all transactions are defined in the section "FORMATS FOR SIGN-ON TRANSACTIONS". (Section 5.5)

CAT FLOW

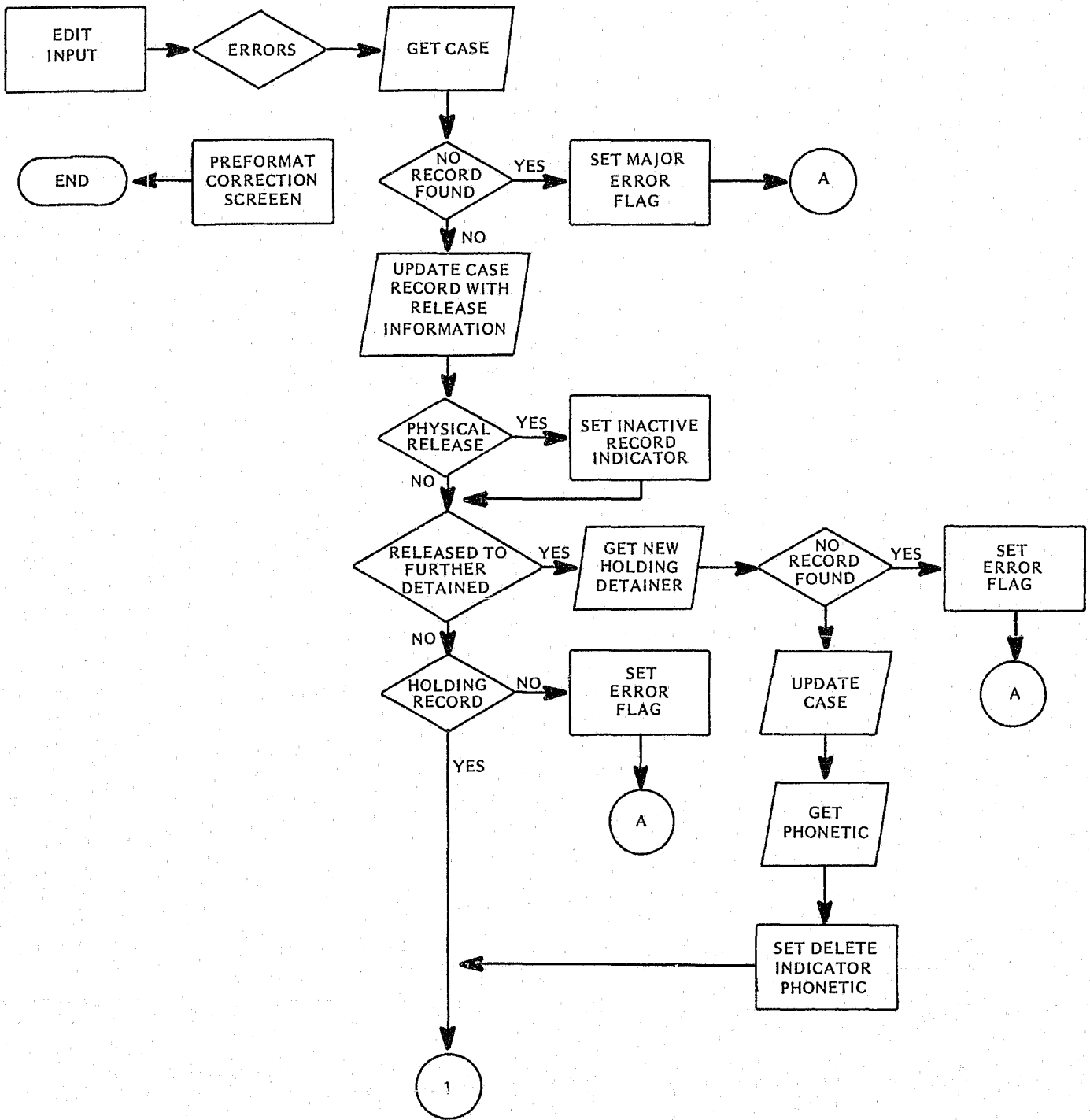


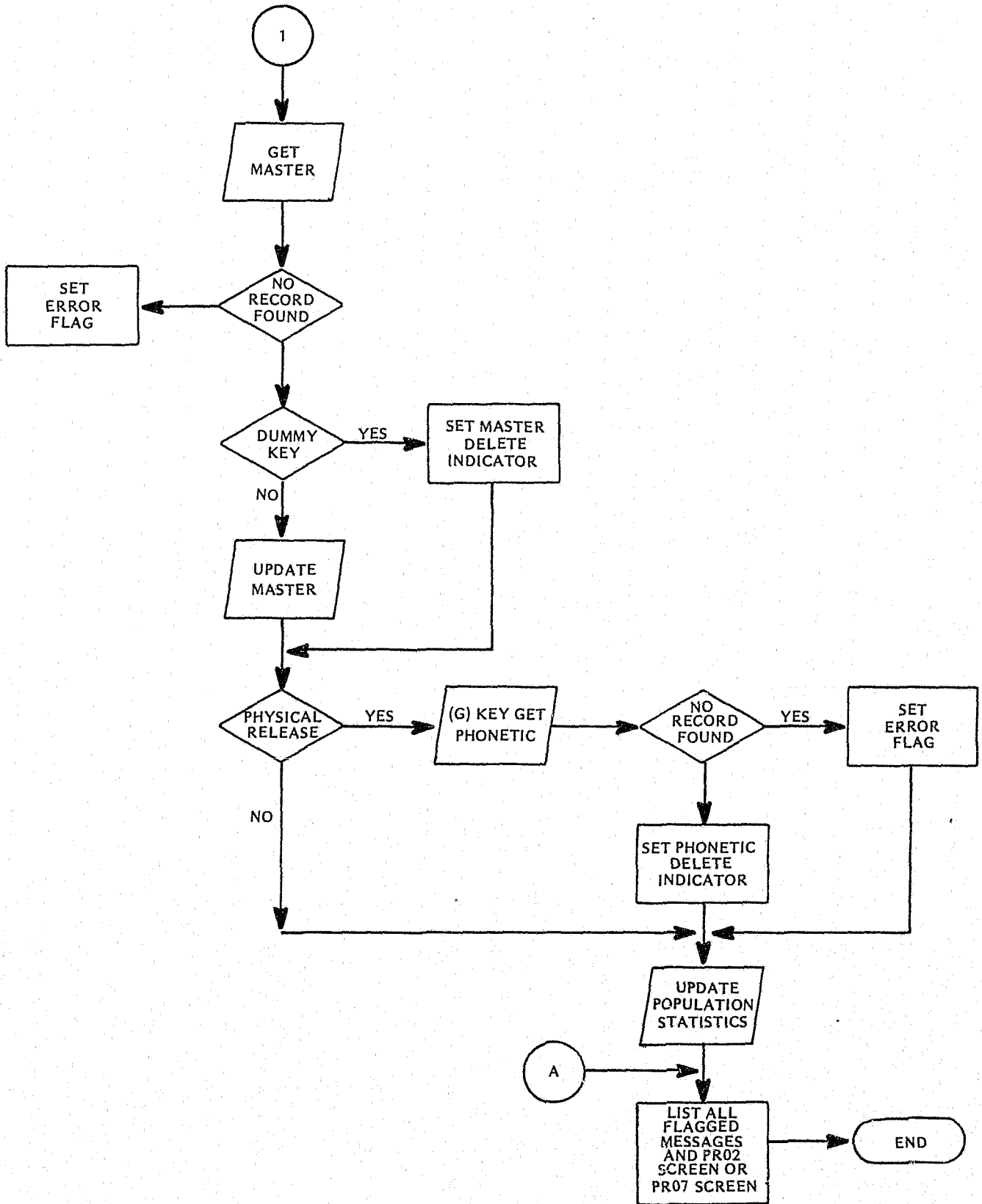


SCOM FLOW

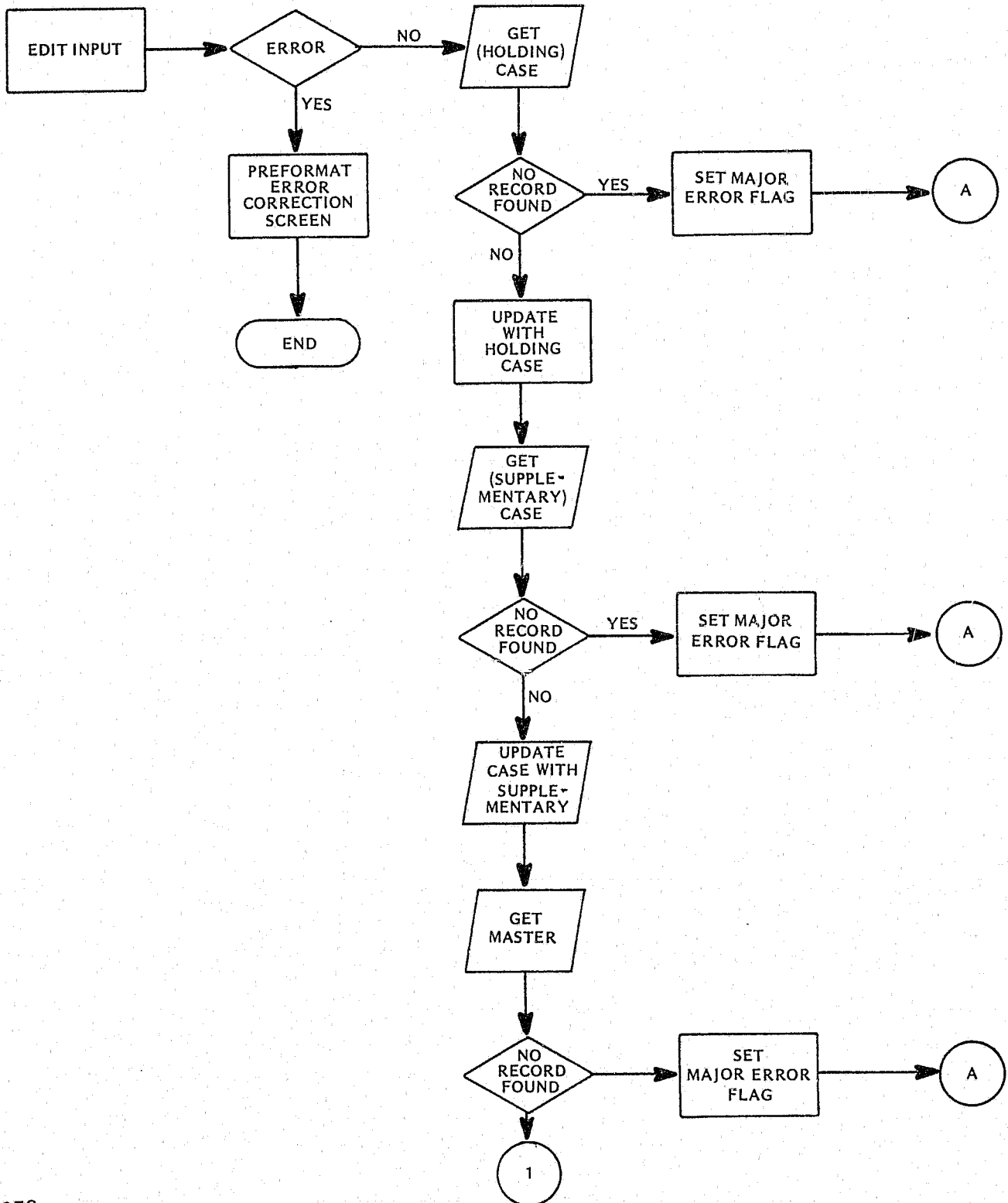


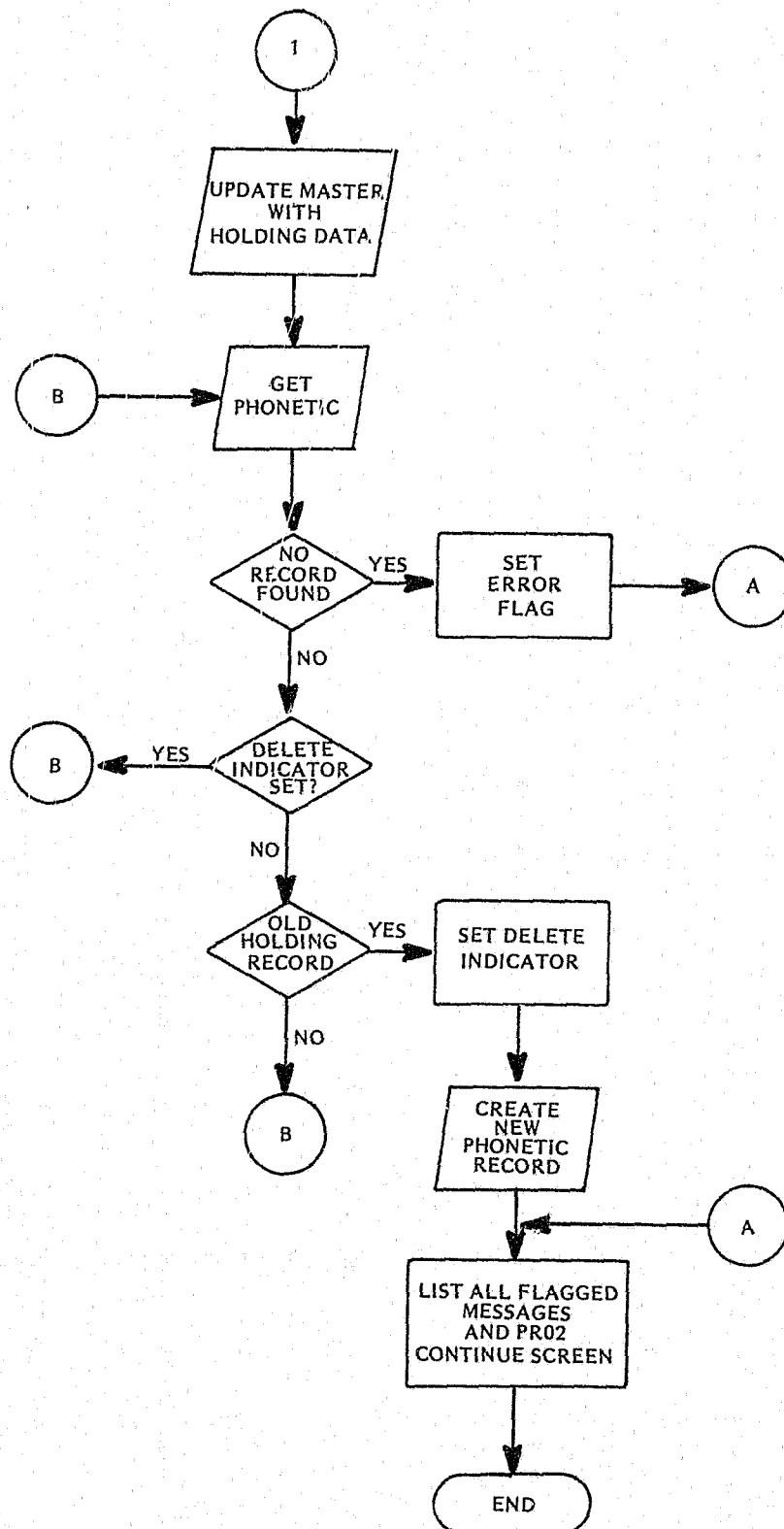
RELS FLOW



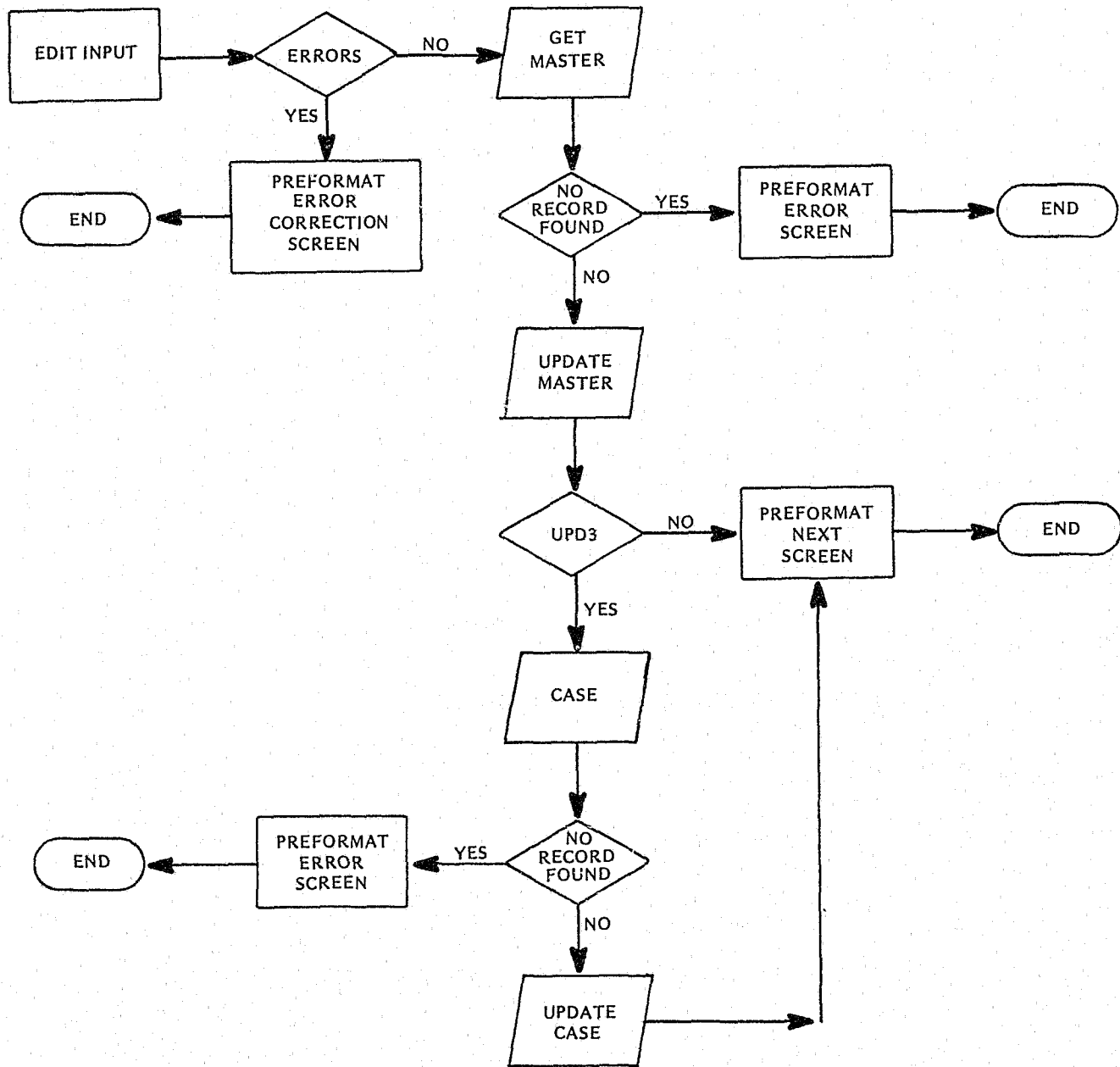


MNT FLOW

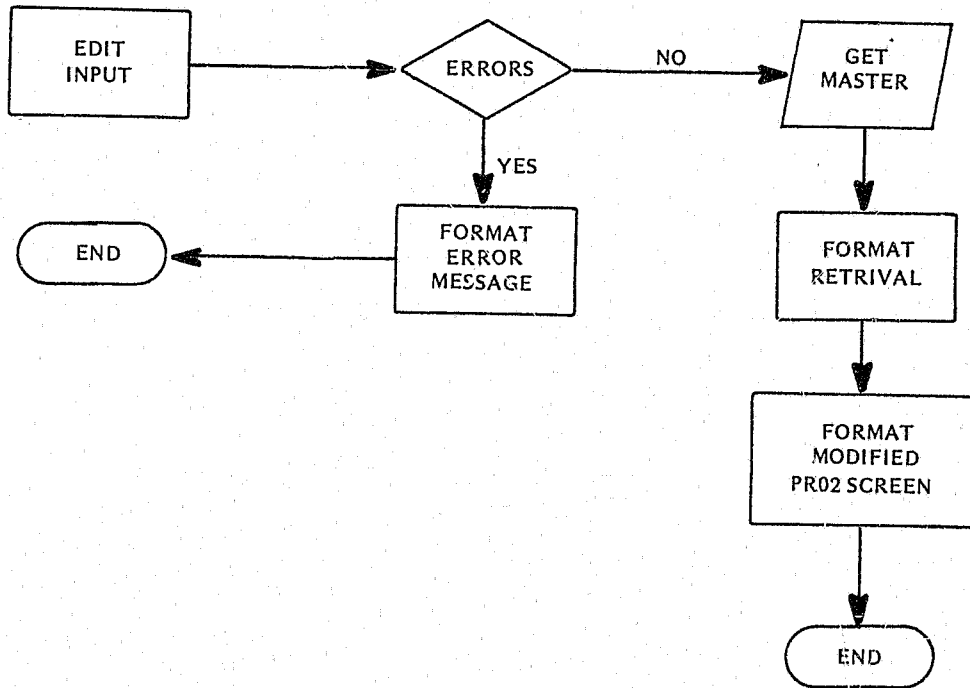




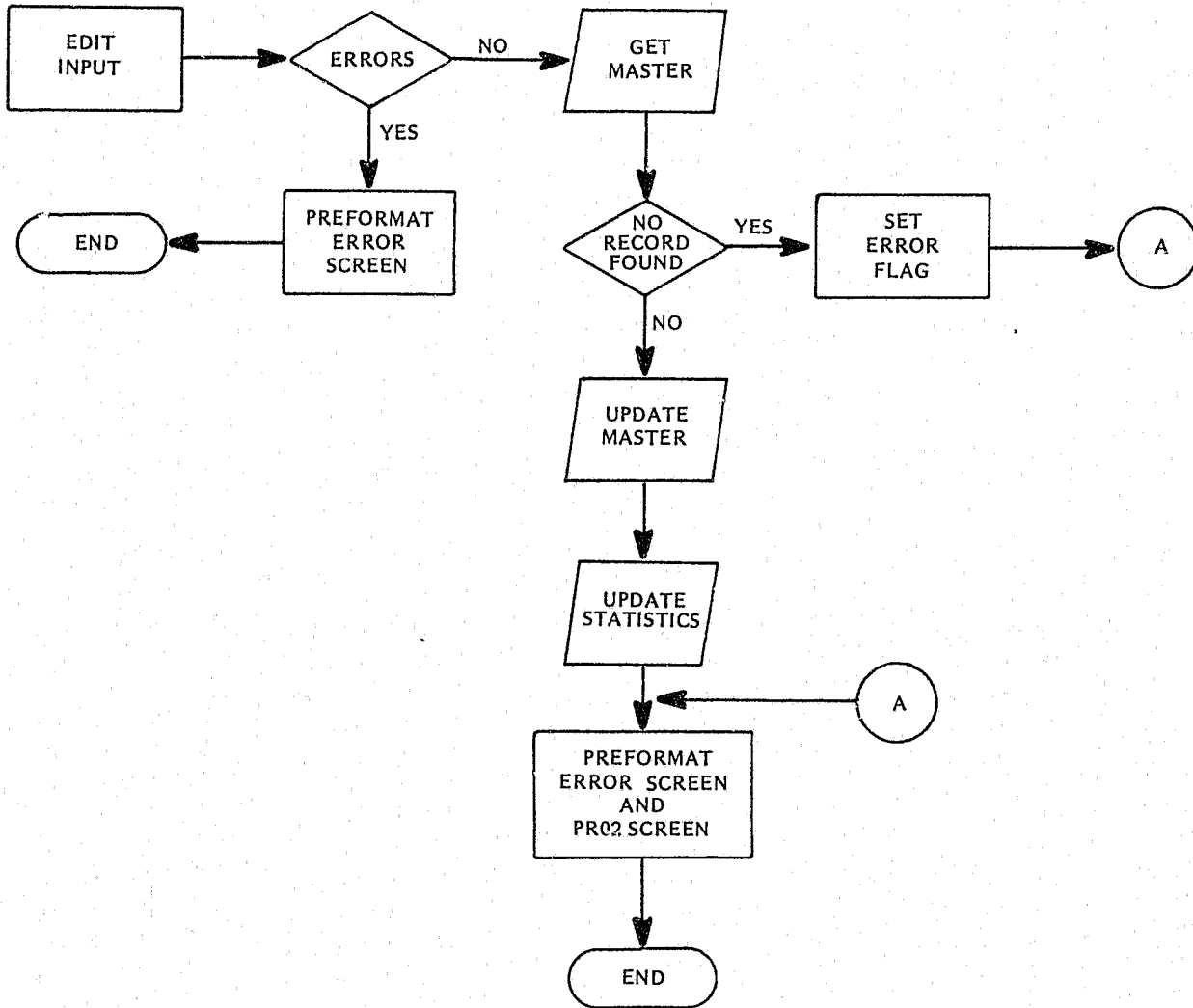
UPD FLOW



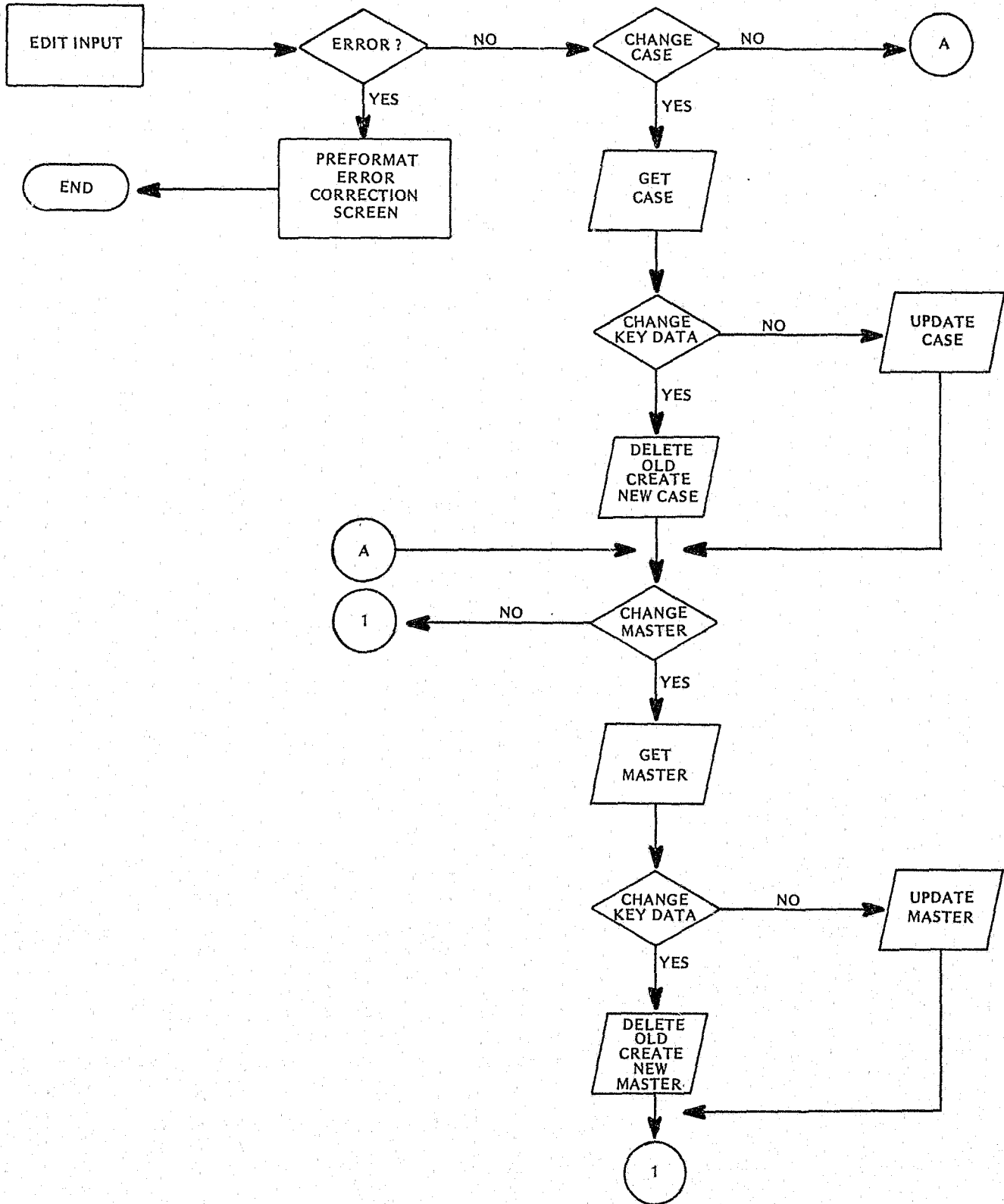
MINQ FLOW

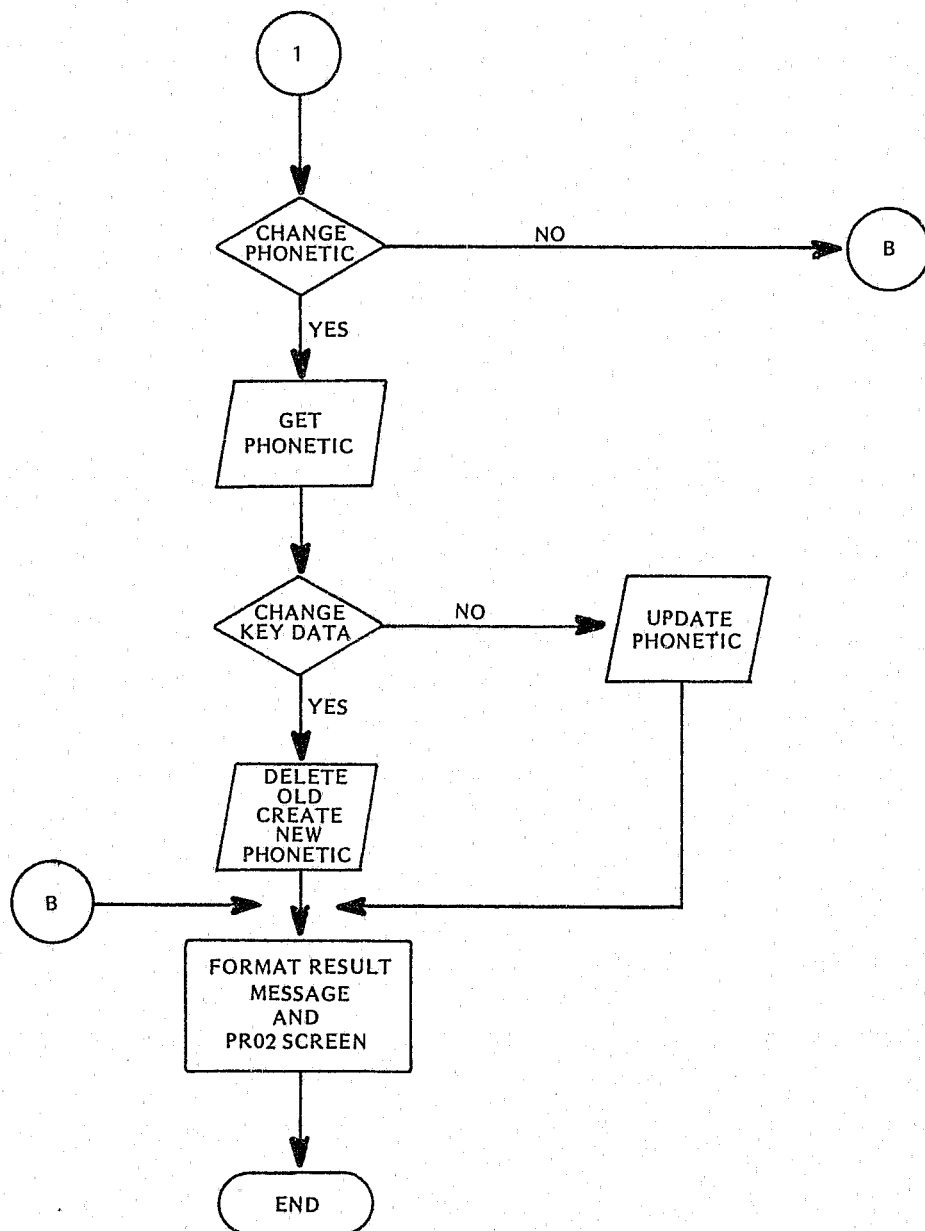


TRAN FLOW

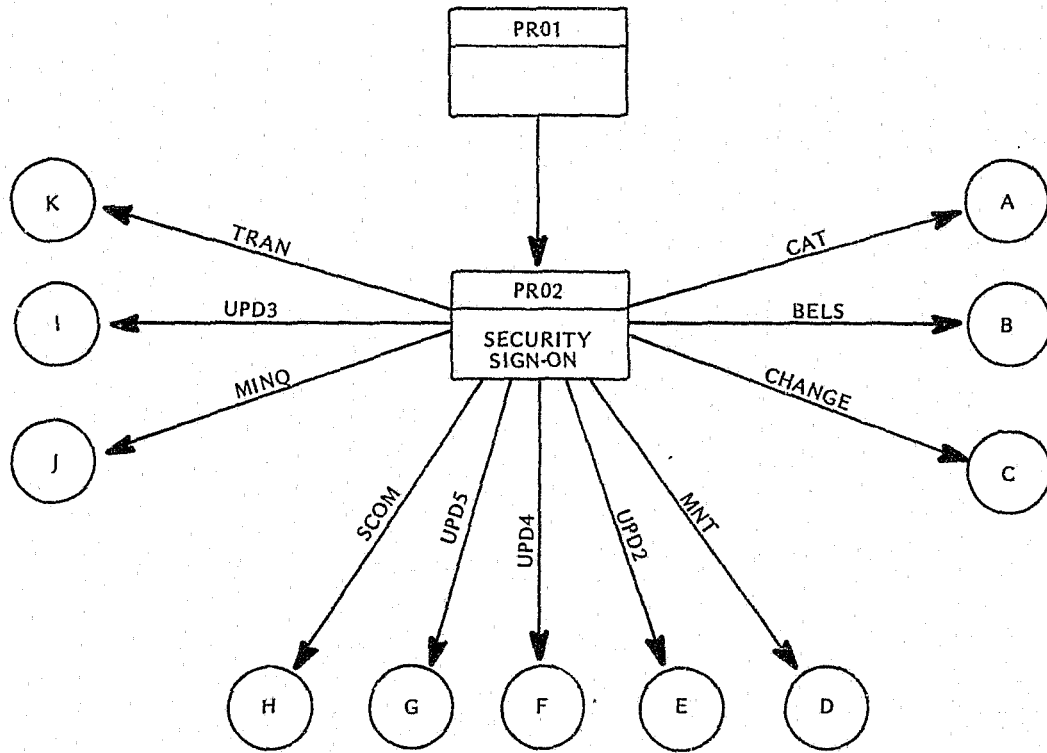


CHANGE FLOW

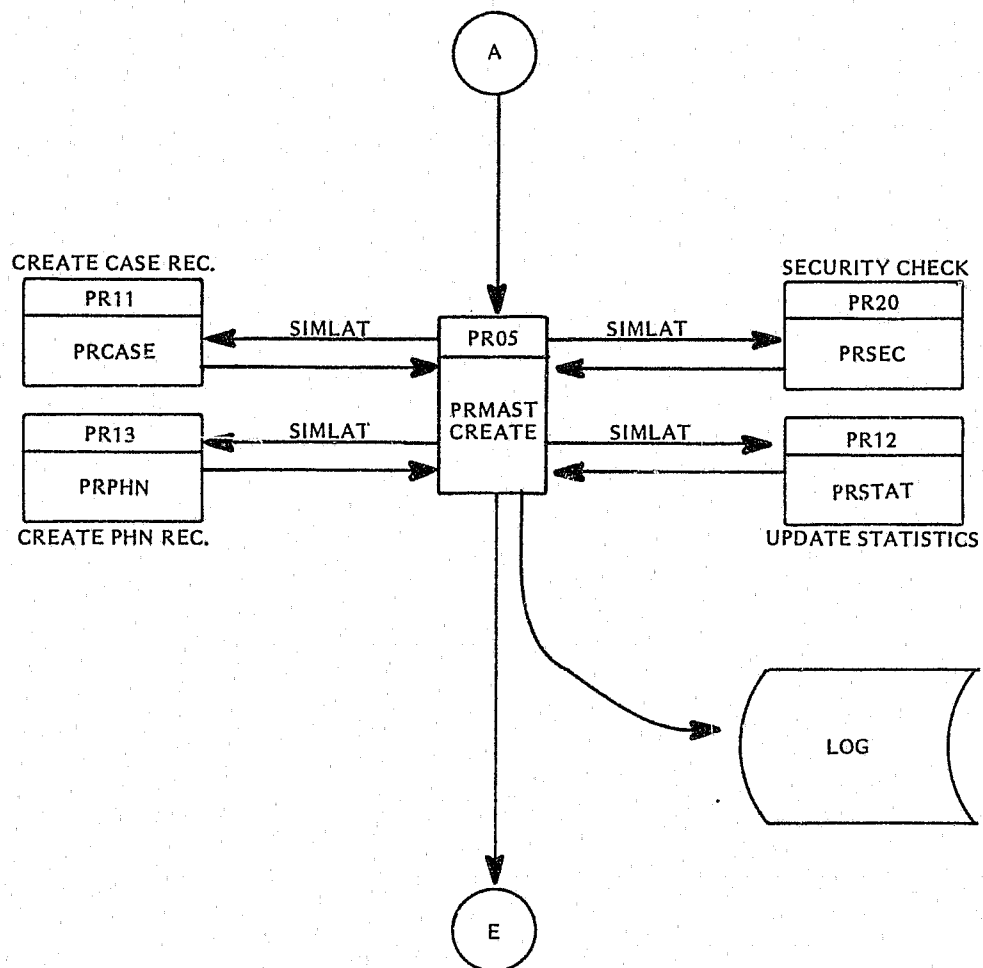




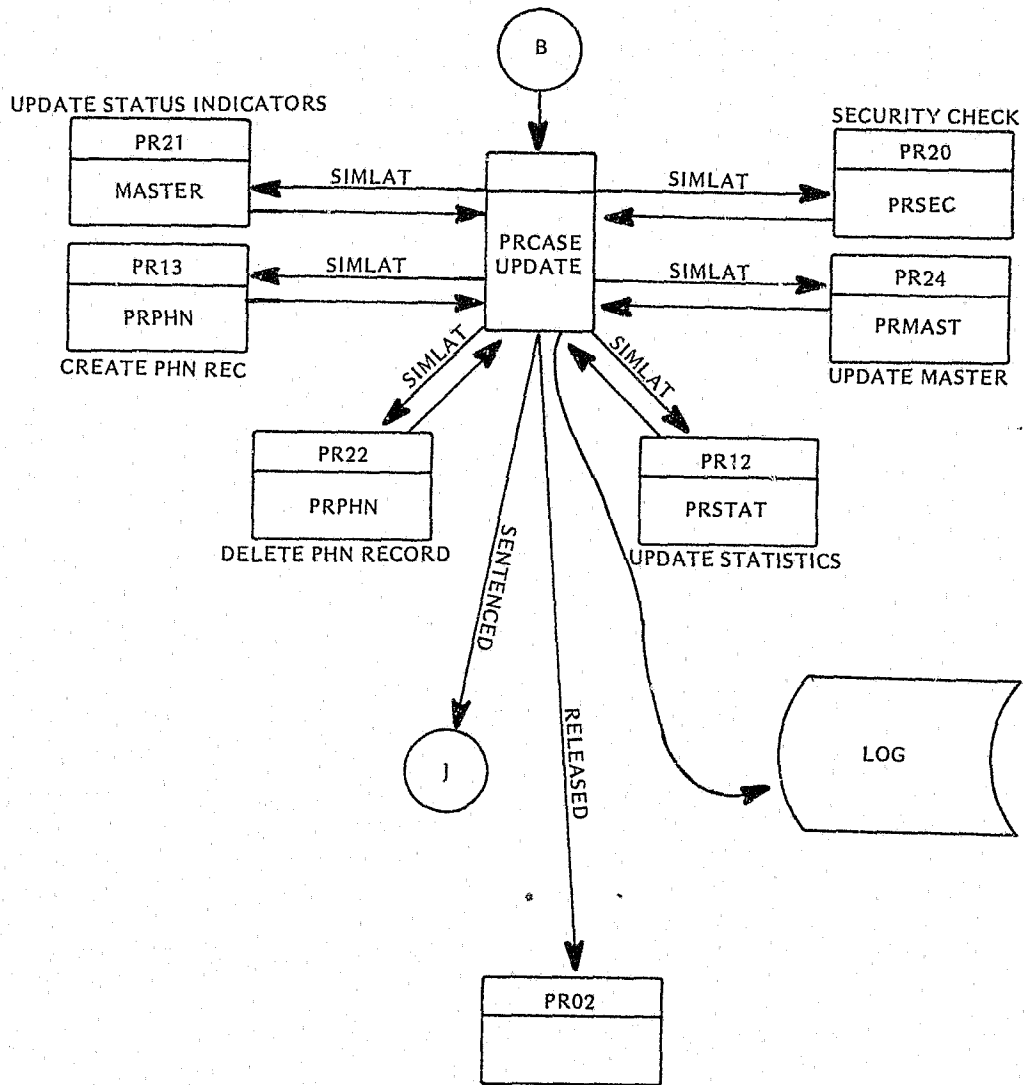
I. INITIATE ACTION PROGRAM



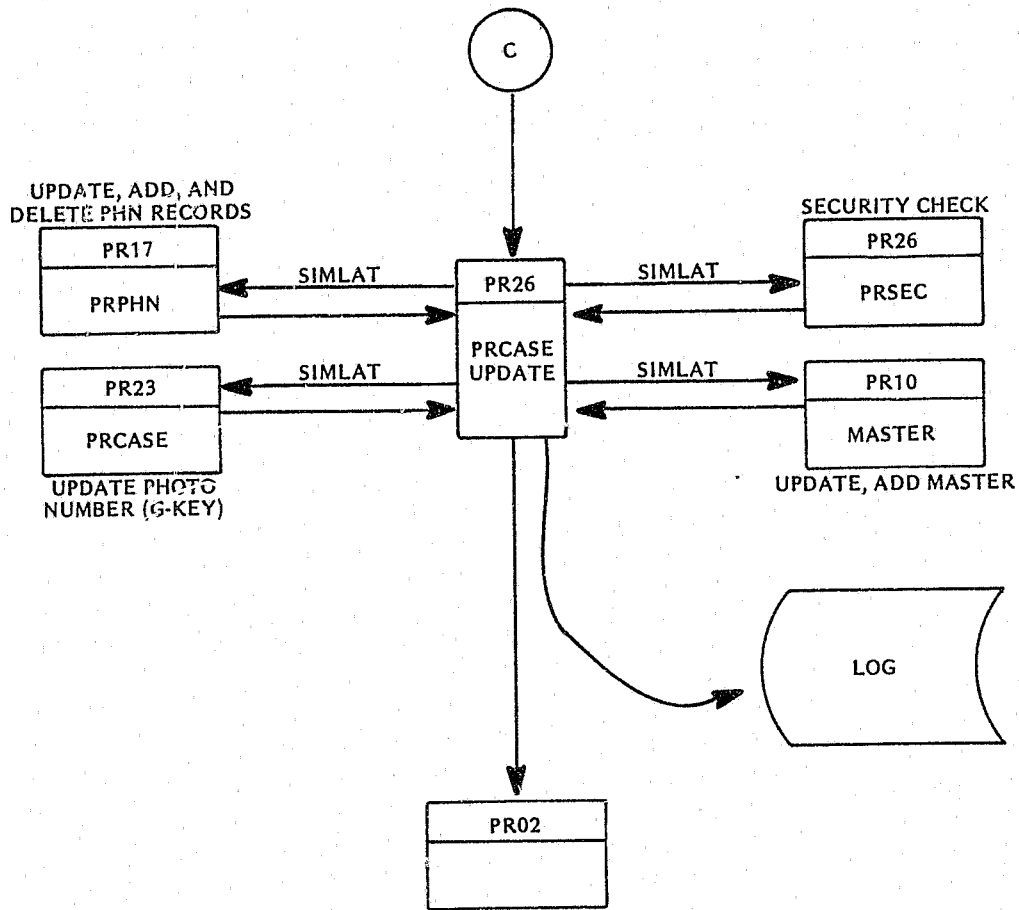
II. CREATE (CAT) PROGRAM



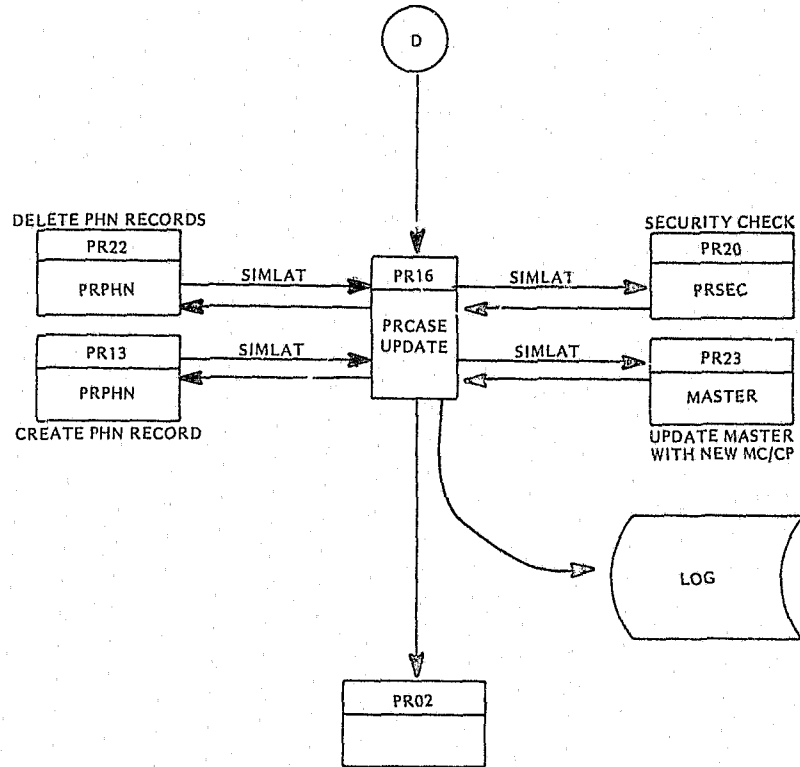
III. RELEASE (RELS) PROGRAM



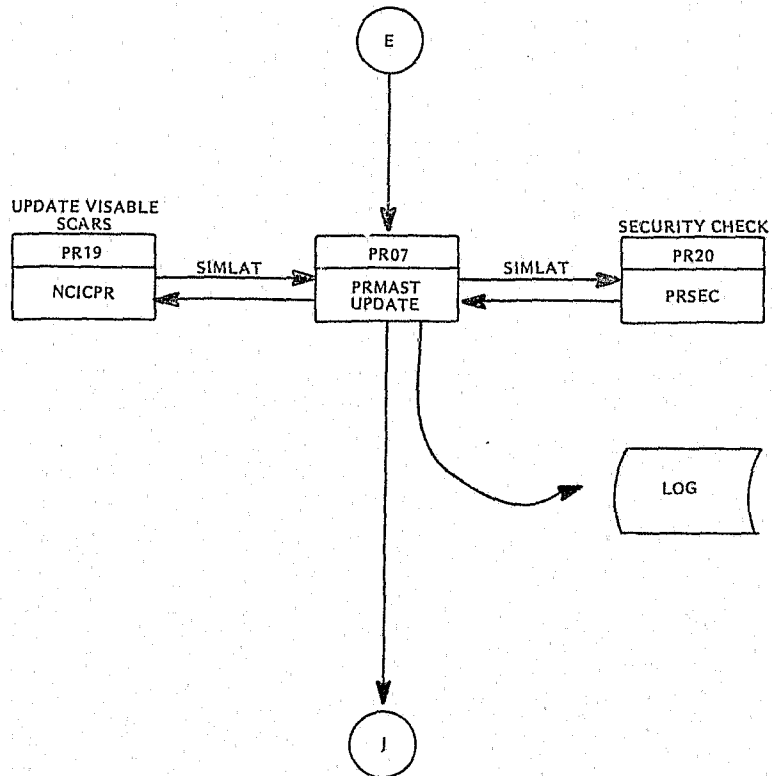
IV. KEY DATA MAINTENANCE (CHANGE) PROGRAM



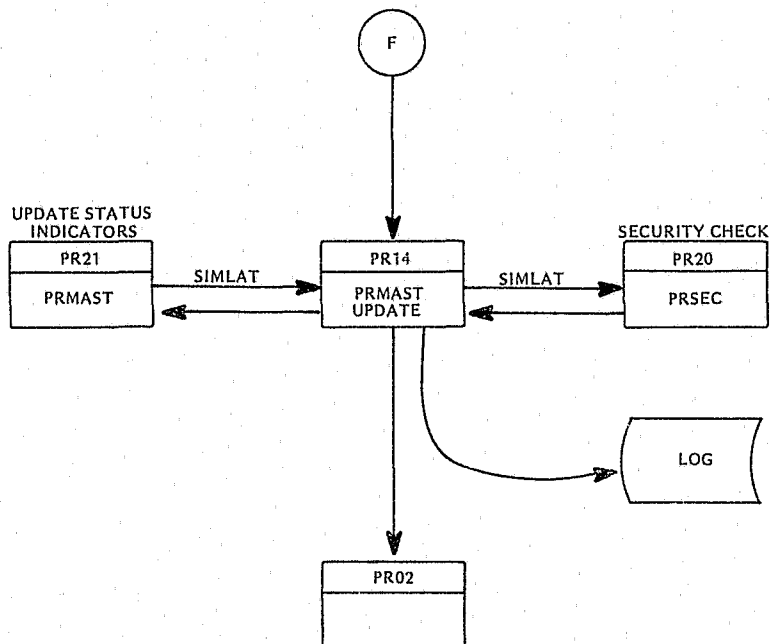
V. FILE MAINTENANCE (MNT) PROGRAM



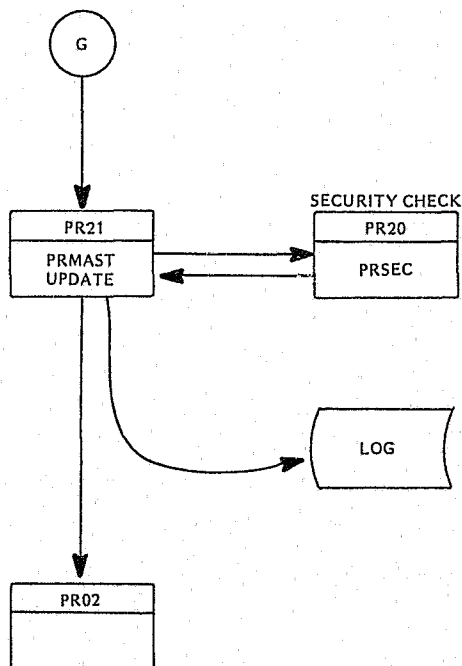
VI. UPDATE (UPD2) PROGRAM



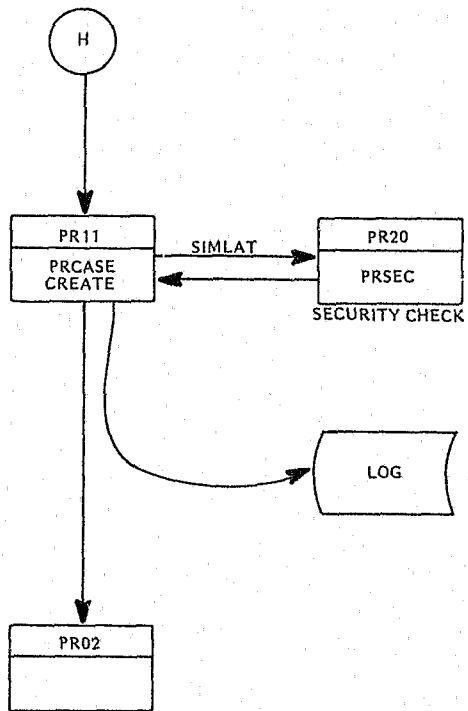
VII. UPDATE (UPD3) PROGRAM



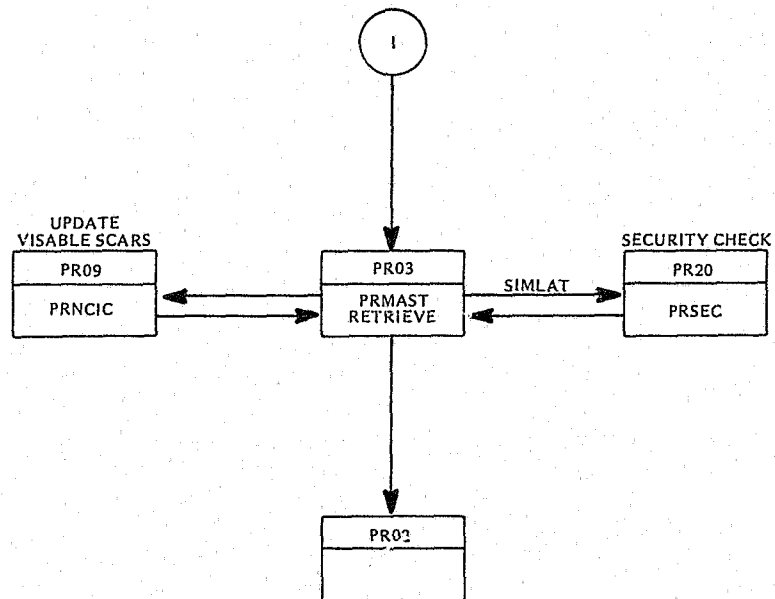
VIII. UPDATE (UPD4) PROGRAM



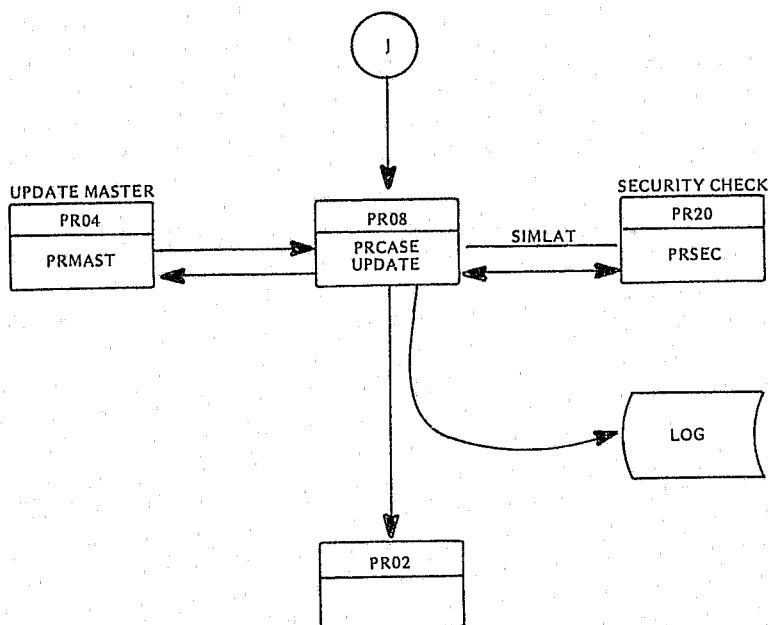
IX. UPDATE (UPD5) PROGRAM



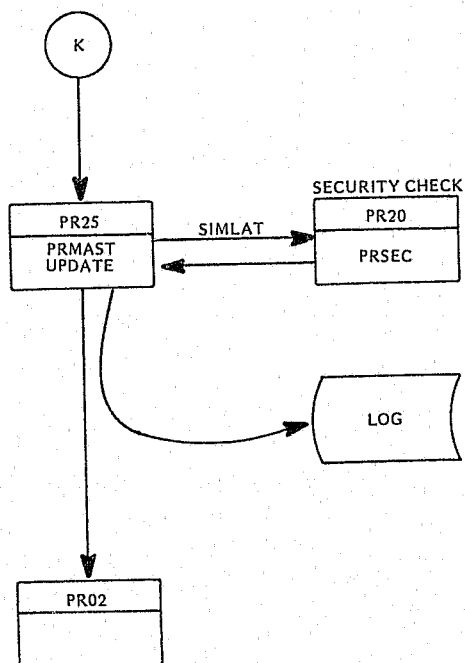
X. CREATE SUPPLEMENTARY COMMITMENT (SCOM) PROGRAM



XI. SIGN-ON MASTER INQUIRY (MINQ) PROGRAM

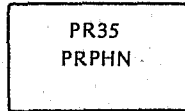


XII. TRANSFER INMATE (TRAN) PROGRAM

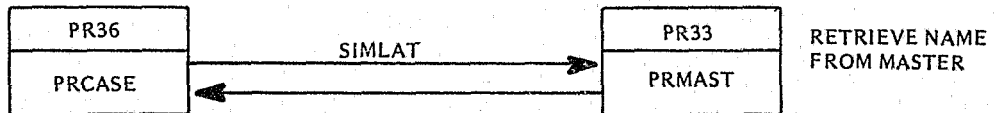


NON SIGN-ON GENERAL ACCESS PROGRAMS

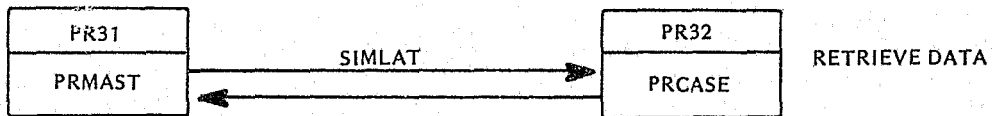
XIII: GENERAL NAME INQUIRY



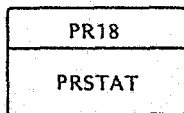
XIV: GENERAL CASE FILE INQUIRY

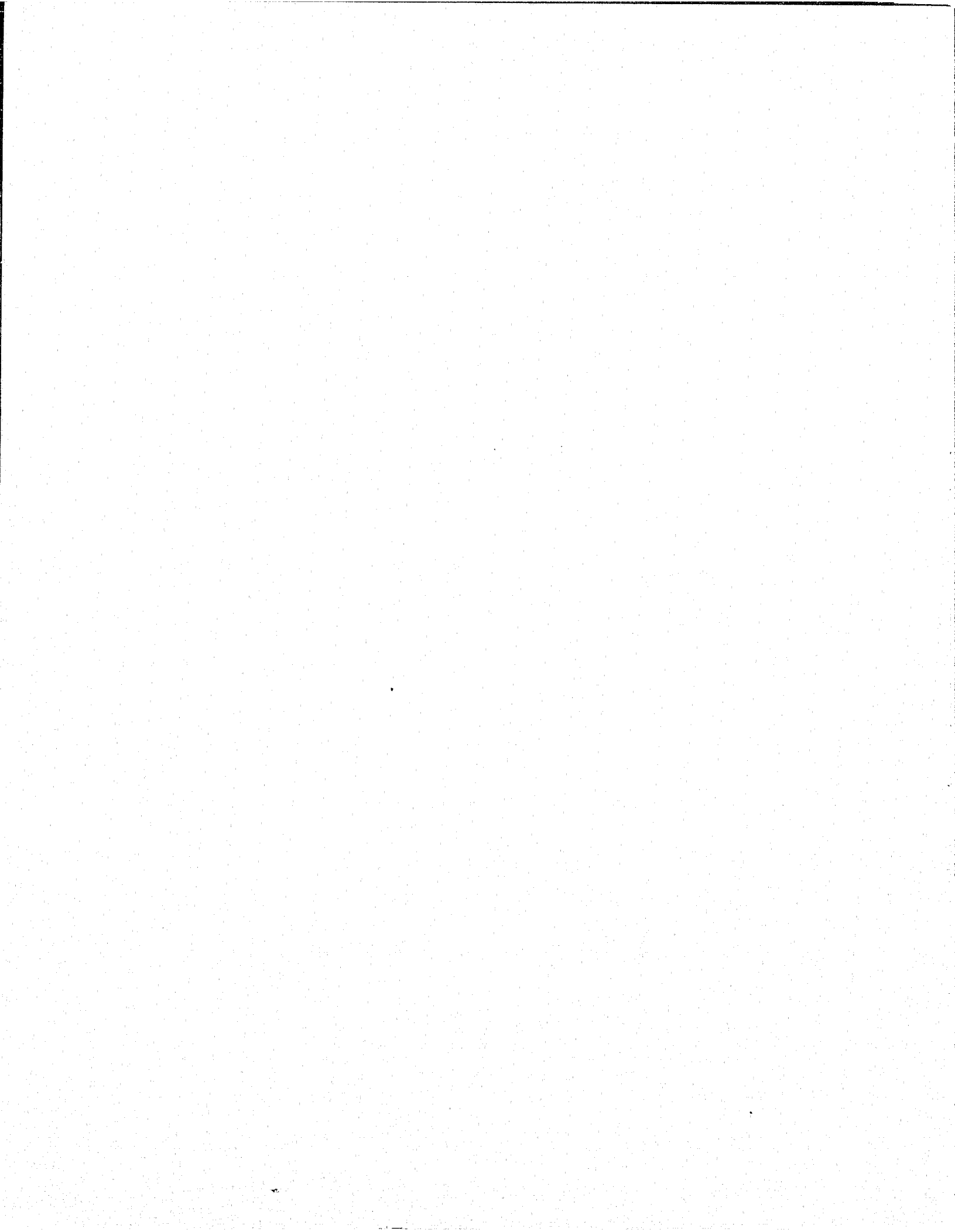


XV: GENERAL MASTER FILE INQUIRY



XVI: PRISON POPULATION INQUIRY





END