

ARIZONA CRIMINAL JUSTICE EXPENDITURES FISCAL YEAR 1976

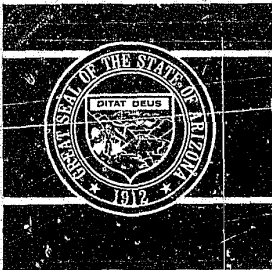
A REPORT FROM THE
STATISTICAL ANALYSIS CENTER
ARIZONA STATE
JUSTICE PLANNING AGENCY

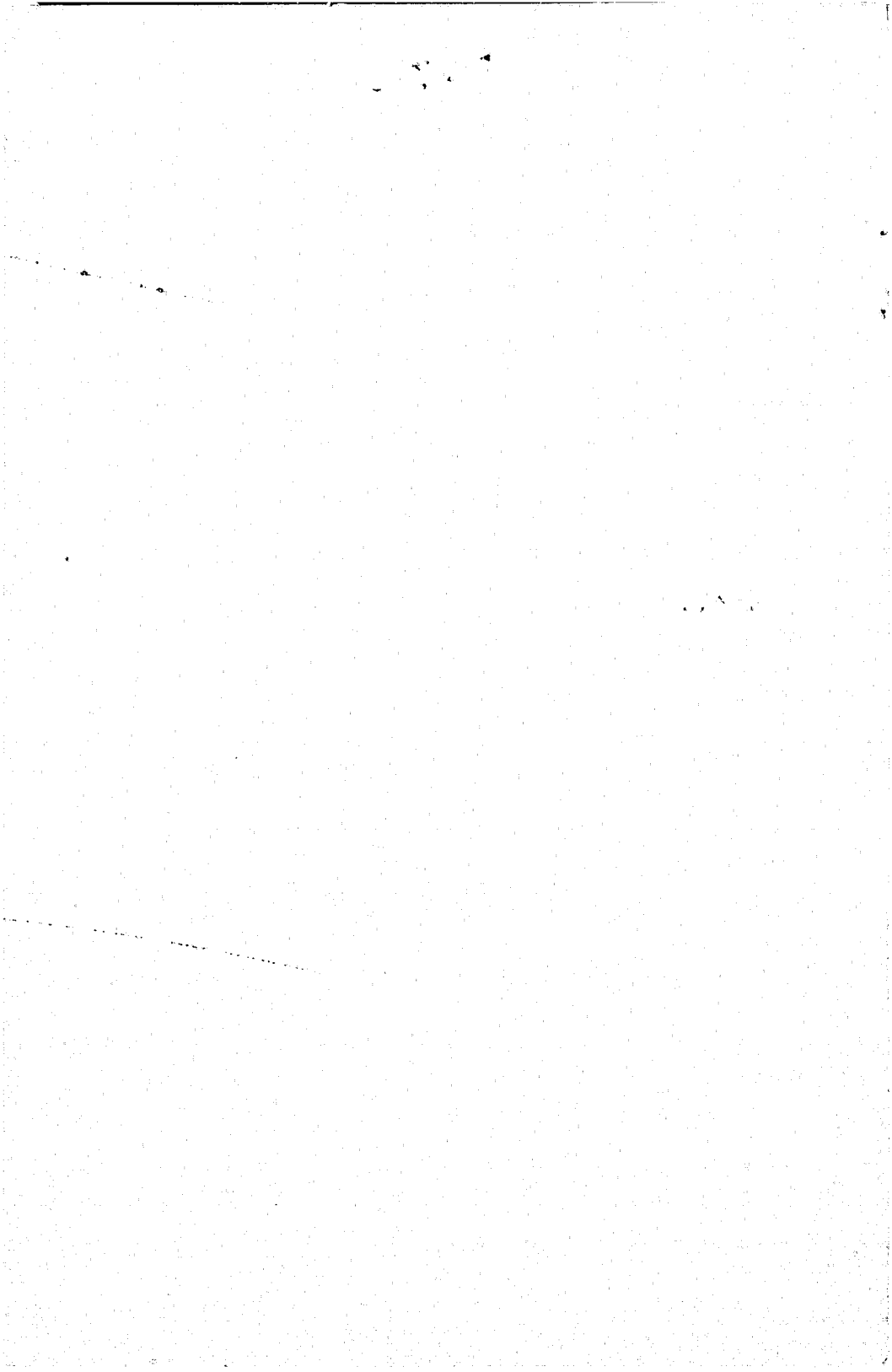
NCJRS

JUN 26 1978

ACQUISITIONS

48078
81087





**ARIZONA CRIMINAL
JUSTICE EXPENDITURES
FISCAL YEAR 1976**

**A REPORT FROM THE
STATISTICAL ANALYSIS CENTER
MARCH 1978**

Arizona State Justice Planning Agency
Ernesto G. Muñoz, Executive Director

Statistical Analysis Center
5119 N. 19th Avenue
Phoenix, Arizona 85015

William M. Braybrook, Director
Sarah Weissinger, Staff
Eunice Habets, Staff

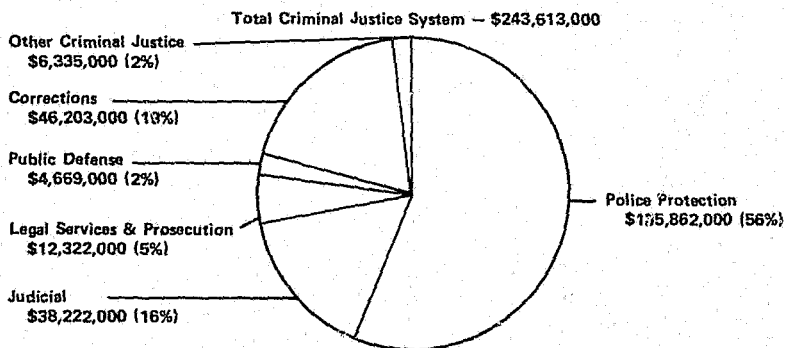
The preparation of this report has been financed by LEAA Discretionary Grant 78-MU-AX-0017

CONTENTS	Page
INTRODUCTION	1
Figure 1 Arizona Criminal Justice Expenditures, Fiscal Year 1976	1
STATEWIDE ANALYSIS	3
Table 1 Arizona Criminal Justice Expenditures, Fiscal Year 1976	3
Figure 2 Comparison of Expenditure Distributions ..	5
Figure 3 Proportion of Criminal Justice Funds Expended by State, Counties, and Municipalities	6
ARIZONA VS. OTHER HIGH CRIME STATES	7
Table 2 Crime Rates and Per Capita Criminal Justice Expenditures, 1976	7
TRENDS IN CRIMINAL JUSTICE SPENDING	9
Figure 4 Criminal Justice Expenditures and Reported Offenses, 1971-1976	9
Table 3 Change in Arizona Criminal Justice Expenditures, Fiscal Years 1971-1976	11
COUNTY ANALYSIS	19
Table 4 Direct Expenditures by County, Fiscal Year 1976	21

INTRODUCTION

During Fiscal Year 1976, Arizona criminal justice expenditures totaled \$243,613,000. The most costly activities were police protection, corrections, and judicial services (Figure 1).

Figure 1
ARIZONA CRIMINAL JUSTICE EXPENDITURES
Fiscal Year 1976



This report is the second in a series of annual reports which summarize data on direct expenditures for the Arizona criminal justice system collected by the Law Enforcement Assistance Administration and the Census Bureau. Direct expenditures include salaries, wages, fees, and commissions; purchases of supplies, materials, and services; and capital outlays for construction, equipment, and land. Intergovernmental transfers, such as payments by one government to another for boarding prisoners, are excluded. Expenditure data for three categories — judicial, legal services and prosecution, and public defense — include both *criminal and civil justice activities*.*

*Both criminal and civil justice activities are included in the expenditure data for the judicial, legal services and prosecution, and public defense categories because available source documents for many governments do not segregate these activities. It is important to note that for some agencies in the criminal justice system, civil activities account for a large portion of their total budgets.

The first section of this report presents statewide expenditure data by level of government and type of activity. The second section compares Arizona's expenditures to those of other "high crime" states. Trends in criminal justice spending are examined in the third section. The final section presents a breakdown of expenditures by county.

STATEWIDE ANALYSIS

Arizona criminal justice expenditures for FY 1976 totaled more than \$240 million. The distribution of these funds by level of government and type of activity is presented in Table 1. Data for this table are from the LEAA publication *Expenditure and Employment Data for the Criminal Justice System, 1976*.

Table 1

ARIZONA CRIMINAL JUSTICE EXPENDITURES Fiscal Year 1976

	<u>Arizona Total</u>	<u>State</u>	<u>Counties</u>	<u>Municipalities</u>
Total Criminal Justice System	\$243,613,000	\$62,803,000	\$92,438,000	\$88,327,000
Police Protection	135,862,000	32,708,000	24,206,000	78,948,000
Judicial	38,222,000	3,601,000	30,757,000	3,864,000
Legal Services & Prosecution	12,322,000	2,555,000	6,332,000	3,435,000
Public Defense	4,669,000	—0—	4,561,000	108,000
Corrections	46,203,000	22,111,000	23,325,000	767,000
Other Criminal Justice	5,335,000	1,828,000	3,302,000	1,205,000

More than half of Arizona's criminal justice expenditures were for police protection (\$136 million or 56%). Corrections accounted for \$46 million or 19%. This category includes the state prison and parole system, county jails and detention centers, and adult and juvenile probation departments. Judicial activities accounted for 16% of the expenditures while the remaining three categories — legal services and prosecution, public defense, and other criminal justice activities — accounted for relatively smaller shares.

Analyzing expenditures in total tends to obscure important differences in the way the state, as opposed to counties and

municipalities, spent criminal justice funds. Figure 2, on the following page, is a comparison of the expenditure distributions of these three levels of government.

Police protection and corrections accounted for the largest portions of state criminal justice expenditures (52% and 35%, respectively). The balance of state expenditures was distributed as follows: judicial, 6%; legal services and prosecution, 4%; and other criminal justice, 3%. No state funds were spent on public defense. Counties spent most of their criminal justice funds on judicial activities (33%), police protection (26%), and corrections (25%). Legal services and prosecution, public defense, and other criminal justice activities accounted for 7%, 5%, and 4%, respectively. Police protection dominated municipal criminal justice spending, with nearly 90% of expenditures occurring in this category.

Overall, counties accounted for \$92 million, or 38% of Arizona's criminal justice expenditures; municipalities, \$88 million, or 36%; and the state, \$63 million, or 26%. When each activity is examined separately, the proportions of funds spent by the state, counties, and municipalities, varied according to governmental responsibilities (Figure 3).

Municipalities spent more on police protection than the state and counties combined, reflecting the fact that most of the state's population is in incorporated cities and towns. Judicial activities, legal services and prosecution, and public defense were primarily supported by county governments. State and county governments shared the responsibility for corrections — the state operating the prison and parole system and the counties supporting jails and probation departments.

Figure 2
COMPARISON OF EXPENDITURE DISTRIBUTIONS

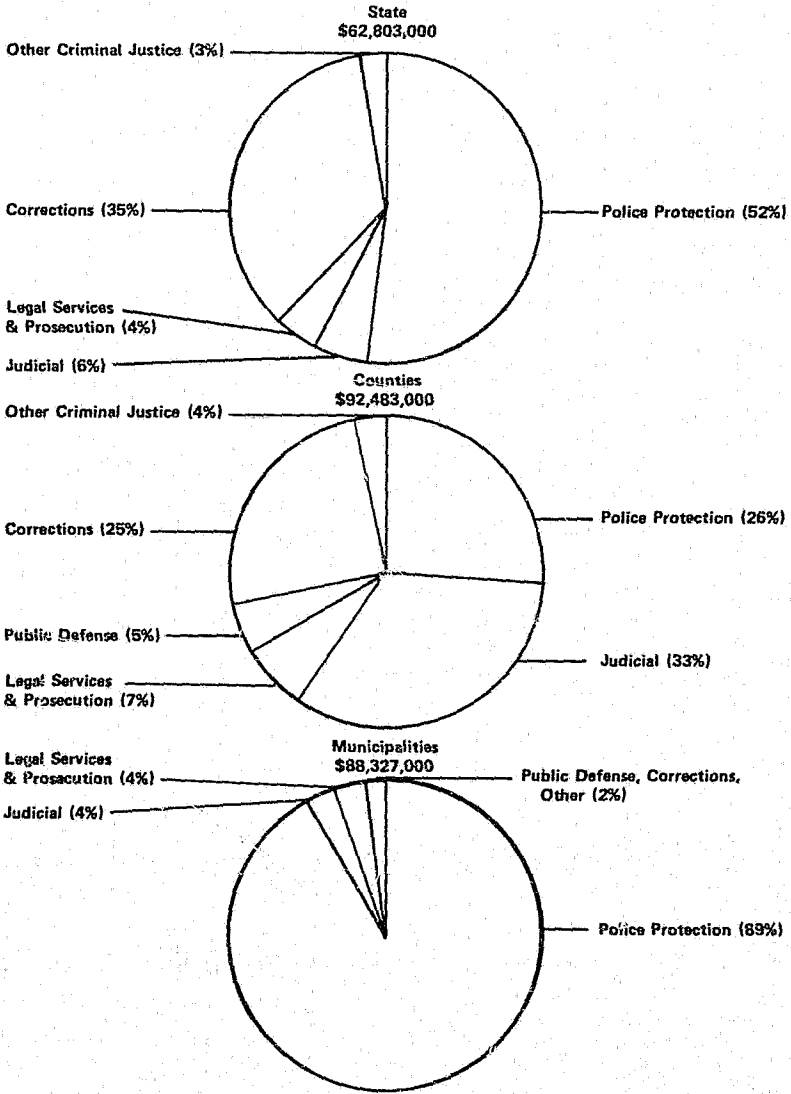
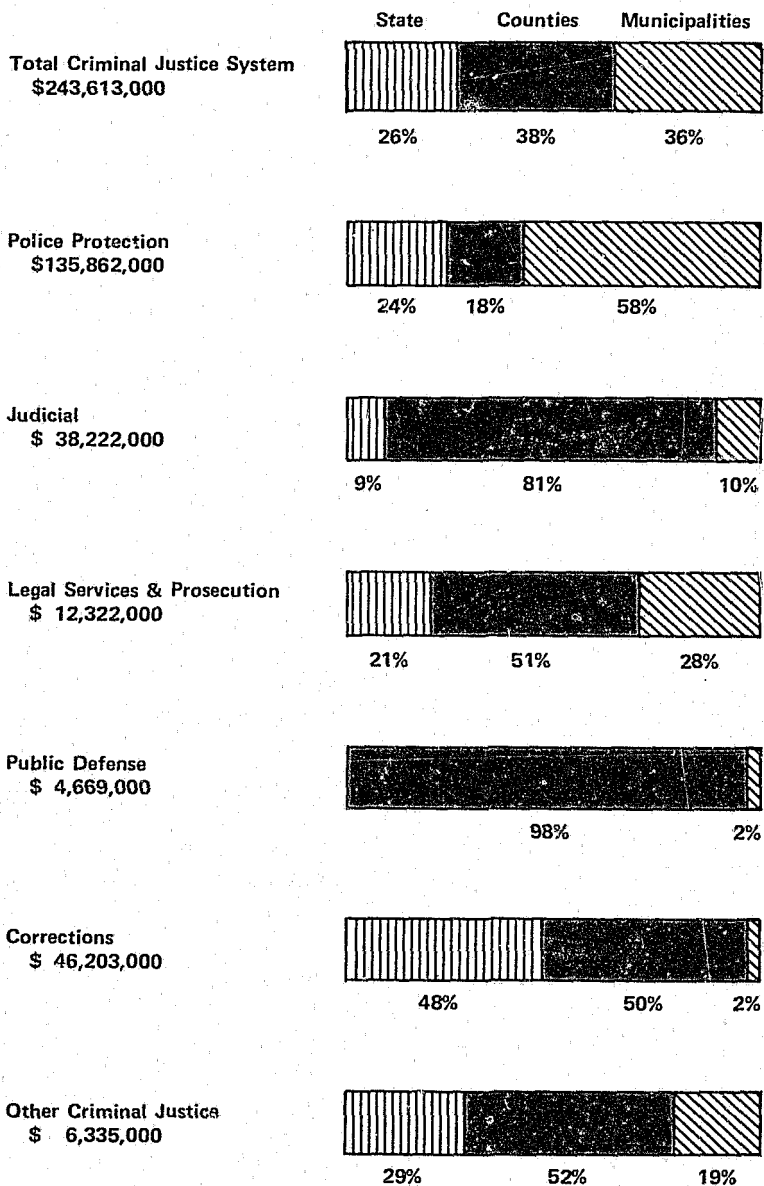


Figure 3

PROPORTION OF CRIMINAL JUSTICE FUNDS EXPENDED
BY STATE, COUNTIES, AND MUNICIPALITIES



ARIZONA VS. OTHER HIGH CRIME STATES

During FY 1976, Arizona spent 14% of its total government funds for criminal justice activities, the highest proportion among the fifty states. Arizona's expenditures for the criminal justice system amounted to \$107 per person, considerably more than the national average of \$80 per person. As Table 2 demonstrates, states with high crime rates tend to have high rates of expenditure. In 1976, six of the ten states with the highest crime rates were among the ten with the highest per capita criminal justice expenditures. Arizona's crime rate was the second highest in the nation and the state ranked fifth highest in per capita expenditures.

Table 2

CRIME RATES AND PER CAPITA CRIMINAL JUSTICE EXPENDITURES, 1976

States with the Highest Crime Rates

Rank		Crime Rate (FBI)
1	Nevada	8,306
2	ARIZONA	7,886
3	California	7,234
4	Florida	7,017
5	Colorado	6,782
6	Michigan	6,478
7	Oregon	6,359
8	Hawaii	6,322
9	Delaware	6,264
10	New York	6,225

States with the Highest Per Capita Criminal Justice Expenditures

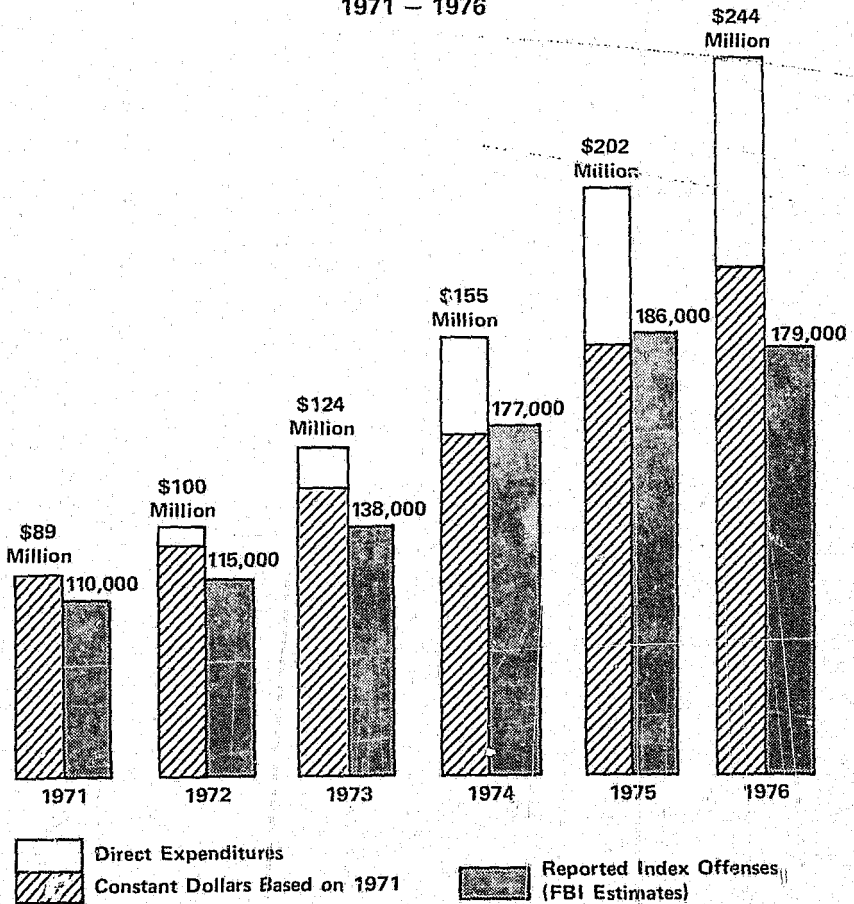
Rank		Per Capita Expenditures
1	Alaska	\$202
2	Nevada	137
3	New York	126
4	California	117
5	ARIZONA	107
6	New Jersey	96
7	Maryland	95
8	Florida	91
9	Delaware	90
10	Illinois	88

TRENDS IN CRIMINAL JUSTICE SPENDING

Direct expenditures for the Arizona criminal justice system more than doubled between 1971, the first year comparable data were collected, and 1976. Criminal justice expenditures were \$89 million in FY 1971 and \$244 million in FY 1976; an increase of 174 percent. As Figure 4 illustrates, however, these expenditures occurred during a period of inflation and rising crime. Thus, although Arizona's criminal justice spending increased steadily from 1971 to 1976, *actual* expenditures in relation to reported offenses rose only slightly.

Figure 4

CRIMINAL JUSTICE EXPENDITURES AND REPORTED OFFENSES
1971 - 1976



With few exceptions, spending increased at all levels of government for all criminal justice activities. Table 3, on the following pages, presents expenditures by level of government and type of activity for fiscal years 1971 through 1976. Data for this table are from the LEAA publication *Trends in Expenditure and Employment Data for the Criminal Justice System, 1971-1976*.

Proportionately, the largest increase in spending occurred in the "other criminal justice" category which rose from \$453,000 to \$6,335,000 or more than 1,000 percent. "Other criminal justice" includes expenditure data on activities that are not classified elsewhere or that cut across more than one category, such as multi-purpose buildings, criminal justice planning units, and educational programs. The sharp increase in this category reflects the growth of grant programs administered by LEAA and criminal justice planning agencies at the state and local levels. Additionally, for the past two years, expenditures in the "other criminal justice" category have reflected capital outlays for the construction of multi-purpose criminal justice buildings.

County expenditures for public defense and corrections also had large rates of increase. The sharp increase in spending for public defense reflects recent court rulings on the right of indigent persons to counsel. The increase in county spending for corrections is attributable to several factors, including the construction of new jail facilities and the closing of municipal jails in favor of the joint use of county facilities.

In absolute dollars, the category showing the greatest increase was police protection (up \$80 million), followed by corrections (up \$30 million), and judicial (up \$26 million). A large part of the increase in judicial expenditures is attributable to substantial capital outlays for the construction of new court facilities.

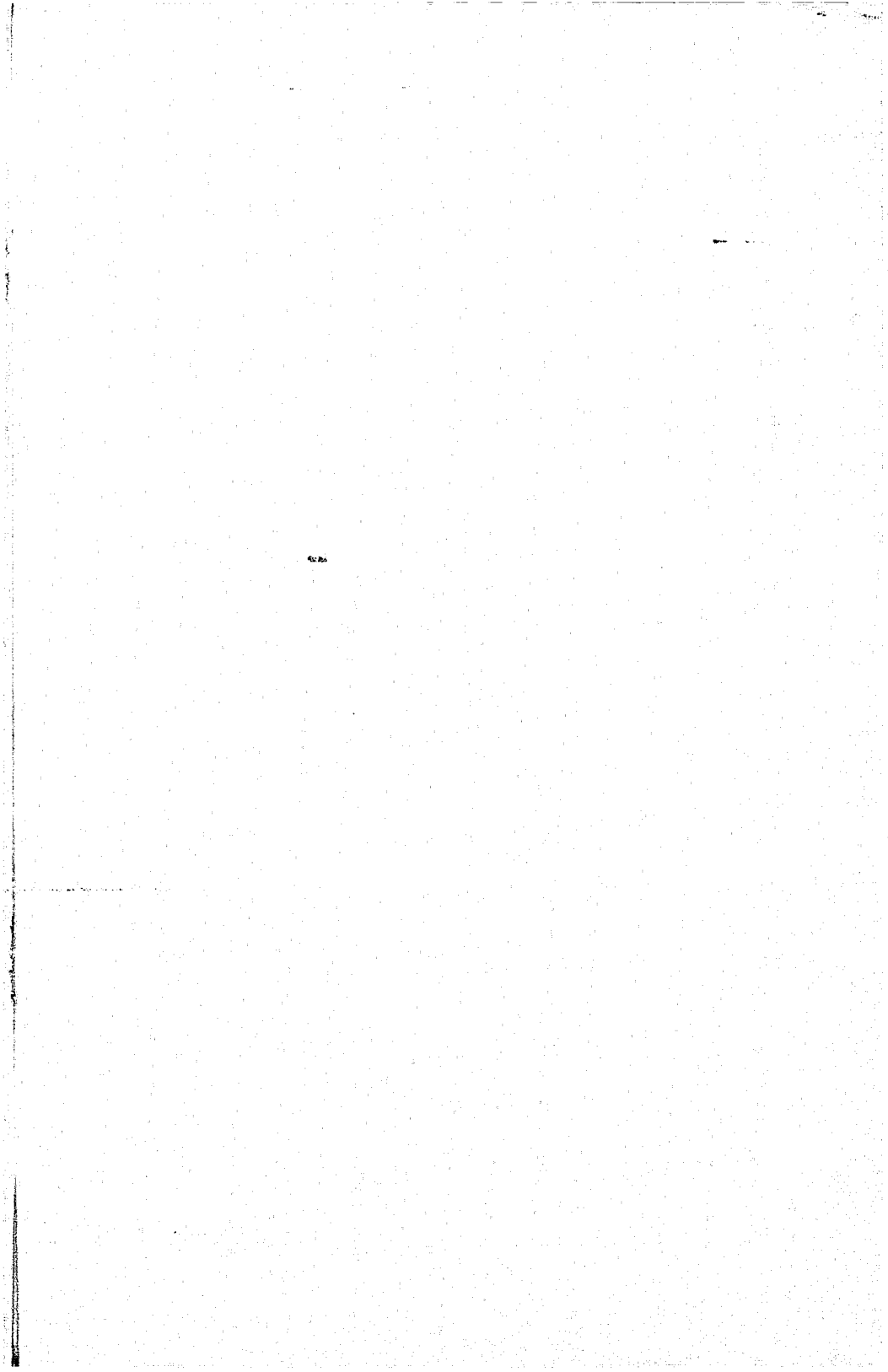


Table 3

CHANGE IN ARIZONA CRIMINAL JUSTICE EXPENDITURES FISCAL YEARS, 1971-1976
 Arizona Total
 (Expenditure amounts are given in thousands of dollars)

	<u>1971</u>	<u>1972</u>	<u>1973</u>	<u>1974</u>	<u>1975</u>	<u>1976</u>
Total Criminal Justice System						
Direct Expenditures	\$89,045	\$99,624	\$124,454	\$154,930	\$201,958	\$243,613
% Change over Previous Year	—	11.9	24.9	24.5	30.4	20.6
Police Protection						
Direct Expenditures	55,494	62,093	78,313	92,497	117,976	135,862
% Change over Previous Year	—	11.9	26.1	18.1	27.5	15.2
Judicial						
Direct Expenditures	11,959	12,489	14,207	18,590	21,188	38,222
% Change over Previous Year	—	4.4	13.8	30.9	14.0	80.4
Legal Services and Prosecution						
Direct Expenditures	4,314	5,099	6,250	7,765	10,145	12,322
% Change over Previous Year	—	18.2	22.6	24.2	30.7	21.5
Public Defense						
Direct Expenditures	730	1,031	1,375	2,337	3,535	4,669
% Change over Previous Year	—	41.2	33.4	70.0	51.3	32.1
Corrections						
Direct Expenditures	16,094	18,220	23,375	32,766	43,786	46,203
% Change over Previous Year	—	13.2	28.3	40.2	33.6	5.5
Other Criminal Justice						
Direct Expenditures	453	693	935	976	5,329	6,335
% Change over Previous Year	—	53.0	34.9	4.4	446.0	18.9

Table 3 (Cont.)

CHANGE IN ARIZONA CRIMINAL JUSTICE EXPENDITURES FISCAL YEARS, 1971-1976
 State
 (Expenditure amounts are given in thousands of dollars)

	<u>1971</u>	<u>1972</u>	<u>1973</u>	<u>1974</u>	<u>1975</u>	<u>1976</u>
Total Criminal Justice System						
Direct Expenditures	\$27,002	\$30,896	\$36,463	\$47,031	\$59,092	\$62,803
% Change over Previous Year	—	14.4	18.0	29.0	25.6	6.3
Police Protection						
Direct Expenditures	13,903	16,778	19,357	25,704	32,671	32,708
% Change over Previous Year	—	20.7	15.4	32.8	27.1	0.1
Judicial						
Direct Expenditures	1,594	1,683	2,047	2,374	3,236	3,601
% Change over Previous Year	—	5.6	21.6	16.0	36.3	11.3
Legal Services and Prosecution						
Direct Expenditures	601	773	943	1,249	1,745	2,555
% Change over Previous Year	—	28.6	22.0	32.4	39.7	46.4
Public Defense						
Direct Expenditures	-0-	-0-	-0-	-0-	-0-	-0-
% Change over Previous Year	—	—	—	—	—	—
Corrections						
Direct Expenditures	10,661	11,217	13,586	16,893	20,341	22,111
% Change over Previous Year	—	5.2	21.1	24.3	20.4	8.7
Other Criminal Justice						
Direct Expenditures	243	445	530	811	1,099	1,828
% Change over Previous Year	—	83.1	19.1	53.0	35.5	66.3

Table 3 (Cont.)

CHANGE IN ARIZONA CRIMINAL JUSTICE EXPENDITURES FISCAL YEARS, 1971-1976
 Counties
 (Expenditure amounts are given in thousands of dollars)

	<u>1971</u>	<u>1972</u>	<u>1973</u>	<u>1974</u>	<u>1975</u>	<u>1976</u>
Total Criminal Justice System						
Direct Expenditures	\$25,174	\$29,361	\$35,688	\$49,660	\$71,065	\$92,483
% Change over Previous Year	—	16.6	21.5	39.2	43.1	30.1
Police Protection						
Direct Expenditures	8,626	10,261	12,036	14,447	19,516	24,206
% Change over Previous Year	—	19.0	17.3	20.0	35.1	24.0
Judicial						
Direct Expenditures	8,835	9,028	10,010	13,558	15,485	30,757
% Change over Previous Year	—	2.2	10.9	35.4	14.2	98.6
Legal Services and Prosecution						
Direct Expenditures	2,248	2,704	3,328	4,343	5,636	6,332
% Change over Previous Year	—	20.3	23.1	30.5	29.8	12.3
Public Defense						
Direct Expenditures	730	1,031	1,286	2,131	3,247	4,561
% Change over Previous Year	—	41.2	24.7	65.7	52.4	40.5
Corrections						
Direct Expenditures	4,733	6,310	8,965	15,180	23,166	23,325
% Change over Previous Year	—	33.3	42.1	69.3	52.6	0.7
Other Criminal Justice						
Direct Expenditures	0-	27	63	0-	4,014	3,302
% Change over Previous Year	—	—	133.3	-100.0	—	-17.7

Table 3 (Cont.)

CHANGE IN ARIZONA CRIMINAL JUSTICE EXPENDITURES FISCAL YEARS, 1971-1976
Municipalities
(Expenditure amounts are given in thousands of dollars)

	<u>1971</u>	<u>1972</u>	<u>1973</u>	<u>1974</u>	<u>1975</u>	<u>1976</u>
Total Criminal Justice System						
Direct Expenditures	\$36,869	\$39,367	\$52,303	\$58,239	\$71,801	\$88,327
% Change over Previous Year	—	6.8	32.9	11.3	23.3	23.0
Police Protection						
Direct Expenditures	32,965	35,054	46,919	52,346	65,788	78,948
% Change over Previous Year	—	6.3	33.8	11.6	25.7	20.0
Judicial						
Direct Expenditures	1,530	1,778	2,151	2,658	2,467	3,864
% Change over Previous Year	—	16.2	21.0	23.6	-7.2	56.6
Legal Services and Prosecution						
Direct Expenditures	1,464	1,621	1,979	2,173	2,764	3,435
% Change over Previous Year	—	10.7	22.1	9.8	27.2	24.3
Public Defense						
Direct Expenditures	-0-	-0-	89	206	288	108
% Change over Previous Year	—	—	—	131.5	39.8	-62.5
Corrections						
Direct Expenditures	699	693	824	692	278	767
% Change over Previous Year	—	-0.9	18.9	-16.0	-59.8	175.9
Other Criminal Justice						
Direct Expenditures	211	221	342	165	215	1,205
% Change over Previous Year	—	4.7	54.8	-51.8	30.3	460.5

COUNTY ANALYSIS

Unpublished data collected by LEAA are supplemented with data from local government budgets to produce the county breakdowns in Table 4. Because different sources are used, statewide totals differ slightly from those in other tables.

The reader is cautioned against making direct comparisons among counties for several reasons. A number of local governments had large capital outlays during 1976 that inflate their reported expenditures. Large single-time capital expenditures include the following: Maricopa County Superior Court Building, Sheriff's office and jail remodeling (\$15 million); Navajo County Governmental Center (\$2.5 million); City of Tucson police headquarters addition and City Hall annex (\$2 million); Pima County sheriff's substation and jail remodeling (\$1.5 million); City of Phoenix police precinct station (\$1 million). Many other agencies had capital expenditures of less than \$1 million during FY 1976. Also, direct comparisons should be avoided because expenditures for Indian criminal justice agencies are excluded, resulting in under reporting for some counties.

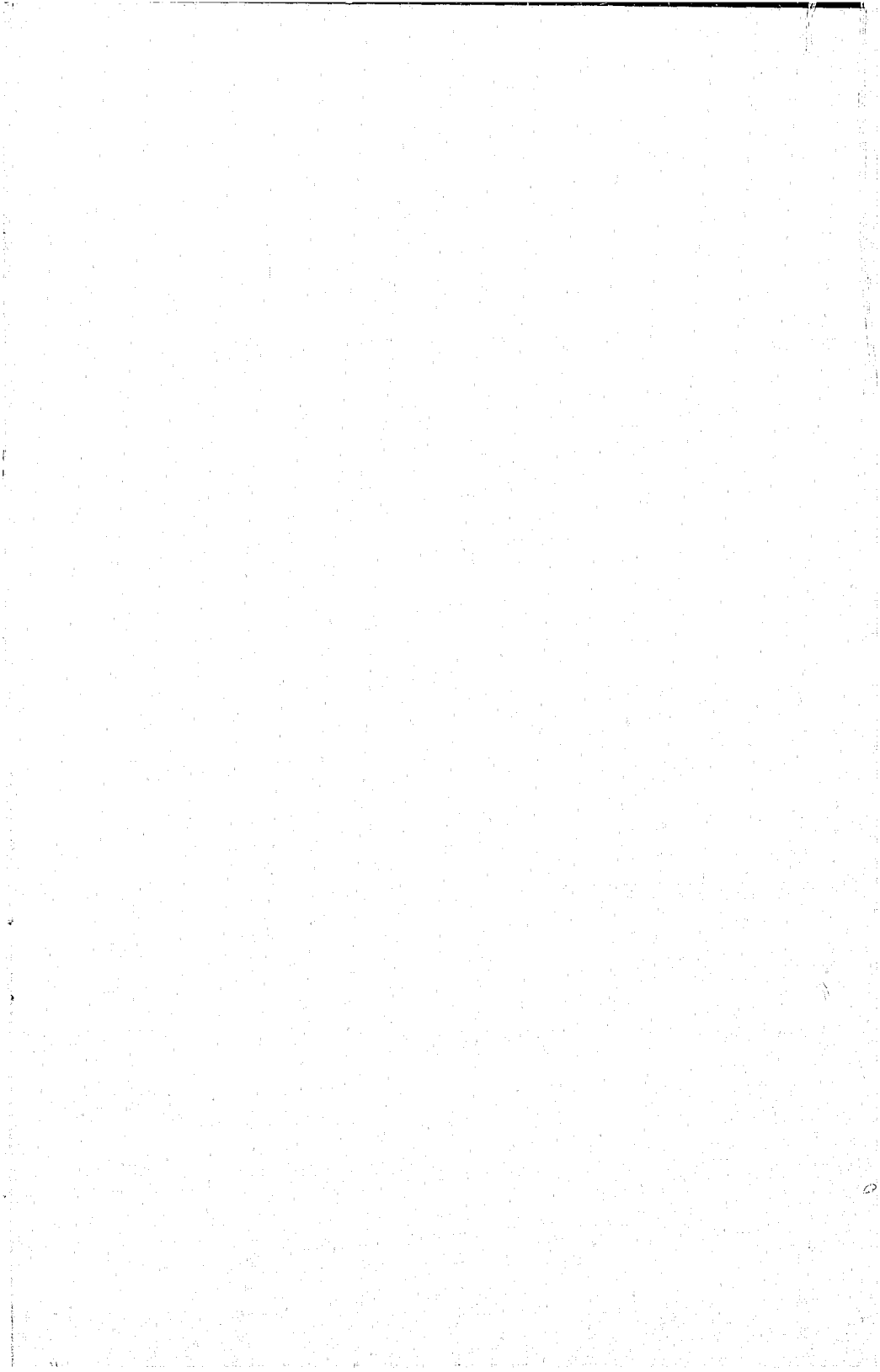


Table 4

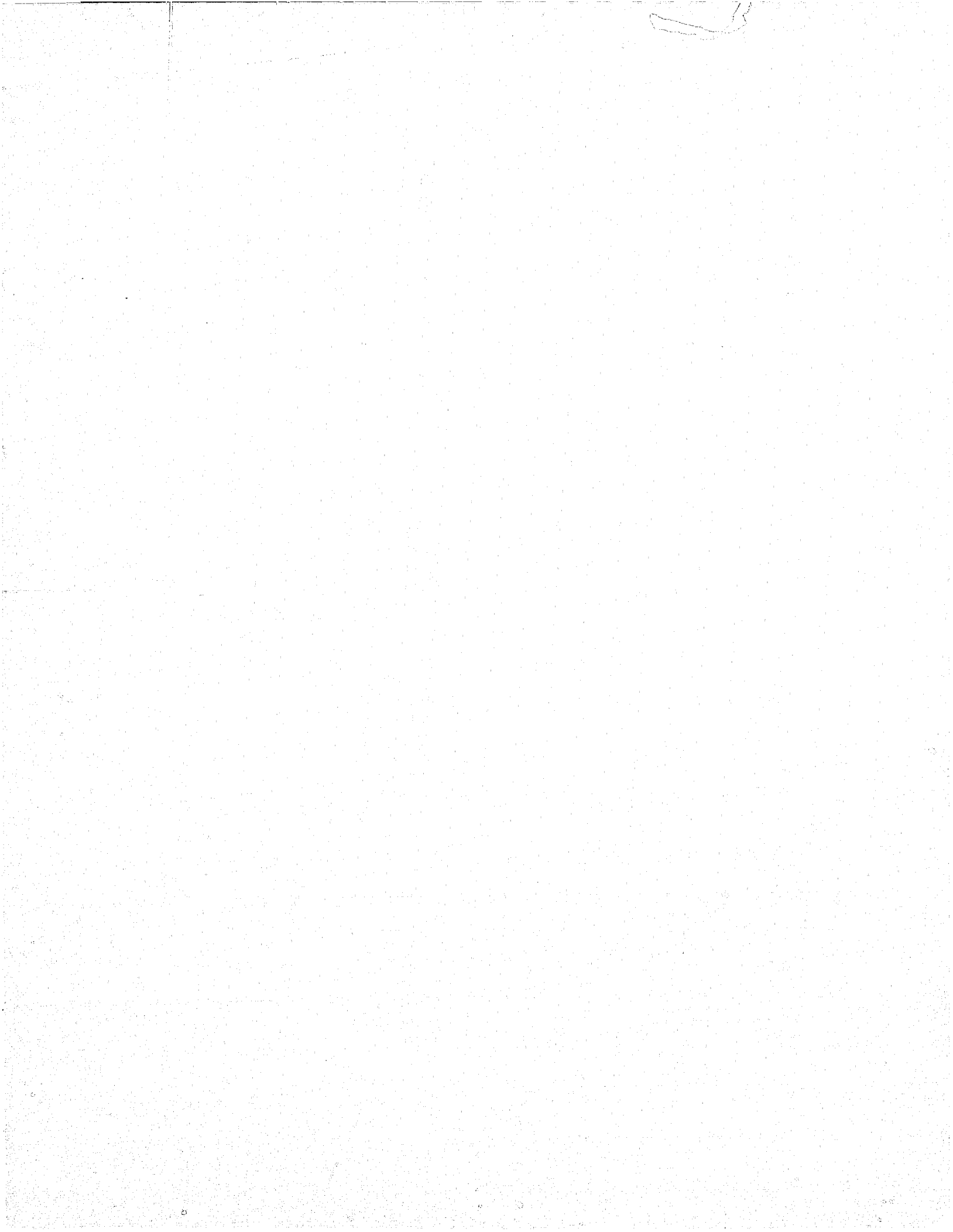
DIRECT EXPENDITURES BY COUNTY, FY 1976

	<u>Apache</u>	<u>Cochise</u>	<u>Coconino</u>	<u>Gila</u>	<u>Graham</u>	<u>Greenlee</u>	<u>Maricopa</u>
TOTAL CRIMINAL JUSTICE SYSTEM	\$507,000	\$3,914,000	\$3,879,000	\$1,617,000	\$545,000	\$492,000	\$101,342,000
County Government	433,000	1,795,000	2,360,000	992,000	354,000	361,000	40,979,000
Municipalities	74,000	2,119,000	1,519,000	625,000	191,000	131,000	60,363,000
POLICE	266,000	2,639,000	2,042,000	997,000	303,000	292,000	60,671,000
County Government	194,000	670,000	714,000	438,000	126,000	178,000	6,957,000
Municipalities	72,000	1,969,000	1,328,000	559,000	178,000	114,000	53,714,000
JUDICIAL	123,000	487,000	625,000	286,000	102,000	101,000	21,028,000
County Government	122,000	424,000	527,000	260,000	96,000	89,000	18,084,000
Municipalities	1,000	63,000	98,000	27,000	6,000	13,000	2,944,000
LEGAL SERVICES & PROSECUTION	25,000	283,000	236,000	136,000	53,000	26,000	4,791,000
County Government	25,000	244,000	155,000	98,000	46,000	22,000	2,546,000
Municipalities	-0-	39,000	81,000	39,000	7,000	4,000	2,245,000
PUBLIC DEFENSE	9,000	90,000	65,000	52,000	20,000	-0-	2,140,000
County Government	9,000	87,000	65,000	52,000	20,000	-0-	2,087,000
Municipalities	-0-	3,000	-0-	-0-	-0-	-0-	53,000
CORRECTIONS	84,000	403,000	911,000	145,000	25,000	72,000	11,603,000
County Government	84,000	371,000	898,000	145,000	25,000	72,000	11,079,000
Municipalities	-0-	33,000	13,000	-0-	-0-	-0-	524,000
OTHER CRIMINAL JUSTICE	-0-	12,000	-0-	-0-	42,000	-0-	1,109,000
County Government	-0-	-0-	-0-	-0-	42,000	-0-	226,000
Municipalities	-0-	12,000	-0-	-0-	-0-	-0-	883,000

Table 4 (Cont.)

DIRECT EXPENDITURES BY COUNTY, FY 1976

	<u>Mohave</u>	<u>Navajo</u>	<u>Pima</u>	<u>Pinal</u>	<u>Santa Cruz</u>	<u>Yavapai</u>	<u>Yuma</u>
TOTAL CRIMINAL JUSTICE SYSTEM	\$2,663,000	\$4,299,000	\$47,674,000	\$5,018,000	\$996,000	\$2,341,000	\$4,768,000
County Government	2,213,000	3,412,000	30,342,000	3,172,000	689,000	1,594,000	2,426,000
Municipalities	450,000	887,000	17,332,000	1,846,000	307,000	747,000	2,341,000
POLICE	1,514,000	1,202,000	25,835,000	3,417,000	571,000	1,389,000	3,059,000
County Government	1,100,000	383,000	10,008,000	1,677,000	295,000	729,000	966,000
Municipalities	415,000	819,000	15,827,000	1,740,000	276,000	660,000	2,094,000
JUDICIAL	488,000	1,367,000	6,946,000	992,000	158,000	482,000	653,000
County Government	467,000	1,313,000	6,506,000	946,000	140,000	469,000	582,000
Municipalities	21,000	55,000	440,000	45,000	18,000	13,000	71,000
LEGAL SERVICES & PROSECUTION	163,000	87,000	3,115,000	201,000	101,000	211,000	230,000
County Government	154,000	73,000	2,348,000	148,000	88,000	143,000	171,000
Municipalities	9,000	14,000	767,000	53,000	13,000	68,000	59,000
PUBLIC DEFENSE	70,000	26,000	1,776,000	140,000	24,000	6,000	140,000
County Government	65,000	26,000	1,739,000	139,000	24,000	-0-	137,000
Municipalities	5,000	-0-	37,000	1,000	-0-	6,000	3,000
CORRECTIONS	427,000	1,618,000	6,857,000	268,000	131,000	253,000	685,000
County Government	427,000	1,618,000	6,827,000	261,000	131,000	253,000	571,000
Municipalities	-0-	-0-	30,000	7,000	-0-	-0-	113,000
OTHER CRIMINAL JUSTICE	-0-	-0-	3,145,000	-0-	11,000	-0-	-0-
County Government	-0-	-0-	2,884,000	-0-	11,000	-0-	-0-
Municipalities	-0-	-0-	261,000	-0-	-0-	-0-	-0-



END