



INFORMATION ON DOMESTIC VIOLENCE IN WISCONSIN:  
EXTENT AND SERVICES AVAILABLE

RESEARCH BULLETIN 78-2

46989

NCJRS

MAY 2 1978

ACQUISITIONS

Wisconsin Legislative Council Staff  
April 14, 1978 RB 78-2

State Capitol  
Madison, Wisconsin

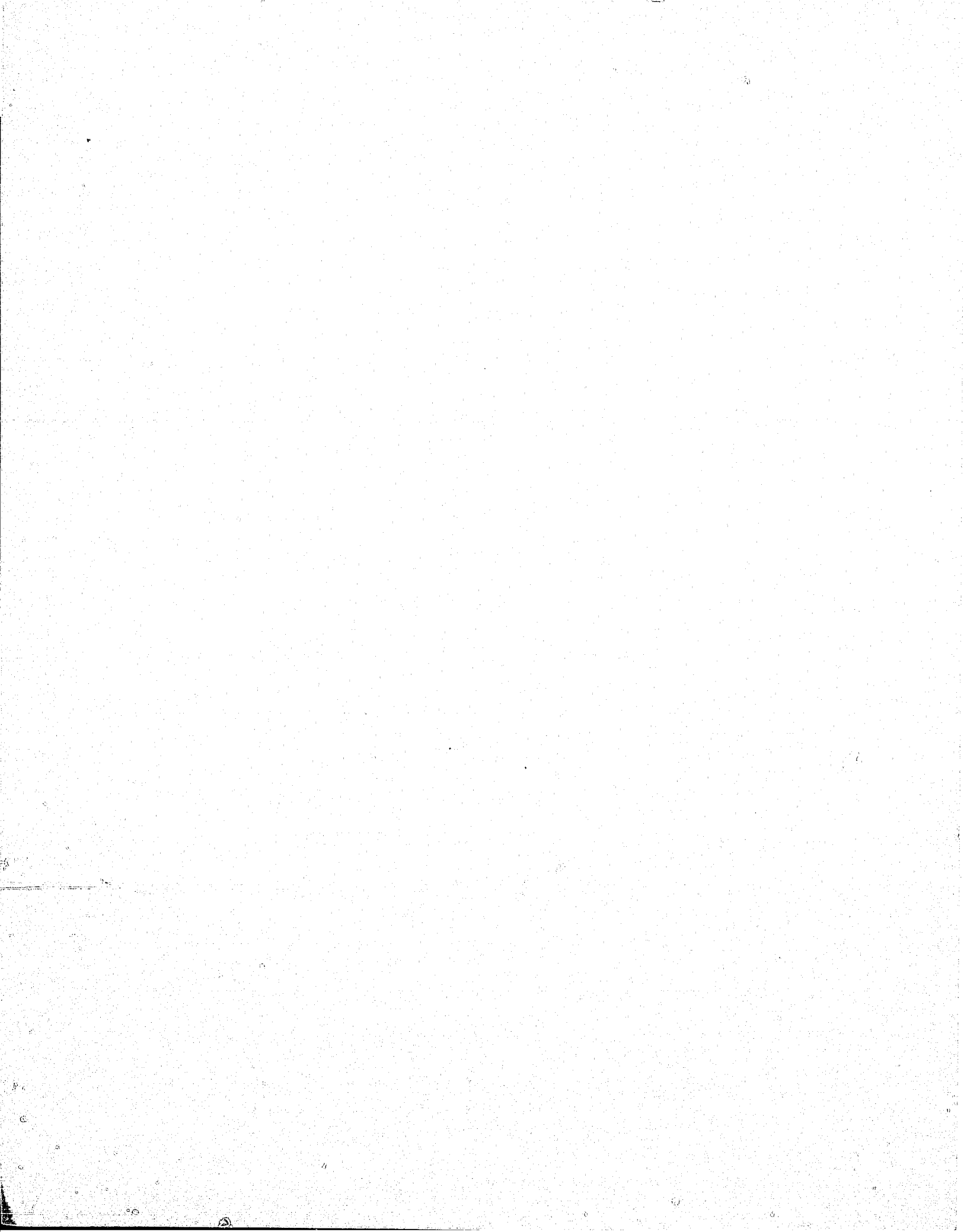
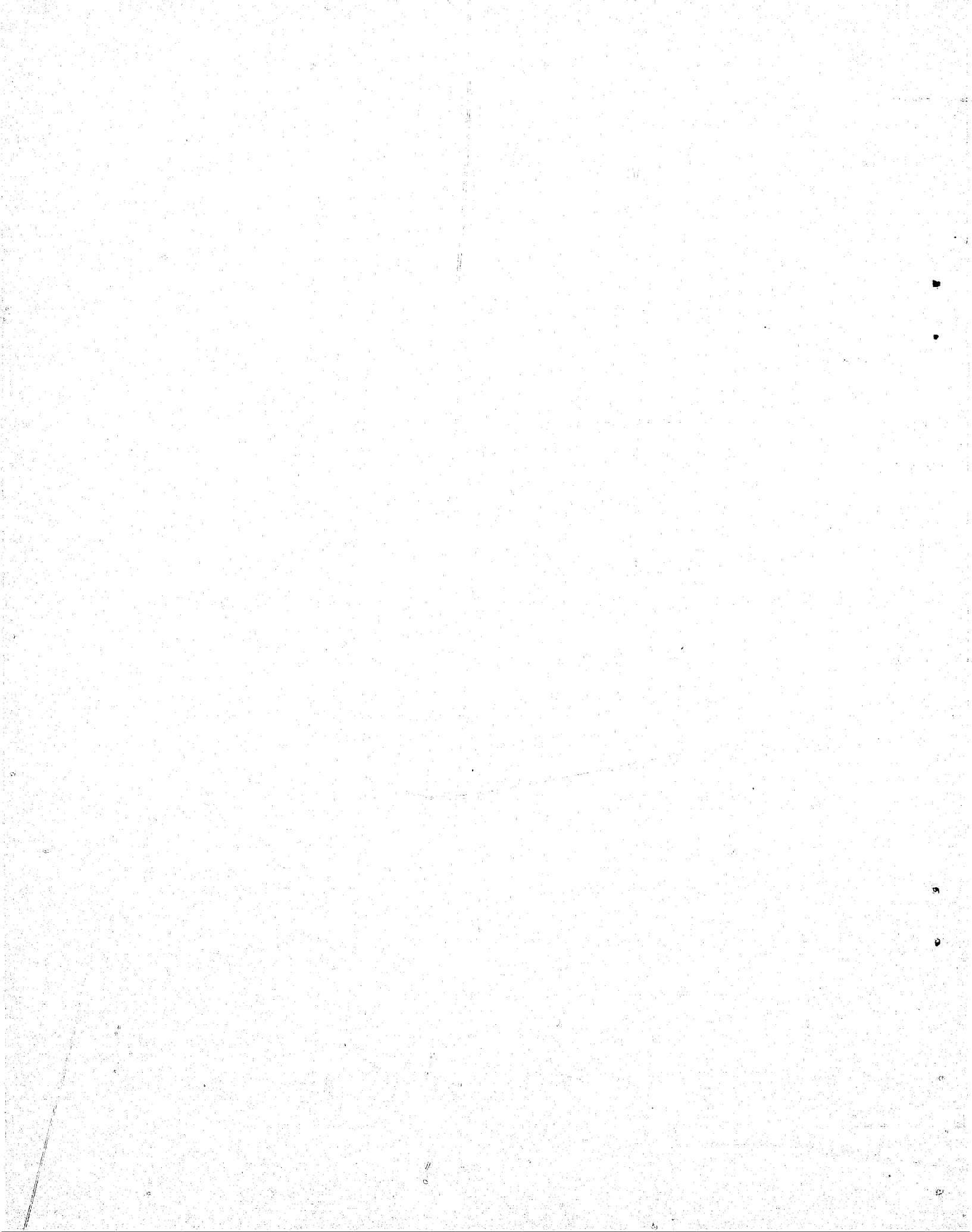


TABLE OF CONTENTS

	<u>Page</u>
INTRODUCTION . . . . .	1
PART I - LAW ENFORCEMENT AUTHORITIES . . . . .	3
PART II - DISTRICT ATTORNEYS . . . . .	15
PART III - COUNTY SOCIAL SERVICE DEPARTMENTS AND S. 51.42 BOARDS . . . . .	23
PART IV - COMMUNITY ORGANIZATIONS . . . . .	47
APPENDIX A - QUESTIONNAIRES . . . . .	55
A-1 - Questionnaire For Sheriffs And Chiefs of Of Police . . . . .	57
A-2 - Questionnaire For District Attorneys . . . . .	61
A-3 - Questionnaire For S. 51.42 Boards And County Social Services Departments . . . . .	65
A-4 - Questionnaire For Community Organizations Assisting Victims Of Domestic Violence In Wisconsin . . . . .	69
APPENDIX B - METHOD OF SELECTING CHIEFS OF POLICE TO RECEIVE QUESTIONNAIRES . . . . .	73



LISTING OF TABLES

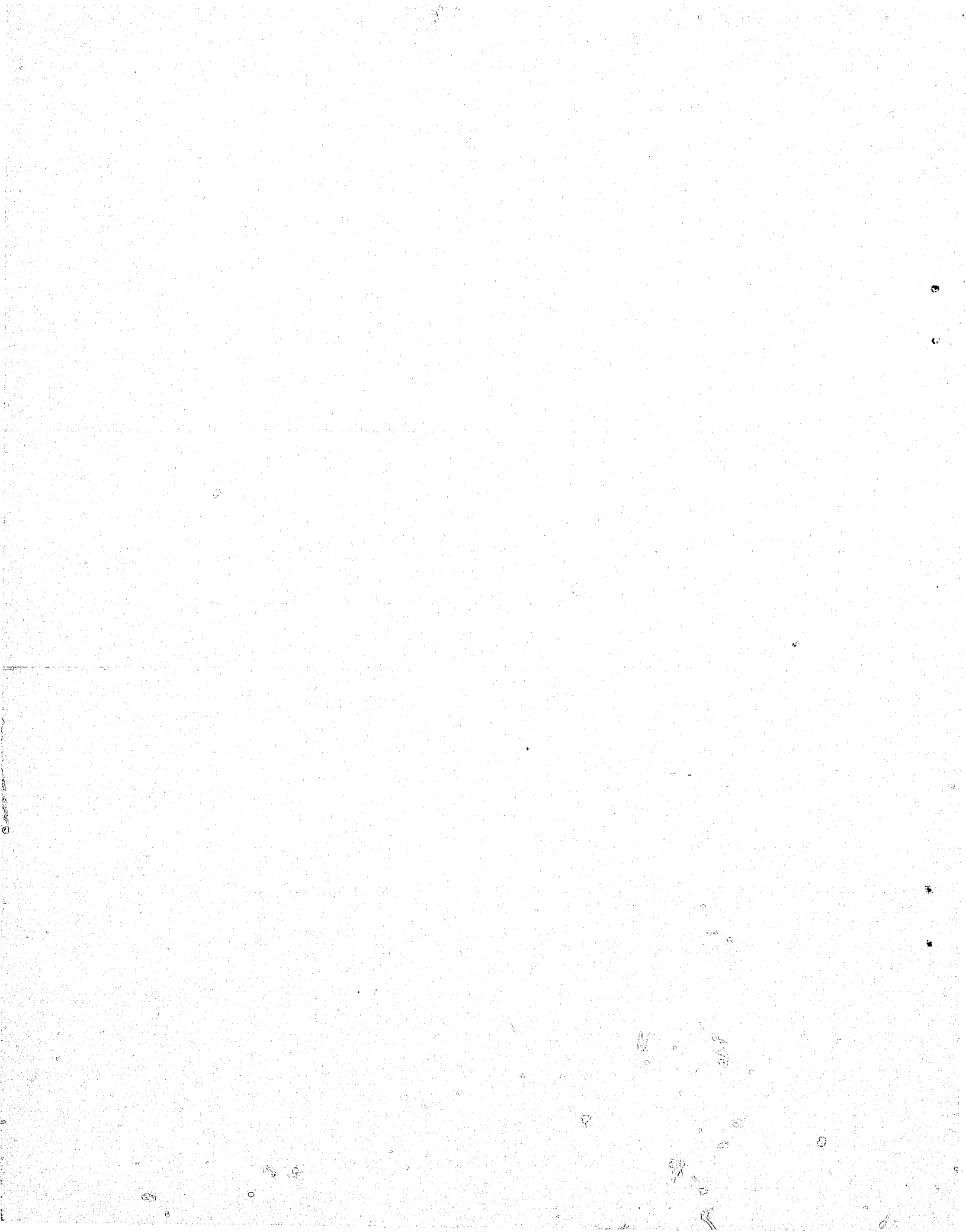
	<u>Page</u>
<u>PART I - LAW ENFORCEMENT AUTHORITIES</u> . . . . .	1
Table 1 - Responses to Questionnaires (Sheriffs) . . . . .	5
Table 2 - Responses to Questionnaires (Chiefs of Police) . . . . .	6
Table 3 - Number of Contacts (Sheriffs) . . . . .	7
Table 4 - Number of Contacts (Chiefs of Police) . . . . .	8
Table 5 - Circumstances of Domestic Violence Contacts (Sheriffs) . . . . .	8
Table 6 - Circumstances of Domestic Violence Contacts (Chiefs of Police) . . . . .	9
Table 7 - Time of Contacts (Sheriffs) . . . . .	9
Table 8 - Time of Contacts (Chiefs of Police) . . . . .	10
Table 9 - Persons Making Contact (Sheriffs) . . . . .	10
Table 10 - Persons Making Contact (Chiefs of Police) . . . . .	11
Table 11 - Age of Victims (Sheriffs) . . . . .	11
Table 12 - Age of Victims (Chiefs of Police) . . . . .	12
 <u>PART II - DISTRICT ATTORNEYS</u> . . . . .	 23
Table 13 - Responses to Questionnaires (District Attorneys) . . . . .	17
Table 14 - Number of Alleged Incidents Reported to District Attorneys . . . . .	18
Table 15 - Percentage of Incidents in Which the Victim Failed to Press Charges . . . . .	19
Table 16 - Source of Initial Referral to District Attorneys . . . . .	19

LISTING OF TABLES  
(Continued)

	<u>Page</u>
<u>PART III - COUNTY SOCIAL SERVICE DEPARTMENTS AND S.</u>	
<u>51.42 BOARDS</u> . . . . .	23
Table 17 - County Social Service Departments Responding to the Questionnaire . . . . .	25
Table 18 - S. 51.42 Boards Responding to the Questionnaire . . . . .	25
Table 19 - Services Available From County Social Service Departments . . . . .	30
Table 20 - Services Available From S. 51.42 Boards . . . . .	31
Table 21 - Contacts With County Social Service Departments . . . . .	33
Table 22 - Contacts With S. 51.42 Boards . . . . .	33
Table 23 - Source of Contacts With County Social Service Departments . . . . .	35
Table 24 - Source of Contacts With S. 51.42 Boards . . . . .	36
Table 25 - Services Provided in 1976 by County Social Service Departments . . . . .	38
Table 26 - Services Provided in 1976 by S. 51.42 Boards . . . . .	39
Table 27 - Number of Services Provided by County Social Service Departments . . . . .	40
Table 28 - Number of Services Provided by S. 51.42 Boards . . . . .	41
Table 29 - Possible New Services to be Provided by County Social Service Departments . . . . .	42
Table 30 - Possible New Services to be Provided by S. 51.42 Boards . . . . .	42
Table 31 - Suggestions for Useful New Services Made by County Social Service Departments . . . . .	43
Table 32 - Suggestions for Useful New Services Made by S. 51.42 Boards . . . . .	44
Table 33 - Suggestions for Changes in Laws Made by County Social Service Departments . . . . .	46

LISTING OF TABLES  
(Continued)

	<u>Page</u>
<u>PART IV - COMMUNITY ORGANIZATIONS</u> . . . . .	47
Table 34 - Services Available From or Planned by Community Organizations . . . . .	48
Table 35 - Services Provided in 1977 by Community Organizations . . . . .	49
Table 36 - Financial and In-Kind Resources of Community Organizations in 1977 . . . . .	51
Table 37 - Source of Contacts With Community Organizations in 1977 . . . . .	53





## RESEARCH BULLETIN 78-2\*

---

INFORMATION ON DOMESTIC VIOLENCE IN WISCONSIN:  
EXTENT AND SERVICES AVAILABLE

---

INTRODUCTION

In an attempt to obtain more information about the extent of domestic violence, questionnaires were sent to selected police chiefs in Wisconsin and to all sheriffs, district attorneys, county social service departments, s. 51.42 boards (community services boards) and to community organizations providing services to abused spouses. The questionnaires were to obtain information on whether services were provided by each of the organizations surveyed to abused spouses, the number of contacts that each organization had with victims of domestic violence, how those persons were brought into contact with the organization, the type of services provided to the victim, suggestions for new services and new legislation and identification of organizations working with victims of domestic violence. Copies of each of the questionnaires are included in Appendix A.

Since sheriffs, district attorneys and county social service departments are organized on a single-county basis, and s. 51.42 boards are organized on a single- or multi-county basis, it was decided that a uniform system of county categories would be established, based on population, for use in analyzing the results of the questionnaires. These categories are as follows:

Category 1 (1 County) [Population over 1,000,000]

Milwaukee

Category 2 (9 Counties) [Population 100,000 to 999,999]

Brown	Racine
Dane	Rock
Kenosha	Waukesha
Marathon	Winnebago
Outagamie	

---

\* This Research Bulletin was prepared by Gordon A. Anderson, Senior Staff Attorney; Richard Sweet, Staff Attorney; and Stephen Lythcott, Legal Research Assistant, Legislative Council Staff.

Category 3 (14 Counties) [Population 50,000 to 99,999]

Chippewa	Manitowoc
Dodge	Ozaukee
Eau Claire	Portage
Fond du Lac	Sheboygan
Grant	Walworth
Jefferson	Washington
La Crosse	Wood

Category 4 (43 Counties) [Population less than 50,000]

Adams	Dunn	Lincoln	Rusk
Ashland	Florence	Marinette	St. Croix
Barron	Forest	Marquette	Sauk
Bayfield	Green	Menominee	Sawyer
Buffalo	Green Lake	Monroe	Shawano
Burnett	Iowa	Oconto	Taylor
Calumet	Iron	Oneida	Trempealeau
Clark	Jackson	Pepin	Vernon
Columbia	Juneau	Pierce	Vilas
Crawford	Kewaunee	Polk	Washburn
Door	Lafayette	Price	Waupaca
Douglas	Langlade	Richland	Waushara

This Research Bulletin is divided into four PARTS:

PART I summarizes and discusses the responses of police chiefs and sheriffs to the questionnaire.

PART II summarizes and discusses the responses of district attorneys to the questionnaire.

PART III summarizes and discusses the responses of county social service departments and s. 51.42 boards to the questionnaire.

PART IV summarizes and discusses the responses of community groups dealing with domestic violence to the questionnaire.

Each Part contains a listing of those groups which responded to the survey and those groups which did not respond to the survey; a series of tables summarizing the responses to the questionnaire by the organizations surveyed; and a discussion of the results of the questionnaire.

In addition, Appendix A includes copies of the questionnaires used in conducting the surveys of police chiefs, sheriffs, county social service departments, district attorneys, s. 51.42 boards and community organizations dealing with domestic violence. Appendix B explains the method by which the chiefs of police were selected to receive the questionnaire.

PART I

LAW ENFORCEMENT AUTHORITIES

Introduction

A questionnaire was sent to all 72 sheriffs in Wisconsin to obtain information about their experiences with domestic violence and their suggestions for improvement. The same questionnaire was also sent to a selected sample of 50 chiefs of police in Wisconsin. The methodology for selecting those 50 chiefs of police is set forth in Appendix B.

This Part summarizes the responses of the sheriffs and chiefs of police and contains a series of tables that present data relating to the responses.

Following are lists of the sheriffs, by county, and chiefs of police, by municipality, to whom the questionnaire was sent. The lists also indicate those sheriffs or chiefs of police who returned the questionnaire.

Sheriffs

Category 1 (1 County) [Population over 1,000,000]

Milwaukee

Category 2 (9 Counties) [Population 100,000 to 999,999]

*Brown	*Racine
*Dane	*Rock
*Kenosha	*Waukesha
*Marathon	*Winnebago
*Outagamie	

Category 3 (14 Counties) [Population 50,000 to 99,999]

Chippewa	*Manitowoc
*Dodge	*Ozaukee
*Eau Claire	*Portage
*Fond du Lac	*Sheboygan
Grant	*Walworth
*Jefferson	*Washington
*La Crosse	*Wood

Category 4 (48 Counties) [Population less than 50,000]

*Adams	*Dunn	*Lincoln	*Rusk
*Ashland	*Florence	*Marinette	*St. Croix
Barron	Forest	*Marquette	*Sauk
*Bayfield	Green	Menominee	Sawyer
Buffalo	*Green Lake	Monroe	*Shawano
*Burnett	*Iowa	*Oconto	Taylor
Calumet	*Iron	*Oneida	*Trempealeau
*Clark	*Jackson	*Pepin	*Vernon
*Columbia	*Juneau	*Pierce	*Vilas
Crawford	*Kewaunee	Polk	*Washburn
Door	*Lafayette	*Price	*Waupaca
Douglas	*Langlade	Richland	Waushara

\* Counties whose sheriff responded to the questionnaire.

Chiefs of Police

Population Over 50,000

*Appleton	*Oshkosh
*Green Bay	Racine
*Kenosha	*Wauwatosa
*Madison	*West Allis
Milwaukee	

Population 25,000 - 50,000

*Beloit	Janesville
Brookfield	*La Crosse
*Eau Claire	Manitowoc
*Fond du Lac	*Menomonee Falls
Greenfield	*New Berlin

Population 10,000 - 24,999

*Beaver Dam	*Muskego
Chippewa Falls	*Shorewood
Franklin	*Sun Prairie
*Marinette	West Bend
*Menomonie	*Wisconsin Rapids

Population 5,000 - 9,999

*Antigo	*Oconomowoc
*Burlington	*Portage
*Fort Atkinson	*River Falls
*Fox Point	*Sturgeon Bay
*Hudson	*Weston
*Madison (Town)	

Population Under 5,000

- |            |                  |
|------------|------------------|
| Algoma     | *Neillsville     |
| *Brodhead  | Oconto Falls     |
| *Delavan   | *Richland Center |
| *Elroy     | Sturtevant       |
| *Ladysmith | *Viroqua         |
| *Medford   |                  |

\* Municipalities whose chief of police responded to the questionnaire.

The initials "N.A." in this Part indicate that the information is not available.

Tables 5 to 12 show answers in the form of average per cents. The questionnaire sent to sheriffs and chiefs of police asked for actual numbers for many answers, but allowed respondents to answer in estimated per cents if actual numbers were not available. In the preparation of this Part, numbers were converted to per cents. The figures shown in those tables are averages of the per cents within each population category. The final column in each table is the average per cent on a statewide basis for all counties and municipalities responding.

Responses to the Questionnaires

Table 1, Responses to Questionnaires (Sheriffs), and Table 2, Responses to Questionnaires (Chiefs of Police), present information relating to the responses from the sheriffs and chiefs of police. The responses of the sheriffs and chiefs of police are categorized, based on the size of the county or municipality (city, town or village), respectively. Also shown are the number of responses received, the percentage of counties or municipalities responding, the population of those counties or municipalities and the percentage of the total population of all counties or municipalities in the category represented by the responses. [Not all persons returning questionnaires answered all questions.]

TABLE 1  
RESPONSES TO QUESTIONNAIRES  
(SHERIFFS)

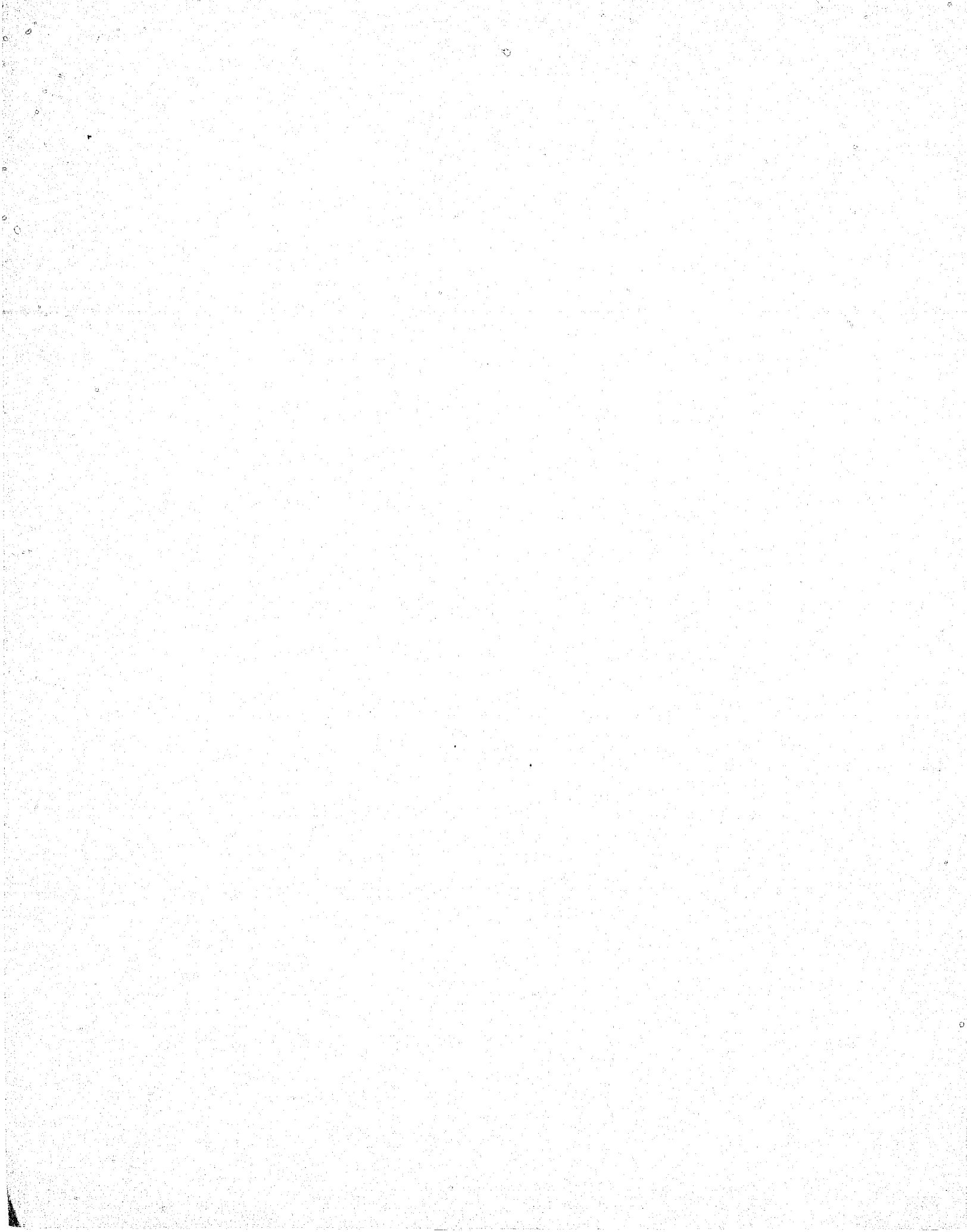
County Category	No. of Counties in Category	No. of Counties Responding	% of Counties Responding	Population of Counties in Category	Population of Counties Responding	% of Category's Population Represented by Counties Responding
1	1	0	0.0	1,004,139	0	0.0
2	9	9	100.0	1,562,073	1,562,073	100.0
3	14	12	85.7	1,003,423	832,719	83.0
4	48	33	68.8	1,053,764	724,190	68.7
Total	72	54	75.0	4,623,399	3,118,982	67.5

SOURCE: Compiled by Wisconsin Legislative Council Staff from questionnaires; population data compiled from 1977 Wisconsin Blue Book, p. 727.

TABLE 2  
 RESPONSES TO QUESTIONNAIRES  
 (CHIEFS OF POLICE)

Municipality Size	No. of Municipalities in Category	No. of Municipalities Responding	% of Municipalities Responding	Population of Municipalities in Category	Population of Municipalities Responding	% of Category's Population Represented by Municipalities Responding
50,000 and Over	9	7	77.8	1,332,525	581,617	43.6
25,000 - 49,999	10	6	60.0	385,826	234,256	60.7
10,000 - 24,999	10	7	70.0	146,547	97,490	66.5
5,000 - 9,999	11	11	100.0	90,589	90,589	100.0
Under 5,000	11	8	72.7	39,918	29,028	72.7
Total	51	39	76.5	1,995,405	1,032,980	51.8

SOURCE: Compiled by Wisconsin Legislative Council Staff from questionnaires; population data compiled from 1977 Wisconsin Blue Book, pp. 742-743.



Number of Contacts With Law Enforcement Authorities

The sheriffs and chiefs of police were asked how many contacts were made with their departments in 1976 dealing with alleged incidents of domestic violence.

The 44 sheriffs who responded stated that there were 4,370 such contacts in 1976. Those sheriffs represent counties with 56.1% of the state's population.

The 29 chiefs of police who responded stated that there were 3,298 such contacts in 1976. Those chiefs of police represent municipalities with 13.2% of the state's population.

Table 3, Number of Contacts (Sheriffs), and Table 4, Number of Contacts (Chiefs of Police), show the number of contacts with sheriffs and chiefs of police, respectively, in each population category and the ratio of contacts per 10,000 population for each population category.

TABLE 3  
NUMBER OF CONTACTS  
(SHERIFFS)

	County Category				Average
	1	2	3	4	
Number of Contacts	N.A.	895	1,242	2,233	----
Number of Contacts per 10,000 Population	N.A.	7.5	16.5	35.5	17.0

SOURCE: Compiled by Wisconsin Legislative Council Staff; population data used in preparing this table compiled from 1977 Wisconsin Blue Book, p. 727.



TABLE 4

NUMBER OF CONTACTS  
(CHIEFS OF POLICE)

	Municipality Size					Average
	50,000 and Over	25,000 - 49,999	10,000 - 24,999	5,000 - 9,999	Under 5,000	
Number of Contacts	1,150	1,394	210	336	208	----
Number of Contacts per 10,000 Population	44.1	70.5	32.5	51.6	89.3	53.9

SOURCE: Compiled by Wisconsin Legislative Council Staff; population data used in preparing this table compiled from 1977 Wisconsin Blue Book, page 742-743.

Circumstances of Contacts

Table 5, Circumstances of Domestic Violence Contacts (Sheriffs), and Table 6, Circumstances of Domestic Violence Contacts (Chiefs of Police), represent responses by sheriffs and chiefs of police, respectively, to questions about the above contacts, concerning the number of contacts resulting in an officer being sent to the scene, the number resulting in a party being transported to a physician or hospital, the number involving use of drugs or alcohol by one or both of the parties and the number involving parties with whom the department had previous contact. Answers are in average per cents and are broken down by county category and size of municipalities.

TABLE 5

CIRCUMSTANCES OF DOMESTIC VIOLENCE CONTACTS  
(SHERIFFS)

	County Category				Average
	1	2	3	4	
Officer Sent to Scene	N.A.	97.1%	95.6%	87.2%	90.5%
Transportation to Physician or Hospital	N.A.	4.6	4.5	5.5	5.2
Use of Alcohol or Drugs by One or Both Parties	N.A.	61.0	79.9	69.8	70.8
Previous Contact With Parties	N.A.	42.0	48.3	36.3	39.3

SOURCE: Compiled by Wisconsin Legislative Council Staff from questionnaires.

TABLE 6  
CIRCUMSTANCES OF DOMESTIC VIOLENCE CONTACTS  
(CHIEFS OF POLICE)

	Municipality Size					Average
	50,000 and over	25,000-49,999	10,000-24,999	5,000-9,999	Under 5,000	
Officer Sent to Scene	90.0%	98.4%	100%	95.8%	98.1%	96.9%
Transportation to Physician or Hospital	3.7	1.4	3.6	8.6	4.0	4.8
Use of Alcohol or Drugs by One or Both Parties	72.5	63.2	52.2	72.7	80.0	70.0
Previous Contact With Parties	43	40.5	41.8	54.8	43.9	46.1

SOURCE: Compiled by Wisconsin Legislative Council Staff from questionnaires.

Time of Contacts

Table 7, Time of Contacts (Sheriffs), and Table 8, Time of Contacts (Chiefs of Police), represent responses by sheriffs and chiefs of police, respectively, to two questions about how many of the contacts occurred on weekends or holidays and how many fell with each of four six-hour segments. Answers are in average per cents and are broken down by county category and size of the municipalities.

TABLE 7  
TIME OF CONTACTS  
(SHERIFFS)

	County Category				Average
	1	2	3	4	
Weekend or Holiday	N.A.	51.3%	60.0%	58.1%	57.6%
Noon - 6 p.m.	N.A.	16.8	7.5	13.4	12.6
6 p.m. - Midnight	N.A.	42.8	52.7	50.3	49.9
Midnight - 6 a.m.	N.A.	33.2	36.0	31.0	32.5
6 a.m. - Noon	N.A.	7.2	3.8	5.3	5.2

SOURCE: Compiled by Wisconsin Legislative Council Staff from questionnaires.

NOTE: All percentages have been rounded to the nearest tenth of a per cent; therefore, the totals may not equal 100.0%.

TABLE 8  
TIME OF CONTACTS  
(CHIEFS OF POLICE)

	Municipality Size					Average
	50,000 and Over	25,000 - 49,999	10,000 - 24,999	5,000 - 9,999	Under 5,000	
Weekend or Holiday	48.0%	57.5%	50.4%	51.6%	60.8%	54.2%
Noon - 6 p.m.	10.0	16.7	25.2	15.1	5.4	13.9
6 p.m. - Midnight	56.7	47.4	35.6	42.4	53.5	46.6
Midnight - 6 a.m.	18.7	30.2	31.2	33.6	34.6	31.3
6 a.m. - Noon	14.7	5.7	8.0	8.9	6.5	8.1

SOURCE: Compiled by Wisconsin Legislative Council Staff from questionnaires.

NOTE: All percentages have been rounded to the nearest tenth of a per cent; therefore, the totals may not equal 100.0%.

Persons Making Contact

Table 9, Persons Making Contact (Sheriffs), and Table 10, Persons Making Contact (Chiefs of Police), represent responses by sheriffs and chiefs of police, respectively, as to who contacted their departments regarding the alleged incidents of domestic violence. Answers are in average per cents and are broken down by county category and size of the municipalities.

TABLE 9  
PERSONS MAKING CONTACT  
(SHERIFFS)

	County Category				Average
	1	2	3	4	
One of the Parties	N.A.	76.8%	77.4%	72.7%	74.0%
A Friend or Relative of One of the Parties	N.A.	11.5	10.4	12.7	12.1
A Neighbor	N.A.	7.2	8.0	5.7	6.3
Social Service or Mental Health Personnel	N.A.	0.0	1.0	2.7	2.1
Clergy	N.A.	0.0	0.1	0.6	0.4
Medical Personnel	N.A.	1.2	0.6	0.4	0.5
Community Organization	N.A.	2.0	1.6	1.7	1.7
Others	N.A.	1.2	1.0	3.4	2.7

SOURCE: Compiled by Wisconsin Legislative Council Staff from questionnaires.

TABLE 10  
PERSONS MAKING CONTACT  
(CHIEFS OF POLICE)

	Municipality Size					Average
	50,000 and Over	25,000-49,999	10,000-24,999	5,000-9,999	Under 5,000	
One of the Parties	67.7%	92.0%	76.4%	74.5%	74.1%	76.0%
A Friend or Relative of One of the Parties	6.0	1.7	4.8	7.6	10.7	7.0
A Neighbor	0.3	4.0	9.0	7.5	5.1	5.9
Social Service or Mental Health Personnel	9.0	0.0	0.0	0.6	1.3	1.6
Clergy	2.3	0.0	0.2	0.6	0.0	0.5
Medical Personnel	6.7	0.0	0.0	0.6	1.3	1.3
Community Organization	8.0	1.0	0.0	2.9	0.0	1.9
Others	0.0	1.3	9.4	5.5	7.4	5.6

SOURCE: Compiled by Wisconsin Legislative Council Staff from questionnaires.

NOTE: All percentages have been rounded to the nearest tenth of a per cent; therefore, the totals may not equal 100.0%.

Age of Victims

Table 11, Age of Victims (Sheriffs), and Table 12, Age of Victims (Chiefs of Police), represent responses by sheriffs and chiefs of police, respectively, as to the ages of the alleged victims of domestic violence in the contacts made. Answers are in average per cents and are broken down by county category and size of the municipalities.

TABLE 11  
AGE OF VICTIMS  
(SHERIFFS)

	County Category				Average
	1	2	3	4	
Under 25	N.A.	30.0%	18.9%	17.8%	19.1%
25 - 40	N.A.	43.3	56.9	49.3	50.7
41 - 55	N.A.	19.0	19.4	25.8	23.7
Over 55	N.A.	7.7	4.7	7.3	6.7

SOURCE: Compiled by Wisconsin Legislative Council Staff from questionnaires.

NOTE: All percentages have been rounded to the nearest tenth of a per cent; therefore, the totals may not equal 100.0%.

TABLE 12  
AGE OF VICTIMS  
(CHIEFS OF POLICE)

	Municipality Size					Average
	50,000 and Over	25,000 - 49,999	10,000 - 24,999	5,000 - 9,999	Under 5,000	
Under 25	8.7%	15.1%	23.2%	30.9%	24.4%	25.0%
25 - 40	47.7	50.8	50.8	49.1	51.4	50.1
41 - 55	28.3	26.2	18.6	10.2	15.1	17.4
Over 55	15.3	7.9	7.4	2.8	8.9	7.4

SOURCE: Compiled by Wisconsin Legislative Council Staff from questionnaires.

NOTE: All percentages have been rounded to the nearest tenth of a per cent; therefore, the totals may not equal 100.0%.

### Per Cent of Time Spent Dealing With Domestic Violence

The sheriffs and chiefs of police were asked what per cent of their officers' time was spent in dealing with domestic violence.

The average for sheriffs who responded was 9.3% of their time. The lowest percentage was 5.8% in counties with populations between 100,000 and 999,999 and the highest was 10.1% in counties with populations under 5,000.

The average for chiefs of police who responded was 3.7% of their time. The lowest percentage was 1.8% in municipalities with populations between 10,000 and 24,999 and the highest was 6.8% in counties with populations 50,000 and over.

### Arrests Made

The sheriffs and chiefs of police were asked how many arrests were made by their departments in 1976 dealing with alleged incidents of domestic violence.

The 37 sheriffs who responded stated that there were 353 such arrests in 1976. Those sheriffs represent counties with 38.9% of the state's population.

The 23 chiefs of police who responded stated that there were 202 such arrests in 1976. Those chiefs of police represent municipalities with 9.0% of the state's population.

### Alternatives to Arrest

The sheriffs and chiefs of police were also asked what alternatives to arrest are used in dealing with domestic violence. The following were the three alternatives used most by both sheriffs and chiefs of police, in order of preference:

1. Referral to counseling by clergy, social service or mental health personnel, marriage counselors, drug counselors or alcohol counselors.
2. Separation of the parties for a "cooling-off" period, either voluntarily or involuntarily.
3. On-the-scene discussion of the problem involving the officer and the parties.

Other alternatives included referral to a private attorney, referral to the district attorney or bringing a friend, relative or counselor into the home.

### Training for Domestic Violence Situations

The sheriffs and chiefs of police were asked whether special training is available for their officers which would assist them in dealing with domestic violence and whether such training would be useful.

Seventeen sheriffs reported that special training is available, while 34 sheriffs reported that it is not. Sixteen chiefs of police reported that such training is available, while 15 reported that it is not. Special training is available more in large counties and municipalities than in small ones. In those areas where special training is available, it is through technical colleges, University of Wisconsin campuses, seminars presented by social service or mental health agencies and inservice programs within the department.

Thirty-five sheriffs said that special training would be useful and 10 said that it would not be useful. Twenty-five chiefs of police said that special training would be useful and six said that it would not be useful. Suggestions for training included seminars in counseling techniques, crisis intervention, psychology and communication skills. Another suggestion was a seminar telling law enforcement officers what other resources are available in communities. Several persons from the northern part of the state said that special training should be made more available in that part of the state so that those departments could utilize the training without a great loss of officers' time and travel expenses.

### Written Policies or Guidelines

The sheriffs and chiefs of police were asked if their departments have any written policies or guidelines on how to deal with domestic violence. Of the 52 sheriffs responding, six had written policies or

guidelines and 46 did not. Of the 33 chiefs of police responding, six had written policies or guidelines and 27 did not. Size of the county or municipality did not appear to be a determinant of whether the department had written policies or guidelines.

### Suggestions for Legislation

The sheriffs and chiefs of police were asked what new laws or changes in existing laws, if any, are needed to respond to domestic violence problems. The answer given most frequently was that no new laws are needed to deal with the problems. One chief of police stated "(y)ou cannot legislate solutions to problems involving human passions." One sheriff stated:

We have the laws. Our problem is getting members of the family to testify in court.

Suggestions for new laws or changes in the law included the following:

1. Allow officers to involuntarily remove the abuser from the home for a "cooling-off" period and provide civil immunity for an officer doing so.
2. Provide funds for the establishment of shelter facilities for victims.
3. Require social service departments to have staff present at night and on weekends.
4. Increase the penalties for domestic violence, especially for repeaters.
5. Revise Ch. 51, Wis. Stats., to make it easier to commit persons with alcohol problems.
6. Require counseling for abusers.
7. Require better prosecution of persons who attack or injure an officer.
8. Allow officers to enforce temporary restraining orders during divorce proceedings without having to go back to court.
9. Require victims to testify against abusers.
10. Allow officers to arrest abusers without victims signing complaints.

PART II

DISTRICT ATTORNEYS

Introduction

A questionnaire was sent to all 72 district attorneys in Wisconsin to obtain information about their experiences with domestic violence and their suggestions for changes in existing laws.

This Part summarizes the responses of the district attorneys and contains a series of tables that present data relating to those responses.

Following is a list, by category, of counties whose district attorney received the questionnaire. The list also indicates those counties whose district attorney returned the questionnaire.

District Attorneys

Category 1 (1 County) [Population over 1,000,000]

\*Milwaukee

Category 2 (9 Counties) [Population 100,000 to 999,999]

*Brown	Racine
*Dane	*Rock
*Kenosha	*Waukesha
Marathon	*Winnebago
Outagamie	

Category 3 (14 Counties) [Population 50,000 to 99,999]

*Chippewa	*Manitowoc
Dodge	*Ozaukee
*Eau Claire	Portage
*Fond du Lac	Sheboygan
*Grant	*Walworth
Jefferson	*Washington
*La Crosse	*Wood



Category 4 (48 Counties) [Population less than 50,000]

Adams	*Dunn	Lincoln	*Rusk
*Ashland	*Florence	*Marinette	*St. Croix
*Barron	*Forest	*Marquette	Sauk
Bayfield	*Green	*Menominee	Sawyer
*Buffalo	Green Lake	*Monroe	*Shawano
*Burnett	*Iowa	Oconto	Taylor
*Calumet	Iron	*Oneida	*Trempealeau
*Clark	Jackson	Pepin	Vernon
*Columbia	Juneau	*Pierce	*Vilas
*Crawford	*Kewaunee	Polk	*Washburn
Door	Lafayette	*Price	*Waupaca
*Douglas	*Langlade	*Richland	*Waushara

\* Counties whose district attorney responded to the questionnaire.

The initials "N.A." in this Part indicate that the information is not available.

Tables 14 to 16 show answers in average per cents. The questionnaire sent to district attorneys asked for actual numbers for many answers, but allowed respondents to provide estimates in per cents if actual numbers were not available. In the preparation of this Part, numbers were converted to per cents. The figures shown in tables in this Part are averages of the per cents for the counties within each population category. The final column in each table is the average per cent, on a statewide basis, for all counties responding.

Responses to the Questionnaires

Table 13, Responses to Questionnaires (District Attorneys), shows how the responses are categorized based on the size of the county. Also shown is the number of responses received and the population of those counties as a per cent of the population of all counties in the category. [Not all persons returning questionnaires answered all questions.]



TABLE 13  
 RESPONSES TO QUESTIONNAIRES  
 (DISTRICT ATTORNEYS)

County Category	No. of Counties in Category	No. of Counties Responding	% of Counties Responding	Population of Counties in Category	Population of Counties Responding	% of Category's Population Represented by Counties Responding
1	1	1	100.0	1,004,139	1,004,139	100.0
2	9	6	66.7	1,562,073	1,149,912	73.6
3	14	10	71.4	1,003,423	714,055	71.2
4	48	32	66.7	1,053,764	742,565	70.5
Total	72	49	68.1	4,623,399	3,610,661	78.1

SOURCE: Compiled by Wisconsin Legislative Council Staff from questionnaires; population data compiled from 1977 Wisconsin Blue Book, p. 727.

Number of Alleged Incidents Brought to the District Attorney's Attention

The district attorneys were asked how many alleged incidents of domestic violence were brought to the attention of their offices in 1976.

The 32 district attorneys who responded stated that there were 3,066 such alleged incidents in 1976. Those district attorneys represent counties with 54.6% of the state's population. Of the 3,066 alleged incidents, 1,590 were reported by Milwaukee County.

Table 14, Number of Alleged Incidents Reported to District Attorneys, shows the number of alleged incidents in each county category and contains a ratio of reported incidents per 10,000 population in each county category and the average for the four categories.

TABLE 14  
NUMBER OF ALLEGED INCIDENTS  
REPORTED TO DISTRICT ATTORNEYS

	County Category				Average
	1	2	3	4	
Number of Alleged Incidents	1,590	431	347	698	3,066 (total)
Number of Alleged Incidents per 10,000 population	15.8	7.6	6.8	15.5	12.1

SOURCE: Compiled by Wisconsin Legislative Council Staff from questionnaires; population data compiled from 1977 Wisconsin Blue Book, p. 727.

Percentage of Incidents in Which the Victim Failed to Press Charges

Table 15, Percentage of Incidents in Which the Victim Failed to Press Charges, contains the responses by district attorneys to the question of how many of the alleged incidents did not result in prosecution because of failure of the victim to press charges. Answers are in average per cents and are broken down by the size of the counties.

TABLE 15  
 PERCENTAGE OF INCIDENTS IN WHICH THE  
 VICTIM FAILED TO PRESS CHARGES

	County Category				Average
	1	2	3	4	
Victim Failed to Press Charges	N.A.	67.5%	53.0%	45.9%	49.8%

SOURCE: Compiled by Wisconsin Legislative Council Staff from questionnaires.

Sources of Initial Referrals

Table 16, Source of Initial Referral to District Attorneys, represents responses by district attorneys to the question of how many of the alleged incidents were brought to their attention by each of several enumerated sources. Answers are in average per cents and are broken down by the sizes of the counties.

TABLE 16  
 SOURCE OF INITIAL REFERRAL TO DISTRICT ATTORNEYS

	County Category				Average
	1	2	3	4	
Arrest of Defendant	18.0%	41.2%	32.7%	17.2%	23.3%
Victim Complaint	41.0	20.0	21.5	40.4	34.0
Referral From Law Enforcement Personnel	38.0	35.8	43.8	35.6	37.6
Referral From Social Service or Mental Health Personnel	0.0	2.8	1.9	4.6	3.7
Referral From Community Organization	1.5	0.2	0.0	2.0	1.4
Other	1.5	0.0	0.0	0.0	0.1

SOURCE: Compiled by Wisconsin Legislative Council Staff from questionnaires.

NOTE: All percentages have been rounded to the nearest tenth of a per cent; therefore, the totals may not equal 100.0%.

### Per Cent of Time Spent Dealing With Domestic Violence

The district attorneys were asked what per cent of their office's time was spent in dealing with domestic violence. The average was 8.9% of their time. The lowest percentage of time was 6.4% in counties with populations between 50,000 and 99,999 and the highest was 18.8% in counties with populations between 100,000 and 999,999.

### Complaints Filed and Convictions Obtained

The district attorneys were asked how many criminal complaints were filed in their counties in 1976 for alleged incidents of domestic violence. The 30 district attorneys who responded stated that there were 1,119 such complaints filed in 1976. These district attorneys represent counties with 51.9% of the state's population.

The district attorneys were also asked how many convictions were obtained in 1976 for crimes where domestic violence was involved. The 26 district attorneys who responded represented 43.6% of the state's population. There were 607 convictions obtained in those counties as follows: six aggravated batteries, 212 batteries, 62 sexual assaults or rapes, 293 disorderly conducts and 29 others.

### Written Policies or Guidelines

The district attorneys were asked if their offices have any written policies or guidelines on how to deal with domestic violence. Forty of the 42 responding said that they had no such policies or guidelines; two had such policies or guidelines. The two district attorneys who had such policies or guidelines were in counties with populations under 50,000.

### Alternatives to Prosecution or Incarceration

The district attorneys were asked what alternatives to prosecution are used in dealing with domestic violence. The following were the three alternatives used most by district attorneys, in order of preference:

1. Referral to counseling by clergy, social service or mental health personnel, marriage counselors, drug counselors or alcohol counselors.
2. Conferences involving the district attorney and the parties.
3. A statement, either written or oral, to the abuser that any abuse in the future will result in prosecution.

Other alternatives to prosecution included referral to family court, deferred prosecution for first offenders (whereby charges are dropped upon successful completion of counseling or some other specified goal) and referral to private attorneys to commence divorce proceedings.

The district attorneys were also asked as to what alternatives to fine or imprisonment are requested by the district attorney of the court when a person is convicted of a crime involving domestic violence. A great many district attorneys answered that one alternative sought is probation with a condition that the convicted person undergo counseling. Very few other responses were received on alternatives to fine or imprisonment, but among those included were probation with a condition that the convicted person not contact the abused person, probation with a condition of nonviolence and probation with confiscation of weapons.

#### Suggestions for Legislation

The district attorneys were asked what new laws or changes in existing laws, if any, are needed to respond to domestic violence problems. The answer given most often was that no new laws are needed to deal with the problems. One response which sums up this point of view is as follows:

No new laws are needed; possibly what is needed is a better public relations job by police agencies and prosecutors as to the existing laws both for the protection of abused children and battered adults and the alternatives which can be pursued to correct domestic situations without incurring criminal penalties. It is not a legislative problem, it is a procedural problem with the laws now existing.

Suggestions for new laws or changes in the law included the following:

1. Provide funds for the establishment of shelter facilities for victims.
2. Make "domestic violence" a specific crime.
3. Create a battery offense between simple battery and aggravated battery where the distinguishing criterion is the use of a weapon.
4. Increase the penalties for domestic violence repeaters.
5. Provide the victim with the economic means to leave the home.
6. Provide better protection for law enforcement officers entering a home.

7. Revise Ch. 51, Wis. Stats., to make it easier to commit persons with mental health, alcohol or drug problems.
8. Provide more funds for supportive groups for victims.
9. Require law enforcement officers to receive crisis intervention training during basic training and periodically thereafter.
10. Require counseling for abusers.
11. Permit family court commissioners to issue restraining orders.
12. Make threats with weapons a crime.
13. Make it harder to get married and easier to get divorced.
14. Have one agency in a county where all domestic violence problems can be referred.



PART III  
COUNTY SOCIAL SERVICE DEPARTMENTS  
AND S. 51.42 BOARDS

This Part summarizes and discusses the responses of the county social service departments and s. 51.42 boards who responded to the questionnaire. A series of tables summarizing these responses is also contained in this Part.

Introduction

Sections 46.21 and 46.22, Wis. Stats., mandate that counties create boards of public welfare. County boards of public welfare are either elected by the county board of supervisors or appointed by the chairperson of the county board of supervisors. County departments of public welfare are given certain functions, duties and powers relating to Aid to Families With Dependent Children (AFDC), administering certain other programs and providing social services for persons receiving certain financial aids. In addition, certain other optional powers and duties are provided under the statutes, including administration of General Relief, making certain investigations and performing duties and functions for juvenile court, furnishing other services than the granting of financial or material aid, administering child welfare services and others.

With the exception of Milwaukee County, the departments of public welfare have come to be known as county social service departments.

Community service boards, commonly known as s. 51.42 boards, are created on a single- or multi-county basis to develop services relating to prevention or treatment of mental disabilities, including mental illness, mental retardation, alcoholism, drug abuse and related services. The powers and duties of such boards, as specified under s. 51.42 (5), Wis. Stats., include:

- (a) Collaborative and cooperative services with public health and other groups for programs or prevention;
- (b) Comprehensive diagnostic and evaluation services;
- (c) Inpatient and outpatient care and treatment, residential facilities, partial hospitalization, precare, after care, emergency care, rehabilitation and habilitation services and supportive transitional services;
- (d) Professional consultation;

- (e) Public informational educational services;
- (f) Related research and staff inservice training;
- (g) The program needs of persons suffering from mental disabilities, including but not limited to mental illness, mental retardation, alcoholism or drug abuse; and
- (h) Continuous planning, development and evaluation of programs and services for all population groups....

There are currently 54 comprehensive community boards in Wisconsin, nine of which serve more than one county and 45 of which serve single counties.

#### Responses to the Questionnaire

Table 17, County Social Service Departments Responding to the Questionnaire, and Table 18, S. 51.42 Boards Responding to the Questionnaire, present information relating to the number of counties in each category, the number and percentage of counties that returned the questionnaire, the total population of counties in each category, the population of the counties that returned the questionnaire and the percentage of the population of each category represented by the responses to the questionnaire.

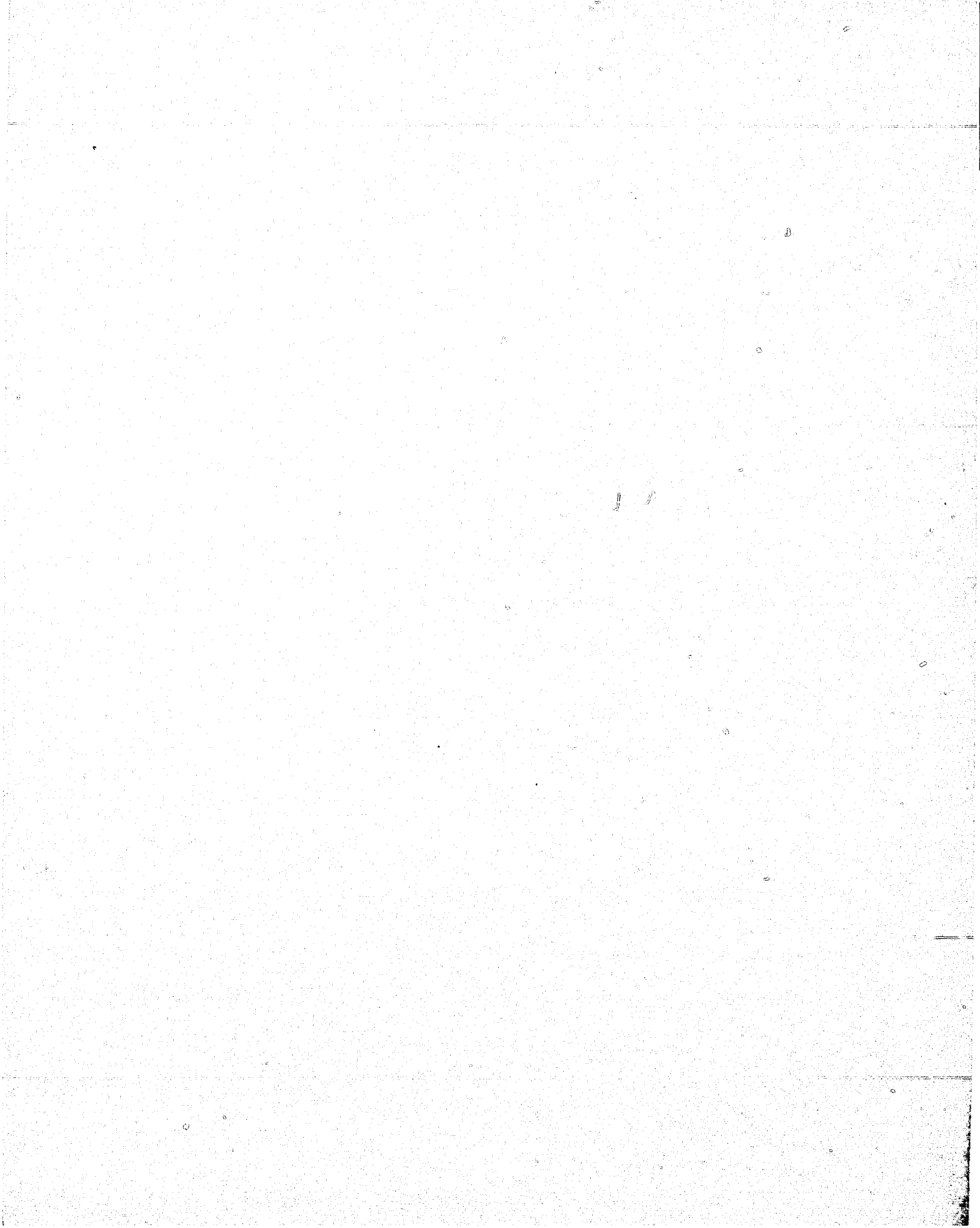


TABLE 17  
 COUNTY SOCIAL SERVICE DEPARTMENTS  
 RESPONDING TO THE QUESTIONNAIRE

County Category	No. of Counties in Category	No. of Counties Responding	% of Counties Responding	Population of Counties in Category	Population of Counties Responding	% of Population in Category
1	1	1	100.0	1,004,139	1,004,139	100.0
2	9	7	77.8	1,562,073	979,674	62.7
3	14	13	92.9	1,003,423	917,540	91.4
4	48	36	75.0	1,053,764	781,093	74.1
Total	72	57	79.2	4,623,399	3,682,446	79.7

SOURCE: Compiled by Wisconsin Legislative Council Staff from questionnaires; population data compiled from 1977 Wisconsin Blue Book, page 727.

-25-

TABLE 18  
 S. 51.42 BOARDS RESPONDING  
 TO THE QUESTIONNAIRE

County Category	No. of Counties in Category	No. of Counties Responding	% of Counties Responding	Population of Counties in Category	Population of Counties Responding	% of Population in Category
1	1	1	100.0	1,004,139	1,004,139	100.0
2	9	6	66.7	1,562,073	1,127,195	72.2
3	14	10	71.4	1,003,423	716,399	71.4
4	48	38	79.2	1,053,764	785,681	74.6
Totals	72	55	76.4	4,623,399	3,633,414	78.6

SOURCE: Compiled by Wisconsin Legislative Council Staff from questionnaires.

Table 17 shows that 57 of Wisconsin's 72 county social service departments or 79.2% of the departments representing 79.7% of the state's population responded to the questionnaire. Table 18 shows that 55 of the 72 counties included in s. 51.42 boards or 76.4% of the counties representing 78.6% of the state's population responded to the questionnaire. [The response to the questionnaire on the part of the s. 51.42 boards included 43 boards representing 55 counties. Eleven boards representing 17 counties did not return the questionnaire.]

Following are lists of the county social service departments and s. 51.42 boards who returned the questionnaire and those who did not.

County Social Service Departments

Category 1 (1 County) [Population over 1,000,000]

\*Milwaukee

Category 2 (9 Counties) [Population 100,000 to 999,999]

\*Brown

Dane

\*Kenosha

\*Marathon

\*Outagamie

\*Racine

\*Rock

Waukesha

\*Winnebago

Category 3 (14 Counties) [Population 50,000 to 99,999]

\*Chippewa

\*Dodge

\*Eau Claire

\*Fond du Lac

\*Grant

\*Jefferson

La Crosse

\*Manitowoc

\*Ozaukee

\*Portage

\*Sheboygan

\*Walworth

\*Washington

\*Wood

Category 4 (48 Counties) [Population less than 50,000]

*Adams	Dunn	*Lincoln	Rusk
*Ashland	*Florence	*Marinette	St. Croix
*Barron	*Forest	Marquette	Sauk
*Bayfield	Green	*Menominee	Sawyer
Buffalo	*Green Lake	*Monroe	*Shawano
*Burnett	*Iowa	*Oconto	*Taylor
*Calumet	*Iron	*Oneida	*Trempealeau
Clark	Jackson	*Pepin	*Vernon
*Columbia	Juneau	*Pierce	*Vilas
Crawford	*Kewaunee	*Polk	*Washburn
*Door	*Lafayette	*Price	*Waupaca
*Douglas	*Langlade	*Richland	*Waushara

\* Counties whose social service department responded to the questionnaire.

S. 51.42 Boards

Category 1 (1 County) [Population over 1,000,000]

\*Milwaukee

Category 2 (9 Counties) [Population 100,000 to 999,999]

Brown	*Racine
*Dane	Rock
Kenosha	*Waukesha
*Marathon (1)	*Winnebago
*Outagamie	

Category 3 (14 Counties) [Population 50,000 to 99,999]

*Chippewa	Manitowoc
*Dodge	*Ozaukee
*Eau Claire	Portage
*Fond du Lac	Sheboygan
Grant	*Walworth
*Jefferson	*Washington
*La Crosse	*Wood

Category 4 (48 Counties) [Population less than 50,000]

*Adams	*Dunn-Pepin-Pierce	*Menominee
*Ashland-Iron-Price	*Florence	*Monroe
Barron	*Forest-Oneida-Vilas	*Oconto
*Bayfield	*Green	Polk
*Buffalo-Jackson-	*Green Lake	Rusk
Trempealeau	Iowa	*St. Croix
Burnett	*Juneau-Richland-Sauk	*Sawyer
*Calumet	*Kewaunee	Shawano
*Clark	*Lafayette	*Taylor
*Columbia	*Langlade-Lincoln (1)	Vernon
*Crawford	*Marinette	Washburn
*Door	*Marquette	Waupaca
Douglas		*Waushara

(1) Marathon, Langlade and Lincoln Counties are served by one s. 51.42 board. This is the only case where a multi-county s. 51.42 board serves counties that belong to different categories.

\* Counties whose s. 51.42 board responded to the questionnaire.

### Availability of Services

The first question asked of the county social service departments and s. 51.42 boards was whether they provided services for victims of domestic violence.

Fifty-six of the 57 counties responding to the county social service department questionnaire said that they provided services to victims of domestic violence. Of the 55 counties represented in the response to the s. 51.42 board questionnaire, 53 said that they provided such services. Two counties, Milwaukee and Menominee Counties, indicated that they did not offer services to victims of domestic violence.

However, only 45 of the 57 county social service departments responding to the questionnaire provided actual numbers or estimates of the number of persons served, three counties indicated that they had not actually provided any services to victims of domestic violence and nine counties were unable to arrive at any estimate of the number of persons receiving services. Of the 55 counties represented in the s. 51.42 board survey, 32 were able to provide estimates of the number of persons served, four said they had not actually served anyone and 19 were unable to provide the actual numbers or estimates of the number of persons served.

Services Available

The second question asked the county social service departments and s. 51.42 boards which of 13 specified types of services were provided by that organization. Table 19, Services Available From County Social Service Departments, and Table 20, Services Available From S. 51.42 Boards, list for each of the four county categories the number of counties within that category in which the specified service is available.



TABLE 19  
SERVICES AVAILABLE FROM COUNTY  
SOCIAL SERVICE DEPARTMENTS

Service	Co. Category 1 (1 County)		Co. Category 2 (7 Counties)		Co. Category 3 (13 Counties)		Co. Category 4 (36 Counties)		Total (57 Counties)	
	No.	%	No.	%	No.	%	No.	%	No.	%
Shelter Care	0	0	0	0.0	0	0.0	3	8.3	3	5.3
Private Home Shelter	1	100	1	14.3	2	15.4	9	25.0	13	22.8
Crisis Counseling-Victims	1	100	7	100.0	13	100.0	32	88.9	53	93.0
Long-Term Counseling-Victims	1	100	6	85.7	9	69.2	19	52.8	35	61.4
Counseling-Abusers	1	100	6	85.7	10	76.9	20	55.6	37	64.9
Telephone Hot Line	0	0	1	14.3	1	7.7	6	16.7	8	14.0
Public Education	0	0	2	28.6	4	30.7	9	25.0	15	26.3
Referrals to Law Enforcement	1	100	5	71.4	12	93.3	28	77.8	46	80.7
Referrals to Community Org.	1	100	7	100.0	6	46.2	13	36.1	27	47.4
Referrals to Medical Personnel	1	100	6	85.7	10	76.9	30	83.3	47	82.5
Referrals to District Attorney	1	100	6	85.7	11	84.6	34	94.4	52	91.2
Referrals to Private Attorney	1	100	6	85.7	8	61.5	24	66.7	39	68.4
Assistance to Police/Prosecutor	1	100	6	85.7	10	76.9	20	55.6	36	63.2
Other	1	100	2	28.6	1	7.7	4	11.1	8	14.0

SOURCE: Compiled by Wisconsin Legislative Council Staff from questionnaires.

NOTE: The percentage columns give the percentage of the counties within each category which provide the services listed in the first column. Since the counties provide multiple services, the columns do not total 100.0%.

TABLE 20

## SERVICES AVAILABLE FROM S. 51.42 BOARDS

Service	Co. Category 1 (1 County)		Co. Category 2 (6 Counties)		Co. Category 3 (10 Counties)		Co. Category 4 (38 Counties)		Total (55 Counties)	
	No.	%	No.	%	No.	%	No.	%	No.	%
Shelter Care	0	0	0	0.0	0	0	2	5.3	2	3.6
Private Home Shelter	0	0	0	0.0	0	0	7	18.4	7	18.4
Crisis Counseling-Victims	0	0	5	83.3	10	100	36	94.7	51	92.7
Long-Term Counseling-Victims	0	0	3	50.0	10	100	32	84.2	45	81.8
Counseling-Abusers	0	0	4	66.7	10	100	35	92.1	49	89.1
Telephone Hot Line	0	0	3	50.6	10	100	15	39.5	28	50.9
Public Education	0	0	1	16.7	6	60	17	44.7	24	43.6
Referrals to Law Enforcement	0	0	3	50.0	9	90	27	71.1	39	70.9
Referrals to Community Org.	0	0	3	50.0	6	60	17	44.7	26	47.3
Referrals to Medical Personnel	0	0	4	66.7	9	90	28	73.7	41	74.5
Referrals to District Attorney	0	0	4	66.7	9	90	26	68.4	39	70.9
Referrals to Private Attorney	0	0	3	50.0	7	70	16	42.1	26	47.3
Assistance to Police/Prosecutor	0	0	3	50.0	7	70	29	76.3	29	52.7
Other	0	0	0	0.0	1	10	1	2.6	2	3.6

SOURCE: Compiled by Wisconsin Legislative Council Staff from questionnaires.

NOTE: The percentage columns give the percentage of the counties within each category which provide the services listed in the first column. Since the counties provide multiple services, the columns do not total 100.0%.

Table 19 shows that crisis counseling of victims and referrals to district attorneys are the services which are most commonly available from county social service departments. These services are available, respectively, in 93% and 91.2% of the counties. Referrals to law enforcement authorities and referrals to medical authorities are available in more than 80% of the counties. Of the 13 major services listed, the least commonly provided is shelter care provided by the county social service department. Even when private home shelters are included, shelter is available in only 16 of the 57 counties (28.1%). In addition, telephone hot lines and public education are also provided in only a small percentage of the counties.

Crisis counseling of victims is also the most commonly available service from s. 51.42 boards (92.7%) but referral to the district attorney ranks only fifth (70.9%) in the frequency of use. Counseling of abusers and long-term counseling of victims are both provided in over 80% of the cases (81.8% and 89.1% of the cases, respectively). In county social service departments, those services were available respectively in 61.4% and 64.9% of the counties.

As is the case with county social service departments, shelter care provided directly by the s. 51.42 board is not generally available, since it is provided in only 3.6% of the counties. If private shelter homes are included, some form of shelter care is available in only nine of 55 counties (22%).

Telephone hot lines are available in 28 (50.9%) of the counties, and public education is performed in 24 of the counties (43.6%) in s. 51.42 boards. These are much higher percentages than the 14% of the county social service departments which have telephone hot lines and 26.3% which perform public education functions.

#### Contacts With Victims of Domestic Violence

The third question asked the department or board to provide the number, actual or estimated, of contacts in 1976 which involved domestic violence.

Table 21, Contacts With County Social Service Departments, and Table 22, Contacts With S. 51.42 Boards, show the total number of contacts with county social service departments and s. 51.42 boards reported by all counties within each of the categories and the total number of contacts for all county social service departments and s. 51.42 boards reporting.

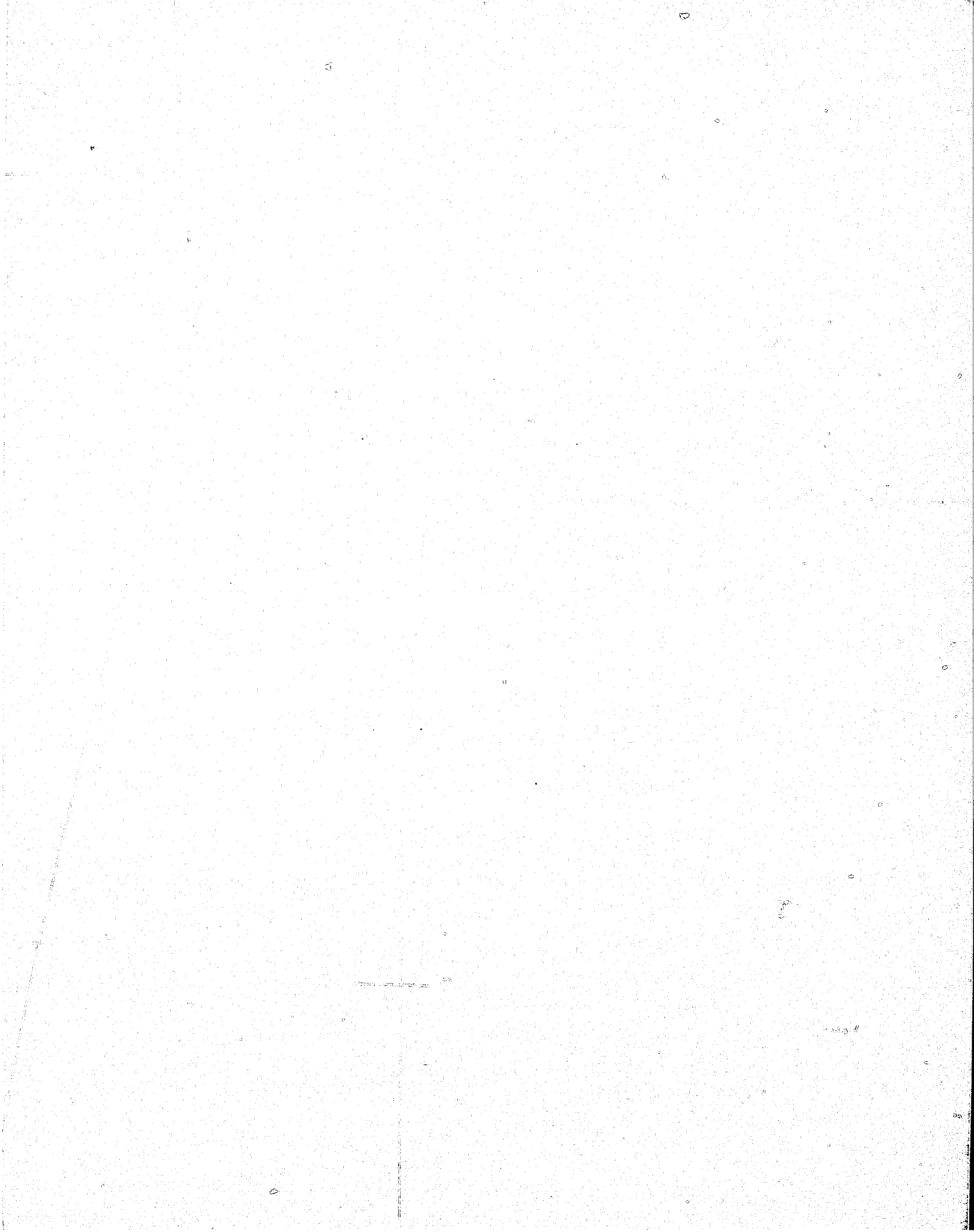


TABLE 21

## CONTACTS WITH COUNTY SOCIAL SERVICE DEPARTMENTS

	Co. Cat. 1 (1 Co.)	Co. Cat. 2 (9 Co.)	Co. Cat. 3 (14 Co.)	Co. Cat. 4 (48 Co.)	Total
Number of Contacts	100	563	140	376	1,179
Percentage of Total Contacts	8.5	47.8	11.9	31.9	100.1
Percentage of Population in Counties Responding	27.3	26.6	24.9	21.2	100.0

SOURCE: Compiled by Wisconsin Legislative Council Staff from questionnaires.

NOTE: All percentages have been rounded to the nearest tenth of a per cent; therefore, the totals may not equal 100.0%.

-33-

TABLE 22

## CONTACTS WITH S. 51.42 BOARDS

	Co. Cat. 1 (1 Co.)	Co. Cat. 2 (9 Co.)	Co. Cat. 3 (14 Co.)	Co. Cat. 4 (48 Co.)	Total
Number of Contacts	0	28	210	455	693
Percentage of Total Contacts	0	4.0	30.3	65.7	100.0
Percentage of Population in Counties Responding	27.6	31.0	19.7	21.6	99.9

SOURCE: Compiled by Wisconsin Legislative Council Staff from questionnaires.

NOTE: All percentages have been rounded to the nearest tenth of a per cent; therefore, the totals may not equal 100.0%.

Table 21 shows that there were 1,179 contacts with the 57 county social service departments responding to the questionnaire. [However, it should be remembered that in only 32 of the 57 counties were actual or estimated numbers of contacts provided.]

In Milwaukee, 100 contacts were reported by the social service department. The highest number of contacts for the other three categories were Category 2: Rock County with 175 contacts; Category 3: Manitowoc County, with 42 contacts; and Category 4: Waupaca County, with 89 contacts. It should also be noted that Racine County, a Category 2 county, reported 150 contacts. The total number of contacts in five counties (Rock, Racine, Milwaukee, Waupaca and Kenosha Counties) is 594 of the 1,179 total contacts by all counties or over 50% of the total contacts involving domestic violence with social service departments.

For s. 51.42 boards, Milwaukee County reported no contacts. Winnebago County, which reported 28 contacts, was the only Category 2 county reporting a specific number of contacts. La Crosse County, with 100 contacts, had the largest number of contacts of the Category 3 counties and the s. 51.42 board for Dunn-Pepin-Pierce Counties with 157 contacts, had the largest number of contacts of the Category 4 counties.

The total number of contacts with five s. 51.42 boards (Dunn-Pepin-Pierce Counties, La Crosse County, Columbia County, Ozaukee County and Waushara County) is 412 of the 693 total contacts by all boards or 59.5% of the total contacts.

Table 21 shows that 47.8% of the contacts with county social service departments are with counties in Category 2, although these counties represent only 26.6% of the total population represented by the county social service departments' responses. Table 22 shows that 65.7% of the contacts with s. 51.42 boards were with Category 4 counties although these counties only represented 21.6% of the population represented by the s. 51.42 board responses.

#### Source of Contacts

The fourth question asked the department or board to estimate the number or percentage of the incidents reported in the third question which were brought to their attention by each of certain specified categories of individuals.

Table 23, Source of Contacts With County Social Service Departments, and Table 24, Source of Contacts With S. 51.42 Boards, show, for all counties within each category and for all counties within the state, the number and percentage of contacts originating with the victim, friends and relatives, law enforcement authorities and other persons or organizations.



TABLE 23  
SOURCE OF CONTACTS WITH  
COUNTY SOCIAL SERVICE DEPARTMENTS

Source	Co. Category 1		Co. Category 2		Co. Category 3		Co. Category 4		Total	
	No.	%	No.	%	No.	%	No.	%	No.	%
Victim	16	16	281	49.9	87	62.1	164	43.6	548	46.5
Friend/Relative	25	25	137	24.3	25	17.9	71	18.9	258	21.9
Law Enforcement	5	5	50	8.9	18	12.9	61	16.2	134	11.4
Medical Personnel	9	9	17	3.0	6	4.3	15	4.0	47	4.0
District or City Attorney	37	37	9	1.6	0	0.0	15	4.0	61	5.2
Community Organization	0	0	12	2.1	3	2.1	1	.3	16	1.4
Clergy	1	1	21	3.7	1	.7	7	1.9	30	2.5
Other	7	7	36	6.4	0	0.0	42	11.2	85	7.2
Totals	100	100	563	99.9	140	100.0%	376	100.1	1,179	100.1

SOURCE: Compiled by Wisconsin Legislative Council Staff from questionnaires.

NOTE: All percentages have been rounded to the nearest tenth of a per cent; therefore, the totals may not equal 100.0%.



TABLE 24  
SOURCE OF CONTACTS WITH  
S. 51.42 BOARDS

Source	Co. Category 1		Co. Category 2		Co. Category 3		Co. Category 4		Total	
	No.	%	No.	%	No.	%	No.	%	No.	%
Victim	0	0	16	57.1	40	19.1	190	44.7	246	37.1
Friend/Relative	0	0	12	42.9	16	7.6	53	12.5	81	12.2
Law Enforcement	0	0	0	0.0	53	25.2	85	20.0	138	20.8
Medical Personnel	0	0	0	0.0	14	6.7	20	4.7	34	5.1
District or City Attorney	0	0	0	0.0	4	1.9	27	6.4	31	4.7
Community Organization	0	0	0	0.0	0	0.0	9	2.1	9	1.4
Clergy	0	0	0	0.0	3	1.4	33	7.8	36	5.4
Other	0	0	0	0.0	80	38.1	8	1.9	88	13.3
Totals	0	0	28.0	100.0	210	100.0	425 <sup>(2)</sup>	100.1	663 <sup>(2)</sup>	100.0

SOURCE: Compiled by Wisconsin Legislative Council Staff from questionnaires.

NOTES: (1) All percentages have been rounded to the nearest tenth of a per cent; therefore the totals may not equal 100%.

(2) The total of the contacts listed in this Table does not equal the number reported by s. 51.42 Boards (in Table 22) since one county did not indicate the source of contacts.

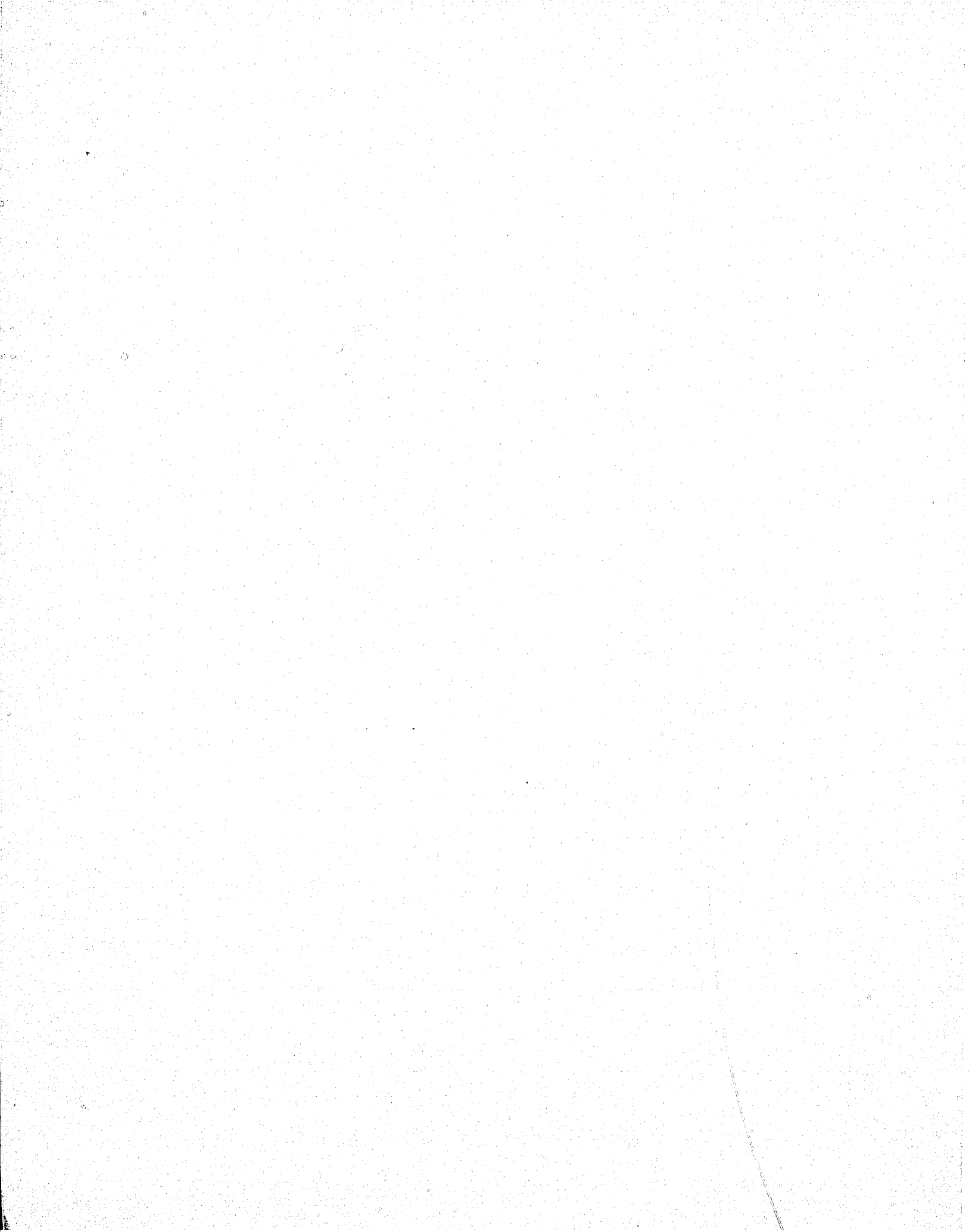


Table 23 shows that 46.5% of the total contacts with county social service departments were by the victim of the domestic violence. The second most frequent source of contact was by friends or relatives (21.9%). Law enforcement represented only 11.4% of the contacts.

There are some variances within each category. For example, in Milwaukee County 37% of the contacts originated with the District Attorney. The second most frequent source of contacts was friends or relatives (25%). Victims (16%) were only the third most frequent source or contact. For each of the three other categories, the victim was the most frequent source of contact and friends or relatives were the second most frequent source of contact.

Table 24 shows that, as is the case with social service departments, victims (37.1%) are the principle source of contacts, although the percentage is significantly lower than the county social service departments (46.5%). The second most frequent source of contact was law enforcement (20.8%).

There is also a variance within the categories as to the most frequent sources of contacts with s. 51.42 boards. In Category 2 (which represented only one county) victims were the most frequent source of contact (57.1%); friends and relatives were the second most frequent source of contacts. In Category 3, 38.1% of the contacts originated with the county social service department; law enforcement was the second most frequent source of contacts (25.2%); and victims were the third most frequent source (19.1%). [However, this represents the experience of one county, La Crosse.] In Category 4, victims were the most frequent source of contacts (44.7%) and law enforcement the second most frequent source of contacts (20%).

#### Services Provided

The fifth question asked that the department or board estimate the number or percentage of the incidents in which certain specified services were provided.

Table 25, Services Provided in 1976 by County Social Service Departments, and Table 26, Services Provided in 1976 by S. 51.42 Boards, show for all counties within each category and for all reported contacts, the number and percentage of persons receiving each particular type of service.

TABLE 25

SERVICES PROVIDED IN 1976  
BY COUNTY SOCIAL SERVICE DEPARTMENTS

Service	Co. Category 1 (100 Contacts)		Co. Category 2 (563 Contacts)		Co. Category 3 (140 Contacts)		Co. Category 4 (376 Contacts)		Total (1,179 Contacts)	
	No.	%	No.	%	No.	%	No.	%	No.	%
Shelter Care	17	17	82	14.6	4	2.9	49	13.0	152	12.9
Counseling of Victims	97	97	320	56.8	120	85.7	290	77.1	827	70.1
Counseling of Abusers	71	71	174	30.9	33	23.6	95	25.3	373	31.6
Referral to Law Enforcement Personnel	66	66	200	35.5	21	15.0	95	25.3	382	32.4
Referral to Community Orgs. for Abused Spouses	53	53	39	6.9	16	11.4	6	1.6	114	9.7
Referral to Medical Personnel	59	59	71	12.6	8	5.7	69	18.4	207	17.6
Referral to Dst. Attorney	33	37	42	7.5	13	9.3	92	24.5	180	15.3
Referral to Private Attorney	51	51	81	14.4	24	17.1	97	25.8	253	21.5

SOURCE: Compiled by Wisconsin Legislative Council Staff from questionnaires.

NOTE: All percentages represent the percentage of persons receiving services from counties in each category who received the specified service. All percentages are rounded to the nearest tenth of a per cent.

TABLE 26  
 SERVICES PROVIDED IN  
 1976 BY S. 51.42 BOARDS

Service	Co. Category 1 (0 Contacts)		Co. Category 2 (28 Contacts)		Co. Category 3 (210 Contacts)		Co. Category 4 (425 Contacts)		Total (663 Contacts)	
	No.	%	No.	%	No.	%	No.	%	No.	%
Shelter Care	0	0	0	0.0	0	0.0	15	3.5	15	2.3
Counseling of Victims	0	0	5	17.9	172	81.9	361	84.9	538	81.2
Counseling of Abusers	0	0	8	28.6	97	46.2	126	29.7	231	34.8
Referral to Law Enforcement Personnel	0	0	8	28.6	6	2.9	32	7.5	46	6.9
Referral to Community Orgs. for Abused Spouses	0	0	12	42.9	37	17.6	21	4.9	70	10.6
Referral to Medical Personnel	0	0	8	28.6	2	1.0	57	13.4	67	10.1
Referral to D/A	0	0	4	14.3	1	0.0	38	8.9	43	6.5
Referral to Private Attorney	0	0	3	10.7	11	5.2	56	13.2	70	10.6

SOURCE: Compiled by Wisconsin Legislative Council Staff from questionnaires.

NOTE: All percentages represent the number of persons receiving the specified service divided by the total number of contacts with s. 51.42 Boards. All percentages are rounded to the nearest tenth of a per cent.

Table 25 shows that counseling of victims, provided to 70.1% of the 1,179 contacts, was by far the most frequently provided service. No other service was provided in more than one-third of the contacts. The second most frequently provided services were referral to law enforcement personnel (32.4%) and counseling of abusers (31.6%) of the total contacts. Shelter care was provided in only 12.9% of the contacts. This percentage varied from 17% of the contacts in Milwaukee County to only 2.9% of the contacts within the counties in Category 3.

In each of the four categories of counties, counseling of victims was the most frequently provided service. There was some variance in the various county categories with respect to the second and third most frequently provided services.

Table 27, Number of Services Provided by County Social Service Departments, and Table 28, Number of Services Provided by S. 51.42 Boards, show by county category and in total the number of services provided, the total number of contacts and the average number of services provided per contact.

TABLE 27  
NUMBER OF SERVICES PROVIDED  
BY COUNTY SOCIAL SERVICE DEPARTMENTS

	Co. Cat. 1 (1 Co.)	Co. Cat. 2 (9 Co.)	Co. Cat. 3 (14 Co.)	Co. Cat. 4 (48 Co.)	Total
Total Number of Services Provided	447	1,009	239	793	2,488
Total Number of Contacts	100	563	140	376	1,179
Average Number of Services Provided Per Contact	4.47	1.79	1.71	2.11	2.11

SOURCE: Compiled by Wisconsin Legislative Council Staff from questionnaires.

TABLE 28  
 NUMBER OF SERVICES PROVIDED  
 BY S. 51.42 BOARDS

	Co. Cat. 1 (1 Co.)	Co. Cat. 2 (9 Co.)	Co. Cat. 3 (14 Co.)	Co. Cat. 4 (48 Co.)	Total
Total Number of Services Provided	0	48	326	706	1,080
Total Number of Contacts	0	28	210	425	663
Average Number of Services Provided per Contact	0	1.71	1.55	1.66	1.63

SOURCE: Compiled by Wisconsin Legislative Council Staff from questionnaires.

The county social service departments provided approximately 2.11 services for each contact, while the s. 51.42 boards provided 1.63 services per contact. [It should also be noted that the Milwaukee County Department provided 4.47 services per contact, which is twice as high as the average.

Of the 2,488 total services provided by county social service departments, 1,036 or 45.7% of the services are referrals to law enforcement, community organizations, medical personnel, district attorneys or private attorneys. For s. 51.42 boards, of the 693 total services provided, 296 or 42.7% of the services provided were referrals. Although the tables indicate a difference in the average number of services provided per contact for s. 51.42 boards and county social service departments, this difference would be much less if the referrals are subtracted from the total services provided. The average number of services per contact would be 1.23 for county social service departments and 1.18 for s. 51.42 boards.

#### Possible New Services

The sixth question asked whether the department or board was planning to provide additional services in the near future and to describe those services.

Table 29, Possible New Services to be Provided by County Social Service Departments, and Table 30, Possible New Services to be Provided by S. 51.42 Boards, contain the most frequently listed new services.

TABLE 29

POSSIBLE NEW SERVICES TO BE PROVIDED  
BY COUNTY SOCIAL SERVICE DEPARTMENTS

Service	Number of Counties (18 Counties)
Shelter Care	10
Coordination of Services With Police and Agencies	6
Publicized Services	3
Women's Organization or Program	5
Needs Assessment or Study	2
Other	6
Total	32

SOURCE: Compiled by Wisconsin Legislative Council Staff  
from questionnaires.

TABLE 30

POSSIBLE NEW SERVICES TO BE  
PROVIDED BY S. 51.42 BOARDS

Service	Number of Suggestions (11 Counties)
Working/Contracting with Womens' Groups	2
Coordinate Services with Police and Other Agencies	4
Community/Public Education	4
Shelter Care	2
Other (24-hr. Services, Staff Training, Needs Assessment, Hot Line)	4
Total	14

SOURCE: Compiled by Wisconsin Legislative Council Staff  
from questionnaires.



Table 29 shows that of 32 possible new services which may be provided by 18 counties, 10 were the creation of shelter care and six were coordination of services with police and other agencies.

Table 30 shows that of the 14 suggestions made by 11 counties for new services, shelter care was suggested in only two of the 11 counties. Coordination of services with police and other agencies and community and public education were both more commonly suggested than shelter care.

Services Needed

The seventh question asked the department or board to identify useful services that were not available in the area served by the department or board.

Table 31, Suggestions for Useful New Services Made by County Social Service Departments, and Table 32, Suggestions for Useful New Services Made by S. 51.42 Boards, contain the most frequently listed suggestions for new services.

TABLE 31  
SUGGESTIONS FOR USEFUL NEW SERVICES  
MADE BY COUNTY SOCIAL SERVICE DEPARTMENTS

Service	Number of Suggestions (48 Counties)
Temporary Shelter Care	39
Financial Aid	6
Education, Awareness	5
Legal Aid	12
Community Groups	8
Women's Centers	2
Coordination of Program	3
24-Hour Social Services	2
Telephone Hot Line	4
Counseling	6
Other	4
Total	89

SOURCE: Compiled by Wisconsin Legislative Council Staff from questionnaires.

TABLE 32  
SUGGESTIONS FOR USEFUL NEW SERVICES  
MADE BY S. 51.42 BOARDS

Description of Service	Number of Suggestions (35 Counties)
Shelters	21
Womens' Groups/Support Groups	6
Legal Aid	5
Coordination of Agencies/Referral System	2
Public Education	5
Financial Aid for Victims	4
Counseling Center	2
Other	5
Total	50

SOURCE: Compiled by Wisconsin Legislative Council Staff  
from questionnaires.

Table 31 shows that of the 48 counties making suggestions, 39 felt that temporary shelter care was needed in the county, 12 suggested free legal aid or a legal action program and eight suggested creation of a community group to aid battered spouses.

Table 32 shows that of the 35 counties represented in the s. 51.42 board responses to the question, 21 felt that temporary shelter care was necessary. The second most frequently suggested service (six suggestions) was the creation of community organizations or women's groups to work with battered spouses. Legal aid was suggested by five counties.

Although both the county social service departments and s. 51.42 boards suggested that temporary shelter care was needed or would be useful in their counties, Tables 29 and 30 show that only 10 county social service departments and two s. 51.42 boards are considering creating shelter care facilities.

### Budgets and Staff

The eighth question asked the department or board to list their budget for services relating to domestic violence, the number of staff involved in delivering the services and whether these services were available outside of normal office hours.

No compilation in table format has been made for either the county social service departments or s. 51.42 boards since most departments and boards said that they were unable to separate out either the budget or the staff used to provide services, and, in addition, in many cases the staff was providing a wide variety of services, some of which were not directly related to domestic violence.

Forty-two of the county social service departments listed a total of approximately 197 persons engaged in providing social services for incidents of domestic violence. The budget data provided was \$184,150 for nine counties. In addition, 41 counties indicated that the services provided were available outside normal office hours.

Thirty-six counties represented by s. 51.42 boards listed 321.5 persons as providing services for incidents of domestic violence. In 37 counties, staff was available outside of normal office hours to provide services. The typical response by both departments and boards was that the social services or mental health staff was on call 24 hours a day to provide such services.

### Changes in Laws or New Laws

The ninth question asked that the department or board suggest new laws or changes in current law that may be needed to respond to domestic violence problems.

Table 33, Suggestions for Changes in Laws Made by County Social Service Departments, shows that the most frequent suggestion was mandatory counseling of abusers. The second most frequent suggestion was protection of the victim. Removal of the abusing spouse was suggested by five persons as was mandatory reporting of spouse abuse by professionals or law enforcement persons. The miscellaneous suggestions included such items as improved mental health services, improved family education and counseling and public education and awareness.

TABLE 33  
SUGGESTIONS FOR CHANGES IN LAWS  
MADE BY COUNTY SOCIAL SERVICE  
DEPARTMENTS

Description	Number of Suggestions (29 Counties)
Financial Aid	4
Enforce Current Laws	4
Restraining Orders	4
Protection of Victim	6
Mandatory Counseling	8
Removal of Abusing Spouse	5
Mandatory Reporting of Spouse Abuse	5
Protection of Professionals Who Treat Abused Spouse	3
Miscellaneous	20
Total	59

SOURCE: Compiled by Wisconsin Legislative Council Staff from questionnaires.

No table has been prepared for suggestions made by s. 51.42 boards since there were a wide variety of suggestions. With the exception of enforcement of current laws, which was suggested by four boards, legal aid for the victims which was suggested by two boards, mandatory reporting of spouse abuse which was suggested by three boards and protection of victims which was suggested by two boards, no other suggestions were reported more than once. Some of the other suggestions included shelter funding, premarital counseling, vocational rehabilitation for abused spouses, public education, restraining orders and enactment of the federal Equal Rights Amendment.

PART IV

COMMUNITY ORGANIZATIONS

Introduction

A questionnaire was sent to 13 community organizations that provide services to victims of domestic violence. Twelve organizations returned questionnaires; but several did not answer all questions asked.

Table 34, Services Available From or Planned by Community Organizations, shows the number of organizations which offer or plan to offer each service to alleged victims. Table 35, Services Provided in 1977 by Community Organizations, shows the number and percentage of alleged victims which received specified services from each organization. Table 36, Financial and In-Kind Resources of Community Organizations in 1977, shows the amounts and percentages of 1977 budgets for each organization provided by various sources and includes the percentage of staff work provided by volunteers. Table 37, Source of Contacts with Community Organizations in 1977, shows the number of incidents of domestic violence reported to each organization and the number and percentage of those reports made by specified categories of persons in 1977.

Services Available or Planned

Organizations were asked to identify the services planned for or provided by, their organization to victims of domestic violence. Eleven organizations replied. All provide or plan to provide crisis counseling, and a majority provide public education (10); referral to social service agencies (9); referral to police (8); a telephone hot line (7); private home shelter facilities (9); long-term victim counseling (7); and referral to the district attorney's office (6). Currently, two organizations counsel alleged assistants in domestic violence cases and three provide their own shelter facilities.

TABLE 34  
 SERVICES AVAILABLE FROM OR PLANNED BY COMMUNITY ORGANIZATIONS

Service	Number of Orgs. Which Provide the Service	Number of Orgs. Which Provide the Service By Referral	Number of Orgs. Which Plan to Provide the Service
Shelter Facilities	3	0	3
Private Home Sheltering	8	1	0
Crises Counseling	9	2	0
Long-Term Counseling of Victims	7	1	0
Referral to Police	8	0	0
Referral to Social Service Agencies	9	0	0
Referral to District Attorney	6	0	0
Telephone Hot Line	7	0	0
Public Education	10	0	0
Counseling of Assailants	2	4	1
Referral to Private Attorney	9	0	0

SOURCE: Compiled by Wisconsin Legislative Council Staff from questionnaires.

### Services Provided in 1977

Organizations were asked to provide the number of alleged victims who received specified services from the organization during 1977. Ten organizations replied. Most frequently, alleged victims received counseling (95%), while least frequently, alleged abusers received counseling (.5%). In more than one-third of the cases, victims were referred to private attorneys, and in almost one-fourth of the cases, victims received protection in shelter facilities.



TABLE 35

## SERVICES PROVIDED IN 1977 BY COMMUNITY ORGANIZATIONS

Organization (City)

Service	Eau Claire (63 Contacts)		Kenosha (165 Contacts)		Madison (200 Contacts)		Milwaukee (1,000 Contacts)		Stevens Point (8 Contacts)		Racine (90 Contacts)		Sheboygan (8 Contacts)		Waukesha (78 Contacts)		Wausau (6 Contacts)		Total * (1,618)	
	No.	%	No.	%	No.	%	No.	%	No.	%	No.	%	No.	%	No.	%	No.	%	No.	%
Shelter Care	39	61.9	10	6.1	--	0	240	24.0	6	75.0	9	10.0	0	0.0	16	20.5	2	33.3	322	19.9**
Counseling of Victims	63	100.0	161	97.6	--	0	950	95.0	2	25.0	90	90.0	8	100.0	78	100.0	2	33.3	1,354	83.7**
Counseling of Abusers	1	1.6	3	1.8	--	0	0	0.0	1	12.5	2	2.2	1	12.5	0	0.0	0	0.0	8	0.5**
Referral to Law Enforcement Personnel	3	4.8	16	9.7	37	18.5	200	20.0	2	25.0	13	14.4	0	0.0	24	30.8	0	0.0	295	18.2**
Referral to Social Services or Mental Health Personnel	54	85.7	64	38.8	162	81.0	50	5.0	2	25.0	58	64.4	8	100.0	16	20.5	3	50.0	417	25.8**
Referral to Medical Personnel	0	0.0	6	3.6	3	1.5	200	20.0	2	25.0	5	5.6	0	0.0	2	2.6	0	0.0	218	13.5**
Referral to District Attorney	20	31.7	62	37.6	123	61.5	400	40.0	1	12.5	13	14.4	0	0.0	22	28.2	3	50.0	644	39.8**
Referral to Private Attorney	4	6.3	5	3.0	110	55.0	100	10.0	0	0.0	4	4.4	0	0.0	5	6.4	0	0.0	228	14.1**

SOURCE: Compiled by Wisconsin Legislative Council Staff from questionnaires.

NOTES: (\*) Two-hundred and eighteen contacts with two organizations are not included in this table since the sources of the contacts were not provided by the organizations. Two other organizations did not provide an actual or estimated number of contacts.

(\*\*) All percentages represent the number of persons receiving the specified services divided by the total number of contacts with the community organization. All percentages are rounded to the nearest tenth of a per cent.



Budgets, Funding Sources and Staff

Organizations were asked to provide the amount of their 1977 budgets and the funding sources for those budgets. Eleven organizations replied. One group indicated no budget for the year. The largest 1977 budget was \$140,000. Five organizations received significant federal funding, three received contributions from the local United Way and eight received private donations. Federal funds provided 74% of the total budgets of the 10 organizations.

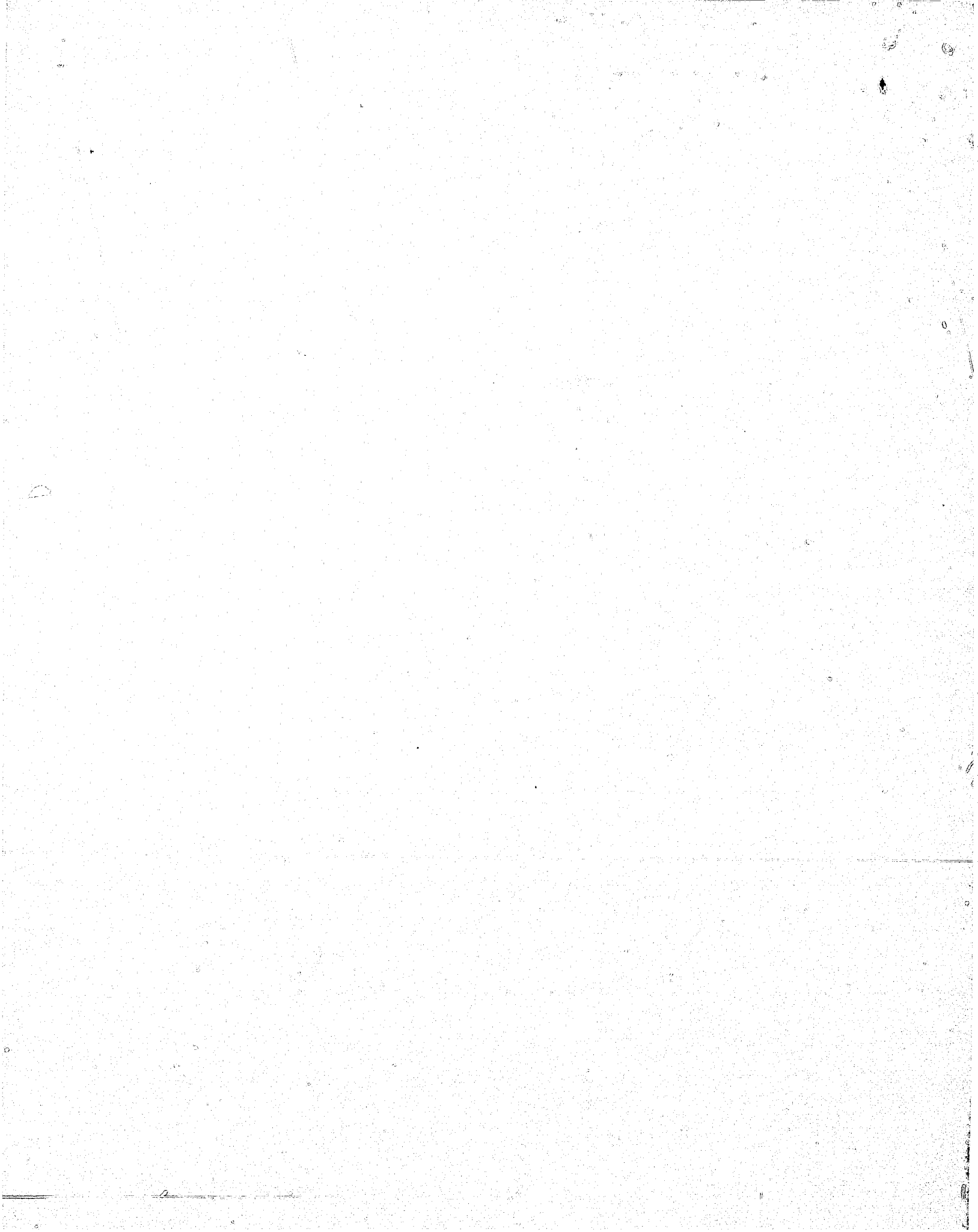


TABLE 36  
FINANCIAL AND IN-KIND RESOURCES OF COMMUNITY ORGANIZATIONS IN 1977

	1977 Budget	Sources of Funding										% of Staff Volunteers
		Federal Government		Local Government		United Way		Private Donation		Other		
		\$	%	\$	%	\$	%	\$	%	\$	%	
Appleton	\$ 75	\$ 0	0%	\$ 0	0%	\$ 0	0%	\$ 75	100%	\$ 0	0%	100%
Eau Claire	140,000	126,000	90	0	0	0	0	4,000	3	10,000	7	20
Green Bay	15,495	15,146	98	0	0	0	0	349	2	0	0	N/A
Kenosha	26,000	20,000	77	0	0	0	0	6,000	23	0	0	25
Madison	11,150	0	0	0	0	11,150	100	0	0	0	0	50
Milwaukee	18,500	7,000	38	0	0	9,500	51	2,000	11	0	0	N/A
Sheboygan	0	0	0	0	0	0	0	0	0	0	0	100
Stevens Point	200	0	0	0	0	0	0	200	100	0	0	90
Racine	8,350	2,480	30	0	0	3,070	37	2,800	34	0	0	35
Waukesha	400	0	0	0	0	0	0	400	100	0	0	100
Wausau	11,000	0	0	11,000	100	0	0	0	0	0	0	5
Total	\$231,670	\$170,626	74%	\$11,000	5%	\$23,720	10%	\$15,824	7%	\$10,000	4%	

SOURCE: Compiled by Wisconsin Legislative Council Staff from questionnaires.

NOTE: All percentages have been rounded to the nearest whole per cent, therefore, the totals may not equal 100.0%.

Source of Contacts

Organizations were asked to identify the number of incidents of domestic violence reported in 1977. Nine organizations replied. Among those groups organized to receive calls for the full year, the number of reported incidents ranged from 78 to 1,000. Reports for partial year periods ranged from six to 250 incidents.

Organizations were also asked to identify the persons who brought to their attention the alleged incidents of domestic violence. Eight organizations replied. For every organization but one, Wausau, victims were the most frequent source of initial contact with the organization. Of the total contacts reported in Table 37, 81.1% were by the victim. Social service or mental health agencies (8.7% of total contacts) and friends or relatives of the victim (5.6% of the total contacts) were the second and third most frequent source of contacts.

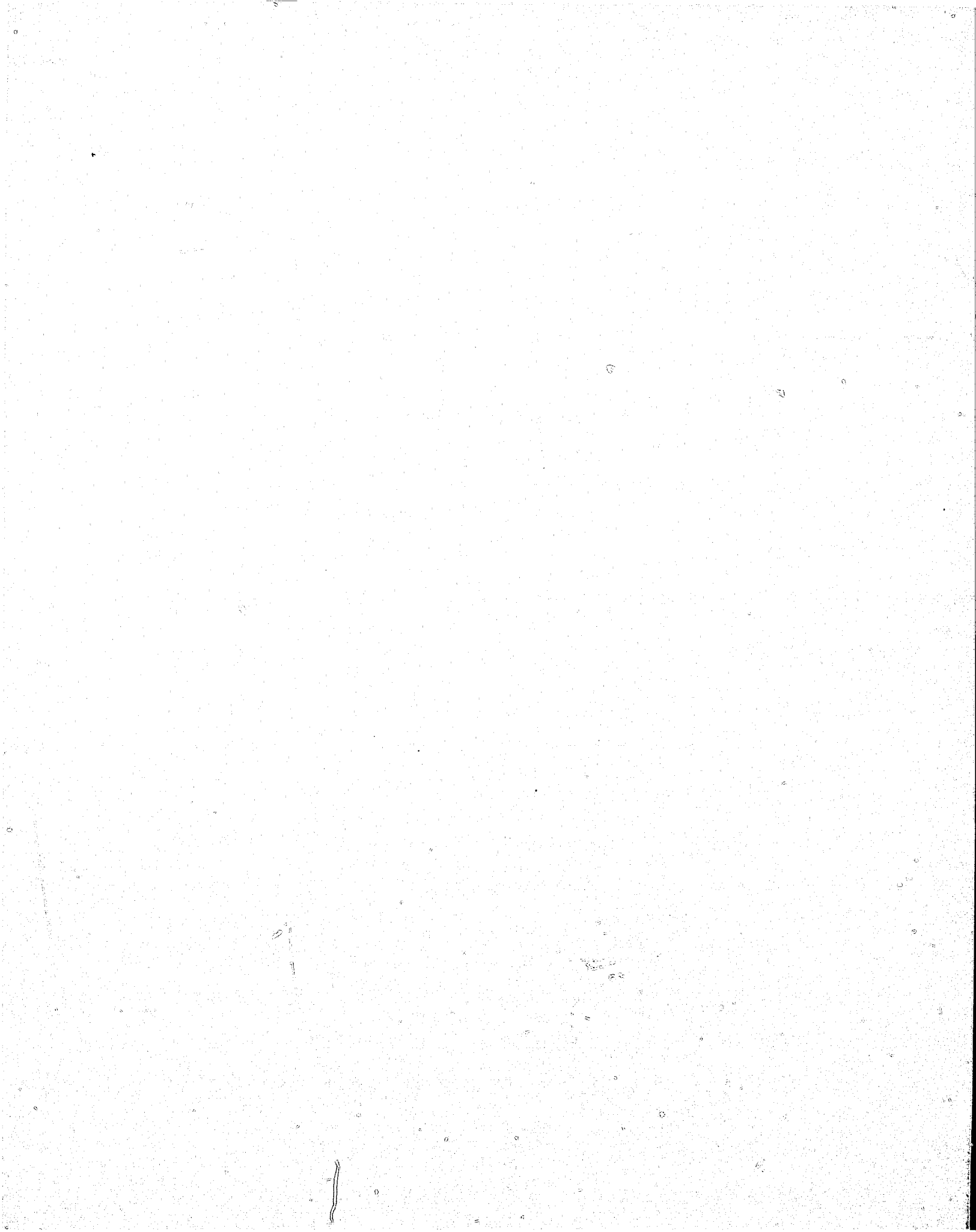


TABLE 37  
SOURCE OF CONTACTS  
WITH COMMUNITY ORGANIZATIONS  
IN 1977

Source of Contact	Organization (Name of City)																Total	
	Eau Claire		Kenosha		Madison		Milwaukee		Sheboygan		Racine		Waukesha		Wausau			
	No.	%	No.	%	No.	%	No.	%	No.	%	No.	%	No.	%	No.	%	No.	%
Victim	32	50.8	69	41.8	200	100	900	90.0	6	75.0	68	75.0	29	37.2	1	16.7	1,305	81.1
Friend/Relative	4	6.3	24	14.5	0	0	50	5.0	0	0.0	0	0.0	10	12.8	2	33.3	90	5.6
Law Enforcement	5	7.9	10	6.1	0	0	0	0.0	0	0.0	13	15.0	5	6.4	1	16.7	34	2.1
Social Service or Mental Health	22	34.9	40	24.2	0	0	50	5.0	2	25.0	9	10.0	15	19.2	2	33.3	140	8.7
Medical Personnel	0	0.0	0	0.0	0	0	0	0.0	0	0.0	0	0.0	0	0.0	0	0.0	0	0.0
District or City Attorney	0	0.0	4	2.4	0	0	0	0.0	0	0.0	0	0.0	1	1.3	0	0.0	5	0.3
Other	0	0.0	18	10.9	0	0	0	0.0	0	0.0	0	0.0	18	23.1	0	0.0	36	2.2
Totals	63	99.9**	165	99.9**	200	100	1,000	100.0	8	100.0	90	100.0	78	100.0	6	100.0	1,610*	100.0

SOURCE: Compiled by Wisconsin Legislative Council Staff from questionnaires.

NOTES: (\*) Two-hundred and eighteen contacts with two organizations are not included in this table since the sources of the contacts were not provided by the organizations. Two other organizations did not provide an actual or estimated number of contacts.

(\*\*) All percentages have been rounded to the nearest tenth of a per cent; therefore, the totals may not equal 100.0%.

Suggestions for New Laws or Changes in Current Laws

Organizations were asked to suggest new laws or changes in existing laws to respond to domestic violence. All 13 organizations replied. The recommendations are summarized as follows:

1. Mandatory training programs for law enforcement officers and other personnel and professionals in crisis intervention.
2. Mandatory reporting of woman abuse to social service agencies and legal agencies.
3. Mandatory reporting and investigation of complaints of spouse abuse by certain agencies.
4. Mandatory counseling for couples once a charge has been filed.
5. Funding for community-based groups providing shelters and other services to battered women.
6. Funding of certain agencies to provide services to battered spouses, to include legal aid, immediate housing for women and their dependent children and immediate financial support.
7. Creation of a specific crime of spouse beating.
8. Authority for and enforcement of temporary restraining orders without the necessity of filing for divorce or a criminal complaint.
9. Authority for creative sentencing, such as diversion for non-sexist training.
10. Harsher penalties for persons convicted of spouse abuse.
11. Enforcement of existing battery laws.

In addition, various recommendations, nonstatutory in nature, were made:

1. Domestic violence matters should receive greater priority by police and courts.
2. Require uniform enforcement of laws against battery, whether involving couples or strangers.
3. Educate existing agencies, institutions, professions and the general public to the magnitude, severity and frequency of the problem with enlightened and sympathetic ways to deal with victims of domestic violence.
4. Encourage law enforcement officers to arrest offending parties, following an assessment of the situation.

APPENDIX A  
QUESTIONNAIRES





4

4

4

Return by January 27, 1978 to:

Wisconsin Legislative Council Staff  
Room 147 North, State Capitol  
Madison, Wisconsin 53702

APPENDIX A-1

From:

QUESTIONNAIRE FOR SHERIFFS AND CHIEFS OF POLICE

Directions

1. For purposes of this questionnaire, domestic violence means physical abuse or threats of physical abuse between spouses or persons living as spouses.
2. Please answer all parts of question #2 with actual numbers of contacts, if those numbers are available. If the actual numbers are not available, please use estimated per cents.

Questions

	<u>Number</u>	<u>Estimated Per Cent</u>
1. What was the number of contacts made with your department in 1976 dealing with alleged incidents of domestic violence?	_____	
2. Of the number of contacts reported in question #1:		
a. How many of those contacts resulted in an officer being sent to the scene of the alleged incident?	_____	_____%
b. How many of those contacts resulted in your department transporting one of the parties to a physician or hospital for medical attention?	_____	_____%
c. How many of those contacts were made by each of the following:		
One of the parties	_____	_____%
A friend or relative of one of the parties	_____	_____%
A neighbor	_____	_____%
Social service or mental health personnel	_____	_____%

	<u>Number</u>	<u>Estimated Per Cent</u>
Clergy	_____	_____%
Medical personnel	_____	_____%
Community organization	_____	_____%
Others	_____	_____%
TOTAL (This should be the same as your answer to question #1.)	=====	100%
d. How many of those contacts involved parties with whom your department has had previous domestic violence contacts?	_____	_____%
e. How many of those contacts occurred during the following hours:		
12 noon - 6 p.m.	_____	_____%
6 p.m. - 12 midnight	_____	_____%
12 midnight - 6 a.m.	_____	_____%
6 a.m. - 12 noon	_____	_____%
TOTAL (This should approximate your answer to question #1.)	=====	100%
f. How many of those contacts occurred on weekends or holidays?	_____	_____%
g. How many of those contacts involved victims in the following age groups:		
Under 25	_____	_____%
25 - 40	_____	_____%
41 - 55	_____	_____%
Over 55	_____	_____%
Total (This should approximate your answer to question #1.)	=====	100%
h. How many of those contacts involved use of alcohol or drugs by one or both of the parties?	_____	_____%
3. What <u>per cent</u> of your officers' time would you estimate is spent in dealing with domestic violence?		_____%
4. How many arrests were made by your department in 1976 for alleged incidents of domestic violence?	_____	
5. Please describe any alternatives to arrest which your department uses in dealing with domestic violence.		

---

---

---

---

6. Does your department have any written policies or guidelines for officers on how to deal with domestic violence?

Yes (please attach copy)

No

7. Is any special training available for your officers which would assist them in dealing with domestic violence?

Yes

No

If yes, please describe:

---

---

---

---

---

---

---

---

8. Would special training be useful to your officers in dealing with domestic violence?

Yes

No

If yes, what suggestions do you have for special training?

---

---

---

---

9. What new laws or changes in existing laws, if any, are needed to respond to domestic violence problems?

---

---

---

---

---

---

---

Name of Person Answering Questionnaire (Please Print)

Thank you very much for your assistance to the Special Committee on Domestic Violence. Please check this blank if you would like a copy of the results of this survey. \_\_\_\_\_

APPENDIX A-2

Return by January 27, 1978 to:

Wisconsin Legislative Council Staff  
 Room 147 North, State Capitol  
 Madison, Wisconsin 53702

From:

QUESTIONNAIRE FOR DISTRICT ATTORNEYS

Directions

1. For purposes of this questionnaire, domestic violence means physical abuse or threats of physical abuse between spouses or persons living as spouses.
2. Please answer questions #2 and 3 with actual numbers of alleged incidents if those numbers are available. If the actual numbers are not available, please use estimated per cents.

Questions

	<u>Number</u>	<u>Estimated Per Cent</u>
1. What was the number of alleged incidents of domestic violence brought to the attention of your office in 1976?	_____	
2. How many of the alleged incidents in question #1 were initially brought to the attention of your office by each of the following?		
Arrest of defendant	_____	_____%
Victim complaint to your office	_____	_____%
Referral from law enforcement personnel	_____	_____%
Referral from social service or mental health personnel	_____	_____%
Referral from community organization	_____	_____%
Other (please specify)	_____	_____%
TOTAL (This should approximate your answer to question #1.)	=====	100%

	<u>Number</u>	<u>Estimated Per Cent</u>
3. How many of the alleged incidents in question #1 did not result in prosecution because of failure of the victim to press charges?	_____	_____ %
4. What per cent of your office's time would you estimate is spent in dealing with domestic violence?		_____ %
5. How many criminal complaints were filed in your county in 1976 for alleged incidents of domestic violence?	_____	
6. How many convictions (including no contest pleas) were obtained in your county in 1976 for each of the following where domestic violence was involved?		
Aggravated battery (s. 940.20, Wis. Stats.)	_____	
Battery (s. 940.22, Wis. Stats.)	_____	
Rape or sexual assault (s. 944.01, 1973 Stats., or s. 940.225, Wis. Stats.)	_____	
Disorderly conduct (s. 947.01, Wis. Stats.)	_____	
Other state crimes (please specify)	_____	

7. Please describe any alternatives to prosecution which your office uses in dealing with domestic violence.

---

---

---

---

---

---

---

8. Please describe any alternatives to fine and/or imprisonment which your office requests courts to impose on a person convicted of a crime where domestic violence is involved.

---

---

---

---

---

---

---

9. What new laws or changes in existing laws, if any, are needed to respond to domestic violence problems?

---

---

---

---

---

---

---

---

---

---

10. Does your office have any written policies or guidelines dealing specifically with prosecution of domestic violence cases?

Yes \_\_\_\_\_

No \_\_\_\_\_

If yes, please attach copy.

\_\_\_\_\_  
Name of Person Answering Questionnaire (Please Print)

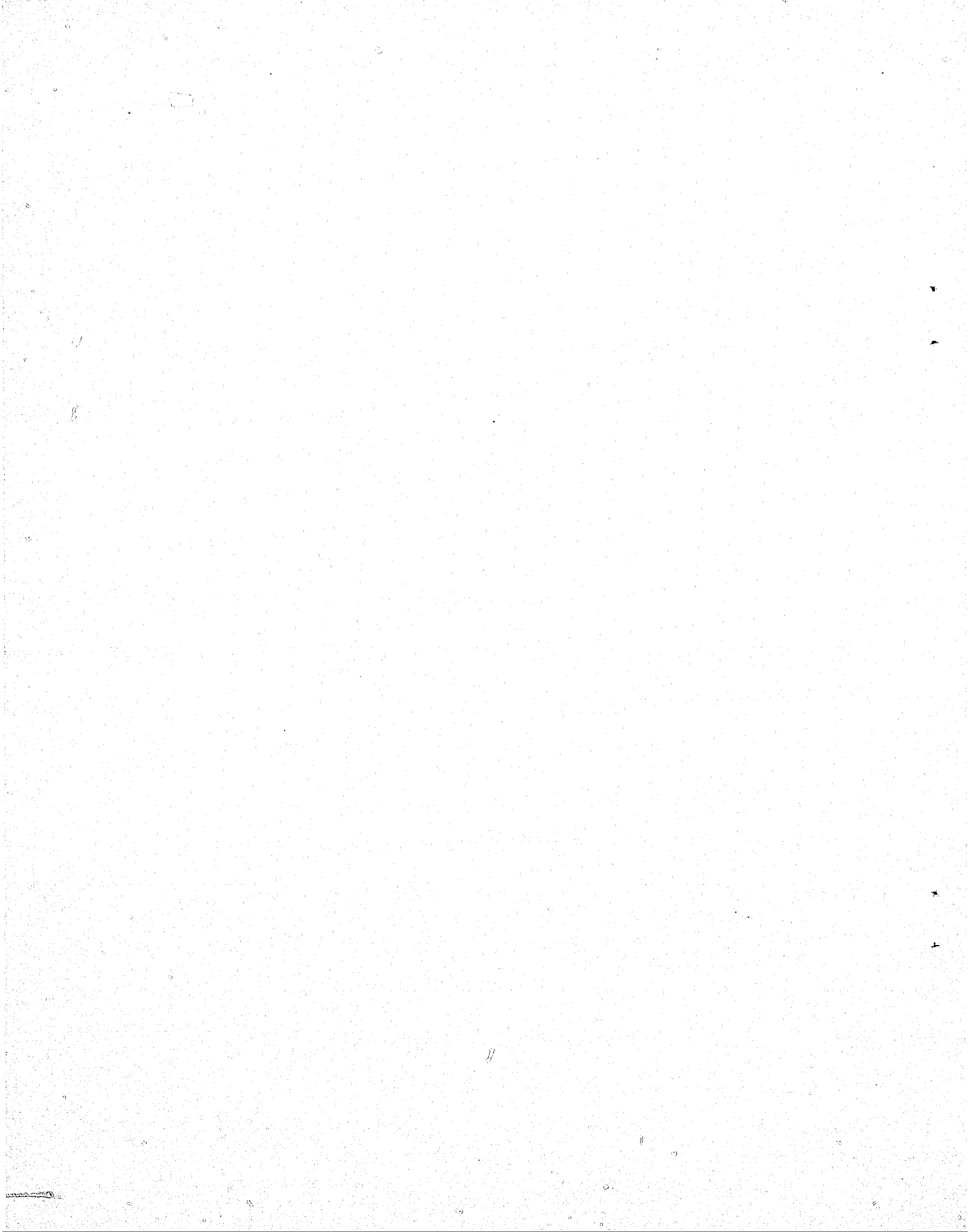
Thank you very much for your assistance to the Special Committee on Domestic Violence. Please check this blank if you would like a copy of the results of this survey. \_\_\_\_\_





**CONTINUED**

**1 OF 2**



January 10, 1978

Return by February 6, 1978 to:

Wisconsin Legislative Council Staff  
Room 147 North, State Capitol  
Madison, Wisconsin 53702

APPENDIX A-3

From:

QUESTIONNAIRE FOR S. 51.42 BOARDS AND  
COUNTY SOCIAL SERVICES DEPARTMENTS

Directions

1. For purposes of completing this survey, domestic violence means physical abuse or threats of physical abuse between spouses or persons living as spouses.
2. Please answer questions #3, 4 and 5 with actual numbers. If actual numbers are not easily accessible, please use estimated per cents.

Questions

1. Do you provide services for victims of domestic violence? yes \_\_\_\_\_  
no \_\_\_\_\_
2. Which of the following services for victims of domestic violence do you provide?
 

Shelter facilities operated by your department or agency	_____
Private home sheltering	_____
Crisis counseling of victims	_____
Long-term counseling of victims for readjustment	_____
Counseling of abusers	_____
Telephone hot line	_____
Public education	_____
Referral to law enforcement personnel	_____
Referral to community organizations for abused spouses	_____
Referral to medical personnel	_____
Referral to district attorney	_____
Referral to private attorney	_____
Assistance to police, city/county prosecutors	_____
Other (please specify)	_____

[Please enclose a copy of any descriptive material which relates to these services.]



7. What services are not available in your area which you feel would be useful?

---

---

---

---

8. (a) What is the budget for the services described in question #2? \_\_\_\_\_

(b) How many staff persons are engaged in providing these services? \_\_\_\_\_

(c) Are any of these services available outside of normal office hours? \_\_\_\_\_

yes \_\_\_\_\_  
no \_\_\_\_\_

If yes, please specify:

---

---

9. What new laws or changes in current laws, if any, are needed to respond to domestic violence problems?

---

---

---

---

---

---

---

10. If you are aware of any community organizations in your county which specifically provide services for abused spouses, please list each organization below:

Name of organization:

Address:

Phone number:

Services provided:

Name of Person Answering Questionnaire (Please Print)

Telephone number, if any, where Council Staff could contact your department or agency during the daytime. \_\_\_\_\_

Thank you very much for your assistance to the Special Committee on Domestic Violence. Please check this blank if you would like a copy of the results of this survey. \_\_\_\_\_

APPENDIX A-4

Return by January 27, 1978 to:

Wisconsin Legislative Council Staff  
Room 147 North, State Capitol  
Madison, Wisconsin 53702

From:

QUESTIONNAIRE FOR COMMUNITY ORGANIZATIONS ASSISTING VICTIMS  
OF DOMESTIC VIOLENCE IN WISCONSIN

Directions

1. For purposes of completing this survey, domestic violence means physical abuse or threats of physical abuse between spouses or persons living as spouses.
2. Please answer questions #6, 9, 10 and 11 with actual numbers. If actual numbers are not easily accessible, please use estimated per cents.

Questions

1. When did your organization begin operation? \_\_\_\_\_
2. Which of the following services for victims of domestic violence do you provide?

- Shelter facilities operated by your organization \_\_\_\_\_
- Private home sheltering \_\_\_\_\_
- Crisis counseling of victims \_\_\_\_\_
- Long-term counseling of victims for readjustment \_\_\_\_\_
- Counseling of assailants \_\_\_\_\_
- Telephone hot line \_\_\_\_\_
- Public education \_\_\_\_\_
- Assistance to police, city/county prosecutors \_\_\_\_\_
- Other (please specify) \_\_\_\_\_

[Please enclose a copy of any descriptive material which relates to these services.]

3. Is your organization planning to provide additional services in the near future?

Yes \_\_\_\_\_  
No \_\_\_\_\_



If yes, please describe these new services.

\_\_\_\_\_  
\_\_\_\_\_  
\_\_\_\_\_

4. What services are not available in your area which you feel would be useful?

\_\_\_\_\_  
\_\_\_\_\_  
\_\_\_\_\_

5. What is your 1977 annual budget? \_\_\_\_\_

6. What amounts for support of your 1977 budget came from the following sources?

Private donations	\$ _____	_____ %
United Way	\$ _____	_____ %
Local government	\$ _____	_____ %
State government	\$ _____	_____ %
Federal government	\$ _____	_____ %
Other (please specify)	\$ _____	_____ %

7. Approximately what percentage of staff work is done by volunteers? \_\_\_\_\_ %

8. How many alleged incidents of domestic violence were brought to the attention of your organization in 1977? \_\_\_\_\_

If your organization was not in operation for all of 1977, please indicate the number of incidents and the time period covered. \_\_\_\_\_

9. Of the alleged incidents reported in question #8, please estimate the number brought to your attention by each of the following:

Victim	_____	_____ %
Friend or relative of victim	_____	_____ %
Law enforcement personnel	_____	_____ %
Social service or mental health personnel	_____	_____ %
Medical personnel	_____	_____ %
District attorney or city attorney	_____	_____ %
Other (please specify)	_____	_____ %

10. Please estimate the number of alleged incidents in question #9, where the victim was a man.

\_\_\_\_\_ %

11. Of the alleged incidents reported in question #8, estimate the number which received the following services [the totals may be greater than the number reported in question #8]:

Shelter care	_____	_____ %
Counseling of victims	_____	_____ %
Counseling of abusers	_____	_____ %
Referral to law enforcement personnel	_____	_____ %
Referral to social services or mental health personnel	_____	_____ %
Referral to medical personnel	_____	_____ %
Referral to district attorney	_____	_____ %
Referral to private attorney	_____	_____ %

12. How has your group made its existence known to the public [please enclose any brochures or leaflets which your group uses].

---



---



---



---

13. What new laws or changes in current laws, if any, are needed to respond to domestic violence problems?

---



---



---



---



---

14. If you are aware of any other community organizations in your county which specifically provide services for battered spouses, please list each organization below:

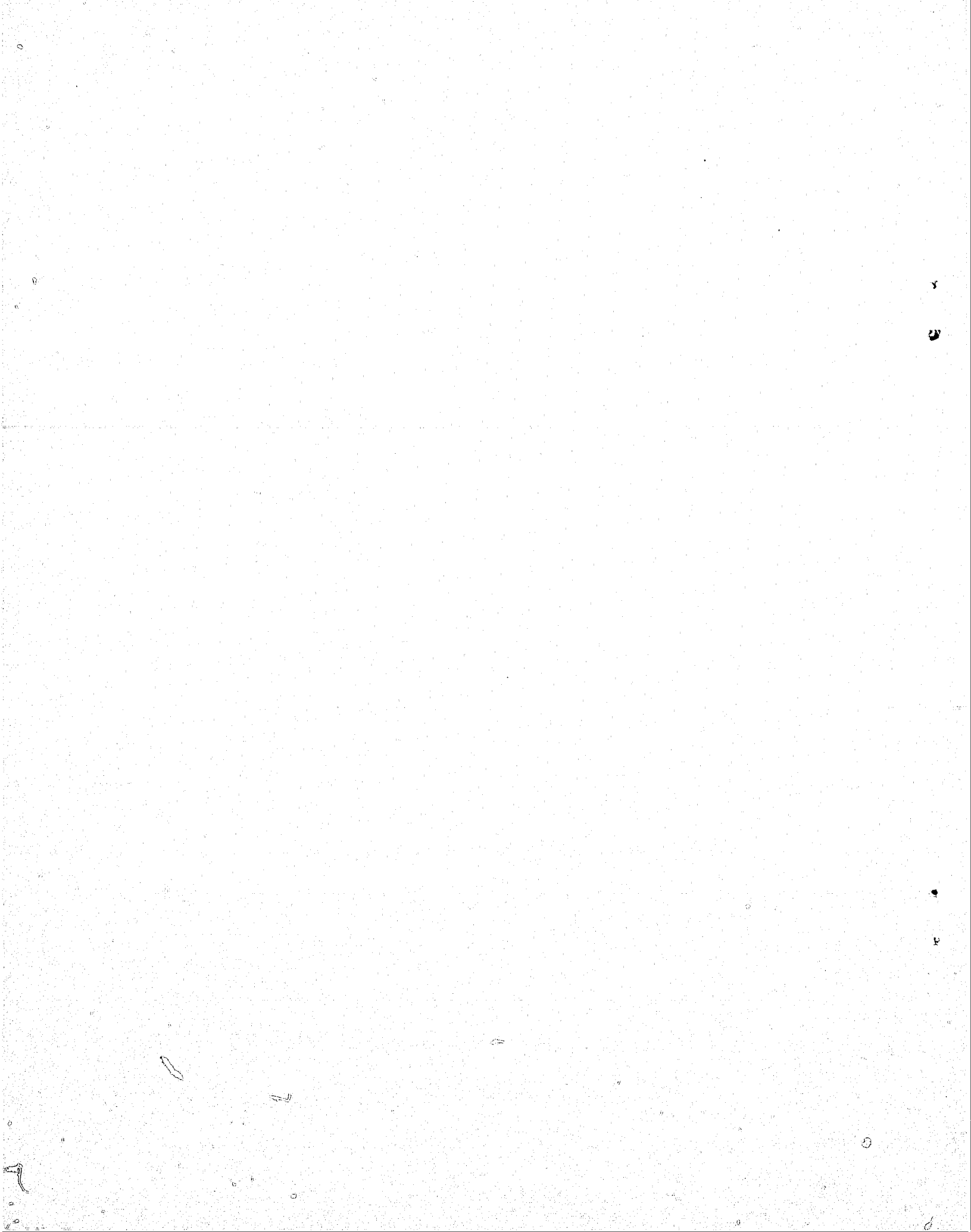
Name of organization:  
 Address:  
 Phone number:  
 Services provided:

Name of Person Answering Questionnaire (Please Print)

Telephone number, if any, where Council Staff could contact your organization during the daytime. \_\_\_\_\_

Thank you very much for your assistance to the Special Committee on Domestic Violence. Please check this blank if you would like a copy of the results of this survey. \_\_\_\_\_

APPENDIX B  
METHOD OF SELECTING CHIEFS  
OF POLICE TO RECEIVE QUESTIONNAIRES



METHOD OF SELECTING CHIEFS  
OF POLICE TO RECEIVE QUESTIONNAIRES

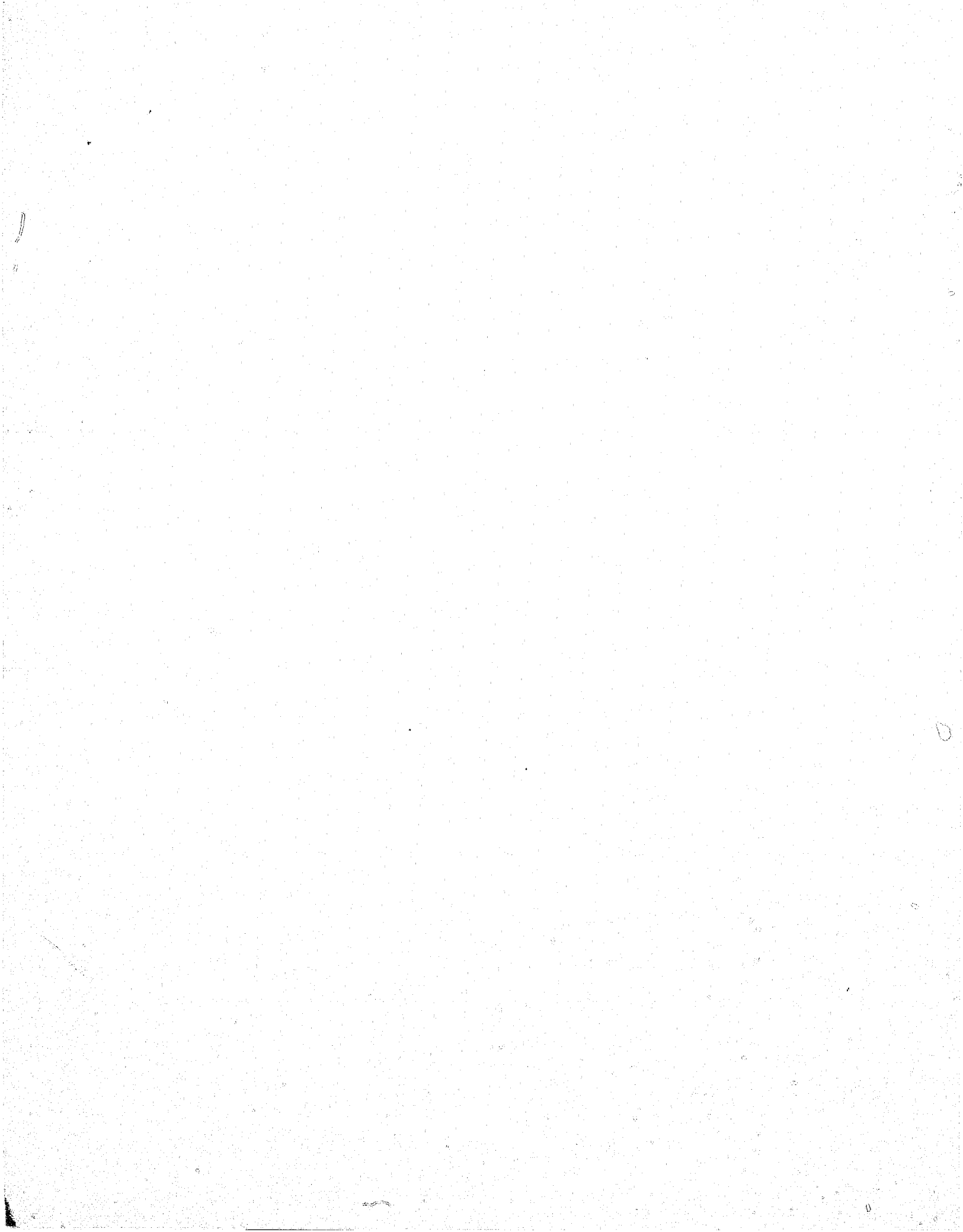
The 50 police departments which received domestic violence questionnaires were selected from a list of law enforcement agencies in Wisconsin Criminal Justice Information, Crime and Arrests - 1976 (Crime Information Bureau, Wisconsin Department of Justice). Police departments are broken down on the list on the basis of the population of their municipality. Ten municipalities were selected from each of the following population categories:

25,000 to 50,000  
10,000 to 25,000  
5,000 to 10,000

Since there were only nine municipalities with populations over 50,000, 11 municipalities under 5,000 were chosen in order to provide a sample size of 50.

All nine municipalities with a population over 50,000 are included in the sample. There were 14 municipalities with populations of 25,000 to 50,000 in the list, so the first 10 were chosen to be included in the sample. For municipalities with populations between 10,000 and 25,000, every fourth municipality on the list was selected to be included on the sample. For municipalities with populations between 5,000 and 10,000, every fifth municipality was selected to be included in the sample. For municipalities under 5,000, every sixth municipality was selected to be included in the sample.

Additionally, a copy of the questionnaire was sent to the President of the Wisconsin Chiefs of Police Association, the Chief of Police from Fort Atkinson, to show him what was sent to the other 50 chiefs and to solicit his help in encouraging return of the questionnaires. The Chief of Police from Fort Atkinson returned his questionnaire completed and this data was included in the report.



**END**

