

# Washington, D.C.: Public attitudes about crime

A National Crime Survey Report

46247  
Cop. 1



**U.S. DEPARTMENT OF JUSTICE**

**Law Enforcement  
Assistance Administration**

**National Criminal Justice Information  
and Statistics Service**

# National Criminal Justice Information and Statistics Service Reports

## Victimization Surveys:

### **Criminal Victimization in the United States (annual):**

- A Comparison of 1975 and 1976 Findings
- A Comparison of 1974 and 1975 Findings
- A Comparison of 1973 and 1974 Findings
- 1975 (final report)
- 1974 (final report)
- 1973 (final report)

### **Criminal Victimization Surveys in Boston, Buffalo, Cincinnati, Houston, Miami, Milwaukee, Minneapolis, New Orleans, Oakland, Pittsburgh, San Diego, San Francisco, and Washington, D.C. (final report, 13 vols.)**

### **Criminal Victimization Surveys in 13 American Cities (summary report, 1 vol.)**

### **Public Attitudes About Crime: Boston, Buffalo, Cincinnati, Houston, Miami, Milwaukee, Minneapolis, New Orleans, Oakland, Pittsburgh, San Diego, San Francisco, and Washington, D.C. (final report, 13 vols.)**

### **Criminal Victimization Surveys in Chicago, Detroit, Los Angeles, New York, and Philadelphia: A Comparison of 1972 and 1974 Findings**

### **Criminal Victimization Surveys in the Nation's Five Largest Cities: National Crime Panel Surveys in Chicago, Detroit, Los Angeles, New York, and Philadelphia, 1972**

### **Criminal Victimization Surveys in Eight American Cities: A Comparison of 1971/72 and 1974/75 Findings—National Crime Surveys in Atlanta, Baltimore, Cleveland, Dallas, Denver, Newark, Portland, and St. Louis**

### **Crime in Eight American Cities: National Crime Panel Surveys in Atlanta, Baltimore, Cleveland, Dallas, Denver, Newark, Portland, and St. Louis—Advance Report, 1971/72**

### **Crimes and Victims: A Report on the Dayton-San Jose Pilot Survey of Victimization**

## Applications of the National Crime Survey

### **Victimization and Attitude Data:**

- Public Opinion About Crime:** The Attitudes of Victims and Nonvictims in Selected Cities
- Local Victim Surveys:** A Review of the Issues
- The Police and Public Opinion:** An Analysis of Victimization and Attitude Data from 13 American Cities
- An Introduction to the National Crime Survey**
- Compensating Victims of Violent Crime:** Potential Costs and Coverage of a National Program

## National Prisoner Statistics:

### **Capital Punishment (annual):**

- 1977 Advance Report
- 1976 (final report)

### **Prisoners in State and Federal Institutions (annual):**

- December 31, 1977, Advance Report
- December 31, 1976 (final report)

### **Census of State Correctional Facilities, 1974:**

- Advance Report

### **Survey of Inmates of State Correctional Facilities, 1974:**

- Advance Report

### **Census of Prisoners in State Correctional Facilities, 1973**

### **The Nation's Jails: A report on the census of jails from the 1972 Survey of Inmates of Local Jails**

### **Survey of Inmates of Local Jails 1972: Advance Report**

### **Children in Custody: Juvenile Detention and Correctional Facility Census**

- Advance Report, 1975 census
- Advance Report, 1974 census
- Final Report, 1973 census
- Final Report, 1971 census

### **National Survey of Court Organization:**

- 1977 Supplement to State Judicial Systems
- 1975 Supplement to State Judicial Systems
- 1971 (full report)

### **State and Local Probation and Parole Systems**

### **State and Local Prosecution and Civil Attorney Systems**

### **Criminal Justice Agencies in Regions 1-10 (10 volumes)**

### **Trends in Expenditure and Employment Data for the Criminal Justice System, 1971-75 (annual)**

### **Expenditure and Employment Data for the Criminal Justice System: 1976 (annual)**

### **Dictionary of Criminal Justice Data Terminology: Terms and Definitions Proposed for Interstate and National Data Collection and Exchange**

### **Program Plan for Statistics, 1977-81**

## Utilization of Criminal Justice Statistics Project:

### **Sourcebook of Criminal Justice Statistics 1977 (annual)**

### **Public Opinion Regarding Crime, Criminal Justice, and Related Topics**

### **New Directions in Processing of Juvenile Offenders: The Denver Model**

### **Who Gets Detained? An Empirical Analysis of the Pre-Adjudicatory Detention of Juveniles in Denver**

### **Juvenile Dispositions: Social and Legal Factors Related to the Processing of Denver Delinquency Cases**

### **Offender-Based Transaction Statistics: New Directions in Data Collection and Reporting**

### **Sentencing of California Felony Offenders**

### **The Judicial Processing of Assault and Burglary**

#### **Offenders in Selected California Counties**

### **Pre-Adjudicatory Detention in Three Juvenile Courts**

### **Delinquency Dispositions: An Empirical Analysis of Processing Decisions in Three Juvenile Courts**

### **The Patterns and Distribution of Assault Incident**

#### **Characteristics Among Social Areas**

### **Patterns of Robbery Characteristics and Their Occurrence Among Social Areas**

### **Crime-Specific Analysis:**

#### **The Characteristics of Burglary Incidents**

#### **An Empirical Examination of Burglary Offender Characteristics**

#### **An Empirical Examination of Burglary Offenders and Offense Characteristics**

### **Sources of National Criminal Justice Statistics: An Annotated Bibliography**

Single copies are available at no charge from the National Criminal Justice Reference Service, Box 6000, Rockville, Md. 20850. Multiple copies are for sale by the Superintendent of Documents, U.S. Government Printing Office, Washington, D.C. 20402

### IMPORTANT

We have provided an evaluation form at the end of this publication. It will assist us in improving future reports if you complete and return it at your convenience. It is a self-mailing form and needs no stamp.

# **Washington, D.C.: Public attitudes about crime**

**A National Crime Survey Report**

**No. SD-NCS-C-32  
June 1978**

**U.S. DEPARTMENT OF JUSTICE**

**Law Enforcement  
Assistance Administration**

**National Criminal Justice Information  
and Statistics Service**

U.S. DEPARTMENT OF JUSTICE  
Law Enforcement Assistance Administration

James M.H. Gregg, Acting Administrator

Harry Bratt, Assistant Administrator  
National Criminal Justice Information  
and Statistics Service

Benjamin H. Renshaw, Director  
Statistics Division

*Acknowledgments.* This report was prepared for the Law Enforcement Assistance Administration by the Bureau of the Census. In the Law Enforcement Assistance Administration, general supervision was supplied by Charles R. Kindermann, assisted by Dawn D. Nelson and Patsy A. Klaus. Collection and processing of data for the household survey were conducted in the Bureau of the Census under the general supervision of Marvin M. Thompson, Demographic Surveys Division, assisted by Linda R. Murphy and Robert L. Goodson. The report was prepared in the Crime Statistics Analysis Staff under the general supervision of Robert P. Parkinson. Adolfo L. Paez directed and edited the report. The analysis was written by J. Frederick Shenk. A technical review of the report was performed by Louis E. Williams, Statistical Methods Division, under the general supervision of Dennis J. Schwanz.

Library of Congress Cataloging in Publication Data

United States. National Criminal Justice Information and  
Statistics Service.

Washington, D.C.: public attitudes about crime.

(A National crime survey report; no. SD-NCS-C-32)

1. Crime and criminals—Washington, D.C.—Public opinion.  
2. Washington, D.C.—Police—Public opinion. 3. Public  
opinion—Washington, D.C.

I. Title. II. Series.

HV6795.W3U55 1977 301.15'43'3649753 77-4173

## Preface

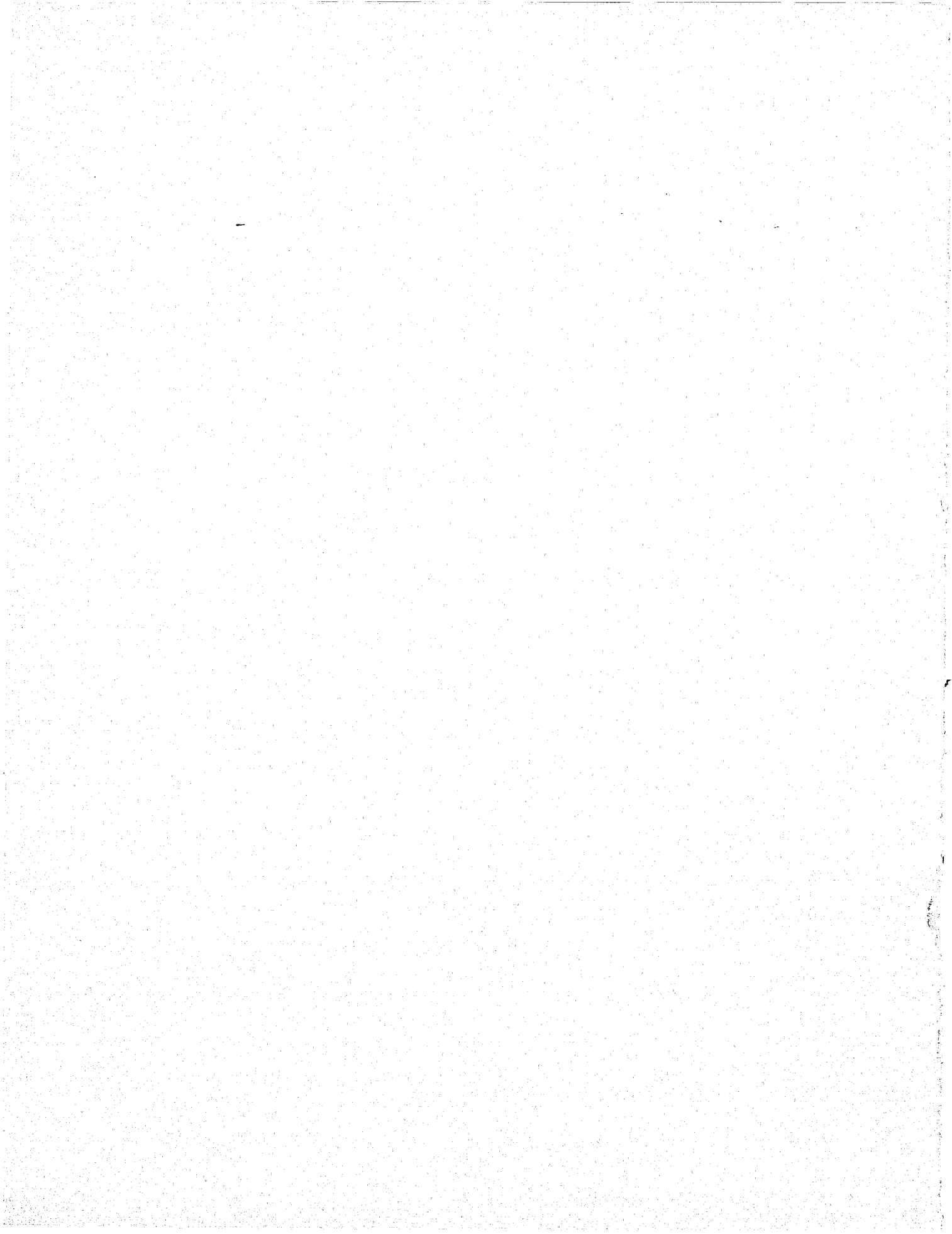
Since early in the 1970's, victimization surveys have been carried out under the National Crime Survey (NCS) program to provide insight into the impact of crime on American society. As one of the most ambitious efforts yet undertaken for filling some of the gaps in crime data, the surveys, carried out for the Law Enforcement Assistance Administration (LEAA) by the U.S. Bureau of the Census, are supplying the criminal justice community with new information on crime and its victims, complementing data resources already on hand for purposes of planning, evaluation, and analysis. Based on representative sampling of households and commercial establishments, the program has had two major elements, a continuous national survey and separate surveys in 26 central cities across the Nation.

Based on a scientifically designed sample of housing units within each jurisdiction, the city surveys had a twofold purpose: the assessment of public attitudes about crime and related matters and the development of information on the extent and nature of residents' experiences with selected forms of criminal victimization. The attitude questions were asked of the occupants of a random half of the housing units selected for the victimization survey. In order to avoid biasing respondents' answers to the attitude questions, this part of the survey was administered before the victimization questions. Whereas the attitude questions were asked of persons age 16 and over, the victimization survey applied to individuals age 12 and over. Because the attitude questions were designed to elicit personal opinions and perceptions as of the date of the interview, it was not necessary to associate a particular time frame with this portion of the survey, even though some queries made reference to a period of time preceding the survey. On the other hand, the victimization questions referred to a fixed time frame—the 12 months preceding the month of interview—and respondents were asked to recall details concerning their experiences as victims of one or more of the following crimes, whether completed or attempted: rape, personal robbery, assault, personal larceny, burglary, household larceny, and motor vehicle theft. In addition, information about burglary and robbery of businesses and certain other organizations was gathered by means of a victimization survey of commercial establishments, conducted separately from the household survey. A previous

publication, *Criminal Victimization Surveys in Washington, D.C.* (1977), provided comprehensive coverage of results from both the household and commercial victimization surveys.

Attitudinal information presented in this report was obtained from interviews with the occupants of 4,676 housing units (8,156 residents age 16 and over), or 90.9 percent of the units eligible for interview. Results of these interviews were inflated by means of a multistage weighting procedure to produce estimates applicable to all residents age 16 and over and to demographic and social subgroups of that population. Because they derived from a survey rather than a complete census, these estimates are subject to sampling error. They also are subject to response and processing errors. The effects of sampling error or variability can be accurately determined in a carefully designed survey. In this report, analytical statements involving comparisons have met the test that the differences cited are equal to or greater than approximately two standard errors; in other words, the chances are at least 95 out of 100 that the differences did not result solely from sampling variability. Estimates based on zero or on about 10 or fewer sample cases were considered unreliable and were not used in the analysis of survey results.

The 37 data tables in Appendix I of this report are organized in a sequence that generally corresponds to the analytical discussion. Two technical appendixes and a glossary follow the data tables: Appendix II consists of a facsimile of the survey questionnaire (Form NCS 6), and Appendix III supplies information on sample design and size, the estimation procedure, reliability of estimates, and significance testing; it also contains standard error tables.



## Contents

	<i>Page</i>
Preface .....	iii
Crime and attitudes .....	1
Summary .....	3
Crime trends .....	8
U.S. crime trends .....	8
Neighborhood crime trends .....	8
Who are the offenders? .....	8
Chances of personal victimization .....	8
Crime and the media .....	9
Fear of crime .....	10
Crime as a deterrent to mobility .....	10
Neighborhood safety .....	10
Crime as a cause for moving away .....	11
Crime as a cause for activity modification .....	11
Residential problems and lifestyles .....	12
Neighborhood problems and selecting a home .....	12
Food and merchandise shopping practices .....	12
Entertainment practices .....	12
Local police performance .....	14
Are they doing a good, average, or poor job? .....	14
How can the police improve? .....	14
Appendixes	
I. Survey data tables .....	15
II. Survey instrument .....	44
III. Technical information and reliability of the estimates .....	47
Sample design and size .....	47
Estimation procedure .....	47
Reliability of estimates .....	48
Computation and application of the standard error .....	49
Glossary .....	51
User evaluation questionnaire .....	53

<b>Charts</b>	<i>Page</i>
A. Summary findings about crime trends .....	4
B. Summary findings about fear of crime .....	5
C. Summary findings about residential problems .....	6
D. Summary findings about police performance .....	7

**Tables**

Appendix I

*Crime trends*

1. Direction of crime trends in the United States .....	16
2. Direction of crime trends in the neighborhood .....	16
3. Comparison of neighborhood crime with other metropolitan area neighborhoods .....	17
4. Place of residence of persons committing neighborhood crimes .....	17
5. Change in the chances of being attacked or robbed .....	18
6. Seriousness of crime problem relative to what newspapers and television report .....	18

*Fear of crime*

7. Fear of going to parts of the metropolitan area during the day .....	19
8. Fear of going to parts of the metropolitan area at night .....	19
9. Neighborhood safety when out alone during the day .....	20
10. Neighborhood safety when out alone during the day .....	21
11. Neighborhood safety when out alone during the day .....	22
12. Neighborhood safety when out alone at night .....	23
13. Neighborhood safety when out alone at night .....	24
14. Neighborhood safety when out alone at night .....	25
15. Neighborhood dangerous enough to consider moving elsewhere .....	26
16. Limitation or change in activities because of fear of crime .....	26
17. Personal limitation or change in activities because of fear of crime .....	27
18. Personal limitation or change in activities because of fear of crime .....	28

*Residential problems and lifestyles*

19. Most important reason for selecting present neighborhood .....	29
20. Most important reason for leaving former residence .....	29
21. Whether or not there are undesirable neighborhood characteristics .....	30
22. Most important neighborhood problem .....	30
23. Whether or not major food shopping done in the neighborhood .....	31
24. Most important reason for not doing major food shopping in the neighborhood .....	31
25. Preferred location for general merchandise shopping .....	32
26. Most important reason for usually doing general merchandise shopping in the suburbs (or neighborhood) or downtown .....	33
27. Change in the frequency with which persons went out for evening entertainment .....	34

28. Most important reason for increasing or decreasing the frequency with which persons went out for evening entertainment .....	35
29. Places usually visited for evening entertainment .....	36
30. Most important reason for usually seeking evening entertainment inside or outside the city .....	37

*Local police performance*

31. Opinion about local police performance .....	38
32. Opinion about local police performance .....	39
33. Opinion about local police performance .....	40
34. Whether or not local police performance needs improvement .....	41
35. Most important measure for improving local police performance .....	41
36. Most important measure for improving local police performance .....	42
37. Most important measure for improving local police performance .....	43

Appendix III

I. Individual respondent data: Standard error approximations for estimated percentages .....	50
II. Household respondent data: Standard error approximations for estimated percentages .....	50



## Crime and attitudes

During the 1960's, the President's Commission on Law Enforcement and Administration of Justice observed that "What America does about crime depends ultimately upon how Americans see crime. . . . The lines along which the Nation takes specific action against crime will be those that the public believes to be the necessary ones." Recognition of the importance of societal perceptions about crime prompted the Commission to authorize several public opinion surveys on the matter.<sup>1</sup> In addition to measuring the degree of concern over crime, those and subsequent surveys provided information on a variety of related subjects, such as the manner in which fear of crime affects people's lives, circumstances engendering fear for personal safety, members of the population relatively more intimidated by or fearful of crime, and the effectiveness of criminal justice systems. Based on a sufficiently large sample, moreover, attitude surveys can provide a means for examining the influence of victimization experiences upon personal outlooks. Conducted periodically in the same area, attitude surveys distinguish fluctuations in the degree of public concern; conducted under the same procedures in different areas, they provide a basis for comparing attitudes in two or more localities. With the advent of the National Crime Survey (NCS) program, it became possible to conduct large-scale attitudinal surveys addressing these and other issues, thereby enabling individuals to participate in appraising the status of public safety in their communities.

Based on data from a 1974 attitudinal survey, this report analyzes the responses of Washington residents to questions covering four topical areas: crime trends, fear of crime, residential problems and lifestyles, and local police performance. Certain questions, relating to household activities, were asked of only one person per household (the "household respondent"), whereas others were administered to all persons age 16 and over ("individual respondents"), including the household respondent. Results were obtained for the total measured population and for several demographic and social subgroups.

Conceptually, the survey incorporated questions pertaining to behavior as well as opinion. Concern-

ing behavior, for example, each respondent for a household was asked where its members shopped for food and other merchandise, where they lived before moving to the present neighborhood, and how long they had lived at that address. Additional questions asked of the household respondent were designed to elicit opinions about the neighborhood in general, about the rationale for selecting that particular community and leaving the former residence, and about factors that influenced shopping practices. None of the questions asked of the household respondent raised the subject of crime. Respondents were free to answer at will. In contrast, most of the individual attitude questions, asked of all household members age 16 and over, dealt specifically with matters relating to crime. These persons were asked for viewpoints on subjects such as crime trends in the local community and in the Nation, chances of being personally attacked or robbed, neighborhood safety during the day or at night, the impact of fear of crime on behavior, and the effectiveness of the local police. For many of these questions, response categories were predetermined and interviewers were instructed to probe for answers matching those on the questionnaire.

Although the attitude survey has provided a wealth of data, the results are opinions. For example, certain residents may have perceived crime as a growing threat or neighborhood safety as deteriorating, when, in fact, crime had declined and neighborhoods had become safer. Furthermore, individuals from the same neighborhood or with similar personal characteristics and/or experiences may have had conflicting opinions about any given issue. Nevertheless, people's opinions, beliefs, and perceptions about crime are important because they may influence behavior, bring about changes in certain routine activities, affect household security measures, or result in pressures on local authorities to improve police services.

The relationship between victimization experiences and attitudes is a recurring theme in the analytical section of this report. Information concerning such experiences was gathered with separate questionnaires, Forms NCS 3 and 4, used in administering the victimization component of the survey. Victimization survey results appeared in *Criminal Victimization Surveys in Washington* (1977), which also contains a detailed description of the survey-measured crimes, a discussion of the limitations of the central city surveys, and facsimiles of Forms NCS 3 and 4. For the purpose of this report, individuals who were victims of the following

<sup>1</sup>President's Commission on Law Enforcement and Administration of Justice. *The Challenge of Crime in a Free Society*. Washington, D.C.: U.S. Government Printing Office, February 1967, pp. 49-53.

crimes, whether completed or attempted, during the 12 months prior to the month of the interview were considered "victimized": rape, personal robbery, assault, and personal larceny. Similarly, members of households that experienced one or more of three types of offenses—burglary, household larceny, and motor vehicle theft—were categorized as victims. These crimes are defined in the glossary. Persons who experienced crimes other than those measured by the program, or who were victimized by any of the relevant offenses outside of the 12-month reference period, were classified as "not victimized." Limitations inherent in the victimization survey—that may have affected the accuracy of distinguishing victims from nonvictims—resulted from the problem of victim recall (the differing ability of respondents to remember crimes) and from the phenomenon of telescoping (the tendency of some respondents to recount incidents occurring outside, usually before, the appropriate time frame). Moreover, some crimes were sustained by victims outside of their city of residence; these may have had little or no effect in the formation of attitudes about local matters.

Despite the difficulties in distinguishing precisely between victims and nonvictims, it was deemed important to explore the possibility that being a victim of crime, irrespective of the level of seriousness or the frequency of occurrence, has an impact on behavior and attitudes. Adopting a simple dichotomous victimization experience variable—victimized and not victimized—for purposes of tabulation and analysis also stemmed from the desirability of attaining the highest possible degree of statistical reliability, even at the cost of using these broad categories. Ideally, the victim category should have distinguished the type or seriousness of crimes, the recency of the events, and/or the number of offenses sustained.<sup>2</sup> Such a procedure seemingly would have yielded more refined measures of the effects of crime upon attitudes. By reducing the number of sample cases on which estimates were based, however, such a subcategorization of victims would have weakened the statistical validity of comparisons between the victims and nonvictims.

---

<sup>2</sup>Survey results presented in this report contain attitudinal data furnished by the victims of "series victimizations" (see glossary).

## Summary

Even though nearly half of all District of Columbia residents age 16 and over indicated they had limited or changed their activities because of crime in the years preceding 1974, most other indicators suggested that the threat of criminal victimization did not strongly influence personal lifestyles or mobility. For instance, motives other than minimizing the threat of crime were paramount in selecting new neighborhoods, leaving old ones, and choosing shopping and entertainment locations. Summarily, these other considerations included matters of environmental quality, housing conditions, and convenience. Also, over 80 percent of the population evaluated police performance as at least average.

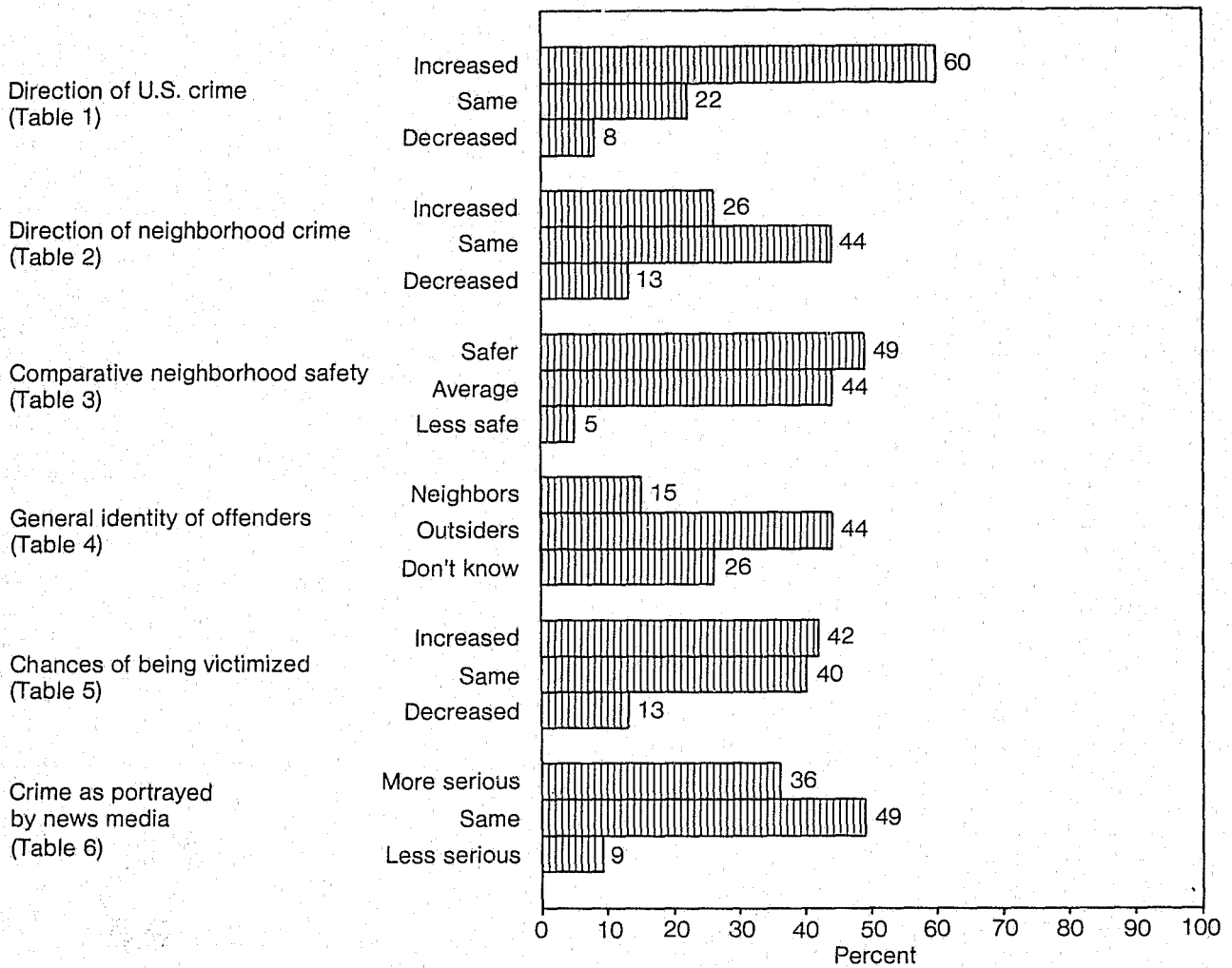
Six in every 10 Washington residents thought that crime in the Nation was on the increase. When the interview focused on local crime, however, impressions were far different. Only 1 in 4 respondents thought that crime in their neighborhoods had increased, most rated the neighborhood crime situation as no worse than average compared with the rest of the city, and fewer than half thought their personal chances of victimization had increased. Nine in 10 residents said they felt safe when out alone in their neighborhoods during the day, and 6 in 10 so indicated about nighttime.

Opinions on crime-related issues were not uniform across all sectors of the city's population, however. The differential effects of the threat of victimization were particularly apparent among women, the elderly, and recent victims. Women were much more likely than men to have expressed fear of being out alone in their neighborhoods at night, to have indicated they had changed their activities because of crime, and to have thought that their chances of robbery or attack had increased. Older persons were much more likely than younger ones to have said that they were afraid to go out in their neighborhoods alone at night and that they had changed or limited their activities because of the crime threat. Differences between young and old in the evaluation of police performance also were quite apparent. Young persons were much more likely than older residents to have given the local police an overall poor performance rating. Although blacks and whites tended to agree on most survey issues, blacks were more likely than whites to have said they changed their activities because of fear of crime and to have rated police performance as less than good,

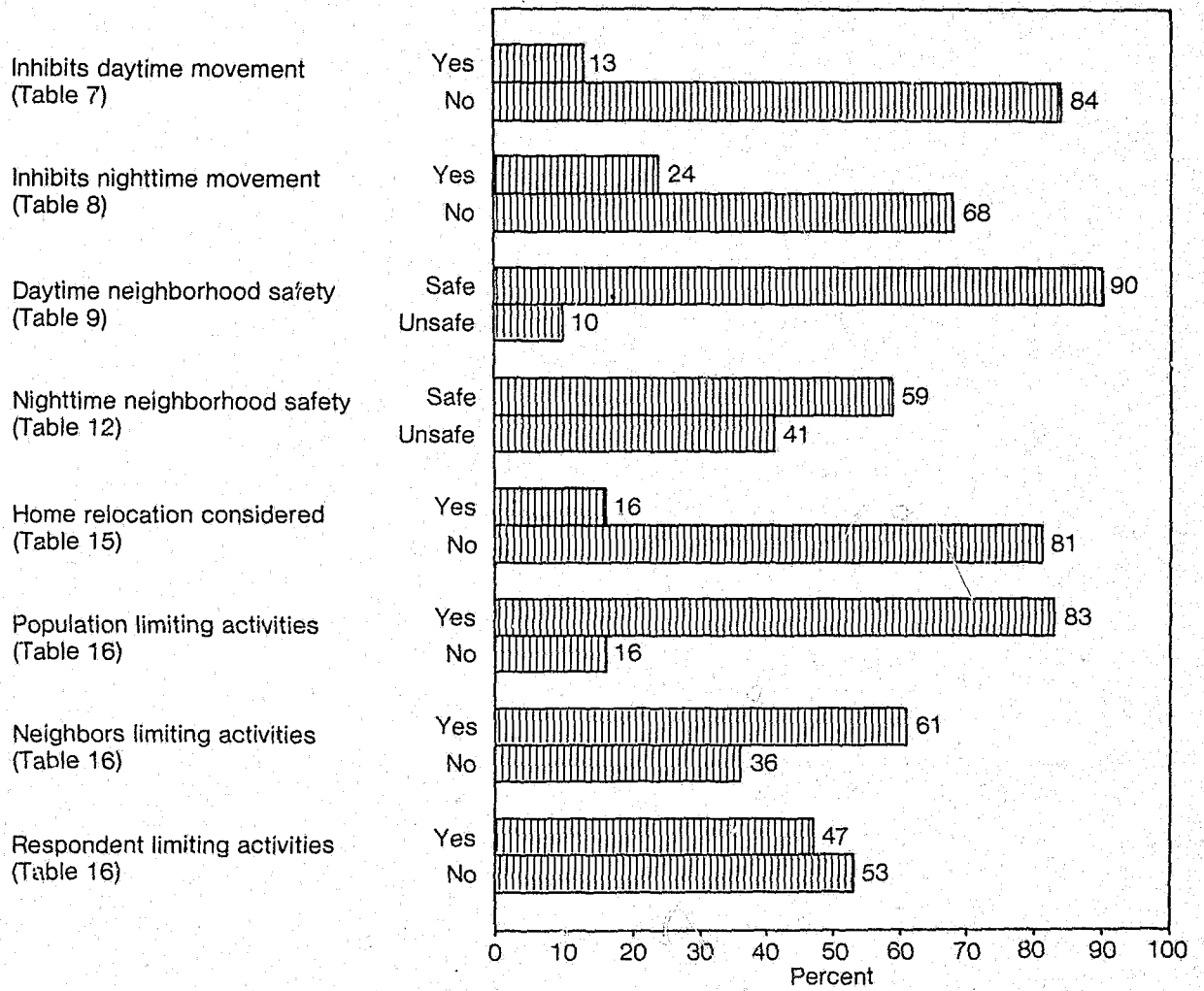
particularly in the areas of operational practices and community relations.

Notwithstanding the relatively low level of concern about the threat of crime among the general population, recent victimization experience was substantially related to some response items. One in every five respondents for victimized households who had expressed dissatisfaction with their neighborhoods said the most important neighborhood problem was crime, and victims in general were more likely than any other subgroup examined to have contemplated moving because of crime. Compared with nonvictims, victims also were more likely to have expressed fear of going to parts of the metropolitan area at night and to have rated their chances of victimization as higher than previously.

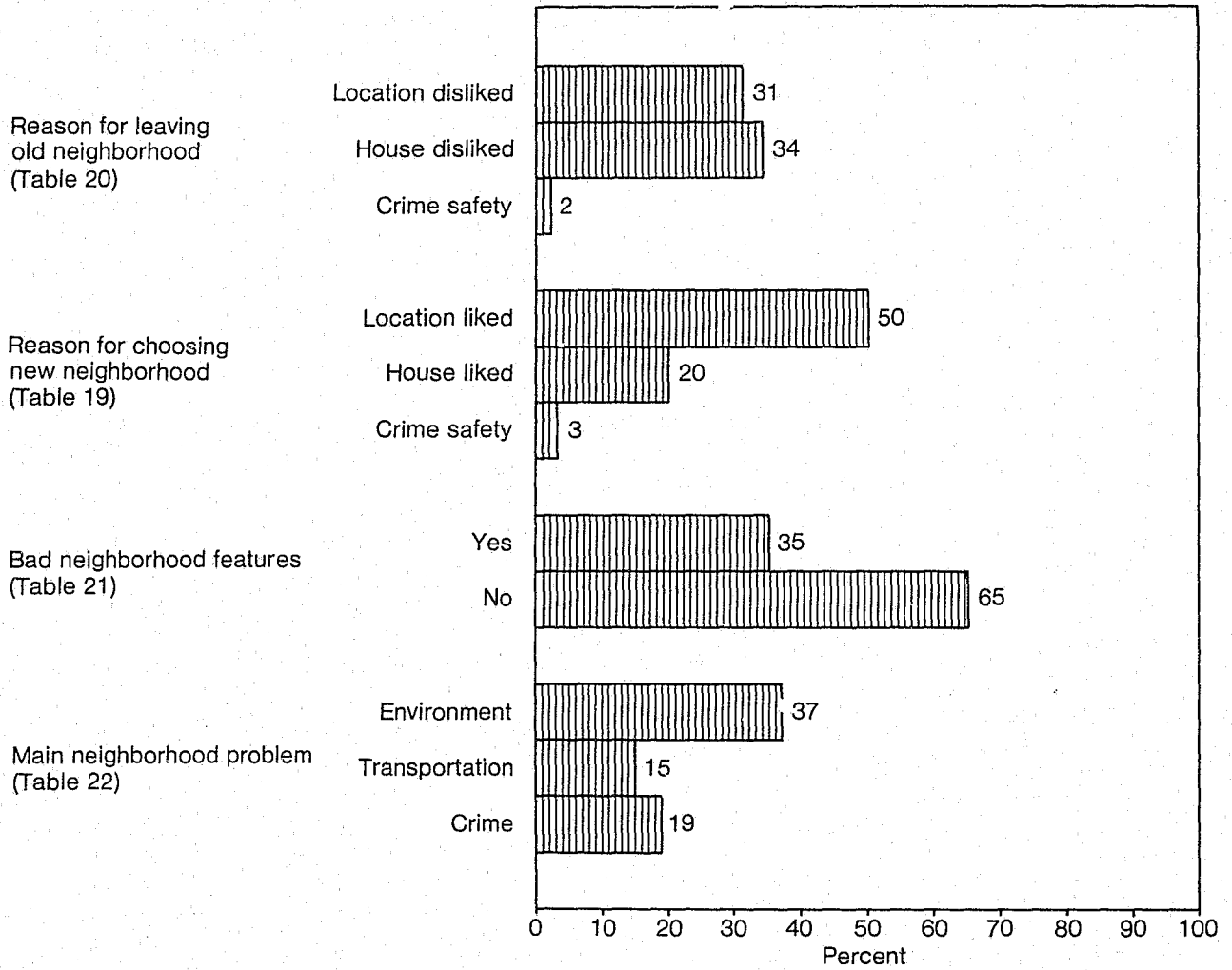
**Chart A. Summary findings about crime trends**



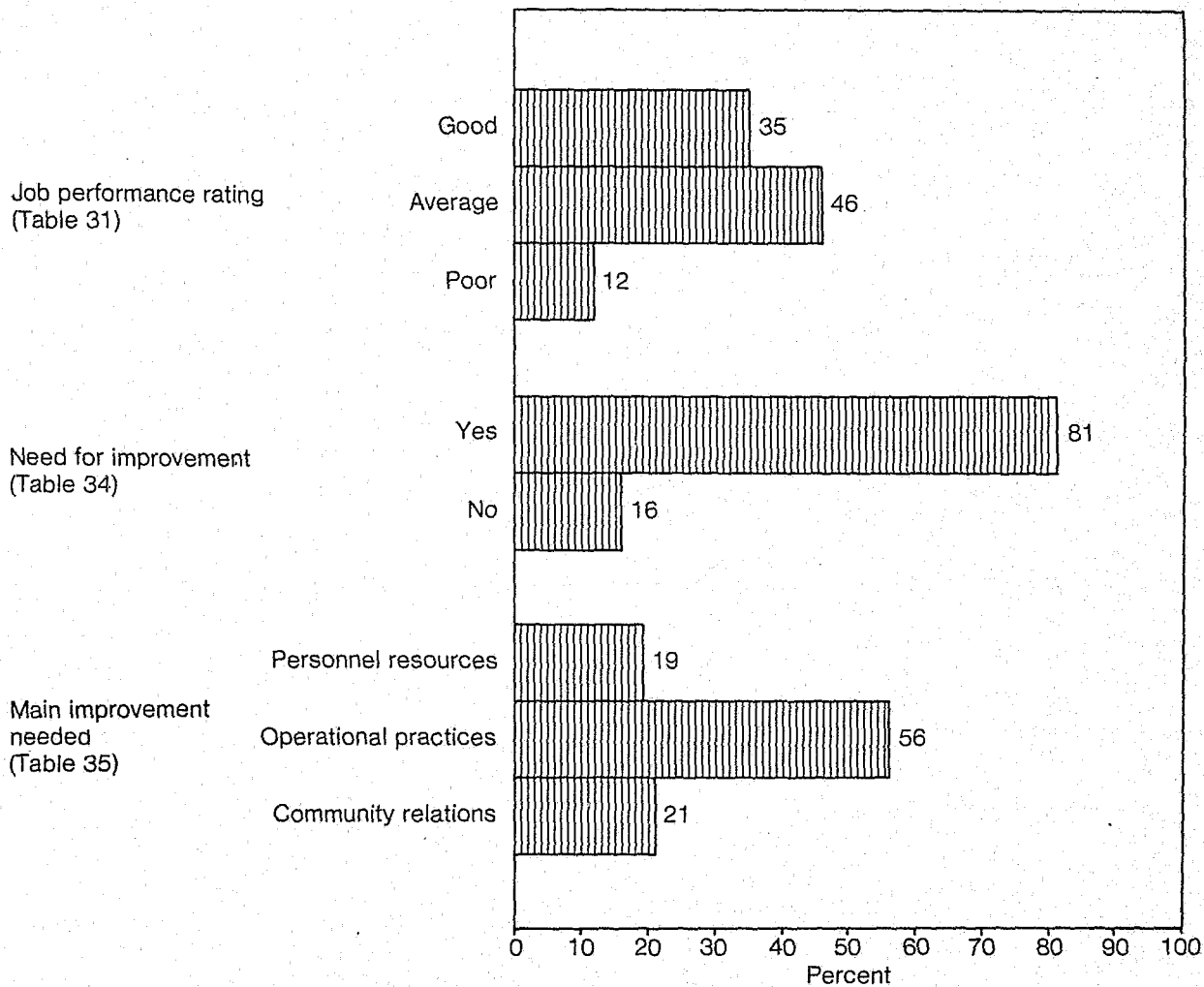
**Chart B. Summary findings about fear of crime**



**Chart C. Summary findings about residential problems**



### Chart D. Summary findings about police performance



## Crime trends

This section of the report deals with the perceptions of Washington residents with respect to national and community crime trends, personal safety, and the accuracy with which newspapers and television were thought to be reporting the crime problem. The findings were drawn from Data Tables 1 through 6, found in Appendix I. The relevant questions, appearing in the facsimile of the survey instrument (Appendix II), are 9a, 9c, 10a, 12, 15a, and 15b; each question was asked of persons age 16 and over.

### U.S. crime trends

Washington residents indicated a widespread but far from unanimous belief, at the time of the survey, that crime had increased in the United States over the previous year or two. Some 60 percent thought that crime had gone up; fewer, about 22 percent, believed that crime had remained at about the same level; and the smallest proportion, 8 percent, indicated that it had decreased. Ten percent didn't know if there had been a trend.

### Neighborhood crime trends

In contrast, the modal (most common) response about crime trends in the neighborhood over the past year or two was that they had remained at about the same level (44 percent), although relatively more people believed that an increase (26) rather than a decrease (13) had occurred; 13 percent did not have an impression of the trend in neighborhood crime.

Most residents (94 percent) rated their neighborhood crime problem as no worse than average in comparison to other parts of the Washington area. Contrasting with the 37 percent who believed their vicinities were less dangerous than others and the 12 percent who thought they were much less dangerous, only 5 percent suggested that their neighborhoods were more or much more dangerous. Although there were some statistically significant differences between the responses of members of different groups who considered their neighborhoods either more dangerous or much more dangerous, the magnitude of variation was quite limited. Variations among responses to the effect that neighborhoods were less dangerous also were small, except among members of the two largest racial groups. Relatively more

whites (72 percent) than blacks (39) believed their communities were less or much less dangerous, whereas blacks were much more likely (54) than whites (24) to have felt that neighborhood crime was about average.

### Who are the offenders?

The largest proportion of residents (44 percent) attributed most neighborhood crime to persons not living in the vicinity, 15 percent blamed neighboring people, and 12 percent cited both outsiders and nearby residents. More than 1 in 4, however, said they did not know where the offenders resided.

There was some disagreement among population subgroups with regard to the place of residence of those committing neighborhood crime. A higher proportion of blacks than whites (18 vs. 10 percent) suggested neighborhood people were committing most crime, whereas whites were more likely than blacks (55 vs. 39 percent) to think that outsiders were the main perpetrators. Residents under age 35 were more likely than older ones (19 vs. 11 percent) to have blamed neighboring residents, and persons age 65 and over were the least likely of any age group to have implicated their neighbors (7 percent). Victims of crime, who might be presumed to have been more knowledgeable about the identity of offenders because of their involvement with crime, were more apt than nonvictims to have had an opinion about the residence of offenders—they identified both community people and outsiders relatively more often than did nonvictims.

### Chances of personal victimization

Respondents were also asked about their perceptions of any change in their chances of being attacked or robbed. Forty-two percent believed their chances had increased over the past year or two, and only 13 percent thought there had been a decrease. A larger proportion of recent victims (47 percent) than nonvictims (40) suggested that their chances of assault or robbery were up, and a substantially higher proportion of females (47) than of males (35) asserted that their chances of attack were up. Relative to other age groups, persons age 16-19 were the least apt to have thought that their chances of being victimized had gone up, whereas those age 20-24 were most likely to have held that belief—an unusual contrast between the responses of the two youngest groups. There was no significant difference between the overall proportion of blacks and whites



rating their chances of attack as having increased, although a nominally higher proportion of blacks believed their chances had gone down.

### **Crime and the media**

As an additional measure of perceptions about crime trends, respondents were asked to compare the seriousness of crime to coverage of the problem by newspapers and television. A higher proportion of persons accepted than rejected the accuracy of media interpretations of crime, although the difference was small (49 vs. 45 percent). Of those rejecting media accounts, 36 percent felt that crime was more serious and only 9 percent thought it was less serious than reported. In general, there was little meaningful opinion variation among demographic groups, although blacks, by a fairly large margin, were more likely than whites (39 vs. 30 percent) to have indicated that crime actually was more serious than portrayed by newspaper and television reporting.

## Fear of crime

Among other things, results covered thus far have shown that many residents of the District of Columbia believed crime had increased over the years leading up to the survey, and, in addition, felt their own chances of being attacked or robbed had risen. Whether or not they feared for their personal safety is a matter treated in this section of the report. Also examined is the impact of the fear of crime on activity patterns and on considerations regarding changes of residence. Survey questions 11a, 11b, 11c, 13a, 13b, 16a, 16b, and 16c—all asked of persons age 16 and over—and Data Tables 7 through 18 are referenced here.

### Crime as a deterrent to mobility

Some five out of every six residents said they were not afraid of going to parts of the metropolitan area they had reason to visit during the day, compared with 68 percent who so stated about nighttime. This substantial difference between proportions of residents who indicated they felt relatively safer during the day than at night held for each sex, race, and age group, as well as for victims and nonvictims.<sup>3</sup>

Some groups under study were less likely than others to indicate fear of visiting parts of the metropolitan area. Compared with their counterparts, relatively fewer males, blacks, or persons not victimized expressed such fear, whether in a daytime or nighttime situation. There was, however, an inconsistency among persons distinguished by age. Whereas relatively more persons age 16-34 than of those 35 and over said they were not afraid of going to parts of the metropolitan area during the day (87 vs. 81 percent), there was less difference of opinion between the two groups with respect to nighttime fear: 69 percent of those age 34 and younger claimed not to fear such excursions, compared with 67 percent of persons in the older age range, a nominal although statistically significant difference.

### Neighborhood safety

Washingtonians reported their feelings about being out alone in their neighborhoods during the day and night by selecting one of four descriptors—very safe, reasonably safe, somewhat unsafe, or very unsafe. Nine out of ten residents said they felt

reasonably or very safe out alone in their neighborhood during the day, and a majority responded in the same manner regarding night, although the proportion dropped to about 6 in 10.

The proportions of respondents who said they felt very or reasonably safe during the day were high for all groups under study, ranging from 3 out of every 4 black females age 65 and over to near unanimity among white males age 16-19. On the matter of daytime safety, intergroup response variations chiefly involved the "very safe" and "reasonably safe" categories. Black females were the demographic group least likely to report feeling safe during the day when out alone in the neighborhood. For matching age groups, lower proportions of black females than of each of the other three race-sex groups indicated they felt safe.

The proportion of residents who said they felt very or reasonably safe when out alone in their neighborhoods at night was, as previously indicated, lower than that reported for the daytime. Moreover, there was a wider response diversity among subgroups that felt very or reasonably safe when out alone in their neighborhood at night than during the day. For example, roughly 9 in 10 males age 16-19, whether white or black, felt secure at night, compared to about 3 in 10 white females age 65 and over.

There were two other major differences in the distribution of responses to the questions about daytime and nighttime neighborhood safety. Concerning nighttime, "reasonably safe" responses outnumbered "very safe" responses for all groups studied. Overall, 43 percent said they felt reasonably safe, compared to only 16 percent who felt very safe. And, in contrast to information recorded about daytime, there were many subgroups for which a higher proportion suggested they felt either somewhat or very unsafe rather than reasonably or very safe at night.

Age and sex were the demographic variables that most clearly differentiated respondents who said they felt secure from those who indicated they were at risk when out alone in their neighborhoods at night. Below age 50, far higher proportions of persons said they felt safe rather than unsafe. For persons age 50-64, there was no significant difference between the proportions who felt safe or unsafe, whereas the large majority of those age 65 and over indicated they felt threatened. Excluding persons

metropolitan area where the respondent *needed or desired* to enter. Thus, it is reasonable to assume that high risk places, those most highly feared, were excluded from consideration by many respondents. Had the questions applied unconditionally to all sectors of the area, the pattern of responses no doubt would have been different.

<sup>3</sup>It should be noted that the source questions for data covered in this section (Questions 13a and 13b) referred to places in the

age 25-34, there was a downward trend with increased age in the proportion of persons who said they felt safe.

Whereas three-fourths of males reported they felt safe at night, 46 percent of females considered themselves likewise, and the response differences between males and females held at each age level. Large proportions of both blacks and whites expressed a feeling of safety when out alone in their neighborhoods at night, and there was no significant difference between the proportion of members of each race who felt secure. However, when specified by age, it was apparent that for both blacks and whites, the relatively high numbers of those who reported feeling safe applied only to persons under age 50, and a clear majority of members of each race over age 64 actually said they felt insecure. Higher proportions of both victims and nonvictims said they felt safe rather than unsafe at night; and, as was true for the question concerning daytime safety, there was virtually no statistical difference between the proportions of nonvictims and victims who expressed a lack of security.

### **Crime as a cause for moving away**

As another indication of the extent to which neighborhood crime caused fear, Washington respondents who had stated they felt somewhat or very unsafe when out alone in the vicinity of their homes during day or night were asked whether the neighborhood was dangerous enough for them to consider moving elsewhere. Four out of five of these residents said they had not, whereas 16 percent suggested that danger from crime had made them consider moving. One-fourth of persons victimized in 1973 had thought of moving because of crime; relatively more blacks than whites had done so. Neither sex nor age of the residents differentiated meaningfully between persons who had contemplated moving and those who had not.<sup>4</sup>

### **Crime as a cause for activity modification**

The final measure of the extent of crime-induced fear was developed by a battery of questions about any perceived limitations or changes in the respond-

<sup>4</sup>As shown in Data Table 15, males appeared to be slightly more likely than females to say they had thought about moving. The observation is somewhat misleading, however, because the source question was asked only of persons who said they felt unsafe during daytime and/or nighttime. Totalling 42 percent of the

ent's activities and in those of other individuals. About 83 percent of all persons age 16 and over thought that people in general were changing their activities because of crime, and a smaller proportion, 61 percent, suggested people in their neighborhood were doing so. A third question in the series centered on the respondents personally, and the proportion of positive answers dropped even further—to 47 percent.

More detailed examination of population subgroups revealed significant variations in proportions of those stating they personally had limited or changed their activities because of fear of crime, and one of the strongest determinants of such change was the age of the resident. Up to age 49, a majority of all respondents denied that crime was limiting or changing their activities; beyond that age, however, a majority indicated that it had done so. A general upward trend with age in crime-related changes was true for each of the four race-sex groups as well, even though statistical significance was lacking between apparent differences for a few intermediate age categories.

More than half (55 percent) of the city's females indicated changing or limiting their activities, compared to a smaller proportion of males (37). These response differences between the sexes held for each age category except the eldest one; for black males and females age 65 and over there was no significant difference between the proportions of those reporting change. For whites of that age group, however, a somewhat higher proportion of females than of males said they had revised their activities.

Overall, blacks were more likely than whites to have suggested that crime was limiting personal activity (49 vs. 42 percent). Comparing persons of opposite sex, however, this difference applied only to those age 25 and over, excluding females age 65 and over.

With regard to victims and nonvictims, there was no significant difference between the proportion of each group who indicated that fear of crime had led to activity changes.

relevant population, individuals who were asked the question included 25 percent of all males, contrasted with 54 percent of all females. Thus, 7 percent of the total population age 16 and over—including 4 percent of males and 8 percent of females—said they had seriously considered moving.

## **Residential problems and lifestyles**

The initial attitude survey questions were designed to gather information about certain specific behavioral practices of Washington, D.C., householders and to explore perceptions about a wide range of community problems, one of which was crime. As indicated in the section entitled "Crime and Attitudes," certain questions were asked of only one member of each household, known as the household respondent. Information gathered from such persons is treated in this section of the report and found in Data Tables 19 through 26; the pertinent data were based on survey questions 2a through 7b. In addition, the responses to questions 8a through 8f, relating to certain aspects of personal lifestyle, also are examined in this section; the relevant questions were asked of all household members age 16 and over, including the household respondent, and the results are displayed in Data Tables 27 through 30. As can be seen from the questionnaire, and unlike the procedure used in developing the information discussed in the two preceding sections of this report, the questions that served as a basis for the topics covered here did not reveal to respondents that the development of data on crime was the main purpose of the survey.

## **Neighborhood problems and selecting a home**

Only about 3 percent of household respondents who had moved during the preceding 5 years to the address where interviewed cited safety from crime as the most important reason for selecting that neighborhood. The most often cited reason was advantageous location—that is, nearness to a job, relatives, friends, shopping, or schools. Similarly, only 2 percent said crime was the most important reason for leaving their former residence, and location again was the reason most often cited for having moved. With respect to those who said they were influenced by crime into leaving the old residence and picking its replacement, there were no variations of consequence among the population groups under study.

A majority of Washingtonians (65 percent) were satisfied with their community to the extent that they were unable to suggest features they disliked about it. Of those who indicated there were neighborhood problems, the largest proportion (37 percent) said environmental issues—such as trash, noise, and

overcrowding—were most important, and 19 percent, the second largest proportion, singled out crime as the major difficulty. Compared with any other subgroup, respondents representing victimized households were much more likely (48 percent) to indicate problems existed, and these persons were also more likely than those speaking for households not victimized (25 vs. 16 percent) to have said crime was the most important community problem. So too, whites were more apt than blacks (22 vs. 17 percent) to cite crime as the most important issue, and of the six annual family income groups, those in the lowest category were most likely to have identified crime (29).

## **Food and merchandise shopping practices**

Persons representing some 263,300 households were asked where they did their major food and general merchandise shopping. Seventy-two percent of these said they shopped for food in their neighborhood. Of the 28 percent of household respondents who indicated food shopping was done in stores outside of the community, only 3 percent cited neighborhood crime as the most important reason for doing so, and the two most often cited reasons for traveling outside of the neighborhood were the lack or inadequacy of stores. In fact, crime was the least frequently given reason for not doing food shopping in the neighborhood, and variations in subgroup responses for the crime category were too small to be meaningful. By a small margin (51 vs. 47 percent), householders usually did general merchandise shopping in suburban or neighborhood areas rather than downtown. Only 2 percent of the household respondents who usually shopped in suburban or neighborhood areas cited crime downtown as the major reason for not shopping there. The number of those who shopped downtown because of crime in the suburbs or the neighborhood was too small to yield a statistically reliable estimate. Convenience was the overriding motive behind location preferences for general merchandise shopping.

## **Entertainment practices**

All respondents age 16 and over were asked about the frequency with which they went out for entertainment and the location they generally chose, either in or outside the city. A majority of persons (55 percent) stated they were going out for entertainment about as much as in the past year or two,

whereas 31 percent suggested they were going out less often and 14 percent more frequently. For those reporting reduced entertainment activity outside the home, crime ranked as one of three most often mentioned primary reasons; in fact, there was no significant difference between the proportion of persons who selected crime and those who gave personal finances or family arrangements as the main cause. Personal characteristics or victim experience appeared to bear little if any relationship to the designation of crime as the major reason for going out less. There was an obvious difference, however, between persons under 35 and older ones. Only about 8 percent of the younger age group cited crime as the major reason for reduced entertainment activity, compared with 1 in 4 persons 35 years and over.

A large majority of residents, 3 out of 4, said they usually stayed in the city for entertainment, and 16 percent stated they left the city about as often as they remained in it. For the 8 percent of city residents who chose suburban areas, the most readily offered reasons were a preference for facilities and convenience. Crime was cited as the paramount reason for not seeking entertainment in the city by about 14 percent of this group. The apparently large proportion of persons age 65 and over (24 percent) who said they relied on suburban entertainment facilities because of their fear of city crime did not differ significantly from the percentages for most other age groups.

## Local police performance

Following the series of questions concerning neighborhood safety and crime as a deterrent to personal mobility, individuals age 16 and over were asked to assess the overall performance of the local police and to suggest ways, if any, in which police effectiveness might be improved. Data Tables 31 through 37, derived from survey questions 14a and 14b, contain the results on which this discussion is based.

### Are they doing a good, average, or poor job?

The largest proportion of Washington residents (46 percent) evaluated police performance as average, the second largest thought it was good (35), and only 12 percent said it was poor; 8 percent declined to comment. There was virtually no difference between ratings by males and females, and victims disagreed with nonvictims only in assigning a poor rating—15 percent of victims suggested police were doing a poor job, whereas 11 percent of the nonvictims thought so.

The city's two largest racial groups, however, clearly differed in their evaluations. Whites were about twice as likely as blacks to rate police performance as good (54 vs. 26 percent), higher proportions of blacks having suggested the police were doing an average or poor job. This difference in the responses of whites and blacks extended to a number of the sex-age subgroups under study, suggesting that race was strongly related to judgments about police performance.

Evaluations given by residents classified according to age also were well defined. Older residents were relatively more likely to give good ratings, and younger ones average or poor ratings. To illustrate, whereas only about 6 percent of respondents age 65 and over said the police were doing a poor job, about 20 percent of youngsters age 16-19 so stated. Conversely, about half of all senior citizens assumed the police were doing a good job, and only 16 percent of the youngsters thought so. As age of respondents increased, there was a distinct rise in the proportion of "good" ratings and a tendency toward a decrease in "poor" ratings, although the latter pattern did not hold as uniformly as the former.

Blacks age 16-34, whether male or female, were the individuals most likely to say the police were doing a poor job. About 20 percent of these persons

gave poor ratings, compared to only about 5 percent for their white counterparts.

### How can the police improve?

Residents were asked to suggest ways in which the police could improve their performance, and about 81 percent of the population had specific suggestions. By far the largest proportion of suggestions for improvement were in the area of operational practices (56 percent). The remainder of the responses were nearly equally divided between matters related to personnel resources and community relations.<sup>5</sup> The specific recommendation most frequently given (21 percent) was to station more police in certain areas or at specific times; other relatively common suggestions were for police to focus on more important duties and for them to be more courteous or prompt. The least frequently expressed need was for increased traffic control (1 percent).

Keeping in mind differences in the way the various groups under study assessed police performance, it is of interest to examine how opinions contrasted regarding ways to improve the police. Whites suggested improving personnel resources proportionally more than blacks (26 vs. 17 percent), whereas the latter were more likely to indicate that operational practices and community relations should be upgraded. The preference for improved personnel resources by whites as opposed to blacks tended to apply irrespective of age, although not all of the apparent differences between age groups were significant. However, the higher degree of interest among blacks in improved operational practices centered on persons 35 and over. The relative difference between blacks and whites desiring better community relations was maintained at each age level, and the contrast was especially marked among young males; 38 percent of black males age 16-24 indicated community relations could be improved, compared with only 13 percent of white males of that age group.

The relative number of respondents calling for improved personnel resources rose with the age of the respondent from 15 percent for 16-19 year-olds

<sup>5</sup>For most of this discussion, the eight specific response items covered in Question 14b were combined into three categories, as follows: *community relations*: (1) "Be more courteous, improve attitude, community relations" and (2) "Don't discriminate." *Operational practices*: (1) "Concentrate on more important duties, serious crime, etc.;" (2) "Be more prompt, responsive, alert"; (3) "Need more traffic control"; and (4) "Need more policemen of particular type (foot, car) in certain areas or at certain times." And *personnel resources*: (1) "Hire more policemen" and (2) "Improve training, raise qualifications or pay, recruitment policies."

to 29 percent for persons age 65 and over, although not all apparent increases for intermediate age groups were significant. In contrast, the frequency of recommendations for improved community relations diminished from a high of 29 percent for the youngest age group to 12 percent for the eldest, although here again not all step-by-step decreases were significant. With respect to those who cited the third area—operational practices—there was no particular correspondence with the respondents' age.

Relatively more females than males (59 vs. 53 percent) suggested improving police operations, whereas a slightly higher proportion of males than females (23 vs. 19 percent) believed better community relations were needed. Concerning personnel resources, the response rates for men and women did not differ significantly.

Victimization experience had little apparent effect over opinions about ways of improving the police. For example, there was no significant difference between the relative frequency with which victims and nonvictims cited the need for an improved personnel situation. And, victims were only slightly more inclined than nonvictims to indicate a need for the police to improve their relations with the public.

## Appendix I

### Survey data tables

The 37 statistical data tables in this appendix present the results of the Washington attitudinal survey conducted early in 1974. They are organized topically, generally paralleling the report's analytical discussion. For each subject, the data tables consist of cross-tabulations of personal (or household) characteristics and the relevant response categories. For a given population group, each table displays the percent distribution of answers to a question.

All statistical data generated by the survey are estimates that vary in their degree of reliability and are subject to variances, or errors, associated with the fact that they were derived from a sample survey rather than a complete enumeration. Constraints on interpretation and other uses of the data, as well as guidelines for determining their reliability, are set forth in Appendix III. As a general rule, however, estimates based on zero or on about 10 or fewer sample cases have been considered unreliable. Such estimates, qualified by footnotes to the data tables, were not used for analytical purposes in this report.

Each data table parenthetically displays the size of the group for which a distribution of responses was calculated. As with the percentages, these base figures are estimates. On tables showing the answers of individual respondents (Tables 1-18 and 27-37), the figures reflect an adjustment based on an independent post-Census estimate of the city's resident population. For data from household respondents (Tables 19-26), the bases were generated solely by the survey itself.

A note beneath each data table identifies the question that served as source of the data. As an expedient in preparing tables, certain response categories were reworded and/or abbreviated. The questionnaire facsimile (Appendix II) should be consulted for the exact wording of both the questions and the response categories. For questionnaire items that carried the instruction "Mark all that apply," thereby enabling a respondent to furnish more than a single answer, the data tables reflect only the answer designated by the respondent as being the most important one rather than all answers given.

The first six data tables were used in preparing the "Crime Trends" section of the report. Tables 7-18 relate to the topic "Fear of Crime"; Tables 19-30 cover "Residential Problems and Lifestyles"; and the last seven tables display information concerning "Local Police Performance."

**Table 1. Direction of crime trends in the United States**

(Percent distribution of responses for the population age 16 and over)

Population characteristic	Total	Increased	Same	Decreased	Don't know	Not available
All persons (532,800)	100.0	59.8	22.1	8.0	9.5	0.6
Sex						
Male (230,600)	100.0	56.8	24.7	9.1	8.8	0.6
Female (302,300)	100.0	62.1	20.1	7.1	10.1	0.5
Race						
White (166,200)	100.0	52.7	24.7	8.7	13.6	0.4
Black (359,100)	100.0	63.3	21.1	7.6	7.4	0.6
Other (7,500)	100.0	51.0	16.8	9.3	20.1	12.6
Age						
16-19 (50,400)	100.0	60.9	23.9	6.9	7.7	10.7
20-24 (81,700)	100.0	63.5	21.8	6.9	7.1	0.7
25-34 (120,500)	100.0	60.5	24.3	6.9	8.1	10.3
35-49 (113,700)	100.0	60.4	21.0	8.9	9.1	0.6
50-64 (100,200)	100.0	57.2	21.4	9.8	11.0	0.6
65 and over (66,500)	100.0	56.1	20.3	7.6	15.1	0.9
Victimization experience						
Not victimized (418,500)	100.0	59.0	22.0	7.9	10.5	0.6
Victimized (114,400)	100.0	62.7	22.6	8.0	6.1	0.6

NOTE: Data based on question 10a. Detail may not add to total because of rounding. Figures in parentheses refer to population in the group.

<sup>1</sup>Estimate, based on about 10 or fewer sample cases, is statistically unreliable.**Table 2. Direction of crime trends in the neighborhood**

(Percent distribution of responses for the population age 16 and over)

Population characteristic	Total	Increased	Same	Decreased	Haven't lived here that long	Don't know	Not available
All persons (532,800)	100.0	25.6	43.7	13.2	4.2	13.0	0.3
Sex							
Male (230,600)	100.0	25.1	44.9	14.7	3.8	11.2	0.3
Female (302,300)	100.0	25.9	42.8	12.0	4.6	14.3	0.2
Race							
White (166,200)	100.0	22.6	44.6	10.5	6.8	15.2	10.3
Black (359,100)	100.0	26.9	43.5	14.5	3.0	11.8	0.2
Other (7,500)	100.0	25.5	37.1	7.9	7.7	20.0	11.8
Age							
16-19 (50,400)	100.0	25.4	44.1	13.8	4.6	11.9	10.1
20-24 (81,700)	100.0	23.4	43.1	11.9	9.2	12.2	10.3
25-34 (120,500)	100.0	25.1	43.8	11.0	6.3	13.6	10.2
35-49 (113,700)	100.0	25.5	44.5	13.3	3.3	13.1	10.3
50-64 (100,200)	100.0	26.1	44.4	16.1	1.0	12.1	10.3
65 and over (66,500)	100.0	28.6	41.6	13.8	0.8	14.9	10.3
Victimization experience							
Not victimized (418,500)	100.0	24.4	43.8	13.6	4.1	13.9	0.3
Victimized (114,400)	100.0	30.0	43.5	11.7	4.9	9.6	10.3

NOTE: Data based on question 9a. Detail may not add to total because of rounding. Figures in parentheses refer to population in the group.

<sup>1</sup>Estimate, based on about 10 or fewer sample cases, is statistically unreliable.



**Table 3. Comparison of neighborhood crime with other metropolitan area neighborhoods**

(Percent distribution of responses for the population age 16 and over)

Population characteristic	Total	Much more dangerous	More dangerous	About average	Less dangerous	Much less dangerous	Not available
All persons (532,800)	100.0	0.7	4.7	44.4	37.2	12.2	0.8
Sex							
Male (230,600)	100.0	0.7	3.8	43.5	37.8	13.5	0.8
Female (302,300)	100.0	0.8	5.4	45.1	36.8	11.2	0.8
Race							
White (166,200)	100.0	10.2	3.5	23.5	48.5	23.7	0.7
Black (359,100)	100.0	1.0	5.2	54.3	31.9	6.8	0.8
Other (7,500)	100.0	10.0	5.8	34.5	45.6	13.2	10.8
Age							
16-19 (50,400)	100.0	1.1	4.4	48.7	33.9	11.3	10.6
20-24 (81,700)	100.0	10.3	5.1	45.4	37.2	11.5	10.5
25-34 (120,500)	100.0	0.6	5.7	45.0	35.7	12.5	0.5
35-49 (113,700)	100.0	0.9	4.7	44.8	37.7	11.2	0.7
50-64 (100,200)	100.0	0.6	4.1	42.1	38.6	13.0	1.5
65 and over (66,500)	100.0	0.9	13.6	41.5	39.8	13.5	10.7
Victimization experience							
Not victimized (418,500)	100.0	0.5	4.2	46.0	36.9	11.5	0.8
Victimized (114,400)	100.0	1.4	6.6	38.4	38.4	14.6	0.6

NOTE: Data based on question 12. Detail may not add to total because of rounding. Figures in parentheses refer to population in the group.

<sup>1</sup>Estimate, based on zero or on about 10 or fewer sample cases, is statistically unreliable.

**Table 4. Place of residence of persons committing neighborhood crimes**

(Percent distribution of responses for the population age 16 and over)

Population characteristic	Total	No neighborhood crime	People living here	Outsiders	Equally by both	Don't know	Not available
All persons (532,800)	100.0	2.4	15.0	43.9	11.8	25.8	1.0
Sex							
Male (230,600)	100.0	2.3	14.4	45.7	12.8	23.8	1.0
Female (302,300)	100.0	2.5	15.6	42.6	11.1	27.3	0.9
Race							
White (166,200)	100.0	3.0	10.0	54.8	4.3	27.0	0.9
Black (359,100)	100.0	2.2	17.5	39.1	15.4	25.0	1.0
Other (7,500)	100.0	12.6	9.9	36.9	9.3	40.4	10.9
Age							
16-19 (50,400)	100.0	2.4	21.6	44.9	14.4	15.6	1.1
20-24 (81,700)	100.0	1.9	18.9	42.0	12.2	23.9	1.0
25-34 (120,500)	100.0	1.7	18.1	39.3	13.1	27.2	0.6
35-49 (113,700)	100.0	3.4	14.4	44.1	12.4	24.4	1.4
50-64 (100,200)	100.0	2.1	10.8	47.0	10.5	28.7	0.9
65 and over (66,500)	100.0	3.2	7.4	49.1	8.3	31.2	0.9
Victimization experience							
Not victimized (418,500)	100.0	2.6	13.5	42.9	12.7	27.3	1.0
Victimized (114,400)	100.0	1.6	20.9	47.7	8.8	20.3	0.8

NOTE: Data based on question 9c. Detail may not add to total because of rounding. Figures in parentheses refer to population in the group.

<sup>1</sup>Estimate, based on about 10 or fewer sample cases, is statistically unreliable.

**Table 5. Change in the chances of being attacked or robbed**

(Percent distribution of responses for the population age 16 and over)

Population characteristic	Total	Going up	Same	Going down	No opinion	Not available
All persons (532,800)	100.0	41.8	39.9	12.9	5.1	0.4
Sex						
Male (230,600)	100.0	35.3	44.0	15.4	4.9	0.4
Female (302,300)	100.0	46.8	36.7	10.9	5.2	0.3
Race						
White (166,200)	100.0	41.2	41.5	11.5	5.6	0.2
Black (359,100)	100.0	42.4	39.2	13.4	4.6	0.5
Other (7,500)	100.0	27.5	36.7	19.1	15.9	10.8
Age						
16-19 (50,400)	100.0	36.2	44.2	14.0	5.3	10.3
20-24 (81,700)	100.0	45.5	38.9	11.4	3.9	10.3
25-34 (120,500)	100.0	42.6	41.0	12.2	3.9	10.3
35-49 (113,700)	100.0	41.4	40.3	13.1	4.6	0.5
50-64 (100,200)	100.0	41.3	38.2	15.0	5.1	10.4
65 and over (66,500)	100.0	41.7	37.5	11.3	9.1	10.5
Victimization experience						
Not victimized (418,500)	100.0	40.4	40.0	13.5	5.8	0.4
Victimized (114,400)	100.0	47.1	39.6	10.7	2.4	10.3

NOTE: Data based on question 15a. Detail may not add to total because of rounding. Figures in parentheses refer to population in the group.

<sup>1</sup>Estimate, based on about 10 or fewer sample cases, is statistically unreliable.**Table 6. Seriousness of crime problem relative to what newspapers and television report**

(Percent distribution of responses for the population age 16 and over)

Population characteristic	Total	Less serious	Same	More serious	No opinion	Not available
All persons (532,800)	100.0	9.2	48.9	36.0	5.3	0.7
Sex						
Male (230,600)	100.0	11.4	48.2	34.4	5.2	0.8
Female (302,300)	100.0	7.5	49.4	37.2	5.3	0.6
Race						
White (166,200)	100.0	10.6	52.4	29.7	6.6	0.6
Black (359,100)	100.0	8.5	47.4	38.9	4.4	0.7
Other (7,500)	100.0	10.1	39.9	34.2	15.8	10.0
Age						
16-19 (50,400)	100.0	11.3	47.2	36.8	3.8	10.9
20-24 (81,700)	100.0	9.8	49.0	37.3	3.6	10.4
25-34 (120,500)	100.0	8.7	49.4	36.3	5.1	0.5
35-49 (113,700)	100.0	9.7	49.7	34.8	4.8	1.0
50-64 (100,200)	100.0	8.5	47.8	37.3	5.5	0.9
65 and over (66,500)	100.0	7.7	49.3	33.2	9.2	10.6
Victimization experience						
Not victimized (418,500)	100.0	9.2	48.9	35.5	5.7	0.7
Victimized (114,400)	100.0	9.1	48.9	37.8	3.6	0.7

NOTE: Data based on question 15b. Detail may not add to total because of rounding. Figures in parentheses refer to population in the group.

<sup>1</sup>Estimate, based on zero or on about 10 or fewer sample cases, is statistically unreliable.

**Table 7. Fear of going to parts of the metropolitan area during the day**

(Percent distribution of responses for the population age 16 and over)

Population characteristic	Total	Yes	No	Not available
All persons (532,800)	100.0	13.4	83.9	2.7
Sex				
Male (230,600)	100.0	11.5	86.8	1.6
Female (302,300)	100.0	14.9	81.7	3.5
Race				
White (166,200)	100.0	16.0	80.5	3.5
Black (359,100)	100.0	12.1	85.7	2.2
Other (7,500)	100.0	20.1	74.8	15.2
Age				
16-19 (50,400)	100.0	9.0	89.0	2.0
20-24 (81,700)	100.0	12.8	85.9	1.2
25-34 (120,500)	100.0	11.4	87.1	1.5
35-49 (113,700)	100.0	13.4	84.4	2.2
50-64 (100,200)	100.0	16.7	79.1	4.2
65 and over (66,500)	100.0	16.3	78.1	5.6
Victimization experience				
Not victimized (418,500)	100.0	12.5	84.9	2.7
Victimized (114,400)	100.0	16.9	80.4	2.6

NOTE: Data based on question 13a. Detail may not add to total because of rounding. Figures in parentheses refer to population in the group.

<sup>1</sup>Estimate, based on about 10 or fewer sample cases, is statistically unreliable.

**Table 8. Fear of going to parts of the metropolitan area at night**

(Percent distribution of responses for the population age 16 and over)

Population characteristic	Total	Yes	No	Not available
All persons (532,800)	100.0	23.9	68.0	8.1
Sex				
Male (230,600)	100.0	21.5	73.7	4.9
Female (302,300)	100.0	25.7	63.7	10.5
Race				
White (166,200)	100.0	25.7	63.3	11.0
Black (359,100)	100.0	22.8	70.4	6.8
Other (7,500)	100.0	32.4	60.9	6.8
Age				
16-19 (50,400)	100.0	22.9	71.9	5.2
20-24 (81,700)	100.0	25.7	68.2	6.1
25-34 (120,500)	100.0	25.7	68.9	5.5
35-49 (113,700)	100.0	23.6	70.0	6.4
50-64 (100,200)	100.0	24.5	63.2	12.3
65 and over (66,500)	100.0	18.6	67.5	13.9
Victimization experience				
Not victimized (481,500)	100.0	22.4	70.0	7.6
Victimized (114,400)	100.0	29.1	61.0	9.9

NOTE: Data based on question 13b. Detail may not add to total because of rounding. Figures in parentheses refer to population in the group.

**Table 9. Neighborhood safety when out alone during the day**

(Percent distribution of responses for the population age 16 and over)

Population characteristic	Total	Very safe	Reasonably safe	Somewhat unsafe	Very unsafe	Not available
All persons (532,800)	100.0	45.4	44.7	7.2	2.4	0.3
Sex						
Male (230,600)	100.0	56.3	37.6	4.5	1.3	0.3
Female (302,300)	100.0	37.0	50.2	9.2	3.3	0.3
Race						
White (166,200)	100.0	61.2	32.5	4.6	1.4	10.2
Black (359,100)	100.0	38.0	50.5	8.3	2.9	0.3
Other (7,500)	100.0	45.9	43.7	6.8	1.8	1.9
Age						
16-19 (50,400)	100.0	53.6	38.0	6.6	1.5	10.3
20-24 (81,700)	100.0	49.0	43.0	5.3	2.3	10.5
25-34 (120,500)	100.0	50.6	43.0	4.9	1.3	10.2
35-49 (113,700)	100.0	45.0	45.6	7.4	1.8	10.1
50-64 (100,200)	100.0	40.7	46.6	8.9	3.6	10.3
65 and over (66,500)	100.0	32.9	50.9	11.1	4.7	10.4
Victimization experience						
Not victimized (418,500)	100.0	43.8	46.4	7.3	2.2	0.2
Victimized (114,400)	100.0	51.0	38.8	6.6	3.2	10.4

NOTE: Data based on question 11b. Detail may not add to total because of rounding. Figures in parentheses refer to population in the group.

<sup>1</sup>Estimate, based on about 10 or fewer sample cases, is statistically unreliable.

**Table 10. Neighborhood safety when out alone during the day**

(Percent distribution of responses for the population age 16 and over)

Population characteristic	Total	Very safe	Reasonably safe	Somewhat unsafe	Very unsafe	Not available
<b>Sex and age</b>						
<b>Male</b>						
16-19 (23,700)	100.0	64.8	30.3	3.8	10.6	10.6
20-24 (32,500)	100.0	61.6	33.8	2.9	11.2	10.6
25-34 (55,200)	100.0	63.4	33.7	2.2	10.6	10.1
35-49 (51,100)	100.0	54.7	39.6	4.7	10.9	10.1
50-64 (42,200)	100.0	49.0	41.6	6.6	2.6	10.2
65 and over (26,000)	100.0	41.9	47.3	8.2	2.4	10.3
<b>Female</b>						
16-19 (26,700)	100.0	43.7	44.9	9.1	2.3	10.0
20-24 (49,200)	100.0	40.6	49.1	6.9	3.0	10.4
25-34 (65,300)	100.0	39.9	50.8	7.1	1.9	10.3
35-49 (62,600)	100.0	37.1	50.6	9.6	2.6	10.1
50-64 (58,000)	100.0	34.6	50.2	10.6	4.2	10.3
65 and over (40,500)	100.0	27.2	53.2	12.9	6.2	10.5
<b>Race and age</b>						
<b>White</b>						
16-19 (9,100)	100.0	78.2	20.4	11.4	10.0	10.0
20-24 (26,300)	100.0	69.7	25.6	2.6	11.4	10.7
25-34 (38,200)	100.0	74.4	24.0	1.6	10.0	10.0
35-49 (27,300)	100.0	64.1	31.5	3.6	10.7	10.0
50-64 (31,500)	100.0	53.2	38.2	6.5	1.8	10.2
65 and over (33,900)	100.0	40.3	46.0	9.6	3.7	10.4
<b>Black</b>						
16-19 (40,900)	100.0	48.1	42.0	7.8	1.8	10.3
20-24 (54,100)	100.0	38.9	51.7	6.6	2.8	10.1
25-34 (79,800)	100.0	39.3	52.1	6.4	1.9	10.3
35-49 (84,200)	100.0	38.7	50.3	8.6	2.2	10.2
50-64 (68,100)	100.0	34.9	50.3	10.1	4.4	10.3
65 and over (31,900)	100.0	25.6	55.9	12.5	5.6	10.4

NOTE: Data based on question 11b. Detail may not add to total because of rounding. Figures in parentheses refer to population in the group.  
<sup>1</sup>Estimate, based on zero or on about 10 or fewer sample cases, is statistically unreliable.

Table 11. Neighborhood safety when out alone during the day

(Percent distribution of responses for the population age 16 and over)

Population characteristic	Total	Very safe	Reasonably safe	Somewhat unsafe	Very unsafe	Not available
Race, sex, and age						
White						
Male						
16-19 (4,600)	100.0	87.4	12.6	10.0	10.0	10.0
20-24 (11,500)	100.0	75.6	21.4	10.9	11.1	11.0
25-34 (19,000)	100.0	80.7	18.1	11.3	10.0	10.0
35-49 (13,500)	100.0	72.7	23.5	13.4	10.5	10.0
50-64 (12,500)	100.0	62.4	31.7	4.3	11.5	10.0
65 and over (11,900)	100.0	52.4	38.0	6.8	12.3	10.6
Female						
16-19 (4,600)	100.0	69.0	28.2	12.8	10.0	10.0
20-24 (14,800)	100.0	65.1	28.8	3.8	11.8	10.5
25-34 (19,100)	100.0	68.2	29.9	11.9	10.0	10.0
35-49 (13,900)	100.0	55.9	39.3	3.9	10.9	10.0
50-64 (19,000)	100.0	47.1	42.5	8.0	12.0	10.3
65 and over (21,900)	100.0	33.7	50.4	11.1	4.5	10.3
Black						
Male						
16-19 (19,000)	100.0	59.3	34.6	4.7	10.7	10.7
20-24 (20,300)	100.0	53.2	41.5	4.0	11.3	10.0
25-34 (35,100)	100.0	54.0	42.0	2.8	11.0	10.2
35-49 (36,800)	100.0	48.0	45.9	4.9	11.0	10.2
50-64 (29,400)	100.0	43.2	45.8	7.6	3.1	10.2
65 and over (13,600)	100.0	34.1	54.6	8.8	12.5	10.0
Female						
16-19 (21,900)	100.0	38.3	48.3	10.5	2.8	10.0
20-24 (33,800)	100.0	30.2	57.8	8.1	3.6	10.2
25-34 (44,700)	100.0	27.6	60.0	9.2	2.7	10.4
35-49 (47,500)	100.0	31.5	53.8	11.4	3.1	10.1
50-64 (38,700)	100.0	28.6	53.7	12.0	5.4	10.3
65 and over (18,400)	100.0	19.2	56.9	15.3	7.9	10.7

NOTE: Data based on question 11b. Detail may not add to total because of rounding. Figures in parentheses refer to population in the group.

<sup>1</sup>Estimate, based on zero or on about 10 or fewer sample cases, is statistically unreliable.

**Table 12. Neighborhood safety when out alone at night**

(Percent distribution of responses for the population age 16 and over)

Population characteristic	Total	Very safe	Reasonably safe	Somewhat unsafe	Very unsafe	Not available
All persons (532,800)	100.0	16.0	42.5	22.2	19.0	0.3
Sex						
Male (230,600)	100.0	25.2	49.8	15.5	9.2	0.3
Female (302,300)	100.0	9.0	37.0	27.3	26.4	0.3
Race						
White (166,200)	100.0	19.3	38.6	23.9	17.9	<sup>1</sup> 0.3
Black (359,100)	100.0	14.2	44.3	21.6	19.6	0.3
Other (7,500)	100.0	27.2	42.6	16.3	13.8	<sup>1</sup> 0.0
Age						
16-19 (50,400)	100.0	22.2	46.9	19.7	10.7	<sup>1</sup> 0.6
20-24 (81,700)	100.0	17.5	46.8	20.2	15.4	<sup>1</sup> 0.1
25-34 (120,500)	100.0	20.6	46.8	19.9	12.6	<sup>1</sup> 0.2
35-49 (113,700)	100.0	16.3	43.9	22.5	17.2	<sup>1</sup> 0.2
50-64 (100,200)	100.0	10.6	39.3	25.3	24.3	<sup>1</sup> 0.5
65 and over (66,500)	100.0	8.8	28.8	25.7	36.2	<sup>1</sup> 0.5
Victimization experience						
Not victimized (418,500)	100.0	15.4	43.5	22.3	18.5	0.3
Victimized (114,400)	100.0	18.1	39.0	22.0	20.6	<sup>1</sup> 0.3

NOTE: Data based on question 11a. Detail may not add to total because of rounding. Figures in parentheses refer to population in the group.

<sup>1</sup>Estimate, based on zero or on about 10 or fewer sample cases, is statistically unreliable.

Table 13. Neighborhood safety when out alone at night

(Percent distribution of responses for the population age 16 and over)

Population characteristic	Total	Very safe	Reasonably safe	Somewhat unsafe	Very unsafe	Not available
<b>Sex and age</b>						
<b>Male</b>						
16-19 (23,700)	100.0	35.5	52.2	9.1	12.0	11.2
20-24 (32,500)	100.0	30.3	56.1	8.9	4.4	10.4
25-34 (55,200)	100.0	31.9	51.3	11.9	4.7	10.1
35-49 (51,100)	100.0	24.2	52.3	15.6	7.8	10.1
50-64 (42,200)	100.0	17.0	45.7	22.1	15.1	10.2
65 and over (26,000)	100.0	10.6	37.9	26.3	24.7	10.5
<b>Female</b>						
16-19 (26,700)	100.0	10.4	42.1	29.0	18.4	10.0
20-24 (49,200)	100.0	9.0	40.6	27.7	22.6	10.0
25-34 (65,300)	100.0	11.1	42.9	26.6	19.2	10.2
35-49 (62,600)	100.0	9.8	37.0	28.1	24.9	10.2
50-64 (58,000)	100.0	6.0	34.7	27.7	30.9	10.7
65 and over (40,500)	100.0	7.6	22.9	25.3	43.6	10.5
<b>Race and age</b>						
<b>White</b>						
16-19 (9,100)	100.0	32.7	43.8	14.4	9.1	10.0
20-24 (26,300)	100.0	21.2	44.6	20.6	13.2	10.5
25-34 (38,200)	100.0	28.5	43.3	20.8	7.4	10.0
35-49 (27,300)	100.0	20.4	43.4	25.9	10.3	10.0
50-64 (31,500)	100.0	11.4	37.4	26.6	24.1	10.4
65 and over (33,900)	100.0	10.5	24.4	28.5	36.1	10.6
<b>Black</b>						
16-19 (40,900)	100.0	19.5	47.9	20.7	11.2	10.7
20-24 (54,100)	100.0	15.5	47.9	20.2	16.4	10.0
25-34 (79,800)	100.0	16.8	48.1	19.6	15.2	10.2
35-49 (84,200)	100.0	14.5	44.0	21.7	19.6	10.2
50-64 (68,100)	100.0	10.1	40.3	24.6	24.4	10.5
65 and over (31,900)	100.0	6.9	33.4	22.9	36.3	10.4

NOTE: Data based on question 11a. Detail may not add to total because of rounding. Figures in parentheses refer to population in the group.

1 Estimate, based on zero or on about 10 or fewer sample cases, is statistically unreliable.



**Table 14. Neighborhood safety when out alone at night**

(Percent distribution of responses for the population age 16 and over)

Population characteristic	Total	Very safe	Reasonably safe	Somewhat unsafe	Very unsafe	Not available
<b>Race, sex, and age</b>						
<b>White</b>						
<b>Male</b>						
16-19 (4,600)	100.0	46.0	44.2	19.8	10.0	10.0
20-24 (11,500)	100.0	34.1	52.3	9.1	13.5	11.0
25-34 (19,000)	100.0	41.5	43.3	13.4	11.9	10.0
35-49 (13,500)	100.0	28.8	51.2	14.6	5.4	10.0
50-64 (12,500)	100.0	18.9	45.9	21.6	13.6	10.0
65 and over (11,900)	100.0	13.2	33.0	29.8	22.9	11.1
<b>Female</b>						
16-19 (4,600)	100.0	19.5	43.4	19.0	18.1	10.0
20-24 (14,800)	100.0	11.1	38.5	29.7	20.7	10.0
25-34 (19,100)	100.0	15.6	43.4	28.1	12.9	10.0
35-49 (13,900)	100.0	12.2	36.0	36.8	15.1	10.0
50-64 (19,000)	100.0	6.5	31.8	29.9	31.1	10.6
65 and over (21,900)	100.0	9.0	19.7	27.7	43.3	10.3
<b>Black</b>						
<b>Male</b>						
16-19 (19,000)	100.0	32.8	54.3	9.0	12.5	11.5
20-24 (20,300)	100.0	27.7	58.3	9.0	5.0	10.0
25-34 (35,100)	100.0	26.7	55.2	11.5	6.4	10.2
35-49 (36,800)	100.0	21.9	53.0	16.1	8.7	10.2
50-64 (29,400)	100.0	16.1	45.8	22.3	15.7	10.2
65 and over (13,600)	100.0	8.6	42.5	23.2	25.7	10.0
<b>Female</b>						
16-19 (21,900)	100.0	8.0	42.4	30.9	18.7	10.0
20-24 (33,800)	100.0	8.1	41.7	26.9	23.3	10.0
25-34 (44,700)	100.0	9.1	42.5	26.0	22.1	10.3
35-49 (47,500)	100.0	8.6	37.0	26.0	28.1	10.3
50-64 (38,700)	100.0	5.6	36.2	26.3	31.1	10.7
65 and over (18,400)	100.0	5.7	26.7	22.7	44.2	10.7

NOTE: Data based on question 11a. Detail may not add to total because of rounding. Figures in parentheses refer to population in the group.  
<sup>1</sup>Estimate, based on zero or on about 10 or fewer sample cases, is statistically unreliable.

**Table 15. Neighborhood dangerous enough to consider moving elsewhere**

(Percent distribution of responses for the population age 16 and over)

Population characteristic	Total	Yes	No	Not available
All persons (222,300)	100.0	16.1	80.5	3.5
Sex				
Male (58,100)	100.0	17.7	78.8	3.6
Female (164,300)	100.0	15.5	81.1	3.4
Race				
White (70,000)	100.0	12.2	84.0	3.8
Black (150,000)	100.0	17.7	79.0	3.3
Other (2,300)	100.0	30.6	66.7	12.7
Age				
16-19 (15,700)	100.0	16.0	79.3	4.8
20-24 (29,500)	100.0	17.0	79.1	3.9
25-34 (39,600)	100.0	17.4	78.6	4.0
35-49 (45,700)	100.0	16.7	80.8	2.5
50-64 (50,400)	100.0	17.5	79.4	3.1
65 and over (41,400)	100.0	11.8	84.6	3.6
Victimization experience				
Not victimized (173,300)	100.0	13.7	83.0	3.4
Victimized (49,100)	100.0	24.6	71.7	3.7

NOTE: Data based on question 11c. Detail may not add to total because of rounding. Figures in parentheses refer to population in the group.

<sup>1</sup>Estimate, based on about 10 or fewer sample cases, is statistically unreliable.

**Table 16. Limitation or change in activities because of fear of crime**

(Percent distribution of responses for the population age 16 and over)

Population characteristic	Total	People in general			People in neighborhood				Personal			
		Yes	No	Not available	Total	Yes	No	Not available	Total	Yes	No	Not available
All persons (532,800)	100.0	83.4	15.7	0.9	100.0	61.4	36.1	2.5	100.0	46.9	52.6	0.5
Sex												
Male (230,600)	100.0	81.6	17.5	0.9	100.0	58.6	39.2	2.2	100.0	36.6	62.9	0.5
Female (302,300)	100.0	84.8	14.3	0.8	100.0	63.5	33.8	2.7	100.0	54.8	44.7	0.5
Race												
White (166,200)	100.0	84.0	14.8	1.2	100.0	56.7	38.8	4.5	100.0	42.4	56.9	0.7
Black (359,100)	100.0	83.3	16.0	0.7	100.0	63.8	34.6	1.6	100.0	49.1	50.5	0.4
Other (7,500)	100.0	77.1	22.1	10.8	100.0	50.7	45.8	13.5	100.0	40.6	59.4	10.0
Age												
16-19 (50,400)	100.0	78.1	21.1	10.8	100.0	55.9	42.2	1.8	100.0	30.4	68.8	10.8
20-24 (81,700)	100.0	81.9	17.9	10.2	100.0	55.8	41.9	2.3	100.0	39.2	60.6	10.2
25-34 (120,500)	100.0	81.5	17.7	0.8	100.0	54.1	42.8	3.0	100.0	37.4	62.2	0.4
35-49 (113,700)	100.0	83.5	15.4	1.1	100.0	61.8	35.6	2.6	100.0	46.2	53.2	0.6
50-64 (100,200)	100.0	88.5	10.7	0.8	100.0	71.0	27.2	1.9	100.0	62.0	37.5	0.5
65 and over (66,500)	100.0	85.1	13.4	1.5	100.0	70.5	26.5	3.0	100.0	64.6	34.9	10.5
Victimization experience												
Not victimized (418,500)	100.0	83.0	16.1	0.9	100.0	61.4	36.4	2.2	100.0	46.9	52.6	0.5
Victimized (114,400)	100.0	84.9	14.3	0.7	100.0	61.2	35.2	3.6	100.0	46.8	52.7	0.5

NOTE: Data based on question 16a, 16b, and 16c. Detail may not add to total because of rounding. Figures in parentheses refer to population in the group.

<sup>1</sup>Estimate, based on zero or on about 10 or fewer sample cases, is statistically unreliable.

**Table 17. Personal limitation or change in activities  
because of fear of crime**

(Percent distribution of responses for the population age 16 and over)

Population characteristic	Total	Yes	No	Not available
Sex and age (532,800)	100.0	46.9	52.6	0.5
Male				
16-19 (23,700)	100.0	20.8	78.3	10.9
20-24 (32,500)	100.0	25.2	74.4	10.4
25-34 (55,200)	100.0	27.6	72.2	10.2
35-49 (51,100)	100.0	33.0	66.3	10.7
50-64 (42,200)	100.0	54.4	44.7	10.9
65 and over (26,000)	100.0	62.1	37.6	10.3
Female				
16-19 (26,700)	100.0	38.9	60.3	10.8
20-24 (49,200)	100.0	48.5	51.5	10.0
25-34 (65,300)	100.0	45.7	53.7	10.6
35-49 (62,600)	100.0	57.0	42.4	10.6
50-64 (58,000)	100.0	67.5	32.3	10.2
65 and over (40,500)	100.0	66.1	33.2	10.7
Race and age				
White				
16-19 (9,100)	100.0	30.0	68.6	11.4
20-24 (26,300)	100.0	39.9	59.6	10.5
25-34 (38,200)	100.0	25.7	73.5	10.8
35-49 (27,300)	100.0	34.7	64.1	11.2
50-64 (31,500)	100.0	55.5	44.5	10.0
65 and over (33,900)	100.0	60.4	39.0	10.6
Black				
16-19 (40,900)	100.0	30.6	68.7	10.7
20-24 (54,100)	100.0	38.9	61.1	10.0
25-34 (79,800)	100.0	42.7	57.0	10.2
35-49 (84,200)	100.0	50.3	49.2	10.5
50-64 (68,100)	100.0	65.0	34.3	0.8
65 and over (31,900)	100.0	69.0	30.6	10.4

NOTE: Data based on question 16c. Detail may not add to total because of rounding. Figures in parentheses refer to population in the group.

\*Estimate, based on zero or on about 10 or fewer sample cases, is statistically unreliable.

**Table 18. Personal limitation or change in activities  
because of fear of crime**

(Percent distribution of responses for the population age 16 and over)

Population characteristic	Total	Yes	No	Not available
Race, sex, and age				
White				
Male				
16-19 (4,600)	100.0	25.1	74.9	10.0
20-24 (11,500)	100.0	25.7	73.1	11.2
25-34 (19,000)	100.0	20.8	78.6	10.6
35-49 (13,500)	100.0	27.4	71.6	11.0
50-64 (12,500)	100.0	48.2	51.8	10.0
65 and over (11,900)	100.0	53.4	46.0	10.6
Female				
16-19 (4,600)	100.0	35.0	62.2	12.8
20-24 (14,800)	100.0	51.0	49.0	10.0
25-34 (19,100)	100.0	30.6	68.4	11.0
35-49 (13,900)	100.0	41.8	56.8	11.4
50-64 (19,000)	100.0	60.4	39.6	10.0
65 and over (21,900)	100.0	64.3	35.1	10.6
Black				
Male				
16-19 (19,000)	100.0	19.9	79.0	11.1
20-24 (20,300)	100.0	25.0	75.0	10.0
25-34 (35,100)	100.0	31.3	68.7	10.0
35-49 (36,800)	100.0	35.4	64.1	10.6
50-64 (29,400)	100.0	56.9	41.8	11.3
65 and over (13,600)	100.0	69.4	30.6	10.0
Female				
16-19 (21,900)	100.0	39.9	59.8	10.4
20-24 (33,800)	100.0	47.2	52.8	10.0
25-34 (44,700)	100.0	51.7	47.8	10.4
35-49 (47,500)	100.0	61.9	37.6	10.4
50-64 (38,700)	100.0	71.1	28.5	10.3
65 and over (18,400)	100.0	68.7	30.6	10.7

NOTE: Data based on question 16c. Detail may not add to total because of rounding. Figures in parentheses refer to population in the group.

<sup>1</sup>Estimate, based on zero or on about 10 or fewer sample cases, is statistically unreliable.

### Table 19. Most important reason for selecting present neighborhood

(Percent distribution of answers by household respondents)

Household characteristic	Total	Always lived in neighborhood	Neighborhood characteristics	Good schools	Safe from crime	Lack of choice	Right price	Location	Characteristics of house	Other and not available
All households (141,200)	100.0	3.9	15.1	2.1	2.8	16.5	11.3	33.0	9.0	6.4
Race										
White (52,800)	100.0	1.6	14.6	3.1	2.6	7.5	5.5	51.5	7.2	6.5
Black (86,000)	100.0	5.3	15.5	1.4	2.8	22.3	14.8	21.3	10.1	6.6
Other (2,400)	100.0	14.9	12.2	14.6	14.6	14.6	14.1	47.8	17.1	10.0
Annual family income										
Less than \$3,000 (19,000)	100.0	3.3	7.6	6.2	11.8	24.3	10.0	35.1	4.0	7.6
\$3,000-\$7,499 (36,100)	100.0	5.0	12.9	11.4	2.6	22.4	15.0	26.5	8.3	5.8
\$7,500-\$9,999 (21,600)	100.0	5.1	14.7	10.5	2.4	16.1	15.8	32.0	9.0	4.3
\$10,000-\$14,999 (27,000)	100.0	3.4	17.4	1.9	3.8	13.1	8.4	35.8	9.7	6.4
\$15,000-\$24,999 (19,000)	100.0	2.6	21.1	10.9	3.2	9.0	9.8	33.2	13.0	7.3
\$25,000 or more (10,800)	100.0	2.1	19.6	12.0	13.5	14.6	14.1	42.8	13.4	7.9
Not available (7,700)	100.0	14.4	15.3	13.4	10.8	17.3	7.8	36.8	15.8	8.3
Victimization experience										
Not victimized (105,100)	100.0	3.8	15.2	1.9	2.6	16.8	12.5	31.4	8.9	6.8
Victimized (36,100)	100.0	4.0	14.7	2.5	3.1	15.5	7.7	37.8	9.3	5.3

NOTE: Data based on question 2a. Detail may not add to total because of rounding. Figures in parentheses refer to households in the group.

<sup>1</sup>Estimate, based on zero or on about 10 or fewer sample cases, is statistically unreliable.

### Table 20. Most important reason for leaving former residence

(Percent distribution of answers by household respondents)

Household characteristic	Total	Location	Characteristics of house	Wanted better house	Wanted cheaper house	Forced out	Living arrangements changed	Influx of bad elements	Crime	Neighborhood characteristics	Other and not available
All households (141,200)	100.0	27.3	12.7	16.5	4.5	6.2	19.1	0.8	2.3	3.7	7.0
Race											
White (52,800)	100.0	45.9	8.2	9.5	2.5	4.6	15.4	10.8	1.5	3.5	8.1
Black (86,000)	100.0	16.0	15.5	20.9	5.6	7.0	21.5	6.8	2.6	3.8	6.3
Other (2,400)	100.0	26.3	11.7	12.2	7.0	11.7	14.2	10.0	17.2	14.9	5.1
Annual family income											
Less than \$3,000 (19,000)	100.0	37.7	6.1	8.5	6.2	10.1	18.1	10.3	12.2	2.7	8.0
\$3,000-\$7,499 (36,100)	100.0	23.4	13.0	16.1	5.9	7.6	20.1	11.0	1.9	4.3	6.7
\$7,500-\$9,999 (21,600)	100.0	23.2	13.3	18.2	5.1	5.3	21.9	10.3	2.9	2.4	7.4
\$10,000-\$14,999 (27,000)	100.0	25.8	14.1	16.8	3.9	4.6	21.1	11.4	2.7	4.2	5.4
\$15,000-\$24,999 (19,000)	100.0	27.0	14.7	20.9	11.8	3.8	17.3	10.3	12.0	3.4	8.8
\$25,000 or more (10,800)	100.0	34.5	16.5	19.3	11.0	14.1	12.5	10.5	12.0	13.7	6.0
Not available (7,700)	100.0	27.6	10.9	17.3	15.8	7.3	15.4	11.5	11.5	15.7	7.0
Victimization experience											
Not victimized (105,100)	100.0	26.8	12.3	17.2	4.3	6.4	20.0	0.8	1.9	3.4	6.9
Victimized (36,100)	100.0	28.9	13.9	14.5	5.2	5.5	16.3	10.6	3.3	4.7	7.0

NOTE: Data based on question 4a. Detail may not add to total because of rounding. Figures in parentheses refer to households in the group.

<sup>1</sup>Estimate, based on zero or on about 10 or fewer sample cases, is statistically unreliable.

**Table 21. Whether or not there are undesirable neighborhood characteristics**

(Percent distribution of answers by household respondents)

Household characteristic	Total	Yes	No	Not available
All households (263,300)	100.0	34.7	64.7	0.6
Race				
White (93,100)	100.0	34.6	65.0	<sup>1</sup> 0.4
Black (166,700)	100.0	34.7	64.6	0.6
Other (3,500)	100.0	36.7	63.3	<sup>1</sup> 0.0
Annual family income				
Less than \$3,000 (31,100)	100.0	37.2	62.2	<sup>1</sup> 0.5
\$3,000-\$7,499 (66,400)	100.0	33.6	65.9	<sup>1</sup> 0.5
\$7,500-\$9,999 (37,100)	100.0	32.0	67.8	<sup>1</sup> 0.2
\$10,000-\$14,999 (52,700)	100.0	32.0	67.3	<sup>1</sup> 0.8
\$15,000-\$24,999 (37,800)	100.0	38.9	60.5	<sup>1</sup> 0.6
\$25,000 or more (22,100)	100.0	38.0	61.8	<sup>1</sup> 0.3
Not available (16,100)	100.0	35.2	63.4	<sup>1</sup> 1.4
Victimization experience				
Not victimized (206,200)	100.0	31.1	68.2	0.6
Victimized (57,100)	100.0	47.6	52.1	<sup>1</sup> 0.3

NOTE: Data based on question 5a. Detail may not add to total because of rounding. Figures in parentheses refer to households in the group.

<sup>1</sup>Estimate, based on zero or on about 10 or fewer sample cases, is statistically unreliable.

**Table 22. Most important neighborhood problem**

(Percent distribution of answers by household respondents)

Household characteristic	Total	Traffic, parking	Environmental problems	Crime	Public transportation	Inadequate schools, shopping	Influx of bad elements	Problems with neighbors	Other and not available
All households (91,400)	100.0	11.8	36.9	18.5	3.2	7.6	3.2	11.9	7.0
Race									
White (32,200)	100.0	18.5	27.8	21.5	2.9	7.7	3.2	9.4	9.1
Black (57,900)	100.0	7.8	41.9	16.8	3.4	7.7	3.2	13.3	6.0
Other (1,300)	100.0	<sup>1</sup> 26.5	<sup>1</sup> 38.8	<sup>1</sup> 17.1	<sup>1</sup> 0.0	<sup>1</sup> 0.0	<sup>1</sup> 4.3	<sup>1</sup> 13.3	<sup>1</sup> 0.0
Annual family income									
Less than \$3,000 (11,600)	100.0	14.1	39.2	28.5	12.0	4.4	11.9	13.6	6.4
\$3,000-\$7,499 (22,300)	100.0	7.1	35.7	21.5	4.0	6.1	4.2	14.3	7.1
\$7,500-\$9,999 (11,900)	100.0	11.6	40.3	16.8	11.9	7.2	3.4	13.0	5.3
\$10,000-\$14,999 (16,900)	100.0	14.1	36.7	16.5	3.7	9.8	12.6	9.9	6.8
\$15,000-\$24,999 (14,700)	100.0	19.9	35.7	13.0	13.0	8.6	12.9	10.3	6.7
\$25,000 or more (8,400)	100.0	18.1	33.3	11.1	14.6	11.1	12.6	11.9	7.3
Not available (5,700)	100.0	9.5	38.6	21.0	11.9	15.8	14.8	15.8	12.5
Victimization experience									
Not victimized (64,200)	100.0	11.0	40.1	15.9	3.0	7.9	3.2	12.2	6.8
Victimized (27,200)	100.0	13.7	29.3	24.6	3.7	6.8	3.2	11.2	7.5

NOTE: Data based on question 5a. Detail may not add to total because of rounding. Figures in parentheses refer to households in the group.

<sup>1</sup>Estimate, based on zero or on about 10 or fewer sample cases, is statistically unreliable.

**Table 23. Whether or not major food shopping done in the neighborhood**

(Percent distribution of answers by household respondents)

Household characteristic	Total	Yes	No	Not available
All households (263,300)	100.0	71.6	27.7	0.7
Race				
White (93,100)	100.0	77.8	21.4	0.8
Black (166,700)	100.0	67.9	31.4	0.7
Other (3,500)	100.0	82.7	17.6	10.0
Annual family income				
Less than \$3,000 (31,100)	100.0	72.4	27.0	10.5
\$3,000-\$7,499 (66,400)	100.0	75.1	24.2	0.8
\$7,500-\$9,999 (37,100)	100.0	71.0	28.6	10.4
\$10,000-\$14,999 (52,700)	100.0	71.9	27.4	10.6
\$15,000-\$24,999 (37,800)	100.0	67.9	31.2	10.8
\$25,000 or more (22,100)	100.0	70.9	28.9	10.2
Not available (16,100)	100.0	66.1	31.7	12.2
Victimization experience				
Not victimized (206,200)	100.0	72.9	26.4	0.7
Victimized (57,100)	100.0	66.9	32.3	10.8

NOTE: Data based on question 6a. Detail may not add to total because of rounding. Figures in parentheses refer to households in the group.

<sup>1</sup>Estimate, based on zero or on about 10 or fewer sample cases, is statistically unreliable.

**Table 24. Most important reason for not doing major food shopping in the neighborhood**

(Percent distribution of answers by household respondents)

Household characteristic	Total	No neighborhood stores	Inadequate stores	High prices	Crime	Not available
All households (72,800)	100.0	37.7	37.1	11.5	2.6	11.1
Race						
White (19,900)	100.0	27.5	32.5	13.3	4.4	22.2
Black (52,400)	100.0	41.6	39.0	10.7	1.9	6.7
Other (600)	100.0	136.1	118.7	119.4	10.0	126.2
Annual family income						
Less than \$3,000 (8,400)	100.0	31.6	20.1	11.5	12.0	34.7
\$3,000-\$7,499 (16,000)	100.0	40.0	32.3	13.2	12.8	11.7
\$7,500-\$9,999 (10,600)	100.0	39.8	38.0	12.4	13.3	6.5
\$10,000-\$14,999 (14,500)	100.0	38.9	42.7	7.9	11.9	8.6
\$15,000-\$24,999 (11,800)	100.0	40.5	39.3	10.1	12.2	7.9
\$25,000 or more (6,400)	100.0	28.3	49.7	17.7	12.5	11.9
Not available (5,100)	100.0	38.2	41.2	10.0	14.3	16.3
Victimization experience						
Not victimized (54,400)	100.0	39.7	35.5	10.6	3.0	11.2
Victimized (18,500)	100.0	31.8	41.5	14.3	11.5	10.9

NOTE: Data based on question 6a. Detail may not add to total because of rounding. Figures in parentheses refer to households in the group.

<sup>1</sup>Estimate, based on zero or on about 10 or fewer sample cases, is statistically unreliable.

**Table 25. Preferred location for general merchandise shopping**

(Percent distribution of answers by household respondents)

Household characteristic	Total	Suburban or neighborhood	Downtown	Not available
All households (263,300)	100.0	51.1	46.8	2.1
Race				
White (93,100)	100.0	56.4	41.7	2.0
Black (166,700)	100.0	48.4	49.5	2.1
Other (3,500)	100.0	40.3	59.7	<sup>1</sup> 0.0
Annual family income				
Less than \$3,000 (31,100)	100.0	39.7	58.6	1.7
\$3,000-\$7,499 (66,400)	100.0	42.5	55.5	1.9
\$7,500-\$9,999 (37,100)	100.0	50.4	47.6	2.0
\$10,000-\$14,999 (52,700)	100.0	55.7	42.0	2.2
\$15,000-\$24,999 (37,800)	100.0	63.7	34.0	2.3
\$25,000 or more (22,100)	100.0	63.2	34.7	<sup>1</sup> 2.0
Not available (16,100)	100.0	48.8	49.1	<sup>1</sup> 2.1
Victimization experience				
Not victimized (206,200)	100.0	49.7	48.3	2.0
Victimized (57,100)	100.0	56.2	41.6	2.2

NOTE: Data based on question 7a. Detail may not add to total because of rounding. Figures in parentheses refer to households in the group.

<sup>1</sup>Estimate, based on zero or on about 10 or fewer sample cases, is statistically unreliable.



**Table 26. Most important reason for usually doing general merchandise shopping in the suburbs (or neighborhood) or downtown**

(Percent distribution of answers by household respondents)

Type of shopper and household characteristic	Total	Better parking	Better transportation	More convenient	Better selection, more stores	Grime in other location	Better store hours	Better prices	Prefer stores, location, etc.	Other and not available
Suburban (or neighborhood) shoppers										
All households (134,600)	100.0	14.5	2.5	40.7	20.1	2.1	1.1	6.8	6.7	5.4
Race										
White (52,500)	100.0	13.2	2.6	48.0	15.1	2.9	10.7	3.3	8.3	6.0
Black (80,700)	100.0	15.3	2.4	35.8	23.5	1.6	1.5	9.1	5.6	5.3
Other (1,400)	100.0	113.0	10.0	51.6	116.0	10.0	10.0	17.7	111.7	10.0
Annual family income										
Less than \$3,000 (12,400)	100.0	5.6	6.1	49.1	17.4	10.9	10.5	9.7	6.5	4.3
\$3,000-\$7,499 (28,200)	100.0	9.2	2.4	45.2	17.3	2.8	11.2	8.1	8.0	5.8
\$7,500-\$9,999 (18,700)	100.0	12.5	11.0	35.7	22.6	12.1	10.0	10.1	7.9	8.1
\$10,000-\$14,999 (29,400)	100.0	17.9	2.4	35.4	21.7	1.7	2.0	6.6	6.6	5.6
\$15,000-\$24,999 (24,100)	100.0	17.8	2.2	42.0	20.7	2.4	11.6	3.4	5.2	4.6
\$25,000 or more (14,000)	100.0	20.0	11.5	42.0	21.5	11.5	10.4	12.9	5.9	4.4
Not available (7,900)	100.0	18.8	12.6	36.4	19.0	12.7	11.4	8.4	15.7	15.0
Victimization experience										
Not victimized (102,500)	100.0	14.9	2.7	41.4	19.4	1.8	1.3	6.1	6.8	5.4
Victimized (32,100)	100.0	13.0	11.6	38.4	22.4	3.1	10.5	9.1	6.3	5.6
Downtown shoppers										
All households (123,300)	100.0	0.4	10.1	48.1	21.0	10.4	1.3	5.9	8.0	4.8
Race										
White (38,800)	100.0	10.6	8.7	51.2	21.6	10.3	10.7	2.5	10.6	3.9
Black (82,500)	100.0	10.3	11.0	46.0	21.0	10.4	1.5	7.5	7.0	5.3
Other (2,100)	100.0	10.0	12.9	72.5	18.0	10.0	15.4	18.5	10.0	12.7
Annual family income										
Less than \$3,000 (18,300)	100.0	10.5	12.8	48.6	17.7	10.7	10.6	9.7	5.0	4.7
\$3,000-\$7,499 (36,900)	100.0	10.0	11.1	46.4	19.6	10.6	11.2	6.7	8.7	5.7
\$7,500-\$9,999 (17,700)	100.0	11.0	12.0	47.4	18.2	10.3	12.0	6.2	9.2	3.9
\$10,000-\$14,999 (22,100)	100.0	10.4	8.5	52.1	20.1	10.0	11.5	5.2	7.5	4.6
\$15,000-\$24,999 (12,800)	100.0	10.4	7.3	46.4	29.4	10.4	12.1	13.4	6.8	13.8
\$25,000 or more (7,700)	100.0	10.0	13.6	46.3	29.1	10.0	10.7	11.4	14.6	14.0
Not available (7,900)	100.0	11.4	10.6	49.4	21.7	10.0	10.8	13.5	6.9	15.6
Victimization experience										
Not victimized (99,600)	100.0	10.4	10.3	48.9	20.2	10.5	1.6	5.8	7.7	4.7
Victimized (23,800)	100.0	10.5	9.3	44.4	24.3	10.0	10.2	6.4	9.6	5.2

NOTE: Data based on question 7b. Detail may not add to total because of rounding. Figures in parentheses refer to households in the group.

<sup>1</sup>Estimate, based on zero or on about 10 or fewer sample cases, is statistically unreliable.

**Table 27. Change in the frequency with which persons went out for evening entertainment**

(Percent distribution of responses for the population age 16 and over)

Population characteristic	Total	More	Same	Less	Not available
All persons (532,800)	100.0	13.5	54.8	31.2	0.5
Sex					
Male (230,600)	100.0	13.8	57.5	28.2	0.5
Female (302,300)	100.0	13.2	52.7	33.5	0.6
Race					
White (166,200)	100.0	14.7	59.7	25.3	0.3
Black (359,100)	100.0	12.9	52.6	33.9	0.6
Other (7,500)	100.0	13.0	52.5	32.1	12.5
Age					
16-19 (50,400)	100.0	31.8	44.2	23.7	10.3
20-24 (81,700)	100.0	20.2	49.6	29.7	10.5
25-34 (120,500)	100.0	17.8	50.7	30.9	0.5
35-49 (113,700)	100.0	8.8	60.0	30.8	0.5
50-64 (100,200)	100.0	6.1	59.9	33.1	0.9
65 and over (66,500)	100.0	2.5	60.0	37.1	10.4
Victimization experience					
Not victimized (418,500)	100.0	12.0	57.7	29.9	0.5
Victimized (114,400)	100.0	18.9	44.3	36.1	0.7

NOTE: Data based on question 8b. Detail may not add to total because of rounding. Figures in parentheses refer to population in the group.

<sup>1</sup>Estimate, based on about 10 or fewer sample cases, is statistically unreliable.

**Table 28. Most important reason for increasing or decreasing the frequency with which persons went out for evening entertainment**

(Percent distribution of responses for the population age 16 and over)

Type of change in frequency and population characteristic	Total	Money	Places to go, etc.	Convenience	Own health	Transportation	Age	Family	Activities, etc.	Crime	Want to, etc.	Other and not available
<b>Persons going out more often</b>												
All persons (71,700)	100.0	14.9	24.5	3.6	0.8	3.3	7.2	13.3	7.6	10.3	16.6	7.9
<b>Sex</b>												
Male (31,800)	100.0	19.2	20.3	3.4	10.4	3.4	8.1	10.1	8.7	10.4	18.1	7.8
Female (40,000)	100.0	11.5	27.9	3.8	11.1	3.2	6.5	15.9	6.7	10.2	15.4	8.0
<b>Race</b>												
White (24,500)	100.0	16.8	33.2	6.0	10.5	11.4	12.0	10.9	9.0	10.5	10.3	9.4
Black (46,300)	100.0	14.2	19.9	2.4	11.0	3.9	10.0	14.6	6.6	10.1	20.0	7.3
Other (1,000)	100.0	10.0	124.9	10.0	10.0	120.1	17.0	114.0	120.2	10.0	113.8	10.0
<b>Age</b>												
16-19 (16,000)	100.0	5.3	25.1	1.2	10.0	4.5	28.1	6.4	4.1	10.0	19.0	6.3
20-24 (16,500)	100.0	21.9	28.4	4.2	10.4	3.7	11.7	9.1	5.6	10.4	17.8	6.9
25-34 (21,500)	100.0	20.9	23.5	4.7	0.6	12.1	10.3	12.7	10.2	10.0	16.0	9.2
35-49 (10,000)	100.0	13.5	20.7	14.5	11.3	13.8	10.6	25.5	6.4	10.6	15.8	7.1
50-64 (6,100)	100.0	15.4	22.3	13.3	14.2	12.1	12.1	24.3	10.6	11.1	12.8	11.8
65 and over (1,700)	100.0	14.0	123.8	13.9	10.0	13.9	18.1	116.0	123.9	10.0	18.4	18.3
<b>Victimization experience</b>												
Not victimized (50,100)	100.0	14.4	23.2	3.9	10.6	3.7	7.7	12.8	7.4	10.3	17.4	8.8
Victimized (21,600)	100.0	16.1	27.6	3.0	11.2	2.4	6.1	14.6	8.0	10.3	14.8	5.9
<b>Persons going out less often</b>												
All persons (166,300)	100.0	17.0	5.1	2.0	7.1	3.1	7.0	15.8	9.8	17.1	6.8	9.1
<b>Sex</b>												
Male (64,900)	100.0	20.4	3.9	2.3	5.6	2.8	7.4	12.8	12.6	14.6	8.5	9.1
Female (101,300)	100.0	14.9	5.9	1.8	8.1	3.3	6.8	17.7	8.1	18.7	5.7	9.1
<b>Race</b>												
White (42,100)	100.0	18.0	6.4	1.6	6.0	3.8	8.6	13.0	13.4	15.3	4.8	9.0
Black (121,800)	100.0	16.7	4.6	2.2	7.6	2.9	6.6	16.6	8.5	17.9	7.3	9.3
Other (2,400)	100.0	116.6	110.7	10.0	10.0	10.0	12.9	26.5	119.0	15.2	113.9	15.4
<b>Age</b>												
16-19 (11,900)	100.0	20.6	8.1	11.7	11.1	8.3	13.4	12.1	16.1	10.6	7.8	10.0
20-24 (24,300)	100.0	21.8	7.2	12.0	11.1	4.4	11.4	20.2	20.3	7.5	6.7	7.3
25-34 (37,200)	100.0	21.0	8.2	1.9	1.4	2.3	1.8	25.9	11.4	8.2	9.5	8.4
35-49 (35,000)	100.0	19.0	3.4	2.7	6.4	2.1	2.6	17.2	8.9	19.6	7.6	10.4
50-64 (33,200)	100.0	13.7	2.8	2.4	12.4	2.0	10.4	9.2	5.8	27.8	4.7	9.0
65 and over (24,700)	100.0	6.3	2.5	10.8	18.3	3.6	24.1	4.9	10.8	24.8	3.8	10.0
<b>Victimization experience</b>												
Not victimized (125,000)	100.0	15.3	4.7	2.1	8.2	3.1	7.8	15.9	9.7	16.8	6.7	9.8
Victimized (41,300)	100.0	22.2	6.3	1.6	3.9	3.2	4.8	15.4	10.4	18.0	7.1	7.2

NOTE: Data based on question 8b. Detail may not add to total because of rounding. Figures in parentheses refer to population in the group.  
 1 Estimate, based on zero or on about 10 or fewer sample cases, is statistically unreliable.

**Table 29. Places usually visited for evening entertainment**

(Percent distribution of responses for the population age 16 and over)

Population characteristic	Total	Inside city	Outside city	About equal	Not available
All persons (374,100)	100.0	75.9	7.6	16.4	0.2
Sex					
Male (172,600)	100.0	75.8	7.1	17.0	10.1
Female (201,500)	100.0	75.9	8.0	15.8	0.3
Race					
White (130,700)	100.0	79.8	8.5	11.6	10.1
Black (237,900)	100.0	73.5	7.2	19.0	0.2
Other (5,500)	100.0	85.1	12.4	12.5	10.0
Age					
16-19 (46,200)	100.0	84.3	3.1	12.0	10.6
20-24 (72,900)	100.0	79.9	6.3	13.8	10.1
25-34 (101,200)	100.0	77.9	5.7	16.2	10.2
35-49 (78,700)	100.0	71.0	9.5	19.4	10.1
50-64 (52,200)	100.0	67.5	12.0	20.2	10.2
65 and over (23,000)	100.0	72.8	12.4	14.8	10.0
Victimization experience					
Not victimized (288,200)	100.0	75.1	7.5	17.2	0.2
Victimized (85,900)	100.0	78.4	7.9	13.6	10.1

NOTE: Data based on question 8d. Detail may not add to total because of rounding. Figures in parentheses refer to population in the group.

<sup>1</sup>Estimate, based on zero or on about 10 or fewer sample cases, is statistically unreliable.

**Table 30. Most important reason for usually seeking evening entertainment inside or outside the city**

(Percent distribution of responses for the population age 16 and over)

Type of place and population characteristic	Total	Convenience, etc.	Parking, traffic	Crime in other place	More to do	Prefer facilities	Other area more expensive	Friends, relatives	Other and not available
<b>Persons entertained inside city</b>									
All persons (283,800)	100.0	54.3	0.6	0.5	11.4	19.7	1.1	9.1	3.3
<b>Sex</b>									
Male (130,800)	100.0	53.8	0.7	0.4	12.0	19.9	1.2	8.6	3.4
Female (153,000)	100.0	54.8	0.5	0.6	10.8	19.5	1.1	9.5	3.2
<b>Race</b>									
White (104,200)	100.0	47.6	0.7	0.6	11.0	31.6	10.2	5.5	2.9
Black (174,900)	100.0	58.0	0.5	0.5	11.7	12.7	1.8	11.3	3.6
Other (4,700)	100.0	67.6	10.0	10.0	19.4	14.7	10.0	18.3	10.0
<b>Age</b>									
16-19 (38,900)	100.0	61.0	10.2	10.2	12.5	9.6	1.6	12.0	3.0
20-24 (58,300)	100.0	55.0	10.3	0.9	13.1	19.2	0.9	7.7	2.9
25-34 (78,800)	100.0	51.9	0.6	10.2	13.5	21.7	1.2	7.6	3.2
35-49 (55,900)	100.0	51.7	10.7	10.5	10.5	23.4	1.4	8.8	3.1
50-64 (35,200)	100.0	55.6	10.7	10.4	6.9	21.9	11.1	9.2	4.3
65 and over (16,700)	100.0	54.5	11.2	12.4	4.5	18.0	10.0	14.9	4.4
<b>Victimization experience</b>									
Not victimized (216,400)	100.0	54.4	0.6	0.6	11.4	18.7	1.1	9.7	3.5
Victimized (67,400)	100.0	54.2	10.4	10.3	11.4	22.8	1.2	7.1	2.6
<b>Persons entertained outside city</b>									
All persons (28,400)	100.0	23.3	7.8	13.7	4.8	27.5	11.2	17.6	4.0
<b>Sex</b>									
Male (12,300)	100.0	23.6	11.1	12.3	6.8	27.1	11.7	12.5	5.0
Female (16,100)	100.0	23.1	5.2	14.9	3.3	27.8	10.8	21.5	3.2
<b>Race</b>									
White (11,000)	100.0	21.8	7.7	11.0	4.5	28.9	11.2	19.8	5.1
Black (17,200)	100.0	24.1	7.9	15.6	5.1	26.4	11.2	16.3	3.4
Other (100)	100.0	149.1	10.0	10.0	10.0	150.9	10.0	10.0	10.0
<b>Age</b>									
16-19 (1,400)	100.0	131.9	14.8	18.6	13.8	113.8	10.0	128.6	18.4
20-24 (4,600)	100.0	23.1	17.5	12.0	17.3	23.2	10.0	20.3	16.6
25-34 (5,800)	100.0	15.7	16.7	10.1	15.7	33.1	13.4	23.1	12.2
35-49 (7,500)	100.0	26.6	9.3	11.0	15.1	29.8	10.0	16.5	11.7
50-64 (6,300)	100.0	23.9	9.2	18.3	13.2	25.8	12.2	12.3	15.4
65 and over (2,800)	100.0	25.2	14.6	23.9	12.5	27.7	10.0	11.2	14.9
<b>Victimization experience</b>									
Not victimized (21,700)	100.0	23.3	8.7	13.5	4.2	26.9	11.2	18.3	3.9
Victimized (6,800)	100.0	23.4	14.8	14.4	17.0	29.5	11.0	15.5	14.4

NOTE: Data based on question 8e. Detail may not add to total because of rounding. Figures in parentheses refer to population in the group.  
 1Estimate, based on zero or on about 10 or fewer sample cases, is statistically unreliable.

**Table 31. Opinion about local police performance**

(Percent distribution of responses for the population age 16 and over)

Population characteristic	Total	Good	Average	Poor	Don't know	Not available
All persons (532,800)	100.0	34.5	45.6	11.8	7.7	0.4
Sex						
Male (230,600)	100.0	35.1	46.0	12.0	6.6	0.4
Female (302,300)	100.0	34.1	45.3	11.6	8.5	0.4
Race						
White (166,200)	100.0	53.5	31.3	5.1	9.8	0.3
Black (359,100)	100.0	25.8	52.4	14.7	6.7	0.4
Other (7,500)	100.0	32.2	36.5	20.0	10.5	10.8
Age						
16-19 (50,400)	100.0	15.7	56.8	20.4	6.7	10.4
20-24 (81,700)	100.0	27.6	49.4	15.8	6.9	10.3
25-34 (120,500)	100.0	30.7	48.8	13.9	6.4	10.3
35-49 (113,700)	100.0	34.5	47.6	10.1	7.3	0.6
50-64 (100,200)	100.0	43.8	39.5	7.6	8.7	10.3
65 and over (66,500)	100.0	50.3	32.5	5.6	11.1	10.5
Victimization experience						
Not victimized (418,500)	100.0	34.8	45.5	10.9	8.3	0.4
Victimized (114,400)	100.0	33.4	45.9	14.8	5.5	10.3

NOTE: Data based on question 14a. Detail may not add to total because of rounding. Figures in parentheses refer to population in the group.

<sup>1</sup>Estimate, based on about 10 or fewer sample cases, is statistically unreliable.

### Table 32. Opinion about local police performance

(Percent distribution of responses for the population age 16 and over)

Population characteristic	Total	Good	Average	Poor	Don't know	Not available
<b>Sex and age</b>						
Male						
16-19 (23,700)	100.0	15.9	56.9	18.7	8.0	10.5
20-24 (32,500)	100.0	29.2	48.1	16.0	6.7	10.0
25-34 (55,200)	100.0	32.4	46.2	14.9	6.3	10.2
35-49 (51,100)	100.0	35.9	46.9	9.7	6.6	10.9
50-64 (42,200)	100.0	45.1	41.6	7.6	5.7	10.0
65 and over (26,000)	100.0	47.8	38.2	6.0	7.5	10.5
Female						
16-19 (26,700)	100.0	15.5	56.8	21.9	5.5	10.3
20-24 (49,200)	100.0	26.5	50.3	15.7	7.0	10.5
25-34 (65,300)	100.0	29.2	51.0	13.0	6.4	10.3
35-49 (62,600)	100.0	33.4	48.2	10.3	7.8	10.3
50-64 (58,000)	100.0	42.9	38.0	7.7	10.9	10.6
65 and over (40,500)	100.0	51.9	28.9	5.3	13.5	10.5
<b>Race and age</b>						
White						
16-19 (9,100)	100.0	37.7	42.1	10.9	8.7	10.6
20-24 (26,300)	100.0	43.1	42.3	4.5	9.4	10.7
25-34 (38,200)	100.0	51.9	34.3	4.7	9.0	10.2
35-49 (27,300)	100.0	55.7	29.3	5.2	9.5	10.2
50-64 (31,500)	100.0	59.1	26.0	4.7	10.2	10.0
65 and over (33,900)	100.0	60.4	23.1	4.5	11.4	10.6
Black						
16-19 (40,900)	100.0	11.0	60.2	22.5	6.0	10.3
20-24 (54,100)	100.0	19.9	53.3	20.8	5.8	10.1
25-34 (79,800)	100.0	20.5	56.1	18.1	5.1	10.2
35-49 (84,200)	100.0	27.6	53.7	11.6	6.4	0.7
50-64 (68,100)	100.0	36.8	45.7	8.9	8.1	10.5
65 and over (31,900)	100.0	39.8	42.7	6.4	10.5	10.4

NOTE: Data based on question 14a. Detail may not add to total because of rounding. Figures in parentheses refer to population in the group.

<sup>1</sup>Estimate, based on zero or on about 10 or fewer sample cases, is statistically unreliable.

### Table 33. Opinion about local police performance

(Percent distribution of responses for the population age 16 and over)

Population characteristic	Total	Good	Average	Poor	Don't know	Not available
<b>Race, sex, and age</b>						
<b>White</b>						
<b>Male</b>						
16-19 (4,600)	100.0	42.1	41.8	18.8	16.1	11.2
20-24 (11,500)	100.0	47.9	38.4	5.6	8.2	10.0
25-34 (19,000)	100.0	50.8	35.6	6.2	7.1	10.3
35-49 (13,500)	100.0	57.3	27.8	4.9	9.5	10.5
50-64 (12,500)	100.0	60.0	28.2	4.8	7.1	10.0
65 and over (11,900)	100.0	60.8	26.5	5.9	6.2	10.6
<b>Female</b>						
16-19 (4,600)	100.0	33.3	42.4	13.1	11.3	10.0
20-24 (14,800)	100.0	39.5	45.4	3.6	10.3	11.2
25-34 (19,100)	100.0	53.0	32.9	3.3	10.8	10.0
35-49 (13,900)	100.0	54.2	30.6	5.6	9.6	10.0
50-64 (19,000)	100.0	58.6	24.5	4.6	12.3	10.0
65 and over (21,900)	100.0	60.2	21.2	3.8	14.3	10.6
<b>Black</b>						
<b>Male</b>						
16-19 (19,000)	100.0	9.7	60.3	21.2	8.5	10.3
20-24 (20,300)	100.0	18.1	54.1	21.8	6.0	10.0
25-34 (35,100)	100.0	22.3	52.2	19.3	6.0	10.2
35-49 (36,800)	100.0	28.1	54.0	11.4	5.5	11.0
50-64 (29,400)	100.0	39.0	47.3	8.6	5.2	10.0
65 and over (13,600)	100.0	36.6	48.7	5.9	8.4	10.4
<b>Female</b>						
16-19 (21,900)	100.0	12.1	60.2	23.7	3.7	10.3
20-24 (33,800)	100.0	21.0	52.9	20.3	5.7	10.2
25-34 (44,700)	100.0	19.2	59.1	17.1	4.3	10.3
35-49 (47,500)	100.0	27.2	53.5	11.8	7.1	10.4
50-64 (38,700)	100.0	35.2	44.6	9.1	10.3	10.8
65 and over (18,400)	100.0	42.2	38.3	7.1	12.0	10.4

NOTE: Data based on question 14a. Detail may not add to total because of rounding. Figures in parentheses refer to population in the group.

<sup>1</sup>Estimate, based on zero or on about 10 or fewer sample cases, is statistically unreliable.



**Table 34. Whether or not local police performance needs improvement**

(Percent distribution of responses for the population age 16 and over)

Population characteristic	Total	Yes	No	Not available
All persons (489,800)	100.0	81.4	16.2	2.4
Sex				
Male (214,500)	100.0	82.2	15.5	2.2
Female (275,300)	100.0	80.7	16.7	2.6
Race				
White (149,300)	100.0	78.4	18.9	2.7
Black (333,800)	100.0	82.7	15.0	2.4
Other (6,700)	100.0	83.5	15.5	1.1
Age				
16-19 (46,800)	100.0	87.2	10.3	2.5
20-24 (75,800)	100.0	84.0	13.2	2.9
25-34 (112,500)	100.0	82.2	14.3	3.6
35-49 (104,800)	100.0	82.9	15.2	1.8
50-64 (91,100)	100.0	78.7	19.5	1.8
65 and over (58,700)	100.0	73.2	25.0	1.8
Victimization experience				
Not victimized (382,000)	100.0	80.7	17.1	2.3
Victimized (107,700)	100.0	83.9	12.9	3.1

NOTE: Data based on question 14b. Detail may not add to total because of rounding. Figures in parentheses refer to population in the group.

<sup>1</sup>Estimate, based on zero or on about 10 or fewer sample cases, is statistically unreliable.

**Table 35. Most important measure for improving local police performance**

(Percent distribution of responses for the population age 16 and over)

Most important measure	All persons (328,000)	Sex		Race			Age						Victimization experience	
		Male (148,300)	Female (179,700)	White (82,200)	Black (241,300)	Other (4,600)	16-19 (34,700)	20-24 (54,100)	25-34 (78,200)	35-49 (74,500)	50-64 (56,300)	65 and over (30,400)	Not victimized (251,600)	Victimized (76,500)
Total	100.0	100.0	100.0	100.0	100.0	100.0	100.0	100.0	100.0	100.0	100.0	100.0	100.0	100.0
Personnel resources														
Total	19.4	20.0	18.9	26.3	17.1	16.8	14.7	16.2	17.3	19.3	23.1	29.2	19.9	17.7
More police	13.0	12.3	13.6	18.1	11.3	14.2	8.8	11.4	9.5	12.8	16.6	23.4	13.7	11.0
Better training	6.4	7.6	5.3	8.3	5.8	2.6	5.9	4.8	7.7	6.5	6.5	5.7	6.3	6.8
Operational practices														
Total	55.9	52.7	58.6	51.9	57.3	57.5	52.4	57.0	55.1	57.8	56.2	54.8	55.1	58.5
Focus on more important duties, etc.	18.3	18.5	18.1	16.4	18.9	19.7	19.4	25.0	19.9	16.2	14.5	13.1	18.0	19.3
Greater promptness, etc.	15.9	13.4	17.9	7.8	18.6	15.3	16.8	14.2	15.6	17.1	17.2	13.2	15.8	16.2
Increased traffic control	1.1	1.2	1.0	2.6	0.6	1.3	0.5	0.7	1.5	1.2	1.1	0.9	1.1	1.0
More police certain areas, times	20.7	19.6	21.5	25.0	19.2	21.2	15.6	17.1	18.1	23.3	23.3	27.6	20.2	22.0
Community relations														
Total	20.7	23.0	18.7	13.5	23.1	18.2	29.0	22.9	23.3	18.8	17.0	11.7	21.4	18.2
Courtesy, attitudes, etc.	16.6	18.4	15.0	11.7	18.2	15.3	22.2	15.7	19.2	15.4	15.2	10.2	16.8	15.7
Don't discriminate	4.1	4.6	3.7	1.8	4.9	2.8	6.8	7.2	4.1	3.3	1.8	1.5	4.6	2.6
Other	4.0	4.2	3.8	8.2	2.5	17.4	3.8	3.9	4.3	4.1	3.7	4.3	3.5	5.6

NOTE: Data based on question 14b. Detail may not add to total because of rounding. Figures in parentheses refer to population in the group.

<sup>1</sup>Estimate, based on about 10 or fewer sample cases, is statistically unreliable.

**Table 36. Most important measure for improving local police performance**

(Percent distribution of responses for the population age 16 and over)

Population characteristic	Total	Personnel resources	Operational practices	Community relations	Other
<b>Sex and age</b>					
<b>Male</b>					
16-19 (16,300)	100.0	13.2	47.9	35.4	3.5
20-24 (22,100)	100.0	14.6	51.5	28.4	5.4
25-34 (36,500)	100.0	19.6	48.5	27.0	4.8
35-49 (34,200)	100.0	20.3	56.8	19.4	3.4
50-64 (25,300)	100.0	24.2	54.7	16.7	4.4
65 and over (14,000)	100.0	28.7	57.8	10.1	13.4
<b>Female</b>					
16-19 (18,400)	100.0	16.1	56.4	23.3	4.1
20-24 (32,000)	100.0	17.3	60.8	19.1	2.8
25-34 (41,700)	100.0	15.2	60.9	20.1	3.8
35-49 (40,300)	100.0	18.4	58.7	18.2	4.6
50-64 (31,000)	100.0	22.2	57.4	17.3	3.1
65 and over (16,300)	100.0	29.5	52.3	13.2	5.0
<b>Race and age</b>					
<b>White</b>					
16-19 (4,600)	100.0	26.7	49.7	11.2	12.4
20-24 (14,100)	100.0	19.8	55.8	15.6	8.7
25-34 (21,000)	100.0	20.8	54.0	17.0	8.2
35-49 (14,300)	100.0	25.8	52.3	13.7	8.3
50-64 (14,600)	100.0	33.6	48.1	9.8	8.4
65 and over (13,700)	100.0	34.2	49.0	10.7	6.0
<b>Black</b>					
16-19 (29,900)	100.0	12.8	52.8	31.9	2.5
20-24 (39,100)	100.0	15.2	57.1	25.9	1.7
25-34 (55,500)	100.0	16.0	55.9	25.4	2.7
35-49 (59,000)	100.0	17.5	59.2	20.2	3.1
50-64 (41,500)	100.0	19.6	58.9	19.4	2.0
65 and over (16,500)	100.0	24.9	59.4	12.7	12.9

NOTE: Data based on question 14b. Detail may not add to total because of rounding. Figures in parentheses refer to population in the group.

<sup>1</sup>Estimate, based on about 10 or fewer sample cases, is statistically unreliable.

**Table 37. Most important measure for improving local police performance**

(Percent distribution of responses for the population age 16 and over)

Population characteristic	Total	Personnel resources	Operational practices	Community relations	Other
Race, sex, and age					
White					
Male					
16-19 (2,000)	100.0	31.5	48.8	18.9	10.8
20-24 (6,500)	100.0	18.9	57.6	14.3	9.2
25-34 (10,800)	100.0	21.0	50.4	20.2	8.4
35-49 (6,900)	100.0	21.0	58.0	14.2	16.8
50-64 (6,200)	100.0	32.3	45.1	11.8	10.9
65 and over (6,100)	100.0	37.7	47.3	10.5	14.4
Female					
16-19 (2,500)	100.0	22.4	50.4	13.4	13.8
20-24 (7,600)	100.0	20.8	54.2	16.8	8.2
25-34 (10,200)	100.0	20.5	58.0	13.6	8.0
35-49 (7,400)	100.0	30.3	46.8	13.2	9.7
50-64 (8,400)	100.0	34.7	50.3	8.3	6.7
65 and over (7,600)	100.0	31.4	50.5	10.9	7.1
Black					
Male					
16-19 (14,200)	100.0	10.1	48.1	39.4	12.4
20-24 (14,900)	100.0	13.3	47.8	35.8	13.1
25-34 (24,800)	100.0	18.9	48.5	29.6	2.9
35-49 (26,800)	100.0	20.1	56.3	21.0	2.5
50-64 (18,900)	100.0	21.9	57.3	18.4	12.4
65 and over (7,800)	100.0	21.6	65.6	10.2	12.6
Female					
16-19 (15,700)	100.0	15.3	57.0	25.1	12.6
20-24 (24,100)	100.0	16.4	62.9	19.8	10.8
25-34 (30,600)	100.0	13.7	61.8	21.9	2.5
35-49 (32,200)	100.0	15.4	61.6	19.4	3.6
50-64 (22,600)	100.0	17.7	60.2	20.4	11.7
65 and over (8,700)	100.0	27.9	53.8	15.1	13.1

NOTE: Data based on question 14b. Detail may not add to total because of rounding. Figures in parentheses refer to population in the group.

<sup>1</sup>Estimate, based on about 10 or fewer sample cases, is statistically unreliable.

## Survey instrument

Form NCS 6, the attitude survey instrument, contains two batteries of questions. The first of these, covering items 1 through 7, was used to elicit data from a knowledgeable adult member of each household (i.e., the household respondent). Questions 8 through 16 were asked directly of each household member age 16 and over, including the household respondent. Unlike the procedure followed in the victimization component of the survey, there was no provision for proxy responses on behalf of individuals who were absent or incapacitated during the interviewing period.

Data on the characteristics of those interviewed, as well as details concerning any experiences as victims of the measured crimes, were gathered with separate instruments, Forms NCS 3 and 4, which were administered immediately after NCS 6. Following is a facsimile of the latter questionnaire; supplemental forms were available for use in households where more than three persons were interviewed. Facsimiles of Forms NCS 3 and 4 have not been included in this report, but can be found in *Criminal Victimization Surveys in Washington, 1977*.

FORM NCS-6  
(7-2-73)

U.S. DEPARTMENT OF COMMERCE  
SOCIAL AND ECONOMIC STATISTICS ADMINISTRATION  
BUREAU OF THE CENSUS

NATIONAL CRIME SURVEY  
CENTRAL CITIES SAMPLE

ATTITUDE QUESTIONNAIRE

NOTICE - Your report to the Census Bureau is confidential by law (Title 13, U.S. Code). It may be seen only by sworn Census employees and may be used only for statistical purposes.

A. Control number

PSU Serial Panel HH Segment

B. Name of household head

C. Reason for noninterview

310 1  TYPE A  2  TYPE B 3  TYPE C

311 Race of head  
1  White  
2  Negro  
3  Other  
TYPE Z

Interview not obtained for -  
Line number

312 \_\_\_\_\_  
313 \_\_\_\_\_  
314 \_\_\_\_\_  
315 \_\_\_\_\_

CENSUS USE ONLY

316 1 317 318 319

HOUSEHOLD ATTITUDE QUESTIONS  
Ask only household respondent

Before we get to the major portion of the survey, I would like to ask you a few questions related to subjects which seem to be of some concern to people. These questions ask you what you think, what you feel, your attitudes and opinions.

320 1. How long have you lived at this address?  
1  Less than 1 year  
2  1-2 years  
3  3-5 years  
4  More than 5 years - SKIP to 5a

\* 321 2a. Why did you select this particular neighborhood? Any other reason? (Mark all that apply)  
1  Neighborhood characteristics - type of neighbors, environment, streets, parks, etc.  
2  Good schools  
3  Safe from crime  
4  Only place housing could be found, lack of choice  
5  Price was right  
6  Location - close to job, family, friends, school, shopping, etc.  
7  House (apartment) or property characteristics - size, quality, yard space, etc.  
8  Always lived in this neighborhood  
9  Other - Specify \_\_\_\_\_

(If more than one reason)  
b. Which reason would you say was the most important?  
322 \_\_\_\_\_ Enter item number

323 3a. Where did you live before you moved here?  
1  Outside U.S.  
2  Inside limits of this city } SKIP to 4a  
3  Somewhere else in U.S. - Specify \_\_\_\_\_  
\_\_\_\_\_ State  
\_\_\_\_\_ County

b. Did you live inside the limits of a city, town, village, etc.?  
324 1  No  
2  Yes - Enter name of city, town, etc. \_\_\_\_\_  
325 \_\_\_\_\_

\* 326 4a. Why did you leave there? Any other reason? (Mark all that apply)  
1  Location - closer to job, family, friends, school, shopping, etc., here  
2  House (apartment) or property characteristics - size, quality, yard space, etc.  
3  Wanted better housing, own home  
4  Wanted cheaper housing  
5  No choice - evicted, building demolished, condemned, etc.  
6  Change in living arrangements - marital status, wanted to live alone, etc.  
7  Bad element moving in  
8  Crime in old neighborhood, afraid  
9  Didn't like neighborhood characteristics - environment, problems with neighbors, etc.  
10  Other - Specify \_\_\_\_\_

(If more than one reason)  
b. Which reason would you say was the most important?  
327 \_\_\_\_\_ Enter item number

328 5a. Is there anything you don't like about this neighborhood?  
0  No - SKIP to 6a  
Yes - What? Anything else? (Mark all that apply)  
\* 329 1  Traffic, parking  
2  Environmental problems - trash, noise, overcrowding, etc.  
3  Crime or fear of crime  
4  Public transportation problem  
5  Inadequate schools, shopping facilities, etc.  
6  Bad element moving in  
7  Problems with neighbors, characteristics of neighbors  
8  Other - Specify \_\_\_\_\_

(If more than one answer)  
b. Which problem would you say is the most serious?  
330 \_\_\_\_\_ Enter item number

331 6a. Do you do your major food shopping in this neighborhood?  
0  Yes - SKIP to 7a  
No - Why not? Any other reason? (Mark all that apply)  
\* 332 1  No stores in neighborhood, others more convenient  
2  Stores in neighborhood inadequate, prefers (better) stores elsewhere  
3  High prices, commissary or PX cheaper  
4  Crime or fear of crime  
5  Other - Specify \_\_\_\_\_

(If more than one reason)  
b. Which reason would you say is the most important?  
333 \_\_\_\_\_ Enter item number

334 7a. When you shop for things other than food, such as clothing and general merchandise, do you USUALLY go to suburban or neighborhood shopping centers or do you shop "downtown"?  
1  Suburban or neighborhood  
2  Downtown

\* 335 b. Why is that? Any other reason? (Mark all that apply)  
1  Better parking, less traffic  
2  Better transportation  
3  More convenient  
4  Better selection, more stores, more choice  
5  Afraid of crime  
6  Store hours better  
7  Better prices  
8  Prefers (better) stores, location, service, employees  
9  Other - Specify \_\_\_\_\_

(If more than one reason)  
c. Which one would you say is the most important reason?  
336 \_\_\_\_\_ Enter item number

INTERVIEWER - Complete interview with household respondent, beginning with Individual Attitude Questions.

**INDIVIDUAL ATTITUDE QUESTIONS - Ask each household member 16 or older**

**KEYER - BEGIN NEW RECORD**

337 Line number Name

8a. How often do you go out in the evening for entertainment, such as to restaurants, theaters, etc.?

338 1  Once a week or more 4  2 or 3 times a year  
 2  Less than once a week - more than once a month 5  Less than 2 or 3 times a year or never  
 3  About once a month

b. Do you go to these places more or less now than you did a year or two ago?

339 1  About the same - SKIP to Check Item A  
 2  More  
 3  Less

Why? Any other reason? (Mark all that apply)

340 1  Money situation 7  Family reasons (marriage, children, parents)  
 2  Places to go, people to go with 8  Activities, job, school  
 3  Convenience 9  Crime or fear of crime  
 4  Health (own) 10  Want to, like to, enjoyment  
 5  Transportation 11  Other - Specify

(If more than one reason)

c. Which reason would you say is the most important?

341 Enter item number

CHECK ITEM A Is box 1, 2, or 3 marked in 8a?  
 No - SKIP to 9a  Yes - ASK 8d

d. When you do go out to restaurants or theaters in the evening, is it usually in the city or outside of the city?

342 1  Usually in the city  
 2  Usually outside of the city  
 3  About equal - SKIP to 9a

e. Why do you usually go (outside the city/in the city)? Any other reason? (Mark all that apply)

343 1  More convenient, familiar, easier to get there, only place available  
 2  Parking problems, traffic  
 3  Too much crime in other place  
 4  More to do  
 5  Prefer (better) facilities (restaurants, theaters, etc.)  
 6  More expensive in other area  
 7  Because of friends, relatives  
 8  Other - Specify

(If more than one reason)

f. Which reason would you say is the most important?

344 Enter item number

9a. Now I'd like to get your opinions about crime in general. Within the past year or two, do you think that crime in your neighborhood has increased, decreased, or remained about the same?

345 1  Increased 4  Don't know - SKIP to 10c  
 2  Decreased 5  Haven't lived here that long - SKIP to 10c  
 3  Same - SKIP to 10c

b. Were you thinking about any specific kinds of crimes when you said you think crime in your neighborhood has (increased/decreased)?

346  No Yes - What kinds of crimes?

c. How about any crimes which may be happening in your neighborhood - would you say they are committed mostly by the people who live here in this neighborhood or mostly by outsiders?

347 1  No crimes happening in neighborhood 3  Outsiders  
 2  People living here 4  Equally by both  
 5  Don't know

10a. Within the past year or two do you think that crime in the United States has increased, decreased, or remained about the same?

348 1  Increased 3  Same  
 2  Decreased 4  Don't know

b. Were you thinking about any specific kinds of crimes when you said you think crime in the U.S. has (increased/decreased)?

349  No Yes - What kinds of crimes?

11a. How safe do you feel or would you feel being out alone in your neighborhood AT NIGHT?

350 1  Very safe 3  Somewhat unsafe  
 2  Reasonably safe 4  Very unsafe

b. How about DURING THE DAY - how safe do you feel or would you feel being out alone in your neighborhood?

351 1  Very safe 3  Somewhat unsafe  
 2  Reasonably safe 4  Very unsafe

CHECK ITEM B Look at 11a and b. Was box 3 or 4 marked in either item?  
 Yes - ASK 11c  No - SKIP to 12

11c. Is the neighborhood dangerous enough to make you think seriously about moving somewhere else?

352  No - SKIP to 12  
 Yes - Why don't you? Any other reason? (Mark all that apply)

353 1  Can't afford to 5  Plan to move soon  
 2  Can't find other housing 6  Health or age  
 3  Relatives, friends nearby 7  Other - Specify

(If more than one reason)

d. Which reason would you say is the most important?

354 Enter item number

12. How do you think your neighborhood compares with others in this metropolitan area in terms of crime? Would you say it is -

355 1  Much more dangerous? 4  Less dangerous?  
 2  More dangerous? 5  Much less dangerous?  
 3  About average?

13a. Are there some parts of this metropolitan area where you have a reason to go or would like to go DURING THE DAY, but are afraid to because of fear of crime?

356  No Yes - Which section(s)?

357 Number of specific places mentioned

b. How about AT NIGHT - are there some parts of this area where you have a reason to go or would like to go but are afraid to because of fear of crime?

358  No Yes - Which section(s)?

359 Number of specific places mentioned

14a. Would you say, in general, that your local police are doing a good job, an average job, or a poor job?

360 1  Good 3  Poor  
 2  Average 4  Don't know - SKIP to 15a

b. In what ways could they improve? Any other ways? (Mark all that apply)

361 1  No improvement needed - SKIP to 15a  
 2  Hire more policemen  
 3  Concentrate on more important duties, serious crime, etc.  
 4  Be more prompt, responsive, alert  
 5  Improve training, raise qualifications or pay, recruitment policies  
 6  Be more courteous, improve attitude, community relations  
 7  Don't discriminate  
 8  Need more traffic control  
 9  Need more policemen of particular type (foot, car) in certain areas or at certain times  
 10  Don't know  
 11  Other - Specify

(If more than one way)

c. Which would you say is the most important?

362 Enter item number

15a. Now I have some more questions about your opinions concerning crime. Please take this card. (Hand respondent Attitude Flashcard, NCS-57-4) Look at the FIRST set of statements. Which one do you agree with most?

363 1  My chances of being attacked or robbed have GONE UP in the past few years  
 2  My chances of being attacked or robbed have GONE DOWN in the past few years  
 3  My chances of being attacked or robbed haven't changed in the past few years  
 4  No opinion

b. Which of the SECOND group do you agree with most?

364 1  Crime is LESS serious than the newspapers and TV say  
 2  Crime is MORE serious than the newspapers and TV say  
 3  Crime is about as serious as the newspapers and TV say  
 4  No opinion

16a. Do you think PEOPLE IN GENERAL have limited or changed their activities in the past few years because they are afraid of crime?

365 1  Yes 2  No

b. Do you think that most PEOPLE IN THIS NEIGHBORHOOD have limited or changed their activities in the past few years because they are afraid of crime?

366 1  Yes 2  No

c. In general, have YOU limited or changed your activities in the past few years because of crime?

367 1  Yes 2  No

INTERVIEWER - Continue Interview with this respondent on NCS-3

## Technical information and reliability of the estimates

Survey results contained in this publication are based on data gathered during early 1974 from persons residing within the city limits of Washington, D.C., including those living in certain types of group quarters, such as dormitories, rooming houses, and religious group dwellings. Nonresidents of the city, including tourists and commuters, did not fall within the scope of the survey. Similarly, crewmembers of merchant vessels, Armed Forces personnel living in military barracks, and institutionalized persons, such as correctional facility inmates, were not under consideration. With these exceptions, all persons age 16 and over living in units designated for the sample were eligible to be interviewed.

Each interviewer's first contact with a unit selected for the survey was in person, and, if it were not possible to secure interviews with all eligible members of the household during the initial visit, interviews by telephone were permissible thereafter. Proxy responses were not permitted for the attitude survey. Survey records were processed and weighted, yielding results representative both of the city's population as a whole and of various sectors within the population. Because they are based on a sample survey rather than a complete enumeration, the results are estimates.

### Sample design and size

Estimates from the survey are based on data obtained from a stratified sample. The basic frame from which the attitude sample was drawn—the city's complete housing inventory, as determined by the 1970 Census of Population and Housing—was the same as that for the victimization survey. A determination was made that a sample roughly half the size of the victimization sample would yield enough attitudinal data on which to base reliable estimates. For the purpose of selecting the victimization sample, the city's housing units were distributed among 105 strata on the basis of various characteristics. Occupied units, which comprised the majority, were grouped into 100 strata defined by a combination of the following characteristics: type of tenure (owned or rented); number of household members (five categories); household income (five categories); and race of head of household (white or other than white). Housing units vacant at the time

of the Census were assigned to an additional four strata, where they were distributed on the basis of rental or property value. A single stratum incorporated group quarters.

To account for units built after the 1970 Census, a sample was drawn, by means of an independent clerical operation, of permits issued for the construction of residential housing within the city. This enabled the proper representation in the survey of persons occupying housing built after 1970.

In order to develop the half sample required for the attitude survey, each unit was randomly assigned to 1 of 12 panels, with units in the first 6 panels being designated for the attitude survey. This procedure resulted in the selection of 5,862 housing units. During the survey period, 717 of these units were found to be vacant, demolished, converted to nonresidential use, temporarily occupied by nonresidents, or otherwise ineligible for both the victimization and attitude surveys. At an additional 469 units visited by interviewers it was impossible to conduct interviews because the occupants could not be reached after repeated calls, did not wish to participate in the survey, or were unavailable for other reasons. Therefore, interviews were taken with the occupants of 4,676 housing units, and the rate of participation among units qualified for interviewing was 90.9 percent. Participating units were occupied by a total of 8,484 persons age 16 and over, or an average of 1.8 residents of the relevant ages per unit. Interviews were conducted with 8,156 of these persons, resulting in a response rate of 96.1 percent among eligible residents.

### Estimation procedure

Data records generated by the attitude survey were assigned either of two sets of final tabulation weights, one for the records of individual respondents and another for those of household respondents. In each case, the final weight was the product of two elements—a factor of roughly twice the weight used in tabulating victimization data estimates and a ratio estimation factor. The following steps determined the tabulation weight for personal victimization data and were, therefore, an integral part of the estimation procedure for attitude data gathered from individual respondents: (1) a basic weight, reflecting the selected unit's probability of being included in the sample; (2) a factor to compensate for the subsampling of units, a situation that arose in instances where the interviewer discovered many more units at the sample address than had been listed in the decennial Census; (3) a within-household noninterview

adjustment to account for situations where at least one but not all eligible persons in a household were interviewed; (4) a household noninterview adjustment to account for households qualified to participate in the survey but from which an interview was not obtained; (5) a household ratio estimate factor for bringing estimates developed from the sample of 1970 housing units into adjustment with the complete Census count of such units; and (6) a population ratio estimate factor that brought the sample estimate into accord with post-Census estimates of the population age 12 and over and adjusted the data for possible biases resulting from undercoverage or overcoverage of the population.

The household ratio estimation procedure (step 5) achieved a slight reduction in the extent of sampling variability, thereby reducing the margin of error in the tabulated survey results. It also compensated for the exclusion from each stratum of any households already included in samples for certain other Census Bureau programs. The household ratio estimator was not applied to interview records gathered from residents of group quarters or of units constructed after the Census. For household victimization data (and attitude data from household respondents), the final weight incorporated all of the steps described above except the third and sixth.

The ratio estimation factor, second element of the final weight, was an adjustment for bringing data from the attitude survey (which, as indicated, was based on a half sample) into accord with data from the victimization survey (based on the whole sample). This adjustment, required because the attitude sample was randomly constructed from the victimization sample, was used for the age, sex, and race characteristics of respondents.

### **Reliability of estimates**

As previously noted, survey results contained in this report are estimates. Despite the precautions taken to minimize sampling variability, the estimates are subject to errors arising from the fact that the sample employed was only one of a large number of possible samples of equal size that could have been used applying the same sample design and selection procedures. Estimates derived from different samples may vary somewhat; they also may differ from figures developed from the average of all possible samples, even if the surveys were administered with the same schedules, instructions, and interviewers.

The standard error of a survey estimate is a measure of the variation among estimates from all possible samples and is, therefore, a gauge of the

precision with which the estimate from a particular sample approximates the average result of all possible samples. The estimate and its associated standard error may be used to construct a confidence interval, that is, an interval having a prescribed probability that it would include the average result of all possible samples. The average value of all possible samples may or may not be contained in any particular computed interval. However, the chances are about 68 out of 100 that a survey-derived estimate would differ from the average result of all possible samples by less than one standard error. Similarly, the chances are about 90 out of 100 that the difference would be less than 1.6 times the standard error; about 95 out of 100 that the difference would be 2.0 times the standard error; and 99 out of 100 chances that it would be less than 2.5 times the standard error. The 68 percent confidence interval is defined as the range of values given by the estimate minus the standard error and the estimate plus the standard error; the chances are 68 in 100 that the average value of all possible samples would fall within that range. Similarly, the 95 percent confidence interval is defined as the estimate plus or minus two standard errors.

In addition to sampling error, the estimates presented in this report are subject to nonsampling error, chiefly affecting the accuracy of the distinction between victims and nonvictims. A major source of nonsampling error is related to the ability of respondents to recall whether or not they were victimized during the 12 months prior to the time of interview. Research on recall indicates that the ability to remember a crime varies with the time interval between victimization and interview, the type of crime, and, perhaps, the socio-demographic characteristics of the respondent. Taken together, recall problems may result in an understatement of the "true" number of victimized persons and households, as defined for the purpose of this report. Another source of nonsampling error pertaining to victimization experience involves telescoping, or bringing within the appropriate 12-month reference period victimizations that occurred before or after the close of the period.

Although the problems of recall and telescoping probably weakened the differentiation between victims and nonvictims, these would *not* have affected the data on personal attitudes or behavior. Nevertheless, such data may have been affected by nonsampling errors resulting from incomplete or erroneous responses, systematic mistakes introduced by interviewers, and improper coding and process-



ing of data. Many of these errors also would occur in a complete census. Quality control measures, such as interviewer observation and a reinterview program, as well as edit procedures in the field and at the clerical and computer processing stages, were utilized to keep such errors at an acceptably low level. As calculated for this survey, the standard errors partially measure only those random nonsampling errors arising from response and interviewer errors; they do not, however, take into account any systematic biases in the data.

Regarding the reliability of data, it should be noted that estimates based on zero or on about 10 or fewer sample cases have been considered unreliable. Such estimates are identified in footnotes to the data tables and were not used for purposes of analysis in this report. For Washington, a minimum weighted estimate of 500 was considered statistically reliable, as was any percentage based on such a figure.

#### **Computation and application of the standard error**

For survey estimates relevant to either the individual or household respondents, standard errors displayed on tables at the end of this appendix can be used for gauging sampling variability. These errors are approximations and suggest an order of magnitude of the standard error rather than the precise error associated with any given estimate. Table I contains standard error approximations applicable to information from individual respondents and Table II gives errors for data derived from household respondents. For percentages not specifically listed in the tables, linear interpolation must be used to approximate the standard error.

To illustrate the application of standard errors in measuring sampling variability, Data Table 1 in this report shows that 59.8 percent of all Washington residents age 16 and over (532,800 persons) believed crime in the United States had increased. Two-way linear interpolation of data listed in Table I would yield a standard error of about 0.5 percent. Consequently, chances are 68 out of 100 that the estimated percentage of 59.8 would be within 0.5 percentage points of the average result from all possible samples; i.e., the 68 percent confidence interval associated with the estimate would be from 59.3 to 60.3. Furthermore, the chances are 95 out of 100 that the estimated percentage would be roughly within 1.0 percentage point of the average for all samples; i.e., the 95 percent confidence interval would be about 58.8 to 60.8 percent. Standard errors associated with data from household respond-

ents are calculated in the same manner, using Table II.

In comparing two sample estimates, the standard error of the difference between the two figures is approximately equal to the square root of the sum of the squares of the standard errors of each estimate considered separately. As an example, Data Table 12 shows that 25.2 percent of males and 9.0 percent of females felt very safe when out alone in the neighborhood at night, a difference of 16.2 percentage points. The standard error for each estimate, determined by interpolation, was about 0.9 (males) and 0.5 (females). Using the formula described previously, the standard error of the difference between 25.2 and 9.0 percent is expressed as  $\sqrt{(0.9)^2 + (0.5)^2}$ , which equals approximately 1.0. Thus, the confidence interval at one standard error around the difference of 16.2 would be from 15.2 to 17.2 (16.2 plus or minus 1.0) and at two standard errors from 14.2 to 18.2. The ratio of a difference to its standard error defines a value that can be equated to a level of significance. For example, a ratio of about 2.0 (or more) denotes that the difference is significant at the 95 percent confidence level (or higher); a ratio ranging between about 1.6 and 2.0 indicates that the difference is significant at a confidence level between 90 and 95 percent; and a ratio of less than about 1.6 defines a level of confidence below 90 percent. In the above example, the ratio of the difference (16.2) to the standard error (1.0) is equal to 16.2, a figure well above the 2.0 minimum level of confidence applied in this report. Thus, it was concluded that the difference between the two proportions was statistically significant. For data gathered from household respondents, the significance of differences between two sample estimates is tested by the same procedure, using standard errors in Table II.

**Table I. Individual respondent data: Standard error approximations for estimated percentages**

(68 chances out of 100)

Base of percent	Estimated percent of answers by individual respondents					
	1.0 or 99.0	2.5 or 97.5	5.0 or 95.0	10.0 or 90.0	25.0 or 75.0	50.0
100	8.7	13.6	19.0	26.1	37.7	43.6
250	5.5	8.6	12.0	16.5	23.9	27.6
500	3.9	6.1	8.5	11.7	16.9	19.5
1,000	2.7	4.3	6.0	8.3	11.9	13.8
2,500	1.7	2.7	3.8	5.2	7.5	8.7
5,000	1.2	1.9	2.7	3.7	5.3	6.2
10,000	0.9	1.4	1.9	2.6	3.8	4.4
25,000	0.5	0.9	1.2	1.7	2.4	2.8
50,000	0.4	0.6	0.8	1.2	1.7	1.9
100,000	0.3	0.4	0.6	0.8	1.2	1.4
250,000	0.2	0.3	0.4	0.5	0.8	0.9
500,000	0.1	0.2	0.3	0.4	0.5	0.6
1,000,000	0.1	0.1	0.2	0.3	0.4	0.4

NOTE: The standard errors in this table are applicable to information in Data Tables 1-18 and 27-37.

**Table II. Household respondent data: Standard error approximations for estimated percentages**

(68 chances out of 100)

Base of percent	Estimated percent of answers by household respondents					
	1.0 or 99.0	2.5 or 97.5	5.0 or 95.0	10.0 or 90.0	25.0 or 75.0	50.0
100	7.4	11.6	16.2	22.4	32.3	37.3
250	4.7	7.4	10.3	14.1	20.4	23.6
500	3.3	5.2	7.3	10.0	14.4	16.7
1,000	2.3	3.7	5.1	7.1	10.2	11.8
2,500	1.5	2.3	3.3	4.5	6.5	7.5
5,000	1.0	1.6	2.3	3.2	4.6	5.3
10,000	0.7	1.2	1.6	2.2	3.2	3.7
25,000	0.5	0.7	1.0	1.4	2.0	2.4
50,000	0.3	0.5	0.7	1.0	1.4	1.7
100,000	0.2	0.4	0.5	0.7	1.0	1.2
250,000	0.1	0.2	0.3	0.4	0.6	0.7
500,000	0.1	0.2	0.2	0.3	0.5	0.5

NOTE: The standard errors in this table are applicable to information in Data Tables 19-26.



## Glossary

- Age**—The appropriate age category is determined by each respondent's age as of the last day of the month preceding the interview.
- Annual family income**—Includes the income of the household head and all other related persons residing in the same household unit. Covers the 12 months preceding the interview and includes wages, salaries, net income from business or farm, pensions, interest, dividends, rent, and any other form of monetary income. The income of persons unrelated to the head of household is excluded.
- Assault**—An unlawful physical attack, whether aggravated or simple, upon a person. Includes attempted assaults with or without a weapon. Excludes rape and attempted rape, as well as attacks involving theft or attempted theft, which are classified as robbery.
- Burglary**—Unlawful or forcible entry of a residence, usually, but not necessarily, attended by theft. Includes attempted forcible entry.
- Central city**—The largest city of a standard metropolitan statistical area (SMSA).
- Community relations**—Refers to question 14b (ways of improving police performance) and includes two response categories: "Be more courteous, improve attitude, community relations" and "Don't discriminate."
- Downtown shopping area**—The central shopping district of the city where the respondent lives.
- Evening entertainment**—Refers to entertainment available in public places, such as restaurants, theaters, bowling alleys, nightclubs, bars, ice cream parlors, etc. Excludes club meetings, shopping, and social visits to the homes of relatives or acquaintances.
- General merchandise shopping**—Refers to shopping for goods other than food, such as clothing, furniture, housewares, etc.
- Head of household**—For classification purposes, only one individual per household can be the head person. In husband-wife households, the husband arbitrarily is considered to be the head. In other households, the head person is the individual so regarded by its members; generally, that person is the chief breadwinner.
- Household**—Consists of the occupants of separate living quarters meeting either of the following criteria: (1) Persons, whether present or temporarily absent, whose usual place of residence is the housing unit in question, or (2) Persons staying in the housing unit who have no usual place of residence elsewhere.
- Household attitude questions**—Items 1 through 7 of Form NCS 6. For households that consist of more than one member, the questions apply to the entire household.
- Household larceny**—Theft or attempted theft of property or cash from a residence or its immediate vicinity. Forcible entry, attempted forcible entry, or unlawful entry are not involved.
- Household respondent**—A knowledgeable adult member of the household, most frequently the head of household or that person's spouse. For each household, such a person answers the "household attitude questions."
- Individual attitude questions**—Items 8 through 16 of Form NCS 6. The questions apply to each person, not the entire household.
- Individual respondent**—Each person age 16 and over, including the household respondent, who participates in the survey. All such persons answer the "individual attitude questions."
- Local police**—The police force in the city where the respondent lives at the time of the interview.
- Major food shopping**—Refers to shopping for the bulk of the household's groceries.
- Measured crimes**—For the purpose of this report, the offenses are rape, personal robbery, assault, personal larceny, burglary, household larceny, and motor vehicle theft, as determined by the victimization component of the survey. Includes both completed and attempted acts that occurred during the 12 months prior to the month of interview.
- Motor vehicle theft**—Stealing or unauthorized taking of a motor vehicle, including attempts at such acts. Motor vehicles include automobiles, trucks, motorcycles, and any other motorized vehicles legally allowed on public roads and highways.
- Neighborhood**—The general vicinity of the respondent's dwelling. The boundaries of a neighborhood define an area with which the respondent identifies.
- Nonvictim**—See "Not victimized" below.
- Not victimized**—For the purpose of this report, persons not categorized as "victimized" (see below) are considered "not victimized."
- Offender**—The perpetrator of a crime.
- Operational practices**—Refers to question 14b (ways of improving police performance) and includes four response categories: "Concentrate on more

important duties, serious crime, etc.”; “Be more prompt, responsive, alert”; “Need more traffic control”; and “Need more policemen of particular type (foot, car) in certain areas or at certain times.”

**Personal larceny**—Theft or attempted theft of property or cash, either with contact (but without force or threat of force) or without direct contact between victim and offender.

**Personnel resources**—Refers to question 14b (ways of improving police performance) and includes two response categories: “Hire more policemen” and “Improve training, raise qualifications or pay, recruitment policies.”

**Race**—Determined by the interviewer upon observation, and asked only about persons not related to the head of household who were not present at the time of interview. The racial categories distinguished are white, black, and other. The category “other” consists mainly of American Indians and/or persons of Asian ancestry.

**Rape**—Carnal knowledge through the use of force or the threat of force, including attempts. Statutory rape (without force) is excluded. Includes both heterosexual and homosexual rape.

**Rate of victimization**—See “Victimization rate,” below.

**Robbery**—Theft or attempted theft, directly from a person, of property or cash by force or threat of force, with or without a weapon.

**Series victimizations**—Three or more criminal events similar, if not identical, in nature and incurred by a person unable to identify separately the details of each act, or, in some cases, to recount accurately the total number of such acts. The term is applicable to each of the crimes measured by the victimization component of the survey.

**Suburban or neighborhood shopping areas**—Shopping centers or districts either outside the city limits or in outlying areas of the city near the respondent’s residence.

**Victim**—See “Victimized,” below.

**Victimization**—A specific criminal act as it affects a single victim, whether a person or household. In criminal acts against persons, the number of victimizations is determined by the number of victims of such acts. Each criminal act against a household is assumed to involve a single victim, the affected household.

**Victimization rate**—For crimes against persons, the victimization rate, a measure of occurrence among population groups at risk, is computed

on the basis of the number of victimizations per 1,000 resident population age 12 and over. For crimes against households, victimization rates are calculated on the basis of the number of victimizations per 1,000 households.

**Victimized**—For the purpose of this report, persons are regarded as “victimized” if they meet either of two criteria: (1) They personally experienced one or more of the following criminal victimizations during the 12 months prior to the month of interview: rape, personal robbery, assault, or personal larceny. Or, (2) they are members of a household that experienced one or more of the following criminal victimizations during the same time frame: burglary, household larceny, or motor vehicle theft.

U.S. DEPARTMENT OF JUSTICE  
LAW ENFORCEMENT ASSISTANCE ADMINISTRATION

USER EVALUATION QUESTIONNAIRE

Washington, D.C. : Public Attitudes About Crime  
SD-NCS-C-32

Dear Reader:

The Law Enforcement Assistance Administration is interested in your comments and suggestions about this report. We have provided this form for whatever opinions you wish to express about it. Please cut out both of these pages, staple them together on one corner, and fold so that the Law Enforcement Assistance Administration address appears on the outside. After folding, use tape to seal closed. No postage stamp is necessary.

Thank you for your help.

1. For what purpose did you use this report?

2. For that purpose, the report—  Met most of my needs  Met some of my needs  Met none of my needs

3. How will this report be useful to you?

Data source

Other (please specify) \_\_\_\_\_

Teaching material

\_\_\_\_\_

Reference for article or report

Will not be useful to me (please explain) \_\_\_\_\_

General information

\_\_\_\_\_

Criminal justice program planning

\_\_\_\_\_

4. Which parts of the report, if any, were difficult to understand or use? How could they be improved?

5. Can you point out specific parts of the text or table notes that are not clear or terms that need to be defined?

6. Are there ways this report could be improved that you have not mentioned?

7. Please suggest other topics you would like to see addressed in future analytic reports using National Crime Survey victimization and/or attitude data.

8. In what capacity did you use this report?

- Researcher
- Educator
- Student
- Criminal justice agency employee
- Government other than criminal justice - *Specify* \_\_\_\_\_
- Other - *Specify* \_\_\_\_\_

9. If you used this report as a governmental employee, please indicate the level of government.

Federal

City

State

Other - Specify \_\_\_\_\_

County

10. If you used this report as a criminal justice agency employee, please indicate the sector in which you work.

Law enforcement (police)

Corrections

Legal services and prosecution

Parole

Public or private defense services

Criminal justice planning agency

Courts or court administration

Other criminal justice agency - Specify type \_\_\_\_\_

Probation

11. If you used this report as a criminal justice employee, please indicate the type of position you held.

*Mark all that apply.*

Agency or institution administrator

Program or project manager

General program planner/evaluator/analyst

Statistician

Budget planner/evaluator/analyst

Other - Specify \_\_\_\_\_

Operations or management planner/evaluator/analyst

12. Additional comments



**OPTIONAL**

<b>Name</b>	<b>Telephone</b>	
	(    )	
<b>Number and street</b>		
<b>City</b>	<b>State</b>	<b>ZIP Code</b>

(Fold here)

---

**U.S. DEPARTMENT OF JUSTICE  
Law Enforcement Assistance Administration  
Washington, D.C. 20531**



**POSTAGE AND FEES PAID  
U.S. DEPARTMENT OF JUSTICE**

JUS-436

**Director, Statistics Division  
National Criminal Justice Information and Statistics Service  
Law Enforcement Assistance Administration  
U.S. Department of Justice  
Washington, D.C. 20531**

---

(Fold here)

**NCJRS REGISTRATION**

The National Criminal Justice Reference Service (NCJRS) abstracts documents published in the criminal justice field. Persons who are registered with the Reference Service receive announcements of documents in their stated fields of interest and order forms for free copies of LEAA and NCJISS publications. If you are not registered with the Reference Service, and wish to be, please provide your name and mailing address below and check the appropriate box.

<b>Name</b>		<b>Telephone</b> (    )	<input type="checkbox"/> Please send me a NCJRS registration form.  <input type="checkbox"/> Please send me the reports listed below.
<b>Number and street</b>			
<b>City</b>	<b>State</b>	<b>ZIP Code</b>	

(Fold here)

U.S. DEPARTMENT OF JUSTICE  
Law Enforcement Assistance Administration  
Washington, D.C. 20531



POSTAGE AND FEES PAID  
U.S. DEPARTMENT OF JUSTICE

JUS-436

User Services Department 2  
National Criminal Justice Reference Service  
Law Enforcement Assistance Administration  
U.S. Department of Justice  
Box 6000  
Rockville, Maryland 20850

(Fold here)

If you wish to receive copies of any of the National Criminal Justice Information and Statistics Service reports listed inside the front cover, please list them below and include your name and address in the space provided above.

---



---



---



---



---

