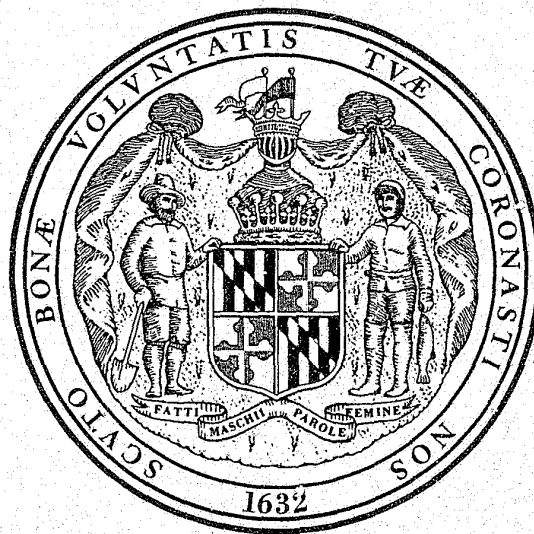


MARYLAND DEPARTMENT OF HEALTH
AND MENTAL HYGIENE

JUVENILE SERVICES
ADMINISTRATION
ANNUAL REPORT



1977

FISCAL YEAR

45882

STATE OF MARYLAND
DEPARTMENT OF
HEALTH AND MENTAL HYGIENE

Neil Solomon, M.D., Ph.D., Secretary

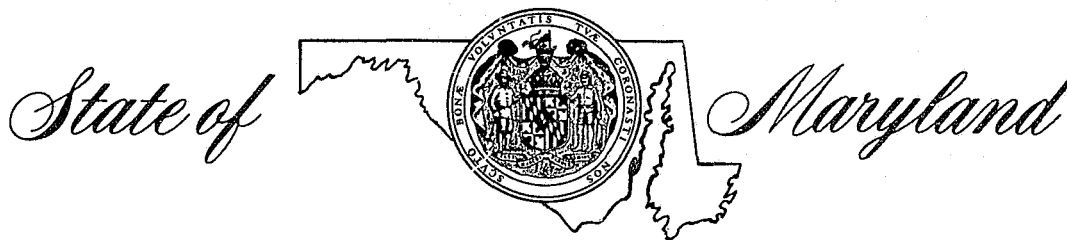
RECEIVED

MAY 23 1978

ACQUISITIONS

Annual Statistical Report
Fiscal Year 1977
JUVENILE SERVICES ADMINISTRATION
Rex C. Smith, Director

Prepared by
Division of Special Services
—Research and Analysis—



JUVENILE SERVICES ADMINISTRATION
DEPARTMENT OF HEALTH AND MENTAL HYGIENE

201 WEST PRESTON STREET • BALTIMORE, MARYLAND 21201 • AREA CODE 301-383-3773

Neil Solomon, M.D., Ph.D., Secretary

January 18, 1978

THE HONORABLE BLAIR LEE
ACTING GOVERNOR FOR THE STATE OF MARYLAND

THE HONORABLE NEIL SOLOMON, M.D., Ph.D.
SECRETARY, DEPARTMENT OF HEALTH AND MENTAL HYGIENE

I am privileged to present herewith the Annual Report of the Juvenile Services Administration for fiscal year 1977.

This past year has been one of considerable change and momentum for the agency. With a change in agency administration, I intend to accept the challenge to provide the type of leadership and direction which will enable the agency to maintain an enviable reputation.

In reviewing eventful developments during the past year, of particular significance is a developing trend which may have far reaching implications. A trend in the direction of juvenile referrals which was first suspected in 1976 has developed more convincingly. For the first time in the ten year history of the agency, the number of juvenile referrals to the agency has decreased from that for the previous year. During the period between 1968-1975, the rate of referrals increased at an average annual rate of more than 25%. In 1976, this rate of increase was reduced to only 1.5% and with the end of 1977, a decrease of 12.7% in the number of referrals was experienced.

This change in the trend for referrals suggests that the problem of juvenile delinquency is being challenged in a more formidable fashion by local governments, active community and citizen groups, courts through more improved methods and finally through many new programs which instituted over the past four to five years are now beginning to impact upon our juvenile population. In particular, community-based programs such as Community Arbitration and Community Detention promise to help effectively deal with much of the agency caseload.

Another possible reason for the slowing rate of referrals is the influence of the declining birthrate. Indications are that the target age population in the 10-17 age group has leveled off and will maintain that status into 1984 or 1985, at which time some growth can be expected. To the extent that such birthrates affect the number of referrals, we can anticipate a corresponding impact on our referral rate.

With modest restraint we can also suggest that the support of a dedicated and talented staff, quite often faced with large caseloads and inadequate staff patterns, has also been a significant factor in affecting the decline in referrals. With differentially assigned caseloads, the staff may now be able to deal more realistically with the problems of youth by providing the type of individual services which are most effective.

I foresee considerable change in both the organization of and the nature of our system of services to the community and our individual programs. I anticipate with great enthusiasm, a differential utilization of the resources available to this Administration, to the end that we can claim otherwise unattainable goals for the troubled youth of our community.

Recognizing that without support from the Department of Health and Mental Hygiene, the Executive Office of the Governor, the Legislature and private and public concerned groups, our efforts would not have been possible, we express deepest appreciation to one and all for their concern and help.

REX C. SMITH
Director

TABLE OF CONTENTS

	Page
Table of Organization, Juvenile Services Administration	1
Definition of Terms	2
Maryland Juvenile Services Administration Flow Chart, Fiscal 1977	3
Highlights: Juvenile Court Services	11
Community Services	37
Institutional Services	47
Federal Grants in Operation During Fiscal 1977	63

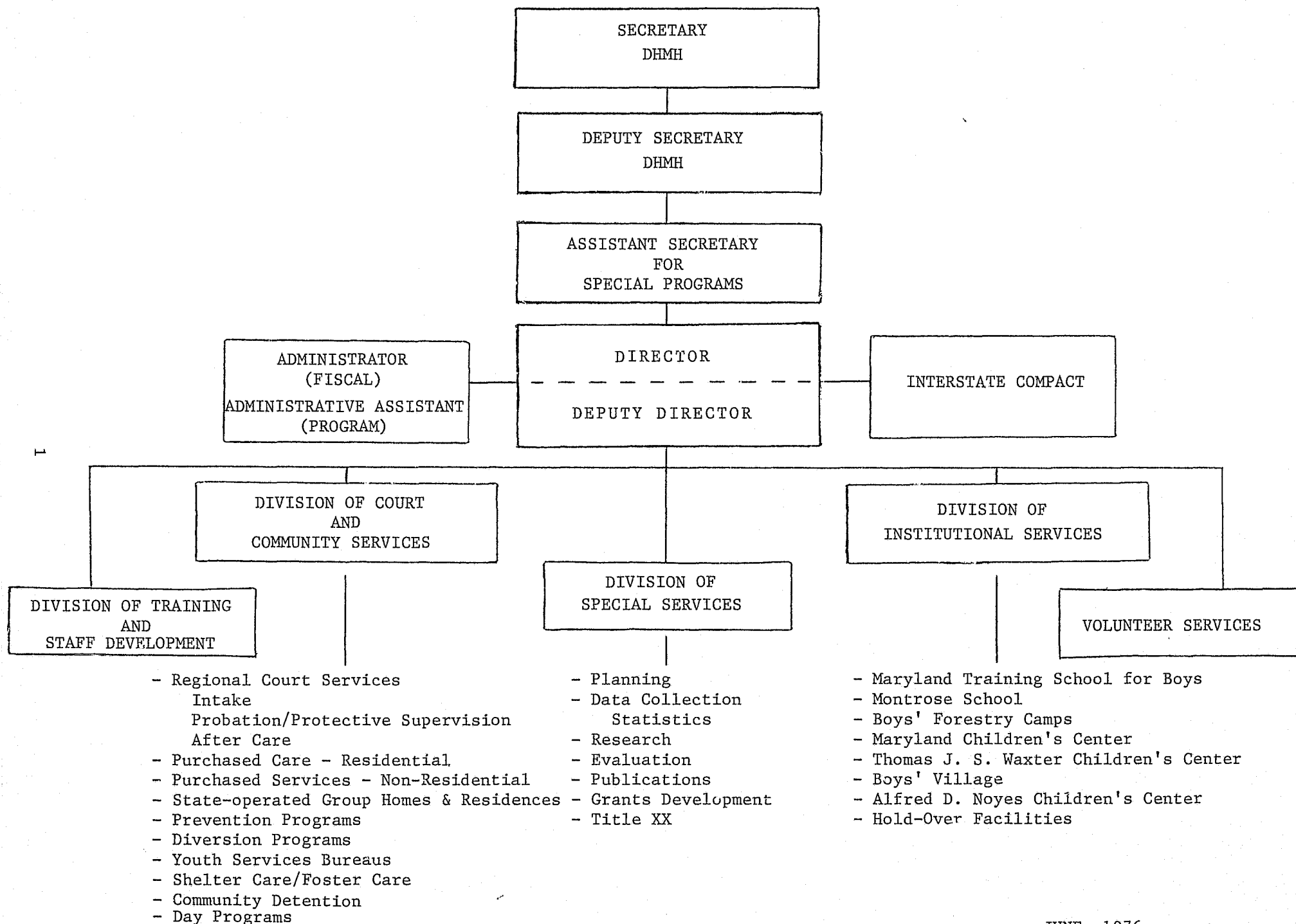
STATISTICS

Budget Expenditures	
Figure 1: Maryland Juvenile Services Administration Fiscal 1977 Budget	7
Table 1: Maryland Juvenile Services Administration, Summary of Budget Expenditures by Major Program, Fiscal 1968-1977	8
Division of Juvenile Court Services	
Table 2: Summary of Juvenile Probation and Court Services Expenditures and Services Rendered, Fiscal 1968-1977	14
Table 3: Total Cases Handled by the Juvenile Services Administration by County and Region; Formal, Informal, Change in Disposition and Disapproved/ Closed at Intake Cases, 1968-1977 Fiscal Years	15
Table 4: Formal Juvenile Court Dispositions by County and Region, 1968-1977 Fiscal Years	16
Table 5: Total Number of Cases Handled Informally by the Juvenile Services Administration by County and Region, 1968-1977 Fiscal Years	17
Table 6: Total Number of Juvenile Cases Disapproved or Closed at Intake by County and Region, Fiscal Years 1970-1977	18
Table 7: Total Offense Case Rate and Total Delinquent Case Rate Per 1,000 Juveniles by County and Region, Fiscal 1977	19
Table 8: Disposition by County and Region, Fiscal 1977	20
Table 9: Manner of Handling Cases by County, Region and Type of Offense, Fiscal 1977	22
Table 10: Manner of Handling Cases by County, Region and Sex, Fiscal 1977	23
Table 11: Manner of Handling Cases by County, Region and Race, Fiscal 1977	24
Table 12: Total Cases Handled by the Juvenile Services Administration by County, Region and Source of Referral, Fiscal 1977	25
Table 13: Total Cases Handled by the Juvenile Services Administration by County, Region and Age, Fiscal 1977	26
Table 14: Total Cases Handled by the Juvenile Services Administration by County, Region and Major Reason Referred, Fiscal 1977	27
Table 15: Total Cases Handled by the Juvenile Services Administration by Major Reason and Age at Time of Referral, Fiscal 1977	29
Table 16: Formal Cases Handled by the Juvenile Services Administration by Major Reason and Disposition, Fiscal 1977	30
Table 17: Comparison of the Number of Cases Handled by the Maryland Juvenile Services Administration by Major Reason for Referral—Fiscal 1976-1977	32
Table 18: Total Cases Handled by the Maryland Juvenile Services Administration by County and Parental Status, Fiscal 1977	33
Table 19: Total Cases Handled by the Maryland Juvenile Services Administration by County and Type of Guardian, Fiscal 1977	34
Table 20: Maryland Juvenile Services Administration Multiple Offense Courts, Formal and Informal Cases, Fiscal 1977	35
Table 21: Maryland Juvenile Services Administration, Baltimore City and Prince George's County, Adoption and Custody Cases, Fiscal 1977	36
Division of Community Services	
Table 22: Maryland Juvenile Services Administration Community Detention	40
Table 23: Community and Residential Expenditures, Fiscal 1968-1977	41
Table 24: Community Residential Placements, Number of Juveniles Served, Fiscal 1968-1977	41
Table 25: Residential and Emergency Placements by Sex and County, Fiscal 1977	42
Table 25A: Private Residential Placements by Type of Services and County, Fiscal 1977	43
Table 26: Residential and Emergency Placements by Race and County, Fiscal 1977	44
Table 27: Community Residential Placements by Race, Fiscal 1977	45
Table 28: Youth Service Center Admissions by Age and Sex, Fiscal 1977	45
Table 29: Maryland Juvenile Services Administration, Total Formally Counseled Cases Served by Youth Services Bureaus by Location, Sex and Race, Fiscal 1977	46

Division of Institutional Services

Table 30:	Maryland Juvenile Services Administration, Summary of Institution Expenditures, Fiscal 1968-1977	51
Table 31:	Summary of Institution Admissions, Fiscal 1968-1977	51
Table 32:	Admissions to Maryland's Juvenile Institutions, Fiscal Year Comparisons, 1976-1977	52
Table 33:	Admissions to Maryland's Juvenile Institutions by County of Residence, Fiscal 1977	53
Table 34:	Admissions to Maryland Training School, Montrose School, Boys' Village and Victor Cullen by Type of Admissions, Fiscal 1968-1977	54
Table 35:	Admissions to Maryland's Training Schools, Forestry Camps and Boys' Village by County, of Residence and County of Admitting Court, Fiscal 1977	55
Table 36:	Admissions to Maryland's Juvenile Institutions by Facility and Offense, Fiscal 1977	56
Figure 2:	Admissions to Maryland's Juvenile Institutions by Age Percents, Fiscal 1977	57
Table 37:	Admissions to Maryland's Training Schools, Forestry Camps and Boys' Village by Age and Race, Fiscal 1977	58
Table 38:	Commitments to Maryland's Training Schools and Forestry Camps by Length of Stay (Based on Releases), Fiscal 1977	59
Table 39:	Average Length of Stay for Detentions in Maryland's Juvenile Institutions, Fiscal 1977	59
Table 40:	Admissions to Maryland's Children Centers by Center and Sex, Fiscal 1968-1977	60
Table 41:	Admissions to Maryland's Children Centers by County of Residence and County of Admitting Court, Fiscal 1977	61
Table 42:	Admissions to Maryland's Children Centers by Age and Race, Fiscal 1977	62

TABLE OF ORGANIZATION
JUVENILE SERVICES ADMINISTRATION



JUNE, 1976

Definition of Terms

THE UNIT OF COUNT is a case referred to the Juvenile Services Administration. Such a case is counted each time a child is referred during the year on a new referral.

COURT means the circuit court of a county or Baltimore City sitting as the juvenile court. In Montgomery County, it means the District Court sitting as a juvenile court.

DELINQUENCY CASES are those cases referred to the Administration for acts defined in the statutes of the State of Maryland as the violation of a State law or municipal ordinance by persons who have not reached their 18th birthday.

CHILDREN IN NEED OF SUPERVISION (CINS) are those cases referred to the Juvenile Services Administration involving children who are in need of guidance, treatment, or rehabilitation because they are habitually truant; habitually disobedient, ungovernable or beyond control; deport themselves so as to injure or endanger themselves or others; or commit an offense applicable only to children.

CHILDREN IN NEED OF ASSISTANCE (CINA) are those cases referred to the Juvenile Services Administration which involve children who need the assistance of the court because of dependency, neglect or mental handicaps.

DEPENDENCY CASES are those cases involving a child who has been deprived of adequate support or care by reason of the death, continued absence from the home, or physical, mental or emotional incapacity or disability of his parent, guardian or other custodian.

NEGLECT CASES are those cases involving a child who requires the aid of the court and either has been abandoned or deserted by his parents, guardian or other custodian; whose parent, guardian or other custodian does not adequately care for him although financially able, or offered the financial means to do so; or who suffers or is likely to suffer serious harm from an improper home environment or guardianship, including the lack of moral supervision or guidance, of his parents, guardian or custodian.

MENTALLY HANDICAPPED CASES are those cases in which a mentally retarded or mentally

ill child is brought into court for the determination of proper care.

SPECIAL PROCEEDINGS includes guardianship or custody cases or application for permission to marry, or enlist in the armed forces, etc.

MANNER OF HANDLING CASES is classified as FORMAL, INFORMAL, DISAPPROVED OR CLOSED AT INTAKE.

DISAPPROVED CASES are those referrals which are determined as lacking legal sufficiency.

CLOSED AT INTAKE CASES are those referrals which are resolved by an Intake Officer through minimal involvement of staff when the facts and circumstances of the offense and the child's background indicate that no supervision or further counselling from Juvenile Services or intervention by the court is necessary or desirable for effecting a positive adjustment by the child.

INFORMAL ADJUSTMENT involves those referrals which are resolved by an Intake Officer by giving voluntary informal supervision for up to 90 days and/or referral to another agency when it appears that the child and his/her parent need assistance in preventing further violations of the law, but will not require nor benefit from judicial proceedings.

FORMAL CASES are those cases in which a petition has been authorized and filed requiring formal court action.

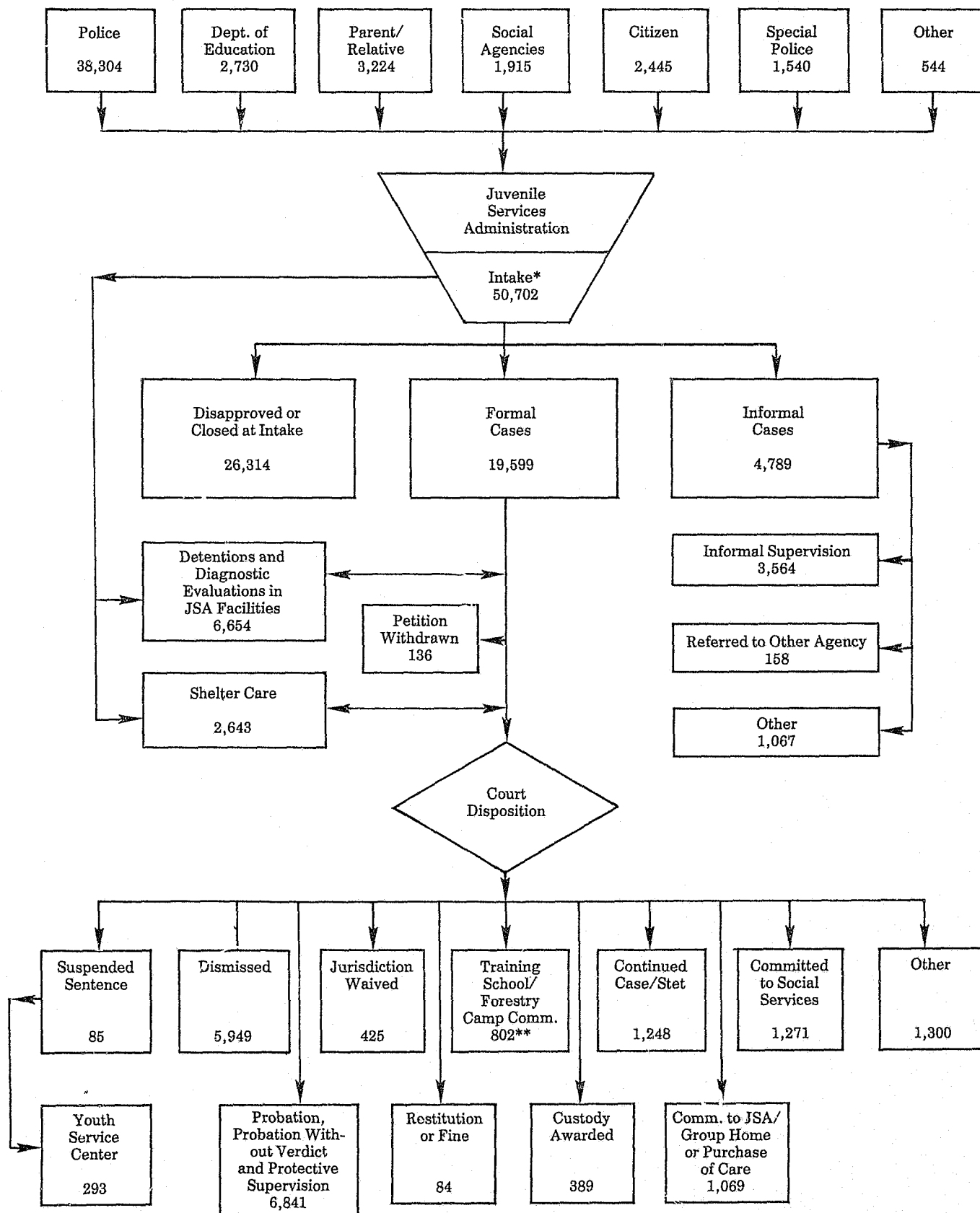
INSTITUTIONAL ADMISSIONS include both commitments and detentions. Such an admission is counted each time a child is either detained or committed to a facility during the year.

COMMITMENT means the transfer of legal custody.

DETENTION means the temporary care of children who, pending court disposition, require secure custody for the protection of themselves and/or the community, in physically restricting facilities.

SHELTER CARE means the temporary care of children in physically unrestricting facilities, pending court disposition.

MARYLAND JUVENILE SERVICES ADMINISTRATION
FLOW CHART OF CASE REFERRALS
FISCAL 1977

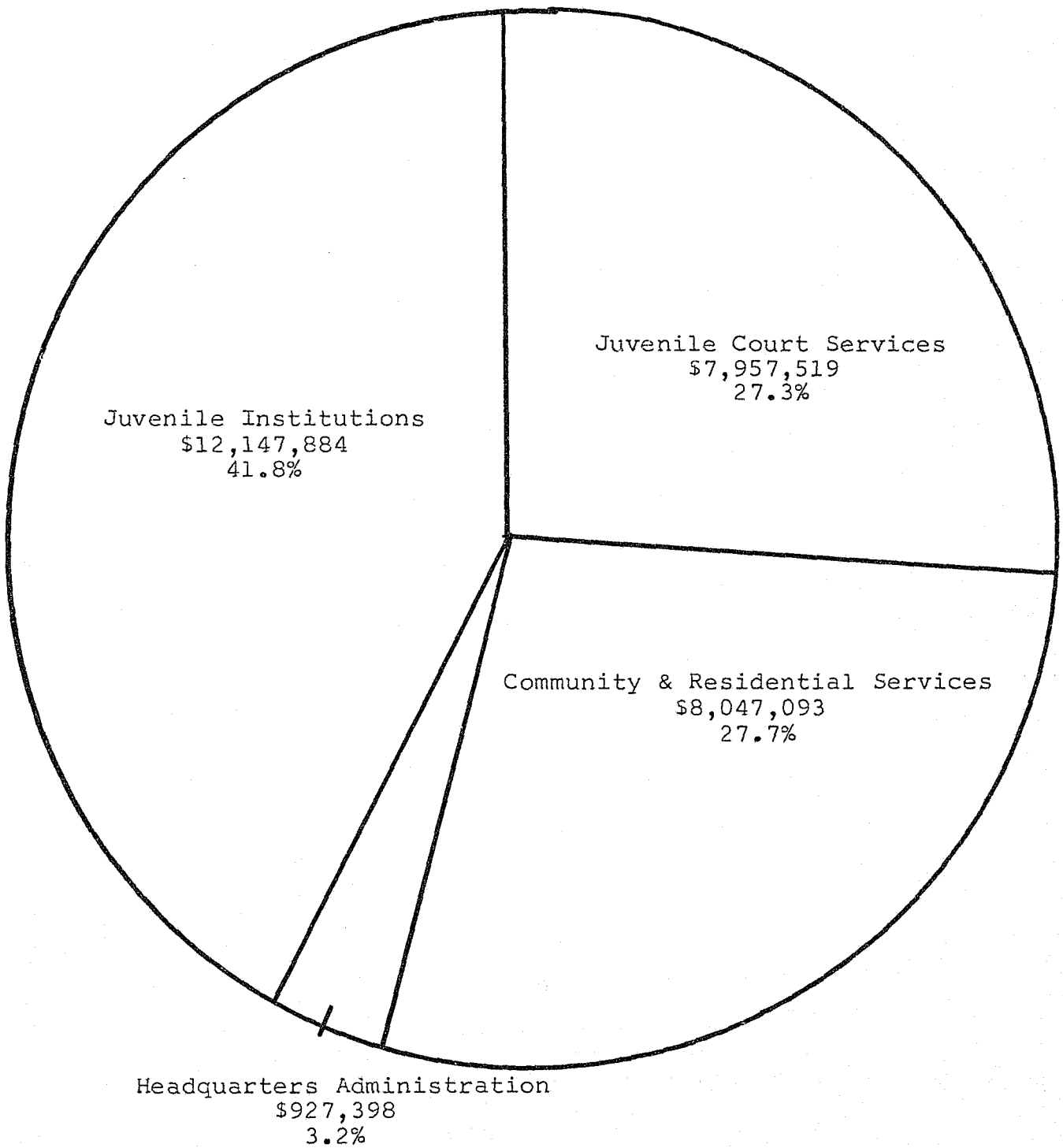


*This figure does not include cases that were referred to JSA prior to July 1, 1977.

**This total does not include 690 cases which were committed through other than regular procedures due to two different methods of reporting commitments.

STATISTICS

FIGURE I
MARYLAND JUVENILE SERVICES ADMINISTRATION
FISCAL 1977 BUDGET



Total
\$29,079,894

TABLE 1: MARYLAND JUVENILE SERVICES ADMINISTRATION
SUMMARY OF BUDGET EXPENDITURES BY MAJOR PROGRAM
FISCAL 1968 - 1977

Fiscal Year	Juvenile Institutions	Juvenile Court Services	Community and Residential Services ¹	Administration, Headquarters ²	Total
1968	\$ 7,261,782	\$ 2,187,060		\$ 456,824	\$ 9,905,666
1969	\$ 7,344,951	\$ 2,130,139	\$ 380,242	\$ 458,217	\$ 10,313,549
1970	\$ 8,539,963	\$ 2,686,603	\$ 651,649	\$ 541,877	\$ 12,420,092
1971	\$ 10,222,861	\$ 3,755,940	\$ 1,439,488	\$ 598,619	\$ 16,016,908
1972	\$ 11,364,651	\$ 4,793,753	\$ 2,315,750	\$ 805,298	\$ 19,279,452
1973	\$ 11,330,290	\$ 4,916,722	\$ 3,075,350	\$ 740,626	\$ 20,062,988
1974	\$ 10,644,860	\$ 5,112,801	\$ 4,260,249	\$ 1,081,863	\$ 21,099,773
1975	\$ 10,512,767	\$ 6,123,325	\$ 6,147,085	\$ 1,097,982	\$ 23,881,159
1976	\$ 11,568,711	\$ 7,095,563	\$ 7,524,331	\$ 870,789	\$ 27,059,394
1977	\$ 12,147,884	\$ 7,957,519	\$ 8,047,093	\$ 927,398	\$ 29,079,894

¹Community and Residential Services were not separately budgeted for fiscal 1968

²The decrease in Administration Headquarters' budget from fiscal 1975 to fiscal 1976 was due to the assimilation of JSA within the Department of Health and Mental Hygiene

**DIVISION OF
JUVENILE COURT
SERVICES**

HIGHLIGHTS OF JUVENILE COURT SERVICES

Manner of Handling Cases

Whenever a case is referred to the Maryland Juvenile Services Administration, inquiries are conducted by the intake unit to determine whether the case should be disapproved because of legal insufficiency, closed at intake, handled informally by an Intake Officer or referred for formal court action.

Of the 50,702 cases that were handled during fiscal 1977 by the Juvenile Services Administration, 51.9% (26,314) were disapproved or closed at intake, 38.7% (19,599) received formal court action, and 9.4% (4,789) were handled informally at intake. The number of cases that were disapproved or closed at intake decreased 11.6% over fiscal 1976. Similarly, the number of cases that were handled informally decreased 6.3% and the number of cases that were handled formally by the courts decreased 15.4%.

Source of Referral

Consistent with previous years experience, a majority of the 50,702 cases that were disposed of during fiscal 1977 were "referred by the police" (75.6%). "Parents and other relatives" referred 6.4%, followed by the "Department of Education" with 5.3%, "citizens" with 4.8%, the "Department of Social Services" with 3.8%, "Special Police" with 3.0% and "other" referrals with 1.1%.

Juvenile Court Trends

Between 1968 and 1976, the number of cases handled by the Juvenile Services Administration increased steadily from 19,782 in 1968 to 58,044 in 1976, at an annual average increase of 21.5%; however, in a significant departure from this trend, there was a decrease from 1976 to 1977 of 12.7%. The number of cases that were handled formally by the courts, while increasing 22.2% since fiscal 1968, have not shown any consistent rate over this ten year period. The number of cases that were handled informally increased between fiscal 1968 and fiscal 1971, decreased thereafter, with the exception of an increase during fiscal 1975. The trend for disapproved or closed at intake cases, a screening category which did not exist prior to fiscal 1970, has been to rapidly increase from 1970 to 1976; however, a decrease of 11.6% occurred from 1976 to 1977.

Juvenile referrals in Maryland continue to be an urban oriented problem. Five political subdivisions with 1975 populations of 250,000 or more accounted for 80.6% of the juvenile cases handled during fiscal 1977 with 40,878 of the 50,702 cases. Of the

five largest political subdivisions, Baltimore City was responsible for the largest percentage of cases with 37.2%. This was followed by Prince George's County with 17.3%, 9.9% from Anne Arundel County and Baltimore County, and 6.3% from Montgomery County.

Disposition

Of the 19,599 cases that were handled formally during fiscal 1977, 31.3% were "withdrawn", "dismissed", or "warned, adjusted or counselled"; 34.9% were placed on "probation", "protective supervision", or "probation without verdict"; 8.5% had "custody awarded" or were "committed to the Department of Social Services"; 6.4% were "continued without finding" or "stet"; 4.1% were "committed to a training school or forestry camp"; 5.5% were "committed to the Maryland Juvenile Services Administration", "purchase of care" or "group home"; 2.2% had "jurisdiction waived"; and 7.1% were disposed of in other ways.

While the total number of cases that were handled formally during fiscal 1977 decreased 15.4% from fiscal 1976, the number of cases that were "withdrawn", "dismissed" or "warned, adjusted or counselled" decreased 29.5%, the number that were placed on "probation", "protective supervision" or "probation without verdict" decreased 3.7%, "commitments to the Maryland Juvenile Services Administration", "purchase of care", or "group home" decreased 8.5%, the number of cases that had "jurisdiction waived" decreased 20.9% and cases "continued without finding" or "stet" decreased 14.5%. The number of commitments to the "Department of Social Services" and cases in which "custody was awarded", on the other hand, increased 2.1%, and the number of cases that were handled in other ways increased 26.4%.

Juvenile Case Rates

The juvenile case rate for Maryland during fiscal 1977 was 51 cases per 1,000 juveniles five through seventeen years of age, a decrease of 6 cases per 1,000 juveniles reported during fiscal 1976. This rate ranged from a low of 22 cases per 1,000 juveniles in Wicomico and Montgomery Counties to a high of 99 cases per 1,000 juveniles in Baltimore City. Although Worcester County again revealed the highest case rate with 129 cases per 1,000 juveniles, this was due primarily to the summer influx of youth to Ocean City.

Of those cases involving delinquent offenses, the case rate was 43 cases per 1,000 juveniles, a decrease of 6 cases per 1,000 juveniles reported during fiscal 1976. This ranged from a low of 15

cases per 1,000 juveniles in Caroline and Allegany Counties to a high of 86 cases per 1,000 juveniles in Baltimore City. Worcester County again revealed the highest case rate with 105 cases per 1,000 juveniles, which was due primarily to the summer influx of youth to Ocean City.

Major Reason for Referral

Delinquency

A majority of the cases that were handled by the Maryland Juvenile Services Administration during fiscal 1977 involved delinquent offenses (42,954 or 84.7%). Of these cases, the largest single offense category was "assault" with 6,445 cases or 12.7%. This was followed by "burglary-breaking and entering" with 6,263 cases (12.4%), "larceny" with 4,907 cases (9.7%), and "shoplifting" with 4,874 cases (9.6%). Over half of the cases that were referred for delinquent offenses were disapproved or closed at intake (22,690 or 52.8%), 16,315 or 39.0% were handled formally by the court and 9.2% or 3,940 cases were handled informally at intake.

The total number of delinquent cases handled during fiscal 1977 decreased 13.7% over fiscal 1976. Of this group, "Purse Snatching" showed the largest decrease (45.0%), followed by "Glue Sniffing" with 39.5% decrease. "Sex Offense" revealed the largest increase with 69.2%, followed by "Arson" with a 14.5% increase. The number of delinquent cases handled formally showed the largest decrease with 18.1%. This was followed by disapproved or closed at intake cases with an 11.0% decrease and a 9.8% decrease for the number of delinquent cases that were handled informally.

CINS

Cases involving Children in Need of Supervision (CINS) accounted for 5,490 cases or 10.8% of the total number of cases handled during fiscal 1977. Of these cases, 42.8% involved "ungovernable" behavior, "runaways" accounted for 36.3% and 20.9% involved "truants". A majority of the CINS cases were disapproved or closed at intake (3,513 or 64.0%), 20.9% or 1,149 cases received formal court action, and 15.1% or 828 cases were handled informally. The total number of CINS cases handled during fiscal 1977 decreased 10.5% from the number handled during fiscal 1976. "Runaway" cases decreased 17.0%, "truancy" cases decreased 6.5% and "ungovernable" cases decreased 6.2%. Of the 5,490 CINS cases handled during fiscal 1977, the number that were handled formally decreased 10.6% from fiscal 1976, disapproved or closed at

intake cases decreased 15.2% while the number handled informally increased 17.1%.

CINA

Only 4.3% or 2,201 of the cases handled by the Maryland Juvenile Services Administration during fiscal 1977 involved Children in Need of Assistance. Referrals for "dependency" accounted for 44.0% of these cases, "neglect" cases accounted for 17.5%, 36.8% involved "dependency and neglect" and "mental handicaps" accounted for 1.7%. A majority of these 2,201 cases were handled formally (94.5%), while .5% were handled informally and 5.0% were disapproved or closed at intake. The total number of cases involving Children in Need of Assistance that were handled during fiscal 1977 increased 7.3% from the 2,051 cases handled during fiscal 1976. "Dependency" cases decreased 13.3%, "neglect" cases decreased 1.3% and "mentally handicapped" decreased 27.5% while "neglect and dependency", a combined group, increased 64.2%. Of the 2,201 cases handled during fiscal 1977 that involved Children in Need of Assistance, the number that were disapproved or closed at intake decreased 18.5%, informal handlings decreased 52.0%, while formal handling increased 9.9%.

Sex Ratio

The sex ratio of cases disposed of by the Maryland Juvenile Services Administration during fiscal 1977 was 3.7 males to every female with 78.6% of the cases involving males and 21.4% involving females. Of the 19,599 cases handled formally, however, the sex ratio was 4.6 males to every female with 82.1% of the formal cases involving males and 17.9% involving females. The ratio for the 4,789 informal cases was 3.4 males for every female with 77.3% of the informal cases involving males and 22.7% involving females. Similarly, males accounted for 76.3% of the 26,314 cases that were disapproved or closed at intake, while 23.7% involved females for a rate of 3.2 males for every female.

Of the 39,864 cases handled during fiscal 1977 that involved males, 50.4% were disapproved or closed at intake, 9.3% were handled informally and 40.3% were handled formally. In comparison, only 32.4% of the 10,838 cases that involved females were handled formally, while 34.1% were handled informally and 33.5% were disapproved or closed at intake.

Race

A majority of the cases handled by the Maryland Juvenile Services Administration during fiscal 1977 involved whites (28,625 or 56.4%), while 43.2% or 21,885 involved blacks and 0.4% or 192 were classified as "other" or race information was not recorded. Of the cases involving whites, 55.7% or 5,942 were disapproved or closed at intake, 10.5% or 3,006 were handled informally and 33.8% or 9,677 received formal court action. Of the 21,885 cases involving blacks, 47.0% were disapproved or closed at intake, 8.1% were handled informally and 44.9% received formal court action.

Age of Juvenile

A majority of the cases handled by the Maryland Juvenile Services Administration during fiscal 1977 involved juveniles between fifteen and seventeen years of age (30,980 or 61.1%). In general, the number of cases increased proportionately with an increase in age up to the age of sixteen, decreasing thereafter. Sixteen year olds comprised the largest single age group with 20.8% of the cases followed by the fifteen year olds with 20.2% of the cases. The average age of juveniles handled by Juvenile Services was 14.8 years. This was approximately the same regardless of the manner of handling. Thus, the average age was 14.8 years for formal cases, 14.7 years for informal cases and 14.9 for cases that were disapproved or closed at intake.

Age by Type of Case

Of the 42,954 delinquency cases handled during fiscal 1977, 64.4% involved juveniles who were between the ages of fifteen and seventeen years with juveniles seventeen years of age accounting for the largest percentage of such cases (22.5%). The average age of juveniles referred for delinquent offenses was 15.0 years.

A majority of the 5,490 cases involving Children in Need of Supervision consisted of juveniles who were between the ages of fourteen and sixteen years (87.4%) with the largest group comprising the fifteen year olds (26.3%). The average age of juveniles referred as Children in Need of Supervision was 14.5 years.

In contrast, juveniles under the age of ten accounted for over half of the 2,201 cases involving Children in Need of Assistance (55.7%) with an average age of 8.8 years for such cases.

Parental Status

Information concerning parental status was available for 39,502 cases or 77.9% of the total number of cases handled during fiscal 1977. For those cases providing this information, 48.7% indicated parents were living together, in 6.3% of the cases, the father, the mother or both parents were deceased, parents were separated in 27.8% of the cases, 12.3% indicated parents were divorced, in 3.1% of the cases, parents were unmarried and 1.8% of the cases listed parental status as "other".

Type of Guardian

Of the 43,985 cases that provided information during fiscal 1976 concerning type of guardian (86.8% of the total cases handled), 42.9% were living with both parents. Juveniles living with their mother accounted for 38.6% of the cases, juveniles living with their father accounted for 5.7%, 4.2% of the juveniles were living with their mother and step-father, .8% were living with their father and step-mother, 1.5% were living in a foster home, 3.9% in another type of family home, .6% were living in an institution (either in-state or out-of-state), 0.6% with non-relatives, .2% alone, and 1.0% of the cases listed type of guardian as "other".

TABLE 2
SUMMARY OF JUVENILE PROBATION AND COURT SERVICES
EXPENDITURES AND SERVICES RENDERED
FISCAL 1968 - 1977

Fiscal Year	Budget Expenditures	Juvenile Dispositions*	Probation, Probation Without Verdict and Protective Supervision Cases	Aftercare Cases
1968	\$ 2,187,060	19,782	4,274	1,518
1969	\$ 2,130,139	25,270	5,080	1,835
1970	\$ 2,686,603	26,236	4,671	1,911
1971	\$ 3,755,940	32,703	5,226	1,920
1972	\$ 4,793,753	37,242	6,019	1,888
1973	\$ 4,916,722	41,949	5,638	1,800
1974	\$ 5,112,801	47,905	5,064	1,409
1975	\$ 6,123,325	57,162	6,468	1,601
1976	\$ 7,095,563	58,044	7,107	1,621
1977	\$ 7,957,519	50,702	6,841	1,588

*Includes Formal, Informal, Change in Disposition and Disapproved/Closed at Intake cases

TABLE 3
TOTAL CASES HANDLED BY THE JUVENILE SERVICES ADMINISTRATION BY COUNTY AND REGION
FORMAL, INFORMAL, CHANGE IN DISPOSITION & DISAPPROVED/CLOSED AT INTAKE CASES
1968 - 1977 FISCAL YEARS

	1968 *		1969		1970		1971		1972		1973		1974		1975		1976		1977		Percent Change 76-77
	N	%	N	%	N	%	N	%	N	%	N	%	N	%	N	%	N	%	N	%	
Region 1																					
Dorchester	168	.8	170	.7	119	.5	209	.6	199	.5	308	.7	317	.7	300	.5	212	.4	197	.4	- 7.1
Somerset	98	.5	103	.4	94	.4	120	.4	118	.3	148	.4	123	.3	144	.3	152	.3	100	.2	- 34.2
Wicomico	209	1.0	321	1.3	242	.9	233	.7	288	.8	338	.8	437	.9	413	.7	320	.5	302	.6	- 5.6
Worcester	287	1.5	307	1.2	517	2.0	818	2.5	694	1.9	610	1.4	656	1.4	750	1.3	816	1.4	790	1.6	- 3.2
Region 2																					
Caroline	63	.3	128	.5	83	.3	123	.4	129	.3	108	.2	150	.3	206	.4	146	.2	134	.3	- 8.2
Cecil	245	1.2	371	1.5	267	1.0	428	1.3	483	1.3	533	1.3	481	1.0	472	.8	548	.9	502	1.0	- 8.4
Kent	114	.6	116	.4	138	.5	128	.4	139	.4	151	.4	214	.4	210	.4	146	.2	203	.4	+ 39.0
Queen Anne's	91	.5	117	.4	118	.4	245	.7	163	.4	163	.4	181	.4	129	.2	154	.3	155	.3	+ 0.6
Talbot	114	.6	63	.2	115	.4	181	.5	144	.4	175	.4	195	.4	254	.4	233	.4	224	.4	- 3.9
Region 3																					
Baltimore	1,939	9.8	2,929	11.6	3,080	11.7	3,521	10.8	3,709	10.0	4,373	10.4	5,531	11.6	6,838	12.0	5,229	9.0	5,024	9.9	- 3.9
Harford	443	2.2	627	2.5	695	2.6	916	2.8	1,058	2.8	904	2.2	915	1.9	998	1.7	1,005	1.7	1,237	2.4	+ 23.1
Region 4																					
Allegany	553	2.8	346	1.4	327	1.2	422	1.3	380	1.0	464	1.1	516	1.1	560	1.0	458	.8	437	.9	- 4.6
Garrett	94	.4	89	.4	36	.1	120	.4	110	.3	135	.3	108	.2	115	.2	161	.3	161	.3	0.0
Washington	833	4.1	416	1.6	559	2.1	511	1.6	471	1.3	750	1.8	691	1.4	842	1.5	850	1.5	843	1.7	- 0.8
Region 5																					
Anne Arundel	931	4.7	1,261	5.0	1,559	6.0	2,618	8.0	2,408	6.5	2,815	6.7	3,706	7.7	5,296	9.3	5,048	8.7	5,035	9.9	- 0.3
Carroll	130	.7	163	.6	223	.9	372	1.1	231	.6	330	.8	549	1.1	669	1.2	621	1.1	742	1.5	+ 19.5
Howard	226	1.1	546	2.2	486	1.9	301	.9	416	1.1	468	1.1	789	1.6	942	1.6	991	1.7	984	1.9	- 0.7
Region 6																					
Frederick	367	1.9	354	1.4	441	1.7	362	1.1	450	1.2	567	1.4	760	1.6	800	1.4	832	1.4	860	1.7	+ 3.4
Montgomery	2,091	10.6	2,724	10.8	2,590	9.9	2,950	9.0	3,677	9.8	3,031	7.2	3,532	7.4	5,253	9.2	4,399	7.6	3,174	6.3	- 27.8
Region 7																					
Calvert	47	.2	129	.5	134	.5	191	.6	213	.6	248	.6	284	.6	433	.8	310	.5	377	.7	+ 21.6
Charles	115	.6	162	.6	324	1.2	381	1.2	582	1.6	531	1.3	953	2.0	987	1.7	960	1.7	953	1.9	- 0.7
Prince George's	3,268	16.5	5,101	20.2	5,550	21.2	5,977	18.3	6,823	18.3	6,717	16.0	8,592	17.9	9,320	16.3	9,074	15.6	8,786	17.3	- 3.2
St. Mary's	75	.4	218	.9	148	.6	192	.6	281	.8	379	.9	456	1.0	541	.9	501	.9	623	1.2	+ 24.4
Region 8																					
Baltimore City	7,281	36.8	8,509	33.7	8,391	32.0	11,384	34.8	14,076	37.8	17,703	42.2	17,769	37.1	20,690	36.2	24,878	42.9	18,859	37.2	- 24.2
STATE	19,782	100.0	25,270	100.0	26,236	100.0	32,703	100.0	37,242	100.0	41,949	100.0	47,905	100.0	57,162	100.0	58,044	100.0	50,702	100.0	- 12.7

* Includes non-support cases and cases involving adults contributing to the delinquency of a minor.

TABLE 4
FORMAL JUVENILE COURT DISPOSITIONS BY COUNTY AND REGION
1968 - 1977 FISCAL YEARS

	1968 *		1969 **		1970 **		1971 **		1972		1973		1974		1975		1976		1977		Percent Change 76-77
	N	%	N	%	N	%	N	%	N	%	N	%	N	%	N	%	N	%	N	%	
Region 1																					
Dorchester	120	.8	144	.8	93	.6	101	.6	86	.5	140	.7	176	.9	142	.7	106	.5	99	.5	- 6.6
Somerset	63	.4	55	.3	49	.3	74	.5	57	.3	81	.4	73	.4	59	.3	91	.4	50	.3	- 45.1
Wicomico	133	.8	223	1.2	158	1.0	158	1.0	201	1.1	243	1.3	266	1.4	214	1.0	167	.7	236	1.2	+ 41.3
Worcester	98	.6	88	.5	100	.6	102	.7	124	.7	108	.6	90	.5	144	.7	106	.5	125	.6	+ 17.9
Region 2																					
Caroline	58	.4	96	.5	45	.3	61	.4	64	.3	52	.3	46	.2	50	.2	39	.2	61	.3	+ 56.4
Cecil	120	.7	120	.7	86	.6	160	1.0	141	.8	148	.8	163	.9	121	.6	169	.7	171	.9	+ 1.2
Kent	106	.7	100	.6	99	.6	77	.5	63	.3	87	.4	87	.5	73	.3	74	.3	98	.5	+ 32.4
Queen Anne's	90	.6	117	.7	115	.7	178	1.1	106	.6	113	.6	105	.6	72	.3	50	.2	71	.4	+ 42.0
Talbot	94	.6	52	.3	41	.3	87	.6	73	.4	61	.3	91	.5	61	.3	55	.2	92	.5	+ 67.3
Region 3																					
Baltimore	1,887	11.8	1,881	10.6	1,564	9.8	1,362	8.8	1,661	9.0	1,513	7.9	1,515	8.1	1,751	8.3	1,261	5.4	1,280	6.5	+ 1.5
Harford	436	2.7	486	2.7	359	2.3	340	2.2	347	1.9	313	1.6	374	2.0	404	1.9	418	1.8	489	2.5	+ 17.0
Region 4																					
Allegany	488	3.0	309	1.7	309	2.0	398	2.6	346	1.9	333	1.7	391	2.1	463	2.2	402	1.7	303	2.0	- 4.7
Garrett	92	.6	86	.5	31	.2	91	.6	77	.4	70	.4	65	.3	83	.4	93	.4	119	.6	+ 28.0
Washington	744	4.6	383	2.2	498	3.1	491	3.2	419	2.3	513	2.7	544	2.9	609	2.9	494	2.1	303	1.5	- 38.7
Region 5																					
Anne Arundel	631	3.9	906	5.1	665	4.2	1,164	7.5	999	5.4	1,049	5.4	1,384	7.4	1,514	7.2	1,441	6.3	1,734	8.8	+ 20.3
Carroll	128	.8	163	.9	102	.6	126	.8	124	.7	107	.5	161	.8	223	1.1	193	.8	291	1.5	+ 50.8
Howard	181	1.1	320	1.8	268	1.7	181	1.2	237	1.3	205	1.1	296	1.6	329	1.6	289	1.2	233	1.2	- 19.4
Region 6																					
Frederick	43	.3	63	.4	135	.8	120	.8	150	.8	131	.7	175	.9	166	.8	209	.9	161	.8	- 23.0
Montgomery	1,262	7.9	1,475	8.3	1,417	8.9	1,218	7.9	1,485	8.1	1,212	6.3	1,230	6.6	2,076	9.8	1,653	7.2	677	3.5	- 59.0
Region 7																					
Calvert	45	.3	106	.6	49	.3	56	.4	85	.5	72	.4	93	.5	168	.8	116	.5	135	.7	- 16.4
Charles	115	.7	145	.8	98	.6	109	.7	173	.9	119	.6	251	1.3	288	1.4	389	1.7	341	1.7	- 12.3
Prince George's	3,228	20.1	3,540	19.9	3,129	19.7	2,800	18.1	3,002	16.4	2,867	14.9	3,259	17.4	3,473	16.5	3,679	15.9	3,869	19.7	+ 5.2
St. Mary's	69	.4	215	1.2	96	.6	87	.6	107	.6	148	.8	199	1.1	219	1.0	139	.6	215	1.1	+ 54.7
Region 8																					
Baltimore City	5,812	36.2	6,715	37.7	6,395	40.2	5,892	38.2	8,213	44.8	9,529	49.6	7,701	41.1	8,377	39.7	11,531	49.8	8,366	42.7	- 27.5
STATE	16,043	100.0	17,788	100.0	15,901	100.0	15,433	100.0	18,340	100.0	19,214	100.0	18,735	100.0	21,079	100.0	23,164	100.0	19,599	100.0	- 15.4

* Includes non-support cases and cases involving adults contributing to the delinquency of a minor and excludes changes in disposition.
** Excludes changes in disposition.

TABLE 5
TOTAL NUMBER OF CASES HANDLED INFORMALLY
BY THE JUVENILE SERVICES ADMINISTRATION BY COUNTY AND REGION
1968 - 1977 FISCAL YEARS

	1968 *		1969 **		1970 **		1971 **		1972		1973		1974		1975		1976		1977		Percent Change 76-77
	N	%	N	%	N	%	N	%	N	%	N	%	N	%	N	%	N	%	N	%	
Region 1																					
Dorchester	41	1.3	23	.3	20	.2	103	.8	73	.7	67	.8	31	.5	57	.8	31	.6	41	.9	+ 32.3
Somerset	35	1.1	48	.7	45	.5	43	.4	39	.4	9	.1	1	.0	1						
Wicomico	74	2.3	93	1.4	83	1.0	70	.6	71	.7	6	.1	7	.1	1		13	.3	9	.2	- 30.8
Worcester	187	5.9	214	3.2	378	4.4	701	5.7	281	2.7			1	.0	5	.1	5	.1	4	.1	- 20.0
Region 2																					
Caroline			31	.5	13	.2	56	.5	35	.3	16	.2	25	.4	20	.3	27	.5	13	.3	- 51.9
Cecil	124	3.9	247	3.7	181	2.1	248	2.0	166	1.6	55	.7	33	.6	27	.4	62	1.2	30	.6	- 51.6
Kent	8	.2	16	.2	8	.1	14	.1	55	.5	23	.3	21	.4	19	.2	13	.3	7	.2	- 53.9
Queen Anne's	1	.0					66	.5	48	.5	41	.5	76	1.3	57	.8	28	.5	16	.3	- 42.9
Talbot			11	.2	14	.2	65	.5	41	.4	32	.4	76	1.3	165	2.2	95	1.9	79	1.7	- 16.8
Region 3																					
Baltimore	1	.0	1,016	15.4	1,308	15.2	1,558	12.7	1,614	15.6	1,781	21.3	1,149	19.0	3,513	47.2	781	15.3	441	9.2	- 43.5
Harford			139	2.1	272	3.2	510	4.2	653	6.3	489	5.8	430	7.1	34	.4	18	.4	58	1.2	+ 222.2
Region 4																					
Allegany	65	2.0	36	.6	17	.2	17	.1	27	.3	52	.6	6	.1	6	.1	5	.1	4	.1	- 20.0
Garrett	1	.0			4	.0	2	.0	29	.3	50	.6	34	.6	24	.3	43	.8	20	.4	- 53.5
Washington	89	2.8	33	.5	55	.6	20	.2	13	.1	46	.5	25	.4	97	1.3	245	4.8	131	2.7	- 46.5
Region 5																					
Anne Arundel	121	3.8	143	2.2	702	8.1	1,189	9.7	1,038	10.0	216	2.6	81	1.3	865	11.6	993	19.4	902	18.8	- 9.2
Carroll	1	.0			44	.5	28	.2	22	.2	34	.4	25	.4	131	1.7	113	2.2	19	.4	- 83.2
Howard					46	.5	81	.7	93	.9	2	.0	1	.0	12	.2	12	.2	10	.2	- 16.7
Region 6																					
Frederick	324	10.1	291	4.5	183	2.1	67	.5	111	1.1	98	1.2	72	1.2	112	1.5	90	1.8	66	1.4	- 26.7
Montgomery	791	24.7	1,184	17.9	1,164	13.5	1,378	11.2	1,961	19.0	1,293	15.5	1,858	30.7	770	10.3	601	11.8	385	8.0	- 35.9
Region 7																					
Calvert	2	.1	23	.3	85	1.0	134	1.1	114	1.1	173	2.1	184	3.1	258	3.5	168	3.3	220	4.6	+ 31.0
Charles			16	.2	226	2.6	244	2.0	262	2.5	78	.9	39	.6	66	.9	26	.5	21	.4	- 19.2
Prince George's	1	.0	1,513	22.9	2,385	27.6	2,983	24.2	2,175	21.0	2,243	26.8	903	14.9	557	7.5	707	13.8	813	17.0	+ 15.0
St. Mary's	3	.2	3	.0	21	.2	102	.8	148	1.4	176	2.1	22	.4	1		1	.0	14	.3	+1300.0
Region 8																					
Baltimore City	1,332	41.6	1,536	23.2	1,378	16.0	2,623	21.3	1,284	12.4	1,378	16.5	945	15.6	645	8.7	1,032	20.2	1,486	31.0	+ 44.0
STATE	3,201	100.0	6,616	100.0	8,632	100.0	12,302	100.0	10,353	100.0	8,358	100.0	6,045	100.0	7,443	100.0	5,109	100.0	4,789	100.0	- 6.3

* Includes non-support cases and cases involving adults contributing to the delinquency of a minor and excludes changes in disposition.

** Excludes changes in disposition.

TABLE 6
TOTAL NUMBER OF JUVENILE CASES DISAPPROVED OR CLOSED AT INTAKE BY COUNTY AND REGION
FISCAL YEARS 1970 - 1977

	1970		1971		1972		1973		1974		1975		1976		1977		Percent Change 1976-1977
	N	%	N	%	N	%	N	%	N	%	N	%	N	%	N	%	
Region 1																	
Dorchester			2	.1	40	.5	101	.7	110	.5	101	.4	75	.2	57	.2	- 24.0
Somerset					22	.3	58	.4	49	.2	84	.3	61	.2	50	.2	- 18.0
Wicomico					16	.2	89	.6	164	.7	198	.7	140	.5	57	.2	- 59.3
Worcester	33	2.7	15	.3	289	3.4	502	3.5	565	2.4	601	2.1	705	2.4	661	2.5	- 6.2
Region 2																	
Caroline	24	2.0	3	.1	30	.3	40	.3	79	.4	136	.5	80	.3	60	.2	- 25.0
Cecil			13	.3	176	2.1	330	2.3	285	1.2	324	1.1	317	1.1	301	1.1	- 5.0
Kent	31	2.6	37	.8	21	.2	41	.3	106	.5	118	.4	59	.2	98	.4	+ 66.1
Queen Anne's	3	.3	1	.0	9	.1	9	.1			76	.2	68	.3			- 10.5
Talbot	60	4.9	27	.6	30	.3	82	.6	28	.1	28	.1	83	.3	53	.2	- 36.1
Region 3																	
Baltimore	108	8.9	492	11.0	434	5.1	1,079	7.5	2,867	12.4	1,574	5.5	3,187	10.7	3,303	12.6	+ 3.6
Harford	63	5.2	63	1.4	58	.7	102	.7	111	.5	560	2.0	569	1.9	690	2.6	+ 21.3
Region 4																	
Allegany					7	.1	79	.5	119	.5	91	.3	51	.2	50	.2	- .2
Garrett	1	.1	20	.5	4	.0	15	.1	9	.0	8		25	.1	22	.1	- 12.0
Washington	4	.3			39	.5	191	1.3	122	.5	136	.5	111	.4	409	1.6	+ 268.5
Region 5																	
Anne Arundel	27	2.2	68	1.5	371	4.3	1,550	10.8	2,241	9.7	2,917	10.2	2,614	8.8	2,399	9.1	- 8.2
Carroll	77	6.3	218	4.9	85	1.0	189	1.3	363	1.6	315	1.1	315	1.0	432	1.6	+ 37.1
Howard	1	.1	9	.2	86	1.0	261	1.8	492	2.1	601	2.1	690	2.3	741	2.8	+ 7.4
Region 6																	
Frederick	123	10.1	172	3.9	189	2.2	338	2.3	513	2.2	522	1.8	533	1.8	633	2.4	+ 18.8
Montgomery			354	7.9	231	2.7	526	3.7	444	1.9	2,407	8.4	2,145	7.2	2,112	8.0	- 1.5
Region 7																	
Calvert					14	.2	3	.0	7	.0	7		26	.1	22	.1	- 15.4
Charles			28	.6	147	1.7	334	2.3	663	2.9	633	2.2	545	1.8	591	2.3	+ 8.4
Prince George's	21	1.7	194	4.4	1,646	19.2	1,607	11.2	4,430	19.2	5,290	18.5	4,688	15.7	4,104	15.6	- 12.5
St. Mary's	31	2.6	3	.1	26	.3	55	.4	235	1.0	321	1.1	361	1.2	394	1.5	+ 9.1
Region 8																	
Baltimore City	607	50.0	2,740	61.4	4,579	53.6	6,796	47.3	9,123	39.5	11,668	40.7	12,315	41.4	9,007	34.2	- 26.9
STATE	1,214	100.0	4,459	100.0	8,549	100.0	14,377	100.0	23,125	100.0	28,640	100.0	29,771	100.0	26,314	100.0	- 11.6

TABLE 7

TOTAL OFFENSE CASE RATE AND TOTAL DELINQUENT CASE RATE
PER 1,000 JUVENILES BY COUNTY AND REGION - FISCAL 1977

	Population Estimate 5 through 17 years July 1, 1975	Total Cases Handled by Juvenile Services Administration	Total Case Rate Per 1,000 Juveniles	Total Delinquent Cases Handled by Juvenile Services Administration	Delinquent Case Rate Per 1,000 Juveniles
Region 1. Dorchester	6,720	197	29	178	26
Somerset	4,440	100	23	83	19
Wicomico	13,500	302	22	251	19
Worcester	6,150	790	128	644	105
Region 2. Caroline	5,140	134	26	79	15
Cecil	14,590	502	34	450	31
Kent	3,840	203	53	154	40
Queen Anne's	4,790	155	32	126	26
Talbot	5,510	224	41	199	36
Region 3. Baltimore	148,610	5,024	34	4,308	30
Harford	35,770	1,237	35	1,031	29
Region 4. Allegany	18,220	437	24	265	15
Garrett	6,030	161	27	116	19
Washington	25,350	843	33	653	26
Region 5. Anne Arundel	88,270	5,035	57	4,256	48
Carroll	19,870	742	37	624	31
Howard	25,060	984	39	882	35
Region 6. Frederick	24,360	860	35	777	32
Montgomery	142,240	3,174	22	2,500	18
Region 7. Calvert	7,070	377	53	262	37
Charles	18,720	953	51	699	37
Prince George's	169,970	8,786	52	7,252	43
St. Mary's	14,110	623	44	520	37
Region 8. Baltimore City	193,630	18,859	97	16,639	86
STATE	1,001,960	50,702	51	42,954	43

TABLE 8
DISPOSITION BY COUNTY AND REGION
FISCAL 1977

	Petition Withdrawn	Dismissed	Warned, Adjusted or Counselled	Jurisdiction Waived	Continue Case without Finding	Custody Awarded	Committed to Department of Social Services	Committed to Training School	Probation	Referred to Other Agency	Restitution or Fine	Support Ordered or Revised	Suspended Sentence	Other
Region 1. Dorchester Somerset Wicomico Worcester	1	17 4 24 36	1	16 16 31 16	27	6 19	7 3 6 8	12 8 14	26 15 102 53	1 1	5 2 5		2	1 6 1
Region 2. Caroline Cecil Kent Queen Anne's Talbot	1 6	7 37 13 14 11		1 7 11 2 9		1 3 4 1	28 18 6 12	15 5 8 6	14 44 18 23 30		1	27 1	8	5 11 6 4 27
Region 3. Baltimore Harford	5 4	299 91	3	21 2	14	3	121 62	75 21	447 176	5 1	4 2	4	1 8	155 18
Region 4. Allegany Garrett Washington	11 1	24 14 8	12 7	2 7 23	1	54 3 16	2 13 30	26 15 23	108 48 37	2 1	7 14		5 45	61 2 19
Region 5. Anne Arundel Carroll Howard	27 1	294 39 118	1	2 4 1	217 2 1	97 6 16	155 25 9	8 3	316 114 58	1	8 9 2	1		487 14 3
Region 6. Frederick Montgomery	6 17	32 175	12	5 2	1 15	2	7 125	20 20	59 229	1	10		9	15 9
Region 7. Calvert Charles Prince George's St. Mary's	25	16 11 1,106 15	2 14	2 1 12 1	5	6 3 142 2	4 44 267 27	11 5 123 17	62 148 1,096 109	1 1	1 9	1	7	7 16 124 15
Region 8. Baltimore City	31	3,544	8	231	5	5	292	304	2,925	8	5			129
STATE	136	5,949	60	425	288	389	1,271	739*	6,257	23	84	34	85	1,135

* This total does not include 690 cases due to two different methods of reporting commitments.

TABLE 8
(continued)

	Committed to Mental Institution	Referred to Psychiatric Care	Set	Probation Without Verdict	Committed to Juvenile Services/ Administration/ Purchase of Care	Group Home	Protective Supervision	Committed to Forestry Camp	Referred to Mental Retardation Adm.	Total Formal	Total Informal	Total Disapproved/ Closed at Intake	GRAND TOTAL
Region 1. Dorchester Somerset Wicomico Worcester			1 1		5 2 1 4	2	1	1		99 50 236 125	41 9 4	57 50 57 661	197 100 302 790
Region 2. Caroline Cecil Kent Queen Anne's Talbot			3 1		1 2 2 2	4 5 2 5	8 1 2 2	8 1		61 171 98 71 92	13 30 7 16 79	60 301 98 68 53	134 502 203 155 224
Region 3. Baltimore Harford	1	2	72 2	3 34	50 14	3	5 36	4 1		1,280 489	441 58	3,303 690	5,024 1,237
Region 4. Allegany Garrett Washington	2 1	1	11 1	23 9 48	18 1 16	2 1	7 3 8	5 1 6		383 119 303	4 20 131	50 22 409	437 161 843
Region 5. Anne Arundel Carroll Howard	2		30	17	76 10 13		55 1 6	5 3	1	1,734 291 233	902 19 10	2,399 432 741	5,035 742 984
Region 6. Frederick Montgomery	5	1	1	1	4 20	12	7 2	2 12		161 677	66 385	633 2,112	860 3,174
Region 7. Calvert Charles Prince George's St. Mary's	1 7 1		18 62 743 14	1 1 3	1 3 77 6	2 1	14 133 5	1 7 2		135 341 3,869 215	220 21 813 14	22 591 4,104 394	377 953 8,786 623
Region 8. Baltimore City	17			1	701	1	149	4	6	8,366	1,486	9,007	18,859
STATE	37	4	960	140	1,029	40	444	63	7	19,599	4,789	26,314	50,702

TABLE 9
MANNER OF HANDLING CASES BY COUNTY, REGION AND TYPE OF OFFENSE
FISCAL 1977

	Formal				Informal			Disapproved/Closed at Intake			
	Delinquent	CINS	CINA	Special Proceedings	Delinquent	CINS	CINA	Delinquent	CINS	CINA	Special Proceedings
Region 1. Dorchester Somerset Wicomico Worcester	84 47 185 109	5 1 1 5	9 2 50 11	1	40 9 4	1		54 36 57 531	3 14 130		
Region 2. Caroline Cecil Kent Queen Anne's Talbot	24 140 57 51 86	3 3 3 6 4	34 28 38 14 2		11 23 5 12 73	2 4 2 4 5	 3 1	44 287 92 63 40	16 14 6 5 13		
Region 3. Baltimore Harford	1,067 365	60 52	153 72		361 55	76 3	4	2,880 611	361 79	62	
Region 4. Allegany Garrett Washington	216 95 232	43 10 12	71 14 59	53	2 10 117	2 10 14		47 11 304	3 11 96	 9	
Region 5. Anne Arundel Carroll Howard	1,196 246 172	230 11 20	308 32 41	2	865 16 10	37 3		2,195 362 700	204 70 40	 1	
Region 6. Frederick Montgomery	142 458	8 70	11 149		58 361	8 23	 1	577 1,687	54 425	2	
Region 7. Calvert Charles Prince George's St. Mary's	121 268 3,121 186	7 22 283 11	7 51 465 18		129 21 731 12	88 82 2	3	12 410 3,400 322	9 177 694 71	1 4 9 1	 1
Region 8. Baltimore City	7,647	279	440		1,024	462		7,968	1,018	21	
STATE	16,315	1,149	2,079	56	3,949	828	12	22,690	3,513	110	1

TABLE 10
MANNER OF HANDLING CASES BY COUNTY, REGION AND SEX
FISCAL 1977

	Formal			Informal			Disapproved/Closed at Intake		
	Male	Female	Total	Male	Female	Total	Male	Female	Total
Region 1. Dorchester Somerset Wicomico Worcester	81 48 169 104	18 2 67 21	99 50 236 125	34 6 2	7 3 2	41 9 4	45 36 44 450	12 14 13 211	57 50 57 661
Region 2. Caroline Cecil Kent Queen Anne's Talbot	42 137 68 53 71	19 34 30 18 21	61 171 98 71 92	11 24 4 11 50	2 6 3 5 29	13 30 7 16 79	42 254 72 54 34	18 47 26 14 19	60 301 98 68 53
Region 3. Baltimore Harford	1,056 408	224 81	1,280 489	337 53	104 5	441 58	2,546 526	757 164	3,303 690
Region 4. Allegany Garrett Washington	270 101 232	113 18 71	383 119 303	2 16 103	2 4 28	4 20 131	32 15 277	18 7 132	50 22 409
Region 5. Anne Arundel Carroll Howard	1,319 250 188	415 41 45	1,734 291 233	714 15 10	188 4	902 19 10	1,894 324 589	505 108 152	2,399 432 741
Region 6. Frederick Montgomery	144 524	17 153	161 677	51 329	15 56	66 385	454 1,576	179 536	633 2,112
Region 7. Calvert Charles Prince George's St. Mary's	114 260 3,102 166	21 81 767 49	135 341 3,869 215	168 15 649 12	52 6 164 2	220 21 813 14	12 421 3,035 306	10 170 1,069 88	22 591 4,104 394
Region 8. Baltimore City	7,179	1,187	8,366	1,084	402	1,486	7,040	1,967	9,007
STATE	16,086	3,513	19,599	3,700	1,089	4,789	20,078	6,236	26,314

TABLE 11
MANNER OF HANDLING CASES BY COUNTY, REGION AND RACE
FISCAL 1977

	Formal				Informal				Disapproved/Closed at Intake			
	White	Black	Other or Unknown	Total	White	Black	Other or Unknown	Total	White	Black	Other or Unknown	Total
Region 1. Dorchester Somerset Wicomico Worcester	59 30 149 96	40 20 86 29	1	99 50 236 125	36 5 4	5 4		41 9 4	42 35 37 578	15 14 20 82	1 1	57 50 57 661
Region 2. Caroline Cecil Kent Queen Anne's Talbot	49 168 66 50 55	12 3 32 20 37	1	61 171 98 71 92	6 27 6 14 59	6 3 1 2 20	1	13 30 7 16 79	45 288 78 52 41	15 13 20 16 12		60 301 98 68 53
Region 3. Baltimore Harford	1,044 437	234 51	2 1	1,280 489	388 55	53 2	1	441 58	2,691 604	609 84	3 2	3,303 690
Region 4. Allegany Garrett Washington	362 113 275	21 6 28		333 119 303	4 20 118			4 20 131	48 22 377	2 32		50 22 409
Region 5. Anne Arundel Carroll Howard	1,434 278 181	289 11 52	11 2	1,734 291 233	742 19 6	159 4	1	902 19 10	2,003 424 605	393 7 136	3 1	2,399 432 741
Region 6. Frederick Montgomery	121 534	40 137	6	161 677	55 346	11 38	1	66 385	551 1,783	82 310	19	633 2,112
Region 7. Calvert Charles Prince George's St. Mary's	102 214 1,955 163	33 127 1,899 52	15	135 341 3,869 215	158 12 537 12	60 9 269 2	2 7	220 21 813 14	17 488 2,244 322	5 103 1,825 72	35	22 591 4,104 394
Region 8. Baltimore City	1,742	6,574	50	8,366	377	1,108	1	1,486	2,567	6,416	24	9,007
STATE	9,677	9,833	89	19,599	3,006	1,769	14	4,789	15,942	10,283	89	26,314

TABLE 12
TOTAL CASES HANDLED BY THE JUVENILE SERVICES ADMINISTRATION
BY COUNTY, REGION AND SOURCE OF REFERRAL - FISCAL 1977

	Source of Referral									TOTAL
	Police	Department of Education	Parent/Relative	Department of Social Services	Other Social Agency	Court/Probation	Other	Citizen	Special Police	
Region 1. Dorchester	169	1	3	12	1			10	1	197
Somerset	76	1	14	3			2	4		100
Wicomico	241	1	19	30	1	5		4	1	302
Worcester	763	5	6	10	1	1	2	2		790
Region 2. Caroline	74	16	2	29			8	5		134
Cecil	428	9	8	18	1			30	8	502
Kent	105	34	5	38			2	18	1	203
Queen Anne's	106	20	3	13			10	3		155
Talbot	184	10	7					23		224
Region 3. Baltimore	4,819	13	44	60	2	1	85			5,024
Harford	1,026	21	103	65	7	4	11			1,237
Region 4. Allegany	177	17	149	45		14		12	23	437
Garrett	81	13	20	22		3	11	11		161
Washington	546	6	54	41	3	22	5	100	66	843
Region 5. Anne Arundel	4,178	95	298	380	5	3	70	2	4	5,035
Carroll	614	23	28	32		7	5	31	2	742
Howard	838	3	46	25	1			36	35	984
Region 6. Frederick	752	27	35	13				31	2	860
Montgomery	2,806	7	228	113	2	9	1	7	1	3,174
Region 7. Calvert	328	28	6	11		1	1	2		377
Charles	863	35	20	31	3	1				953
Prince George's	4,624	558	615	456	34	40	195	874	1,390	8,786
St. Mary's	549	18	23	29	2	1		1		623
Region 8. Baltimore City	13,957	1,769	1,488	351	25	11	13	1,239	6	18,859
STATE	38,304	2,730	3,224	1,827	88	123	421	2,445	1,540	50,702

TABLE 13
TOTAL CASES HANDLED BY THE JUVENILE SERVICES ADMINISTRATION
BY COUNTY, REGION AND AGE - FISCAL 1977

	Under 10 Years	10 Years	11 Years	12 Years	13 Years	14 Years	15 Years	16 Years	17 Years	18 Years	Over 18 or Unknown	Total
Region 1. Dorchester	14	7	11	17	24	16	26	41	40	1		197
Somerset	4	3	8	4	9	12	15	21	20	4		100
Wicomico	33	5	3	12	25	43	52	62	62	3	2	302
Worcester	14	5	16	21	58	98	162	182	226	6	2	790
Region 2. Caroline	24	3	5	8	17	22	14	15	23	2	1	134
Cecil	31	10	10	25	40	55	89	108	119	12	3	502
Kent	30	9	9	13	10	26	35	37	32		2	203
Queen Anne's	9	2	3	12	18	27	24	31	28	1		155
Talbot	11	4	8	9	19	32	35	48	54	4		224
Region 3. Baltimore	135	53	130	169	403	671	1,068	1,100	1,160	115	20	5,024
Harford	59	15	28	57	108	192	297	233	207	40	1	1,237
Region 4. Allegany	57	7	11	13	28	53	66	76	65	3	58	437
Garrett	10	1	4	6	10	18	47	35	24	5	1	161
Washington	45	22	42	36	63	117	158	184	163	12	1	843
Region 5. Anne Arundel	301	66	133	236	401	684	1,005	1,039	1,054	103	13	5,035
Carroll	40	13	16	36	65	93	156	140	163	13	7	742
Howard	33	22	20	44	64	129	177	194	263	33	5	984
Region 6. Frederick	26	14	27	54	78	149	170	170	155	17		860
Montgomery	117	34	53	105	269	471	680	712	688	39	6	3,174
Region 7. Calvert	13	10	15	19	47	72	70	74	54	3		377
Charles	58	14	36	55	112	155	190	165	155	11	2	953
Prince George's	422	147	241	441	837	1,282	1,750	1,848	1,691	107	20	8,786
St. Mary's	33	19	9	33	53	79	128	121	117	18	13	623
Region 8. Baltimore City	621	291	532	968	1,806	2,807	3,734	3,934	3,699	333	134	18,859
STATE	2,140	776	1,370	2,393	4,564	7,303	10,148	10,570	10,262	885	291	50,702

TABLE 14
TOTAL CASES HANDLED BY THE JUVENILE SERVICES ADMINISTRATION
BY COUNTY, REGION AND MAJOR REASON REFERRED - FISCAL 1977

	Arson	Assault	Auto Theft/ Unauthorized Use	Burglary/ Breaking and Entering	Larceny	Robbery	Disorderly Conduct	Sex Offense	Vandalism	Narcotics Violation	Glue Sniffing and Other Inhalants	Alcoholic Beverage Violation	Shoplifting	Purse Snatching	Firearms or Deadly Weapons Violation	Rec/Poss of Stolen Goods
Region 1. Dorchester	2	15	7	24	27	1	16		17	16		1	28			4
Somerset		9	6	11	20	1	7	3	7	2			3		1	
Wicomico	3	17	19	55	37	4	9	1	20	22		2	38			4
Worcester		28	30	68	35	3	28	3	45	215		34	65	2	10	6
Region 2. Caroline	1	14		5	4		4	1	4	11			6			1
Cecil	3	57	37	83	45	2	20	4	31	52		6	24		2	8
Kent	1	28	9	16	11		1		15	25		18	7		1	1
Queen Anne's		15	7	7	37		4		18	17		1	3		2	
Talbot		32	11	13	16		7	1	16	30		17	39		1	1
Region 3. Baltimore	32	654	212	691	376	31	178	13	226	367	20	102	808	1	26	38
Harford	15	103	23	174	157	2	30	5	86	95	8	22	162		2	6
Region 4. Allegany	4	16	22	44	19	1	5	2	19	14	2	8	53	1	1	2
Garrett	1	10	4	15	19			10	6	5			7	2		1
Washington	17	78	16	92	84	6	37	1	50	37	7	59	98		4	4
Region 5. Anne Arundel	24	543	156	709	469	17	282	19	201	425	5	160	432	3	41	53
Carroll	3	43	7	78	117		21	2	86	104		31	30		3	6
Howard	8	84	29	129	74	10	31	12	81	83	5	25	129		15	11
Region 6. Frederick	1	59	33	104	82		19	6	72	71		52	125		1	15
Montgomery	29	201	156	273	342	15	79	25	168	247		214	151	11	29	46
Region 7. Calvert	5	27	5	49	36	1	7	1	49	24		5	14		1	7
Charles	9	104	30	100	106	3	23	6	95	53		30	39	4	5	3
Prince George's	76	751	318	1,026	773	187	209	35	397	523	7	64	1,526	6	143	129
St. Mary's	12	63	10	84	62	2	17	2	49	67		19	21		13	5
Region 8. Baltimore City	165	3,494	836	2,413	1,959	520	1,199	139	712	1,043	162	133	1,066	75	318	120
STATE	411	6,445	1,983	6,263	4,907	806	2,233	291	2,470	3,548	216	1,003	4,874	105	619	471

TABLE 14
(continued)

	Trespassing	False Fire Alarm	Violation of Supervision	Other	Total Delinquent	Runaway	Truancy	Un- governable	Total CINS	Neglect	Dependency	Dependency and Neglect	Mentally Handicapped	Total CINA	Special Proceedings	GRAND TOTAL
Region 1. Dorchester	4			16	178	5		4	9	2	2	5		9	1	197
Somerset	1	1		11	83	7	2	6	15	1		1		2		100
Wicomico	5		7	8	251			1	1	14	35	1		50		302
Worcester	12	3	1	56	644	121	7	7	135	2	3	6		11		790
Region 2. Caroline	2			26	79	6	12	3	21	19	2	13		34		134
Cecil	10	1		65	450	7	11	3	21	8	9	14		31		502
Kent	1			20	154	5	2	4	11	1	35	2		38		203
Queen Anne's	3			12	126	5	4	6	15		14			14		155
Talbot				15	199	12	5	5	22		1	1	1	3		224
Region 3. Baltimore	210	5	2	316	4,308	263	41	193	497	8	190	20	1	219		5,024
Harford	7			134	1,031	20	22	92	134	6	31	35		72		1,237
Region 4. Allegany			6	46	265	4	11	33	48	7	40	23	1	71	53	437
Garrett	2		3	31	116	8	8	15	31	3	7	4		14		161
Washington	10	1	11	41	653	72	13	37	122	19	28	21		68		843
Region 5. Anne Arundel	197	4		516	4,256	120	77	274	471	54	120	131	3	308		5,035
Carroll	10		8	75	624	38	22	24	84	5	23	2	2	32	2	742
Howard	63			93	882	25	9	26	60	10	18	14		42		984
Region 6. Frederick	20			117	777	17	25	28	70	12	1			13		860
Montgomery	109	11	9	391	2,506	282	9	227	518	3	6	141		150		3,174
Region 7. Calvert	6			25	262	65	23	16	104	1	4	5	1	11		377
Charles	24			65	699	98	76	25	199	8	42	5		55		953
Prince George's	350	34	1	697	7,252	326	218	515	1,059	167	289	6	12	474	1	8,786
St. Mary's	24			70	520	30	20	34	84	6	7	5	1	19		623
Region 8. Baltimore City	665	107	1	1,512	16,639	458	532	769	1,759	29	61	356	15	461		18,859
STATE	1,735	167	49	4,358	42,954	1,994	1,149	2,347	5,490	385	968	811	37	2,201	57	50,702

TABLE 15
TOTAL CASES HANDLED BY THE JUVENILE SERVICES ADMINISTRATION
BY MAJOR REASON AND AGE AT TIME OF REFERRAL - FISCAL 1977

Major Reason	Under 10 Years	10 Years	11 Years	12 Years	13 Years	14 Years	15 Years	16 Years	17 Years	18 Years	Over 18 or Unknown	Total
Arson	41	17	19	47	50	62	84	46	33	6	6	411
Assault	149	131	218	340	664	1,009	1,267	1,316	1,181	110	60	6,445
Auto Theft/Unauth. Use	11	7	15	30	119	255	487	516	505	34	4	1,983
Burglary/B & E	105	115	196	352	594	992	1,253	1,347	1,148	139	22	6,263
Larceny	80	76	128	263	474	676	933	1,032	1,126	104	15	4,907
Robbery	3	6	13	27	65	119	193	183	176	17	4	806
Disorderly Conduct	19	6	34	52	127	252	410	608	649	61	15	2,233
Sex Offense	12	6	18	13	31	44	55	46	57	6	3	291
Vandalism	117	80	154	215	263	371	419	400	395	33	23	2,470
Narcotics Violation	4	3	4	28	88	277	673	1,033	1,301	128	9	3,548
Glue Sniffing	2	3	2	7	25	32	50	45	45	4	1	216
Alcoholic Beverage Viol.		2	2	8	21	66	148	336	388	27	5	1,003
Shoplifting	89	92	162	299	516	750	921	974	992	67	12	4,874
Purse Snatching			3	5	5	20	24	18	30			105
Firearms Violation	2	4	2	19	33	60	134	175	169	19	2	619
Rec/Poss of Stolen Goods	2	2	11	11	47	52	110	109	120	7		471
Trespassing	24	21	28	84	182	261	386	376	356	13	4	1,735
False Fire Alarm	24	7	12	19	22	26	21	22	13	1		167
Violation of Supervision				1	2	6	14	15	9	2		49
Other	103	51	95	190	372	654	962	857	951	90	33	4,358
Total Delinquent	787	629	1,116	2,010	3,700	5,984	8,544	9,454	9,644	868	218	42,954
Runaway	9	9	30	64	217	418	557	466	214	7	3	1,994
Truancy	72	22	49	91	198	308	315	67	24	2	1	1,149
Ungovernable	47	32	43	105	320	458	568	455	302	6	11	2,347
Total CINS	128	63	122	260	735	1,184	1,440	988	540	15	15	5,490
Neglect	227	20	26	20	26	19	22	15	9		1	385
Dependency	513	34	61	57	55	63	76	62	42	1	4	968
Dependency & Neglect	472	27	44	42	44	51	61	44	25		1	811
Mentally Handicapped	13	3	1	4	3	2	5	4	2			37
Total CINA	1,225	84	132	123	128	135	164	125	78	1	6	2,201
Special Proceedings					1			3			53	57
GRAND TOTAL	2,140	776	1,370	2,393	4,564	7,303	10,148	10,570	10,262	884	292	50,702

TABLE 16
FORMAL CASES HANDLED BY THE JUVENILE SERVICES ADMINISTRATION
BY MAJOR REASON AND DISPOSITION
FISCAL 1977

Major Reason	Petition Withdrawn	Dismissed	Warned, Adjusted or Counseled	Jurisdiction Waived	Continue Case Without Finding	Custody Awarded To	Comm. to Dept. of Social Services	Committed to Training School	Probation	Referred to Other Agency	Restitution or Fine	Support Ordered or Revised
Arson		73		4	2		1	3	68		2	
Assault	13	1,125	7	83	32	9	13	90	988	1	5	
Auto Theft/Unauth. Use	3	365	3	37	16	17	3	77	419		3	
Burglary/B & E	19	975	4	97	64	36	16	223	1,674	2	21	
Larceny	6	803	3	47	18	9	7	79	780	1	11	
Robbery		232	1	33	3		3	41	234		1	
Disorderly Conduct	4	197		7	5	1	2	14	186	1	1	
Sex Offense		70	1	10	1		2	10	45			
Vandalism	5	354	2	4	8	5		17	200	1	20	
Narcotics Violation	5	247	1	26	15	1		31	273	2		
Glue Sniffing		42	1			1		7	42			
Alcoholic Beverage Viol.	1	30	2	1	1		1	2	47		2	
Shoplifting	1	347	11	21	11	7	2	59	500	1	7	1
Purse Snatching		26		9				5	23			
Firearms Violation	1	96	1	9		1	3	8	102			
Rec/Poss of Stolen Goods	1	75		4	3			1	60		1	
Trespassing		122	2		6		1	7	101	1	1	
False Fire Alarm		22						2	16			
Violation of Supervision	1	2			1			11	12		1	
Other	18	368	9	32	21	13	30	35	363		8	
Total Delinquent	78	5,566	48	424	207	100	84	722	6,133	10	84	1
Runaway	4	43	2		3	6	12	2	32	10		
Truancy	5	38	1			1	10	4	20			
Ungovernable	14	66	4		19	26	49	6	60	2		
Total CINS	23	147	7		22	33	71	12	112	12		
Neglect		43	1		14	25	213		1			
Dependency	17	60	4	1	26	183	428		8			30
Dependency & Neglect	17	121			19	47	472		3			3
Mentally Handicapped	1	7					3	5				
Total CINA	35	231	5	1	59	255	1,116	5	12			33
Special Proceedings						1				1		
GRAND TOTAL	136	5,949	60	425	288	389	1,271	739	6,257	23	84	34

TABLE 16
(continued)

Major Reason	Suspended Sentence	Other	Committed to Mental Inst.	Referred to Psychiatric Care	Stet	Probation without Verdict	Com. to Juvenile Services Admin./ Purchase of Care	Group Home	Protective Supervision	Committed to Forestry Camp	Referred to Mental-Retardation Admin.	Total
Arson		10	2		5		12				1	183
Assault	10	93	3	1	88	10	134		5	3		2,713
Auto Theft/Unauth. Use	4	72	1		67	4	67	3	4	9		1,174
Burglary/B & E	17	234	2		181	23	185	7	1	17		3,798
Larceny	15	93	6		120	34	103	7	1	10		2,153
Robbery	4	15		1	29		54			5		656
Disorderly Conduct	2	13			26	1	27		1	1	1	490
Sex Offense	1	8	1		8		14					171
Vandalism	4	24	1		40	8	19	1		2		715
Narcotics Violation	9	54	2		64	13	23	2	1	4		773
Glue Sniffing	2				1		11					107
Alcoholic Beverage Viol.	5	12			8	2	2		2			118
Shoplifting	3	49	1		133	21	70	1	3	2		1,251
Purse Snatching		1					8			1		73
Firearms Violation		12			12		9	1		1		256
Rec/Poss of Stolen Goods		10		1	21	2	2			1		182
Trespassing	2	14	1		38		9			1		306
False Fire Alarm			1		1		4					46
Violation of Supervision	1	3	1			1	7	2		3		46
Other	6	73	3		54	19	39	1	9	3		1,104
Total Delinquent	85	790	25	3	896	138	799	25	27	63	2	16,315
Runaway		35	1		7		60	4	68			289
Truancy		23			12		22		74			210
Ungovernable		89	4		14		117	11	169			650
Total CINS		147	5		33		199	15	311			1,149
Neglect		39		1	10		2		14			363
Dependency		70	1		20		20		31			899
Dependency & Neglect		31	1		1		8		61		1	785
Mentally Handicapped		6	5				1				4	32
Total CINA		146	7	1	31		31		106		5	2,079
Special Proceedings		52				2						56
GRAND TOTAL	85	1,135	37	4	960	140	1,029	40	444	63	7	19,599

TABLE 17
COMPARISON OF THE NUMBER OF CASES HANDLED BY
THE MARYLAND JUVENILE SERVICES ADMINISTRATION
BY MAJOR REASON FOR REFERRAL - FISCAL 1976 - FISCAL 1977

Major Reason	Formal			Informal			Disapproved/Closed at Intake			Total		
	FY 1976	FY 1977	Percent Change	FY 1976	FY 1977	Percent Change	FY 1976	FY 1977	Percent Change	FY 1976	FY 1977	Percent Change
Arson	172	183	+ 6.4	29	45	+ 55.2	158	183	+ 15.8	359	411	+ 14.5
Assault	3,210	2,713	- 18.3	584	618	+ 5.8	3,217	3,114	- 3.2	7,011	6,445	- 8.1
Auto Theft/Unauth. Use	1,469	1,174	- 20.1	141	142	+ .7	551	667	+ 21.1	2,161	1,983	- 8.2
Burglary/B & E	4,465	3,798	- 14.9	510	458	- 10.2	1,771	2,007	+ 13.3	6,746	6,263	- 7.2
Larceny	2,592	2,153	- 16.9	580	570	- 1.7	2,678	2,184	- 18.5	5,850	4,907	- 16.1
Robbery	842	656	- 22.1	32	23	- 28.1	125	127	+ 1.6	999	806	- 19.3
Disorderly Conduct	643	490	- 23.8	197	150	- 23.9	2,246	1,593	- 29.1	3,086	2,233	- 27.6
Sex Offense	97	171	+ 76.3	20	27	+ 35.0	55	93	+ 69.1	172	291	+ 69.2
Vandalism	837	715	- 14.6	259	296	+ 14.3	1,372	1,459	+ 6.3	2,468	2,470	+ .1
Narcotics Violation	790	773	- 2.2	306	274	- 10.5	2,559	2,501	- 2.3	3,655	3,548	- 2.9
Glue Sniffing	195	107	- 45.1	25	17	- 32.0	137	92	- 32.9	357	216	- 39.5
Alcoholic Beverage Viol.	102	118	+ 15.7	115	70	- 39.1	818	815	- .4	1,035	1,003	- 3.1
Shoplifting	1,572	1,251	- 20.4	826	575	- 30.4	3,896	3,048	- 21.8	6,294	4,874	- 22.6
Purse Snatching	139	73	- 47.5	8	10	+ 25.0	44	22	- 50.0	191	105	- 45.0
Firearms Violation	424	256	- 39.6	47	50	+ 6.4	359	313	- 12.8	830	619	- 25.2
Rec/Poss of Stolen Goods	240	182	- 24.2	42	49	+ 16.7	245	240	- 2.0	527	471	- 10.6
Trespassing	399	306	- 23.3	163	135	- 17.2	1,780	1,294	- 27.3	2,342	1,735	- 25.9
False Fire Alarm	38	46	+ 21.1	9	21	+ 133.3	86	100	+ 16.3	133	167	+ 25.6
Violation of Supervision	41	46	+ 14.6	3		- 100.0	6	3	- 50.0	50	49	- 2.0
Other	1,659	1,104	- 33.5	481	419	- 12.9	3,392	2,835	- 16.4	5,532	4,358	- 21.2
Total Delinquent	19,926	16,315	- 18.1	4,377	3,949	- 9.8	25,495	22,690	- 11.0	49,798	42,954	- 13.7
Runaway	306	289	- 5.6	214	218	+ 1.9	1,881	1,487	- 20.9	2,401	1,994	- 17.0
Truancy	248	210	- 15.3	165	240	+ 45.5	816	699	- 14.3	1,229	1,149	- 6.5
Ungovernable	731	650	- 11.1	328	370	+ 12.8	1,444	1,327	- 8.1	2,503	2,347	- 6.2
Total CINS	1,285	1,149	- 10.6	707	828	+ 17.1	4,141	3,513	- 15.2	6,133	5,490	- 10.5
Neglect	348	363	+ 4.3	9		- 100.0	33	22	- 33.3	390	385	- 1.3
Dependency	1,049	899	- 14.3	8	11	+ 37.5	59	58	- 1.7	1,116	968	- 13.3
Dependency & Neglect	451	785	+ 74.1	8	1	- 87.5	35	25	- 28.6	494	811	+ 64.2
Mentally Handicapped	43	32	- 25.6				8	5	- 37.5	51	37	- 27.5
Total CINA	1,891	2,079	+ 9.9	25	12	- 52.0	135	110	- 18.5	2,051	2,201	+ 7.3
Special Proceedings	62	56	- 9.7					1	+ 100.0	62	57	- 8.1
GRAND TOTAL	23,164	19,599	- 15.4	5,109	4,789	- 6.3	29,771	26,314	- 11.6	58,044	50,702	- 12.7

TABLE 18
TOTAL CASES HANDLED BY THE MARYLAND JUVENILE SERVICES ADMINISTRATION
BY COUNTY AND PARENTAL STATUS - FISCAL 1977

	Parents Living Together	Mother Deceased	Father Deceased	Both Parents Deceased	Parents Separated	Parents Divorced	Parents Unmarried	Other	Information Not Provided	Total
Region 1. Dorchester	88	9	11		24	34	25		6	197
Somerset	40	5	7		24	17	6	1		100
Wicomico	95	11	23	1	38	93	39	2		302
Worcester	459	13	41	4	66	168	24	7	8	790
Region 2. Caroline	66	1	6	2	12	37	8		2	134
Cecil	285	9	38	2	31	99	15	5	18	502
Kent	61	3	7	4	14	48	12	1	53	203
Queen Anne's	81	1	6	1	23	27	9	4	3	155
Talbot	119	3	12	4	8	40	28	8	2	224
Region 3. Baltimore	2,843	67	161	9	65	109	8	3	1,759	5,024
Harford	667	6	50	8	95	388	15	3	5	1,237
Region 4. Allegany	210	7	16		14	97	14		79	437
Garrett	116	2	11	1	4	26	1			161
Washington	433	11	41	2	22	120	25	3	186	843
Region 5. Anne Arundel	866	7	13	2	12	54	3	2	4,076	5,035
Carroll	402	8	35	2	46	129	4	6	110	742
Howard	477	12	20	3	41	129	11	5	286	984
Region 6. Frederick	458	18	28	4	58	154	28	2	110	860
Montgomery	1,895	55	82	19	247	507	57	12	300	3,174
Region 7. Calvert	222	12	9	1	35	67	13	1	17	377
Charles	537	10	68	9	85	76	35	1	132	953
Prince George's	4,086	170	592	69	1,367	1,979	262	74	187	8,786
St. Mary's	389	5	38	1	30	77	16		67	623
Region 8. Baltimore City	4,358	151	391	44	8,635	381	580	525	3,794	18,859
STATE	19,253	596	1,706	192	10,996	4,856	1,238	665	11,200	50,702

TABLE 19
TOTAL CASES HANDLED BY THE MARYLAND JUVENILE SERVICES ADMINISTRATION
BY COUNTY AND TYPE OF GUARDIAN - FISCAL 1977

	Both Parents	Mother	Father	Mother and Step- Father	Father and Step- Mother	Foster Home	Other Family Home	Insti- tution	Non- Relatives	Alone	Out-of- State Insti- tution	Other	Inform- ation Not Provided	Total
Region 1. Dorchester	87	55	16	15	5	1	9	1	4				4	197
Somerset	37	30	8	11		2	9			3				100
Wicomico	87	100	12	32	5	13	44	2	1	3		3		302
Worcester	444	154	38	73	7	12	32	7	1	3	2	13	4	790
Region 2. Caroline	65	33	4	14	5	4	6		1				2	134
Cecil	267	94	21	36	11	13	12	6	5	7	1	7	22	502
Kent	58	50	4	19	7	2	17		1			2	43	203
Queen Anne's	81	33	8	8	2	13	6					2	2	155
Talbot	120	49	12	8	6	9	9	2	2	2		3	2	224
Region 3. Baltimore	2,804	1,247	262	13	11	25	42	16	6		2	5	591	5,024
Harford	643	277	61	110	21	27	54	9	4	6	2	19	4	1,237
Region 4. Allegany	193	74	9	24	3	23	18	12	4			1	76	437
Garrett	114	32	1	4	1	1	5					2	1	161
Washington	425	193	14	73	15	7	47	5	2			45	17	843
Region 5. Anne Arundel	872	613	302	30	5	8	17	3	4	1	1	48	3,131	5,035
Carroll	396	139	22	77	17	23	18	3	5			4	38	742
Howard	452	234	113	84	7	19	33	7	5			3	27	984
Region 6. Frederick	445	137	29	58	25	7	38	3	7	1		9	101	860
Montgomery	1,826	614	185	119	31	42	117	24	17	6	4	13	176	3,174
Region 7. Calvert	215	71	17	24	4	18	10	4	6			3	5	377
Charles	521	238	35	60	8	4	33	1	10			3	40	953
Prince George's	3,963	2,799	357	634	76	254	411	69	65	22	8	69	59	8,786
St. Mary's	384	128	15	27	6	8	6		2	4		4	39	623
Region 8. Baltimore City	4,370	9,615	947	275	64	141	734	48	107	10	3	212	2,333	18,859
STATE	18,869	17,009	2,492	1,828	342	676	1,727	222	259	68	23	470	6,717	50,702

TABLE 20
MARYLAND JUVENILE SERVICES ADMINISTRATION
MULTIPLE OFFENSE COUNTS
FORMAL & INFORMAL CASES
FISCAL 1977

Offense	Formal Cases		Informal Cases	
	Major Reason for Referral	Additional Complaints	Major Reason for Referral	Additional Complaints
Arson	183	242	45	49
Assault	2,713	3,357	618	677
Auto Theft/Unauthorized Use	1,174	1,490	142	151
Burglary/Breaking & Entering	3,798	5,645	458	494
Larceny	2,153	4,527	570	681
Robbery	5	1,268	23	110
Disorderly Conduct	490	749	150	207
Sex Offense	171	227	27	33
Vandalism	715	1,885	296	390
Narcotics Violation	773	1,107	274	331
Glue Sniffing/Other Inhalents	107	130	17	19
Alcoholic Beverage Violation	118	206	70	96
Shoplifting	1,251	1,486	575	626
Purse Snatching	73	132	10	15
Firearms/Deadly Weapon Violation	256	530	50	86
Rec/Poss of Stolen Goods	182	1,009	49	81
Trespassing	306	544	135	198
False Fire Alarm	46	48	21	26
Violation of Supervision	46	46		2
Other	1,104	2,421	419	807
Total Delinquent	16,315	27,049	3,949	5,079
Runaway	289	309	218	231
Truancy	210	230	240	264
Ungovernable	650	735	370	490
Total CINS	1,149	1,274	828	985
Neglect	363	384		
Dependency	899	911	11	11
Dependency & Neglect	785	800	1	1
Mentally Handicapped	32	38		
Total CINA	2,079	2,133	12	12
Special Proceedings	56	56		
GRAND TOTAL	19,599	30,512	4,789	6,076

TABLE 21
MARYLAND JUVENILE SERVICES ADMINISTRATION
BALTIMORE CITY AND PRINCE GEORGE'S COUNTY
ADOPTION AND CUSTODY CASES
FISCAL 1977

Type of Case	Baltimore City	Prince George's County
Adoptions		
Pending at Beginning of Year	59	45
Assigned During Year	279	59
Completed During Year	302	95
Pending at End of Year	36	9
Custodies		
Pending at Beginning of Year	94	11
Assigned During Year	235	30
Completed During Year	257	40
Pending at End of Year	72	1
Guardianship		
Pending at Beginning of Year	13	
Assigned During Year	44	
Completed During Year	38	
Pending at End of Year	19	
Out-of-Town Inquiries (Requests from other courts)		
Pending at Beginning of Year	2	
Assigned During Year	28	
Completed During Year	28	
Pending at End of Year	2	
Guardianships with Right to Consent to Adoption		
Pending at Beginning of Year		
Assigned During Year	83	
Completed During Year	83	
Pending at End of Year		

Prior to July 1, 1967, responsibilities for certain adoption, custody and guardianship services were the responsibility of several local juvenile probation agencies. The Courts of Baltimore City and Prince George's County certified several positions performing said services pursuant to Article 52A, Section 16, "In any event, a court, . . . shall not have fewer personnel as a result of the operation of the Department of Juvenile Services than it had authorized as of 7/1/66, as certified by the Chief Judge of each judicial circuit."

It was felt that these valuable services, thus provided, should be reflected in this and future Annual Reports.

**DIVISION OF
COMMUNITY SERVICES**

COMMUNITY BASED SERVICES

Between 1968 and 1975, the number of admissions to community-based programs increased steadily from a mere 116 community residential placements during fiscal 1968, to 4,304 placements during fiscal 1976; however, in a significant departure from this trend, but consistent with other programs, a decrease of 8.9% from 1976 to 1977 was observed in the number of placements to community-based programs. These placements include both emergency and planned admissions to the Maryland Youth Residence Center, Good Shepherd Center, three group homes operated by the Maryland Juvenile Services Administration and care purchased from foster and shelter care homes, group homes, and various residential treatment facilities. In addition to these residential placements, there were 293 referrals to the Youth Service Center and 5,667 referrals to Maryland's Youth Service Bureaus, both of which are day programs.

Of the total number of community residential placements during fiscal 1977, 94.1% or 3,690 were purchase of care placements, 2.9% or 115 were admissions to the Good Shepherd Center, 1.9% or 74 were State-owned group home admissions and 1.1% or 41 involved admissions to Maryland Youth Residence Center.

Purchase of Care

Placements in Purchase of Care facilities, which included private residential placements made up of private group homes, specialized institutions and foster homes, and emergency shelter care provided by private families in their own homes, decreased 10.5% from fiscal 1976. Emergency shelter care placements accounted for 71.6% of these placements during fiscal 1977, while private residential placements accounted for 28.4%.

A majority of the 1,047 private residential placements involved males (70.6%), while females accounted for 29.4%. Of these placements, 32.8% involved blacks, whites accounted for 66.8% and in .4% of the cases, race was classified as "other." Baltimore City was responsible for the greatest number of placements with 32.8% of the total, followed by Prince George's County with 17.3% and Montgomery County with 11.9%.

Of the 2,643 emergency shelter care placements, 51% involved females, while males accounted for 49%. A majority of these admissions involved whites (69.8%), blacks accounted for 29.3% and in 0.9% of the cases, race was classified as "other." Prince George's County accounted for the largest number of placements with 34.7% of the total. This was

followed by Baltimore City with 26.9% of the placements and Montgomery County with 15.2%.

Good Shepherd Center

Good Shepherd Center, which is a therapeutic residential facility for girls reported 115 admissions during fiscal 1977, an increase of 14.8% from fiscal 1976. These admissions involved 78.3% whites, 20.9% involved blacks and in 0.8% of the cases, race was classified as "other." Baltimore City was responsible for the largest number of admissions with 20.9%, followed by Montgomery County with 14.8%, Prince George's County with 13.9% and Baltimore County with 12.2%.

State-Owned Group Homes

Admissions to the three state-owned group homes during fiscal 1977 increased 21.3% from the 61 admissions reported during fiscal 1976 to 74. The majority of these admissions reported during fiscal 1977 involved males (56.8%), while females accounted for 43.2%. Of the 42 admissions to the two boys' group homes, 95.2% involved blacks and 4.8% involved whites. Of the 32 admissions to the girls' group home, 31 were black while one admission was white. The three group homes involved seventy admissions from Baltimore City (94.6%), three admissions from Prince George's County and one from Allegany County.

Maryland Youth Residence Center

Maryland Youth Residence Center, which is a residential treatment facility for boys twelve years of age and younger, reported 41 admissions during fiscal 1977. This represents an increase of 70.8% from fiscal 1976. A majority involved blacks (80.5%), while whites accounted for 17.1% and in one case, race was classified as "other." Most of the admissions involved juveniles from Baltimore City (82.9%) while five admissions involved a juvenile from Prince George's County, and one from Baltimore County and St. Mary's County.

Youth Service Center

The Youth Service Center, which is a day program offering specialized services to delinquent youth, reported 293 referrals during fiscal 1977. This represents an increase of 30.8% from fiscal 1976. These referrals involved 87.4% males and 12.6% females. The majority of referrals were black (99.7%), with one white male being referred. While these referrals involved juveniles fourteen to nineteen years of age,

a majority involved juveniles who were sixteen to seventeen years of age (83.3%).

Youth Services Bureaus

Youth Services Bureaus in Maryland are local community agencies which provide services to youth on a voluntary basis. The primary purpose of these community operated programs is youth development and juvenile delinquency prevention. Seventy-five percent of the funds required to operate Bureaus are provided by the State of Maryland through grants from the Juvenile Services Administration. The remaining 25% of the funds are provided to Bureaus by their local units of government.

During fiscal 1977, Youth Services Bureaus serviced 5,667 formal cases. Formal cases in this context are not "court-related" cases, but are cases which receive regularly scheduled counselling, have a complete case file developed and have a specific

counselor assigned. A majority of these cases involved males (59.1%), while females accounted for 40.9%. Whites accounted for 62.3% of the cases, 37.3% involved blacks and 0.4% were classified as "other."

In addition to formal counselling, however, Youth Services Bureaus provide a broad range of services including the following: Informal Counselling, Crisis Intervention, Information and Referral, Tutoring, Leisure Time Activities, Mobilizing Community Resources, Job Placement Assistance, Community Education, Consultation and/or Training, and Drug Education. The above figures do not reflect the number of cases served in these other areas.

Seventeen Youth Services Bureaus are funded through the Maryland Juvenile Services Administration. Two are located in Anne Arundel County, five in Prince George's County, three in Baltimore City, two in Montgomery County, one in Charles County, one in Carroll County, and three in Baltimore City.

TABLE 22
MARYLAND JUVENILE SERVICES ADMINISTRATION
COMMUNITY DETENTION
FISCAL 1977

Detentions	Baltimore City	Prince George's County
Number Detained	2,091	1,158
Number Not Eligible for Community Detention	1,009	938
Number Eligible for Community Detention	1,082	220
Number Not Accepted into Community Detention	474	26
Number Accepted into Community Detention	608	194

Community Detention is a viable alternative to detaining youth in detention centers. It provides youth with intensive supervision in their own or surrogate home for the period between initial court appearance and disposition. The objective of community detention is to keep the youth trouble-free, and available to the court.

JSA has two community detention programs. They are the "Urban County House Detention" in Prince George's County, and the "House Detention Program" in Baltimore City. They were designed to demonstrate that youth can be successfully supervised outside the institutional setting typically used for detained children.

TABLE 23
COMMUNITY AND RESIDENTIAL EXPENDITURES
FISCAL 1968 - 1977

Fiscal Year	Good Shepherd Center	Purchase of Care	State-Owned Group Homes	Md. Youth Residence Center	Program Direction	Youth Service Bureaus	Youth Service Center	Total
1968	\$ 292,872							\$ 292,872*
1969	\$ 288,091	\$ 92,151						\$ 380,242
1970	\$ 398,156	\$ 182,959	\$ 70,534					\$ 651,649
1971	\$ 475,629	\$ 740,271	\$ 223,588					\$ 1,439,488
1972	\$ 666,710	\$ 1,389,901	\$ 208,979	\$ 50,160				\$ 2,315,750
1973	\$ 742,802	\$ 1,819,199	\$ 201,154	\$ 254,169	\$ 58,026			\$ 3,075,350
1974	\$ 758,149	\$ 2,825,064	\$ 236,514	\$ 364,168	\$ 76,354			\$ 4,260,249
1975	\$ 809,205	\$ 4,238,650	\$ 238,570	\$ 346,831	\$ 77,240	\$ 436,589		\$ 6,147,085
1976	\$ 868,106	\$ 4,826,722	\$ 254,846	\$ 396,300	\$ 81,834	\$ 790,493	\$ 306,030	\$ 7,524,331
1977	\$ 952,436	\$ 5,045,029	\$ 252,676	\$ 353,059	\$ 67,122	\$ 1,018,418	\$ 316,992	\$ 8,005,732**

* Not included in Operating Budget for 1968.

** This amount excludes \$41,361 which is Direct Administrative Cost related to earning Federal Title XX Funding.

TABLE 24
COMMUNITY RESIDENTIAL PLACEMENTS
NUMBER OF ADMISSIONS
FISCAL 1968 - 1977

Fiscal Year	Shepherd Center	Purchase of Care		State-Owned Group Homes	Maryland Youth Residence Center	Total
		Residential	Emergency			
1968	116					116
1969	105	16				121
1970	88	130		22		240
1971	131	276		46		453
1972	87	601	539	60	36	1,323
1973	85	850	1,068	82	35	2,120
1974	86	1,184	1,987	76	35	3,368
1975	91	1,067	2,794	45	22	4,019
1976	98	1,109	3,012	61	24	4,304
1977	115	1,047	2,643	74	41	3,920

TABLE 25
RESIDENTIAL AND EMERGENCY PLACEMENTS BY SEX AND COUNTY
FISCAL 1977

	Private Residential Placements			Emergency Placements		
	Male	Female	Total	Male	Female	Total
Region 1. Dorchester Somerset Wicomico Worcester	3 2 6 5	 5 3	3 2 11 8	2 1 2	 4 2	2 5 4
Region 2. Caroline Cecil Keni Queen Anne's Talbot	3 15 8 4 8	1 1 1 2 7	4 16 9 6 15	 18 2 13	 6 1 3 19	 24 3 3 32
Region 3. Baltimore Harford	58 23	15 3	73 26	53 3	74 6	127 9
Region 4. Allegany Garrett Washington	15 5 10	7 5	22 5 15	8 2 2	11 4 11	19 6 13
Region 5. Anne Arundel Carroll Howard	59 11 15	32 8 5	91 19 20	115 26 11	77 20 9	192 46 20
Region 6. Frederick Montgomery	10 80	1 45	11 125	10 168	6 233	16 401
Region 7. Calvert Charles Prince George's St. Mary's	4 17 113 12	 4 68 5	4 21 181 17	1 33 439 19	1 27 478 11	2 60 917 30
Region 8. Baltimore City	253	90	343	367	345	712
STATE	739	308	1,047	1,295	1,348	2,643

TABLE 25A
PRIVATE RESIDENTIAL PLACEMENTS
TYPE OF SERVICES BY COUNTY AND REGION
FISCAL 1977

	Private Residential Placements			
	Basic Service	Intermediate Service	Full Service	Total
Region 1. Dorchester Somerset Wicomico Worcester	1 8	3 1 3 7	1	3 2 11 8
Region 2. Caroline Cecil Kent Queen Anne's Talbot	1 1 3 2 5	3 14 5 4 10	1 1	4 16 9 6 15
Region 3. Baltimore Harford	11 1	48 18	14 7	73 26
Region 4. Allegany Garrett Washington	8 1 6	12 4 7	2 2	22 5 15
Region 5. Anne Arundel Carroll Howard	26 9 2	58 10 11	7 7	91 19 20
Region 6. Frederick Montgomery	2 28	5 81	4 16	11 125
Region 7. Calvert Charles Prince George's St. Mary's	4 80 7	4 17 88 5	13 5	4 21 181 17
Region 8. Baltimore City	122	191	30	343
STATE	328	609	110	1,047

TABLE 26
RESIDENTIAL AND EMERGENCY PLACEMENTS BY RACE AND COUNTY
FISCAL 1977

	Private Residential Placements				Emergency Placements				Good Shepherd Center			
	White	Black	Other	Total	White	Black	Other	Total	White	Black	Other	Total
Region 1. Dorchester Somerset Wicomico Worcester	3 1 8 5	 1 3 3		3 2 11 8	2 4 3	 1 1		2 5 4	3			3
Region 2. Caroline Cecil Kent Queen Anne's Talbot	3 14 5 5 10	1 2 4 1 5		4 16 9 6 15	 24 2 3 25	 1 7		 24 3 3 32	 1 1 1			 1 1 1
Region 3. Baltimore Harford	65 24	8 2		73 26	115 9	12		127 9	14 6	 1		14 7
Region 4. Allegany Garrett Washington	21 5 15	1		22 5 15	19 6 13			19 6 13	2 4			2 4
Region 5. Anne Arundel Carroll Howard	82 18 20	9	1	91 19 20	184 46 19	8 1		192 46 20	11 3 3			11 3 3
Region 6. Frederick Montgomery	11 107	 17	 1	11 125	14 350	2 38	 13	16 401	1 15	 2		1 17
Region 7. Calvert Charles Prince George's St. Mary's	4 17 140 15	 4 41 2		4 21 181 17	2 48 696 27	 12 212 3	 9	2 60 917 30	2 12 1	 3	 1	2 16 1
Region 8. Baltimore City	101	239	3	343	234	476	2	712	9	15		24
Out-of-State									1	3		4
STATE	699	343	5	1,047	1,845	774	24	2,643	90	24	1	115

TABLE 27
COMMUNITY RESIDENTIAL PLACEMENTS BY RACE
FISCAL 1977

Placement	White		Black		Other		Total	
	Number	Percent	Number	Percent	Number	Percent	Number	Percent
Good Shepherd Center	90	78.3	24	20.9	1	.8	115	100.0
Purchase of Care Residential Placements	699	66.8	343	32.8	5	.4	1,047	100.0
Purchase of Care Emergency Placements	1,845	69.8	774	29.3	24	.9	2,643	100.0
State-Owned Group Homes								
Males	2	4.8	40	95.2			42	100.0
Females	4	12.5	28	87.5			32	100.0
Maryland Youth Residence Center	7	17.1	33	80.5	1	2.4	41	100.0

TABLE 28
YOUTH SERVICE CENTER ADMISSIONS BY AGE AND SEX *
FISCAL 1977

Age	Male		Female		Total	
	Number	Percent	Number	Percent	Number	Percent
14	1	.4			1	.3
15	13	5.1	3	8.1	16	5.5
16	95	37.1	17	46.0	112	38.2
17	119	46.5	13	35.1	132	45.1
18	25	9.8	4	10.8	29	9.9
19	3	1.1			3	1.0
Total	256	100.0	37	100.0	293	100.0

* The Youth Service Center is a day program offering specialized services to delinquent youth.

TABLE 29

TOTAL FORMALLY COUNSELLED CASES SERVED BY YOUTH SERVICES BUREAUS
BY LOCATION, SEX AND RACE
FISCAL 1977

Bureau	Location	Male			Female			Total
		Black	White	Other	Black	White	Other	
Annapolis	Anne Arundel County	221	40		125	34		420
Bowie	Prince George's Co.	18	94	3	15	110	1	241
Carroll County	Carroll County	6	188	1	4	141		340
College Park	Prince George's Co.	13	94	2	10	56	1	176
Dundalk	Baltimore County	5	258	2	6	133	4	408
East Baltimore	Baltimore City	396	11		223	2		632
Glenarden	Prince George's Co.	78			67			145
Greenbelt	Prince George's Co.	18	189		18	163		388
Harundale	Anne Arundel County	2	111		1	60		174
Laurel	Prince George's Co.	9	56	1	9	31	1	107
Lighthouse	Baltimore County	9	72		8	56		145
Listening Post	Montgomery County	2	39	2		15	2	60
North Central	Baltimore City	53	31		19	7		110
Northwest Baltimore	Baltimore City	288	6		203			497
PCA	Baltimore County	1	50	1	1	52		105
Rockville	Montgomery County	45	173	1	35	175		426
Tri-County	Charles County	134	641		72	446		93
	TOTALS	1,298	2,053	13	816	1,478	9	5,667

**DIVISION OF
INSTITUTIONAL
SERVICES**

ADMISSIONS TO MARYLAND'S JUVENILE INSTITUTIONS

Maryland Training School

Maryland Training School, which is a training school for boys with a rated capacity of 301, reported 2,838 admissions during fiscal 1977. This includes 723 commitments and 2,115 detentions with an average length of stay of 5.8 months and 15 days respectively. This represents a decrease of 5.3% from the number of admissions reported during fiscal 1976. However, the number of detentions, which accounted for 74.5% of the total number of admissions during fiscal 1977, decreased 9.1%, while the number of commitments, on the other hand, which accounted for 25.5% of the total number of admissions, increased 7.9%.

Although juveniles were admitted to the training school from all of Maryland's counties, from Baltimore City and from out-of-state, it is significant to note that Baltimore City accounted for 61.0% of the commitments and 82.3% of the detentions.

A majority of the admissions involved blacks (64.9%), 34.8% involved whites and 0.3% were classified as "other".

Of the total number of admissions to the training school, a majority involved juveniles between fifteen and seventeen years of age (81.9%). In general, the number of admissions increased proportionately with an increase in age up to the age of sixteen, decreasing thereafter. Juveniles under fifteen years of age accounted for 15.8% of the admissions, 22.1% involved juveniles fifteen years of age, 30.5% involved sixteen year olds, 29.3% were seventeen years of age, 2.2% involved juveniles eighteen years of age and 0.1% were classified as "unknown". The largest single age group for blacks involved sixteen year olds with 29.6% of the admissions. Of those admissions involving whites, on the other hand, seventeen year olds comprised the largest single age group with 33.0%.

All of the admissions to the training school involved delinquent offenses. The largest single offense category was "burglary-breaking and entering" with 22.7% of the admissions. This was followed by "assault" with 18.8%, "auto theft-unauthorized use" with 8.9% and "larceny" with 8.8%. Concerning commitments, the largest single offense category was "burglary-breaking and entering" with 25.5% of the commitments. This was followed by "assault" with 16.0% and "auto theft-unauthorized use" with 9.5%. Of the detentions, "burglary-breaking and entering" accounted for

21.8%, followed by "assault" with 19.7%, "larceny" with 9.4% and "auto theft-unauthorized use" with 8.7%.

Of the 615 juveniles released from commitments to Maryland Training School during fiscal 1977, the average length of stay was 5.8 months. This represents a decrease of 0.2 months from fiscal 1976. Of the 1,945 juveniles released from detentions, the average length of stay was 15 days.

Montrose School

Montrose School, which is a co-educational training school with a rated capacity of 255, reported 947 admissions during fiscal 1977, of which 600 were commitments and 347 were detentions. This represents a 3.5% decrease from the number reported during fiscal 1976. This decrease was due to the 10.2% decrease in the number of commitments which accounted for 63.4% of the total number of admissions. The number of detentions, on the other hand, which accounted for 36.6% of the total number of admissions increased 10.9%

Of the 947 admissions during fiscal 1977, a majority involved females (52.9%), while males accounted for 47.1%. For commitments, however, 73.8% involved males and 26.2% involved females. A majority of the 347 detentions involved females (99.1%), while males accounted for 0.9%.

Although juveniles were admitted to Montrose from twenty of the Maryland counties, from Baltimore City and from out-of-state, it is significant to note that 56.6% of the admissions involved juveniles from Baltimore City. Of the commitments, 61.2% involved juveniles from Baltimore City and of the detentions, 48.7% were from Baltimore City.

A majority of the 947 admissions to Montrose involved blacks (55.3%), while whites accounted for 44.3% and 0.4% were classified as "other".

Of the total number of admissions, a majority involved juveniles between fourteen and fifteen years of age (58.7%). Juveniles fifteen years of age comprised the largest single group with 31.7% of the admissions. Juveniles under fourteen years accounted for 18.3% of the admissions, while juveniles over fifteen accounted for 23.0%. The largest single age group for both whites and blacks involved fifteen year olds, with 32.5% of the total white admissions, and 31.1% of the total black admissions being that age.

Cases involving "burglary-breaking and entering" accounted for 20.5% of the 600 commitments to Montrose. This was the largest single offense

category. Cases involving "violation of supervision, probation or aftercare" accounted for 18.7% of the commitments, followed by "assault" with 15.5% and "larceny" with 7.0%. Of the 347 detentions, "shoplifting" was the largest single offense category with 17.3%. This was followed by "other" with 16.7%, "assault" with 15.0%, and "violation of supervision, probation or aftercare" with 12.4%.

Of the 568 juveniles released from commitments during fiscal 1977, the average length of stay was 7.0 months. This represents an increase of 0.9 months from fiscal 1976. Of the 486 juveniles released from detentions during fiscal 1977, the average length of stay was 12 days. This represents a decrease of 1 day from fiscal 1976.

Boys' Village

Boys' Village, which is now a detention center for boys with a rated capacity of 56, reported 1,456 detentions during fiscal 1977 and 1,363 releases. This represents an increase of 18.9% from the number of detentions during fiscal 1976.

Although juveniles were admitted to Boys' Village from nine of Maryland's counties, from Baltimore City and from out-of-state, a vast majority of the admissions involved juveniles from Prince George's County (71.8%).

Of the total number admitted during fiscal 1977, 57.3% involved blacks, whites accounted for 42.4% and 0.3% were classified as "other".

A majority involved juveniles between the ages of fifteen and seventeen years of age (70.7%). Juveniles under fifteen years of age accounted for 26.7% of the admissions, juveniles fifteen years of age accounted for 19.2%, 25.4% involved sixteen year olds, 26.1% involved seventeen year olds, eighteen year olds accounted for 2.2% and in 0.4% of the cases, age was unknown.

Cases involving "shoplifting" accounted for 20.4% of the total number of detentions. This was the largest single offense category. Cases involving "burglary-breaking and entering" accounted for 11.9%, followed by "larceny" with 11.2% and "assault" with 8.9%.

Of the 1,363 juveniles released from detentions at Boys' Village during fiscal 1977, the average length of stay was 21 days. This represents a decrease of 1 day from fiscal 1976.

Boys' Forestry Camps

The Boys' Forestry Camps, which have a rated capacity of 140, reported 268 commitments during fiscal 1977. This represents a decrease of 5.3% from fiscal 1976. Of the total number of admissions reported during fiscal 1977, 169 or 63.1% were direct commitments to the Forestry Camps and 99 or 36.9% were transfers from other institutions.

Juveniles were admitted to the Forestry Camps from nineteen of Maryland's counties, from Baltimore City and from out-of-state. Over half of the admissions involved juveniles from Prince George's County (21.3%), Baltimore City (20.2%) and Montgomery County (17.9%).

A majority of the admissions involved whites (71.3%) while blacks accounted for 28.7%.

Of the 268 admissions, a majority involved juveniles sixteen to seventeen years of age (73.9%). Only 20.9% of the admissions involved juveniles under sixteen years of age, while 38.8% involved sixteen year olds, seventeen year olds accounted for 35.1% and eighteen year olds accounted for 5.2%.

Cases involving "burglary-breaking and entering" accounted for 29.1% of the admissions to the Forestry Camps. This was followed by "violation of supervision, probation or aftercare" with 17.5%, "larceny" with 11.6%, and "assault" with 10.8%.

The average length of stay was 7.4 months for the 268 juveniles released from commitments to the Forestry Camps during fiscal 1977. This represents an increase of 0.5 months from fiscal 1976.

Maryland Children's Center

Maryland Children's Center, which is a diagnostic and evaluation center with a rated capacity of 112, reported 1,344 admissions during fiscal 1977. This represents an increase of 3.7% from fiscal 1976. Whereas the evaluation process previously required a 30 day stay, it has now been reduced to 21 days with the same service provided.

While juveniles were admitted to Maryland Children's Center from all of Maryland's counties, from Baltimore City and from out-of-state, the majority of the admissions during fiscal 1977 were from Baltimore City (41.2%). This was followed by Prince George's County with 19.1% and Montgomery County with 12.1%.

Of the 1,344 admissions during fiscal 1977, a majority involved males (72.7%), while females

accounted for 27.3%. Over half of these admissions involved whites (57.1%), while blacks accounted for 42.7% and 0.2% were classified as "other".

A majority of the admissions involved juveniles between the ages of fourteen and sixteen (67.6%). Juveniles under fourteen years of age accounted for 18.5% of the admissions, juveniles fourteen years of age accounted for 21.5%, 25.1% involved fifteen year olds, 21.0% involved sixteen year olds, juveniles over sixteen accounted for 13.8% and in 0.1% of the cases, age was unknown. The largest single age group involved fifteen year olds with 25.1%. This was approximately the same regardless of race.

Cases involving "ungovernable" behavior accounted for 21.6% of the total number of admissions. This represents the largest single offense category. Cases involving "burglary-breaking and entering" accounted for 15.3% of the admissions, "assault" accounted for 11.8% and "violation of supervision, probation and aftercare" involved 7.9%.

The average length of stay was 21 days of the 1,313 juveniles released during fiscal 1977. This is the same figure as was reported for fiscal 1976.

Waxter Children's Center

Waxter Children's Center, which is a detention facility with a rated capacity of 40, reported 1,395 admissions during fiscal 1977. This represents an increase of 9.3% from fiscal 1976.

Juveniles were admitted to the center from seventeen of Maryland's counties, from Baltimore City and from out-of-state. Montgomery County, however, was responsible for the largest percentage

of admissions with 36.3%. This was followed by out-of-state admissions with 22.9%, Anne Arundel County with 19.0% and Prince George's County with 9.7%.

Of the 1,395 admissions during fiscal 1977, a majority involved males (67.4%), with females accounting for 32.6%. Nearly three-quarters of these admissions involved whites (71.2%), while blacks accounted for 28.0% and 0.8% were classified as "other".

A majority of the admissions to Waxter Children's Center involved juveniles between the ages of fifteen and seventeen years (76.2%). Juveniles under fifteen years of age accounted for 20.7%, while eighteen year olds accounted for 2.6% and in 0.5% of the cases, age was unknown. In general, the number of admissions increased proportionately with an increase in age up to the age of seventeen, with the seventeen year olds comprising the largest single age group with 26.2%. Of those admissions involving blacks, however, the number of admissions increased proportionately with an increase in age up to the age of sixteen, decreasing thereafter. Sixteen year olds comprised the largest single age group for blacks, with 28.7%.

The largest single offense category for Waxter Children's Center was "other" with 23.0% of the admissions. This was followed by "shoplifting" with 16.5% and "burglary-breaking and entering" with 13.3%.

Of the 1,343 juveniles released from detentions during fiscal 1977, the average length of stay was 15 days. This represents an increase of 3 days during fiscal 1976.

TABLE 30
MARYLAND JUVENILE SERVICES ADMINISTRATION
SUMMARY OF INSTITUTION EXPENDITURES
FISCAL 1968 - 1977

Fiscal Years	Training Schools	Detention Centers	Forestry Camps	Total
1968	\$ 5,632,139	\$ 1,039,728	\$ 589,915	\$ 7,261,782
1969	\$ 5,633,399	\$ 1,138,951	\$ 572,601	\$ 7,344,951
1970	\$ 6,513,389	\$ 1,342,038	\$ 684,536	\$ 8,539,953
1971	\$ 7,916,373	\$ 1,537,667	\$ 768,821	\$ 10,222,861
1972	\$ 8,700,095	\$ 1,782,315	\$ 882,241	\$ 11,364,651
1973	\$ 8,741,551	\$ 1,752,665	\$ 836,074	\$ 11,330,290
1974	\$ 7,981,170	\$ 1,832,283	\$ 831,407	\$ 10,644,860
1975	\$ 7,426,182	\$ 2,095,326	\$ 991,259	\$ 10,512,767
1976	\$ 6,277,419	\$ 4,190,101	\$ 1,101,191	\$ 11,568,711
1977	\$ 6,420,088	\$ 4,641,308	\$ 1,086,488	\$ 12,147,884

TABLE 31
SUMMARY OF INSTITUTION ADMISSIONS
FISCAL 1968 - 1977

Fiscal Years	Training School Admissions			Detention Center Admissions	Forestry Camp Admissions
	Commitments	Detentions	Total		
1968	1,648	949	2,597	3,303	266
1969	1,833	923	2,756	3,868	291
1970	1,822	912	2,734	4,441	318
1971	1,790	1,190	2,980	4,652	348
1972	1,801	1,843	3,644	4,131	288
1973	1,439	2,807	4,246	3,323	276
1974	1,131	4,118	5,249	2,440	278
1975	1,255	4,544	5,799	2,477	346
1976	1,338	2,640	3,978	3,797	283
1977	1,323	2,462	3,785	4,195	268

TABLE 32
ADMISSIONS TO MARYLAND'S JUVENILE INSTITUTIONS
FISCAL YEAR COMPARISONS
1976 - 1977

Institution	Fiscal 1976	Fiscal 1977	Percent Change
Maryland Training School			
Commitments			
Male	670	723	+ 7.9
Detentions			
Male	2,327	2,115	- 9.1
Total Admissions	2,997	2,838	- 5.3
Montrose School			
Commitments			
Male	562	443	- 21.2
Female	129	157	+ 21.7
Detentions			
Male	63	3	- 95.2
Female	302	344	+ 13.9
Admissions			
Male	625	446	- 28.6
Female	431	501	+ 16.2
Total Admissions	981	947	- 3.5
Boys' Village			
Detentions			
Male	1,225	1,456	+ 18.9
Total Admissions	1,225	1,456	+ 18.9
Boys' Forestry Camps			
Commitments			
Male	283	268	- 5.3
Total Admissions	283	268	- 5.3
Maryland Children's Center			
Male	927	977	+ 5.4
Female	369	367	- .5
Total Admissions	1,296	1,344	+ 3.7
Waxter Children's Center			
Male	894	940	+ 5.2
Female	382	455	+ 19.1
Total Admissions	1,276	1,395	+ 9.3

TABLE 33
ADMISSIONS TO MARYLAND'S JUVENILE INSTITUTIONS
BY COUNTY OF RESIDENCE - FISCAL 1977

	Maryland Training School		Montrose School		Total for Training Schools		Forestry Camp Admissions	Boys' Village Admissions	Maryland Children's Center	Waxter Children's Center
	Committed	Detained	Committed	Detained	Committed	Detained				
Region 1. Dorchester Somerset Wicomico Worcester	6 6 9	2 4 13 2	6 7 11	 1	12 13 20	2 4 14 2	 1 2		6 1 7 6	1 1 3 1
Region 2. Caroline Cecil Kent Queen Anne's Talbot	1 15 5 1 7	7 52 6 4 11	 5 4 4	 3 4 1	 1 20 5 5 11	7 55 6 8 12	 11 3 1	 1 1	5 13 2 3 1	 3 4
Region 3. Baltimore Harford	40 19	126 36	32 12	13 2	72 31	139 38	5 2	1 2	60 38	13
Region 4. Allegany Garrett Washington	19 9 12	2 1	5 2 7	1 3	24 11 19	3 4	7 8 12		8 5 26	3 69
Region 5. Anne Arundel Carroll Howard	15 12 1	2 42 5	8 2 2	3 5 2	23 14 3	5 47 7	24 6 4	3	90 10 18	265 78
Region 6. Frederick Montgomery	10 19	1 2	13 27	2 21	23 46	3 23	4 48		10 163	18 434
Region 7. Calvert Charles Prince George's St. Mary's	6 8 52 3	 2 29	10 4 54 7	2 3 82 2	16 12 106 10	2 5 111 2	2 5 57 7	16 71 1,045 51	7 26 257 24	7 3 135 5
Region 8. Baltimore City	441	1,741	367	169	808	1,910	54	6	554	33
Out-of-State	7	25	11	28	18	53	5	259	4	319
STATE	723	2,115	600	347	1,323	2,462	268	1,456	1,344	1,395

TABLE 34
ADMISSIONS TO MARYLAND TRAINING SCHOOL, MONTROSE SCHOOL,
BOYS' VILLAGE AND VICTOR CULLEN BY TYPE OF ADMISSION
FISCAL 1968 - 1977

Year & Type of Admission	Maryland Training School	Montrose School	Boys' Village	Victor Cullen *	Total
1968					
Commitments	782	291	381	194	1,648
Detentions	530	211	208		949
Total	1,312	502	589	194	2,597
1969					
Commitments	818	308	466	241	1,833
Detentions	493	211	219		923
Total	1,311	519	685	241	2,756
1970					
Commitments	761	336	406	319	1,822
Detentions	429	302	181		912
Total	1,190	638	587	319	2,734
1971					
Commitments	872	308	311	299	1,790
Detentions	655	362	173		1,190
Total	1,527	670	484	299	2,980
1972					
Commitments	498	402	420	481	1,801
Detentions	759	437	535	112	1,843
Total	1,257	839	955	593	3,644
1973					
Commitments	336	326	382	395	1,439
Detentions	1,019	466	1,158	164	2,807
Total	1,355	792	1,540	559	4,246
1974					
Commitments	403	347	350	31	1,131
Detentions	2,472	599	960	87	4,118
Total	2,875	946	1,310	118	5,249
1975					
Commitments	659	519	77		1,255
Detentions	3,048	408	1,088		4,544
Total	3,707	927	1,165		5,799
1976					
Commitments	670	668			1,338
Detentions	2,327	313	1,225		3,865
Total	2,997	981	1,225		5,203
1977					
Commitments	723	600			1,323
Detentions	2,115	347	1,456		3,918
Total	2,838	947	1,456		5,241

CONTINUED

1 OF 2

TABLE 35
ADMISSIONS TO MARYLAND'S TRAINING SCHOOLS, FORESTRY CAMPS AND BOYS' VILLAGE
BY COUNTY OF RESIDENCE AND COUNTY OF ADMITTING COURT
FISCAL 1977

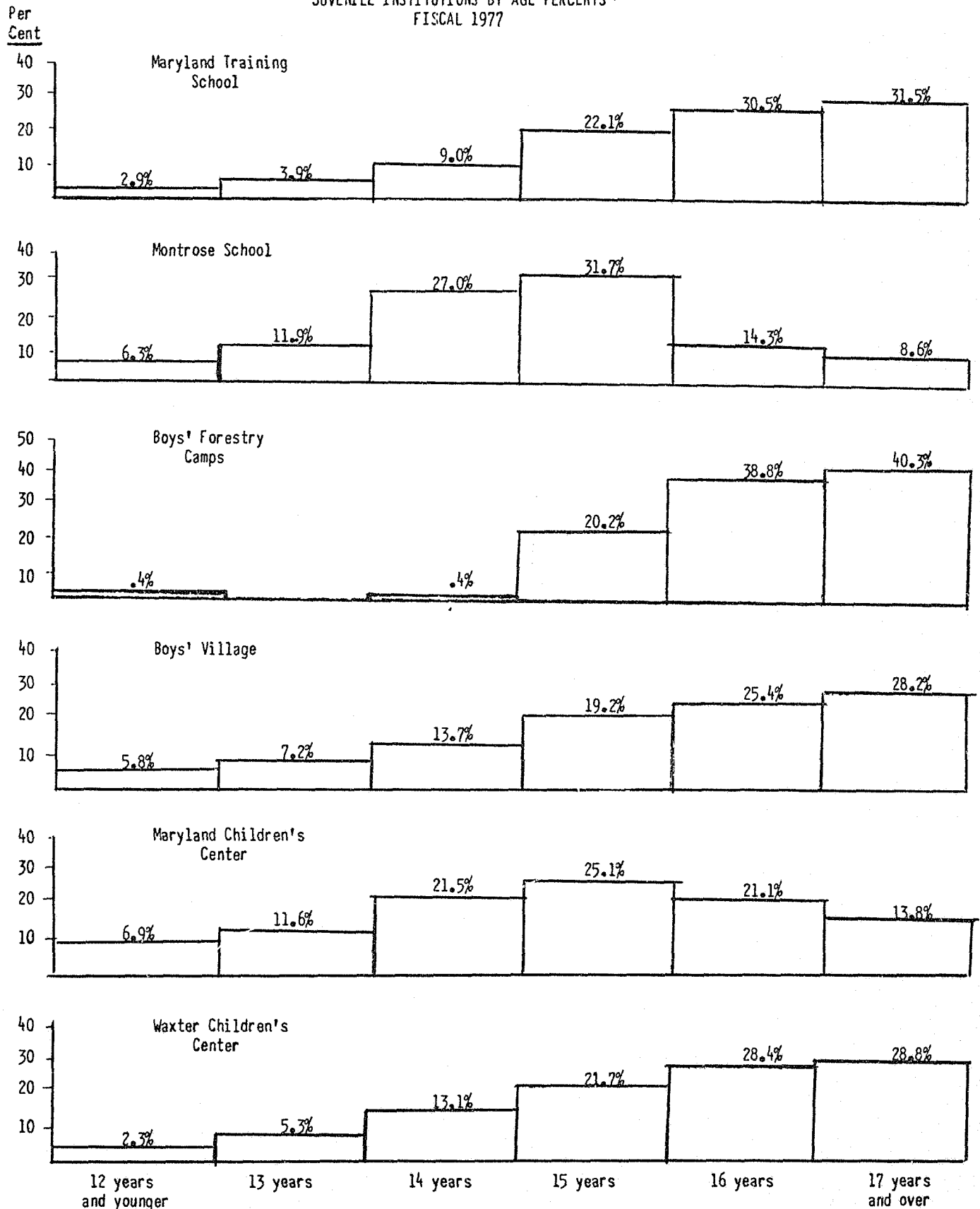
	Maryland Training School		Montrose School		Boys' Village		Boys' Forestry Camps	
	County of Residence	Admitting Court	County of Residence	Admitting Court	County of Residence	Admitting Court	County of Residence	Admitting Court
Region 1. Dorchester Somerset Wicomico Worcester	8 10 22 2	9 9 27 2	6 7 12	6 7 12			1 2	1 2
Region 2. Caroline Cecil Kent Queen Anne's Talbot	8 67 11 5 18	9 81 18 6 18	8 8 5	12 2 5 5	1 1	1	11 3 1	12 3 1
Region 3. Baltimore Harford	166 55	177 57	45 14	61 17	1 2	2	5 2	5 3
Region 4. Allegany Garrett Washington	21 9 13	24 16 14	6 2 10	8 2 11			7 8 12	6 9 12
Region 5. Anne Arundel Carroll Howard	17 54 6	16 56 2	11 7 4	12 7 4	3		24 6 4	26 7 3
Region 6. Frederick Montgomery	11 21	10 21	15 48	15 50		1	4 48	5 49
Region 7. Calvert Charles Prince George's St. Mary's	6 10 81 3	5 6 80 5	12 7 136 9	17 7 150 10	16 71 1,045 51	17 69 1,315 51	2 5 57 7	1 5 57 8
Region 8. Baltimore City	2,182	2,170	536	527	6		54	53
Out-of-State	32		39		259		5	
STATE	2,838	2,838	947	947	1,456	1,456	268	268

TABLE 36
ADMISSIONS TO MARYLAND'S JUVENILE INSTITUTIONS
BY FACILITY AND OFFENSE
FISCAL 1977

Offense	Maryland Children's Center	Waxter Children's Center	Boys' Village	Maryland Training School			Montrose School			Boys' Forestry Camps
	Evaluations	Detentions	Detentions	Commitments	Detentions	Total	Commitments	Detentions	Total	Commitments
Arson	37	11	11	3	14	17	8	4	12	1
Assault	158	140	128	116	417	533	93	52	145	29
Auto Theft/Unauthorized Use	66	104	92	69	184	253	39	11	50	28
Burglary/Breaking & Entering	206	185	260	184	460	644	123	24	147	78
Larceny	82	121	163	53	198	251	42	26	68	31
Robbery	49	34	80	42	87	129	33	6	39	11
Disorderly Conduct	26	38	44	10	86	96	15	30	45	1
Sex Offense	26	10	10	9	22	31	7	8	15	
Vandalism	19	25	35	8	28	36	10	5	15	7
Narcotics Violation	29	63	48	24	55	79	7	10	17	14
Glue Sniffing/Other Inhalents	10	2		4	26	30	10	5	15	
Alcoholic Beverage Violation	4	8	15	4	6	10	1		1	2
Shoplifting	56	230	297	37	104	141	41	60	101	3
Purse Snatching	9		3	6	30	36	8		8	2
Firearms/Deadly Weapon Violation	17	11	37	15	61	76	6	1	7	5
Rec/Poss of Stolen Goods	12	9	13	7	6	13	4	2	6	1
Trespassing	16	22	33	10	30	40	6	2	8	1
False Fire Alarm	4	2	3	2	4	6	1		1	
Runaway *	74									
Truancy *	15									
Ungovernable *	290									
Other *	27	323	105	40	157	197	34	58	92	7
Dependency & Neglect	5									
Special Proceedings	1									
Violation of Supervision *	106	57	79	80	140	220	112	43	155	47
TOTAL	1,344	1,395	1,456	723	2,115	2,838	600	347	947	268

* Includes Interstate Compact cases.

FIGURE 2: ADMISSIONS TO MARYLAND'S
JUVENILE INSTITUTIONS BY AGE PERCENTS *
FISCAL 1977



*Percents do not add to 100.0 since "Age Unknown" is not included.

TABLE 37
ADMISSIONS TO MARYLAND'S TRAINING SCHOOLS,
FORESTRY CAMPS AND BOYS' VILLAGE BY AGE AND RACE
FISCAL 1977

Race by Institution	Age of Juvenile											Total	
	Under 10	10	11	12	13	14	15	16	17	18	Unknown	Number	Per- cent
Maryland Training School													
White		3	6	18	26	62	205	319	325	20	2	986	34.8
Black	2	5	11	38	82	193	417	545	507	42	1	1,843	64.9
Other					2		5	2				9	.3
Total	2	8	17	56	110	255	627	866	832	62	3	2,838	100.0
Montrose School													
White		3	4	10	41	119	136	69	35	1	1	419	44.3
Black	1	2	7	33	70	137	163	65	40	5	1	524	55.3
Other					2		1	1				4	.4
Total	1	5	11	43	113	256	300	135	75	6	2	947	100.0
Total Training Schools													
White		6	10	28	67	181	341	388	360	21	3	1,405	37.1
Black	3	7	18	71	152	330	580	610	547	47	2	2,367	62.5
Other					4		6	3				13	.4
Total	3	13	28	99	223	511	927	1,001	907	68	5	3,785	100.0
Boys' Village													
White		1	9	9	36	81	118	177	175	9	2	617	42.4
Black	6	11	11	38	68	117	162	192	204	22	4	835	57.3
Other					1	1		1	1			4	.3
Total	6	12	20	47	105	199	280	370	380	31	6	1,456	100.0
Boys' Forestry Camps													
White		1					37	78	64	11		191	71.3
Black						1	17	26	30	3		77	28.7
Other													0.0
Total		1				1	54	104	94	14		268	100.0

TABLE 38
COMMITMENTS TO MARYLAND'S TRAINING SCHOOLS
AND FORESTRY CAMPS BY LENGTH OF STAY (BASED ON RELEASES)
FISCAL 1977

Length of Stay (Months)	Maryland Training School	Montrose School	Boys' Forestry Camps	Total
0-1	83	35	8	126
2	39	21	4	64
3	44	30	13	87
4	61	47	21	129
5	81	77	23	181
6	87	98	34	219
7	65	64	34	163
8	37	42	34	113
9	35	33	32	100
10	16	26	19	61
11	16	17	9	42
12	10	18	6	34
13	16	13	11	40
14	5	9	4	18
15	7	11	3	21
16	3	8	3	14
17	4	3	1	8
18	2	4		6
Over 18	4	12		16
Total	615	568	259	1,442
Average	5.8	7.0	7.4	6.6

TABLE 39
AVERAGE LENGTH OF STAY FOR DETENTIONS
IN MARYLAND'S JUVENILE INSTITUTIONS
FISCAL 1977

Institution	Total Releases	Average Length of Stay (Days)
Maryland Training School	1,945	15
Montrose School	486	12
Boys' Village	1,363	14
Maryland Children's Center	1,313	21
Waxter Children's Center	1,343	11
Total	6,450	15

TABLE 40
ADMISSIONS TO MARYLAND'S CHILDREN CENTERS
BY CENTER AND SEX
FISCAL 1968 - 1977

Year and Sex	Maryland Children's Center	T. J. S. Waxter Children's Center	Total
Fiscal 1968			
Male Admissions	741	1,493	2,234
Female Admissions	266	803	1,069
Total	1,007	2,296	3,303
Fiscal 1969			
Male Admissions	868	1,748	2,616
Female Admissions	311	941	1,252
Total	1,179	2,689	3,868
Fiscal 1970			
Male Admissions	861	2,112	2,973
Female Admissions	332	1,136	1,468
Total	1,193	3,248	4,441
Fiscal 1971			
Male Admissions	933	2,154	3,087
Female Admissions	330	1,235	1,565
Total	1,263	3,389	4,652
Fiscal 1972			
Male Admissions	1,021	1,884	2,905
Female Admissions	334	892	1,226
Total	1,355	2,776	4,131
Fiscal 1973			
Male Admissions	973	1,189	2,162
Female Admissions	325	836	1,161
Total	1,298	2,025	3,323
Fiscal 1974			
Male Admissions	938	818	1,756
Female Admissions	295	389	684
Total	1,233	1,207	2,440
Fiscal 1975			
Male Admissions	980	906	1,886
Female Admissions	338	253	591
Total	1,318	1,159	2,477
Fiscal 1976			
Male Admissions	927	894	1,821
Female Admissions	369	382	751
Total	1,296	1,276	2,572
Fiscal 1977			
Male Admissions	977	940	1,917
Female Admissions	367	455	822
Total	1,344	1,395	2,739

TABLE 41
ADMISSIONS TO MARYLAND'S CHILDREN CENTERS
BY COUNTY OF RESIDENCE AND COUNTY OF ADMITTING COURT
FISCAL 1977

	Maryland Children's Center		Waxter Children's Center		Total	
	County of Residence	County of Admitting Court	County of Residence	County of Admitting Court	County of Residence	County of Admitting Court
Region 1. Dorchester Somerset Wicomico Worcester	6 1 7 6	5 1 7 6	1 1 3 1	1 2 1	7 2 10 7	6 1 9 7
Region 2. Caroline Cecil Kent Queen Anne's Talbot	5 13 2 3 1	5 14 2 2 2	 3 4	 12 2 1 1	5 16 6 3 1	5 26 4 3 3
Region 3. Baltimore Harford	60 38	54 35	13	15	73 38	69 35
Region 4. Allegany Garrett Washington	8 5 26	9 5 18	 3 69	 4 52	8 8 95	9 9 70
Region 5. Anne Arundel Carroll Howard	90 10 18	88 9 19	265 78	321 102	355 10 96	409 9 121
Region 6. Frederick Montgomery	10 163	11 173	18 434	15 507	28 597	26 680
Region 7. Calvert Charles Prince George's St. Mary's	7 26 257 24	7 28 260 24	7 3 135 5	6 10 296 9	14 29 392 29	13 38 556 33
Region 8. Baltimore City	554	559	33	33	587	592
Out-of-State	4	1	319	5	323	6
STATE	1,344	1,344	1,395	1,395	2,739	2,739

TABLE 42
ADMISSIONS TO MARYLAND'S CHILDREN CENTERS
BY AGE AND RACE
FISCAL 1977

Age	Maryland Children's Center				Waxter Children's Center				Total			
	Black	White	Other	Total	Black	White	Other	Total	Black	White	Other	Total
Under 10 Years	2	3		5	1	1		2	3	4		7
10 Years	4	3		7	1			1	5	3		8
11 Years	15	12		27	1	2		3	16	14		30
12 Years	26	28		54	17	9		26	43	37		80
13 Years	69	87		156	29	45		74	98	132		230
14 Years	127	161	1	289	49	132	1	182	176	293	2	471
15 Years	152	185		337	86	214	2	302	238	399	2	639
16 Years	105	177	1	283	112	280	4	396	217	457	5	679
17 Years	68	102	1	171	88	274	3	365	156	376	4	536
18 Years	5	9		14	5	31		36	10	40		50
Unknown	1			1	1	6	1	8	2	6	1	9
Total	574	767	3	1,344	390	994	11	1,395	964	1,761	14	2,739
Percent	42.7	57.1	0.2	100.0	28.0	71.2	0.8	100.0	35.2	64.3	0.5	100.0

FEDERAL GRANTS

**FEDERAL GRANTS IN OPERATION
DURING FISCAL 1977**

By Program Area

With the assistance of the Governor's Commission on Law Enforcement and the Administration of Justice, Federal funds were provided under the Omnibus Crime Control and Safe Streets Act of 1973 for the following on-going programs during fiscal 1977.

<u>Juvenile Court Services</u>		LEAA	STATE*
Community Treatment Intensive Probation Project (Baltimore City)		\$ 118,722	\$ 13,194
Diagnostic and Treatment Services (Prince George's County)		14,375	1,598
Diagnostic and Treatment Services (Baltimore County)		27,000	3,000
Diagnostic and Treatment Services (Eastern Shore)		17,190	1,908
Diagnostic and Treatment Services (Western Maryland)		10,725	1,188
Diagnostic and Treatment Services (Baltimore City)		16,250	1,807
		<u>\$ 204,262</u>	<u>\$ 22,695</u>
<u>Community Services</u>		LEAA	STATE*
Diversion of Impact Offenders		\$ 73,670	\$ 8,188
Residential Facilities Project		7,500	834
Differential Group Home and Treatment Project		101,268	11,251
House Detention		31,209	3,469
Regional Delinquency Prevention Specialists		27,900	3,096
Community Treatment of Impact Offenders and Families (Anne Arundel County)		31,880	3,544
Community Arbitration Program (Anne Arundel County)		64,750	7,190
Community Arbitration Program (Baltimore County)		68,120	7,570
Experimental School - Juvenile Counselor for Delinquent Youth		21,163	2,351
Twenty-four Hour Intake Coverage Program (Region V)		42,180	4,684
Transportation Corps - Eastern Shore		17,504	1,944
Shelter and Foster Parents Training Program		3,804	424
Community Volunteer Program		14,768	1,640
Non-Residential Care Supplemental Project (Prince George's County)		79,476	8,831
Community Diversion Youthful Offenders (Prince George's County)		129,100	14,344
Urban County House Detention (Prince George's County)		57,257	6,355
		<u>\$ 771,549</u>	<u>\$ 85,715</u>
<u>Institutional Rehabilitation</u>		LEAA	STATE*
Cumberland Center - Detention Hold Facility		\$ 67,733	\$ 7,527
		<u>\$ 67,733</u>	<u>\$ 7,527</u>
<u>Multi-Functional</u>		LEAA	STATE*
In-Service Training for Juvenile Services and Private Agencies Personnel (with University of Maryland)		\$ 42,664	\$ 4,744
Management Information Needs Study		25,000	2,777
Training of Trainers and Management Level Training Project		25,000	2,777
Parent Effectiveness Training for Selected Personnel Who Serve Juvenile Services Clients		33,334	3,700
Training Seminars for Juvenile Court Judges, Masters, and Certain Juvenile Services Staff		16,875	1,876
Group Home Evaluation System Development Project		37,410	4,160
Staff Training in Alcohol Training		11,250	1,251
Institute for Juvenile Justice Management (Phase I)		1,820	202
		<u>\$ 193,353</u>	<u>\$ 21,487</u>
TOTAL		\$1,236,897	\$137,424

*This State must contribute in cash a portion of the total cost of all projects funded by the Governor's Commission.

The services and facilities of the Maryland State Department of Health and Mental Hygiene are operated on a non-discriminatory basis. This policy prohibits discrimination on the basis of race, color, sex, or national origin and applies to the provision of service, use of facilities, opportunity to participate, practice of employment and granting of advantages, privileges and accommodations.

END