

HRP-0004132

STUDY OF CHILD ABUSE IN VANDERBURGH COUNTY, INDIANA.  
1971-1974

Comprehensive Health Planning Council of Southwestern  
Indiana

Prepared for:

Public Health Service

24 September 1974

45600  
009577

DISTRIBUTED BY:

**NTIS**

National Technical Information Service  
U. S. DEPARTMENT OF COMMERCE

## KEEP UP TO DATE

Between the time you ordered this report—which is only one of the hundreds of thousands in the NTIS information collection available to you—and the time you are reading this message, several *new* reports relevant to your interests probably have entered the collection.

Subscribe to the **Weekly Government Abstracts** series that will bring you summaries of new reports *as soon as they are received by NTIS* from the originators of the research. The WGA's are an NTIS weekly newsletter service covering the most recent research findings in 25 areas of industrial, technological, and sociological interest—invaluable information for executives and professionals who must keep up to date.

The executive and professional information service provided by NTIS in the **Weekly Government Abstracts** newsletters will give you thorough and comprehensive coverage of government-conducted or sponsored re-

search activities. And you'll get this important information within two weeks of the time it's released by originating agencies.

WGA newsletters are computer produced and electronically photocomposed to slash the time gap between the release of a report and its availability. You can learn about technical innovations immediately—and use them in the most meaningful and productive ways possible for your organization. Please request NTIS-PR-205/PCW for more information.

The weekly newsletter series will keep you current. *But learn what you have missed in the past* by ordering a computer **NTISearch** of all the research reports in your area of interest, dating as far back as 1964, if you wish. Please request NTIS-PR-186/PCN for more information.

WRITE: Managing Editor  
5285 Port Royal Road  
Springfield, VA 22151

## Keep Up To Date With SRIM

SRIM (Selected Research in Microfiche) provides you with regular, automatic distribution of the complete texts of NTIS research reports *only* in the subject areas you select. SRIM covers almost all Government research reports by subject area and/or the originating Federal or local government agency. You may subscribe by any category or subcategory of our WGA (**Weekly Government Abstracts**) or **Government Reports Announcements and Index** categories, or to the reports issued by a particular agency such as the Department of Defense, Federal Energy Administration, or Environmental Protection Agency. Other options that will give you greater selectivity are available on request.

The cost of SRIM service is only 45¢ domestic (60¢ foreign) for each complete

microfiche report. Your SRIM service begins as soon as your order is received and processed and you will receive biweekly shipments thereafter. If you wish, your service will be backdated to furnish you microfiche of reports issued earlier.

Because of contractual arrangements with several Special Technology Groups, not all NTIS reports are distributed in the SRIM program. You will receive a notice in your microfiche shipments identifying the exceptionally priced reports not available through SRIM.

A deposit account with NTIS is required before this service can be initiated. If you have specific questions concerning this service, please call (703) 451-1558, or write NTIS, attention SRIM Product Manager.

This information product distributed by

**NTIS**

U.S. DEPARTMENT OF COMMERCE  
National Technical Information Service  
5285 Port Royal Road  
Springfield, Virginia 22161



H&P-0004132

**STUDY OF CHILD ABUSE  
IN VANDERBURGH COUNTY, INDIANA  
1971 - 1974**

**COMPREHENSIVE HEALTH PLANNING COUNCIL  
OF SOUTHWESTERN INDIANA**

Approved by  
Tri-State Area Health Planning Council, Inc.  
305 S. Third Avenue  
Evansville, Indiana 47708

September 24, 1974

**NCJRS**

**MAR 8 1978**

**ACQUISITIONS**

**PRICES SUBJECT TO CHANGE**

Reproduced by  
**NATIONAL TECHNICAL  
INFORMATION SERVICE**  
U S Department of Commerce  
Springfield VA 22151

This document was financed in part by U. S. Public Health Service Areawide Health Planning Grant No. 05 P 000016020 and the Indiana State Department of Mental Health.

DOCUMENT INFORMATION SHEET

REPORT NUMBER  
HRP-0004132

TITLE  
Study of Child Abuse in Vanderburgh County,  
Indiana. 1971-1974.

REPORT DATE  
24 Sep 74

PERFORMING ORGANIZATION, NUMBER & NAME  
Comprehensive Health Planning Council of  
Southwestern Indiana, Evansville.

CONTRACT-GRANT NUMBER  
PHS-05-P-0000-16-02-0

SPONSORING ORGANIZATION  
Public Health Service, Rockville, Md.

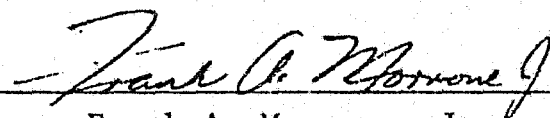
AVAILABILITY  
UNLIMITED



DEPARTMENT OF HEALTH, EDUCATION, AND WELFARE  
PUBLIC HEALTH SERVICE  
HEALTH RESOURCES ADMINISTRATION  
ROCKVILLE, MARYLAND 20852

BUREAU OF HEALTH PLANNING AND  
RESOURCES DEVELOPMENT  
NATIONAL HEALTH PLANNING  
INFORMATION CENTER

THE FOLLOWING DOCUMENT HAS BEEN  
REPRODUCED FROM THE BEST AVAILABLE  
COPY. ALTHOUGH PORTIONS OF THE  
DOCUMENT MAY BE ILLEGIBLE, IT IS  
BEING DISTRIBUTED FOR THE VALUABLE  
LEGIBLE INFORMATION IT CONTAINS.

  
Frank A. Morrone, Jr.

ia

## TABLE OF CONTENTS

i.	Title Page	
ii.	Table of Contents	
iii.	Acknowledgements	
iv.	Abstract and Recommendations	
I.	Introduction-----	1
II.	Methodology-----	2
III.	Findings-----	3
IV.	Conclusions-----	7
 <b>Appendix</b>		
A.	Survey of Child Abuse Cases - Vanderburgh County--	9
B.	Survey of Professional Attitudes-----	16
C.	Data relating to child abuse-----	19
	Figure 1 - Age of abuse child	
	Figure 2 - Age of Suspected Abuser	
	Figure 3 -- Comparison of Single Parent Families	
	Figure 4 - Comparison of Rent versus Home Ownership	
	Figure 5 - Referral Source	
	Figure 6 - Legal Disposition of Child	
	Figure 7 - Time of Removal from Home	

## ACKNOWLEDGMENTS

A study of this nature is the result of the efforts of a large number of interested people. Whether this study has meaning and relevance is contingent upon follow through by a large number of interested people. Therefore, it is proper at the beginning of this study to acknowledge those groups and individuals whose efforts and support have produced this study and whose continued support is assured.

The Committee on Abuse and Neglect (C.A.N.), chaired by Roberta Mattingly, was formalized by the concern for the abused child in our community. The Committee consisted of representatives of the following community agencies:

Evansville-Vanderburgh School Corp. Student Services Department	Catholic Charities
Social Service Department St. Mary's Hospital	Southwestern Indiana Mental Health Center
Youth Guidance Center	Juvenile Division Vanderburgh Superior Court
Family & Children's Service	Evansville Psychiatric Children's Center
Youth Service Bureau	Vanderburgh County Mental Health Association
Juvenile Division Evansville Police Department	St. Mary's Hospital
Public Health Department Nursing Division	Community Committee
Deaconess Hospital	The Rehabilitation Center
St. Vincent's Day Nursery	Welborn Memorial Baptist Hospital
Department of Public Welfare	Tri-State Area Health Planning Council, Inc.

A special word of thanks goes to Catholic Charities who provided the staff time of Ed Fitzsimmons to conduct a study of professional attitudes on child abuse in our area and to Southwestern Indiana Mental Health Center who provided the staff time of Jerry D. Schrum, Ph.D. for technical assistance in writing this document.

Appreciation is also extended to Mr. Dale Work, Director of the Department of Public Welfare, who permitted his staff to participate in this study and who made the records available for review.

The staff members of the Department of Public Welfare who participated in this study deserve special recognition. They are: Mrs. Ruby Lowe, Mrs. Janet Miller, Mrs. Carol Schmitt, and Mr. Harry Glenn.



## ABSTRACT AND RECOMMENDATIONS

### Abstract

This study is composed of two parts. Part one is a survey of professional attitudes in our community pertaining to child abuse and child abuse laws. Part two consists of a survey of those adjudicated cases of child abuse that occurred in Vanderburgh County during the past three years.

With over a 50 percent return of the questionnaires from the professional community (teachers, social workers, clergy, psychologists, visiting nurses, public Health nurses), the results would seem to indicate that they do not seem to recognize the significance of social isolation in a matrix of characteristics which identify potentially abusing families; do not clearly understand the provisions of Indiana law mandating the reporting of child abuse; report that people with knowledge of an abusing or negligent parent are reluctant to make a report of the situation; do not know if abused and neglected children receive adequate protection in Vanderburgh County; do not know if parents of abused or neglected children receive adequate services in Vanderburgh County.

The study of the cases of adjudicated abuse in our community indicates that:

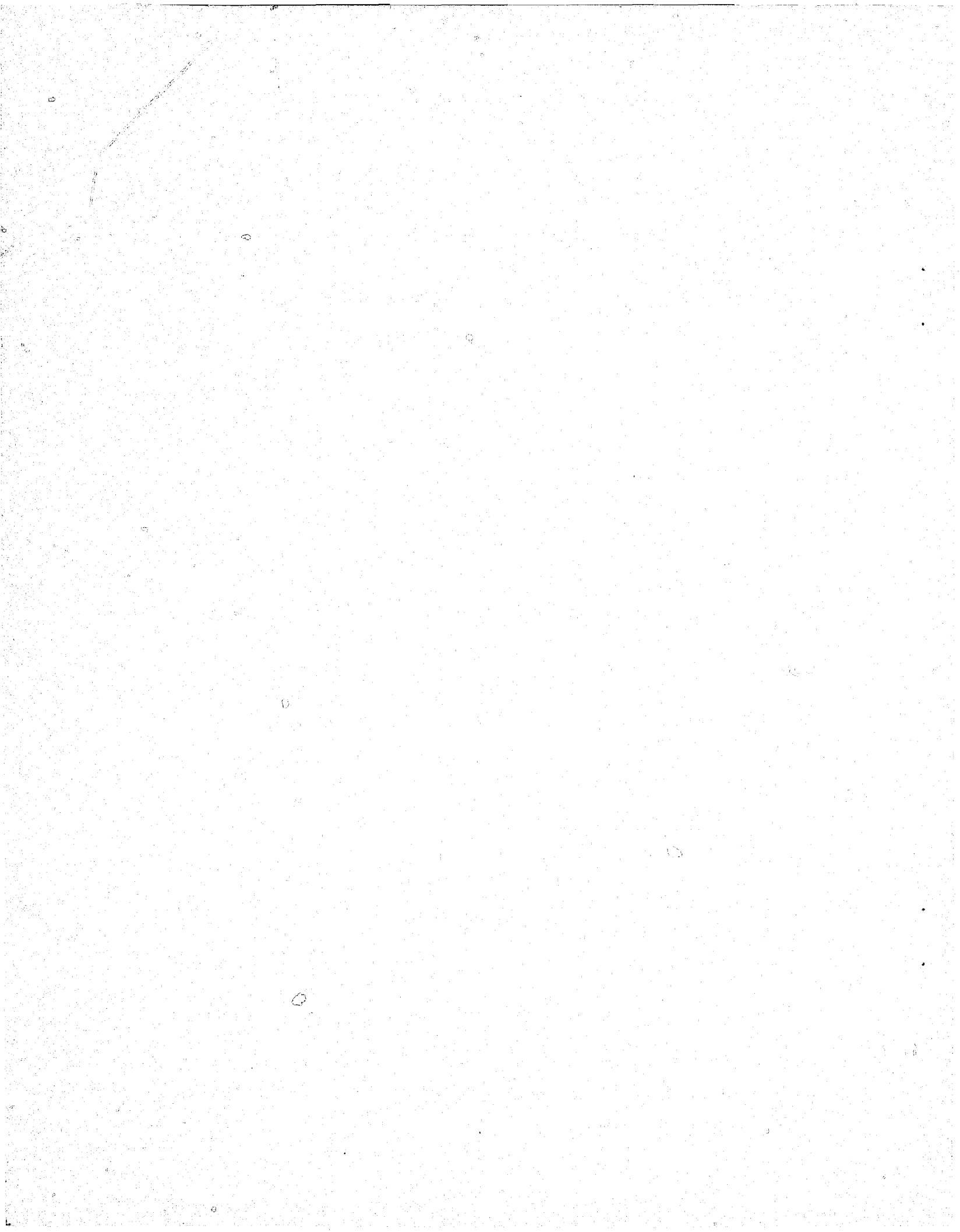
1. Most cases of abuse occur in families headed by a single parent.
2. Most abusing parents (usually mother) married early in life and are undereducated with few employable skills.
3. Most abusing families are not on welfare but are essentially in need of financial help.
4. Most abusing parents are socially isolated, and are only infrequently able to pursue interests of their own.

### Recommendations

Based on the study of the adjudicated cases of child abuse in Vanderburgh County as well as the study regarding community and professional attitudes toward child abuse and child abuse services, the following two recommendations are being submitted:

1. That the position of a coordinator for child abuse services be established in Vanderburgh County. The job description of this coordinator would include responsibility for development and administration of a program that would include:
  - a. Identification of all child abuse cases in this county and subsequent development of central registry of names.
  - b. Review of the use of investigatory powers to determine whether or not abuse had occurred.
  - c. Determination of the most effective manner and technique of intervention and to determine the utilization of ancillary resources in our community.

- d. Development of means of educating staff of social welfare agencies within our community relative to the incidence and language of child abuse and the techniques being utilized to deal with this phenomenon.
  - e. Develop educational programs and material in order to deal with community attitudes and stereotypes.
  - f. Evaluation of the system of resources that are being utilized in the area of child abuse to determine the relative value and efficiency of that system.
2. That this study indicates and recognizes the need for development and coordination of a well-structured, professionally operated Information and Referral Service. This would facilitate delivery of services in a more focused and consistent fashion and be meaningful in relation to prevention of child abuse. This program should include the following:
- a. Means of follow-up.
  - b. Ability to call case Conferences.



## I. INTRODUCTION

During the Fall of 1973, representatives from two agencies dealing with child abuse and neglect met to discuss some mutual problems and difficulties in attempting to be helpful to abusive and/or neglectful families. It readily became apparent that a large system existed within this community dealing with the area of abuse and neglect, although there existed little coordination and/or communication between the many agencies which frequently become involved. Therefore, it was decided to form a task-oriented committee composed of representatives from as many agencies as possible which regularly deal with abuse/neglect cases. The initial goal was to provide a format for general discussion and to explore alternative methods of improving the overall system. This group slowly grew over the next several months and eventually involved representatives from hospitals, Police Departments, schools, welfare departments, courts and other human resource agencies. These meetings further emphasized that lack of coordination and/or communication, both between and within agencies, was wide-spread, often resulting in agencies and individuals working at cross purposes with relation to a given family. The committee decided to establish two major goals, (1) increase the level of knowledge and skill for workers in this area and (2) evaluate the current system with the intent of making recommendations to improve the effectiveness of child protective services.

With respect to the first goal, a comprehensive two day symposium was held during the Spring of 1974 and a long term training project is currently in progress.

The Tri-State Area Health Planning Council, Inc. was requested to evaluate the current system of child abuse services. It was expected that such a systematic overview study would aid in the identification of both the assets and limitations of the current system and also, would provide the necessary information to make reasonable recommendations to improve the total identification, intervention and prevention aspects of child abuse/neglect.

## II. METHODOLOGY

This study is composed of two parts, part one is a case study of the adjudicated (legally defined) abuse cases from 1971 through 1973. The second part is a survey of the attitudes held by our community regarding child abuse or neglect.

Inasmuch as the Department of Public Welfare is legislatively charged to investigate and report instances of child abuse, we turned to the Vanderburgh County Department of Public Welfare for records to study. Using the criteria of those cases that were legally defined by the court system as being abuse cases from 1971 through 1973, we found a total of 30 cases to review.

The instrument for reviewing these cases (Appendix A) was composed of 41 variables, each designed to shed some light on individuals involved as well as their social and economic levels of functioning. Each case record was thoroughly studied by individuals responsible for the study and frequently cross checked with other workers in order to guarantee a high level of inter-rater reliability.

There are certain limitations to the study of the case records. First, it is to be recognized that many of the survey questions required a judgement based on sometimes limited data in case records. Additionally, it must be recognized that the information coming from the study does not necessarily reflect the identity of the child abuser or his family in Vanderburgh County. At best, the study can only give a parameter of the problem of abuse as reflected in those 30 cases adjudicated in Vanderburgh County in the last three years. Certainly many more cases must be studied before we can feel that we have an accurate picture of the problem in our community. However, the study, at present, does give us a base line of information from which we can work and certainly identifies vast areas that need further study.

The second part of this study was accomplished through the use of a questionnaire (Appendix B) mailed to 214 teachers, social workers, clergymen, psychologists, visiting nurses, and public health nurses working in Vanderburgh County. A mailing of this size was made in an attempt to reach one member in ten from each profession. These professionals were selected because their daily contact with parents and children enables them to establish liaison between families with potential for abuse or neglect and helping services. For this reason, their knowledge about child abuse and neglect and their attitudes toward Vanderburgh County's protective service system are crucial to the quality of services provided by that system.

By the time analysis of the response was begun, 109 had responded. Seventy-nine of the respondents were teachers or allied professionals in the public schools. The balance was drawn from the other professions. The division of response allowed comparison between the response of the professionals working in the schools and the professionals working outside the schools. Since there were few major differences in the responses of the professionals in schools and professionals outside the schools, it was decided to present the findings without regard to professional affiliation.

### III. FINDINGS

#### A. Characteristics of the Abused Child

According to the case findings, 57 percent of the children who were abused were preschool aged (Appendix C - Figure 1). This appears to be significant in that the age group from 0 to 5 years of age only represents 26 percent of the overall population of children from 0 to 18 years. There were, however, two peaks in terms of age, a child from 7 months to 2 years represented 25 percent of the abused population and abused children whose ages ranged from 6 to 9 years of age represented 21 percent of the abused population. After this, the percentages drop dramatically.

Another interesting characteristic of a child abused in the population was that 59 percent of them were the oldest child in the family. Within the same population, 28 percent were the only child and 24 percent of the situations involved the youngest of sibling rank.

Within the study, it was found that 93 percent of those children involved were white while 7 percent were black. The comparison with the total black population in Vanderburgh County would suggest no significant differences in abuse cases as a function of race. It is also interesting to note that the sex breakdown among those children who were abused aligns itself so closely with the sexual distribution within our general population as to appear not to be significant.

Perhaps the most frightening characteristic of the children involved in these cases was that 40 percent of them carried on their bodies evidence that they had been abused previously. This evidence was in the form of residual scars, fractures and bruises, and gave every indication that abuse had developed into an ongoing patterns of handling crises and/or frustration.

Comparisons were made with respect to age and race of abused children between the data obtained from adjudicated cases and expectations of these variables by the professional community. Only 26 percent of the helping professionals responding to the survey felt that the majority of the abused children were of preschool age. Thus the attitude of the majority of the helping professionals with respect to age of the child abused, was inconsistent with the actual data obtained. With respect to race, 2/3 of the helping professionals responding to the survey felt that abuse or neglect was not a race related phenomenon, an attitude supported by the case studies.

#### B. Characteristics of the Family

The general picture of the child abusing family within this population indicated in most instances a family having many and very diverse problems and few coping skills. They were generally a very young family (Appendix C - Figure 2), that is, 40 percent of the abusers ranged in age from 18 to 25 and according to the 1970 census this age group only accounts for approximately 9 percent of the general population. Only 43 percent of the homes of the abused children were equipped with a telephone as compared to 85 percent of the general population in Vanderburgh County. Of the families involved, 40 percent of them did not have any form of immediate transportation available to them. And though 93 percent of those people involved did have relatives living in Vanderburgh County, the data suggested that they were living in relative emotional isolation.

Only 37 percent of them had completed high school as opposed to 53 percent of the general population in Vanderburgh County. Fifty-seven percent of parents were judged to be in excellent or good health.

Certainly there were problems in other areas too. Of those adults who abused children, 40 percent were struggling as a single parent (Appendix C - Figure 3) within the family structure. Thirty-seven percent of them indicated that there had been trauma within the family in the last six months. Trauma in this situation was anything that could have been a climatic causal factor such as financial crisis, illness or death in the family. Twenty-three percent of the suspected abusers were habitually turning to drugs and/or alcohol to help them cope with the stresses within the family. Seventy-three percent of the suspected abusers had less than one activity during the week in which they could become involved in their own interests and be away from the family and out of the house. Of those families studied, 27 percent of them did not recognize any opportunity to remove themselves from the confines of their homes or the immediacy of their family.

A particularly disturbing note is that while the employment rate in our community varies from 4 to 6 percent, the percent of unemployed at the time abuse took place was 32 percent. This is especially significant when one recognizes that this particular study recognized welfare payments or social security payments as employment, that is, a predictable flow of money into the family regardless of the amount. This economic instability was also reflected in the number who owned their own homes (Appendix C - Figure 4). In 1970, 32 percent of the housing units in Evansville were rental properties, but 82 percent of suspected child abuse families were living in rental property while only 10 percent owned their own homes.

With the myriad of existing problems and frustrations, it was not surprising to find that 53 percent of those suspected child abusers so confronted were classified as being very defensive and having cooperated, but very little while working with the welfare department and the court.

Comparisons were made of the characteristics of the abusive families found in the welfare department case studies with the characteristics of abusive families as perceived by the professional community. With respect to social isolation of the abusing parent(s), only 12 percent of the professionals responding to the survey recognized that social isolation is closely related to abuse and neglect. Thus, the vast majority of the community professionals do not seem to be aware of the isolation in which the parents of abused children live. With respect to the marital status of the abusing parent, 80 percent of the professional respondents would not limit their expectation of abuse or neglect to single parent families. This expectation was supported by the case studies.

### C. Characteristics of the Identification System

The lack of coordination among the numerous agencies dealing with child abuse within our community was reflected within those cases reviewed. Perhaps the most disturbing single factor was that 57 percent of those people who ultimately were adjudicated as having abused their children physically, had either sought help or had been involved with some kind of social service agency within our community, but the potential for abuse had not been recognized or reported.

Of those cases reviewed, 10 percent of them showed that hospitals had indicated their concern over a developing pattern of accidents or injuries prior to the situation that finally brought the case to the court's attention. Sixteen percent of the cases adjudicated showed that the police had been involved to some degree with the family prior to the crisis that led to the abuse of the child. However, in those cases where they were involved, they did not report to the authorities any evidence of child abuse that would warrant an investigation. Ten percent of the cases showed that schools had been aware and stated a concern about the child's well being, but their statement of concern had not intervened in the process that finally led to abuse.

When looking at those referral sources that did initiate the investigation which did lead to the adjudication, it was found that 44 percent of them came from the medical field (Appendix C - Figure 5). This included hospitals, nurses and private physicians. Relatives reported 26 percent of the adjudicated cases, while the police department initiated only 18 percent of the investigations. Four percent were reported by schools, 4 percent by neighbors and 4 percent by significant others.

After the point of adjudication, 60 percent of those individuals involved in abuse were referred to other agencies within our community for either direct or indirect help.

The survey of professionals also pointed out a number of weaknesses in Vanderburgh County's system of identifying abused or neglected children. Ninety-two percent of the professionals responding agreed that persons who suspect a child is being abused or neglected are usually hesitant to report that situation. Of the professionals questioned, 36 percent did not know that Indiana law requires persons having knowledge of an abused child to make a report to the police or to the welfare department. Of those professionals responding, 56 percent did not know that Indiana law grants immunity from civil or criminal liability to persons reporting child abuse or neglect.

Thirty-four respondents offered other reasons why persons suspecting child abuse are reluctant to make a report. Of these respondents, 12 (35 percent) indicated that relatives who might otherwise report a case fail to do so because of fear of legal retaliation from parents of the child. Seven (20 percent) felt that many failed to report cases because they lacked full knowledge of the particular situation and were fearful of making an erroneous report. Five (15 percent) cited fear of legal action as a deterrent for making a report. The other 10 responses included fear of publicity, fear of appearing to be a busybody, fear of upsetting the child and apathy.

#### D. Resolution of Family Situation :

After the point of legal adjudication, 20 percent of the children remained in their own homes (Appendix C - Figure 6). Twenty-three percent were placed with relatives of parents and 47 percent were given foster placement. Of the children involved, 10 percent were placed in institutional settings. The time away from home before resolution of the situation is particularly disturbing (Appendix C - Figure 7). Of the 80 percent of the children removed from home, 21 percent returned home within six months of the date the abuse occurred. There were 14 percent of the children that were away from home for periods of time ranging from 6 months to one year. Of those removed, 50 percent were removed for one year or more and 7 percent of the children were removed permanently.



The professional community sampled is uncertain as to how to evaluate the resolution of abusing and neglecting family situations. Of those surveyed, 56 percent stated they did not know if abused and neglected children in Vanderburgh County received adequate protection. Seventy-six percent stated that they did not know if parents of abused or neglected children received adequate services.

However, the respondents seemed to be more certain about the quality of treatment that should be given parents who abuse or neglect their children. Of those involved, 67 percent felt that parents who abuse or neglect their children but who voluntarily seek help should not be prosecuted. Sixty-one percent felt that parents who abuse or neglect their children can, in most cases, change their behavior when they are given adequate help. Of those who returned their questionnaire, 75 percent stated that they would be willing to support increased spending by the local government to provide better services for parents who abuse or neglect their children. It seems reasonable to question the reliability of this response since the respondents admitted lack of knowledge about the adequacy of current services to abusing or neglecting parents.

Few respondents offered suggestions on improving services to abused and neglected children and their parents. The most frequently mentioned need (7 respondents) was the development of a more effective method of case finding. These respondents felt that too many cases went unreported.

#### IV. CONCLUSIONS

After reviewing the data from the cases made available, patterns of similarity emerged. It may be helpful to recognize these patterns in determining situations that have potential for abuse in the future. With this thought in mind, the following conclusions have been reached.

1. The population at greatest risk for developing patterns of child abuse seems to be women, high school dropouts, who married as teenagers. Having foregone the completion of their high school education or other specialized training, they find themselves ill equipped to raise their families alone as a result of divorce or separation. The commonly held belief that stepmothers are frequently abusive did not hold true in this study; in fact, no stepmothers were to be found in the suspected abuser population.
2. It seems that the child most often abused in our community is the pre-school aged child who is either the only child or the oldest child of the family. It is interesting to note that the sex of the child did not seem to be important and perhaps this speaks to the stereotype of the single mother most often abusing the male child.
3. Perhaps the most singularly significant point is the social isolation in which these families seem to live. While most of them have relatives in the immediate vicinity, there are few meaningful contacts with relatives or significant others. They are extremely mobile, frequently moving from one rental property to another and seldom owning their own homes. Few of them have telephones or automobiles or any easily accessible opportunity to speak with other people or to leave their immediate situation. Most of this population did profess a belief in some religion, but few found opportunity or inclination to be actively involved in that religion. One of the most important points of the whole study is that these parents are unable to leave the immediate attention of their children for any kind of social, recreational or personal kind of pursuit more than once or twice a month.
4. The population at risk is not entirely made up of welfare recipients; in fact, the bulk of them were not. They were, however, that group of people not qualifying for welfare, but with no particular job skills or capability; therefore, essentially finding themselves to be unemployed or laid off.

As a result of their financial disability, these people have sought counseling and financial help on numerous occasions. However, seldom does the agency recognize their potential for child abuse and their explosive depression and frustration.

5. This study shows that there is a real hesitancy of professionals as well as the public to report suspected child abuse. There is a definite lack of understanding of responsibilities and the process of reporting suspected abuse. In view of all the confusion and hesitancy, perhaps the singularly most important referral source has been and will continue to be the medical facilities.

6. There seems to be a problem in terms of legal determination as to when a child may or may not return home. Over half of the children were removed for one year or longer, but few children were removed permanently. It would seem that many children were being removed for unnecessarily long periods of time while a legal determination is made.

**APPENDIX A**

Survey of Child Abuse Cases -  
Vanderburgh County

1. Age of Abused Child:
2. Sex of Abused Child:
  - a. Male
  - b. Female
3. Relationship of Suspected Abuser:
  - a. Mother
  - b. Father
  - c. Stepmother
  - d. Stepfather
  - e. Other
4. Address:
5. Stability of Living Quarters:
  - a. No Change in Preceding Year
  - b. One or Two Changes in Preceding Year
  - c. Three or More Changes in Preceding Year
6. Relatives Living in Vanderburgh County:
  - a. Yes
  - b. No
7. Educational Level of Suspected Abuser:
  - a. Did not complete elementary
  - b. Elementary
  - c. Did not complete secondary
  - d. Completed secondary
  - e. College
8. Stability of Employment:
  - a. Unemployed at the Time of Abuse
  - b. Sporadic Employment within preceding six months

- c. Steady Employment
    - 1. Strike
    - 2. Sick Leave
  - d. Other
9. Suspected Abuser was abused as child:
- a. Yes
  - b. No
10. History of Abuse:
- a. Yes
  - b. No
11. Marital Status:
- a. Married
  - b. Single
  - c. Widowed
  - d. Divorced
  - e. Separated
  - f. Other
12. Involved with Other Social Service:
- a. Yes (which)
  - b. No
  - c. Unknown
13. Previous Physician Involvement:
- a. Yes
  - b. No
  - c. Unknown
14. Previous Hospital Involvement:
- a. Yes
  - b. No
  - c. Unknown

15. Previous Police Involvement:

- a. Yes
- b. No
- c. Unknown

16. School Involvement:

- a. Yes
- b. No
- c. Unknown

17. Health of Parent (Physical):

- a. Excellent
- b. Good
- c. Fair
- d. Poor
- e. Unknown

18. Recent Trauma:

- a. Yes (what)
- b. No
- c. Unknown

19. Stated Reason for Abuse:

20. Month:

- |      |      |      |       |
|------|------|------|-------|
| a. 1 | d. 4 | g. 7 | j. 10 |
| b. 2 | e. 5 | h. 8 | k. 11 |
| c. 3 | f. 6 | i. 9 | l. 12 |

21. Agencies involved after referral:

22. Type of Abuse:

- a. Beating
- b. Malnutrition
- c. Fracture
- d. Burns

- e. Sexual
  - f. Poisoning
  - g. Cutting
  - h. Suffocating
  - i. Other
23. I.Q. of Abuser:
- a. Bright
  - b. Normal
  - c. Dull
24. Legal Disposition of Child:
- a. Remain in home
  - b. Placed with relative
  - c. Foster Placement
  - d. Institutionalization
25. Time of removal from home:
- a. Up to six months
  - b. Six months to year
  - c. One year or more
  - d. Permanent
  - e. Not removed
26. Who reported abuse:
- a. neighbor
  - b. relative
  - c. police
  - d. medical
  - e. school
  - f. Other



27. Drug or Alcohol Involvement:
- a. Occasional
  - b. Habitual
  - c. No involvement
  - d. Unknown
28. Race:
- a. White
  - b. Black
  - c. Other
29. Sibling Rank: ?/?
30. Religion (Involvement) VI I SI NI
- a. Protestant
  - b. Catholic
  - c. Jewish
  - d. Other
31. Age of Suspected Abuser:
32. Response:
- a. Open
  - b. Defensive but cooperative
  - c. Very defensive/limited cooperation
33. Suicide Attempts of Abuser:
- a. Yes
  - b. No
  - c. Unknown
34. Telephone in Home:
- a. Yes
  - b. No
  - c. Unknown

35. Transportation Available:

- a. Yes
- b. No
- c. Unknown

36. Outside Interest:

- a. Extensive
- b. Limited
- c. None

37. Prior Military Service of Suspected Abuser:

- a. Yes
- b. No
- c. N/A

38. Criminal Record of Abuser:

- a. Yes
- b. No
- c. Unknown

39. Family Home

- a. Owned
- b. Rented
- c. Leased

40. Bankruptcy Filed:

- a. Yes
- b. No
- c. Unknown

41. Classification of Abuser Personality:

- |        |       |
|--------|-------|
| a. I   | d. IV |
| b. II  | e. V  |
| c. III | f. VI |

APPENDIX B

QUESTIONNAIRE ON CHILD ABUSE AND NEGLECT

- 1) An abused child is any child whose health and development has been impaired or endangered by physical assault. In your opinion is this a serious problem in this community?  
\_\_\_\_\_ agree \_\_\_\_\_ disagree \_\_\_\_\_ don't know
- 2) A neglected child is any child whose health and development has been impaired or endangered by lack of adequate care or protection. In your opinion, is this a serious problem in this community?  
\_\_\_\_\_ agree \_\_\_\_\_ disagree \_\_\_\_\_ don't know
- 3) Child abuse or neglect are not problems in middle income families.  
\_\_\_\_\_ agree \_\_\_\_\_ disagree \_\_\_\_\_ don't know
- 4) Child abuse or neglect almost always occurs in single-parent families.  
\_\_\_\_\_ agree \_\_\_\_\_ disagree \_\_\_\_\_ don't know
- 5) Child abuse or neglect almost always occurs in families which are socially isolated.  
\_\_\_\_\_ agree \_\_\_\_\_ disagree \_\_\_\_\_ don't know
- 6) Child abuse or neglect varies considerably according to race.  
\_\_\_\_\_ agree \_\_\_\_\_ disagree \_\_\_\_\_ don't know
- 7) The majority of abused children are of preschool age.  
\_\_\_\_\_ agree \_\_\_\_\_ disagree \_\_\_\_\_ don't know
- 8) Parents of abused or neglected children frequently have been abused or neglected by their parents.  
\_\_\_\_\_ agree \_\_\_\_\_ disagree \_\_\_\_\_ don't know
- 9) Indiana Law requires that persons having knowledge of an abused child report that child to the police or the county welfare department.  
\_\_\_\_\_ agree \_\_\_\_\_ disagree \_\_\_\_\_ don't know
- 10) Indiana Law grants immunity from civil or criminal liability to persons reporting child abuse or neglect.  
\_\_\_\_\_ agree \_\_\_\_\_ disagree \_\_\_\_\_ don't know
- 11) Parents who abuse or neglect their children should be prosecuted to the full extent provided by the Law.  
\_\_\_\_\_ agree \_\_\_\_\_ disagree \_\_\_\_\_ don't know

(Continued on reverse side)

12) Parents who abuse or neglect their children but who voluntarily seek help should not be prosecuted.

\_\_\_\_\_ agree \_\_\_\_\_ disagree \_\_\_\_\_ don't know

13) Parents who abuse or neglect their children can, in most cases, change their behavior when they are given adequate help.

\_\_\_\_\_ agree \_\_\_\_\_ disagree \_\_\_\_\_ don't know

14) Would you be willing to support increased spending by local government to provide better services for parents who abuse or neglect their children?

\_\_\_\_\_ agree \_\_\_\_\_ disagree \_\_\_\_\_ don't know

15) Persons who suspect that a child is being abused or neglected are usually hesitant to report the situation.

\_\_\_\_\_ agree \_\_\_\_\_ disagree \_\_\_\_\_ don't know

Please explain

16) In Vanderburgh County abused and neglected children receive adequate protection.

\_\_\_\_\_ agree \_\_\_\_\_ disagree \_\_\_\_\_ don't know

Please explain

17) In Vanderburgh County parents of abused and neglected children receive adequate service.

\_\_\_\_\_ agree \_\_\_\_\_ disagree \_\_\_\_\_ don't know

Please explain

18) Please state your occupation or profession. \_\_\_\_\_

19) Number of years you have practiced your occupation or profession in this community. \_\_\_\_\_

APPENDIX C

Figure 1  
Age of Abused Child

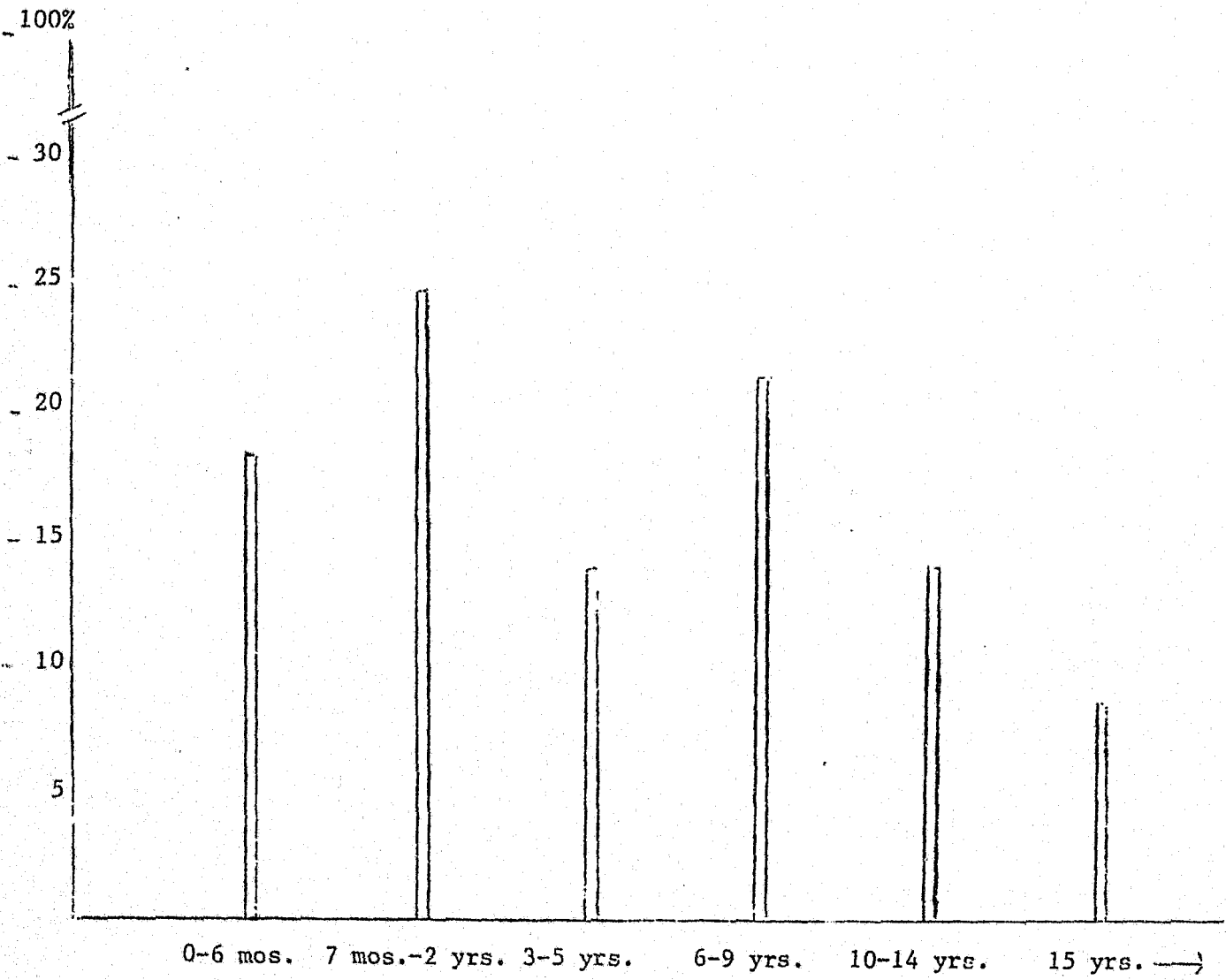


Figure 2  
Age of Suspected Abuser

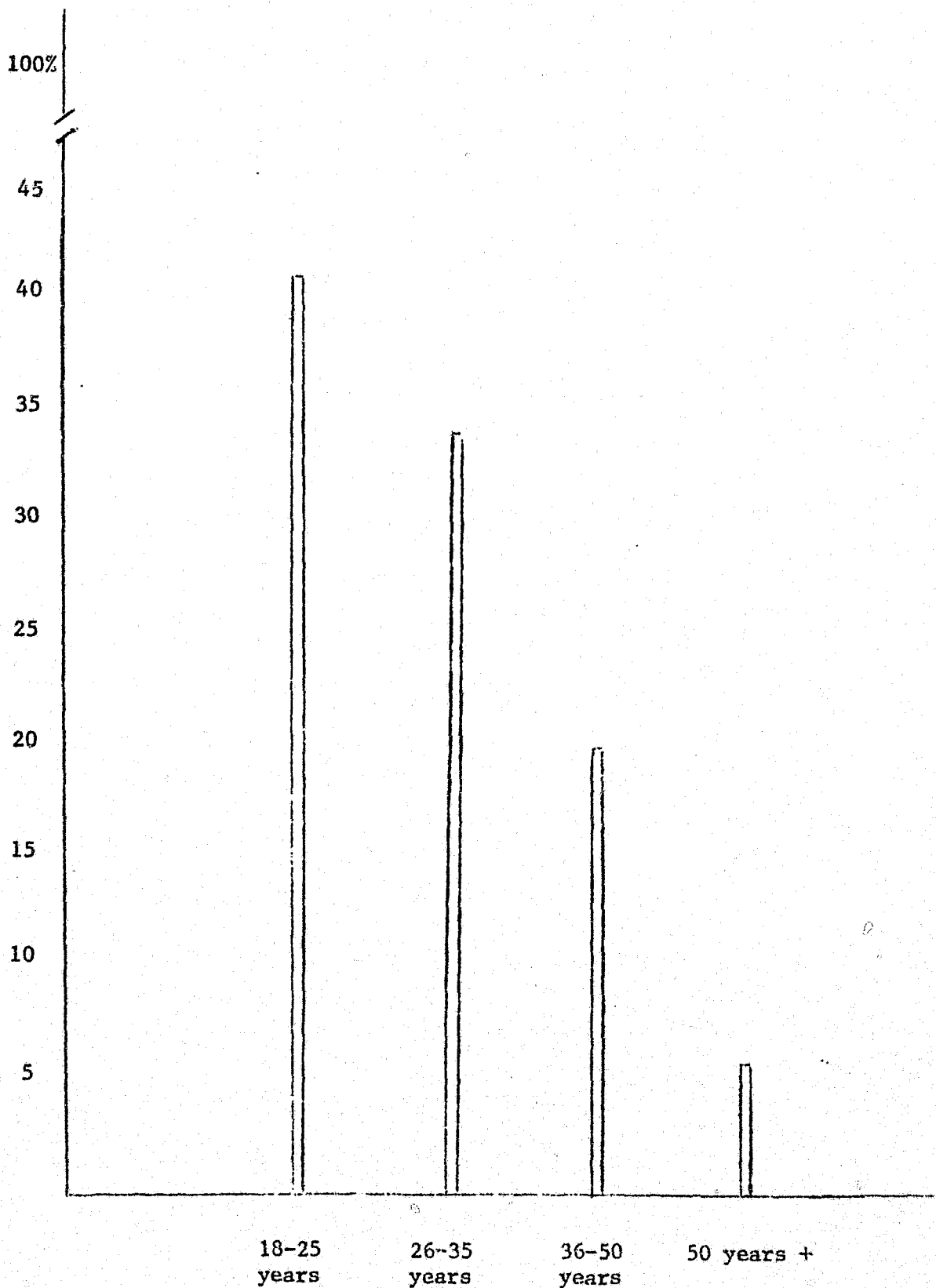
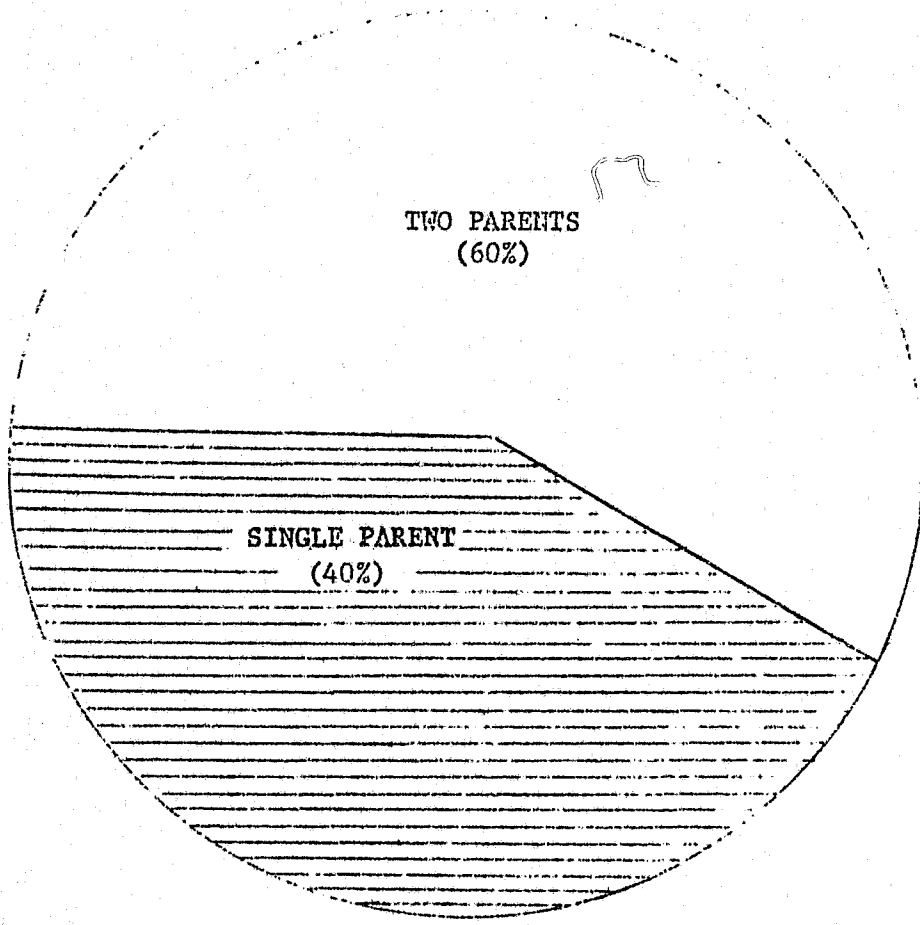




Figure 3

Comparison of Single Parent Families

STUDY  
POPULATION



VANDEBURGH  
COUNTY  
POPULATION

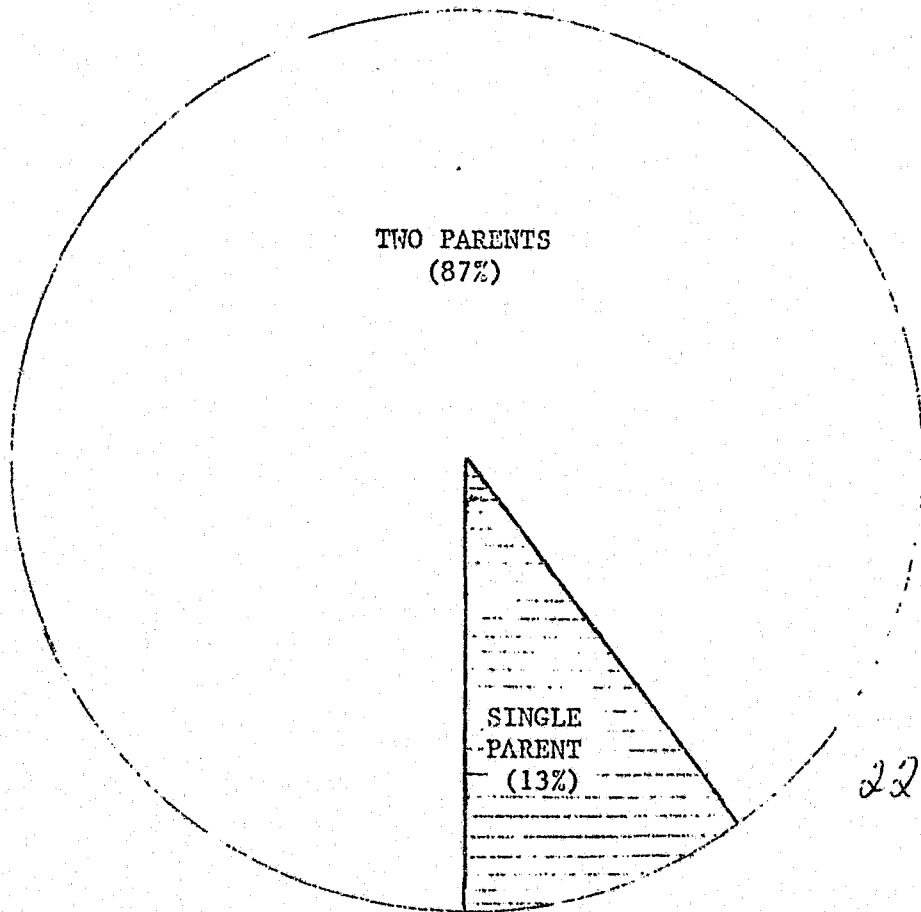


Figure 4

Comparison of Rent versus Home Ownership

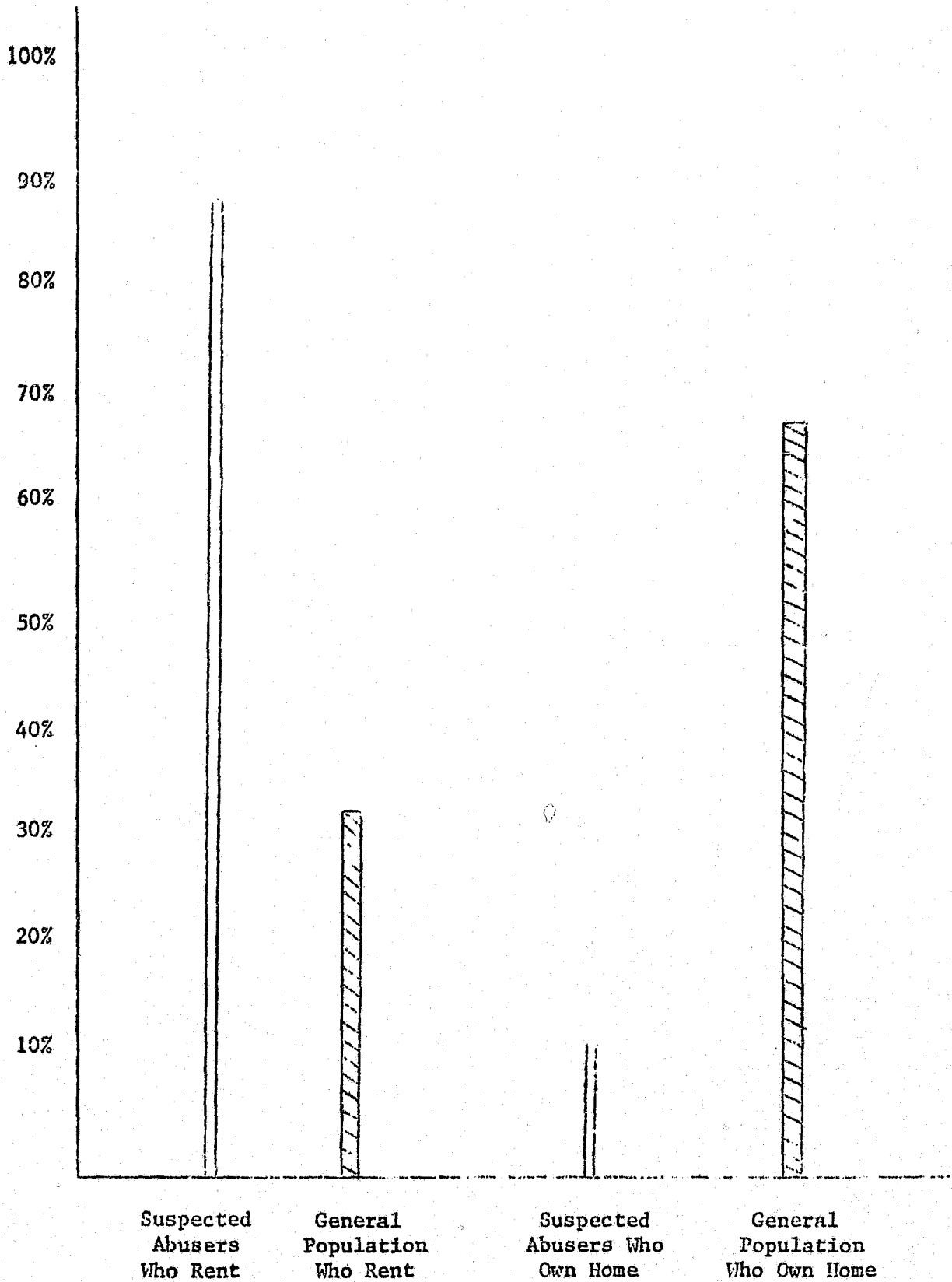


Figure 5  
Referral Source

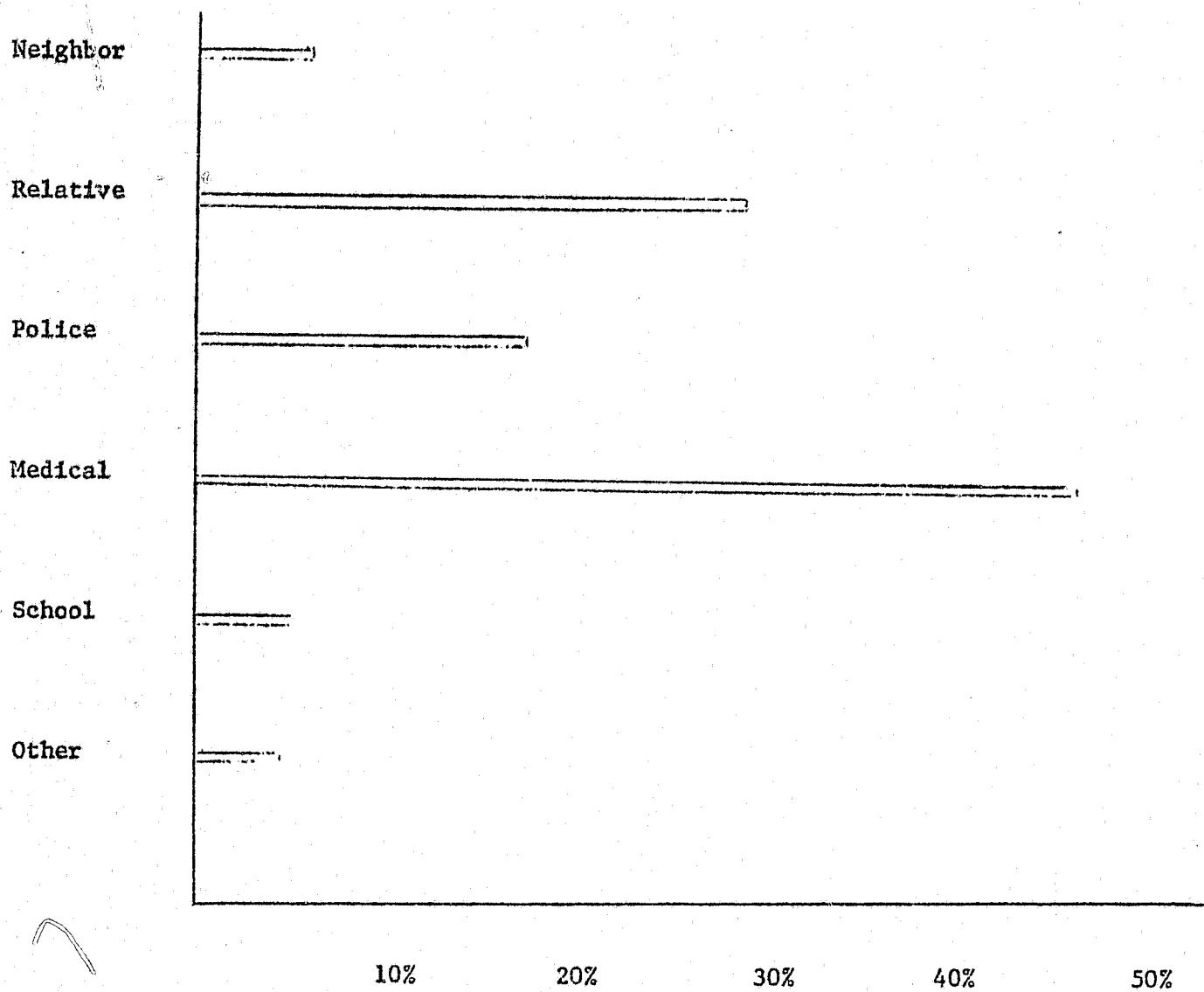


Figure 6

Legal Disposition of Child

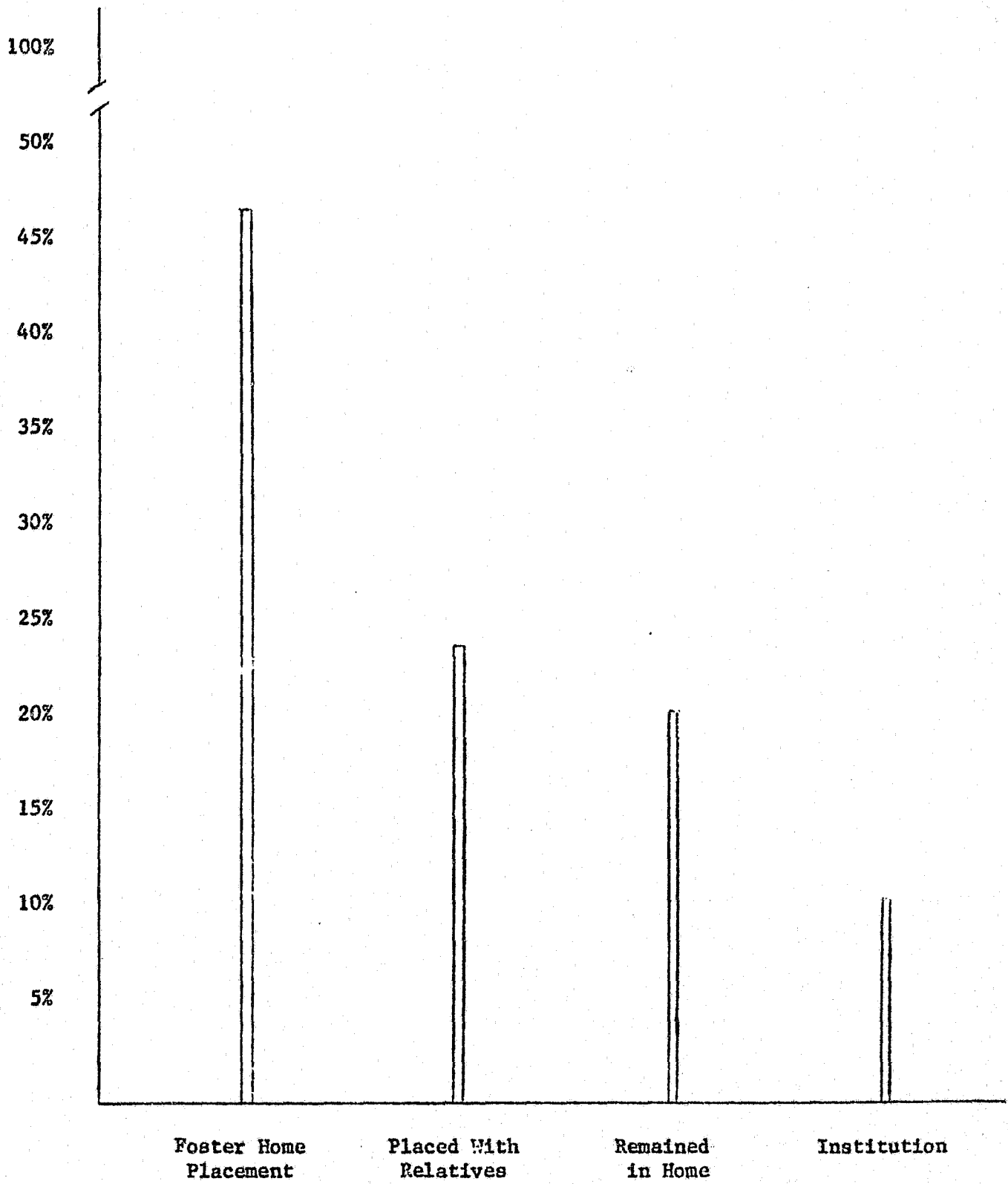
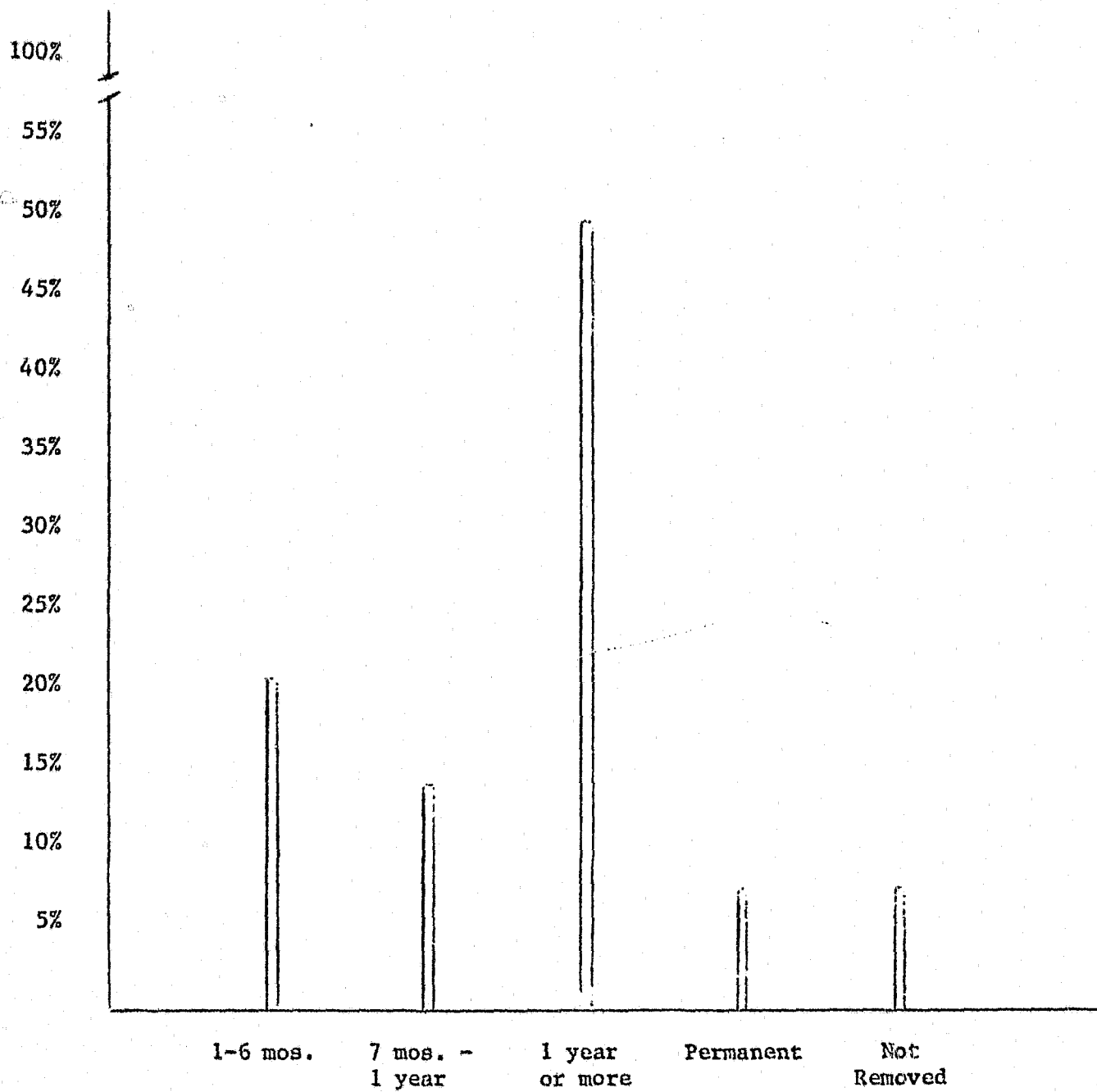


Figure 7

Time of Removal From Home





**END**