

Prepared under grant number 76 NI-99-0045 from the National Institute of Law Enforcement and Criminal Justice, Law Enforcement Assistance Administration, U. S. Department of Justice. Points of view or opinions stated in this document are those of the authors and do not necessarily represent the official positions or policies of the U. S. Department of Justice.

NCJRS

LOAN DOCUMENT

APR 14 1977

RETURN TO:
NCJRS
P O BOX 24036 S. W. POST OFFICE
WASHINGTON, D.C. 20024

ACQUISITIONS

- SITE VISIT SELECTION
PHASE I EVALUATION OF INTENSIVE
SPECIAL PROBATION PROJECTS -

for

U. S. Department of Justice
Law Enforcement Assistance Administration

Staff

J. Banks, Principal Investigator
A. L. Porter
R. L. Rardin
T. R. Siler
V. E. Unger

Research Assistants

B. L. Brownlee
C. B. Hirschman
M. A. Mullens
C. Welsh

Local Advisory Board

Mrs. Rachel B. Champagne Mr. Jim Pace
Dr. Bruce Cook Mr. Inman Phillips
Mr. George Cox Mr. Bill Read
Dr. Richard E. Longfellow

40516
13

The projects selected for site visits were chosen from those 46 ISP projects identified prior to and during the telephone survey. Of these 46 projects, 20 were selected for site visits. Information gathered via the telephone survey was used in choosing the sites. The principal criterion for selecting projects to be visited was the existence of a "good" project evaluation, based upon the judgment of the telephone survey interviewer. Several important factors influenced this judgment. First, it was desirable that the project have an evaluation effort including a research design. Second, it was desirable that the project have a control group. Third, it was desirable that the project have a "good" data base. Of the original 46 ISP projects, 36 received a non-negative judgmental response from the interviewers with respect to this last criterion.

To further narrow the candidates for selection two secondary selection criteria were established. First, the projects should, if possible, utilize a unique approach to probation. Second, the projects selected for site visits should conform to the general characteristics of the entire population of the 46 ISP projects. Using these criteria, the final 20 projects to be visited were selected. The projects, along with their performance with respect to all but the last secondary criterion, are shown in Exhibit I. The performance of the projects selected for site visits with respect to the last secondary criterion (conformity to general characteristics) is shown in Exhibits II through XIV.

Exhibit I

Projects and Their Performance

<u>Project Title</u>	<u>Project Location</u>	<u>Evaluation</u>	<u>Control Group</u>	<u>Data Base</u>	<u>Project Uniqueness</u>	<u>Interviewer Judgment</u>
Adult Probation Aides	Tucson, Arizona	* ^{1/}			*	
Differential Diagnosis Treatment for Adult Offenders	San Jose, California	*	*	*	*	*
Volunteers in Probation	Evansville, Indiana	*		*	*	*
Probation Rehabilitation Three	New York City, New York			*		*
Volunteers in Probation	Columbus, Ohio	*	*		*	*
Adult Community Services Offender Project	Salem, Oregon	*	*	*		*
High Intensity Unit	Philadelphia, Pennsylvania	*	*	*		*
Mini-Block Application	Denver, Colorado	*	*	*	*	*
Exemplary Replication Program	Orlando, Florida	*	*			*
Ohio Governor's Region 10B Probation Rehabilitation Activities	Wooster, Ohio	*				*
Community-Based Corrections	Des Moines, Iowa	*		*	*	*

^{1/}* indicates positive response with respect to criterion or subject

^{2/} indicates whether the interviewer thought the project worthwhile and receptive to visit.

<u>Project Title</u>	<u>Project Location</u>	<u>Evaluation</u>	<u>Control Group</u>	<u>Data Base</u>	<u>Project Uniqueness</u>	<u>Interview Judgment</u>
Special Services for Mentally Deficient Offenders	Tucson, Arizona	*		*	*	*
Model Adult Probation Project	Cambridge, Massachusetts					*
Mutual Objectives Contact Program	Lansing, Michigan	*	*	*	*	*
Comprehensive Probation & Parole Services Project	Jefferson City, Missouri	*	*	*		
Model Probation Case Project	Brockton, Massachusetts	*	*	*		
Intensive Differentiated Supervision of Impact Parolees and Probationers	Baltimore, Maryland	*	*	*	*	*
Intensive Supervision of Narcotics Offenders	Baltimore, Maryland	*	*	*	*	*
Amarundel County Impact Probation Project	Millersville, Maryland	*		*		*
Project Scope	Atlanta, Georgia	*	*	*		*

EXHIBIT II *

Distribution of Years in Operation of Projects Selected for Site Visits Vs. Total ISP Project Population

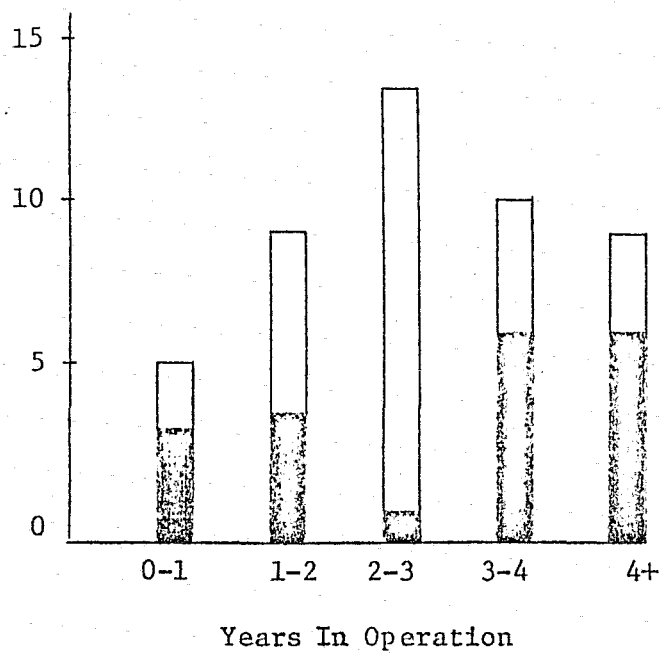
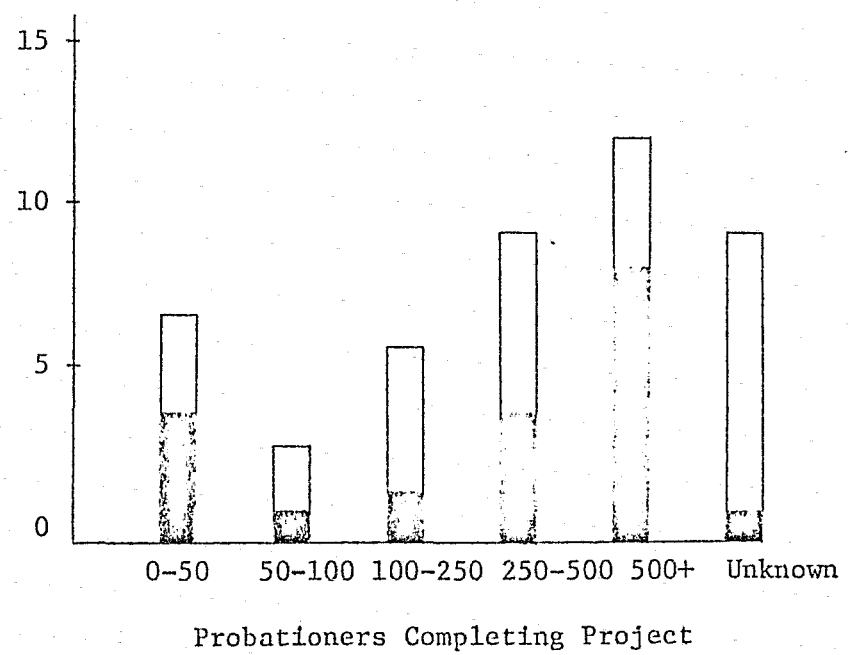


EXHIBIT III

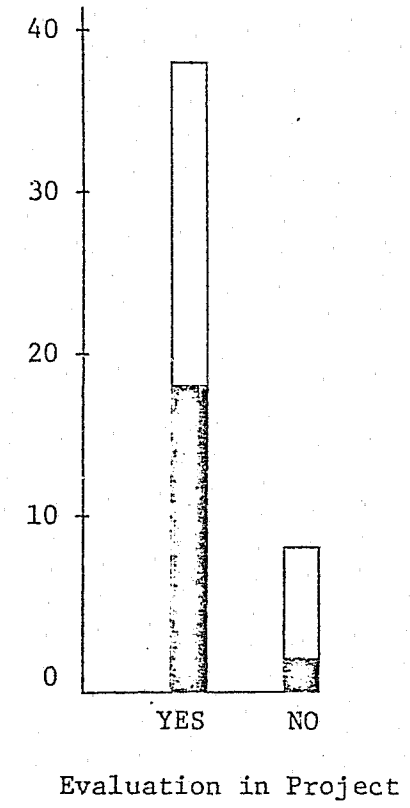
Distribution of Probationers Completing Project of Projects Selected for Site Visits Vs. Total ISP Project Population



*In Exhibits II through XII, the shaded area represents projects selected for site visit

EXHIBIT IV

Distribution of Evaluation in Project of Projects Selected for Site Visits
Vs. Total ISP Project Population



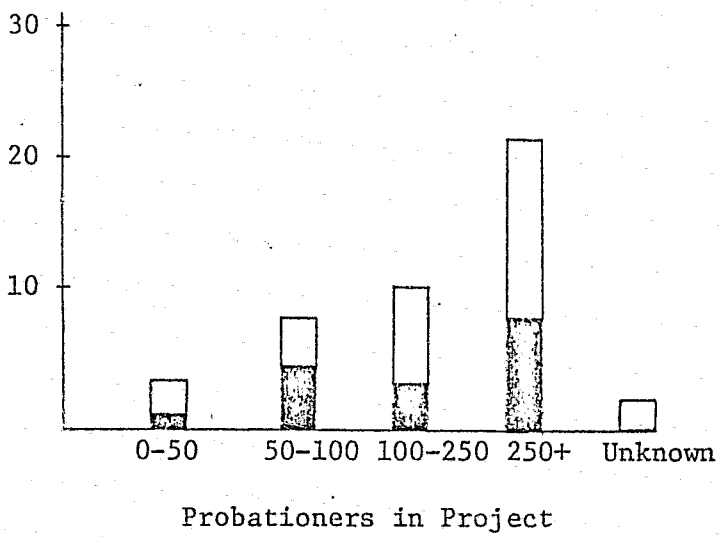


EXHIBIT V

Distribution of Probationers in Project of Projects Selected for Site Visits Vs. Total ISP Project Population

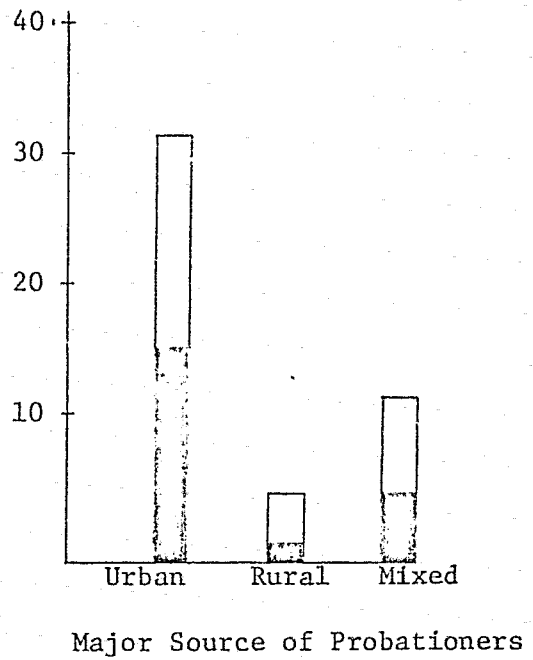
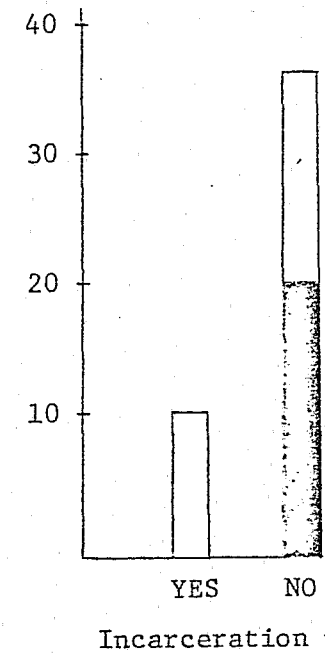


EXHIBIT VI

Distribution of Major Source of Probationers of Projects Selected for Site Visits Vs. Total ISP Project Population

EXHIBIT VII

Distribution of Incarceration of Projects Selected for Site Visits
Vs. Total ISP Project Population



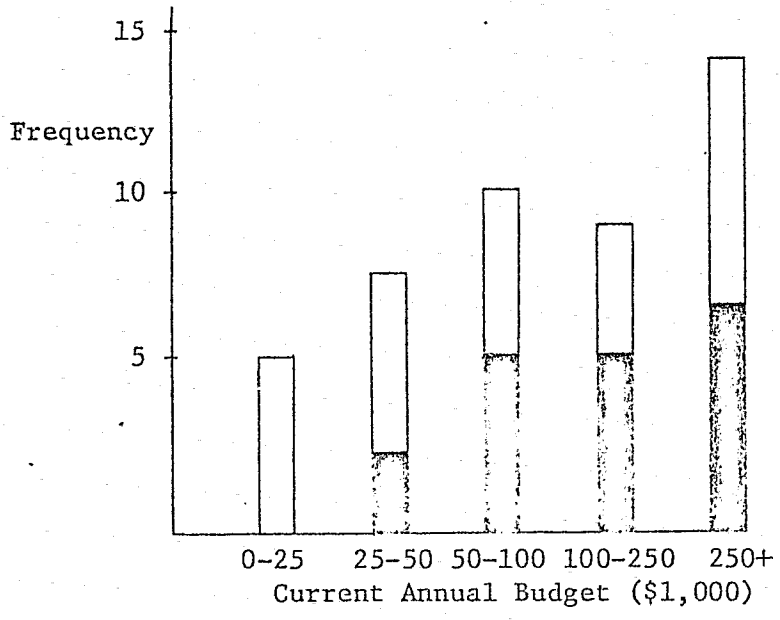


EXHIBIT VIII

Distribution of Current Annual Budget (\$1,000)
of Projects Selected for Site Visits Vs. Total ISP
Project Population

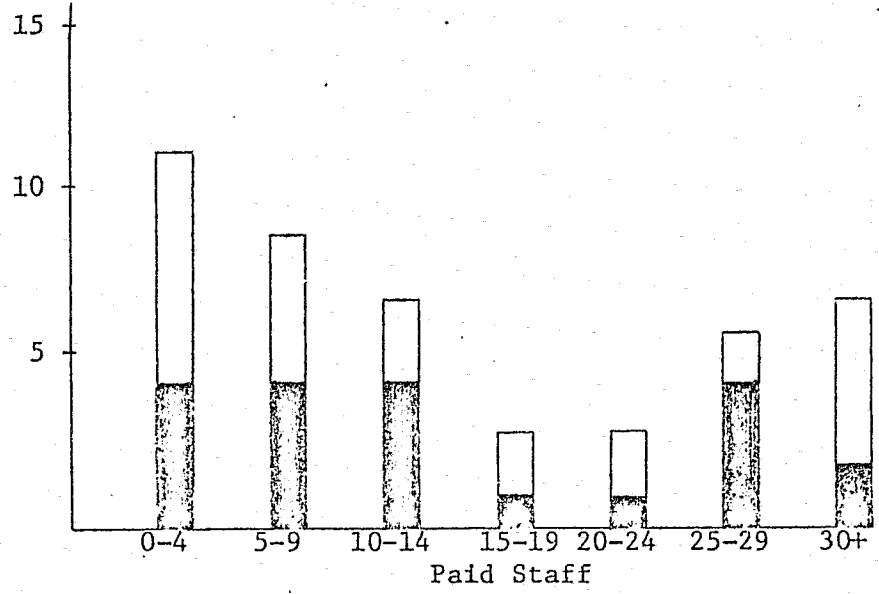


EXHIBIT IX

Distribution of Paid Staff of Projects Selected for
Site Visits Vs. Total ISP Project Population

EXHIBIT X

Distribution of Control Group of Projects Selected for Site Visits
Vs. Total ISP Project Population

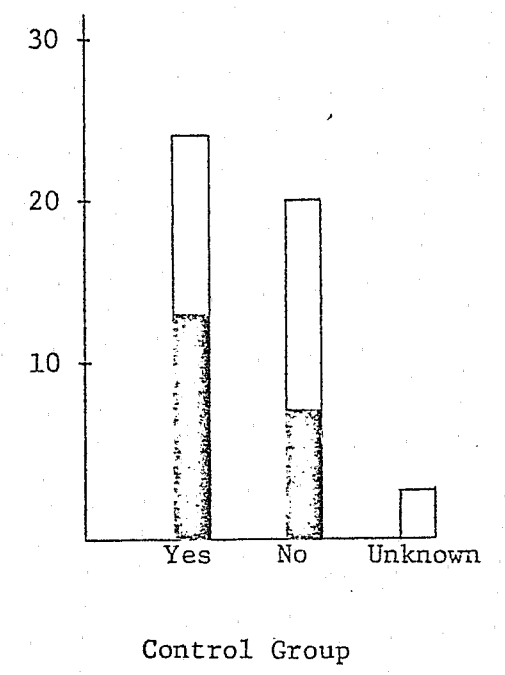
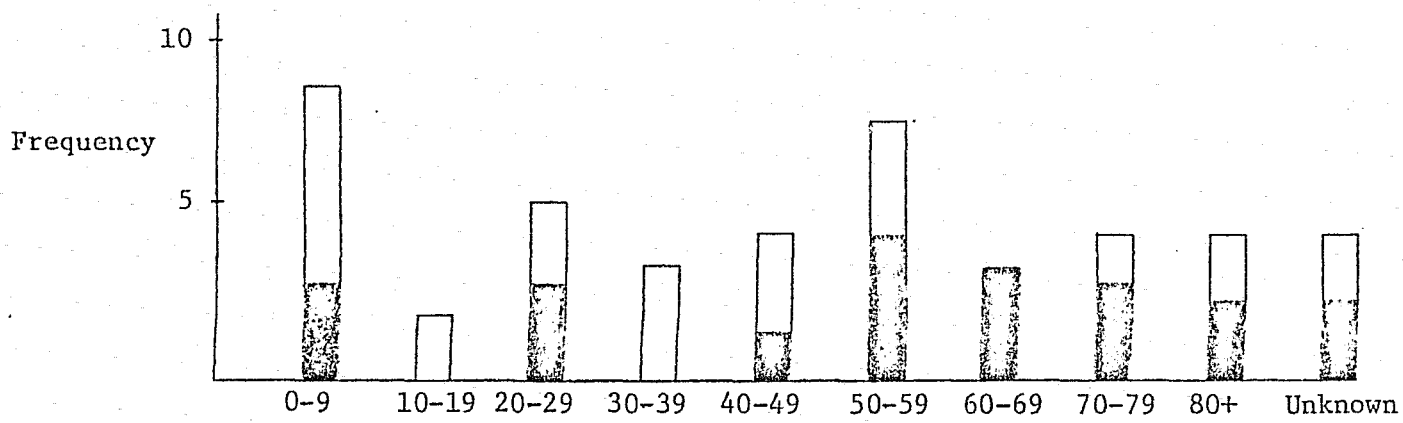


EXHIBIT XI

Distribution of Caseload^{1/} of Projects Selected for Site Visits Vs. Total ISP Project Population



^{1/}Clients Supervised + 5 times Pre-Sentence Investigations

EXHIBIT XII

Distribution of LEAA Region of Projects Selected for Site Visits Vs. Total ISP Project Population

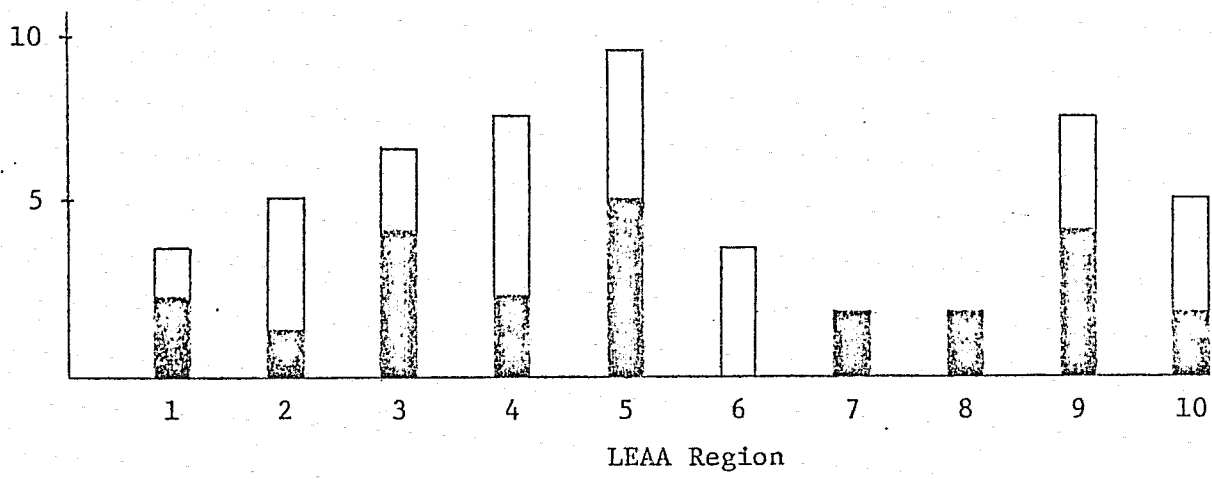


EXHIBIT XIII

Distribution of Restrictions on Clients of Projects Selected
For Site Visits Vs. Total ISP Project Population

	<u>Interviewed</u>	<u>Site Visit</u>
None	19	8
Felons	8	4
Non-Violent	2	0
Impact Crime	4	1
Migrants	1	
Sex Offender	1	1
1st Offender	3	0
Burglary	3	2
Narcotics	1	1
Alcohol	1	1
Mental	1	1
Comm. Resident	1	0
Misdemeanants	2	1

EXHIBIT XIV

Distribution of Primary Project Focus of Projects
Selected For Site Visits Vs. Total Project Population

	<u>Interviewed</u>	<u>Site Vi</u>
Volunteer	6	2
Probation Aide	2	1
Specialized Treatment	7	4
Decentralized Facilities	3	2
Intensive Supervision	8	5
Employment	2	0
Staff Expansion	3	0
Replication	1	1
Community	2	0
Pre-Sentence	1	0
Drug	2	1
Caseload Mgt.	3	0
Mental	1	1
Contract	1	1
Misc.	5	2

END