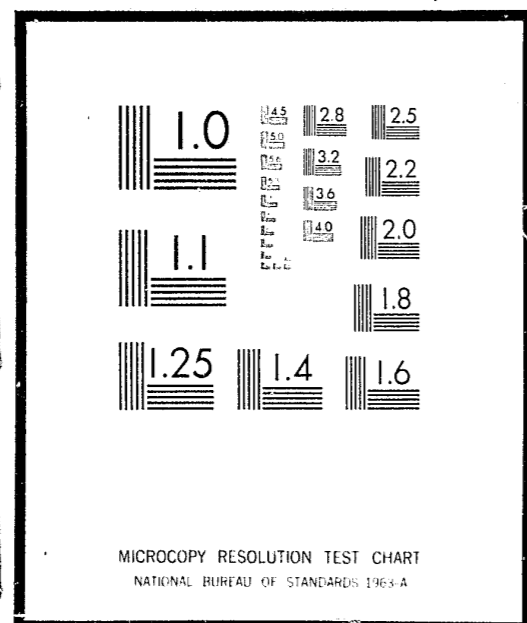


# NCJRS

This microfiche was produced from documents received for inclusion in the NCJRS data base. Since NCJRS cannot exercise control over the physical condition of the documents submitted, the individual frame quality will vary. The resolution chart on this frame may be used to evaluate the document quality.



Microfilming procedures used to create this fiche comply with the standards set forth in 41CFR 101-11.504

Points of view or opinions stated in this document are those of the author(s) and do not represent the official position or policies of the U.S. Department of Justice.

U.S. DEPARTMENT OF JUSTICE  
LAW ENFORCEMENT ASSISTANCE ADMINISTRATION  
NATIONAL CRIMINAL JUSTICE REFERENCE SERVICE  
WASHINGTON, D.C. 20531

4/28/77  
Date filmed

Research Report 75-8

A STUDY OF THE INCIDENCE OF NEW  
CRIMES CHARGED TO RESIDENTS  
WHILE ON FURLOUGH FROM THE YOUTH  
AND ADULT INSTITUTIONS UNDER THE  
JURISDICTION OF THE D. C. DEPART-  
MENT OF CORRECTIONS DURING THE  
FISCAL YEAR 1974.

Prepared by:

The Office of Planning and Program Analysis  
D.C. Department of Corrections  
D. C. Jackson, Director

May 1, 1975

NCJRS

FEB 14 1977

ACQUISITIONS

Mary H. Oakey  
Program Analyst

39061

Research Report 75-8

Study of the Incidence of New Crimes Charged to Residents While on Furlough from the Youth and Adult Institutions Under the Jurisdiction of the D. C. Department of Corrections During the Fiscal Year 1974.

The study illustrates the contrast between the total number of new crimes charged to residents while on furlough from the seven institutions under the jurisdiction of the Department and the actual number of these charges which resulted in convictions. The study includes all residents who participated in the furlough program during the Fiscal Year 1974.

130P3

## INTRODUCTION

This study was conducted to determine the incidence of new crimes charged to wards of the District of Columbia Department of Corrections while on furlough from the seven institutions under its jurisdiction.

These institutions are identified as follows:

- Adult Services Division which consists of one maximum, one medium and one minimum security facility for adult male offenders who are serving felony sentences.
- Detention Services which includes the D. C. Jail and the Women's Detention Center. These institutions are used primarily as holding facilities for persons awaiting trial or transfer to another institution, and those offenders who are serving misdemeanor sentences.
- Two Youth Centers which serve young offenders who are convicted under the Federal Youth Corrections Act.

The average population of the institutions for the fiscal year 1974 was 2,831.

Furloughs totaling 38,369 were granted by the Department to residents who qualified to receive the privilege.

### PROCEDURE

The data contained in this study are based on the fiscal year 1974 (July 1, 1973 through June 30, 1974), and the following sources were utilized in the research:

1. Daily Record of Arrests, Metropolitan Police Department, Washington, D. C. for the fiscal year.
2. Federal Bureau of Investigation - a listing of those under the jurisdiction of this Department who were apprehended by the FBI and charged with new offenses during the fiscal year.
3. Escape and apprehension records of the D. C. Department of Corrections.
4. Records of the U. S. District Court.
5. Wales System, Department terminal.
6. Terminal readings and printouts of the D. C. Superior Court computer system.
7. Record office unit of each institution of the D. C. Department of Corrections.
8. Files of the Community Services Division of the D. C. Department of Corrections.

In order to identify the residents who were charged with having committed new crimes while on furlough, a search was made of the daily record of arrests by the Metropolitan Police Department, the list of those persons who were apprehended by the FBI and charged with new offenses and the escape and apprehension record of this Department. From this research, it was established that 25 persons were charged with a total of 32 new offenses..

The Wales computer terminal was used to establish the present whereabouts of each of the 25 persons, as well as to supply the disposition of new charges, information on the original charge, time left to serve on original charge prior to parole eligibility at the time the new charge was received, and other information relevant to conducting the research. In those cases where the information in the Wales terminal was incomplete, the terminal and printouts of the Superior Court computer system and the District Court records were used to obtain the final disposition in each case. The record office files of the institutions and the Community Services Division were utilized to further verify all names and to supply the type of furlough and information not found in the other sources.

#### PRESENTATION OF DATA

Table 1 reflects the average yearly population of each institution, together with the number of furloughs granted by each institution and the number of new charges received by the residents from that institution while on furlough.

Table 1  
Average Population of Each Institution, Number of Furloughs  
Granted and New Charges Received

Institution	*Average Population Fiscal Year 1974	Furloughs	No. Residents Participating	Charges Received
Minimum Sec.	235	28,796	557	21
Medium Sec.	1,060	8,381	300	3
Maximum Sec.	200	---	---	--
Youth Center I	325	283	**180	3
Youth Center II	198	747	246	4
Jail	749	132	** 8	1
Women's Det. Ctr.	<u>62</u>	<u>30</u>	<u>11</u>	<u>0</u>
Total	2,831	38,369	1,302	32

\*Average population is based on monthly averages for the fiscal year.  
\*\*Estimated.

Of the 32 new charges, 18 resulted in convictions, 10 resulted in no convictions, on 3 no record of disposition could be found, and 1 charge is still pending. Of the 18 convicted, 16 were sentenced to Department institutions, 1 was transferred to a Federal institution, and 1 was given probation. Further, the 18 convictions are broken down into 16 felony and 2 misdemeanor.

Table 2 compares the number of new convictions received with the number of charges which resulted in no convictions.

Table 2  
Disposition of New Charges Brought

Category	New Charges Brought	Percentage
New Convictions	18	56.25%
*No Conviction (Nolle Prosequi, No Papers, Dismissed, and No Charges)	10	31.12%
Disposition Pending	1	3.12%
No Record of Disposition	<u>3</u>	<u>9.86%</u>
	32	99.86%

Table 3 is a breakdown by category of offenses committed against persons, property, drug abuse, and other, and subsequent dispositions resulting in: conviction or no conviction (\* and no record of disposition), and case pending.

Table 3  
Category of Offense by Disposition

Offense Category	Total Charges Brought	Pending	Convictions	No convictions
Against Person	18 (100%)	0 (0%)	14 (78%)	4 (22%)
Against Property	6 (100%)	1 (17%)	3 (50%)	2 (33%)
Drug Abuse	4 (100%)	0 (0%)	1 (25%)	3 (75%)
**Other	<u>4 (100%)</u>	<u>0 (0%)</u>	<u>0 (0%)</u>	<u>4 (100%)</u>
	32 (100%)	1 (3.12%)	18 (56.25%)	13 (40.62%)

\*\* Includes Durham Humphrey Act, Carry. Dang. Weapon, Unregistered Firearm, Driving w/o Permit.

Of the 32 new charges received, 7 were multiple charges; thus a total of 25 persons were charged.

Table 4 indicates the time remaining until parole eligibility at the time the new charges were placed against the residents.

Table 4  
Time Remaining Until Parole Eligibility  
at Time New Charges were Brought

Time Remaining Until Parole Eligibility	Number of Residents
1 month to 1 year	9
1 year to 18 months	3
2 years	2
3 years	4
5 years	2
*Youth Act Offenders	5
	25

\*Parole eligibility is determined by the Parole Board.

Table 5 cites the categories of furloughs, together with the number of residents who received new charges while participating in each type.

Table 5  
Furlough Categories

Category	Number of Residents
Work Training	9
Holiday	1
Educational	7
Home Visit	6
Self-help	.1
Total	25

Attached as an appendix is a table showing the breakdown of the 32 new charges in the order of the seriousness of the offense, together with the disposition or status of each case at the time the study was conducted.



#### SUMMARY OF FINDINGS

Our research disclosed that 32 new charges were placed against 25 residents of the institutions under the jurisdiction of the Department during the fiscal year 1974. At the time the study was conducted 1 of the 32 charges was still pending, leaving a total of 31 cases which had been disposed of. Based on the 31 known dispositions, 18 (58.06%) represent new convictions received.

When compared to the 38,369 furloughs that were issued by the Department during the fiscal year, the 25 persons charged represent a new charge rate of .07% or 7 new charges per 10,000 furloughs granted, and the 18 new convictions represent a new conviction rate of .05% or 5 new convictions per 10,000 furloughs granted.

NEW CHARGES BROUGHT AGAINST RESIDENTS OF THE YOUTH AND ADULT INSTITUTIONS UNDER THE JURISDICTION OF THE D.C. DEPARTMENT OF CORRECTIONS DURING THE FISCAL YEAR 1974, SHOWING COMPLETE BREAKDOWN OF OFFENSES AND DISPOSITIONS

Type of Offense	No. New Off.	New Conviction	Cont. & Pend.	Prob. & Susp. Sen.	Nolle	No Paper	Not Guilty	Fine Paid	Dismissed	No Charge	No Record of Disp.
Attempted Murder	2	2									
Armed Robbery	3	3									
Bank Robbery	7	6									1
Assault W/I/T/Rape	1	1									
Assault W/Dang. Weapon	2	1					1				
Threats with a Gun	1					1					
Breaking & Entering	1										1
Grand Larceny	1								1		
Burglary I	2	1							1		
Unauth. Use of Vehicle	1	1									
Narc. & Dang. Drug Act.	4	1			2						1
Theft	1		1								
Petit Larceny	1	1									
Durham Humphry Act.	1									1	
Carry Dang. Weapon	1					1					
Unregistered Firearm	1						1				
Driving w/o Permit	1							1			
Unlawful Entry	1			1							

**END**

*faint handwritten text*