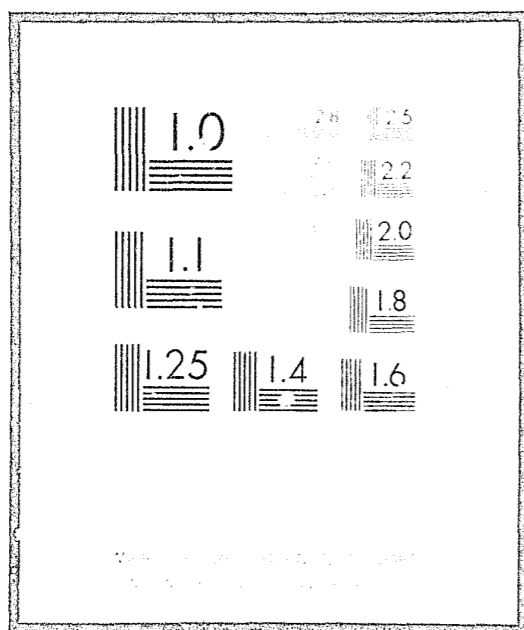


NCJRS

This microfiche was produced from documents received for inclusion in the NCJRS data base. Since NCJRS cannot exercise control over the physical condition of the documents submitted, the individual frame quality will vary. The resolution chart on this frame may be used to evaluate the document quality.



Microfilming procedures used to create this fiche comply with the standards set forth in 41CFR 101-11.504

Points of view or opinions stated in this document are those of the author(s) and do not represent the official position or policies of the U.S. Department of Justice.

U.S. DEPARTMENT OF JUSTICE
LAW ENFORCEMENT ASSISTANCE ADMINISTRATION
NATIONAL CRIMINAL JUSTICE REFERENCE SERVICE
WASHINGTON, D.C. 20531

2/18/77

DATE FILMED

DADE COUNTY PUBLIC SCHOOLS
SECURITY SERVICES DEPARTMENT
ANNUAL REPORT

1975 - 76 FISCAL YEAR

JOHN O. TRUITT, DIRECTOR

37200

September 27, 1976

THE SECURITY SERVICES DEPARTMENT

OF THE

DADE COUNTY PUBLIC SCHOOLS

This annual report contains statistics gathered during the 1975-76 fiscal year, the first full year under the reporting system initiated in September, 1974 by the Security Services Department.

All complaints of illegal or disruptive occurrences that were reported directly to the Security Services Department by the various schools and other Departments in the school system, form the main basis for this report. Additionally, all complaints handled initially by local Police Agencies were followed up by the Security Services Department and are included in the totals.

NCJRS

OCT 27 1978

ACQUISITIONS

DADE COUNTY PUBLIC SCHOOLS
 SECURITY SERVICES DEPARTMENT
 STAFF ORGANIZATIONAL CHART

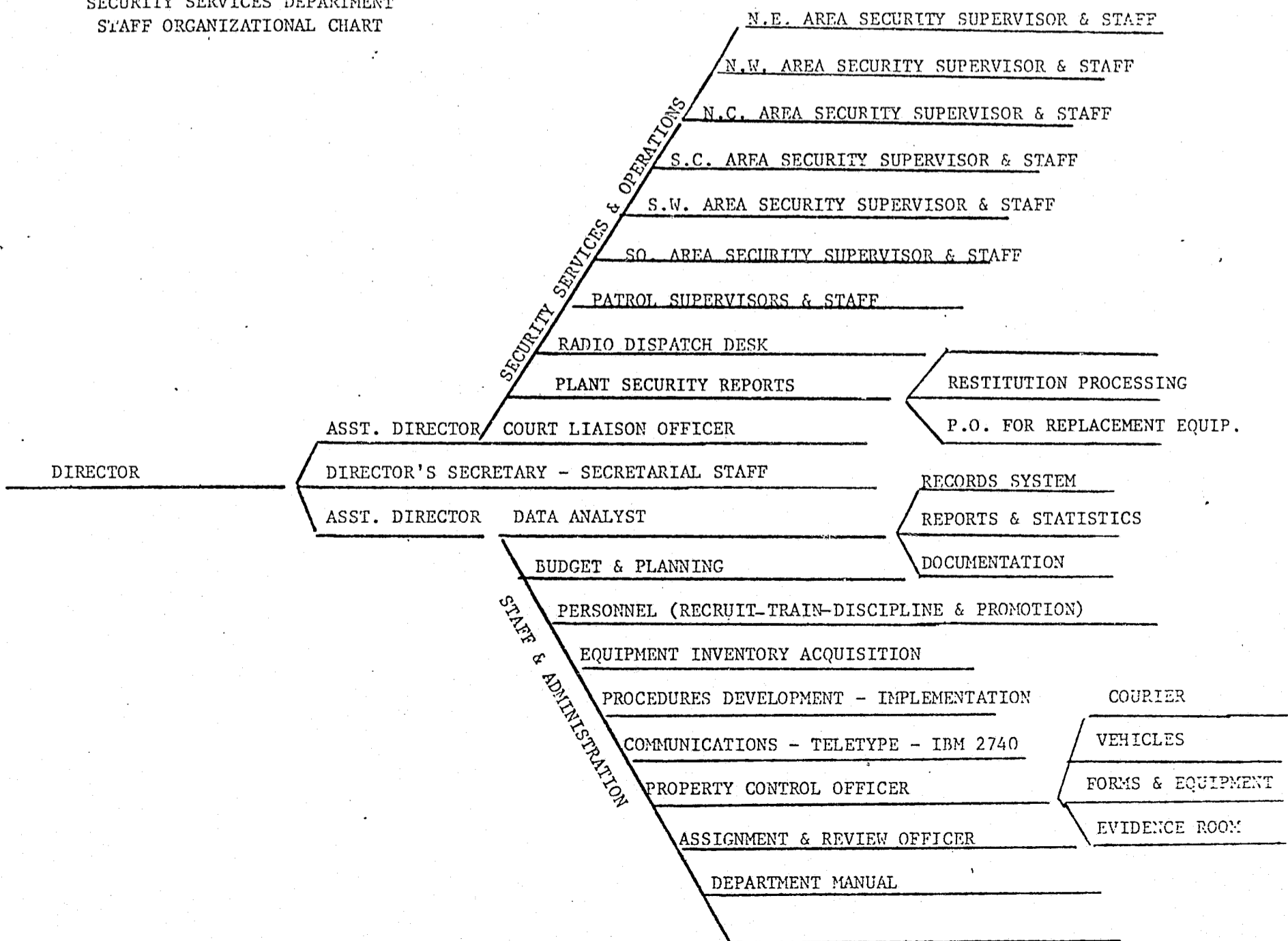


TABLE OF CONTENTS

INTRODUCTION
ORGANIZATIONAL CHART

- I. COMPLAINTS REPORTED AND DISPOSITION
- II. TABLE OF COMPLAINTS AND DISPOSITIONS
- III. COMPLAINTS - TIME OF OCCURRENCE
- IV. TABLE OF COMPLAINTS TIME OF OCCURRENCE
- V. ESTIMATED VALUE OF PROPERTY LOSS AND RECOVERIES
- VI. TABLE OF ESTIMATED PROPERTY LOSS AND RECOVERY
- VII. OFFENDERS BY AGE AND ETHNIC CLASSIFICATION
- VIII. TABLE OF OFFENDERS BY AGE AND ETHNIC CLASSIFICATION
- IX. DECENTRALIZATION
- X. JUVENILE OFFENDERS REFERRED TO DIVISION OF YOUTH SERVICES
COURT ATTENDANCE
EMPLOYEE APPLICANT BACKGROUND INVESTIGATION
- XI. AUTOMATED ALARM SYSTEMS
- XII. PLANT SECURITY REPORTS
RESTITUTION FOR DAMAGES
- XIII. INTERN PROGRAM
TRAINING
- XIV. SCHOOLS AND SEMINARS ATTENDED
- XV. COMPLAINT REPORTS BY SCHOOL
- XVI. GLOSSARY

COMPLAINTS REPORTED AND DISPOSITIONS

The following table groups the complaints reported to the Security Services Department during the 1975-76 Fiscal Year by three categories: OFFENSES AGAINST PERSONS, OFFENSES AGAINST PROPERTY AND OTHER OFFENSES.

Reported complaints are grouped by Area and School level, Special Center, Bus and Other School locations in the table on Page II - A.

DADE COUNTY PUBLIC SCHOOLS
SECURITY SERVICES DEPARTMENT

FISCAL YEAR
COMPLAINT ACTIVITY REPORT
PERIOD COVERED: 1975 - 76

OFFENSES AGAINST PERSONS	COMPLAINTS		ACTUAL TOTAL	CLEARED BY		TOTAL CLEARED
	RECEIVED	UNFOUNDED		ARREST	EX. CLEARED	
HOMICIDE	-	-	-	-	-	-
RAPE	4	-2	2	-	1	3
ROBBERY	156	-7	149	56	32	95
ASSAULT	-	-	-	-	-	-
ON PERSONNEL	259	-3	256	114	142	259
ON STUDENTS	842	-10	832	203	454	667
OTHER ASSAULTS	31	-3	28	6	15	24
SEX OFFENSES	48	-6	42	9	20	35
TOTAL	1340	-31	1309	388	664	1083
OFFENSES AGAINST PROPERTY						
BREAKING & ENTERING	2055	-37	2018	232	97	366
LARCENY (SCHOOL PROP.)	580	-15	565	26	49	90
LARCENY (PERSONAL PROP.)	1686	-25	1661	76	179	280
AUTO THEFT	15	-	15	3	7	10
ARSON	71	-1	70	5	10	16
POSSESSION STOLEN PROP.	12	-1	11	9	6	16
VANDALISM	1212	-25	1187	34	336	395
TOTAL	5631	-104	5527	385	684	1173
OTHER OFFENSES						
WEAPONS (CARRY, POSSESS.)	53	-2	51	11	37	50
NARCOTICS, MISC.	25	-1	24	11	12	24
COCAINE	1	-	1	1	-	1
MARIJUANA	97	-3	94	47	37	87
BARB / AMPHET.	3	-	3	-	2	2
INHALANTS	-	-	-	-	-	-
DRUNKENNESS	10	-1	9	5	8	14
DISORDERLY CONDUCT	261	-7	254	49	182	238
MISC. OFFENSES	974	-76	898	22	666	764
BOMB THREATS	212	-2	210	4	21	27
TRESPASSING	393	-5	388	108	226	339
BUS COMPLAINTS	-	-	-	-	-	-
ASSAULTS	33	-	33	2	-	2
VANDALISM	134	-	134	5	3	8
OTHER	78	-	78	-	23	23
TOTAL	2274	-97	2177	265	1217	1579
TOTAL OFFENSES	9245	-232	9013	1038	2565	3835
NON-OFFENSES						
QRU ALARMS	2647	-3	2644	-	2624	2627
VEHICLE ACCIDENTS	136	-3	133	6	84	93
PERSONNEL INVESTIGATIONS	105	-7	98	8	28	43
OPEN DOOR/WINDOW REPORTS	1425	-	1425	-	-	-
OFF CAMPUS - AOA	210	-1	209	9	76	86
APPLICANT BG CHECK	346	-	346	-	-	-
TOTAL NON-OFFENSES	4869	-14	4855	23	2812	2849

DADE COUNTY PUBLIC SCHOOLS
SECURITY SERVICES DEPARTMENT
ANALYSIS OF REPORTED INCIDENTS BY SCHOOL LEVEL

FISCAL YEAR
1975 - 76

Period:

	ELEMENTARY	JUNIOR HIGH	SENIOR HIGH	SPECIAL CENTERS	OTHER	COMMUNITY SCHOOL	BUS	TOTAL
NORTHEAST AREA	335	427	621	-	22	-	27	1432
NORTHWEST AREA	699	659	441	64	74	-	35	1972
NORTH CENTRAL AREA	1153	694	887	123	76	-	62	2995
SOUTH CENTRAL AREA	875	511	193	8	158	-	42	1787
SOUTHWEST AREA	730	597	760	72	69	19	95	2342
SOUTH AREA	725	544	391	9	78	-	72	1819
DISTRICT	4517	3432	3293	276	477	19	333	12347

COMPLAINTS - TIME OF OCCURRENCE

The following table summarizes complaints reported to the Security Services Department by time of occurrence. Of the total number reported there were 5777 that did not occur during regular school hours. During the school day, extending from 7:00 A.M. until 5:00 P.M., 6570 complaints were reported. This last is a composite figure for those reported with the actual time of occurrence known, and those that occurred during the day but the exact time not known.

DADE COUNTY PUBLIC SCHOOLS

FISCAL YEAR SECURITY SERVICES DEPARTMENT DADE

Reporting Period 1975-76

INCIDENT - TIME OF OCCURRANCE

Analysis Date _____

	N.EAST	N.WEST	N.CENTRAL	S.CENTRAL	S.WEST	SOUTH	DISTRICT
00:01 to 01:00	25	22	35	64	35	32	213
01:01 to 02:00	10	26	49	28	23	25	161
02:01 to 03:00	5	9	28	19	19	18	98
03:01 to 04:00	7	10	24	19	16	16	92
04:01 to 05:00	5	9	37	25	13	23	112
05:01 to 06:00	6	11	29	11	15	15	87
06:01 to 07:00	14	17	27	12	17	15	102
07:01 to 08:00	38	32	62	43	46	41	262
08:01 to 09:00	70	62	102	49	98	44	425
09:01 to 10:00	70	68	143	53	97	62	493
10:01 to 11:00	84	91	121	62	101	70	529
11:01 to 12:00	85	105	159	69	127	119	664
12:01 to 13:00	96	143	231	73	172	99	814
13:01 to 14:00	105	93	156	94	112	84	644
14:01 to 15:00	102	110	178	106	142	91	729
15:01 to 16:00	69	85	127	58	93	79	511
16:01 to 17:00	35	71	129	61	89	80	465
17:01 to 18:00	28	58	86	55	105	56	388
18:01 to 19:00	15	44	81	52	51	43	286
19:01 to 20:00	20	43	83	42	68	75	331
20:01 to 21:00	23	66	80	47	85	66	367
21:01 to 22:00	41	60	78	59	68	53	359
22:01 to 23:00	28	89	129	97	103	38	484
23:01 to 24:00	25	39	109	91	86	58	408
WEEKEND	42	128	153	78	67	79	547
NIGHT	39	161	115	109	60	76	560
DAY	226	151	164	61	237	192	1031
UNKNOWN	119	169	280	250	197	170	1185
TOTAL	1432	1972	2995	1787	2342	1819	12347

ESTIMATED VALUE OF PROPERTY LOSS AND RECOVERY

The estimated value of property loss during the 1975-76 Fiscal Year is shown on the following table. Both school and personal property losses are listed. These values are determined by the investigating officer from the victim.

These dollar amounts do not indicate the total loss figure but are a preliminary estimate of loss in most instances.

DADE COUNTY PUBLIC SCHOOLS
SECURITY SERVICES DEPARTMENT

DADE

FISCAL YEAR

Period: 1975 - 76

ESTIMATED VALUE OF PROPERTY LOST & RECOVERED

		ROBBERY	THEFT	ARSON	VANDALISM	OTHER	LOSS TOTAL	TOTAL	RECOVERED	
VI	NORTHEAST AREA	School Loss	35.00	28648.11	-	923.31	50.00	29656.42	80318.88	1017.55
		Personal Loss	224.95	49648.51	-	35.00	754.00	50662.46		4953.41
	NORTHWEST AREA	School Loss	-	59002.00	35000.00	54.00	680.20	94736.20	118492.15	3995.86
		Personal Loss	413.33	22667.62	-	615.00	60.00	23755.95		786.83
	NORTH CENTRAL AREA	School Loss	-	97888.66	-	354.00	1.00	98243.66	135268.38	14767.83
		Personal Loss	58.30	36845.82	-	110.00	10.60	37024.72		7421.59
	SOUTH CENTRAL AREA	School Loss	328.00	107084.30	100.00	42.00	326.00	107880.30	116133.99	6416.60
		Personal Loss	-	8253.69	-	-	-	8253.69		212.00
	SOUTHWEST AREA	School Loss	-	27146.09	559.44	1187.47	2533.00	31426.00	61312.07	2786.40
		Personal Loss	7.35	29627.32	-	140.00	111.40	29886.07		2479.55
	SOUTH AREA	School Loss	-	30504.06	5002.85	1213.04	2085.52	38805.47	71595.23	6269.05
		Personal Loss	74.98	32265.30	-	277.98	171.50	32789.76		3913.02
	DISTRICT	School Loss	363.00	350273.22	40662.29	3773.82	5675.72	400748.05	583120.70	35253.29
		Personal Loss	778.91	179308.26	-	1177.98	1107.50	182372.65		19766.40
		Total Loss	1141.91	529581.48	40662.29	4951.80	6783.22	583120.70		55019.69

OFFENDERS BY AGE AND ETHNIC CLASSIFICATION

The following table summarizes by age and ethnic classification all offenders processed by the department during the 1975-76 Fiscal Year.

The table on page VIII-A indicates the methods used to dispose of charges against these identified offenders. Not all dispositions had been completed by the close of the Fiscal Year.

VII

SSD - 0100

DADE COUNTY PUBLIC SCHOOLS
SECURITY SERVICES DEPARTMENT

FISCAL YEAR
PERIOD: 1975 - 76

ANALYSIS OF OFFENDERS BY AGE & ETHNIC GROUP

AGE	<5	5	6	7	8	9	10	11	12	13	14	15	16	17	18	>18	TOTAL
1 WHITE MALE STUDENT	-	-	5	10	6	25	52	41	89	135	218	219	142	109	11	11	1073
2 WHT MALE NON-STUDENT	-	-	-	-	-	-	-	1	-	1	4	3	20	10	12	45	96
3 WHITE FEMALE STUDENT	-	-	2	2	1	4	6	11	19	18	39	18	16	7	1	2	146
4 WHT FEMALE NON-STU	-	-	-	-	-	-	-	-	-	-	-	8	-	3	1	6	18
5 BLACK MALE STUDENT	1	4	2	9	23	23	55	68	121	191	283	308	280	156	27	13	1564
6 BLK MALE NON-STUDENT	-	-	-	-	-	-	1	2	8	6	6	13	12	26	25	69	168
7 BLACK FEMALE STUDENT	-	-	-	2	3	6	8	16	22	66	83	77	42	15	6	-	346
8 BLK FEMALE NON-STU	-	-	-	-	-	-	1	2	3	6	8	3	1	3	1	13	41
9 SLO MALE STUDENT	1	1	2	1	1	6	10	15	21	40	54	65	35	25	3	3	283
10 SLO MALE NON-STUDENT	-	-	-	-	-	-	-	-	-	-	1	1	2	4	2	18	28
11 SLO FEMALE STUDENT	-	-	-	-	-	-	-	1	1	4	1	3	1	1	-	-	12
12 SLO FEMALE NON-STU	-	-	-	-	-	-	-	-	-	-	-	-	-	-	1	1	2
13 OTHER MALE STUDENT	1	-	-	-	-	-	-	-	-	-	1	-	1	-	-	-	3
14 OTH MALE NON-STUDENT	-	-	-	-	-	-	-	-	-	-	-	-	-	-	-	-	-
15 OTHER FEMALE STUDENT	-	-	-	-	-	-	-	-	-	-	-	-	-	-	-	-	-
16 OTH FEMALE NON-STU	-	-	-	-	-	-	-	-	-	-	-	-	-	-	-	-	-
TOTALS	3	5	11	24	34	64	133	157	284	467	698	718	552	359	90	181	3780

SSD - 0110

2/75

DADE COUNTY PUBLIC SCHOOLS
SECURITY SERVICES DEPARTMENT

DISPOSITION OF IDENTIFIED OFFENDERS

FISCAL YEAR
PERIOD: 1975 - 76

AREA	WARN & DISMISS	ARREST JUVENILE	ARREST ADULT	ADMINISTRATIVE	OTHER	TOTAL
NORTHEAST	237	179	5	84	-	505
NORTHWEST	352	217	2	34	-	605
NORTH CENTRAL	439	311	33	24	-	807
SOUTH CENTRAL	177	177	22	110	-	486
SOUTHWEST	227	357	17	84	-	685
SOUTH	298	174	17	57	-	546
TOTAL	1730	1415	96	393	-	3634

S.S.D. 0200

6/75

DEPARTMENTAL ORGANIZATION

During Fiscal Year 1975-76 the decentralization of the Security Services Department was completed when the Southwest Area Security Office opened in 1975. Space in the Lindsey Hopkins Central Administration Building became available and the administrative staff of the Security Department relocated there in January of 1976.

The decentralization, relocation and reorganization of the Department was in compliance with the recommendations of the "Comprehensive Study of Security Services" of September, 1973 as approved by the Board.

JUVENILE OFFENDERS REFERRED TO THE DIVISION OF YOUTH SERVICES

As a result of action taken by officers of this department a total of twenty-three hundred and thirty-six juvenile offenders were referred to the Division of Youth Services.

Under certain guidelines, security officers are allowed to use their discretion in the referral of juveniles to the Division of Youth Services. Criteria, such as severity of the offense, recent past involvement in illegal activities by the offender, attitude of the offender and his parents, and whether or not the victim elects to prosecute are some of the elements taken into consideration.

The following chart indicates actions taken by the Division of Youth Services. Not all dispositions have been received.

COURT ATTENDANCE

Officers of this department have been subpoenaed to appear in court on seven hundred and seventy-one occasions. Two hundred and sixty-one of those were for juvenile court. The remaining five hundred and ten subpoenas were for various divisions of circuit court in reference to adult offenders.

EMPLOYEE APPLICANT BACKGROUND INVESTIGATIONS

The names of all persons who are being considered for employment in the Dade County School System are listed by the personnel office and submitted to the Security Services Department for criminal history record checks.

An IBM 2740 inquiry terminal, tied into the Dade County Public Safety Department automated records system was installed in October, 1974 for this purpose. Office personnel were trained in the operation of this terminal and in the interpretation of the information retrieved. During this Fiscal Year thirty-seven hundred and twenty names were checked through the terminal. Follow up investigation of applicants with criminal histories were conducted on three hundred and forty-six persons.

SUMMARY OF CASES REFERRED TO DIVISION OF YOUTH SERVICES

PERIOD COVERED: 7/75 - 6/76

CHARGES	OFFENDERS CITED	W & D BY D.Y.S.	D. Y. S. SUPER.	NON- JUDICIAL	STATE SCHOOL	COUN SELING	PAY RES- TITUTION	MENTAL HOSPITAL	COMMUNITY AGENCY	PSY.EVAL.	NON- PROSECUT.	OTHER
B & E	626	53	47	2	-	11	37	2	19	5	1	-
A & B	624	32	46	4	1	10	9	1	19	6	10	2
Larceny	244	23	21	-	-	4	24	-	3	-	3	2
Robbery	86	5	7	-	-	-	3	-	3	-	2	1
Trespass	175	17	20	2	1	6	-	1	11	2	-	1
Vandalism	175	3	2	-	1	1	8	-	-	-	-	-
Poss.Narc.	72	11	6	1	1	5	-	-	3	1	-	1
Poss.Alch.	5	-	-	-	-	1	-	-	-	-	-	-
Sale Narc.	4	3	-	-	-	-	-	-	-	-	-	-
Diso.Cond.	83	10	1	-	2	1	-	-	3	-	-	-
Arson	12	2	-	-	1	-	-	-	-	-	-	-
V.Threat	12	2	-	-	-	-	-	-	-	-	-	-
Disrupt Sch.Func.	26	4	2	1	-	-	-	-	-	3	-	1
Extortion	13	-	-	-	-	1	-	-	1	-	-	-
Loiter & Prowl	24	7	-	-	1	-	-	-	-	-	1	-
Disord. Intox.	4	1	-	-	-	-	-	-	1	-	-	-
C.C.W.	19	2	-	-	-	-	-	1	1	1	-	-
Mal.Misch.	40	-	-	-	-	1	-	-	3	-	-	-
B.R.C.	12	-	2	-	-	-	-	-	2	-	-	-
Throw Missiles	10	1	-	-	-	-	2	-	-	1	-	-

DADE COUNTY PUBLIC SCHOOLS - SECURITY SERVICES DEPARTMENT
SUMMARY OF CASES REFERRED TO DIVISION OF YOUTH SERVICES

PERIOD COVERED: 7/75 - 6/76

CHARGES	OFFENDERS CITED	W & D BY D.Y.S.	D. Y. S. SUPER.	NON-JUDICIAL	STATE SCHOOL	COUN SELING	PAY RES-TITUTION	MENTAL HOSPITAL	COMMUNITY AGENCY	PSY.EVAL.	NON-PROSECUT.	OTHER
Sex.Batt.	7	-	1	-	-	-	-	-	1	-	-	-
Disturb.	6	-	-	-	-	-	-	-	-	-	-	-
Poss.Gamb.	1	-	-	-	-	-	-	-	-	-	-	-
Tamper W. Witness	1	-	-	-	-	-	-	-	-	-	-	-
Indecent Exposure	4	-	-	-	-	-	-	-	-	1	-	-
Mal. Injury	2	-	-	-	-	-	-	-	-	-	-	-
Inj.Per.	1	-	-	-	-	-	-	-	-	-	-	-
Obstructing Justice	1	-	-	-	-	-	-	-	-	-	-	-
Obscene Call	2	-	1	-	-	-	-	-	-	-	-	-
Att. Murder	1	-	-	-	-	-	-	-	-	-	-	-
Poss. Explosive	1	-	-	-	-	-	-	-	-	-	-	-
L & L	9	1	-	-	-	1	-	-	-	1	-	-
Bomb Threat	1	-	-	-	-	-	-	-	-	-	-	-
Poss.Burg.	1	1	-	-	-	-	-	-	-	-	-	-
Tools	1	1	-	-	-	-	-	-	-	-	-	-
False Alarm	1	1	-	-	-	-	-	-	-	-	-	-
Crim. Misch.	15	1	-	-	-	-	-	-	-	-	-	-
Agg. Battery	14	-	-	-	1	-	-	-	-	-	-	-
Inhale Harmful Substance	1	-	-	-	-	-	-	-	-	-	-	-
Resist Arrest W/Viol.	1	-	-	-	-	-	-	-	-	-	-	-
TOTAL	2336	180	156	10	9	42	83	5	70	21	17	8

AUTOMATED ALARM SYSTEMS

A total of one hundred and seventy-one sites have automated intrusion alarm systems installed as of the end of the 1975-76 fiscal year. This is an increase of thirty-three during the year.

Replacement of older tape alarm systems with the newer digital alarm units has continued through this period. Eighty-five tape alarms remain to be replaced during the coming year.

In addition to the building intrusion alarms, there are eleven automated fire alarm systems, eleven elevator emergency alarms and one panic alarm operational within the school system. Rounds of the Central Maintenance watchmen are keyed to send signals through the automated alarm systems also.

Automated fire alarm systems are to be installed in the remaining school sites during the next four years, in compliance with State Regulation 6A-2.

All automated alarm systems are monitored by the Security Services Department on a twenty-four hour a day basis. Alarm signals are responded to by officers of the Security Services Department or other agencies as dispatched through this department.

PATROL DIVISION ACTIVITIES

The three Patrol Divisions within Department, responded to a total of forty-five hundred and one dispatched calls. There were eight hundred and thirty-nine reports initiated by Security Officers assigned to patrol, two hundred and nine assists to other police agencies; fourteen hundred and fifty-two open door/window reports were written and three hundred and fifty-nine arrests made. Other police agencies responded to six hundred and fifty-six calls, primarily intrusion alarms.

PLANT SECURITY REPORTS

Plant Security Reports are prepared and forwarded to the Security Services Department in all cases of vandalism, theft, building damage, property damage, illegal entry, accidental damage, fire and arson by the location suffering the loss.

During the 1975-76 Fiscal Year, 10164 Plant Security Reports were processed by the department. Requisitions for replacement of lost property are processed against these Plant Security Reports by this department.

RESTITUTION FOR DAMAGES

Letters requesting restitution for theft and damage of school property under the provisions of the Florida Parent Responsibility law were sent to 607 parents or guardians of offenders. Restitution in the amount of \$47,744.58 was requested. Payments in the amount of \$6,154.58 were received.

Accounts totaling \$55,708.97 were submitted as uncollectable. This figure represents an accumulation of Restitution Requested accounts from prior years that were completely inactive during the year. All efforts by this office to collect from the persons responsible for these accounts were unsuccessful.

INTERN PROGRAM

During this year Biscayne College sent one of their criminal justice students to serve an internship with this department.

This type of cooperative venture is in our opinion a positive approach in our endeavor to recruit bright young people as prospective employees.

TRAINING

One security service officer recruit attended the Southeast Florida Institute of Criminal Justice (Miami-Dade Community College, N.C.). This is in compliance with the minimum standards for police officers in the State of Florida. The training consists of 680 hours of classroom instruction and field experience.

In addition a total of 3023.5 hours were devoted to specialized training for security officers of this department. This training is a continuing effort to upgrade the ability to better deal with police functions in today's changing society by the officers of this department.

The following list outlines the schools attended.

CRIMINAL JUSTICE INSTITUTE

- A) Mid-Management
- B) Line Supervision
- C) Officer Intermediate Class
- D) Crime Investigation Techniques
- E) Criminal Law-Arrests

LINDSEY HOPKINS EDUCATIONAL CENTER

Management Prospectives Workshop sponsored by University of South Florida.

INTERNATIONAL ASSOCIATION CHIEFS OF POLICE - Seminar

Computer Systems in Law Enforcement

FEDERAL BUREAU OF INVESTIGATION

Personnel issues in Policing

FLORIDA DEPARTMENT OF LEGAL AFFAIRS

- A) Florida Supreme Court Decisions
- B) U.S. Supreme Court Decisions
- C) Search and Seizure
- D) Arrests

NATIONAL CONFERENCE OF CHRISTIANS AND JEWS

Juvenile Justice Process

DIVISION OF YOUTH SERVICES

- A) Workshop - Biscayne College
- B) Florida Youth Related Services Association

DEFENSIVE DRIVING SCHOOL

INSERVICE TRAINING

- A) Film - "Tunnel"
- B) Film - "Officer Down, Code 3"
- C) Ethics Workshop
- D) Film - "Authority"

REPORT BY LOCATION

The following section contains summarizations by location of complaints handled by the department during the 1975-76 Fiscal Year. The reports list complaints reported, unfounded, actual, cleared by arrest and exceptionally cleared for each location. These complaints are telephoned directly to the department or in some cases are reported via other Police Agencies.

Cases shown as cleared during the fiscal year did not all occur during this period. Some cases had occurred during the prior fiscal year and were not cleared until the current year.

NORTHEAST AREA

DADE COUNTY PUBLIC SCHOOLS
SECURITY SERVICES DEPARTMENT

AREA: NORTHEAST

REPORT BY LOCATION

REPORT PERIOD: 7/75 - 6/76

LOCATION / COMPLAINTS	RPTD	UNF	ACTUAL	CLEARED BY		LOCATION / COMPLAINTS	RPTD	UNF	ACTUAL	CLEARED BY	
				ARREST	EX. CLEAR					ARREST	EX. CLEAR
0241 BAY HARBOR EL.						0561 BRYAN EL.					
Other-Misc.	1	-	1	-	1	Asslt. Stu/Stu	1	-	1	-	-
Total	1	-	1	-	1	Vandalism	3	-	3	-	2
						Other-Misc.	1	-	1	-	1
0321 BISCAYNE EL.						Veh. Accid.	1	-	1	-	1
Asslt. Stu/Stu	1	-	1	-	-	Total	6	-	6	-	4
B & E	5	-	5	-	-						
Arson	1	-	1	-	-	0761 FIENBERG EL.					
Vandalism	2	-	2	-	1	B & E	10	-	10	1	-
Trespassing	1	-	1	-	1	Larceny/Per.	2	-	2	-	1
QRU	2	-	2	-	2	Sex Offenses	1	-	1	-	1
Veh. Accid.	1	-	1	-	1	Total	13	-	13	1	2
Per. Invest.	1	-	1	-	1						
Total	14	-	14	-	6	2081 FULFORD EL.					
						B & E	2	-	2	-	-
0361 BISCAYNE GARDENS EL.						B & E Auto	1	-	1	-	-
Asslt. Stu/Stu	1	-	1	-	1	Vandalism	1	-	1	-	-
Asslt. Per./Non Stu	1	-	1	1	-	Total	4	-	4	-	-
B & E	1	-	1	-	-						
B & E Auto	1	-	1	-	-	2241 GRATIGNY EL.					
Larceny / Per.	4	-	4	-	1	B & E	4	-	4	-	1
Sex Offenses	1	-	1	-	1	Larceny/Per.	3	-	3	-	-
Other-Misc.	2	-	2	-	2	Vandalism	2	-	2	-	2
Bomb Threat	1	-	1	-	-	Sex Offenses	1	-	1	-	-
Trespassing	3	-	3	1	2	Other-Misc.	2	-	2	-	2
Veh. Accident.	1	-	1	-	1	Trespassing	2	1	1	-	1
Total	16	-	16	2	8	QRU Alarms	1	-	1	-	1
						Total	15	1	14	-	7

DADE COUNTY PUBLIC SCHOOLS
SECURITY SERVICES DEPARTMENT

AREA: NORTHEAST

REPORT BY LOCATION

REPORT PERIOD: 7/75 - 6/76

LOCATION / COMPLAINTS	RPTD	UNF	ACTUAL	CLEARED BY		LOCATION / COMPLAINTS	RPTD	UNF	ACTUAL	CLEARED BY	
				ARREST	EX.CLEAR					ARREST	EX.CLEAR
2281 GREYNOLDS PARK EL.						2581 IVES, MADIE EL.					
Asslt./Stu/Stu	1	-	1	-	1	B & E	7	-	7	-	-
B & E	2	-	2	-	1	Vandalism	8	-	8	-	-
Larceny-Sch.	1	-	1	-	1	Disorderly Conduct	1	-	1	-	1
Vandalism	3	-	3	-	-	Other-Misc.	3	-	3	-	3
Weapons/Possession	1	-	1	-	1	Trespassing	2	-	2	-	2
Other-Misc.	3	-	3	-	3	QRU Alarms	16	-	16	-	16
Trespassing	1	-	1	-	1	Personnel Invest.	1	-	1	-	-
QRU - Alarms	12	-	12	-	12	Total	38	-	38	-	22
Total	24	-	24	-	20	3661 NATURAL BRIDGE EL.					
2401 HIBISCUS EL.						3701 NORLAND EL.					
Asslt. Stu/Stud	1	-	1	-	1	Asslt. Stu/Stu	1	-	1	1	-
Asslt. Per/Non-Stud.	1	-	1	-	-	B & E	1	-	1	-	-
B & E	3	-	3	-	-	Vandalism	2	-	2	-	-
Larceny/Per.	2	-	2	-	-	Weapons-Poss.	1	-	1	-	1
Other-Misc.	1	-	1	-	1	Other-Misc.	3	-	3	-	2
Trespassing	1	-	1	-	1	Trespassing	1	-	1	-	1
Total	9	-	9	-	3	Total	9	-	9	1	4
2441 HIGHLAND OAKS EL.						4021 OAK GROVE EL.					
B & E	7	-	7	-	1	B & E	6	-	6	-	-
B & E Auto	4	-	4	-	-	Larceny-Sch.	2	-	2	-	-
Larceny/Per.	2	-	2	-	-	Larceny-Per.	4	-	4	-	-
Vandalism	7	-	7	-	1	Vandalism	1	-	1	-	-
Other-Misc.	5	-	5	-	4	Other-Misc.	2	-	2	1	1
Bomb Threat	1	-	1	-	-	Trespassing	1	-	1	-	1
Trespassing	3	-	3	-	3	QRU Alarms	13	-	13	-	13
QRU Alarms	16	-	16	-	16	Personnel Invest.	1	-	1	-	1
Total	45	-	45	-	25	Total	31	-	31	1	17

DADE COUNTY PUBLIC SCHOOLS
SECURITY SERVICES DEPARTMENT

AREA: NORTHEAST

REPORT BY LOCATION

REPORT PERIOD: 7/75 - 6/76

LOCATION / COMPLAINTS	RPTD	UNF	ACTUAL	CLEARED BY		LOCATION / COMPLAINTS	RPTD	UNF	ACTUAL	CLEARED BY	
				ARREST	EX.CLEAR					ARREST	EX.CLEAR
3741 NORTH BEACH EL.						4061 OJUS EL.					
B & E	1	-	1	-	-	B & E	2	-	2	1	-
Total	1	-	1	-	-	Larceny/Per.	1	-	1	-	-
3941 NORTH MIAMI EL.						4341 PARKWAY EL.					
B & E	3	-	3	-	-	B & E	3	-	3	-	-
Larceny/Sch	1	-	1	-	-	Larceny/Sch.	4	-	4	-	1
Larceny/Per	7	-	7	-	1	Larceny/Per.	1	-	1	-	-
Sex Offenses	1	-	1	-	-	Arson	1	-	1	-	-
Other-Misc.	1	-	1	-	-	B.R.C. Stolen Prop.	1	-	1	-	1
Bomb Threat	3	-	3	-	-	Vandalism	1	-	1	-	-
Trespassing	1	-	1	-	1	Disorderly Conduct	1	-	1	-	-
Total	17	-	17	-	2	Other-Misc.	1	-	1	-	1
4001 NORWOOD EL.						4021 OAK GROVE EL.					
Asslt. Stu/Stud.	1	-	1	1	-	B & E	6	-	6	-	-
B & E	3	-	3	-	-	Larceny/Per.	2	-	2	-	-
Larceny/Per.	1	-	1	-	-	B.R.C. Stolen Prop.	5	-	5	-	1
Vandalism	2	-	2	-	-	Vandalism	2	-	2	-	2
Other-Misc.	2	-	2	-	2	Other-Misc.	2	-	2	-	1
QRU - Alarms	1	-	1	-	1	Trespassing	2	-	2	-	1
Total	10	-	10	1	3	Total	17	-	17	-	7

DADE COUNTY PUBLIC SCHOOLS
SECURITY SERVICES DEPARTMENT

AREA: NORTHEAST

REPORT BY LOCATION

REPORT PERIOD: 7/75 - 6/76

LOCATION / COMPLAINTS	RPTD	UNF	ACTUAL	CLEARED BY		LOCATION / COMPLAINTS	RPTD	UNF	ACTUAL	CLEARED BY	
				ARREST	EX.CLEAR					ARREST	EX.CLEAR
4801 SABAL PALM EL.						6191 FISHER, IDA JR.					
Asslt. Stu/Stu	2	-	2	-	2	Robbery	3	-	3	1	-
B & E	1	-	1	-	-	Asslt. Per/Stu	5	-	5	3	2
Larceny/Sch	1	-	1	-	-	Asslt. Stu/Stu	18	-	18	9	6
Larceny/Per	7	-	7	-	-	Asslt. Stu/Non Stu	1	-	1	-	-
Vandalism	2	-	2	-	1	Asslt. Other	1	-	1	-	1
Other-Misc.	5	-	5	-	4	B & E	13	-	13	2	1
Trespassing	3	-	3	-	3	B & E Auto	1	-	1	1	-
QRU - Alarms	13	-	13	-	13	Larceny/Sch	7	-	7	1	2
Total	34	-	34	-	23	Larceny/Per	7	-	7	2	-
						Arson	1	-	1	-	-
5161 SOUTH BEACH EL.						B.R.C. Stolen Prop.	1	-	1	-	1
B & E	5	-	5	2	-	Vandalism	3	-	3	-	-
Arson	1	-	1	-	-	Weapons-Poss.	5	-	5	-	3
Vandalism	1	-	1	-	-	Narcotics-Misc	1	-	1	-	1
Total	7	-	7	2	-	Cocaine	4	-	4	-	3
						Disorderly Conduct	3	-	3	-	2
						Other-Misc.	2	-	2	-	1
						Bomb Threat	2	-	2	-	-
						Personnel Invest.	1	-	1	-	-
						Total	79	-	79	19	23
5481 TREASURE ISLAND EL.											
Other-Misc.	1	-	1	-	-						
Total	1	-	1	-	-						

DADE COUNTY PUBLIC SCHOOLS
SECURITY SERVICES DEPARTMENT

AREA: NORTHEAST

REPORT BY LOCATION

REPORT PERIOD: 7/75 - 6/76

LOCATION / COMPLAINTS	RPTD	UNF	ACTUAL	CLEARED BY		LOCATION / COMPLAINTS	RPTD	UNF	ACTUAL	CLEARED BY	
				ARREST	EX.CLEAR					ARREST	EX.CLEAR
6281 JEFFERSON JR.						6541 NAUTILUS JR.					
Robbery	1	-	1	1	-	Robbery	1	-	1	-	1
Asslt. Per/Stu	8	-	8	5	11	Asslt. Per/Stu	1	-	1	-	1
Asslt. Stu/Stu	9	-	9	-	1	Asslt. Stu/Stu	8	-	8	-	8
B & E	4	-	4	-	1	B & E	1	-	1	-	-
Larceny/Per	12	-	12	2	1	Larceny/Sch	2	-	2	-	-
Vandalism	17	-	17	1	10	Larceny/Per	8	-	8	-	1
Sex Offenses	3	2	1	-	1	Vandalism	5	-	5	-	5
Marijuana	1	-	1	-	1	Disorderly Conduct	3	-	3	-	3
Disorderly Conduct	3	-	3	-	3	Personnel Invest.	1	-	1	-	-
Other-Misc.	5	-	5	-	5	Total	30	-	30	-	19
Bomb Threat	2	-	2	-	-						
Trespassing	6	1	5	-	4	6571 NORLAND JR.					
QRU - Alarms	14	-	14	-	15	Sex Offenses	-	-	-	-	1
Personnel Invest.	1	-	1	-	1	Robbery	6	1	5	3	2
Total	86	3	83	9	54	Asslt. Per/Stu	8	-	8	-	8
						Asslt. Stu/Stu	20	-	20	3	16
6301 KENNEDY JR.						Asslt. Per/Non Stu	1	-	1	-	1
Asslt. Stu/Stu	3	-	3	-	3	Asslt. Stu/Non Stu	3	-	3	1	2
B & E	6	-	6	-	-	B & E	6	-	6	2	-
Larceny/Sch	2	-	2	1	2	B & E Auto	1	-	1	-	-
Larceny/Per	25	1	24	2	7	Larceny/Sch	9	-	9	1	2
Vandalism	7	-	7	-	3	Larceny/Per	15	1	14	2	5
Narc.-Misc.	1	-	1	-	1	Arson	2	-	2	-	1
Marijuana	1	-	1	-	1	Vandalism	11	-	11	-	7
Other-Misc.	2	-	2	-	2	Weapons-Carry/Poss	1	-	1	-	1
Bomb Threat	1	-	1	-	-	Marijuana	1	-	1	-	1
Trespassing	2	-	2	-	2	Disorderly Conduct	6	-	6	1	6
QRU-Alarms	17	-	17	-	17	Other-Misc.	3	-	3	-	3
Vehicle Accid.	1	-	1	-	-	Trespassing	2	-	2	-	2
Personnel Invest.	1	-	1	-	-	QRU-Alarms	9	-	9	-	9
Total	69	1	68	3	38	Bus Accidents	1	-	1	-	1
						Total	105	2	103	13	68

DADE COUNTY PUBLIC SCHOOLS
SECURITY SERVICES DEPARTMENT

AREA: NORTHEAST

REPORT BY LOCATION

REPORT PERIOD: 7/75 - 6/76

LOCATION / COMPLAINTS	RPTD	UNF	ACTUAL	CLEARED BY		LOCATION / COMPLAINTS	RPTD	UNF	ACTUAL	CLEARED BY	
				ARREST	EX.CLEAR					ARREST	EX.CLEAR
6631 NORTH MIAMI JR.						7201 CONT.					
Robbery	4	-	4	3	1	Disorderly Conduct	4	-	4	3	1
Asslt. Per/Stu	4	-	4	-	4	Other-Misc.	1	-	1	-	1
Asslt. Stu/Stu	7	-	7	-	6	Bomb Threat	2	-	2	-	-
Asslt. Stu/Non Stu	2	-	2	-	1	Trespassing	5	-	5	3	1
B & E	3	-	3	-	-	QRU Alarms	6	-	6	-	5
B & E Auto	1	-	1	-	1	Total	176	1	175	19	27
Larceny/Sch	1	-	1	-	-	7381 NORLAND SR.					
Larceny/Per	21	-	21	1	3	Asslt. Per/Stu	3	-	3	1	2
Vandalism	4	-	4	-	3	Asslt. Stu/Stu	10	-	10	2	4
Marijuana	1	-	1	1	-	Asslt. Stu/Non Stu	2	-	2	-	2
Barb/Amphet	1	-	1	-	1	B & E	12	-	12	-	1
Disorderly Conduct	2	-	2	1	1	B & E Auto	10	-	10	-	-
Other-Misc.	2	-	2	-	1	Larceny/Sch	9	-	9	1	-
Trespassing	2	-	2	2	-	Larceny/Per	24	1	23	-	2
QRU Alarms	4	-	4	-	4	Vandalism	12	-	12	-	3
Personnel Invest.	1	-	1	-	-	Narc. - Misc.	2	-	2	1	1
Total	60	-	60	8	26	Barb/Amphet	1	-	1	-	1
7201 MIAMI BEACH SR.						Disorderly Conduct	2	-	2	-	2
Rape	1	1	0	-	-	Other-Misc.	8	2	6	-	5
Robbery	4	-	4	1	2	Trespassing	8	1	7	1	5
Asslt. Per/Stu	1	-	1	-	1	QRU Alarms	10	-	10	-	10
Asslt. Stu/Stu	26	-	26	5	9	Vehicle Accid.	1	-	1	-	1
Asslt. Other	1	-	1	-	1	Total	114	4	110	6	39
B & E	4	-	4	-	-	<hr/>					
B & E Auto	17	-	17	-	1						
Larceny/Sch	3	-	3	-	1						
Larceny/Per	91	-	91	3	3						
Arson	1	-	1	-	-						
Vandalism	4	-	4	-	-						
Weapons Carry/Poss.	4	-	4	3	1						
Marijuana	1	-	1	1	-						

DADE COUNTY PUBLIC SCHOOLS
SECURITY SERVICES DEPARTMENT

AREA: NORTHEAST

REPORT BY LOCATION

REPORT PERIOD: 7/75 - 6/76

LOCATION / COMPLAINTS	RPTD	UNF	ACTUAL	CLEARED BY		LOCATION / COMPLAINTS	RPTD	UNF	ACTUAL	CLEARED BY	
				ARREST	EX.CLEAR					ARREST	EX.CLEAR
7541 NO. MIAMI BEACH SR.						7591 CONT.					
Robbery	4	-	4	1	-	Vandalism	19	-	19	-	5
Asslt. Per/Stu	3	-	3	1	2	Marijuana	1	-	1	1	-
Asslt. Stu/Stu	19	-	19	3	7	Other-Misc.	9	-	9	-	5
B & E	1	-	1	-	-	Trespassing	1	-	1	-	1
B & E Auto	10	1	9	1	-	QRU Alarms	8	-	8	-	8
Larceny/Sch	20	-	20	1	1	Total	131	1	130	5	30
Larceny/Per	96	-	96	1	5	9231 TRANSPORTATION					
Arson	1	-	1	-	-	Asslt. Stu/Stu	-	-	-	-	1
Vandalism	17	1	16	-	5	Vandalism	12	-	12	-	6
Weapons Carry/Poss.	3	-	3	1	2	Disorderly Conduct	3	-	3	-	1
Sex Offenses	1	-	1	1	-	QRU Alarms	-	-	-	-	-
Narc. Misc.	3	-	3	3	-	Vehicle Accid.	5	-	5	-	6
Marijuana	2	-	2	1	1	Bus Accidents	7	-	7	-	6
Disorderly Conduct	2	-	2	1	1	Total	27	-	27	-	20
Other-Misc.	6	1	5	-	5	OFF CAMPUS					
Bomb Threat	7	-	7	-	-	AOA	10	-	10	1	4
Trespassing	1	-	1	-	1	Asslt. Stu/Stu	3	-	3	-	2
Vehicle Accid.	1	-	1	-	-	Larceny/Sch	1	-	1	-	1
Personnel Invest.	2	-	2	-	2	Sex Offenses	1	-	1	-	1
Total	199	3	196	15	32	Disorderly Conduct	1	-	1	-	1
7591 NORTH MIAMI SR.						Other-Misc.	2	-	2	-	2
Rape	1	-	1	-	1	Total	18	-	18	1	11
Robbery	-	-	-	1	-	<hr/>					
Asslt. Stu/Stu	4	-	4	1	3						
Asslt. Stu/Non Stu	1	-	1	-	-						
B & E	4	-	4	-	-						
B & E Auto	11	-	11	-	1						
Larceny/Sch	14	-	14	-	2						
Larceny/Per	55	1	54	1	4						
Auto Theft	2	-	2	1	-						
Arson	1	-	1	-	-						

DADE COUNTY PUBLIC SCHOOLS
SECURITY SERVICES DEPARTMENT

AREA: NORTHEAST

REPORT BY LOCATION

REPORT PERIOD: 7/75 - 6/76

LOCATION / COMPLAINTS	RPTD	UNF	ACTUAL	CLEARED BY		LOCATION / COMPLAINTS	RPTD	UNF	ACTUAL	CLEARED BY	
				ARREST	EX. CLEAR					ARREST	EX. CLEAR
NORTHEAST AREA OFFICE											
B & E	1	-	1	-	-						
Total	1	-	1	-	-						
S & D											
Vehicle Accidents	1	-	1	-	1						
Total	1	-	1	-	1						
TRANSMITTER BLDG.											
Vandalism	1	-	1	-	-						
QRU Alarms	1	-	1	-	1						
Total	2	-	2	-	1						

NORTHWEST AREA

DADE COUNTY PUBLIC SCHOOLS
SECURITY SERVICES DEPARTMENT

AREA: NORTHWEST

REPORT BY LOCATION

REPORT PERIOD: 7/75 - 6/76

LOCATION / COMPLAINTS	RPTD	UNF	ACTUAL	CLEARED BY		LOCATION / COMPLAINTS	RPTD	UNF	ACTUAL	CLEARED BY	
				ARREST	EX.CLEAR					ARREST	EX.CLEAR
0461						0681					
Brentwood El.						Carol City El.					
Asslt. Stu/N-Stu.	1	-	1	-	1	Robbery	1	-	1	-	-
" Other	1	-	1	-	-	Asslt. Pers/Stu.	1	-	1	-	1
B&E	9	-	9	1	-	" Stu/Stu.	2	-	2	-	2
Larceny-School	1	-	1	-	-	" Stu/N-Stu.	1	-	1	-	-
" Personal	8	-	8	-	-	B&E	17	-	17	2	-
Vandalism	1	-	1	-	-	Larceny-Personal	3	-	3	-	1
Other-Misc.	4	-	4	-	4	Vandalism	8	-	8	-	1
Bomb Threat	1	-	1	-	1	Sex Offenses	1	-	1	-	-
QRU	34	-	34	-	34	Diso. Cond.	3	-	3	-	3
Total	60	-	60	1	40	Other-Mis.	7	-	7	-	7
						Bomb Threat	1	-	1	-	-
0641						Trespassing	1	-	1	-	1
Bunche Park El.						Personnel Invest.	1	-	1	-	-
Robbery	1	-	1	1	-	Total	47	-	47	2	16
Asslt. Per/Stu.	1	-	1	-	1						
" Stu/Stu.	2	-	2	-	-	1161					
B&E	10	-	10	-	-	Crestview El.					
B&E Auto	3	-	3	-	-	Asslt. Other	-	-	-	-	1
Larceny-School	-	-	-	-	1	B&E	5	-	5	1	-
" Personal	3	-	3	-	-	Larceny-Personal	1	-	1	-	1
Vandalism	13	-	13	-	3	Vandalism	6	-	6	-	1
Other -Misc.	8	-	8	-	8	Diso. Cond.	1	-	1	-	1
QRU	9	-	9	-	9	Other-Misc.	6	-	6	-	5
Personnel Invest.	2	-	2	-	-	Trespassing	1	-	1	-	1
Total	52	-	52	1	22	Total	20	-	20	1	10

DADE COUNTY PUBLIC SCHOOLS
SECURITY SERVICES DEPARTMENT

AREA: NORTHWEST

REPORT BY LOCATION

REPORT PERIOD: 7/75 - 6/76

LOCATION / COMPLAINTS	RPTD	UNF	ACTUAL	CLEARED BY		LOCATION / COMPLAINTS	RPTD	UNF	ACTUAL	CLEARED BY	
				ARREST	EX.CLEAR					ARREST	EX.CLEAR
1481						2161					
Dupuis El.						Golden Glades El.					
B&E	2	-	2	-	-	Robbery	1	-	1	-	-
Vandalism	3	-	3	-	-	Asslt. Stu/Stu	2	-	2	-	1
Other-Misc.	1	-	1	-	1	B&E	10	-	10	-	1
Bomb Threat	1	-	1	-	-	Larceny-School	1	-	1	-	-
Total	7	-	7	-	1	" Personal	7	-	7	-	-
						Arson	4	-	4	-	-
1521						Vandalism	16	-	16	-	-
Earhart, A. El.						Other-Misc.	1	-	1	-	-
Other-Misc.	1	1	0	-	-	Trespassing	1	-	1	-	-
Bus Accidents	3	-	3	-	-	QRU	11	-	11	-	11
Total	4	1	3	-	-	Vehicle accident	1	-	1	-	-
						Total	55	-	55	-	13
1921											
Flamingo El.						2801					
Asslt. Per/Stu.	1	-	1	-	1	Lake Stevens El.					
B&E	2	-	2	-	-	B&E	8	-	8	-	-
Larceny-School	2	-	2	-	-	B&E Auto	1	-	1	-	-
" -Personal	1	-	1	-	-	Larceny-School	2	-	2	-	-
Vandalism	14	-	14	-	-	" Personal	12	-	12	-	2
Weapons:Poss.	1	-	1	-	1	Arson	1	-	1	-	-
Sex Offense	1	-	1	-	1	Vandalism	4	-	4	1	-
Other-Misc.	3	-	3	-	3	Other-Misc.	3	-	3	-	3
QRU	8	-	8	-	8	Total	31	-	31	1	5
Personnel Invest.	1	-	1	-	-						
Total	34	-	34	-	14						

DADE COUNTY PUBLIC SCHOOLS
SECURITY SERVICES DEPARTMENT

AREA: NORTHWEST

REPORT BY LOCATION

REPORT PERIOD: 7/75 - 6/76

LOCATION / COMPLAINTS	RPTD	UNF	ACTUAL	CLEARED BY		LOCATION / COMPLAINTS	RPTD	UNF	ACTUAL	CLEARED BY	
				ARREST	EX.CLEAR					ARREST	EX.CLEAR
3141						3421					
Meadowlane El.						Milam El.					
Asslt. Stu/Stu.	1	-	1	1	-	Asslt. Per/N-Stu.	-	-	-	-	1
B&E	4	-	4	-	-	" Stu/N-Stu.	1	-	1	-	-
Vandalism	3	-	3	-	-	B&E	2	-	2	-	-
Bomb Threat	1	-	1	-	-	Larceny-School	3	-	3	-	-
Total	9	-	9	1	-	Vandalism	1	-	1	-	1
						Other-Misc.	1	-	1	-	-
3241						Trespassing	1	-	1	-	1
Miami Gardens El.						Total	9	-	9	-	3
Vandalism	2	-	2	-	2						
Diso. Cond.	1	-	1	-	1	3581					
Other-Misc.	6	-	6	-	5	Myrtle Grove El.					
Total	9	-	9	-	8	Robbery	-	-	-	-	1
						Asslt. Stu/Stu.	4	-	4	-	4
3281						" Stu/N-Stu.	1	-	1	-	-
Miami Lakes El.						" Other	1	-	1	-	-
Larceny-Personal	10	-	10	-	-	B&E	13	-	13	4	1
Stolen Property	-	-	-	1	-	Larceny-School	1	-	1	-	-
Other-Misc.	3	-	3	-	3	" Personal	2	-	2	-	-
Bomb Threat	1	-	1	-	-	Vandalism	2	-	2	-	1
Personnel Invest.	1	-	1	-	-	Weapons:Poss.	1	-	1	-	1
Total	15	-	15	1	3	Diso. Cond.	2	-	2	-	2
						Other-Misc.	6	-	6	-	6
3141						Trespassing	1	-	1	-	1
Meadowlane El.						QRU	14	-	14	-	13
Asslt. Stu/Stu.	1	-	1	1	-	Total	48	-	48	4	30
B&E	4	-	4	-	-						
Vandalism	3	-	3	-	-						
Bomb Threat	1	-	1	-	-						
Total	9	-	9	1	-						

DADE COUNTY PUBLIC SCHOOLS
SECURITY SERVICES DEPARTMENT

AREA: NORTHWEST

REPORT BY LOCATION

REPORT PERIOD: 7/75 - 6/76

LOCATION / COMPLAINTS	RPTD	UNF	ACTUAL	CLEARED BY		LOCATION / COMPLAINTS	RPTD	UNF	ACTUAL	CLEARED BY	
				ARREST	EX. CLEAR					ARREST	EX. CLEAR
3781						3861					
No. Carol City El.						No. Glade El.					
B&E	8	-	8	2	-	B&E	9	1	8	1	-
Arson	1	-	1	-	-	Larceny-School	1	-	1	-	1
Vandalism	4	-	4	-	-	" Personal	2	-	2	-	-
Marijuana	1	-	1	-	1	Vandalism	2	-	2	-	-
Diso. Cond.	1	-	1	-	1	Other-Misc.	8	-	8	-	8
Other-Misc.	3	-	3	-	2	Trespassing	3	1	2	-	2
QRU	1	-	1	-	1	Total	25	2	23	1	11
Total	19	-	19	2	5						
3821						3901					
No. County El.						No. Hialeah El.					
Asslt. Stu/Stu	2	-	2	-	1	B&E	2	-	2	-	-
B&E	10	1	9	-	1	Vandalism	1	-	1	-	1
B&E Auto	1	-	1	-	-	Total	3	-	3	-	1
Larceny-Personal	2	-	2	-	-						
Vandalism	6	-	6	-	4	3981					
Other-Misc.	3	-	3	-	3	No. Twin Lakes El.					
QRU	21	-	21	-	21	Asslt. Stu/N-Stu.	1	-	1	-	-
Total	45	1	44	-	30	B&E	3	-	3	1	-
						Vandalism	3	-	3	-	1
						Other-Misc.	1	-	1	-	-
						Trespassing	-	-	-	1	-
						Total	8	-	8	2	1

DADE COUNTY PUBLIC SCHOOLS
SECURITY SERVICES DEPARTMENT

AREA: NORTHWEST

REPORT BY LOCATION

REPORT PERIOD: 7/75 - 6/76

LOCATION / COMPLAINTS	RPTD	UNF	ACTUAL	CLEARED BY		LOCATION / COMPLAINTS	RPTD	UNF	ACTUAL	CLEARED BY	
				ARREST	EX. CLEAR					ARREST	EX. CLEAR
4021						4261					
Oak Grove El.						Palm Springs El.					
B&E	1	-	1	-	-	Asslt. Per/Stu.	2	-	2	-	1
Total	1	-	1	-	-	B&E	4	-	4	-	-
4121						Larceny-School	1	-	1	-	-
Opa-Locka El.						Vandalism	4	-	4	1	-
Robbery	2	-	2	-	1	Other-Misc.	3	-	3	-	3
Asslt. Stu/Stu.	1	-	1	-	-	Personnel Invest.	1	-	1	-	-
" Per/N-Stu.	1	-	1	-	1	Total	15	-	15	1	4
B&E	3	-	3	-	-						
Arson	1	-	1	-	-	4281					
Other-Misc.	1	-	1	-	-	Palm Springs, No. El.					
Personnel Invest.	1	-	1	-	-	B&E	3	-	3	-	1
Total	10	-	10	-	2	Larceny-Personal	3	-	3	-	1
						Vandalism	2	-	2	-	2
						Other-Misc.	4	-	4	-	1
						Total	12	-	12	-	5
4241											
Palm Lakes El.						Larceny-Personal	1	-	1	-	-
Larceny-Personal	1	-	1	-	-	Vandalism	3	-	3	-	-
Vandalism	3	-	3	-	-	Bomb Threat	2	-	2	-	-
Bomb Threat	2	-	2	-	-	Personnel Invest.	1	-	1	-	-
Personnel Invest.	1	-	1	-	-	Total	7	-	7	-	-
Total	7	-	7	-	-						

DADE COUNTY PUBLIC SCHOOLS
SECURITY SERVICES DEPARTMENT

AREA: NORTHWEST

REPORT BY LOCATION

REPORT PERIOD: 7/75 - 6/76

LOCATION / COMPLAINTS	RPTD	UNF	ACTUAL	CLEARED BY		LOCATION / COMPLAINTS	RPTD	UNF	ACTUAL	CLEARED BY	
				ARREST	EX.CLEAR					ARREST	EX.CLEAR
4301						4881					
Parkview El.						Scott Lake El.					
Assault Stu/NS	1	-	1	-	1	Assault Per/NStu	1	-	1	-	1
B&E	4	-	4	-	-	B&E	2	-	2	-	-
Larceny-School	1	-	1	-	-	Larceny-Personal	1	-	1	-	-
Vandalism	4	-	4	-	-	Vandalism	4	-	4	-	2
Bomb Threat	1	-	1	-	-	Other-Misc.	2	-	2	-	1
Trespassing	1	-	1	-	-	Trespassing	2	-	2	-	1
Vehicle Accident	1	-	1	-	-						
Total	13	-	13	-	1	Total	12	-	12	-	5
4541						5081					
Rainbow Park El.						Skyway El.					
Robbery	1	-	1	-	1	Larceny-Personal	1	-	1	-	-
Assault Stu/Stu	3	-	3	1	2	Vandalism	2	-	2	-	-
Assault Stu/NStu	1	-	1	-	-	Other-Misc.	4	-	4	1	2
B&E	29	-	29	2	1	QRU	19	-	19	-	18
Larceny-School	3	-	3	-	-						
Larceny-Personal	1	-	1	-	-	Total	26	-	26	1	20
Vandalism	14	-	14	-	2						
Other-Misc.	3	-	3	-	2	5601					
Trespassing	3	-	3	-	3	Twin Lakes El.					
QRU	21	-	21	-	21	Larceny-Personal	1	-	1	1	-
Personnel Invest.	1	-	1	-	-	Vandalism	2	-	2	-	1
Total	80	-	80	3	32	Other-Misc.	1	-	1	-	-
						Bomb Threat	1	-	1	-	-
						Trespassing	1	-	1	-	-
						Total	6	-	6	1	1

DADE COUNTY PUBLIC SCHOOLS
SECURITY SERVICES DEPARTMENT

AREA: NORTHWEST

REPORT BY LOCATION

REPORT PERIOD: 7/75 - 6/76

LOCATION / COMPLAINTS	RPTD	UNF	ACTUAL	CLEARED BY		LOCATION / COMPLAINTS	RPTD	UNF	ACTUAL	CLEARED BY	
				ARREST	EX.CLEAR					ARREST	EX.CLEAR
5711						6051					
Walter, Mae El.						Carol City Jr.					
B&E	7	-	7	-	-	Robbery	1	-	1	-	-
B&E Auto	1	-	1	-	-	Assault Per/Stu	3	-	3	2	1
Larceny-School	1	-	1	-	1	Assault Stu/Stu	10	-	10	4	2
Vandalism	1	-	1	-	1	B&E	41	1	40	3	2
Other-Misc.	3	-	3	-	-	B&E Auto	1	-	1	1	-
QRU	3	-	3	-	3	Larceny-School	3	-	3	-	-
Vehicle Accident	1	-	1	-	-	Larceny-Person	9	-	9	-	-
Personnel Invest.	1	-	1	-	-	Arson	1	-	1	-	-
Total	18	-	18	-	5	Vandalism	14	-	14	1	3
						Disorderly Cond.	4	-	4	1	3
						Other-Misc.	7	-	7	-	5
						Bomb Threat	1	-	1	1	-
						Trespassing	6	-	6	1	5
						QRU	8	-	8	-	8
						Personnel Invest.	1	-	1	-	-
						Total	110	1	109	14	29

DADE COUNTY PUBLIC SCHOOLS
SECURITY SERVICES DEPARTMENT

AREA: NORTHWEST

REPORT BY LOCATION

REPORT PERIOD: 7/75 - 6/76

LOCATION / COMPLAINTS	RPTD	UNF	ACTUAL	CLEARED BY		LOCATION / COMPLAINTS	RPTD	UNF	ACTUAL	CLEARED BY	
				ARREST	EX.CLEAR					ARREST	EX.CLEAR
6171						6231					
Filer Jr.						Hialeah Jr.					
Assault Per/ Stu	3	-	3	-	3	Robbery	3	-	3	-	2
Assault Stu/Stu.	18	-	18	4	14	Assault Per/Stu.	11	-	11	1	7
B&E	9	1	8	-	-	Assault Stu/Stu	10	-	10	1	9
Larceny-School	2	-	2	-	-	B&E	1	-	1	-	-
Larceny-Person	14	-	14	1	1	B&E Auto	1	-	1	-	4
Vandalism	7	-	7	2	-	Larceny-School	6	1	5	1	11
Marijuana	1	-	1	1	-	Larceny-Person	23	1	22	1	-
Disorderly Cond.	3	-	3	1	2	Arson	2	-	2	-	8
Other-Misc.	3	-	3	-	2	Vandalism	12	-	12	-	1
Bomb Threat	2	-	2	-	-	Weapons: Poss.	1	-	1	-	-
QRU	9	-	9	-	8	Sex Offenses	1	1	-	-	4
Personnel Invest.	1	-	1	-	-	Disorderly Cond.	6	-	6	1	7
						Other-Misc.	6	-	6	-	-
Total	72	1	71	9	30	Bomb Threat	3	-	3	-	-
						Trespassing	2	-	2	1	1
						QRU	7	-	7	-	7
						Total	95	3	92	6	61

DADE COUNTY PUBLIC SCHOOLS
SECURITY SERVICES DEPARTMENT

AREA: NORTHWEST

REPORT BY LOCATION

REPORT PERIOD: 7/75 - 6/76

LOCATION / COMPLAINTS	RPTD	UNF	ACTUAL	CLEARED BY		LOCATION / COMPLAINTS	RPTD	UNF	ACTUAL	CLEARED BY	
				ARREST	EX.CLEAR					ARREST	EX.CLEAR
6351						6591					
Lake Stevens Jr.						North Dade Jr.					
Assault Stu/Stu	3	-	3	-	3	Robbery	3	-	3	-	2
B&E	-	-	-	1	-	Assault Per/Stu	2	-	2	-	-
Larceny-School	4	-	4	-	-	Assault Stu/Stu	7	-	7	2	2
Larceny-Person	6	-	6	-	3	Assault Stu/NStu	1	-	1	-	1
Vandalism	16	-	16	-	4	B&E	17	-	17	1	1
Weapons: Poss.	3	-	3	-	3	B&E Auto	1	-	1	-	-
Marijuana	3	-	3	1	2	Larceny-School	5	-	5	-	-
Disorderly Cond.	1	-	1	-	-	Larceny-Person	4	-	4	-	-
Other-Misc.	7	-	7	-	5	Arson	2	-	2	-	-
Bomb Threat	2	-	2	-	-	Vandalism	11	-	11	-	1
Trespassing	1	-	1	1	-	Marijuana	1	-	1	1	-
QRU	28	-	28	-	17	Drunkenness	1	-	1	-	1
Personnel Invest.	1	-	1	-	-	Disorderly Cond.	3	-	3	2	-
						Other-Misc.	14	-	14	-	7
Total	75	-	75	3	37	Trespassing	9	-	9	4	6
						QRU	34	-	34	3	31
						Vehicle Accident	1	-	1	-	1
6501						Total	116	-	116	13	53
Miami Lakes Jr.											
B&E	2	-	2	-	-						
Larceny-Person	1	-	1	-	-						
Other-Misc.	1	-	1	-	1						
Bus Accidents	1	-	1	-	1						
Total	5	-	5	-	2						

DADE COUNTY PUBLIC SCHOOLS
SECURITY SERVICES DEPARTMENT

AREA: NORTHWEST

REPORT BY LOCATION

REPORT PERIOD: 7/75 - 6/76

LOCATION / COMPLAINTS	RPTD	UNF	ACTUAL	CLEARED BY		LOCATION / COMPLAINTS	RPTD	UNF	ACTUAL	CLEARED BY	
				ARREST	EX. CLEAR					ARREST	EX. CLEAR
6681						6721					
Palm Springs Jr.						Parkway Jr.					
Robbery	1	-	1	1	-	Assault Per/Stu	6	-	6	4	2
Assault Per/Stu.	3	-	3	2	-	Assault Stu/Stu	16	-	16	2	7
Assault Stu/Stu	9	1	8	1	8	Assault Stu/NStu	4	-	4	1	2
B&E	8	-	8	1	-	B&E	21	-	21	-	-
Larceny-School	6	-	6	-	1	Larceny-School	4	-	4	-	-
Larceny-Person	4	-	4	2	-	Larceny-Person	15	-	15	-	3
Arson	1	-	1	1	-	Arson	1	-	1	-	-
Vandalism	5	-	5	-	3	Vandalism	28	-	28	-	2
Marijuana	1	-	1	-	1	Marijuana	2	-	2	-	1
Disorderly Cond.	2	-	2	2	-	Disorderly Cond.	2	-	2	-	2
Other-Misc.	5	1	4	-	4	Other-Misc.	11	-	11	-	4
Bomb Threat	10	-	10	-	-	Bomb Threat	5	-	5	-	-
Trespassing	2	-	2	1	1	Trespassing	1	-	1	-	1
Vehicle Accident	1	-	1	-	-	QRU	5	-	5	-	5
Bus Accident	1	-	1	-	1	Personnel Invest.	1	-	1	-	-
Personnel Invest.	2	-	2	-	-						
Total	61	2	59	11	19	Total	122	-	122	7	29

DADE COUNTY PUBLIC SCHOOLS
SECURITY SERVICES DEPARTMENT

AREA: NORTHWEST

REPORT BY LOCATION

REPORT PERIOD: 7/75 - 6/76

LOCATION / COMPLAINTS	RPTD	UNF	ACTUAL	CLEARED BY		LOCATION / COMPLAINTS	RPTD	UNF	ACTUAL	CLEARED BY	
				ARREST	EX. CLEAR					ARREST	EX. CLEAR
7111						7131					
Hialeah Sr.						Hialeah-Miami Lake					
Robbery	3	-	3	-	-	Assault Per/Stu	3	-	3	1	1
Assault Stu/Stu	5	-	5	1	3	Assault Stu/Stu	10	-	10	3	7
Assault Other	1	-	1	-	1	Assault Stu/NStu	2	-	2	-	-
B&E	8	-	8	-	-	Assault Other	4	1	3	-	2
B&E Auto	2	-	2	-	-	B&E Auto	4	-	4	-	-
Larceny School	9	-	9	1	-	Larceny-School	15	-	15	-	-
Larceny-Person	16	-	16	1	-	Larceny-Person	10	-	10	-	1
Vandalism	7	-	7	-	-	Vandalism	8	-	8	-	3
Weapons Poss.	-	-	-	-	1	Marijuana	1	-	1	1	-
Marijuana	1	-	1	1	-	Disorderly Cond.	5	-	5	1	5
Other-Misc.	6	-	6	-	3	Other-Misc.	9	-	9	-	5
Bomb Threat	1	-	1	-	-	Bomb Threat	3	-	3	-	-
Trespassing	-	-	-	1	-	Trespassing	4	-	4	1	3
Personnel Invest.	1	-	1	-	-	Bus Accident	1	-	1	-	-
Total	60	-	60	5	8	Total	79	1	78	7	27

DADE COUNTY PUBLIC SCHOOLS
SECURITY SERVICES DEPARTMENT

AREA: NORTHWEST

REPORT BY LOCATION

REPORT PERIOD: 7/75 - 6/76

LOCATION / COMPLAINTS	RPTD	UNF	ACTUAL	CLEARED BY		LOCATION / COMPLAINTS	RPTD	UNF	ACTUAL	CLEARED BY	
				ARREST	EX.CLEAR					ARREST	EX.CLEAR
7231						8901					
Carol City Sr.						Miami Lakes Tech.					
Robbery	5	-	5	3	-	Assault Stu/stu	1	-	1	-	1
Assault Per/Stu	8	-	8	4	3	B&E	1	-	1	-	-
Assault Stu/Stu	32	-	32	15	8	B&E Auto	1	-	1	-	-
Assault Per/NStu	2	-	2	1	-	Vandalism	1	-	1	-	-
Assault Stu/NStu	4	-	4	1	-	Other-Misc.	3	-	3	-	3
Assault Other	2	-	2	-	-	Bomb Threat	2	-	2	-	-
B&E	21	2	19	4	1	QRU	17	-	17	-	16
B&E Auto	29	-	29	1	-						
Larceny-School	39	-	39	3	-	Total	26	-	26	-	20
Larceny-Person	47	-	47	-	2						
Arson	2	-	2	-	-	9231					
B.R.C.	1	-	1	1	-	Transportation					
Vandalism	25	-	25	1	1	Assault Per/Stu	1	-	1	-	1
Weapons: Poss.	1	-	1	-	1	Assault Per/NStu	1	-	1	1	-
Marijuana	3	-	3	2	-	B&E Auto	2	-	2	1	-
Drunkenness	1	-	1	1	-	Vandalism	17	-	17	1	8
Disorderly Cond.	3	-	3	1	2	Other-Misc.	1	-	1	-	-
Other-Misc.	8	1	7	1	5	Vehicle Accident	8	-	8	-	-
Bomb Threat	4	-	4	-	-	Bus Accident	5	-	5	1	1
Trespassing	13	-	13	11	-	Personnel Invest.	1	-	1	-	-
QRU	42	-	42	-	42						
Vehicle Accident	1	-	1	-	1	Total	36	-	36	4	10
Personnel Invest.	1	-	1	-	-						
Total	294	3	291	50	66	9241					
						Maintenance					
						B&E Auto	1	-	1	-	-
						Larceny-School	7	-	7	-	-
						Larceny-Person	1	-	1	-	-
						Vandalism	5	-	5	-	-
						Total	14	-	14	-	-

DADE COUNTY PUBLIC SCHOOLS
SECURITY SERVICES DEPARTMENT

AREA: NORTHWEST

REPORT BY LOCATION

REPORT PERIOD: 7/75 - 6/76

LOCATION / COMPLAINTS	RPTD	UNF	ACTUAL	CLEARED BY		LOCATION / COMPLAINTS	RPTD	UNF	ACTUAL	CLEARED BY	
				ARREST	EX.CLEAR					ARREST	EX.CLEAR
9484						9913					
Youth Opp., No.						N.W. Security					
Robbery	1	-	1	1	-	Vandalism	1	-	1	-	-
Assault Per/Stu.	2	-	2	-	3	Other-Misc.	2	-	2	-	1
Assault Stu/Stu	5	-	5	3	3	Vehicle Accident	2	-	2	-	-
B&E	5	-	5	-	-	Total	5	-	5	-	1
B&E Auto	1	-	1	-	-	Off Campus					
Larceny-School	1	-	1	-	-	Assault Stu/Stu	1	-	1	-	2
Larceny-Person	1	-	1	-	-	Larceny-Person	1	-	1	-	-
Vandalism	8	-	8	-	6	Other-Misc.	3	-	3	-	1
Narcotics	1	-	1	-	-	AOA	20	-	20	3	1
Disorderly Cond.	3	-	3	-	3	Total	25	-	25	3	4
QRU	25	-	25	-	25	Payroll Dept.					
Personnel Invest.	1	-	1	-	-	Other-Misc.	1	-	1	-	-
Total	54	-	54	4	40	Total	1	-	1	-	-
						9521					
						N.W. Area Office					
						Vandalism	1	-	1	-	1
						Other-Misc.	1	-	1	-	1
						QRU	20	-	20	-	20
						Total	22	-	22	-	22

NORTH CENTRAL AREA

DADE COUNTY PUBLIC SCHOOLS
SECURITY SERVICES DEPARTMENT

AREA: NORTH CENTRAL

REPORT BY LOCATION

REPORT PERIOD: 7/75 - 6/76

LOCATION / COMPLAINTS	RPTD	UNF	ACTUAL	CLEARED BY		LOCATION / COMPLAINTS	RPTD	UNF	ACTUAL	CLEARED BY	
				ARREST	EX. CLEAR					ARREST	EX. CLEAR
0101						0481					
Arcola Lakes El.						Bright El.					
Assault Per/NStu	1	-	1	-	1	B&E	5	-	5	1	-
B&E	8	-	8	2	1	Larceny-Person	1	-	1	-	-
Larceny-School	2	-	2	-	-	Vandalism	5	2	3	-	-
Larceny-Person	11	-	11	-	3	Other-Misc.	2	-	2	-	1
B.R.C.	-	-	-	3	-	Total	13	2	11	1	1
Other-Misc.	6	1	5	-	5						
Trespassing	1	-	1	-	1	0521					
QRU	79	-	79	-	79	Broadmoor El.					
Total	108	1	107	5	90	Assault Stu/NStu	1	-	1	-	1
						B&E	14	-	14	-	-
0401						Larceny-School	1	-	1	-	-
Blanton, Van EL.						Larceny-Person	3	-	3	-	1
Assault Per/NStu	1	-	1	1	-	Vandalism	2	-	2	-	-
B&E	6	1	5	-	4	Other-Misc.	4	-	4	-	1
Larceny-School	1	-	1	-	1	QRU	25	-	25	-	25
Larceny-Person	9	-	9	-	-	Total	50	-	50	-	28
Vandalism	5	1	4	-	1						
Disorderly Cond.	2	-	2	-	2	1201					
Other-Misc.	17	-	17	-	17	Curtiss El.					
Bomb Threat	1	-	1	-	-	Assault Stu/NStu	1	1	-	-	-
Trespassing	3	-	3	-	1	Larceny-School	1	-	1	-	-
QRU	1	-	1	-	1	Vandalism	1	-	1	-	-
Total	46	2	44	1	27	Total	3	1	2	-	-

DADE COUNTY PUBLIC SCHOOLS
SECURITY SERVICES DEPARTMENT

AREA: NORTH CENTRAL

REPORT BY LOCATION

REPORT PERIOD: 7/75 - 6/76

LOCATION / COMPLAINTS	RPTD	UNF	ACTUAL	CLEARED BY		LOCATION / COMPLAINTS	RPTD	UNF	ACTUAL	CLEARED BY	
				ARREST	EX.CLEAR					ARREST	EX.CLEAR
1401						1681					
Drew El.						Evans El.					
Robbery	2	-	2	-	-	Assault Stu/Stu	4	-	4	-	2
Assault Stu/Stu	2	-	2	-	1	Assault Per/NStu	1	-	1	1	-
Assault Other	-	-	-	-	1	Assault Stu/NStu	3	-	3	-	2
B&E	5	-	5	1	-	B&E	54	1	53	4	1
Larceny-School	1	-	1	-	-	Larceny-School	5	-	5	-	-
Larceny-Person	4	-	4	-	1	Larceny-Person	3	-	3	1	-
Other-Misc.	4	-	4	-	4	Arson	1	-	1	-	-
Trespassing	2	-	2	-	1	B.R.C.	1	-	1	-	1
QRU	26	-	26	-	26	Vandalism	14	-	14	-	1
Total	46	-	46	1	34	Disorderly Cond.	1	-	1	-	-
						Other-Misc.	4	-	4	-	3
						Trespassing	1	-	1	-	1
						QRU	6	-	6	-	6
						Personnel Invest.	1	-	1	-	1
						Total	99	1	98	6	18
1601						2041					
Edison Park El.						Franklin, Ben El.					
Robbery	1	-	1	-	-	Assault Per/Stu	1	-	1	-	1
Assault Per/Stu	1	-	1	1	-	B&E	3	-	3	-	-
Assault Stu/Stu	1	-	1	-	1	Larceny-Person	5	-	5	-	1
Assault Stu/NStu	1	-	1	-	1	Vandalism	4	-	4	-	-
B&E	8	-	8	1	-	Weapons Poss.	1	-	1	-	1
Larceny-Person	1	-	1	-	-	Narcotics	1	-	1	-	1
Vandalism	1	-	1	-	-	Other-Misc.	14	1	13	-	9
Other-Misc.	1	-	1	-	-	Bomb Threat	3	-	3	-	-
QRU	5	-	5	-	5	Personnel Invest.	1	-	1	-	1
Personnel Invest.	2	-	2	-	1	Total	33	1	32	-	14
Total	22	-	22	2	8						

DADE COUNTY PUBLIC SCHOOLS
SECURITY SERVICES DEPARTMENT

AREA: NORTH CENTRAL

REPORT BY LOCATION

REPORT PERIOD: 7/75 - 6/76

LOCATION / COMPLAINTS	RPTD	UNF	ACTUAL	CLEARED BY		LOCATION / COMPLAINTS	RPTD	UNF	ACTUAL	CLEARED BY	
				ARREST	EX.CLEAR					ARREST	EX.CLEAR
2121						2501					
Gladeview El.						Holmes El.					
Assault Stu/Stu	1	-	1	1	-	Assault Per/NStu	-	-	-	1	-
Assault Other	2	-	2	-	-	Assault Other	2	-	2	-	-
B&E	6	-	6	-	-	B&E	17	-	17	-	2
B&E Auto	4	-	4	-	-	Larceny-Person	2	-	2	-	-
Larceny-Person	3	-	3	-	-	Arson	1	-	1	-	-
Vandalism	1	-	1	-	-	Vandalism	2	-	2	-	-
Other-Misc.	2	1	1	-	1	QRU	13	-	13	-	13
QRU	32	-	32	-	32	Personnel Invest.	1	1	-	-	-
Total	51	1	50	1	33	Total	38	1	37	1	15
2361						2531					
Hialeah El.						Primary C El.					
B&E	2	-	2	-	-	Larceny-School	2	-	2	-	-
Larceny-School	2	-	2	-	-	Vandalism	1	-	1	-	-
Vandalism	2	-	2	-	-	Other-Misc.	2	-	2	-	2
Disorderly Cond.	1	-	1	-	1	Vehicle Accident	1	-	1	-	-
Trespassing	1	-	1	-	1	Personnel Invest.	1	-	1	-	-
QRU	9	-	9	-	9	Total	7	-	7	-	2
Vehicle Accident	1	-	1	-	1						
Total	18	-	18	-	12	2621					
						Johnson, J. W. El.					
						B&E	2	-	2	-	1
						Larceny-Person	1	-	1	-	-
						QRU	14	-	14	-	14
						Total	17	-	17	-	15

DADE COUNTY PUBLIC SCHOOLS
SECURITY SERVICES DEPARTMENT

AREA: NORTH CENTRAL

REPORT BY LOCATION

REPORT PERIOD: 7/75 - 6/76

LOCATION / COMPLAINTS	RPTD	UNF	ACTUAL	CLEARED BY		LOCATION / COMPLAINTS	RPTD	UNF	ACTUAL	CLEARED BY	
				ARREST	EX.CLEAR					ARREST	EX.CLEAR
2761						2981					
King, Martin Luther						Liberty City El.					
Assault Per/Stu	1	-	1	-	1	Robbery	1	-	1	-	-
Larceny-Person	1	-	1	-	-	Assault Stu/Stu	1	-	1	-	-
Other-Misc.	1	-	1	-	1	Assault Stu/NStu	1	-	1	-	1
QRU	15	-	15	-	15	B&E	13	-	13	-	1
Total	18	-	18	-	17	Larceny-School	1	-	1	1	-
						Auto Theft	1	-	1	-	-
						Vandalism	12	-	12	-	-
						Other-Misc.	7	-	7	-	7
						Trespassing	1	-	1	-	-
2821						QRU	34	-	34	-	34
Lakeview El.						Vehicle Accident	1	-	1	-	1
Assault Stu/NStu	2	-	2	-	1	Total	73	-	73	1	44
Assault Other	1	-	1	-	1						
B&E	4	-	4	-	1	3021					
B&E Auto	1	-	1	-	-	Little River El.					
Larceny-Person	1	-	1	-	-	Robbery	2	-	2	-	-
Vandalism	1	-	1	-	-	Assault Per/Stu	1	-	1	-	-
Other-Misc.	1	-	1	-	1	Assault Stu/Stu	1	-	1	-	-
Bomb Threat	1	-	1	-	-	B&E	17	1	16	2	-
Trespassing	1	-	1	-	1	Larceny-School	6	-	6	-	-
QRU	1	-	1	-	1	Larceny-Person	1	-	1	-	-
Total	14	-	14	-	6	Arson	1	-	1	-	-
						Vandalism	3	-	3	-	1
						Disorderly Cond.	1	-	1	-	-
						Other-Misc.	5	-	5	-	5
						QRU	24	-	24	-	24
						Personnel Invest.	1	1	-	-	-
						Total	63	2	61	2	30

DADE COUNTY PUBLIC SCHOOLS
SECURITY SERVICES DEPARTMENT

AREA: NORTH CENTRAL

REPORT BY LOCATION

REPORT PERIOD: 7/75 - 6/76

LOCATION / COMPLAINTS	RPTD	UNF	ACTUAL	CLEARED BY		LOCATION / COMPLAINTS	RPTD	UNF	ACTUAL	CLEARED BY	
				ARREST	EX.CLEAR					ARREST	EX.CLEAR
3041						3381					
Lorah Park El.						Miami Springs El.					
Assault Per/Stu	1	-	1	-	1	Larceny-Person	6	-	6	-	1
B&E	4	-	4	-	-	Bomb Threat	1	-	1	-	-
Larceny-Person	7	-	7	-	-	Trespassing	1	-	1	1	-
Vandalism	4	-	4	-	-	QRU	13	-	13	-	13
Other-Misc.	1	-	1	-	1	Total	21	-	21	1	14
QRU	1	-	1	-	1						
Personnel Invest.	1	-	1	-	1	3501					
Total	19	-	19	-	4	Morningside El.					
						Assault Stu/NStu	1	-	1	-	1
						B&E	2	-	2	1	-
						B&E Auto	1	-	1	-	1
						Larceny-Person	1	-	1	-	-
						Disorderly Cond.	1	-	1	-	1
						Other-Misc.	3	-	3	-	3
						Total	9	-	9	1	6
3301											
Miami Park El.						4071					
Assault Per/NStu	1	-	1	-	1	Olinda El.					
B&E	5	-	5	-	-	Robbery	1	-	1	-	-
B&E Auto	2	-	2	-	-	B&E Auto	1	-	1	-	-
Larceny-Person	2	-	2	-	-	Larceny-Person	5	-	5	-	-
Vandalism	4	-	4	-	1	Vandalism	1	-	1	-	-
Other-Misc.	5	-	5	-	4	Disorderly Cond.	1	-	1	-	1
QRU	10	-	10	-	10	QRU	3	-	3	-	3
Total	29	-	29	-	16	Personnel Invest.	1	-	1	-	1
						Total	13	-	13	-	5
3341											
Miami Shores El.											
B&E	1	-	1	-	-						
Vandalism	1	-	1	-	-						
Other-Misc.	1	-	1	-	-						
Trespassing	1	-	1	-	1						
Total	4	-	4	-	1						

DADE COUNTY PUBLIC SCHOOLS
SECURITY SERVICES DEPARTMENT

AREA: NORTH CENTRAL

REPORT BY LOCATION

REPORT PERIOD: 7/75 - 6/76

LOCATION / COMPLAINTS	RPTD	UNF	ACTUAL	CLEARED BY		LOCATION / COMPLAINTS	RPTD	UNF	ACTUAL	CLEARED BY	
				ARREST	EX.CLEAR					ARREST	EX.CLEAR
4171						4961					
Orchard Villa El.						Shadowlawn El					
B&E	30	-	30	4	5	B&E	10	1	9	2	-
Larceny-School	2	-	2	-	2	Larceny-School	1	-	1	-	-
Larceny-Person	3	-	3	-	-	Larceny-Person	3	-	3	-	-
Vandalism	2	-	2	-	-	Vandalism	10	-	10	-	-
Other-Misc.	2	1	1	-	-	Sex Offenses	1	-	1	-	-
Bomb Threat	2	-	2	-	1	Disorderly Cond.	1	-	1	-	1
QRU	32	-	32	-	32	Other-Misc.	1	-	1	-	1
Total	73	1	72	4	40	QRU	6	-	6	-	6
						Total	33	1	32	2	8
4501						5201					
Poinciana Park El.						South Hialeah El.					
Robbery	1	-	1	-	1	B&E	9	-	9	-	1
Assault Stu/Stu	-	-	-	-	1	Larceny-Person	2	-	2	-	-
B&E	24	-	24	1	1	Arson	1	-	1	-	1
B&E Auto	2	-	2	-	-	Vandalism	3	-	3	-	1
Larceny-School	4	-	4	-	1	Disorderly Cond.	1	-	1	-	1
Larceny-Person	6	-	6	-	1	Other-Misc.	2	-	2	-	2
Arson	1	-	1	-	-	Total	18	-	18	-	6
Vandalism	4	-	4	-	2						
Weapons: Poss.	1	-	1	-	1	5361					
Sex Offenses	1	-	1	-	-	Springview El.					
Narcotics	1	-	1	1	-	B&E	4	-	4	-	-
Disorderly Cond.	8	-	8	-	7	Larceny-Person	2	-	2	-	-
Other-Misc.	14	1	13	1	10	Vandalism	2	-	2	-	-
Trespassing	3	-	3	-	2	Other-Misc.	1	-	1	-	-
QRU	19	-	19	-	19	Total	9	-	9	-	-
Personnel Invest.	2	-	2	-	1						
Total	91	1	90	3	47						

DADE COUNTY PUBLIC SCHOOLS
SECURITY SERVICES DEPARTMENT

AREA: NORTH CENTRAL

REPORT BY LOCATION

REPORT PERIOD: 7/75 - 6/76

LOCATION / COMPLAINTS	RPTD	UNF	ACTUAL	CLEARED BY		LOCATION / COMPLAINTS	RPTD	UNF	ACTUAL	CLEARED BY	
				ARREST	EX.CLEAR					ARREST	EX.CLEAR
5861						5971					
West Little River El.						Young, Nathan El.					
Assault Per/Stu.	2	-	2	-	2	Assault Per/NStu.	1	-	1	-	-
Assault Stu/Stu	1	-	1	-	1	B&E	9	1	8	-	-
Assault Per/NStu	1	-	1	-	1	Larceny-Person	2	-	2	-	2
B&E	24	1	23	2	1	Other-Misc.	1	-	1	-	1
B&E Auto	1	-	1	-	-	Trespassing	1	-	1	-	-
Larceny-School	1	-	1	-	-	QRU	8	-	8	-	7
Larceny-Person	4	-	4	-	-	Total	22	1	21	-	10
Vandalism	2	-	2	-	-						
Disorderly Cond.	1	-	1	-	1	6141					
Other-Misc.	7	1	6	-	6	Drew Jr.					
QRU	26	-	26	-	26	Assault Per/Stu	1	-	1	1	-
Personnel Invest.	1	-	1	-	-	Assault Stu/Stu	3	-	3	2	1
Total	71	2	69	2	38	B&E	5	-	5	-	-
						B&E Auto	2	-	2	-	-
5901						Larceny-School	1	-	1	-	-
Westview El.						Larceny-Person	5	-	5	-	-
B&E	9	-	9	1	-	Vandalism	6	-	6	-	5
Larceny-Person	6	-	6	1	-	Weapons: Poss.	2	-	2	-	2
Vandalism	2	-	2	-	-	Other-Misc.	5	-	5	-	4
Other-Misc.	3	-	3	-	3	Bomb Threat	2	-	2	-	-
QRU	2	-	2	-	2	Trespassing	9	-	9	3	6
Total	22	-	22	2	5	QRU	21	-	21	-	21
						Vehicle Accident	1	-	1	1	-
						Personnel Invest.	2	-	2	-	-
						Total	65	-	65	7	39

DADE COUNTY PUBLIC SCHOOLS
SECURITY SERVICES DEPARTMENT

AREA: NORTH CENTRAL

REPORT BY LOCATION

REPORT PERIOD: 7/75 - 6/76

LOCATION / COMPLAINTS	RPTD	UNF	ACTUAL	CLEARED BY		LOCATION / COMPLAINTS	RPTD	UNF	ACTUAL	CLEARED BY	
				ARREST	EX.CLEAR					ARREST	EX.CLEAR
6391						6411					
Madison Jr.						Mann, Horace Jr.					
Robbery	1	-	1	-	-	Robbery	8	1	7	2	1
Assault Per/Stu	7	-	7	2	3	Assault Per/Stu	4	-	4	2	1
Assault Stu/Stu	11	-	11	4	6	Assault Stu/Stu	18	1	17	4	9
Assault Per/NStu	2	-	2	2	-	Assault Per/NStu	2	-	2	1	-
Assault Stu/NStu	2	-	2	-	1	Assault Stu/NStu	2	-	2	1	2
B&E	27	1	26	1	-	Assault Other	-	-	-	-	1
Larceny-School	6	1	5	-	1	B&E	12	-	12	3	-
Larceny-Person	14	-	14	-	4	B&E Auto	1	-	1	-	-
Vandalism	26	-	26	1	7	Larceny-School	3	-	3	-	2
Weapons Poss.	1	1	-	-	-	Larceny-Person	22	-	22	3	3
Sex Offenses	1	1	-	-	-	Arson	1	-	1	-	1
Marijuana	1	-	1	-	1	B.R.C.	1	-	1	-	1
Disorderly Cond.	4	-	4	1	1	Vandalism	17	-	17	-	7
Other-Misc.	11	1	10	1	7	Weapons Poss.	2	-	2	2	-
Bomb Threat	1	-	1	-	-	Sex Offenses	1	1	-	-	-
Trespassing	6	-	6	1	4	Disorderly Cond.	8	1	7	3	4
QRU	30	-	30	-	30	Other-Misc.	12	1	11	1	7
Vehicle Accident	2	-	2	1	1	Bomb Threat	2	-	2	-	-
						Trespassing	13	-	13	6	4
						QRU	23	-	23	-	23
						Vehicle Accident	1	-	1	-	1
						Personnel Invest.	2	-	2	-	1
Total	153	5	148	14	66	Total	155	5	150	28	68

DADE COUNTY PUBLIC SCHOOLS
SECURITY SERVICES DEPARTMENT

AREA: NORTH CENTRAL

REPORT BY LOCATION

REPORT PERIOD: 7/75 - 6/76

LOCATION / COMPLAINTS	RPTD	UNF	ACTUAL	CLEARED BY		LOCATION / COMPLAINTS	RPTD	UNF	ACTUAL	CLEARED BY	
				ARREST	EX.CLEAR					ARREST	EX.CLEAR
6481						6981					
Edison Middle						Westview Jr.					
B&E	34	1	33	2	-	Robbery	2	-	2	2	-
Larceny-School	3	-	3	-	-	Assault Per/Stu	3	-	3	1	2
Larceny-Person	2	-	2	-	-	Assault Stu/Stu	17	-	17	6	9
Vandalism	11	-	11	-	3	Assault Per/NStu	1	-	1	-	-
Disorderly Cond.	2	-	2	-	1	Assault Stu/NStu	1	-	1	-	1
Other-Misc.	12	1	11	-	9	B&E	8	-	8	1	2
QRU	42	-	42	-	42	Larceny-School	8	1	7	2	1
Total	106	2	104	2	55	Larceny-Person	24	2	22	1	5
6521						Vandalism	8	-	8	-	3
Miami Springs Jr.						Sex Offenses	1	-	1	-	-
Robbery	6	-	6	5	-	Marijuana	2	-	2	2	-
Assault Per/Stu	3	-	3	3	-	Disorderly Cond.	2	-	2	-	2
Assault Stu/Stu	10	-	10	4	5	Other-Misc.	4	-	4	-	4
Assault Other	1	-	1	1	-	Bomb Threat	1	-	1	-	-
B&E	14	2	12	1	-	Trespassing	5	-	5	3	1
Larceny-School	3	-	3	-	-	QRU	24	-	24	-	24
Larceny-Person	8	-	8	1	-	Personnel Invest.	1	1	-	-	-
Vandalism	8	-	8	1	4	Total	112	4	108	18	54
Weapons Poss.	1	-	1	-	1						
Disorderly Cond.	6	-	6	5	2						
Other-Misc.	5	-	5	1	2						
Bomb Threat	10	-	10	-	-						
Trespassing	11	-	11	6	4						
QRU	2	1	1	-	1						
Personnel Invest.	1	-	1	-	1						
Total	89	3	86	28	20						

DADE COUNTY PUBLIC SCHOOLS
SECURITY SERVICES DEPARTMENT

AREA: NORTH CENTRAL

REPORT BY LOCATION

REPORT PERIOD: 7/75 - 6/76

LOCATION / COMPLAINTS	RPTD	UNF	ACTUAL	CLEARED BY		LOCATION / COMPLAINTS	RPTD	UNF	ACTUAL	CLEARED BY	
				ARREST	EX.CLEAR					ARREST	EX.CLEAR
7251 Central Sr.						7301 Edison Sr.					
Robbery	9	-	9	4	1	Robbery	2	-	2	-	1
Assault Per/Stu	5	1	4	-	1	Assault Stu/Stu	6	-	6	1	1
Assault Stu/Stu	44	-	44	7	13	Assault Per/NStu	1	-	1	1	-
Assault Per/NStu	3	-	3	2	-	Assault Stu/NStu	1	-	1	-	1
Assault Stu/NStu	2	-	2	-	1	B&E	24	1	23	1	-
B&E	45	4	41	4	-	B&E Auto	3	-	3	-	1
B&E Auto	11	-	11	-	-	Larceny-School	7	1	6	-	-
Larceny-School	27	-	27	3	-	Larceny-Person	14	-	14	-	3
Larceny-Person	62	1	61	5	3	Vandalism	14	-	14	-	1
Auto Theft	1	-	1	1	-	Weapons: Poss.	1	-	1	-	1
Arson	1	-	1	-	-	Disorderly Cond.	1	-	1	-	1
Vandalism	30	1	29	1	4	Other-Misc.	6	-	6	-	4
Weapons: Poss.	1	-	1	1	-	Bomb Threat	2	-	2	-	-
Sex Offenses	2	-	2	-	1	QRU	59	-	59	-	59
Marijuana	1	-	1	1	-						
Drunkenness	1	-	1	-	1						
Disorderly Cond.	4	-	4	1	1						
Other-Misc.	11	-	11	-	10						
Bomb Threat	8	-	8	-	-						
Trespassing	10	-	10	8	3						
QRU	74	-	74	-	73						
Vehicle Accident	1	-	1	-	-						
Personnel Invest.	4	-	4	-	-						
Total	357	7	350	38	112	Total	141	2	139	3	73

DADE COUNTY PUBLIC SCHOOLS
SECURITY SERVICES DEPARTMENT

AREA: NORTH CENTRAL

REPORT BY LOCATION

REPORT PERIOD: 7/75 - 6/76

LOCATION / COMPLAINTS	RPTD	UNF	ACTUAL	CLEARED BY		LOCATION / COMPLAINTS	RPTD	UNF	ACTUAL	CLEARED BY	
				ARREST	EX.CLEAR					ARREST	EX.CLEAR
7411 Northwestern Sr.						7511 Miami Springs Sr.					
Rape	-	1	-1	-	-	Assault Per/Stu	4	-	4	1	3
Assault Per/Stu	1	-	1	1	-	Assault Stu/Stu	11	-	11	5	4
Assault Stu/Stu	2	-	2	1	1	Assault Stu/NStu	2	-	2	-	1
Assault Stu/NStu	1	1	-	-	-	B&E	3	-	3	1	-
B&E	20	-	20	1	1	B&E Auto	4	-	4	2	-
Larceny-School	14	1	13	-	-	Larceny-School	7	-	7	-	1
Larceny-Person	3	-	3	-	-	Larceny-Person	30	1	29	1	5
Auto Theft	1	-	1	-	1	B.R.C.	1	-	1	1	-
Vandalism	1	-	1	-	-	Vandalism	9	-	9	-	4
Weapons: Poss.	1	-	1	1	-	Weapons: Poss.	7	-	7	1	5
Sex Offenses	1	-	1	1	-	Sex Offenses	1	-	1	-	1
Disorderly Cond.	1	-	1	-	1	Marijuana	2	-	2	1	1
Other-Misc.	13	-	13	-	12	Disorderly Cond.	1	-	1	-	1
Bomb Threat	2	-	2	-	-	Other-Misc.	4	-	4	-	3
Trespassing	1	-	1	-	1	Bomb Threat	7	-	7	-	-
QRU	66	-	66	-	66	Trespassing	3	-	3	1	1
Personnel Invest.	1	-	1	-	-	Vehicle Accident	1	-	1	1	1
Total	129	3	126	5	83	Total	97	1	96	15	31
						7541 North Miami Beach					
						Larceny-School	1	-	1	-	1
						Total	1	-	1	-	1

DADE COUNTY PUBLIC SCHOOLS
SECURITY SERVICES DEPARTMENT

AREA: NORTH CENTRAL

REPORT BY LOCATION

REPORT PERIOD: 7/75 - 6/76

LOCATION / COMPLAINTS	RPTD	UNF	ACTUAL	CLEARED BY		LOCATION / COMPLAINTS	RPTD	UNF	ACTUAL	CLEARED BY	
				ARREST	EX.CLEAR					ARREST	EX.CLEAR
7831						8139 Dorsey Skill Cntr					
Mac Arthur, No.						Assault Per/Stu	1	-	1	-	1
Robbery	4	1	3	5	1	Assault Stu/Stu	1	-	1	-	1
Assault Per/Stu	9	-	9	5	5	Assault Per/NStu	1	-	1	-	1
Assault Stu/Stu	45	-	45	7	33	B&E	23	1	22	2	-
Assault Per/NStu	3	-	3	1	1	B&E Auto	2	-	2	-	-
Assault Stu/NStu	3	-	3	1	-	Larceny-School	3	-	3	-	-
Assault Other	1	-	1	1	-	Larceny-Person	15	-	15	-	1
B&E	11	-	11	-	1	Vandalism	5	-	5	-	-
Larceny-School	9	-	9	2	1	Disorderly Cond.	1	-	1	-	1
Larceny-Person	9	1	8	3	-	Other-Misc.	7	1	6	-	4
Arson	1	-	1	-	-	Trespassing	1	-	1	-	1
B.R.C.	1	-	1	1	1	QRU	20	-	20	-	20
Vandalism	20	-	20	-	8	Vehicle Accident	5	1	4	-	3
Marijuana	4	-	4	1	3	Personnel Invest.	1	-	1	1	-
Drunkenness	1	-	1	-	1	Total	86	3	83	3	33
Disorderly Cond.	11	-	11	-	13	9231					
Other-Misc.	5	-	5	-	5	Transportation					
Bomb Threat	3	-	3	-	-	Assault Stu/Stu	6	-	6	3	2
Trespassing	1	-	1	3	-	Assault Per/NStu	-	-	-	-	1
QRU	59	-	59	-	59	Larceny-Person	1	-	1	-	-
Personnel Invest.	3	1	2	-	1	Vandalism	20	-	20	2	11
Total	203	3	200	30	133	Disorderly Cond.	2	-	2	-	2
8045						Other-Misc.	3	-	3	1	2
Miami Agriculture						Trespassing	1	-	1	1	-
B&E	9	-	9	-	-	Vehicle Accident	20	-	20	1	10
B&E Auto	1	-	1	-	-	Bus Accident	7	-	7	-	3
Inhalants	2	-	2	-	1	Personnel Invest.	2	-	2	-	1
Other-Misc.	1	-	1	-	-	Total	62	-	62	8	32
Total	13	-	13	-	1						

DADE COUNTY PUBLIC SCHOOLS
SECURITY SERVICES DEPARTMENT

AREA: NORTH CENTRAL

REPORT BY LOCATION

REPORT PERIOD: 7/75 - 6/76

LOCATION / COMPLAINTS	RPTD	UNF	ACTUAL	CLEARED BY		LOCATION / COMPLAINTS	RPTD	UNF	ACTUAL	CLEARED BY	
				ARREST	EX.CLEAR					ARREST	EX.CLEAR
9241						Off Campus					
Maintenance						Rape	2	-	2	-	2
B&E Auto	1	-	1	-	-	Robbery	1	-	1	-	1
Larceny-School	1	-	1	-	-	Assault Stu/Stu	6	-	6	1	5
Total	2	-	2	-	-	Assault Stu/NStu	1	-	1	-	1
9486						Assault Other	1	-	1	-	1
C.O.P.E. No.						Larceny-School	1	-	1	-	-
Larceny-Person	7	-	7	-	3	Larceny-Person	5	-	5	-	3
QRU	1	-	1	-	1	Auto Theft	4	-	4	1	3
Total	8	-	8	-	4	Sex Offenses	3	-	3	-	3
9561						Disorderly Cond.	1	-	1	-	1
Reading Center						Other-Misc.	16	-	16	-	13
Robbery	1	-	1	-	-	Bomb Threat	1	-	1	-	1
Larceny-Person	1	-	1	-	-	Vehicle Accident	2	-	2	-	1
Other-Misc.	1	-	1	-	-	A.O.A.	15	-	15	2	10
Total	3	-	3	-	-	Total	59	-	59	4	45

SOUTH CENTRAL AREA

DADE COUNTY PUBLIC SCHOOLS
SECURITY SERVICES DEPARTMENT

AREA: SOUTH CENTRAL

REPORT BY LOCATION

REPORT PERIOD: 7/75 - 6/76

LOCATION / COMPLAINTS	RPTD	UNF	ACTUAL	CLEARED BY		LOCATION / COMPLAINTS	RPTD	UNF	ACTUAL	CLEARED BY	
				ARREST.	EX. CLEAR					ARREST	EX. CLEAR
0081						0281					
Allapattah El.						Bethune El.					
Assault Per/Stu	3	-	3	-	3	B&E	11	1	10	4	1
Assault Stu/Stu	3	-	3	1	2	Larceny-School	2	-	2	-	-
B&E	11	-	11	-	-	Larceny-Person	1	-	1	-	-
Larceny-Person	1	-	1	-	-	Vandalism	2	-	2	-	-
Auto Theft	-	-	-	-	1	Other-Misc.	3	-	3	-	2
Vandalism	3	-	3	-	4	Trespassing	1	-	1	-	1
Sex Offense	2	-	2	2	-	QRU	8	-	8	-	7
Other-Misc.	-	-	-	-	1	Personnel Invest.	1	-	1	-	-
Trespassing	1	-	1	-	1	Total	29	1	28	4	11
QRU	16	-	16	-	16						
Personnel Invest.	1	-	1	-	1	0601					
Total	41	-	41	3	29	Buena Vista El.					
						Assault Other	1	-	1	-	1
0121						Personnel Invest.	1	1	-	-	-
Auburndale El.						Total	2	1	1	-	1
B&E	1	-	1	-	-						
Vandalism	1	-	1	-	-	0721					
Trespassing	1	-	1	-	1	Carver El.					
QRU	5	-	5	-	5	B&E	12	-	12	-	2
Total	8	-	8	-	6	Vandalism	1	-	1	-	-
						Other-Misc.	1	-	1	-	-
						QRU	20	-	20	-	19
						Total	34	-	34	-	21

DADE COUNTY PUBLIC SCHOOLS
SECURITY SERVICES DEPARTMENT

AREA: SOUTH CENTRAL

REPORT BY LOCATION

REPORT PERIOD: 7/75 - 6/76

LOCATION / COMPLAINTS	RPTD	UNF	ACTUAL	CLEARED BY		LOCATION / COMPLAINTS	RPTD	UNF	ACTUAL	CLEARED BY	
				ARREST.	EX.CLEAR					ARREST	EX.CLEAR
0801						0881					
Citrus Grove El.						Comstock El.					
B&E	8	-	8	1	-	B&E	14	-	14	13	-
Larceny-School	1	-	1	-	-	B&E Auto	1	-	1	-	-
Vandalism	2	-	2	-	-	Vandalism	8	-	8	-	-
Other-Misc.	1	-	1	-	-	Disorderly Cond.	1	-	1	-	1
Bomb Threat	1	-	1	-	-	Other-Misc.	2	-	2	-	1
QRU	2	-	2	-	2	QRU	17	-	17	-	17
Total	15	-	15	1	2	Vehicle Accident	1	-	1	-	-
						Total	44	-	44	13	19
0841						0961					
Coconut Grove El.						Coral Gables El.					
Assault Other	1	-	1	-	1	B&E	3	-	3	-	-
B&E	9	-	9	1	-	Sex Offense	1	-	1	-	-
Larceny-School	1	-	1	-	-	Other-Misc.	1	-	1	-	1
Vandalism	3	-	3	-	-	Total	5	-	5	-	1
Disorderly Cond.	1	-	1	-	-						
Other-Misc.	2	-	2	-	-						
QRU	5	-	5	-	5						
Total	22	-	22	1	6						
						1121					
						Coral Way El.					
						B&E	2	-	2	-	-
						Vandalism	1	-	1	-	-
						Other-Misc.	2	-	2	-	-
						Bomb Threat	2	-	2	-	-
						QRU	33	-	33	-	32
						Total	40	-	40	-	32

DADE COUNTY PUBLIC SCHOOLS
SECURITY SERVICES DEPARTMENT

AREA: SOUTH CENTRAL

REPORT BY LOCATION

REPORT PERIOD: 7/75 - 6/76

LOCATION / COMPLAINTS	RPTD	UNF	ACTUAL	CLEARED BY		LOCATION / COMPLAINTS	RPTD	UNF	ACTUAL	CLEARED BY	
				ARREST.	EX.CLEAR					ARREST	EX.CLEAR
1321						1441					
Dade El.						Dunbar El.					
Robbery	1	-	1	1	-	Robbery	2	-	2	-	-
B&E	12	-	12	2	-	Assault Stu/NStu	1	-	1	-	1
Larceny-School	3	-	3	-	-	B&E	12	-	12	1	1
Vandalism	6	-	6	-	1	B&E Auto	1	-	1	-	-
Other-Misc.	1	-	1	-	1	Larceny-School	4	-	4	-	-
Trespassing	2	-	2	-	-	Larceny-Person	2	-	2	-	-
QRU	13	-	13	-	13	Other-Misc.	2	-	2	-	2
Total	38	-	38	3	15	Trespassing	1	-	1	-	-
						QRU	6	-	6	-	6
						Total	31	-	31	1	10
1361						1561					
Douglas El.						Earlington Hgts. El.					
Robbery	1	-	1	-	-	Rape	1	-	1	-	-
Assault Per/NStu	2	-	2	1	1	Assault Other	1	-	1	-	1
B&E	42	-	42	1	6	B&E	16	-	16	3	-
Vandalism	6	-	6	-	-	B&E Auto	1	-	1	-	-
Trespassing	1	-	1	1	-	Larceny-Person	6	-	6	-	-
QRU	19	-	19	-	18	Vandalism	2	-	2	-	1
Total	71	-	71	3	25	Other-Misc.	4	-	4	1	3
						Bomb Threat	2	-	2	-	1
						Trespassing	1	-	1	-	1
						QRU	18	-	18	-	18
						Total	52	-	52	4	25

DADE COUNTY PUBLIC SCHOOLS
SECURITY SERVICES DEPARTMENT

AREA: SOUTH CENTRAL

REPORT BY LOCATION

REPORT PERIOD: 7/75 - 6/76

LOCATION / COMPLAINTS	RPTD	UNF	ACTUAL	CLEARED BY		LOCATION / COMPLAINTS	RPTD	UNF	ACTUAL	CLEARED BY	
				ARREST	EX.CLEAR					ARREST	EX.CLEAR
1881 Flagler El.						2661 Kensington Park El.					
B&E	3	1	2	-	-	Assault Other	1	-	1	-	1
Vandalism	1	-	1	-	1	B&E	9	-	9	1	-
Total	4	1	3	-	1	Larceny-School	2	1	1	-	-
1961 Floral Hgts. El.						Vandalism	3	-	3	-	1
B&E	16	1	15	4	1	Disorderly Cond.	3	-	3	-	3
Larceny-School	1	-	1	-	-	Other-Misc.	3	1	2	-	1
Larceny-Person	1	-	1	-	-	Bomb Threat	5	-	5	-	-
Arson	2	-	2	-	-	Total	26	2	24	1	6
Vandalism	7	-	7	-	-	2741 Key Biscayne El.					
Narcotics	-	-	-	1	-	Larceny-Person	2	-	2	-	-
Other-Misc.	3	-	3	-	2	Vandalism	1	-	1	-	-
QRU	45	-	45	-	43	Other-Misc.	2	1	1	-	1
Total	75	1	74	5	46	Total	5	1	4	-	1
2461 Highland Park											
B&E	2	-	2	1	-						
Arson	1	-	1	-	-						
Vandalism	2	-	2	-	-						
Other-Misc.	1	-	1	-	-						
Bomb Threat	-	-	-	-	1						
Total	6	-	6	1	1						

DADE COUNTY PUBLIC SCHOOLS
SECURITY SERVICES DEPARTMENT

AREA: SOUTH CENTRAL

REPORT BY LOCATION

REPORT PERIOD: 7/75 - 6/76

LOCATION / COMPLAINTS	RPTD	UNF	ACTUAL	CLEARED BY		LOCATION / COMPLAINTS	RPTD	UNF	ACTUAL	CLEARED BY	
				ARREST	EX.CLEAR					ARREST	EX.CLEAR
2781 Kinloch Park El.						3221 Merrick El.					
B&E	6	-	6	-	-	B&E	3	-	3	-	-
Arson	1	-	1	-	1	Larceny-Person	1	-	1	-	-
Vandalism	2	1	1	-	-	Other-Misc.	2	-	2	-	-
Disorderly Cond.	1	-	1	-	-	QRU	1	-	1	-	1
Other-Misc.	3	-	3	-	-	Total	7	-	7	-	1
Bomb Threat	2	-	2	-	-	3461 Miramar El.					
QRU	4	-	4	-	4	B&E	2	-	2	-	-
Total	19	1	18	-	5	Larceny-School	2	-	2	-	-
3181 Melrose El.						Larceny-Person	3	-	3	1	-
Robbery	2	-	2	1	2	Vandalism	1	-	1	-	-
Assault Per/Stu	-	-	-	1	-	Personnel Invest.	1	-	1	-	1
B&E	5	-	5	4	-	Total	9	-	9	1	1
Larceny-Person	6	-	6	1	1						
Vandalism	3	1	2	-	-						
Weapons: Poss.	1	1	-	-	-						
Marijuana	1	-	1	-	-						
Disorderly Cond.	1	-	1	-	-						
Other-Misc.	-	-	-	-	1						
Trespassing	2	-	2	1	-						
QRU	5	-	5	-	5						
Vehicle Accident	1	-	1	-	-						
Total	27	2	25	8	9						

DADE COUNTY PUBLIC SCHOOLS
SECURITY SERVICES DEPARTMENT

AREA: SOUTH CENTRAL

REPORT BY LOCATION

REPORT PERIOD: 7/75 - 6/76

LOCATION / COMPLAINTS	RPTD	UNF	ACTUAL	CLEARED BY		LOCATION / COMPLAINTS	RPTD	UNF	ACTUAL	CLEARED BY	
				ARREST.	EX.CLEAR					ARREST	EX.CLEAR
4401						4841					
Pharr, Kelsey El.						Santa Clara El.					
Assault Other	1	-	1	-	1	Robbery	1	-	1	-	-
B&E Auto	1	-	1	-	-	B&E	7	-	7	-	1
Larceny-Person	12	-	12	-	1	Larceny-Person	1	-	1	-	-
Auto Theft	1	-	1	1	-	QRU	5	-	5	-	5
Arson	1	-	1	-	-	Total	14	-	14	-	6
Vandalism	1	-	1	-	-	5001					
Marijuana	1	-	1	1	-	Shenandoah El.					
Other-Misc.	2	-	2	-	1	B&E	4	-	4	-	-
Trespassing	1	-	1	-	2	Larceny-School	1	-	1	-	-
QRU	6	-	6	-	6	Disorderly Cond.	1	-	1	1	-
Vehicle Accident	1	-	1	-	-	Other-Misc.	2	-	2	-	1
Total	28	-	28	2	13	Bomb Threat	1	1	-	-	-
4681						Personnel Invest.	1	-	1	1	-
Riverside El.						Total	10	1	9	2	1
Robbery	7	1	6	3	3	5041					
Assault Stu/Stu	3	-	3	1	2	Silver Bluff El.					
Assault Per/NStu	1	-	1	1	-	B&E	9	-	9	-	-
B&E	9	1	8	5	-	Vandalism	1	-	1	-	-
Larceny-School	1	-	1	-	-	Other-Misc.	2	-	2	-	2
Larceny-Person	2	-	2	-	1	Bomb Threat	2	-	2	-	-
Arson	1	-	1	-	-	QRU	3	-	3	-	3
Vandalism	2	-	2	-	2	Total	17	-	17	-	5
Disorderly Cond.	1	-	1	-	1						
Other-Misc.	2	-	2	2	-						
Bomb Threat	1	-	1	-	-						
Trespassing	1	-	1	-	1						
QRU	4	-	4	-	4						
Total	35	2	33	12	14						

DADE COUNTY PUBLIC SCHOOLS
SECURITY SERVICES DEPARTMENT

AREA: SOUTH CENTRAL

REPORT BY LOCATION

REPORT PERIOD: 7/75 - 6/76

LOCATION / COMPLAINTS	RPTD	UNF	ACTUAL	CLEARED BY		LOCATION / COMPLAINTS	RPTD	UNF	ACTUAL	CLEARED BY	
				ARREST.	EX.CLEAR					ARREST	EX.CLEAR
5321						5751					
Southside El.						West Dunbar El.					
Vandalism	1	-	1	-	-	Robbery	3	-	3	3	-
Other-Misc.	1	-	1	-	-	Assault Stu/Stu	1	-	1	-	-
Bomb Threat	1	-	1	-	-	Larceny-School	2	-	2	-	1
Total	3	-	3	-	-	Larceny-Person	1	-	1	1	-
5401						Vandalism	-	-	-	-	1
Sunset El.						Bomb Threat	1	-	1	-	-
B&E	6	-	6	-	1	QRU	47	-	47	-	39
Larceny-Person	2	-	2	-	1	Total	55	-	55	4	41
Vandalism	3	-	3	-	1	5831					
Other-Misc.	4	-	4	-	1	West Laboratory El.					
Trespassing	2	-	2	-	-	B&E	1	-	1	-	-
Total	17	-	17	-	4	Total	1	-	1	-	-
5561						5931					
Tucker El.						Wheatley, Phyllis					
Robbery	1	-	1	-	-	Robbery	1	-	1	-	1
B&E	12	-	12	5	1	Assault Per/Stu.	2	1	1	-	-
Larceny-Person	1	-	1	-	-	Assault Stu/NStu	1	-	1	-	1
Vandalism	8	-	8	-	1	B&E	7	-	7	1	-
Other-Misc.	2	1	1	-	1	Larceny-Person	4	-	4	1	2
QRU	14	-	14	-	13	Vandalism	2	-	2	-	-
Total	38	1	37	5	16	QRU	14	-	14	-	13
						Personnel Invest.	1	-	1	-	-
						Total	32	1	31	2	17

DADE COUNTY PUBLIC SCHOOLS
SECURITY SERVICES DEPARTMENT

AREA: SOUTH CENTRAL

REPORT BY LOCATION

REPORT PERIOD: 7/75 - 6/76

LOCATION / COMPLAINTS	RPTD	UNF	ACTUAL	CLEARED BY		LOCATION / COMPLAINTS	RPTD	UNF	ACTUAL	CLEARED BY	
				ARREST	EX.CLEAR					ARREST	EX.CLEAR
6011						6031					
Allapattah Jr.						Brownsville Jr.					
Assault Per/Stu	1	-	1	-	1	Robbery	11	-	11	2	3
Assault Stu/Stu	2	-	2	1	1	Assault Per/Stu	1	-	1	-	1
B&E	5	-	5	1	-	Assault Stu/Stu	7	1	6	2	5
Larceny-School	1	-	1	-	-	Assault Per/NStu	1	-	1	2	-
Larceny-Person	2	-	2	-	-	Assault Stu/NStu	2	-	2	-	1
Arson	1	-	1	-	-	B&E	21	-	21	2	3
Disorderly Cond.	1	-	1	-	1	B&E Auto	1	-	1	1	-
Other-Misc.	1	-	1	-	1	Larceny-School	2	-	2	-	-
QRU	9	-	9	-	9	Larceny-Person	6	1	5	2	-
Personnel Invest.	1	-	1	-	-	Arson	2	-	2	-	-
						Vandalism	10	-	10	-	2
Total	24	-	24	2	13	Sex Offenses	2	-	2	1	-
						Barb/Amphet.	1	-	1	-	-
						Disorderly Cond.	3	-	3	1	2
						Other-Misc.	11	1	10	1	2
						Bomb Threat	1	-	1	-	-
						Trespassing	2	-	2	-	-
						QRU	22	-	22	-	22
						Vehicle Accident	1	-	1	-	-
						Personnel Invest.	-	-	-	1	-
						Total	107	3	104	15	41

DADE COUNTY PUBLIC SCHOOLS
SECURITY SERVICES DEPARTMENT

AREA: SOUTH CENTRAL

REPORT BY LOCATION

REPORT PERIOD: 7/75-6/76

LOCATION / COMPLAINTS	RPTD	UNF	ACTUAL	CLEARED BY		LOCATION / COMPLAINTS	RPTD	UNF	ACTUAL	CLEARED BY	
				ARREST	EX.CLEAR					ARREST	EX.CLEAR
6071						6331					
Carver Jr.						Kinlock Park Jr.					
Assault Stu/Stu	2	-	2	1	1	Robbery	1	-	1	1	-
Assault Per/NStu	1	-	1	1	-	Assault Per/Stu	1	-	1	-	1
B&E	43	1	42	6	2	Assault Stu/Stu	1	-	1	-	-
Larceny-School	1	-	1	-	-	B&E	8	-	8	2	-
Vandalism	7	-	7	-	1	Larceny-School	1	-	1	-	-
Other-Misc.	4	-	4	1	1	Larceny-Person	1	-	1	-	-
QRU	49	-	49	-	48	Arson	2	-	2	-	-
Personnel Invest.	1	-	1	-	-	Vandalism	5	-	5	-	2
						Other-Misc.	4	-	4	-	1
Total	108	1	107	9	53	Bomb Threat	1	-	1	1	-
						QRU	15	-	15	-	14
						Total	40	-	40	4	18
6091						6371					
Citrus Grove Jr.						Lee, Robert E. Jr.					
Assault Per/Stu	11	-	11	8	1	Assault Stu/Stu	3	-	3	-	-
Assault Stu/Stu	7	-	7	3	6	B&E	17	-	17	-	-
Assault Per/NStu	1	-	1	-	1	Larceny-School	2	1	1	-	-
Assault Stu/NStu	1	-	1	-	-	Larceny-Person	1	-	1	-	-
B&E	5	-	5	-	-	Vandalism	2	-	2	-	1
Larceny-School	1	-	1	-	1	Disorderly Cond.	1	-	1	-	-
Larceny-Person	3	-	3	-	1	Other-Misc.	2	-	2	-	1
Vandalism	6	1	5	1	2	Bomb Threat	2	-	2	-	-
Other-Misc.	1	-	1	-	1	Trespassing	1	-	1	-	1
Bomb Threat	1	-	1	-	-	QRU	11	-	11	-	11
QRU	3	-	3	-	3	Total	42	1	41	-	14
Total	40	1	39	12	16						

DADE COUNTY PUBLIC SCHOOLS
SECURITY SERVICES DEPARTMENT

AREA: SOUTH CENTRAL

REPORT BY LOCATION

REPORT PERIOD: 7/75 - 6/76

LOCATION / COMPLAINTS	RPTD	UNF	ACTUAL	CLEARED BY		LOCATION / COMPLAINTS	RPTD	UNF	ACTUAL	CLEARED BY	
				ARREST	EX.CLEAR					ARREST	EX.CLEAR
6451						6841					
Merritt, Ada Jr.						Shenandoah Jr.					
Assault Per./Stu.	-	-	-	1	-	Assault Stu/Stu	1	-	1	-	1
Assault Stu/Stu	1	-	1	1	-	B&E	10	-	10	2	-
B&E	8	-	8	5	-	Vandalism	4	-	4	-	1
B&E Auto	1	-	1	-	-	Other-Misc.	1	-	1	-	1
Vandalism	4	-	4	-	-	Bomb Threat	1	-	1	-	-
Marijuana	1	-	1	-	1	Trespassing	1	-	1	-	-
Other-Misc.	1	1	-	-	-	Total	18	-	18	2	3
Trespassing	1	-	1	-	-						
QRU	19	-	19	-	19						
Total	36	1	35	7	20	6911					
						Washington Jr.					
6741						Robbery	4	-	4	1	-
Ponce de Leon Jr.						Assault Per/Stu	1	-	1	-	2
Robbery	1	-	1	-	-	Assault Stu/Stu	11	-	11	2	8
Assault Per/Stu	1	-	1	1	-	B&E	25	-	25	4	-
Assault Stu/Stu	1	-	1	1	-	Larceny-School	6	-	6	-	-
Assault Other	1	1	-	-	-	Larceny-Person	1	-	1	-	-
Larceny-School	3	-	3	-	-	Arson	1	-	1	-	-
Arson	2	-	2	-	2	Vandalism	2	-	2	-	1
Vandalism	5	-	5	1	3	Other-Misc.	2	-	2	-	1
Other-Misc.	3	-	3	1	-	Trespassing	1	-	1	-	1
QRU	2	-	2	-	2	QRU	12	-	12	-	11
Vehicle Accident	1	-	1	-	1	Personnel Invest.	1	-	1	-	-
Total	20	1	19	4	8	Total	67	-	67	7	24

DADE COUNTY PUBLIC SCHOOLS
SECURITY SERVICES DEPARTMENT

AREA: SOUTH CENTRAL

REPORT BY LOCATION

REPORT PERIOD: 7/75 - 6/76

LOCATION / COMPLAINTS	RPTD	UNF	ACTUAL	CLEARED BY		LOCATION / COMPLAINTS	RPTD	UNF	ACTUAL	CLEARED BY	
				ARREST	EX.CLEAR					ARREST	EX.CLEAR
7071						7341					
Coral Gables Sr.						Jackson Sr.					
Assault Per/Stu	1	-	1	1	-	Robbery	5	-	5	1	1
Assault Stu/Stu	2	-	2	1	-	Assault Per/Stu	7	-	7	1	3
B&E	3	-	3	1	2	Assault Stu/Stu	13	-	13	1	8
Larceny-School	1	-	1	-	-	Assault Other	1	-	1	1	-
Larceny-Person	3	-	3	-	1	B&E	18	-	18	1	1
Vandalism	5	-	5	-	-	B&E Auto	3	-	3	-	-
Weapons: Poss.	1	-	1	-	2	Larceny-School	6	-	6	-	-
Marijuana	1	-	1	-	1	Larceny-Person	9	-	9	-	1
Disorderly Cond.	1	-	1	1	-	B.R.C.	1	-	1	-	-
Other-Misc.	3	-	3	-	3	Vandalism	9	-	9	-	1
Bomb Threat	1	-	1	-	-	Weapons: Poss.	1	-	1	-	1
Trespassing	2	-	2	1	-	Sex Offenses	1	-	1	-	-
QRU	9	-	9	-	9	Narcotics	1	-	1	-	-
Vehicle Accident	1	-	1	-	1	Marijuana	3	-	3	2	1
Total	34	-	34	5	19	Drunkennes	1	-	1	1	1
						Disorderly Cond.	3	-	3	1	2
						Other-Misc.	6	-	6	-	3
						Bomb Threat	2	-	2	-	-
						Trespassing	4	-	4	2	-
						QRU	26	-	26	-	26
						Vehicle Accident	1	-	1	-	-
						Total	121	-	121	11	49

DADE COUNTY PUBLIC SCHOOLS
SECURITY SERVICES DEPARTMENT

AREA: SOUTH CENTRAL

REPORT BY LOCATION

REPORT PERIOD: 7/75 - 6/76

LOCATION / COMPLAINTS	RPTD	UNF	ACTUAL	CLEARED BY		LOCATION / COMPLAINTS	RPTD	UNF	ACTUAL	CLEARED BY	
				ARREST	EX. CLEAR					ARREST	EX. CLEAR
7461						8027					
Miami Sr.						English Center					
Robbery	2	-	2	-	-	B&E	1	1	-	-	-
Assault Stu/Stu	13	1	12	3	3	B&E Auto	1	-	1	-	-
Assault Stu/NStu	2	-	2	-	2	Other-Misc.	3	-	3	-	3
B&E	13	-	13	-	-	Bomb Threat	1	-	1	-	-
Larceny-School	4	-	4	1	-	Trespassing	2	-	2	-	1
Larceny-Person	5	-	5	1	-	QRU	1	-	1	-	1
Vandalism	4	-	4	-	1	Total	9	1	8	-	5
Disorderly Cond.	2	-	2	1	1						
Other-Misc.	7	-	7	-	1	9030					
Bomb Threat	7	-	7	-	-	Data Processing					
Trespassing	2	-	2	-	-	Larceny-Person	1	-	1	-	-
Vehicle Accident	1	-	1	-	-	QRU	2	-	2	-	2
Total	62	1	61	6	9	Total	3	-	3	-	2
8005						9181					
Lindsey Hopkins						S & D					
B&E	10	-	10	-	-	Vehicle Accident	1	-	1	-	1
B&E Auto	2	-	2	-	1	Total	1	-	1	-	1
Larceny-School	18	1	17	-	-						
Larceny-Person	2	-	2	-	-						
Marijuana	1	-	1	-	-						
Other-Misc.	13	1	12	-	4						
Bomb Threat	2	-	2	1	-						
Personnel Invest.	2	-	2	-	-						
Total	50	2	48	1	5						
8015											
Baker Aviation											
Larceny-School	1	-	1	-	-						
Total	1	-	1	-	-						

DADE COUNTY PUBLIC SCHOOLS
SECURITY SERVICES DEPARTMENT

AREA: SOUTH CENTRAL

REPORT BY LOCATION

REPORT PERIOD: 7/75 - 6/76

LOCATION / COMPLAINTS	RPTD	UNF	ACTUAL	CLEARED BY		LOCATION / COMPLAINTS	RPTD	UNF	ACTUAL	CLEARED BY	
				ARREST	EX. CLEAR					ARREST	EX. CLEAR
9231						9441					
Transportation						Miami Skill Ctr.					
Assault Stu/Stu	1	-	1	1	-	Robbery	1	-	1	-	-
B&E Auto	1	-	1	-	-	B&E	1	-	1	-	-
Larceny-School	1	-	1	-	-	Larceny-School	1	-	1	-	-
Larceny-Person	1	-	1	-	-	Arson	1	1	-	-	-
Vandalism	19	-	19	-	12	Weapons, Poss.	1	-	1	-	1
Other-Misc.	1	-	1	-	-	Other-Misc.	1	-	1	-	1
Vehicle Accident	7	-	7	-	3	Bomb Threat	1	1	-	-	-
Bus Accident	11	-	11	-	7	Personnel Invest.	1	-	1	-	1
Total	42	-	42	1	22	Total	8	2	6	-	3
9241						S.C. Area Office					
Maintenance						B&E	2	-	2	-	-
B&E	1	-	1	1	-	Auto Theft	1	-	1	-	-
B&E Auto	12	-	12	1	-	Vandalism	2	-	2	-	-
Larceny-School	16	1	15	-	-	Total	5	-	5	-	-
Larceny-Person	3	-	3	-	-						
Vandalism	2	-	2	-	-	S. C. Security					
Other-Misc.	6	-	6	-	2	Other-Misc.	2	-	2	1	-
QRU	6	-	6	-	5	Total	2	-	2	1	-
Vehicle Accident	5	-	5	1	2						
Personnel Invest.	5	1	4	1	1	Staff Development					
Total	56	2	54	4	10	Larceny-School	1	-	1	-	-
						Vandalism	3	-	3	-	-
						Total	4	-	4	-	-

DADE COUNTY PUBLIC SCHOOLS
SECURITY SERVICES DEPARTMENT

AREA: SOUTH CENTRAL

REPORT BY LOCATION

REPORT PERIOD: 7/75 - 6/76

LOCATION / COMPLAINTS	RPTD	UNF	ACTUAL	CLEARED BY		LOCATION / COMPLAINTS	RPTD	UNF	ACTUAL	CLEARED BY	
				ARREST	EX.CLEAR					ARREST	EX.CLEAR
West Dunbar Compound											
Larceny-School	2	-	2	-	-						
Other-Misc.	2	-	2	-	2						
Personnel Invest.	1	-	1	-	-						
Total	5	-	5	-	2						
Individualizing Spanish Speakers English											
B&E	1	-	1	-	-						
Total	1	-	1	-	-						
Off Campus											
A.O.A.	20	1	19	2	3						
Total	20	1	19	2	3						

SOUTHWEST AREA

DADE COUNTY PUBLIC SCHOOLS
SECURITY SERVICES DEPARTMENT

AREA: SOUTHWEST

REPORT BY LOCATION

REPORT PERIOD: 7/75 - 6/76

LOCATION / COMPLAINTS	RPTD	UNF	ACTUAL	CLEARED BY		LOCATION / COMPLAINTS	RPTD	UNF	ACTUAL	CLEARED BY	
				ARREST	EX. CLEAR					ARREST	EX. CLEAR
0201						1001					
Banyan El.						Coral Park El.					
Assault Stu/Stu	1	-	1	-	1	Vandalism	3	1	2	-	-
B&E	1	-	1	-	-	Other-Misc.	3	-	3	-	3
Larceny-School	1	-	1	-	-	QRU	3	-	3	-	3
Vandalism	5	-	5	-	2	Total	9	1	8	-	6
Other-Misc.	2	1	1	-	2						
Trespassing	2	-	2	-	3						
QRU	7	-	7	-	7						
Vehicle Accident	1	-	1	-	1						
Personnel Invest.	5	-	5	4	1						
Total	25	1	24	4	17	1081					
						Coral Terrace					
0441						Vandalism	1	-	1	-	-
Blue Lakes El.						Trespassing	2	-	2	-	1
Assault Per/Stu	1	-	1	-	1	QRU	9	-	9	-	9
B&E	7	-	7	2	-	Total	12	-	12	-	10
B&E Auto	1	-	1	-	-						
Larceny-School	2	-	2	-	-	1281					
Larceny-Person	10	-	10	-	1	Cypress El.					
Vandalism	16	-	16	-	3	Assault Stu/Stu	1	-	1	-	-
Sex Offenses	1	-	1	-	-	Assault Stu/NStu	1	-	1	-	-
Other-Misc.	8	-	8	-	7	B&E	1	-	1	-	-
Bomb Threat	1	-	1	-	-	Larceny-Person	3	-	3	-	-
Trespassing	1	-	1	-	1	Vandalism	3	-	3	-	-
QRU	19	-	19	-	19	Disorderly Cond.	1	-	1	-	1
Total	67	-	67	2	32	Other-Misc.	2	-	2	-	2
						Bomb Threat	1	-	1	-	-
						Trespassing	6	-	6	1	4
						QRU	8	-	8	-	6
						Vehicle Accident	1	-	1	-	1
						Total	28	-	28	1	14

DADE COUNTY PUBLIC SCHOOLS
SECURITY SERVICES DEPARTMENT

AREA: SOUTHWEST

REPORT BY LOCATION

REPORT PERIOD: 7/75 - 6/76

LOCATION / COMPLAINTS	RPTD	UNF	ACTUAL	CLEARED BY		LOCATION / COMPLAINTS	RPTD	UNF	ACTUAL	CLEARED BY	
				ARREST.	EX.CLEAR					ARREST.	EX.CLEAR
1641						1801					
Emerson El.						Fairlawn El.					
B&E	1	-	1	-	-	Assault Stu/Stu	1	-	1	-	1
Larceny-School	1	-	1	-	-	B&E	5	-	5	1	-
Arson	1	-	1	-	-	Vandalism	1	-	1	-	1
Vandalism	7	-	7	-	2	Other-Misc.	2	1	1	-	1
Other-Misc.	2	-	2	-	1	Trespassing	1	-	1	-	1
Trespassing	1	-	1	-	1	QRU	7	-	7	-	7
QRU	5	-	5	-	5	Vehicle Accident	1	-	1	-	-
Total	18	-	18	-	9	Personnel Invest.	1	1	-	-	-
						Total	19	2	17	1	11
1721						1841					
Everglades El.						Flagami El.					
Assault Per/Stu	1	-	1	-	-	Larceny-School	1	-	1	-	-
B&E	13	1	12	4	1	Larceny-Person	2	-	2	-	-
Larceny-Person	4	-	4	-	-	Disorderly Cond.	1	-	1	1	-
Vandalism	4	-	4	-	1	Total	4	-	4	1	-
Other-Misc.	3	-	3	-	3						
Trespassing	1	-	1	-	1	2261					
QRU	8	-	8	-	8	Greenglade El.					
Vehicle Accident	1	-	1	-	1	B&E	1	-	1	-	-
Total	35	1	34	4	15	Larceny-School	1	-	1	-	-
						Larceny-Person	4	-	4	-	-
1761						Other-Misc.	1	-	1	-	1
Fairchild El.						Total	7	-	7	-	1
B&E	2	-	2	1	-						
Other-Misc.	3	2	1	-	1						
Trespassing	1	-	1	-	1						
Total	6	2	4	1	2						

DADE COUNTY PUBLIC SCHOOLS
SECURITY SERVICES DEPARTMENT

AREA: SOUTHWEST

REPORT BY LOCATION

REPORT PERIOD: 7/75 - 6/76

LOCATION / COMPLAINTS	RPTD	UNF	ACTUAL	CLEARED BY		LOCATION / COMPLAINTS	RPTD	UNF	ACTUAL	CLEARED BY	
				ARREST.	EX.CLEAR					ARREST.	EX.CLEAR
2641						2881					
Kendale El.						Leewood El.					
Larceny-Person	4	-	4	-	1	Assault Stu/Stu	1	-	1	1	-
Vandalism	1	-	1	-	-	B&E	5	-	5	3	-
QRU	1	-	1	-	1	Larceny-School	1	-	1	-	-
Total	6	-	6	-	2	Larceny-Person	10	1	9	1	2
						Vandalism	1	-	1	-	-
2651						Sex Offenses	1	-	1	-	-
B&E	1	-	1	-	-	Other-Misc.	3	-	3	-	3
Larceny-School	1	-	1	-	-	Trespassing	1	-	1	-	1
Larceny-Person	1	-	1	-	-	Personnel Invest.	1	-	1	-	1
Sex Offenses	1	-	1	-	-	Total	24	1	23	5	7
Other-Misc.	5	1	4	-	3						
Bomb Threat	1	-	1	-	-	3061					
Trespassing	1	-	1	-	1	Ludlam El.					
QRU	29	-	29	-	29	Assault Stu/Stu	1	-	1	2	-
Total	40	1	39	-	33	B&E	3	1	2	-	-
						Larceny-Person	1	-	1	-	-
2701						Vandalism	2	-	2	-	-
Kenwood El.						Weapons: Poss.	1	-	1	-	1
Robbery	-	1	-1	-	-	Disorderly Cond.	1	-	1	-	1
Assault Stu/Stu	1	-	1	-	-	Other-Misc.	1	-	1	-	-
B&E	1	-	1	-	-	QRU	12	-	12	-	12
Larceny-School	-	-	-	-	1	Vehicle Accident	-	-	-	-	1
Larceny-Person	1	-	1	-	-	Total	22	1	21	2	15
Other-Misc.	1	-	1	-	1						
Bomb Threat	2	-	2	-	-						
QRU	18	-	18	-	17						
Total	24	1	23	-	19						

DADE COUNTY PUBLIC SCHOOLS
SECURITY SERVICES DEPARTMENT

AREA: SOUTHWEST

REPORT BY LOCATION

REPORT PERIOD: 7/75 - 6/76

LOCATION / COMPLAINTS	RPTD	UNF	ACTUAL	CLEARED BY		LOCATION / COMPLAINTS	RPTD	UNF	ACTUAL	CLEARED BY	
				ARREST	EX.CLEAR					ARREST	EX.CLEAR
3101						4721					
Martin, F. C. El.						Rockway El.					
Assault Stu/Stu	1	-	1	1	1	B&E	2	-	2	-	-
B&E	13	-	13	3	-	Larceny-Person	3	-	3	-	2
Larceny-Person	2	-	2	-	-	Vandalism	-	1	-1	-	-
Vandalism	4	-	4	1	2	Other-Misc.	1	-	1	-	1
Sex Offenses	1	-	1	1	-	Trespassing	1	-	1	1	-
Other-Misc.	1	-	1	-	1	QRU	2	-	2	-	2
Trespassing	2	-	2	1	1	Total	9	1	8	1	5
QRU	12	-	12	-	12						
Total	36	-	36	7	17	4741					
						Royal Green El.					
4091						B&E Auto	1	-	1	-	-
Olympia Hgts. El.						Larceny-Person	1	-	1	-	-
Assault Stu/Stu	1	-	1	-	-	Vandalism	1	-	1	-	-
Assault Other	1	-	1	1	-	Other-Misc.	1	-	1	-	1
B&E	5	-	5	2	-	Bomb Threat	2	-	2	-	-
Larceny-Person	1	-	1	-	-	QRU	17	-	17	-	17
Vandalism	5	-	5	-	1	Vehicle Accident	1	-	1	-	1
Disorderly Cond.	2	-	2	-	2	Total	24	-	24	-	19
Other-Misc.	9	-	9	-	2						
Bomb Threat	2	-	2	-	-						
QRU	7	-	7	-	7						
Personnel Invest.	1	-	1	-	-						
Total	34	-	34	3	12						

DADE COUNTY PUBLIC SCHOOLS
SECURITY SERVICES DEPARTMENT

AREA: SOUTHWEST

REPORT BY LOCATION

REPORT PERIOD: 7/75 - 6/76

LOCATION / COMPLAINTS	RPTD	UNF	ACTUAL	CLEARED BY		LOCATION / COMPLAINTS	RPTD	UNF	ACTUAL	CLEARED BY	
				ARREST	EX.CLEAR					ARREST	EX.CLEAR
4761						5121					
Royal Palm El.						Snapper Creek El.					
Assault Per/Stu	1	-	1	-	-	Larceny-Person	4	-	4	-	-
Assault Other	-	1	-1	-	-	Vandalism	1	-	1	-	-
B&E	9	2	7	-	-	Sex Offenses	1	-	1	-	1
Larceny-School	1	-	1	-	-	Disorderly Cond.	1	1	-	-	-
Larceny-Person	2	-	2	-	-	Other-Misc.	1	-	1	-	-
Arson	1	-	1	-	1	QRU	16	-	16	-	16
Vandalism	10	-	10	-	1	Total	23	1	22	1	17
Disorderly Cond.	1	-	1	-	2						
Other-Misc.	4	-	4	-	5	5241					
Trespassing	6	-	6	-	9	South Miami El.					
QRU	9	-	9	-	1	B&E	3	-	3	1	2
Personnel Invest.	1	-	1	-	1	Vandalism	3	1	2	-	-
Total	45	3	42	-	19	Other-Misc.	4	-	4	-	4
						QRU	20	-	20	-	19
4921						Total	30	1	29	1	25
Seminole El.											
Assault Per/Stu	1	-	1	-	-	5421					
B&E	7	-	7	-	-	Sunset Park El.					
Larceny-School	2	-	2	-	-	B&E	1	-	1	1	-
Larceny-Person	1	-	1	-	-	B&E Auto	1	-	1	-	1
Vandalism	3	-	3	-	-	Larceny-School	22	1	21	-	1
Other-Misc.	2	1	1	-	-	Larceny-Person	1	-	1	-	-
QRU	12	-	12	-	12	Vandalism	1	-	1	-	-
Total	28	1	27	-	12	Sex Offenses	1	-	1	-	1
						Disorderly Cond.	1	-	1	-	3
						Other-Misc.	4	1	3	-	1
						Trespassing	1	-	1	-	1
						Total	33	2	31	1	7

CONTINUED

1 OF 2

DADE COUNTY PUBLIC SCHOOLS
SECURITY SERVICES DEPARTMENT

AREA: SOUTHWEST

REPORT BY LOCATION

REPORT PERIOD: 7/75 - 6/76

LOCATION / COMPLAINTS	RPTD	UNF	ACTUAL	CLEARED BY		LOCATION / COMPLAINTS	RPTD	UNF	ACTUAL	CLEARED BY	
				ARREST	EX.CLEAR					ARREST	EX.CLEAR
5441						5641					
Sylvania Hgts. El.						Village Green El.					
Assault Stu/Stu	1	-	1	-	1	B&E	6	-	6	-	-
B&E	1	-	1	-	-	Larceny-School	1	-	1	-	1
Larceny-School	3	-	3	-	-	Larceny-Person	2	-	2	-	-
Vandalism	7	-	7	-	2	Arson	1	-	1	-	-
Other-Misc.	3	1	2	-	1	Vandalism	3	-	3	-	-
Trespassing	1	-	1	-	1	Disorderly Cond.	2	-	2	-	-
QRU	8	-	8	-	8	Other-Misc.	11	6	5	-	2
Total	24	1	23	-	13	Bomb Threat	2	-	2	-	4
						Trespassing	2	-	2	-	1
5521						QRU	6	-	6	-	6
Tropical El.						Total	36	6	30	-	16
B&E	9	-	9	1	-						
Larceny-Person	1	-	1	-	-	5671					
Vandalism	2	-	2	-	-	Vineland El.					
Other-Misc.	4	-	4	-	4	B&E	3	-	3	1	-
Trespassing	2	-	2	-	2	Larceny-Person	3	-	3	-	-
QRU	9	-	9	-	9	Vandalism	1	-	1	-	-
Total	27	-	27	1	15	Narcotics	1	-	1	-	-
						Other-Misc.	4	2	2	-	3
						Trespassing	1	-	1	-	1
						QRU	10	-	10	-	10
						Total	23	2	21	1	14

DADE COUNTY PUBLIC SCHOOLS
SECURITY SERVICES DEPARTMENT

AREA: SOUTHWEST

REPORT BY LOCATION

REPORT PERIOD: 7/75 - 6/76

LOCATION / COMPLAINTS	RPTD	UNF	ACTUAL	CLEARED BY		LOCATION / COMPLAINTS	RPTD	UNF	ACTUAL	CLEARED BY	
				ARREST	EX.CLEAR					ARREST	EX.CLEAR
6211						6781					
Glades Jr.						Richmond Hgts. Jr.					
Assault Per/Stu	2	-	2	1	-	Robbery	2	1	1	-	-
Assault Stu/Stu	4	-	4	1	1	Assault Per/Stu	1	-	1	-	-
Larceny-School	4	-	4	-	-	Assault Stu/Stu	5	1	4	2	-
Larceny-Person	17	1	16	1	1	Assault Other	1	-	1	-	-
Arson	3	-	3	2	-	B&E	5	-	5	1	-
Vandalism	9	-	9	1	5	B&E Auto	2	-	2	-	-
Weapons Poss.	1	-	1	-	-	Larceny-School	1	-	1	-	-
Sex Offenses	1	-	1	-	-	Larceny-Person	17	-	17	-	1
Narcotics	2	-	2	-	2	Arson	2	-	2	-	1
Marijuana	1	-	1	-	-	Vandalism	8	-	8	-	4
Disorderly Cond.	1	-	1	-	1	Sex Offense	1	-	1	-	1
Other-Misc.	7	-	7	-	6	Marijuana	3	1	2	2	1
Trespassing	4	-	4	-	3	Disorderly Cond.	5	-	5	-	5
QRU	2	-	2	-	1	Other-Misc.	9	4	5	-	5
Vehicle Accident	1	-	1	-	1	Trespassing	10	-	10	5	4
Total	59	1	58	6	21	QRU	7	-	7	-	7
						Personnel Invest.	1	-	1	-	-
						Total	80	7	73	10	29
6441											
McMillan Jr.											
Larceny-Person	2	-	2	-	-						
Arson	1	-	1	-	-						
Total	3	-	3	-	-						

DADE COUNTY PUBLIC SCHOOLS
SECURITY SERVICES DEPARTMENT

AREA: SOUTHWEST

REPORT BY LOCATION

REPORT PERIOD: 7/75 - 6/76

LOCATION / COMPLAINTS	RPTD	UNF	ACTUAL	CLEARED BY		LOCATION / COMPLAINTS	RPTD	UNF	ACTUAL	CLEARED BY	
				ARREST	EX. CLEAR					ARREST	EX. CLEAR
6801						6821					
Riviera Jr.						Rockway Jr.					
Assault Per/Stu	3	-	3	2	1	Robbery	1	-	1	-	-
Assault Stu/Stu	9	-	9	3	5	Assault Per/Stu	2	-	2	1	1
Assault Stu/NStu	3	-	3	2	-	Assault Stu/Stu	13	-	13	2	11
B&E	11	-	11	2	-	Assault Stu/NStu	2	-	2	1	-
Larceny-School	6	-	6	-	-	Assault Other	1	-	1	-	-
Larceny-Person	8	-	8	2	-	B&E	11	-	11	8	-
Arson	1	-	1	-	-	Larceny-School	4	-	4	-	1
Vandalism	11	-	11	-	2	Larceny-Person	27	2	25	2	3
Weapons: Poss.	1	-	1	-	2	Arson	1	-	1	1	-
Disorderly Cond.	4	-	4	1	2	B.R.C.	1	1	-	-	-
Other-Misc.	15	3	12	-	10	Vandalism	13	1	12	1	4
Trespassing	16	-	16	8	5	Weapons: Poss.	1	-	1	-	1
QRU	20	-	20	-	20	Marijuana	1	-	1	-	1
Total	108	3	105	20	47	Disorderly Cond.	15	-	15	1	13
						Other-Misc.	15	4	11	-	10
						Bomb Threat	11	-	11	-	6
						Trespassing	11	-	11	-	9
						QRU	26	-	26	-	27
						Total	156	8	148	17	87

DADE COUNTY PUBLIC SCHOOLS
SECURITY SERVICES DEPARTMENT

AREA: SOUTHWEST

REPORT BY LOCATION

REPORT PERIOD: 7/75 - 6/76

LOCATION / COMPLAINTS	RPTD	UNF	ACTUAL	CLEARED BY		LOCATION / COMPLAINTS	RPTD	UNF	ACTUAL	CLEARED BY	
				ARREST	EX. CLEAR					ARREST	EX. CLEAR
6881						6961					
South Miami Jr.						West Miami Jr.					
Robbery	-	-	-	1	-	Assault Stu/Stu	3	-	3	1	3
Assault Per/Stu	2	-	2	-	-	Assault Per/NStu	1	-	1	-	-
Assault Stu/Stu	1	-	1	1	-	B&E	11	-	11	7	-
B&E	2	-	2	-	1	Larceny-School	2	-	2	-	1
Larceny-School	1	-	1	-	-	Larceny-Person	12	-	12	-	-
Larceny-Person	9	1	8	1	1	B.R.C.	1	-	1	1	1
Vandalism	7	-	7	1	1	Vandalism	3	-	3	-	1
Sex Offenses	1	-	1	-	1	Sex Offenses	1	-	1	-	1
Marijuana	1	-	1	-	1	Disorderly Cond.	2	-	2	1	-
Disorderly Cond.	1	-	1	-	1	Other-Misc.	4	2	2	-	1
Other-Misc.	2	-	2	-	2	Trespassing	6	-	6	2	4
QRU	9	-	9	-	9	QRU	6	-	6	-	6
Total	36	1	35	3	17	Total	52	2	50	12	18
6901						7271					
W. R. Thomas Jr.						Coral Park Sr.					
Assault Per/Stu	1	-	1	1	-	Assault Per/Stu	1	-	1	-	1
Assault Stu/Stu	2	-	2	-	-	Assault Stu/Stu	5	1	4	1	2
Assault Stu/NStu	1	-	1	1	-	Assault Stu/NStu	1	-	1	-	-
B&E	2	-	2	1	-	B&E	1	-	1	-	-
Larceny-School	1	-	1	-	-	B&E Auto	7	-	7	-	-
Larceny-Person	25	-	25	1	1	Larceny-School	6	1	5	-	-
Vandalism	8	-	8	-	3	Larceny-Person	17	-	17	2	-
Cocaine	1	-	1	1	-	Arson	1	-	1	-	1
Marijuana	2	-	2	-	1	Vandalism	9	1	8	1	1
Disorderly Cond.	2	-	2	-	2	Sex Offenses	1	-	1	-	-
Other-Misc.	3	1	2	-	1	Narcotics	-	1	-1	-	-
Bomb Threat	3	-	3	-	1	Marijuana	1	-	1	-	1
Trespassing	2	-	2	1	1	Disorderly Cond.	6	2	4	-	2
QRU	57	-	57	-	57	Other-Misc.	8	-	8	-	6
Total	110	1	109	6	67	Bomb Threat	4	-	4	-	1
						Trespassing	2	-	2	1	1
						QRU	7	-	7	-	7
						Vehicle Accident	2	-	2	-	2
						Total	79	6	73	5	25

DADE COUNTY PUBLIC SCHOOLS
SECURITY SERVICES DEPARTMENT

AREA: SOUTHWEST

REPORT BY LOCATION

REPORT PERIOD: 7/75 - 6/76

LOCATION / COMPLAINTS	RPTD	UNF	ACTUAL	CLEARED BY		LOCATION / COMPLAINTS	RPTD	UNF	ACTUAL	CLEARED BY	
				ARREST	EX. CLEAR					ARREST	EX. CLEAR
7361						7631					
Killian Sr.						MacArthur, So.					
Robbery	5	1	4	1	1	Robbery	3	1	2	3	-
Assault Per/Stu	5	-	5	3	1	Assault Per/Stu	11	1	10	7	3
Assault Stu/Stu	24	2	22	7	8	Assault Stu/Stu	33	-	33	21	10
Assault Per/NStu	1	-	1	-	-	Assault Stu/NStu	1	-	1	-	1
B&E	4	-	4	-	-	B&E	2	-	2	-	-
B&E Auto	12	-	12	-	2	B&E Auto	1	-	1	-	-
Larceny-School	20	1	19	1	2	Larceny-School	6	-	6	-	-
Larceny-Person	45	-	45	2	5	Larceny-Person	17	-	17	5	-
B.R.C.	1	-	1	-	-	Vandalism	17	-	17	3	6
Vandalism	19	1	18	1	2	Weapons: Poss.	1	-	1	1	-
Narcotics	2	-	2	1	1	Narcotics	-	-	-	1	-
Marijuana	6	-	6	2	3	Marijuana	13	-	13	9	3
Drunkenness	-	-	-	-	2	Drunkenness	1	-	1	1	-
Disorderly Cond.	16	1	15	1	11	Disorderly Cond.	11	-	11	6	4
Other-Misc.	18	1	17	-	14	Other-Misc.	5	1	4	-	2
Bomb Threat	7	-	7	-	1	Bomb Threat	2	-	2	-	1
Trespassing	31	1	30	5	23	Trespassing	1	-	1	-	1
QRU	24	-	24	-	24	QRU	22	-	22	-	22
Vehicle Accident	2	-	2	-	2	Vehicle Accident	2	-	2	-	2
Bus Accident	-	-	-	-	1	Personnel Invest.	3	-	3	1	1
Personnel Invest.	5	-	5	-	-						
Total	247	8	239	24	103	Total	152	3	149	58	56

DADE COUNTY PUBLIC SCHOOLS
SECURITY SERVICES DEPARTMENT

AREA: SOUTHWEST

REPORT BY LOCATION

REPORT PERIOD: 7/75 - 6/76

LOCATION / COMPLAINTS	RPTD	UNF	ACTUAL	CLEARED BY		LOCATION / COMPLAINTS	RPTD	UNF	ACTUAL	CLEARED BY	
				ARREST	EX. CLEAR					ARREST	EX. CLEAR
7721						7741					
South Miami Sr.						Southwest Sr.					
Robbery	3	-	3	2	-	Robbery	1	-	1	-	-
Assault Per/Stu	1	-	1	1	-	Assault Per/Stu	4	-	4	4	-
Assault Stu/Stu	8	-	8	1	1	Assault Stu/Stu	14	-	14	3	10
B&E	1	-	1	-	-	Assault Stu/NStu	1	-	1	-	1
B&E Auto	4	-	4	2	-	B&E	8	-	8	2	-
Larceny-School	12	-	12	3	1	B&E Auto	22	1	21	-	1
Larceny-Person	23	1	22	-	-	Larceny-School	19	1	18	1	1
Auto Theft	1	-	1	-	-	Larceny-Person	33	-	33	2	1
Arson	1	-	1	-	-	Arson	2	-	2	-	-
Vandalism	11	2	9	2	1	Vandalism	15	2	13	-	2
Sex Offenses	1	1	-	-	-	Narcotics	1	-	1	1	-
Marijuana	1	1	-	-	-	Marijuana	4	1	3	1	1
Drunkenness	1	-	1	1	-	Drunkenness	3	1	2	1	1
Disorderly Cond.	3	-	3	2	2	Disorderly Cond.	10	-	10	4	4
Other-Misc.	13	2	11	-	11	Other-Misc.	24	3	21	-	13
Bomb Threat	3	-	3	-	-	Bomb Threat	3	-	3	-	-
Trespassing	3	-	3	2	1	Trespassing	13	-	13	2	7
QRU	16	-	16	-	16	QRU	15	-	15	-	14
Total	106	7	99	16	33	Total	195	9	186	21	58

DADE COUNTY PUBLIC SCHOOLS
SECURITY SERVICES DEPARTMENT

AREA: SOUTHWEST

REPORT BY LOCATION

REPORT PERIOD: 7/75 - 6/76

LOCATION / COMPLAINTS	RPTD	UNF	ACTUAL	CLEARED BY		LOCATION / COMPLAINTS	RPTD	UNF	ACTUAL	CLEARED BY	
				ARREST	EX.CLEAR					ARREST	EX.CLEAR
2861						9231					
Youth Opp., So.						Transportation					
Assault Per/Stu	2	-	2	-	2	Assault Per/Stu	4	-	4	2	-
Assault Stu/Stu	-	-	-	-	1	Assault Stu/Stu	6	-	6	4	1
B&E	5	2	3	-	-	Assault Stu/NStu	2	-	2	-	1
B&E Auto	2	-	2	-	-	Assault Other	1	-	1	-	-
Larceny-School	5	-	5	1	-	B&E Auto	1	-	1	-	-
Larceny-Person	2	-	2	-	1	Larceny-School	2	-	2	-	-
Arson	1	-	1	-	1	Larceny-Person	3	-	3	-	1
Vandalism	3	-	3	1	2	Vandalism	51	2	49	5	22
Marijuana	2	-	2	2	-	Sex Offenses	1	-	1	-	-
Other-Misc.	3	-	3	-	3	Disorderly Cond.	6	1	5	-	6
QRU	44	-	44	-	44	Other-Misc.	8	-	8	-	4
						Bomb Threat	1	-	1	1	-
Total	69	2	67	4	54	Vehicle Accident	7	-	7	-	9
						Bus Accident	1	-	1	-	3
9181 S&D						Personnel Invest.	2	-	2	-	1
Vehicle Accident	1	-	1	-	-	Total	96	3	93	12	48
Total	1	-	1	-	-						
						9241					
						Maintenance					
						Vehicle Accident	1	-	1	-	-
						Total	1	-	1	-	-
						9411					
						Data Processing					
						QRU	1	-	1	-	1
						Total	1	-	1	-	1

DADE COUNTY PUBLIC SCHOOLS
SECURITY SERVICES DEPARTMENT

AREA: SOUTHWEST

REPORT BY LOCATION

REPORT PERIOD: 7/75-6/76

LOCATION / COMPLAINTS	RPTD	UNF	ACTUAL	CLEARED BY		LOCATION / COMPLAINTS	RPTD	UNF	ACTUAL	CLEARED BY	
				ARREST	EX.CLEAR					ARREST	EX.CLEAR
9551						Off Campus					
S. W. Area Office						Robbery	2	-	2	-	1
B&E	1	-	1	1	-	Assault Stu/Stu	4	-	4	-	4
Total	1	-	1	1	-	Assault Other	1	-	1	-	1
						B&E	1	-	1	1	-
9913						Larceny-School	1	-	1	-	-
S. W. Security						Arson	1	-	1	-	1
Larceny-Person	1	-	1	-	-	B.R.C.	1	-	1	1	-
Vandalism	1	-	1	-	-	Vandalism	4	-	4	-	2
Vehicle Accident	1	-	1	-	1	Sex Offenses	8	-	8	-	5
Total	3	-	3	-	1	Drunkness	1	-	1	-	1
						Disorderly Cond.	3	-	3	-	2
Diagnostic Research Center						Other-Misc.	21	-	21	1	17
Larceny-School	1	-	1	-	-	Vehicle Accident	3	-	3	-	3
Total	1	-	1	-	-	A.O.A.	9	-	9	-	10
						Total	60	-	60	3	47
Lindsey Hopkins											
Personnel Invest.	1	-	1	-	-						
Total	1	-	1	-	-						

SOUTH AREA

DADE COUNTY PUBLIC SCHOOLS
SECURITY SERVICES DEPARTMENT

AREA: SOUTH

REPORT BY LOCATION

REPORT PERIOD: 7/75 - 6/76

LOCATION / COMPLAINTS	RPTD	UNF	ACTUAL	CLEARED BY		LOCATION / COMPLAINTS	RPTD	UNF	ACTUAL	CLEARED BY	
				ARREST.	EX. CLEAR					ARREST.	EX. CLEAR
0041 AIR BASE EL.						0661 CARIBBEAN EL.					
B & E	9	-	9	2	-	Asslt. Stu/Non Stu	1	-	1	-	-
Larceny/School	2	-	2	-	-	Larceny/School	1	-	1	-	-
Larceny/Personal	8	-	8	-	1	Larceny/Personal	6	-	6	-	2
Vandalism	8	-	8	1	2	Other-Misc.	3	1	2	1	1
Sex Offenses	1	-	1	-	1	Total	11	1	10	1	3
Other-Misc.	5	-	5	-	1						
Trespassing	1	-	1	1	1						
QRU Alarms	9	-	9	-	9						
Total	43	-	43	4	15	0861 COLONIAL DRIVE EL.					
						Asslt. Stu/Stu	2	-	2	-	1
0161 AVOCADO EL.						Larceny/School	1	-	1	-	-
B & E	1	-	1	1	4	Larceny/Personal	14	-	14	-	2
Larceny/Personal	1	-	1	1	-	Vandalism	2	-	2	-	1
Vandalism	1	-	1	-	-	Sex Offenses	1	-	1	-	-
Other-Misc.	2	-	2	-	2	Other-Misc.	8	1	7	-	6
QRU Alarms	18	-	18	-	18	Trespassing	3	-	3	-	3
Total	23	-	23	2	24	QRU Alarms	22	-	22	-	22
						Total	53	1	52	-	35
0261 BEL-AIRE EL.						0921 COOPER EL.					
Larceny/School	1	-	1	-	-	Asslt. Stu/Stu	2	-	2	1	3
Larceny/Personal	4	-	4	-	1	Asslt. Per/Non Stu	1	-	1	1	-
Other-Misc.	3	1	2	-	2	B & E	5	-	5	-	1
Total	8	1	7	-	3	Larceny/Personal	9	-	9	1	2
						Vandalism	1	-	1	-	-
						Total	18	-	18	3	6

DADE COUNTY PUBLIC SCHOOLS
SECURITY SERVICES DEPARTMENT

AREA: SOUTH

REPORT BY LOCATION

REPORT PERIOD: 7/75 - 6/76

LOCATION / COMPLAINTS	RPTD	UNF	ACTUAL	CLEARED BY		LOCATION / COMPLAINTS	RPTD	UNF	ACTUAL	CLEARED BY	
				ARREST	EX.CLEAR					ARREST	EX.CLEAR
1041 CORAL REEF EL.						2201 GOULDS EL.					
Asslt Stu/Stu	1	-	1	-	-	B & E	1	-	1	1	-
B & E	2	-	2	2	-	Larceny/Personal	1	-	1	1	-
Larceny/School	1	1	-	-	-	Vandalism	3	-	3	-	1
Larceny/Personal	1	-	1	-	-	Trespassing	1	-	1	1	-
Vandalism	1	-	1	-	-	QRU Alarms	11	-	11	-	12
Other-Misc.	1	-	1	-	1	Total	17	-	17	3	13
Total	7	1	6	2	1	2321 GULFSTREAM EL.					
1241 CUTLER RIDGE EL.						Asslt. Stu/Stu	1	-	1	1	-
Bomb Threat	1	-	1	-	-	B & E	10	-	10	1	1
B & E	8	-	8	3	-	Larceny/Personal	9	-	9	1	2
Larceny/Personal	6	-	6	-	-	Vandalism	1	-	1	-	-
Arson	1	-	1	-	-	Narcotics-Misc.	1	-	1	-	1
Vandalism	5	-	5	-	-	Marijuana	1	-	1	1	-
Disorderly Conduct	1	-	1	-	1	Other-Misc.	2	-	2	-	2
Other-Misc.	2	-	2	-	2	Trespassing	3	-	3	1	3
QRU Alarms	1	-	1	-	1	Total	28	-	28	5	9
Total	25	-	25	3	4	2541 HOWARD DRIVE EL.					
2001 FLORIDA CITY EL.						B & E	2	-	2	-	-
B & E	6	1	5	-	1	Larceny/Personal	4	-	4	-	1
Larceny/Personal	2	-	2	1	-	Arson	1	-	1	-	-
Vandalism	1	-	1	-	-	Vandalism	6	-	6	-	-
Other-Misc.	2	-	2	-	1	Sex Offenses	1	-	1	1	-
QRU Alarms	33	-	33	-	33	Other-Misc.	5	1	4	-	4
Total	44	1	43	1	35	Trespassing	1	-	1	-	1
						Total	20	1	19	1	6

DADE COUNTY PUBLIC SCHOOLS
SECURITY SERVICES DEPARTMENT

AREA: SOUTH

REPORT BY LOCATION

REPORT PERIOD: 7/75 - 6/76

LOCATION / COMPLAINTS	RPTD	UNF	ACTUAL	CLEARED BY		LOCATION / COMPLAINTS	RPTD	UNF	ACTUAL	CLEARED BY	
				ARREST	EX.CLEAR					ARREST	EX.CLEAR
2901 LEISURE CITY EL.						3261 CONT.					
Asslt. Stu/Stu	1	-	1	-	1	Disorderly Conduct	1	-	1	-	1
B & E	13	-	13	2	3	Other-Misc.	3	-	3	-	2
Larceny/Personal	4	-	4	-	2	Trespassing	1	-	1	1	-
Vandalism	1	-	1	-	-	QRU Alarms	26	-	26	-	26
Weapons Carry/Poss.	1	-	1	-	1	Total	59	1	58	1	35
Other-Misc.	2	-	2	-	2	3541 MOTON EL.					
Bomb Threat	2	-	2	-	1	Asslt. Stu/Stu	-	-	-	-	1
Trespassing	1	-	1	-	1	Asslt. Stu/Non Stu	1	-	1	-	1
Total	25	-	25	2	11	B & E	15	-	15	2	1
2941 LEWIS, A.L. EL.						Larceny/Personal	2	-	2	1	-
Asslt. Stu/Stu	1	-	1	-	-	Vandalism	10	1	9	-	-
B & E	22	-	22	4	-	Other-Misc.	3	-	3	-	3
Larceny/Sch	1	-	1	-	-	QRU Alarms	16	-	16	-	16
Larceny/Personal	2	-	2	-	-	Total	47	1	46	3	22
Vandalism	2	-	2	-	-	3621 NARANJA EL.					
Other-Misc.	3	-	3	-	1	Robbery	2	-	2	-	-
QRU Alarms	12	-	12	-	11	B & E	10	1	9	-	-
Total	43	-	43	4	12	Larceny/Personal	4	-	4	-	1
3261 MIAMI HGTS. EL.						Arson	1	-	1	-	-
Robbery	1	-	1	-	1	Vandalism	6	1	5	-	-
Asslt. Stu/Stu	1	-	1	-	1	Disorderly Conduct	1	-	1	-	1
Asslt. Stu/Non Stu	1	-	1	-	1	Other-Misc.	3	-	3	-	1
B & E	4	-	4	-	-	Trespassing	1	-	1	-	1
Larceny/Sch	1	1	-	-	-	QRU Alarms	23	1	22	-	32
Larceny/Personal	5	-	5	-	-	Personnel Invest.	1	-	1	-	-
Vandalism	15	-	15	-	3	Total	52	3	49	-	36

DADE COUNTY PUBLIC SCHOOLS
SECURITY SERVICES DEPARTMENT

AREA: SOUTH

REPORT BY LOCATION

REPORT PERIOD: 7/75 - 6/76

LOCATION / COMPLAINTS	RPTD	UNF	ACTUAL	CLEARED BY		LOCATION / COMPLAINTS	RPTD	UNF	ACTUAL	CLEARED BY	
				ARREST	EX. CLEAR					ARREST	EX. CLEAR
4221 PALMETTO EL.						4461 PINE VILLA EL.					
B & E	3	-	3	-	-	B & E	15	-	15	4	-
B & E Auto	1	-	1	-	-	Larceny/Per	2	-	2	-	-
Larceny/Personal	7	-	7	-	-	Vandalism	12	-	12	1	-
Vandalism	6	1	5	-	12	Other-Misc.	3	-	3	-	3
Other-Misc.	1	-	1	-	1	Trespassing	2	-	2	1	1
Bomb Threats	2	-	2	-	-	QRU Alarms	18	-	18	-	18
Total	20	1	19	-	13	Total	52	-	52	6	22
4381 PERRINE EL.						4581 REDLAND EL.					
Asslt. Per/Stu	1	-	1	-	1	Asslt. Stu/Stu	1	-	1	-	1
B & E	2	-	2	1	-	Asslt. Per/Non Stu	1	-	1	-	1
Larceny/Sch	2	-	2	-	-	B & E	1	-	1	-	-
Larceny/Per	2	-	2	1	-	Larceny/Sch	2	-	2	-	-
Other-Misc.	1	-	1	-	1	Larceny/Per	1	-	1	-	-
QRU Alarms	3	-	3	-	3	Vandalism	1	-	1	-	1
Total	11	-	11	2	5	Total	7	-	7	-	3
4421 PINECREST EL.						4611 REDONDO EL.					
B & E	1	-	1	-	-	B & E	2	-	2	-	-
Larceny/Per	5	-	5	-	1	Larceny/Per	2	-	2	1	1
Vandalism	5	-	5	-	1	Vandalism	2	-	2	-	-
Other-Misc.	2	1	1	-	1	Disorderly Conduct	1	-	1	-	1
QRU Alarms	1	-	1	-	1	Other-Misc.	3	-	3	-	2
Total	14	1	13	-	4	Total	10	-	10	1	4

DADE COUNTY PUBLIC SCHOOLS
SECURITY SERVICES DEPARTMENT

AREA: SOUTH

REPORT BY LOCATION

REPORT PERIOD: 7/75 - 6/76

LOCATION / COMPLAINTS	RPTD	UNF	ACTUAL	CLEARED BY		LOCATION / COMPLAINTS	RPTD	UNF	ACTUAL	CLEARED BY	
				ARREST	EX. CLEAR					ARREST	EX. CLEAR
4651 RICHMOND EL.						5951 WHISPERING PINES EL.					
Asslt. Stu/Non Stu	1	-	1	-	1	B & E Auto	1	-	1	-	-
B & E	8	-	8	-	-	Larceny/Per	9	-	9	-	-
Larceny/Sch	1	-	1	-	-	Vandalism	1	-	1	-	-
Larceny/Per	3	-	3	-	-	Other-Misc.	7	1	6	-	6
Vandalism	2	-	2	-	-	Trespassing	1	-	1	-	1
Other-Misc.	1	-	1	-	1	Total	19	1	18	-	7
Bomb Threats	1	-	1	-	-	6111 CUTLER RIDGE JR.					
QRU Alarms	8	1	7	-	8	Asslt. Per/Stu	1	-	1	1	1
Total	25	1	24	-	10	Asslt. Stu/Stu	8	-	8	1	6
5281 SOUTH MIAMI HGTS.						B & E	8	-	8	1	1
Asslt. Stu/Stu	1	-	1	-	1	Larceny/Sch	2	-	2	-	1
B & E	8	-	8	1	-	Larceny/Per	19	-	19	1	1
B & E Auto	1	-	1	-	-	Vandalism	5	-	5	-	1
Larceny/Per	4	-	4	-	2	Marijuana	3	-	3	3	1
Vandalism	7	1	6	-	1	Disorderly Conduct	4	1	3	1	1
Other-Misc.	6	1	5	-	4	Other-Misc.	11	1	10	1	9
Trespassing	1	-	1	-	1	Bomb Threat	2	-	2	-	2
QRU Alarms	5	-	5	-	5	Trespassing	6	-	6	2	4
Total	33	2	31	1	14	QRU Alarms	11	-	11	-	11
5791 WEST HOMESTEAD EL.						Vehicle Accidents	1	-	1	-	-
B & E	1	-	1	-	-	Total	81	2	79	11	39
B & E Auto	2	-	2	-	-						
Vandalism	1	-	1	-	-						
Other-Misc.	2	-	2	-	2						
Bomb Threat	1	-	1	-	-						
QRU Alarms	2	-	2	-	2						
Total	9	-	9	-	4						

DADE COUNTY PUBLIC SCHOOLS
SECURITY SERVICES DEPARTMENT

AREA: SOUTH

REPORT BY LOCATION

REPORT PERIOD: 7/75 - 6/76

LOCATION / COMPLAINTS	RPTD	UNF	ACTUAL	CLEARED BY		LOCATION / COMPLAINTS	RPTD	UNF	ACTUAL	CLEARED BY	
				ARREST.	EX. CLEAR					ARREST.	EX. CLEAR
6251 HOMESTEAD JR.						6431 CONT.					
Robbery	5	-	5	1	-	Larceny/Personal	22	1	21	2	4
Asslt. Per/Stu	8	-	8	3	6	Vandalism	9	-	9	1	1
Asslt. Stu/Stu	27	1	26	10	14	Disorderly Conduct	3	-	3	-	2
Asslt. Per/Non Stu	1	-	1	1	-	Other-Misc.	20	-	20	1	14
Asslt. Stu/Non Stu	2	-	2	-	1	Trespassing	15	-	15	2	10
Asslt. Other	1	-	1	1	-	QRU Alarms	38	-	38	-	38
B & E	14	-	14	2	6	Total	177	1	176	18	91
Larceny/Sch	8	1	7	-	1						
Larceny/Personal	31	1	30	3	4	6701 PALMETTO JR.					
Arson	1	-	1	1	-	Asslt. Per/Stu	1	-	1	1	-
Vandalism	8	-	8	2	3	Asslt. Stu/Stu	3	-	3	-	3
Weapons Carry/Poss.	2	-	2	-	2	B & E	3	-	3	-	-
Sex Offenses	3	-	3	2	1	B & E Auto	1	-	1	-	-
Narc. Misc.	1	-	1	-	1	Larceny/Sch	4	-	4	-	-
Marijuana	7	-	7	3	3	Larceny/Personal	47	4	43	-	5
Disorderly Conduct	8	-	8	1	7	Arson	1	-	1	-	-
Other-Misc.	11	-	11	-	7	Vandalism	6	1	5	-	-
Bomb Threat	1	-	1	-	-	Other-Misc.	7	2	5	1	3
Trespassing	8	-	8	1	5	Bomb Threat	1	-	1	-	-
QRU Alarms	5	-	5	-	5	Trespassing	3	-	3	-	3
Total	152	3	149	31	66	QRU Alarms	1	-	1	-	1
						Vehicle Accidents	2	-	2	-	2
6431 MAYS JR.						Total	80	7	73	2	17
Rape	1	-	1	-	-						
Robbery	1	-	1	-	1						
Asslt. Per/Stu	6	-	6	3	3						
Asslt. Stu/Stu	25	-	25	3	15						
Asslt. Per/Non Stu	2	-	2	-	-						
Asslt. Stu/Non Stu	1	-	1	-	2						
Asslt. Other	1	-	1	-	-						
B & E	29	-	29	6	1						
Larceny/Sch	4	-	4	-	-						

DADE COUNTY PUBLIC SCHOOLS
SECURITY SERVICES DEPARTMENT

AREA: SOUTH

REPORT BY LOCATION

REPORT PERIOD: 7/75 - 6/76

LOCATION / COMPLAINTS	RPTD	UNF	ACTUAL	CLEARED BY		LOCATION / COMPLAINTS	RPTD	UNF	ACTUAL	CLEARED BY	
				ARREST.	EX. CLEAR					ARREST.	EX. CLEAR
6761 REDLAND JR.						7431 CONT.					
Asslt. Stu/Stu	6	-	6	-	6	Larceny/Personal	61	1	60	1	6
Asslt. Per/Non Stu	1	-	1	-	1	Auto Theft	1	-	1	-	1
B & E	7	-	7	-	-	Arson	2	-	2	-	-
Larceny/Sch	6	-	6	-	1	Vandalism	10	-	10	-	1
Larceny/Personal	4	-	4	-	2	Narc. Misc.	4	-	4	1	2
Vandalism	12	-	12	-	5	Disorderly Conduct	4	-	4	-	3
Marijuana	1	-	1	1	-	Other-Misc.	10	-	10	-	7
Disorderly Conduct	2	1	1	-	1	Bomb Threat	9	-	9	-	1
Other-Misc.	5	1	4	-	4	QRU Alarms	38	-	38	-	38
Bomb Threat	1	-	1	-	1	Vehicle Accidents	4	-	4	-	3
Trespassing	2	-	2	1	1	Total	180	1	179	4	71
QRU Alarms	1	-	1	-	1						
Total	48	2	46	2	23	7701 SOUTH DADE SR.					
						Asslt. Per/Stu	3	-	3	2	1
6861 SOUTHWOOD JR.						Asslt. Stu/Stu	18	-	18	5	9
B & E	2	-	2	-	-	Asslt. Stu/Non Stu	2	-	2	-	2
Larceny/Sch	1	-	1	-	-	Asslt. Other	1	-	1	1	-
Other-Misc.	3	-	3	-	3	B & E	8	-	8	-	-
Total	6	-	6	-	3	B & E Auto	15	-	15	1	-
						Larceny/Sch	14	-	14	1	3
7431 PALMETTO SR.						Larceny/Per	55	-	55	-	7
Assault Per/Stu	2	-	2	-	2	Auto Theft	1	-	1	1	-
Asslt. Stu/Stu	5	-	5	1	4	B.R.C. Stolen Prop.	1	-	1	1	-
Asslt. Per/Non Stu	1	-	1	1	-	Vandalism	23	-	23	-	4
Asslt. Stu/Non Stu	1	-	1	-	1	Weapons/Carry, Poss.	1	-	1	-	1
B & E	5	-	5	-	-	Narc.-Misc.	1	-	1	-	1
B & E Auto	15	-	15	-	1	Marijuana	5	-	5	5	-
Larceny/Sch	8	-	8	-	1	Drunkennes	1	-	1	-	1
						Disorderly Conduct	1	-	1	1	-
						Other-Misc.	21	4	17	1	9
						Trespassing	2	-	2	-	2
						QRU Alarms	37	-	37	-	37
						Vehicle Accidents	1	-	1	-	1
						Total	211	4	207	19	78

DADE COUNTY PUBLIC SCHOOLS
SECURITY SERVICES DEPARTMENT

AREA: SOUTH

REPORT BY LOCATION

REPORT PERIOD: 7/75 - 6/76

LOCATION / COMPLAINTS	RPTD	UNF	ACTUAL	CLEARED BY		LOCATION / COMPLAINTS	RPTD	UNF	ACTUAL	CLEARED BY	
				ARREST	EX.CLEAR					ARREST	EX.CLEAR
7731 SOUTHRIDGE SR.						9241 MAINTENANCE					
B & E	1	-	1	-	-	B & E Auto	3	-	3	-	-
Total	1	-	1	-	-	Larceny/Sch	4	-	4	-	-
						Larceny/Personal	1	-	1	-	-
						Total	8	-	8	-	-
8049 SOUTH DADE SKILL						9913 SOUTH AREA SECURITY					
B & E	1	-	1	-	-	B & E	1	-	1	-	1
Larceny/Sch	5	-	5	-	-	Larceny/Sch	1	-	1	-	-
Other-Misc.	1	-	1	-	-	Total	2	-	2	-	1
Total	7	-	7	-	-						
9231 TRANSPORTATION						EVERGLADES MIGRANTS					
Assault Per/Stu	1	-	1	-	1	B & E	2	-	2	-	-
Asslt. Stu/Stu	8	-	8	3	4	Total	2	-	2	-	-
Asslt. Stu/Non Stu	1	-	1	-	1						
Asslt. Other	1	-	1	-	-	REDLAND LABOR CAMP					
Larceny/Sch	1	-	1	-	-	B & E	2	-	2	-	-
Auto Theft	1	-	1	-	-	Other-Misc.	1	-	1	-	1
Arson	1	-	1	-	-	Total	3	-	3	-	1
Vandalism	30	-	30	1	15						
Marijuana	1	-	1	-	1						
Other-Misc.	7	1	6	-	4						
Bomb Threat	1	-	1	-	-						
Vehicle Accid.	7	1	6	-	1						
Bus Accid.	12	-	12	1	6						
Total	72	2	70	5	33						

DADE COUNTY PUBLIC SCHOOLS
SECURITY SERVICES DEPARTMENT

AREA: SOUTH

REPORT BY LOCATION

REPORT PERIOD: 7/75 - 6/76

LOCATION / COMPLAINTS	RPTD	UNF	ACTUAL	CLEARED BY		LOCATION / COMPLAINTS	RPTD	UNF	ACTUAL	CLEARED BY	
				ARREST	EX.CLEAR					ARREST	EX.CLEAR
EVERGLADES LABOR CAMP											
Vandalism	1	-	1	-	-						
Total	1	-	1	-	-						
SOUTH AREA OFFICE											
QRU Alarms	3	-	3	-	3						
Total	3	-	3	-	3						
SOUTH DADE LABOR CAMP											
Vandalism	1	-	1	-	-						
Total	1	-	1	-	-						
OFF CAMPUS											
Robbery	1	-	1	-	1						
Asslt. Stu/Stu	4	-	4	-	4						
Asslt. Stu/Non Stu	1	-	1	-	-						
B & E	1	-	1	-	1						
Larceny/Sch	1	-	1	-	-						
Larceny/Personal	2	-	2	-	2						
Vandalism	2	-	2	-	1						
Disorderly Conduct	1	-	1	-	-						
Other-Misc.	16	-	16	1	14						
QRU Alarms	1	-	1	-	1						
Vehicle Accidents	4	-	4	1	3						
Personnel Invest.	9	-	9	-	-						
AOA	17	-	17	1	10						
Total	60	-	60	3	37						

GLOSSARY

ALARM SIGNAL - Electronic signal transmitted to the Central Security Office when any unauthorized entry is made into an alarm protected area.

ARREST - Suspect (s) charged with specific offense.

ASSIST OTHER AGENCY - Requested assistance rendered to police agency.

COMPLAINT -

EXCEPTIONALLY CLEARED - A case may be shown as exceptionally cleared due to the refusal to prosecute by the victim(s). A case may be exceptionally cleared by warning and dismissing juvenile offenders.

INCIDENT - An occurrence with connotations of probable illegal activity.

OFFICER INITIATED REPORT - Officer uncovers a violation of the law while on duty - initiates the first report of it.

OPEN DOOR/WINDOW REPORT - Officer discovers an unsecured school building.

QRU ALARM - Alarm signal received - but investigation revealed no criminal act occurred.

UNFOUNDED - No basis for complaint.

UNIT - Police radio equipped vehicle. Portion of a automated alarm system.

WARN AND DISMISS - Juveniles who have committed a violation of the law but released without being formally charged.

END

7 11/15/1911