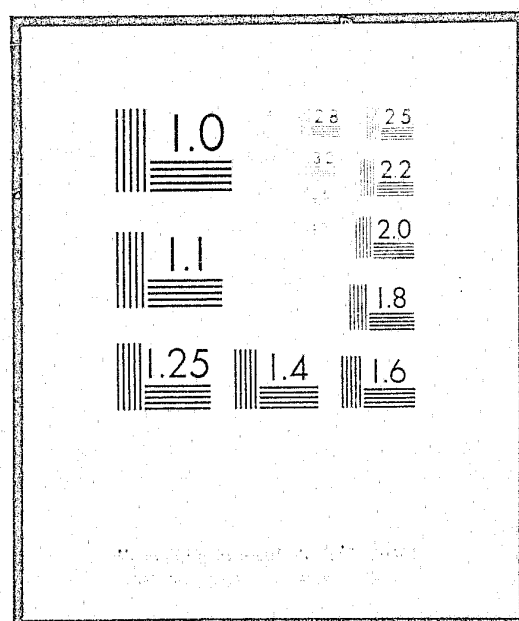


NCJRS

This microfiche was produced from documents received for inclusion in the NCJRS data base. Since NCJRS cannot exercise control over the physical condition of the documents submitted, the individual frame quality will vary. The resolution chart on this frame may be used to evaluate the document quality.



Microfilming procedures used to create this fiche comply with the standards set forth in 41CFR 101-11.504

Points of view or opinions stated in this document are those of the author(s) and do not represent the official position or policies of the U.S. Department of Justice.

U.S. DEPARTMENT OF JUSTICE
LAW ENFORCEMENT ASSISTANCE ADMINISTRATION
NATIONAL CRIMINAL JUSTICE REFERENCE SERVICE
WASHINGTON, D.C. 20531

1/25/77
Date filmed

1975
CALENDAR YEAR SUMMARY OF POPULATION MOVEMENT



DEPARTMENT OF HEALTH AND SOCIAL SERVICES
DIVISION OF CORRECTIONS
BUREAU OF PLANNING, DEVELOPMENT, AND RESEARCH
MADISON, WISCONSIN 53701

STATISTICAL BULLETIN C-60B

JULY 1976

36630

S T A T E O F W I S C O N S I N

DEPARTMENT OF HEALTH AND SOCIAL SERVICES
Manuel Carballo, Secretary

DIVISION OF CORRECTIONS
Fred W. Hinickle, Acting Administrator

BUREAU OF PLANNING, DEVELOPMENT, AND RESEARCH
Paul H. Kusuda, Director
Perry C. Baker, Chief, Research and Evaluation Section
Theodore H. Johnson, Chief, Information and Systems Development Section

NCJRS

1975 CALENDAR YEAR SUMMARY OF
POPULATION MOVEMENT*

SEP 24 1976

AC-112
This publication summarizes the movement of offender populations under the supervision of the Wisconsin Division of Corrections for calendar year 1975. Appendix tables contain aggregated information on correctional clients confined in state institutions and on clients receiving state supervision while living in their home communities. Types of information included are as follows: beginning of the year counts, end of the year counts, average populations, admissions during the year, and releases during the year. Included in the narrative are five-year trend tables for primary offender groups.

In 1975 the Division's total population, in institutions and receiving supervision in communities, for the first time exceeded 20,000 cases. By the end of the year the Division was responsible for supervision of 22,457 clients. During 1975 adult populations increased, while juvenile populations remained at about the 1974 level.

To be noted in the narrative tables is the continued upward trend in the probation and parole populations. It is also of note that institution populations, having decreased for three years, showed large increases in both 1974 and 1975. Population pressures in the adult institutions can be anticipated in the next few years. Examination of the series of tables that follow show that most of the gain in community supervision populations has been due to the growth of the adult male probation program. One factor explaining this growth is the gradual state absorption during 1972, 1973, and 1974 of all Milwaukee County adult probation cases from the previously county-administered program. Another factor which affects all five-year trend tables was the change in the age of majority from 21 to 18 which occurred in late 1972.

*Note: This bulletin is the companion publication to the C-60A which reports the same information on a fiscal year basis.

Table A shows the combined average daily population for community supervision and institutions for calendar years 1971 through 1975, with year-to-year percentage changes. The average total population grew every year during the five-year period. During recent years the growth rate has been particularly high. However, the 1975 increase was down 5.3 percentage points from 1974.

Table A
Institution and Community Supervision Populations
Average Daily Population with Percent Change
Calendar Years 1971 through 1975

Calendar Year	Average Daily Population	Percent Change
1971	13,873	+5.4
1972	13,968	+0.9
1973	15,166	+8.6
1974	18,149	+19.7
1975	20,766	+14.4

Note: Includes community supervision cases supervised in other states and cases from other states supervised in Wisconsin.

Table B shows the average daily population and annual percentage changes in average population of offenders supervised in the community by the Division's Bureau of Probation and Parole. During the five-year period, probation and parole average populations increased every year, with the highest rate of increase in 1974. Again, this is partly due to the state absorption of all Milwaukee County adult probation cases, completed in 1974. The 1975 increase was down 9.1 percentage points from 1974.

Table B
Community Supervision Populations
Average Daily Population with Percent Change
Calendar Years 1971 through 1975

Calendar Year	Average Daily Population	Percent Change
1971	10,132	+8.7
1972	10,993	+8.5
1973	12,407	+12.9
1974	15,089	+21.6
1975	17,243	+12.5

Note: Includes probation, parole, and outpatient sex crimes cases.

During the last five calendar years, annual average population of incarcerated offenders (adult and juvenile) declined from 3,741 in 1971 to 2,759 in 1973, then went back up in 1974 and reached 3,523 in 1975. Increasing adult institutional populations are expected in the years immediately ahead (see Table C).

Table C
Corrections Institutional Populations
Average Daily Population with Percent Change
Calendar Years 1971 through 1975

Calendar Year	Average Daily Population	Percent Change
1971	3,741	-2.7
1972	2,975	-20.5
1973	2,759	-7.3
1974	3,060	+10.9
1975	3,523	+15.1

Note: Includes institutions and camps for adults and juveniles.

Table D depicts probation average daily population increases from 5,857 in 1971 to 14,392 in 1975. The probation increase over the five-year period amounted to nearly 150 percent (8,535 cases).

Average parole numbers, also shown in Table D, revealed a gradual four-year decline in total population through 1974. During 1975, however, the parole population increased slightly reflecting increased institution admissions beginning in 1973. During the 1960's and up to about 1971 the probation population was about equal to the parole caseload. In recent years, however, the probation population has greatly exceeded the number on parole.

Table D
Average Daily Population
of Probation and Parole Cases
Calendar Years 1971 through 1975

Calendar Year	Average Daily Population	Type of Population	
		Probation	Parole*
1971	10,132	5,857	4,275
1972	11,993	6,990	4,003
1973	12,407	9,379	3,028
1974	15,089	12,341	2,748
1975	17,243	14,392	2,851

*Includes mandatory releases-releases from adult institutions to community supervision after having served the sentence less "good time" earned (not a parole grant).

Additional information about probation is presented in Table E and information about parole can be found in Table F. (Slight differences in population counts may be noted between these two tables compared with counts in Table D, due to the different methods of averaging that were used.)

Changes among specific types of probation cases can be reviewed in Table E. Combined end-of-the-month average population for adult male and adult female probation increased steadily by 1,000 to nearly 3,000 additional cases each year. In the five-year period, average number of adult probationers more than doubled, with the highest yearly increase in calendar year 1974. This growth is partially attributable to the completed take-over of cases from Milwaukee County.

The end-of-the-month average combined male and female juvenile probation population declined from a high of 559 in 1971 to a low in 1973 of 270. Juvenile probation numbers have stabilized during 1974 and 1975, averaging about 340 cases.

From calendar year 1971 through 1975 end-of-the-month average population of males and females from other states supervised in Wisconsin (Interstate Compact cases) increased gradually each year, reaching a combined total of 329 in 1975. Roughly 95 percent of all cases supervised in Wisconsin from other states were adults.

Table E
Average End-of-the-Month Probation Cases by Type
Calendar Years 1971 through 1975

Calendar Year	Total Probation Population	Type and Sex of Population					
		Adult		Juvenile		From Other States	
		Male	Female	Male	Female	Male	Female
1971	5,835	4,453	635	373	186	164	24
1972	7,046	5,569	817	317	142	176	25
1973	9,466	7,659	1,306	195	75	197	34
1974	12,286	9,934	1,735	256	82	249	30
1975	14,336	11,563	2,115	288	41	288	41

Table F shows that during the last five calendar years the annual combined end-of-the-month averages of adult male and female parolees and mandatory releasees has changed only slightly, a small increase appearing in 1975.

During the last five-year period the average end-of-the-month population of juvenile males on aftercare decreased rapidly from 1,783 in calendar year 1971 to 457 in calendar year 1975. Over the same period the average for juvenile females on aftercare also decreased comparably. The sizeable reduction in juvenile population from 1972 to 1973 was due primarily to the change in the age of majority from 21 to 18.

Table F
Average End-of-the-Month Population of
Adult Parole and Juvenile Aftercare Cases
Calendar Years 1971 through 1975

Calendar Year	Total Parole Population*	Type and Sex of Population					
		Adult		Juvenile		From Other States	
		Male	Female	Male	Female	Male	Female
1971	4,262	1,768	89	1,783	494	120	8
1972	4,041	2,055	113	1,332	383	152	6
1973	3,015	2,037	114	544	167	143	10
1974	2,733	1,863	101	469	150	140	10
1975	2,837	2,007	105	457	117	141	10

*Includes mandatory releases to parole.

Table G reveals that after reductions during the first three years of the period, institution average daily populations have increased in the last two years. The only exception is the juvenile female institutional population, which continued to decline, reaching a low of 67 in 1975.

Table G
Average Daily Population for Correctional Institutions
by Type of Institution and Sex
Calendar Years 1971 through 1975

Calendar Year	Total Institution Population	Type of Institution and Sex			
		Adult		Juvenile	
		Male	Female	Male	Female
1971	3,741	2,633	122	796	190
1972	2,975	2,128	90	648	109
1973	2,759	1,991	70	582	116
1974	3,060	2,276	81	602	101
1975	3,523	2,692	108	656	67

Appendix tables are attached for calendar year 1975. The tables contain information on population movement for the specific facilities and programs in the Division of Corrections.

Prepared by: Bureau of Planning, Development, and Research
Research and Evaluation Section
Division of Corrections
P.O. Box 669
Madison, Wisconsin 53701

CALENDAR 1975
REPORT OF WISCONSIN CORRECTIONS POPULATION

TABLE 1. ADULT INSTITUTIONS

	Total Population	Total Males	WSP		WSR		WCI	KMCI	WCCS Adult	WHW		
			Total	(Rec)	Total	(Rec)				Total	Male	Female
POPULATION-JANUARY 1, 1975	2,587	2,501	914	(82)	669	(82)	528	61	329	86	-	86
POPULATION-DECEMBER 31, 1975 /a	2,992	2,867	1,082	(53)	665	(85)	559	178	346	162	37	125
POPULATION PLUS RESIDENTS IN MEDICAL HOSPITALS-DECEMBER 31, 1975	2,998	2,872	1,085		665		559	180	346	163		
In institution proper	2,413		952		562		559	178	-	162		
In reception center	138		53		85		-	-	-	-		
In farms and camps	441		77		18		-	-	346	-		
ADP Alcohol and Education Treatment Program at Winnebago Mental Health Institute	15		-		-		-	-	-	15		
ADP Including Residents in Medical Hospitals	2,800		1,007		669		562	114	329	119		
ADP Excluding Residents in Medical Hospitals	2,791		1,003		669		560	113	328	118		
ADP Including Beds Held	2,830		1,020		675		566	114	331	124		
Rated bed capacity /b	2,744		876		623		576	129	379	161		
Percent of occupancy including beds held	103		116		108		98	88	87	77		
INTAKE /c	6,471	6,262	1,801	(853)	1,760	(1,154)	908	371	1,216	415	206	209
New admission	1,425	1,326	391	(391)	935	(935)	-	-	-	99	-	99
New sentence	895	836	314	(314)	522	(522)	-	-	-	59	-	59
New sentence, probation violator	475	435	30	(30)	405	(405)	-	-	-	40	-	40
Probation violator-no new sentence	47	47	47	(47)	-	(-)	-	-	-	-	-	-
Juvenile aftercare violator	8	8	-	(-)	8	(8)	-	-	-	-	-	-
Re-admission with new sentence	115	113	65	(65)	48	(48)	-	-	-	2	-	2
Adult parole violator	71	70	42	(42)	28	(28)	-	-	-	1	-	1
Mandatory release (MR) violator	44	43	23	(23)	20	(20)	-	-	-	1	-	1
Re-admission without new sentence	117	113	59	(59)	54	(54)	-	-	-	4	-	4
Adult parole violator	68	65	34	(34)	31	(31)	-	-	-	3	-	3
Mandatory release (MR) violator	49	48	25	(25)	23	(23)	-	-	-	1	-	1
Voluntary return from parole or MR	-	-	-	(-)	-	(-)	-	-	-	-	-	-
Temporary hold pending revocation hearing	33	25	19	(19)	6	(6)	-	-	-	8	-	8
Parole	16	15	12	(12)	3	(3)	-	-	-	1	-	1
Probation	17	10	7	(7)	3	(3)	-	-	-	7	-	7

TABLE 1. (Concluded)

	Total Population	Total Males	WSP		WSR		WCI	KMCI	WCCS Adult	WHW		
			Total	(Rec)	Total	(Rec)				Total	Male	Female
Transfer from:	2,971	2,971	550	(227)	254	(3)	585	291	1,094	197	197	-
Adult institution	2,658	2,658	550	(227)	254	(3)	585	291	781	197	197	-
Adult institution, intra-camp system	313	313	-	(-)	-	(-)	-	-	313	-	-	-
Return from absence	1,810	1,714	717	(92)	463	(108)	323	80	122	105	9	96
Non-correctional institution	94	89	75	(2)	8	(2)	6	-	-	5	-	5
Authorized	1,683	1,593	634	(90)	446	(106)	310	74	122	97	7	90
Unauthorized	33	32	8	(-)	9	(-)	7	6	-	3	2	1
SEPARATION /a	6,066	5,896	1,633	(290)	1,764	(585)	877	254	1,199	339	169	170
First release	878	818	134	(3)	156	(2)	79	54	389	66	6	60
Parole	654	612	58	(-)	104	(-)	60	43	341	48	6	42
Mandatory release	184	169	65	(1)	39	(-)	10	8	47	15	-	15
Pardon, conditional pardon, commutation	-	-	-	(-)	-	(-)	-	-	-	-	-	-
Expiration of sentence	5	4	3	(-)	-	(-)	1	-	-	1	-	1
Discharge by court	35	33	8	(2)	13	(2)	8	3	1	2	-	2
Re-release	201	197	67	(1)	30	(4)	12	4	84	4	-	4
Parole	87	87	14	(-)	12	(2)	9	3	49	-	-	-
Mandatory release	83	79	38	(-)	15	(2)	3	-	23	4	-	4
Pardon, conditional pardon, commutation	-	-	-	(-)	-	(-)	-	-	-	-	-	-
Expiration of sentence	29	29	13	(-)	3	(-)	-	1	12	-	-	-
Discharge by court	2	2	2	(1)	-	(-)	-	-	-	-	-	-
Release after voluntary return	-	-	-	(-)	-	(-)	-	-	-	-	-	-
Release from temporary hold pending revocation hearing	6	4	4	(2)	-	(-)	-	-	-	2	-	2
Parole	3	3	3	(1)	-	(-)	-	-	-	-	-	-
Probation	3	1	1	(1)	-	(-)	-	-	-	2	-	2
Death	2	2	-	(-)	-	(-)	1	-	1	-	-	-
Transfer to:	2,700	2,700	682	(184)	1,077	(466)	447	97	381	16	16	-
Adult institution	2,393	2,393	682	(184)	1,077	(466)	447	97	74	16	16	-
Adult institution, intra-camp system	307	307	-	(-)	-	(-)	-	-	307	-	-	-
Absence	2,279	2,175	746	(100)	501	(113)	338	99	344	251	147	104
Non-correctional institution	117	110	90	(2)	13	(4)	7	-	-	7	-	7
Authorized /e	2,066	1,970	652	(98)	480	(109)	319	86	288	241	145	96
Unauthorized	96	95	4	(-)	8	(-)	12	13	56	3	2	1

TABLE 2. JUVENILE INSTITUTIONS

	Total Population	Total Boys	Total Girls	WSB		LBS				WCCS Juv.	WSG		
				Total	(Rec)	Total	(Rec)	Boys	Girls		Total	Boys	Girls
POPULATION - January 1, 1975	759	669	90	377	(44)	257	(26)	192	39	19	106	59	47
POPULATION - December 31, 1975	763	699	64	360	(45)	243	(12)	209	22	28	132	91	41
POPULATION PLUS JUVENILES IN MEDICAL HOSPITALS - December 31, 1975	763			360		243				28	132		
ADP Including Juveniles in Medical Hospitals	723			359		237				27	100		
ADP Excluding Juveniles in Medical Hospitals	722			359		237				27	99		
ADP Including Beds Held	805			397		245				29	134		
Rated bed capacity	902			344		287				40	231		
Percent of occupancy including beds held	89			115		85				73	58		
INTAKE /a	4,634	4,189	445	2,099	(545)	1,337	(401)	817	119	356	842	567	275
Admission	938	835	103	496	(484)	383	(357)	15	11	-	59	5	54
New admission	601	553	48	342	(342)	234	(234)	-	-	-	25	-	25
New admission, probation violation	77	70	7	45	(45)	27	(27)	-	-	-	5	-	5
Return from aftercare	194	170	24	93	(93)	89	(89)	-	-	-	12	-	12
Temporary care-replacement	66	42	24	16	(4)	33	(7)	15	11	-	17	5	12
Temporary hold pending revocation hearing	66	49	17	35	(35)	17	(17)	-	-	-	14	1	13
Aftercare	50	36	14	22	(22)	15	(15)	-	-	-	13	1	12
Probation	16	13	3	13	(13)	2	(2)	-	-	-	1	-	1
Transfer from juvenile institution	273	273	-	21	(7)	34	(2)	32	-	95	123	123	-
Return from absence	3,357	3,032	325	1,547	(19)	903	(25)	770	108	261	646	438	208
Non-correctional institution	9	7	2	-	(-)	8	(-)	7	1	-	1	-	1
Authorized	3,067	2,781	286	1,450	(16)	806	(17)	683	106	246	565	393	172
Overstayed leave	114	105	9	66	(1)	26	(2)	23	1	5	17	9	8
Unauthorized	167	139	28	31	(2)	63	(6)	57	-	10	63	36	27

TABLE 2. (Concluded)

	Total Population	Total Boys	Total Girls	WSB		LBS				WCCS Juv.	WSG		
				Total	(Rec)	Total	(Rec)	Boys	Girls		Total	Boys	Girls
<u>SEPARATION</u> /b	<u>4,630</u>	<u>4,159</u>	<u>471</u>	<u>2,116</u>	<u>(149)</u>	<u>1,351</u>	<u>(40)</u>	<u>1,130</u>	<u>181</u>	<u>347</u>	<u>816</u>	<u>535</u>	<u>281</u>
First release	639	562	77	258	(2)	216	(-)	181	35	51	114	72	42
Aftercare	537	469	68	197	(1)	183	(-)	153	30	51	106	68	38
Direct discharge	99	91	8	60	(1)	32	(-)	27	5	-	7	4	3
Discharge by court	3	2	1	1	(-)	1	(-)	1	-	-	1	-	1
Re-release	175	139	36	80	(-)	64	(-)	44	20	7	24	8	16
Aftercare	126	96	30	51	(-)	49	(-)	31	18	7	19	7	12
Direct discharge	49	43	6	29	(-)	15	(-)	13	2	-	5	1	4
Discharge by court	-	-	-	-	(-)	-	(-)	-	-	-	-	-	-
Release from temporary care- replacement	55	32	23	12	(2)	29	(4)	13	12	-	14	3	11
Release from temporary hold pending revocation hearing	10	8	2	7	(5)	1	(1)	-	-	-	2	-	2
Aftercare	10	8	2	7	(5)	1	(1)	-	-	-	2	-	2
Probation	-	-	-	-	(-)	-	(-)	-	-	-	-	-	-
Death	2	2	-	2	(-)	-	(-)	-	-	-	-	-	-
Transfer to juvenile institution	263	263	-	138	(120)	95	(5)	90	-	21	9	9	-
Absence	3,486	3,153	333	1,619	(20)	946	(30)	802	114	268	653	443	210
Non-correctional institution	15	11	4	2	(-)	12	(1)	9	2	-	1	-	1
Authorized	3,293	2,983	310	1,586	(19)	864	(22)	730	112	249	594	404	190
Unauthorized	178	159	19	31	(1)	70	(7)	63	-	19	58	39	19

TABLE 3. PROBATION AND PAROLE SERVICES

	TOTAL POPULATION	Commitment Status								
		Probation					Parole and Mandatory Release			
		TOTAL	Adult	Juvenile*		Inter- state Compact	TOTAL	Adult	Juvenile Aftercare	Inter- state Compact
				Custody	Regular					
POPULATION - January 1, 1975	16,784	13,876	13,204	284	71	317	2,908	2,204	553	151
POPULATION - December 31, 1975 ^{/a}	18,702	15,744	15,105	248	49	342	2,958	2,294	516	148
Male	16,026	13,294	12,741	209	46	298	2,732	2,175	418	139
Female	2,676	2,450	2,364	39	3	44	226	119	98	9
Supervised in Wisconsin	17,843	15,123	14,492	241	48	342	2,720	2,073	499	148
Supervised outside Wisconsin	859	621	613	7	1	-	238	221	17	-
<u>AVERAGE DAILY POPULATION - CY '75</u>	<u>17,243</u>	<u>14,392</u>	<u>13,713</u>	<u>284</u>	<u>61</u>	<u>334</u>	<u>2,851</u>	<u>2,117</u>	<u>580</u>	<u>154</u>
<u>INTAKE</u>	<u>12,161</u>	<u>10,146</u>	<u>9,622</u>	<u>216</u>	<u>58</u>	<u>250</u>	<u>2,015</u>	<u>1,206</u>	<u>693</u>	<u>116</u>
New admission (new case)	12,003	10,015	9,493	216	58	248	1,988	1,183	692	113
Reinstatement	158	131	129	-	-	2	27	23	1	3
<u>TERMINATION</u>	<u>10,243</u>	<u>8,278</u>	<u>7,721</u>	<u>252</u>	<u>80</u>	<u>225</u>	<u>1,965</u>	<u>1,116</u>	<u>730</u>	<u>119</u>
Discharge	8,199	6,781	6,388	175	75	143	1,418	836	512	70
Revocation	1,462	1,018	946	69	1	2	444	241	200	3
New offense	(838)	(525)	(467)	(55)	(1)	(2)	(313)	(154)	(158)	(1)
Rule violation	(624)	(493)	(479)	(14)	(-)	(-)	(131)	(87)	(42)	(2)
Off records	386	344	319	8	4	13	42	20	15	7
All others	196	135	68	-	-	67	61	19	3	39

Note: Juvenile Custody Probation: Cases in which the legal custody of the child has been transferred to the Department.
Juvenile Regular Probation: Juveniles with special needs for whom the state provides services. Such services are unavailable from county agencies. The juvenile court, however, retains custody.

FOOTNOTES

Table 1. Adult Institutions

- /a Excludes residents placed on work or study release who are not reported in the institution count: 6-WSR, 1-Gordon, 1-Flambeau. WHW started accepting males on July 21, 1975.
- /b The rated bed capacity of KMCI represents an average. The capacity in January was 62 and increased during the year to 175.
- /c Excludes 37 status changes for residents held pending revocation hearings: 13 new sentence, probation violators; 5 probation violators-no new sentence, 13 re-admissions without new sentence parole violators, 6 re-admissions without new sentence MR violators.
- /d Excludes 497 status changes for residents out on temporary absence: 90 first release paroles, 8 first release MR, 14 re-release parole, 9 re-release MR, 1 release from temporary hold pending revocation hearing parole, 4 deaths, 20 first release DCO's, 4 re-release DCO's, 5 re-release expiration of sentence, 271 transfers, 2 non-correctional institution absences, 60 authorized absences, 9 unauthorized absences.
- /e Includes 21 residents participating in the Alcohol Education and Treatment Program at Winnebago Mental Health Institution on December 31, 1975.

Table 2. Juvenile Institutions

- /a Excludes 60 status changes for juveniles held pending revocation hearings: 20 new admission, probation violators, 39 returns from aftercare, 1 temporary care-replacement.
- /b Excludes 328 status changes for juveniles out on temporary absence: 2 first releases to aftercare, 5 re-releases to aftercare, 3 releases from temporary care-replacement, 1 release from temporary hold pending revocation hearing, probation, 1 release from temporary hold pending revocation hearing, aftercare, 3 first releases DCO, 87 first releases direct discharge, 49 re-releases direct discharge, 10 transfers, 16 authorized absences, 136 overstayed leaves, 8 unauthorized absences.

Table 3. Probation and Parole Services

- /a Includes 4 juvenile probationers and 12 juvenile parolees also included in institution counts who are held pending revocation hearings.

Note: Differences in totals for January 1, 1975 between Monthly and Annual Report of Table 3 Probation and Parole Services are the result of the addition of 986 adult probationers, 298 adult parolees, and 1 juvenile aftercare who had been removed at the time of absconding. Absconders are no longer removed until they are apprehended and have a hearing. An additional difference of 3 is due to the accumulation of small month-to-month variances during the calendar year.

7. 11-15-75
END