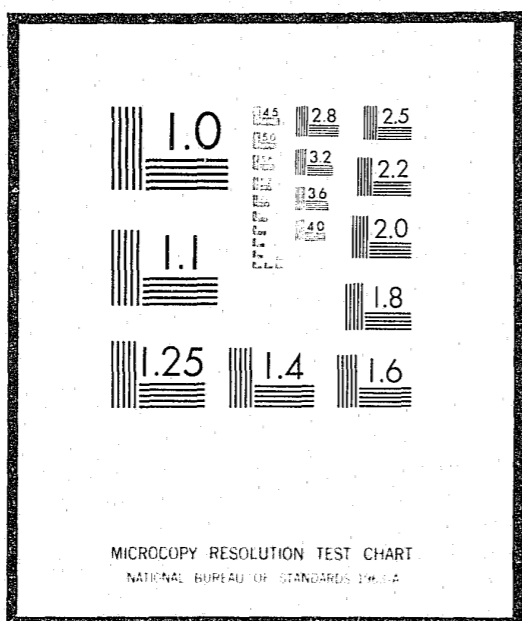


# NCJRS

This microfiche was produced from documents received for inclusion in the NCJRS data base. Since NCJRS cannot exercise control over the physical condition of the documents submitted, the individual frame quality will vary. The resolution chart on this frame may be used to evaluate the document quality.



Microfilming procedures used to create this fiche comply with the standards set forth in 41CFR 101-11.504

Points of view or opinions stated in this document are those of the author(s) and do not represent the official position or policies of the U.S. Department of Justice.

U.S. DEPARTMENT OF JUSTICE  
LAW ENFORCEMENT ASSISTANCE ADMINISTRATION  
NATIONAL CRIMINAL JUSTICE REFERENCE SERVICE  
WASHINGTON, D.C. 20531

10/14/76  
Date filmed

## RESIDENTS IN WISCONSIN JUVENILE CORRECTIONAL INSTITUTIONS ON DECEMBER 31, 1975 WITH FIVE-YEAR TRENDS FOR 1971-1975



35561  
DUP

DEPARTMENT OF HEALTH AND SOCIAL SERVICES  
DIVISION OF CORRECTIONS  
BUREAU OF PLANNING, DEVELOPMENT, AND RESEARCH  
MADISON, WISCONSIN 53701

STATISTICAL BULLETIN C-58

JULY 1976

August

This bulletin describes the population resident in Wisconsin juvenile correctional institutions on December 31, 1975. The juvenile population is housed in four institutions: Wisconsin School for Boys and Camp Flambeau for boys, and the co-educational institutions, Lincoln Boys School and Wisconsin School for Girls. The narrative highlights significant changes in characteristics from one year ago and also contains tables showing five-year trends for time in institution and type of admission.

White boys, including two percent white of Mexican origin, comprised about 72 percent of the male juvenile population compared to 71 percent in 1974. Black males comprised 23 percent, down one percentage point from last year. The female population was 75 percent White, an increase of two percentage points from 1974, and 23 percent Black, up six percentage points from 1974. On December 31, 1974 there were nine female Native-American (Indian) residents whereas there was only one Native American female at the end of 1975.

Median age was 16.7 for boys and 16.3 for girls. Last year the median age for each was 16.6 years.

Table A  
Time in Institution for Residents on December 31, 1971-1975

| Time in Institution    | 1971  | 1972  | 1973  | 1974  | 1975  |
|------------------------|-------|-------|-------|-------|-------|
| Total Boys             | 802   | 564   | 684   | 669   | 699   |
| Total Percent of Boys  | 100.0 | 100.0 | 100.0 | 100.0 | 100.0 |
| Less than 3 months     | 40.0  | 31.7  | 35.8  | 40.4  | 31.3  |
| 3 months, less than 6  | 29.6  | 27.1  | 21.8  | 21.5  | 26.3  |
| 6 months or more       | 30.4  | 41.2  | 42.4  | 38.1  | 42.4  |
| Total Girls            | 138   | 111   | 138   | 90    | 64    |
| Total Percent of Girls | 100.0 | 100.0 | 100.0 | 100.0 | 100.0 |
| Less than 3 months     | 37.0  | 36.0  | 35.5  | 46.7  | 40.6  |
| 3 months, less than 6  | 31.2  | 27.0  | 23.2  | 20.0  | 32.8  |
| 6 months or more       | 31.8  | 37.0  | 41.3  | 33.3  | 26.6  |

STATE OF WISCONSIN

DEPARTMENT OF HEALTH AND SOCIAL SERVICES

Manuel Carballo, Secretary

DIVISION OF CORRECTIONS

Fred W. Hinckle, Acting Administrator

BUREAU OF PLANNING, DEVELOPMENT AND RESEARCH

Paul H. Kusuda, Director

Perry C. Barber, Chief, Research and Evaluation Section

Theodore H. Johnson, Chief, Information and System Development

The male juvenile resident population is 699, an increase of four percent over 1975. There are 64 female juvenile residents, a decrease of 29 percent from a year ago, and the lowest figure in five years.

Boys held in institutions "less than 3 months" decreased nine percentage points from last year, to 31 percent. Those held six months or more increased four percentage points, to 42 percent. Girls resident "less than 3 months" comprise 41 percent of their total population, a decrease of six percentage points from 1974. Those females resident "3 months, less than 6" increased 13 percentage points, to 33 percent.

Time in institution does not include time spent by youth in institutions while being held temporarily pending revocation hearings.

Table B  
Type of Admission for Residents on December 31, 1971-1975

| Type of Admission                          | 1971         | 1972         | 1973         | 1974         | 1975         |
|--|--------------|--------------|--------------|--------------|--------------|
| Total Boys                                 | 802          | 564          | 684          | 669          | 699          |
| <u>Total Percent of Boys</u>               | <u>100.0</u> | <u>100.0</u> | <u>100.0</u> | <u>100.0</u> | <u>100.0</u> |
| New commitment                             | 50.1         | 65.2         | 71.2         | 77.7         | 74.4         |
| First return from aftercare                | 22.7         | 17.9         | 19.1         | 16.6         | 18.9         |
| Second or subsequent return from aftercare | 24.7         | 14.9         | 7.5          | 3.7          | 3.9          |
| Return for replacement or medical care     | 2.5          | 2.0          | 0.9          | 0.9          | 1.4          |
| Return pending revocation hearing          | -            | -            | 1.3          | 1.1          | 1.4          |
| Total Girls                                | 138          | 111          | 138          | 90           | 64           |
| <u>Total Percent of Girls</u>              | <u>100.0</u> | <u>100.0</u> | <u>100.0</u> | <u>100.0</u> | <u>100.0</u> |
| New commitment                             | 58.8         | 69.4         | 82.6         | 64.5         | 64.1         |
| First return from aftercare                | 29.7         | 15.3         | 6.5          | 20.0         | 20.3         |
| Second or subsequent return from aftercare | 10.1         | 8.1          | 7.3          | 6.7          | 4.7          |
| Return for replacement or medical care     | 1.4          | 7.2          | 3.6          | 4.4          | 4.7          |
| Return pending revocation hearing          | -            | -            | -            | 4.4          | 6.2          |

Newly committed boys are 74 percent of the male juvenile population, a decrease of four percentage points from 1974's peak of 78 percent. Second or subsequent male juvenile returns from aftercare remain near the 1974 record low figure.

For juvenile females, second or subsequent returns from aftercare show continuing change, decreasing two percentage points to 4.7 percent, a steady decline since 1971.

Table C  
County of Commitment for 763 Residents December 31, 1975  
Selected Counties Ranked by Number of Commitments

| County of Commitment | Youth Committed | Cumulated Total | County Percent | Cumulated Percent |
|----------------------|-----------------|-----------------|----------------|-------------------|
| Milwaukee            | 232             | 232             | 30.4           | 30.4              |
| Kenosha              | 43              | 275             | 5.6            | 36.0              |
| Rock                 | 43              | 318             | 5.6            | 41.6              |
| Racine               | 41              | 359             | 5.4            | 47.0              |
| Waukesha             | 28              | 387             | 3.7            | 50.7              |
| Douglas              | 25              | 412             | 3.3            | 54.0              |
| Outagamie            | 24              | 436             | 3.1            | 57.1              |
| LaCrosse             | 18              | 454             | 2.4            | 59.5              |
| Marathon             | 17              | 471             | 2.2            | 61.7              |
| Winnebago            | 17              | 488             | 2.2            | 63.9              |
| Brown                | 14              | 502             | 1.9            | 65.8              |
| Dane                 | 14              | 516             | 1.9            | 67.7              |
| Monroe               | 14              | 530             | 1.9            | 69.6              |
| All other            | 233             | 763             | 30.4           | 100.0             |

Juveniles resident on December 31, 1975 were committed by 62 of Wisconsin's 72 counties. Four counties: Milwaukee, Kenosha, Racine, and Rock had committed 47 percent of the total residents. Milwaukee county alone represents 30 percent of the resident population, down 2.5 percentage points from 1974.

Table D

County of Commitment for 699 Boys Resident December 31, 1975  
Selected Counties Ranked by Number of Commitments

| County of Commitment | Boys Committed | Cumulated Total | County Percent | Cumulated Percent |
|----------------------|----------------|-----------------|----------------|-------------------|
| Milwaukee            | 213            | 213             | 30.5           | 30.5              |
| Kenosha              | 41             | 254             | 5.9            | 36.4              |
| Racine               | 39             | 293             | 5.5            | 41.9              |
| Rock                 | 36             | 329             | 5.2            | 47.1              |
| Waukesha             | 28             | 357             | 4.0            | 51.1              |
| Douglas              | 21             | 378             | 3.0            | 54.1              |
| Outagamie            | 20             | 398             | 2.8            | 56.9              |
| LaCrosse             | 18             | 416             | 2.6            | 59.5              |
| Marathon             | 16             | 432             | 2.3            | 61.8              |
| Winnebago            | 15             | 447             | 2.1            | 63.9              |
| Brown                | 14             | 461             | 2.0            | 65.9              |
| Dane                 | 13             | 474             | 1.9            | 67.8              |
| Monroe               | 13             | 487             | 1.9            | 69.7              |
| All other            | 212            | 699             | 30.3           | 100.0             |

Since over ten times as many male as female juveniles were resident, the percent of males committed by each county is very similar to the table of total population by county of commitment. Milwaukee county male juvenile commitments decreased 2.5 percentage points from 1974.

Table E

County of Commitment for 64 Girls Resident December 31, 1975  
Selected Counties Ranked by Number of Commitments

| County of Commitment | Girls Committed | Cumulated Total | County Percent | Cumulated Percent |
|----------------------|-----------------|-----------------|----------------|-------------------|
| Milwaukee            | 19              | 19              | 29.7           | 29.7              |
| Rock                 | 7               | 26              | 10.9           | 40.6              |
| Douglas              | 4               | 30              | 6.3            | 46.9              |
| Outagamie            | 4               | 34              | 6.3            | 53.2              |
| Bayfield             | 3               | 37              | 4.6            | 57.8              |
| Jefferson            | 3               | 40              | 4.6            | 62.4              |
| All other            | 24              | 64              | 37.6           | 100.0             |

Girls resident on December 31, 1975 were committed by 25 of Wisconsin's 72 counties. Two counties, Milwaukee and Rock, committed 41 percent of the residents. The six counties on Table E committed 62.4 percent of the population. No other county committed more than two female juveniles.

Prepared by: Judith Goth, Management Information Technician  
Bureau of Planning, Development, and Research  
Division of Corrections  
P.O. Box 669  
Madison, WI 53701



Table 3  
Residents in Juvenile Institutions, by Institution and Sex  
Age  
December 31, 1975

| Age          | Total Youth |         | Wis. School for Boys |         | Lincoln Boys School |       |       |       | Juvenile Camp System |         | Wisconsin School for Girls |       |       |       |
|--------------|-------------|---------|----------------------|---------|---------------------|-------|-------|-------|----------------------|---------|----------------------------|-------|-------|-------|
|              | Number      | Percent | Number               | Percent | Boys                |       | Girls |       | Number               | Percent | Boys                       |       | Girls |       |
| Total        | 763         | 100.0   | 360                  | 100.0   | 220                 | 100.0 | 23    | 100.0 | 28                   | 100.0   | 91                         | 100.0 | 41    | 100.0 |
| Less than 13 | 4           | 0.5     | 3                    | 0.8     | 1                   | 0.4   | -     | -     | -                    | -       | -                          | -     | -     | -     |
| 13           | 19          | 2.5     | 10                   | 2.8     | 7                   | 3.2   | -     | -     | -                    | -       | 1                          | 1.1   | 1     | 2.5   |
| 14           | 51          | 6.7     | 16                   | 4.4     | 20                  | 9.1   | 1     | 4.3   | 1                    | 3.6     | 8                          | 8.8   | 5     | 12.2  |
| 15           | 151         | 19.8    | 64                   | 17.8    | 43                  | 19.6  | 4     | 17.4  | 8                    | 28.6    | 19                         | 20.9  | 13    | 31.7  |
| 16           | 237         | 31.1    | 103                  | 28.6    | 70                  | 31.8  | 12    | 52.2  | 12                   | 42.8    | 29                         | 31.9  | 11    | 26.8  |
| 17           | 301         | 39.4    | 164                  | 45.6    | 79                  | 35.9  | 6     | 26.1  | 7                    | 25.0    | 34                         | 37.3  | 11    | 26.8  |
| Median       |             | 16.7    |                      | 16.8    |                     | 16.6  |       | 16.5  |                      | 16.4    |                            | 16.6  |       | 16.1  |

Table 4  
Residents in Juvenile Institutions, by Institution and Sex  
Time in Institution  
December 31, 1975

| Time in Institution     | Total Youth |         | Wis. School for Boys |         | Lincoln Boys School |       |       |       | Juvenile Camp System |         | Wisconsin School for Girls |       |       |       |
|-------------------------|-------------|---------|----------------------|---------|---------------------|-------|-------|-------|----------------------|---------|----------------------------|-------|-------|-------|
|                         | Number      | Percent | Number               | Percent | Boys                |       | Girls |       | Number               | Percent | Boys                       |       | Girls |       |
| Total                   | 763         | 100.0   | 360                  | 100.0   | 220                 | 100.0 | 23    | 100.0 | 28                   | 100.0   | 91                         | 100.0 | 41    | 100.0 |
| Less than 3 months      | 245         | 32.1    | 118                  | 32.8    | 76                  | 34.6  | 6     | 26.1  | -                    | -       | 25                         | 27.5  | 20    | 48.8  |
| 3 months, less than 6   | 205         | 26.9    | 73                   | 20.3    | 68                  | 30.9  | 13    | 56.5  | 8                    | 28.6    | 35                         | 38.4  | 8     | 19.5  |
| 6 months, less than 9   | 120         | 15.7    | 50                   | 13.9    | 33                  | 15.0  | 4     | 17.4  | 12                   | 42.8    | 18                         | 19.8  | 3     | 7.3   |
| 9 months, less than 12  | 91          | 11.9    | 54                   | 15.0    | 19                  | 8.6   | -     | -     | 7                    | 25.0    | 8                          | 8.8   | 3     | 7.3   |
| 12 months, less than 15 | 72          | 9.4     | 42                   | 11.7    | 21                  | 9.6   | -     | -     | 1                    | 3.6     | 5                          | 5.5   | 3     | 7.3   |
| 15 months, less than 18 | 9           | 1.2     | 6                    | 1.6     | 2                   | 0.9   | -     | -     | -                    | -       | -                          | -     | 1     | 2.5   |
| 18 months and over      | 21          | 2.8     | 17                   | 4.7     | 1                   | 0.4   | -     | -     | -                    | -       | -                          | -     | 3     | 7.3   |

Table 5  
Residents in Juvenile Institutions, by Institution and Sex  
County of Commitment  
December 31, 1975

| County of Commitment | Total | Wis. School for Boys | Lincoln Boys School |       | Juvenile Camp System | Wis. School for Girls |       |
|----------------------|-------|----------------------|---------------------|-------|----------------------|-----------------------|-------|
|                      |       |                      | Boys                | Girls |                      | Boys                  | Girls |
| Total                | 763   | 360                  | 220                 | 23    | 28                   | 91                    | 41    |
| Adams                | 2     | -                    | 2                   | -     | -                    | -                     | -     |
| Ashland              | 2     | 1                    | 1                   | -     | -                    | -                     | -     |
| Barron               | 6     | -                    | 5                   | -     | 1                    | -                     | -     |
| Bayfield             | 5     | -                    | 2                   | -     | -                    | -                     | -     |
| Brown                | 14    | -                    | 14                  | -     | -                    | -                     | -     |
| Buffalo              | -     | -                    | -                   | -     | -                    | -                     | -     |
| Burnett              | 5     | -                    | 4                   | -     | -                    | -                     | -     |
| Calumet              | 4     | -                    | 4                   | -     | -                    | -                     | -     |
| Chippewa             | 12    | -                    | 12                  | -     | -                    | -                     | -     |
| Clark                | 3     | -                    | 3                   | -     | -                    | -                     | -     |
| Columbia             | 6     | 4                    | 1                   | -     | -                    | -                     | -     |
| Crawford             | 1     | 1                    | -                   | -     | -                    | -                     | -     |
| Dane                 | 14    | 10                   | -                   | -     | -                    | -                     | -     |
| Dodge                | 8     | 3                    | -                   | -     | -                    | -                     | -     |
| Door                 | 4     | -                    | 1                   | -     | 1                    | -                     | -     |
| Douglas              | 25    | -                    | 19                  | -     | 2                    | -                     | -     |
| Dunn                 | 3     | -                    | 3                   | -     | -                    | -                     | -     |
| Eau Claire           | 12    | -                    | 10                  | -     | 1                    | -                     | -     |
| Florence             | 2     | -                    | 2                   | -     | -                    | -                     | -     |
| Fond du Lac          | 12    | 8                    | -                   | -     | -                    | -                     | -     |
| Forest               | -     | -                    | -                   | -     | -                    | -                     | -     |
| Grant                | 3     | 1                    | -                   | -     | -                    | -                     | -     |
| Green                | -     | -                    | -                   | -     | -                    | -                     | -     |
| Green Lake           | -     | -                    | -                   | -     | -                    | -                     | -     |
| Iowa                 | 1     | 1                    | -                   | -     | -                    | -                     | -     |
| Iron                 | -     | -                    | -                   | -     | -                    | -                     | -     |
| Jackson              | 3     | -                    | 3                   | -     | -                    | -                     | -     |
| Jefferson            | 7     | 3                    | -                   | -     | -                    | -                     | -     |
| Juneau               | 4     | -                    | 4                   | -     | -                    | -                     | -     |
| Kenosha              | 43    | 27                   | -                   | -     | -                    | -                     | -     |
| Kewaunee             | -     | -                    | -                   | -     | -                    | -                     | -     |
| Lacrosse             | 18    | -                    | 15                  | -     | 2                    | -                     | -     |
| Lafayette            | -     | -                    | -                   | -     | -                    | -                     | -     |
| Langlade             | 7     | 1                    | 5                   | -     | 1                    | -                     | -     |
| Lincoln              | 3     | -                    | 2                   | -     | -                    | -                     | -     |
| Manitowoc            | 5     | 4                    | -                   | -     | -                    | -                     | -     |
| Marathon             | 17    | -                    | 12                  | -     | 3                    | -                     | -     |
| Marquette            | 3     | -                    | 3                   | -     | -                    | -                     | -     |
| Menominee            | 6     | -                    | 6                   | -     | -                    | -                     | -     |

Table 5 (Concluded)

| County of Commitment | Total | Wis. School for Boys | Lincoln Boys School |       | Juvenile Camp System | Wis. School for Girls |       |
|----------------------|-------|----------------------|---------------------|-------|----------------------|-----------------------|-------|
|                      |       |                      | Boys                | Girls |                      | Boys                  | Girls |
| Milwaukee            | 232   | 174                  | 4                   | -     | 2                    | 33                    | 19    |
| Monroe               | 14    | 3                    | 9                   | 1     | 1                    | -                     | -     |
| Oconto               | 3     | -                    | 3                   | -     | -                    | -                     | -     |
| Oneida               | 2     | -                    | 1                   | -     | 1                    | -                     | -     |
| Outagamie            | 24    | -                    | 20                  | 4     | -                    | -                     | -     |
| Ozaukee              | 4     | 3                    | -                   | -     | -                    | 1                     | -     |
| Pepin                | -     | -                    | -                   | -     | -                    | -                     | -     |
| Pierce               | 2     | -                    | 1                   | 1     | -                    | -                     | -     |
| Polk                 | 5     | -                    | 3                   | -     | 2                    | -                     | -     |
| Portage              | 3     | -                    | 3                   | -     | -                    | -                     | -     |
| Price                | -     | -                    | -                   | -     | -                    | -                     | -     |
| Racine               | 41    | 33                   | -                   | -     | 2                    | 4                     | 2     |
| Richland             | -     | -                    | -                   | -     | -                    | -                     | -     |
| Rock                 | 43    | 26                   | -                   | -     | -                    | 10                    | 7     |
| Rusk                 | 1     | -                    | 1                   | -     | -                    | -                     | -     |
| St. Croix            | 4     | -                    | 4                   | -     | -                    | -                     | -     |
| Sauk                 | 2     | 2                    | -                   | -     | -                    | -                     | -     |
| Sawyer               | 6     | 1                    | 5                   | -     | -                    | -                     | -     |
| Shawano              | 10    | 1                    | 7                   | 1     | 1                    | -                     | -     |
| Sheboygan            | 13    | 7                    | 1                   | -     | -                    | 4                     | 1     |
| Taylor               | 1     | -                    | 1                   | -     | -                    | -                     | -     |
| Trempealeau          | 1     | -                    | 1                   | -     | -                    | -                     | -     |
| Vernon               | 2     | -                    | 1                   | 1     | -                    | -                     | -     |
| Vilas                | 5     | -                    | 5                   | -     | -                    | -                     | -     |
| Walworth             | 4     | 4                    | -                   | -     | -                    | -                     | -     |
| Washburn             | 3     | -                    | 3                   | -     | -                    | -                     | -     |
| Washington           | 10    | 4                    | -                   | -     | -                    | 5                     | 1     |
| Waukesha             | 28    | 26                   | -                   | -     | -                    | 2                     | -     |
| Waupaca              | 8     | 2                    | 3                   | 2     | 1                    | -                     | -     |
| Waushara             | 2     | -                    | 2                   | -     | -                    | -                     | -     |
| Winnebago            | 17    | 10                   | -                   | -     | 2                    | 3                     | 2     |
| Wood                 | 13    | -                    | 10                  | 1     | 1                    | 1                     | -     |

**END**

*7 copies/11/22/21*