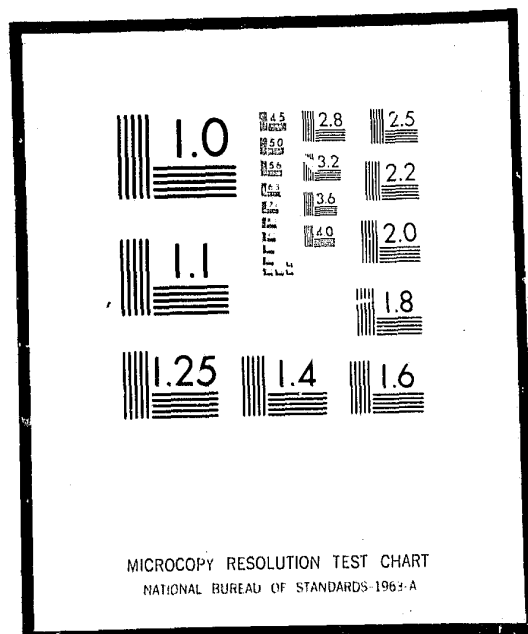


NCJRS

This microfiche was produced from documents received for inclusion in the NCJRS data base. Since NCJRS cannot exercise control over the physical condition of the documents submitted, the individual frame quality will vary. The resolution chart on this frame may be used to evaluate the document quality.



Microfilming procedures used to create this fiche comply with the standards set forth in 41CFR 101-11.504

Points of view or opinions stated in this document are those of the author(s) and do not represent the official position or policies of the U.S. Department of Justice.

U.S. DEPARTMENT OF JUSTICE
LAW ENFORCEMENT ASSISTANCE ADMINISTRATION
NATIONAL CRIMINAL JUSTICE REFERENCE SERVICE
WASHINGTON, D.C. 20531

DIVISION OF PROBATION AND PAROLE SERVICES

6767 FOREST HILL AVENUE
RICHMOND, VIRGINIA 23225

A. C. GAUDIO, DIRECTOR

R. J. POLISKY, ASSISTANT DIRECTOR
SPECIAL PROGRAMS OPERATIONS

D. L. FARRIS, COORDINATOR
COMMUNITY CORRECTIONAL CENTERS

Date filmed, 8/3/76

PREFACE

There are presently two Community Correctional Centers in the Commonwealth of Virginia operated by the Division of Probation and Parole Services of the Virginia Department of Corrections. Both have been made possible through awards of Law Enforcement Assistance Administration funds by the Virginia Council on Criminal Justice. One such Center is located in Roanoke (Watimka House) and the other in Richmond (Seven North Second).

Seven North Second opened its doors on March 25, 1974, and Watimka House on February 10, 1975. They have served as the beginning of an exciting community residential treatment centers concept in Virginia Corrections, and have provided the initial thrust necessary to begin to develop the community-based concept beyond the long-standing programs of Probation and Parole.

Two additional Community Correctional Centers are planned to begin operations during fiscal year 1976-77, and it is felt that, as funds become available, similar programs will begin to take root in every major population area in Virginia.

The data and information contained in this report were prepared by the Coordinator for Community Correctional Centers, Mr. Daniel L. Farris, who provided the initial leadership in the establishment of these Centers in the Commonwealth of Virginia.

R. J. Polisky
Assistant Director

SEVEN NORTH SECOND COMPLETED ITS SECOND YEAR OF OPERATION ON MARCH 25, 1976. DURING THIS PERIOD AS THE FOLLOWING TABLES WILL SHOW 190 CLIENTS WERE RECEIVED INTO THE PROGRAM. AS OF MARCH 25, 1976, 170 CLIENTS HAD BEEN DISCHARGED; 20 REMAINED IN RESIDENCE.

THE DIFFERENT CATEGORIES OF CLIENTS RECEIVED HAVE BEEN BROKEN DOWN BY RACE, AGE AND TYPE OF DISCHARGE. OF THE STATE CLIENTS RECEIVED THE PAROLEES DIRECT FROM PRISON STATISTICALLY HAD A HIGHER SUCCESS RATE THAN ANY OTHER CATEGORY. SECOND HIGHEST SUCCESSFUL CASES WERE PROBATIONERS DIRECT FROM COURT. PAROLEES FROM THE CURRENT CASELOAD HAD THE LOWEST SUCCESS RATE WHILE PROBATIONERS FROM THE CURRENT CASELOAD ALSO HAD A LOW SUCCESS RATE. "SUCCESS" IS DEFINED AS HAVING MOVED THROUGH A LEVEL SYSTEM WHICH HAS MEANT WORKING, BEGINNING A SAVINGS PROGRAM AND WORKING ON IMPROVING SOCIAL SKILLS.

IT WOULD APPEAR FROM A REVIEW OF THE CASES SUCCESSFUL PROGRAM COMPLETION WAS A HIGHER PROBABILITY IN THOSE INSTANCES IN WHICH THE CLIENT CAME TO THE PROGRAM "FRESH" WITHOUT HAVING HAD "TIME ON THE STREETS" FIRST. THERE APPEARED TO BE NO STATISTICAL SIGNIFICANCE AMONG OFFENSES FOR THE VARIOUS GROUPS. A BROAD RANGE OF OFFENSES COULD BE FOUND IN ALL CATEGORIES. AGE WAS NOT A SIGNIFICANT FACTOR EITHER AND TENDED TO SUPPORT THE LONG VOICED WORDS OF CORRECTIONAL PERSONNEL THAT THE TIME IMMEDIATELY FOLLOWING A PERIOD OF CONFINEMENT IS MOST CRITICAL TO A SATISFACTORY ADJUSTMENT. THIS AFTERCARE PROVIDED BY SEVEN NORTH SECOND IS AT LEAST A QUALIFIED SUCCESS AS SEEN BY THE FOLLOWING TABLES.

FOR CRITICS WHO FEEL THIS TYPE OF CORRECTIONAL PROGRAM IS TOO EXPENSIVE, EVIDENCE DOES NOT REVEAL SUCH HERE. THE FIRST THREE MONTHS THE PROGRAM WAS IN EXISTENCE COSTS WERE EXTREMELY HIGH BROUGHT ABOUT PRIMARILY BY THE LOW NUMBER OF CLIENTS RECEIVED. THE ENSUING TWELVE MONTHS SAW A SIGNIFICANT DROP IN PER CAPITA COST BRINGING THE CENTER INTO A COMPETITIVE COST RANGE. THE NET COSTS PROJECT AN EVEN BETTER PICTURE IN VIEW OF THE PROGRAM INCOME. THIS RESULTS FROM ASSESSMENTS TO RESIDENTS FOR WHAT IS TERMED "RENTAL PAYMENTS" OF TWO DOLLARS DAILY. COLLECTIONS FOR THE TWO YEAR PERIOD TOTALED \$15,849. FURTHER PROCEEDS CAME FROM A CONTRACT WITH THE FEDERAL BUREAU OF PRISONS (CLIENTS ARE ACCEPTED ON A SPACE-AVAILABLE BASIS) AND WERE \$24,791 FOR THE TWO YEAR PERIOD. AN ADDED BENEFIT IS THE AMOUNT OF TAXABLE INCOME RESULTING FROM CLIENTS WORKING AT JOBS IN THE COMMUNITY VIS-A-VIS BEING SUPPORTED WHILE INCARCERATED. EARNINGS FOR THE TWO YEAR PERIOD BY RESIDENTS TOTALED OVER \$98 THOUSAND. NET COSTS (EXCLUSIVE OF CLIENT EARNINGS) RESULTED IN AN ACTUAL COST PER MAN PER DAY OF \$17.91. BEAR IN MIND, HOWEVER, THE EXTREMELY HIGH PER DIEM COST THE FIRST THREE MONTHS OF OPERATION DROVE THE TWO YEAR AVERAGE UP CONSIDERABLY. EVEN AT THE UNDER EIGHTEEN DOLLAR FIGURE THIS COMPUTES TO BE A PER CAPITA COST OF \$6,537.15 (RESIDENTS ARE IN THE PROGRAM FOR LESS THAN 90 DAYS USUALLY).

BEING COMMUNITY BASED, SEVEN NORTH SECOND RELIES HEAVILY UPON EXISTING COMMUNITY SOCIAL SERVICE AGENCIES. THIS RELIANCE DOES TWO THINGS. FIRST IT KEEPS PERSONNEL COSTS FOR THE CENTER RELATIVELY LOW WHEN COMPARED TO THE HIGH COSTS OF SPECIALIZED STAFF. SECONDLY IT REDUCES THE AMOUNT OF DUPLICATION OF SERVICES AND ALLOWS, IF NOT FORCES, INTERAGENCY COLLABORATION, WHICH IS VIEWED TO BE PRODUCTIVE. FOR THE TWO YEAR PERIOD AN AVERAGE OF OVER 25

REFERRALS TO COMMUNITY AGENCIES WERE MADE MONTHLY FOR A TOTAL OF 682 REFERRALS FOR THE TWO YEAR PERIOD. REFERRAL SOURCES INCLUDED BUT WERE NOT NECESSARILY LIMITED TO: AA; AID-SIR; RUBICON ALCOHOL PROGRAM; TASC; MENTAL HEALTH; DVR; VEC.

THE RAW DATA FROM WHICH THE FOLLOWING STATISTICAL TABLES ARE DERIVED ARE NOT INCLUDED WITH THIS REPORT. DATA, HOWEVER, IS ON FILE IN THE OFFICE OF THE COORDINATOR AND ANY READER WANTING TO REVIEW IT MUST NECESSARILY AVAIL HIMSELF TO THAT OFFICE.

(4)

PAROLEES (DIRECT FROM PRISON)

NUMBER RECEIVED: 84

RACE - BLACK: 53 63.1%
 WHITE: 29 34.5%
 OTHER: 2 2.4%
 (AM. IND.)

MEDIAN AGE: 31 (RANGE: 58-19)

NUMBER DISCHARGED: 78

	NUMBER	PERCENTAGE	MEDIAN STAY (DAYS)
A COMPLETED PROGRAM	56	71.8	64 (RANGE: 137-55)
C TRANSFERRED TO ANOTHER TREATMENT FACILITY	3	3.8	72 (RANGE: 89-28)
D VIOLATED PROGRAM STANDARDS	4	5.1	59 (RANGE: 71-40)
E ARRESTED AND INCARCERATED	4	5.1	34 (RANGE: 73-4)
F ABSCONDED FROM PROGRAM	9	11.6	22 (RANGE: 43-2)
G EMERGENCY REFERRAL, TEMPORARY STAY	1	1.3	1 (ONLY 1)
H OTHER (AUTO ACCIDENT FATALITY)	1	1.3	2 (ONLY 1)

(5)

PAROLEES (CURRENT CASELOAD)

NUMBER RECEIVED: 26 (INCLUDES 3 READMITTED)

RACE - BLACK: 14 53.8%
 WHITE: 12 46.2%

MEDIAN AGE: 30.5 (RANGE: 66-19)

NUMBER DISCHARGED: 20

	NUMBER	PERCENTAGE	MEDIAN STAY (DAYS)
A COMPLETED PROGRAM	7	35	80 (RANGE: 129-56)
B COMPLETED SENTENCE	1	5	35 (ONLY 1)
C TRANSFERRED TO ANOTHER TREATMENT FACILITY	3	15	21 (RANGE: 41-17)
D VIOLATED PROGRAM STANDARDS	4	20	17 (RANGE: 52-10)
E ARRESTED AND INCARCERATED	2	10	57 (ONLY 2)
F ABSCONDED FROM PROGRAM	3	15	17 (RANGE: 36-1)

(6)

PROBATIONERS (DIRECT FROM COURT)

NUMBER RECEIVED: 10

RACE - BLACK: 6 60%
WHITE: 4 40%

MEDIAN AGE: 19.5 (RANGE 28-17)

NUMBER DISCHARGED: 8

	NUMBER	PERCENTAGE	MEDIAN STAY (DAYS)
A COMPLETED PROGRAM	5	62.5	59 (RANGE: 125-56)
D VIOLATED PROGRAM STANDARDS	1	12.5	85 (ONLY 1)
F ABSCONDED FROM PROGRAM	2	25.0	61 (RANGE: 70-52)

(7)

PROBATIONERS (FROM CURRENT CASELOAD)

NUMBER RECEIVED: 45 (INCLUDES 2 READMITTED)

RACE - BLACK: 22 48.9%
WHITE: 23 51.1%

MEDIAN AGE: 21 (RANGE: 66-17)

NUMBER DISCHARGED: 41

	NUMBER	PERCENTAGE	MEDIAN STAY (DAYS)
A COMPLETED PROGRAM	16	39.0	88 (RANGE: 148-56)
C TRANSFERRED TO ANOTHER TREATMENT FACILITY	3	7.3	33 (RANGE: 42- 4)
D VIOLATED PROGRAM STANDARDS	10	24.4	24 (RANGE: 74- 2)
E ARRESTED AND INCARCERATED	4	9.8	21 (RANGE: 25- 7)
F ABSCONDED FROM PROGRAM	8	19.5	29 (RANGE: 64- 1)

(8)

PRE SENTENCE CASES

NUMBER RECEIVED: 1

RACE - BLACK: 0 0%
WHITE: 1 100%

MEDIAN AGE: 18 (ONLY 1)

NUMBER DISCHARGED: 1

H OTHER: JAILED FOLLOWING COURT HEARING TO AWAIT DISPOSITION

NUMBER PERCENTAGE MEDIAN STAY (DAYS)

1 100 20 (ONLY 1)

(9)

FEDERAL CASES

NUMBER RECEIVED: 24 (INCLUDES 2 READMITTED)

RACE - BLACK: 17 70.8%
WHITE: 7 29.2%

MEDIAN AGE: 30.5 (RANGE: 62-24)

NUMBER DISCHARGED: 22

NUMBER PERCENTAGE MEDIAN STAY (DAYS)

A COMPLETED PROGRAM 17 77.3 77 (RANGE: 99-36)
B COMPLETED SENTENCE 1 4.5 51 (ONLY 1)
C TRANSFERRED TO ANOTHER TREATMENT FACILITY 1 4.5 71 (ONLY 1)
D VIOLATED PROGRAM STANDARDS 1 4.5 76 (ONLY 1)
F ABSCONDED FROM PROGRAM 2 9.2 59 (RANGE: 77-42)

TOTAL CASES

NUMBER RECEIVED: 190

RACE - BLACK: 112 58.9%
 WHITE: 76 40.0%
 OTHER: 2 1.1%
 (AM. IND.)

MEDIAN AGE: 26 (RANGE: 66-17)

NUMBER DISCHARGED: 170

	NUMBER	PERCENTAGE	MEDIAN STAY (DAYS)
A COMPLETED PROGRAM	101	59.4	72 (RANGE: 143-36)
B COMPLETED SENTENCE	2	1.2	43 (ONLY 2)
C TRANSFERRED TO ANOTHER TREATMENT FACILITY	10	5.9	37 (RANGE: 89-4)
D VIOLATED PROGRAM STANDARDS	20	11.8	33 (RANGE: 85-2)
E ARRESTED AND INCARCERATED	10	5.9	22 (RANGE: 96-4)
F ABSCONDED FROM PROGRAM	24	14.0	34 (RANGE: 77-1)
G EMERGENCY REFERRAL, TEMPORARY STAY	1	.6	1 (ONLY 1)
H OTHER (SPECIFY)	2	1.2	11 (ONLY 2)

A. AUTO ACCIDENT FATALITY (1)
 B. JAILED FOLLOWING COURT (1)
 HEARING TO AWAIT DISPOSITION

PROGRAM COSTS

PERIOD OF	EXPENDITURES			TOTAL COSTS
	PERSONNEL	RENT	OTHER	
3/25/74 - 6/30/74	\$ 23,630	\$ 3,548	\$ 8,835	\$ 36,013
7/ 1/74 - 6/30/75	\$ 87,775	\$13,200	\$10,236	\$111,211
7/ 1/75 - 3/25/76	\$ 76,734	\$ 9,900	\$ 5,533	\$ 92,167
TOTAL	\$188,139	\$26,648	\$24,604	\$239,391

PROGRAM INCOME

PERIOD OF	RENT PAID BY RESIDENTS	RECEIPTS FROM FEDERAL CONTRACT	TOTAL
3/25/74* - 6/30/74	\$ 444	\$ 559	\$ 1,003
7/ 1/74 - 6/30/75	\$ 8,425	\$12,528	\$20,953
7/ 1/75 - 3/25/76*	\$ 6,980	\$11,704	\$18,684
TOTAL	\$15,849	\$24,791	\$40,640

*MARCH FIGURES PRO-RATED

EARNINGS BY RESIDENTS EMPLOYED IN THE COMMUNITY

3/25/74 - 6/30/74	\$ 3,119.70
7/ 1/74 - 6/30/75	\$54,525.56
7/ 1/75 - 3/25/76	\$40,541.89
TOTAL	\$98,187.15

OCCUPANCY RATE

PERIOD OF	ACTUAL MAN/DAYS	POSSIBLE MAN/DAYS	PERCENTAGE OCCUPANCY
3/25/74 - 6/30/74	496	2,352	21.0
7/ 1/74 - 6/30/75	5,806	8,760	66.2
7/ 1/75 - 3/25/76	4,793	6,432	74.5
TOTAL	11,095	17,544	63.2

NET COSTS

PERIOD OF	PROGRAM COSTS	PROGRAM INCOME	NET COST	ACTUAL MAN/DAYS	ACTUAL COST PER MAN PER DAY
3/25/74 - 6/30/74	\$ 36,013	\$ 1,003	\$ 35,010	496	\$70.58
7/ 1/74 - 6/30/75	\$111,211	\$20,953	\$ 90,258	5,806	\$15.55
7/ 1/75 - 3/25/76	\$ 92,167	\$18,684	\$ 73,483	4,793	\$15.33
TOTAL	\$239,391	\$40,640	\$198,751	11,095	\$17.91

END