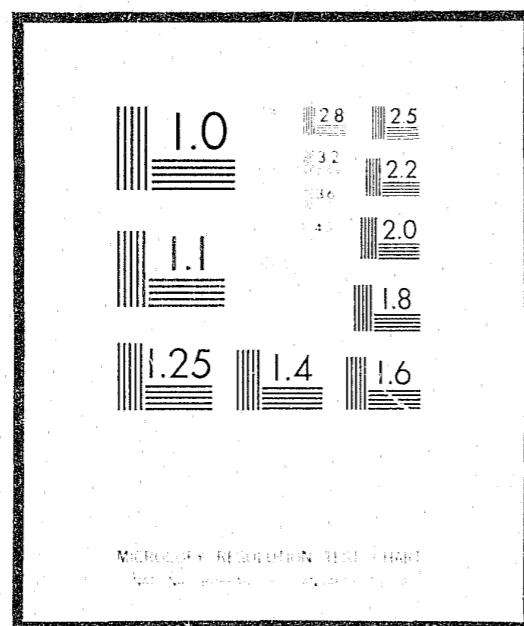


# NCJRS

This microfiche was produced from documents received for inclusion in the NCJRS data base. Since NCJRS cannot exercise control over the physical condition of the documents submitted, the individual frame quality will vary. The resolution chart on this frame may be used to evaluate the document quality.



Microfilming procedures used to create this fiche comply with the standards set forth in 41CFR 101-11.504

Points of view or opinions stated in this document are those of the author(s) and do not represent the official position or policies of the U.S. Department of Justice.

U.S. DEPARTMENT OF JUSTICE  
 LAW ENFORCEMENT ASSISTANCE ADMINISTRATION  
 NATIONAL CRIMINAL JUSTICE REFERENCE SERVICE  
 WASHINGTON, D.C. 20531

12/6/76

Date filmed.

## Federally Funded Child Abuse & Neglect Projects 1975



SH 104 DUP

FEDERALLY-FUNDED CHILD ABUSE AND  
NEGLECT PROJECTS

1975

NCJRS

JUN 10 1976

ACQUISITIONS

U.S. DEPARTMENT OF HEALTH, EDUCATION, AND WELFARE  
Office of Human Development  
Office of Child Development  
Children's Bureau  
National Center on Child Abuse and Neglect

DHEW Publication No. (OHD) 76-30076

# TABLE OF CONTENTS

	<i>Page</i>
Introduction . . . . .	i
Members of the Advisory Board on Child Abuse and Neglect . . . . .	ii
Members of the HEW Intradepartmental Committee on Child Abuse and Neglect . . . . .	iii
 Projects Funded in 1975	
Funded by the National Center on Child Abuse and Neglect (NCCAN) . . . . .	2
Demonstration Centers . . . . .	2
Resource Demonstration Projects . . . . .	6
Innovative Demonstration Projects . . . . .	10
Training Demonstration Grant . . . . .	12
Curricula Development Contract . . . . .	12
Research Grants . . . . .	13
Evaluation Contracts . . . . .	17
Technical Assistance Contracts . . . . .	18
Information Contract . . . . .	20
State Grants . . . . .	20
 Funded by the Office of Child Development, Social and Rehabilitation Service, and the Public Health Service (OCD/SRS/PHS) . . . . .	
Demonstration Grants . . . . .	21
 Funded by the Health Resources Administration . . . . .	
Evaluation Contract . . . . .	24
 Funded by the Office of Child Development (OCD) . . . . .	
Technical Assistance Grant . . . . .	25
Information Grants . . . . .	25
 Funded by the Social and Rehabilitation Service (SRS) . . . . .	
Training Grants . . . . .	27
Evaluation Contract . . . . .	31
Information Grants . . . . .	31
 Funded by the Public Health Service (PHS) . . . . .	
Demonstration Grants . . . . .	33
Research Grants and Contracts . . . . .	34
Training Grants . . . . .	39
 Funded by the Office of Education (OE) . . . . .	
Training Grants . . . . .	40
 Funded by the Department of Justice (DJ) . . . . .	
Grants . . . . .	41
 Funded Directly by the Law Enforcement Assistance Agency (LEAA) . . . . .	
Demonstration Grants . . . . .	42
Training Grants . . . . .	43
Information Grants . . . . .	44
 Indexes	
Principal Investigators and Institutions . . . . .	46
Project Titles and Project Numbers . . . . .	50
Project Numbers by States . . . . .	55

## INTRODUCTION

In January 1974, Congress passed the Child Abuse Prevention and Treatment Act of 1974 (P.L. 93-247), which created the National Center on Child Abuse and Neglect and an Advisory Board, and authorized the Center to make grants to the States and to public and private agencies for programs in child abuse and neglect. Prior to this time, the Department of Health, Education, and Welfare had coordinated its efforts in child abuse and neglect through an Intradepartmental Committee under the leadership of the Office of Child Development (OCD).

This publication lists those Federally supported projects directly related to child abuse and neglect. It does not include those many Federal projects which are indirectly related, such as those funded by the National Center for Child Advocacy of the Children's Bureau which are described in DHEW Publication No. (OHD) 76-30082, CHILD ADVOCACY PROGRAMS 1975.

This publication contains an annotated listing of grants and contracts funded under the auspices of the Intradepartmental Committee and National Center on Child Abuse and Neglect and by the Department of Justice and its Law Enforcement Assistance Agency. The grants and contracts were made to carry out demonstration and resource projects, research, technical assistance, information collection and evaluation, all in the field of child abuse and neglect.

A brief description is included for each contract and grant along with the project director and the dates and amount of funding. A number in parentheses following the dates, e.g. (2), indicates the year of funding for an on-going project. Projects completed by November 30, 1975 are so indicated. For information regarding specific projects, inquiries should be addressed directly to the project directors.

Three indexes are included: (1) by project directors and institutions; (2) by titles, including project numbers; and (3) by States, listing project numbers only.

Members are listed for the Advisory Board on Child Abuse and Neglect and the HEW Intradepartmental Committee on Child Abuse and Neglect. The Board is composed of representatives of all Federal agencies administering programs related to child abuse and neglect. The Committee, established on July 22, 1973, to coordinate efforts of HEW agencies addressing the problem of child abuse and neglect, is composed of representatives from OCD, the Social and Rehabilitation Service, the Public Health Service, and the Office of Education.

Douglas J. Besharov  
Director  
National Center on Child Abuse and Neglect

MEMBERS OF THE ADVISORY BOARD created by the  
CHILD ABUSE AND PREVENTION TREATMENT ACT

*Office of Child Development*

Douglas J. Besharov, Chairman  
Frank Ferro  
James Rich  
\*Saul R. Rosoff  
E. Thomas Stonecipher

*Office of Education*

Betty L. Fogg  
Robert R. Weatherford, Ph.D.

*National Institute of Education*

David Boesel  
Michael O'Malley

*Office of the Assistant Secretary for Health*

Patricia R. Johnson  
Gwen Bates

*Alcohol, Drug Abuse, and Mental Health  
Administration*

Ira S. Lourie, M.D.  
Gisela Meloy, M.D.

*NIH/National Institute of Child Health &  
Human Development*

Felix de la Cruz, M.D.  
James Kavanaugh, M.D.

*Health Services Administration*

Virginia Insley  
Henriette Villaescusa

*Social and Rehabilitation Service*

Mildred M. Arnold  
\*Ms. Johnnie U. Brooks  
George E. McDowell

*Department of Agriculture*

Ella Mae Burdahl  
John M. Damgard

*Department of Defense*

Col. Frank W. Hayes, MC, USA  
\*Col. Edward J. Huycke, MC, USA  
\*Lt. Col. James A. Granger, MC, USA  
Col. Henry A. Robinson, Jr., MC, USA

*Department of Housing and Urban Development*

Philip E. Ryan  
Paul Williams

*Department of Interior*

Clare G. Jerdone  
Janice Johnson

*Department of Justice*

\*Michael Lottman  
\*Stanley Pottinger  
Daniel Rinzell  
Louis Thrasher

*Department of Labor*

Leonard Burchman  
Lucille C. Pinkett

MEMBERS OF THE INTRADEPARTMENTAL COMMITTEE  
ON CHILD ABUSE AND NEGLECT

*Office of Child Development*

Frank Ferro  
Betty Simmons  
Cecelia Sudia  
Pauline Tait

*Office of Education*

Betty L. Fogg  
Robert R. Weatherford, Ph.D.

*Office of the Assistant Secretary  
for Health*

John Burckhardt

*Health Services Administration*

Virginia Insley  
Geraldine Norris  
Henriette Villaescusa

*Alcohol, Drug Abuse & Mental Health  
Administration*

Willard O. Foster  
Ira S. Lourie, M.D.  
Gisela Meloy, M.D.

*National Institute of Child Health &  
Human Development*

Vacant

*Health Resources Administration*

Feather Hair, Ph.D.  
Jerry L. Weston, Ph.D.

*Social and Rehabilitation Service*

Mildred M. Arnold  
David Eppley, Ph.D.  
James Huddleston  
Geraldine McKinney  
Virginia White

*Office of the Secretary/Office of  
Public Affairs*

Maurice McDonald  
Nancy Porter

*Office of the Secretary/Administration  
and Management*

Harry A. Hadd

*Assistant Secretary for Planning  
and Evaluation*

William Prosser

*Regional Representative*

Donald Barrow, Region III

\*Term expired June 30, 1975.

PROJECTS FUNDED IN 1975

# PROJECTS FUNDED BY THE NATIONAL CENTER ON CHILD ABUSE AND NEGLECT

## DEMONSTRATION CENTERS

90-C-389

### HAWAII CHILD ABUSE DEMONSTRATION CENTER

The Kauaikeolani Children's Hospital has established a demonstration center with a multidisciplinary team expanded to include legal services. Training programs are being developed with special attention on child development (working with University of Hawaii School of Medicine, Nursing, Social Work and Public Health students) and on sexual abuse. Both a medical and a social service review, aimed at improving case management, are being conducted on all reported cases of child abuse. The major affiliated agency is the Department of Social Services and Housing. A wide range of support services are available.

Gail F. Breakey  
Kauaikeolani Children's Hospital  
226 North Kaukini Street  
Honolulu, Hawaii 96817

6/30/75-6/29/76 (2)  
\$299,982

90-C-390

### FAMILY AND CHILD ADVOCATES

A wide range of services to families and children, provided through various agencies, are available. Among them are an emergency homemaker program and a lay therapy program. A liaison has been established between the project, the court and protective services. High risk families are being identified and provided with services. A central registry is being established.

James A. Bogle  
Evanston Mental Health Services  
1601 Sherman Avenue  
Evanston, Illinois 60201

6/30/75-6/29/76 (2)  
\$175,000

90-C-393

### METROPOLITAN AREA PROTECTIVE SERVICES PROJECT

Through a coordinated and comprehensive program which could later be used as a model in other areas, medical, social, psychological, psychiatric, legal and other services are being provided, in cooperation with numerous public and private agencies, to abusing and neglecting families on Chicago's north side.

Dennis Depcik  
Metropolitan Area Protective Services  
1630 West Armitage Avenue  
Chicago, Illinois 60622

6/30/75-6/29/76 (2)  
\$250,000

90-C-394

### URBAN INDIAN CHILD RESOURCE CENTER

An Urban Indian Child Resource Center has been established in the San Francisco Bay area to provide short-term residential shelter contract services for crisis intervention, interim treatment, and physical and emotional support services for abused and neglected Indian children and their families.

Agnes F. Williams  
Indian Nurses of California, Inc.  
390 Euclid Avenue  
Oakland, California 94610

6/30/75-6/29/76 (2)  
\$154,600

90-C-395

### CHILD ABUSE AND NEGLECT DEMONSTRATION ORGANIZATION

Operating in both urban and rural areas throughout seven counties in Central Texas, this program aims to increase public awareness of child abuse and neglect by disseminating information on symptoms related to identification, and to develop continuing services for families and children, including resources necessary to fill any gaps in existing services.

Jack C. Knox  
Central Texas Council of Governments  
P.O. Box 729  
Belton, Texas 76513

6/30/75-6/29/76 (2)  
\$150,000

90-C-396

### BEDFORD-STUYVESANT FAMILY SERVICES PROGRAM

This program coordinates and provides homemaker services, parent counseling, evening and daytime activity groups, and other direct services to youth and to families of neglected and abused children in Central Brooklyn. Through a coalition of agencies, interagency service delivery patterns are being developed and reinforced to provide both referral and follow-up services when the necessary assistance is not available through one of the involved agencies.

Donald Gibbs  
The Wiltwvck School  
1239-41 Fulton Street  
Brooklyn, New York 11216

6/30/75-6/29/76 (2)  
\$249,710

90-C-397

### DEMONSTRATION CENTER FOR CHILD ABUSE AND NEGLECT

Major objectives are to prevent child abuse and neglect by identifying children and families at risk and by recognizing early signs of abuse and neglect; to improve services delivery to children and families, including investigation, assessment, treatment, referral, follow-up, public education and small group training; and to coordinate activities with other agencies that provide services for abused or neglected children.

Odell Childress  
St. Christopher's Hospital for Children  
2600 North Lawrence Street  
Philadelphia, Pennsylvania 19133

6/30/75-6/29/76 (2)  
\$190,000

90-C-399

### CONNECTICUT CHILD ABUSE AND NEGLECT DEMONSTRATION CENTER

A hospital-community-based demonstration center provides a comprehensive range of preventive and rehabilitative services to children and families where abuse and neglect is likely to occur. The Protective Services Division of the Department of Children and Youth Services coordinates activities of a consortium of public and private agencies and facilities that include Mt. Sinai Hospital Department of Ambulatory and Community Services, Connecticut Child Welfare Association, and the University of Connecticut Schools of Social Work, Law and Medicine.



Donna Pressma  
Connecticut Department of  
Children and Youth Services  
94 Branford Street  
Hartford, Connecticut 06112

6/30/75-6/29/76 (2)  
\$275,000

90-C-400  
THE FAMILY DEVELOPMENT PROGRAM

Improving methods of identification, treatment, and prevention of child abuse and neglect is the goal of this hospital-based program. A multidisciplinary interagency conference will review and make recommendations for treatment, including medical, educational and other supportive services. In addition, education and training programs for hospital staff will be developed. The program will be coordinated with state resources of the Division of Youth and Family Services.

John G. Cosgrove  
College of Medicine and Dentistry of New Jersey  
Martland Hospital Unit  
Department of Social Services  
65 Bergen Street  
Newark, New Jersey 07107

6/30/75-6/29/76 (2)  
\$290,000

90-C-401  
CHILDREN'S HOSPITAL NATIONAL MEDICAL CENTER  
CHILD ABUSE AND NEGLECT MODEL CENTER

The quality and accessibility of services for abused children and their families have been expanded and existing treatment modalities are being tested. Emphasis is on interagency coordination of service delivery by the court, police, corporation counsel, social rehabilitation agency, medical screening facilities, foster family services and other agencies.

Mary Holman  
Research Foundation of Children's Hospital  
2125 13th Street, N.W.  
Washington, D.C. 20009

6/30/75-6/29/76 (2)  
\$280,000

90-C-405  
FAMILY RESOURCE CENTER

Emphasis is on lowering the incidence of child abuse and neglect in Bernalillo County through a variety of intervention programs, including therapy and parent education for families of abused or neglected children, special training for personnel and volunteers in the agencies concerned, and a 24-hour hotline and abuse registry. Working with the Family Resource Center is a community advisory board.

Wayne Holder  
Family Resource Center  
8016 Zuni Street, S.E.  
Albuquerque, New Mexico 87108

6/30/75-6/29/76 (2)  
\$270,010

90-C-406  
FAMILY STRESS CENTER

To prevent and reduce the incidence of child abuse and neglect, San Diego County, through its Human Resources Agency and the YMCA Human Development Department, has developed a service delivery system which includes training in parenting skills; individual and group counseling for children and families;

recreational and education programs; child care services; parent aide models; a Parents Anonymous group; a 24-hour hotline; and referral information for homemaker, legal aid, and other supportive services.

Gary D. Matthies  
YMCA Human Development Department  
577 Third Avenue  
Chula Vista, California 92010

6/30/75-6/29/76 (2)  
\$150,000

90-C-691  
DEMONSTRATION PROJECT FOR CHILD ABUSE AND NEGLECT

Professional people at Columbus Children's Hospital are organizing educational programs with Children's Hospital personnel and the community. The group evaluates every case of child neglect or abuse seen and reported by Children's Hospital as well as all cases of suspected child abuse. Various plans for prevention of abuse are being introduced. For a selected group of cases, which also have ongoing medical problems, the group will undertake definitive therapy and case management in cooperation with Franklin County Children's Services.

Rosalyn Bandman  
Children's Hospital Research Foundation  
561 South 17th Street  
Columbus, Ohio 43205

6/30/75-6/29/76 (1)  
\$250,000

90-C-692  
REGIONAL CHILD ABUSE TREATMENT AND REFERRAL DEMONSTRATION CENTER

A multidisciplinary team approach is being used to treat both abused and abusers. Objectives are to reduce the incidence of abuse and mortality, cut in half the incidence of repeat offenses, demonstrate continuity of care for total case management, improve treatment through new levels of care, increase referrals, provide options for the courts, provide a safe environment for children at risk, educate both professionals and the community.

Mary P. Jones  
P.A.C.T. Program  
Norton Children's Hospital  
P.O. Box 655  
Louisville, Kentucky 40201

6/30/75-6/29/76 (1)  
\$250,000

90-C-693  
CHILD ABUSE AND NEGLECT DEMONSTRATION CENTER

By coordinating existing services, a team approach is used to demonstrate how high risk families can be identified and how to prevent child abuse by successfully treating abusing parents and by offering help to parents who appear to be on the brink of physical violence toward their children.

George Bell  
City of Detroit Mayor's Office  
1126 City-County Building  
Detroit, Michigan 48226

6/30/75-6/29/76 (1)  
\$250,000

90-C-694  
PARENTAL STRESS CENTER

This project demonstrates a coordinated approach of medical, mental health, welfare and judicial agencies on behalf of children under two years of age, a highly vulnerable population subjected to abuse and neglect.



Margaret Harrell  
Children's Hospital of Pittsburgh  
125 DeSoto Street  
Pittsburgh, Pennsylvania 15213

6/30/75-6/29/76 (1)  
\$250,000

90-C-695  
CLAYTON COUNTY PROTECTIVE SERVICE TEAM

A comprehensive system for both service delivery in the community and evaluation and research is being developed. Emphasis is on integration and coordination of services; identification of incidents of child abuse and neglect; education of professionals, para-professionals community; and treatment for families.

Patricia Hinton  
5870 Maddox Road  
Suites Q, R & S  
Morrow, Georgia 30260

6/30/75-6/29/76 (1)  
\$250,000

RESOURCE DEMONSTRATION PROJECTS

90-C-404  
REGIONAL RESOURCE CENTER FOR REGION I

The Judge Baker Guidance Center, in collaboration with the Massachusetts Department of Public Welfare, is establishing a central and regional management support system to work with the New England states to improve treatment and preventive services to children and families. Assistance will be given to develop state capacities in seven areas: management information, research, community education, program and service development, organization development, policy development and legal liaison, and staff development.

Raquel Cohen, M.D.  
Judge Baker Guidance Center  
295 Longwood Avenue  
Boston, Massachusetts 02115

6/30/75-6/29/76 (2)  
\$430,000

90-C-402  
REGIONAL RESOURCE CENTER FOR REGION II

The Protective Services Resource Institute, operated jointly by Rutgers Medical School and the New Jersey Division of Family and Children's Services, will provide resource services to New Jersey, Puerto Rico and the Virgin Islands. Included are comprehensive training in protective services, developing coordinated public information programs, and providing technical assistance to agencies and organizations in establishing prevention and treatment programs.

Frank Schneiger  
Rutgers University Medical School  
Department of Pediatrics  
University Heights  
Piscataway, New Jersey 08854

6/30/75-6/29/76 (2)  
\$300,000

90-C-601  
REGIONAL RESOURCE CENTER FOR REGION III

Howard University is establishing a multidisciplinary Resource Center to provide training, technical assistance and information-sharing resources to the mid-Atlantic states. This effort will start with training services to Pennsylvania and Virginia in 1976, and expand to other states in following years.

Barbara Stembridge, Ph.D.  
Institute for Urban Affairs and Research  
P.O. Box 191  
Washington, D.C. 20059

6/30/75-6/29/76 (1)  
\$249,807

90-C-392  
REGIONAL RESOURCE CENTER FOR REGION IV

An inventory of regional resources on child abuse and neglect is being made, and methods for assessing community needs are being developed. The Center is developing training kits, resource handbooks and "how to do it" manuals for the primary use of the state agencies having the responsibility for child abuse and neglect services. Technical assistance is provided.

George Thomas, Ph.D.  
University of Georgia  
Room 311, Tucker Hall  
Athens, Georgia 30601

6/30/75-6/29/76 (2)  
\$350,000

90-C-600  
REGIONAL RESOURCE CENTER FOR REGION V

The Mid-west Parent-Child Welfare Resource Center serves Region V by providing training, technical assistance, consultation library, media and other supportive services and materials to organizations, groups and individuals concerned with combatting child abuse and neglect.

Martha Rogers-Graf  
School of Social Welfare  
University of Wisconsin  
Milwaukee, Wisconsin 53201

6/30/75-6/29/76 (1)  
\$250,000

90-C-599  
REGIONAL RESOURCE CENTER FOR REGION VI

This Center, which serves Arkansas, Louisiana, New Mexico, Oklahoma, and Texas, includes a central administrative unit based at the School of Social Work and three technical resource components located at the University of Texas Law School, the pediatrics department of the University of Texas Medical Branch at Galveston, and the third involving both the School of Social Work faculty and the Center for Social Work Research, University of Texas at Austin.

Donna Scott  
School of Social Work  
University of Texas  
Austin, Texas 78712

6/30/75-6/29/76 (1)  
\$250,000

90-C-483  
REGIONAL RESOURCE CENTER FOR REGION VII

This Center is assisting Iowa, Kansas, Missouri, and Nebraska in working out their own programs to cope with their unique problems and to utilize their own resources. Consultation and technical assistance and training are offered.

Gerald Solomons, M.D.  
Institute of Child Behavior and Development  
University of Iowa  
Iowa City, Iowa 52242

6/30/75-6/29/76 (1)  
\$249,348

90-C-409  
**REGIONAL RESOURCE CENTER FOR REGION VIII**

All county and state governments in Colorado, Montana, North Dakota, South Dakota, Utah, and Wyoming are served. Direct services include individual and group psychotherapy, play therapy, individual consultation, training, patient evaluation, a public awareness campaign and aid in developing community programs. Indirect services include consultation and training for licensing, staffing, purchasing supplies, and legal problems.

Brian Fraser, J.D.  
National Center for the Prevention and Treatment of  
Child Abuse and Neglect  
University of Colorado Medical Center  
1205 Oneida Street  
Denver, Colorado 80220

6/30/75-6/29/76 (2)  
\$262,000

90-C-484  
**REGIONAL RESOURCE CENTER FOR REGION IX**

This university-based project serves California, Hawaii, Nevada, Guam, Trust Territories of the Pacific, and America Samoa; and utilizes the resources of academic departments and a medical center to provide public education, training and technical assistance coordinated with each state's agencies. Satellite centers are used as geographical outposts. A study is being made to determine the needs, and appropriate delivery systems for the Trust Territories.

Herschel Swinger  
David B. Friedman, M.D.  
California State University  
5151 State University Drive  
Los Angeles, California 90032

6/30/75-6/29/76 (1)  
\$270,000

90-C-485  
**REGIONAL RESOURCE CENTER FOR REGION X**

A human services federation composed of public and private agencies is identifying the needs and resources of Alaska, Idaho, Oregon, and Washington. Being developed are training and technical assistance programs, including legal and public advocacy support services to agencies providing services and public education. Models are being developed to provide improved service delivery to rural families.

James Bax, Ph.D.  
Northwest Federation for Human Services  
P.O. Box 2526  
Boise, Idaho 83720

6/30/75-6/29/76 (1)  
\$250,000

90-C-391  
**H.E.L.P. RESOURCE PROJECT FOR CHILDREN AND FAMILIES IN MARYLAND**

Maryland Department of Employment and Social Services is establishing a resource center to serve the state by providing a range of services in training, technical assistance, community planning and dissemination of materials and resources. The project has established a statewide planning and coordinating committee to assist in coordination of information and resources.

Curtis L. Decker  
Maryland Department of Employment  
and Social Services  
1100 North Eutaw Street  
Baltimore, Maryland 21201

6/30/75-6/29/76 (2)  
\$250,000

90-C-398  
**NEW YORK STATE RESOURCE CENTER**

Community and education resources are being developed to facilitate the early identification, prevention and treatment of child abuse and neglect in New York State. Particular emphasis will be given to developing model training and technical assistance materials for state child protection services and private agencies to support the New York State law.

E. Ronald Bard  
Cornell University  
NG-14 MUR Hall  
Ithaca, New York 14853

6/30/75-6/29/76 (2)  
\$239,999

90-C-408  
**NORTH CAROLINA RESOURCE PROJECT**

The University of North Carolina Medical Center is developing a statewide educational program concerning child abuse and neglect through its Area Health Education Centers. Training, technical assistance and conferences are being provided to help local counties coordinate service delivery systems.

Frank Loda, M.D.  
Department of Pediatrics  
School of Medicine  
University of North Carolina  
Chapel Hill, North Carolina 27514

6/30/75-6/29/76 (2)  
\$239,050

90-C-410  
**ARIZONA COMMUNITY DEVELOPMENT FOR ABUSE AND NEGLECT**

Several program and service demonstration models, involving community voluntary manpower and financial commitment, are aimed at prevention, identification and treatment of child abuse. The goal is to develop effective approaches in coordinating and delivering a statewide program directed at agencies, community organizations, and individuals.

Bonnie Palmer  
Department of Economic Security  
Bureau of Community Support  
P.O. Box 6123  
Phoenix, Arizona 85005

6/30/75-6/29/76 (2)  
\$240,000

90-C-403  
**NATIONAL URBAN LEAGUE CHILD ABUSE PROJECT**

Resources are being developed for providing assistance in child abuse and neglect cases in both minority families and other families. An inventory of available resources, documentation of standards and licensing requirements, a public awareness campaign, and coordination of activities with the state agency are included.

Natalie Dowdell  
National Urban League, Inc.  
Community Development Department  
500 East 62nd Street  
New York, New York 10021

6/30/75-6/29/76 (2)  
\$298,869

90-C-407

**THE EDUCATIONAL SYSTEM'S ROLE IN CHILD ABUSE AND NEGLECT**

A data base on child abuse in the public schools is being developed to survey teacher preparation and to survey state and local educational policies and codes as related to abuse and neglect. A National Advisory Committee has been set up to seek alternative methods of identification and prevention in public schools. A series of regional conferences will be held to make educators, decision-makers and the public at large aware of the issues and alternatives.

C.D. Jones  
Education Commission of the States  
Department of Planning and Development  
1860 Lincoln Street  
Denver, Colorado 80203

6/30/75-6/29/76 (2)  
\$229,979

**INNOVATIVE DEMONSTRATION PROJECTS**

90-C-575

**DEMONSTRATION PROJECT FOR COORDINATED DELIVERY OF LOCAL, STATE AND MILITARY SOCIAL SERVICES TO CHILDREN AND FAMILIES RESIDING ON A MILITARY BASE OR IN SURROUNDING RURAL COUNTIES**

This project will develop and field test a model cooperative arrangement between Fort Campbell Military Base and the adjacent civilian communities for a delivery system of comprehensive emergency services to abused and neglected children and their families, both those living under the military jurisdiction on a military base and those living in the immediate civilian community. Service delivery will cut across county lines to include socially isolated rural areas to establish a regional concept of 24-hour emergency services that encompass intake, foster care, caretaker and homemaker services.

Jeanne Dycus, Director  
Tennessee Department of Human Services  
Social Services Division  
404 State Office Building  
Nashville, Tennessee 37219

7/1/75-6/30/76 (1)  
\$146,971

90-C-576

**CHILD ADVOCACY RESOURCES EXPANSION**

Using existing resources, an integrated system of services will be developed for military families at military installations in the San Antonio, Texas, area (Brooks, Kelly, Lackland, Randolph and Fort Sam Houston). Legal and procedural aspects of services delivery to troubled military families will be investigated through a policy study, and new dimensions of social services agency/military interaction will be developed.

Bernard J. Tallerico, Director  
Project CARE  
P.O. Box 66  
Social Work Service  
Brooke Army Medical Center  
Fort Sam Houston, Texas 78234

7/1/75-6/30/76 (1)  
\$200,441

90-C-622

**COOK INLET NATIVE ASSOCIATION CHILD ABUSE AND NEGLECT PROGRAM**

Utilizing agencies that have contact with Native American families, this project consists of coordinated case finding, joint investigation, evaluation and treatment of case reports, placement of family aides to support abusing or neglecting families, and recruitment of Native foster homes.

Robert W. Rude  
Cook Inlet Native Association  
P.O. Box 515  
Anchorage, Alaska 99510

7/1/75-6/30/76 (1)  
\$141,024

90-C-623

**CHILD ABUSE AND NEGLECT SERVICE PROJECT**

A 24-hour service to identify and treat child abuse and neglect in sparsely populated areas with minimal resources is being demonstrated. Protective services for Indian children on a reservation are being developed as are a legal base and methods of dealing with child abuse and neglect problems on the reservation. A handbook for social workers in rural and reservation areas will be prepared.

Betty Bay  
Montana Department of Social and  
Rehabilitation Services  
P.O. Box 1723  
Helena, Montana 59601

7/1/75-6/30/76 (1)  
\$162,407

90-C-624

**DEVELOPING A COMMUNITY OF CHILD CARE AND CONCERN FOR NATIVE AMERICAN CHILDREN AND FAMILIES**

This project in the Native American community of Greater Minneapolis will develop the resources and expand the capacity of professionals, agencies, community organizations and individuals to meet comprehensive needs of children and their families, particularly Native Americans, involved in abuse and neglect.

John Red Horse  
University of Minnesota  
Center for Urban and Regional Affairs  
311 Walter Library  
Minneapolis, Minnesota 55455

7/1/75-6/30/76 (1)  
\$165,993

90-C-625

**CHOCTAW CENTER ON CHILD ABUSE AND NEGLECT**

An innovative demonstration program is being conducted on the reservation to reduce the incidence of child abuse and neglect; preserve family life through intensive casework services; deliver emergency services to children in crisis situations; and provide day care, recreation, adult education, parent effectiveness training, and other services including those of traditional Choctaw medicine men.

Phillip Martin  
Mississippi Band of Choctaw Indians  
Route 7, Box 21  
Philadelphia, Mississippi 39350

7/1/75-6/30/76 (1)  
\$174,649

90-C-626

**PROJECT KU NAK WE SHA' (CARING)**

The re-affirmation and integration of the Tribal extended family in the nurture and care of children is a primary goal of this project, which utilizes new methods and techniques compatible with tribal traditional, problem-solving ways to combat child abuse and neglect.

Maxine W. Robbins  
The Yakima Indian Nation  
P.O. Box 632  
Toppenish, Washington 98948

7/1/75-6/30/76 (1)  
\$169,183

90-C-621  
**MIGRANT CHILD ABUSE AND NEGLECT PREVENTION PROJECT**

A services delivery system is being developed for prevention and intervention in cases of child abuse and neglect among migrant families. Use of the extended family is one of the program's demonstration characteristics. Another aim is to demonstrate the services for migrant families consistent with their cultural lifestyles, both in their homebase areas and in the worksites of the northern states.

Abdon Ibarra  
P.O. Box 917  
2220 Station Ursula  
Laredo, Texas 78040

7/1/75-6/30/76 (1)  
\$173,894

90-C-699  
**APPALACHIAN CITIZENS FOR CHILDREN'S RIGHTS**

Delivery of services through networks in Appalachia and other areas in rural America, is being developed by this demonstration child abuse and neglect program which will include a rural residential treatment home, self-help programs, "do-it-yourself" materials, and interagency teams.

Patricia M. Keith  
Family Service Association  
364 High Street  
Morgantown, West Virginia 26505

7/1/75-6/30/76 (1)  
\$125,090

**TRAINING DEMONSTRATION GRANT**

90-C-577  
**KANSAS STATE GRANT CHILD ABUSE AND NEGLECT TRAINING PROGRAM**

A comprehensive training program will be directed toward improvement of quality of services to abused and neglected children and their families. Training modules, developed in cooperation with the University of Kansas Medical Center, will be aimed at individual professions, interdisciplinary groups and community organizations combating child abuse and neglect.

Robert C. Harder  
Secretary S.R.S.  
State Office Building  
Topeka, Kansas 66612

6/30/75-6/29/76 (1)  
\$38,567

**CURRICULA DEVELOPMENT CONTRACT**

HEW 105-75-1104  
**CHILD ABUSE AND NEGLECT CURRICULUM DEVELOPMENT**

A training curriculum being developed for use by professionals and paraprofessionals working in child abuse and neglect includes a core curriculum with additional specialized professional units in identification, reporting, referral and organization of community resources. It is designed for use by staff development

specialists, trainers, group facilitators and persons generally familiar with group activities. The materials will address training needs of legal, law enforcement, court related, medical, health, social work and educational personnel.

Noel Day  
Urban and Rural Systems Associates  
Pier 1½  
San Francisco, California 94111

13/31/74-6/29/76  
\$597,026

**RESEARCH PROJECTS**

90-C-411  
**CHILD ABUSE AND NEGLECT RESOURCES DEMONSTRATION (CANRED) PROJECT**

Current case identification methods, specifically CANRIS (Child Abuse/Neglect Reporting/Inquiry System) and the Public Information Campaign are being evaluated. The project will identify specific services needed to protect abused and neglected children and improve their social and emotional functioning and that of their families; and assess the capacity of local communities to provide services to deal with the problem of child abuse and neglect through the systematic coordination of existing and potential service providers. Models of an integrated resource and service delivery system will be developed to meet specifically identified client needs.

Janne B. Dinges  
Texas Department of Public Welfare  
John H. Reagan Building  
Austin, Texas 78701

6/30/75-6/29/76 (2)  
\$200,000

90-C-418  
**ABUSE AND NEGLECT AMONG LOW-INCOME FAMILIES: A COMPARATIVE STUDY OF ADEQUATE AND INADEQUATE CHILD CARE**

To clarify factors which interact with poverty and may make families more likely to neglect or abuse their children, this study is comparing 300 families who care adequately for their children with 400 who have neglected and 100 who have abused their children. Factors to be assessed include family structure and functioning; unemployment; child rearing knowledge, attitudes and practices; child and parental health; drugs and alcohol; and awareness and use of available community resources.

Ludwig Geismar, Ph.D.  
Rutgers University School of Social Work  
Bernard Horowitz, Ph.D.  
New Jersey Division of Youth and Family Services  
1 South Montgomery Street  
Trenton, New Jersey 08625

6/30/75-6/29/76 (1)  
\$163,047

90-C-419  
**CAUSAL FACTORS IN NEGLECT AND BATTERING: A PROSPECTIVE STUDY**

To determine if there is a pathological pattern identifiable in the parent well in advance of the crisis behavior of battering or neglect, this study will identify pregnant women as high, moderate, or low risks for child abuse and neglect. Prenatal, perinatal, and postnatal evaluations are being made. The information gathered concerning infant temperament, mother-child interaction, childrearing beliefs, maternal perception of the infant, stress incidence, and expectations of the child will be evaluated to determine if there is a recognizable pattern.

William A. Attemeier III, M.D.  
Vanderbilt University Hospital  
Department of Pediatrics  
21st Avenue and Garland Street  
Nashville, Tennessee 37232

6/1/75-5/31/76 (1)  
\$173,361

90-C-421

IDENTIFICATION AND DEFINITION OF FACTORS CAUSALLY  
ASSOCIATED WITH CHILD ABUSE AND NEGLECT

Personality characteristics will be compared for 100 neglectful, 100 abusive, and 100 control families, each with a child under four years of age. The study will identify environmental variables and stresses, as well as family stresses, and will study the children, their inherent vulnerability, if any; and their relation to environmental stresses and parental and child characteristics.

Arthur H. Green, M.D.  
Department of Psychiatry  
Downstate Medical Center  
State University of New York  
450 Clarkson Avenue  
Brooklyn, New York 11203

5/1/75-4/30/76 (1)  
\$125,989

90-C-423

SERVICE PROJECT TO DETERMINE RELIABILITY AND  
VALIDITY OF CHILD-REARING QUESTIONNAIRE

A screening questionnaire will be given to persons involved in research for early recognition of families likely to abuse and/or neglect their children. Data will be gathered to assess the reliability and validity of the child-rearing questionnaire which has been developed by the Department of Human Development. Both short and long term followup will be used in predictive validation studies.

Ray E. Helfer, M.D.  
Department of Human Development  
Michigan State University  
East Lansing, Michigan 48824

6/1/75-5/31/76 (1)  
\$22,568

90-C-424

A PROSPECTIVE STUDY OF THE ANTECEDENTS OF CHILD ABUSE

A longitudinal approach is being used to look at the characteristics of a group of pregnant women, the temperament of their newborns, and the interaction of mother and infant during the first year of life to identify high risk situations for child abuse and neglect. The approach will spotlight the behavior of the infant to determine what role the child plays in his own abuse.

Byron Egeland, Ph.D.  
Department of Educational Psychology  
University of Minnesota  
Room N-548, Elliott Hall  
Minneapolis, Minnesota 55455

5/1/75-4/30/76 (1)  
\$116,221

90-C-425

AN EXPLORATORY STUDY OF DEFINING AND CLASSIFYING  
CASES OF CHILD ABUSE

An attempt will be made to distinguish those variables which determine cases to be labeled "abused" from those which cause a parent/caretaker to abuse a child. The study will also seek to learn when various

diagnostic personnel classify a case as child abuse or not, to determine how definitions vary among professionals, and to determine how definitions can affect case classifications and sometimes result in false labeling.

Richard J. Gelles  
University of Rhode Island  
Kingston, Rhode Island 02881

6/30/75-6/29/76 (1)  
\$30,400

90-C-442

APATHY-FUTILITY SYNDROME IN CHILD NEGLECT: AN URBAN VIEW

A hypothesis from a rural study on apathetic parents is being tested in an urban setting to understand causal factors in child neglect as they relate to maternal characteristics, to determine if neglect is an intergenerational life style and what factors precipitate it. Fifty families who are at or near poverty level, each with a 5-year-old child and a father present in the home, will be interviewed. Another 50, identified as "neglecting" families, will be referred by protective services for interviews.

Norman A. Polansky  
School of Social Work  
University of Pennsylvania  
Philadelphia, Pennsylvania 19104

6/15/75-6/14/76 (1)  
\$175,332

90-C-445

FAMILY INTERACTION PATTERNS RELATED TO CHILD ABUSE AND NEGLECT

The structure of interaction in families where child abuse or neglect has occurred is compared with patterns in a matched group of families where neither abuse nor neglect has occurred. Multiple methods such as self-reported behavior, questionnaires, case worker reports, standard child development tests, and routine medical diagnostics will measure interaction patterns related to maternal health, child development, parenting problems, and other factors.

Robert L. Burgess, M.D.  
Pennsylvania State University  
5 Old Main  
University Park, Pennsylvania 16802

6/30/75-6/29/76 (1)  
\$109,464

90-C-448

AN EXPLORATORY INVESTIGATION OF POTENTIAL SOCIETAL AND  
INTRAFAMILIAL FACTORS CONTRIBUTING TO CHILD ABUSE AND NEGLECT

Patterns of child abuse in the Black community will be studied to identify and examine environmental, societal and institutional stress variables and dominant familial characteristics which may contribute to abusive or neglectful behavior. The effects of agency intervention strategies on parent-child behavior and coping abilities of selected Black families will be assessed.

Evangeline Ward, Ph.D.  
National Council for Black Child Development, Inc.  
490 L'Enfant Plaza East  
Suite 3204  
Washington, D.C. 20024

6/1/75-5/30/76 (1)  
\$178,000

90-C-426

**CHILD ABUSE: A CONTROLLED STUDY OF SOCIAL, FAMILIAL, INDIVIDUAL AND INTERACTIONAL FACTORS**

Possible causes of child abuse are being examined to implement prevention and treatment training programs in this study of the relationship between child abuse and drug abuse. Families to be studied are those in which one parent is entering a drug treatment program, those in which one child has been abused, and control families. Predictor equations will be developed.

R.H. Starr, Jr., Ph.D.  
Family Bureau  
Children's Hospital of Michigan  
3901 Beaubien Boulevard  
Detroit, Michigan 48201

6/1/75-5/30/76 (1)  
\$223,324

90-C-427

**AN INVESTIGATION OF THE RELATIONSHIP BETWEEN SUBSTANCE ABUSE AND CHILD ABUSE**

The distribution and frequency of child abuse/neglect types will be examined among alcohol and drug abusers. Child abusers and substance abusers will be studied for common factors, and types of abuse. The samples will be compared to develop more specific hypotheses.

Joseph Mayer, Ph.D.  
Washington Center for Addiction  
Boston, Massachusetts 02130

6/30/75-6/29/76 (1)  
\$125,000

90-C-428

**AN INVESTIGATION OF THE EFFECTS OF A MULTIDIMENSIONAL SERVICE PROGRAM RECIDIVISM DISCONTINUATION OF CHILD ABUSE AND NEGLECT**

Recidivism or discontinuation of abuse and/or neglect will be examined in approximately 380 families who have received varying types and amounts of intervention services since 1968 through a child abuse prevention program in the Lehigh Valley. Families who will be served by the program in the next two years will also be studied.

Roy C. Herrenkohl, Jr., Ph.D.  
Center for Social Research  
Department of Social Relations  
Lehigh University  
Bethlehem, Pennsylvania 18015

6/1/75-5/31/76 (1)  
\$106,223

90-C-429

**IDENTIFICATION OF THE FACTORS EFFECTIVE IN THE DISCONTINUATION OF PARENTAL ABUSE AND NEGLECT**

To identify crucial elements that should be built into service programs that will contribute to better parenting by neglectful and abusive parents, factors associated with discontinuation of abusive or neglectful behavior by parents will be studied. Semi-structured interviews with parents in 200 to 250 families referred in 1972 to six public child protective services programs in various parts of the U.S. will be the principal source of data, which will be supplemented by case record review.

Ann W. Shyne, M.D.  
Child Welfare League  
67 Irving Place  
New York, New York 10003

5/1/75-4/30/76 (1)  
\$93,906

90-C-430

**EVALUATION MEASURES FOR CHILD ABUSE AND NEGLECT PROJECTS**

Measures of the effectiveness, impact, costs, and efficiency of programs concerned with the identification, treatment, and prevention of child abuse and neglect are being developed. Special attention will be placed on outcome measures such as parent-child rating scales, responsiveness to service rating scales used in the training and technical assistance provided by the Resource Projects.

James R. Seaborg, Ph.D.  
Center for Social Welfare Research  
School of Social Work  
University of Washington  
Seattle, Washington 98195

6/1/75-5/31/76 (1)  
\$233,607

90-C-451

**SAN ANTONIO CHILD ABUSE/NEGLECT RESEARCH PROJECT**

The relationship between the use of mood-changing chemicals such as drugs and alcohol and the evidence of child abuse and neglect will be studied in a predominantly Mexican-American population. Collaborative efforts will be developed with various local agencies, the Texas Department of Public Welfare, and the University of Texas School of Social Work.

Dario Chapa  
Mexican/American Neighborhood Civic Organization  
118 Broadway, Suite 327  
San Antonio, Texas 78207

6/30/75-6/29/76 (1)  
\$123,021

HEW-100-75-0058

**NATIONAL INCIDENCE FEASIBILITY STUDY**

Methodological issues and procedures to develop incidence estimates, methods of determining severity, and means for determining national trends for child abuse and neglect were examined.

Marvin Burt, Ph.D.  
Burt Associates, Inc.  
7315 Wisconsin Avenue  
Bethesda, Maryland 20014

Completed

**EVALUATION CONTRACTS**

The Department of Health, Education and Welfare requires an evaluation for all demonstration programs. To meet this requirement separate contracts were awarded; one to evaluate the Demonstration Centers, another to evaluate the Resource Demonstration Projects and a third to evaluate the Innovative Demonstration Projects.

HEW 105-76-1117

**FORMATIVE EVALUATION OF DEMONSTRATION CENTERS**

An evaluation will be made of the 12 Demonstration Centers funded by NCCAN to provide comprehensive services for the identification, prevention and treatment of child abuse and neglect. Formative aspects of program development will be stressed, and an information system for the administration and monitoring of the projects will be established.



Earl F. Doty  
E.H. White and Company  
347 Clement Street  
San Francisco, California 94118

11/30/75-9/30/76 (2)  
\$224,916

**HEW 105-76-1004**  
**FORMATIVE EVALUATION OF RESOURCE PROJECTS**

The 16 Resource Projects funded by NCCAN, which provide training, technical assistance, public awareness, needs assessment, and other services to programs for families and children involved in abuse and neglect, will be evaluated. The formative aspects of resource project development will be stressed and an information system for the administration and monitoring of the projects will be established.

James Gee  
Associate Control Research and Analysis, Inc.  
1000 Vermont Avenue, N.W.  
Washington, D.C. 20005

12/3/75-9/30/76 (2)  
\$304,878

**HEW 105-76-1118**  
**FORMATIVE EVALUATION OF INNOVATIVE DEMONSTRATIONS**

A process evaluation will be made of the Innovative Demonstration Projects serving special target populations: Native Americans, isolated rural and military families. This evaluation is concerned with the formative aspects of program development including the establishment of an information system to monitor the projects.

Jack Hanson  
CPI Associates  
2030 M Street, NW  
Washington, D.C. 20036

8/1/75-3/31/77  
\$161,851

**TECHNICAL ASSISTANCE CONTRACTS**

**HEW 105-75-1102**  
**PROVISION OF TECHNICAL ASSISTANCE IN THE DEVELOPMENT OF CHILD ABUSE AND NEGLECT PUBLIC AWARENESS PROGRAMS AND MATERIALS**

Existing public awareness activities and materials, concerned with child abuse and neglect will be assessed to determine needs; and to provide the resources for the development of needed programs; to provide technical assistance for selected sites to plan and produce public awareness programs; and to provide technical assistance to designated staff in each regional office who will review and plan for regional public awareness needs.

William G. Moore  
Joseph A. Davis Consultants, Inc.  
104 East 40th Street, Suite 203  
New York, New York 10016

6/30/75-6/30/76  
\$306,539

**HEW 105-75-1121**  
**PROVISION OF TECHNICAL ASSISTANCE IN THE DEVELOPMENT AND IMPROVEMENT OF CHILD ABUSE AND NEGLECT REPORTING SYSTEMS AND CENTRAL REGISTERS**

A sample of existing statewide Central Register Systems will be analyzed to determine variations and differing requirements. Model Central Registers and associated reporting systems will be designed which can be used by states to expand existing or implement new registers. Training and direct technical assistance in developing Central Register systems and associated reporting systems will be provided to the states.

Quinn Shelton  
National Institute for Community Development  
2021 K St., N.W.  
Washington, D.C. 20006

7/1/75-12/31/76  
\$560,857

**HEW 105-75-1110**  
**ASSESSMENT OF TRAINING AND TECHNICAL ASSISTANCE REQUIREMENTS OF CHILD ABUSE AND NEGLECT PROGRAMS**

Regional training and technical assistance needs will be assessed by surveying existing resources and programs and by implementing a coordinated planning process with input gained from a variety of child abuse and neglect programs. This assessment will result in a proposed two-year technical assistance strategy for NCCAN and for each Regional Office.

Eddie A. Taylor  
Development Associates, Inc.  
1521 New Hampshire Ave. N.W.  
Washington, D.C. 20036

6/26/75-1/27/76  
\$461,338

**HEW 105-75-1111**  
**PROVISION FOR TRAINING OF SELECTED PERSONNEL FROM ORGANIZATIONS AND AGENCIES HAVING CHILD ABUSE AND NEGLECT RESPONSIBILITIES IN REGIONS I-V**

The threefold goal of this program is to develop knowledgeable skills in diagnosing and treating child abuse and neglect for supervisory and non-supervisory personnel in hospitals, mental health programs, public health services, child protective and welfare agencies, law enforcement, schools and courts; to build multidisciplinary teamwork and coordinative skills among the employees of the various agencies or programs working with abuse and neglect cases; and to enable trained supervisory personnel to train their own staffs.

Robert MacDicken  
Kirschner Associates, Inc.  
733 15 Street N.W.  
Washington, D.C. 20005

6/26/75-4/6/76  
\$457,994

**HEW 105-75-1112**  
**PROVISION FOR TRAINING OF SELECTED PERSONNEL FROM ORGANIZATIONS AND AGENCIES HAVING CHILD ABUSE AND NEGLECT RESPONSIBILITIES IN REGIONS VI-X AND AMONG INDIAN POPULATION**

The threefold goal of this program is to develop knowledgeable skills in diagnosing and treating child abuse and neglect for supervisory and non-supervisory personnel in hospitals, mental health programs, public health services, child protective and welfare agencies, law enforcement, schools and courts; to build multidisciplinary teamwork and coordinative skills among the employees of the various agencies or programs working with abuse and neglect cases; and to enable trained supervisory personnel to train their own staffs.



David Boorkman  
Urban and Rural Systems Associates  
Pier 1½  
San Francisco, California 94111

6/30/75-4/6/76  
\$501,122

### INFORMATION CONTRACT

HEW 105-75-1103  
CLEARING HOUSE ON PROGRAMS, AND SUMMARIZATION OF  
RESEARCH ON CHILD ABUSE AND NEGLECT

*Copy as is*  
National surveys and literature scanning are being used to develop an on-line data base for Child Abuse and Neglect ongoing programs and on research conducted since 1965. *A Directory of Programs* and a *Summary of Research 1965-1974* will be published in 1976; and analyses will be made of the state-of-the-art of programs and research. NCCAN will be able to query the data base to provide immediate answers to inquiries from staff.

Douglas Berninger, Ph.D.  
Herner and Company  
2100 M Street N.W.  
Washington, D.C. 20037

12/23/74-6/22/76  
\$494,014

### STATE GRANTS

The following states were eligible under Public Law 93-247 Section 4 (b) (2) to qualify for assistance for Fiscal Year 1975:

Arkansas	\$ 37,362
Connecticut	45,533
Hawaii	27,411
Illinois	116,055
Maine	28,878
Minnesota	54,620
Missouri	49,438
New Hampshire	28,809
New York	166,649
North Dakota	25,734
Oklahoma	41,761
Tennessee	54,750
Utah	31,574
Vermont	24,058
Virginia	61,061
TOTAL	\$793,693

The following states were conditionally eligible for assistance in Fiscal Year 1975 subject to their fulfilling specific requirements designated under Public Law 93-247 Section 4 (b) (2):

Colorado	\$ 41,107
Massachusetts	67,451
TOTAL	\$108,558

## PROJECTS FUNDED JOINTLY BY THE OFFICE OF CHILD DEVELOPMENT, SOCIAL AND REHABILITATION SERVICE, AND THE PUBLIC HEALTH SERVICE

### DEMONSTRATION GRANTS

90-C-73  
THE FAMILY LEARNING CENTER PROJECT

A community-based approach is being given to the problems of child abuse and neglect. Program elements and evaluation instruments are designed to promote a coordinated system to detect, report, treat, and prevent child abuse and neglect that involves medical, social service, mental health, legal, law enforcement, educational agencies, and lay groups.

Margaret Nicholson  
Adams County Department of Social Services  
4200 East 72nd Avenue  
Commerce City, Colorado 80022

5/1/75-4/30/76 (2)  
\$206,694

90-C-74  
A PROTECTIVE SERVICE SYSTEM FOR UNION COUNTY, NEW JERSEY

A comprehensive, systematic and integrated delivery network is being established to strengthen current protective services capacity. The network will provide a wide range of preventive and treatment services to all reported abused and neglected children and their families. It will demonstrate innovative outreach, reporting assessment and treatment programs.

Bonnie Ludlow  
New Jersey Division of Youth  
and Family Services  
1155 Magnolia Avenue  
Elizabeth, New Jersey 07207

5/1/75-4/30/76 (2)  
\$198,922

90-C-75  
FAMILY RESOURCE CENTER

This urban, hospital-based program includes family intervention, coordination of services among relevant agencies, a community education program, and a multidisciplinary hospital team to identify, evaluate and follow up abused children. More than 50 families were served by the family intervention program during the first year. Individual and group therapy for parents, a 24-hour crisis nursery, play therapy, and a child development program are included.

Gregory Eschele  
The Family Resource Center  
St. Louis Children's Hospital  
St. Louis, Missouri 63108

5/1/75-4/30/76 (2)  
\$160,026

**90-C-76  
MAKAH CHILD DEVELOPMENT SERVICES CENTER**

A system will be implemented to integrate the delivery of services to families where child abuse or neglect has occurred or seems likely to occur. The system will coordinate the resources of the community and existing legal programs. Related problems will be examined by and for Native Americans on reservations.

Mary Jo Butterfield  
Makah Tribal Council  
P.O. Box 507  
Neah Bay, Washington 98357

5/1/75-4/30/76 (2)  
\$30,672

**90-C-77  
COORDINATING COMMUNITY CONCERN FOR CHILD ABUSE**

A central agency has been designated to formulate and coordinate a treatment plan for abusing and neglecting parents that is relevant to their special needs, to facilitate interagency communication, and to enable families to receive a full range of services.

Christina Narr  
The Panel for Family Living  
420 South "L" Street  
Tacoma, Washington 98405

5/1/75-4/30/76 (2)  
\$116,195

**90-C-78  
ARKANSAS CHILD ABUSE AND NEGLECT PROJECT**

A volunteer-based model for protective services will be expanded from its pilot basis in one county to a four-county area. The model is designed to expand the capacity of professional agencies through community involvement and the services of volunteers who will receive training and professional supervision from multidisciplinary teams.

Jack Hill  
Arkansas Social Services  
P.O. Box 1437  
Little Rock, Arkansas 72203

5/1/75-4/30/76 (2)  
\$219,541

**90-C-79  
CHILD ABUSE/NEGLECT DEMONSTRATION UNIT**

A specialized protective services unit in the Bayamon area is expected to serve over 1000 children a year. Its effectiveness will be compared with the generalist management of cases in a similar area. If successful, this unit will be used as a model for establishing similar services in eight other high-need areas.

Doris Gonzalez Knudson  
Department of Social Services  
P.O. Box 2578  
Bayamon, Puerto Rico 00619

5/1/75-4/30/76 (2)  
\$156,527

**90-C-80  
CHILD PROTECTION CENTER**

Service will be given to about 200 children in the East Baton Rouge Parish through the establishment of a 24-hour center hotline. Interdisciplinary evaluation of cases will be made, as will a joint agency determination of treatment plans and other needed services. Emphasis will be on preventive services.

Jeanette Hendrix  
Baton Rouge Child Protection Center  
2843 Victoria Dr.  
Baton Rouge, Louisiana 70805

5/1/75-4/30/76 (2)  
\$178,580

**90-C-81  
FAMILY CARE CENTER**

A 24-hour Family Care Center for children, under two years of age, and siblings who are victims of child abuse is proposed as an alternative to foster home placement when abusing parents are incarcerated. Treatment goals are aimed at the early reconstruction of the family.

Oliver Johnson  
Family Care Center  
809 North Santa Fe  
Compton, California 90220

5/1/75-4/30/76 (2)  
\$156,645

**90-C-82  
PARENT AND CHILD EFFECTIVE RELATIONS PROJECT**

Case finding will be improved by training personnel who have regular contact with children and families, by using interdisciplinary coordinating teams to improve case handling, and by developing alternative approaches to minimize the separation of children from their families. Management information and cost effectiveness systems will be developed.

Charlene Bennett  
Juvenile Welfare Board of Pinellas County  
3455 First Avenue South  
St. Petersburg, Florida 33711

5/1/75-4/30/76 (2)  
\$126,512

**90-C-83  
PRO-CHILD: A CHILD ABUSE AND NEGLECT PROGRAM**

The Pro-Child program is based on early identification, diagnosis, evaluation, treatment and care for the abused/neglected child and his family. Included are the establishment of a community advisory board, the use of a multidisciplinary team, innovative treatment techniques and facilities, and development of public awareness of the problem of child abuse and Pro-Child services. The project aims to reduce, coordinate and improve community services.

Cindy Ragan  
Arlington County Board of Public Welfare  
P.O. Box 7258  
Arlington, Virginia 22207

5/1/75-4/30/76 (2)  
\$128,288

PROJECT FUNDED BY  
HEALTH RESOURCES ADMINISTRATION

EVALUATION CONTRACT

HRA 106-74-120

EVALUATION OF CHILD ABUSE/NEGLECT DEMONSTRATION PROJECTS

Baseline data are being collected on the 11 communities and existing Child Abuse and Neglect programs of the 11 demonstration projects funded by OCD/SRS in Fiscal Year 1974. It will develop evaluation methods, commence formulative evaluations of the projects and plan for summative evaluations.

Fred Collignon  
Berkeley Planning Associates  
2320 Channing Way  
Berkeley, California 94704

9/30/75-9/30/76 (2)  
\$250,000

PROJECTS FUNDED BY THE OFFICE OF CHILD DEVELOPMENT

TECHNICAL ASSISTANCE GRANT

90-C-104

PARENTS ANONYMOUS SELF-HELP FOR CHILD ABUSING PARENTS

The number of chapters of Parents Anonymous, self-help groups for abusing parents is being increased. Materials are being pilot-tested before their dissemination. Technical assistance and training will be available.

Leonard L. Lieber  
Parents Anonymous  
2810 Artesia Boulevard  
Redondo Beach, California 90278

5/1/75-4/30/76 (2)  
\$271,246

INFORMATION GRANTS

OCD-CB-454 (C1)

NATIONAL CLEARINGHOUSE FOR CHILD NEGLECT AND ABUSE

+ A mechanism has been established for systematic collection of data on the nature, incidence, and characteristics of child abuse and neglect from official state sources. Reports generated from the participating States' data are returned to the individual States on a quarterly basis so that they can monitor their own reporting mechanisms. Reports on the national incidence will be prepared.

Vincent DeFrancis, J.D.  
The American Humane Association  
Childrens Division  
P.O. Box 1266  
Denver, Colorado 80201

4/1/75-3/30/76 (2)  
\$194,721

OCD-CB-500 (C1)

STRUCTURE AND PERFORMANCE OF PROGRAMS ON CHILD ABUSE AND NEGLECT

\* A survey of agencies handling child abuse and neglect cases in 129 counties across the nation is aimed at identifying and characterizing programs to recommend the most effective structure for rendering protective services and to plan future experimental demonstration programs.

Saad Z. Nagi, Ph.D.  
Ohio State University  
1250 Chambers Road  
Columbus, Ohio 43212

7/1/75-6/30/76 (2)  
\$75,000

OCD-CB-508

REVISION OF THE 1962 MODEL CHILD ABUSE (AND NEGLECT) REPORTING LAW

\* A revision was prepared of the Model Child Abuse Reporting Law developed by the Children's Bureau in 1962 includes recommended guidelines for reporting child neglect. The revision can serve as a guide to state and local governments in revising or expanding their child abuse and neglect legislation. Extensive commentary was developed, along with appendices detailing rules and practices.

Alan Sussman  
Institute of Judicial Administration  
40 Washington Square South  
New York, New York 10012

Completed

## PROJECTS FUNDED BY SOCIAL AND REHABILITATION SERVICE

### TRAINING GRANTS

47-P-05352/1-01

#### WORKSHOP ON PROTECTIVE SERVICES FOR CHILDREN

This 5-day workshop provided an opportunity for 50 staff members and volunteers working in the field of public welfare to increase their skills and competences in protective services for children who are the potential victims of abuse and neglect.

Edward J. Durnall  
Division of Continuing Education  
University of New Hampshire  
Durham, New Hampshire 03824

Completed

47-P-10405/2-01

#### TRAINING IN CHILD ABUSE AND NEGLECT

An educational program established for child protective caseworkers and supervisors included didactic information and clinical training. Four workshops were held for staff of the Monroe County Department of Social Services and other community agencies involved with children.

Martin Nacman  
Social Work Division  
Department of Health Services  
School of Medicine & Dentistry  
University of Rochester  
Rochester, New York 14642

Completed

47-P-10446/2-01

#### TRAINING PROJECT IN PROTECTIVE SERVICES FOR CHILDREN

Education for work with abusive and neglectful families was directed toward current supervisory and direct practice staff in state, local, and voluntary public welfare agencies engaged in child and family services. A 2-day interdisciplinary symposium focused on the role of the various professions dealing with problems of child abuse and neglect.

Lillian Lampkin, Dean  
School of Social Work  
Hunter College  
129 East 79th Street  
New York, New York 10021

Completed

47-P-15463/3-01

#### INTENSIVE TRAINING IN CHILD PROTECTIVE SERVICES

Training was provided for personnel in the Norfolk Department of Human Resources to increase their competence in providing services to abused and neglected children and their families both in recognizing potential and actual cases of abuse and neglect and in the techniques of working with parents.

Ethelyn R. Strong, Ph.D.  
Social Work Department  
Norfolk State College  
2401 Corprew Avenue  
Norfolk, Virginia 23504

Completed

47-P-20474/4-01  
INSTITUTE ON CHILD NEGLECT AND ABUSE

Eighty supervisory personnel in the Family and Children's Services Program of the Alabama Department of Pensions and Security were given three weeks of concentrated training in the prevention, diagnosis and treatment of potential and actual cases of child neglect and abuse.

Fred Delli Quadri, Dean  
School of Social Work  
University of Alabama  
P.O. Box 2846  
University, Alabama 35486

Completed

47-P-20492/4-01  
A SOCIAL SYSTEMS APPROACH TO CHILD NEGLECT AND ABUSE

Supervisory staff attended three 2-day workshops on the problems of child abuse and neglect to further their knowledge and increase their competency in dealing with neglecting and abusing parents.

Willie R. Berry  
Department of Sociology and Anthropology  
Western Kentucky University  
Bowling Green, Kentucky 42101

Completed

47-P-20497/4-01  
TRAINING WORKERS FOR SERVICE TO ABUSED AND NEGLECTED CHILDREN

In-service training was provided for Department of Public Welfare social workers involved in services for neglected and abused children. Two 3-day workshops in protective services for 210 social workers were followed by a state-wide workshop for supervisors.

Lester R. Glich, Dean  
School of Social Work  
University of Southern Mississippi  
Box 114, Southern Station  
Hattiesburg, Mississippi 39401

Completed

47-P-25436/5-01  
SOUTHWEST INDIANA CHILD ABUSE AND NEGLECT TRAINING PROJECT

One-day workshops provided ongoing educational experiences for personnel of the Department of Public Welfare, nursing services, juvenile court, schools and private agencies. The aim was to help participants become more effective providers of protective services by improving their detection, referral and intervention abilities.

Charles D. Holbrook  
University of Evansville  
P.O. Box 329  
Evansville, Indiana 47702

Completed

47-P-25494/5-01  
TRAINING FOR STRENGTHENING PARENTAL SKILLS

Eighty parents, from a target population of abusing and neglecting parents, were trained in effective parenting through the cooperative efforts of the Illinois Valley Community College, the Illinois Department of Children and Family Services and other public and private social agencies in a predominantly rural area.

Harry Brown, Dean  
Continuing Education  
Illinois Valley Community College  
Rural Route 1  
Oglesby, Illinois 61348

Completed

47-P-25512/5-01  
DYNAMICS OF EFFECTIVE PARENTING

Sequential learning experiences were provided for protective service workers in County Welfare Departments and Children Services Boards to improve worker effectiveness in maximizing opportunities for the growth and well-being of children through more effective parenting.

Jacqueline Michael  
Coordinator, Community Education Program  
College of Community Services  
University of Cincinnati  
312 French Hall  
Cincinnati, Ohio 45221

Completed

47-P-25518/5-01  
CRISIS INTERVENTION AND CRITICAL INCIDENT HANDLING

Four 12-hour training courses were held on theory and practice in crisis intervention and critical incident handling for 100 employees in Family and Children's Services of the State Department of Social Services.

Marian I. Reavey  
Associate Professor, School of Social Work  
Wayne State University  
Detroit, Michigan 48202

Completed

47-P-35192/7-01  
CHILD ABUSE EDUCATION AND TRAINING PROGRAM

A wide range of training materials related to child abuse was produced, and training was given to social service supervisors and workers of the Missouri Division of Welfare to improve services to abused children and their families.

Charles F. Mitchell  
Associate Professor, School of Social Work  
609 Clark  
University of Missouri  
Columbia, Missouri 65201

Completed

47-P-35196/7-01  
TRAINING IN THE AREA OF CHILD ABUSE AND NEGLECT

An integrated crises-disciplinary resource team conducted training workshops for state social rehabilitation and mental health workers, legal personnel, law enforcement officials, medical and nursing personnel and others.

Duane Thomas  
Social Service Division, Medical Center  
University of Kansas  
39th and Rainbow Bend  
Kansas City, Kansas 66103

Completed

47-P-40248/8-01

**REGIONAL TRAINING PROGRAM ON CHILD ABUSE AND NEGLECT**

Training was planned to increase the interest and to expand the capacities of public and voluntary child welfare agencies and related institutions and disciplines in Region VIII. Identifying the need for protective services and providing essential services to neglected and abused children and their families were the goals.

Alexander G. Zaphiris, Ph.D.  
Graduate School of Social Work  
University of Denver  
Denver, Colorado 80210

Completed

47-P-45414/9-01

**CALIFORNIA STATE-WIDE TRAINING IN CHILD ABUSE**

Ten 2-day training sessions were conducted in California for staffs of the county welfare departments mandated by law to protect children. The sessions concentrated on the identification, case management and treatment of abusive and high risk families. These sessions were followed by one-day sessions three months later.

Sharrell Munce  
Children's Trauma Center  
Children's Hospital Medical Center  
51st and Grove Streets  
Oakland, California 94609

Completed

46-P-90034/8-01

**NATIONAL TRAINING PROJECT ON CHILD ABUSE AND NEGLECT**

A system of specialized training programs was developed for supervisory and staff development personnel of agencies and public officials serving responsibility to abused or neglected children and their families. Training materials were developed, and an institute for the "training of trainers" was held and three follow-up workshops scheduled.

Alexander G. Zaphiris, Ph.D.  
Graduate School of Social Work  
University of Denver  
Denver, Colorado 80210

Completed

48-P-90262/0-01

**NATIONAL TRAINING PROJECT ON LEGAL ASPECTS OF PROTECTIVE SERVICES TO ABUSED AND NEGLECTED CHILDREN**

A training manual will be developed to include all legal aspects involved in providing child protective services; and workshops will be conducted for State agency staff and attorneys.

Barbara A. Caulfield  
University of Oregon  
School of Law  
11th & Kincaid  
Eugene, Oregon 97403

8/1/75-8/1/76 (1)  
\$75,000

**EVALUATION CONTRACT**

SRS-74-31

**DEVELOPMENT OF EVALUATION SYSTEM FOR MEASURING COST EFFECTIVENESS OF PROTECTIVE SERVICES**

A model evaluation system was developed for measuring cost effectiveness of protective services to abused/neglected children.

Marvin Burt, Ph.D.  
Burt Associates, Inc.  
7315 Wisconsin Avenue  
Bethesda, Maryland 20014

Completed

**INFORMATION GRANTS**

09-P-56015/5

**STATE OF KNOWLEDGE OF CHILD NEGLECT**

A state-of-the-art study of child neglect in the United States was made. Advances in the following areas were considered: cause, early signs, possible prevention programs, methods of handling, service delivery systems and potential consequences or failures to adequately care for children. The study, which relied heavily on material in print, was supplemented by direct contacts with practitioners and expert consultants. The published study may be obtained by sending \$1.20 for GPO Stock No. 1765-4-00006-8 to the Government Printing Office, Washington, D.C. 20402

Norman A. Polansky, Ph.D.  
Regional Institute of Social Welfare Research  
University of Georgia  
1260 South Lumpkin  
Athens, Georgia 30602

Completed

86-P-80086/9-01

**EARLY WARNING SIGNALS OF SERIOUS NEGLECT AND ABUSE**

A survey was made of sustained and unsustained cases of child neglect and abuse sampled at various stages of entrance into protective services systems to elucidate differentiating factors which affect the families surveyed. The literature and expert opinions were canvassed to identify elements necessary for or injurious to healthy development of children. A rationale will be developed from these components to study specific situations or populations at varying degrees of risk. Hypotheses about intervention methods with such populations will be developed.

Jeanne M. Giovannoni  
School of Social Welfare  
University of California  
405 Hilgard Avenue  
Los Angeles, California 90024

6/29/75-6/28/76 (2)  
\$252,000

SRS-500-76-0005

**DRAFT STATE QUESTIONNAIRE RELATED TO DEVELOPMENT OF GUIDE FOR PUBLIC SOCIAL SERVICE AGENCIES ON SERVICES TO ABUSED AND NEGLECTED CHILDREN AND THEIR FAMILIES**

Guidelines being developed for use by local and state protective services are in the form of questionnaires.

Douglas Holmes  
Community Research Applications, Inc.  
1560 Broadway, Suite 1214  
New York, New York 10036

9/75-6/76  
\$48,783

**PROJECTS FUNDED BY PUBLIC HEALTH SERVICE**

**DEMONSTRATION PROJECTS**

**H81 DA 01496-01**

**WOMEN'S CENTER/DETROIT-WAYNE COUNTY MENTAL HEALTH BOARD PROJECT**

Attention to the child-rearing behaviors and mother-child interactions will be given to 60 mothers and their children in a multimodality outpatient program offering detoxification, methadone maintenance, counseling, child care, employment, and aftercare services. The research and evaluation component will be coordinated with the University of Michigan.

Jane Mannette  
Project Director  
W.O.M.A.N. Center  
4105 Cass  
Detroit, Michigan 48201

7/1/75-6/30/76 (2)  
\$371,912

**H81 DA 01651-01**

**WOMEN, INCORPORATED (BOSTON)**

This agency will administer a small residential program designed to meet the special needs of female former opiate addicts released to probation or parole. Patterned after a therapeutic community model of comprehensive care for women and their children, client-centered therapy, vocational training, recreational activities, educational services, and a variety of services for preschool children will be offered.

Patricia Ready  
Women, Inc.  
134 Mt. Auburn Street  
Cambridge, Massachusetts 01432

1/1/75-12/30/75 (1)  
\$220,510

**H81 DA 01686-01**

**NEW YORK MEDICAL COLLEGE PROGRAM FOR PREGNANT ADDICTS & ADDICTED MOTHERS**

The concept of comprehensive care is the core of this outpatient program, designed to treat and study a static patient population that includes 100 women and their children, which focuses on the problem of opiate addiction, problems associated with pregnancy, parturition and parenthood, the problem of neonates and the problems which arise among the children of addicts. Nine basic interrelated life-functioning areas are considered.

Richard Brotman, M.D.  
Project Director  
N.Y. Medical College  
5 East 102nd Street  
New York, New York 10029

3/1/75-4/30/76 (1)  
\$500,000

**H81 DA 01698-01**

**THE ODYSSEY HOUSE PARENTS' DEMONSTRATION PROGRAM**

The entire series of treatment phases through which parent/patients move, assuming more responsibility and independence as they advance, averages 24 months and ends with graduation from this residential therapeutic community program to treat, at any one time, 40 parents and their children (45-50) who are accepted by referral from a variety of sources throughout the United States.



Judeanne Densen-Gerber, M.D.  
Odyssey House  
309-311 East 6th Street  
New York, New York 10003

8/1/75-7/31/76 (2)  
\$754,000

### RESEARCH GRANTS AND CONTRACTS

#### ADM-42-74-38 CHILD ABUSE: FORMAL AND INFORMAL DECISION-MAKING PROCESSES

Formal and informal decision-making processes in two contrasting jurisdictions in Massachusetts were analyzed. The inter-agency approach was compared with an intra-agency approach within the framework of relevant Massachusetts Law and Public Welfare Regulations.

Gail Garinger  
Judge Baker Guidance Center  
295 Longwood Avenue  
Boston, Massachusetts 02115

Completed

#### ADM-42-74-43 SURVEY OF DATA ON CHILD ABUSE

This project was to develop baselines data on the incidence and social concomitants of child abuse and neglect in one community. A stratified sample of the population focused on obtaining data on incidence of child abuse, kinds of abuse, family structure, family functioning, and special problems of the family.

Jean E. Bedger  
Council for Community Services  
64 E. Jackson Blvd.  
Chicago, Illinois 60604

Completed

#### ADM-42-74-56 CHILD ABUSE AND NEGLECT PROGRAMS UNDER MENTAL HEALTH AUSPICES

Eight child abuse and neglect programs under mental health auspices were studied and a monograph was produced for use by mental health agencies in establishing child abuse and neglect services. Development of the programs, their relationships within the community, successes and failures of interventions and service delivery were reviewed.

Douglas Holmes  
Community Research Applications, Inc.  
33 West 60th St.  
New York, New York 10023

Completed

#### HRA 106-74-9 SURVEY OF NINE HEALTH-BASED PROGRAMS FOR CHILD ABUSE/NEGLECT

A survey was made of nine health-based, multidisciplinary programs which address the problem of child abuse and neglect, examining the procedures and practices of these programs in the context of their communities.

June Lockhart, M.D.  
American Academy of Pediatrics  
Evanston, Illinois 60204

Completed

#### MC-R-060339-01-0 CHILD TRAUMA INTERVENTION PROJECT, UCLA

The goals of this project are defined as research on identifying potential abusers; research and implementation of interdisciplinary training programs in child abuse; treatment and rehabilitation studies on the identified child abuser and child; and acquisition of an experimental data base in child abuse.

Morris Paulson  
University of California, Los Angeles  
405 Hilgard Avenue  
Los Angeles, California 90024

7/1/75-6/30/76 (2)  
\$337,480

#### MC-R-060342-01-0 BEHAVIOR, PARENTING, AND OUTCOME OF HIGH RISK INFANTS

The developmental outcome of high risk neonates hospitalized because of prematurity or congenital abnormalities which interfere with parent-infant experiences normally following birth was studied. A profile of the specific combinations of factors which increase outcome risk within these two groups of infants will be developed.

James Kent, Ph.D.  
Children's Hospital of Los Angeles  
P.O. Box 54700 Terminal Annex  
Los Angeles, California 90054

10/1/75-9/30/76  
\$110,302

#### MC-R-390337-01-0 MOTHER TO INFANT ATTACHMENT

The basic principles of mother to infant attachment will be defined to determine if the infant's contribution to a reciprocal interaction which a mother perceives is necessary in the formation of mother to infant attachment; to determine if close contact of the mother with her infant in the first hours of life will significantly influence maternal attachment and increase the length of time she breast feeds and, in addition, if this close contact in the first hours of life confers on the infant protection against bacterial infection; and to investigate the unique situation of the attachment of a mother to her malformed infant.

John H. Kennell  
Case Western Reserve University  
2040 Adelbert Road  
Cleveland, Ohio 44106

7/1/76-6/30/76 (2)  
\$56,806

#### MC-R-420336-01-0 FOLLOW-UP STUDY OF TRAUMATIZED CHILDREN

Abused children were studied at intervals until they become adults with their own children. Children were compared on age, race, sex, and socioeconomic status eight years after they were studied as infants to test the hypothesis that abused children will be below non-abused in various areas of development.

Elizabeth Elmer  
Pittsburgh Child Guidance Center  
201 DeSoto Street  
Pittsburgh, Pennsylvania 15213

Completed

MC-R-530351-01-0  
MEASURES TO PREDICT CHILD ABUSE

A battery of tests will be developed to identify parents who have potential for abuse and/or neglect of their infants and children. These tests will then be used in a longitudinal study; and a typology of abusive parents will be constructed from the data.

Mildred Disbrow  
University of Washington  
200 Administration Building  
Seattle, Washington 98195

7/1/75-6/30/76 (2)  
\$125,243

N01-42803  
THE EFFECT OF BIRTH ORDER ON MOTHER-CHILD RELATIONSHIP

Effects of birth order, sex, and socioeconomic status upon mother-infant interaction and upon the cognitive-intellectual and emotional development of the infant up to 2 years will be studied.

Michael Lewis  
Project Director  
Educational Testing Service  
Rosedale Road  
Princeton, New Jersey 08540

7/1/75-10/31/76 (2)  
\$88,825

N01-22033  
CORRELATES OF FAMILY SIZE AND CHILD SPACING

The effects of family size and child spacing on the lives of both parents and their offspring were studied. Variables examined in the children included academic achievement, intellectual capacity, social relationships and personality.

R.L. Nuttal  
Boston College  
Brighton, Massachusetts 02135

Completed

PLD-7321-75RH  
THE INCIDENCE OF ABUSE OF ADOLESCENTS AS SEEN IN  
ALTERNATIVE SERVICES

A report will be written to incorporate data gathered from various research centers and from a conference focusing on the relationship between youth and the phenomenon of abuse and neglect.

William Hoffman, Ph.D.  
Department of Continuing Education  
in Social Work  
University of Minnesota  
Nolte Center  
Minneapolis, Minnesota 55455

6/15/75-12/31/75 (1)  
\$2,500

PLD-7339-75RH  
THE INCIDENCE OF ABUSE OF ADOLESCENTS AS SEEN IN  
ALTERNATIVE SERVICES

A report will be written to incorporate data gathered from various research centers and from a conference focusing on the relationship between youth and the phenomenon of abuse and neglect.

Diane Cabot  
Prince Georges County Hotline, Inc.  
6100 Rhode Island Avenue  
Riverdale, Maryland 20840

6/23/75-3/22/76 (1)  
\$2,500

PLD-7360-75RH  
THE INCIDENCE OF ABUSE OF ADOLESCENTS AS SEEN IN  
ALTERNATIVE SERVICES

A report will be written to incorporate data gathered from various research centers and from a conference focusing on the relationship between youth and the phenomenon of abuse and neglect.

Marjorie Statman  
Special Approaches in Juvenile  
Assistance  
1743 18th Street, N.W.  
Washington, D.C. 20852

6/23/75-12/22/75 (1)  
\$2,500

PLD-10802-75RH  
THE INCIDENCE OF ABUSE OF ADOLESCENTS AS SEEN IN  
ALTERNATIVE SERVICES

A report will be prepared of a two-day conference to be held at the University of Minnesota in November 1975 by mental health and social work experts from the State of Minnesota on the area of abuse and neglect of adolescents. This is part of the joint NIMH-NICHHD study of the relationship between youth and the phenomenon of abuse and neglect.

Joseph Palozzolo  
Youth Emergency Service Corporation  
9307 Olive Street Road  
St. Louis, Missouri 63132

6/23/75-3/22/76 (1)  
\$2,500

R01-MH-24741  
A LONGITUDINAL STUDY OF PHYSICALLY ABUSED CHILDREN

The effectiveness of a community program of services for physically abused and neglected children and their parents will be assessed including the impact of making available to the children and their parents extensive medical, legal, and social assistance. A wide range of community resources will be used, including self-help groups such as Parents Anonymous.

James Kent, Ph.D.  
Children's Hospital of Los Angeles  
P.O. Box 54700 Terminal Annex  
Los Angeles, California 90054

6/30/75-6/30/76 (2)  
\$124,000

R01-8031  
DENSITY AND PATHOLOGY IN URBAN AREAS

The effects of intra-urban population distribution on several social, psychological and somatic variables will be examined to determine if relationships do exist between density and pathology, including mental illness, crime and child abuse.

H.M. Choldin  
University of Illinois  
Urbana, Illinois 61801

9/1/75-6/30/76 (2)  
\$56,132

R01-8533

**MODERNIZATION THROUGH EDUCATION OF MOTHER-CHILD DYADS**

Effects will be studied of two different parent education programs in low income Black communities on mother-child interaction patterns and the children's cognitive and personal-social development. One goal is to modify negative interactions and therapy to change the mother's self-esteem and her concept of herself in relationship to her child.

D.T. Slaughter  
University of Chicago  
Chicago, Illinois 60601

6/1/75-5/31/76 (2)  
\$75,623

R18AA00824

**CHILDREN OF ALCOHOLICS**

A 17-year follow-up study will explore the long-term developmental effects of parental alcoholism in the context of the multiproblem family.

Dorothy Miller  
Scientific Analysis Corporation  
San Francisco, California 94105

6/1/75-5/31/76 (1)  
\$74,000

R18AA00031

**SERVICES TO CHILDREN OF ALCOHOLIC PARENTS AND THOSE PARENTS**

The goals of this three-year grant are to identify and reach the child of the alcoholic family, to conduct in-depth evaluation of the background of the child, to conduct conjoint family therapy, and to collect physical, psychological and sociological data on these children at risk.

William Bosma  
Department of Psychiatry  
University of Maryland  
Baltimore, Maryland 21201

7/1/75-6/30/76 (3)  
\$175,000

R18 AA01489-01

**DEVELOPING SERVICES FOR CHILDREN OF PROBLEM DRINKER PARENTS**

Opportunity for normal adjustment will be provided for elementary-school children of problem-drinking parents. Counselors, youth workers, and a social worker will be employed to provide services designed to reduce the likelihood of the children abusing alcohol themselves, refer alcoholic parents to rehabilitation services, and develop a coordinated effort with community agencies able to provide services. The interagency advisory committee of the Orange County Commission on Alcohol and Drug Abuse will serve as an advisory board and aid in service and coordination aspects.

Hunter B. Stewart  
Committee for Economic Progress, Inc.  
Orangeburg, South Carolina 29115

2/1/75-1/31/76 (1)  
\$110,331

**TRAINING GRANTS**

T/5AA00152

**FAMILY THERAPY TRAINING**

Training in family therapy techniques will be given to families in which alcoholism is a problem. This intervention hopes to be a deterrent to the sequelae, which include child abuse, to alcoholism in families.

David Berenson  
Center for Family Learning  
New Rochelle, New York 10805

6/1/75-7/31/76 (1)  
\$33,081

R18AA001641

**COMMUNITY PROGRAM FOR FAMILIES WITH PROBLEM DRINKERS**

Attitudes and behavior toward drinking will be studied within families by dealing with structure and functioning of family relationships, especially in high risk families. This will be carried out by self-help and self-study in group settings to result in the training of families to lead similar groups.

Peggy Papp  
Center for Family Learning  
New Rochelle, New York 10805

11/1/75-10/31/76 (2)  
\$68,000

ADM-42-74-36

**DEVELOPMENT OF TRAINING MODELS FOR THE IDENTIFICATION, TREATMENT AND PREVENTION OF CHILD ABUSE AND NEGLECT**

Training modules will be developed, tested and evaluated for extensive use nationwide by personnel involved in child abuse situations, such as mental health, medical, welfare, school and law enforcement professionals.

Sharrell Munce  
Children's Hospital Medical Center  
Children's Trauma Center  
51st and Grove Street  
Oakland, California 94609

6/24/74-6/23/76 (2)  
\$360,000

## PROJECTS FUNDED BY OFFICE OF EDUCATION

### TRAINING GRANTS

OEG-0-74-8908

#### THE ABUSED, MALTREATED AND NEGLECTED CHILD

Using the school situation, this project will identify children and families in need of assistance. Training is aimed at educating school staff to involve the family in remediation, amelioration and education of the children who have suffered neglect and abuse.

Nathan Gross  
New York City Board of Education,  
Community School District #18  
545 Utica Avenue  
Brooklyn, New York 11203

7/1/75-6/30/76 (2)  
\$135,000

OEG-0-74-8806

#### A MULTIDISCIPLINARY APPROACH TO EDUCATIONAL PROBLEMS ASSOCIATED WITH CHILD ABUSE AND NEGLECT (PROJECT PROTECTION)

Elementary and secondary school teachers will be trained to recognize neglect and abuse in children and to learn sources and methods of referral for reporting and services. Emphasis will be on staff and curriculum development and on policy revision.

Diane Broadhurst  
Montgomery County Public Schools  
850 Hungerford Drive  
Rockville, Maryland 20850

7/1/75-6/30/76 (2)  
\$80,000

OEG-0-74-8855

#### CHILD ABUSE: A MULTIDISCIPLINARY INTERAGENCY PROGRAM FOR IDENTIFICATION AND REFERRAL

Replicable processes will be developed to train school personnel to identify abused children, to refer those cases according to the Texas Family code, to work with the children and their parents in a school setting. A series of auto-tutorial packages designed for staff development and another series designed for young adult usage will be produced.

Stuart McKentry  
Consortium C, EPD  
202 North Loop West  
Houston, Texas 77018

7/1/75-6/30/76 (2)  
\$90,000

## PROJECTS FUNDED BY THE DEPARTMENT OF JUSTICE

### GRANTS

74-NI-99-0043

#### JUVENILE JUSTICE STANDARDS PROJECT

Twenty-six volumes of legal and administrative standards are being prepared to improve the effectiveness, efficiency and fairness of the juvenile justice system. The standards will focus on Pre- and non-court issues, court roles and procedures, treatment and corrections and administration. One of these volumes will be on child abuse and neglect.

Paul Nejelski  
Institute of Judicial Administration  
33 Washington Square  
New York, New York 10011

5/22/75-7/22/76 (2)  
\$347,664

75-NI-99-0082

#### PHYSICAL CHILD ABUSE PRESCRIPTIVE PACKAGE

A manual will be prepared which synthesizes the best programs, methods and procedures currently used by communities across the country to reduce the incidence of child abuse. The manual will provide communities with operational guidelines on the legal, organizational, programmatic and evaluation ingredients necessary for the optimal delivery of services to families and children involved in child abuse.

Arnold Schuchter  
Center for Community Resource Development  
Boston University  
710 Commonwealth Avenue  
Boston, Massachusetts 02215

3/15/75-11/14/75 (1)  
\$60,000

**PROJECTS FUNDED DIRECTLY BY  
THE LAW ENFORCEMENT ASSISTANCE ADMINISTRATION  
DEMONSTRATION GRANTS**

**73A46R2054  
TALK LINE**

The Talk Line was consolidated to serve the needs of military dependents and civilian youth in Rapid City to prevent delinquency through its availability for anyone in the Rapid City area. Problems tackled via the Talk Line include drug and alcohol abuse, child abuse, delinquency, in-school behavior and family situations. More than 50 volunteer counselors have been trained by the professional staffs of the West River Mental Health Center and other area social agencies.

Pennington County  
Courthouse  
Rapid City, South Dakota 57701

Completed

**74A01R0020  
JUVENILE PROBATION SUPERVISION AND EVALUATION**

Some of the ongoing benefits of this project, designed to help the court deal effectively with young people and their parents in delinquency, dependency, child abuse and neglect situations, include social summaries (prepared by the probation officer) to give a better understanding of the child's need, better recordkeeping by the court, and a process of screening out juveniles who should not be in court.

Russell County Commission  
County Courthouse  
Phoenix City, Alabama 36867

Completed

**74A26R0045  
JUVENILE DIVISION**

A juvenile division in the Saginaw County prosecuting attorney's office was established to ensure that juvenile offenders' contacts with the criminal justice system would be fair and efficient. Emphasis was placed on the protection of children who are the innocent victims of parental or other abuse and neglect. Investigation and prosecution of abuse and neglect of children was vigorously pursued.

Saginaw County  
Courthouse  
Saginaw, Michigan 48602

Completed

**74A29R0126  
ADDITIONAL MANPOWER—JUVENILE**

The office of the Jasper County juvenile counselor, whose duties included the supervision of unofficial cases and the handling of abuse and adoption case loads was continued and a juvenile bureau for the city of Joplin was created with an additional officer hired to provide 24-hour coverage.

Ozark Gateway Law Enforcement  
Assistance Counselor  
P.O. Box 1355  
303 East Third  
Joplin, Missouri 64801

Completed

**75A29R0179  
GROUP HOME**

A community-based subsidized foster home is being established to provide an alternative to detention of juveniles who do not require custody in jails. The home will be an immediate placement facility for the juvenile court for neglected, abused and delinquent children up to the age of 17, giving additional time for investigation, evaluation and treatment plan development.

Twenty-sixth Judicial Circuit Juvenile Court  
Courthouse  
Tuscumbia, Missouri 65082

4/1/75-3/31/76 (1)  
\$9,180

**74A34R0054  
UNITED HOME FOR BOYS GROUP FOSTER HOME**

A group residence was provided for ten boys between the ages of 10 and 17 who have been neglected, abandoned or, in selected cases, have been adjudicated delinquents by the court.

Passaic County  
Courthouse  
Paterson, New Jersey 07005

Completed

**74A34R0055  
PATERSON YMCA GROUP FOSTER HOME**

A group home was provided for 12 boys, ages 12 to 17, who have been abused, neglected, abandoned or, in selected cases, have been adjudicated delinquents by the court.

Passaic County  
Courthouse  
Paterson, New Jersey 07005

Completed

**74A42R0222  
PARENT STRESS CENTER**

A parent stress center for the diagnosis, management, and rehabilitation of the very young abused child and his parents was established.

Children's Hospital of Pittsburgh  
125 Desoto Street  
Pittsburgh, Pennsylvania 15213

8/1/74-7/31/75 (1)  
\$35,693

**TRAINING GRANTS**

**74A17R0208  
THE CHILD ADVOCATE ASSOCIATION**

Both the development of methods and the training of legal and medical personnel in the identification, court procedure and treatment of child abuse were goals. Developing identification and treatment modes for post-abuse problems and parents, among them subsequent delinquency and violent crime, were included.

Child Advocate Association/Illinois Department  
of Children and Family Services  
7200 Sears Tower  
233 South Wacker Drive  
Chicago, Illinois 60606

Completed

74A34R0141

**TRAINING SEMINAR—CHILD ABUSE INVESTIGATION**

Four 3-day seminars on child abuse investigation were held by the Department of Law and Public Safety in four parts of the state for personnel from prosecutors offices, state and municipal police forces, the division of youth and family services, and other agencies.

Department of Law and Public Safety  
State House Annex  
Trenton, New Jersey 08625

Completed

74A46R0135

**SPECIALIZED TRAINING—BOSTON, MASSACHUSETTS**

Training was provided for a team of designated persons from the sheriff's office, district county court and social welfare, that investigates reports of child abuse. The team members attended the Fifth National Symposium and Workshop on Protecting the Abused, the Neglected and the Sexually Exploited Child, held in Boston, Massachusetts, October 15-16, 1974.

Davison County District Court  
County Courthouse  
Mitchell, South Dakota 57301

Completed

**INFORMATION GRANTS**

75A11R0001

**PROJECT ON CHILD ABUSE AND CHILD SAFETY**

Designed to substantially increase the reporting of child abuse by training potential reporters, this project also aims to insure the prompt delivery of sufficient medical, legal and social responses to instances of child abuse by creating an inter-agency child abuse team which will include attorneys from the office of the corporation counsel, investigators from the Metropolitan Police Department, social workers from the Division of Social Service, D.C. Superior Court and the Social Rehabilitation Administration, a consulting psychiatrist and consulting physicians.

Office of the Corporation Counsel  
The District Building  
14th and E Streets N.W.  
Washington, D.C. 20004

3/1/75-2/28/76 (1)  
\$105,000

75DF030019

**CRIMINAL JUSTICE PLANNING IN METRO WASHINGTON AREA**

An annotated directory of projects of interest to criminal justice planners and law enforcement officials is being developed, along with a tri-state plan for supervision of probationers and parolees and a new analysis system to improve metropolitan area serious crime reports. Alternative recommendations on child abuse, runaway youth and the extradition of misdemeanants are among other goals.

John A. Herzig  
Metro Washington Council of Governments  
1225 Connecticut Avenue N.W.  
Washington, D.C. 20036

5/15/75-5/15/76 (1)  
\$84,692

**INDEXES**

PRINCIPAL INVESTIGATORS AND INSTITUTIONS

<i>A</i>	<i>Page</i>	<i>Page</i>	
Adams County Department of Social Services	21	Child Advocate Association	44
American Academy of Pediatrics	34	Children's Hospital of Los Angeles	35,37
American Humane Association	25	Children's Hospital of Michigan	16
Arizona Department of Economic Security	9	Children's Hospital of Pittsburgh	6,43
Arkansas Social Services	22	Children's Hospital Research Foundation, The	5
Arlington County Board of Public Welfare	23	Children's Hospital Medical Center, Children's Trauma Center	30,39
Associate Control Research and Analysis, Inc.	18	Childress, Odell	3
Attemeier, William A. III	14	Child Welfare League of America	16
		Choldin, H.M.	37
		Clayton County Department of Family and Children Services	6
		Cohen, Raquel	6
		Collignon, Fred	24
		Committee for Economic Progress, Inc.	38
<i>B</i>		Community Research Applications, Inc.	32,34
Bandman, Rosalyn	5	Connecticut Department of Children and Youth Services	4
Bard, E. Ronald	9	Consortium C, EPD	40
Bax, James	8	Cook Inlet Native Association	11
Baton Rouge Child Protection Center	23	Cornell University	9
Bay, Betty	11	Cosgrove, John G.	4
Bedger, Jean E.	34	Council for Community Services	34
Bell, George	5	CPI Associates	18
Bennett, Charlene	23		
Berenson, David	39	<i>D</i>	
Berkeley Planning Associates	24	Davis, Joseph A. Consultants Inc.	18
Berninger, Douglas	20	Davison County District Court, South Dakota	44
Berry, Willie R.	28	Day, Noel	13
Bogle, James A.	2	Decker, Curtis L.	8
Boorkman, David	20	De Francis, Vincent, J.D.	25
Bosma, William	38	Delli Quadri, Fred	28
Boston College	36	Densen-Gerber, Judeanne	34
Boston University Center for Community Resource Development	41	Depcik, Dennis	2
Breakey, Gail F.	2	Detroit—Youth Department	5
Broadhurst, Diane	40	Development Associates, Inc.	19
Brotman, Richard	33	Dinges, Janne B.	13
Brown, Harry	29	Disbrow, Mildred	36
Burgess, Robert L.	15	Doty, Earl F.	18
Burt Associates, Inc.	17,31	Dowdell, Natalie	9
Burt, Marvin	17,31	Durnall, Edward J.	27
Butterfield, Mary Jo	22	Dycus, Jean	10
<i>C</i>		<i>E</i>	
Cabot, Diane	37	Education Commission of the States	10
California State University, Los Angeles	8	Educational Testing Service	36
Case Western Reserve University	35	Egeland, Byron	14
Caufield, Barbara	30	Elmer, Elizabeth	35
Center for Community Resource Development, Boston	41		
Center for Family Learning	39		
Central Texas Council of Governments	3		
Chapa, Dario	17		

<i>Page</i>	<i>Page</i>
Eschele, Gregory	21
Evanston Mental Health Services	2
<i>F</i>	
Family Care Center	23
Family Resource Center, Albuquerque	4
Family Resource Center, St. Louis	21
Family Service Association	12
Fraser, Brian	8
Friedman, David B.	8
<i>G</i>	
Garinger, Gail	34
Gee, James	18
Geismar, Ludwig	13
Gelles, Richard J.	15
Gibbs, Mr. Donald	3
Giovannoni, Jeanne M.	31
Glich, I ester R.	28
Green, Arthur H.	14
Gross, Nathan	40
<i>H</i>	
Hanson, Jack	18
Harder, Robert C.	12
Harrell, Margaret	6
Helfer, Ray E.	14
Hendrix, Jeannette	23
Herner and Company	20
Herrenkohl, Roy C., Jr.	16
Herzig, John A.	45
Hill, Jack	22
Hinton, Patricia	6
Hoffman, William	36
Holbrook, Charles D.	28
Holder, Wayne	4
Holman, Mary	4
Holmes, Douglas	32, 34
Hunter College School of Social Work	27
<i>I</i>	
Ibarra, Abdon	12
Illinois Valley Community College	29
Indian Nurses of California, Inc.	3
Institute of Judicial Administration	26, 41
Institute for Urban Affairs and Research	7
<i>J</i>	
Johnson, Oliver	23
Jones, C.D.	10
Jones, Mary P.	5
Joseph A. Davis Consultants, Inc.	18
Judge Baker Guidance Center	6, 34
Juvenile Welfare Board of Pinellas County	23
<i>K</i>	
Kauikeolani Children's Hospital	2
Keith, Patricia M.	12
Kennedy-Shriver Center for Mental Retardation	.
Kennell, John H.	35
Kent, James	35, 37
Kirschner Associates, Inc.	19
Knox, Jack C.	3
Knudson, Doris Gonzalez	22
<i>L</i>	
Lampkin, Lillian	27
Law and Public Safety, New Jersey	44
Lehigh University Center for Social Research	16
Lewis, Michael	36
Lieber, Leonard L.	25
Lockhart, June	34
Loda, Frank	9
Ludlow, Bonnie	21
<i>M</i>	
MacDicken, Robert	19
Makah Tribal Council	22
Mannette, Jane	33
Martin, Phillip	11
Maryland Department of Employment and Social Services	8
Matthies, Gary D.	5
Mayer, Joseph	16
McKentry, Stuart	40
Metropolitan Area Protective Services	2
Metro Washington Council of Governments	45
Mexican-American Neighborhood Civic Organization	17



	Page		Page
Michael, Jacqueline	29	Passaic County Courthouse (Group Home), New Jersey	43
Michigan State University Department of Human Development	14	Passaic County Courthouse (YMCA Home), New Jersey	43
Migrant Child Abuse and Neglect Program	12	Paulson, Morris	35
Miller, Dorothy	38	Pennington County Courthouse, South Dakota	42
Mississippi Band of Choctaw Indians	11	Pennsylvania State University, The	15
Mitchell, Charles F.	29	Pittsburgh Child Guidance Center	35
Montana Department of Social and Rehabilitation Services	11	Polansky, Norman A.	15,31
Montgomery County Public Schools	40	Pressma, Donna	4
Moore, William G.	18	Prince Georges County Hotline, Inc.	37
Munce, Sharrell	30,39	Project Care	10
		Puerto Rico Department of Social Services	22
<i>N</i>			
Nacman, Martin	27		
Nagi, Saad Z.	25	<i>R</i>	
Narr, Christina	22	Ragan, Cindy	23
National Council for Black Child Development, Inc.	15	Ready, Patricia	33
National Institute for Community Development	19	Reavey, Marian I.	29
National Urban League, Inc.	9	Red Horse, John	11
Nejelski, Paul	41	Research Foundation of Children's Hospital	4
New Jersey College of Medicine and Dentistry	4	Robbins, Maxine W.	12
New Jersey Division of Youth and Family Services	21	Rogers-Graf, Martha	7
New York City Board of Education	21	Rude, Robert W.	11
Community School District #18	40	Russell County Commission, Alabama	42
New York Medical College	33	Rutgers University Medical School	6
Nicholson, Margaret	21	Rutgers University School of Social Work	13
Norfolk State College	27		
Norfolk State College	27	<i>S</i>	
Northwest Federation for Human Services	8	Saginaw County Courthouse, Michigan	42
Norton Children's Hospital	5	St. Christopher's Hospital	3
Nuttal, R. L.	36	Schneiger, Frank	6
		Schuchter, Arnold	41
<i>O</i>			
Odyssey House	34	Scientific Analysis Corp.	38
Office of the Corporation Counsel, DC	44	Scott, Donna	7
Ohio State University	25	Seaborg, James R.	17
Ozark Gateway Law Enforcement Assistance Counselor	42	Shelton, Quinn	19
		Shyne, Ann W.	16
		Slaughter, D.T.	38
		Solomons, Gerald M.D.	7
		Special Approaches in Juvenile Assistance, Washington, DC	37
		Starr, R. H., Jr.	16
<i>P</i>			
P.A.C.T. Program	5	State Grants	20
Palmer, Bonnie	9	Statman, Marjorie	37
Palozzolo, Joseph	37	Stembridge, Barbara	7
Panel for Family Living, The	22	Stewart, Hunter B.	38
Papp, Peggy	39	Strong, Ethelyn R.	27
Parents Anonymous	25	Sussman, Alan	26
		Swinger, Herschel	8

	Page		Page
<i>T</i>			
Tallerico, Bernard J.	10	University of Southern Mississippi	28
Taylor, Eddie A.	19	University of Texas at Austin	7
Tennessee Department of Human Services	10	University of Washington	17,36
Texas Department of Public Welfare	13	University of Wisconsin	7
Thomas, Duane	29	Urban and Rural Systems Associates	13,20
Thomas, George	7		
Twenty-sixth Judicial Circuit Juvenile Court, Missouri	43	<i>V</i>	
		Vanderbilt University Hospital	14
<i>U</i>			
University of Alabama	28		
University of California, L.A.	31,35	<i>W</i>	
University of Chicago	38	Ward, Evangeline	15
University of Cincinnati	29	Washington Center for Addiction	16
University of Colorado Medical Center	8	Wayne State University	29
University of Denver	30	Western Kentucky University	28
University of Evansville	28	White, E.H. & Co.	18
University of Georgia	7,31	Williams, Agnes F.	3
University of Illinois	37	Wiltwyck School, The	3
University of Iowa	7	W.O.M.A.N. Center	33
University of Kansas	12,29	Women, inc.	33
University of Maryland	38		
University of Minnesota	11,14,36	<i>Y</i>	
University of Missouri	29	Yakima Indian Nation, The	12
University of New Hampshire	27	YMCA Human Development Department, San Diego	5
University of New York Downstate Medical Center	14	Youth Emergency Service Corporation, St. Louis	37
University of North Carolina	9		
University of Oregon	30	<i>Z</i>	
University of Pennsylvania	15	Zaphiris, Alexander G.	30
University of Rhode Island	15		
University of Rochester	27		

PROJECT TITLES WITH PROJECT NUMBERS

<i>A</i>	<i>Project Number</i>	<i>Page</i>
Abuse and Neglect Among Low-Income Families: A Comparative Study of Adequate and Inadequate Child Care	90-C-418	13
Abused, Maltreated and Neglected Child, The	OEG-0-74-8908	40
Additional Manpower—Juvenile	74A29R0126	42
Apathy-Futility Syndrome in Child Neglect: An Urban View	90-C-442	15
Appalachian Citizens for Children's Rights	90-C-699	12
Arizona Community Development for Abuse and Neglect	90-C-410	9
Arkansas Child Abuse and Neglect Project	90-C-78	22
Assessment of Training and Technical Assistance Requirements of Child Abuse and Neglect Programs	HEW 105-75-1110	19
 <i>B</i>		
Bedford-Stuyvesant Family Services Program	90-C-396	3
Behavior, Parenting and Outcome of High Risk Infants	MC-R-060342-01-0	35
 <i>C</i>		
California State-wide Training in Child Abuse	47-P-45414/9-01	30
Causal Factors in Neglect and Battering: A Prospective Study	90-C-419	13
Child Abuse: A Controlled Study of Social, Familial, Individual and Interactional Factors	90-C-426	16
Child Abuse: A Multidisciplinary Interagency Program for Identification and Referral	OEG-0-74-8855	40
Child Abuse and Neglect Curriculum Development	HEW 105-75-1104	12
Child Abuse and Neglect Demonstration Center	90-C-693	5
Child Abuse and Neglect Demonstration Organization	90-C-395	3
Child Abuse and Neglect Programs Under Mental Health Auspices	ADM-42-74-56	34
Child Abuse and Neglect Resources Demonstration (CANRED) Project	90-C-411	13
Child Abuse and Neglect Service Project	90-C-623	11
Child Abuse Education and Training Program	47-P-35192/7-01	29
Child Abuse: Formal and Informal Decision-Making Processes	ADM-42-74-38	34
Child Abuse/Neglect Demonstration Unit	90-C-79	22
Child Advocacy Resources Expansion	90-C-576	10
Child Advocate Association	74A17R0208	43
Child Protection Center	90-C-80	22
Children of Alcoholics	R18AA00824	38
Children's Hospital National Medical Center		
Child Abuse and Neglect Model Center	90-C-401	4
Child Trauma Intervention Project, UCLA	MC-R-060339-01-0	35
Choctaw Center on Child Abuse and Neglect	90-C-625	11
Clayton County Protective Service Team	90-C-695	6
Clearinghouse on Programs, and Summarization of Research on Child Abuse and Neglect	HEW 105-75-1103	20
Community Program for Families with Problem Drinkers	R18AA001641	39
Connecticut Child Abuse and Neglect Demonstration Center	90-C-399	3
Cook Inlet Native Association Child Abuse and Neglect Program	90-C-622	10
Coordinating Community Concern for Child Abuse	90-C-77	22
Correlates for Family Size and Child Spacing	N01-22033	36
Criminal Justice Planning in Metro Washington Area	75DF030019	44
Crisis Intervention and Critical Incident Handling	47-P-25518/5-01	29

<i>D</i>	<i>Project Number</i>	<i>Page</i>
Demonstration Center for Child Abuse and Neglect	90-C-397	3
Demonstration Project for Child Abuse and Neglect	90-C-691	5
Demonstration Project for Coordinated Delivery of Social Services to Children Residing on a Military Base or in Surrounding Rural Counties	90-C-575	10
Density and Pathology in Urban Areas	R01-8031	37
Developing a Community of Child Care and Concern for Native American Children and Families	90-C-624	11
Developing Services for Children of Problem Drinker Parents	R18AA01489-01	38
Development of Evaluation System for Measuring Cost Effectiveness of Protective Services	SRS-74-31	31
Development of Training Models for the Identification, Treatment and Prevention of Child Abuse and Neglect	ADM-42-74-36	39
Draft State Questionnaire Related to Development of Guide for Public Social Service Agencies on Services to Abused and Neglected Children and Their Families	SRS-500-76-0005	32
Dynamics of Effective Parenting	47-P-25512/5-01	29
 <i>E</i>		
Early Warning Signals of Serious Neglect and Abuse	86-P-80086/9-01	31
Educational System's Role in Child Abuse and Neglect	90-C-407	10
Effect of Birth Order on Mother-Child Relationships	N01-42803	36
Evaluation of Child Abuse/Neglect Demonstration Projects	HRA 106-74-120	23
(Formative) Evaluation of Demonstration Centers	HEW 105-76-1117	17
(Formative) Evaluation of Innovative Demonstrations	HEW 105-76-1118	18
(Formative) Evaluation of Resource Projects	HEW 105-76-1004	18
Evaluation Measures for Child Abuse and Neglect Projects	90-C-430	17
Exploratory Investigation of Potential Societal and Intrafamilial Factors Contributing to Child Abuse and Neglect	90-C-448	15
Exploratory Study of Defining and Classifying Cases of Child Abuse	90-C-425	14
 <i>F</i>		
Family and Child Advocates	90-C-390	2
Family Care Center	90-C-81	23
Family Development Program	90-C-400	4
Family Interaction Patterns Related to Child Abuse and Neglect	90-C-445	15
Family Learning Center Project, The	90-C-73	21
Family Resource Center (Albuquerque, New Mexico)	90-C-405	4
Family Resource Center (St. Louis, Missouri)	90-C-75	21
Family Stress Center	90-C-406	4
Family Therapy Training	T/5AA00152	39
Follow-up Study of Traumatized Children	MC-R-420336-01-0	35
 <i>G</i>		
Group Home	75A29R0179	43
 <i>H</i>		
Hawaii Child Abuse Demonstration Center	90-C-389	2
H.E.L.P. Resource Project for Children and Families in Maryland	90-C-391	8

<i>I</i>	<i>Project Number</i>	<i>Page</i>
Identification and Definition of Factors Causally Associated with Child Abuse and Neglect	90-C-421	14
Identification of the Factors Effective in the Discontinuation of Parental Abuse and Neglect	90-C-429	16
Incidence of Abuse of Adolescents as Seen in Alternative Services	PLD-7321-75RH	36
Incidence of Abuse of Adolescents as Seen in Alternative Services	PLD-1080-75RH	37
Incidence of Abuse of Adolescents as Seen in Alternative Services	PLD-7339-75RH	36
Incidence of Abuse of Adolescents as Seen in Alternative Services	PLD-7360-75RH	37
Institute on Child Neglect and Abuse	47-P-20474/4-01	28
Intensive Training on Child Protective Services	47-P-15463/3-01	27
Investigation of the Effects of a Multidimensional Service Program		
Recidivism Discontinuation of Child Abuse and Neglect	90-C-428	16
Investigation of the Relationship Between Substance Abuse and Child Abuse	90-C-427	16
 <i>J</i>		
Juvenile Division	74A26R0045	42
Juvenile Justice Standards Project	74 NI-99-0043	41
Juvenile Probation Supervision and Evaluation	74A01R0020	42
 <i>K</i>		
Kansas State Grant Child Abuse and Neglect Training Program	90-C-577	12
 <i>L</i>		
Longitudinal Study of Physically Abused Children, A	R01-MH-24741	37
 <i>M</i>		
Makah Child Development Services Center	90-C-76	22
Measures to Predict Child Abuse	MC-R-53035-01-0	36
Metropolitan Area Protective Services Project	90-C-393	2
Migrant Child Abuse and Neglect Prevention Project	90-C-621	12
Modernization Through Education of Mother-Child Dyads	R01-8533	38
Mother to Infant Attachment	MC-R-390337-01-0	35
Multidisciplinary Approach to Educational Problems Associated with Child Abuse and Neglect	OEG-74-8806	40
 <i>N</i>		
National Center for the Prevention and Treatment of Child Abuse and Neglect	90-C-409	8
National Clearinghouse for Child Neglect and Abuse	OCD-CB-454(C1)	25
National Incidence Feasibility Study	HEW-100-75-0058	17
National Training Project on Child Abuse and Neglect	46-P-90034/8-01	30
National Training Project on Legal Aspects of Protective Services to Abused and Neglected Children	48-P-90262/0-01	30
National Urban League Child Abuse Project	90-C-403	9
New York Medical College Program for Pregnant Addicts and Addicted Mothers, The	H81 DA01686-01	33

<i>N (Cont.)</i>	<i>Project Number</i>	<i>Page</i>
New York Resource Center	90-C-398	9
North Carolina Resource Project	90-C-408	9
 <i>O</i>		
Odyssey House Parents' Demonstration Program	H81 DA01698-01	33
 <i>P</i>		
Parental Stress Center	90-C-694	5
	74A42R0222	43
Parent and Child Effective Relations Project	90-C-82	23
Parents Anonymous Self-Help for Child Abusing Parents	90-C-104	25
Paterson YMCA Group Foster Home	74A34R0055	43
Physical Child Abuse Prescriptive Package	75-NI-99-0082	41
Pro-Child: A Child Abuse and Neglect Program	90-C-83	23
Project Ku nak we sha' (Caring)	90-C-626	11
Project on Child Abuse and Child Safety	75A11R0001	44
Prospective Study of the Antecedents of Child Abuse	90-C-424	14
Protective Service System for Union County, New Jersey	90-C-74	21
Provision of Technical Assistance in the Development and Improvement of Child Abuse and Neglect Reporting Systems and Central Registers	HEW 105-75-1121	19
Provision of Technical Assistance in the Development of Child Abuse and Neglect Public Awareness Programs and Materials	HEW 105-75-1102	18
Provision for Training of Selected Personnel from Organizations and Agencies Having Child Abuse and Neglect Responsibilities in Regions I-V	HEW 105-75-1111	19
Provision for Training of Selected Personnel from Organizations and Agencies Having Child Abuse and Neglect Responsibilities in Regions VI-X and Among Indian Population	HEW 105-75-1112	19
 <i>R</i>		
Regional Child Abuse Treatment and Referral Demonstration Center	90-C-692	5
Regional Resource Center for Region I	90-C-404	6
Regional Resource Center for Region II	90-C-402	6
Regional Resource Center for Region III	90-C-601	6
Regional Resource Center for Region IV	90-C-392	7
Regional Resource Center for Region V	90-C-600	7
Regional Resource Center for Region VI	90-C-599	7
Regional Resource Center for Region VII	90-C-483	7
Regional Resource Center for Region VIII	90-C-409	8
Regional Resource Center for Region IX	90-C-484	8
Regional Resource Center for Region X	90-C-485	8
Regional Training Program on Child Abuse and Neglect	47-P-40248/8-01	30
Revision of the 1962 Model Child Abuse (and Neglect) Reporting Law	OCD-CB-508	25
 <i>S</i>		
San Antonio Child Abuse/Neglect Research Project	90-C-451	17
Service Project to Determine Reliability and Validity of Child Rearing Questionnaire	90-C-423	14
Services to Children of Alcoholic Parents and Those Parents	R18AA00031	38

S (Cont.)

	Project Number	Page
Social Systems Approach to Child Neglect and Abuse	47-P-20492/4-01	28
Southwest Indiana Child Abuse and Neglect Training Project	47-P-25436/5-01	28
Specialized Training—Boston, Massachusetts	74A46R0135	44
State of Knowledge of Child Neglect	09-P-56015/5	31
Structure and Performance of Programs of Child Abuse and Neglect	OCD-CB-500(C1)	25
Survey of Data on Child Abuse	ADM 42-74-43	34
Survey of Nine Health-Based Programs for Child Abuse/Neglect	HRA 106-74-9	34

T

Talk Line	73A46R2054	42
Training for Strengthening Parental Skills	47-P-25494/5-01	28
Training in Child Abuse and Neglect	47-P-10405/2-01	27
Training in the Area of Child Abuse and Neglect	47-P-35196/7-01	29
Training Project in Protective Services for Children	47-P-10446/2-01	27
Training Seminar—Child Abuse Investigation	74A34R0141	44
Training Workers for Service to Abused and Neglected Children	47-P-20497/4-01	28

U

United Home for Boys Group Foster Home	74A34R0054	43
Urban Indian Child Resource Center	90-C-394	2

W

Woman, Incorporated (Boston)	H81 DA 01651-01	33
Women's Center/Detroit-Wayne County Mental Health Board Project	H81 DA 01496-01	33
Workshop on Protective Services for Children	47-P-05352/1-01	27

PROJECT NUMBERS BY STATES

<u>State</u>	<u>Project #</u>	<u>Page</u>	<u>State</u>	<u>Project #</u>	<u>Page</u>
Alabama	47-P-20474/4-01	28	Illinois (Cont.)	R01-8031	37
	74A01R0020	42		R01-8533	38
Alaska	90-C-622	10	Indiana	47-P-25436/5-01	28
Arkansas	90-C-78	22	Kansas	47-P-35196/7-01	29
Arizona	90-C-410	9		90-C-577	12
California	47-P-45414/9-01	30	Kentucky	47-P-20492/4-01	28
	86-P-80086/9-01	31		90-C-692	5
	90-C-81	23	Louisiana	90-C-80	22
	90-C-104	25	Maryland	90-C-391	8
	90-C-394	2		HEW-100-75-0058	17
	90-C-406	4		OEG-0-74-8806	40
	90-C-484	8		PLD-7339-75RH	36
	ADM-42-74-36	39		R18AA00031	38
	HEW-105-75-1104	12		SRS-74-31	31
	HEW-105-75-1112	19	Massachusetts	75-NI-99-0082	41
	HEW-105-76-1117	17		90-C-404	6
	HRA-106-74-120	23		90-C-427	16
	MC-R-060339-01-0	35		ADM-42-74-38	34
	MC-R-060342-01-0	35		H81 DA 01651-01	33
	R01-MH-24741	37		N01-22033	36
	R18AA00824	38	Michigan	47-P-25518/5-01	29
Colorado	46-P-90034/8-01	30		74A26R0045	42
	47-P-40248/8-01	30		90-C-423	14
	90-C-73	21		90-C-426	16
	90-C-407	10		90-C-693	5
	90-C-409	8		H81 DA 01496-01	33
	OCD-CB-454 (C1)	25	Minnesota	90-C-424	14
Connecticut	90-C-399	3		90-C-624	11
District of Columbia	75A11R0001	44		PLD-7321-75RH	36
	75DF030019	44	Mississippi	47-P-20497/4-01	28
	90-C-401	4		90-C-625	11
	90-C-448	15	Missouri	47-P-35192/7-01	29
	90-C-601	6		74A29R0126	42
	HEW-105-75-1103	20		75A29R0179	43
	HEW-105-75-1110	19		90-C-75	21
	HEW-105-75-1111	19		PLD-10802-75RH	37
	HEW-105-75-1121	19	Montana	90-C-623	11
	HEW-105-76-1004	18	New Hampshire	47-P-05352/1-01	27
	HEW-105-76-1118	18	New Jersey	74A34R0054	43
	PLD-7360-75RH	37		74A34R0055	43
Florida	90-C-82	23		74A34R0141	44
Georgia	09-P-56015/5	31		90-C-74	21
	90-C-392	7		90-C-400	4
	90-C-695	6		90-C-402	6
Hawaii	90-C-389	2		90-C-418	15
Iowa	90-C-483	7		N01-42803	36
Idaho	90-C-485	8	New Mexico	90-C-405	4
Illinois	47-P-25494/5-01	28	New York	47-P-10405/2-01	27
	74A17R0208	43		47-P-10446/2-01	27
	90-C-390	2		74-NI-99-0043	41
	90-C-393	2		90-C-396	3
	ADM-42-74-43	34			
	HRA-106-74-9	34			

<u>State</u>	<u>Project #</u>	<u>Page</u>	<u>State</u>	<u>Project #</u>	<u>Page</u>		
New York (Cont.)	90-C-398	9	Rhode Island	90-C-425	14		
	90-C-403	9	South Carolina	R18AA01489-01	38		
	90-C-421	14		South Dakota	73A46R2054	42	
	90-C-429	16	74A46R0135		44		
	ADM-42-74-56	34	Tennessee		90-C-419	13	
	H81 DA 01686-01	33		90-C-575	10		
	H81 DA 01698-01	33		Texas	90-C-395	3	
	HEW-105-75-1102	18			90-C-411	13	
	OCD-CB-508	25			90-C-451	17	
	OEG-0-74-8908	40	90-C-576		10		
	R18AA001641	39	90-C-599		7		
	SRS-500-76-0005	32	90-C-621		12		
	T/5AA00152	39	OEG-0-74-8855	40			
	North Carolina	90-C-408	9	Virginia	47-P-15463/3-01	27	
	Ohio	47-P-25512/5-01	29		90-C-83	23	
90-C-691		5	Washington	90-C-76	22		
MC-R-390337-01-0		35		90-C-77	22		
OCD-CB-500(C1)		25		90-C-430	17		
Oregon	48-P-90262/0-01	30		90-C-626	11		
	Pennsylvania	74A42R0222		43	MC-R-530351-01-0	36	
		90-C-397		3	West Virginia	90-C-699	12
		90-C-428	16	Wisconsin		90-C-600	7
		90-C-442	15				
90-C-445		15					
90-C-694	5						
MC-R-420336-01-0	35						
Puerto Rico	90-C-79	22					

**END**

*7. 10. 1990*