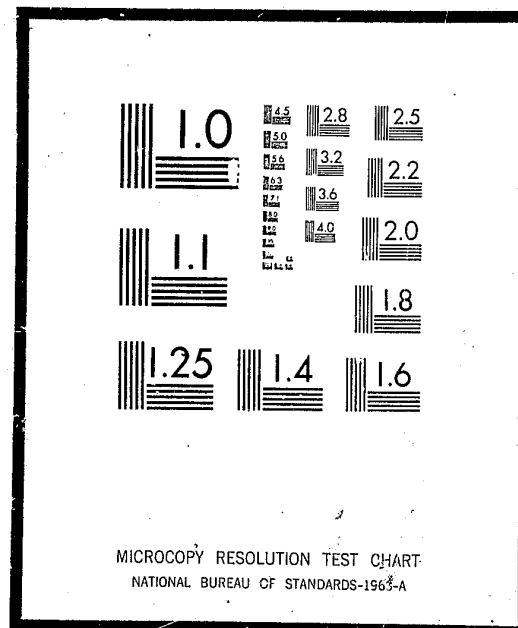


NCJRS

This microfiche was produced from documents received for inclusion in the NCJRS data base. Since NCJRS cannot exercise control over the physical condition of the documents submitted, the individual frame quality will vary. The resolution chart on this frame may be used to evaluate the document quality.



Microfilming procedures used to create this fiche comply with the standards set forth in 41CFR 101-11.504

Points of view or opinions stated in this document are those of the author(s) and do not represent the official position or policies of the U.S. Department of Justice.

U.S. DEPARTMENT OF JUSTICE
LAW ENFORCEMENT ASSISTANCE ADMINISTRATION
NATIONAL CRIMINAL JUSTICE REFERENCE SERVICE
WASHINGTON, D.C. 20531

Date filmed

7/14/76

LOUISVILLE / JEFFERSON COUNTY, (KY) -

METROPOLITAN SOCIAL SERVICES DEPARTMENT -

HOME DETENTION -

A PRELIMINARY EVALUATION,

MARCH, 1976

Prepared by:

MSSD Office of Research & Planning
G. B. Haarman, Director

V. L. Allen	J. E. Metzler
D. G. Conlin	S. A. Mimms
T. A. Hildenbrand	M. F. Seibold
K. S. McDaniel	A. M. Stastny
	H. K. Williams



L. E. LEBACH, III
COUNTY CLERK

COURT CLERKS:
TOM HENRY
BOB KIRCHGARTNER
GLEN MCDONALD

METROPOLITAN SOCIAL SERVICES DEPARTMENT

DIVISION OF ADMINISTRATION

216 S. 5TH STREET
LOUISVILLE, KENTUCKY 40202



SAM L. NEAL
EXECUTIVE DIRECTOR

The contents of this publication, including the conclusions represent the views of the staff of the Office of Research and Planning, Metropolitan Social Services Department.

This publication should not be considered to have official approval of the Jefferson County Fiscal Court, the Jefferson County Juvenile Court, or the Metropolitan Social Services Department, either expressed or implied until reviewed and evaluated by those organizations and subsequently endorsed by the appropriate individuals.

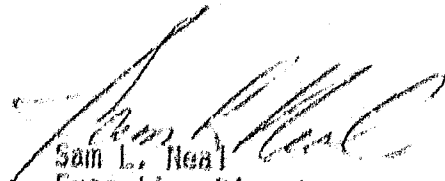

Sam L. Neal
Executive Director

TABLE OF CONTENTS

	Page
List of Tables.	11
Introduction	1
Methodology	4
Objectives	6
Recidivist Versus Non-Recidivist Typology.	10
General Findings: Outcome	21
Impressions and Recommendations	22

LIST OF TABLES

Table	TITLE	Page
1	Average Daily Population for Detention, ATD and Home Detention. May-October, 1974 and 1975	6
2	Sex and Race by Outcome	7
3	Outcome by Time of Entrance in Program	9
4	Sex and Race by Outcome - Control Group.	10
5	Sex and Race by Reason Referred (Grouped). Home Detention Population	11
6	PreHistory Score by Sex and Race - Home Detention Population	11
7	Sex and Race by Number of Prior Offenses - Home Detention Population	12
8	Age by Sex and Race - Home Detention Population	13
9	Living Arrangement by Sex and Race - Home Detention Population	14
10	Sex and Race by Income - Home Detention Population	15
11	Receiving Public Assistance by Sex and Race - Home Detention Population	15
12	School Status by Sex and Race - Home Detention Population	16
13	Length in Program by Sex and Race - Home Detention Population	17
14	Court Disposition by Sex and Race - Home Detention Population	17
15	Summary Description - Home Detention Population	19
16	Summary Description - Control Population	20

INTRODUCTION

Considerable interest and attention has been given to juvenile detention in Jefferson County. In March of 1974, County Judge Todd Hollenbach appointed the Commission on Juvenile Justice and Services. Among the priority tasks assigned this commission were detention center planning and alternatives to detention planning. The two tasks are closely interrelated as planning regarding the size for a new detention facility is directly related to the number of alternatives which are available.

There are two reasons for attempting to keep a new detention facility small and consequently the rate of detention low. The first reason is philosophical. While detention may have a therapeutic shock effect on some children, contact with the institution can frequently contribute to making a confirmed criminal out of only a misbehaving youth. Detention by itself has potentially destructive psychological effects. Sherwood Norman states three effects in the NCCD Handbook, Think Twice Before You Build or Enlarge a Detention Center:

- 1) Holding the detained youngster in forced association with other delinquents intensifies his hostility to society and exalts his status in the delinquent group.
- 2) Separation from his home and familiar environment makes the child feel he has been abandoned: "If no one cares about me, why should I care?" Most delinquent children have been rejected by their home, their school and their community. Confinement in detention heightens their sense of rejection and lowers their self-esteem--- and self-esteem is one of the most valuable deterrents to delinquency.
- 3) Detention underscores failure. It denies the child an opportunity to assume responsibility for his own behavior under close supervision in the community between adjudication and court disposition.

The second reason for keeping a new detention facility small is the economic factor. Several months ago, the Commission on Juvenile Justice and

and Services was given the figure of \$28,000 to \$37,000 per bed construction costs. Obviously the smaller the facility the cheaper the construction costs.

An additional important cost factor is the operating cost. In fiscal year 73-74, operating cost per child per day at the present Detention Center was \$32.47.

MSSD operates a 92 bed Detention Center for Jefferson County youths charged with committing a public offense. As of January 1, 1975, the number and type of alternatives to detention was limited. MSSD operated an Alternatives to Detention (ATD) program which was designed to provide short-term shelter care to those children who committed a delinquent act and were in need of care and supervision but not secure detention. Under this program, private individuals in the community open their homes to these youths and are compensated by MSSD at the rate of \$5.00 per child per day. As of January 1, 1975, the ATD program had one staff social worker and space for eight children pending adjudication. In September, the capacity for ATD was increased to sixteen.

Other alternative programs were the Home of the Innocents for dependent children and Shelter House which serves runaways.

Because of the success of the ATD program which demonstrated the feasibility of detaining some youths in a non-secure setting and also in light of the Jefferson County Commission on Juvenile Justice and Services' recommendations for a small fifty bed detention center, the need for additional alternatives was indicated. The Commission's report emphasized that the construction of a small fifty (50) bed facility will only be feasible if a strong system of diversion and alternatives to detention can also be developed.

On February 1, 1975, an application was submitted by MSSD to LEAA through the Kentucky Crime Commission for a Home Detention Program modeled after similar LEAA programs in St. Louis, Missouri and Newport News, Virginia.

This program was designed to remove from secure detention children who could be released to their own homes if intensive supervision and supportive services to the parents could be provided. Two types of children were considered appropriate candidates for Home Detention: 1) children whose offenses are serious but who have a stable home and 2) those whose offenses are less serious but whose home is questionably adequate.

The youths were assigned to the Home Detention Program by the Juvenile Court Judge, usually at arraignment or detention hearing. The children were then released to their own homes. Intensive supervision was provided by one of four home detention workers. Each of these workers had a maximum caseload of five children. The first home detention worker began accepting a caseload in mid April, but the full staff was not operational until June.

The goal of the Home Detention Program was to test a potentially viable alternative to detention so that money would not be wasted on an unnecessarily large Detention Center. The specific objectives of the Home Detention Program were:

- ✓ to reduce the average daily population of the Detention Center by six children per day, as compared to 1974;
- ✓ to reduce the total number of children detained by 100 per year;
- ✓ to detain in a non-secure setting 200 children who do not constitute a clear danger to themselves or the community;
- ✓ to provide care at a cost comparable to or less expensive than the secure detention experience; and
- ✓ to assist youths in remaining arrest free during the period of their adjudication through a program of supervision and personal support.

METHODOLOGY

The primary methodology of this evaluation involves an examination of whether the Home Detention Program met its objectives as outlined in the grant application and cited in the introduction of this report. Since the stated objectives were for an entire year, they had to be adjusted as this evaluation covers only those juveniles assigned to the Home Detention Program in the period from April, 1975 through the end of October, 1975. There were 109 juveniles in this, the experimental population.

Demographic, prior history, in-program offense, and court adjudication information on each child who entered the program was available in the Juvenile Court records. In addition, the Home Detention program maintained files on each child. Daily population figures on the Detention Center, ATD and Home Detention were also examined.

As a further test of the effectiveness and success of the program and also as an attempt to distinguish a typology of those youths likely to recidivate during court proceedings a control group was selected. The control population was made up of fifty juveniles released to the community without home supervision in a period prior to the beginning of the Home Detention Program (January-September, 1974). The sample was drawn from referrals to court who were handled formally but released either before or after arraignment. The control sample was matched with the experimental population on sex, race, and type of offense.

With one exception, there were no statistically significant differences between the experimental and control populations. The exception was school status as the Home Detention population had a lower rate of withdrawal from school than the control population ($p < .05$).

The similarities between the experimental and control groups indicate that valid inferences may be drawn.

In this study the following two definitions are used:

Non Recidivists - no detected offenses during court proceedings and

Recidivists - new detected offenses during court proceedings.

OBJECTIVES

The first objective of the Home Detention Program was to reduce the average daily population of the Detention Center by six as compared to 1974. In order to test this objective, the daily populations for detention, ATD and Home Detention were examined for the period from May through October, 1975. Likewise, daily populations for detention and ATD from the same time period of 1974 were examined. The results are presented in Table 1.

TABLE 1.

AVERAGE DAILY POPULATION FOR DETENTION, ATD AND HOME DETENTION
May-October, 1974 & 1975

	1974						TOTAL
	May	June	July	Aug.	Sept.	Oct.	
DETENTION	66.4	58.9	55.5	56.9	59.5	66.9	60.7
A.T.D.	2.3	2.9	6.1	7.2	7.5	5.1	5.1
HOME DETENTION							
	1975						TOTAL
	May	June	July	Aug.	Sept.	Oct.	
DETENTION	56.0	50.1	45.7	47.1	37.7	49.9	47.8
A.T.D.	7.5	7.4	6.6	8.1	9.7	10.6	8.3
HOME DETENTION	9.3	9.3	11.5	18.6	16.3	15.7	14.1

The average daily population in the Detention Center declined by over twelve persons per day from 1974 to 1975. Not all of the decline can be attributed to Home Detention as ATD increased its capacity in 1975. Nevertheless, quite clearly this objective has been met and exceeded.

The second objective was to reduce the total number of children detained by 100 per year. Accurate information on the number of children actually detained in 1974 and 1975 is unavailable so this objective could not be tested.

The third objective was to provide care at a cost comparable to or less

expensive than the detention experience. In fiscal year 73-74, the last year for which accurate data is available, the average cost per child per day in secure detention was \$32.47. The total cost for Home Detention was \$24,462.

From April through the end of October, 109 youths spent 2,602 child/days in the Home Detention Program. Therefore, the average cost per child per day in Home Detention was \$9.40. Quite obviously then, this objective has been met as the cost of having a child on home detention is at least one-third to one-fourth as expensive as keeping the child in secure detention.

TABLE 2.
SEX AND RACE BY OUTCOME

	MALE						FEMALE						TOTAL	
	White		Black		Sub T.		White		Black		Sub T.			
	No.	%	No.	%	No.	%	No.	%	No.	%	No.	%	No.	%
Still Active	1		1		2		0		0		0		2	
No Offenses/ No Warrants	24	58.5	26	60.6	50	59.5	4	44.4	10	71.4	14	60.9	64	59.8
Returned to Center	2	4.9	2	4.7	4	4.8	0	-	0	-	0	-	4	3.7
Bench Warrant/ Returned to Cntr./ No Offense	4	9.8	4	9.3	8	9.5	3	33.3	4	28.6	7	30.4	15	14.0
Committed New Offense	11	26.8	11	25.6	22	26.2	2	22.2	0	-	2	8.7	24	22.4
TOTALS	42	100.0	44	100.1	86	100.0	9	99.9	14	100.0	23	100.0	109	99.9

The final objective of the program related to assisting the youths to remain arrest free while on Home Detention.

Successful completion of the Home Detention Program was determined by two basic criteria: 1) that the child commit no new offenses while on Home Detention and 2) availability of the child for court appearances.

The results are presented in Table 2. As the table shows, 64 juveniles

successfully completed the program, seventeen were returned to secure detention either because the children's behavior or their family situation was unworkable or because a bench warrant was issued. Twenty-four juveniles were arrested while on home detention. Of the 24 recidivists charged with new offenses; one was arrested for a major offense against person, twelve were charged with major property offenses, nine committed minor criminal offenses and two were charged with social offenses (offenses which would not be criminal if committed by an adult).

The success rate (no offenses/no warrants) for males and females was nearly identical. However, males were more likely to commit new offenses than females. While very few females committed new offenses, nearly a third were returned on bench warrants---a rate three times that of males.

The Director of the Home Detention Program expressed concern that the initial referrals the program received were not appropriate referrals but were high AWOL risks and came from highly unstable family situations. The referrals were accepted at the time in an effort to build the caseloads, but the high risk of many of the youngsters was recognized. As a test of these observations, the Home Detention population was divided into two sub samples based upon date of entrance into Home Detention. The first group included those who entered the program in April and May while the second group included those who entered from June through October. The distribution for these two groups is presented in Table 3.

As the table indicates, there are considerable differences in the two groups. The group which entered the program in April and May had a success rate of only 37.5 per cent while two-thirds of those who entered the program since then were successes. This second group (from June to October) appears

to more accurately reflect the output of the Home Detention Program when it operates as designed.

TABLE 3.
OUTCOME BY TIME OF ENTRANCE IN PROGRAM

	Apr. & May		June-Oct.		T O T A L	
	No.	%	No.	%	No.	%
Still Active	0		2		2	
No Offenses/ No Warrants	9	37.5	55	66.3	64	59.8
Returned to Center	3	12.5	1	1.2	4	3.7
Bench Warrant/ Returned to Cntr./ No Offense	4	16.7	11	13.3	15	14.0
Committed New Offense	8	33.3	16	19.3	24	22.4
T O T A L S	24	100.0	85	100.1	109	99.9

*Percentages do not include "Still Active".

Since no specific criteria was listed in the objectives as an acceptable level of success or failure, it is impossible to make a judgment about this objective. While the success rate for the first month and a half was obviously unacceptably low, this was anticipated. The perceptible improvement in the success rate since that time is encouraging, but probably still not as high as had been hoped.

Only in Tables 2 and 3 are distinctions maintained between all four categories of outcome. In all of the remaining tables and discussion, the juveniles returned to secure detention either on a bench warrant or by the worker have been removed from consideration. This was done because the reason for bench warrants being issued were not included in this study. Bench warrants do not necessarily reflect purposive non-appearance in court or behavior on the program.

RECIDIVIST, VERSUS NON-RECIDIVIST TYPOLOGY

In order to distinguish a typology of youths likely to recidivate during court proceedings both the experimental and control populations were divided into two sub groups; non-recidivists were those juveniles who did not commit new offenses during the court process, recidivists were those arrested on new charges during court proceedings. The purpose of this examination was two-fold: 1) to identify those likely to recidivate whether they were released or placed on home detention and 2) to see what types of juveniles were less likely to recidivate during home detention.

The overall outcome of the control group is presented in Table 4. In the following analyses, the two youths returned on bench warrants have been excluded. Summary descriptions of the Home Detention and Control populations are presented in Tables 15 and 16.

TABLE 4.

SEX AND RACE BY OUTCOME - CONTROL GROUP

	TOTAL		MALE			FEMALE		
	No.	%	White No.	Black No.	Sub T. No.	White No.	Black No.	Sub T. No.
No Offenses/ No Warrants	35	70.0	14 73.7	11 65.0	25 64.1	4 100.0	6 85.7	10 90.9
Bench Warrants/ No Offenses	2	4.0	0 -	2 10.0	2 5.1	0 -	0 -	0 -
Committed New Offenses	13	26.0	5 26.3	7 36.0	12 30.8	0 -	1 14.3	1 9.1
TOTALS	50	100.0	19 100.0	20 100.0	39 100.0	4 100.0	7 100.0	11 100.0

As was noted in the previous section, very few females committed new offenses while on Home Detention. The same held true for the control group. The ratio of recidivists to non-recidivists was much higher for males than females but the small number of female recidivists renders statistical inferences invalid. The racial differences between recidivists and non-recidivists were minimal in both the experimental and control populations.

TABLE 5.
SEX AND RACE BY REASON REFERRED (GROUPED)
HOME DETENTION POPULATION

		TOTAL		MALE						FEMALE					
				White		Black		Sub T.		White		Black		Sub T.	
		No.	%	No.	%	No.	%	No.	%	No.	%	No.	%	No.	%
NON-RECIDIVISTS	Major vs. Person	9	14.1	3	12.5	6	23.1	9	18.0	0	-	0	-	0	-
	Major vs. Property	23	35.9	12	50.0	10	38.5	22	44.0	0	-	1	10.0	1	7.1
	Minor	18	28.1	7	29.2	8	30.8	15	30.0	1	25.0	2	20.0	3	21.4
	Social	14	21.9	2	8.3	2	7.7	4	8.0	3	75.0	7	70.0	10	71.4
	TOTALS	64	100.0	24	100.0	26	100.1	50	100.0	4	100.0	10	100.0	14	99.9
RECIDIVISTS	Major vs. Person	5	20.8	2	18.2	3	27.3	5	22.7	0	-	0	-	0	-
	Major vs. Property	13	54.2	7	63.6	6	54.5	13	59.1	0	-	0	-	0	-
	Minor	4	16.7	2	18.2	1	9.1	3	13.6	1	50.0	0	-	1	50.0
	Social	2	8.3	0	-	1	9.1	1	4.5	1	50.0	0	-	1	50.0
	TOTALS	24	100.0	11	100.0	11	100.0	22	99.9	2	100.0	0	-	2	100.0

The next factor examined was the type of offense which led to the court proceedings. In both the experimental and control groups, social offenders were much less likely to recidivate than those charged with criminal offenses.

TABLE 6.
PRE-HISTORY SCORE BY SEX AND RACE
HOME DETENTION POPULATION

		TOTAL		MALE						FEMALE					
				White		Black		Sub T.		White		Black		Sub T.	
		No.	%	No.	%	No.	%	No.	%	No.	%	No.	%	No.	%
NON-RECIDIVISTS	No Prior Offenses	9	14.1	4	16.7	1	3.8	5	10.0	1	25.0	3	30.0	4	28.6
	Prior Dep. Only	1	1.6	0	-	0	-	0	-	0	-	1	10.0	1	7.1
	Dependent/Delinquent	1	1.6	1	4.2	0	-	1	2.0	0	-	0	-	0	-
	Prior Social	6	9.4	1	4.2	2	7.7	3	6.0	1	25.0	2	20.0	3	21.4
	Prior Minor Offenses	10	15.6	2	8.3	4	15.4	6	12.0	2	50.0	2	20.0	4	28.6
	At Least One Prior Major Offense	37	57.8	16	66.7	19	73.1	35	70.0	0	-	2	20.0	2	14.3
	TOTALS	64	100.1	24	100.1	26	100.0	50	100.0	4	100.0	10	100.0	14	100.0
RECIDIVISTS	No Prior Offenses	2	8.3	1	9.1	1	9.1	2	9.1	0	-	0	-	0	-
	Prior Social Offense	2	8.3	0	-	0	-	0	-	2	100.0	0	-	2	100.0
	Prior Minor Offenses	5	20.8	3	27.3	2	18.2	5	22.7	0	-	0	-	0	-
	At Least One Prior Major Offense	15	62.5	7	63.6	8	72.7	15	68.2	0	-	0	-	0	-
	TOTALS	24	99.9	11	100.0	11	100.0	22	100.0	2	100.0	0	-	2	100.0

Because of the small number of social offender recidivists, the differences could not be statistically tested. Nevertheless, it is quite clear that social offenders were very unlikely to commit new offenses during the court process. Major property offenders appeared more likely to recidivate in both the experimental and control populations.

The prior delinquent history of the juvenile had an important effect on the control group but not on the experimental group. In the control group, all thirteen of the recidivists had been previously arrested on at least one major offense while fewer than half of the non-recidivists had committed a prior major offense and nearly a third were first offenders. The differences with regard to type of pre-history between recidivists and non-recidivists in the experimental population were negligible.

TABLE 7.
SEX AND RACE BY THE NUMBER OF PRIOR OFFENSES
HOME DETENTION POPULATION

PRIOR OFFENSES	TOTAL		SEX AND RACE					
			MALE			FEMALE		
	No.	%	White No.	Black No.	Sub T. No.	White No.	Black No.	Sub T. No.
NON-RECIDIVISTS	0	9 14.1	4 16.7	1 3.9	5 10.0	1 25.0	3 30.0	4 20.6
	1	16 25.0	5 20.8	5 19.2	10 20.0	1 25.0	5 50.0	6 42.9
	2-5	17 26.5	10 41.7	6 23.1	16 32.0	0 -	1 10.0	1 7.1
	6-10	14 21.9	4 16.7	7 26.9	11 22.0	2 50.0	1 10.0	3 21.4
	11-15	6 9.4	1 4.2	5 19.2	6 12.0	0 -	0 -	0 -
	16-20	1 1.6	0 -	1 3.9	1 2.0	0 -	0 -	0 -
	21+	1 1.6	0 -	1 3.9	1 2.0	0 -	0 -	0 -
	TOTALS	64 100.1	24 100.1	26 100.1	50 100.0	4 100.0	10 100.0	14 100.0
	Mean	(4.8)	(3.5)	(7.2)	(5.4)	(4.3)	(1.7)	(2.4)
RECIDIVISTS	0	2 8.3	1 9.1	1 9.1	2 9.1	0 -	0 -	0 -
	1	4 16.7	1 9.1	2 18.2	3 13.6	1 50.0	0 -	1 50.0
	2-5	8 33.3	5 45.5	2 18.2	7 31.8	1 50.0	0 -	1 50.0
	6-10	5 20.8	2 18.2	3 27.3	5 22.7	0 -	0 -	0 -
	11-15	2 8.3	0 -	2 18.2	2 9.1	0 -	0 -	0 -
	16-20	1 4.2	1 9.1	0 -	1 4.5	0 -	0 -	0 -
	21+	2 8.3	1 9.1	1 9.1	2 9.1	0 -	0 -	0 -
	TOTALS	24 99.9	11 100.1	11 100.1	22 99.9	2 100.0	0 -	2 100.0
	Mean	(6.6)	(6.7)	(7.3)	(7.0)	(2.3)	(-)	(2.3)

When the non-recidivists from the control and experimental groups were compared, it was clear that the controls had a significantly higher rate of first offenders than the experimentals ($p < .05$). Similar differences were

apparent with regard to the mean number of prior offenses. The control group recidivists had a significantly higher mean number of prior offenses than the control non-recidivists ($p < .001$). The Home Detention non-recidivists had a higher mean number of prior offenses than the control non-recidivists ($p < .05$). On the other hand, the Home Detention recidivists had a lower mean number of prior offenses than control group recidivists ($p < .05$). Thus the data would suggest that Home Detention has a greater impact on the success of multiple offenders than a matched group without those services.

TABLE 8.
AGE BY SEX AND RACE
HOME DETENTION POPULATION

AGE	TOTAL		MALE				FEMALE			
			White		Black		Sub T.		White	
	No.	%	No.	%	No.	%	No.	%	No.	%
NON-RECIDIVISTS	10	1 1.6	0 -	-	1 3.8	1 2.0	0 -	-	0 -	-
	11	0 -	0 -	-	0 -	0 -	0 -	-	0 -	-
	12	2 3.1	1 4.2	1 3.8	2 4.0	0 -	-	0 -	-	0 -
	13	4 6.3	1 4.2	0 -	1 2.0	1 25.0	2 20.0	3 21.4	1 25.0	4 40.0
	14	11 17.2	4 16.7	2 7.7	6 12.0	2 50.0	0 -	2 14.3	0 -	3 30.0
	15	16 25.0	6 25.0	8 30.8	14 28.0	0 -	3 30.0	3 21.4	0 -	1 10.0
	16	18 28.1	6 25.0	9 34.6	15 30.0	0 -	1 10.0	1 7.1	0 -	-
	17	12 18.8	6 25.0	5 19.2	11 22.0	0 -	-	-	0 -	-
	TOTALS	64 100.1	24 100.1	26 99.9	50 100.0	4 100.0	10 100.0	14 99.9		
	Mean	(15.2)	(15.4)	(15.3)	(15.4)	(14.3)	(14.7)	(14.6)		
RECIDIVISTS	12	1 4.2	1 9.1	0 -	1 4.5	0 -	-	0 -	-	-
	13	1 4.2	0 -	1 9.1	1 4.5	0 -	-	0 -	-	-
	14	5 20.8	1 9.1	3 27.3	4 18.2	1 50.0	0 -	1 50.0	0 -	-
	15	9 37.5	4 36.4	4 36.4	8 36.4	1 50.0	0 -	1 50.0	0 -	-
	16	6 25.0	3 27.3	3 27.3	6 27.3	0 -	-	0 -	-	-
	17	2 8.3	2 18.2	0 -	2 9.1	0 -	-	0 -	-	-
	TOTALS	24 100.0	11 100.1	11 100.1	22 100.0	2 100.0	0 -	2 100.0		
	Mean	(15.0)	(15.3)	(14.8)	(15.0)	(14.5)	-	(14.5)		

The Home Detention Program appeared to perform better than the Control group with older juveniles but significantly worse with those fifteen or under ($p < .05$). Home Detention tended to be particularly successful with seventeen year olds as twelve youths were among the non-recidivists but only two were recidivists.

The design of the Home Detention Program laid emphasis on the adequacy of the juvenile's home situation as it was felt that the intensive supervision of a home detention worker demanded at least some structure and participation on the part of the child's family. The only available indicator of the home situation was living arrangement which is shown in Table 9. Overall, no discernable differences in living arrangement were apparent between non-recidivists and recidivists in either the Home Detention or Control populations. *Non-recidivists did have a higher rate of living with both parents in the Home Detention population but the difference was not significant.*

TABLE 9.
LIVING ARRANGEMENT BY SEX AND RACE
HOME DETENTION POPULATION

	TOTAL	MALE						FEMALE					
		White		Black		Sub T.		White		Black		Sub T.	
		No.	%	No.	%	No.	%	No.	%	No.	%	No.	%
NON-RECIDIVISTS	Unknown*	2	-	1	-	1	-	2	-	0	-	0	-
	Mother & Stepfa.	0	-	0	-	0	-	0	-	0	-	0	-
	Mother Only	33	53.2	8	34.8	17	68.0	25	52.1	3	75.0	5	50.0
	Relative	6	9.7	2	8.7	2	8.0	4	8.3	0	-	2	20.0
	Both Parents	18	29.0	10	43.5	6	24.0	16	33.3	0	-	2	20.0
	Father Only	3	4.8	2	8.7	0	-	2	4.2	1	25.0	0	-
	Independent	2	3.2	1	4.3	0	-	1	2.1	0	-	1	10.0
TOTALS		64	99.9	24	100.0	26	100.0	50	100.0	4	100.0	10	100.0
RECIDIVISTS	Mother & Stepfa.	2	8.3	2	18.2	0	-	2	9.1	0	-	0	-
	Mother Only	16	66.7	6	54.5	9	81.8	15	68.2	1	50.0	0	-
	Relative	1	4.2	1	9.1	0	-	1	4.5	0	-	0	-
	Both Parents	4	16.7	1	9.1	2	18.2	3	13.6	1	50.0	1	50.0
	Father Only	1	4.2	1	9.1	0	-	1	4.5	0	-	0	-
	Independent	0	-	0	-	0	-	0	-	0	-	0	-
TOTALS		24	100.1	11	100.0	11	100.0	22	99.9	2	100.0	0	-

*Percentages do not include "Unknowns".

Tables 10 and 11 present information on the financial status of the Home Detention and Control populations. Family income was unknown for a high percent age of both populations which renders interpretations questionable. For those

on whom information was available, non-recidivists had a higher mean income than recidivists. This was true for both the Control and Experimental populations. Receipt of public assistance is another measure of financial status. The results were similar for the Home Detention population with recidivists having a higher rate of receiving public assistance than non-recidivists. The reverse was true for the Controls with the recidivists having a slightly lower rate of receipt of public assistance.

TABLE 10.
SEX AND RACE BY INCOME
HOME DETENTION POPULATION

	TOTAL	MALE						FEMALE					
		White		Black		Sub T.		White		Black		Sub T.	
		No.	%	No.	%	No.	%	No.	%	No.	%	No.	%
NON-RECIDIVISTS	Unknown	23		9		10		19		0		4	
	Less Than \$3,500	10	24.4	4	26.7	3	18.8	7	22.6	2	50.0	1	16.7
	\$ 3,500-\$5,499	10	24.4	1	6.7	6	37.5	7	22.6	1	25.0	2	33.3
	5,500- 7,499	11	26.8	4	26.7	3	18.8	7	22.6	1	25.0	3	50.0
	7,500-\$9,999	5	12.2	2	13.3	3	18.8	5	16.1	0	-	0	-
	\$10,000 & Over	5	12.2	4	26.7	1	6.2	5	16.1	0	-	0	-
	TOTALS	64	100.0	24	100.1	26	100.1	50	100.0	4	100.0	10	100.0
RECIDIVISTS	Mean		(\$5,866)		(\$7,450)		(\$5,359)		(\$6,371)		(\$3,875)		(\$4,583)
	Unknown	11		5		5		10		1		0	
	Less Than \$3,500	5	30.6	2	33.3	3	60.0	5	41.7	0	-	0	-
	\$ 3,500-\$5,499	4	30.8	2	33.3	2	33.3	4	33.3	0	-	0	-
	5,500- 7,499	2	15.4	1	16.7	1	16.7	2	16.7	0	-	0	-
	7,500-\$9,999	2	15.4	1	16.7	0	-	1	8.3	1	100.0	0	-
	\$10,000 & Over	0	-	0	-	0	-	0	-	0	-	0	-
	TOTALS	24	100.1	11	100.0	11	100.0	22	100.0	2	100.0	0	-
	Mean		(\$4,750)		(\$5,333)		(\$3,500)		(\$4,417)		(\$8,750)		(\$8,750)

*Percentages do not include Unknown

TABLE 11.
RECEIVING PUBLIC ASSISTANCE BY SEX AND RACE
HOME DETENTION POPULATION

	TOTAL	MALE						FEMALE					
		White		Black		Sub T.		White		Black		Sub T.	
		No.	%	No.	%	No.	%	No.	%	No.	%	No.	%
NON-RECIDIVISTS	YES	27	44.3	8	34.8	12	48.0	20	41.7	2	50.0	5	55.6
	NO	34	55.7	15	65.2	13	52.0	28	58.3	2	50.0	4	44.4
	Unknown	3		1		1		2		0		1	
	TOTALS	64	100.0	24	100.0	26	100.0	50	100.0	4	100.0	10	100.0
RECIDIVISTS	YES	12	54.5	4	36.4	7	77.8	11	55.0	1	50.0	0	-
	NO	10	45.5	7	63.6	2	22.2	9	45.0	1	50.0	0	-
	Unknown	2		0		2		2		0		0	
	TOTALS	24	100.0	11	100.0	11	100.0	22	100.0	2	100.0	0	-

*Percentages do not include Unknowns.

The final demographic variable examined was school status. The information is presented in Table 12. As was noted in the methodology, school status was the one factor which differentiated the overall Home Detention population from the Control population as the Control group had a higher rate of school withdrawal. For the Control group, the recidivists were more likely to be withdrawn from school than the non-recidivists. Interestingly, the opposite was true for the Home Detention population with those withdrawn from school more likely to be non-recidivists. *While the differences were not significant, the implication at this time is that being withdrawn from school should not be a hindrance to admission into Home Detention.*

TABLE 12.
SCHOOL STATUS BY SEX AND RACE
HOME DETENTION POPULATION

		TOTAL		SEX					
				MALE			FEMALE		
		No.	%	White No.	Black No.	Sub T. No.	White No.	Black No.	Sub T. No.
NON-RECIDIVISTS	Unknown	3		2	1	3	0	0	0
	Attending	48	78.7	16	21	37	4	7	11
	Withdrawn	13	21.3	6	4	10	0	3	3
	TOTALS	64	100.0	24	26	50	4	10	14
RECIDIVISTS	Unknown	0		0	0	0	0	0	0
	Attending	21	87.5	8	11	19	2	0	2
	Withdrawn	3	12.5	3	0	3	0	0	0
	TOTALS	24	100.0	11	11	22	2	0	2

*Percentages do not include Unknowns.

As might have been expected, the length of time on Home Detention differed greatly, for the recidivists and non-recidivists. The mean length of time on Home Detention for non-recidivists was double that of the recidivists. *It should also be noted that seventy per cent of the recidivists committed new offenses within three weeks.*

TABLE 13.
LENGTH IN PROGRAM BY SEX AND RACE
HOME DETENTION PROGRAM

DAYS	TOTAL	M A L E						F E M A L E					
		White		Black		Sub T.		White		Black		Sub T.	
		No.	%	No.	%	No.	%	No.	%	No.	%	No.	%
NON-RECIDIVISTS	1-10	6	9.4	2	8.3	1	3.8	3	6.0	0	-	3	21.4
	11-20	18	28.1	9	37.5	5	19.2	14	28.0	0	-	4	28.6
	21-30	18	28.1	6	25.0	9	34.6	15	30.0	2	50.0	1	21.4
	31-40	6	9.4	2	8.3	4	15.4	6	12.0	0	-	0	-
	41+	16	25.0	5	20.8	7	26.9	12	24.0	2	50.0	2	28.6
	TOTALS	64	100.0	24	99.9	26	99.9	50	100.0	4	100.0	10	100.0
RECIDIVISTS	Mean	(31.8)		(24.9)		(37.9)		(31.7)		(46.5)		(26.6)	
	1-10	10	41.7	3	27.3	6	54.5	9	40.9	1	50.0	0	50.0
	11-20	7	29.2	3	27.3	3	27.3	6	27.3	1	50.0	0	50.0
	21-30	5	20.8	3	27.3	2	18.2	5	22.7	0	-	0	-
	31-40	2	8.3	2	18.2	0	-	2	9.1	0	-	0	-
	41+	0	-	0	-	0	-	0	-	0	-	0	-
	TOTALS	24	100.0	11	100.1	11	100.0	22	100.0	2	100.0	0	100.0
	Mean	(16.0)		(20.2)		(12.6)		(16.4)		(11.5)		(11.5)	

TABLE 14.
COURT DISPOSITION BY SEX AND RACE
HOME DETENTION POPULATION

	TOTAL	M A L E						F E M A L E					
		White		Black		Sub T.		White		Black		Sub T.	
		No.	%	No.	%	No.	%	No.	%	No.	%	No.	%
NON-RECIDIVISTS	Disposition Still Pending	2		1		1		2		0		0	
	Dismissed/Filed Away	18	29.0	4	17.4	9	36.0	13	27.1	2	50.0	3	30.0
	Foster Care/Protective Serv.	4	6.5	0	-	1	4.0	1	2.1	0	-	3	30.0
	Mental Health/Drug Center	2	3.2	2	8.7	0	-	2	4.2	0	-	0	-
	Probation/VPO	26	41.9	12	52.2	11	44.0	23	47.9	1	25.0	2	20.0
	Group Home	4	6.5	2	8.7	1	4.0	3	6.3	0	-	1	10.0
	Delinquent Institution	8	12.9	3	13.0	3	12.0	6	12.5	1	25.0	1	10.0
	TOTALS	64	100.0	24	100.0	26	100.0	50	100.1	4	100.0	10	100.0
RECIDIVISTS	Disposition Still Pending	4		0		4		0		0		0	
	Dismissed/Filed Away	4	20.0	2	18.2	1	14.3	3	16.7	1	50.0	0	5
	Foster Care/Protective Serv.	0	-	0	-	0	-	0	-	0	-	0	-
	Mental Health/Drug Center	0	-	0	-	0	-	0	-	0	-	0	-
	Probation/VPO	9	45.0	6	54.5	3	42.9	9	50.0	0	-	0	-
	Group Home	0	-	0	-	0	-	0	-	0	-	0	-
	Delinquent Institution	7	35.0	3	27.3	3	42.9	6	33.3	1	50.0	0	5
	TOTALS	24	100.0	11	100.0	11	100.1	22	100.0	2	100.0	0	100.0

*Percentages do not include Disposition Still Pending.

The ultimate court disposition for both the Home Detention and the control populations was highly related to whether the child committed a new offense during the court process. *Those who committed new offenses pending adjudication in both populations were more likely to be committed to a delinquent institution ($p < .05$).* Non-recidivists had a slightly higher rate of having their cases filed away or dismissed.

SUMMARY DESCRIPTION
HOME DETENTION POPULATION

	NON-RECIDIVISTS		RECIDIVISTS	
	%	Mean	%	Mean
Major vs. Person Offenders	14.1		20.8	
Major vs. Property Offenders	35.9		54.2	
Minor Offenders	28.1		16.7	
Social Offenders	21.9		8.3	
First Offenders	14.1		8.3	
Previous Major Offense	57.8		62.5	
Mean Number Prior Offenses		4.8		6.6
Mean Age		15.2		15.0
Age 14 and Under	28.1		29.2	
Age 15 and 16	53.1		62.5	
Age 17	18.8		8.3	
Living with Mother Only	53.2		66.7	
Living with Both Parents	29.0		16.7	
Mean Income		\$5,866		\$4,750
Below \$3,500	24.4		38.5	
Above \$7,500	24.4		15.4	
Receiving Public Assistance	44.3		54.5	
Withdrawn from School	21.3		12.5	
<u>DISPOSITION</u>				
Filed Away/Dismissed	29.0		20.0	
Probation/VPO	41.9		45.0	
Delinquent Institution	12.9		35.0	
Mean Number of Days in Home Detention		31.8		16.0

SUMMARY DESCRIPTION
CONTROL POPULATION

	NON-RECIDIVISTS		RECIDIVISTS	
	%	Mean	%	Mean
Major vs. Person Offenders	11.4		7.7	
Major vs. Property Offenders	48.6		53.8	
Minor Offenders	17.1		38.5	
Social Offenders	22.9		-	
First Offenders	31.4		-	
Previous Major Offense	45.7		100.0	
Mean Number Prior Offenses		3.0		10.8
Mean Age		15.2		15.7
Age 14 and Under	25.7		15.4	
Age 15 and 16	60.0		53.8	
Age 17	14.3		30.8	
Living with Mother Only	42.9		38.5	
Living with Both Parents	34.3		38.5	
Mean Income		\$6,375		\$5,975
Below \$3,500	41.7		30.0	
Above \$7,500	29.2		20.0	
Receiving Public Assistance	37.1		30.8	
Withdrawn from School	25.7		46.2	
<u>DISPOSITION</u>				
Filed Away/Dismissed	40.0		23.1	
Probation/VPO	37.1		23.1	
Delinquent Institution	2.9		46.2	

GENERAL FINDINGS: OUTCOME

✓ Home Detention has a greater impact on the success of multiple offenders than a matched Control Group without those services.

✓ Initial program start-up had a deleterious effect on the Home Detention outcome. To fill the caseloads, juveniles who were higher risks were accepted which may have affected recidivism.

✓ Home Detention had better success with social and minor offenders compared to other offense categories.

✓ Home Detention was more successful with older juveniles and with those withdrawn from school than the Control Group.

✓ Females performed well in the program.

✓ Home Detention did not do as well with children under fifteen.

✓ Those from families with higher incomes did better in both the Experimental and Control groups.

✓ Living arrangement had no significant effect on outcome. However, living arrangement is a quantitative measure and does not rate the quality of the home environment.

✓ Juveniles who committed new offenses did so early in the program.

✓ Recidivists were more likely to receive an institutional disposition.

IMPRESSIONS AND RECOMMENDATIONS

- It would appear that the program is well on its way to meeting the goals and objectives as stated in the grant application.
- The progress (success/recidivism) should continue to be monitored as the program gains expertise in determining those youths who are the optimum candidates for Home Detention.
- An improved measurement for the quality of the home situation should be employed and monitored as to its impact on the success/failure rate of the program.
- The majority of referrals to Home Detention came from only a few assessment workers. Ongoing discussion with the assessment staff should seek to encourage referrals of all youths who might respond to the program.
- In general, the project is operating within reasonable expectations for a new program.

END