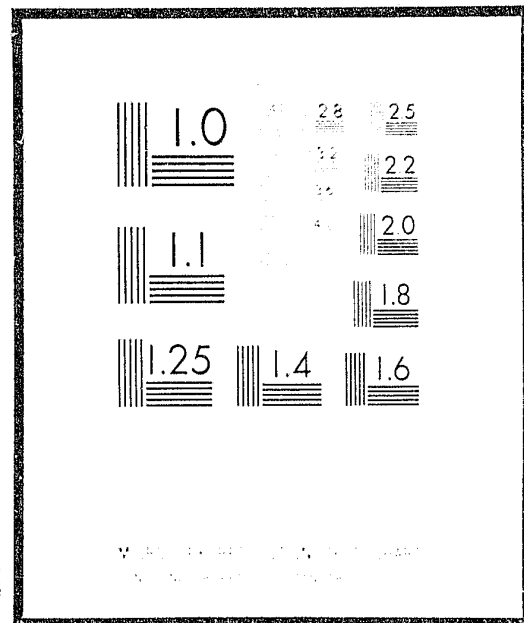


NCJRS

This microfiche was produced from documents received for inclusion in the NCJRS data base. Since NCJRS cannot exercise control over the physical condition of the documents submitted, the individual frame quality will vary. The resolution chart on this frame may be used to evaluate the document quality.



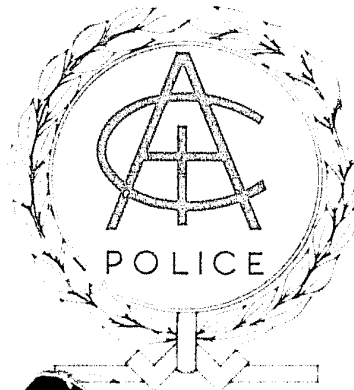
Microfilming procedures used to create this fiche comply with the standards set forth in 41CFR 101-11.504

Points of view or opinions stated in this document are those of the author(s) and do not represent the official position or policies of the U.S. Department of Justice.

U.S. DEPARTMENT OF JUSTICE
LAW ENFORCEMENT ASSISTANCE ADMINISTRATION
NATIONAL CRIMINAL JUSTICE REFERENCE SERVICE
WASHINGTON, D.C. 20531

11/17/76

Date filmed.



32643
READING ROOM

of State and Provincial Police

I

1967

COMPARATIVE DATA REPORT
1969
DIVISION OF STATE AND PROVINCIAL POLICE



INTERNATIONAL ASSOCIATION OF CHIEFS OF POLICE

1319 18th Street, N.W.

Washington, D.C. 20036

This project was supported by Grant SG-70-001 awarded by the National Criminal Justice Statistical Research Center of the Law Enforcement Assistance Administration of the U.S. Department of Justice.

FOREWORD

The International Association of Chiefs of Police (IACP) was founded in 1893. One of the most compelling reasons for the formation of the Association was the early realization that a vehicle was needed by which information relative to police management and operational matters could be compiled and disseminated. Consequently, the IACP constitution singled out the promotion of information-gathering and exchange as one of the chief purposes of the Association. This 1969 Comparative Data Report is an excellent example of our continuing dedication to this purpose.

Quinn Tamm
Executive Director
International Association of
Chiefs of Police

**DIVISION OF STATE
AND
PROVINCIAL POLICE**

OFFICERS 1969-70

General Chairman
Robert R. Lester
Commissioner, Department of Public Safety
Oklahoma City, Oklahoma

Immediate Past General Chairman
Leo J. Mulcahy
Commissioner, Connecticut State Police
Hartford, Connecticut

1st Vice Chairman
Fredrick E. Davids
Director, Department of Michigan State Police
East Lansing, Michigan

2nd Vice Chairman
James J. Hegarty
Director, Department of Public Safety
Phoenix, Arizona

Secretary-Treasurer
Woodrow W. Corbin
Major, Maryland State Police
Pikesville, Maryland

Advisor
Bernard R. Caldwell
Chairman, State Police Merit Board
Springfield, Illinois

Sergeant-at-Arms
Adolph M. Pastore
Major (Retired), Connecticut State Police
Hartford, Connecticut

STAFF

William H. Freney, Director
Division of State and Provincial Police

Norman Darwick, Assistant Director
IACP Highway Safety Division

David A. Espie, Consultant
IACP Division of State and Provincial Police

Ronald H. Sostkowski, Consultant
IACP Division of State and Provincial Police

COMPARATIVE DATA REPORT

1969

FOREWORD iii

PREFACE vii

COMPARATIVE DATA TABLES

ADMINISTRATION 1

OPERATIONS 21

SERVICES 31

INFORMATION SYSTEMS 39

ANNEX

CANADIAN PROVINCES

MANPOWER DATA 59

SALARY INFORMATION 60

PREFACE

The 1969 Comparative Data Report is a document containing comparative information relating to State Police, State Highway Patrol and Provincial Police administration and operations. Some of the data included is similar to that presented in previous documents, but it is intended that each volume will be a complete and separate reference manual relating to specific fields of police management and administration.

It is important for the reader and the student of police administration to be aware of the historical development of the Division of State and Provincial Police within the structure of the International Association of Chiefs of Police. The historical data provides information that allows the reader to understand the purpose and direction of the Division.

In 1938, Commissioner Anthony Sunderland of the Connecticut State Police directed letters to a number of state police executives urging them to meet at Cleveland, Ohio, during a conference of the Interstate Commission on Crime, for the purpose of discussing the matter of organizing the nation's state police organizations. The meeting was held in July of that year, attended by representatives of 12 states. It was decided by this group that a further meeting should be held on the occasion of the annual convention of the International Association of Chiefs of Police in the fall of 1938, at Toronto, Canada. Attending this meeting were representatives from Delaware, Illinois, Indiana, Maryland, Michigan, Minnesota, Missouri, New Hampshire, Rhode Island, West Virginia and the Province of Ontario.

It was agreed at the Toronto meeting that a state and provincial police organization should be established, preferably within the organizational structure of the International Association of Chiefs of Police, to carry on the activities and principles of the State Police Executive Association which had gone out of existence.

This idea was presented to the Executive Committee of the International Association of Chiefs of Police. It was approved and a State and Provincial Police Executive Section was established within the Association.

It was agreed that the State and Provincial Section should work within the policy framework of the International Association of Chiefs of Police. It was further established that the Section would conduct regional meetings of Section members for the purpose of more effectively dealing with the problems and advancing the interests of State and Provincial police organizations within each region.

Superintendent Donald S. Stiver of the Indiana State Police was elected to be the first Chairman of the State and Provincial Section.

In 1964 at the Association's annual conference in Louisville, Kentucky, the Section voted to change its name from State and Provincial Section to Division of State and Provincial Police for more appropriate identification of the group.

The Division of State and Provincial Police is an integral part of the International Association of Chiefs of Police. Within the framework of the larger organization, it maintains a separate administrative identity and structure to plan, direct and control the activities of the Division in the light of the special needs and problems of State and Provincial agencies. All officers and members of the Division of State and Provincial Police are guided by the rules and regulations contained in the Constitution and Rules of the International Association of Chiefs of Police.

The data contained herein has not been verified. Utilization of the information must be accompanied with this qualifying thought. We believe the data is factual and we have endeavored to report it to you as it was received by the central repository.

The researcher and the student must be cautioned concerning the pitfalls of comparison based solely on the data within. Comparison minus consideration of the many critical variables is dangerous. Any opinions, assumptions, or decisions resulting would be invalid.

The cooperative efforts of all reporting agencies in making this document possible are greatly appreciated. Their efforts will contribute significantly toward the enhancement of knowledge for all.

William H. Franey
Director
Division of State and Provincial Police

Commissioner Robert R. Lester
General Chairman
Division of State and Provincial Police

ADMINISTRATION

ADMINISTRATION

I. HIGHWAY SAFETY LEGISLATION

A. Status of legislation dealing with 16 NHTSB standards.

	1. Motor Vehicle Inspection				2. Motor Vehicle Registration				3. Motorcycle Safety				4. Driver Education			
	ENACTED	PAR-TIALLY ENACTED	PENDING	OTHER	ENACTED	PAR-TIALLY ENACTED	PENDING	OTHER	ENACTED	PAR-TIALLY ENACTED	PENDING	OTHER	ENACTED	PAR-TIALLY ENACTED	PENDING	OTHER
HIGHWAY PATROLS																
ALABAMA			YES													YES
ARIZONA				YES					YES					YES		
CALIFORNIA	YES					YES			YES	YES				YES		
COLORADO	YES				YES				YES				YES			
FLORIDA	YES				YES				YES				YES			
GEORGIA	YES				YES					YES						
IOWA			YES		YES					YES			YES			
KANSAS				YES	YES					YES			YES			
MINNESOTA			YES				YES			YES					YES	
MISSISSIPPI																
MISSOURI	YES					YES				YES				YES		
MONTANA				YES		YES						YES	YES			
NEBRASKA																
NEVADA			YES			YES					YES		YES			
NORTH CAROLINA	YES					YES				YES				YES		
NORTH DAKOTA				YES	YES				YES					YES		
OHIO	YES				YES				YES				YES			
OKLAHOMA	YES							YES	YES				YES			
SOUTH CAROLINA	YES				YES				YES				YES			
SOUTH DAKOTA	YES				YES				YES					YES		
TENNESSEE				YES				YES	YES							YES
TEXAS	YES								YES				YES			
UTAH	YES				YES				YES				YES			
WASHINGTON	YES				YES				YES				YES			
WISCONSIN		YES			YES				YES				YES			
WYOMING	YES					YES						YES				YES
STATE POLICE																
ALASKA			YES			YES				YES						YES
ARKANSAS		YES			YES					YES				YES		
CONNECTICUT		YES			YES					YES			YES			
DELAWARE	YES				YES				YES				YES			
IDAHO	YES					YES				YES			YES			
ILLINOIS			YES		YES				YES				YES			
INDIANA	YES				YES					YES				YES		
KENTUCKY	YES					YES			YES							YES
LOUISIANA	YES				YES				YES				YES			
MAINE	YES				YES					YES			YES			
MARYLAND		YES			YES					YES			YES			
MASSACHUSETTS	YES				YES				YES							YES
MICHIGAN				YES	YES					YES				YES		
NEW HAMPSHIRE																
NEW JERSEY	YES				YES				YES					YES		
NEW MEXICO	YES					YES				YES			YES			
NEW YORK	YES				YES					YES				YES		
OREGON			YES					YES			YES				YES	
PENNSYLVANIA				YES				YES		YES				YES		
RHODE ISLAND	YES					YES				YES				YES		
VERMONT	YES				YES				YES				YES			
VIRGINIA	YES				YES					YES			YES			
WEST VIRGINIA	YES						YES				YES			YES		
CANADA																
ALBERTA	YES				YES				YES				YES			
BRITISH COLUMBIA		YES			YES				YES					YES		
MANITOBA				YES				YES				YES				YES
ONTARIO	YES				YES				YES							
SASKATCHEWAN				YES	YES					YES						YES

ADMINISTRATION

I. HIGHWAY SAFETY LEGISLATION

	A. Status of legislation dealing with 16 NHSB standards.															
	5. Driver Licensing				6. Codes and Laws				7. Traffic Courts				8. Alcohol in relation to Highway Safety			
	ENACTED	PAR-TIALLY ENACTED	PENDING	OTHER	ENACTED	PAR-TIALLY ENACTED	PENDING	OTHER	ENACTED	PAR-TIALLY ENACTED	PENDING	OTHER	ENACTED	PAR-TIALLY ENACTED	PENDING	OTHER
HIGHWAY PATROLS																
ALABAMA				YES				YES				YES	YES			
ARIZONA		YES						YES		YES			YES			
CALIFORNIA	YES				YES				YES				YES			
COLORADO	YES				YES			YES				YES				
FLORIDA	YES				YES				YES			YES				
GEORGIA		YES				YES			YES			YES				
IOWA		YES				YES			YES			YES				
KANSAS		YES				YES			YES			YES				
MINNESOTA			YES			YES				YES			YES			
MISSISSIPPI											YES			YES		
MISSOURI		YES				YES				YES			YES			
MONTANA			YES				YES				YES					YES
NEBRASKA												YES				
NEVADA		YES	YES			YES	YES			YES		YES	YES			
NORTH CAROLINA		YES			YES			YES				YES	YES			
NORTH DAKOTA	YES					YES						YES				
OHIO	YES					YES		YES				YES				
OKLAHOMA		YES				YES			YES			YES				
SOUTH CAROLINA	YES					YES			YES			YES				
SOUTH DAKOTA	YES					YES			YES			YES				
TENNESSEE				YES				YES			YES					
TEXAS	YES															
UTAH	YES					YES			YES			YES				
WASHINGTON	YES				YES				YES			YES				
WISCONSIN		YES	YES				YES			YES				YES		
WYOMING				YES				YES		YES						YES
STATE POLICE																
ALASKA	YES					YES			YES					YES		
ARKANSAS		YES				YES			YES					YES		
CONNECTICUT	YES					YES			YES					YES		
DELAWARE	YES					YES			YES				YES			
IDAHO		YES				YES			YES				YES			
ILLINOIS			YES			YES			YES					YES		
INDIANA		YES				YES			YES				YES			
KENTUCKY		YES						YES			YES	YES				
LOUISIANA	YES						YES			YES				YES		
MAINE		YES				YES			YES					YES		
MARYLAND		YES			YES				YES			YES			YES	
MASSACHUSETTS	YES						YES				YES	YES				
MICHIGAN		YES					YES			YES			YES			
NEW HAMPSHIRE																
NEW JERSEY		YES				YES			YES			YES				
NEW MEXICO		YES				YES			YES			YES				
NEW YORK		YES				YES			YES			YES				
OREGON			YES			YES			YES					YES		
PENNSYLVANIA		YES			YES				YES			YES				
RHODE ISLAND		YES				YES			YES			YES				
VERMONT		YES				YES			YES			YES				
VIRGINIA	YES					YES			YES			YES				
WEST VIRGINIA		YES				YES			YES		YES					
CANADA																
ALBERTA	YES				YES				YES			YES				
BRITISH COLUMBIA	YES				YES			YES		YES						YES
MANITOBA				YES				YES				YES				YES
ONTARIO	YES													YES		
SASKATCHEWAN		YES			YES				YES	YES						

ADMINISTRATION

I. HIGHWAY SAFETY LEGISLATION

	A. Status of legislation dealing with 16 NHSB standards.															
	9. Identification and Surveillance of Accident Location				10. Traffic Records				11. Emergency Medical Services				12. Highway Design Construction and Maintenance			
	ENACTED	PAR-TIALLY ENACTED	PENDING	OTHER	ENACTED	PAR-TIALLY ENACTED	PENDING	OTHER	ENACTED	PAR-TIALLY ENACTED	PENDING	OTHER	ENACTED	PAR-TIALLY ENACTED	PENDING	OTHER
HIGHWAY PATROLS																
ALABAMA			YES													
ARIZONA		YES					YES						YES			
CALIFORNIA												YES				YES
COLORADO	YES					YES						YES			YES	
FLORIDA	YES					YES					YES				YES	
GEORGIA							YES		YES						YES	
IOWA		YES							YES				YES		YES	
KANSAS		YES							YES				YES		YES	
MINNESOTA			YES							YES			YES			
MISSISSIPPI											YES			YES		
MISSOURI		YES					YES		YES				YES			YES
MONTANA	YES										YES				YES	
NEBRASKA			YES			YES							YES			YES
NEVADA									YES		YES				YES	
NORTH CAROLINA		YES								YES			YES			
NORTH DAKOTA															YES	
OHIO	YES								YES			YES				
OKLAHOMA	YES								YES					YES		YES
SOUTH CAROLINA	YES								YES					YES		YES
SOUTH DAKOTA										YES			YES			YES
TENNESSEE								YES		YES			YES			YES
TEXAS									YES							YES
UTAH	YES										YES			YES		
WASHINGTON	YES								YES				YES		YES	
WISCONSIN	YES									YES				YES		YES
WYOMING								YES			YES			YES		YES
STATE POLICE																
ALASKA			YES							YES					YES	
ARKANSAS	YES								YES				YES		YES	
CONNECTICUT	YES								YES				YES		YES	
DELAWARE		YES							YES				YES		YES	
IDAHO		YES													YES	
ILLINOIS	YES									YES			YES		YES	
INDIANA		YES								YES			YES		YES	
KENTUCKY								YES				YES		YES		YES
LOUISIANA	YES						YES			YES			YES		YES	
MAINE	YES									YES			YES		YES	
MARYLAND		YES			YES				YES				YES		YES	
MASSACHUSETTS			YES										YES			YES
MICHIGAN		YES					YES						YES			YES
NEW HAMPSHIRE																
NEW JERSEY		YES					YES			YES				YES		
NEW MEXICO		YES					YES			YES			YES		YES	
NEW YORK		YES					YES			YES			YES		YES	
OREGON									YES	YES			YES			YES
PENNSYLVANIA		YES									YES		YES			YES
RHODE ISLAND	YES								YES				YES			YES
VERMONT	YES					YES			YES				YES		YES	
VIRGINIA		YES							YES			YES			YES	
WEST VIRGINIA		YES								YES			YES			YES
CANADA																
ALBERTA									YES	YES				YES		YES
BRITISH COLUMBIA	YES						YES		YES				YES			YES
MANITOBA									YES			YES				YES
ONTARIO	YES									YES		YES		YES		YES
SASKATCHEWAN		YES							YES	YES				YES	YES	

ADMINISTRATION

I. HIGHWAY SAFETY LEGISLATION

	A. Status of legislation dealing with 16 NHSB standards.															
	13. Traffic Control Devices				14. Pedestrian Safety				15. Police Traffic Services				16. Debris Hazard Control and Cleanup			
	ENACTED	PAR-TIALLY ENACTED	PENDING	OTHER	ENACTED	PAR-TIALLY ENACTED	PENDING	OTHER	ENACTED	PAR-TIALLY ENACTED	PENDING	OTHER	ENACTED	PAR-TIALLY ENACTED	PENDING	OTHER
HIGHWAY PATROLS																
ALABAMA																
ARIZONA		YES			YES				YES				YES			
CALIFORNIA			YES					YES				YES				YES
COLORADO	YES				YES					YES				YES		
FLORIDA	YES				YES			YES					YES			
GEORGIA	YES				YES				YES				YES			
IOWA		YES			YES			YES				YES				
KANSAS		YES			YES				YES				YES			
MINNESOTA			YES			YES				YES				YES		
MISSISSIPPI				YES				YES					YES			
MISSOURI		YES						YES					YES			
MONTANA				YES				YES				YES				
NEBRASKA	YES				YES			YES					YES			
NEVADA		YES				YES			YES	YES						YES
NORTH CAROLINA	YES				YES			YES								YES
NORTH DAKOTA	YES															
OHIO	YES				YES			YES				YES				
OKLAHOMA				YES	YES			YES				YES				
SOUTH CAROLINA	YES				YES				YES						YES	
SOUTH DAKOTA			YES		YES					YES				YES		
TENNESSEE				YES				YES			YES					YES
TEXAS																
UTAH	YES				YES			YES				YES				
WASHINGTON		YES			YES				YES			YES				
WISCONSIN			YES		YES			YES				YES				
WYOMING				YES	YES					YES						YES
STATE POLICE																
ALASKA	YES				YES					YES	YES					
ARKANSAS	YES				YES				YES				YES			
CONNECTICUT		YES				YES			YES						YES	
DELAWARE	YES				YES			YES				YES				
IDAHO		YES			YES				YES						YES	
ILLINOIS	YES				YES			YES							YES	
INDIANA		YES			YES				YES					YES		
KENTUCKY	YES						YES				YES					YES
LOUISIANA	YES				YES			YES			YES					
MAINE		YES			YES				YES						YES	
MARYLAND		YES			YES			YES					YES			
MASSACHUSETTS			YES			YES		YES							YES	
MICHIGAN		YES			YES					YES				YES		
NEW HAMPSHIRE																
NEW JERSEY		YES			YES				YES						YES	
NEW MEXICO	YES				YES			YES					YES			
NEW YORK	YES				YES						YES					YES
OREGON																
PENNSYLVANIA			YES			YES			YES						YES	
RHODE ISLAND		YES			YES				YES							
VERMONT			YES		YES				YES				YES			
VIRGINIA	YES				YES			YES				YES				
WEST VIRGINIA		YES				YES				YES				YES		
CANADA																
ALBERTA	YES				YES						YES					
BRITISH COLUMBIA	YES				YES					YES		YES				
MANITOBA				YES			YES			YES						YES
ONTARIO	YES				YES			YES			YES					
SASKATCHEWAN	YES				YES					YES						YES

ADMINISTRATION

II. ORGANIZATION

	A. Your department categorized as:	B. Is department part of a larger department	C. Name of the larger department	D. Span of Control						E. Decentralization						
				1. Ratio of sergeants to troopers		2. Ratio of Lieutenants to sergeants		3. Ratio of Captains to Lieutenants		1. Number of decentralized units						
				TO		TO		TO		a. TROOP, DISTRICT, ZONE, HOURS.	b. POSTS OR SUB-POSTS					
HIGHWAY PATROLS																
ALABAMA	Department of Public Safety	NO		1	9	1	2	1	1.5	10	18					
ARIZONA	Highway Patrol	YES	Arizona Highway Department	1	7	1	5			9	40					
CALIFORNIA	Highway Patrol	NO		1	10.6	1	3.2	1	2.2	6	68					
COLORADO	Highway Patrol	YES	Department of Highways	1	10.6	1	1.5	1	2.5	5	85					
FLORIDA	Highway Patrol	YES	Department of Public Safety	1	8	1	2.6	1	1.5	12	57					
GEORGIA	Department of Public Safety	NO		1	5.8	1	2.5	1	1.6	6	42					
IOWA	Highway Patrol	YES	Department of Public Safety	1	9	1	2	1	4	5	14					
KANSAS	Highway Patrol	NO		1	6.8	1	1.4	1	1.6	8	102					
MINNESOTA	Highway Patrol	YES	Department of Highways	1	9			1	3	3	11					
MISSISSIPPI	Highway Patrol	YES	Department of Public Safety							9						
MISSOURI	Highway Patrol	NO		1	2.8	1	6.1	1	1.7	9	67					
MONTANA	Highway Patrol	NO		1	15			1	2	5	10					
NEBRASKA	Highway Patrol	YES	Department of Roads	1	6.8	1	1.4	1	1.3	6	47					
NEVADA	Highway Patrol	YES	Department of Motor Vehicles	1	5.7	1	2.7			6	15					
NORTH CAROLINA	Highway Patrol	YES	Department of Motor Vehicles	1	8	1	6	1	1	6	41					
NORTH DAKOTA	Highway Patrol	NO		1	6	1	4	1	4.5	8	34					
OHIO	Highway Patrol	YES	Department of Highway Safety	1	10	1	3	1	2	10	57					
OKLAHOMA	Highway Patrol	YES	Department of Public Safety	1	10	1	2	1	7	10						
SOUTH CAROLINA	Highway Patrol	YES	Highway Department	1	10	1	2	1	3	7	39					
SOUTH DAKOTA	Highway Patrol	YES	Department of Highways	1	5	1	3	1	1	5	3					
TENNESSEE	Highway Patrol	YES	Department of Safety	1	5	1	3	1	4	8	89					
TEXAS	Department of Public Safety	NO		1	12	1	5	1	1.3	6	86					
UTAH	Highway Patrol	YES	Department of Public Safety	1	8.5	1	3	1	6	6	13					
WASHINGTON	Highway Patrol	NO		1	8.1	1	4	1	2.1	7	52					
WISCONSIN	Highway Patrol	YES	Division of Motor Vehicles	1	10	1	5	1	1	6						
WYOMING	Highway Patrol	YES	Highway Department	1	7			1	4	12						
STATE POLICE																
ALASKA	State Police	YES	Department of Public Safety	1	10	2	5	1	1.3	3	26					
ARKANSAS	State Police	NO		1	15	1	2	1	2	8						
CONNECTICUT	State Police	NO		1	8.6	1	2.3	1	2.3	11	1					
DELAWARE	State Police	YES	Delaware State Highway Dept.	1	3.2	1	2	1	1.2	8	1					
IDAHO	State Police	YES	Department of Law Enforcement	1	20	1	1			6						
ILLINOIS	State Police	YES	Department of Public Safety	1	3	1	11	1	1	15	7					
INDIANA	State Police	NO		1	8.1	1	6	1	4	11	12					
KENTUCKY	State Police	YES	Department of Public Safety	1	5	1	2.5	1	3	8	16					
LOUISIANA	State Police	YES	Department of Public Safety	1	2	1	1.6	1	3.8	12						
MAINE	State Police	NO		1	6	1	2	1	2	7						
MARYLAND	State Police	NO		1	5.2	1	5.1	1	2.1	6	11					
MASSACHUSETTS	State Police	YES	Department of Public Safety	1	5	1	4.5	1	1.5	6	25					
MICHIGAN	State Police	NO		1	12	1	5	1	1.1	8	59					
NEW HAMPSHIRE	State Police	YES	Department of Safety	1	10	1	1	1	5	7						
NEW JERSEY	State Police	YES	Department of Law & Public Safety	1	7	1	4	1	2.5	5	49					
NEW MEXICO	State Police	NO		1	7	1	2	1	0.9	12	74					
NEW YORK	State Police	YES	Executive Department							9	100					
OREGON	State Police	NO		1	12	1	4	1	1	4	36					
PENNSYLVANIA	State Police	NO		1	9	1	4	1	3	16	77					
RHODE ISLAND	State Police	YES	Executive Department							1	8					
VERMONT	Department of Public Safety	NO		1	8	1	3	1	3	5	6					
VIRGINIA	State Police	NO		1	12.3	1	3.4	1	1.5	8	43					
WEST VIRGINIA	Department of Public Safety	NO		1	3.2	1	2	1	3	5	62					
CANADA																
ALBERTA	Provincial Police	YES	R.C.M.P.							5	107					
BRITISH COLUMBIA	Provincial Police	YES	R.C.M.P.	1	4	1	2	1	2	11	130					
MANITOBA	Provincial Police	YES	R.C.M.P.							3	88					
ONTARIO	Provincial Police	YES	Dept. of the Attorney General and Minister of Justice	1	13	1	3.3			17	199					
SASKATCHEWAN	Provincial Police	YES	R.C.M.P.							6	120					

ADMINISTRATION

III. RUDGET	A. Current annual budget	B. Annual budget period	C. Percent of budget expended on personnel	D. Percent of budget expended on transportation	E. Type of budget			IV. PERSONNEL					
					1. Line item	2. Programmed	3. Other	A. Total authorized employees			B. Total present employees		
								1. Sworn police personnel	2. Full time civilian personnel	3. Total police and civilian	1. Sworn police personnel	2. Full time civilian personnel	3. Total police and civilian
HIGHWAY PATROLS													
ALABAMA	\$ 8,399,800	October 1969-Sept. 1970	75	12	YES				653	279	932		
ARIZONA	7,858,819	July 1968-June 1969	63	14	YES				489	179	668	483	
CALIFORNIA	98,242,671	July 1968-June 1969	80	10	YES	YES			5,735	1,728	7,463	5,387	
COLORADO	6,654,063	July 1968-July 1969	74	9	YES	YES			428	214	642	414	
FLORIDA	12,980,354	July 1968-June 1969	70	20	YES				900	783	1,683	887	
GEORGIA	11,669,000	July 1968-June 1969	73	7	YES				688	424	1,112	684	
IOWA	6,245,535	July 1968-June 1969	71	20		YES			410	227	637	399	
KANSAS	4,775,723	July 1967-June 1968	69	21	YES				283	91	384	282	
MINNESOTA	6,356,303	July 1968-June 1969	54	17	YES	YES			437	280	517	427	
MISSISSIPPI	8,000,000	July 1968-June 1969	48	20	YES				475	160	635	475	
MISSOURI	15,293,575	July 1968-June 1969	62	8	YES	YES			750	628	1,378	710	
MONTANA	2,876,600	July 1969-June 1970	58	25	YES				175	80	255	173	
NEBRASKA	8,524,529	July 1967-June 1969	65	11	YES	YES			305	81	386	229	
NEVADA	1,601,165	July 1968-June 1969	68	11	YES	YES			102	35	137	100	
NORTH CAROLINA	11,260,790	July 1968-June 1969	72	16	YES				877	287	1,164	853	
NORTH DAKOTA		July 1968-June 1970			YES				80	14	94	75	
OHIO	14,972,429	July 1968-July 1969	80	9	YES				973	738	1,711	970	
OKLAHOMA	4,467,750	July 1968-June 1969	51	15	YES				518		419	223	
SOUTH CAROLINA	7,119,543	July 1967-June 1968	80	10	YES						554	91	
SOUTH DAKOTA	2,007,165	July 1968-June 1969	50	15	YES				122	39	162	122	
TENNESSEE	7,785,000	July 1968-June 1969	70	15		YES			634	252	886	634	
TEXAS	31,767,427	September 1968-August 1969	72	10		YES			1,619	2,025	3,644	1,612	
UTAH	3,087,530	July 1968-June 1969	82	13	YES	YES			230	42	272	230	
WASHINGTON	12,529,388	July 1968-June 1969	77	10	YES	YES			695	438	1,133	648	
WISCONSIN	7,834,500	July 1968-June 1969	70	11		YES			534	142	676	522	
WYOMING	1,458,329	July 1969-June 1970	65	18	YES				97	3	100	95	
STATE POLICE													
ALASKA	\$ 2,953,300	July 1968-June 1969	71	13	YES	NO			148	82	230	141	
ARKANSAS	4,449,137	July 1968-June 1969	75	13	YES				386	107	493	386	
CONNECTICUT	10,730,000	July 1968-June 1969	74	13	YES	NO			732	240	972	707	
DELAWARE	3,225,580	July 1968-June 1969	79	7	YES				308	64	372	270	
IDAHO	2,008,007	January 1968-December 1968	63	5	YES	YES			117	24	141	117	
ILLINOIS	22,000,000	July 1968-June 1969	70	18	YES				1,521	538	2,059	1,503	
INDIANA	10,721,845	July 1968-June 1969	73	21	YES	NO			974	298	1,272	945	
KENTUCKY	8,883,590	July 1968-June 1969	71	17		YES			567	320	887	539	
LOUISIANA	8,555,442	July 1968-June 1969	72	15	YES						889	651	
MAINE	4,025,719	July 1969-June 1970	78	8			YES		303	55	358	295	
MARYLAND	14,454,459	July 1969-June 1969	75	10	NO	YES			1,053	453	1,506	1,053	
MASSACHUSETTS	8,539,698	July -June	78	7	YES				672	150	822	641	
MICHIGAN	28,907,765	July 1968-June 1969	74	6	YES				1,760	467	2,227	1,714	
NEW HAMPSHIRE	1,811,972	July 1968-June 1969	62	10	YES						134	19	
NEW JERSEY	16,426,251	July 1968-June 1969	80	5	NO	YES			1,378	350	1,728	1,370	
NEW MEXICO	4,030,732	July 1968-June 1969	71	16	YES	YES			260	101	361	250	
NEW YORK	42,160,245	April 1969-March 1970	83	7		YES			3,239	499	3,738	3,208	
OREGON	7,300,000	July 1968-June 1969	82	12		YES			582	99	681	563	
PENNSYLVANIA	37,519,184	July 1968-June 1969	75	8	YES				3,183	539	3,702	2,955	
RHODE ISLAND		July 1968-June 1969	66	7	YES				145	27	172	143	
VERMONT	3,500,000	July 1968-June 1969	75	14	YES	YES			195	89	274	186	
VIRGINIA	13,110,270	July 1968-June 1969	67	17			YES		923	342	1,265	862	
WEST VIRGINIA	4,387,110	July 1968-July 1969	61	9	YES	NO			346	155	501	344	
CANADA													
ALBERTA	\$12,000,000	April 1969-March 1970	70	10			YES		1,068	175	1,243	1,041	
BRITISH COLUMBIA	20,607,000	April 1968-March 1969	80	7	YES	YES			1,964	249	2,213	1,893	
MANITOBA	6,900,000	April -March	76	8	YES	YES			588	70	658	556	
ONTARIO	40,896,000	April 1969-March 1970	80	9		YES			3,645	911	4,556	3,594	
SASKATCHEWAN	10,000,000	April 1969-March 1970	70	10	YES	YES			898	109	997	882	

ADMINISTRATION

IV. PERSONNEL	C. Present sworn personnel by rank										D. Present annual salary (excluding longevity and fringe benefits)					
	1. Patrolman or Trooper	2. Corporal	3. Sergeant	4. Detective or Agent	5. Lieutenant	6. Captain	7. Major	8. Inspector	9. Lt. Colonel Deputy	10. Colonel Superintendent Comm. etc.	1. Trooper			2. Corporal		
											SALARY BEGIN	SALARY TOP	NO. OF YEARS	SALARY BEGIN	SALARY TOP	NO. OF YEARS
HIGHWAY PATROLS																
ALABAMA	447	71	57		39	33	5			1	6,305	8,229	7	6,877	8,957	7
ARIZONA	325		66		7	9	5	1	1	1	6,840	8,280	5	8,520		
CALIFORNIA	4,682		442		139	63		19	1	1	8,736	10,104	3			
COLORADO	346		34		23	9			1	1	6,204	7,920	5			
FLORIDA	693	49	85		33	19	5	1	1	1	6,420	8,800		6,840	9,360	
GEORGIA	409	69	70	85	28	17	4		1	1	5,425	9,493	35	5,590	9,782	35
IOWA	327		40		22	6	2		1	1	6,180	8,100	20			
KANSAS	221		33		14	9	3		1	1	6,060	7,784	2 1/2			
MINNESOTA	366		42			13	4		1	1	6,072	8,328	12			
MISSISSIPPI	355			40	18	9	2	9	1	1	5,800					
MISSOURI	433	77	154		25	15	3		1	1	6,000	9,600	30	6,300	10,080	30
MONTANA	150		14			8				1	6,942	8,604	25			
NEBRASKA	217	18	34		14	11	3		1	1	6,240	7,740	5 1/2	7,920	8,220	2
NEVADA	78		14		4			3		1	7,478	9,082	4			
NORTH CAROLINA	716		140		8	8	3		1	1	6,108	8,520	11			
NORTH DAKOTA	57		10		2	9	1			1	6,240	8,340	13			
OHIO	590	197	86		35	16	5		1	1	7,176	9,776	18	7,904	10,712	18
OKLAHOMA	350		41		22	6	1			1	5,400	6,600				
SOUTH CAROLINA	429	42	45		26	9	1			1	5,720	8,580		6,500	9,360	
SOUTH DAKOTA	89		19		6	7				1	6,000	7,920	8			
TENNESSEE	437		103	26	54	15	1	5	2	1	5,340	7,080	6			
TEXAS	1,303		126	99	27	31	6	9	1	1	7,080					
UTAH	193		22		10	1				1	5,746	6,496	9			
WASHINGTON	517		76		27	17	8		1	1	6,604	10,020	4			
WISCONSIN	321		31		7	8	2			1	6,420	8,352				
WYOMING	79				12	3	1	1		1	5,520	6,720	10			
STATE POLICE																
ALASKA	101	16	11		6	5			1	1	9,684	11,604	5	10,404	12,480	4
ARKANSAS	207	20	30	20	20	20			1	1	5,100	6,300	16	5,520	6,420	16
CONNECTICUT	533	30	61	23	26	11			1	1	6,980	8,540	6	7,940	9,920	6
DELAWARE	133	27	42	26	21	17	2		1	1	6,800	8,500	20	8,000	9,000	3-20
IDAHO	46	56	6		8				1	1	6,024	7,320	3	6,972	8,472	3
ILLINOIS	1,043	150	133	58	25	25	5			1	6,900	10,080	21	8,880	10,680	21
INDIANA	592		128	94	23	12	2		1	1	6,900	8,640	6			
KENTUCKY	408		53	31	33	11	1		1	1	6,360	8,112	6			
LOUISIANA	339		167	5	105	28	5		1	1	5,040	7,440		5,290	7,680	
MAINE	218															

ADMINISTRATION

IV. PERSONNEL

	D. Present annual salary (excluding longevity and fringe benefits)														
	3. Sergeant			4. Lieutenant			5. Captain			6. Major			7. Inspector		
	SALARY BEGIN	SALARY TOP	NO. OF YEARS	SALARY BEGIN	SALARY TOP	NO. OF YEARS	SALARY BEGIN	SALARY TOP	NO. OF YEARS	SALARY BEGIN	SALARY TOP	NO. OF YEARS	SALARY BEGIN	SALARY TOP	NO. OF YEARS
HIGHWAY PATROLS															
ALABAMA	7,527	9,672	7	8,229	10,187	7	9,321	11,492	7	11,492	14,534	7			
ARIZONA	9,420			10,920			11,640			13,920			14,160		
CALIFORNIA	9,612	11,676	4	11,124	13,536	4	13,536	16,452	4	15,660	19,044	4	18,144	22,044	4
COLORADO	7,176	9,168	5	8,316	10,608	5	8,624	12,276	5						
FLORIDA	7,680	10,560		9,120	12,600		9,600	13,320		10,380	14,440		11,340	15,900	
GEORGIA	5,890	10,307	35	5,990	10,482	35	6,390	11,182	35	6,990	12,232	35			
IOWA	7,380	8,580	20	7,860	9,060	20	8,280	9,480	20	10,080	11,280	20			
KANSAS	6,684	8,568	6	7,392	9,456	7	8,160	10,416	8	9,000	11,460	9			
MINNESOTA	8,664	9,372	5				9,744	10,548	5	10,548	11,424	5			
MISSISSIPPI				6,000				6,600		7,260					
MISSOURI	6,600	10,560	30	7,500	12,000	30	8,400	13,440	30	9,300	14,880	30			
MONTANA	8,000	9,525	25				9,187	10,440	25						
NEBRASKA	8,520	8,820	2	9,360	9,660	2	10,200	10,500	2	11,100	11,400	2			
NEVADA	8,241	10,009	4	9,083	11,040	4							10,009	12,175	4
NORTH CAROLINA	7,380	10,320		8,940	11,376		9,852	12,528		10,848	13,800				
NORTH DAKOTA	8,640	9,240	5	9,420	9,840	5	9,540	9,860	5		10,992				
OHIO	8,736	11,772	18	9,568	12,896	18	10,400	14,040	18	11,440	15,496	18			
OKLAHOMA	6,000	7,200		6,600	7,800		7,200	8,400		7,800	9,000				
SOUTH CAROLINA	7,280	9,984		7,800	10,400		9,100	12,480		9,880	13,260				
SOUTH DAKOTA	8,100	8,280	2	8,580	8,880	2	9,180	10,200	3	10,200	11,400	3			
TENNESSEE	8,360	7,800	4	7,440	9,060	4	9,060	10,800	4	10,320	12,240	4	10,800	12,720	4
TEXAS	8,352			8,916			10,176			14,148			11,232	13,692	7
UTAH		9,300			10,164			11,124							
WASHINGTON	11,220			12,564				14,064			15,756				
WISCONSIN	7,488	9,804		8,832	11,484		9,528	12,396		11,316	14,748				
WYOMING				7,740	9,180	6	8,460	10,980	6				8,460	11,000	6
STATE POLICE															
ALASKA	11,112	13,344	4	11,916	14,304	3	13,812	16,584	3	15,576	18,684	3			
ARKANSAS	5,820	6,600	16	6,360	7,200	16	6,375	7,500	16	8,700	8,700				
CONNECTICUT	8,830	10,930	6	9,840	12,066	6	10,960	13,300	6	14,000	17,240	6			
DELAWARE	8,600	9,400	5-20	9,000	9,900	8-20	9,600	10,800	8-20	12,200	14,200	11-20			
IDAHO	8,076	9,804	3	9,348	11,340	3									
ILLINOIS	9,600	11,520	21	10,500	12,600	21	11,700	14,040	21	13,080	15,720	21			
INDIANA	7,560	9,420	6	9,000	11,280	6	9,840	12,300	6	11,280	13,920	6			
KENTUCKY	7,716	9,852	6	8,520	10,872	6	9,384	11,976	6	10,344	13,200	6			
LOUISIANA	5,760	8,160		6,300	9,300		7,200	10,800		8,280	11,680				
MAINE	6,552	7,982	6	7,592	9,230	6	8,372	10,192	6	9,698	13,052	6			
MARYLAND	9,110	9,566		11,582	15,056		12,388	16,102		13,503	17,553				
MASSACHUSETTS	7,391	10,028		8,499	10,777	6	9,110	12,181		10,782	13,652	6			
MICHIGAN	9,437	13,008		11,108	14,219	4	13,843	20,003		17,935	21,944	4			
NEW HAMPSHIRE	6,824	8,613	5	7,474	9,401	5	8,210	10,238	5	9,369	11,592	5			
NEW JERSEY	7,737	11,645	7	10,369	13,477	7	12,003	15,603	7		17,000				
NEW MEXICO	8,280	8,760	2	9,000	9,420	1	9,600	10,740	3	11,280					
NEW YORK	11,038	13,582		13,592	15,485	5	14,382	16,221	5	16,761	18,703	5	15,416	17,316	5
OREGON		9,720		10,560	11,400			13,800	2		14,340				
PENNSYLVANIA	9,159	12,268	6	9,923	13,301	6	11,501	15,387	6	12,675	16,978	6			
RHODE ISLAND		10,465			11,500			13,500			15,525				
VERMONT	7,410	10,088	8	8,424	11,544	8	9,820	13,286	8	11,034	15,286	8			
VIRGINIA	8,784	10,032	3½	9,600	12,000	6½	11,472	14,328	6½	13,128	15,675	5			
WEST VIRGINIA	8,064	9,264	20	8,640	9,840	20	9,144	10,344	20	10,224	11,424	20			
CANADA*															
ALBERTA															
BRITISH COLUMBIA															
MANITOBA															
ONTARIO															
SASKATCHEWAN															

*See Annex

ADMINISTRATION

IV. PERSONNEL

	D. Present annual salary (excluding longevity and fringe benefits)						E. Present annual salary (excluding longevity and fringe benefits) Detective Ranks												
	8. Lt. Col., Deputy, etc.			9. Col., Supt., Comm., etc.			1. Detective/Investigator			2. Sergeant			3. Lieutenant						
	SALARY BEGIN	SALARY TOP	NO. OF YEARS	SALARY BEGIN	SALARY TOP	NO. OF YEARS	SALARY BEGIN	SALARY TOP	NO. OF YEARS	SALARY BEGIN	SALARY TOP	NO. OF YEARS	SALARY BEGIN	SALARY TOP	NO. OF YEARS	SALARY BEGIN	SALARY TOP	NO. OF YEARS	
HIGHWAY PATROLS																			
ALABAMA					19,800		6,305	8,580	7	7,527	10,023	7	8,229	10,751	7				
ARIZONA	15,600			18,480															
CALIFORNIA	23,604			23,625															
COLORADO	11,700	14,828	5	14,220	18,144	5													
FLORIDA	12,420	17,520		17,820															
GEORGIA	9,790	17,132	35	16,365	24,365	41	5,425	9,782	35	5,890	10,307	35	5,990	10,307	35				
IOWA	10,680	11,880	20	11,280	12,480	20													
KANSAS	9,924	12,600	10	13,000	13,000														
MINNESOTA	11,868	12,852	5	13,344	14,448	5													
MISSISSIPPI		11,260		12,500															
MISSOURI	10,200	16,320	30	12,000	19,200	30													
MONTANA				13,300	14,000														
NEBRASKA	12,120	12,840	3	13,320	14,040	3													
NEVADA				11,040	13,421	4													
NORTH CAROLINA	11,940	15,192		13,128	16,708														
NORTH DAKOTA				12,996															
OHIO	14,076	20,176	18	19,552	25,792	18													
OKLAHOMA	8,400	9,600			15,000														
SOUTH CAROLINA				10,660	14,820														
SOUTH DAKOTA				11,100	14,172	5													
TENNESSEE	12,720	16,440	5		17,500		7,800	9,480	4										
TEXAS	16,000	20,000		26,000															
UTAH		12,732			15,468														
WASHINGTON		17,748			22,500														
WISCONSIN				13,416	17,472	5													
WYOMING	9,300	11,820	6	10,620	13,500	6													
STATE POLICE																			
ALASKA	19,380	22,572	4	23,788	23,788	1													
ARKANSAS	9,800	9,900		12,000	12,000														
CONNECTICUT	15,530	19,010	6	22,000	27,000	6	7,940	9,920	6	8,830	10,930	6							
DELAWARE	14,700	17,000	11-20	17,000	20,000	16-20													
IDAHO				12,500															
ILLINOIS				20,000	20,000														
INDIANA	13,920	17,040	6	16,400									7,560	9,420	6	9,000	11,280	6	
KENTUCKY	11,412	14,556	6	12,576	16,056	6	6,896	8,940	6	7,716	9,852	6	8,520	10,872	6				
LOUISIANA	9,600	14,400																	
MAINE		14,976		16,484			6,240	7,592	6	6,552	7,982	6	7,592	9,230	6				
MARYLAND	14,718	19,134		20,000									9,748	12,670					
MASSACHUSETTS	11,973	15,249	6	16,000	16,000														
MICHIGAN	19,042.56	23,448	4	26,000			8,665	10,857	4	9,437	13,008		11,108	14,219	4				

ADMINISTRATION

IV. PERSONNEL

	E. Present annual salary (excluding longevity and fringe benefits) Detective Ranks			F. Manpower													
	4. Captain/Major			1. Normal work day	2. Normal work week	3. No. of Holidays per year	4. Working days vacation earned per year	5. Average number sick days taken per officer per year	6. Dept. turnover rate percent			7. Scheduled hours for tours of duty by shift					
	SALARY BEGIN	SALARY TOP	NO. OF YEARS						1966	1967	1968	DAY SHIFT		EVENING SHIFT		NIGHT SHIFT	
				HOURS	DAYS	TO	TO	TO				TO					
HIGHWAY PATROLS																	
ALABAMA	11,492	15,146	7	8	5	12	12					6	3	3	12	10	6
ARIZONA				8	5	12	15	8.8	2.3	4.9	0.3						
CALIFORNIA				8	5	11	10-20	6	3.3	3.1	5.5	8	4	4	12	12	8
COLORADO				8	5	11	12-21	3.1	11.0	11.0	10.4	7	3	3	11	11	7
FLORIDA				9	5	8	12	.5	6.8	10.7	7.9	7	4	3	12	11	7
GEORGIA	6,990	12,232	35	8	5.2		15-21	3.5	6.0	8.0	7.0						
IOWA				10	5.5	7	24	4	4.0	3.0	4.0	7	5	4	2	11	7
KANSAS				9	5.4	1	12-18	2.9	3.3	1.1	2.9	7	4	4	1	11	8
MINNESOTA				8	5	10	12-24	3	4.0	4.0	3.0	8	4:30	5:30	2	10	6
MISSISSIPPI				9	6		15	5		7.0	8.0	6	3	3	12		
MISSOURI				8	5		18	2.5	3.0	5.8	5.4	8	4	4	12	12	8
MONTANA				8	5	10	21					9	6	3	12	6	3
NEBRASKA				10	5	11	10-20	2.9	4.8	4.9	4.9	6,7,8	4,5,6				
NEVADA				8 1/2	6	8	15		1.7	1.7	1.4	7	4	3	12	10	7
NORTH CAROLINA				8	5	10	15	3	7.8	7.6	5.9	6	3	2	11	12	8
NORTH DAKOTA				9	5	6	12-24	3	12.0	5.0	8.0	6,9	3,6	3	11	6	2
OHIO				8	5	9	14-28	3.8	13.3	7.5	6.5	8	4	4	12	12	8
OKLAHOMA				10	5	7	15	3.4	2.6	2.4	2.2	6	2	2	10	10	6
SOUTH CAROLINA				8	5	12	15	3.5	7.0	4.5	5.6	8	5	3	12	11	8
SOUTH DAKOTA				10	5	9	15-20	2	1.0	1.0	2.0						
TENNESSEE				9	6	2	12		1.7	2.1	1.9	7	4	4	1	11	8
TEXAS				9	5	12-15	10-13	2.6	5.0	5.9	7.8						
UTAH				8	6	12	12		1.8	3.4	3.6	6	2	2	10	10	6
WASHINGTON				9	5	11	15	2.2	4.7	4.9	4.9	6	3	3	12	12	8
WISCONSIN				8	5	7 1/2	10-20	5	5.0	6.0	6.4	7	3:30	3	11:30	11	7:30
WYOMING				8	5		12	5	.4	1.0	6.0	8	4	4	12	12	8
STATE POLICE																	
ALASKA				8	5	11	15-30	4	19.6	11.9	21.9	7	3	3	11	11	7
ARKANSAS				10	5		18	4	4.0	4.0	2.0	7	5	2	12	12	9
CONNECTICUT	14,000	17,240	6	10	5	11	15	6	4.3	3.8	4.5	7:30	5:30	3:30	1:30	11	9
DELAWARE				8	5	12	10-20	6	4.5	9.9	1.6	8	4	4	12	12	8
IDAHO				9	5 1/2	8	14	5	3.5	7.6	4.2						
ILLINOIS				9	5	5	10-20	4.5	3.5	2.6	1.3	8	5	4	1	11	7
INDIANA				9	5	3	12	6	8.9	5.2	3.6	6	3	3	12	11	8
KENTUCKY				8	5	13	12	5	8.8	8.4	5.0	8	4	4	12	12	8
LOUISIANA				8	5	7	12-18		3.0	3.0	3.0	8	4	4	12	12	8
MAINE						10	12-24	4.5	1.0	6.5	5.0						
MARYLAND				10	5	13	10-20	6.8	5.5	7.5	5.4	8	6	4	2	12	10
MASSACHUSETTS				8	6	10	12-24	5	3.5	8.3	7.7	8	4	4	12	12	8
MICHIGAN				8	5	8	13-21	8	6.0	7.0	10.5	8	4	4	12	12	8
NEW HAMPSHIRE				9	5	10	15	4				9	6	3	12	10	7
NEW JERSEY				8	6	6	10-20	2	1.2	2.3	2.7						
NEW MEXICO	9,600	10,740	2	9		6	12	3.5	4.2	5.9	6.3	7	4	4	1		
NEW YORK	15,085	16,924	5	8	5	11	20	7.4	4.7	4.8	3.1	7	3	3	11	11	7
OREGON				8	5	9	10-20	3	6.6	4.0	7.0	6,11	2,7	2,7	10,3	10,3	6,11
PENNSYLVANIA				8	5	13	15	3	4.0	4.0	4.0	7	3	3	11	11	7
RHODE ISLAND					4 1/2		15-20										
VERMONT				9 1/2	5	12	12-18	4.3	6.6	6.2		8	5:30	5	2:30	12	8
VIRGINIA				8	5	11	12-18	8.3	5.6	5.6	6.5	8	4	4	12	12	8
WEST VIRGINIA				10.6	5	12	15-24		8.6	7.1	9.1						
CANADA																	
ALBERTA				8	6		21-28		6.5	5.8	4.7						
BRITISH COLUMBIA				8	5 1/2	10	21-28	3	6.3	4.3		8	4	4	12	12	8
MANITOBA				8	5	10	15-20	3	3.2	4.0	3.7						
ONTARIO				8	5	11	10-20		4.2	5.4	6.0	8	4	4	12	12	8
SASKATCHEWAN				8	5		21-28		3.0	5.0	5.0	8	4	4	12	12	8

ADMINISTRATION

IV. PERSONNEL

	G. Time Expenditure - Percent					H. Number of police officers killed or injured in line of duty - 1968		V. JOB BENEFITS						
	1. Traffic Services	2. Criminal Investigation	3. Administrative Services	4. Special Services	5. Other	KILLED	INJURED	A. Uniforms		B. Health Insurance				
								1. Uniforms issued at no cost to officer	2. Clothing allowance	1. Plan available	2. Employee pay all	3. Department pay all	4. Costs shared by	
	DEPARTMENT		EMPLOYEE											
HIGHWAY PATROLS														
ALABAMA								YES	NO	YES		YES	100%	
ARIZONA	52	1	15	9	21		40	NO	YES	YES	YES			
CALIFORNIA	88	1	4	4	3	1	2,156	NO	NO	YES	NO		\$8	Varies
COLORADO	76		9	1	14	1	10	YES	NO	YES	NO		\$5	Balance
FLORIDA	86	1	3	3	7		114	YES	NO	YES	YES			
GEORGIA	64	12	8	6	10	1	60	YES	NO	YES	NO		2% of Total Payroll	Fixed Premium based on hospital plan
IOWA	80	5		15				YES	NO	YES	NO		25%	75%
KANSAS	63	1	25	5	6	1	10	YES	NO	YES	YES			
MINNESOTA	63		11	5	21		2	YES	YES	YES		YES		
MISSISSIPPI	70	20	10			1		YES	NO	YES	NO		40%	60%
MISSOURI	72	4	9	10	6		5	NO	YES	YES	YES			
MONTANA	83		9	9			25	YES	YES	YES	NO		30%	70%
NEBRASKA	84	8	1	8			16	YES	NO	YES	YES			
NEVADA	70				30		2	NO	YES	YES		YES		
NORTH CAROLINA	91	1	3	2	4	1	40	YES	NO	YES	YES			
NORTH DAKOTA	82	3	6		13		6	YES	NO	YES	NO		12 1/2%	87 1/2%
OHIO	82	2	12	4			30	YES	NO	YES	YES			
OKLAHOMA	93	2	1	4			48	YES	NO	YES		YES		
SOUTH CAROLINA	90		4	1	6		5	YES	NO	YES	YES			
SOUTH DAKOTA	60	5	20	15				YES	NO	YES	YES			
TENNESSEE	90	6	2	2		1	30	YES	NO	YES	NO		50%	50%
TEXAS	65	1	13	3	19		7	YES	NO	YES	YES			
UTAH	77	2	5	9	7		2	NO	YES	YES	NO		92%	8%
WASHINGTON	85	5	6	4		1		YES	NO	YES				
WISCONSIN	73	9	8	9	10			YES	NO	YES	NO		40%	60%
WYOMING	67		5	29			4	YES	NO	YES		YES		
STATE POLICE														
ALASKA	31	28	5	36			7	YES	NO	YES		YES		
ARKANSAS	60	20	5	5	10		16	NO	YES	YES	YES			
CONNECTICUT	30	19	30	4	16		5	YES	YES	YES	NO	NO	Individuals Share	Dependents Share
DELAWARE	47	42	7	5			50	YES	YES	YES	YES			
IDAHO	64	1	13	4	18		3	YES	NO	YES		YES		
ILLINOIS	80	6	10	4		1	124	YES	NO	YES			\$5.00 Monthly	Balance
INDIANA	55	11	21	13			52	YES	NO	YES	YES			
KENTUCKY	60	20	8	12			45	YES		YES	YES			
LOUISIANA	86	1	6	6	2	2	25	YES	NO	YES			50%	50%
MAINE	70	15	10	5				YES	NO	YES	YES			
MARYLAND	45	13	33	9			15	YES	YES	YES			5.5%	Balance
MASSACHUSETTS	59	18	18	5			37	YES	NO	YES			75%	25%
MICHIGAN	34	25	24	14	3	1	226	YES	NO	YES			90%	10%
NEW HAMPSHIRE	75	15	10				18	YES	NO	YES				
NEW JERSEY	42	24	20	5	9	1	61	YES	NO	YES		YES		
NEW MEXICO	59	8	23	10			30	YES	YES	YES			98%	2%
NEW YORK	47	42	3	4	4		347	YES	NO	YES		YES		
OREGON	68	12			20		8	YES	NO	YES	YES			
PENNSYLVANIA	60	23	18				304	YES	NO	YES			\$5.00 Monthly	Balance
RHODE ISLAND								YES	NO	YES			60%	40%
VERMONT	70	20	5	5			5	YES	NO	YES			50%	50%
VIRGINIA	82	11	4	2		1	217	YES	NO	YES	YES			
WEST VIRGINIA	46	16	15	9	15		84	YES	NO	YES	YES			
CANADA														
ALBERTA							34	YES	YES	YES		YES		
BRITISH COLUMBIA								YES	YES	YES		YES		
MANITOBA								YES	YES	YES		YES		
ONTARIO	41	39				5	275	YES	YES	YES				

ADMINISTRATION

V. JOB BENEFITS

	C. Retirement						VI. RECRUITMENT		
	1. Retirement Contributions		2. Maximum Retirement Percent of Salary	3. Do you have a		4. Orphan's benefit plan	A. Recruitment is the responsibility of:		
	a. PERCENT BY EMPLOYEE	b. PERCENT BY DEPARTMENT		a. WIDOW'S BENEFIT PLAN	b. PERCENT OF SALARY PAID		1. Governmental Personnel Agency	2. Civil Service Board	3. Police Agency
HIGHWAY PATROLS									
ALABAMA	8		80	NO		NO	YES		YES
ARIZONA	5	3.5	50-60	YES	66	YES			
CALIFORNIA	9	20.2	75	YES	50	YES		YES	YES
COLORADO	7	7	50	YES	50	YES		YES	
FLORIDA	7	7	50	YES	50	YES			YES
GEORGIA	5.5	6.7		YES		YES			
IOWA	4.0-6.5	16	50	YES	25	YES			YES
KANSAS	7	16	66	YES	75	YES	YES		YES
MINNESOTA	7	20.2	50	YES	75	YES	YES	YES	YES
MISSISSIPPI	5	15.3	55	YES	50	YES			YES
MISSOURI	4	4	Varies	NO		NO			YES
MONTANA	5	15% of Drivers License Fees	50	YES	50				YES
NEBRASKA	Set Amount	Set Amount	50	YES	50	YES			YES
NEVADA	6	6	50-65	YES	Flat Rate	YES	YES		YES
NORTH CAROLINA	5	5	Years of Service	YES	66	NO			YES
NORTH DAKOTA	6	7.5	Fixed	YES		YES			YES
OHIO	7	9-21	66	YES		YES			YES
OKLAHOMA	5	10% of Drivers License Fees	50	YES	50	YES			YES
SOUTH CAROLINA	10	14.5	Years of Service	YES					YES
SOUTH DAKOTA	4.2	4.2	50	YES	50	YES		YES	
TENNESSEE	11.7	8.2		YES	50	NO			YES
TEXAS	5	Matching	Varies	YES		YES			YES
UTAH	6.4	7.3	50	YES	25	NO		YES	
WASHINGTON	7	25.6	78	YES	50	YES			YES
WISCONSIN	3.5	7.5		YES		YES			
WYOMING	8.2	8.2		NO		NO			YES
STATE POLICE									
ALASKA	3.5	7		YES		YES	YES		YES
ARKANSAS	7	5	60	YES	7	YES			YES
CONNECTICUT	5	State Contributes As Needed	50	YES	1.5	YES	YES		
DELAWARE	2	2	50	YES	50	YES			YES
IDAHO	3.6-First \$400; 7.2 of Balance	7.5		NO		NO	YES		
ILLINOIS	8	7	70	YES	1	NO			YES
INDIANA	5% of Salary to \$930.00	Legislative Allotment	\$930.00 Per Month	YES	\$225.00 Per Month Line of Duty Death	YES			YES
KENTUCKY	7	13	2	YES	Varies	YES			YES
LOUISIANA	5		75	YES	Up to 75%	YES		YES	
MAINE	7.5		50	YES	Optional	YES	YES		
MARYLAND			64	YES		YES	YES		YES
MASSACHUSETTS	6	85	50	YES	66	YES			YES
MICHIGAN	5	18.5	50	YES	50	NO		YES	
NEW HAMPSHIRE			50	NO		NO	YES		
NEW JERSEY	7	32	50	YES	50	YES			YES
NEW MEXICO	7	13.5	Varies	YES	Line of Duty 50	NO			YES
NEW YORK		100	50-60	YES	50	NO			YES
OREGON	50	50	23	YES		NO			YES
PENNSYLVANIA	5% to \$7800; 10% Thereafter	7.8	50	YES	50	NO			YES
RHODE ISLAND			50	YES		YES			YES
VERMONT	5-11	16.5	50	YES	70% of Half Salary	YES			YES
VIRGINIA	5 1/2% of Salary in Excess of \$1200	6.3	1.4 X Years of Service	YES	50	YES			YES
WEST VIRGINIA	6	12	4	YES	2.5	YES			YES
CANADA									
ALBERTA	6.5	6.5	70	YES	Varies	YES			YES
BRITISH COLUMBIA	6	6	35/50 of 6 Year Avg.	YES	50% + Child Allowance	YES			YES
MANITOBA	6	6	70	YES	Length of Service	YES			YES
ONTARIO	6	6	70	YES	1% X Years of Service	YES			YES
SASKATCHEWAN	6		70	YES	Varies	YES			YES

ADMINISTRATION

VI. RECRUITMENT

	A. Recruitment is the responsibility of:		B. Examination											
	4. Other	1. Frequency examinations given:	1. For 1968 the number:					2. For 1968 the number:						
			a. ANNUALLY	b. SEMI-ANNUALLY	c. MONTHLY	d. CONTINUALLY	e. OTHER (SPECIFY)	a. APPLYING TO TAKE EXAM	b. ACTUALLY TAKING EXAM	c. PASSED	d. APPOINTED			
HIGHWAY PATROLS														
ALABAMA										As Needed				
ARIZONA	Law Enforcement Merit System Coun.									As Needed	330	301	106	99
CALIFORNIA										Quarterly	4,041	2,967		257
COLORADO				YES							730	392	112	63
FLORIDA										As Needed		153	101	101
GEORGIA	Merit System						YES							
IOWA										As Needed				
KANSAS										As Needed	408	293	94	30
MINNESOTA										As Needed	500	417	142	
MISSISSIPPI										As Needed	150	109	38	21
MISSOURI							YES				201	271	121	99
MONTANA										As Needed				
NEBRASKA										As Needed	85			
NEVADA										As Needed				
NORTH CAROLINA								YES			600	375	253	100
NORTH DAKOTA				YES							50	41	26	6
OHIO								YES			1,094	710	212	115
OKLAHOMA										As Needed	171	99	73	
SOUTH CAROLINA										As Needed	347	220	147	40
SOUTH DAKOTA				YES							100	100	50	5
TENNESSEE				YES							749	702	451	12
TEXAS								YES					512	247
UTAH				YES							YES			
WASHINGTON									YES		378	202	128	68
WISCONSIN	Bureau of Personnel									As Needed				
WYOMING	Hwy. Dept. Personnel Div.	YES									70	36	16	9
STATE POLICE														
ALASKA									YES		142	86	45	22
ARKANSAS									YES		219	141	42	10
CONNECTICUT										As Needed	2,000	900	450	
DELAWARE										As Needed	105	92	63	
IDAHO										As Needed		50	45	11
ILLINOIS	State Police Merit Board							YES			2,006	1,284	674	210
INDIANA										As Authorized				
KENTUCKY										Approx. Every 6 Weeks	96	58	25	17
LOUISIANA								YES						20
MAINE										As Needed	136	68	33	19
MARYLAND								YES		As Needed	608	403	242	105
MASSACHUSETTS										As Needed	1,214	910	414	
MICHIGAN									YES		724	498	216	
NEW HAMPSHIRE										As Needed				
NEW JERSEY									Every 6 Wks.		2,101	2,101	288	92
NEW MEXICO										As Needed	220			
NEW YORK										As Needed	3,109	2,431	1,472	313
OREGON									YES				62	42
PENNSYLVANIA										Quarterly	4,439	2,815	1,342	425
RHODE ISLAND									YES					
VERMONT									YES		141	20	3	2
VIRGINIA										As Needed	287	191	140	77
WEST VIRGINIA										As Needed	405	228	48	20
CANADA														
ALBERTA										YES	375	352	282	87
BRITISH COLUMBIA										YES	480	350	290	90
MANITOBA										As Needed	65	63	61	
ONTARIO										As Needed	4,165	2,387	916	413
SASKATCHEWAN										YES	285			87

ADMINISTRATION

VII. STATE LAW ENFORCEMENT PLANNING AGENCIES

	A. Full title of State Planning Agency	B. Organizational authority for agency			C. Within State Government, agency located in:			
		1. Executive Order	2. State statute	3. Formed from existing agency (Specify)	1. Governor's Office	2. Attorney General's Office	3. State Planning Agency	4. Cabinet Department
HIGHWAY PATROLS								
ALABAMA	Law Enforcement Planning Agency	YES			YES			
ARIZONA	State Justice Planning Agency	YES			YES			
CALIFORNIA	California Council on Criminal Justice	YES	YES					
COLORADO	Governor's Council on Crime Control	YES			YES			
FLORIDA	Interagency Law Enforcement Planning Council	YES			YES			
GEORGIA								
IOWA	Office for Planning and Programming	YES			YES			
KANSAS	Governor's Committee on the Administration of Criminal Justice	YES			YES			
MINNESOTA	Governor's Commission on Crime Prevention and Control	YES				YES		
MISSISSIPPI	Law Enforcement Assistance Division	YES			YES			
MISSOURI	Missouri Law Enforcement Assistance Council	YES				YES		
MONTANA	Governor's Crime Control Commission	YES			YES			
NEBRASKA	Governor's Commission on Law Enforcement and Criminal Justice	YES					YES	
NEVADA	Commission on Crime, Delinquency and Corrections	YES			YES			
NORTH CAROLINA	Governor's Law and Order Committee		YES		YES			
NORTH DAKOTA	The North Dakota Combined Law Enforcement Control		YES					
OHIO	Ohio Law Enforcement Planning Agency	YES					YES	
OKLAHOMA	Oklahoma Crime Commission	YES				YES		
SOUTH CAROLINA	Governor's Committee on Criminal Admin. & Juvenile Delinquency	YES			YES			
SOUTH DAKOTA	Planning and Advisory Commission on Crime	YES						
TENNESSEE						YES		
TEXAS	Texas Criminal Justice Council	YES			YES			
UTAH	Utah State Law Planning Agency	YES						
WASHINGTON	Law and Justice Planning Office	YES				YES		
WISCONSIN	Wisconsin Council Criminal Justice	YES			YES			
WYOMING	Governor's Committee on Criminal Administration		YES					
STATE POLICE								
ALASKA	Governor's Planning Council on the Admin. of Criminal Justice		1968		YES			
ARKANSAS	Arkansas Commission on Crime and Law Enforcement	YES				YES		
CONNECTICUT	Planning Committee on Criminal Administration	YES						
DELAWARE	Delaware Law Enforcement Planning Agency	YES		Governor's Commission on Law Enforcement and Admin.	YES			
IDAHO	Idaho Law Enforcement Planning Commission		1969					
ILLINOIS	Illinois Law Enforcement Commission	YES		Governor's Committee on Criminal Justice	YES			
INDIANA	Indiana State Criminal Justice Planning Agency		1969		YES			
KENTUCKY	Kentucky Commission of Law Enforcement & Crime Prevention	YES			YES			
LOUISIANA	Louisiana Commission on Law Enforcement	YES			YES			
MAINE	Law Enforcement Planning and Assistance Agency	YES	YES		YES			
MARYLAND	Governor's Commission on Law Enforcement	YES			YES			
MASSACHUSETTS	Committee on Law Enforcement & Admin. of Criminal Justice	YES			YES			
MICHIGAN	Michigan Commission on Law Enforcement & Criminal Justice	YES			YES			
NEW HAMPSHIRE		YES						
NEW JERSEY	State Law Enforcement Planning Agency	YES			YES			
NEW MEXICO	Governor's Policy Board for Law Enforcement	YES						
NEW YORK	New York State Office of Crime Control Planning	YES						
OREGON	Law Enforcement Council	YES			YES			
PENNSYLVANIA	Pennsylvania Crime Commission	YES						
RHODE ISLAND	Governor's Committee on Crime Delinquency and Criminal Admin.	YES			YES			
VERMONT	Governor's Commission on Crime Control and Prevention	YES			YES			
VIRGINIA	State Law Enforcement Planning Council	YES			YES			
WEST VIRGINIA	Governor's Commission on Crime, Delinquency and Corrections	YES			YES			
CANADA								
ALBERTA								
BRITISH COLUMBIA								
MANITOBA								
ONTARIO								
SASKATCHEWAN								

ADMINISTRATION

VII. STATE LAW ENFORCEMENT PLANNING AGENCIES

	C. Within State Government, agency located in:	D. Number of members on advisory board	E. Number on law enforcement planning staff										
			5. Separate Department	6. Other	1. Clerical								
					2. Professional								
				a. COURTS	b. CORRECTIONS	c. POLICE	d. ACADEMIC AND RESEARCH	e. FINANCE AND BUDGET	f. SOCIAL WELFARE	g. JUVENILE DELINQUENCY	h. LEGAL	i. SCIENTIFIC	
HIGHWAY PATROLS													
ALABAMA													
ARIZONA	YES	10 Voting 3 Advisory	2	7	1	1	1	1			1		
CALIFORNIA		25	12	0									
COLORADO		20	3	11	2		2	1		2	1		
FLORIDA		22	1	3		2	1						
GEORGIA													
IOWA		23	2	3							1		
KANSAS								1			1		
MINNESOTA													
MISSISSIPPI		34	4	11	1	3	2	1					
MISSOURI		19	3	8	1	1	2	1			1		
MONTANA		12	2		1	1	1	1		1	1		
NEBRASKA		17	3	1							1		
NEVADA		16	1	1		1							
NORTH CAROLINA		26	3	9		1	1	1		1	1		
NORTH DAKOTA		15	3	3									
OHIO		21	1	1		1		1					
OKLAHOMA		40	3	14	1	2	1	1/2	1		1	1	
SOUTH CAROLINA		16	1	6	1	2	1			1	2		
SOUTH DAKOTA		16	1	1									
TENNESSEE													
TEXAS		21	4	7	1	1	1	1					
UTAH	Department of Public Safety	16	2	4	1	1	1			1			
WASHINGTON		29	1	4		1							
WISCONSIN		10	3	7		2	1	2			2		
WYOMING		22	1	2									
STATE POLICE													
ALASKA		5	1	1		1							
ARKANSAS		14	1	1	1	1	1						
CONNECTICUT	YES	25	5	1	1	2	2	1	1	2	1		
DELAWARE		19	2	3									
IDAHO	YES	18	2	1	1	2		1		1			
ILLINOIS		26	8	1			2			1	2		
INDIANA		13											
KENTUCKY		48	5		1	2		1		1	4		
LOUISIANA		35	3		1	1	2	1					
MAINE		19	1				1	1					
MARYLAND		16	7				7	3		1	1	1	
MASSACHUSETTS		30	11	2	2	2	2	1	2	2	5	2	
MICHIGAN		28	8	1	1	3	4	2		1	1		
NEW HAMPSHIRE													
NEW JERSEY		14	7	1	2	2	4	2	1		1		
NEW MEXICO	YES	19	2			1		1					
NEW YORK	YES												
OREGON			3	1	1	1							
PENNSYLVANIA	Department of Justice	40											
RHODE ISLAND		22	2	1		1							
VERMONT		19	1	1		1	1			1	1		
VIRGINIA		16	3	1	1	1	1	1		1	1		
WEST VIRGINIA		30	10	2	2	8	2	1					
CANADA													
ALBERTA													
BRITISH COLUMBIA													
MANITOBA													
ONTARIO													
SASKATCHEWAN													

ADMINISTRATION

VII. STATE LAW ENFORCEMENT PLANNING AGENCIES

	E. Number on law enforcement planning staff		F. How are planning funds made available to local jurisdictions								
	2. Professional		1. Direct grants								
	j. INFORMATION SYSTEMS	k. OTHER	a. POPULATION FORMULA (SPECIFY)	b. POPULATION PLUS OTHER FACTOR FORMULA	c. REGIONAL BOARDS AND AGENCIES	d. APPLICABILITY OF LOCALITIES	e. UNTIL FUNDS RUN OUT	f. TO GOVERNMENT AGENCIES ONLY	g. TO GOVERNMENT AND PRIVATE AGENCIES ONLY	h. TO PROFESSIONAL ASSOCIATIONS	i. TO LOCAL GOVERNMENT ASSOCIATIONS OR LEAGUE
HIGHWAY PATROLS											
ALABAMA											
ARIZONA		1	YES		YES						
CALIFORNIA			10,000 + Adj. for Pop. Served in Region		YES						
COLORADO				YES	YES						
FLORIDA			YES		YES						
GEORGIA											
IOWA				YES							
KANSAS		Director			YES	YES					
MINNESOTA		3		YES	YES	YES		YES			
MISSISSIPPI		1	YES		YES						
MISSOURI					YES	YES					
MONTANA	1										
NEBRASKA			YES		YES				YES	YES	
NEVADA			YES		YES						
NORTH CAROLINA		4		YES		YES					
NORTH DAKOTA					YES						
OHIO		1									
OKLAHOMA	1½	1	YES		YES						
SOUTH CAROLINA				Minimum of \$7,500	YES	NO	NO	NO	NO	NO	NO
SOUTH DAKOTA			YES		YES	YES					
TENNESSEE											
TEXAS		1	YES		YES	NO					
UTAH			YES		YES	YES		YES			
WASHINGTON		1		Merit of Application	YES	YES					
WISCONSIN				Minority Population	Same	Same		YES		YES	
WYOMING			YES		YES						
STATE POLICE											
ALASKA											
ARKANSAS				YES							
CONNECTICUT		3	YES		YES			YES			
DELAWARE											
IDAHO	1			YES	YES	YES		YES		YES	
ILLINOIS	2	2	YES		YES	YES					
INDIANA					YES						
KENTUCKY					YES						
LOUISIANA	2	3	YES	YES	YES					YES	
MAINE		1		YES						YES	
MARYLAND	2		YES		YES						
MASSACHUSETTS	2	4		YES	YES			YES	YES	YES	
MICHIGAN		5		YES	YES			YES		YES	
NEW HAMPSHIRE											
NEW JERSEY		6		YES							
NEW MEXICO		1		YES	YES	YES			YES		
NEW YORK											
OREGON		2	YES		YES					YES	
PENNSYLVANIA											
RHODE ISLAND				YES	YES	YES					
VERMONT					YES	YES	YES				
VIRGINIA		1	YES		YES	YES					
WEST VIRGINIA		3	YES		YES	YES	YES	YES			
CANADA											
ALBERTA											
BRITISH COLUMBIA											
MANITOBA										YES	
ONTARIO										YES	YES
SASKATCHEWAN											

ADMINISTRATION

VII. STATE LAW ENFORCEMENT PLANNING AGENCIES

	G. Performance of planning services for local jurisdictions			H. Contracting with private and/or professional associations for state planning functions	I. Do you plan to contract for services after the first year of planning	J. Do you contemplate future increase in your professional staff	K. Requirements for local jurisdictions for awarding of grants				L. State Plans	
	1. Regional Basis	2. Local waiver of planning funds (What percentage of localities waived funds)	3. Only certain planning functions performed by localities				1. Local advisory boards	2. Submission of proposed budget	3. Submission of staff biographies	4. Submission of formulas for allocation of monies among functions	1. Completion date for state plans	2. Does your state/province now provide assistance to local law enforcement agencies
HIGHWAY PATROLS												
ALABAMA												
ARIZONA			YES	YES	4.8						May 15, 1969	YES
CALIFORNIA	YES			NO		NO	YES				April 4, 1969	YES
COLORADO	YES			NO			YES	YES			April 24, 1969	YES
FLORIDA	YES			NO		YES	YES	YES			June 15, 1969	
GEORGIA												
IOWA				YES		YES	YES	YES			June 1, 1969	YES
KANSAS	YES			YES	10	YES	YES	YES			May 1, 1969	NO
MINNESOTA	YES			YES		YES	YES	YES	NO		May 9, 1969	YES
MISSISSIPPI				YES	30	NO	NO	YES	YES	YES	June 1969	YES
MISSOURI	YES					YES	YES	YES	YES		June 16, 1969	YES
MONTANA				YES			YES	YES		YES	May 23, 1969	
NEBRASKA	YES			YES		YES	YES	YES	YES		May 1, 1969	YES
NEVADA	YES					YES	YES	YES	YES		April 30, 1969	NO
NORTH CAROLINA								YES	YES	YES	YES	YES
NORTH DAKOTA	Pending			YES		YES	YES	YES	YES		May 27, 1969	YES
OHIO	YES	NO		YES		YES	YES	YES	YES	YES	April 1969	YES
OKLAHOMA			YES	NO		NO	YES	YES	YES			
SOUTH CAROLINA	YES	NO	NO	NO		YES	YES	YES	NO	NO	June 1, 1969	YES
SOUTH DAKOTA	YES						YES	YES	YES		May 1, 1969	YES
TENNESSEE											June 1, 1969	YES
TEXAS	YES	NO		YES	10	YES	YES	YES	YES			
UTAH	YES			YES		YES	YES	YES	YES	YES	May, 1969	YES
WASHINGTON				YES	15	YES	YES	YES	YES	YES	April 20, 1969	YES
WISCONSIN				NO			YES	YES	YES	YES	May 15	YES
WYOMING				NO		NO	YES	YES	YES		April 30, 1969	YES
STATE POLICE												
ALASKA		100			25	YES	YES				May 2, 1969	NO
ARKANSAS	YES			NO		YES	YES		YES		May 1, 1969	YES
CONNECTICUT						YES	YES	YES	YES		April 28, 1969	YES
DELAWARE		100		YES	75	YES	YES	YES	YES		June 16, 1969	YES
IDAHO	YES			YES			YES	YES	YES		May 15, 1969	YES
ILLINOIS	YES		NO	NO		NO	YES	YES	YES	NO	YES	April 1969
INDIANA	YES											
KENTUCKY						YES	YES	YES	YES		June 15, 1969	YES
LOUISIANA	YES			YES	33	YES	YES	YES	YES	YES	June 1969	YES
MAINE				YES	33	YES	YES	YES	YES	YES	April 1969	
MARYLAND	YES			NO		YES	YES	YES	YES		May 1, 1969	YES
MASSACHUSETTS	YES			YES	10-15	YES	YES	YES	YES	YES	May 1969	YES
MICHIGAN	YES			NO		YES	YES	YES	YES	YES	May 29, 1969	YES
NEW HAMPSHIRE												
NEW JERSEY	YES			YES						YES		YES
NEW MEXICO	YES			YES	40	NO	YES	YES	YES	YES	May 1, 1969	YES
NEW YORK												
OREGON							YES	YES	YES		June 1, 1969	YES
PENNSYLVANIA	YES											
RHODE ISLAND						NO	YES	YES	YES	YES	YES	YES
VERMONT	YES	100		YES			YES	YES	YES		June 10, 1969	YES
VIRGINIA	YES			YES		YES	YES	YES	YES	YES	June 10, 1969	YES
WEST VIRGINIA	YES			YES	NO	NO	YES	YES	YES	YES	May 15, 1969	YES
CANADA												
ALBERTA												
BRITISH COLUMBIA												
MANITOBA										YES		
ONTARIO										YES		YES
SASKATCHEWAN												

OPERATIONS

OPERATIONS

I. FUNCTIONS

A. Functions Department Has As A Responsibility

	HIGHWAY SAFETY	CRIME STATE-WIDE	CRIME HIGHWAY ONLY	CRIME LIMITED	LIQUOR CONTROL	DRIVERS LICENSE EXAMINATION	MOTOR VEHICLE INSPECTION	JAIL OPERATIONS	COMMERCIAL VEHICLE REGULATION	SERVICE OF TRAFFIC CRIMINAL WARRANTS	SERVICE OF CIVIL PROCESS	SERVICE OF SUSPENSION/REVOCAATION NOTICES	GENERAL PATROL STATE-WIDE	GENERAL PATROL RESTRICTED TO UNINCORPORATED AREAS	INVESTIGATIVE FUNCTIONS STATE-WIDE	INVESTIGATIVE FUNCTIONS REQUEST ONLY
HIGHWAY PATROLS																
ALABAMA	YES	YES				YES						YES	YES		YES	
ARIZONA	YES			YES					YES	YES			YES			
CALIFORNIA	YES		YES	YES			YES		YES	YES			YES	YES		
COLORADO	YES								YES				YES			
FLORIDA	YES			YES		YES	YES		YES			YES	YES		YES	
GEORGIA	YES	YES				YES	YES					YES	YES		YES	
IOWA	YES			YES		YES	YES					YES	YES			
KANSAS	YES			YES			YES		YES			YES		YES		
MINNESOTA	YES		YES				YES		YES	YES			YES	YES	YES	YES
MISSISSIPPI	YES			YES		YES	YES					YES			YES	
MISSOURI	YES			YES		YES	YES		YES	YES		YES	YES		YES	
MONTANA	YES					YES	YES		YES	YES		YES	YES		YES	
NEBRASKA	YES	YES			YES		YES		YES	YES		YES	YES		YES	
NEVADA	YES		YES				YES		YES	YES		YES		YES		
NORTH CAROLINA	YES											YES		YES		
NORTH DAKOTA	YES		YES		YES	YES	YES		YES	YES		YES	YES		YES	
OHIO	YES			YES		YES	YES		YES	YES			YES	YES	YES	YES
OKLAHOMA	YES					YES	YES		YES	YES		YES	YES			
SOUTH CAROLINA	YES		YES						YES	YES		YES		YES		
SOUTH DAKOTA	YES			YES			YES		YES			YES	YES			
TENNESSEE	YES			YES		YES				YES		YES	YES			YES
TEXAS	YES	YES				YES	YES		YES	YES		YES	YES			YES
UTAH	YES						YES		YES	YES			YES			
WASHINGTON	YES			YES			YES		YES				YES		YES	
WISCONSIN	YES						YES		YES	YES		YES				
WYOMING	YES								YES			YES	YES		YES	
STATE POLICE																
ALASKA	YES	YES				YES	YES			YES	YES	YES	YES		YES	
ARKANSAS	YES	YES				YES	YES					YES	YES		YES	YES
CONNECTICUT	YES	YES								YES			YES		YES	
DELAWARE	YES	YES			YES	YES			YES	YES		YES	YES		YES	
IDAHO	YES			YES					YES			YES	YES			YES
ILLINOIS	YES	YES					YES		YES				YES		YES	
INDIANA	YES	YES					YES		YES	YES			YES		YES	
KENTUCKY	YES	YES			YES	YES				YES		YES	YES		YES	
LOUISIANA	YES	YES				YES	YES		YES			YES	YES		YES	
MAINE		YES					YES		YES			YES	YES		YES	
MARYLAND	YES	YES					YES		YES	YES				YES	YES	
MASSACHUSETTS	YES	YES			YES					YES			YES		YES	
MICHIGAN	YES	YES			YES		YES		YES	YES		YES	YES		YES	
NEW HAMPSHIRE	YES	YES								YES			YES		YES	
NEW JERSEY	YES	YES							YES	YES			YES		YES	
NEW MEXICO	YES	YES			YES	YES	YES		YES	YES		YES	YES		YES	
NEW YORK	YES	YES					YES		YES	YES		YES	YES		YES	
OREGON	YES	YES								YES		YES		YES	YES	
PENNSYLVANIA	YES	YES				YES	YES		YES	YES		YES	YES		YES	
RHODE ISLAND	YES	YES											YES			
VERMONT	YES	YES								YES			YES		YES	
VIRGINIA	YES						YES		YES	YES			YES		YES	
WEST VIRGINIA	YES	YES			YES	YES	YES		YES	YES		YES	YES		YES	
CANADA																
ALBERTA	YES	YES			YES				YES	YES		YES	YES		YES	
BRITISH COLUMBIA	YES	YES			YES	YES	YES		YES	YES	YES	YES	YES		YES	
MANITOBA	YES	YES			YES			YES	YES	YES			YES		YES	
ONTARIO	YES	YES			YES					YES			YES		YES	
SASKATCHEWAN	YES	YES			YES					YES			YES		YES	

OPERATIONS

I. FUNCTIONS										II. EQUIPMENT					
A. Functions Department Has As A Responsibility		B. Type of Patrol			C. Which of the Following Highways Does your Department Patrol?					A. Motor Vehicles					
MARINE REGULATION	TRAINING LOCAL POLICE	LINE	AREA	COMBINATION	STATE HIGHWAYS INCLUDING THOSE WITHIN INCORPORATED AREAS	STATE HIGHWAYS (OUTSIDE OF INCORPORATED AREAS)	COUNTY RURAL HIGHWAYS	CONTROLLED ACCESS ROADS (WITHIN INCORPORATED AREAS)	CITY STREETS (UNDER CONTRACT)	1. Total number of vehicles in fleet	2. Number of vehicles by type				
										4-DOOR SEDAN	2-DOOR SEDAN	MOTOR SCOOTERS	MOTOR-CYCLES (3 WHEEL)	MOTOR-CYCLES (SOLO)	
HIGHWAY PATROLS															
ALABAMA		YES			YES	YES	YES			485	461			6	
ARIZONA		YES			YES	YES	YES	YES		474	445				
CALIFORNIA					YES	YES	YES	YES		2,513	1,997		17	389	
COLORADO		YES			YES	YES	YES			350	60	237		22	
FLORIDA					YES	YES		YES	YES	781	750				
GEORGIA		YES			YES	YES	YES			643	18	613			
IOWA			YES			YES	YES			410	400				
KANSAS					YES	YES				245	133	97		4	
MINNESOTA		YES			YES	YES		YES		464	348				
MISSISSIPPI					YES	YES				398	381				
MISSOURI		YES		YES		YES	YES	YES		738	423	203		5	
MONTANA			YES			YES	YES	YES		185	172				
NEBRASKA		YES			YES	YES	YES	YES		279	36	235			
NEVADA					YES	YES	YES			123	109	8		2	
NORTH CAROLINA						YES	YES			950					
NORTH DAKOTA	YES		YES	YES	YES	YES	YES	YES		84	83				
OHIO		YES			YES	YES	YES		YES	798	2	737			
OKLAHOMA			YES	YES	YES	YES	YES			301	323				
SOUTH CAROLINA					YES	YES				714	13	695			
SOUTH DAKOTA					YES	YES	YES			130	128			2	
TENNESSEE					YES	YES	YES	YES		437	416			8	
TEXAS		YES			YES	YES	YES	YES		1,800	1,742	16		2	
UTAH			YES			YES	YES	YES		221	151	62			
WASHINGTON					YES	YES	YES	YES		702	749			4	
WISCONSIN			YES			YES				495	451			3	
WYOMING					YES	YES		YES		106	105				
STATE POLICE															
ALASKA	YES				YES	YES	YES		YES	88	74			2	
ARKANSAS			YES			YES	YES	YES		477	361	102			
CONNECTICUT		YES			YES	YES	YES	YES		990	210	673		3	
DELAWARE	YES	YES			YES	YES	YES	YES		201	154	30		3	
IDAHO					YES	YES		YES	YES	126	121				
ILLINOIS					YES	YES		YES	YES	1,519	1,475				
INDIANA			YES			YES	YES			905	829	38			
KENTUCKY	YES				YES	YES	YES	YES		561	1	542			
LOUISIANA					YES	YES	YES	YES		390	360			8	
MAINE					YES	YES	YES	YES		311		298			
MARYLAND		YES			YES	YES	YES	YES		872	820	16			
MASSACHUSETTS	YES	YES			YES	YES		YES	YES	351	166	66		67	
MICHIGAN	YES	YES	YES			YES		YES	YES	823	501	229			
NEW HAMPSHIRE		YES			YES	YES	YES	YES		124	115	3			
NEW JERSEY		YES			YES	YES	YES	YES		742	714				
NEW MEXICO	YES	YES			YES	YES		YES	YES	254	90	149	2		
NEW YORK	YES	YES			YES	YES	YES	YES	YES	1,596	1,540				
OREGON	YES				YES	YES	YES	YES		340	7	256			
PENNSYLVANIA		YES			YES	YES		YES	YES	1,473	1,360			25	
RHODE ISLAND		YES			YES	YES				90	2	71		10	
VERMONT	YES	YES			YES	YES		YES	YES	143	129	1			
VIRGINIA						YES	YES	YES	YES	884		859			
WEST VIRGINIA		YES				YES		YES	YES	252	229	2			
CANADA															
ALBERTA	YES				YES	YES	YES		YES	402	219				
BRITISH COLUMBIA	YES				YES	YES	YES	YES	YES	610	489	30		8	
MANITOBA	YES				YES	YES			YES	213	196			2	
ONTARIO	YES				YES	YES		YES	YES	1,258	98	997		111	
SASKATCHEWAN	YES				YES	YES			YES	378		334			

OPERATIONS

II. EQUIPMENT															
A. Motor Vehicles															
2. Number of vehicles by type							3. Operational cost per mile			4. Liability Insurance furnished by			5. Number of fleet vehicles involved in accidents-1968	6. Patrol vehicle issued to Officer	
JEEPS	BUSES	PICK-UP TRUCKS	OTHER TRUCKS	MOBILE COMMAND POSTS	SPECIAL RIOT VEHICLES	OTHER	PATROL CARS	MOTOR-CYCLES (SOLO)	MOTOR-CYCLES (3 WHEEL)	OFFICER	DEPARTMENT	OTHER			
HIGHWAY PATROLS															
ALABAMA		2	10	2	4		.03			YES					
ARIZONA		1	3	2		5	.05				YES			66	
CALIFORNIA	1	1	2	57		12	.05	.04	.04			State		1,344	
COLORADO			23	3		2	.03				YES			123	
FLORIDA		3	1	4		1	.05				YES			201	
GEORGIA	2		1	1		1	.06					YES		134	
IOWA	1				1		.04				YES			77	
KANSAS		1	1			2	.04					YES		67	
MINNESOTA				4			.06				YES			130	
MISSISSIPPI	3		3	2	1		.04				YES			88	
MISSOURI		1	2	16		2	.03			YES				169	
MONTANA				1	1		.04				YES			36	
NEBRASKA		1					.03				YES			20	
NEVADA			1	2	1		.06	.06			YES			17	
NORTH CAROLINA			8	4	2	6	.04			YES	YES			213	
NORTH DAKOTA							.06				YES			3	
OHIO		1	19	37	1	1	.05			YES				352	
OKLAHOMA			3	1	2	4	.05			YES				63	
SOUTH CAROLINA							.05					Self Insured		170	
SOUTH DAKOTA							.08				YES			10	
TENNESSEE	2			2		1	.05					YES		162	
TEXAS	13		4	2	1	6	.04					YES		153	
UTAH	4		1			1	.03			YES				35	
WASHINGTON				12			.04				YES			138	
WISCONSIN				3	1		.04				YES			101	
WYOMING							.07				YES			25	
STATE POLICE															
ALASKA			6	3		3	.13	.06			YES			17	
ARKANSAS			2	1	2	1	.04					YES		222	
CONNECTICUT	8	3	15	9		4	.03				YES			92	
DELAWARE	1		7	1		1	.14				YES			33	
IDAHO			2	1		2	.05				YES			303	
ILLINOIS		1	1	8	2		.05				YES			309	
INDIANA	13		5	4	2		.04				YES			187	
KENTUCKY	3		3				.06			YES				122	
LOUISIANA	1	1	7	3		1	.03				YES			107	
MAINE	4			6		1	.05				YES			262	
MARYLAND	1		15	3			.03				YES			78	
MASSACHUSETTS	2	1	3	1	1	1	.03	.04				YES		293	
MICHIGAN	7	2		21	2		.03				YES			130	
NEW HAMPSHIRE						1	.04					YES		79	
NEW JERSEY	1	1	6	4		1	.02				YES			397	
NEW MEXICO			2				.07				YES			80	
NEW YORK			8	16			.05				YES			398	
OREGON			73	4			.04				YES			37	
PENNSYLVANIA		2		46	3	2	.05					YES		76	
RHODE ISLAND				1		1	.03					YES		230	
VERMONT	2		1				.03				YES			129	
VIRGINIA			3	10			.03				YES				
WEST VIRGINIA	1	1		14			.04				YES				
CANADA															
ALBERTA			6	12			.06					YES		192	
BRITISH COLUMBIA	2	1	2	44			.05							395	
MANITOBA			5	4			.05	.04						114	
ONTARIO	3	2	3	12	2		.04	.03			YES	YES		603	
SASKATCHEWAN				15			.06							NO	

OPERATIONS

II. EQUIPMENT

	A. Motor Vehicles													
	7. Patrol vehicles—air-conditioned				8. Use un-marked patrol cars	9. Percent un-marked	10. Equipment carried in patrol car						11. Color of emergency lights on marked patrol vehicle	
	ALL CARS	PATROL CARS ONLY	NO	OTHER			ACCIDENT INVESTIGATION KIT	EVIDENCE KIT	CAMERAS (TYPE)	TEAR GAS	SHOTGUN	HELMET		OTHER
HIGHWAY PATROLS														
ALABAMA	YES				YES	6	YES			YES	YES		Blue	
ARIZONA	YES				YES	6.3	YES	YES		YES	YES	YES	Red	
CALIFORNIA			YES		NO		YES	YES		YES	YES	YES	Red	
COLORADO			YES		YES	9.8	YES	YES				YES	Red	
FLORIDA	YES				YES	10	YES	YES		YES	YES	YES	Blue	
GEORGIA	YES				NO		YES	YES		YES	YES	YES	Red	
IOWA					YES	16				YES	YES	YES	Red	
KANSAS	YES				YES			YES	YES	YES	YES	YES	Red	
MINNESOTA			YES		YES	10	YES	YES	YES	YES	YES		Red	
MISSISSIPPI	YES				YES	10	YES	YES	YES	YES	YES	YES	Blue	
MISSOURI	YES				YES	4.9	YES	YES		YES	YES	YES	Red	
MONTANA			YES		NO		YES	YES		YES	YES	YES	Red	
NEBRASKA	YES				NO		YES	YES		YES	YES	YES	Red	
NEVADA	YES			YES	NO		YES	YES		YES	YES	YES	Red	
NORTH CAROLINA		YES			YES	14	YES			YES	YES		Blue	
NORTH DAKOTA			YES		YES	6	YES	Yashica				YES	Red	
OHIO		YES			NO		YES	YES	YES		YES	YES	Red	
OKLAHOMA	YES				NO		YES			YES		YES	Red	
SOUTH CAROLINA	YES				YES	14		YES			YES	YES	Blue	
SOUTH DAKOTA	YES				NO			YES		YES	YES		Red	
TENNESSEE	YES				YES	16			YES	YES	YES		Blue	
TEXAS				YES	NO		YES	YES	YES	YES	YES	YES	Red	
UTAH			YES		NO		YES	YES	YES	YES	YES	YES	Red	
WASHINGTON	YES				NO		YES			YES	YES		Red	
WISCONSIN					YES	10	YES			YES	YES	YES	Red	
WYOMING	YES				NO		YES	YES			YES		Red	
STATE POLICE														
ALASKA			YES		YES	25	YES	YES	Graflet	YES	YES	NO	YES	Red
ARKANSAS	YES				YES	1.9		Yashica D	YES	YES	YES	YES	Blue	
CONNECTICUT			YES		YES	1.0					YES	YES	Red	
DELAWARE		YES			YES	80	YES	YES		YES	YES	YES	Red	
IDAHO			YES		NO			Argus 264-K	YES	YES	YES	YES	Red	
ILLINOIS	YES				YES	20			YES	YES	YES	YES	Red	
INDIANA				YES	YES	2.6		Crown Graphic	YES	YES	YES		Red	
KENTUCKY			YES		YES	5	YES	Kodak Super 75	YES	YES	YES	YES	Blue	
LOUISIANA	YES				NO		YES	YES		YES	YES		Red	
MAINE			YES		NO								Blue	
MARYLAND		YES			YES	26	YES	Kodak 124				YES	Red	
MASSACHUSETTS			YES		YES	25				YES	YES		Blue	
MICHIGAN			YES		NO		YES	Kodak 704		YES	YES	YES	Red	
NEW HAMPSHIRE			YES		YES	5	YES	Speed Graphic			YES	YES	Blue	
NEW JERSEY				YES	YES	67						YES	Red	
NEW MEXICO	YES				YES	10		Polaroid	YES	YES	YES	YES	Red	
NEW YORK			YES		YES	6						YES	Red	
OREGON			YES		NO							YES	Red	
PENNSYLVANIA				YES	YES	10						YES	Red	
RHODE ISLAND			YES		YES					YES	YES	YES	Red	
VERMONT			YES		YES		YES	YES		YES	YES	YES	Blue	
VIRGINIA	YES				YES	50		35 mm		YES	YES	YES	Red	
WEST VIRGINIA	YES				YES	80	YES	YES	Yashica	YES	YES	YES	Red	
CANADA														
ALBERTA			YES		YES	20	YES	Yashica Graflet				YES	Red	
BRITISH COLUMBIA			YES		YES	32		Twin Lens					Red	
MANITOBA			YES		YES	30		Yashica Graflet				YES	Red	
ONTARIO			YES		YES	9						YES	Red	
SASKATCHEWAN			YES		YES	20	YES	Yashica Graflet				YES	Red	

OPERATIONS

II. EQUIPMENT

	A. Motor Vehicles					B. Aircraft											
	12. Average number of automobiles in fleet in 1968	13. Number of new automobiles purchased in 1968	14. Average life of automobile		15. Total fleet automobiles driven in 1968	1. Use aircraft	2. Type of aircraft		3. Aircraft is:				4. Pilots are:				
			MONTHS	MILES			FIXED WING	ROTARY	AUTHORIZED BY LAW	DEPARTMENT OWNED	LEASED	USED FOR TRAFFIC LAW ENFORCEMENT	POLICE OFFICERS	CIVILIAN	BOTH		
HIGHWAY PATROLS																	
ALABAMA	430	250	24	80,000		NO											
ARIZONA	450	242	24	60,000	14,176,200	YES	YES				YES		YES	YES			
CALIFORNIA	2,387	1,126	18	76,000	99,688,888	YES		YES				YES	YES	YES	YES		
COLORADO	296	167	18	183,000	14,390,383	YES	YES			YES	YES				YES		
FLORIDA	730	192	24	85,000	22,776,310	YES	YES			YES	YES			YES	YES		
GEORGIA	506	288	12-18	75,000 to 85,000	19,364,347	NO											
IOWA	410	318	18	60,000	15,741,428	YES	YES				YES		YES	YES	YES		
KANSAS	238	158	14	60,000	9,042,192	YES	YES					YES	YES	YES	YES		
MINNESOTA	445	233	30	85,000	12,240,000	YES	YES			YES	YES		YES	YES	YES		
MISSISSIPPI	381	217	9	63,000		YES	YES	YES			YES						YES
MISSOURI		45	12	25,000 to 35,000	18,787,544	YES	YES	YES			YES		YES	YES	YES		
MONTANA	185	70	18	55,000 to 65,000	5,845,552	NO											
NEBRASKA	270	163	20	70,000	9,892,363	YES	YES	YES	YES			YES		YES	YES		YES
NEVADA	123	57	24	60,000	2,577,203	NO											
NORTH CAROLINA	900	833	12		20,091,745	YES	YES			YES	YES		YES	YES	YES		
NORTH DAKOTA	84		20	70,000	2,779,642	YES	YES				YES		YES	YES	YES		
OHIO	739	434	24	75,000	31,181,000	YES	YES						YES	YES	YES		
OKLAHOMA	289	235	22	90,000	14,051,814	YES	YES			YES	YES		YES	YES	YES		
SOUTH CAROLINA	665	236	36	110,000	20,879,053	NO											
SOUTH DAKOTA	130	53	18	70,000	4,650,197	NO											
TENNESSEE	400	233	24	100,000	16,500,000	YES		YES		YES			YES	YES	YES		
TEXAS	1,570	523	24	85,000	42,127,820	YES		YES			YES		YES	YES	YES		
UTAH													YES	YES	YES	YES	
WASHINGTON	749	390	20	65,000	19,573,728	YES	YES			YES			YES	YES	YES		
WISCONSIN	490	275	24	72,000	11,767,444	YES	YES						YES	YES	YES		
WYOMING	105	45	20	75,000	3,700,000	NO											
STATE POLICE																	
ALASKA	80	11	24	75,000	1,576,405	YES	YES										
ARKANSAS	450	361	24	50,000	11,015,552	YES	YES			YES	YES		YES	YES	YES		
CONNECTICUT	850	285	18-24	65,000 to 80,000	19,885,074	NO											
DELAWARE	168	51	36	60,000	3,593,526	YES	YES				YES			YES			
IDAHO	126	47	24	80,000	4,084,264	NO											
ILLINOIS	1,410	608	24	50,000	39,671,453	YES	YES					YES			YES	YES	
INDIANA	800	467	14	50,000	32,027,206	YES	YES			YES	YES		YES	YES	YES		
KENTUCKY	482	200	24	60,000	12,808,691	YES	YES			YES	YES		YES	YES	YES		
LOUISIANA			24	100,000													
MAINE	305	251	12	43,000	10,600,000	NO											
MARYLAND	778	406	24	70,000	22,077,755	YES	YES	YES	YES	YES	YES				YES		
MASSACHUSETTS	282	53	18	70,000	7,215,480	YES		YES	YES	YES	YES		YES	YES	YES		
MICHIGAN	810	441	14	50,000	27,000,000	YES	YES			YES	YES		YES	YES	YES		
NEW HAMPSHIRE			24	60,000	4,455,792	NO											
NEW JERSEY	742	380	24	75,000	20,018,262	YES		YES				YES				YES	
NEW MEXICO	245	95	28	75,000	8,051,056	YES	YES				YES		YES	YES	YES	YES	
NEW YORK	1,475	750	18	75,000	55,866,361	YES	YES	YES		YES			YES	YES	YES		
OREGON	340	229		70,000	13,889,562	NO											
PENNSYLVANIA	1,300	800	21	50,000	40,000,000	YES		YES			YES		YES		YES		
RHODE ISLAND	80	37	24	80,000	2,272,828	YES		YES					YES			YES	
VERMONT	141	68	22	60,000	4,553,713	NO											
VIRGINIA	788	435	24	70,000	27,783,084	YES	YES				YES				YES		
WEST VIRGINIA	240	115	24		5,465,076	NO											
CANADA																	
ALBERTA	379	23	24	60,000	10,680,077	YES	YES			YES			YES		YES	YES	
BRITISH COLUMBIA	610	45	30	60,000	16,588,000	NO											
MANITOBA	215	78	17	60,000	6,120,820	NO											
ONTARIO	1,184	822	12	60,000	58,000,000	YES	YES						YES	YES	YES	YES	
SASKATCHEWAN	368	220		60,000	11,000,000	YES	YES			YES	YES		YES	YES	YES	YES	

OPERATIONS

II. EQUIPMENT	B. Aircraft			III. MOTOR VEHICLE INSPECTION					IV. DRIVER LICENSING				
	5. Operational cost per hour (logged)		6. Law prescribes speed-measuring methods	A. Have MVI Law	B. Type	C. Police Agency Administers	D. Police Agency Provides Field Supervision	E. If Yes to C and D, Number of Personnel Assigned		A. Department Administers Program	B. Personnel Assigned		C. Minimum Age for License
	FIXED WING	ROTARY						SWORN	CIVILIAN		SWORN	CIVILIAN	
HIGHWAY PATROLS													
ALABAMA			NO	NO					YES	112		16	
ARIZONA	10,14 Single, 49,58 Twin		NO	NO					NO			16	
CALIFORNIA			YES		YES	YES	516	144	NO			18	
COLORADO	11.00	60.00	NO	YES	NO	NO						16	
FLORIDA	7.30		YES	YES	Mandatory Periodic	YES	YES	41	83	YES	17	147	15
GEORGIA				YES	Mandatory Periodic	YES	YES	36	7	YES	11	155	15
IOWA	6.00		NO	NO					YES	40	275	16 with Driver Education	
KANSAS	13.11		NO	NO		NO	NO		NO			14 Restricted	
MINNESOTA	20.00			YES	Random	YES	YES	22	22	YES			16
MISSISSIPPI	26.00	55.00		YES		YES	YES	18	3	YES	48	56	15
MISSOURI	11.00	18.00	NO	YES	Mandatory Periodic	YES	YES	32	6	YES	15	126	16
MONTANA				YES						YES	22	74	16
NEBRASKA	11.00	65.00	NO	YES	Mandatory Periodic	NO	NO			NO			16
NEVADA			NO	NO						NO			16
NORTH CAROLINA	10.00		NO	YES	Mandatory Periodic	NO				NO			16
NORTH DAKOTA	6.63		NO	NO									16
OHIO			NO	YES		YES	YES	7	149	YES	7	149	16
OKLAHOMA				YES		YES	YES	34	14	YES	84	75	16
SOUTH CAROLINA				YES		NO	NO			NO			15
SOUTH DAKOTA				YES		YES	YES	6	2	NO			16
TENNESSEE			NO	NO						YES	55	140	16
TEXAS	40.75	11.50	NO	YES		YES	YES	95	18	YES	365	298	18
UTAH				YES		YES	YES	12	2	NO			16
WASHINGTON	18.00		NO	YES		YES	YES			NO			16
WISCONSIN	8.71		NO	YES		YES	YES	58	2	NO			16
WYOMING				YES		NO	NO			NO			16
STATE POLICE													
ALASKA			NO	YES		YES	YES			YES		11	16
ARKANSAS	10.00		YES	YES		YES	YES	25	4	YES	28	1	14
CONNECTICUT				NO						NO			16
DELAWARE	40.00		NO	YES		NO	NO			NO			16
IDAHO				YES		NO	NO			NO			16
ILLINOIS	9.50		NO	YES		YES	YES	25	4	NO			18
INDIANA	12.00		NO	YES		NO	YES	25	28	NO			16
KENTUCKY	9.47		NO	YES	Mandatory	NO	NO			YES	67	23	16
LOUISIANA			NO	YES		YES	YES	18	3	YES		350	15
MAINE				YES		YES	YES	11	2	NO			15
MARYLAND	60.00	23.66		YES		YES	YES	42	8	NO			16
MASSACHUSETTS		54.00	NO	YES		NO	NO			NO			16
MICHIGAN	24.00		NO	YES	Random	YES	YES	2		NO			16
NEW HAMPSHIRE				YES		NO	NO			NO			16
NEW JERSEY		85.00	NO	YES	Mandatory		NO			NO			17
NEW MEXICO	11.00		NO	YES		NO	YES			NO			16
NEW YORK	34.75	103.50	NO	YES		NO	YES	79	5	NO			16
OREGON				NO		NO	NO			NO			16
PENNSYLVANIA			YES	YES		NO	YES	68		YES	62	51	16
RHODE ISLAND			NO	YES		NO	NO			NO			16
VERMONT				YES		NO	NO			NO			16
VIRGINIA	14.58		NO	YES	Mandatory	YES	YES			NO			16
WEST VIRGINIA			NO	YES		YES	YES	12	4	YES		60	16
CANADA													
ALBERTA	18.00		YES	YES		NO	NO			NO			14
BRITISH COLUMBIA				YES		NO	NO			NO			16
MANITOBA				YES		NO	NO			NO			16
ONTARIO	23.17		NO	NO		NO	NO			NO			16
SASKATCHEWAN			NO	NO									16

OPERATIONS

IV. DRIVER LICENSING	D. Periodic Exam Required	E. If Yes to D, How Often	V. ACCIDENT INVESTIGATION				VI. TRAFFIC STATISTICS							
			A. Investigate/Report All Accidents Within Your Jurisdiction	B. Use Uniform Manual on Accident Classification	C. Fatal Accidents Investigated By:		D. Accident Arrests/Citations in 1968	E. Number of Accidents Handled By Your Officers in 1968	A. Fatal Accidents-1968					
					UNI-FORMED PERSONNEL	DETECTIVES			TOTAL FATALITIES STATE WIDE	TOTAL FATALITIES RURAL	TOTAL FATALITIES URBAN	TOTAL PEDESTRIAN FATALITIES RURAL	TOTAL PEDESTRIAN FATALITIES URBAN	
HIGHWAY PATROLS														
ALABAMA	NO		YES	YES	YES		21,038	1,164	866	288	77	72		
ARIZONA	YES	3 Yrs. Operator, 2 Yrs. Chauffeurs	YES	YES	YES		5,004	7,335	696	458	238	45	78	
CALIFORNIA	YES	4 Yrs.	YES	YES	YES		59,025	144,059	4,853	2,691	2,162	246	616	
COLORADO	YES	3 Yrs.	YES	YES	YES		18,786	24,710	669	497	172			
FLORIDA	NO		YES	YES	YES		44,858	55,200	2,109	1,532	577	223	169	
GEORGIA	NO		NO	YES	YES		10,061	23,813	1,780	1,441	330	130	102	
IOWA	NO		YES	YES	YES		7,520	11,583	807	712	155	24	35	
KANSAS	NO		NO	YES	YES		4,145	8,580	640	521	128	18	27	
MINNESOTA	NO		YES	YES	YES		3,817	10,966	1,057	707	350	61	61	
MISSISSIPPI	NO		YES	YES	YES		5,893	8,814	773	450	323	30	53	
MISSOURI	NO		YES	YES	YES		13,849	31,185	1,493	1,165	328	84	87	
MONTANA	NO		YES	YES	YES		4,706	6,816	289	266	23			
NEBRASKA	YES	4 Yrs.	NO	NO	YES			6,738	451	347	104	9	26	
NEVADA	YES	5 Yrs.	YES	YES	YES			4,765	219	180	39	14	12	
NORTH CAROLINA	YES	4 Yrs.	YES	YES	YES			39,742	1,863	1,550	313	249	83	
NORTH DAKOTA	NO		NO	YES	YES		2,010	3,376	198	187	11	11	4	
OHIO	NO			YES	YES	YES		30,110	64,026	2,535	1,692	843	142	238
OKLAHOMA	YES		NO	YES	YES		45,542	59,284	796	567	229	28	52	
SOUTH CAROLINA	YES		YES	YES	YES		12,274	31,439	996	889	107	145	28	
SOUTH DAKOTA	YES		NO	YES	YES		3,686		255	225	30	13	8	
TENNESSEE	NO		YES	YES	YES			17,925	1,192	836	356	35		
TEXAS	YES		NO	YES	YES		26,190	46,894	3,481	2,146	1,335	206	303	
UTAH	YES		YES	YES	YES		5,651	7,436	287	127	162	31	32	
WASHINGTON	YES		YES	YES	YES		13,128	26,796	930	664	286	69	60	
WISCONSIN	YES		NO	YES	YES		1,439	3,069	1,166	864	302	64	86	
WYOMING	NO		NO	YES	YES		1,414	3,113	164	164	10	4	2	
STATE POLICE														
ALASKA	YES		YES	YES	YES			522	78	72	6	2	2	
ARKANSAS	NO		YES	YES	YES		5,670	13,093	707	577	130	Combined 89	Combined 89	
CONNECTICUT	NO		YES	YES	YES		11,715	14,409	438	195	243	21	65	
DELAWARE	YES	4 Yrs.	YES	YES	YES		6,268	8,826	153	128	25	15	12	
IDAHO	YES	3 Yrs.	NO	YES	YES		2,577	4,997	300	268	32	13	8	
ILLINOIS	YES	9 Yrs.	NO	YES	YES		21,451	38,370	2,499	1,729	707	137	283	
INDIANA	YES	4 Yrs.	YES	YES	YES		11,493	25,859	1,519	1,092	427	84	113	
KENTUCKY	NO		NO	YES	YES		590	21,878	1,054	871	183	93	60	
LOUISIANA	NO		YES	YES	YES		20,552	32,402	1,300	1,008	292	115	111	
MAINE	YES		NO	YES	YES			9,770	230	174	56	13	10	
MARYLAND	NO		YES	YES	YES		12,526	19,593	868					
MASSACHUSETTS	NO		YES	YES	YES		1,474	4,516	807	353	544	31	209	
MICHIGAN	YES	3 Yrs.	NO	YES	YES		19,410	35,887	2,388	1,685	703	173	217	
NEW HAMPSHIRE	YES		YES	NO	YES		798	2,634	184					
NEW JERSEY	NO		YES	YES	YES		17,576	19,054	1,352	146	1,206	21	365	
NEW MEXICO	NO		YES	YES	YES			7,492	481	365	116	34	40	
NEW YORK	YES	3 Yrs. Vision	YES	YES	YES	YES	18,966	44,710	4,076	1,761	1,353	271	691	
OREGON	NO		NO	YES	YES		2,999	5,273	648	444	204	42	49	
PENNSYLVANIA	YES	10 Yrs.	YES	YES	YES		19,445	51,203	2,410	1,415	895	Combined 448	Combined 448	
RHODE ISLAND	YES		YES	YES	YES		177	1,540						
VERMONT	NO		YES	YES	YES		1,532	6,158	142	117	42	7	6	
VIRGINIA	NO		NO	YES	YES		26,647	36,827	1,218	903	315	137	95	
WEST VIRGINIA	NO		YES	YES	YES		2,019	13,323	520	391	129	Combined 78	Combined 78	
CANADA														
ALBERTA	YES		NO	YES	YES			14,789	242			Combined 34	Combined 34	
BRITISH COLUMBIA	YES	5 Yrs.	NO	YES	YES		16,000	26,000	574					
MANITOBA	NO		NO	YES	YES				199	150	49	22	16	
ONTARIO	YES		YES	YES	YES		31,147	61,159	1,586	1,161	425	166	170	
SASKATCHEWAN	NO		YES	YES	YES			11,015		229				

OPERATIONS

VI. TRAFFIC STATISTICS

	A. Fatal Accidents—1968		B. Personal Injury Accidents—1968					C. Property Damage Accidents—1968 Statewide	D. Vehicle Registration			E. Licensed Drivers	
	MILEAGE DEATH RATE	TOTAL FATAL ACCIDENTS STATE-WIDE	TOTAL INJURIES STATE-WIDE	TOTAL INJURIES-RURAL	TOTAL INJURIES-URBAN	TOTAL PEDESTRIAN INJURIES-RURAL	TOTAL PEDESTRIAN INJURIES-URBAN		TOTAL INJURY ACCIDENTS STATEWIDE	TOTAL NUMBER	TOTAL NUMBER VEHICLES REGISTERED		TOTAL NUMBER PASSENGER VEHICLES REGISTERED
HIGHWAY PATROLS													
ALABAMA				9,018		150				1,904,650	1,421,597	32,953	1,700,000
ARIZONA	6.9	600	28,080	8,768	19,312	105	719	16,652	27,319	1,195,437	722,782	25,460	1,090,000
CALIFORNIA	4.0	4,224	239,044	76,159	163,785	2,178	11,306	156,547		12,668,566	9,470,047	401,869	11,324,141
COLORADO	6.1	570	27,289	12,241	15,048			17,590	58,146	1,457,790	898,030	28,594	1,290,440
FLORIDA	6.2	1,767	112,182	49,730	62,452	1,295	2,523	68,313	134,032	3,973,178	3,044,421	64,653	4,000,000
GEORGIA	5.5	1,483	27,680	15,537	12,143			17,089	64,690	2,337,875	1,860,979	32,991	2,279,084
IOWA	4.4	721	33,836	16,234	17,602	150	1,045	21,915	65,895	1,910,493	1,328,976	41,824	1,620,294
KANSAS	5.2	534								1,559,934	1,077,938	34,336	1,395,808
MINNESOTA	4.2	845	45,516	7,508	21,788			29,296	65,559	2,401,106	1,643,025	43,290	2,071,000
MISSISSIPPI	5.7	621	11,701	4,898	6,803	74	269	7,327	23,748	1,120,224	830,090	11,296	1,269,460
MISSOURI	6.0	944		17,810		151				2,482,993	1,852,950	38,036	2,540,721
MONTANA		243								538,600	311,893	17,175	392,300
NEBRASKA	5.0	371	18,478	7,940	10,538	28	629	11,938	28,140	1,020,837	661,311	19,104	902,000
NEVADA	6.6	182	6,076					4,227	10,743	335,463	225,708	13,113	329,672
NORTH CAROLINA	6.7	1,583	55,133	30,457	24,676	652	1,453	33,578	74,222	2,898,420	2,210,021	32,448	1,750,000
NORTH DAKOTA		157	4,568	2,444	2,124	18	150	2,953	17,246	410,000	265,000	9,200	372,000
OHIO	4.8	2,199	99,331	50,655	41,676	696	2,424	60,538	147,280	5,820,000	4,745,000	109,500	6,500,000
OKLAHOMA	4.9	668	20,776	12,027	7,849	95	656	13,194	45,424	1,723,032	1,148,509	34,598	1,489,532
SOUTH CAROLINA	7.0	815	21,459	14,054	7,405	490	559	13,489	43,893	1,233,234	976,065	12,143	1,300,000
SOUTH DAKOTA	5.9	258	5,612	3,299	2,313	26	178		10,450	442,684	281,429	9,555	400,000
TENNESSEE	5.7	1,045	9,809			6,249	10,631			1,994,975	1,568,963	34,916	2,213,619
TEXAS	5.5	2,902	216,972	97,914	149,058	518	4,561	120,540	816,830	6,228,200	4,752,000	96,000	5,849,126
UTAH	5.2	258	15,599	3,519	12,080			9,550	24,724	733,598	497,917	15,575	640,000
WASHINGTON	4.9	754	40,103	24,050	16,053	429	819	26,085	52,368	2,284,276	1,547,069	46,637	1,727,000
WISCONSIN	5.3	997	52,056	23,727	28,329	350	2,209	33,792	69,046	2,148,391	1,685,078	59,655	2,100,000
WYOMING	6.1	131	5,085	3,082	2,003	12	88	3,079	9,002	273,858	146,134	6,820	216,131
STATE POLICE													
ALASKA		65	1,856	Combined 1,716	Combined 1,716	Combined 140	Combined 140	1,573	7,910	150,000	133,301	5,607	139,900
ARKANSAS	5.5	570	15,523	8,800	6,723	Combined 357	Combined 357	8,863	20,740	1,320,522	714,764	16,025	1,000,000 +
CONNECTICUT	3.2	386								1,748,194	1,094,287	23,699	2,140,710
DELAWARE		138	5,783	3,604	2,080	132	261	3,882	12,105	304,876	238,375	3,507	305,000
IDAHO	7.0	248	10,843	5,939	4,904	37	189	7,169	18,830	529,032	407,326	22,539	600,000
ILLINOIS	4.9	2,090	148,725	48,273	100,452	583	11,217	93,441	355,534	5,417,802	4,355,394	80,975	6,509,916
INDIANA	5.1	1,283	73,405	30,914	42,491	410	2,701	48,723	132,410	3,027,868	2,197,784	64,543	3,400,000
KENTUCKY	5.9	884	29,548	19,649	9,899	395	837	18,351	54,020	1,740,000	1,333,000	25,000	1,610,000
LOUISIANA	8.4		24,173	24,173		316				1,831,175	1,314,226	25,649	1,676,074
MAINE	4.3	108	9,461	5,263	4,198	89	289	6,551	16,911	579,440	379,601	6,374	511,437
MARYLAND	4.7	755	54,325					32,622	60,937	2,014,944	1,472,583	22,801	1,875,380
MASSACHUSETTS	3.3	769								2,365,517	2,103,455	30,917	2,850,027
MICHIGAN	4.9	305,495	160,416	66,600	99,813	1,130	6,208	100,237	203,243	4,327,885	3,076,249	100,185	5,100,000
NEW HAMPSHIRE													
NEW JERSEY	3.7	1,210	141,329	7,068	134,263	157	7,829	7,986	111,813	3,459,196	2,928,024	38,502	3,790,879
NEW MEXICO	7.5	404	12,488	4,523	7,963	54	326	7,588	20,207	754,770	417,049	14,939	640,000
NEW YORK	4.1	2,803	355,799	119,382	236,417	3,702	25,170	220,208	186,111	6,721,746	5,567,184	75,632	7,500,000
OREGON	5.4	548	28,447	11,418	17,029	210	952	18,449	52,403	1,378,715	1,133,687	36,760	1,125,000
PENNSYLVANIA	4.2	2,122	129,580	49,484	80,396	Combined 7,700	Combined 7,700	83,267	184,899	5,587,000	4,137,256	110,072	6,074,000
RHODE ISLAND													
VERMONT	6.2	120								208,067	170,408	5,291	225,991
VIRGINIA	4.8	1,036	45,693	25,675	20,018	718	1,817	30,146	89,265	2,285,833	1,700,079	24,906	2,307,275
WEST VIRGINIA	6.4	444	14,824	7,746	988	Combined 219	Combined 219	9,714	28,136	891,426	692,656	16,722	843,517
CANADA													
ALBERTA			3,139						11,408	780,810	481,881	14,205	797,267
BRITISH COLUMBIA		460	20,371						13,299	916,000	739,000	18,500	1,001,576
MANITOBA		160	8,527	1,953	6,574	40	631	5,839	13,527	419,520	686,566	4,959	429,911
ONTARIO		1,348	71,520	28,688	42,832	857	6,445	47,710	106,062	2,892,981	2,424,586	47,826	3,128,509
SASKATCHEWAN				4,394					8,355	478,000	313,000		847,000

SERVICES

SERVICES

SERVICES

I. RECORDS

	A. Centralized Records Unit						B. Records Unit Personnel							C. Records Unit Organization		
	1. Unit Is Centralized	2. Types of Records Maintained				3. Records System Within Subordinate Units	1. Number and Classification							1. Subdivisions		
		ACCIDENT	M.V. REGISTRATION	DRIVER LICENSE	CRIMINAL		TOTAL ASSIGNED	CIVILIAN SPECIALISTS	ANALYSTS	POLICE OFFICERS	STENOGRAPHERS	TYPISTS	CLERKS	FILES SECTION	IDENTIFICATION SECTION	REPORT RECORDING AND PROCESSING SECTION
HIGHWAY PATROLS																
ALABAMA	NO	YES		YES	YES	YES	22	14		2	1	3	2	YES		YES
ARIZONA	YES	YES			YES	NO	8		4	1	3		YES		YES	
CALIFORNIA	YES	YES				YES	132	132	21		2	8	35	YES		YES
COLORADO	NO	YES												YES	YES	YES
FLORIDA	YES	YES		YES	YES	YES	63		1	2	2	11	29	YES		YES
GEORGIA	NO	YES		YES	YES	YES	179	18	21	20	45	75	YES	YES	YES	
IOWA	YES	YES		YES		YES	147	3	2	8	41	72	YES	YES	YES	
KANSAS	NO	YES			YES	NO	27		1	2	14	6	YES		YES	
MINNESOTA	NO				YES	YES										
MISSISSIPPI	YES	YES		YES	YES	YES	37	2	2	5			30	YES		YES
MISSOURI	NO	YES			YES	YES	39	19	2	4	3	11	11	YES		YES
MONTANA	YES	YES		YES		YES								YES	YES	YES
NEBRASKA	YES				YES	YES			1	1	3	2		YES	YES	YES
NEVADA	YES	YES			YES	YES	4		1			3		YES		YES
NORTH CAROLINA	YES	YES	YES	YES		YES	120	6	1		5	16	6	YES	YES	YES
NORTH DAKOTA	YES				YES	YES	3		2				1	YES		YES
OHIO	NO	YES			YES	YES	26	10		3	2	2	7	YES		YES
OKLAHOMA	YES	YES		YES	YES	YES	17	1		1		3	12	YES		YES
SOUTH CAROLINA	NO				YES	YES	7	6		1	2	1	3	YES		YES
SOUTH DAKOTA	NO	YES		YES		YES										YES
TENNESSEE	NO	YES		YES	YES	YES										
TEXAS	NO	YES		YES	YES	YES										
UTAH	NO				YES	YES	1						1			YES
WASHINGTON	YES	YES			YES	YES	33	10	9	2	2	6	4	YES		YES
WISCONSIN	YES	YES			YES	NO	12	2	1		1	2	6			YES
WYOMING	NO		YES		YES											
STATE POLICE																
ALASKA	YES	YES		YES	YES	NO	6	2				1	3	YES	YES	YES
ARKANSAS	NO	YES			YES	YES	13	4	2				7			YES
CONNECTICUT	YES	YES			YES	YES	35	2	4			26	7	YES		YES
DELAWARE	YES	YES			YES	YES	14	1	1	4		1	7	YES	YES	YES
IDAHO	NO				YES	YES	3		1			2		YES	YES	YES
ILLINOIS	NO	YES			YES	YES	15		2	1	5	7		YES		YES
INDIANA	YES	YES	YES	YES	YES	YES	79	17	1	3	5	26	28	YES	YES	YES
KENTUCKY	YES	YES	YES		YES	NO	40	2	3	1	7	27		YES	YES	YES
LOUISIANA	YES	YES		YES	YES	YES	49	13	13	3	6	9		YES	YES	YES
MAINE	NO	YES			YES	YES	22	9	1	3	3	3	3			
MARYLAND	NO	YES			YES	YES	90	32	3	3	6	21	25	YES		
MASSACHUSETTS	NO	YES				YES										
MICHIGAN	YES				YES	YES	85	17	8	1	24	35		YES	YES	YES
NEW HAMPSHIRE	YES				YES	YES	6	1	1		1	3				
NEW JERSEY	YES	YES			YES	YES	36	15	8	3	6	4		YES		YES
NEW MEXICO	YES	YES			YES	YES	11	5	3	1	2			YES	YES	YES
NEW YORK	YES	YES			YES	YES	31		1	2	9	19		YES		
OREGON	YES	YES			YES	YES	51	1	19	1	26	4		YES	YES	YES
PENNSYLVANIA	YES	YES			YES	NO	106	30	15	3	57	1		YES	YES	YES
RHODE ISLAND	NO				YES	YES										
VERMONT	YES				YES	NO	5		1		3	1		YES	YES	YES
VIRGINIA	YES	YES			YES	NO	67	13	1	8	1	11	33	YES	YES	YES
WEST VIRGINIA	NO	YES			YES	YES	14	7	1	2	1	3		YES	YES	YES
CANADA																
ALBERTA	YES	YES			YES	YES	29		9	3		17		YES	YES	YES
BRITISH COLUMBIA	YES	YES			YES	YES	15		3		1	11		YES		
MANITOBA	YES	YES	YES		YES	YES	19		6	2	3	8		YES	YES	YES
ONTARIO	YES	YES			YES	YES	150	18	4	25	8	20	53	YES	YES	YES
SASKATCHEWAN	YES	YES			YES	YES	25		11	2	2	10		YES	YES	YES

SERVICES

I. RECORDS

	C. Records Unit Organization				D. Motor Vehicle Inspection Records															
	1. Subdivisions				1. Maintained by Agency	2. Data available to field officer	3. Data available by:				4. Average retrieval time	5. MVI required								
	MACHINE RECORDS SECTION	INQUIRY SECTION	ASSIGNMENT AND REVIEW SECTION	OTHER			RADIO	TELEPHONE	COMBINATION RADIO/PHONE	OTHER		ANNUALLY	SEMI-ANNUALLY	OTHER						
HIGHWAY PATROLS																				
ALABAMA	YES				NO	YES			YES											
ARIZONA	YES	YES	YES		NO															
CALIFORNIA	YES	YES		YES	YES	NO													YES	
COLORADO	YES				NO	YES	YES	YES			2 Minutes				YES				YES	
FLORIDA	YES	YES	YES		YES	YES	YES	YES	YES	YES					YES					
GEORGIA	YES				YES	YES			YES				YES							
IOWA	YES	YES	YES		YES	YES	YES				10 Minutes									YES
KANSAS		YES																		
MINNESOTA					YES	YES				YES	One Week									YES
MISSISSIPPI		YES			YES	YES			YES		5 Minutes	YES								
MISSOURI					YES	YES			YES		15 Minutes	YES								
MONTANA	YES	YES	YES		NO	NO														
NEBRASKA	YES	YES	YES		NO	YES			YES			YES								
NEVADA					NO	NO														
NORTH CAROLINA	YES	YES	YES		NO	YES		YES			20 Minutes	YES								
NORTH DAKOTA	YES				YES	YES	YES	YES		YES	Varies									
OHIO	YES	YES		YES																YES
OKLAHOMA	YES		YES		YES	YES			YES		30 Minutes									
SOUTH CAROLINA					NO	YES		YES			Immediately	YES								
SOUTH DAKOTA					YES	YES			YES		20 Minutes	YES								
TENNESSEE																				
TEXAS					YES	YES	YES	YES	YES	YES		YES								YES
UTAH					YES	YES			YES		15 Minutes	YES								
WASHINGTON	YES	YES	YES	YES	YES	YES	YES	YES	YES	YES	15 Minutes									YES
WISCONSIN			YES	YES	YES	YES	YES	YES			1/2 Day									
WYOMING					NO															
STATE POLICE																				
ALASKA					NO	YES	YES	YES	YES	YES	3 Minutes to an Hour									YES
ARKANSAS	YES				YES	YES	YES	YES			5 Minutes	YES								
CONNECTICUT	YES	YES	YES																	YES
DELAWARE	YES			YES	NO	YES		YES		YES		YES								
IDAHO		YES			NO	YES	YES	YES	YES	YES	5 Minutes	YES								
ILLINOIS		YES	YES		YES	YES			YES											YES
INDIANA	YES	YES		YES	NO	YES						YES								
KENTUCKY		YES	YES		NO	YES			YES		10 Minutes	YES								
LOUISIANA	YES	YES	YES		YES	YES	YES	YES	YES	YES	Immediately	YES								
MAINE	YES			YES	YES	YES	YES	YES	YES	YES	5 Minutes			YES						
MARYLAND		YES			NO	YES	YES	YES	YES	YES	30 Minutes									YES
MASSACHUSETTS					NO	YES	YES		YES	YES	15 to 30 Minutes			YES						
MICHIGAN	YES	YES		YES	YES	YES				YES	One Month									YES
NEW HAMPSHIRE					NO									YES						
NEW JERSEY	YES	YES			NO	YES		YES		YES	45 Minutes	YES								
NEW MEXICO	YES	YES			NO	YES			YES	YES	60 Minutes			YES						
NEW YORK					NO	YES		YES	YES	YES	10 Minutes	YES								
OREGON	YES		YES		NO	NO														
PENNSYLVANIA		YES			NO	YES		YES		YES	30 Minutes			YES						
RHODE ISLAND					NO	YES	YES	YES				YES								
VERMONT		YES			NO	YES			YES		30 Minutes			YES						
VIRGINIA	YES	YES	YES		YES	YES			YES		5 Minutes			YES						
WEST VIRGINIA	YES	YES			YES	YES	YES	YES		YES		YES								
CANADA																				
ALBERTA		YES		YES	NO	YES	YES	YES	YES	YES	10 Minutes									
BRITISH COLUMBIA					NO	YES	YES	YES	YES	YES	5 Minutes to 10 Days			YES						
MANITOBA					NO	YES			YES		5 Minutes									
ONTARIO	YES	YES	YES	YES	NO	YES		YES	YES	YES										YES
SASKATCHEWAN		YES			NO	YES	YES			YES	5 Minutes									

SERVICES

II. PLANNING AND RESEARCH

	A. Dept. has Specialized Unit	B. Unit includes Sub-units	C. Unit provides Forms Control /Design	D. Personnel Assigned						E. Research Projects /Studies Completed in 1968	F. Currently being Conducted	III. INSPECTORIAL SERVICES									
				TOTAL	SWORN OFFICERS	CIVILIAN SPECIALISTS	STENOGRAPHERS	TYPISTS	CLERKS			A. Dept. has Staff Inspection Unit	B. Personnel Assigned								
													TOTAL	CAPTAINS	LIEUTENANT	SERGEANT					
HIGHWAY PATROLS																					
ALABAMA	YES	NO												YES	7	4	1				
ARIZONA	YES	NO	YES	3	3					2	6	YES	4								
CALIFORNIA	YES	YES	NO	30	8	12	5	1		92	59	NO									
COLORADO	YES	NO	YES									NO									
FLORIDA	YES	NO	NO	3	2		1			1		NO									
GEORGIA	YES	YES	NO	2	1				1			NO									
IOWA	YES	NO	YES		1							YES									
KANSAS	YES											YES			1	3 to 6	3 to 6				
MINNESOTA	YES	NO	YES	2	1		1			4	3	YES	2	1							
MISSISSIPPI	YES	YES	YES	1						4	2	NO									
MISSOURI	YES	NO	NO	3	2			1				NO									
MONTANA	NO											NO									
NEBRASKA	YES	YES	YES	3	2		1			1		YES									
NEVADA	NO											YES									
NORTH CAROLINA	YES	NO	YES	2			1			6		YES	3			1				1	
NORTH DAKOTA												YES	2	1							
OHIO	YES	YES	YES	9		2	1	2		3	10	YES	1			1					
OKLAHOMA	YES	NO	YES	3			1					YES	2	2							
SOUTH CAROLINA	YES	NO	NO							1	3	NO									
SOUTH DAKOTA	NO											NO	1			1					
TENNESSEE												NO									
TEXAS	YES	YES	YES	16			5			2	3	YES									
UTAH	NO											NO									
WASHINGTON	YES	YES	YES	2				1				YES	2	1							
WISCONSIN	YES	NO	YES	4		1	1	1	1			NO									
WYOMING	YES	NO										NO									
STATE POLICE																					
ALASKA	YES	NO	YES	2	1		1			4		YES	1	1							
ARKANSAS	NO											NO									
CONNECTICUT	NO											YES	1	1							
DELAWARE	YES	NO	NO	2	2					3	3	NO									
IDAHO	NO											YES	2			1					
ILLINOIS	YES	NO	YES	4	3		1			12	3	YES	6	1	1	2					
INDIANA	YES	NO	YES	6	4		2			1	1	YES	2	2							
KENTUCKY	NO			3	2		1					YES	3	1	1						
LOUISIANA	YES	YES	YES	2	1		1					NO									
MAINE	NO									1		YES	3	1	2						
MARYLAND	YES	NO	NO	4	3		1			3	6	NO									
MASSACHUSETTS	YES	NO	YES	2	2					1	2	YES	2	2							
MICHIGAN	YES	YES	YES	7	4	2	1			11	17	YES	2			2					
NEW HAMPSHIRE	NO											NO									
NEW JERSEY	YES	YES	YES	13	11		2			14	13	YES	1	1							
NEW MEXICO	YES	NO	YES	1	1							NO									
NEW YORK	YES	NO	NO	5	3	1	1			6	8	YES	9							1	
OREGON	NO									1		YES	1								
PENNSYLVANIA	YES	YES	YES	23	12	4	3	1		75	6	YES	3			1				1	
RHODE ISLAND	NO											NO									
VERMONT	NO									3	4	NO									
VIRGINIA	YES	NO	YES	8	7	</															

SERVICES

III. INSPECTIONAL SERVICES

	B. Personnel Assigned		C. Type of Inspections conducted		D. Check-list used for General Inspections	E. HQ Informed of Inspection Results by:			F. Is there a Follow-up Inspection	A. State-wide/Province-wide Crime Laboratory	
	TROOPERS	OTHER	PLANNED AND ANNOUNCED	PLANNED AND UNANNOUNCED		WRITTEN REPORTS	VERBAL REPORTS	STAFF CONFERENCES		1. Is administration of this unit your responsibility	2. If no lab, who provides laboratory services
HIGHWAY PATROLS											
ALABAMA		2	YES	YES	YES	YES		YES	YES	NO	
ARIZONA		4	YES	YES	NO	YES	YES	YES	YES	NO	
CALIFORNIA			YES	YES	YES	YES		YES	YES	NO	
COLORADO			NO	NO				YES	NO	Colorado Bureau of Investigation	
FLORIDA								YES	NO	Florida Bureau of Law Enforcement	
GEORGIA			YES	YES	YES	YES		YES	YES		
IOWA			YES	YES	YES	YES		YES	NO	Bureau of Criminal Investigation	
KANSAS			YES	NO	YES	YES		YES	NO	Kansas Bureau of Investigation	
MINNESOTA		1	YES	YES	YES	YES		YES	NO	Bureau of Criminal Apprehension	
MISSISSIPPI								YES	YES		
MISSOURI			NO	YES	NO	YES		YES	YES		
MONTANA			NO	YES	YES	YES		YES	YES		
NEBRASKA			YES	YES	YES	YES		YES	YES		
NEVADA			YES	YES	NO	YES	YES	YES	YES		
NORTH CAROLINA		1	YES	NO	YES	YES	YES	YES	YES	State Bureau of Investigation	
NORTH DAKOTA		1	YES	YES	YES	YES		YES	NO		
OHIO			YES	YES	YES	YES	YES	YES	NO	Attorney General	
OKLAHOMA			YES	YES	YES	YES		YES	NO	Oklahoma Bureau of Investigation	
SOUTH CAROLINA			YES	YES	NO		YES	YES	NO	South Carolina Law Enforcement Division	
SOUTH DAKOTA			YES	NO		YES		YES	NO	Division of Criminal Investigation	
TENNESSEE			NO					YES	YES		
TEXAS			YES	YES		YES	YES	YES	YES		
UTAH				YES			YES	YES	YES	Cities and Counties	
WASHINGTON		1	YES	YES	YES	YES	YES	YES	NO		
WISCONSIN			YES		YES		YES	YES	YES	Department of Justice—Crime Laboratory Division	
WYOMING			NO					YES	NO		
STATE POLICE											
ALASKA			YES	YES	YES	YES		YES	NO	FBI	
ARKANSAS						YES		YES	YES		
CONNECTICUT			YES	YES	YES	YES	YES	YES	YES		
DELAWARE			YES		NO	YES		YES	NO	FBI	
IDAHO		1	NO	YES	YES	YES	YES	NO	NO		
ILLINOIS		1	YES	YES	YES	YES		YES	YES		
INDIANA			YES	YES	YES	YES		YES	YES		
KENTUCKY		1	YES	NO	YES	YES		YES	YES		
LOUISIANA								YES	YES		
MAINE			YES	YES	YES	YES		YES	YES		
MARYLAND								YES	YES		
MASSACHUSETTS			YES	YES	NO	YES	YES	YES	YES		
MICHIGAN			NO	YES	YES		YES	YES	YES		
NEW HAMPSHIRE			NO		NO	YES		YES	YES		
NEW JERSEY			YES	YES	YES	YES		YES	YES		
NEW MEXICO			YES	YES	NO	YES	YES	YES	NO		
NEW YORK		8	NO	YES	NO	YES	YES	YES	YES		
OREGON		1	YES	YES	YES	YES	YES	YES	YES		
PENNSYLVANIA		1	YES	NO	YES	YES		YES	YES		
RHODE ISLAND								YES	YES		
VERMONT			NO					YES	YES		
VIRGINIA			YES	YES	NO	YES		YES	NO		
WEST VIRGINIA			YES	YES	YES	YES		YES	YES		
CANADA											
ALBERTA			YES	YES	NO	YES	YES	YES	YES	R.C.M.P. Hq. Ottawa	
BRITISH COLUMBIA			YES	YES	YES	YES		YES	YES	R.C.M.P. Hq. Ottawa	
MANITOBA			YES	YES	NO	YES		YES	NO	R.C.M.P. Crime Detection Labs—Regina, Sask.	
ONTARIO		10	YES	NO	NO	YES		YES	YES	Centre of Forensic Sciences of Dept. of Attorney General	
SASKATCHEWAN			YES	YES	NO	YES		YES	YES	R.C.M.P. Hq. Ottawa	

SERVICES

IV. CRIME LABORATORY

	B. Functions of Crime Laboratory							C. Crime Scenes Processed by A Mobile Laboratory Unit	D. Provide Some Laboratory Services for Local Police Agencies	E. Officers Testify As Expert Witnesses in Cases Handled by Other Police Agencies	F. Conduct Polygraph Examinations for Other Police Agencies	G. Services Provided to Other Agencies Without Cost	V. INTERNAL AFFAIRS			
	FIRE-ARMS IDENT.	DOCUMENT ANALYSIS	CHEMICAL ANALYSIS	TOOL MARK IDENTIFICATION	PHOTOGRAPHY	FILM DEVELOPMENT	POLYGRAPH EXAMINATION						A. Does Department Have An Internal Affairs Unit Which is Responsible for Conducting Invest. Relating to Police Personnel	TOTAL PERSONNEL	POLICE PERSONNEL	CIVILIAN SPECIALISTS
HIGHWAY PATROLS																
ALABAMA	YES	YES	YES	YES	YES			NO	NO		YES	YES	NO			
ARIZONA			YES										YES	1		
CALIFORNIA	YES	YES	YES	YES	YES	YES	YES	NO	YES	YES	YES	YES	YES	7	3	
COLORADO													NO			
FLORIDA	YES	YES	YES	YES	YES	YES	YES	YES	YES	YES	YES	YES	YES	6	5	
GEORGIA	YES	YES	YES	YES	YES	YES	YES	NO	YES	YES	YES	YES	NO			
IOWA	YES	YES		YES	YES	YES	YES	YES	YES	YES	YES	YES	NO			
KANSAS	YES	YES	YES	YES	YES	YES	YES	NO	YES	YES	YES	YES	NO			
MINNESOTA	YES	YES	YES	YES	YES	YES	YES	NO	NO	NO	NO	NO	NO			
MISSISSIPPI	YES		YES	YES	YES	YES	YES	NO	YES	YES	YES	YES	YES	5	5	
MISSOURI	YES	YES	YES	YES	YES	YES	YES	NO	YES	YES	YES	YES	NO			
MONTANA													NO			
NEBRASKA	YES	YES		YES	YES	YES	YES	NO	YES	YES	YES	YES	NO			
NEVADA								NO	NO	NO			NO			
NORTH CAROLINA	YES	YES	YES	YES	YES	YES	YES	NO	NO	YES	YES	YES	NO			
NORTH DAKOTA													YES	1		
OHIO	YES	YES	YES	YES	YES	YES	YES	YES	YES	YES	YES	YES	NO			
OKLAHOMA	YES	YES	YES	YES	YES	YES	YES	YES	YES	YES	YES	YES	NO			
SOUTH CAROLINA	YES	YES	YES	YES	YES	YES	YES	NO	YES	YES	YES	YES	NO			
SOUTH DAKOTA																
TENNESSEE	YES							NO	YES	YES	YES	YES	NO			
TEXAS	YES	YES	YES	YES	YES	YES	YES	NO	YES	YES	YES	YES	NO			
UTAH								NO	YES	YES		YES	NO			
WASHINGTON													NO			
WISCONSIN	YES	YES	YES	YES	YES	YES	YES	YES	YES	YES	NO	NO	NO			
WYOMING													NO			
STATE POLICE																
ALASKA													YES	YES	YES	NO
ARKANSAS	YES	YES						YES	YES	YES	YES	YES	NO			
CONNECTICUT	YES	YES						YES	YES	YES	YES	YES	NO			
DELAWARE								YES	YES	YES	NO	YES	YES	YES	NO	
IDAHO											NO	NO	YES	NO	YES	
ILLINOIS	YES	YES	YES	YES	YES	YES	YES	YES	YES	YES	YES	YES	YES	NO		
INDIANA	YES	YES	YES	YES	YES	YES	YES	YES	NO	YES	YES	YES	YES	NO		
KENTUCKY	YES	YES	YES	YES	YES	YES	YES	YES	NO	YES	YES	YES	YES	NO		
LOUISIANA	YES	YES	YES	YES	YES	YES	YES	YES	YES	YES	YES	YES	YES	YES		
MAINE	YES	YES						YES	YES	YES	NO	YES	YES	YES	YES	
MARYLAND	YES	YES						YES	YES	YES	YES	YES	YES	YES	NO	
MASSACHUSETTS	YES		YES	YES	YES	YES	YES	YES	NO	YES	YES	YES	YES	YES	YES	
MICHIGAN	YES	YES	YES	YES	YES	YES	YES	YES	YES	YES	YES	YES	YES	NO		
NEW HAMPSHIRE	YES							YES	YES	YES	YES	YES	YES	NO		
NEW JERSEY	YES	YES	YES	YES	YES	YES	YES	YES	NO	YES	YES	YES	YES	NO		
NEW MEXICO									NO	NO	NO	YES	YES	NO		
NEW YORK	YES	YES	YES	YES	YES	YES	YES	YES	NO	YES	YES	YES	YES	NO		
OREGON	YES	YES	YES	YES	YES	YES	YES	YES	YES	YES	YES	YES	YES	NO		
PENNSYLVANIA	YES	YES	YES	YES	YES	YES	YES		NO	YES	YES	YES	YES	NO		
RHODE ISLAND								YES	YES	YES	YES	YES	YES	NO		
VERMONT	YES							YES	YES	YES	YES	YES	YES	NO		
VIRGINIA								YES	YES	YES	YES	YES	YES	NO		
WEST VIRGINIA	YES	YES	YES	YES	YES	YES	YES	YES	NO	YES	YES	YES	YES	NO		
CANADA																
ALBERTA	YES	YES	YES	YES	YES	YES	YES	YES	YES	YES	NO	YES	YES	NO	YES	
BRITISH COLUMBIA	YES	YES	YES	YES	YES	YES	YES	YES	YES	YES	YES	YES	NO	YES	YES	
MANITOBA	YES	YES	YES	YES	YES	YES	YES	YES	YES	YES	YES	YES	NO	YES	YES	
ONTARIO	YES	YES	YES	YES	YES	YES	YES	YES	NO	NO	NO	NO	YES	NO		
SASKATCHEWAN	YES	YES	YES	YES	YES	YES	YES	YES	YES	YES	NO	YES	YES	NO	YES	

SERVICES

V. INTERNAL AFFAIRS

VI. INTELLIGENCE UNIT

	C. Handling of Complaints			3. Are all Complaints Investigated from the Headquarters Unit	A. Does Your Dept. Have An Intelligence Unit	B. Personnel Assigned to Unit			C. Is the Intelligence Unit A Headquarters Unit Only	D. Is Your Unit A Member of L.E.I.U. (Law Enforcement Intelligence Unit)
	1. Are All Complaints Concerning Officer Conduct, Operational Procedures, Policies, etc., Investigated	2. Do You Investigate Complaints of Improper or Illegal Practices Involving Other Police Agencies Within Your Jurisdiction	a. If yes, who can request this service			b. Who must authorize this service	TOTAL PERSONNEL	POLICE PERSONNEL		
HIGHWAY PATROLS										
ALABAMA	YES	NO		NO	NO					
ARIZONA	YES	NO		NO	YES	4	4		YES	YES
CALIFORNIA	YES	NO		NO	NO					NO
COLORADO	YES	NO			NO					
FLORIDA	YES	NO		NO	NO					
GEORGIA	YES	YES	Judge, Grand Jury, Solicitor, Sheriff, etc.	Governor	NO	3	3		YES	NO
IOWA	YES	NO			NO					
KANSAS	YES	NO		NO	YES	1	1		NO	NO
MINNESOTA	YES	YES	Governor, Attorney General	Governor, Attorney Gen.	NO	13	12	1	YES	NO
MISSISSIPPI	YES	NO			NO					NO
MISSOURI	YES	YES	Anyone	Governor	NO	20	20		NO	NO
MONTANA	YES	NO			NO	2			NO	YES
NEBRASKA	YES	YES	Anyone	Governor	NO					NO
NEVADA	YES	NO			NO					
NORTH CAROLINA										
NORTH DAKOTA	YES				NO					
OHIO	YES	NO			YES	3	2	1	YES	YES
OKLAHOMA	YES	NO			NO					
SOUTH CAROLINA	YES	NO			NO					
SOUTH DAKOTA										
TENNESSEE	YES	NO			NO					
TEXAS	YES	YES	Appropriate Officials	Director	NO	45	28	17	YES	YES
UTAH	YES	NO			NO					NO
WASHINGTON					NO	6	5	1	NO	YES
WISCONSIN	YES	NO			NO					
WYOMING	YES	NO			NO					NO
STATE POLICE										
ALASKA	YES	YES	Anyone	Commissioner or Gov.	NO					NO
ARKANSAS	YES	YES	Governor, Circuit Judge, Grand Jury, Attorney Gen	Director	NO	5	4	1	YES	NO
CONNECTICUT	YES	NO			YES	39	37	2	YES	YES
DELAWARE	YES	NO			YES	7	7		NO	YES
IDAHO	YES	NO			NO					
ILLINOIS	YES	YES	State's Attorney	Superintendent or Director	YES	16	14	2	NO	YES
INDIANA	YES	NO			NO	19	18	1	YES	YES
KENTUCKY	YES	NO			NO	4	2	2	NO	YES
LOUISIANA	YES	NO			YES	3	2	1	YES	NO
MAINE	YES	NO			NO	4	4		YES	YES
MARYLAND	YES	YES	Chief of Police, Chief Executive Officer	Superintendent &/or Gov.	NO	11	10	1	YES	YES
MASSACHUSETTS	YES	NO			YES	26	21	5	NO	YES
MICHIGAN	YES	NO			NO				NO	YES
NEW HAMPSHIRE	YES	NO			YES	3	3		YES	NO
NEW JERSEY	YES	NO			YES	11	10	1	YES	YES
NEW MEXICO	YES	YES	District Attorney or Agency Itself	Chief	YES	6	6		NO	YES
NEW YORK	YES	YES	Governor, Atty. Gen., District Atty., Mayor	Superintendent	NO	24	23	1	NO	NO
OREGON	YES	YES	Agencies Involved	Superintendent	NO	71	50	21	NO	YES
PENNSYLVANIA	YES	NO			NO	17	17		NO	NO
RHODE ISLAND	YES	YES		Superintendent	YES	8			YES	YES
VERMONT	YES	NO			NO					NO
VIRGINIA	YES	NO			NO					NO
WEST VIRGINIA	YES	YES	Prosecuting Atty. or Judges of Circuit Court	Superintendent	YES	5	5		NO	NO
CANADA										
ALBERTA	YES	YES	Attorney General	Attorney General	NO	4	4		YES	NO
BRITISH COLUMBIA	YES	YES	Attorney General	Attorney General	NO	9	8	1	YES	NO
MANITOBA	YES	YES	Attorney General	Attorney General	NO	47	41	6	NO	NO
ONTARIO	YES	YES	Municipal Officials	Ontario Police Comm.	YES	22	20	2	NO	YES
SASKATCHEWAN	YES	NO			NO				NO	NO

INFORMATION SYSTEMS

INFORMATION SYSTEMS

INFORMATION SYSTEMS

I. INTERNAL DIRECTIVE SYSTEM

	A. Directive Classification						B. Distribution of Directives						C. Review and Revision			
	1. Types of Directives used						1. Distributed to:				2. General orders are:		3. General orders eventually become part of general duty manual	4. All personnel affected receive copy of order	1. Orders reviewed annually	2. Orders issued with expiration date
	GENERAL ORDERS	SPECIAL ORDERS	PERSONNEL ORDERS	INSTRUCTIONAL MATERIAL	MEMORANDA	OTHER	ALL PERSONNEL	DISTRICT/REGIONAL OFFICES ONLY	COMMAND LEVEL PERSONNEL	OTHER	INDEXED	CROSS-INDEXED				
HIGHWAY PATROLS																
ALABAMA				YES	YES				YES						NO	YES
ARIZONA	YES	YES	YES	YES	YES		YES			YES			NO	YES	YES	NO
CALIFORNIA	YES	YES	YES	YES	YES	YES	YES		YES	YES			YES	NO	NO	NO
COLORADO	YES	YES	YES	YES	YES		YES			YES			YES	YES	YES	NO
FLORIDA	YES	YES	YES	YES	YES		YES			YES			YES	YES	NO	NO
GEORGIA	YES	YES	YES	YES	YES		YES			YES			YES	YES	NO	NO
IOWA	YES	YES	YES	YES	YES		YES			YES			YES	YES	NO	NO
KANSAS	YES	YES	YES	YES	YES		YES			YES	YES		YES	YES	NO	NO
MINNESOTA	YES	YES	YES	YES	YES	YES	YES			YES			YES	YES	YES	YES
MISSISSIPPI	YES	YES	YES	YES	YES	YES	YES			YES			NO	YES	NO	NO
MISSOURI	YES	YES			YES		YES		YES				YES	YES	NO	YES
MONTANA	YES	YES	YES	YES	YES		YES		YES				YES	YES	NO	YES
NEBRASKA	YES	YES	YES	YES	YES		YES			YES			YES	YES	YES	NO
NEVADA	YES	YES	YES	YES	YES	YES	YES			YES			YES	YES	YES	YES
NORTH CAROLINA	YES	YES		YES	YES		YES			YES	YES		YES	YES	YES	NO
NORTH DAKOTA	YES	YES	YES	YES	YES		YES			YES			YES	YES	YES	NO
OHIO	YES	YES	YES	YES	YES			YES		YES			YES	NO	YES	YES
OKLAHOMA	YES	YES	YES	YES	YES		YES			YES			YES	YES	YES	YES
SOUTH CAROLINA	YES	YES	YES	YES	YES		YES			YES			YES	YES	YES	NO
SOUTH DAKOTA	YES	YES	YES	YES	YES			YES					YES	NO	YES	NO
TENNESSEE	YES	YES	YES	YES	YES	YES	YES			YES			YES	YES	NO	NO
TEXAS	YES	YES	YES	YES	YES	YES	YES			YES			YES	YES	YES	YES
UTAH	YES				YES		YES			YES			NO	YES	NO	NO
WASHINGTON	YES	YES	YES	YES	YES			YES	YES	YES	YES		YES	NO	YES	NO
WISCONSIN	YES	YES	YES	YES	YES	YES	YES	YES	YES	YES			YES	YES	YES	NO
WYOMING	YES	YES	YES	YES	YES		YES			YES			YES	YES	NO	YES
STATE POLICE																
ALASKA	YES	YES	YES	YES	YES		YES			YES			YES	YES	YES	NO
ARKANSAS	YES	YES	YES	YES	YES			YES	YES	YES			NO	NO	NO	YES
CONNECTICUT	YES	YES	YES	YES	YES		YES			YES	YES		YES	YES	NO	NO
DELAWARE	YES	YES	YES	YES	YES	YES		YES		YES			YES	YES	YES	YES
IDAHO	YES	YES	YES	YES	YES		YES			YES			YES	YES	NO	NO
ILLINOIS	YES	YES	YES	YES	YES		YES			YES	YES		YES	YES		
INDIANA	YES	YES	YES	YES	YES		YES			YES			YES	YES	YES	NO
KENTUCKY	YES	YES	YES	YES	YES		YES			YES			YES	YES	NO	NO
LOUISIANA	YES	YES	YES	YES	YES		YES						NO	YES	YES	NO
MAINE	YES	YES	YES	YES	YES	YES	YES			YES	YES		YES	YES	YES	YES
MARYLAND	YES	YES	YES	YES	YES		YES			YES			YES	YES	NO	NO
MASSACHUSETTS	YES	YES	YES	YES	YES	YES	YES			YES			YES	YES	NO	NO
MICHIGAN	YES	YES	YES	YES	YES			YES		YES	YES		YES	NO	NO	NO
NEW HAMPSHIRE	YES	YES	YES		YES		YES			YES			YES	YES	NO	NO
NEW JERSEY	YES	YES	YES	YES	YES					YES		YES	YES	YES	YES	NO
NEW MEXICO	YES	YES	YES	YES	YES		YES			YES			NO	YES	NO	NO
NEW YORK	YES	YES	YES	YES	YES	YES	YES			YES	YES		YES	YES	NO	NO
OREGON	YES	YES	YES	YES	YES		YES			YES			YES	YES	YES	NO
PENNSYLVANIA	YES	YES	YES	YES	YES		YES				YES		NO	NO	NO	
RHODE ISLAND	YES	YES	YES	YES			YES			YES	YES		YES	YES	NO	NO
VERMONT	YES	YES	YES	YES	YES	YES	YES			YES			YES	YES	YES	NO
VIRGINIA	YES	YES	YES	YES	YES		YES			YES			YES	YES	YES	NO
WEST VIRGINIA	YES	YES	YES	YES	YES	YES	YES			YES			YES	YES	YES	NO
CANADA																
ALBERTA	YES	YES	YES	YES	YES	YES	YES						YES	NO	NO	YES
BRITISH COLUMBIA	YES	YES	YES	YES	YES	YES	YES						YES	NO	NO	YES
MANITOBA	YES	YES	YES	YES	YES		YES			YES			NO	NO	YES	YES
ONTARIO																
SASKATCHEWAN	YES	YES	YES	YES	YES		YES						NO	NO	YES	YES

INFORMATION SYSTEMS

I. INTERNAL DIRECTIVE SYSTEM	C. Review and Revision				D. Authority to Issue Orders				II. ACCIDENT RECORDS			
	3. Orders purged by:	1. Supervisory personnel	2. Division Commanders only	3. Restricted to specific level	4. Other	A. Single Agency Collects/Processes Accident Data	B. Agency Primarily Responsible	C. Data Processing Practices Standardized	D. Your Agency:			
									1. Prescribes Accident Report Forms	2. Provides the Accident Report Forms	3. Prepares Instructions for their use	
HIGHWAY PATROLS												
ALABAMA		YES				NO		NO	NO			
ARIZONA			YES	YES		YES	Highway Department	YES	YES	YES	YES	
CALIFORNIA					YES	YES	Police	YES	YES	YES	YES	
COLORADO		YES				YES	DMV	YES	YES	YES	YES	
FLORIDA			YES			YES	Police	YES	YES	YES	YES	
GEORGIA	Until Rescinded			YES		YES	Police	YES	YES	YES	YES	
IOWA	Until Rescinded	YES				YES	Police	YES	YES	YES	YES	
KANSAS	As Determined by Staff			YES		YES	DMV	YES	YES	YES	YES	
MINNESOTA	Disposition Schedule	YES				YES	Office of Drivers License	YES	YES	YES	YES	
MISSISSIPPI	Review Revision			YES		YES	Department of Public Safety	YES	NO	YES	YES	
MISSOURI	Revision and Updating	YES				NO	Highway Patrol	YES	NO	NO	NO	
MONTANA		YES				YES	Highway Patrol	YES	YES	YES	YES	
NEBRASKA			YES			YES	Accident Records Bureau	YES	YES	YES	YES	
NEVADA		YES		YES		YES	DMV	NO	NO	NO	NO	
NORTH CAROLINA				YES		YES	DMV	YES	YES	YES	YES	
NORTH DAKOTA		YES				NO		YES	YES	YES	YES	
OHIO		YES		YES		YES	DMV	YES	YES	YES	YES	
OKLAHOMA		YES	YES		YES	YES	Police	YES	YES	YES	YES	
SOUTH CAROLINA			YES			YES	DMV	YES	YES	YES	YES	
SOUTH DAKOTA		YES	YES			YES	Police	YES	YES	YES	YES	
TENNESSEE					YES	YES		YES	YES	YES	YES	
TEXAS		YES				YES	Police	YES	YES	YES	YES	
UTAH		YES				YES		YES	YES	YES	YES	
WASHINGTON	Periodic Review			YES		YES	Police		YES		YES	
WISCONSIN		YES	YES			YES	DMV	YES	YES	YES	YES	
WYOMING		YES				YES	Accident Records Section	YES	YES	YES	YES	
STATE POLICE												
ALASKA	Regulation or Directive	YES				YES	Department of Highways		YES	YES	YES	
ARKANSAS	Expiration Date and Tickler	YES				YES	Police	YES	YES	YES	YES	
CONNECTICUT	Periodic Review and Updating			YES		YES	DMV	YES	YES	YES	YES	
DELAWARE	Expiration Date and Review		YES			YES	Police	YES	YES	YES	YES	
IDAHO	Random Inspection	YES				YES	Dept. of Law Enforcement & Highway Dept.	NO	YES	YES	YES	
ILLINOIS						YES	Division of Highways	NO	YES			
INDIANA	Order of Originator	YES				YES	Police	YES	YES	YES	YES	
KENTUCKY	Tickler & Permanent File System	YES				YES	Police	YES	YES	YES	YES	
LOUISIANA				YES		NO		NO	YES	YES	YES	
MAINE			YES			YES	Police	YES	YES	YES	YES	
MARYLAND			YES			YES	Police	YES	YES	YES	YES	
MASSACHUSETTS				YES		YES	DMV	NO	YES	YES	YES	
MICHIGAN		YES			YES	YES	Police	YES	YES	YES	YES	
NEW HAMPSHIRE		YES				YES	DMV		YES	YES		
NEW JERSEY				YES	YES	YES	DMV	YES	YES	YES	YES	
NEW MEXICO			YES			YES	Highway Department	NO	YES	YES	NO	
NEW YORK				YES		YES	DMV	YES	YES	YES	YES	
OREGON				YES		YES	DMV	YES	YES	YES	YES	
PENNSYLVANIA					YES	YES	Department of Highways	YES	YES	YES	YES	
RHODE ISLAND			YES	YES		YES	DMV	YES	YES	YES	YES	
VERMONT	Expiration Date	YES				YES	DMV	YES	YES	YES	YES	
VIRGINIA	Periodic Review			YES		YES	Police	YES	YES	YES	YES	
WEST VIRGINIA				YES		YES	DMV	YES	YES	YES	YES	
CANADA												
ALBERTA		YES				YES	DMV	YES	YES	YES	YES	
BRITISH COLUMBIA		YES				YES	DMV	YES	YES	YES	YES	
MANITOBA					YES	YES		YES	YES	YES	YES	
ONTARIO												
SASKATCHEWAN				YES		YES	DMV	YES	YES	YES	NO	

INFORMATION SYSTEMS

II. ACCIDENT RECORDS	E. Your System Receives Copy of All Reports	F. Reporting Threshold	G. Your System Receives Summaries from Local Agencies	H. Use Special Report Form for Police Reports/Investigations	I. Frequency of Your Routine Accident Summaries	J. Average Number of Special Studies Per Year	K. Your System Provides for Data Distribution to Other Agencies	L. Records Traffic Deaths With Office of Vital Statistics	M. Exchange Information on Accidents Involving Out-of-State Residents	III. DATA PROCESSING	
										A. Computer	
										1. Use	2. Model and Type
HIGHWAY PATROLS											
ALABAMA	NO			NO	Daily, Monthly		YES	NO		NO	
ARIZONA	YES	\$100	YES	YES	Monthly, Annually	12	YES	YES	NO	YES	IBM 360-40
CALIFORNIA	NO	\$200	NO	NO	Quarterly, Annually	50	YES	YES	YES	YES	IBM 1-360-30, 2-7740
COLORADO	YES	All	NO	YES				NO	YES	NO	
FLORIDA	YES	\$50	NO	YES	Monthly	50	YES	YES	NO	YES	IBM 360-30
GEORGIA	NO	\$25	NO	YES	Monthly, Quarterly, Annually		YES	YES	YES	YES	Honeywell H-1200
IOWA	YES	\$100	NO	YES	Monthly	60	YES	YES	NO	YES	IBM 360-40, 360-50
KANSAS	NO	\$100	NO	YES	Monthly		YES	YES	YES	YES	IBM 360-40, 360-30
MINNESOTA	NO	\$100	NO	YES	Quarterly	3	YES	YES	YES	YES	IBM 360-50
MISSISSIPPI	NO	\$50	NO	YES	Monthly	20	YES	YES	YES	YES	IBM 360-40
MISSOURI	NO		NO	YES	Monthly		YES	YES	NO	YES	IBM 360-40
MONTANA	NO	\$100	NO	YES	Monthly	12	YES	YES	NO	YES	IBM 360-40
NEBRASKA	YES	\$100	YES	YES	Weekly	25	YES	YES	YES	YES	
NEVADA	NO		NO	NO	Annually		NO	YES	NO	YES	IBM 360-40
NORTH CAROLINA	YES	\$100	NO	YES	Weekly, Monthly, Semi-Annually, and Annually	20	YES	YES	NO	YES	IBM 360-40
NORTH DAKOTA	YES	\$50	YES	YES						YES	IBM 360-50
OHIO	YES	\$100	YES	YES	Monthly	17	YES	YES	YES		
OKLAHOMA	YES		NO	YES	Monthly	12	YES	YES	YES	YES	IBM 360-20
SOUTH CAROLINA	YES	\$100	NO	YES	Weekly, Monthly	14	YES	YES	YES	YES	IBM 360-40
SOUTH DAKOTA	YES	\$100	NO	YES	Quarterly, Annually	10	YES	YES	YES	YES	IBM 360-40
TENNESSEE	YES	\$100	NO	YES	Monthly		YES	YES	YES	YES	
TEXAS	YES	\$25	NO	YES	Monthly	25	YES	YES	YES	YES	IBM 360-40
UTAH	YES	\$50	NO	YES	Annually		YES	NO	NO	NO	
WASHINGTON		\$100	YES	YES	Quarterly	10	YES	YES	YES	YES	IBM 360-50
WISCONSIN	YES	\$100	NO	NO	Monthly	10	NO	YES	NO	YES	IBM 360-30
WYOMING	YES	\$50	NO	YES	Monthly, Annually	6	YES	NO	YES	YES	IBM 360-40
STATE POLICE											
ALASKA	YES	\$100	NO	YES	Monthly		YES	YES	NO	NO	
ARKANSAS	YES	\$100	NO	YES	Monthly	10	YES	NO	NO	YES	IBM 402 Tab System
CONNECTICUT	NO	\$200	NO	YES	Monthly	12	YES	NO	NO	YES	IBM 360, IBM 402
DELAWARE	YES	\$25	NO	YES	Monthly	6	YES	YES	NO	YES	IBM 360-30
IDAHO	YES	\$100	NO	YES	Monthly	Varies	NO	YES	NO	YES	
ILLINOIS	NO		NO	NO	Monthly		YES				
INDIANA	YES	\$50	NO	YES	Monthly, Semi-Annually, Annually	10	YES	YES	YES	YES	IBM 360-30, 360-50
KENTUCKY	YES	\$100	NO	YES	Monthly	15	YES	YES	YES	YES	Univac 1005
LOUISIANA	NO	\$100	NO	YES	Monthly		YES	YES	YES	YES	Univac 1005, 418
MAINE	YES	\$100	NO	YES	Daily	12	YES	YES	YES	YES	IBM 360-40
MARYLAND	NO	\$100	NO	YES	Monthly	12	YES	YES	YES	YES	IBM 360-20
MASSACHUSETTS	YES	\$200	NO	YES	Monthly	3	YES	NO	NO		
MICHIGAN	YES		YES	YES	Weekly	5	YES	YES	YES	YES	Burroughs 5500
NEW HAMPSHIRE	NO	\$100	NO							NO	
NEW JERSEY	NO	\$200	NO	YES	Monthly	2	YES	YES	NO	NO	
NEW MEXICO	YES	\$25	NO	NO	Monthly		NO	YES	NO	YES	IBM 360-40
NEW YORK	YES	\$150	NO	YES	Monthly	1	YES	YES	YES	YES	Univac 1004/5
OREGON	YES		NO	YES	Monthly	6	YES	YES	NO	YES	IBM 360-40
PENNSYLVANIA	YES	\$100	NO	YES	Quarterly	50	YES	NO	NO	NO	
RHODE ISLAND	NO		NO	YES	Weekly			YES	YES	NO	
VERMONT	YES	\$35	NO	YES	Monthly		YES	NO	NO	NO	
VIRGINIA	YES	\$100	NO	YES	Monthly	500	YES	YES	NO	YES	IBM 360-20
WEST VIRGINIA	YES	\$100	NO	YES	Monthly	12	YES	YES	NO	YES	IBM 360-30
CANADA											
ALBERTA	YES	\$100	NO	NO	Monthly		YES	NO	NO	NO	
BRITISH COLUMBIA	YES	\$100	NO	NO	Monthly		YES	NO	NO	NO	
MANITOBA	NO	\$100	NO	NO	Monthly		YES	YES	NO	YES	
ONTARIO											
SASKATCHEWAN	YES	\$100	YES	YES	Monthly	1	YES	YES	YES	YES	

INFORMATION SYSTEMS

III. DATA PROCESSING				IV. DATA TYPES								
A. Computer		B. Personnel		C. Budget		D. Historical Information		A. Juvenile				
3. Controlled by:	4. Equipment Is:	1. Supervisory		2. Formal job specifications for system head	1. Total annual 1969-70	2. Total salaries 1969-70	1. Year use of data processing equipment began	2. Year use of present system began	1. Collecting agency			
		NUMBER	SWORN OR CIVILIAN						STATUTE	EXECUTIVE ORDER	COMPUTER	MANUAL
HIGHWAY PATROLS												
ALABAMA												
ARIZONA	Department	Leased	3	Both	YES	\$ 337,038	\$121,588	1958	1969			
CALIFORNIA	Department	Leased	17	Civilian	YES	1,521,189	879,783	1938	1966			
COLORADO												
FLORIDA	Department	Leased	3	Civilian	YES			1954	1968			
GEORGIA	Department	Leased	2	Civilian	YES	309,000	77,400	1968	1968			
IOWA	Comptroller	Leased, Purchased	1	Civilian	NO		39,800	1964	1964			
KANSAS	DMV and Highway Department	Leased				18,338	13,870	1960			BCI	
MINNESOTA	Highway Department	Leased	3	Civilian	NO	1,000,000	450,000	1960	1967			
MISSISSIPPI	Department	Leased			NO							
MISSOURI	Department	Purchased	1	Civilian	YES	287,450	71,846	1943	1969			
MONTANA	Highway Department	Leased	1	Civilian	NO	48,876	32,861	1968			Highway Patrol	
NEBRASKA	Department of Adm'n. Services	Leased						1965	1968			
NEVADA	DMV and Highway Department	Leased						1967	1968			
NORTH CAROLINA	Other Agency	Leased	4	Civilian	YES	1,647,215	599,515	1963	1966		Dept. of Juvenile Corrections	
NORTH DAKOTA	Other Agency	Leased						1961	1968		Highway Patrol	
OHIO						192,000		1941	1968			
OKLAHOMA	Department	Leased	2	Civilian	NO	165,000	75,000	1966	1966			
SOUTH CAROLINA	Department	Leased	5	Civilian	YES	500,000	228,000	1958	1967			
SOUTH DAKOTA	Other Agency	Leased										
TENNESSEE	Department	Leased										
TEXAS	Department	Leased	3	Civilian	YES	670,197	369,197	1939	1969		Department of Public Safety	
UTAH												
WASHINGTON	Other Agency	Purchased	1	Sworn		456,000	150,000	1941				
WISCONSIN	Other Agency	Leased				271,000		1956	1956			
WYOMING		Purchased			NO	16,000	11,200	1960	1965			
STATE POLICE												
ALASKA					YES	58,500		1962	1967			
ARKANSAS	Department	Leased	1	Sworn	NO	45,000	25,000	1966	1966			
CONNECTICUT	Dept. and State Data Process'g Ct.	Leased	1	Sworn	NO			1962	1968		State Police	
DELAWARE	Highway Department	Leased	1	Sworn	YES	50,000	30,000	1940	1967		State Police	
IDAHO	Highway Department	Purchased										
ILLINOIS			5	Civilian	YES	518,000	300,000	1949	1969			
INDIANA	Central Data Processing	Leased	14	Civilian	YES	1,214,500	427,140	1942	1967			
KENTUCKY	Department	Leased and Purchased	3	Both	NO			1950	1964			
LOUISIANA	Department	Leased	3	Civilian	NO	615,853	155,326	1967	1968			
MAINE	State Controller	Leased	2	Sworn	NO	38,354	33,254	1955	1968		State Police	
MARYLAND	Department	Leased	7	Both	YES	882,235	396,841	1950	1968		Dept. of Juvenile Services	
MASSACHUSETTS	Department	Leased						1957				
MICHIGAN	Department	Purchased	4	Civilian	YES	1,200,000	400,000	1950	1967		State Police	
NEW HAMPSHIRE												
NEW JERSEY			2	Sworn	NO	231,396	150,000	1952				
NEW MEXICO	Other Agency	Leased	1	Sworn	NO	10,000		1966	1966		Welfare Department	
NEW YORK	Department	Leased	1	Civilian	NO	46,175	122,600	1960	1967			
OREGON	Other Agency	Purchased	1	Sworn	NO	42,750	29,260	1958	1968			
PENNSYLVANIA		Leased	3	Both	YES	101,000	56,000	1962	1962			
RHODE ISLAND												
VERMONT								1967	1967			
VIRGINIA	Department	Leased	3	Both	NO	64,000	26,000	1954	1968			
WEST VIRGINIA	DMV	Leased	1	Civilian	YES			1964	1964		State Police	
CANADA												
ALBERTA												
BRITISH COLUMBIA											RCMP	
MANITOBA	Other Agency	Purchased									RCMP	
ONTARIO												
SASKATCHEWAN	Province											

INFORMATION SYSTEMS

IV. DATA TYPES														
A. Juvenile						B. Firearms								
2. Authority		3. Storage & Retrieval		4. Real time available	5. System Interfaced with:	6. Funded by:			1. Collecting agency		2. Authority		3. Storage & Retrieval	
STATUTE	EXECUTIVE ORDER	COMPUTER	MANUAL			STATE	FEDERAL	COMBINATION	STATUTE	EXECUTIVE ORDER	COMPUTER	MANUAL		
HIGHWAY PATROLS														
ALABAMA														
ARIZONA														
CALIFORNIA														
COLORADO														
FLORIDA														
GEORGIA														
IOWA														
KANSAS														
MINNESOTA														
MISSISSIPPI														
MISSOURI														
MONTANA														
NEBRASKA														
NEVADA														
NORTH CAROLINA	YES								YES					State Bureau of Investigation
NORTH DAKOTA	YES								YES					YES
OHIO														
OKLAHOMA														
SOUTH CAROLINA														
SOUTH DAKOTA														
TENNESSEE														
TEXAS		YES							YES					
UTAH														
WASHINGTON									YES					YES
WISCONSIN														
WYOMING														
STATE POLICE														
ALASKA														
ARKANSAS														
CONNECTICUT		YES	YES					NO						
DELAWARE	YES		YES					NO		YES				State Police
IDAHO														State Police
ILLINOIS														State Police
INDIANA														State Police
ILLINOIS														State Police
INDIANA								YES	NO					State Police
KENTUCKY														
LOUISIANA														
MAINE	YES								YES					State Police
MARYLAND		YES	YES					YES				YES		State Police
MASSACHUSETTS														
MICHIGAN	YES		YES	YES	YES				YES					State Police
NEW HAMPSHIRE														
NEW JERSEY														State Police
NEW MEXICO	YES										YES			State Police
NEW YORK														State Police
NEW YORK														State Police
OREGON														
PENNSYLVANIA														
RHODE ISLAND														
VERMONT														
VIRGINIA														
VIRGINIA														
WEST VIRGINIA		YES	YES						NO		YES			Dept. of Public Safety
CANADA														
ALBERTA														
BRITISH COLUMBIA														RCMP
MANITOBA														RCMP
ONTARIO														
SASKATCHEWAN														

INFORMATION SYSTEMS

IV. DATA TYPES

	B. Firearms			C. Crime								
	4. Real time available	5. System interfaced with:	6. Funded by:			1. Collecting agency	2. Authority		3. Storage & Retrieval		4. Real time available	5. System interfaced with:
			STATE	FEDERAL	COMBINATION		STATUTE	EXECUTIVE ORDER	COMPUTER	MANUAL		
HIGHWAY PATROLS												
ALABAMA												
ARIZONA					Highway Patrol	YES		YES	YES	YES	NCIC and Auto-Stat	
CALIFORNIA												
COLORADO												
FLORIDA												
GEORGIA					Department of Public Safety	YES	YES	YES		YES	NCIC and LETS	
IOWA					BCI							
KANSAS					Kans. Bur. of Investigation	YES			YES	NO		
MINNESOTA												
MISSISSIPPI												
MISSOURI			YES		Highway Patrol	YES			YES	YES		
MONTANA					Highway Patrol	YES						
NEBRASKA									YES	NO		
NEVADA												
NORTH CAROLINA			YES		State Bur. of Investigation	YES			YES	NO		
NORTH DAKOTA												
OHIO												
OKLAHOMA					State Crime Bureau	YES				NO		
SOUTH CAROLINA												
SOUTH DAKOTA												
TENNESSEE												
TEXAS					Dept. of Public Safety		YES		YES	NO		
UTAH												
WASHINGTON	YES	NCIC	YES		State Patrol	YES		YES		YES		
WISCONSIN												
WYOMING												
STATE POLICE												
ALASKA												
ARKANSAS					State Police	YES			YES			
CONNECTICUT					State Police		YES	YES		NO		
DELAWARE			YES		State Police	YES		YES				
IDAHO			YES		State Police	YES			YES			
ILLINOIS			YES		State Police	YES			YES			
INDIANA									YES			
KENTUCKY					State Police	YES			YES			
LOUISIANA												
MAINE					State Police	YES			YES			
MARYLAND			YES		State Police	YES		YES		NO	NCIC	
MASSACHUSETTS												
MICHIGAN			YES		State Police	YES		YES		NO	NCIC	
NEW HAMPSHIRE												
NEW JERSEY			YES		State Police	YES		YES		NO		YES
NEW MEXICO			YES		Individual Agencies							YES
NEW YORK	YES	NCIC	YES		NYSIS	YES		YES		NO		YES
OREGON					State Police	YES			YES			
PENNSYLVANIA												
RHODE ISLAND					State Police	YES			YES			
VERMONT												
VIRGINIA												
WEST VIRGINIA	NO	NCIC		YES	Dept. of Public Safety		YES	YES		NO		YES
CANADA												
ALBERTA						YES			YES			
BRITISH COLUMBIA									YES			
MANITOBA					RCMP							
ONTARIO												
SASKATCHEWAN					Dominion Bur. of Statistics	YES		YES		YES		

INFORMATION SYSTEMS

IV. DATA TYPES

	C. Crime			D. Fingerprints									
	6. Funded by:			1. Collecting agency	2. Authority		3. Storage & Retrieval		4. Real time available	5. System interfaced with:	6. Funded by:		
	STATE	FEDERAL	COMBINATION		STATUTE	EXECUTIVE ORDER	COMPUTER	MANUAL			STATE	FEDERAL	COMBINATION
HIGHWAY PATROLS													
ALABAMA													
ARIZONA	YES			Highway Patrol	YES			YES				YES	
CALIFORNIA													
COLORADO													
FLORIDA													
GEORGIA			YES	Department of Public Safety	YES			YES				YES	
IOWA				BCI									
KANSAS	YES				YES			YES				YES	
MINNESOTA													
MISSISSIPPI													
MISSOURI	YES			Highway Patrol	YES			YES				YES	
MONTANA													
NEBRASKA	YES			State Patrol	YES			YES				YES	
NEVADA													
NORTH CAROLINA	YES			State Bureau of Investigation	YES			YES					
NORTH DAKOTA												YES	
OHIO													
OKLAHOMA				State Crime Bureau	YES			YES					
SOUTH CAROLINA													
SOUTH DAKOTA													
TENNESSEE													
TEXAS	YES			Department of Public Safety	YES			YES			NCIC	YES	
UTAH													
WASHINGTON	YES												
WISCONSIN													
WYOMING													
STATE POLICE													
ALASKA													
ARKANSAS				State Police	YES			YES				YES	
CONNECTICUT													
DELAWARE	YES			State Police	YES			YES				YES	
IDAHO	YES			State Police	YES			YES				YES	
ILLINOIS	YES			Bur. of Criminal Identification & Inv.	YES			YES				YES	
INDIANA								YES					
KENTUCKY	YES			State Police	YES			YES				YES	
LOUISIANA													
MAINE	YES			State Police	YES			YES				YES	
MARYLAND	YES			State Police	YES			YES				YES	
MASSACHUSETTS													
MICHIGAN	YES			State Police	YES			YES		NO	NCIC	YES	
NEW HAMPSHIRE													
NEW JERSEY	YES			State Police	YES			YES		NO		YES	
NEW MEXICO				State Police	YES			YES		YES		YES	
NEW YORK	YES			NYSIS				YES		NO		YES	
OREGON	YES			State Bureau of Identification	YES								
PENNSYLVANIA													
RHODE ISLAND				State Police									
VERMONT				Department of Public Safety	YES			YES					
VIRGINIA													
WEST VIRGINIA	YES			Department of Public Safety		YES	YES	YES	YES	NO		YES	
CANADA													
ALBERTA						YES		YES					
BRITISH COLUMBIA								YES		YES			
MANITOBA				RCMP									
ONTARIO													
SASKATCHEWAN		YES		RCMP	YES		YES	YES	YES	YES		YES	

INFORMATION SYSTEMS

IV. DATA TYPES

E. Organized Crime									
1. Collecting agency	2. Authority		3. Storage & Retrieval		4. Real time available	5. System interfaced with:	6. Funded by:		
	STATUTE	EXECUTIVE ORDER	COMPUTER	MANUAL			STATE	FEDERAL	COMBINATION
HIGHWAY PATROLS									
ALABAMA									
ARIZONA	Highway Patrol		YES	YES			YES		
CALIFORNIA									
COLORADO									
FLORIDA									
GEORGIA	Department of Public Safety								
IOWA	BCI								
KANSAS	Bureau of Investigation		YES	YES			YES		
MINNESOTA									
MISSISSIPPI									
MISSOURI	Highway Patrol			YES			YES		
MONTANA									
NEBRASKA	State Patrol	YES		YES					
NEVADA									
NORTH CAROLINA									
NORTH DAKOTA	Highway Patrol	YES		YES			YES		
OHIO									
OKLAHOMA									
SOUTH CAROLINA									
SOUTH DAKOTA									
TENNESSEE									
TEXAS	Dept. of Public Safety		YES	YES	Local Agencies		YES		
UTAH									
WASHINGTON									
WISCONSIN									
WYOMING									
STATE POLICE									
ALASKA									
ARKANSAS									
CONNECTICUT									
DELAWARE									
IDAHO	State Police	YES		YES			YES		
ILLINOIS	State Police		YES	YES			YES		
INDIANA				YES					
KENTUCKY	State Police		YES	YES			YES		
LOUISIANA									
MAINE	State Police		YES	YES			YES		
MARYLAND	Dept. of Parole & Probation	YES		YES			YES		
MASSACHUSETTS									
MICHIGAN	State Police	YES		YES	NCIC & Law Enf. Information Network		YES		
NEW HAMPSHIRE									
NEW JERSEY	State Police	YES		YES			YES		
NEW MEXICO	Attorney General		YES	YES			YES		
NEW YORK		YES		YES					
OREGON									
PENNSYLVANIA									
RHODE ISLAND	State Police			YES					
VERMONT									
VIRGINIA									
WEST VIRGINIA									
CANADA									
ALBERTA									
BRITISH COLUMBIA									
MANITOBA	RCMP								
ONTARIO									
SASKATCHEWAN	RCMP	YES		YES	YES		YES		

INFORMATION SYSTEMS

IV. DATA TYPE

F. Probation/Parole										G. Traffic Accidents		
1. Collecting agency	2. Authority		3. Storage & Retrieval		4. Real time available	5. System interfaced with:	6. Funded by:			1. Collecting agency		
	STATUTE	EXECUTIVE ORDER	COMPUTER	MANUAL			STATE	FEDERAL	COMBINATION			
HIGHWAY PATROLS												
ALABAMA												
ARIZONA	YES			YES				YES				Highway Patrol
CALIFORNIA												Highway Patrol
COLORADO												
FLORIDA												
GEORGIA												Department of Public Safety
IOWA												DMV
KANSAS	Board of Probation	YES		YES				YES				DMV
MINNESOTA												Highway Patrol
MISSISSIPPI												Department of Public Safety
MISSOURI	Probation and Parole Board	YES		YES				YES				Highway Patrol
MONTANA												Highway Patrol
NEBRASKA	State Patrol	YES		YES				YES				Highway Patrol
NEVADA												
NORTH CAROLINA									YES			Highway Patrol
NORTH DAKOTA	YES	YES		YES								Highway Department
OHIO												DMV
OKLAHOMA												Department of Public Safety
SOUTH CAROLINA												Highway Patrol
SOUTH DAKOTA												Highway Patrol
TENNESSEE												
TEXAS	Board of Pardons	YES		YES				YES				Department of Public Safety
UTAH												
WASHINGTON	Department of Institutions	YES		YES								State Patrol
WISCONSIN												Highway Patrol
WYOMING												Highway Department
STATE POLICE												
ALASKA												Highway Department
ARKANSAS												State Police
CONNECTICUT												State Police
DELAWARE												State Police
IDAHO	Board of Corrections	YES										State Police
ILLINOIS												State Police
INDIANA								YES				
KENTUCKY												State Police
LOUISIANA												State Police
MAINE	Dept. of Mental Health & Corrections	YES		YES				YES				State Police
MARYLAND		YES		YES								State Police
MASSACHUSETTS												
MICHIGAN	Department of Corrections	YES		YES					YES			State Police
NEW HAMPSHIRE												
NEW JERSEY												State Police and DMV
NEW MEXICO	Department of Corrections	YES		YES								Highway Department
NEW YORK	Div. of Probation	YES		YES								
OREGON												
PENNSYLVANIA												
RHODE ISLAND												DMV
VERMONT												DMV
VIRGINIA												State Police
WEST VIRGINIA	Board of Probation and Parole		YES	YES				YES				Department of Public Safety
CANADA												
ALBERTA												
BRITISH COLUMBIA												
MANITOBA	RCMP											DMV
ONTARIO									YES			Department of Transport
SASKATCHEWAN	Fed. Govt.	YES							YES			Dominion Bureau of Statistics

INFORMATION SYSTEMS

IV. DATA TYPES

	G. Traffic Accidents					H. Traffic Enforcement							
	2. Authority		3. Storage & Retrieval		4. Real time available	5. System Interfaced with:	6. Funded by:			1. Collecting agency		2. Authority	
	STATUTE	EXECUTIVE ORDER	COMPUTER	MANUAL			STATE	FEDERAL	COMBINATION	STATUTE	EXECUTIVE ORDER		
HIGHWAY PATROLS													
ALABAMA													
ARIZONA	YES			YES						Highway Patrol	YES		
CALIFORNIA	YES		YES		NO					Highway Patrol	YES		
COLORADO													
FLORIDA													
GEORGIA	YES		YES		YES					Department of Public Safety	YES		
IOWA	YES		YES	YES	NO					Highway Patrol and DMV	YES	YES	
KANSAS	YES		YES		NO					Highway Patrol and DMV	YES		
MINNESOTA	YES		YES	YES	YES				YES	Highway Patrol	YES		
MISSISSIPPI		YES	YES	YES									
MISSOURI	YES			YES		YES				Department of Revenue	YES		
MONTANA	YES		YES	YES					YES	Highway Patrol	YES		
NEBRASKA	YES		YES						YES	Highway Patrol	YES		
NEVADA													
NORTH CAROLINA	YES		YES		YES					Highway Patrol	YES		
NORTH DAKOTA	YES		YES			YES				Highway Patrol	YES		
OHIO	YES		YES		NO				YES	DMV	YES		
OKLAHOMA	YES		YES		NO				YES	Highway Patrol	YES		
SOUTH CAROLINA		YES	YES		YES	DMV			YES	Highway Patrol		YES	
SOUTH DAKOTA	YES		YES		NO				YES				
TENNESSEE													
TEXAS	YES			YES		Highway Department			YES	Department of Public Safety	YES		
UTAH													
WASHINGTON	YES		YES		NO				YES	State Patrol	YES		
WISCONSIN	YES			YES					YES				
WYOMING	NO	NO	YES		NO				YES	Highway Patrol	YES		
STATE POLICE													
ALASKA		YES	YES	YES	NO				YES				
ARKANSAS	YES			YES		Highway Department			YES	State Police	YES		
CONNECTICUT		YES	YES		NO					State Police		YES	
DELAWARE	YES		YES		NO		YES			State Police	YES		
IDAHO	YES		YES	YES	YES				YES	State Police	YES		
ILLINOIS	YES			YES					YES	State Police		YES	
INDIANA			YES		NO				YES				
KENTUCKY	YES			YES					YES	State Police	YES		
LOUISIANA	YES		YES		NO				YES				
MAINE	YES		YES		NO				YES	State Police	YES		
MARYLAND	YES		YES	YES	NO	Highway Department			YES	State Police		YES	
MASSACHUSETTS													
MICHIGAN	YES		YES		NO	Highway Department			YES				
NEW HAMPSHIRE													
NEW JERSEY	YES		YES	YES	NO				YES	State Police	YES		
NEW MEXICO		YES	YES		NO				YES	DMV	YES		
NEW YORK	YES		YES		YES				YES	DMV	YES		
OREGON													
PENNSYLVANIA													
RHODE ISLAND	YES												
VERMONT	YES		YES							DMV	YES		
VIRGINIA	YES		YES		YES				YES	State Police			
WEST VIRGINIA		YES	YES		NO				YES	Department of Public Safety		YES	
CANADA													
ALBERTA										DMV	YES		
BRITISH COLUMBIA													
MANITOBA										RCMP			
ONTARIO	YES		YES		NO				YES	Department of Transport	YES		
SASKATCHEWAN	YES		YES						YES	Bureau of Statistics	YES		

INFORMATION SYSTEMS

IV. DATA TYPES

	H. Traffic Enforcement					I. Driver Licensing								
	3. Storage & Retrieval		4. Real time available	5. System Interfaced with:	6. Funded by:			1. Collecting agency		2. Authority		3. Storage & Retrieval	4. Real time available	
	COMPUTER	MANUAL			STATE	FEDERAL	COMBINATION	STATUTE	EXECUTIVE ORDER					
HIGHWAY PATROLS														
ALABAMA														
ARIZONA	YES	YES	NO				YES							
CALIFORNIA	YES		NO				YES							
COLORADO														
FLORIDA										Department of Public Safety	YES	YES	YES	NO
GEORGIA	YES		YES				YES			Department of Public Safety	YES	YES	YES	YES
IOWA	YES	YES	NO				YES			DMV	YES	YES	YES	NO
KANSAS	YES	YES					YES			DMV	YES	YES	YES	YES
MINNESOTA	YES	YES	YES						YES	DMV	YES	YES	YES	YES
MISSISSIPPI														
MISSOURI	YES		YES				YES			Department of Revenue	YES	YES		YES
MONTANA	YES	YES	NO						YES	Highway Patrol	YES	YES	YES	
NEBRASKA	YES						YES			DMV	YES		YES	
NEVADA														
NORTH CAROLINA	YES		NO				YES			DMV	YES	YES		YES
NORTH DAKOTA	YES						YES			Highway Department	YES	YES		
OHIO	YES		YES						YES	DMV	YES	YES		YES
OKLAHOMA	YES	YES	NO						YES	Department of Public Safety	YES	YES	YES	NO
SOUTH CAROLINA	YES		YES						YES	DMV		YES	YES	YES
SOUTH DAKOTA														
TENNESSEE														
TEXAS		YES							YES	Department of Public Safety	YES		YES	
UTAH														
WASHINGTON	YES		NO						YES	DMV	YES	YES		YES
WISCONSIN														
WYOMING	YES		NO						YES	Department of Revenue	NO			
STATE POLICE														
ALASKA														
ARKANSAS		YES					YES			Department of Revenue	YES	YES		YES
CONNECTICUT		YES			NO					DMV				
DELAWARE	YES		NO	Accident Records	YES					DMV	YES	YES		YES
IDAHO		YES					YES			DMV	YES		YES	
ILLINOIS	YES		NO				YES							
INDIANA	YES	YES	NO						YES	DMV		YES		YES
KENTUCKY	YES	YES	NO						YES	Department of Public Safety	YES		YES	
LOUISIANA										Department of Public Safety				
MAINE	YES		NO						YES	DMV	YES	YES	YES	YES
MARYLAND	YES		NO				YES			DMV	YES	YES	YES	NO
MASSACHUSETTS														
MICHIGAN										Department of State	YES	YES	YES	YES
NEW HAMPSHIRE														
NEW JERSEY		YES							YES	DMV	YES	YES		YES
NEW MEXICO	YES	YES	YES						YES	DMV	YES	YES	YES	NO
NEW YORK	YES		YES						YES	DMV	YES	YES		YES
OREGON														
PENNSYLVANIA														
RHODE ISLAND														
VERMONT	YES									DMV	YES	YES		
VIRGINIA	YES		YES						YES					
WEST VIRGINIA	YES		NO						YES	DMV	YES	YES		NO
CANADA														
ALBERTA														
BRITISH COLUMBIA										DMV	YES	YES		
MANITOBA										DMV	YES	YES		YES
ONTARIO		YES							YES	Department of Transport	YES	YES		NO
SASKATCHEWAN	YES								YES	Treasury Department	YES	YES		YES

INFORMATION SYSTEMS

IV. DATA TYPES

	I. Driver Licensing			J. Vehicle Registration/Titling						
	6. System interfaced with:	6. Funded by:			1. Collecting agency	2. Authority		3. Storage & Retrieval		4. Real time available
		STATE	FEDERAL	COMBINATION		STATUTE	EXECUTIVE ORDER	COMPUTER	MANUAL	
HIGHWAY PATROLS										
ALABAMA										
ARIZONA										
CALIFORNIA										
COLORADO										
FLORIDA		YES								
GEORGIA		YES								
IOWA		YES		DMV	YES		YES			
KANSAS		YES		DMV	YES		YES	YES		
MINNESOTA			YES	DMV	YES		YES	YES	NO	
MISSISSIPPI										
MISSOURI		YES		DMV	YES		YES		YES	
MONTANA			YES	DMV	YES			YES		
NEBRASKA		YES		DMV	YES			YES		
NEVADA				DMV		YES	YES		YES	
NORTH CAROLINA		YES			YES		YES		YES	
NORTH DAKOTA		YES		DMV	YES		YES			
OHIO	NCIC	YES		DMV	YES		YES	YES	YES	
OKLAHOMA			YES	Tax Commission				YES		
SOUTH CAROLINA	DMV		YES	DMV		YES	YES		YES	
SOUTH DAKOTA										
TENNESSEE										
TEXAS	National Drivers Registry Service	YES		Department of Public Safety	YES		YES		YES	
UTAH										
WASHINGTON		YES		DMV	YES		YES		YES	
WISCONSIN										
WYOMING		YES		Department of Revenue						
STATE POLICE										
ALASKA										
ARKANSAS	Traffic Enforcement & Accident Reports	YES		Department of Revenue	YES		YES		YES	
CONNECTICUT				DMV						
DELAWARE	State Police and Highway Department	YES		DMV	YES		YES		YES	
IDAHO		YES		DMV	YES			YES		
ILLINOIS										
INDIANA		YES					YES		NO	
KENTUCKY		YES		State Police and Department of Finance	YES		YES	YES	NO	
LOUISIANA		YES								
MAINE			YES	DMV	YES			YES		
MARYLAND		YES		DMV			YES		NO	
MASSACHUSETTS										
MICHIGAN	Law Enforcement Information Network		YES	Department of State	YES		YES	YES	YES	
NEW HAMPSHIRE										
NEW JERSEY				DMV	YES		YES		YES	
NEW MEXICO			YES	DMV	YES		YES	YES	NO	
NEW YORK			YES	DMV	YES		YES		YES	
OREGON										
PENNSYLVANIA										
RHODE ISLAND										
VERMONT				DMV	YES		YES			
VIRGINIA										
WEST VIRGINIA	NCIC and Law Enforcement		YES	DMV	YES		YES		NO	
CANADA										
ALBERTA				DMV	YES					
BRITISH COLUMBIA				DMV			YES			
MANITOBA				DMV						
ONTARIO		YES		Department of Transport	YES			YES		
SASKATCHEWAN	Vehicle Registration and Titling	YES		Treasury Department	YES		YES		YES	

INFORMATION SYSTEMS

IV. DATA TYPES

	J. Vehicle Registration/Titling			K. Vehicle Inspection						
	5. System interfaced with:	6. Funded by:			1. Collecting agency	2. Authority		3. Storage & Retrieval		4. Real time available
		STATE	FEDERAL	COMBINATION		STATUTE	EXECUTIVE ORDER	COMPUTER	MANUAL	
HIGHWAY PATROLS										
ALABAMA										
ARIZONA										
CALIFORNIA				Highway Patrol	YES		YES		NO	
COLORADO										
FLORIDA				Department of Public Safety	YES		YES		NO	
GEORGIA				Department of Public Safety	YES			YES		
IOWA		YES								
KANSAS		YES		Highway Patrol	YES			YES		
MINNESOTA			YES	Highway Patrol	YES		YES		NO	
MISSISSIPPI										
MISSOURI		YES		Highway Patrol	YES			YES		
MONTANA		YES								
NEBRASKA		YES		DMV	YES			YES		
NEVADA		YES								
NORTH CAROLINA		YES		Highway Patrol	YES		YES		NO	
NORTH DAKOTA		YES		Highway Patrol	YES		YES			
OHIO	NCIC		YES	Highway Patrol	YES			YES		
OKLAHOMA				Highway Patrol	YES			YES		
SOUTH CAROLINA	Other Law Enforcement Agencies		YES	Highway Department	YES		YES		YES	
SOUTH DAKOTA				Highway Patrol	YES		YES			
TENNESSEE										
TEXAS	Department of Public Safety	YES		Department of Public Safety	YES			YES		
UTAH										
WASHINGTON		YES		State Patrol	YES			YES		
WISCONSIN				Highway Patrol	YES			YES		
WYOMING		YES		Department of Revenue	YES			YES		
STATE POLICE										
ALASKA										
ARKANSAS	Driver License, Accident Records & Law Enforcement	YES		State Police	YES			YES		
CONNECTICUT										
DELAWARE	State Police and Highway Department	YES		DMV	YES		YES	YES		
IDAHO		YES		Motor Vehicle Inspection Div.	YES		YES		YES	
ILLINOIS				State Police	YES			YES		
INDIANA		YES		State Police	YES			YES		
KENTUCKY		YES		Department of Public Safety	YES		YES	YES	NO	
LOUISIANA										
MAINE		YES		State Police	YES			YES		
MARYLAND		YES		DMV	YES			YES		
MASSACHUSETTS										
MICHIGAN	Law Enforcement Information Network		YES	State Police	YES		YES		NO	
NEW HAMPSHIRE										
NEW JERSEY		YES		DMV	YES			YES		
NEW MEXICO			YES	DMV	YES			YES		
NEW YORK			YES	DMV	YES			YES		
OREGON										
PENNSYLVANIA										
RHODE ISLAND										
VERMONT				DMV	YES			YES		
VIRGINIA										
WEST VIRGINIA	NCIC and Law Enforcement		YES	DMV		YES		YES		
CANADA										
ALBERTA				DMV	YES					
BRITISH COLUMBIA				DMV	YES					
MANITOBA				DMV						
ONTARIO		YES		Department of Transport	YES			YES		
SASKATCHEWAN	Driver Licensing	YES								

INFORMATION SYSTEMS

IV. DATA TYPES

	K. Vehicle Inspection			L. Commercial Vehicle Regulation							
	5. System Interfaced with:	6. Funded by:			1. Collecting agency	2. Authority		3. Storage & Retrieval		4. Real time available	5. System Interfaced with:
		STATE	FEDERAL	COMBINATION		STATUTE	EXECUTIVE ORDER	COMPUTER	MANUAL		
HIGHWAY PATROLS											
ALABAMA											
ARIZONA											
CALIFORNIA		YES		Highway Patrol	YES		YES		NO		
COLORADO											
FLORIDA		YES									
GEORGIA				DMV	YES			YES			
IOWA											
KANSAS		YES		Kansas Corporation Commission	YES			YES			
MINNESOTA				Public Safety Commission	YES						
MISSISSIPPI											
MISSOURI		YES			YES			YES			
MONTANA				Highway Patrol	YES			YES			
NEBRASKA		YES		DMV	YES			YES			
NEVADA				DMV		YES	YES		NO		
NORTH CAROLINA		YES		Highway Patrol	YES			YES			
NORTH DAKOTA		YES		Public Service Commission	YES			YES			
OHIO		YES		Public Utility Commission	YES			YES			
OKLAHOMA				Highway Patrol	YES			YES			
SOUTH CAROLINA	DMV			DMV		YES		YES		Engineering Division	
SOUTH DAKOTA	DMV										
TENNESSEE											
TEXAS		YES			YES			YES			
UTAH											
WASHINGTON		YES		State Patrol	YES			YES			
WISCONSIN		YES		Highway Patrol	YES			YES			
WYOMING		YES		Department of Revenue	YES		YES		YES		
STATE POLICE											
ALASKA											
ARKANSAS				Commerce Commission	YES						
CONNECTICUT				DMV							
DELAWARE	DMV	YES		DMV	YES		YES		YES	DMV	
IDAHO		YES									
ILLINOIS		YES									
INDIANA								YES			
KENTUCKY											
LOUISIANA											
MAINE		YES		Public Utilities Commission	YES			YES			
MARYLAND		YES		DMV			YES		NO		
MASSACHUSETTS											
MICHIGAN		YES		Department of State	YES		YES	YES	NO		
NEW HAMPSHIRE											
NEW JERSEY		YES		DMV	YES		YES		NO		
NEW MEXICO		YES		DMV	YES		YES	YES	NO		
NEW YORK				DMV	YES		YES		YES		
OREGON											
PENNSYLVANIA											
RHODE ISLAND											
VERMONT				DMV	YES		YES				
VIRGINIA											
WEST VIRGINIA			YES	DMV	YES		YES		NO	NCIC	
CANADA											
ALBERTA				DMV							
BRITISH COLUMBIA				Department of Transport							
MANITOBA				DMV							
ONTARIO		YES		Department of Transport	YES			YES			
SASKATCHEWAN											

INFORMATION SYSTEMS

IV. DATA TYPES

	L. Commercial Vehicle Registration			M. Highway Engineering						
	6. Funded by:			1. Collecting agency	2. Authority		3. Storage & Retrieval		4. Real time available	5. System Interfaced with:
	STATE	FEDERAL	COMBINATION		STATUTE	EXECUTIVE ORDER	COMPUTER	MANUAL		
HIGHWAY PATROLS										
ALABAMA										
ARIZONA										
CALIFORNIA	YES									
COLORADO										
FLORIDA										
GEORGIA										
IOWA	YES			Highway Department	YES	YES	YES	YES	NO	
KANSAS	YES			Highway Department	YES		YES	YES	NO	
MINNESOTA				Highway Department	YES		YES	YES	NO	
MISSISSIPPI										
MISSOURI	YES			Highway Department	YES		YES		NO	
MONTANA				Highway Department	YES		YES	YES		
NEBRASKA	YES			Highway Department	YES		YES	YES		
NEVADA	YES			Highway Department	YES		YES			
NORTH CAROLINA	YES			Highway Department	YES		YES		YES	
NORTH DAKOTA	YES			Highway Department	YES					
OHIO				DMV	YES		YES		NO	
OKLAHOMA	YES			Highway Department			YES	YES	YES	Law Enforcement Agencies
SOUTH CAROLINA				Highway Department		YES	YES		YES	
SOUTH DAKOTA										
TENNESSEE										
TEXAS	YES			Highway Department	YES		YES		YES	
UTAH										
WASHINGTON	YES			Highway Department	YES		YES		YES	
WISCONSIN										
WYOMING				Highway Department	YES		YES		NO	
STATE POLICE										
ALASKA										
ARKANSAS				Highway Department	YES		YES		YES	
CONNECTICUT				Highway Department						
DELAWARE	YES									
IDAHO				Highway Department	YES		YES		YES	
ILLINOIS										
INDIANA				Highway Department			YES		NO	
KENTUCKY										
LOUISIANA										
MAINE	YES			Highway Department		YES	YES		YES	
MARYLAND	YES			Highway Department	YES	YES	YES			
MASSACHUSETTS										
MICHIGAN	YES			Highway Department	YES		YES		NO	
NEW HAMPSHIRE										
NEW JERSEY	YES			Department of Transportation	YES		YES		NO	
NEW MEXICO	YES			Highway Department	YES		YES	YES	NO	
NEW YORK				Department of Transportation	YES		YES		YES	
OREGON										
PENNSYLVANIA										
RHODE ISLAND										
VERMONT				DMV	YES				YES	
VIRGINIA										
WEST VIRGINIA				Highway Department	YES				YES	
CANADA										
ALBERTA				Highway Department						
BRITISH COLUMBIA				Highway Department						
MANITOBA				DMV						
ONTARIO	YES			Highway Department	YES		YES		NO	
SASKATCHEWAN				Highway Department	YES					

INFORMATION SYSTEMS

IV. DATA TYPES				V. MISCELLANEOUS										
M. Highway Engineering				A. Agency Participates With:				B. Current Management Data Programs					C. Regional Information Systems Within Your State	
B. Funded by				NCIC	LETS	NATIONAL DRIVERS REGISTRY	OTHER	PERSONNEL RECORDS	MAN-POWER DEPLOYMENT	FLEET ACCIDENT RECORDS	INVENTORY	BUDGET	PROGRAM EVALUATION	DEPARTMENT PARTICIPATES
STATE	FEDERAL	COMBINATION												
HIGHWAY PATROLS														
ALABAMA				YES	YES	YES								
ARIZONA				YES	YES	YES	YES	YES		YES	YES	YES		
CALIFORNIA				YES			YES	YES		YES	YES		YES	YES
COLORADO														
FLORIDA				YES	YES	YES						YES	YES	NO
GEORGIA				YES	YES	YES		YES	YES					
IOWA	YES			YES	YES	YES								
KANSAS	YES	YES		YES	YES		YES				YES	YES		
MINNESOTA			YES	YES	YES	YES	YES				YES	YES	YES	YES
MISSISSIPPI				YES	YES									
MISSOURI			YES	YES	YES						YES	YES		
MONTANA			YES	YES	YES									
NEBRASKA			YES	YES	YES			YES			YES	YES	YES	
NEVADA			YES	YES	YES								YES	NO
NORTH CAROLINA	YES			YES	YES							YES		
NORTH DAKOTA	YES			YES	YES									
OHIO			YES	YES	YES	YES	YES			YES	YES		YES	YES
OKLAHOMA				YES	YES	YES		YES	YES	YES	YES	YES	YES	
SOUTH CAROLINA			YES	YES	YES	YES	YES	YES		YES	YES			
SOUTH DAKOTA				YES	YES	YES					YES	YES		YES
TENNESSEE														
TEXAS			YES	YES	YES	YES			YES	YES	YES	YES	YES	YES
UTAH				YES	YES									
WASHINGTON			YES	YES	YES	YES	YES	YES	YES					
WISCONSIN														
WYOMING			YES	YES	YES									
STATE POLICE														
ALASKA						YES					YES	YES		
ARKANSAS			YES	YES	YES	YES								
CONNECTICUT				YES	YES			YES		YES				
DELAWARE				YES	YES		YES							
IDAHO			YES	YES	YES	YES								
ILLINOIS				YES	YES	YES		YES	YES					
INDIANA			YES	YES	YES	YES			YES	YES			YES	
KENTUCKY				YES	YES	YES		YES	YES			YES	YES	
LOUISIANA				YES	YES	YES					YES	YES		
MAINE			YES	YES	YES									
MARYLAND	YES			YES	YES								YES	YES
MASSACHUSETTS				YES	YES			YES	YES	YES	YES	YES		
MICHIGAN			YES	YES	YES		YES	YES						
NEW HAMPSHIRE														
NEW JERSEY	YES			YES	YES			YES	YES	YES	YES	YES		
NEW MEXICO			YES	YES	YES	YES							YES	NO
NEW YORK			YES	YES	YES			YES						
OREGON				YES	YES			YES	YES	YES	YES			
PENNSYLVANIA				YES	YES	YES								
RHODE ISLAND														
VERMONT				YES	YES									
VIRGINIA				YES	YES									
WEST VIRGINIA	YES													
CANADA														
ALBERTA														
BRITISH COLUMBIA														
MANITOBA														
ONTARIO	YES			YES			YES	YES					YES	YES
SASKATCHEWAN														

ANNEX

ANNEX

PERSONNEL

CANADIAN PROVINCES	NUMBER OF SWORN PERSONNEL BY RANK									
	COMMR.	DEP. COMM.	ASSIST. COMM.	CHIEF SUPT.	STAFF SUPT.	SUPT.	CHIEF INSP.	INSP. (CID)	INSP.	SGT. MAJ.
ALBERTA			1	4					11	
BRITISH COLUMBIA			1	1		7			20	
MANITOBA	1			1		1			7	1
ONTARIO	1	2	5	6	16	17	10	10	39	17
SASKATCHEWAN										
CANADIAN PROVINCES	STAFF SGT.	DET. SGT.	TRAFFIC SGT.	SGT.	CPL.	CONST./PTLM.	SPECIAL CONST.	CADETS		TOTAL
ALBERTA	37			82	223	665				1,023
BRITISH COLUMBIA	81			158	352	1,344				1,964
MANITOBA	20			42	128	364	6			576
ONTARIO	35	23	16	122	503	2,736		36		3,594
SASKATCHEWAN										

PERSONNEL

CANADIAN PROVINCES	SALARY: 1969																	
	BASE ANNUAL PAY																	
	COMMISSIONER			DEP. COMM.			ASSIST. COMM.			CHIEF SUPT.			STAFF SUPT.			SUPT.		
	MIN.	MAX.	NO. YRS.	MIN.	MAX.	NO. YRS.	MIN.	MAX.	NO. YRS.	MIN.	MAX.	NO. YRS.	MIN.	MAX.	NO. YRS.	MIN.	MAX.	NO. YRS.
ALBERTA								21,978			18,906					15,311	16,666	3
BRITISH COLUMBIA								21,978			18,906					15,311	16,666	3
MANITOBA	26,500	26,500		26,373	26,373		21,978	21,978		18,926	18,926	3				15,311	16,666	
ONTARIO																		
SASKATCHEWAN	26,500	26,500		26,373	26,373		21,978	21,978		18,926	18,926					15,311	16,666	3
CANADIAN PROVINCES	CHIEF INSP.			INSP. (CID)			INSPECTOR			SGT. MAJOR			STAFF SGT.			DET. SGT.		
	MIN.	MAX.	NO. YRS.	MIN.	MAX.	NO. YRS.	MIN.	MAX.	NO. YRS.	MIN.	MAX.	NO. YRS.	MIN.	MAX.	NO. YRS.	MIN.	MAX.	NO. YRS.
ALBERTA							12,712	13,797	3		11,172		10,609	11,026	2			
BRITISH COLUMBIA	12,712	13,797	3		12,114						11,114		10,609	11,026	2			
MANITOBA				12,114	12,114		12,712	13,797	3	11,172	11,172		10,609	11,026	2	9,730	10,243	2
ONTARIO													10,097			10,097		
SASKATCHEWAN							12,712	13,797	3	11,172	11,172		10,609	11,026	2			
CANADIAN PROVINCES	TRAFFIC SGT.			SERGEANT			CORPORAL			CONSTABLE/PTLM.			CADETS					
	MIN.	MAX.	NO. YRS.	MIN.	MAX.	NO. YRS.	MIN.	MAX.	NO. YRS.	MIN.	MAX.	NO. YRS.	MIN.	MAX.	NO. YRS.			
ALBERTA				9,730	10,243	2	8,900	9,157	2	5,665	8,180	7						
BRITISH COLUMBIA				9,730	10,243	2	8,900	9,157	2	5,665	5,180	7						
MANITOBA	9,730	10,243	2	9,730	10,243	2	8,900	9,157	2	5,665	8,180	7						
ONTARIO	10,097			9,340	9,705	2	8,636	8,975	2	7,344	8,257	3½						
SASKATCHEWAN				9,730	10,243	2	8,900	9,157	2	5,665	8,180	7						

END

7 tables/annex