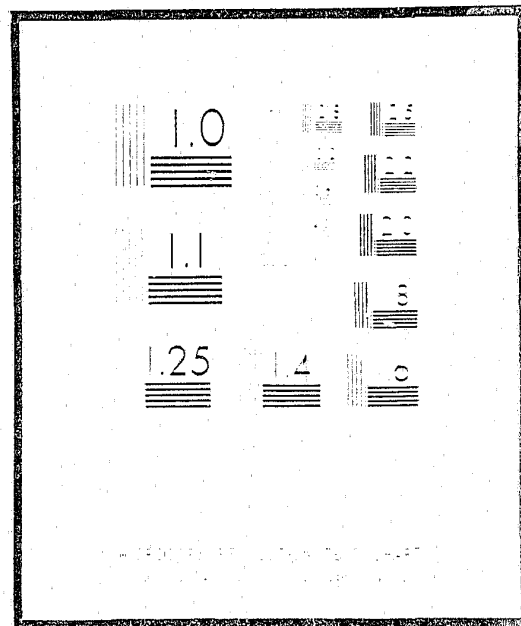


NCJRS

This microfiche was produced from documents received for inclusion in the NCJRS data base. Since NCJRS cannot exercise control over the physical condition of the documents submitted, the individual frame quality will vary. The resolution chart on this frame may be used to evaluate the document quality.



Microfilming procedures used to create this fiche comply with the standards set forth in 41CFR 101-11.504

Points of view or opinions stated in this document are those of the author s and do not represent the official position or policies of the U.S. Department of Justice.

U.S. DEPARTMENT OF JUSTICE
LAW ENFORCEMENT ASSISTANCE ADMINISTRATION
NATIONAL CRIMINAL JUSTICE REFERENCE SERVICE
WASHINGTON, D.C. 20531

Date filmed 5.26.76

32451

REPORT OF PROBATION
SUPERVISION WORKLOAD
FISCAL YEAR ENDED
JUNE 30, 1975



COMMONWEALTH OF VIRGINIA
DEPARTMENT OF CORRECTIONS

VIRGINIA
DEPARTMENT OF CORRECTIONS

22 East Cary Street
507 South Belvidere Street
327 West Main Street

Richmond, Virginia 23219

Jack F. Davis, Director
Charles L. Wolff, Jr., Deputy Director
Herbert A. Parr, Administrative Staff Director

DIVISION OF ADULT SERVICES
429 South Belvidere Street
Richmond, VA. 23220
Robert M. Landon, Director

DIVISION OF YOUTH SERVICES
302 Turner Road
Richmond, VA. 23225
William E. Weddington, Director

DIVISION OF PROBATION AND PAROLE SERVICES
6767 Forest Hill Avenue
Richmond, VA. 23225
Anthony C. Gaudio, Director

DIVISION OF FINANCE
22 East Cary Street
Richmond, VA. 23219
Charles S. Owen, Acting Director

Prepared
by
BUREAU OF MANAGEMENT INFORMATION
REPORTING GROUP

PREFACE

The information in the following annual statistical report was compiled by the Department of Corrections, Bureau of Management Information. All questions, remarks or requests relating to the report should be directed to this agency.

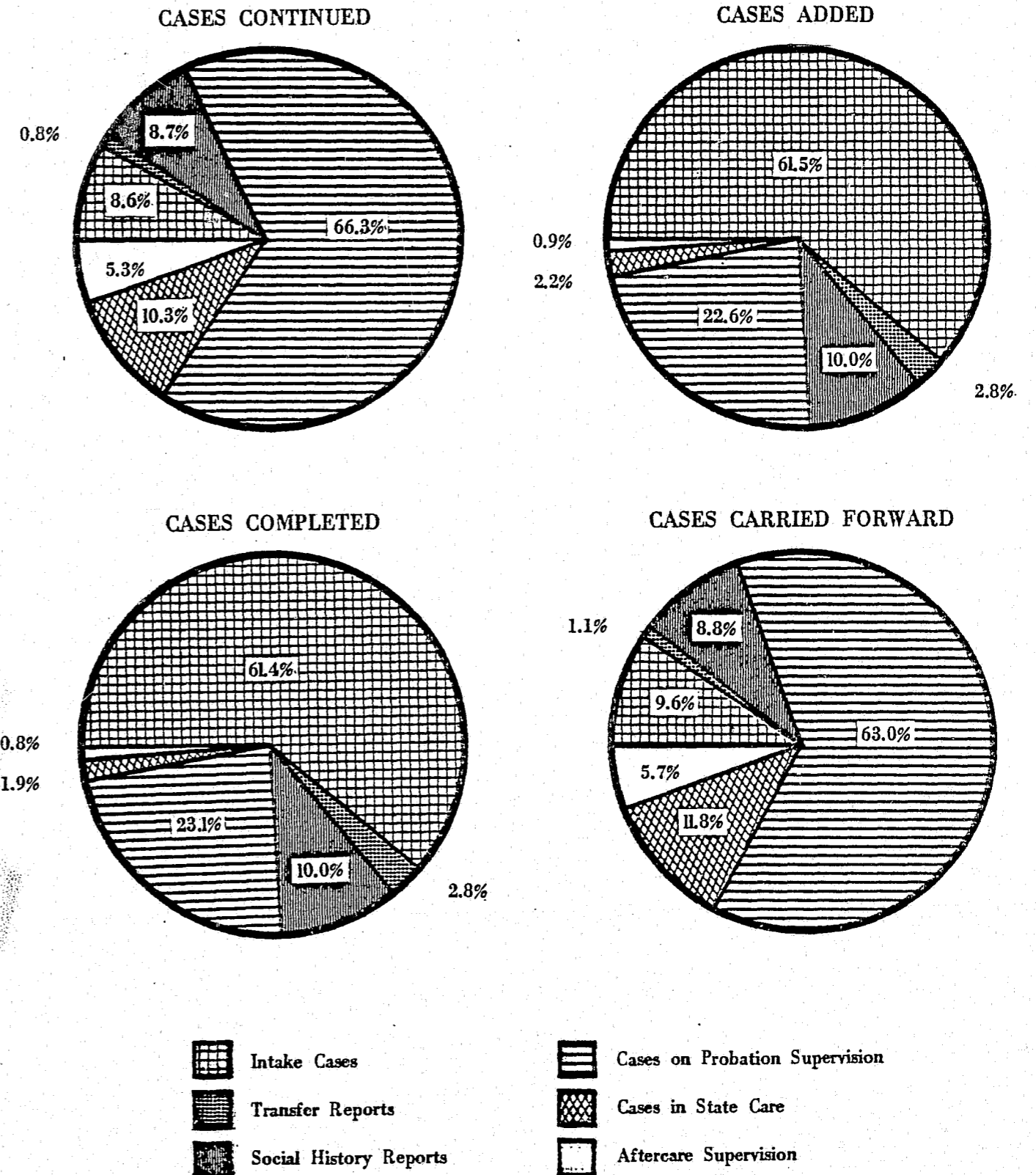
Department of Corrections
Bureau of Management Information
Reporting Section
22 E. Cary Street
Richmond, Virginia 23219

Telephone: (804) 786-6581

TABLE OF CONTENTS

	Page
Graph I Comparison of Probation Supervision Workload Cases Continued, Added, Completed, and Carried Forward, October, 1974 - June, 1975.....	3
Analysis of the Report of Probation Supervision Workload	
Intake Cases.....	4
Transfer Reports.....	4
Social History Reports.....	4
Cases on Probation Supervision.....	5
Cases in State Care.....	5
Aftercare Supervision.....	5
Norfolk City and Roanoke County.....	5
Statistical Data	
Region I.....	6
Region II.....	12
Region III.....	16
Region IV.....	18
Region V.....	24
Region VI.....	30
Total All Regions.....	36
Statistical Data Norfolk City and Roanoke County.....	38
Appendix I Probation Supervision Workload Definitions.....	39
Appendix II Delinquent Cities and Counties.....	40
Appendix III Division of Youth Services Direct Care Facilities.....	41
Appendix IV J.C. 25 Form "Report of Court Services Workload".....	42

GRAPH I
COMPARISON OF PROBATION SUPERVISION
WORKLOAD CASES CONTINUED, ADDED,
COMPLETED AND CARRIED FORWARD
OCTOBER, 1974 - JUNE, 1975



**REPORT OF PROBATION
SUPERVISION WORKLOAD
OCTOBER, 1974 - JUNE, 1975**

This report represents the total monthly "Report of Court Service Workload," (J.C. 25) submitted by the Probation Departments and Court Service Units in the Commonwealth the last 9 months of fiscal year 1975. It must be noted that due to a change in the J.C. 25 report form and format in October, 1974, the totals for the report reflect only the nine (9) months reported on the new form. Because of the total change in the reporting format it is impossible to make any comparison between the 1974-75 report statistics and the 1973-74 report.

Intake

During the 9 months there were 58,818 intake cases referred to the Court Service Units. These persons were seen and service case files initiated, thereby making these case files a part of the total probation supervision workload for the year. Intake cases accounted for the majority (61.5 percent) of the total probation supervision workload -- 95,687 cases. At the time of intake, unofficial supervision or counseling was ordered for 4,442 of the cases, increasing the overall intake workload by 7.6 percent. There were 1,332 intake case files continued from September, 1974 resulting in a total intake workload of 60,150 cases for the report period. Of the total intake cases, 97.5 percent were completed during the period. The unofficial supervision cases represented 7.4 percent (4,312) of the total completed workload (58,646). At the close of the fiscal year, June 30, 1975, there were 1,504 files which remained open and were carried forward to fiscal 1976. Of these cases 449 or 29.9 percent were under unofficial supervision.

When comparing the regions the largest addition of intake cases was attributed to Northern Virginia (Region III), which added 17,696 new cases or 30.1 percent of the total intake workload. In this region it is significant to note that 10,115 of the total intake cases were added by Fairfax County. Tidewater (Region I) followed behind Northern Virginia in overall workload added with 13,760 files opened or 23.4 percent of all addition to intake. The regional pattern established for adding new intake cases remained constant for completion of cases during the 9 months. Northern Virginia was again the leader, accounting for 17,681 completed cases or 30.1 percent. In Region III, Fairfax County completed the greatest number of cases -- 10,115. Tidewater (Region I) again came second by completing 13,531 cases.

Transfer Reports

Transfer reports are ordered on all individuals fifteen years of age or older who have been charged with a felon. This report is used to determine if an individual should be transferred to District Court for trial as an adult.

For the reporting period there were 2,731 (2.9 percent) cases on which transfer reports were initiated; combined with the 126 continued from September, 1974 there was a total transfer workload of 2,857 cases. Completed for the 9 months were 2,686 transfer reports or 94.0 percent of the total workload in this category. There were 171 reports carried forward to fiscal year 1976 which meant that 6.0 percent of the transfer workload was incomplete for the year. In examining the regional totals, Richmond (Region II) was the leader for both the additions (1,129) and completions (1,093) of the transfer workload.

Social History Reports

When a child is placed on probation by the court it becomes necessary to make a comprehensive study of the child's social history and environment. The Court Service Unit according to the standard adopted by the State Board of Corrections must complete a social history report on any child placed in a supervised capacity. Therefore, the number of social history reports does not necessarily represent only children on probation.

Social history reports added 10.1 percent or 9,614 cases to the Probation Supervision Workload, while 1,347 reports were continued from September, 1974. This brought the total social histories being studied during the report period to 10,961. Of these studies 9,580 or 87.4 percent were completed during the period. The remaining 1,381 case studies were carried forward to fiscal 1976. In comparing regional totals, Richmond (Region II) was again the leader in both studies added (2,364) and completed (2,336). Northern Virginia (Region III) was a close second, adding 2,011 studies and completing 1,968.

Note: The data in this report are representative of a nine month reporting period, October 1, 1974 through June 30, 1975.

Cases on Probation/Supervision

The cases placed on probation/supervision by the courts contributed the second largest portion of cases added to the overall workload -- 21,613 or 22.6 percent. The individuals placed on probation are considered official cases and numbered 19,321 for the period. The unofficial cases were handled by field counselors and required the consent of a child's parent. They amounted to 10.6 percent (2,292) of the total cases added. There were 10,294 probation/supervision cases brought forward from September, 1974. This gave a total workload of 31,907 cases for this period. Of these, 19,533 (61.2) official and 2,522 (7.9) unofficial were completed. Those cases (9,852) which remained open at the close of the fiscal year were 30.9 percent of the total workload for the 9 months. Official probation accounted for 91.5 percent of the cases and unofficial supervision for 8.5 percent. It is significant to note that of the 19,321 official cases added during the 9 months, 14,163 were added by Richmond (Region II), with the city of Richmond accounting for 11,897 or 61.6 percent of the total workload. The official cases completed by the Richmond Region (14,163) were 72.5 percent of the total official cases completed and of this, the city of Richmond handled 11,815 or 60.5 percent of all probation/supervision cases completed.

It is significant to note that the domestic relations and non-support cases for adults under official probation and unofficial supervision were substantially higher than the juvenile cases handled. The adult cases for the period represented 65.8 percent (14,505) and the juvenile were 34.2 percent (7,550) of all completed cases on probation or supervision.

Cases in State Receiving Service

During the 9 months there were 1,090 children committed to the direct care of the Department of Corrections, Division of Youth Services. (See Appendix III) This was 1.1 percent of the total cases added to the workload. At the start of the reporting period there were 1,096 children already under state care bringing the total cases receiving service during the period to 2,186. There were 1,052 children released from the department during the report period which meant that 1,134 cases or 51.8 percent of all children under direct care during the period were carried forward to fiscal 1976.

Of the children received into direct care, 982 of their families were receiving personal contact or counseling by the Court Service Units. Added to the 496 families continued from September, 1974 the total families receiving service came to 1,478 for this period. There were 775 family cases completed during the nine months, while 703 or 47.6 percent were continued to fiscal 1976. The most significant number of additions and completions were by Richmond (Region II), with 709 and 601 cases, respectively.

Cases on Aftercare Supervision

Juveniles who were placed on aftercare supervision after being released from the direct care of the state accounted for a very small percentage of cases added and completed in the 9 months. There was a total caseload increase of 839 juveniles which, combined with the 829 cases continued, brought the total case workload to 1,668 aftercare juveniles being supervised. Of these persons, 46.9 percent (782) completed their supervision during the period and 886 were carried forward for aftercare supervision in fiscal 1976.

Richmond (Region II) once again accounted for the greatest additions and completions during the report period, adding 233 cases for aftercare supervision and completing 196. Tidewater (Region I) was second, adding 180 cases and completing 201.

Analysis of the City of Norfolk and Roanoke County

The City of Norfolk and Roanoke County totals have been omitted from the main body of the statistical analysis and tables, and this must be kept in mind when reviewing the district, regional, and grand totals of the report. Both courts failed to submit their data for the reporting period on the new form and, instead, submitted all information on the old form. As a result, the totals for the above courts are based on the same nine (9) months reporting period as the other courts (October 1974 through June 1975) but are being reported separately using the old format.

Note: The data in this report are representative of a nine month reporting period, October 1, 1974 through June 30, 1975.

PROBATION SUPERVISION WORKLOAD
 BY REGION, DISTRICT, AND CITY/COUNTY
 ACCORDING TO TYPE OF CASE
 YEAR ENDED JUNE 30, 1975¹

Region District City/County	INTAKE			TRANSFER REPORTS			SOCIAL HISTORY REPORTS					
	Juvenile	Adult	Total	Unofficial		Juvenile	Adult	Total	Juvenile	Adult	Total	
				Juvenile	Adult							
Region I - TIDEWATER												
Continued from last fiscal year	229	168	397	210	0	210	30	28	58	171	0	171
Added during fiscal year	8,268	2,599	10,867	2,804	89	2,893	606	197	803	1,639	13	1,652
Completed during fiscal year	8,295	2,432	10,727	2,733	71	2,804	601	214	815	1,670	13	1,683
Carried forward to next fiscal year	202	335	537	281	18	299	35	11	46	140	0	140
District 1 - CHESAPEAKE												
Continued from last fiscal year	179	0	179	55	0	55	0	0	0	0	0	0
Added during fiscal year	794	28	822	123	5	128	0	0	0	0	0	0
Completed during fiscal year	955	28	983	167	5	172	0	0	0	0	0	0
Carried forward to next fiscal year	18	0	18	11	0	11	0	0	0	0	0	0
District 2 - VIRGINIA BEACH												
Continued from last fiscal year	27	0	27	126	0	126	1	0	1	18	0	18
Added during fiscal year	2,120	0	2,120	2,401	9	2,410	20	0	20	337	0	337
Completed during fiscal year	2,109	0	2,109	2,337	9	2,346	20	0	20	344	0	344
Carried forward to next fiscal year	38	0	38	190	0	190	1	0	1	11	0	11
District 3 - PORTSMOUTH												
Continued from last fiscal year	7	164	171	1	0	1	8	0	8	46	0	46
Added during fiscal year	1,002	1,305	2,307	28	71	99	83	1	84	395	0	395
Completed during fiscal year	966	1,187	2,153	23	55	78	86	1	87	390	0	390
Carried forward to next fiscal year	43	282	325	6	16	22	5	0	5	51	0	51
District 4 - NORFOLK ***												
Continued from last fiscal year	0	0	0	0	0	0	0	0	0	0	0	0
Added during fiscal year	0	0	0	0	0	0	0	0	0	0	0	0
Completed during fiscal year	0	0	0	0	0	0	0	0	0	0	0	0
Carried forward to next fiscal year	0	0	0	0	0	0	0	0	0	0	0	0
District 5												
Continued from last fiscal year	0	0	0	14	0	14	1	0	1	21	0	21
Added during fiscal year	825	542	1,367	21	2	23	79	2	81	190	9	199
Completed during fiscal year	825	542	1,367	28	1	29	74	2	76	195	9	204
Carried forward to next fiscal year	0	0	0	7	1	8	6	0	6	16	0	16
FRANKLIN CITY												
Continued from last fiscal year	0	0	0	0	0	0	1	0	1	2	0	2
Added during fiscal year	104	71	175	15	2	17	18	0	18	27	2	29
Completed during fiscal year	104	71	175	13	1	14	17	0	17	28	2	30
Carried forward to next fiscal year	0	0	0	2	1	3	2	0	2	1	0	1
SUFFOLK												
Continued from last fiscal year	0	0	0	10	0	10	0	0	0	9	0	9
Added during fiscal year	465	314	779	3	0	3	41	2	43	104	2	106
Completed during fiscal year	465	314	779	8	0	8	37	2	39	100	2	102
Carried forward to next fiscal year	0	0	0	5	0	5	4	0	4	13	0	13
ISLE OF WIGHT												
Continued from last fiscal year	0	0	0	1	0	1	0	0	0	9	0	9
Added during fiscal year	160	85	245	2	0	2	11	0	11	44	2	46
Completed during fiscal year	160	85	245	3	0	3	11	0	11	51	2	53
Carried forward to next fiscal year	0	0	0	0	0	0	0	0	0	2	0	2
SOUTHAMPTON												
Continued from last fiscal year	0	0	0	3	0	3	0	0	0	1	0	1
Added during fiscal year	96	72	168	1	0	1	9	0	9	15	3	18
Completed during fiscal year	96	72	168	4	0	4	9	0	9	16	3	19
Carried forward to next fiscal year	0	0	0	0	0	0	0	0	0	0	0	0

CASES ON PROBATION/SUPERVISION					CASES IN STATE RECEIVING SERVICE		CASES ON AFTER CARE SUPERVISION		GRAND TOTAL			
Juvenile		Adult			Total	Juvenile	Family	Juvenile	Juvenile	Adult	Family	Total
Official	Unofficial	Official	Unofficial									
1,431	45	592	165	2,233	195	73	207	2,518	953	73	3,544	
1,076	319	899	247	2,541	306	150	180	15,198	4,044	150	19,392	
948	184	756	296	2,184	252	137	201	14,884	3,782	137	18,803	
1,559	180	735	116	2,590	249	86	186	2,832	1,215	86	4,133	
District 1 - CHESAPEAKE												
199	0	0	0	199	53	0	16	502	0	0	502	
243	94	8	0	345	51	0	41	1,346	41	0	1,387	
133	11	8	0	152	45	0	32	1,343	41	0	1,384	
309	83	0	0	392	59	0	25	505	0	0	505	
District 2 - VIRGINIA BEACH												
208	2	1	0	211	22	52	17	421	1	52	474	
178	3	0	0	181	45	41	30	5,134	9	41	5,184	
141	2	0	0	143	41	52	25	5,019	9	52	5,080	
245	3	1	0	249	26	41	22	536	1	41	578	
District 3 - PORTSMOUTH												
258	4	352	154	768	8	0	42	374	670	0	1,044	
157	46	340	191	734	42	23	26	1,779	1,908	23	3,710	
189	34	331	261	815	42	21	36	1,766	1,835	21	3,622	
226	16	361	84	687	8	2	32	387	743	2	1,132	
District 4 - NORFOLK ***												
0	0	0	0	0	0	0	0	0	0	0	0	
0	0	0	0	0	0	0	0	0	0	0	0	
0	0	0	0	0	0	0	0	0	0	0	0	
0	0	0	0	0	0	0	0	0	0	0	0	
District 5												
215	0	0	0	215	31	1	31	313	0	1	314	
112	11	0	0	123	49	42	25	1,312	555	42	1,909	
134	6	0	0	140	35	32	29	1,326	554	32	1,912	
193	5	0	0	198	45	11	27	299	1	11	311	
FRANKLIN CITY												
23	0	0	0	23	1	0	2	29	0	0	29	
20	2	0	0	22	3	3	2	191	75	3	269	
16	2	0	0	18	1	0	1	182	74	0	256	
27	0	0	0	27	3	3	3	38	1	3	42	
SUFFOLK												
151	0	0	0	151	17	1	21	208	0	1	209	
58	4	0	0	62	32	24	14	721	318	24	1,063	
77	1	0	0	78	22	22	20	730	318	22	1,070	
132	3	0	0	135	27	3	15	199	0	3	202	
ISLE OF WIGHT												
29	0	0	0	29	10	0	5	54	0	0	54	
28	1	0	0	29	12	14	4	262	87	14	363	
31	0	0	0	31	8	9	4	268	87	9	364	
26	1	0	0	27	14	5	5	48	0	5	53	
SOUTHAMPTON												
12	0	0	0	12	3	0	3	22	0	0	22	
6	4	0	0	10	2	1	5	138	75	1	214	
10	3	0	0	13	4	1	4	146	75	1	222	
8	1	0	0	9	1	0	4	14	0	0	14	

PROBATION SUPERVISION WORKLOAD
 BY REGION, DISTRICT, AND CITY/COUNTY
 ACCORDING TO TYPE OF CASE
 YEAR ENDED JUNE 30, 1975¹

Region District City/County	INTAKE			TRANSFER REPORTS			SOCIAL HISTORY REPORTS			CASES ON PROBATION/SUPERVISION				CASES IN STATE RECEIVING SERVICE		CASES ON AFTER CARE SUPERVISION		GRAND TOTAL						
	Juvenile	Adult	Total	Unofficial		Total	Juvenile	Adult	Total	Juvenile	Adult	Total	Juvenile		Adult		Total	Juvenile	Family	Juvenile	Juvenile	Adult	Family	Total
				Official	Unofficial								Official	Unofficial										
District 7 - NEWPORT NEWS																								
Continued from last fiscal year	2	4	6	0	0	0	20	28	48	56	0	56	263	37	239	11	550	29	17	57	464	282	17	763
Added during fiscal year	1,945	583	2,528	14	0	14	399	187	586	411	0	411	213	144	551	56	964	83	41	37	3,246	1,377	41	4,664
Completed during fiscal year	1,856	534	2,390	9	0	9	396	204	600	429	0	429	167	125	417	35	744	61	31	51	3,094	1,190	31	4,315
Carried forward to next fiscal year	91	53	144	5	0	5	23	11	34	38	0	38	309	56	373	32	770	51	27	43	616	469	27	1,112
District 8 - HAMPTON **																								
Continued from last fiscal year	14	0	14	12	0	12	0	0	0	22	0	22	244	0	0	0	244	49	0	36	377	0	0	377
Added during fiscal year	1,409	30	1,439	182	0	182	0	0	0	245	0	245	135	0	0	0	135	30	0	14	2,015	30	0	2,045
Completed during fiscal year	1,411	30	1,441	132	0	132	0	0	0	244	0	244	159	0	0	0	159	25	0	23	1,994	30	0	2,024
Carried forward to next fiscal year	12	0	12	62	0	62	0	0	0	23	0	23	220	0	0	0	220	54	0	27	398	0	0	398
District 31																								
Continued from last fiscal year	0	0	0	2	0	2	0	0	0	8	0	8	44	2	0	0	46	3	3	8	67	0	3	70
Added during fiscal year	173	111	284	35	2	37	25	7	32	61	4	65	38	21	0	0	59	6	3	7	366	124	3	493
Completed during fiscal year	173	111	284	37	1	38	25	7	32	68	4	72	25	6	0	0	31	3	1	5	342	123	1	466
Carried forward to next fiscal year	0	0	0	0	1	1	0	0	0	1	0	1	57	17	0	0	74	6	5	10	91	1	5	97
ACCOMACK*																								
Continued from last fiscal year	0	0	0	0	0	0	0	0	0	8	0	8	26	0	0	0	26	1	0	3	38	0	0	38
Added during fiscal year	81	59	140	17	2	19	17	0	17	22	4	26	11	7	0	0	18	5	1	1	161	65	1	227
Completed during fiscal year	81	59	140	17	1	18	17	0	17	29	4	33	17	2	0	0	19	0	1	2	165	64	1	230
Carried forward to next fiscal year	0	0	0	0	1	1	0	0	0	1	0	1	20	5	0	0	25	6	0	2	34	1	0	35
NORTHAMPTON*																								
Continued from last fiscal year	0	0	0	2	0	2	0	0	0	0	0	0	18	2	0	0	20	2	3	5	29	0	3	32
Added during fiscal year	92	52	144	18	0	18	8	7	15	39	0	39	27	14	0	0	41	1	2	6	205	59	2	266
Completed during fiscal year	92	52	144	20	0	20	8	7	15	39	0	39	8	4	0	0	12	3	0	3	177	59	0	236
Carried forward to next fiscal year	0	0	0	0	0	0	0	0	0	0	0	0	37	12	0	0	49	0	5	8	57	0	5	62
Region II - RICHMOND																								
Continued from last fiscal year	321	90	411	54	14	68	33	0	33	317	2	319	1,537	167	1,818	344	3,866	372	145	204	3,005	2,268	145	5,418
Added during fiscal year	7,061	2,354	9,415	550	163	713	1,067	62	1,129	2,358	6	2,364	1,348	629	12,161	44	14,182	319	390	233	13,565	14,790	390	28,745
Completed during fiscal year	7,232	2,344	9,576	549	170	719	1,031	62	1,093	2,328	8	2,336	1,334	605	12,829	382	15,150	332	269	196	13,607	15,795	269	29,671
Carried forward to next fiscal year	150	100	250	55	7	62	69	0	69	347	0	347	1,551	191	1,150	6	2,898	359	266	241	2,963	1,263	266	4,492
District 6																								
Continued from last fiscal year	0	0	0	9	0	9	0	0	0	20	0	20	100	16	7	0	123	47	5	30	222	7	5	234
Added during fiscal year	345	112	457	184	69	253	19	0	19	183	4	187	78	199	282	17	576	32	75	30	1,070	484	75	1,629
Completed during fiscal year	329	88	417	191	69	260	19	0	19	190	4	194	63	209	289	17	578	42	54	29	1,072	467	54	1,593
Carried forward to next fiscal year	16	24	40	2	0	2	0	0	0	13	0	13	115	6	0	0	121	37	26	31	220	24	26	270
EMPORIA																								
Continued from last fiscal year	0	0	0	5	0	5	0	0	0	7	0	7	12	2	0	0	14	12	0	2	40	0	0	40
Added during fiscal year	35	3	38	70	5	75	4	0	4	22	0	22	12	35	9	0	56	3	19	7	188	17	19	224
Completed during fiscal year	25	3	28	74	5	79	4	0	4	29	0	29	12	37	9	0	58	11	19	1	193	17	19	229
Carried forward to next fiscal year	10	0	10	1	0	1	0	0	0	0	0	0	12	0	0	0	12	4	0	8	35	0	0	35
HOPEWELL																								
Continued from last fiscal year	0	0	0	1	0	1	0	0	0	5	0	5	20	4	0	0	24	17	0	11	58	0	0	58
Added during fiscal year	137	38	175	15	49	64	3	0	3	56	0	56	16	5	141	0	162	14	23	12	258	228	23	509
Completed during fiscal year	132	26	158	16	49	65	3	0	3	56	0	56	16	4	141	0	161	17	9	11	255	216	9	480
Carried forward to next fiscal year	5	12	17	0	0	0	0	0	0	5	0	5	20	5	0	0	25	14	14	12	61	12	14	87
PRINCE GEORGE																								
Continued from last fiscal year	0	0	0	0	0	0	0	0	0	5	0	5	51	0	7	0	58	4	4	2	62	7	4	73
Added during fiscal year	78	35	113	0	0	0	6	0	6	58	4	62	26	101	65	3	195	7	9	2	278	107	9	394
Completed during fiscal year	78	35	113	0	0	0	6	0	6	58	4	62	28	101	72	3	204	3	5	4	278	114	5	397
Carried forward to next fiscal year	0	0	0	0	0	0	0	0	0	5	0	5	49	0	0	0	49	8	8	0	62	0	8	70

PROBATION SUPERVISION WORKLOAD
 BY REGION, DISTRICT, AND CITY/COUNTY
 ACCORDING TO TYPE OF CASE
 YEAR ENDED JUNE 30, 1975¹

Region District City/County	INTAKE			TRANSFER REPORTS			SOCIAL HISTORY REPORTS					
	Juvenile	Adult	Total	Unofficial			Juvenile	Adult	Total	Juvenile	Adult	Total
				Juvenile	Adult	Total						
SURRY												
Continued from last fiscal year	0	0	0	0	0	0	0	0	0	0	0	0
Added during fiscal year	7	5	12	2	8	10	0	0	0	2	0	2
Completed during fiscal year	7	5	12	2	8	10	0	0	0	2	0	2
Carried forward to next fiscal year	0	0	0	0	0	0	0	0	0	0	0	0
SUSSEX												
Continued from last fiscal year	0	0	0	0	0	0	0	0	0	2	0	2
Added during fiscal year	14	7	21	0	0	0	3	0	3	9	0	9
Completed during fiscal year	14	7	21	0	0	0	3	0	3	8	0	8
Carried forward to next fiscal year	0	0	0	0	0	0	0	0	0	3	0	3
GREENSVILLE												
Continued from last fiscal year	0	0	0	3	0	3	0	0	0	1	0	1
Added during fiscal year	49	16	65	60	7	67	1	0	1	20	0	20
Completed during fiscal year	48	7	55	62	7	69	1	0	1	21	0	21
Carried forward to next fiscal year	1	9	10	1	0	1	0	0	0	0	0	0
BRUNSWICK												
Continued from last fiscal year	0	0	0	0	0	0	0	0	0	0	0	0
Added during fiscal year	25	8	33	37	0	37	2	0	2	16	0	16
Completed during fiscal year	25	5	30	37	0	37	2	0	2	16	0	16
Carried forward to next fiscal year	0	3	3	0	0	0	0	0	0	0	0	0
District 9												
Continued from last fiscal year	0	0	0	0	0	0	8	0	8	30	0	30
Added during fiscal year	699	103	802	90	2	92	119	3	122	172	1	173
Completed during fiscal year	699	103	802	60	2	62	122	3	125	192	1	193
Carried forward to next fiscal year	0	0	0	30	0	30	5	0	5	10	0	10
WILLIAMSBURG												
Continued from last fiscal year	0	0	0	0	0	0	0	0	0	8	0	8
Added during fiscal year	91	2	93	15	0	15	20	0	20	16	0	16
Completed during fiscal year	91	2	93	7	0	7	19	0	19	23	0	23
Carried forward to next fiscal year	0	0	0	8	0	8	1	0	1	1	0	1
YORK												
Continued from last fiscal year	0	0	0	0	0	0	7	0	7	7	0	7
Added during fiscal year	209	0	209	34	0	34	35	0	35	62	0	62
Completed during fiscal year	209	0	209	21	0	21	41	0	41	64	0	64
Carried forward to next fiscal year	0	0	0	13	0	13	1	0	1	5	0	5
JAMES CITY												
Continued from last fiscal year	0	0	0	0	0	0	0	0	0	7	0	7
Added during fiscal year	108	4	112	15	0	15	25	0	25	31	0	31
Completed during fiscal year	108	4	112	8	0	8	23	0	23	38	0	38
Carried forward to next fiscal year	0	0	0	7	0	7	2	0	2	0	0	0
KING AND QUEEN												
Continued from last fiscal year	0	0	0	0	0	0	0	0	0	0	0	0
Added during fiscal year	30	7	37	1	0	1	5	0	5	7	0	7
Completed during fiscal year	30	7	37	1	0	1	4	0	4	5	0	5
Carried forward to next fiscal year	0	0	0	0	0	0	1	0	1	2	0	2
GLOUCESTER												
Continued from last fiscal year	0	0	0	0	0	0	1	0	1	4	0	4
Added during fiscal year	104	26	130	4	2	6	15	0	15	13	0	13
Completed during fiscal year	104	26	130	4	2	6	16	0	16	16	0	16
Carried forward to next fiscal year	0	0	0	0	0	0	0	0	0	1	0	1

Cases on Probation/Supervision	Cases in State Receiving Service			Cases on After Care Supervision			Grand Total			
	Juvenile		Total	Adult		Total	Juvenile	Adult	Family	Total
	Official	Unofficial		Official	Unofficial					
1	0	1	0	0	0	2	3	0	0	3
1	1	2	36	14	50	0	13	63	2	78
0	1	1	36	14	51	0	13	63	2	78
2	0	2	0	0	2	0	3	0	0	3
4	0	4	0	0	4	3	12	0	1	13
2	21	23	0	0	23	2	52	7	4	63
2	21	23	0	0	23	1	51	7	1	59
4	0	4	0	0	4	4	13	0	4	17
8	3	11	0	0	11	4	24	0	0	24
18	19	37	23	0	60	6	177	46	9	232
4	21	25	23	0	48	6	168	37	9	214
22	1	23	0	0	23	4	33	9	0	42
4	7	11	0	0	11	7	23	0	0	23
3	17	20	8	0	28	0	104	16	9	129
1	24	25	8	0	33	4	114	13	9	136
6	0	6	0	0	6	3	13	3	0	16
137	32	169	2	0	171	21	239	2	18	259
118	68	186	8	0	194	24	1,302	117	29	1,448
142	64	206	6	0	212	20	1,311	115	34	1,460
113	36	149	4	0	153	25	230	4	13	247
7	1	8	0	0	8	4	23	0	4	27
19	7	26	0	0	26	3	173	2	2	177
12	6	18	0	0	18	2	163	2	5	170
14	2	16	0	0	16	5	33	0	1	34
36	7	43	0	0	43	6	65	0	6	71
32	28	60	0	0	60	5	406	0	9	415
36	21	57	0	0	57	4	398	0	10	408
32	14	46	0	0	46	7	73	0	5	78
26	4	30	0	0	30	6	47	0	6	53
30	9	39	0	0	39	3	225	4	3	232
23	9	32	0	0	32	6	219	4	7	230
33	4	37	0	0	37	3	53	0	2	55
7	1	8	2	0	10	0	9	2	0	11
8	2	10	0	0	10	1	54	7	2	63
11	2	13	2	0	15	0	54	9	1	64
4	1	5	0	0	5	1	9	0	1	10
17	6	23	0	0	23	1	29	0	1	30
10	8	18	0	0	18	4	160	28	6	194
17	7	24	0	0	24	2	166	28	5	199
10	7	17	0	0	17	3	23	0	2	25

PROBATION SUPERVISION WORKLOAD
 BY REGION, DISTRICT, AND CITY/COUNTY
 ACCORDING TO TYPE OF CASE
 YEAR ENDED JUNE 30, 1975¹

Region District City/County	INTAKE			TRANSFER REPORTS			SOCIAL HISTORY REPORTS					
	Juvenile	Adult	Total	Unofficial		Total	Juvenile	Adult	Total	Juvenile	Adult	Total
				Juvenile	Adult							
MATHEWS												
Continued from last fiscal year	0	0	0	0	0	0	0	0	0	1	0	1
Added during fiscal year	16	5	21	0	0	0	6	0	6	4	0	4
Completed during fiscal year	16	5	21	0	0	0	6	0	6	5	0	5
Carried forward to next fiscal year	0	0	0	0	0	0	0	0	0	0	0	0
MIDDLESEX												
Continued from last fiscal year	0	0	0	0	0	0	0	0	0	0	0	0
Added during fiscal year	23	7	30	5	0	5	3	0	3	8	0	8
Completed during fiscal year	23	7	30	5	0	5	3	0	3	8	0	8
Carried forward to next fiscal year	0	0	0	0	0	0	0	0	0	0	0	0
CHARLES CITY												
Continued from last fiscal year	0	0	0	0	0	0	0	0	0	1	0	1
Added during fiscal year	39	20	59	9	0	9	6	3	9	14	1	15
Completed during fiscal year	39	20	59	8	0	8	6	3	9	14	1	15
Carried forward to next fiscal year	0	0	0	1	0	1	0	0	0	1	0	1
NEW KENT												
Continued from last fiscal year	0	0	0	0	0	0	0	0	0	2	0	2
Added during fiscal year	79	32	111	7	0	7	4	0	4	17	0	17
Completed during fiscal year	79	32	111	6	0	6	4	0	4	19	0	19
Carried forward to next fiscal year	0	0	0	1	0	1	0	0	0	0	0	0
District II												
Continued from last fiscal year	121	69	190	36	14	50	2	0	2	11	2	13
Added during fiscal year	622	298	920	223	91	314	207	53	260	224	1	225
Completed during fiscal year	717	339	1,056	246	98	344	206	53	259	190	3	193
Carried forward to next fiscal year	26	28	54	13	7	20	3	0	3	45	0	45
PETERSBURG												
Continued from last fiscal year	0	0	0	16	10	26	0	0	0	6	0	6
Added during fiscal year	201	81	282	203	84	287	89	0	89	120	0	120
Completed during fiscal year	201	79	280	213	91	304	88	0	88	86	0	86
Carried forward to next fiscal year	0	2	2	6	3	9	1	0	1	40	0	40
DINWIDDIE												
Continued from last fiscal year	0	0	0	13	0	13	0	0	0	0	0	0
Added during fiscal year	169	55	224	7	2	9	41	0	41	23	0	23
Completed during fiscal year	169	55	224	20	2	22	41	0	41	23	0	23
Carried forward to next fiscal year	0	0	0	0	0	0	0	0	0	0	0	0
NOTTOWAY												
Continued from last fiscal year	89	38	127	7	4	11	0	0	0	1	2	3
Added during fiscal year	155	77	232	13	5	18	9	0	9	35	0	35
Completed during fiscal year	218	89	307	13	5	18	9	0	9	36	2	38
Carried forward to next fiscal year	26	26	52	7	4	11	0	0	0	0	0	0
AMELIA												
Continued from last fiscal year	16	15	31	0	0	0	0	0	0	2	0	2
Added during fiscal year	46	49	95	0	0	0	29	32	61	18	1	19
Completed during fiscal year	62	64	126	0	0	0	29	32	61	17	1	18
Carried forward to next fiscal year	0	0	0	0	0	0	0	0	0	3	0	3
POWHATAN												
Continued from last fiscal year	16	16	32	0	0	0	2	0	2	2	0	2
Added during fiscal year	51	36	87	0	0	0	39	21	60	28	0	28
Completed during fiscal year	67	52	119	0	0	0	39	21	60	28	0	28
Carried forward to next fiscal year	0	0	0	0	0	0	2	0	2	2	0	2

CASES ON PROBATION/SUPERVISION					CASES IN STATE RECEIVING SERVICE		CASES ON AFTER CARE SUPERVISION		GRAND TOTAL			
Juvenile		Adult			Total	Juvenile	Family	Juvenile	Juvenile	Adult	Family	Total
Official	Unofficial	Official	Unofficial									
12	2	0	0	14	0	0	0	15	0	0	15	
3	5	0	0	8	0	0	0	34	5	0	39	
12	6	0	0	18	0	0	0	45	5	0	50	
3	1	0	0	4	0	0	0	4	0	0	4	
7	4	0	0	11	1	1	0	12	0	1	13	
3	6	0	0	9	4	1	2	54	7	1	62	
8	4	0	0	12	2	1	1	54	7	1	62	
2	6	0	0	8	3	1	1	12	0	1	13	
7	1	0	0	8	1	0	1	11	0	0	11	
9	2	7	0	18	3	6	1	83	31	6	120	
9	3	4	0	16	2	5	1	82	28	5	115	
7	0	3	0	10	2	1	1	12	3	1	16	
18	6	0	0	24	2	0	0	28	0	0	28	
4	1	1	0	6	1	0	0	113	33	0	146	
14	6	0	0	20	2	0	0	130	32	0	162	
8	1	1	0	10	1	0	0	11	1	0	12	
267	64	963	344	1,638	20	11	21	542	1,392	11	1,945	
316	123	101	27	567	55	56	28	1,798	571	56	2,425	
391	101	833	365	1,690	38	37	23	1,912	1,691	37	3,640	
192	86	231	6	515	37	30	26	428	272	30	730	
135	38	788	332	1,293	7	7	10	212	1,130	7	1,349	
257	98	19	11	385	37	52	16	1,021	195	52	1,268	
292	86	807	343	1,528	19	34	13	998	1,320	34	2,352	
100	50	0	0	150	25	25	13	235	5	25	265	
19	7	94	0	120	1	0	2	42	94	0	136	
14	8	36	0	58	2	0	3	267	93	0	360	
2	1	13	0	16	2	0	2	260	70	0	330	
31	14	117	0	162	1	0	3	49	117	0	166	
42	7	49	4	102	7	4	2	155	97	4	256	
27	5	14	3	49	8	3	3	255	99	3	357	
32	3	4	6	45	10	2	2	323	106	2	431	
37	9	59	1	106	5	5	3	87	90	5	182	
47	6	14	7	74	2	0	3	76	36	0	112	
11	4	20	8	43	2	1	2	112	110	1	223	
45	5	4	15	69	3	1	4	165	116	1	282	
13	5	30	0	48	1	0	1	23	30	0	53	
24	6	18	1	49	3	0	4	57	35	0	92	
7	8	12	5	32	6	0	4	143	74	0	217	
20	6	5	1	32	4	0	2	166	79	0	245	
11	8	25	5	49	5	0	6	34	30	0	64	

PROBATION SUPERVISION WORKLOAD
BY REGION, DISTRICT, AND CITY/COUNTY
ACCORDING TO TYPE OF CASE
YEAR ENDED JUNE 30, 1975¹

Region District City/County	INTAKE			TRANSFER REPORTS			SOCIAL HISTORY REPORTS					
	Juvenile	Adult	Total	Unofficial		Juvenile	Adult	Total	Juvenile	Adult	Total	
				Juvenile	Adult							
KING GEORGE*												
Continued from last fiscal year	0	0	0	0	0	0	0	0	0	0	0	
Added during fiscal year	9	0	9	0	0	0	6	0	6	22	0	22
Completed during fiscal year	9	0	9	0	0	0	4	0	4	19	0	19
Carried forward to next fiscal year	0	0	0	0	0	0	2	0	2	3	0	3
LANCASTER												
Continued from last fiscal year	0	0	0	1	0	1	1	0	1	4	0	4
Added during fiscal year	7	0	7	1	0	1	2	0	2	21	0	21
Completed during fiscal year	7	0	7	2	0	2	3	0	3	20	0	20
Carried forward to next fiscal year	0	0	0	0	0	0	0	0	0	5	0	5
NORTHUMBERLAND												
Continued from last fiscal year	0	0	0	2	0	2	1	0	1	1	0	1
Added during fiscal year	14	0	14	5	0	5	8	0	8	7	0	7
Completed during fiscal year	13	0	13	6	0	6	8	0	8	8	0	8
Carried forward to next fiscal year	1	0	1	1	0	1	1	0	1	0	0	0
RICHMOND												
Continued from last fiscal year	1	0	1	3	0	3	0	0	0	3	0	3
Added during fiscal year	11	0	11	2	0	2	7	0	7	16	0	16
Completed during fiscal year	12	0	12	5	0	5	5	0	5	15	0	15
Carried forward to next fiscal year	0	0	0	0	0	0	2	0	2	4	0	4
SPOTSYLVANIA*												
Continued from last fiscal year	0	0	0	0	0	0	0	0	0	3	0	3
Added during fiscal year	35	0	35	0	0	0	12	0	12	89	0	89
Completed during fiscal year	35	0	35	0	0	0	12	0	12	85	0	85
Carried forward to next fiscal year	0	0	0	0	0	0	0	0	0	7	0	7
STAFFORD*												
Continued from last fiscal year	0	0	0	0	0	0	0	0	0	10	0	10
Added during fiscal year	15	0	15	0	0	0	30	0	30	94	0	94
Completed during fiscal year	15	0	15	0	0	0	28	0	28	101	0	101
Carried forward to next fiscal year	0	0	0	0	0	0	2	0	2	3	0	3
WESTMORELAND												
Continued from last fiscal year	3	0	3	1	0	1	0	0	0	1	0	1
Added during fiscal year	27	2	29	6	0	6	7	0	7	23	0	23
Completed during fiscal year	30	2	32	7	0	7	6	0	6	23	0	23
Carried forward to next fiscal year	0	0	0	0	0	0	1	0	1	1	0	1
Region III - NORTHERN VIRGINIA												
Continued from last fiscal year	23	0	23	8	0	8	3	0	3	380	20	400
Added during fiscal year	14,787	2,781	17,568	119	9	128	145	0	145	1,809	202	2,011
Completed during fiscal year	14,792	2,781	17,573	99	9	108	143	0	143	1,815	153	1,968
Carried forward to next fiscal year	18	0	18	28	0	28	5	0	5	374	69	443
District 17 - ARLINGTON												
Continued from last fiscal year	0	0	0	0	0	0	0	0	0	160	10	170
Added during fiscal year	1,414	585	1,999	37	9	46	0	0	0	733	146	879
Completed during fiscal year	1,414	585	1,999	37	9	46	0	0	0	731	105	836
Carried forward to next fiscal year	0	0	0	0	0	0	0	0	0	162	51	213
District 18 - ALEXANDRIA												
Continued from last fiscal year	21	0	21	0	0	0	1	0	1	36	0	36
Added during fiscal year	1,772	270	2,042	0	0	0	33	0	33	231	0	231
Completed during fiscal year	1,775	270	2,045	0	0	0	29	0	29	214	0	214
Carried forward to next fiscal year	18	0	18	0	0	0	5	0	5	53	0	53

CASES ON PROBATION/SUPERVISION					CASES IN STATE RECEIVING SERVICE		CASES ON AFTER CARE SUPERVISION		GRAND TOTAL			
Juvenile		Adult			Total	Juvenile	Family	Juvenile	Juvenile	Adult	Family	Total
Official	Unofficial	Official	Unofficial									
33	0	0	0	33	3	0	2	38	0	0	38	
5	0	0	0	5	3	0	1	46	0	0	46	
5	0	0	0	5	2	0	2	41	0	0	41	
33	0	0	0	33	4	0	1	43	0	0	43	
13	0	0	0	13	3	3	0	22	0	3	25	
26	0	0	0	26	3	3	2	62	0	3	65	
18	0	0	0	18	2	2	1	53	0	2	55	
21	0	0	0	21	4	4	1	31	0	4	35	
21	0	0	0	21	2	2	1	28	0	2	30	
10	0	0	0	10	4	4	2	50	0	4	54	
19	0	0	0	19	3	3	1	58	0	3	61	
12	0	0	0	12	3	3	2	20	0	3	23	
15	0	0	0	15	1	1	1	24	0	1	25	
9	0	0	0	9	1	1	1	47	0	1	48	
16	0	0	0	16	1	1	2	56	0	1	57	
8	0	0	0	8	1	1	0	15	0	1	16	
85	0	0	0	85	7	0	6	101	0	0	101	
37	0	0	0	37	4	0	2	179	0	0	179	
3	0	0	0	3	5	0	2	142	0	0	142	
119	0	0	0	119	6	0	6	138	0	0	138	
108	0	0	0	108	28	0	8	154	0	0	154	
50	0	0	0	50	14	0	5	208	0	0	208	
49	0	0	0	49	11	0	10	214	0	0	214	
109	0	0	0	109	31	0	3	148	0	0	148	
30	0	0	0	30	9	9	5	49	0	9	58	
19	0	0	0	19	13	13	6	101	2	13	116	
27	0	0	0	27	6	6	6	105	2	6	113	
22	0	0	0	22	16	16	5	45	0	16	61	
1,278	77	40	23	1,418	157	49	71	1,997	83	49	2,129	
1,518	163	47	115	1,843	141	55	121	18,803	3,154	55	22,012	
1,390	198	39	79	1,706	126	37	96	18,659	3,061	37	21,757	
1,406	42	48	59	1,555	172	67	96	2,141	176	67	2,384	
263	21	9	22	315	16	16	29	489	41	16	546	
228	17	13	93	351	12	12	16	2,457	846	12	3,315	
236	27	7	58	328	14	14	21	2,480	764	14	3,258	
255	11	15	57	338	14	14	24	466	123	14	603	
201	11	5	1	218	38	28	18	326	6	28	360	
225	25	6	2	258	36	30	29	2,351	278	30	2,659	
219	23	7	2	251	32	18	27	2,319	279	18	2,616	
207	13	4	1	225	42	40	20	358	5	40	403	

PROBATION SUPERVISION WORKLOAD
 BY REGION, DISTRICT, AND CITY/COUNTY
 ACCORDING TO TYPE OF CASE
 YEAR ENDED JUNE 30, 1975¹

Region District City/County	INTAKE			Unofficial			TRANSFER REPORTS			SOCIAL HISTORY REPORTS		
	Juvenile	Adult	Total	Juvenile	Adult	Total	Juvenile	Adult	Total	Juvenile	Adult	Total
District 19												
Continued from last fiscal year	1	0	1	1	0	1	2	0	2	176	9	185
Added during fiscal year	11,190	1,861	13,051	77	0	77	101	0	101	789	55	844
Completed during fiscal year	11,191	1,861	13,052	58	0	58	103	0	103	810	46	856
Carried forward to next fiscal year	0	0	0	20	0	20	0	0	0	155	18	173
FALLS CHURCH												
Continued from last fiscal year	1	0	1	1	0	1	2	0	2	19	0	19
Added during fiscal year	19	0	19	2	0	2	3	0	3	36	0	36
Completed during fiscal year	20	0	20	2	0	2	5	0	5	46	0	46
Carried forward to next fiscal year	0	0	0	1	0	1	0	0	0	9	0	9
FAIRFAX												
Continued from last fiscal year	0	0	0	0	0	0	0	0	0	131	9	140
Added during fiscal year	8,386	1,729	10,115	0	0	0	0	0	0	624	55	679
Completed during fiscal year	8,386	1,729	10,115	0	0	0	0	0	0	616	46	662
Carried forward to next fiscal year	0	0	0	0	0	0	0	0	0	139	18	157
PRINCE WILLIAM												
Continued from last fiscal year	0	0	0	0	0	0	0	0	0	26	0	26
Added during fiscal year	2,785	132	2,917	75	0	75	98	0	98	129	0	129
Completed during fiscal year	2,785	132	2,917	56	0	56	98	0	98	148	0	148
Carried forward to next fiscal year	0	0	0	19	0	19	0	0	0	7	0	7
District 20												
Continued from last fiscal year	1	0	1	7	0	7	0	0	0	8	1	9
Added during fiscal year	411	65	476	5	0	5	11	0	11	56	1	57
Completed during fiscal year	412	65	477	4	0	4	11	0	11	60	2	62
Carried forward to next fiscal year	0	0	0	8	0	8	0	0	0	4	0	4
LOUDOUN												
Continued from last fiscal year	0	0	0	5	0	5	0	0	0	7	1	8
Added during fiscal year	388	65	453	3	0	3	5	0	5	41	1	42
Completed during fiscal year	388	65	453	0	0	0	5	0	5	44	2	46
Carried forward to next fiscal year	0	0	0	8	0	8	0	0	0	4	0	4
FAUQUIER/RAPPAHANNOCK												
Continued from last fiscal year	1	0	1	2	0	2	0	0	0	1	0	1
Added during fiscal year	23	0	23	2	0	2	6	0	6	15	0	15
Completed during fiscal year	24	0	24	4	0	4	6	0	6	16	0	16
Carried forward to next fiscal year	0	0	0	0	0	0	0	0	0	0	0	0
Region IV - VALLEY												
Continued from last fiscal year	127	0	127	25	0	25	13	0	13	198	0	198
Added during fiscal year	4,169	665	4,834	187	8	195	158	0	158	1,059	8	1,067
Completed during fiscal year	4,145	648	4,793	197	8	205	154	0	154	1,053	8	1,061
Carried forward to next fiscal year	151	17	168	15	0	15	17	0	17	204	0	204
District 18												
Continued from last fiscal year	3	0	3	20	0	20	3	0	3	35	0	35
Added during fiscal year	1,472	6	1,478	18	0	18	44	0	44	382	1	383
Completed during fiscal year	1,470	6	1,476	38	0	38	46	0	46	388	1	389
Carried forward to next fiscal year	5	0	5	0	0	0	1	0	1	39	0	39
CHARLOTTESVILLE												
Continued from last fiscal year	0	0	0	12	0	12	0	0	0	18	0	18
Added during fiscal year	891	0	891	15	0	15	7	0	7	95	0	95
Completed during fiscal year	891	0	891	27	0	27	7	0	7	105	0	105
Carried forward to next fiscal year	0	0	0	0	0	0	0	0	0	8	0	8

CASES ON PROBATION/SUPERVISION					CASES IN STATE RECEIVING SERVICE		CASES ON AFTER CARE SUPERVISION		GRAND TOTAL			
Juvenile		Adult			Total	Juvenile	Family	Juvenile	Adult	Family	Total	
Official	Unofficial	Official	Unofficial									
748	40	24	0	812	88	0	19	1,075	33	0	1,108	
1,013	115	26	20	1,174	87	0	66	13,438	1,962	0	15,400	
886	139	23	19	1,067	73	0	42	13,302	1,949	0	15,251	
875	16	27	1	919	102	0	43	1,211	46	0	1,257	
7	0	0	0	7	0	0	1	31	0	0	31	
21	0	0	0	21	0	0	0	81	0	0	81	
11	0	0	0	11	0	0	1	85	0	0	85	
17	0	0	0	17	0	0	0	27	0	0	27	
377	14	24	0	415	33	0	18	573	33	0	606	
511	0	24	20	555	27	0	21	9,569	1,828	0	11,397	
431	14	22	19	486	22	0	28	9,497	1,816	0	11,313	
457	0	26	1	484	38	0	11	645	45	0	690	
364	26	0	0	390	55	0	0	471	0	0	471	
481	115	2	0	598	60	0	45	3,788	134	0	3,922	
444	125	1	0	570	51	0	13	3,720	133	0	3,853	
401	16	1	0	418	64	0	32	539	1	0	540	
66	5	2	0	73	15	5	5	107	3	5	115	
52	6	2	0	60	6	13	10	557	68	13	638	
49	9	2	0	60	7	5	6	558	69	5	632	
69	2	2	0	73	14	13	9	106	2	13	121	
48	5	2	0	55	10	0	4	79	3	0	82	
22	2	2	0	26	6	13	6	473	68	13	554	
25	5	2	0	32	3	0	1	471	69	0	540	
45	2	2	0	49	13	13	9	81	2	13	96	
18	0	0	0	18	5	5	1	28	0	5	33	
30	4	0	0	34	0	0	4	84	0	0	84	
24	4	0	0	28	4	5	5	87	0	5	92	
24	0	0	0	24	1	0	0	25	0	0	25	
774	64	16	0	854	106	54	125	1,432	16	54	1,502	
579	248	4	5	836	96	124	77	6,573	690	124	7,387	
584	222	14	4	824	98	84	85	6,538	682	84	7,304	
769	90	6	1	866	104	94	117	1,467	24	94	1,585	
237	30	4	0	271	37	16	26	391	4	16	411	
246	162	2	3	413	51	68	34	2,419	12	68	2,499	
277	164	4	2	447	43	44	34	2,460	13	44	2,517	
206	28	2	1	237	45	40	26	350	3	40	393	
60	9	2	0	71	15	13	10	124	2	13	139	
68	56	1	2	127	16	18	10	1,158	3	18	1,179	
69	56	2	1	128	12	12	13	1,180	3	12	1,195	
59	9	1	1	70	19	19	7	102	2	19	123	

PROBATION SUPERVISION WORKLOAD
 BY REGION, DISTRICT, AND CITY/COUNTY
 ACCORDING TO TYPE OF CASE
 YEAR ENDED JUNE 30, 1975¹

Region District City/County	INTAKE			TRANSFER REPORTS			SOCIAL HISTORY REPORTS					
	Juvenile	Adult	Total	Unofficial			Juvenile	Adult	Total	Juvenile	Adult	Total
				Juvenile	Adult	Total						
MADISON												
Continued from last fiscal year	0	0	0	0	0	0	0	0	0	0	0	0
Added during fiscal year	11	3	14	0	0	0	0	0	0	20	0	20
Completed during fiscal year	11	3	14	0	0	0	0	0	0	15	0	15
Carried forward to next fiscal year	0	0	0	0	0	0	0	0	0	5	0	5
GREENE												
Continued from last fiscal year	0	0	0	0	0	0	0	0	0	1	0	1
Added during fiscal year	0	0	0	0	0	0	5	0	5	13	0	13
Completed during fiscal year	0	0	0	0	0	0	5	0	5	12	0	12
Carried forward to next fiscal year	0	0	0	0	0	0	0	0	0	2	0	2
ALBEMARLE												
Continued from last fiscal year	0	0	0	5	0	5	1	0	1	6	0	6
Added during fiscal year	373	0	373	2	0	2	2	0	2	31	0	31
Completed during fiscal year	373	0	373	7	0	7	2	0	2	31	0	31
Carried forward to next fiscal year	0	0	0	0	0	0	1	0	1	6	0	6
FLUVANNA												
Continued from last fiscal year	0	0	0	0	0	0	0	0	0	2	0	2
Added during fiscal year	12	3	15	1	0	1	0	0	0	6	1	7
Completed during fiscal year	12	3	15	1	0	1	0	0	0	8	1	9
Carried forward to next fiscal year	0	0	0	0	0	0	0	0	0	0	0	0
GOOCHLAND												
Continued from last fiscal year	0	0	0	0	0	0	0	0	0	0	0	0
Added during fiscal year	0	0	0	0	0	0	0	0	0	15	0	15
Completed during fiscal year	0	0	0	0	0	0	0	0	0	13	0	13
Carried forward to next fiscal year	0	0	0	0	0	0	0	0	0	2	0	2
LOUISA												
Continued from last fiscal year	0	0	0	0	0	0	0	0	0	4	0	4
Added during fiscal year	0	0	0	0	0	0	12	0	12	33	0	33
Completed during fiscal year	0	0	0	0	0	0	12	0	12	36	0	36
Carried forward to next fiscal year	0	0	0	0	0	0	0	0	0	1	0	1
ORANGE												
Continued from last fiscal year	0	0	0	0	0	0	0	0	0	3	0	3
Added during fiscal year	3	0	3	0	0	0	0	0	0	75	0	75
Completed during fiscal year	3	0	3	0	0	0	0	0	0	67	0	67
Carried forward to next fiscal year	0	0	0	0	0	0	0	0	0	11	0	11
CULPEPER												
Continued from last fiscal year	3	0	3	3	0	3	2	0	2	1	0	1
Added during fiscal year	182	0	182	0	0	0	18	0	18	104	0	104
Completed during fiscal year	180	0	180	3	0	3	20	0	20	101	0	101
Carried forward to next fiscal year	5	0	5	0	0	0	0	0	0	4	0	4
District 25												
Continued from last fiscal year	79	0	79	4	0	4	9	0	9	125	0	125
Added during fiscal year	1,583	180	1,763	107	6	113	49	0	49	360	4	364
Completed during fiscal year	1,620	180	1,800	103	6	109	43	0	43	347	4	351
Carried forward to next fiscal year	42	0	42	8	0	8	15	0	15	138	0	138
STAUNTON/AUGUSTA												
Continued from last fiscal year	18	0	18	2	0	2	8	0	8	83	0	83
Added during fiscal year	796	138	934	27	0	27	38	0	38	195	0	195
Completed during fiscal year	807	138	945	29	0	29	31	0	31	166	0	166
Carried forward to next fiscal year	7	0	7	0	0	0	15	0	15	112	0	112

CASES ON PROBATION/SUPERVISION					CASES IN STATE RECEIVING SERVICE		CASES ON AFTER CARE SUPERVISION		GRAND TOTAL			
Juvenile		Adult			Total	Juvenile	Family	Juvenile	Juvenile	Adult	Family	Total
Official	Unofficial	Official	Unofficial									
MADISON												
Continued from last fiscal year	18	0	0	0	18	1	0	0	19	0	0	19
Added during fiscal year	8	3	1	0	12	0	1	1	43	4	1	48
Completed during fiscal year	16	1	0	0	17	1	1	0	44	3	1	48
Carried forward to next fiscal year	10	2	1	0	13	0	0	1	18	1	0	19
GREENE												
Continued from last fiscal year	10	0	0	0	10	2	0	0	13	0	0	13
Added during fiscal year	8	0	0	0	8	3	5	3	32	0	5	37
Completed during fiscal year	15	0	0	0	15	3	3	1	36	0	3	39
Carried forward to next fiscal year	3	0	0	0	3	2	2	2	9	0	2	11
ALBEMARLE												
Continued from last fiscal year	19	6	1	0	26	3	1	3	43	1	1	45
Added during fiscal year	23	19	0	0	42	6	7	3	459	0	7	466
Completed during fiscal year	20	22	1	0	43	4	8	4	463	1	8	472
Carried forward to next fiscal year	22	3	0	0	25	5	0	2	39	0	0	39
FLUVANNA												
Continued from last fiscal year	11	3	0	0	14	2	0	1	19	0	0	19
Added during fiscal year	6	8	0	1	15	0	2	1	34	5	2	41
Completed during fiscal year	10	8	0	1	19	2	2	1	42	5	2	49
Carried forward to next fiscal year	7	3	0	0	10	0	0	1	11	0	0	11
GOOCHLAND												
Continued from last fiscal year	10	0	0	0	10	2	0	3	15	0	0	15
Added during fiscal year	7	3	0	0	10	4	5	1	30	0	5	35
Completed during fiscal year	11	3	0	0	14	3	2	3	33	0	2	35
Carried forward to next fiscal year	6	0	0	0	6	3	3	1	12	0	3	15
LOUISA												
Continued from last fiscal year	26	6	0	0	32	2	0	1	39	0	0	39
Added during fiscal year	25	50	0	0	75	2	4	0	122	0	4	126
Completed during fiscal year	35	54	0	0	89	1	1	1	139	0	1	140
Carried forward to next fiscal year	16	2	0	0	18	3	3	0	22	0	3	25
ORANGE												
Continued from last fiscal year	41	6	1	0	48	3	2	8	61	1	2	64
Added during fiscal year	41	9	0	0	50	10	9	8	146	0	9	155
Completed during fiscal year	38	10	1	0	49	8	6	8	134	1	6	141
Carried forward to next fiscal year	44	5	0	0	49	5	5	8	73	0	5	78
CULPEPER												
Continued from last fiscal year	42	0	0	0	42	7	0	0	58	0	0	58
Added during fiscal year	60	14	0	0	74	10	17	7	395	0	17	412
Completed during fiscal year	63	10	0	0	73	9	9	3	389	0	9	398
Carried forward to next fiscal year	39	4	0	0	43	8	8	4	64	0	8	72
District 25												
Continued from last fiscal year	358	31	10	0	399	40	25	74	720	10	25	755
Added during fiscal year	148	75	2	0	225	18	22	22	2,362	192	22	2,576
Completed during fiscal year	148	52	9	0	209	21	14	23	2,357	199	14	2,570
Carried forward to next fiscal year	358	54	3	0	415	37	33	73	725	3	33	761
STAUNTON/AUGUSTA												
Continued from last fiscal year	144	7	1	0	152	15	10	52	329	1	10	340
Added during fiscal year	65	27	0	0	92	9	7	8	1,165	138	7	1,310
Completed during fiscal year	38	14	0	0	52	8	3	3	1,096	138	3	1,237
Carried forward to next fiscal year	171	20	1	0	192	16	14	57	398	1	14	413

PROBATION SUPERVISION WORKLOAD
 BY REGION, DISTRICT, AND CITY/COUNTY
 ACCORDING TO TYPE OF CASE
 YEAR ENDED JUNE 30, 1975¹

Region District City/County	INTAKE			TRANSFER REPORTS			SOCIAL HISTORY REPORTS					
	Juvenile	Adult	Total	Unofficial			Juvenile	Adult	Total	Juvenile	Adult	Total
				Juvenile	Adult	Total						
BUENA VISTA*												
Continued from last fiscal year	0	0	0	0	0	0	0	0	0	4	0	4
Added during fiscal year	54	2	56	18	1	19	0	0	0	3	0	3
Completed during fiscal year	54	2	56	18	1	19	0	0	0	5	0	5
Carried forward to next fiscal year	0	0	0	0	0	0	0	0	0	2	0	2
CLIFTON FORGE												
Continued from last fiscal year	4	0	4	0	0	0	0	0	0	3	0	3
Added during fiscal year	61	0	61	1	0	1	2	0	2	18	0	18
Completed during fiscal year	56	0	56	0	0	0	2	0	2	11	0	11
Carried forward to next fiscal year	9	0	9	1	0	1	0	0	0	10	0	10
HIGHLAND												
Continued from last fiscal year	0	0	0	0	0	0	0	0	0	0	0	0
Added during fiscal year	8	0	8	2	0	2	0	0	0	1	0	1
Completed during fiscal year	8	0	8	2	0	2	0	0	0	1	0	1
Carried forward to next fiscal year	0	0	0	0	0	0	0	0	0	0	0	0
ROCKBRIDGE*												
Continued from last fiscal year	0	0	0	0	0	0	0	0	0	7	0	7
Added during fiscal year	69	8	77	24	4	28	1	0	1	12	0	12
Completed during fiscal year	69	8	77	24	4	28	1	0	1	17	0	17
Carried forward to next fiscal year	0	0	0	0	0	0	0	0	0	2	0	2
LEXINGTON												
Continued from last fiscal year	0	0	0	0	0	0	1	0	1	14	0	14
Added during fiscal year	160	26	186	24	1	25	0	0	0	18	4	22
Completed during fiscal year	160	26	186	24	1	25	1	0	1	29	4	33
Carried forward to next fiscal year	0	0	0	0	0	0	0	0	0	3	0	3
BATH												
Continued from last fiscal year	11	0	11	0	0	0	0	0	0	0	0	0
Added during fiscal year	23	0	23	1	0	1	0	0	0	17	0	17
Completed during fiscal year	31	0	31	1	0	1	0	0	0	16	0	16
Carried forward to next fiscal year	3	0	3	0	0	0	0	0	0	1	0	1
ALLEGHANY												
Continued from last fiscal year	12	0	12	2	0	2	0	0	0	14	0	14
Added during fiscal year	105	4	109	3	0	3	2	0	2	19	0	19
Completed during fiscal year	112	4	116	3	0	3	2	0	2	30	0	30
Carried forward to next fiscal year	5	0	5	2	0	2	0	0	0	3	0	3
BOTETOURT												
Continued from last fiscal year	17	0	17	0	0	0	0	0	0	0	0	0
Added during fiscal year	152	0	152	0	0	0	4	0	4	36	0	36
Completed during fiscal year	162	0	162	0	0	0	4	0	4	35	0	35
Carried forward to next fiscal year	7	0	7	0	0	0	0	0	0	1	0	1
CRAIG												
Continued from last fiscal year	1	0	1	0	0	0	0	0	0	0	0	0
Added during fiscal year	4	0	4	0	0	0	0	0	0	5	0	5
Completed during fiscal year	5	0	5	0	0	0	0	0	0	5	0	5
Carried forward to next fiscal year	0	0	0	0	0	0	0	0	0	0	0	0
COVINGTON												
Continued from last fiscal year	16	0	16	0	0	0	0	0	0	0	0	0
Added during fiscal year	151	2	153	7	0	7	2	0	2	36	0	36
Completed during fiscal year	156	2	158	2	0	2	2	0	2	32	0	32
Carried forward to next fiscal year	11	0	11	5	0	5	0	0	0	4	0	4

CASES ON PROBATION/SUPERVISION					CASES IN STATE RECEIVING SERVICE		CASES ON AFTER CARE SUPERVISION		GRAND TOTAL			
Juvenile		Adult			Total	Juvenile	Family	Juvenile	Juvenile	Adult	Family	Total
Official	Unofficial	Official	Unofficial									
8	1	0	0	9	0	0	2	15	0	0	15	
3	0	1	0	4	0	0	0	78	4	0	82	
3	1	1	0	5	0	0	2	83	4	0	87	
8	0	0	0	8	0	0	0	10	0	0	10	
25	0	0	0	25	1	1	1	34	0	1	35	
7	3	0	0	10	0	1	1	93	0	1	94	
5	2	0	0	7	0	0	1	77	0	0	77	
27	1	0	0	28	1	2	1	50	0	2	52	
0	0	0	0	0	0	0	0	0	0	0	0	
2	3	1	0	6	0	0	0	16	1	0	17	
1	0	1	0	2	0	0	0	12	1	0	13	
1	3	0	0	4	0	0	0	4	0	0	4	
25	2	4	0	32	6	6	3	44	4	6	54	
7	0	0	0	7	0	0	0	113	12	0	125	
10	1	2	0	13	0	0	1	123	14	0	137	
23	1	2	0	26	6	6	2	34	2	6	42	
51	6	5	0	62	4	4	8	84	5	4	93	
8	0	0	0	8	2	2	0	212	31	2	245	
48	6	5	0	59	6	6	8	282	36	6	324	
11	0	0	0	11	0	0	0	14	0	0	14	
4	2	0	0	6	0	0	0	17	0	0	17	
7	0	0	0	7	0	0	0	48	0	0	48	
2	0	0	0	2	0	0	0	50	0	0	50	
9	2	0	0	11	0	0	0	15	0	0	15	
22	8	0	0	30	5	0	4	67	0	0	67	
15	5	0	0	20	1	4	1	151	4	4	159	
7	7	0	0	14	0	0	2	163	4	0	167	
30	6	0	0	36	6	4	3	55	0	4	59	
28	3	0	0	31	5	0	0	53	0	0	53	
14	31	0	0	45	5	8	8	250	0	8	258	
25	16	0	0	41	7	5	2	251	0	5	256	
17	18	0	0	35	3	3	6	52	0	3	55	
2	1	0	0	3	0	0	0	4	0	0	4	
2	0	0	0	2	0	0	0	11	0	0	11	
1	0	0	0	1	0	0	0	11	0	0	11	
3	1	0	0	4	0	0	0	4	0	0	4	
48	1	0	0	49	4	4	4	73	0	4	77	
18	6	0	0	24	1	0	4	225	2	0	227	
8	5	0	0	13	0	0	4	209	2	0	211	
58	2	0	0	60	5	4	4	89	0	4	93	

PROBATION SUPERVISION WORKLOAD
 BY REGION, DISTRICT, AND CITY/COUNTY
 ACCORDING TO TYPE OF CASE
 YEAR ENDED JUNE 30, 1975¹

Region District City/County	INTAKE			TRANSFER REPORTS			SOCIAL HISTORY REPORTS					
	Juvenile	Adult	Total	Unofficial			Juvenile	Adult	Total	Juvenile	Adult	Total
				Juvenile	Adult	Total						
District 26												
Continued from last fiscal year	45	0	45	1	0	1	1	0	1	38	0	38
Added during fiscal year	1,114	479	1,593	62	2	64	65	0	65	307	3	310
Completed during fiscal year	1,055	462	1,517	56	2	58	65	0	65	318	3	321
Carried forward to next fiscal year	104	17	121	7	0	7	1	0	1	27	0	27
WINCHESTER/FREDERICK												
Continued from last fiscal year	18	0	18	0	0	0	0	0	0	0	0	0
Added during fiscal year	300	64	364	0	0	0	39	0	39	79	0	79
Completed during fiscal year	277	64	341	0	0	0	39	0	39	79	0	79
Carried forward to next fiscal year	41	0	41	0	0	0	0	0	0	0	0	0
CLARKE												
Continued from last fiscal year	0	0	0	0	0	0	0	0	0	11	0	11
Added during fiscal year	78	26	104	2	0	2	2	0	2	47	0	47
Completed during fiscal year	78	26	104	0	0	0	1	0	1	53	0	53
Carried forward to next fiscal year	0	0	0	2	0	2	1	0	1	5	0	5
WARREN												
Continued from last fiscal year	23	0	23	0	0	0	0	0	0	23	0	23
Added during fiscal year	75	46	121	45	0	45	3	0	3	59	0	59
Completed during fiscal year	84	40	124	45	0	45	3	0	3	74	0	74
Carried forward to next fiscal year	14	6	20	0	0	0	0	0	0	8	0	8
SHENANDOAH												
Continued from last fiscal year	0	0	0	1	0	1	0	0	0	2	0	2
Added during fiscal year	119	47	166	6	2	8	6	0	6	22	0	22
Completed during fiscal year	105	44	149	2	2	4	6	0	6	21	0	21
Carried forward to next fiscal year	14	3	17	5	0	5	0	0	0	3	0	3
PAGE												
Continued from last fiscal year	0	0	0	0	0	0	1	0	1	1	0	1
Added during fiscal year	260	61	321	4	0	4	9	0	9	19	0	19
Completed during fiscal year	225	53	278	4	0	4	10	0	10	17	0	17
Carried forward to next fiscal year	35	8	43	0	0	0	0	0	0	3	0	3
ROCKINGHAM/HARRISONBURG												
Continued from last fiscal year	4	0	4	0	0	0	0	0	0	1	0	1
Added during fiscal year	282	235	517	5	0	5	6	0	6	81	3	84
Completed during fiscal year	286	235	521	5	0	5	6	0	6	74	3	77
Carried forward to next fiscal year	0	0	0	0	0	0	0	0	0	8	0	8
Region V - LYNCHBURG												
Continued from last fiscal year	37	0	37	6	1	7	17	0	17	148	13	161
Added during fiscal year	6,638	3,135	9,773	278	214	492	343	23	366	1,644	101	1,745
Completed during fiscal year	6,639	3,127	9,766	241	213	454	333	21	354	1,648	105	1,753
Carried forward to next fiscal year	36	8	44	43	2	45	27	2	29	144	9	153
District 10												
Continued from last fiscal year	0	0	0	0	1	1	0	0	0	9	0	9
Added during fiscal year	560	128	688	114	18	132	16	0	16	247	5	252
Completed during fiscal year	554	128	682	107	18	125	16	0	16	254	4	258
Carried forward to next fiscal year	6	0	6	7	1	8	0	0	0	2	1	3
CUMBERLAND												
Continued from last fiscal year	0	0	0	0	0	0	0	0	0	4	0	4
Added during fiscal year	11	0	11	5	0	5	3	0	3	9	1	10
Completed during fiscal year	11	0	11	2	0	2	3	0	3	13	1	14
Carried forward to next fiscal year	0	0	0	3	0	3	0	0	0	0	0	0

CASES ON PROBATION/SUPERVISION					CASES IN STATE RECEIVING SERVICE		CASES ON AFTER CARE SUPERVISION		GRAND TOTAL			
Juvenile		Adult			Total	Juvenile	Family	Juvenile	Juvenile	Adult	Family	Total
Official	Unofficial	Official	Unofficial									
179	3	2	0	184	29	13	25	321	2	13	336	
185	11	0	2	198	27	34	21	1,792	486	34	2,312	
159	6	1	2	168	34	26	28	1,721	470	26	2,217	
205	8	1	0	214	22	21	18	392	18	21	431	
40	0	1	0	41	7	7	10	75	1	7	83	
67	4	0	0	71	11	8	8	508	64	8	580	
41	1	0	0	42	11	8	12	460	64	8	532	
66	3	1	0	70	7	7	6	123	1	7	131	
13	1	0	0	14	1	0	1	27	0	0	27	
12	4	0	0	16	0	0	0	145	26	0	171	
10	1	0	0	11	1	0	1	145	26	0	171	
15	4	0	0	19	0	0	0	27	0	0	27	
30	0	0	0	30	6	0	2	84	0	0	84	
29	0	0	0	29	3	9	4	218	46	9	273	
32	0	0	0	32	4	4	2	244	40	4	288	
27	0	0	0	27	5	5	4	58	6	5	69	
17	0	0	0	17	0	0	1	21	0	0	21	
11	1	0	2	14	1	1	0	166	51	1	218	
11	1	0	2	14	0	1	1	147	48	1	196	
17	0	0	0	17	1	0	0	40	3	0	43	
27	2	1	0	30	6	6	2	39	1	6	46	
17	2	0	0	19	5	5	1	317	61	5	383	
24	3	1	0	28	7	7	3	293	54	7	354	
20	1	0	0	21	4	4	0	63	8	4	75	
52	0	0	0	52	9	0	9	75	0	0	75	
49	0	0	0	49	7	11	8	438	238	11	687	
41	0	0	0	41	11	6	9	432	238	6	676	
60	0	0	0	60	5	5	8	81	0	5	86	
1,097	154	19	7	1,277	169	78	150	1,778	40	78	1,896	
1,000	332	32	57	1,421	154	152	152	10,541	3,562	152	14,255	
980	396	25	40	1,441	164	149	140	10,541	3,531	149	14,221	
1,117	90	26	24	1,257	159	81	162	1,778	71	81	1,930	
169	12	3	2	186	5	5	26	221	6	5	232	
180	20	1	1	202	40	45	29	1,206	153	45	1,404	
163	23	1	2	189	24	35	31	1,172	153	35	1,360	
186	9	3	1	199	21	15	24	255	6	15	276	
23	1	0	0	24	0	2	4	32	0	2	34	
19	1	0	0	20	4	4	3	55	1	4	60	
14	1	0	0	15	2	6	4	50	1	6	57	
28	1	0	0	29	2	0	3	37	0	0	37	

PROBATION SUPERVISION WORKLOAD
 BY REGION, DISTRICT, AND CITY/COUNTY
 ACCORDING TO TYPE OF CASE
 YEAR ENDED JUNE 30, 1975¹

Region District City/County	INTAKE			TRANSFER REPORTS			SOCIAL HISTORY REPORTS					
	Juvenile	Adult	Total	Unofficial			Juvenile	Adult	Total	Juvenile	Adult	Total
				Juvenile	Adult	Total						
BUCKINGHAM												
Continued from last fiscal year	0	0	0	0	0	0	0	0	0	1	0	1
Added during fiscal year	22	1	23	7	0	7	4	0	4	20	0	20
Completed during fiscal year	22	1	23	6	0	6	4	0	4	21	0	21
Carried forward to next fiscal year	0	0	0	1	0	1	0	0	0	0	0	0
APPOMATTOX												
Continued from last fiscal year	0	0	0	0	0	0	0	0	0	0	0	0
Added during fiscal year	31	7	38	10	1	11	2	0	2	18	0	18
Completed during fiscal year	30	7	37	10	0	10	2	0	2	18	0	18
Carried forward to next fiscal year	1	0	1	0	1	1	0	0	0	0	0	0
PRINCE EDWARD												
Continued from last fiscal year	0	0	0	0	0	0	0	0	0	0	0	0
Added during fiscal year	45	10	55	0	0	0	1	0	1	28	0	28
Completed during fiscal year	43	10	53	0	0	0	1	0	1	28	0	28
Carried forward to next fiscal year	2	0	2	0	0	0	0	0	0	0	0	0
CHARLOTTE												
Continued from last fiscal year	0	0	0	0	0	0	0	0	0	2	0	2
Added during fiscal year	45	37	82	14	12	26	3	0	3	15	4	19
Completed during fiscal year	44	37	81	12	12	24	3	0	3	17	3	20
Carried forward to next fiscal year	1	0	1	2	0	2	0	0	0	0	1	1
LUNENBURG												
Continued from last fiscal year	0	0	0	0	0	0	0	0	0	0	0	0
Added during fiscal year	45	0	45	3	0	3	1	0	1	26	0	26
Completed during fiscal year	45	0	45	2	0	2	1	0	1	26	0	26
Carried forward to next fiscal year	0	0	0	1	0	1	0	0	0	0	0	0
MECKLENBURG												
Continued from last fiscal year	0	0	0	0	1	1	0	0	0	0	0	0
Added during fiscal year	187	10	197	70	1	71	0	0	0	74	0	74
Completed during fiscal year	187	10	197	70	2	72	0	0	0	74	0	74
Carried forward to next fiscal year	0	0	0	0	0	0	0	0	0	0	0	0
HALIFAX												
Continued from last fiscal year	0	0	0	0	0	0	0	0	0	2	0	2
Added during fiscal year	174	63	237	5	4	9	2	0	2	57	0	57
Completed during fiscal year	172	63	235	5	4	9	2	0	2	57	0	57
Carried forward to next fiscal year	2	0	2	0	0	0	0	0	0	2	0	2
District 21												
Continued from last fiscal year	5	0	5	0	0	0	6	0	6	14	0	14
Added during fiscal year	1,096	0	1,096	53	0	53	135	0	135	230	0	230
Completed during fiscal year	1,083	0	1,083	29	0	29	119	0	119	228	0	228
Carried forward to next fiscal year	18	0	18	24	0	24	22	0	22	16	0	16
MARTINSVILLE												
Continued from last fiscal year	4	0	4	0	0	0	2	0	2	0	0	0
Added during fiscal year	444	0	444	24	0	24	44	0	44	80	0	80
Completed during fiscal year	448	0	448	11	0	11	38	0	38	74	0	74
Carried forward to next fiscal year	0	0	0	13	0	13	8	0	8	6	0	6
PATRICK												
Continued from last fiscal year	0	0	0	0	0	0	0	0	0	0	0	0
Added during fiscal year	63	0	63	0	0	0	7	0	7	21	0	21
Completed during fiscal year	61	0	61	0	0	0	7	0	7	20	0	20
Carried forward to next fiscal year	2	0	2	0	0	0	0	0	0	1	0	1

CASES ON PROBATION/SUPERVISION					CASES IN STATE RECEIVING SERVICE			CASES ON AFTER CARE SUPERVISION			GRAND TOTAL			
Juvenile		Adult			Total	Juvenile	Family	Juvenile	Juvenile	Adult	Family	Total		
Official	Unofficial	Official	Unofficial											
25	0	0	2	27	0	0	5	31	2	0	33			
22	4	0	0	26	2	3	0	81	1	3	85			
26	3	0	2	31	0	1	2	84	3	1	88			
21	1	0	0	22	2	2	3	28	0	2	30			
20	0	0	0	20	0	0	1	21	0	0	21			
14	0	0	1	15	3	1	3	81	9	1	91			
25	0	0	0	25	2	0	4	91	7	0	98			
9	0	0	1	10	1	1	0	11	2	1	14			
22	5	0	0	27	0	1	0	27	0	1	28			
29	5	0	0	34	5	4	5	118	10	4	132			
19	10	0	0	29	2	2	4	107	10	2	119			
32	0	0	0	32	3	3	1	38	0	3	41			
28	4	0	0	32	1	0	3	38	0	0	38			
12	0	0	0	12	4	4	3	96	53	4	153			
10	4	0	0	14	2	3	3	95	52	3	150			
30	0	0	0	30	3	1	3	39	1	1	41			
10	0	0	0	10	2	0	4	16	0	0	16			
15	3	0	0	18	4	5	4	101	0	5	106			
12	3	0	0	15	4	4	3	96	0	4	100			
13	0	0	0	13	2	1	5	21	0	1	22			
30	0	1	0	31	2	0	6	38	2	0	40			
36	2	1	0	39	11	15	6	386	12	15	413			
38	2	1	0	41	8	10	7	386	13	10	409			
28	0	1	0	29	5	5	5	38	1	5	44			
11	2	2	0	15	0	2	3	18	2	2	22			
33	5	0	0	38	7	9	5	288	67	9	364			
19	0	0	0	19	4	9	4	263	67	9	339			
25	7	2	0	34	3	2	4	43	2	2	47			
144	50	1	0	195	43	10	33	295	1	10	306			
153	54	1	0	208	16	45	28	1,765	1	45	1,811			
140	96	1	0	237	36	51	30	1,761	1	51	1,813			
157	8	1	0	166	23	4	31	299	1	4	304			
46	21	1	0	68	15	1	20	108	1	1	110			
54	19	0	0	73	6	19	8	679	0	19	698			
42	39	0	0	81	11	19	16	679	0	19	698			
58	1	1	0	60	10	1	12	108	1	1	110			
24	2	0	0	26	0	0	0	26	0	0	26			
6	2	1	0	9	1	0	1	101	1	0	102			
17	2	1	0	20	1	0	0	108	1	0	109			
13	2	0	0	15	0	0	1	19	0	0	19			

PROBATION SUPERVISION WORKLOAD
 BY REGION, DISTRICT, AND CITY/COUNTY
 ACCORDING TO TYPE OF CASE
 YEAR ENDED JUNE 30, 1975¹

Region District City/County	INTAKE			TRANSFER REPORTS			SOCIAL HISTORY REPORTS					
	Juvenile	Adult	Total	Unofficial		Total	Juvenile	Adult	Total	Juvenile	Adult	Total
				Juvenile	Adult							
HENRY												
Continued from last fiscal year	1	0	1	0	0	0	4	0	4	14	0	14
Added during fiscal year	589	0	589	29	0	29	84	0	84	129	0	129
Completed during fiscal year	574	0	574	18	0	18	74	0	74	134	0	134
Carried forward to next fiscal year	16	0	16	11	0	11	14	0	14	9	0	9
District 22												
Continued from last fiscal year	20	0	20	2	0	2	2	0	2	40	4	44
Added during fiscal year	1,561	916	2,477	96	196	292	60	22	82	252	10	262
Completed during fiscal year	1,581	916	2,497	95	195	290	61	20	81	266	14	280
Carried forward to next fiscal year	0	0	0	3	1	4	1	2	3	26	0	26
DANVILLE												
Continued from last fiscal year	0	0	0	0	0	0	2	0	2	12	0	12
Added during fiscal year	558	175	733	50	2	52	14	0	14	84	0	84
Completed during fiscal year	558	175	733	50	2	52	16	0	16	92	0	92
Carried forward to next fiscal year	0	0	0	0	0	0	0	0	0	4	0	4
FRANKLIN COUNTY												
Continued from last fiscal year	6	0	6	0	0	0	0	0	0	12	3	15
Added during fiscal year	471	335	806	20	13	33	17	11	28	58	6	64
Completed during fiscal year	477	335	812	17	13	30	17	11	28	58	9	67
Carried forward to next fiscal year	0	0	0	3	0	3	0	0	0	12	0	12
PITTSYLVANIA												
Continued from last fiscal year	14	0	14	2	0	2	0	0	0	16	1	17
Added during fiscal year	532	406	938	26	181	207	29	11	40	110	4	114
Completed during fiscal year	546	406	952	28	180	208	28	9	37	116	5	121
Carried forward to next fiscal year	0	0	0	0	1	1	1	2	3	10	0	10
District 23												
Continued from last fiscal year	0	0	0	3	0	3	6	0	6	45	1	46
Added during fiscal year	2,010	1,543	3,553	6	0	6	77	0	77	393	14	407
Completed during fiscal year	2,010	1,543	3,553	0	0	0	79	0	79	388	14	402
Carried forward to next fiscal year	0	0	0	9	0	9	4	0	4	50	1	51
ROANOKE**												
Continued from last fiscal year	0	0	0	0	0	0	6	0	6	39	1	40
Added during fiscal year	1,836	1,507	3,343	0	0	0	75	0	75	337	14	351
Completed during fiscal year	1,836	1,507	3,343	0	0	0	77	0	77	341	14	355
Carried forward to next fiscal year	0	0	0	0	0	0	4	0	4	35	1	36
SALEM**												
Continued from last fiscal year	0	0	0	3	0	3	0	0	0	6	0	6
Added during fiscal year	174	36	210	6	0	6	2	0	2	56	0	56
Completed during fiscal year	174	36	210	0	0	0	2	0	2	47	0	47
Carried forward to next fiscal year	0	0	0	9	0	9	0	0	0	15	0	15
ROANOKE COUNTY***												
Continued from last fiscal year	0	0	0	0	0	0	0	0	0	0	0	0
Added during fiscal year	0	0	0	0	0	0	0	0	0	0	0	0
Completed during fiscal year	0	0	0	0	0	0	0	0	0	0	0	0
Carried forward to next fiscal year	0	0	0	0	0	0	0	0	0	0	0	0
District 24												
Continued from last fiscal year	12	0	12	1	0	1	3	0	3	40	8	48
Added during fiscal year	1,411	548	1,959	9	0	9	55	1	56	522	72	594
Completed during fiscal year	1,411	540	1,951	10	0	10	58	1	59	512	73	585
Carried forward to next fiscal year	12	8	20	0	0	0	0	0	0	50	7	57

CASES ON PROBATION/SUPERVISION					CASES IN STATE RECEIVING SERVICE			CASES ON AFTER CARE SUPERVISION		GRAND TOTAL			
Juvenile		Adult			Total	Juvenile	Family	Juvenile	Juvenile	Adult	Family	Total	
Official	Unofficial	Official	Unofficial										
74	27	0	0	101	28	9	13	161	0	9	170		
93	33	0	0	126	9	26	19	985	0	26	1,011		
81	55	0	0	136	24	32	14	974	0	32	1,006		
86	5	0	0	91	13	3	18	172	0	3	175		
193	67	1	4	265	14	23	14	352	9	23	384		
222	107	11	55	395	11	11	19	2,328	1,210	11	3,549		
242	156	6	36	440	18	19	19	2,438	1,187	19	3,644		
173	18	6	23	220	7	15	14	242	32	15	289		
65	6	0	0	71	0	9	9	94	0	9	103		
58	0	0	0	58	6	6	6	776	177	6	959		
76	6	0	0	82	6	7	10	814	177	7	998		
47	0	0	0	47	0	8	5	56	0	8	64		
50	15	1	3	69	5	5	5	93	7	5	105		
41	39	5	19	104	4	4	6	656	389	4	1,049		
43	42	1	8	94	5	5	6	665	377	5	1,047		
48	12	5	14	79	4	4	5	84	19	4	107		
78	46	0	1	125	9	9	0	165	2	9	176		
123	68	6	36	233	1	1	7	896	644	1	1,541		
123	108	5	28	264	7	7	3	959	633	7	1,599		
78	6	1	9	94	3	3	4	102	13	3	118		
310	16	2	0	328	65	26	36	481	3	26	510		
201	57	8	0	266	25	9	33	2,802	1,565	9	4,376		
187	61	5	0	253	43	14	22	2,790	1,562	14	4,366		
324	12	5	0	341	47	21	47	493	6	21	520		
249	16	2	0	267	65	24	31	406	3	24	433		
182	57	8	0	247	24	8	33	2,544	1,529	8	4,081		
173	61	5	0	239	42	14	19	2,549	1,526	14	4,089		
258	12	5	0	275	47	18	45	401	6	18	425		
61	0	0	0	61	0	2	5	75	0	2	77		
19	0	0	0	19	1	1	0	258	36	1	295		
14	0	0	0	14	1	0	3	241	36	0	277		
66	0	0	0	66	0	3	2	92	0	3	95		
0	0	0	0	0	0	0	0	0	0	0	0		
0	0	0	0	0	0	0	0	0	0	0	0		
0	0	0	0	0	0	0	0	0	0	0	0		
0	0	0	0	0	0	0	0	0	0	0	0		
281	9	12	1	303	42	14	41	429	21	14	464		
244	94	11	1	350	62	42	43	2,440	633	42	3,115		
248	60	12	2	322	43	30	38	2,380	628	30	3,038		
277	43	11	0	331	61	26	46	489	26	26	541		

PROBATION SUPERVISION WORKLOAD
 BY REGION, DISTRICT, AND CITY/COUNTY
 ACCORDING TO TYPE OF CASE
 YEAR ENDED JUNE 30, 1975¹

Region District City/County	INTAKE			TRANSFER REPORTS			SOCIAL HISTORY REPORTS					
	Juvenile	Adult	Total	Unofficial			Juvenile	Adult	Total	Juvenile	Adult	Total
				Juvenile	Adult	Total						
LYNCHBURG												
Continued from last fiscal year	0	0	0	1	0	1	0	0	0	1	0	1
Added during fiscal year	774	329	1,103	8	0	8	20	0	20	98	0	98
Completed during fiscal year	774	329	1,103	9	0	9	20	0	20	98	0	98
Carried forward to next fiscal year	0	0	0	0	0	0	0	0	0	1	0	1
WAYNESBORO												
Continued from last fiscal year	0	0	0	0	0	0	0	0	0	13	3	16
Added during fiscal year	255	46	301	0	0	0	2	0	2	121	7	128
Completed during fiscal year	255	46	301	0	0	0	2	0	2	120	10	130
Carried forward to next fiscal year	0	0	0	0	0	0	0	0	0	14	0	14
BEDFORD (County and City)												
Continued from last fiscal year	12	0	12	0	0	0	2	0	2	10	0	10
Added during fiscal year	141	22	163	0	0	0	7	0	7	102	0	102
Completed during fiscal year	150	21	171	0	0	0	9	0	9	95	0	95
Carried forward to next fiscal year	3	1	4	0	0	0	0	0	0	17	0	17
NELSON												
Continued from last fiscal year	0	0	0	0	0	0	0	0	0	1	0	1
Added during fiscal year	68	80	148	0	0	0	1	0	1	29	16	45
Completed during fiscal year	59	73	132	0	0	0	1	0	1	28	14	42
Carried forward to next fiscal year	9	7	16	0	0	0	0	0	0	2	2	4
AMHERST												
Continued from last fiscal year	0	0	0	0	0	0	1	0	1	6	4	10
Added during fiscal year	39	18	57	0	0	0	3	0	3	50	32	82
Completed during fiscal year	39	18	57	0	0	0	4	0	4	50	33	83
Carried forward to next fiscal year	0	0	0	0	0	0	0	0	0	6	3	9
CAMPBELL												
Continued from last fiscal year	0	0	0	0	0	0	0	0	0	9	1	10
Added during fiscal year	134	53	187	1	0	1	22	1	23	122	17	139
Completed during fiscal year	134	53	187	1	0	1	22	1	23	121	16	137
Carried forward to next fiscal year	0	0	0	0	0	0	0	0	0	10	2	12
Region VI - SOUTHWEST VIRGINIA												
Continued from last fiscal year	18	0	18	1	0	1	2	0	2	93	5	98
Added during fiscal year	1,884	35	1,919	21	0	21	127	3	130	760	15	775
Completed during fiscal year	1,864	35	1,899	22	0	22	124	3	127	761	18	779
Carried forward to next fiscal year	38	0	38	0	0	0	5	0	5	92	2	94
District 27												
Continued from last fiscal year	0	0	0	0	0	0	0	0	0	48	0	48
Added during fiscal year	810	3	813	0	0	0	1	0	1	281	0	281
Completed during fiscal year	810	3	813	0	0	0	1	0	1	300	0	300
Carried forward to next fiscal year	0	0	0	0	0	0	0	0	0	29	0	29
GALAX												
Continued from last fiscal year	0	0	0	0	0	0	0	0	0	1	0	1
Added during fiscal year	16	0	16	0	0	0	0	0	0	14	0	14
Completed during fiscal year	16	0	16	0	0	0	0	0	0	12	0	12
Carried forward to next fiscal year	0	0	0	0	0	0	0	0	0	3	0	3
RADFORD												
Continued from last fiscal year	0	0	0	0	0	0	0	0	0	6	0	6
Added during fiscal year	75	2	77	0	0	0	0	0	0	23	0	23
Completed during fiscal year	75	2	77	0	0	0	0	0	0	29	0	29
Carried forward to next fiscal year	0	0	0	0	0	0	0	0	0	0	0	0

CASES ON PROBATION/SUPERVISION					CASES IN STATE RECEIVING SERVICE		CASES ON AFTER CARE SUPERVISION		GRAND TOTAL			
Juvenile		Adult			Total	Juvenile	Family	Juvenile	Juvenile	Adult	Family	Total
Official	Unofficial	Official	Unofficial									
86	0	0	0	86	17	9	10	115	0	9	124	
61	20	0	0	81	13	16	20	1,014	329	16	1,359	
68	13	0	0	81	19	15	11	1,012	329	15	1,356	
79	7	0	0	86	11	10	19	117	0	10	127	
48	4	0	0	52	3	3	4	72	3	3	78	
49	21	3	0	73	8	5	4	460	56	5	521	
46	18	1	0	65	4	2	5	450	57	2	509	
51	7	2	0	60	7	6	3	82	2	6	90	
55	0	0	0	55	16	0	11	106	0	0	106	
56	45	0	0	101	21	0	10	382	22	0	404	
57	19	0	0	76	11	0	9	350	21	0	371	
54	26	0	0	80	26	0	12	138	1	0	139	
28	0	3	0	31	1	0	0	30	3	0	33	
14	1	0	0	15	3	2	0	116	96	2	214	
25	0	2	0	27	0	0	0	113	89	0	202	
17	1	1	0	19	4	2	0	33	10	2	45	
16	5	0	0	21	2	0	4	34	4	0	38	
24	2	4	1	31	9	9	3	130	55	9	194	
10	5	1	1	17	5	6	2	115	53	6	174	
30	2	3	0	35	6	3	5	49	6	3	58	
48	0	9	1	58	3	2	12	72	11	2	85	
40	5	4	0	49	8	10	6	338	75	10	423	
42	5	8	1	56	4	7	11	340	79	7	426	
46	0	5	0	51	7	5	7	70	7	5	82	
591	21	34	0	646	97	97	72	895	39	97	1,031	
628	130	29	3	790	74	111	76	3,700	85	111	3,896	
595	114	39	2	750	80	99	64	3,624	97	99	3,820	
624	37	24	1	686	91	109	84	971	27	109	1,107	
208	5	20	0	233	41	41	33	335	20	41	396	
206	26	1	3	236	30	30	20	1,374	7	30	1,411	
271	24	20	2	317	38	38	28	1,472	25	38	1,535	
143	7	1	1	152	33	33	25	237	2	33	272	
11	0	0	0	11	2	2	0	14	0	2	16	
11	1	0	0	12	2	2	2	46	0	2	48	
12	1	0	0	13	2	2	2	45	0	2	47	
10	0	0	0	10	2	2	0	15	0	2	17	
22	1	0	0	23	7	7	1	37	0	7	44	
21	6	0	0	27	4	4	2	131	2	4	137	
35	7	0	0	42	5	5	2	153	2	5	160	
8	0	0	0	8	6	6	1	15	0	6	21	

PROBATION SUPERVISION WORKLOAD
BY REGION, DISTRICT, AND CITY/COUNTY
ACCORDING TO TYPE OF CASE
YEAR ENDED JUNE 30, 1975¹

Region District City/County	INTAKE			TRANSFER REPORTS			SOCIAL HISTORY REPORTS					
	Juvenile	Adult	Total	Unofficial			Juvenile	Adult	Total	Juvenile	Adult	Total
				Juvenile	Adult	Total						
PULASKI												
Continued from last fiscal year	0	0	0	0	0	0	0	0	0	8	0	8
Added during fiscal year	405	0	405	0	0	0	1	0	1	54	0	54
Completed during fiscal year	405	0	405	0	0	0	1	0	1	58	0	58
Carried forward to next fiscal year	0	0	0	0	0	0	0	0	0	4	0	4
WYTHE												
Continued from last fiscal year	0	0	0	0	0	0	0	0	0	3	0	3
Added during fiscal year	120	0	120	0	0	0	0	0	0	30	0	30
Completed during fiscal year	120	0	120	0	0	0	0	0	0	33	0	33
Carried forward to next fiscal year	0	0	0	0	0	0	0	0	0	0	0	0
CARROLL												
Continued from last fiscal year	0	0	0	0	0	0	0	0	0	1	0	1
Added during fiscal year	11	0	11	0	0	0	0	0	0	24	0	24
Completed during fiscal year	11	0	11	0	0	0	0	0	0	17	0	17
Carried forward to next fiscal year	0	0	0	0	0	0	0	0	0	8	0	8
MONTGOMERY												
Continued from last fiscal year	0	0	0	0	0	0	0	0	0	22	0	22
Added during fiscal year	176	1	177	0	0	0	0	0	0	105	0	105
Completed during fiscal year	176	1	177	0	0	0	0	0	0	115	0	115
Carried forward to next fiscal year	0	0	0	0	0	0	0	0	0	12	0	12
FLOYD												
Continued from last fiscal year	0	0	0	0	0	0	0	0	0	2	0	2
Added during fiscal year	3	0	3	0	0	0	0	0	0	19	0	19
Completed during fiscal year	3	0	3	0	0	0	0	0	0	19	0	19
Carried forward to next fiscal year	0	0	0	0	0	0	0	0	0	2	0	2
GRAYSON												
Continued from last fiscal year	0	0	0	0	0	0	0	0	0	5	0	5
Added during fiscal year	4	0	4	0	0	0	0	0	0	12	0	12
Completed during fiscal year	4	0	4	0	0	0	0	0	0	17	0	17
Carried forward to next fiscal year	0	0	0	0	0	0	0	0	0	0	0	0
District 28												
Continued from last fiscal year	0	0	0	1	0	1	0	0	0	10	2	12
Added during fiscal year	305	7	312	7	0	7	103	3	106	145	5	150
Completed during fiscal year	305	7	312	8	0	8	101	3	104	141	7	148
Carried forward to next fiscal year	0	0	0	0	0	0	2	0	2	14	0	14
BRISTOL												
Continued from last fiscal year	0	0	0	0	0	0	0	0	0	0	0	0
Added during fiscal year	110	0	110	0	0	0	34	2	36	34	1	35
Completed during fiscal year	110	0	110	0	0	0	32	2	34	29	1	30
Carried forward to next fiscal year	0	0	0	0	0	0	2	0	2	5	0	5
WASHINGTON												
Continued from last fiscal year	0	0	0	1	0	1	0	0	0	5	1	6
Added during fiscal year	56	1	57	2	0	2	33	1	34	61	2	63
Completed during fiscal year	56	1	57	3	0	3	33	1	34	59	3	62
Carried forward to next fiscal year	0	0	0	0	0	0	0	0	0	7	0	7
SMYTH												
Continued from last fiscal year	0	0	0	0	0	0	0	0	0	5	1	6
Added during fiscal year	139	6	145	5	0	5	36	0	36	50	2	52
Completed during fiscal year	139	6	145	5	0	5	36	0	36	53	3	56
Carried forward to next fiscal year	0	0	0	0	0	0	0	0	0	2	0	2

CASES ON PROBATION/SUPERVISION					CASES IN STATE RECEIVING SERVICE			CASES ON AFTER CARE SUPERVISION			GRAND TOTAL			
Juvenile		Adult			Total	Juvenile	Family	Juvenile	Juvenile	Adult	Family	Total		
Official	Unofficial	Official	Unofficial											
55	1	16	0	72	5	5	12	81	16	5	102			
41	1	0	0	42	12	12	4	518	0	12	530			
53	1	16	0	70	10	10	9	537	16	10	563			
43	1	0	0	44	7	7	7	62	0	7	69			
23	0	0	0	23	4	4	6	36	0	4	40			
18	1	1	0	20	4	4	1	174	1	4	179			
17	1	0	0	18	3	3	4	178	0	3	181			
24	0	1	0	25	5	5	3	32	1	5	38			
20	0	0	0	20	5	5	2	28	0	5	33			
11	0	0	0	11	1	1	2	49	0	1	50			
17	0	0	0	17	2	2	2	49	0	2	51			
14	0	0	0	14	4	4	2	28	0	4	32			
42	2	3	0	47	13	13	11	90	3	13	106			
74	14	0	3	91	6	6	4	379	4	6	389			
86	12	3	2	103	11	11	7	407	6	11	424			
30	4	0	1	35	8	8	8	62	1	8	71			
12	1	1	0	14	1	1	0	16	1	1	18			
15	2	0	0	17	0	0	1	40	0	0	40			
23	2	1	0	26	1	1	0	48	1	1	50			
4	1	0	0	5	0	0	1	8	0	0	8			
23	0	0	0	23	4	4	1	33	0	4	37			
15	1	0	0	16	1	1	4	37	0	1	38			
28	0	0	0	28	4	4	2	55	0	4	59			
10	1	0	0	11	1	1	3	15	0	1	16			
110	0	14	0	124	26	0	13	160	16	0	176			
144	0	6	0	150	20	41	15	739	21	41	801			
95	0	9	0	104	19	16	11	680	26	16	722			
159	0	11	0	170	27	25	17	219	11	25	255			
38	0	5	0	43	12	0	5	55	5	0	60			
38	0	1	0	39	6	15	4	226	4	15	245			
31	0	4	0	35	8	6	4	214	7	6	227			
45	0	2	0	47	10	9	5	67	2	9	78			
45	0	5	0	50	8	0	4	63	6	0	69			
55	0	1	0	56	7	13	7	221	5	13	239			
33	0	3	0	36	7	6	4	195	8	6	209			
67	0	3	0	70	8	7	7	89	3	7	99			
27	0	4	0	31	6	0	4	42	5	0	47			
51	0	4	0	55	7	13	4	292	12	13	317			
31	0	2	0	33	4	4	3	271	11	4	286			
47	0	6	0	53	9	9	5	63	6	9	78			

PROBATION SUPERVISION WORKLOAD
 BY REGION, DISTRICT, AND CITY/COUNTY
 ACCORDING TO TYPE OF CASE
 YEAR ENDED JUNE 30, 1975¹

Region District City/County	INTAKE			TRANSFER REPORTS			SOCIAL HISTORY REPORTS			CASES ON PROBATION/SUPERVISION					CASES IN STATE RECEIVING SERVICE		CASES ON AFTER CARE SUPERVISION		GRAND TOTAL						
	Juvenile	Adult	Total	Unofficial			Juvenile	Adult	Total	Juvenile	Adult	Total	Juvenile		Adult		Total	Juvenile	Family	Juvenile	Juvenile	Adult	Family	Total	
				Official	Unofficial	Official							Unofficial	Total											
District 29																									
Continued from last fiscal year	1	0	1	0	0	0	1	0	1	30	0	30	183	5	0	0	188	0	25	23	243	0	25	268	
Added during fiscal year	469	22	491	13	0	13	12	0	12	210	0	210	210	42	22	0	274	0	18	25	981	44	18	1,043	
Completed during fiscal year	432	22	454	13	0	13	11	0	11	210	0	210	173	34	10	0	217	0	20	19	892	32	20	944	
Carried forward to next fiscal year	38	0	38	0	0	0	2	0	2	30	0	30	220	13	12	0	245	0	23	29	332	12	23	367	
GILES																									
Continued from last fiscal year	0	0	0	0	0	0	0	0	0	10	0	10	23	0	0	0	23	0	0	2	35	0	0	35	
Added during fiscal year	107	21	128	9	0	9	2	0	2	27	0	27	43	5	7	0	55	0	3	1	194	28	3	225	
Completed during fiscal year	100	21	121	9	0	9	2	0	2	29	0	29	27	5	1	0	33	0	1	1	173	22	1	196	
Carried forward to next fiscal year	7	0	7	0	0	0	0	0	0	8	0	8	39	0	6	0	45	0	2	2	56	6	2	64	
BLAND																									
Continued from last fiscal year	0	0	0	0	0	0	0	0	0	1	0	1	1	0	0	0	1	0	0	0	2	0	0	2	
Added during fiscal year	1	0	1	0	0	0	0	0	0	0	0	0	1	0	2	0	3	0	0	0	2	2	0	4	
Completed during fiscal year	0	0	0	0	0	0	0	0	0	1	0	1	1	0	1	0	2	0	0	0	2	1	0	3	
Carried forward to next fiscal year	1	0	1	0	0	0	0	0	0	0	0	0	1	0	1	0	2	0	0	0	2	1	0	3	
TAZEWELL																									
Continued from last fiscal year	1	0	1	0	0	0	0	0	0	14	0	14	84	5	0	0	89	0	5	5	109	0	5	114	
Added during fiscal year	234	0	234	2	0	2	4	0	4	75	0	75	91	26	13	0	130	0	6	5	437	13	6	456	
Completed during fiscal year	209	0	209	2	0	2	2	0	2	73	0	73	77	24	8	0	109	0	5	4	391	8	5	404	
Carried forward to next fiscal year	26	0	26	0	0	0	2	0	2	16	0	16	98	7	5	0	110	0	6	6	155	5	6	166	
BUCHANAN																									
Continued from last fiscal year	0	0	0	0	0	0	0	0	0	3	0	3	35	0	0	0	35	0	11	8	46	0	11	57	
Added during fiscal year	27	0	27	2	0	2	1	0	1	55	0	55	28	10	0	0	38	0	5	12	135	0	5	140	
Completed during fiscal year	27	0	27	2	0	2	1	0	1	57	0	57	35	5	0	0	40	0	11	6	133	0	11	144	
Carried forward to next fiscal year	0	0	0	0	0	0	0	0	0	1	0	1	28	5	0	0	33	0	5	14	48	0	5	53	
RUSSELL																									
Continued from last fiscal year	0	0	0	0	0	0	0	0	0	1	0	1	17	0	0	0	17	0	4	3	21	0	4	25	
Added during fiscal year	36	1	37	0	0	0	4	0	4	24	0	24	11	0	0	0	11	0	3	2	77	1	3	81	
Completed during fiscal year	33	1	34	0	0	0	4	0	4	23	0	23	8	0	0	0	8	0	0	2	70	1	0	71	
Carried forward to next fiscal year	3	0	3	0	0	0	0	0	0	2	0	2	20	0	0	0	20	0	7	3	28	0	7	35	
DICKENSON																									
Continued from last fiscal year	0	0	0	0	0	0	1	0	1	1	0	1	23	0	0	0	23	0	5	5	30	0	5	35	
Added during fiscal year	64	0	64	0	0	0	1	0	1	29	0	29	36	1	0	0	37	0	1	5	136	0	1	137	
Completed during fiscal year	63	0	63	0	0	0	2	0	2	27	0	27	25	0	0	0	25	0	3	6	123	0	3	126	
Carried forward to next fiscal year	1	0	1	0	0	0	0	0	0	3	0	3	34	1	0	0	35	0	3	4	43	0	3	46	
District 50																									
Continued from last fiscal year	17	0	17	0	0	0	1	0	1	5	3	8	90	11	0	0	101	30	31	3	157	3	31	191	
Added during fiscal year	300	3	303	1	0	1	11	0	11	124	10	134	68	62	0	0	130	24	22	16	606	13	22	641	
Completed during fiscal year	317	3	320	1	0	1	11	0	11	110	11	121	56	56	0	0	112	23	25	6	580	14	25	619	
Carried forward to next fiscal year	0	0	0	0	0	0	1	0	1	19	2	21	102	17	0	0	119	31	28	13	183	2	28	213	
WISE																									
Continued from last fiscal year	13	0	13	0	0	0	1	0	1	2	0	2	54	3	0	0	57	21	23	2	96	0	23	119	
Added during fiscal year	183	0	183	0	0	0	8	0	8	67	0	67	38	33	0	0	71	16	15	13	358	0	15	373	
Completed during fiscal year	196	0	196	0	0	0	8	0	8	60	0	60	40	30	0	0	70	14	19	6	354	0	19	373	
Carried forward to next fiscal year	0	0	0	0	0	0	1	0	1	9	0	9	52	6	0	0	58	23	19	9	100	0	19	119	
SCOTT																									
Continued from last fiscal year	2	0	2	0	0	0	0	0	0	1	3	4	18	2	0	0	20	0	0	0	23	3	0	26	
Added during fiscal year	49	0	49	1	0	1	2	0	2	17	7	24	9	6	0	0	15	2	3	0	86	7	3	96	
Completed during fiscal year	51	0	51	1	0	1	2	0	2	18	8	26	6	6	0	0	12	2	0	0	86	8	0	94	
Carried forward to next fiscal year	0	0	0	0	0	0	0	0	0	0	2	2	21	2	0	0	23	0	3	0	23	2	3	28	

PROBATION SUPERVISION WORKLOAD
 BY REGION, DISTRICT, AND CITY/COUNTY
 ACCORDING TO TYPE OF CASE
 YEAR ENDED JUNE 30, 1975¹

Region District City/County	INTAKE			TRANSFER REPORTS			SOCIAL HISTORY REPORTS					
	Juvenile	Adult	Total	Unofficial			Juvenile	Adult	Total	Juvenile	Adult	Total
				Juvenile	Adult	Total						
LEE												
Continued from last fiscal year	2	0	2	0	0	0	0	0	0	2	0	2
Added during fiscal year	68	3	71	0	0	0	1	0	1	40	3	43
Completed during fiscal year	70	3	73	0	0	0	1	0	1	32	3	35
Carried forward to next fiscal year	0	0	0	0	0	0	0	0	0	10	0	10
Grand Total												
Continued from last fiscal year	755	258	1,013	304	15	319	98	28	126	1,307	40	1,347
Added during fiscal year	42,807	11,569	54,376	3,959	483	4,442	2,446	285	2,731	9,269	345	9,614
Completed during fiscal year	42,967	11,367	54,334	3,841	471	4,312	2,386	300	2,686	9,275	305	9,580
Carried forward to next fiscal year	595	460	1,055	422	27	449	158	13	171	1,301	80	1,381

* All reports for nine (9) months are not in.

** All reports for nine (9) months are in but not all on right forms. Old forms excluded.

*** All reports are in but are on old forms. Totals not included in the main body of the report but are being reported separately on the old forms format.

^{1/} The data in this report are representative of a nine month reporting period, October 1, 1974 through June 30, 1975.

CASES ON PROBATION/SUPERVISION					CASES IN STATE RECEIVING SERVICE		CASES ON AFTER CARE SUPERVISION		GRAND TOTAL			
Juvenile		Adult			Total	Juvenile	Family	Juvenile	Juvenile	Adult	Family	Total
Official	Unofficial	Official	Unofficial									
18	6	0	0	24	9	8	1	38	0	8	46	
21	23	0	0	44	6	4	3	162	6	4	172	
10	20	0	0	30	7	6	0	140	6	6	152	
29	9	0	0	38	8	6	4	60	0	6	66	
6,708	528	2,519	539	10,294	1,096	496	829	11,625	3,399	496	15,520	
6,149	1,821	13,172	471	21,613	1,090	982	839	68,380	26,325	982	95,687	
5,831	1,719	13,702	803	22,055	1,052	775	782	67,853	26,948	775	95,576	
7,026	630	1,989	207	9,852	1,134	703	886	12,152	2,776	703	15,631	

**PROBATION SUPERVISION WORKLOAD
NORFOLK CITY AND ROANOKE COUNTY
ACCORDING TO TYPE OF CASE
YEAR ENDED JUNE 30, 1975¹**

	PRE-HEARING STUDIES			PROBATION CASES UNDER SUPERVISION					AFTERCARE UNDER SUPERVISION			TOTAL		
	Juvenile	Adult	Total	Juvenile		Adult			Juvenile	Adult	Total	Total	Total	Grand Total
				Judicial	Non-Judicial	Judicial	Non-Judicial	Juvenile				Adult		
Norfolk														
Continued from last fiscal year	60	21	81	695	1	102	0	798	106	0	106	862	123	985
Added during fiscal year	688	218	906	857	48	150	25	1,080	65	0	65	1,658	393	2,051
Completed during fiscal year	656	225	881	749	49	135	25	958	77	0	77	1,531	385	1,916
Carried forward to next fiscal year	92	14	106	803	0	117	0	920	94	0	94	989	131	1,120
Roanoke County														
Continued from last fiscal year	22	0	22	120	1	1	1	123	4	0	4	147	2	149
Added during fiscal year	339	1	340	97	5	567	1	670	8	0	8	449	569	1,018
Completed during fiscal year	350	1	351	80	3	50	1	134	5	0	5	438	52	490
Carried forward to next fiscal year	11	0	11	137	3	518	1	659	7	0	7	158	519	677

^{1/} The data in this report are representative of a nine month reporting period, October 1, 1974 through June 30, 1975.

**APPENDIX I
PROBATION SUPERVISION WORKLOAD
DEFINITIONS**

1. *Intake* -- Concerns all cases referred to the Court Service Units for any service in which the subject is seen and a service case file is opened. Examples of cases falling under the Intake process would be the referral of individuals regarding acts of delinquency, incorrigibility, and adult domestic relations problems.
2. *Unofficial Intake Supervision* -- Those cases which are resolved unofficially at Intake with a decision to provide unofficial supervision or counseling (with agreement by child's parents) on a short-term basis by the Intake worker. Note: Unofficial Intake Supervision cases are a subtotal of all Intake cases serviced.
3. *Transfer Reports* -- Refers to report ordered on an individual 15 years of age or older who is charged with a felony. The purpose of the report is to assist the Court in determining if an individual will be transferred to District Court for trial as an adult.
4. *Social History Reports* -- A comprehensive report concerning the complete social history of a child who is before the Court or receiving unofficial services. A Social History Report is always required on any child placed on probation.
5. *Official Probation Supervision* -- Refers to a case that has been through the complete judicial process and probation supervision was ordered by the Judge.
6. *Unofficial Probation Supervision* -- Refers to any case which is referred from the Intake Process to a Field Counselor for supervision with consent of the child's parents.
7. *Cases in State Care* -- Cases in which a child has been committed to the direct care of the Department of Corrections, Division of Youth Services, and is being counseled while in state care.
8. *Family Cases in State Care* -- Refers to cases in which personal contact and counseling is being given to families of children committed to direct care in a state institution.
9. *Aftercare Supervision* -- Refers to cases in which a child is receiving supervision following release from the direct care of a state institution. The child may be released from direct care but still may reside in a Community Youth Home while on Aftercare Supervision.
10. *Adult Cases* -- Adults who are before the Court and receiving services by the Court Service Unit for problems of domestic relations and non-support.
11. *Active Cases* -- The JC-25 Form is used to compute active workloads and it is not intended that the form be used for total case counts. Active cases are those cases where the counselor has rendered or is rendering an active service, other than maintaining some type of record on paper which does not require contact with the individual or collateral contacts involving the individual. For example, cases referred to other court service units or agencies for service unless there is still meaningful involvement with case on the part of the referring unit is not counted. The term "meaningful involvement" refers to personal or other significant contacts with the client or collaterals involved on a planned or regular basis.

APPENDIX II
DELINQUENT CITIES AND COUNTIES

The following table represents those cities and counties which did not submit their monthly "Report of Court Service Workload."

<u>COUNTIES</u>	<u>NUMBER MISSING</u>	<u>MONTH/S</u>
Accomack	5	July - November, 1974
Bath	1	May, 1975
Caroline	4	October, 1974 - January, 1975
Hanover	4	October, 1974 - January, 1975
King George	1	July, 1974
Northampton	5	July - November, 1974
Roanoke	1	April, 1975
Rockbridge	2	September, December, 1974
Spotsylvania	1	July, 1974
Stafford	1	July, 1974
<hr/>		
<u>CITIES</u>		
Buena Vista	4	September - December, 1974
Fredericksburg	1	July, 1974

APPENDIX III
DIVISION OF YOUTH SERVICES
DIRECT CARE FACILITIES

I. Learning Centers

Bon Air
Beaumont
Janie Porter Barrett
Hanover
Pinecrest
Natural Bridge
Appalachian

II. Community Youth Homes

Hampton Place
Exodus House
Ladies Mile Manor
Discovery House
Abraxas House
Grove Avenue

III. Reception and Diagnostic Center

IV. Roanoke Child Care Bureau

APPENDIX IV
J.C. 25 FORM "REPORT OF COURT SERVICES
WORKLOAD"

DC - JC-25
Revised 1975

REPORT OF COURT SERVICES WORKLOAD

JURISDICTION _____ DISTRICT _____ DATE _____

I. Intake	Intake		Unofficial Supervision	
	Juvenile	Adult	Juvenile	Adult
A. # Begin month				
B. # Added				
C. Total				
D. # Completed	x1/3	x1/3		
E. # Remaining				

II. Transfer Reports	Juvenile	Adult
	A. # Begin month	
B. # Added		
C. Total		
D. # Completed	x2	x2
E. # Remaining		

III. Social History Reports	Juvenile	Adult
	A. # Begin month	
B. # Added		
C. Total		
D. # Completed	x5	x5
E. # Remaining		

IV. Cases on Probation/ Supervision	Juvenile		Adult	
	Official	Unoff.	Official	Unoff.
A. # Begin month				
B. # Added				
C. Total	x1	x1	x1	x1
D. # Discharged				
E. # Remaining				

V. Cases in State Care Receiving Service	Juvenile	Family
	A. # Begin month	
B. # Added		
C. Total	x1	x1
D. # Released		
E. # Remaining		

VI. Cases on Aftercare Supervision	Juvenile
	A. # Begin month
B. # Added	
C. Total	x1
D. # Discharged	
E. # Remaining	

Total Credits	A. Juvenile		÷ #Officers	=	Average Workload
	B. Adult				
	C. Total (A+B)				

END