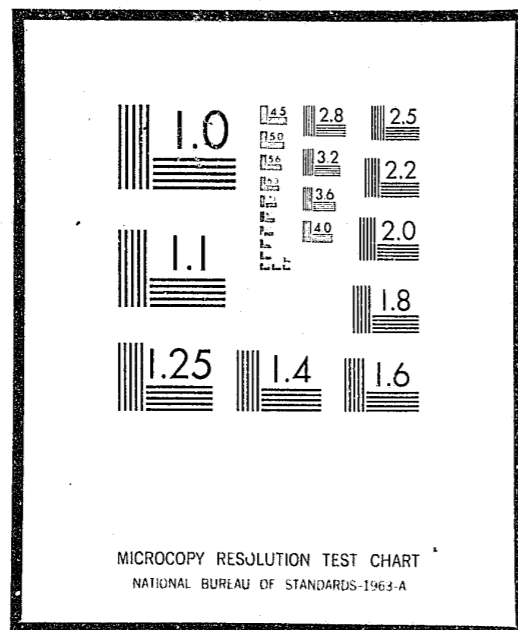


NCJRS

This microfiche was produced from documents received for inclusion in the NCJRS data base. Since NCJRS cannot exercise control over the physical condition of the documents submitted, the individual frame quality will vary. The resolution chart on this frame may be used to evaluate the document quality.



Microfilming procedures used to create this fiche comply with the standards set forth in 41CFR 101-11.504

Points of view or opinions stated in this document are those of the author(s) and do not represent the official position or policies of the U.S. Department of Justice.

U.S. DEPARTMENT OF JUSTICE
LAW ENFORCEMENT ASSISTANCE ADMINISTRATION
NATIONAL CRIMINAL JUSTICE REFERENCE SERVICE
WASHINGTON, D.C. 20531

Date filmed,

4/12/76

CHARACTERISTICS OF INMATES UNDER CUSTODY IN THE FACILITIES OF THE NEW YORK STATE DEPARTMENT OF CORRECTIONAL SERVICES IN 1974

September, 1975

Vol. X, No. 3

This report is one of a series to make data available on the population in the facilities of the New York State Department of Correctional Services. The material in this report cover reported inmate characteristics at the time of commitment and include the following selected items: Reason for Commitment, County of Commitment, Race or Nationality, Minimum and Maximum Sentence, Dangerous Drug Usage, Education, Prior Adult Criminal Record and Present Age. In addition, summary figures are shown for all facilities combined and for both sexes along with percent distributions. Summary totals are also provided for the four basic types of correctional facilities: General Confinement, Reception and Classification, Camps and Specialized Facilities.

H I G H L I G H T S

1. 97.4% of the inmate population are males.
2. 95.0% of male inmates were committed for felonies while 5.0% were committed for other reasons. 97.6% of female inmates were committed for felonies and 2.4% were committed for other reasons.
3. Highest percentages of males under custody were committed for the following felonies: 34.9% for robbery; 12.4% for homicide; 10.0% for dangerous drugs and 9.4% for burglary. 28.9% of females under custody were committed for dangerous drug felonies; 28.4% for homicide and 13.7% for robbery.
4. 69.3% of male inmates were committed from New York City while 63.2% of females were committed from that area.
5. 73.6% of the male population are non-white and 81.6% of the female population.
6. 48.6% of the male population had received maximum sentences of over five years while 44.7% of the female population fell in this category. 15.0% of females had received maximum sentences of life or death while only 8.7% of males had received a life or death maximum. (No inmate currently under custody has a death sentence).
7. 56.0% of the male population had a record of dangerous drug usage and 49.2% of the female population.
8. 59.1% of the male population had one or more previous local, state or federal commitment, but only 31.6% of the female population.
9. Of the total population, 14.1% were under 21 years of age on December 31, 1974. However, only 10.5% of women under custody were under 21 while 14.2% of males were in this category.

TABLE 1A
MOVEMENT OF POPULATION IN THE FACILITIES OF THE
NEW YORK STATE DEPARTMENT OF CORRECTIONAL SERVICES
ADMISSIONS DURING 1974

Facility and Sex	Under Custody 1/1/74	New Commit- ments 1/	Ret.	Ret. MLC Viol.	Trans. From Dept. Inst.	Total Handled During Year
			Parole Viola- tors 2/			
Total	13,437	6,728	1,315	313	18,641	40,434
Males	13,053	6,493	1,290	310	18,608	39,754
Females	384	235	25	3	33	680
General Confinement	10,638	243	1,147	313	10,303	22,644
Attica	1,399	2	200	25	1,243	2,869
Auburn	1,503	1	102	16	1,110	2,732
Clinton	1,687	1	25	5	1,747	3,465
Coxsackie	498	-	76	2	871	1,447
Eastern	626	1	17	-	661	1,305
Elmira	1,105	1	52	8	1,392	2,558
Great Meadow	1,088	1	40	10	1,415	2,554
Green Haven	1,666	6	512	212	928	3,324
Ossining Maint. Cadre	73	-	83	32	86	274
Tappan	172	-	12	-	371	555
Wallkill	475	-	3	-	472	950
Bedford Hills (F)	346	230	25	3	7	611
Reception & Classification	727	6,427	-	-	4,297	11,451
Attica Reception-Class.	23	514	-	-	46	583
Clinton Reception	3	175	-	-	-	178
Clinton Classification	110	-	-	-	2,003	2,113
Elmira Reception	280	1,680	-	-	20	1,980
Green Haven Reception	171	4,058	-	-	14	4,243
Ossining Classification	140	-	-	-	2,214	2,354
Camps	418	-	22	-	741	1,181
Adirondack	87	-	1	-	118	206
Georgetown	92	-	34	-	178	274
Monterey	74	-	2	-	144	220
Pharsalia	78	-	12	-	139	229
Summit	87	-	3	-	162	252
Specialized	1,654	58	146	-	3,300	5,158
ACTEC	172	-	2	-	387	561
Albion	267	1	42	-	423	733
Bayview	-	-	68	-	365	433
Edgecombe	-	-	5	-	179	184
Rochester	33	-	6	-	85	124
Taconic	-	-	11	-	365	376
Fishkill:						
Beacon	58	-	-	-	-	58
Diagnostic & Eval.	42	-	-	-	368	410
Elderly & Handicapped	173	-	1	-	74	248
Female	-	-	-	-	20	20
Work Release	57	-	8	-	241	306
Borderline	291	-	-	-	87	378
Emotionally Impaired	-	-	-	-	86	86
Cadre	-	-	2	-	155	157
Matteawan State Hosp.	561	57	1	-	465	1,084
Males	(523)	(52)	(1)	-	(459)	(1,035)
F males	(38)	(5)	(1)	-	(6)	(49)

See page 22 for explanatory footnotes.

TABLE 1B
MOVEMENT OF POPULATION IN THE FACILITIES OF THE
NEW YORK STATE DEPARTMENT OF CORRECTIONAL SERVICES
RELEASES DURING 1974

Facility and Sex	Total Handled During Year	MCL Re- lease	Rest.	Other	Trans.	Under Custody 12/31/74
			to Par. Super. 3/	Re- leases 4/	to Dept. Inst.	
Total	40,434	3,964	1,704	24	1,714	18,641
Males	39,754	3,780	1,683	24	1,652	18,608
Females	680	184	21	-	62	33
General Confinement	22,644	3,088	1,484	24	969	11,397
Attica	2,869	218	155	8	113	826
Auburn	2,732	327	156	-	86	633
Clinton	3,465	214	208	-	71	1,214
Coxsackie	1,447	285	49	-	115	364
Eastern	1,305	294	93	-	56	185
Elmira	2,558	457	181	-	118	649
Great Meadow	2,554	194	225	-	62	708
Green Haven	3,324	480	333	13	268	572
Ossining Maint. Cadre	274	36	12	3	11	129
Tappan	555	148	42	-	32	186
Wallkill	950	251	12	-	12	192
Bedford Hills (F)	611	184	18	-	25	24
Reception & Classification	11,451	-	3	-	39	10,518
Attica Reception-Class.	583	-	-	-	1	477
Clinton Reception	178	-	-	-	-	177
Clinton Classification	2,113	-	1	-	2	1,969
Elmira Reception	1,980	-	-	-	29	1,628
Green Haven Reception	4,243	-	-	-	2	4,094
Ossining Classification	2,354	-	2	-	5	2,173
Camps	1,181	32	12	-	48	685
Adirondack	206	32	12	-	8	68
Georgetown	274	-	-	-	12	172
Monterey	220	-	-	-	8	137
Pharsalia	229	-	-	-	14	149
Summit	252	-	-	-	6	159
Specialized	5,158	844	205	-	658	1,756
ACTEC	561	74	20	-	10	194
Albion	733	209	25	-	77	161
Bayview	433	158	12	-	133	25
Edgecombe	184	45	2	-	11	10
Rochester	124	67	8	-	9	15
Taconic	376	80	20	-	20	114
Fishkill:						
Beacon	58	3	5	-	43	-
Diagnostic & Eval.	410	-	7	-	5	366
Elderly & Handicapped	248	31	19	-	11	79
Female	20	-	-	-	-	20
Work Release	306	114	11	-	10	79
Borderline	378	52	17	-	12	243
Emotionally Impaired	86	4	4	-	6	72
Cadre	157	7	6	-	5	29
Matteawan State Hosp.	1,084	-	49	-	306	369
Males	(1,035)	-	(46)	-	(269)	(360)
Females	(49)	-	(3)	-	(37)	(9)

See page 22 for explanatory footnotes.

TABLE 2A
CHARACTERISTICS OF INMATES UNDER CUSTODY IN THE
FACILITIES OF THE NEW YORK STATE DEPARTMENT OF CORRECTIONAL SERVICES
DECEMBER 31, 1974
ALL FACILITIES

Characteristics	Total		Males		Females	
	Number	Percent	Number	Percent	Number	Percent
<u>Reason for Commitment</u>	14,387	100.0	14,007	100.0	380	100.0
Felonies	13,675	95.0	13,304	95.0	371	97.6
Murder	966	6.7	949	6.8	17	4.5
Homicide (Neg.& Non-Neg.)	1,844	12.8	1,736	12.4	108	28.4
Robbery	4,942	34.4	4,890	34.9	52	13.7
Burglary	1,328	9.2	1,320	9.4	8	2.1
Felonious Assault	852	5.9	829	5.9	23	6.0
Grand Larceny (Not Auto)	366	2.6	350	2.5	16	4.2
Grand Larceny (Auto)	47	0.3	46	0.3	1	0.3
Rape	406	2.8	404	2.9	2	0.5
Sex Offenses, Ex. Rape	236	1.6	236	1.7	-	-
Dangerous Drugs	1,513	10.5	1,403	10.0	110	28.9
Forgery	159	1.1	148	1.1	11	2.9
Dangerous Weapons	597	4.2	588	4.2	9	2.4
All Other Felonies	419	2.9	405	2.9	14	3.7
Misd. & Violations	14	0.1	13	0.1	1	0.3
Youthful Offenders	633	4.4	625	4.4	8	2.1
Juvenile Delinquents <u>5/</u>	13	0.1	13	0.1	-	-
Not Convicted <u>6/</u>	52	0.4	52	0.4	-	-
<u>County of Commitment</u>	14,387	100.0	14,007	100.0	380	100.0
New York City	9,949	69.2	9,709	69.3	240	63.2
Upstate	4,438	30.8	4,298	30.7	140	36.8
Counties with 200 or more commitments	2,593	18.0	2,502	17.9	91	23.9
Nassau	575	4.0	560	4.0	15	3.9
Erie	562	3.9	545	3.9	17	4.5
Monroe	446	3.1	427	3.1	19	5.0
Onondaga	361	2.5	342	2.4	19	5.0
Suffolk	356	2.5	347	2.5	9	2.4
Westchester	293	2.0	281	2.0	12	3.1
Counties with less than 200 commitments	1,845	12.8	1,796	12.8	49	12.9

See page 22 for explanatory footnotes.

TABLE 2B
CHARACTERISTICS OF INMATES UNDER CUSTODY IN THE
FACILITIES OF THE NEW YORK STATE DEPARTMENT OF CORRECTIONAL SERVICES
DECEMBER 31, 1974
ALL FACILITIES

Characteristics	Total		Males		Females	
	Number	Percent	Number	Percent	Number	Percent
<u>Race or Nationality</u>	14,387	100.0	14,007	100.0	380	100.0
White	3,774	26.2	3,704	26.4	70	18.4
Black	8,280	57.6	8,022	57.3	258	67.9
Puerto Rican <u>7/</u>	2,277	15.8	2,227	15.9	50	13.2
Other	56	0.4	54	0.4	2	0.5
<u>Min. Sentence on Commitment</u>	14,387	100.0	14,007	100.0	380	100.0
No Minimum <u>8/</u>	1,165	8.1	1,150	8.2	15	3.9
One Day	15	0.1	15	0.1	-	-
12-29 Months	1,388	9.6	1,345	9.6	43	11.4
30 Months	104	0.7	101	0.7	3	0.8
31-59 Months	676	4.7	661	4.7	15	3.9
60-119 Months	965	6.7	950	6.8	15	3.9
120-239 Months	515	3.6	500	3.6	15	3.9
20 or More Years	630	4.4	620	4.4	10	2.7
Life or Death	169	1.2	166	1.2	3	0.8
Unspecified Minimum	8,760	60.9	8,499	60.7	261	68.7
<u>Max. Sentence on Commitment</u>	14,387	100.0	14,007	100.0	380	100.0
Indefinite <u>9/</u>	59	0.4	59	0.4	-	-
Less Than <u>36</u> Months	1	b/	1	b/	-	-
36 Months	2,522	17.5	2,435	17.4	87	22.9
37-47 Months	15	0.1	14	0.1	1	0.3
48 Months	3,363	23.4	3,291	23.5	72	18.9
49-59 Months	9	0.1	9	0.1	-	-
60 Months	1,442	10.0	1,392	9.9	50	13.2
61-120 Months	3,466	24.1	3,402	24.3	64	16.8
121-239 Months	1,425	9.9	1,389	9.9	36	9.5
20 or More Years	811	5.6	798	5.7	13	3.4
Life or Death	1,274	8.9	1,217	8.7	57	15.0

See page 22 for explanatory footnotes.

TABLE 2C
CHARACTERISTICS OF INMATES UNDER CUSTODY IN THE
FACILITIES OF THE NEW YORK STATE DEPARTMENT OF CORRECTIONAL SERVICES
DECEMBER 31, 1974
ALL FACILITIES

Characteristics	Total		Males		Females	
	Number	Percent	Number	Percent	Number	Percent
<u>Users of Dangerous Drugs</u>	8,028	100.0	7,841	100.0	187	100.0
<u>by Reason for Commitment</u>						
Drug Law Violations	1,062	13.2	991	12.6	71	38.0
Other Major Crimes <u>10/</u>	6,506	81.0	6,395	81.6	111	59.3
Other Misd. & Violations	7	0.1	7	0.1	-	-
Youthful Offender	445	5.6	440	5.6	5	2.7
Juvenile Delinquent	8	0.1	8	0.1	-	-
Not Convicted	-	-	-	-	-	-
<u>Education on Commitment</u>	14,387	100.0	14,007	100.0	380	100.0
<u>College or Spec. Voc.</u>	721	5.0	685	4.9	36	9.5
High School Graduate	2,136	14.8	2,082	14.8	54	14.2
High School, Non-Grad.	6,805	47.3	6,594	47.1	211	55.5
Elementary	3,294	22.9	3,223	23.0	71	18.7
Special Classes	157	1.1	153	1.1	4	1.0
Never in School	95	0.7	94	0.7	1	0.3
Not Stated	1,179	8.2	1,176	8.4	3	0.8
<u>Prior Adult Criminal Record</u>	14,387	100.0	14,007	100.0	380	100.0
<u>State or Federal Commitment</u>	4,605	32.0	4,554	32.5	51	13.4
Local Commitment Only	3,786	26.3	3,717	26.6	69	18.2
No Institutional Commitment	5,992	41.7	5,732	40.9	260	68.4
Not Stated	4	b/	4	b/	-	-
<u>Age on December 31, 1974</u>	14,387	100.0	14,007	100.0	380	100.0
16-18 Years	725	5.0	712	5.1	13	3.4
19-20 Years	1,304	9.1	1,277	9.1	27	7.1
21-29 Years	6,727	46.7	6,557	46.8	170	44.7
30-39 Years	3,631	25.2	3,519	25.2	112	29.5
40-54 Years	1,697	11.8	1,654	11.8	43	11.3
55-64 Years	238	1.7	229	1.6	9	2.4
65 Years & Over	65	0.5	59	0.4	6	1.6

See page 22 for explanatory footnotes.

TABLE 3.1A
CHARACTERISTICS OF INMATES UNDER CUSTODY IN THE
FACILITIES OF THE NEW YORK STATE DEPARTMENT OF CORRECTIONAL SERVICES
DECEMBER 31, 1974
GENERAL CONFINEMENT FACILITIES

Characteristics	Total	Cox-					
	Number	Attica	Auburn	Clinton	sackie	Eastern	Elmira
<u>Reason for Commitment</u>	11,397	1,549	1,530	1,758	634	677	1,153
<u>Felonies</u>	10,968	1,533	1,517	1,756	393	666	1,068
Murder	860	179	176	144	3	29	16
Homicide (Neg. & Non-Neg.)	1,531	208	206	271	43	98	105
Robbery	4,035	393	545	509	195	326	548
Burglary	985	174	116	161	57	46	123
Felonious Assault	677	89	74	127	24	40	63
Grand Larceny (Not Auto)	252	44	33	46	11	14	24
Grand Larceny (Auto)	41	5	3	10	3	3	5
Rape	313	78	43	36	12	18	29
Sex Offenses, Ex. Rape	185	68	30	26	7	5	16
Dangerous Drugs	1,173	155	148	224	24	50	70
Forgery	132	36	27	16	1	2	7
Dangerous Weapons	464	50	67	128	5	20	26
All Other Felonies	320	54	49	58	8	15	36
Misd. & Violations	9	-	-	-	5	-	1
Youthful Offenders	410	16	13	2	228	11	82
Juvenile Delinquents <u>5/</u>	10	-	-	-	8	-	2
Not Convicted <u>6/</u>	-	-	-	-	-	-	-
<u>County of Commitment</u>	11,397	1,549	1,530	1,758	634	677	1,153
New York City	8,033	613	1,031	1,400	403	554	827
Upstate	3,364	936	499	358	231	123	326
Counties with 200 or more Commitments	1,967	611	303	170	116	70	171
Nassau	458	40	63	70	18	30	40
Erie	419	276	22	5	32	1	37
Monroe	323	190	27	5	28	1	26
Onondaga	245	62	110	6	15	2	19
Suffolk	284	25	49	44	16	23	27
Westchester	238	18	32	40	7	13	22
Counties with less than 200 commitments	1,397	325	196	188	115	53	155

See page 22 for explanatory footnotes.

TABLE 3.2A
CHARACTERISTICS OF INMATES UNDER CUSTODY IN THE
FACILITIES OF THE NEW YORK STATE DEPARTMENT OF CORRECTIONAL SERVICES
DECEMBER 31, 1974
GENERAL CONFINEMENT FACILITIES

Characteristics	Great Meadow	Green Haven	Ossining Main.Cadre	Tappan	Wall- kill	Bedford Hills (F)
<u>Reason for Commitment</u>	<u>1,365</u>	<u>1,658</u>	<u>83</u>	<u>147</u>	<u>483</u>	<u>360</u>
Felonies	1,330	1,644	83	143	483	352
Murder	49	210	1	3	34	16
Homicide (Neg. & Non-Neg.)	133	247	16	17	85	102
Robbery	653	548	24	66	179	49
Burglary	142	110	10	11	27	8
Felonious Assault	80	111	8	9	33	19
Grand Larceny (Not Auto)	25	34	-	-	6	15
Grand Larceny (Auto)	5	6	-	-	-	1
Rape	49	39	4	-	3	2
Sex Offenses, Ex. Rape	11	19	2	-	1	-
Dangerous Drugs	98	175	10	20	92	107
Forgery	11	18	-	1	2	11
Dangerous Weapons	55	76	5	10	13	9
All Other Felonies	19	51	3	6	8	13
Misd. & Violations	2	-	-	-	-	1
Youthful Offenders	33	14	-	4	-	7
Juvenile Delinquents <u>5/</u>	-	-	-	-	-	-
Not Convicted <u>6/</u>	-	-	-	-	-	-
<u>County of Commitment</u>	<u>1,365</u>	<u>1,658</u>	<u>83</u>	<u>147</u>	<u>483</u>	<u>360</u>
New York City	1,098	1,315	65	132	369	226
Upstate	267	343	18	15	114	134
Counties with 200 or more commitments	136	212	11	11	70	86
Nassau	48	94	4	9	28	14
Erie	14	7	-	-	9	16
Monroe	11	15	-	-	2	18
Onondaga	5	6	-	-	2	18
Suffolk	29	45	4	1	12	9
Westchester	29	45	3	1	17	11
Counties with less than 200 commitments	131	131	7	4	44	48

See page 22 for explanatory footnotes.

TABLE 3.1B
CHARACTERISTICS OF INMATES UNDER CUSTODY IN THE
FACILITIES OF THE NEW YORK STATE DEPARTMENT OF CORRECTIONAL SERVICES
DECEMBER 31, 1974
GENERAL CONFINEMENT FACILITIES

Characteristics	Total Number	Attica	Auburn	Clinton	Cox- sackie	Eastern	Elmira
<u>Race or Nationality</u>	<u>11,397</u>	<u>1,549</u>	<u>1,530</u>	<u>1,758</u>	<u>634</u>	<u>677</u>	<u>1,153</u>
White	2,768	560	425	490	145	102	270
Black	6,739	810	944	908	348	437	667
Puerto Rican <u>7/</u>	1,839	164	153	356	134	138	208
Other	51	15	8	4	7	-	8
<u>Min. Sentence on Commitment</u>	<u>11,397</u>	<u>1,549</u>	<u>1,530</u>	<u>1,758</u>	<u>634</u>	<u>677</u>	<u>1,153</u>
No Minimum <u>8/</u>	805	29	25	8	369	40	169
One Day	9	4	2	1	-	-	-
12-29 Months	1,045	147	136	289	29	48	99
30 Months	82	12	15	18	1	2	10
31-59 Months	559	85	104	119	4	33	39
60-119 Months	838	165	121	181	7	34	32
120-239 Months	429	77	80	68	-	11	12
20 or More Years	546	117	110	96	1	11	2
Life or Death	157	26	37	26	-	5	-
Unspecified Minimum	6,927	887	900	952	223	493	790
<u>Max. Sentence on Commitment</u>	<u>11,397</u>	<u>1,549</u>	<u>1,530</u>	<u>1,758</u>	<u>634</u>	<u>677</u>	<u>1,153</u>
Indefinite <u>9/</u>	-	-	-	-	-	-	-
Less Than <u>36</u> Months	1	-	-	-	1	-	-
36 Months	1,876	177	215	345	73	105	273
37-47 Months	13	2	3	1	1	-	1
48 Months	2,484	258	234	282	430	136	377
49-59 Months	6	1	-	2	-	-	-
60 Months	1,144	127	126	173	37	91	131
61-120 Months	2,882	405	421	446	69	208	260
121-239 Months	1,218	200	208	207	8	84	64
20 or More Years	678	159	127	84	3	27	20
Life or Death	1,095	220	196	218	12	26	27

See page 22 for explanatory footnotes.

TABLE 3.2B
CHARACTERISTICS OF INMATES UNDER CUSTODY IN THE
FACILITIES OF THE NEW YORK STATE DEPARTMENT OF CORRECTIONAL SERVICES
DECEMBER 31, 1974
GENERAL CONFINEMENT FACILITIES

Characteristics	Great Meadow	Green Haven	Ossining Main.Cadre	Tappan	Wall- kill	Bedford Hills (F)
Race or Nationality	1,365	1,658	83	147	483	360
White	174	346	25	28	135	68
Black	960	1,021	44	92	266	242
Puerto Rican 7/	228	287	14	27	82	48
Other	3	4	-	-	-	2
Min. Sentence on Commitment	1,365	1,658	83	147	483	360
No Minimum 8/	89	54	2	7	-	13
One Day	1	-	1	-	-	-
12-29 Months	167	62	5	7	15	41
30 Months	9	11	-	-	1	3
31-59 Months	95	45	2	4	14	15
60-119 Months	108	152	9	2	12	15
120-239 Months	33	126	-	2	6	14
20 or More Years	31	148	-	2	18	10
Life or Death	3	49	1	-	7	3
Unspecified Minimum	829	1,011	63	123	410	246
Max. Sentence on Commitment	1,365	1,658	83	147	483	360
Indefinite 9/	-	-	-	-	-	-
Less Than 36 Months	-	-	-	-	-	-
36 Months	302	216	14	24	52	80
37-47 Months	-	4	-	-	-	1
48 Months	302	272	22	32	72	67
49-59 Months	1	1	-	-	1	-
60 Months	136	154	10	37	72	50
61-120 Months	355	420	23	37	178	60
121-239 Months	119	212	8	11	63	34
20 or More Years	70	149	4	4	18	13
Life or Death	80	230	2	2	27	55

See page 22 for explanatory footnotes.

TABLE 3.1C
CHARACTERISTICS OF INMATES UNDER CUSTODY IN THE
FACILITIES OF THE NEW YORK STATE DEPARTMENT OF CORRECTIONAL SERVICES
DECEMBER 31, 1974
GENERAL CONFINEMENT FACILITIES

Characteristics	Total Number	Attica	Auburn	Clinton	Cox- sackie	Eastern	Elmira
Users of Dangerous Drugs by Reason for Commitment	6,305	711	764	827	473	472	830
Drug Law Violations	806	115	93	144	23	40	55
Other Major Crimes 10/ Other Misd. & Violations	5,197	588	667	681	281	423	713
Youthful Offender	6	-	-	-	4	-	-
Juvenile Delinquent	291	8	4	2	161	9	61
Not Convicted	5	-	-	-	4	-	1
	-	-	-	-	-	-	-
Education on Commitment	11,397	1,549	1,530	1,758	634	677	1,153
College or Spec. Voc.	551	102	140	69	1	29	36
High School Graduate	1,692	313	320	229	28	93	126
High School Non-Grad.	5,477	579	671	677	353	379	637
Elementary	2,576	410	272	472	220	123	236
Special Classes	114	13	10	9	30	9	24
Never in School	74	17	7	15	-	-	2
Not Stated	913	115	110	287	2	44	92
Prior Adult Criminal Record	11,397	1,549	1,530	1,758	634	677	1,153
State or Federal Commitment	3,772	724	564	864	18	165	140
Local Commitment Only	3,052	337	388	452	92	228	385
No Institutional Commitment	4,571	488	578	442	522	284	628
Not Stated	2	-	-	-	2	-	-
Age on December 31, 1974	11,397	1,549	1,530	1,758	634	677	1,153
16-18 Years	446	2	1	2	293	4	87
19-20 Years	915	27	67	3	272	107	250
21-29 Years	5,485	663	770	527	68	484	808
30-39 Years	3,005	541	492	763	1	74	6
40-54 Years	1,339	266	183	400	-	8	2
55-64 Years	176	40	14	57	-	-	-
65 Years & Over	31	10	3	6	-	-	-

See page 22 for explanatory footnotes.

TABLE 3.2C
CHARACTERISTICS OF INMATES UNDER CUSTODY IN THE
FACILITIES OF THE NEW YORK STATE DEPARTMENT OF CORRECTIONAL SERVICES
DECEMBER 31, 1974
GENERAL CONFINEMENT FACILITIES

Characteristics	Great Meadow	Green Haven	Ossining Main.Cadre	Tappan	Wall- Kill	Bedford Hills (F)
<u>Users of Dangerous Drugs by Reason for Commitment</u>	896	770	44	92	251	175
Drug Law Violations	68	115	9	14	62	68
Other Major Crimes <u>10/</u>	801	643	35	74	189	102
Other Misd. & Violations	2	-	-	-	-	-
Youthful Offender	25	12	-	4	-	5
Juvenile Delinquent	-	-	-	-	-	-
Not Convicted	-	-	-	-	-	-
<u>Education on Commitment</u>	1,365	1,658	83	147	483	360
College or Special Voc.	38	63	6	3	30	34
High School Graduate	144	256	20	26	86	51
High School Non-Grad.	726	875	34	76	267	203
Elementary	272	388	20	33	66	64
Special Classes	11	4	-	-	-	4
Never in School	6	22	1	1	2	1
Not Stated	168	50	2	8	32	3
<u>Prior Adult Criminal Record</u>	1,365	1,658	83	147	483	360
State or Federal Commitment	336	715	41	46	111	48
Local Commitment Only	495	421	14	43	131	66
No Institutional Commitment	534	522	28	58	241	246
Not Stated	-	-	-	-	-	-
<u>Age on December 31, 1974</u>	1,365	1,658	83	147	483	360
16-18 Years	40	2	-	3	-	12
19-20 Years	127	23	1	6	6	26
21-29 Years	1,053	517	29	67	238	161
30-39 Years	112	662	28	51	171	104
40-54 Years	29	303	23	17	66	42
55-64 Years	3	46	2	3	2	9
65 Years & Over	1	5	-	-	-	6

See page 22 for explanatory footnotes.

TABLE 4A
CHARACTERISTICS OF INMATES UNDER CUSTODY IN THE
FACILITIES OF THE NEW YORK STATE DEPARTMENT OF CORRECTIONAL SERVICES
DECEMBER 31, 1974
RECEPTION AND CLASSIFICATION FACILITIES

Characteristics	Total Number	Attica Rec.- Class.	Clinton Rec.- Class.	Elmira Rec.	Green Haven Rec.	Ossining Class.
<u>Reason for Commitment</u>	891	105	142	323	147	174
<u>Felonies</u>	812	105	142	244	147	174
Murder	17	1	1	5	5	5
Homicide (Neg. & Non-Neg.)	83	12	10	29	18	14
Robbery	283	17	50	116	42	58
Burglary	101	17	13	30	21	20
Felonious Assault	57	7	13	16	8	13
Grand Larceny (Not Auto)	26	9	4	6	4	3
Grand Larceny (Auto)	4	1	-	2	1	-
Rape	40	6	6	14	8	6
Sex Offenses, Ex. Rape	18	5	5	3	4	1
Dangerous Drugs	108	21	23	13	22	29
Forgery	10	3	2	1	2	2
Dangerous Weapons	41	5	13	2	3	18
All Other Felonies	24	1	2	7	9	5
<u>Misd. & Violations</u>	-	-	-	-	-	-
Youthful Offenders	77	-	-	77	-	-
Juvenile Delinquents <u>5/</u>	2	-	-	2	-	-
Not Convicted <u>6/</u>	-	-	-	-	-	-
<u>County of Commitment</u>	891	105	142	323	147	174
New York City	631	38	111	206	133	143
Upstate	260	67	31	117	14	31
Counties with 200 or more commitments	139	43	16	46	11	23
Nassau	32	3	6	7	3	13
Erie	22	11	1	10	-	-
Monroe	27	19	-	8	-	-
Onondaga	22	8	-	14	-	-
Suffolk	10	-	4	-	-	6
Westchester	26	2	5	7	8	4
Counties with less than 200 commitments	121	24	15	71	3	8

See page 22 for explanatory footnotes.

TABLE 4B
CHARACTERISTICS OF INMATES UNDER CUSTODY IN THE
FACILITIES OF THE NEW YORK STATE DEPARTMENT OF CORRECTIONAL SERVICES
DECEMBER 31, 1974
RECEPTION AND CLASSIFICATION FACILITIES

Characteristics	Total Number	Attica	Clinton	Elmira Rec.	Green	Ossining Class.
		Rec.- Class.	Rec.- Class.		Haven Rec.	
<u>Race or Nationality</u>	891	105	142	323	147	174
White	258	42	38	93	43	42
Black	472	50	79	174	74	95
Puerto Rican 7/	161	13	25	56	30	37
Other	-	-	-	-	-	-
<u>Min. Sentence on Commitment</u>	891	105	142	323	147	174
No Minimum 8/	40	-	-	40	-	-
One Day	-	-	-	-	-	-
12-29 Months	205	44	40	27	43	51
30 Months	15	1	7	2	1	4
31-59 Months	71	5	19	13	18	16
60-119 Months	64	12	7	20	14	11
120-239 Months	23	4	6	2	8	3
20 or More Years	7	-	-	1	3	3
Life or Death	-	-	-	-	-	-
Unspecified Minimum	466	39	63	218	60	86
<u>Max. Sentence on Commitment</u>	891	105	142	323	147	174
Indefinite 9/	-	-	-	-	-	-
Less Than 36 Months	-	-	-	-	-	-
36 Months	220	26	29	74	37	54
37-47 Months	-	-	-	-	-	-
48 Months	249	24	25	130	33	37
49-59 Months	1	-	1	-	-	-
60 Months	72	8	20	20	4	20
61-120 Months	173	13	39	59	32	30
121-239 Months	58	9	11	17	13	8
20 or More Years	36	8	3	13	9	3
Life or Death	82	17	14	10	19	22

See page 22 for explanatory footnotes.

TABLE 4C
CHARACTERISTICS OF INMATES UNDER CUSTODY IN THE
FACILITIES OF THE NEW YORK STATE DEPARTMENT OF CORRECTIONAL SERVICES
DECEMBER 31, 1974
RECEPTION AND CLASSIFICATION FACILITIES

Characteristics	Total Number	Attica	Clinton	Elmira Rec.	Green	Ossining Class.
		Rec.- Class.	Rec.- Class.		Haven Rec.	
<u>Users of Dangerous Drugs By Reason for Commitment</u>	599	68	81	251	87	112
Drug Law Violations	89	20	17	12	17	23
Other Major Crimes 10/ Other Misd. & Violations	452	48	64	181	70	89
Youthful Offender	-	-	-	-	-	-
Juvenile Delinquent	56	-	-	56	-	-
Not Convicted	2	-	-	2	-	-
-	-	-	-	-	-	-
<u>Education on Commitment</u>	891	105	142	323	147	174
College or Spec. Voc.	50	12	12	1	12	13
High School Graduate	131	31	18	38	18	26
High School Non-Grad.	382	35	57	166	57	67
Elementary	210	18	30	108	23	31
Special Classes	9	-	1	7	-	1
Never In School	2	1	-	1	-	-
Not Stated	107	8	24	2	37	36
<u>Prior Adult Criminal Record</u>	891	105	142	323	147	174
State or Federal Commitment	230	48	52	8	60	62
Local Commitment Only	220	15	47	69	38	51
No Institutional Commitment	441	42	43	246	49	61
Not Stated	-	-	-	-	-	-
<u>Age on December 31, 1974</u>	891	105	142	323	147	174
16-18 Years	156	-	-	156	-	-
19-20 Years	156	-	-	156	-	-
21-29 Years	357	68	80	11	90	108
30-39 Years	152	22	45	-	42	43
40-54 Years	59	12	13	-	15	19
55-64 Years	10	2	4	-	-	4
65 Years and Over	1	1	-	-	-	-

See page 22 for explanatory footnotes.

TABLE 5A
CHARACTERISTICS OF INMATES UNDER CUSTODY IN THE
FACILITIES OF THE NEW YORK STATE DEPARTMENT OF CORRECTIONAL SERVICES
DECEMBER 31, 1974
CAMPS

Characteristics	Total Number	Camp Adiron- dack	Camp George- town	Camp Mon- terey	Camp Phar- salia	Camp Summit
<u>Reason for Commitment</u>	404	86	90	75	66	87
Felonies	336	86	69	56	50	75
Murder	2	-	1	-	1	-
Homicide (Neg. & Non-Neg.)	16	7	3	2	2	2
Robbery	161	32	38	26	28	37
Burglary	63	12	15	11	8	17
Felony Assault	15	5	-	5	2	3
Grand Larceny (Not Auto)	15	4	3	3	3	2
Grand Larceny (Auto)	-	-	-	-	-	-
Rape	-	-	-	-	-	-
Sex Offenses, Ex. Rape	-	-	-	-	-	-
Dangerous Drugs	32	11	5	4	4	8
Forgery	4	1	-	1	-	2
Dangerous Weapons	15	6	2	1	2	4
All Other Felonies	13	8	2	3	-	-
Misd. & Violations	1	-	1	-	-	-
Youthful Offenders	67	-	20	19	16	12
Juvenile Delinquents <u>5/</u>	-	-	-	-	-	-
Not Convicted <u>6/</u>	-	-	-	-	-	-
<u>County of Commitment</u>	404	86	90	75	66	87
New York City	241	59	59	25	42	56
Upstate	163	27	31	50	24	31
Counties with 200 or more commitments	77	7	16	28	12	14
Nassau	16	4	1	1	6	4
Erie	12	-	-	11	1	-
Monroe	18	1	4	11	1	1
Onondaga	14	-	11	1	1	1
Suffolk	16	2	-	4	2	8
Westchester	1	-	-	-	1	-
Counties with less than 200 commitments	86	20	15	22	12	17

See page 22 for explanatory footnotes.

TABLE 5B
CHARACTERISTICS OF INMATES UNDER CUSTODY IN THE
FACILITIES OF THE NEW YORK STATE DEPARTMENT OF CORRECTIONAL SERVICES
DECEMBER 31, 1974
CAMPS

Characteristics	Total Number	Camp Adiron- dack	Camp George- town	Camp Mon- terey	Camp Phar- salia	Camp Summit
<u>Race or Nationality</u>	404	86	90	75	66	87
White	161	40	30	39	20	32
Black	194	36	51	31	32	44
Puerto Rican <u>7/</u>	48	10	9	5	14	10
Other	1	-	-	-	-	1
<u>Min. Sentence on Commitment</u>	404	86	90	75	66	87
No Minimum <u>8/</u>	120	-	39	37	20	24
One Day	-	-	-	-	-	-
12-29 Months	43	13	10	6	5	9
30 Months	-	-	-	-	-	-
31-59 Months	1	1	-	-	-	-
60-119 Months	1	1	-	-	-	-
120-239 Months	-	-	-	-	-	-
20 or More Years	-	-	-	-	-	-
Life or Death	-	-	-	-	-	-
Unspecified Minimum	239	71	41	32	41	54
<u>Max. Sentence on Commitment</u>	404	86	90	75	66	87
Indefinite <u>9/</u>	-	-	-	-	-	-
Less Than 36 Months	-	-	-	-	-	-
36 Months	124	46	22	11	18	27
37-47 Months	1	-	-	-	1	-
48 Months	210	25	54	52	36	43
49-59 Months	-	-	-	-	-	-
60 Months	35	4	7	7	7	10
61-120 Months	33	10	7	5	4	7
121-239 Months	1	1	-	-	-	-
20 or More Years	-	-	-	-	-	-
Life or Death	-	-	-	-	-	-

See page 22 for explanatory footnotes.

TABLE 5C
CHARACTERISTICS OF INMATES UNDER CUSTODY IN THE
FACILITIES OF THE NEW YORK STATE DEPARTMENT OF CORRECTIONAL SERVICES
DECEMBER 31, 1974
CAMPS

Characteristics	Total Number	Camp Adiron- dack	Camp George- town	Camp Mon- terey	Camp Phar- salia	Camp Summit
<u>Users of Dangerous Drugs</u>						
<u>By Reason for Commitment</u>	305	54	67	62	56	66
Drug Law Violations	30	9	5	4	4	8
Other Major Crimes <u>10/</u>	225	45	49	45	37	49
Other Misd. & Violations	1	-	1	-	-	-
Youthful Offender	49	-	12	13	15	9
Juvenile Delinquent	-	-	-	-	-	-
Not Convicted	-	-	-	-	-	-
<u>Education on Commitment</u>	404	86	90	75	66	87
College or Spec. Voc.	12	7	1	1	1	2
High School Graduate	50	16	5	10	6	13
High School Non-Grad.	242	35	66	41	47	53
Elementary	75	21	10	21	7	16
Special Classes	4	-	3	1	-	-
Never in School	-	-	-	-	-	-
Not Stated	21	7	5	1	5	3
<u>Prior Adult Criminal Record</u>	404	86	90	75	66	87
State or Federal Commitment	38	19	8	3	2	6
Local Commitment Only	101	32	21	12	17	19
No Institutional Commitment	265	35	61	60	47	62
Not Stated	-	-	-	-	-	-
<u>Age on December 31, 1974</u>	404	86	90	75	66	87
16-18 Years	68	-	22	20	14	12
19-20 Years	115	-	29	30	26	30
21-29 Years	186	51	39	25	26	45
30-39 Years	24	24	-	-	-	-
40-54 Years	10	10	-	-	-	-
55-64 Years	1	1	-	-	-	-
65 Years and Over	-	-	-	-	-	-

See page 22 for explanatory footnotes.

TABLE 6A
CHARACTERISTICS OF INMATES UNDER CUSTODY IN THE
FACILITIES OF THE NEW YORK STATE DEPARTMENT OF CORRECTIONAL SERVICES
DECEMBER 31, 1974
SPECIALIZED FACILITIES

Characteristics	Total Number	ACTEC	Albion	Bay- view	Edge- combe	Roches- ter	Taconic	Fish- kill 11/	Mattea- wan S.H.
<u>Reason for Commitment</u>	1,695	263	261	105	116	25	142	423	360
<u>Felonies</u>	1,559	258	235	95	112	23	141	401	294
Murder	87	5	2	1	3	-	2	27	47
Homicide(Neg. & Non-Neg)	214	35	18	6	13	3	17	63	59
Robbery	463	88	58	48	26	4	62	96	81
Burglary	179	33	51	11	8	5	13	36	22
Felonious Assault	103	19	16	7	7	2	3	28	21
Grand Larceny (Not Auto)	73	11	17	-	9	4	8	17	7
Grand Larceny (Auto)	2	-	-	-	-	1	1	-	-
Rape	53	13	6	-	-	-	1	13	20
Sex Offenses, Ex. Rape	33	15	1	1	-	-	-	10	6
Dangerous Drugs	200	16	41	11	26	2	19	68	17
Forgery	13	3	1	1	-	2	-	6	-
Dangerous Weapons	77	12	10	9	13	-	10	16	7
All Other Felonies	62	8	14	-	7	-	5	21	7
Misd. & Violations	4	-	1	-	-	-	-	-	3
Youthful Offenders	79	4	25	10	4	2	1	22	11
Juvenile Delinquents <u>5/</u>	1	1	-	-	-	-	-	-	-
Not Convicted <u>6/</u>	52	-	-	-	-	-	-	-	52
<u>County of Commitment</u>	1,695	263	261	105	116	25	142	423	360
New York City	1,044	157	9	97	94	-	121	305	261
Upstate	651	106	252	8	22	25	21	118	99
Counties with 200 or more commitments	410	50	188	4	21	19	19	57	52
Nassau	69	19	-	3	9	-	11	17	10
Erie	109	3	93	-	-	-	-	5	8
Monroe	78	3	42	-	-	19	-	3	11
Onondaga	80	7	53	-	-	-	-	13	7
Suffolk	46	13	-	1	8	-	6	8	10
Westchester	28	5	-	-	4	-	2	11	6
Counties with less than 200 commitments	241	56	64	4	1	6	2	61	47

See page 22 for explanatory footnotes.

TABLE 6B
CHARACTERISTICS OF INMATES UNDER CUSTODY IN THE
FACILITIES OF THE NEW YORK STATE DEPARTMENT OF CORRECTIONAL SERVICES
DECEMBER 31, 1974
SPECIALIZED FACILITIES

Characteristics	Total Number	ACTEC	Albion	Bay- view	Edge- combe	Roches- ter	Taconic	Fish- kill 11/	Mattea- wan S.H.
Race or Nationality	1,695	263	261	105	116	25	142	423	360
White	587	145	95	8	35	15	30	124	135
Black	875	100	153	72	58	10	88	230	164
Puerto Rican 7/	229	18	10	25	23	-	24	68	61
Other	4	-	3	-	-	-	-	1	-
Min. Sentence on Commitment	1,695	263	261	105	116	25	142	423	360
No Minimum 8/	200	8	49	21	9	6	4	31	72
One Day	6	3	1	-	-	-	1	1	-
12-29 Months	95	29	13	2	6	1	6	30	8
30 Months	7	3	2	-	-	-	1	1	-
31-59 Months	45	12	7	1	3	-	3	9	10
60-119 Months	62	9	9	1	1	2	-	14	26
120-239 Months	63	8	3	3	2	1	2	15	29
20 or More Years	77	6	2	2	2	-	1	27	37
Life or Death	12	-	-	-	1	-	-	2	9
Unspecified Minimum	1,128	185	175	75	92	15	124	293	169
Max. Sentence on Commitment	1,695	263	261	105	116	25	142	423	360
Indefinite 9/	59	-	-	-	-	-	-	2	57
Less than 36 Months	-	-	-	-	-	-	-	-	-
36 Months	302	69	29	27	34	3	29	83	28
37-47 Months	1	-	-	-	-	-	-	1	-
48 Months	420	50	96	42	29	11	29	109	54
49-59 Months	2	-	-	-	-	-	2	-	-
60 Months	191	26	19	14	20	6	35	44	27
61-120 Months	378	64	83	12	23	2	34	97	63
121-239 Months	148	31	25	5	4	1	10	34	38
20 or More Years	97	16	6	3	3	1	1	22	45
Life or Death	97	7	3	2	3	1	2	31	48

See page 22 for explanatory footnotes.

TABLE 6C
CHARACTERISTICS OF INMATES UNDER CUSTODY IN THE
FACILITIES OF THE NEW YORK STATE DEPARTMENT OF CORRECTIONAL SERVICES
DECEMBER 31, 1974
SPECIALIZED FACILITIES

Characteristics	Total Number	ACTEC	Albion	Bay- view	Edge- combe	Roches- ter	Taconic	Fish- kill 11/	Mattea- wan S.H.
Users of Dangerous Drugs By Reason for Commitment	819	138	147	74	52	15	89	186	118
Drug law Violations	137	13	37	8	12	1	16	41	9
Other Major Crimes 10/	632	122	94	58	37	12	72	130	107
Other Misd. & Violations	-	-	-	-	-	-	-	-	-
Youthful Offender	49	2	16	8	3	2	1	15	2
Juvenile Delinquent	1	1	-	-	-	-	-	-	-
Not Convicted	-	-	-	-	-	-	-	-	-
Education on Commitment	1,695	263	261	105	116	25	142	423	360
College or Spec. Voc.	108	25	22	-	12	1	15	18	15
High School Graduate	263	46	62	8	17	11	28	54	37
High School, Non-Grad.	704	114	106	60	58	8	73	177	108
Elementary	433	52	68	36	23	5	18	127	104
Special Classes	30	3	2	1	1	-	-	14	9
Never in School	19	1	1	-	2	-	-	7	8
Not Stated	138	22	-	-	3	-	8	26	79
Prior Adult Criminal Record	1,695	263	261	105	116	25	142	423	360
State or Federal Commitment	565	112	81	21	18	8	51	144	130
Local Commitment Only	413	63	46	39	29	3	43	101	89
No Institutional Commitment	715	88	134	45	69	14	48	178	139
Not Stated	2	-	-	-	-	-	-	-	2
Age on December 31, 1974	1,695	263	261	105	116	25	142	423	360
16-18 Years	55	6	16	7	-	-	2	17	7
19-20 Years	118	6	33	13	10	6	5	25	20
21-29 Years	699	133	119	51	42	14	77	127	136
30-39 Years	450	77	47	24	35	2	35	123	107
40-54 Years	289	35	43	9	25	3	21	80	73
55-64 Years	51	6	3	1	3	-	-	26	12
65 Years and Over	33	-	-	-	1	-	2	25	5

See page 22 for explanatory footnotes.

FOOTNOTES

- 1/ Includes new commitments, 20 transfers from institutions outside the Department (one Mental Hygiene, 19 local) and 17 affirmations of sentence.
- 2/ Returned for technical violations without new court commitments. Includes on return from DACC, 40 returns from escape and 264 returned late from temporary release.
- 3/ Does not include one cooperative case restored to parole supervision in March 1974, who was never under custody in a New York State correctional facility.
- 4/ Includes 481 maximum expirations of sentence, 34 deaths, 444 court orders, 49 escapes, 411 absent from temporary release (please note that 263 were returned late from temporary release) and 216 transfers to institutions outside the Department (203 to Mental Hygiene, 2 to DACC and 11 to local institutions) and 79 mentally handicapped persons.
- 5/ Commitments of Wayward Minors eliminated effective September 1, 1971.
- 6/ Such commitments of insane or mental defectives eliminated effective May 30, 1974.
- 7/ Includes persons of Puerto Rican birth or parentage.
- 8/ Includes reformatory sentences, eliminated effective July 31, 1974 and commitments of not-convicted insane or mental defectives eliminated May 30, 1974 and transfers from local penal institutions.
- 9/ Includes not convicted insane or mental defective commitments, eliminated May 30, 1974 and transfers from local penal institutions.
- 10/ Includes all felonies and the misdemeanors and violations formerly specified in section 552, Code of Criminal Procedure.
- 11/ Includes 20 females.
 - a/ Includes 12 inmates in Transfer Unit as of December 31, 1974.
 - b/ Less than 0.1 percent.

END