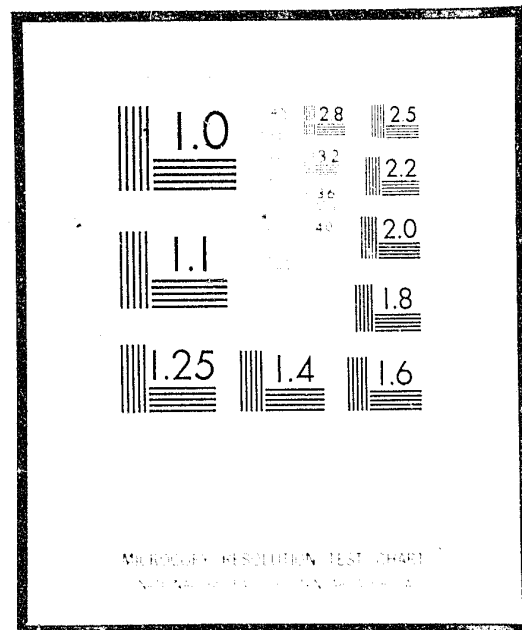


NCJRS

This microfiche was produced from documents received for inclusion in the NCJRS data base. Since NCJRS cannot exercise control over the physical condition of the documents submitted, the individual frame quality will vary. The resolution chart on this frame may be used to evaluate the document quality.



Microfilming procedures used to create this fiche comply with the standards set forth in 41CFR 101-11.504

Points of view or opinions stated in this document are those of the author(s) and do not represent the official position or policies of the U.S. Department of Justice.

U.S. DEPARTMENT OF JUSTICE
 LAW ENFORCEMENT ASSISTANCE ADMINISTRATION
 NATIONAL CRIMINAL JUSTICE REFERENCE SERVICE
 WASHINGTON, D.C. 20531

4/14/76

Date filmed

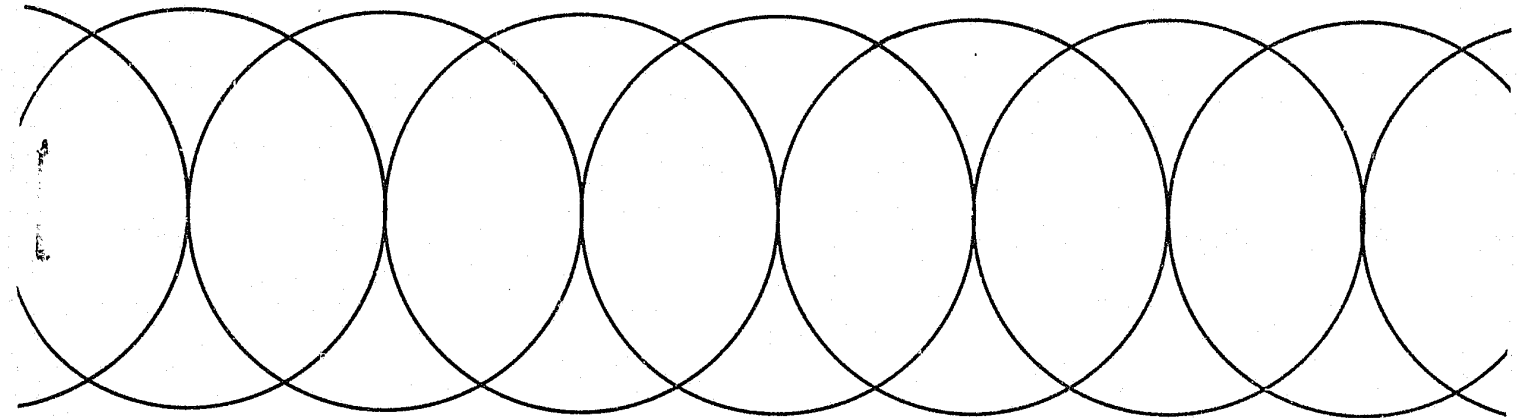
Final Report

74-DF-09-0029
 74-EP-09-0005

California -
 Department of Justice -

MANAGEMENT AND ADMINISTRATIVE STATISTICS

MAS design requirements



31759

SEARCHED INDEXED

California Department of Justice/Division of Law Enforcement/Bureau of Criminal Statistics

State of California

DEPARTMENT OF JUSTICE

EVELLE J. YOUNGER, Attorney General



Prepared by the
BUREAU OF CRIMINAL STATISTICS

MAS DESIGN REQUIREMENTS

Floyd Cornett
Marjorie Wallior

74-0319 5/75 200

77 Cadillac Drive
P.O. Box 13427
Sacramento, Ca. 95813

DESIGN REQUIREMENTS
Prepared for
LAW ENFORCEMENT CONSOLIDATED DATA CENTER

Reviewed and Approved by:

W. H. Hutchins

W. H. Hutchins, Chief
Bureau of Criminal Statistics

5/13/75
Date

Stan Wilkins

Stan Wilkins, Program Administrator
Management and Administrative Statistics
Bureau of Criminal Statistics

5-13-75
Date

Robert Livingston

Robert Livingston, Program Administrator
CDS Technical Assistance
Bureau of Criminal Statistics

5-13-75
Date

Accepted by:

Carol Andrews

Carol Andrews, Manager
BCS Program Support, LECDC

5-15-75
Date

DESIGN REQUIREMENTS
MANAGEMENT AND ADMINISTRATIVE STATISTICS

Historical Change Log

Date	Version	Section	Change Made By	Reason for Change

Distribution of Master Copies

A copy of each revision should be sent to the following:

- User Library Dorinne Forneris, Cadillac Drive
- CDS Technical Assistance Bob Livingston, Cadillac Drive
- User Program Administrator Stan Wilkins, Cadillac Drive
- LECDC Program Manager Carol Andrews, 18th and I Streets

DESIGN REQUIREMENTS
TABLE OF CONTENTS

Section	Page
1.0 Overview	
1.1 Introduction	1
1.2 Authorization	2
1.3 Objectives	3
1.4 Development Control	5
1.5 Project Documentation	6
2.0 Input	
2.1 Data Elements	7
Record Key	7
Quantitative Data	7
2.2 Data Codes	8
2.3 Computer Validations and Conditional Checks	17
Record Key	18
Demographic and Economic Characteristics	19
Workload	20
Personnel	22
Expenditures	23
3.0 File Maintenance	
3.1 Transaction Processing	25
3.2 Error Processing	26
3.3 File Control	27
3.4 File Security	28
4.0 Outputs	
4.1 Error Listings	29
4.2 Statistical Reports	31
5.0 Appendices	
5.1 Data Transcription Estimates	49
5.2 Criminal Justice Profile Tape Record Layout	51
5.3 Criminal Justice Profile Data Elements	53
5.4 Conversion Table	66
5.5 Consultant Reports on Juvenile Probation Data Elements	68

DESIGN REQUIREMENTS
MANAGEMENT AND ADMINISTRATIVE STATISTICS

1.1 Introduction

The Bureau of Criminal Statistics (BCS) is the state's center for collecting and reporting statistical data on criminal justice agencies. These agencies include law enforcement, prosecution, public defense, judicial, and probation.

The Law Enforcement Assistance Administration (LEAA) recently awarded a multi-grant program to the Bureau of Criminal Statistics entitled Comprehensive Data Systems (CDS). The need for CDS was demonstrated by the lack of systematic and accurate procedures for the collection of nationwide criminal justice data.

CDS objectives are to establish an integrated criminal justice information system, to ensure uniform and reliable data, and to act as a planning tool for criminal justice administrators. CDS is composed of five modules, one of which is Management and Administrative Statistics (MAS).

Various criminal justice agencies have expressed a need for comparative statistics on personnel, expenditures, workload, facilities, and equipment: LEAA, through the formation of the CDS guidelines; Office of Criminal Justice Planning, through numerous contracts for information with BCS; and regional planners and criminal justice administrators, through repeated requests for data from BCS. The objective of MAS is to meet the data needs expressed by these criminal justice planners and administrators.

DESIGN REQUIREMENTS
MANAGEMENT AND ADMINISTRATIVE STATISTICS

1.2 Authorization

Legal authority - The basic legal authority which establishes the Bureau of Criminal Statistics as the central agency to collect, process, tabulate, analyze, and interpret data submitted by agencies in the California criminal justice system is the California Penal Code, Sections 13000 et. seq.

Division authorization - The Law Enforcement Assistance Administration awarded funds for the MAS project on July 1, 1974. Section II-31 of the Operational Plan specifies the MAS commitment to LEAA.

Data processing authorization - The MAS data processing authorization number is MS-1 number 56. Authorization was given December 1, 1973.

DESIGN REQUIREMENTS
MANAGEMENT AND ADMINISTRATIVE STATISTICS

1.3 Objectives

The first objective of MAS is to develop and implement a systematic method of collecting, analyzing, and reporting data on personnel, expenditures, workload, facilities, and equipment from criminal justice agencies in California. This information will be entered into a computerized data base and made available to criminal justice planners. The second objective of MAS is to provide an exemplary model for LEAA to introduce nationwide.

The implementation of MAS will consist of six Phases. In Phase One, workload records from the Criminal Justice Profile (MS-1 number 56) will be converted to fiscal year data, keypunched and entered on the computer. Expenditure, workload, and personnel data currently on tape for the Profile will also be incorporated into the MAS system. The data being utilized in Phase One is from all segments of criminal justice. Phase Two will be an expansion of the probation data elements listed in Phase One. Phase Three will expand law enforcement and jail data elements. In Phase Four, data on courts will be collected and entered. District attorney and public defender data will be dealt with in Phase Five. In the final stage, Phase Six, data on facilities will be added for each criminal justice segment and data on equipment will be added to the law enforcement data elements.

In all phases the objectives will be met by: determining data availability from source agencies to avoid duplication of data gathering; identifying information needs of criminal justice planners; defining the files; programming the data; and making the information available to criminal justice planners.

DESIGN REQUIREMENTS
MANAGEMENT AND ADMINISTRATIVE STATISTICS

In order to achieve the MAS goals, four specifications must be met:

1. The system must initially accept data from the Criminal Justice Profile data base in order to establish an MAS data base.
2. The system must have the capability of accepting fiscal year workload data as an addition to the data base.
3. There must be the ability to update files on request.
4. The system must be able to incorporate data elements added in the future for use in Phases Two through Six.

All information needed for establishing the MAS data base and for updating the files will be supplied by the MAS component.

DESIGN REQUIREMENTS
MANAGEMENT AND ADMINISTRATIVE STATISTICS

1.4 Development Control

To ensure proper control for the development of MAS, the Project Implementation Plan (PIP) procedures will be followed during the development of the system. Informal meetings between LECD and MAS staff will be held bimonthly to develop progress reports to management as required.

DESIGN REQUIREMENTS
MANAGEMENT AND ADMINISTRATIVE STATISTICS

1.5 Project Documentation

The Design Requirements are prepared by MAS to document the MAS system. They are the first of five basic documents described below:

Design Requirements - Will provide the detailed information necessary for data processing system design, analysis, and program implementation.

System Specifications - Will outline in detail the proposed data processing system approach to implement the Design Requirements. This document will be developed and maintained by LECDC.

Program Documentation - Will document each computer program and will be developed and maintained by LECDC.

Operation Documentation - Will provide the computer operations staff with all the information necessary for the processing of MAS data on the computer. This will be developed and maintained by LECDC.

User Documentation - Will provide the procedures for preparing input documents for user agencies for processing by LECDC. This document will be developed and maintained by MAS.

As changes are made to the MAS system, they will be recorded in the Design Requirements' Historical Change Log. This document will be updated as needed. Upon written request, LECDC staff will schedule and implement the change.

DESIGN REQUIREMENTS
MANAGEMENT AND ADMINISTRATIVE STATISTICS

2.1 Data Elements

The Criminal Justice Profile data base (MS-1 number 56) will be duplicated and made part of the MAS data base. Appendix 5.2 contains a copy of the Criminal Justice Profile tape record layout. Appendix 5.3 is a listing of the Criminal Justice Profile data elements and codes. In these appendices the column headed "Argument Values" contains data codes. The column headed "Result Values" contains data elements. A conversion table appears in Appendix 5.4. It lists expenditure and personnel data elements and their corresponding Criminal Justice Profile codes and MAS codes. To the Criminal Justice Profile data base will be added fiscal year data. A listing of the additional data elements and codes follows.

RECORD KEY

Item	Mnemonic	Size	Type
Agency	AGY	5	Code 1
Criminal Justice Characteristic	CJC	5	Code 2

QUANTITATIVE DATA

Fiscal Year	Mnemonic	Size	Type
Fiscal Year 1969	FY69	7	Numeric
Fiscal Year 1970	FY70	7	Numeric
Fiscal Year 1971	FY71	7	Numeric
Fiscal Year 1972	FY72	7	Numeric
Fiscal Year 1973	FY73	7	Numeric
Fiscal Year 1974	FY74	7	Numeric
Fiscal Year 1975	FY75	7	Numeric
Fiscal Year 1976	FY76	7	Numeric
Fiscal Year 1977	FY77	7	Numeric
Fiscal Year 1978	FY78	7	Numeric

DESIGN REQUIREMENTS
MANAGEMENT AND ADMINISTRATIVE STATISTICS

2.2 Data Codes

Code 1 Agency

MAS will use the BCS standardized agency codes now cataloged on disk. The table name for these codes is CS-AGY-5.

Code 2 Criminal Justice Characteristic.

DEMOGRAPHIC AND ECONOMIC CHARACTERISTICS

04000	Population
04010	Incorporated
04020	Unincorporated
04022	Adult Population (18 and over)
04024	Juvenile Population (10 to 17)
04030	Square Miles
04040	Assessed Value Per Capita
04050	Income Per Capita

WORKLOAD

Law Enforcement

04060	7 Major Crimes Reported
04090	7 Major Crimes Reported - Sheriff
04120	7 Major Crimes Reported - Police
04150	Adult Felony Arrests
04160	Released
04170	To Other Jurisdiction
04180	Misdemeanor Complaint
04190	Felony Complaint
04195	Misdemeanor and Felony Complaints

DESIGN REQUIREMENTS
MANAGEMENT AND ADMINISTRATIVE STATISTICS

04200	Adult Felony Arrests - Sheriff
04210	Released
04220	To Other Jurisdiction
04230	Misdemeanor Complaint
04240	Felony Complaint
04245	Misdemeanor and Felony Complaints
04250	Adult Felony Arrests - Police
04260	Released
04270	To Other Jurisdiction
04280	Misdemeanor Complaint
04290	Felony Complaint
04295	Misdemeanor and Felony Complaints
04300	Adult Misdemeanor Arrests
04310	Released
04320	To Other Jurisdiction
04330	Misdemeanor Complaint
04340	Adult Misdemeanor Arrests - Sheriff
04350	Released
04360	To Other Jurisdiction
04370	Misdemeanor Complaint
04380	Adult Misdemeanor Arrests - Police
04390	Released
04400	To Other Jurisdiction
04410	Misdemeanor Complaint
04420	Juvenile Arrests
04422	Felony Level
04424	Misdemeanor Level
04426	Delinquent Tendencies
04430	Handled Within Department
04432	Felony Level
04434	Misdemeanor Level
04436	Delinquent Tendencies

DESIGN REQUIREMENTS
MANAGEMENT AND ADMINISTRATIVE STATISTICS

04440	To Other Jurisdiction
04442	Felony Level
04444	Misdemeanor Level
04446	Delinquent Tendencies
04450	To Juvenile Court or Probation
04452	Felony Level
04454	Misdemeanor Level
04456	Delinquent Tendencies
04460	Juvenile Arrests - Sheriff
04462	Felony Level
04464	Misdemeanor Level
04466	Delinquent Tendencies
04470	Handled Within Department
04472	Felony Level
04474	Misdemeanor Level
04476	Delinquent Tendencies
04480	To Other Jurisdiction
04482	Felony Level
04484	Misdemeanor Level
04486	Delinquent Tendencies
04490	To Juvenile Court or Probation
04492	Felony Level
04494	Misdemeanor Level
04496	Delinquent Tendencies
04500	Juvenile Arrests - Police
04502	Felony Level
04504	Misdemeanor Level
04506	Delinquent Tendencies
04510	Handled Within Department
04512	Felony Level
04514	Misdemeanor Level
04516	Delinquent Tendencies
04520	To Other Jurisdiction
04522	Felony Level
04524	Misdemeanor Level
04526	Delinquent Tendencies

DESIGN REQUIREMENTS
MANAGEMENT AND ADMINISTRATIVE STATISTICS

04530	To Juvenile Court or Probation
04532	Felony Level
04534	Misdemeanor Level
04536	Delinquent Tendencies
	Courts
04537	Lower Court Filings
04538	Criminal
04539	Civil
04540	Lower Court Felony Dispositions
04550	Dismissed
04560	Reduced to Misdemeanor
04570	Sentenced Section 17 P. C.
04580	Held to Answer
04590	Amended to Misdemeanor
04600	Certified to Juvenile Court
04610	To Other Jurisdiction
04612	Lower Court Dispositions (Municipal Only)
04614	Criminal
04616	Civil
04618	Municipal Court Weighted Caseload Per Judicial Position
04620	Superior Court Filings
04622	Information
04623	Indictment
04624	Certification
04625	Superior Court Felony Defendants
04626	0 - .9 Months Filing to Disposition
04627	1 - 1.9 Months Filing to Disposition
04628	2 - 2.9 Months Filing to Disposition
04629	3 - 5.9 Months Filing to Disposition
04630	6 - 11.9 Months Filing to Disposition
04631	12 - 23.9 Months Filing to Disposition
04632	24 + Months Filing to Disposition
04633	Median Time Filing to Disposition
04634	Superior Court Felony Defendants Convicted

DESIGN REQUIREMENTS
MANAGEMENT AND ADMINISTRATIVE STATISTICS

04635	0 - .9 Months Filing to Disposition
04636	1 - 1.9 Months Filing to Disposition
04637	2 - 2.9 Months Filing to Disposition
04638	3 - 5.9 Months Filing to Disposition
04639	6 - 11.9 Months Filing to Disposition
04640	12 - 23.9 Months Filing to Disposition
04641	24 + Months Filing to Disposition
04642	Median Time Filing to Disposition
04643	Superior Court Felony Defendants Not Convicted
04644	0 - .9 Months Filing to Disposition
04645	1 - 1.9 Months Filing to Disposition
04646	2 - 2.9 Months Filing to Disposition
04647	3 - 5.9 Months Filing to Disposition
04648	6 - 11.9 Months Filing to Disposition
04649	12 - 23.9 Months Filing to Disposition
04650	24 + Months Filing to Disposition
04651	Median Time Filing to Disposition
04660	Superior Court Dispositions
04670	Not Convicted
04680	Dismissed
04690	Acquitted
04700	By Jury
04710	By Court
04720	By Transcript
04730	Convicted
04740	Original Plea of Guilty
04750	Change Plea to Guilty
04760	Tried
04770	By Jury
04780	By Court
04790	By Transcript
04795	Other
04800	Superior Court Convictions
04810	Felony Sentence
04820	Misdemeanor Sentence

DESIGN REQUIREMENTS
MANAGEMENT AND ADMINISTRATIVE STATISTICS

04830	Defendants Sentenced
04835	Death
04840	Prison
04850	Youth Authority
04860	Probation
04870	Probation and Jail
04880	Probation and Jail - Same Length
04890	Jail Only
04900	Fine
04910	CRC
04920	Mental Hygiene (MDSO)
04925	Superior Court Weighted Caseload Per Judicial Position
Adult Probation	
04930	Superior Court Probation Caseload
04940	Received for Supervision
04950	Straight Probation
04960	Probation and Jail
04970	Removed From Probation
04980	Terminated
04990	Violated
05000	Lower Court Probation Caseload
05010	Received for Supervision
05020	Straight Probation
05030	Probation and Jail
05040	Removed From Probation
05050	Terminated
05060	Violated
Juvenile Probation	
05070	Juvenile Probation Initial Referrals
05080	Closed
05090	Informal Probation
05100	Petition Filed

DESIGN REQUIREMENTS
MANAGEMENT AND ADMINISTRATIVE STATISTICS

05110	Juvenile Court Dispositions
05115	Other
05120	Transferred
05130	Closed
05140	Remanded to Adult Authority
05150	Youth Authority
05160	Non-ward
05170	Ward
05180	Subsequent Petitions
05190	Removals
05200	Informal
05210	Non-ward
05220	Ward
05230	Cases During Period
05240	Informal
05250	Non-ward
05260	Ward
05270	Cases Pending at End of Period
05280	Active Caseload Beginning of Period
05290	Informal
05291	Non-ward
05292	Ward
05293	Persons Under Supervision
05294	Adult Supervision
05295	County Jails
05296	Sentenced
05297	Not Sentenced
05298	County Camps
05299	Sentenced
05300	Not Sentenced
05301	Juvenile Supervision
05302	County Jails
05303	Sentenced
05304	Not Sentenced
05305	Juvenile Halls
05306	Camps, Ranches, Homes, Schools
05307	City and County Camps
05308	Sentenced
05309	Not Sentenced

DESIGN REQUIREMENTS
MANAGEMENT AND ADMINISTRATIVE STATISTICS

PERSONNEL

05320	Total Personnel
05330	Law Enforcement
05340	Police Departments
05350	Sworn
05360	Civilian
05370	Sheriff's Office
05380	Sworn
05390	Civilian
05400	California Highway Patrol
05410	Sworn
05420	Civilian
05430	University
05440	Sworn
05450	Civilian
05460	Bay Area Rapid Transit
05470	Sworn
05480	Civilian
05490	Prosecution
05500	District Attorneys
05510	Attorneys
05520	Investigators
05530	Clerical Staff
05540	All Other
05550	Public Defense
05560	Public Defenders
05570	Attorneys
05580	Investigators
05590	Clerical Staff
05600	All Other

DESIGN REQUIREMENTS
MANAGEMENT AND ADMINISTRATIVE STATISTICS

05610	Courts
05620	Superior Court
05630	Judgeships
05640	Auxiliary
05650	Municipal Court
05660	Judgeships
05670	Auxiliary
05680	Justice Court
05690	Corrections
05700	Probation
05710	Probation Officers
05720	All Others

EXPENDITURES

05730	Total Expenditures
05740	Law Enforcement
05750	Police Department
05760	Sheriff's Office
05770	Prosecution
05780	District Attorney
05790	Public Defense
05800	Public Defender
05810	Courts
05820	Superior Court
05830	Municipal Court
05840	Justice Court
05850	Court Related
05860	Constable and Marshal
05870	Court Reporter, Transcripts
05880	County Clerk
05890	Grand Jury
05900	Law Library
05910	All Other
05920	Corrections
05930	Jail and Rehabilitation
05940	Probation

DESIGN REQUIREMENTS
MANAGEMENT AND ADMINISTRATIVE STATISTICS

2.3 Computer Validations and Conditional Checks

Data elements may be validated individually or as a part of conditional checking. All elements validated will be checked for format, limit, and correctness.

Errors will be flagged and displayed as they are found. The validation and conditional checking process will be continued until the entire record has been processed.

Validation will require that numeric fields contain numeric characters and coded fields contain valid codes.

The sum of all county entries for each data element must equal the statewide total for each respective data element. Exceptions are codes 05000, 05010, 05020, 05030, 05040, 05050, 05306, and 05060. In these cases the statewide total was coded N/A (not available), while some county entries contain data. Data codes 04651, 04642, and 04633 represent median times and will not add to a statewide total.

Conditional checks will ensure completeness and consistency. Detailed descriptions for all validations and conditional checks follow.

DESIGN REQUIREMENTS
MANAGEMENT AND ADMINISTRATIVE STATISTICS

Record Key

Validation:

AGY - Valid Agency Code

Conditional Checks:

The year must be within ten years prior to current year and it must be 1970 or later.

DESIGN REQUIREMENTS
MANAGEMENT AND ADMINISTRATIVE STATISTICS

Demographic and Economic Characteristics

Validation:

All elements must be numeric, blank, or be coded "\$", which indicates data was not available.

Conditional Checks: (see Section 2, Topic 2, for listing of codes).

Total of entries in 04020 and 04010 must equal entries in 04000.

DESIGN REQUIREMENTS
MANAGEMENT AND ADMINISTRATIVE STATISTICS

Workload

Validation:

All elements must be numeric, blank, or coded "\$", which indicates data was not available.

Conditional Checks:

Law Enforcement

Total of entries in 04120 and 04090 must equal entries in 04060.

Total of entries in 04195, 04190, 04180, 04170, and 04160 must equal entries in 04150.

Total of entries in 04245, 04240, 04230, 04220, and 04210 must equal entries in 04200.

Total of entries in 04295, 04290, 04280, 04270, and 04260 must equal entries in 04250.

Total of entries in 04250 and 04200 must equal entries in 04150.

Total of entries in 04330, 04320, and 04310 must equal entries in 04300.

Total of entries in 04370, 04360, and 04350 must equal entries in 04340.

Total of entries in 04410, 04400, and 04390 must equal entries in 04380.

Total of entries in 04380 and 04340 must equal entries in 04300.

Total of entries in 04450, 04440, and 04430 must equal entries in 04420.

Total of entries in 04426, 04424, and 04422 must equal entries in 04420.

Total of entries in 04436, 04434, and 04432 must equal entries in 04430.

Total of entries in 04446, 04444, and 04442 must equal entries in 04440.

Total of entries in 04456, 04454, and 04452 must equal entries in 04450.

Total of entries in 04490, 04480, and 04470 must equal entries in 04460.

Total of entries in 04466, 04464, and 04462 must equal entries in 04460.

DESIGN REQUIREMENTS
MANAGEMENT AND ADMINISTRATIVE STATISTICS

Total of entries in 04476, 04474, and 04472 must equal entries in 04470.

Total of entries in 04486, 04484, and 04482 must equal entries in 04480.

Total of entries in 04496, 04494, and 04492 must equal entries in 04490.

Total of entries in 04530, 04520, and 04510 must equal entries in 04500.

Total of entries in 04506, 04504, and 04502 must equal entries in 04500.

Total of entries in 04516, 04514, and 04512 must equal entries in 04510.

Total of entries in 04526, 04524, and 04522 must equal entries in 04520.

Total of entries in 04536, 04534, and 04532 must equal entries in 04530.

Total of entries in 04500 and 04460 must equal entries in 04420.

Courts

Total of entries in 04539 and 04538 must equal entries in 04537.

Total of entries in 04610, 04600, 04590, 04580, 04570, 04560, and 04550 must equal entries in 04540.

Total of entries in 04616 and 04614 must equal entries in 04612.

Total of entries in 04624, 04623, and 04622 must equal entries in 04620.

Total of entries in 04632, 04631, 04630, 04629, 04628, 04627, and 04626 must equal entries in 04625.

Total of entries in 04641, 04640, 04639, 04638, 04637, 04636, and 04635 must equal entries in 04634.

Total of entries in 04650, 04649, 04648, 04647, 04646, 04645, and 04644 must equal entries in 04643.

Total of entries in 04643 and 04634 must equal entries in 04625.

Total of entries in 04720, 04710, and 04700 must equal entries in 04690.

Total of entries in 04760, 04750, and 04740 must equal entries in 04730.

Total of entries in 04690 and 04680 must equal entries in 04670.

Total of entries in 04730 and 04670 must equal entries in 04660.

Total of entries in 04790, 04780, and 04770 must equal entries in 04760.

Total of entries in 04820 and 04810 must equal entries in 04800.

Total of entries in 04830 must equal entries in 04800.

Total of entries in 04920, 04910, 04900, 04890, 04880, 04870, 04860, 04850, 04840, and 04835 must equal entries in 04830.

DESIGN REQUIREMENTS
MANAGEMENT AND ADMINISTRATIVE STATISTICS

Adult Probation

Total of entries in 04960 and 04950 must equal entries in 04940.
Total of entries in 04990 and 04980 must equal entries in 04970.
Total of entries in 05030 and 05020 must equal entries in 05010.
Total of entries in 05060 and 05050 must equal entries in 05040.

Juvenile Probation

Total of entries in 05100, 05090, and 05080 must equal entries in 05070.
Total of entries in 05170, 05160, 05150, 05140, 05130, 05120, and 05115 must equal entries in 05110.
Total of entries in 05220, 05210, and 05200 must equal entries in 05190.
Total of entries in 05260, 05250, and 05240 must equal entries in 05230.
Total of entries in 05292, 05291, and 05290 must equal entries in 05280.
Total of entries in 05297 and 05296 must equal entries in 05295.
Total of entries in 05300 and 05299 must equal entries in 05298.
Total of entries in 05298 and 05295 must equal entries in 05294.
Total of entries in 05304 and 05303 must equal entries in 05302.
Total of entries in 05309 and 05308 must equal entries in 05307.
Total of entries in 05307, 05306, 05305, and 05302 must equal entries in 05301.
Total of entries in 05301 and 05294 must equal entries in 05293.
Total of entries in 05290 and 05090 must equal entries in 05240.
Total of entries in 05291 and 05160 must equal entries in 05250.
Total of entries in 05292 and 05170 must equal entries in 05260.

Personnel

Validation:

All elements must be numeric, blank, or coded "\$", which indicates data was not available.

Conditional checks:

Total of entries in 05690, 05610, 05550, 05490, and 05330 must equal entries in 05320.

DESIGN REQUIREMENTS
MANAGEMENT AND ADMINISTRATIVE STATISTICS

Law Enforcement

Total of entries in 05360 and 05350 must equal entries in 05340.
Total of entries in 05390 and 05380 must equal entries in 05370.
Total of entries in 05420 and 05410 must equal entries in 05400.
Total of entries in 05450 and 05440 must equal entries in 05430.
Total of entries in 05480 and 05470 must equal entries in 05460.
Total of entries in 05460, 05430, 05400, 05370, and 05340 must equal entries in 05330.

Prosecution

Total of entries in 05540, 05530, 05520, and 05510 must equal entries in 05500.
Total of entries in 05500 must equal entries in 05490.

Public Defense

Total of entries in 05600, 05590, 05580, and 05570 must equal entries in 05560.
Total of entries in 05560 must equal entries in 05550.

Courts

Total of entries in 05640 and 05630 must equal entries in 05620.
Total of entries in 05670 and 05660 must equal entries in 05650.
Total of entries in 05680, 05650, and 05620 must equal entries in 05610.

Corrections

Total of entries in 05720 and 05710 must equal entries in 05700.
Total of entries in 05700 must equal entries in 05690.

Expenditures

Validation:

All elements must be numeric, blank, or coded "\$", which indicates data was not available.

DESIGN REQUIREMENTS
MANAGEMENT AND ADMINISTRATIVE STATISTICS

Conditional checks:

Total of entries in 05920, 05850, 05810, 05790, 05770, and 05740 must equal entries in 05730.

Total of entries in 05760 and 05750 must equal entries in 05740.

Total of entries in 05780 must equal entries in 05770.

Total of entries in 05800 must equal entries in 05790.

Total of entries in 05840, 05830, and 05820 must equal entries in 05810.

Total of entries in 05910, 05900, 05890, 05880, 05870, and 05860 must equal entries in 05850.

Total of entries in 05940 and 05930 must equal entries in 05920.

DESIGN REQUIREMENTS
MANAGEMENT AND ADMINISTRATIVE STATISTICS

3.1 Transaction Processing

The MAS system must have provisions to maintain a computerized file by inputting transactions into the same format at will. The completed system must be able to add, change, and delete master file records. Records will be added from the Criminal Justice Profile (MS-1 number 56).

The initial input will consist of data for six Fiscal Years, 1969-1974. Each subsequent year's data will be added to the existing file until data are on file for the ten previous years. When the tenth year data are input, data from the first year will be deleted, so that the file will never contain more than ten year's data.

We anticipate an input volume of about 33,276 records the first year. The input records will be submitted for update once each year. However, the system developed should have the flexibility to accommodate for updates on demand.

DESIGN REQUIREMENTS
MANAGEMENT AND ADMINISTRATIVE STATISTICS

3.2 Error Processing

All validations and conditional checks will be made on master records updated by input transactions. Master records found to be in error will be flagged as such and the record displayed on an error list for each update.

DESIGN REQUIREMENTS
MANAGEMENT AND ADMINISTRATIVE STATISTICS

3.3 File Control

An audit trail must be provided which will account for all transactions processed by the computer processing unit.

The MAS questionnaires sent to the data entry unit must balance with the records output to the computer processing unit. The MAS computer program must provide adequate input and output record counts to maintain the audit trail.

DESIGN REQUIREMENTS
MANAGEMENT AND ADMINISTRATIVE STATISTICS

3.4 File Security

Provisions must be made to allow for the re-creation of the master file from three separate and distinct sources. In addition to this, at least one of these sources must be stored in such a way as to be protected from fire, water, and other potential hazards.

DESIGN REQUIREMENTS
MANAGEMENT AND ADMINISTRATIVE STATISTICS

4.1 Error Listings

Each MAS update run will have a listing of all update errors. These listings will provide the MAS staff with the information needed to correct the MAS master file. Following is the detailed information needed to provide these listings.

Name: MAS Update Errors

Purpose: To provide a listing of all error records found on the MAS master file.

Source: MAS master file

Data Elements Used: All

Selection: All records flagged as errors

Sequence: Agency order

Frequency: With each update run

Report format: See Figure 1

DESIGN REQUIREMENTS
MANAGEMENT AND ADMINISTRATIVE STATISTICS
MAS Update Errors

AGY	CJC	FY69	FY70	FY71	FY72	FY73	FY74	FY75	FY76	FY77	FY78
XXXXX	XXXXX	XXXXXXXX	XXXXXXXX	XXXXXXXX	XXXXXXXX	XXXXXXXX	XXXXXXXX	XXXXXXXX	XXXXXXXX	XXXXXXXX	XXXXXXXX

*****ERRORS*****

Figure 1

DESIGN REQUIREMENTS
MANAGEMENT AND ADMINISTRATIVE STATISTICS

4.2 Statistical Reports

Statistical reports initially required from the MAS system are illustrated in Figures 2 through 16. Computer programs will be needed to tabulate totals, percentages, and rates.

After the first statistical reports are run, modifications and additional reports may be required. Therefore, for a period of six months after the initial run, the system must have the flexibility to accommodate these changes and additions.

The system must be able to divide a given line item by any other line item for any given year. For example: divide Adult Felony Arrests (Code 04150) in 1970 by Sworn Sheriff's Personnel (Code 05380) in 1970 to produce the number of arrests per officer.

Name: California Criminal Justice Management Report

Purpose: To provide statistical data to user agencies

Source: MAS master file

Data Elements Used: All

Selection: At user option

Special Forms: None

Frequency: On request

Routing: To BCS

Report Format: Tables 1-15

Appendix 5.5 contains consultant reports which identify criminal justice management data needs and possible analytical tables for use in Phase Two, probation. These tables present more detailed analyses than Phase One tables. Similar tables are envisioned for Phases Three through Five.

TABLE 1
 DEMOGRAPHIC AND ECONOMIC CHARACTERISTICS, 1972-73 AND 1973-74
 County by Characteristic

County and population group	Population group number	Population (in 100's)	Square miles (1970)	Assessed value per capita	Per capita income	Percent change		
						Population	Assessed value per capita	Income per capita
Statewide total								
1972-73								
1973-74								
Alameda								
1972-73								
1973-74								
Alpine								
1972-73								
1973-74								
Amador								
1972-73								
1973-74								
Ventura								
1972-73								
1973-74								
Yolo								
1972-73								
1973-74								
Yuba								
1972-73								
1973-74								
Recap by population group								
Statewide total								
1972-73								
1973-74								
1 - 5,000,000 to 9,999,999								
1972-73								
1973-74								
2 - 1,000,000 to 4,999,999								
1972-73								
1973-74								
5 - 10,000 to 49,999								
1972-73								
1973-74								
6 - 0 to 9,999								
1972-73								
1973-74								

TABLE 2
 PERSONNEL AND WORKLOAD, 1972-73 AND 1973-74
 County by Rate per 1,000 Population

County and population group	Personnel			Workload		
	Sheriff's (sworn officers)	Judicial positions	Probation officers	Sheriff's arrests	Felony court dispositions	Probation cases July 1
Statewide total						
1972-73						
1973-74						
Alameda						
1972-73						
1973-74						
Alpine						
1972-73						
1973-74						
Ventura						
1972-73						
1973-74						
Yolo						
1972-73						
1973-74						
Yuba						
1972-73						
1973-74						
Recap by population group						
Statewide total						
1972-73						
1973-74						
1 - 5,000,000 to 9,999,999						
1972-73						
1973-74						
2 - 1,000,000 to 4,999,999						
1972-73						
1973-74						
6 - 0 to 9,999						
1972-73						
1973-74						

TABLE 3
 PERSONS IN COUNTY DETENTION
 SEPTEMBER 20, 1972 AND SEPTEMBER 21, 1973
 County by Type of Detention

County and population group	Adult			Juvenile			Percent change		
	Total	Camps	Jails	Total	Juvenile Halls	Camps, Ranches, Homes	Jails	Total adult	Total juvenile
Statewide total									
1972-73									
1973-74									
Alameda									
1972-73									
1973-74									
Alpine									
1972-73									
1973-74									
Ventura									
1972-73									
1973-74									
Yolo									
1972-73									
1973-74									
Yuba									
1972-73									
1973-74									
Recap by population group									
Statewide total									
1972-73									
1973-74									
1 - 5,000,000 to 9,999,999									
1972-73									
1973-74									
2 - 1,000,000 to 4,999,999									
1972-73									
1973-74									
6 - 0 to 9,999									
1972-73									
1973-74									

TABLE 4
 SHERIFF'S OFFICE WORKLOAD, 1972-73 AND 1973-74
 County by Type of Arrest and Rate per 1,000 Population

County and population group	Total arrests	Adult		Juvenile			Total arrests per 1,000 population	Percent change Total arrest
		Felony	Misdemeanor	Felony level	Misdemeanor level	Delinquent tendencies		
Statewide total								
1972-73								
1973-74								
Alameda								
1972-73								
1973-74								
Alpine								
1972-73								
1973-74								
Ventura								
1972-73								
1973-74								
Yolo								
1972-73								
1973-74								
Yuba								
1972-73								
1973-74								
Recap by population group								
Statewide total								
1972-73								
1973-74								
1 - 5,000,000 to 9,999,999								
1972-73								
1973-74								
2 - 1,000,000 to 4,999,999								
1972-73								
1973-74								
5 - 10,000 to 49,999								
1972-73								
1973-74								
6 - 0 to 9,999								
1972-73								
1973-74								

TABLE 5
 SHERIFF'S OFFICE PERSONNEL, 1972-73 AND 1973-74
 County by Number and Rate per 1,000 Unincorporated Population

County and population group	Personnel			Sworn officers per 1,000 population	Arrests per sworn officer	Percent change		
	Total	Sworn	Civilian			Total personnel	Officers per 1,000 population	Arrests per officer
Statewide total								
1972-73								
1973-74								
Alameda								
1972-73								
1973-74								
Alpine								
1972-73								
1973-74								
Ventura								
1972-73								
1973-74								
Yolo								
1972-73								
1973-74								
Yuba								
1972-73								
1973-74								
Recap by population group								
Statewide total								
1972-73								
1973-74								
1 - 5,000,000 to 9,999,999								
1972-73								
1973-74								
2 - 1,000,000 to 4,999,999								
1972-73								
1973-74								
5 - 10,000 to 49,999								
1972-73								
1973-74								
6 - 0 to 9,999								
1972-73								
1973-74								

TABLE 6
 SHERIFF'S OFFICE EXPENITURES, 1972-73 AND 1973-74
 County by Number and Rate

County and population group	Total expenditures in \$1,000's	Expenditures per capita arrestee	Percent change	
			Total expenditures	Expenditures per capita arrestee
Statewide total				
1972-73				
1973-74				
Alameda				
1972-73				
1973-74				
Alpine				
1972-73				
1973-74				
Ventura				
1972-73				
1973-74				
Yolo				
1972-73				
1973-74				
Yuba				
1972-73				
1973-74				
Recap by population group				
Statewide total				
1972-73				
1973-74				
1 - 5,000,000 to 9,999,999				
1972-73				
1973-74				
6 - 0 to 9,999				
1972-73				
1973-74				

TABLE 7
SUPERIOR AND LOWER COURT FELONY WORKLOAD, 1971-72 AND 1972-73
County by Type of Felony Defendants

County and population group	Superior court					Lower court				Percent change	
	Total	Not convicted		Convicted		Total	Dis-missed	Prosecuted		Total Superior court	Total lower court
		Dis-missed	Acquit- ted	Guilty plea	Trial			reduce to misd.	Section 17 P.C.		
Statewide total											
1971-72											
1972-73											
Alameda											
1971-72											
1972-73											
Alpine											
1971-72											
1972-73											
Ventura											
1971-72											
1972-73											
Yolo											
1971-72											
1972-73											
Yuba											
1971-72											
1972-73											
Recap by population group											
Statewide total											
1971-72											
1972-73											
1 - 5,000,000 to 9,999,999											
1971-72											
1972-73											
2 - 1,000,000 to 4,999,999											
1971-72											
1972-73											
5 - 10,000 to 49,999											
1971-72											
1972-73											
6 - 0 to 9,999											
1971-72											
1972-73											

TABLE 8
SUPERIOR AND MUNICIPAL COURT FELONY FILINGS, 1971-72 AND 1972-73
County by Number and Rate per 1,000 Population

County and population group	Superior court		Municipal court		Percent change	
	Total felony filings	Filings per 1,000 population	Total felony filings	Filings per 1,000 population	Superior filings	Municipal filings
Statewide total						
1971-72						
1972-73						
Alameda						
1971-72						
1972-73						
Alpine						
1971-72						
1972-73						
Ventura						
1971-72						
1972-73						
Yolo						
1971-72						
1972-73						
Yuba						
1971-72						
1972-73						
Recap by population group						
Statewide total						
1971-72						
1972-73						
1 - 5,000,000 to 9,999,999						
1971-72						
1972-73						
2 - 1,000,000 to 4,999,999						
1971-72						
1972-73						
6 - 0 to 9,999						
1971-72						
1972-73						

TABLE 9
 MEDIAN TIME FROM FILING TO DISPOSITION IN SUPERIOR COURT,
 1971-72 AND 1972-73
 County by Time

County and population group	Total defendants	Months						Median (months)
		Less than 1.0	1.0-1.9	2.0-2.9	3.0-5.9	6.0-11.9	12.0-23.9	
Statewide total								
1971-72								
1972-73								
Alameda								
1971-72								
1972-73								
Alpine								
1971-72								
1972-73								
Ventura								
1971-72								
1972-73								
Yolo								
1971-72								
1972-73								
Yuba								
1971-72								
1972-73								
Recap by population group								
Statewide total								
1971-72								
1972-73								
1 - 5,000,000 to 9,999,999								
1971-72								
1972-73								
2 - 1,000,000 to 4,999,999								
1971-72								
1972-73								
5 - 10,000 to 49,999								
1971-72								
1972-73								
6 - 0 to 9,999								
1971-72								
1972-73								

TABLE 10
 SUPERIOR AND MUNICIPAL COURT PERSONNEL, 1971-72^d AND 1972-73
 County by Judicial positions, Rate per 1,000 Population and
 Weighted Caseload

County and population group	Superior court			Municipal court			Percent change	
	Total ^b judicial positions	Judgeships per 1,000 population	Weighted ^d caseload per judgeships	Total ^b judicial positions	Judgeships per 1,000 population	Weighted ^d caseload per judgeship	Superior court total positions	Lower court judgeships
Statewide total								
1971-72								
1972-73								
Alameda								
1971-72								
1972-72								
Alpine								
1971-72								
1972-73								
Ventura								
1971-72								
1972-73								
Yolo								
1971-72								
1972-73								
Yuba								
1971-72								
1972-73								
Recap by population group								
Statewide total								
1971-72								
1972-73								
1 - 5,000,000 to 9,999,999								
1971-72								
1972-73								
2 - 1,000,000 to 4,999,999								
1971-72								
1972-73								
5 - 10,000 to 49,999								
1971-72								
1972-73								
6 - 0 to 9,999								
1971-72								
1972-73								

TABLE 11
 SUPERIOR AND LOWER COURT EXPENDITURES, 1971-72 AND 1972-73
 County by Number and Rate per Capita Defendant

County and population group	Superior court		Lower court		Percent change	
	Total expenditures in \$1,000's	Expenditures per capita defendant	Total expenditures in \$1,000's	Expenditures per capita defendant	Superior court total	Lower court total
Statewide total						
1971-72						
1972-73						
Alameda						
1971-72						
1972-73						
Alpine						
1971-72						
1972-73						
Ventura						
1971-72						
1972-73						
Yolo						
1971-72						
1972-73						
Yuba						
1971-72						
1972-73						
Recap by population group						
Statewide total						
1971-72						
1972-73						
1 - 5,000,000 to 9,999,999						
1971-72						
1972-73						
2 - 1,000,000 to 4,999,999						
1971-72						
1972-73						
6 - 0 to 9,999						
1971-72						
1972-73						

TABLE 12
 ADULT PROBATION ACTIVE CASELOAD - SUPERIOR AND LOWER COURT,
 1972-73 AND 1973-74
 County by Status

County and population group	Superior court			Lower court			Probationers per 1,000 population	Percent change	
	Active caseload July 1	Received	Removed	Active caseload July 1	Received	Removed		Superior court July 1	Lower court July 1
Statewide total									
1972-73									
1973-74									
Alameda									
1972-73									
1973-74									
Alpine									
1972-73									
1973-74									
Ventura									
1972-73									
1973-74									
Yolo									
1972-73									
1973-74									
Yuba									
1972-73									
1973-74									
Recap by population group									
Statewide total									
1972-73									
1973-74									
1 - 5,000,000 to 9,999,999									
1972-73									
1973-74									
2 - 1,000,000 to 4,999,999									
1972-73									
1973-74									
5 - 10,000 to 49,999									
1972-73									
1973-74									
6 - 0 to 9,999									
1972-73									
1973-74									

TABLE 13
 JUVENILE PROBATION ACTIVE CASELOAD^a, 1972-73 AND 1973-74
 County by Status

County and population group	Active caseload July 1	Received			Removed			Probationers per 1,000 population	Percent change Active caseload July 1
		Informal	Non-ward	Ward	Informal	Non-ward	Ward		
Statewide total									
1972-73									
1973-74									
Alameda									
1972-73									
1973-74									
Alpine									
1972-73									
1973-74									
Ventura									
1972-73									
1973-74									
Yolo									
1972-73									
1973-74									
Yuba									
1972-73									
1973-74									
Recap by population group									
Statewide total									
1972-73									
1973-74									
1 - 5,000,000 to 9,999,999									
1972-73									
1973-74									
2 - 1,000,000 to 4,999,999									
1972-73									
1973-74									
5 - 10,000 to 49,999									
1972-73									
1973-74									
6 - 0 to 9,999									
1972-73									
1973-74									

TABLE 14
 PROBATION DEPARTMENT PERSONNEL, 1972-73 AND 1973-74
 County by Number, Rate per 1,000 Population, and Average Caseload

County and population group	Probation officers	Officers per 1,000 population	Total probation caseload July 1	Caseload per officer	Percent change		
					Probation officers	Officers per 1,000 population	Caseload per officer
Statewide total							
1972-73							
1973-74							
Alameda							
1972-73							
1973-74							
Alpine							
1972-73							
1973-74							
Ventura							
1972-73							
1973-74							
Yolo							
1972-73							
1973-74							
Yuba							
1972-73							
1973-74							
Recap by population group							
Statewide total							
1972-73							
1973-74							
1 - 5,000,000 to 9,999,999							
1972-73							
1973-74							
2 - 1,000,000 to 4,999,999							
1972-73							
1973-74							
5 - 10,000 to 49,999							
1972-73							
1973-74							
6 - 0 to 9,999							
1972-73							
1973-74							

TABLE 15
 PROBATION DEPARTMENT EXPENITURES, 1972-73 AND 1973-74
 County by Number and Rate per Capita Probationer

County and population group	Total expenditures in \$1,000's	Expenditures per capita probationer	Percent change	
			Total expenditures	Expenditures per capita probationer
Statewide total				
1972-73				
1973-74				
Alameda				
1972-73				
1973-74				
Alpine				
1972-73				
1973-74				
Ventura				
1972-73				
1973-74				
Yolo				
1972-73				
1973-74				
Yuba				
1972-73				
1973-74				
Recap by population group				
Statewide total				
1972-73				
1973-74				
1 - 5,000,000 to 9,999,999				
1972-73				
1973-74				
6 - 0 to 9,999				
1972-73				
1973-74				

APPENDICES

DESIGN REQUIREMENTS
MANAGEMENT AND ADMINISTRATIVE STATISTICS

5.1 Data Transcription Estimates

18,998 records from Criminal Justice Profile
 x56 Characters per record
1,063,888 Key strokes

14,278 MAS records
 x52 characters per record
742,456 Key strokes

1,063,888
+ 742,456
1,806,344 Total key strokes

DESIGN REQUIREMENTS
MANAGEMENT AND ADMINISTRATIVE STATISTICS

5.2 Criminal Justice Profile Tape Record Layout

See next page.

CRIMINAL JUSTICE PROFILE (MS-1 NO.56)
Tape Record Layout
Figure 1

Column	Element	
1-2	County code	2N
3-7	Argument values	5N
8-14	1966 data	7N *(left justified)
20-21	67	
22-28	68	
29-35	69	
36-42	70	
43-49	71	
50-56	72	
57-63	73	
64-70	74	
71-77	75	
78-84	76	
58-91	77	
92-98	78	
99-105	79	
106-112	80	
113-119	81	
120-126	82	
127-133	83	
134-140	84	
141-147	85	
148-200	Filler	Blank

*Also \$ and .

DESIGN REQUIREMENTS
MANAGEMENT AND ADMINISTRATIVE STATISTICS

5.3 Criminal Justice Profile Data Elements

See next page.

03/15/75

TABLE CSCJPT1

TABLE DESCRIPTION	ARGUMENT DESCRIPTION	RESULT DESCRIPTION
*****	*****	*****
TYPE = BINARY	DATA TYPE = CHARACTER	DATA TYPE = CHARACTER
ENTRY COUNT = 322	LENGTH = 5	LENGTH = 30
	DECIMAL PLACES = 0	DECIMAL PLACES = 0

ARGUMENT VALUES	RESULT VALUES
(00010)	(SEVEN MAJOR CRIMES REPORTED)
(00020)	(PERSONAL VIOLENCE)
(00030)	(WILLFUL HOMICIDE)
(00040)	(ROBBERY)
(00050)	(AGGRAVATED ASSAULT)
(00060)	(FORCIBLE RAPE)
(00070)	(PROPERTY CRIMES)
(00080)	(BURGLARY)
(00090)	(GRAND THEFT)
(00100)	(AUTO THEFT)
(00110)	(SEVEN MAJOR CRIMES PER 100,000)
(00120)	(PERSONAL VIOLENCE)
(00130)	(WILLFUL HOMICIDE)
(00140)	(ROBBERY)
(00150)	(AGGRAVATED ASSAULT)
(00160)	(FORCIBLE RAPE)
(00170)	(PROPERTY CRIMES)
(00180)	(BURGLARY)
(00190)	(GRAND THEFT)
(00200)	(AUTO THEFT)
(00210)	(TOTAL CLEARANCES)
(00220)	(WILLFUL HOMICIDE)

ARGUMENT VALUES	RESULT VALUES
(00230)	(ROBBERY)
(00240)	(AGGRAVATED ASSAULT)
(00250)	(FORCIBLE RAPE)
(00260)	(BURGLARY)
(00270)	(GRAND THEFT)
(00280)	(AUTO THEFT)
(00290)	(TOTAL CLEARANCE RATES)
(00300)	(WILLFUL HOMICIDE)
(00310)	(ROBBERY)
(00320)	(AGGRAVATED ASSAULT)
(00330)	(FORCIBLE RAPE)
(00340)	(BURGLARY)
(00350)	(GRAND THEFT)
(00360)	(AUTO THEFT)
(00370)	(TOTAL FELONY ARRESTS)
(00380)	(PERSONAL VIOLENCE ARRESTS)
(00390)	(WILLFUL HOMICIDE)
(00400)	(MANSLAUGHTER VEHICLE)
(00410)	(ROBBERY)
(00420)	(ASSAULT)
(00430)	(FORCIBLE RAPE)
(00440)	(KIDNAPPING)
(00450)	(PROPERTY CRIME ARRESTS)
(00460)	(BURGLARY)
(00470)	(GRAND THEFT)
(00480)	(AUTO THEFT)

ARGUMENT VALUES	RESULT VALUES
(00490)	(FORGERY)
(00500)	(DRUG LAW VIOLATIONS)
(00510)	(MARIJUANA)
(00520)	(OTHER DRUGS LESS MARIJUANA)
(00530)	(ALL OTHER FELONY ARRESTS)
(00540)	(SEX-LESS FORCIBLE RAPE)
(00550)	(STAT, RAPE)
(00560)	(L & L)
(00570)	(PERVERSION)
(00580)	(ALL OTHER SEX)
(00590)	(OTHER)
(00600)	(WEAPONS)
(00610)	(DRUNK DRIVING)
(00620)	(HIT AND RUN)
(00630)	(ARSON)
(00640)	(ESCAPE)
(00650)	(BOOKMAKING)
(00660)	(ALL OTHER)
(00670)	(TOTAL FEL ARRESTS(LESS DRUGS))
(00680)	(TOTAL ARREST RATE PER 100,000)
(00690)	(PERSONAL VIOLENCE)
(00700)	(PROPERTY CRIMES)
(00710)	(DRUG LAW VIOLATIONS)
(00720)	(ALL OTHER)
(00730)	(TOTAL RATE(LESS DRUGS))
(00740)	(TOTAL POLICE DISPOS FEL ARREST)

03/15/75

TABLE CSCJPT1

ARGUMENT VALUES	RESULT VALUES
(00750)	(TO OTHER JURISDICTION)
(00760)	(TOTAL LESS OTHER JURISD)
(00770)	(RELEASED POLICE LEVEL)
(00780)	(TOTAL COMPLAINTS FILED)
(00790)	(MISDEMEANOR)
(00800)	(FELONY)
(00810)	(PERCENT)
(00820)	(RELEASED POLICE LEVEL)
(00830)	(TOTAL COMPLAINTS FILED)
(00840)	(MISDEMEANOR)
(00850)	(FELONY)
(00860)	(MALES)
(00870)	(FEMALES)
(00880)	(TOTAL ADULT MISD ARRESTS)
(00890)	(ASSAULT AND BATTERY)
(00900)	(PETTY THEFT)
(00910)	(DRUNK)
(00920)	(DISTURBING THE PEACE)
(00930)	(DRUNK DRIVING)
(00940)	(TRAFFIC(CUSTODY))
(00950)	(SEX OFFENSES)
(00960)	(DRUG LAW VIOLATIONS)
(00970)	(NON SUPPORT)
(00980)	(GAMBLING)
(00990)	(ALL OTHERS)
(01000)	(TOTAL POLICE DISPOS MISD ARR)

03/15/75

TABLE CSCJPT1

ARGUMENT VALUES	RESULT VALUES
(01010)	(TO OTHER JURISDICTION)
(01020)	(TOTAL LESS OTHER JURIS)
(01030)	(RELEASED POLICE LEVEL)
(01040)	(MISDEMEANOR COMPLAINT)
(01050)	(MALES)
(01060)	(FEMALES)
(01070)	(TOTAL JUVENILE ARRESTS)
(01080)	(FELONY LEVEL)
(01090)	(HOMICIDE)
(01100)	(ROBBERY)
(01110)	(ASSAULT)
(01120)	(BURGLARY AND THEFT)
(01130)	(AUTO THEFT)
(01140)	(FORCIBLE RAPE)
(01150)	(DRUGS)
(01160)	(MISDEMEANOR LEVEL)
(01170)	(DELINQUENT TENDENCIES)
(01180)	(PERCENT)
(01190)	(FELONY LEVEL)
(01200)	(MISDEMEANOR LEVEL)
(01210)	(DELINQUENT TENDENCIES)
(01220)	(TOTAL POLICE DISPO JUV ARRESTS)
(01230)	(HANDLED WITHIN DEPARTMENT)
(01240)	(TO OTHER AGENCIES)
(01250)	(TO JUV CRT OR PROB)
(01260)	(JUV PROB DISPOS INITIAL REFER)

03/15/75

TABLE CSCJPT1

ARGUMENT
VALUESRESULT
VALUES

(01270)	(CLOSED)
(01280)	(INFORMAL SUPERVISION)
(01290)	(PETITION FILED)
(01300)	(PERCENT PETITIONS)
(01310)	(DISP INITIAL PETITIONS)
(01320)	(DISMISSED, TRANSFERRED, REMAND)
(01330)	(YOUTH AUTHORITY)
(01340)	(PROBATION)
(01350)	(NON-WARD)
(01360)	(WARD)
(01370)	(PERCENT PROBATION)
(01380)	(SUBSEQUENT PETITIONS FILED)
(01390)	(TERMINATIONS)
(01400)	(INFORMAL SUPERVISION)
(01410)	(NON-WARD)
(01420)	(WARD)
(01430)	(ACTIVE CASELOAD)
(01440)	(PENDING COURT)
(01450)	(INFORMAL SUPERVISION)
(01460)	(NON-WARD)
(01470)	(WARD)
(01480)	(PRE-SUPERIOR COURT DISPOS)
(01490)	(DISMISSED)
(01500)	(REDUCED TO MISD)
(01510)	(SENT SECTION 17 PC)
(01520)	(SUPERIOR COURT TOTAL FILINGS)

03/15/75

TABLE CSCJPT1

ARGUMENT
VALUESRESULT
VALUES

(01530)	(INFORMATION)
(01540)	(INDICTMENT)
(01550)	(CERTIFICATION)
(01560)	(TOTAL DISPOSITIONS)
(01570)	(NOT CONVICTED)
(01580)	(DISMISSED)
(01590)	(ACQUITTED)
(01600)	(BY JURY)
(01610)	(BY COURT)
(01620)	(BY TRANSCRIPT)
(01630)	(CONVICTED)
(01640)	(ORIGINAL PLEA OF GUILTY)
(01650)	(CHANGE PLEA TO GUILTY)
(01660)	(TRIED)
(01670)	(BY JURY)
(01680)	(BY COURT)
(01690)	(BY TRANSCRIPT)
(01700)	(SUPERIOR COURT CONVICTIONS)
(01710)	(FELONY SENTENCE)
(01720)	(MISD SENTENCE)
(01730)	(DEFENDANTS SENTENCED)
(01740)	(PRISON)
(01750)	(YOUTH AUTHORITY)
(01760)	(PROBATION)
(01770)	(PROBATION AND JAIL)
(01780)	(JAIL ONLY)

ARGUMENT VALUES	RESULT VALUES
(01790)	(FINE)
(01800)	(CRG)
(01810)	(MENTAL HYGIENE)
(01820)	(SEX KNOWN)
(01830)	(MALE)
(01840)	(FEMALE)
(01850)	(PERCENT FEMALE)
(01860)	(AGE KNOWN)
(01870)	(18-19)
(01880)	(20-24)
(01890)	(25-39)
(01900)	(40 AND OVER)
(01910)	(PERCENT)
(01920)	(UNDER 25)
(01930)	(25-39)
(01940)	(40 AND OVER)
(01950)	(RACE KNOWN)
(01960)	(WHITE)
(01970)	(MEXICAN-AMERICAN)
(01980)	(NEGRO)
(01990)	(OTHER)
(02000)	(PERCENT)
(02010)	(WHITE)
(02020)	(MEXICAN-AMERICAN)
(02030)	(NEGRO)
(02040)	(OTHER)

ARGUMENT VALUES	RESULT VALUES
(02050)	(SUP CRT PROB ACT CASES JAN 1)
(02060)	(RECEIVED FOR SUPERVISION)
(02070)	(STRAIGHT PROBATION)
(02080)	(PROBATION AND JAIL)
(02090)	(PERCENT PROBATION AND JAIL)
(02100)	(REASON FOR REMOVAL-TOTAL)
(02110)	(TERMINATED)
(02120)	(PERCENT TERMINATED)
(02130)	(VIOLATED)
(02140)	(PERCENT VIOLATED)
(02150)	(PERCENT OF JAN 1 CASES TERM)
(02160)	(PERCENT OF JAN 1 CASES VIOL)
(02170)	(LOWER CRT PROB ACT CASES JAN 1)
(02180)	(RECEIVED FOR SUPERVISION)
(02190)	(STRAIGHT PROBATION)
(02200)	(PROBATION AND JAIL)
(02210)	(PERCENT PROBATION AND JAIL)
(02220)	(REASON FOR REMOVAL-TOTAL)
(02230)	(TERMINATED)
(02240)	(PERCENT TERMINATED)
(02250)	(VIOLATED)
(02260)	(PERCENT VIOLATED)
(02270)	(PERCENT OF JAN 1 CASES TERM)
(02280)	(PERCENT OF JAN 1 CASES VIOL)
(02290)	(DISPOSITION OF FELONY ARRESTS)
(02300)	(PERCENT DISTRIBUTION)

03/15/75

TABLE CSCJPT1

ARGUMENT
VALUESRESULT
VALUES

(02310)	(RELEASED POLICE LEVEL)
(02320)	(TOTAL COMPLAINTS FILED)
(02330)	(MISDEMEANOR)
(02340)	(FELONY)
(02350)	(LOWER COURT DISPOS)
(02360)	(PERCENT DISTRIBUTION)
(02370)	(NOT CONVICTED)
(02380)	(CONVICTED)
(02390)	(REDUCED TO MISDEMEANOR)
(02400)	(SECTION 17PC)
(02410)	(SUPERIOR COURT DISPOS)
(02420)	(PERCENT DISTRIBUTION)
(02430)	(NOT CONVICTED)
(02440)	(DISMISSED)
(02450)	(ACQUITTED)
(02460)	(CONVICTED)
(02470)	(ORIGINAL PLEA OF GUILTY)
(02480)	(CHANGE PLEA TO GUILTY)
(02490)	(TRIED)
(02500)	(TOTAL TRIED)
(02510)	(BY JURY)
(02520)	(BY COURT)
(02530)	(BY TRANSCRIPT)
(02540)	(SUPERIOR COURT CONVICTIONS)
(02550)	(PERCENT DISTRIBUTION LEVEL)
(02560)	(FELONY LEVEL)

03/15/75

TABLE CSCJPT1

ARGUMENT
VALUESRESULT
VALUES

(02570)	(MISDEMEANOR LEVEL)
(02580)	(PERCENT DISTRIBUTION SENT)
(02590)	(PRISON)
(02600)	(YOUTH AUTHORITY)
(02610)	(PROBATION)
(02620)	(PROBATION AND JAIL)
(02630)	(JAIL AND FINE)
(02640)	(CRC)
(02650)	(MENTAL HYGIENE)
(02660)	(TOTAL EXPENDITURES)
(02670)	(SUPERIOR COURTS)
(02680)	(MUNICIPAL COURTS)
(02690)	(JUSTICE COURTS)
(02700)	(DISTRICT ATTORNEY)
(02710)	(PUBLIC DEFENDER)
(02720)	(CONSTABLES AND MARSHALS)
(02730)	(SHERIFF)
(02740)	(PROBATION)
(02750)	(POLICE DEPARTMENTS)
(02760)	(JAILS AND REHABILITATION)
(02770)	(COURT REPORTERS, TRANSCRIPTS)
(02780)	(MISCELLANEOUS COURTS)
(02790)	(COUNTY CLERK)
(02800)	(GRAND JURY)
(02810)	(LAW LIBRARY)
(02820)	(TOTAL PERSONNEL)

ARGUMENT VALUES	RESULT VALUES
(02630)	(LAW ENFORCEMENT)
(02840)	(POLICE DEPARTMENTS)
(02850)	(SWORN)
(02860)	(CIVILIAN)
(02870)	(SHERIFF'S OFFICE)
(02880)	(SWORN)
(02890)	(CIVILIAN)
(02900)	(CALIFORNIA HIGHWAY PATROL)
(02910)	(SWORN)
(02920)	(CIVILIAN)
(02930)	(UNIVERSITY)
(02940)	(SWORN)
(02950)	(CIVILIAN)
(02960)	(BAY AREA RAPID TRANSIT)
(02970)	(SWORN)
(02980)	(CIVILIAN)
(02990)	(PROSECUTION)
(03000)	(DISTRICT ATTORNEYS)
(03010)	(ATTORNEYS)
(03020)	(INVESTIGATORS)
(03030)	(CLERICAL STAFF)
(03040)	(ALL OTHER)
(03050)	(PUBLIC DEFENSE)
(03060)	(PUBLIC DEFENDERS)
(03070)	(ATTORNEYS)
(03080)	(INVESTIGATORS)

ARGUMENT VALUES	RESULT VALUES
(03090)	(CLERICAL STAFF)
(03100)	(ALL OTHER)
(03110)	(COURTS)
(03120)	(SUPERIOR COURTS)
(03130)	(JUDGESHIPS)
(03140)	(AUXILLARY)
(03150)	(MUNICIPAL COURTS)
(03160)	(JUDGESHIPS)
(03170)	(AUXILLARY)
(03180)	(JUSTICE COURTS)
(03190)	(CORRECTIONS)
(03200)	(PROBATION)
(03210)	(PROBATION OFFICERS)
(03220)	(ALL OTHERS)

DESIGN REQUIREMENTS
MANAGEMENT AND ADMINISTRATIVE STATISTICS

5.4 Conversion Table

Data Element (Result Value)	MAS Code (Argument Value)	Profile Code (Argument Value)
Total Personnel	05320	02820
Law Enforcement	05330	02830
Police Departments	05340	02840
Sworn	05350	02850
Civilian	05360	02860
Sheriff's Office	05370	02870
Sworn	05380	02880
Civilian	05390	02890
California Highway Patrol	05400	02900
Sworn	05410	02910
Civilian	05420	02920
University	05430	02930
Sworn	05440	02940
Civilian	05450	02950
Bay Area Rapid Transit	05460	02960
Sworn	05470	02970
Civilian	05480	02980
Prosecution	05490	02990
District Attorneys	05500	03000
Attorneys	05510	03010
Investigators	05520	03020
Clerical Staff	05530	03030
All Other	05540	03040
Public Defense	05550	03050
Public Defenders	05560	03060
Attorneys	05570	03070
Investigators	05580	03080
Clerical Staff	05590	03090
All Other	05600	03100

DESIGN REQUIREMENTS
MANAGEMENT AND ADMINISTRATIVE STATISTICS

Data Element (Result Value)	MAS Code (Argument Value)	Profile Code (Argument Value)
Courts	05610	03110
Superior Courts	05620	03120
Judgeships	05630	03130
Auxiliary	05640	03140
Municipal Courts	05650	03150
Judgeships	05660	03160
Auxiliary	05670	03170
Justice Courts	05680	03180
Corrections	05690	03190
Probation	05700	03200
Probation Officers	05710	03210
All Others	05720	03220
Total Expenditures	05730	02660
Police Department	05750	02750
Sheriff's Office	05760	02730
District Attorney	05780	02700
Public Defender	05800	02710
Superior Court	05820	02670
Municipal Court	05830	02680
Justice Court	05840	02690
Constable and Marshal	05860	02720
Court Reporter, Transcripts	05870	02770
County Clerk	05880	02790
Grand Jury	05890	02800
Law Library	05900	02810
Miscellaneous	05910	02780
Jail and Rehabilitation	05930	02760
Probation	05940	02740

DESIGN REQUIREMENTS
MANAGEMENT AND ADMINISTRATIVE STATISTICS

5.5 Consultant Reports on Juvenile Probation Data Elements

See next page.

TABLE XX -- NUMBER OF ADMISSIONS TO CALIFORNIA JUVENILE ARRESTS -- BY TYPE OF OFFENSE AND BY SEX

COUNTY AREA	POPULATION GROUP	NUMBER OF ADMISSIONS DURING 1974 - FISCAL YEAR															
		PROPERTY		PEOPLE		ALCOHOL-DRUGS		OTHER SPECIFIC		INCOGNITIBLE		OTHER DELIN		TOTAL-ALL OFFENSES			
		BOYS	GIRLS	BOYS	GIRLS	BOYS	GIRLS	BOYS	GIRLS	BOYS	GIRLS	BOYS	GIRLS	BOYS	GIRLS		
DEL NORTE																	
HUMBOLDT																	
LAKE																	
MENDOCINO																	
SONOMA																	
TOTAL NORTH COASTAL AREA																	
LASSEN																	
MODOC																	
PLUMAS																	
SHASTA																	
TOTAL SOUTH COASTAL AREA																	
SAN DIEGO																	
VENTURA																	
TOTAL SOUTH COASTAL AREA																	
IMPERIAL																	
IMYO																	
RIVERSIDE																	
SAN BERNARDINO																	
TOTAL SOUTHEAST DESERT AREA																	
GRAND TOTAL - STATE OF CALIF.																	
RECAP BY POPULATION GROUPS:																	
1- 5,000,000 TO 9,999,999																	
2- 1,000,000 TO 4,999,999																	
3- 200,000 TO 999,999																	
4- 50,000 TO 199,999																	
5- 10,000 TO 49,999																	
6- 0 TO 9,999																	
GRAND TOTAL - STATE OF CALIF.																	

FOOTNOTES:

TABLE XXX -- CAPACITY AND AVERAGE DAILY POPULATION OF CALIFORNIA JUVENILE HALLS -- BY SEX

1 COUNTY- AREA- POPULATION GROUP	ACTUAL CAPACITY AND AVERAGE DAILY POPULATION ENDING 19__ FISCAL YEAR											
	LOWEST MONTH			HIGHEST MONTH			ANNUAL AVERAGE			MAXIMUM BED CAPACITY		
	2 BOYS	3 GIRLS	4 TOTAL	5 BOYS	6 GIRLS	7 TOTAL	8 BOYS	9 GIRLS	10 TOTAL	11 BOYS	12 GIRLS	13 TOTAL
DEL NORTE HUMBOLDT LAKE MENDOCINO SONOMA												
TOTAL NORTH COASTAL AREA												
LASSEN MODOC PLUMAS SHASTA												
SAH DIEGO VENTURA												
TOTAL SOUTH COASTAL AREA												
IMPERIAL INYO RIVERSIDE SAN BERNARDINO												
TOTAL SOUTHEAST DESERT AREA												
GRAND TOTAL - STATE OF CALIF.												
RECAP BY POPULATION GROUPS:												
1- 5,000,000 TO 9,999,999												
2- 1,000,000 TO 4,999,999												
3- 200,000 TO 999,999												
4- 50,000 TO 199,999												
5- 10,000 TO 49,999												
6- 0 TO 9,999												
GRAND TOTAL - STATE OF CALIF.												

FOOTNOTES:

TABLE XX -- DISTRIBUTION OF FULL-TIME EQUIVALENT POSITIONS IN CALIFORNIA JUVENILE HALLS -- BY MAJOR FUNCTION (A)
(INCLUDES P.S.E. AND EXTRA HELP PERSONNEL)

1 COUNTY AREA - POPULATION GROUP		APPROVED FINAL BUDGET DISTRIBUTION FOR 19__ FISCAL YEAR							
		2 JUVENILE HALL ADMINISTRATION	3 J. H. STAFF TRAINING & DEVELOPMENT	4 JUVEN. HALL SUPPORT SERVICES	5 JUVENILE CUSTODY SERVICES	6 J. H. SPECIAL PROGRAMS & SERVICES	7 JUVENILE HALL WORK PROGRAMS	8 TOTAL JUVENILE HALL	9 JUVENILE HALL SCHOOL
DEL NORTE		XX,XXX.X	XX,XXX.X	XX,XXX.X	XX,XXX.X	XX,XXX.X	XX,XXX.X	XX,XXX.X	X,XXX.X
HUMBOLDT	(B)								
LAKE									(C)
MENDOCINO									
SONOMA									
TOTAL NORTH COASTAL AREA									
LASSEN									
MADOC							(D)		
PLUMAS									
SHASTA									
TOTAL SOUTH COASTAL AREA									
SAN DIEGO									
VENTURA									
TOTAL SOUTH COASTAL AREA									
IMPERIAL	(B)								
INYO							(D)		
RIVERSIDE									(C)
SAN BERNARDINO	(E)								
TOTAL SOUTHWEST DESERT AREA									
GRAND TOTAL - STATE OF CALIF.									
RECAP BY POPULATION GROUPS:									
1-	5,000,000 TO 9,999,999								
2-	1,000,000 TO 4,999,999								
3-	200,000 TO 999,999								
4-	50,000 TO 199,999								
5-	10,000 TO 49,999								
6-	0 TO 9,999								
GRAND TOTAL - STATE OF CALIF.		XX,XXX.X	XX,XXX.X	XX,XXX.X	XX,XXX.X	XX,XXX.X	XX,XXX.X	XX,XXX.X	X,XXX.X

FOOTNOTES: A. ONLY 41 COUNTIES HAVE JUVENILE HALLS. B. REPORT NOT RECEIVED. C. SCHOOL DATA NOT AVAILABLE. D. THESE COUNTIES DO NOT HAVE WORK PROGRAMS. E. DATA ESTIMATED BY COUNTY

TABLE XXX -- ANNUAL OPERATING COSTS OF CALIFORNIA JUVENILE HALLS-- BY MAJOR FUNCTION (A)
 (DOES NOT INCLUDE OTHER CHARGES NOR FIXED ASSETS)

1 COUNTY-- AREA-- POPULATION GROUP--	ACTUAL EXPENDITURES FOR 19-- FISCAL YEAR							
	2 JUVENILE HALL ADMINISTRATH	3 J. H. STAFF TRAINING & DEVELOPMENT	4 JUVEN. HALL SUPPORT SERVICES	5 JUVENILE CUSTODY SERVICES	6 J. H. SPECIAL PROGRAMS & SERVICES	7 JUVENILE HALL WORK PROGRAMS	8 TOTAL JUVENILE HALL	9 JUVENILE SCHOOL
DEL NORTE	\$XXX,XXX,XXX	\$XXX,XXX,XXX	\$XXX,XXX,XXX	\$XXX,XXX,XXX	\$XXX,XXX,XXX	\$XXX,XXX,XXX	\$XXX,XXX,XXX	\$XX,XXX,XXX
HUMBOLDT								
LAKE								
MENDOCINO								
SONOMA								(C)
TOTAL NORTH COASTAL AREA								
LASSEN								
YACOC								
PLUMAS								
SHASTA								
SAH DIEGO								
VENTURA								
TOTAL SOUTH COASTAL AREA								
IMPERIAL								
INYO								
RIVERSIDE								
SAN BERNARDINO								
TOTAL SOUTHEAST DESERT AREA								
GRAND TOTAL - STATE OF CALIF.	\$XXX,XXX,XXX	\$XXX,XXX,XXX	\$XXX,XXX,XXX	\$XXX,XXX,XXX	\$XXX,XXX,XXX	\$XXX,XXX,XXX	\$XXX,XXX,XXX	\$XX,XXX,XXX
RECAP BY POPULATION GROUPS:								
1- 5,000,000 TO 9,999,999								
2- 1,000,000 TO 4,999,999								
3- 200,000 TO 999,999								
4- 50,000 TO 199,999								
5- 10,000 TO 49,999								
6- 0 TO 9,999								
GRAND TOTAL - STATE OF CALIF.	\$XXX,XXX,XXX	\$XXX,XXX,XXX	\$XXX,XXX,XXX	\$XXX,XXX,XXX	\$XXX,XXX,XXX	\$XXX,XXX,XXX	\$XXX,XXX,XXX	\$XX,XXX,XXX

FOOTNOTES: A. ONLY 41 COUNTIES HAVE JUVENILE HALLS. B. REPORT NOT RECEIVED. C. SCHOOL COST DATA NOT AVAILABLE. D. THESE COUNTIES DO NOT HAVE WORK PROGRAMS. E. DATA ESTIMATED BY COUNTY.

END