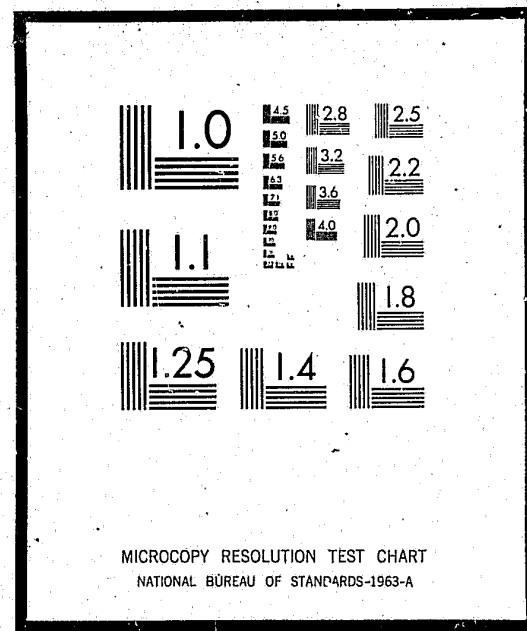


NCJRS

JUL 31 1975

This microfiche was produced from documents received for inclusion in the NCJRS data base. Since NCJRS cannot exercise control over the physical condition of the documents submitted, the individual frame quality will vary. The resolution chart on this frame may be used to evaluate the document quality.



Microfilming procedures used to create this fiche comply with the standards set forth in 41CFR 101-11.504

Points of view or opinions stated in this document are those of the author(s) and do not represent the official position or policies of the U.S. Department of Justice.

U.S. DEPARTMENT OF JUSTICE
LAW ENFORCEMENT ASSISTANCE ADMINISTRATION
NATIONAL CRIMINAL JUSTICE REFERENCE SERVICE
WASHINGTON, D.C. 20531

Date filmed

11/6/75

Philadelphia - FINAL EVALUATION REPORT
Ludlow Community Center
PH-74-C-B1-E-251
5

Evaluation Completed By:
Educational Management Associates
801 Penn Square Building
1317 Filbert Street
Philadelphia, Pennsylvania, 19107
(215) LO 9 1020

27054

Evaluation

LUDLOW COMMUNITY CENTER

The main objectives of the Ludlow Community Center for the year 1974 - 1975 were:

- (1) To provide an information and referral service to residents of the Ludlow Community
- (2) To provide a transportation and communication service between inmates at Graterford Prison and friends and families in the community.
- (3) To establish an architectural design center to assist persons in the Ludlow community to plan for community development.

Indicators of progress toward the achievement of these goals include:

Number of drop-ins	1200
Average per month	100
Active case files	90
Agencies receiving referrals	24
Inmates active (group)	16
(individuals)	14

Cost of referral/active case \$250.00
Cost per drop in counselled \$25.00

Trips to Graterford average over one per week

Proportion of client population which is Spanish-speaking 70%

Number of youths enrolled in recreational programs Over 400

Follow-up on Refunding Report Recommendations:

No significant progress on securing additional independent sources of funding for affiliated programs has been made. Continuing effort will be needed here to maintain the level of program activity for non-LEAA programming.

Cost-effectiveness for drop-in counseling has improved somewhat as the number of drop-ins increased in the later Spring and early summer. Awareness of the project within the Ludlow community is high as evidenced by the community survey, the results of which is discussed fully below. Implementation of the use of the flyers distributed locally by the Concilio's Consumer Education project is urged as a means of reaching the Spanish-speaking population and making effective use of LEAA project funds.

The design center activity remains at a low level following an indication that the Association's plan for housing which the center developed may be more actively considered by the City administration. (We had previously recommended a shift in planning emphasis when it appeared that there was little or no interest in housing in this area).

With the refunding of the project at the 1974-1975 level, we again note that the probable demands on the Director's time are such that attention should be directed toward redistribution of work assignments so that the Director is not essential to each function and can continue in his absence, if necessary.

No special arrangements to establish counseling groups for ex-inmates or other client groups have been concluded. If it is possible to make such arrangements for the Fall, we urge that a meeting with the evaluator be established to discuss evaluation of this specific aspect of the program.

Results of the Community Survey.

A survey of community residents was conducted during May 1975. A door-to-door visitation was made for a sample of community residents in the Ludlow area selected at random. Completed responses were received from fifty four (54) residents. This was adjudged to be an adequate number of responses from the original group of one hundred selected and no additional residents were interviewed. An analysis of the results follows.

Demographic Data.

The average age of the respondents was 32.7 years; somewhat younger than has been observed in other project areas served by LEAA projects. The respondents were nearly equally divided between males (52%) and females (48%). Fifty four percent (54%) of the responding group reported being employed. A lower proportion of persons (30%) reported recorded themselves as homeowners, than has been the case for other LEAA project areas surveyed. Thus, the lower average age, a high degree of non-employed persons, and low ownership of homes, suggests a likelihood of a transient population and the potential as a high crime area. In our opinion, the presence of a project for the reduction of crime in this area, with sub-goals for the improvement in the stock of sales housing is justified.

Project Recognition.

The Ludlow Community Association enjoys a high degree of community recognition with 19% of respondents strongly agreeing and 73% agreeing that they have all of the information they want about this program. With respects to the specifics of the project, there appears to be some confusion. The majority of the persons surveyed are unaware of any association between the Center and the City government. A majority of the persons reporting believe that the Center does not have the support of the Philadelphia Police Departments in its efforts at crime reduction. Of the persons surveyed, their composite estimate is that over ninety percent of the people in the Ludlow Community know about the program. The staff members are judged effective by 90% of the respondents and 54% of the people believe that the physical resources of the Center are adequate, 17% don't know.

Attitude about Community.

Of those surveyed, one person in four reports a desire to move to another community. The major reasons cited in order of frequency are housing, crime and schools. One person in four reports being victimized by crime within the last three months. Crimes against property outnumber crimes against persons by three to one, with more than one-third of the crimes going unreported.

The composite profile of the "typical" criminal in this community is a drug-involved male, gang member. He will be a resident of the Ludlow Community is equally likely to be under age nineteen or between 19 and 26. The perception

of community members is clearly for the criminal to be a young person and while probably male, this survey indicates an unusually high number of persons indicating the probably involvement of females in crime. These figures tend to suggest the efforts of the Ludlow Community Association to develop youth recreational programs for both men and women is well advised.

Project Impact.

A clear pattern emerges in the responses to the five questions on project impact. The consistent responses indicate that the project is viewed very favorably by members of the community. Staff members are consistently reported as being helpful, the project is believed to reduce crime, and the materials and staff members are all judged useful and valuable. There were few if any contra-indications in this section of the questionnaire.

Evaluation.

As noted previously, this program is clearly linked to the prevention of crime in the Ludlow area. Ninety eight percent (98%) of the respondents said "The program reduces crime in our area;" 87% indicate that the program is needed; 40% say there are no other such programs and 50% know of no others. Despite comments by the evaluators about potential problems in organization (the Director's role), 81% report that the program is well organized and 80% recognize that the program needs additional resources to support its programs.

Conclusions and Recommendations.

Continuing attention to staff roles and responsibilities within the context of the Director's activities is needed in order to avoid excessive dependence on the presence of the Director to maintain productivity. The increase in the number of Spanish speaking clients should be reflected in future staffing plans when and if changes are to be made.

More complete records on client follow-ups after referral to a social service agency are needed. At the present time it is difficult or impossible to track clients longitudinally from project records. A routine for follow-up and reporting would make this easier.

We feel that a group counseling activity based at the center for one or more client groups, including ex-inmates would be a valuable adjunct to the Center's current activities. If possible, this should be done in association with an organization which has the professional resources needed such as the Philadelphia Adult Probation Department.

Overall, we feel that the project is meeting its goals and that it could profit from some additional planning and effort to consolidate its gains in a limited number of areas, resisting pressures to become too diffuse in focus.