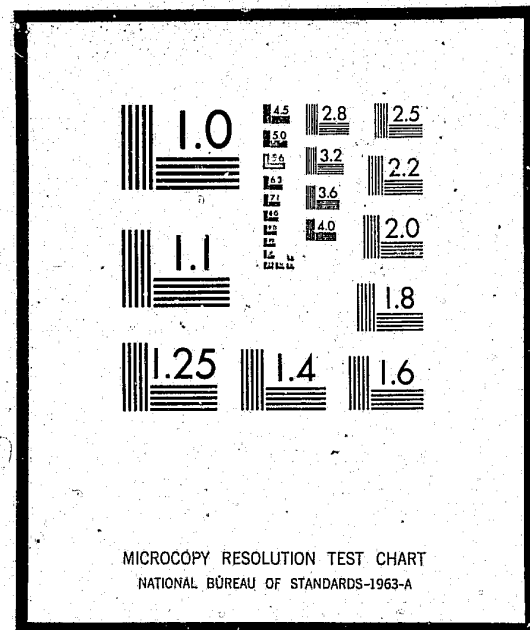


NCJRS

This microfiche was produced from documents received for inclusion in the NCJRS data base. Since NCJRS cannot exercise control over the physical condition of the documents submitted, the individual frame quality will vary. The resolution chart on this frame may be used to evaluate the document quality.



Microfilming procedures used to create this fiche comply with the standards set forth in 41CFR 101-11.504

Points of view or opinions stated in this document are those of the author(s) and do not represent the official position or policies of the U.S. Department of Justice.

U.S. DEPARTMENT OF JUSTICE
LAW ENFORCEMENT ASSISTANCE ADMINISTRATION
NATIONAL CRIMINAL JUSTICE REFERENCE SERVICE
WASHINGTON, D.C. 20531

Date filmed

11/6/75

STATE OF FLORIDA
FLORIDA PAROLE AND PROBATION COMMISSION

✓ A REPORT OF
FLORIDA-PAROLE AND PROBATION COMMISSION-
CLIENT PARTICIPATION IN
PSYCHOLOGICAL/PSYCHIATRIC PROGRAMS - Report

DIVISION OF PLANNING AND EVALUATION

SUNIL B. NATH, DIRECTOR

JUNE 1975

A REPORT OF FLORIDA PAROLE AND PROBATION COMMISSION

CLIENT PARTICIPATION IN

PSYCHOLOGICAL/PSYCHIATRIC PROGRAMS

(In Partial Fulfillment of LEAA Grant 73-08-10)

Planning and Evaluation

Sunil B. Nath, Director

Report Staff:

James C. Payne, II, Ph.D.

Jennifer J. Davis
Wanjenell Barrentine
Alpha A. Piland

Planning & Evaluation
Supervisor
Statistician I
Secretary II
Secretary II

TABLE OF CONTENTS

	Page
Table of Contents	i
List of Charts	i
List of Tables	ii
List of Appendices	ii
Introduction	iii
Psychological/Psychiatric Programs	1
Evaluation Control Charts	5

LIST OF CHARTS

	Page
Chart 1 - Psychological/Psychiatric Program Participants	2
Chart 2 - Percentage Participation by Classification Within Areas for the Psychological/Psychiatric Programs	4
Chart 3 - Evaluation Control Charts: State Average Line and Standard Deviations	7
Chart 4 - Level of Probation Misdemeanant Participation in Psychological/Psychiatric Programs	8
Chart 5 - Level of Probation Felon Participation in Psychological/Psychiatric Programs	8
Chart 6 - Level of Parole, MCR, W/R Participation in Psychological/Psychiatric Programs	9

LIST OF TABLES

	Page
Table 1 - Areas Ranked by Psychological/Psychiatric Program Participation	2
Table 2 - Psychological/Psychiatric Program Participation: Breakdown by Classification and Area	3

LIST OF APPENDICES

	Page
Appendix A Raw Data - Area	10
Appendix B Raw Data - Districts	11

INTRODUCTION

The major purpose of the Florida Parole and Probation Commission is the resocialization of offenders. In order to help achieve this goal clients must report periodically for consultation to Parole and Probation Officers. While it is known that this consultation provides assistance and guidance in the resocialization process, it is also recognized that other forms of treatment, found in the local communities, are often necessary. The Commission finds these Community Services helpful in the resocialization process, although they are considered supplemental forms of treatment.

During the month of November, 1974, the Florida Parole and Probation Commission conducted a statewide survey to determine the number of parolees and probationers in rehabilitative programs or treatment modalities concurrent with their reporting required by the Commission. The treatment modalities were categorized into five major groups: Alcohol Programs, Drug Programs, Education Programs, Psychological/Psychiatric Programs, and Other Programs.

The survey forms were mailed in late October and were to be completed by every officer with a caseload, based on the November caseload.

The report: STATEWIDE SURVEY: COMMUNITY TREATMENT

MODALITIES presents the findings of the survey for each of the Commission's ten Areas. (Copies of the Statewide Survey may be obtained from the Florida Parole and Probation Commission, Division of Planning and Evaluation.)

The present report consolidates the data for the Psychological/Psychiatric Programs.

Two points must be remembered when reading this report: First, the survey data presented is representative of the November, 1974 caseload only. Secondly, it should be realized that clients participate in Community Treatment Programs usually within their first year of supervision; therefore, it is plausible that a high percentage of the overall caseload have, at one time, been involved in this program.

PSYCHOLOGICAL/PSYCHIATRIC PROGRAMS

The Statewide Survey: Community Treatment Modalities, March 1975, by the Florida Parole and Probation Commission, Division of Planning and Evaluation, presented information concerning the participation, by the clients under the supervision of the Commission, in Community Treatment Programs. The major program categories were: Alcohol, Education, Drug, Psychological/Psychiatric, and Other. The data on program participation was presented in Area Chapters in the Survey. (The state has been subdivided into 10 Areas for the purposes of the Commission.) This report will consolidate the data on Psychological/Psychiatric Program participants.*

The Psychological/Psychiatric program participants constituted 9.5% (1440) of the total participating clients in the state. The clients in the Psychological/Psychiatric programs were grouped into three classifications: Probation Misdemeanants (P. Misdemeanants), Probation Felons (P. Felons), and a Parole, Mandatory Conditional Release (MCR), and Work Release (W/R) grouping. The largest number of participants in the Psychological/Psychiatric programs were P. Felons, 911 (63.3%); P. Misdemeanants were second, 414 (28.7%); and the Parole, MCR, W/R grouping third with 115 clients (8.0%). (See Chart 1, page 2)

*Further information on the Survey techniques, method of data collection, and findings may be found in the Statewide Survey: Community Treatment Modalities.

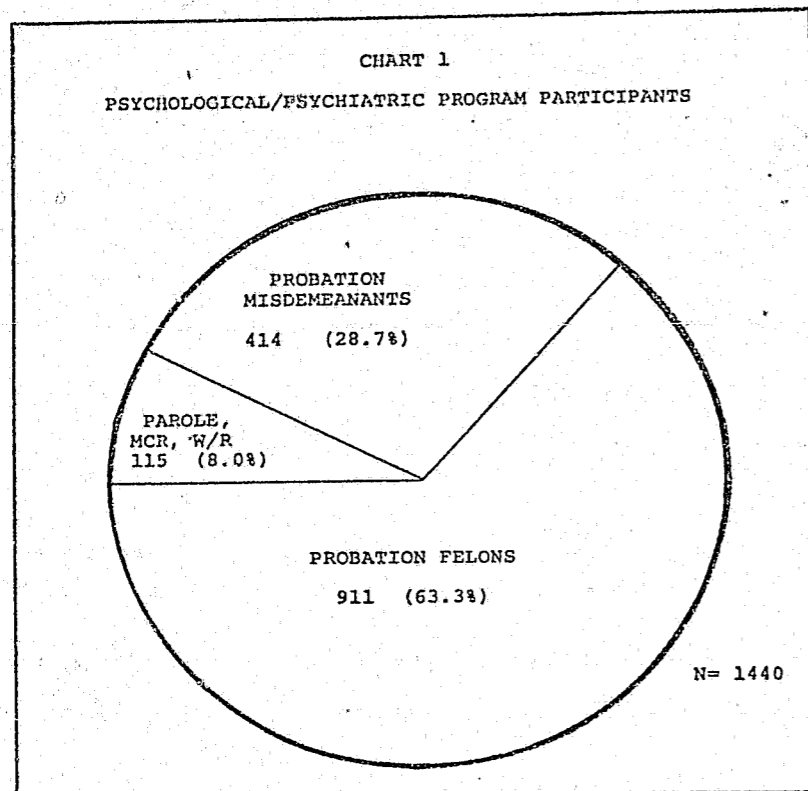


Table 1 ranks the percentage participation for each Area.

TABLE 1
AREAS RANKED BY PSYCHOLOGICAL/PSYCHIATRIC PROGRAM PARTICIPATION

Areas	Ranks	Client Participation	
		Frequency	Percent
Pensacola I	8	91	6.3%
Jacksonville II	5	136	9.5%
Tampa III	3	207	14.4%
Bartow IV	10	64	4.4%
Miami V	2	209	14.5%
St. Petersburg VI	1	250	17.4%
Orlando VII	7	123	8.5%
W. Palm Beach VIII	4	142	9.9%
Ft. Lauderdale IX	6	130	9.0%
Tallahassee X	9	88	6.1%
TOTAL		1440	100.0%

Pinellas, Dade, and Hillsborough counties (the major counties in the St. Petersburg, Miami, and Tampa Areas, respectively) were among the five leading counties, in terms of total case-load volume, as of June 30, 1974.* These Areas also ranked first, second, and third, respectively, in participation in the Psychological/Psychiatric programs (see Table 1, page 2). This relationship between the general client population (total caseload volume) and percentage participation is plausible since participation in this type of program is not directly related to a particular offense or grouping of offenses or to one of the three classifications - P. Misdemeanants; P. Felons; or the Parole, MCR, W/R grouping.

Table 2 illustrates the relationship between the classifications and the Areas. See Table 2, page 4.

In every Area P. Felons ranked first, largest number of participants, then P. Misdemeanants and the Parole, MCR, and W/R grouping.

Chart 2 pictorially presents the data of Table 2. See Chart 2, page 4.

* Florida Parole and Probation Commission Special Report, December, 1974, page 7.

TABLE 2

PSYCHOLOGICAL/PSYCHIATRIC PROGRAM PARTICIPATION:

AREA	BREAKDOWN BY CLASSIFICATION AND AREA					
	CLASSIFICATION					
	P. Misdemeanants		P. Felons		Parole, MCR, W/R	
	Freq.*	Percent	Freq.*	Percent	Freq.*	Percent
I	37	40.7%	48	52.7%	6	6.6%
II	38	27.9%	91	66.9%	7	5.2%
III	66	31.9%	128	61.8%	13	6.3%
IV	14	21.9%	43	67.2%	7	10.9%
V	56	26.8%	138	66.0%	15	7.2%
VI	75	30.0%	148	59.2%	27	10.8%
VII	37	30.1%	77	62.6%	9	7.3%
VIII	37	26.1%	91	64.1%	14	9.8%
IX	16	12.3%	103	79.2%	11	8.5%
X	38	43.2%	44	50.0%	6	6.8%
TOTAL	414		911		115	

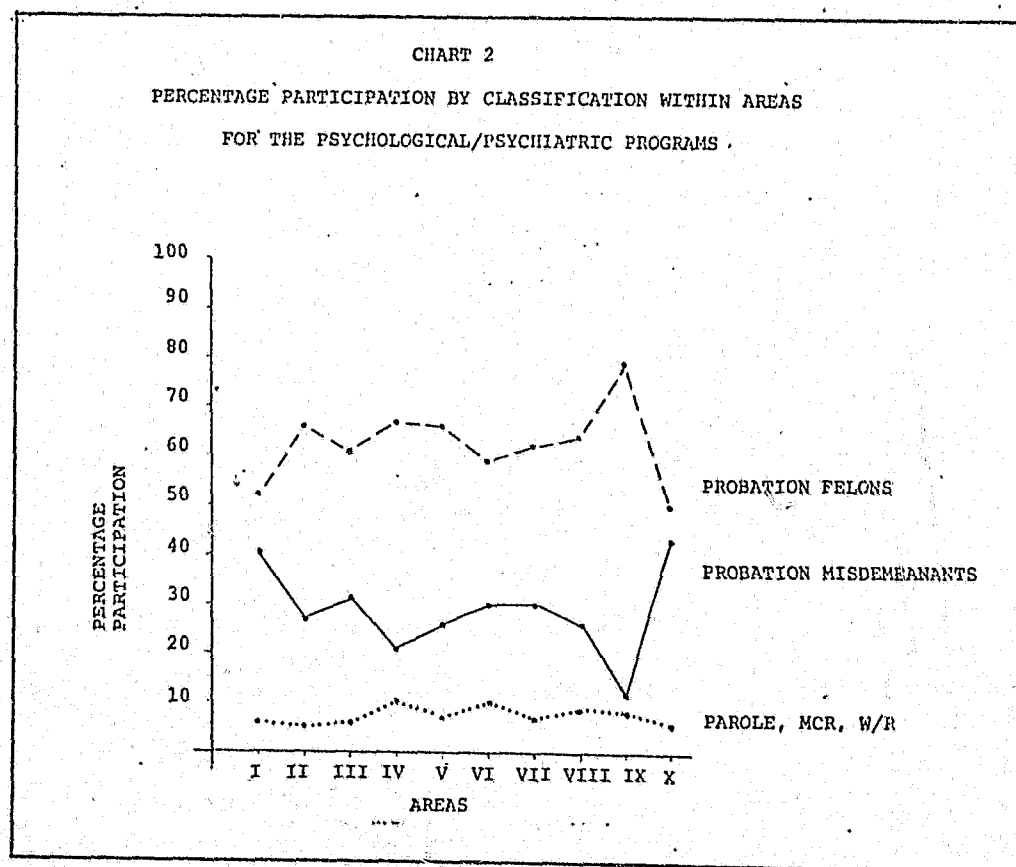
* Freq. = Frequency

EVALUATION CONTROL CHARTS

The following charts illustrate the Area data in the form of Evaluation Control Charts. Evaluation Control Charts (ECC) are graphic representations of numeric values. The average or mean of those values is indicated along with the ranges or control limits about the mean on each ECC. The control limits are related to the amount of dispersion of the data involved, and are usually determined statistically. Any data points falling between the control limits depicts an acceptable variation from the mean. However, whenever a data point falls outside these control limits, a unique situation or problem exists which may require further investigation and/or explanation.

The data for the Areas is presented as the Level of Participation in a particular program within a Classification (Probation Misdemeanant; Probation Felon; and the Parole, Mandatory Conditional Release (MCR), and Work Release (W/R) grouping). These data are presented as a percentage of participation.

The mean or State Average Line is indicated along with two control limits. The first control limit extends from -1s to +1s (s = standard deviation). This range is described by the Zone Descriptors as Below Average Participation Zone and Above Average Participation Zone.



The second set of control limits extends from -2s to +2s. In Zone Descriptor terms this would include Low Level, Below Average, Above Average and High Level Participation Zones.

Any Area points which fall in the Minimal Level or the Very High Level Participation Zones would be considered an unusual level of participation for that program and classification. The study for which these data were collected asked only for descriptive information on client participation; therefore, why an Area has an unusual level of participation is presently not known, further study will be necessary.

CHART 3

EVALUATION CONTROL CHARTS:
STATE AVERAGE LINE and STANDARD DEVIATIONS

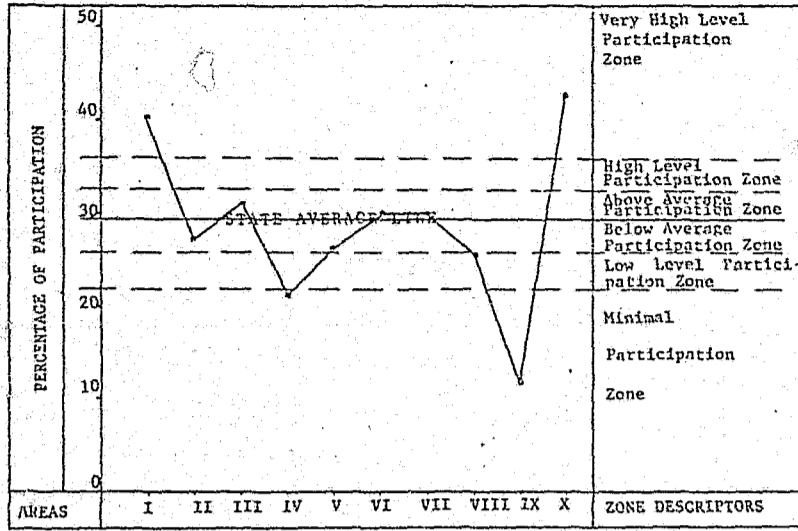
CLASSIFICATION	LEVELS OF PARTICIPATION						
	MINIMAL LEVEL	LOW LEVEL	BELOW AVERAGE	STATE AVERAGE LINE	ABOVE AVERAGE	HIGH LEVEL	VERY HIGH LEVEL
	← -2s	← -1s	← X	→ +1s	→ +2s	→	→
PROBATION MISDEMEANANTS	IV** 22.45%	25.77%	29.09%	32.41%	35.73%	I*	X*
PROBATION FELONS	47.53%	55.25%	62.97%	70.69%	78.41%	IX*	
PAROLE, MCR, W/R	4.20%	6.07%	7.94%	9.81%	11.68%		

*This Area showed an unusually high level of participation.

**This Area showed an unusually low level of participation.

CHART 4

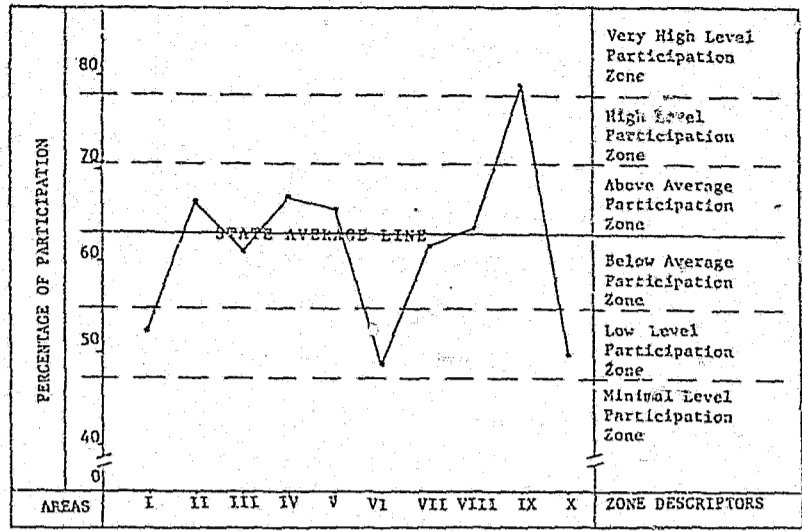
LEVEL OF PROBATION MISDEMEANANT PARTICIPATION IN
PSYCHOLOGICAL/PSYCHIATRIC - PROGRAM



LEVELS OF PARTICIPATION - RANGES			
Very High Level	35.74% +		> $\bar{X} + 2S$
High Level	32.42% - 35.73%		$\bar{X} + 2S$
Above Average	29.10% - 32.41%		$\bar{X} + S$
STATE AVERAGE	29.09%		\bar{X}
Below Average	25.78% - 29.08%		$\bar{X} - S$
Low Level	22.46% - 25.77%		$\bar{X} - 2S$
Minimal Level	< 22.45%		< $\bar{X} - 2S$
Mean (\bar{X}) = 29.09			
Standard Deviation (S) = 3.32			

CHART 5

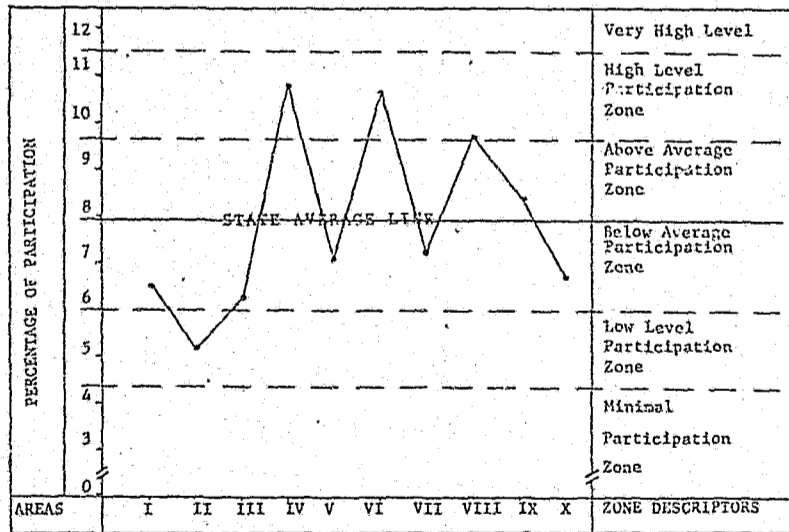
LEVEL OF PROBATION FELON PARTICIPATION IN
PSYCHOLOGICAL/PSYCHIATRIC - PROGRAM



LEVELS OF PARTICIPATION - RANGES			
Very High Level	78.42% +		> $\bar{X} + 2S$
High Level	70.70% - 78.41%		$\bar{X} + 2S$
Above Average	62.98% - 70.69%		$\bar{X} + S$
STATE AVERAGE	62.97%		\bar{X}
Below Average	55.26% - 62.96%		$\bar{X} - S$
Low Level	47.53% - 55.25%		$\bar{X} - 2S$
Minimal Level	< 47.53%		< $\bar{X} - 2S$
Mean (\bar{X}) = 62.97			
Standard Deviation (S) = 7.72			

CHART 6

LEVEL OF PAROLE, MCR, W/R PARTICIPATION IN
PSYCHOLOGICAL/PSYCHIATRIC - PROGRAM



LEVELS OF PARTICIPATION - RANGES			
Very High Level	11.69% +		> $\bar{X} + 2S$
High Level	9.82% - 11.68%		$\bar{X} + 2S$
Above Average	7.95% - 9.81%		$\bar{X} + S$
STATE AVERAGE	7.94%		\bar{X}
Below Average	6.08% - 7.93%		$\bar{X} - S$
Low Level	4.21% - 6.07%		$\bar{X} - 2S$
Minimal Level	< 4.20%		< $\bar{X} - 2S$
Mean (\bar{X}) = 7.94			
Standard Deviation (S) = 1.87			

PSYCHOLOGICAL/PSYCHIATRIC

Raw Data - Areas

Areas	Probation Misdemeanant	Probation Felon	Parole, MCR, W/R	Total
I -Pensacola	37	48	6	91
II -Jacksonville	38	91	7	136
III -Tampa	66	128	13	207
IV -Bartow	14	43	7	64
V -Miami	56	138	15	209
VI -St. Petersburg	75	148	27	250
VII -Orlando	37	77	9	123
VIII-W. Palm Beach	37	91	14	142
IX -Ft. Lauderdale	16	103	11	130
X -Tallahassee	38	44	6	88
State	414	911	115	1440

APPENDIX B

RAW DATA - DISTRICTS

DISTRICTS	Probation Misdemeanant	Probation Felon	Parole, MCR, W/R
AREA I			
01 - Pensacola	25	17	5
14 - Mariana	2	8	1
19 - Crestview	4	13	0
25 - Panama City	1	4	0
30 - Milton	5	6	0
AREA II			
04 - Jacksonville	38	86	7
48 - Green Cove Springs	0	5	0
AREA III			
08 - Tampa	66	128	13
31 - Dade City	0	0	0
AREA IV			
06 - Bartow	1	24	1
17 - Ocala	0	9	3
22 - Tavares	2	5	1
32 - Sebring	0	0	1
33 - Arcadia	0	0	0
34 - Bushness	0	0	0
42 - Inverness	3	3	0
43 - Brooksville	2	0	0
45 - Wauchula	6	2	1
AREA V			
07 - Miami	56	138	15
26 - Key West	0	0	0
AREA VI			
03 - Clearwater	63	115	18
13 - Bradenton	1	14	5
27 - Sarasota	11	19	4
AREA VII			
05 - Orlando	5	28	2
15 - Deland	9	5	0
20 - Titusville	3	19	1
21 - St. Augustine	0	4	3
28 - Sanford	13	8	1
29 - Palatka	2	5	0
39 - Kissimmee	5	8	2

APPENDIX B (cont.)

RAW DATA - DISTRICTS

DISTRICTS	Probation Misdemeanant	Probation Felon	Parole, MCR, W/R
AREA III			
12 - Vero Beach	3	3	0
16 - West Palm Beach	8	44	6
23 - Ft. Myers	5	19	3
35 - Labelle	0	5	0
38 - Ft. Pierce	13	14	5
44 - Okeechobee	1	1	0
46 - Punta Gorda	2	4	0
47 - Stuart	5	1	0
AREA IX			
18 - Ft. Lauderdale	13	97	9
36 - Naples	3	6	2
AREA X			
02 - Live Oak	0	0	0
09 - Lake City	2	4	1
10 - Gainesville	11	25	1
11 - Tallahassee	17	8	2
24 - Perry	0	0	0
37 - Madison	4	0	0
40 - Quincy	2	4	0
41 - Starke	2	3	2

END