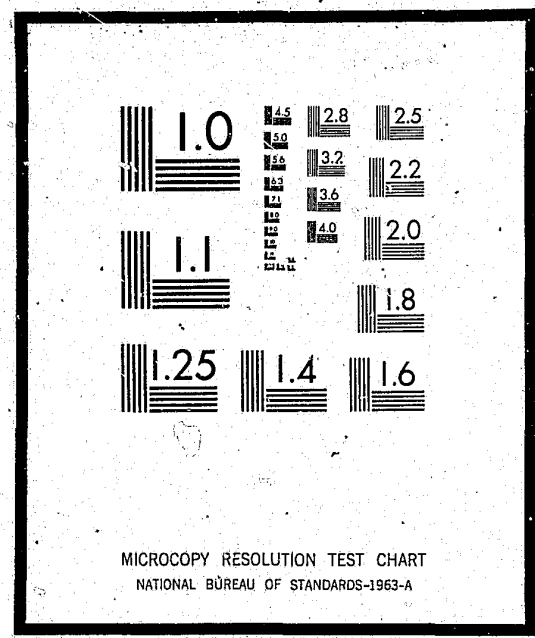


# NCJRS

This microfiche was produced from documents received for inclusion in the NCJRS data base. Since NCJRS cannot exercise control over the physical condition of the documents submitted, the individual frame quality will vary. The resolution chart on this frame may be used to evaluate the document quality.



Microfilming procedures used to create this fiche comply with the standards set forth in 41CFR 101-11.504

Points of view or opinions stated in this document are those of the author(s) and do not represent the official position or policies of the U.S. Department of Justice.

U.S. DEPARTMENT OF JUSTICE  
LAW ENFORCEMENT ASSISTANCE ADMINISTRATION  
NATIONAL CRIMINAL JUSTICE REFERENCE SERVICE  
WASHINGTON, D.C. 20531

Date filmed 11/6/75

STATE OF FLORIDA  
FLORIDA PAROLE AND PROBATION COMMISSION

A REPORT OF  
FLORIDA PAROLE AND PROBATION COMMISSION  
CLIENT PARTICIPATION IN  
DRUG PROGRAMS - Report

DIVISION OF PLANNING AND EVALUATION  
SUNIL B. NATH, DIRECTOR  
JUNE 1975

A REPORT OF FLORIDA PAROLE AND PROBATION COMMISSION  
CLIENT PARTICIPATION IN  
DRUG PROGRAMS  
(In Partial Fulfillment of LEAA Grant 73-08-10)

Planning and Evaluation  
Sunil B. Nath, Director

Report Staff:

James C. Payne, II, Ph.D.

Jennifer J. Davis  
Wanjenell Barrentine  
Alpha A. Piland

Planning & Evaluation  
Supervisor  
Statistician I  
Secretary II  
Secretary II

TABLE OF CONTENTS

	Page
Table of Contents	i
List of Charts	i
List of Tables	ii
List of Appendices	ii
Introduction	iii
Drug Programs	1
Evaluation Control Charts	6

LIST OF CHARTS

	Page
Chart 1 - Drug Program Participation by Classification	2
Chart 2 - Percentage Participation by Classification Within Areas for the Drug Programs	5
Chart 3 - Evaluation Control Charts: State Average Line and Standard Deviations	8
Chart 4 - Level of Probation Misdemeanant Participation in Drug Programs	9
Chart 5 - Level of Probation Felon Participation in Drug Programs	9
Chart 6 - Level of Parole, MCR, W/R Participation in Drug Programs	10

LIST OF TABLES

	Page
Table 1 - Areas Ranked by Drug Program Participation	3
Table 2 - Drug Program Participants: Break-down by Classification and Area	3
Table 3 - Drug Program Participants: Classifications Ranked Within Areas	4

LIST OF APPENDICES

	Page
Appendix A Raw Data - Area	11
Appendix B Raw Data - Districts	12

INTRODUCTION

The major purpose of the Florida Parole and Probation Commission is the resocialization of offenders. In order to help achieve this goal clients must report periodically for consultation to Parole and Probation Officers. While it is known that this consultation provides assistance and guidance in the resocialization process, it is also recognized that other forms of treatment, found in the local communities, are often necessary. The Commission finds these Community Services helpful in the resocialization process, although they are considered supplemental forms of treatment.

During the month of November, 1974, the Florida Parole and Probation Commission conducted a statewide survey to determine the number of parolees and probationers in rehabilitative programs or treatment modalities concurrent with their reporting required by the Commission. The treatment modalities were categorized into five major groups: Alcohol Programs, Drug Programs, Education Programs, Psychological/Psychiatric Programs, and Other Programs.

The survey forms were mailed in late October and were to be completed by every officer with a caseload, based on the November caseload.

The report: STATEWIDE SURVEY: COMMUNITY TREATMENT

MODALITIES presents the findings of the survey for each of the Commission's ten Areas. (Copies of the Statewide Survey may be obtained from the Florida Parole and Probation Commission, Division of Planning and Evaluation.)

The present report consolidates the data for the Drug Programs.

Two points must be remembered when reading this report: First, the survey data presented is representative of the November, 1974 caseload only. Secondly, it should be realized that clients participate in Community Treatment Programs usually within their first year of supervision; therefore, it is plausible that a higher percentage of the overall caseload have, at one time, been involved in this program.

## DRUG PROGRAMS

The Statewide Survey: Community Treatment Modalities, March 1975, by the Florida Parole and Probation Commission, Division of Planning and Evaluation, presented information concerning the participation, by the clients under the supervision of the Commission, in Community Treatment Programs. The major program categories were: Alcohol, Education, Drug, Psychological/Psychiatric, and Other. The data on program participation was presented in Area Chapters in the Survey. (The state had been subdivided into 10 Areas for the purposes of the Commission.) This report will consolidate the data on Drug Program participants.\*

The Drug program participants constituted 10.3% (1554) of the total participating clients in the state during November 1974. The clients in the Drug programs were grouped into three classifications: Probation Misdemeanants (P. Misdemeanants); Probation Felons (P. Felons); and a Parole, Mandatory Conditional Release (MCR), and Work Release (W/R) grouping. The largest number of participants in the Drug Programs were P. Felons, 67.8% (1053); with P. Misdemeanants second, 23.6% (367); and the Parole, MCR, W/R grouping last, 8.6% (134). (See Chart 1, page 2) Since only two of the eight narcotics or drug offenses are misdemeanors, the number of P. Misdemeanants in the caseload convicted of narcotics or drug offenses would be small compared to the P. Felons.\*\* The distribution of drug offenders as of

---

\*Further information on the Survey techniques, method of data collection, and findings may be found in the Statewide Survey: Community Treatment Modalities.

\*\*See Appendix C for a listing of the narcotics or drug offenses.

September, 1974, was 19.9% (1801) Probation Misdemeanants; 75.1% (6820) Probation Felons; and 5% (457) Parole, MCR, and W/R.\* This would explain the weighting of P. Felons in the drug programs.

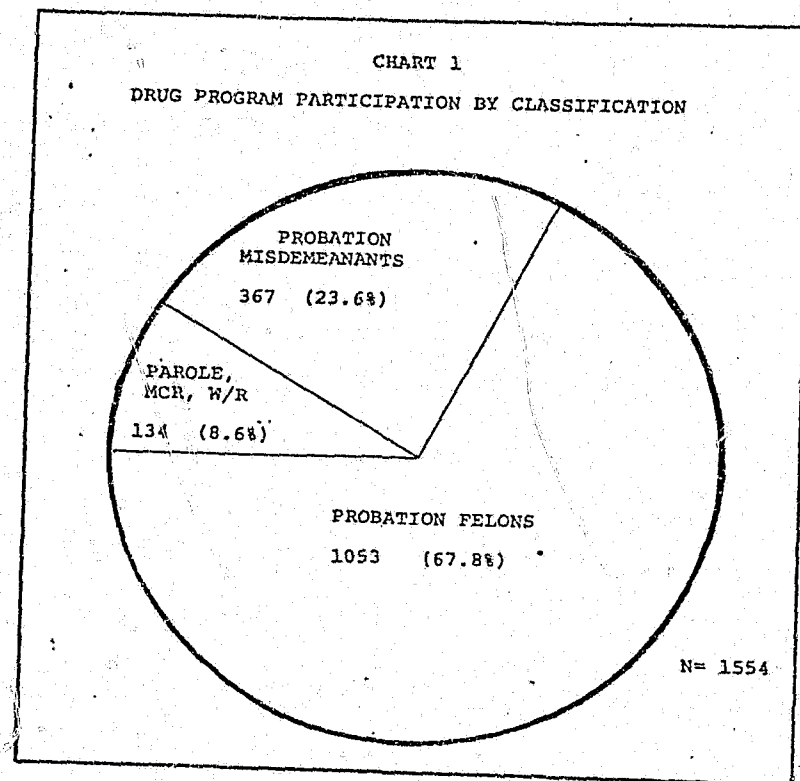


Table 1 ranks the percentage of client participation for each Area. (See Table 1, page 3)

Table 2 shows the relationship between the classifications and the Areas. (See Table 2, page 3)

\*Florida Parole and Probation Commission figures from correspondence between the Chairman, Ray Howard, Florida Parole and Probation Commission and Mr. G. H. Sheldon, Representative, 69th District, March 19, 1975.

TABLE 1  
AREAS RANKED BY DRUG PROGRAM PARTICIPATION

AREA	RANKS	CLIENT PARTICIPATION	
		Frequency	Percent
PENSACOLA I	3	208	13.4
JACKSONVILLE II	9	59	3.8
TAMPA III	6	104	6.7
BARTOW IV	8	73	4.7
MIAMI V	1	335	21.6
ST. PETERSBURG VI	4	202	12.9
ORLANDO VII	7	97	6.2
W. PALM BEACH VIII	5	180	11.6
FT. LAUDERDALE IX	2	259	16.7
TALLAHASSEE X	10	37	2.4
<b>TOTAL</b>		<b>1554</b>	<b>100.0</b>

TABLE 2  
DRUG PROGRAM PARTICIPANTS:  
BREAKDOWN BY CLASSIFICATION AND AREA

AREA	CLASSIFICATION						TOTAL	
	P. MISDEMEANANT		P. FELON		PAROLE, MCR, W/R		Freq.*	Percent
	Freq.*	Percent	Freq.*	Percent	Freq.*	Percent		
I	131	63.0%	66	31.7%	11	5.3%	208	100.0%
II	9	15.3%	36	61.0%	14	23.7%	59	100.0%
III	24	23.1%	68	65.4%	12	11.5%	104	100.0%
IV	32	43.8%	35	47.9%	6	8.3%	73	100.0%
V	47	14.0%	265	79.1%	23	6.9%	335	100.0%
VI	48	23.8%	135	66.8%	19	9.4%	202	100.0%
VII	17	17.5%	58	59.8%	22	22.7%	97	100.0%
VIII	43	23.9%	123	68.3%	14	7.8%	180	100.0%
IX	13	5.0%	238	91.9%	8	3.1%	259	100.0%
X	3	8.1%	29	78.4%	5	13.5%	37	100.0%
<b>TOTAL</b>	<b>367</b>		<b>1053</b>		<b>134</b>		<b>1554</b>	

\*Freq. - Frequency

In every Area, except Area I, P. Felons ranked first (largest number of participants). Area I has a larger number of P. Misdemeanants than P. Felons. The classifications are ranked within each Area in Table 3.

TABLE 3  
DRUG PROGRAM PARTICIPANTS:  
CLASSIFICATIONS RANKED WITHIN AREAS

AREA	CLASSIFICATION		
	P. MISDEMEANANTS	P. FELONS	PAROLE, MCR, W/R
I	1	2	3
II	3	1	2
III	2	1	3
IV	2	1	3
V	2	1	3
VI	2	1	3
VII	3	1	2
VIII	2	1	3
IX	2	1	3
X	3	1	2

Rankings are based on percentage participation of each classification within an Area.

An average rank may be found by summing the ranks within each classification, then dividing by the number of Areas. The average ranks are:

P. Misdemeanants 2.2  
P. Felons 1.1  
Parole, MCR, W/R 2.7

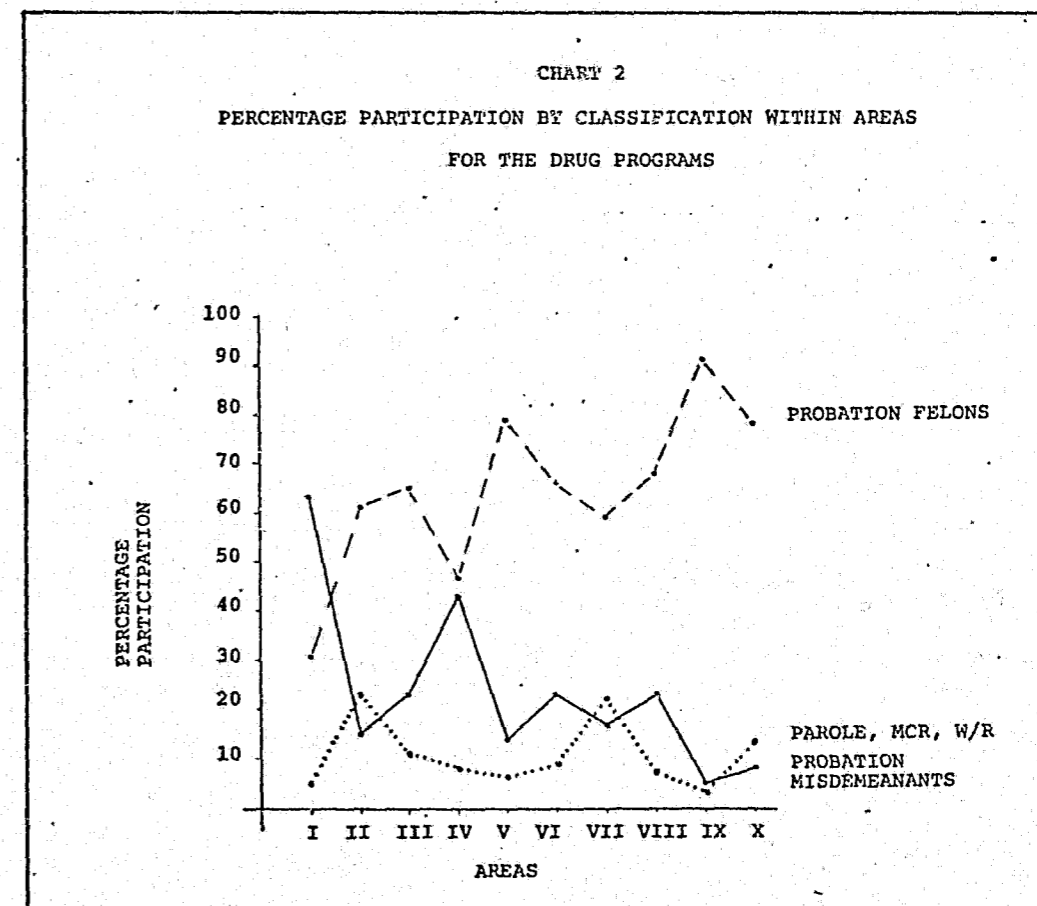
This same ordering may be found if the average percentage participation is computed.

P. Misdemeanants 23.75%  
P. Felons 65.03%  
Parole, MCR, W/R 11.22%

(Average percentage participation is found by, summing the percentages in Table 2 within a classification, then dividing by the number of Areas - 10).

Both the average ranks and the average percentage participation are representative of the distribution of Drug offenders under supervision by the Florida Parole and Probation Commission.

Chart 2 pictorially presents the data of Table 2.



## EVALUATION CONTROL CHARTS

The following charts illustrate the Area data in the form of Evaluation Control Charts. Evaluation Control Charts (ECC) are graphic representations of numeric values. The average or mean of those values is indicated along with the ranges or control limits about the mean on each ECC. The control limits are related to the amount of dispersion of the data involved, and are usually determined statistically. Any data points falling between the control limits depicts an acceptable variation from the mean. However, whenever a data point falls outside these control limits, a unique situation or problem exists which may require further investigation and/or explanation.

The data for the Areas is presented as the Level of Participation in a particular program within a Classification (Probation Misdemeanant; Probation Felon; and the Parole, Mandatory Conditional Release (MCR), and Work Release (W/R) grouping). These data are presented as a percentage of participation.

The mean or State Average Line is indicated along with two control limits. The first control limit extends from  $-1s$  to  $+1s$  ( $s$  = standard deviation). This range is described by the Zone Descriptors as Below Average Participation Zone and Above Average Participation Zone.

-7-

The second set of control limits extends from  $-2s$  to  $+2s$ . In Zone Descriptor terms this would include Low Level, Below Average, Above Average and High Level Participation Zones.

Any Area points which fall in the Minimal Level or the Very High Level Participation Zones would be considered an unusual level of participation for that program and classification. The study for which these data were collected asked only for descriptive information on client participation; therefore, why an Area has an unusual level of participation is presently not known, further study will be necessary.

CHART 3

EVALUATION CONTROL CHARTS

STATE AVERAGE LINE and STANDARD DEVIATIONS

CLASSIFICATION	LEVELS OF PARTICIPATION						
	MINIMAL LEVEL	LOW LEVEL	BELOW AVERAGE	STATE AVERAGE LINE	ABOVE AVERAGE	HIGH LEVEL	VERY HIGH LEVEL
	← -2s ← -1s ← X → +1s → +2s →						
PROBATION MISDEMEANANTS	-----	7.18%		23.75%	40.32%	56.89%	I*
PROBATION FELONS	I** 33.03%	49.03%		65.03%	81.03%	97.03%	
PAROLE, MCR, W/R	-----	4.62%		11.22%	17.82%	24.42%	

\*This Area showed an unusually high level of participation.

\*\*This Area showed an unusually low level of participation.

CHART 4

LEVEL OF PROBATION MISDEMEANANT PARTICIPATION IN DRUG PROGRAM

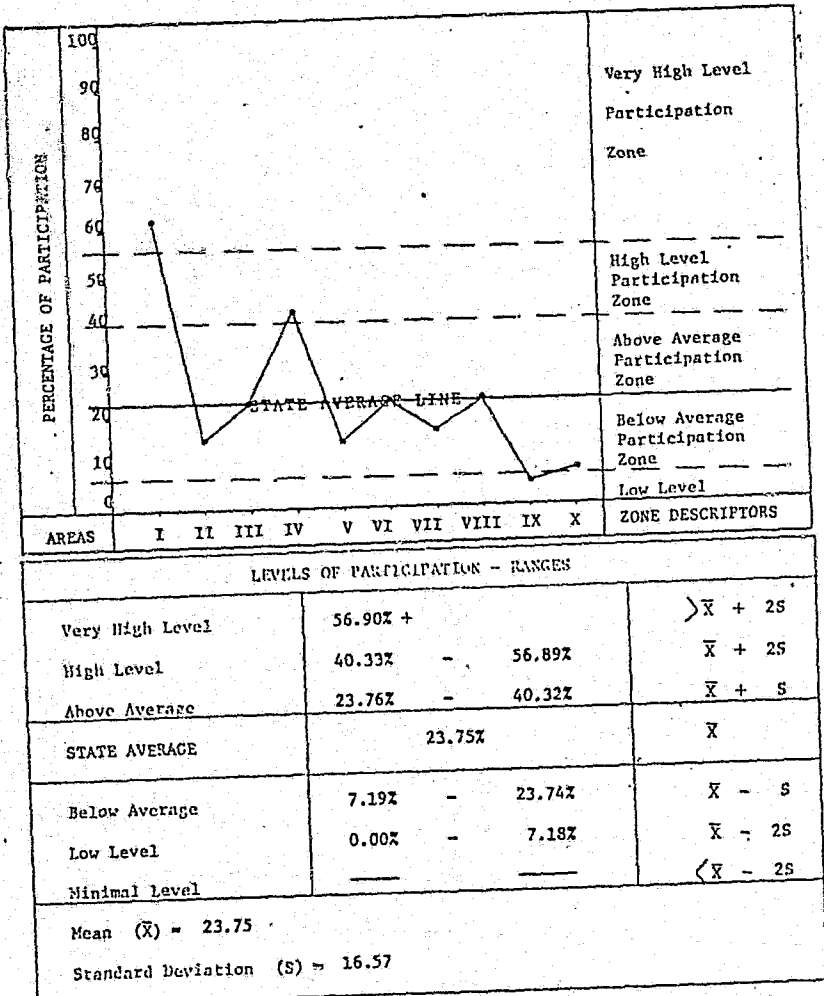


CHART 5

LEVEL OF PROBATION FELON PARTICIPATION IN DRUG PROGRAMS

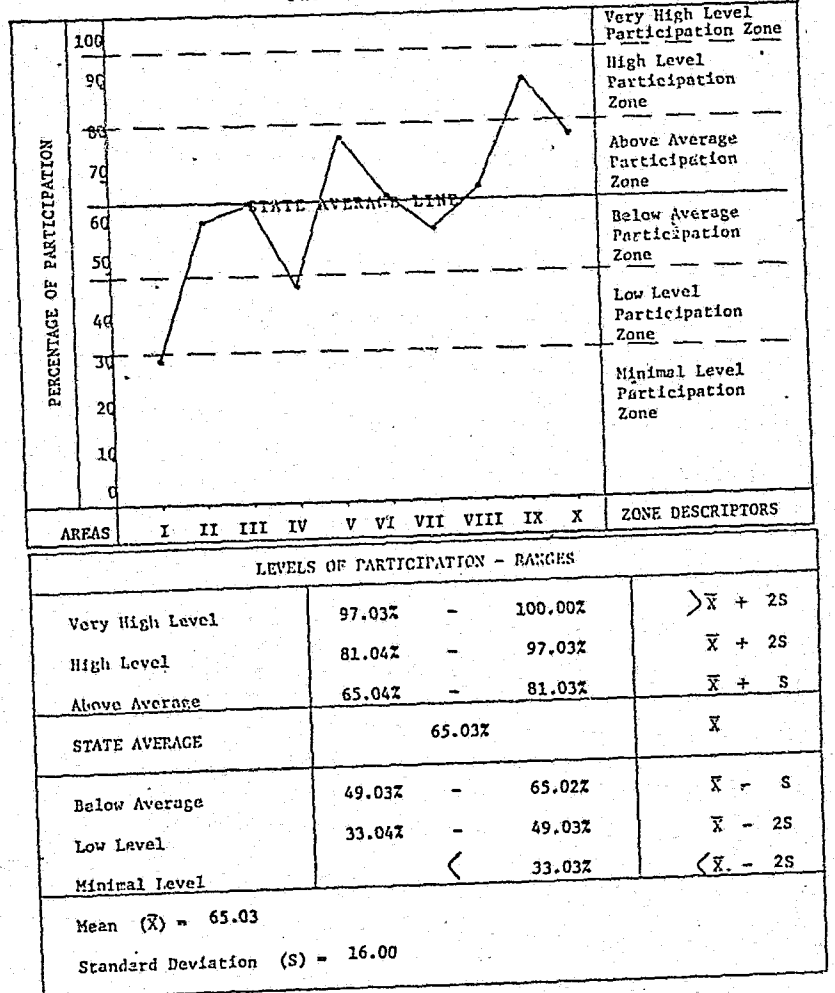
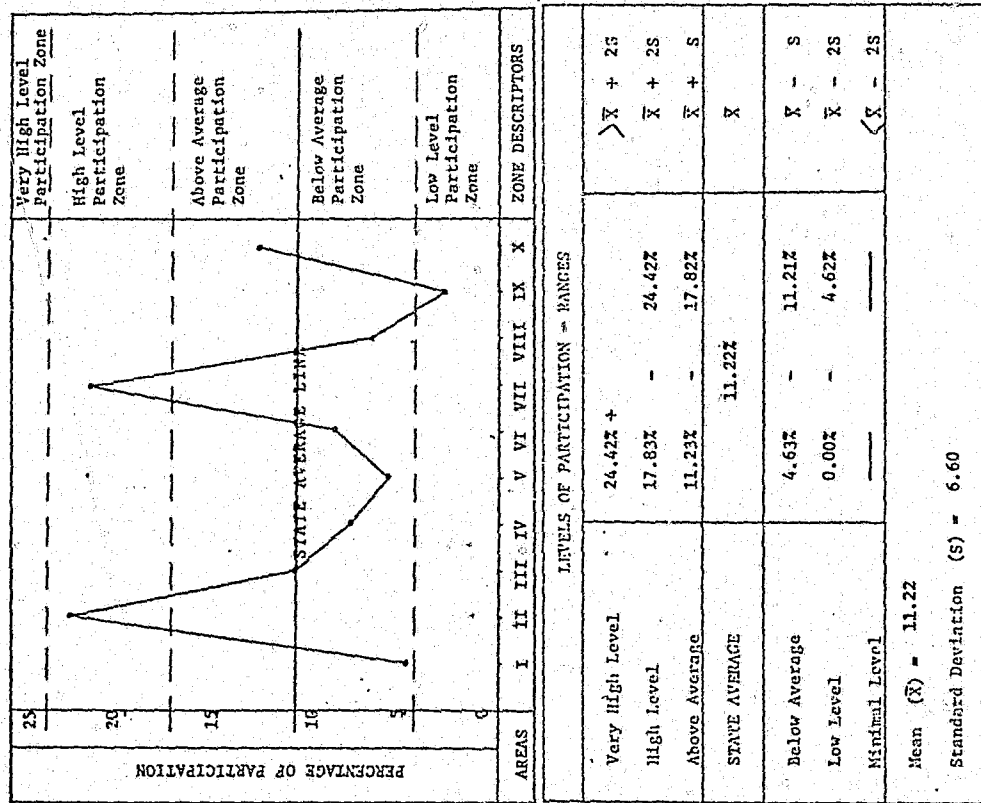




CHART 6

LEVEL OF PAROLE, MCR, W/R PARTICIPATION IN  
DRUG PROGRAMS



APPENDIX A  
DRUG PROGRAMS

Raw Data - Areas

Areas	Probation Misdemeanant	Probation Felon	Parole, MCR, W/R	Total
I -Pensacola	131	66	11	208
II -Jacksonville	9	36	14	59
III -Tampa	24	68	12	104
IV -Bartow	32	35	6	73
V -Miami	47	265	23	335
VI -St. Petersburg	48	135	19	202
VII -Orlando	17	58	22	97
VIII -W. Palm Beach	43	123	14	180
IX -Ft. Lauderdale	13	238	8	259
X -Tallahassee	3	29	5	37
State	367	1053	134	1554

APPENDIX B

Raw Data - Districts

	Probation Misdemeanant	Probation Felon	Parole, MCR, W/R
AREA I			
01 - Pensacola	128	56	10
14 - Mariana	0	4	0
19 - Crestview	2	0	0
25 - Panama City	0	6	1
30 - Milton	1	0	0
AREA II			
04 - Jacksonville	9	34	14
48 - Green Cove Springs	0	2	0
AREA III			
08 - Tampa	24	68	12
31 - Dade City	0	0	0
AREA IV			
06 - Bartow	1	15	4
17 - Ocala	1	5	2
22 - Tavares	5	9	0
32 - Sebring	0	0	0
33 - Arcadia	0	0	0
34 - Bushness	0	1	0
42 - Inverness	25	5	0
43 - Brooksville	0	0	0
45 - Wauchula	0	0	0
AREA V			
07 - Miami	47	263	23
26 - Key West	0	2	0
AREA VI			
03 - Clearwater	25	124	16
13 - Bradenton	20	9	2
27 - Sarasota	3	2	1
AREA VII			
05 - Orlando	9	30	3
15 - Deland	4	9	1
20 - Titusville	1	10	12
21 - St. Augustine	0	5	6
28 - Sanford	0	2	0
29 - Palatka	2	1	0
39 - Kissimmee	1	1	0

APPENDIX B (cont.)

Raw Data - Districts

	Probation Misdemeanant	Probation Felon	Parole, MCR, W/R
AREA III			
12 - Vero Beach	2	4	0
16 - West Palm Beach	19	66	7
23 - Ft. Myers	2	17	4
35 - Labelle	0	9	0
38 - Ft. Pierce	17	20	3
44 - Okeechobee	0	0	0
46 - Punta Gorda	0	0	0
47 - Stuart	3	7	0
AREA IX			
18 - Ft. Lauderdale	12	237	8
36 - Naples	1	1	0
AREA X			
02 - Live Oak	0	0	0
09 - Lake City	0	0	0
10 - Gainesville	0	19	4
11 - Tallahassee	3	8	1
24 - Perry	0	1	0
37 - Madison	0	0	0
40 - Quincy	0	1	0
41 - Starke	0	0	0

APPENDIX C

NARCOTICS OR DRUG OFFENSE LISTING

<u>OFFENSE</u>	<u>CLASSIFICATION</u>
-Fraudulently obtaining narcotics or drugs	felony
-Possession of narcotics or drugs	felony
-Sale or delivery, other	felony
-Possession of drug paraphernalia	felony
-Sale or delivery to minor	felony
-Sniffing toxic solvents	misdemeanor
-Attempted sale or delivery of narcotics/drugs	felony
-Possession of narcotics or drugs (marajuana, less than five (5) grams)	.misdemeanor

**END**