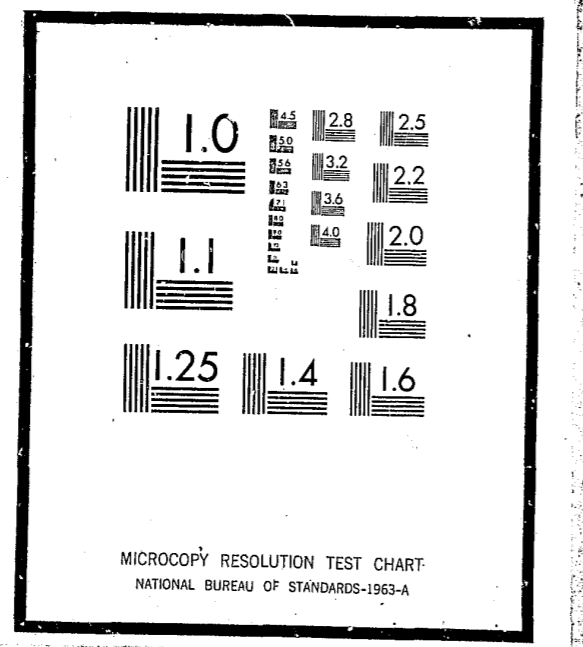


NCJRS

This microfiche was produced from documents received for inclusion in the NCJRS data base. Since NCJRS cannot exercise control over the physical condition of the documents submitted, the individual frame quality will vary. The resolution chart on this frame may be used to evaluate the document quality.



Microfilming procedures used to create this fiche comply with the standards set forth in 41CFR 101-11.504

Points of view or opinions stated in this document are those of the author(s) and do not represent the official position or policies of the U.S. Department of Justice.

U.S. DEPARTMENT OF JUSTICE
LAW ENFORCEMENT ASSISTANCE ADMINISTRATION
NATIONAL CRIMINAL JUSTICE REFERENCE SERVICE
WASHINGTON, D.C. 20531

Date filmed

7/20/76

NPS Bulletin

cut 1

NUMBER 43

AUGUST, 1968

NATIONAL PRISONER STATISTICS - PRISONERS IN STATE AND FEDERAL INSTITUTIONS FOR ADULT FELONS 1966,

NCJ-002171

UNITED STATES DEPARTMENT OF JUSTICE
RAMSEY CLARK, ATTORNEY GENERAL

BUREAU OF PRISONS
Myrl E. Alexander, Director

Prisoners in State and Federal Institutions

1966

GUIDE AND INDEX			
SUBJECT	TEXT PAGES	TABLE NUMBERS	CHART NUMBERS
Authorized temporary absences	-	3,10,11	-
Boarded prisoners	-	10,11	-
Civilian population	-	1,4,5	1
Conditional release violators returned	2,4	3,5,9-11	4
Court commitments:			
General	1,2,4	2-5,8,10,11	4
By month	2-4	13	-
Court orders	-	3,10,11	-
Deaths	-	3,10,11	-
Escapes and escapees returned	-	3,10,11	-
Executions	-	3,10	-
Method of release:			
Conditional pardons	-	3	-
Full pardons	-	3	-
Other conditional releases	-	3	6
Paroles	4	3	6
Prison population:			
General	1,2,4	1,3-6,10,11,15	1-3
By month	1,3	14	-
Rate per 100,000 of civilian population:			
Court commitments	-	2,4	-
Prison population	1	1,4	-
Releases	2,4	3,5,10,11	5,6
Sex:			
Female	4	3,5,10,11	-
Male	-	3,5	-
Trend data:			
1939-1966	-	1	1
1940-1966	-	2,4	-
1950-1966	1,4	5-10	4,5
1965-1966	1,2,4	3-9,11	2
Transfers	-	3	-
Type of institution:			
Federal	1,2,4	1-5	1
State:			
Individually	1,2,4	6-14	2,3,6
Nation-wide	1-4	1-5	1,4-6
By specific institution	-	15	-
Combined Federal & State	1,2,4	1-5	-
Type of release:			
Conditional	4	3,5,10-12	6
Unconditional	-	3,5,10-12	-

COVERAGE OF THIS REPORT

This report presents summary information concerning sentenced prisoners admitted to, confined in, and released from State and Federal correctional institutions for adult felony offenders in the United States¹ during calendar year 1966. Also included are trend data on movement of the sentenced prison population since 1939.

The National Prisoner Statistics (NPS) program is a voluntary reporting system initiated by the Bureau of the Census in 1926, and transferred to the Federal Bureau of Prisons in 1950. In addition to the annual series of which this bulletin is a part, NPS publishes an annual bulletin on prisoners executed under civil authority, and occasional detailed reports on court commitments to, and first releases from, State institutions.²

We welcome comments from recipients concerning the contents of this issue, and invite suggestions for changes in future bulletins.

PRISON POPULATION FALLS SHARPLY

During 1966, the number of sentenced prisoners in State and Federal institutions decreased by 5.3 percent -- from 210,895 prisoners confined at the end of 1965, to a December 31, 1966 population of 199,654. This was the fifth consecutive year the prison population has fallen, and the percentage drop was the largest since World War II, when the number of prisoners declined by 8.8 percent during 1943. (Chart 1, and Tables 1, 3, and 5)

¹See Table 15 for a breakdown of the institutions which are included in this report.

²A third annual series, "Personnel in State and Federal institutions", has been discontinued.

The ratio of prisoners confined to the civilian population decreased from 109.5 per 100,000 on December 31, 1965, to 102.7 per 100,000 at the end of 1966 -- the lowest figure since 1946, when the year-end ratio was 99.7 per 100,000. (Tables 1 and 3)

The decline in State prison population was five percent in 1966, compared to 1.4 percent in 1965 -- while Federal institutions recorded decreases of 8.5 percent in 1966, and 3.1 percent in 1965. At the close of 1966, the number of prisoners in State institutions was 21.1 percent higher than at the end of 1950, and the Federal population was 12.3 percent above the 1950 figure. (Table 5)

POPULATION IN STATE INSTITUTIONS

The 1966 year-end population in State institutions fell below the 1965 level in all but six States -- and below the 1960 level in 31 States and the District of Columbia. Thirty-one States reported decreases of five percent or more, with decreases in excess of 10 percent in 11 States. (Chart 2 and Table 6)

The extent of the decline in the prison population is illustrated by the month-end figures shown in Figure 2. The population peaked in February at 191,114, then descended steadily to the December 31 figure of 180,409. The average number of prisoners incarcerated (based on the month-end figures) fell 3.5 percent, from 192,848 in 1965, to 186,390 in 1966. (Figure 2 and Table 14)

COURT COMMITMENTS

The number of prisoners received from court by State and Federal institutions decreased for the fifth consecutive year, dropping sharply from 87,505 in 1965, to

77,857 in 1966 — a decline of 11.0 percent. Court commitments to State institutions fell by 11.2 percent, and commitments to Federal institutions by 10 percent. In all but six States the number received was below the 1965 total. (Chart 4, and Tables 2, 4, 5, and 7)

By month, court commitments to State institutions followed the same pattern as in previous years, with the smallest number received in the third quarter (21.3 percent of the total for the year), and the highest in the first (27.5 percent). (Figure 3 and Table 13)

VIOLATORS RETURNED

For the second straight year, the number of releasees returned after violating

the terms of their parole or other type of conditional release declined. In 1966, 17,662 violators were returned, a decrease of 8.9 percent from the 1965 figure of 19,373. This contrasts with a 0.8 percent decrease in 1965, and increases of 3.4 and 9.7 percent in 1964 and 1963, respectively. The number of violators returned in 1966 fell by 9.4 percent in State institutions and by 4.2 percent in Federal institutions. (Chart 4 and Table 5)

Thirty-six States and the District of Columbia returned fewer violators in 1966 than in 1965, with 20 reporting decreases greater than 10 percent. Increases of more than 10 percent were recorded in six jurisdictions. (Figure 1 and Table 8)

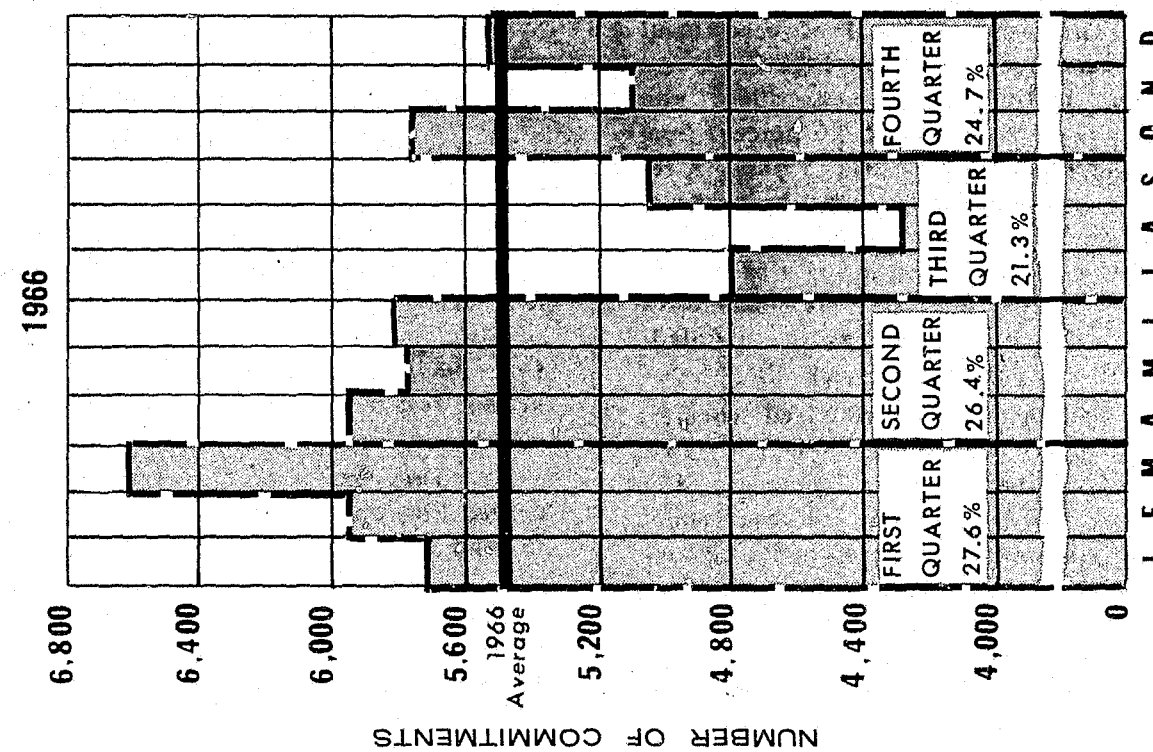
Figure 1. - PRIMARY ELEMENTS OF PRISON POPULATION MOVEMENT IN STATE INSTITUTIONS, BY THE 10 STATES WITH THE MOST PRISONERS CONFINED ON DECEMBER 31, 1966

State	Prisoners confined on Dec. 31, 1966	Percent of national total	Percent change, 1965-1966			
			Year-end prison population	Court commitments	Violators returned	Releases
UNITED STATES ...	180,409	100.0	-5.0	-11.2	-9.4	-4.0
California	27,467	15.2	4.3	-8.0	-15.4	-20.0
New York	15,760	8.7	-10.0	-13.6	-1.8	3.6
Texas	12,392	6.9	-3.6	-12.4	-24.5	4.3
Ohio	10,694	5.9	-6.0	-5.0	-9.5	-3.4
Illinois	7,491	4.2	-9.8	-16.0	-9.9	-7.8
Florida	6,972	3.9	-0.3	-11.3	-38.4	2.2
Michigan	6,754	3.7	-8.0	-5.9	0.2	-8.4
Pennsylvania	6,519	3.6	-8.4	-7.0	-14.1	-11.6
Georgia	5,385	3.0	-9.7	(a)	(a)	(a)
North Carolina ..	5,297	2.9	-12.1	-28.0	-5.6	3.5

(a) Percent change not shown as 1965 and 1966 figures are not comparable.

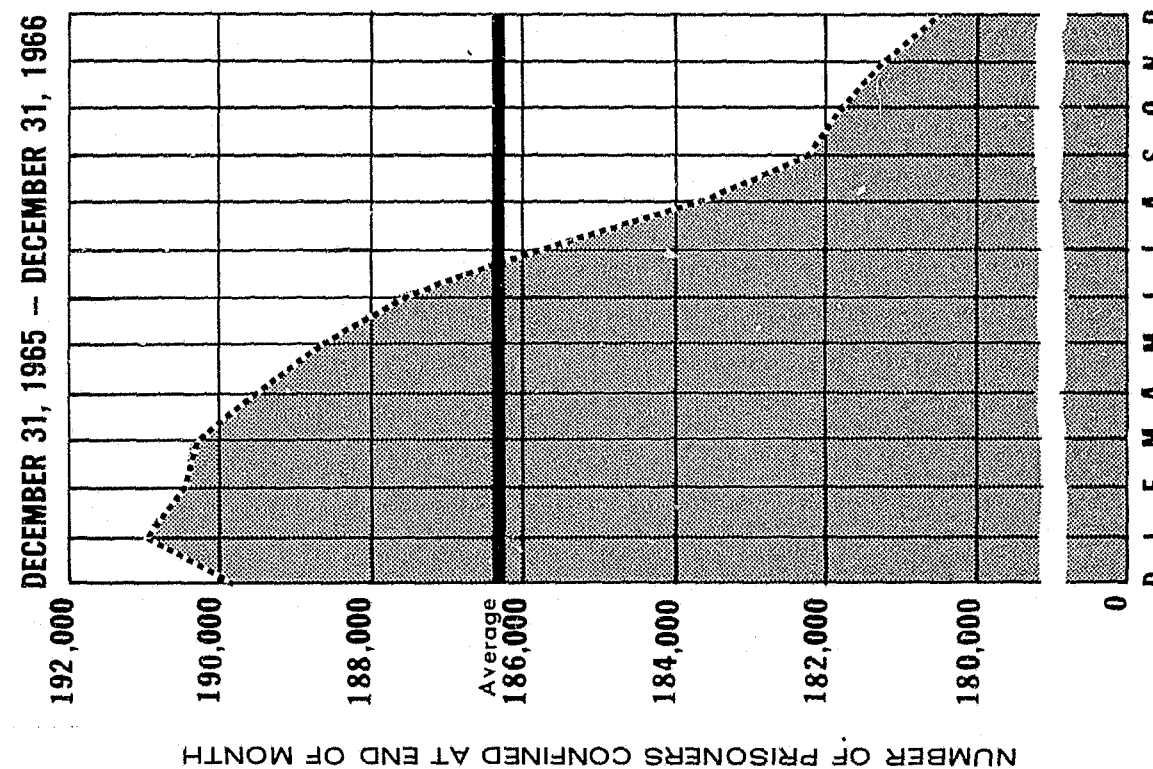
Source: Tables 6-9

FIGURE 3 - COURT COMMITMENTS TO STATE INSTITUTIONS BY MONTH: 1966



Source: Table 13

FIGURE 2 - PRISONERS CONFINED IN STATE INSTITUTIONS BY MONTH: DECEMBER 31, 1965 - DECEMBER 31, 1966



Source: Table 14

RELEASES

The combined total of conditional and unconditional releases from State and Federal institutions during 1966 was 102,335 — a decrease of 3.6 percent from the 1965 figure of 106,161. Prisoners released conditionally — i.e., to continue their sentences under supervision in the community — accounted for 65.4 percent of the total. Eighty-nine percent of those released conditionally were paroled. (Chart 5 and Tables 3, 5, and 12)

State institutions released four percent fewer prisoners in 1966 than in 1965, and Federal institutions 1.2 percent. The use by State institutions of conditional methods of release decreased by 2.9 percent in 1966 from 1965, while Federal usage increased by 6.6 percent. (Chart 5, and Tables 3, 5, and 12)

A decline in the total number of releases was reported in 27 States and

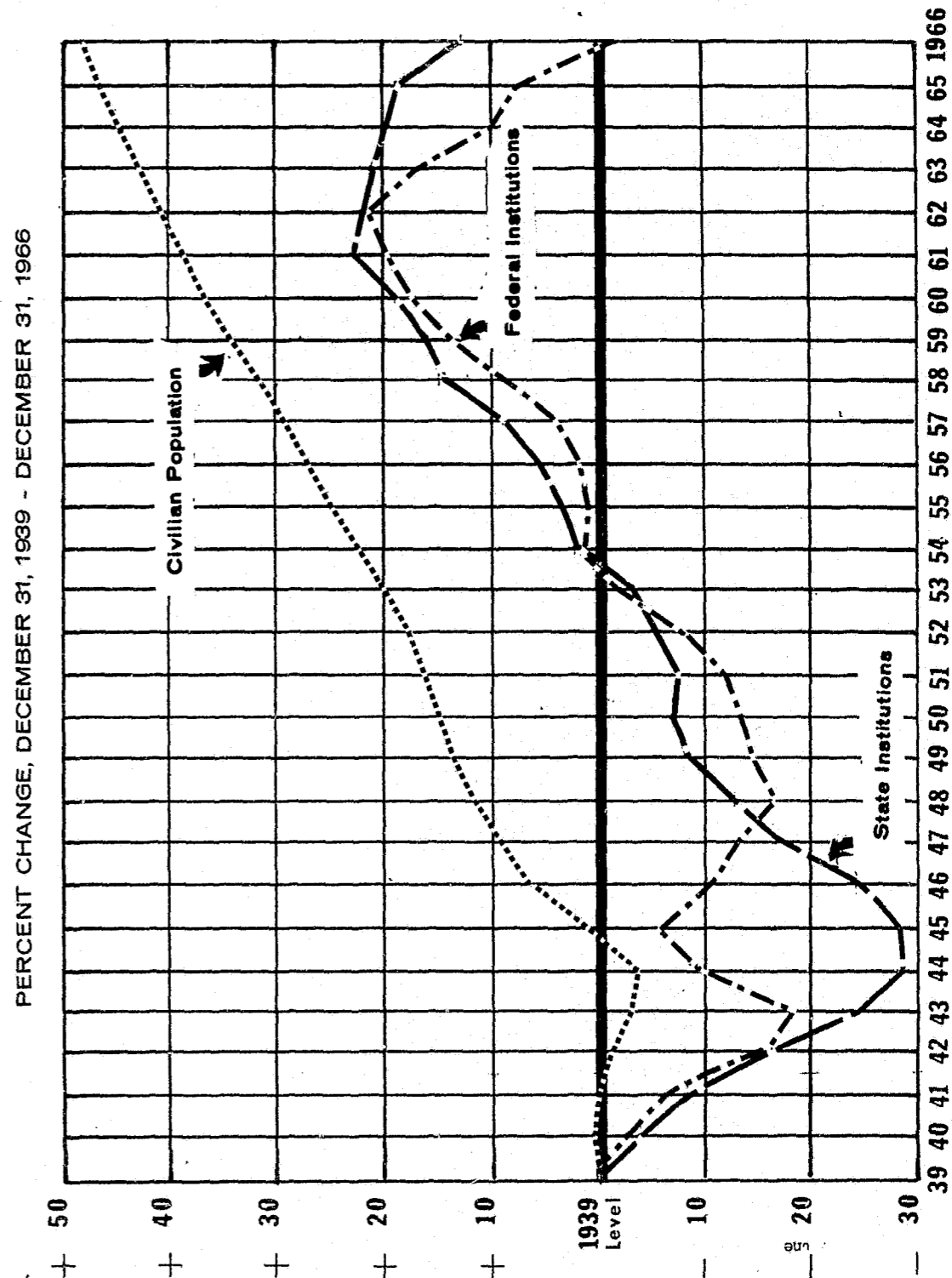
the District of Columbia. Fifty percent or more of the releases were by parole in 29 States. (Chart 6, and Tables 8 and 12)

WOMEN CONFINED IN STATE AND FEDERAL INSTITUTIONS

The December 31, 1966 total of 6,951 sentenced female prisoners confined was 8.2 percent below the 1965 figure of 7,568. The number of women incarcerated in State institutions was down 7.1 percent from 1965, while the number in the Federal system fell by 16.9 percent. (Tables 3 and 5)

The number of female prisoners received from court decreased by 11.4 percent in State and 15.4 percent in Federal institutions. State institutions recorded a decline of 9.1 percent in the number of female conditional release violators returned, but Federal institutions reported an increase of 15.7 percent. (Tables 3, 5, and 11)

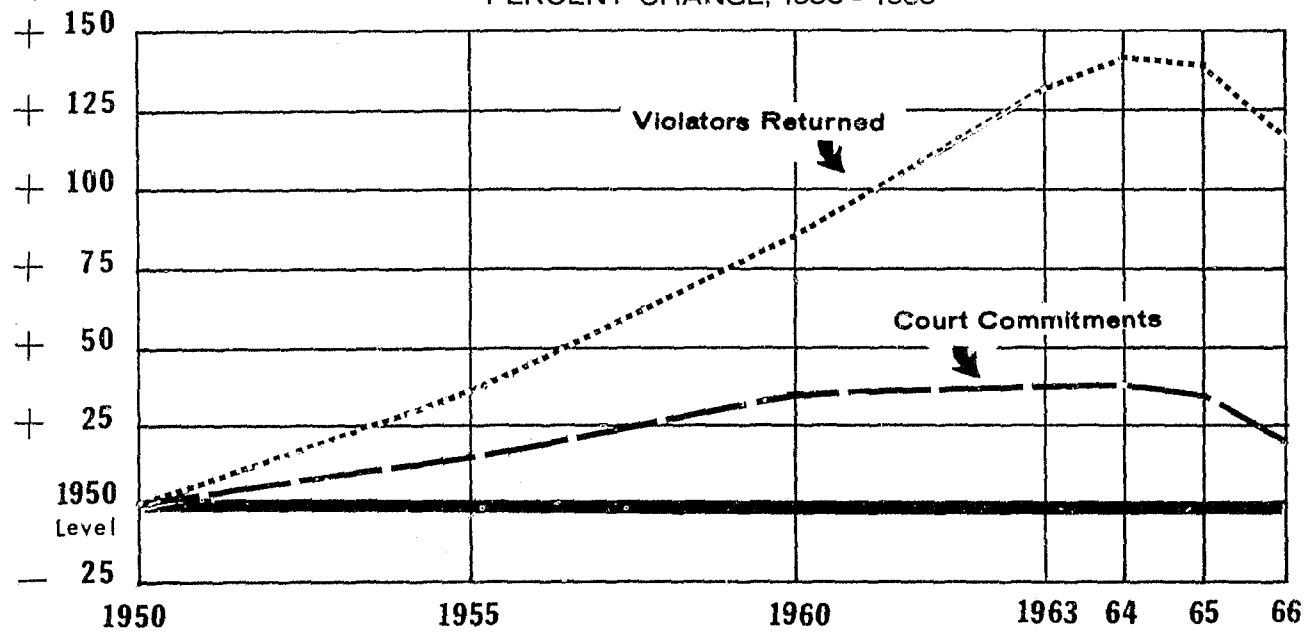
CHART 1 — RATE OF GROWTH OF STATE AND FEDERAL PRISON POPULATIONS AND OF CIVILIAN POPULATION



Source: Table 1

CHART 4 - COURT COMMITMENTS AND CONDITIONAL RELEASE VIOLATORS RETURNED TO STATE INSTITUTIONS

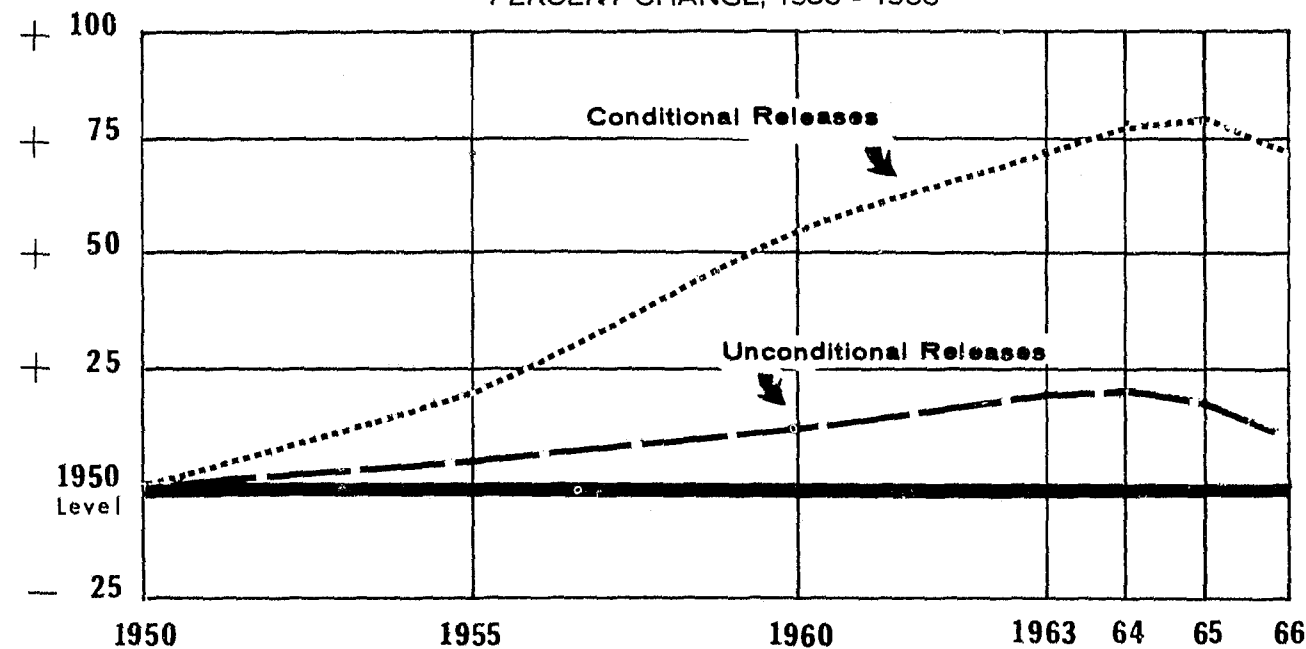
PERCENT CHANGE, 1950 - 1966



Source: Table 5

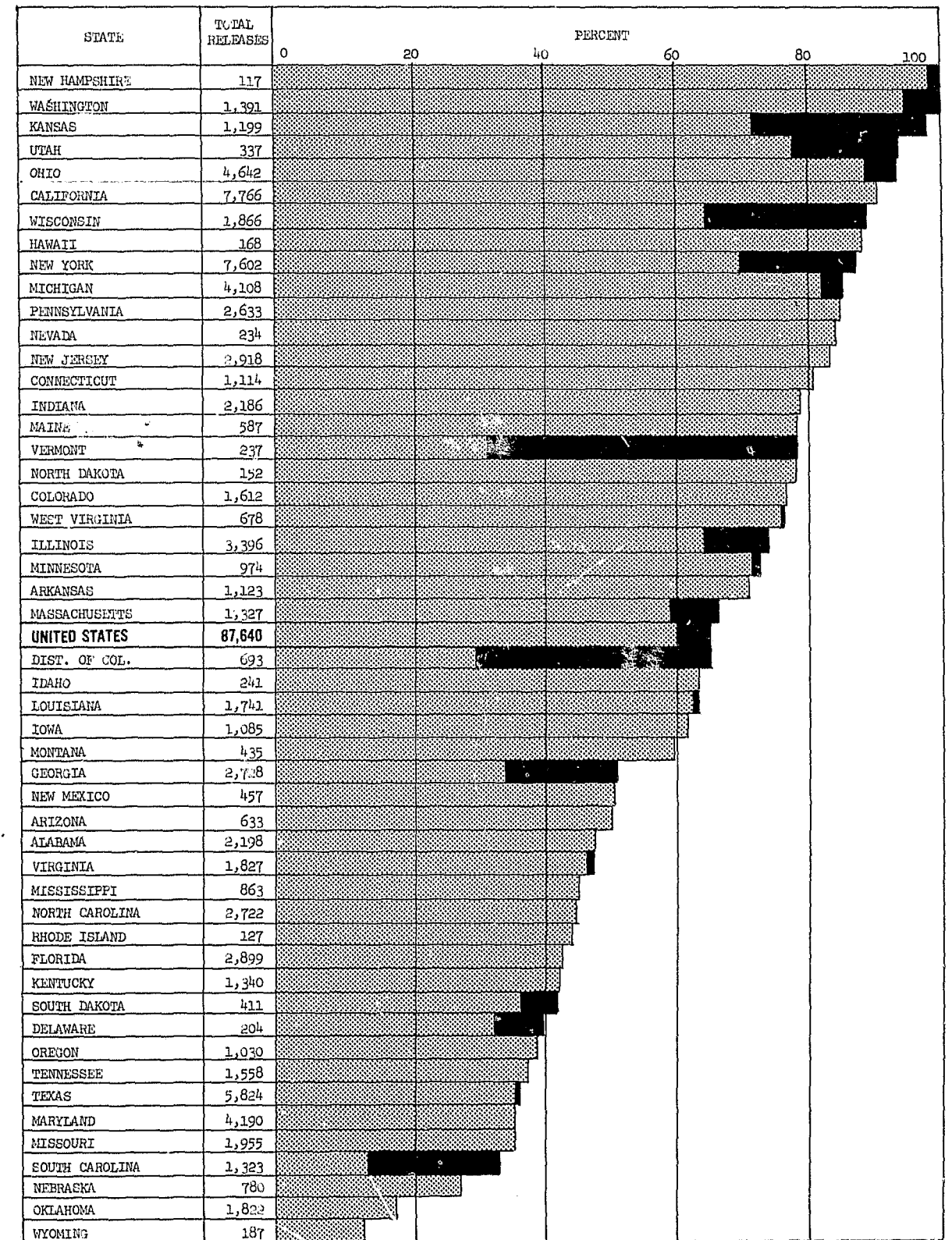
CHART 5 - PRISONERS RELEASED FROM STATE INSTITUTIONS, BY TYPE OF RELEASE

PERCENT CHANGE, 1950 - 1966



Source: Table 5

CHART 6 - PRINCIPAL METHODS OF CONDITIONAL RELEASE FROM STATE INSTITUTIONS: 1966



■ PAROLE ■ OTHER CONDITIONAL RELEASE

Source: Table 12

Table 1. - SENTENCED PRISONERS PRESENT AT END OF YEAR IN STATE AND FEDERAL INSTITUTIONS, FOR THE UNITED STATES: 1939-1966

(State figures exclude Hawaii prior to 1960 & Alaska for all years. This table supersedes Table 1, National Prisoner Statistics Bulletin No. 38)

Year	Number			Rate per 100,000 of the estimated civilian population of the U. S. (a)			Estimated year-end U. S. civilian population (b)
	All institutions	Federal institutions	State institutions	All institutions	Federal institutions	State institutions	
1966 (c)	199,654	19,245	180,409	102.7	9.9	92.8	194,490
1965	210,895	21,040	189,855	109.5	10.9	98.6	192,602
1964	214,336	21,709	192,627	112.6	11.4	101.2	190,410
1963	217,283	23,128	194,155	115.7	12.3	103.4	187,808
1962	218,830	23,944	194,886	118.3	12.9	105.3	185,029
1961	220,149	23,696	196,453	120.8	13.0	107.8	182,306
1960	212,953	23,218	189,735	118.6	12.9	105.7	179,486
1959	207,446	22,492	184,954	117.7	12.8	104.9	176,242
1958	205,493	21,549	183,944	118.8	12.5	106.3	173,003
1957	195,256	20,420	174,836	114.9	12.0	102.9	169,942
1956	189,421	20,134	169,287	113.5	12.1	101.4	166,886
1955	185,780	20,088	165,692	113.4	12.3	101.1	163,842
1954	182,848	20,003	162,845	113.8	12.4	101.3	160,685
1953	173,547	19,363	154,184	110.2	12.3	97.9	157,517
1952	168,200	18,014	150,186	108.8	11.6	97.1	154,633
1951	165,640	17,395	148,245	108.9	11.4	97.4	152,150
1950	166,123	17,134	148,989	110.3	11.4	98.9	150,606
1949	163,749	16,868	146,881	110.0	11.3	98.6	148,890
1948	155,977	16,328	139,649	106.6	11.2	95.4	146,373
1947	151,304	17,146	134,158	105.2	11.9	93.3	143,867
1946	140,079	17,622	122,457	99.7	12.5	87.2	140,475
1945	133,649	18,638	115,011	100.5	14.0	86.5	132,979
1944	132,456	18,139	114,317	104.2	14.3	89.9	127,140
1943	137,220	16,113	121,107	108.0	12.7	95.3	127,103
1942	150,384	16,623	133,761	116.4	12.9	103.5	129,220
1941	165,439	18,465	146,974	126.0	14.1	112.0	131,268
1940	173,706	19,260	154,446	132.0	14.6	117.3	131,626
1939	179,818	19,730	160,088	137.1	15.0	122.0	131,170

10

(a) As rates were computed individually, sum of State and Federal rates may not exactly equal "All institutions" rate.

(b) Civilian population figures are in thousands. The 1966 figure is based upon extrapolation of estimated figures published by the Bureau of the Census in Series P-25, Current Population Reports Numbers 380 and 395. For the remaining years, figures are based upon interpolations of estimated figures published in Series P-25, Numbers 368 and 380 (1960-1965), and 368 (1939-1959).

(c) Figures are lower than those appearing in NPS Bulletin No. 40, due to changes received from States too late for inclusion therein.

Table 2. - SENTENCED PRISONERS RECEIVED FROM COURT IN STATE AND FEDERAL INSTITUTIONS, FOR THE UNITED STATES: 1940-1966

(State figures exclude Hawaii prior to 1960 and Alaska for all years. Federal figures include a few prisoners committed from the Federal courts in Alaska and Hawaii. This table supersedes Table 2 in National Prisoner Statistics Bulletin Number 40)

Year	Number			Rate per 100,000 of the estimated civilian population of the U. S. (a)		
	All institutions	Federal institutions	State institutions	All institutions	Federal institutions	State institutions
1966	77,857	11,508	66,349	40.0	5.9	34.1
1965	87,505	12,781	74,724	45.4	6.6	38.8
1964	87,578	12,482	75,096	46.0	6.6	39.4
1963	87,826	12,882	74,944	46.8	6.9	39.9
1962	89,082	13,514	75,568	48.1	7.3	40.8
1961	93,513	13,517	79,996	51.3	7.4	43.9
1960	88,575	13,723	74,852	49.3	7.6	41.7
1959	87,192	13,872	73,320	49.5	7.9	41.6
1958	88,633	13,803	74,830	51.2	8.0	43.3
1957	80,482	13,305	67,177	47.4	7.8	39.5
1956	77,924	13,454	64,470	46.7	8.1	38.6
1955	78,414	15,286	63,128	47.9	9.3	38.5
1954	80,900	16,685	64,215	50.3	10.4	40.0
1953	74,240	16,376	57,864	47.1	10.4	36.7
1952	70,892	15,305	55,587	45.8	9.9	35.9
1951	67,165	14,120	53,045	44.1	9.3	34.9
1950	63,473	14,237	55,236	46.1	9.5	36.7
1949	63,925	13,130	55,795	46.3	8.8	37.5
1948	63,777	12,430	51,347	43.6	8.5	35.1
1947	64,804	12,948	51,856	45.0	9.0	36.0
1946	61,338	14,950	46,388	43.7	10.6	33.0
1945	53,212	14,171	39,041	40.0	10.7	29.4
1944	50,162	14,047	36,115	39.5	11.0	28.4
1943	50,582	12,203	37,879	39.4	9.6	29.8
1942	58,858	13,725	45,133	45.5	10.6	34.9
1941	68,700	15,350	53,350	52.3	11.7	40.6
1940	73,104	15,109	57,995	55.5	11.5	44.1

11

(a) As rates were computed individually, sum of State and Federal rates may not exactly equal "All institutions" rate. See Table 1 for civilian population figure.

Table 3. - MOVEMENT OF SENTENCED PRISONERS IN STATE AND FEDERAL INSTITUTIONS, BY SEX, FOR THE UNITED STATES: CALENDAR YEAR 1966

Movement of sentenced prisoners	All institutions			Federal institutions			State institutions (a)		
	Total	Male	Female	Total	Male	Female	Total	Male	Female
Prisoners present:									
January 1, 1966 (b)	210,895	203,327	7,568	21,040	20,261	779	189,855	183,066	6,789
December 31, 1966	199,654	192,703	6,951	19,245	18,598	647	180,409	174,105	6,304
Percent change	-5.3	-5.2	-8.2	-8.5	-8.2	-16.9	-5.0	-4.9	-7.1
Admissions, total	204,365	190,952	7,413	23,938	23,229	709	180,427	173,723	6,704
Admitted except transfers	128,087	121,994	6,093	16,221	15,545	676	111,866	106,449	5,417
Court commitments	77,857	74,100	3,757	11,508	11,036	472	66,349	63,044	3,305
Returned as violators of conditional release (c) ..	17,662	16,862	800	1,746	1,687	59	15,916	15,175	741
Other admissions (d)	32,568	31,032	1,536	2,967	2,802	165	29,601	28,230	1,371
Transferred from other institutions	76,278	74,958	1,320	7,717	7,684	33	68,561	67,274	1,287
Departures, total	215,606	207,576	8,030	25,733	24,892	841	189,873	182,684	7,189
Discharged, except transfers	139,098	132,363	6,735	18,152	17,348	804	120,946	115,015	5,931
Releases, total	102,335	97,309	5,026	14,695	14,072	623	87,640	83,237	4,403
Conditional releases, total (e)	66,908	63,306	3,602	9,273	8,867	406	57,635	54,439	3,196
Paroles	59,707	56,399	3,308	6,029	5,734	295	53,678	50,665	3,013
Other Conditional releases	7,201	6,907	294	3,244	3,133	111	3,957	3,774	183
Unconditional releases, total (f)	35,427	34,003	1,424	5,422	5,205	217	30,005	28,798	1,207
Deaths, except executions	639	630	9	50	50	-	589	580	9
Executions	1	1	-	-	-	-	1	1	-
Other departures (g)	36,123	34,423	1,700	3,407	3,226	181	32,716	31,197	1,519
Transferred to other institutions	76,508	75,213	1,295	7,581	7,544	37	68,927	67,669	1,258

12

- (a) Excludes Alaska.
- (b) Figures are lower than those appearing in NPS Bulletin No. 40, due to changes received from States too late for inclusion therein.
- (c) Figures shown do not include some violators who were returned with new or additional sentences and were included as "court commitments".
- (d) Includes escapees returned, returns from court orders and authorized temporary absences, and "other" admissions.
- (e) Includes 49 conditional pardons (all male).
- (f) Includes 16 full pardons (13 male, 3 female).
- (g) Includes escapes, court orders, authorized temporary absences, and "other" departures.

Table 4. - SENTENCED PRISONERS RECEIVED FROM COURT AND PRESENT AT END OF YEAR IN STATE AND FEDERAL INSTITUTIONS, FOR THE UNITED STATES: 1940-66

(State figures exclude Hawaii prior to 1960 and Alaska for all years. Federal figures include a few prisoners committed from the Federal courts in Alaska and Hawaii. This table supersedes Table 4 appearing in National Prisoner Statistics Bulletin Number 40)

	1966	Per- cent change	1965	Per- cent change	1960	Per- cent change	1955	Per- cent change	1950	Per- cent change	1945	Per- cent change	1940
Estimated civilian population of the United States as of December 31 (a)	194,490	1.0	192,602	7.3	179,486	9.5	163,842	8.8	150,606	13.3	132,979	1.0	131,626
Present December 31:													
All institutions	199,654	-5.3	210,895	-1.0	212,953	14.6	185,780	11.8	166,123	24.3	133,649	-23.1	173,706
Rate per 100,000 of civilian population	102.6	-6.3	109.5	-7.7	118.6	4.6	113.4	2.8	110.3	9.8	100.5	-23.9	132.0
Federal institutions	19,245	-8.5	21,040	-9.4	23,218	15.6	20,088	17.2	17,134	-8.1	18,638	-3.2	19,260
Rate per 100,000 of civilian population	9.9	-9.2	10.9	-15.5	12.9	4.9	12.3	7.9	11.4	-18.6	14.0	-4.1	14.6
State institutions	180,409	-5.0	189,855	0.1	189,735	14.5	165,692	11.2	148,989	29.5	115,011	-25.5	154,446
Rate per 100,000 of civilian population	92.7	-6.0	98.6	-6.7	105.7	4.5	101.1	2.2	98.9	14.3	86.5	-26.3	117.3
Received from court:													
All institutions	77,857	-11.0	87,505	-1.2	88,575	13.0	78,414	12.9	69,473	30.6	53,212	-27.2	73,104
Rate per 100,000 of civilian population	40.0	-11.9	45.4	-7.9	49.3	2.9	47.9	3.9	46.1	15.3	40.0	-27.9	55.5
Federal institutions	11,508	-10.0	12,781	-6.9	13,723	-10.2	15,286	7.4	14,237	0.5	14,171	-6.2	15,109
Rate per 100,000 of civilian population	5.9	-10.6	6.6	-13.2	7.6	-18.3	9.3	-2.1	9.5	-11.2	10.7	-7.0	11.5
State institutions	66,349	-11.2	74,724	-0.2	74,852	18.6	63,128	14.3	55,236	41.5	39,041	-32.7	57,995
Rate per 100,000 of civilian population	34.1	-12.1	38.8	-7.0	41.7	8.3	38.5	4.9	36.7	24.8	29.4	-33.3	44.1

13

(a) The civilian population figures are in thousands. The 1966 figure is based upon extrapolation of estimated figures published by the Bureau of the Census in Series P-25, Current Population Reports Numbers 380 and 395. For the remaining years, figures are based upon interpolations of estimated figures published in Series P-25, Numbers 368 and 380 (1960 and 1965), and 368 (1940-1955).

NOTE: As rates were computed individually, sum of State and Federal rates may not exactly equal "All institutions" rate.

Table 5. - SUMMARY OF MOVEMENT OF SENTENCED PRISONERS, BY TYPE OF INSTITUTION AND SEX, FOR THE UNITED STATES: 1950-1966

(Excludes statistics on transfers, escapes and escapees returned, court orders, executions and other deaths, and authorized temporary absences. State figures exclude Hawaii prior to 1960 and Alaska for all years. Federal figures include a few prisoners committed from the Federal courts in Alaska and Hawaii. Refer to Tables 6-11 for detailed State figures and footnotes. This table supersedes Table 5 in National Prisoner Statistics Bulletin No. 40)

	1966	Per- cent change	1965	Per- cent change	1964	Per- cent change	1963	Per- cent change	1960	Per- cent change	1955	Per- cent change	1950	Percent Change 1950-66
Estimated United States civilian population as of December 31 (a)	194,490	1.0	192,602	1.2	190,410	1.4	187,808	4.6	179,486	9.5	163,842	8.8	150,606	29.1
Present December 31:														
All institutions	199,654	-5.3	210,895	-1.6	214,336	-1.4	217,283	2.0	212,953	14.6	185,780	11.8	166,123	20.2
Male	192,703	-5.2	203,327	-1.6	206,632	-1.4	209,538	2.1	205,253	14.9	178,655	11.4	160,315	20.2
Female	6,951	-8.2	7,568	-1.8	7,704	-0.5	7,745	0.6	7,700	8.1	7,125	22.7	5,808	19.7
Federal institutions	19,245	-8.5	21,040	-3.1	21,709	-6.1	23,128	-0.4	23,218	15.6	20,088	17.2	17,134	12.3
Male	18,598	-8.2	20,261	-3.0	20,882	-6.0	22,215	-0.6	22,343	15.4	19,367	16.2	16,672	11.6
Female	647	-16.9	779	-5.8	827	-9.4	913	4.3	875	21.4	721	56.1	462	40.0
State institutions	180,409	-5.0	189,855	-1.4	192,627	-0.8	194,155	2.3	189,735	14.5	165,692	11.2	148,989	21.1
Male	174,105	-4.9	183,066	-1.4	185,750	-0.8	187,323	2.4	182,910	14.8	159,288	10.9	143,643	21.2
Female	6,304	-7.1	6,789	-1.3	6,877	0.7	6,832	0.1	6,825	6.6	6,404	19.8	5,346	17.9
Received from court:														
All institutions	77,857	-11.0	87,505	-0.1	87,578	-0.3	87,826	-0.8	88,575	13.0	78,414	12.9	69,473	12.1
Male	74,100	-11.0	83,241	-0.1	83,337	-0.2	83,533	-0.9	84,264	13.3	74,368	12.4	66,161	12.0
Female	3,757	-11.9	4,264	0.5	4,241	-1.2	4,293	-0.4	4,311	6.5	4,046	22.2	3,312	13.4
Federal institutions	11,508	-10.0	12,781	2.4	12,482	-3.1	12,882	-6.1	13,723	-10.2	15,286	7.4	14,237	-19.2
Male	11,056	-9.7	12,247	2.3	11,973	-2.7	12,311	-6.5	13,161	-10.6	14,726	7.0	13,762	-19.7
Female	452	-15.4	534	4.9	509	-10.9	571	1.6	562	0.4	560	17.9	475	-4.8
State institutions	66,349	-11.2	74,724	-0.5	75,096	0.2	74,944	0.1	74,852	18.6	63,128	14.3	55,236	20.1
Male	63,044	-11.2	70,994	-0.5	71,364	0.2	71,222	0.2	71,103	19.2	59,642	13.8	52,399	20.3
Female	3,305	-11.4	3,730	-0.1	3,732	0.3	3,722	-0.7	3,749	7.5	3,486	22.9	2,837	16.4
Violators returned(b):														
All institutions	17,662	-8.9	19,393	-0.8	19,558	3.4	18,906	25.8	15,023	38.2	10,872	25.1	8,692	103.2
Male	16,862	-9.0	18,527	-0.6	18,647	3.9	17,950	25.5	14,307	38.7	10,317	26.4	8,164	106.5
Female	800	-7.6	866	-4.9	911	-4.7	956	33.5	716	29.0	555	5.1	528	51.5
Federal institutions	1,746	-4.2	1,823	7.8	1,691	2.5	1,650	13.3	1,456	48.6	980	-28.5	1,371	27.4
Male	1,687	-4.8	1,772	8.5	1,633	1.7	1,605	12.6	1,425	47.8	964	-28.6	1,350	25.0
Female	59	15.7	51	-12.1	58	28.9	45	45.2	31	(d)	16	-(c)	21	(c)
State institutions	15,916	-9.4	17,570	-1.7	17,867	3.5	17,256	27.2	13,567	37.2	9,892	35.1	7,321	117.4
Male	15,175	-9.4	16,755	-1.5	17,014	4.1	16,345	26.9	12,882	37.7	9,353	37.3	6,814	122.7
Female	741	-9.1	815	-4.5	853	-6.4	911	33.0	685	27.1	539	6.3	507	46.2

14

	1966	Per- cent change	1965	Per- cent change	1964	Per- cent change	1963	Per- cent change	1960	Per- cent change	1955	Per- cent change	1950	Percent change 1950-66
All Releases:														
All institutions	102,335	-3.6	106,161	-0.4	106,633	1.5	105,050	9.1	96,284	16.1	82,924	10.4	75,088	36.3
Male	97,309	-3.8	101,131	-0.3	101,485	1.8	99,685	9.1	91,405	16.3	78,569	10.9	70,863	37.3
Female	5,026	-0.1	5,030	-2.3	5,148	-4.0	5,365	10.0	4,879	12.0	4,355	3.1	4,225	19.0
Federal institutions	14,695	-1.2	14,874	-1.5	15,100	-0.5	15,181	6.9	14,196	-10.0	15,776	3.9	15,187	-3.2
Male	14,072	-1.3	14,255	-1.4	14,455	-0.9	14,584	7.1	13,613	-10.7	15,251	3.7	14,707	-4.3
Female	623	0.6	619	-4.0	645	8.0	597	2.4	583	11.0	525	9.4	480	29.8
State institutions	87,640	-4.0	91,287	-0.3	91,533	1.9	89,869	9.5	82,088	22.2	67,148	12.1	59,901	46.3
Male	83,237	-4.2	86,876	-0.2	87,030	2.3	85,101	9.4	77,792	22.9	63,318	12.8	56,156	48.2
Female	4,403	-0.2	4,411	-2.0	4,503	-5.6	4,768	11.0	4,296	12.2	3,830	2.3	3,745	17.6
Conditional releases:														
All institutions	66,908	-1.7	68,044	0.1	67,952	2.2	66,467	12.0	59,326	29.2	45,913	7.9	42,533	57.3
Male	63,306	-1.9	64,537	0.1	64,450	2.6	62,843	11.8	56,194	29.9	43,271	8.2	40,006	58.2
Female	3,602	2.7	3,507	0.1	3,502	-3.4	3,624	15.7	3,132	18.5	2,642	4.6	2,527	42.5
Federal institutions	9,273	6.6	8,696	-2.5	8,920	0.5	8,874	15.1	7,712	19.8	6,440	-32.0	9,466	-2.0
Male	8,867	6.7	8,307	-2.5	8,520	0.2	8,501	14.5	7,427	20.2	6,179	-31.9	9,073	-2.3
Female	406	4.4	389	-2.8	400	7.2	373	30.9	285	9.2	261	-33.6	393	3.3
State institutions	57,635	-2.9	59,348	0.5	59,032	2.5	57,593	11.6	51,614	30.8	39,473	19.4	33,067	74.3
Male	54,439	-3.2	56,230	0.5	55,930	2.9	54,342	11.4	48,767	31.5	37,092	19.9	30,933	76.0
Female	3,196	2.5	3,118	0.5	3,102	-4.6	3,251	14.2	2,847	19.6	2,381	11.6	2,134	49.8
Unconditional releases:														
All institutions	35,427	-7.1	38,117	-1.5	38,681	0.3	33,584	4.4	36,958	-0.1	37,011	13.7	32,555	8.8
Male	34,003	-7.1	36,594	-1.2	37,035	0.5	36,843	4.6	35,211	-0.2	35,298	14.4	30,857	10.2
Female	1,424	-6.5	1,523	-7.5	1,646	-5.5	1,741	-0.3	1,747	2.0	1,713	0.9	1,698	-16.1
Federal institutions	5,422	-12.2	6,178	-(d)	6,180	-2.0	6,307	-2.7	6,484	-30.5	9,336	63.2	5,721	-5.2
Male	5,205	-12.5	5,948	0.2	5,935	-2.4	6,083	-1.7	6,186	-31.8	9,072	61.0	5,634	-7.6
Female	217	-5.7	230	-6.1	245	9.4	224	-24.8	298	12.9	264	203.4	87	149.4
State institutions	30,005	-6.1	31,939	-1.7	32,501	0.7	32,277	5.9	30,474	10.1	27,675	3.1	26,834	11.8
Male	28,798	-6.0	30,646	-1.5	31,100	1.1	30,760	6.0	29,025	10.7	26,226	4.0	25,223	14.2
Female	1,207	-6.7	1,293	-7.7	1,401	-7.6	1,517	4.7	1,449	-	1,449	-10.1	1,611	-25.1

15

(a) Civilian population figures are in thousands. The 1966 figure is based upon extrapolation of estimated figures published by the Bureau of the Census in Series P-25, Current Population Reports Numbers 380 and 395. For the remaining years, figures are based upon interpolations of estimated figures published in Series P-25, Numbers 368 and 380 (1960-1965), and 368 (1950 and 1955).

(b) Figures shown do not include some violators who were returned with new or additional sentences and were listed as "court commitments".

(c) Percent change not shown where beginning figure is less than 25.

(d) Percent change is less than 0.05 percent.

Table 6. - YEAR-END PRISON POPULATION IN STATE INSTITUTIONS, BY STATE: 1950-1966

(Supersedes Table 6, National Prisoner Statistics Bulletin Number 40)

Region and State, and number of prisoners confined on Dec. 31, 1966	1966	Per- cent change	1965	Per- cent change	1964	Per- cent change	1963	Per- cent change	1960	Per- cent change	1955	Per- cent change	1950
United States (a)	180,409	-5.0	189,855	-1.4	192,627	-0.8	194,155	2.3	189,735	14.5	165,652	11.2	148,989
The South	65,125	-5.1	68,648	-0.1	68,711	-1.7	69,922	-2.4	71,641	17.4	61,028	13.9	53,597
The North Central Region	42,732	-8.2	46,526	-4.7	48,845	-1.0	49,332	-1.8	50,255	7.5	46,741	7.4	43,515
The West (a)	40,561	1.0	40,178	0.6	39,951	1.4	39,411	17.0	33,675	34.3	25,067	23.9	20,232
The Northeastern Region	31,991	-7.3	34,503	-1.8	35,120	-1.0	35,490	3.9	34,164	4.0	32,856	3.8	31,645
10,000 and above:													
California	27,467	4.3	26,325	-0.6	26,483	1.3	26,133	20.7	21,660	42.2	15,230	37.8	11,056
New York (b)	15,760	-10.0	17,504	-0.9	17,658	-1.4	17,906	4.1	17,207	(c)	17,069	11.5	15,313
Texas	12,392	-3.6	12,854	4.7	12,278	1.6	12,084	6.9	11,308	31.2	8,622	34.2	6,424
Ohio	10,694	-6.0	11,374	-4.1	11,861	1.9	11,644	4.8	11,111	6.0	10,483	14.8	9,128
5,000 under 10,000:													
Illinois	7,491	-9.8	8,306	-5.1	8,754	-1.1	8,855	-2.3	9,064	11.5	8,130	3.1	7,886
Florida	6,972	-0.3	6,995	4.0	6,725	-0.4	6,751	-4.7	7,084	46.7	4,830	21.6	3,973
Michigan	6,754	-8.0	7,342	-8.5	8,028	-2.9	8,264	-13.5	9,550	(d)	9,547	11.1	8,591
Pennsylvania	6,519	-8.4	7,116	-7.2	7,667	-1.8	7,804	(d)	7,802	6.3	7,342	-1.2	7,432
Georgia (e)	5,385	-9.7	5,966	(c)	7,309	-0.6	7,350	5.2	6,985	22.5	5,701	25.4	4,545
North Carolina (f)	5,297	-12.1	6,029	(c)	4,888	-1.3	4,950	-17.2	5,977	12.1	5,334	6.6	5,004
Maryland	5,117	-6.4	5,467	0.3	5,453	5.6	5,164	-2.9	5,316	13.5	4,685	20.4	3,892
3,000 under 5,000:													
New Jersey	4,912	1.5	4,839	4.9	4,614	0.4	4,594	7.2	4,284	13.3	3,782	-5.2	3,991
Virginia	4,220	-7.3	4,553	-6.6	4,873	-4.5	5,103	-11.6	5,775	18.6	4,869	9.7	4,439
Louisiana	4,068	5.8	3,844	7.9	3,564	-10.0	3,961	5.7	3,749	23.9	3,026	13.2	2,674
Alabama	4,056	-7.3	4,377	-4.6	4,586	-9.8	5,083	-5.3	5,369	2.8	5,222	17.2	4,454
Indiana	3,907	-12.9	4,486	-6.5	4,797	-0.8	4,836	-10.9	5,429	21.7	4,462	-5.8	4,738
Missouri	3,447	-2.0	3,517	-0.3	3,529	-7.5	3,816	3.2	3,698	-6.8	3,966	16.6	3,400
Washington	3,098	-3.2	3,202	8.2	2,960	16.6	2,539	3.4	2,455	0.5	2,443	6.7	2,290

16

Region and State, and number of prisoners confined on Dec. 31, 1966	1966	Per- cent change	1965	Per- cent change	1964	Per- cent change	1963	Per- cent change	1960	Per- cent change	1955	Per- cent change	1950
2,000 under 3,000:													
Tennessee	2,968	-7.6	3,213	0.8	3,187	-1.8	3,246	3.6	3,134	15.1	2,723	-2.1	2,780
Kentucky	2,932	4.2	2,813	-7.2	3,030	0.2	3,025	-16.0	3,603	7.6	3,349	2.8	3,259
Oklahoma	2,776	-1.9	2,829	0.7	2,808	1.2	2,776	3.6	2,679	3.0	2,600	8.3	2,401
Wisconsin	2,709	-4.3	2,830	-0.5	2,844	1.2	2,811	1.0	2,784	22.1	2,281	13.1	2,017
Colorado	2,540	-8.2	2,766	3.8	2,666	2.8	2,594	24.8	2,078	15.4	1,800	20.8	1,490
Kansas	2,444	-12.4	2,791	-1.2	2,825	-2.4	2,893	25.1	2,313	17.2	1,974	0.8	1,959
South Carolina	2,248	-3.2	2,323	0.7	2,306	-1.7	2,347	12.8	2,080	12.3	1,852	22.4	1,513
1,000 under 2,000:													
Iowa	1,885	-13.5	2,178	-3.5	2,256	-1.5	2,291	3.9	2,204	(d)	2,203	5.7	2,084
Oregon	1,880	-6.0	2,000	-2.7	2,056	-0.2	2,061	20.5	1,710	10.2	1,552	1.2	1,534
Arkansas	1,864	-5.4	1,970	-1.1	1,992	-0.4	2,000	-0.8	2,016	15.1	1,751	13.6	1,541
Massachusetts	1,829	-5.2	1,929	-2.6	1,980	-3.2	2,046	6.6	1,920	-3.8	1,995	-16.0	2,375
Mississippi	1,829	-9.4	2,019	-1.8	2,056	-3.1	2,121	7.4	1,975	-5.0	2,080	-3.6	2,158
Arizona	1,627	-4.0	1,694	4.1	1,627	-5.8	1,728	14.0	1,516	43.7	1,055	20.2	878
Minnesota	1,620	-8.6	1,772	-4.9	1,863	8.3	1,720	-16.5	2,059	4.8	1,964	4.5	1,879
Connecticut	1,599	-2.6	1,642	-4.3	1,716	3.9	1,652	10.4	1,497	18.8	1,260	23.5	1,020
District of Columbia	1,542	-3.9	1,604	-3.0	1,653	-10.2	1,841	-6.0	1,958	0.8	1,943	31.5	1,478
West Virginia	1,189	-19.5	1,477	-14.2	1,722	-9.9	1,912	-20.6	2,407	6.1	2,269	-21.9	2,904
Nebraska	1,027	-10.8	1,151	-13.0	1,323	-6.2	1,411	11.2	1,269	17.5	1,080	-5.8	1,147
500 under 1,000:													
New Mexico	912	-9.0	1,002	1.5	987	-16.2	1,178	-5.2	1,243	71.7	724	2.7	705
Utah	659	-6.0	701	6.1	661	-4.5	692	25.1	553	-0.2	554	-1.4	562
Nevada	651	4.7	622	38.2	450	1.8	442	7.0	413	10.7	373	55.4	240
Maine	605	-13.0	695	-3.3	719	-0.6	723	-3.6	750	21.0	620	-15.8	736
South Dakota	555	-2.8	571	8.8	525	-5.6	556	5.7	526	24.3	423	-6.2	451
Montana	548	-6.5	586	-21.0	742	3.8	715	18.8	602	13.8	529	-11.1	595
Below 500:													
Idaho	477	-0.8	481	1.1	476	-7.0	512	-6.7	549	5.6	520	1.2	514
Hawaii	423	-8.6	463	-8.1	504	2.9	490	-12.2	558	(g)	(g)	(g)	(g)
Rhode Island (h)	329	6.1	310	11.5	278	(c)	266	4.3	255	(c)	305	7.4	284
Wyoming	279	-17.0	336	-0.9	339	3.7	327	-3.3	338	17.8	287	-22.0	368
Delaware (i)	270	-14.3	315	(c)	281	35.1	208	-8.0	226	(c)	172	8.9	158
Vermont	233	-11.4	263	-9.3	290	0.3	289	7.4	269	-5.6	285	10.0	259
New Hampshire	205	-	205	3.5	198	-5.7	210	16.7	180	-9.1	198	-15.7	235
North Dakota	199	-4.3	208	-13.3	240	2.1	235	-5.2	248	8.8	228	-3.0	235

17

(a) Excludes Hawaii in 1950 and 1955. (b) Beginning in 1960, includes prisoners out of the institutions on temporary absences. (c) Percent change not shown as figures are not comparable. (d) Percent change less than 0.05 percent. (e) Prior to 1965, includes misdemeanants and juveniles confined in State correctional institutions. (f) The 1965 figure has been revised to include 1,061 prisoners who had erroneously been excluded from figures for 1965 and prior years. (g) Figures not available. (h) Prior to 1960 includes male misdemeanants in adult correctional institutions. Excludes female misdemeanants beginning in 1965. (i) Includes only Superior Court cases. Prior to 1960 excludes Kent and Sussex County Workhouses. The 1965 figure has been revised to include 34 prisoners who had erroneously been excluded from figures for 1965 and prior years.

Table 7. - COURT COMMITMENTS TO STATE INSTITUTIONS, BY STATE: 1950-1966
(Supersedes Table 8, National Prisoner Statistics Bulletin Number 40)

Region and State, and number of prisoners confined on Dec. 31, 1966	1966	Per- cent change	1965	Per- cent change	1964	Per- cent change	1963	Per- cent change	1960	Per- cent change	1955	Per- cent change	1950
United States ^(a)	66,349	-11.2	74,724	-0.5	75,096	0.2	74,944	0.1	74,852	18.6	63,128	14.3	55,236
The South	28,748	-13.2	33,129	-1.5	33,622	4.2	32,273	0.1	32,249	14.8	28,086	19.2	23,569
The North Central Region	15,544	-8.4	16,978	-4.4	17,753	-3.6	18,414	-0.7	18,544	13.9	16,282	11.5	14,599
The West ^(a)	10,465	-13.0	12,033	8.0	11,139	-4.5	11,666	-2.5	11,969	47.3	8,123	2.9	7,896
The Northeastern Region	11,592	-7.9	12,584	(b)	12,582	-0.1	12,591	4.1	12,090	13.7	10,637	16.0	9,172
10,000 and above:													
California	5,525	-8.0	6,004	13.1	5,307	0.3	5,289	-12.3	6,028	65.7	3,638	16.5	3,122
New York	4,732	-13.6	5,474	3.9	5,269	-2.4	5,396	4.0	5,186	15.0	4,510	30.5	3,456
Texas	4,921	-12.4	5,615	-1.9	5,723	1.1	5,659	12.2	5,043	27.8	3,947	31.7	2,996
Ohio	3,251	-5.0	3,421	1.0	3,388	-7.5	3,663	-1.9	3,733	14.4	3,264	19.7	2,727
5,000 under 10,000:													
Illinois	2,067	-16.0	2,461	-5.4	2,601	1.0	2,576	-8.8	2,826	28.7	2,196	17.6	1,868
Florida	2,831	-11.3	3,193	-3.7	3,314	18.5	2,797	-7.6	3,026	43.8	2,105	38.9	1,516
Michigan	3,088	-5.9	3,280	-12.3	3,741	-6.2	3,990	7.7	3,706	13.2	3,275	6.5	3,076
Pennsylvania	1,873	-7.0	2,015	-5.3	2,128	0.4	2,119	0.9	2,101	-3.9	2,187	17.1	1,867
Georgia ^(c)	2,064	(a)	3,178	1.5	3,130	6.4	2,941	16.5	2,524	22.1	2,067	28.7	1,606
North Carolina	1,697	-28.0	2,356	-4.3	2,461	9.4	2,249	-17.0	2,709	13.6	2,384	23.7	1,928
Maryland	4,499	-5.8	4,775	2.1	4,675	13.4	4,121	-5.7	4,369	13.3	3,855	26.0	3,060
3,000 under 5,000:													
New Jersey	2,640	2.9	2,566	2.2	2,510	5.0	2,391	5.1	2,274	35.4	1,679	8.0	1,555
Virginia	1,424	-5.7	1,510	-7.3	1,629	-13.8	1,890	0.3	1,884	2.4	1,839	5.0	1,751
Louisiana	1,748	-10.8	1,960	14.8	1,707	2.9	1,659	0.6	1,649	22.9	1,342	15.3	1,164
Alabama ^(e)	1,565	-16.4	1,873	-6.9	2,011	-7.7	2,179	-7.6	2,357	(a)	3,065	21.9	2,514
Indiana	1,219	-6.9	1,310	8.0	1,213	-4.7	1,273	-8.8	1,396	4.9	1,331	17.4	1,134
Missouri	1,729	-7.4	1,868	12.9	1,654	-5.1	1,743	-5.3	1,841	8.8	1,692	9.2	1,550
Washington	976	-18.3	1,195	8.4	1,102	-2.1	1,126	14.1	987	22.6	805	-13.7	933

Region and State, and number of prisoners confined on Dec. 31, 1966	1966	Per- cent change	1965	Per- cent change	1964	Per- cent change	1963	Per- cent change	1960	Per- cent change	1955	Per- cent change	1950
2,000 under 3,000:													
Tennessee	1,214	-13.5	1,403	7.9	1,300	2.0	1,275	-1.5	1,294	31.5	984	-4.1	1,026
Kentucky	1,313	0.2	1,311	-17.6	1,591	9.1	1,458	-18.7	1,793	21.5	1,476	8.1	1,365
Oklahoma	1,660	-5.0	1,747	-2.8	1,797	3.4	1,738	15.0	1,511	22.2	1,237	4.6	1,183
Wisconsin	1,149	3.9	1,106	-19.0	1,365	-2.0	1,393	5.9	1,315	4.0	1,265	20.4	1,051
Colorado	1,015	-21.7	1,296	-1.1	1,311	-3.5	1,359	13.9	1,193	28.4	929	-2.9	957
Kansas	822	-26.3	1,115	2.1	1,092	4.2	1,048	6.4	985	22.8	802	-3.7	833
South Carolina	1,194	-9.5	1,319	2.7	1,284	2.2	1,256	39.1	903	8.8	830	36.7	607
1,000 under 2,000:													
Iowa	639	-7.9	694	-16.7	833	-1.5	846	0.1	845	13.7	743	17.6	632
Oregon	858	-8.6	939	6.8	879	-15.0	1,034	16.0	891	39.0	641	-7.0	689
Arkansas	912	-10.7	1,021	1.8	1,003	4.3	962	-3.6	998	26.8	787	13.2	695
Massachusetts	827	0.2	825	-5.4	872	-6.5	933	-2.3	955	10.9	861	1.2	851
Mississippi	629	-8.2	685	-14.1	797	-3.3	824	-3.7	856	16.1	737	-2.1	753
Arizona	585	-20.5	736	-0.5	740	-11.3	834	2.2	816	51.1	540	19.5	452
Minnesota	476	-4.0	496	-16.6	595	25.5	474	-25.1	633	-3.1	653	-3.8	679
Connecticut	839	0.5	835	-3.6	866	5.6	820	21.5	675	14.2	591	34.3	440
District of Columbia	626	-6.1	667	8.3	616	0.7	612	5.9	578	-14.9	679	17.1	580
West Virginia	293	-15.8	348	-5.4	368	-20.9	465	-9.0	511	-18.2	625	-11.0	702
Nebraska	616	-11.7	698	-7.8	757	-11.2	852	11.1	767	19.1	644	3.4	623
500 under 1,000:													
New Mexico	323	-19.9	403	-0.2	404	-18.1	493	-0.4	495	22.8	403	-7.8	437
Utah	194	-35.8	302	22.3	247	-6.4	264	-1.5	268	59.5	168	-29.7	239
Nevada	247	-23.3	322	42.5	226	-4.2	236	6.3	222	1.8	218	26.7	172
Maine	273	-34.7	418	-6.9	449	-1.8	457	-7.7	495	52.3	325	-31.0	471
South Dakota	377	-3.3	390	3.7	376	-9.6	416	14.6	363	24.7	291	-3.6	302
Montana	310	-10.7	347	-10.8	389	-12.0	442	4.0	425	11.3	382	-6.8	410
Below 500:													
Idaho	218	-6.0	232	-2.5	238	-16.5	285	3.6	275	18.0	233	-19.7	290
Hawaii	83	36.1	61	-24.7	81	-12.9	93	-30.6	134	(f)	(f)	(f)	(f)
Rhode Island ^(g)	133	-1.5	135	(d)	152	19.7	127	22.1	104	(d)	201	-19.6	250
Wyoming	131	-33.2	196	-8.8	215	1.9	211	-10.2	235	41.6	166	-14.9	195
Delaware ^(h)	158	-6.0	168	-22.2	216	14.9	188	-23.0	244	(d)	127	3.3	123
Vermont	183	-16.8	220	-10.6	246	1.7	242	11.5	217	4.8	207	-1.4	210
New Hampshire	92	-4.2	96	6.7	90	-15.1	106	27.7	83	9.2	76	5.6	72
North Dakota	111	-20.1	139	0.7	138	-1.4	140	4.5	134	6.3	126	1.6	124

(a) Excludes Hawaii in 1950 and 1955. (b) Percent change less than 0.05 percent. (c) Prior to 1965, includes misdemeanants and juveniles received from court in State correctional institutions. (d) Percent change not shown as figures are not comparable. (e) Prior to 1960 includes misdemeanants received from court. (f) Figures not available. (g) Prior to 1960 includes male misdemeanants in adult correctional institutions. Excludes female misdemeanants beginning in 1965. (h) Prior to 1960 excludes Kent and Sussex County Workhouses.

Table 8. - VIOLATORS RETURNED TO STATE INSTITUTIONS, BY STATE: 1950-1966

(Figures shown do not include some violators who were returned with new or additional sentences and were included as "court commitments". Supercedes Table 9, National Prisoner Statistics Bulletin Number 40)

Region and State, and number of prisoners confined on Dec. 31, 1966	1966	Per- cent change	1965	Per- cent change	1964	Per- cent change	1963	Per- cent change	1960	Per- cent change	1955	Per- cent change	1950
United States (a)	15,916	-9.4	17,570	-1.7	17,867	3.5	17,256	27.2	13,567	37.2	9,892	35.1	7,321
The South	3,430	-9.3	3,783	0.1	3,778	8.2	3,492	31.9	2,647	53.7	1,722	46.1	1,179
The North Central Region	3,956	-10.9	4,439	-13.7	5,141	3.5	4,965	15.2	4,310	19.0	3,621	49.1	2,429
The West (a)	4,611	-13.7	5,344	8.0	4,950	-0.2	4,960	51.2	3,280	82.0	1,802	34.9	1,336
The Northeastern Region	3,919	-2.1	4,004	0.2	3,998	4.1	3,839	15.3	3,330	21.2	2,747	15.6	2,377
10,000 and above:													
California	3,349	-15.4	3,960	11.7	3,545	-5.2	3,741	63.9	2,283	102.9	1,125	24.4	904
New York	1,938	-1.8	1,973	-0.3	1,978	2.9	1,922	6.5	1,805	28.4	1,406	12.3	1,252
Texas	559	-24.5	740	-2.1	756	30.8	578	34.7	429	113.4	201	136.5	85
Ohio	646	-9.5	714	-36.8	1,130	6.7	1,059	21.6	871	-7.7	944	67.1	565
5,000 under 10,000:													
Illinois	630	-9.9	699	0.4	696	5.0	663	58.2	419	46.5	286	38.8	206
Florida	181	-38.4	294	-0.7	296	1.0	293	30.8	224	183.5	79	2.6	77
Michigan	862	0.2	860	-8.5	940	-4.0	979	21.9	803	5.7	760	14.8	662
Pennsylvania	492	-14.1	573	-1.9	584	-1.2	591	10.3	536	8.9	492	34.1	367
Georgia (b)	231	(c)	294	6.5	276	-7.4	298	55.2	192	102.1	95	(d)	21
North Carolina (e)	352	-5.6	373	-10.3	416	9.2	381	31.4	290	(e)	37	(d)	15
Maryland (f)	292	16.3	251	5.5	238	-4.8	250	4.6	239	37.4	174	357.9	38
3,000 under 5,000:													
New Jersey	512	34.0	382	19.4	320	-12.8	367	31.5	279	-29.0	393	36.9	287
Virginia	142	-4.7	149	-9.7	165	7.8	153	4.1	147	-19.7	183	39.7	131
Louisiana	281	12.0	251	0.8	249	31.7	189	94.8	97	83.0	53	-39.8	88
Alabama	382	26.1	303	-13.4	350	45.2	241	10.6	218	-	218	39.7	156
Indiana	509	-13.6	589	-15.5	697	10.1	633	11.8	566	-1.6	575	40.6	409
Missouri	127	-7.3	137	19.1	115	13.9	101	-9.8	112	33.1	61	-7.6	66
Washington	355	-7.6	384	4.1	369	31.3	281	28.9	218	-3.1	225	44.2	156

20

Region and State, and number of prisoners confined on Dec. 31, 1966	1966	Per- cent change	1965	Per- cent change	1964	Per- cent change	1963	Per- cent change	1960	Per- cent change	1955	Per- cent change	1950
2,000 under 3,000:													
Tennessee	102	-30.6	147	51.5	97	31.1	74	-14.0	86	22.9	70	20.7	58
Kentucky	160	-9.6	177	2.9	172	-13.1	198	65.0	120	-13.0	138	-4.8	145
Oklahoma	127	53.0	83	22.1	68	-2.9	70	100.0	35	6.1	33	-45.9	61
Wisconsin	453	-34.2	688	-7.4	743	-2.2	760	-1.8	774	103.7	380	216.7	120
Colorado	359	-8.9	394	-20.4	495	14.1	434	33.1	326	33.1	245	380.4	51
Kansas	215	-12.6	246	9.3	225	-10.4	251	-11.6	284	6.0	268	47.3	182
South Carolina	81	-18.2	99	30.3	76	11.8	68	11.5	61	90.6	32	-3.0	33
1,000 under 2,000:													
Iowa	168	6.3	158	-3.7	164	13.9	144	17.1	123	115.8	57	-14.9	67
Oregon	119	-19.0	147	33.6	110	5.8	104	-14.8	122	84.8	66	-10.8	74
Arkansas	184	2.2	180	16.1	155	2.0	152	12.6	135	84.9	73	-	73
Massachusetts	411	-11.0	462	3.6	446	4.4	427	30.6	327	63.5	200	-1.0	202
Mississippi	60	-47.4	114	29.5	88	-20.7	111	131.3	48	(d)	24	-7.7	26
Arizona	26	-63.9	72	5.7	35	-20.5	44	(d)	23	(d)	20	(d)	12
Minnesota	242	9.5	221	-29.8	315	3.3	305	17.3	260	23.8	210	84.2	114
Connecticut	278	4.1	267	-18.1	326	31.5	248	25.9	197	45.9	135	6.3	127
District of Columbia	176	-0.6	177	-1.7	180	4.7	172	7.5	160	8.8	147	20.5	122
West Virginia	120	-14.3	140	-21.8	179	-26.6	244	47.9	165	0.6	164	234.7	49
Nebraska	41	-32.8	61	29.8	47	34.3	35	-28.6	49	8.9	45	(d)	10
500 under 1,000:													
New Mexico	97	-17.1	117	0.9	116	-7.2	125	58.2	79	(d)	13	-72.3	47
Utah	110	69.2	65	-	65	80.6	36	16.1	31	(d)	11	-59.3	27
Nevada	32	(d)	15	(d)	5	(d)	8	(d)	5	-	5	(d)	7
Maine	223	-14.2	260	0.4	259	23.9	209	54.8	135	64.6	82	22.4	67
South Dakota	31	-3.1	32	-13.5	37	(d)	18	-43.8	32	(d)	21	(d)	15
Montana	84	-	84	-20.8	106	-1.9	108	10.2	98	216.1	31	(d)	1
Below 500:													
Idaho	36	-5.3	38	2.7	37	-21.3	47	42.4	33	-40.0	55	7.8	51
Hawaii	39	-37.1	62	5.1	59	(d)	23	-59.7	57	(g)	(g)	(g)	(g)
Rhode Island	9	-50.0	18	(d)	21	(d)	13	(d)	4	(d)	7	(d)	16
Wyoming (h)	5	(d)	6	(d)	8	(d)	9	(d)	5	(d)	6	(d)	6
Delaware (i)	-	(d)	11	(d)	17	(d)	20	(d)	1	-	1	-	1
Vermont	28	-26.3	38	-7.3	41	13.9	36	44.0	25	(d)	17	-41.4	29
New Hampshire	28	-9.7	31	(d)	23	-11.5	26	(d)	22	(d)	15	-50.0	30
North Dakota	32	-5.9	34	6.3	32	(d)	17	-	17	(d)	14	(d)	13

21

(a) Excludes Hawaii in 1950 and 1955. (b) Prior to 1965, includes misdemeanants and juveniles returned as violators to State correctional institutions. After 1950 excludes prisoners not subject to imprisonment in the State Penitentiary. (c) Percent change not shown as figures are not comparable. (d) Percent change not shown where beginning figure is less than 25. (e) After 1955 includes Highway Road Camp felony prisoners. (f) Includes estimated figures for House of Correction for last four months of 1965. (g) Figures not available. (h) After 1955 excludes Wyoming Industrial Institute. (i) Prior to 1960 excludes Kent and Sussex County Workhouses.

Table 9. - RELEASES FROM STATE INSTITUTIONS, BY STATE: 1950-1966

(Includes prisoners discharged conditionally and unconditionally; excludes deaths, executions, court orders, authorized temporary absences, transfers, escapes, and "other" departures. Supersedes Table 10, National Prisoner Statistics Bulletin Number 40)

Region and State, and number of prisoners confined on Dec. 31, 1966	1966	Per- cent change	1965	Per- cent change	1964	Per- cent change	1963	Per- cent change	1960	Per- cent change	1955	Per- cent change	1950
United States (a)	87,640	-4.0	91,287	-0.3	91,533	1.9	89,869	9.5	82,088	22.2	67,148	12.1	59,901
The South	33,733	-2.2	34,498	-4.5	36,123	0.7	35,869	9.1	32,873	(b)	26,488	(b)	25,133
The North Central Region	22,754	-3.6	23,593	0.6	23,459	-3.1	24,212	10.3	21,950	17.4	18,701	18.9	15,730
The West (a)	14,491	-12.4	16,540	6.2	15,577	11.1	14,022	9.6	12,797	32.4	9,669	23.6	7,822
The Northeastern Region	16,662	(c)	16,656	1.7	16,374	3.9	15,766	9.0	14,468	17.7	12,290	9.6	11,216
10,000 and above:													
California	7,766	-20.0	9,710	11.3	8,724	24.0	7,038	16.3	6,050	29.7	4,666	42.1	3,284
New York	7,602	3.6	7,335	2.1	7,186	6.1	6,773	5.0	6,450	25.6	5,136	14.3	4,493
Texas	5,824	4.3	5,582	-8.7	6,115	-0.9	6,170	20.2	5,134	31.7	3,897	57.1	2,481
Ohio	4,642	-3.4	4,807	7.8	4,460	-6.1	4,749	-3.5	4,921	27.5	3,861	30.7	2,955
5,000 under 10,000:													
Illinois	3,396	-7.8	3,682	(c)	3,681	0.9	3,648	32.8	2,748	24.7	2,203	10.0	2,002
Florida	2,899	2.2	2,837	-3.8	2,949	-2.5	3,026	1.3	2,987	82.4	1,638	15.0	1,424
Michigan	4,108	-8.4	4,483	-2.2	4,586	-3.0	4,726	8.8	4,345	19.9	3,623	-0.1	3,627
Pennsylvania	2,633	-11.6	2,977	8.2	2,752	-6.2	2,934	11.5	2,631	6.0	2,482	39.7	1,777
Georgia (d)	2,728	(b)	3,179	-4.9	3,342	17.6	2,843	8.7	2,615	40.7	1,858	(b)	4,402
North Carolina (e)	2,722	3.5	2,630	-10.5	2,937	-4.8	3,086	3.4	2,984	(b)	1,518	29.7	1,170
Maryland (f)	4,190	5.2	3,984	3.1	3,864	-2.0	3,941	3.7	3,800	6.4	3,572	23.1	2,902
3,000 under 5,000:													
New Jersey	2,918	9.7	2,659	-2.1	2,717	4.5	2,601	17.6	2,211	9.8	2,014	1.1	1,992
Virginia	1,827	-4.5	1,914	-2.3	1,959	-8.3	2,136	0.1	2,133	5.0	2,032	22.3	1,661
Louisiana	1,741	-7.3	1,879	-11.7	2,129	12.6	1,890	24.4	1,519	30.3	1,166	11.7	1,044
Alabama	2,198	-12.6	2,514	-10.6	2,813	1.6	2,769	8.3	2,557	-20.7	3,223	-0.8	3,250
Indiana	2,186	2.2	2,139	15.5	1,852	-12.7	2,121	26.3	1,679	-10.6	1,879	34.8	1,394
Missouri	1,955	-3.0	2,015	-2.4	2,064	-1.1	2,086	12.5	1,854	9.8	1,689	20.3	1,404
Washington	1,391	5.9	1,314	30.7	1,005	-16.4	1,202	-25.7	1,617	66.0	974	17.8	827

22

Region and State, and number of prisoners confined on Dec. 31, 1966	1966	Per- cent change	1965	Per- cent change	1964	Per- cent change	1963	Per- cent change	1960	Per- cent change	1955	Per- cent change	1950
2,000 under 3,000:													
Tennessee	1,558	-1.8	1,586	8.2	1,466	13.1	1,296	12.0	1,157	12.8	1,026	2.1	1,005
Kentucky	1,340	-20.2	1,679	-3.2	1,734	-12.8	1,988	15.1	1,727	5.8	1,632	15.2	1,417
Oklahoma	1,822	2.4	1,780	-1.3	1,803	7.1	1,683	9.3	1,540	36.0	1,132	1.0	1,121
Wisconsin	1,866	-6.0	1,986	-9.9	2,203	-4.8	2,315	17.5	1,970	21.2	1,626	38.5	1,174
Colorado	1,612	-0.2	1,615	-7.1	1,739	11.6	1,558	8.4	1,437	24.3	1,156	32.0	876
Kansas	1,199	5.2	1,140	-1.2	1,154	10.1	1,048	-9.9	1,163	-1.3	1,178	47.3	800
South Carolina	1,323	0.5	1,316	0.8	1,305	11.7	1,168	11.0	1,052	19.7	879	50.5	584
1,000 under 2,000:													
Iowa	1,085	19.8	906	-11.4	1,023	-6.5	1,094	12.7	971	31.6	738	11.8	660
Oregon	1,030	-6.6	1,103	13.8	969	-0.8	977	16.3	840	28.0	656	6.3	617
Arkansas	1,123	-3.9	1,168	4.2	1,121	-2.0	1,144	19.0	961	25.3	767	-6.7	822
Massachusetts	1,327	1.8	1,304	-5.9	1,386	11.4	1,244	-2.9	1,281	14.9	1,115	-4.5	1,168
Mississippi	863	7.5	803	-13.3	926	-2.4	949	4.7	906	42.0	638	9.8	581
Arizona	633	-11.3	714	-16.0	850	6.5	798	-0.3	800	57.2	509	8.5	469
Minnesota	974	2.6	949	-0.3	952	-15.9	1,132	21.1	935	11.7	837	29.2	648
Connecticut	1,114	-2.3	1,140	5.7	1,079	5.6	1,022	19.8	853	26.2	676	0.7	671
District of Columbia	693	-13.7	803	-3.9	836	10.1	759	-3.9	790	26.2	626	13.6	551
West Virginia	678	-1.2	686	-	686	-17.4	830	7.1	775	1.6	763	28.2	595
Nebraska	780	-15.1	919	2.6	896	23.9	723	-7.0	777	27.2	611	-5.6	647
500 under 1,000:													
New Mexico	457	2.5	446	-28.1	620	-12.6	709	55.1	457	45.1	315	-21.6	402
Utah	337	4.0	324	-5.8	344	30.3	264	-2.2	270	50.0	180	5.9	170
Nevada	234	47.2	159	-24.3	210	-18.3	257	25.4	205	10.2	186	-21.2	236
Maine	587	-17.3	710	0.3	708	4.4	678	19.6	567	41.0	402	-10.7	450
South Dakota	411	13.2	363	-14.8	426	2.9	414	-0.2	415	27.7	325	17.3	277
Montana	435	-23.8	571	23.6	462	-6.7	495	-3.1	511	-8.1	556	40.1	397
Below 500:													
Idaho	241	-2.0	246	-20.1	308	-6.7	330	29.4	255	-5.2	269	-11.8	305
Hawaii	168	21.7	138	0.7	137	-23.0	178	28.1	139	(g)	(g)	(g)	(g)
Rhode Island (h)	127	5.8	120	-13.0	138	15.0	120	2.6	117	(b)	185	-36.0	289
Wyoming (i)	187	-6.5	200	-4.3	209	-3.2	216	-	216	(b)	202	-15.5	239
Delaware (k)	204	29.1	158	14.5	138	-27.7	191	-19.1	236	(b)	121	-1.6	123
Vermont	237	-18.8	292	2.1	286	-6.2	305	6.6	286	30.6	219	-17.4	265
New Hampshire	117	-1.7	119	-2.5	122	37.1	89	23.6	72	18.0	61	-45.0	111
North Dakota	152	-25.5	204	25.9	162	3.8	156	-9.3	172	31.3	131	-7.7	142

23

(a) Excludes Hawaii in 1950 and 1955. (b) Percent change not shown as figures are not comparable. (c) Percent change less than 0.05 percent. (d) Prior to 1965, includes misdemeanants and juveniles released from State correctional institutions. After 1950 excludes prisoners not subject to imprisonment in the State Penitentiary. (e) After 1955 includes Highway Road Camp prisoners. (f) Includes estimated figures for House of Correction for last four months of 1965. (g) Figures not available. (h) Prior to 1960 includes male misdemeanants released from Adult Correctional Institutions. Beginning in 1965, excludes female misdemeanants. (i) After 1955 excludes Wyoming Industrial Institute. (k) Prior to 1960 excludes Kent and Sussex County Workhouses.

Table 10. - MOVEMENT OF SENTENCED PRISONERS IN STATE INSTITUTIONS, BY REGION AND STATE: CALENDAR YEAR 1966

(Includes both females and males)

Region and State	Prisoner population		Admissions during the year				Departures during the year					
	Present Dec. 31, 1966 (a)	Percent of national total (b)	Total	Court commitments	Violators returned (c)	Other admissions (d)	Total	Releases			Deaths (e)	Other departures (f)
								Total	Conditional	Unconditional		
United States	180,403	100.0	111,866	66,349	15,916	29,601	120,946	87,640	57,635	30,005	590	32,716
NORTHEAST	31,991	17.7	17,005	11,592	3,919	1,494	19,152	16,662	13,892	2,770	86	2,404
Maine	605	0.3	535	273	223	39	650	587	461	126	4	59
New Hampshire	205	0.1	120	92	28	-	119	117	117	-	-	2
Vermont	233	0.1	243	183	28	32	274	237	186	51	-	37
Massachusetts	1,829	1.0	1,413	827	411	175	1,503	1,327	883	444	5	171
Rhode Island (g)	329	0.2	142	133	9	-	128	127	56	71	1	-
Connecticut	1,599	0.9	1,186	839	278	69	1,220	1,114	899	215	5	101
New York	15,760	8.7	6,673	4,732	1,938	3	7,855	7,602	6,633	969	45	208
New Jersey	4,912	2.7	4,050	2,640	512	898	4,099	2,918	2,426	492	5	1,176
Pennsylvania	6,513	3.6	2,643	1,873	492	278	3,304	2,633	2,231	402	21	650
NORTH CENTRAL	42,732	23.7	28,539	15,544	3,320	9,039	32,461	22,754	17,480	5,274	156	9,551
Ohio	10,694	5.9	3,955	3,251	646	58	4,745	4,642	4,337	305	45	58
Indiana	3,907	2.2	8,062	1,219	509	6,334	8,609	2,186	1,723	463	9	6,414
Illinois	7,491	4.2	3,111	2,067	630	414	3,916	3,396	2,510	886	37	483
Michigan	6,754	3.7	4,706	3,088	862	756	5,273	4,108	3,499	609	18	1,147
Wisconsin	2,709	1.5	2,488	1,149	453	886	2,789	1,866	1,661	205	7	916
Minnesota	1,620	0.9	779	476	242	61	1,037	974	706	268	6	57
Iowa	1,885	1.0	967	639	168	160	1,259	1,085	666	419	6	168
Missouri	3,447	1.9	1,950	1,729	127	94	2,068	1,955	694	1,261	14	99
North Dakota	195	0.1	144	111	32	1	153	152	119	33	-	1
South Dakota	555	0.3	412	377	31	4	422	411	172	239	1	10
Nebraska	1,027	0.6	676	616	41	19	806	780	216	564	4	22
Kansas	2,444	1.4	1,289	822	215	252	1,384	1,199	1,177	22	9	176

24

Region and State	Prisoner population		Admissions during the year				Departures during the year					
	Present Dec. 31, 1966 (a)	Percent of national total (b)	Total	Court commitments	Violators returned (c)	Other admissions (d)	Total	Releases			Deaths (e)	Other departures (f)
								Total	Conditional	Unconditional		
SOUTH	65,125	36.1	39,400	28,748	3,430	7,222	42,764	33,733	14,545	19,188	226	8,805
Delaware (h)	270	0.1	159	153	-	1	204	204	81	123	-	-
Maryland	5,117	2.8	5,186	4,499	292	395	5,404	4,190	1,487	2,703	12	1,202
Dist. of Columbia	1,542	0.9	2,427	626	176	1,625	2,459	693	455	238	-	1,766
Virginia	4,220	2.3	2,386	1,424	142	820	2,712	1,827	865	962	17	868
West Virginia	1,189	0.7	485	293	120	72	785	678	515	163	6	101
North Carolina	5,227	2.9	2,551	1,697	352	502	3,283	2,722	1,211	1,511	-	561
South Carolina	2,248	1.2	1,298	1,194	81	23	1,372	1,323	434	889	6	43
Georgia (i)	5,385	3.0	2,635	2,064	231	340	3,216	2,728	1,400	1,328	20	468
Florida	6,972	3.9	4,525	2,831	181	1,513	4,519	2,899	1,231	1,668	22	1,598
Kentucky	2,932	1.6	1,523	1,313	160	50	1,403	1,340	567	773	15	48
Tennessee	2,968	1.6	1,391	1,214	102	75	1,671	1,558	579	979	16	97
Alabama	4,056	2.2	2,013	1,565	322	66	2,334	2,198	1,045	1,153	20	116
Mississippi	1,829	1.0	1,102	629	60	413	1,292	863	388	475	7	422
Arkansas	1,864	1.0	1,124	52	184	28	1,230	1,123	797	326	17	90
Louisiana	4,068	2.3	2,444	1,748	281	415	2,216	1,741	1,098	643	21	454
Oklahoma	2,776	1.5	1,865	1,660	127	78	1,915	1,822	315	1,507	11	82
Texas	12,392	6.9	6,286	4,921	559	806	6,749	5,824	2,077	3,747	36	889
WEST	40,561	22.5	26,922	10,465	4,611	11,846	26,569	14,491	11,718	2,773	122	11,956
Montana	548	0.3	400	310	84	6	411	435	260	175	2	4
Idaho	477	0.3	292	218	36	38	296	241	153	88	3	52
Wyoming	279	0.2	138	131	5	2	195	187	23	164	1	7
Colorado	2,540	1.4	1,503	1,015	359	127	1,722	1,612	1,233	379	4	106
New Mexico	912	0.5	426	323	97	6	516	457	234	223	-	59
Arizona	1,627	0.9	755	585	26	144	821	633	317	316	5	183
Utah	659	0.4	314	194	110	10	358	337	315	22	4	17
Nevada	651	0.4	310	247	32	31	275	234	197	37	2	39
Washington	3,998	1.7	1,512	976	355	181	1,649	1,391	1,391	-	16	242
Oregon	1,880	1.0	1,703	858	119	726	1,829	1,030	399	631	9	790
California	27,467	15.2	19,358	5,525	3,349	10,484	18,216	7,766	7,047	719	75	10,375
Hawaii	423	0.2	211	83	39	89	251	168	149	19	1	82

25

(a) Figures include 1 female prisoner boarded in Vermont from New Hampshire, 16 boarded in Nebraska from South Dakota, and 8 boarded in Nebraska from Wyoming.
 (b) Due to independent rounding of figures, the regional and national totals may not exactly equal the sum of the corresponding States.
 (c) Figures shown do not include some violators who were returned with new or additional sentences and were included as "court commitments".
 (d) Includes escapees returned, returns from court orders and authorized temporary absences, and "other" admissions.
 (e) Includes one execution. Detailed data on use of the death penalty are presented in National Prisoner Statistics Bulletin Number 41, of April, 1967.
 (f) Includes escapees, court orders, authorized temporary absences, and "other" departures.
 (g) Reformatory for Women excluded from all but December 31, 1966 population figure. December 31 figure excludes female misdemeanants.
 (h) Includes only Superior Court cases.
 (i) Excludes misdemeanants and juveniles confined in State correctional institutions.

Table 11. - MOVEMENT OF SENTENCED FEMALE PRISONERS IN STATE INSTITUTIONS, BY REGION AND STATE: CALENDAR YEAR 1966

(Statistics on transfers which bring this table into balance are excluded)

Region and State	Prisoner population		Admissions during the year				Departures during the year					
	Present Jan. 1, 1966 (a)	Present Dec. 31, 1966 (b)	Total	Court commitments	Violators returned (c)	Other admissions (d)	Total	Releases			Deaths	Other departures (e)
								Total	Conditional	Unconditional		
United States	6,789	6,304	5,417	3,305	741	1,371	5,931	4,403	3,196	1,207	9	1,519
NORTHEAST	1,592	1,474	1,201	765	244	192	1,353	1,127	900	227	3	223
Maine	57	52	38	20	7	11	54	42	36	6	-	12
New Hampshire	1	1	1	1	-	-	1	1	1	-	-	-
Vermont	4	4	4	4	-	-	4	4	3	1	-	-
Massachusetts	128	104	253	159	39	55	275	219	96	123	-	56
Rhode Island (g)	7	10	(f)	(f)	(f)	(f)	(f)	(f)	(f)	(f)	(f)	(f)
Connecticut	139	119	159	79	54	26	176	144	128	16	-	32
New York (h)	649	611	397	288	109	-	431	418	358	60	3	10
New Jersey	369	345	278	156	24	98	321	214	206	8	-	107
Pennsylvania	238	228	71	58	11	2	91	85	72	13	-	6
NORTH CENTRAL	1,459	1,270	1,206	766	122	318	1,423	1,082	889	193	1	340
Ohio	434	380	205	187	9	9	262	251	224	27	-	11
Indiana	75	65	81	29	13	39	89	47	47	-	-	42
Illinois	255	223	120	92	15	13	154	140	103	37	1	13
Michigan	191	156	180	112	27	41	215	159	143	16	-	56
Wisconsin	155	143	226	109	36	81	262	177	162	15	-	85
Minnesota	47	41	36	18	5	13	45	36	33	3	-	9
Iowa	73	60	173	53	5	115	186	72	40	32	-	114
Missouri	87	90	79	70	6	3	75	71	42	29	-	4
North Dakota	4	1	2	2	-	-	5	5	5	-	-	-
South Dakota	11	16	17	16	1	-	12	12	10	2	-	-
Nebraska	37	30	36	32	2	2	43	43	11	32	-	-
Kansas	90	65	51	46	3	2	75	69	69	-	-	6

26

Region and State	Prisoner population		Admissions during the year				Departures during the year					
	Present Jan. 1, 1966 (a)	Present Dec. 31, 1966 (b)	Total	Court commitments	Violators returned (c)	Other admissions (d)	Total	Releases			Deaths	Other departures (e)
								Total	Conditional	Unconditional		
SOUTH	2,215	2,029	1,483	1,248	78	157	1,639	1,399	679	720	4	236
Delaware (i)	15	9	3	3	-	-	9	9	5	4	-	-
Maryland	172	160	233	223	6	4	236	192	60	132	1	43
Dist. of Columbia	58	31	50	21	8	21	59	37	31	6	-	22
Virginia	134	131	68	55	5	8	71	63	36	27	-	8
West Virginia	39	25	11	3	3	5	25	19	17	2	-	6
North Carolina (h)	234	199	79	79	-	-	114	114	56	58	-	-
South Carolina	99	81	77	67	7	3	94	91	46	45	-	3
Georgia (k)	198	175	90	86	4	-	113	102	54	48	1	10
Florida	318	311	194	171	2	21	201	174	78	96	-	27
Kentucky	50	49	32	28	4	-	33	33	18	15	-	-
Tennessee	66	55	43	41	2	-	54	53	29	24	-	1
Alabama	132	128	68	57	11	-	72	70	41	29	-	2
Mississippi	71	70	44	33	2	9	45	33	24	9	-	12
Arkansas	56	49	42	38	4	-	49	41	25	16	-	8
Louisiana	137	145	115	87	5	23	106	79	58	21	2	25
Oklahoma	59	57	60	53	6	1	62	61	19	42	-	1
Texas	377	354	274	203	9	62	296	228	82	146	-	68
WEST	1,523	1,531	1,527	526	297	704	1,516	795	728	67	1	720
Montana	8	8	10	10	-	-	10	10	5	5	-	-
Idaho	19	12	9	7	-	2	16	14	8	6	-	2
Wyoming	8	8	6	5	-	-	6	6	-	6	-	-
Colorado	57	51	41	33	7	1	46	45	42	3	-	1
New Mexico	21	21	17	13	4	-	17	16	13	3	-	1
Arizona	58	48	30	25	2	3	40	34	23	11	-	6
Utah	16	11	7	7	-	-	12	12	12	-	-	-
Nevada	18	21	16	12	3	1	12	11	11	-	-	1
Washington	86	83	45	29	10	6	48	40	40	-	1	7
Oregon	50	49	68	28	4	36	68	32	14	18	-	36
California	1,182	1,219	1,276	356	267	653	1,239	573	558	15	-	666
Hawaii (l)	-	-	2	-	-	2	2	2	2	-	-	-

27

(a) Ten of the prisoners from South Dakota, and the 8 from Wyoming, were boarded in Nebraska; the one from New Hampshire was boarded in Vermont.

(b) The 16 prisoners from South Dakota and the 8 from Wyoming were boarded in Nebraska; the one from New Hampshire was boarded in Vermont.

(c) Figures shown do not include some violators who were returned with new or additional sentences and were included as "court commitments".

(d) Includes escapees returned, returns from court orders and authorized temporary absences, and "other" admissions.

(e) Includes escapes, court orders, authorized temporary absences, and "other" departures.

(f) Figures not available.

(g) Excludes misdemeanants.

(h) Prisoner population figure for Jan. 1, 1966 differs from Dec. 31, 1965 figure published in *NPS Bulletin* No. 40 due to change received from State too late for inclusion in that publication.

(i) Includes only Superior Court cases.

(k) Excludes misdemeanants and juveniles confined in State correctional institutions.

(l) One female prisoner was in the institutional count on December 31, 1966, but was housed in the Honolulu City-County Jail.

Table 12. - METHODS OF RELEASE FROM STATE INSTITUTIONS BY SEX, REGION, AND STATE: CALENDAR YEAR 1966

Region and State	All releases	Conditional											Unconditional	
		Total	Percent of all releases	Paroles					Other conditional releases				Total	Percent of all releases
				Total	Percent of all releases	Percent of conditional releases	Male	Female	Total	Percent of all releases	Male	Female		
United States	87,640	57,635	65.8	53,439	61.0	92.7	50,665	2,774	4,196	4.8	4,013	183	30,005	34.2
NORTHEAST	16,662	13,892	83.4	12,363	74.2	89.0	11,603	760	1,529	9.2	1,485	44	2,770	16.6
Maine	587	461	78.5	461	78.5	100.0	425	36	-	-	-	-	126	21.5
New Hampshire	117	117	100.0	115	98.3	98.3	114	1	2	1.7	2	-	5	-
Vermont	237	186	78.5	74	31.2	39.8	71	3	112	47.3	112	-	51	21.5
Massachusetts	1,327	883	66.5	787	59.3	89.1	787	-	96	7.2	96	-	444	33.5
Rhode Island (a)	127	56	44.1	56	44.1	100.0	56	-	-	-	-	-	71	55.9
Connecticut	1,114	899	80.7	899	80.7	100.0	771	128	-	-	-	-	215	19.3
New York	7,602	6,633	87.3	5,314	69.9	80.1	5,000	314	1,319	17.4	1,275	44	969	12.7
New Jersey	2,918	2,426	83.1	2,426	83.1	100.0	2,220	206	-	-	-	-	492	16.9
Pennsylvania	2,633	2,231	84.7	2,231	84.7	100.0	2,159	72	-	-	-	-	402	15.3
NORTH CENTRAL	22,754	17,480	76.8	16,000	70.3	91.5	15,343	657	1,480	6.5	1,391	89	5,274	23.2
Ohio	4,642	4,337	93.4	4,138	89.1	95.4	3,921	217	199	4.3	192	7	305	6.6
Indiana	2,186	1,723	78.8	1,722	78.8	99.9	1,676	46	1	(b)	-	1	463	21.2
Illinois	3,396	2,510	73.9	2,180	64.2	86.9	2,096	84	330	9.7	311	19	886	26.1
Michigan	4,108	3,499	85.2	3,356	81.7	95.9	3,356	-	143	3.5	143	-	609	14.8
Wisconsin	1,866	1,661	89.0	1,204	64.5	72.5	1,072	132	457	24.5	427	30	205	11.0
Minnesota	974	706	72.5	695	71.4	98.4	665	30	11	1.1	8	3	268	27.5
Iowa	1,085	666	61.4	666	61.4	100.0	626	40	-	-	-	-	419	38.6
Missouri	1,955	694	35.5	694	35.5	100.0	652	42	-	-	-	-	1,261	64.5
North Dakota	152	119	78.3	119	78.3	100.0	114	5	-	-	-	-	33	21.7
South Dakota	411	172	41.8	149	36.3	86.6	140	9	23	5.6	22	1	239	58.2
Nebraska	780	216	27.7	216	27.7	100.0	205	11	-	-	-	-	564	72.3
Kansas	1,199	1,177	98.2	861	71.8	73.2	820	41	316	26.4	288	28	22	1.8

28

Region and State	All releases	Conditional											Unconditional	
		Total	Percent of all releases	Paroles					Other conditional releases				Total	Percent of all releases
				Total	Percent of all releases	Percent of conditional releases	Male	Female	Total	Percent of all releases	Male	Female		
SOUTH	33,733	14,545	43.1	13,481	40.0	92.7	12,848	633	1,064	3.2	1,018	46	19,188	56.9
Delaware	204	81	39.7	65	31.9	80.2	60	5	16	7.8	16	-	123	60.3
Maryland	4,190	1,487	35.5	1,487	35.5	100.0	1,427	60	-	-	-	-	2,703	64.5
Dist. of Columbia ..	693	455	65.7	202	29.1	44.4	181	21	253	36.5	243	10	238	34.3
Virginia	1,827	865	47.3	848	46.4	98.0	812	36	17	0.9	17	-	962	52.7
West Virginia	678	515	76.0	514	75.8	99.8	497	17	1	0.1	1	-	163	24.0
North Carolina	2,722	1,211	44.5	1,211	44.5	100.0	1,155	56	-	-	-	-	1,511	55.5
South Carolina	1,323	434	32.8	165	12.5	38.0	143	22	269	20.3	245	24	889	67.2
Georgia	2,728	1,400	51.3	922	33.8	65.9	880	42	478	17.5	466	12	1,328	48.7
Florida	2,899	1,231	42.5	1,231	42.5	100.0	1,153	78	-	-	-	-	1,668	57.5
Kentucky	1,340	567	42.3	567	42.3	100.0	549	18	-	-	-	-	773	57.7
Tennessee	1,558	579	37.2	579	37.2	100.0	550	29	-	-	-	-	979	62.8
Alabama	2,198	1,045	47.5	1,045	47.5	100.0	1,004	41	-	-	-	-	1,153	52.5
Mississippi	863	388	45.0	388	45.0	100.0	364	24	-	-	-	-	475	55.0
Arkansas	1,123	797	71.0	797	71.0	100.0	772	25	-	-	-	-	326	29.0
Louisiana	1,741	1,098	63.1	1,097	63.0	99.9	1,039	58	1	0.1	1	-	643	36.9
Oklahoma	1,822	315	17.3	315	17.3	100.0	296	19	-	-	-	-	1,507	82.7
Texas	5,824	2,077	35.7	2,048	35.2	98.6	1,966	82	29	0.5	29	-	3,747	64.3
WEST	14,491	11,718	80.9	11,595	80.0	99.0	10,871	724	123	0.8	119	4	2,773	19.1
Montana	435	260	59.8	260	59.8	100.0	255	5	-	-	-	-	175	40.2
Idaho	241	153	63.5	153	63.5	100.0	145	8	-	-	-	-	88	36.5
Wyoming	187	23	12.3	23	12.3	100.0	23	-	-	-	-	-	164	87.7
Colorado	1,612	1,233	76.5	1,233	76.5	100.0	1,191	42	-	-	-	-	379	23.5
New Mexico	457	234	51.2	234	51.2	100.0	221	13	-	-	-	-	223	48.8
Arizona	633	317	50.1	317	50.1	100.0	294	23	-	-	-	-	316	49.9
Utah	337	315	93.5	261	77.4	82.9	251	10	54	16.0	52	2	22	6.5
Nevada	234	197	84.2	197	84.2	100.0	186	11	-	-	-	-	37	15.8
Washington	1,391	1,391	100.0	1,322	95.0	95.0	1,284	38	69	5.0	67	2	-	-
Oregon	1,030	399	38.7	399	38.7	100.0	385	14	-	-	-	-	631	61.3
California	7,766	7,047	90.7	7,047	90.7	100.0	6,489	558	-	-	-	-	719	9.3
Hawaii	168	149	88.7	149	88.7	100.0	147	2	-	-	-	-	19	11.3

29

(a) Excludes releases from Reformatory for Women.
 (b) Less than 0.05 percent.

Table 13. - MONTHLY BREAKDOWN OF COURT COMMITMENTS TO STATE INSTITUTIONS, BY REGION AND STATE: CALENDAR YEAR 1966

Region and State	Total court commitments	Month during which committed												Monthly average (a)
		Jan.	Feb.	Mar.	Apr.	May	June	July	Aug.	Sept.	Oct.	Nov.	Dec.	
Unites States	66,349	5,708	5,970	6,638	5,943	5,752	5,817	4,801	4,283	5,048	5,758	5,096	5,535	5,529
NORTHEAST	11,592	1,044	983	1,129	1,005	1,001	1,237	814	616	794	1,017	988	964	966
Maine	273	30	16	14	14	28	20	19	20	36	22	18	36	23
New Hampshire	92	4	9	5	8	9	6	-	5	17	16	8	5	8
Vermont	183	18	19	10	17	18	15	7	8	18	22	20	11	15
Massachusetts	827	110	72	49	75	90	109	29	28	61	105	58	41	69
Rhode Island ^(b)	133	26	12	13	10	9	19	9	14	4	10	3	4	11
Connecticut	839	92	86	75	79	65	112	37	43	49	62	67	72	70
New York	4,732	388	416	487	418	392	490	327	209	318	402	456	429	394
New Jersey	2,640	200	200	288	209	245	294	247	155	152	221	215	214	220
Pennsylvania	1,873	176	153	188	175	145	172	139	134	139	157	143	152	156
NORTH CENTRAL	15,544	1,412	1,402	1,539	1,390	1,300	1,311	1,183	980	1,240	1,343	1,054	1,390	1,295
Ohio	3,251	303	272	347	268	252	304	259	251	232	271	248	244	271
Indiana	1,219	115	114	116	111	83	100	104	62	89	99	90	136	102
Illinois	2,067	156	201	178	208	182	176	215	102	141	189	106	213	172
Michigan	3,088	298	285	303	225	262	261	228	227	277	271	208	243	257
Wisconsin	1,149	104	102	116	134	99	76	81	77	84	88	76	112	96
Minnesota	476	46	36	45	38	43	34	32	33	37	52	33	47	40
Iowa	639	68	57	47	61	39	52	50	40	67	50	56	52	53
Missouri	1,729	148	126	193	160	183	166	92	91	145	173	81	171	144
North Dakota	111	8	15	10	8	14	8	3	8	11	6	14	6	9
South Dakota	377	23	44	31	37	32	20	26	21	42	33	31	37	31
Nebraska	616	52	57	65	64	56	48	47	34	50	52	41	50	51
Kansas	822	91	93	88	76	55	66	46	34	65	59	70	79	69

30

Region and State	Total court commitments	Month during which committed												Monthly average (a)
		Jan.	Feb.	Mar.	Apr.	May	June	July	Aug.	Sept.	Oct.	Nov.	Dec.	
SOUTH	28,748	2,337	2,633	2,899	2,613	2,575	2,421	2,005	1,854	2,238	2,595	2,262	2,316	2,396
Delaware	158	6	18	15	18	15	9	19	14	19	17	5	3	13
Maryland	4,499	373	384	458	481	386	375	328	307	315	402	348	342	375
Dist. of Columbia	626	37	82	50	38	58	58	45	64	33	57	60	44	52
Virginia	1,424	83	158	132	119	153	114	98	105	75	136	134	117	119
West Virginia	293	18	24	29	26	30	22	24	17	22	25	28	28	24
North Carolina	1,697	145	185	167	151	118	133	68	138	143	162	144	143	141
South Carolina	1,194	101	104	116	62	92	111	83	52	156	103	71	143	100
Georgia	2,064	158	168	205	199	221	143	96	143	168	222	169	172	172
Florida	2,831	238	247	271	240	223	255	238	200	230	232	219	238	236
Kentucky	1,313	74	129	184	94	179	125	57	35	94	157	93	92	109
Tennessee	1,214	103	107	130	121	134	111	76	51	76	111	84	110	101
Alabama	1,565	133	160	136	149	119	131	141	123	142	148	89	94	130
Mississippi	629	43	66	33	112	69	36	35	58	23	40	42	72	52
Arkansas	912	95	59	99	81	64	85	47	53	76	94	89	70	76
Louisiana	1,748	135	195	200	143	197	163	114	51	109	148	162	131	146
Oklahoma	1,660	129	157	182	117	125	124	118	90	156	175	149	138	138
Texas	4,921	466	390	492	462	392	426	418	353	401	366	376	379	410
WEST	10,465	915	952	1,071	935	876	848	799	833	776	803	792	865	872
Montana	310	31	27	22	22	23	30	21	20	36	30	22	26	26
Idaho	218	14	27	29	22	8	16	12	22	12	20	15	21	18
Wyoming	131	16	9	12	11	9	14	16	7	13	11	6	7	11
Colorado	1,015	96	114	102	81	59	101	75	73	79	83	77	75	85
New Mexico	323	34	39	25	34	23	10	22	16	37	25	24	34	27
Arizona	585	53	36	84	59	63	52	42	43	36	41	43	33	49
Utah	194	12	21	16	22	18	13	17	18	14	12	13	18	16
Nevada	247	21	6	36	19	18	31	15	22	29	19	16	15	21
Washington	976	102	83	112	97	71	96	61	77	69	72	66	70	81
Oregon	858	97	83	96	77	53	61	59	55	77	56	66	78	72
California	5,525	436	500	532	485	525	414	453	470	367	426	443	474	460
Hawaii	83	3	7	5	6	6	10	6	10	7	8	1	14	7

31

(a) Due to independent rounding of figures, U. S. and regional totals may not exactly equal sum of corresponding States.
 (b) Excludes Rhode Island Reformatory for Women.

Table 14. - MONTH-END STATE PRISON POPULATION FIGURES, BY REGION AND STATE: CALENDAR YEAR 1966

Region and State	Prisoners confined on last day of ^(a) :													Month-end average Dec. '65 through Dec. '66 (b)
	Dec. 1965	Jan. 1966	Feb. 1966	Mar. 1966	Apr. 1966	May 1966	Jun. 1966	July 1966	Aug. 1966	Sep. 1966	Oct. 1966	Nov. 1966	Dec. 1966	
United States ..	189,855	191,114	190,560	190,359	189,572	188,788	187,710	185,955	183,486	182,169	181,751	181,344	180,409	186,390
NORTHEAST	34,503	34,568	34,657	34,342	34,048	33,938	33,954	33,621	33,000	32,566	32,353	32,315	31,991	33,527
Maine	695	702	680	654	634	619	597	581	572	590	485	592	605	616
New Hampshire	206	198	203	199	197	200	201	198	192	192	201	203	206	200
Vermont	262	256	250	237	242	240	235	215	211	213	223	231	232	234
Massachusetts	1,929	1,968	2,000	1,995	2,015	2,023	2,028	1,993	1,932	1,916	1,933	1,898	1,829	1,958
Rhode Island (c)	310	320	330	341	344	347	351	350	349	348	341	335	329	338
Connecticut	1,642	1,697	1,727	1,742	1,733	1,738	1,784	1,744	1,702	1,662	1,634	1,615	1,599	1,694
New York	17,504	17,522	17,538	17,265	16,966	16,845	16,872	16,668	16,292	16,018	15,935	15,872	15,760	16,697
New Jersey	4,839	4,804	4,824	4,844	4,865	4,923	4,959	4,999	4,968	4,930	4,915	4,939	4,912	4,902
Pennsylvania	7,116	7,101	7,105	7,065	7,052	7,003	6,927	6,873	6,782	6,697	6,686	6,630	6,519	6,889
NORTH CENTRAL	46,518	46,507	46,447	46,129	45,739	45,381	44,980	44,578	43,998	43,640	43,501	43,146	42,724	44,868
Ohio	11,374	11,421	11,370	11,297	11,202	11,208	11,154	11,150	11,109	10,981	10,980	10,851	10,694	11,138
Indiana	4,486	4,417	4,347	4,265	4,243	4,178	4,133	4,123	4,032	3,988	3,958	3,952	3,907	4,156
Illinois	8,306	8,180	8,182	8,075	7,946	7,853	7,744	7,703	7,587	7,582	7,584	7,474	7,491	7,824
Michigan	7,342	7,408	7,428	7,384	7,271	7,270	7,205	7,167	7,117	7,082	7,040	6,952	6,754	7,186
Wisconsin	2,830	2,846	2,863	2,891	2,938	2,897	2,883	2,817	2,761	2,701	2,631	2,679	2,709	2,804
Minnesota	1,772	1,804	1,833	1,804	1,775	1,738	1,705	1,666	1,627	1,610	1,619	1,638	1,620	1,709
Iowa	2,178	2,184	2,170	2,161	2,128	2,058	2,047	2,002	1,973	1,961	1,956	1,937	1,885	2,049
Missouri	3,517	3,548	3,541	3,551	3,545	3,555	3,579	3,536	3,488	3,473	3,475	3,422	3,447	3,514
North Dakota	208	214	220	224	212	209	188	179	174	188	188	199	199	200
South Dakota	581	578	590	574	576	571	556	554	540	532	540	556	571	563
Nebraska	1,133	1,137	1,116	1,133	1,144	1,127	1,121	1,101	1,077	1,069	1,061	1,035	1,003	1,097
Kansas	2,791	2,770	2,787	2,770	2,759	2,717	2,665	2,580	2,513	2,473	2,469	2,451	2,444	2,630

32

33

Region and State	Prisoners confined on last day of (a):													Month-end average Dec. '65 through Dec. '66 (b)
	Dec. 1965	Jan. 1966	Feb. 1966	Mar. 1966	Apr. 1966	May 1966	Jun. 1966	Jul. 1966	Aug. 1966	Sept. 1966	Oct. 1966	Nov. 1966	Dec. 1966	
SOUTH	68,648	69,614	68,793	69,064	68,932	68,695	68,269	67,424	66,332	65,892	65,751	65,633	65,125	67,552
Delaware	315	304	306	303	304	308	303	306	306	306	301	289	270	302
Maryland	5,467	5,509	5,498	5,569	5,645	5,552	5,600	5,494	5,313	5,197	5,223	5,200	5,117	5,414
Dist. of Columbia	1,604	1,560	1,587	1,635	1,632	1,645	1,634	1,574	1,581	1,548	1,540	1,560	1,542	1,588
Virginia	4,553	4,451	4,466	4,485	4,408	4,407	4,344	4,294	4,267	4,172	4,159	4,175	4,220	4,339
West Virginia	1,477	1,461	1,471	1,484	1,465	1,446	1,402	1,360	1,308	1,297	1,254	1,239	1,189	1,373
North Carolina	6,029	7,051	6,054	6,021	5,991	5,883	5,771	5,601	5,473	5,392	5,367	5,312	5,297	5,788
South Carolina	2,323	2,291	2,302	2,308	2,263	2,243	2,235	2,210	2,146	2,212	2,228	2,199	2,248	2,247
Georgia	5,966	5,921	5,863	5,805	5,775	5,799	5,682	5,566	5,489	5,442	5,482	5,454	5,385	5,664
Florida	6,995	7,075	7,056	7,079	7,048	7,020	7,067	7,115	7,040	6,994	6,996	6,972	6,972	7,033
Kentucky	2,813	2,805	2,847	2,954	2,958	3,035	3,069	3,031	2,961	2,949	2,996	2,975	2,932	2,948
Tennessee	3,213	3,210	3,217	3,213	3,222	3,235	3,205	3,148	3,086	3,041	3,028	3,003	2,968	3,138
Alabama	4,377	4,346	4,331	4,364	4,358	4,353	4,345	4,311	4,212	4,233	4,095	4,040	4,056	4,263
Mississippi	2,019	2,007	2,071	2,034	2,092	2,096	2,060	2,007	1,989	1,906	1,884	1,867	1,829	1,989
Arkansas	1,970	2,007	1,996	1,986	1,949	1,934	1,929	1,906	1,878	1,882	1,894	1,908	1,864	1,931
Louisiana	3,844	3,809	3,887	3,936	3,940	3,999	4,038	4,041	3,986	3,993	4,003	4,033	4,068	3,967
Oklahoma	2,829	2,926	2,960	3,020	3,000	2,994	3,003	2,965	2,913	2,918	2,936	2,953	2,776	2,938
Texas	12,854	12,881	12,881	12,868	12,882	12,746	12,582	12,495	12,384	12,410	12,365	12,454	12,392	12,630
WEST	40,186	40,425	40,663	40,824	40,853	40,774	40,507	40,332	40,156	40,071	40,146	40,250	40,569	40,443
Montana	586	599	604	589	569	548	544	541	528	540	544	538	548	560
Idaho	481	482	499	507	516	489	488	478	470	473	484	476	477	486
Wyoming	344	346	339	330	317	315	320	317	307	312	311	288	287	318
Colorado	2,766	2,757	2,796	2,797	2,755	2,691	2,685	2,665	2,650	2,616	2,591	2,545	2,540	2,681
New Mexico	1,002	1,005	1,010	992	1,001	988	938	927	913	918	919	915	912	957
Arizona	1,694	1,692	1,667	1,706	1,713	1,713	1,709	1,679	1,671	1,646	1,639	1,632	1,627	1,676
Utah	701	715	719	700	691	673	658	652	651	632	625	630	659	670
Nevada	622	621	615	642	647	642	641	630	632	640	649	649	651	637
Washington	3,202	3,210	3,209	3,217	3,223	3,225	3,264	3,241	3,225	3,188	3,136	3,115	3,098	3,196
Oregon	2,000	2,042	2,059	2,062	2,064	2,029	1,994	1,963	1,902	1,879	1,866	1,874	1,880	1,970
California	26,325	26,504	26,699	26,842	26,919	27,024	26,830	26,811	26,771	26,793	26,953	27,170	27,467	26,854
Hawaii	463	452	447	440	438	437	436	428	436	434	429	418	423	437

(a) Boarded female prisoners are shown in State from which boarded rather than State in which boarded.
 (b) Due to independent rounding of figures, U.S. and regional totals may not exactly equal sum of corresponding States.
 (c) Figures estimated for months of January, February, April, May, July, August, October, and November.

Table 15. - SENTENCED PRISONERS IN STATE INSTITUTIONS, BY INSTITUTION AND SEX: DECEMBER 31, 1966

State and institution	Total	Male	Female	State and institution	Total	Male	Female
United States	180,409	174,105	6,304	Hawaii (Dept. of Social Services, Corrections Division) (a)	423	423	-
Alabama (State Board of Corrections)	4,056	3,928	128	State Prison; Honolulu	349	349	-
Kilby Prison; Montgomery	616	616	-	Kulani Honor Camp; Hilo	43	43	-
Atmore Prison Farm; Atmore	1,151	1,151	-	Olinda Honor Camp; Mokawao, Maui	31	31	-
Draper Correctional Center; Elmore	598	-	-	Idaho (State Penitentiary; Boise)	477	465	12
Trusty Barracks; Montgomery	323	323	-	Illinois	7,491	7,268	223
State Cattle Ranch; Greensboro	27	27	-	State Pen., Joliet Branch; Joliet	4,113	4,113	-
Frank Lee Youth Center; Deatsville	26	26	-	State Pen., Menard Branch; Menard	1,954	1,954	-
Kilby Hospital; Montgomery	23	23	-	State Pen., Pontiac Branch; Pontiac	1,201	1,201	-
Quarantine, R&C; Montgomery	31	31	-	State Reformatory for Women; Dwight	223	-	223
Julia Tutwiler Prison; Wetumpka	129	1	128	Indiana	3,907	3,842	65
Road Camps	989	989	-	State Prison; Michigan City	1,955	1,955	-
(New Not Assigned)	143	143	-	Reformatory; Fendleton	1,887	1,887	-
Arizona (State Prison; Florence)	1,627	1,579	48	Women's Prison; Indianapolis	65	-	65
Arkansas (State Penitentiary; Grady)	1,864	1,815	49	Iowa (Board of Control of State Institutions, Div. of Corr.)	1,885	1,825	60
California (Department of Corrections)	27,467	26,248	1,219	State Penitentiary; Ft. Madison	1,055	1,055	-
State Prison; San Quentin	3,961	3,961	-	Men's Reformatory; Anamosa	760	760	-
State Prison; Folsom	2,428	-	-	Women's Reformatory; Rockwell City	60	-	60
State Prison; Soledad	3,304	3,304	-	Kansas	2,444	2,379	65
Corr. Training Facility; Soledad	3,304	3,304	-	State Penitentiary; Lansing	492	492	-
Correctional Institution; Tehachapi	564	564	-	State Industrial Ref.; Hutchinson	767	767	-
Institution for Men; Chino	1,814	1,814	-	Reception & Diagnostic Center; Topeka	89	89	-
Men's Colony; Los Padres	3,651	3,651	-	State Indust. Farm for Women; Lansing	65	-	65
Deuel Vocational Institution; Tracy	1,566	1,566	-	Kentucky	2,932	2,883	49
Calif. Conservation Ctr.; Susanville	2,314	2,314	-	State Penitentiary; Midville	1,173	1,173	-
Sierra Conservation Ctr.; Jamestown	1,655	1,655	-	State Reformatory; La Grange	1,710	1,710	-
Southern Conservation Center; Chino	1,046	1,046	-	Corr. Inst. for Women; Feewee Valley	49	-	49
Medical Facility; Vacaville	1,866	1,866	-	Louisiana	4,068	3,923	145
Rehabilitation Center; Corona	2,238	1,940	298	State Penitentiary; Angola	3,690	3,545	145
Institution for Women; Frontera	921	-	921	Corr. and Indust. School; DeQuincy	378	378	-
Work Purlough	19	19	-	Maine	605	553	52
Colorado	2,540	2,480	60	State Prison; Thomaston	389	389	-
State Penitentiary; Canon City	2,009	1,958	51	State Ref. for Men; South Windham	164	164	-
State Reformatory; Buena Vista	531	531	-	State Ref. for Women; Skowhegan	52	-	52
Connecticut	1,599	1,480	119	Maryland	5,117	4,957	160
State Prison; Somers	1,127	1,127	-	Penitentiary; Baltimore	1,308	1,308	-
Reformatory; Cheshire	353	353	-	House of Correction; Jessup (b)	2,277	2,277	-
State Farm & Pris. for Women; Miantic	119	-	119	Correctional Institution; Hagerstown	1,372	1,372	-
Delaware (Dept. of Corr.; Smyrna)	-	261	9	Corr. Inst. for Women; Jessup	160	-	160
(No breakdown available)	270	261	9	Massachusetts	1,829	1,725	104
District of Columbia	1,542	1,511	31	Corr. Inst., Concord; West Concord	359	359	-
Reformatory; Lorton	1,223	1,223	-	Corr. Inst., Norfolk; Norfolk	746	746	-
Women's Reformatory; Occoquan	31	-	31	Corr. Inst., Walpole; South Walpole	401	401	-
Youth Center; Lorton	288	288	-	Corr. Inst., Framingham; Framingham	104	-	104
Florida (Division of Corrections)	6,972	6,661	311	Corr. Inst., Plymouth; South Carver	51	51	-
State Prison; Raiford	2,992	2,992	-	Corr. Inst., Monroe; Readsboro, Vt.	34	34	-
Apalachee Corr. Inst.; Chattahoochee	710	710	-	Corr. Inst., Warwick; Orange	44	44	-
Avon Park Corr. Inst.; Avon Park	525	525	-	Michigan (Dept. of Corrections)	6,754	6,598	156
Florida Corr. Inst.; Lowell	401	95	306	State Prison of So. Mich.; Jackson	3,155	3,155	-
Glades Corr. Inst.; Belle Glade	429	429	-	Reformatory; Ionia	921	921	-
Sumter Corr. Inst.; Bushnell	171	171	-	Training Unit; Ionia	475	475	-
Santa Fe Corr. Farm; Gainesville	52	52	-	House of Correction and Branch Prison; Marquette	726	726	-
State Hospital; Chattahoochee	27	22	5	Cassidy Lake Tech. School; Chelsea	184	184	-
Road Prisons	1,665	1,665	-	Detroit House of Corr.; Plymouth	223	67	156
Georgia (Board of Corrections)	5,385	5,210	175	Camps	668	668	-
State Prison; Reidsville	1,850	1,850	-	Federal Pre-Release Guidance Center	10	10	-
Chatham Prison Branch; Savannah	40	40	-	Reception-Diagnostic Center	392	392	-
DeCATUR Prison Branch; Bainbridge	57	57	-	Minnesota (Dept. of Corrections)	1,620	1,579	41
Jefferson Prison Branch; Louisville	35	35	-	State Prison; Stillwater	900	900	-
Lee Prison Branch; Leesburg	25	25	-	State Reformatory for Men; St. Cloud	679	679	-
Lowndes Prison Branch; Valdosta	70	70	-	State Ref. for Women; Shakopee	41	-	41
Macon Prison Branch; Milledgeville	61	61	-	Mississippi (State Prison; Parchman)	1,829	1,759	70
Marion Prison Branch; Milledgeville	61	61	-	Missouri	3,447	3,357	90
Marion Prison Branch; Warm Springs	59	59	-	State Pen. for Men; Jefferson City	2,151	2,151	-
Montgomery Prison Branch; Mt. Vernon	59	59	-	Intermediate Ref.; Jefferson City	446	446	-
Pulaski Prison Branch; Hawkinsville	61	61	-	Reception Center; Jefferson City	157	157	-
Putnam Prison Branch; Eatonton	106	106	-	Training Center for Men; Moberly	603	603	-
Stone Mountain Prison Branch	70	70	-	State Pen. for Women; Tipton	90	-	90
Ware Prison Branch; Waycross	55	55	-				
Wayne Prison Branch; Jesup	106	106	-				
Battley Hospital Prison Branch; Rome	15	12	3				
Industrial Institute; Alto	98	98	-				
Training and Development Center	55	55	-				
Gracewood Prison Barracks	-	-	-				
Colony Farm Prison Camp	172	-	172				
Public Work Camps	2,389	2,389	-				

See footnotes at end of table.

Table 15. - SENTENCED PRISONERS IN STATE INSTITUTIONS, BY INSTITUTION AND SEX: DECEMBER 31, 1966 (Continued)

State and institution	Total	Male	Female	State and institution	Total	Male	Female
Montana (State Prison; Deer Lodge)	548	540	8	South Carolina (Dept. of Corrections)	2,248	2,167	81
Nebraska	1,027	973	54	Central Corr. Inst.; Columbia	1,392	1,392	-
Penal & Corr. Complex; Lincoln	973	973	-	Manning Corr. Inst.; Columbia	269	269	-
State Ref. for Women; York	54	-	54	Walden Corr. Inst.; Columbia	60	60	-
Nevada (State Prison; Carson City)	651	630	21	Watersee River Corr. Inst.; Boykin	213	213	-
New Hampshire (State Prison; Concord)	205	205	(c)	Harbison Corr. Inst. for Women; Irmo	81	-	81
New Jersey (Dept. of Inst. & Agencies)	4,912	4,567	345	Pre-Release Center; Columbia	116	116	-
State Prison; Trenton	2,872	2,872	-	Youth Corr. Center; Ridgeville	117	117	-
Reformatory; Bordentown	961	961	-	South Dakota	555	555	-
Reformatory; Annandale	734	734	-	Penitentiary; Sioux Falls	519	519	(d)
Reformatory for Women; Clinton	345	-	345	Reformatory; Sioux Falls	36	36	-
New Mexico (Penitentiary; Santa Fe)	912	891	21	Tennessee	2,368	2,313	55
New York (Dept. of Correction)	15,760	15,149	611	State Penitentiary; W. Nashville	1,936	1,936	-
Attica Prison; Attica	2,040	2,040	-	Brushy Mountain Pen.; Petros	513	513	-
Auburn Prison; Auburn	1,602	1,602	-	Fort Pillow State Farm; Ft. Pillow	464	464	-
Clinton Prison; Dannemora	1,936	1,936	-	Prison for Women; Nashville	55	-	55
Green Haven Prison; Stormville	1,749	1,749	-	Texas (Dept. of Corrections)	12,392	12,038	354
Sing Sing Prison; Ossining	1,782	1,782	-	Central Unit; Sugar Land	1,052	1,052	-
Wallkill Prison; Wallkill	492	492	-	Clemens Unit; Brazoria	613	613	-
Westfield Prison; Bedford Hills	256	-	256	Coffield Unit; Tennessee Colony	200	200	-
State Vocational Inst.; W. Coxsackie	606	606	-	Darrington Unit; Rosharon	449	449	-
Elmira Reformatory; Elmira	1,214	1,214	-	Diagnostic Unit; Huntsville	478	478	-
Great Meadow Corr. Inst.; Comstock	1,020	1,020	-	Eastham Unit; Weldon	1,140	1,140	-
Woodbourne Corr. Inst.; Woodbourne	546	546	-	Ellis Unit; Huntsville	1,589	1,589	-
Westfield Ref.; Bedford Hills	199	-	199	Ferguson Unit; Midway	812	812	-
Western Ref. for Women; Albion	134	-	134	Goree Unit; Huntsville	354	-	354
Catskill Reformatory; Napanoch	599	599	-	Jester Unit; Richmond	654	654	-
Beacon State Institution	438	438	-	Huntsville Unit; Huntsville	1,610	1,610	-
Albion State Training School; Albion	22	-	22	Ramsey Unit; Rosharon	1,494	1,494	-
Reception Center; Elmira	325	325	-	Retrieve Unit; Angleton	359	359	-
Dannemora State Hospital; Dannemora	449	449	-	Wynne Unit; Huntsville	1,588	1,588	-
Youth Camps	351	351	-	Utah (State Prison; Draper)	659	648	11
North Carolina (Prison Dept.; Raleigh)	5,297	5,098	199	Vermont	233	228	5
(No breakdown available)	-	-	-	State Prison & House of Corr. for Men; Windsor	228	228	-
North Dakota (Penitentiary; Bismarck)	199	198	1	Women's Reformatory; Rutland	5	-	5
Ohio (Dept. of Mental Hygiene and Correction, Division of Corr.)	10,694	10,314	380	Virginia (Div. of Corrections)	4,220	4,089	131
Penitentiary; Columbus	4,059	4,059	-	Penitentiary; Richmond	1,394	1,394	-
State Reformatory; Mansfield	2,048	2,048	-	State Prison Farm; State Farm	799	799	-
Lebanon Corr. Inst.; Lebanon	1,224	1,224	-	Southampton Farm; Capron	375	375	-
London Corr. Inst.; London	1,720	1,720	-	Bland Corr. Farm; Bland	16	16	-
Marion Corr. Inst.; Marion	1,263	1,263	-	State Convict Road Force; Richmond	22	22	-
Ref. for Women; Marysville	380	-	380	Line Plant	29	29	-
Oklahoma	2,776	2,719	57	Sanitoria (Custodial Workers)	22	22	-
State Penitentiary; McAlester	2,265	2,265	-	State Indust. Farm for Women; Gochland	131	-	131
State Reformatory; Granite	511	511	-	Washington (Dept. of Institutions)	3,098	3,015	83
Oregon	1,880	1,831	49	State Penitentiary; Walla Walla	1,630	1,547	83
State Penitentiary; Salem	1,408	1,359	49	State Reformatory; Monroe	798	798	-
State Corr. Inst.; Salem	472	472	-	Corr. Center; Reception; Shelton	124	124	-
Pennsylvania (Bureau of Corr.)	6,519	6,291	228	Corr. Center, Institution; Shelton	341	341	-
Eastern Diagnostic and Classification Center; Philadelphia	131	131	-	Clallam Bay Honor Camp; Clallam	47	47	-
Western Diagnostic and Classification Center; Pittsburgh	93	93	-	Larch Mountain Honor Camp; Yacolt	87	87	-
State Corr. Inst.; Camp Hill	1,049	1,049	-	Washougal Honor Camp; Washougal	71	71	-
State Corr. Inst.; Dallas	577	577	-	West Virginia	1,189	1,164	25
State Corr. Inst.; Graterford	1,490	1,490	-	Penitentiary; Moundsville	897	897	-
State Corr. Inst.; Huntingdon	905	905	-	Medium Security Prison; Huttonsville	267	267	-
State Corr. Inst.; Muncy	228	-	228	State Pris. for Women; Pence Springs	25	-	25
State Corr. Inst.; Philadelphia	654	654	-	Wisconsin (Div. of Corrections, State Dept. of Public Welfare)	2,709	2,566	143
State Corr. Inst.; Pittsburgh	722	722	-	State Prison; Waupun	1,023	1,023	-
State Corr. Inst.; Rockview	670	670	-	State Reformatory; Green Bay	740	740	-
Rhode Island	329	319	10	Correctional Institution; Fox Lake	469	469	-
Adult Corr. Institutions; Howard	319	319	-	Correctional Camp System; Madison	334	334	-
Reformatory for Women; Howard	10	-	10	Home for Women; Taycheedah	143	-	143
				Wyoming (State Penitentiary; Rawlins)	279	279	(e)

(a) Figures exclude one female in the institutional out-count who was housed in the Honolulu City-County Jail.
 (b) Includes Correction Camps.
 (c) One prisoner boarded in Vermont Women's Reformatory.
 (d) Sixteen prisoners boarded in Nebraska State Reformatory for Women.
 (e) Eight prisoners boarded in Nebraska State Reformatory for Women.

END