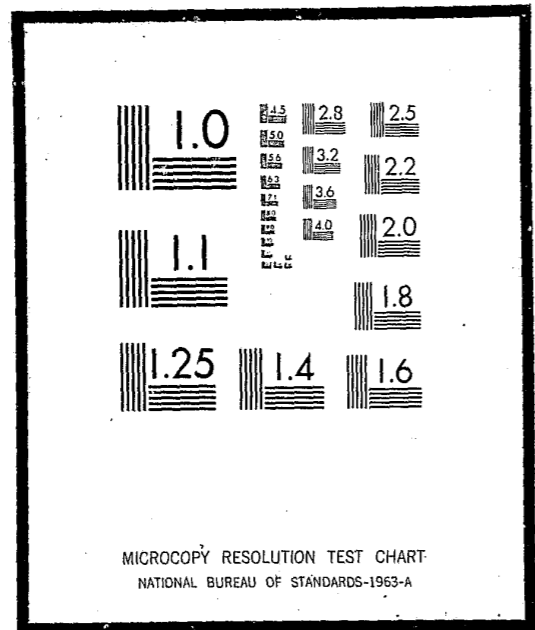


NCJRS

This microfiche was produced from documents received for inclusion in the NCJRS data base. Since NCJRS cannot exercise control over the physical condition of the documents submitted, the individual frame quality will vary. The resolution chart on this frame may be used to evaluate the document quality.



Microfilming procedures used to create this fiche comply with the standards set forth in 41CFR 101-11.504

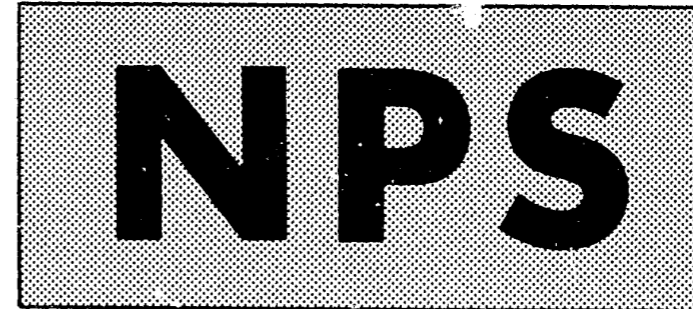
Points of view or opinions stated in this document are those of the author(s) and do not represent the official position or policies of the U.S. Department of Justice.

U.S. DEPARTMENT OF JUSTICE
LAW ENFORCEMENT ASSISTANCE ADMINISTRATION
NATIONAL CRIMINAL JUSTICE REFERENCE SERVICE
WASHINGTON, D.C. 20531

Date filmed

7/20/76

Cat 1



BULLETIN

NATIONAL PRISONER STATISTICS

NUMBER 41 APRIL, 1967

EXECUTIONS 1930 - 1966

NCJ-0022169

UNITED STATES DEPARTMENT OF JUSTICE
RAMSEY CLARK, ATTORNEY GENERAL

BUREAU OF PRISONS
Myrl E. Alexander, Director

EXECUTIONS 1930-1966

INTRODUCTION (Chart 1, Table 1)

One execution was carried out by civil authorities in the United States during calendar year 1966. This is the lowest number of executions in any of the 37 years covered by this report.

A total of 3,857 prisoners have been executed under civil authority in the United States from 1930 through 1966. As Chart 1 and Table 1 indicate, there has been a definite decline during this period in the use of the death penalty, from a high of 199 in 1935, to the low of one last year.

During the period covered, executions carried out under State authorities numbered 3,824, or more than 99 percent of the total, while 33 Federal executions accounted for less than one percent.¹

COVERAGE

The information for this report was submitted to the National Prisoner Statistics program of the Federal Bureau of Prisons by cooperating prison officials in 39 jurisdictions which had legal provisions for the death penalty during 1966. These included 37 States, the District of Columbia, and the Federal Government.

During 1966, there were no additional States abolishing the death penalty. At the close of the year, capital punishment was illegal in 13

The 33 Federal executions were carried out in the following years and States—1963: Iowa (1); 1957: Georgia (2); 1956: Missouri (1); 1954: New York (1); 1953: Missouri (2), New York (2); 1950: Alaska (1); 1948: Alaska (1), Florida (1), California (3); 1945: Wyoming (1); 1943: Tennessee (1); 1942: District of Columbia (6); 1939: Alaska (1); 1938: Indiana (1), Illinois (1), Michigan (1), Kansas (2); 1936: Indiana (1), Oklahoma (1), Arizona (1); 1930: Kansas (1).

States (except for certain exceptional crimes): New York (abolished in 1965, except for persons found guilty of killing a peace officer acting in the line of duty, and for convicts serving a life sentence who murder a guard or an inmate while in jail or while attempting to escape); Vermont (1965, except for those persons convicted of first degree murder who commit an "unrelated" second murder, for convicts who murder any person employed in any capacity in or about the State Prison or House of Correction, and for persons found guilty of killing a law enforcement officer acting in the line of duty); West Virginia (1965); Iowa (1965); Oregon (1964); Michigan (1846 for all crimes but treason; for treason in 1963); Alaska (1957); Hawaii (1957); North Dakota (1915, except for treason and for first degree murder committed by a prisoner serving a life sentence for first degree murder); Minnesota (1911); Maine (1887); Wisconsin (1853); and Rhode Island (1852, except for persons convicted of committing murder while serving a life sentence for any offense).

In addition to the 13 States in which the death penalty is not now in effect, three other States have experimented, during the past 36 years, with abolition of the death penalty for varying periods of time—South Dakota from 1915 to 1938, Kansas from 1907 to 1934, and Delaware from 1958 to 1961.

Information is presented in this report on all prisoners executed under civil authority from 1930 through 1966. In addition, for the years 1960-1966, data are presented on prisoners received from court under sentence of death, prisoners under sentence of death whose cases were disposed of by means other than execution, and prisoners who were under the death sentence at the end of the year. It should be noted that prisoners under sentence of death who are being held in local or county jails ordinarily are not included in National Prisoner Statistics figures. Two exceptions to this are: (1) prisoners held in the Cook

County, Illinois Jail and the District of Columbia Jail (the only local institutions in which executions are carried out), and (2) a few cases in States where prisoners awaiting execution in State prisons are subsequently returned to a local jail pending outcome of an appeal or other legal action.

The "under sentence of death" interval begins when the court first pronounces the sentence of death and terminates either at the time of execution or at the time of some other disposition which releases the individual from the sentence of death, such as commutation, transfer to a mental hospital, grant of a new trial, reversal of judgment, vacated sentence, suicide, or death from natural causes. Many prisoners "under sentence of death" at the close of 1966 received short stays or reprieves granted by State governors. In addition, a large number had appeals before State or Federal courts. The remainder had their dates of execution set for sometime in 1967--although these prisoners, too, could still appeal or receive executive or judicial stays.

EXECUTION CARRIED OUT IN ONE JURISDICTION (Chart 2, Table 2)

The declining number of executions since 1930 has been accompanied by a decrease in the number of jurisdictions implementing the death penalty.

In 1930, executions were carried out in 32 jurisdictions in the United States. This number held fairly constant until 1945, but generally declined from that time until 1966, when it reached an all-time low of only one jurisdiction implementing the death penalty. Table 2 indicates that, since 1930, the 17 jurisdictions in the Southern region of the United States have accounted for 2,306, or 59.8 percent, of the 3,857 executions carried out during this period.

The one jurisdiction having an execution in 1966 was Oklahoma.

METHOD OF EXECUTION (Table 2)

The single execution in 1966 was carried out by electrocution. Among the jurisdictions which retained the death penalty at the close

of 1966, 21 prescribed electrocution, 10 lethal gas, 6 hanging, and one shooting or hanging. Executions ordered by the Federal courts are carried out in accordance with the method used by the State in which the death sentence is imposed. If the laws of the State prohibit capital punishment, the Federal court designates another State in which the sentence is to be carried out. Methods of execution in 1966 in the respective jurisdictions are shown in Table 2.

OFFENSE, RACE, SEX, AND AGE (Figures A-D, Tables 1, 3)

The one prisoner executed in 1966 was sentenced to death for murder. He was a white male, 30 years of age.

Table 1 indicates that 2,065, or 53.5 percent, of the 3,857 prisoners executed in the United States from 1930 to 1966 were Negro, 1,750 (45.4 percent) were white, and 42 (1.1 percent) were of other races. Figure A shows that 19 of the 42 in the "other" race category were American Indian, 13 were Filipino, eight were Chinese, and two were Japanese.

Of the total executions carried out under civil authority in the United States, 3,333, or 86.4 percent, were for murder, 455 (11.8 percent) were for rape, and 69 (1.8 percent) were for other offenses.

Figure A. - AMERICAN INDIANS AND ORIENTALS EXECUTED IN THE UNITED STATES, BY STATE: 1930-1966(a)

State	Total	American Indian	Filipino	Chinese	Japanese
United States	42	19	13	8	2
FEDERAL	2	2	-	-	-
STATE	40	17	13	8	2
Arkansas	1	1	-	-	-
California ...	18	3	11	3	1
Colorado	1	-	-	-	1
Nebraska	1	1	-	-	-
New Jersey ...	2	1	1	-	-
New York	5	1	1	3	-
North Carolina	5	5	-	-	-
Ohio	1	-	-	1	-
Oklahoma	3	3	-	-	-
Texas	1	1	-	-	-
Washington ...	2	1	-	1	-

(a) All executed for murder, except for 2 American Indians executed for rape in North Carolina.

Figures B and C present information on the 32 women executed in the United States since 1930. Twenty of these were white, and 12 were Negro. Except for one executed for espionage and one for kidnaping, all of the 32 were executed for murder.

Figure B. - WOMEN EXECUTED UNDER CIVIL AUTHORITY IN THE UNITED STATES, BY STATE AND RACE: 1930-1966(a)

Region and State	Total	White	Negro
United States	32	20	12
Percent	100.0	62.5	37.5
FEDERAL	2	2	-
TOTAL STATE	30	18	12
Alabama	3	2	1
Arizona	1	1	-
California	4	4	-
Delaware	1	1	-
Georgia	1	-	1
Illinois	1	1	-
Louisiana	2	1	1
Mississippi	3	-	3
New York	5	4	1
North Carolina .	2	-	2
Ohio	3	2	1
Pennsylvania ...	2	1	1
South Carolina .	2	1	1

(a) All were executed for murder except for two Federal executions, one for espionage and one for kidnaping.

ELAPSED TIME FROM SENTENCE OF DEATH TO EXECUTION (Figure D)

"Elapsed time from sentence of death to execution" refers to the period between the first imposition of the death penalty and the date of execution. The elapsed time for the one prisoner executed in 1966 was 47 months.

The elapsed time from sentencing to date of execution is determined by several factors. In addition to State laws governing the date of

Figure C. - WOMEN EXECUTED UNDER CIVIL AUTHORITY IN THE UNITED STATES, BY YEAR AND RACE: 1930-1966(a)

Year	Total	White	Negro
All years	32	20	12
1962	1	1	-
1957	1	1	-
1955	1	1	-
1954	2	1	1
1953	3	3	-
1951	1	1	-
1947	2	1	1
1946	1	-	1
1945	1	-	1
1944	3	-	3
1943	3	1	2
1942	1	1	-
1941	1	1	-
1938	2	2	-
1937	1	-	1
1936	1	1	-
1935	3	2	1
1934	1	1	-
1931	1	1	-
1930	2	1	1

(a) All were executed for murder except for two Federal executions, one for espionage and one for kidnaping.

execution there are appeals, which may be made at all levels of the State courts as well as to the United States Supreme Court. These, in addition to judicial and executive orders granting stays or reprieves, account for the variation in elapsed time.

PRISONERS SENTENCED TO DEATH IN 1966 (Figure E, Table 4)

During 1966, 114 prisoners were sentenced to death - 47 more than the 67 reported in 1965. Of the total, 88 were convicted for murder, 20 for rape, 2 for kidnaping, 3 for robbery, and 1 for assault. One white female was convicted of murder in Illinois; of the remaining 113 males, 56 were white, 55 were Negro, and 2 were Indian.

At the close of 1966, 111 were still under sentence of death, none had been executed, and 3 had their cases disposed of (two were granted new trials, 1 was commuted to life).

Figure D. - CHARACTERISTICS OF PRISONER EXECUTED IN 1966, PRISONERS WHOSE SENTENCE WAS DISPOSED OF BY OTHER MEANS IN 1966, AND PRISONERS UNDER SENTENCE OF DEATH ON DECEMBER 31, 1966

Item	Executed 1966	Other disposition 1966	Under sentence of death 12-31-66
Age (in years)			
Median age	-	31.4	30.8
16 to 19	-	-	6
20 to 24	-	5	74
25 to 29	-	19	111
30 to 34	1	9	79
35 to 44	-	11	94
45 to 54	-	6	22
55 and over	-	2	17
Unknown	-	1	3
Elapsed time (in months)(a)			
Median elapsed time	-	31.7	29.5
3 and under	-	1	26
4 to 6	-	-	17
7 to 12	-	4	69
13 to 18	-	6	37
19 to 24	-	6	32
25 to 36	-	17	59
37 to 48	1	4	47
49 to 60	-	5	33
61 to 72	-	1	32
73 to 84	-	2	27
85 to 96	-	2	11
97 and over	-	5	15
Unknown	-	-	1
Year first received sentence of death:			
1946	-	1	-
1949	-	-	2
1953	-	-	-
1954	-	-	-
1955	-	-	1
1956	-	-	4
1957	-	3	4
1958	-	1	2
1959	-	3	12
1960	-	1	28
1961	-	3	30
1962	1	6	33
1963	-	1	42
1964	-	23	63
1965	-	8	74
1966	-	3	111

(a) "Elapsed time" for those executed is the period between the first imposition of the death penalty and the date of execution. In the case of those whose cases were disposed of by other means, it is the period between the date of the first imposition of the death sentence and the time of other disposition. For prisoners awaiting execution at year's end, elapsed time is computed from the date of the first imposition of the death sentence to Dec. 31, 1966.

OTHER DISPOSITIONS NOT RESULTING IN EXECUTION (Figure E, Table 4)

During calendar year 1966, the sentences of 53 prisoners (52 males and one female) were disposed of by means other than execution. As noted, these "other dispositions" include commutations, transfers to mental hospitals, grants of new trials, reversals of judgment, and vacated sentences. The highest number of "other dispositions" occurred in 1964, when the sentences of 68 prisoners were disposed of by means other than execution.

Thirty-three of the 53 "other dispositions" during 1966 had their death sentences reversed, vacated, or were granted new trials (7 of these were reconvicted and sentenced to life imprisonment), 17 had their sentences commuted (16 to life and one to 21 years), and 3 were transferred to mental hospitals.

Forty-five of the 53 prisoners receiving a disposition other than execution had been sentenced for murder, 7 for rape, and one for assault. The median elapsed time—the period from first imposition of the death sentence to the date of "other disposition"—for the 53 prisoners was 31.7 months. The median elapsed time in 1966 ranged from 2 months and 10 days (in Texas) for a murderer whose sentence was commuted to life, to 20 years, one month and 15 days (in Florida) for a murderer whose sentence was also commuted to life.

PRISONERS UNDER SENTENCE OF DEATH AT THE CLOSE OF 1966 (Figure E, Table 4)

At the beginning of 1966, 346 prisoners were under sentence of death. It should be noted that the number of prisoners under sentence of death on January 1 is higher than that recorded at the close of 1965 (331) for two reasons: (1) a number of prisoners sentenced to death are not always brought to the attention of reporting authorities until subsequent years; and (2) a few prisoners previously reported as having been "disposed of by other means" by reason of having been granted a new trial, are subsequently resentenced to death but are included in the current "awaiting execution at the beginning of year" figure rather than being counted as new court commit-

Figure E. - MOVEMENT OF PRISONERS UNDER SENTENCE OF DEATH, BY OFFENSE: 1966

Offense	Reported under sentence of death on 1-1-66(a)	Received from court during 1966	Executed 1966			Other dispositions not resulting in execution			Reported under sentence of death 12-31-66(d)			
			Total	Present 1-1-66	Received in 1966	Total	Commu-tations (b)	Transfer to mental hospital	Other (c)	Total	Year received	
											1966	Prior years
Total	346	114	1	1	-	53	17	3	33	406	111	295
Murder	290	88	1	1	-	45	16	3	26	332	86	246
Rape	52	20	-	-	-	7	1	-	6	65	19	46
Kidnaping	2	2	-	-	-	-	-	-	-	4	2	2
Robbery	-	3	-	-	-	-	-	-	-	3	3	-
Assault by life prisoner	1	1	-	-	-	1	-	-	1	1	1	-
Burglary	1	-	-	-	-	-	-	-	-	1	-	1

(a) Includes 15 prisoners received in 1965, but reported in 1966.

(b) All commuted to life except 1 prisoner in Louisiana whose sentence was commuted to 21 years.

(c) Includes reversals of judgments, vacated sentences and grants for new trials.

(d) Includes prisoners reported with appeals or other judicial or executive action pending. Excludes prisoners granted new trials.

ments. Including 114 prisoners received from court during the year, the total number of prisoners under sentence of death during 1966 was 460. Of these, one was executed, 53 had their cases disposed of by means other than execution, and 406 were awaiting execution at the end of the year. This marks the highest year-end population awaiting execution since 1953, when statistics on this subject first became available.

Of the 406 prisoners awaiting execution at year's end, 332 had been sentenced for murder, 65 for rape, three for robbery (one in Alabama and two in Texas), four for kidnaping (two in New Hampshire and two in California), one for burglary (North Carolina) and one for assault by a life prisoner (California).

More than half (59 percent) of the prisoners awaiting execution at the close of 1966 were distributed among eight States: California (60), Florida (51), Louisiana (31), Texas (22), Maryland (19), Georgia (19), Alabama (19), and New Jersey (19).

The median age of the 406 prisoners awaiting execution at year's end was 30.8 years, the ages ranging from one 18-year old convicted of rape in Tennessee, to a 67-year old murderer in Florida. Five 19-year olds were among the prisoners awaiting execution

at year's end—one was convicted for murder, and four for rape.

Elapsed time for this group is computed from the first imposition of the death sentence to December 31, 1966. The median elapsed time for the total group was 29.5 months. The longest elapsed time was 13 years, 9 months, and 13 days—for two Negro prisoners convicted of aggravated rape in Louisiana.

MOVEMENT OF PRISONERS UNDER SENTENCE OF DEATH: 1960-1966 (Figure F)

In 1960, the Federal Bureau of Prisons revised the data-collection form submitted to the officials participating in the "Executions" aspect of the National Prisoner Statistics program. The new form provided data on the number of prisoners received from court under sentence of death during the year, and the disposition of prisoners under sentence of death. The information derived from the expanded program is summarized in Figure F. As shown, the seven-year period from 1960 through 1966 was characterized by: (1) an increase in the number of prisoners under sentence of death on January 1, 1966; (2) a substantial increase in the annual number of prisoners received from court under sentence of death; (3) a definite decrease in the number of pris-

oners executed under civil authority in the United States each year; (4) an increase for the past three years in the number of prisoners whose cases were disposed of by means other than execution; (5) an increase in the number of prisoners awaiting execution at year's end (from a low of 210 in 1960 to a high of 406 in 1966); and (6) a decrease in the elapsed time for those whose cases were disposed of by means other than execution, and for those awaiting execution at year's end.

MILITARY EXECUTIONS

Executions carried out by the armed forces are excluded from this report. For the 37-year period since 1930, the Army (including Air Force) carried out 160 executions—148 of these during the period 1942-1950, three each in 1954, 1955, and 1957, and one each in 1958, 1959, and 1961. Of the 160 executions, 106 were for murder (including 21 involving rape), 53 were for rape and one was for desertion. The Navy has executed no one since 1849.

Figure F. - MOVEMENT OF PRISONERS UNDER SENTENCE OF DEATH: 1960-1966

Number of prisoners	1966	1965	1964	1963	1962	1961	1960
Under sentence of death, Jan. 1 ^(a)	346	333	300	275	273	212	189
Received from court during year	114	67	98	91	99	136	113
Executed during year	1	7	15	21	47	42	56
Median elapsed time (in months) ...	-	44.5	20.5	16.0	20.5	16.2	17.0
Other dispositions	53	62	68	48	58	49	36
Median elapsed time (in months) ^(b)	31.7	33.3	23.5	22.4	16.6	18.7	-
Commutations	17	19	9	15	27	17	22
Transfer to mental hospitals .	3	4	3	1	4	3	3
Other ^(c)	33	39	56	32	27	29	11
Under sentence of death, Dec. 31	406	331	315	297	267	257	210
Median elapsed time (in months) ...	29.5	30.8	26.8	24.0	16.7	14.4	13.4

(a) The number of prisoners under sentence of death on January 1 is higher than recorded at the close of the preceding year for two reasons: (1) a few prisoners sentenced to death are not always brought to the attention of reporting authorities until the following year; and (2) a few prisoners previously reported as having been "disposed of by other means" by reason of having been granted a new trial, are subsequently re-sentenced to death but are included in the current "awaiting execution at beginning of year" figure rather than being counted as new court commitments.

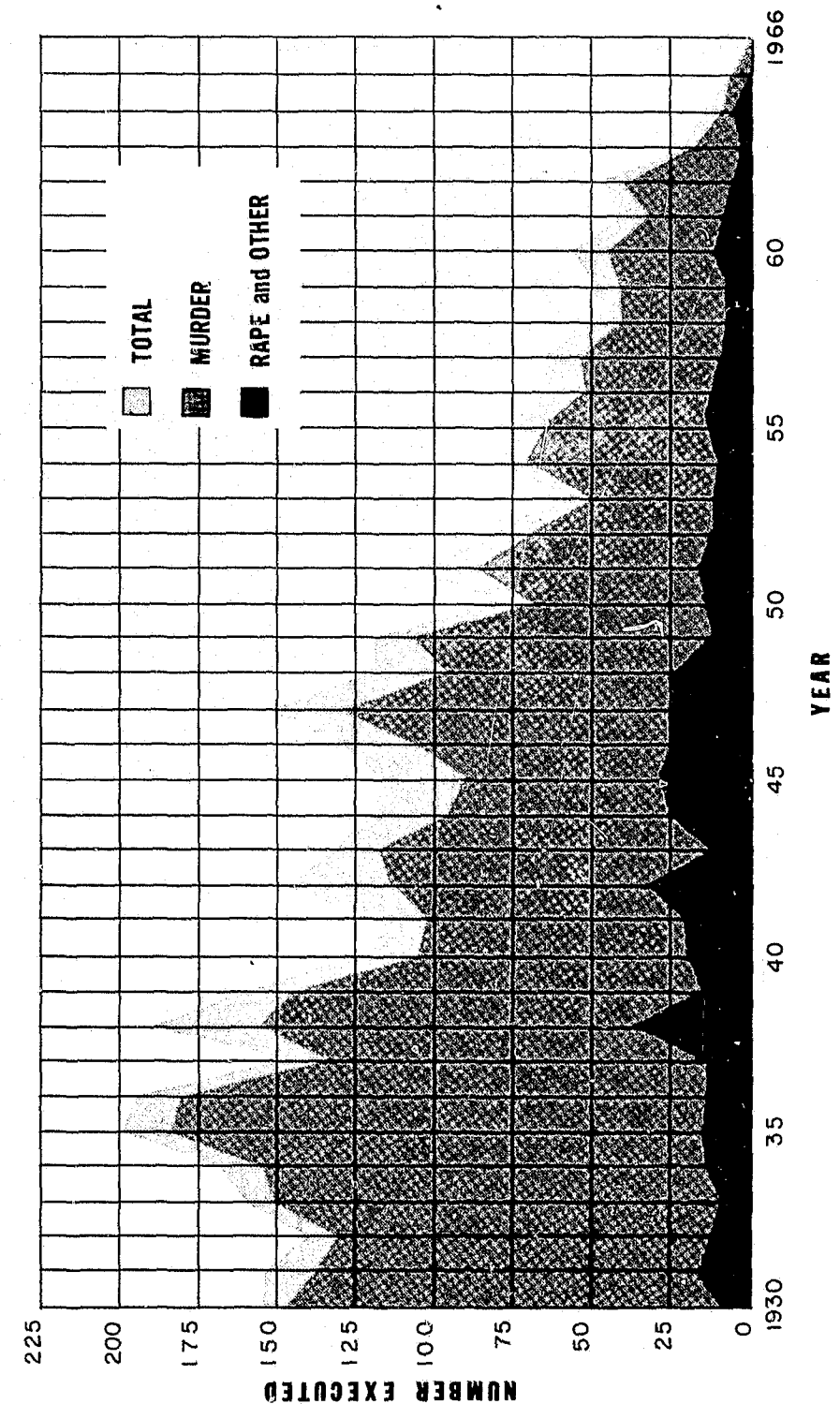
(b) Information not available for 1960.

(c) Includes reversals of judgment, vacated sentences, grants for new trial, suicide, or death from natural causes.

CHART 1

EXECUTIONS 1930 - 1966

PRISONERS EXECUTED UNDER CIVIL AUTHORITY IN THE UNITED STATES, BY OFFENSE

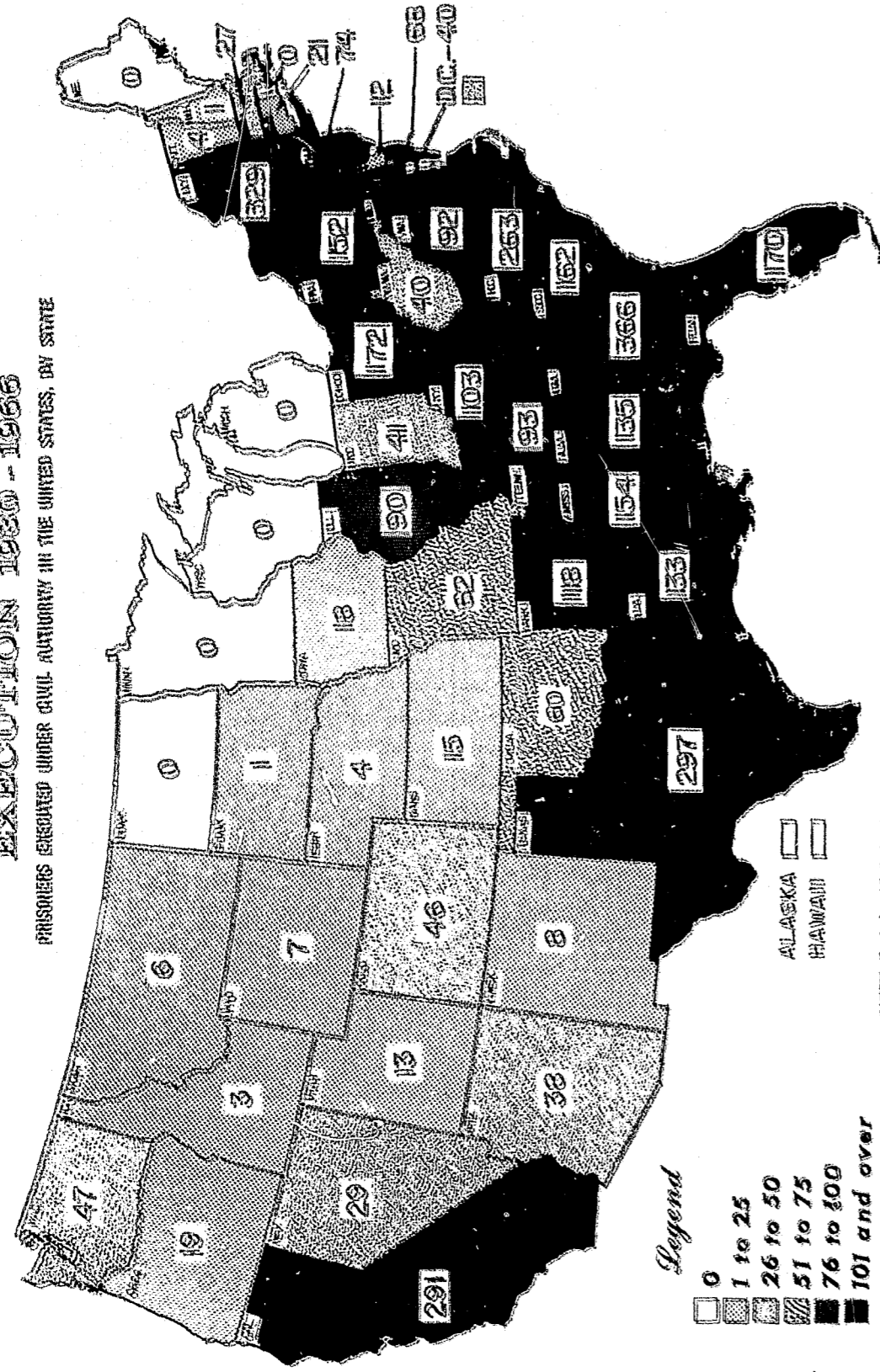


SOURCE: TABLE 1

CHART 2

EXECUTION 1930 - 1966

PRISONERS EXECUTED UNDER CIVIL AUTHORITY IN THE UNITED STATES, BY STATE



NOTE: Excludes 23 Federal Executions carried out in the United States during the period covered.

Source: Table 39

TABLE 1. - PRISONERS EXECUTED UNDER CIVIL AUTHORITY IN THE UNITED STATES, BY YEAR, SEX, RACE AND MARK (1930-1966) (For years 1930-1966 excludes Alaska and Hawaii except for some Federal executions in Alaska 1956, 1965, and 1966.)

Year	All offenders		Whites		Negroes		Hispanics		Other		Total		Males		Females		Total		
	Total	Executed	Total	Executed	Total	Executed	Total	Executed	Total	Executed	Total	Executed	Total	Executed	Total	Executed	Total	Executed	
All years	2,537	2,537	2,537	2,537	42	42	2,495	2,495	40	40	694	694	48	48	396	396	2,537	2,537	
Percent	100.0	100.0	100.0	100.0	1.6	1.6	97.4	97.4	1.6	1.6	27.3	27.3	1.9	1.9	15.2	15.2	100.0	100.0	
1930
1931
1932
1933
1934
1935
1936
1937
1938
1939
1940
1941
1942
1943
1944
1945
1946
1947
1948
1949
1950
1951
1952
1953
1954
1955
1956
1957
1958
1959
1960
1961
1962
1963
1964
1965
1966

(a) ...

Table 2. - PRISONERS EXECUTED UNDER CIVIL AUTHORITY IN THE UNITED STATES, BY STATE AND YEAR: 1930-1966
(Method of Execution in 1966: E-Electrocution, (-Lethal Gas, H-Hanging, S-Shooting or Hanging.)

Region and State	Total	1966	1965	1964	1963	1962	1961	1960	1955-59	1950-54	1945-49	1940-44	1935-39	1930-34
United States ..	3,857	1	7	15	21	47	42	56	304	413	639	645	891	776
FEDERAL(a)	33	-	-	-	1	-	-	-	3	6	6	7	9	1
TOTAL STATE	3,824	1	7	15	20	47	42	56	301	407	633	638	882	775
NORTHEAST	608	-	-	-	3	4	3	7	51	56	74	110	145	155
Maine(b)	XX	XX	XX	XX	XX	XX	XX	XX	XX	XX	XX	XX	XX	XX
New Hampshire ..H	1	-	-	-	-	-	-	-	-	-	-	-	-	-
Vermont(b)	4	XX	-	-	-	-	-	-	-	-	-	-	-	-
Massachusetts ..E	27	-	-	-	-	-	-	-	-	-	-	-	-	-
Rhode Island(b) ..	XX	XX	XX	XX	XX	XX	XX	XX	XX	XX	XX	XX	XX	XX
Connecticut	21	-	-	-	-	-	-	-	-	-	-	-	-	-
New York(b)	329	XX	-	-	-	-	2	6	25	27	36	78	73	80
New Jersey	74	-	-	-	-	-	-	-	9	8	8	6	16	24
Pennsylvania	152	-	-	-	-	2	1	-	12	19	21	15	41	41
NORTH CENTRAL	403	-	5	2	3	7	2	2	16	42	64	42	113	105
Ohio	172	-	-	-	2	2	1	2	12	20	36	15	39	43
Indiana	41	-	-	-	-	-	1	-	-	2	5	2	20	11
Illinois	90	-	-	-	-	2	-	-	1	8	5	13	27	34
Michigan(b)	XX	XX	XX	XX	XX	XX	XX	XX	XX	XX	XX	XX	XX	XX
Wisconsin(b)	XX	XX	XX	XX	XX	XX	XX	XX	XX	XX	XX	XX	XX	XX
Minnesota(b)	XX	XX	XX	XX	XX	XX	XX	XX	XX	XX	XX	XX	XX	XX
Iowa(b)	18	XX	-	-	-	2	-	-	-	1	4	3	7	1
Missouri	62	-	1	2	1	-	-	-	2	5	9	6	20	16
North Dakota(b) ..	XX	XX	XX	XX	XX	XX	XX	XX	XX	XX	XX	XX	XX	XX
South Dakota(b) ..	1	-	-	-	-	-	-	-	-	-	1	-	XX	XX
Nebraska	4	-	-	-	-	-	-	-	1	1	2	-	-	-
Kansas(b)	15	-	4	-	-	-	-	-	-	5	2	3	-	XX
SOUTH	2,306	1	1	12	10	22	26	32	183	244	419	413	524	419
Delaware(b)	12	-	-	-	-	-	-	XX	-	-	2	2	6	2
Maryland	68	-	-	-	-	-	-	-	4	2	19	26	10	6
Dist. of Col.	40	-	-	-	-	-	1	-	1	3	13	3	5	8
Virginia	92	-	-	-	-	1	4	1	8	15	22	13	20	8
West Virginia(b) ..	40	XX	-	-	-	-	-	-	4	5	9	2	10	10
North Carolina ..G	263	-	-	-	-	-	1	-	5	14	62	50	80	51
South Carolina ..E	162	-	-	-	-	2	-	-	10	16	32	30	37	37
Georgia	366	-	-	2	2	1	1	1	34	51	79	58	73	64
Florida	170	-	-	2	1	5	2	2	27	22	27	38	29	15
Kentucky	103	-	-	-	-	1	-	-	8	8	15	19	34	18
Tennessee	93	-	-	-	-	-	-	-	7	1	16	19	31	16
Alabama	135	-	1	1	1	1	1	1	6	14	21	29	41	19
Mississippi	154	-	-	1	2	1	1	1	21	15	26	34	22	26
Arkansas	118	-	-	1	-	-	-	8	7	11	18	20	33	20
Louisiana	133	-	-	-	-	-	-	-	13	14	23	24	19	39
Oklahoma	60	1	-	-	1	1	1	3	3	4	7	6	9	25
Texas	297	-	-	5	4	9	3	8	25	49	36	38	72	46
WEST	507	-	1	1	4	14	11	15	51	65	76	73	100	96
Montana	6	-	-	-	-	-	-	-	-	-	-	1	4	1
Idaho	3	-	-	-	-	-	-	-	1	2	-	1	4	1
Wyoming	7	-	1	-	-	-	-	-	-	-	-	2	3	3
Colorado	46	-	-	1	-	2	1	1	2	1	7	6	9	16
New Mexico	8	-	-	-	-	-	-	1	1	2	2	3	5	5
Arizona	38	-	-	-	2	-	1	1	6	2	3	6	10	7
Utah	13	-	-	-	-	-	-	1	4	2	1	2	2	7
Nevada	29	-	-	-	-	-	-	1	4	2	5	5	3	5
Washington	47	-	-	-	1	-	1	1	2	9	9	13	13	16
Oregon(b)	19	XX	XX	-	-	1	-	-	-	4	6	1	1	1
California	291	-	-	-	1	11	8	9	35	39	45	35	57	51
Alaska(c)	XX	XX	XX	XX	XX	XX	XX	XX	-	-	-	-	-	-
Hawaii(c)	XX	XX	XX	XX	XX	XX	XX	XX	-	-	-	-	-	-

(a) See the text for the States and years in which the 33 Federal executions occurred.
(b) Death penalty is illegal as indicated (XX), except for the provisions indicated in the text.
(c) Alaska and Hawaii, when territories, abolished capital punishment in 1957. As states, Alaska and Hawaii are included in series beginning January 1, 1960.

Table 3. - PRISONERS EXECUTED UNDER CIVIL AUTHORITY IN THE UNITED STATES, BY OFFENSE, RACE, AND STATE: 1930-1966
(For years 1930-1959, excludes Alaska and Hawaii except for three Federal executions in Alaska, one each in 1939, 1948 and 1950.)

Region and State	All offenses			Murder			Rape			Total			Other offenses		
	Total	White	Negro	Total	White	Negro	Total	White	Negro	Total	White	Negro	Total	White	Negro
United States	3,857	1,750	2,065	42	40	42	455	48	405	2	69	31	38	5	19
Percent ...	100.0	-	-	-	-	-	11.8	-	-	-	1.8	-	-	-	-
FEDERAL	33	28	3	2	2	2	2	2	-	-	15	-	15	1	-
TOTAL STATE	3,824	1,722	2,062	40	40	38	453	46	405	2	54	31	23	4	19
NORTHEAST	608	424	177	7	7	7	10	3	7	-	2	-	2	-	2
Maine (b)	XX	XX	XX	XX	XX	XX	XX	XX	XX	XX	XX	XX	XX	XX	XX
New Hampshire	1	1	1	1	1	1	1	1	1	1	1	1	1	1	1
Vermont (c)	4	4	4	4	4	4	4	4	4	4	4	4	4	4	4
Massachusetts	27	25	2	2	2	2	2	2	2	2	2	2	2	2	2
Rhode Island (b) ..	XX	XX	XX	XX	XX	XX	XX	XX	XX	XX	XX	XX	XX	XX	XX
Connecticut	21	18	3	5	5	5	5	5	5	5	5	5	5	5	5
New York (c)	329	234	90	2	2	2	2	2	2	2	2	2	2	2	2
New Jersey	74	47	25	2	2	2	2	2	2	2	2	2	2	2	2
Pennsylvania	152	95	57	-	-	-	-	-	-	-	-	-	-	-	-
NORTH CENTRAL	403	257	144	2	2	2	10	3	7	-	2	-	2	-	2
Ohio	172	104	67	1	1	1	10	3	7	-	2	-	2	-	2
Indiana	41	31	10	1	1	1	1	1	1	1	1	1	1	1	1
Illinois	90	59	31	XX	XX	XX	XX	XX	XX	XX	XX	XX	XX	XX	XX
Michigan (b)	XX	XX	XX	XX	XX	XX	XX	XX	XX	XX	XX	XX	XX	XX	XX
Wisconsin (b)	XX	XX	XX	XX	XX	XX	XX	XX	XX	XX	XX	XX	XX	XX	XX
Minnesota (b)	XX	XX	XX	XX	XX	XX	XX	XX	XX	XX	XX	XX	XX	XX	XX
Iowa (c)	18	18	33	3	3	3	3	3	3	3	3	3	3	3	3
Missouri	62	29	33	XX	XX	XX	XX	XX	XX	XX	XX	XX	XX	XX	XX
North Dakota (b) ..	XX	XX	XX	XX	XX	XX	XX	XX	XX	XX	XX	XX	XX	XX	XX
South Dakota (c) ..	1	1	1	1	1	1	1	1	1	1	1	1	1	1	1
Nebraska	4	1	3	1	1	1	1	1	1	1	1	1	1	1	1
Kansas (c)	15	12	3	1	1	1	1	1	1	1	1	1	1	1	1

Region and State	All offenses										Murder			Rape			Total			Armed robbery		Kidnaping		Other offenses (a)																		
	Total	White		Negro		Other	Total	White	Negro	Other	Total	White	Negro	Other	Total	White	Negro	Total	White	Negro	White	Negro	White	Negro																		
		595		1,231																					8		443		43		398		2		4		19		5		-	
		1,824		1,231																					8		443		43		398		2		4		19		5		-	
SOUTH	2,306	657	1,659	10	1,824	8	443	43	398	2	39	9	30	4	19	5	11																									
Delaware (c)	12	5	7	-	4	-	4	4	3	-	-	-	-	-	-	-	-	-	-	-	-	-	-																			
Maryland	68	13	55	-	7	-	7	7	3	-	-	-	-	-	-	-	-	-	-	-	-	-	-																			
Dist. of Col.	40	17	23	-	3	-	3	3	1	-	-	-	-	-	-	-	-	-	-	-	-	-	-																			
Virginia	92	17	75	-	17	-	17	17	5	-	-	-	-	-	-	-	-	-	-	-	-	-	-																			
West Virginia (c)	40	31	9	-	28	-	28	28	1	-	-	-	-	-	-	-	-	-	-	-	-	-	-																			
North Carolina	263	59	199	5	207	3	47	41	37	2	1	1	1	1	1	1	1	1	1	1	1	1	1																			
South Carolina	182	35	127	-	120	-	61	58	3	-	-	-	-	-	-	-	-	-	-	-	-	-	-																			
Georgia	366	68	298	-	299	-	65	78	35	-	-	-	-	-	-	-	-	-	-	-	-	-	-																			
Florida	103	57	52	-	88	-	47	41	9	-	-	-	-	-	-	-	-	-	-	-	-	-	-																			
Kentucky	93	27	66	-	66	-	22	44	20	-	-	-	-	-	-	-	-	-	-	-	-	-	-																			
Tennessee	135	28	107	-	106	-	26	80	20	-	-	-	-	-	-	-	-	-	-	-	-	-	-																			
Alabama	154	30	124	-	130	-	30	100	21	-	-	-	-	-	-	-	-	-	-	-	-	-	-																			
Mississippi	118	27	90	-	99	-	25	73	17	-	-	-	-	-	-	-	-	-	-	-	-	-	-																			
Arkansas	133	30	103	-	116	-	30	86	4	-	-	-	-	-	-	-	-	-	-	-	-	-	-																			
Louisiana	60	12	48	-	54	-	40	11	4	-	-	-	-	-	-	-	-	-	-	-	-	-	-																			
Oklahoma	297	114	182	-	210	-	101	108	1	-	-	-	-	-	-	-	-	-	-	-	-	-	-																			
Texas	507	404	82	21	494	21	392	81	21	-	-	-	-	-	-	-	-	-	-	-	-	-	-																			
WEST	6	4	2	-	6	-	4	2	-	-	-	-	-	-	-	-	-	-	-	-	-	-	-																			
Montana	3	3	-	-	3	-	3	3	-	-	-	-	-	-	-	-	-	-	-	-	-	-	-																			
Idaho	7	6	1	-	7	-	6	7	-	-	-	-	-	-	-	-	-	-	-	-	-	-	-																			
Wyoming	46	40	6	-	46	-	40	6	-	-	-	-	-	-	-	-	-	-	-	-	-	-	-																			
Colorado	38	28	10	-	38	-	28	10	-	-	-	-	-	-	-	-	-	-	-	-	-	-	-																			
New Mexico	13	13	-	-	13	-	13	-	-	-	-	-	-	-	-	-	-	-	-	-	-	-	-																			
Arizona	29	27	2	-	29	-	27	2	-	-	-	-	-	-	-	-	-	-	-	-	-	-	-																			
Utah	47	40	7	-	47	-	40	7	-	-	-	-	-	-	-	-	-	-	-	-	-	-	-																			
Nevada	19	16	3	-	19	-	16	3	-	-	-	-	-	-	-	-	-	-	-	-	-	-	-																			
Washington	291	221	70	18	279	18	210	69	18	-	-	-	-	-	-	-	-	-	-	-	-	-	-																			
Oregon (c)	XX	XX	XX	-	XX	-	XX	XX	XX	-	-	-	-	-	-	-	-	-	-	-	-	-	-																			
California	XX	XX	XX	-	XX	-	XX	XX	XX	-	-	-	-	-	-	-	-	-	-	-	-	-	-																			
Alaska (d)	XX	XX	XX	-	XX	-	XX	XX	XX	-	-	-	-	-	-	-	-	-	-	-	-	-	-																			
Hawaii (d)	XX	XX	XX	-	XX	-	XX	XX	XX	-	-	-	-	-	-	-	-	-	-	-	-	-	-																			

(a) In this category the 8 Federal executions were for espionage. The 9 executions in North Carolina and the 2 in Alabama were for burglary. In California, the 6 executions were for aggravated assault committed by prisoners under a life sentence.

(b) Death penalty illegal during entire period, except for provisions indicated in the text.

(c) See text for period during which death penalty was in force.

(d) Alaska and Hawaii when territories abolished capital punishment in 1957. As States, Alaska and Hawaii are included in this series beginning Jan. 1, 1960.

Table 4. - MOVEMENT OF PRISONERS UNDER SENTENCE OF DEATH, BY STATE AND OFFENSE: 1966

Region and State	Prisoners reported under sentence of death: 1-1-66				Received from court during 1966			Executed in 1966		Other dispositions not resulting in execution				Prisoners reported under sentence of death: 12-31-66(c)				
	Total	Offense			Total	Offense			Total	Offense	Total	Com-mu- ted (a)	Trans. to mental hosp.	Other (b)	Total	Offense		
		Mur- der	Rape	Oth- er		Mur- der	Rape	Oth- er								Mur- der	Mur- der	Rape
United States	346	290	52	4	114	88	20	6	1	1	53	17	3	33	406	332	65	9
FEDERAL	1	1	-	-	1	1	-	-	-	-	-	-	-	-	2	2	-	-
TOTAL STATE	345	289	52	4	113	87	20	6	1	1	53	17	3	33	404	330	65	9
NORTHEAST	52	50	-	2	12	12	-	-	-	-	2	-	-	2	62	60	-	2
Maine (a)	XX	XX	XX	XX	XX	XX	XX	XX	XX	XX	XX	XX	XX	XX	XX	XX	XX	XX
New Hampshire	2	-	-	2	-	-	-	-	-	-	-	-	-	-	-	-	-	-
Vermont (a)	XX	XX	XX	XX	XX	XX	XX	XX	XX	XX	XX	XX	XX	XX	XX	XX	XX	XX
Massachusetts	7	-	-	-	2	-	-	-	-	-	-	-	-	-	8	8	-	-
Rhode Island (a)	XX	XX	XX	XX	XX	XX	XX	XX	XX	XX	XX	XX	XX	XX	XX	XX	XX	XX
Connecticut	-	-	-	-	1	1	-	-	-	-	-	-	-	-	1	1	-	-
New York (a)	14	14	-	-	-	-	-	-	-	-	-	-	-	-	14	14	-	-
New Jersey	14	14	-	-	5	5	-	-	-	-	-	-	-	-	19	19	-	-
Pennsylvania	15	15	-	-	4	4	-	-	-	-	-	-	-	-	18	18	-	-
NORTH CENTRAL	35	35	-	-	8	8	-	-	-	-	4	2	-	2	39	39	-	-
Ohio	13	13	-	-	5	5	-	-	-	-	3	2	-	1	15	15	-	-
Indiana	7	7	-	-	-	-	-	-	-	-	-	-	-	-	7	7	-	-
Illinois	12	12	-	-	1	1	-	-	-	-	-	-	-	-	13	13	-	-
Michigan (a)	XX	XX	XX	XX	XX	XX	XX	XX	XX	XX	XX	XX	XX	XX	XX	XX	XX	XX
Wisconsin (a)	XX	XX	XX	XX	XX	XX	XX	XX	XX	XX	XX	XX	XX	XX	XX	XX	XX	XX
Minnesota (a)	XX	XX	XX	XX	XX	XX	XX	XX	XX	XX	XX	XX	XX	XX	XX	XX	XX	XX
Iowa (a)	XX	XX	XX	XX	XX	XX	XX	XX	XX	XX	XX	XX	XX	XX	XX	XX	XX	XX
Missouri	2	2	-	-	1	1	-	-	-	-	-	-	-	-	2	2	-	-
North Dakota (a)	XX	XX	XX	XX	XX	XX	XX	XX	XX	XX	XX	XX	XX	XX	XX	XX	XX	XX
South Dakota	-	-	-	-	-	-	-	-	-	-	-	-	-	-	-	-	-	-
Nebraska	1	1	-	-	1	1	-	-	-	-	-	-	-	-	2	2	-	-
Kansas	-	-	-	-	-	-	-	-	-	-	-	-	-	-	-	-	-	-
SOUTH	181	128	52	1	58	36	19	3	1	1	26	10	3	13	212	144	64	4
Delaware	1	1	-	-	1	1	-	-	-	-	-	-	-	-	2	2	-	-
Maryland	20	14	6	-	5	3	2	-	-	-	6	1	1	4	19	13	6	-
Dist. of Col.	-	-	-	-	-	-	-	-	-	-	-	-	-	-	-	-	-	-
Virginia	4	3	1	-	1	1	-	-	-	-	1	-	-	1	4	3	1	-
West Virginia (d)	XX	XX	XX	XX	XX	XX	XX	XX	XX	XX	XX	XX	XX	XX	XX	XX	XX	XX
North Carolina	3	2	1	-	2	2	-	-	-	-	1	-	-	1	4	3	-	-
South Carolina	9	5	4	-	2	2	-	-	-	-	-	-	-	-	11	7	4	-
Georgia	16	13	3	-	3	2	1	-	-	-	2	1	1	1	19	13	6	-
Florida	47	30	17	-	8	3	5	-	-	-	4	3	1	1	51	35	16	-
Kentucky	8	8	-	-	1	1	-	-	-	-	1	-	-	-	8	8	-	-
Tennessee	1	1	-	-	5	5	-	-	-	-	-	-	-	-	6	5	1	-
Alabama	15	13	2	-	4	3	1	-	-	-	-	-	-	-	19	13	6	-
Mississippi	3	2	1	-	2	2	-	-	-	-	2	-	-	2	3	3	-	-
Arkansas	12	7	5	-	1	1	-	-	-	-	1	-	-	1	11	6	5	-
Louisiana	30	19	11	-	5	3	2	-	-	-	4	3	1	1	31	18	13	-
Oklahoma	2	3	-	-	2	2	-	-	-	-								

U. S. DEPARTMENT OF JUSTICE
BUREAU OF PRISONS
WASHINGTON, D. C.
20537

OFFICIAL BUSINESS

POSTAGE AND FEES PAID
U. S. DEPARTMENT OF JUSTICE

If you do NOT desire to continue receiving
this material, please check here and
return this cover to above address.

If your address has changed, please indi-
cate hereon and return this cover to above
address.

END