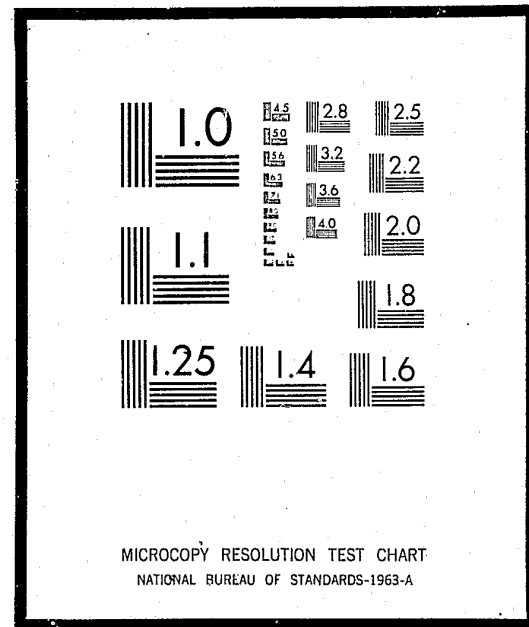


# NCJRS

This microfiche was produced from documents received for inclusion in the NCJRS data base. Since NCJRS cannot exercise control over the physical condition of the documents submitted, the individual frame quality will vary. The resolution chart on this frame may be used to evaluate the document quality.



Microfilming procedures used to create this fiche comply with the standards set forth in 41CFR 101-11.504

Points of view or opinions stated in this document are those of the author(s) and do not represent the official position or policies of the U.S. Department of Justice.

U.S. DEPARTMENT OF JUSTICE  
LAW ENFORCEMENT ASSISTANCE ADMINISTRATION  
NATIONAL CRIMINAL JUSTICE REFERENCE SERVICE  
WASHINGTON, D.C. 20531

Date filmed

7/15/76

LAW ENFORCEMENT ASSISTANCE ADMINISTRATION



## CRIMINAL JUSTICE AGENCIES IN ALABAMA 1971

NATIONAL INSTITUTE OF LAW ENFORCEMENT AND CRIMINAL JUSTICE  
STATISTICS DIVISION

WASHINGTON, D. C.

ISSUED FEBRUARY 1972

LAW ENFORCEMENT ASSISTANCE  
ADMINISTRATION

Jerris Leonard  
*Administrator*

Richard W. Velde  
Clarence M. Coster  
*Associate Administrators*

NATIONAL INSTITUTE OF LAW ENFORCEMENT  
AND CRIMINAL JUSTICE

Martin B. Danziger, *Acting Assistant Administrator*

STATISTICS DIVISION  
George E. Hall, *Director*

Statistical Programs  
Anthony G. Turner, *Chief*

ACKNOWLEDGEMENTS

Preparation of this report was the responsibility of the Statistics Division, National Institute of Law Enforcement and Criminal Justice, Law Enforcement Assistance Administration. The original planning was the responsibility of Linda Wells. This report was prepared by Karen Joerg. A statement covering definitions and limitations of data was prepared by the Bureau of the Census. Under LEAA design specifications, the Bureau of the Census conducted the directory survey and prepared the tabulations. The Federal Bureau of Investigation provided valuable assistance in the development of the code identifiers, and in the verification of some entries, particularly in the law enforcement sector.

LEAA-NILECJ STAT DIVISION PUBLICATION SD-D-2

Library of Congress Card Number 70-185037

For sale by the Superintendent of Documents, U.S. Government Printing Office  
Washington, D.C. 20402 - Price 50 cents  
Stock Number 2700-0105

TABLE OF CONTENTS

Section	Page
FOREWORD . . . . .	v
NATIONAL SUMMARY . . . . .	1
LIMITATIONS OF DATA . . . . .	3
DEFINITIONS OF LEVELS OF GOVERNMENT . . . . .	4
DEFINITIONS OF TYPES OF CRIMINAL JUSTICE AGENCIES . . . . .	5
CODE IDENTIFIERS . . . . .	9
SUMMARY TABLES . . . . .	10
LISTINGS OF ADDRESSES OF AGENCIES . . . . .	11
Prosecutors . . . . .	11
Defenders . . . . .	13
Enforcement Agencies . . . . .	13
Courts . . . . .	20
Probation and Parole Agencies . . . . .	29
Adult Correctional Institutions . . . . .	31
Juvenile Correctional Institutions . . . . .	34
All Other Agencies . . . . .	34

## FOREWORD

Under Title I of Public Law 90-351, the Law Enforcement Assistance Administration is authorized "to collect, evaluate, publish, and disseminate statistics and other information on the condition and progress of law enforcement in the several States". In partial response to this authorization, LEAA's Statistics Division of the National Institute of Law Enforcement and Criminal Justice entered into an inter-agency agreement with the U.S. Bureau of the Census to conduct a survey in January of 1970 to develop a National Criminal Justice Directory.

The primary emphasis of the directory survey was to obtain the names and addresses of all criminal justice agencies and institutions in the United States. This report presents the individual names and addresses of enforcement agencies, courts (civil as well as criminal), prosecutors' offices, defenders' offices, adult correction agencies, juvenile correction agencies, probation offices, and "other" agencies in Alabama, and counts of agencies by level of government and sector (enforcement, courts, corrections, etc.). While summary national statistics are given in this report, more detailed national findings and a description of the survey methodology may be found in the report "Criminal Justice Agencies in the United States - 1970 - Summary Report" (LEAA - Statistics Division, Report SD-D-1).

The directory is periodically updated. The counts that appear in this volume are as of October 1971 and therefore differ somewhat from those in the Summary Report.

## NATIONAL SUMMARY

According to the national directory survey of criminal justice agencies, there are 46,197 public agencies in the criminal justice system which are administered at the state or local government level. This total was based on a census of all publicly financed agencies dealing with crime, criminals, or the administration of criminal justice. The census was conducted in January of 1970 in each state and county of the United States, plus all municipalities and townships with a 1960 population of 1,000 or more persons. The figures and list of agencies in this report represent the most recent update of the directory-- October 1971. The numbers therefore may differ somewhat from the counts cited in the Summary Report which provided data as of January 1970.

The results indicate the dispersion within the criminal justice community of the various types of agencies. For example, there are 14,901 <sup>1/</sup> enforcement agencies in the United States, of which over 14,000 are operated at the local level of government. It should be noted, however, from other available evidence <sup>2/</sup> that state-operated agencies are about 11 times larger on the average than local agencies, in terms of full-time personnel.

There are almost as many courts (13,033) as there are enforcement agencies (14,901). Not all courts, however, address all levels of crime, as do the general police agencies. This survey contains information, for example, about a number of courts which are not technically in the criminal justice system, such as probate courts and family relation courts. About seven-eighths of the courts surveyed are operated at the local level of government.

<sup>1/</sup> According to the 1967 President's Commission on Law Enforcement and Administration of Justice, Task Force Report: The Police, page 7, there may be as many as 25,000 other police agencies in jurisdictions not covered by the directory survey, that is in townships, boroughs, or villages of under 1,000 population. More recent efforts place this number closer to 10,000, and the Statistics Division is planning to survey this sector of the criminal justice system.

<sup>2/</sup> See, U. S. Department of Justice, Law Enforcement Assistance Administration and U. S. Department of Commerce, Bureau of the Census, Expenditure and Employment Data for the Criminal Justice System, 1968-69.

About one-fifth of the agencies identified deal with prosecution and defense. Prosecutors' offices, however, outnumber defenders' offices by a factor of 22 to 1; 8,487 to 378. Almost 30 percent of the defenders' offices are state operated but only 7 percent of the prosecutors' offices are operated by state governments.

There are 5,312 (11%) corrections agencies, including 4,503 for adults and 809 for juveniles. Probation offices account for another five percent (2,444 agencies), with the remaining four percent (1,642) of the "other" agencies consisting of such diverse functions as police academies, courts administration, state planning agencies, juvenile boards, and others. Local administration handles about nine in every ten of the adult correction facilities and three in every four of the probation offices.

In general, the concentration of agencies at the local level of government spans the range of criminal justice activities. Only those specialized agencies in the "other" category are more likely to be found at the state level of administration. Sixty-nine percent of the "other" agencies are state operated.

## LIMITATIONS OF DATA

Readers should be cautious in interpretations of these counts, keeping in mind that this survey did not include agencies of those municipal governments with a 1960 population of less than 1,000. The figures in this report reflect the October 1971 update of the directory, particularly in the courts sector and the juvenile corrections sector, and consequently may differ from the figures presented in the Summary Report (Statistics Division Report SD-D-1). Moreover, in deciding whether an agency belonged in the directory or not, the general rule was to be inclusive rather than exclusive.

While numbers will help describe the scope and diversity of the system, the size and range of activity of criminal justice agencies within a state may not always be reflected by simple counts of agencies. Organizational complexity varies considerably from one governmental unit to another, even within a single state. Of the categories enumerated in the directory, the counts of local adult correctional facilities are the most reliable due to the refinement of this sector through the National Jail Census conducted in the Spring of 1970.

## DEFINITIONS OF LEVELS OF GOVERNMENT

The criminal justice agencies reported were classified by type of government (state, county, municipality, or township) according to Census Bureau definitions as summarized below:

### Counties

Organized county governments are found throughout Alabama, the total of such governments being 67.

### Cities

This category includes all active governmental units officially designated as cities, villages, boroughs, and towns. This concept generally corresponds to the "incorporated places" that are recognized in Census Bureau reporting of population and housing statistics. Municipalities which are governmentally inactive were excluded from the survey.

### Townships

There are no organized township governments in Alabama.

### Regional Agencies

An agency serving more than one local government was generally assigned to either the largest government involved or to the next highest level of government, depending on the type of agency involved. However, classification was often based on the unique factors involved in the particular case and a complete explanation of procedures would be impractical.

## DEFINITIONS OF TYPES OF CRIMINAL JUSTICE AGENCIES

Names of criminal justice agencies were collected and classified under the following headings:

1. Courts
2. Enforcement agencies
3. Correctional institutions
4. Probation and parole agencies
5. Prosecutors
6. Public defenders
7. All other criminal justice agencies

Following is a more detailed explanation covering the types of agencies included in these categories and some comments concerning their limitations.

### Courts

The survey included appellate courts, major trial courts of general jurisdiction, special courts (probate, juvenile, family, domestic relations courts) as well as other courts of limited jurisdiction (county, municipal, justice, magistrate, mayor, traffic and police courts).

Specifically excluded from the survey were minor courts of nominal participation in the criminal justice system where the judge's compensation was exclusively on a fee basis (unsalaried). Also excluded were Workmen's Compensation Boards, Bank, Tax, and Industrial Review Boards and Land Courts.

The counts for the "courts" sector include only independent court systems. Sub-units (divisions, departments, bureaus or branches), regardless of function or importance, were excluded.

Courts were classified by level of government based primarily on the geographical boundaries of the district served by the court. In Alabama, the Alabama Supreme Court, the Court of Civil Appeals, the Court of Criminal Appeals, and the Circuit Courts were listed at the state level of government. At the county level are Probate Courts, County Courts, Inferior Courts, Courts of General Sessions, Intermediate Courts, and Courts of Common Pleas. Juvenile Courts which are not a division of another court were also included at the county level of government. Recorder's Courts were counted at the municipal level of government.

### Enforcement Agencies

Included in this sector are state, county, and municipal police or law enforcement agencies with sworn police officers.

Included are all major law enforcement agencies, including the state police, state bureau of investigation in some cases, the county sheriff and police department and county detectives, as well as municipal police departments. Included also are all identifiable and independently administered Park Ranger, Harbor Police, Airport Police, Housing Police, and Transit Police agencies with 50 or more sworn officers, and some smaller forces. Excluded are branches, divisions, or departments of a main law enforcement agency. For example, the Juvenile Division of a sheriff's department would not be counted as an independent law enforcement agency.

Those counties, cities, towns, and villages whose police services are provided for under a contractual agreement with another government or private agency were not considered to have a police department.

Marshals and constables whose primary duties are the serving of warrants were excluded from the survey where they were identifiable. Regulatory agencies were not included in most instances. Game Wardens, Alcoholic Beverage Control Boards, Bingo Boards, Gambling Boards and the like were excluded unless they operate a force of 50 or more sworn police officers.

It should be noted that state, county and municipal medical examiners and coroners were included in this sector.

### Correctional Institutions

General Definition -- An individual facility, such as a prison, jail, farm, or annex, which is either separately administered or administratively dependent upon a parent institution and located in a separate geographical area. Hospitals for the criminally insane and halfway houses for narcotic addicts and alcoholics were not counted in this sector but in the "all other criminal justice agencies" sector.

Juvenile Correctional Facilities -- Included are those facilities which detain juveniles only, for 48 hours or more. This includes detention centers, reception and diagnostic centers, some halfway houses and other probation or work-release type facilities; that is, institutions detaining juveniles for court disposition as well as those holding juveniles for rehabilitation after court disposition. At the local level of government an agency was considered to be a juvenile agency if the administrator considered it as such. At the state level, facilities were assigned juvenile status if they were administered by the state juvenile corrections agency (each is under a separate board of trustees and not the State Board of Corrections).

Adult Correctional Facilities -- Included are those institutions which detain adults only or a combination of prisoner populations. Drunk tanks, lock-ups and other facilities which detain persons for less than 48 hours are excluded.

### Probation and Parole Agencies

Included are probation and parole departments, commissions, boards or agencies operated by the state or local government, including those administratively dependent on the courts. The assignment of a probation officer to a particular level of government was an involved process related to both the type of area served and administrative responsibility. As a rule, a probation department serving more than one county was assigned to the state level of government. Probation services provided on a contractual basis were not included.

### Prosecutors

Included are agencies giving legal counsel to the county, municipal, or state government, most of whom have at least minimal prosecutorial responsibility.

In Alabama, the Office of the Attorney General and District Attorneys are included at the state level of government. County Solicitors were counted at the county level, and City Prosecutors at the city level of government.

Deputy prosecutors or deputy district attorneys and deputy circuit solicitors were not included separately, but were considered a part of the main prosecutor's office. Many city attorneys were included though they may prosecute few cases. It is virtually impossible to verify the prosecutorial nature of each city attorney's duties due to the large numbers of agencies involved. Consequently, city attorneys were included unless it was specifically stated that the attorney does not prosecute cases.

Wherever possible, welfare fraud investigators and similar activities were excluded from this category.

#### Public Defenders

Included in this category are state or city-dependent law schools with legal aid clinics, as well as public defender offices in the government. Court-appointed attorneys were not included.

Public defender offices are included where these are publicly financed and administered as a department of government. Any organization administered by a non-governmental body (legal aid society, bar association) was excluded even though supported entirely by public funds.

#### Other Criminal Justice Agencies

Included are any other criminal justice agencies operated by a government which could not be assigned to other categories, such as: police academies, crime commissions, grand juries, some identification bureaus, juvenile boards, court administrators, state planning agencies and regions where available, separate detention facilities or hospitals for the criminally insane, institutions, commissions, boards, or clinics for drug addicts and alcoholics, and administrative agencies such as a department of corrections or a department of public safety.

No attempt was made to include departments of colleges or universities with organized programs in fields of criminal justice.

#### CODE IDENTIFIERS

A seven or nine-digit code identifier was assigned to each agency in the Directory. Police agencies which have National Crime Information Center (NCIC) identifiers have retained this seven-digit number. All other agencies in the Directory were assigned a nine-digit identifier in accordance with the following scheme:

Digits 1-2	Two-letter state abbreviation
Digits 3-5	County number as designated by the NCIC Manual  <u>Exception</u> - For Michigan, digits 3 and 4 are the county number; digit 5 is "0"
Digits 6-7	Unit number of agency by type within each level of government and county
Digit 8	Level of Government  0 ....Special District 1 ....City, town, or township 3 ....County 5 ....State
Digit 9	Type of Agency  A - Prosecutor D - Defender M - Coroner or Medical Examiner C - Correctional Institution J - Court G - Probation or Parole Y - All other agencies E - State Planning Agency Z - Police agency not in NCIC

A description of the seven-digit identifiers used in the NCIC may be found in the NCIC Operating Manual, which is maintained by the Federal Bureau of Investigation.

The code identifier is found on the last line of each agency's address in the directory.



Table 1.--ALABAMA CRIMINAL JUSTICE AGENCIES BY FUNCTION AND LEVEL OF GOVERNMENT: OCTOBER 1971

Level of government	Total agencies	Enforcement agencies	Courts	Prosecutor's offices	Defender's offices	Adult corrections	Juvenile corrections	Probation and parole	All other agencies
Total . . . . .	869	255	299	96	5	115	9	70	20
State . . . . .	108	2	40	37	1	8	3	1	16
Local . . . . .	761	253	259	59	4	107	6	69	4
County . . . . .	402	83	143	34	3	67	6	63	3
City, township, and special district . . . . .	359	170	116	25	1	40	0	6	1

Table 2.--NUMBER AND PERCENT OF ALABAMA CRIMINAL JUSTICE AGENCIES BY LEVEL OF GOVERNMENT: OCTOBER 1971

Type of agency	Total number in Alabama	Percent at state or local level	
		Total	Percent at local level
All agencies . . . . .	869	100.0%	87.6%
Enforcement . . . . .	255	100.0	99.2
Courts . . . . .	299	100.0	86.6
Prosecutors . . . . .	96	100.0	62.5
Defenders . . . . .	5	100.0	80.0
Adult corrections . . . . .	115	100.0	93.0
Juvenile corrections . . . . .	9	100.0	66.7
Probation and parole . . . . .	70	100.0	98.6
All other agencies . . . . .	20	100.0	20.0

PROSECUTOR'S OFFICES STATE LEVEL			
OFFICE OF ATTY GENERAL STATE OF ALABAMA 250 ADMIN BLDG MONTGOMERY	AL	36104	DISTRICT ATTORNEY 13TH CIRCUIT 50 ROYAL ST MOBILE AL002015A
DISTRICT ATTORNEY 1ST CIRCUIT COURTHOUSE GROVE HILL	AL	36451	DISTRICT ATTORNEY 14TH CIRCUIT COURTHOUSE JASPER AL064015A
DISTRICT ATTORNEY 2ND CIRCUIT COURTHOUSE GREENVILLE	AL	36037	DISTRICT ATTORNEY 15TH CIRCUIT COURTHOUSE MONTGOMERY AL003025A
DISTRICT ATTORNEY 3RD CIRCUIT COURTHOUSE CLAYTON	AL	36016	DISTRICT ATTORNEY 16TH CIRCUIT COURTHOUSE GADSDEN AL031015A
DISTRICT ATTORNEY 4TH CIRCUIT COURTHOUSE SELMA	AL	36701	DISTRICT ATTORNEY 17TH CIRCUIT COURTHOUSE LINDEN AL048015A
DISTRICT ATTORNEY 6TH CIRCUIT COURTHOUSE TUSCALOOSA	AL	35401	DISTRICT ATTORNEY 18TH CIRCUIT COURTHOUSE COLUMBIANA AL059015A
DISTRICT ATTORNEY 7TH CIRCUIT COURTHOUSE ANNISTON	AL	36201	DISTRICT ATTORNEY 19TH CIRCUIT COURTHOUSE WETUMPKA AL029015A
DISTRICT ATTORNEY 8TH CIRCUIT COURTHOUSE DECATUR	AL	35601	DISTRICT ATTORNEY 20TH CIRCUIT COURTHOUSE DOTHAN AL038015A
DISTRICT ATTORNEY 9TH CIRCUIT COURTHOUSE FORT PAYNE	AL	35967	DISTRICT ATTORNEY 21ST CIRCUIT COURTHOUSE BREWTON AL030015A
DISTRICT ATTORNEY 10TH CIRCUIT COURTHOUSE BESSEMER	AL	35020	DISTRICT ATTORNEY 22ND CIRCUIT COURTHOUSE ANDALUSIA AL023015A
DISTRICT ATTORNEY 11TH CIRCUIT COURTHOUSE FLORENCE	AL	35631	DISTRICT ATTORNEY 24TH CIRCUIT COURTHOUSE CARROLLTON AL054015A
DISTRICT ATTORNEY 12TH CIRCUIT COURTHOUSE ELBA	AL	36323	DISTRICT ATTORNEY 25TH CIRCUIT COURTHOUSE HAMILTON AL049015A
DISTRICT ATTORNEY 26TH CIRCUIT COURTHOUSE PHENIX CITY	AL	36602	DISTRICT ATTORNEY 26TH CIRCUIT COURTHOUSE GUNTERSVILLE AL050015A
DISTRICT ATTORNEY 27TH CIRCUIT COURTHOUSE TALLADEGA	AL	35160	DISTRICT ATTORNEY 28TH CIRCUIT COURTHOUSE BAY MINETTE AL005025A
DISTRICT ATTORNEY 29TH CIRCUIT COURTHOUSE ONEONTA	AL	35121	DISTRICT ATTORNEY 30TH CIRCUIT COURTHOUSE TUSCUMBIA AL020015A
DISTRICT ATTORNEY 31ST CIRCUIT COURTHOUSE RUSSELLVILLE	AL	35653	DISTRICT ATTORNEY 32ND CIRCUIT COURTHOUSE CULLMAN AL025015A
DISTRICT ATTORNEY 33RD CIRCUIT COURTHOUSE OZARK	AL	36360	DISTRICT ATTORNEY 34TH CIRCUIT COURTHOUSE P O BOX 119 RUSSELLVILLE AL033015A
DISTRICT ATTORNEY 35TH CIRCUIT COURTHOUSE MONROEVILLE	AL	36460	DISTRICT ATTORNEY 35TH CIRCUIT COURTHOUSE MONROEVILLE AL051025A
DISTRICT ATTORNEY 36TH CIRCUIT COURTHOUSE MOULTON	AL	35650	DISTRICT ATTORNEY 36TH CIRCUIT COURTHOUSE MOULTON AL042015A
DISTRICT ATTORNEY 37TH CIRCUIT COURTHOUSE OPELIKA	AL	36801	DISTRICT ATTORNEY 37TH CIRCUIT COURTHOUSE OPELIKA AL043015A

DISTRICT ATTORNEY 23RD CIRCUIT COURTHOUSE HUNTSVILLE AL 35804 AL047013A	CO SOLICITOR S OFFICE SOLICITOR JACKSON AL 36545 AL016013A	COUNTY ATTORNEY JEFFERSON COUNTY CO COURTHOUSE 716 N 21ST ST BIRMINGHAM AL 35203 AL001013A
LOCAL LEVEL AUTAUGA COUNTY SOLICITOR S OFFICE COUNTY SOLICITOR P O BOX 148 PRATTVILLE AL 36067 AL004013A	CITY ATTORNEY S OFFICE ATTORNEY 503 W PUTNAM ST ELBA AL 36323 AL019011A	CITY ATTORNEY S OFFICE ATTORNEY 1800 3RD AVENUE NO BESSEMER AL 35020 AL001011A
CITY ATTORNEY OFFICE ATTORNEY BOX 400 FOLEY AL 36535 AL005011A	CO SOLICITOR S OFFICE SOLICITOR ANDALUSIA AL 36420 AL023013A	LEGAL DEPARTMENT CITY ATTORNEY CITY HALL 210 NO 20TH ST BIRMINGHAM AL 35203 AL001011A
COUNTY SOLICITOR COURTHOUSE ONEONTA AL 35121 AL008011A	COUNTY SOLICITOR S OFC COUNTY SOLICITOR LIVERNE AL 36049 AL024013A	CITY ATTORNEYS OFFICE CITY ATTORNEY 4709 GARY AVENUE FAIRFIELD AL 35064 AL001011A
COUNTY ATTORNEY COURTHOUSE ONEONTA AL 35121 AL008021A	CO SOLICITOR S OFF SOLICITOR CULLMAN AL 35055 AL025013A	CITY ATTORNEY S OFF ATTORNEY 2501 30TH AVE NO BIRMINGHAM AL 35207 AL001021A
COUNTY SOLICITOR S OFF SOLICITOR GREENVILLE AL 36037 AL010013A	ATTORNEYS OFFICE ATTORNEY 422 2ND AVE W CULLMAN AL 35055 AL025011A	CITY ATTORNEY S OFFICE ATTORNEY CITY HALL HOMWOOD AL 35209 AL001031A
CLERKS OFFICE CITY ATTORNEY CITY HALL GREENVILLE AL 36037 AL010011A	COUNTY ATTORNEY S OFC ATTORNEY 1104 1/2 WATER AVE SELMA AL 36701 AL027013A	CITY ATTORNEY S OFF ATTORNEY MASSEY BLDG BIRMINGHAM AL 35203 AL001041A
COUNTY SOLICITOR S OFC SOLICITOR COURTHOUSE ANNISTON AL 36201 AL011013A	COUNTY SOLICITOR S OFC SOLICITOR 28 BROAD ST SELMA AL 36701 AL027023A	COUNTY SOLICITOR S OFC SOLICITOR COURTHOUSE VERNON AL 35592 AL040013A
CITY PROSECUTOR OFFICE ATTORNEY P O BOX 670 ANNISTON AL 36201 AL011011A	CITY ATTORNEY S OFF CITY ATTORNEY HARLSON BLDG FORT PAYNE AL 35965 AL028011A	PROSECUTORS OFC ATTORNEY CITY HALL FLORENCE AL 35630 AL041011A
COUNTY SOLICITOR S OFF SOLICITOR LAFAYETTE AL 36862 AL012013A	COUNTY ATTORNEY S OFF CO ATTORNEY BREWTON AL 36426 AL030013A	COUNTY SOLICITOR S OFC SOLICITOR COURTHOUSE MOULTON AL 35650 AL042013A
COUNTY SOLICITOR S OFC SOLICITOR COURT HOUSE CENTRE AL 35960 AL013013A	PROSECUTOR S OFFICE MAYOR FLOMATON AL 36441 AL003001A	COUNTY SOLICITOR S OFF COUNTY SOLICITOR HAYNEVILLE AL 36040 AL045013A
COUNTY SOLICITOR S OFF DISTRICT ATTORNEY P O BOX 564 CLANTON AL 35045 AL014013A	ATTORNEY S OFFICE CITY ATTORNEY EUTAW AL 35462 AL035011A	CO SOLICITOR S OFFICE SOLICITOR TUSKEGEE AL 36083 AL046013A

MAJISON CO ATTYS OFC ATTORNEY 102 S SIDE SQUARE HUNTSVILLE AL 35801 AL047013A	PROSECUTOR S OFF CITY PROSECUTOR P O DRAWER 159 MONTGOMERY AL 36101 AL003011A	DEFENDERS' OFFICES STATE LEVEL UNIV OF ALA LAW SCHOOL ALA DEFENDER PROG DIRECTOR BOX 1435 UNIVERSITY AL 35486 AL063015D
COUNTY SOLICITORS OFC SOLICITOR COURTHOUSE HUNTSVILLE AL 35801 AL047023A	SOLICITOR S OFFICE SOLICITOR DECATUR AL 35601 AL052013A	LOCAL LEVEL PUBLIC DEFENDER OFFICE ATTORNEY P O BOX 670 ANNISTON AL 36201 AL011021D
CITY ATTORNEY S OFFICE ATTORNEY BOX 308 HUNTSVILLE AL 35804 AL047011A	COUNTY SOLICITOR S OFF COUNTY SOLICITOR CO COURTHOUSE MARION AL 36756 AL053013A	PUBLIC DEFENDER S OFF PUBLIC DEFENDER BREWTON AL 36426 AL030013D
COUNTY SOLICITOR S OFC DEPUTY SOLICITOR LINDEN AL 36748 AL048013A	CO ATTORNEY S OFF COUNTY ATTORNEY ROANKE AL 36274 AL056013A	JUV DEFENDERS OFFICE JUVENILE DEFENDER P O BOX 1469 DOTHAN AL 36301 AL038013D
COUNTY ATTORNEY S OFFICE COUNTY ATTORNEY HAMILTON AL 35970 AL049013A	CO SOLICITOR S OFF COUNTY SOLICITOR WEDOWEE AL 36278 AL056023A	PUBLIC DEFENDER JEFFERSON CO DIST ATTORNEY OFC 716 N 21ST ST BIRMINGHAM AL 35203 AL001013D
CITY ATTORNEY S OFFICE ATTORNEY ARAB AL 35016 AL050011A	PHENIX CITY ATTYS OFC CITY ATTORNEY 1109 BROAD ST PHENIX CITY AL 36867 AL057011A	ENFORCEMENT AGENCIES STATE LEVEL DEPT OF PUBLIC SAFETY CHIEF INVEST AND IDENT B P O BOX 1511 MONTGOMERY AL 36104 AL003015Z
CITY ATTORNEY S OFF ATTORNEY P O BOX 11307 CHICKASAW AL 36611 AL002011A	COUNTY ATTORNEY S OFC CO ATTORNEY PELL CITY AL 35125 AL058013A	DEPT OF PUBLIC SAFETY PATROL DIVISION CHIEF COLISEUM BLVD MONTGOMERY AL 36109 ALASTOO
ATTORNEY OFFICE ATTORNEY P O BOX 517 BAYOU LA BATRE AL 36509 AL002021A	COUNTY SOLICITOR S OFC CO SOLICITOR ASHVILLE AL 35953 AL058023A	LOCAL LEVEL AUTAUGA COUNTY SHERIFF S OFFICE SHERIFF P O BOX 87 PRATTVILLE AL 36067 AL00400
LEGAL DEPARTMENT CITY ATTORNEY BOX 1827 MOBILE AL 36601 AL002031A	COUNTY SOLICITORS OFFICE SOLICITOR YORK AL 36925 AL060013A	PRATTVILLE POLICE DEPT CHIEF OF POLICE PRATTVILLE AL 36067 AL00401
CO ATTORNEY S OFC ATTORNEY MONROEVILLE AL 36460 AL051013A	COUNTY SOLICITOR S OFC SOLICITOR COURTHOUSE DADEVILLE AL 36853 AL062013A	COUNTY SHERIFFS DEPT SHERIFF BAY MINETTE AL 36507 AL00500
CO SOLICITOR S SOLICITOR MONROEVILLE AL 36460 AL051023A	CITY ATTORNEY ATTORNEY COURTHOUSE ALEXANDER CITY AL 35010 AL062011A	POLICE DEPARTMENT CHIEF OF POLICE POLICE BUILDING BAY MINETTE AL 36507 AL00501
CITY ATTORNEY S OFFICE CITY ATTORNEY MONROEVILLE AL 36460 AL051011A	CITY PROSECUTOR S OFFICE PROSECUTOR CITY HALL TUSCALOOSA AL 35401 AL063011A	DAPHINE TOWN POLICE DEPT CHIEF OF POLICE DAPHINE AL 36526

FAIRHOPE POLICE DEPT  
CHIEF OF POLICE  
BOX 429  
FAIRHOPE AL 36532  
AL00502

POLICE DEPT  
CHIEF OF POLICE  
BOX 400  
FOLEY AL 36535  
AL00503

ROBERTSDALE POLICE DEPT  
CHIEF OF POLICE  
ROBERTSDALE AL 36567  
AL00505

COUNTY SHERIFFS DEPT  
SHERIFF  
CLAYTON AL 36016  
AL00600

CLAYTON POLICE DEPT  
CHIEF OF POLICE  
CLAYTON AL 36016

EUFULA POLICE DEPT  
CHIEF OF POLICE  
EUFULA AL 36027  
AL00601

SHERIFF S DEPT  
SHERIFF  
CENTREVILLE AL 35042  
AL00700

BRENT TOWN POLICE DEPT  
CHIEF OF POLICE  
BRENT AL 35074  
AL00702

CENTREVILLE POLICE DEPT  
CHIEF OF POLICE  
CENTREVILLE AL 35042  
AL00701

POLICE DEPT  
CHIEF  
P O BOX 187  
WEST BLOCTON AL 35184  
AL00703

CORONERS OFFICE  
CORONER  
ONEONTA AL 35121  
AL008011M

BLOUNT CO SHERIFF S DEPT  
SHERIFF  
ONEONTA AL 35121  
AL00800

ONEONTA POLICE DEPT  
CHIEF OF POLICE  
202 3RD AVENUE E  
ONEONTA AL 35121  
AL00801

COUNTY SHERIFFS DEPT  
SHERIFF  
UNION SPRINGS AL 36089  
AL00900

POLICE DEPARTMENT  
CHIEF OF POLICE  
P O BOX 549  
UNION SPRINGS AL 36089  
AL00901

SHERIFF S DEPT  
SHERIFF  
COURTHOUSE  
GREENVILLE AL 36037  
AL01000

GEORGIANA POLICE DEPT  
CHIEF OF POLICE  
GEORGIANA AL 36033  
AL01002

POLICE DEPARTMENT  
CHIEF OF POLICE  
CITY HALL  
GREENVILLE AL 36037  
AL01001

CALHOUN CO SHERIFFS OFC  
SHERIFF  
COURTHOUSE  
ANNISTON AL 36201  
AL01100

CITY POLICE DEPARTMENT  
CHIEF OF POLICE  
P O BOX 670  
ANNISTON AL 36201  
AL01101

POLICE DEPARTMENT  
POLICE CHIEF  
EAST LADIGA ST  
JACKSONVILLE AL 36265  
AL01102

PIEDMONT POLICE DEPT  
CHIEF OF POLICE  
PIEDMONT AL 36372  
AL01103

WEAVER TOWN POLICE DEPT  
CHIEF OF POLICE  
WEAVER AL 36277  
AL01104

SHERIFF S DEPT  
SHERIFF  
LAFAYETTE AL 36862  
AL01200

LAFAYETTE POLICE DEPT  
CHIEF OF POLICE  
LAFAYETTE AL 36862  
AL01201

POLICE DEPARTMENT  
CHIEF OF POLICE  
POLICE DEPT  
LANETT AL 36863  
AL01202

CORONER S OFFICE  
CORONER  
RT 1  
CENTRE AL 35960  
AL013013M

CHEROKEE COUNTY  
SHERIFF  
CENTRE AL 35960  
AL01300

POLICE DEPARTMENT  
CHIEF OF POLICE  
CENTRE AL 35960  
AL01301

CHILTON CO SHERIFF S DEP  
SHERIFF  
CHILTON CO CTSE  
CLANTON AL 35045  
AL01400

CLANTON POLICE DEPT  
CHIEF OF POLICE  
2ND AVE NO  
CLANTON AL 35045  
AL01401

SHERIFF S DEPT  
SHERIFF  
BUTLER AL 36904  
AL01500

POLICE DEPT  
CHIEF OF POLICE  
P O BOX 58  
BUTLER AL 36904  
AL01501

SHERIFF S DEPARTMENT  
SHERIFF  
GROVE HILL AL 36451  
AL01600

POLICE DEPT  
CHIEF OF POLICE  
P O BOX 335  
GROVE HILL AL 36451  
AL01603

JACKSON POLICE DEPT  
CHIEF OF POLICE  
118 COLLEGE AVE  
JACKSON AL 36545  
AL01601

POLICE DEPARTMENT  
CHIEF OF POLICE  
P O BOX 127  
THOMASVILLE AL 36784  
AL01602

CLAY CO SHERIFF S OFC  
SHERIFF  
ASHLAND AL 36251  
AL01700

CITY POLICE DEPT  
CHIEF  
ASHLAND AL 36251  
AL01701

LINEVILLE POLICE DEPT  
CHIEF OF POLICE  
LINEVILLE AL 36266  
AL01702

COUNTY SHERIFFS DEPT  
SHERIFF  
HEFLIN AL 36264  
AL01800

HEFLIN POLICE DEPT  
CHIEF OF POLICE  
HEFLIN AL 36264  
AL01801

COFFEE CO SHERIFF DEPT  
SHERIFF  
ELBA AL 36323  
AL01900

ELBA POLICE DEPARTMENT  
CHIEF OF POLICE  
P O BOX 450  
ELBA AL 36323  
AL01901

LAW ENFORCEMENT AGENCY  
CHIEF OF POLICE  
CITY GOV UT BLDG  
ENTERPRISE AL 36330  
AL01902

NEW BROCKTON POLICE DEPT  
CHIEF OF POLICE  
NEW BROCKTON AL 36351  
AL01903

COUNTY SHERIFFS DEPT  
SHERIFF  
TUSCUMBIA AL 35674  
AL02000

POLICE DEPARTMENT  
CHIEF  
CHEROKEE AL 35616  
AL02004

LEIGHTON POLICE DEPT  
CHIEF OF POLICE  
PO BOX 308  
LEIGHTON AL 35646  
AL02005

POLICE DEPARTMENT  
CHIEF OF POLICE  
MUSCLE SHOALS AL 35660  
AL02003

SHEFFIELD POLICE DEPT  
CHIEF OF POLICE  
MUNICIPAL BUILDING  
P O BOX 637  
SHEFFIELD AL 35660  
AL02001

POLICE DEPARTMENT  
CHIEF OF POLICE  
P O BOX 84  
TUSCUMBIA AL 35674  
AL02002

COUNTY SHERIFFS DEPT  
SHERIFF  
EVERGREEN AL 36401  
AL02100

POLICE DEPARTMENT  
CHIEF OF POLICE  
EVERGREEN AL 36401  
AL02101

COUNTY SHERIFFS DEPT  
SHERIFF  
ROCKFORD AL 35136  
AL02200

GOODWATER POLICE DEPT  
CHIEF OF POLICE  
GOODWATER AL 35072  
AL02201

CORONER S OFFICE  
CORONER  
ANDALUSIA AL 36420  
AL023013M

SHERIFF S DEPT  
SHERIFF  
ANDALUSIA AL 36420  
AL02300

ANDALUSIA POLICE DEPT  
CHIEF OF POLICE  
ANDALUSIA AL 36420  
AL02301

FLORALA POLICE DEPT  
CHIEF OF POLICE  
FLORALA AL 36442  
AL02303

OPP CITY POLICE DEPT  
CHIEF OF POLICE  
OPP AL 36437  
AL02302

CORONER S OFFICE  
CORONER  
LIVERNE AL 36049  
AL024013M

SHERIFF S DEPT  
SHERIFF  
LIVERNE AL 36049  
AL02400

BRANTLEY POLICE DEPT  
CHIEF OF POLICE  
BRANTLEY AL 36009  
AL02402

POLICE DEPARTMENT  
CHIEF OF POLICE  
LIVERNE AL 36049  
AL02401

SHERIFF S DEPT  
CHIEF DEPUTY  
CULLMAN AL 35055  
AL02500

CULLMAN POLICE DEPT  
CHIEF OF POLICE  
CITY HALL  
CULLMAN AL 35055  
AL02501

HANCEVILLE POLICE DEPT  
CHIEF OF POLICE  
HANCEVILLE AL 35077  
AL02502

COUNTY SHERIFFS DEPT  
SHERIFF  
OZARK AL 36360  
AL02600

POLICE DEPARTMENT  
CHIEF OF POLICE  
OZARK AL 36360  
AL02601

DALLAS CO SHERIFF S OFC  
SHERIFF  
P O BOX 531  
SELMA AL 36701  
AL02700

POLICE DEPARTMENT  
CHIEF OF POLICE  
P O BOX L  
SELMA AL 36701  
AL02701

COUNTY SHERIFFS DEPT SHERIFF FORT PAYNE AL 35967 AL02800	COUNTY SHERIFFS DEPT SHERIFF GADSDEN AL 35901 AL03100	POLICE DEPT CHIEF POLICE HARTFORD AL 36344 AL03403	POLICE DEPT CHIEF OF POLICE ASHFORD AL 36312 AL03802	BROWNVILLE POLICE DEPT O CHIEF OF POLICE BIRMINGHAM AL 35203 AL00117	POLICE DEPT CHIEF OF POLICE BOX 9006 CRESTLINE BR MOUNTAIN BROOK AL 35209 AL00103
POLICE DEPARTMENT CHIEF OF POLICE CITY HALL COLLINSVILLE AL 35961 AL02802	ATTALLA POLICE DEPT CHIEF OF POLICE ATTALLA AL 35954 AL03101	SAMSON POLICE DEPT CHIEF OF POLICE SAMSON AL 36477 AL03402	DOTHAN POLICE DEPT CHIEF OF POLICE S ST ANDREWS ST DOTHAN AL 36301 AL03801	POLICE DEPARTMENT SAFETY DIRECTOR 5231 COURT B FAIRFIELD AL 35064 AL00104	POLICE DEPT CHIEF OF POLICE P O BOX 128 PLEASANT GROVE AL 35127 AL00114
POLICE DEPT CHIEF OF POLICE CITY HALL FORT PAYNE AL 35967 AL02801	GADSDEN POLICE DEPT CHIEF OF POLICE 90 BROAD ST GADSDEN AL 35901 AL03102	POLICE DEPT CHIEF OF POLICE P O BOX 320 SLOCUMB AL 36375 AL03404	COUNTY SHERIFFS DEPT SHERIFF SCOTTSBORO AL 35768 AL03900	FULTONDALE POLICE DEPT CHIEF OF POLICE FULTONDALE AL 35068 AL00111	PLEASANT GROVE POL DEPT CHIEF OF POLICE PLEASANT GROVE AL 35217 AL00114
SHERIFF S DEPT SHERIFF WETUMPKA AL 36092 AL02900	GLENCOE TOWN POLICE DEPT CHIEF OF POLICE GLENCOE AL 35905 AL03104	COUNTY SHERIFFS DEPT SHERIFF EUTAW AL 35462 AL03900	BRIDGEPORT POLICE DEPT CHIEF 713 STATE ST BRIDGEPORT AL 35740 AL03902	CITY POLICE DEPT CHIEF OF POLICE P O BOX 301 FULTONDALE AL 35068 AL00111	TARRANT POLICE DEPT CHIEF OF POLICE 1004 FORD AVE TARRANT AL 35217 AL00108
POLICE DEPT CHIEF TALLASSEE AL 36078 AL02902	RAINBOW CITY POL DEPT POLICE CHIEF 708 WILLIAMS AVE R GADSDEN AL 35901 AL03105	EUTAW CITY POLICE DEPT CHIEF OF POLICE EUTAW AL 35462 AL03501	SCOTTSBORO POLICE DEPT CHIEF OF POLICE SCOTTSBORO AL 35768 AL03901	POLICE DEPT CHIEF OF POLICE P O BOX 38 GARDENDALE AL 35071 AL00105	POLICE DEPARTMENT CHIEF OF POLICE P O BOX 137 TRUSSVILLE AL 35173 AL00105
WETUMPKA POLICE DEPT CHIEF OF POLICE WETUMPKA AL 36092 AL02901	COUNTY SHERIFFS DEPT SHERIFF FAYETTE AL 35555 AL03200	HALE CO SHERIFF S DEPT SHERIFF 1000 MAIN ST GREENSBORO AL 36744 AL03600	STEVENSON POLICE DEPT CHIEF OF POLICE STEVENSON AL 35772 AL00105	PUBLIC SAFETY DEPT CHIEF OF POLICE CITY OF GRAYSVILLE GRAYSVILLE AL 35073 AL00116	CITY POLICE DEPT CHIEF OF POLICE 513 MONTGOMERY HWY VESTAVIA HILLS AL 35216 AL00109
CO CORONER S OFFICE CORONER MCMILLAN AVE BREWTON AL 36426 AL030013M	POLICE DEPT CHIEF OF POLICE FAYETTE AL 35555 AL03201	POLICE DEPARTMENT CHIEF P O BOX 176 GREENSBORO AL 36744 AL03601	CORONER S OFFICE JEFFERSON CO CORONER 716 N 21ST ST BIRMINGHAM AL 35203 AL001013M	POLICE DEPARTMENT POLICE CHIEF CITY HALL HOMEWOOD AL 35209 AL00110	WARRIOR POLICE DEPT CHIEF OF POLICE 222 SELMA ST WARRIOR AL 35180 AL00110
CO SHERIFF S DEPT SHERIFF GO COURTHOUSE BREWTON AL 36426 AL03000	CORONER CORONER RUSSELLVILLE AL 35653 AL033013M	COUNTY SHERIFFS DEPT SHERIFF ABBEVILLE AL 36310 AL03700	COUNTY SHERIFFS DEPT SHERIFF COURT HOUSE 716 N 21ST ST BIRMINGHAM AL 35203 AL00100	POLICE DEPARTMENT CHIEF 101 SOUTH 20TH ST IRONDALE AL 35210 AL00113	HUEYTOWN POLICE DEPT CHIEF OF POLICE P O DRAWER C HUEYTOWN AL 35020 AL00113
POLICE DEPT CHIEF OF POLICE 201 E LOUISVILLE A ATHORE AL 36502 AL03001	SHERIFF S OFFICE SHERIFF P O BOX 640 RUSSELLVILLE AL 35653 AL03300	ABBEVILLE POLICE DEPT CHIEF OF POLICE ABBEVILLE AL 36310 AL03701	POLICE DEPT CHIEF ADAMSVILLE AL 35005 AL00122	IRONDALE POLICE DEPT CHIEF OF POLICE IRONDALE AL 35210 AL00113	HOOVER POLICE DEPT CHIEF OF POLICE BIRMINGHAM AL 35203 AL00112
BREWTON POLICE DEPT CHIEF OF POLICE P O BOX 368 BREWTON AL 36426 AL03002	RUSSELLVILLE POLICE DEPT CHIEF OF POLICE RUSSELLVILLE AL 35653 AL03301	POLICE DEPARTMENT CHIEF OF POLICE CITY HALL HEADLAND AL 36345 AL03702	BESSEMER POLICE DEPT CHIEF OF POLICE 23 NO 15TH STREET BESSEMER AL 35020 AL00101	POLICE DEPT CHIEF OF POLICE P O BOX 126 LEEDS AL 35094 AL00106	ROOSEVELT POLICE DEPT CHIEF OF POLICE BIRMINGHAM AL 35203 AL00115
E BREWTON POLICE DEPT CHIEF OF POLICE EAST BREWTON AL 36426 AL03004	COUNTY SHERIFFS DEPT SHERIFF GENEVA AL 36340 AL03400	HOUSTON CO CORONER CORONER 1208 BRANNON ROAD DOTHAN AL 36301 AL038013M	POLICE DEPT CHIEF OF POLICE CITY HALL 710 N 20TH ST BIRMINGHAM AL 35203 AL00102	LIPSCOMB POLICE DEPT CHIEF OF POLICE LIPSCOMB AL 35020 AL00120	CORONER S OFFICE CORONER VERNON AL 35592 AL040013M
FLOMATON POLICE DEPT CHIEF FLOMATON AL 36441 AL03004	GENEVA POLICE DEPT CHIEF OF POLICE GENEVA AL 36340 AL03401	SHERIFF DEPT SHERIFF HOUSTON COURTHSE DOTHAN AL 36301 AL03800	BRIGHTON POLICE DEPT CHIEF OF POLICE BRIGHTON AL 35020 AL00118	MIDFIELD POLICE DEPT CHIEF OF POLICE 390 MIDFIELD ST MIDFIELD AL 35228 AL00107	SHERIFF S DEPT SHERIFF VERNON AL 35592 AL04000

POLICE DEPARTMENT CHIEF OF POLICE SULLIGENT AL04001	AL 35586	COUNTY SHERIFF S OFFICE SHERIFF HAYNEVILLE AL04500	AL 36040	GUIN TOWN POLICE DEPT CHIEF OF POLICE GUIN TOWN AL00201	AL 35563	MOBILE POLICE DEPT CHIEF OF POLICE 51 GOVERNMENT ST MOBILE AL00201	AL 36602	HARTSELLE POLICE DEPT MAYOR 1806 SUNSET ST N E HARTSELLE AL05202	AL 35640	TROY CITY POLICE DEPT CHIEF OF POLICE TROY AL05501	AL 36081
VERNON TOWN POLICE DEPT CHIEF OF POLICE VERNON AL04002	AL 35592	FORT DEPOSIT POLICE DEPT CHIEF OF POLICE FORT DEPOSIT AL04501	AL 36032	HAMILTON POLICE DEPT CHIEF OF POLICE HAMILTON AL04901	AL 35570	PRICHARD CITY JAIL CHIEF OF POLICE PRICHARD CITY AL00202	AL 36610	COUNTY CORONER S OFC CORONER 214 DEKALB STREET MARION AL053013M	AL 36756	SHERIFF S DEPT SHERIFF WEDDOWEE AL05600	AL 36278
CO SHERIFF S DEPT SHERIFF P O BOX 51 FLORENCE AL04100	AL 35630	CO SHERIFF S DEPT SHERIFF CO JAIL TUSKEGEE AL04600	AL 36083	WINFIELD POLICE DEPT CHIEF OF POLICE WINFIELD AL05000	AL 35594	SARALAND POLICE DEPT CHIEF OF POLICE P O BOX 295 SARALAND AL00205	AL 36571	PERRY CO SHERIFF S OFC SHERIFF PERRY CO COURT HOU MARION AL05300	AL 36756	ROANOKE CITY POLICE DEPT CHIEF OF POLICE ROANOKE AL05601	AL 36274
FLORENCE POLICE DEPT CHIEF OF POLICE CITY HALL FLORENCE AL04101	AL 35630	TUSKEGEE POLICE DEPT CHIEF OF POLICE TUSKEGEE AL04601	AL 36083	COUNTY SHERIFF S OFFICE SHERIFF COURTHOUSE GUNTERSVILLE AL05000	AL 35976	SATSUMA POLICE DEPT ACTING CHIEF P O BOX 265 SATSUMA AL00207	AL 36572	MARION CITY POLICE DEPT CHIEF OF POLICE MARION AL05301	AL 36756	CORONER S OFFICE CORONER 1314 5TH AVE PHENIX CITY AL057013M	AL 36867
COUNTY SHERIFFS DEPT SHERIFF MOULTON AL04200	AL 03565	COUNTY SHERIFFS DEPT SHERIFF HUNTSVILLE AL04700	AL 35800	ALBERTVILLE POLICE DEPT CHIEF OF POLICE ALBERTVILLE AL05001	AL 35950	MONROE CO SHERIFF S OFC SHERIFF MONROEVILLE AL05100	AL 36460	UNIONTOWN POLICE DEPT CHIEF OF POLICE UNIONTOWN AL05302	AL 36786	SHERIFF S OFFICE SHERIFF P O BOX 640 PHENIX CITY AL05700	AL 36867
MOULTON POLICE DEPT CHIEF OF POLICE MOULTON AL04201	AL 35650	HUNTSVILLE POLICE DEPT CHIEF OF POLICE BOX 2085 HUNTSVILLE AL04701	AL 35804	POLICE DEPT CHIEF ARAB AL05003	AL 35016	FRISCO CITY POLICE DEPT CHIEF OF POLICE FRISCO CITY AL05102	AL 36445	CO SHERIFF S DEPT SHERIFF CARROLLTON AL05400	AL 35447	POLICE DEPT CHIEF OF POLICE HURTSBORO AL05702	AL 36860
LEE CO CORONER S OFF CORONER S 9TH STREET OPELIKA AL043013M	AL 36801	MADISON POLICE DEPT COMMISSIONER P O BOX 38 MADISON AL04702	AL 35758	BOAZ CITY POLICE DEPT CHIEF OF POLICE BOAZ AL05004	AL 35957	MONROEVILLE POLICE DEPT CHIEF OF POLICE 132 S MT PLEASANT MONROEVILLE AL05101	AL 36460	ALICEVILLE POLICE DEPT CHIEF OF POLICE ALICEVILLE AL05401	AL 35442	PHENIX POLICE DEPT CHIEF OF POLICE 1109 BROAD ST PHENIX CITY AL05701	AL 36867
LEE CO SHERIFF S OFF SHERIFF S 9TH STREET OPELIKA AL04300	AL 36801	SHERIFF S DEPT SHERIFF LINDEN AL04800	AL 36748	GUNTERSVILLE POLICE DEPT CHIEF OF POLICE GUNTERSVILLE AL05002	AL 35976	CORONER CORONER 1011 S HULL STREET MONTGOMERY AL003013M	AL 36104	GORDO TOWN POLICE DEPT CHIEF OF POLICE GORDO AL05402	AL 35466	COUNTY SHERIFF S OFC SHERIFF ASHVILLE AL05800	AL 35953
AUBURN POLICE DEPT CHIEF BOX 511 AUBURN AL04301	AL 36830	DEMOPOLIS POLICE DEPT CHIEF OF POLICE DRAWER T DEMOPOLIS AL04801	AL 36732	SHERIFF S DEPT SHERIFF 111 ST EMANUEL ST P O BOX 113 MOBILE AL00200	AL 36601	SHERIFF S DEPARTMENT SHERIFF COURTHOUSE MONTGOMERY AL00300	AL 36102	POLICE DEPARTMENT CHIEF OF POLICE P O BOX 431 REFORM AL05403	AL 35481	POLICE DEPARTMENT CHIEF OF POLICE 1905 FIRST AVE N PELL CITY AL05801	AL 35123
POLICE DEPARTMENT CHIEF OF POLICE POLICE BLDG OPELIKA AL04302	AL 36801	LINDEN POLICE DEPT CHIEF OF POLICE 211 NO MAIN LINDEN AL04802	AL 36748	CHICKASAW POLICE DEPT CHIEF P O BOX 11307 CHICKASAW AL00203	AL 36611	POLICE DEPARTMENT CHIEF OF POLICE P O DRAWER 159 MONTGOMERY AL00301	AL 36101	COUNTY CORONER S OFFICE CORONER TROY AL055013M	AL 36081	CITY POLICE DEPT CHIEF OF POLICE RAGLAND AL05803	AL 35131
COUNTY SHERIFF S OFC SHERIFF ATHENS AL04400	AL 35611	MARION CO CORONER S OFF COUNTY CORONER FUNERAL PARLOR HAMILTON AL049013M	AL 35570	POLICE DEPT CHIEF OF POLICE P O BOX 517 BAYOU LA BATRE AL00206	AL 36509	MORGAN CO SHERIFF S OFC SHERIFF DECATUR AL05200	AL 35601	PIKE CO SHERIFF S OFC SHERIFF COURTHOUSE TROY AL05300	AL 36081	COUNTY SHERIFFS DEPT SHERIFF COLUMBIANA AL05900	AL 35051
ATHENS CITY POLICE DEPT CHIEF OF POLICE ATHENS AL04401	AL 35611	SHERIFF S DEPARTMENT COUNTY SHERIFF COURT HOUSE HAMILTON AL04900	AL 35570	CITRONELLE POLICE DEPT CHIEF OF POLICE CITRONELLE AL00204	AL 36522	DECATUR POLICE DEPT CHIEF OF POLICE CITY HALL P O BOX 488 DECATUR AL05201	AL 35601	BRUNSDIDGE POLICE DEPT CHIEF OF POLICE 102 NORTH MAIN ST BRUNSDIDGE AL05502	AL 36010	ALABASTER POLICE DEPT CHIEF OF POLICE ALABASTER AL05904	AL 35007
										CALERA POLICE DEPT CHIEF OF POLICE CALERA AL05901	AL 35040

CALERA POLICE DEPT  
CHIEF  
P O BOX 177  
CALERA AL 35040  
AL05901

POLICE DEPARTMENT  
CHIEF OF POLICE  
CITY HALL  
ALEXANDER CITY AL 35010  
AL06201

JASPER CITY POLICE DEPT  
CHIEF OF POLICE  
JASPER AL 35501  
AL06401

30TH CIRCUIT COURT  
CHIEF JUDGE  
BLOUNT COUNTY  
COUNTY COURTHOUSE  
ONEONTA AL 35121  
AL008015J

21ST CIRCUIT COURT  
ESCAMOTA CO  
CIRCUIT CLERK  
DREWTON AL 36426  
AL030015J

13TH CIRCUIT COURT  
MOBILE CO  
CIRCUIT CLERK  
MOBILE AL 36600  
AL002015J

COLUMBIANA POLICE DEPT  
CHIEF OF POLICE  
COLUMBIANA AL 35051  
AL05902

CAMP HILL POLICE DEPT  
CHIEF OF POLICE  
CAMP HILL AL 36850  
AL06203

SUMITON TOWN POLICE  
DEPT/CHIEF OF POLICE  
SUMITON AL 35148  
AL06405

2ND CIRCUIT COURT  
BUTLER COUNTY  
CIRCUIT CLERK  
GREENVILLE AL 36037  
AL010015J

16TH CIRCUIT COURT  
ETOWAH CO  
CIRCUIT CLERK  
GADSDEN AL 35901  
AL031015J

35TH CIRCUIT COURT  
MONROE CO  
CIRCUIT CLERK  
MONROEVILLE AL 36460  
AL051015J

MONTEVALLO POLICE DEPT  
CHIEF OF POLICE  
MONTEVALLO AL 35115  
AL05903

CARRVILLE POLICE DEPT  
CHIEF OF POLICE  
E TALLASSEE AL 36023  
AL06204

COUNTY SHERIFFS DEPT  
SHERIFF  
CHATOM AL 36518  
AL06500

7TH CIRCUIT COURT  
CALHOUN COUNTY  
CIRCUIT CLERK  
ANNISTON AL 36201  
AL011015J

34TH CIRCUIT COURT  
FRANKLIN COUNTY  
CIRCUIT CLERK  
RUSSELLVILLE AL 35653  
AL033015J

15TH CIRCUIT COURT  
MONTGOMERY CO  
CIRCUIT CLERK  
MONTGOMERY AL 36102  
AL003045J

VINCENT TOWN POLICE DEPT  
CHIEF OF POLICE  
VINCENT AL 35178  
AL05905

DADEVILLE POLICE DEPT  
CHIEF OF POLICE  
DADEVILLE AL 36853  
AL06202

COUNTY SHERIFFS DEPT  
SHERIFF  
CAMDEN AL 36726  
AL06600

1ST CIRCUIT COURT  
CLARKE CO  
CIRCUIT CLERK  
GROVE HILL AL 36451  
AL014015J

20TH CIRCUIT COURT  
HOUSTON CO  
CIRCUIT CLERK  
DOTHAN AL 36302  
AL038015J

8TH CIRCUIT COURT  
MORGAN CO  
CIRCUIT CLERK  
DECATUR AL 35601  
AL052015J

SHERIFF S DEPT  
SHERIFF  
LIVINGSTON AL 35470  
AL06000

TUSCALOOSA COUNTY  
SHERIFF S DEPT  
SHERIFF  
714 GREENSBORO AVE  
TUSCALOOSA AL 35401  
AL06300

POLICE DEPT  
CHIEF OF POLICE  
CITY HALL  
CAMDEN AL 36726  
AL06601

12TH CIRCUIT COURT  
COFFEE COUNTY  
CIRCUIT CLERK  
ELBA AL 36323  
AL019015J

10TH CIRCUIT COURT  
JEFFERSON CO  
CIRCUIT CLERK  
BESSEMER AL 35020  
AL001015J

24TH CIRCUIT COURT  
PICKENS CO  
CIRCUIT CLERK  
CARROLLTON AL 35447  
AL054015J

CITY POLICE DEPT  
CHIEF OF POLICE  
LIVINGSTON AL 35470  
AL06002

POLICE DEPT  
CHIEF OF POLICE  
BOX 346  
NORTHPORT AL 35476  
AL06302

COUNTY SHERIFFS DEPT  
SHERIFF  
DOUBLE SPRINGS AL 35553  
AL06700

31ST CIRCUIT COURT  
COLBERT CO  
CIRCUIT CLERK  
TUSCUMBIA AL 35674  
AL020015J

11TH CIRCUIT COURT  
LAUDERDALE CO  
CIRCUIT CLERK  
FLORENCE AL 35631  
AL041015J

26TH CIRCUIT COURT  
RUSSELL CO  
CIRCUIT CLERK  
PHENIX CITY AL 36867  
AL057015J

POLICE DEPARTMENT  
CHIEF OF POLICE  
YORK AL 36925  
AL06001

TUSCALOOSA POLICE DEPT  
CHIEF OF POLICE  
2520 7TH STREET  
TUSCALOOSA AL 35401  
AL06301

POLICE  
CHIEF  
20TH STREET  
HALEYVILLE AL 35565  
AL06702

22ND CIRCUIT COURT  
COWINGTON CO  
CIRCUIT CLERK  
ANDALUSIA AL 36420  
AL023015J

36TH CIRCUIT COURT  
LAWRENCE CO  
CIRCUIT CLERK  
MOULTON AL 35650  
AL042015J

18TH CIRCUIT COURT  
SHELBY CO  
CIRCUIT CLERK  
COLUMBIANA AL 35051  
AL059015J

COURTS  
STATE LEVEL  
COURT OF CRIMINAL APPEAL  
PRESIDING JUDGE  
JUDICIAL BLDG  
445 DEXTER AVE  
MONTGOMERY AL 36104  
AL003015J

CO SHERIFF S OFFICE  
SHERIFF  
3318 LIVINGSTON TR  
TALLADEGA AL 35150  
AL06100

COUNTY CORONER S OFC  
CORONER  
908 6TH ST  
JASPER AL 35501  
AL064012M

COURT OF CIVIL APPEALS  
PRESIDING JUDGE  
JUDICIAL BLDG  
445 DEXTER AVE  
MONTGOMERY AL 36104  
AL003025J

POLICE DEPT  
CHIEF  
CITY HALL  
CHILDERSBURG AL 35044  
AL06103

COUNTY SHERIFFS DEPT  
SHERIFF  
JASPER AL 35501  
AL06400

33RD CIRCUIT COURT  
DALE COUNTY  
CIRCUIT CLERK  
OZARK AL 36360  
AL026015J

23RD CIRCUIT COURT  
MADISON CO  
CIRCUIT CLERK  
HUNTSVILLE AL 35804  
AL047015J

6TH CIRCUIT COURT  
TUSCALOOSA CO  
CIRCUIT CLERK  
TUSCALOOSA AL 35401  
AL062015J

POLICE DEPARTMENT  
CHIEF OF POLICE  
29 W 3RD ST  
SYLACAUGA AL 35150  
AL06101

CARBON HILL POLICE DEPT  
POLICE CHIEF  
CARBON HILL AL 35549  
AL06402

ALA SUPREME COURT  
CHIEF JUDGE  
JUDICIAL BLDG  
445 DEXTER AVE  
MONTGOMERY AL 36104  
AL003035J

4TH CIRCUIT COURT  
DALLAS CO  
CIRCUIT CLERK  
SELMA AL 36701  
AL027015J

17TH CIRCUIT COURT  
MARENGO CO  
CIRCUIT CLERK  
LINDEN AL 36748  
AL048015J

14TH CIRCUIT COURT  
WALKER CO  
CIRCUIT CLERK  
JASPER AL 35501  
AL064015J

TALLADEGA POLICE DEPT  
POLICE CHIEF  
CITY HALL  
TALLADEGA AL 35160  
AL06102

CORDOVA POLICE DEPT  
CHIEF OF POLICE  
CORDOVA AL 35550  
AL06403

28TH CIRCUIT COURT  
BALDWIN COUNTY  
CIRCUIT CLERK  
BAY MINETTE AL 36507  
AL005015J

9TH CIRCUIT COURT  
DE KALB CO  
CIRCUIT CLERK  
FORT PAYNE AL 35967  
AL028015J

25TH CIRCUIT COURT  
MARION COUNTY  
CIRCUIT CLERK  
HAMILTON AL 35570  
AL049015J

37TH CIRCUIT COURT  
LEE COUNTY  
CIRCUIT CLERK  
OPELIKA AL 36801  
AL043015J

COUNTY SHERIFFS DEPT  
SHERIFF  
DADEVILLE AL 36853  
AL06200

POLICE DEPT  
CHIEF OF POLICE  
P O BOX K  
DORA AL 35062  
AL06404

3RD CIRCUIT COURT  
BARBOUR COUNTY  
CIRCUIT CLERK  
CLAYTON AL 36016  
AL006015J

19TH CIRCUIT COURT  
ELMORE CO  
CIRCUIT CLERK  
WETUMPKA AL 36092  
AL029015J

27TH CIRCUIT COURT  
MARSHALL CO  
CIRCUIT CLERK  
GUNTERSVILLE AL 35975  
AL050015J

LOCAL LEVEL  
AUTAUGA COUNTY  
COURT OF RECORD  
JUDGE  
P O BOX 418  
PRATTVILLE AL 36067  
AL004013J

AUTAUGA COUNTY PROBATE COURT JUDGE P O BOX 488 PRATTVILLE AL004023J	AL	36067	MAYOR S COURT MAYOR P O BOX 187 WEST BLOCTON AL097011J	AL	35184	RECORDER S COURT MAYOR CITY HALL E LADIGA ST JACKSONVILLE AL011021J	AL	36265
PRATTVILLE RECORDERS CT COURT CLERK CITY HALL VINE STREET PRATTVILLE AL004011J	AL	36067	LAW AND EQUITY COURT CLERK ONEONTA AL008013J	AL	35121	RECORDERS COURT RECORDER CITY HALL OXFORD AL011031J	AL	36201
BALDWIN CO PROBATE COURT PROBATE JUDGE COURTHOUSE BAY MINETTE AL005013J	AL	36507	JUVENILE COURT CLERK ONEONTA AL008023J	AL	35121	COUNTY COURT JUDGE LAFAYETTE AL012013J	AL	36862
CITY COURT RECORDER CITY HALL BAY MINETTE AL005011J	AL	36507	BLOUNT CO PROBATE COURT JUDGE ONEONTA AL008033J	AL	35121	JUVENILE COURT JUDGE LAFAYETTE AL012023J	AL	36862
RECORDERS COURT JUDGE FAIRHOPE AL005021J	AL	36332	MAYOR S COURT MAYOR 202 3RD AVENUE E ONEONTA AL008011J	AL	35121	CHAMBERS CO PROBATE CT PROBATE JUDGE LA FAYETTE AL012033J	AL	36862
CITY COURT RECORDER BOX 400 FOLEY AL005031J	AL	36535	BULLOCK CO PROBATE COURT PROBATE JUDGE COURTHOUSE UNION SPRINGS AL009013J	AL	36089	RECORDER S COURT MAYOR LAFAYETTE AL012011J	AL	36862
RECORDERS COURT CLERK OF COURT P O BOX 296 ROBERTSDALE AL005041J	AL	36567	RECORDER S COURT RECORDER P O BOX 549 UNION SPRINGS AL009011J	AL	36089	RECORDER S COURT MAYOR CITY OF LANETT LANETT AL012021J	AL	36863
BARBOUR CO PROBATE COURT PROBATE JUDGE COURTHOUSE CLAYTON AL006013J	AL	36016	INFERIOR COURT OF BUTLER COUNTY JUDGE GREENVILLE AL010013J	AL	36037	CHEROKEE CO COURT JUDGE CENTRE AL013013J	AL	35960
MAYOR S COURT MAYOR P O BOX 218 CLAYTON AL006011J	AL	36016	PROBATE COURT OF BUTLER COUNTY PROBATE JUDGE COURTHOUSE GREENVILLE AL010023J	AL	36037	JUVENILE COURT JUDGE OF PROBATE CENTRE AL013023J	AL	35960
PROBATE COURT JUDGE CENTREVILLE AL007013J	AL	35042	RECORDER S COURT CITY RECORDER CITY HALL GREENVILLE AL010011J	AL	36037	RECORDER S COURTS JUDGE CENTRE AL013011J	AL	35960
JUVENILE COURT JUDGE CENTREVILLE AL007023J	AL	35042	CALHOUN CO PROBATE COURT PROBATE JUDGE ANNISTON AL011013J	AL	36201	LAW EQUITY CT CHILTON CO JUDGE P O BOX 1187 CLANTON AL014013J	AL	35045
COUNTY COURT JUDGE CENTREVILLE AL007033J	AL	35042	CITY RECORDER S COURT RECORDER P O BOX 670 ANNISTON AL011011J	AL	36201	CHILTON CO PROBATE CT PROBATE JUDGE COURT HOUSE CLANTON AL014023J	AL	35045

RECORDER S COURT CITY RECORDER P O BOX 565 CLANTON AL014011J	AL	35045	RECORDER COURT RECORDER ASHLAND AL017011J	AL	36251	CONECUH CO PROBATE CT PROBATE JUDGE COURTHOUSE EVERGREEN AL021013J	AL	36401
PROBATE COURT JUDGE BUTLER AL015013J	AL	36904	CLEBURNE CO PROBATE CT PROBATE JUDGE COURTHOUSE HEFLIN AL018013J	AL	36264	COOSA CO PROBATE COURT PROBATE JUDGE COURTHOUSE ROCKFORD AL022013J	AL	35136
INFERIOR COURT JUDGE BUTLER AL015023J	AL	36904	HEFLIN MUNICIPAL COURT JUDGE HEFLIN AL018011J	AL	36264	PROBATE COURT JUDGE ANDALUSIA AL023013J	AL	36420
RECORDER S COURT COURT RECORDER P O BOX 138 BUTLER AL015011J	AL	36904	INFERIOR COURT JUDGE ELBA AL019013J	AL	36323	INTERMEDIATE COURT JUDGE ANDALUSIA AL023023J	AL	36420
INFERIOR COURT JUDGE GROVE HILL AL016013J	AL	36451	PROBATE COURT JUDGE ELBA AL019023J	AL	36323	ANDALUSIA RECORDERS CT COURT RECORDER ANDALUSIA AL023011J	AL	36420
JUVENILE COURT JUDGE GROVE HILL AL016023J	AL	36451	RECORDER S COURT JUDGE P O BOX 450 ELBA AL019011J	AL	36323	PROBATE COURT JUDGE OF PROBATE LIVERNE AL024013J	AL	36049
PROBATE COURT JUDGE GROVE HILL AL016033J	AL	36451	RECORDER S COURT JUDGE CITY GOV UT BLDG ENTERPRISE AL019021J	AL	36330	LAW AND EQUITY COURT JUDGE LIVERNE AL024023J	AL	36049
RECORDERS COURT RECORDER P O BOX 335 GROVE HILL AL016011J	AL	36451	COLBERT CO PROBATE CT PROBATE JUDGE COURTHOUSE TUSCUMBIA AL020013J	AL	35674	RECORDER S COURT RECORDER LIVERNE AL024011J	AL	36049
RECORDER S COURT RECORDER GROVE HILL AL016021J	AL	36451	RECORDER S COURT JUDGE CHEROKEE AL020011J	AL	35616	PROBATE COURT CHIEF CLERK P O BOX 237 CULLMAN AL025013J	AL	35055
MAYOR S COURT MAYOR P O BOX 127 THOMASVILLE AL016031J	AL	36784	LEIGHTON MUNICIPAL CT MAYOR PO BOX 308 LEIGHTON AL020021J	AL	35646	INTERMEDIATE COURT CLERK CULLMAN AL025023J	AL	35055
CLAY CO PROBATE COURT JUDGE ASHLAND AL017013J	AL	36251	RECORDERS COURT RECORDER MUNICIPAL BUILDING P O DRAWER G SHEFFIELD AL020031J	AL	35660	RECORDERS COURT CITY RECORDER 409 1ST AVE WEST CULLMAN AL025011J	AL	35055
CLAY COUNTY COURT RECORDER ASHLAND AL017023J	AL	36251	RECORDER S COURT MUNICIPAL BUILDING 103 W 3RD ST TUSCUMBIA AL020041J	AL	35674	DALE CO PROBATE COURT PROBATE JUDGE COURT SQUARE OZARK AL026013J	AL	36360

RECORDER S COURT RECORDER OZARK AL 36360 AL026011J	PROBATE COURT PROBATE JUDGE P O BOX 557 BREWTON AL 36426 AL030013J	PROBATE COURT PROBATE JUDGE P O BOX 70 RUSSELLVILLE AL 35653 AL033023J
DALLAS CO PROBATE COURT PROBATE JUDGE P O BOX 997 SELMA AL 36701 AL027013J	JUVENILE COURT JUDGE CO COURTHOUSE BREWTON AL 36426 AL030023J	INTERMEDIATE COURT JUDGE P O BOX 669 RUSSELLVILLE AL 35653 AL033033J
DALLAS COUNTY COURT JUDGE P O BOX 997 SELMA AL 36701 AL027023J	INFERIOR COURT JUDGE BREWTON AL 36426 AL030033J	GENEVA CO PROBATE CT PROBATE JUDGE COURTHOUSE GENEVA AL 36340 AL034013J
DALLAS CO JUVENILE CT JUDGE P O BOX 997 SELMA AL 36701 AL027033J	ATHORE CITY COURT MAYOR 201 E LOUISVILLE A ATHORE AL 35502 AL030011J	GENEVA CO INFERIOR CT JUDGE COURTHOUSE GENEVA AL 36340 AL034023J
RECORDER S COURT RECORDER P O BX L SELMA AL 36701 AL027011J	MUNICIPAL COURT JUDGE P O BOX 368 BREWTON AL 36426 AL030021J	MAYOR S COURT MAYOR 500 4TH AVE HARTFORD AL 36344 AL034011J
DEKALB CO PROBATE CT PROBATE JUDGE COURTHOUSE FORT PAYNE AL 35967 AL028013J	MAYOR S COURT MAYOR FLOMATON AL 36441 AL030031J	SLOCUMB MAYOR S COURT MAYOR P O BOX 320 SLOCUMB AL 36375 AL034021J
DEKALB COUNTY COURT COUNTY JUDGE COURTHOUSE FORT PAYNE AL 35967 AL028023J	ETOWAH CO PROBATE CT PROBATE JUDGE COURTHOUSE GADSDEN AL 35901 AL031013J	GREENE CO PROBATE CT PROBATE JUDGE COURTHOUSE EUTAW AL 35462 AL035013J
RECORDER S COURT MAYOR CITY HALL COLLINSVILLE AL 35961 AL028011J	CITY RECORDER S COURT CITY RECORDER 90 BROAD ST GADSDEN AL 35901 AL031021J	RECORDERS COURT RECORDER EUTAW AL 35462 AL035011J
CITY COURT JUDGE CITY HALL FORT PAYNE AL 35967 AL028021J	RECORDER S COURT RECORDER 823 FORREST AVE GADSDEN AL 35901 AL031031J	COUNTY COURT JUDGE 1000 MAIN ST GREENSBORO AL 36744 AL036013J
ELMORE COUNTY COURT JUDGE WETUMPKA AL 36092 AL029013J	FAYETTE CO PROBATE COURT PROBATE JUDGE COURTHOUSE FAYETTE AL 35555 AL032013J	JUVENILE COURT JUDGE 1000 MAIN ST GREENSBORO AL 36744 AL036023J
ELMORE CO PROBATE CT PROBATE JUDGE WETUMPKA AL 36092 AL029023J	MAYOR S COURT MAYOR FAYETTE AL 35555 AL032011J	HALE CO PROBATE CT PROBATE JUDGE 1000 MAIN ST GREENSBORO AL 36744 AL036033J
CITY COURT MAYOR TALLASSEE AL 36078 AL029011J	JUVENILE COURT JUDGE P O BOX 669 RUSSELLVILLE AL 35653 AL033013J	GREENSBORO CITY COURT MAYOR P O BOX 176 GREENSBORO AL 36744 AL036011J

HENRY CO PROBATE CT PROBATE JUDGE COURTHOUSE ABBEVILLE AL 36310 AL037013J	JEFFERSON CO PROBATE CT BESSEMER PRESIDING JUDGE COURTHOUSE BESSEMER AL 35020 AL001023J	FULTONDALE COURT JUDGE P O BOX 301 FULTONDALE AL 35068 AL001021J
MAYOR S COURT MAYOR P O BOX 36 HEADLAND AL 36345 AL037011J	JEFFERSON CRIMINAL CT BESSEMER PRESIDING JUDGE COURTHOUSE BESSEMER AL 35020 AL001033J	CITY RECORDER S COURT RECORDER 2230 3RD AVE NO BIRMINGHAM AL 35203 AL001031J
PROBATE CT HOUSTON CO JUDGE OF PROBATE P O BOX 609 DOTHAN AL 36301 AL038013J	JEFFERSON CO CIVIL CT PRESIDING JUDGE COURTHOUSE 716 N 21ST ST BIRMINGHAM AL 35203 AL001043J	RECORDER S COURT MAYOR P O DRAWER NO 130 GRAYSVILLE AL 35073 AL001011J
HOUSTON COUNTY COURT JUDGE OF CO COURT P O BOX 1392 COURTHOUSE DOTHAN AL 36301 AL038023J	JEFFERSON CO COURT OF GENERAL SESSIONS PRESIDING JUDGE 716 N 21ST ST BIRMINGHAM AL 35203 AL001053J	RECORDER S COURT JUDGE CITY HALL HOMEWOOD AL 35209 AL001051J
ASHFORD TOWN COURT MAYOR ASHFORD AL 36312 AL038011J	JEFFERSON CO COURT OF GEN SESSIONS-N BHA PRESIDING JUDGE 2911 1/2 N 27TH N BIRMINGHAM AL 35207 AL001063J	RECORDER S COURT MAYOR 101 SOUTH 20TH ST IRONDALE AL 35210 AL001021J
CITY RECORDERS COURT JUDGE S ST ANDREWS ST DOTHAN AL 36301 AL038021J	JEFFERSON CO CRIMINAL CT PRESIDING JUDGE BIRMINGHAM CTHSE 716 N 21 S BIRMINGHAM AL 35203 AL001073J	RECORDERS COURT RECORDER MASSEY BLDG BIRMINGHAM AL 35203 AL001071J
JACKSON CO PROBATE CT PROBATE JUDGE COURTHOUSE SCOTTSBORO AL 35768 AL039013J	JEFFERSON CO COURT OF GEN SESSION ENSLEY PRESIDING JUDGE UNITED SECURITY BLDG ENSLEY AL 35218 AL001083J	MIDFIELD RECORDERS CT JUDGE 190 MEDFIELD ST MIDFIELD AL 35228 AL001081J
JACKSON COUNTY COURT COUNTY JUDGE COURTHOUSE SCOTTSBORO AL 35768 AL039023J	JEFFERSON CO FAMILY CT PRESIDING JUDGE 120 2ND COURT N BIRMINGHAM AL 35204 AL001093J	RECORDER S COURT JUDGE BOX 9006 CRESTLINE BR MOUNTAIN BROOK AL 35209 AL001091J
JACKSON CO JUVENILE CT JUVENILE JUDGE COURTHOUSE SCOTTSBORO AL 35768 AL039033J	MAYOR S COURT MAYOR ADAMSVILLE AL 35005 AL001011J	MUNICIPAL COURT COURT RECORDER P O BOX 128 PLEASANT GROVE AL 35127 AL001101J
RECORDERS COURT RECORDER 406 ALABAMA AVE BRIDGEPORT AL 35740 AL039011J	BESSEMER RECORDERS COURT CITY RECORDER 23 NO 15TH STREET BESSEMER AL 35020 AL001011J	TARRANT RECORDER COURT JUDGE 404 TITLE BLDG BIRMINGHAM AL 35204 AL001111J
RECORDERS COURT RECORDER STEVENSON AL 35772 AL039011J	RECORDER S COURT PRESIDING JUDGE CITY HALL 710 NO 20TH ST BIRMINGHAM AL 35203 AL001021J	RECORDER S COURT RECORDER TRUSSVILLE AL 35173 AL001031J
JEFFERSON CO PROBATE CT BIRMINGHAM PRESIDING JUDGE 716 N 21ST ST BIRMINGHAM AL 35203 AL001013J	RECORDER S COURT RECORDER 5231 COURT B FAIRFIELD AL 35064 AL001011J	RECORDER S COURT CITY RECORDER 513 MONTGOMERY HWY VESTAVIA HILLS AL 35216 AL001131J



WARRIOR RECORDERS COURT JUDGE 710 FRANK NELSON B BIRMINGHAM AL 35203 AL001041J	CITY RECORDER S COURT CITY RECORDER BOX 511 AUBURN AL 36830 AL043011J	PROBATE COURT JUDGE OF PROBATE LINDEN AL 36748 AL048013J
RECORDER S COURT JUDGE P O DRAWER C HUEYTOWN AL 35020 AL001051J	RECORDER S COURT RECORDER POLICE BLDG OPELIKA AL 36801 AL043021J	COUNTY COURT JUDGE LINDEN AL 36748 AL048023J
PROBATE COURT JUDGE OF PROBATE VERNON AL 35592 AL040013J	PROBATE COURT JUDGE P O BOX 228 ATHENS AL 35611 AL044013J	CITY RECORDER COURT RECORDER DRAWER Y DEMOPOLIS AL 36732 AL048011J
RECORDER S COURT RECORDER P O BOX 365 SULLIGENT AL 35586 AL040011J	PROBATE COURT PROBATE JUDGE HAYNEVILLE AL 36040 AL045013J	MAYOR S COURT MAYOR 211 NO MAIN LINDEN AL 36748 AL048021J
PROBATE COURT PROBATE JUDGE P O BOX 1059 FLORENCE AL 35630 AL041013J	PROBATE COURT JUDGE OF PROBATE COURTHOUSE TUSKEGEE AL 36083 AL046013J	MARION CO SUPERIOR COURT JUDGE P O BOX 572 HAMILTON AL 35570 AL049013J
COUNTY COURT COUNTY JUDGE COURTHOUSE FLORENCE AL 35630 AL041023J	INFERIOR COURT TUSKEGEE AL 36083 AL046023J	MARION CO PROBATE CT PROBATE JUDGE COURTHOUSE HAMILTON AL 35570 AL049023J
JUVENILE COURT PROBATE JUDGE P O BOX 1059 FLORENCE AL 35630 AL041033J	RECORDERS COURT RECORDER CITY HALL TUSKEGEE AL 36083 AL046011J	CITY COURT RECORDER HAMILTON AL 35570 AL049011J
RECORDER S COURT CITY RECORDER 1171/2 SOUTH COURT AL 35630 AL041011J	MADISON CO PROBATE CT JUDGE COURTHOUSE HUNTSVILLE AL 35801 AL047013J	PROBATE COURT JUDGE COURTHOUSE GUNTERSVILLE AL 35976 AL050013J
LAWRENCE CO PROBATE CT PROBATE JUDGE COURTHOUSE MOULTON AL 35650 AL042013J	MADISON COUNTY COURT JUDGE COURTHOUSE HUNTSVILLE AL 35801 AL047023J	COUNTY COURT JUDGE COURTHOUSE GUNTERSVILLE AL 35976 AL050023J
COURT OF COMMON PLEAS JUDGE 5 9TH STREET OPELIKA AL 36801 AL043013J	MADISON CO FAMILY CT JUDGE COURTHOUSE HUNTSVILLE AL 35801 AL047033J	RECORDERS COURT JUDGE ARAB AL 35016 AL050011J
JUVENILE COURT JUDGE 5 9TH STREET OPELIKA AL 36801 AL043023J	RECORDERS COURT RECORDER BOX 2085 HUNTSVILLE AL 35804 AL047011J	PROBATE COURT JUDGE OF PROBATE MOBILE CO COURTHOU MOBILE AL 36602 AL002013J
PROBATE COURT JUDGE 5 9TH STREET OPELIKA AL 36801 AL043033J	RECORDER S COURT COURT CLERK P O BOX 38 MADISON AL 35758 AL047021J	JUVENILE COURT JUVENILE JUDGE MOBILE CO COURTHOU MOBILE AL 36602 AL002023J

INFERIOR GEN SESS COURT JUDGE MOBILE CO COURTHOU MOBILE AL 36602 AL002033J	MONTGOMERY COUNTY COURT JUDGE COURTHOUSE MONTGOMERY AL 36102 AL003013J	MAYOR S COURT MAYOR P O BOX 431 REFORM AL 35481 AL054011J
RECORDER S COURT JUDGE P O BOX 11307 CHICKASAW AL 36611 AL002011J	PROBATE COURT JUDGE COURTHOUSE MONTGOMERY AL 36102 AL003023J	PIKE CO INFERIOR COURT JUDGE TROY AL 36081 AL055013J
RECORDERS COURT JUDGE P O BOX 517 BAYOU LA BATRE AL 36509 AL002021J	COUNTY JUVENILE COURT JUDGE COURTHOUSE MONTGOMERY AL 36102 AL003033J	PIKE CO PROBATE COURT PROBATE JUDGE COURTHOUSE TROY AL 36081 AL055023J
RECORDERS COURT CITY RECORDER 502 PECAN ST CITRONELLE AL 36522 AL002031J	MUNICIPAL COURT PRESIDING JUDGE P O DRAAER 159 MONTGOMERY AL 36101 AL003011J	MAYOR S COURT MAYOR P O BOX 675 BRUNDIDGE AL 36010 AL055011J
MUNICIPAL COURT CHIEF CLERK P O BOX 2446 MOBILE AL 36601 AL002041J	MORGAN COUNTY COURT JUDGE MORGAN CO COURTHOU DECATUR AL 35601 AL052013J	PROBATE COURT JUDGE WEDDOWEE AL 36278 AL056013J
PRICHARD CITY RECORDER S COURT CLERK OF COURT PRICHARD AL 36610 AL002011J	RECORDERS COURT CITY RECORDER CITY HALL P O BOX 488 DECATUR AL 35601 AL052011J	COUNTY COURT JUDGE WEDDOWEE AL 36278 AL056023J
SARALAND RECORDERS OFF RECORDER 819 ELLEN STREET SARALAND AL 36571 AL002051J	RECORDERS COURT CITY RECORDER 200 MCCLANHAN ST HARTSELLE AL 35640 AL052021J	JUVENILE COURT JUDGE WEDDOWEE AL 36278 AL056033J
RECORDER S COURT RECORDER P O BOX 278 SATSUMA AL 36572 AL002061J	PERRY CO PROBATE COURT JUDGE PERRY CO COURTHOU MARION AL 36756 AL053013J	PROBATE COURT JUDGE P O BOX 700 PHENIX CITY AL 36867 AL057013J
MONROE COUNTY COURT CLERK OF COURT COURTHOUSE MONROEVILLE AL 36460 AL051013J	PERRY COUNTY COURT JUDGE PERRY CO COURTHOU MARION AL 36756 AL053023J	COURT OF COMMON PLEAS JUDGE P O BOX 999 PHENIX CITY AL 36867 AL057023J
PROBATE COURT JUDGE OF PROBATE MONROEVILLE AL 36460 AL051023J	PERRY CO JUVENILE COURT JUDGE PERRY CO COURTHOU MARION AL 36756 AL053033J	JUVENILE COURT JUDGE P O BOX 143 PHENIX CITY AL 36867 AL057033J
JUVENILE COURT JUDGE MONROEVILLE AL 36460 AL051033J	CO PROBATE COURT JUDGE CARROLLTON AL 35447 AL054013J	INFERIOR COURT JUDGE 2301 1/2 SUMMERVILLE RD PHENIX CITY AL 36867 AL057043J
MAYOR S COURT MAYOR BOX 147 MONROEVILLE AL 36460 AL051011J	PICKENS CO COURT JUDGE CARROLLTON AL 35447 AL054023J	RECORDER S COURT RECORDER HURTSBORO AL 36860 AL057011J

PHENIX RECORDERS COURT JUDGE 1109 BROAD STREET PHENIX CITY AL 36867 AL057021J	SUMTER CO PROBATE CT PROBATE JUDGE COURTHOUSE LIVINGSTON AL 35470 AL060023J	TUSCALOOSA COUNTY COURT JUDGE 714 GREENSBORO AVE TUSCALOOSA AL 35401 AL063013J	WASHINGTON CO PROBATE CT PROBATE JUDGE COURTHOUSE CHATON AL 36518 AL065013J	PAROLE AND PROBATION DEP PROBATION OFFICER P O BOX 582 ONEONTA AL 35121 AL008013G	CO PENSIONS AND SEC DEPT PROBATION OFFICER HWY 31 S EVERGREEN AL 36401 AL021013G
PROBATE COURT JUDGE OF PROBATE ASHVILLE AL 35953 AL058013J	RECORDER S COURT RECORDER LIVINGSTON AL 35470 AL060011J	TUSCALOOSA CO PROBATE CT PROBATE JUDGE COURTHOUSE TUSCALOOSA AL 35401 AL063023J	WILCOX CO PROBATE CT PROBATE JUDGE COURTHOUSE CAMDEN AL 36726 AL066013J	CO PENSIONS AND SEC DEPT PROBATION OFFICER COURTHOUSE UNION SPRINGS AL 36059 AL009013G	CO PENSIONS AND SEC DEPT PROBATION OFFICER COURTHOUSE ROCKFORD AL 35136 AL022013G
COUNTY COURT JUDGE OF PROBATE ASHVILLE AL 35953 AL058023J	CITY COURT MAYOR YORK AL 36925 AL060021J	COUNTY JUVENILE COURT JUDGE COURTHOUSE TUSCALOOSA AL 35401 AL063033J	MAYORS COURT MAYOR CITY HALL CAMDEN AL 36726 AL066011J	CO PENSIONS AND SEC DEPT PROBATION OFFICER COURTHOUSE GREENVILLE AL 36037 AL010013G	CO PENSIONS AND SEC DEPT PROBATION OFFICER P O BOX 786 ANDALUSIA AL 36420 AL023013G
INFERIOR COURT JUDGE ASHVILLE AL 35953 AL058033J	PROBATE COURT JUDGE P O BOX 245 TALLADEGA AL 35160 AL061013J	CITY COURT JUDGE BOX 346 NORTHPORT AL 35476 AL063011J	WINSTON CO PROBATE CT PROBATE JUDGE COURTHOUSE DOUBLE SPRINGS AL 35553 AL067013J	JUV CT PROBATION OFFICE PROBATION OFFICER LAFAYETTE AL 36862 AL012013G	CO PENSIONS AND SEC DEPT PROBATION OFFICER COURTHOUSE CULLMAN AL 35055 AL025013G
INFERIOR COURT JUDGE PELL CITY AL 35125 AL058043J	CO COURT NORTHERN DIV JUDGE 118 E NORTH ST TALLADEGA AL 35160 AL061023J	RECORDER S COURT JUDGE CITY HALL TUSCALOOSA AL 35401 AL063021J	LAW AND EQUITY COURT JUDGE TRADERS AND FARMERS BK BLDG HALEYVILLE AL 35565 AL067023J	CO PENSIONS AND SEC DEPT PROBATION OFFICER COURTHOUSE ANNEX CENTRE AL 35960 AL013013G	CO PENSIONS AND SEC DEPT PROBATION OFFICER SO UNION OZARK AL 36360 AL026013G
RECORDER S COURT RECORDER 1905 FIRST AVE N PELL CITY AL 35125 AL058011J	CO COURT SOUTHERN DIV JUDGE COUNTY BLDG SYLACAUGA AL 35150 AL061033J	WALKER CO PROBATE CT PROBATE JUDGE COURTHOUSE JASPER AL 35501 AL064013J	HALEYVILLE COURT MAYOR 20TH STREET HALEYVILLE AL 35565 AL067011J	PENS-SEC DEPT CHILTON CO DIRECTOR P O BOX 446 CLANTON AL 35045 AL014013G	JUVENILE PROBATION OFC PROBATION OFFICER SELMA AL 36701 AL027013G
RECORDERS COURT RECORDER RAGLAND AL 35131 AL058021J	RECORDER S COURT JUDGE CITY HALL CHILDERSBURG AL 35044 AL061011J	WALKER COUNTY COURT COUNTY JUDGE COURTHOUSE JASPER AL 35501 AL064023J	PROBATION and PAROLE AGENCIES STATE LEVEL BOARD OF PARDONS AND PAROLES DIRECTOR 654 STATE ADM BLDG MONTGOMERY AL 36104 AL003015G	CO PENSIONS AND SEC DEPT PROBATION OFFICER 117 S MULBERRY ST BUTLER AL 36904 AL015013G	CO PENSIONS AND SEC DEPT PROBATION OFFICER ACTIVITY BLDG FORY PAYNE AL 35967 AL028013G
SHELBY CO PROBATE CT PROBATE JUDGE COURTHOUSE COLUMBIANA AL 35051 AL059013J	RECORDER S COURT COURT RECORDER 112 N ANNVISTEN SYLACAUGA AL 35150 AL061021J	WALKER CO INFERIOR COURT JUDGE COURTHOUSE JASPER AL 35501 AL064033J	LOCAL LEVEL CO PENSIONS AND SEC DEPT PROBATION OFFICER COURT HOUSE PRATTVILLE AL 36067 AL004013G	CO PENSIONS AND SEC DEPT PROBATION OFFICER GROVE HILL AL 36451 AL016013G	CO PENSIONS AND SEC DEPT PROBATION OFFICER COURTHOUSE WETUMPKA AL 36092 AL029013G
RECORDER S COURT MAYOR ALABASTER AL 35007 AL059011J	RECORDERS COURT RECORDER CITY HALL TALLADEGA AL 35160 AL061031J	CARBON HILL RECORDERS CT MAYOR CARBON HILL AL 35549 AL064011J	CO PENSION AND SEC DEPT PROBATION OFFICER COURTHOUSE BAY MINETTE AL 36507 AL005013G	CO PENSIONS AND SEC DEPT PROBATION OFFICER COURT HOUSE ASHLAND AL 36251 AL017013G	CO PROBATION S OFFICE PROBATION OFFICER BREWTON AL 36426 AL030013G
CITY COURT MAYOR P O BOX 177 CALERA AL 35040 AL059021J	TALLAPOOSA CO PROBATE CT PROBATE JUDGE COURTHOUSE DADEVILLE AL 36853 AL062013J	RECORDERS COURT RECORDER JASPER AL 35501 AL064021J	PROBATION OFFICE INVESTIGATOR BOX 400 FOLEY AL 36535 AL0050116	CO PENSIONS AND SEC DEPT PROBATION OFFICER COURTHOUSE HEFLIN AL 36264 AL018013G	CO PENSIONS AND SEC DEPT PROBATION OFFICER COURTHOUSE GADSDEN AL 35901 AL031013G
RECORDER COURT COURT RECORDER COLUMBIANA AL 35051 AL059031J	CITY COURT CITY JUDGE P O BOX 443 ALEXANDER CITY AL 35010 AL062011J	RECORDER S COURT RECORDER DORA AL 35062 AL064011J	CO PENSIONS AND SEC DEPT PROBATION OFFICER COURTHOUSE CLAYTON AL 36016 AL006013G	CO PENSIONS AND SEC DEPT PROBATION OFFICER COURTHOUSE ELBA AL 36323 AL019013G	CO PENSIONS AND SEC DEPT PROBATION OFFICER COUNTY OFC BLDG FAYETTE AL 35555 AL032013G
COUNTY COURT JUDGE LIVINGSTON AL 35470 AL060013J	MAYOR S COURT MAYOR DADEVILLE AL 36853 AL062021J	MAYOR S COURT MAYOR TOWN OF PARRISH PARRISH AL 35586 AL064041J	CO PENSIONS AND SEC DEPT PROBATION OFFICER COURT HOUSE CENTREVILLE AL 35042 AL007013G	CO PENSIONS AND SEC DEPT PROBATION OFFICER COURTHOUSE TUSCUMBIA AL 35674 AL020013G	PROBA AND PAROLE OFFICE PROBATION OFFICER P O BOX 401 RUSSELLVILLE AL 35653 AL033013G

CO PENSIONS AND SEC DEPT PROBATION OFFICER COURTHOUSE GENEVA AL 36340 AL034013G	CO PENSIONS AND SEC DEPT PROBATION OFFICER MAIN ST MOULTON AL 35650 AL042013G	CO PENSIONS AND SEC DEPT PROBATION OFFICER COURTHOUSE MARION AL 36756 AL053013G
CO PENSIONS AND SEC DEPT PROBATION OFFICER COURTHOUSE EUTAW AL 35462 AL035013G	COUNTY PROBATION OFFICE PROB OFFICER 50 9TH STREET OPELIKA AL 36801 AL043013G	CO PENSIONS AND SEC DEPT PROBATION OFFICER BOX 31 CARROLLTON AL 35447 AL054013G
CO PENSIONS AND SEC DEPT PROBATION OFFICER COURTHOUSE GREENSBORO AL 36744 AL036013G	CO PENSIONS AND SEC DEPT PROBATION OFFICER BROWNS FERRY ST ATHENS AL 35611 AL044013G	CO PENSIONS AND SEC DEPT PROBATION OFFICER COURTHOUSE WEDOWEE AL 36278 AL056013G
CO PENSIONS AND SEC DEPT PROBATION OFFICER COURTHOUSE ANNEX ABBEVILLE AL 36310 AL037013G	CO PENSIONS AND SEC DEPT PROBATION OFFICER COURTHOUSE HAYNEVILLE AL 36040 AL045013G	CO PENSIONS AND SEC DEPT PROBATION OFFICER COURTHOUSE PHENIX CITY AL 36867 AL057013G
CO PENSIONS AND SEC DEPT PROBATION OFFICER COURTHOUSE DOTHAN AL 36301 AL038013G	CO PENSIONS AND SEC DEPT PROBATION OFFICER COURTHOUSE TUSKEGEE AL 36083 AL046013G	PROBATION DEPT MAYOR 1109 BROAD ST PHENIX CITY AL 36867 AL057011G
CO PENSIONS AND SEC DEPT PROBATION OFFICER 110 E APPLE TREE SCOTTSBORO AL 35760 AL039013G	JUVENILE PROBATION DEPT PROBATION OFFICER COURTHOUSE HUNTSVILLE AL 35804 AL047013G	CO PENSIONS AND SEC DEPT PROBATION OFFICER COURTHOUSE ASHVILLE AL 35953 AL058013G
JEFFERSON CO FAMILY CT PROBATION SECTION CH PROB OFFICER P O BOX 3747 BIRMINGHAM AL 35211 AL001013G	CO PENSIONS AND SEC DEPT PROBATION OFFICER COURTHOUSE HAMILTON AL 35570 AL049013G	CO PENSIONS AND SEC DEPT PROBATION OFFICER COUNTY OFC BLDG COLUMBIANA AL 35051 AL059013G
PAROLE OFFICER CITY HALL RM 116 710 N 20TH BIRMINGHAM AL 35203 AL001011G	CO PENSIONS AND SEC DEPT PROBATION OFFICER WORTH ST GUNTERSVILLE AL 35976 AL050013G	CO PENSIONS AND SEC DEPT PROBATION OFFICER COURTHOUSE LIVINGSTON AL 35470 AL060013G
THE HALF WAY HOUSE 1724 15TH AVE SO BIRMINGHAM AL 35213 AL001021G	CO JUVENILE CT PROBATION PROBATION OFFICER COURTHOUSE MOBILE AL 36602 AL002013G	CO PENSIONS AND SEC DEPT PROBATION OFFICER 106 W SOUTH ST TALLADEGA AL 35160 AL061013G
CO PROBATION PAROLE AGCY PROBATION OFFICER VERNON AL 35592 AL040013G	FAMILY CT PROBATION DEPT PROBATION OFFICER COURTHOUSE MONTGOMERY AL 36102 AL002013G	CO PENSIONS AND SEC DEPT PROBATION OFFICER COURTHOUSE DADEVILLE AL 36853 AL062013G
JUVENILE PROBATION DEPT JUVENILE OFFICER P O BOX 1059 FLORENCE AL 35630 AL041013G	MONTGOMERY COUNTY YOUTH FACILITY PROBATION OFFICER 1111 AIR BASE BOULEVARD MONTGOMERY AL 36108 AL003023G	JUVENILE AUTHORITY JUVENILE OFFICER COURTHOUSE ALEXANDER CITY AL 35010 AL062011G
FLORENCE PROBATION OFC YOUTH AID OFFICER CITY HALL FLORENCE AL 35630 AL041011G	JUVENILE PROBATION AGENCY PROBATION OFFICER MORGAN CO COURTHOUSE DECATUR AL 35601 AL052013G	CO PENSIONS AND SEC DEPT PROBATION OFFICER COURTHOUSE TUSCALOOSA AL 35401 AL063013G

CO PENSIONS AND SEC DEPT PROBATION OFFICER LIBRARY BLDG JASPER AL 35501 AL064013G	LOCAL LEVEL COUNTY SHERIFFS DEPT SHERIFF BAY MINETTE AL 36507 AL00500	POLICE DEPARTMENT CHIEF OF POLICE POLICE DEPT LANETT AL 36863 AL01202
CO PENSIONS AND SEC DEPT PROBATION OFFICER COURTHOUSE CHATOH AL 36518 AL065013G	FAIRHOPE POLICE DEPT CHIEF OF POLICE BOX 429 FAIRHOPE AL 36532 AL00502	CHEROKEE COUNTY SHERIFF CENTRE AL 35960 AL01300
CO PENSIONS AND SEC DEPT PROBATION OFFICER BROAD ST CAMDEN AL 36726 AL066013G	POLICE DEPT CHIEF OF POLICE BOX 400 FOLEY AL 36535 AL00503	CHILTON CO SHERIFF S DEPT SHERIFF CHILTON CO CTHSE CLANTON AL 35045 AL01400
CO PENSIONS AND SEC DEPT PROBATION OFFICER COURTHOUSE DOUBLE SPRINGS AL 35553 AL067013G	COUNTY SHERIFFS DEPT SHERIFF CLAYTON AL 36016 AL00600	SHERIFF S DEPT SHERIFF BUTLER AL 36904 AL01500
ADULT CORRECTIONAL INSTITUTIONS STATE LEVEL ATMORE PRISON FARM WARDEN ROUTE 2 BOX 38 ATMORE AL 36502 AL030015C	EUFAULA POLICE DEPT CHIEF OF POLICE EUFAULA AL 36027 AL00601	SHERIFF S DEPARTMENT SHERIFF GROVE HILL AL 36451 AL01600
DRAPER CORRECTIONAL CTR REIPER PRISON WARDEN P O BOX 1107 ELMORE AL 36025 AL029015C	BLOUNT CO SHERIFF S DEPT SHERIFF ONEONTA AL 35121 AL00800	JACKSON POLICE DEPT CHIEF OF POLICE 118 COLLEGE AVE JACKSON AL 36545 AL01601
FRANK LEE YOUTH CENTER WARDEN ROUTE 1 BOX 300 DEATSVILLE AL 36022 AL029025C	COUNTY SHERIFFS DEPT SHERIFF UNION SPRINGS AL 36089 AL00900	CLAY CO SHERIFF S OFC SHERIFF ASHLAND AL 36251 AL01700
JULIE TUTWILLER PRISON WARDEN P O BOX 30 WETUMPKA AL 36092 AL029035C	SHERIFF S DEPT SHERIFF COURTHOUSE GREENVILLE AL 36037 AL01000	COUNTY SHERIFFS DEPT SHERIFF HEFLIN AL 36264 AL01800
STATE CATTLE RANCH HONOR FARM WARDEN GREENSBORO AL 36744 AL036015C	CALHOUN CO SHERIFFS OFC SHERIFF COURTHOUSE ANNISTON AL 36201 AL01100	COFFEE CO SHERIFF DEPT SHERIFF ELBA AL 36323 AL01900
STATE BD OF CORRECTIONS DIRECTOR ROAD CAMPS ROUTE 3 BOX 115 MONTGOMERY AL 36110 AL003015C	CITY POLICE DEPARTMENT CHIEF OF POLICE P O BOX 670 ANNISTON AL 36201 AL01101	LAW ENFORCEMENT AGENCY CHIEF OF POLICE CITY GOV UT BLDG ENTERPRISE AL 36330 AL01902
HOLMAN UNIT WARDEN ROUTE 2 BOX 37 ATHORE AL 36502 AL030025C	POLICE DEPARTMENT POLICE CHIEF EAST LADIGA ST JACKSONVILLE AL 36265 AL01102	COUNTY SHERIFFS DEPT SHERIFF TUSCUMBIA AL 35674 AL02000
MEDICAL AND DIAGNOSTIC CENTER ROUTE 5 BOX 125 MONTGOMERY AL 36109 AL003025C	SHERIFF S DEPT SHERIFF LAFAYETTE AL 36862 AL01200	COUNTY SHERIFFS DEPT SHERIFF EVERGREEN AL 36401 AL02100

COUNTY SHERIFFS DEPT SHERIFF ROCKFORD AL 35136 AL02200	COUNTY SHERIFFS DEPT SHERIFF GADSDEN AL 35901 AL03100	JEFFERSON CO JAIL SHERIFF 211 18TH ST N BESSEMER AL 35020 AL001023C	COUNTY SHERIFFS DEPT SHERIFF MOULTON AL 03565 AL04200	COUNTY SHERIFF S OFFICE SHERIFF COURTHOUSE GUNTERSVILLE AL 35976 AL05000	PERRY CO SHERIFF S OFC SHERIFF PERRY CO COURT HOU MARION AL 36756 AL05300
SHERIFF S DEPT SHERIFF ANDALUSIA AL 36420 AL02300	GADSDEN POLICE DEPT CHIEF OF POLICE 90 BROAD ST GADSDEN AL 35901 AL03102	BESSEMER POLICE DEPT CHIEF OF POLICE 23 NO 15TH STREET BESSEMER AL 35020 AL00101	LEE CO SHERIFF S OFF SHERIFF S 9TH STREET OPELIKA AL 36801 AL04300	ALBERTVILLE POLICE DEPT CHIEF OF POLICE ALBERTVILLE AL 35950 AL05001	CO SHERIFF S DEPT SHERIFF CARROLLTON AL 35447 AL05400
SHERIFF S DEPT SHERIFF LIVERNE AL 36049 AL02400	COUNTY SHERIFFS DEPT SHERIFF FAYETTE AL 35555 AL03200	MUNICIPAL PRISON CHIEF WARDEN 501 6TH AVENUE SO BIRMINGHAM AL 35205 AL001011C	AUBURN POLICE DEPT CHIEF BOX 511 AUBURN AL 36830 AL04301	SHERIFF S DEPT SHERIFF 111 ST EMMANUEL ST P O BOX 113 MOBILE AL 36601 AL00200	PIKE CO SHERIFF S OFC SHERIFF COURTHOUSE TROY AL 36081 AL05500
SHERIFF S DEPT CHIEF DEPUTY CULLMAN AL 35055 AL02500	SHERIFF S OFFICE SHERIFF P O BOX 640 RUSSELLVILLE AL 35653 AL03300	POLICE DEPARTMENT SAFETY DIRECTOR 5231 COURT B FAIRFIELD AL 35064 AL00104	COUNTY SHERIFF S OFC SHERIFF ATHENS AL 35611 AL04400	MOBILE POLICE DEPT CHIEF OF POLICE 51 GOVERNMENT ST MOBILE AL 36802 AL00201	TROY CITY POLICE DEPT CHIEF OF POLICE TROY AL 36081 AL05501
COUNTY SHERIFFS DEPT SHERIFF OZARK AL 36360 AL02600	COUNTY SHERIFFS DEPT SHERIFF GENEVA AL 36340 AL03400	PUBLIC SAFETY DEPT CHIEF OF POLICE CITY OF GRAYSVILLE GRAYSVILLE AL 35073 AL00116	ATHENS CITY POLICE DEPT CHIEF OF POLICE ATHENS AL 35611 AL04401	PRICHARD CITY JAIL CHIEF OF POLICE PRICHARD CITY AL 36610 AL00202	SHERIFF S DEPT SHERIFF WEDOWEE AL 36278 AL05600
POLICE DEPARTMENT CHIEF OF POLICE OZARK AL 36360 AL02601	COUNTY SHERIFFS DEPT SHERIFF EUTAW AL 35462 AL03500	POLICE DEPARTMENT POLICE CHIEF CITY HALL HOMWOOD AL 35209 AL00110	COUNTY SHERIFF S OFFICE SHERIFF HAYNEVILLE AL 36040 AL04500	SATSUMA POLICE DEPT ACTING CHIEF P O BOX 265 SATSUMA AL 36572 AL00207	SHERIFF S OFFICE SHERIFF P O BOX 640 PHENIX CITY AL 36867 AL05700
DALLAS CO SHERIFF S OFC SHERIFF P O BOX 531 SELMA AL 36701 AL02700	HALE CO SHERIFF S DEPT SHERIFF 1000 MAIN ST GREENSBORO AL 36744 AL03600	POLICE DEPARTMENT CHIEF 101 SOUTH 20TH ST IRONDALE AL 35210 AL00113	CO SHERIFF S DEPT SHERIFF CO JAIL TUSKEGEE AL 36083 AL04600	MONROE CO SHERIFF S OFC SHERIFF MONROEVILLE AL 36460 AL05100	PHENIX POLICE DEPT CHIEF OF POLICE 1109 BROAD ST PHENIX CITY AL 36867 AL05701
POLICE DEPARTMENT CHIEF OF POLICE P O BX L SELMA AL 36701 AL02701	COUNTY SHERIFFS DEPT SHERIFF ABBEVILLE AL 36310 AL03700	POLICE DEPT CHIEF OF POLICE P O BOX 126 LEEDS AL 35094 AL00106	COUNTY SHERIFFS DEPT SHERIFF HUNTSVILLE AL 35800 AL04700	MONROEVILLE POLICE DEPT CHIEF OF POLICE 132 S MT PLEASANT MONROEVILLE AL 36460 AL05101	ST CLAIR COUNTY JAIL SHERIFF COURTHOUSE ASHVILLE AL 35953 AL058013C
COUNTY SHERIFFS DEPT SHERIFF FORT PAYNE AL 35967 AL02800	SHERIFF DEPT SHERIFF HOUSTON COURTHSE DOTHAN AL 36301 AL03800	POLICE DEPT CHIEF OF POLICE P O BOX 128 PLEASANT GROVE AL 35127 AL00114	HUNTSVILLE POLICE DEPT CHIEF OF POLICE BOX 2085 HUNTSVILLE AL 35804 AL04701	SHERIFF S DEPARTMENT SHERIFF COURTHOUSE MONTGOMERY AL 36102 AL00300	ST CLAIR COUNTY JAIL SHERIFF PELL CITY AL 35125 AL058023C
POLICE DEPT CHIEF OF POLICE CITY HALL FORT PAYNE AL 35967 AL02801	DOTHAN POLICE DEPT CHIEF OF POLICE S ST ANDREWS ST DOTHAN AL 36301 AL03801	WARRIOR POLICE DEPT CHIEF OF POLICE 222 SELMA ST WARRIOR AL 35180 AL00114	SHERIFF S DEPT SHERIFF LINDEN AL 36748 AL04800	POLICE DEPARTMENT CHIEF OF POLICE P O DRAWER 159 MONTGOMERY AL 36101 AL00301	COUNTY SHERIFFS DEPT SHERIFF COLUMBIANA AL 35051 AL05900
SHERIFF S DEPT SHERIFF WETUMPKA AL 36092 AL02900	COUNTY SHERIFFS DEPT SHERIFF SCOTTSBORO AL 35768 AL03900	SHERIFF S DEPT SHERIFF VERNON AL 35592 AL04000	DEMOPOLIS POLICE DEPT CHIEF OF POLICE DRAWER T DEMOPOLIS AL 36732 AL04801	MORGAN CO SHERIFF S OFC SHERIFF DECATUR AL 35601 AL05200	SHERIFF S DEPT SHERIFF LIVINGSTON AL 35470 AL06000
CO SHERIFF S DEPT SHERIFF CO COURTHOUSE BREWTON AL 36426 AL03000	JEFFERSON COUNTY JAIL WARDEN COURTHOUSE 716 NORTH 21ST ST BIRMINGHAM AL 35203 AL001013C	CO SHERIFF S DEPT SHERIFF P O BOX 51 FLORENCE AL 35630 AL04100	SHERIFF S DEPARTMENT COUNTY SHERIFF COURT HOUSE HAMILTON AL 35572 AL04900	DECATUR POLICE DEPT CHIEF OF POLICE CITY HALL P O BOX 488 DECATUR AL 35601 AL05201	

JUVENILE CORRECTIONAL INSTITUTIONS

CO SHERIFF & OFFICE		STATE LEVEL	
SHERIFF		ALABAMA BOYS	
3318 LIVINGSTON TR		INDUSTRIAL SCHOOL	
TALLADEGA	AL 35150	SUPERINTENDENT	
		8950 ROEBUCK BLVD	AL 35206
AL06100		BIRMINGHAM	
		AL001015C	
POLICE DEPARTMENT		ALA INDUSTRIAL SCHOOL	
CHIEF OF POLICE		SUPERINTENDENT	
29 W 3RD ST	AL 35150	MT HEIGS	AL 36097
BYLACAUGA			
AL06101		AL003035C	
TALLADEGA POLICE DEPT		STATE TRAINING SCHOOL	
POLICE CHIEF		FOR GIRLS	
CITY HALL		SUPERINTENDENT	
TALLADEGA	AL 35160	BOX 4038	AL 35206
		BIRMINGHAM	
AL06102		AL001025C	
COUNTY SHERIFFS DEPT		LOCAL LEVEL	
SHERIFF		JUVENILE DETENTION CTR	
DADEVILLE	AL 36053	SUPERINTENDENT	
		120 SECOND CT NORT	AL 35204
AL06200		BIRMINGHAM	
		AL001033C	
POLICE DEPARTMENT		JUVENILE DETENTION HOME	
CHIEF OF POLICE		SUPERINTENDENT	
CITY HALL		817 COOK AVE N W	
ALEXANDER CITY	AL 35010	HUNTSVILLE	AL 35801
AL06201		AL047013C	
TUSCALOOSA COUNTY		BOYS DETENTION HOME	
SHERIFFS DEPT		SUPERINTENDENT	
SHERIFF		507 STANTON ROAD	
714 GREENSBORO AVE	AL 35401	MOBILE	AL 36617
TUSCALOOSA			
AL06300		AL002013C	
TUSCALOOSA POLICE DEPT		GIRLS DETENTION HOME	
CHIEF OF POLICE		SUPERINTENDENT	
2520 7TH STREET	AL 35401	563 STANTON ROAD	AL 36617
TUSCALOOSA		MOBILE	
AL06301		AL002023C	
COUNTY SHERIFFS DEPT		MONTGOMERY COUNTY	
SHERIFF		YOUTH FACILITY	
JASPER	AL 35501	DETENTION DIRECTOR	
		1111 AIR BASE BOULEVARD	AL 36108
AL06400		MONTGOMERY	
		AL003013C	
CARBON HILL POLICE DEPT		JUVENILE DETENT HOME	
POLICE CHIEF		SUPERINTENDENT	
CARBON HILL	AL 35549	FLINT CITY	AL 35601
AL06402		AL052013C	
ALL OTHER AGENCIES			
COUNTY SHERIFFS DEPT		STATE LEVEL	
SHERIFF		ALABAMA STATE	
CHATON	AL 36510	DD OF CORRECTIONS	
		DIRECTOR	
AL06500		101 SOUTH UNION ST	AL 36104
		MONTGOMERY	
		AL003013C	
COUNTY SHERIFFS DEPT		DEPT OF PUBLIC SAFETY	
SHERIFF		DIRECTOR	
CAMDEN	AL 36726	P O BOX 1511	AL 36104
		MONTGOMERY	
AL06600		AL003025Y	
COUNTY SHERIFFS DEPT		ALA POLICE ACADEMY	
SHERIFF		DIRECTOR	
DOUBLE SPRINGS	AL 35553	COLISEUM BLVD	AL 36109
		MONTGOMERY	
AL06700		AL003035Y	

COMMISSION TO PRESERVE	
THE PEACE	
CHAIRMAN	
STATE CAPITOL	
MONTGOMERY	AL 36104
AL003045Y	
HEALTH DEPT	
DIV OF NARCOTICS	
AND DANGEROUS DRUG	
501 DEXTER AVE	
MONTGOMERY	AL 36104
AL003055Y	
DEPT OF MENTAL HEALTH	
DIV OF ALCOHOLISM	
DIRECTOR	
715 STATE OFFICE BLDG	
MONTGOMERY	AL 36102
AL003065Y	
ALA STATE MILITARY DEPT	
ADJUTANT GENERAL	
P O BOX 1311	
1720 FEDERAL DRIVE	
MONTGOMERY	AL 36102
AL003075Y	
ALA LAW ENFORCEMENT	
PLANNING AGENCY	
ADMINISTRATOR	
PUBLIC SAFETY BLDG	
MONTGOMERY	AL 36102
AL003015E	
LAW ENFORCMENT REG 1	
ADVISEY BD CHAIRMAN	
MORGAN CO COURTHOU	
DECATUR	AL 35601
AL052015E	
LAW ENFORCMT REG 2	
ADVISEY BD CHAIRMAN	
CHIEF	
TUSCALOOSA POL DEPT	
TUSCALOOSA	AL 35401
AL062015E	
LAW ENFORCMT REGION 3	
ADVISEY BD CHAIRMAN	
CO COMMISSIONERS P	
211 COUNTHOUSE	
BIRMINGHAM	AL 35203
AL001015E	
LAW ENFORCMT REGION 4	
MAYOR JOHN GAITHER	
P O BOX 128	
HEFLIN	AL 36264
AL018015E	
LAW ENFORCMT REGION 5	
SHERIFF MAC BUTLER	
P O DRAWER 4219	
MONTGOMERY	AL 36104
AL003025E	
LAW ENFORCMT REGION 6	
CHIEF H GLENN HOLT	
BREWTON POLICE DEP	
BREWTON	AL 36426
AL030015E	
LAW ENFORCMT REGION 7	
MAYOR H N BROWN	
CITY HALL	
ENTERPRISE	AL 36331
AL019005E	

CIRCUIT COURTS OF ALA  
PRESIDING JUDGE  
STATE CAPITOL  
MONTGOMERY AL 36104  
AL030035E

LOCAL LEVEL

JURY COMMISSION  
JEFFERSON CO  
COMMISSIONER  
716 N 21ST ST  
BIRMINGHAM AL 35203  
AL001013Y

GRAND JURY JEFFERSON CO  
CHAIRMAN  
612 COURTHOUSE  
716 N 21ST  
BIRMINGHAM AL 35203  
AL001023Y

GRAND JURY JEFFERSON CO  
CHAIRMAN  
BESSEMER COURTHOUS  
BESSEMER AL 35020  
AL001033Y

POLICE TRAINING DEPT  
DIRECTOR  
P O DRAWER 159  
MONTGOMERY AL 36101  
AL003011E

**END**