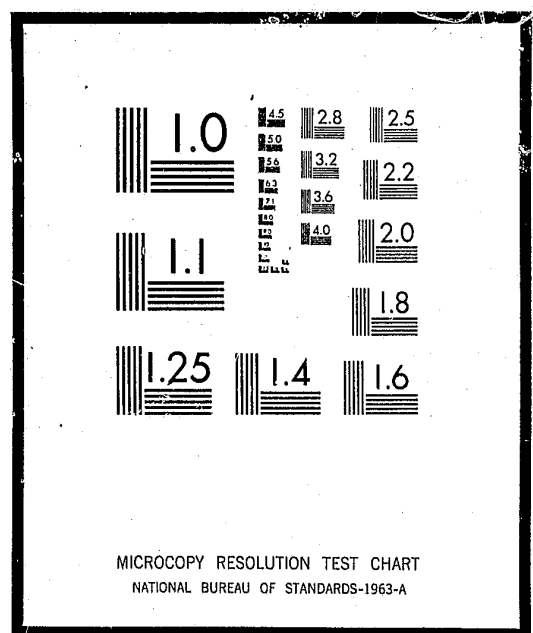


# NCJRS

This microfiche was produced from documents received for inclusion in the NCJRS data base. Since NCJRS cannot exercise control over the physical condition of the documents submitted, the individual frame quality will vary. The resolution chart on this frame may be used to evaluate the document quality.



Microfilming procedures used to create this fiche comply with the standards set forth in 41CFR 101-11.504

Points of view or opinions stated in this document are those of the author(s) and do not represent the official position or policies of the U.S. Department of Justice.

U.S. DEPARTMENT OF JUSTICE  
LAW ENFORCEMENT ASSISTANCE ADMINISTRATION  
NATIONAL CRIMINAL JUSTICE REFERENCE SERVICE  
WASHINGTON, D.C. 20531

Date filmed

9/23/75

COMMONWEALTH OF VIRGINIA  
DEPARTMENT OF CORRECTIONS

CHILDREN'S CASES DISPOSED OF BY THE JUVENILE COURTS  
FOR THE  
FISCAL YEAR ENDED JUNE 30, 1973

15709

Prepared By:  
Bureau of Management Information

CHILDREN'S CASES DISPOSED OF BY THE JUVENILE COURTS  
FISCAL YEAR ENDED JUNE 30, 1973

Monthly reports submitted by Virginia courts with juvenile jurisdiction for 1972-73 indicated 67,956 youth cases were disposed of. This was an increase of 4,101 or 6.4% over fiscal year 1972.

DELINQUENCY: The type of juvenile activity pertaining to delinquency includes: (1) violation of criminal statutes for other than motor vehicle operation, (2) behavior beyond parental control, such as habitual disobedience or runaway, or (3) school truancy and related problems. Delinquency cases decreased 1.5% over the previous fiscal year.

TRAFFIC VIOLATIONS: Cases concerning the operation of motor vehicles increased by 1,097 to 19,059. This is not a fully accurate figure since some counties handle all traffic law violators as adults. In such instances, these cases are not represented in the reported juvenile statistics.

DEPENDENCY AND NEGLECT: The number of cases where neglect was a major factor decreased by 456 or 7.9%. The prior year such cases increased 10.4%.

OTHER TYPES OF CASES: There were 11,781 cases reported as "All Other". The number of such cases increased 50.0% from the prior fiscal year in which the cases of this type had increased 49.4% from the next previous year. These cases include children referred to the court for (1) commitment as mentally defective; (2) determination of custody or guardianship; and (3) consent to marry or enlist in the Armed Forces for wards of the State or local governments.

UNOFFICIAL CASES: The 5,683 unofficial cases represent 8.4% of all cases disposed of. The practice of many cities and counties to report only official cases indicated that the prevalence of habitual juvenile misbehavior and delinquent conduct is greater than the base statistics appear to show.

RACE AND SEX: Of the official cases disposed of 57.1% were white males, 18.7% were white females, 17.6% were non white males and 6.6% were non white females.

CITY AND COUNTY: The cities accounted for 35,086 or 52% of the cases and the counties 32,870 or 48%.

The information in the following tables is compiled from monthly reports submitted by the judges of the individual courts in cooperation with the Department of Welfare and Institutions. Although the data herein is not complete in several respects, it is believed that it substantially represents the volume of children's cases handled by juvenile courts in Virginia. It is felt that the large increase in cases disposed of is due, in part, to the efforts of the courts to submit more accurate data.

COMPARISON OF YEARS ENDED JUNE 30, 1971, 1972, and 1973

Type of Case	Number of Cases			Percent of Caseload		
	1971	1972	1973	1971	1972	1973
Delinquency	28,784	32,276	31,805	53.5	50.6	46.8
Traffic Violations	14,510	17,962	19,059	27.0	28.1	28.1
Dependent and Neglected	5,225	5,767	5,311	9.7	9.0	7.8
Other Types	5,255	7,850	11,781	9.8	12.3	17.3
TOTAL	53,774	63,855	67,956 *	100.0	100.0	100.0

TOTAL CASES OF CITIES AND COUNTIES BY OFFICIAL AND UNOFFICIAL CASES

	OFFICIAL CASES				UNOFFICIAL CASES			
	WHITE		NONWHITE		WHITE		NONWHITE	
	Male	Female	Male	Female	Male	Female	Male	Female
Counties	20,175	6,371	3,186	1,149	1,234	524	143	88
	56.7%	54.7%	29.0%	28.2%	44.4%	42.7%	12.2%	17.7%
Cities *	15,392	5,285	7,787	2,928	1,546	705	1,033	410
	43.3%	45.3%	71.0%	71.8%	55.6%	57.3%	87.8%	82.3%
GRAND TOTAL *	35,567	11,656	10,973	4,077	2,780	1,229	1,176	498
	100.0%	100.0%	100.0%	100.0%	100.0%	100.0%	100.0%	100.0%

TOTAL CASES OF CITIES AND COUNTIES BY DELINQUENCY AND TRAFFIC VIOLATIONS

	DELINQUENCY				TRAFFIC VIOLATIONS			
	WHITE		NONWHITE		WHITE		NONWHITE	
	MALE	FEMALE	MALE	FEMALE	MALE	FEMALE	MALE	FEMALE
Counties	9,448	2,765	1,915	452	6,980	1,146	651	102
	56.8%	52.2%	24.8%	20.9%	49.2%	41.7%	36.2%	32.0%
Cities *	7,191	2,528	5,794	1,712	7,216	1,599	1,148	217
	43.2%	47.8%	75.2%	79.1%	50.8%	58.3%	63.8%	68.0%
GRAND TOTAL *	16,639	5,293	7,709	2,164	14,196	2,745	1,799	319
	100.0%	100.0%	100.0%	100.0%	100.0%	100.0%	100.0%	100.0%

TOTAL CASES OF CITIES AND COUNTIES BY TYPE OF CASE

	TOTAL	DELINQUENCY	TRAFFIC VIOLATIONS	DEPENDENT AND NEGLECTED	ALL OTHER
Counties	32,870	14,580	8,879	2,639	6,772
	48.3%	45.8%	46.6%	49.7%	57.5%
Cities *	35,086	17,225	10,180	2,672	5,009
	51.7%	54.2%	53.4%	50.3%	42.5%
GRAND TOTAL *	67,956	31,805	19,059	5,311	11,781
	100.0%	100.0%	100.0%	100.0%	100.0%

\* Information for Danyville estimated for June, 1973. Report not received.

REPORT OF CHILDREN'S CASES DISPOSED OF BY THE JUVENILE COURTS  
ACCORDING TO TYPE OF CASE AND RACE AND SEX BY COUNTIES AND CITIES

Fiscal Year Ended June 30, 1973

Counties	OFFICIAL CASES					UNOFFICIAL CASES			
	TOTAL	WHITE		NONWHITE		Male	Female	Male	Female
		Male	Female	Male	Female				
Accomack	68	20	2	22	1	6	9	6	2
Albemarle	615	424	83	49	16	27	15	-	1
Alleghany & Covington	387	288	74	15	4	3	-	3	-
Amelia	13	2	2	1	8	-	-	-	-
Amherst	406	215	106	65	20	-	-	-	-
Appomattox	66	34	9	14	9	-	-	-	-
Arlington	2,786	1,569	738	341	138	-	-	-	-
Augusta	419	333	72	9	5	-	-	-	-
Bath	67	61	3	2	1	-	-	-	-
Bedford	127	68	26	26	7	-	-	-	-
Bland	20	15	5	-	-	-	-	-	-
Botetourt	201	152	36	8	5	-	-	-	-
Brunswick	21	7	3	9	2	-	-	-	-
Buchanan	133	97	36	-	-	-	-	-	-
Buckingham	196	65	4	108	19	-	-	-	-
Campbell	805	501	196	74	34	-	-	-	-
Caroline	91	51	8	16	5	-	6	-	5
Carroll & part of Galax	198	171	27	-	-	-	-	-	-
Charles City	58	8	3	17	3	6	5	12	4
Charlotte	224	86	36	62	40	-	-	-	-
Chesterfield	2,410	1,125	485	77	31	463	187	25	17
Clarke	103	68	15	6	2	8	4	-	-
Craig	18	10	8	-	-	-	-	-	-
Culpeper	146	92	20	24	8	1	1	-	-
Dumfries	114	16	17	38	30	-	-	5	8
Dickenson	92	66	26	-	-	-	-	-	-
Dinwiddie	51	33	4	11	2	-	1	-	-
Dorset	115	46	12	24	9	6	4	10	4
Douglas	5,664	3,911	1,365	295	93	-	-	-	-
Dunham	151	92	22	29	6	-	2	-	-
Dwight	125	109	12	4	-	-	-	-	-
Essex	121	90	8	11	12	-	-	-	-
Franklin	198	125	21	30	22	-	-	-	-
Fredricksburg	297	245	47	5	-	-	-	-	-
Giles	57	49	8	-	-	-	-	-	-
Goochland	134	63	15	19	2	20	10	5	-
Greene	57	29	8	17	3	-	-	-	-
Grayson & part of Galax	229	185	39	2	3	-	-	-	-
Henrico	84	51	16	17	-	-	-	-	-
Harrisonburg	48	12	1	18	17	-	-	-	-
Halifax & South Boston	616	289	91	178	58	-	-	-	-
Hampden	159	97	33	24	5	-	-	-	-
Henrico	1,466	1,103	240	81	42	-	-	-	-
Henry	684	367	130	114	36	26	7	2	2
Hughes	4	4	-	-	-	-	-	-	-
Isle of Wight	72	16	8	28	20	-	-	-	-
James City and Williamsburg	645	300	78	226	41	-	-	-	-

Counties (contd)	TOTAL	OFFICIAL CASES				UNOFFICIAL CASES			
		WHITE		NONWHITE		WHITE		NONWHITE	
		Male	Female	Male	Female	Male	Female	Male	Female
King George	77	38	23	13	3	-	-	-	-
King & Queen	20	8	1	8	3	-	-	-	-
King William	109	67	18	16	3	4	1	-	-
Lancaster	79	37	6	29	7	-	-	-	-
Lee	190	111	79	-	-	-	-	-	-
Loudoun	301	150	52	19	7	46	19	1	7
Louisa	203	146	32	23	2	-	-	-	-
Lunenburg	19	5	4	8	2	-	-	-	-
Madison	112	85	16	8	3	-	-	-	-
Mathews	76	37	10	19	3	3	2	-	-
Mecklenburg	585	257	79	166	83	-	-	-	2
Middlesex	47	13	2	29	-	1	-	2	-
Montgomery	627	381	161	16	6	54	8	-	1
Nelson	252	161	33	37	21	-	-	-	-
New Kent	126	69	12	17	-	14	10	4	-
Northampton	52	26	1	20	5	-	-	-	-
Northumberland	50	16	4	20	5	3	-	2	-
Nottoway	105	47	35	22	1	-	-	-	-
Orange	274	180	53	29	12	-	-	-	-
Page	197	140	50	7	-	-	-	-	-
Patrick	116	88	11	13	3	1	-	-	-
Pittsylvania	840	424	135	177	104	-	-	-	-
Powhatan	23	19	1	2	1	-	-	-	-
Prince Edward	97	40	24	19	14	-	-	-	-
Prince George	237	147	49	30	11	-	-	-	-
Prince William	685	501	159	24	1	-	-	-	-
Pulaski	356	181	67	13	4	60	17	10	4
Rappahannock	-	-	-	-	-	-	-	-	-
Richmond	105	41	9	17	6	12	9	8	3
Roanoke	1,327	673	164	15	7	318	138	10	2
Rockbridge & Lexington	50	35	7	1	3	3	1	-	-
Rockingham & Harrisonburg	721	653	68	-	-	-	-	-	-
Russell	138	93	39	6	-	-	-	-	-
Scott	131	119	12	-	-	-	-	-	-
Shenandoah	219	167	47	4	1	-	-	-	-
Smyth	642	435	181	10	1	12	3	-	-
Southampton	96	48	10	34	4	-	-	-	-
Spotsylvania	282	166	72	33	11	-	-	-	-
Stafford	408	276	95	30	7	-	-	-	-
Stafford	15	5	-	10	-	-	-	-	-
Sussex	48	14	2	21	11	-	-	-	-
Tazewell	208	98	16	1	-	55	34	4	-
Terrace	167	137	23	5	2	-	-	-	-
Washington	877	603	170	8	8	66	22	-	-
Westmoreland	195	53	6	54	3	13	8	32	26
Wise & Norton	129	91	23	3	6	3	1	2	-
Wythe	253	162	70	16	5	-	-	-	-
York	243	172	42	18	11	-	-	-	-

Harrisonburg started reporting separately in August 1972

COMMONWEALTH OF VIRGINIA  
DEPARTMENT OF CORRECTIONS

CHILDREN'S CASES DISPOSED OF BY THE JUVENILE COURTS  
FOR DELINQUENCY AND TRAFFIC VIOLATIONS ACCORDING  
TO RACE AND SEX  
Fiscal Year Ended June 30, 1973

CITIES	TOTAL	OFFICIAL CASES				UNOFFICIAL CASES			
		WHITE		NONWHITE		WHITE		NONWHITE	
		Male	Female	Male	Female	Male	Female	Male	Female
Alexandria	1,562	753	265	328	123	39	17	24	11
Bedford	62	46	10	5	1	-	-	-	-
Bristol	482	259	103	10	11	59	25	12	3
Buena Vista	61	46	15	-	-	-	-	-	-
Charlottesville	878	406	128	186	56	53	11	21	17
Chesapeake	925	505	211	164	45	-	-	-	-
Crofton Forge	29	20	4	4	1	-	-	-	-
Colonial Heights	146	93	27	-	-	18	8	-	-
Covington (See Alleghany Co.)	-	-	-	-	-	-	-	-	-
Danville *	1,082	560	172	272	78	-	-	-	-
Emporia	55	11	8	15	3	5	-	11	2
Falls Church	287	176	38	27	5	20	16	3	2
Franklin	69	13	1	33	22	-	-	-	-
Fredericksburg	319	159	74	54	32	-	-	-	-
Galax (See Carroll & Grayson Co.)	-	-	-	-	-	-	-	-	-
Hampton	1,321	617	237	341	126	-	-	-	-
Harrisonburg	151	135	16	-	-	-	-	-	-
Hopewell	525	179	44	60	13	155	43	20	11
Independence	977	474	143	230	72	14	13	21	10
Martinsville	321	174	60	62	25	-	-	-	-
Manassas	382	172	33	121	56	-	-	-	-
Newport News	1,860	920	305	491	144	-	-	-	-
Norfolk	5,842	2,330	950	1,855	707	-	-	-	-
Portsmouth (See Wise Co.)	-	-	-	-	-	-	-	-	-
Petersburg	1,325	317	71	355	93	147	124	140	78
Portsmouth	1,790	628	255	662	245	-	-	-	-
Radford	141	95	40	4	1	1	-	-	-
Richmond	5,959	1,749	583	1,875	777	216	54	540	165
Roanoke	1,582	420	271	233	125	240	143	99	51
Salem	215	154	46	14	1	-	-	-	-
South Boston (See Halifax Co.)	-	-	-	-	-	-	-	-	-
Staunton	341	198	52	63	28	-	-	-	-
Suffolk	348	40	6	85	27	51	32	79	28
Virginia Beach	5,469	3,314	987	227	101	528	217	63	32
Waynesboro	241	172	59	7	3	-	-	-	-
Williamsburg (See James City Co.)	-	-	-	-	-	-	-	-	-
Winchester	339	257	71	4	7	-	-	-	-
<b>STATE TOTAL</b>	<b>67,956</b>	<b>35,567</b>	<b>11,656</b>	<b>10,973</b>	<b>4,077</b>	<b>2,780</b>	<b>1,229</b>	<b>1,176</b>	<b>498</b>

COUNTIES	TOTAL	DELINQUENCY				TRAFFIC VIOLATIONS				
		WHITE		NONWHITE		WHITE		NONWHITE		
		MALE	FEMALE	MALE	FEMALE	TOTAL	MALE	FEMALE	MALE	FEMALE
Accomack	67	26	10	28	3	-	-	-	-	-
Albemarle	220	176	22	20	2	236	189	28	18	1
Alleghany & Covington	197	154	33	10	-	80	70	8	2	-
Amelia	11	2	2	-	7	-	-	-	-	-
Amherst	108	42	26	32	8	142	115	15	11	1
Appomattox	23	10	3	8	2	18	15	1	2	-
Arlington	748	396	144	177	31	793	589	144	58	2
Augusta	158	122	30	5	1	217	184	29	4	-
Bath	39	38	-	-	1	26	23	1	2	-
Bedford	78	43	15	19	1	8	7	1	-	-
Bland	16	14	2	-	-	1	-	1	-	-
Botetourt	82	60	18	2	2	102	82	14	5	1
Brunswick	20	7	3	9	1	-	-	-	-	-
Buchanan	133	97	36	-	-	-	-	-	-	-
Buckingham	77	30	1	40	6	34	24	1	6	3
Campbell	191	137	30	15	9	294	211	41	38	4
Caroline	35	28	1	5	1	3	1	-	-	2
Carroll & Part of Galax	49	36	13	-	-	141	134	7	-	-
Charles City	39	7	4	25	3	8	6	2	-	-
Charlotte	51	7	3	31	10	61	54	2	4	1
Chesterfield	1,402	954	369	57	22	767	527	194	32	14
Clarke	64	47	9	6	2	32	25	7	-	-
Craig	10	9	1	-	-	8	8	-	-	-
Culpeper	49	29	5	13	2	55	42	4	9	-
Dumfries	17	6	2	9	-	7	3	2	2	-
Dickenson	79	60	19	-	-	1	1	-	-	-
Lincolnton	33	24	-	8	1	5	5	-	-	-
Essex	52	23	6	14	9	46	27	5	14	-
Fairfax	2,614	1,839	568	167	40	503	427	40	34	2
Fauquier	91	51	15	24	1	12	12	-	-	-
Floyd	41	33	5	3	-	71	68	2	1	-
Fluvanna	74	57	3	9	5	23	21	-	1	1
Franklin	118	90	5	18	5	53	28	13	7	5
Frederick	94	74	18	2	-	196	167	26	3	-
Giles	53	46	7	-	-	-	-	-	-	-
Gloucester	59	39	12	7	1	64	40	10	14	-
Gooseland	41	20	5	13	3	13	8	3	2	-
Grayson & part of Galax	91	71	15	2	3	91	78	13	-	-
Green	37	20	8	9	-	27	20	3	4	-
Greensville	21	7	1	10	3	8	5	-	2	1
Halifax & So. Boston	213	77	17	95	24	247	161	36	48	2
Hanover	125	79	23	20	3	-	-	-	-	-
Henrico	426	284	63	60	19	809	710	85	12	2
Henry	325	162	80	61	22	295	205	33	48	9
Highland	-	-	-	-	-	1	1	-	-	-
Isle of Wight	31	2	2	20	7	2	-	-	-	2
James City & Williamsburg	547	257	51	204	35	34	25	1	8	-

Information for Danville estimated for June 1973. Report not received.

COUNTIES (Contd)	DELINQUENCY					TRAFFIC VIOLATIONS				
	WHITE		NONWHITE			WHITE		NONWHITE		
	TOTAL	MALE	FEMALE	MALE	FEMALE	TOTAL	MALE	FEMALE	MALE	FEMALE
King George	35	17	8	9	1	21	14	4	3	-
King and Queen	7	3	-	1	3	13	5	1	7	-
King William	27	15	2	10	-	51	39	4	5	3
Lancaster	20	7	-	12	1	59	30	6	17	6
Lee	81	51	30	-	-	48	36	12	-	-
Loudoun	181	125	32	17	7	29	22	5	2	-
Louisa	74	41	18	15	-	117	100	8	8	1
Lunenburg	8	1	-	5	2	-	-	-	-	-
Madison	26	20	2	1	3	63	50	9	4	-
Mathews	28	10	6	10	2	29	25	1	3	-
Mecklenburg	257	122	19	90	26	169	106	18	36	9
Middlesex	31	4	1	26	-	16	10	1	5	-
Montgomery	268	167	85	13	3	157	144	13	-	-
Nelson	157	111	5	27	14	43	30	7	6	-
New Kent	38	23	7	8	-	74	53	9	12	-
Northampton	46	24	1	19	2	2	2	-	-	-
Northumberland	11	1	1	8	1	35	16	3	13	3
Nottoway	36	22	4	10	-	-	-	-	-	-
Orange	154	96	29	24	5	89	72	7	5	5
Page	121	101	17	3	-	20	11	5	4	-
Patrick	40	34	2	4	-	66	54	8	4	-
Pittsylvania	193	102	18	57	16	300	214	26	50	10
Powhatan	23	19	1	2	1	-	-	-	-	-
Prince Edward	46	20	9	12	5	20	14	3	3	-
Prince George	100	55	26	16	3	44	34	5	5	-
Prince William	586	430	134	21	1	11	11	-	-	-
Pulaski	281	200	53	22	6	5	5	-	-	-
Rappahannock	-	-	-	-	-	-	-	-	-	-
Richmond	49	15	10	16	8	40	31	3	5	1
Roanoke	482	334	126	17	5	435	379	50	4	2
Rockbridge & Lexington	48	37	8	1	2	-	-	-	-	-
Rockingham & * Harrisonburg	145	117	28	-	-	282	252	30	-	-
Russell	92	70	16	6	-	10	10	-	-	-
Scott	37	36	1	-	-	87	76	11	-	-
Shenandoah	122	100	18	4	-	31	31	-	-	-
Smyth	224	159	60	5	-	177	141	32	3	1
Southampton	25	4	2	18	1	54	36	8	9	1
Spotsylvania	90	54	24	11	1	72	48	16	8	-
Stafford	192	134	41	15	2	75	62	7	5	1
Surry	8	-	-	8	-	7	5	-	2	-
Sussex	45	13	2	21	9	1	1	-	-	-
Tazewell	208	153	50	5	-	-	-	-	-	-
Warren	72	51	15	5	1	88	79	8	-	1
Washington	399	310	79	7	3	262	233	29	-	-
Westmoreland	90	12	7	55	16	73	50	1	22	-
Wise & Norton	76	62	11	2	1	1	1	-	-	-
Wythe	173	124	35	13	1	10	10	-	-	-
York	79	50	17	7	5	159	120	24	10	5

\* Harrisonburg started reporting separately in August 1972

CITIES	DELINQUENCY					TRAFFIC VIOLATIONS				
	WHITE		NONWHITE			WHITE		NONWHITE		
	TOTAL	Male	Female	Male	Female	TOTAL	Male	Female	Male	Female
Alexandria	777	328	115	266	68	537	378	106	46	7
Bedford	48	33	9	5	1	6	6	-	-	-
Bristol	311	187	93	20	11	138	115	20	2	1
Buena Vista	61	46	15	-	-	-	-	-	-	-
Charlottesville	434	207	52	142	33	188	143	22	20	3
Chesapeake	595	348	97	128	22	77	61	8	7	1
Clifton Forge	13	8	2	3	-	5	5	-	-	-
Colonial Heights	57	26	5	18	8	64	53	11	-	-
Covington (See Alleghany Co.)	-	-	-	-	-	-	-	-	-	-
Danville *	573	302	57	168	46	331	198	58	66	9
Emporia	34	9	1	21	3	-	-	-	-	-
Falls Church	165	111	19	28	7	90	73	15	2	-
Franklin	47	11	1	22	13	-	-	-	-	-
Fredericksburg	110	45	29	23	13	79	54	13	11	1
Galax (See Carroll & Grayson Co.)	-	-	-	-	-	-	-	-	-	-
Hampton	811	360	126	251	74	253	175	33	40	5
Harrisonburg	12	10	2	-	-	89	76	13	-	-
Hopewell	315	189	49	60	17	187	140	32	15	-
Lynchburg	425	188	45	153	39	344	241	52	48	3
Martinsville	188	96	32	44	16	90	65	16	7	2
Nansemond	91	18	3	59	11	206	143	21	25	17
Newport News	830	280	122	350	78	861	602	136	97	26
Norfolk	3,112	1,011	415	1,305	381	1,631	1,069	293	222	47
Norton (See Wise Co.)	-	-	-	-	-	-	-	-	-	-
Petersburg	607	182	60	308	57	251	147	37	50	17
Portsmouth	902	242	113	412	135	426	272	63	73	18
Radford	62	51	9	2	-	27	21	6	-	-
Richmond	2,628	652	166	1,392	418	1,280	745	172	323	40
Roanoke	896	357	189	241	109	-	-	-	-	-
Salem	85	51	23	11	-	102	94	7	1	-
South Boston (See Halifax Co.)	-	-	-	-	-	-	-	-	-	-
Staunton	221	115	36	52	18	86	73	10	3	-
Suffolk	312	70	34	157	51	33	21	3	6	3
Virginia Beach	2,215	1,456	537	143	79	2,539	2,034	410	83	12
Waynesboro	147	101	37	6	3	80	63	16	1	-
Williamsburg (See James City Co.)	-	-	-	-	-	-	-	-	-	-
Winchester	141	101	35	4	1	180	149	26	-	5
STATE TOTAL	31,805	16,639	5,293	7,709	2,164	19,059	14,196	2,745	1,799	319

\* Information for Danville estimated for June 1973. Report was not received.

COMMONWEALTH OF VIRGINIA  
DEPARTMENT OF CORRECTIONS

CHILDREN'S CASES DISPOSED OF BY THE JUVENILE COURTS  
ACCORDING TO CLASSIFICATION OF CASE BY COUNTY AND CITY  
Fiscal Year Ended June 30, 1973

COUNTIES	TOTAL	DELINQUENCY	TRAFFIC VIOLATIONS	DEPENDENT AND NEGLECTED	ALL OTHER
Accomack	68	67	-	-	1
Albemarle	615	220	236	28	131
Alleghany & Covington	387	197	80	56	54
Amelia	13	11	-	1	1
Amherst	406	108	142	15	141
Appomattox	66	23	18	6	19
Arlington	2,786	748	793	168	1,077
Augusta	419	158	217	3	41
Bath	67	39	26	2	-
Bedford	127	78	8	40	1
Bland	20	16	1	3	-
Botetourt	201	82	102	2	15
Brunswick	21	20	-	1	-
Buchanan	133	133	-	-	-
Buckingham	196	77	34	80	5
Campbell	805	191	294	5	315
Caroline	91	35	3	4	49
Carroll & Part of Galax	198	49	141	8	-
Charles City	58	39	8	8	3
Charlotte	224	51	61	-	112
Chesterfield	2,410	1,402	767	57	184
Clarke	103	64	32	6	1
Craig	18	10	8	-	-
Culpeper	146	49	55	16	26
Cumberland	114	17	7	79	11
Dickenson	92	79	1	12	-
Dinwiddie	51	33	5	13	-
Essex	115	52	46	6	11
Fairfax	5,664	2,614	503	1,006	1,541
Fauquier	151	91	12	25	23
Floyd	125	41	71	2	11
Fluvanna	121	74	23	15	9
Franklin	198	118	53	21	6
Frederick	297	94	196	7	-
Giles	57	53	-	4	-
Gloucester	134	59	64	2	9
Goochland	57	41	13	3	-
Grayson & Part of Galax	229	91	91	27	20
Greene	84	37	27	8	12
Greensville	48	21	8	15	4
Halifax & South Boston	616	213	247	155	1
Hanover	159	125	-	13	21
Henrico	1,466	426	809	4	227
Henry	684	325	295	18	46
Highland	4	-	1	-	3
Isle of Wight	72	31	2	5	34
James City & Williamsburg	645	547	34	63	1

COUNTIES (contd)	TOTAL	DELINQUENCY	TRAFFIC VIOLATIONS	DEPENDENT AND NEGLECTED	ALL OTHER
King George	77	35	21	13	8
King & Queen	20	7	13	-	-
King William	109	27	51	-	31
Lancaster	79	20	59	-	-
Lee	190	81	48	59	2
Loudoun	301	181	29	4	87
Louisa	203	74	117	12	-
Lunenburg	19	8	-	7	4
Madison	112	26	63	18	5
Mathews	76	28	29	2	17
Mecklenburg	585	257	169	5	154
Middlesex	47	31	16	-	-
Montgomery	627	268	157	20	182
Nelson	252	157	43	-	52
New Kent	126	38	74	5	9
Northampton	52	46	2	4	-
Northumberland	50	11	35	-	4
Nottoway	105	36	-	5	64
Orange	274	154	89	9	22
Page	197	121	20	14	42
Patrick	116	40	66	8	2
Pittsylvania	840	193	300	-	347
Powhatan	23	23	-	-	-
Prince Edward	97	46	20	31	-
Prince George	237	100	44	13	80
Prince William	685	586	11	-	88
Pulaski	356	281	5	7	63
Rappahannock	-	-	-	-	-
Richmond	105	49	40	5	11
Roanoke	1,327	482	435	67	343
Rockbridge & Lexington	50	48	-	-	2
Rockingham & * Harrisonburg	721	145	282	19	275
Russell	138	92	10	31	5
Scott	131	37	87	-	7
Shenandoah	219	122	31	8	58
Smyth	642	224	177	57	184
Southampton	96	25	54	2	15
Spotsylvania	282	90	72	49	71
Stafford	408	192	75	82	59
Surry	15	8	7	-	-
Sussex	48	45	1	2	-
Tazewell	208	208	-	-	-
Warren	167	72	88	7	-
Washington	877	399	262	19	197
Westmoreland	195	90	73	8	24
Wise & Norton	129	76	1	7	45
Wythe	253	173	10	26	44
York	243	79	159	2	3

\* Harrisonburg started reporting separately in August 1972

<u>CITIES</u>	<u>TOTAL</u>	<u>DELINQUENCY</u>	<u>TRAFFIC VIOLATIONS</u>	<u>DEPENDENT AND NEGLECTED</u>	<u>ALL OTHER</u>
Alexandria	1,562	777	537	125	123
Bedford	62	48	6	8	-
Bristol	482	311	138	10	23
Buena Vista	61	61	-	-	-
Charlottesville	878	434	188	32	224
Chesapeake	925	595	77	147	106
Crofton Forge	29	13	5	2	9
Colonial Heights	146	57	64	5	20
Covington (See Alleghany Co.)					
Danville *	1,082	573	331	13	165
Emporia	55	34	-	16	5
Falls Church	287	165	90	2	30
Franklin	69	47	-	10	12
Fredricksburg	319	110	79	26	104
Galax (See Carroll & Grayson Co.)					
Hampton	1,321	811	253	242	15
Harrisonburg	151	12	89	18	32
Hopewell	525	315	187	15	8
Lynchburg	977	425	344	83	125
Martinsville	321	188	90	43	-
Manassas	382	91	206	18	67
Newport News	1,860	830	861	68	101
Norfolk	5,842	3,112	1,631	1,092	7
Portsmouth (See Wise Co.)					
Petersburg	1,325	607	251	143	324
Portsmouth	1,790	902	426	114	348
Radford	141	62	27	22	30
Richmond	5,959	2,628	1,280	112	1,939
Roanoke	1,582	896	-	286	400
Salem	215	85	102	-	28
South Boston (See Halifax Co.)					
Staunton	341	221	86	3	31
Suffolk	348	312	33	-	3
Virginia Beach	5,469	2,215	2,539	-	715
Waynesboro	241	147	80	-	14
Williamsburg (See James City Co.)					
Winchester	339	141	180	17	1
STATE TOTAL	67,956	31,805	19,059	5,311	11,781

# END

\* Information for Danville estimated for June 1973. Report was not received.