

156977

**U.S. Department of Justice
National Institute of Justice**

This document has been reproduced exactly as received from the person or organization originating it. Points of view or opinions stated in this document are those of the authors and do not necessarily represent the official position or policies of the National Institute of Justice.

Permission to reproduce this copyrighted material in microfilm only has been granted by
New York State Division
of Criminal Justice Services

to the National Criminal Justice Reference Service (NCJRS).

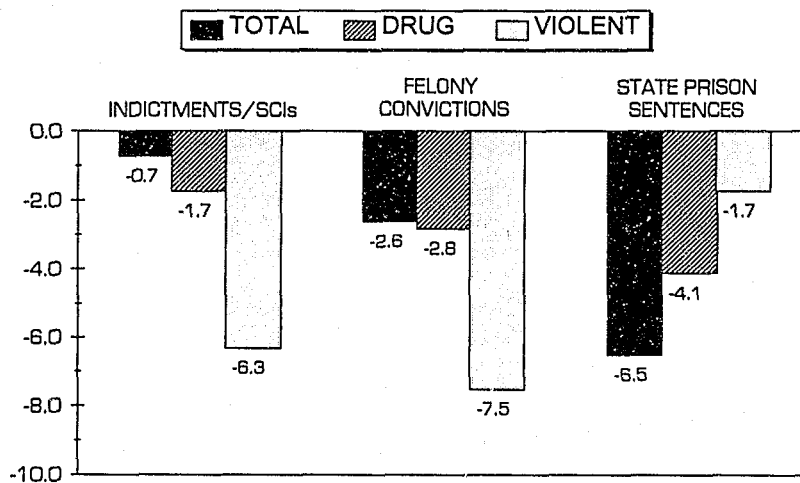
Further reproduction outside of the NCJRS system requires permission of the copyright owner.



Criminal Justice Indicators

NEW YORK STATE FELONY PROCESSING FINAL REPORT

PERCENT CHANGES FOR 1994 vs. 1993



NCJRS

OCT 18 1995

HIGHLIGHTS

ACQUISITION

- » **Indictments/SCIs:** New York State felony indictments and Superior Court Informations (SCIs) totaled 70,567 in 1994, down slightly from the 71,040 indictments/SCIs reported in 1993, and the lowest level reported since 1988. Drug offenses, which accounted for 41 percent of the indictment/SCI total, were down by almost two percent while violent felonies (31 percent of the total) declined by six percent. Felony prosecutions dropped in both New York City and the Upstate counties by two percent, while the Suburban New York City counties reported an increase of 13 percent.
- » **Convictions:** The number of felony convictions in New York State decreased by almost three percent between 1993 and 1994. Violent felony convictions decreased at about twice the rate of drug felony convictions. A decline of almost six percent in New York City offset felony conviction increases in both the Suburban New York City (+6.7%) and Upstate (+2.5%) counties.
- » **Sentences:** Prison sentences in New York State decreased by six percent, down from 28,591 in 1993 to 26,725 in 1994. Sentences to State prison for drug convictions declined at a greater rate than for violent felony convictions. Only the Upstate counties reported an increase in the total number of prison sentences.
- » **Processing Time:** Indictment processing times varied across regions in the State. In New York City, the median number of days between arrest and indictment was 16 days compared with 56 days in Suburban New York City and 63 days Upstate. The time between indictment and disposition was longer in New York City (145 days) than in the Suburban New York City (125 days) and Upstate (123 days) counties.

REGIONAL FELONY PROCESSING

FELONY INDICTMENTS/SCIs

	1994	1993	% chng
New York State			
Total	70,567	71,040	-0.7
Drug	28,680	29,173	-1.7
Violent	22,009	23,494	-6.3
New York City			
Total	46,117	47,247	-2.4
Drug	23,108	23,023	0.4
Violent	15,417	17,176	-10.2
Suburban New York City			
Total	8,972	7,917	13.3
Drug	2,206	2,304	-4.3
Violent	2,543	2,393	6.3
Upstate Counties			
Total	15,359	15,727	-2.3
Drug	3,356	3,831	-12.4
Violent	4,049	3,924	3.2

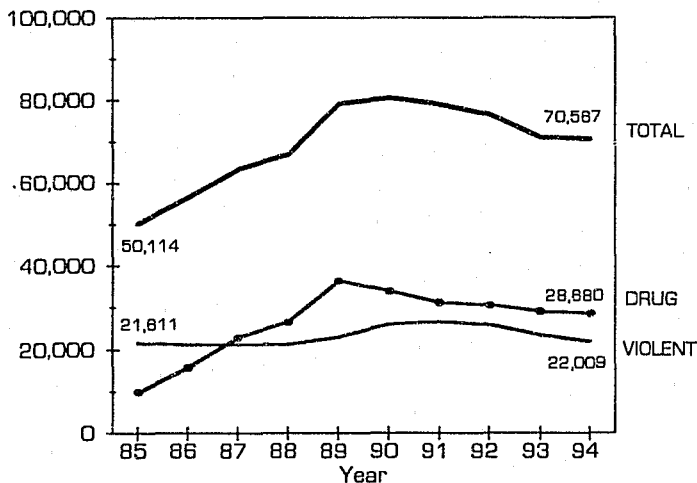
FELONY CONVICTIONS

	1994	1993	% chng
New York State			
Total	55,575	57,039	-2.6
Drug	23,434	24,103	-2.8
Violent	15,307	16,546	-7.5
New York City			
Total	35,936	38,139	-5.8
Drug	18,484	19,225	-3.9
Violent	10,866	12,271	-11.5
Suburban New York City			
Total	6,745	6,320	6.7
Drug	1,901	2,035	-6.6
Violent	1,744	1,623	7.5
Upstate Counties			
Total	12,817	12,502	2.5
Drug	3,042	2,833	7.4
Violent	2,696	2,651	1.7

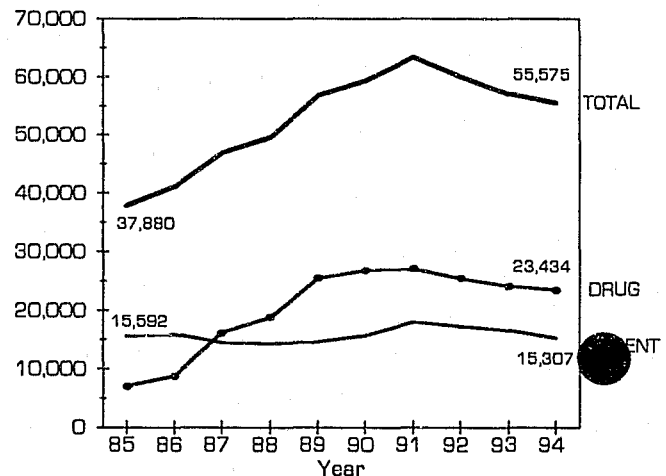
Note: Suburban New York City includes Nassau, Rockland, Suffolk and Westchester counties. Statewide totals include cases from special prosecutors not included in the three geographic regions. Indictments and convictions for other (non-drug/non-violent) offenses are not shown in the above tables.

TEN YEAR TRENDS: 1985 - 1994

FELONY INDICTMENTS/SCIs



FELONY CONVICTIONS



NEW YORK STATE
COUNTY FELONY PROCESSING: 1994 vs. 1993

	Felony Indictments/SCIs			Felony Convictions			State Prison Sentences		
	1994	1993	% change	1994	1993	% change	1994	1993	% change
Albany	557	570	-2.3	484	432	12.0	310	273	13.6
Allegany	88	95	-7.4	79	66	19.7	21	23	-8.7
Bronx	9,683	9,322	3.9	7,837	7,270	7.8	4,206	3,985	5.5
Broome	621	633	-1.9	523	509	2.8	172	171	0.6
Cattaraugus	121	156	-22.4	89	180	-50.6	19	46	-58.7
Cayuga	107	110	-2.7	74	81	-8.6	38	42	-9.5
Chautauqua	374	319	17.2	221	190	16.3	51	40	27.5
Chemung	272	265	2.6	240	224	7.1	102	92	10.9
Chenango	82	45	82.2	29	43	-32.6	9	14	-35.7
Clinton	172	165	4.2	137	180	-23.9	31	49	-36.7
Columbia	142	139	2.2	143	126	13.5	62	61	1.6
Cortland	121	113	7.1	98	85	15.3	43	14	207.1
Delaware	35	53	-34.0	28	34	-17.6	3	7	-57.1
Dutchess	478	484	-1.2	453	415	9.2	151	131	15.3
Erie	1,879	2,052	-8.4	1,662	1,520	9.3	650	582	11.7
Essex	92	94	-2.1	35	39	-10.3	12	10	20.0
Franklin	52	93	-44.1	49	73	-32.9	21	24	-12.5
Fulton	110	78	41.0	93	76	22.4	29	27	7.4
Genesee	101	121	-16.5	118	93	26.9	50	29	72.4
Greene	62	na	-	23	na	-	8	na	-
Hamilton	7	26	-73.1	7	13	-46.2	3	3	0.0
Herkimer	142	124	14.5	103	99	4.0	32	22	45.5
Jefferson	291	264	10.2	233	252	-7.5	47	66	-28.8
Kings	10,374	12,159	-14.7	8,081	10,091	-19.9	4,078	5,410	-24.6
Lewis	48	55	-12.7	43	35	22.9	2	8	-75.0
Livingston	248	302	-17.9	153	152	0.7	46	36	27.8
Madison	89	77	15.6	78	88	-11.4	25	25	0.0
Monroe	1,921	2,095	-8.3	1,608	1,751	-8.2	746	772	-3.4
Montgomery	69	106	-34.9	98	88	11.4	54	40	35.0
Nassau	3,747	2,893	29.5	2,477	2,146	15.4	923	958	-3.7
New York	10,021	10,623	-5.7	8,184	8,085	1.2	4,779	5,256	-9.1
Niagara	356	385	-7.5	303	199	52.3	189	140	35.0

Note: Greene County figures are not available for 1993.

NEW YORK STATE
COUNTY FELONY PROCESSING: 1994 vs. 1993

- continued -

	Felony Indictments/SCIs			Felony Convictions			State Prison Sentences		
	1994	1993	% change	1994	1993	% change	1994	1993	% change
Oneida	750	820	-8.5	592	702	-15.7	227	290	-21.7
Onondaga	1,394	1,423	-2.0	1,112	1,020	9.0	388	361	7.5
Ontario	417	343	21.6	317	328	-3.4	134	140	-4.3
Orange	838	710	18.0	615	639	-3.8	257	266	-3.4
Orleans	98	88	11.4	64	89	-28.1	24	25	-4.0
Oswego	175	189	-7.4	107	184	-41.8	21	52	-59.6
Otsego	67	61	9.8	50	45	11.1	10	14	-28.6
Putnam	115	166	-30.7	95	137	-30.7	17	30	-43.3
Queens	9,596	9,153	4.8	6,777	6,791	-0.2	3,536	3,902	-9.4
Rensselaer	293	291	0.7	249	190	31.1	119	84	41.7
Richmond	794	657	20.9	477	505	-5.5	321	304	5.6
Rockland	415	378	9.8	252	334	-24.6	103	147	-29.9
St. Lawrence	225	246	-8.5	191	133	43.6	54	46	17.4
Saratoga	142	146	-2.7	152	116	31.0	61	41	48.8
Schenectady	347	434	-20.0	385	296	30.1	233	132	76.5
Schuyler	17	42	-59.5	13	20	-35.0	4	5	-20.0
Seneca	77	61	26.2	41	59	-30.5	8	12	-33.3
Steuben	257	292	-12.0	266	245	8.6	58	45	28.9
Suffolk	3,017	2,767	9.0	2,390	2,272	5.2	787	826	-4.7
Sullivan	282	233	21.0	259	247	4.9	91	126	-27.8
Tioga	88	114	-22.8	84	89	-5.6	17	28	-39.3
Tompkins	109	105	3.8	97	116	-16.4	28	36	-22.2
Ulster	332	313	6.1	314	231	35.9	83	89	-6.7
Warren	119	145	-17.9	118	148	-20.3	43	51	-15.7
Washington	102	75	36.0	100	79	26.6	51	38	34.2
Wayne	318	308	3.2	277	250	10.8	87	53	64.2
Westchester	1,793	1,879	-4.6	1,626	1,568	3.7	673	679	-0.9
Wyoming	103	53	94.3	61	54	13.0	13	9	44.4
Yates	56	49	14.3	54	42	28.6	14	15	-6.7
Spec. Narcotics	5,649	5,333	5.9	4,580	4,677	-2.1	2,336	2,359	-1.0
Medicaid Fraud	96	125	-23.2	62	62	0.0	6	15	-60.0
Organized Crime	23	24	-4.2	15	16	-6.3	9	15	-40.0

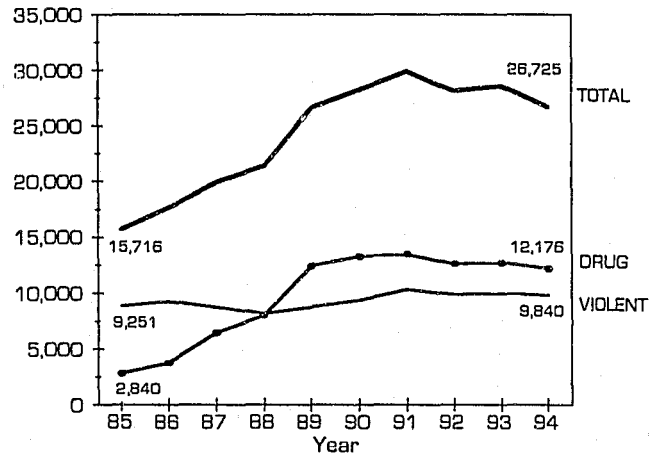
Note: Schoharie County is not displayed due to incomplete reporting.

REGIONAL FELONY PROCESSING

SENTENCES TO STATE PRISON

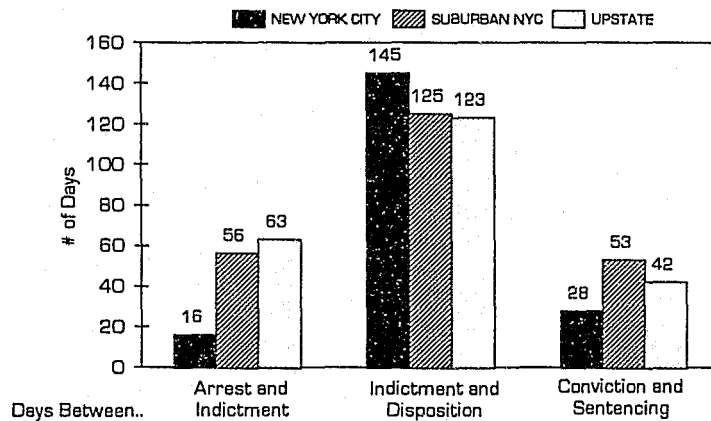
	1994	1993	% chng
New York State			
Total	26,725	28,591	-6.5
Drug	12,176	12,695	-4.1
Violent	9,840	10,011	-1.7
New York City			
Total	19,256	21,216	-9.2
Drug	9,647	10,261	-6.0
Violent	7,047	7,545	-6.6
Suburban New York City			
Total	2,486	2,610	-4.8
Drug	941	1,023	-8.0
Violent	1,015	921	10.2
Upstate Counties			
Total	4,968	4,735	4.9
Drug	1,583	1,403	12.8
Violent	1,778	1,544	15.2

**STATE PRISON SENTENCES BY OFFENSE:
1985-1994**



Note: Suburban New York City includes Nassau, Rockland, Suffolk and Westchester counties. Statewide totals include cases from special prosecutors not included in the three geographic regions. Prison sentences for other (non-drug/non-violent) offenses are not shown in the above table.

1994 INDICTMENT PROCESSING TIMES BY REGION: MEDIAN NUMBER OF DAYS FROM ARREST TO DISPOSITION



Note: Superior Court Informations (SCIs) were excluded from the processing time figures shown above for indictments. The median processing time between SCI and disposition is only one day in each of the three geographic regions. The proportion of total felony cases that SCIs comprised did vary by region, however. During 1994, 21 percent of the felony prosecutions in New York City were SCIs as opposed to indictments, compared with 53 percent in the Suburban New York City area, and 36 percent in the Upstate counties.

NEW YORK STATE DIVISION OF CRIMINAL JUSTICE SERVICES
 Paul Shechtman, Director of Criminal Justice and Commissioner, DCJS
 OFFICE OF JUSTICE SYSTEMS ANALYSIS / BUREAU OF STATISTICAL SERVICES
 Richard A. Rosen, Bureau Chief



BULK RATE
 US POSTAGE
 PAID
 ALBANY NY
 PERMIT NO 473

DCJS BUREAU OF STATISTICAL SERVICES
 NEW YORK STATE DIVISION OF CRIMINAL JUSTICE SERVICES
 EXECUTIVE PARK TOWER, STUYVESANT PLAZA, ALBANY, NY 12203

NEW YORK STATE FELONY PROCESSING FINAL REPORT

This *Indicators* bulletin compares final felony processing data for 1994 with final felony processing data for 1993. These figures were derived from the agency's Indictment Statistical System. The table below displays the numeric and percent increases by region in final indictment/SCI counts compared with the previously published preliminary data for 1994.

	1994 preliminary	1994 final	numeric increase	percent increase
New York State	68,273	70,567	2,294	3.4
New York City	45,159	46,117	958	2.1
Suburban New York City	8,501	8,972	471	5.5
Upstate	14,518	15,359	841	5.8

136 551 8582 704 20858 153 931
SUBURBAN MD F&DL

NEW YORK STATE DIVISION OF CRIMINAL JUSTICE SERVICES
Paul Shechtman, Director of Criminal Justice and Commissioner, DCJS
OFFICE OF JUSTICE SYSTEMS ANALYSIS / BUREAU OF STATISTICAL SERVICES
Richard A. Rosen, Bureau Chief



BULK RATE
US POSTAGE
PAID
ALBANY NY
PERMIT NO 473

OJSA BUREAU OF STATISTICAL SERVICES
NEW YORK STATE DIVISION OF CRIMINAL JUSTICE SERVICES
EXECUTIVE PARK TOWER, STUYVESANT PLAZA, ALBANY, NY 12203

NEW YORK STATE FELONY PROCESSING FINAL REPORT

This *Indicators* bulletin compares final felony processing data for 1994 with final felony processing data for 1993. These figures were derived from the agency's Indictment Statistical System. The table below displays the numeric and percent increases by region in final indictment/SCI counts compared with the previously published preliminary data for 1994.

	1994 preliminary	1994 final	numeric increase	percent increase
New York State	68,273	70,567	2,294	3.4
New York City	45,159	46,117	958	2.1
Suburban New York City	8,501	8,972	471	5.5
Upstate	14,518	15,359	841	5.8